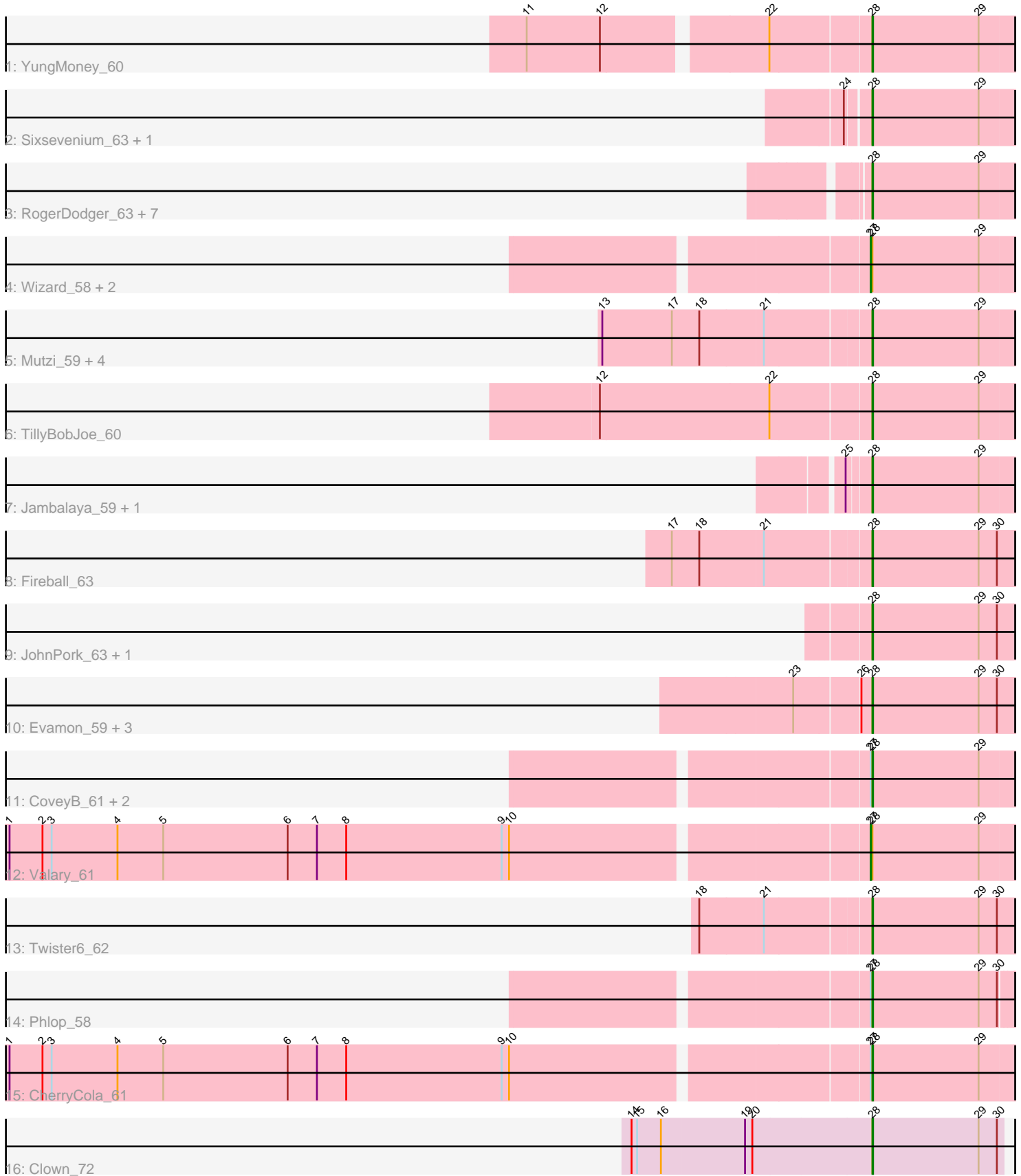


Pham 303521



Note: Tracks are now grouped by subcluster and scaled. Switching in subcluster is indicated by changes in track color. Track scale is now set by default to display the region 30 bp upstream of start 1 to 30 bp downstream of the last possible start. If this default region is judged to be packed too tightly with annotated starts, the track will be further scaled to only show that region of the ORF with annotated starts. This action will be indicated by adding "Zoomed" to the title. For starts, yellow indicates the location of called starts comprised solely of Glimmer/GeneMark auto-annotations, green indicates the location of called starts with at least 1 manual gene annotation.

## Pham 303521 Report

This analysis was run 06/08/26 on database version 649.

Pham number 303521 has 37 members, 4 are drafts.

Phages represented in each track:

- Track 1 : YungMoney\_60
- Track 2 : Sixsevenium\_63, Bakery\_65
- Track 3 : RogerDodger\_63, Danyall\_61, Barb\_62, PullumCavea\_59, PinkCoffee\_62, ClamChowder\_62, KimmyK\_61, Fugax\_63
- Track 4 : Wizard\_58, Arri\_61, VanDeWege\_62
- Track 5 : Mutzi\_59, Shinji\_59, Togo\_59, Egi03\_60, SmokingBunny\_60
- Track 6 : TillyBobJoe\_60
- Track 7 : Jambalaya\_59, Savbucketdawg\_59
- Track 8 : Fireball\_63
- Track 9 : JohnPork\_63, Portcullis\_62
- Track 10 : Evamon\_59, Salvador\_59, Nubi\_60, Sendy\_61
- Track 11 : CoveyB\_61, Gezellig\_58, Halo3\_59
- Track 12 : Valary\_61
- Track 13 : Twister6\_62
- Track 14 : Phlop\_58
- Track 15 : CherryCola\_61
- Track 16 : Clown\_72

### ***Summary of Final Annotations (See graph section above for start numbers):***

The start number called the most often in the published annotations is 28, it was called in 29 of the 33 non-draft genes in the pham.

Genes that call this "Most Annotated" start:

- Bakery\_65, Barb\_62, CherryCola\_61, ClamChowder\_62, Clown\_72, CoveyB\_61, Danyall\_61, Egi03\_60, Evamon\_59, Fireball\_63, Fugax\_63, Gezellig\_58, Halo3\_59, Jambalaya\_59, JohnPork\_63, KimmyK\_61, Mutzi\_59, Nubi\_60, Phlop\_58, PinkCoffee\_62, Portcullis\_62, PullumCavea\_59, RogerDodger\_63, Salvador\_59, Savbucketdawg\_59, Sendy\_61, Shinji\_59, Sixsevenium\_63, SmokingBunny\_60, TillyBobJoe\_60, Togo\_59, Twister6\_62, YungMoney\_60,

Genes that have the "Most Annotated" start but do not call it:

- Arri\_61, Valary\_61, VanDeWege\_62, Wizard\_58,

Genes that do not have the "Most Annotated" start:

- 

### Summary by start number:

Start 27:

- Found in 9 of 37 ( 24.3% ) of genes in pham
- Manual Annotations of this start: 4 of 33
- Called 44.4% of time when present
- Phage (with cluster) where this start called: Arri\_61 (DC1), Valary\_61 (DC1), VanDeWege\_62 (DC1), Wizard\_58 (DC1),

Start 28:

- Found in 37 of 37 ( 100.0% ) of genes in pham
- Manual Annotations of this start: 29 of 33
- Called 89.2% of time when present
- Phage (with cluster) where this start called: Bakery\_65 (DC1), Barb\_62 (DC1), CherryCola\_61 (DC1), ClamChowder\_62 (DC1), Clown\_72 (DC2), CoveyB\_61 (DC1), Danyall\_61 (DC1), Egi03\_60 (DC1), Evamon\_59 (DC1), Fireball\_63 (DC1), Fugax\_63 (DC1), Gezellig\_58 (DC1), Halo3\_59 (DC1), Jambalaya\_59 (DC1), JohnPork\_63 (DC1), KimmyK\_61 (DC1), Mutzi\_59 (DC1), Nubi\_60 (DC1), Phlop\_58 (DC1), PinkCoffee\_62 (DC1), Portcullis\_62 (DC1), PullumCavea\_59 (DC1), RogerDodger\_63 (DC1), Salvador\_59 (DC1), Savbucketdawg\_59 (DC1), Sendy\_61 (DC1), Shinji\_59 (DC1), Sixsevenium\_63 (DC1), SmokingBunny\_60 (DC1), TillyBobJoe\_60 (DC1), Togo\_59 (DC1), Twister6\_62 (DC1), YungMoney\_60 (DC1),

### Summary by clusters:

There are 2 clusters represented in this pham: DC2, DC1,

Info for manual annotations of cluster DC1:

- Start number 27 was manually annotated 4 times for cluster DC1.
- Start number 28 was manually annotated 28 times for cluster DC1.

Info for manual annotations of cluster DC2:

- Start number 28 was manually annotated 1 time for cluster DC2.

### Gene Information:

Gene: Arri\_61 Start: 45398, Stop: 45661, Start Num: 27

Candidate Starts for Arri\_61:

(Start: 27 @45398 has 4 MA's), (Start: 28 @45401 has 29 MA's), (29, 45575),

Gene: Bakery\_65 Start: 47562, Stop: 47822, Start Num: 28

Candidate Starts for Bakery\_65:

(24, 47526), (Start: 28 @47562 has 29 MA's), (29, 47736),

Gene: Barb\_62 Start: 45218, Stop: 45478, Start Num: 28

Candidate Starts for Barb\_62:

(Start: 28 @45218 has 29 MA's), (29, 45392),

Gene: CherryCola\_61 Start: 46023, Stop: 46283, Start Num: 28  
Candidate Starts for CherryCola\_61:  
(1, 44643), (2, 44697), (3, 44712), (4, 44820), (5, 44895), (6, 45099), (7, 45147), (8, 45195), (9, 45450),  
(10, 45462), (Start: 27 @46020 has 4 MA's), (Start: 28 @46023 has 29 MA's), (29, 46197),

Gene: ClamChowder\_62 Start: 45218, Stop: 45478, Start Num: 28  
Candidate Starts for ClamChowder\_62:  
(Start: 28 @45218 has 29 MA's), (29, 45392),

Gene: Clown\_72 Start: 49056, Stop: 49268, Start Num: 28  
Candidate Starts for Clown\_72:  
(14, 48669), (15, 48678), (16, 48717), (19, 48852), (20, 48864), (Start: 28 @49056 has 29 MA's), (29,  
49230), (30, 49260),

Gene: CoveyB\_61 Start: 45116, Stop: 45376, Start Num: 28  
Candidate Starts for CoveyB\_61:  
(Start: 27 @45113 has 4 MA's), (Start: 28 @45116 has 29 MA's), (29, 45290),

Gene: Danyall\_61 Start: 45322, Stop: 45582, Start Num: 28  
Candidate Starts for Danyall\_61:  
(Start: 28 @45322 has 29 MA's), (29, 45496),

Gene: Egi03\_60 Start: 45087, Stop: 45347, Start Num: 28  
Candidate Starts for Egi03\_60:  
(13, 44661), (17, 44775), (18, 44820), (21, 44922), (Start: 28 @45087 has 29 MA's), (29, 45261),

Gene: Evamon\_59 Start: 44897, Stop: 45172, Start Num: 28  
Candidate Starts for Evamon\_59:  
(23, 44777), (26, 44879), (Start: 28 @44897 has 29 MA's), (29, 45071), (30, 45101),

Gene: Fireball\_63 Start: 45773, Stop: 46057, Start Num: 28  
Candidate Starts for Fireball\_63:  
(17, 45461), (18, 45506), (21, 45608), (Start: 28 @45773 has 29 MA's), (29, 45947), (30, 45977),

Gene: Fugax\_63 Start: 45210, Stop: 45470, Start Num: 28  
Candidate Starts for Fugax\_63:  
(Start: 28 @45210 has 29 MA's), (29, 45384),

Gene: Gezellig\_58 Start: 45269, Stop: 45529, Start Num: 28  
Candidate Starts for Gezellig\_58:  
(Start: 27 @45266 has 4 MA's), (Start: 28 @45269 has 29 MA's), (29, 45443),

Gene: Halo3\_59 Start: 45854, Stop: 46114, Start Num: 28  
Candidate Starts for Halo3\_59:  
(Start: 27 @45851 has 4 MA's), (Start: 28 @45854 has 29 MA's), (29, 46028),

Gene: Jambalaya\_59 Start: 45057, Stop: 45317, Start Num: 28  
Candidate Starts for Jambalaya\_59:  
(25, 45021), (Start: 28 @45057 has 29 MA's), (29, 45231),

Gene: JohnPork\_63 Start: 45472, Stop: 45747, Start Num: 28  
Candidate Starts for JohnPork\_63:  
(Start: 28 @45472 has 29 MA's), (29, 45646), (30, 45676),

Gene: KimmyK\_61 Start: 45652, Stop: 45912, Start Num: 28

Candidate Starts for KimmyK\_61:

(Start: 28 @45652 has 29 MA's), (29, 45826),

Gene: Mutzi\_59 Start: 46569, Stop: 46829, Start Num: 28

Candidate Starts for Mutzi\_59:

(13, 46143), (17, 46257), (18, 46302), (21, 46404), (Start: 28 @46569 has 29 MA's), (29, 46743),

Gene: Nubi\_60 Start: 45002, Stop: 45277, Start Num: 28

Candidate Starts for Nubi\_60:

(23, 44882), (26, 44984), (Start: 28 @45002 has 29 MA's), (29, 45176), (30, 45206),

Gene: Phlop\_58 Start: 45344, Stop: 45619, Start Num: 28

Candidate Starts for Phlop\_58:

(Start: 27 @45341 has 4 MA's), (Start: 28 @45344 has 29 MA's), (29, 45518), (30, 45548),

Gene: PinkCoffee\_62 Start: 45224, Stop: 45484, Start Num: 28

Candidate Starts for PinkCoffee\_62:

(Start: 28 @45224 has 29 MA's), (29, 45398),

Gene: Portcullis\_62 Start: 45472, Stop: 45747, Start Num: 28

Candidate Starts for Portcullis\_62:

(Start: 28 @45472 has 29 MA's), (29, 45646), (30, 45676),

Gene: PullumCavea\_59 Start: 45403, Stop: 45663, Start Num: 28

Candidate Starts for PullumCavea\_59:

(Start: 28 @45403 has 29 MA's), (29, 45577),

Gene: RogerDodger\_63 Start: 45525, Stop: 45785, Start Num: 28

Candidate Starts for RogerDodger\_63:

(Start: 28 @45525 has 29 MA's), (29, 45699),

Gene: Salvador\_59 Start: 44895, Stop: 45170, Start Num: 28

Candidate Starts for Salvador\_59:

(23, 44775), (26, 44877), (Start: 28 @44895 has 29 MA's), (29, 45069), (30, 45099),

Gene: Savbucketdawg\_59 Start: 45057, Stop: 45317, Start Num: 28

Candidate Starts for Savbucketdawg\_59:

(25, 45021), (Start: 28 @45057 has 29 MA's), (29, 45231),

Gene: Sendy\_61 Start: 45203, Stop: 45478, Start Num: 28

Candidate Starts for Sendy\_61:

(23, 45083), (26, 45185), (Start: 28 @45203 has 29 MA's), (29, 45377), (30, 45407),

Gene: Shinji\_59 Start: 45003, Stop: 45263, Start Num: 28

Candidate Starts for Shinji\_59:

(13, 44577), (17, 44691), (18, 44736), (21, 44838), (Start: 28 @45003 has 29 MA's), (29, 45177),

Gene: Sixsevenium\_63 Start: 46791, Stop: 47051, Start Num: 28

Candidate Starts for Sixsevenium\_63:

(24, 46755), (Start: 28 @46791 has 29 MA's), (29, 46965),

Gene: SmokingBunny\_60 Start: 45435, Stop: 45695, Start Num: 28  
Candidate Starts for SmokingBunny\_60:  
(13, 45009), (17, 45123), (18, 45168), (21, 45270), (Start: 28 @45435 has 29 MA's), (29, 45609),

Gene: TillyBobJoe\_60 Start: 45222, Stop: 45482, Start Num: 28  
Candidate Starts for TillyBobJoe\_60:  
(12, 44787), (22, 45063), (Start: 28 @45222 has 29 MA's), (29, 45396),

Gene: Togo\_59 Start: 45435, Stop: 45695, Start Num: 28  
Candidate Starts for Togo\_59:  
(13, 45009), (17, 45123), (18, 45168), (21, 45270), (Start: 28 @45435 has 29 MA's), (29, 45609),

Gene: Twister6\_62 Start: 45174, Stop: 45449, Start Num: 28  
Candidate Starts for Twister6\_62:  
(18, 44907), (21, 45009), (Start: 28 @45174 has 29 MA's), (29, 45348), (30, 45378),

Gene: Valary\_61 Start: 46020, Stop: 46283, Start Num: 27  
Candidate Starts for Valary\_61:  
(1, 44643), (2, 44697), (3, 44712), (4, 44820), (5, 44895), (6, 45099), (7, 45147), (8, 45195), (9, 45450),  
(10, 45462), (Start: 27 @46020 has 4 MA's), (Start: 28 @46023 has 29 MA's), (29, 46197),

Gene: VanDeWege\_62 Start: 45360, Stop: 45623, Start Num: 27  
Candidate Starts for VanDeWege\_62:  
(Start: 27 @45360 has 4 MA's), (Start: 28 @45363 has 29 MA's), (29, 45537),

Gene: Wizard\_58 Start: 45266, Stop: 45529, Start Num: 27  
Candidate Starts for Wizard\_58:  
(Start: 27 @45266 has 4 MA's), (Start: 28 @45269 has 29 MA's), (29, 45443),

Gene: YungMoney\_60 Start: 47352, Stop: 47612, Start Num: 28  
Candidate Starts for YungMoney\_60:  
(11, 46824), (12, 46944), (22, 47193), (Start: 28 @47352 has 29 MA's), (29, 47526),