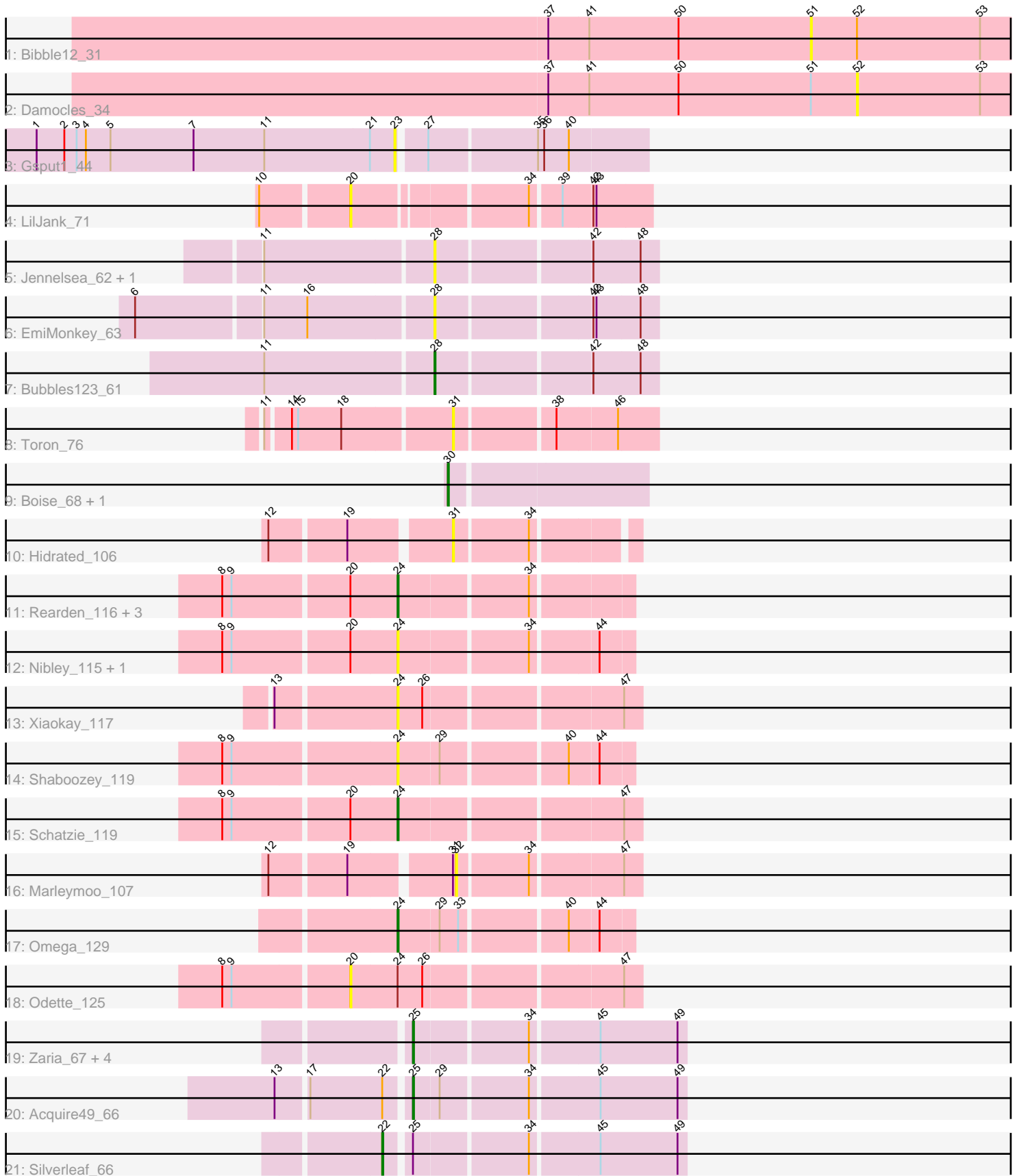


Pham 303569



Note: Tracks are now grouped by subcluster and scaled. Switching in subcluster is indicated by changes in track color. Track scale is now set by default to display the region 30 bp upstream of start 1 to 30 bp downstream of the last possible start. If this default region is judged to be packed too tightly with annotated starts, the track will be further scaled to only show that region of the ORF with annotated starts. This action will be indicated by adding "Zoomed" to the title. For starts, yellow indicates the location of called starts comprised solely of Glimmer/GeneMark auto-annotations, green indicates the location of called starts with at least 1 manual gene annotation.

Pham 303569 Report

This analysis was run 06/08/26 on database version 649.

Pham number 303569 has 31 members, 17 are drafts.

Phages represented in each track:

- Track 1 : Bible12_31
- Track 2 : Damocles_34
- Track 3 : Gspu1_44
- Track 4 : LilJank_71
- Track 5 : Jennelsea_62, Mwanjiwa_71
- Track 6 : EmiMonkey_63
- Track 7 : Bubbles123_61
- Track 8 : Toron_76
- Track 9 : Boise_68, RomansRevenge_70
- Track 10 : Hidrated_106
- Track 11 : Rearden_116, Hannaconda_109, Porcelain_118, KashFlow_115
- Track 12 : Nibley_115, BronnyJames_115
- Track 13 : Xiaokay_117
- Track 14 : Shaboozey_119
- Track 15 : Schatzie_119
- Track 16 : Marleymoo_107
- Track 17 : Omega_129
- Track 18 : Odette_125
- Track 19 : Zaria_67, Halena_64, DirkDirk_63, Calm_67, LeBron_65
- Track 20 : Acquire49_66
- Track 21 : Silverleaf_66

Summary of Final Annotations (See graph section above for start numbers):

The start number called the most often in the published annotations is 25, it was called in 6 of the 14 non-draft genes in the pham.

Genes that call this "Most Annotated" start:

- Acquire49_66, Calm_67, DirkDirk_63, Halena_64, LeBron_65, Zaria_67,

Genes that have the "Most Annotated" start but do not call it:

- Silverleaf_66,

Genes that do not have the "Most Annotated" start:

- Bibble12_31, Boise_68, BronnyJames_115, Bubbles123_61, Damocles_34, EmiMonkey_63, Gspu1_44, Hannaconda_109, Hidrated_106, Jennelsea_62, KashFlow_115, LilJank_71, Marleymoo_107, Mwanjiwa_71, Nibley_115, Odette_125, Omega_129, Porcelain_118, Rearden_116, RomansRevenge_70, Schatzie_119, Shaboozey_119, Toron_76, Xiaokay_117,

Summary by start number:

Start 20:

- Found in 9 of 31 (29.0%) of genes in pham
- No Manual Annotations of this start.
- Called 22.2% of time when present
- Phage (with cluster) where this start called: LilJank_71 (DU2), Odette_125 (J),

Start 22:

- Found in 2 of 31 (6.5%) of genes in pham
- Manual Annotations of this start: 1 of 14
- Called 50.0% of time when present
- Phage (with cluster) where this start called: Silverleaf_66 (L1),

Start 23:

- Found in 1 of 31 (3.2%) of genes in pham
- No Manual Annotations of this start.
- Called 100.0% of time when present
- Phage (with cluster) where this start called: Gspu1_44 (CU2),

Start 24:

- Found in 11 of 31 (35.5%) of genes in pham
- Manual Annotations of this start: 5 of 14
- Called 90.9% of time when present
- Phage (with cluster) where this start called: BronnyJames_115 (J), Hannaconda_109 (J), KashFlow_115 (J), Nibley_115 (J), Omega_129 (J), Porcelain_118 (J), Rearden_116 (J), Schatzie_119 (J), Shaboozey_119 (J), Xiaokay_117 (J),

Start 25:

- Found in 7 of 31 (22.6%) of genes in pham
- Manual Annotations of this start: 6 of 14
- Called 85.7% of time when present
- Phage (with cluster) where this start called: Acquire49_66 (L1), Calm_67 (L1), DirkDirk_63 (L1), Halena_64 (L1), LeBron_65 (L1), Zaria_67 (L1),

Start 28:

- Found in 4 of 31 (12.9%) of genes in pham
- Manual Annotations of this start: 1 of 14
- Called 100.0% of time when present
- Phage (with cluster) where this start called: Bubbles123_61 (F1), EmiMonkey_63 (F1), Jennelsea_62 (F1), Mwanjiwa_71 (F1),

Start 30:

- Found in 2 of 31 (6.5%) of genes in pham
- Manual Annotations of this start: 1 of 14
- Called 100.0% of time when present

- Phage (with cluster) where this start called: Boise_68 (FT), RomansRevenge_70 (FT),

Start 31:

- Found in 3 of 31 (9.7%) of genes in pham
- No Manual Annotations of this start.
- Called 66.7% of time when present
- Phage (with cluster) where this start called: Hidrated_106 (J), Toron_76 (F6),

Start 32:

- Found in 1 of 31 (3.2%) of genes in pham
- No Manual Annotations of this start.
- Called 100.0% of time when present
- Phage (with cluster) where this start called: Marleymoo_107 (J),

Start 51:

- Found in 2 of 31 (6.5%) of genes in pham
- No Manual Annotations of this start.
- Called 50.0% of time when present
- Phage (with cluster) where this start called: Bibble12_31 (AS2),

Start 52:

- Found in 2 of 31 (6.5%) of genes in pham
- No Manual Annotations of this start.
- Called 50.0% of time when present
- Phage (with cluster) where this start called: Damocles_34 (AS2),

Summary by clusters:

There are 8 clusters represented in this pham: F1, FT, CU2, F6, AS2, J, L1, DU2,

Info for manual annotations of cluster F1:

- Start number 28 was manually annotated 1 time for cluster F1.

Info for manual annotations of cluster FT:

- Start number 30 was manually annotated 1 time for cluster FT.

Info for manual annotations of cluster J:

- Start number 24 was manually annotated 5 times for cluster J.

Info for manual annotations of cluster L1:

- Start number 22 was manually annotated 1 time for cluster L1.
- Start number 25 was manually annotated 6 times for cluster L1.

Gene Information:

Gene: Acquire49_66 Start: 45197, Stop: 45448, Start Num: 25

Candidate Starts for Acquire49_66:

(13, 45080), (17, 45107), (Start: 22 @45176 has 1 MA's), (Start: 25 @45197 has 6 MA's), (29, 45221), (34, 45302), (45, 45365), (49, 45440),

Gene: Bible12_31 Start: 21385, Stop: 21161, Start Num: 51

Candidate Starts for Bible12_31:

(37, 21640), (41, 21601), (50, 21514), (51, 21385), (52, 21340), (53, 21220),

Gene: Boise_68 Start: 47176, Stop: 46991, Start Num: 30

Candidate Starts for Boise_68:

(Start: 30 @47176 has 1 MA's),

Gene: BronnyJames_115 Start: 65267, Stop: 65479, Start Num: 24

Candidate Starts for BronnyJames_115:

(8, 65105), (9, 65114), (20, 65222), (Start: 24 @65267 has 5 MA's), (34, 65387), (44, 65447),

Gene: Bubbles123_61 Start: 41991, Stop: 42194, Start Num: 28

Candidate Starts for Bubbles123_61:

(11, 41832), (Start: 28 @41991 has 1 MA's), (42, 42132), (48, 42177),

Gene: Calm_67 Start: 44988, Stop: 45239, Start Num: 25

Candidate Starts for Calm_67:

(Start: 25 @44988 has 6 MA's), (34, 45093), (45, 45156), (49, 45231),

Gene: Damocles_34 Start: 21480, Stop: 21301, Start Num: 52

Candidate Starts for Damocles_34:

(37, 21780), (41, 21741), (50, 21654), (51, 21525), (52, 21480), (53, 21360),

Gene: DirkDirk_63 Start: 44398, Stop: 44649, Start Num: 25

Candidate Starts for DirkDirk_63:

(Start: 25 @44398 has 6 MA's), (34, 44503), (45, 44566), (49, 44641),

Gene: EmiMonkey_63 Start: 44267, Stop: 44470, Start Num: 28

Candidate Starts for EmiMonkey_63:

(6, 43991), (11, 44108), (16, 44150), (Start: 28 @44267 has 1 MA's), (42, 44408), (43, 44411), (48, 44453),

Gene: Gspu1_44 Start: 32260, Stop: 32490, Start Num: 23

Candidate Starts for Gspu1_44:

(1, 31912), (2, 31939), (3, 31951), (4, 31960), (5, 31984), (7, 32065), (11, 32134), (21, 32236), (23, 32260), (27, 32284), (35, 32386), (36, 32392), (40, 32416),

Gene: Halena_64 Start: 44435, Stop: 44686, Start Num: 25

Candidate Starts for Halena_64:

(Start: 25 @44435 has 6 MA's), (34, 44540), (45, 44603), (49, 44678),

Gene: Hannaconda_109 Start: 62823, Stop: 63035, Start Num: 24

Candidate Starts for Hannaconda_109:

(8, 62661), (9, 62670), (20, 62778), (Start: 24 @62823 has 5 MA's), (34, 62943),

Gene: Hidrated_106 Start: 65428, Stop: 65589, Start Num: 31

Candidate Starts for Hidrated_106:

(12, 65269), (19, 65338), (31, 65428), (34, 65497),

Gene: Jennelsea_62 Start: 41284, Stop: 41487, Start Num: 28
Candidate Starts for Jennelsea_62:
(11, 41125), (Start: 28 @41284 has 1 MA's), (42, 41425), (48, 41470),

Gene: KashFlow_115 Start: 65328, Stop: 65540, Start Num: 24
Candidate Starts for KashFlow_115:
(8, 65166), (9, 65175), (20, 65283), (Start: 24 @65328 has 5 MA's), (34, 65448),

Gene: LeBron_65 Start: 44439, Stop: 44690, Start Num: 25
Candidate Starts for LeBron_65:
(Start: 25 @44439 has 6 MA's), (34, 44544), (45, 44607), (49, 44682),

Gene: LilJank_71 Start: 45400, Stop: 45666, Start Num: 20
Candidate Starts for LilJank_71:
(10, 45319), (20, 45400), (34, 45556), (39, 45583), (42, 45610), (43, 45613),

Gene: Marleymoo_107 Start: 65101, Stop: 65268, Start Num: 32
Candidate Starts for Marleymoo_107:
(12, 64939), (19, 65008), (31, 65098), (32, 65101), (34, 65167), (47, 65251),

Gene: Mwanjiwa_71 Start: 43700, Stop: 43903, Start Num: 28
Candidate Starts for Mwanjiwa_71:
(11, 43541), (Start: 28 @43700 has 1 MA's), (42, 43841), (48, 43886),

Gene: Nibley_115 Start: 64844, Stop: 65056, Start Num: 24
Candidate Starts for Nibley_115:
(8, 64682), (9, 64691), (20, 64799), (Start: 24 @64844 has 5 MA's), (34, 64964), (44, 65024),

Gene: Odette_125 Start: 69428, Stop: 69694, Start Num: 20
Candidate Starts for Odette_125:
(8, 69311), (9, 69320), (20, 69428), (Start: 24 @69473 has 5 MA's), (26, 69497), (47, 69677),

Gene: Omega_129 Start: 69312, Stop: 69524, Start Num: 24
Candidate Starts for Omega_129:
(Start: 24 @69312 has 5 MA's), (29, 69351), (33, 69369), (40, 69465), (44, 69492),

Gene: Porcelain_118 Start: 65153, Stop: 65365, Start Num: 24
Candidate Starts for Porcelain_118:
(8, 64991), (9, 65000), (20, 65108), (Start: 24 @65153 has 5 MA's), (34, 65273),

Gene: Rearden_116 Start: 64864, Stop: 65076, Start Num: 24
Candidate Starts for Rearden_116:
(8, 64702), (9, 64711), (20, 64819), (Start: 24 @64864 has 5 MA's), (34, 64984),

Gene: RomansRevenge_70 Start: 47385, Stop: 47200, Start Num: 30
Candidate Starts for RomansRevenge_70:
(Start: 30 @47385 has 1 MA's),

Gene: Schatzie_119 Start: 68356, Stop: 68577, Start Num: 24
Candidate Starts for Schatzie_119:
(8, 68194), (9, 68203), (20, 68311), (Start: 24 @68356 has 5 MA's), (47, 68560),

Gene: Shaboozey_119 Start: 65288, Stop: 65500, Start Num: 24

Candidate Starts for Shaboozey_119:

(8, 65126), (9, 65135), (Start: 24 @65288 has 5 MA's), (29, 65327), (40, 65441), (44, 65468),

Gene: Silverleaf_66 Start: 45037, Stop: 45309, Start Num: 22

Candidate Starts for Silverleaf_66:

(Start: 22 @45037 has 1 MA's), (Start: 25 @45058 has 6 MA's), (34, 45163), (45, 45226), (49, 45301),

Gene: Toron_76 Start: 46968, Stop: 47153, Start Num: 31

Candidate Starts for Toron_76:

(11, 46797), (14, 46818), (15, 46824), (18, 46866), (31, 46968), (38, 47058), (46, 47115),

Gene: Xiaokay_117 Start: 66343, Stop: 66564, Start Num: 24

Candidate Starts for Xiaokay_117:

(13, 66232), (Start: 24 @66343 has 5 MA's), (26, 66367), (47, 66547),

Gene: Zaria_67 Start: 44988, Stop: 45239, Start Num: 25

Candidate Starts for Zaria_67:

(Start: 25 @44988 has 6 MA's), (34, 45093), (45, 45156), (49, 45231),