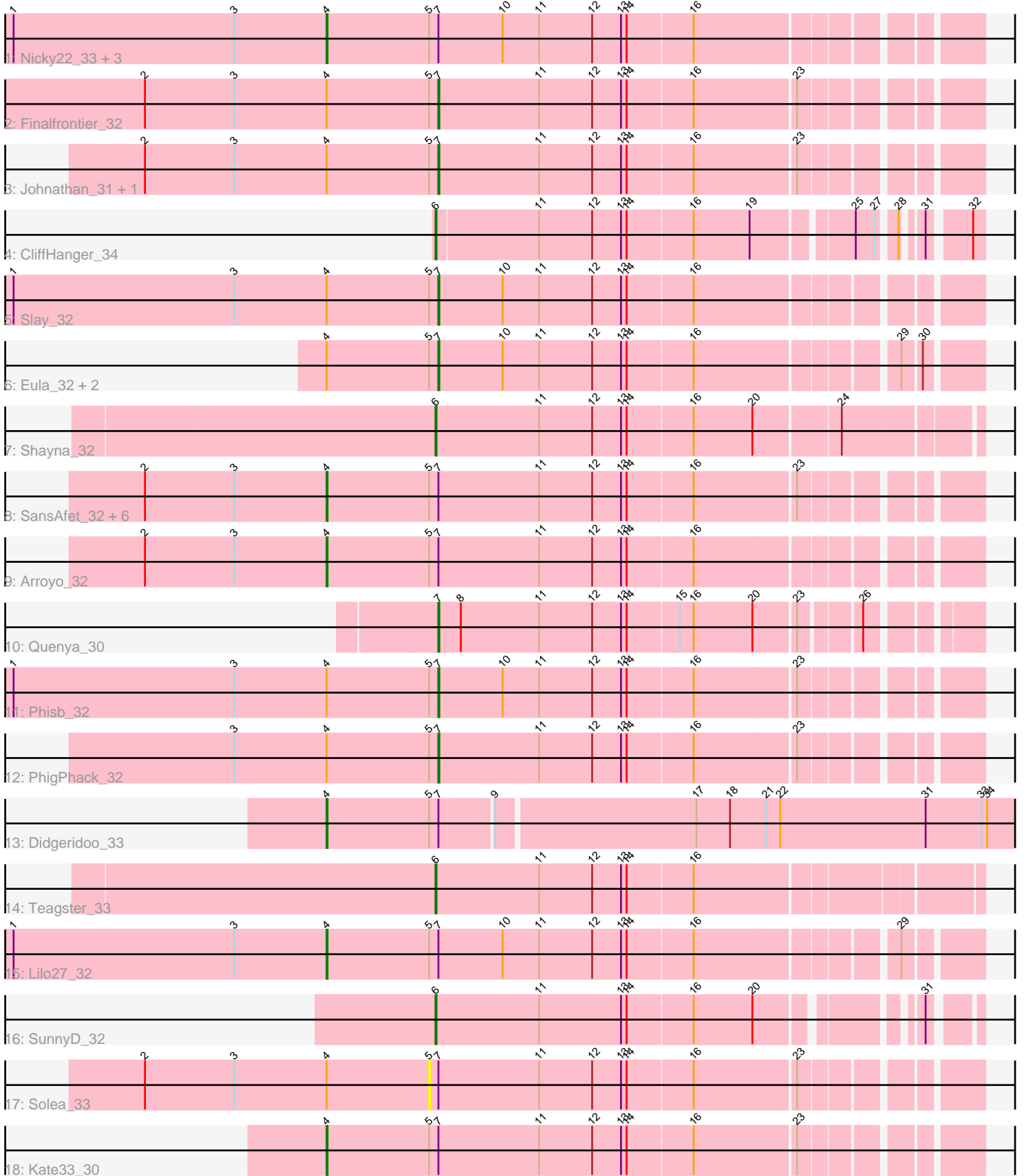


Pham 303588



Note: Tracks are now grouped by subcluster and scaled. Switching in subcluster is indicated by changes in track color. Track scale is now set by default to display the region 30 bp upstream of start 1 to 30 bp downstream of the last possible start. If this default region is judged to be packed too tightly with annotated starts, the track will be further scaled to only show that region of the ORF with annotated starts. This action will be indicated by adding "Zoomed" to the title. For starts, yellow indicates the location of called starts comprised solely of Glimmer/GeneMark auto-annotations, green indicates the location of called starts with at least 1 manual gene annotation.

Pham 303588 Report

This analysis was run 06/08/26 on database version 649.

Pham number 303588 has 30 members, 2 are drafts.

Phages represented in each track:

- Track 1 : Nicky22_33, Jovita_32, Swervy_32, SarBear_31
- Track 2 : Finalfrontier_32
- Track 3 : Johnathan_31, Abigail_31
- Track 4 : CliffHanger_34
- Track 5 : Slay_32
- Track 6 : Eula_32, QMacho_33, Pecas_32
- Track 7 : Shayna_32
- Track 8 : SansAfet_32, Burritobowl_31, DickRichards_31, Avocadoman_31, Milomuff_32, Doobus_31, LimaBean_31
- Track 9 : Arroyo_32
- Track 10 : Quenya_30
- Track 11 : Phisb_32
- Track 12 : PhigPhack_32
- Track 13 : Didgeridoo_33
- Track 14 : Teagster_33
- Track 15 : Lilo27_32
- Track 16 : SunnyD_32
- Track 17 : Solea_33
- Track 18 : Kate33_30

Summary of Final Annotations (See graph section above for start numbers):

The start number called the most often in the published annotations is 4, it was called in 15 of the 28 non-draft genes in the pham.

Genes that call this "Most Annotated" start:

- Arroyo_32, Avocadoman_31, Burritobowl_31, DickRichards_31, Didgeridoo_33, Doobus_31, Jovita_32, Kate33_30, Lilo27_32, LimaBean_31, Milomuff_32, Nicky22_33, SansAfet_32, SarBear_31, Swervy_32,

Genes that have the "Most Annotated" start but do not call it:

- Abigail_31, Eula_32, Finalfrontier_32, Johnathan_31, Pecas_32, PhigPhack_32, Phisb_32, QMacho_33, Slay_32, Solea_33,

Genes that do not have the "Most Annotated" start:

- CliffHanger_34, Quenya_30, Shayna_32, SunnyD_32, Teagster_33,

Summary by start number:

Start 4:

- Found in 25 of 30 (83.3%) of genes in pham
- Manual Annotations of this start: 15 of 28
- Called 60.0% of time when present
- Phage (with cluster) where this start called: Arroyo_32 (EB), Avocadoman_31 (EB), Burritobowl_31 (EB), DickRichards_31 (EB), Didgeridoo_33 (EB), Doobus_31 (EB), Jovita_32 (EB), Kate33_30 (EB), Lilo27_32 (EB), LimaBean_31 (EB), Milomuff_32 (EB), Nicky22_33 (EB), SansAfet_32 (EB), SarBear_31 (EB), Swervy_32 (EB),

Start 5:

- Found in 25 of 30 (83.3%) of genes in pham
- No Manual Annotations of this start.
- Called 4.0% of time when present
- Phage (with cluster) where this start called: Solea_33 (EB),

Start 6:

- Found in 4 of 30 (13.3%) of genes in pham
- Manual Annotations of this start: 4 of 28
- Called 100.0% of time when present
- Phage (with cluster) where this start called: CliffHanger_34 (EB), Shayna_32 (EB), SunnyD_32 (EB), Teagster_33 (EB),

Start 7:

- Found in 26 of 30 (86.7%) of genes in pham
- Manual Annotations of this start: 9 of 28
- Called 38.5% of time when present
- Phage (with cluster) where this start called: Abigail_31 (EB), Eula_32 (EB), Finalfrontier_32 (EB), Johnathan_31 (EB), Pecas_32 (EB), PhigPhack_32 (EB), Phisb_32 (EB), QMacho_33 (EB), Quenya_30 (EB), Slay_32 (EB),

Summary by clusters:

There is one cluster represented in this pham: EB

Info for manual annotations of cluster EB:

- Start number 4 was manually annotated 15 times for cluster EB.
- Start number 6 was manually annotated 4 times for cluster EB.
- Start number 7 was manually annotated 9 times for cluster EB.

Gene Information:

Gene: Abigail_31 Start: 22628, Stop: 23164, Start Num: 7

Candidate Starts for Abigail_31:

(2, 22316), (3, 22412), (Start: 4 @22511 has 15 MA's), (5, 22619), (Start: 7 @22628 has 9 MA's), (11, 22736), (12, 22793), (13, 22823), (14, 22829), (16, 22895), (23, 23000),

Gene: Arroyo_32 Start: 23288, Stop: 23941, Start Num: 4

Candidate Starts for Arroyo_32:

(2, 23093), (3, 23189), (Start: 4 @23288 has 15 MA's), (5, 23396), (Start: 7 @23405 has 9 MA's), (11, 23513), (12, 23570), (13, 23600), (14, 23606), (16, 23672),

Gene: Avocadoman_31 Start: 22453, Stop: 23106, Start Num: 4

Candidate Starts for Avocadoman_31:

(2, 22258), (3, 22354), (Start: 4 @22453 has 15 MA's), (5, 22561), (Start: 7 @22570 has 9 MA's), (11, 22678), (12, 22735), (13, 22765), (14, 22771), (16, 22837), (23, 22942),

Gene: Burritobowl_31 Start: 22845, Stop: 23498, Start Num: 4

Candidate Starts for Burritobowl_31:

(2, 22650), (3, 22746), (Start: 4 @22845 has 15 MA's), (5, 22953), (Start: 7 @22962 has 9 MA's), (11, 23070), (12, 23127), (13, 23157), (14, 23163), (16, 23229), (23, 23334),

Gene: CliffHanger_34 Start: 22466, Stop: 22987, Start Num: 6

Candidate Starts for CliffHanger_34:

(Start: 6 @22466 has 4 MA's), (11, 22574), (12, 22631), (13, 22661), (14, 22667), (16, 22733), (19, 22793), (25, 22889), (27, 22907), (28, 22922), (31, 22937), (32, 22976),

Gene: DickRichards_31 Start: 23174, Stop: 23827, Start Num: 4

Candidate Starts for DickRichards_31:

(2, 22979), (3, 23075), (Start: 4 @23174 has 15 MA's), (5, 23282), (Start: 7 @23291 has 9 MA's), (11, 23399), (12, 23456), (13, 23486), (14, 23492), (16, 23558), (23, 23663),

Gene: Didgeridoo_33 Start: 23183, Stop: 23950, Start Num: 4

Candidate Starts for Didgeridoo_33:

(Start: 4 @23183 has 15 MA's), (5, 23291), (Start: 7 @23300 has 9 MA's), (9, 23354), (17, 23561), (18, 23597), (21, 23636), (22, 23651), (31, 23807), (33, 23867), (34, 23873),

Gene: Doobus_31 Start: 22620, Stop: 23273, Start Num: 4

Candidate Starts for Doobus_31:

(2, 22425), (3, 22521), (Start: 4 @22620 has 15 MA's), (5, 22728), (Start: 7 @22737 has 9 MA's), (11, 22845), (12, 22902), (13, 22932), (14, 22938), (16, 23004), (23, 23109),

Gene: Eula_32 Start: 23053, Stop: 23589, Start Num: 7

Candidate Starts for Eula_32:

(Start: 4 @22936 has 15 MA's), (5, 23044), (Start: 7 @23053 has 9 MA's), (10, 23122), (11, 23161), (12, 23218), (13, 23248), (14, 23254), (16, 23320), (29, 23515), (30, 23533),

Gene: Finalfrontier_32 Start: 23664, Stop: 24200, Start Num: 7

Candidate Starts for Finalfrontier_32:

(2, 23352), (3, 23448), (Start: 4 @23547 has 15 MA's), (5, 23655), (Start: 7 @23664 has 9 MA's), (11, 23772), (12, 23829), (13, 23859), (14, 23865), (16, 23931), (23, 24036),

Gene: Johnathan_31 Start: 22510, Stop: 23046, Start Num: 7

Candidate Starts for Johnathan_31:

(2, 22198), (3, 22294), (Start: 4 @22393 has 15 MA's), (5, 22501), (Start: 7 @22510 has 9 MA's), (11, 22618), (12, 22675), (13, 22705), (14, 22711), (16, 22777), (23, 22882),

Gene: Jovita_32 Start: 23039, Stop: 23692, Start Num: 4

Candidate Starts for Jovita_32:

(1, 22703), (3, 22940), (Start: 4 @23039 has 15 MA's), (5, 23147), (Start: 7 @23156 has 9 MA's), (10, 23225), (11, 23264), (12, 23321), (13, 23351), (14, 23357), (16, 23423),

Gene: Kate33_30 Start: 22654, Stop: 23307, Start Num: 4

Candidate Starts for Kate33_30:

(Start: 4 @22654 has 15 MA's), (5, 22762), (Start: 7 @22771 has 9 MA's), (11, 22879), (12, 22936), (13, 22966), (14, 22972), (16, 23038), (23, 23143),

Gene: Lilo27_32 Start: 22847, Stop: 23500, Start Num: 4

Candidate Starts for Lilo27_32:

(1, 22511), (3, 22748), (Start: 4 @22847 has 15 MA's), (5, 22955), (Start: 7 @22964 has 9 MA's), (10, 23033), (11, 23072), (12, 23129), (13, 23159), (14, 23165), (16, 23231), (29, 23426),

Gene: LimaBean_31 Start: 22389, Stop: 23042, Start Num: 4

Candidate Starts for LimaBean_31:

(2, 22194), (3, 22290), (Start: 4 @22389 has 15 MA's), (5, 22497), (Start: 7 @22506 has 9 MA's), (11, 22614), (12, 22671), (13, 22701), (14, 22707), (16, 22773), (23, 22878),

Gene: Milomuff_32 Start: 22754, Stop: 23407, Start Num: 4

Candidate Starts for Milomuff_32:

(2, 22559), (3, 22655), (Start: 4 @22754 has 15 MA's), (5, 22862), (Start: 7 @22871 has 9 MA's), (11, 22979), (12, 23036), (13, 23066), (14, 23072), (16, 23138), (23, 23243),

Gene: Nicky22_33 Start: 23401, Stop: 24054, Start Num: 4

Candidate Starts for Nicky22_33:

(1, 23065), (3, 23302), (Start: 4 @23401 has 15 MA's), (5, 23509), (Start: 7 @23518 has 9 MA's), (10, 23587), (11, 23626), (12, 23683), (13, 23713), (14, 23719), (16, 23785),

Gene: Pecas_32 Start: 23053, Stop: 23589, Start Num: 7

Candidate Starts for Pecas_32:

(Start: 4 @22936 has 15 MA's), (5, 23044), (Start: 7 @23053 has 9 MA's), (10, 23122), (11, 23161), (12, 23218), (13, 23248), (14, 23254), (16, 23320), (29, 23515), (30, 23533),

Gene: PhigPhack_32 Start: 22873, Stop: 23409, Start Num: 7

Candidate Starts for PhigPhack_32:

(3, 22657), (Start: 4 @22756 has 15 MA's), (5, 22864), (Start: 7 @22873 has 9 MA's), (11, 22981), (12, 23038), (13, 23068), (14, 23074), (16, 23140), (23, 23245),

Gene: Phisb_32 Start: 23109, Stop: 23645, Start Num: 7

Candidate Starts for Phisb_32:

(1, 22656), (3, 22893), (Start: 4 @22992 has 15 MA's), (5, 23100), (Start: 7 @23109 has 9 MA's), (10, 23178), (11, 23217), (12, 23274), (13, 23304), (14, 23310), (16, 23376), (23, 23481),

Gene: QMacho_33 Start: 23536, Stop: 24072, Start Num: 7

Candidate Starts for QMacho_33:

(Start: 4 @23419 has 15 MA's), (5, 23527), (Start: 7 @23536 has 9 MA's), (10, 23605), (11, 23644), (12, 23701), (13, 23731), (14, 23737), (16, 23803), (29, 23998), (30, 24016),

Gene: Quenya_30 Start: 23232, Stop: 23762, Start Num: 7

Candidate Starts for Quenya_30:

(Start: 7 @23232 has 9 MA's), (8, 23256), (11, 23340), (12, 23397), (13, 23427), (14, 23433), (15, 23484), (16, 23499), (20, 23562), (23, 23604), (26, 23661),

Gene: SansAfet_32 Start: 22861, Stop: 23514, Start Num: 4

Candidate Starts for SansAfet_32:

(2, 22666), (3, 22762), (Start: 4 @22861 has 15 MA's), (5, 22969), (Start: 7 @22978 has 9 MA's), (11, 23086), (12, 23143), (13, 23173), (14, 23179), (16, 23245), (23, 23350),

Gene: SarBear_31 Start: 22749, Stop: 23402, Start Num: 4

Candidate Starts for SarBear_31:

(1, 22413), (3, 22650), (Start: 4 @22749 has 15 MA's), (5, 22857), (Start: 7 @22866 has 9 MA's), (10, 22935), (11, 22974), (12, 23031), (13, 23061), (14, 23067), (16, 23133),

Gene: Shayna_32 Start: 22699, Stop: 23253, Start Num: 6

Candidate Starts for Shayna_32:

(Start: 6 @22699 has 4 MA's), (11, 22810), (12, 22867), (13, 22897), (14, 22903), (16, 22969), (20, 23032), (24, 23119),

Gene: Slay_32 Start: 23514, Stop: 24050, Start Num: 7

Candidate Starts for Slay_32:

(1, 23061), (3, 23298), (Start: 4 @23397 has 15 MA's), (5, 23505), (Start: 7 @23514 has 9 MA's), (10, 23583), (11, 23622), (12, 23679), (13, 23709), (14, 23715), (16, 23781),

Gene: Solea_33 Start: 22862, Stop: 23407, Start Num: 5

Candidate Starts for Solea_33:

(2, 22559), (3, 22655), (Start: 4 @22754 has 15 MA's), (5, 22862), (Start: 7 @22871 has 9 MA's), (11, 22979), (12, 23036), (13, 23066), (14, 23072), (16, 23138), (23, 23243),

Gene: SunnyD_32 Start: 22741, Stop: 23256, Start Num: 6

Candidate Starts for SunnyD_32:

(Start: 6 @22741 has 4 MA's), (11, 22852), (13, 22939), (14, 22945), (16, 23011), (20, 23074), (31, 23212),

Gene: Swervy_32 Start: 22916, Stop: 23569, Start Num: 4

Candidate Starts for Swervy_32:

(1, 22580), (3, 22817), (Start: 4 @22916 has 15 MA's), (5, 23024), (Start: 7 @23033 has 9 MA's), (10, 23102), (11, 23141), (12, 23198), (13, 23228), (14, 23234), (16, 23300),

Gene: Teagster_33 Start: 23532, Stop: 24086, Start Num: 6

Candidate Starts for Teagster_33:

(Start: 6 @23532 has 4 MA's), (11, 23643), (12, 23700), (13, 23730), (14, 23736), (16, 23802),