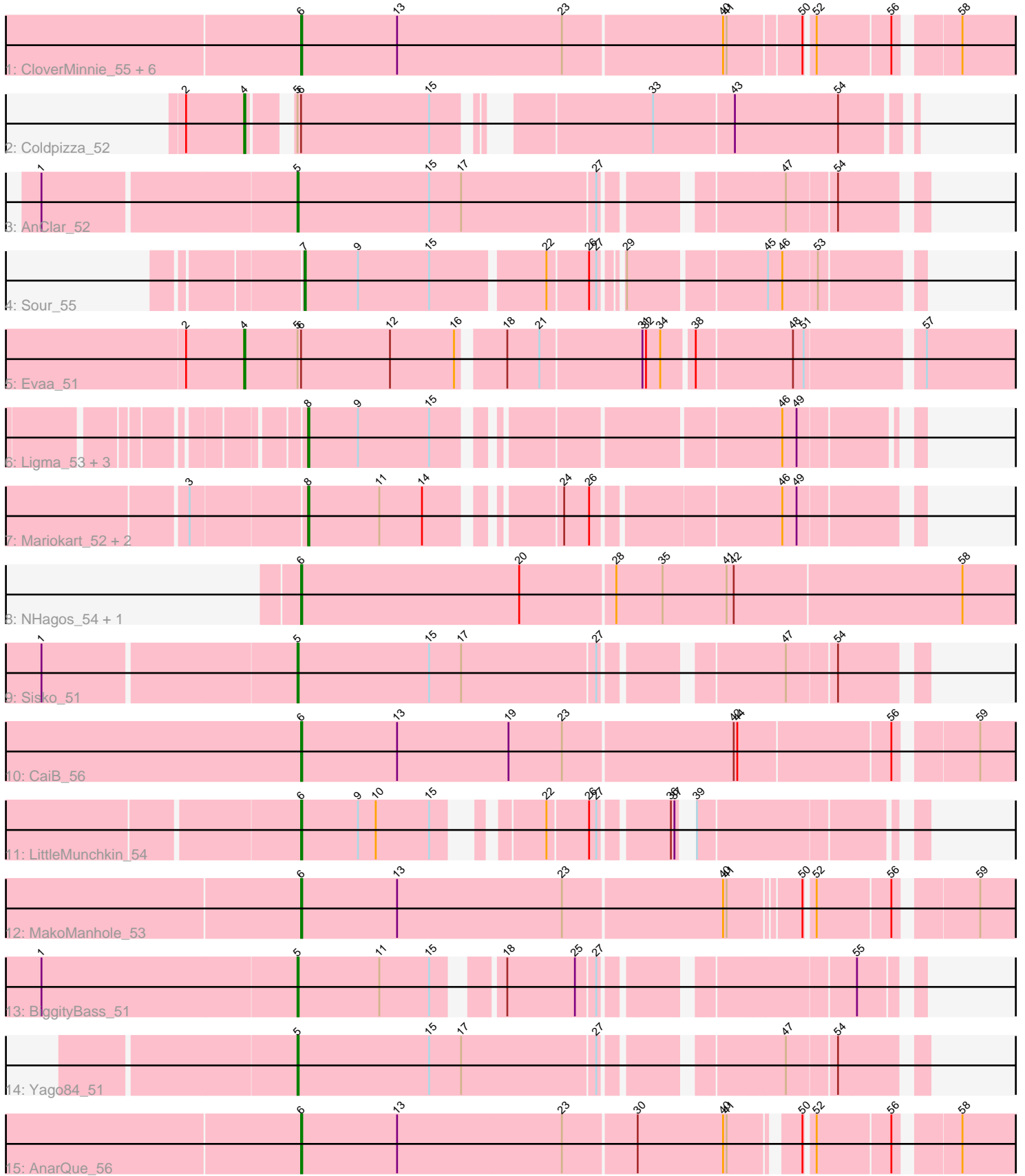


Pham 303611



Note: Tracks are now grouped by subcluster and scaled. Switching in subcluster is indicated by changes in track color. Track scale is now set by default to display the region 30 bp upstream of start 1 to 30 bp downstream of the last possible start. If this default region is judged to be packed too tightly with annotated starts, the track will be further scaled to only show that region of the ORF with annotated starts. This action will be indicated by adding "Zoomed" to the title. For starts, yellow indicates the location of called starts comprised solely of Glimmer/GeneMark auto-annotations, green indicates the location of called starts with at least 1 manual gene annotation.

## Pham 303611 Report

This analysis was run 06/08/26 on database version 649.

Pham number 303611 has 27 members, 5 are drafts.

Phages represented in each track:

- Track 1 : CloverMinnie\_55, Blackpen\_55, Wooper\_56, FelixTres\_55, MossRose\_55, TraderJ\_56, Yeshua\_56
- Track 2 : Coldpizza\_52
- Track 3 : AnClar\_52
- Track 4 : Sour\_55
- Track 5 : Evaa\_51
- Track 6 : Ligma\_53, Fresco\_53, Axumite\_53, Shatter\_53
- Track 7 : Mariokart\_52, CharlottesWeb\_52, JellyBelly\_51
- Track 8 : NHagos\_54, AksarBAT\_55
- Track 9 : Sisko\_51
- Track 10 : CaiB\_56
- Track 11 : LittleMunchkin\_54
- Track 12 : MakoManhole\_53
- Track 13 : BiggityBass\_51
- Track 14 : Yago84\_51
- Track 15 : AnarQue\_56

### ***Summary of Final Annotations (See graph section above for start numbers):***

The start number called the most often in the published annotations is 6, it was called in 10 of the 22 non-draft genes in the pham.

Genes that call this "Most Annotated" start:

- AksarBAT\_55, AnarQue\_56, Blackpen\_55, CaiB\_56, CloverMinnie\_55, FelixTres\_55, LittleMunchkin\_54, MakoManhole\_53, MossRose\_55, NHagos\_54, TraderJ\_56, Wooper\_56, Yeshua\_56,

Genes that have the "Most Annotated" start but do not call it:

- Coldpizza\_52, Evaa\_51,

Genes that do not have the "Most Annotated" start:

- AnClar\_52, Axumite\_53, BiggityBass\_51, CharlottesWeb\_52, Fresco\_53, JellyBelly\_51, Ligma\_53, Mariokart\_52, Shatter\_53, Sisko\_51, Sour\_55, Yago84\_51,

## Summary by start number:

### Start 4:

- Found in 2 of 27 ( 7.4% ) of genes in pham
- Manual Annotations of this start: 2 of 22
- Called 100.0% of time when present
- Phage (with cluster) where this start called: Coldpizza\_52 (DR), Evaa\_51 (DR),

### Start 5:

- Found in 6 of 27 ( 22.2% ) of genes in pham
- Manual Annotations of this start: 4 of 22
- Called 66.7% of time when present
- Phage (with cluster) where this start called: AnClar\_52 (DR), BiggityBass\_51 (DR), Sisko\_51 (DR), Yago84\_51 (DR),

### Start 6:

- Found in 15 of 27 ( 55.6% ) of genes in pham
- Manual Annotations of this start: 10 of 22
- Called 86.7% of time when present
- Phage (with cluster) where this start called: AksarBAT\_55 (DR), AnarQue\_56 (DR), Blackpen\_55 (DR), CaiB\_56 (DR), CloverMinnie\_55 (DR), FelixTres\_55 (DR), LittleMunchkin\_54 (DR), MakoManhole\_53 (DR), MossRose\_55 (DR), NHagos\_54 (DR), TraderJ\_56 (DR), Wooper\_56 (DR), Yeshua\_56 (DR),

### Start 7:

- Found in 1 of 27 ( 3.7% ) of genes in pham
- Manual Annotations of this start: 1 of 22
- Called 100.0% of time when present
- Phage (with cluster) where this start called: Sour\_55 (DR),

### Start 8:

- Found in 7 of 27 ( 25.9% ) of genes in pham
- Manual Annotations of this start: 5 of 22
- Called 100.0% of time when present
- Phage (with cluster) where this start called: Axumite\_53 (DR), CharlottesWeb\_52 (DR), Fresco\_53 (DR), JellyBelly\_51 (DR), Ligma\_53 (DR), Mariokart\_52 (DR), Shatter\_53 (DR),

## Summary by clusters:

There is one cluster represented in this pham: DR

### Info for manual annotations of cluster DR:

- Start number 4 was manually annotated 2 times for cluster DR.
- Start number 5 was manually annotated 4 times for cluster DR.
- Start number 6 was manually annotated 10 times for cluster DR.
- Start number 7 was manually annotated 1 time for cluster DR.
- Start number 8 was manually annotated 5 times for cluster DR.

## Gene Information:

Gene: AksarBAT\_55 Start: 48138, Stop: 47536, Start Num: 6  
Candidate Starts for AksarBAT\_55:  
(Start: 6 @48138 has 10 MA's), (20, 47955), (28, 47877), (35, 47838), (41, 47784), (42, 47778), (58, 47589),

Gene: AnClar\_52 Start: 48749, Stop: 48273, Start Num: 5  
Candidate Starts for AnClar\_52:  
(1, 48956), (Start: 5 @48749 has 4 MA's), (15, 48638), (17, 48611), (27, 48500), (47, 48374), (54, 48335),

Gene: AnarQue\_56 Start: 48966, Stop: 48397, Start Num: 6  
Candidate Starts for AnarQue\_56:  
(Start: 6 @48966 has 10 MA's), (13, 48885), (23, 48747), (30, 48687), (40, 48615), (41, 48612), (50, 48564), (52, 48558), (56, 48498), (58, 48453),

Gene: Axumite\_53 Start: 46714, Stop: 46265, Start Num: 8  
Candidate Starts for Axumite\_53:  
(Start: 8 @46714 has 5 MA's), (9, 46672), (15, 46612), (46, 46360), (49, 46348),

Gene: BiggityBass\_51 Start: 48087, Stop: 47641, Start Num: 5  
Candidate Starts for BiggityBass\_51:  
(1, 48300), (Start: 5 @48087 has 4 MA's), (11, 48018), (15, 47976), (18, 47934), (25, 47877), (27, 47862), (55, 47682),

Gene: Blackpen\_55 Start: 48044, Stop: 47466, Start Num: 6  
Candidate Starts for Blackpen\_55:  
(Start: 6 @48044 has 10 MA's), (13, 47963), (23, 47825), (40, 47693), (41, 47690), (50, 47633), (52, 47627), (56, 47567), (58, 47522),

Gene: CaiB\_56 Start: 49517, Stop: 48930, Start Num: 6  
Candidate Starts for CaiB\_56:  
(Start: 6 @49517 has 10 MA's), (13, 49436), (19, 49343), (23, 49298), (42, 49157), (44, 49154), (56, 49031), (59, 48971),

Gene: CharlottesWeb\_52 Start: 46101, Stop: 45649, Start Num: 8  
Candidate Starts for CharlottesWeb\_52:  
(3, 46194), (Start: 8 @46101 has 5 MA's), (11, 46041), (14, 46005), (24, 45915), (26, 45894), (46, 45750), (49, 45738),

Gene: CloverMinnie\_55 Start: 48552, Stop: 47974, Start Num: 6  
Candidate Starts for CloverMinnie\_55:  
(Start: 6 @48552 has 10 MA's), (13, 48471), (23, 48333), (40, 48201), (41, 48198), (50, 48141), (52, 48135), (56, 48075), (58, 48030),

Gene: Coldpizza\_52 Start: 49032, Stop: 48547, Start Num: 4  
Candidate Starts for Coldpizza\_52:  
(2, 49080), (Start: 4 @49032 has 2 MA's), (Start: 5 @49005 has 4 MA's), (Start: 6 @49002 has 10 MA's), (15, 48894), (33, 48747), (43, 48681), (54, 48597),

Gene: Evaa\_51 Start: 46670, Stop: 46056, Start Num: 4  
Candidate Starts for Evaa\_51:  
(2, 46718), (Start: 4 @46670 has 2 MA's), (Start: 5 @46625 has 4 MA's), (Start: 6 @46622 has 10 MA's), (12, 46547), (16, 46493), (18, 46460), (21, 46433), (31, 46349), (32, 46346), (34, 46334), (38,

46310), (48, 46232), (51, 46223), (57, 46133),

Gene: FelixTres\_55 Start: 48587, Stop: 48012, Start Num: 6

Candidate Starts for FelixTres\_55:

(Start: 6 @48587 has 10 MA's), (13, 48506), (23, 48368), (40, 48236), (41, 48233), (50, 48179), (52, 48173), (56, 48113), (58, 48068),

Gene: Fresco\_53 Start: 46714, Stop: 46265, Start Num: 8

Candidate Starts for Fresco\_53:

(Start: 8 @46714 has 5 MA's), (9, 46672), (15, 46612), (46, 46360), (49, 46348),

Gene: JellyBelly\_51 Start: 46099, Stop: 45647, Start Num: 8

Candidate Starts for JellyBelly\_51:

(3, 46192), (Start: 8 @46099 has 5 MA's), (11, 46039), (14, 46003), (24, 45913), (26, 45892), (46, 45748), (49, 45736),

Gene: Ligma\_53 Start: 46714, Stop: 46265, Start Num: 8

Candidate Starts for Ligma\_53:

(Start: 8 @46714 has 5 MA's), (9, 46672), (15, 46612), (46, 46360), (49, 46348),

Gene: LittleMunchkin\_54 Start: 49386, Stop: 48961, Start Num: 6

Candidate Starts for LittleMunchkin\_54:

(Start: 6 @49386 has 10 MA's), (9, 49338), (10, 49323), (15, 49278), (22, 49218), (26, 49185), (27, 49179), (36, 49131), (37, 49128), (39, 49125),

Gene: MakoManhole\_53 Start: 48044, Stop: 47469, Start Num: 6

Candidate Starts for MakoManhole\_53:

(Start: 6 @48044 has 10 MA's), (13, 47963), (23, 47825), (40, 47693), (41, 47690), (50, 47636), (52, 47630), (56, 47570), (59, 47510),

Gene: Mariokart\_52 Start: 46387, Stop: 45935, Start Num: 8

Candidate Starts for Mariokart\_52:

(3, 46480), (Start: 8 @46387 has 5 MA's), (11, 46327), (14, 46291), (24, 46201), (26, 46180), (46, 46036), (49, 46024),

Gene: MossRose\_55 Start: 48597, Stop: 48031, Start Num: 6

Candidate Starts for MossRose\_55:

(Start: 6 @48597 has 10 MA's), (13, 48516), (23, 48378), (40, 48246), (41, 48243), (50, 48198), (52, 48192), (56, 48132), (58, 48087),

Gene: NHagos\_54 Start: 47410, Stop: 46808, Start Num: 6

Candidate Starts for NHagos\_54:

(Start: 6 @47410 has 10 MA's), (20, 47227), (28, 47149), (35, 47110), (41, 47056), (42, 47050), (58, 46861),

Gene: Shatter\_53 Start: 46714, Stop: 46265, Start Num: 8

Candidate Starts for Shatter\_53:

(Start: 8 @46714 has 5 MA's), (9, 46672), (15, 46612), (46, 46360), (49, 46348),

Gene: Sisko\_51 Start: 46752, Stop: 46276, Start Num: 5

Candidate Starts for Sisko\_51:

(1, 46959), (Start: 5 @46752 has 4 MA's), (15, 46641), (17, 46614), (27, 46503), (47, 46377), (54, 46338),

Gene: Sour\_55 Start: 49917, Stop: 49447, Start Num: 7

Candidate Starts for Sour\_55:

(Start: 7 @49917 has 1 MA's), (9, 49872), (15, 49812), (22, 49722), (26, 49689), (27, 49683), (29, 49671), (45, 49563), (46, 49551), (53, 49524),

Gene: TraderJ\_56 Start: 48929, Stop: 48354, Start Num: 6

Candidate Starts for TraderJ\_56:

(Start: 6 @48929 has 10 MA's), (13, 48848), (23, 48710), (40, 48578), (41, 48575), (50, 48521), (52, 48515), (56, 48455), (58, 48410),

Gene: Wooper\_56 Start: 48938, Stop: 48363, Start Num: 6

Candidate Starts for Wooper\_56:

(Start: 6 @48938 has 10 MA's), (13, 48857), (23, 48719), (40, 48587), (41, 48584), (50, 48530), (52, 48524), (56, 48464), (58, 48419),

Gene: Yago84\_51 Start: 46827, Stop: 46351, Start Num: 5

Candidate Starts for Yago84\_51:

(Start: 5 @46827 has 4 MA's), (15, 46716), (17, 46689), (27, 46578), (47, 46452), (54, 46413),

Gene: Yeshua\_56 Start: 48915, Stop: 48340, Start Num: 6

Candidate Starts for Yeshua\_56:

(Start: 6 @48915 has 10 MA's), (13, 48834), (23, 48696), (40, 48564), (41, 48561), (50, 48507), (52, 48501), (56, 48441), (58, 48396),