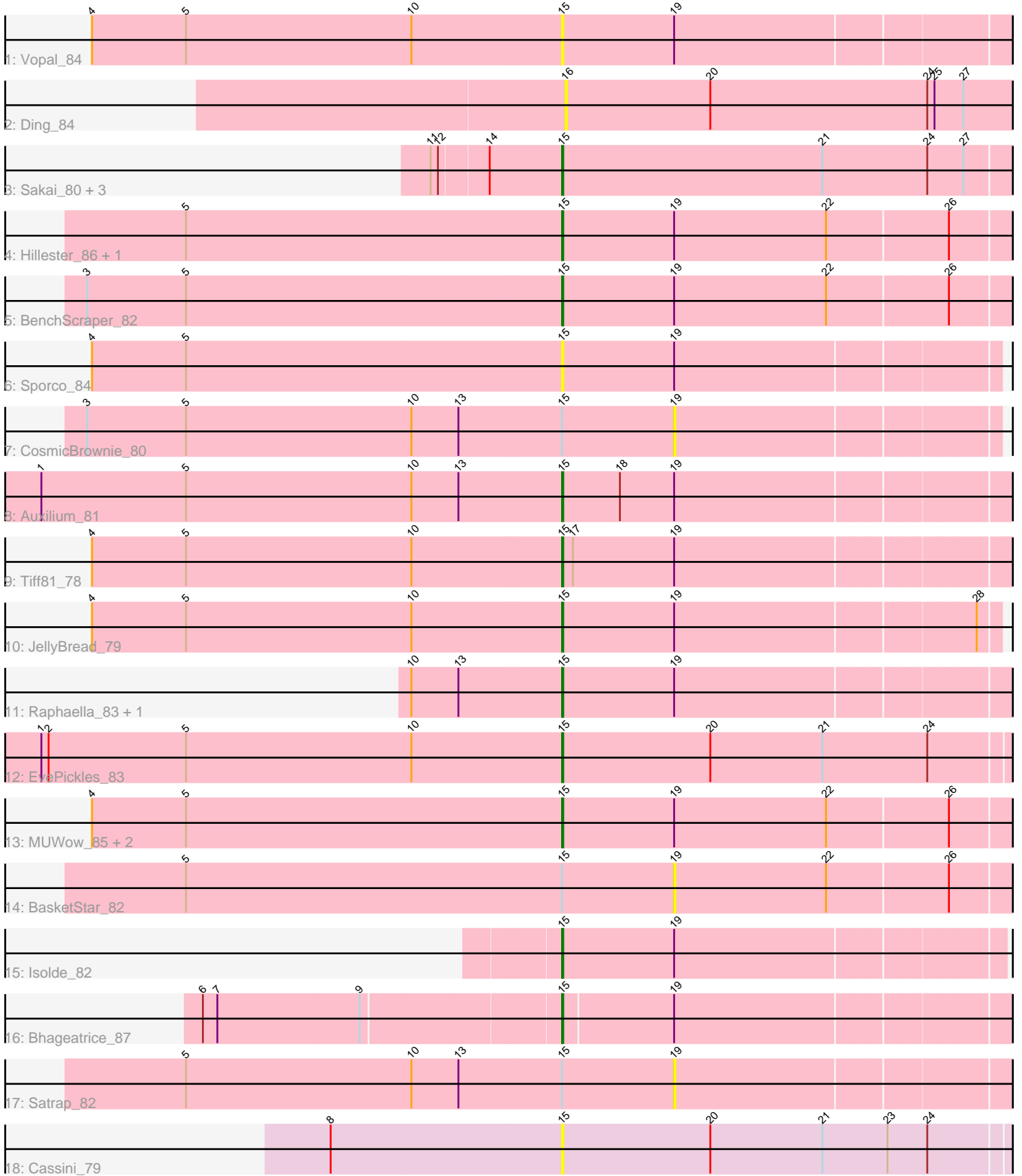


Pham 303623



Note: Tracks are now grouped by subcluster and scaled. Switching in subcluster is indicated by changes in track color. Track scale is now set by default to display the region 30 bp upstream of start 1 to 30 bp downstream of the last possible start. If this default region is judged to be packed too tightly with annotated starts, the track will be further scaled to only show that region of the ORF with annotated starts. This action will be indicated by adding "Zoomed" to the title. For starts, yellow indicates the location of called starts comprised solely of Glimmer/GeneMark auto-annotations, green indicates the location of called starts with at least 1 manual gene annotation.

Pham 303623 Report

This analysis was run 06/08/26 on database version 649.

Pham number 303623 has 25 members, 8 are drafts.

Phages represented in each track:

- Track 1 : Vopal_84
- Track 2 : Ding_84
- Track 3 : Sakai_80, CookieBear_82, SonDevVon_91, Gorpy_81
- Track 4 : Hillester_86, RadFad_87
- Track 5 : BenchScraper_82
- Track 6 : Sporco_84
- Track 7 : CosmicBrownie_80
- Track 8 : Auxilium_81
- Track 9 : Tiff81_78
- Track 10 : JellyBread_79
- Track 11 : Raphaella_83, Faja_85
- Track 12 : EvePickles_83
- Track 13 : MUWow_85, Windest_86, Richie_85
- Track 14 : BasketStar_82
- Track 15 : Isolde_82
- Track 16 : Bhageatrice_87
- Track 17 : Satrap_82
- Track 18 : Cassini_79

Summary of Final Annotations (See graph section above for start numbers):

The start number called the most often in the published annotations is 15, it was called in 17 of the 17 non-draft genes in the pham.

Genes that call this "Most Annotated" start:

- Auxilium_81, BenchScraper_82, Bhageatrice_87, Cassini_79, CookieBear_82, EvePickles_83, Faja_85, Gorpy_81, Hillester_86, Isolde_82, JellyBread_79, MUWow_85, RadFad_87, Raphaella_83, Richie_85, Sakai_80, SonDevVon_91, Sporco_84, Tiff81_78, Vopal_84, Windest_86,

Genes that have the "Most Annotated" start but do not call it:

- BasketStar_82, CosmicBrownie_80, Satrap_82,

Genes that do not have the "Most Annotated" start:

- Ding_84,

Summary by start number:

Start 15:

- Found in 24 of 25 (96.0%) of genes in pham
- Manual Annotations of this start: 17 of 17
- Called 87.5% of time when present
- Phage (with cluster) where this start called: Auxilium_81 (AY), BenchScraper_82 (AY), Bhageatrice_87 (AY), Cassini_79 (FN), CookieBear_82 (AY), EvePickles_83 (AY), Faja_85 (AY), Gorpy_81 (AY), Hillester_86 (AY), Isolde_82 (AY), JellyBread_79 (AY), MUWow_85 (AY), RadFad_87 (AY), Raphaella_83 (AY), Richie_85 (AY), Sakai_80 (AY), SonDevVon_91 (AY), Sporco_84 (AY), Tiff81_78 (AY), Vopal_84 (AY), Windest_86 (AY),

Start 16:

- Found in 1 of 25 (4.0%) of genes in pham
- No Manual Annotations of this start.
- Called 100.0% of time when present
- Phage (with cluster) where this start called: Ding_84 (AY),

Start 19:

- Found in 18 of 25 (72.0%) of genes in pham
- No Manual Annotations of this start.
- Called 16.7% of time when present
- Phage (with cluster) where this start called: BasketStar_82 (AY), CosmicBrownie_80 (AY), Satrap_82 (AY),

Summary by clusters:

There are 2 clusters represented in this pham: AY, FN,

Info for manual annotations of cluster AY:

- Start number 15 was manually annotated 17 times for cluster AY.

Gene Information:

Gene: Auxilium_81 Start: 45001, Stop: 45360, Start Num: 15

Candidate Starts for Auxilium_81:

(1, 44572), (5, 44692), (10, 44878), (13, 44917), (Start: 15 @45001 has 17 MA's), (18, 45049), (19, 45094),

Gene: BasketStar_82 Start: 47340, Stop: 47693, Start Num: 19

Candidate Starts for BasketStar_82:

(5, 46938), (Start: 15 @47247 has 17 MA's), (19, 47340), (22, 47466), (26, 47562),

Gene: BenchScraper_82 Start: 45488, Stop: 45886, Start Num: 15

Candidate Starts for BenchScraper_82:

(3, 45098), (5, 45179), (Start: 15 @45488 has 17 MA's), (19, 45581), (22, 45707), (26, 45803),

Gene: Bhageatrice_87 Start: 50237, Stop: 50593, Start Num: 15
Candidate Starts for Bhageatrice_87:
(6, 49952), (7, 49964), (9, 50081), (Start: 15 @50237 has 17 MA's), (19, 50327),

Gene: Cassini_79 Start: 46271, Stop: 46672, Start Num: 15
Candidate Starts for Cassini_79:
(8, 46082), (Start: 15 @46271 has 17 MA's), (20, 46394), (21, 46487), (23, 46541), (24, 46574),

Gene: CookieBear_82 Start: 46578, Stop: 46994, Start Num: 15
Candidate Starts for CookieBear_82:
(11, 46473), (12, 46479), (14, 46518), (Start: 15 @46578 has 17 MA's), (21, 46794), (24, 46881), (27, 46911),

Gene: CosmicBrownie_80 Start: 45811, Stop: 46065, Start Num: 19
Candidate Starts for CosmicBrownie_80:
(3, 45328), (5, 45409), (10, 45595), (13, 45634), (Start: 15 @45718 has 17 MA's), (19, 45811),

Gene: Ding_84 Start: 46525, Stop: 46929, Start Num: 16
Candidate Starts for Ding_84:
(16, 46525), (20, 46645), (24, 46825), (25, 46831), (27, 46855),

Gene: EvePickles_83 Start: 48170, Stop: 48571, Start Num: 15
Candidate Starts for EvePickles_83:
(1, 47741), (2, 47747), (5, 47861), (10, 48047), (Start: 15 @48170 has 17 MA's), (20, 48293), (21, 48386), (24, 48473),

Gene: Faja_85 Start: 48003, Stop: 48362, Start Num: 15
Candidate Starts for Faja_85:
(10, 47880), (13, 47919), (Start: 15 @48003 has 17 MA's), (19, 48096),

Gene: Gorpy_81 Start: 47920, Stop: 48336, Start Num: 15
Candidate Starts for Gorpy_81:
(11, 47815), (12, 47821), (14, 47860), (Start: 15 @47920 has 17 MA's), (21, 48136), (24, 48223), (27, 48253),

Gene: Hillester_86 Start: 47374, Stop: 47820, Start Num: 15
Candidate Starts for Hillester_86:
(5, 47065), (Start: 15 @47374 has 17 MA's), (19, 47467), (22, 47593), (26, 47689),

Gene: Isolde_82 Start: 47475, Stop: 47825, Start Num: 15
Candidate Starts for Isolde_82:
(Start: 15 @47475 has 17 MA's), (19, 47568),

Gene: JellyBread_79 Start: 46390, Stop: 46737, Start Num: 15
Candidate Starts for JellyBread_79:
(4, 46003), (5, 46081), (10, 46267), (Start: 15 @46390 has 17 MA's), (19, 46483), (28, 46720),

Gene: MUWow_85 Start: 48328, Stop: 48726, Start Num: 15
Candidate Starts for MUWow_85:
(4, 47941), (5, 48019), (Start: 15 @48328 has 17 MA's), (19, 48421), (22, 48547), (26, 48643),

Gene: RadFad_87 Start: 47374, Stop: 47820, Start Num: 15
Candidate Starts for RadFad_87:

(5, 47065), (Start: 15 @47374 has 17 MA's), (19, 47467), (22, 47593), (26, 47689),

Gene: Raphaella_83 Start: 46297, Stop: 46656, Start Num: 15

Candidate Starts for Raphaella_83:

(10, 46174), (13, 46213), (Start: 15 @46297 has 17 MA's), (19, 46390),

Gene: Richie_85 Start: 48060, Stop: 48458, Start Num: 15

Candidate Starts for Richie_85:

(4, 47673), (5, 47751), (Start: 15 @48060 has 17 MA's), (19, 48153), (22, 48279), (26, 48375),

Gene: Sakai_80 Start: 46631, Stop: 47047, Start Num: 15

Candidate Starts for Sakai_80:

(11, 46526), (12, 46532), (14, 46571), (Start: 15 @46631 has 17 MA's), (21, 46847), (24, 46934), (27, 46964),

Gene: Satrap_82 Start: 46928, Stop: 47194, Start Num: 19

Candidate Starts for Satrap_82:

(5, 46526), (10, 46712), (13, 46751), (Start: 15 @46835 has 17 MA's), (19, 46928),

Gene: SonDevVon_91 Start: 47576, Stop: 47992, Start Num: 15

Candidate Starts for SonDevVon_91:

(11, 47471), (12, 47477), (14, 47516), (Start: 15 @47576 has 17 MA's), (21, 47792), (24, 47879), (27, 47909),

Gene: Sporco_84 Start: 47977, Stop: 48324, Start Num: 15

Candidate Starts for Sporco_84:

(4, 47590), (5, 47668), (Start: 15 @47977 has 17 MA's), (19, 48070),

Gene: Tiff81_78 Start: 45438, Stop: 45797, Start Num: 15

Candidate Starts for Tiff81_78:

(4, 45051), (5, 45129), (10, 45315), (Start: 15 @45438 has 17 MA's), (17, 45447), (19, 45531),

Gene: Vopal_84 Start: 48363, Stop: 48722, Start Num: 15

Candidate Starts for Vopal_84:

(4, 47976), (5, 48054), (10, 48240), (Start: 15 @48363 has 17 MA's), (19, 48456),

Gene: Windest_86 Start: 45545, Stop: 45943, Start Num: 15

Candidate Starts for Windest_86:

(4, 45158), (5, 45236), (Start: 15 @45545 has 17 MA's), (19, 45638), (22, 45764), (26, 45860),