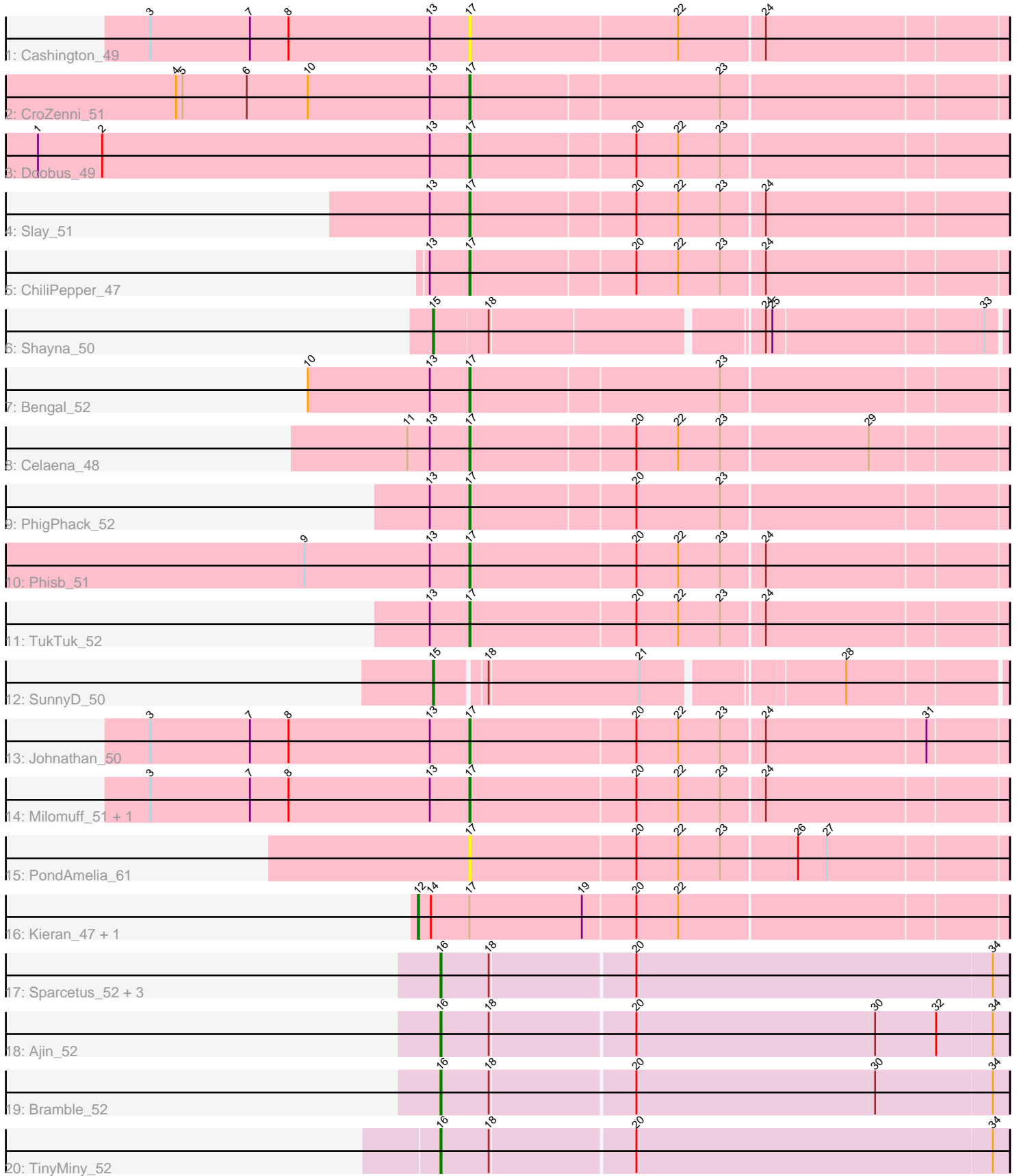


Pham 303629



Note: Tracks are now grouped by subcluster and scaled. Switching in subcluster is indicated by changes in track color. Track scale is now set by default to display the region 30 bp upstream of start 1 to 30 bp downstream of the last possible start. If this default region is judged to be packed too tightly with annotated starts, the track will be further scaled to only show that region of the ORF with annotated starts. This action will be indicated by adding "Zoomed" to the title. For starts, yellow indicates the location of called starts comprised solely of Glimmer/GeneMark auto-annotations, green indicates the location of called starts with at least 1 manual gene annotation.

Pham 303629 Report

This analysis was run 06/08/26 on database version 649.

Pham number 303629 has 25 members, 4 are drafts.

Phages represented in each track:

- Track 1 : Cashington_49
- Track 2 : CroZenni_51
- Track 3 : Doobus_49
- Track 4 : Slay_51
- Track 5 : ChiliPepper_47
- Track 6 : Shayna_50
- Track 7 : Bengal_52
- Track 8 : Celaena_48
- Track 9 : PhigPhack_52
- Track 10 : Phisb_51
- Track 11 : TukTuk_52
- Track 12 : SunnyD_50
- Track 13 : Johnathan_50
- Track 14 : Milomuff_51, Solea_52
- Track 15 : PondAmelia_61
- Track 16 : Kieran_47, Kamdara_47
- Track 17 : Sparcetus_52, Kors_52, LordBart_52, RikSengupta_52
- Track 18 : Ajin_52
- Track 19 : Bramble_52
- Track 20 : TinyMiny_52

Summary of Final Annotations (See graph section above for start numbers):

The start number called the most often in the published annotations is 17, it was called in 11 of the 21 non-draft genes in the pham.

Genes that call this "Most Annotated" start:

- Bengal_52, Cashington_49, Celaena_48, ChiliPepper_47, CroZenni_51, Doobus_49, Johnathan_50, Milomuff_51, PhigPhack_52, Phisb_51, PondAmelia_61, Slay_51, Solea_52, TukTuk_52,

Genes that have the "Most Annotated" start but do not call it:

- Kamdara_47, Kieran_47,

Genes that do not have the "Most Annotated" start:

- Ajin_52, Bramble_52, Kors_52, LordBart_52, RikSengupta_52, Shayna_50, Sparcetus_52, SunnyD_50, TinyMiny_52,

Summary by start number:

Start 12:

- Found in 2 of 25 (8.0%) of genes in pham
- Manual Annotations of this start: 1 of 21
- Called 100.0% of time when present
- Phage (with cluster) where this start called: Kamdara_47 (EB), Kieran_47 (EB),

Start 15:

- Found in 2 of 25 (8.0%) of genes in pham
- Manual Annotations of this start: 2 of 21
- Called 100.0% of time when present
- Phage (with cluster) where this start called: Shayna_50 (EB), SunnyD_50 (EB),

Start 16:

- Found in 7 of 25 (28.0%) of genes in pham
- Manual Annotations of this start: 7 of 21
- Called 100.0% of time when present
- Phage (with cluster) where this start called: Ajin_52 (EF), Bramble_52 (EF), Kors_52 (EF), LordBart_52 (EF), RikSengupta_52 (EF), Sparcetus_52 (EF), TinyMiny_52 (EF),

Start 17:

- Found in 16 of 25 (64.0%) of genes in pham
- Manual Annotations of this start: 11 of 21
- Called 87.5% of time when present
- Phage (with cluster) where this start called: Bengal_52 (EB), Cashington_49 (EB), Celaena_48 (EB), ChiliPepper_47 (EB), CroZenni_51 (EB), Doobus_49 (EB), Johnathan_50 (EB), Milomuff_51 (EB), PhigPhack_52 (EB), Phisb_51 (EB), PondAmelia_61 (EB), Slay_51 (EB), Solea_52 (EB), TukTuk_52 (EB),

Summary by clusters:

There are 2 clusters represented in this pham: EF, EB,

Info for manual annotations of cluster EB:

- Start number 12 was manually annotated 1 time for cluster EB.
- Start number 15 was manually annotated 2 times for cluster EB.
- Start number 17 was manually annotated 11 times for cluster EB.

Info for manual annotations of cluster EF:

- Start number 16 was manually annotated 7 times for cluster EF.

Gene Information:

Gene: Ajin_52 Start: 36420, Stop: 36938, Start Num: 16

Candidate Starts for Ajin_52:

(Start: 16 @36420 has 7 MA's), (18, 36465), (20, 36594), (30, 36816), (32, 36873), (34, 36924),

Gene: Bengal_52 Start: 34139, Stop: 34624, Start Num: 17
Candidate Starts for Bengal_52:
(10, 33989), (13, 34103), (Start: 17 @34139 has 11 MA's), (23, 34367),

Gene: Bramble_52 Start: 36469, Stop: 36987, Start Num: 16
Candidate Starts for Bramble_52:
(Start: 16 @36469 has 7 MA's), (18, 36514), (20, 36643), (30, 36865), (34, 36973),

Gene: Cashington_49 Start: 33456, Stop: 33944, Start Num: 17
Candidate Starts for Cashington_49:
(3, 33159), (7, 33252), (8, 33288), (13, 33420), (Start: 17 @33456 has 11 MA's), (22, 33648), (24, 33726),

Gene: Celaena_48 Start: 35134, Stop: 35619, Start Num: 17
Candidate Starts for Celaena_48:
(11, 35077), (13, 35098), (Start: 17 @35134 has 11 MA's), (20, 35284), (22, 35323), (23, 35362), (29, 35497),

Gene: ChiliPepper_47 Start: 34434, Stop: 34919, Start Num: 17
Candidate Starts for ChiliPepper_47:
(13, 34398), (Start: 17 @34434 has 11 MA's), (20, 34584), (22, 34623), (23, 34662), (24, 34701),

Gene: CroZenni_51 Start: 33989, Stop: 34474, Start Num: 17
Candidate Starts for CroZenni_51:
(4, 33716), (5, 33722), (6, 33782), (10, 33839), (13, 33953), (Start: 17 @33989 has 11 MA's), (23, 34217),

Gene: Doobus_49 Start: 33650, Stop: 34138, Start Num: 17
Candidate Starts for Doobus_49:
(1, 33248), (2, 33308), (13, 33614), (Start: 17 @33650 has 11 MA's), (20, 33800), (22, 33839), (23, 33878),

Gene: Johnathan_50 Start: 33482, Stop: 33970, Start Num: 17
Candidate Starts for Johnathan_50:
(3, 33185), (7, 33278), (8, 33314), (13, 33446), (Start: 17 @33482 has 11 MA's), (20, 33635), (22, 33674), (23, 33713), (24, 33752), (31, 33899),

Gene: Kamdara_47 Start: 34343, Stop: 34879, Start Num: 12
Candidate Starts for Kamdara_47:
(Start: 12 @34343 has 1 MA's), (14, 34355), (Start: 17 @34391 has 11 MA's), (19, 34496), (20, 34544), (22, 34583),

Gene: Kieran_47 Start: 34346, Stop: 34882, Start Num: 12
Candidate Starts for Kieran_47:
(Start: 12 @34346 has 1 MA's), (14, 34358), (Start: 17 @34394 has 11 MA's), (19, 34499), (20, 34547), (22, 34586),

Gene: Kors_52 Start: 36509, Stop: 37027, Start Num: 16
Candidate Starts for Kors_52:
(Start: 16 @36509 has 7 MA's), (18, 36554), (20, 36683), (34, 37013),

Gene: LordBart_52 Start: 36406, Stop: 36924, Start Num: 16

Candidate Starts for LordBart_52:

(Start: 16 @36406 has 7 MA's), (18, 36451), (20, 36580), (34, 36910),

Gene: Milomuff_51 Start: 33983, Stop: 34471, Start Num: 17

Candidate Starts for Milomuff_51:

(3, 33686), (7, 33779), (8, 33815), (13, 33947), (Start: 17 @33983 has 11 MA's), (20, 34136), (22, 34175), (23, 34214), (24, 34253),

Gene: PhigPhack_52 Start: 34000, Stop: 34485, Start Num: 17

Candidate Starts for PhigPhack_52:

(13, 33964), (Start: 17 @34000 has 11 MA's), (20, 34150), (23, 34228),

Gene: Phisb_51 Start: 34065, Stop: 34553, Start Num: 17

Candidate Starts for Phisb_51:

(9, 33912), (13, 34029), (Start: 17 @34065 has 11 MA's), (20, 34218), (22, 34257), (23, 34296), (24, 34335),

Gene: PondAmelia_61 Start: 34512, Stop: 35000, Start Num: 17

Candidate Starts for PondAmelia_61:

(Start: 17 @34512 has 11 MA's), (20, 34665), (22, 34704), (23, 34743), (26, 34812), (27, 34839),

Gene: RikSengupta_52 Start: 36534, Stop: 37052, Start Num: 16

Candidate Starts for RikSengupta_52:

(Start: 16 @36534 has 7 MA's), (18, 36579), (20, 36708), (34, 37038),

Gene: Shayna_50 Start: 32769, Stop: 33266, Start Num: 15

Candidate Starts for Shayna_50:

(Start: 15 @32769 has 2 MA's), (18, 32817), (24, 33054), (25, 33060), (33, 33249),

Gene: Slay_51 Start: 34383, Stop: 34871, Start Num: 17

Candidate Starts for Slay_51:

(13, 34347), (Start: 17 @34383 has 11 MA's), (20, 34533), (22, 34572), (23, 34611), (24, 34650),

Gene: Solea_52 Start: 33983, Stop: 34471, Start Num: 17

Candidate Starts for Solea_52:

(3, 33686), (7, 33779), (8, 33815), (13, 33947), (Start: 17 @33983 has 11 MA's), (20, 34136), (22, 34175), (23, 34214), (24, 34253),

Gene: Sparcetus_52 Start: 36411, Stop: 36929, Start Num: 16

Candidate Starts for Sparcetus_52:

(Start: 16 @36411 has 7 MA's), (18, 36456), (20, 36585), (34, 36915),

Gene: SunnyD_50 Start: 32782, Stop: 33273, Start Num: 15

Candidate Starts for SunnyD_50:

(Start: 15 @32782 has 2 MA's), (18, 32824), (21, 32962), (28, 33133),

Gene: TinyMiny_52 Start: 36429, Stop: 36947, Start Num: 16

Candidate Starts for TinyMiny_52:

(Start: 16 @36429 has 7 MA's), (18, 36474), (20, 36603), (34, 36933),

Gene: TukTuk_52 Start: 34122, Stop: 34610, Start Num: 17

Candidate Starts for TukTuk_52:

(13, 34086), (Start: 17 @34122 has 11 MA's), (20, 34275), (22, 34314), (23, 34353), (24, 34392),

