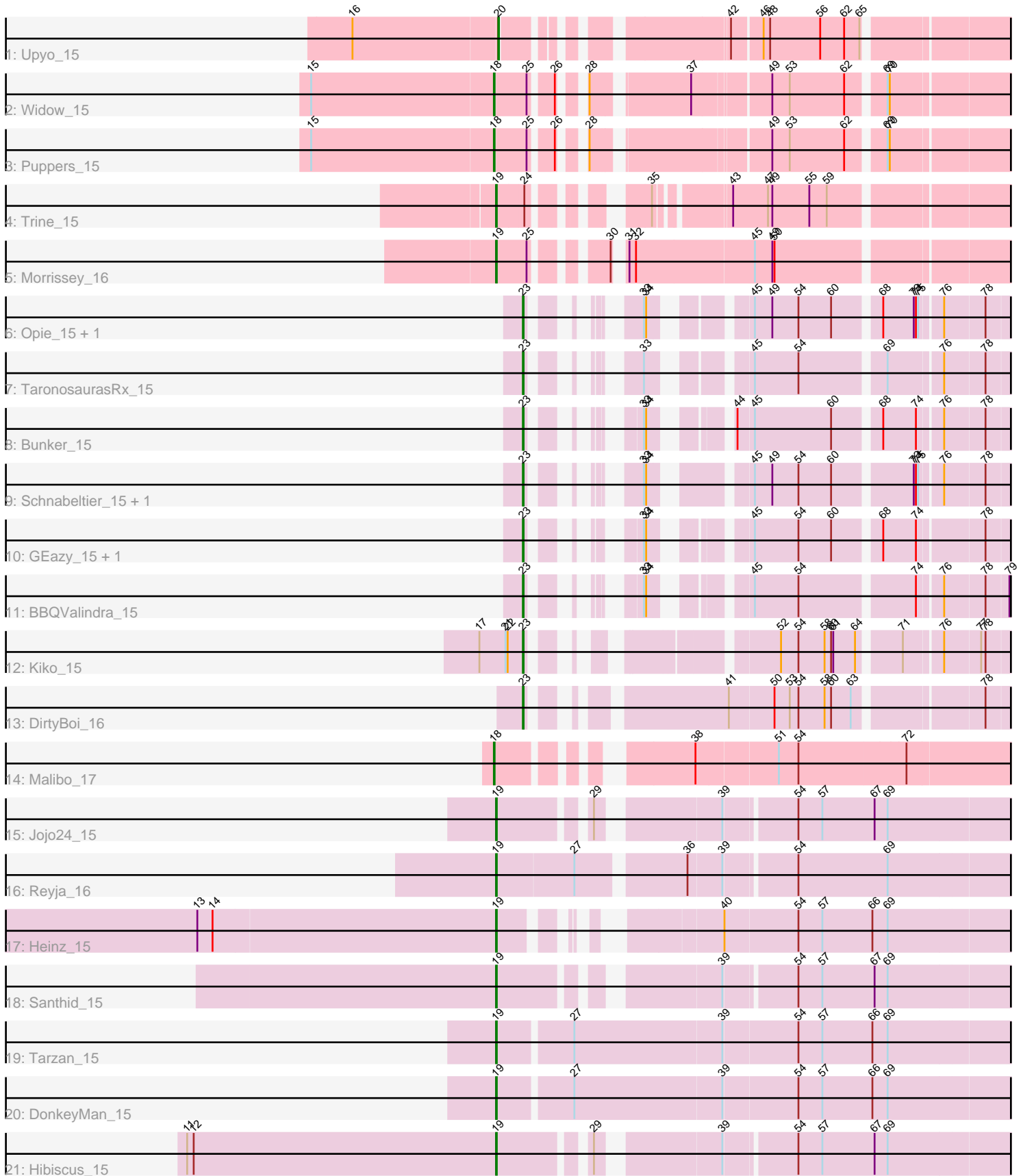


Zoomed Pham 303644



Note: Tracks are now grouped by subcluster and scaled. Switching in subcluster is indicated by changes in track color. Track scale is now set by default to display the region 30 bp upstream of start 1 to 30 bp downstream of the last possible start. If this default region is judged to be packed too tightly with annotated starts, the track will be further scaled to only show that region of the ORF with annotated starts. This action will be indicated by adding "Zoomed" to the title. For starts, yellow indicates the location of called starts comprised solely of Glimmer/GeneMark auto-annotations, green indicates the location of called starts with at least 1 manual gene annotation.

Pham 303644 Report

This analysis was run 06/08/26 on database version 649.

Pham number 303644 has 24 members, 0 are drafts.

Phages represented in each track:

- Track 1 : Upyo_15
- Track 2 : Widow_15
- Track 3 : Puppies_15
- Track 4 : Trine_15
- Track 5 : Morrissey_16
- Track 6 : Opie_15, Eyes_15
- Track 7 : TaronosaurusRx_15
- Track 8 : Bunker_15
- Track 9 : Schnabeltier_15, MagicMan_15
- Track 10 : GEazy_15, HannahD_15
- Track 11 : BBQValindra_15
- Track 12 : Kiko_15
- Track 13 : DirtyBoi_16
- Track 14 : Malibo_17
- Track 15 : Jojo24_15
- Track 16 : Reyja_16
- Track 17 : Heinz_15
- Track 18 : Santhid_15
- Track 19 : Tarzan_15
- Track 20 : DonkeyMan_15
- Track 21 : Hibiscus_15

Summary of Final Annotations (See graph section above for start numbers):

The start number called the most often in the published annotations is 23, it was called in 11 of the 24 non-draft genes in the pham.

Genes that call this "Most Annotated" start:

- BBQValindra_15, Bunker_15, DirtyBoi_16, Eyes_15, GEazy_15, HannahD_15, Kiko_15, MagicMan_15, Opie_15, Schnabeltier_15, TaronosaurusRx_15,

Genes that have the "Most Annotated" start but do not call it:

-

Genes that do not have the "Most Annotated" start:

- DonkeyMan_15, Heinz_15, Hibiscus_15, Jojo24_15, Malibo_17, Morrissey_16, Poppers_15, Reyja_16, Santhid_15, Tarzan_15, Trine_15, Upyo_15, Widow_15,

Summary by start number:

Start 18:

- Found in 3 of 24 (12.5%) of genes in pham
- Manual Annotations of this start: 3 of 24
- Called 100.0% of time when present
- Phage (with cluster) where this start called: Malibo_17 (DW), Poppers_15 (CD), Widow_15 (CD),

Start 19:

- Found in 9 of 24 (37.5%) of genes in pham
- Manual Annotations of this start: 9 of 24
- Called 100.0% of time when present
- Phage (with cluster) where this start called: DonkeyMan_15 (DY), Heinz_15 (DY), Hibiscus_15 (DY), Jojo24_15 (DY), Morrissey_16 (CD), Reyja_16 (DY), Santhid_15 (DY), Tarzan_15 (DY), Trine_15 (CD),

Start 20:

- Found in 1 of 24 (4.2%) of genes in pham
- Manual Annotations of this start: 1 of 24
- Called 100.0% of time when present
- Phage (with cluster) where this start called: Upyo_15 (CD),

Start 23:

- Found in 11 of 24 (45.8%) of genes in pham
- Manual Annotations of this start: 11 of 24
- Called 100.0% of time when present
- Phage (with cluster) where this start called: BBQValindra_15 (DB), Bunker_15 (DB), DirtyBoi_16 (DB), Eyes_15 (DB), GEazy_15 (DB), HannahD_15 (DB), Kiko_15 (DB), MagicMan_15 (DB), Opie_15 (DB), Schnabeltier_15 (DB), TaronosaurusRx_15 (DB),

Summary by clusters:

There are 4 clusters represented in this pham: DW, CD, DB, DY,

Info for manual annotations of cluster CD:

- Start number 18 was manually annotated 2 times for cluster CD.
- Start number 19 was manually annotated 2 times for cluster CD.
- Start number 20 was manually annotated 1 time for cluster CD.

Info for manual annotations of cluster DB:

- Start number 23 was manually annotated 11 times for cluster DB.

Info for manual annotations of cluster DW:

- Start number 18 was manually annotated 1 time for cluster DW.

Info for manual annotations of cluster DY:

- Start number 19 was manually annotated 7 times for cluster DY.

Gene Information:

Gene: BBQValindra_15 Start: 9257, Stop: 10068, Start Num: 23

Candidate Starts for BBQValindra_15:

(Start: 23 @9257 has 11 MA's), (33, 9323), (34, 9326), (45, 9416), (54, 9476), (74, 9623), (76, 9653), (78, 9707), (79, 9737), (80, 9740),

Gene: Bunker_15 Start: 9257, Stop: 10068, Start Num: 23

Candidate Starts for Bunker_15:

(Start: 23 @9257 has 11 MA's), (33, 9323), (34, 9326), (44, 9395), (45, 9416), (60, 9521), (68, 9578), (74, 9623), (76, 9653), (78, 9707),

Gene: DirtyBoi_16 Start: 9613, Stop: 10517, Start Num: 23

Candidate Starts for DirtyBoi_16:

(Start: 23 @9613 has 11 MA's), (41, 9817), (50, 9877), (53, 9898), (54, 9910), (58, 9946), (60, 9955), (63, 9982), (78, 10141), (89, 10333), (95, 10429),

Gene: DonkeyMan_15 Start: 8928, Stop: 9955, Start Num: 19

Candidate Starts for DonkeyMan_15:

(Start: 19 @8928 has 9 MA's), (27, 9024), (39, 9225), (54, 9324), (57, 9357), (66, 9426), (69, 9447), (81, 9621), (92, 9828), (98, 9948),

Gene: Eyes_15 Start: 9267, Stop: 10099, Start Num: 23

Candidate Starts for Eyes_15:

(Start: 23 @9267 has 11 MA's), (33, 9336), (34, 9339), (45, 9432), (49, 9456), (54, 9492), (60, 9537), (68, 9594), (73, 9636), (74, 9639), (75, 9642), (76, 9669), (78, 9723), (88, 9858), (96, 10026),

Gene: GEazy_15 Start: 9276, Stop: 10090, Start Num: 23

Candidate Starts for GEazy_15:

(Start: 23 @9276 has 11 MA's), (33, 9345), (34, 9348), (45, 9438), (54, 9498), (60, 9543), (68, 9600), (74, 9645), (78, 9729), (91, 9954),

Gene: HannahD_15 Start: 9276, Stop: 10090, Start Num: 23

Candidate Starts for HannahD_15:

(Start: 23 @9276 has 11 MA's), (33, 9345), (34, 9348), (45, 9438), (54, 9498), (60, 9543), (68, 9600), (74, 9645), (78, 9729), (91, 9954),

Gene: Heinz_15 Start: 8959, Stop: 9896, Start Num: 19

Candidate Starts for Heinz_15:

(1, 7540), (2, 7555), (3, 7579), (4, 7678), (5, 7738), (6, 7918), (7, 7987), (8, 8092), (9, 8146), (10, 8170), (13, 8551), (14, 8572), (Start: 19 @8959 has 9 MA's), (40, 9166), (54, 9265), (57, 9298), (66, 9367), (69, 9388), (82, 9577), (92, 9769), (94, 9820), (97, 9850), (98, 9889),

Gene: Hibiscus_15 Start: 8943, Stop: 9913, Start Num: 19

Candidate Starts for Hibiscus_15:

(11, 8517), (12, 8526), (Start: 19 @8943 has 9 MA's), (29, 9048), (39, 9192), (54, 9282), (57, 9315), (67, 9387), (69, 9405), (92, 9786), (94, 9837), (98, 9906),

Gene: Jojo24_15 Start: 8937, Stop: 9907, Start Num: 19

Candidate Starts for Jojo24_15:

(Start: 19 @8937 has 9 MA's), (29, 9042), (39, 9186), (54, 9276), (57, 9309), (67, 9381), (69, 9399), (92, 9780), (94, 9831), (98, 9900),

Gene: Kiko_15 Start: 9515, Stop: 10383, Start Num: 23

Candidate Starts for Kiko_15:

(17, 9458), (21, 9494), (22, 9497), (Start: 23 @9515 has 11 MA's), (52, 9752), (54, 9776), (58, 9812), (60, 9821), (61, 9824), (64, 9854), (71, 9905), (76, 9953), (77, 10001), (78, 10007), (80, 10040), (84, 10085), (95, 10295),

Gene: MagicMan_15 Start: 9597, Stop: 10435, Start Num: 23

Candidate Starts for MagicMan_15:

(Start: 23 @9597 has 11 MA's), (33, 9666), (34, 9669), (45, 9768), (49, 9792), (54, 9828), (60, 9873), (73, 9972), (74, 9975), (75, 9978), (76, 10005), (78, 10059), (99, 10416),

Gene: Malibo_17 Start: 9627, Stop: 10582, Start Num: 18

Candidate Starts for Malibo_17:

(Start: 18 @9627 has 3 MA's), (38, 9828), (51, 9936), (54, 9963), (72, 10107),

Gene: Morrissey_16 Start: 9186, Stop: 10171, Start Num: 19

Candidate Starts for Morrissey_16:

(Start: 19 @9186 has 9 MA's), (25, 9228), (30, 9300), (31, 9306), (32, 9315), (45, 9471), (49, 9495), (50, 9498), (82, 9822), (83, 9837), (87, 9903), (93, 10086), (98, 10161),

Gene: Opie_15 Start: 9611, Stop: 10443, Start Num: 23

Candidate Starts for Opie_15:

(Start: 23 @9611 has 11 MA's), (33, 9680), (34, 9683), (45, 9776), (49, 9800), (54, 9836), (60, 9881), (68, 9938), (73, 9980), (74, 9983), (75, 9986), (76, 10013), (78, 10067), (88, 10202), (96, 10370),

Gene: Puppies_15 Start: 8726, Stop: 9696, Start Num: 18

Candidate Starts for Puppies_15:

(15, 8477), (Start: 18 @8726 has 3 MA's), (25, 8768), (26, 8795), (28, 8813), (49, 9023), (53, 9047), (62, 9122), (69, 9167), (70, 9170), (98, 9686),

Gene: Reyja_16 Start: 9079, Stop: 10085, Start Num: 19

Candidate Starts for Reyja_16:

(Start: 19 @9079 has 9 MA's), (27, 9184), (36, 9319), (39, 9364), (54, 9454), (69, 9577), (92, 9958), (94, 10009), (97, 10039), (98, 10078),

Gene: Santhid_15 Start: 8945, Stop: 9915, Start Num: 19

Candidate Starts for Santhid_15:

(Start: 19 @8945 has 9 MA's), (39, 9194), (54, 9284), (57, 9317), (67, 9389), (69, 9407), (92, 9788), (94, 9839), (98, 9908),

Gene: Schnabeltier_15 Start: 9598, Stop: 10436, Start Num: 23

Candidate Starts for Schnabeltier_15:

(Start: 23 @9598 has 11 MA's), (33, 9667), (34, 9670), (45, 9769), (49, 9793), (54, 9829), (60, 9874), (73, 9973), (74, 9976), (75, 9979), (76, 10006), (78, 10060), (99, 10417),

Gene: TaronosaurusRx_15 Start: 9610, Stop: 10442, Start Num: 23

Candidate Starts for TaronosaurusRx_15:

(Start: 23 @9610 has 11 MA's), (33, 9679), (45, 9775), (54, 9835), (69, 9943), (76, 10012), (78, 10066), (96, 10369), (99, 10423),

Gene: Tarzan_15 Start: 8933, Stop: 9960, Start Num: 19

Candidate Starts for Tarzan_15:

(Start: 19 @8933 has 9 MA's), (27, 9029), (39, 9230), (54, 9329), (57, 9362), (66, 9431), (69, 9452), (90, 9812), (92, 9833), (98, 9953),

Gene: Trine_15 Start: 8732, Stop: 9684, Start Num: 19

Candidate Starts for Trine_15:

(Start: 19 @8732 has 9 MA's), (24, 8768), (35, 8867), (43, 8948), (47, 8996), (49, 9002), (55, 9053), (59, 9077), (80, 9305), (82, 9329), (98, 9668),

Gene: Upyo_15 Start: 8842, Stop: 9809, Start Num: 20

Candidate Starts for Upyo_15:

(16, 8647), (Start: 20 @8842 has 1 MA's), (42, 9082), (46, 9121), (48, 9130), (56, 9199), (62, 9232), (65, 9253), (82, 9460), (85, 9526), (86, 9538), (98, 9799),

Gene: Widow_15 Start: 8717, Stop: 9687, Start Num: 18

Candidate Starts for Widow_15:

(15, 8468), (Start: 18 @8717 has 3 MA's), (25, 8759), (26, 8786), (28, 8804), (37, 8918), (49, 9014), (53, 9038), (62, 9113), (69, 9158), (70, 9161), (98, 9677),