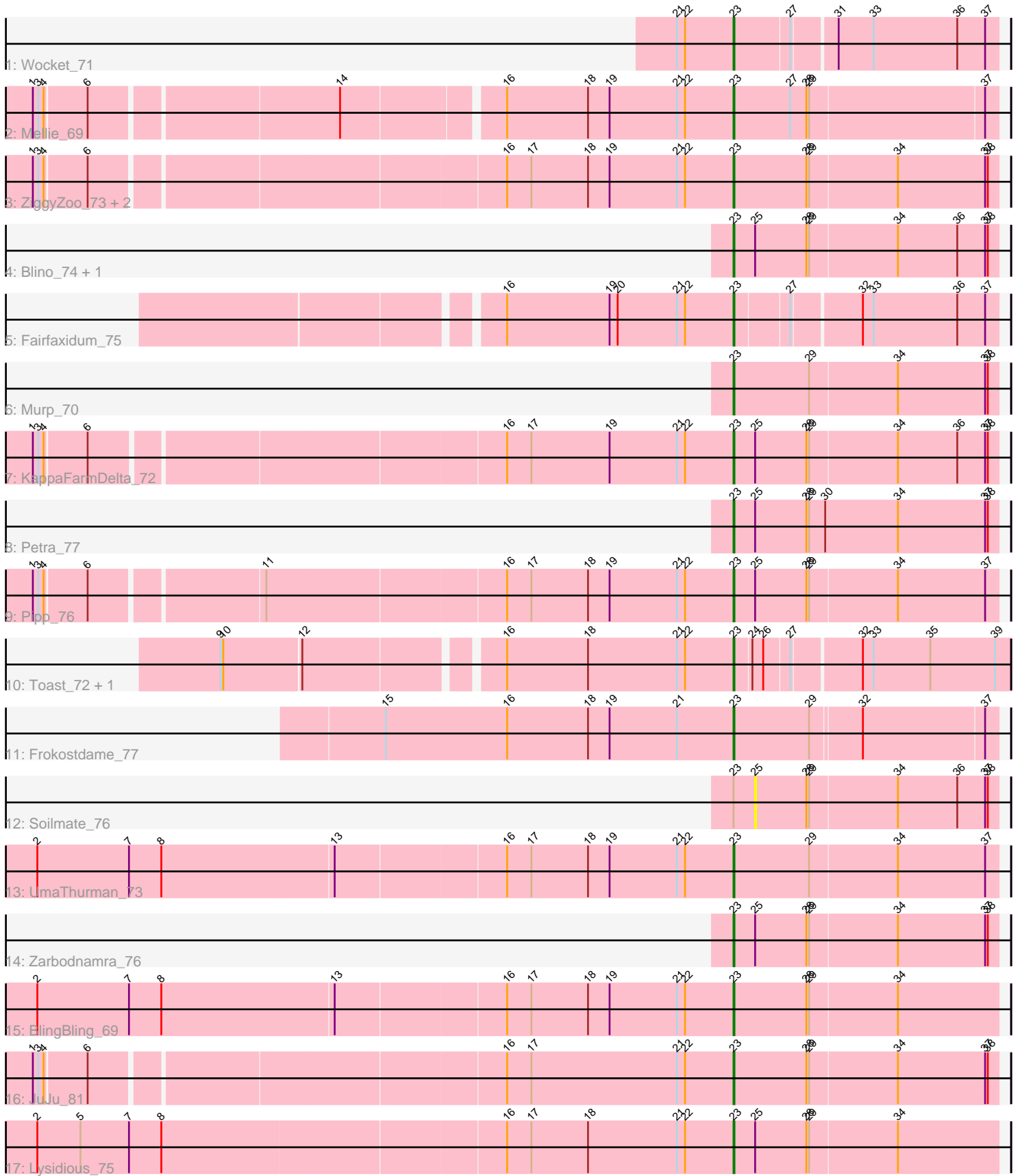


Pham 303678



Note: Tracks are now grouped by subcluster and scaled. Switching in subcluster is indicated by changes in track color. Track scale is now set by default to display the region 30 bp upstream of start 1 to 30 bp downstream of the last possible start. If this default region is judged to be packed too tightly with annotated starts, the track will be further scaled to only show that region of the ORF with annotated starts. This action will be indicated by adding "Zoomed" to the title. For starts, yellow indicates the location of called starts comprised solely of Glimmer/GeneMark auto-annotations, green indicates the location of called starts with at least 1 manual gene annotation.

## Pham 303678 Report

This analysis was run 06/08/26 on database version 649.

Pham number 303678 has 21 members, 1 are drafts.

Phages represented in each track:

- Track 1 : Wocket\_71
- Track 2 : Mellie\_69
- Track 3 : ZiggyZoo\_73, Obliviate\_71, Archis\_74
- Track 4 : Blino\_74, CarolAnn\_73
- Track 5 : Fairfaxidum\_75
- Track 6 : Murp\_70
- Track 7 : KappaFarmDelta\_72
- Track 8 : Petra\_77
- Track 9 : Pipp\_76
- Track 10 : Toast\_72, PCoral7\_72
- Track 11 : Frokostdame\_77
- Track 12 : Soilmate\_76
- Track 13 : UmaThurman\_73
- Track 14 : Zarbodnamra\_76
- Track 15 : BlingBling\_69
- Track 16 : JuJu\_81
- Track 17 : Lysidious\_75

### ***Summary of Final Annotations (See graph section above for start numbers):***

The start number called the most often in the published annotations is 23, it was called in 20 of the 20 non-draft genes in the pham.

Genes that call this "Most Annotated" start:

- Archis\_74, BlingBling\_69, Blino\_74, CarolAnn\_73, Fairfaxidum\_75, Frokostdame\_77, JuJu\_81, KappaFarmDelta\_72, Lysidious\_75, Mellie\_69, Murp\_70, Obliviate\_71, PCoral7\_72, Petra\_77, Pipp\_76, Toast\_72, UmaThurman\_73, Wocket\_71, Zarbodnamra\_76, ZiggyZoo\_73,

Genes that have the "Most Annotated" start but do not call it:

- Soilmate\_76,

Genes that do not have the "Most Annotated" start:

-

## Summary by start number:

### Start 23:

- Found in 21 of 21 ( 100.0% ) of genes in pham
- Manual Annotations of this start: 20 of 20
- Called 95.2% of time when present
- Phage (with cluster) where this start called: Archis\_74 (CV), BlingBling\_69 (CV), Blino\_74 (CV), CarolAnn\_73 (CV), Fairfaxidum\_75 (CV), Frokostdame\_77 (CV), JuJu\_81 (CV), KappaFarmDelta\_72 (CV), Lysidious\_75 (CV), Mellie\_69 (CV), Murp\_70 (CV), Oblivate\_71 (CV), PCoral7\_72 (CV), Petra\_77 (CV), Pipp\_76 (CV), Toast\_72 (CV), UmaThurman\_73 (CV), Wocket\_71 (CV), Zarbodnamra\_76 (CV), ZiggyZoo\_73 (CV),

### Start 25:

- Found in 8 of 21 ( 38.1% ) of genes in pham
- No Manual Annotations of this start.
- Called 12.5% of time when present
- Phage (with cluster) where this start called: Soilmate\_76 (CV),

## Summary by clusters:

There is one cluster represented in this pham: CV

Info for manual annotations of cluster CV:

- Start number 23 was manually annotated 20 times for cluster CV.

## Gene Information:

Gene: Archis\_74 Start: 44249, Stop: 44539, Start Num: 23

Candidate Starts for Archis\_74:

(1, 43502), (3, 43508), (4, 43514), (6, 43559), (16, 43997), (17, 44024), (18, 44087), (19, 44111), (21, 44186), (22, 44195), (Start: 23 @44249 has 20 MA's), (28, 44330), (29, 44333), (34, 44429), (37, 44525), (38, 44528),

Gene: BlingBling\_69 Start: 45058, Stop: 45348, Start Num: 23

Candidate Starts for BlingBling\_69:

(2, 44296), (7, 44398), (8, 44434), (13, 44623), (16, 44806), (17, 44833), (18, 44896), (19, 44920), (21, 44995), (22, 45004), (Start: 23 @45058 has 20 MA's), (28, 45139), (29, 45142), (34, 45238),

Gene: Blino\_74 Start: 49739, Stop: 50029, Start Num: 23

Candidate Starts for Blino\_74:

(Start: 23 @49739 has 20 MA's), (25, 49763), (28, 49820), (29, 49823), (34, 49919), (36, 49985), (37, 50015), (38, 50018),

Gene: CarolAnn\_73 Start: 49738, Stop: 50028, Start Num: 23

Candidate Starts for CarolAnn\_73:

(Start: 23 @49738 has 20 MA's), (25, 49762), (28, 49819), (29, 49822), (34, 49918), (36, 49984), (37, 50014), (38, 50017),

Gene: Fairfaxidum\_75 Start: 46200, Stop: 46478, Start Num: 23

Candidate Starts for Fairfaxidum\_75:

(16, 45948), (19, 46062), (20, 46071), (21, 46137), (22, 46146), (Start: 23 @46200 has 20 MA's), (27, 46257), (32, 46329), (33, 46341), (36, 46434), (37, 46464),

Gene: Frokostdame\_77 Start: 48052, Stop: 48336, Start Num: 23

Candidate Starts for Frokostdame\_77:

(15, 47665), (16, 47800), (18, 47890), (19, 47914), (21, 47989), (Start: 23 @48052 has 20 MA's), (29, 48136), (32, 48190), (37, 48322),

Gene: JuJu\_81 Start: 49884, Stop: 50174, Start Num: 23

Candidate Starts for JuJu\_81:

(1, 49137), (3, 49143), (4, 49149), (6, 49194), (16, 49632), (17, 49659), (21, 49821), (22, 49830), (Start: 23 @49884 has 20 MA's), (28, 49965), (29, 49968), (34, 50064), (37, 50160), (38, 50163),

Gene: KappaFarmDelta\_72 Start: 44721, Stop: 45011, Start Num: 23

Candidate Starts for KappaFarmDelta\_72:

(1, 43974), (3, 43980), (4, 43986), (6, 44031), (16, 44469), (17, 44496), (19, 44583), (21, 44658), (22, 44667), (Start: 23 @44721 has 20 MA's), (25, 44745), (28, 44802), (29, 44805), (34, 44901), (36, 44967), (37, 44997), (38, 45000),

Gene: Lysidious\_75 Start: 46689, Stop: 46979, Start Num: 23

Candidate Starts for Lysidious\_75:

(2, 45927), (5, 45975), (7, 46029), (8, 46065), (16, 46437), (17, 46464), (18, 46527), (21, 46626), (22, 46635), (Start: 23 @46689 has 20 MA's), (25, 46713), (28, 46770), (29, 46773), (34, 46869),

Gene: Mellie\_69 Start: 43931, Stop: 44218, Start Num: 23

Candidate Starts for Mellie\_69:

(1, 43196), (3, 43202), (4, 43208), (6, 43253), (14, 43514), (16, 43679), (18, 43769), (19, 43793), (21, 43868), (22, 43877), (Start: 23 @43931 has 20 MA's), (27, 43994), (28, 44012), (29, 44015), (37, 44204),

Gene: Murp\_70 Start: 47087, Stop: 47377, Start Num: 23

Candidate Starts for Murp\_70:

(Start: 23 @47087 has 20 MA's), (29, 47171), (34, 47267), (37, 47363), (38, 47366),

Gene: Oblivate\_71 Start: 44250, Stop: 44540, Start Num: 23

Candidate Starts for Oblivate\_71:

(1, 43503), (3, 43509), (4, 43515), (6, 43560), (16, 43998), (17, 44025), (18, 44088), (19, 44112), (21, 44187), (22, 44196), (Start: 23 @44250 has 20 MA's), (28, 44331), (29, 44334), (34, 44430), (37, 44526), (38, 44529),

Gene: PCoral7\_72 Start: 44973, Stop: 45266, Start Num: 23

Candidate Starts for PCoral7\_72:

(9, 44433), (10, 44436), (12, 44520), (16, 44721), (18, 44811), (21, 44910), (22, 44919), (Start: 23 @44973 has 20 MA's), (24, 44991), (26, 45003), (27, 45030), (32, 45102), (33, 45114), (35, 45177), (39, 45249),

Gene: Petra\_77 Start: 46403, Stop: 46696, Start Num: 23

Candidate Starts for Petra\_77:

(Start: 23 @46403 has 20 MA's), (25, 46427), (28, 46484), (29, 46487), (30, 46505), (34, 46586), (37, 46682), (38, 46685),

Gene: Pipp\_76 Start: 46298, Stop: 46588, Start Num: 23

Candidate Starts for Pipp\_76:

(1, 45551), (3, 45557), (4, 45563), (6, 45608), (11, 45788), (16, 46046), (17, 46073), (18, 46136), (19, 46160), (21, 46235), (22, 46244), (Start: 23 @46298 has 20 MA's), (25, 46322), (28, 46379), (29, 46382), (34, 46478), (37, 46574),

Gene: Soilmate\_76 Start: 49762, Stop: 50028, Start Num: 25

Candidate Starts for Soilmate\_76:

(Start: 23 @49738 has 20 MA's), (25, 49762), (28, 49819), (29, 49822), (34, 49918), (36, 49984), (37, 50014), (38, 50017),

Gene: Toast\_72 Start: 44973, Stop: 45266, Start Num: 23

Candidate Starts for Toast\_72:

(9, 44433), (10, 44436), (12, 44520), (16, 44721), (18, 44811), (21, 44910), (22, 44919), (Start: 23 @44973 has 20 MA's), (24, 44991), (26, 45003), (27, 45030), (32, 45102), (33, 45114), (35, 45177), (39, 45249),

Gene: UmaThurman\_73 Start: 45529, Stop: 45819, Start Num: 23

Candidate Starts for UmaThurman\_73:

(2, 44767), (7, 44869), (8, 44905), (13, 45094), (16, 45277), (17, 45304), (18, 45367), (19, 45391), (21, 45466), (22, 45475), (Start: 23 @45529 has 20 MA's), (29, 45613), (34, 45709), (37, 45805),

Gene: Wocket\_71 Start: 45215, Stop: 45496, Start Num: 23

Candidate Starts for Wocket\_71:

(21, 45152), (22, 45161), (Start: 23 @45215 has 20 MA's), (27, 45275), (31, 45320), (33, 45359), (36, 45452), (37, 45482),

Gene: Zarbodnamra\_76 Start: 45341, Stop: 45631, Start Num: 23

Candidate Starts for Zarbodnamra\_76:

(Start: 23 @45341 has 20 MA's), (25, 45365), (28, 45422), (29, 45425), (34, 45521), (37, 45617), (38, 45620),

Gene: ZiggyZoo\_73 Start: 46713, Stop: 47003, Start Num: 23

Candidate Starts for ZiggyZoo\_73:

(1, 45966), (3, 45972), (4, 45978), (6, 46023), (16, 46461), (17, 46488), (18, 46551), (19, 46575), (21, 46650), (22, 46659), (Start: 23 @46713 has 20 MA's), (28, 46794), (29, 46797), (34, 46893), (37, 46989), (38, 46992),