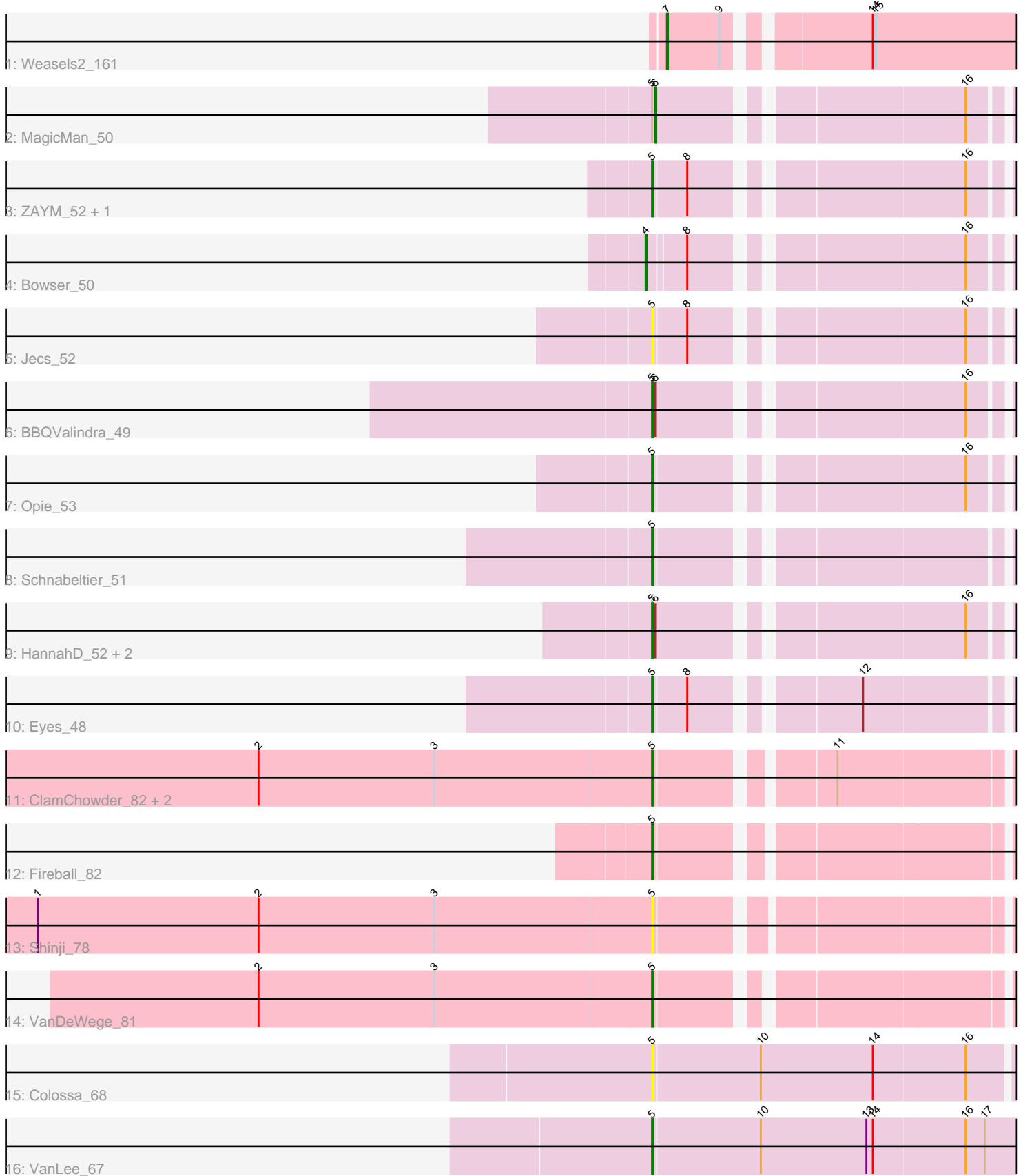


Pham 303682



Note: Tracks are now grouped by subcluster and scaled. Switching in subcluster is indicated by changes in track color. Track scale is now set by default to display the region 30 bp upstream of start 1 to 30 bp downstream of the last possible start. If this default region is judged to be packed too tightly with annotated starts, the track will be further scaled to only show that region of the ORF with annotated starts. This action will be indicated by adding "Zoomed" to the title. For starts, yellow indicates the location of called starts comprised solely of Glimmer/GeneMark auto-annotations, green indicates the location of called starts with at least 1 manual gene annotation.

Pham 303682 Report

This analysis was run 06/08/26 on database version 649.

Pham number 303682 has 21 members, 5 are drafts.

Phages represented in each track:

- Track 1 : Weasels2_161
- Track 2 : MagicMan_50
- Track 3 : ZAYM_52, TaronosaurusRx_54
- Track 4 : Bowser_50
- Track 5 : Jecs_52
- Track 6 : BBQValindra_49
- Track 7 : Opie_53
- Track 8 : Schnabeltier_51
- Track 9 : HannahD_52, NaLuna_53, GEazy_55
- Track 10 : Eyes_48
- Track 11 : ClamChowder_82, Fugax_83, Barb_82
- Track 12 : Fireball_82
- Track 13 : Shinji_78
- Track 14 : VanDeWege_81
- Track 15 : Colossa_68
- Track 16 : VanLee_67

Summary of Final Annotations (See graph section above for start numbers):

The start number called the most often in the published annotations is 5, it was called in 13 of the 16 non-draft genes in the pham.

Genes that call this "Most Annotated" start:

- BBQValindra_49, Barb_82, ClamChowder_82, Colossa_68, Eyes_48, Fireball_82, Fugax_83, GEazy_55, HannahD_52, Jecs_52, NaLuna_53, Opie_53, Schnabeltier_51, Shinji_78, TaronosaurusRx_54, VanDeWege_81, VanLee_67, ZAYM_52,

Genes that have the "Most Annotated" start but do not call it:

- MagicMan_50,

Genes that do not have the "Most Annotated" start:

- Bowser_50, Weasels2_161,

Summary by start number:

Start 4:

- Found in 1 of 21 (4.8%) of genes in pham
- Manual Annotations of this start: 1 of 16
- Called 100.0% of time when present
- Phage (with cluster) where this start called: Bowser_50 (DB),

Start 5:

- Found in 19 of 21 (90.5%) of genes in pham
- Manual Annotations of this start: 13 of 16
- Called 94.7% of time when present
- Phage (with cluster) where this start called: BBQValindra_49 (DB), Barb_82 (DC1), ClamChowder_82 (DC1), Colossa_68 (KA), Eyes_48 (DB), Fireball_82 (DC1), Fugax_83 (DC1), GEazy_55 (DB), HannahD_52 (DB), Jecs_52 (DB), NaLuna_53 (DB), Opie_53 (DB), Schnabeltier_51 (DB), Shinji_78 (DC1), TaronosaurusRx_54 (DB), VanDeWege_81 (DC1), VanLee_67 (KA), ZAYM_52 (DB),

Start 6:

- Found in 5 of 21 (23.8%) of genes in pham
- Manual Annotations of this start: 1 of 16
- Called 20.0% of time when present
- Phage (with cluster) where this start called: MagicMan_50 (DB),

Start 7:

- Found in 1 of 21 (4.8%) of genes in pham
- Manual Annotations of this start: 1 of 16
- Called 100.0% of time when present
- Phage (with cluster) where this start called: Weasels2_161 (CB),

Summary by clusters:

There are 4 clusters represented in this pham: CB, KA, DB, DC1,

Info for manual annotations of cluster CB:

- Start number 7 was manually annotated 1 time for cluster CB.

Info for manual annotations of cluster DB:

- Start number 4 was manually annotated 1 time for cluster DB.
- Start number 5 was manually annotated 7 times for cluster DB.
- Start number 6 was manually annotated 1 time for cluster DB.

Info for manual annotations of cluster DC1:

- Start number 5 was manually annotated 5 times for cluster DC1.

Info for manual annotations of cluster KA:

- Start number 5 was manually annotated 1 time for cluster KA.

Gene Information:

Gene: BBQValindra_49 Start: 36026, Stop: 36406, Start Num: 5

Candidate Starts for BBQValindra_49:
(Start: 5 @36026 has 13 MA's), (Start: 6 @36029 has 1 MA's), (16, 36284),

Gene: Barb_82 Start: 53127, Stop: 53516, Start Num: 5
Candidate Starts for Barb_82:
(2, 52761), (3, 52926), (Start: 5 @53127 has 13 MA's), (11, 53268),

Gene: Bowser_50 Start: 35722, Stop: 36102, Start Num: 4
Candidate Starts for Bowser_50:
(Start: 4 @35722 has 1 MA's), (8, 35755), (16, 35980),

Gene: ClamChowder_82 Start: 53127, Stop: 53516, Start Num: 5
Candidate Starts for ClamChowder_82:
(2, 52761), (3, 52926), (Start: 5 @53127 has 13 MA's), (11, 53268),

Gene: Colossa_68 Start: 42108, Stop: 42548, Start Num: 5
Candidate Starts for Colossa_68:
(Start: 5 @42108 has 13 MA's), (10, 42207), (14, 42312), (16, 42396),

Gene: Eyes_48 Start: 35683, Stop: 36063, Start Num: 5
Candidate Starts for Eyes_48:
(Start: 5 @35683 has 13 MA's), (8, 35713), (12, 35845),

Gene: Fireball_82 Start: 53252, Stop: 53641, Start Num: 5
Candidate Starts for Fireball_82:
(Start: 5 @53252 has 13 MA's),

Gene: Fugax_83 Start: 53119, Stop: 53508, Start Num: 5
Candidate Starts for Fugax_83:
(2, 52753), (3, 52918), (Start: 5 @53119 has 13 MA's), (11, 53260),

Gene: GEazy_55 Start: 36162, Stop: 36542, Start Num: 5
Candidate Starts for GEazy_55:
(Start: 5 @36162 has 13 MA's), (Start: 6 @36165 has 1 MA's), (16, 36420),

Gene: HannahD_52 Start: 35529, Stop: 35909, Start Num: 5
Candidate Starts for HannahD_52:
(Start: 5 @35529 has 13 MA's), (Start: 6 @35532 has 1 MA's), (16, 35787),

Gene: Jecs_52 Start: 35323, Stop: 35700, Start Num: 5
Candidate Starts for Jecs_52:
(Start: 5 @35323 has 13 MA's), (8, 35353), (16, 35578),

Gene: MagicMan_50 Start: 35795, Stop: 36172, Start Num: 6
Candidate Starts for MagicMan_50:
(Start: 5 @35792 has 13 MA's), (Start: 6 @35795 has 1 MA's), (16, 36050),

Gene: NaLuna_53 Start: 35529, Stop: 35909, Start Num: 5
Candidate Starts for NaLuna_53:
(Start: 5 @35529 has 13 MA's), (Start: 6 @35532 has 1 MA's), (16, 35787),

Gene: Opie_53 Start: 36511, Stop: 36888, Start Num: 5
Candidate Starts for Opie_53:

(Start: 5 @36511 has 13 MA's), (16, 36766),

Gene: Schnabeltier_51 Start: 35759, Stop: 36136, Start Num: 5

Candidate Starts for Schnabeltier_51:

(Start: 5 @35759 has 13 MA's),

Gene: Shinji_78 Start: 52301, Stop: 52693, Start Num: 5

Candidate Starts for Shinji_78:

(1, 51728), (2, 51935), (3, 52100), (Start: 5 @52301 has 13 MA's),

Gene: TaronosaurusRx_54 Start: 35309, Stop: 35686, Start Num: 5

Candidate Starts for TaronosaurusRx_54:

(Start: 5 @35309 has 13 MA's), (8, 35339), (16, 35564),

Gene: VanDeWege_81 Start: 52957, Stop: 53343, Start Num: 5

Candidate Starts for VanDeWege_81:

(2, 52591), (3, 52756), (Start: 5 @52957 has 13 MA's),

Gene: VanLee_67 Start: 42424, Stop: 42873, Start Num: 5

Candidate Starts for VanLee_67:

(Start: 5 @42424 has 13 MA's), (10, 42523), (13, 42622), (14, 42628), (16, 42712), (17, 42730),

Gene: Weasels2_161 Start: 90277, Stop: 90663, Start Num: 7

Candidate Starts for Weasels2_161:

(Start: 7 @90277 has 1 MA's), (9, 90325), (14, 90436), (15, 90439),

Gene: ZAYM_52 Start: 35058, Stop: 35435, Start Num: 5

Candidate Starts for ZAYM_52:

(Start: 5 @35058 has 13 MA's), (8, 35088), (16, 35313),