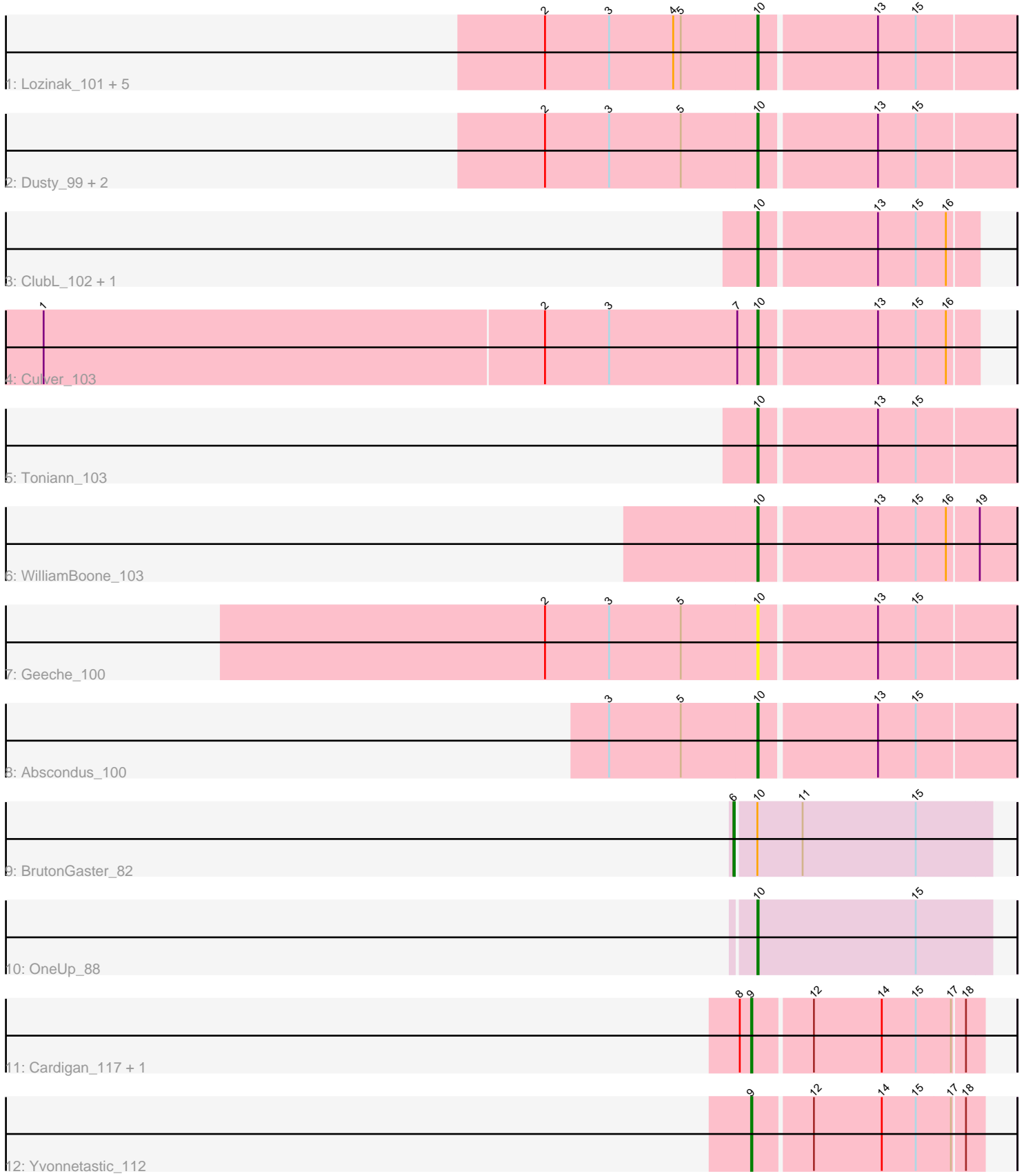


Pham 303685



Note: Tracks are now grouped by subcluster and scaled. Switching in subcluster is indicated by changes in track color. Track scale is now set by default to display the region 30 bp upstream of start 1 to 30 bp downstream of the last possible start. If this default region is judged to be packed too tightly with annotated starts, the track will be further scaled to only show that region of the ORF with annotated starts. This action will be indicated by adding "Zoomed" to the title. For starts, yellow indicates the location of called starts comprised solely of Glimmer/GeneMark auto-annotations, green indicates the location of called starts with at least 1 manual gene annotation.

Pham 303685 Report

This analysis was run 06/08/26 on database version 649.

Pham number 303685 has 21 members, 2 are drafts.

Phages represented in each track:

- Track 1 : Lozinak_101, Engineer_102, PhinkBoden_100, Cucurbita_102, Bachita_103, Smoothie_102
- Track 2 : Dusty_99, Aphelion_102, Miskis_95
- Track 3 : ClubL_102, Norvs_103
- Track 4 : Culver_103
- Track 5 : Toniann_103
- Track 6 : WilliamBoone_103
- Track 7 : Geeche_100
- Track 8 : Abscondus_100
- Track 9 : BrutonGaster_82
- Track 10 : OneUp_88
- Track 11 : Cardigan_117, JonJames_116
- Track 12 : Yvonnetastic_112

Summary of Final Annotations (See graph section above for start numbers):

The start number called the most often in the published annotations is 10, it was called in 16 of the 19 non-draft genes in the pham.

Genes that call this "Most Annotated" start:

- Abscondus_100, Aphelion_102, Bachita_103, ClubL_102, Cucurbita_102, Culver_103, Dusty_99, Engineer_102, Geeche_100, Lozinak_101, Miskis_95, Norvs_103, OneUp_88, PhinkBoden_100, Smoothie_102, Toniann_103, WilliamBoone_103,

Genes that have the "Most Annotated" start but do not call it:

- BrutonGaster_82,

Genes that do not have the "Most Annotated" start:

- Cardigan_117, JonJames_116, Yvonnetastic_112,

Summary by start number:

Start 6:

- Found in 1 of 21 (4.8%) of genes in pham
- Manual Annotations of this start: 1 of 19
- Called 100.0% of time when present
- Phage (with cluster) where this start called: BrutonGaster_82 (CQ2),

Start 9:

- Found in 3 of 21 (14.3%) of genes in pham
- Manual Annotations of this start: 2 of 19
- Called 100.0% of time when present
- Phage (with cluster) where this start called: Cardigan_117 (DD), JonJames_116 (DD), Yvonnetastic_112 (DD),

Start 10:

- Found in 18 of 21 (85.7%) of genes in pham
- Manual Annotations of this start: 16 of 19
- Called 94.4% of time when present
- Phage (with cluster) where this start called: Abscondus_100 (CQ1), Aphelion_102 (CQ1), Bachita_103 (CQ1), ClubL_102 (CQ1), Cucurbita_102 (CQ1), Culver_103 (CQ1), Dusty_99 (CQ1), Engineer_102 (CQ1), Geeche_100 (CQ1), Lozinak_101 (CQ1), Miskis_95 (CQ1), Norvs_103 (CQ1), OneUp_88 (CQ2), PhinkBoden_100 (CQ1), Smoothie_102 (CQ1), Toniann_103 (CQ1), WilliamBoone_103 (CQ1),

Summary by clusters:

There are 3 clusters represented in this pham: CQ2, DD, CQ1,

Info for manual annotations of cluster CQ1:

- Start number 10 was manually annotated 15 times for cluster CQ1.

Info for manual annotations of cluster CQ2:

- Start number 6 was manually annotated 1 time for cluster CQ2.
- Start number 10 was manually annotated 1 time for cluster CQ2.

Info for manual annotations of cluster DD:

- Start number 9 was manually annotated 2 times for cluster DD.

Gene Information:

Gene: Abscondus_100 Start: 59662, Stop: 59859, Start Num: 10

Candidate Starts for Abscondus_100:

(3, 59545), (5, 59602), (Start: 10 @59662 has 16 MA's), (13, 59752), (15, 59782),

Gene: Aphelion_102 Start: 61215, Stop: 61412, Start Num: 10

Candidate Starts for Aphelion_102:

(2, 61047), (3, 61098), (5, 61155), (Start: 10 @61215 has 16 MA's), (13, 61305), (15, 61335),

Gene: Bachita_103 Start: 60873, Stop: 61070, Start Num: 10

Candidate Starts for Bachita_103:

(2, 60705), (3, 60756), (4, 60807), (5, 60813), (Start: 10 @60873 has 16 MA's), (13, 60963), (15, 60993),

Gene: BrutonGaster_82 Start: 54964, Stop: 55164, Start Num: 6
Candidate Starts for BrutonGaster_82:
(Start: 6 @54964 has 1 MA's), (Start: 10 @54979 has 16 MA's), (11, 55015), (15, 55105),

Gene: Cardigan_117 Start: 66367, Stop: 66543, Start Num: 9
Candidate Starts for Cardigan_117:
(8, 66358), (Start: 9 @66367 has 2 MA's), (12, 66412), (14, 66466), (15, 66493), (17, 66520), (18, 66529),

Gene: ClubL_102 Start: 59803, Stop: 59970, Start Num: 10
Candidate Starts for ClubL_102:
(Start: 10 @59803 has 16 MA's), (13, 59893), (15, 59923), (16, 59947),

Gene: Cucurbita_102 Start: 61380, Stop: 61577, Start Num: 10
Candidate Starts for Cucurbita_102:
(2, 61212), (3, 61263), (4, 61314), (5, 61320), (Start: 10 @61380 has 16 MA's), (13, 61470), (15, 61500),

Gene: Culver_103 Start: 59702, Stop: 59869, Start Num: 10
Candidate Starts for Culver_103:
(1, 59138), (2, 59534), (3, 59585), (7, 59687), (Start: 10 @59702 has 16 MA's), (13, 59792), (15, 59822), (16, 59846),

Gene: Dusty_99 Start: 59721, Stop: 59918, Start Num: 10
Candidate Starts for Dusty_99:
(2, 59553), (3, 59604), (5, 59661), (Start: 10 @59721 has 16 MA's), (13, 59811), (15, 59841),

Gene: Engineer_102 Start: 60846, Stop: 61043, Start Num: 10
Candidate Starts for Engineer_102:
(2, 60678), (3, 60729), (4, 60780), (5, 60786), (Start: 10 @60846 has 16 MA's), (13, 60936), (15, 60966),

Gene: Geeche_100 Start: 59944, Stop: 60141, Start Num: 10
Candidate Starts for Geeche_100:
(2, 59776), (3, 59827), (5, 59884), (Start: 10 @59944 has 16 MA's), (13, 60034), (15, 60064),

Gene: JonJames_116 Start: 66878, Stop: 67054, Start Num: 9
Candidate Starts for JonJames_116:
(8, 66869), (Start: 9 @66878 has 2 MA's), (12, 66923), (14, 66977), (15, 67004), (17, 67031), (18, 67040),

Gene: Lozinak_101 Start: 60684, Stop: 60881, Start Num: 10
Candidate Starts for Lozinak_101:
(2, 60516), (3, 60567), (4, 60618), (5, 60624), (Start: 10 @60684 has 16 MA's), (13, 60774), (15, 60804),

Gene: Miskis_95 Start: 59384, Stop: 59581, Start Num: 10
Candidate Starts for Miskis_95:
(2, 59216), (3, 59267), (5, 59324), (Start: 10 @59384 has 16 MA's), (13, 59474), (15, 59504),

Gene: Norvs_103 Start: 60711, Stop: 60878, Start Num: 10
Candidate Starts for Norvs_103:
(Start: 10 @60711 has 16 MA's), (13, 60801), (15, 60831), (16, 60855),

Gene: OneUp_88 Start: 56848, Stop: 57033, Start Num: 10

Candidate Starts for OneUp_88:

(Start: 10 @56848 has 16 MA's), (15, 56974),

Gene: PhinkBoden_100 Start: 60474, Stop: 60671, Start Num: 10

Candidate Starts for PhinkBoden_100:

(2, 60306), (3, 60357), (4, 60408), (5, 60414), (Start: 10 @60474 has 16 MA's), (13, 60564), (15, 60594),

Gene: Smoothie_102 Start: 60684, Stop: 60881, Start Num: 10

Candidate Starts for Smoothie_102:

(2, 60516), (3, 60567), (4, 60618), (5, 60624), (Start: 10 @60684 has 16 MA's), (13, 60774), (15, 60804),

Gene: Toniann_103 Start: 60654, Stop: 60851, Start Num: 10

Candidate Starts for Toniann_103:

(Start: 10 @60654 has 16 MA's), (13, 60744), (15, 60774),

Gene: WilliamBoone_103 Start: 59422, Stop: 59619, Start Num: 10

Candidate Starts for WilliamBoone_103:

(Start: 10 @59422 has 16 MA's), (13, 59512), (15, 59542), (16, 59566), (19, 59590),

Gene: Yvonnetastic_112 Start: 63521, Stop: 63697, Start Num: 9

Candidate Starts for Yvonnetastic_112:

(Start: 9 @63521 has 2 MA's), (12, 63566), (14, 63620), (15, 63647), (17, 63674), (18, 63683),