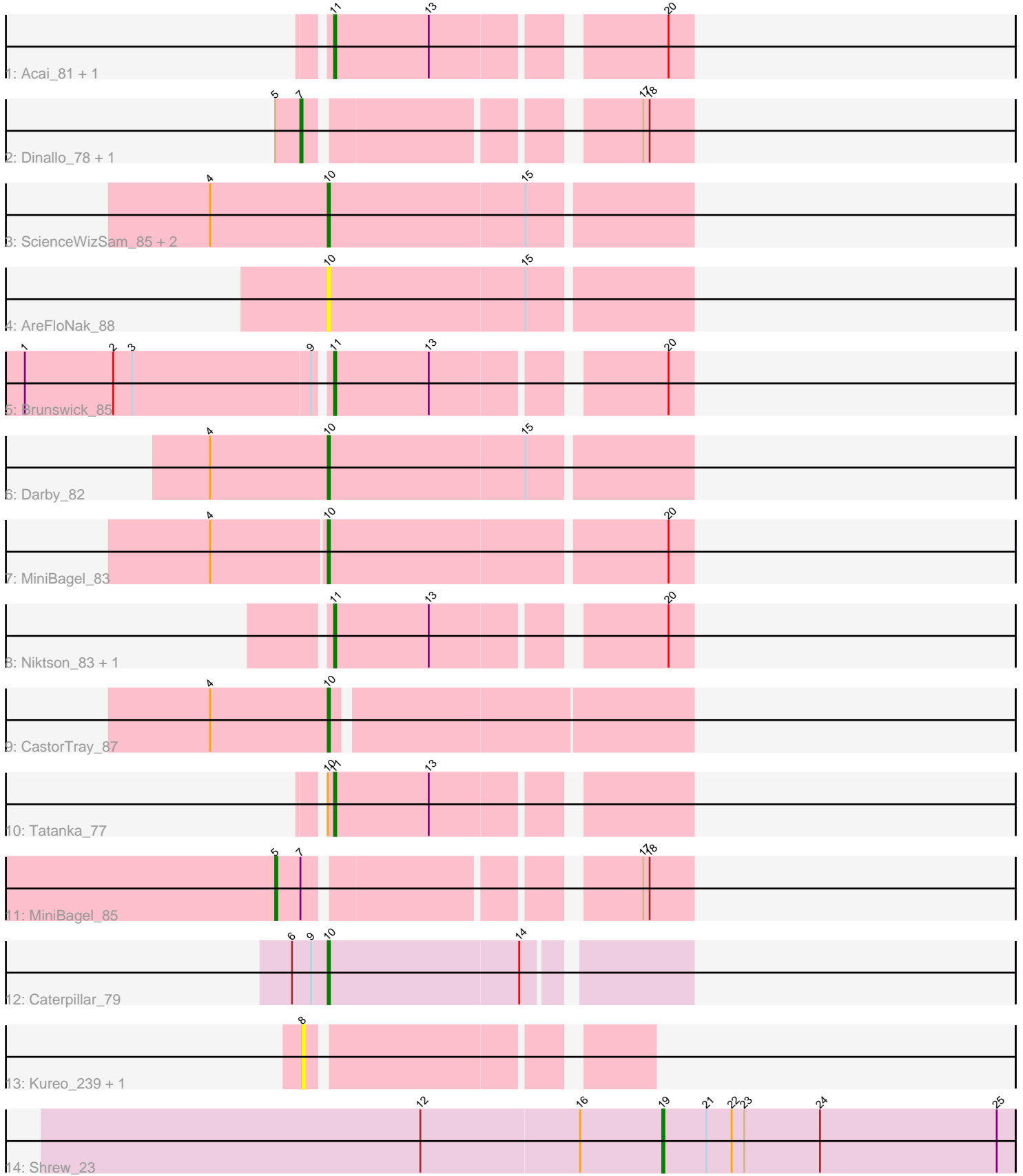


Pham 303692



Note: Tracks are now grouped by subcluster and scaled. Switching in subcluster is indicated by changes in track color. Track scale is now set by default to display the region 30 bp upstream of start 1 to 30 bp downstream of the last possible start. If this default region is judged to be packed too tightly with annotated starts, the track will be further scaled to only show that region of the ORF with annotated starts. This action will be indicated by adding "Zoomed" to the title. For starts, yellow indicates the location of called starts comprised solely of Glimmer/GeneMark auto-annotations, green indicates the location of called starts with at least 1 manual gene annotation.

Pham 303692 Report

This analysis was run 06/08/26 on database version 649.

Pham number 303692 has 20 members, 5 are drafts.

Phages represented in each track:

- Track 1 : Acai_81, Issa_77
- Track 2 : Dinallo_78, Tenno_85
- Track 3 : ScienceWizSam_85, Trustiboi_82, DevitoJr_83
- Track 4 : AreFloNak_88
- Track 5 : Brunswick_85
- Track 6 : Darby_82
- Track 7 : MiniBagel_83
- Track 8 : Niktson_83, ElephantMan_83
- Track 9 : CastorTray_87
- Track 10 : Tatanka_77
- Track 11 : MiniBagel_85
- Track 12 : Caterpillar_79
- Track 13 : Kureo_239, JeNeSaisPas_235
- Track 14 : Shrew_23

Summary of Final Annotations (See graph section above for start numbers):

The start number called the most often in the published annotations is 10, it was called in 7 of the 15 non-draft genes in the pham.

Genes that call this "Most Annotated" start:

- AreFloNak_88, CastorTray_87, Caterpillar_79, Darby_82, DevitoJr_83, MiniBagel_83, ScienceWizSam_85, Trustiboi_82,

Genes that have the "Most Annotated" start but do not call it:

- Tatanka_77,

Genes that do not have the "Most Annotated" start:

- Acai_81, Brunswick_85, Dinallo_78, ElephantMan_83, Issa_77, JeNeSaisPas_235, Kureo_239, MiniBagel_85, Niktson_83, Shrew_23, Tenno_85,

Summary by start number:

Start 5:

- Found in 3 of 20 (15.0%) of genes in pham
- Manual Annotations of this start: 1 of 15
- Called 33.3% of time when present
- Phage (with cluster) where this start called: MiniBagel_85 (AU1),

Start 7:

- Found in 3 of 20 (15.0%) of genes in pham
- Manual Annotations of this start: 1 of 15
- Called 66.7% of time when present
- Phage (with cluster) where this start called: Dinallo_78 (AU1), Tenno_85 (AU1),

Start 8:

- Found in 2 of 20 (10.0%) of genes in pham
- No Manual Annotations of this start.
- Called 100.0% of time when present
- Phage (with cluster) where this start called: JeNeSaisPas_235 (FK), Kureo_239 (FK),

Start 10:

- Found in 9 of 20 (45.0%) of genes in pham
- Manual Annotations of this start: 7 of 15
- Called 88.9% of time when present
- Phage (with cluster) where this start called: AreFloNak_88 (AU1), CastorTray_87 (AU1), Caterpillar_79 (AU4), Darby_82 (AU1), DevitoJr_83 (AU1), MiniBagel_83 (AU1), ScienceWizSam_85 (AU1), Trustiboi_82 (AU1),

Start 11:

- Found in 6 of 20 (30.0%) of genes in pham
- Manual Annotations of this start: 5 of 15
- Called 100.0% of time when present
- Phage (with cluster) where this start called: Acai_81 (AU1), Brunswick_85 (AU1), ElephantMan_83 (AU1), Issa_77 (AU1), Niktson_83 (AU1), Tatanka_77 (AU1),

Start 19:

- Found in 1 of 20 (5.0%) of genes in pham
- Manual Annotations of this start: 1 of 15
- Called 100.0% of time when present
- Phage (with cluster) where this start called: Shrew_23 (singleton),

Summary by clusters:

There are 4 clusters represented in this pham: AU1, singleton, FK, AU4,

Info for manual annotations of cluster AU1:

- Start number 5 was manually annotated 1 time for cluster AU1.
- Start number 7 was manually annotated 1 time for cluster AU1.
- Start number 10 was manually annotated 6 times for cluster AU1.
- Start number 11 was manually annotated 5 times for cluster AU1.

Info for manual annotations of cluster AU4:

- Start number 10 was manually annotated 1 time for cluster AU4.

Gene Information:

Gene: Acai_81 Start: 52359, Stop: 52514, Start Num: 11

Candidate Starts for Acai_81:

(Start: 11 @52359 has 5 MA's), (13, 52404), (20, 52503),

Gene: AreFloNak_88 Start: 52445, Stop: 52612, Start Num: 10

Candidate Starts for AreFloNak_88:

(Start: 10 @52445 has 7 MA's), (15, 52538),

Gene: Brunswick_85 Start: 52520, Stop: 52675, Start Num: 11

Candidate Starts for Brunswick_85:

(1, 52379), (2, 52421), (3, 52430), (9, 52514), (Start: 11 @52520 has 5 MA's), (13, 52565), (20, 52664),

Gene: CastorTray_87 Start: 53174, Stop: 53338, Start Num: 10

Candidate Starts for CastorTray_87:

(4, 53123), (Start: 10 @53174 has 7 MA's),

Gene: Caterpillar_79 Start: 51167, Stop: 51328, Start Num: 10

Candidate Starts for Caterpillar_79:

(6, 51155), (9, 51164), (Start: 10 @51167 has 7 MA's), (14, 51257),

Gene: Darby_82 Start: 52663, Stop: 52830, Start Num: 10

Candidate Starts for Darby_82:

(4, 52612), (Start: 10 @52663 has 7 MA's), (15, 52756),

Gene: DevitoJr_83 Start: 52322, Stop: 52489, Start Num: 10

Candidate Starts for DevitoJr_83:

(4, 52271), (Start: 10 @52322 has 7 MA's), (15, 52415),

Gene: Dinallo_78 Start: 53472, Stop: 53633, Start Num: 7

Candidate Starts for Dinallo_78:

(Start: 5 @53460 has 1 MA's), (Start: 7 @53472 has 1 MA's), (17, 53610), (18, 53613),

Gene: ElephantMan_83 Start: 53050, Stop: 53205, Start Num: 11

Candidate Starts for ElephantMan_83:

(Start: 11 @53050 has 5 MA's), (13, 53095), (20, 53194),

Gene: Issa_77 Start: 51886, Stop: 52041, Start Num: 11

Candidate Starts for Issa_77:

(Start: 11 @51886 has 5 MA's), (13, 51931), (20, 52030),

Gene: JeNeSaisPas_235 Start: 108097, Stop: 108243, Start Num: 8

Candidate Starts for JeNeSaisPas_235:

(8, 108097),

Gene: Kureo_239 Start: 106320, Stop: 106466, Start Num: 8

Candidate Starts for Kureo_239:

(8, 106320),

Gene: MiniBagel_83 Start: 52634, Stop: 52801, Start Num: 10

Candidate Starts for MiniBagel_83:

(4, 52580), (Start: 10 @52634 has 7 MA's), (20, 52790),

Gene: MiniBagel_85 Start: 53043, Stop: 53216, Start Num: 5

Candidate Starts for MiniBagel_85:

(Start: 5 @53043 has 1 MA's), (Start: 7 @53055 has 1 MA's), (17, 53193), (18, 53196),

Gene: Niktson_83 Start: 53050, Stop: 53205, Start Num: 11

Candidate Starts for Niktson_83:

(Start: 11 @53050 has 5 MA's), (13, 53095), (20, 53194),

Gene: ScienceWizSam_85 Start: 52495, Stop: 52662, Start Num: 10

Candidate Starts for ScienceWizSam_85:

(4, 52444), (Start: 10 @52495 has 7 MA's), (15, 52588),

Gene: Shrew_23 Start: 9412, Stop: 9579, Start Num: 19

Candidate Starts for Shrew_23:

(12, 9298), (16, 9373), (Start: 19 @9412 has 1 MA's), (21, 9433), (22, 9445), (23, 9451), (24, 9487), (25, 9571),

Gene: Tatanka_77 Start: 52245, Stop: 52400, Start Num: 11

Candidate Starts for Tatanka_77:

(Start: 10 @52242 has 7 MA's), (Start: 11 @52245 has 5 MA's), (13, 52290),

Gene: Tenno_85 Start: 53263, Stop: 53424, Start Num: 7

Candidate Starts for Tenno_85:

(Start: 5 @53251 has 1 MA's), (Start: 7 @53263 has 1 MA's), (17, 53401), (18, 53404),

Gene: Trustiboi_82 Start: 52682, Stop: 52849, Start Num: 10

Candidate Starts for Trustiboi_82:

(4, 52631), (Start: 10 @52682 has 7 MA's), (15, 52775),