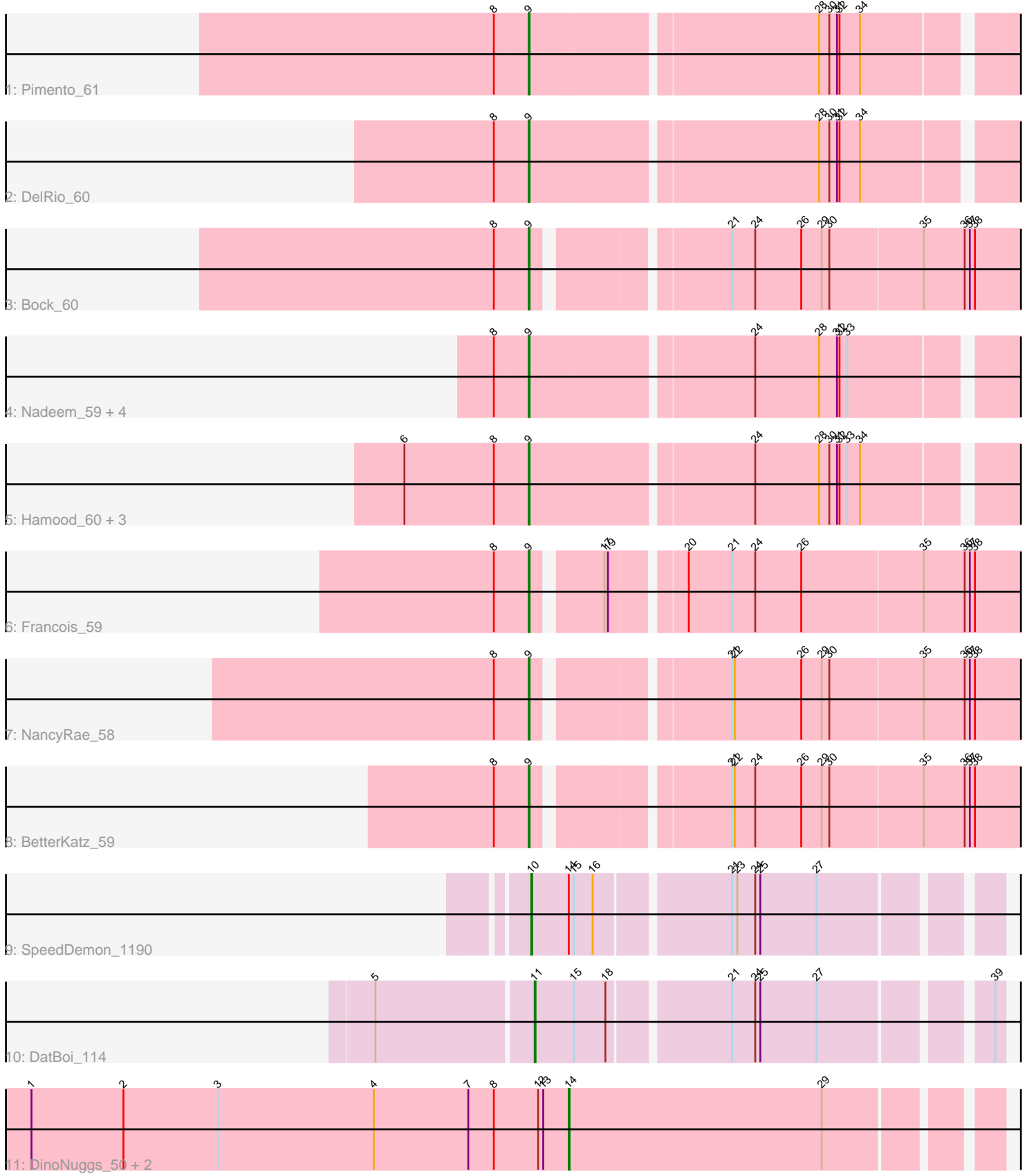


Pham 303693



Note: Tracks are now grouped by subcluster and scaled. Switching in subcluster is indicated by changes in track color. Track scale is now set by default to display the region 30 bp upstream of start 1 to 30 bp downstream of the last possible start. If this default region is judged to be packed too tightly with annotated starts, the track will be further scaled to only show that region of the ORF with annotated starts. This action will be indicated by adding "Zoomed" to the title. For starts, yellow indicates the location of called starts comprised solely of Glimmer/GeneMark auto-annotations, green indicates the location of called starts with at least 1 manual gene annotation.

Pham 303693 Report

This analysis was run 06/08/26 on database version 649.

Pham number 303693 has 20 members, 2 are drafts.

Phages represented in each track:

- Track 1 : Pimento_61
- Track 2 : DelRio_60
- Track 3 : Bock_60
- Track 4 : Nadeem_59, Mulch_59, Brylie_59, Parada_59, WheatThin_58
- Track 5 : Hamood_60, Chop_60, Ayotoya_60, GrandSlam_60
- Track 6 : Francois_59
- Track 7 : NancyRae_58
- Track 8 : BetterKatz_59
- Track 9 : SpeedDemon_1190
- Track 10 : DatBoi_114
- Track 11 : DinoNuggs_50, DearBasketball_52, Reyja_50

Summary of Final Annotations (See graph section above for start numbers):

The start number called the most often in the published annotations is 9, it was called in 15 of the 18 non-draft genes in the pham.

Genes that call this "Most Annotated" start:

- Ayotoya_60, BetterKatz_59, Bock_60, Brylie_59, Chop_60, DelRio_60, Francois_59, GrandSlam_60, Hamood_60, Mulch_59, Nadeem_59, NancyRae_58, Parada_59, Pimento_61, WheatThin_58,

Genes that have the "Most Annotated" start but do not call it:

-

Genes that do not have the "Most Annotated" start:

- DatBoi_114, DearBasketball_52, DinoNuggs_50, Reyja_50, SpeedDemon_1190,

Summary by start number:

Start 9:

- Found in 15 of 20 (75.0%) of genes in pham
- Manual Annotations of this start: 15 of 18
- Called 100.0% of time when present

- Phage (with cluster) where this start called: Ayotoya_60 (DI), BetterKatz_59 (DI), Bock_60 (DI), Brylie_59 (DI), Chop_60 (DI), DelRio_60 (DI), Francois_59 (DI), GrandSlam_60 (DI), Hamood_60 (DI), Mulch_59 (DI), Nadeem_59 (DI), NancyRae_58 (DI), Parada_59 (DI), Pimento_61 (DI), WheatThin_58 (DI),

Start 10:

- Found in 1 of 20 (5.0%) of genes in pham
- Manual Annotations of this start: 1 of 18
- Called 100.0% of time when present
- Phage (with cluster) where this start called: SpeedDemon_1190 (DL),

Start 11:

- Found in 1 of 20 (5.0%) of genes in pham
- Manual Annotations of this start: 1 of 18
- Called 100.0% of time when present
- Phage (with cluster) where this start called: DatBoi_114 (DL),

Start 14:

- Found in 4 of 20 (20.0%) of genes in pham
- Manual Annotations of this start: 1 of 18
- Called 75.0% of time when present
- Phage (with cluster) where this start called: DearBasketball_52 (DY), DinoNuggs_50 (DY), Reyja_50 (DY),

Summary by clusters:

There are 3 clusters represented in this pham: DL, DY, DI,

Info for manual annotations of cluster DI:

- Start number 9 was manually annotated 15 times for cluster DI.

Info for manual annotations of cluster DL:

- Start number 10 was manually annotated 1 time for cluster DL.
- Start number 11 was manually annotated 1 time for cluster DL.

Info for manual annotations of cluster DY:

- Start number 14 was manually annotated 1 time for cluster DY.

Gene Information:

Gene: Ayotoya_60 Start: 40557, Stop: 41096, Start Num: 9

Candidate Starts for Ayotoya_60:

(6, 40413), (8, 40518), (Start: 9 @40557 has 15 MA's), (24, 40806), (28, 40881), (30, 40893), (31, 40902), (32, 40905), (33, 40914), (34, 40929),

Gene: BetterKatz_59 Start: 39771, Stop: 40310, Start Num: 9

Candidate Starts for BetterKatz_59:

(8, 39732), (Start: 9 @39771 has 15 MA's), (21, 39969), (22, 39972), (24, 39996), (26, 40050), (29, 40074), (30, 40083), (35, 40191), (36, 40239), (37, 40245), (38, 40251),

Gene: Bock_60 Start: 39800, Stop: 40339, Start Num: 9

Candidate Starts for Bock_60:

(8, 39761), (Start: 9 @39800 has 15 MA's), (21, 39998), (24, 40025), (26, 40079), (29, 40103), (30, 40112), (35, 40220), (36, 40268), (37, 40274), (38, 40280),

Gene: Brylie_59 Start: 39537, Stop: 40076, Start Num: 9

Candidate Starts for Brylie_59:

(8, 39498), (Start: 9 @39537 has 15 MA's), (24, 39786), (28, 39861), (31, 39882), (32, 39885), (33, 39894),

Gene: Chop_60 Start: 40308, Stop: 40847, Start Num: 9

Candidate Starts for Chop_60:

(6, 40164), (8, 40269), (Start: 9 @40308 has 15 MA's), (24, 40557), (28, 40632), (30, 40644), (31, 40653), (32, 40656), (33, 40665), (34, 40680),

Gene: DatBoi_114 Start: 72473, Stop: 72970, Start Num: 11

Candidate Starts for DatBoi_114:

(5, 72302), (Start: 11 @72473 has 1 MA's), (15, 72518), (18, 72554), (21, 72686), (24, 72713), (25, 72719), (27, 72785), (39, 72959),

Gene: DearBasketball_52 Start: 33392, Stop: 33871, Start Num: 14

Candidate Starts for DearBasketball_52:

(1, 32762), (2, 32870), (3, 32981), (4, 33164), (7, 33275), (8, 33305), (12, 33356), (13, 33362), (Start: 14 @33392 has 1 MA's), (29, 33689),

Gene: DelRio_60 Start: 40718, Stop: 41257, Start Num: 9

Candidate Starts for DelRio_60:

(8, 40679), (Start: 9 @40718 has 15 MA's), (28, 41042), (30, 41054), (31, 41063), (32, 41066), (34, 41090),

Gene: DinoNuggs_50 Start: 33061, Stop: 33540, Start Num: 14

Candidate Starts for DinoNuggs_50:

(1, 32431), (2, 32539), (3, 32650), (4, 32833), (7, 32944), (8, 32974), (12, 33025), (13, 33031), (Start: 14 @33061 has 1 MA's), (29, 33358),

Gene: Francois_59 Start: 39804, Stop: 40343, Start Num: 9

Candidate Starts for Francois_59:

(8, 39765), (Start: 9 @39804 has 15 MA's), (17, 39873), (19, 39876), (20, 39951), (21, 40002), (24, 40029), (26, 40083), (35, 40224), (36, 40272), (37, 40278), (38, 40284),

Gene: GrandSlam_60 Start: 40308, Stop: 40847, Start Num: 9

Candidate Starts for GrandSlam_60:

(6, 40164), (8, 40269), (Start: 9 @40308 has 15 MA's), (24, 40557), (28, 40632), (30, 40644), (31, 40653), (32, 40656), (33, 40665), (34, 40680),

Gene: Hamood_60 Start: 40308, Stop: 40847, Start Num: 9

Candidate Starts for Hamood_60:

(6, 40164), (8, 40269), (Start: 9 @40308 has 15 MA's), (24, 40557), (28, 40632), (30, 40644), (31, 40653), (32, 40656), (33, 40665), (34, 40680),

Gene: Mulch_59 Start: 39537, Stop: 40076, Start Num: 9

Candidate Starts for Mulch_59:

(8, 39498), (Start: 9 @39537 has 15 MA's), (24, 39786), (28, 39861), (31, 39882), (32, 39885), (33, 39894),

Gene: Nadeem_59 Start: 39525, Stop: 40064, Start Num: 9

Candidate Starts for Nadeem_59:

(8, 39486), (Start: 9 @39525 has 15 MA's), (24, 39774), (28, 39849), (31, 39870), (32, 39873), (33, 39882),

Gene: NancyRae_58 Start: 39535, Stop: 40074, Start Num: 9

Candidate Starts for NancyRae_58:

(8, 39496), (Start: 9 @39535 has 15 MA's), (21, 39733), (22, 39736), (26, 39814), (29, 39838), (30, 39847), (35, 39955), (36, 40003), (37, 40009), (38, 40015),

Gene: Parada_59 Start: 39537, Stop: 40076, Start Num: 9

Candidate Starts for Parada_59:

(8, 39498), (Start: 9 @39537 has 15 MA's), (24, 39786), (28, 39861), (31, 39882), (32, 39885), (33, 39894),

Gene: Pimento_61 Start: 39447, Stop: 39986, Start Num: 9

Candidate Starts for Pimento_61:

(8, 39408), (Start: 9 @39447 has 15 MA's), (28, 39771), (30, 39783), (31, 39792), (32, 39795), (34, 39819),

Gene: Reyja_50 Start: 33061, Stop: 33540, Start Num: 14

Candidate Starts for Reyja_50:

(1, 32431), (2, 32539), (3, 32650), (4, 32833), (7, 32944), (8, 32974), (12, 33025), (13, 33031), (Start: 14 @33061 has 1 MA's), (29, 33358),

Gene: SpeedDemon_1190 Start: 76290, Stop: 76790, Start Num: 10

Candidate Starts for SpeedDemon_1190:

(Start: 10 @76290 has 1 MA's), (Start: 14 @76332 has 1 MA's), (15, 76338), (16, 76359), (21, 76506), (23, 76512), (24, 76533), (25, 76539), (27, 76605),

Gene: WheatThin_58 Start: 39525, Stop: 40064, Start Num: 9

Candidate Starts for WheatThin_58:

(8, 39486), (Start: 9 @39525 has 15 MA's), (24, 39774), (28, 39849), (31, 39870), (32, 39873), (33, 39882),