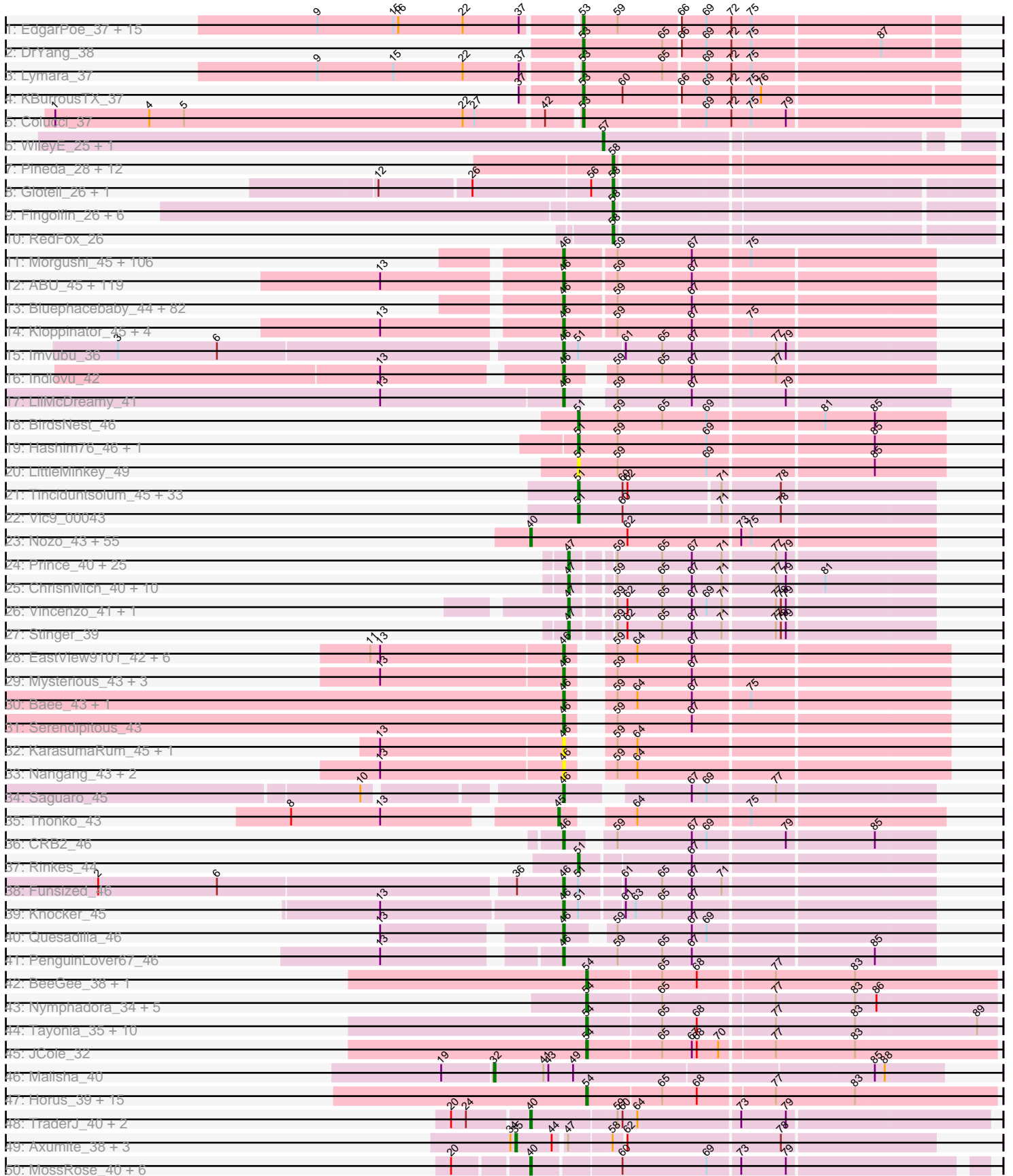
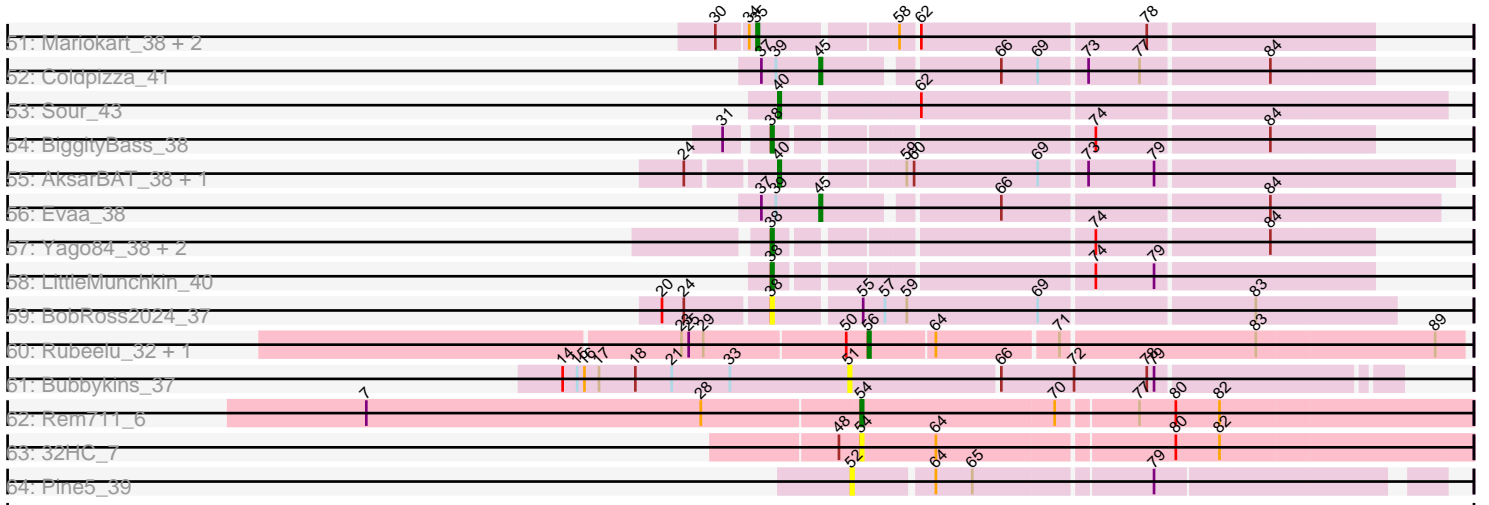


Pham 304583



Pham 304583



Note: Tracks are now grouped by subcluster and scaled. Switching in subcluster is indicated by changes in track color. Track scale is now set by default to display the region 30 bp upstream of start 1 to 30 bp downstream of the last possible start. If this default region is judged to be packed too tightly with annotated starts, the track will be further scaled to only show that region of the ORF with annotated starts. This action will be indicated by adding "Zoomed" to the title. For starts, yellow indicates the location of called starts comprised solely of Glimmer/GeneMark auto-annotations, green indicates the location of called starts with at least 1 manual gene annotation.

Pham 304583 Report

This analysis was run 06/08/26 on database version 649.

Pham number 304583 has 596 members, 69 are drafts.

Phages represented in each track:

- Track 1 : EdgarPoe_37, Tophat_37, Chubster_37, Mordred_37, PrincessTrina_37, Chipper1996_370, Conboy_37, JaNo_37, HumptyDumpty_37, Chocolat_37, MoyaNatalis_37, Kabreeze_37, Linus_37, JayCookie_37, RosiePosie_37, Scavito_37
- Track 2 : DrYang_38
- Track 3 : Lymara_37
- Track 4 : KBurroustX_37
- Track 5 : Colucci_37
- Track 6 : WileyE_25, Chickaboom_25
- Track 7 : Pineda_28, Coral_26, Colusalem_27, Lunar_27, Polka_26, HannahPhantana_27, Cote_27, GramZayde_26, Daob_27, Amelia_27, OtsoOtso_26, Melons_27, Damocles_28
- Track 8 : Glotell_26, Leona_25
- Track 9 : Fingolfin_26, PhluffyCoco_26, Atlantica_26, Amphitrite_26, DanHam62_26, KHumphrey_26, Camara_26
- Track 10 : RedFox_26
- Track 11 : Morgushi_45, MiniBoss_45, Soile_45, Beaglebox_44, Kwadwo_44, Haleema_44, Solosis_44, Jesabah_45, Dice_44, Lulumae_44, Telesworld_44, Emiris_45, Brilliant_45, Cobra_45, Swish_45, Wallhey_44, Vaishali24_44, Orfeu_44, Khan1_45, Ricotta_44, JacAttac_45, Mikota_45, Iridessa_45, KingTut_36, Vaticameos_41, Vortex_45, PallasAthena_45, Fozzie_44, Apizium_44, SallyH_45, MRabcd_44, Puhltonio_45, Andre_45, Nova1_45, Lehmann_45, Timmi_44, HSavage_45, Maskar_44, Derpp_44, Kwksand96_44, Carthage_43, TallGrassMM_45, Labeouficaum_44, Pherdinand_45, Cannibal_45, Dione_44, Pinkman_44, Riverton_45, Samaymay_45, LuckyMarjie_44, DuchessDung_43, Pacifista_44, Cher_44, Nathan_45, Gwennie1_45, Aleia_45, MrPhizzler_45, RedMaple_44, Murdoc_45, Serpentine_0045, Grand2040_44, KLucky39_45, Simielle_44, Zonia_45, Maru_44, Rimu_45, OSmaximus_45, FluffyNinja_45, Triad_45, Mcshane_44, Yoshand_45, BlackStallion_45, Gareth_44, Banjo_44, Cornbread_44, Frankicide_45, Freya_44, KlimbOn_45, Piglet_0044, Phunky_45, Roy17_45, Ashraf_44, ImtiyazSitla_44, Serendipity_45, Legolas_44, CamL_45, Mana_44, Sheila_45, QueenBeane_45, Gyarad_0045, RedRaider89_46, Taraxa_45, GeneCoco_45, ElvisPhasley_45, PinheadLarry_45, Xavier_44, MelsMeow_44, Longacauda_44, Toni_44, TyrionL_44, Childish_44, Newman_45, Hocus_44, Sigman_45, Phareon_45, Daffy_45, Inverness_45
- Track 12 : ABU_45, TooFast2Furius_46, Spartan300_45, PhrodoBaggins_44, Badfish_45, LasagnaCat_45, DoesntMatter_44, Horchata_45, Scrick_45, LostAndPhound_44, Chute_44, Katniss_45, Orion_45, Keitherie_45, Scoot17C_45,

Charles1_45, Megatron_45, Omniscient_45, IsaacEli_45, PhatCats2014_45, Lulwa_45, Held_45, HenryJackson_44, GreenChile_45, Harvey_45, Robyn_44, Nyala_44, DaddyDaniels_45, Valjean_45, BlacksBerry_44, Olak_44, AltPhacts_45, Morty_45, DonSanchon_44, Gophee_45, Potter_44, HighStump_44, FleetyMac_45, ShadowBud_45, Aonishiki_45, OneBrain_46, CampRoach_45, Kimbrough_45, LeiMonet_45, Fang_45, ShiVal_45, Craff_45, Lumine_44, TomBombadil_45, Jiraiya_44, CharlieGBrown_44, True_44, Anderson_45, Struggle_44, Hekos_42, Fringe_45, Flake_45, EmpTee_45, SirBeauregard_45, Adriana_45, Mesmerelda_44, Chaelin_45, Mecca_44, PG1_45, Megamind20_45, Roscoe_46, Chuni_44, Plata_44, Vivaldi_45, DolOn_46, Nacho_0045, Chorkpop_45, SassyCat97_44, Numberten_45, DelRivs_44, Giraffe_45, MitKao_45, Boehler_45, Aelin_44, Inchworm_45, NiaNia_47, Bishoperium_44, Chah_46, Olive_45, SDcharge11_45, Oline_44, Tomlarah_45, Karn_44, Manad_44, Jiminy_44, Quisquiliae_45, Mosaic_44, Podrick_45, Selr12_45, Larson_46, ThreeOh3D2_45, Windsor_44, Skippy_45, Squiggle_45, Coletti_45, Schadenfreude_44, Lopsy_44, Duggie_44, Mutante_44, Crownjwl_45, BoogieWoogie_44, Trypo_45, ProfessorX_45, Cornobble_44, LeeLot_45, Kikipoo_45, Doddsville_45, Thunderbird_44, Lego3393_44, Virgeve_44, Durga_45, CheetO_45, LemonSlice_45, Squid_45, Antonia_44

- Track 13 : Bluephacebaby_44, Hamish_45, PhenghisKhan_44, JangoPhett_45, Eremos_45, Happabalu_45, AbsoluteMadLad_44, PhrankReynolds_43, Colbert_45, UAch1_45, HogWash_45, Phipps_45, Jillium_44, Slatt_45, FugateOSU_44, Roliet_45, Phamished_45, Mag7_44, Lasso_45, Tooj_45, Hartsy_45, FremontTroll_45, BlueHusk_45, Mesh1_45, Kahve_44, PhatLouie_45, Daka_46, Oosterbaan_45, YouGoGlencoco_45, Soto_45, Matalotodo_45, Placalicious_44, Zaider_46, Cosmolli16_44, CaspiBoi_44, FriarPreacher_44, JDog_44, Haimas_45, Zelda_45, Buckeye_45, Orwigg_44, Hetaeria_45, Phleuron_44, Basato_46, Swiphy_45, Usavi_45, Pipsqueak_45, Melc17_45, Burr_44, KingVeVeVe_45, Veritas_44, BatteryCK_44, Mulan_44, MichaelPhcott_44, Prickles_45, Iridoclysis_45, Riggan_45, Magic8_45, Weher20_45, Chunky_45, Gwilliam_45, SilverBell_45, OliverWalter_45, DirtJuice_45, Altwerkus_44, Waterdiva_45, Nicole21_45, JakeO_44, Suffolk_45, Dati_45, Kailash_45, Phergie_44, Schueller_44, Thora_45, Dingo_45, AngelCake_45, Vista_45, Etaye_45, Sophia_44, Surely_45, Virapocalypse_45, Chipette_46, Hertubise_45
- Track 14 : Kloppinator_45, Plmatters_45, UncleHowie_45, Pops_45, Eugenia_45
- Track 15 : Imvubu_36
- Track 16 : Indlovu_42
- Track 17 : LilMcDreamy_41
- Track 18 : BirdsNest_46
- Track 19 : Hashim76_46, Zenteno07_48
- Track 20 : LittleMinkey_49
- Track 21 : Tinciduntolum_45, Hedgerow_44, TA17A_45, Lephleur_44, Brownie5_44, Rhinoforte_44, LilSmirk_44, Boyle_44, Eaglehorse_44, Ares_44, Lars_44, FrenchFry_44, Bananafish_44, Blocker23_44, Tres_44, Holeinone_44, Sabella_43, PrinceCharming_44, Allegro_44, Glass_44, Kheth_44, Kaleb_44, Phantasmagoria_44, LizLemon_44, MasterPo_44, Calamitous_44, Faze9_43, ItsyBitsy1_44, West99_44, Coffee_44, Kolhan_44, Godines_44, Laurie_43, Opia_44
- Track 22 : Vic9_00043
- Track 23 : Nozo_43, Yahalom_43, Daisy_43, Rita1961_43, Gervas_43, Philly_42, Marlia_43, Corofin_43, Heathcliff_43, Neos5_43, Olivio_42, Morty007_43, Chalmers_43, Chandler_43, Mortcellus_42, Abinghost_43, Gadget_44, Devonte_43, Deenasa_43, Casbah_42, OrangeOswald_43, Shenandoah_43, LestyG_43, TinyTerror_43, Compostia_44, Obutu_43, SynergyX_43, Baloo_43, MmasiCarm_43, SwainyDoc_43, Kamiyu_43, Bernardo_44, Athena_44, Jackstina_40,

Mulaychimus_43, Phlyer_43, Yinz_43, ChaChing_43, Ben11_42, Halfpint_42, Briakila_44, Pipefish_45, Phayeta_44, Phaedrus_41, Glubnar_44, HarveySr_43, RomaT_43, Chentzyk_43, Akoma_43, Marley1013_43, GlenHope_44, Tydolla_43, RagingRooster_43, SlippinJimmy_43, Audrey_43, Kronus_42

- Track 24 : Prince_40, Zemanar_41, Fortunato_41, Apex_41, Fanaw_39, Nigel_39, Heath_39, Hydro_40, JAMaL_40, VioletZ_41, BobbyK_41, QueenPie_39, JoyceMaria_40, Austelle_41, Waleliano_40, Lolalove_40, BrownCNA_42, Mithril_40, Mudslide_40, RawrgerThat_41, Xincheng_39, Magpie_39, Hangman_40, JaguarMi_40, Frederick_41, Cooper_41
- Track 25 : ChrisnMich_40, LittleDigger_39, Antihero_39, Renkei_39, Ahwei_39, Nanao_39, Hally898_39, GinPorsche_40, Lambano_39, Epah_39, Poster_39
- Track 26 : Vincenzo_41, AlanGrant_42
- Track 27 : Stinger_39
- Track 28 : EastView9101_42, SirJeffery_44, Rita130_44, Reccee_44, Acadian_44, Donny_44, Suigeneris_44
- Track 29 : Mysterious_43, Reprobate_44, Nehemiah_43, Phelemich_43
- Track 30 : Bae_43, Rich_42
- Track 31 : Serendipitous_43
- Track 32 : KarasumaRum_45, StinkyVeggy_45
- Track 33 : Nangang_43, Shenyu_43, DigitDog_43
- Track 34 : Saguaro_45
- Track 35 : Thonko_43
- Track 36 : CRB2_46
- Track 37 : Rinkes_44
- Track 38 : Funsized_46
- Track 39 : Knocker_45
- Track 40 : Quesadilla_46
- Track 41 : PenguinLover67_46
- Track 42 : BeeGee_38, RavenCo17_36
- Track 43 : Nymphadora_34, Bosnia_34, Herod_34, BatStarr_34, Eviarto_34, TimTam_34
- Track 44 : Tayonia_35, Eudoria_35, Suscepit_35, Maridalia_34, Manasvini_35, Zameen_35, Neobush_35, Polly_32, Kita_36, Antonio_35, Trumpet_35
- Track 45 : JCole_32
- Track 46 : Malisha_40
- Track 47 : Horus_39, BearBQ_38, ShawBrad_38, Lutum_39, Asapag_39, Ecliptus_40, Leroy_39, Phabuloso_36, Whitney_42, ODay_42, Budski_39, Getalong_40, Kenna_38, Holliday_38, Periwinkle_42, CheeseTouch_37
- Track 48 : TraderJ_40, Yeshua_40, Wooper_40
- Track 49 : Axumite_38, Shatter_38, Ligma_38, Fresco_38
- Track 50 : MossRose_40, MakoManhole_40, CaiB_40, AnarQue_40, FelixTres_39, Blackpen_40, CloverMinnie_40
- Track 51 : Mariokart_38, JellyBelly_38, CharlottesWeb_38
- Track 52 : Coldpizza_41
- Track 53 : Sour_43
- Track 54 : BiggityBass_38
- Track 55 : AksarBAT_38, NHagos_38
- Track 56 : Evaa_38
- Track 57 : Yago84_38, Sisko_38, AnClar_39
- Track 58 : LittleMunchkin_40
- Track 59 : BobRoss2024_37
- Track 60 : Rubeelu_32, Butters_32
- Track 61 : Bubbykins_37

- Track 62 : Rem711_6
- Track 63 : 32HC_7
- Track 64 : Pine5_39

Summary of Final Annotations (See graph section above for start numbers):

The start number called the most often in the published annotations is 46, it was called in 308 of the 527 non-draft genes in the pham.

Genes that call this "Most Annotated" start:

- ABU_45, AbsoluteMadLad_44, Acadian_44, Adriana_45, Aelin_44, Aleia_45, AltPhacts_45, Altwerkus_44, Anderson_45, Andre_45, AngelCake_45, Antonia_44, Aonishiki_45, Apizium_44, Ashraf_44, Badfish_45, Bae_43, Banjo_44, Basato_46, BatteryCK_44, Beaglebox_44, Bishoperium_44, BlackStallion_45, BlacksBerry_44, BlueHusk_45, Bluephacebaby_44, Boehler_45, BoogieWoogie_44, Brilliant_45, Buckeye_45, Burr_44, CRB2_46, CamL_45, CampRoach_45, Cannibal_45, Carthage_43, Caspiboi_44, Chaelin_45, Chah_46, Charles1_45, CharlieGBrown_44, CheetO_45, Cher_44, Childish_44, Chipette_46, Chorkpop_45, Chuni_44, Chunky_45, Chute_44, Cobra_45, Colbert_45, Coletti_45, Cornbread_44, Cornobble_44, Cosmolli16_44, Craff_45, Crownjwl_45, DaddyDaniels_45, Daffy_45, Daka_46, Dati_45, DelRivs_44, Derpp_44, Dice_44, DigitDog_43, Dingo_45, Dione_44, DirtJuice_45, Doddsville_45, DoesntMatter_44, DoIOn_46, DonSanchon_44, Donny_44, DuchessDung_43, Duggie_44, Durga_45, EastView9101_42, ElvisPhasley_45, Emiris_45, EmpTee_45, Eremos_45, Etaye_45, Eugenia_45, Fang_45, Flake_45, FleetyMac_45, FluffyNinja_45, Fozzie_44, Frankicide_45, FremontTroll_45, Freya_44, FriarPreacher_44, Fringe_45, FugateOSU_44, Funsized_46, Gareth_44, GeneCoco_45, Giraffe_45, Gophee_45, Grand2040_44, GreenChile_45, Gwennie1_45, Gwilliam_45, Gyarad_0045, HSavage_45, Haimas_45, Haleema_44, Hamish_45, Happabalu_45, Hartsy_45, Harvey_45, Hekos_42, Held_45, HenryJackson_44, Hertubise_45, Hetaeria_45, HighStump_44, Hocus_44, HogWash_45, Horchata_45, ImtiyazSitla_44, Imvubu_36, Inchworm_45, Indlovu_42, Inverness_45, Iridessa_45, Iridoclysis_45, IsaacEli_45, JDog_44, JacAttac_45, JakeO_44, JangoPhett_45, Jesabah_45, Jillium_44, Jiminy_44, Jiraiya_44, KLucky39_45, Kahve_44, Kailash_45, KarasumaRum_45, Karn_44, Katniss_45, Keitherie_45, Khan1_45, Kikipoo_45, Kimbrough_45, KingTut_36, KingVeVeVe_45, KlimbOn_45, Kloppinator_45, Knocker_45, Kwadwo_44, Kwksand96_44, Labeouficaum_44, Larson_46, LasagnaCat_45, Lasso_45, LeeLot_45, Lego3393_44, Legolas_44, Lehmann_45, LeiMonet_45, LemonSlice_45, LilMcDreamy_41, Longacauda_44, Lopsy_44, LostAndPhound_44, LuckyMarjie_44, Lulumae_44, Lulwa_45, Lumine_44, MRabcd_44, Mag7_44, Magic8_45, Mana_44, Manad_44, Maru_44, Maskar_44, Matalotodo_45, Mcshane_44, Mecca_44, Megamind20_45, Megatron_45, Melc17_45, MelsMeow_44, Mesh1_45, Mesmerelda_44, MichaelPhcott_44, Mikota_45, MiniBoss_45, MitKao_45, Morgushi_45, Morty_45, Mosaic_44, MrPhizzler_45, Mulan_44, Murdoc_45, Mutante_44, Mysterious_43, Nacho_0045, Nangang_43, Nathan_45, Nehemiah_43, Newman_45, NiaNia_47, Nicole21_45, Nova1_45, Numberten_45, Nyala_44, OSmaximus_45, Olak_44, Oline_44, Olive_45, OliverWalter_45, Omniscient_45, OneBrain_46, Oosterbaan_45, Orfeu_44, Orion_45, Orwigg_44, PG1_45, Pacifista_44, PallasAthena_45, PenguinLover67_46, Phamished_45, Phareon_45, PhatCats2014_45, PhatLouie_45, Phelemich_43,

PhenghisKhan_44, Pherdinand_45, Phergie_44, Phipps_45, Phleuron_44, PhrankReynolds_43, PhrodoBaggins_44, Phunky_45, Piglet_0044, PinheadLarry_45, Pinkman_44, Pipsqueak_45, Placalicious_44, Plata_44, Plmatters_45, Podrick_45, Pops_45, Potter_44, Prickles_45, ProfessorX_45, Puhltonio_45, QueenBeane_45, Quesadilla_46, Quisquiliae_45, Reccee_44, RedMaple_44, RedRaider89_46, Reprobate_44, Rich_42, Ricotta_44, Riggan_45, Rimu_45, Rita130_44, Riverton_45, Robyn_44, Roliet_45, Roscoe_46, Roy17_45, SDcharge11_45, Saguaro_45, SallyH_45, Samaymay_45, SassyCat97_44, Schadenfreude_44, Schueller_44, Scoot17C_45, Scrick_45, Selr12_45, Serendipitous_43, Serendipity_45, Serpentine_0045, ShadowBud_45, Sheila_45, Shenyu_43, ShiVal_45, Sigman_45, SilverBell_45, Simielle_44, SirBeauregard_45, SirJeffery_44, Skippy_45, Slatt_45, Soile_45, Solosis_44, Sophia_44, Soto_45, Spartan300_45, Squid_45, Squiggle_45, StinkyVeggy_45, Struggle_44, Suffolk_45, Suigeneris_44, Surely_45, Swiphy_45, Swish_45, TallGrassMM_45, Taraxa_45, Telesworld_44, Thora_45, ThreeOh3D2_45, Thunderbird_44, Timmi_44, TomBombadil_45, Tomlarah_45, Toni_44, TooFast2Furius_46, Tooj_45, Triad_45, True_44, Trypo_45, TyrionL_44, UAch1_45, UncleHowie_45, Usavi_45, Vaishali24_44, Valjean_45, Vaticameos_41, Veritas_44, Virapocalypse_45, Virgeve_44, Vista_45, Vivaldi_45, Vortex_45, Wallhey_44, Waterdiva_45, Weher20_45, Windsor_44, Xavier_44, Yoshand_45, YouGoGlencoco_45, Zaider_46, Zelda_45, Zonia_45,

Genes that have the "Most Annotated" start but do not call it:

-

Genes that do not have the "Most Annotated" start:

- 32HC_7, Abinghost_43, Ahwei_39, Akoma_43, AksarBAT_38, AlanGrant_42, Allegro_44, Amelia_27, Amphitrite_26, AnClar_39, AnarQue_40, Antihero_39, Antonio_35, Apex_41, Ares_44, Asapag_39, Athena_44, Atlantica_26, Audrey_43, Austelle_41, Axumite_38, Baloo_43, Bananafish_44, BatStarr_34, BearBQ_38, BeeGee_38, Ben11_42, Bernardo_44, BiggityBass_38, BirdsNest_46, Blackpen_40, Blocker23_44, BobRoss2024_37, BobbyK_41, Bosnia_34, Boyle_44, Briakila_44, BrownCNA_42, Brownie5_44, Bubbykins_37, Budski_39, Butters_32, CaiB_40, Calamitous_44, Camara_26, Casbah_42, ChaChing_43, Chalmers_43, Chandler_43, CharlottesWeb_38, CheeseTouch_37, Chentzyk_43, Chickaboom_25, Chipper1996_370, Chocolat_37, ChrisnMich_40, Chubster_37, CloverMinnie_40, Coffee_44, Coldpizza_41, Colucci_37, Colusalem_27, Compostia_44, Conboy_37, Cooper_41, Coral_26, Corofin_43, Cote_27, Daisy_43, Damocles_28, DanHam62_26, Daob_27, Deenasa_43, Devonte_43, DrYang_38, Eaglehorse_44, Ecliptus_40, EdgarPoe_37, Epah_39, Eudoria_35, Evaa_38, Eviarto_34, Fanaw_39, Faze9_43, FelixTres_39, Fingolfin_26, Fortunato_41, Frederick_41, FrenchFry_44, Fresco_38, Gadget_44, Gervas_43, Getalong_40, GinPorsche_40, Glass_44, GlenHope_44, Glotell_26, Glubnar_44, Godines_44, GramZayde_26, Halfpint_42, Hally898_39, Hangman_40, HannahPhantana_27, HarveySr_43, Hashim76_46, Heath_39, Heathcliff_43, Hedgerow_44, Herod_34, Holeinone_44, Holliday_38, Horus_39, HumptyDumpty_37, Hydro_40, ItsyBitsy1_44, JAMaL_40, JCole_32, JaNo_37, Jackstina_40, JaguarMi_40, JayCookie_37, JellyBelly_38, JoyceMaria_40, KBurrousTX_37, KHumphrey_26, Kabreeze_37, Kaleb_44, Kamiyu_43, Kenna_38, Kheth_44, Kita_36, Kolhan_44, Kronus_42, Lambano_39, Lars_44, Laurie_43, Leona_25, Lephleur_44, Leroy_39, LestyG_43, Ligma_38, LilSmirk_44, Linus_37, LittleDigger_39, LittleMinkey_49, LittleMunchkin_40, LizLemon_44, Lolalove_40, Lunar_27, Lutum_39, Lymara_37, Magpie_39, MakoManhole_40, Malisha_40, Manasvini_35, Maridalia_34, Mariokart_38, Marley1013_43, Marlia_43, MasterPo_44, Melons_27, Mithril_40, MmasiCarm_43, Mordred_37, Mortcellus_42, Morty007_43,

MossRose_40, MoyaNatalis_37, Mudslide_40, Mulaychimus_43, NHagos_38, Nanao_39, Neobush_35, Neos5_43, Nigel_39, Nozo_43, Nymphadora_34, ODay_42, Obutu_43, Olivio_42, Opia_44, OrangeOswald_43, OtsoOtso_26, Periwinkle_42, Phabuloso_36, Phaedrus_41, Phantasmagoria_44, Phayeta_44, Philly_42, PhluffyCoco_26, Phlyer_43, Pine5_39, Pineda_28, Pipefish_45, Polka_26, Polly_32, Poster_39, PrinceCharming_44, Prince_40, PrincessTrina_37, QueenPie_39, RagingRooster_43, RavenCo17_36, RawrgerThat_41, RedFox_26, Rem711_6, Renkei_39, Rhinoforte_44, Rinkes_44, Rita1961_43, RomaT_43, RosiePosie_37, Rubeelu_32, Sabella_43, Scavito_37, Shatter_38, ShawBrad_38, Shenandoah_43, Sisko_38, SlippinJimmy_43, Sour_43, Stinger_39, Suscepit_35, SwainyDoc_43, SynergyX_43, TA17A_45, Tayonia_35, Thonko_43, TimTam_34, Tinciduntolum_45, TinyTerror_43, Tophat_37, TraderJ_40, Tres_44, Trumpet_35, Tydolla_43, Vic9_00043, Vincenzo_41, VioletZ_41, Waleliano_40, West99_44, Whitney_42, WileyE_25, Wooper_40, Xincheng_39, Yago84_38, Yahalom_43, Yeshua_40, Yinz_43, Zameen_35, Zemanar_41, Zenteno07_48,

Summary by start number:

Start 32:

- Found in 1 of 596 (0.2%) of genes in pham
- Manual Annotations of this start: 1 of 527
- Called 100.0% of time when present
- Phage (with cluster) where this start called: Malisha_40 (DN),

Start 35:

- Found in 7 of 596 (1.2%) of genes in pham
- Manual Annotations of this start: 5 of 527
- Called 100.0% of time when present
- Phage (with cluster) where this start called: Axumite_38 (DR), CharlottesWeb_38 (DR), Fresco_38 (DR), JellyBelly_38 (DR), Ligma_38 (DR), Mariokart_38 (DR), Shatter_38 (DR),

Start 38:

- Found in 6 of 596 (1.0%) of genes in pham
- Manual Annotations of this start: 5 of 527
- Called 100.0% of time when present
- Phage (with cluster) where this start called: AnClar_39 (DR), BiggityBass_38 (DR), BobRoss2024_37 (DR), LittleMunchkin_40 (DR), Sisko_38 (DR), Yago84_38 (DR),

Start 40:

- Found in 69 of 596 (11.6%) of genes in pham
- Manual Annotations of this start: 61 of 527
- Called 100.0% of time when present
- Phage (with cluster) where this start called: Abinghost_43 (B3), Akoma_43 (B3), AksarBAT_38 (DR), AnarQue_40 (DR), Athena_44 (B3), Audrey_43 (B3), Baloo_43 (B3), Ben11_42 (B3), Bernardo_44 (B3), Blackpen_40 (DR), Briakila_44 (B3), CaiB_40 (DR), Casbah_42 (B3), ChaChing_43 (B3), Chalmers_43 (B3), Chandler_43 (B3), Chentzyk_43 (B3), CloverMinnie_40 (DR), Compostia_44 (B3), Corofin_43 (B3), Daisy_43 (B3), Deenasa_43 (B3), Devonte_43 (B3), FelixTres_39 (DR), Gadjet_44 (B3), Gervas_43 (B3), GlenHope_44 (B3), Glubnar_44 (B3), Halfpint_42 (B3), HarveySr_43 (B3), Heathcliff_43 (B3), Jackstina_40 (B3), Kamiyu_43 (B3), Kronus_42 (B3), LestyG_43 (B3), MakoManhole_40 (DR), Marley1013_43 (B3), Marlia_43 (B3), MmasiCarm_43 (B3), Mortcellus_42 (B3), Morty007_43 (B3),

MossRose_40 (DR), Mulaychimus_43 (B3), NHagos_38 (DR), Neos5_43 (B3), Nozo_43 (B3), Obutu_43 (B3), Olivio_42 (B3), OrangeOswald_43 (B3), Phaedrus_41 (B3), Phayeta_44 (B3), Philly_42 (B3), Phlyer_43 (B3), Pipefish_45 (B3), RagingRooster_43 (B3), Rita1961_43 (B3), RomaT_43 (B3), Shenandoah_43 (B3), SlippinJimmy_43 (B3), Sour_43 (DR), SwainyDoc_43 (B3), SynergyX_43 (B3), TinyTerror_43 (B3), TraderJ_40 (DR), Tydolla_43 (B3), Wooper_40 (DR), Yahalom_43 (B3), Yeshua_40 (DR), Yinz_43 (B3),

Start 45:

- Found in 3 of 596 (0.5%) of genes in pham
- Manual Annotations of this start: 3 of 527
- Called 100.0% of time when present
- Phage (with cluster) where this start called: Coldpizza_41 (DR), Evaa_38 (DR), Thonko_43 (B8),

Start 46:

- Found in 343 of 596 (57.6%) of genes in pham
- Manual Annotations of this start: 308 of 527
- Called 100.0% of time when present
- Phage (with cluster) where this start called: ABU_45 (B1), AbsoluteMadLad_44 (B1), Acadian_44 (B5), Adriana_45 (B1), Aelin_44 (B1), Aleia_45 (B1), AltPhacts_45 (B1), Altwerkus_44 (B1), Anderson_45 (B1), Andre_45 (B1), AngelCake_45 (B1), Antonia_44 (B1), Aonishiki_45 (B1), Apizium_44 (B1), Ashraf_44 (B1), Badfish_45 (B1), Bae_43 (B5), Banjo_44 (B1), Basato_46 (B1), BatteryCK_44 (B1), Beaglebox_44 (B1), Bishoperium_44 (B1), BlackStallion_45 (B1), BlacksBerry_44 (B1), BlueHusk_45 (B1), Bluephacebaby_44 (B1), Boehler_45 (B1), BoogieWoogie_44 (B1), Brilliant_45 (B1), Buckeye_45 (B1), Burr_44 (B1), CRB2_46 (B9), CamL_45 (B1), CampRoach_45 (B1), Cannibal_45 (B1), Carthage_43 (B1), Caspiboi_44 (B1), Chaelin_45 (B1), Chah_46 (B1), Charles1_45 (B1), CharlieGBrown_44 (B1), CheetO_45 (B1), Cher_44 (B1), Childish_44 (B1), Chipette_46 (B1), Chorkpop_45 (B1), Chuni_44 (B1), Chunky_45 (B1), Chute_44 (B1), Cobra_45 (B1), Colbert_45 (B1), Coletti_45 (B1), Cornbread_44 (B1), Cornobble_44 (B1), Cosmolli16_44 (B1), Craff_45 (B1), Crownjwl_45 (B1), DaddyDaniels_45 (B1), Daffy_45 (B1), Daka_46 (B1), Dati_45 (B1), DelRivs_44 (B1), Derpp_44 (B1), Dice_44 (B1), DigitDog_43 (B5), Dingo_45 (B1), Dione_44 (B1), DirtJuice_45 (B1), Doddsville_45 (B1), DoesntMatter_44 (B1), DolOn_46 (B1), DonSanchon_44 (B1), Donny_44 (B5), DuchessDung_43 (B1), Duggie_44 (B1), Durga_45 (B1), EastView9101_42 (B5), ElvisPhasley_45 (B1), Emiris_45 (B1), EmpTee_45 (B1), Eremos_45 (B1), Etaye_45 (B1), Eugenia_45 (B1), Fang_45 (B1), Flake_45 (B1), FleetyMac_45 (B1), FluffyNinja_45 (B1), Fozzie_44 (B1), Frankicide_45 (B1), FremontTroll_45 (B1), Freya_44 (B1), FriarPreacher_44 (B1), Fringe_45 (B1), FugateOSU_44 (B1), Funsized_46 (B9), Gareth_44 (B1), GeneCoco_45 (B1), Giraffe_45 (B1), Gophee_45 (B1), Grand2040_44 (B1), GreenChile_45 (B1), Gwennie1_45 (B1), Gwilliam_45 (B1), Gyarad_0045 (B1), HSavage_45 (B1), Haimas_45 (B1), Haleema_44 (B1), Hamish_45 (B1), Happabalu_45 (B1), Hartsy_45 (B1), Harvey_45 (B1), Hekos_42 (B1), Held_45 (B1), HenryJackson_44 (B1), Hertubise_45 (B1), Hetaeria_45 (B1), HighStump_44 (B1), Hocus_44 (B1), HogWash_45 (B1), Horchata_45 (B1), ImtiyazSitla_44 (B1), Imvubu_36 (B10), Inchworm_45 (B1), Indlovu_42 (B11), Inverness_45 (B1), Iridessa_45 (B1), Iridoclysis_45 (B1), IsaacEli_45 (B1), JDog_44 (B1), JacAttac_45 (B1), JakeO_44 (B1), JangoPhett_45 (B1), Jesabah_45 (B1), Jillium_44 (B1), Jiminy_44 (B1), Jiraiya_44 (B1), KLucky39_45 (B1), Kahve_44 (B1), Kailash_45 (B1), KarasumaRum_45 (B5), Karn_44 (B1), Katniss_45 (B1), Keitherie_45 (B1),

Khan1_45 (B1), Kikipoo_45 (B1), Kimbrough_45 (B1), KingTut_36 (B1), KingVeVeVe_45 (B1), KlimbOn_45 (B1), Kloppinator_45 (B1), Knocker_45 (B9), Kwadwo_44 (B1), Kwksand96_44 (B1), Labeouficaum_44 (B1), Larson_46 (B1), LasagnaCat_45 (B1), Lasso_45 (B1), LeeLot_45 (B1), Lego3393_44 (B1), Legolas_44 (B1), Lehmann_45 (B1), LeiMonet_45 (B1), LemonSlice_45 (B1), LilMcDreamy_41 (B12), Longacauda_44 (B1), Lopsy_44 (B1), LostAndPhound_44 (B1), LuckyMarjie_44 (B1), Lulumae_44 (B1), Lulwa_45 (B1), Lumine_44 (B1), MRabcd_44 (B1), Mag7_44 (B1), Magic8_45 (B1), Mana_44 (B1), Manad_44 (B1), Maru_44 (B1), Maskar_44 (B1), Matalotodo_45 (B1), Mcshane_44 (B1), Mecca_44 (B1), Megamind20_45 (B1), Megatron_45 (B1), Melc17_45 (B1), MelsMeow_44 (B1), Mesh1_45 (B1), Mesmerelda_44 (B1), MichaelPhcott_44 (B1), Mikota_45 (B1), MiniBoss_45 (B1), MitKao_45 (B1), Morgushi_45 (B1), Morty_45 (B1), Mosaic_44 (B1), MrPhizzler_45 (B1), Mulan_44 (B1), Murdoc_45 (B1), Mutante_44 (B1), Mysterious_43 (B5), Nacho_0045 (B1), Nangang_43 (B5), Nathan_45 (B1), Nehemiah_43 (B5), Newman_45 (B1), NiaNia_47 (B1), Nicole21_45 (B1), Nova1_45 (B1), Numberten_45 (B1), Nyala_44 (B1), OSmaximus_45 (B1), Olak_44 (B1), Oline_44 (B1), Olive_45 (B1), OliverWalter_45 (B1), Omniscient_45 (B1), OneBrain_46 (B1), Oosterbaan_45 (B1), Orfeu_44 (B1), Orion_45 (B1), Orwigg_44 (B1), PG1_45 (B1), Pacifista_44 (B1), PallasAthena_45 (B1), PenguinLover67_46 (B9), Phamished_45 (B1), Phareon_45 (B1), PhatCats2014_45 (B1), PhatLouie_45 (B1), Phelemich_43 (B5), PhenghisKhan_44 (B1), Pherdinand_45 (B1), Phergie_44 (B1), Phipps_45 (B1), Phleuron_44 (B1), PhrankReynolds_43 (B1), PhrodoBaggins_44 (B1), Phunky_45 (B1), Piglet_0044 (B1), PinheadLarry_45 (B1), Pinkman_44 (B1), Pipsqueak_45 (B1), Placalicious_44 (B1), Plata_44 (B1), Plmatters_45 (B1), Podrick_45 (B1), Pops_45 (B1), Potter_44 (B1), Prickles_45 (B1), ProfessorX_45 (B1), Puhltonio_45 (B1), QueenBeane_45 (B1), Quesadilla_46 (B9), Quisquilliae_45 (B1), Reccee_44 (B5), RedMaple_44 (B1), RedRaider89_46 (B1), Reprobate_44 (B5), Rich_42 (B5), Ricotta_44 (B1), Riggan_45 (B1), Rimu_45 (B1), Rita130_44 (B5), Riverton_45 (B1), Robyn_44 (B1), Roliet_45 (B1), Roscoe_46 (B1), Roy17_45 (B1), SDcharge11_45 (B1), Saguaro_45 (B7), SallyH_45 (B1), Samaymay_45 (B1), SassyCat97_44 (B1), Schadenfreude_44 (B1), Schueller_44 (B1), Scoot17C_45 (B1), Scrick_45 (B1), Selr12_45 (B1), Serendipitous_43 (B5), Serendipity_45 (B1), Serpentine_0045 (B1), ShadowBud_45 (B1), Sheila_45 (B1), Shenyu_43 (B5), ShiVal_45 (B1), Sigman_45 (B1), SilverBell_45 (B1), Simielle_44 (B1), SirBeauregard_45 (B1), SirJeffery_44 (B5), Skippy_45 (B1), Slatt_45 (B1), Soile_45 (B1), Solosis_44 (B1), Sophia_44 (B1), Soto_45 (B1), Spartan300_45 (B1), Squid_45 (B1), Squiggle_45 (B1), StinkyVeggy_45 (B5), Struggle_44 (B1), Suffolk_45 (B1), Suigeneris_44 (B5), Surely_45 (B1), Swiphy_45 (B1), Swish_45 (B1), TallGrassMM_45 (B1), Taraxa_45 (B1), Telesworld_44 (B1), Thora_45 (B1), ThreeOh3D2_45 (B1), Thunderbird_44 (B1), Timmi_44 (B1), TomBombadil_45 (B1), Tomlarah_45 (B1), Toni_44 (B1), TooFast2Furius_46 (B1), Tooj_45 (B1), Triad_45 (B1), True_44 (B1), Trypo_45 (B1), TyrionL_44 (B1), UAch1_45 (B1), UncleHowie_45 (B1), Usavi_45 (B1), Vaishali24_44 (B1), Valjean_45 (B1), Vaticameos_41 (B1), Veritas_44 (B1), Virapocalypse_45 (B1), Virgeve_44 (B1), Vista_45 (B1), Vivaldi_45 (B1), Vortex_45 (B1), Wallhey_44 (B1), Waterdiva_45 (B1), Weher20_45 (B1), Windsor_44 (B1), Xavier_44 (B1), Yoshand_45 (B1), YouGoGlencoco_45 (B1), Zaider_46 (B1), Zelda_45 (B1), Zonia_45 (B1),

Start 47:

- Found in 44 of 596 (7.4%) of genes in pham
- Manual Annotations of this start: 28 of 527
- Called 90.9% of time when present

- Phage (with cluster) where this start called: Ahwei_39 (B4), AlanGrant_42 (B4), Antihero_39 (B4), Apex_41 (B4), Austelle_41 (B4), BobbyK_41 (B4), BrownCNA_42 (B4), ChrisnMich_40 (B4), Cooper_41 (B4), Epah_39 (B4), Fanaw_39 (B4), Fortunato_41 (B4), Frederick_41 (B4), GinPorsche_40 (B4), Hally898_39 (B4), Hangman_40 (B4), Heath_39 (B4), Hydro_40 (B4), JAMaL_40 (B4), JaguarMi_40 (B4), JoyceMaria_40 (B4), Lambano_39 (B4), LittleDigger_39 (B4), Lolalove_40 (B4), Magpie_39 (B4), Mithril_40 (B4), Mudslide_40 (B4), Nanao_39 (B4), Nigel_39 (B4), Poster_39 (B4), Prince_40 (B4), QueenPie_39 (B4), RawrgerThat_41 (B4), Renkei_39 (B4), Stinger_39 (B4), Vincenzo_41 (B4), VioletZ_41 (B4), Waleliano_40 (B4), Xincheng_39 (B4), Zemanar_41 (B4),

Start 51:

- Found in 44 of 596 (7.4%) of genes in pham
- Manual Annotations of this start: 38 of 527
- Called 93.2% of time when present
- Phage (with cluster) where this start called: Allegro_44 (B2), Ares_44 (B2), Bananafish_44 (B2), BirdsNest_46 (B13), Blocker23_44 (B2), Boyle_44 (B2), Brownie5_44 (B2), Bubbykins_37 (UNK), Calamitous_44 (B2), Coffee_44 (B2), Eaglehorse_44 (B2), Faze9_43 (B2), FrenchFry_44 (B2), Glass_44 (B2), Godines_44 (B2), Hashim76_46 (B13), Hedgerow_44 (B2), Holeinone_44 (B2), ItsyBitsy1_44 (B2), Kaleb_44 (B2), Kheth_44 (B2), Kolhan_44 (B2), Lars_44 (B2), Laurie_43 (B2), Lephleur_44 (B2), LilSmirk_44 (B2), LittleMinkey_49 (B13), LizLemon_44 (B2), MasterPo_44 (B2), Opia_44 (B2), Phantasmagoria_44 (B2), PrinceCharming_44 (B2), Rhinoforte_44 (B2), Rinkes_44 (B9), Sabella_43 (B2), TA17A_45 (B2), Tinciduntolum_45 (B2), Tres_44 (B2), Vic9_00043 (B2), West99_44 (B2), Zenteno07_48 (B13),

Start 52:

- Found in 1 of 596 (0.2%) of genes in pham
- No Manual Annotations of this start.
- Called 100.0% of time when present
- Phage (with cluster) where this start called: Pine5_39 (singleton),

Start 53:

- Found in 20 of 596 (3.4%) of genes in pham
- Manual Annotations of this start: 19 of 527
- Called 100.0% of time when present
- Phage (with cluster) where this start called: Chipper1996_370 (AR), Chocolat_37 (AR), Chubster_37 (AR), Colucci_37 (AR), Conboy_37 (AR), DrYang_38 (AR), EdgarPoe_37 (AR), HumptyDumpty_37 (AR), JaNo_37 (AR), JayCookie_37 (AR), KBurrousTX_37 (AR), Kabreeze_37 (AR), Linus_37 (AR), Lymara_37 (AR), Mordred_37 (AR), MoyaNatalis_37 (AR), PrincessTrina_37 (AR), RosiePosie_37 (AR), Scavito_37 (AR), Tophat_37 (AR),

Start 54:

- Found in 38 of 596 (6.4%) of genes in pham
- Manual Annotations of this start: 36 of 527
- Called 100.0% of time when present
- Phage (with cluster) where this start called: 32HC_7 (Z), Antonio_35 (CZ1), Asapag_39 (DN1), BatStarr_34 (CZ1), BearBQ_38 (DN), BeeGee_38 (CY5), Bosnia_34 (CZ1), Budski_39 (DN), CheeseTouch_37 (DN1), Ecliptus_40 (DN), Eudoria_35 (CZ1), Eviarto_34 (CZ1), Getalong_40 (DN1), Herod_34 (CZ1), Holliday_38 (DN1), Horus_39 (DN1), JCole_32 (CZ2), Kenna_38 (DN1), Kita_36

(CZ1), Leroy_39 (DN1), Lutum_39 (DN1), Manasvini_35 (CZ1), Maridalia_34 (CZ1), Neobush_35 (CZ1), Nymphadora_34 (CZ1), ODay_42 (DN), Periwinkle_42 (DN1), Phabuloso_36 (DN1), Polly_32 (CZ1), RavenCo17_36 (CZ8), Rem711_6 (Z), ShawBrad_38 (DN1), Suscepit_35 (CZ1), Tayonia_35 (CZ1), TimTam_34 (CZ1), Trumpet_35 (CZ1), Whitney_42 (DN1), Zameen_35 (CZ1),

Start 56:

- Found in 4 of 596 (0.7%) of genes in pham
- Manual Annotations of this start: 2 of 527
- Called 50.0% of time when present
- Phage (with cluster) where this start called: Butters_32 (N), Rubeelu_32 (N),

Start 57:

- Found in 3 of 596 (0.5%) of genes in pham
- Manual Annotations of this start: 2 of 527
- Called 66.7% of time when present
- Phage (with cluster) where this start called: Chickaboom_25 (AS1), WileyE_25 (AS1),

Start 58:

- Found in 30 of 596 (5.0%) of genes in pham
- Manual Annotations of this start: 19 of 527
- Called 76.7% of time when present
- Phage (with cluster) where this start called: Amelia_27 (AS2), Amphitrite_26 (AS3), Atlantica_26 (AS3), Camara_26 (AS3), Colusalem_27 (AS2), Coral_26 (AS2), Cote_27 (AS2), Damocles_28 (AS2), DanHam62_26 (AS3), Daob_27 (AS2), Fingolfin_26 (AS3), Glotell_26 (AS3), GramZayde_26 (AS2), HannahPhantana_27 (AS2), KHumphrey_26 (AS3), Leona_25 (AS3), Lunar_27 (AS2), Melons_27 (AS2), OtsoOtso_26 (AS2), PhluffyCoco_26 (AS3), Pineda_28 (AS2), Polka_26 (AS2), RedFox_26 (AS3),

Summary by clusters:

There are 27 clusters represented in this pham: DN, singleton, CZ2, CZ1, CZ8, B12, B13, B10, B11, DR, Z, DN1, AS3, AS2, AS1, CY5, N, AR, UNK, B4, B5, B7, B1, B2, B3, B8, B9,

Info for manual annotations of cluster AR:

- Start number 53 was manually annotated 19 times for cluster AR.

Info for manual annotations of cluster AS1:

- Start number 57 was manually annotated 2 times for cluster AS1.

Info for manual annotations of cluster AS2:

- Start number 58 was manually annotated 10 times for cluster AS2.

Info for manual annotations of cluster AS3:

- Start number 58 was manually annotated 9 times for cluster AS3.

Info for manual annotations of cluster B1:

- Start number 46 was manually annotated 288 times for cluster B1.

Info for manual annotations of cluster B10:

- Start number 46 was manually annotated 1 time for cluster B10.

Info for manual annotations of cluster B11:

- Start number 46 was manually annotated 1 time for cluster B11.

Info for manual annotations of cluster B12:

- Start number 46 was manually annotated 1 time for cluster B12.

Info for manual annotations of cluster B13:

- Start number 51 was manually annotated 3 times for cluster B13.

Info for manual annotations of cluster B2:

- Start number 51 was manually annotated 34 times for cluster B2.

Info for manual annotations of cluster B3:

- Start number 40 was manually annotated 51 times for cluster B3.

Info for manual annotations of cluster B4:

- Start number 47 was manually annotated 28 times for cluster B4.

Info for manual annotations of cluster B5:

- Start number 46 was manually annotated 11 times for cluster B5.

Info for manual annotations of cluster B7:

- Start number 46 was manually annotated 1 time for cluster B7.

Info for manual annotations of cluster B8:

- Start number 45 was manually annotated 1 time for cluster B8.

Info for manual annotations of cluster B9:

- Start number 46 was manually annotated 5 times for cluster B9.

- Start number 51 was manually annotated 1 time for cluster B9.

Info for manual annotations of cluster CY5:

- Start number 54 was manually annotated 1 time for cluster CY5.

Info for manual annotations of cluster CZ1:

- Start number 54 was manually annotated 17 times for cluster CZ1.

Info for manual annotations of cluster CZ2:

- Start number 54 was manually annotated 1 time for cluster CZ2.

Info for manual annotations of cluster CZ8:

- Start number 54 was manually annotated 1 time for cluster CZ8.

Info for manual annotations of cluster DN:

- Start number 32 was manually annotated 1 time for cluster DN.

- Start number 54 was manually annotated 4 times for cluster DN.

Info for manual annotations of cluster DN1:

- Start number 54 was manually annotated 11 times for cluster DN1.

Info for manual annotations of cluster DR:

- Start number 35 was manually annotated 5 times for cluster DR.
- Start number 38 was manually annotated 5 times for cluster DR.
- Start number 40 was manually annotated 10 times for cluster DR.
- Start number 45 was manually annotated 2 times for cluster DR.

Info for manual annotations of cluster N:

- Start number 56 was manually annotated 2 times for cluster N.

Info for manual annotations of cluster Z:

- Start number 54 was manually annotated 1 time for cluster Z.

Gene Information:

Gene: 32HC_7 Start: 3414, Stop: 3172, Start Num: 54

Candidate Starts for 32HC_7:

(48, 3423), (Start: 54 @3414 has 36 MA's), (64, 3384), (80, 3291), (82, 3273),

Gene: ABU_45 Start: 39190, Stop: 38975, Start Num: 46

Candidate Starts for ABU_45:

(13, 39292), (Start: 46 @39190 has 308 MA's), (59, 39160), (67, 39115),

Gene: Abinghost_43 Start: 39027, Stop: 38791, Start Num: 40

Candidate Starts for Abinghost_43:

(Start: 40 @39027 has 61 MA's), (62, 38970), (73, 38904), (75, 38898),

Gene: AbsoluteMadLad_44 Start: 39199, Stop: 38984, Start Num: 46

Candidate Starts for AbsoluteMadLad_44:

(Start: 46 @39199 has 308 MA's), (59, 39169), (67, 39124),

Gene: Acadian_44 Start: 39648, Stop: 39439, Start Num: 46

Candidate Starts for Acadian_44:

(11, 39762), (13, 39756), (Start: 46 @39648 has 308 MA's), (59, 39633), (64, 39621), (67, 39588),

Gene: Adriana_45 Start: 39188, Stop: 38973, Start Num: 46

Candidate Starts for Adriana_45:

(13, 39290), (Start: 46 @39188 has 308 MA's), (59, 39158), (67, 39113),

Gene: Aelin_44 Start: 38754, Stop: 38539, Start Num: 46

Candidate Starts for Aelin_44:

(13, 38856), (Start: 46 @38754 has 308 MA's), (59, 38724), (67, 38679),

Gene: Ahwei_39 Start: 38171, Stop: 37965, Start Num: 47

Candidate Starts for Ahwei_39:

(Start: 47 @38171 has 28 MA's), (59, 38150), (65, 38123), (67, 38105), (71, 38087), (77, 38057), (79, 38051), (81, 38030),

Gene: Akoma_43 Start: 39031, Stop: 38795, Start Num: 40

Candidate Starts for Akoma_43:

(Start: 40 @39031 has 61 MA's), (62, 38974), (73, 38908), (75, 38902),

Gene: AksarBAT_38 Start: 33442, Stop: 33182, Start Num: 40

Candidate Starts for AksarBAT_38:

(24, 33475), (Start: 40 @33442 has 61 MA's), (59, 33400), (60, 33397), (69, 33346), (73, 33328), (79, 33301),

Gene: AlanGrant_42 Start: 39951, Stop: 39745, Start Num: 47

Candidate Starts for AlanGrant_42:

(Start: 47 @39951 has 28 MA's), (59, 39930), (62, 39924), (65, 39903), (67, 39885), (69, 39876), (71, 39867), (77, 39837), (78, 39834), (79, 39831),

Gene: Aleia_45 Start: 38768, Stop: 38553, Start Num: 46

Candidate Starts for Aleia_45:

(Start: 46 @38768 has 308 MA's), (59, 38738), (67, 38693), (75, 38660),

Gene: Allegro_44 Start: 39432, Stop: 39226, Start Num: 51

Candidate Starts for Allegro_44:

(Start: 51 @39432 has 38 MA's), (60, 39405), (62, 39402), (71, 39348), (78, 39315),

Gene: AltPhacts_45 Start: 39177, Stop: 38962, Start Num: 46

Candidate Starts for AltPhacts_45:

(13, 39279), (Start: 46 @39177 has 308 MA's), (59, 39147), (67, 39102),

Gene: Altwerkus_44 Start: 38878, Stop: 38663, Start Num: 46

Candidate Starts for Altwerkus_44:

(Start: 46 @38878 has 308 MA's), (59, 38848), (67, 38803),

Gene: Amelia_27 Start: 19057, Stop: 18836, Start Num: 58

Candidate Starts for Amelia_27:

(Start: 58 @19057 has 19 MA's),

Gene: Amphitrite_26 Start: 18730, Stop: 18515, Start Num: 58

Candidate Starts for Amphitrite_26:

(Start: 58 @18730 has 19 MA's),

Gene: AnClar_39 Start: 35606, Stop: 35379, Start Num: 38

Candidate Starts for AnClar_39:

(Start: 38 @35606 has 5 MA's), (74, 35489), (84, 35420),

Gene: AnarQue_40 Start: 34838, Stop: 34584, Start Num: 40

Candidate Starts for AnarQue_40:

(20, 34880), (Start: 40 @34838 has 61 MA's), (60, 34790), (69, 34739), (73, 34721), (79, 34694),

Gene: Anderson_45 Start: 39183, Stop: 38968, Start Num: 46

Candidate Starts for Anderson_45:

(13, 39285), (Start: 46 @39183 has 308 MA's), (59, 39153), (67, 39108),

Gene: Andre_45 Start: 39182, Stop: 38967, Start Num: 46

Candidate Starts for Andre_45:

(Start: 46 @39182 has 308 MA's), (59, 39152), (67, 39107), (75, 39074),

Gene: AngelCake_45 Start: 39202, Stop: 38987, Start Num: 46

Candidate Starts for AngelCake_45:

(Start: 46 @39202 has 308 MA's), (59, 39172), (67, 39127),

Gene: Antihero_39 Start: 38171, Stop: 37965, Start Num: 47
Candidate Starts for Antihero_39:
(Start: 47 @38171 has 28 MA's), (59, 38150), (65, 38123), (67, 38105), (71, 38087), (77, 38057), (79, 38051), (81, 38030),

Gene: Antonia_44 Start: 38754, Stop: 38539, Start Num: 46
Candidate Starts for Antonia_44:
(13, 38856), (Start: 46 @38754 has 308 MA's), (59, 38724), (67, 38679),

Gene: Antonio_35 Start: 29354, Stop: 29118, Start Num: 54
Candidate Starts for Antonio_35:
(Start: 54 @29354 has 36 MA's), (65, 29312), (68, 29291), (77, 29249), (83, 29201), (89, 29129),

Gene: Aonishiki_45 Start: 39226, Stop: 39011, Start Num: 46
Candidate Starts for Aonishiki_45:
(13, 39328), (Start: 46 @39226 has 308 MA's), (59, 39196), (67, 39151),

Gene: Apex_41 Start: 39377, Stop: 39171, Start Num: 47
Candidate Starts for Apex_41:
(Start: 47 @39377 has 28 MA's), (59, 39356), (65, 39329), (67, 39311), (71, 39293), (77, 39263), (79, 39257),

Gene: Apizium_44 Start: 38943, Stop: 38728, Start Num: 46
Candidate Starts for Apizium_44:
(Start: 46 @38943 has 308 MA's), (59, 38913), (67, 38868), (75, 38835),

Gene: Ares_44 Start: 39502, Stop: 39296, Start Num: 51
Candidate Starts for Ares_44:
(Start: 51 @39502 has 38 MA's), (60, 39475), (62, 39472), (71, 39418), (78, 39385),

Gene: Asapag_39 Start: 30538, Stop: 30302, Start Num: 54
Candidate Starts for Asapag_39:
(Start: 54 @30538 has 36 MA's), (65, 30496), (68, 30475), (77, 30433), (83, 30385),

Gene: Ashraf_44 Start: 38747, Stop: 38532, Start Num: 46
Candidate Starts for Ashraf_44:
(Start: 46 @38747 has 308 MA's), (59, 38717), (67, 38672), (75, 38639),

Gene: Athena_44 Start: 39778, Stop: 39542, Start Num: 40
Candidate Starts for Athena_44:
(Start: 40 @39778 has 61 MA's), (62, 39721), (73, 39655), (75, 39649),

Gene: Atlantica_26 Start: 18732, Stop: 18517, Start Num: 58
Candidate Starts for Atlantica_26:
(Start: 58 @18732 has 19 MA's),

Gene: Audrey_43 Start: 39027, Stop: 38791, Start Num: 40
Candidate Starts for Audrey_43:
(Start: 40 @39027 has 61 MA's), (62, 38970), (73, 38904), (75, 38898),

Gene: Austelle_41 Start: 39833, Stop: 39627, Start Num: 47
Candidate Starts for Austelle_41:

(Start: 47 @39833 has 28 MA's), (59, 39812), (65, 39785), (67, 39767), (71, 39749), (77, 39719), (79, 39713),

Gene: Axumite_38 Start: 32837, Stop: 32601, Start Num: 35

Candidate Starts for Axumite_38:

(34, 32840), (Start: 35 @32837 has 5 MA's), (44, 32816), (Start: 47 @32810 has 28 MA's), (Start: 58 @32786 has 19 MA's), (62, 32780), (78, 32690),

Gene: Badfish_45 Start: 39213, Stop: 38998, Start Num: 46

Candidate Starts for Badfish_45:

(13, 39315), (Start: 46 @39213 has 308 MA's), (59, 39183), (67, 39138),

Gene: Bae_43 Start: 39550, Stop: 39341, Start Num: 46

Candidate Starts for Bae_43:

(Start: 46 @39550 has 308 MA's), (59, 39535), (64, 39523), (67, 39490), (75, 39457),

Gene: Baloo_43 Start: 39030, Stop: 38794, Start Num: 40

Candidate Starts for Baloo_43:

(Start: 40 @39030 has 61 MA's), (62, 38973), (73, 38907), (75, 38901),

Gene: Bananafish_44 Start: 39438, Stop: 39232, Start Num: 51

Candidate Starts for Bananafish_44:

(Start: 51 @39438 has 38 MA's), (60, 39411), (62, 39408), (71, 39354), (78, 39321),

Gene: Banjo_44 Start: 38888, Stop: 38673, Start Num: 46

Candidate Starts for Banjo_44:

(Start: 46 @38888 has 308 MA's), (59, 38858), (67, 38813), (75, 38780),

Gene: Basato_46 Start: 39467, Stop: 39252, Start Num: 46

Candidate Starts for Basato_46:

(Start: 46 @39467 has 308 MA's), (59, 39437), (67, 39392),

Gene: BatStarr_34 Start: 29521, Stop: 29285, Start Num: 54

Candidate Starts for BatStarr_34:

(Start: 54 @29521 has 36 MA's), (65, 29479), (77, 29416), (83, 29368), (86, 29356),

Gene: BatteryCK_44 Start: 38807, Stop: 38592, Start Num: 46

Candidate Starts for BatteryCK_44:

(Start: 46 @38807 has 308 MA's), (59, 38777), (67, 38732),

Gene: Beaglebox_44 Start: 38909, Stop: 38694, Start Num: 46

Candidate Starts for Beaglebox_44:

(Start: 46 @38909 has 308 MA's), (59, 38879), (67, 38834), (75, 38801),

Gene: BearBQ_38 Start: 30173, Stop: 29937, Start Num: 54

Candidate Starts for BearBQ_38:

(Start: 54 @30173 has 36 MA's), (65, 30131), (68, 30110), (77, 30068), (83, 30020),

Gene: BeeGee_38 Start: 30304, Stop: 30068, Start Num: 54

Candidate Starts for BeeGee_38:

(Start: 54 @30304 has 36 MA's), (65, 30262), (68, 30241), (77, 30199), (83, 30151),

Gene: Ben11_42 Start: 38849, Stop: 38613, Start Num: 40

Candidate Starts for Ben11_42:

(Start: 40 @38849 has 61 MA's), (62, 38792), (73, 38726), (75, 38720),

Gene: Bernardo_44 Start: 39575, Stop: 39339, Start Num: 40

Candidate Starts for Bernardo_44:

(Start: 40 @39575 has 61 MA's), (62, 39518), (73, 39452), (75, 39446),

Gene: BiggityBass_38 Start: 35067, Stop: 34840, Start Num: 38

Candidate Starts for BiggityBass_38:

(31, 35082), (Start: 38 @35067 has 5 MA's), (74, 34950), (84, 34881),

Gene: BirdsNest_46 Start: 37877, Stop: 37662, Start Num: 51

Candidate Starts for BirdsNest_46:

(Start: 51 @37877 has 38 MA's), (59, 37853), (65, 37826), (69, 37799), (81, 37733), (85, 37703),

Gene: Bishoperium_44 Start: 38897, Stop: 38682, Start Num: 46

Candidate Starts for Bishoperium_44:

(13, 38999), (Start: 46 @38897 has 308 MA's), (59, 38867), (67, 38822),

Gene: BlackStallion_45 Start: 39199, Stop: 38984, Start Num: 46

Candidate Starts for BlackStallion_45:

(Start: 46 @39199 has 308 MA's), (59, 39169), (67, 39124), (75, 39091),

Gene: Blackpen_40 Start: 34256, Stop: 34002, Start Num: 40

Candidate Starts for Blackpen_40:

(20, 34298), (Start: 40 @34256 has 61 MA's), (60, 34208), (69, 34157), (73, 34139), (79, 34112),

Gene: BlacksBerry_44 Start: 38915, Stop: 38700, Start Num: 46

Candidate Starts for BlacksBerry_44:

(13, 39017), (Start: 46 @38915 has 308 MA's), (59, 38885), (67, 38840),

Gene: Blocker23_44 Start: 39556, Stop: 39350, Start Num: 51

Candidate Starts for Blocker23_44:

(Start: 51 @39556 has 38 MA's), (60, 39529), (62, 39526), (71, 39472), (78, 39439),

Gene: BlueHusk_45 Start: 38696, Stop: 38481, Start Num: 46

Candidate Starts for BlueHusk_45:

(Start: 46 @38696 has 308 MA's), (59, 38666), (67, 38621),

Gene: Bluephacebaby_44 Start: 38894, Stop: 38679, Start Num: 46

Candidate Starts for Bluephacebaby_44:

(Start: 46 @38894 has 308 MA's), (59, 38864), (67, 38819),

Gene: BobRoss2024_37 Start: 32952, Stop: 32707, Start Num: 38

Candidate Starts for BobRoss2024_37:

(20, 32994), (24, 32985), (Start: 38 @32952 has 5 MA's), (55, 32919), (Start: 57 @32910 has 2 MA's), (59, 32901), (69, 32847), (83, 32763),

Gene: BobbyK_41 Start: 39202, Stop: 38996, Start Num: 47

Candidate Starts for BobbyK_41:

(Start: 47 @39202 has 28 MA's), (59, 39181), (65, 39154), (67, 39136), (71, 39118), (77, 39088), (79, 39082),

Gene: Boehler_45 Start: 39200, Stop: 38985, Start Num: 46
Candidate Starts for Boehler_45:
(13, 39302), (Start: 46 @39200 has 308 MA's), (59, 39170), (67, 39125),

Gene: BoogieWoogie_44 Start: 38881, Stop: 38666, Start Num: 46
Candidate Starts for BoogieWoogie_44:
(13, 38983), (Start: 46 @38881 has 308 MA's), (59, 38851), (67, 38806),

Gene: Bosnia_34 Start: 29521, Stop: 29285, Start Num: 54
Candidate Starts for Bosnia_34:
(Start: 54 @29521 has 36 MA's), (65, 29479), (77, 29416), (83, 29368), (86, 29356),

Gene: Boyle_44 Start: 39557, Stop: 39351, Start Num: 51
Candidate Starts for Boyle_44:
(Start: 51 @39557 has 38 MA's), (60, 39530), (62, 39527), (71, 39473), (78, 39440),

Gene: Briakila_44 Start: 39797, Stop: 39561, Start Num: 40
Candidate Starts for Briakila_44:
(Start: 40 @39797 has 61 MA's), (62, 39740), (73, 39674), (75, 39668),

Gene: Brilliant_45 Start: 38905, Stop: 38690, Start Num: 46
Candidate Starts for Brilliant_45:
(Start: 46 @38905 has 308 MA's), (59, 38875), (67, 38830), (75, 38797),

Gene: BrownCNA_42 Start: 39463, Stop: 39257, Start Num: 47
Candidate Starts for BrownCNA_42:
(Start: 47 @39463 has 28 MA's), (59, 39442), (65, 39415), (67, 39397), (71, 39379), (77, 39349), (79, 39343),

Gene: Brownie5_44 Start: 39563, Stop: 39357, Start Num: 51
Candidate Starts for Brownie5_44:
(Start: 51 @39563 has 38 MA's), (60, 39536), (62, 39533), (71, 39479), (78, 39446),

Gene: Bubbykins_37 Start: 28274, Stop: 28059, Start Num: 51
Candidate Starts for Bubbykins_37:
(14, 28391), (15, 28385), (16, 28382), (17, 28376), (18, 28361), (21, 28346), (33, 28322), (Start: 51 @28274 has 38 MA's), (66, 28214), (72, 28184), (78, 28154), (79, 28151),

Gene: Buckeye_45 Start: 39217, Stop: 39002, Start Num: 46
Candidate Starts for Buckeye_45:
(Start: 46 @39217 has 308 MA's), (59, 39187), (67, 39142),

Gene: Budski_39 Start: 30500, Stop: 30264, Start Num: 54
Candidate Starts for Budski_39:
(Start: 54 @30500 has 36 MA's), (65, 30458), (68, 30437), (77, 30395), (83, 30347),

Gene: Burr_44 Start: 38894, Stop: 38679, Start Num: 46
Candidate Starts for Burr_44:
(Start: 46 @38894 has 308 MA's), (59, 38864), (67, 38819),

Gene: Butters_32 Start: 26751, Stop: 26518, Start Num: 56
Candidate Starts for Butters_32:

(23, 26826), (25, 26823), (29, 26817), (50, 26760), (Start: 56 @26751 has 2 MA's), (64, 26727), (71, 26679), (83, 26601), (89, 26529),

Gene: CRB2_46 Start: 41727, Stop: 41521, Start Num: 46

Candidate Starts for CRB2_46:

(Start: 46 @41727 has 308 MA's), (59, 41706), (67, 41661), (69, 41652), (79, 41607), (85, 41556),

Gene: CaiB_40 Start: 34824, Stop: 34570, Start Num: 40

Candidate Starts for CaiB_40:

(20, 34866), (Start: 40 @34824 has 61 MA's), (60, 34776), (69, 34725), (73, 34707), (79, 34680),

Gene: Calamitous_44 Start: 39443, Stop: 39237, Start Num: 51

Candidate Starts for Calamitous_44:

(Start: 51 @39443 has 38 MA's), (60, 39416), (62, 39413), (71, 39359), (78, 39326),

Gene: CamL_45 Start: 39195, Stop: 38980, Start Num: 46

Candidate Starts for CamL_45:

(Start: 46 @39195 has 308 MA's), (59, 39165), (67, 39120), (75, 39087),

Gene: Camara_26 Start: 18733, Stop: 18518, Start Num: 58

Candidate Starts for Camara_26:

(Start: 58 @18733 has 19 MA's),

Gene: CampRoach_45 Start: 39185, Stop: 38970, Start Num: 46

Candidate Starts for CampRoach_45:

(13, 39287), (Start: 46 @39185 has 308 MA's), (59, 39155), (67, 39110),

Gene: Cannibal_45 Start: 39178, Stop: 38963, Start Num: 46

Candidate Starts for Cannibal_45:

(Start: 46 @39178 has 308 MA's), (59, 39148), (67, 39103), (75, 39070),

Gene: Carthage_43 Start: 38107, Stop: 37892, Start Num: 46

Candidate Starts for Carthage_43:

(Start: 46 @38107 has 308 MA's), (59, 38077), (67, 38032), (75, 37999),

Gene: Casbah_42 Start: 38879, Stop: 38643, Start Num: 40

Candidate Starts for Casbah_42:

(Start: 40 @38879 has 61 MA's), (62, 38822), (73, 38756), (75, 38750),

Gene: Caspiboi_44 Start: 38904, Stop: 38689, Start Num: 46

Candidate Starts for Caspiboi_44:

(Start: 46 @38904 has 308 MA's), (59, 38874), (67, 38829),

Gene: ChaChing_43 Start: 39042, Stop: 38806, Start Num: 40

Candidate Starts for ChaChing_43:

(Start: 40 @39042 has 61 MA's), (62, 38985), (73, 38919), (75, 38913),

Gene: Chaelin_45 Start: 38892, Stop: 38677, Start Num: 46

Candidate Starts for Chaelin_45:

(13, 38994), (Start: 46 @38892 has 308 MA's), (59, 38862), (67, 38817),

Gene: Chah_46 Start: 39212, Stop: 38997, Start Num: 46

Candidate Starts for Chah_46:

(13, 39314), (Start: 46 @39212 has 308 MA's), (59, 39182), (67, 39137),

Gene: Chalmers_43 Start: 39834, Stop: 39598, Start Num: 40

Candidate Starts for Chalmers_43:

(Start: 40 @39834 has 61 MA's), (62, 39777), (73, 39711), (75, 39705),

Gene: Chandler_43 Start: 39810, Stop: 39574, Start Num: 40

Candidate Starts for Chandler_43:

(Start: 40 @39810 has 61 MA's), (62, 39753), (73, 39687), (75, 39681),

Gene: Charles1_45 Start: 39180, Stop: 38965, Start Num: 46

Candidate Starts for Charles1_45:

(13, 39282), (Start: 46 @39180 has 308 MA's), (59, 39150), (67, 39105),

Gene: CharlieGBrown_44 Start: 38770, Stop: 38555, Start Num: 46

Candidate Starts for CharlieGBrown_44:

(13, 38872), (Start: 46 @38770 has 308 MA's), (59, 38740), (67, 38695),

Gene: CharlottesWeb_38 Start: 32763, Stop: 32527, Start Num: 35

Candidate Starts for CharlottesWeb_38:

(30, 32778), (34, 32766), (Start: 35 @32763 has 5 MA's), (Start: 58 @32712 has 19 MA's), (62, 32706), (78, 32616),

Gene: CheeseTouch_37 Start: 27100, Stop: 26864, Start Num: 54

Candidate Starts for CheeseTouch_37:

(Start: 54 @27100 has 36 MA's), (65, 27058), (68, 27037), (77, 26995), (83, 26947),

Gene: CheetO_45 Start: 39194, Stop: 38979, Start Num: 46

Candidate Starts for CheetO_45:

(13, 39296), (Start: 46 @39194 has 308 MA's), (59, 39164), (67, 39119),

Gene: Chentzyk_43 Start: 39391, Stop: 39155, Start Num: 40

Candidate Starts for Chentzyk_43:

(Start: 40 @39391 has 61 MA's), (62, 39334), (73, 39268), (75, 39262),

Gene: Cher_44 Start: 38917, Stop: 38702, Start Num: 46

Candidate Starts for Cher_44:

(Start: 46 @38917 has 308 MA's), (59, 38887), (67, 38842), (75, 38809),

Gene: Chickaboom_25 Start: 18878, Stop: 18663, Start Num: 57

Candidate Starts for Chickaboom_25:

(Start: 57 @18878 has 2 MA's),

Gene: Childish_44 Start: 38920, Stop: 38705, Start Num: 46

Candidate Starts for Childish_44:

(Start: 46 @38920 has 308 MA's), (59, 38890), (67, 38845), (75, 38812),

Gene: Chipette_46 Start: 39410, Stop: 39195, Start Num: 46

Candidate Starts for Chipette_46:

(Start: 46 @39410 has 308 MA's), (59, 39380), (67, 39335),

Gene: Chipper1996_370 Start: 30385, Stop: 30167, Start Num: 53

Candidate Starts for Chipper1996_370:

(9, 30535), (15, 30490), (16, 30487), (22, 30448), (37, 30415), (Start: 53 @30385 has 19 MA's), (59, 30364), (66, 30328), (69, 30313), (72, 30298), (75, 30286),

Gene: Chocolat_37 Start: 30385, Stop: 30167, Start Num: 53

Candidate Starts for Chocolat_37:

(9, 30535), (15, 30490), (16, 30487), (22, 30448), (37, 30415), (Start: 53 @30385 has 19 MA's), (59, 30364), (66, 30328), (69, 30313), (72, 30298), (75, 30286),

Gene: Chorkpop_45 Start: 38916, Stop: 38701, Start Num: 46

Candidate Starts for Chorkpop_45:

(13, 39018), (Start: 46 @38916 has 308 MA's), (59, 38886), (67, 38841),

Gene: ChrisnMich_40 Start: 38163, Stop: 37957, Start Num: 47

Candidate Starts for ChrisnMich_40:

(Start: 47 @38163 has 28 MA's), (59, 38142), (65, 38115), (67, 38097), (71, 38079), (77, 38049), (79, 38043), (81, 38022),

Gene: Chubster_37 Start: 30157, Stop: 29939, Start Num: 53

Candidate Starts for Chubster_37:

(9, 30307), (15, 30262), (16, 30259), (22, 30220), (37, 30187), (Start: 53 @30157 has 19 MA's), (59, 30136), (66, 30100), (69, 30085), (72, 30070), (75, 30058),

Gene: Chuni_44 Start: 39211, Stop: 38996, Start Num: 46

Candidate Starts for Chuni_44:

(13, 39313), (Start: 46 @39211 has 308 MA's), (59, 39181), (67, 39136),

Gene: Chunky_45 Start: 39203, Stop: 38988, Start Num: 46

Candidate Starts for Chunky_45:

(Start: 46 @39203 has 308 MA's), (59, 39173), (67, 39128),

Gene: Chute_44 Start: 39241, Stop: 39026, Start Num: 46

Candidate Starts for Chute_44:

(13, 39343), (Start: 46 @39241 has 308 MA's), (59, 39211), (67, 39166),

Gene: CloverMinnie_40 Start: 34764, Stop: 34510, Start Num: 40

Candidate Starts for CloverMinnie_40:

(20, 34806), (Start: 40 @34764 has 61 MA's), (60, 34716), (69, 34665), (73, 34647), (79, 34620),

Gene: Cobra_45 Start: 39201, Stop: 38986, Start Num: 46

Candidate Starts for Cobra_45:

(Start: 46 @39201 has 308 MA's), (59, 39171), (67, 39126), (75, 39093),

Gene: Coffee_44 Start: 39546, Stop: 39340, Start Num: 51

Candidate Starts for Coffee_44:

(Start: 51 @39546 has 38 MA's), (60, 39519), (62, 39516), (71, 39462), (78, 39429),

Gene: Colbert_45 Start: 39256, Stop: 39041, Start Num: 46

Candidate Starts for Colbert_45:

(Start: 46 @39256 has 308 MA's), (59, 39226), (67, 39181),

Gene: Coldpizza_41 Start: 37616, Stop: 37404, Start Num: 45

Candidate Starts for Coldpizza_41:

(37, 37640), (39, 37634), (Start: 45 @37616 has 3 MA's), (66, 37550), (69, 37535), (73, 37517), (77, 37496), (84, 37445),

Gene: Coletti_45 Start: 39241, Stop: 39026, Start Num: 46

Candidate Starts for Coletti_45:

(13, 39343), (Start: 46 @39241 has 308 MA's), (59, 39211), (67, 39166),

Gene: Colucci_37 Start: 29963, Stop: 29742, Start Num: 53

Candidate Starts for Colucci_37:

(1, 30272), (4, 30215), (5, 30194), (22, 30026), (27, 30020), (42, 29981), (Start: 53 @29963 has 19 MA's), (69, 29891), (72, 29876), (75, 29864), (79, 29843),

Gene: Colusalem_27 Start: 19035, Stop: 18814, Start Num: 58

Candidate Starts for Colusalem_27:

(Start: 58 @19035 has 19 MA's),

Gene: Compostia_44 Start: 39458, Stop: 39222, Start Num: 40

Candidate Starts for Compostia_44:

(Start: 40 @39458 has 61 MA's), (62, 39401), (73, 39335), (75, 39329),

Gene: Conboy_37 Start: 30384, Stop: 30166, Start Num: 53

Candidate Starts for Conboy_37:

(9, 30534), (15, 30489), (16, 30486), (22, 30447), (37, 30414), (Start: 53 @30384 has 19 MA's), (59, 30363), (66, 30327), (69, 30312), (72, 30297), (75, 30285),

Gene: Cooper_41 Start: 38382, Stop: 38176, Start Num: 47

Candidate Starts for Cooper_41:

(Start: 47 @38382 has 28 MA's), (59, 38361), (65, 38334), (67, 38316), (71, 38298), (77, 38268), (79, 38262),

Gene: Coral_26 Start: 18896, Stop: 18675, Start Num: 58

Candidate Starts for Coral_26:

(Start: 58 @18896 has 19 MA's),

Gene: Cornbread_44 Start: 38917, Stop: 38702, Start Num: 46

Candidate Starts for Cornbread_44:

(Start: 46 @38917 has 308 MA's), (59, 38887), (67, 38842), (75, 38809),

Gene: Cornobble_44 Start: 38755, Stop: 38540, Start Num: 46

Candidate Starts for Cornobble_44:

(13, 38857), (Start: 46 @38755 has 308 MA's), (59, 38725), (67, 38680),

Gene: Corofin_43 Start: 39053, Stop: 38817, Start Num: 40

Candidate Starts for Corofin_43:

(Start: 40 @39053 has 61 MA's), (62, 38996), (73, 38930), (75, 38924),

Gene: Cosmolli16_44 Start: 38905, Stop: 38690, Start Num: 46

Candidate Starts for Cosmolli16_44:

(Start: 46 @38905 has 308 MA's), (59, 38875), (67, 38830),

Gene: Cote_27 Start: 19041, Stop: 18820, Start Num: 58

Candidate Starts for Cote_27:

(Start: 58 @19041 has 19 MA's),

Gene: Craff_45 Start: 39198, Stop: 38983, Start Num: 46
Candidate Starts for Craff_45:
(13, 39300), (Start: 46 @39198 has 308 MA's), (59, 39168), (67, 39123),

Gene: Crownjwl_45 Start: 38971, Stop: 38756, Start Num: 46
Candidate Starts for Crownjwl_45:
(13, 39073), (Start: 46 @38971 has 308 MA's), (59, 38941), (67, 38896),

Gene: DaddyDaniels_45 Start: 38889, Stop: 38674, Start Num: 46
Candidate Starts for DaddyDaniels_45:
(13, 38991), (Start: 46 @38889 has 308 MA's), (59, 38859), (67, 38814),

Gene: Daffy_45 Start: 38920, Stop: 38705, Start Num: 46
Candidate Starts for Daffy_45:
(Start: 46 @38920 has 308 MA's), (59, 38890), (67, 38845), (75, 38812),

Gene: Daisy_43 Start: 39054, Stop: 38818, Start Num: 40
Candidate Starts for Daisy_43:
(Start: 40 @39054 has 61 MA's), (62, 38997), (73, 38931), (75, 38925),

Gene: Daka_46 Start: 39193, Stop: 38978, Start Num: 46
Candidate Starts for Daka_46:
(Start: 46 @39193 has 308 MA's), (59, 39163), (67, 39118),

Gene: Damocles_28 Start: 19194, Stop: 18973, Start Num: 58
Candidate Starts for Damocles_28:
(Start: 58 @19194 has 19 MA's),

Gene: DanHam62_26 Start: 18732, Stop: 18517, Start Num: 58
Candidate Starts for DanHam62_26:
(Start: 58 @18732 has 19 MA's),

Gene: Daob_27 Start: 19046, Stop: 18825, Start Num: 58
Candidate Starts for Daob_27:
(Start: 58 @19046 has 19 MA's),

Gene: Dati_45 Start: 38914, Stop: 38699, Start Num: 46
Candidate Starts for Dati_45:
(Start: 46 @38914 has 308 MA's), (59, 38884), (67, 38839),

Gene: Deenasa_43 Start: 39789, Stop: 39553, Start Num: 40
Candidate Starts for Deenasa_43:
(Start: 40 @39789 has 61 MA's), (62, 39732), (73, 39666), (75, 39660),

Gene: DelRivs_44 Start: 38915, Stop: 38700, Start Num: 46
Candidate Starts for DelRivs_44:
(13, 39017), (Start: 46 @38915 has 308 MA's), (59, 38885), (67, 38840),

Gene: Derpp_44 Start: 38759, Stop: 38544, Start Num: 46
Candidate Starts for Derpp_44:
(Start: 46 @38759 has 308 MA's), (59, 38729), (67, 38684), (75, 38651),

Gene: Devonte_43 Start: 39018, Stop: 38782, Start Num: 40
Candidate Starts for Devonte_43:
(Start: 40 @39018 has 61 MA's), (62, 38961), (73, 38895), (75, 38889),

Gene: Dice_44 Start: 38894, Stop: 38679, Start Num: 46
Candidate Starts for Dice_44:
(Start: 46 @38894 has 308 MA's), (59, 38864), (67, 38819), (75, 38786),

Gene: DigitDog_43 Start: 39348, Stop: 39139, Start Num: 46
Candidate Starts for DigitDog_43:
(13, 39456), (Start: 46 @39348 has 308 MA's), (59, 39333), (64, 39321),

Gene: Dingo_45 Start: 39177, Stop: 38962, Start Num: 46
Candidate Starts for Dingo_45:
(Start: 46 @39177 has 308 MA's), (59, 39147), (67, 39102),

Gene: Dione_44 Start: 38899, Stop: 38684, Start Num: 46
Candidate Starts for Dione_44:
(Start: 46 @38899 has 308 MA's), (59, 38869), (67, 38824), (75, 38791),

Gene: DirtJuice_45 Start: 39183, Stop: 38968, Start Num: 46
Candidate Starts for DirtJuice_45:
(Start: 46 @39183 has 308 MA's), (59, 39153), (67, 39108),

Gene: Doddsville_45 Start: 38913, Stop: 38698, Start Num: 46
Candidate Starts for Doddsville_45:
(13, 39015), (Start: 46 @38913 has 308 MA's), (59, 38883), (67, 38838),

Gene: DoesntMatter_44 Start: 39186, Stop: 38971, Start Num: 46
Candidate Starts for DoesntMatter_44:
(13, 39288), (Start: 46 @39186 has 308 MA's), (59, 39156), (67, 39111),

Gene: DolOn_46 Start: 39423, Stop: 39208, Start Num: 46
Candidate Starts for DolOn_46:
(13, 39525), (Start: 46 @39423 has 308 MA's), (59, 39393), (67, 39348),

Gene: DonSanchon_44 Start: 38893, Stop: 38678, Start Num: 46
Candidate Starts for DonSanchon_44:
(13, 38995), (Start: 46 @38893 has 308 MA's), (59, 38863), (67, 38818),

Gene: Donny_44 Start: 39653, Stop: 39444, Start Num: 46
Candidate Starts for Donny_44:
(11, 39767), (13, 39761), (Start: 46 @39653 has 308 MA's), (59, 39638), (64, 39626), (67, 39593),

Gene: DrYang_38 Start: 31723, Stop: 31505, Start Num: 53
Candidate Starts for DrYang_38:
(Start: 53 @31723 has 19 MA's), (65, 31675), (66, 31666), (69, 31651), (72, 31636), (75, 31624), (87, 31549),

Gene: DuchessDung_43 Start: 38047, Stop: 37832, Start Num: 46
Candidate Starts for DuchessDung_43:
(Start: 46 @38047 has 308 MA's), (59, 38017), (67, 37972), (75, 37939),

Gene: Duggie_44 Start: 38915, Stop: 38700, Start Num: 46
Candidate Starts for Duggie_44:
(13, 39017), (Start: 46 @38915 has 308 MA's), (59, 38885), (67, 38840),

Gene: Durga_45 Start: 39213, Stop: 38998, Start Num: 46
Candidate Starts for Durga_45:
(13, 39315), (Start: 46 @39213 has 308 MA's), (59, 39183), (67, 39138),

Gene: Eaglehorse_44 Start: 39470, Stop: 39264, Start Num: 51
Candidate Starts for Eaglehorse_44:
(Start: 51 @39470 has 38 MA's), (60, 39443), (62, 39440), (71, 39386), (78, 39353),

Gene: EastView9101_42 Start: 39303, Stop: 39094, Start Num: 46
Candidate Starts for EastView9101_42:
(11, 39417), (13, 39411), (Start: 46 @39303 has 308 MA's), (59, 39288), (64, 39276), (67, 39243),

Gene: Ecliptus_40 Start: 31004, Stop: 30768, Start Num: 54
Candidate Starts for Ecliptus_40:
(Start: 54 @31004 has 36 MA's), (65, 30962), (68, 30941), (77, 30899), (83, 30851),

Gene: EdgarPoe_37 Start: 30384, Stop: 30166, Start Num: 53
Candidate Starts for EdgarPoe_37:
(9, 30534), (15, 30489), (16, 30486), (22, 30447), (37, 30414), (Start: 53 @30384 has 19 MA's), (59, 30363), (66, 30327), (69, 30312), (72, 30297), (75, 30285),

Gene: ElvisPhasley_45 Start: 39235, Stop: 39020, Start Num: 46
Candidate Starts for ElvisPhasley_45:
(Start: 46 @39235 has 308 MA's), (59, 39205), (67, 39160), (75, 39127),

Gene: Emiris_45 Start: 39181, Stop: 38966, Start Num: 46
Candidate Starts for Emiris_45:
(Start: 46 @39181 has 308 MA's), (59, 39151), (67, 39106), (75, 39073),

Gene: EmpTee_45 Start: 39193, Stop: 38978, Start Num: 46
Candidate Starts for EmpTee_45:
(13, 39295), (Start: 46 @39193 has 308 MA's), (59, 39163), (67, 39118),

Gene: Epah_39 Start: 38171, Stop: 37965, Start Num: 47
Candidate Starts for Epah_39:
(Start: 47 @38171 has 28 MA's), (59, 38150), (65, 38123), (67, 38105), (71, 38087), (77, 38057), (79, 38051), (81, 38030),

Gene: Eremos_45 Start: 39192, Stop: 38977, Start Num: 46
Candidate Starts for Eremos_45:
(Start: 46 @39192 has 308 MA's), (59, 39162), (67, 39117),

Gene: Etaye_45 Start: 39183, Stop: 38968, Start Num: 46
Candidate Starts for Etaye_45:
(Start: 46 @39183 has 308 MA's), (59, 39153), (67, 39108),

Gene: Eudoria_35 Start: 29354, Stop: 29118, Start Num: 54
Candidate Starts for Eudoria_35:
(Start: 54 @29354 has 36 MA's), (65, 29312), (68, 29291), (77, 29249), (83, 29201), (89, 29129),

Gene: Eugenia_45 Start: 39202, Stop: 38987, Start Num: 46
Candidate Starts for Eugenia_45:
(13, 39304), (Start: 46 @39202 has 308 MA's), (59, 39172), (67, 39127), (75, 39094),

Gene: Evaa_38 Start: 33917, Stop: 33678, Start Num: 45
Candidate Starts for Evaa_38:
(37, 33941), (39, 33935), (Start: 45 @33917 has 3 MA's), (66, 33851), (84, 33746),

Gene: Eviarto_34 Start: 29497, Stop: 29261, Start Num: 54
Candidate Starts for Eviarto_34:
(Start: 54 @29497 has 36 MA's), (65, 29455), (77, 29392), (83, 29344), (86, 29332),

Gene: Fanaw_39 Start: 38868, Stop: 38662, Start Num: 47
Candidate Starts for Fanaw_39:
(Start: 47 @38868 has 28 MA's), (59, 38847), (65, 38820), (67, 38802), (71, 38784), (77, 38754), (79, 38748),

Gene: Fang_45 Start: 39206, Stop: 38991, Start Num: 46
Candidate Starts for Fang_45:
(13, 39308), (Start: 46 @39206 has 308 MA's), (59, 39176), (67, 39131),

Gene: Faze9_43 Start: 39566, Stop: 39360, Start Num: 51
Candidate Starts for Faze9_43:
(Start: 51 @39566 has 38 MA's), (60, 39539), (62, 39536), (71, 39482), (78, 39449),

Gene: FelixTres_39 Start: 34827, Stop: 34573, Start Num: 40
Candidate Starts for FelixTres_39:
(20, 34869), (Start: 40 @34827 has 61 MA's), (60, 34779), (69, 34728), (73, 34710), (79, 34683),

Gene: Fingolfin_26 Start: 18733, Stop: 18518, Start Num: 58
Candidate Starts for Fingolfin_26:
(Start: 58 @18733 has 19 MA's),

Gene: Flake_45 Start: 39248, Stop: 39033, Start Num: 46
Candidate Starts for Flake_45:
(13, 39350), (Start: 46 @39248 has 308 MA's), (59, 39218), (67, 39173),

Gene: FleetyMac_45 Start: 39201, Stop: 38986, Start Num: 46
Candidate Starts for FleetyMac_45:
(13, 39303), (Start: 46 @39201 has 308 MA's), (59, 39171), (67, 39126),

Gene: FluffyNinja_45 Start: 39199, Stop: 38984, Start Num: 46
Candidate Starts for FluffyNinja_45:
(Start: 46 @39199 has 308 MA's), (59, 39169), (67, 39124), (75, 39091),

Gene: Fortunato_41 Start: 39196, Stop: 38990, Start Num: 47
Candidate Starts for Fortunato_41:
(Start: 47 @39196 has 28 MA's), (59, 39175), (65, 39148), (67, 39130), (71, 39112), (77, 39082), (79, 39076),

Gene: Fozzie_44 Start: 39215, Stop: 39000, Start Num: 46
Candidate Starts for Fozzie_44:

(Start: 46 @39215 has 308 MA's), (59, 39185), (67, 39140), (75, 39107),

Gene: Frankicide_45 Start: 39211, Stop: 38996, Start Num: 46

Candidate Starts for Frankicide_45:

(Start: 46 @39211 has 308 MA's), (59, 39181), (67, 39136), (75, 39103),

Gene: Frederick_41 Start: 39202, Stop: 38996, Start Num: 47

Candidate Starts for Frederick_41:

(Start: 47 @39202 has 28 MA's), (59, 39181), (65, 39154), (67, 39136), (71, 39118), (77, 39088), (79, 39082),

Gene: FremontTroll_45 Start: 38953, Stop: 38738, Start Num: 46

Candidate Starts for FremontTroll_45:

(Start: 46 @38953 has 308 MA's), (59, 38923), (67, 38878),

Gene: FrenchFry_44 Start: 39560, Stop: 39354, Start Num: 51

Candidate Starts for FrenchFry_44:

(Start: 51 @39560 has 38 MA's), (60, 39533), (62, 39530), (71, 39476), (78, 39443),

Gene: Fresco_38 Start: 32837, Stop: 32601, Start Num: 35

Candidate Starts for Fresco_38:

(34, 32840), (Start: 35 @32837 has 5 MA's), (44, 32816), (Start: 47 @32810 has 28 MA's), (Start: 58 @32786 has 19 MA's), (62, 32780), (78, 32690),

Gene: Freya_44 Start: 38890, Stop: 38675, Start Num: 46

Candidate Starts for Freya_44:

(Start: 46 @38890 has 308 MA's), (59, 38860), (67, 38815), (75, 38782),

Gene: FriarPreacher_44 Start: 39217, Stop: 39002, Start Num: 46

Candidate Starts for FriarPreacher_44:

(Start: 46 @39217 has 308 MA's), (59, 39187), (67, 39142),

Gene: Fringe_45 Start: 39182, Stop: 38967, Start Num: 46

Candidate Starts for Fringe_45:

(13, 39284), (Start: 46 @39182 has 308 MA's), (59, 39152), (67, 39107),

Gene: FugateOSU_44 Start: 38895, Stop: 38680, Start Num: 46

Candidate Starts for FugateOSU_44:

(Start: 46 @38895 has 308 MA's), (59, 38865), (67, 38820),

Gene: Funsized_46 Start: 41756, Stop: 41544, Start Num: 46

Candidate Starts for Funsized_46:

(2, 42029), (6, 41957), (36, 41783), (Start: 46 @41756 has 308 MA's), (Start: 51 @41747 has 38 MA's), (61, 41723), (65, 41702), (67, 41684), (71, 41666),

Gene: Gadget_44 Start: 39041, Stop: 38805, Start Num: 40

Candidate Starts for Gadget_44:

(Start: 40 @39041 has 61 MA's), (62, 38984), (73, 38918), (75, 38912),

Gene: Gareth_44 Start: 38898, Stop: 38683, Start Num: 46

Candidate Starts for Gareth_44:

(Start: 46 @38898 has 308 MA's), (59, 38868), (67, 38823), (75, 38790),

Gene: GeneCoco_45 Start: 39207, Stop: 38992, Start Num: 46
Candidate Starts for GeneCoco_45:
(Start: 46 @39207 has 308 MA's), (59, 39177), (67, 39132), (75, 39099),

Gene: Gervas_43 Start: 39008, Stop: 38772, Start Num: 40
Candidate Starts for Gervas_43:
(Start: 40 @39008 has 61 MA's), (62, 38951), (73, 38885), (75, 38879),

Gene: Getalong_40 Start: 31359, Stop: 31123, Start Num: 54
Candidate Starts for Getalong_40:
(Start: 54 @31359 has 36 MA's), (65, 31317), (68, 31296), (77, 31254), (83, 31206),

Gene: GinPorsche_40 Start: 38171, Stop: 37965, Start Num: 47
Candidate Starts for GinPorsche_40:
(Start: 47 @38171 has 28 MA's), (59, 38150), (65, 38123), (67, 38105), (71, 38087), (77, 38057), (79, 38051), (81, 38030),

Gene: Giraffe_45 Start: 38901, Stop: 38686, Start Num: 46
Candidate Starts for Giraffe_45:
(13, 39003), (Start: 46 @38901 has 308 MA's), (59, 38871), (67, 38826),

Gene: Glass_44 Start: 39560, Stop: 39354, Start Num: 51
Candidate Starts for Glass_44:
(Start: 51 @39560 has 38 MA's), (60, 39533), (62, 39530), (71, 39476), (78, 39443),

Gene: GlenHope_44 Start: 39021, Stop: 38785, Start Num: 40
Candidate Starts for GlenHope_44:
(Start: 40 @39021 has 61 MA's), (62, 38964), (73, 38898), (75, 38892),

Gene: Glotell_26 Start: 18731, Stop: 18516, Start Num: 58
Candidate Starts for Glotell_26:
(12, 18866), (26, 18812), (Start: 56 @18743 has 2 MA's), (Start: 58 @18731 has 19 MA's),

Gene: Glubnar_44 Start: 39020, Stop: 38784, Start Num: 40
Candidate Starts for Glubnar_44:
(Start: 40 @39020 has 61 MA's), (62, 38963), (73, 38897), (75, 38891),

Gene: Godines_44 Start: 39502, Stop: 39296, Start Num: 51
Candidate Starts for Godines_44:
(Start: 51 @39502 has 38 MA's), (60, 39475), (62, 39472), (71, 39418), (78, 39385),

Gene: Gophee_45 Start: 39184, Stop: 38969, Start Num: 46
Candidate Starts for Gophee_45:
(13, 39286), (Start: 46 @39184 has 308 MA's), (59, 39154), (67, 39109),

Gene: GramZayde_26 Start: 18877, Stop: 18656, Start Num: 58
Candidate Starts for GramZayde_26:
(Start: 58 @18877 has 19 MA's),

Gene: Grand2040_44 Start: 38916, Stop: 38701, Start Num: 46
Candidate Starts for Grand2040_44:
(Start: 46 @38916 has 308 MA's), (59, 38886), (67, 38841), (75, 38808),

Gene: GreenChile_45 Start: 39192, Stop: 38977, Start Num: 46
Candidate Starts for GreenChile_45:
(13, 39294), (Start: 46 @39192 has 308 MA's), (59, 39162), (67, 39117),

Gene: Gwennie1_45 Start: 39262, Stop: 39047, Start Num: 46
Candidate Starts for Gwennie1_45:
(Start: 46 @39262 has 308 MA's), (59, 39232), (67, 39187), (75, 39154),

Gene: Gwilliam_45 Start: 39196, Stop: 38981, Start Num: 46
Candidate Starts for Gwilliam_45:
(Start: 46 @39196 has 308 MA's), (59, 39166), (67, 39121),

Gene: Gyarad_0045 Start: 39198, Stop: 38983, Start Num: 46
Candidate Starts for Gyarad_0045:
(Start: 46 @39198 has 308 MA's), (59, 39168), (67, 39123), (75, 39090),

Gene: HSavage_45 Start: 39202, Stop: 38987, Start Num: 46
Candidate Starts for HSavage_45:
(Start: 46 @39202 has 308 MA's), (59, 39172), (67, 39127), (75, 39094),

Gene: Haimas_45 Start: 39193, Stop: 38978, Start Num: 46
Candidate Starts for Haimas_45:
(Start: 46 @39193 has 308 MA's), (59, 39163), (67, 39118),

Gene: Haleema_44 Start: 38916, Stop: 38701, Start Num: 46
Candidate Starts for Haleema_44:
(Start: 46 @38916 has 308 MA's), (59, 38886), (67, 38841), (75, 38808),

Gene: Halfpint_42 Start: 38847, Stop: 38611, Start Num: 40
Candidate Starts for Halfpint_42:
(Start: 40 @38847 has 61 MA's), (62, 38790), (73, 38724), (75, 38718),

Gene: Hally898_39 Start: 38183, Stop: 37977, Start Num: 47
Candidate Starts for Hally898_39:
(Start: 47 @38183 has 28 MA's), (59, 38162), (65, 38135), (67, 38117), (71, 38099), (77, 38069), (79, 38063), (81, 38042),

Gene: Hamish_45 Start: 39185, Stop: 38970, Start Num: 46
Candidate Starts for Hamish_45:
(Start: 46 @39185 has 308 MA's), (59, 39155), (67, 39110),

Gene: Hangman_40 Start: 39194, Stop: 38988, Start Num: 47
Candidate Starts for Hangman_40:
(Start: 47 @39194 has 28 MA's), (59, 39173), (65, 39146), (67, 39128), (71, 39110), (77, 39080), (79, 39074),

Gene: HannahPhantana_27 Start: 19053, Stop: 18832, Start Num: 58
Candidate Starts for HannahPhantana_27:
(Start: 58 @19053 has 19 MA's),

Gene: Happabalu_45 Start: 38914, Stop: 38699, Start Num: 46
Candidate Starts for Happabalu_45:
(Start: 46 @38914 has 308 MA's), (59, 38884), (67, 38839),

Gene: Hartsy_45 Start: 39236, Stop: 39021, Start Num: 46
Candidate Starts for Hartsy_45:
(Start: 46 @39236 has 308 MA's), (59, 39206), (67, 39161),

Gene: Harvey_45 Start: 39211, Stop: 38996, Start Num: 46
Candidate Starts for Harvey_45:
(13, 39313), (Start: 46 @39211 has 308 MA's), (59, 39181), (67, 39136),

Gene: HarveySr_43 Start: 39014, Stop: 38778, Start Num: 40
Candidate Starts for HarveySr_43:
(Start: 40 @39014 has 61 MA's), (62, 38957), (73, 38891), (75, 38885),

Gene: Hashim76_46 Start: 38349, Stop: 38134, Start Num: 51
Candidate Starts for Hashim76_46:
(Start: 51 @38349 has 38 MA's), (59, 38325), (69, 38271), (85, 38175),

Gene: Heath_39 Start: 38801, Stop: 38595, Start Num: 47
Candidate Starts for Heath_39:
(Start: 47 @38801 has 28 MA's), (59, 38780), (65, 38753), (67, 38735), (71, 38717), (77, 38687), (79, 38681),

Gene: Heathcliff_43 Start: 38992, Stop: 38756, Start Num: 40
Candidate Starts for Heathcliff_43:
(Start: 40 @38992 has 61 MA's), (62, 38935), (73, 38869), (75, 38863),

Gene: Hedgerow_44 Start: 39542, Stop: 39336, Start Num: 51
Candidate Starts for Hedgerow_44:
(Start: 51 @39542 has 38 MA's), (60, 39515), (62, 39512), (71, 39458), (78, 39425),

Gene: Hekos_42 Start: 37765, Stop: 37550, Start Num: 46
Candidate Starts for Hekos_42:
(13, 37867), (Start: 46 @37765 has 308 MA's), (59, 37735), (67, 37690),

Gene: Held_45 Start: 38900, Stop: 38685, Start Num: 46
Candidate Starts for Held_45:
(13, 39002), (Start: 46 @38900 has 308 MA's), (59, 38870), (67, 38825),

Gene: HenryJackson_44 Start: 38916, Stop: 38701, Start Num: 46
Candidate Starts for HenryJackson_44:
(13, 39018), (Start: 46 @38916 has 308 MA's), (59, 38886), (67, 38841),

Gene: Herod_34 Start: 29521, Stop: 29285, Start Num: 54
Candidate Starts for Herod_34:
(Start: 54 @29521 has 36 MA's), (65, 29479), (77, 29416), (83, 29368), (86, 29356),

Gene: Hertubise_45 Start: 39207, Stop: 38992, Start Num: 46
Candidate Starts for Hertubise_45:
(Start: 46 @39207 has 308 MA's), (59, 39177), (67, 39132),

Gene: Hetaeria_45 Start: 39209, Stop: 38994, Start Num: 46
Candidate Starts for Hetaeria_45:
(Start: 46 @39209 has 308 MA's), (59, 39179), (67, 39134),

Gene: HighStump_44 Start: 38899, Stop: 38684, Start Num: 46
Candidate Starts for HighStump_44:
(13, 39001), (Start: 46 @38899 has 308 MA's), (59, 38869), (67, 38824),

Gene: Hocus_44 Start: 38905, Stop: 38690, Start Num: 46
Candidate Starts for Hocus_44:
(Start: 46 @38905 has 308 MA's), (59, 38875), (67, 38830), (75, 38797),

Gene: HogWash_45 Start: 39205, Stop: 38990, Start Num: 46
Candidate Starts for HogWash_45:
(Start: 46 @39205 has 308 MA's), (59, 39175), (67, 39130),

Gene: Holeinone_44 Start: 39422, Stop: 39216, Start Num: 51
Candidate Starts for Holeinone_44:
(Start: 51 @39422 has 38 MA's), (60, 39395), (62, 39392), (71, 39338), (78, 39305),

Gene: Holliday_38 Start: 29214, Stop: 28978, Start Num: 54
Candidate Starts for Holliday_38:
(Start: 54 @29214 has 36 MA's), (65, 29172), (68, 29151), (77, 29109), (83, 29061),

Gene: Horchata_45 Start: 39187, Stop: 38972, Start Num: 46
Candidate Starts for Horchata_45:
(13, 39289), (Start: 46 @39187 has 308 MA's), (59, 39157), (67, 39112),

Gene: Horus_39 Start: 30560, Stop: 30324, Start Num: 54
Candidate Starts for Horus_39:
(Start: 54 @30560 has 36 MA's), (65, 30518), (68, 30497), (77, 30455), (83, 30407),

Gene: HumptyDumpty_37 Start: 30383, Stop: 30165, Start Num: 53
Candidate Starts for HumptyDumpty_37:
(9, 30533), (15, 30488), (16, 30485), (22, 30446), (37, 30413), (Start: 53 @30383 has 19 MA's), (59, 30362), (66, 30326), (69, 30311), (72, 30296), (75, 30284),

Gene: Hydro_40 Start: 39211, Stop: 39005, Start Num: 47
Candidate Starts for Hydro_40:
(Start: 47 @39211 has 28 MA's), (59, 39190), (65, 39163), (67, 39145), (71, 39127), (77, 39097), (79, 39091),

Gene: ImtiyazSitla_44 Start: 38747, Stop: 38532, Start Num: 46
Candidate Starts for ImtiyazSitla_44:
(Start: 46 @38747 has 308 MA's), (59, 38717), (67, 38672), (75, 38639),

Gene: Imvubu_36 Start: 35895, Stop: 35680, Start Num: 46
Candidate Starts for Imvubu_36:
(3, 36156), (6, 36096), (Start: 46 @35895 has 308 MA's), (Start: 51 @35886 has 38 MA's), (61, 35859), (65, 35838), (67, 35820), (77, 35772), (79, 35766),

Gene: Inchworm_45 Start: 39185, Stop: 38970, Start Num: 46
Candidate Starts for Inchworm_45:
(13, 39287), (Start: 46 @39185 has 308 MA's), (59, 39155), (67, 39110),

Gene: Indlovu_42 Start: 38503, Stop: 38300, Start Num: 46

Candidate Starts for Indlovu_42:
(13, 38602), (Start: 46 @38503 has 308 MA's), (59, 38485), (65, 38458), (67, 38440), (77, 38392),

Gene: Inverness_45 Start: 39199, Stop: 38984, Start Num: 46
Candidate Starts for Inverness_45:
(Start: 46 @39199 has 308 MA's), (59, 39169), (67, 39124), (75, 39091),

Gene: Iridessa_45 Start: 38901, Stop: 38686, Start Num: 46
Candidate Starts for Iridessa_45:
(Start: 46 @38901 has 308 MA's), (59, 38871), (67, 38826), (75, 38793),

Gene: Iridoclysis_45 Start: 39179, Stop: 38964, Start Num: 46
Candidate Starts for Iridoclysis_45:
(Start: 46 @39179 has 308 MA's), (59, 39149), (67, 39104),

Gene: IsaacEli_45 Start: 39203, Stop: 38988, Start Num: 46
Candidate Starts for IsaacEli_45:
(13, 39305), (Start: 46 @39203 has 308 MA's), (59, 39173), (67, 39128),

Gene: ItsyBitsy1_44 Start: 39424, Stop: 39218, Start Num: 51
Candidate Starts for ItsyBitsy1_44:
(Start: 51 @39424 has 38 MA's), (60, 39397), (62, 39394), (71, 39340), (78, 39307),

Gene: JAMaL_40 Start: 39382, Stop: 39176, Start Num: 47
Candidate Starts for JAMaL_40:
(Start: 47 @39382 has 28 MA's), (59, 39361), (65, 39334), (67, 39316), (71, 39298), (77, 39268), (79, 39262),

Gene: JCole_32 Start: 26177, Stop: 25941, Start Num: 54
Candidate Starts for JCole_32:
(Start: 54 @26177 has 36 MA's), (65, 26135), (67, 26117), (68, 26114), (70, 26102), (77, 26072), (83, 26024),

Gene: JDog_44 Start: 38916, Stop: 38701, Start Num: 46
Candidate Starts for JDog_44:
(Start: 46 @38916 has 308 MA's), (59, 38886), (67, 38841),

Gene: JaNo_37 Start: 30383, Stop: 30165, Start Num: 53
Candidate Starts for JaNo_37:
(9, 30533), (15, 30488), (16, 30485), (22, 30446), (37, 30413), (Start: 53 @30383 has 19 MA's), (59, 30362), (66, 30326), (69, 30311), (72, 30296), (75, 30284),

Gene: JacAttac_45 Start: 39185, Stop: 38970, Start Num: 46
Candidate Starts for JacAttac_45:
(Start: 46 @39185 has 308 MA's), (59, 39155), (67, 39110), (75, 39077),

Gene: Jackstina_40 Start: 38951, Stop: 38715, Start Num: 40
Candidate Starts for Jackstina_40:
(Start: 40 @38951 has 61 MA's), (62, 38894), (73, 38828), (75, 38822),

Gene: JaguarMi_40 Start: 38677, Stop: 38471, Start Num: 47
Candidate Starts for JaguarMi_40:

(Start: 47 @38677 has 28 MA's), (59, 38656), (65, 38629), (67, 38611), (71, 38593), (77, 38563), (79, 38557),

Gene: JakeO_44 Start: 38918, Stop: 38703, Start Num: 46

Candidate Starts for JakeO_44:

(Start: 46 @38918 has 308 MA's), (59, 38888), (67, 38843),

Gene: JangoPhett_45 Start: 39187, Stop: 38972, Start Num: 46

Candidate Starts for JangoPhett_45:

(Start: 46 @39187 has 308 MA's), (59, 39157), (67, 39112),

Gene: JayCookie_37 Start: 30387, Stop: 30169, Start Num: 53

Candidate Starts for JayCookie_37:

(9, 30537), (15, 30492), (16, 30489), (22, 30450), (37, 30417), (Start: 53 @30387 has 19 MA's), (59, 30366), (66, 30330), (69, 30315), (72, 30300), (75, 30288),

Gene: JellyBelly_38 Start: 32766, Stop: 32530, Start Num: 35

Candidate Starts for JellyBelly_38:

(30, 32781), (34, 32769), (Start: 35 @32766 has 5 MA's), (Start: 58 @32715 has 19 MA's), (62, 32709), (78, 32619),

Gene: Jesabah_45 Start: 38918, Stop: 38703, Start Num: 46

Candidate Starts for Jesabah_45:

(Start: 46 @38918 has 308 MA's), (59, 38888), (67, 38843), (75, 38810),

Gene: Jillium_44 Start: 38909, Stop: 38694, Start Num: 46

Candidate Starts for Jillium_44:

(Start: 46 @38909 has 308 MA's), (59, 38879), (67, 38834),

Gene: Jiminy_44 Start: 38753, Stop: 38538, Start Num: 46

Candidate Starts for Jiminy_44:

(13, 38855), (Start: 46 @38753 has 308 MA's), (59, 38723), (67, 38678),

Gene: Jiraiya_44 Start: 38906, Stop: 38691, Start Num: 46

Candidate Starts for Jiraiya_44:

(13, 39008), (Start: 46 @38906 has 308 MA's), (59, 38876), (67, 38831),

Gene: JoyceMaria_40 Start: 39197, Stop: 38991, Start Num: 47

Candidate Starts for JoyceMaria_40:

(Start: 47 @39197 has 28 MA's), (59, 39176), (65, 39149), (67, 39131), (71, 39113), (77, 39083), (79, 39077),

Gene: KBurrousTX_37 Start: 31486, Stop: 31268, Start Num: 53

Candidate Starts for KBurrousTX_37:

(37, 31513), (Start: 53 @31486 has 19 MA's), (60, 31462), (66, 31429), (69, 31414), (72, 31399), (75, 31387), (76, 31381),

Gene: KHumphrey_26 Start: 18730, Stop: 18515, Start Num: 58

Candidate Starts for KHumphrey_26:

(Start: 58 @18730 has 19 MA's),

Gene: KLUcky39_45 Start: 39197, Stop: 38982, Start Num: 46

Candidate Starts for KLUcky39_45:

(Start: 46 @39197 has 308 MA's), (59, 39167), (67, 39122), (75, 39089),

Gene: Kabreeze_37 Start: 30383, Stop: 30165, Start Num: 53

Candidate Starts for Kabreeze_37:

(9, 30533), (15, 30488), (16, 30485), (22, 30446), (37, 30413), (Start: 53 @30383 has 19 MA's), (59, 30362), (66, 30326), (69, 30311), (72, 30296), (75, 30284),

Gene: Kahve_44 Start: 38913, Stop: 38698, Start Num: 46

Candidate Starts for Kahve_44:

(Start: 46 @38913 has 308 MA's), (59, 38883), (67, 38838),

Gene: Kailash_45 Start: 39251, Stop: 39036, Start Num: 46

Candidate Starts for Kailash_45:

(Start: 46 @39251 has 308 MA's), (59, 39221), (67, 39176),

Gene: Kaleb_44 Start: 39557, Stop: 39351, Start Num: 51

Candidate Starts for Kaleb_44:

(Start: 51 @39557 has 38 MA's), (60, 39530), (62, 39527), (71, 39473), (78, 39440),

Gene: Kamiyu_43 Start: 39000, Stop: 38764, Start Num: 40

Candidate Starts for Kamiyu_43:

(Start: 40 @39000 has 61 MA's), (62, 38943), (73, 38877), (75, 38871),

Gene: KarasumaRum_45 Start: 39790, Stop: 39581, Start Num: 46

Candidate Starts for KarasumaRum_45:

(13, 39898), (Start: 46 @39790 has 308 MA's), (59, 39775), (64, 39763),

Gene: Karn_44 Start: 38913, Stop: 38698, Start Num: 46

Candidate Starts for Karn_44:

(13, 39015), (Start: 46 @38913 has 308 MA's), (59, 38883), (67, 38838),

Gene: Katniss_45 Start: 39212, Stop: 38997, Start Num: 46

Candidate Starts for Katniss_45:

(13, 39314), (Start: 46 @39212 has 308 MA's), (59, 39182), (67, 39137),

Gene: Keitherie_45 Start: 39250, Stop: 39035, Start Num: 46

Candidate Starts for Keitherie_45:

(13, 39352), (Start: 46 @39250 has 308 MA's), (59, 39220), (67, 39175),

Gene: Kenna_38 Start: 29550, Stop: 29314, Start Num: 54

Candidate Starts for Kenna_38:

(Start: 54 @29550 has 36 MA's), (65, 29508), (68, 29487), (77, 29445), (83, 29397),

Gene: Khan1_45 Start: 38934, Stop: 38719, Start Num: 46

Candidate Starts for Khan1_45:

(Start: 46 @38934 has 308 MA's), (59, 38904), (67, 38859), (75, 38826),

Gene: Kheth_44 Start: 39445, Stop: 39239, Start Num: 51

Candidate Starts for Kheth_44:

(Start: 51 @39445 has 38 MA's), (60, 39418), (62, 39415), (71, 39361), (78, 39328),

Gene: Kikipoo_45 Start: 39203, Stop: 38988, Start Num: 46

Candidate Starts for Kikipoo_45:

(13, 39305), (Start: 46 @39203 has 308 MA's), (59, 39173), (67, 39128),

Gene: Kimbrough_45 Start: 38905, Stop: 38690, Start Num: 46

Candidate Starts for Kimbrough_45:

(13, 39007), (Start: 46 @38905 has 308 MA's), (59, 38875), (67, 38830),

Gene: KingTut_36 Start: 34574, Stop: 34359, Start Num: 46

Candidate Starts for KingTut_36:

(Start: 46 @34574 has 308 MA's), (59, 34544), (67, 34499), (75, 34466),

Gene: KingVeVeVe_45 Start: 39178, Stop: 38963, Start Num: 46

Candidate Starts for KingVeVeVe_45:

(Start: 46 @39178 has 308 MA's), (59, 39148), (67, 39103),

Gene: Kita_36 Start: 29363, Stop: 29127, Start Num: 54

Candidate Starts for Kita_36:

(Start: 54 @29363 has 36 MA's), (65, 29321), (68, 29300), (77, 29258), (83, 29210), (89, 29138),

Gene: KlimbOn_45 Start: 39191, Stop: 38976, Start Num: 46

Candidate Starts for KlimbOn_45:

(Start: 46 @39191 has 308 MA's), (59, 39161), (67, 39116), (75, 39083),

Gene: Kloppinator_45 Start: 39214, Stop: 38999, Start Num: 46

Candidate Starts for Kloppinator_45:

(13, 39316), (Start: 46 @39214 has 308 MA's), (59, 39184), (67, 39139), (75, 39106),

Gene: Knocker_45 Start: 40870, Stop: 40658, Start Num: 46

Candidate Starts for Knocker_45:

(13, 40978), (Start: 46 @40870 has 308 MA's), (Start: 51 @40861 has 38 MA's), (61, 40837), (63, 40831), (65, 40816), (67, 40798),

Gene: Kolhan_44 Start: 39436, Stop: 39230, Start Num: 51

Candidate Starts for Kolhan_44:

(Start: 51 @39436 has 38 MA's), (60, 39409), (62, 39406), (71, 39352), (78, 39319),

Gene: Kronus_42 Start: 39610, Stop: 39374, Start Num: 40

Candidate Starts for Kronus_42:

(Start: 40 @39610 has 61 MA's), (62, 39553), (73, 39487), (75, 39481),

Gene: Kwadwo_44 Start: 38895, Stop: 38680, Start Num: 46

Candidate Starts for Kwadwo_44:

(Start: 46 @38895 has 308 MA's), (59, 38865), (67, 38820), (75, 38787),

Gene: Kwksand96_44 Start: 38764, Stop: 38549, Start Num: 46

Candidate Starts for Kwksand96_44:

(Start: 46 @38764 has 308 MA's), (59, 38734), (67, 38689), (75, 38656),

Gene: Labeouficaum_44 Start: 38759, Stop: 38544, Start Num: 46

Candidate Starts for Labeouficaum_44:

(Start: 46 @38759 has 308 MA's), (59, 38729), (67, 38684), (75, 38651),

Gene: Lambano_39 Start: 38183, Stop: 37977, Start Num: 47

Candidate Starts for Lambano_39:

(Start: 47 @38183 has 28 MA's), (59, 38162), (65, 38135), (67, 38117), (71, 38099), (77, 38069), (79, 38063), (81, 38042),

Gene: Lars_44 Start: 39547, Stop: 39341, Start Num: 51

Candidate Starts for Lars_44:

(Start: 51 @39547 has 38 MA's), (60, 39520), (62, 39517), (71, 39463), (78, 39430),

Gene: Larson_46 Start: 39308, Stop: 39093, Start Num: 46

Candidate Starts for Larson_46:

(13, 39410), (Start: 46 @39308 has 308 MA's), (59, 39278), (67, 39233),

Gene: LasagnaCat_45 Start: 39197, Stop: 38982, Start Num: 46

Candidate Starts for LasagnaCat_45:

(13, 39299), (Start: 46 @39197 has 308 MA's), (59, 39167), (67, 39122),

Gene: Lasso_45 Start: 39170, Stop: 38955, Start Num: 46

Candidate Starts for Lasso_45:

(Start: 46 @39170 has 308 MA's), (59, 39140), (67, 39095),

Gene: Laurie_43 Start: 38946, Stop: 38740, Start Num: 51

Candidate Starts for Laurie_43:

(Start: 51 @38946 has 38 MA's), (60, 38919), (62, 38916), (71, 38862), (78, 38829),

Gene: LeeLot_45 Start: 39201, Stop: 38986, Start Num: 46

Candidate Starts for LeeLot_45:

(13, 39303), (Start: 46 @39201 has 308 MA's), (59, 39171), (67, 39126),

Gene: Lego3393_44 Start: 39206, Stop: 38991, Start Num: 46

Candidate Starts for Lego3393_44:

(13, 39308), (Start: 46 @39206 has 308 MA's), (59, 39176), (67, 39131),

Gene: Legolas_44 Start: 38911, Stop: 38696, Start Num: 46

Candidate Starts for Legolas_44:

(Start: 46 @38911 has 308 MA's), (59, 38881), (67, 38836), (75, 38803),

Gene: Lehmann_45 Start: 38734, Stop: 38519, Start Num: 46

Candidate Starts for Lehmann_45:

(Start: 46 @38734 has 308 MA's), (59, 38704), (67, 38659), (75, 38626),

Gene: LeiMonet_45 Start: 38902, Stop: 38687, Start Num: 46

Candidate Starts for LeiMonet_45:

(13, 39004), (Start: 46 @38902 has 308 MA's), (59, 38872), (67, 38827),

Gene: LemonSlice_45 Start: 38898, Stop: 38683, Start Num: 46

Candidate Starts for LemonSlice_45:

(13, 39000), (Start: 46 @38898 has 308 MA's), (59, 38868), (67, 38823),

Gene: Leona_25 Start: 18655, Stop: 18440, Start Num: 58

Candidate Starts for Leona_25:

(12, 18790), (26, 18736), (Start: 56 @18667 has 2 MA's), (Start: 58 @18655 has 19 MA's),

Gene: Lephleur_44 Start: 39440, Stop: 39234, Start Num: 51

Candidate Starts for Lephleur_44:

(Start: 51 @39440 has 38 MA's), (60, 39413), (62, 39410), (71, 39356), (78, 39323),

Gene: Leroy_39 Start: 30561, Stop: 30325, Start Num: 54

Candidate Starts for Leroy_39:

(Start: 54 @30561 has 36 MA's), (65, 30519), (68, 30498), (77, 30456), (83, 30408),

Gene: LestyG_43 Start: 39031, Stop: 38795, Start Num: 40

Candidate Starts for LestyG_43:

(Start: 40 @39031 has 61 MA's), (62, 38974), (73, 38908), (75, 38902),

Gene: Ligma_38 Start: 32837, Stop: 32601, Start Num: 35

Candidate Starts for Ligma_38:

(34, 32840), (Start: 35 @32837 has 5 MA's), (44, 32816), (Start: 47 @32810 has 28 MA's), (Start: 58 @32786 has 19 MA's), (62, 32780), (78, 32690),

Gene: LilMcDreamy_41 Start: 38754, Stop: 38542, Start Num: 46

Candidate Starts for LilMcDreamy_41:

(13, 38862), (Start: 46 @38754 has 308 MA's), (59, 38736), (67, 38691), (79, 38637),

Gene: LilSmirk_44 Start: 39434, Stop: 39228, Start Num: 51

Candidate Starts for LilSmirk_44:

(Start: 51 @39434 has 38 MA's), (60, 39407), (62, 39404), (71, 39350), (78, 39317),

Gene: Linus_37 Start: 30384, Stop: 30166, Start Num: 53

Candidate Starts for Linus_37:

(9, 30534), (15, 30489), (16, 30486), (22, 30447), (37, 30414), (Start: 53 @30384 has 19 MA's), (59, 30363), (66, 30327), (69, 30312), (72, 30297), (75, 30285),

Gene: LittleDigger_39 Start: 38205, Stop: 37999, Start Num: 47

Candidate Starts for LittleDigger_39:

(Start: 47 @38205 has 28 MA's), (59, 38184), (65, 38157), (67, 38139), (71, 38121), (77, 38091), (79, 38085), (81, 38064),

Gene: LittleMinkey_49 Start: 38461, Stop: 38246, Start Num: 51

Candidate Starts for LittleMinkey_49:

(Start: 51 @38461 has 38 MA's), (59, 38437), (69, 38383), (85, 38287),

Gene: LittleMunchkin_40 Start: 36172, Stop: 35945, Start Num: 38

Candidate Starts for LittleMunchkin_40:

(Start: 38 @36172 has 5 MA's), (74, 36055), (79, 36031),

Gene: LizLemon_44 Start: 39556, Stop: 39350, Start Num: 51

Candidate Starts for LizLemon_44:

(Start: 51 @39556 has 38 MA's), (60, 39529), (62, 39526), (71, 39472), (78, 39439),

Gene: Lolalove_40 Start: 39208, Stop: 39002, Start Num: 47

Candidate Starts for Lolalove_40:

(Start: 47 @39208 has 28 MA's), (59, 39187), (65, 39160), (67, 39142), (71, 39124), (77, 39094), (79, 39088),

Gene: Longacauda_44 Start: 38903, Stop: 38688, Start Num: 46

Candidate Starts for Longacauda_44:

(Start: 46 @38903 has 308 MA's), (59, 38873), (67, 38828), (75, 38795),

Gene: Lopsy_44 Start: 38753, Stop: 38538, Start Num: 46
Candidate Starts for Lopsy_44:
(13, 38855), (Start: 46 @38753 has 308 MA's), (59, 38723), (67, 38678),

Gene: LostAndPhound_44 Start: 38904, Stop: 38689, Start Num: 46
Candidate Starts for LostAndPhound_44:
(13, 39006), (Start: 46 @38904 has 308 MA's), (59, 38874), (67, 38829),

Gene: LuckyMarjie_44 Start: 38913, Stop: 38698, Start Num: 46
Candidate Starts for LuckyMarjie_44:
(Start: 46 @38913 has 308 MA's), (59, 38883), (67, 38838), (75, 38805),

Gene: Lulumae_44 Start: 38895, Stop: 38680, Start Num: 46
Candidate Starts for Lulumae_44:
(Start: 46 @38895 has 308 MA's), (59, 38865), (67, 38820), (75, 38787),

Gene: Lulwa_45 Start: 39182, Stop: 38967, Start Num: 46
Candidate Starts for Lulwa_45:
(13, 39284), (Start: 46 @39182 has 308 MA's), (59, 39152), (67, 39107),

Gene: Lumine_44 Start: 38891, Stop: 38676, Start Num: 46
Candidate Starts for Lumine_44:
(13, 38993), (Start: 46 @38891 has 308 MA's), (59, 38861), (67, 38816),

Gene: Lunar_27 Start: 19041, Stop: 18820, Start Num: 58
Candidate Starts for Lunar_27:
(Start: 58 @19041 has 19 MA's),

Gene: Lutum_39 Start: 29550, Stop: 29314, Start Num: 54
Candidate Starts for Lutum_39:
(Start: 54 @29550 has 36 MA's), (65, 29508), (68, 29487), (77, 29445), (83, 29397),

Gene: Lymara_37 Start: 30202, Stop: 29981, Start Num: 53
Candidate Starts for Lymara_37:
(9, 30352), (15, 30307), (22, 30265), (37, 30232), (Start: 53 @30202 has 19 MA's), (65, 30154), (69, 30130), (72, 30115), (75, 30103),

Gene: MRabcd_44 Start: 38895, Stop: 38680, Start Num: 46
Candidate Starts for MRabcd_44:
(Start: 46 @38895 has 308 MA's), (59, 38865), (67, 38820), (75, 38787),

Gene: Mag7_44 Start: 38801, Stop: 38586, Start Num: 46
Candidate Starts for Mag7_44:
(Start: 46 @38801 has 308 MA's), (59, 38771), (67, 38726),

Gene: Magic8_45 Start: 39236, Stop: 39021, Start Num: 46
Candidate Starts for Magic8_45:
(Start: 46 @39236 has 308 MA's), (59, 39206), (67, 39161),

Gene: Magpie_39 Start: 39044, Stop: 38838, Start Num: 47
Candidate Starts for Magpie_39:

(Start: 47 @39044 has 28 MA's), (59, 39023), (65, 38996), (67, 38978), (71, 38960), (77, 38930), (79, 38924),

Gene: MakoManhole_40 Start: 34842, Stop: 34588, Start Num: 40

Candidate Starts for MakoManhole_40:

(20, 34884), (Start: 40 @34842 has 61 MA's), (60, 34794), (69, 34743), (73, 34725), (79, 34698),

Gene: Malisha_40 Start: 30125, Stop: 29862, Start Num: 32

Candidate Starts for Malisha_40:

(19, 30155), (Start: 32 @30125 has 1 MA's), (41, 30095), (43, 30092), (49, 30077), (85, 29903), (88, 29897),

Gene: Mana_44 Start: 38910, Stop: 38695, Start Num: 46

Candidate Starts for Mana_44:

(Start: 46 @38910 has 308 MA's), (59, 38880), (67, 38835), (75, 38802),

Gene: Manad_44 Start: 38752, Stop: 38537, Start Num: 46

Candidate Starts for Manad_44:

(13, 38854), (Start: 46 @38752 has 308 MA's), (59, 38722), (67, 38677),

Gene: Manasvini_35 Start: 29355, Stop: 29119, Start Num: 54

Candidate Starts for Manasvini_35:

(Start: 54 @29355 has 36 MA's), (65, 29313), (68, 29292), (77, 29250), (83, 29202), (89, 29130),

Gene: Maridalia_34 Start: 29354, Stop: 29118, Start Num: 54

Candidate Starts for Maridalia_34:

(Start: 54 @29354 has 36 MA's), (65, 29312), (68, 29291), (77, 29249), (83, 29201), (89, 29129),

Gene: Mariokart_38 Start: 32762, Stop: 32526, Start Num: 35

Candidate Starts for Mariokart_38:

(30, 32777), (34, 32765), (Start: 35 @32762 has 5 MA's), (Start: 58 @32711 has 19 MA's), (62, 32705), (78, 32615),

Gene: Marley1013_43 Start: 39809, Stop: 39573, Start Num: 40

Candidate Starts for Marley1013_43:

(Start: 40 @39809 has 61 MA's), (62, 39752), (73, 39686), (75, 39680),

Gene: Marlia_43 Start: 39012, Stop: 38776, Start Num: 40

Candidate Starts for Marlia_43:

(Start: 40 @39012 has 61 MA's), (62, 38955), (73, 38889), (75, 38883),

Gene: Maru_44 Start: 38853, Stop: 38638, Start Num: 46

Candidate Starts for Maru_44:

(Start: 46 @38853 has 308 MA's), (59, 38823), (67, 38778), (75, 38745),

Gene: Maskar_44 Start: 38747, Stop: 38532, Start Num: 46

Candidate Starts for Maskar_44:

(Start: 46 @38747 has 308 MA's), (59, 38717), (67, 38672), (75, 38639),

Gene: MasterPo_44 Start: 39443, Stop: 39237, Start Num: 51

Candidate Starts for MasterPo_44:

(Start: 51 @39443 has 38 MA's), (60, 39416), (62, 39413), (71, 39359), (78, 39326),

Gene: Matalotodo_45 Start: 39196, Stop: 38981, Start Num: 46
Candidate Starts for Matalotodo_45:
(Start: 46 @39196 has 308 MA's), (59, 39166), (67, 39121),

Gene: Mcshane_44 Start: 38893, Stop: 38678, Start Num: 46
Candidate Starts for Mcshane_44:
(Start: 46 @38893 has 308 MA's), (59, 38863), (67, 38818), (75, 38785),

Gene: Mecca_44 Start: 38896, Stop: 38681, Start Num: 46
Candidate Starts for Mecca_44:
(13, 38998), (Start: 46 @38896 has 308 MA's), (59, 38866), (67, 38821),

Gene: Megamind20_45 Start: 38918, Stop: 38703, Start Num: 46
Candidate Starts for Megamind20_45:
(13, 39020), (Start: 46 @38918 has 308 MA's), (59, 38888), (67, 38843),

Gene: Megatron_45 Start: 39194, Stop: 38979, Start Num: 46
Candidate Starts for Megatron_45:
(13, 39296), (Start: 46 @39194 has 308 MA's), (59, 39164), (67, 39119),

Gene: Melc17_45 Start: 39191, Stop: 38976, Start Num: 46
Candidate Starts for Melc17_45:
(Start: 46 @39191 has 308 MA's), (59, 39161), (67, 39116),

Gene: Melons_27 Start: 19041, Stop: 18820, Start Num: 58
Candidate Starts for Melons_27:
(Start: 58 @19041 has 19 MA's),

Gene: MelsMeow_44 Start: 38797, Stop: 38582, Start Num: 46
Candidate Starts for MelsMeow_44:
(Start: 46 @38797 has 308 MA's), (59, 38767), (67, 38722), (75, 38689),

Gene: Mesh1_45 Start: 39208, Stop: 38993, Start Num: 46
Candidate Starts for Mesh1_45:
(Start: 46 @39208 has 308 MA's), (59, 39178), (67, 39133),

Gene: Mesmerelda_44 Start: 38906, Stop: 38691, Start Num: 46
Candidate Starts for Mesmerelda_44:
(13, 39008), (Start: 46 @38906 has 308 MA's), (59, 38876), (67, 38831),

Gene: MichaelPhcott_44 Start: 38798, Stop: 38583, Start Num: 46
Candidate Starts for MichaelPhcott_44:
(Start: 46 @38798 has 308 MA's), (59, 38768), (67, 38723),

Gene: Mikota_45 Start: 39181, Stop: 38966, Start Num: 46
Candidate Starts for Mikota_45:
(Start: 46 @39181 has 308 MA's), (59, 39151), (67, 39106), (75, 39073),

Gene: MiniBoss_45 Start: 39187, Stop: 38972, Start Num: 46
Candidate Starts for MiniBoss_45:
(Start: 46 @39187 has 308 MA's), (59, 39157), (67, 39112), (75, 39079),

Gene: MitKao_45 Start: 38902, Stop: 38687, Start Num: 46

Candidate Starts for MitKao_45:

(13, 39004), (Start: 46 @38902 has 308 MA's), (59, 38872), (67, 38827),

Gene: Mithril_40 Start: 39212, Stop: 39006, Start Num: 47

Candidate Starts for Mithril_40:

(Start: 47 @39212 has 28 MA's), (59, 39191), (65, 39164), (67, 39146), (71, 39128), (77, 39098), (79, 39092),

Gene: MmasiCarm_43 Start: 39013, Stop: 38777, Start Num: 40

Candidate Starts for MmasiCarm_43:

(Start: 40 @39013 has 61 MA's), (62, 38956), (73, 38890), (75, 38884),

Gene: Mordred_37 Start: 30383, Stop: 30165, Start Num: 53

Candidate Starts for Mordred_37:

(9, 30533), (15, 30488), (16, 30485), (22, 30446), (37, 30413), (Start: 53 @30383 has 19 MA's), (59, 30362), (66, 30326), (69, 30311), (72, 30296), (75, 30284),

Gene: Morgushi_45 Start: 38903, Stop: 38688, Start Num: 46

Candidate Starts for Morgushi_45:

(Start: 46 @38903 has 308 MA's), (59, 38873), (67, 38828), (75, 38795),

Gene: Mortcellus_42 Start: 39665, Stop: 39429, Start Num: 40

Candidate Starts for Mortcellus_42:

(Start: 40 @39665 has 61 MA's), (62, 39608), (73, 39542), (75, 39536),

Gene: Morty_45 Start: 39203, Stop: 38988, Start Num: 46

Candidate Starts for Morty_45:

(13, 39305), (Start: 46 @39203 has 308 MA's), (59, 39173), (67, 39128),

Gene: Morty007_43 Start: 39809, Stop: 39573, Start Num: 40

Candidate Starts for Morty007_43:

(Start: 40 @39809 has 61 MA's), (62, 39752), (73, 39686), (75, 39680),

Gene: Mosaic_44 Start: 38908, Stop: 38693, Start Num: 46

Candidate Starts for Mosaic_44:

(13, 39010), (Start: 46 @38908 has 308 MA's), (59, 38878), (67, 38833),

Gene: MossRose_40 Start: 34821, Stop: 34567, Start Num: 40

Candidate Starts for MossRose_40:

(20, 34863), (Start: 40 @34821 has 61 MA's), (60, 34773), (69, 34722), (73, 34704), (79, 34677),

Gene: MoyaNatalis_37 Start: 30387, Stop: 30169, Start Num: 53

Candidate Starts for MoyaNatalis_37:

(9, 30537), (15, 30492), (16, 30489), (22, 30450), (37, 30417), (Start: 53 @30387 has 19 MA's), (59, 30366), (66, 30330), (69, 30315), (72, 30300), (75, 30288),

Gene: MrPhizzler_45 Start: 38911, Stop: 38696, Start Num: 46

Candidate Starts for MrPhizzler_45:

(Start: 46 @38911 has 308 MA's), (59, 38881), (67, 38836), (75, 38803),

Gene: Mudslide_40 Start: 39444, Stop: 39238, Start Num: 47

Candidate Starts for Mudslide_40:

(Start: 47 @39444 has 28 MA's), (59, 39423), (65, 39396), (67, 39378), (71, 39360), (77, 39330), (79, 39324),

Gene: Mulan_44 Start: 38920, Stop: 38705, Start Num: 46

Candidate Starts for Mulan_44:

(Start: 46 @38920 has 308 MA's), (59, 38890), (67, 38845),

Gene: Mulaychimus_43 Start: 38995, Stop: 38759, Start Num: 40

Candidate Starts for Mulaychimus_43:

(Start: 40 @38995 has 61 MA's), (62, 38938), (73, 38872), (75, 38866),

Gene: Murdoc_45 Start: 39195, Stop: 38980, Start Num: 46

Candidate Starts for Murdoc_45:

(Start: 46 @39195 has 308 MA's), (59, 39165), (67, 39120), (75, 39087),

Gene: Mutante_44 Start: 38902, Stop: 38687, Start Num: 46

Candidate Starts for Mutante_44:

(13, 39004), (Start: 46 @38902 has 308 MA's), (59, 38872), (67, 38827),

Gene: Mysterious_43 Start: 39920, Stop: 39711, Start Num: 46

Candidate Starts for Mysterious_43:

(13, 40028), (Start: 46 @39920 has 308 MA's), (59, 39905), (67, 39860),

Gene: NHagos_38 Start: 33445, Stop: 33185, Start Num: 40

Candidate Starts for NHagos_38:

(24, 33478), (Start: 40 @33445 has 61 MA's), (59, 33403), (60, 33400), (69, 33349), (73, 33331), (79, 33304),

Gene: Nacho_0045 Start: 39197, Stop: 38982, Start Num: 46

Candidate Starts for Nacho_0045:

(13, 39299), (Start: 46 @39197 has 308 MA's), (59, 39167), (67, 39122),

Gene: Nanao_39 Start: 38170, Stop: 37964, Start Num: 47

Candidate Starts for Nanao_39:

(Start: 47 @38170 has 28 MA's), (59, 38149), (65, 38122), (67, 38104), (71, 38086), (77, 38056), (79, 38050), (81, 38029),

Gene: Nangang_43 Start: 39713, Stop: 39504, Start Num: 46

Candidate Starts for Nangang_43:

(13, 39821), (Start: 46 @39713 has 308 MA's), (59, 39698), (64, 39686),

Gene: Nathan_45 Start: 39233, Stop: 39018, Start Num: 46

Candidate Starts for Nathan_45:

(Start: 46 @39233 has 308 MA's), (59, 39203), (67, 39158), (75, 39125),

Gene: Nehemiah_43 Start: 39920, Stop: 39711, Start Num: 46

Candidate Starts for Nehemiah_43:

(13, 40028), (Start: 46 @39920 has 308 MA's), (59, 39905), (67, 39860),

Gene: Neobush_35 Start: 29354, Stop: 29118, Start Num: 54

Candidate Starts for Neobush_35:

(Start: 54 @29354 has 36 MA's), (65, 29312), (68, 29291), (77, 29249), (83, 29201), (89, 29129),

Gene: Neos5_43 Start: 39824, Stop: 39588, Start Num: 40
Candidate Starts for Neos5_43:
(Start: 40 @39824 has 61 MA's), (62, 39767), (73, 39701), (75, 39695),

Gene: Newman_45 Start: 39194, Stop: 38979, Start Num: 46
Candidate Starts for Newman_45:
(Start: 46 @39194 has 308 MA's), (59, 39164), (67, 39119), (75, 39086),

Gene: NiaNia_47 Start: 38925, Stop: 38710, Start Num: 46
Candidate Starts for NiaNia_47:
(13, 39027), (Start: 46 @38925 has 308 MA's), (59, 38895), (67, 38850),

Gene: Nicole21_45 Start: 39192, Stop: 38977, Start Num: 46
Candidate Starts for Nicole21_45:
(Start: 46 @39192 has 308 MA's), (59, 39162), (67, 39117),

Gene: Nigel_39 Start: 38086, Stop: 37880, Start Num: 47
Candidate Starts for Nigel_39:
(Start: 47 @38086 has 28 MA's), (59, 38065), (65, 38038), (67, 38020), (71, 38002), (77, 37972), (79, 37966),

Gene: Nova1_45 Start: 38848, Stop: 38633, Start Num: 46
Candidate Starts for Nova1_45:
(Start: 46 @38848 has 308 MA's), (59, 38818), (67, 38773), (75, 38740),

Gene: Nozo_43 Start: 39789, Stop: 39553, Start Num: 40
Candidate Starts for Nozo_43:
(Start: 40 @39789 has 61 MA's), (62, 39732), (73, 39666), (75, 39660),

Gene: Numberten_45 Start: 39201, Stop: 38986, Start Num: 46
Candidate Starts for Numberten_45:
(13, 39303), (Start: 46 @39201 has 308 MA's), (59, 39171), (67, 39126),

Gene: Nyala_44 Start: 38894, Stop: 38679, Start Num: 46
Candidate Starts for Nyala_44:
(13, 38996), (Start: 46 @38894 has 308 MA's), (59, 38864), (67, 38819),

Gene: Nymphadora_34 Start: 29521, Stop: 29285, Start Num: 54
Candidate Starts for Nymphadora_34:
(Start: 54 @29521 has 36 MA's), (65, 29479), (77, 29416), (83, 29368), (86, 29356),

Gene: ODay_42 Start: 31024, Stop: 30788, Start Num: 54
Candidate Starts for ODay_42:
(Start: 54 @31024 has 36 MA's), (65, 30982), (68, 30961), (77, 30919), (83, 30871),

Gene: OSmaximus_45 Start: 39236, Stop: 39021, Start Num: 46
Candidate Starts for OSmaximus_45:
(Start: 46 @39236 has 308 MA's), (59, 39206), (67, 39161), (75, 39128),

Gene: Obutu_43 Start: 39013, Stop: 38777, Start Num: 40
Candidate Starts for Obutu_43:
(Start: 40 @39013 has 61 MA's), (62, 38956), (73, 38890), (75, 38884),

Gene: Olak_44 Start: 38897, Stop: 38682, Start Num: 46
Candidate Starts for Olak_44:
(13, 38999), (Start: 46 @38897 has 308 MA's), (59, 38867), (67, 38822),

Gene: Oline_44 Start: 38763, Stop: 38548, Start Num: 46
Candidate Starts for Oline_44:
(13, 38865), (Start: 46 @38763 has 308 MA's), (59, 38733), (67, 38688),

Gene: Olive_45 Start: 39184, Stop: 38969, Start Num: 46
Candidate Starts for Olive_45:
(13, 39286), (Start: 46 @39184 has 308 MA's), (59, 39154), (67, 39109),

Gene: OliverWalter_45 Start: 39206, Stop: 38991, Start Num: 46
Candidate Starts for OliverWalter_45:
(Start: 46 @39206 has 308 MA's), (59, 39176), (67, 39131),

Gene: Olivio_42 Start: 38882, Stop: 38646, Start Num: 40
Candidate Starts for Olivio_42:
(Start: 40 @38882 has 61 MA's), (62, 38825), (73, 38759), (75, 38753),

Gene: Omniscient_45 Start: 39203, Stop: 38988, Start Num: 46
Candidate Starts for Omniscient_45:
(13, 39305), (Start: 46 @39203 has 308 MA's), (59, 39173), (67, 39128),

Gene: OneBrain_46 Start: 38902, Stop: 38687, Start Num: 46
Candidate Starts for OneBrain_46:
(13, 39004), (Start: 46 @38902 has 308 MA's), (59, 38872), (67, 38827),

Gene: Oosterbaan_45 Start: 39194, Stop: 38979, Start Num: 46
Candidate Starts for Oosterbaan_45:
(Start: 46 @39194 has 308 MA's), (59, 39164), (67, 39119),

Gene: Opia_44 Start: 39429, Stop: 39223, Start Num: 51
Candidate Starts for Opia_44:
(Start: 51 @39429 has 38 MA's), (60, 39402), (62, 39399), (71, 39345), (78, 39312),

Gene: OrangeOswald_43 Start: 39030, Stop: 38794, Start Num: 40
Candidate Starts for OrangeOswald_43:
(Start: 40 @39030 has 61 MA's), (62, 38973), (73, 38907), (75, 38901),

Gene: Orfeu_44 Start: 38902, Stop: 38687, Start Num: 46
Candidate Starts for Orfeu_44:
(Start: 46 @38902 has 308 MA's), (59, 38872), (67, 38827), (75, 38794),

Gene: Orion_45 Start: 39192, Stop: 38977, Start Num: 46
Candidate Starts for Orion_45:
(13, 39294), (Start: 46 @39192 has 308 MA's), (59, 39162), (67, 39117),

Gene: Orwigg_44 Start: 38890, Stop: 38675, Start Num: 46
Candidate Starts for Orwigg_44:
(Start: 46 @38890 has 308 MA's), (59, 38860), (67, 38815),

Gene: OtsoOtso_26 Start: 18904, Stop: 18683, Start Num: 58

Candidate Starts for OtsoOtso_26:

(Start: 58 @18904 has 19 MA's),

Gene: PG1_45 Start: 39205, Stop: 38990, Start Num: 46

Candidate Starts for PG1_45:

(13, 39307), (Start: 46 @39205 has 308 MA's), (59, 39175), (67, 39130),

Gene: Pacifista_44 Start: 38896, Stop: 38681, Start Num: 46

Candidate Starts for Pacifista_44:

(Start: 46 @38896 has 308 MA's), (59, 38866), (67, 38821), (75, 38788),

Gene: PallasAthena_45 Start: 38907, Stop: 38692, Start Num: 46

Candidate Starts for PallasAthena_45:

(Start: 46 @38907 has 308 MA's), (59, 38877), (67, 38832), (75, 38799),

Gene: PenguinLover67_46 Start: 41013, Stop: 40795, Start Num: 46

Candidate Starts for PenguinLover67_46:

(13, 41109), (Start: 46 @41013 has 308 MA's), (59, 40980), (65, 40953), (67, 40935), (85, 40830),

Gene: Periwinkle_42 Start: 31005, Stop: 30769, Start Num: 54

Candidate Starts for Periwinkle_42:

(Start: 54 @31005 has 36 MA's), (65, 30963), (68, 30942), (77, 30900), (83, 30852),

Gene: Phabuloso_36 Start: 29262, Stop: 29026, Start Num: 54

Candidate Starts for Phabuloso_36:

(Start: 54 @29262 has 36 MA's), (65, 29220), (68, 29199), (77, 29157), (83, 29109),

Gene: Phaedrus_41 Start: 38950, Stop: 38714, Start Num: 40

Candidate Starts for Phaedrus_41:

(Start: 40 @38950 has 61 MA's), (62, 38893), (73, 38827), (75, 38821),

Gene: Phamished_45 Start: 39200, Stop: 38985, Start Num: 46

Candidate Starts for Phamished_45:

(Start: 46 @39200 has 308 MA's), (59, 39170), (67, 39125),

Gene: Phantasmagoria_44 Start: 39441, Stop: 39235, Start Num: 51

Candidate Starts for Phantasmagoria_44:

(Start: 51 @39441 has 38 MA's), (60, 39414), (62, 39411), (71, 39357), (78, 39324),

Gene: Phareon_45 Start: 38904, Stop: 38689, Start Num: 46

Candidate Starts for Phareon_45:

(Start: 46 @38904 has 308 MA's), (59, 38874), (67, 38829), (75, 38796),

Gene: PhatCats2014_45 Start: 39209, Stop: 38994, Start Num: 46

Candidate Starts for PhatCats2014_45:

(13, 39311), (Start: 46 @39209 has 308 MA's), (59, 39179), (67, 39134),

Gene: PhatLouie_45 Start: 39198, Stop: 38983, Start Num: 46

Candidate Starts for PhatLouie_45:

(Start: 46 @39198 has 308 MA's), (59, 39168), (67, 39123),

Gene: Phayeta_44 Start: 38895, Stop: 38659, Start Num: 40

Candidate Starts for Phayeta_44:

(Start: 40 @38895 has 61 MA's), (62, 38838), (73, 38772), (75, 38766),

Gene: Phelemich_43 Start: 39919, Stop: 39710, Start Num: 46

Candidate Starts for Phelemich_43:

(13, 40027), (Start: 46 @39919 has 308 MA's), (59, 39904), (67, 39859),

Gene: PhenghisKhan_44 Start: 38804, Stop: 38589, Start Num: 46

Candidate Starts for PhenghisKhan_44:

(Start: 46 @38804 has 308 MA's), (59, 38774), (67, 38729),

Gene: Pherdinand_45 Start: 39200, Stop: 38985, Start Num: 46

Candidate Starts for Pherdinand_45:

(Start: 46 @39200 has 308 MA's), (59, 39170), (67, 39125), (75, 39092),

Gene: Phergie_44 Start: 38795, Stop: 38580, Start Num: 46

Candidate Starts for Phergie_44:

(Start: 46 @38795 has 308 MA's), (59, 38765), (67, 38720),

Gene: Philly_42 Start: 38881, Stop: 38645, Start Num: 40

Candidate Starts for Philly_42:

(Start: 40 @38881 has 61 MA's), (62, 38824), (73, 38758), (75, 38752),

Gene: Phipps_45 Start: 39171, Stop: 38956, Start Num: 46

Candidate Starts for Phipps_45:

(Start: 46 @39171 has 308 MA's), (59, 39141), (67, 39096),

Gene: Phleuron_44 Start: 38801, Stop: 38586, Start Num: 46

Candidate Starts for Phleuron_44:

(Start: 46 @38801 has 308 MA's), (59, 38771), (67, 38726),

Gene: PhluffyCoco_26 Start: 18717, Stop: 18502, Start Num: 58

Candidate Starts for PhluffyCoco_26:

(Start: 58 @18717 has 19 MA's),

Gene: Phlyer_43 Start: 39769, Stop: 39533, Start Num: 40

Candidate Starts for Phlyer_43:

(Start: 40 @39769 has 61 MA's), (62, 39712), (73, 39646), (75, 39640),

Gene: PhrankReynolds_43 Start: 38801, Stop: 38586, Start Num: 46

Candidate Starts for PhrankReynolds_43:

(Start: 46 @38801 has 308 MA's), (59, 38771), (67, 38726),

Gene: PhrodoBaggins_44 Start: 39188, Stop: 38973, Start Num: 46

Candidate Starts for PhrodoBaggins_44:

(13, 39290), (Start: 46 @39188 has 308 MA's), (59, 39158), (67, 39113),

Gene: Phunky_45 Start: 39201, Stop: 38986, Start Num: 46

Candidate Starts for Phunky_45:

(Start: 46 @39201 has 308 MA's), (59, 39171), (67, 39126), (75, 39093),

Gene: Piglet_0044 Start: 39308, Stop: 39093, Start Num: 46

Candidate Starts for Piglet_0044:

(Start: 46 @39308 has 308 MA's), (59, 39278), (67, 39233), (75, 39200),

Gene: Pine5_39 Start: 32324, Stop: 32103, Start Num: 52

Candidate Starts for Pine5_39:

(52, 32324), (64, 32294), (65, 32279), (79, 32210),

Gene: Pineda_28 Start: 19194, Stop: 18973, Start Num: 58

Candidate Starts for Pineda_28:

(Start: 58 @19194 has 19 MA's),

Gene: PinheadLarry_45 Start: 38914, Stop: 38699, Start Num: 46

Candidate Starts for PinheadLarry_45:

(Start: 46 @38914 has 308 MA's), (59, 38884), (67, 38839), (75, 38806),

Gene: Pinkman_44 Start: 38757, Stop: 38542, Start Num: 46

Candidate Starts for Pinkman_44:

(Start: 46 @38757 has 308 MA's), (59, 38727), (67, 38682), (75, 38649),

Gene: Pipefish_45 Start: 40422, Stop: 40186, Start Num: 40

Candidate Starts for Pipefish_45:

(Start: 40 @40422 has 61 MA's), (62, 40365), (73, 40299), (75, 40293),

Gene: Pipsqueak_45 Start: 39199, Stop: 38984, Start Num: 46

Candidate Starts for Pipsqueak_45:

(Start: 46 @39199 has 308 MA's), (59, 39169), (67, 39124),

Gene: Placalicious_44 Start: 38892, Stop: 38677, Start Num: 46

Candidate Starts for Placalicious_44:

(Start: 46 @38892 has 308 MA's), (59, 38862), (67, 38817),

Gene: Plata_44 Start: 38913, Stop: 38698, Start Num: 46

Candidate Starts for Plata_44:

(13, 39015), (Start: 46 @38913 has 308 MA's), (59, 38883), (67, 38838),

Gene: Plmatters_45 Start: 39198, Stop: 38983, Start Num: 46

Candidate Starts for Plmatters_45:

(13, 39300), (Start: 46 @39198 has 308 MA's), (59, 39168), (67, 39123), (75, 39090),

Gene: Podrick_45 Start: 39189, Stop: 38974, Start Num: 46

Candidate Starts for Podrick_45:

(13, 39291), (Start: 46 @39189 has 308 MA's), (59, 39159), (67, 39114),

Gene: Polka_26 Start: 18904, Stop: 18683, Start Num: 58

Candidate Starts for Polka_26:

(Start: 58 @18904 has 19 MA's),

Gene: Polly_32 Start: 28797, Stop: 28561, Start Num: 54

Candidate Starts for Polly_32:

(Start: 54 @28797 has 36 MA's), (65, 28755), (68, 28734), (77, 28692), (83, 28644), (89, 28572),

Gene: Pops_45 Start: 39213, Stop: 38998, Start Num: 46

Candidate Starts for Pops_45:

(13, 39315), (Start: 46 @39213 has 308 MA's), (59, 39183), (67, 39138), (75, 39105),

Gene: Poster_39 Start: 38171, Stop: 37965, Start Num: 47
Candidate Starts for Poster_39:
(Start: 47 @38171 has 28 MA's), (59, 38150), (65, 38123), (67, 38105), (71, 38087), (77, 38057), (79, 38051), (81, 38030),

Gene: Potter_44 Start: 38913, Stop: 38698, Start Num: 46
Candidate Starts for Potter_44:
(13, 39015), (Start: 46 @38913 has 308 MA's), (59, 38883), (67, 38838),

Gene: Prickles_45 Start: 39189, Stop: 38974, Start Num: 46
Candidate Starts for Prickles_45:
(Start: 46 @39189 has 308 MA's), (59, 39159), (67, 39114),

Gene: Prince_40 Start: 39354, Stop: 39148, Start Num: 47
Candidate Starts for Prince_40:
(Start: 47 @39354 has 28 MA's), (59, 39333), (65, 39306), (67, 39288), (71, 39270), (77, 39240), (79, 39234),

Gene: PrinceCharming_44 Start: 39549, Stop: 39343, Start Num: 51
Candidate Starts for PrinceCharming_44:
(Start: 51 @39549 has 38 MA's), (60, 39522), (62, 39519), (71, 39465), (78, 39432),

Gene: PrincessTrina_37 Start: 30387, Stop: 30169, Start Num: 53
Candidate Starts for PrincessTrina_37:
(9, 30537), (15, 30492), (16, 30489), (22, 30450), (37, 30417), (Start: 53 @30387 has 19 MA's), (59, 30366), (66, 30330), (69, 30315), (72, 30300), (75, 30288),

Gene: ProfessorX_45 Start: 39184, Stop: 38969, Start Num: 46
Candidate Starts for ProfessorX_45:
(13, 39286), (Start: 46 @39184 has 308 MA's), (59, 39154), (67, 39109),

Gene: Puhltonio_45 Start: 39205, Stop: 38990, Start Num: 46
Candidate Starts for Puhltonio_45:
(Start: 46 @39205 has 308 MA's), (59, 39175), (67, 39130), (75, 39097),

Gene: QueenBeane_45 Start: 39195, Stop: 38980, Start Num: 46
Candidate Starts for QueenBeane_45:
(Start: 46 @39195 has 308 MA's), (59, 39165), (67, 39120), (75, 39087),

Gene: QueenPie_39 Start: 39295, Stop: 39089, Start Num: 47
Candidate Starts for QueenPie_39:
(Start: 47 @39295 has 28 MA's), (59, 39274), (65, 39247), (67, 39229), (71, 39211), (77, 39181), (79, 39175),

Gene: Quesadilla_46 Start: 40987, Stop: 40781, Start Num: 46
Candidate Starts for Quesadilla_46:
(13, 41086), (Start: 46 @40987 has 308 MA's), (59, 40966), (67, 40921), (69, 40912),

Gene: Quisquilliae_45 Start: 39223, Stop: 39008, Start Num: 46
Candidate Starts for Quisquilliae_45:
(13, 39325), (Start: 46 @39223 has 308 MA's), (59, 39193), (67, 39148),

Gene: RagingRooster_43 Start: 39031, Stop: 38795, Start Num: 40

Candidate Starts for RagingRooster_43:

(Start: 40 @39031 has 61 MA's), (62, 38974), (73, 38908), (75, 38902),

Gene: RavenCo17_36 Start: 30180, Stop: 29944, Start Num: 54

Candidate Starts for RavenCo17_36:

(Start: 54 @30180 has 36 MA's), (65, 30138), (68, 30117), (77, 30075), (83, 30027),

Gene: RawrgerThat_41 Start: 39199, Stop: 38993, Start Num: 47

Candidate Starts for RawrgerThat_41:

(Start: 47 @39199 has 28 MA's), (59, 39178), (65, 39151), (67, 39133), (71, 39115), (77, 39085), (79, 39079),

Gene: Reccee_44 Start: 39831, Stop: 39622, Start Num: 46

Candidate Starts for Reccee_44:

(11, 39945), (13, 39939), (Start: 46 @39831 has 308 MA's), (59, 39816), (64, 39804), (67, 39771),

Gene: RedFox_26 Start: 18732, Stop: 18517, Start Num: 58

Candidate Starts for RedFox_26:

(Start: 58 @18732 has 19 MA's),

Gene: RedMaple_44 Start: 39202, Stop: 38987, Start Num: 46

Candidate Starts for RedMaple_44:

(Start: 46 @39202 has 308 MA's), (59, 39172), (67, 39127), (75, 39094),

Gene: RedRaider89_46 Start: 39422, Stop: 39207, Start Num: 46

Candidate Starts for RedRaider89_46:

(Start: 46 @39422 has 308 MA's), (59, 39392), (67, 39347), (75, 39314),

Gene: Rem711_6 Start: 3521, Stop: 3279, Start Num: 54

Candidate Starts for Rem711_6:

(7, 3722), (28, 3584), (Start: 54 @3521 has 36 MA's), (70, 3443), (77, 3413), (80, 3398), (82, 3380),

Gene: Renkei_39 Start: 38205, Stop: 37999, Start Num: 47

Candidate Starts for Renkei_39:

(Start: 47 @38205 has 28 MA's), (59, 38184), (65, 38157), (67, 38139), (71, 38121), (77, 38091), (79, 38085), (81, 38064),

Gene: Reprobate_44 Start: 39924, Stop: 39715, Start Num: 46

Candidate Starts for Reprobate_44:

(13, 40032), (Start: 46 @39924 has 308 MA's), (59, 39909), (67, 39864),

Gene: Rhinoforte_44 Start: 39550, Stop: 39344, Start Num: 51

Candidate Starts for Rhinoforte_44:

(Start: 51 @39550 has 38 MA's), (60, 39523), (62, 39520), (71, 39466), (78, 39433),

Gene: Rich_42 Start: 39520, Stop: 39311, Start Num: 46

Candidate Starts for Rich_42:

(Start: 46 @39520 has 308 MA's), (59, 39505), (64, 39493), (67, 39460), (75, 39427),

Gene: Ricotta_44 Start: 38921, Stop: 38706, Start Num: 46

Candidate Starts for Ricotta_44:

(Start: 46 @38921 has 308 MA's), (59, 38891), (67, 38846), (75, 38813),

Gene: Riggan_45 Start: 39182, Stop: 38967, Start Num: 46

Candidate Starts for Riggan_45:

(Start: 46 @39182 has 308 MA's), (59, 39152), (67, 39107),

Gene: Rimu_45 Start: 38931, Stop: 38716, Start Num: 46

Candidate Starts for Rimu_45:

(Start: 46 @38931 has 308 MA's), (59, 38901), (67, 38856), (75, 38823),

Gene: Rinkes_44 Start: 40426, Stop: 40223, Start Num: 51

Candidate Starts for Rinkes_44:

(Start: 51 @40426 has 38 MA's), (67, 40363),

Gene: Rita130_44 Start: 39651, Stop: 39442, Start Num: 46

Candidate Starts for Rita130_44:

(11, 39765), (13, 39759), (Start: 46 @39651 has 308 MA's), (59, 39636), (64, 39624), (67, 39591),

Gene: Rita1961_43 Start: 39014, Stop: 38778, Start Num: 40

Candidate Starts for Rita1961_43:

(Start: 40 @39014 has 61 MA's), (62, 38957), (73, 38891), (75, 38885),

Gene: Riverton_45 Start: 39203, Stop: 38988, Start Num: 46

Candidate Starts for Riverton_45:

(Start: 46 @39203 has 308 MA's), (59, 39173), (67, 39128), (75, 39095),

Gene: Robyn_44 Start: 38766, Stop: 38551, Start Num: 46

Candidate Starts for Robyn_44:

(13, 38868), (Start: 46 @38766 has 308 MA's), (59, 38736), (67, 38691),

Gene: Roliet_45 Start: 39191, Stop: 38976, Start Num: 46

Candidate Starts for Roliet_45:

(Start: 46 @39191 has 308 MA's), (59, 39161), (67, 39116),

Gene: RomaT_43 Start: 39804, Stop: 39568, Start Num: 40

Candidate Starts for RomaT_43:

(Start: 40 @39804 has 61 MA's), (62, 39747), (73, 39681), (75, 39675),

Gene: Roscoe_46 Start: 39429, Stop: 39214, Start Num: 46

Candidate Starts for Roscoe_46:

(13, 39531), (Start: 46 @39429 has 308 MA's), (59, 39399), (67, 39354),

Gene: RosiePosie_37 Start: 30386, Stop: 30168, Start Num: 53

Candidate Starts for RosiePosie_37:

(9, 30536), (15, 30491), (16, 30488), (22, 30449), (37, 30416), (Start: 53 @30386 has 19 MA's), (59, 30365), (66, 30329), (69, 30314), (72, 30299), (75, 30287),

Gene: Roy17_45 Start: 38895, Stop: 38680, Start Num: 46

Candidate Starts for Roy17_45:

(Start: 46 @38895 has 308 MA's), (59, 38865), (67, 38820), (75, 38787),

Gene: Rubeelu_32 Start: 26751, Stop: 26518, Start Num: 56

Candidate Starts for Rubeelu_32:

(23, 26826), (25, 26823), (29, 26817), (50, 26760), (Start: 56 @26751 has 2 MA's), (64, 26727), (71, 26679), (83, 26601), (89, 26529),

Gene: SDcharge11_45 Start: 39169, Stop: 38954, Start Num: 46
Candidate Starts for SDcharge11_45:
(13, 39271), (Start: 46 @39169 has 308 MA's), (59, 39139), (67, 39094),

Gene: Sabella_43 Start: 39434, Stop: 39228, Start Num: 51
Candidate Starts for Sabella_43:
(Start: 51 @39434 has 38 MA's), (60, 39407), (62, 39404), (71, 39350), (78, 39317),

Gene: Saguaro_45 Start: 40648, Stop: 40445, Start Num: 46
Candidate Starts for Saguaro_45:
(10, 40756), (Start: 46 @40648 has 308 MA's), (67, 40585), (69, 40576), (77, 40537),

Gene: SallyH_45 Start: 39205, Stop: 38990, Start Num: 46
Candidate Starts for SallyH_45:
(Start: 46 @39205 has 308 MA's), (59, 39175), (67, 39130), (75, 39097),

Gene: Samaymay_45 Start: 39195, Stop: 38980, Start Num: 46
Candidate Starts for Samaymay_45:
(Start: 46 @39195 has 308 MA's), (59, 39165), (67, 39120), (75, 39087),

Gene: SassyCat97_44 Start: 38901, Stop: 38686, Start Num: 46
Candidate Starts for SassyCat97_44:
(13, 39003), (Start: 46 @38901 has 308 MA's), (59, 38871), (67, 38826),

Gene: Scavito_37 Start: 30384, Stop: 30166, Start Num: 53
Candidate Starts for Scavito_37:
(9, 30534), (15, 30489), (16, 30486), (22, 30447), (37, 30414), (Start: 53 @30384 has 19 MA's), (59, 30363), (66, 30327), (69, 30312), (72, 30297), (75, 30285),

Gene: Schadenfreude_44 Start: 38752, Stop: 38537, Start Num: 46
Candidate Starts for Schadenfreude_44:
(13, 38854), (Start: 46 @38752 has 308 MA's), (59, 38722), (67, 38677),

Gene: Schueller_44 Start: 38914, Stop: 38699, Start Num: 46
Candidate Starts for Schueller_44:
(Start: 46 @38914 has 308 MA's), (59, 38884), (67, 38839),

Gene: Scoot17C_45 Start: 39194, Stop: 38979, Start Num: 46
Candidate Starts for Scoot17C_45:
(13, 39296), (Start: 46 @39194 has 308 MA's), (59, 39164), (67, 39119),

Gene: Scrick_45 Start: 38919, Stop: 38704, Start Num: 46
Candidate Starts for Scrick_45:
(13, 39021), (Start: 46 @38919 has 308 MA's), (59, 38889), (67, 38844),

Gene: Selr12_45 Start: 38922, Stop: 38707, Start Num: 46
Candidate Starts for Selr12_45:
(13, 39024), (Start: 46 @38922 has 308 MA's), (59, 38892), (67, 38847),

Gene: Serendipitous_43 Start: 39478, Stop: 39269, Start Num: 46
Candidate Starts for Serendipitous_43:
(Start: 46 @39478 has 308 MA's), (59, 39463), (67, 39418),

Gene: Serendipity_45 Start: 39219, Stop: 39004, Start Num: 46
Candidate Starts for Serendipity_45:
(Start: 46 @39219 has 308 MA's), (59, 39189), (67, 39144), (75, 39111),

Gene: Serpentine_0045 Start: 39200, Stop: 38985, Start Num: 46
Candidate Starts for Serpentine_0045:
(Start: 46 @39200 has 308 MA's), (59, 39170), (67, 39125), (75, 39092),

Gene: ShadowBud_45 Start: 39220, Stop: 39005, Start Num: 46
Candidate Starts for ShadowBud_45:
(13, 39322), (Start: 46 @39220 has 308 MA's), (59, 39190), (67, 39145),

Gene: Shatter_38 Start: 32837, Stop: 32601, Start Num: 35
Candidate Starts for Shatter_38:
(34, 32840), (Start: 35 @32837 has 5 MA's), (44, 32816), (Start: 47 @32810 has 28 MA's), (Start: 58 @32786 has 19 MA's), (62, 32780), (78, 32690),

Gene: ShawBrad_38 Start: 29124, Stop: 28888, Start Num: 54
Candidate Starts for ShawBrad_38:
(Start: 54 @29124 has 36 MA's), (65, 29082), (68, 29061), (77, 29019), (83, 28971),

Gene: Sheila_45 Start: 39237, Stop: 39022, Start Num: 46
Candidate Starts for Sheila_45:
(Start: 46 @39237 has 308 MA's), (59, 39207), (67, 39162), (75, 39129),

Gene: Shenandoah_43 Start: 39003, Stop: 38767, Start Num: 40
Candidate Starts for Shenandoah_43:
(Start: 40 @39003 has 61 MA's), (62, 38946), (73, 38880), (75, 38874),

Gene: Shenyu_43 Start: 39713, Stop: 39504, Start Num: 46
Candidate Starts for Shenyu_43:
(13, 39821), (Start: 46 @39713 has 308 MA's), (59, 39698), (64, 39686),

Gene: ShiVal_45 Start: 39193, Stop: 38978, Start Num: 46
Candidate Starts for ShiVal_45:
(13, 39295), (Start: 46 @39193 has 308 MA's), (59, 39163), (67, 39118),

Gene: Sigman_45 Start: 39185, Stop: 38970, Start Num: 46
Candidate Starts for Sigman_45:
(Start: 46 @39185 has 308 MA's), (59, 39155), (67, 39110), (75, 39077),

Gene: SilverBell_45 Start: 39215, Stop: 39000, Start Num: 46
Candidate Starts for SilverBell_45:
(Start: 46 @39215 has 308 MA's), (59, 39185), (67, 39140),

Gene: Simielle_44 Start: 38888, Stop: 38673, Start Num: 46
Candidate Starts for Simielle_44:
(Start: 46 @38888 has 308 MA's), (59, 38858), (67, 38813), (75, 38780),

Gene: SirBeauregard_45 Start: 38892, Stop: 38677, Start Num: 46
Candidate Starts for SirBeauregard_45:
(13, 38994), (Start: 46 @38892 has 308 MA's), (59, 38862), (67, 38817),

Gene: SirJeffery_44 Start: 39650, Stop: 39441, Start Num: 46
Candidate Starts for SirJeffery_44:
(11, 39764), (13, 39758), (Start: 46 @39650 has 308 MA's), (59, 39635), (64, 39623), (67, 39590),

Gene: Sisko_38 Start: 33610, Stop: 33383, Start Num: 38
Candidate Starts for Sisko_38:
(Start: 38 @33610 has 5 MA's), (74, 33493), (84, 33424),

Gene: Skippy_45 Start: 39183, Stop: 38968, Start Num: 46
Candidate Starts for Skippy_45:
(13, 39285), (Start: 46 @39183 has 308 MA's), (59, 39153), (67, 39108),

Gene: Slatt_45 Start: 39209, Stop: 38994, Start Num: 46
Candidate Starts for Slatt_45:
(Start: 46 @39209 has 308 MA's), (59, 39179), (67, 39134),

Gene: SlippinJimmy_43 Start: 39796, Stop: 39560, Start Num: 40
Candidate Starts for SlippinJimmy_43:
(Start: 40 @39796 has 61 MA's), (62, 39739), (73, 39673), (75, 39667),

Gene: Soile_45 Start: 38912, Stop: 38697, Start Num: 46
Candidate Starts for Soile_45:
(Start: 46 @38912 has 308 MA's), (59, 38882), (67, 38837), (75, 38804),

Gene: Solosis_44 Start: 38910, Stop: 38695, Start Num: 46
Candidate Starts for Solosis_44:
(Start: 46 @38910 has 308 MA's), (59, 38880), (67, 38835), (75, 38802),

Gene: Sophia_44 Start: 38910, Stop: 38695, Start Num: 46
Candidate Starts for Sophia_44:
(Start: 46 @38910 has 308 MA's), (59, 38880), (67, 38835),

Gene: Soto_45 Start: 39203, Stop: 38988, Start Num: 46
Candidate Starts for Soto_45:
(Start: 46 @39203 has 308 MA's), (59, 39173), (67, 39128),

Gene: Sour_43 Start: 37566, Stop: 37306, Start Num: 40
Candidate Starts for Sour_43:
(Start: 40 @37566 has 61 MA's), (62, 37515),

Gene: Spartan300_45 Start: 39189, Stop: 38974, Start Num: 46
Candidate Starts for Spartan300_45:
(13, 39291), (Start: 46 @39189 has 308 MA's), (59, 39159), (67, 39114),

Gene: Squid_45 Start: 38901, Stop: 38686, Start Num: 46
Candidate Starts for Squid_45:
(13, 39003), (Start: 46 @38901 has 308 MA's), (59, 38871), (67, 38826),

Gene: Squiggle_45 Start: 38913, Stop: 38698, Start Num: 46
Candidate Starts for Squiggle_45:
(13, 39015), (Start: 46 @38913 has 308 MA's), (59, 38883), (67, 38838),

Gene: Stinger_39 Start: 37776, Stop: 37570, Start Num: 47
Candidate Starts for Stinger_39:
(Start: 47 @37776 has 28 MA's), (59, 37755), (62, 37749), (65, 37728), (67, 37710), (71, 37692), (77, 37662), (78, 37659), (79, 37656),

Gene: StinkyVeggy_45 Start: 39790, Stop: 39581, Start Num: 46
Candidate Starts for StinkyVeggy_45:
(13, 39898), (Start: 46 @39790 has 308 MA's), (59, 39775), (64, 39763),

Gene: Struggle_44 Start: 38751, Stop: 38536, Start Num: 46
Candidate Starts for Struggle_44:
(13, 38853), (Start: 46 @38751 has 308 MA's), (59, 38721), (67, 38676),

Gene: Suffolk_45 Start: 39200, Stop: 38985, Start Num: 46
Candidate Starts for Suffolk_45:
(Start: 46 @39200 has 308 MA's), (59, 39170), (67, 39125),

Gene: Suigeneris_44 Start: 39653, Stop: 39444, Start Num: 46
Candidate Starts for Suigeneris_44:
(11, 39767), (13, 39761), (Start: 46 @39653 has 308 MA's), (59, 39638), (64, 39626), (67, 39593),

Gene: Surely_45 Start: 39203, Stop: 38988, Start Num: 46
Candidate Starts for Surely_45:
(Start: 46 @39203 has 308 MA's), (59, 39173), (67, 39128),

Gene: Susceptit_35 Start: 29355, Stop: 29119, Start Num: 54
Candidate Starts for Susceptit_35:
(Start: 54 @29355 has 36 MA's), (65, 29313), (68, 29292), (77, 29250), (83, 29202), (89, 29130),

Gene: SwainyDoc_43 Start: 39025, Stop: 38789, Start Num: 40
Candidate Starts for SwainyDoc_43:
(Start: 40 @39025 has 61 MA's), (62, 38968), (73, 38902), (75, 38896),

Gene: Swiphy_45 Start: 39198, Stop: 38983, Start Num: 46
Candidate Starts for Swiphy_45:
(Start: 46 @39198 has 308 MA's), (59, 39168), (67, 39123),

Gene: Swish_45 Start: 39186, Stop: 38971, Start Num: 46
Candidate Starts for Swish_45:
(Start: 46 @39186 has 308 MA's), (59, 39156), (67, 39111), (75, 39078),

Gene: SynergyX_43 Start: 39031, Stop: 38795, Start Num: 40
Candidate Starts for SynergyX_43:
(Start: 40 @39031 has 61 MA's), (62, 38974), (73, 38908), (75, 38902),

Gene: TA17A_45 Start: 39424, Stop: 39218, Start Num: 51
Candidate Starts for TA17A_45:
(Start: 51 @39424 has 38 MA's), (60, 39397), (62, 39394), (71, 39340), (78, 39307),

Gene: TallGrassMM_45 Start: 38825, Stop: 38610, Start Num: 46
Candidate Starts for TallGrassMM_45:
(Start: 46 @38825 has 308 MA's), (59, 38795), (67, 38750), (75, 38717),

Gene: Taraxa_45 Start: 38401, Stop: 38186, Start Num: 46
Candidate Starts for Taraxa_45:
(Start: 46 @38401 has 308 MA's), (59, 38371), (67, 38326), (75, 38293),

Gene: Tayonia_35 Start: 29354, Stop: 29118, Start Num: 54
Candidate Starts for Tayonia_35:
(Start: 54 @29354 has 36 MA's), (65, 29312), (68, 29291), (77, 29249), (83, 29201), (89, 29129),

Gene: Telesworld_44 Start: 38898, Stop: 38683, Start Num: 46
Candidate Starts for Telesworld_44:
(Start: 46 @38898 has 308 MA's), (59, 38868), (67, 38823), (75, 38790),

Gene: Thonko_43 Start: 36961, Stop: 36752, Start Num: 45
Candidate Starts for Thonko_43:
(8, 37108), (13, 37054), (Start: 45 @36961 has 3 MA's), (64, 36931), (75, 36865),

Gene: Thora_45 Start: 39202, Stop: 38987, Start Num: 46
Candidate Starts for Thora_45:
(Start: 46 @39202 has 308 MA's), (59, 39172), (67, 39127),

Gene: ThreeOh3D2_45 Start: 39200, Stop: 38985, Start Num: 46
Candidate Starts for ThreeOh3D2_45:
(13, 39302), (Start: 46 @39200 has 308 MA's), (59, 39170), (67, 39125),

Gene: Thunderbird_44 Start: 38906, Stop: 38691, Start Num: 46
Candidate Starts for Thunderbird_44:
(13, 39008), (Start: 46 @38906 has 308 MA's), (59, 38876), (67, 38831),

Gene: TimTam_34 Start: 29521, Stop: 29285, Start Num: 54
Candidate Starts for TimTam_34:
(Start: 54 @29521 has 36 MA's), (65, 29479), (77, 29416), (83, 29368), (86, 29356),

Gene: Timmi_44 Start: 38911, Stop: 38696, Start Num: 46
Candidate Starts for Timmi_44:
(Start: 46 @38911 has 308 MA's), (59, 38881), (67, 38836), (75, 38803),

Gene: Tinciduntolum_45 Start: 39562, Stop: 39356, Start Num: 51
Candidate Starts for Tinciduntolum_45:
(Start: 51 @39562 has 38 MA's), (60, 39535), (62, 39532), (71, 39478), (78, 39445),

Gene: TinyTerror_43 Start: 39016, Stop: 38780, Start Num: 40
Candidate Starts for TinyTerror_43:
(Start: 40 @39016 has 61 MA's), (62, 38959), (73, 38893), (75, 38887),

Gene: TomBombadil_45 Start: 39196, Stop: 38981, Start Num: 46
Candidate Starts for TomBombadil_45:
(13, 39298), (Start: 46 @39196 has 308 MA's), (59, 39166), (67, 39121),

Gene: Tomlarah_45 Start: 39187, Stop: 38972, Start Num: 46
Candidate Starts for Tomlarah_45:
(13, 39289), (Start: 46 @39187 has 308 MA's), (59, 39157), (67, 39112),

Gene: Toni_44 Start: 38903, Stop: 38688, Start Num: 46

Candidate Starts for Toni_44:

(Start: 46 @38903 has 308 MA's), (59, 38873), (67, 38828), (75, 38795),

Gene: TooFast2Furius_46 Start: 39432, Stop: 39217, Start Num: 46

Candidate Starts for TooFast2Furius_46:

(13, 39534), (Start: 46 @39432 has 308 MA's), (59, 39402), (67, 39357),

Gene: Tooj_45 Start: 39260, Stop: 39045, Start Num: 46

Candidate Starts for Tooj_45:

(Start: 46 @39260 has 308 MA's), (59, 39230), (67, 39185),

Gene: Tophat_37 Start: 30385, Stop: 30167, Start Num: 53

Candidate Starts for Tophat_37:

(9, 30535), (15, 30490), (16, 30487), (22, 30448), (37, 30415), (Start: 53 @30385 has 19 MA's), (59, 30364), (66, 30328), (69, 30313), (72, 30298), (75, 30286),

Gene: TraderJ_40 Start: 34851, Stop: 34585, Start Num: 40

Candidate Starts for TraderJ_40:

(20, 34896), (24, 34887), (Start: 40 @34851 has 61 MA's), (59, 34803), (60, 34800), (64, 34791), (73, 34731), (79, 34704),

Gene: Tres_44 Start: 39437, Stop: 39231, Start Num: 51

Candidate Starts for Tres_44:

(Start: 51 @39437 has 38 MA's), (60, 39410), (62, 39407), (71, 39353), (78, 39320),

Gene: Triad_45 Start: 38064, Stop: 37849, Start Num: 46

Candidate Starts for Triad_45:

(Start: 46 @38064 has 308 MA's), (59, 38034), (67, 37989), (75, 37956),

Gene: True_44 Start: 38900, Stop: 38685, Start Num: 46

Candidate Starts for True_44:

(13, 39002), (Start: 46 @38900 has 308 MA's), (59, 38870), (67, 38825),

Gene: Trumpet_35 Start: 29355, Stop: 29119, Start Num: 54

Candidate Starts for Trumpet_35:

(Start: 54 @29355 has 36 MA's), (65, 29313), (68, 29292), (77, 29250), (83, 29202), (89, 29130),

Gene: Trypo_45 Start: 39196, Stop: 38981, Start Num: 46

Candidate Starts for Trypo_45:

(13, 39298), (Start: 46 @39196 has 308 MA's), (59, 39166), (67, 39121),

Gene: Tydolla_43 Start: 39765, Stop: 39529, Start Num: 40

Candidate Starts for Tydolla_43:

(Start: 40 @39765 has 61 MA's), (62, 39708), (73, 39642), (75, 39636),

Gene: TyrionL_44 Start: 38759, Stop: 38544, Start Num: 46

Candidate Starts for TyrionL_44:

(Start: 46 @38759 has 308 MA's), (59, 38729), (67, 38684), (75, 38651),

Gene: UAch1_45 Start: 39209, Stop: 38994, Start Num: 46

Candidate Starts for UAch1_45:

(Start: 46 @39209 has 308 MA's), (59, 39179), (67, 39134),

Gene: UncleHowie_45 Start: 38899, Stop: 38684, Start Num: 46
Candidate Starts for UncleHowie_45:
(13, 39001), (Start: 46 @38899 has 308 MA's), (59, 38869), (67, 38824), (75, 38791),

Gene: Usavi_45 Start: 39200, Stop: 38985, Start Num: 46
Candidate Starts for Usavi_45:
(Start: 46 @39200 has 308 MA's), (59, 39170), (67, 39125),

Gene: Vaishali24_44 Start: 38861, Stop: 38646, Start Num: 46
Candidate Starts for Vaishali24_44:
(Start: 46 @38861 has 308 MA's), (59, 38831), (67, 38786), (75, 38753),

Gene: Valjean_45 Start: 39192, Stop: 38977, Start Num: 46
Candidate Starts for Valjean_45:
(13, 39294), (Start: 46 @39192 has 308 MA's), (59, 39162), (67, 39117),

Gene: Vaticameos_41 Start: 36890, Stop: 36675, Start Num: 46
Candidate Starts for Vaticameos_41:
(Start: 46 @36890 has 308 MA's), (59, 36860), (67, 36815), (75, 36782),

Gene: Veritas_44 Start: 38762, Stop: 38547, Start Num: 46
Candidate Starts for Veritas_44:
(Start: 46 @38762 has 308 MA's), (59, 38732), (67, 38687),

Gene: Vic9_00043 Start: 39943, Stop: 39737, Start Num: 51
Candidate Starts for Vic9_00043:
(Start: 51 @39943 has 38 MA's), (60, 39916), (71, 39859), (78, 39826),

Gene: Vincenzo_41 Start: 39951, Stop: 39745, Start Num: 47
Candidate Starts for Vincenzo_41:
(Start: 47 @39951 has 28 MA's), (59, 39930), (62, 39924), (65, 39903), (67, 39885), (69, 39876), (71, 39867), (77, 39837), (78, 39834), (79, 39831),

Gene: VioletZ_41 Start: 39270, Stop: 39064, Start Num: 47
Candidate Starts for VioletZ_41:
(Start: 47 @39270 has 28 MA's), (59, 39249), (65, 39222), (67, 39204), (71, 39186), (77, 39156), (79, 39150),

Gene: Virapocalypse_45 Start: 39187, Stop: 38972, Start Num: 46
Candidate Starts for Virapocalypse_45:
(Start: 46 @39187 has 308 MA's), (59, 39157), (67, 39112),

Gene: Virgeve_44 Start: 38967, Stop: 38752, Start Num: 46
Candidate Starts for Virgeve_44:
(13, 39069), (Start: 46 @38967 has 308 MA's), (59, 38937), (67, 38892),

Gene: Vista_45 Start: 39200, Stop: 38985, Start Num: 46
Candidate Starts for Vista_45:
(Start: 46 @39200 has 308 MA's), (59, 39170), (67, 39125),

Gene: Vivaldi_45 Start: 39229, Stop: 39014, Start Num: 46
Candidate Starts for Vivaldi_45:
(13, 39331), (Start: 46 @39229 has 308 MA's), (59, 39199), (67, 39154),

Gene: Vortex_45 Start: 38906, Stop: 38691, Start Num: 46
Candidate Starts for Vortex_45:
(Start: 46 @38906 has 308 MA's), (59, 38876), (67, 38831), (75, 38798),

Gene: Waleliano_40 Start: 39197, Stop: 38991, Start Num: 47
Candidate Starts for Waleliano_40:
(Start: 47 @39197 has 28 MA's), (59, 39176), (65, 39149), (67, 39131), (71, 39113), (77, 39083), (79, 39077),

Gene: Wallhey_44 Start: 38763, Stop: 38548, Start Num: 46
Candidate Starts for Wallhey_44:
(Start: 46 @38763 has 308 MA's), (59, 38733), (67, 38688), (75, 38655),

Gene: Waterdiva_45 Start: 39192, Stop: 38977, Start Num: 46
Candidate Starts for Waterdiva_45:
(Start: 46 @39192 has 308 MA's), (59, 39162), (67, 39117),

Gene: Weher20_45 Start: 39191, Stop: 38976, Start Num: 46
Candidate Starts for Weher20_45:
(Start: 46 @39191 has 308 MA's), (59, 39161), (67, 39116),

Gene: West99_44 Start: 39557, Stop: 39351, Start Num: 51
Candidate Starts for West99_44:
(Start: 51 @39557 has 38 MA's), (60, 39530), (62, 39527), (71, 39473), (78, 39440),

Gene: Whitney_42 Start: 32542, Stop: 32306, Start Num: 54
Candidate Starts for Whitney_42:
(Start: 54 @32542 has 36 MA's), (65, 32500), (68, 32479), (77, 32437), (83, 32389),

Gene: WileyE_25 Start: 18878, Stop: 18663, Start Num: 57
Candidate Starts for WileyE_25:
(Start: 57 @18878 has 2 MA's),

Gene: Windsor_44 Start: 38896, Stop: 38681, Start Num: 46
Candidate Starts for Windsor_44:
(13, 38998), (Start: 46 @38896 has 308 MA's), (59, 38866), (67, 38821),

Gene: Wooper_40 Start: 34857, Stop: 34591, Start Num: 40
Candidate Starts for Wooper_40:
(20, 34902), (24, 34893), (Start: 40 @34857 has 61 MA's), (59, 34809), (60, 34806), (64, 34797), (73, 34737), (79, 34710),

Gene: Xavier_44 Start: 38913, Stop: 38698, Start Num: 46
Candidate Starts for Xavier_44:
(Start: 46 @38913 has 308 MA's), (59, 38883), (67, 38838), (75, 38805),

Gene: Xincheng_39 Start: 38653, Stop: 38447, Start Num: 47
Candidate Starts for Xincheng_39:
(Start: 47 @38653 has 28 MA's), (59, 38632), (65, 38605), (67, 38587), (71, 38569), (77, 38539), (79, 38533),

Gene: Yago84_38 Start: 33684, Stop: 33457, Start Num: 38

Candidate Starts for Yago84_38:
(Start: 38 @33684 has 5 MA's), (74, 33567), (84, 33498),

Gene: Yahalom_43 Start: 39041, Stop: 38805, Start Num: 40
Candidate Starts for Yahalom_43:
(Start: 40 @39041 has 61 MA's), (62, 38984), (73, 38918), (75, 38912),

Gene: Yeshua_40 Start: 34834, Stop: 34568, Start Num: 40
Candidate Starts for Yeshua_40:
(20, 34879), (24, 34870), (Start: 40 @34834 has 61 MA's), (59, 34786), (60, 34783), (64, 34774), (73, 34714), (79, 34687),

Gene: Yinz_43 Start: 39067, Stop: 38831, Start Num: 40
Candidate Starts for Yinz_43:
(Start: 40 @39067 has 61 MA's), (62, 39010), (73, 38944), (75, 38938),

Gene: Yoshand_45 Start: 39199, Stop: 38984, Start Num: 46
Candidate Starts for Yoshand_45:
(Start: 46 @39199 has 308 MA's), (59, 39169), (67, 39124), (75, 39091),

Gene: YouGoGlencoco_45 Start: 39194, Stop: 38979, Start Num: 46
Candidate Starts for YouGoGlencoco_45:
(Start: 46 @39194 has 308 MA's), (59, 39164), (67, 39119),

Gene: Zaider_46 Start: 39424, Stop: 39209, Start Num: 46
Candidate Starts for Zaider_46:
(Start: 46 @39424 has 308 MA's), (59, 39394), (67, 39349),

Gene: Zameen_35 Start: 29354, Stop: 29118, Start Num: 54
Candidate Starts for Zameen_35:
(Start: 54 @29354 has 36 MA's), (65, 29312), (68, 29291), (77, 29249), (83, 29201), (89, 29129),

Gene: Zelda_45 Start: 39241, Stop: 39026, Start Num: 46
Candidate Starts for Zelda_45:
(Start: 46 @39241 has 308 MA's), (59, 39211), (67, 39166),

Gene: Zemanar_41 Start: 39200, Stop: 38994, Start Num: 47
Candidate Starts for Zemanar_41:
(Start: 47 @39200 has 28 MA's), (59, 39179), (65, 39152), (67, 39134), (71, 39116), (77, 39086), (79, 39080),

Gene: Zenteno07_48 Start: 38553, Stop: 38338, Start Num: 51
Candidate Starts for Zenteno07_48:
(Start: 51 @38553 has 38 MA's), (59, 38529), (69, 38475), (85, 38379),

Gene: Zonia_45 Start: 39213, Stop: 38998, Start Num: 46
Candidate Starts for Zonia_45:
(Start: 46 @39213 has 308 MA's), (59, 39183), (67, 39138), (75, 39105),