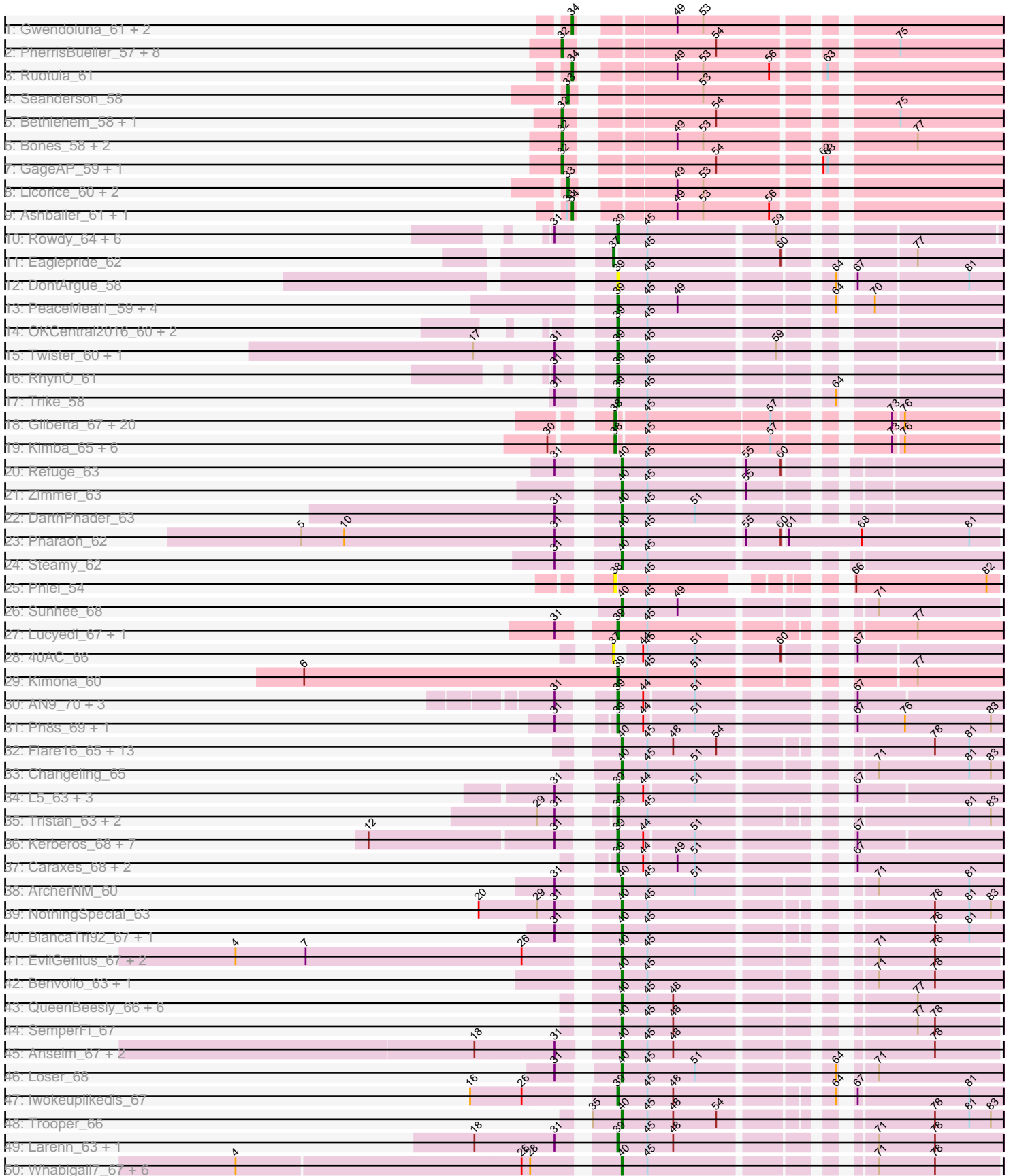
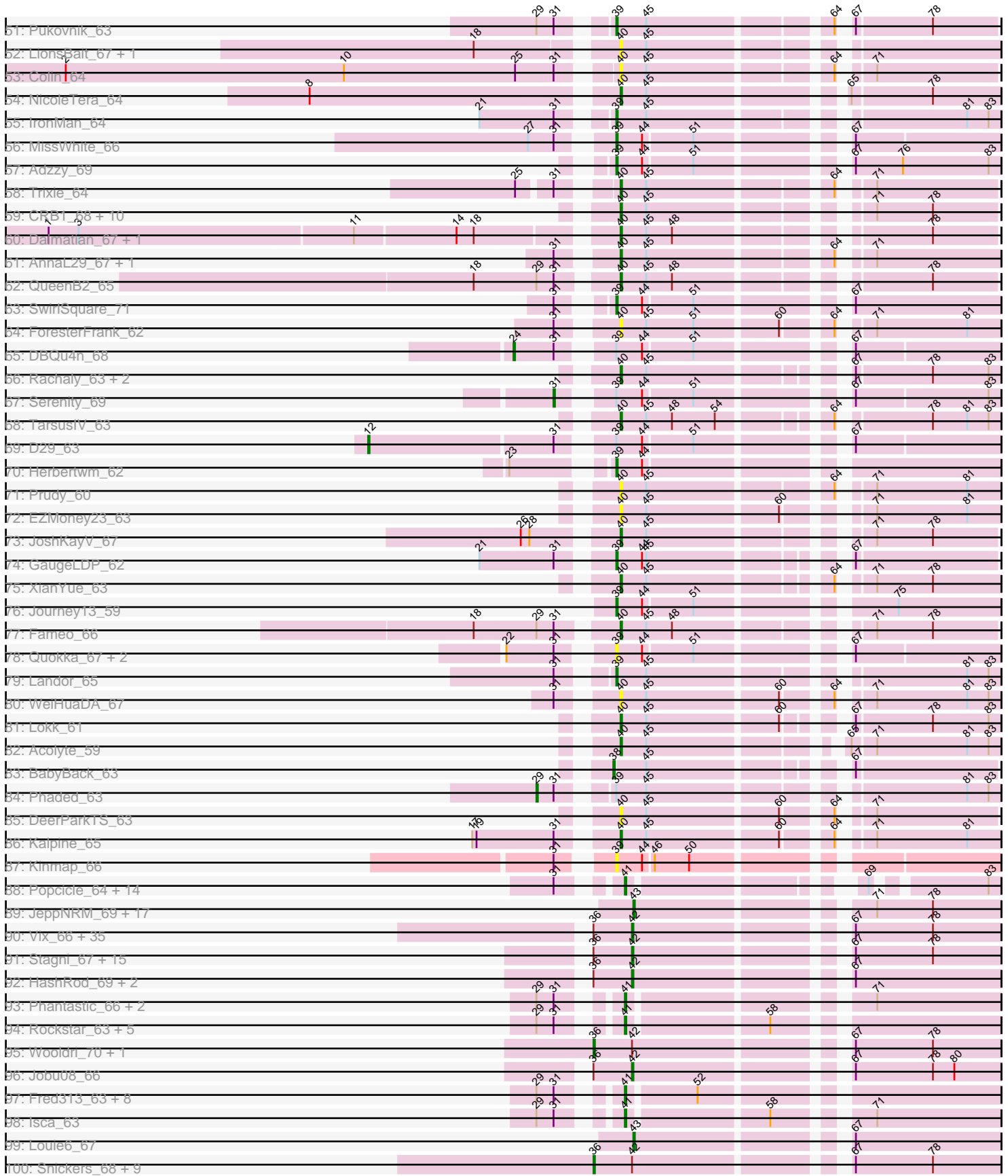


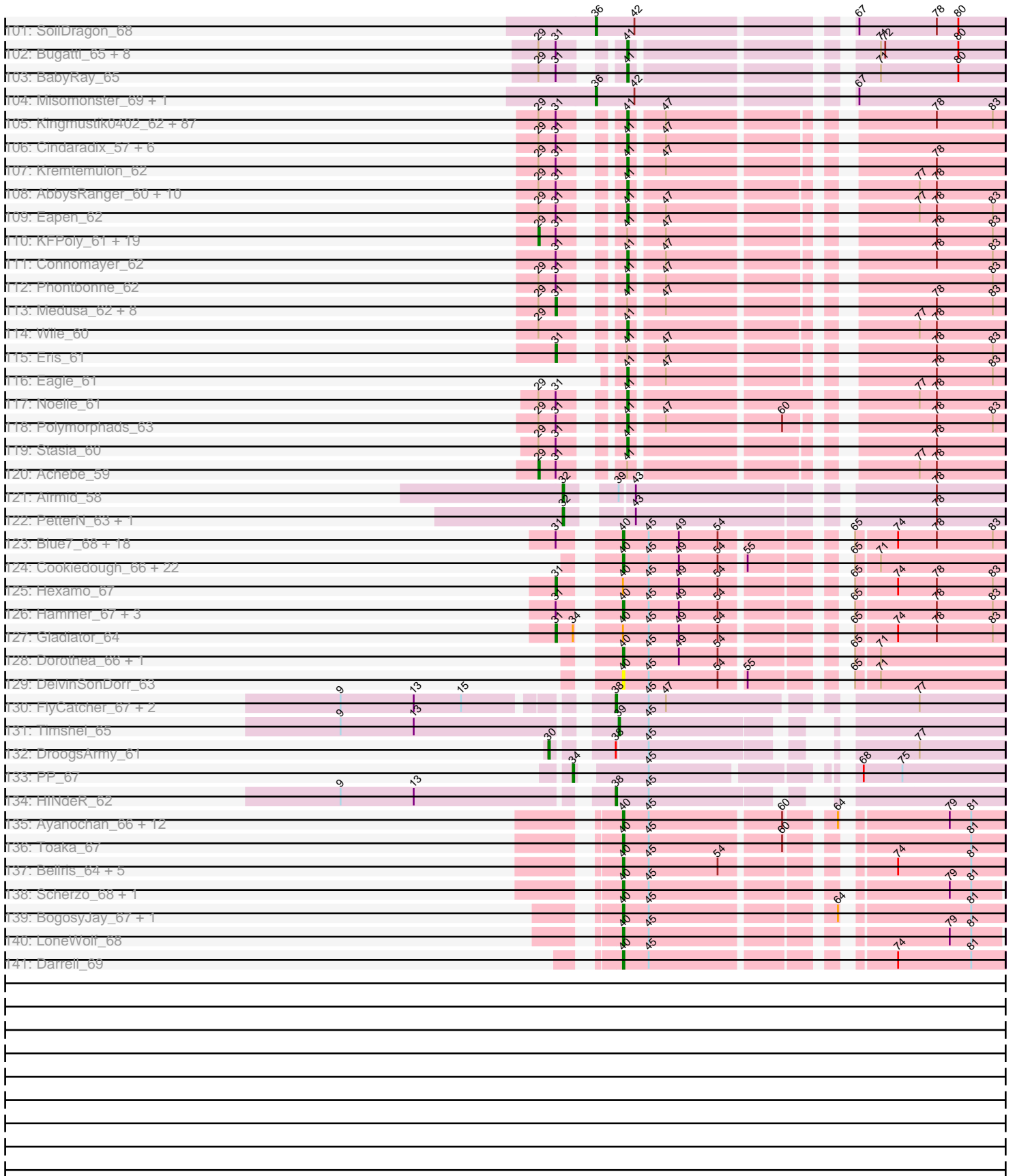
Pham 304584



Pham 304584



Pham 304584



Note: Tracks are now grouped by subcluster and scaled. Switching in subcluster is indicated by changes in track color. Track scale is now set by default to display the region 30 bp upstream of start 1 to 30 bp downstream of the last possible start. If this default region is judged to be packed too tightly with annotated starts, the track will be further scaled to only show that region of the ORF with annotated starts. This action will be indicated by adding "Zoomed" to the title. For starts, yellow indicates the location of called starts comprised solely of Glimmer/GeneMark auto-annotations, green indicates the location of called starts with at least 1 manual gene annotation.

Pham 304584 Report

This analysis was run 06/08/26 on database version 649.

Pham number 304584 has 578 members, 64 are drafts.

Phages represented in each track:

- Track 1 : Gwendoluna_61, Pelly_58, Dulcie_58
- Track 2 : PherrisBueller_57, Norz_59, Beatrix_58, StrongArm_57, Dreamboat_59, Jasper_59, Bexan_56, Ohno789_59, Doom_56
- Track 3 : Ruotula_61
- Track 4 : Seanderson_58
- Track 5 : Bethlehem_58, Pari_61
- Track 6 : Bones_58, Graduation_62, Cueylyss_59
- Track 7 : GageAP_59, SpikeBT_57
- Track 8 : Licorice_60, BillKnuckles_56, Traft412_61
- Track 9 : Ashballer_61, JC27_61
- Track 10 : Rowdy_64, Edison31_58, Kristoff_61, DustyMartin_64, Rebeuca_62, Topanga_58, Shapes_64
- Track 11 : Eaglepride_62
- Track 12 : DontArgue_58
- Track 13 : PeaceMeal1_59, Severus_59, Drake94_59, KittenMittens_58, Poompha_59
- Track 14 : OKCentral2016_60, Chupacabra_60, Goose_62
- Track 15 : Twister_60, WalterMcMickey_60
- Track 16 : RhynO_61
- Track 17 : Trike_58
- Track 18 : Gilberta_67, Timothy_66, Aneem_67, Ebony_66, Hutc2_65, Flaverint_67, Wolpertinger_64, Orange_65, Mabel_66, Sham4_66, Insomnia_67, Lucivia_67, Snape_66, Munch_66, Bowtie_67, Et2Brutus_65, Bud_65, Saskia_66, Fibonacci_66, Mulciber_65, Petersenfast_64
- Track 19 : Kimba_65, Salz_65, Joselito_67, Jabith_67, TinyTimmy_66, Bachome_68, MaCh_66
- Track 20 : Refuge_63
- Track 21 : Zimmer_63
- Track 22 : DarthPhader_63
- Track 23 : Pharaoh_62
- Track 24 : Steamy_62
- Track 25 : Phlei_54
- Track 26 : Sunhee_68
- Track 27 : Lucyedi_67, EagleEye_68
- Track 28 : 40AC_66
- Track 29 : Kimona_60
- Track 30 : AN9_70, VC3_69, ANI8_70, C3_63

- Track 31 : Ph8s_69, Che12_69
- Track 32 : Flare16_65, Gratitude_63, Equemioh13_65, Sknot_65, HarryHoudini_66, Baehexic_64, Drake55_67, Centaur_66, Piro94_65, Updawg_66, MiculUcigas_65, WideWale_66, Terrific_66, NaSiaTalie_65
- Track 33 : Changeling_65
- Track 34 : L5_63, TipsytheTRex_65, Koduck_68, Jsquared_69
- Track 35 : Tristan_63, Jaan_65, Bactobuster_62
- Track 36 : Kerberos_68, Tomathan_68, D32_67, StarStuff_68, Duplo_68, Pomar16_67, Travvers_67, Naji_68
- Track 37 : Caraxes_68, Superchunk_67, Odin_66
- Track 38 : ArcherNM_60
- Track 39 : NothingSpecial_63
- Track 40 : BiancaTri92_67, Leogania_67
- Track 41 : EvilGenius_67, ChipMunk_68, KingCyrus_67
- Track 42 : Benvolio_63, Echild_66
- Track 43 : QueenBeesly_66, Georgie2_67, SnapTap_66, Crucio_66, SweetiePie_66, Power_65, FiringLine_66
- Track 44 : SemperFi_67
- Track 45 : Anselm_67, Retro23_67, Heffalump_65
- Track 46 : Loser_68
- Track 47 : Iwokeuplikedis_67
- Track 48 : Trooper_66
- Track 49 : Larenn_63, Malec_64
- Track 50 : Whabigail7_67, Agape74_68, AbbyPaige_68, Jerm_68, Smeagan_69, Turbido_67, LilTurb_67
- Track 51 : Pukovnik_63
- Track 52 : LionsBait_67, HippoHollow_65
- Track 53 : Colin_64
- Track 54 : NicoleTera_64
- Track 55 : IronMan_64
- Track 56 : MissWhite_66
- Track 57 : Adzzy_69
- Track 58 : Trixie_64
- Track 59 : CRB1_68, Buggy_68, Leviathan_68, LadyBird_70, VA6_66, AN3_68, 20ES_68, Deloris_66, First_0067, BengiVuitton_66, Dignity_68
- Track 60 : Dalmatian_67, DudeLittle_65
- Track 61 : AnnaL29_67, RedRock_67
- Track 62 : QueenB2_65
- Track 63 : SwirlSquare_71
- Track 64 : ForesterFrank_62
- Track 65 : DBQu4n_68
- Track 66 : Rachaly_63, Miko_61, BobSwaget_60
- Track 67 : Serenity_69
- Track 68 : TarsusIV_63
- Track 69 : D29_63
- Track 70 : Herbertwm_62
- Track 71 : Prudy_60
- Track 72 : EZMoney23_63
- Track 73 : JoshKayV_67
- Track 74 : GaugeLDP_62
- Track 75 : XianYue_63
- Track 76 : Journey13_59
- Track 77 : Fameo_66

- Track 78 : Quokka_67, Bradman_68, MajorMajor_67
- Track 79 : Landor_65
- Track 80 : WeiHuaDA_67
- Track 81 : Lokk_61
- Track 82 : Acolyte_59
- Track 83 : BabyBack_63
- Track 84 : Phaded_63
- Track 85 : DeerParkTS_63
- Track 86 : Kalpine_65
- Track 87 : Kinmap_66
- Track 88 : Popcicle_64, QuinnKiro_63, Veracruz_62, Hookmount_64, Caviar_64, Panamaxus_62, Lambert1_64, Margo_64, Noella_64, Todacoro_64, EtoileNova_63, Pocahontas_64, Texage_62, Norbert_61, ResDef_63
- Track 89 : JeppNRM_69, Pawn_68, Heliosoles_67, PhishRPhriends_66, Manu_68, ACFishhook_66, Gemma_67, Kalnoky_69, OlanP_67, HaveUMetTed_69, Groupthink_69, Reba_68, Calvinny_67, Marius_69, ClownCar_67, Kalb97_69, PurpleHaze_68, Phranny_69
- Track 90 : Vix_66, GtownJaz_68, P28Green_69, MoneyMay_67, Malinsilva_70, Phoxy_68, LBerry_69, Spike509_68, Croquant_67, Mainiac_68, Grub_68, Cullens_68, Beauxregard13_67, Sabia_68, Lilith_67, Gwennie_65, Penny1_68, Watson_67, Dieselweasel_69, EpicPhail_69, MarQuardt_68, Marie_66, Lowa_67, JHC117_66, Tiffany_67, JenCasNa_69, Grif_68, Montavir_65, Microwolf_66, Taurus_69, Sabinator_66, Fernando_68, LarryKay_68, PotatoSplit_69, Grum1_67, LugYA_71
- Track 91 : Stagni_67, GingkoMaracino_68, Ollie_68, AgronaGT15_67, Rummer_67, Methuselah_63, Bxz2_63, Aglet_69, Soshari_70, MadMarie_68, Bigflo_67, Zetzy_67, StepMih_67, AugsMagnumOpus_71, MuchMore_71, Farber_68
- Track 92 : HashRod_69, KADY_67, BuzzBuzz_64
- Track 93 : Phantastic_66, BabyJohn_60, Chiqui_60
- Track 94 : Rockstar_63, MK4_65, MA5_65, B1_57, JF4_63, JF2_63
- Track 95 : Wooldri_70, Anubis_71
- Track 96 : Jobu08_66
- Track 97 : Fred313_63, Kachowdy_63, Zarafa_63, Heathen_65, HeIDan_64, Marchesa_63, DropBear_63, Scout_64, Roimos_63
- Track 98 : Isca_63
- Track 99 : Louie6_67
- Track 100 : Snickers_68, PGHhamlin_70, BreSam8_68, Pembroke_68, DaHudson_67, Daishi_67, Phoebe_69, Hercules11_68, Colbster_66, SoYo_67
- Track 101 : SoilDragon_68
- Track 102 : Bugatti_65, Clammy_65, Giroux_67, Idleandcovert_65, SaturnRing_65, Puppy_65, Pistachio_65, TNguyen7_66, BlueBird_67
- Track 103 : BabyRay_65
- Track 104 : Misomonster_69, TinyPebbles_67
- Track 105 : Kingmustik0402_62, Mazhar510_62, LochMonster_63, BellusTerra_63, Burger_60, Sparxx_63, Eros_62, Romney_61, MeeZee_61, PeterPeter_62, Obama12_63, Peaches_60, Deano_60, Alberto7_63, Kyee_62, ChampagnePapi_64, LHTSCC_64, Wilbur_62, Scamp_62, ICleared_61, LittleB_62, Druantia_61, Arturo_60, Ulysses_61, Chaph_62, Pipcraft_59, TygerBlood_62, Citius_62, Caelakin_61, Kamy_61, Cerulean_63, OKaNui_62, Happiness_61, Mayonnaise_60, TroyPia_63, Koan_59, Taquarus_61, Huxley_61, Commander_61, Bartimeaus_62, Lorenzo_62, Wizard007_61, Eurydice_63, Holli_61, Relief_61, Sultana_62, Skipitt_61, Albee_62, Maxo_63, RockieBear_60, Lunsford_63, Blackmoor_61, TiroTheta9_61, NorthStar_60, Ohfah_63, KekoraPapaka_60, Melvin_64,

YoSam321_62, BangNhom_61, SteMason_59, Phelipe_63, Broseidon_62, Koreni_61, SheldonCooper_62, Gadost_62, NotAPhaseMom_61, Nebs_63, Annyong_61, CentreCat_62, Jaykayelowell_59, Baby16_62, Tinybot_61, LappelDuVide_62, Morrow_63, DirtyDunning_61, Houdini22_61, Iceman_62, Pumbaa_62, Spino_61, Roosevelt_60, JetBlade_62, Ruin_62, LeoAvram_61, Florean_62, Nemo27_61, SenorClean_62, Dhanush_62, Rosa24_60

- Track 106 : Cindaradix_57, Mundrea_60, Cintron_62, AvatarAhPeg_59, Miramae_59, Shygu2_60, Stink_59
- Track 107 : Kremtemulon_62
- Track 108 : AbbysRanger_60, Badger_59, PetiteSangsue_60, Bumblebee11_59, Xena_59, Morpher26_60, Katalie136_60, Cici_60, Datway_60, Perplexer_60, Backyardigan_58
- Track 109 : Eapen_62
- Track 110 : KFPoly_61, Palestino_61, Camperdownii_60, Kratak_61, Phighter1804_62, Funston_61, Phacado_62, HamSlice_59, JoongJeon_61, Millski_61, Clarenza_61, Abdiel_62, Thanksgivukkah_61, Lemur_62, Iracema64_63, Wander_62, BubbleTrouble_61, Bruiser_61, TinaFeyge_60, Bombshell_62
- Track 111 : Connomayer_62
- Track 112 : Phontbonne_62
- Track 113 : Medusa_62, Sabertooth_62, LittleGuy_62, Flux_62, Maverick_61, Shaka_60, Cocoaberry_62, Avle17_62, Nyxis_61
- Track 114 : Wile_60
- Track 115 : Eris_61
- Track 116 : Eagle_61
- Track 117 : Noelle_61
- Track 118 : Polymorphads_63
- Track 119 : Stasia_60
- Track 120 : Achebe_59
- Track 121 : Airmid_58
- Track 122 : PetterN_63, Scorpia_62
- Track 123 : Blue7_68, Jeffabunny_67, Temprado_68, Artemis2UCLA_67, BennyP_67, WunderPhul_67, CloudWang3_68, Indra_70, Wiks_66, Helmet_69, Rifter_67, Lilbunny_66, Zaka_67, Koko_69, Yokurt_66, BlessJoy_67, Garak_68, Zulu_68, ToneTone_64
- Track 124 : Cookiedough_66, Blinn1_69, Priamo_68, GreedyLawyer_63, VohminGhazi_66, SuperAwesome_66, JewelBug_66, SmellyB_66, Kazan_67, Polyphemus_68, Neeharika16_65, Candra_64, EricB_65, Pmask_65, BABullseye_59, Isiphiwo_64, Newrala_66, Hoot_61, Chartreuse_65, DaVinci_64, McFly_66, SuperCallie99_63, Kipper29_66
- Track 125 : Hexamo_67
- Track 126 : Hammer_67, Tucker_67, Gruunaga_67, Roksolana_68
- Track 127 : Gladiator_64
- Track 128 : Dorothea_66, Jordennis_65
- Track 129 : DelvinSonDorr_63
- Track 130 : FlyCatcher_67, Toro_65, Sheen_65
- Track 131 : Timshel_65
- Track 132 : DroogsArmy_61
- Track 133 : PP_67
- Track 134 : HINdeR_62
- Track 135 : Ayanochan_66, Jiawan_65, ExplosioNervosa_66, Hanray_66, Spouty_66, Priya_66, Fayely_66, EmyBug_65, Alma_66, Eidsmoe_66, Halex_66, Qobbit_66, Conquerage_66
- Track 136 : Toaka_67

- Track 137 : Bellris_64, CogOmlette_64, WorldCup_64, Elephantoan_66, Minispark_64, Rahalelujah_66
- Track 138 : Scherzo_68, Ugenie5_64
- Track 139 : BogosyJay_67, Maminiaina_67
- Track 140 : LoneWolf_68
- Track 141 : Darrell_69

Summary of Final Annotations (See graph section above for start numbers):

The start number called the most often in the published annotations is 41, it was called in 144 of the 514 non-draft genes in the pham.

Genes that call this "Most Annotated" start:

- AbbysRanger_60, Albee_62, Alberto7_63, Annyong_61, Arturo_60, AvatarAhPeg_59, B1_57, Baby16_62, BabyJohn_60, BabyRay_65, Backyardigan_58, Badger_59, BangNhom_61, Bartimeaus_62, BellusTerra_63, Blackmoor_61, BlueBird_67, Broseidon_62, Bugatti_65, Bumblebee11_59, Burger_60, Caelakin_61, Caviar_64, CentreCat_62, Cerulean_63, ChampagnePapi_64, Chaph_62, Chiqui_60, Cici_60, Cindaradix_57, Cintron_62, Citius_62, Clammy_65, Commander_61, Connomayer_62, Datway_60, Deano_60, Dhanush_62, DirtyDunning_61, DropBear_63, Druantia_61, Eagle_61, Eapen_62, Eros_62, EtoileNova_63, Eurydice_63, Floean_62, Fred313_63, Gadost_62, Giroux_67, Happiness_61, Heathen_65, HelDan_64, Holli_61, Hookmount_64, Houdini22_61, Huxley_61, ICleared_61, Iceman_62, Idleandcovert_65, Isca_63, JF2_63, JF4_63, Jaykayelowell_59, JetBlade_62, Kachowdy_63, Kampy_61, Katalie136_60, KekoraPapaka_60, Kingmustik0402_62, Koan_59, Koreni_61, Kremtemulon_62, Kyee_62, LHTSCC_64, Lambert1_64, LappelDuVide_62, LeoAvram_61, LittleB_62, LochMonster_63, Lorenzo_62, Lunsford_63, MA5_65, MK4_65, Marchesa_63, Margo_64, Maxo_63, Mayonnaise_60, Mazhar510_62, MeeZee_61, Melvin_64, Miramae_59, Morpher26_60, Morrow_63, Mundrea_60, Nebs_63, Nemo27_61, Noella_64, Noelle_61, Norbert_61, NorthStar_60, NotAPhaseMom_61, OKaNui_62, Obama12_63, Ohfah_63, Panamaxus_62, Peaches_60, Perplexer_60, PeterPeter_62, PetiteSangsue_60, Phantastic_66, Phelipe_63, Phontbonne_62, Pipcraft_59, Pistachio_65, Pocahontas_64, Polymorphads_63, Popcicle_64, Pumbaa_62, Puppy_65, QuinnKiro_63, Relief_61, ResDef_63, RockieBear_60, Rockstar_63, Roimos_63, Romney_61, Roosevelt_60, Rosa24_60, Ruin_62, SaturnRing_65, Scamp_62, Scout_64, SeniorClean_62, SheldonCooper_62, Shygu2_60, Skipitt_61, Sparxx_63, Spino_61, Stasia_60, SteMason_59, Stink_59, Sultana_62, TNguyen7_66, Taquarus_61, Texage_62, Tinybot_61, TiroTheta9_61, Todacoro_64, TroyPia_63, TygerBlood_62, Ulysses_61, Veracruz_62, Wilbur_62, Wile_60, Wizard007_61, Xena_59, YoSam321_62, Zarafa_63,

Genes that have the "Most Annotated" start but do not call it:

- Abdiel_62, Achebe_59, Avle17_62, Bombshell_62, Bruiser_61, BubbleTrouble_61, Camperdownii_60, Clarenza_61, Cocoaberry_62, Eris_61, Flux_62, Funston_61, HamSlice_59, Iracema64_63, JoongJeon_61, KFPoly_61, Kratark_61, Lemur_62, LittleGuy_62, Maverick_61, Medusa_62, Millski_61, Nyxis_61, Palestino_61, Phacado_62, Phighter1804_62, Sabertooth_62, Shaka_60, Thanksgivukkah_61, TinaFeyge_60, Wander_62,

Genes that do not have the "Most Annotated" start:

• 20ES_68, 40AC_66, ACFishhook_66, AN3_68, AN9_70, ANI8_70, AbbyPaige_68, Acolyte_59, Adzzy_69, Agape74_68, Aglet_69, AgronaGT15_67, Airmid_58, Alma_66, Aneem_67, AnnaL29_67, Anselm_67, Anubis_71, ArcherNM_60, Artemis2UCLA_67, Ashballer_61, AugsMagnumOpus_71, Ayanochan_66, BABullseye_59, BabyBack_63, Bachome_68, Bactobuster_62, Baehexic_64, Beatrix_58, Beauxregard13_67, Bellris_64, BengiVuitton_66, BennyP_67, Benvolio_63, Bethlehem_58, Bexan_56, BiancaTri92_67, Bigflo_67, BillKnuckles_56, BlessJoy_67, Blinn1_69, Blue7_68, BobSwaget_60, BogosyJay_67, Bones_58, Bowtie_67, Bradman_68, BreSam8_68, Bud_65, Buggy_68, BuzzBuzz_64, Bxz2_63, C3_63, CRB1_68, Calvinny_67, Candra_64, Caraxes_68, Centaur_66, Changeling_65, Chartreuse_65, Che12_69, ChipMunk_68, Chupacabra_60, CloudWang3_68, ClownCar_67, CogOmlette_64, Colbster_66, Colin_64, Conquerage_66, Cookiedough_66, Croquant_67, Crucio_66, Cueyllyss_59, Cullens_68, D29_63, D32_67, DBQu4n_68, DaHudson_67, DaVinci_64, Daishi_67, Dalmatian_67, Darrell_69, DARTHPhader_63, DeerParkTS_63, Deloris_66, DelvinSonDorr_63, Dieselweasel_69, Dignity_68, DontArgue_58, Doom_56, Dorothea_66, Drake55_67, Drake94_59, Dreamboat_59, DroogsArmy_61, DudeLittle_65, Dulcie_58, Duplo_68, DustyMartin_64, EZMoney23_63, EagleEye_68, Eaglepride_62, Ebony_66, Echild_66, Edison31_58, Eidsmoe_66, Elephantoan_66, EmyBug_65, EpicPhail_69, Equemioh13_65, EricB_65, Et2Brutus_65, EvilGenius_67, ExplosioNervosa_66, Fameo_66, Farber_68, Fayely_66, Fernando_68, Fibonacci_66, FiringLine_66, First_0067, Flare16_65, Flaverint_67, FlyCatcher_67, ForesterFrank_62, GageAP_59, Garak_68, GaugeLDP_62, Gemma_67, Georgie2_67, Gilberta_67, GingkoMaracino_68, Gladiator_64, Goose_62, Graduation_62, Gratitude_63, GreedyLawyer_63, Grif_68, Groupthink_69, Grub_68, Grum1_67, Gruunaga_67, GtownJaz_68, Gwendoluna_61, Gwennie_65, HINdeR_62, Hammer_67, Hanray_66, HarryHoudini_66, HashRod_69, HaveUMetTed_69, Heffalump_65, Heliosoles_67, Helmet_69, Herbertwm_62, Hercules11_68, Hexamo_67, HippoHollow_65, Horex_66, Hoot_61, Hutc2_65, Indra_70, Insomnia_67, IronMan_64, Isiphiwo_64, Iwokeuplikedis_67, JC27_61, JHC117_66, Jaan_65, Jabith_67, Jasper_59, Jeffabunny_67, JenCasNa_69, JeppNRM_69, Jerm_68, JewelBug_66, Jiawan_65, Jobu08_66, Jordennis_65, Joselito_67, JoshKayV_67, Journey13_59, Jsquared_69, KADY_67, Kalb97_69, Kalnoky_69, Kalpine_65, Kazan_67, Kerberos_68, Kimba_65, Kimona_60, KingCyrus_67, Kinmap_66, Kipper29_66, KittenMittens_58, Koduck_68, Koko_69, Kristoff_61, L5_63, LBerry_69, LadyBird_70, Landor_65, Larenn_63, LarryKay_68, Leogania_67, Leviathan_68, Licorice_60, LilTurb_67, Lilbunny_66, Lilith_67, LionsBait_67, Lökk_61, LoneWolf_68, Loser_68, Louie6_67, Lowa_67, Lucivia_67, Lucyedi_67, LugYA_71, MaCh_66, Mabel_66, MadMarie_68, Mainiac_68, MajorMajor_67, Malec_64, Malinsilva_70, Maminiaina_67, Manu_68, MarQuardt_68, Marie_66, Marius_69, McFly_66, Methuselah_63, Microwolf_66, MiculUcigas_65, Miko_61, Minispark_64, Misomonster_69, MissWhite_66, MoneyMay_67, Montavir_65, MuchMore_71, Mulciber_65, Munch_66, NaSiaTalie_65, Naji_68, Neeharika16_65, Newrala_66, NicoleTera_64, Norz_59, NothingSpecial_63, OKCentral2016_60, Odin_66, Ohno789_59, OlanP_67, Ollie_68, Orange_65, P28Green_69, PGHhamlin_70, PP_67, Pari_61, Pawn_68, PeaceMeal1_59, Pelly_58, Pembroke_68, Penny1_68, Petersenfast_64, PetterN_63, Ph8s_69, Phaded_63, Pharaoh_62, PherrisBueller_57, PhishRPhriends_66, Phlei_54, Phoebe_69, Phoxy_68, Phranny_69, Piro94_65, Pmask_65, Polyphemus_68, Pomar16_67, Poompha_59, PotatoSplit_69, Power_65, Priamo_68, Priya_66, Prudy_60, Pukovnik_63, PurpleHaze_68, Qobbit_66, QueenB2_65,

QueenBeesly_66, Quokka_67, Rachaly_63, Rahalelujah_66, Reba_68, Rebeuca_62, RedRock_67, Refuge_63, Retro23_67, RhynO_61, Rifter_67, Roksolana_68, Rowdy_64, Rummer_67, Ruotula_61, Sabia_68, Sabinator_66, Salz_65, Saskia_66, Scherzo_68, Scorpia_62, Seanderson_58, SemperFi_67, Serenity_69, Severus_59, Sham4_66, Shapes_64, Sheen_65, Sknot_65, Smeagan_69, SmellyB_66, SnapTap_66, Snape_66, Snickers_68, SoYo_67, SoilDragon_68, Soshari_70, Spike509_68, SpikeBT_57, Spouty_66, Stagni_67, StarStuff_68, Steamy_62, StepMih_67, StrongArm_57, Sunhee_68, SuperAwesome_66, SuperCallie99_63, Superchunk_67, SweetiePie_66, SwirlSquare_71, TarsusIV_63, Taurus_69, Temprado_68, Terrific_66, Tiffany_67, Timothy_66, Timshel_65, TinyPebbles_67, TinyTimmy_66, TipsytheTRex_65, Toaka_67, Tomathan_68, ToneTone_64, Topanga_58, Toro_65, Traft412_61, Travvers_67, Trike_58, Tristan_63, Trixie_64, Trooper_66, Tucker_67, Turbido_67, Twister_60, Ugenie5_64, Updawg_66, VA6_66, VC3_69, Vix_66, VohminGhazi_66, WalterMcMickey_60, Watson_67, WeiHuaDA_67, Whabigail7_67, WideWale_66, Wiks_66, Wolpertinger_64, Wooldri_70, WorldCup_64, WunderPhul_67, XianYue_63, Yokurt_66, Zaka_67, Zetty_67, Zimmer_63, Zulu_68,

Summary by start number:

Start 12:

- Found in 9 of 578 (1.6%) of genes in pham
- Manual Annotations of this start: 1 of 514
- Called 11.1% of time when present
- Phage (with cluster) where this start called: D29_63 (A2),

Start 24:

- Found in 1 of 578 (0.2%) of genes in pham
- Manual Annotations of this start: 1 of 514
- Called 100.0% of time when present
- Phage (with cluster) where this start called: DBQu4n_68 (A2),

Start 29:

- Found in 180 of 578 (31.1%) of genes in pham
- Manual Annotations of this start: 22 of 514
- Called 12.2% of time when present
- Phage (with cluster) where this start called: Abdiel_62 (A4), Achebe_59 (A4), Bombshell_62 (A4), Bruiser_61 (A4), BubbleTrouble_61 (A4), Camperdownii_60 (A4), Clarenza_61 (A4), Funston_61 (A4), HamSlice_59 (A4), Iracema64_63 (A4), JoongJeon_61 (A4), KFPoly_61 (A4), Kratark_61 (A4), Lemur_62 (A4), Millski_61 (A4), Palestino_61 (A4), Phacado_62 (A4), Phaded_63 (A2), Phighter1804_62 (A4), Thanksgivukkah_61 (A4), TinaFeyge_60 (A4), Wander_62 (A4),

Start 30:

- Found in 8 of 578 (1.4%) of genes in pham
- Manual Annotations of this start: 1 of 514
- Called 12.5% of time when present
- Phage (with cluster) where this start called: DroogsArmy_61 (A7),

Start 31:

- Found in 284 of 578 (49.1%) of genes in pham
- Manual Annotations of this start: 13 of 514
- Called 4.6% of time when present

- Phage (with cluster) where this start called: Avle17_62 (A4), CocoaBerry_62 (A4), Eris_61 (A4), Flux_62 (A4), Gladiator_64 (A6), Hexamo_67 (A6), LittleGuy_62 (A4), Maverick_61 (A4), Medusa_62 (A4), Nyxis_61 (A4), Sabertooth_62 (A4), Serenity_69 (A2), Shaka_60 (A4),

Start 32:

- Found in 19 of 578 (3.3%) of genes in pham
- Manual Annotations of this start: 19 of 514
- Called 100.0% of time when present
- Phage (with cluster) where this start called: Airmid_58 (A5), Beatrix_58 (A1), Bethlehem_58 (A1), Bexan_56 (A1), Bones_58 (A1), Cueylyss_59 (A1), Doom_56 (A1), Dreamboat_59 (A1), GageAP_59 (A1), Graduation_62 (A1), Jasper_59 (A1), Norz_59 (A1), Ohno789_59 (A1), Pari_61 (A1), PetterN_63 (A5), PherrisBueller_57 (A1), Scorpia_62 (A5), SpikeBT_57 (A1), StrongArm_57 (A1),

Start 33:

- Found in 6 of 578 (1.0%) of genes in pham
- Manual Annotations of this start: 4 of 514
- Called 66.7% of time when present
- Phage (with cluster) where this start called: BillKnuckles_56 (A1), Licorice_60 (A1), Seanderson_58 (A1), Traft412_61 (A1),

Start 34:

- Found in 8 of 578 (1.4%) of genes in pham
- Manual Annotations of this start: 7 of 514
- Called 87.5% of time when present
- Phage (with cluster) where this start called: Ashballer_61 (A1), Dulcie_58 (A1), Gwendoluna_61 (A1), JC27_61 (A1), PP_67 (A7), Pelly_58 (A1), Ruotula_61 (A1),

Start 36:

- Found in 71 of 578 (12.3%) of genes in pham
- Manual Annotations of this start: 15 of 514
- Called 21.1% of time when present
- Phage (with cluster) where this start called: Anubis_71 (A3), BreSam8_68 (A3), Colbster_66 (A3), DaHudson_67 (A3), Daishi_67 (A3), Hercules11_68 (A3), Misomonster_69 (A3), PGHhamlin_70 (A3), Pembroke_68 (A3), Phoebe_69 (A3), Snickers_68 (A3), SoYo_67 (A3), SoilDragon_68 (A3), TinyPebbles_67 (A3), Wooldri_70 (A3),

Start 37:

- Found in 2 of 578 (0.3%) of genes in pham
- Manual Annotations of this start: 1 of 514
- Called 100.0% of time when present
- Phage (with cluster) where this start called: 40AC_66 (A17), Eaglepride_62 (A10),

Start 38:

- Found in 35 of 578 (6.1%) of genes in pham
- Manual Annotations of this start: 27 of 514
- Called 97.1% of time when present
- Phage (with cluster) where this start called: Aneem_67 (A11), BabyBack_63 (A2), Bachome_68 (A11), Bowtie_67 (A11), Bud_65 (A11), Ebony_66 (A11), Et2Brutus_65 (A11), Fibonacci_66 (A11), Flaverint_67 (A11), FlyCatcher_67 (A7), Gilberta_67 (A11), HINdeR_62 (A7), Hutc2_65 (A11), Insomnia_67 (A11), Jabith_67 (A11),

Joselito_67 (A11), Kimba_65 (A11), Lucivia_67 (A11), MaCh_66 (A11), Mabel_66 (A11), Mulciber_65 (A11), Munch_66 (A11), Orange_65 (A11), Petersenfast_64 (A11), Phlei_54 (A13), Salz_65 (A11), Saskia_66 (A11), Sham4_66 (A11), Sheen_65 (A7), Snape_66 (A11), Timothy_66 (A11), TinyTimmy_66 (A11), Toro_65 (A7), Wolpertinger_64 (A11),

Start 39:

- Found in 69 of 578 (11.9%) of genes in pham
- Manual Annotations of this start: 54 of 514
- Called 92.8% of time when present
- Phage (with cluster) where this start called: AN9_70 (A2), ANI8_70 (A2), Adzzy_69 (A2), Bactobuster_62 (A2), Bradman_68 (A2), C3_63 (A2), Caraxes_68 (A2), Che12_69 (A2), Chupacabra_60 (A10), D32_67 (A2), DontArgue_58 (A10), Drake94_59 (A10), Duplo_68 (A2), DustyMartin_64 (A10), EagleEye_68 (A16), Edison31_58 (A10), GaugeLDP_62 (A2), Goose_62 (A10), Herbertwm_62 (A2), IronMan_64 (A2), Iwokeuplikedis_67 (A2), Jaan_65 (A2), Journey13_59 (A2), Jsquared_69 (A2), Kerberos_68 (A2), Kimona_60 (A19), Kinmap_66 (A21), KittenMittens_58 (A10), Koduck_68 (A2), Kristoff_61 (A10), L5_63 (A2), Landor_65 (A2), Larenn_63 (A2), Lucyedi_67 (A16), MajorMajor_67 (A2), Malec_64 (A2), MissWhite_66 (A2), Naji_68 (A2), OKCentral2016_60 (A10), Odin_66 (A2), PeaceMeal1_59 (A10), Ph8s_69 (A2), Pomar16_67 (A2), Poompha_59 (A10), Pukovnik_63 (A2), Quokka_67 (A2), Rebeuca_62 (A10), RhynO_61 (A10), Rowdy_64 (A10), Severus_59 (A10), Shapes_64 (A10), StarStuff_68 (A2), Superchunk_67 (A2), SwirlSquare_71 (A2), Timshel_65 (A7), TopsytheTRex_65 (A2), Tomathan_68 (A2), Topanga_58 (A10), Travvers_67 (A2), Trike_58 (A10), Tristan_63 (A2), Twister_60 (A10), VC3_69 (A2), WalterMcMickey_60 (A10),

Start 40:

- Found in 163 of 578 (28.2%) of genes in pham
- Manual Annotations of this start: 137 of 514
- Called 98.8% of time when present
- Phage (with cluster) where this start called: 20ES_68 (A2), AN3_68 (A2), AbbyPaige_68 (A2), Acolyte_59 (A2), Agape74_68 (A2), Alma_66 (A9), AnnaL29_67 (A2), Anselm_67 (A2), ArcherNM_60 (A2), Artemis2UCLA_67 (A6), Ayanochan_66 (A9), BABullseye_59 (A6), Baehexic_64 (A2), Bellris_64 (A9), BengiVuitton_66 (A2), BennyP_67 (A6), Benvolio_63 (A2), BiancaTri92_67 (A2), BlessJoy_67 (A6), Blinn1_69 (A6), Blue7_68 (A6), BobSwaget_60 (A2), BogosyJay_67 (A9), Bugsy_68 (A2), CRB1_68 (A2), Candra_64 (A6), Centaur_66 (A2), Changeling_65 (A2), Chartreuse_65 (A6), ChipMunk_68 (A2), CloudWang3_68 (A6), CogOmlette_64 (A9), Colin_64 (A2), Conquerage_66 (A9), Cookiedough_66 (A6), Crucio_66 (A2), DaVinci_64 (A6), Dalmatian_67 (A2), Darrell_69 (A9), DarthPhader_63 (A12), DeerParkTS_63 (A2), Deloris_66 (A2), DelvinSonDorr_63 (A6), Dignity_68 (A2), Dorothea_66 (A6), Drake55_67 (A2), DudeLittle_65 (A2), EZMoney23_63 (A2), Echild_66 (A2), Eidsmoe_66 (A9), Elephantoon_66 (A9), EmyBug_65 (A9), Equemioh13_65 (A2), EricB_65 (A6), EvilGenius_67 (A2), ExplosioNervosa_66 (A9), Fameo_66 (A2), Fayely_66 (A9), FiringLine_66 (A2), First_0067 (A2), Flare16_65 (A2), ForesterFrank_62 (A2), Garak_68 (A6), Georgie2_67 (A2), Gratitude_63 (A2), GreedyLawyer_63 (A6), Gruunaga_67 (A6), Hammer_67 (A6), Hanray_66 (A9), HarryHoudini_66 (A2), Heffalump_65 (A2), Helmet_69 (A6), HippoHollow_65 (A2), Horex_66 (A9), Hoot_61 (A6), Indra_70 (A6), Isiphiwo_64 (A6), Jeffabunny_67 (A6), Jerm_68 (A2), JewelBug_66 (A6), Jiawan_65 (A9), Jordennis_65 (A6), JoshKayV_67 (A2), Kalpine_65 (A2), Kazan_67 (A6), KingCyrus_67 (A2), Kipper29_66 (A6), Koko_69 (A6), LadyBird_70 (A2), Leogania_67 (A2), Leviathan_68 (A2), LilTurb_67

(A2), Lilbunny_66 (A6), LionsBait_67 (A2), Lokk_61 (A2), LoneWolf_68 (A9), Loser_68 (A2), Maminaiaina_67 (A9), McFly_66 (A6), MiculUcigas_65 (A2), Miko_61 (A2), Minispark_64 (A9), NaSiaTalie_65 (A2), Neeharika16_65 (A6), Newrala_66 (A6), NicoleTera_64 (A2), NothingSpecial_63 (A2), Pharaoh_62 (A12), Piro94_65 (A2), Pmask_65 (A6), Polyphemus_68 (A6), Power_65 (A2), Priamo_68 (A6), Priya_66 (A9), Prudy_60 (A2), Qobbit_66 (A9), QueenB2_65 (A2), QueenBeesly_66 (A2), Rachaly_63 (A2), Rahalelujah_66 (A9), RedRock_67 (A2), Refuge_63 (A12), Retro23_67 (A2), Rifter_67 (A6), Roksolana_68 (A6), Scherzo_68 (A9), SemperFi_67 (A2), Sknot_65 (A2), Smeagan_69 (A2), SmellyB_66 (A6), SnapTap_66 (A2), Spouty_66 (A9), Steamy_62 (A12), Sunhee_68 (A14), SuperAwesome_66 (A6), SuperCallie99_63 (A6), SweetiePie_66 (A2), TarsusIV_63 (A2), Temprado_68 (A6), Terrific_66 (A2), Toaka_67 (A9), ToneTone_64 (A6), Trixie_64 (A2), Trooper_66 (A2), Tucker_67 (A6), Turbido_67 (A2), Ugenie5_64 (A9), Updawg_66 (A2), VA6_66 (A2), VohminGhazi_66 (A6), WeiHuaDA_67 (A2), Whabigail7_67 (A2), WideWale_66 (A2), Wiks_66 (A6), WorldCup_64 (A9), WunderPhul_67 (A6), XianYue_63 (A2), Yokurt_66 (A6), Zaka_67 (A6), Zimmer_63 (A12), Zulu_68 (A6),

Start 41:

- Found in 190 of 578 (32.9%) of genes in pham
- Manual Annotations of this start: 144 of 514
- Called 83.7% of time when present
- Phage (with cluster) where this start called: AbbysRanger_60 (A4), Albee_62 (A4), Alberto7_63 (A4), Annyong_61 (A4), Arturo_60 (A4), AvatarAhPeg_59 (A4), B1_57 (A3), Baby16_62 (A4), BabyJohn_60 (A3), BabyRay_65 (A3), Backyardigan_58 (A4), Badger_59 (A4), BangNhom_61 (A4), Bartimeaus_62 (A4), BellusTerra_63 (A4), Blackmoor_61 (A4), BlueBird_67 (A3), Broseidon_62 (A4), Bugatti_65 (A3), Bumblebee11_59 (A4), Burger_60 (A4), Caelakin_61 (A4), Caviar_64 (A3), CentreCat_62 (A4), Cerulean_63 (A4), ChampagnePapi_64 (A4), Chaph_62 (A4), Chiqui_60 (A3), Cici_60 (A4), Cindaradix_57 (A4), Cintron_62 (A4), Citius_62 (A4), Clammy_65 (A3), Commander_61 (A4), Connomayer_62 (A4), Datway_60 (A4), Deano_60 (A4), Dhanush_62 (A4), DirtyDunning_61 (A4), DropBear_63 (A3), Druantia_61 (A4), Eagle_61 (A4), Eapen_62 (A4), Eros_62 (A4), EtoileNova_63 (A3), Eurydice_63 (A4), Florean_62 (A4), Fred313_63 (A3), Gadost_62 (A4), Giroux_67 (A3), Happiness_61 (A4), Heathen_65 (A3), HelDan_64 (A3), Holli_61 (A4), Hookmount_64 (A3), Houdini22_61 (A4), Huxley_61 (A4), ICleared_61 (A4), Iceman_62 (A4), Idleandcovert_65 (A3), Isca_63 (A3), JF2_63 (A3), JF4_63 (A3), Jaykayelowell_59 (A4), JetBlade_62 (A4), Kachowdy_63 (A3), Kampy_61 (A4), Katalie136_60 (A4), KekoraPapaka_60 (A4), Kingmustik0402_62 (A4), Koan_59 (A4), Koreni_61 (A4), Kremtemulon_62 (A4), Kyee_62 (A4), LHTSCC_64 (A4), Lambert1_64 (A3), LappelDuVide_62 (A4), LeoAvram_61 (A4), LittleB_62 (A4), LochMonster_63 (A4), Lorenzo_62 (A4), Lunsford_63 (A4), MA5_65 (A3), MK4_65 (A3), Marchesa_63 (A3), Margo_64 (A3), Maxo_63 (A4), Mayonnaise_60 (A4), Mazhar510_62 (A4), MeeZee_61 (A4), Melvin_64 (A4), Miramae_59 (A4), Morpher26_60 (A4), Morrow_63 (A4), Mundrea_60 (A4), Nebs_63 (A4), Nemo27_61 (A4), Noella_64 (A3), Noelle_61 (A4), Norbert_61 (A3), NorthStar_60 (A4), NotAPhaseMom_61 (A4), OKaNui_62 (A4), Obama12_63 (A4), Ohfah_63 (A4), Panamaxus_62 (A3), Peaches_60 (A4), Perplexer_60 (A4), PeterPeter_62 (A4), PetiteSangsue_60 (A4), Phantastic_66 (A3), Phelipe_63 (A4), Phontbonne_62 (A4), Pipcraft_59 (A4), Pistachio_65 (A3), Pocahontas_64 (A3), Polymorphads_63 (A4), Popcicle_64 (A3), Pumbaa_62 (A4), Puppy_65 (A3), QuinnKiro_63 (A3), Relief_61 (A4), ResDef_63 (A3), RockieBear_60 (A4), Rockstar_63 (A3), Roimos_63 (A3), Romney_61 (A4), Roosevelt_60 (A4), Rosa24_60 (A4), Ruin_62 (A4), SaturnRing_65 (A3), Scamp_62 (A4), Scout_64 (A3), SenorClean_62 (A4), SheldonCooper_62 (A4),

Shygu2_60 (A4), Skipitt_61 (A4), Sparxx_63 (A4), Spino_61 (A4), Stasia_60 (A4), SteMason_59 (A4), Stink_59 (A4), Sultana_62 (A4), TNguyen7_66 (A3), Taquarus_61 (A4), Texage_62 (A3), Tinybot_61 (A4), TiroTheta9_61 (A4), Todacoro_64 (A3), TroyPia_63 (A4), TygerBlood_62 (A4), Ulysses_61 (A4), Veracruz_62 (A3), Wilbur_62 (A4), Wile_60 (A4), Wizard007_61 (A4), Xena_59 (A4), YoSam321_62 (A4), Zarafa_63 (A3),

Start 42:

- Found in 71 of 578 (12.3%) of genes in pham
- Manual Annotations of this start: 51 of 514
- Called 78.9% of time when present
- Phage (with cluster) where this start called: Aglet_69 (A3), AgronaGT15_67 (A3), AugsMagnumOpus_71 (A3), Beauxregard13_67 (A3), Bigflo_67 (A3), BuzzBuzz_64 (A3), Bxz2_63 (A3), Croquant_67 (A3), Cullens_68 (A3), Dieselweasel_69 (A3), EpicPhail_69 (A3), Farber_68 (A3), Fernando_68 (A3), GingkoMaracino_68 (A3), Grif_68 (A3), Grub_68 (A3), Grum1_67 (A3), GtownJaz_68 (A3), Gwennie_65 (A3), HashRod_69 (A3), JHC117_66 (A3), JenCasNa_69 (A3), Jobu08_66 (A3), KADY_67 (A3), LBerry_69 (A3), LarryKay_68 (A3), Lilit_67 (A3), Lowa_67 (A3), LugYA_71 (A3), MadMarie_68 (A3), Mainiac_68 (A3), Malinsilva_70 (A3), MarQuardt_68 (A3), Marie_66 (A3), Methuselah_63 (A3), Microwolf_66 (A3), MoneyMay_67 (A3), Montavir_65 (A3), MuchMore_71 (A3), Ollie_68 (A3), P28Green_69 (A3), Penny1_68 (A3), Phoxy_68 (A3), PotatoSplit_69 (A3), Rummer_67 (A3), Sabia_68 (A3), Sabinator_66 (A3), Soshari_70 (A3), Spike509_68 (A3), Stagni_67 (A3), StepMih_67 (A3), Taurus_69 (A3), Tiffany_67 (A3), Vix_66 (A3), Watson_67 (A3), Zetzy_67 (A3),

Start 43:

- Found in 22 of 578 (3.8%) of genes in pham
- Manual Annotations of this start: 17 of 514
- Called 86.4% of time when present
- Phage (with cluster) where this start called: ACFishhook_66 (A3), Calvinny_67 (A3), ClownCar_67 (A3), Gemma_67 (A3), Groupthink_69 (A3), HaveUMetTed_69 (A3), Heliosoles_67 (A3), JeppNRM_69 (A3), Kalb97_69 (A3), Kalnoky_69 (A3), Louie6_67 (A3), Manu_68 (A3), Marius_69 (A3), OlanP_67 (A3), Pawn_68 (A3), PhishRPhriends_66 (A3), Phranny_69 (A3), PurpleHaze_68 (A3), Reba_68 (A3),

Summary by clusters:

There are 17 clusters represented in this pham: A21, A17, A16, A11, A10, A13, A12, A19, A1, A3, A2, A5, A4, A7, A6, A9, A14,

Info for manual annotations of cluster A1:

- Start number 32 was manually annotated 16 times for cluster A1.
- Start number 33 was manually annotated 4 times for cluster A1.
- Start number 34 was manually annotated 6 times for cluster A1.

Info for manual annotations of cluster A10:

- Start number 37 was manually annotated 1 time for cluster A10.
- Start number 39 was manually annotated 16 times for cluster A10.

Info for manual annotations of cluster A11:

- Start number 38 was manually annotated 24 times for cluster A11.

Info for manual annotations of cluster A12:

- Start number 40 was manually annotated 5 times for cluster A12.

Info for manual annotations of cluster A14:

- Start number 40 was manually annotated 1 time for cluster A14.

Info for manual annotations of cluster A16:

- Start number 39 was manually annotated 2 times for cluster A16.

Info for manual annotations of cluster A19:

- Start number 39 was manually annotated 1 time for cluster A19.

Info for manual annotations of cluster A2:

- Start number 12 was manually annotated 1 time for cluster A2.
- Start number 24 was manually annotated 1 time for cluster A2.
- Start number 29 was manually annotated 1 time for cluster A2.
- Start number 31 was manually annotated 1 time for cluster A2.
- Start number 38 was manually annotated 1 time for cluster A2.
- Start number 39 was manually annotated 34 times for cluster A2.
- Start number 40 was manually annotated 67 times for cluster A2.

Info for manual annotations of cluster A3:

- Start number 36 was manually annotated 15 times for cluster A3.
- Start number 41 was manually annotated 33 times for cluster A3.
- Start number 42 was manually annotated 51 times for cluster A3.
- Start number 43 was manually annotated 17 times for cluster A3.

Info for manual annotations of cluster A4:

- Start number 29 was manually annotated 21 times for cluster A4.
- Start number 31 was manually annotated 10 times for cluster A4.
- Start number 41 was manually annotated 111 times for cluster A4.

Info for manual annotations of cluster A5:

- Start number 32 was manually annotated 3 times for cluster A5.

Info for manual annotations of cluster A6:

- Start number 31 was manually annotated 2 times for cluster A6.
- Start number 40 was manually annotated 46 times for cluster A6.

Info for manual annotations of cluster A7:

- Start number 30 was manually annotated 1 time for cluster A7.
- Start number 34 was manually annotated 1 time for cluster A7.
- Start number 38 was manually annotated 2 times for cluster A7.
- Start number 39 was manually annotated 1 time for cluster A7.

Info for manual annotations of cluster A9:

- Start number 40 was manually annotated 18 times for cluster A9.

Gene Information:

Gene: 20ES_68 Start: 41417, Stop: 41187, Start Num: 40
Candidate Starts for 20ES_68:
(Start: 40 @41417 has 137 MA's), (45, 41399), (71, 41270), (78, 41231),

Gene: 40AC_66 Start: 42289, Stop: 42059, Start Num: 37
Candidate Starts for 40AC_66:
(Start: 37 @42289 has 1 MA's), (44, 42277), (45, 42274), (51, 42241), (60, 42187), (67, 42157),

Gene: ACFishhook_66 Start: 41128, Stop: 40898, Start Num: 43
Candidate Starts for ACFishhook_66:
(Start: 43 @41128 has 17 MA's), (71, 40984), (78, 40945),

Gene: AN3_68 Start: 40132, Stop: 39902, Start Num: 40
Candidate Starts for AN3_68:
(Start: 40 @40132 has 137 MA's), (45, 40114), (71, 39985), (78, 39946),

Gene: AN9_70 Start: 41277, Stop: 41041, Start Num: 39
Candidate Starts for AN9_70:
(Start: 31 @41304 has 13 MA's), (Start: 39 @41277 has 54 MA's), (44, 41259), (51, 41226), (67, 41139),

Gene: ANI8_70 Start: 41277, Stop: 41041, Start Num: 39
Candidate Starts for ANI8_70:
(Start: 31 @41304 has 13 MA's), (Start: 39 @41277 has 54 MA's), (44, 41259), (51, 41226), (67, 41139),

Gene: AbbyPaige_68 Start: 41661, Stop: 41431, Start Num: 40
Candidate Starts for AbbyPaige_68:
(4, 41910), (26, 41715), (28, 41709), (Start: 40 @41661 has 137 MA's), (45, 41643), (71, 41514), (78, 41475),

Gene: AbbysRanger_60 Start: 40318, Stop: 40094, Start Num: 41
Candidate Starts for AbbysRanger_60:
(Start: 29 @40360 has 22 MA's), (Start: 31 @40348 has 13 MA's), (Start: 41 @40318 has 144 MA's), (77, 40153), (78, 40141),

Gene: Abdiel_62 Start: 40510, Stop: 40244, Start Num: 29
Candidate Starts for Abdiel_62:
(Start: 29 @40510 has 22 MA's), (Start: 31 @40498 has 13 MA's), (Start: 41 @40468 has 144 MA's), (47, 40447), (78, 40291), (83, 40252),

Gene: Achebe_59 Start: 40343, Stop: 40077, Start Num: 29
Candidate Starts for Achebe_59:
(Start: 29 @40343 has 22 MA's), (Start: 31 @40331 has 13 MA's), (Start: 41 @40301 has 144 MA's), (77, 40136), (78, 40124),

Gene: Acolyte_59 Start: 40074, Stop: 39841, Start Num: 40
Candidate Starts for Acolyte_59:
(Start: 40 @40074 has 137 MA's), (45, 40056), (65, 39942), (71, 39927), (81, 39864), (83, 39849),

Gene: Adzzy_69 Start: 39937, Stop: 39698, Start Num: 39
Candidate Starts for Adzzy_69:
(Start: 39 @39937 has 54 MA's), (44, 39919), (51, 39886), (67, 39799), (76, 39766), (83, 39706),

Gene: Agape74_68 Start: 41655, Stop: 41425, Start Num: 40

Candidate Starts for Agape74_68:

(4, 41904), (26, 41709), (28, 41703), (Start: 40 @41655 has 137 MA's), (45, 41637), (71, 41508), (78, 41469),

Gene: Aglet_69 Start: 41171, Stop: 40941, Start Num: 42

Candidate Starts for Aglet_69:

(Start: 36 @41198 has 15 MA's), (Start: 42 @41171 has 51 MA's), (67, 41042), (78, 40988),

Gene: AgronaGT15_67 Start: 41019, Stop: 40789, Start Num: 42

Candidate Starts for AgronaGT15_67:

(Start: 36 @41046 has 15 MA's), (Start: 42 @41019 has 51 MA's), (67, 40890), (78, 40836),

Gene: Airmid_58 Start: 39243, Stop: 38977, Start Num: 32

Candidate Starts for Airmid_58:

(Start: 32 @39243 has 19 MA's), (Start: 39 @39219 has 54 MA's), (Start: 43 @39210 has 17 MA's), (78, 39024),

Gene: Albee_62 Start: 40464, Stop: 40240, Start Num: 41

Candidate Starts for Albee_62:

(Start: 29 @40506 has 22 MA's), (Start: 31 @40494 has 13 MA's), (Start: 41 @40464 has 144 MA's), (47, 40443), (78, 40287), (83, 40248),

Gene: Alberto7_63 Start: 40801, Stop: 40577, Start Num: 41

Candidate Starts for Alberto7_63:

(Start: 29 @40843 has 22 MA's), (Start: 31 @40831 has 13 MA's), (Start: 41 @40801 has 144 MA's), (47, 40780), (78, 40624), (83, 40585),

Gene: Alma_66 Start: 40634, Stop: 40401, Start Num: 40

Candidate Starts for Alma_66:

(Start: 40 @40634 has 137 MA's), (45, 40616), (60, 40529), (64, 40502), (79, 40439), (81, 40424),

Gene: Aneem_67 Start: 40626, Stop: 40393, Start Num: 38

Candidate Starts for Aneem_67:

(Start: 38 @40626 has 27 MA's), (45, 40608), (57, 40524), (73, 40464), (76, 40458),

Gene: AnnaL29_67 Start: 42021, Stop: 41788, Start Num: 40

Candidate Starts for AnnaL29_67:

(Start: 31 @42051 has 13 MA's), (Start: 40 @42021 has 137 MA's), (45, 42003), (64, 41889), (71, 41874),

Gene: Annyong_61 Start: 40509, Stop: 40285, Start Num: 41

Candidate Starts for Annyong_61:

(Start: 29 @40551 has 22 MA's), (Start: 31 @40539 has 13 MA's), (Start: 41 @40509 has 144 MA's), (47, 40488), (78, 40332), (83, 40293),

Gene: Anselm_67 Start: 41559, Stop: 41329, Start Num: 40

Candidate Starts for Anselm_67:

(18, 41646), (Start: 31 @41592 has 13 MA's), (Start: 40 @41559 has 137 MA's), (45, 41541), (48, 41523), (78, 41373),

Gene: Anubis_71 Start: 41084, Stop: 40827, Start Num: 36

Candidate Starts for Anubis_71:

(Start: 36 @41084 has 15 MA's), (Start: 42 @41057 has 51 MA's), (67, 40928), (78, 40874),

Gene: ArcherNM_60 Start: 40803, Stop: 40570, Start Num: 40

Candidate Starts for ArcherNM_60:

(Start: 31 @40833 has 13 MA's), (Start: 40 @40803 has 137 MA's), (45, 40785), (51, 40752), (71, 40656), (81, 40593),

Gene: Artemis2UCLA_67 Start: 39185, Stop: 38952, Start Num: 40

Candidate Starts for Artemis2UCLA_67:

(Start: 31 @39215 has 13 MA's), (Start: 40 @39185 has 137 MA's), (45, 39167), (49, 39146), (54, 39119), (65, 39053), (74, 39026), (78, 38999), (83, 38960),

Gene: Arturo_60 Start: 40579, Stop: 40355, Start Num: 41

Candidate Starts for Arturo_60:

(Start: 29 @40621 has 22 MA's), (Start: 31 @40609 has 13 MA's), (Start: 41 @40579 has 144 MA's), (47, 40558), (78, 40402), (83, 40363),

Gene: Ashballer_61 Start: 40810, Stop: 40559, Start Num: 34

Candidate Starts for Ashballer_61:

(Start: 33 @40813 has 4 MA's), (Start: 34 @40810 has 7 MA's), (49, 40759), (53, 40741), (56, 40696),

Gene: AugsMagnumOpus_71 Start: 41162, Stop: 40932, Start Num: 42

Candidate Starts for AugsMagnumOpus_71:

(Start: 36 @41189 has 15 MA's), (Start: 42 @41162 has 51 MA's), (67, 41033), (78, 40979),

Gene: AvatarAhPeg_59 Start: 40091, Stop: 39867, Start Num: 41

Candidate Starts for AvatarAhPeg_59:

(Start: 29 @40133 has 22 MA's), (Start: 31 @40121 has 13 MA's), (Start: 41 @40091 has 144 MA's), (47, 40070),

Gene: Avle17_62 Start: 40491, Stop: 40237, Start Num: 31

Candidate Starts for Avle17_62:

(Start: 29 @40503 has 22 MA's), (Start: 31 @40491 has 13 MA's), (Start: 41 @40461 has 144 MA's), (47, 40440), (78, 40284), (83, 40245),

Gene: Ayanochan_66 Start: 40417, Stop: 40184, Start Num: 40

Candidate Starts for Ayanochan_66:

(Start: 40 @40417 has 137 MA's), (45, 40399), (60, 40312), (64, 40285), (79, 40222), (81, 40207),

Gene: B1_57 Start: 39044, Stop: 38814, Start Num: 41

Candidate Starts for B1_57:

(Start: 29 @39086 has 22 MA's), (Start: 31 @39074 has 13 MA's), (Start: 41 @39044 has 144 MA's), (58, 38954),

Gene: BABullseye_59 Start: 36740, Stop: 36507, Start Num: 40

Candidate Starts for BABullseye_59:

(Start: 40 @36740 has 137 MA's), (45, 36722), (49, 36701), (54, 36674), (55, 36659), (65, 36608), (71, 36593),

Gene: Baby16_62 Start: 40475, Stop: 40251, Start Num: 41

Candidate Starts for Baby16_62:

(Start: 29 @40517 has 22 MA's), (Start: 31 @40505 has 13 MA's), (Start: 41 @40475 has 144 MA's), (47, 40454), (78, 40298), (83, 40259),

Gene: BabyBack_63 Start: 41397, Stop: 41167, Start Num: 38

Candidate Starts for BabyBack_63:

(Start: 38 @41397 has 27 MA's), (45, 41376), (67, 41262),

Gene: BabyJohn_60 Start: 40871, Stop: 40641, Start Num: 41

Candidate Starts for BabyJohn_60:

(Start: 29 @40913 has 22 MA's), (Start: 31 @40901 has 13 MA's), (Start: 41 @40871 has 144 MA's), (71, 40727),

Gene: BabyRay_65 Start: 40849, Stop: 40619, Start Num: 41

Candidate Starts for BabyRay_65:

(Start: 29 @40891 has 22 MA's), (Start: 31 @40879 has 13 MA's), (Start: 41 @40849 has 144 MA's), (71, 40705), (80, 40651),

Gene: Bachome_68 Start: 40606, Stop: 40373, Start Num: 38

Candidate Starts for Bachome_68:

(Start: 30 @40648 has 1 MA's), (Start: 38 @40606 has 27 MA's), (45, 40588), (57, 40504), (73, 40444), (76, 40438),

Gene: Backyardigan_58 Start: 40334, Stop: 40110, Start Num: 41

Candidate Starts for Backyardigan_58:

(Start: 29 @40376 has 22 MA's), (Start: 31 @40364 has 13 MA's), (Start: 41 @40334 has 144 MA's), (77, 40169), (78, 40157),

Gene: Bactobuster_62 Start: 41701, Stop: 41465, Start Num: 39

Candidate Starts for Bactobuster_62:

(Start: 29 @41740 has 22 MA's), (Start: 31 @41728 has 13 MA's), (Start: 39 @41701 has 54 MA's), (45, 41680), (81, 41488), (83, 41473),

Gene: Badger_59 Start: 40302, Stop: 40078, Start Num: 41

Candidate Starts for Badger_59:

(Start: 29 @40344 has 22 MA's), (Start: 31 @40332 has 13 MA's), (Start: 41 @40302 has 144 MA's), (77, 40137), (78, 40125),

Gene: Baehexic_64 Start: 40861, Stop: 40631, Start Num: 40

Candidate Starts for Baehexic_64:

(Start: 40 @40861 has 137 MA's), (45, 40843), (48, 40825), (54, 40795), (78, 40678), (81, 40654),

Gene: BangNhom_61 Start: 40867, Stop: 40643, Start Num: 41

Candidate Starts for BangNhom_61:

(Start: 29 @40909 has 22 MA's), (Start: 31 @40897 has 13 MA's), (Start: 41 @40867 has 144 MA's), (47, 40846), (78, 40690), (83, 40651),

Gene: Bartimeaus_62 Start: 40466, Stop: 40242, Start Num: 41

Candidate Starts for Bartimeaus_62:

(Start: 29 @40508 has 22 MA's), (Start: 31 @40496 has 13 MA's), (Start: 41 @40466 has 144 MA's), (47, 40445), (78, 40289), (83, 40250),

Gene: Beatrix_58 Start: 40913, Stop: 40653, Start Num: 32

Candidate Starts for Beatrix_58:

(Start: 32 @40913 has 19 MA's), (54, 40826), (75, 40724),

Gene: Beauxregard13_67 Start: 41174, Stop: 40944, Start Num: 42

Candidate Starts for Beauxregard13_67:

(Start: 36 @41201 has 15 MA's), (Start: 42 @41174 has 51 MA's), (67, 41045), (78, 40991),

Gene: Bellris_64 Start: 40143, Stop: 39910, Start Num: 40

Candidate Starts for Bellris_64:

(Start: 40 @40143 has 137 MA's), (45, 40125), (54, 40077), (74, 39984), (81, 39933),

Gene: BellusTerra_63 Start: 40468, Stop: 40244, Start Num: 41

Candidate Starts for BellusTerra_63:

(Start: 29 @40510 has 22 MA's), (Start: 31 @40498 has 13 MA's), (Start: 41 @40468 has 144 MA's), (47, 40447), (78, 40291), (83, 40252),

Gene: BengiVuitton_66 Start: 41394, Stop: 41164, Start Num: 40

Candidate Starts for BengiVuitton_66:

(Start: 40 @41394 has 137 MA's), (45, 41376), (71, 41247), (78, 41208),

Gene: BennyP_67 Start: 39255, Stop: 39022, Start Num: 40

Candidate Starts for BennyP_67:

(Start: 31 @39285 has 13 MA's), (Start: 40 @39255 has 137 MA's), (45, 39237), (49, 39216), (54, 39189), (65, 39123), (74, 39096), (78, 39069), (83, 39030),

Gene: Benvolio_63 Start: 40669, Stop: 40436, Start Num: 40

Candidate Starts for Benvolio_63:

(Start: 40 @40669 has 137 MA's), (45, 40651), (71, 40522), (78, 40483),

Gene: Bethlehem_58 Start: 41462, Stop: 41202, Start Num: 32

Candidate Starts for Bethlehem_58:

(Start: 32 @41462 has 19 MA's), (54, 41375), (75, 41273),

Gene: Bexan_56 Start: 40692, Stop: 40432, Start Num: 32

Candidate Starts for Bexan_56:

(Start: 32 @40692 has 19 MA's), (54, 40605), (75, 40503),

Gene: BiancaTri92_67 Start: 41939, Stop: 41709, Start Num: 40

Candidate Starts for BiancaTri92_67:

(Start: 31 @41969 has 13 MA's), (Start: 40 @41939 has 137 MA's), (45, 41921), (78, 41756), (81, 41732),

Gene: Bigflo_67 Start: 41170, Stop: 40940, Start Num: 42

Candidate Starts for Bigflo_67:

(Start: 36 @41197 has 15 MA's), (Start: 42 @41170 has 51 MA's), (67, 41041), (78, 40987),

Gene: BillKnuckles_56 Start: 41364, Stop: 41107, Start Num: 33

Candidate Starts for BillKnuckles_56:

(Start: 33 @41364 has 4 MA's), (49, 41307), (53, 41289),

Gene: Blackmoor_61 Start: 40466, Stop: 40242, Start Num: 41

Candidate Starts for Blackmoor_61:

(Start: 29 @40508 has 22 MA's), (Start: 31 @40496 has 13 MA's), (Start: 41 @40466 has 144 MA's), (47, 40445), (78, 40289), (83, 40250),

Gene: BlessJoy_67 Start: 39611, Stop: 39378, Start Num: 40

Candidate Starts for BlessJoy_67:

(Start: 31 @39641 has 13 MA's), (Start: 40 @39611 has 137 MA's), (45, 39593), (49, 39572), (54, 39545), (65, 39479), (74, 39452), (78, 39425), (83, 39386),

Gene: Blinn1_69 Start: 39269, Stop: 39036, Start Num: 40

Candidate Starts for Blinn1_69:

(Start: 40 @39269 has 137 MA's), (45, 39251), (49, 39230), (54, 39203), (55, 39188), (65, 39137), (71, 39122),

Gene: Blue7_68 Start: 39279, Stop: 39046, Start Num: 40

Candidate Starts for Blue7_68:

(Start: 31 @39309 has 13 MA's), (Start: 40 @39279 has 137 MA's), (45, 39261), (49, 39240), (54, 39213), (65, 39147), (74, 39120), (78, 39093), (83, 39054),

Gene: BlueBird_67 Start: 40896, Stop: 40666, Start Num: 41

Candidate Starts for BlueBird_67:

(Start: 29 @40938 has 22 MA's), (Start: 31 @40926 has 13 MA's), (Start: 41 @40896 has 144 MA's), (71, 40752), (72, 40749), (80, 40698),

Gene: BobSwaget_60 Start: 39664, Stop: 39434, Start Num: 40

Candidate Starts for BobSwaget_60:

(Start: 40 @39664 has 137 MA's), (45, 39646), (67, 39532), (78, 39481), (83, 39442),

Gene: BogosyJay_67 Start: 40706, Stop: 40473, Start Num: 40

Candidate Starts for BogosyJay_67:

(Start: 40 @40706 has 137 MA's), (45, 40688), (64, 40574), (81, 40496),

Gene: Bombshell_62 Start: 40503, Stop: 40237, Start Num: 29

Candidate Starts for Bombshell_62:

(Start: 29 @40503 has 22 MA's), (Start: 31 @40491 has 13 MA's), (Start: 41 @40461 has 144 MA's), (47, 40440), (78, 40284), (83, 40245),

Gene: Bones_58 Start: 41008, Stop: 40748, Start Num: 32

Candidate Starts for Bones_58:

(Start: 32 @41008 has 19 MA's), (49, 40948), (53, 40930), (77, 40807),

Gene: Bowtie_67 Start: 40633, Stop: 40400, Start Num: 38

Candidate Starts for Bowtie_67:

(Start: 38 @40633 has 27 MA's), (45, 40615), (57, 40531), (73, 40471), (76, 40465),

Gene: Bradman_68 Start: 40388, Stop: 40152, Start Num: 39

Candidate Starts for Bradman_68:

(22, 40448), (Start: 31 @40415 has 13 MA's), (Start: 39 @40388 has 54 MA's), (44, 40370), (51, 40337), (67, 40250),

Gene: BreSam8_68 Start: 41191, Stop: 40934, Start Num: 36

Candidate Starts for BreSam8_68:

(Start: 36 @41191 has 15 MA's), (Start: 42 @41164 has 51 MA's), (67, 41035), (78, 40981),

Gene: Broseidon_62 Start: 40466, Stop: 40242, Start Num: 41

Candidate Starts for Broseidon_62:

(Start: 29 @40508 has 22 MA's), (Start: 31 @40496 has 13 MA's), (Start: 41 @40466 has 144 MA's), (47, 40445), (78, 40289), (83, 40250),

Gene: Bruiser_61 Start: 40506, Stop: 40240, Start Num: 29

Candidate Starts for Bruiser_61:

(Start: 29 @40506 has 22 MA's), (Start: 31 @40494 has 13 MA's), (Start: 41 @40464 has 144 MA's), (47, 40443), (78, 40287), (83, 40248),

Gene: BubbleTrouble_61 Start: 40506, Stop: 40240, Start Num: 29

Candidate Starts for BubbleTrouble_61:

(Start: 29 @40506 has 22 MA's), (Start: 31 @40494 has 13 MA's), (Start: 41 @40464 has 144 MA's), (47, 40443), (78, 40287), (83, 40248),

Gene: Bud_65 Start: 40180, Stop: 39947, Start Num: 38

Candidate Starts for Bud_65:

(Start: 38 @40180 has 27 MA's), (45, 40162), (57, 40078), (73, 40018), (76, 40012),

Gene: Bugatti_65 Start: 40896, Stop: 40666, Start Num: 41

Candidate Starts for Bugatti_65:

(Start: 29 @40938 has 22 MA's), (Start: 31 @40926 has 13 MA's), (Start: 41 @40896 has 144 MA's), (71, 40752), (72, 40749), (80, 40698),

Gene: Buggy_68 Start: 41712, Stop: 41482, Start Num: 40

Candidate Starts for Buggy_68:

(Start: 40 @41712 has 137 MA's), (45, 41694), (71, 41565), (78, 41526),

Gene: Bumblebee11_59 Start: 40304, Stop: 40080, Start Num: 41

Candidate Starts for Bumblebee11_59:

(Start: 29 @40346 has 22 MA's), (Start: 31 @40334 has 13 MA's), (Start: 41 @40304 has 144 MA's), (77, 40139), (78, 40127),

Gene: Burger_60 Start: 40464, Stop: 40240, Start Num: 41

Candidate Starts for Burger_60:

(Start: 29 @40506 has 22 MA's), (Start: 31 @40494 has 13 MA's), (Start: 41 @40464 has 144 MA's), (47, 40443), (78, 40287), (83, 40248),

Gene: BuzzBuzz_64 Start: 41198, Stop: 40968, Start Num: 42

Candidate Starts for BuzzBuzz_64:

(Start: 36 @41225 has 15 MA's), (Start: 42 @41198 has 51 MA's), (67, 41069),

Gene: Bxz2_63 Start: 41205, Stop: 40975, Start Num: 42

Candidate Starts for Bxz2_63:

(Start: 36 @41232 has 15 MA's), (Start: 42 @41205 has 51 MA's), (67, 41076), (78, 41022),

Gene: C3_63 Start: 41277, Stop: 41041, Start Num: 39

Candidate Starts for C3_63:

(Start: 31 @41304 has 13 MA's), (Start: 39 @41277 has 54 MA's), (44, 41259), (51, 41226), (67, 41139),

Gene: CRB1_68 Start: 41940, Stop: 41710, Start Num: 40

Candidate Starts for CRB1_68:

(Start: 40 @41940 has 137 MA's), (45, 41922), (71, 41793), (78, 41754),

Gene: Caelakin_61 Start: 40464, Stop: 40240, Start Num: 41
Candidate Starts for Caelakin_61:
(Start: 29 @40506 has 22 MA's), (Start: 31 @40494 has 13 MA's), (Start: 41 @40464 has 144 MA's),
(47, 40443), (78, 40287), (83, 40248),

Gene: Calvinny_67 Start: 41056, Stop: 40826, Start Num: 43
Candidate Starts for Calvinny_67:
(Start: 43 @41056 has 17 MA's), (71, 40912), (78, 40873),

Gene: Camperdownii_60 Start: 40180, Stop: 39914, Start Num: 29
Candidate Starts for Camperdownii_60:
(Start: 29 @40180 has 22 MA's), (Start: 31 @40168 has 13 MA's), (Start: 41 @40138 has 144 MA's),
(47, 40117), (78, 39961), (83, 39922),

Gene: Candra_64 Start: 39104, Stop: 38871, Start Num: 40
Candidate Starts for Candra_64:
(Start: 40 @39104 has 137 MA's), (45, 39086), (49, 39065), (54, 39038), (55, 39023), (65, 38972), (71,
38957),

Gene: Caraxes_68 Start: 39685, Stop: 39446, Start Num: 39
Candidate Starts for Caraxes_68:
(Start: 39 @39685 has 54 MA's), (44, 39667), (49, 39646), (51, 39634), (67, 39547),

Gene: Caviar_64 Start: 40846, Stop: 40643, Start Num: 41
Candidate Starts for Caviar_64:
(Start: 31 @40876 has 13 MA's), (Start: 41 @40846 has 144 MA's), (69, 40717), (83, 40651),

Gene: Centaur_66 Start: 41075, Stop: 40845, Start Num: 40
Candidate Starts for Centaur_66:
(Start: 40 @41075 has 137 MA's), (45, 41057), (48, 41039), (54, 41009), (78, 40892), (81, 40868),

Gene: CentreCat_62 Start: 40467, Stop: 40243, Start Num: 41
Candidate Starts for CentreCat_62:
(Start: 29 @40509 has 22 MA's), (Start: 31 @40497 has 13 MA's), (Start: 41 @40467 has 144 MA's),
(47, 40446), (78, 40290), (83, 40251),

Gene: Cerulean_63 Start: 40868, Stop: 40644, Start Num: 41
Candidate Starts for Cerulean_63:
(Start: 29 @40910 has 22 MA's), (Start: 31 @40898 has 13 MA's), (Start: 41 @40868 has 144 MA's),
(47, 40847), (78, 40691), (83, 40652),

Gene: ChampagnePapi_64 Start: 40867, Stop: 40643, Start Num: 41
Candidate Starts for ChampagnePapi_64:
(Start: 29 @40909 has 22 MA's), (Start: 31 @40897 has 13 MA's), (Start: 41 @40867 has 144 MA's),
(47, 40846), (78, 40690), (83, 40651),

Gene: Changeling_65 Start: 41651, Stop: 41418, Start Num: 40
Candidate Starts for Changeling_65:
(Start: 40 @41651 has 137 MA's), (45, 41633), (51, 41600), (71, 41504), (81, 41441), (83, 41426),

Gene: Chaph_62 Start: 40475, Stop: 40251, Start Num: 41
Candidate Starts for Chaph_62:

(Start: 29 @40517 has 22 MA's), (Start: 31 @40505 has 13 MA's), (Start: 41 @40475 has 144 MA's), (47, 40454), (78, 40298), (83, 40259),

Gene: Chartreuse_65 Start: 38455, Stop: 38222, Start Num: 40

Candidate Starts for Chartreuse_65:

(Start: 40 @38455 has 137 MA's), (45, 38437), (49, 38416), (54, 38389), (55, 38374), (65, 38323), (71, 38308),

Gene: Che12_69 Start: 39901, Stop: 39662, Start Num: 39

Candidate Starts for Che12_69:

(Start: 31 @39925 has 13 MA's), (Start: 39 @39901 has 54 MA's), (44, 39883), (51, 39850), (67, 39763), (76, 39730), (83, 39670),

Gene: ChipMunk_68 Start: 42936, Stop: 42706, Start Num: 40

Candidate Starts for ChipMunk_68:

(4, 43188), (7, 43140), (26, 42990), (Start: 40 @42936 has 137 MA's), (45, 42918), (71, 42789), (78, 42750),

Gene: Chiqui_60 Start: 40880, Stop: 40650, Start Num: 41

Candidate Starts for Chiqui_60:

(Start: 29 @40922 has 22 MA's), (Start: 31 @40910 has 13 MA's), (Start: 41 @40880 has 144 MA's), (71, 40736),

Gene: Chupacabra_60 Start: 40090, Stop: 39857, Start Num: 39

Candidate Starts for Chupacabra_60:

(Start: 39 @40090 has 54 MA's), (45, 40069),

Gene: Cici_60 Start: 40319, Stop: 40095, Start Num: 41

Candidate Starts for Cici_60:

(Start: 29 @40361 has 22 MA's), (Start: 31 @40349 has 13 MA's), (Start: 41 @40319 has 144 MA's), (77, 40154), (78, 40142),

Gene: Cindaradix_57 Start: 39937, Stop: 39713, Start Num: 41

Candidate Starts for Cindaradix_57:

(Start: 29 @39979 has 22 MA's), (Start: 31 @39967 has 13 MA's), (Start: 41 @39937 has 144 MA's), (47, 39916),

Gene: Cintron_62 Start: 40587, Stop: 40363, Start Num: 41

Candidate Starts for Cintron_62:

(Start: 29 @40629 has 22 MA's), (Start: 31 @40617 has 13 MA's), (Start: 41 @40587 has 144 MA's), (47, 40566),

Gene: Citius_62 Start: 40485, Stop: 40261, Start Num: 41

Candidate Starts for Citius_62:

(Start: 29 @40527 has 22 MA's), (Start: 31 @40515 has 13 MA's), (Start: 41 @40485 has 144 MA's), (47, 40464), (78, 40308), (83, 40269),

Gene: Clammy_65 Start: 40896, Stop: 40666, Start Num: 41

Candidate Starts for Clammy_65:

(Start: 29 @40938 has 22 MA's), (Start: 31 @40926 has 13 MA's), (Start: 41 @40896 has 144 MA's), (71, 40752), (72, 40749), (80, 40698),

Gene: Clarenza_61 Start: 40503, Stop: 40237, Start Num: 29

Candidate Starts for Clarenza_61:

(Start: 29 @40503 has 22 MA's), (Start: 31 @40491 has 13 MA's), (Start: 41 @40461 has 144 MA's), (47, 40440), (78, 40284), (83, 40245),

Gene: CloudWang3_68 Start: 39697, Stop: 39464, Start Num: 40

Candidate Starts for CloudWang3_68:

(Start: 31 @39727 has 13 MA's), (Start: 40 @39697 has 137 MA's), (45, 39679), (49, 39658), (54, 39631), (65, 39565), (74, 39538), (78, 39511), (83, 39472),

Gene: ClownCar_67 Start: 41049, Stop: 40819, Start Num: 43

Candidate Starts for ClownCar_67:

(Start: 43 @41049 has 17 MA's), (71, 40905), (78, 40866),

Gene: Cocoaberry_62 Start: 40498, Stop: 40244, Start Num: 31

Candidate Starts for Cocoaberry_62:

(Start: 29 @40510 has 22 MA's), (Start: 31 @40498 has 13 MA's), (Start: 41 @40468 has 144 MA's), (47, 40447), (78, 40291), (83, 40252),

Gene: CogOmlette_64 Start: 40140, Stop: 39907, Start Num: 40

Candidate Starts for CogOmlette_64:

(Start: 40 @40140 has 137 MA's), (45, 40122), (54, 40074), (74, 39981), (81, 39930),

Gene: Colbster_66 Start: 41201, Stop: 40944, Start Num: 36

Candidate Starts for Colbster_66:

(Start: 36 @41201 has 15 MA's), (Start: 42 @41174 has 51 MA's), (67, 41045), (78, 40991),

Gene: Colin_64 Start: 41389, Stop: 41159, Start Num: 40

Candidate Starts for Colin_64:

(2, 41761), (10, 41566), (25, 41446), (Start: 31 @41419 has 13 MA's), (Start: 40 @41389 has 137 MA's), (45, 41371), (64, 41257), (71, 41242),

Gene: Commander_61 Start: 40463, Stop: 40239, Start Num: 41

Candidate Starts for Commander_61:

(Start: 29 @40505 has 22 MA's), (Start: 31 @40493 has 13 MA's), (Start: 41 @40463 has 144 MA's), (47, 40442), (78, 40286), (83, 40247),

Gene: Connomayer_62 Start: 40464, Stop: 40240, Start Num: 41

Candidate Starts for Connomayer_62:

(Start: 31 @40494 has 13 MA's), (Start: 41 @40464 has 144 MA's), (47, 40443), (78, 40287), (83, 40248),

Gene: Conquerage_66 Start: 40403, Stop: 40170, Start Num: 40

Candidate Starts for Conquerage_66:

(Start: 40 @40403 has 137 MA's), (45, 40385), (60, 40298), (64, 40271), (79, 40208), (81, 40193),

Gene: Cookiedough_66 Start: 39083, Stop: 38850, Start Num: 40

Candidate Starts for Cookiedough_66:

(Start: 40 @39083 has 137 MA's), (45, 39065), (49, 39044), (54, 39017), (55, 39002), (65, 38951), (71, 38936),

Gene: Croquant_67 Start: 41169, Stop: 40939, Start Num: 42

Candidate Starts for Croquant_67:

(Start: 36 @41196 has 15 MA's), (Start: 42 @41169 has 51 MA's), (67, 41040), (78, 40986),

Gene: Crucio_66 Start: 41335, Stop: 41105, Start Num: 40
Candidate Starts for Crucio_66:
(Start: 40 @41335 has 137 MA's), (45, 41317), (48, 41299), (77, 41161),

Gene: Cueylyss_59 Start: 41208, Stop: 40948, Start Num: 32
Candidate Starts for Cueylyss_59:
(Start: 32 @41208 has 19 MA's), (49, 41148), (53, 41130), (77, 41007),

Gene: Cullens_68 Start: 41170, Stop: 40940, Start Num: 42
Candidate Starts for Cullens_68:
(Start: 36 @41197 has 15 MA's), (Start: 42 @41170 has 51 MA's), (67, 41041), (78, 40987),

Gene: D29_63 Start: 41454, Stop: 41065, Start Num: 12
Candidate Starts for D29_63:
(Start: 12 @41454 has 1 MA's), (Start: 31 @41328 has 13 MA's), (Start: 39 @41301 has 54 MA's), (44, 41283), (51, 41250), (67, 41163),

Gene: D32_67 Start: 41301, Stop: 41065, Start Num: 39
Candidate Starts for D32_67:
(Start: 12 @41454 has 1 MA's), (Start: 31 @41328 has 13 MA's), (Start: 39 @41301 has 54 MA's), (44, 41283), (51, 41250), (67, 41163),

Gene: DBQu4n_68 Start: 41336, Stop: 41046, Start Num: 24
Candidate Starts for DBQu4n_68:
(Start: 24 @41336 has 1 MA's), (Start: 31 @41309 has 13 MA's), (Start: 39 @41282 has 54 MA's), (44, 41264), (51, 41231), (67, 41144),

Gene: DaHudson_67 Start: 41190, Stop: 40933, Start Num: 36
Candidate Starts for DaHudson_67:
(Start: 36 @41190 has 15 MA's), (Start: 42 @41163 has 51 MA's), (67, 41034), (78, 40980),

Gene: DaVinci_64 Start: 38509, Stop: 38276, Start Num: 40
Candidate Starts for DaVinci_64:
(Start: 40 @38509 has 137 MA's), (45, 38491), (49, 38470), (54, 38443), (55, 38428), (65, 38377), (71, 38362),

Gene: Daishi_67 Start: 40066, Stop: 39809, Start Num: 36
Candidate Starts for Daishi_67:
(Start: 36 @40066 has 15 MA's), (Start: 42 @40039 has 51 MA's), (67, 39910), (78, 39856),

Gene: Dalmatian_67 Start: 41532, Stop: 41302, Start Num: 40
Candidate Starts for Dalmatian_67:
(1, 41907), (3, 41886), (11, 41697), (14, 41628), (18, 41616), (Start: 40 @41532 has 137 MA's), (45, 41514), (48, 41496), (78, 41346),

Gene: Darrell_69 Start: 41231, Stop: 40998, Start Num: 40
Candidate Starts for Darrell_69:
(Start: 40 @41231 has 137 MA's), (45, 41213), (74, 41072), (81, 41021),

Gene: DarthPhader_63 Start: 41641, Stop: 41408, Start Num: 40
Candidate Starts for DarthPhader_63:
(Start: 31 @41671 has 13 MA's), (Start: 40 @41641 has 137 MA's), (45, 41623), (51, 41590),

Gene: Datway_60 Start: 40290, Stop: 40066, Start Num: 41

Candidate Starts for Datway_60:

(Start: 29 @40332 has 22 MA's), (Start: 31 @40320 has 13 MA's), (Start: 41 @40290 has 144 MA's), (77, 40125), (78, 40113),

Gene: Deano_60 Start: 40472, Stop: 40248, Start Num: 41

Candidate Starts for Deano_60:

(Start: 29 @40514 has 22 MA's), (Start: 31 @40502 has 13 MA's), (Start: 41 @40472 has 144 MA's), (47, 40451), (78, 40295), (83, 40256),

Gene: DeerParkTS_63 Start: 40456, Stop: 40226, Start Num: 40

Candidate Starts for DeerParkTS_63:

(Start: 40 @40456 has 137 MA's), (45, 40438), (60, 40351), (64, 40324), (71, 40309),

Gene: Deloris_66 Start: 41090, Stop: 40860, Start Num: 40

Candidate Starts for Deloris_66:

(Start: 40 @41090 has 137 MA's), (45, 41072), (71, 40943), (78, 40904),

Gene: DelvinSonDorr_63 Start: 39314, Stop: 39081, Start Num: 40

Candidate Starts for DelvinSonDorr_63:

(Start: 40 @39314 has 137 MA's), (45, 39296), (54, 39248), (55, 39233), (65, 39182), (71, 39167),

Gene: Dhanush_62 Start: 40467, Stop: 40243, Start Num: 41

Candidate Starts for Dhanush_62:

(Start: 29 @40509 has 22 MA's), (Start: 31 @40497 has 13 MA's), (Start: 41 @40467 has 144 MA's), (47, 40446), (78, 40290), (83, 40251),

Gene: Dieselweasel_69 Start: 41173, Stop: 40943, Start Num: 42

Candidate Starts for Dieselweasel_69:

(Start: 36 @41200 has 15 MA's), (Start: 42 @41173 has 51 MA's), (67, 41044), (78, 40990),

Gene: Dignity_68 Start: 41750, Stop: 41520, Start Num: 40

Candidate Starts for Dignity_68:

(Start: 40 @41750 has 137 MA's), (45, 41732), (71, 41603), (78, 41564),

Gene: DirtyDunning_61 Start: 40479, Stop: 40255, Start Num: 41

Candidate Starts for DirtyDunning_61:

(Start: 29 @40521 has 22 MA's), (Start: 31 @40509 has 13 MA's), (Start: 41 @40479 has 144 MA's), (47, 40458), (78, 40302), (83, 40263),

Gene: DontArgue_58 Start: 39140, Stop: 38904, Start Num: 39

Candidate Starts for DontArgue_58:

(Start: 39 @39140 has 54 MA's), (45, 39119), (64, 39005), (67, 39002), (81, 38927),

Gene: Doom_56 Start: 39819, Stop: 39559, Start Num: 32

Candidate Starts for Doom_56:

(Start: 32 @39819 has 19 MA's), (54, 39732), (75, 39630),

Gene: Dorothea_66 Start: 39081, Stop: 38848, Start Num: 40

Candidate Starts for Dorothea_66:

(Start: 40 @39081 has 137 MA's), (45, 39063), (49, 39042), (54, 39015), (65, 38949), (71, 38934),

Gene: Drake55_67 Start: 41178, Stop: 40948, Start Num: 40
Candidate Starts for Drake55_67:
(Start: 40 @41178 has 137 MA's), (45, 41160), (48, 41142), (54, 41112), (78, 40995), (81, 40971),

Gene: Drake94_59 Start: 39177, Stop: 38941, Start Num: 39
Candidate Starts for Drake94_59:
(Start: 39 @39177 has 54 MA's), (45, 39156), (49, 39135), (64, 39042), (70, 39027),

Gene: Dreamboat_59 Start: 39108, Stop: 38848, Start Num: 32
Candidate Starts for Dreamboat_59:
(Start: 32 @39108 has 19 MA's), (54, 39021), (75, 38919),

Gene: DroogsArmy_61 Start: 43358, Stop: 43107, Start Num: 30
Candidate Starts for DroogsArmy_61:
(Start: 30 @43358 has 1 MA's), (Start: 38 @43328 has 27 MA's), (45, 43307), (77, 43166),

Gene: DropBear_63 Start: 40798, Stop: 40568, Start Num: 41
Candidate Starts for DropBear_63:
(Start: 29 @40840 has 22 MA's), (Start: 31 @40828 has 13 MA's), (Start: 41 @40798 has 144 MA's),
(52, 40753),

Gene: Druantia_61 Start: 40467, Stop: 40243, Start Num: 41
Candidate Starts for Druantia_61:
(Start: 29 @40509 has 22 MA's), (Start: 31 @40497 has 13 MA's), (Start: 41 @40467 has 144 MA's),
(47, 40446), (78, 40290), (83, 40251),

Gene: DudeLittle_65 Start: 41298, Stop: 41068, Start Num: 40
Candidate Starts for DudeLittle_65:
(1, 41673), (3, 41652), (11, 41463), (14, 41394), (18, 41382), (Start: 40 @41298 has 137 MA's), (45,
41280), (48, 41262), (78, 41112),

Gene: Dulcie_58 Start: 39702, Stop: 39451, Start Num: 34
Candidate Starts for Dulcie_58:
(Start: 34 @39702 has 7 MA's), (49, 39651), (53, 39633),

Gene: Duplo_68 Start: 41338, Stop: 41102, Start Num: 39
Candidate Starts for Duplo_68:
(Start: 12 @41491 has 1 MA's), (Start: 31 @41365 has 13 MA's), (Start: 39 @41338 has 54 MA's), (44,
41320), (51, 41287), (67, 41200),

Gene: DustyMartin_64 Start: 40196, Stop: 39963, Start Num: 39
Candidate Starts for DustyMartin_64:
(Start: 31 @40223 has 13 MA's), (Start: 39 @40196 has 54 MA's), (45, 40175), (59, 40091),

Gene: EZMoney23_63 Start: 41001, Stop: 40768, Start Num: 40
Candidate Starts for EZMoney23_63:
(Start: 40 @41001 has 137 MA's), (45, 40983), (60, 40896), (71, 40854), (81, 40791),

Gene: Eagle_61 Start: 40489, Stop: 40265, Start Num: 41
Candidate Starts for Eagle_61:
(Start: 41 @40489 has 144 MA's), (47, 40468), (78, 40312), (83, 40273),

Gene: EagleEye_68 Start: 40411, Stop: 40178, Start Num: 39

Candidate Starts for EagleEye_68:

(Start: 31 @40438 has 13 MA's), (Start: 39 @40411 has 54 MA's), (45, 40390), (77, 40237),

Gene: Eaglepride_62 Start: 40120, Stop: 39884, Start Num: 37

Candidate Starts for Eaglepride_62:

(Start: 37 @40120 has 1 MA's), (45, 40099), (60, 40012), (77, 39943),

Gene: Eapen_62 Start: 40459, Stop: 40235, Start Num: 41

Candidate Starts for Eapen_62:

(Start: 29 @40501 has 22 MA's), (Start: 31 @40489 has 13 MA's), (Start: 41 @40459 has 144 MA's), (47, 40438), (77, 40294), (78, 40282), (83, 40243),

Gene: Ebony_66 Start: 40197, Stop: 39964, Start Num: 38

Candidate Starts for Ebony_66:

(Start: 38 @40197 has 27 MA's), (45, 40179), (57, 40095), (73, 40035), (76, 40029),

Gene: Echild_66 Start: 40693, Stop: 40460, Start Num: 40

Candidate Starts for Echild_66:

(Start: 40 @40693 has 137 MA's), (45, 40675), (71, 40546), (78, 40507),

Gene: Edison31_58 Start: 39960, Stop: 39727, Start Num: 39

Candidate Starts for Edison31_58:

(Start: 31 @39987 has 13 MA's), (Start: 39 @39960 has 54 MA's), (45, 39939), (59, 39855),

Gene: Eidsmoe_66 Start: 40395, Stop: 40162, Start Num: 40

Candidate Starts for Eidsmoe_66:

(Start: 40 @40395 has 137 MA's), (45, 40377), (60, 40290), (64, 40263), (79, 40200), (81, 40185),

Gene: Elephantoon_66 Start: 40030, Stop: 39797, Start Num: 40

Candidate Starts for Elephantoon_66:

(Start: 40 @40030 has 137 MA's), (45, 40012), (54, 39964), (74, 39871), (81, 39820),

Gene: EmyBug_65 Start: 40397, Stop: 40164, Start Num: 40

Candidate Starts for EmyBug_65:

(Start: 40 @40397 has 137 MA's), (45, 40379), (60, 40292), (64, 40265), (79, 40202), (81, 40187),

Gene: EpicPhail_69 Start: 41174, Stop: 40944, Start Num: 42

Candidate Starts for EpicPhail_69:

(Start: 36 @41201 has 15 MA's), (Start: 42 @41174 has 51 MA's), (67, 41045), (78, 40991),

Gene: Equemioh13_65 Start: 40980, Stop: 40750, Start Num: 40

Candidate Starts for Equemioh13_65:

(Start: 40 @40980 has 137 MA's), (45, 40962), (48, 40944), (54, 40914), (78, 40797), (81, 40773),

Gene: EricB_65 Start: 39061, Stop: 38828, Start Num: 40

Candidate Starts for EricB_65:

(Start: 40 @39061 has 137 MA's), (45, 39043), (49, 39022), (54, 38995), (55, 38980), (65, 38929), (71, 38914),

Gene: Eris_61 Start: 40509, Stop: 40255, Start Num: 31

Candidate Starts for Eris_61:

(Start: 31 @40509 has 13 MA's), (Start: 41 @40479 has 144 MA's), (47, 40458), (78, 40302), (83, 40263),

Gene: Eros_62 Start: 40466, Stop: 40242, Start Num: 41

Candidate Starts for Eros_62:

(Start: 29 @40508 has 22 MA's), (Start: 31 @40496 has 13 MA's), (Start: 41 @40466 has 144 MA's), (47, 40445), (78, 40289), (83, 40250),

Gene: Et2Brutus_65 Start: 40160, Stop: 39927, Start Num: 38

Candidate Starts for Et2Brutus_65:

(Start: 38 @40160 has 27 MA's), (45, 40142), (57, 40058), (73, 39998), (76, 39992),

Gene: EtoileNova_63 Start: 40850, Stop: 40647, Start Num: 41

Candidate Starts for EtoileNova_63:

(Start: 31 @40880 has 13 MA's), (Start: 41 @40850 has 144 MA's), (69, 40721), (83, 40655),

Gene: Eurydice_63 Start: 40464, Stop: 40240, Start Num: 41

Candidate Starts for Eurydice_63:

(Start: 29 @40506 has 22 MA's), (Start: 31 @40494 has 13 MA's), (Start: 41 @40464 has 144 MA's), (47, 40443), (78, 40287), (83, 40248),

Gene: EvilGenius_67 Start: 42937, Stop: 42707, Start Num: 40

Candidate Starts for EvilGenius_67:

(4, 43189), (7, 43141), (26, 42991), (Start: 40 @42937 has 137 MA's), (45, 42919), (71, 42790), (78, 42751),

Gene: ExplosioNervosa_66 Start: 40463, Stop: 40230, Start Num: 40

Candidate Starts for ExplosioNervosa_66:

(Start: 40 @40463 has 137 MA's), (45, 40445), (60, 40358), (64, 40331), (79, 40268), (81, 40253),

Gene: Fameo_66 Start: 41657, Stop: 41427, Start Num: 40

Candidate Starts for Fameo_66:

(18, 41744), (Start: 29 @41702 has 22 MA's), (Start: 31 @41690 has 13 MA's), (Start: 40 @41657 has 137 MA's), (45, 41639), (48, 41621), (71, 41510), (78, 41471),

Gene: Farber_68 Start: 41160, Stop: 40930, Start Num: 42

Candidate Starts for Farber_68:

(Start: 36 @41187 has 15 MA's), (Start: 42 @41160 has 51 MA's), (67, 41031), (78, 40977),

Gene: Fayely_66 Start: 40364, Stop: 40131, Start Num: 40

Candidate Starts for Fayely_66:

(Start: 40 @40364 has 137 MA's), (45, 40346), (60, 40259), (64, 40232), (79, 40169), (81, 40154),

Gene: Fernando_68 Start: 41170, Stop: 40940, Start Num: 42

Candidate Starts for Fernando_68:

(Start: 36 @41197 has 15 MA's), (Start: 42 @41170 has 51 MA's), (67, 41041), (78, 40987),

Gene: Fibonacci_66 Start: 40166, Stop: 39933, Start Num: 38

Candidate Starts for Fibonacci_66:

(Start: 38 @40166 has 27 MA's), (45, 40148), (57, 40064), (73, 40004), (76, 39998),

Gene: FiringLine_66 Start: 41316, Stop: 41086, Start Num: 40

Candidate Starts for FiringLine_66:

(Start: 40 @41316 has 137 MA's), (45, 41298), (48, 41280), (77, 41142),

Gene: First_0067 Start: 41317, Stop: 41087, Start Num: 40
Candidate Starts for First_0067:
(Start: 40 @41317 has 137 MA's), (45, 41299), (71, 41170), (78, 41131),

Gene: Flare16_65 Start: 40736, Stop: 40506, Start Num: 40
Candidate Starts for Flare16_65:
(Start: 40 @40736 has 137 MA's), (45, 40718), (48, 40700), (54, 40670), (78, 40553), (81, 40529),

Gene: Flaverint_67 Start: 40624, Stop: 40391, Start Num: 38
Candidate Starts for Flaverint_67:
(Start: 38 @40624 has 27 MA's), (45, 40606), (57, 40522), (73, 40462), (76, 40456),

Gene: Florean_62 Start: 40463, Stop: 40239, Start Num: 41
Candidate Starts for Florean_62:
(Start: 29 @40505 has 22 MA's), (Start: 31 @40493 has 13 MA's), (Start: 41 @40463 has 144 MA's),
(47, 40442), (78, 40286), (83, 40247),

Gene: Flux_62 Start: 40493, Stop: 40239, Start Num: 31
Candidate Starts for Flux_62:
(Start: 29 @40505 has 22 MA's), (Start: 31 @40493 has 13 MA's), (Start: 41 @40463 has 144 MA's),
(47, 40442), (78, 40286), (83, 40247),

Gene: FlyCatcher_67 Start: 44015, Stop: 43773, Start Num: 38
Candidate Starts for FlyCatcher_67:
(9, 44180), (13, 44129), (15, 44096), (Start: 38 @44015 has 27 MA's), (45, 43994), (47, 43982), (77,
43832),

Gene: ForesterFrank_62 Start: 41646, Stop: 41413, Start Num: 40
Candidate Starts for ForesterFrank_62:
(Start: 31 @41676 has 13 MA's), (Start: 40 @41646 has 137 MA's), (45, 41628), (51, 41595), (60,
41541), (64, 41514), (71, 41499), (81, 41436),

Gene: Fred313_63 Start: 40492, Stop: 40262, Start Num: 41
Candidate Starts for Fred313_63:
(Start: 29 @40534 has 22 MA's), (Start: 31 @40522 has 13 MA's), (Start: 41 @40492 has 144 MA's),
(52, 40447),

Gene: Funston_61 Start: 40506, Stop: 40240, Start Num: 29
Candidate Starts for Funston_61:
(Start: 29 @40506 has 22 MA's), (Start: 31 @40494 has 13 MA's), (Start: 41 @40464 has 144 MA's),
(47, 40443), (78, 40287), (83, 40248),

Gene: Gadost_62 Start: 40468, Stop: 40244, Start Num: 41
Candidate Starts for Gadost_62:
(Start: 29 @40510 has 22 MA's), (Start: 31 @40498 has 13 MA's), (Start: 41 @40468 has 144 MA's),
(47, 40447), (78, 40291), (83, 40252),

Gene: GageAP_59 Start: 40447, Stop: 40187, Start Num: 32
Candidate Starts for GageAP_59:
(Start: 32 @40447 has 19 MA's), (54, 40360), (62, 40300), (63, 40297),

Gene: Garak_68 Start: 39552, Stop: 39319, Start Num: 40
Candidate Starts for Garak_68:

(Start: 31 @39582 has 13 MA's), (Start: 40 @39552 has 137 MA's), (45, 39534), (49, 39513), (54, 39486), (65, 39420), (74, 39393), (78, 39366), (83, 39327),

Gene: GaugeLDP_62 Start: 40923, Stop: 40693, Start Num: 39

Candidate Starts for GaugeLDP_62:

(21, 41004), (Start: 31 @40953 has 13 MA's), (Start: 39 @40923 has 54 MA's), (44, 40905), (45, 40902), (67, 40788),

Gene: Gemma_67 Start: 41052, Stop: 40822, Start Num: 43

Candidate Starts for Gemma_67:

(Start: 43 @41052 has 17 MA's), (71, 40908), (78, 40869),

Gene: Georgie2_67 Start: 41361, Stop: 41131, Start Num: 40

Candidate Starts for Georgie2_67:

(Start: 40 @41361 has 137 MA's), (45, 41343), (48, 41325), (77, 41187),

Gene: Gilberta_67 Start: 40617, Stop: 40384, Start Num: 38

Candidate Starts for Gilberta_67:

(Start: 38 @40617 has 27 MA's), (45, 40599), (57, 40515), (73, 40455), (76, 40449),

Gene: GingkoMaracino_68 Start: 41056, Stop: 40826, Start Num: 42

Candidate Starts for GingkoMaracino_68:

(Start: 36 @41083 has 15 MA's), (Start: 42 @41056 has 51 MA's), (67, 40927), (78, 40873),

Gene: Giroux_67 Start: 40895, Stop: 40665, Start Num: 41

Candidate Starts for Giroux_67:

(Start: 29 @40937 has 22 MA's), (Start: 31 @40925 has 13 MA's), (Start: 41 @40895 has 144 MA's), (71, 40751), (72, 40748), (80, 40697),

Gene: Gladiator_64 Start: 38807, Stop: 38544, Start Num: 31

Candidate Starts for Gladiator_64:

(Start: 31 @38807 has 13 MA's), (Start: 34 @38795 has 7 MA's), (Start: 40 @38777 has 137 MA's), (45, 38759), (49, 38738), (54, 38711), (65, 38645), (74, 38618), (78, 38591), (83, 38552),

Gene: Goose_62 Start: 39906, Stop: 39673, Start Num: 39

Candidate Starts for Goose_62:

(Start: 39 @39906 has 54 MA's), (45, 39885),

Gene: Graduation_62 Start: 41280, Stop: 41020, Start Num: 32

Candidate Starts for Graduation_62:

(Start: 32 @41280 has 19 MA's), (49, 41220), (53, 41202), (77, 41079),

Gene: Gratitude_63 Start: 40980, Stop: 40750, Start Num: 40

Candidate Starts for Gratitude_63:

(Start: 40 @40980 has 137 MA's), (45, 40962), (48, 40944), (54, 40914), (78, 40797), (81, 40773),

Gene: GreedyLawyer_63 Start: 39068, Stop: 38835, Start Num: 40

Candidate Starts for GreedyLawyer_63:

(Start: 40 @39068 has 137 MA's), (45, 39050), (49, 39029), (54, 39002), (55, 38987), (65, 38936), (71, 38921),

Gene: Grif_68 Start: 41245, Stop: 41015, Start Num: 42

Candidate Starts for Grif_68:

(Start: 36 @41272 has 15 MA's), (Start: 42 @41245 has 51 MA's), (67, 41116), (78, 41062),

Gene: Groupthink_69 Start: 41056, Stop: 40826, Start Num: 43

Candidate Starts for Groupthink_69:

(Start: 43 @41056 has 17 MA's), (71, 40912), (78, 40873),

Gene: Grub_68 Start: 41162, Stop: 40932, Start Num: 42

Candidate Starts for Grub_68:

(Start: 36 @41189 has 15 MA's), (Start: 42 @41162 has 51 MA's), (67, 41033), (78, 40979),

Gene: Grum1_67 Start: 41170, Stop: 40940, Start Num: 42

Candidate Starts for Grum1_67:

(Start: 36 @41197 has 15 MA's), (Start: 42 @41170 has 51 MA's), (67, 41041), (78, 40987),

Gene: Gruunaga_67 Start: 39476, Stop: 39243, Start Num: 40

Candidate Starts for Gruunaga_67:

(Start: 31 @39506 has 13 MA's), (Start: 40 @39476 has 137 MA's), (45, 39458), (49, 39437), (54, 39410), (65, 39344), (78, 39290), (83, 39251),

Gene: GtownJaz_68 Start: 41172, Stop: 40942, Start Num: 42

Candidate Starts for GtownJaz_68:

(Start: 36 @41199 has 15 MA's), (Start: 42 @41172 has 51 MA's), (67, 41043), (78, 40989),

Gene: Gwendoluna_61 Start: 41840, Stop: 41589, Start Num: 34

Candidate Starts for Gwendoluna_61:

(Start: 34 @41840 has 7 MA's), (49, 41789), (53, 41771),

Gene: Gwennie_65 Start: 41174, Stop: 40944, Start Num: 42

Candidate Starts for Gwennie_65:

(Start: 36 @41201 has 15 MA's), (Start: 42 @41174 has 51 MA's), (67, 41045), (78, 40991),

Gene: HINdeR_62 Start: 43023, Stop: 42802, Start Num: 38

Candidate Starts for HINdeR_62:

(9, 43197), (13, 43146), (Start: 38 @43023 has 27 MA's), (45, 43002),

Gene: HamSlice_59 Start: 40504, Stop: 40238, Start Num: 29

Candidate Starts for HamSlice_59:

(Start: 29 @40504 has 22 MA's), (Start: 31 @40492 has 13 MA's), (Start: 41 @40462 has 144 MA's), (47, 40441), (78, 40285), (83, 40246),

Gene: Hammer_67 Start: 39083, Stop: 38850, Start Num: 40

Candidate Starts for Hammer_67:

(Start: 31 @39113 has 13 MA's), (Start: 40 @39083 has 137 MA's), (45, 39065), (49, 39044), (54, 39017), (65, 38951), (78, 38897), (83, 38858),

Gene: Hanray_66 Start: 40727, Stop: 40494, Start Num: 40

Candidate Starts for Hanray_66:

(Start: 40 @40727 has 137 MA's), (45, 40709), (60, 40622), (64, 40595), (79, 40532), (81, 40517),

Gene: Happiness_61 Start: 40450, Stop: 40226, Start Num: 41

Candidate Starts for Happiness_61:

(Start: 29 @40492 has 22 MA's), (Start: 31 @40480 has 13 MA's), (Start: 41 @40450 has 144 MA's), (47, 40429), (78, 40273), (83, 40234),

Gene: HarryHoudini_66 Start: 41179, Stop: 40949, Start Num: 40
Candidate Starts for HarryHoudini_66:
(Start: 40 @41179 has 137 MA's), (45, 41161), (48, 41143), (54, 41113), (78, 40996), (81, 40972),

Gene: HashRod_69 Start: 41198, Stop: 40968, Start Num: 42
Candidate Starts for HashRod_69:
(Start: 36 @41225 has 15 MA's), (Start: 42 @41198 has 51 MA's), (67, 41069),

Gene: HaveUMetTed_69 Start: 41041, Stop: 40811, Start Num: 43
Candidate Starts for HaveUMetTed_69:
(Start: 43 @41041 has 17 MA's), (71, 40897), (78, 40858),

Gene: Heathen_65 Start: 40587, Stop: 40357, Start Num: 41
Candidate Starts for Heathen_65:
(Start: 29 @40629 has 22 MA's), (Start: 31 @40617 has 13 MA's), (Start: 41 @40587 has 144 MA's),
(52, 40542),

Gene: Heffalump_65 Start: 42125, Stop: 41895, Start Num: 40
Candidate Starts for Heffalump_65:
(18, 42212), (Start: 31 @42158 has 13 MA's), (Start: 40 @42125 has 137 MA's), (45, 42107), (48,
42089), (78, 41939),

Gene: HelDan_64 Start: 40803, Stop: 40573, Start Num: 41
Candidate Starts for HelDan_64:
(Start: 29 @40845 has 22 MA's), (Start: 31 @40833 has 13 MA's), (Start: 41 @40803 has 144 MA's),
(52, 40758),

Gene: Heliosoles_67 Start: 41059, Stop: 40829, Start Num: 43
Candidate Starts for Heliosoles_67:
(Start: 43 @41059 has 17 MA's), (71, 40915), (78, 40876),

Gene: Helmet_69 Start: 39552, Stop: 39319, Start Num: 40
Candidate Starts for Helmet_69:
(Start: 31 @39582 has 13 MA's), (Start: 40 @39552 has 137 MA's), (45, 39534), (49, 39513), (54,
39486), (65, 39420), (74, 39393), (78, 39366), (83, 39327),

Gene: Herbertwm_62 Start: 40747, Stop: 40508, Start Num: 39
Candidate Starts for Herbertwm_62:
(23, 40801), (Start: 39 @40747 has 54 MA's), (44, 40729),

Gene: Hercules11_68 Start: 41206, Stop: 40949, Start Num: 36
Candidate Starts for Hercules11_68:
(Start: 36 @41206 has 15 MA's), (Start: 42 @41179 has 51 MA's), (67, 41050), (78, 40996),

Gene: Hexamo_67 Start: 39212, Stop: 38949, Start Num: 31
Candidate Starts for Hexamo_67:
(Start: 31 @39212 has 13 MA's), (Start: 40 @39182 has 137 MA's), (45, 39164), (49, 39143), (54,
39116), (65, 39050), (74, 39023), (78, 38996), (83, 38957),

Gene: HippoHollow_65 Start: 42630, Stop: 42397, Start Num: 40
Candidate Starts for HippoHollow_65:
(18, 42714), (Start: 40 @42630 has 137 MA's), (45, 42612),

Gene: Horex_66 Start: 40743, Stop: 40510, Start Num: 40
Candidate Starts for Horex_66:
(Start: 40 @40743 has 137 MA's), (45, 40725), (60, 40638), (64, 40611), (79, 40548), (81, 40533),

Gene: Holli_61 Start: 40254, Stop: 40030, Start Num: 41
Candidate Starts for Holli_61:
(Start: 29 @40296 has 22 MA's), (Start: 31 @40284 has 13 MA's), (Start: 41 @40254 has 144 MA's),
(47, 40233), (78, 40077), (83, 40038),

Gene: Hookmount_64 Start: 40847, Stop: 40644, Start Num: 41
Candidate Starts for Hookmount_64:
(Start: 31 @40877 has 13 MA's), (Start: 41 @40847 has 144 MA's), (69, 40718), (83, 40652),

Gene: Hoot_61 Start: 36919, Stop: 36686, Start Num: 40
Candidate Starts for Hoot_61:
(Start: 40 @36919 has 137 MA's), (45, 36901), (49, 36880), (54, 36853), (55, 36838), (65, 36787), (71,
36772),

Gene: Houdini22_61 Start: 40468, Stop: 40244, Start Num: 41
Candidate Starts for Houdini22_61:
(Start: 29 @40510 has 22 MA's), (Start: 31 @40498 has 13 MA's), (Start: 41 @40468 has 144 MA's),
(47, 40447), (78, 40291), (83, 40252),

Gene: Hutc2_65 Start: 40166, Stop: 39933, Start Num: 38
Candidate Starts for Hutc2_65:
(Start: 38 @40166 has 27 MA's), (45, 40148), (57, 40064), (73, 40004), (76, 39998),

Gene: Huxley_61 Start: 40528, Stop: 40304, Start Num: 41
Candidate Starts for Huxley_61:
(Start: 29 @40570 has 22 MA's), (Start: 31 @40558 has 13 MA's), (Start: 41 @40528 has 144 MA's),
(47, 40507), (78, 40351), (83, 40312),

Gene: ICleared_61 Start: 40496, Stop: 40272, Start Num: 41
Candidate Starts for ICleared_61:
(Start: 29 @40538 has 22 MA's), (Start: 31 @40526 has 13 MA's), (Start: 41 @40496 has 144 MA's),
(47, 40475), (78, 40319), (83, 40280),

Gene: Iceman_62 Start: 40753, Stop: 40529, Start Num: 41
Candidate Starts for Iceman_62:
(Start: 29 @40795 has 22 MA's), (Start: 31 @40783 has 13 MA's), (Start: 41 @40753 has 144 MA's),
(47, 40732), (78, 40576), (83, 40537),

Gene: Idleandcovert_65 Start: 40896, Stop: 40666, Start Num: 41
Candidate Starts for Idleandcovert_65:
(Start: 29 @40938 has 22 MA's), (Start: 31 @40926 has 13 MA's), (Start: 41 @40896 has 144 MA's),
(71, 40752), (72, 40749), (80, 40698),

Gene: Indra_70 Start: 39553, Stop: 39320, Start Num: 40
Candidate Starts for Indra_70:
(Start: 31 @39583 has 13 MA's), (Start: 40 @39553 has 137 MA's), (45, 39535), (49, 39514), (54,
39487), (65, 39421), (74, 39394), (78, 39367), (83, 39328),

Gene: Insomnia_67 Start: 40605, Stop: 40372, Start Num: 38

Candidate Starts for Insomnia_67:

(Start: 38 @40605 has 27 MA's), (45, 40587), (57, 40503), (73, 40443), (76, 40437),

Gene: Iracema64_63 Start: 40773, Stop: 40507, Start Num: 29

Candidate Starts for Iracema64_63:

(Start: 29 @40773 has 22 MA's), (Start: 31 @40761 has 13 MA's), (Start: 41 @40731 has 144 MA's), (47, 40710), (78, 40554), (83, 40515),

Gene: IronMan_64 Start: 41884, Stop: 41648, Start Num: 39

Candidate Starts for IronMan_64:

(21, 41962), (Start: 31 @41911 has 13 MA's), (Start: 39 @41884 has 54 MA's), (45, 41863), (81, 41671), (83, 41656),

Gene: Isca_63 Start: 40349, Stop: 40119, Start Num: 41

Candidate Starts for Isca_63:

(Start: 29 @40391 has 22 MA's), (Start: 31 @40379 has 13 MA's), (Start: 41 @40349 has 144 MA's), (58, 40259), (71, 40205),

Gene: Isiphiwo_64 Start: 38635, Stop: 38402, Start Num: 40

Candidate Starts for Isiphiwo_64:

(Start: 40 @38635 has 137 MA's), (45, 38617), (49, 38596), (54, 38569), (55, 38554), (65, 38503), (71, 38488),

Gene: Iwokeuplikedis_67 Start: 40902, Stop: 40669, Start Num: 39

Candidate Starts for Iwokeuplikedis_67:

(16, 40989), (26, 40953), (Start: 39 @40902 has 54 MA's), (45, 40881), (48, 40863), (64, 40770), (67, 40767), (81, 40692),

Gene: JC27_61 Start: 40499, Stop: 40248, Start Num: 34

Candidate Starts for JC27_61:

(Start: 33 @40502 has 4 MA's), (Start: 34 @40499 has 7 MA's), (49, 40448), (53, 40430), (56, 40385),

Gene: JF2_63 Start: 39044, Stop: 38814, Start Num: 41

Candidate Starts for JF2_63:

(Start: 29 @39086 has 22 MA's), (Start: 31 @39074 has 13 MA's), (Start: 41 @39044 has 144 MA's), (58, 38954),

Gene: JF4_63 Start: 39044, Stop: 38814, Start Num: 41

Candidate Starts for JF4_63:

(Start: 29 @39086 has 22 MA's), (Start: 31 @39074 has 13 MA's), (Start: 41 @39044 has 144 MA's), (58, 38954),

Gene: JHC117_66 Start: 41169, Stop: 40939, Start Num: 42

Candidate Starts for JHC117_66:

(Start: 36 @41196 has 15 MA's), (Start: 42 @41169 has 51 MA's), (67, 41040), (78, 40986),

Gene: Jaan_65 Start: 42053, Stop: 41820, Start Num: 39

Candidate Starts for Jaan_65:

(Start: 29 @42092 has 22 MA's), (Start: 31 @42080 has 13 MA's), (Start: 39 @42053 has 54 MA's), (45, 42032), (81, 41843), (83, 41828),

Gene: Jabith_67 Start: 40606, Stop: 40373, Start Num: 38

Candidate Starts for Jabith_67:

(Start: 30 @40648 has 1 MA's), (Start: 38 @40606 has 27 MA's), (45, 40588), (57, 40504), (73, 40444), (76, 40438),

Gene: Jasper_59 Start: 38994, Stop: 38734, Start Num: 32

Candidate Starts for Jasper_59:

(Start: 32 @38994 has 19 MA's), (54, 38907), (75, 38805),

Gene: Jaykayelowell_59 Start: 40457, Stop: 40233, Start Num: 41

Candidate Starts for Jaykayelowell_59:

(Start: 29 @40499 has 22 MA's), (Start: 31 @40487 has 13 MA's), (Start: 41 @40457 has 144 MA's), (47, 40436), (78, 40280), (83, 40241),

Gene: Jeffabunny_67 Start: 39179, Stop: 38946, Start Num: 40

Candidate Starts for Jeffabunny_67:

(Start: 31 @39209 has 13 MA's), (Start: 40 @39179 has 137 MA's), (45, 39161), (49, 39140), (54, 39113), (65, 39047), (74, 39020), (78, 38993), (83, 38954),

Gene: JenCasNa_69 Start: 41170, Stop: 40940, Start Num: 42

Candidate Starts for JenCasNa_69:

(Start: 36 @41197 has 15 MA's), (Start: 42 @41170 has 51 MA's), (67, 41041), (78, 40987),

Gene: JeppNRM_69 Start: 41057, Stop: 40827, Start Num: 43

Candidate Starts for JeppNRM_69:

(Start: 43 @41057 has 17 MA's), (71, 40913), (78, 40874),

Gene: Jerm_68 Start: 41727, Stop: 41497, Start Num: 40

Candidate Starts for Jerm_68:

(4, 41976), (26, 41781), (28, 41775), (Start: 40 @41727 has 137 MA's), (45, 41709), (71, 41580), (78, 41541),

Gene: JetBlade_62 Start: 40458, Stop: 40234, Start Num: 41

Candidate Starts for JetBlade_62:

(Start: 29 @40500 has 22 MA's), (Start: 31 @40488 has 13 MA's), (Start: 41 @40458 has 144 MA's), (47, 40437), (78, 40281), (83, 40242),

Gene: JewelBug_66 Start: 39340, Stop: 39107, Start Num: 40

Candidate Starts for JewelBug_66:

(Start: 40 @39340 has 137 MA's), (45, 39322), (49, 39301), (54, 39274), (55, 39259), (65, 39208), (71, 39193),

Gene: Jiawan_65 Start: 40759, Stop: 40526, Start Num: 40

Candidate Starts for Jiawan_65:

(Start: 40 @40759 has 137 MA's), (45, 40741), (60, 40654), (64, 40627), (79, 40564), (81, 40549),

Gene: Jobu08_66 Start: 41002, Stop: 40772, Start Num: 42

Candidate Starts for Jobu08_66:

(Start: 36 @41029 has 15 MA's), (Start: 42 @41002 has 51 MA's), (67, 40873), (78, 40819), (80, 40804),

Gene: JoongJeon_61 Start: 40503, Stop: 40237, Start Num: 29

Candidate Starts for JoongJeon_61:

(Start: 29 @40503 has 22 MA's), (Start: 31 @40491 has 13 MA's), (Start: 41 @40461 has 144 MA's), (47, 40440), (78, 40284), (83, 40245),

Gene: Jordennis_65 Start: 38821, Stop: 38588, Start Num: 40

Candidate Starts for Jordennis_65:

(Start: 40 @38821 has 137 MA's), (45, 38803), (49, 38782), (54, 38755), (65, 38689), (71, 38674),

Gene: Joselito_67 Start: 40626, Stop: 40393, Start Num: 38

Candidate Starts for Joselito_67:

(Start: 30 @40668 has 1 MA's), (Start: 38 @40626 has 27 MA's), (45, 40608), (57, 40524), (73, 40464), (76, 40458),

Gene: JoshKayV_67 Start: 41782, Stop: 41552, Start Num: 40

Candidate Starts for JoshKayV_67:

(26, 41836), (28, 41830), (Start: 40 @41782 has 137 MA's), (45, 41764), (71, 41635), (78, 41596),

Gene: Journey13_59 Start: 38823, Stop: 38584, Start Num: 39

Candidate Starts for Journey13_59:

(Start: 39 @38823 has 54 MA's), (44, 38805), (51, 38772), (75, 38655),

Gene: Jsquared_69 Start: 40546, Stop: 40310, Start Num: 39

Candidate Starts for Jsquared_69:

(Start: 31 @40573 has 13 MA's), (Start: 39 @40546 has 54 MA's), (44, 40528), (51, 40495), (67, 40408),

Gene: KADY_67 Start: 41198, Stop: 40968, Start Num: 42

Candidate Starts for KADY_67:

(Start: 36 @41225 has 15 MA's), (Start: 42 @41198 has 51 MA's), (67, 41069),

Gene: KFPoly_61 Start: 40500, Stop: 40234, Start Num: 29

Candidate Starts for KFPoly_61:

(Start: 29 @40500 has 22 MA's), (Start: 31 @40488 has 13 MA's), (Start: 41 @40458 has 144 MA's), (47, 40437), (78, 40281), (83, 40242),

Gene: Kachowdy_63 Start: 40839, Stop: 40609, Start Num: 41

Candidate Starts for Kachowdy_63:

(Start: 29 @40881 has 22 MA's), (Start: 31 @40869 has 13 MA's), (Start: 41 @40839 has 144 MA's), (52, 40794),

Gene: Kalb97_69 Start: 41055, Stop: 40825, Start Num: 43

Candidate Starts for Kalb97_69:

(Start: 43 @41055 has 17 MA's), (71, 40911), (78, 40872),

Gene: Kalnoky_69 Start: 41053, Stop: 40823, Start Num: 43

Candidate Starts for Kalnoky_69:

(Start: 43 @41053 has 17 MA's), (71, 40909), (78, 40870),

Gene: Kalpine_65 Start: 41568, Stop: 41335, Start Num: 40

Candidate Starts for Kalpine_65:

(17, 41655), (19, 41652), (Start: 31 @41598 has 13 MA's), (Start: 40 @41568 has 137 MA's), (45, 41550), (60, 41463), (64, 41436), (71, 41421), (81, 41358),

Gene: Kampy_61 Start: 40466, Stop: 40242, Start Num: 41

Candidate Starts for Kamy_61:

(Start: 29 @40508 has 22 MA's), (Start: 31 @40496 has 13 MA's), (Start: 41 @40466 has 144 MA's), (47, 40445), (78, 40289), (83, 40250),

Gene: Katalie136_60 Start: 40304, Stop: 40080, Start Num: 41

Candidate Starts for Katalie136_60:

(Start: 29 @40346 has 22 MA's), (Start: 31 @40334 has 13 MA's), (Start: 41 @40304 has 144 MA's), (77, 40139), (78, 40127),

Gene: Kazan_67 Start: 39074, Stop: 38841, Start Num: 40

Candidate Starts for Kazan_67:

(Start: 40 @39074 has 137 MA's), (45, 39056), (49, 39035), (54, 39008), (55, 38993), (65, 38942), (71, 38927),

Gene: KekoraPapaka_60 Start: 40464, Stop: 40240, Start Num: 41

Candidate Starts for KekoraPapaka_60:

(Start: 29 @40506 has 22 MA's), (Start: 31 @40494 has 13 MA's), (Start: 41 @40464 has 144 MA's), (47, 40443), (78, 40287), (83, 40248),

Gene: Kerberos_68 Start: 41300, Stop: 41064, Start Num: 39

Candidate Starts for Kerberos_68:

(Start: 12 @41453 has 1 MA's), (Start: 31 @41327 has 13 MA's), (Start: 39 @41300 has 54 MA's), (44, 41282), (51, 41249), (67, 41162),

Gene: Kimba_65 Start: 40126, Stop: 39893, Start Num: 38

Candidate Starts for Kimba_65:

(Start: 30 @40168 has 1 MA's), (Start: 38 @40126 has 27 MA's), (45, 40108), (57, 40024), (73, 39964), (76, 39958),

Gene: Kimona_60 Start: 39068, Stop: 38832, Start Num: 39

Candidate Starts for Kimona_60:

(6, 39287), (Start: 39 @39068 has 54 MA's), (45, 39047), (51, 39014), (77, 38891),

Gene: KingCyrus_67 Start: 42932, Stop: 42702, Start Num: 40

Candidate Starts for KingCyrus_67:

(4, 43184), (7, 43136), (26, 42986), (Start: 40 @42932 has 137 MA's), (45, 42914), (71, 42785), (78, 42746),

Gene: Kingmustik0402_62 Start: 40453, Stop: 40229, Start Num: 41

Candidate Starts for Kingmustik0402_62:

(Start: 29 @40495 has 22 MA's), (Start: 31 @40483 has 13 MA's), (Start: 41 @40453 has 144 MA's), (47, 40432), (78, 40276), (83, 40237),

Gene: Kinmap_66 Start: 39557, Stop: 39321, Start Num: 39

Candidate Starts for Kinmap_66:

(Start: 31 @39584 has 13 MA's), (Start: 39 @39557 has 54 MA's), (44, 39539), (46, 39533), (50, 39509),

Gene: Kipper29_66 Start: 39087, Stop: 38854, Start Num: 40

Candidate Starts for Kipper29_66:

(Start: 40 @39087 has 137 MA's), (45, 39069), (49, 39048), (54, 39021), (55, 39006), (65, 38955), (71, 38940),

Gene: KittenMittens_58 Start: 39185, Stop: 38949, Start Num: 39
Candidate Starts for KittenMittens_58:
(Start: 39 @39185 has 54 MA's), (45, 39164), (49, 39143), (64, 39050), (70, 39035),

Gene: Koan_59 Start: 40464, Stop: 40240, Start Num: 41
Candidate Starts for Koan_59:
(Start: 29 @40506 has 22 MA's), (Start: 31 @40494 has 13 MA's), (Start: 41 @40464 has 144 MA's),
(47, 40443), (78, 40287), (83, 40248),

Gene: Koduck_68 Start: 40131, Stop: 39895, Start Num: 39
Candidate Starts for Koduck_68:
(Start: 31 @40158 has 13 MA's), (Start: 39 @40131 has 54 MA's), (44, 40113), (51, 40080), (67,
39993),

Gene: Koko_69 Start: 40037, Stop: 39804, Start Num: 40
Candidate Starts for Koko_69:
(Start: 31 @40067 has 13 MA's), (Start: 40 @40037 has 137 MA's), (45, 40019), (49, 39998), (54,
39971), (65, 39905), (74, 39878), (78, 39851), (83, 39812),

Gene: Koreni_61 Start: 40145, Stop: 39921, Start Num: 41
Candidate Starts for Koreni_61:
(Start: 29 @40187 has 22 MA's), (Start: 31 @40175 has 13 MA's), (Start: 41 @40145 has 144 MA's),
(47, 40124), (78, 39968), (83, 39929),

Gene: Kratak_61 Start: 40504, Stop: 40238, Start Num: 29
Candidate Starts for Kratak_61:
(Start: 29 @40504 has 22 MA's), (Start: 31 @40492 has 13 MA's), (Start: 41 @40462 has 144 MA's),
(47, 40441), (78, 40285), (83, 40246),

Gene: Kremtemulon_62 Start: 40570, Stop: 40346, Start Num: 41
Candidate Starts for Kremtemulon_62:
(Start: 29 @40612 has 22 MA's), (Start: 31 @40600 has 13 MA's), (Start: 41 @40570 has 144 MA's),
(47, 40549), (78, 40393),

Gene: Kristoff_61 Start: 40482, Stop: 40249, Start Num: 39
Candidate Starts for Kristoff_61:
(Start: 31 @40509 has 13 MA's), (Start: 39 @40482 has 54 MA's), (45, 40461), (59, 40377),

Gene: Kyee_62 Start: 40462, Stop: 40238, Start Num: 41
Candidate Starts for Kyee_62:
(Start: 29 @40504 has 22 MA's), (Start: 31 @40492 has 13 MA's), (Start: 41 @40462 has 144 MA's),
(47, 40441), (78, 40285), (83, 40246),

Gene: L5_63 Start: 40284, Stop: 40048, Start Num: 39
Candidate Starts for L5_63:
(Start: 31 @40311 has 13 MA's), (Start: 39 @40284 has 54 MA's), (44, 40266), (51, 40233), (67,
40146),

Gene: LBerry_69 Start: 41174, Stop: 40944, Start Num: 42
Candidate Starts for LBerry_69:
(Start: 36 @41201 has 15 MA's), (Start: 42 @41174 has 51 MA's), (67, 41045), (78, 40991),

Gene: LHTSCC_64 Start: 40867, Stop: 40643, Start Num: 41

Candidate Starts for LHTSCC_64:

(Start: 29 @40909 has 22 MA's), (Start: 31 @40897 has 13 MA's), (Start: 41 @40867 has 144 MA's), (47, 40846), (78, 40690), (83, 40651),

Gene: LadyBird_70 Start: 42006, Stop: 41776, Start Num: 40

Candidate Starts for LadyBird_70:

(Start: 40 @42006 has 137 MA's), (45, 41988), (71, 41859), (78, 41820),

Gene: Lambert1_64 Start: 40846, Stop: 40643, Start Num: 41

Candidate Starts for Lambert1_64:

(Start: 31 @40876 has 13 MA's), (Start: 41 @40846 has 144 MA's), (69, 40717), (83, 40651),

Gene: Landor_65 Start: 41962, Stop: 41726, Start Num: 39

Candidate Starts for Landor_65:

(Start: 31 @41989 has 13 MA's), (Start: 39 @41962 has 54 MA's), (45, 41941), (81, 41749), (83, 41734),

Gene: LappelDuVide_62 Start: 40463, Stop: 40239, Start Num: 41

Candidate Starts for LappelDuVide_62:

(Start: 29 @40505 has 22 MA's), (Start: 31 @40493 has 13 MA's), (Start: 41 @40463 has 144 MA's), (47, 40442), (78, 40286), (83, 40247),

Gene: Larenn_63 Start: 41019, Stop: 40783, Start Num: 39

Candidate Starts for Larenn_63:

(18, 41103), (Start: 31 @41049 has 13 MA's), (Start: 39 @41019 has 54 MA's), (45, 40998), (48, 40980), (71, 40869), (78, 40830),

Gene: LarryKay_68 Start: 41200, Stop: 40970, Start Num: 42

Candidate Starts for LarryKay_68:

(Start: 36 @41227 has 15 MA's), (Start: 42 @41200 has 51 MA's), (67, 41071), (78, 41017),

Gene: Lemur_62 Start: 40503, Stop: 40237, Start Num: 29

Candidate Starts for Lemur_62:

(Start: 29 @40503 has 22 MA's), (Start: 31 @40491 has 13 MA's), (Start: 41 @40461 has 144 MA's), (47, 40440), (78, 40284), (83, 40245),

Gene: LeoAvram_61 Start: 40467, Stop: 40243, Start Num: 41

Candidate Starts for LeoAvram_61:

(Start: 29 @40509 has 22 MA's), (Start: 31 @40497 has 13 MA's), (Start: 41 @40467 has 144 MA's), (47, 40446), (78, 40290), (83, 40251),

Gene: Leogania_67 Start: 42317, Stop: 42087, Start Num: 40

Candidate Starts for Leogania_67:

(Start: 31 @42347 has 13 MA's), (Start: 40 @42317 has 137 MA's), (45, 42299), (78, 42134), (81, 42110),

Gene: Leviathan_68 Start: 41799, Stop: 41569, Start Num: 40

Candidate Starts for Leviathan_68:

(Start: 40 @41799 has 137 MA's), (45, 41781), (71, 41652), (78, 41613),

Gene: Licorice_60 Start: 41831, Stop: 41574, Start Num: 33

Candidate Starts for Licorice_60:

(Start: 33 @41831 has 4 MA's), (49, 41774), (53, 41756),

Gene: LilTurb_67 Start: 41609, Stop: 41379, Start Num: 40

Candidate Starts for LilTurb_67:

(4, 41858), (26, 41663), (28, 41657), (Start: 40 @41609 has 137 MA's), (45, 41591), (71, 41462), (78, 41423),

Gene: Lilbunny_66 Start: 39183, Stop: 38950, Start Num: 40

Candidate Starts for Lilbunny_66:

(Start: 31 @39213 has 13 MA's), (Start: 40 @39183 has 137 MA's), (45, 39165), (49, 39144), (54, 39117), (65, 39051), (74, 39024), (78, 38997), (83, 38958),

Gene: Lilit_67 Start: 41163, Stop: 40933, Start Num: 42

Candidate Starts for Lilit_67:

(Start: 36 @41190 has 15 MA's), (Start: 42 @41163 has 51 MA's), (67, 41034), (78, 40980),

Gene: LionsBait_67 Start: 42631, Stop: 42398, Start Num: 40

Candidate Starts for LionsBait_67:

(18, 42715), (Start: 40 @42631 has 137 MA's), (45, 42613),

Gene: LittleB_62 Start: 40465, Stop: 40241, Start Num: 41

Candidate Starts for LittleB_62:

(Start: 29 @40507 has 22 MA's), (Start: 31 @40495 has 13 MA's), (Start: 41 @40465 has 144 MA's), (47, 40444), (78, 40288), (83, 40249),

Gene: LittleGuy_62 Start: 40390, Stop: 40136, Start Num: 31

Candidate Starts for LittleGuy_62:

(Start: 29 @40402 has 22 MA's), (Start: 31 @40390 has 13 MA's), (Start: 41 @40360 has 144 MA's), (47, 40339), (78, 40183), (83, 40144),

Gene: LochMonster_63 Start: 40703, Stop: 40479, Start Num: 41

Candidate Starts for LochMonster_63:

(Start: 29 @40745 has 22 MA's), (Start: 31 @40733 has 13 MA's), (Start: 41 @40703 has 144 MA's), (47, 40682), (78, 40526), (83, 40487),

Gene: Lokk_61 Start: 40288, Stop: 40058, Start Num: 40

Candidate Starts for Lokk_61:

(Start: 40 @40288 has 137 MA's), (45, 40270), (60, 40183), (67, 40156), (78, 40105), (83, 40066),

Gene: LoneWolf_68 Start: 40713, Stop: 40483, Start Num: 40

Candidate Starts for LoneWolf_68:

(Start: 40 @40713 has 137 MA's), (45, 40695), (79, 40518), (81, 40503),

Gene: Lorenzo_62 Start: 40464, Stop: 40240, Start Num: 41

Candidate Starts for Lorenzo_62:

(Start: 29 @40506 has 22 MA's), (Start: 31 @40494 has 13 MA's), (Start: 41 @40464 has 144 MA's), (47, 40443), (78, 40287), (83, 40248),

Gene: Loser_68 Start: 41965, Stop: 41732, Start Num: 40

Candidate Starts for Loser_68:

(Start: 31 @41995 has 13 MA's), (Start: 40 @41965 has 137 MA's), (45, 41947), (51, 41914), (64, 41833), (71, 41818),

Gene: Louie6_67 Start: 41199, Stop: 40969, Start Num: 43

Candidate Starts for Louie6_67:
(Start: 43 @41199 has 17 MA's), (67, 41070),

Gene: Lowa_67 Start: 41162, Stop: 40932, Start Num: 42
Candidate Starts for Lowa_67:
(Start: 36 @41189 has 15 MA's), (Start: 42 @41162 has 51 MA's), (67, 41033), (78, 40979),

Gene: Lucivia_67 Start: 40675, Stop: 40442, Start Num: 38
Candidate Starts for Lucivia_67:
(Start: 38 @40675 has 27 MA's), (45, 40657), (57, 40573), (73, 40513), (76, 40507),

Gene: Lucyedi_67 Start: 40607, Stop: 40374, Start Num: 39
Candidate Starts for Lucyedi_67:
(Start: 31 @40634 has 13 MA's), (Start: 39 @40607 has 54 MA's), (45, 40586), (77, 40433),

Gene: LugYA_71 Start: 41171, Stop: 40941, Start Num: 42
Candidate Starts for LugYA_71:
(Start: 36 @41198 has 15 MA's), (Start: 42 @41171 has 51 MA's), (67, 41042), (78, 40988),

Gene: Lunsford_63 Start: 40458, Stop: 40234, Start Num: 41
Candidate Starts for Lunsford_63:
(Start: 29 @40500 has 22 MA's), (Start: 31 @40488 has 13 MA's), (Start: 41 @40458 has 144 MA's),
(47, 40437), (78, 40281), (83, 40242),

Gene: MA5_65 Start: 40253, Stop: 40023, Start Num: 41
Candidate Starts for MA5_65:
(Start: 29 @40295 has 22 MA's), (Start: 31 @40283 has 13 MA's), (Start: 41 @40253 has 144 MA's),
(58, 40163),

Gene: MK4_65 Start: 40328, Stop: 40098, Start Num: 41
Candidate Starts for MK4_65:
(Start: 29 @40370 has 22 MA's), (Start: 31 @40358 has 13 MA's), (Start: 41 @40328 has 144 MA's),
(58, 40238),

Gene: MaCh_66 Start: 40605, Stop: 40372, Start Num: 38
Candidate Starts for MaCh_66:
(Start: 30 @40647 has 1 MA's), (Start: 38 @40605 has 27 MA's), (45, 40587), (57, 40503), (73, 40443),
(76, 40437),

Gene: Mabel_66 Start: 40622, Stop: 40389, Start Num: 38
Candidate Starts for Mabel_66:
(Start: 38 @40622 has 27 MA's), (45, 40604), (57, 40520), (73, 40460), (76, 40454),

Gene: MadMarie_68 Start: 41172, Stop: 40942, Start Num: 42
Candidate Starts for MadMarie_68:
(Start: 36 @41199 has 15 MA's), (Start: 42 @41172 has 51 MA's), (67, 41043), (78, 40989),

Gene: Mainiac_68 Start: 41164, Stop: 40934, Start Num: 42
Candidate Starts for Mainiac_68:
(Start: 36 @41191 has 15 MA's), (Start: 42 @41164 has 51 MA's), (67, 41035), (78, 40981),

Gene: MajorMajor_67 Start: 40388, Stop: 40152, Start Num: 39
Candidate Starts for MajorMajor_67:

(22, 40448), (Start: 31 @40415 has 13 MA's), (Start: 39 @40388 has 54 MA's), (44, 40370), (51, 40337), (67, 40250),

Gene: Malec_64 Start: 41586, Stop: 41350, Start Num: 39

Candidate Starts for Malec_64:

(18, 41670), (Start: 31 @41616 has 13 MA's), (Start: 39 @41586 has 54 MA's), (45, 41565), (48, 41547), (71, 41436), (78, 41397),

Gene: Malinsilva_70 Start: 41162, Stop: 40932, Start Num: 42

Candidate Starts for Malinsilva_70:

(Start: 36 @41189 has 15 MA's), (Start: 42 @41162 has 51 MA's), (67, 41033), (78, 40979),

Gene: Maminiaina_67 Start: 40688, Stop: 40455, Start Num: 40

Candidate Starts for Maminiaina_67:

(Start: 40 @40688 has 137 MA's), (45, 40670), (64, 40556), (81, 40478),

Gene: Manu_68 Start: 41056, Stop: 40826, Start Num: 43

Candidate Starts for Manu_68:

(Start: 43 @41056 has 17 MA's), (71, 40912), (78, 40873),

Gene: MarQuardt_68 Start: 41172, Stop: 40942, Start Num: 42

Candidate Starts for MarQuardt_68:

(Start: 36 @41199 has 15 MA's), (Start: 42 @41172 has 51 MA's), (67, 41043), (78, 40989),

Gene: Marchesa_63 Start: 40789, Stop: 40559, Start Num: 41

Candidate Starts for Marchesa_63:

(Start: 29 @40831 has 22 MA's), (Start: 31 @40819 has 13 MA's), (Start: 41 @40789 has 144 MA's), (52, 40744),

Gene: Margo_64 Start: 40872, Stop: 40669, Start Num: 41

Candidate Starts for Margo_64:

(Start: 31 @40902 has 13 MA's), (Start: 41 @40872 has 144 MA's), (69, 40743), (83, 40677),

Gene: Marie_66 Start: 41170, Stop: 40940, Start Num: 42

Candidate Starts for Marie_66:

(Start: 36 @41197 has 15 MA's), (Start: 42 @41170 has 51 MA's), (67, 41041), (78, 40987),

Gene: Marius_69 Start: 41053, Stop: 40823, Start Num: 43

Candidate Starts for Marius_69:

(Start: 43 @41053 has 17 MA's), (71, 40909), (78, 40870),

Gene: Maverick_61 Start: 40494, Stop: 40240, Start Num: 31

Candidate Starts for Maverick_61:

(Start: 29 @40506 has 22 MA's), (Start: 31 @40494 has 13 MA's), (Start: 41 @40464 has 144 MA's), (47, 40443), (78, 40287), (83, 40248),

Gene: Maxo_63 Start: 40466, Stop: 40242, Start Num: 41

Candidate Starts for Maxo_63:

(Start: 29 @40508 has 22 MA's), (Start: 31 @40496 has 13 MA's), (Start: 41 @40466 has 144 MA's), (47, 40445), (78, 40289), (83, 40250),

Gene: Mayonnaise_60 Start: 40464, Stop: 40240, Start Num: 41

Candidate Starts for Mayonnaise_60:

(Start: 29 @40506 has 22 MA's), (Start: 31 @40494 has 13 MA's), (Start: 41 @40464 has 144 MA's), (47, 40443), (78, 40287), (83, 40248),

Gene: Mazhar510_62 Start: 40465, Stop: 40241, Start Num: 41

Candidate Starts for Mazhar510_62:

(Start: 29 @40507 has 22 MA's), (Start: 31 @40495 has 13 MA's), (Start: 41 @40465 has 144 MA's), (47, 40444), (78, 40288), (83, 40249),

Gene: McFly_66 Start: 39068, Stop: 38835, Start Num: 40

Candidate Starts for McFly_66:

(Start: 40 @39068 has 137 MA's), (45, 39050), (49, 39029), (54, 39002), (55, 38987), (65, 38936), (71, 38921),

Gene: Medusa_62 Start: 40508, Stop: 40254, Start Num: 31

Candidate Starts for Medusa_62:

(Start: 29 @40520 has 22 MA's), (Start: 31 @40508 has 13 MA's), (Start: 41 @40478 has 144 MA's), (47, 40457), (78, 40301), (83, 40262),

Gene: MeeZee_61 Start: 40461, Stop: 40237, Start Num: 41

Candidate Starts for MeeZee_61:

(Start: 29 @40503 has 22 MA's), (Start: 31 @40491 has 13 MA's), (Start: 41 @40461 has 144 MA's), (47, 40440), (78, 40284), (83, 40245),

Gene: Melvin_64 Start: 40459, Stop: 40235, Start Num: 41

Candidate Starts for Melvin_64:

(Start: 29 @40501 has 22 MA's), (Start: 31 @40489 has 13 MA's), (Start: 41 @40459 has 144 MA's), (47, 40438), (78, 40282), (83, 40243),

Gene: Methuselah_63 Start: 41194, Stop: 40964, Start Num: 42

Candidate Starts for Methuselah_63:

(Start: 36 @41221 has 15 MA's), (Start: 42 @41194 has 51 MA's), (67, 41065), (78, 41011),

Gene: Microwolf_66 Start: 41186, Stop: 40956, Start Num: 42

Candidate Starts for Microwolf_66:

(Start: 36 @41213 has 15 MA's), (Start: 42 @41186 has 51 MA's), (67, 41057), (78, 41003),

Gene: MiculUcigas_65 Start: 40639, Stop: 40409, Start Num: 40

Candidate Starts for MiculUcigas_65:

(Start: 40 @40639 has 137 MA's), (45, 40621), (48, 40603), (54, 40573), (78, 40456), (81, 40432),

Gene: Miko_61 Start: 41066, Stop: 40836, Start Num: 40

Candidate Starts for Miko_61:

(Start: 40 @41066 has 137 MA's), (45, 41048), (67, 40934), (78, 40883), (83, 40844),

Gene: Millski_61 Start: 40507, Stop: 40241, Start Num: 29

Candidate Starts for Millski_61:

(Start: 29 @40507 has 22 MA's), (Start: 31 @40495 has 13 MA's), (Start: 41 @40465 has 144 MA's), (47, 40444), (78, 40288), (83, 40249),

Gene: Minispark_64 Start: 40137, Stop: 39904, Start Num: 40

Candidate Starts for Minispark_64:

(Start: 40 @40137 has 137 MA's), (45, 40119), (54, 40071), (74, 39978), (81, 39927),

Gene: Miramae_59 Start: 39753, Stop: 39529, Start Num: 41
Candidate Starts for Miramae_59:
(Start: 29 @39795 has 22 MA's), (Start: 31 @39783 has 13 MA's), (Start: 41 @39753 has 144 MA's),
(47, 39732),

Gene: Misomonster_69 Start: 41224, Stop: 40967, Start Num: 36
Candidate Starts for Misomonster_69:
(Start: 36 @41224 has 15 MA's), (Start: 42 @41197 has 51 MA's), (67, 41068),

Gene: MissWhite_66 Start: 40337, Stop: 40101, Start Num: 39
Candidate Starts for MissWhite_66:
(27, 40382), (Start: 31 @40364 has 13 MA's), (Start: 39 @40337 has 54 MA's), (44, 40319), (51,
40286), (67, 40199),

Gene: MoneyMay_67 Start: 41170, Stop: 40940, Start Num: 42
Candidate Starts for MoneyMay_67:
(Start: 36 @41197 has 15 MA's), (Start: 42 @41170 has 51 MA's), (67, 41041), (78, 40987),

Gene: Montavir_65 Start: 41171, Stop: 40941, Start Num: 42
Candidate Starts for Montavir_65:
(Start: 36 @41198 has 15 MA's), (Start: 42 @41171 has 51 MA's), (67, 41042), (78, 40988),

Gene: Morpher26_60 Start: 40325, Stop: 40101, Start Num: 41
Candidate Starts for Morpher26_60:
(Start: 29 @40367 has 22 MA's), (Start: 31 @40355 has 13 MA's), (Start: 41 @40325 has 144 MA's),
(77, 40160), (78, 40148),

Gene: Morrow_63 Start: 40470, Stop: 40246, Start Num: 41
Candidate Starts for Morrow_63:
(Start: 29 @40512 has 22 MA's), (Start: 31 @40500 has 13 MA's), (Start: 41 @40470 has 144 MA's),
(47, 40449), (78, 40293), (83, 40254),

Gene: MuchMore_71 Start: 41162, Stop: 40932, Start Num: 42
Candidate Starts for MuchMore_71:
(Start: 36 @41189 has 15 MA's), (Start: 42 @41162 has 51 MA's), (67, 41033), (78, 40979),

Gene: Mulciber_65 Start: 40163, Stop: 39930, Start Num: 38
Candidate Starts for Mulciber_65:
(Start: 38 @40163 has 27 MA's), (45, 40145), (57, 40061), (73, 40001), (76, 39995),

Gene: Munch_66 Start: 40626, Stop: 40393, Start Num: 38
Candidate Starts for Munch_66:
(Start: 38 @40626 has 27 MA's), (45, 40608), (57, 40524), (73, 40464), (76, 40458),

Gene: Mundrea_60 Start: 40317, Stop: 40093, Start Num: 41
Candidate Starts for Mundrea_60:
(Start: 29 @40359 has 22 MA's), (Start: 31 @40347 has 13 MA's), (Start: 41 @40317 has 144 MA's),
(47, 40296),

Gene: NaSiaTalie_65 Start: 40733, Stop: 40503, Start Num: 40
Candidate Starts for NaSiaTalie_65:
(Start: 40 @40733 has 137 MA's), (45, 40715), (48, 40697), (54, 40667), (78, 40550), (81, 40526),

Gene: Naji_68 Start: 41301, Stop: 41065, Start Num: 39

Candidate Starts for Naji_68:

(Start: 12 @41454 has 1 MA's), (Start: 31 @41328 has 13 MA's), (Start: 39 @41301 has 54 MA's), (44, 41283), (51, 41250), (67, 41163),

Gene: Nebs_63 Start: 40467, Stop: 40243, Start Num: 41

Candidate Starts for Nebs_63:

(Start: 29 @40509 has 22 MA's), (Start: 31 @40497 has 13 MA's), (Start: 41 @40467 has 144 MA's), (47, 40446), (78, 40290), (83, 40251),

Gene: Neeharika16_65 Start: 38528, Stop: 38295, Start Num: 40

Candidate Starts for Neeharika16_65:

(Start: 40 @38528 has 137 MA's), (45, 38510), (49, 38489), (54, 38462), (55, 38447), (65, 38396), (71, 38381),

Gene: Nemo27_61 Start: 40463, Stop: 40239, Start Num: 41

Candidate Starts for Nemo27_61:

(Start: 29 @40505 has 22 MA's), (Start: 31 @40493 has 13 MA's), (Start: 41 @40463 has 144 MA's), (47, 40442), (78, 40286), (83, 40247),

Gene: Newrala_66 Start: 39070, Stop: 38837, Start Num: 40

Candidate Starts for Newrala_66:

(Start: 40 @39070 has 137 MA's), (45, 39052), (49, 39031), (54, 39004), (55, 38989), (65, 38938), (71, 38923),

Gene: NicoleTera_64 Start: 41319, Stop: 41080, Start Num: 40

Candidate Starts for NicoleTera_64:

(8, 41517), (Start: 40 @41319 has 137 MA's), (45, 41301), (65, 41181), (78, 41127),

Gene: Noella_64 Start: 40847, Stop: 40644, Start Num: 41

Candidate Starts for Noella_64:

(Start: 31 @40877 has 13 MA's), (Start: 41 @40847 has 144 MA's), (69, 40718), (83, 40652),

Gene: Noelle_61 Start: 40629, Stop: 40402, Start Num: 41

Candidate Starts for Noelle_61:

(Start: 29 @40671 has 22 MA's), (Start: 31 @40659 has 13 MA's), (Start: 41 @40629 has 144 MA's), (77, 40461), (78, 40449),

Gene: Norbert_61 Start: 40846, Stop: 40643, Start Num: 41

Candidate Starts for Norbert_61:

(Start: 31 @40876 has 13 MA's), (Start: 41 @40846 has 144 MA's), (69, 40717), (83, 40651),

Gene: NorthStar_60 Start: 40464, Stop: 40240, Start Num: 41

Candidate Starts for NorthStar_60:

(Start: 29 @40506 has 22 MA's), (Start: 31 @40494 has 13 MA's), (Start: 41 @40464 has 144 MA's), (47, 40443), (78, 40287), (83, 40248),

Gene: Norz_59 Start: 41380, Stop: 41120, Start Num: 32

Candidate Starts for Norz_59:

(Start: 32 @41380 has 19 MA's), (54, 41293), (75, 41191),

Gene: NotAPhaseMom_61 Start: 40468, Stop: 40244, Start Num: 41

Candidate Starts for NotAPhaseMom_61:

(Start: 29 @40510 has 22 MA's), (Start: 31 @40498 has 13 MA's), (Start: 41 @40468 has 144 MA's), (47, 40447), (78, 40291), (83, 40252),

Gene: NothingSpecial_63 Start: 41525, Stop: 41295, Start Num: 40

Candidate Starts for NothingSpecial_63:

(20, 41606), (Start: 29 @41567 has 22 MA's), (Start: 31 @41555 has 13 MA's), (Start: 40 @41525 has 137 MA's), (45, 41507), (78, 41342), (81, 41318), (83, 41303),

Gene: Nyxis_61 Start: 40384, Stop: 40130, Start Num: 31

Candidate Starts for Nyxis_61:

(Start: 29 @40396 has 22 MA's), (Start: 31 @40384 has 13 MA's), (Start: 41 @40354 has 144 MA's), (47, 40333), (78, 40177), (83, 40138),

Gene: OKCentral2016_60 Start: 39649, Stop: 39413, Start Num: 39

Candidate Starts for OKCentral2016_60:

(Start: 39 @39649 has 54 MA's), (45, 39628),

Gene: OKaNui_62 Start: 40514, Stop: 40290, Start Num: 41

Candidate Starts for OKaNui_62:

(Start: 29 @40556 has 22 MA's), (Start: 31 @40544 has 13 MA's), (Start: 41 @40514 has 144 MA's), (47, 40493), (78, 40337), (83, 40298),

Gene: Obama12_63 Start: 40851, Stop: 40627, Start Num: 41

Candidate Starts for Obama12_63:

(Start: 29 @40893 has 22 MA's), (Start: 31 @40881 has 13 MA's), (Start: 41 @40851 has 144 MA's), (47, 40830), (78, 40674), (83, 40635),

Gene: Odin_66 Start: 40072, Stop: 39833, Start Num: 39

Candidate Starts for Odin_66:

(Start: 39 @40072 has 54 MA's), (44, 40054), (49, 40033), (51, 40021), (67, 39934),

Gene: Ohfah_63 Start: 40467, Stop: 40243, Start Num: 41

Candidate Starts for Ohfah_63:

(Start: 29 @40509 has 22 MA's), (Start: 31 @40497 has 13 MA's), (Start: 41 @40467 has 144 MA's), (47, 40446), (78, 40290), (83, 40251),

Gene: Ohno789_59 Start: 40571, Stop: 40311, Start Num: 32

Candidate Starts for Ohno789_59:

(Start: 32 @40571 has 19 MA's), (54, 40484), (75, 40382),

Gene: OlanP_67 Start: 41229, Stop: 40999, Start Num: 43

Candidate Starts for OlanP_67:

(Start: 43 @41229 has 17 MA's), (71, 41085), (78, 41046),

Gene: Ollie_68 Start: 41041, Stop: 40811, Start Num: 42

Candidate Starts for Ollie_68:

(Start: 36 @41068 has 15 MA's), (Start: 42 @41041 has 51 MA's), (67, 40912), (78, 40858),

Gene: Orange_65 Start: 40175, Stop: 39942, Start Num: 38

Candidate Starts for Orange_65:

(Start: 38 @40175 has 27 MA's), (45, 40157), (57, 40073), (73, 40013), (76, 40007),

Gene: P28Green_69 Start: 41173, Stop: 40943, Start Num: 42

Candidate Starts for P28Green_69:

(Start: 36 @41200 has 15 MA's), (Start: 42 @41173 has 51 MA's), (67, 41044), (78, 40990),

Gene: PGHhamlin_70 Start: 41189, Stop: 40932, Start Num: 36

Candidate Starts for PGHhamlin_70:

(Start: 36 @41189 has 15 MA's), (Start: 42 @41162 has 51 MA's), (67, 41033), (78, 40979),

Gene: PP_67 Start: 45562, Stop: 45308, Start Num: 34

Candidate Starts for PP_67:

(Start: 34 @45562 has 7 MA's), (45, 45523), (68, 45406), (75, 45379),

Gene: Palestino_61 Start: 40506, Stop: 40240, Start Num: 29

Candidate Starts for Palestino_61:

(Start: 29 @40506 has 22 MA's), (Start: 31 @40494 has 13 MA's), (Start: 41 @40464 has 144 MA's), (47, 40443), (78, 40287), (83, 40248),

Gene: Panamaxus_62 Start: 40846, Stop: 40643, Start Num: 41

Candidate Starts for Panamaxus_62:

(Start: 31 @40876 has 13 MA's), (Start: 41 @40846 has 144 MA's), (69, 40717), (83, 40651),

Gene: Pari_61 Start: 39772, Stop: 39512, Start Num: 32

Candidate Starts for Pari_61:

(Start: 32 @39772 has 19 MA's), (54, 39685), (75, 39583),

Gene: Pawn_68 Start: 41060, Stop: 40830, Start Num: 43

Candidate Starts for Pawn_68:

(Start: 43 @41060 has 17 MA's), (71, 40916), (78, 40877),

Gene: PeaceMeal1_59 Start: 39186, Stop: 38950, Start Num: 39

Candidate Starts for PeaceMeal1_59:

(Start: 39 @39186 has 54 MA's), (45, 39165), (49, 39144), (64, 39051), (70, 39036),

Gene: Peaches_60 Start: 40463, Stop: 40239, Start Num: 41

Candidate Starts for Peaches_60:

(Start: 29 @40505 has 22 MA's), (Start: 31 @40493 has 13 MA's), (Start: 41 @40463 has 144 MA's), (47, 40442), (78, 40286), (83, 40247),

Gene: Pelly_58 Start: 39989, Stop: 39738, Start Num: 34

Candidate Starts for Pelly_58:

(Start: 34 @39989 has 7 MA's), (49, 39938), (53, 39920),

Gene: Pembroke_68 Start: 41198, Stop: 40941, Start Num: 36

Candidate Starts for Pembroke_68:

(Start: 36 @41198 has 15 MA's), (Start: 42 @41171 has 51 MA's), (67, 41042), (78, 40988),

Gene: Penny1_68 Start: 41174, Stop: 40944, Start Num: 42

Candidate Starts for Penny1_68:

(Start: 36 @41201 has 15 MA's), (Start: 42 @41174 has 51 MA's), (67, 41045), (78, 40991),

Gene: Perplexer_60 Start: 40301, Stop: 40077, Start Num: 41

Candidate Starts for Perplexer_60:

(Start: 29 @40343 has 22 MA's), (Start: 31 @40331 has 13 MA's), (Start: 41 @40301 has 144 MA's), (77, 40136), (78, 40124),

Gene: PeterPeter_62 Start: 40461, Stop: 40237, Start Num: 41

Candidate Starts for PeterPeter_62:

(Start: 29 @40503 has 22 MA's), (Start: 31 @40491 has 13 MA's), (Start: 41 @40461 has 144 MA's), (47, 40440), (78, 40284), (83, 40245),

Gene: Petersenfast_64 Start: 40174, Stop: 39941, Start Num: 38

Candidate Starts for Petersenfast_64:

(Start: 38 @40174 has 27 MA's), (45, 40156), (57, 40072), (73, 40012), (76, 40006),

Gene: PetiteSangsue_60 Start: 40304, Stop: 40080, Start Num: 41

Candidate Starts for PetiteSangsue_60:

(Start: 29 @40346 has 22 MA's), (Start: 31 @40334 has 13 MA's), (Start: 41 @40304 has 144 MA's), (77, 40139), (78, 40127),

Gene: PetterN_63 Start: 39541, Stop: 39275, Start Num: 32

Candidate Starts for PetterN_63:

(Start: 32 @39541 has 19 MA's), (Start: 43 @39508 has 17 MA's), (78, 39322),

Gene: Ph8s_69 Start: 40234, Stop: 39995, Start Num: 39

Candidate Starts for Ph8s_69:

(Start: 31 @40258 has 13 MA's), (Start: 39 @40234 has 54 MA's), (44, 40216), (51, 40183), (67, 40096), (76, 40063), (83, 40003),

Gene: Phacado_62 Start: 40505, Stop: 40239, Start Num: 29

Candidate Starts for Phacado_62:

(Start: 29 @40505 has 22 MA's), (Start: 31 @40493 has 13 MA's), (Start: 41 @40463 has 144 MA's), (47, 40442), (78, 40286), (83, 40247),

Gene: Phaded_63 Start: 41980, Stop: 41705, Start Num: 29

Candidate Starts for Phaded_63:

(Start: 29 @41980 has 22 MA's), (Start: 31 @41968 has 13 MA's), (Start: 39 @41941 has 54 MA's), (45, 41920), (81, 41728), (83, 41713),

Gene: Phantastic_66 Start: 40511, Stop: 40281, Start Num: 41

Candidate Starts for Phantastic_66:

(Start: 29 @40553 has 22 MA's), (Start: 31 @40541 has 13 MA's), (Start: 41 @40511 has 144 MA's), (71, 40367),

Gene: Pharaoh_62 Start: 40656, Stop: 40402, Start Num: 40

Candidate Starts for Pharaoh_62:

(5, 40863), (10, 40833), (Start: 31 @40686 has 13 MA's), (Start: 40 @40656 has 137 MA's), (45, 40638), (55, 40575), (60, 40551), (61, 40548), (68, 40497), (81, 40422),

Gene: Phelipe_63 Start: 40467, Stop: 40243, Start Num: 41

Candidate Starts for Phelipe_63:

(Start: 29 @40509 has 22 MA's), (Start: 31 @40497 has 13 MA's), (Start: 41 @40467 has 144 MA's), (47, 40446), (78, 40290), (83, 40251),

Gene: PherrisBueller_57 Start: 38645, Stop: 38385, Start Num: 32

Candidate Starts for PherrisBueller_57:

(Start: 32 @38645 has 19 MA's), (54, 38558), (75, 38456),

Gene: Phighter1804_62 Start: 40570, Stop: 40304, Start Num: 29
Candidate Starts for Phighter1804_62:
(Start: 29 @40570 has 22 MA's), (Start: 31 @40558 has 13 MA's), (Start: 41 @40528 has 144 MA's),
(47, 40507), (78, 40351), (83, 40312),

Gene: PhishRPhriends_66 Start: 40237, Stop: 40007, Start Num: 43
Candidate Starts for PhishRPhriends_66:
(Start: 43 @40237 has 17 MA's), (71, 40093), (78, 40054),

Gene: Phlei_54 Start: 40345, Stop: 40127, Start Num: 38
Candidate Starts for Phlei_54:
(Start: 38 @40345 has 27 MA's), (45, 40324), (66, 40225), (82, 40135),

Gene: Phoebe_69 Start: 41190, Stop: 40933, Start Num: 36
Candidate Starts for Phoebe_69:
(Start: 36 @41190 has 15 MA's), (Start: 42 @41163 has 51 MA's), (67, 41034), (78, 40980),

Gene: Phontbonne_62 Start: 40370, Stop: 40146, Start Num: 41
Candidate Starts for Phontbonne_62:
(Start: 29 @40412 has 22 MA's), (Start: 31 @40400 has 13 MA's), (Start: 41 @40370 has 144 MA's),
(47, 40349), (83, 40154),

Gene: Phoxy_68 Start: 41195, Stop: 40965, Start Num: 42
Candidate Starts for Phoxy_68:
(Start: 36 @41222 has 15 MA's), (Start: 42 @41195 has 51 MA's), (67, 41066), (78, 41012),

Gene: Phranny_69 Start: 41042, Stop: 40812, Start Num: 43
Candidate Starts for Phranny_69:
(Start: 43 @41042 has 17 MA's), (71, 40898), (78, 40859),

Gene: Pipcraft_59 Start: 40464, Stop: 40240, Start Num: 41
Candidate Starts for Pipcraft_59:
(Start: 29 @40506 has 22 MA's), (Start: 31 @40494 has 13 MA's), (Start: 41 @40464 has 144 MA's),
(47, 40443), (78, 40287), (83, 40248),

Gene: Piro94_65 Start: 41086, Stop: 40856, Start Num: 40
Candidate Starts for Piro94_65:
(Start: 40 @41086 has 137 MA's), (45, 41068), (48, 41050), (54, 41020), (78, 40903), (81, 40879),

Gene: Pistachio_65 Start: 40443, Stop: 40213, Start Num: 41
Candidate Starts for Pistachio_65:
(Start: 29 @40485 has 22 MA's), (Start: 31 @40473 has 13 MA's), (Start: 41 @40443 has 144 MA's),
(71, 40299), (72, 40296), (80, 40245),

Gene: Pmask_65 Start: 39071, Stop: 38838, Start Num: 40
Candidate Starts for Pmask_65:
(Start: 40 @39071 has 137 MA's), (45, 39053), (49, 39032), (54, 39005), (55, 38990), (65, 38939), (71,
38924),

Gene: Pocahontas_64 Start: 40843, Stop: 40640, Start Num: 41
Candidate Starts for Pocahontas_64:
(Start: 31 @40873 has 13 MA's), (Start: 41 @40843 has 144 MA's), (69, 40714), (83, 40648),

Gene: Polymorphads_63 Start: 40457, Stop: 40233, Start Num: 41
Candidate Starts for Polymorphads_63:
(Start: 29 @40499 has 22 MA's), (Start: 31 @40487 has 13 MA's), (Start: 41 @40457 has 144 MA's),
(47, 40436), (60, 40361), (78, 40280), (83, 40241),

Gene: Polyphemus_68 Start: 39456, Stop: 39223, Start Num: 40
Candidate Starts for Polyphemus_68:
(Start: 40 @39456 has 137 MA's), (45, 39438), (49, 39417), (54, 39390), (55, 39375), (65, 39324), (71,
39309),

Gene: Pomar16_67 Start: 41341, Stop: 41105, Start Num: 39
Candidate Starts for Pomar16_67:
(Start: 12 @41494 has 1 MA's), (Start: 31 @41368 has 13 MA's), (Start: 39 @41341 has 54 MA's), (44,
41323), (51, 41290), (67, 41203),

Gene: Poompha_59 Start: 39184, Stop: 38948, Start Num: 39
Candidate Starts for Poompha_59:
(Start: 39 @39184 has 54 MA's), (45, 39163), (49, 39142), (64, 39049), (70, 39034),

Gene: Popcicle_64 Start: 40843, Stop: 40640, Start Num: 41
Candidate Starts for Popcicle_64:
(Start: 31 @40873 has 13 MA's), (Start: 41 @40843 has 144 MA's), (69, 40714), (83, 40648),

Gene: PotatoSplit_69 Start: 41174, Stop: 40944, Start Num: 42
Candidate Starts for PotatoSplit_69:
(Start: 36 @41201 has 15 MA's), (Start: 42 @41174 has 51 MA's), (67, 41045), (78, 40991),

Gene: Power_65 Start: 41360, Stop: 41130, Start Num: 40
Candidate Starts for Power_65:
(Start: 40 @41360 has 137 MA's), (45, 41342), (48, 41324), (77, 41186),

Gene: Priamo_68 Start: 38887, Stop: 38654, Start Num: 40
Candidate Starts for Priamo_68:
(Start: 40 @38887 has 137 MA's), (45, 38869), (49, 38848), (54, 38821), (55, 38806), (65, 38755), (71,
38740),

Gene: Priya_66 Start: 40398, Stop: 40165, Start Num: 40
Candidate Starts for Priya_66:
(Start: 40 @40398 has 137 MA's), (45, 40380), (60, 40293), (64, 40266), (79, 40203), (81, 40188),

Gene: Prudy_60 Start: 41489, Stop: 41256, Start Num: 40
Candidate Starts for Prudy_60:
(Start: 40 @41489 has 137 MA's), (45, 41471), (64, 41357), (71, 41342), (81, 41279),

Gene: Pukovnik_63 Start: 41608, Stop: 41375, Start Num: 39
Candidate Starts for Pukovnik_63:
(Start: 29 @41647 has 22 MA's), (Start: 31 @41635 has 13 MA's), (Start: 39 @41608 has 54 MA's),
(45, 41587), (64, 41473), (67, 41470), (78, 41419),

Gene: Pumbaa_62 Start: 40409, Stop: 40185, Start Num: 41
Candidate Starts for Pumbaa_62:
(Start: 29 @40451 has 22 MA's), (Start: 31 @40439 has 13 MA's), (Start: 41 @40409 has 144 MA's),
(47, 40388), (78, 40232), (83, 40193),

Gene: Puppy_65 Start: 40515, Stop: 40285, Start Num: 41

Candidate Starts for Puppy_65:

(Start: 29 @40557 has 22 MA's), (Start: 31 @40545 has 13 MA's), (Start: 41 @40515 has 144 MA's), (71, 40371), (72, 40368), (80, 40317),

Gene: PurpleHaze_68 Start: 41055, Stop: 40825, Start Num: 43

Candidate Starts for PurpleHaze_68:

(Start: 43 @41055 has 17 MA's), (71, 40911), (78, 40872),

Gene: Qobbit_66 Start: 40360, Stop: 40127, Start Num: 40

Candidate Starts for Qobbit_66:

(Start: 40 @40360 has 137 MA's), (45, 40342), (60, 40255), (64, 40228), (79, 40165), (81, 40150),

Gene: QueenB2_65 Start: 41338, Stop: 41108, Start Num: 40

Candidate Starts for QueenB2_65:

(18, 41425), (Start: 29 @41383 has 22 MA's), (Start: 31 @41371 has 13 MA's), (Start: 40 @41338 has 137 MA's), (45, 41320), (48, 41302), (78, 41152),

Gene: QueenBeesly_66 Start: 41316, Stop: 41086, Start Num: 40

Candidate Starts for QueenBeesly_66:

(Start: 40 @41316 has 137 MA's), (45, 41298), (48, 41280), (77, 41142),

Gene: QuinnKiro_63 Start: 40846, Stop: 40643, Start Num: 41

Candidate Starts for QuinnKiro_63:

(Start: 31 @40876 has 13 MA's), (Start: 41 @40846 has 144 MA's), (69, 40717), (83, 40651),

Gene: Quokka_67 Start: 40388, Stop: 40152, Start Num: 39

Candidate Starts for Quokka_67:

(22, 40448), (Start: 31 @40415 has 13 MA's), (Start: 39 @40388 has 54 MA's), (44, 40370), (51, 40337), (67, 40250),

Gene: Rachaly_63 Start: 41211, Stop: 40981, Start Num: 40

Candidate Starts for Rachaly_63:

(Start: 40 @41211 has 137 MA's), (45, 41193), (67, 41079), (78, 41028), (83, 40989),

Gene: Rahalelujah_66 Start: 40152, Stop: 39919, Start Num: 40

Candidate Starts for Rahalelujah_66:

(Start: 40 @40152 has 137 MA's), (45, 40134), (54, 40086), (74, 39993), (81, 39942),

Gene: Reba_68 Start: 40715, Stop: 40485, Start Num: 43

Candidate Starts for Reba_68:

(Start: 43 @40715 has 17 MA's), (71, 40571), (78, 40532),

Gene: Rebeuca_62 Start: 40483, Stop: 40250, Start Num: 39

Candidate Starts for Rebeuca_62:

(Start: 31 @40510 has 13 MA's), (Start: 39 @40483 has 54 MA's), (45, 40462), (59, 40378),

Gene: RedRock_67 Start: 42256, Stop: 42023, Start Num: 40

Candidate Starts for RedRock_67:

(Start: 31 @42286 has 13 MA's), (Start: 40 @42256 has 137 MA's), (45, 42238), (64, 42124), (71, 42109),

Gene: Refuge_63 Start: 41665, Stop: 41432, Start Num: 40
Candidate Starts for Refuge_63:
(Start: 31 @41695 has 13 MA's), (Start: 40 @41665 has 137 MA's), (45, 41647), (55, 41584), (60, 41560),

Gene: Relief_61 Start: 40461, Stop: 40237, Start Num: 41
Candidate Starts for Relief_61:
(Start: 29 @40503 has 22 MA's), (Start: 31 @40491 has 13 MA's), (Start: 41 @40461 has 144 MA's), (47, 40440), (78, 40284), (83, 40245),

Gene: ResDef_63 Start: 40846, Stop: 40643, Start Num: 41
Candidate Starts for ResDef_63:
(Start: 31 @40876 has 13 MA's), (Start: 41 @40846 has 144 MA's), (69, 40717), (83, 40651),

Gene: Retro23_67 Start: 41552, Stop: 41322, Start Num: 40
Candidate Starts for Retro23_67:
(18, 41639), (Start: 31 @41585 has 13 MA's), (Start: 40 @41552 has 137 MA's), (45, 41534), (48, 41516), (78, 41366),

Gene: RhynO_61 Start: 40124, Stop: 39888, Start Num: 39
Candidate Starts for RhynO_61:
(Start: 31 @40151 has 13 MA's), (Start: 39 @40124 has 54 MA's), (45, 40103),

Gene: Rifter_67 Start: 38679, Stop: 38446, Start Num: 40
Candidate Starts for Rifter_67:
(Start: 31 @38709 has 13 MA's), (Start: 40 @38679 has 137 MA's), (45, 38661), (49, 38640), (54, 38613), (65, 38547), (74, 38520), (78, 38493), (83, 38454),

Gene: RockieBear_60 Start: 40464, Stop: 40240, Start Num: 41
Candidate Starts for RockieBear_60:
(Start: 29 @40506 has 22 MA's), (Start: 31 @40494 has 13 MA's), (Start: 41 @40464 has 144 MA's), (47, 40443), (78, 40287), (83, 40248),

Gene: Rockstar_63 Start: 40337, Stop: 40107, Start Num: 41
Candidate Starts for Rockstar_63:
(Start: 29 @40379 has 22 MA's), (Start: 31 @40367 has 13 MA's), (Start: 41 @40337 has 144 MA's), (58, 40247),

Gene: Roimos_63 Start: 40719, Stop: 40489, Start Num: 41
Candidate Starts for Roimos_63:
(Start: 29 @40761 has 22 MA's), (Start: 31 @40749 has 13 MA's), (Start: 41 @40719 has 144 MA's), (52, 40674),

Gene: Roksolana_68 Start: 39513, Stop: 39280, Start Num: 40
Candidate Starts for Roksolana_68:
(Start: 31 @39543 has 13 MA's), (Start: 40 @39513 has 137 MA's), (45, 39495), (49, 39474), (54, 39447), (65, 39381), (78, 39327), (83, 39288),

Gene: Romney_61 Start: 40461, Stop: 40237, Start Num: 41
Candidate Starts for Romney_61:
(Start: 29 @40503 has 22 MA's), (Start: 31 @40491 has 13 MA's), (Start: 41 @40461 has 144 MA's), (47, 40440), (78, 40284), (83, 40245),

Gene: Roosevelt_60 Start: 40466, Stop: 40242, Start Num: 41

Candidate Starts for Roosevelt_60:

(Start: 29 @40508 has 22 MA's), (Start: 31 @40496 has 13 MA's), (Start: 41 @40466 has 144 MA's), (47, 40445), (78, 40289), (83, 40250),

Gene: Rosa24_60 Start: 40495, Stop: 40271, Start Num: 41

Candidate Starts for Rosa24_60:

(Start: 29 @40537 has 22 MA's), (Start: 31 @40525 has 13 MA's), (Start: 41 @40495 has 144 MA's), (47, 40474), (78, 40318), (83, 40279),

Gene: Rowdy_64 Start: 40196, Stop: 39963, Start Num: 39

Candidate Starts for Rowdy_64:

(Start: 31 @40223 has 13 MA's), (Start: 39 @40196 has 54 MA's), (45, 40175), (59, 40091),

Gene: Ruin_62 Start: 40457, Stop: 40233, Start Num: 41

Candidate Starts for Ruin_62:

(Start: 29 @40499 has 22 MA's), (Start: 31 @40487 has 13 MA's), (Start: 41 @40457 has 144 MA's), (47, 40436), (78, 40280), (83, 40241),

Gene: Rummer_67 Start: 41198, Stop: 40968, Start Num: 42

Candidate Starts for Rummer_67:

(Start: 36 @41225 has 15 MA's), (Start: 42 @41198 has 51 MA's), (67, 41069), (78, 41015),

Gene: Ruotula_61 Start: 42152, Stop: 41901, Start Num: 34

Candidate Starts for Ruotula_61:

(Start: 34 @42152 has 7 MA's), (49, 42101), (53, 42083), (56, 42038), (63, 42011),

Gene: Sabertooth_62 Start: 40496, Stop: 40242, Start Num: 31

Candidate Starts for Sabertooth_62:

(Start: 29 @40508 has 22 MA's), (Start: 31 @40496 has 13 MA's), (Start: 41 @40466 has 144 MA's), (47, 40445), (78, 40289), (83, 40250),

Gene: Sabia_68 Start: 41179, Stop: 40949, Start Num: 42

Candidate Starts for Sabia_68:

(Start: 36 @41206 has 15 MA's), (Start: 42 @41179 has 51 MA's), (67, 41050), (78, 40996),

Gene: Sabinator_66 Start: 41169, Stop: 40939, Start Num: 42

Candidate Starts for Sabinator_66:

(Start: 36 @41196 has 15 MA's), (Start: 42 @41169 has 51 MA's), (67, 41040), (78, 40986),

Gene: Salz_65 Start: 40073, Stop: 39840, Start Num: 38

Candidate Starts for Salz_65:

(Start: 30 @40115 has 1 MA's), (Start: 38 @40073 has 27 MA's), (45, 40055), (57, 39971), (73, 39911), (76, 39905),

Gene: Saskia_66 Start: 40173, Stop: 39940, Start Num: 38

Candidate Starts for Saskia_66:

(Start: 38 @40173 has 27 MA's), (45, 40155), (57, 40071), (73, 40011), (76, 40005),

Gene: SaturnRing_65 Start: 40896, Stop: 40666, Start Num: 41

Candidate Starts for SaturnRing_65:

(Start: 29 @40938 has 22 MA's), (Start: 31 @40926 has 13 MA's), (Start: 41 @40896 has 144 MA's), (71, 40752), (72, 40749), (80, 40698),

Gene: Scamp_62 Start: 40466, Stop: 40242, Start Num: 41
Candidate Starts for Scamp_62:
(Start: 29 @40508 has 22 MA's), (Start: 31 @40496 has 13 MA's), (Start: 41 @40466 has 144 MA's),
(47, 40445), (78, 40289), (83, 40250),

Gene: Scherzo_68 Start: 41043, Stop: 40813, Start Num: 40
Candidate Starts for Scherzo_68:
(Start: 40 @41043 has 137 MA's), (45, 41025), (79, 40848), (81, 40833),

Gene: Scorpia_62 Start: 39600, Stop: 39334, Start Num: 32
Candidate Starts for Scorpia_62:
(Start: 32 @39600 has 19 MA's), (Start: 43 @39567 has 17 MA's), (78, 39381),

Gene: Scout_64 Start: 40050, Stop: 39820, Start Num: 41
Candidate Starts for Scout_64:
(Start: 29 @40092 has 22 MA's), (Start: 31 @40080 has 13 MA's), (Start: 41 @40050 has 144 MA's),
(52, 40005),

Gene: Seanderson_58 Start: 41329, Stop: 41072, Start Num: 33
Candidate Starts for Seanderson_58:
(Start: 33 @41329 has 4 MA's), (53, 41254),

Gene: SemperFi_67 Start: 41584, Stop: 41354, Start Num: 40
Candidate Starts for SemperFi_67:
(Start: 40 @41584 has 137 MA's), (45, 41566), (48, 41548), (77, 41410), (78, 41398),

Gene: SenorClean_62 Start: 40464, Stop: 40240, Start Num: 41
Candidate Starts for SenorClean_62:
(Start: 29 @40506 has 22 MA's), (Start: 31 @40494 has 13 MA's), (Start: 41 @40464 has 144 MA's),
(47, 40443), (78, 40287), (83, 40248),

Gene: Serenity_69 Start: 40640, Stop: 40377, Start Num: 31
Candidate Starts for Serenity_69:
(Start: 31 @40640 has 13 MA's), (Start: 39 @40613 has 54 MA's), (44, 40595), (51, 40562), (67,
40475), (83, 40385),

Gene: Severus_59 Start: 39184, Stop: 38948, Start Num: 39
Candidate Starts for Severus_59:
(Start: 39 @39184 has 54 MA's), (45, 39163), (49, 39142), (64, 39049), (70, 39034),

Gene: Shaka_60 Start: 40491, Stop: 40237, Start Num: 31
Candidate Starts for Shaka_60:
(Start: 29 @40503 has 22 MA's), (Start: 31 @40491 has 13 MA's), (Start: 41 @40461 has 144 MA's),
(47, 40440), (78, 40284), (83, 40245),

Gene: Sham4_66 Start: 40173, Stop: 39940, Start Num: 38
Candidate Starts for Sham4_66:
(Start: 38 @40173 has 27 MA's), (45, 40155), (57, 40071), (73, 40011), (76, 40005),

Gene: Shapes_64 Start: 40196, Stop: 39963, Start Num: 39
Candidate Starts for Shapes_64:
(Start: 31 @40223 has 13 MA's), (Start: 39 @40196 has 54 MA's), (45, 40175), (59, 40091),

Gene: Sheen_65 Start: 43903, Stop: 43661, Start Num: 38

Candidate Starts for Sheen_65:

(9, 44068), (13, 44017), (15, 43984), (Start: 38 @43903 has 27 MA's), (45, 43882), (47, 43870), (77, 43720),

Gene: SheldonCooper_62 Start: 40868, Stop: 40644, Start Num: 41

Candidate Starts for SheldonCooper_62:

(Start: 29 @40910 has 22 MA's), (Start: 31 @40898 has 13 MA's), (Start: 41 @40868 has 144 MA's), (47, 40847), (78, 40691), (83, 40652),

Gene: Shygu2_60 Start: 40355, Stop: 40131, Start Num: 41

Candidate Starts for Shygu2_60:

(Start: 29 @40397 has 22 MA's), (Start: 31 @40385 has 13 MA's), (Start: 41 @40355 has 144 MA's), (47, 40334),

Gene: Skipitt_61 Start: 40458, Stop: 40234, Start Num: 41

Candidate Starts for Skipitt_61:

(Start: 29 @40500 has 22 MA's), (Start: 31 @40488 has 13 MA's), (Start: 41 @40458 has 144 MA's), (47, 40437), (78, 40281), (83, 40242),

Gene: Sknot_65 Start: 40736, Stop: 40506, Start Num: 40

Candidate Starts for Sknot_65:

(Start: 40 @40736 has 137 MA's), (45, 40718), (48, 40700), (54, 40670), (78, 40553), (81, 40529),

Gene: Smeagan_69 Start: 41886, Stop: 41656, Start Num: 40

Candidate Starts for Smeagan_69:

(4, 42135), (26, 41940), (28, 41934), (Start: 40 @41886 has 137 MA's), (45, 41868), (71, 41739), (78, 41700),

Gene: SmellyB_66 Start: 39068, Stop: 38835, Start Num: 40

Candidate Starts for SmellyB_66:

(Start: 40 @39068 has 137 MA's), (45, 39050), (49, 39029), (54, 39002), (55, 38987), (65, 38936), (71, 38921),

Gene: SnapTap_66 Start: 41395, Stop: 41165, Start Num: 40

Candidate Starts for SnapTap_66:

(Start: 40 @41395 has 137 MA's), (45, 41377), (48, 41359), (77, 41221),

Gene: Snape_66 Start: 40165, Stop: 39932, Start Num: 38

Candidate Starts for Snape_66:

(Start: 38 @40165 has 27 MA's), (45, 40147), (57, 40063), (73, 40003), (76, 39997),

Gene: Snickers_68 Start: 41171, Stop: 40914, Start Num: 36

Candidate Starts for Snickers_68:

(Start: 36 @41171 has 15 MA's), (Start: 42 @41144 has 51 MA's), (67, 41015), (78, 40961),

Gene: SoYo_67 Start: 41109, Stop: 40852, Start Num: 36

Candidate Starts for SoYo_67:

(Start: 36 @41109 has 15 MA's), (Start: 42 @41082 has 51 MA's), (67, 40953), (78, 40899),

Gene: SoilDragon_68 Start: 40645, Stop: 40388, Start Num: 36

Candidate Starts for SoilDragon_68:

(Start: 36 @40645 has 15 MA's), (Start: 42 @40618 has 51 MA's), (67, 40489), (78, 40435), (80, 40420),

Gene: Soshari_70 Start: 41194, Stop: 40964, Start Num: 42

Candidate Starts for Soshari_70:

(Start: 36 @41221 has 15 MA's), (Start: 42 @41194 has 51 MA's), (67, 41065), (78, 41011),

Gene: Sparxx_63 Start: 40459, Stop: 40235, Start Num: 41

Candidate Starts for Sparxx_63:

(Start: 29 @40501 has 22 MA's), (Start: 31 @40489 has 13 MA's), (Start: 41 @40459 has 144 MA's), (47, 40438), (78, 40282), (83, 40243),

Gene: Spike509_68 Start: 41195, Stop: 40965, Start Num: 42

Candidate Starts for Spike509_68:

(Start: 36 @41222 has 15 MA's), (Start: 42 @41195 has 51 MA's), (67, 41066), (78, 41012),

Gene: SpikeBT_57 Start: 39705, Stop: 39445, Start Num: 32

Candidate Starts for SpikeBT_57:

(Start: 32 @39705 has 19 MA's), (54, 39618), (62, 39558), (63, 39555),

Gene: Spino_61 Start: 40467, Stop: 40243, Start Num: 41

Candidate Starts for Spino_61:

(Start: 29 @40509 has 22 MA's), (Start: 31 @40497 has 13 MA's), (Start: 41 @40467 has 144 MA's), (47, 40446), (78, 40290), (83, 40251),

Gene: Spouty_66 Start: 40397, Stop: 40164, Start Num: 40

Candidate Starts for Spouty_66:

(Start: 40 @40397 has 137 MA's), (45, 40379), (60, 40292), (64, 40265), (79, 40202), (81, 40187),

Gene: Stagni_67 Start: 41173, Stop: 40943, Start Num: 42

Candidate Starts for Stagni_67:

(Start: 36 @41200 has 15 MA's), (Start: 42 @41173 has 51 MA's), (67, 41044), (78, 40990),

Gene: StarStuff_68 Start: 41303, Stop: 41067, Start Num: 39

Candidate Starts for StarStuff_68:

(Start: 12 @41456 has 1 MA's), (Start: 31 @41330 has 13 MA's), (Start: 39 @41303 has 54 MA's), (44, 41285), (51, 41252), (67, 41165),

Gene: Stasia_60 Start: 40232, Stop: 40008, Start Num: 41

Candidate Starts for Stasia_60:

(Start: 29 @40274 has 22 MA's), (Start: 31 @40262 has 13 MA's), (Start: 41 @40232 has 144 MA's), (78, 40055),

Gene: SteMason_59 Start: 40461, Stop: 40237, Start Num: 41

Candidate Starts for SteMason_59:

(Start: 29 @40503 has 22 MA's), (Start: 31 @40491 has 13 MA's), (Start: 41 @40461 has 144 MA's), (47, 40440), (78, 40284), (83, 40245),

Gene: Steamy_62 Start: 40151, Stop: 39912, Start Num: 40

Candidate Starts for Steamy_62:

(Start: 31 @40181 has 13 MA's), (Start: 40 @40151 has 137 MA's), (45, 40133),

Gene: StepMih_67 Start: 41164, Stop: 40934, Start Num: 42

Candidate Starts for StepMih_67:

(Start: 36 @41191 has 15 MA's), (Start: 42 @41164 has 51 MA's), (67, 41035), (78, 40981),

Gene: Stink_59 Start: 40033, Stop: 39809, Start Num: 41

Candidate Starts for Stink_59:

(Start: 29 @40075 has 22 MA's), (Start: 31 @40063 has 13 MA's), (Start: 41 @40033 has 144 MA's), (47, 40012),

Gene: StrongArm_57 Start: 40820, Stop: 40560, Start Num: 32

Candidate Starts for StrongArm_57:

(Start: 32 @40820 has 19 MA's), (54, 40733), (75, 40631),

Gene: Sultana_62 Start: 40464, Stop: 40240, Start Num: 41

Candidate Starts for Sultana_62:

(Start: 29 @40506 has 22 MA's), (Start: 31 @40494 has 13 MA's), (Start: 41 @40464 has 144 MA's), (47, 40443), (78, 40287), (83, 40248),

Gene: Sunhee_68 Start: 39935, Stop: 39705, Start Num: 40

Candidate Starts for Sunhee_68:

(Start: 40 @39935 has 137 MA's), (45, 39917), (49, 39896), (71, 39788),

Gene: SuperAwesome_66 Start: 39073, Stop: 38840, Start Num: 40

Candidate Starts for SuperAwesome_66:

(Start: 40 @39073 has 137 MA's), (45, 39055), (49, 39034), (54, 39007), (55, 38992), (65, 38941), (71, 38926),

Gene: SuperCallie99_63 Start: 38955, Stop: 38722, Start Num: 40

Candidate Starts for SuperCallie99_63:

(Start: 40 @38955 has 137 MA's), (45, 38937), (49, 38916), (54, 38889), (55, 38874), (65, 38823), (71, 38808),

Gene: Superchunk_67 Start: 39685, Stop: 39446, Start Num: 39

Candidate Starts for Superchunk_67:

(Start: 39 @39685 has 54 MA's), (44, 39667), (49, 39646), (51, 39634), (67, 39547),

Gene: SweetiePie_66 Start: 41527, Stop: 41297, Start Num: 40

Candidate Starts for SweetiePie_66:

(Start: 40 @41527 has 137 MA's), (45, 41509), (48, 41491), (77, 41353),

Gene: SwirlSquare_71 Start: 40512, Stop: 40273, Start Num: 39

Candidate Starts for SwirlSquare_71:

(Start: 31 @40536 has 13 MA's), (Start: 39 @40512 has 54 MA's), (44, 40494), (51, 40461), (67, 40374),

Gene: TNguyen7_66 Start: 40862, Stop: 40632, Start Num: 41

Candidate Starts for TNguyen7_66:

(Start: 29 @40904 has 22 MA's), (Start: 31 @40892 has 13 MA's), (Start: 41 @40862 has 144 MA's), (71, 40718), (72, 40715), (80, 40664),

Gene: Taquarus_61 Start: 40467, Stop: 40243, Start Num: 41

Candidate Starts for Taquarus_61:

(Start: 29 @40509 has 22 MA's), (Start: 31 @40497 has 13 MA's), (Start: 41 @40467 has 144 MA's), (47, 40446), (78, 40290), (83, 40251),

Gene: TarsusIV_63 Start: 40986, Stop: 40756, Start Num: 40

Candidate Starts for TarsusIV_63:

(Start: 40 @40986 has 137 MA's), (45, 40968), (48, 40950), (54, 40920), (64, 40857), (78, 40803), (81, 40779), (83, 40764),

Gene: Taurus_69 Start: 41170, Stop: 40940, Start Num: 42

Candidate Starts for Taurus_69:

(Start: 36 @41197 has 15 MA's), (Start: 42 @41170 has 51 MA's), (67, 41041), (78, 40987),

Gene: Temprado_68 Start: 39552, Stop: 39319, Start Num: 40

Candidate Starts for Temprado_68:

(Start: 31 @39582 has 13 MA's), (Start: 40 @39552 has 137 MA's), (45, 39534), (49, 39513), (54, 39486), (65, 39420), (74, 39393), (78, 39366), (83, 39327),

Gene: Terrific_66 Start: 41090, Stop: 40860, Start Num: 40

Candidate Starts for Terrific_66:

(Start: 40 @41090 has 137 MA's), (45, 41072), (48, 41054), (54, 41024), (78, 40907), (81, 40883),

Gene: Texage_62 Start: 40847, Stop: 40644, Start Num: 41

Candidate Starts for Texage_62:

(Start: 31 @40877 has 13 MA's), (Start: 41 @40847 has 144 MA's), (69, 40718), (83, 40652),

Gene: Thanksgivukkah_61 Start: 40504, Stop: 40238, Start Num: 29

Candidate Starts for Thanksgivukkah_61:

(Start: 29 @40504 has 22 MA's), (Start: 31 @40492 has 13 MA's), (Start: 41 @40462 has 144 MA's), (47, 40441), (78, 40285), (83, 40246),

Gene: Tiffany_67 Start: 41056, Stop: 40826, Start Num: 42

Candidate Starts for Tiffany_67:

(Start: 36 @41083 has 15 MA's), (Start: 42 @41056 has 51 MA's), (67, 40927), (78, 40873),

Gene: Timothy_66 Start: 40142, Stop: 39909, Start Num: 38

Candidate Starts for Timothy_66:

(Start: 38 @40142 has 27 MA's), (45, 40124), (57, 40040), (73, 39980), (76, 39974),

Gene: Timshel_65 Start: 43612, Stop: 43391, Start Num: 39

Candidate Starts for Timshel_65:

(9, 43789), (13, 43738), (Start: 39 @43612 has 54 MA's), (45, 43591),

Gene: TinaFeyge_60 Start: 40501, Stop: 40235, Start Num: 29

Candidate Starts for TinaFeyge_60:

(Start: 29 @40501 has 22 MA's), (Start: 31 @40489 has 13 MA's), (Start: 41 @40459 has 144 MA's), (47, 40438), (78, 40282), (83, 40243),

Gene: TinyPebbles_67 Start: 41227, Stop: 40970, Start Num: 36

Candidate Starts for TinyPebbles_67:

(Start: 36 @41227 has 15 MA's), (Start: 42 @41200 has 51 MA's), (67, 41071),

Gene: TinyTimmy_66 Start: 40119, Stop: 39886, Start Num: 38

Candidate Starts for TinyTimmy_66:

(Start: 30 @40161 has 1 MA's), (Start: 38 @40119 has 27 MA's), (45, 40101), (57, 40017), (73, 39957), (76, 39951),

Gene: Tinybot_61 Start: 40494, Stop: 40270, Start Num: 41

Candidate Starts for Tinybot_61:

(Start: 29 @40536 has 22 MA's), (Start: 31 @40524 has 13 MA's), (Start: 41 @40494 has 144 MA's), (47, 40473), (78, 40317), (83, 40278),

Gene: TopsytheTRex_65 Start: 40588, Stop: 40352, Start Num: 39

Candidate Starts for TopsytheTRex_65:

(Start: 31 @40615 has 13 MA's), (Start: 39 @40588 has 54 MA's), (44, 40570), (51, 40537), (67, 40450),

Gene: TiroTheta9_61 Start: 40458, Stop: 40234, Start Num: 41

Candidate Starts for TiroTheta9_61:

(Start: 29 @40500 has 22 MA's), (Start: 31 @40488 has 13 MA's), (Start: 41 @40458 has 144 MA's), (47, 40437), (78, 40281), (83, 40242),

Gene: Toaka_67 Start: 40624, Stop: 40391, Start Num: 40

Candidate Starts for Toaka_67:

(Start: 40 @40624 has 137 MA's), (45, 40606), (60, 40519), (81, 40414),

Gene: Todacoro_64 Start: 40846, Stop: 40643, Start Num: 41

Candidate Starts for Todacoro_64:

(Start: 31 @40876 has 13 MA's), (Start: 41 @40846 has 144 MA's), (69, 40717), (83, 40651),

Gene: Tomathan_68 Start: 41350, Stop: 41114, Start Num: 39

Candidate Starts for Tomathan_68:

(Start: 12 @41503 has 1 MA's), (Start: 31 @41377 has 13 MA's), (Start: 39 @41350 has 54 MA's), (44, 41332), (51, 41299), (67, 41212),

Gene: ToneTone_64 Start: 39112, Stop: 38879, Start Num: 40

Candidate Starts for ToneTone_64:

(Start: 31 @39142 has 13 MA's), (Start: 40 @39112 has 137 MA's), (45, 39094), (49, 39073), (54, 39046), (65, 38980), (74, 38953), (78, 38926), (83, 38887),

Gene: Topanga_58 Start: 39963, Stop: 39730, Start Num: 39

Candidate Starts for Topanga_58:

(Start: 31 @39990 has 13 MA's), (Start: 39 @39963 has 54 MA's), (45, 39942), (59, 39858),

Gene: Toro_65 Start: 44015, Stop: 43773, Start Num: 38

Candidate Starts for Toro_65:

(9, 44180), (13, 44129), (15, 44096), (Start: 38 @44015 has 27 MA's), (45, 43994), (47, 43982), (77, 43832),

Gene: Traft412_61 Start: 40928, Stop: 40671, Start Num: 33

Candidate Starts for Traft412_61:

(Start: 33 @40928 has 4 MA's), (49, 40871), (53, 40853),

Gene: Travvers_67 Start: 41300, Stop: 41064, Start Num: 39

Candidate Starts for Travvers_67:

(Start: 12 @41453 has 1 MA's), (Start: 31 @41327 has 13 MA's), (Start: 39 @41300 has 54 MA's), (44, 41282), (51, 41249), (67, 41162),

Gene: Trike_58 Start: 39190, Stop: 38954, Start Num: 39

Candidate Starts for Trike_58:

(Start: 31 @39220 has 13 MA's), (Start: 39 @39190 has 54 MA's), (45, 39169), (64, 39055),

Gene: Tristan_63 Start: 41778, Stop: 41545, Start Num: 39

Candidate Starts for Tristan_63:

(Start: 29 @41817 has 22 MA's), (Start: 31 @41805 has 13 MA's), (Start: 39 @41778 has 54 MA's), (45, 41757), (81, 41568), (83, 41553),

Gene: Trixie_64 Start: 41204, Stop: 40974, Start Num: 40

Candidate Starts for Trixie_64:

(25, 41255), (Start: 31 @41234 has 13 MA's), (Start: 40 @41204 has 137 MA's), (45, 41186), (64, 41072), (71, 41057),

Gene: Trooper_66 Start: 41462, Stop: 41232, Start Num: 40

Candidate Starts for Trooper_66:

(35, 41480), (Start: 40 @41462 has 137 MA's), (45, 41444), (48, 41426), (54, 41396), (78, 41279), (81, 41255), (83, 41240),

Gene: TroyPia_63 Start: 40462, Stop: 40238, Start Num: 41

Candidate Starts for TroyPia_63:

(Start: 29 @40504 has 22 MA's), (Start: 31 @40492 has 13 MA's), (Start: 41 @40462 has 144 MA's), (47, 40441), (78, 40285), (83, 40246),

Gene: Tucker_67 Start: 39281, Stop: 39048, Start Num: 40

Candidate Starts for Tucker_67:

(Start: 31 @39311 has 13 MA's), (Start: 40 @39281 has 137 MA's), (45, 39263), (49, 39242), (54, 39215), (65, 39149), (78, 39095), (83, 39056),

Gene: Turbido_67 Start: 41605, Stop: 41375, Start Num: 40

Candidate Starts for Turbido_67:

(4, 41854), (26, 41659), (28, 41653), (Start: 40 @41605 has 137 MA's), (45, 41587), (71, 41458), (78, 41419),

Gene: Twister_60 Start: 40044, Stop: 39811, Start Num: 39

Candidate Starts for Twister_60:

(17, 40128), (Start: 31 @40071 has 13 MA's), (Start: 39 @40044 has 54 MA's), (45, 40023), (59, 39939),

Gene: TygerBlood_62 Start: 40464, Stop: 40240, Start Num: 41

Candidate Starts for TygerBlood_62:

(Start: 29 @40506 has 22 MA's), (Start: 31 @40494 has 13 MA's), (Start: 41 @40464 has 144 MA's), (47, 40443), (78, 40287), (83, 40248),

Gene: Ugenie5_64 Start: 41042, Stop: 40812, Start Num: 40

Candidate Starts for Ugenie5_64:

(Start: 40 @41042 has 137 MA's), (45, 41024), (79, 40847), (81, 40832),

Gene: Ulysses_61 Start: 40144, Stop: 39920, Start Num: 41

Candidate Starts for Ulysses_61:

(Start: 29 @40186 has 22 MA's), (Start: 31 @40174 has 13 MA's), (Start: 41 @40144 has 144 MA's), (47, 40123), (78, 39967), (83, 39928),

Gene: Updawg_66 Start: 40980, Stop: 40750, Start Num: 40

Candidate Starts for Updawg_66:

(Start: 40 @40980 has 137 MA's), (45, 40962), (48, 40944), (54, 40914), (78, 40797), (81, 40773),

Gene: VA6_66 Start: 41310, Stop: 41080, Start Num: 40

Candidate Starts for VA6_66:

(Start: 40 @41310 has 137 MA's), (45, 41292), (71, 41163), (78, 41124),

Gene: VC3_69 Start: 41277, Stop: 41041, Start Num: 39

Candidate Starts for VC3_69:

(Start: 31 @41304 has 13 MA's), (Start: 39 @41277 has 54 MA's), (44, 41259), (51, 41226), (67, 41139),

Gene: Veracruz_62 Start: 40846, Stop: 40643, Start Num: 41

Candidate Starts for Veracruz_62:

(Start: 31 @40876 has 13 MA's), (Start: 41 @40846 has 144 MA's), (69, 40717), (83, 40651),

Gene: Vix_66 Start: 41253, Stop: 41023, Start Num: 42

Candidate Starts for Vix_66:

(Start: 36 @41280 has 15 MA's), (Start: 42 @41253 has 51 MA's), (67, 41124), (78, 41070),

Gene: VohminGhazi_66 Start: 39069, Stop: 38836, Start Num: 40

Candidate Starts for VohminGhazi_66:

(Start: 40 @39069 has 137 MA's), (45, 39051), (49, 39030), (54, 39003), (55, 38988), (65, 38937), (71, 38922),

Gene: WalterMcMickey_60 Start: 40044, Stop: 39811, Start Num: 39

Candidate Starts for WalterMcMickey_60:

(17, 40128), (Start: 31 @40071 has 13 MA's), (Start: 39 @40044 has 54 MA's), (45, 40023), (59, 39939),

Gene: Wander_62 Start: 40503, Stop: 40237, Start Num: 29

Candidate Starts for Wander_62:

(Start: 29 @40503 has 22 MA's), (Start: 31 @40491 has 13 MA's), (Start: 41 @40461 has 144 MA's), (47, 40440), (78, 40284), (83, 40245),

Gene: Watson_67 Start: 41162, Stop: 40932, Start Num: 42

Candidate Starts for Watson_67:

(Start: 36 @41189 has 15 MA's), (Start: 42 @41162 has 51 MA's), (67, 41033), (78, 40979),

Gene: WeiHuaDA_67 Start: 42183, Stop: 41950, Start Num: 40

Candidate Starts for WeiHuaDA_67:

(Start: 31 @42213 has 13 MA's), (Start: 40 @42183 has 137 MA's), (45, 42165), (60, 42078), (64, 42051), (71, 42036), (81, 41973), (83, 41958),

Gene: Whabigail7_67 Start: 41605, Stop: 41375, Start Num: 40

Candidate Starts for Whabigail7_67:

(4, 41854), (26, 41659), (28, 41653), (Start: 40 @41605 has 137 MA's), (45, 41587), (71, 41458), (78, 41419),

Gene: WideWale_66 Start: 40980, Stop: 40750, Start Num: 40

Candidate Starts for WideWale_66:

(Start: 40 @40980 has 137 MA's), (45, 40962), (48, 40944), (54, 40914), (78, 40797), (81, 40773),

Gene: Wiks_66 Start: 39183, Stop: 38950, Start Num: 40

Candidate Starts for Wiks_66:

(Start: 31 @39213 has 13 MA's), (Start: 40 @39183 has 137 MA's), (45, 39165), (49, 39144), (54, 39117), (65, 39051), (74, 39024), (78, 38997), (83, 38958),

Gene: Wilbur_62 Start: 40461, Stop: 40237, Start Num: 41

Candidate Starts for Wilbur_62:

(Start: 29 @40503 has 22 MA's), (Start: 31 @40491 has 13 MA's), (Start: 41 @40461 has 144 MA's), (47, 40440), (78, 40284), (83, 40245),

Gene: Wile_60 Start: 40335, Stop: 40111, Start Num: 41

Candidate Starts for Wile_60:

(Start: 29 @40377 has 22 MA's), (Start: 41 @40335 has 144 MA's), (77, 40170), (78, 40158),

Gene: Wizard007_61 Start: 40469, Stop: 40245, Start Num: 41

Candidate Starts for Wizard007_61:

(Start: 29 @40511 has 22 MA's), (Start: 31 @40499 has 13 MA's), (Start: 41 @40469 has 144 MA's), (47, 40448), (78, 40292), (83, 40253),

Gene: Wolpertinger_64 Start: 40174, Stop: 39941, Start Num: 38

Candidate Starts for Wolpertinger_64:

(Start: 38 @40174 has 27 MA's), (45, 40156), (57, 40072), (73, 40012), (76, 40006),

Gene: Wooldri_70 Start: 41109, Stop: 40852, Start Num: 36

Candidate Starts for Wooldri_70:

(Start: 36 @41109 has 15 MA's), (Start: 42 @41082 has 51 MA's), (67, 40953), (78, 40899),

Gene: WorldCup_64 Start: 40146, Stop: 39913, Start Num: 40

Candidate Starts for WorldCup_64:

(Start: 40 @40146 has 137 MA's), (45, 40128), (54, 40080), (74, 39987), (81, 39936),

Gene: WunderPhul_67 Start: 39181, Stop: 38948, Start Num: 40

Candidate Starts for WunderPhul_67:

(Start: 31 @39211 has 13 MA's), (Start: 40 @39181 has 137 MA's), (45, 39163), (49, 39142), (54, 39115), (65, 39049), (74, 39022), (78, 38995), (83, 38956),

Gene: Xena_59 Start: 40301, Stop: 40077, Start Num: 41

Candidate Starts for Xena_59:

(Start: 29 @40343 has 22 MA's), (Start: 31 @40331 has 13 MA's), (Start: 41 @40301 has 144 MA's), (77, 40136), (78, 40124),

Gene: XianYue_63 Start: 40566, Stop: 40336, Start Num: 40

Candidate Starts for XianYue_63:

(Start: 40 @40566 has 137 MA's), (45, 40548), (64, 40437), (71, 40422), (78, 40383),

Gene: YoSam321_62 Start: 40458, Stop: 40234, Start Num: 41

Candidate Starts for YoSam321_62:

(Start: 29 @40500 has 22 MA's), (Start: 31 @40488 has 13 MA's), (Start: 41 @40458 has 144 MA's), (47, 40437), (78, 40281), (83, 40242),

Gene: Yokurt_66 Start: 39183, Stop: 38950, Start Num: 40

Candidate Starts for Yokurt_66:

(Start: 31 @39213 has 13 MA's), (Start: 40 @39183 has 137 MA's), (45, 39165), (49, 39144), (54, 39117), (65, 39051), (74, 39024), (78, 38997), (83, 38958),

Gene: Zaka_67 Start: 39183, Stop: 38950, Start Num: 40

Candidate Starts for Zaka_67:

(Start: 31 @39213 has 13 MA's), (Start: 40 @39183 has 137 MA's), (45, 39165), (49, 39144), (54, 39117), (65, 39051), (74, 39024), (78, 38997), (83, 38958),

Gene: Zarafa_63 Start: 40812, Stop: 40582, Start Num: 41

Candidate Starts for Zarafa_63:

(Start: 29 @40854 has 22 MA's), (Start: 31 @40842 has 13 MA's), (Start: 41 @40812 has 144 MA's), (52, 40767),

Gene: Zetzy_67 Start: 40733, Stop: 40503, Start Num: 42

Candidate Starts for Zetzy_67:

(Start: 36 @40760 has 15 MA's), (Start: 42 @40733 has 51 MA's), (67, 40604), (78, 40550),

Gene: Zimmer_63 Start: 41380, Stop: 41147, Start Num: 40

Candidate Starts for Zimmer_63:

(Start: 40 @41380 has 137 MA's), (45, 41362), (55, 41299),

Gene: Zulu_68 Start: 39561, Stop: 39328, Start Num: 40

Candidate Starts for Zulu_68:

(Start: 31 @39591 has 13 MA's), (Start: 40 @39561 has 137 MA's), (45, 39543), (49, 39522), (54, 39495), (65, 39429), (74, 39402), (78, 39375), (83, 39336),