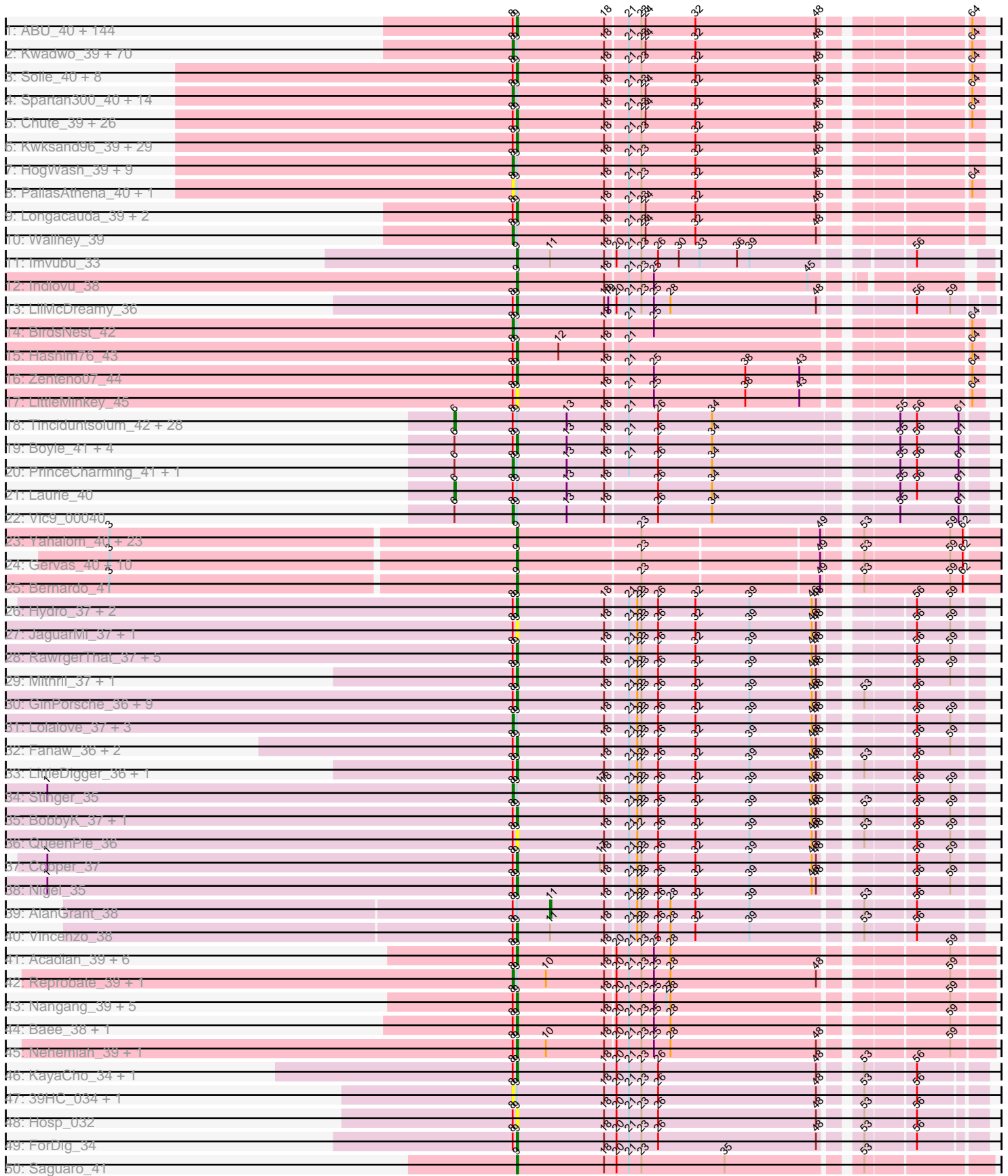
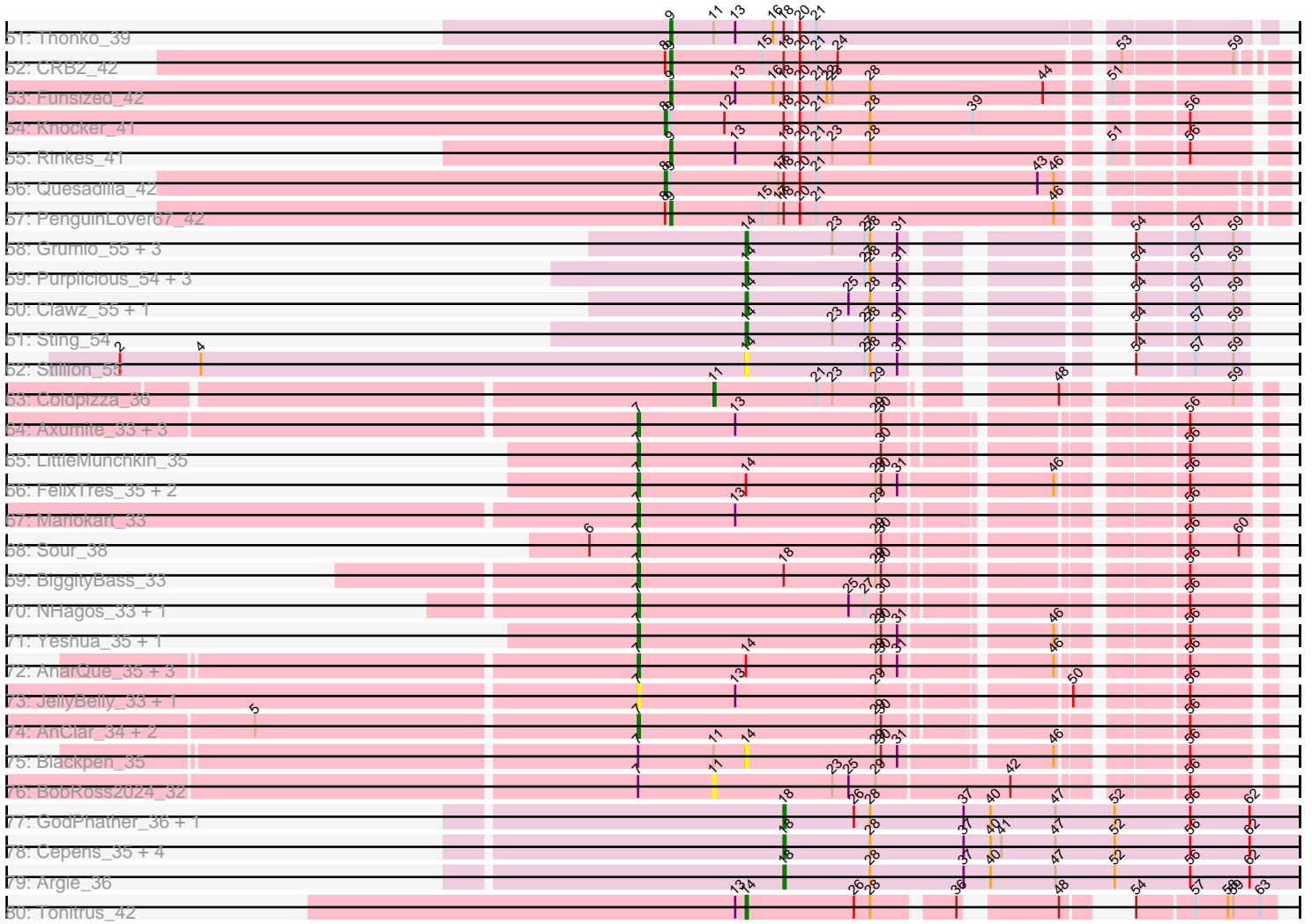


Pham 304594



Pham 304594



Note: Tracks are now grouped by subcluster and scaled. Switching in subcluster is indicated by changes in track color. Track scale is now set by default to display the region 30 bp upstream of start 1 to 30 bp downstream of the last possible start. If this default region is judged to be packed too tightly with annotated starts, the track will be further scaled to only show that region of the ORF with annotated starts. This action will be indicated by adding "Zoomed" to the title. For starts, yellow indicates the location of called starts comprised solely of Glimmer/GeneMark auto-annotations, green indicates the location of called starts with at least 1 manual gene annotation.

Pham 304594 Report

This analysis was run 06/08/26 on database version 649.

Pham number 304594 has 515 members, 69 are drafts.

Phages represented in each track:

- Track 1 : ABU_40, TooFast2Furius_41, Hamish_40, PhrodoBaggins_39, Morgushi_40, Badfish_40, Olak_39, Freya_39, MiniBoss_40, Horchata_40, Mag7_39, Fang_40, Jesabah_40, Katniss_40, Mcshane_39, Schadenfreude_39, Orion_40, Mecca_39, LostAndPhound_39, Scoot17C_40, True_39, Charles1_40, Colbert_40, Megatron_40, Bishoperium_39, Quisquiliae_40, Potter_39, Xavier_39, Omniscient_40, IsaacEli_40, Lulwa_40, Phipps_40, Held_40, Slatt_40, Bluephacebaby_39, Mulan_39, LeiMonet_40, Harvey_40, GreenChile_40, Khan1_40, Lasso_40, Tooj_40, KingVeVeVe_40, Vortex_40, AltPhacts_40, RedMaple_39, Gophee_40, Mikota_40, Fozzie_39, Hartsy_40, Banjo_39, KingTut_31, FremontTroll_40, Orwigg_39, SallyH_40, BlueHusk_40, ShadowBud_40, Puhltonio_40, Aonishiki_40, Pacifista_39, CampRoach_40, Nyala_39, Oosterbaan_40, Craff_40, Kloppinator_40, Anderson_40, Kahve_39, Matalotodo_40, Soto_40, Legolas_39, Fringe_40, MRabcd_39, DirtJuice_40, Haimas_40, Zelda_40, Beaglebox_39, TallGrassMM_40, Pherdinand_40, Phergie_39, Dice_39, Adriana_40, Riverton_40, Sheila_40, Samaymay_40, Hetaeria_40, Basato_41, Usavi_40, Veritas_39, HenryJackson_39, Nathan_40, Haleema_39, PG1_40, MrPhizzler_40, Simielle_39, Murdoc_40, DolOn_41, Prickles_40, Iridoclysis_40, Orfeu_39, Giraffe_40, Mesmerelda_39, OSmaximus_40, NiaNia_41, Chah_41, Gwilliam_40, Yoshand_40, PhrankReynolds_39, SilverBell_40, SDcharge11_40, OliverWalter_40, BlackStallion_40, Podrick_40, PhenghisKhan_39, Selr12_40, KlimbOn_40, Solosis_39, Phunky_40, Skippy_40, Squiggle_40, UncleHowie_40, Burr_39, Boehler_40, Eugenia_40, Serendipity_40, Childish_39, BatteryCK_39, Kailash_40, Ricotta_39, Maru_39, LemonSlice_40, RedRaider89_41, Thora_40, Dingo_40, AngelCake_40, ElvisPhasley_40, Kikipoo_40, Morty_40, Rimu_40, Chorkpop_40, Pops_40, Virapocalypse_40, Newman_40, Andre_40, Phareon_40, Daffy_40
- Track 2 : Kwadwo_39, Manad_39, Mana_39, JangoPhett_40, DoesntMatter_40, Megamind20_40, Timmi_39, Aelin_39, UAch1_40, Swish_40, Roliet_40, Phamished_40, JacAttac_40, SassyCat97_39, Telesworld_39, CamL_40, Lumine_39, Mesh1_40, Kimbrough_40, Daka_40, ShiVal_40, YouGoGlencoco_40, TomBombadil_40, Cosmolli16_39, Zaider_41, DonSanchon_39, FriarPreacher_40, HighStump_39, LuckyMarjie_39, Cannibal_40, Buckeye_40, Altwerkus_39, Cher_39, Hocus_39, Pipsqueak_40, Dione_39, Antonia_39, Vivaldi_40, Nacho_0040, Cornobble_39, FugateOSU_39, Riggan_40, Numberten_40, MitKao_40, FluffyNinja_40, Mutante_39, Gareth_39, Plmatters_40, Placalicious_39, Waterdiva_40, Nicole21_40, Sophia_39, Jillium_39, Mosaic_39, Phleuron_39, KLucky39_40, ThreeOh3D2_40, Crownjwl_40, QueenBeane_40, PhatCats2014_40, LeeLot_40, Vista_40, Surely_40, AbsoluteMadLad_39, Sigman_40, CheetO_40,

Chipette_41, Squid_40, Inverness_40, Hertubise_40, MichaelPhcott_39

- Track 3 : Soile_40, Brilliant_40, Schueller_39, Iridessa_40, Caspiboi_39, Aleia_40, JakeO_39, DelRivs_39, Taraxa_39
- Track 4 : Spartan300_40, Eremos_40, Lulumae_39, BoogieWoogie_39, Lehmann_40, HSavage_40, Roscoe_41, Serpentine_0040, Piglet_0039, Chunky_40, Olive_40, Grand2040_39, Larson_41, Roy17_40, Gyarad_0040
- Track 5 : Chute_39, Scrick_40, Keitherie_40, Robyn_39, Lopsy_39, PhatLouie_40, Flake_40, SirBeauregard_40, EmpTee_40, Apizium_39, Carthage_38, Swiphy_40, Chaelin_40, Valjean_40, Vaishali24_39, Windsor_39, Virgeve_39, Toni_39, Triad_40, Chuni_39, Tomlarah_40, Frankicide_40, Suffolk_40, Coletti_40, BlackBerry_39, ProfessorX_40, FleetyMac_39
- Track 6 : Kwksand96_39, LasagnaCat_40, MelsMeow_39, Melc17_40, Ashraf_39, Emiris_40, Gwennie1_40, JDog_39, Maskar_39, DaddyDaniels_40, Jiminy_39, Hekos_37, Happabalu_40, Cornbread_39, Plata_39, Struggle_39, Weher20_40, Inchworm_40, Jiraiya_39, Karn_39, DuchessDung_38, Dati_40, Trypo_40, Oline_39, PinheadLarry_40, Doddsville_40, Thunderbird_39, ImtiyazSitla_39, Durga_40, Duggie_39
- Track 7 : HogWash_39, OneBrain_40, Magic8_40, Cobra_40, CharlieGBrown_39, Labeouficaum_39, GeneCoco_40, Derpp_39, TyrionL_39, Etaye_40
- Track 8 : PallasAthena_40, Nova1_39
- Track 9 : Longacauda_39, Pinkman_39, Zonia_40
- Track 10 : Wallhey_39
- Track 11 : Imvubu_33
- Track 12 : Indlovu_38
- Track 13 : LilMcDreamy_36
- Track 14 : BirdsNest_42
- Track 15 : Hashim76_43
- Track 16 : Zenteno07_44
- Track 17 : LittleMinkey_45
- Track 18 : Tinciduntolum_42, TA17A_42, Rhinoforte_41, LilSmirk_41, Qyrzula_38, Eaglehorse_41, Arbiter_40, Ares_41, Lars_41, MasterPo_41, FrenchFry_41, Bananafish_41, Hedgerow_41, Tres_41, Holeinone_41, Sabella_40, Allegro_41, Glass_41, ItsyBitsy1_41, Kheth_41, Kaleb_41, LizLemon_41, Brownie5_41, Faze9_40, Coffee_41, Kolhan_41, Godines_41, Rosebush_40, Opia_41
- Track 19 : Boyle_41, Blocker23_41, Phantasmagoria_41, Calamitous_41, West99_41
- Track 20 : PrinceCharming_41, Lepheur_41
- Track 21 : Laurie_40
- Track 22 : Vic9_00040
- Track 23 : Yahalom_40, Nozo_40, Obutu_40, Morty007_40, Gadjet_41, Devonte_40, Shenandoah_40, Compostia_41, LestyG_40, Jackstina_37, SynergyX_40, Baloo_40, SwainyDoc_40, Phlyer_40, Mortcellus_39, Phayeta_41, Marley1013_40, Philly_39, GlenHope_41, RagingRooster_40, SlippinJimmy_40, Halfpint_39, Chentzyk_40, Audrey_40
- Track 24 : Gervas_40, Marlia_40, Deenasa_40, TinyTerror_40, Kamiyu_40, Phaedruss_38, Athena_41, Yinz_40, Glubnar_41, Neos5_40, Tydolla_40
- Track 25 : Bernardo_41
- Track 26 : Hydro_37, Apex_37, Mudslide_37
- Track 27 : JaguarMi_37, Xincheng_36
- Track 28 : RawrgerThat_37, JoyceMaria_37, Prince_37, Waleliano_37, Austelle_38, VioletZ_37
- Track 29 : Mithril_37, BrownCNA_38

- Track 30 : GinPorsche_36, Ahwei_36, Heath_36, Antihero_36, Hally898_36, Nanao_36, ChrisnMich_36, Lambano_36, Epah_36, Poster_36
- Track 31 : Lolalove_37, Hangman_37, Fortunato_37, Magpie_36
- Track 32 : Fanaw_36, JAMaL_37, Zemanar_38
- Track 33 : LittleDigger_36, Renkei_36
- Track 34 : Stinger_35
- Track 35 : BobbyK_37, Frederick_37
- Track 36 : QueenPie_36
- Track 37 : Cooper_37
- Track 38 : Nigel_35
- Track 39 : AlanGrant_38
- Track 40 : Vincenzo_38
- Track 41 : Acadian_39, Rita130_39, EastView9101_38, Donny_39, Suigeneris_39, SirJeffery_39, Reccee_39
- Track 42 : Reprobate_39, Mysterious_39
- Track 43 : Nangang_39, Serendipitous_38, DigitDog_39, Shenyu_39, KarasumaRum_41, StinkyVeggy_41
- Track 44 : Bae_38, Rich_38
- Track 45 : Nehemiah_39, Phelemich_39
- Track 46 : KayaCho_34, Jolie1_034
- Track 47 : 39HC_034, 40BC_034
- Track 48 : Hosp_032
- Track 49 : ForDig_34
- Track 50 : Saguaro_41
- Track 51 : Thonko_39
- Track 52 : CRB2_42
- Track 53 : Funsized_42
- Track 54 : Knocker_41
- Track 55 : Rinkes_41
- Track 56 : Quesadilla_42
- Track 57 : PenguinLover67_42
- Track 58 : Grumio_55, DonTron_55, KingstonB_56, Soos_51
- Track 59 : Purplicious_54, ColdSoup_56, Amo99_56, Jollymon_55
- Track 60 : Clawz_55, Makar_56
- Track 61 : Sting_54
- Track 62 : Stillion_55
- Track 63 : Coldpizza_36
- Track 64 : Axumite_33, Ligma_33, Fresco_33, Shatter_33
- Track 65 : LittleMunchkin_35
- Track 66 : FelixTres_35, MossRose_35, CloverMinnie_35
- Track 67 : Mariokart_33
- Track 68 : Sour_38
- Track 69 : BiggityBass_33
- Track 70 : NHagos_33, AksarBAT_33
- Track 71 : Yeshua_35, Wooper_35
- Track 72 : AnarQue_35, TraderJ_35, MakoManhole_35, CaiB_35
- Track 73 : JellyBelly_33, CharlottesWeb_33
- Track 74 : AnClar_34, Yago84_33, Sisko_33
- Track 75 : Blackpen_35
- Track 76 : BobRoss2024_32
- Track 77 : GodPhather_36, Jeon_35
- Track 78 : Cepens_35, D12_34, Taptic_35, PR_35, Megabear_35
- Track 79 : Argie_36

- Track 80 : Tonitrus_42

Summary of Final Annotations (See graph section above for start numbers):

The start number called the most often in the published annotations is 9, it was called in 278 of the 446 non-draft genes in the pham.

Genes that call this "Most Annotated" start:

- ABU_40, Acadian_39, Adriana_40, Ahwei_36, Aleia_40, AltPhacts_40, Anderson_40, Andre_40, AngelCake_40, Antihero_36, Aonishiki_40, Apex_37, Apizium_39, Ashraf_39, Athena_41, Audrey_40, Austelle_38, Badfish_40, Bae_38, Baloo_40, Banjo_39, Basato_41, BatteryCK_39, Beaglebox_39, Bernardo_41, Bishoperium_39, BlackStallion_40, BlacksBerry_39, Blocker23_41, BlueHusk_40, Bluephacebaby_39, BobbyK_37, Boehler_40, Boyle_41, Brilliant_40, BrownCNA_38, Burr_39, CRB2_42, Calamitous_41, CampRoach_40, Carthage_38, Caspiboi_39, Chaelin_40, Chah_41, Charles1_40, Chentzyk_40, Childish_39, Chorkpop_40, ChrisnMich_36, Chuni_39, Chute_39, Colbert_40, Coletti_40, Compostia_41, Cooper_37, Cornbread_39, Craff_40, DaddyDaniels_40, Daffy_40, Dati_40, Deenasa_40, DelRivs_39, Devonte_40, Dice_39, DigitDog_39, Dingo_40, DirtJuice_40, Doddsville_40, DolOn_41, Donny_39, DuchessDung_38, Duggie_39, Durga_40, EastView9101_38, ElvisPhasley_40, Emiris_40, EmpTee_40, Epah_36, Eugenia_40, Fanaw_36, Fang_40, Flake_40, FleetyMac_39, ForDig_34, Fozzie_39, Frankicide_40, Frederick_37, FremontTroll_40, Freya_39, Fringe_40, Funsized_42, Gadget_41, Gervas_40, GinPorsche_36, Giraffe_40, GlenHope_41, Glubnar_41, Gophee_40, GreenChile_40, Gwennie1_40, Gwilliam_40, Haimas_40, Haleema_39, Halfpint_39, Hally898_36, Hamish_40, Happabalu_40, Hartsy_40, Harvey_40, Hashim76_43, Heath_36, Hekos_37, Held_40, HenryJackson_39, Hetaeria_40, Horchata_40, Hosp_032, Hydro_37, ImtiyazSitla_39, Imvubu_33, Inchworm_40, Indlovu_38, Iridessa_40, Iridoclysis_40, IsaacEli_40, JAMaL_37, JDog_39, Jackstina_37, JaguarMi_37, JakeO_39, Jesabah_40, Jiminy_39, Jiraiya_39, Jolie1_034, JoyceMaria_37, Kahve_39, Kailash_40, Kamiyu_40, KarasumaRum_41, Karn_39, Katniss_40, KayaCho_34, Keitherie_40, Khan1_40, Kikipoo_40, KingTut_31, KingVeVeVe_40, KlimbOn_40, Kloppinator_40, Kwksand96_39, Lambano_36, LasagnaCat_40, Lasso_40, Legolas_39, LeiMonet_40, LemonSlice_40, LestyG_40, LilMcDreamy_36, LittleDigger_36, LittleMinkey_45, Longacauda_39, Lopsy_39, LostAndPhound_39, Lulwa_40, MRabcd_39, Mag7_39, Marley1013_40, Marlia_40, Maru_39, Maskar_39, Matalotodo_40, Mcshane_39, Mecca_39, Megatron_40, Melc17_40, MelsMeow_39, Mesmerelda_39, Mikota_40, MiniBoss_40, Mithril_37, Morgushi_40, Mortcellus_39, Morty007_40, Morty_40, MrPhizzler_40, Mudslide_37, Mulan_39, Murdoc_40, Nanao_36, Nangang_39, Nathan_40, Nehemiah_39, Neos5_40, Newman_40, NiaNia_41, Nigel_35, Nozo_40, Nyala_39, OSmaximus_40, Obutu_40, Olak_39, Oline_39, OliverWalter_40, Omniscient_40, Oosterbaan_40, Orfeu_39, Orion_40, Orwigg_39, PG1_40, Pacifista_39, PenguinLover67_42, Phaedrus_38, Phantasmagoria_41, Phareon_40, PhatLouie_40, Phayeta_41, Phelemich_39, PhenghisKhan_39, Pherdinand_40, Phergie_39, Philly_39, Phipps_40, Phlyer_40, PhrankReynolds_39, PhrodoBaggins_39, Phunky_40, PinheadLarry_40, Pinkman_39, Plata_39, Podrick_40, Pops_40, Poster_36, Potter_39, Prickles_40, Prince_37, ProfessorX_40, Puhltonio_40, QueenPie_36, Quisquilliae_40, RagingRooster_40, RawrgerThat_37, Reccee_39, RedMaple_39, RedRaider89_41, Renkei_36, Rich_38, Ricotta_39,

Rimu_40, Rinkes_41, Rita130_39, Riverton_40, Robyn_39, SDcharge11_40, Saguaro_41, SallyH_40, Samaymay_40, Schadenfreude_39, Schueller_39, Scoot17C_40, Scrick_40, Selr12_40, Serendipitous_38, Serendipity_40, ShadowBud_40, Sheila_40, Shenandoah_40, Shenyu_39, SilverBell_40, Simielle_39, SirBeauregard_40, SirJeffery_39, Skippy_40, Slatt_40, SlippinJimmy_40, Soile_40, Solosis_39, Soto_40, Squiggle_40, StinkyVeggy_41, Struggle_39, Suffolk_40, Suigeneris_39, SwainyDoc_40, Swiphy_40, SynergyX_40, TallGrassMM_40, Taraxa_39, Thonko_39, Thora_40, Thunderbird_39, TinyTerror_40, Tomlarah_40, Toni_39, TooFast2Furius_41, Tooj_40, Triad_40, True_39, Trypo_40, Tydolla_40, UncleHowie_40, Usavi_40, Vaishali24_39, Valjean_40, Veritas_39, Vincenzo_38, VioletZ_37, Virapocalypse_40, Virgeve_39, Vortex_40, Waleliano_37, Weher20_40, West99_41, Windsor_39, Xavier_39, Xincheng_36, Yahalom_40, Yinz_40, Yoshand_40, Zelda_40, Zemanar_38, Zenteno07_44, Zonia_40,

Genes that have the "Most Annotated" start but do not call it:

- 39HC_034, 40BC_034, AbsoluteMadLad_39, Aelin_39, AlanGrant_38, Allegro_41, Altwerkus_39, Antonia_39, Arbiter_40, Ares_41, Bananafish_41, BirdsNest_42, BoogieWoogie_39, Brownie5_41, Buckeye_40, CamL_40, Cannibal_40, CharlieGBrown_39, CheetO_40, Cher_39, Chipette_41, Chunky_40, Cobra_40, Coffee_41, Cornobble_39, Cosmolli16_39, Crownjwl_40, Daka_40, Derpp_39, Dione_39, DoesntMatter_40, DonSanchon_39, Eaglehorse_41, Eremos_40, Etaye_40, Faze9_40, FluffyNinja_40, Fortunato_37, FrenchFry_41, FriarPreacher_40, FugateOSU_39, Gareth_39, GeneCoco_40, Glass_41, Godines_41, Grand2040_39, Gyarad_0040, HSavage_40, Hangman_37, Hedgerow_41, Hertubise_40, HighStump_39, Hocus_39, HogWash_39, Holeinone_41, Inverness_40, ItsyBitsy1_41, JacAttac_40, JangoPhett_40, Jillium_39, KLucky39_40, Kaleb_41, Kheth_41, Kimbrough_40, Knocker_41, Kolhan_41, Kwadwo_39, Labeouficaum_39, Lars_41, Larson_41, Laurie_40, LeeLot_40, Lehmann_40, Lephleur_41, LilSmirk_41, LizLemon_41, Lolalove_37, LuckyMarjie_39, Lulumae_39, Lumine_39, Magic8_40, Magpie_36, Mana_39, Manad_39, MasterPo_41, Megamind20_40, Mesh1_40, MichaelPhcott_39, MitKao_40, Mosaic_39, Mutante_39, Mysterious_39, Nacho_0040, Nicole21_40, Nova1_39, Numberten_40, Olive_40, OneBrain_40, Opia_41, PallasAthena_40, Phamished_40, PhatCats2014_40, Phleuron_39, Piglet_0039, Pipsqueak_40, Placalicious_39, Plmatters_40, PrinceCharming_41, QueenBeane_40, Quesadilla_42, Qyrzula_38, Reprobate_39, Rhinoforte_41, Riggan_40, Roliet_40, Roscoe_41, Rosebush_40, Roy17_40, Sabella_40, SassyCat97_39, Serpentine_0040, ShiVal_40, Sigman_40, Sophia_39, Spartan300_40, Squid_40, Stinger_35, Surely_40, Swish_40, TA17A_42, Telesworld_39, ThreeOh3D2_40, Timmi_39, Tinciduntolum_42, TomBombadil_40, Tres_41, TyrionL_39, UAch1_40, Vic9_00040, Vista_40, Vivaldi_40, Wallhey_39, Waterdiva_40, YouGoGlencoco_40, Zaider_41,

Genes that do not have the "Most Annotated" start:

- AksarBAT_33, Amo99_56, AnClar_34, AnarQue_35, Argie_36, Axumite_33, BiggityBass_33, Blackpen_35, BobRoss2024_32, CaiB_35, Cepens_35, CharlottesWeb_33, Clawz_55, CloverMinnie_35, ColdSoup_56, Coldpizza_36, D12_34, DonTron_55, FelixTres_35, Fresco_33, GodPhather_36, Grumio_55, JellyBelly_33, Jeon_35, Jollymon_55, KingstonB_56, Ligma_33, LittleMunchkin_35, Makar_56, MakoManhole_35, Mariokart_33, Megabear_35, MossRose_35, NHagos_33, PR_35, Purplicious_54, Shatter_33, Sisko_33, Soos_51, Sour_38, Stillion_55, Sting_54, Taptic_35, Tonitrus_42, TraderJ_35, Wooper_35, Yago84_33, Yeshua_35,

Summary by start number:

Start 6:

- Found in 39 of 515 (7.6%) of genes in pham
- Manual Annotations of this start: 29 of 446
- Called 76.9% of time when present
- Phage (with cluster) where this start called: Allegro_41 (B2), Arbitrator_40 (B2), Ares_41 (B2), Bananafish_41 (B2), Brownie5_41 (B2), Coffee_41 (B2), Eaglehorse_41 (B2), Faze9_40 (B2), FrenchFry_41 (B2), Glass_41 (B2), Godines_41 (B2), Hedgerow_41 (B2), Holeinone_41 (B2), ItsyBitsy1_41 (B2), Kaleb_41 (B2), Kheth_41 (B2), Kolhan_41 (B2), Lars_41 (B2), Laurie_40 (B2), LilSmirk_41 (B2), LizLemon_41 (B2), MasterPo_41 (B2), Opia_41 (B2), Qyrzula_38 (B2), Rhinoforte_41 (B2), Rosebush_40 (B2), Sabella_40 (B2), TA17A_42 (B2), Tinciduntolum_42 (B2), Tres_41 (B2),

Start 7:

- Found in 26 of 515 (5.0%) of genes in pham
- Manual Annotations of this start: 20 of 446
- Called 92.3% of time when present
- Phage (with cluster) where this start called: AksarBAT_33 (DR), AnClar_34 (DR), AnarQue_35 (DR), Axumite_33 (DR), BiggityBass_33 (DR), CaiB_35 (DR), CharlottesWeb_33 (DR), CloverMinnie_35 (DR), FelixTres_35 (DR), Fresco_33 (DR), JellyBelly_33 (DR), Ligma_33 (DR), LittleMunchkin_35 (DR), MakoManhole_35 (DR), Mariokart_33 (DR), MossRose_35 (DR), NHagos_33 (DR), Shatter_33 (DR), Sisko_33 (DR), Sour_38 (DR), TraderJ_35 (DR), Wooper_35 (DR), Yago84_33 (DR), Yeshua_35 (DR),

Start 8:

- Found in 425 of 515 (82.5%) of genes in pham
- Manual Annotations of this start: 103 of 446
- Called 26.8% of time when present
- Phage (with cluster) where this start called: 39HC_034 (B6), 40BC_034 (B6), AbsoluteMadLad_39 (B1), Aelin_39 (B1), Altwerkus_39 (B1), Antonia_39 (B1), BirdsNest_42 (B13), BoogieWoogie_39 (B1), Buckeye_40 (B1), CamL_40 (B1), Cannibal_40 (B1), CharlieGBrown_39 (B1), CheetO_40 (B1), Cher_39 (B1), Chipette_41 (B1), Chunky_40 (B1), Cobra_40 (B1), Cornobble_39 (B1), Cosmolli16_39 (B1), Crownjwl_40 (B1), Daka_40 (B1), Derpp_39 (B1), Dione_39 (B1), DoesntMatter_40 (B1), DonSancho_39 (B1), Eremos_40 (B1), Etaye_40 (B1), FluffyNinja_40 (B1), Fortunato_37 (B4), FriarPreacher_40 (B1), FugateOSU_39 (B1), Gareth_39 (B1), GeneCoco_40 (B1), Grand2040_39 (B1), Gyarad_0040 (B1), HSavage_40 (B1), Hangman_37 (B4), Hertubise_40 (B1), HighStump_39 (B1), Hocus_39 (B1), HogWash_39 (B1), Inverness_40 (B1), JacAttac_40 (B1), JangoPhett_40 (B1), Jillium_39 (B1), KLucky39_40 (B1), Kimbrough_40 (B1), Knocker_41 (B9), Kwadwo_39 (B1), Labeoufcaum_39 (B1), Larson_41 (B1), LeeLot_40 (B1), Lehmann_40 (B1), Lephleur_41 (B2), Lolalove_37 (B4), LuckyMarjie_39 (B1), Lulumae_39 (B1), Lumine_39 (B1), Magic8_40 (B1), Magpie_36 (B4), Mana_39 (B1), Manad_39 (B1), Megamind20_40 (B1), Mesh1_40 (B1), MichaelPhcott_39 (B1), MitKao_40 (B1), Mosaic_39 (B1), Mutante_39 (B1), Mysterious_39 (B5), Nacho_0040 (B1), Nicole21_40 (B1), Nova1_39 (B1), Numberten_40 (B1), Olive_40 (B1), OneBrain_40 (B1), PallasAthena_40 (B1), Phamished_40 (B1), PhatCats2014_40 (B1), Phleuron_39 (B1), Piglet_0039 (B1), Pipsqueak_40 (B1), Placalicious_39 (B1), Plmatters_40 (B1), PrinceCharming_41

(B2), QueenBeane_40 (B1), Quesadilla_42 (B9), Reprobate_39 (B5), Riggan_40 (B1), Roliet_40 (B1), Roscoe_41 (B1), Roy17_40 (B1), SassyCat97_39 (B1), Serpentine_0040 (B1), ShiVal_40 (B1), Sigman_40 (B1), Sophia_39 (B1), Spartan300_40 (B1), Squid_40 (B1), Stinger_35 (B4), Surely_40 (B1), Swish_40 (B1), Telesworld_39 (B1), ThreeOh3D2_40 (B1), Timmi_39 (B1), TomBombadil_40 (B1), TyrionL_39 (B1), UAch1_40 (B1), Vic9_00040 (B2), Vista_40 (B1), Vivaldi_40 (B1), Wallhey_39 (B1), Waterdiva_40 (B1), YouGoGlencoco_40 (B1), Zaider_41 (B1),

Start 9:

- Found in 467 of 515 (90.7%) of genes in pham
- Manual Annotations of this start: 278 of 446
- Called 69.0% of time when present
- Phage (with cluster) where this start called: ABU_40 (B1), Acadian_39 (B5), Adriana_40 (B1), Ahwei_36 (B4), Aleia_40 (B1), AltPhacts_40 (B1), Anderson_40 (B1), Andre_40 (B1), AngelCake_40 (B1), Antihero_36 (B4), Aonishiki_40 (B1), Apex_37 (B4), Apizium_39 (B1), Ashraf_39 (B1), Athena_41 (B3), Audrey_40 (B3), Austelle_38 (B4), Badfish_40 (B1), Bae_38 (B5), Baloo_40 (B3), Banjo_39 (B1), Basato_41 (B1), BatteryCK_39 (B1), Beaglebox_39 (B1), Bernardo_41 (B3), Bishoperium_39 (B1), BlackStallion_40 (B1), BlacksBerry_39 (B1), Blocker23_41 (B2), BlueHusk_40 (B1), Bluephacebaby_39 (B1), BobbyK_37 (B4), Boehler_40 (B1), Boyle_41 (B2), Brilliant_40 (B1), BrownCNA_38 (B4), Burr_39 (B1), CRB2_42 (B9), Calamitous_41 (B2), CampRoach_40 (B1), Carthage_38 (B1), Caspiboi_39 (B1), Chaelin_40 (B1), Chah_41 (B1), Charles1_40 (B1), Chentzyk_40 (B3), Childish_39 (B1), Chorkpop_40 (B1), ChrisnMich_36 (B4), Chuni_39 (B1), Chute_39 (B1), Colbert_40 (B1), Coletti_40 (B1), Compostia_41 (B3), Cooper_37 (B4), Cornbread_39 (B1), Craff_40 (B1), DaddyDaniels_40 (B1), Daffy_40 (B1), Dati_40 (B1), Deenasa_40 (B3), DelRivs_39 (B1), Devonte_40 (B3), Dice_39 (B1), DigitDog_39 (B5), Dingo_40 (B1), DirtJuice_40 (B1), Doddsville_40 (B1), DolOn_41 (B1), Donny_39 (B5), DuchessDung_38 (B1), Duggie_39 (B1), Durga_40 (B1), EastView9101_38 (B5), ElvisPhasley_40 (B1), Emiris_40 (B1), EmpTee_40 (B1), Epah_36 (B4), Eugenia_40 (B1), Fanaw_36 (B4), Fang_40 (B1), Flake_40 (B1), FleetyMac_39 (B1), ForDig_34 (B6), Fozzie_39 (B1), Frankicide_40 (B1), Frederick_37 (B4), FremontTroll_40 (B1), Freya_39 (B1), Fringe_40 (B1), Funsized_42 (B9), Gadget_41 (B3), Gervas_40 (B3), GinPorsche_36 (B4), Giraffe_40 (B1), GlenHope_41 (B3), Glubnar_41 (B3), Gophee_40 (B1), GreenChile_40 (B1), Gwennie1_40 (B1), Gwilliam_40 (B1), Haimas_40 (B1), Haleema_39 (B1), Halfpint_39 (B3), Hally898_36 (B4), Hamish_40 (B1), Happabalu_40 (B1), Hartsy_40 (B1), Harvey_40 (B1), Hashim76_43 (B13), Heath_36 (B4), Hekos_37 (B1), Held_40 (B1), HenryJackson_39 (B1), Hetaeria_40 (B1), Horchata_40 (B1), Hosp_032 (B6), Hydro_37 (B4), ImtiyazSitla_39 (B1), Imvubu_33 (B10), Inchworm_40 (B1), Indlovu_38 (B11), Iridessa_40 (B1), Iridoclysis_40 (B1), IsaacEli_40 (B1), JAMaL_37 (B4), JDog_39 (B1), Jackstina_37 (B3), JaguarMi_37 (B4), JakeO_39 (B1), Jesabah_40 (B1), Jiminy_39 (B1), Jiraiya_39 (B1), Jolie1_034 (B6), JoyceMaria_37 (B4), Kahve_39 (B1), Kailash_40 (B1), Kamiyu_40 (B3), KarasumaRum_41 (B5), Karn_39 (B1), Katniss_40 (B1), KayaCho_34 (B6), Keitherie_40 (B1), Khan1_40 (B1), Kikipoo_40 (B1), KingTut_31 (B1), KingVeVeVe_40 (B1), KlimbOn_40 (B1), Kloppinator_40 (B1), Kwksand96_39 (B1), Lambano_36 (B4), LasagnaCat_40 (B1), Lasso_40 (B1), Legolas_39 (B1), LeiMonet_40 (B1), LemonSlice_40 (B1), LestyG_40 (B3), LiiMcDreamy_36 (B12), LittleDigger_36 (B4), LittleMinkey_45 (B13), Longacauda_39 (B1), Lopsy_39 (B1), LostAndPhound_39 (B1), Lulwa_40 (B1), MRabcd_39 (B1), Mag7_39 (B1), Marley1013_40 (B3), Marlia_40 (B3), Maru_39 (B1), Maskar_39 (B1), Matalotodo_40 (B1), Mcshane_39 (B1), Mecca_39 (B1), Megatron_40 (B1), Melc17_40 (B1), MelsMeow_39 (B1), Mesmerelda_39 (B1),

Mikota_40 (B1), MiniBoss_40 (B1), Mithril_37 (B4), Morgushi_40 (B1), Mortcellus_39 (B3), Morty007_40 (B3), Morty_40 (B1), MrPhizzler_40 (B1), Mudslide_37 (B4), Mulan_39 (B1), Murdoc_40 (B1), Nanao_36 (B4), Nangang_39 (B5), Nathan_40 (B1), Nehemiah_39 (B5), Neos5_40 (B3), Newman_40 (B1), NiaNia_41 (B1), Nigel_35 (B4), Nozo_40 (B3), Nyala_39 (B1), OSmaximus_40 (B1), Obutu_40 (B3), Olak_39 (B1), Oline_39 (B1), OliverWalter_40 (B1), Omniscient_40 (B1), Oosterbaan_40 (B1), Orfeu_39 (B1), Orion_40 (B1), Orwigg_39 (B1), PG1_40 (B1), Pacifista_39 (B1), PenguinLover67_42 (B9), Phaedrus_38 (B3), Phantasmagoria_41 (B2), Phareon_40 (B1), PhatLouie_40 (B1), Phayeta_41 (B3), Phelemich_39 (B5), PhenghisKhan_39 (B1), Pherdinand_40 (B1), Phergie_39 (B1), Philly_39 (B3), Phipps_40 (B1), Phlyer_40 (B3), PhrankReynolds_39 (B1), PhrodoBaggins_39 (B1), Phunky_40 (B1), PinheadLarry_40 (B1), Pinkman_39 (B1), Plata_39 (B1), Podrick_40 (B1), Pops_40 (B1), Poster_36 (B4), Potter_39 (B1), Prickles_40 (B1), Prince_37 (B4), ProfessorX_40 (B1), Puhltonio_40 (B1), QueenPie_36 (B4), Quisquiliae_40 (B1), RagingRooster_40 (B3), RawrgerThat_37 (B4), Reccee_39 (B5), RedMaple_39 (B1), RedRaider89_41 (B1), Renkei_36 (B4), Rich_38 (B5), Ricotta_39 (B1), Rimu_40 (B1), Rinkes_41 (B9), Rita130_39 (B5), Riverton_40 (B1), Robyn_39 (B1), SDcharge11_40 (B1), Saguario_41 (B7), SallyH_40 (B1), Samaymay_40 (B1), Schadenfreude_39 (B1), Schueller_39 (B1), Scoot17C_40 (B1), Scrick_40 (B1), Selr12_40 (B1), Serendipitous_38 (B5), Serendipity_40 (B1), ShadowBud_40 (B1), Sheila_40 (B1), Shenandoah_40 (B3), Shenyu_39 (B5), SilverBell_40 (B1), Simielle_39 (B1), SirBeauregard_40 (B1), SirJeffery_39 (B5), Skippy_40 (B1), Slatt_40 (B1), SlippinJimmy_40 (B3), Soile_40 (B1), Solosis_39 (B1), Soto_40 (B1), Squiggle_40 (B1), StinkyVeggy_41 (B5), Struggle_39 (B1), Suffolk_40 (B1), Suigeneris_39 (B5), SwainyDoc_40 (B3), Swiphy_40 (B1), SynergyX_40 (B3), TallGrassMM_40 (B1), Taraxa_39 (B1), Thonko_39 (B8), Thora_40 (B1), Thunderbird_39 (B1), TinyTerror_40 (B3), Tomlarah_40 (B1), Toni_39 (B1), TooFast2Furius_41 (B1), Tooj_40 (B1), Triad_40 (B1), True_39 (B1), Trypo_40 (B1), Tydolla_40 (B3), UncleHowie_40 (B1), Usavi_40 (B1), Vaishali24_39 (B1), Valjean_40 (B1), Veritas_39 (B1), Vincenzo_38 (B4), VioletZ_37 (B4), Virapocalypse_40 (B1), Virgeve_39 (B1), Vortex_40 (B1), Waleliano_37 (B4), Weher20_40 (B1), West99_41 (B2), Windsor_39 (B1), Xavier_39 (B1), Xincheng_36 (B4), Yahalom_40 (B3), Yinz_40 (B3), Yoshand_40 (B1), Zelda_40 (B1), Zemanar_38 (B4), Zenteno07_44 (B13), Zonia_40 (B1),

Start 11:

- Found in 7 of 515 (1.4%) of genes in pham
- Manual Annotations of this start: 2 of 446
- Called 42.9% of time when present
- Phage (with cluster) where this start called: AlanGrant_38 (B4), BobRoss2024_32 (DR), Coldpizza_36 (DR),

Start 14:

- Found in 21 of 515 (4.1%) of genes in pham
- Manual Annotations of this start: 6 of 446
- Called 66.7% of time when present
- Phage (with cluster) where this start called: Amo99_56 (CP), Blackpen_35 (DR), Clawz_55 (CP), ColdSoup_56 (CP), DonTron_55 (CP), Grumio_55 (CP), Jollymon_55 (CP), KingstonB_56 (CP), Makar_56 (CP), Purplicious_54 (CP), Soos_51 (CP), Stillion_55 (CP), Sting_54 (CP), Tonitrus_42 (singleton),

Start 18:

- Found in 440 of 515 (85.4%) of genes in pham

- Manual Annotations of this start: 8 of 446
- Called 1.8% of time when present
- Phage (with cluster) where this start called: Argie_36 (W), Cepens_35 (W), D12_34 (W), GodPhather_36 (W), Jeon_35 (W), Megabear_35 (W), PR_35 (W), Taptic_35 (W),

Summary by clusters:

There are 17 clusters represented in this pham: singleton, W, B10, B8, B11, B4, B5, B6, B7, B12, B1, B2, B3, CP, DR, B9, B13,

Info for manual annotations of cluster B1:

- Start number 8 was manually annotated 90 times for cluster B1.
- Start number 9 was manually annotated 196 times for cluster B1.

Info for manual annotations of cluster B10:

- Start number 9 was manually annotated 1 time for cluster B10.

Info for manual annotations of cluster B11:

- Start number 9 was manually annotated 1 time for cluster B11.

Info for manual annotations of cluster B12:

- Start number 9 was manually annotated 1 time for cluster B12.

Info for manual annotations of cluster B13:

- Start number 8 was manually annotated 1 time for cluster B13.
- Start number 9 was manually annotated 2 times for cluster B13.

Info for manual annotations of cluster B2:

- Start number 6 was manually annotated 29 times for cluster B2.
- Start number 8 was manually annotated 3 times for cluster B2.
- Start number 9 was manually annotated 5 times for cluster B2.

Info for manual annotations of cluster B3:

- Start number 9 was manually annotated 33 times for cluster B3.

Info for manual annotations of cluster B4:

- Start number 8 was manually annotated 5 times for cluster B4.
- Start number 9 was manually annotated 22 times for cluster B4.
- Start number 11 was manually annotated 1 time for cluster B4.

Info for manual annotations of cluster B5:

- Start number 8 was manually annotated 2 times for cluster B5.
- Start number 9 was manually annotated 9 times for cluster B5.

Info for manual annotations of cluster B6:

- Start number 9 was manually annotated 2 times for cluster B6.

Info for manual annotations of cluster B7:

- Start number 9 was manually annotated 1 time for cluster B7.

Info for manual annotations of cluster B8:

- Start number 9 was manually annotated 1 time for cluster B8.

Info for manual annotations of cluster B9:

- Start number 8 was manually annotated 2 times for cluster B9.
- Start number 9 was manually annotated 4 times for cluster B9.

Info for manual annotations of cluster CP:

- Start number 14 was manually annotated 5 times for cluster CP.

Info for manual annotations of cluster DR:

- Start number 7 was manually annotated 20 times for cluster DR.
- Start number 11 was manually annotated 1 time for cluster DR.

Info for manual annotations of cluster W:

- Start number 18 was manually annotated 8 times for cluster W.

Gene Information:

Gene: 39HC_034 Start: 34919, Stop: 35236, Start Num: 8

Candidate Starts for 39HC_034:

(Start: 8 @34919 has 103 MA's), (Start: 9 @34922 has 278 MA's), (Start: 18 @34985 has 8 MA's), (20, 34994), (21, 35003), (23, 35012), (26, 35024), (48, 35138), (53, 35159), (56, 35192),

Gene: 40BC_034 Start: 34919, Stop: 35236, Start Num: 8

Candidate Starts for 40BC_034:

(Start: 8 @34919 has 103 MA's), (Start: 9 @34922 has 278 MA's), (Start: 18 @34985 has 8 MA's), (20, 34994), (21, 35003), (23, 35012), (26, 35024), (48, 35138), (53, 35159), (56, 35192),

Gene: ABU_40 Start: 36604, Stop: 36915, Start Num: 9

Candidate Starts for ABU_40:

(Start: 8 @36601 has 103 MA's), (Start: 9 @36604 has 278 MA's), (Start: 18 @36667 has 8 MA's), (21, 36682), (23, 36691), (24, 36694), (32, 36730), (48, 36817), (64, 36907),

Gene: AbsoluteMadLad_39 Start: 36610, Stop: 36924, Start Num: 8

Candidate Starts for AbsoluteMadLad_39:

(Start: 8 @36610 has 103 MA's), (Start: 9 @36613 has 278 MA's), (Start: 18 @36676 has 8 MA's), (21, 36691), (23, 36700), (24, 36703), (32, 36739), (48, 36826), (64, 36916),

Gene: Acadian_39 Start: 37200, Stop: 37520, Start Num: 9

Candidate Starts for Acadian_39:

(Start: 8 @37197 has 103 MA's), (Start: 9 @37200 has 278 MA's), (Start: 18 @37263 has 8 MA's), (20, 37269), (21, 37278), (23, 37287), (25, 37296), (28, 37308), (59, 37491),

Gene: Adriana_40 Start: 36602, Stop: 36913, Start Num: 9

Candidate Starts for Adriana_40:

(Start: 8 @36599 has 103 MA's), (Start: 9 @36602 has 278 MA's), (Start: 18 @36665 has 8 MA's), (21, 36680), (23, 36689), (24, 36692), (32, 36728), (48, 36815), (64, 36905),

Gene: Aelin_39 Start: 36165, Stop: 36479, Start Num: 8

Candidate Starts for Aelin_39:

(Start: 8 @36165 has 103 MA's), (Start: 9 @36168 has 278 MA's), (Start: 18 @36231 has 8 MA's), (21, 36246), (23, 36255), (24, 36258), (32, 36294), (48, 36381), (64, 36471),

Gene: Ahwei_36 Start: 35900, Stop: 36211, Start Num: 9

Candidate Starts for Ahwei_36:

(Start: 8 @35897 has 103 MA's), (Start: 9 @35900 has 278 MA's), (Start: 18 @35963 has 8 MA's), (21, 35978), (22, 35984), (23, 35987), (26, 35999), (32, 36026), (39, 36065), (46, 36110), (48, 36113), (53, 36134), (56, 36167),

Gene: AksarBAT_33 Start: 30196, Stop: 30510, Start Num: 7

Candidate Starts for AksarBAT_33:

(Start: 7 @30196 has 20 MA's), (25, 30313), (27, 30322), (30, 30331), (56, 30469),

Gene: AlanGrant_38 Start: 37675, Stop: 37962, Start Num: 11

Candidate Starts for AlanGrant_38:

(Start: 8 @37648 has 103 MA's), (Start: 9 @37651 has 278 MA's), (Start: 11 @37675 has 2 MA's), (Start: 18 @37714 has 8 MA's), (21, 37729), (22, 37735), (23, 37738), (26, 37750), (28, 37759), (32, 37777), (39, 37816), (53, 37885), (56, 37918),

Gene: Aleia_40 Start: 36185, Stop: 36496, Start Num: 9

Candidate Starts for Aleia_40:

(Start: 8 @36182 has 103 MA's), (Start: 9 @36185 has 278 MA's), (Start: 18 @36248 has 8 MA's), (21, 36263), (23, 36272), (32, 36311), (48, 36398), (64, 36488),

Gene: Allegro_41 Start: 37726, Stop: 38091, Start Num: 6

Candidate Starts for Allegro_41:

(Start: 6 @37726 has 29 MA's), (Start: 8 @37768 has 103 MA's), (Start: 9 @37771 has 278 MA's), (13, 37807), (Start: 18 @37834 has 8 MA's), (21, 37849), (26, 37870), (34, 37909), (55, 38032), (56, 38044), (61, 38074),

Gene: AltPhacts_40 Start: 36591, Stop: 36902, Start Num: 9

Candidate Starts for AltPhacts_40:

(Start: 8 @36588 has 103 MA's), (Start: 9 @36591 has 278 MA's), (Start: 18 @36654 has 8 MA's), (21, 36669), (23, 36678), (24, 36681), (32, 36717), (48, 36804), (64, 36894),

Gene: Altwerkus_39 Start: 36289, Stop: 36603, Start Num: 8

Candidate Starts for Altwerkus_39:

(Start: 8 @36289 has 103 MA's), (Start: 9 @36292 has 278 MA's), (Start: 18 @36355 has 8 MA's), (21, 36370), (23, 36379), (24, 36382), (32, 36418), (48, 36505), (64, 36595),

Gene: Amo99_56 Start: 30719, Stop: 30940, Start Num: 14

Candidate Starts for Amo99_56:

(Start: 14 @30719 has 6 MA's), (27, 30785), (28, 30788), (31, 30803), (54, 30881), (57, 30911), (59, 30932),

Gene: AnClar_34 Start: 32553, Stop: 32864, Start Num: 7

Candidate Starts for AnClar_34:

(5, 32346), (Start: 7 @32553 has 20 MA's), (29, 32685), (30, 32688), (56, 32823),

Gene: AnarQue_35 Start: 31659, Stop: 31973, Start Num: 7

Candidate Starts for AnarQue_35:

(Start: 7 @31659 has 20 MA's), (Start: 14 @31719 has 6 MA's), (29, 31791), (30, 31794), (31, 31803), (46, 31875), (56, 31932),

Gene: Anderson_40 Start: 36597, Stop: 36908, Start Num: 9

Candidate Starts for Anderson_40:

(Start: 8 @36594 has 103 MA's), (Start: 9 @36597 has 278 MA's), (Start: 18 @36660 has 8 MA's), (21, 36675), (23, 36684), (24, 36687), (32, 36723), (48, 36810), (64, 36900),

Gene: Andre_40 Start: 36596, Stop: 36907, Start Num: 9

Candidate Starts for Andre_40:

(Start: 8 @36593 has 103 MA's), (Start: 9 @36596 has 278 MA's), (Start: 18 @36659 has 8 MA's), (21, 36674), (23, 36683), (24, 36686), (32, 36722), (48, 36809), (64, 36899),

Gene: AngelCake_40 Start: 36616, Stop: 36927, Start Num: 9

Candidate Starts for AngelCake_40:

(Start: 8 @36613 has 103 MA's), (Start: 9 @36616 has 278 MA's), (Start: 18 @36679 has 8 MA's), (21, 36694), (23, 36703), (24, 36706), (32, 36742), (48, 36829), (64, 36919),

Gene: Antihero_36 Start: 35900, Stop: 36211, Start Num: 9

Candidate Starts for Antihero_36:

(Start: 8 @35897 has 103 MA's), (Start: 9 @35900 has 278 MA's), (Start: 18 @35963 has 8 MA's), (21, 35978), (22, 35984), (23, 35987), (26, 35999), (32, 36026), (39, 36065), (46, 36110), (48, 36113), (53, 36134), (56, 36167),

Gene: Antonia_39 Start: 36165, Stop: 36479, Start Num: 8

Candidate Starts for Antonia_39:

(Start: 8 @36165 has 103 MA's), (Start: 9 @36168 has 278 MA's), (Start: 18 @36231 has 8 MA's), (21, 36246), (23, 36255), (24, 36258), (32, 36294), (48, 36381), (64, 36471),

Gene: Aonishiki_40 Start: 36640, Stop: 36951, Start Num: 9

Candidate Starts for Aonishiki_40:

(Start: 8 @36637 has 103 MA's), (Start: 9 @36640 has 278 MA's), (Start: 18 @36703 has 8 MA's), (21, 36718), (23, 36727), (24, 36730), (32, 36766), (48, 36853), (64, 36943),

Gene: Apex_37 Start: 37106, Stop: 37417, Start Num: 9

Candidate Starts for Apex_37:

(Start: 8 @37103 has 103 MA's), (Start: 9 @37106 has 278 MA's), (Start: 18 @37169 has 8 MA's), (21, 37184), (22, 37190), (23, 37193), (26, 37205), (32, 37232), (39, 37271), (46, 37316), (48, 37319), (56, 37373), (59, 37397),

Gene: Apizium_39 Start: 36360, Stop: 36671, Start Num: 9

Candidate Starts for Apizium_39:

(Start: 8 @36357 has 103 MA's), (Start: 9 @36360 has 278 MA's), (Start: 18 @36423 has 8 MA's), (21, 36438), (23, 36447), (24, 36450), (32, 36486), (48, 36573), (64, 36663),

Gene: Arbiter_40 Start: 37812, Stop: 38177, Start Num: 6

Candidate Starts for Arbiter_40:

(Start: 6 @37812 has 29 MA's), (Start: 8 @37854 has 103 MA's), (Start: 9 @37857 has 278 MA's), (13, 37893), (Start: 18 @37920 has 8 MA's), (21, 37935), (26, 37956), (34, 37995), (55, 38118), (56, 38130), (61, 38160),

Gene: Ares_41 Start: 37796, Stop: 38161, Start Num: 6

Candidate Starts for Ares_41:

(Start: 6 @37796 has 29 MA's), (Start: 8 @37838 has 103 MA's), (Start: 9 @37841 has 278 MA's), (13, 37877), (Start: 18 @37904 has 8 MA's), (21, 37919), (26, 37940), (34, 37979), (55, 38102), (56, 38114), (61, 38144),

Gene: Argie_36 Start: 36020, Stop: 36304, Start Num: 18

Candidate Starts for Argie_36:

(Start: 18 @36020 has 8 MA's), (28, 36068), (37, 36119), (40, 36134), (47, 36170), (52, 36203), (56, 36245), (62, 36278),

Gene: Ashraf_39 Start: 36164, Stop: 36475, Start Num: 9

Candidate Starts for Ashraf_39:

(Start: 8 @36161 has 103 MA's), (Start: 9 @36164 has 278 MA's), (Start: 18 @36227 has 8 MA's), (21, 36242), (23, 36251), (32, 36290), (48, 36377),

Gene: Athena_41 Start: 38010, Stop: 38333, Start Num: 9

Candidate Starts for Athena_41:

(3, 37722), (Start: 9 @38010 has 278 MA's), (23, 38097), (49, 38220), (53, 38241), (59, 38301), (62, 38310),

Gene: Audrey_40 Start: 37259, Stop: 37582, Start Num: 9

Candidate Starts for Audrey_40:

(3, 36971), (Start: 9 @37259 has 278 MA's), (23, 37346), (49, 37469), (53, 37490), (59, 37550), (62, 37559),

Gene: Austelle_38 Start: 37562, Stop: 37873, Start Num: 9

Candidate Starts for Austelle_38:

(Start: 8 @37559 has 103 MA's), (Start: 9 @37562 has 278 MA's), (Start: 18 @37625 has 8 MA's), (21, 37640), (22, 37646), (23, 37649), (26, 37661), (32, 37688), (39, 37727), (46, 37772), (48, 37775), (56, 37829), (59, 37853),

Gene: Axumite_33 Start: 29709, Stop: 30020, Start Num: 7

Candidate Starts for Axumite_33:

(Start: 7 @29709 has 20 MA's), (13, 29763), (29, 29841), (30, 29844), (56, 29979),

Gene: Badfish_40 Start: 36627, Stop: 36938, Start Num: 9

Candidate Starts for Badfish_40:

(Start: 8 @36624 has 103 MA's), (Start: 9 @36627 has 278 MA's), (Start: 18 @36690 has 8 MA's), (21, 36705), (23, 36714), (24, 36717), (32, 36753), (48, 36840), (64, 36930),

Gene: Bae_38 Start: 37127, Stop: 37447, Start Num: 9

Candidate Starts for Bae_38:

(Start: 8 @37124 has 103 MA's), (Start: 9 @37127 has 278 MA's), (Start: 18 @37190 has 8 MA's), (20, 37196), (21, 37205), (23, 37214), (25, 37223), (28, 37235), (59, 37418),

Gene: Baloo_40 Start: 37262, Stop: 37585, Start Num: 9

Candidate Starts for Baloo_40:

(3, 36974), (Start: 9 @37262 has 278 MA's), (23, 37349), (49, 37472), (53, 37493), (59, 37553), (62, 37562),

Gene: Bananafish_41 Start: 37732, Stop: 38097, Start Num: 6

Candidate Starts for Bananafish_41:

(Start: 6 @37732 has 29 MA's), (Start: 8 @37774 has 103 MA's), (Start: 9 @37777 has 278 MA's), (13, 37813), (Start: 18 @37840 has 8 MA's), (21, 37855), (26, 37876), (34, 37915), (55, 38038), (56, 38050), (61, 38080),

Gene: Banjo_39 Start: 36302, Stop: 36613, Start Num: 9

Candidate Starts for Banjo_39:

(Start: 8 @36299 has 103 MA's), (Start: 9 @36302 has 278 MA's), (Start: 18 @36365 has 8 MA's), (21, 36380), (23, 36389), (24, 36392), (32, 36428), (48, 36515), (64, 36605),

Gene: Basato_41 Start: 36881, Stop: 37192, Start Num: 9

Candidate Starts for Basato_41:

(Start: 8 @36878 has 103 MA's), (Start: 9 @36881 has 278 MA's), (Start: 18 @36944 has 8 MA's), (21, 36959), (23, 36968), (24, 36971), (32, 37007), (48, 37094), (64, 37184),

Gene: BatteryCK_39 Start: 36221, Stop: 36532, Start Num: 9

Candidate Starts for BatteryCK_39:

(Start: 8 @36218 has 103 MA's), (Start: 9 @36221 has 278 MA's), (Start: 18 @36284 has 8 MA's), (21, 36299), (23, 36308), (24, 36311), (32, 36347), (48, 36434), (64, 36524),

Gene: Beaglebox_39 Start: 36323, Stop: 36634, Start Num: 9

Candidate Starts for Beaglebox_39:

(Start: 8 @36320 has 103 MA's), (Start: 9 @36323 has 278 MA's), (Start: 18 @36386 has 8 MA's), (21, 36401), (23, 36410), (24, 36413), (32, 36449), (48, 36536), (64, 36626),

Gene: Bernardo_41 Start: 37807, Stop: 38130, Start Num: 9

Candidate Starts for Bernardo_41:

(3, 37519), (Start: 9 @37807 has 278 MA's), (23, 37894), (49, 38017), (53, 38038), (59, 38098), (62, 38107),

Gene: BiggityBass_33 Start: 31960, Stop: 32271, Start Num: 7

Candidate Starts for BiggityBass_33:

(Start: 7 @31960 has 20 MA's), (Start: 18 @32041 has 8 MA's), (29, 32092), (30, 32095), (56, 32230),

Gene: BirdsNest_42 Start: 35554, Stop: 35868, Start Num: 8

Candidate Starts for BirdsNest_42:

(Start: 8 @35554 has 103 MA's), (Start: 9 @35557 has 278 MA's), (Start: 18 @35620 has 8 MA's), (21, 35635), (25, 35653), (64, 35860),

Gene: Bishoperium_39 Start: 36311, Stop: 36622, Start Num: 9

Candidate Starts for Bishoperium_39:

(Start: 8 @36308 has 103 MA's), (Start: 9 @36311 has 278 MA's), (Start: 18 @36374 has 8 MA's), (21, 36389), (23, 36398), (24, 36401), (32, 36437), (48, 36524), (64, 36614),

Gene: BlackStallion_40 Start: 36613, Stop: 36924, Start Num: 9

Candidate Starts for BlackStallion_40:

(Start: 8 @36610 has 103 MA's), (Start: 9 @36613 has 278 MA's), (Start: 18 @36676 has 8 MA's), (21, 36691), (23, 36700), (24, 36703), (32, 36739), (48, 36826), (64, 36916),

Gene: Blackpen_35 Start: 31137, Stop: 31391, Start Num: 14

Candidate Starts for Blackpen_35:

(Start: 7 @31077 has 20 MA's), (Start: 11 @31119 has 2 MA's), (Start: 14 @31137 has 6 MA's), (29, 31209), (30, 31212), (31, 31221), (46, 31293), (56, 31350),

Gene: BlacksBerry_39 Start: 36329, Stop: 36640, Start Num: 9

Candidate Starts for BlacksBerry_39:

(Start: 8 @36326 has 103 MA's), (Start: 9 @36329 has 278 MA's), (Start: 18 @36392 has 8 MA's), (21, 36407), (23, 36416), (24, 36419), (32, 36455), (48, 36542), (64, 36632),

Gene: Blocker23_41 Start: 37895, Stop: 38215, Start Num: 9

Candidate Starts for Blocker23_41:

(Start: 6 @37850 has 29 MA's), (Start: 8 @37892 has 103 MA's), (Start: 9 @37895 has 278 MA's), (13, 37931), (Start: 18 @37958 has 8 MA's), (21, 37973), (26, 37994), (34, 38033), (55, 38156), (56, 38168), (61, 38198),

Gene: BlueHusk_40 Start: 36110, Stop: 36421, Start Num: 9

Candidate Starts for BlueHusk_40:

(Start: 8 @36107 has 103 MA's), (Start: 9 @36110 has 278 MA's), (Start: 18 @36173 has 8 MA's), (21, 36188), (23, 36197), (24, 36200), (32, 36236), (48, 36323), (64, 36413),

Gene: Bluephacebaby_39 Start: 36308, Stop: 36619, Start Num: 9

Candidate Starts for Bluephacebaby_39:

(Start: 8 @36305 has 103 MA's), (Start: 9 @36308 has 278 MA's), (Start: 18 @36371 has 8 MA's), (21, 36386), (23, 36395), (24, 36398), (32, 36434), (48, 36521), (64, 36611),

Gene: BobRoss2024_32 Start: 29738, Stop: 30019, Start Num: 11

Candidate Starts for BobRoss2024_32:

(Start: 7 @29696 has 20 MA's), (Start: 11 @29738 has 2 MA's), (23, 29804), (25, 29813), (29, 29828), (42, 29900), (56, 29978),

Gene: BobbyK_37 Start: 36931, Stop: 37242, Start Num: 9

Candidate Starts for BobbyK_37:

(Start: 8 @36928 has 103 MA's), (Start: 9 @36931 has 278 MA's), (Start: 18 @36994 has 8 MA's), (21, 37009), (22, 37015), (23, 37018), (26, 37030), (32, 37057), (39, 37096), (46, 37141), (48, 37144), (53, 37165), (56, 37198), (59, 37222),

Gene: Boehler_40 Start: 36614, Stop: 36925, Start Num: 9

Candidate Starts for Boehler_40:

(Start: 8 @36611 has 103 MA's), (Start: 9 @36614 has 278 MA's), (Start: 18 @36677 has 8 MA's), (21, 36692), (23, 36701), (24, 36704), (32, 36740), (48, 36827), (64, 36917),

Gene: BoogieWoogie_39 Start: 36292, Stop: 36606, Start Num: 8

Candidate Starts for BoogieWoogie_39:

(Start: 8 @36292 has 103 MA's), (Start: 9 @36295 has 278 MA's), (Start: 18 @36358 has 8 MA's), (21, 36373), (23, 36382), (24, 36385), (32, 36421), (48, 36508), (64, 36598),

Gene: Boyle_41 Start: 37896, Stop: 38216, Start Num: 9

Candidate Starts for Boyle_41:

(Start: 6 @37851 has 29 MA's), (Start: 8 @37893 has 103 MA's), (Start: 9 @37896 has 278 MA's), (13, 37932), (Start: 18 @37959 has 8 MA's), (21, 37974), (26, 37995), (34, 38034), (55, 38157), (56, 38169), (61, 38199),

Gene: Brilliant_40 Start: 36319, Stop: 36630, Start Num: 9

Candidate Starts for Brilliant_40:

(Start: 8 @36316 has 103 MA's), (Start: 9 @36319 has 278 MA's), (Start: 18 @36382 has 8 MA's), (21, 36397), (23, 36406), (32, 36445), (48, 36532), (64, 36622),

Gene: BrownCNA_38 Start: 37192, Stop: 37503, Start Num: 9

Candidate Starts for BrownCNA_38:

(Start: 8 @37189 has 103 MA's), (Start: 9 @37192 has 278 MA's), (Start: 18 @37255 has 8 MA's), (21, 37270), (22, 37276), (23, 37279), (26, 37291), (32, 37318), (39, 37357), (46, 37402), (48, 37405), (56, 37459), (59, 37483),

Gene: Brownie5_41 Start: 37857, Stop: 38222, Start Num: 6

Candidate Starts for Brownie5_41:

(Start: 6 @37857 has 29 MA's), (Start: 8 @37899 has 103 MA's), (Start: 9 @37902 has 278 MA's), (13, 37938), (Start: 18 @37965 has 8 MA's), (21, 37980), (26, 38001), (34, 38040), (55, 38163), (56, 38175), (61, 38205),

Gene: Buckeye_40 Start: 36628, Stop: 36942, Start Num: 8

Candidate Starts for Buckeye_40:

(Start: 8 @36628 has 103 MA's), (Start: 9 @36631 has 278 MA's), (Start: 18 @36694 has 8 MA's), (21, 36709), (23, 36718), (24, 36721), (32, 36757), (48, 36844), (64, 36934),

Gene: Burr_39 Start: 36308, Stop: 36619, Start Num: 9

Candidate Starts for Burr_39:

(Start: 8 @36305 has 103 MA's), (Start: 9 @36308 has 278 MA's), (Start: 18 @36371 has 8 MA's), (21, 36386), (23, 36395), (24, 36398), (32, 36434), (48, 36521), (64, 36611),

Gene: CRB2_42 Start: 39392, Stop: 39706, Start Num: 9

Candidate Starts for CRB2_42:

(Start: 8 @39389 has 103 MA's), (Start: 9 @39392 has 278 MA's), (15, 39443), (Start: 18 @39455 has 8 MA's), (20, 39464), (21, 39473), (24, 39485), (53, 39629), (59, 39686),

Gene: CaiB_35 Start: 31645, Stop: 31959, Start Num: 7

Candidate Starts for CaiB_35:

(Start: 7 @31645 has 20 MA's), (Start: 14 @31705 has 6 MA's), (29, 31777), (30, 31780), (31, 31789), (46, 31861), (56, 31918),

Gene: Calamitous_41 Start: 37782, Stop: 38102, Start Num: 9

Candidate Starts for Calamitous_41:

(Start: 6 @37737 has 29 MA's), (Start: 8 @37779 has 103 MA's), (Start: 9 @37782 has 278 MA's), (13, 37818), (Start: 18 @37845 has 8 MA's), (21, 37860), (26, 37881), (34, 37920), (55, 38043), (56, 38055), (61, 38085),

Gene: CamL_40 Start: 36606, Stop: 36920, Start Num: 8

Candidate Starts for CamL_40:

(Start: 8 @36606 has 103 MA's), (Start: 9 @36609 has 278 MA's), (Start: 18 @36672 has 8 MA's), (21, 36687), (23, 36696), (24, 36699), (32, 36735), (48, 36822), (64, 36912),

Gene: CampRoach_40 Start: 36599, Stop: 36910, Start Num: 9

Candidate Starts for CampRoach_40:

(Start: 8 @36596 has 103 MA's), (Start: 9 @36599 has 278 MA's), (Start: 18 @36662 has 8 MA's), (21, 36677), (23, 36686), (24, 36689), (32, 36725), (48, 36812), (64, 36902),

Gene: Cannibal_40 Start: 36589, Stop: 36903, Start Num: 8

Candidate Starts for Cannibal_40:

(Start: 8 @36589 has 103 MA's), (Start: 9 @36592 has 278 MA's), (Start: 18 @36655 has 8 MA's), (21, 36670), (23, 36679), (24, 36682), (32, 36718), (48, 36805), (64, 36895),

Gene: Carthage_38 Start: 35521, Stop: 35832, Start Num: 9

Candidate Starts for Carthage_38:

(Start: 8 @35518 has 103 MA's), (Start: 9 @35521 has 278 MA's), (Start: 18 @35584 has 8 MA's), (21, 35599), (23, 35608), (24, 35611), (32, 35647), (48, 35734), (64, 35824),

Gene: Caspiroi_39 Start: 36318, Stop: 36629, Start Num: 9

Candidate Starts for Caspiboi_39:

(Start: 8 @36315 has 103 MA's), (Start: 9 @36318 has 278 MA's), (Start: 18 @36381 has 8 MA's), (21, 36396), (23, 36405), (32, 36444), (48, 36531), (64, 36621),

Gene: Cepens_35 Start: 35735, Stop: 36019, Start Num: 18

Candidate Starts for Cepens_35:

(Start: 18 @35735 has 8 MA's), (28, 35783), (37, 35834), (40, 35849), (41, 35855), (47, 35885), (52, 35918), (56, 35960), (62, 35993),

Gene: Chaelin_40 Start: 36306, Stop: 36617, Start Num: 9

Candidate Starts for Chaelin_40:

(Start: 8 @36303 has 103 MA's), (Start: 9 @36306 has 278 MA's), (Start: 18 @36369 has 8 MA's), (21, 36384), (23, 36393), (24, 36396), (32, 36432), (48, 36519), (64, 36609),

Gene: Chah_41 Start: 36626, Stop: 36937, Start Num: 9

Candidate Starts for Chah_41:

(Start: 8 @36623 has 103 MA's), (Start: 9 @36626 has 278 MA's), (Start: 18 @36689 has 8 MA's), (21, 36704), (23, 36713), (24, 36716), (32, 36752), (48, 36839), (64, 36929),

Gene: Charles1_40 Start: 36594, Stop: 36905, Start Num: 9

Candidate Starts for Charles1_40:

(Start: 8 @36591 has 103 MA's), (Start: 9 @36594 has 278 MA's), (Start: 18 @36657 has 8 MA's), (21, 36672), (23, 36681), (24, 36684), (32, 36720), (48, 36807), (64, 36897),

Gene: CharlieGBrown_39 Start: 36181, Stop: 36495, Start Num: 8

Candidate Starts for CharlieGBrown_39:

(Start: 8 @36181 has 103 MA's), (Start: 9 @36184 has 278 MA's), (Start: 18 @36247 has 8 MA's), (21, 36262), (23, 36271), (32, 36310), (48, 36397),

Gene: CharlottesWeb_33 Start: 29653, Stop: 29964, Start Num: 7

Candidate Starts for CharlottesWeb_33:

(Start: 7 @29653 has 20 MA's), (13, 29707), (29, 29785), (50, 29872), (56, 29923),

Gene: CheetO_40 Start: 36605, Stop: 36919, Start Num: 8

Candidate Starts for CheetO_40:

(Start: 8 @36605 has 103 MA's), (Start: 9 @36608 has 278 MA's), (Start: 18 @36671 has 8 MA's), (21, 36686), (23, 36695), (24, 36698), (32, 36734), (48, 36821), (64, 36911),

Gene: Chentzyk_40 Start: 37623, Stop: 37946, Start Num: 9

Candidate Starts for Chentzyk_40:

(3, 37335), (Start: 9 @37623 has 278 MA's), (23, 37710), (49, 37833), (53, 37854), (59, 37914), (62, 37923),

Gene: Cher_39 Start: 36328, Stop: 36642, Start Num: 8

Candidate Starts for Cher_39:

(Start: 8 @36328 has 103 MA's), (Start: 9 @36331 has 278 MA's), (Start: 18 @36394 has 8 MA's), (21, 36409), (23, 36418), (24, 36421), (32, 36457), (48, 36544), (64, 36634),

Gene: Childish_39 Start: 36334, Stop: 36645, Start Num: 9

Candidate Starts for Childish_39:

(Start: 8 @36331 has 103 MA's), (Start: 9 @36334 has 278 MA's), (Start: 18 @36397 has 8 MA's), (21, 36412), (23, 36421), (24, 36424), (32, 36460), (48, 36547), (64, 36637),

Gene: Chipette_41 Start: 36821, Stop: 37135, Start Num: 8

Candidate Starts for Chipette_41:

(Start: 8 @36821 has 103 MA's), (Start: 9 @36824 has 278 MA's), (Start: 18 @36887 has 8 MA's), (21, 36902), (23, 36911), (24, 36914), (32, 36950), (48, 37037), (64, 37127),

Gene: Chorkpop_40 Start: 36330, Stop: 36641, Start Num: 9

Candidate Starts for Chorkpop_40:

(Start: 8 @36327 has 103 MA's), (Start: 9 @36330 has 278 MA's), (Start: 18 @36393 has 8 MA's), (21, 36408), (23, 36417), (24, 36420), (32, 36456), (48, 36543), (64, 36633),

Gene: ChrisnMich_36 Start: 35892, Stop: 36203, Start Num: 9

Candidate Starts for ChrisnMich_36:

(Start: 8 @35889 has 103 MA's), (Start: 9 @35892 has 278 MA's), (Start: 18 @35955 has 8 MA's), (21, 35970), (22, 35976), (23, 35979), (26, 35991), (32, 36018), (39, 36057), (46, 36102), (48, 36105), (53, 36126), (56, 36159),

Gene: Chuni_39 Start: 36625, Stop: 36936, Start Num: 9

Candidate Starts for Chuni_39:

(Start: 8 @36622 has 103 MA's), (Start: 9 @36625 has 278 MA's), (Start: 18 @36688 has 8 MA's), (21, 36703), (23, 36712), (24, 36715), (32, 36751), (48, 36838), (64, 36928),

Gene: Chunky_40 Start: 36614, Stop: 36928, Start Num: 8

Candidate Starts for Chunky_40:

(Start: 8 @36614 has 103 MA's), (Start: 9 @36617 has 278 MA's), (Start: 18 @36680 has 8 MA's), (21, 36695), (23, 36704), (24, 36707), (32, 36743), (48, 36830), (64, 36920),

Gene: Chute_39 Start: 36655, Stop: 36966, Start Num: 9

Candidate Starts for Chute_39:

(Start: 8 @36652 has 103 MA's), (Start: 9 @36655 has 278 MA's), (Start: 18 @36718 has 8 MA's), (21, 36733), (23, 36742), (24, 36745), (32, 36781), (48, 36868), (64, 36958),

Gene: Clawz_55 Start: 30520, Stop: 30741, Start Num: 14

Candidate Starts for Clawz_55:

(Start: 14 @30520 has 6 MA's), (25, 30577), (28, 30589), (31, 30604), (54, 30682), (57, 30712), (59, 30733),

Gene: CloverMinnie_35 Start: 31585, Stop: 31899, Start Num: 7

Candidate Starts for CloverMinnie_35:

(Start: 7 @31585 has 20 MA's), (Start: 14 @31645 has 6 MA's), (29, 31717), (30, 31720), (31, 31729), (46, 31801), (56, 31858),

Gene: Cobra_40 Start: 36612, Stop: 36926, Start Num: 8

Candidate Starts for Cobra_40:

(Start: 8 @36612 has 103 MA's), (Start: 9 @36615 has 278 MA's), (Start: 18 @36678 has 8 MA's), (21, 36693), (23, 36702), (32, 36741), (48, 36828),

Gene: Coffee_41 Start: 37840, Stop: 38205, Start Num: 6

Candidate Starts for Coffee_41:

(Start: 6 @37840 has 29 MA's), (Start: 8 @37882 has 103 MA's), (Start: 9 @37885 has 278 MA's), (13, 37921), (Start: 18 @37948 has 8 MA's), (21, 37963), (26, 37984), (34, 38023), (55, 38146), (56, 38158), (61, 38188),

Gene: Colbert_40 Start: 36670, Stop: 36981, Start Num: 9

Candidate Starts for Colbert_40:

(Start: 8 @36667 has 103 MA's), (Start: 9 @36670 has 278 MA's), (Start: 18 @36733 has 8 MA's), (21, 36748), (23, 36757), (24, 36760), (32, 36796), (48, 36883), (64, 36973),

Gene: ColdSoup_56 Start: 30719, Stop: 30940, Start Num: 14

Candidate Starts for ColdSoup_56:

(Start: 14 @30719 has 6 MA's), (27, 30785), (28, 30788), (31, 30803), (54, 30881), (57, 30911), (59, 30932),

Gene: Coldpizza_36 Start: 34143, Stop: 34412, Start Num: 11

Candidate Starts for Coldpizza_36:

(Start: 11 @34143 has 2 MA's), (21, 34200), (23, 34209), (29, 34233), (48, 34311), (59, 34395),

Gene: Coletti_40 Start: 36655, Stop: 36966, Start Num: 9

Candidate Starts for Coletti_40:

(Start: 8 @36652 has 103 MA's), (Start: 9 @36655 has 278 MA's), (Start: 18 @36718 has 8 MA's), (21, 36733), (23, 36742), (24, 36745), (32, 36781), (48, 36868), (64, 36958),

Gene: Compostia_41 Start: 37690, Stop: 38013, Start Num: 9

Candidate Starts for Compostia_41:

(3, 37402), (Start: 9 @37690 has 278 MA's), (23, 37777), (49, 37900), (53, 37921), (59, 37981), (62, 37990),

Gene: Cooper_37 Start: 36111, Stop: 36422, Start Num: 9

Candidate Starts for Cooper_37:

(1, 35772), (Start: 8 @36108 has 103 MA's), (Start: 9 @36111 has 278 MA's), (17, 36171), (Start: 18 @36174 has 8 MA's), (21, 36189), (22, 36195), (23, 36198), (26, 36210), (32, 36237), (39, 36276), (46, 36321), (48, 36324), (56, 36378), (59, 36402),

Gene: Cornbread_39 Start: 36331, Stop: 36642, Start Num: 9

Candidate Starts for Cornbread_39:

(Start: 8 @36328 has 103 MA's), (Start: 9 @36331 has 278 MA's), (Start: 18 @36394 has 8 MA's), (21, 36409), (23, 36418), (32, 36457), (48, 36544),

Gene: Cornobble_39 Start: 36166, Stop: 36480, Start Num: 8

Candidate Starts for Cornobble_39:

(Start: 8 @36166 has 103 MA's), (Start: 9 @36169 has 278 MA's), (Start: 18 @36232 has 8 MA's), (21, 36247), (23, 36256), (24, 36259), (32, 36295), (48, 36382), (64, 36472),

Gene: Cosmolli16_39 Start: 36316, Stop: 36630, Start Num: 8

Candidate Starts for Cosmolli16_39:

(Start: 8 @36316 has 103 MA's), (Start: 9 @36319 has 278 MA's), (Start: 18 @36382 has 8 MA's), (21, 36397), (23, 36406), (24, 36409), (32, 36445), (48, 36532), (64, 36622),

Gene: Craff_40 Start: 36612, Stop: 36923, Start Num: 9

Candidate Starts for Craff_40:

(Start: 8 @36609 has 103 MA's), (Start: 9 @36612 has 278 MA's), (Start: 18 @36675 has 8 MA's), (21, 36690), (23, 36699), (24, 36702), (32, 36738), (48, 36825), (64, 36915),

Gene: Crownjwl_40 Start: 36382, Stop: 36696, Start Num: 8

Candidate Starts for Crownjwl_40:

(Start: 8 @36382 has 103 MA's), (Start: 9 @36385 has 278 MA's), (Start: 18 @36448 has 8 MA's), (21, 36463), (23, 36472), (24, 36475), (32, 36511), (48, 36598), (64, 36688),

Gene: D12_34 Start: 36305, Stop: 36589, Start Num: 18

Candidate Starts for D12_34:

(Start: 18 @36305 has 8 MA's), (28, 36353), (37, 36404), (40, 36419), (41, 36425), (47, 36455), (52, 36488), (56, 36530), (62, 36563),

Gene: DaddyDaniels_40 Start: 36303, Stop: 36614, Start Num: 9

Candidate Starts for DaddyDaniels_40:

(Start: 8 @36300 has 103 MA's), (Start: 9 @36303 has 278 MA's), (Start: 18 @36366 has 8 MA's), (21, 36381), (23, 36390), (32, 36429), (48, 36516),

Gene: Daffy_40 Start: 36334, Stop: 36645, Start Num: 9

Candidate Starts for Daffy_40:

(Start: 8 @36331 has 103 MA's), (Start: 9 @36334 has 278 MA's), (Start: 18 @36397 has 8 MA's), (21, 36412), (23, 36421), (24, 36424), (32, 36460), (48, 36547), (64, 36637),

Gene: Daka_40 Start: 36605, Stop: 36919, Start Num: 8

Candidate Starts for Daka_40:

(Start: 8 @36605 has 103 MA's), (Start: 9 @36608 has 278 MA's), (Start: 18 @36671 has 8 MA's), (21, 36686), (23, 36695), (24, 36698), (32, 36734), (48, 36821), (64, 36911),

Gene: Dati_40 Start: 36328, Stop: 36639, Start Num: 9

Candidate Starts for Dati_40:

(Start: 8 @36325 has 103 MA's), (Start: 9 @36328 has 278 MA's), (Start: 18 @36391 has 8 MA's), (21, 36406), (23, 36415), (32, 36454), (48, 36541),

Gene: Deenasa_40 Start: 38021, Stop: 38344, Start Num: 9

Candidate Starts for Deenasa_40:

(3, 37733), (Start: 9 @38021 has 278 MA's), (23, 38108), (49, 38231), (53, 38252), (59, 38312), (62, 38321),

Gene: DelRivs_39 Start: 36329, Stop: 36640, Start Num: 9

Candidate Starts for DelRivs_39:

(Start: 8 @36326 has 103 MA's), (Start: 9 @36329 has 278 MA's), (Start: 18 @36392 has 8 MA's), (21, 36407), (23, 36416), (32, 36455), (48, 36542), (64, 36632),

Gene: Derpp_39 Start: 36170, Stop: 36484, Start Num: 8

Candidate Starts for Derpp_39:

(Start: 8 @36170 has 103 MA's), (Start: 9 @36173 has 278 MA's), (Start: 18 @36236 has 8 MA's), (21, 36251), (23, 36260), (32, 36299), (48, 36386),

Gene: Devonte_40 Start: 37250, Stop: 37573, Start Num: 9

Candidate Starts for Devonte_40:

(3, 36962), (Start: 9 @37250 has 278 MA's), (23, 37337), (49, 37460), (53, 37481), (59, 37541), (62, 37550),

Gene: Dice_39 Start: 36308, Stop: 36619, Start Num: 9

Candidate Starts for Dice_39:

(Start: 8 @36305 has 103 MA's), (Start: 9 @36308 has 278 MA's), (Start: 18 @36371 has 8 MA's), (21, 36386), (23, 36395), (24, 36398), (32, 36434), (48, 36521), (64, 36611),

Gene: DigitDog_39 Start: 36912, Stop: 37232, Start Num: 9

Candidate Starts for DigitDog_39:

(Start: 8 @36909 has 103 MA's), (Start: 9 @36912 has 278 MA's), (Start: 18 @36975 has 8 MA's), (20, 36981), (21, 36990), (23, 36999), (25, 37008), (27, 37017), (28, 37020), (59, 37203),

Gene: Dingo_40 Start: 36591, Stop: 36902, Start Num: 9

Candidate Starts for Dingo_40:

(Start: 8 @36588 has 103 MA's), (Start: 9 @36591 has 278 MA's), (Start: 18 @36654 has 8 MA's), (21, 36669), (23, 36678), (24, 36681), (32, 36717), (48, 36804), (64, 36894),

Gene: Dione_39 Start: 36310, Stop: 36624, Start Num: 8

Candidate Starts for Dione_39:

(Start: 8 @36310 has 103 MA's), (Start: 9 @36313 has 278 MA's), (Start: 18 @36376 has 8 MA's), (21, 36391), (23, 36400), (24, 36403), (32, 36439), (48, 36526), (64, 36616),

Gene: DirtJuice_40 Start: 36597, Stop: 36908, Start Num: 9

Candidate Starts for DirtJuice_40:

(Start: 8 @36594 has 103 MA's), (Start: 9 @36597 has 278 MA's), (Start: 18 @36660 has 8 MA's), (21, 36675), (23, 36684), (24, 36687), (32, 36723), (48, 36810), (64, 36900),

Gene: Doddsville_40 Start: 36327, Stop: 36638, Start Num: 9

Candidate Starts for Doddsville_40:

(Start: 8 @36324 has 103 MA's), (Start: 9 @36327 has 278 MA's), (Start: 18 @36390 has 8 MA's), (21, 36405), (23, 36414), (32, 36453), (48, 36540),

Gene: DoesntMatter_40 Start: 36597, Stop: 36911, Start Num: 8

Candidate Starts for DoesntMatter_40:

(Start: 8 @36597 has 103 MA's), (Start: 9 @36600 has 278 MA's), (Start: 18 @36663 has 8 MA's), (21, 36678), (23, 36687), (24, 36690), (32, 36726), (48, 36813), (64, 36903),

Gene: DolOn_41 Start: 36837, Stop: 37148, Start Num: 9

Candidate Starts for DolOn_41:

(Start: 8 @36834 has 103 MA's), (Start: 9 @36837 has 278 MA's), (Start: 18 @36900 has 8 MA's), (21, 36915), (23, 36924), (24, 36927), (32, 36963), (48, 37050), (64, 37140),

Gene: DonSanchon_39 Start: 36304, Stop: 36618, Start Num: 8

Candidate Starts for DonSanchon_39:

(Start: 8 @36304 has 103 MA's), (Start: 9 @36307 has 278 MA's), (Start: 18 @36370 has 8 MA's), (21, 36385), (23, 36394), (24, 36397), (32, 36433), (48, 36520), (64, 36610),

Gene: DonTron_55 Start: 30760, Stop: 30981, Start Num: 14

Candidate Starts for DonTron_55:

(Start: 14 @30760 has 6 MA's), (23, 30808), (27, 30826), (28, 30829), (31, 30844), (54, 30922), (57, 30952), (59, 30973),

Gene: Donny_39 Start: 37205, Stop: 37525, Start Num: 9

Candidate Starts for Donny_39:

(Start: 8 @37202 has 103 MA's), (Start: 9 @37205 has 278 MA's), (Start: 18 @37268 has 8 MA's), (20, 37274), (21, 37283), (23, 37292), (25, 37301), (28, 37313), (59, 37496),

Gene: DuchessDung_38 Start: 35464, Stop: 35775, Start Num: 9

Candidate Starts for DuchessDung_38:

(Start: 8 @35461 has 103 MA's), (Start: 9 @35464 has 278 MA's), (Start: 18 @35527 has 8 MA's), (21, 35542), (23, 35551), (32, 35590), (48, 35677),

Gene: Duggie_39 Start: 36329, Stop: 36640, Start Num: 9

Candidate Starts for Duggie_39:

(Start: 8 @36326 has 103 MA's), (Start: 9 @36329 has 278 MA's), (Start: 18 @36392 has 8 MA's), (21, 36407), (23, 36416), (32, 36455), (48, 36542),

Gene: Durga_40 Start: 36627, Stop: 36938, Start Num: 9

Candidate Starts for Durga_40:

(Start: 8 @36624 has 103 MA's), (Start: 9 @36627 has 278 MA's), (Start: 18 @36690 has 8 MA's), (21, 36705), (23, 36714), (32, 36753), (48, 36840),

Gene: Eaglehorse_41 Start: 37764, Stop: 38129, Start Num: 6

Candidate Starts for Eaglehorse_41:

(Start: 6 @37764 has 29 MA's), (Start: 8 @37806 has 103 MA's), (Start: 9 @37809 has 278 MA's), (13, 37845), (Start: 18 @37872 has 8 MA's), (21, 37887), (26, 37908), (34, 37947), (55, 38070), (56, 38082), (61, 38112),

Gene: EastView9101_38 Start: 36855, Stop: 37175, Start Num: 9

Candidate Starts for EastView9101_38:

(Start: 8 @36852 has 103 MA's), (Start: 9 @36855 has 278 MA's), (Start: 18 @36918 has 8 MA's), (20, 36924), (21, 36933), (23, 36942), (25, 36951), (28, 36963), (59, 37146),

Gene: ElvisPhasley_40 Start: 36649, Stop: 36960, Start Num: 9

Candidate Starts for ElvisPhasley_40:

(Start: 8 @36646 has 103 MA's), (Start: 9 @36649 has 278 MA's), (Start: 18 @36712 has 8 MA's), (21, 36727), (23, 36736), (24, 36739), (32, 36775), (48, 36862), (64, 36952),

Gene: Emiris_40 Start: 36598, Stop: 36909, Start Num: 9

Candidate Starts for Emiris_40:

(Start: 8 @36595 has 103 MA's), (Start: 9 @36598 has 278 MA's), (Start: 18 @36661 has 8 MA's), (21, 36676), (23, 36685), (32, 36724), (48, 36811),

Gene: EmpTee_40 Start: 36607, Stop: 36918, Start Num: 9

Candidate Starts for EmpTee_40:

(Start: 8 @36604 has 103 MA's), (Start: 9 @36607 has 278 MA's), (Start: 18 @36670 has 8 MA's), (21, 36685), (23, 36694), (24, 36697), (32, 36733), (48, 36820), (64, 36910),

Gene: Epah_36 Start: 35900, Stop: 36211, Start Num: 9

Candidate Starts for Epah_36:

(Start: 8 @35897 has 103 MA's), (Start: 9 @35900 has 278 MA's), (Start: 18 @35963 has 8 MA's), (21, 35978), (22, 35984), (23, 35987), (26, 35999), (32, 36026), (39, 36065), (46, 36110), (48, 36113), (53, 36134), (56, 36167),

Gene: Eremos_40 Start: 36603, Stop: 36917, Start Num: 8

Candidate Starts for Eremos_40:

(Start: 8 @36603 has 103 MA's), (Start: 9 @36606 has 278 MA's), (Start: 18 @36669 has 8 MA's), (21, 36684), (23, 36693), (24, 36696), (32, 36732), (48, 36819), (64, 36909),

Gene: Etaye_40 Start: 36594, Stop: 36908, Start Num: 8

Candidate Starts for Etaye_40:

(Start: 8 @36594 has 103 MA's), (Start: 9 @36597 has 278 MA's), (Start: 18 @36660 has 8 MA's), (21, 36675), (23, 36684), (32, 36723), (48, 36810),

Gene: Eugenia_40 Start: 36616, Stop: 36927, Start Num: 9

Candidate Starts for Eugenia_40:

(Start: 8 @36613 has 103 MA's), (Start: 9 @36616 has 278 MA's), (Start: 18 @36679 has 8 MA's), (21, 36694), (23, 36703), (24, 36706), (32, 36742), (48, 36829), (64, 36919),

Gene: Fanaw_36 Start: 36597, Stop: 36908, Start Num: 9

Candidate Starts for Fanaw_36:

(Start: 8 @36594 has 103 MA's), (Start: 9 @36597 has 278 MA's), (Start: 18 @36660 has 8 MA's), (21, 36675), (22, 36681), (23, 36684), (26, 36696), (32, 36723), (39, 36762), (46, 36807), (48, 36810), (56, 36864), (59, 36888),

Gene: Fang_40 Start: 36620, Stop: 36931, Start Num: 9

Candidate Starts for Fang_40:

(Start: 8 @36617 has 103 MA's), (Start: 9 @36620 has 278 MA's), (Start: 18 @36683 has 8 MA's), (21, 36698), (23, 36707), (24, 36710), (32, 36746), (48, 36833), (64, 36923),

Gene: Faze9_40 Start: 37860, Stop: 38225, Start Num: 6

Candidate Starts for Faze9_40:

(Start: 6 @37860 has 29 MA's), (Start: 8 @37902 has 103 MA's), (Start: 9 @37905 has 278 MA's), (13, 37941), (Start: 18 @37968 has 8 MA's), (21, 37983), (26, 38004), (34, 38043), (55, 38166), (56, 38178), (61, 38208),

Gene: FelixTres_35 Start: 31648, Stop: 31962, Start Num: 7

Candidate Starts for FelixTres_35:

(Start: 7 @31648 has 20 MA's), (Start: 14 @31708 has 6 MA's), (29, 31780), (30, 31783), (31, 31792), (46, 31864), (56, 31921),

Gene: Flake_40 Start: 36662, Stop: 36973, Start Num: 9

Candidate Starts for Flake_40:

(Start: 8 @36659 has 103 MA's), (Start: 9 @36662 has 278 MA's), (Start: 18 @36725 has 8 MA's), (21, 36740), (23, 36749), (24, 36752), (32, 36788), (48, 36875), (64, 36965),

Gene: FleetyMac_39 Start: 36615, Stop: 36926, Start Num: 9

Candidate Starts for FleetyMac_39:

(Start: 8 @36612 has 103 MA's), (Start: 9 @36615 has 278 MA's), (Start: 18 @36678 has 8 MA's), (21, 36693), (23, 36702), (24, 36705), (32, 36741), (48, 36828), (64, 36918),

Gene: FluffyNinja_40 Start: 36610, Stop: 36924, Start Num: 8

Candidate Starts for FluffyNinja_40:

(Start: 8 @36610 has 103 MA's), (Start: 9 @36613 has 278 MA's), (Start: 18 @36676 has 8 MA's), (21, 36691), (23, 36700), (24, 36703), (32, 36739), (48, 36826), (64, 36916),

Gene: ForDig_34 Start: 34911, Stop: 35225, Start Num: 9

Candidate Starts for ForDig_34:

(Start: 8 @34908 has 103 MA's), (Start: 9 @34911 has 278 MA's), (Start: 18 @34974 has 8 MA's), (20, 34983), (21, 34992), (23, 35001), (26, 35013), (48, 35127), (53, 35148), (56, 35181),

Gene: Fortunato_37 Start: 36922, Stop: 37236, Start Num: 8

Candidate Starts for Fortunato_37:

(Start: 8 @36922 has 103 MA's), (Start: 9 @36925 has 278 MA's), (Start: 18 @36988 has 8 MA's), (21, 37003), (22, 37009), (23, 37012), (26, 37024), (32, 37051), (39, 37090), (46, 37135), (48, 37138), (56, 37192), (59, 37216),

Gene: Fozzie_39 Start: 36629, Stop: 36940, Start Num: 9

Candidate Starts for Fozzie_39:

(Start: 8 @36626 has 103 MA's), (Start: 9 @36629 has 278 MA's), (Start: 18 @36692 has 8 MA's), (21, 36707), (23, 36716), (24, 36719), (32, 36755), (48, 36842), (64, 36932),

Gene: Frankicide_40 Start: 36625, Stop: 36936, Start Num: 9

Candidate Starts for Frankicide_40:

(Start: 8 @36622 has 103 MA's), (Start: 9 @36625 has 278 MA's), (Start: 18 @36688 has 8 MA's), (21, 36703), (23, 36712), (24, 36715), (32, 36751), (48, 36838), (64, 36928),

Gene: Frederick_37 Start: 36931, Stop: 37242, Start Num: 9

Candidate Starts for Frederick_37:

(Start: 8 @36928 has 103 MA's), (Start: 9 @36931 has 278 MA's), (Start: 18 @36994 has 8 MA's), (21, 37009), (22, 37015), (23, 37018), (26, 37030), (32, 37057), (39, 37096), (46, 37141), (48, 37144), (53, 37165), (56, 37198), (59, 37222),

Gene: FremontTroll_40 Start: 36367, Stop: 36678, Start Num: 9

Candidate Starts for FremontTroll_40:

(Start: 8 @36364 has 103 MA's), (Start: 9 @36367 has 278 MA's), (Start: 18 @36430 has 8 MA's), (21, 36445), (23, 36454), (24, 36457), (32, 36493), (48, 36580), (64, 36670),

Gene: FrenchFry_41 Start: 37854, Stop: 38219, Start Num: 6

Candidate Starts for FrenchFry_41:

(Start: 6 @37854 has 29 MA's), (Start: 8 @37896 has 103 MA's), (Start: 9 @37899 has 278 MA's), (13, 37935), (Start: 18 @37962 has 8 MA's), (21, 37977), (26, 37998), (34, 38037), (55, 38160), (56, 38172), (61, 38202),

Gene: Fresco_33 Start: 29709, Stop: 30020, Start Num: 7

Candidate Starts for Fresco_33:

(Start: 7 @29709 has 20 MA's), (13, 29763), (29, 29841), (30, 29844), (56, 29979),

Gene: Freya_39 Start: 36304, Stop: 36615, Start Num: 9

Candidate Starts for Freya_39:

(Start: 8 @36301 has 103 MA's), (Start: 9 @36304 has 278 MA's), (Start: 18 @36367 has 8 MA's), (21, 36382), (23, 36391), (24, 36394), (32, 36430), (48, 36517), (64, 36607),

Gene: FriarPreacher_40 Start: 36628, Stop: 36942, Start Num: 8

Candidate Starts for FriarPreacher_40:

(Start: 8 @36628 has 103 MA's), (Start: 9 @36631 has 278 MA's), (Start: 18 @36694 has 8 MA's), (21, 36709), (23, 36718), (24, 36721), (32, 36757), (48, 36844), (64, 36934),

Gene: Fringe_40 Start: 36596, Stop: 36907, Start Num: 9

Candidate Starts for Fringe_40:

(Start: 8 @36593 has 103 MA's), (Start: 9 @36596 has 278 MA's), (Start: 18 @36659 has 8 MA's), (21, 36674), (23, 36683), (24, 36686), (32, 36722), (48, 36809), (64, 36899),

Gene: FugateOSU_39 Start: 36306, Stop: 36620, Start Num: 8

Candidate Starts for FugateOSU_39:

(Start: 8 @36306 has 103 MA's), (Start: 9 @36309 has 278 MA's), (Start: 18 @36372 has 8 MA's), (21, 36387), (23, 36396), (24, 36399), (32, 36435), (48, 36522), (64, 36612),

Gene: Funsized_42 Start: 39513, Stop: 39821, Start Num: 9

Candidate Starts for Funsized_42:

(Start: 9 @39513 has 278 MA's), (13, 39549), (16, 39570), (Start: 18 @39576 has 8 MA's), (20, 39582), (21, 39591), (22, 39597), (23, 39600), (28, 39621), (44, 39717), (51, 39741),

Gene: Gadget_41 Start: 37273, Stop: 37596, Start Num: 9

Candidate Starts for Gadget_41:

(3, 36985), (Start: 9 @37273 has 278 MA's), (23, 37360), (49, 37483), (53, 37504), (59, 37564), (62, 37573),

Gene: Gareth_39 Start: 36309, Stop: 36623, Start Num: 8

Candidate Starts for Gareth_39:

(Start: 8 @36309 has 103 MA's), (Start: 9 @36312 has 278 MA's), (Start: 18 @36375 has 8 MA's), (21, 36390), (23, 36399), (24, 36402), (32, 36438), (48, 36525), (64, 36615),

Gene: GeneCoco_40 Start: 36618, Stop: 36932, Start Num: 8

Candidate Starts for GeneCoco_40:

(Start: 8 @36618 has 103 MA's), (Start: 9 @36621 has 278 MA's), (Start: 18 @36684 has 8 MA's), (21, 36699), (23, 36708), (32, 36747), (48, 36834),

Gene: Gervas_40 Start: 37240, Stop: 37563, Start Num: 9

Candidate Starts for Gervas_40:

(3, 36952), (Start: 9 @37240 has 278 MA's), (23, 37327), (49, 37450), (53, 37471), (59, 37531), (62, 37540),

Gene: GinPorsche_36 Start: 35900, Stop: 36211, Start Num: 9

Candidate Starts for GinPorsche_36:

(Start: 8 @35897 has 103 MA's), (Start: 9 @35900 has 278 MA's), (Start: 18 @35963 has 8 MA's), (21, 35978), (22, 35984), (23, 35987), (26, 35999), (32, 36026), (39, 36065), (46, 36110), (48, 36113), (53, 36134), (56, 36167),

Gene: Giraffe_40 Start: 36315, Stop: 36626, Start Num: 9

Candidate Starts for Giraffe_40:

(Start: 8 @36312 has 103 MA's), (Start: 9 @36315 has 278 MA's), (Start: 18 @36378 has 8 MA's), (21, 36393), (23, 36402), (24, 36405), (32, 36441), (48, 36528), (64, 36618),

Gene: Glass_41 Start: 37854, Stop: 38219, Start Num: 6

Candidate Starts for Glass_41:

(Start: 6 @37854 has 29 MA's), (Start: 8 @37896 has 103 MA's), (Start: 9 @37899 has 278 MA's), (13, 37935), (Start: 18 @37962 has 8 MA's), (21, 37977), (26, 37998), (34, 38037), (55, 38160), (56, 38172), (61, 38202),

Gene: GlenHope_41 Start: 37253, Stop: 37576, Start Num: 9

Candidate Starts for GlenHope_41:

(3, 36965), (Start: 9 @37253 has 278 MA's), (23, 37340), (49, 37463), (53, 37484), (59, 37544), (62, 37553),

Gene: Glubnar_41 Start: 37252, Stop: 37575, Start Num: 9

Candidate Starts for Glubnar_41:

(3, 36964), (Start: 9 @37252 has 278 MA's), (23, 37339), (49, 37462), (53, 37483), (59, 37543), (62, 37552),

Gene: GodPhather_36 Start: 36499, Stop: 36783, Start Num: 18

Candidate Starts for GodPhather_36:

(Start: 18 @36499 has 8 MA's), (26, 36538), (28, 36547), (37, 36598), (40, 36613), (47, 36649), (52, 36682), (56, 36724), (62, 36757),

Gene: Godines_41 Start: 37796, Stop: 38161, Start Num: 6

Candidate Starts for Godines_41:

(Start: 6 @37796 has 29 MA's), (Start: 8 @37838 has 103 MA's), (Start: 9 @37841 has 278 MA's), (13, 37877), (Start: 18 @37904 has 8 MA's), (21, 37919), (26, 37940), (34, 37979), (55, 38102), (56, 38114), (61, 38144),

Gene: Gophee_40 Start: 36598, Stop: 36909, Start Num: 9

Candidate Starts for Gophee_40:

(Start: 8 @36595 has 103 MA's), (Start: 9 @36598 has 278 MA's), (Start: 18 @36661 has 8 MA's), (21, 36676), (23, 36685), (24, 36688), (32, 36724), (48, 36811), (64, 36901),

Gene: Grand2040_39 Start: 36327, Stop: 36641, Start Num: 8

Candidate Starts for Grand2040_39:

(Start: 8 @36327 has 103 MA's), (Start: 9 @36330 has 278 MA's), (Start: 18 @36393 has 8 MA's), (21, 36408), (23, 36417), (24, 36420), (32, 36456), (48, 36543), (64, 36633),

Gene: GreenChile_40 Start: 36606, Stop: 36917, Start Num: 9

Candidate Starts for GreenChile_40:

(Start: 8 @36603 has 103 MA's), (Start: 9 @36606 has 278 MA's), (Start: 18 @36669 has 8 MA's), (21, 36684), (23, 36693), (24, 36696), (32, 36732), (48, 36819), (64, 36909),

Gene: Grumio_55 Start: 30198, Stop: 30419, Start Num: 14

Candidate Starts for Grumio_55:

(Start: 14 @30198 has 6 MA's), (23, 30246), (27, 30264), (28, 30267), (31, 30282), (54, 30360), (57, 30390), (59, 30411),

Gene: Gwennie1_40 Start: 36679, Stop: 36990, Start Num: 9

Candidate Starts for Gwennie1_40:

(Start: 8 @36676 has 103 MA's), (Start: 9 @36679 has 278 MA's), (Start: 18 @36742 has 8 MA's), (21, 36757), (23, 36766), (32, 36805), (48, 36892),

Gene: Gwilliam_40 Start: 36610, Stop: 36921, Start Num: 9

Candidate Starts for Gwilliam_40:

(Start: 8 @36607 has 103 MA's), (Start: 9 @36610 has 278 MA's), (Start: 18 @36673 has 8 MA's), (21, 36688), (23, 36697), (24, 36700), (32, 36736), (48, 36823), (64, 36913),

Gene: Gyarad_0040 Start: 36609, Stop: 36923, Start Num: 8

Candidate Starts for Gyarad_0040:

(Start: 8 @36609 has 103 MA's), (Start: 9 @36612 has 278 MA's), (Start: 18 @36675 has 8 MA's), (21, 36690), (23, 36699), (24, 36702), (32, 36738), (48, 36825), (64, 36915),

Gene: HSavage_40 Start: 36613, Stop: 36927, Start Num: 8

Candidate Starts for HSavage_40:

(Start: 8 @36613 has 103 MA's), (Start: 9 @36616 has 278 MA's), (Start: 18 @36679 has 8 MA's), (21, 36694), (23, 36703), (24, 36706), (32, 36742), (48, 36829), (64, 36919),

Gene: Haimas_40 Start: 36607, Stop: 36918, Start Num: 9

Candidate Starts for Haimas_40:

(Start: 8 @36604 has 103 MA's), (Start: 9 @36607 has 278 MA's), (Start: 18 @36670 has 8 MA's), (21, 36685), (23, 36694), (24, 36697), (32, 36733), (48, 36820), (64, 36910),

Gene: Haleema_39 Start: 36330, Stop: 36641, Start Num: 9

Candidate Starts for Haleema_39:

(Start: 8 @36327 has 103 MA's), (Start: 9 @36330 has 278 MA's), (Start: 18 @36393 has 8 MA's), (21, 36408), (23, 36417), (24, 36420), (32, 36456), (48, 36543), (64, 36633),

Gene: Halfpint_39 Start: 37079, Stop: 37402, Start Num: 9

Candidate Starts for Halfpint_39:

(3, 36791), (Start: 9 @37079 has 278 MA's), (23, 37166), (49, 37289), (53, 37310), (59, 37370), (62, 37379),

Gene: Hally898_36 Start: 35912, Stop: 36223, Start Num: 9

Candidate Starts for Hally898_36:

(Start: 8 @35909 has 103 MA's), (Start: 9 @35912 has 278 MA's), (Start: 18 @35975 has 8 MA's), (21, 35990), (22, 35996), (23, 35999), (26, 36011), (32, 36038), (39, 36077), (46, 36122), (48, 36125), (53, 36146), (56, 36179),

Gene: Hamish_40 Start: 36599, Stop: 36910, Start Num: 9

Candidate Starts for Hamish_40:

(Start: 8 @36596 has 103 MA's), (Start: 9 @36599 has 278 MA's), (Start: 18 @36662 has 8 MA's), (21, 36677), (23, 36686), (24, 36689), (32, 36725), (48, 36812), (64, 36902),

Gene: Hangman_37 Start: 36920, Stop: 37234, Start Num: 8

Candidate Starts for Hangman_37:

(Start: 8 @36920 has 103 MA's), (Start: 9 @36923 has 278 MA's), (Start: 18 @36986 has 8 MA's), (21, 37001), (22, 37007), (23, 37010), (26, 37022), (32, 37049), (39, 37088), (46, 37133), (48, 37136), (56, 37190), (59, 37214),

Gene: Happabalu_40 Start: 36328, Stop: 36639, Start Num: 9

Candidate Starts for Happabalu_40:

(Start: 8 @36325 has 103 MA's), (Start: 9 @36328 has 278 MA's), (Start: 18 @36391 has 8 MA's), (21, 36406), (23, 36415), (32, 36454), (48, 36541),

Gene: Hartsy_40 Start: 36650, Stop: 36961, Start Num: 9

Candidate Starts for Hartsy_40:

(Start: 8 @36647 has 103 MA's), (Start: 9 @36650 has 278 MA's), (Start: 18 @36713 has 8 MA's), (21, 36728), (23, 36737), (24, 36740), (32, 36776), (48, 36863), (64, 36953),

Gene: Harvey_40 Start: 36625, Stop: 36936, Start Num: 9

Candidate Starts for Harvey_40:

(Start: 8 @36622 has 103 MA's), (Start: 9 @36625 has 278 MA's), (Start: 18 @36688 has 8 MA's), (21, 36703), (23, 36712), (24, 36715), (32, 36751), (48, 36838), (64, 36928),

Gene: Hashim76_43 Start: 36042, Stop: 36353, Start Num: 9

Candidate Starts for Hashim76_43:

(Start: 8 @36039 has 103 MA's), (Start: 9 @36042 has 278 MA's), (12, 36072), (Start: 18 @36105 has 8 MA's), (21, 36120), (64, 36345),

Gene: Heath_36 Start: 36530, Stop: 36841, Start Num: 9

Candidate Starts for Heath_36:

(Start: 8 @36527 has 103 MA's), (Start: 9 @36530 has 278 MA's), (Start: 18 @36593 has 8 MA's), (21, 36608), (22, 36614), (23, 36617), (26, 36629), (32, 36656), (39, 36695), (46, 36740), (48, 36743), (53, 36764), (56, 36797),

Gene: Hedgerow_41 Start: 37836, Stop: 38201, Start Num: 6

Candidate Starts for Hedgerow_41:

(Start: 6 @37836 has 29 MA's), (Start: 8 @37878 has 103 MA's), (Start: 9 @37881 has 278 MA's), (13, 37917), (Start: 18 @37944 has 8 MA's), (21, 37959), (26, 37980), (34, 38019), (55, 38142), (56, 38154), (61, 38184),

Gene: Hekos_37 Start: 35179, Stop: 35490, Start Num: 9

Candidate Starts for Hekos_37:

(Start: 8 @35176 has 103 MA's), (Start: 9 @35179 has 278 MA's), (Start: 18 @35242 has 8 MA's), (21, 35257), (23, 35266), (32, 35305), (48, 35392),

Gene: Held_40 Start: 36314, Stop: 36625, Start Num: 9

Candidate Starts for Held_40:

(Start: 8 @36311 has 103 MA's), (Start: 9 @36314 has 278 MA's), (Start: 18 @36377 has 8 MA's), (21, 36392), (23, 36401), (24, 36404), (32, 36440), (48, 36527), (64, 36617),

Gene: HenryJackson_39 Start: 36330, Stop: 36641, Start Num: 9

Candidate Starts for HenryJackson_39:

(Start: 8 @36327 has 103 MA's), (Start: 9 @36330 has 278 MA's), (Start: 18 @36393 has 8 MA's), (21, 36408), (23, 36417), (24, 36420), (32, 36456), (48, 36543), (64, 36633),

Gene: Hertubise_40 Start: 36618, Stop: 36932, Start Num: 8

Candidate Starts for Hertubise_40:

(Start: 8 @36618 has 103 MA's), (Start: 9 @36621 has 278 MA's), (Start: 18 @36684 has 8 MA's), (21, 36699), (23, 36708), (24, 36711), (32, 36747), (48, 36834), (64, 36924),

Gene: Hetaeria_40 Start: 36623, Stop: 36934, Start Num: 9

Candidate Starts for Hetaeria_40:

(Start: 8 @36620 has 103 MA's), (Start: 9 @36623 has 278 MA's), (Start: 18 @36686 has 8 MA's), (21, 36701), (23, 36710), (24, 36713), (32, 36749), (48, 36836), (64, 36926),

Gene: HighStump_39 Start: 36310, Stop: 36624, Start Num: 8

Candidate Starts for HighStump_39:

(Start: 8 @36310 has 103 MA's), (Start: 9 @36313 has 278 MA's), (Start: 18 @36376 has 8 MA's), (21, 36391), (23, 36400), (24, 36403), (32, 36439), (48, 36526), (64, 36616),

Gene: Hocus_39 Start: 36319, Stop: 36633, Start Num: 8

Candidate Starts for Hocus_39:

(Start: 8 @36319 has 103 MA's), (Start: 9 @36322 has 278 MA's), (Start: 18 @36385 has 8 MA's), (21, 36400), (23, 36409), (24, 36412), (32, 36448), (48, 36535), (64, 36625),

Gene: HogWash_39 Start: 36616, Stop: 36930, Start Num: 8

Candidate Starts for HogWash_39:

(Start: 8 @36616 has 103 MA's), (Start: 9 @36619 has 278 MA's), (Start: 18 @36682 has 8 MA's), (21, 36697), (23, 36706), (32, 36745), (48, 36832),

Gene: Holeinone_41 Start: 37716, Stop: 38081, Start Num: 6

Candidate Starts for Holeinone_41:

(Start: 6 @37716 has 29 MA's), (Start: 8 @37758 has 103 MA's), (Start: 9 @37761 has 278 MA's), (13, 37797), (Start: 18 @37824 has 8 MA's), (21, 37839), (26, 37860), (34, 37899), (55, 38022), (56, 38034), (61, 38064),

Gene: Horchata_40 Start: 36601, Stop: 36912, Start Num: 9

Candidate Starts for Horchata_40:

(Start: 8 @36598 has 103 MA's), (Start: 9 @36601 has 278 MA's), (Start: 18 @36664 has 8 MA's), (21, 36679), (23, 36688), (24, 36691), (32, 36727), (48, 36814), (64, 36904),

Gene: Hosp_032 Start: 33115, Stop: 33429, Start Num: 9

Candidate Starts for Hosp_032:

(Start: 8 @33112 has 103 MA's), (Start: 9 @33115 has 278 MA's), (Start: 18 @33178 has 8 MA's), (20, 33187), (21, 33196), (23, 33205), (26, 33217), (48, 33331), (53, 33352), (56, 33385),

Gene: Hydro_37 Start: 36940, Stop: 37251, Start Num: 9

Candidate Starts for Hydro_37:

(Start: 8 @36937 has 103 MA's), (Start: 9 @36940 has 278 MA's), (Start: 18 @37003 has 8 MA's), (21, 37018), (22, 37024), (23, 37027), (26, 37039), (32, 37066), (39, 37105), (46, 37150), (48, 37153), (56, 37207), (59, 37231),

Gene: ImtiyazSitla_39 Start: 36164, Stop: 36475, Start Num: 9

Candidate Starts for ImtiyazSitla_39:

(Start: 8 @36161 has 103 MA's), (Start: 9 @36164 has 278 MA's), (Start: 18 @36227 has 8 MA's), (21, 36242), (23, 36251), (32, 36290), (48, 36377),

Gene: Imvubu_33 Start: 33638, Stop: 33946, Start Num: 9

Candidate Starts for Imvubu_33:

(Start: 9 @33638 has 278 MA's), (Start: 11 @33662 has 2 MA's), (Start: 18 @33701 has 8 MA's), (20, 33707), (21, 33716), (23, 33725), (26, 33737), (30, 33752), (33, 33767), (36, 33794), (39, 33803), (56, 33902),

Gene: Inchworm_40 Start: 36599, Stop: 36910, Start Num: 9

Candidate Starts for Inchworm_40:

(Start: 8 @36596 has 103 MA's), (Start: 9 @36599 has 278 MA's), (Start: 18 @36662 has 8 MA's), (21, 36677), (23, 36686), (32, 36725), (48, 36812),

Gene: Indlovu_38 Start: 36164, Stop: 36469, Start Num: 9

Candidate Starts for Indlovu_38:

(Start: 9 @36164 has 278 MA's), (Start: 18 @36227 has 8 MA's), (21, 36242), (23, 36251), (25, 36260), (45, 36371),

Gene: Inverness_40 Start: 36610, Stop: 36924, Start Num: 8

Candidate Starts for Inverness_40:

(Start: 8 @36610 has 103 MA's), (Start: 9 @36613 has 278 MA's), (Start: 18 @36676 has 8 MA's), (21, 36691), (23, 36700), (24, 36703), (32, 36739), (48, 36826), (64, 36916),

Gene: Iridessa_40 Start: 36315, Stop: 36626, Start Num: 9

Candidate Starts for Iridessa_40:

(Start: 8 @36312 has 103 MA's), (Start: 9 @36315 has 278 MA's), (Start: 18 @36378 has 8 MA's), (21, 36393), (23, 36402), (32, 36441), (48, 36528), (64, 36618),

Gene: Iridoclysis_40 Start: 36593, Stop: 36904, Start Num: 9

Candidate Starts for Iridoclysis_40:

(Start: 8 @36590 has 103 MA's), (Start: 9 @36593 has 278 MA's), (Start: 18 @36656 has 8 MA's), (21, 36671), (23, 36680), (24, 36683), (32, 36719), (48, 36806), (64, 36896),

Gene: IsaacEli_40 Start: 36617, Stop: 36928, Start Num: 9

Candidate Starts for IsaacEli_40:

(Start: 8 @36614 has 103 MA's), (Start: 9 @36617 has 278 MA's), (Start: 18 @36680 has 8 MA's), (21, 36695), (23, 36704), (24, 36707), (32, 36743), (48, 36830), (64, 36920),

Gene: ItsyBitsy1_41 Start: 37718, Stop: 38083, Start Num: 6

Candidate Starts for ItsyBitsy1_41:

(Start: 6 @37718 has 29 MA's), (Start: 8 @37760 has 103 MA's), (Start: 9 @37763 has 278 MA's), (13, 37799), (Start: 18 @37826 has 8 MA's), (21, 37841), (26, 37862), (34, 37901), (55, 38024), (56, 38036), (61, 38066),

Gene: JAMaL_37 Start: 37111, Stop: 37422, Start Num: 9

Candidate Starts for JAMaL_37:

(Start: 8 @37108 has 103 MA's), (Start: 9 @37111 has 278 MA's), (Start: 18 @37174 has 8 MA's), (21, 37189), (22, 37195), (23, 37198), (26, 37210), (32, 37237), (39, 37276), (46, 37321), (48, 37324), (56, 37378), (59, 37402),

Gene: JDog_39 Start: 36330, Stop: 36641, Start Num: 9

Candidate Starts for JDog_39:

(Start: 8 @36327 has 103 MA's), (Start: 9 @36330 has 278 MA's), (Start: 18 @36393 has 8 MA's), (21, 36408), (23, 36417), (32, 36456), (48, 36543),

Gene: JacAttac_40 Start: 36596, Stop: 36910, Start Num: 8

Candidate Starts for JacAttac_40:

(Start: 8 @36596 has 103 MA's), (Start: 9 @36599 has 278 MA's), (Start: 18 @36662 has 8 MA's), (21, 36677), (23, 36686), (24, 36689), (32, 36725), (48, 36812), (64, 36902),

Gene: Jackstina_37 Start: 37183, Stop: 37506, Start Num: 9

Candidate Starts for Jackstina_37:

(3, 36895), (Start: 9 @37183 has 278 MA's), (23, 37270), (49, 37393), (53, 37414), (59, 37474), (62, 37483),

Gene: JaguarMi_37 Start: 36406, Stop: 36717, Start Num: 9

Candidate Starts for JaguarMi_37:

(Start: 8 @36403 has 103 MA's), (Start: 9 @36406 has 278 MA's), (Start: 18 @36469 has 8 MA's), (21, 36484), (22, 36490), (23, 36493), (26, 36505), (32, 36532), (39, 36571), (46, 36616), (48, 36619), (56, 36673), (59, 36697),

Gene: JakeO_39 Start: 36332, Stop: 36643, Start Num: 9

Candidate Starts for JakeO_39:

(Start: 8 @36329 has 103 MA's), (Start: 9 @36332 has 278 MA's), (Start: 18 @36395 has 8 MA's), (21, 36410), (23, 36419), (32, 36458), (48, 36545), (64, 36635),

Gene: JangoPhett_40 Start: 36598, Stop: 36912, Start Num: 8

Candidate Starts for JangoPhett_40:

(Start: 8 @36598 has 103 MA's), (Start: 9 @36601 has 278 MA's), (Start: 18 @36664 has 8 MA's), (21, 36679), (23, 36688), (24, 36691), (32, 36727), (48, 36814), (64, 36904),

Gene: JellyBelly_33 Start: 29656, Stop: 29967, Start Num: 7

Candidate Starts for JellyBelly_33:

(Start: 7 @29656 has 20 MA's), (13, 29710), (29, 29788), (50, 29875), (56, 29926),

Gene: Jeon_35 Start: 36241, Stop: 36525, Start Num: 18

Candidate Starts for Jeon_35:

(Start: 18 @36241 has 8 MA's), (26, 36280), (28, 36289), (37, 36340), (40, 36355), (47, 36391), (52, 36424), (56, 36466), (62, 36499),

Gene: Jesabah_40 Start: 36332, Stop: 36643, Start Num: 9

Candidate Starts for Jesabah_40:

(Start: 8 @36329 has 103 MA's), (Start: 9 @36332 has 278 MA's), (Start: 18 @36395 has 8 MA's), (21, 36410), (23, 36419), (24, 36422), (32, 36458), (48, 36545), (64, 36635),

Gene: Jillium_39 Start: 36320, Stop: 36634, Start Num: 8

Candidate Starts for Jillium_39:

(Start: 8 @36320 has 103 MA's), (Start: 9 @36323 has 278 MA's), (Start: 18 @36386 has 8 MA's), (21, 36401), (23, 36410), (24, 36413), (32, 36449), (48, 36536), (64, 36626),

Gene: Jiminy_39 Start: 36167, Stop: 36478, Start Num: 9

Candidate Starts for Jiminy_39:

(Start: 8 @36164 has 103 MA's), (Start: 9 @36167 has 278 MA's), (Start: 18 @36230 has 8 MA's), (21, 36245), (23, 36254), (32, 36293), (48, 36380),

Gene: Jiraiya_39 Start: 36320, Stop: 36631, Start Num: 9

Candidate Starts for Jiraiya_39:

(Start: 8 @36317 has 103 MA's), (Start: 9 @36320 has 278 MA's), (Start: 18 @36383 has 8 MA's), (21, 36398), (23, 36407), (32, 36446), (48, 36533),

Gene: Jolie1_034 Start: 34902, Stop: 35216, Start Num: 9

Candidate Starts for Jolie1_034:

(Start: 8 @34899 has 103 MA's), (Start: 9 @34902 has 278 MA's), (Start: 18 @34965 has 8 MA's), (20, 34974), (21, 34983), (23, 34992), (26, 35004), (48, 35118), (53, 35139), (56, 35172),

Gene: Jollymon_55 Start: 30719, Stop: 30940, Start Num: 14

Candidate Starts for Jollymon_55:

(Start: 14 @30719 has 6 MA's), (27, 30785), (28, 30788), (31, 30803), (54, 30881), (57, 30911), (59, 30932),

Gene: JoyceMaria_37 Start: 36926, Stop: 37237, Start Num: 9

Candidate Starts for JoyceMaria_37:

(Start: 8 @36923 has 103 MA's), (Start: 9 @36926 has 278 MA's), (Start: 18 @36989 has 8 MA's), (21, 37004), (22, 37010), (23, 37013), (26, 37025), (32, 37052), (39, 37091), (46, 37136), (48, 37139), (56, 37193), (59, 37217),

Gene: KLucky39_40 Start: 36608, Stop: 36922, Start Num: 8

Candidate Starts for KLucky39_40:

(Start: 8 @36608 has 103 MA's), (Start: 9 @36611 has 278 MA's), (Start: 18 @36674 has 8 MA's), (21, 36689), (23, 36698), (24, 36701), (32, 36737), (48, 36824), (64, 36914),

Gene: Kahve_39 Start: 36327, Stop: 36638, Start Num: 9

Candidate Starts for Kahve_39:

(Start: 8 @36324 has 103 MA's), (Start: 9 @36327 has 278 MA's), (Start: 18 @36390 has 8 MA's), (21, 36405), (23, 36414), (24, 36417), (32, 36453), (48, 36540), (64, 36630),

Gene: Kailash_40 Start: 36665, Stop: 36976, Start Num: 9

Candidate Starts for Kailash_40:

(Start: 8 @36662 has 103 MA's), (Start: 9 @36665 has 278 MA's), (Start: 18 @36728 has 8 MA's), (21, 36743), (23, 36752), (24, 36755), (32, 36791), (48, 36878), (64, 36968),

Gene: Kaleb_41 Start: 37851, Stop: 38216, Start Num: 6

Candidate Starts for Kaleb_41:

(Start: 6 @37851 has 29 MA's), (Start: 8 @37893 has 103 MA's), (Start: 9 @37896 has 278 MA's), (13, 37932), (Start: 18 @37959 has 8 MA's), (21, 37974), (26, 37995), (34, 38034), (55, 38157), (56, 38169), (61, 38199),

Gene: Kamiyu_40 Start: 37232, Stop: 37555, Start Num: 9

Candidate Starts for Kamiyu_40:

(3, 36944), (Start: 9 @37232 has 278 MA's), (23, 37319), (49, 37442), (53, 37463), (59, 37523), (62, 37532),

Gene: KarasumaRum_41 Start: 37354, Stop: 37674, Start Num: 9

Candidate Starts for KarasumaRum_41:

(Start: 8 @37351 has 103 MA's), (Start: 9 @37354 has 278 MA's), (Start: 18 @37417 has 8 MA's), (20, 37423), (21, 37432), (23, 37441), (25, 37450), (27, 37459), (28, 37462), (59, 37645),

Gene: Karn_39 Start: 36327, Stop: 36638, Start Num: 9

Candidate Starts for Karn_39:

(Start: 8 @36324 has 103 MA's), (Start: 9 @36327 has 278 MA's), (Start: 18 @36390 has 8 MA's), (21, 36405), (23, 36414), (32, 36453), (48, 36540),

Gene: Katniss_40 Start: 36626, Stop: 36937, Start Num: 9

Candidate Starts for Katniss_40:

(Start: 8 @36623 has 103 MA's), (Start: 9 @36626 has 278 MA's), (Start: 18 @36689 has 8 MA's), (21, 36704), (23, 36713), (24, 36716), (32, 36752), (48, 36839), (64, 36929),

Gene: KayaCho_34 Start: 34898, Stop: 35212, Start Num: 9

Candidate Starts for KayaCho_34:

(Start: 8 @34895 has 103 MA's), (Start: 9 @34898 has 278 MA's), (Start: 18 @34961 has 8 MA's), (20, 34970), (21, 34979), (23, 34988), (26, 35000), (48, 35114), (53, 35135), (56, 35168),

Gene: Keitherie_40 Start: 36664, Stop: 36975, Start Num: 9

Candidate Starts for Keitherie_40:

(Start: 8 @36661 has 103 MA's), (Start: 9 @36664 has 278 MA's), (Start: 18 @36727 has 8 MA's), (21, 36742), (23, 36751), (24, 36754), (32, 36790), (48, 36877), (64, 36967),

Gene: Khan1_40 Start: 36348, Stop: 36659, Start Num: 9

Candidate Starts for Khan1_40:

(Start: 8 @36345 has 103 MA's), (Start: 9 @36348 has 278 MA's), (Start: 18 @36411 has 8 MA's), (21, 36426), (23, 36435), (24, 36438), (32, 36474), (48, 36561), (64, 36651),

Gene: Kheth_41 Start: 37739, Stop: 38104, Start Num: 6

Candidate Starts for Kheth_41:

(Start: 6 @37739 has 29 MA's), (Start: 8 @37781 has 103 MA's), (Start: 9 @37784 has 278 MA's), (13, 37820), (Start: 18 @37847 has 8 MA's), (21, 37862), (26, 37883), (34, 37922), (55, 38045), (56, 38057), (61, 38087),

Gene: Kikipoo_40 Start: 36617, Stop: 36928, Start Num: 9

Candidate Starts for Kikipoo_40:

(Start: 8 @36614 has 103 MA's), (Start: 9 @36617 has 278 MA's), (Start: 18 @36680 has 8 MA's), (21, 36695), (23, 36704), (24, 36707), (32, 36743), (48, 36830), (64, 36920),

Gene: Kimbrough_40 Start: 36316, Stop: 36630, Start Num: 8

Candidate Starts for Kimbrough_40:

(Start: 8 @36316 has 103 MA's), (Start: 9 @36319 has 278 MA's), (Start: 18 @36382 has 8 MA's), (21, 36397), (23, 36406), (24, 36409), (32, 36445), (48, 36532), (64, 36622),

Gene: KingTut_31 Start: 31988, Stop: 32299, Start Num: 9

Candidate Starts for KingTut_31:

(Start: 8 @31985 has 103 MA's), (Start: 9 @31988 has 278 MA's), (Start: 18 @32051 has 8 MA's), (21, 32066), (23, 32075), (24, 32078), (32, 32114), (48, 32201), (64, 32291),

Gene: KingVeVeVe_40 Start: 36592, Stop: 36903, Start Num: 9

Candidate Starts for KingVeVeVe_40:

(Start: 8 @36589 has 103 MA's), (Start: 9 @36592 has 278 MA's), (Start: 18 @36655 has 8 MA's), (21, 36670), (23, 36679), (24, 36682), (32, 36718), (48, 36805), (64, 36895),

Gene: KingstonB_56 Start: 30198, Stop: 30419, Start Num: 14

Candidate Starts for KingstonB_56:

(Start: 14 @30198 has 6 MA's), (23, 30246), (27, 30264), (28, 30267), (31, 30282), (54, 30360), (57, 30390), (59, 30411),

Gene: KlimbOn_40 Start: 36605, Stop: 36916, Start Num: 9

Candidate Starts for KlimbOn_40:

(Start: 8 @36602 has 103 MA's), (Start: 9 @36605 has 278 MA's), (Start: 18 @36668 has 8 MA's), (21, 36683), (23, 36692), (24, 36695), (32, 36731), (48, 36818), (64, 36908),

Gene: Kloppinator_40 Start: 36628, Stop: 36939, Start Num: 9

Candidate Starts for Kloppinator_40:

(Start: 8 @36625 has 103 MA's), (Start: 9 @36628 has 278 MA's), (Start: 18 @36691 has 8 MA's), (21, 36706), (23, 36715), (24, 36718), (32, 36754), (48, 36841), (64, 36931),

Gene: Klocker_41 Start: 38602, Stop: 38913, Start Num: 8

Candidate Starts for Klocker_41:

(Start: 8 @38602 has 103 MA's), (Start: 9 @38605 has 278 MA's), (12, 38635), (Start: 18 @38668 has 8 MA's), (20, 38674), (21, 38683), (28, 38713), (39, 38770), (56, 38869),

Gene: Kolhan_41 Start: 37730, Stop: 38095, Start Num: 6

Candidate Starts for Kolhan_41:

(Start: 6 @37730 has 29 MA's), (Start: 8 @37772 has 103 MA's), (Start: 9 @37775 has 278 MA's), (13, 37811), (Start: 18 @37838 has 8 MA's), (21, 37853), (26, 37874), (34, 37913), (55, 38036), (56, 38048), (61, 38078),

Gene: Kwadwo_39 Start: 36306, Stop: 36620, Start Num: 8

Candidate Starts for Kwadwo_39:

(Start: 8 @36306 has 103 MA's), (Start: 9 @36309 has 278 MA's), (Start: 18 @36372 has 8 MA's), (21, 36387), (23, 36396), (24, 36399), (32, 36435), (48, 36522), (64, 36612),

Gene: Kwksand96_39 Start: 36178, Stop: 36489, Start Num: 9

Candidate Starts for Kwksand96_39:

(Start: 8 @36175 has 103 MA's), (Start: 9 @36178 has 278 MA's), (Start: 18 @36241 has 8 MA's), (21, 36256), (23, 36265), (32, 36304), (48, 36391),

Gene: Labeouficaum_39 Start: 36170, Stop: 36484, Start Num: 8

Candidate Starts for Labeouficaum_39:

(Start: 8 @36170 has 103 MA's), (Start: 9 @36173 has 278 MA's), (Start: 18 @36236 has 8 MA's), (21, 36251), (23, 36260), (32, 36299), (48, 36386),

Gene: Lambano_36 Start: 35912, Stop: 36223, Start Num: 9

Candidate Starts for Lambano_36:

(Start: 8 @35909 has 103 MA's), (Start: 9 @35912 has 278 MA's), (Start: 18 @35975 has 8 MA's), (21, 35990), (22, 35996), (23, 35999), (26, 36011), (32, 36038), (39, 36077), (46, 36122), (48, 36125), (53, 36146), (56, 36179),

Gene: Lars_41 Start: 37841, Stop: 38206, Start Num: 6

Candidate Starts for Lars_41:

(Start: 6 @37841 has 29 MA's), (Start: 8 @37883 has 103 MA's), (Start: 9 @37886 has 278 MA's), (13, 37922), (Start: 18 @37949 has 8 MA's), (21, 37964), (26, 37985), (34, 38024), (55, 38147), (56, 38159), (61, 38189),

Gene: Larson_41 Start: 36719, Stop: 37033, Start Num: 8

Candidate Starts for Larson_41:

(Start: 8 @36719 has 103 MA's), (Start: 9 @36722 has 278 MA's), (Start: 18 @36785 has 8 MA's), (21, 36800), (23, 36809), (24, 36812), (32, 36848), (48, 36935), (64, 37025),

Gene: LasagnaCat_40 Start: 36611, Stop: 36922, Start Num: 9

Candidate Starts for LasagnaCat_40:

(Start: 8 @36608 has 103 MA's), (Start: 9 @36611 has 278 MA's), (Start: 18 @36674 has 8 MA's), (21, 36689), (23, 36698), (32, 36737), (48, 36824),

Gene: Lasso_40 Start: 36584, Stop: 36895, Start Num: 9

Candidate Starts for Lasso_40:

(Start: 8 @36581 has 103 MA's), (Start: 9 @36584 has 278 MA's), (Start: 18 @36647 has 8 MA's), (21, 36662), (23, 36671), (24, 36674), (32, 36710), (48, 36797), (64, 36887),

Gene: Laurie_40 Start: 37240, Stop: 37605, Start Num: 6

Candidate Starts for Laurie_40:

(Start: 6 @37240 has 29 MA's), (Start: 8 @37282 has 103 MA's), (Start: 9 @37285 has 278 MA's), (13, 37321), (Start: 18 @37348 has 8 MA's), (26, 37384), (34, 37423), (55, 37546), (56, 37558), (61, 37588),

Gene: LeeLot_40 Start: 36612, Stop: 36926, Start Num: 8

Candidate Starts for LeeLot_40:

(Start: 8 @36612 has 103 MA's), (Start: 9 @36615 has 278 MA's), (Start: 18 @36678 has 8 MA's), (21, 36693), (23, 36702), (24, 36705), (32, 36741), (48, 36828), (64, 36918),

Gene: Legolas_39 Start: 36325, Stop: 36636, Start Num: 9

Candidate Starts for Legolas_39:

(Start: 8 @36322 has 103 MA's), (Start: 9 @36325 has 278 MA's), (Start: 18 @36388 has 8 MA's), (21, 36403), (23, 36412), (24, 36415), (32, 36451), (48, 36538), (64, 36628),

Gene: Lehmann_40 Start: 36145, Stop: 36459, Start Num: 8

Candidate Starts for Lehmann_40:

(Start: 8 @36145 has 103 MA's), (Start: 9 @36148 has 278 MA's), (Start: 18 @36211 has 8 MA's), (21, 36226), (23, 36235), (24, 36238), (32, 36274), (48, 36361), (64, 36451),

Gene: LeiMonet_40 Start: 36316, Stop: 36627, Start Num: 9

Candidate Starts for LeiMonet_40:

(Start: 8 @36313 has 103 MA's), (Start: 9 @36316 has 278 MA's), (Start: 18 @36379 has 8 MA's), (21, 36394), (23, 36403), (24, 36406), (32, 36442), (48, 36529), (64, 36619),

Gene: LemonSlice_40 Start: 36312, Stop: 36623, Start Num: 9

Candidate Starts for LemonSlice_40:

(Start: 8 @36309 has 103 MA's), (Start: 9 @36312 has 278 MA's), (Start: 18 @36375 has 8 MA's), (21, 36390), (23, 36399), (24, 36402), (32, 36438), (48, 36525), (64, 36615),

Gene: Lephleur_41 Start: 37776, Stop: 38099, Start Num: 8

Candidate Starts for Lephleur_41:

(Start: 6 @37734 has 29 MA's), (Start: 8 @37776 has 103 MA's), (Start: 9 @37779 has 278 MA's), (13, 37815), (Start: 18 @37842 has 8 MA's), (21, 37857), (26, 37878), (34, 37917), (55, 38040), (56, 38052), (61, 38082),

Gene: LestyG_40 Start: 37263, Stop: 37586, Start Num: 9

Candidate Starts for LestyG_40:

(3, 36975), (Start: 9 @37263 has 278 MA's), (23, 37350), (49, 37473), (53, 37494), (59, 37554), (62, 37563),

Gene: Ligma_33 Start: 29709, Stop: 30020, Start Num: 7

Candidate Starts for Ligma_33:

(Start: 7 @29709 has 20 MA's), (13, 29763), (29, 29841), (30, 29844), (56, 29979),

Gene: LilMcDreamy_36 Start: 36325, Stop: 36642, Start Num: 9

Candidate Starts for LilMcDreamy_36:

(Start: 8 @36322 has 103 MA's), (Start: 9 @36325 has 278 MA's), (Start: 18 @36388 has 8 MA's), (19, 36391), (20, 36394), (21, 36403), (23, 36412), (25, 36421), (28, 36433), (48, 36538), (56, 36592), (59, 36616),

Gene: LilSmirk_41 Start: 37728, Stop: 38093, Start Num: 6

Candidate Starts for LilSmirk_41:

(Start: 6 @37728 has 29 MA's), (Start: 8 @37770 has 103 MA's), (Start: 9 @37773 has 278 MA's), (13, 37809), (Start: 18 @37836 has 8 MA's), (21, 37851), (26, 37872), (34, 37911), (55, 38034), (56, 38046), (61, 38076),

Gene: LittleDigger_36 Start: 35934, Stop: 36245, Start Num: 9

Candidate Starts for LittleDigger_36:

(Start: 8 @35931 has 103 MA's), (Start: 9 @35934 has 278 MA's), (Start: 18 @35997 has 8 MA's), (21, 36012), (22, 36018), (23, 36021), (26, 36033), (32, 36060), (39, 36099), (46, 36144), (48, 36147), (53, 36168), (56, 36201),

Gene: LittleMinkey_45 Start: 36138, Stop: 36449, Start Num: 9

Candidate Starts for LittleMinkey_45:

(Start: 8 @36135 has 103 MA's), (Start: 9 @36138 has 278 MA's), (Start: 18 @36201 has 8 MA's), (21, 36216), (25, 36234), (38, 36300), (43, 36339), (64, 36441),

Gene: LittleMunchkin_35 Start: 33126, Stop: 33437, Start Num: 7

Candidate Starts for LittleMunchkin_35:

(Start: 7 @33126 has 20 MA's), (30, 33261), (56, 33396),

Gene: LizLemon_41 Start: 37850, Stop: 38215, Start Num: 6

Candidate Starts for LizLemon_41:

(Start: 6 @37850 has 29 MA's), (Start: 8 @37892 has 103 MA's), (Start: 9 @37895 has 278 MA's), (13, 37931), (Start: 18 @37958 has 8 MA's), (21, 37973), (26, 37994), (34, 38033), (55, 38156), (56, 38168), (61, 38198),

Gene: Lolalove_37 Start: 36934, Stop: 37248, Start Num: 8

Candidate Starts for Lolalove_37:

(Start: 8 @36934 has 103 MA's), (Start: 9 @36937 has 278 MA's), (Start: 18 @37000 has 8 MA's), (21, 37015), (22, 37021), (23, 37024), (26, 37036), (32, 37063), (39, 37102), (46, 37147), (48, 37150), (56, 37204), (59, 37228),

Gene: Longacauda_39 Start: 36317, Stop: 36628, Start Num: 9

Candidate Starts for Longacauda_39:

(Start: 8 @36314 has 103 MA's), (Start: 9 @36317 has 278 MA's), (Start: 18 @36380 has 8 MA's), (21, 36395), (23, 36404), (24, 36407), (32, 36443), (48, 36530),

Gene: Lopsy_39 Start: 36167, Stop: 36478, Start Num: 9

Candidate Starts for Lopsy_39:

(Start: 8 @36164 has 103 MA's), (Start: 9 @36167 has 278 MA's), (Start: 18 @36230 has 8 MA's), (21, 36245), (23, 36254), (24, 36257), (32, 36293), (48, 36380), (64, 36470),

Gene: LostAndPhound_39 Start: 36318, Stop: 36629, Start Num: 9

Candidate Starts for LostAndPhound_39:

(Start: 8 @36315 has 103 MA's), (Start: 9 @36318 has 278 MA's), (Start: 18 @36381 has 8 MA's), (21, 36396), (23, 36405), (24, 36408), (32, 36444), (48, 36531), (64, 36621),

Gene: LuckyMarjie_39 Start: 36324, Stop: 36638, Start Num: 8

Candidate Starts for LuckyMarjie_39:

(Start: 8 @36324 has 103 MA's), (Start: 9 @36327 has 278 MA's), (Start: 18 @36390 has 8 MA's), (21, 36405), (23, 36414), (24, 36417), (32, 36453), (48, 36540), (64, 36630),

Gene: Lulumae_39 Start: 36306, Stop: 36620, Start Num: 8

Candidate Starts for Lulumae_39:

(Start: 8 @36306 has 103 MA's), (Start: 9 @36309 has 278 MA's), (Start: 18 @36372 has 8 MA's), (21, 36387), (23, 36396), (24, 36399), (32, 36435), (48, 36522), (64, 36612),

Gene: Lulwa_40 Start: 36596, Stop: 36907, Start Num: 9

Candidate Starts for Lulwa_40:

(Start: 8 @36593 has 103 MA's), (Start: 9 @36596 has 278 MA's), (Start: 18 @36659 has 8 MA's), (21, 36674), (23, 36683), (24, 36686), (32, 36722), (48, 36809), (64, 36899),

Gene: Lumine_39 Start: 36302, Stop: 36616, Start Num: 8

Candidate Starts for Lumine_39:

(Start: 8 @36302 has 103 MA's), (Start: 9 @36305 has 278 MA's), (Start: 18 @36368 has 8 MA's), (21, 36383), (23, 36392), (24, 36395), (32, 36431), (48, 36518), (64, 36608),

Gene: MRabcd_39 Start: 36309, Stop: 36620, Start Num: 9

Candidate Starts for MRabcd_39:

(Start: 8 @36306 has 103 MA's), (Start: 9 @36309 has 278 MA's), (Start: 18 @36372 has 8 MA's), (21, 36387), (23, 36396), (24, 36399), (32, 36435), (48, 36522), (64, 36612),

Gene: Mag7_39 Start: 36215, Stop: 36526, Start Num: 9

Candidate Starts for Mag7_39:

(Start: 8 @36212 has 103 MA's), (Start: 9 @36215 has 278 MA's), (Start: 18 @36278 has 8 MA's), (21, 36293), (23, 36302), (24, 36305), (32, 36341), (48, 36428), (64, 36518),

Gene: Magic8_40 Start: 36647, Stop: 36961, Start Num: 8

Candidate Starts for Magic8_40:

(Start: 8 @36647 has 103 MA's), (Start: 9 @36650 has 278 MA's), (Start: 18 @36713 has 8 MA's), (21, 36728), (23, 36737), (32, 36776), (48, 36863),

Gene: Magpie_36 Start: 36770, Stop: 37084, Start Num: 8

Candidate Starts for Magpie_36:

(Start: 8 @36770 has 103 MA's), (Start: 9 @36773 has 278 MA's), (Start: 18 @36836 has 8 MA's), (21, 36851), (22, 36857), (23, 36860), (26, 36872), (32, 36899), (39, 36938), (46, 36983), (48, 36986), (56, 37040), (59, 37064),

Gene: Makar_56 Start: 30547, Stop: 30768, Start Num: 14

Candidate Starts for Makar_56:

(Start: 14 @30547 has 6 MA's), (25, 30604), (28, 30616), (31, 30631), (54, 30709), (57, 30739), (59, 30760),

Gene: MakoManhole_35 Start: 31663, Stop: 31977, Start Num: 7

Candidate Starts for MakoManhole_35:

(Start: 7 @31663 has 20 MA's), (Start: 14 @31723 has 6 MA's), (29, 31795), (30, 31798), (31, 31807), (46, 31879), (56, 31936),

Gene: Mana_39 Start: 36321, Stop: 36635, Start Num: 8

Candidate Starts for Mana_39:

(Start: 8 @36321 has 103 MA's), (Start: 9 @36324 has 278 MA's), (Start: 18 @36387 has 8 MA's), (21, 36402), (23, 36411), (24, 36414), (32, 36450), (48, 36537), (64, 36627),

Gene: Manad_39 Start: 36163, Stop: 36477, Start Num: 8

Candidate Starts for Manad_39:

(Start: 8 @36163 has 103 MA's), (Start: 9 @36166 has 278 MA's), (Start: 18 @36229 has 8 MA's), (21, 36244), (23, 36253), (24, 36256), (32, 36292), (48, 36379), (64, 36469),

Gene: Mariokart_33 Start: 29652, Stop: 29963, Start Num: 7

Candidate Starts for Mariokart_33:

(Start: 7 @29652 has 20 MA's), (13, 29706), (29, 29784), (56, 29922),

Gene: Marley1013_40 Start: 38041, Stop: 38364, Start Num: 9

Candidate Starts for Marley1013_40:

(3, 37753), (Start: 9 @38041 has 278 MA's), (23, 38128), (49, 38251), (53, 38272), (59, 38332), (62, 38341),

Gene: Marlia_40 Start: 37244, Stop: 37567, Start Num: 9

Candidate Starts for Marlia_40:

(3, 36956), (Start: 9 @37244 has 278 MA's), (23, 37331), (49, 37454), (53, 37475), (59, 37535), (62, 37544),

Gene: Maru_39 Start: 36267, Stop: 36578, Start Num: 9

Candidate Starts for Maru_39:

(Start: 8 @36264 has 103 MA's), (Start: 9 @36267 has 278 MA's), (Start: 18 @36330 has 8 MA's), (21, 36345), (23, 36354), (24, 36357), (32, 36393), (48, 36480), (64, 36570),

Gene: Maskar_39 Start: 36164, Stop: 36475, Start Num: 9

Candidate Starts for Maskar_39:

(Start: 8 @36161 has 103 MA's), (Start: 9 @36164 has 278 MA's), (Start: 18 @36227 has 8 MA's), (21, 36242), (23, 36251), (32, 36290), (48, 36377),

Gene: MasterPo_41 Start: 37737, Stop: 38102, Start Num: 6

Candidate Starts for MasterPo_41:

(Start: 6 @37737 has 29 MA's), (Start: 8 @37779 has 103 MA's), (Start: 9 @37782 has 278 MA's), (13, 37818), (Start: 18 @37845 has 8 MA's), (21, 37860), (26, 37881), (34, 37920), (55, 38043), (56, 38055), (61, 38085),

Gene: Matalotodo_40 Start: 36610, Stop: 36921, Start Num: 9

Candidate Starts for Matalotodo_40:

(Start: 8 @36607 has 103 MA's), (Start: 9 @36610 has 278 MA's), (Start: 18 @36673 has 8 MA's), (21, 36688), (23, 36697), (24, 36700), (32, 36736), (48, 36823), (64, 36913),

Gene: Mcshane_39 Start: 36307, Stop: 36618, Start Num: 9

Candidate Starts for Mcshane_39:

(Start: 8 @36304 has 103 MA's), (Start: 9 @36307 has 278 MA's), (Start: 18 @36370 has 8 MA's), (21, 36385), (23, 36394), (24, 36397), (32, 36433), (48, 36520), (64, 36610),

Gene: Mecca_39 Start: 36310, Stop: 36621, Start Num: 9

Candidate Starts for Mecca_39:

(Start: 8 @36307 has 103 MA's), (Start: 9 @36310 has 278 MA's), (Start: 18 @36373 has 8 MA's), (21, 36388), (23, 36397), (24, 36400), (32, 36436), (48, 36523), (64, 36613),

Gene: Megabear_35 Start: 35678, Stop: 35962, Start Num: 18

Candidate Starts for Megabear_35:

(Start: 18 @35678 has 8 MA's), (28, 35726), (37, 35777), (40, 35792), (41, 35798), (47, 35828), (52, 35861), (56, 35903), (62, 35936),

Gene: Megamind20_40 Start: 36329, Stop: 36643, Start Num: 8

Candidate Starts for Megamind20_40:

(Start: 8 @36329 has 103 MA's), (Start: 9 @36332 has 278 MA's), (Start: 18 @36395 has 8 MA's), (21, 36410), (23, 36419), (24, 36422), (32, 36458), (48, 36545), (64, 36635),

Gene: Megatron_40 Start: 36608, Stop: 36919, Start Num: 9

Candidate Starts for Megatron_40:

(Start: 8 @36605 has 103 MA's), (Start: 9 @36608 has 278 MA's), (Start: 18 @36671 has 8 MA's), (21, 36686), (23, 36695), (24, 36698), (32, 36734), (48, 36821), (64, 36911),

Gene: Melc17_40 Start: 36605, Stop: 36916, Start Num: 9

Candidate Starts for Melc17_40:

(Start: 8 @36602 has 103 MA's), (Start: 9 @36605 has 278 MA's), (Start: 18 @36668 has 8 MA's), (21, 36683), (23, 36692), (32, 36731), (48, 36818),

Gene: MelsMeow_39 Start: 36213, Stop: 36524, Start Num: 9

Candidate Starts for MelsMeow_39:

(Start: 8 @36210 has 103 MA's), (Start: 9 @36213 has 278 MA's), (Start: 18 @36276 has 8 MA's), (21, 36291), (23, 36300), (32, 36339), (48, 36426),

Gene: Mesh1_40 Start: 36619, Stop: 36933, Start Num: 8

Candidate Starts for Mesh1_40:

(Start: 8 @36619 has 103 MA's), (Start: 9 @36622 has 278 MA's), (Start: 18 @36685 has 8 MA's), (21, 36700), (23, 36709), (24, 36712), (32, 36748), (48, 36835), (64, 36925),

Gene: Mesmerelda_39 Start: 36320, Stop: 36631, Start Num: 9

Candidate Starts for Mesmerelda_39:

(Start: 8 @36317 has 103 MA's), (Start: 9 @36320 has 278 MA's), (Start: 18 @36383 has 8 MA's), (21, 36398), (23, 36407), (24, 36410), (32, 36446), (48, 36533), (64, 36623),

Gene: MichaelPhcott_39 Start: 36209, Stop: 36523, Start Num: 8

Candidate Starts for MichaelPhcott_39:

(Start: 8 @36209 has 103 MA's), (Start: 9 @36212 has 278 MA's), (Start: 18 @36275 has 8 MA's), (21, 36290), (23, 36299), (24, 36302), (32, 36338), (48, 36425), (64, 36515),

Gene: Mikota_40 Start: 36595, Stop: 36906, Start Num: 9

Candidate Starts for Mikota_40:

(Start: 8 @36592 has 103 MA's), (Start: 9 @36595 has 278 MA's), (Start: 18 @36658 has 8 MA's), (21, 36673), (23, 36682), (24, 36685), (32, 36721), (48, 36808), (64, 36898),

Gene: MiniBoss_40 Start: 36601, Stop: 36912, Start Num: 9

Candidate Starts for MiniBoss_40:

(Start: 8 @36598 has 103 MA's), (Start: 9 @36601 has 278 MA's), (Start: 18 @36664 has 8 MA's), (21, 36679), (23, 36688), (24, 36691), (32, 36727), (48, 36814), (64, 36904),

Gene: MitKao_40 Start: 36313, Stop: 36627, Start Num: 8

Candidate Starts for MitKao_40:

(Start: 8 @36313 has 103 MA's), (Start: 9 @36316 has 278 MA's), (Start: 18 @36379 has 8 MA's), (21, 36394), (23, 36403), (24, 36406), (32, 36442), (48, 36529), (64, 36619),

Gene: Mithril_37 Start: 36941, Stop: 37252, Start Num: 9

Candidate Starts for Mithril_37:

(Start: 8 @36938 has 103 MA's), (Start: 9 @36941 has 278 MA's), (Start: 18 @37004 has 8 MA's), (21, 37019), (22, 37025), (23, 37028), (26, 37040), (32, 37067), (39, 37106), (46, 37151), (48, 37154), (56, 37208), (59, 37232),

Gene: Morgushi_40 Start: 36317, Stop: 36628, Start Num: 9

Candidate Starts for Morgushi_40:

(Start: 8 @36314 has 103 MA's), (Start: 9 @36317 has 278 MA's), (Start: 18 @36380 has 8 MA's), (21, 36395), (23, 36404), (24, 36407), (32, 36443), (48, 36530), (64, 36620),

Gene: Mortcellus_39 Start: 37897, Stop: 38220, Start Num: 9

Candidate Starts for Mortcellus_39:

(3, 37609), (Start: 9 @37897 has 278 MA's), (23, 37984), (49, 38107), (53, 38128), (59, 38188), (62, 38197),

Gene: Morty_40 Start: 36617, Stop: 36928, Start Num: 9

Candidate Starts for Morty_40:

(Start: 8 @36614 has 103 MA's), (Start: 9 @36617 has 278 MA's), (Start: 18 @36680 has 8 MA's), (21, 36695), (23, 36704), (24, 36707), (32, 36743), (48, 36830), (64, 36920),

Gene: Morty007_40 Start: 38041, Stop: 38364, Start Num: 9

Candidate Starts for Morty007_40:

(3, 37753), (Start: 9 @38041 has 278 MA's), (23, 38128), (49, 38251), (53, 38272), (59, 38332), (62, 38341),

Gene: Mosaic_39 Start: 36319, Stop: 36633, Start Num: 8

Candidate Starts for Mosaic_39:

(Start: 8 @36319 has 103 MA's), (Start: 9 @36322 has 278 MA's), (Start: 18 @36385 has 8 MA's), (21, 36400), (23, 36409), (24, 36412), (32, 36448), (48, 36535), (64, 36625),

Gene: MossRose_35 Start: 31642, Stop: 31956, Start Num: 7

Candidate Starts for MossRose_35:

(Start: 7 @31642 has 20 MA's), (Start: 14 @31702 has 6 MA's), (29, 31774), (30, 31777), (31, 31786), (46, 31858), (56, 31915),

Gene: MrPhizzler_40 Start: 36325, Stop: 36636, Start Num: 9

Candidate Starts for MrPhizzler_40:

(Start: 8 @36322 has 103 MA's), (Start: 9 @36325 has 278 MA's), (Start: 18 @36388 has 8 MA's), (21, 36403), (23, 36412), (24, 36415), (32, 36451), (48, 36538), (64, 36628),

Gene: Mudslide_37 Start: 37173, Stop: 37484, Start Num: 9

Candidate Starts for Mudslide_37:

(Start: 8 @37170 has 103 MA's), (Start: 9 @37173 has 278 MA's), (Start: 18 @37236 has 8 MA's), (21, 37251), (22, 37257), (23, 37260), (26, 37272), (32, 37299), (39, 37338), (46, 37383), (48, 37386), (56, 37440), (59, 37464),

Gene: Mulan_39 Start: 36334, Stop: 36645, Start Num: 9

Candidate Starts for Mulan_39:

(Start: 8 @36331 has 103 MA's), (Start: 9 @36334 has 278 MA's), (Start: 18 @36397 has 8 MA's), (21, 36412), (23, 36421), (24, 36424), (32, 36460), (48, 36547), (64, 36637),

Gene: Murdoc_40 Start: 36609, Stop: 36920, Start Num: 9

Candidate Starts for Murdoc_40:

(Start: 8 @36606 has 103 MA's), (Start: 9 @36609 has 278 MA's), (Start: 18 @36672 has 8 MA's), (21, 36687), (23, 36696), (24, 36699), (32, 36735), (48, 36822), (64, 36912),

Gene: Mutante_39 Start: 36313, Stop: 36627, Start Num: 8

Candidate Starts for Mutante_39:

(Start: 8 @36313 has 103 MA's), (Start: 9 @36316 has 278 MA's), (Start: 18 @36379 has 8 MA's), (21, 36394), (23, 36403), (24, 36406), (32, 36442), (48, 36529), (64, 36619),

Gene: Mysterious_39 Start: 37478, Stop: 37801, Start Num: 8

Candidate Starts for Mysterious_39:

(Start: 8 @37478 has 103 MA's), (Start: 9 @37481 has 278 MA's), (10, 37502), (Start: 18 @37544 has 8 MA's), (20, 37550), (21, 37559), (23, 37568), (25, 37577), (28, 37589), (48, 37694), (59, 37772),

Gene: NHagos_33 Start: 30199, Stop: 30513, Start Num: 7

Candidate Starts for NHagos_33:

(Start: 7 @30199 has 20 MA's), (25, 30316), (27, 30325), (30, 30334), (56, 30472),

Gene: Nacho_0040 Start: 36608, Stop: 36922, Start Num: 8

Candidate Starts for Nacho_0040:

(Start: 8 @36608 has 103 MA's), (Start: 9 @36611 has 278 MA's), (Start: 18 @36674 has 8 MA's), (21, 36689), (23, 36698), (24, 36701), (32, 36737), (48, 36824), (64, 36914),

Gene: Nanao_36 Start: 35899, Stop: 36210, Start Num: 9

Candidate Starts for Nanao_36:

(Start: 8 @35896 has 103 MA's), (Start: 9 @35899 has 278 MA's), (Start: 18 @35962 has 8 MA's), (21, 35977), (22, 35983), (23, 35986), (26, 35998), (32, 36025), (39, 36064), (46, 36109), (48, 36112), (53, 36133), (56, 36166),

Gene: Nangang_39 Start: 37277, Stop: 37597, Start Num: 9

Candidate Starts for Nangang_39:

(Start: 8 @37274 has 103 MA's), (Start: 9 @37277 has 278 MA's), (Start: 18 @37340 has 8 MA's), (20, 37346), (21, 37355), (23, 37364), (25, 37373), (27, 37382), (28, 37385), (59, 37568),

Gene: Nathan_40 Start: 36647, Stop: 36958, Start Num: 9

Candidate Starts for Nathan_40:

(Start: 8 @36644 has 103 MA's), (Start: 9 @36647 has 278 MA's), (Start: 18 @36710 has 8 MA's), (21, 36725), (23, 36734), (24, 36737), (32, 36773), (48, 36860), (64, 36950),

Gene: Nehemiah_39 Start: 37481, Stop: 37801, Start Num: 9

Candidate Starts for Nehemiah_39:

(Start: 8 @37478 has 103 MA's), (Start: 9 @37481 has 278 MA's), (10, 37502), (Start: 18 @37544 has 8 MA's), (20, 37550), (21, 37559), (23, 37568), (25, 37577), (28, 37589), (48, 37694), (59, 37772),

Gene: Neos5_40 Start: 38056, Stop: 38379, Start Num: 9

Candidate Starts for Neos5_40:

(3, 37768), (Start: 9 @38056 has 278 MA's), (23, 38143), (49, 38266), (53, 38287), (59, 38347), (62, 38356),

Gene: Newman_40 Start: 36608, Stop: 36919, Start Num: 9

Candidate Starts for Newman_40:

(Start: 8 @36605 has 103 MA's), (Start: 9 @36608 has 278 MA's), (Start: 18 @36671 has 8 MA's), (21, 36686), (23, 36695), (24, 36698), (32, 36734), (48, 36821), (64, 36911),

Gene: NiaNia_41 Start: 36339, Stop: 36650, Start Num: 9

Candidate Starts for NiaNia_41:

(Start: 8 @36336 has 103 MA's), (Start: 9 @36339 has 278 MA's), (Start: 18 @36402 has 8 MA's), (21, 36417), (23, 36426), (24, 36429), (32, 36465), (48, 36552), (64, 36642),

Gene: Nicole21_40 Start: 36603, Stop: 36917, Start Num: 8

Candidate Starts for Nicole21_40:

(Start: 8 @36603 has 103 MA's), (Start: 9 @36606 has 278 MA's), (Start: 18 @36669 has 8 MA's), (21, 36684), (23, 36693), (24, 36696), (32, 36732), (48, 36819), (64, 36909),

Gene: Nigel_35 Start: 35815, Stop: 36126, Start Num: 9

Candidate Starts for Nigel_35:

(1, 35476), (Start: 8 @35812 has 103 MA's), (Start: 9 @35815 has 278 MA's), (Start: 18 @35878 has 8 MA's), (21, 35893), (22, 35899), (23, 35902), (26, 35914), (32, 35941), (39, 35980), (46, 36025), (48, 36028), (56, 36082), (59, 36106),

Gene: Nova1_39 Start: 36262, Stop: 36576, Start Num: 8

Candidate Starts for Nova1_39:

(Start: 8 @36262 has 103 MA's), (Start: 9 @36265 has 278 MA's), (Start: 18 @36328 has 8 MA's), (21, 36343), (23, 36352), (32, 36391), (48, 36478), (64, 36568),

Gene: Nozo_40 Start: 38021, Stop: 38344, Start Num: 9

Candidate Starts for Nozo_40:

(3, 37733), (Start: 9 @38021 has 278 MA's), (23, 38108), (49, 38231), (53, 38252), (59, 38312), (62, 38321),

Gene: Numberten_40 Start: 36612, Stop: 36926, Start Num: 8

Candidate Starts for Numberten_40:

(Start: 8 @36612 has 103 MA's), (Start: 9 @36615 has 278 MA's), (Start: 18 @36678 has 8 MA's), (21, 36693), (23, 36702), (24, 36705), (32, 36741), (48, 36828), (64, 36918),

Gene: Nyala_39 Start: 36308, Stop: 36619, Start Num: 9

Candidate Starts for Nyala_39:

(Start: 8 @36305 has 103 MA's), (Start: 9 @36308 has 278 MA's), (Start: 18 @36371 has 8 MA's), (21, 36386), (23, 36395), (24, 36398), (32, 36434), (48, 36521), (64, 36611),

Gene: OSmaximus_40 Start: 36650, Stop: 36961, Start Num: 9

Candidate Starts for OSmaximus_40:

(Start: 8 @36647 has 103 MA's), (Start: 9 @36650 has 278 MA's), (Start: 18 @36713 has 8 MA's), (21, 36728), (23, 36737), (24, 36740), (32, 36776), (48, 36863), (64, 36953),

Gene: Obutu_40 Start: 37245, Stop: 37568, Start Num: 9

Candidate Starts for Obutu_40:

(3, 36957), (Start: 9 @37245 has 278 MA's), (23, 37332), (49, 37455), (53, 37476), (59, 37536), (62, 37545),

Gene: Olak_39 Start: 36311, Stop: 36622, Start Num: 9

Candidate Starts for Olak_39:

(Start: 8 @36308 has 103 MA's), (Start: 9 @36311 has 278 MA's), (Start: 18 @36374 has 8 MA's), (21, 36389), (23, 36398), (24, 36401), (32, 36437), (48, 36524), (64, 36614),

Gene: Oline_39 Start: 36177, Stop: 36488, Start Num: 9

Candidate Starts for Oline_39:

(Start: 8 @36174 has 103 MA's), (Start: 9 @36177 has 278 MA's), (Start: 18 @36240 has 8 MA's), (21, 36255), (23, 36264), (32, 36303), (48, 36390),

Gene: Olive_40 Start: 36595, Stop: 36909, Start Num: 8

Candidate Starts for Olive_40:

(Start: 8 @36595 has 103 MA's), (Start: 9 @36598 has 278 MA's), (Start: 18 @36661 has 8 MA's), (21, 36676), (23, 36685), (24, 36688), (32, 36724), (48, 36811), (64, 36901),

Gene: OliverWalter_40 Start: 36620, Stop: 36931, Start Num: 9

Candidate Starts for OliverWalter_40:

(Start: 8 @36617 has 103 MA's), (Start: 9 @36620 has 278 MA's), (Start: 18 @36683 has 8 MA's), (21, 36698), (23, 36707), (24, 36710), (32, 36746), (48, 36833), (64, 36923),

Gene: Omniscient_40 Start: 36617, Stop: 36928, Start Num: 9

Candidate Starts for Omniscient_40:

(Start: 8 @36614 has 103 MA's), (Start: 9 @36617 has 278 MA's), (Start: 18 @36680 has 8 MA's), (21, 36695), (23, 36704), (24, 36707), (32, 36743), (48, 36830), (64, 36920),

Gene: OneBrain_40 Start: 36313, Stop: 36627, Start Num: 8

Candidate Starts for OneBrain_40:

(Start: 8 @36313 has 103 MA's), (Start: 9 @36316 has 278 MA's), (Start: 18 @36379 has 8 MA's), (21, 36394), (23, 36403), (32, 36442), (48, 36529),

Gene: Oosterbaan_40 Start: 36608, Stop: 36919, Start Num: 9

Candidate Starts for Oosterbaan_40:

(Start: 8 @36605 has 103 MA's), (Start: 9 @36608 has 278 MA's), (Start: 18 @36671 has 8 MA's), (21, 36686), (23, 36695), (24, 36698), (32, 36734), (48, 36821), (64, 36911),

Gene: Opia_41 Start: 37723, Stop: 38088, Start Num: 6

Candidate Starts for Opia_41:

(Start: 6 @37723 has 29 MA's), (Start: 8 @37765 has 103 MA's), (Start: 9 @37768 has 278 MA's), (13, 37804), (Start: 18 @37831 has 8 MA's), (21, 37846), (26, 37867), (34, 37906), (55, 38029), (56, 38041), (61, 38071),

Gene: Orfeu_39 Start: 36316, Stop: 36627, Start Num: 9

Candidate Starts for Orfeu_39:

(Start: 8 @36313 has 103 MA's), (Start: 9 @36316 has 278 MA's), (Start: 18 @36379 has 8 MA's), (21, 36394), (23, 36403), (24, 36406), (32, 36442), (48, 36529), (64, 36619),

Gene: Orion_40 Start: 36606, Stop: 36917, Start Num: 9

Candidate Starts for Orion_40:

(Start: 8 @36603 has 103 MA's), (Start: 9 @36606 has 278 MA's), (Start: 18 @36669 has 8 MA's), (21, 36684), (23, 36693), (24, 36696), (32, 36732), (48, 36819), (64, 36909),

Gene: Orwigg_39 Start: 36304, Stop: 36615, Start Num: 9

Candidate Starts for Orwigg_39:

(Start: 8 @36301 has 103 MA's), (Start: 9 @36304 has 278 MA's), (Start: 18 @36367 has 8 MA's), (21, 36382), (23, 36391), (24, 36394), (32, 36430), (48, 36517), (64, 36607),

Gene: PG1_40 Start: 36619, Stop: 36930, Start Num: 9

Candidate Starts for PG1_40:

(Start: 8 @36616 has 103 MA's), (Start: 9 @36619 has 278 MA's), (Start: 18 @36682 has 8 MA's), (21, 36697), (23, 36706), (24, 36709), (32, 36745), (48, 36832), (64, 36922),

Gene: PR_35 Start: 36282, Stop: 36566, Start Num: 18

Candidate Starts for PR_35:

(Start: 18 @36282 has 8 MA's), (28, 36330), (37, 36381), (40, 36396), (41, 36402), (47, 36432), (52, 36465), (56, 36507), (62, 36540),

Gene: Pacifista_39 Start: 36310, Stop: 36621, Start Num: 9

Candidate Starts for Pacifista_39:

(Start: 8 @36307 has 103 MA's), (Start: 9 @36310 has 278 MA's), (Start: 18 @36373 has 8 MA's), (21, 36388), (23, 36397), (24, 36400), (32, 36436), (48, 36523), (64, 36613),

Gene: PallasAthena_40 Start: 36321, Stop: 36635, Start Num: 8

Candidate Starts for PallasAthena_40:

(Start: 8 @36321 has 103 MA's), (Start: 9 @36324 has 278 MA's), (Start: 18 @36387 has 8 MA's), (21, 36402), (23, 36411), (32, 36450), (48, 36537), (64, 36627),

Gene: PenguinLover67_42 Start: 38630, Stop: 38941, Start Num: 9

Candidate Starts for PenguinLover67_42:

(Start: 8 @38627 has 103 MA's), (Start: 9 @38630 has 278 MA's), (15, 38681), (17, 38690), (Start: 18 @38693 has 8 MA's), (20, 38702), (21, 38711), (46, 38843),

Gene: Phaedrus_38 Start: 37182, Stop: 37505, Start Num: 9

Candidate Starts for Phaedrus_38:

(3, 36894), (Start: 9 @37182 has 278 MA's), (23, 37269), (49, 37392), (53, 37413), (59, 37473), (62, 37482),

Gene: Phamished_40 Start: 36611, Stop: 36925, Start Num: 8

Candidate Starts for Phamished_40:

(Start: 8 @36611 has 103 MA's), (Start: 9 @36614 has 278 MA's), (Start: 18 @36677 has 8 MA's), (21, 36692), (23, 36701), (24, 36704), (32, 36740), (48, 36827), (64, 36917),

Gene: Phantasmagoria_41 Start: 37780, Stop: 38100, Start Num: 9

Candidate Starts for Phantasmagoria_41:

(Start: 6 @37735 has 29 MA's), (Start: 8 @37777 has 103 MA's), (Start: 9 @37780 has 278 MA's), (13, 37816), (Start: 18 @37843 has 8 MA's), (21, 37858), (26, 37879), (34, 37918), (55, 38041), (56, 38053), (61, 38083),

Gene: Phareon_40 Start: 36318, Stop: 36629, Start Num: 9

Candidate Starts for Phareon_40:

(Start: 8 @36315 has 103 MA's), (Start: 9 @36318 has 278 MA's), (Start: 18 @36381 has 8 MA's), (21, 36396), (23, 36405), (24, 36408), (32, 36444), (48, 36531), (64, 36621),

Gene: PhatCats2014_40 Start: 36620, Stop: 36934, Start Num: 8

Candidate Starts for PhatCats2014_40:

(Start: 8 @36620 has 103 MA's), (Start: 9 @36623 has 278 MA's), (Start: 18 @36686 has 8 MA's), (21, 36701), (23, 36710), (24, 36713), (32, 36749), (48, 36836), (64, 36926),

Gene: PhatLouie_40 Start: 36612, Stop: 36923, Start Num: 9

Candidate Starts for PhatLouie_40:

(Start: 8 @36609 has 103 MA's), (Start: 9 @36612 has 278 MA's), (Start: 18 @36675 has 8 MA's), (21, 36690), (23, 36699), (24, 36702), (32, 36738), (48, 36825), (64, 36915),

Gene: Phayeta_41 Start: 37127, Stop: 37450, Start Num: 9

Candidate Starts for Phayeta_41:

(3, 36839), (Start: 9 @37127 has 278 MA's), (23, 37214), (49, 37337), (53, 37358), (59, 37418), (62, 37427),

Gene: Phelemich_39 Start: 37480, Stop: 37800, Start Num: 9

Candidate Starts for Phelemich_39:

(Start: 8 @37477 has 103 MA's), (Start: 9 @37480 has 278 MA's), (10, 37501), (Start: 18 @37543 has 8 MA's), (20, 37549), (21, 37558), (23, 37567), (25, 37576), (28, 37588), (48, 37693), (59, 37771),

Gene: PhenghisKhan_39 Start: 36218, Stop: 36529, Start Num: 9

Candidate Starts for PhenghisKhan_39:

(Start: 8 @36215 has 103 MA's), (Start: 9 @36218 has 278 MA's), (Start: 18 @36281 has 8 MA's), (21, 36296), (23, 36305), (24, 36308), (32, 36344), (48, 36431), (64, 36521),

Gene: Pherdinand_40 Start: 36614, Stop: 36925, Start Num: 9

Candidate Starts for Pherdinand_40:

(Start: 8 @36611 has 103 MA's), (Start: 9 @36614 has 278 MA's), (Start: 18 @36677 has 8 MA's), (21, 36692), (23, 36701), (24, 36704), (32, 36740), (48, 36827), (64, 36917),

Gene: Phergie_39 Start: 36209, Stop: 36520, Start Num: 9

Candidate Starts for Phergie_39:

(Start: 8 @36206 has 103 MA's), (Start: 9 @36209 has 278 MA's), (Start: 18 @36272 has 8 MA's), (21, 36287), (23, 36296), (24, 36299), (32, 36335), (48, 36422), (64, 36512),

Gene: Philly_39 Start: 37113, Stop: 37436, Start Num: 9

Candidate Starts for Philly_39:

(3, 36825), (Start: 9 @37113 has 278 MA's), (23, 37200), (49, 37323), (53, 37344), (59, 37404), (62, 37413),

Gene: Phipps_40 Start: 36585, Stop: 36896, Start Num: 9

Candidate Starts for Phipps_40:

(Start: 8 @36582 has 103 MA's), (Start: 9 @36585 has 278 MA's), (Start: 18 @36648 has 8 MA's), (21, 36663), (23, 36672), (24, 36675), (32, 36711), (48, 36798), (64, 36888),

Gene: Phleuron_39 Start: 36212, Stop: 36526, Start Num: 8

Candidate Starts for Phleuron_39:

(Start: 8 @36212 has 103 MA's), (Start: 9 @36215 has 278 MA's), (Start: 18 @36278 has 8 MA's), (21, 36293), (23, 36302), (24, 36305), (32, 36341), (48, 36428), (64, 36518),

Gene: Phlyer_40 Start: 38001, Stop: 38324, Start Num: 9

Candidate Starts for Phlyer_40:

(3, 37713), (Start: 9 @38001 has 278 MA's), (23, 38088), (49, 38211), (53, 38232), (59, 38292), (62, 38301),

Gene: PhrankReynolds_39 Start: 36215, Stop: 36526, Start Num: 9

Candidate Starts for PhrankReynolds_39:

(Start: 8 @36212 has 103 MA's), (Start: 9 @36215 has 278 MA's), (Start: 18 @36278 has 8 MA's), (21, 36293), (23, 36302), (24, 36305), (32, 36341), (48, 36428), (64, 36518),

Gene: PhrodoBaggins_39 Start: 36602, Stop: 36913, Start Num: 9

Candidate Starts for PhrodoBaggins_39:

(Start: 8 @36599 has 103 MA's), (Start: 9 @36602 has 278 MA's), (Start: 18 @36665 has 8 MA's), (21, 36680), (23, 36689), (24, 36692), (32, 36728), (48, 36815), (64, 36905),

Gene: Phunky_40 Start: 36615, Stop: 36926, Start Num: 9

Candidate Starts for Phunky_40:

(Start: 8 @36612 has 103 MA's), (Start: 9 @36615 has 278 MA's), (Start: 18 @36678 has 8 MA's), (21, 36693), (23, 36702), (24, 36705), (32, 36741), (48, 36828), (64, 36918),

Gene: Piglet_0039 Start: 36719, Stop: 37033, Start Num: 8

Candidate Starts for Piglet_0039:

(Start: 8 @36719 has 103 MA's), (Start: 9 @36722 has 278 MA's), (Start: 18 @36785 has 8 MA's), (21, 36800), (23, 36809), (24, 36812), (32, 36848), (48, 36935), (64, 37025),

Gene: PinheadLarry_40 Start: 36328, Stop: 36639, Start Num: 9

Candidate Starts for PinheadLarry_40:

(Start: 8 @36325 has 103 MA's), (Start: 9 @36328 has 278 MA's), (Start: 18 @36391 has 8 MA's), (21, 36406), (23, 36415), (32, 36454), (48, 36541),

Gene: Pinkman_39 Start: 36171, Stop: 36482, Start Num: 9

Candidate Starts for Pinkman_39:

(Start: 8 @36168 has 103 MA's), (Start: 9 @36171 has 278 MA's), (Start: 18 @36234 has 8 MA's), (21, 36249), (23, 36258), (24, 36261), (32, 36297), (48, 36384),

Gene: Pipsqueak_40 Start: 36610, Stop: 36924, Start Num: 8

Candidate Starts for Pipsqueak_40:

(Start: 8 @36610 has 103 MA's), (Start: 9 @36613 has 278 MA's), (Start: 18 @36676 has 8 MA's), (21, 36691), (23, 36700), (24, 36703), (32, 36739), (48, 36826), (64, 36916),

Gene: Placalicious_39 Start: 36303, Stop: 36617, Start Num: 8

Candidate Starts for Placalicious_39:

(Start: 8 @36303 has 103 MA's), (Start: 9 @36306 has 278 MA's), (Start: 18 @36369 has 8 MA's), (21, 36384), (23, 36393), (24, 36396), (32, 36432), (48, 36519), (64, 36609),

Gene: Plata_39 Start: 36327, Stop: 36638, Start Num: 9

Candidate Starts for Plata_39:

(Start: 8 @36324 has 103 MA's), (Start: 9 @36327 has 278 MA's), (Start: 18 @36390 has 8 MA's), (21, 36405), (23, 36414), (32, 36453), (48, 36540),

Gene: Plmatters_40 Start: 36609, Stop: 36923, Start Num: 8

Candidate Starts for Plmatters_40:

(Start: 8 @36609 has 103 MA's), (Start: 9 @36612 has 278 MA's), (Start: 18 @36675 has 8 MA's), (21, 36690), (23, 36699), (24, 36702), (32, 36738), (48, 36825), (64, 36915),

Gene: Podrick_40 Start: 36603, Stop: 36914, Start Num: 9

Candidate Starts for Podrick_40:

(Start: 8 @36600 has 103 MA's), (Start: 9 @36603 has 278 MA's), (Start: 18 @36666 has 8 MA's), (21, 36681), (23, 36690), (24, 36693), (32, 36729), (48, 36816), (64, 36906),

Gene: Pops_40 Start: 36627, Stop: 36938, Start Num: 9

Candidate Starts for Pops_40:

(Start: 8 @36624 has 103 MA's), (Start: 9 @36627 has 278 MA's), (Start: 18 @36690 has 8 MA's), (21, 36705), (23, 36714), (24, 36717), (32, 36753), (48, 36840), (64, 36930),

Gene: Poster_36 Start: 35900, Stop: 36211, Start Num: 9

Candidate Starts for Poster_36:

(Start: 8 @35897 has 103 MA's), (Start: 9 @35900 has 278 MA's), (Start: 18 @35963 has 8 MA's), (21, 35978), (22, 35984), (23, 35987), (26, 35999), (32, 36026), (39, 36065), (46, 36110), (48, 36113), (53, 36134), (56, 36167),

Gene: Potter_39 Start: 36327, Stop: 36638, Start Num: 9

Candidate Starts for Potter_39:

(Start: 8 @36324 has 103 MA's), (Start: 9 @36327 has 278 MA's), (Start: 18 @36390 has 8 MA's), (21, 36405), (23, 36414), (24, 36417), (32, 36453), (48, 36540), (64, 36630),

Gene: Prickles_40 Start: 36603, Stop: 36914, Start Num: 9

Candidate Starts for Prickles_40:

(Start: 8 @36600 has 103 MA's), (Start: 9 @36603 has 278 MA's), (Start: 18 @36666 has 8 MA's), (21, 36681), (23, 36690), (24, 36693), (32, 36729), (48, 36816), (64, 36906),

Gene: Prince_37 Start: 37083, Stop: 37394, Start Num: 9

Candidate Starts for Prince_37:

(Start: 8 @37080 has 103 MA's), (Start: 9 @37083 has 278 MA's), (Start: 18 @37146 has 8 MA's), (21, 37161), (22, 37167), (23, 37170), (26, 37182), (32, 37209), (39, 37248), (46, 37293), (48, 37296), (56, 37350), (59, 37374),

Gene: PrinceCharming_41 Start: 37884, Stop: 38207, Start Num: 8

Candidate Starts for PrinceCharming_41:

(Start: 6 @37842 has 29 MA's), (Start: 8 @37884 has 103 MA's), (Start: 9 @37887 has 278 MA's), (13, 37923), (Start: 18 @37950 has 8 MA's), (21, 37965), (26, 37986), (34, 38025), (55, 38148), (56, 38160), (61, 38190),

Gene: ProfessorX_40 Start: 36598, Stop: 36909, Start Num: 9

Candidate Starts for ProfessorX_40:

(Start: 8 @36595 has 103 MA's), (Start: 9 @36598 has 278 MA's), (Start: 18 @36661 has 8 MA's), (21, 36676), (23, 36685), (24, 36688), (32, 36724), (48, 36811), (64, 36901),

Gene: Puhltonio_40 Start: 36619, Stop: 36930, Start Num: 9

Candidate Starts for Puhltonio_40:

(Start: 8 @36616 has 103 MA's), (Start: 9 @36619 has 278 MA's), (Start: 18 @36682 has 8 MA's), (21, 36697), (23, 36706), (24, 36709), (32, 36745), (48, 36832), (64, 36922),

Gene: Purplicious_54 Start: 29966, Stop: 30187, Start Num: 14

Candidate Starts for Purplicious_54:

(Start: 14 @29966 has 6 MA's), (27, 30032), (28, 30035), (31, 30050), (54, 30128), (57, 30158), (59, 30179),

Gene: QueenBeane_40 Start: 36606, Stop: 36920, Start Num: 8

Candidate Starts for QueenBeane_40:

(Start: 8 @36606 has 103 MA's), (Start: 9 @36609 has 278 MA's), (Start: 18 @36672 has 8 MA's), (21, 36687), (23, 36696), (24, 36699), (32, 36735), (48, 36822), (64, 36912),

Gene: QueenPie_36 Start: 37024, Stop: 37335, Start Num: 9

Candidate Starts for QueenPie_36:

(Start: 8 @37021 has 103 MA's), (Start: 9 @37024 has 278 MA's), (Start: 18 @37087 has 8 MA's), (21, 37102), (22, 37108), (26, 37123), (32, 37150), (39, 37189), (46, 37234), (48, 37237), (53, 37258), (56, 37291), (59, 37315),

Gene: Quesadilla_42 Start: 38636, Stop: 38953, Start Num: 8

Candidate Starts for Quesadilla_42:

(Start: 8 @38636 has 103 MA's), (Start: 9 @38639 has 278 MA's), (17, 38699), (Start: 18 @38702 has 8 MA's), (20, 38711), (21, 38720), (43, 38843), (46, 38852),

Gene: Quisquilliae_40 Start: 36637, Stop: 36948, Start Num: 9

Candidate Starts for Quisquilliae_40:

(Start: 8 @36634 has 103 MA's), (Start: 9 @36637 has 278 MA's), (Start: 18 @36700 has 8 MA's), (21, 36715), (23, 36724), (24, 36727), (32, 36763), (48, 36850), (64, 36940),

Gene: Qyrzula_38 Start: 37881, Stop: 38246, Start Num: 6

Candidate Starts for Qyrzula_38:

(Start: 6 @37881 has 29 MA's), (Start: 8 @37923 has 103 MA's), (Start: 9 @37926 has 278 MA's), (13, 37962), (Start: 18 @37989 has 8 MA's), (21, 38004), (26, 38025), (34, 38064), (55, 38187), (56, 38199), (61, 38229),

Gene: RagingRooster_40 Start: 37263, Stop: 37586, Start Num: 9

Candidate Starts for RagingRooster_40:

(3, 36975), (Start: 9 @37263 has 278 MA's), (23, 37350), (49, 37473), (53, 37494), (59, 37554), (62, 37563),

Gene: RawrgerThat_37 Start: 36928, Stop: 37239, Start Num: 9

Candidate Starts for RawrgerThat_37:

(Start: 8 @36925 has 103 MA's), (Start: 9 @36928 has 278 MA's), (Start: 18 @36991 has 8 MA's), (21, 37006), (22, 37012), (23, 37015), (26, 37027), (32, 37054), (39, 37093), (46, 37138), (48, 37141), (56, 37195), (59, 37219),

Gene: Reccee_39 Start: 37383, Stop: 37703, Start Num: 9

Candidate Starts for Reccee_39:

(Start: 8 @37380 has 103 MA's), (Start: 9 @37383 has 278 MA's), (Start: 18 @37446 has 8 MA's), (20, 37452), (21, 37461), (23, 37470), (25, 37479), (28, 37491), (59, 37674),

Gene: RedMaple_39 Start: 36616, Stop: 36927, Start Num: 9

Candidate Starts for RedMaple_39:

(Start: 8 @36613 has 103 MA's), (Start: 9 @36616 has 278 MA's), (Start: 18 @36679 has 8 MA's), (21, 36694), (23, 36703), (24, 36706), (32, 36742), (48, 36829), (64, 36919),

Gene: RedRaider89_41 Start: 36836, Stop: 37147, Start Num: 9

Candidate Starts for RedRaider89_41:

(Start: 8 @36833 has 103 MA's), (Start: 9 @36836 has 278 MA's), (Start: 18 @36899 has 8 MA's), (21, 36914), (23, 36923), (24, 36926), (32, 36962), (48, 37049), (64, 37139),

Gene: Renkei_36 Start: 35934, Stop: 36245, Start Num: 9

Candidate Starts for Renkei_36:

(Start: 8 @35931 has 103 MA's), (Start: 9 @35934 has 278 MA's), (Start: 18 @35997 has 8 MA's), (21, 36012), (22, 36018), (23, 36021), (26, 36033), (32, 36060), (39, 36099), (46, 36144), (48, 36147), (53, 36168), (56, 36201),

Gene: Reprobate_39 Start: 37482, Stop: 37805, Start Num: 8

Candidate Starts for Reprobate_39:

(Start: 8 @37482 has 103 MA's), (Start: 9 @37485 has 278 MA's), (10, 37506), (Start: 18 @37548 has 8 MA's), (20, 37554), (21, 37563), (23, 37572), (25, 37581), (28, 37593), (48, 37698), (59, 37776),

Gene: Rhinoforte_41 Start: 37844, Stop: 38209, Start Num: 6

Candidate Starts for Rhinoforte_41:

(Start: 6 @37844 has 29 MA's), (Start: 8 @37886 has 103 MA's), (Start: 9 @37889 has 278 MA's), (13, 37925), (Start: 18 @37952 has 8 MA's), (21, 37967), (26, 37988), (34, 38027), (55, 38150), (56, 38162), (61, 38192),

Gene: Rich_38 Start: 37097, Stop: 37417, Start Num: 9

Candidate Starts for Rich_38:

(Start: 8 @37094 has 103 MA's), (Start: 9 @37097 has 278 MA's), (Start: 18 @37160 has 8 MA's), (20, 37166), (21, 37175), (23, 37184), (25, 37193), (28, 37205), (59, 37388),

Gene: Ricotta_39 Start: 36335, Stop: 36646, Start Num: 9

Candidate Starts for Ricotta_39:

(Start: 8 @36332 has 103 MA's), (Start: 9 @36335 has 278 MA's), (Start: 18 @36398 has 8 MA's), (21, 36413), (23, 36422), (24, 36425), (32, 36461), (48, 36548), (64, 36638),

Gene: Riggan_40 Start: 36593, Stop: 36907, Start Num: 8

Candidate Starts for Riggan_40:

(Start: 8 @36593 has 103 MA's), (Start: 9 @36596 has 278 MA's), (Start: 18 @36659 has 8 MA's), (21, 36674), (23, 36683), (24, 36686), (32, 36722), (48, 36809), (64, 36899),

Gene: Rimu_40 Start: 36345, Stop: 36656, Start Num: 9

Candidate Starts for Rimu_40:

(Start: 8 @36342 has 103 MA's), (Start: 9 @36345 has 278 MA's), (Start: 18 @36408 has 8 MA's), (21, 36423), (23, 36432), (24, 36435), (32, 36471), (48, 36558), (64, 36648),

Gene: Rinkes_41 Start: 38207, Stop: 38515, Start Num: 9

Candidate Starts for Rinkes_41:

(Start: 9 @38207 has 278 MA's), (13, 38243), (Start: 18 @38270 has 8 MA's), (20, 38276), (21, 38285), (23, 38294), (28, 38315), (51, 38435), (56, 38471),

Gene: Rita130_39 Start: 37203, Stop: 37523, Start Num: 9

Candidate Starts for Rita130_39:

(Start: 8 @37200 has 103 MA's), (Start: 9 @37203 has 278 MA's), (Start: 18 @37266 has 8 MA's), (20, 37272), (21, 37281), (23, 37290), (25, 37299), (28, 37311), (59, 37494),

Gene: Riverton_40 Start: 36617, Stop: 36928, Start Num: 9

Candidate Starts for Riverton_40:

(Start: 8 @36614 has 103 MA's), (Start: 9 @36617 has 278 MA's), (Start: 18 @36680 has 8 MA's), (21, 36695), (23, 36704), (24, 36707), (32, 36743), (48, 36830), (64, 36920),

Gene: Robyn_39 Start: 36180, Stop: 36491, Start Num: 9

Candidate Starts for Robyn_39:

(Start: 8 @36177 has 103 MA's), (Start: 9 @36180 has 278 MA's), (Start: 18 @36243 has 8 MA's), (21, 36258), (23, 36267), (24, 36270), (32, 36306), (48, 36393), (64, 36483),

Gene: Roliet_40 Start: 36602, Stop: 36916, Start Num: 8

Candidate Starts for Roliet_40:

(Start: 8 @36602 has 103 MA's), (Start: 9 @36605 has 278 MA's), (Start: 18 @36668 has 8 MA's), (21, 36683), (23, 36692), (24, 36695), (32, 36731), (48, 36818), (64, 36908),

Gene: Roscoe_41 Start: 36840, Stop: 37154, Start Num: 8

Candidate Starts for Roscoe_41:

(Start: 8 @36840 has 103 MA's), (Start: 9 @36843 has 278 MA's), (Start: 18 @36906 has 8 MA's), (21, 36921), (23, 36930), (24, 36933), (32, 36969), (48, 37056), (64, 37146),

Gene: Rosebush_40 Start: 37851, Stop: 38216, Start Num: 6

Candidate Starts for Rosebush_40:

(Start: 6 @37851 has 29 MA's), (Start: 8 @37893 has 103 MA's), (Start: 9 @37896 has 278 MA's), (13, 37932), (Start: 18 @37959 has 8 MA's), (21, 37974), (26, 37995), (34, 38034), (55, 38157), (56, 38169), (61, 38199),

Gene: Roy17_40 Start: 36306, Stop: 36620, Start Num: 8

Candidate Starts for Roy17_40:

(Start: 8 @36306 has 103 MA's), (Start: 9 @36309 has 278 MA's), (Start: 18 @36372 has 8 MA's), (21, 36387), (23, 36396), (24, 36399), (32, 36435), (48, 36522), (64, 36612),

Gene: SDcharge11_40 Start: 36583, Stop: 36894, Start Num: 9

Candidate Starts for SDcharge11_40:

(Start: 8 @36580 has 103 MA's), (Start: 9 @36583 has 278 MA's), (Start: 18 @36646 has 8 MA's), (21, 36661), (23, 36670), (24, 36673), (32, 36709), (48, 36796), (64, 36886),

Gene: Sabella_40 Start: 37728, Stop: 38093, Start Num: 6

Candidate Starts for Sabella_40:

(Start: 6 @37728 has 29 MA's), (Start: 8 @37770 has 103 MA's), (Start: 9 @37773 has 278 MA's), (13, 37809), (Start: 18 @37836 has 8 MA's), (21, 37851), (26, 37872), (34, 37911), (55, 38034), (56,

38046), (61, 38076),

Gene: Saguaro_41 Start: 38281, Stop: 38601, Start Num: 9

Candidate Starts for Saguaro_41:

(Start: 9 @38281 has 278 MA's), (Start: 18 @38344 has 8 MA's), (20, 38353), (21, 38362), (23, 38371), (35, 38431), (53, 38518),

Gene: SallyH_40 Start: 36619, Stop: 36930, Start Num: 9

Candidate Starts for SallyH_40:

(Start: 8 @36616 has 103 MA's), (Start: 9 @36619 has 278 MA's), (Start: 18 @36682 has 8 MA's), (21, 36697), (23, 36706), (24, 36709), (32, 36745), (48, 36832), (64, 36922),

Gene: Samaymay_40 Start: 36609, Stop: 36920, Start Num: 9

Candidate Starts for Samaymay_40:

(Start: 8 @36606 has 103 MA's), (Start: 9 @36609 has 278 MA's), (Start: 18 @36672 has 8 MA's), (21, 36687), (23, 36696), (24, 36699), (32, 36735), (48, 36822), (64, 36912),

Gene: SassyCat97_39 Start: 36312, Stop: 36626, Start Num: 8

Candidate Starts for SassyCat97_39:

(Start: 8 @36312 has 103 MA's), (Start: 9 @36315 has 278 MA's), (Start: 18 @36378 has 8 MA's), (21, 36393), (23, 36402), (24, 36405), (32, 36441), (48, 36528), (64, 36618),

Gene: Schadenfreude_39 Start: 36166, Stop: 36477, Start Num: 9

Candidate Starts for Schadenfreude_39:

(Start: 8 @36163 has 103 MA's), (Start: 9 @36166 has 278 MA's), (Start: 18 @36229 has 8 MA's), (21, 36244), (23, 36253), (24, 36256), (32, 36292), (48, 36379), (64, 36469),

Gene: Schueller_39 Start: 36331, Stop: 36642, Start Num: 9

Candidate Starts for Schueller_39:

(Start: 8 @36328 has 103 MA's), (Start: 9 @36331 has 278 MA's), (Start: 18 @36394 has 8 MA's), (21, 36409), (23, 36418), (32, 36457), (48, 36544), (64, 36634),

Gene: Scoot17C_40 Start: 36608, Stop: 36919, Start Num: 9

Candidate Starts for Scoot17C_40:

(Start: 8 @36605 has 103 MA's), (Start: 9 @36608 has 278 MA's), (Start: 18 @36671 has 8 MA's), (21, 36686), (23, 36695), (24, 36698), (32, 36734), (48, 36821), (64, 36911),

Gene: Scrick_40 Start: 36333, Stop: 36644, Start Num: 9

Candidate Starts for Scrick_40:

(Start: 8 @36330 has 103 MA's), (Start: 9 @36333 has 278 MA's), (Start: 18 @36396 has 8 MA's), (21, 36411), (23, 36420), (24, 36423), (32, 36459), (48, 36546), (64, 36636),

Gene: Selr12_40 Start: 36336, Stop: 36647, Start Num: 9

Candidate Starts for Selr12_40:

(Start: 8 @36333 has 103 MA's), (Start: 9 @36336 has 278 MA's), (Start: 18 @36399 has 8 MA's), (21, 36414), (23, 36423), (24, 36426), (32, 36462), (48, 36549), (64, 36639),

Gene: Serendipitous_38 Start: 37048, Stop: 37368, Start Num: 9

Candidate Starts for Serendipitous_38:

(Start: 8 @37045 has 103 MA's), (Start: 9 @37048 has 278 MA's), (Start: 18 @37111 has 8 MA's), (20, 37117), (21, 37126), (23, 37135), (25, 37144), (27, 37153), (28, 37156), (59, 37339),

Gene: Serendipity_40 Start: 36633, Stop: 36944, Start Num: 9

Candidate Starts for Serendipity_40:

(Start: 8 @36630 has 103 MA's), (Start: 9 @36633 has 278 MA's), (Start: 18 @36696 has 8 MA's), (21, 36711), (23, 36720), (24, 36723), (32, 36759), (48, 36846), (64, 36936),

Gene: Serpentine_0040 Start: 36611, Stop: 36925, Start Num: 8

Candidate Starts for Serpentine_0040:

(Start: 8 @36611 has 103 MA's), (Start: 9 @36614 has 278 MA's), (Start: 18 @36677 has 8 MA's), (21, 36692), (23, 36701), (24, 36704), (32, 36740), (48, 36827), (64, 36917),

Gene: ShadowBud_40 Start: 36634, Stop: 36945, Start Num: 9

Candidate Starts for ShadowBud_40:

(Start: 8 @36631 has 103 MA's), (Start: 9 @36634 has 278 MA's), (Start: 18 @36697 has 8 MA's), (21, 36712), (23, 36721), (24, 36724), (32, 36760), (48, 36847), (64, 36937),

Gene: Shatter_33 Start: 29709, Stop: 30020, Start Num: 7

Candidate Starts for Shatter_33:

(Start: 7 @29709 has 20 MA's), (13, 29763), (29, 29841), (30, 29844), (56, 29979),

Gene: Sheila_40 Start: 36651, Stop: 36962, Start Num: 9

Candidate Starts for Sheila_40:

(Start: 8 @36648 has 103 MA's), (Start: 9 @36651 has 278 MA's), (Start: 18 @36714 has 8 MA's), (21, 36729), (23, 36738), (24, 36741), (32, 36777), (48, 36864), (64, 36954),

Gene: Shenandoah_40 Start: 37235, Stop: 37558, Start Num: 9

Candidate Starts for Shenandoah_40:

(3, 36947), (Start: 9 @37235 has 278 MA's), (23, 37322), (49, 37445), (53, 37466), (59, 37526), (62, 37535),

Gene: Shenyu_39 Start: 37277, Stop: 37597, Start Num: 9

Candidate Starts for Shenyu_39:

(Start: 8 @37274 has 103 MA's), (Start: 9 @37277 has 278 MA's), (Start: 18 @37340 has 8 MA's), (20, 37346), (21, 37355), (23, 37364), (25, 37373), (27, 37382), (28, 37385), (59, 37568),

Gene: ShiVal_40 Start: 36604, Stop: 36918, Start Num: 8

Candidate Starts for ShiVal_40:

(Start: 8 @36604 has 103 MA's), (Start: 9 @36607 has 278 MA's), (Start: 18 @36670 has 8 MA's), (21, 36685), (23, 36694), (24, 36697), (32, 36733), (48, 36820), (64, 36910),

Gene: Sigman_40 Start: 36596, Stop: 36910, Start Num: 8

Candidate Starts for Sigman_40:

(Start: 8 @36596 has 103 MA's), (Start: 9 @36599 has 278 MA's), (Start: 18 @36662 has 8 MA's), (21, 36677), (23, 36686), (24, 36689), (32, 36725), (48, 36812), (64, 36902),

Gene: SilverBell_40 Start: 36629, Stop: 36940, Start Num: 9

Candidate Starts for SilverBell_40:

(Start: 8 @36626 has 103 MA's), (Start: 9 @36629 has 278 MA's), (Start: 18 @36692 has 8 MA's), (21, 36707), (23, 36716), (24, 36719), (32, 36755), (48, 36842), (64, 36932),

Gene: Simielle_39 Start: 36302, Stop: 36613, Start Num: 9

Candidate Starts for Simielle_39:

(Start: 8 @36299 has 103 MA's), (Start: 9 @36302 has 278 MA's), (Start: 18 @36365 has 8 MA's), (21, 36380), (23, 36389), (24, 36392), (32, 36428), (48, 36515), (64, 36605),

Gene: SirBeauregard_40 Start: 36306, Stop: 36617, Start Num: 9

Candidate Starts for SirBeauregard_40:

(Start: 8 @36303 has 103 MA's), (Start: 9 @36306 has 278 MA's), (Start: 18 @36369 has 8 MA's), (21, 36384), (23, 36393), (24, 36396), (32, 36432), (48, 36519), (64, 36609),

Gene: SirJeffery_39 Start: 37202, Stop: 37522, Start Num: 9

Candidate Starts for SirJeffery_39:

(Start: 8 @37199 has 103 MA's), (Start: 9 @37202 has 278 MA's), (Start: 18 @37265 has 8 MA's), (20, 37271), (21, 37280), (23, 37289), (25, 37298), (28, 37310), (59, 37493),

Gene: Sisko_33 Start: 30560, Stop: 30871, Start Num: 7

Candidate Starts for Sisko_33:

(5, 30353), (Start: 7 @30560 has 20 MA's), (29, 30692), (30, 30695), (56, 30830),

Gene: Skippy_40 Start: 36597, Stop: 36908, Start Num: 9

Candidate Starts for Skippy_40:

(Start: 8 @36594 has 103 MA's), (Start: 9 @36597 has 278 MA's), (Start: 18 @36660 has 8 MA's), (21, 36675), (23, 36684), (24, 36687), (32, 36723), (48, 36810), (64, 36900),

Gene: Slatt_40 Start: 36623, Stop: 36934, Start Num: 9

Candidate Starts for Slatt_40:

(Start: 8 @36620 has 103 MA's), (Start: 9 @36623 has 278 MA's), (Start: 18 @36686 has 8 MA's), (21, 36701), (23, 36710), (24, 36713), (32, 36749), (48, 36836), (64, 36926),

Gene: SlippinJimmy_40 Start: 38028, Stop: 38351, Start Num: 9

Candidate Starts for SlippinJimmy_40:

(3, 37740), (Start: 9 @38028 has 278 MA's), (23, 38115), (49, 38238), (53, 38259), (59, 38319), (62, 38328),

Gene: Soile_40 Start: 36329, Stop: 36640, Start Num: 9

Candidate Starts for Soile_40:

(Start: 8 @36326 has 103 MA's), (Start: 9 @36329 has 278 MA's), (Start: 18 @36392 has 8 MA's), (21, 36407), (23, 36416), (32, 36455), (48, 36542), (64, 36632),

Gene: Solosis_39 Start: 36324, Stop: 36635, Start Num: 9

Candidate Starts for Solosis_39:

(Start: 8 @36321 has 103 MA's), (Start: 9 @36324 has 278 MA's), (Start: 18 @36387 has 8 MA's), (21, 36402), (23, 36411), (24, 36414), (32, 36450), (48, 36537), (64, 36627),

Gene: Soos_51 Start: 29927, Stop: 30148, Start Num: 14

Candidate Starts for Soos_51:

(Start: 14 @29927 has 6 MA's), (23, 29975), (27, 29993), (28, 29996), (31, 30011), (54, 30089), (57, 30119), (59, 30140),

Gene: Sophia_39 Start: 36321, Stop: 36635, Start Num: 8

Candidate Starts for Sophia_39:

(Start: 8 @36321 has 103 MA's), (Start: 9 @36324 has 278 MA's), (Start: 18 @36387 has 8 MA's), (21, 36402), (23, 36411), (24, 36414), (32, 36450), (48, 36537), (64, 36627),

Gene: Soto_40 Start: 36617, Stop: 36928, Start Num: 9

Candidate Starts for Soto_40:

(Start: 8 @36614 has 103 MA's), (Start: 9 @36617 has 278 MA's), (Start: 18 @36680 has 8 MA's), (21, 36695), (23, 36704), (24, 36707), (32, 36743), (48, 36830), (64, 36920),

Gene: Sour_38 Start: 34439, Stop: 34750, Start Num: 7

Candidate Starts for Sour_38:

(Start: 6 @34412 has 29 MA's), (Start: 7 @34439 has 20 MA's), (29, 34571), (30, 34574), (56, 34709), (60, 34736),

Gene: Spartan300_40 Start: 36600, Stop: 36914, Start Num: 8

Candidate Starts for Spartan300_40:

(Start: 8 @36600 has 103 MA's), (Start: 9 @36603 has 278 MA's), (Start: 18 @36666 has 8 MA's), (21, 36681), (23, 36690), (24, 36693), (32, 36729), (48, 36816), (64, 36906),

Gene: Squid_40 Start: 36312, Stop: 36626, Start Num: 8

Candidate Starts for Squid_40:

(Start: 8 @36312 has 103 MA's), (Start: 9 @36315 has 278 MA's), (Start: 18 @36378 has 8 MA's), (21, 36393), (23, 36402), (24, 36405), (32, 36441), (48, 36528), (64, 36618),

Gene: Squiggle_40 Start: 36327, Stop: 36638, Start Num: 9

Candidate Starts for Squiggle_40:

(Start: 8 @36324 has 103 MA's), (Start: 9 @36327 has 278 MA's), (Start: 18 @36390 has 8 MA's), (21, 36405), (23, 36414), (24, 36417), (32, 36453), (48, 36540), (64, 36630),

Gene: Stillion_55 Start: 30524, Stop: 30745, Start Num: 14

Candidate Starts for Stillion_55:

(2, 30176), (4, 30221), (Start: 14 @30524 has 6 MA's), (27, 30590), (28, 30593), (31, 30608), (54, 30686), (57, 30716), (59, 30737),

Gene: Sting_54 Start: 30366, Stop: 30587, Start Num: 14

Candidate Starts for Sting_54:

(Start: 14 @30366 has 6 MA's), (23, 30414), (27, 30432), (28, 30435), (31, 30450), (54, 30528), (57, 30558), (59, 30579),

Gene: Stinger_35 Start: 35502, Stop: 35816, Start Num: 8

Candidate Starts for Stinger_35:

(1, 35166), (Start: 8 @35502 has 103 MA's), (Start: 9 @35505 has 278 MA's), (17, 35565), (Start: 18 @35568 has 8 MA's), (21, 35583), (22, 35589), (23, 35592), (26, 35604), (32, 35631), (39, 35670), (46, 35715), (48, 35718), (56, 35772), (59, 35796),

Gene: StinkyVeggy_41 Start: 37354, Stop: 37674, Start Num: 9

Candidate Starts for StinkyVeggy_41:

(Start: 8 @37351 has 103 MA's), (Start: 9 @37354 has 278 MA's), (Start: 18 @37417 has 8 MA's), (20, 37423), (21, 37432), (23, 37441), (25, 37450), (27, 37459), (28, 37462), (59, 37645),

Gene: Struggle_39 Start: 36165, Stop: 36476, Start Num: 9

Candidate Starts for Struggle_39:

(Start: 8 @36162 has 103 MA's), (Start: 9 @36165 has 278 MA's), (Start: 18 @36228 has 8 MA's), (21, 36243), (23, 36252), (32, 36291), (48, 36378),

Gene: Suffolk_40 Start: 36614, Stop: 36925, Start Num: 9

Candidate Starts for Suffolk_40:

(Start: 8 @36611 has 103 MA's), (Start: 9 @36614 has 278 MA's), (Start: 18 @36677 has 8 MA's), (21, 36692), (23, 36701), (24, 36704), (32, 36740), (48, 36827), (64, 36917),

Gene: Suigeneris_39 Start: 37205, Stop: 37525, Start Num: 9

Candidate Starts for Suigeneris_39:

(Start: 8 @37202 has 103 MA's), (Start: 9 @37205 has 278 MA's), (Start: 18 @37268 has 8 MA's), (20, 37274), (21, 37283), (23, 37292), (25, 37301), (28, 37313), (59, 37496),

Gene: Surely_40 Start: 36614, Stop: 36928, Start Num: 8

Candidate Starts for Surely_40:

(Start: 8 @36614 has 103 MA's), (Start: 9 @36617 has 278 MA's), (Start: 18 @36680 has 8 MA's), (21, 36695), (23, 36704), (24, 36707), (32, 36743), (48, 36830), (64, 36920),

Gene: SwainyDoc_40 Start: 37257, Stop: 37580, Start Num: 9

Candidate Starts for SwainyDoc_40:

(3, 36969), (Start: 9 @37257 has 278 MA's), (23, 37344), (49, 37467), (53, 37488), (59, 37548), (62, 37557),

Gene: Swiphy_40 Start: 36612, Stop: 36923, Start Num: 9

Candidate Starts for Swiphy_40:

(Start: 8 @36609 has 103 MA's), (Start: 9 @36612 has 278 MA's), (Start: 18 @36675 has 8 MA's), (21, 36690), (23, 36699), (24, 36702), (32, 36738), (48, 36825), (64, 36915),

Gene: Swish_40 Start: 36597, Stop: 36911, Start Num: 8

Candidate Starts for Swish_40:

(Start: 8 @36597 has 103 MA's), (Start: 9 @36600 has 278 MA's), (Start: 18 @36663 has 8 MA's), (21, 36678), (23, 36687), (24, 36690), (32, 36726), (48, 36813), (64, 36903),

Gene: SynergyX_40 Start: 37263, Stop: 37586, Start Num: 9

Candidate Starts for SynergyX_40:

(3, 36975), (Start: 9 @37263 has 278 MA's), (23, 37350), (49, 37473), (53, 37494), (59, 37554), (62, 37563),

Gene: TA17A_42 Start: 37718, Stop: 38083, Start Num: 6

Candidate Starts for TA17A_42:

(Start: 6 @37718 has 29 MA's), (Start: 8 @37760 has 103 MA's), (Start: 9 @37763 has 278 MA's), (13, 37799), (Start: 18 @37826 has 8 MA's), (21, 37841), (26, 37862), (34, 37901), (55, 38024), (56, 38036), (61, 38066),

Gene: TallGrassMM_40 Start: 36239, Stop: 36550, Start Num: 9

Candidate Starts for TallGrassMM_40:

(Start: 8 @36236 has 103 MA's), (Start: 9 @36239 has 278 MA's), (Start: 18 @36302 has 8 MA's), (21, 36317), (23, 36326), (24, 36329), (32, 36365), (48, 36452), (64, 36542),

Gene: Taptic_35 Start: 35678, Stop: 35962, Start Num: 18

Candidate Starts for Taptic_35:

(Start: 18 @35678 has 8 MA's), (28, 35726), (37, 35777), (40, 35792), (41, 35798), (47, 35828), (52, 35861), (56, 35903), (62, 35936),

Gene: Taraxa_39 Start: 35815, Stop: 36126, Start Num: 9

Candidate Starts for Taraxa_39:

(Start: 8 @35812 has 103 MA's), (Start: 9 @35815 has 278 MA's), (Start: 18 @35878 has 8 MA's), (21, 35893), (23, 35902), (32, 35941), (48, 36028), (64, 36118),

Gene: Telesworld_39 Start: 36309, Stop: 36623, Start Num: 8

Candidate Starts for Telesworld_39:

(Start: 8 @36309 has 103 MA's), (Start: 9 @36312 has 278 MA's), (Start: 18 @36375 has 8 MA's), (21, 36390), (23, 36399), (24, 36402), (32, 36438), (48, 36525), (64, 36615),

Gene: Thonko_39 Start: 34628, Stop: 34939, Start Num: 9

Candidate Starts for Thonko_39:

(Start: 9 @34628 has 278 MA's), (Start: 11 @34652 has 2 MA's), (13, 34664), (16, 34685), (Start: 18 @34691 has 8 MA's), (20, 34697), (21, 34706),

Gene: Thora_40 Start: 36616, Stop: 36927, Start Num: 9

Candidate Starts for Thora_40:

(Start: 8 @36613 has 103 MA's), (Start: 9 @36616 has 278 MA's), (Start: 18 @36679 has 8 MA's), (21, 36694), (23, 36703), (24, 36706), (32, 36742), (48, 36829), (64, 36919),

Gene: ThreeOh3D2_40 Start: 36611, Stop: 36925, Start Num: 8

Candidate Starts for ThreeOh3D2_40:

(Start: 8 @36611 has 103 MA's), (Start: 9 @36614 has 278 MA's), (Start: 18 @36677 has 8 MA's), (21, 36692), (23, 36701), (24, 36704), (32, 36740), (48, 36827), (64, 36917),

Gene: Thunderbird_39 Start: 36320, Stop: 36631, Start Num: 9

Candidate Starts for Thunderbird_39:

(Start: 8 @36317 has 103 MA's), (Start: 9 @36320 has 278 MA's), (Start: 18 @36383 has 8 MA's), (21, 36398), (23, 36407), (32, 36446), (48, 36533),

Gene: Timmi_39 Start: 36322, Stop: 36636, Start Num: 8

Candidate Starts for Timmi_39:

(Start: 8 @36322 has 103 MA's), (Start: 9 @36325 has 278 MA's), (Start: 18 @36388 has 8 MA's), (21, 36403), (23, 36412), (24, 36415), (32, 36451), (48, 36538), (64, 36628),

Gene: Tinciduntolum_42 Start: 37856, Stop: 38221, Start Num: 6

Candidate Starts for Tinciduntolum_42:

(Start: 6 @37856 has 29 MA's), (Start: 8 @37898 has 103 MA's), (Start: 9 @37901 has 278 MA's), (13, 37937), (Start: 18 @37964 has 8 MA's), (21, 37979), (26, 38000), (34, 38039), (55, 38162), (56, 38174), (61, 38204),

Gene: TinyTerror_40 Start: 37248, Stop: 37571, Start Num: 9

Candidate Starts for TinyTerror_40:

(3, 36960), (Start: 9 @37248 has 278 MA's), (23, 37335), (49, 37458), (53, 37479), (59, 37539), (62, 37548),

Gene: TomBombadil_40 Start: 36607, Stop: 36921, Start Num: 8

Candidate Starts for TomBombadil_40:

(Start: 8 @36607 has 103 MA's), (Start: 9 @36610 has 278 MA's), (Start: 18 @36673 has 8 MA's), (21, 36688), (23, 36697), (24, 36700), (32, 36736), (48, 36823), (64, 36913),

Gene: Tomlarah_40 Start: 36601, Stop: 36912, Start Num: 9

Candidate Starts for Tomlarah_40:

(Start: 8 @36598 has 103 MA's), (Start: 9 @36601 has 278 MA's), (Start: 18 @36664 has 8 MA's), (21, 36679), (23, 36688), (24, 36691), (32, 36727), (48, 36814), (64, 36904),

Gene: Toni_39 Start: 36317, Stop: 36628, Start Num: 9

Candidate Starts for Toni_39:

(Start: 8 @36314 has 103 MA's), (Start: 9 @36317 has 278 MA's), (Start: 18 @36380 has 8 MA's), (21, 36395), (23, 36404), (24, 36407), (32, 36443), (48, 36530), (64, 36620),

Gene: Tonitrus_42 Start: 28395, Stop: 28634, Start Num: 14

Candidate Starts for Tonitrus_42:

(13, 28389), (Start: 14 @28395 has 6 MA's), (26, 28455), (28, 28464), (36, 28503), (48, 28545), (54, 28560), (57, 28590), (58, 28608), (59, 28611), (63, 28626),

Gene: TooFast2Furius_41 Start: 36846, Stop: 37157, Start Num: 9

Candidate Starts for TooFast2Furius_41:

(Start: 8 @36843 has 103 MA's), (Start: 9 @36846 has 278 MA's), (Start: 18 @36909 has 8 MA's), (21, 36924), (23, 36933), (24, 36936), (32, 36972), (48, 37059), (64, 37149),

Gene: Tooj_40 Start: 36674, Stop: 36985, Start Num: 9

Candidate Starts for Tooj_40:

(Start: 8 @36671 has 103 MA's), (Start: 9 @36674 has 278 MA's), (Start: 18 @36737 has 8 MA's), (21, 36752), (23, 36761), (24, 36764), (32, 36800), (48, 36887), (64, 36977),

Gene: TraderJ_35 Start: 31645, Stop: 31959, Start Num: 7

Candidate Starts for TraderJ_35:

(Start: 7 @31645 has 20 MA's), (Start: 14 @31705 has 6 MA's), (29, 31777), (30, 31780), (31, 31789), (46, 31861), (56, 31918),

Gene: Tres_41 Start: 37731, Stop: 38096, Start Num: 6

Candidate Starts for Tres_41:

(Start: 6 @37731 has 29 MA's), (Start: 8 @37773 has 103 MA's), (Start: 9 @37776 has 278 MA's), (13, 37812), (Start: 18 @37839 has 8 MA's), (21, 37854), (26, 37875), (34, 37914), (55, 38037), (56, 38049), (61, 38079),

Gene: Triad_40 Start: 35478, Stop: 35789, Start Num: 9

Candidate Starts for Triad_40:

(Start: 8 @35475 has 103 MA's), (Start: 9 @35478 has 278 MA's), (Start: 18 @35541 has 8 MA's), (21, 35556), (23, 35565), (24, 35568), (32, 35604), (48, 35691), (64, 35781),

Gene: True_39 Start: 36314, Stop: 36625, Start Num: 9

Candidate Starts for True_39:

(Start: 8 @36311 has 103 MA's), (Start: 9 @36314 has 278 MA's), (Start: 18 @36377 has 8 MA's), (21, 36392), (23, 36401), (24, 36404), (32, 36440), (48, 36527), (64, 36617),

Gene: Trypo_40 Start: 36610, Stop: 36921, Start Num: 9

Candidate Starts for Trypo_40:

(Start: 8 @36607 has 103 MA's), (Start: 9 @36610 has 278 MA's), (Start: 18 @36673 has 8 MA's), (21, 36688), (23, 36697), (32, 36736), (48, 36823),

Gene: Tydolla_40 Start: 37997, Stop: 38320, Start Num: 9

Candidate Starts for Tydolla_40:

(3, 37709), (Start: 9 @37997 has 278 MA's), (23, 38084), (49, 38207), (53, 38228), (59, 38288), (62, 38297),

Gene: TyrionL_39 Start: 36170, Stop: 36484, Start Num: 8

Candidate Starts for TyrionL_39:

(Start: 8 @36170 has 103 MA's), (Start: 9 @36173 has 278 MA's), (Start: 18 @36236 has 8 MA's), (21, 36251), (23, 36260), (32, 36299), (48, 36386),

Gene: UAch1_40 Start: 36620, Stop: 36934, Start Num: 8

Candidate Starts for UAch1_40:

(Start: 8 @36620 has 103 MA's), (Start: 9 @36623 has 278 MA's), (Start: 18 @36686 has 8 MA's), (21, 36701), (23, 36710), (24, 36713), (32, 36749), (48, 36836), (64, 36926),

Gene: UncleHowie_40 Start: 36313, Stop: 36624, Start Num: 9

Candidate Starts for UncleHowie_40:

(Start: 8 @36310 has 103 MA's), (Start: 9 @36313 has 278 MA's), (Start: 18 @36376 has 8 MA's), (21, 36391), (23, 36400), (24, 36403), (32, 36439), (48, 36526), (64, 36616),

Gene: Usavi_40 Start: 36614, Stop: 36925, Start Num: 9

Candidate Starts for Usavi_40:

(Start: 8 @36611 has 103 MA's), (Start: 9 @36614 has 278 MA's), (Start: 18 @36677 has 8 MA's), (21, 36692), (23, 36701), (24, 36704), (32, 36740), (48, 36827), (64, 36917),

Gene: Vaishali24_39 Start: 36275, Stop: 36586, Start Num: 9

Candidate Starts for Vaishali24_39:

(Start: 8 @36272 has 103 MA's), (Start: 9 @36275 has 278 MA's), (Start: 18 @36338 has 8 MA's), (21, 36353), (23, 36362), (24, 36365), (32, 36401), (48, 36488), (64, 36578),

Gene: Valjean_40 Start: 36606, Stop: 36917, Start Num: 9

Candidate Starts for Valjean_40:

(Start: 8 @36603 has 103 MA's), (Start: 9 @36606 has 278 MA's), (Start: 18 @36669 has 8 MA's), (21, 36684), (23, 36693), (24, 36696), (32, 36732), (48, 36819), (64, 36909),

Gene: Veritas_39 Start: 36176, Stop: 36487, Start Num: 9

Candidate Starts for Veritas_39:

(Start: 8 @36173 has 103 MA's), (Start: 9 @36176 has 278 MA's), (Start: 18 @36239 has 8 MA's), (21, 36254), (23, 36263), (24, 36266), (32, 36302), (48, 36389), (64, 36479),

Gene: Vic9_00040 Start: 38279, Stop: 38602, Start Num: 8

Candidate Starts for Vic9_00040:

(Start: 6 @38237 has 29 MA's), (Start: 8 @38279 has 103 MA's), (Start: 9 @38282 has 278 MA's), (13, 38318), (Start: 18 @38345 has 8 MA's), (26, 38381), (34, 38420), (55, 38543), (61, 38585),

Gene: Vincenzo_38 Start: 37651, Stop: 37962, Start Num: 9

Candidate Starts for Vincenzo_38:

(Start: 8 @37648 has 103 MA's), (Start: 9 @37651 has 278 MA's), (Start: 11 @37675 has 2 MA's), (Start: 18 @37714 has 8 MA's), (21, 37729), (22, 37735), (23, 37738), (26, 37750), (28, 37759), (32, 37777), (39, 37816), (53, 37885), (56, 37918),

Gene: VioletZ_37 Start: 36999, Stop: 37310, Start Num: 9

Candidate Starts for VioletZ_37:

(Start: 8 @36996 has 103 MA's), (Start: 9 @36999 has 278 MA's), (Start: 18 @37062 has 8 MA's), (21, 37077), (22, 37083), (23, 37086), (26, 37098), (32, 37125), (39, 37164), (46, 37209), (48, 37212), (56, 37266), (59, 37290),

Gene: Virapocalypse_40 Start: 36601, Stop: 36912, Start Num: 9

Candidate Starts for Virapocalypse_40:

(Start: 8 @36598 has 103 MA's), (Start: 9 @36601 has 278 MA's), (Start: 18 @36664 has 8 MA's), (21, 36679), (23, 36688), (24, 36691), (32, 36727), (48, 36814), (64, 36904),

Gene: Virgeve_39 Start: 36381, Stop: 36692, Start Num: 9

Candidate Starts for Virgeve_39:

(Start: 8 @36378 has 103 MA's), (Start: 9 @36381 has 278 MA's), (Start: 18 @36444 has 8 MA's), (21, 36459), (23, 36468), (24, 36471), (32, 36507), (48, 36594), (64, 36684),

Gene: Vista_40 Start: 36611, Stop: 36925, Start Num: 8

Candidate Starts for Vista_40:

(Start: 8 @36611 has 103 MA's), (Start: 9 @36614 has 278 MA's), (Start: 18 @36677 has 8 MA's), (21, 36692), (23, 36701), (24, 36704), (32, 36740), (48, 36827), (64, 36917),

Gene: Vivaldi_40 Start: 36640, Stop: 36954, Start Num: 8

Candidate Starts for Vivaldi_40:

(Start: 8 @36640 has 103 MA's), (Start: 9 @36643 has 278 MA's), (Start: 18 @36706 has 8 MA's), (21, 36721), (23, 36730), (24, 36733), (32, 36769), (48, 36856), (64, 36946),

Gene: Vortex_40 Start: 36320, Stop: 36631, Start Num: 9

Candidate Starts for Vortex_40:

(Start: 8 @36317 has 103 MA's), (Start: 9 @36320 has 278 MA's), (Start: 18 @36383 has 8 MA's), (21, 36398), (23, 36407), (24, 36410), (32, 36446), (48, 36533), (64, 36623),

Gene: Waleliano_37 Start: 36926, Stop: 37237, Start Num: 9

Candidate Starts for Waleliano_37:

(Start: 8 @36923 has 103 MA's), (Start: 9 @36926 has 278 MA's), (Start: 18 @36989 has 8 MA's), (21, 37004), (22, 37010), (23, 37013), (26, 37025), (32, 37052), (39, 37091), (46, 37136), (48, 37139), (56, 37193), (59, 37217),

Gene: Wallhey_39 Start: 36174, Stop: 36488, Start Num: 8

Candidate Starts for Wallhey_39:

(Start: 8 @36174 has 103 MA's), (Start: 9 @36177 has 278 MA's), (Start: 18 @36240 has 8 MA's), (21, 36255), (23, 36264), (24, 36267), (32, 36303), (48, 36390),

Gene: Waterdiva_40 Start: 36603, Stop: 36917, Start Num: 8

Candidate Starts for Waterdiva_40:

(Start: 8 @36603 has 103 MA's), (Start: 9 @36606 has 278 MA's), (Start: 18 @36669 has 8 MA's), (21, 36684), (23, 36693), (24, 36696), (32, 36732), (48, 36819), (64, 36909),

Gene: Weher20_40 Start: 36605, Stop: 36916, Start Num: 9

Candidate Starts for Weher20_40:

(Start: 8 @36602 has 103 MA's), (Start: 9 @36605 has 278 MA's), (Start: 18 @36668 has 8 MA's), (21, 36683), (23, 36692), (32, 36731), (48, 36818),

Gene: West99_41 Start: 37896, Stop: 38216, Start Num: 9

Candidate Starts for West99_41:

(Start: 6 @37851 has 29 MA's), (Start: 8 @37893 has 103 MA's), (Start: 9 @37896 has 278 MA's), (13, 37932), (Start: 18 @37959 has 8 MA's), (21, 37974), (26, 37995), (34, 38034), (55, 38157), (56, 38169), (61, 38199),

Gene: Windsor_39 Start: 36310, Stop: 36621, Start Num: 9

Candidate Starts for Windsor_39:

(Start: 8 @36307 has 103 MA's), (Start: 9 @36310 has 278 MA's), (Start: 18 @36373 has 8 MA's), (21, 36388), (23, 36397), (24, 36400), (32, 36436), (48, 36523), (64, 36613),

Gene: Wooper_35 Start: 31651, Stop: 31965, Start Num: 7

Candidate Starts for Wooper_35:

(Start: 7 @31651 has 20 MA's), (29, 31783), (30, 31786), (31, 31795), (46, 31867), (56, 31924),

Gene: Xavier_39 Start: 36327, Stop: 36638, Start Num: 9

Candidate Starts for Xavier_39:

(Start: 8 @36324 has 103 MA's), (Start: 9 @36327 has 278 MA's), (Start: 18 @36390 has 8 MA's), (21, 36405), (23, 36414), (24, 36417), (32, 36453), (48, 36540), (64, 36630),

Gene: Xincheng_36 Start: 36382, Stop: 36693, Start Num: 9

Candidate Starts for Xincheng_36:

(Start: 8 @36379 has 103 MA's), (Start: 9 @36382 has 278 MA's), (Start: 18 @36445 has 8 MA's), (21, 36460), (22, 36466), (23, 36469), (26, 36481), (32, 36508), (39, 36547), (46, 36592), (48, 36595), (56, 36649), (59, 36673),

Gene: Yago84_33 Start: 30634, Stop: 30945, Start Num: 7

Candidate Starts for Yago84_33:

(5, 30427), (Start: 7 @30634 has 20 MA's), (29, 30766), (30, 30769), (56, 30904),

Gene: Yahalom_40 Start: 37273, Stop: 37596, Start Num: 9

Candidate Starts for Yahalom_40:

(3, 36985), (Start: 9 @37273 has 278 MA's), (23, 37360), (49, 37483), (53, 37504), (59, 37564), (62, 37573),

Gene: Yeshua_35 Start: 31628, Stop: 31942, Start Num: 7

Candidate Starts for Yeshua_35:

(Start: 7 @31628 has 20 MA's), (29, 31760), (30, 31763), (31, 31772), (46, 31844), (56, 31901),

Gene: Yinz_40 Start: 37299, Stop: 37622, Start Num: 9

Candidate Starts for Yinz_40:

(3, 37011), (Start: 9 @37299 has 278 MA's), (23, 37386), (49, 37509), (53, 37530), (59, 37590), (62, 37599),

Gene: Yoshand_40 Start: 36613, Stop: 36924, Start Num: 9

Candidate Starts for Yoshand_40:

(Start: 8 @36610 has 103 MA's), (Start: 9 @36613 has 278 MA's), (Start: 18 @36676 has 8 MA's), (21, 36691), (23, 36700), (24, 36703), (32, 36739), (48, 36826), (64, 36916),

Gene: YouGoGlencoco_40 Start: 36605, Stop: 36919, Start Num: 8

Candidate Starts for YouGoGlencoco_40:

(Start: 8 @36605 has 103 MA's), (Start: 9 @36608 has 278 MA's), (Start: 18 @36671 has 8 MA's), (21, 36686), (23, 36695), (24, 36698), (32, 36734), (48, 36821), (64, 36911),

Gene: Zaider_41 Start: 36835, Stop: 37149, Start Num: 8

Candidate Starts for Zaider_41:

(Start: 8 @36835 has 103 MA's), (Start: 9 @36838 has 278 MA's), (Start: 18 @36901 has 8 MA's), (21, 36916), (23, 36925), (24, 36928), (32, 36964), (48, 37051), (64, 37141),

Gene: Zelda_40 Start: 36655, Stop: 36966, Start Num: 9

Candidate Starts for Zelda_40:

(Start: 8 @36652 has 103 MA's), (Start: 9 @36655 has 278 MA's), (Start: 18 @36718 has 8 MA's), (21, 36733), (23, 36742), (24, 36745), (32, 36781), (48, 36868), (64, 36958),

Gene: Zemanar_38 Start: 36929, Stop: 37240, Start Num: 9

Candidate Starts for Zemanar_38:

(Start: 8 @36926 has 103 MA's), (Start: 9 @36929 has 278 MA's), (Start: 18 @36992 has 8 MA's), (21, 37007), (22, 37013), (23, 37016), (26, 37028), (32, 37055), (39, 37094), (46, 37139), (48, 37142), (56, 37196), (59, 37220),

Gene: Zenteno07_44 Start: 36234, Stop: 36545, Start Num: 9

Candidate Starts for Zenteno07_44:

(Start: 8 @36231 has 103 MA's), (Start: 9 @36234 has 278 MA's), (Start: 18 @36297 has 8 MA's), (21, 36312), (25, 36330), (38, 36396), (43, 36435), (64, 36537),

Gene: Zonia_40 Start: 36627, Stop: 36938, Start Num: 9

Candidate Starts for Zonia_40:

(Start: 8 @36624 has 103 MA's), (Start: 9 @36627 has 278 MA's), (Start: 18 @36690 has 8 MA's), (21, 36705), (23, 36714), (24, 36717), (32, 36753), (48, 36840),