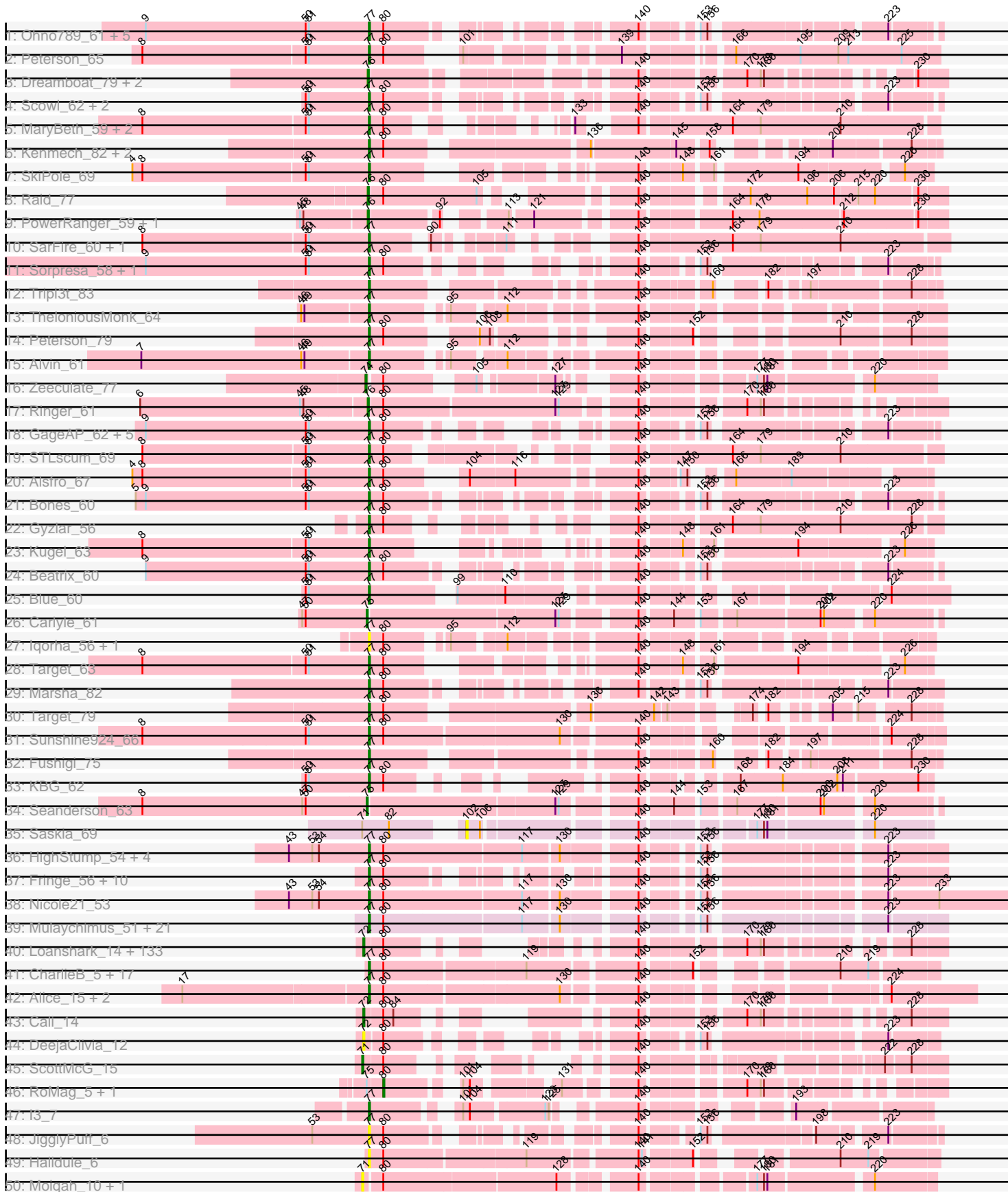
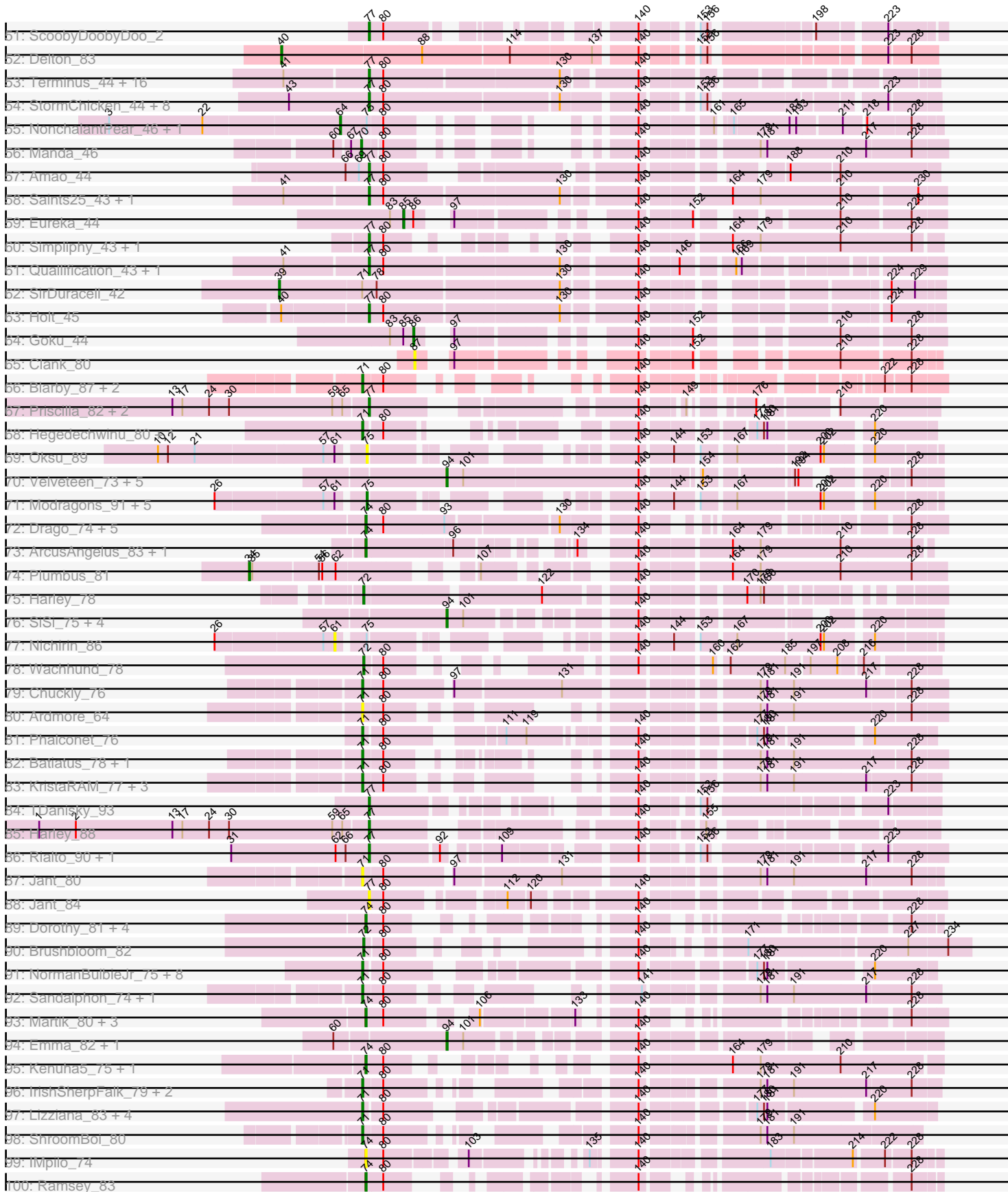


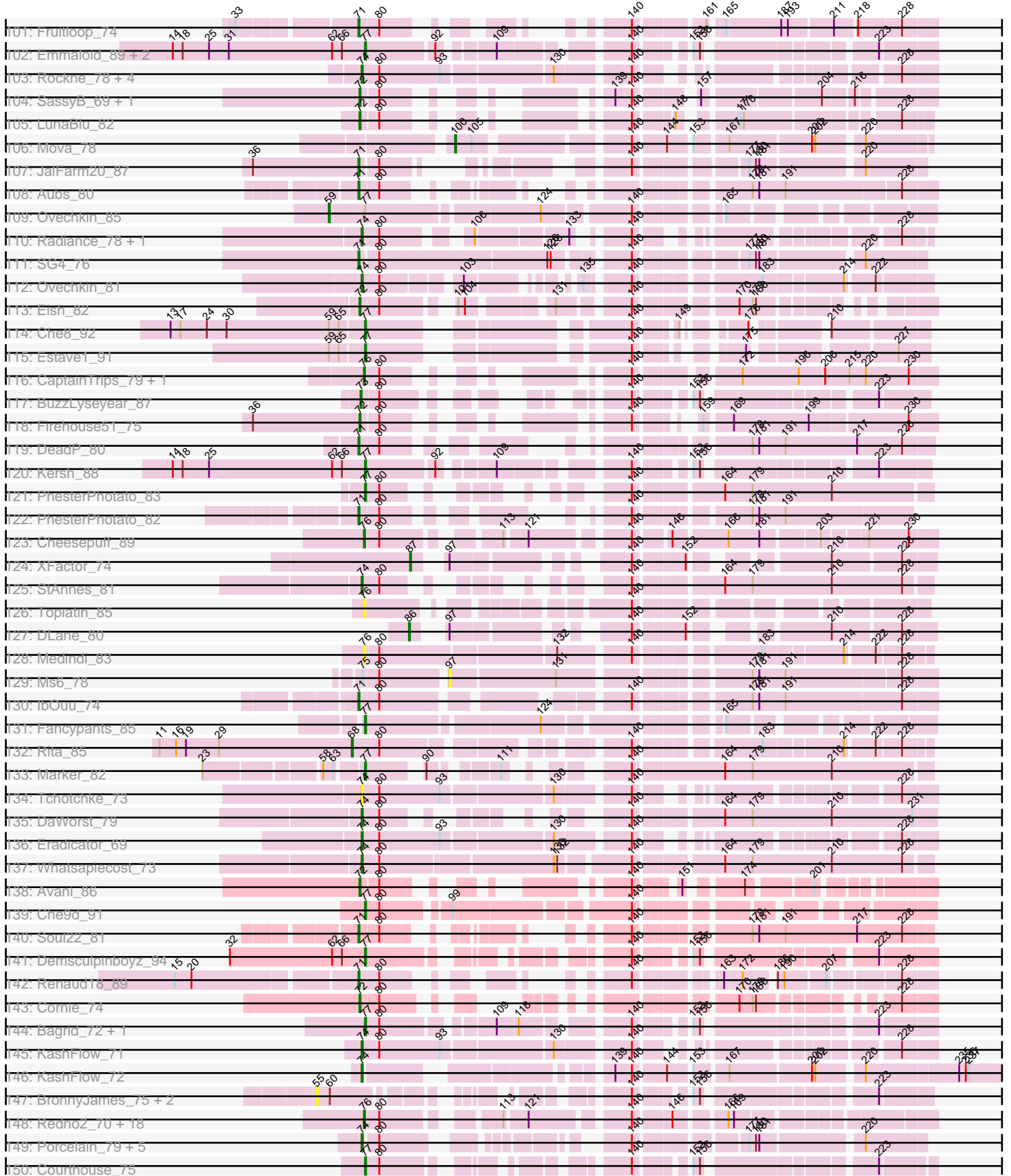
Pham 304596



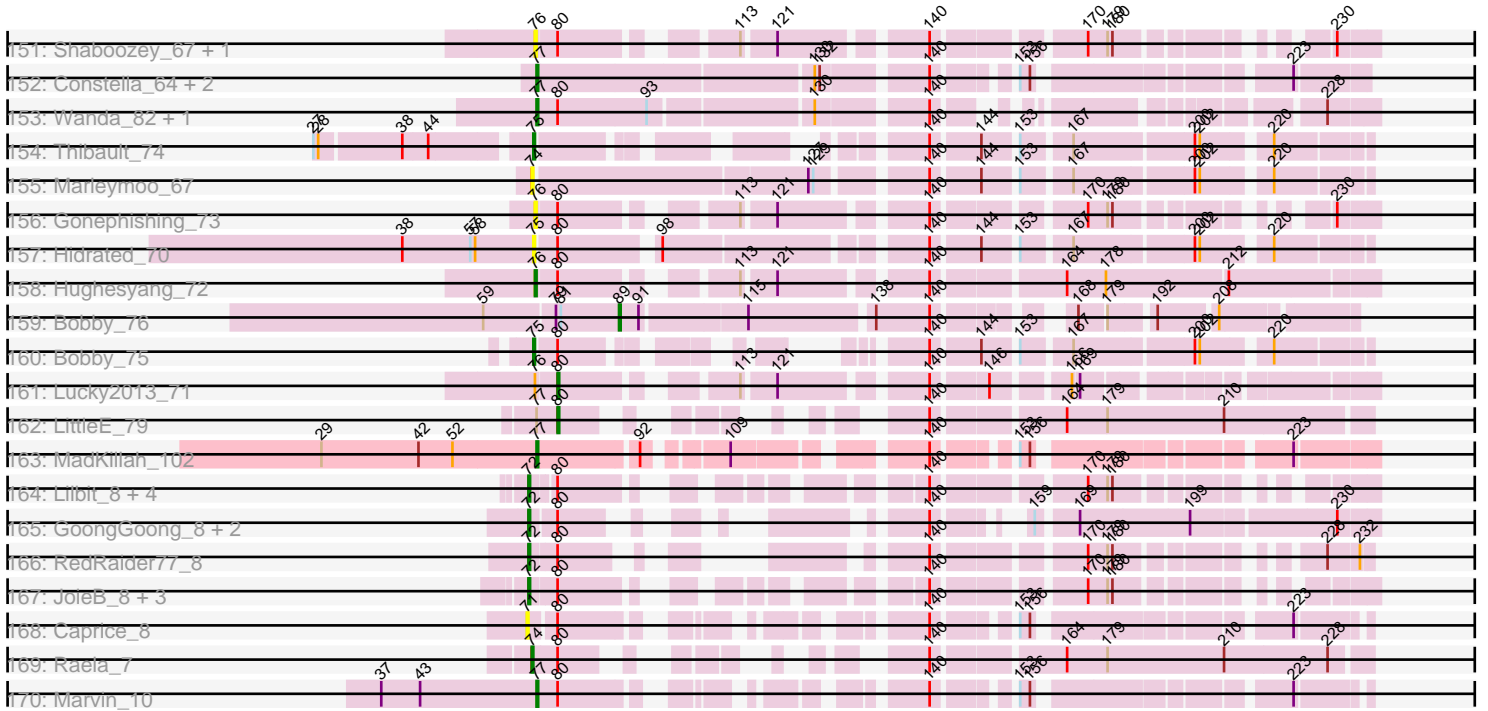
Pham 304596



Pham 304596



Pham 304596



Note: Tracks are now grouped by subcluster and scaled. Switching in subcluster is indicated by changes in track color. Track scale is now set by default to display the region 30 bp upstream of start 1 to 30 bp downstream of the last possible start. If this default region is judged to be packed too tightly with annotated starts, the track will be further scaled to only show that region of the ORF with annotated starts. This action will be indicated by adding "Zoomed" to the title. For starts, yellow indicates the location of called starts comprised solely of Glimmer/GeneMark auto-annotations, green indicates the location of called starts with at least 1 manual gene annotation.

Pham 304596 Report

This analysis was run 06/08/26 on database version 649.

Pham number 304596 has 511 members, 55 are drafts.

Phages represented in each track:

- Track 1 : Ohno789_61, Dreamboat_62, PherrisBueller_60, Graduation_65, Jasper_61, Cueyllyss_61
- Track 2 : Peterson_65
- Track 3 : Dreamboat_79, Jasper_78, PherrisBueller_78
- Track 4 : Scowl_62, StrongArm_59, Bexan_58
- Track 5 : MaryBeth_59, Corvo_62, MetalQZJ_58
- Track 6 : Kenmech_82, Abbysshoes_80, Dussy_79
- Track 7 : SkiPole_69
- Track 8 : Raid_77
- Track 9 : PowerRanger_59, Euphoria_59
- Track 10 : SarFire_60, Thor_60
- Track 11 : Sorpresa_58, Sandaddy_57
- Track 12 : Tripl3t_83
- Track 13 : TheloniousMonk_64
- Track 14 : Peterson_79
- Track 15 : Alvin_61
- Track 16 : Zeeculate_77
- Track 17 : Ringer_61
- Track 18 : GageAP_62, Makemake_63, NEHalo_58, AFIS_57, Blackflame_57, SpikeBT_59
- Track 19 : STLscum_69
- Track 20 : Alsfro_67
- Track 21 : Bones_60
- Track 22 : Gyzlar_56
- Track 23 : Kugel_63
- Track 24 : Beatrix_60
- Track 25 : Blue_60
- Track 26 : Carlyle_61
- Track 27 : Iqorha_56, Inyanga_56
- Track 28 : Target_63
- Track 29 : Marsha_82
- Track 30 : Target_79
- Track 31 : Sunshine924_66
- Track 32 : Fushigi_75
- Track 33 : KBG_62
- Track 34 : Seanderson_63
- Track 35 : Saskia_69

- Track 36 : HighStump_54, Orwigg_52, Iridessa_53, Legolas_54, Longacauda_53
- Track 37 : Fringe_56, MrPhizzler_54, Rimu_53, Latretium_78, VasuNzinga_9, BoogieWoogie_53, RedRaider77_10, Lumine_53, Gwilliam_53, DolOn_56, Khan1_53
- Track 38 : Nicole21_53
- Track 39 : Mulaychimus_51, SwainyDoc_51, Chentzyk_51, Kronus_50, Childish_52, Phayeta_52, Soile_53, SlippinJimmy_52, Ben11_50, Gervas_51, Marlia_51, Kahve_52, DaddyDaniels_54, Mortcellus_50, Casbah_50, Craff_55, TinyTerror_51, Rita1961_51, MmasiCarm_51, Obutu_51, Brilliant_54, HenryJackson_52
- Track 40 : Loanshark_14, Pinkcreek_9, Teardrop_13, StubbySaigey_13, BananaFence_14, YemiJoy2021_14, SVoro_14, Rahel_13, Essence_13, LifeSavor_14, Belieber_12, Ewok_14, Kboogie_13, EmmaElysia_13, Bonray_14, Dietrick_12, Ablatia_13, Jessibeth14_14, NedWong_14, Trinitium_13, Phlegm_14, ZygoTaiga_15, Delilah_14, Janiyra_13, Gizmo_15, Gamgam_13, Pivoine_13, McWolfish_14, Capablanca_14, ChickenPhender_13, Adlitam_13, ErnieJ_17, PurduePete_14, Littleton_14, Rizal_13, Labradorite_12, Naija_13, Khaleesi_14, Derek_14, Caravan_16, ValleyTerrace_13, Shifa_10, Shelob_17, Bipolarisk_14, Ading_13, Substance289_12, Morizzled23_13, Amataga_13, InigoMontoya_14, DrPhinkDaddy_14, Sprinklers_13, Turret_13, EmToTheThree_17, Darko_13, Zalkecks_15, Wally_13, Bread_14, Ava3_15, Jaygup_13, Alice_12, Tortoise16_12, Basquiat_13, SmallFry_13, Matsumoto_13, Bezza_10, CindyLou_13, SilverDipper_13, Shnickers_13, ArcherS7_13, JPickles_13, BackyardAgain_12, CharlieB_15, TinyTim_14, Megamind_14, Atlantean_13, Napoleon13_13, ET08_12, ChaylaJr_13, Rabinovish_12, Jedediah_13, Erdmann_14, LRRHood_14, Pleione_15, HyRo_11, Burrough_14, Quasimodo_13, SrishMeg2525_14, Ghost_14, Norm_14, Latch_13, Chomp_13, Zeenon_16, Maby2021_14, Daffodil_15, Guwapp_13, FudgeTart_14, Breeniome_14, Phox_14, Issimir_14, EasyJones_13, McGee_13, FoxtrotP1_15, Fixie_12, Ngannou_13, Babyland_13, Chargie21_13, Momo_13, YoungMoneyMata_13, Delylah_16, ParkTD_14, Catera_13, MikeLiesIn_15, Roots515_14, Asterius_15, Audrick_14, Blackbrain_13, JustHall_13, Melpomini_13, Willis_14, Stubby_14, GlutenPhree_13, Jemmno_12, BadAgartude_14, Fludd_13, Phusco_13, Izajani_14, Yucca_13, Shrimp_14, Salacia_15, Gabriel_14, ShiaLabeouf_13, Bangla1971_13, Flabslab_13, Cactojaque_12
- Track 41 : CharlieB_5, LRRHood_6, Ronan_6, Blackdragon_5, Shaqnato_6, Koguma_6, Phox_6, Cali_6, Bigswole_5, Lethe_6, Sprinklers_6, Lukilu_6, Yassified_6, Duckfeet_6, Grungle_6, IkeLoa_6, ET08_5, BeanWater_5
- Track 42 : Alice_15, Bezza_13, Flabslab_16
- Track 43 : Cali_14
- Track 44 : DeejaClivia_12
- Track 45 : ScottMcG_15
- Track 46 : RoMag_5, Kamryn_6
- Track 47 : l3_7
- Track 48 : JigglyPuff_6
- Track 49 : Halldule_6
- Track 50 : Moiqah_10, Moby_10
- Track 51 : ScoobyDoobyDoo_2
- Track 52 : Delton_83
- Track 53 : Terminus_44, Kostya_43, Nimrod_45, xkcd_46, Misfit_44, BugsBunny_43, PhatBacter_45, Palpatine_45, Liveloughbron_46, Phaux_44, Murica_44, BigBubba_43, FireRed_45, HuffyPuff_44, Petra64142_47, Greep_46, Policronamos_45
- Track 54 : StormChicken_44, Nala_43, Rimmer_43, Youngblood_44, MPhalcon_42, Buck_43, TeamEdward_44, MISSy_42, Becksu_43
- Track 55 : NonchalantPear_46, Ukulele_42

- Track 56 : Manda_46
- Track 57 : Amao_44
- Track 58 : Saints25_43, Highbury_43
- Track 59 : Eureka_44
- Track 60 : Simpliphy_43, Petruchio_60
- Track 61 : Quallification_43, FairyPath_42
- Track 62 : SirDuracell_42
- Track 63 : Holt_45
- Track 64 : Goku_44
- Track 65 : Clank_80
- Track 66 : Blarby_87, Zapner_87, Jabbawokkie_88
- Track 67 : Priscilla_82, Koella_74, NormanBulbieJr_80
- Track 68 : Hegedechwinu_80, Crumble_76
- Track 69 : Oksu_89
- Track 70 : Velveteen_73, Sarma624_77, BigPhil_72, Brookers_73, Cerasum_72, Coco12_75
- Track 71 : Modragons_91, Llama_93, Seabastian_94, OfUltron_94, Jinglebell_93, Ochi17_92
- Track 72 : Drago_74, Enby_78, DirtMcgirt_76, Lorde_77, Lucia_76, UncleRicky_76
- Track 73 : ArcusAngelus_83, Chevrolet_86
- Track 74 : Plumbus_81
- Track 75 : Harley_78
- Track 76 : SiSi_75, Girr_75, Ruby_73, MisterCuddles_76, Veteran_71
- Track 77 : Nichirin_86
- Track 78 : Wachhund_78
- Track 79 : Chuckly_76
- Track 80 : Ardmore_64
- Track 81 : Phalconet_76
- Track 82 : Batiatus_78, Tweety_79
- Track 83 : KristaRAM_77, Nitzel_73, Bobi_85, Krakatau_74
- Track 84 : TDanisky_93
- Track 85 : Harley_88
- Track 86 : Rialto_90, Moonbeam_87
- Track 87 : Jant_80
- Track 88 : Jant_84
- Track 89 : Dorothy_81, RedBird_81, Sassafras_81, Inventum_78, SuperGrey_79
- Track 90 : Brushbloom_82
- Track 91 : NormanBulbieJr_75, Cabrinians_78, SwagPiggett_82, FreddyB_88, Priscilla_76, Koella_70, Brocalys_71, LastJedi_70, BobaPhett_81
- Track 92 : Sandalphon_74, Minnie_76
- Track 93 : Martik_80, Pippy_75, Blexus_75, Leozinho_78
- Track 94 : Emma_82, Mantra_76
- Track 95 : Kenuha5_75, Gandalph_77
- Track 96 : IrishSherpFalk_79, WillSterrel_78, Bubbles123_74
- Track 97 : Lizziana_83, Saal_78, Gorge_80, Flathead_78, Donkeykong_83
- Track 98 : ShroomBoi_80
- Track 99 : IMpilo_74
- Track 100 : Ramsey_83
- Track 101 : Fruitloop_74
- Track 102 : Emmaloid_89, Sabbb_88, Slim_89
- Track 103 : Rockne_78, Phatniss_74, Boomer_81, Llij_73, PMC_74
- Track 104 : SassyB_69, PopTart_69
- Track 105 : LunaBlu_82

- Track 106 : Mova_78
- Track 107 : JalFarm20_87
- Track 108 : Aubs_80
- Track 109 : Ovechkin_85
- Track 110 : Radiance_78, Dante_78
- Track 111 : SG4_76
- Track 112 : Ovechkin_81
- Track 113 : Eish_82
- Track 114 : Che8_92
- Track 115 : Estave1_91
- Track 116 : CaptainTrips_79, MinionDave_75
- Track 117 : BuzzLyseyear_87
- Track 118 : Firehouse51_75
- Track 119 : DeadP_80
- Track 120 : Kersh_88
- Track 121 : PhesterPhotato_83
- Track 122 : PhesterPhotato_82
- Track 123 : Cheesepuff_89
- Track 124 : XFactor_74
- Track 125 : StAnnes_81
- Track 126 : Topiatin_85
- Track 127 : DLane_80
- Track 128 : Medindi_83
- Track 129 : Ms6_78
- Track 130 : IbOuu_74
- Track 131 : Fancypants_85
- Track 132 : Rita_85
- Track 133 : Marker_82
- Track 134 : Tchotchke_73
- Track 135 : DaWorst_79
- Track 136 : Eradicator_69
- Track 137 : Whatsapiecost_73
- Track 138 : Avani_86
- Track 139 : Che9d_91
- Track 140 : Soul22_81
- Track 141 : Demsculpinboyz_94
- Track 142 : Renaud18_89
- Track 143 : Cornie_74
- Track 144 : Bagrid_72, EricMillard_72
- Track 145 : KashFlow_71
- Track 146 : KashFlow_72
- Track 147 : BronnyJames_75, Shaboozey_74, Nibley_68
- Track 148 : Redno2_70, DmpstrDiver_73, Zelink_71, Schatzie_68, Phoebus_76, Dallas_72, Odette_72, Halley_75, Kalah2_68, Ejimix_73, Squint_74, JuicyJay_72, HokkenD_66, Porcelain_73, Superphikiman_71, MiaZeal_74, Beem_73, NihilNomen_74, Ariel_73
- Track 149 : Porcelain_79, Squint_80, MiaZeal_80, Lucky2013_77, Superphikiman_77, Ariel_79
- Track 150 : Courthouse_75
- Track 151 : Shaboozey_67, BronnyJames_68
- Track 152 : Constella_64, Xiaokay_68, Thibault_65
- Track 153 : Wanda_82, Klein_78
- Track 154 : Thibault_74

- Track 155 : Marleymoo_67
- Track 156 : Gonephishing_73
- Track 157 : Hidrated_70
- Track 158 : Hughesyang_72
- Track 159 : Bobby_76
- Track 160 : Bobby_75
- Track 161 : Lucky2013_71
- Track 162 : LittleE_79
- Track 163 : MadKillah_102
- Track 164 : Lilbit_8, FeliMaine_8, Pringar_7, Beelzebub_9, Clarkson_8
- Track 165 : GoongGoong_8, MosMoris_9, Gattaca_9
- Track 166 : RedRaider77_8
- Track 167 : JoieB_8, Huphlepuuff_7, LittleLaf_7, Corazon_7
- Track 168 : Caprice_8
- Track 169 : Raela_7
- Track 170 : Marvin_10

Summary of Final Annotations (See graph section above for start numbers):

The start number called the most often in the published annotations is 72, it was called in 153 of the 456 non-draft genes in the pham.

Genes that call this "Most Annotated" start:

- Ablatia_13, Ading_13, Adlitam_13, Alice_12, Amataga_13, ArcherS7_13, Asterius_15, Atlantean_13, Audrick_14, Ava3_15, Avani_86, Babyland_13, BackyardAgain_12, BadAgartude_14, BananaFence_14, Bangla1971_13, Basquiat_13, Beelzebub_9, Belieber_12, Bezza_10, Bipolarisk_14, Blackbrain_13, Bonray_14, Bread_14, Breeniome_14, Brushbloom_82, Burrough_14, Cactojaque_12, Cali_14, Capablanca_14, Caravan_16, Catera_13, Chargie21_13, CharlieB_15, ChaylaJr_13, ChickenPhender_13, Chomp_13, CindyLou_13, Clarkson_8, Corazon_7, Cornie_74, Daffodil_15, Darko_13, DeejaClivia_12, Delilah_14, Delylah_16, Derek_14, Dietrick_12, DrPhinkDaddy_14, ET08_12, EasyJones_13, Eish_82, EmToTheThree_17, EmmaElysia_13, Erdmann_14, ErnieJ_17, Essence_13, Ewok_14, FeliMaine_8, Firehouse51_75, Fixie_12, Flabslab_13, Fludd_13, FoxtrotP1_15, FudgeTart_14, Gabriel_14, Gangam_13, Gattaca_9, Ghost_14, Gizmo_15, GlutenPhree_13, GoongGoong_8, Guwapp_13, Harley_78, Huphlepuuff_7, HyRo_11, InigoMontoya_14, Issimir_14, Izajani_14, JPickles_13, Janiyra_13, Jaygup_13, Jediah_13, Jemmno_12, Jessibeth14_14, JoieB_8, JustHall_13, Kboogie_13, Khaleesi_14, LRRHood_14, Labradorite_12, Latch_13, LifeSavor_14, Lilbit_8, LittleLaf_7, Littleton_14, Loanshark_14, LunaBlu_82, Maby2021_14, Matsumoto_13, McGee_13, McWolfish_14, Megamind_14, Melpomini_13, MikeLiesIn_15, Momo_13, Morizzled23_13, MosMoris_9, Naija_13, Napoleon13_13, NedWong_14, Ngannou_13, Norm_14, ParkTD_14, Phlegm_14, Phox_14, Phusco_13, Pinkcreek_9, Pivoine_13, Pleione_15, PopTart_69, Pringar_7, PurduePete_14, Quasimodo_13, Rabinovish_12, Rahel_13, RedRaider77_8, Rizal_13, Roots515_14, SVoro_14, Salacia_15, SassyB_69, Shelob_17, ShiaLabeouf_13, Shifa_10, Shnickers_13, Shrimp_14, SilverDipper_13, SmallFry_13, Sprinklers_13, SrishMeg2525_14, StubbySaigey_13, Stubby_14, Substance289_12, Teardrop_13, TinyTim_14, Tortoise16_12, Trinitium_13, Turret_13, ValleyTerrace_13, Wachhund_78, Wally_13, Willis_14,

YemiJoy2021_14, YoungMoneyMata_13, Yucca_13, Zalkecks_15, Zeenon_16, ZygoTaiga_15,

Genes that have the "Most Annotated" start but do not call it:

-

Genes that do not have the "Most Annotated" start:

- AFIS_57, Abbyshoes_80, Alice_15, Alsfro_67, Alvin_61, Amao_44, ArcusAngelus_83, Ardmore_64, Ariel_73, Ariel_79, Aubs_80, Bagrid_72, Batiatus_78, BeanWater_5, Beatrix_60, Becksu_43, Beem_73, Ben11_50, Bexan_58, Bezza_13, BigBubba_43, BigPhil_72, Bigswole_5, Blackdragon_5, Blackflame_57, Blarby_87, Blexus_75, Blue_60, BobaPhett_81, Bobby_75, Bobby_76, Bobi_85, Bones_60, BoogieWoogie_53, Boomer_81, Brilliant_54, Brocalys_71, BronnyJames_68, BronnyJames_75, Brookers_73, Bubbles123_74, Buck_43, BugsBunny_43, BuzzLyseyear_87, Cabrinians_78, Cali_6, Caprice_8, CaptainTrips_79, Carlyle_61, Casbah_50, Cerasum_72, CharlieB_5, Che8_92, Che9d_91, CheesePuff_89, Chentzyk_51, Chevrolet_86, Childish_52, Chuckly_76, Clank_80, Coco12_75, Constella_64, Corvo_62, Courthouse_75, Craff_55, Crumble_76, Cueyllyss_61, DLane_80, DaWorst_79, DaddyDaniels_54, Dallas_72, Dante_78, DeadP_80, Delton_83, Demsculpinboyz_94, DirtMcgirt_76, DmpstrDiver_73, DoLOn_56, Donkeykong_83, Dorothy_81, Drago_74, Dreamboat_62, Dreamboat_79, Duckfeet_6, Dussy_79, ET08_5, Ejimix_73, Emma_82, Emmaloid_89, Enby_78, Eradicator_69, EricMillard_72, Estave1_91, Euphoria_59, Eureka_44, FairyPath_42, Fancypants_85, FireRed_45, Flabslab_16, Flathead_78, FreddyB_88, Fringe_56, Fruitloop_74, Fushigi_75, GageAP_62, Gandolph_77, Gervas_51, Girr_75, Goku_44, Gonephishing_73, Gorge_80, Graduation_65, Greep_46, Grungle_6, Gwilliam_53, Gyzlar_56, Halldule_6, Halley_75, Harley_88, Hegedechwinu_80, HenryJackson_52, Hidrated_70, HighStump_54, Highbury_43, HokkenD_66, Holt_45, HufflyPuff_44, Hughesyang_72, I3_7, IMPilo_74, IbOuu_74, IkeLoa_6, Inventum_78, Inyanga_56, Iqorha_56, Iridessa_53, IrishSherpFalk_79, Jabbawokkie_88, JalFarm20_87, Jant_80, Jant_84, Jasper_61, Jasper_78, JigglyPuff_6, Jinglebell_93, JuicyJay_72, KBG_62, Kahve_52, Kalah2_68, Kamryn_6, KashFlow_71, KashFlow_72, Kenmech_82, Kenuha5_75, Kersh_88, Khan1_53, Klein_78, Koella_70, Koella_74, Koguma_6, Kostya_43, Krakatau_74, KristaRAM_77, Kronus_50, Kugel_63, LRRHood_6, LastJedi_70, Latretium_78, Legolas_54, Leozinho_78, Lethe_6, LittleE_79, Liveloughbron_46, Lizziana_83, Llama_93, Llij_73, Longacauda_53, Lorde_77, Lucia_76, Lucky2013_71, Lucky2013_77, Lukilu_6, Lumine_53, MISSy_42, MPhalcon_42, MadKillah_102, Makemake_63, Manda_46, Mantra_76, Marker_82, Marleymoo_67, Marlia_51, Marsha_82, Martik_80, Marvin_10, MaryBeth_59, Medindi_83, MetalQZJ_58, MiaZeal_74, MiaZeal_80, MinionDave_75, Minnie_76, Misfit_44, MisterCuddles_76, MmasiCarm_51, Moby_10, Modragons_91, Moiqah_10, Moonbeam_87, Mortcellus_50, Mova_78, MrPhizzler_54, Ms6_78, Mulaychimus_51, Murica_44, NEHalo_58, Nala_43, Nibley_68, Nichirin_86, Nicole21_53, NihilNomen_74, Nimrod_45, Nitzel_73, NonchalantPear_46, NormanBulbieJr_75, NormanBulbieJr_80, Obutu_51, Ochi17_92, Odette_72, OfUltron_94, Ohno789_61, Oksu_89, Orwigg_52, Ovechkin_81, Ovechkin_85, PMC_74, Palpatine_45, Peterson_65, Peterson_79, Petra64142_47, Petruchio_60, Phalconet_76, PhatBacter_45, Phatniss_74, Phaux_44, Phayeta_52, PherrisBueller_60, PherrisBueller_78, PhesterPhotato_82, PhesterPhotato_83, Phoebus_76, Phox_6, Pippy_75, Plumbus_81, Policronamos_45, Porcelain_73, Porcelain_79, PowerRanger_59, Priscilla_76, Priscilla_82, Quallification_43, Radiance_78, Raela_7, Raid_77, Ramsey_83, RedBird_81, RedRaider77_10, Redno2_70,

Renaud18_89, Rialto_90, Rimmer_43, Rimu_53, Ringer_61, Rita1961_51, Rita_85, RoMag_5, Rockne_78, Ronan_6, Ruby_73, SG4_76, STLscum_69, Saal_78, Sabbb_88, Saints25_43, Sandaddy_57, Sandalphon_74, SarFire_60, Sarma624_77, Saskia_69, Sassafras_81, Schatzie_68, ScoobyDoobyDoo_2, ScottMcG_15, Scowl_62, Seabastian_94, Seanderson_63, Shaboozey_67, Shaboozey_74, Shaqnato_6, ShroomBoi_80, SiSi_75, Simpliphy_43, SirDuracell_42, SkiPole_69, Slim_89, SlippinJimmy_52, Soile_53, Sorpresa_58, Soul22_81, SpikeBT_59, Sprinklers_6, Squint_74, Squint_80, StAnnes_81, StormChicken_44, StrongArm_59, Sunshine924_66, SuperGrey_79, Superphikiman_71, Superphikiman_77, SwagPiggett_82, SwainyDoc_51, TDanisky_93, Target_63, Target_79, Tchotchke_73, TeamEdward_44, Terminus_44, TheloniousMonk_64, Thibault_65, Thibault_74, Thor_60, TinyTerror_51, Topiatin_85, Tripl3t_83, Tweety_79, Ukulele_42, UncleRicky_76, VasuNzinga_9, Velveteen_73, Veteran_71, Wanda_82, Whatsapiecost_73, WillSterrel_78, XFactor_74, Xiaokay_68, Yassified_6, Youngblood_44, Zapner_87, Zeeculate_77, Zelink_71, xkcd_46,

Summary by start number:

Start 34:

- Found in 1 of 511 (0.2%) of genes in pham
- Manual Annotations of this start: 1 of 456
- Called 100.0% of time when present
- Phage (with cluster) where this start called: Plumbus_81 (F1),

Start 39:

- Found in 1 of 511 (0.2%) of genes in pham
- Manual Annotations of this start: 1 of 456
- Called 100.0% of time when present
- Phage (with cluster) where this start called: SirDuracell_42 (E),

Start 40:

- Found in 2 of 511 (0.4%) of genes in pham
- Manual Annotations of this start: 1 of 456
- Called 50.0% of time when present
- Phage (with cluster) where this start called: Delton_83 (D1),

Start 55:

- Found in 3 of 511 (0.6%) of genes in pham
- No Manual Annotations of this start.
- Called 100.0% of time when present
- Phage (with cluster) where this start called: BronnyJames_75 (J), Nibley_68 (J), Shaboozey_74 (J),

Start 59:

- Found in 8 of 511 (1.6%) of genes in pham
- Manual Annotations of this start: 1 of 456
- Called 12.5% of time when present
- Phage (with cluster) where this start called: Ovechkin_85 (F1),

Start 61:

- Found in 8 of 511 (1.6%) of genes in pham
- No Manual Annotations of this start.
- Called 12.5% of time when present

- Phage (with cluster) where this start called: Nichirin_86 (F1),

Start 64:

- Found in 2 of 511 (0.4%) of genes in pham
- Manual Annotations of this start: 2 of 456
- Called 100.0% of time when present
- Phage (with cluster) where this start called: NonchalantPear_46 (E), Ukulele_42 (E),

Start 68:

- Found in 1 of 511 (0.2%) of genes in pham
- Manual Annotations of this start: 1 of 456
- Called 100.0% of time when present
- Phage (with cluster) where this start called: Rita_85 (F1),

Start 70:

- Found in 1 of 511 (0.2%) of genes in pham
- Manual Annotations of this start: 1 of 456
- Called 100.0% of time when present
- Phage (with cluster) where this start called: Manda_46 (E),

Start 71:

- Found in 50 of 511 (9.8%) of genes in pham
- Manual Annotations of this start: 42 of 456
- Called 96.0% of time when present
- Phage (with cluster) where this start called: Ardmore_64 (F1), Aubs_80 (F1), Batiatus_78 (F1), Blarby_87 (F), BobaPhett_81 (F1), Bobi_85 (F1), Brocalys_71 (F1), Bubbles123_74 (F1), Cabrinians_78 (F1), Caprice_8 (S), Chuckly_76 (F1), Crumble_76 (F1), DeadP_80 (F1), Donkeykong_83 (F1), Flathead_78 (F1), FreddyB_88 (F1), Fruitloop_74 (F1), Gorge_80 (F1), Hegedechwinu_80 (F1), IbOuu_74 (F1), IrishSherpFalk_79 (F1), Jabbawokkie_88 (F2), JalFarm20_87 (F1), Jant_80 (F1), Koella_70 (F1), Krakatau_74 (F1), KristaRAM_77 (F1), LastJedi_70 (F1), Lizziana_83 (F1), Minnie_76 (F1), Moby_10 (C1), Moiqah_10 (C1), Nitzel_73 (F1), NormanBulbieJr_75 (F1), Phalconet_76 (F1), PhesterPhotato_82 (F1), Priscilla_76 (F1), Renaud18_89 (F4), SG4_76 (F1), Saal_78 (F1), Sandalphon_74 (F1), ScottMcG_15 (C1), ShroomBoi_80 (F1), Soul22_81 (F2), SwagPigglett_82 (F1), Tweety_79 (F1), WillSterrel_78 (F1), Zapner_87 (F2),

Start 72:

- Found in 159 of 511 (31.1%) of genes in pham
- Manual Annotations of this start: 153 of 456
- Called 100.0% of time when present
- Phage (with cluster) where this start called: Ablatia_13 (C1), Ading_13 (C1), Adlitam_13 (C1), Alice_12 (C1), Amataga_13 (C1), ArcherS7_13 (C1), Asterius_15 (C1), Atlantean_13 (C1), Audrick_14 (C1), Ava3_15 (C1), Avani_86 (F2), Babyland_13 (C1), BackyardAgain_12 (C1), BadAgartude_14 (C1), BananaFence_14 (C1), Bangla1971_13 (C1), Basquiat_13 (C1), Beelzebub_9 (S), Belieber_12 (C1), Bezza_10 (C1), Bipolarisk_14 (C1), Blackbrain_13 (C1), Bonray_14 (C1), Bread_14 (C1), Breeniome_14 (C1), Brushbloom_82 (F1), Burrough_14 (C1), Cactojaque_12 (C1), Cali_14 (C1), Capablanca_14 (C1), Caravan_16 (C1), Catera_13 (C1), Chargie21_13 (C1), CharlieB_15 (C1), ChaylaJr_13 (C1), ChickenPhender_13 (C1), Chomp_13 (C1), CindyLou_13 (C1), Clarkson_8 (S), Corazon_7 (S), Cornie_74 (F5), Daffodil_15 (C1), Darko_13 (C1), DeejaClivia_12 (C1), Delilah_14 (C1), Delylah_16 (C1), Derek_14 (C1), Dietrick_12 (C1), DrPhinkDaddy_14 (C1), ET08_12 (C1),

EasyJones_13 (C1), Eish_82 (F1), EmToTheThree_17 (C1), EmmaElysia_13 (C1), Erdmann_14 (C1), ErnieJ_17 (C1), Essence_13 (C1), Ewok_14 (C1), FeliMaine_8 (S), Firehouse51_75 (F1), Fixie_12 (C1), Flabslab_13 (C1), Fludd_13 (C1), FoxtrotP1_15 (C1), FudgeTart_14 (C1), Gabriel_14 (C1), Gamgam_13 (C1), Gattaca_9 (S), Ghost_14 (C1), Gizmo_15 (C1), GlutenPhree_13 (C1), GoongGoong_8 (S), Guwapp_13 (C1), Harley_78 (F1), Huphlepuuff_7 (S), HyRo_11 (C1), InigoMontoya_14 (C1), Issimir_14 (C1), Izajani_14 (C1), JPickles_13 (C1), Janiyra_13 (C1), Jaygup_13 (C1), Jedediah_13 (C1), Jemmno_12 (C1), Jessibeth14_14 (C1), JoieB_8 (S), JustHall_13 (C1), Kboogie_13 (C1), Khaleesi_14 (C1), LRRHood_14 (C1), Labradorite_12 (C1), Latch_13 (C1), LifeSavor_14 (C1), Lilbit_8 (S), LittleLaf_7 (S), Littleton_14 (C1), Loanshark_14 (C1), LunaBlu_82 (F1), Maby2021_14 (C1), Matsumoto_13 (C1), McGee_13 (C1), McWolfish_14 (C1), Megamind_14 (C1), Melpomini_13 (C1), MikeLiesIn_15 (C1), Momo_13 (C1), Morizzled23_13 (C1), MosMoris_9 (S), Naija_13 (C1), Napoleon13_13 (C1), NedWong_14 (C1), Ngannou_13 (C1), Norm_14 (C1), ParkTD_14 (C1), Phlegm_14 (C1), Phox_14 (C1), Phusco_13 (C1), Pinkcreek_9 (C1), Pivoine_13 (C1), Pleione_15 (C1), PopTart_69 (F1), Pringar_7 (S), PurduePete_14 (C1), Quasimodo_13 (C1), Rabinovish_12 (C1), Rahel_13 (C1), RedRaider77_8 (S), Rizal_13 (C1), Roots515_14 (C1), SVoro_14 (C1), Salacia_15 (C1), SassyB_69 (F1), Shelob_17 (C1), ShiaLabeouf_13 (C1), Shifa_10 (C1), Shnickers_13 (C1), Shrimp_14 (C1), SilverDipper_13 (C1), SmallFry_13 (C1), Sprinklers_13 (C1), SrishMeg2525_14 (C1), StubbySaigey_13 (C1), Stubby_14 (C1), Substance289_12 (C1), Teardrop_13 (C1), TinyTim_14 (C1), Tortoise16_12 (C1), Trinitium_13 (C1), Turret_13 (C1), ValleyTerrace_13 (C1), Wachhund_78 (F1), Wally_13 (C1), Willis_14 (C1), YemiJoy2021_14 (C1), YoungMoneyMata_13 (C1), Yucca_13 (C1), Zalkecks_15 (C1), Zeenon_16 (C1), ZygoTaiga_15 (C1),

Start 73:

- Found in 1 of 511 (0.2%) of genes in pham
- Manual Annotations of this start: 1 of 456
- Called 100.0% of time when present
- Phage (with cluster) where this start called: BuzzLyseyear_87 (F1),

Start 74:

- Found in 45 of 511 (8.8%) of genes in pham
- Manual Annotations of this start: 42 of 456
- Called 100.0% of time when present
- Phage (with cluster) where this start called: ArcusAngelus_83 (F1), Ariel_79 (J), Blexus_75 (F1), Boomer_81 (F1), Chevrolet_86 (F1), DaWorst_79 (F1), Dante_78 (F1), DirtMcgirt_76 (F1), Dorothy_81 (F1), Drago_74 (F1), Enby_78 (F1), Eradicator_69 (F1), Gandolph_77 (F1), IMpilo_74 (F1), Inventum_78 (F1), KashFlow_71 (J), KashFlow_72 (J), Kenuha5_75 (F1), Leozinho_78 (F1), Lij_73 (F1), Lorde_77 (F1), Lucia_76 (F1), Lucky2013_77 (J), Marleymoo_67 (J), Martik_80 (F1), MiaZeal_80 (J), Ovechkin_81 (F1), PMC_74 (F1), Phatniss_74 (F1), Pippy_75 (F1), Porcelain_79 (J), Radiance_78 (F1), Raela_7 (S), Ramsey_83 (F1), RedBird_81 (F1), Rockne_78 (F1), Sassafras_81 (F1), Squint_80 (J), StAnnes_81 (F1), SuperGrey_79 (F1), Superphikiman_77 (J), Tchotchke_73 (F1), UncleRicky_76 (F1), Whatsapiecost_73 (F1), Zeeculate_77 (A1),

Start 75:

- Found in 18 of 511 (3.5%) of genes in pham
- Manual Annotations of this start: 10 of 456
- Called 66.7% of time when present

- Phage (with cluster) where this start called: Bobby_75 (J), Carlyle_61 (A1), Hidrated_70 (J), Jinglebell_93 (F1), Llama_93 (F1), Modragons_91 (F1), Ochi17_92 (F1), OfUltron_94 (F1), Oksu_89 (F1), Seabastian_94 (F1), Seanderson_63 (A1), Thibault_74 (J),

Start 76:

- Found in 36 of 511 (7.0%) of genes in pham
- Manual Annotations of this start: 29 of 456
- Called 97.2% of time when present
- Phage (with cluster) where this start called: Ariel_73 (J), Beem_73 (J), BronnyJames_68 (J), CaptainTrips_79 (F1), CheesePuff_89 (F1), Dallas_72 (J), DmpstrDiver_73 (J), Dreamboat_79 (A1), Ejimix_73 (J), Euphoria_59 (A1), Gonephishing_73 (J), Halley_75 (J), HokkenD_66 (J), Hughesyang_72 (J), Jasper_78 (A1), JuicyJay_72 (J), Kalah2_68 (J), Medindi_83 (F1), MiaZeal_74 (J), MinionDave_75 (F1), NihilNomen_74 (J), Odette_72 (J), PherrisBueller_78 (A1), Phoebus_76 (J), Porcelain_73 (J), PowerRanger_59 (A1), Raid_77 (A1), Redno2_70 (J), Ringer_61 (A1), Schatzie_68 (J), Shaboozey_67 (J), Squint_74 (J), Superphikiman_71 (J), Topiatin_85 (F1), Zelink_71 (J),

Start 77:

- Found in 175 of 511 (34.2%) of genes in pham
- Manual Annotations of this start: 148 of 456
- Called 98.9% of time when present
- Phage (with cluster) where this start called: AFIS_57 (A1), Abbyshoes_80 (A1), Alice_15 (C1), Alsfro_67 (A1), Alvin_61 (A1), Amao_44 (E), Bagrid_72 (J), BeanWater_5 (C1), Beatrix_60 (A1), Becksu_43 (E), Ben11_50 (B3), Bexan_58 (A1), Bezza_13 (C1), BigBubba_43 (E), Bigswole_5 (C1), Blackdragon_5 (C1), Blackflame_57 (A1), Blue_60 (A1), Bones_60 (A1), BoogieWoogie_53 (B1), Brilliant_54 (B1), Buck_43 (E), BugsBunny_43 (E), Cali_6 (C1), Casbah_50 (B3), CharlieB_5 (C1), Che8_92 (F1), Che9d_91 (F2), Chentzyk_51 (B3), Childish_52 (B1), Constella_64 (J), Corvo_62 (A1), Courthouse_75 (J), Craff_55 (B1), Cueyllyss_61 (A1), DaddyDaniels_54 (B1), Demsculpinboyz_94 (F2), DoOn_56 (B1), Dreamboat_62 (A1), Duckfeet_6 (C1), Dussy_79 (A1), ET08_5 (C1), Emmaloid_89 (F1), EricMillard_72 (J), Estave1_91 (F1), FairyPath_42 (E), Fancypants_85 (F1), FireRed_45 (E), Flabslab_16 (C1), Fringe_56 (B1), Fushigi_75 (A1), GageAP_62 (A1), Gervas_51 (B3), Graduation_65 (A1), Greep_46 (E), Grungle_6 (C1), Gwilliam_53 (B1), Gyzlar_56 (A1), Halldule_6 (C1), Harley_88 (F1), HenryJackson_52 (B1), HighStump_54 (B1), Highbury_43 (E), Holt_45 (E), HufflyPuff_44 (E), I3_7 (C1), IkeLoa_6 (C1), Inyanga_56 (A1), Iqorha_56 (A1), Iridessa_53 (B1), Jant_84 (F1), Jasper_61 (A1), JigglyPuff_6 (C1), KBG_62 (A1), Kahve_52 (B1), Kenmech_82 (A1), Kersh_88 (F1), Khan1_53 (B1), Klein_78 (J), Koella_74 (F1), Koguma_6 (C1), Kostya_43 (E), Kronus_50 (B3), Kugel_63 (A1), LRRHood_6 (C1), Latretium_78 (F1), Legolas_54 (B1), Lethe_6 (C1), Liveloughbron_46 (E), Longacauda_53 (B1), Lukilu_6 (C1), Lumine_53 (B1), MISSy_42 (E), MPhalcon_42 (E), MadKillah_102 (O), Makemake_63 (A1), Marker_82 (F1), Marlia_51 (B3), Marsha_82 (A1), Marvin_10 (S), MaryBeth_59 (A1), MetalQZJ_58 (A1), Misfit_44 (E), MmasiCarm_51 (B3), Moonbeam_87 (F1), Mortcellus_50 (B3), MrPhizzler_54 (B1), Mulaychimus_51 (B3), Murica_44 (E), NEHalo_58 (A1), Nala_43 (E), Nicole21_53 (B1), Nimrod_45 (E), NormanBulbieJr_80 (F1), Obutu_51 (B3), Ohno789_61 (A1), Orwigg_52 (B1), Palpatine_45 (E), Peterson_65 (A1), Peterson_79 (A1), Petra64142_47 (E), Petruccio_60 (A1), PhatBacter_45 (E), Phaux_44 (E), Phayeta_52 (B3), PherrisBueller_60 (A1), PhesterPhotato_83 (F1), Phox_6 (C1), Policronamos_45 (E), Priscilla_82 (F1),

Qualification_43 (E), RedRaider77_10 (S), Rialto_90 (F1), Rimmer_43 (E), Rimu_53 (B1), Rita1961_51 (B3), Ronan_6 (C1), STLscum_69 (A1), Sabbb_88 (F1), Saints25_43 (E), Sandaddy_57 (A1), SarFire_60 (A1), ScoobyDoobyDoo_2 (C2), Scowl_62 (A1), Shaqnato_6 (C1), Simpliphy_43 (E), SkiPole_69 (A1), Slim_89 (F1), SlippinJimmy_52 (B3), Soile_53 (B1), Sorpresa_58 (A1), SpikeBT_59 (A1), Sprinklers_6 (C1), StormChicken_44 (E), StrongArm_59 (A1), Sunshine924_66 (A1), SwainyDoc_51 (B3), TDanisky_93 (F1), Target_63 (A1), Target_79 (A1), TeamEdward_44 (E), Terminus_44 (E), TheloniousMonk_64 (A1), Thibault_65 (J), Thor_60 (A1), TinyTerror_51 (B3), Tripl3t_83 (A1), VasuNzinga_9 (S), Wanda_82 (J), Xiaokay_68 (J), Yassified_6 (C1), Youngblood_44 (E), xkcd_46 (E),

Start 80:

- Found in 431 of 511 (84.3%) of genes in pham
- Manual Annotations of this start: 4 of 456
- Called 0.9% of time when present
- Phage (with cluster) where this start called: Kamryn_6 (C1), LittleE_79 (J), Lucky2013_71 (J), RoMag_5 (C1),

Start 85:

- Found in 2 of 511 (0.4%) of genes in pham
- Manual Annotations of this start: 1 of 456
- Called 50.0% of time when present
- Phage (with cluster) where this start called: Eureka_44 (E),

Start 86:

- Found in 3 of 511 (0.6%) of genes in pham
- Manual Annotations of this start: 2 of 456
- Called 66.7% of time when present
- Phage (with cluster) where this start called: DLane_80 (F1), Goku_44 (E),

Start 87:

- Found in 2 of 511 (0.4%) of genes in pham
- Manual Annotations of this start: 1 of 456
- Called 100.0% of time when present
- Phage (with cluster) where this start called: Clank_80 (F), XFactor_74 (F1),

Start 89:

- Found in 1 of 511 (0.2%) of genes in pham
- Manual Annotations of this start: 1 of 456
- Called 100.0% of time when present
- Phage (with cluster) where this start called: Bobby_76 (J),

Start 94:

- Found in 13 of 511 (2.5%) of genes in pham
- Manual Annotations of this start: 13 of 456
- Called 100.0% of time when present
- Phage (with cluster) where this start called: BigPhil_72 (F1), Brookers_73 (F1), Cerasum_72 (F1), Coco12_75 (F1), Emma_82 (F1), Girr_75 (F1), Mantra_76 (F1), MisterCuddles_76 (F1), Ruby_73 (F1), Sarma624_77 (F1), SiSi_75 (F1), Velveteen_73 (F1), Veteran_71 (F1),

Start 97:

- Found in 8 of 511 (1.6%) of genes in pham

- No Manual Annotations of this start.
- Called 12.5% of time when present
- Phage (with cluster) where this start called: Ms6_78 (F1),

Start 100:

- Found in 1 of 511 (0.2%) of genes in pham
- Manual Annotations of this start: 1 of 456
- Called 100.0% of time when present
- Phage (with cluster) where this start called: Mova_78 (F1),

Start 102:

- Found in 1 of 511 (0.2%) of genes in pham
- No Manual Annotations of this start.
- Called 100.0% of time when present
- Phage (with cluster) where this start called: Saskia_69 (A11),

Summary by clusters:

There are 16 clusters represented in this pham: F1, F2, E, F5, F, F4, J, O, A1, S, B1, B3, A11, C1, C2, D1,

Info for manual annotations of cluster A1:

- Start number 74 was manually annotated 1 time for cluster A1.
- Start number 75 was manually annotated 2 times for cluster A1.
- Start number 76 was manually annotated 7 times for cluster A1.
- Start number 77 was manually annotated 43 times for cluster A1.

Info for manual annotations of cluster B1:

- Start number 77 was manually annotated 18 times for cluster B1.

Info for manual annotations of cluster B3:

- Start number 77 was manually annotated 12 times for cluster B3.

Info for manual annotations of cluster C1:

- Start number 71 was manually annotated 1 time for cluster C1.
- Start number 72 was manually annotated 130 times for cluster C1.
- Start number 77 was manually annotated 19 times for cluster C1.
- Start number 80 was manually annotated 2 times for cluster C1.

Info for manual annotations of cluster C2:

- Start number 77 was manually annotated 1 time for cluster C2.

Info for manual annotations of cluster D1:

- Start number 40 was manually annotated 1 time for cluster D1.

Info for manual annotations of cluster E:

- Start number 39 was manually annotated 1 time for cluster E.
- Start number 64 was manually annotated 2 times for cluster E.
- Start number 70 was manually annotated 1 time for cluster E.
- Start number 77 was manually annotated 26 times for cluster E.
- Start number 85 was manually annotated 1 time for cluster E.
- Start number 86 was manually annotated 1 time for cluster E.

Info for manual annotations of cluster F1:

- Start number 34 was manually annotated 1 time for cluster F1.
- Start number 59 was manually annotated 1 time for cluster F1.
- Start number 68 was manually annotated 1 time for cluster F1.
- Start number 71 was manually annotated 37 times for cluster F1.
- Start number 72 was manually annotated 8 times for cluster F1.
- Start number 73 was manually annotated 1 time for cluster F1.
- Start number 74 was manually annotated 32 times for cluster F1.
- Start number 75 was manually annotated 6 times for cluster F1.
- Start number 76 was manually annotated 3 times for cluster F1.
- Start number 77 was manually annotated 17 times for cluster F1.
- Start number 86 was manually annotated 1 time for cluster F1.
- Start number 87 was manually annotated 1 time for cluster F1.
- Start number 94 was manually annotated 13 times for cluster F1.
- Start number 100 was manually annotated 1 time for cluster F1.

Info for manual annotations of cluster F2:

- Start number 71 was manually annotated 3 times for cluster F2.
- Start number 72 was manually annotated 1 time for cluster F2.
- Start number 77 was manually annotated 2 times for cluster F2.

Info for manual annotations of cluster F4:

- Start number 71 was manually annotated 1 time for cluster F4.

Info for manual annotations of cluster F5:

- Start number 72 was manually annotated 1 time for cluster F5.

Info for manual annotations of cluster J:

- Start number 74 was manually annotated 8 times for cluster J.
- Start number 75 was manually annotated 2 times for cluster J.
- Start number 76 was manually annotated 19 times for cluster J.
- Start number 77 was manually annotated 6 times for cluster J.
- Start number 80 was manually annotated 2 times for cluster J.
- Start number 89 was manually annotated 1 time for cluster J.

Info for manual annotations of cluster O:

- Start number 77 was manually annotated 1 time for cluster O.

Info for manual annotations of cluster S:

- Start number 72 was manually annotated 13 times for cluster S.
- Start number 74 was manually annotated 1 time for cluster S.
- Start number 77 was manually annotated 3 times for cluster S.

Gene Information:

Gene: AFIS_57 Start: 39716, Stop: 39357, Start Num: 77

Candidate Starts for AFIS_57:

(9, 39917), (50, 39773), (51, 39770), (Start: 77 @39716 has 148 MA's), (Start: 80 @39704 has 4 MA's), (140, 39569), (153, 39533), (156, 39527), (223, 39395),

Gene: Abbyshoes_80 Start: 47965, Stop: 47543, Start Num: 77

Candidate Starts for Abbyshoes_80:

(Start: 77 @47965 has 148 MA's), (Start: 80 @47953 has 4 MA's), (136, 47797), (145, 47725), (158, 47701), (205, 47629), (228, 47566),

Gene: Ablatia_13 Start: 3972, Stop: 4337, Start Num: 72

Candidate Starts for Ablatia_13:

(Start: 72 @3972 has 153 MA's), (Start: 80 @3987 has 4 MA's), (140, 4122), (170, 4200), (179, 4212), (180, 4215), (228, 4308),

Gene: Ading_13 Start: 3949, Stop: 4314, Start Num: 72

Candidate Starts for Ading_13:

(Start: 72 @3949 has 153 MA's), (Start: 80 @3964 has 4 MA's), (140, 4099), (170, 4177), (179, 4189), (180, 4192), (228, 4285),

Gene: Adlitam_13 Start: 3966, Stop: 4331, Start Num: 72

Candidate Starts for Adlitam_13:

(Start: 72 @3966 has 153 MA's), (Start: 80 @3981 has 4 MA's), (140, 4116), (170, 4194), (179, 4206), (180, 4209), (228, 4302),

Gene: Alice_15 Start: 5418, Stop: 5885, Start Num: 77

Candidate Starts for Alice_15:

(17, 5256), (Start: 77 @5418 has 148 MA's), (Start: 80 @5430 has 4 MA's), (130, 5580), (140, 5640), (224, 5811),

Gene: Alice_12 Start: 4384, Stop: 4734, Start Num: 72

Candidate Starts for Alice_12:

(Start: 72 @4384 has 153 MA's), (Start: 80 @4399 has 4 MA's), (140, 4519), (170, 4597), (179, 4609), (180, 4612), (228, 4705),

Gene: Alsfro_67 Start: 41490, Stop: 41089, Start Num: 77

Candidate Starts for Alsfro_67:

(4, 41700), (8, 41691), (50, 41547), (51, 41544), (Start: 77 @41490 has 148 MA's), (Start: 80 @41478 has 4 MA's), (104, 41433), (116, 41394), (140, 41298), (147, 41271), (150, 41265), (166, 41244), (189, 41196),

Gene: Alvin_61 Start: 40955, Stop: 40545, Start Num: 77

Candidate Starts for Alvin_61:

(7, 41156), (46, 41012), (49, 41009), (Start: 77 @40955 has 148 MA's), (95, 40898), (112, 40859), (140, 40763),

Gene: Amao_44 Start: 35225, Stop: 34809, Start Num: 77

Candidate Starts for Amao_44:

(66, 35246), (69, 35234), (Start: 77 @35225 has 148 MA's), (Start: 80 @35213 has 4 MA's), (140, 35039), (188, 34937), (210, 34895),

Gene: Amataga_13 Start: 3970, Stop: 4335, Start Num: 72

Candidate Starts for Amataga_13:

(Start: 72 @3970 has 153 MA's), (Start: 80 @3985 has 4 MA's), (140, 4120), (170, 4198), (179, 4210), (180, 4213), (228, 4306),

Gene: ArcherS7_13 Start: 3966, Stop: 4331, Start Num: 72

Candidate Starts for ArcherS7_13:

(Start: 72 @3966 has 153 MA's), (Start: 80 @3981 has 4 MA's), (140, 4116), (170, 4194), (179, 4206), (180, 4209), (228, 4302),

Gene: ArcusAngelus_83 Start: 49676, Stop: 50101, Start Num: 74

Candidate Starts for ArcusAngelus_83:

(Start: 74 @49676 has 42 MA's), (96, 49751), (134, 49823), (140, 49856), (164, 49928), (179, 49952), (210, 50024), (228, 50087),

Gene: Ardmore_64 Start: 42842, Stop: 43237, Start Num: 71

Candidate Starts for Ardmore_64:

(Start: 71 @42842 has 42 MA's), (Start: 80 @42857 has 4 MA's), (179, 43079), (181, 43085), (191, 43109), (228, 43208),

Gene: Ariel_79 Start: 48566, Stop: 48168, Start Num: 74

Candidate Starts for Ariel_79:

(Start: 74 @48566 has 42 MA's), (Start: 80 @48554 has 4 MA's), (140, 48398), (177, 48314), (180, 48308), (181, 48305), (220, 48221),

Gene: Ariel_73 Start: 46707, Stop: 46291, Start Num: 76

Candidate Starts for Ariel_73:

(Start: 76 @46707 has 29 MA's), (Start: 80 @46695 has 4 MA's), (113, 46611), (121, 46593), (140, 46515), (146, 46485), (166, 46446), (169, 46443),

Gene: Asterius_15 Start: 5050, Stop: 5400, Start Num: 72

Candidate Starts for Asterius_15:

(Start: 72 @5050 has 153 MA's), (Start: 80 @5065 has 4 MA's), (140, 5185), (170, 5263), (179, 5275), (180, 5278), (228, 5371),

Gene: Atlantean_13 Start: 3970, Stop: 4335, Start Num: 72

Candidate Starts for Atlantean_13:

(Start: 72 @3970 has 153 MA's), (Start: 80 @3985 has 4 MA's), (140, 4120), (170, 4198), (179, 4210), (180, 4213), (228, 4306),

Gene: Aubs_80 Start: 49176, Stop: 49556, Start Num: 71

Candidate Starts for Aubs_80:

(Start: 71 @49176 has 42 MA's), (Start: 80 @49191 has 4 MA's), (179, 49398), (181, 49404), (191, 49428), (228, 49527),

Gene: Audrick_14 Start: 3949, Stop: 4314, Start Num: 72

Candidate Starts for Audrick_14:

(Start: 72 @3949 has 153 MA's), (Start: 80 @3964 has 4 MA's), (140, 4099), (170, 4177), (179, 4189), (180, 4192), (228, 4285),

Gene: Ava3_15 Start: 5050, Stop: 5400, Start Num: 72

Candidate Starts for Ava3_15:

(Start: 72 @5050 has 153 MA's), (Start: 80 @5065 has 4 MA's), (140, 5185), (170, 5263), (179, 5275), (180, 5278), (228, 5371),

Gene: Avani_86 Start: 46087, Stop: 46437, Start Num: 72

Candidate Starts for Avani_86:

(Start: 72 @46087 has 153 MA's), (Start: 80 @46102 has 4 MA's), (140, 46237), (151, 46267), (174, 46303), (201, 46354),

Gene: Babyland_13 Start: 3970, Stop: 4335, Start Num: 72

Candidate Starts for Babyland_13:

(Start: 72 @3970 has 153 MA's), (Start: 80 @3985 has 4 MA's), (140, 4120), (170, 4198), (179, 4210), (180, 4213), (228, 4306),

Gene: BackyardAgain_12 Start: 3966, Stop: 4331, Start Num: 72

Candidate Starts for BackyardAgain_12:

(Start: 72 @3966 has 153 MA's), (Start: 80 @3981 has 4 MA's), (140, 4116), (170, 4194), (179, 4206), (180, 4209), (228, 4302),

Gene: BadAgartude_14 Start: 4738, Stop: 5088, Start Num: 72

Candidate Starts for BadAgartude_14:

(Start: 72 @4738 has 153 MA's), (Start: 80 @4753 has 4 MA's), (140, 4873), (170, 4951), (179, 4963), (180, 4966), (228, 5059),

Gene: Bagrid_72 Start: 50124, Stop: 49711, Start Num: 77

Candidate Starts for Bagrid_72:

(Start: 77 @50124 has 148 MA's), (Start: 80 @50112 has 4 MA's), (109, 50028), (118, 50010), (140, 49932), (153, 49896), (156, 49890), (223, 49758),

Gene: BananaFence_14 Start: 4971, Stop: 5336, Start Num: 72

Candidate Starts for BananaFence_14:

(Start: 72 @4971 has 153 MA's), (Start: 80 @4986 has 4 MA's), (140, 5121), (170, 5199), (179, 5211), (180, 5214), (228, 5307),

Gene: Bangla1971_13 Start: 3966, Stop: 4331, Start Num: 72

Candidate Starts for Bangla1971_13:

(Start: 72 @3966 has 153 MA's), (Start: 80 @3981 has 4 MA's), (140, 4116), (170, 4194), (179, 4206), (180, 4209), (228, 4302),

Gene: Basquiat_13 Start: 3951, Stop: 4316, Start Num: 72

Candidate Starts for Basquiat_13:

(Start: 72 @3951 has 153 MA's), (Start: 80 @3966 has 4 MA's), (140, 4101), (170, 4179), (179, 4191), (180, 4194), (228, 4287),

Gene: Batiatus_78 Start: 48266, Stop: 48646, Start Num: 71

Candidate Starts for Batiatus_78:

(Start: 71 @48266 has 42 MA's), (Start: 80 @48281 has 4 MA's), (140, 48401), (179, 48488), (181, 48494), (191, 48518), (228, 48617),

Gene: BeanWater_5 Start: 2594, Stop: 3034, Start Num: 77

Candidate Starts for BeanWater_5:

(Start: 77 @2594 has 148 MA's), (Start: 80 @2606 has 4 MA's), (119, 2726), (140, 2816), (152, 2858), (210, 2954), (219, 2978),

Gene: Beatrix_60 Start: 41870, Stop: 41490, Start Num: 77

Candidate Starts for Beatrix_60:

(9, 42071), (50, 41927), (51, 41924), (Start: 77 @41870 has 148 MA's), (Start: 80 @41858 has 4 MA's), (140, 41702), (153, 41666), (156, 41660), (223, 41528),

Gene: Becksu_43 Start: 35704, Stop: 35261, Start Num: 77

Candidate Starts for Becksu_43:

(43, 35776), (Start: 77 @35704 has 148 MA's), (Start: 80 @35692 has 4 MA's), (130, 35542), (140, 35482), (153, 35446), (156, 35440), (223, 35308),

Gene: Beelzebub_9 Start: 2804, Stop: 3181, Start Num: 72

Candidate Starts for Beelzebub_9:

(Start: 72 @2804 has 153 MA's), (Start: 80 @2816 has 4 MA's), (140, 2972), (170, 3050), (179, 3062), (180, 3065),

Gene: Beem_73 Start: 50984, Stop: 50568, Start Num: 76

Candidate Starts for Beem_73:

(Start: 76 @50984 has 29 MA's), (Start: 80 @50972 has 4 MA's), (113, 50888), (121, 50870), (140, 50792), (146, 50762), (166, 50723), (169, 50720),

Gene: Belieber_12 Start: 3970, Stop: 4335, Start Num: 72

Candidate Starts for Belieber_12:

(Start: 72 @3970 has 153 MA's), (Start: 80 @3985 has 4 MA's), (140, 4120), (170, 4198), (179, 4210), (180, 4213), (228, 4306),

Gene: Ben11_50 Start: 45429, Stop: 44986, Start Num: 77

Candidate Starts for Ben11_50:

(Start: 77 @45429 has 148 MA's), (Start: 80 @45417 has 4 MA's), (117, 45297), (130, 45267), (140, 45207), (153, 45171), (156, 45165), (223, 45033),

Gene: Bexan_58 Start: 41649, Stop: 41269, Start Num: 77

Candidate Starts for Bexan_58:

(50, 41706), (51, 41703), (Start: 77 @41649 has 148 MA's), (Start: 80 @41637 has 4 MA's), (140, 41481), (153, 41445), (156, 41439), (223, 41307),

Gene: Bezza_13 Start: 5418, Stop: 5885, Start Num: 77

Candidate Starts for Bezza_13:

(17, 5256), (Start: 77 @5418 has 148 MA's), (Start: 80 @5430 has 4 MA's), (130, 5580), (140, 5640), (224, 5811),

Gene: Bezza_10 Start: 4384, Stop: 4734, Start Num: 72

Candidate Starts for Bezza_10:

(Start: 72 @4384 has 153 MA's), (Start: 80 @4399 has 4 MA's), (140, 4519), (170, 4597), (179, 4609), (180, 4612), (228, 4705),

Gene: BigBubba_43 Start: 35101, Stop: 34667, Start Num: 77

Candidate Starts for BigBubba_43:

(41, 35173), (Start: 77 @35101 has 148 MA's), (Start: 80 @35089 has 4 MA's), (130, 34939), (140, 34879),

Gene: BigPhil_72 Start: 44249, Stop: 44626, Start Num: 94

Candidate Starts for BigPhil_72:

(Start: 94 @44249 has 13 MA's), (101, 44264), (140, 44420), (154, 44462), (192, 44528), (194, 44531), (228, 44600),

Gene: Bigswole_5 Start: 1613, Stop: 2053, Start Num: 77

Candidate Starts for Bigswole_5:

(Start: 77 @1613 has 148 MA's), (Start: 80 @1625 has 4 MA's), (119, 1745), (140, 1835), (152, 1877), (210, 1973), (219, 1997),

Gene: Bipolarisk_14 Start: 5050, Stop: 5400, Start Num: 72

Candidate Starts for Bipolarisk_14:

(Start: 72 @5050 has 153 MA's), (Start: 80 @5065 has 4 MA's), (140, 5185), (170, 5263), (179, 5275), (180, 5278), (228, 5371),

Gene: Blackbrain_13 Start: 3966, Stop: 4331, Start Num: 72

Candidate Starts for Blackbrain_13:

(Start: 72 @3966 has 153 MA's), (Start: 80 @3981 has 4 MA's), (140, 4116), (170, 4194), (179, 4206), (180, 4209), (228, 4302),

Gene: Blackdragon_5 Start: 1616, Stop: 2056, Start Num: 77

Candidate Starts for Blackdragon_5:

(Start: 77 @1616 has 148 MA's), (Start: 80 @1628 has 4 MA's), (119, 1748), (140, 1838), (152, 1880), (210, 1976), (219, 2000),

Gene: Blackflame_57 Start: 40484, Stop: 40125, Start Num: 77

Candidate Starts for Blackflame_57:

(9, 40685), (50, 40541), (51, 40538), (Start: 77 @40484 has 148 MA's), (Start: 80 @40472 has 4 MA's), (140, 40337), (153, 40301), (156, 40295), (223, 40163),

Gene: Blarby_87 Start: 46989, Stop: 47345, Start Num: 71

Candidate Starts for Blarby_87:

(Start: 71 @46989 has 42 MA's), (Start: 80 @47004 has 4 MA's), (140, 47124), (222, 47295), (228, 47316),

Gene: Blexus_75 Start: 48431, Stop: 48811, Start Num: 74

Candidate Starts for Blexus_75:

(Start: 74 @48431 has 42 MA's), (Start: 80 @48446 has 4 MA's), (106, 48506), (133, 48578), (140, 48611), (228, 48788),

Gene: Blue_60 Start: 41591, Stop: 41178, Start Num: 77

Candidate Starts for Blue_60:

(50, 41648), (51, 41645), (Start: 77 @41591 has 148 MA's), (99, 41534), (110, 41495), (140, 41399), (224, 41228),

Gene: BobaPhett_81 Start: 50730, Stop: 51155, Start Num: 71

Candidate Starts for BobaPhett_81:

(Start: 71 @50730 has 42 MA's), (Start: 80 @50745 has 4 MA's), (140, 50925), (177, 51009), (180, 51015), (181, 51018), (220, 51102),

Gene: Bobby_76 Start: 51549, Stop: 51166, Start Num: 89

Candidate Starts for Bobby_76:

(Start: 59 @51630 has 1 MA's), (79, 51588), (81, 51585), (Start: 89 @51549 has 1 MA's), (91, 51537), (115, 51477), (138, 51405), (140, 51372), (168, 51312), (179, 51297), (192, 51273), (208, 51240),

Gene: Bobby_75 Start: 51169, Stop: 50789, Start Num: 75

Candidate Starts for Bobby_75:

(Start: 75 @51169 has 10 MA's), (Start: 80 @51157 has 4 MA's), (140, 51022), (144, 50995), (153, 50977), (167, 50950), (200, 50881), (202, 50878), (220, 50842),

Gene: Bobi_85 Start: 50553, Stop: 50930, Start Num: 71

Candidate Starts for Bobi_85:

(Start: 71 @50553 has 42 MA's), (Start: 80 @50568 has 4 MA's), (140, 50688), (179, 50775), (181, 50781), (191, 50805), (217, 50868), (228, 50907),

Gene: Bones_60 Start: 41965, Stop: 41585, Start Num: 77

Candidate Starts for Bones_60:

(5, 42175), (9, 42166), (50, 42022), (51, 42019), (Start: 77 @41965 has 148 MA's), (Start: 80 @41953 has 4 MA's), (140, 41797), (153, 41761), (156, 41755), (223, 41623),

Gene: Bonray_14 Start: 5044, Stop: 5394, Start Num: 72

Candidate Starts for Bonray_14:

(Start: 72 @5044 has 153 MA's), (Start: 80 @5059 has 4 MA's), (140, 5179), (170, 5257), (179, 5269), (180, 5272), (228, 5365),

Gene: BoogieWoogie_53 Start: 47371, Stop: 46982, Start Num: 77

Candidate Starts for BoogieWoogie_53:

(Start: 77 @47371 has 148 MA's), (Start: 80 @47359 has 4 MA's), (140, 47203), (153, 47167), (156, 47161), (223, 47029),

Gene: Boomer_81 Start: 48708, Stop: 49136, Start Num: 74

Candidate Starts for Boomer_81:

(Start: 74 @48708 has 42 MA's), (Start: 80 @48723 has 4 MA's), (93, 48777), (130, 48870), (140, 48930), (228, 49107),

Gene: Bread_14 Start: 5050, Stop: 5400, Start Num: 72

Candidate Starts for Bread_14:

(Start: 72 @5050 has 153 MA's), (Start: 80 @5065 has 4 MA's), (140, 5185), (170, 5263), (179, 5275), (180, 5278), (228, 5371),

Gene: Breeniome_14 Start: 3966, Stop: 4331, Start Num: 72

Candidate Starts for Breeniome_14:

(Start: 72 @3966 has 153 MA's), (Start: 80 @3981 has 4 MA's), (140, 4116), (170, 4194), (179, 4206), (180, 4209), (228, 4302),

Gene: Brilliant_54 Start: 47338, Stop: 46895, Start Num: 77

Candidate Starts for Brilliant_54:

(Start: 77 @47338 has 148 MA's), (Start: 80 @47326 has 4 MA's), (117, 47206), (130, 47176), (140, 47116), (153, 47080), (156, 47074), (223, 46942),

Gene: Brocalys_71 Start: 46210, Stop: 46635, Start Num: 71

Candidate Starts for Brocalys_71:

(Start: 71 @46210 has 42 MA's), (Start: 80 @46225 has 4 MA's), (140, 46405), (177, 46489), (180, 46495), (181, 46498), (220, 46582),

Gene: BronnyJames_75 Start: 47278, Stop: 46868, Start Num: 55

Candidate Starts for BronnyJames_75:

(55, 47278), (60, 47266), (140, 47086), (153, 47050), (156, 47044), (223, 46912),

Gene: BronnyJames_68 Start: 45323, Stop: 44922, Start Num: 76

Candidate Starts for BronnyJames_68:

(Start: 76 @45323 has 29 MA's), (Start: 80 @45311 has 4 MA's), (113, 45227), (121, 45209), (140, 45131), (170, 45053), (179, 45041), (180, 45038), (230, 44945),

Gene: Brookers_73 Start: 47200, Stop: 47577, Start Num: 94

Candidate Starts for Brookers_73:

(Start: 94 @47200 has 13 MA's), (101, 47215), (140, 47371), (154, 47413), (192, 47479), (194, 47482), (228, 47551),

Gene: Brushbloom_82 Start: 49907, Stop: 50308, Start Num: 72

Candidate Starts for Brushbloom_82:

(Start: 72 @49907 has 153 MA's), (Start: 80 @49922 has 4 MA's), (140, 50057), (171, 50120), (227, 50255), (234, 50288),

Gene: Bubbles123_74 Start: 48058, Stop: 48471, Start Num: 71

Candidate Starts for Bubbles123_74:

(Start: 71 @48058 has 42 MA's), (Start: 80 @48073 has 4 MA's), (140, 48229), (179, 48316), (181, 48322), (191, 48346), (217, 48409), (228, 48448),

Gene: Buck_43 Start: 35755, Stop: 35318, Start Num: 77

Candidate Starts for Buck_43:

(43, 35827), (Start: 77 @35755 has 148 MA's), (Start: 80 @35743 has 4 MA's), (130, 35593), (140, 35533), (153, 35497), (156, 35491), (223, 35359),

Gene: BugsBunny_43 Start: 35586, Stop: 35152, Start Num: 77

Candidate Starts for BugsBunny_43:

(41, 35658), (Start: 77 @35586 has 148 MA's), (Start: 80 @35574 has 4 MA's), (130, 35424), (140, 35364),

Gene: Burrough_14 Start: 5050, Stop: 5400, Start Num: 72

Candidate Starts for Burrough_14:

(Start: 72 @5050 has 153 MA's), (Start: 80 @5065 has 4 MA's), (140, 5185), (170, 5263), (179, 5275), (180, 5278), (228, 5371),

Gene: BuzzLyseyear_87 Start: 51492, Stop: 51857, Start Num: 73

Candidate Starts for BuzzLyseyear_87:

(Start: 73 @51492 has 1 MA's), (Start: 80 @51507 has 4 MA's), (140, 51642), (153, 51678), (156, 51684), (223, 51816),

Gene: Cabrinians_78 Start: 48130, Stop: 48555, Start Num: 71

Candidate Starts for Cabrinians_78:

(Start: 71 @48130 has 42 MA's), (Start: 80 @48145 has 4 MA's), (140, 48325), (177, 48409), (180, 48415), (181, 48418), (220, 48502),

Gene: Cactojaque_12 Start: 3900, Stop: 4265, Start Num: 72

Candidate Starts for Cactojaque_12:

(Start: 72 @3900 has 153 MA's), (Start: 80 @3915 has 4 MA's), (140, 4050), (170, 4128), (179, 4140), (180, 4143), (228, 4236),

Gene: Cali_14 Start: 5699, Stop: 6064, Start Num: 72

Candidate Starts for Cali_14:

(Start: 72 @5699 has 153 MA's), (Start: 80 @5714 has 4 MA's), (84, 5723), (140, 5849), (170, 5927), (179, 5939), (180, 5942), (228, 6035),

Gene: Cali_6 Start: 2751, Stop: 3191, Start Num: 77

Candidate Starts for Cali_6:

(Start: 77 @2751 has 148 MA's), (Start: 80 @2763 has 4 MA's), (119, 2883), (140, 2973), (152, 3015), (210, 3111), (219, 3135),

Gene: Capablanca_14 Start: 5050, Stop: 5415, Start Num: 72

Candidate Starts for Capablanca_14:

(Start: 72 @5050 has 153 MA's), (Start: 80 @5065 has 4 MA's), (140, 5200), (170, 5278), (179, 5290), (180, 5293), (228, 5386),

Gene: Caprice_8 Start: 2539, Stop: 2922, Start Num: 71

Candidate Starts for Caprice_8:

(Start: 71 @2539 has 42 MA's), (Start: 80 @2554 has 4 MA's), (140, 2710), (153, 2746), (156, 2752), (223, 2884),

Gene: CaptainTrips_79 Start: 47890, Stop: 48285, Start Num: 76

Candidate Starts for CaptainTrips_79:

(Start: 76 @47890 has 29 MA's), (Start: 80 @47902 has 4 MA's), (140, 48037), (172, 48115), (196, 48166), (206, 48190), (215, 48208), (220, 48223), (230, 48262),

Gene: Caravan_16 Start: 5077, Stop: 5427, Start Num: 72

Candidate Starts for Caravan_16:

(Start: 72 @5077 has 153 MA's), (Start: 80 @5092 has 4 MA's), (140, 5212), (170, 5290), (179, 5302), (180, 5305), (228, 5398),

Gene: Carlyle_61 Start: 39697, Stop: 39242, Start Num: 75

Candidate Starts for Carlyle_61:

(47, 39754), (50, 39751), (Start: 75 @39697 has 10 MA's), (127, 39535), (129, 39532), (140, 39475), (144, 39448), (153, 39430), (167, 39403), (200, 39334), (202, 39331), (220, 39295),

Gene: Casbah_50 Start: 45459, Stop: 45016, Start Num: 77

Candidate Starts for Casbah_50:

(Start: 77 @45459 has 148 MA's), (Start: 80 @45447 has 4 MA's), (117, 45327), (130, 45297), (140, 45237), (153, 45201), (156, 45195), (223, 45063),

Gene: Catera_13 Start: 3970, Stop: 4335, Start Num: 72

Candidate Starts for Catera_13:

(Start: 72 @3970 has 153 MA's), (Start: 80 @3985 has 4 MA's), (140, 4120), (170, 4198), (179, 4210), (180, 4213), (228, 4306),

Gene: Cerasum_72 Start: 44267, Stop: 44644, Start Num: 94

Candidate Starts for Cerasum_72:

(Start: 94 @44267 has 13 MA's), (101, 44282), (140, 44438), (154, 44480), (192, 44546), (194, 44549), (228, 44618),

Gene: Chargie21_13 Start: 3951, Stop: 4316, Start Num: 72

Candidate Starts for Chargie21_13:

(Start: 72 @3951 has 153 MA's), (Start: 80 @3966 has 4 MA's), (140, 4101), (170, 4179), (179, 4191), (180, 4194), (228, 4287),

Gene: CharlieB_5 Start: 1612, Stop: 2052, Start Num: 77

Candidate Starts for CharlieB_5:

(Start: 77 @1612 has 148 MA's), (Start: 80 @1624 has 4 MA's), (119, 1744), (140, 1834), (152, 1876), (210, 1972), (219, 1996),

Gene: CharlieB_15 Start: 4563, Stop: 4913, Start Num: 72

Candidate Starts for CharlieB_15:

(Start: 72 @4563 has 153 MA's), (Start: 80 @4578 has 4 MA's), (140, 4698), (170, 4776), (179, 4788), (180, 4791), (228, 4884),

Gene: ChaylaJr_13 Start: 3993, Stop: 4358, Start Num: 72

Candidate Starts for ChaylaJr_13:

(Start: 72 @3993 has 153 MA's), (Start: 80 @4008 has 4 MA's), (140, 4143), (170, 4221), (179, 4233), (180, 4236), (228, 4329),

Gene: Che8_92 Start: 51445, Stop: 51828, Start Num: 77

Candidate Starts for Che8_92:

(13, 51271), (17, 51280), (24, 51304), (30, 51322), (Start: 59 @51415 has 1 MA's), (65, 51424), (Start: 77 @51445 has 148 MA's), (140, 51631), (149, 51661), (176, 51697), (210, 51748),

Gene: Che9d_91 Start: 48600, Stop: 49028, Start Num: 77

Candidate Starts for Che9d_91:

(Start: 77 @48600 has 148 MA's), (Start: 80 @48612 has 4 MA's), (99, 48666), (140, 48810),

Gene: Cheese puff_89 Start: 49033, Stop: 49464, Start Num: 76

Candidate Starts for Cheese puff_89:

(Start: 76 @49033 has 29 MA's), (Start: 80 @49045 has 4 MA's), (113, 49129), (121, 49147), (140, 49225), (146, 49252), (166, 49297), (181, 49324), (203, 49369), (221, 49405), (230, 49441),

Gene: Chentzyk_51 Start: 45971, Stop: 45528, Start Num: 77

Candidate Starts for Chentzyk_51:

(Start: 77 @45971 has 148 MA's), (Start: 80 @45959 has 4 MA's), (117, 45839), (130, 45809), (140, 45749), (153, 45713), (156, 45707), (223, 45575),

Gene: Chevrolet_86 Start: 49677, Stop: 50102, Start Num: 74

Candidate Starts for Chevrolet_86:

(Start: 74 @49677 has 42 MA's), (96, 49752), (134, 49824), (140, 49857), (164, 49929), (179, 49953), (210, 50025), (228, 50088),

Gene: ChickenPhender_13 Start: 3951, Stop: 4316, Start Num: 72

Candidate Starts for ChickenPhender_13:

(Start: 72 @3951 has 153 MA's), (Start: 80 @3966 has 4 MA's), (140, 4101), (170, 4179), (179, 4191), (180, 4194), (228, 4287),

Gene: Childish_52 Start: 47365, Stop: 46922, Start Num: 77

Candidate Starts for Childish_52:

(Start: 77 @47365 has 148 MA's), (Start: 80 @47353 has 4 MA's), (117, 47233), (130, 47203), (140, 47143), (153, 47107), (156, 47101), (223, 46969),

Gene: Chomp_13 Start: 3970, Stop: 4335, Start Num: 72

Candidate Starts for Chomp_13:

(Start: 72 @3970 has 153 MA's), (Start: 80 @3985 has 4 MA's), (140, 4120), (170, 4198), (179, 4210), (180, 4213), (228, 4306),

Gene: Chuckly_76 Start: 45511, Stop: 45978, Start Num: 71

Candidate Starts for Chuckly_76:

(Start: 71 @45511 has 42 MA's), (Start: 80 @45526 has 4 MA's), (97, 45580), (131, 45673), (179, 45820), (181, 45826), (191, 45850), (217, 45913), (228, 45949),

Gene: CindyLou_13 Start: 3970, Stop: 4335, Start Num: 72

Candidate Starts for CindyLou_13:

(Start: 72 @3970 has 153 MA's), (Start: 80 @3985 has 4 MA's), (140, 4120), (170, 4198), (179, 4210), (180, 4213), (228, 4306),

Gene: Clank_80 Start: 46512, Stop: 46865, Start Num: 87

Candidate Starts for Clank_80:

(Start: 87 @46512 has 1 MA's), (97, 46527), (140, 46647), (152, 46689), (210, 46785), (228, 46842),

Gene: Clarkson_8 Start: 2580, Stop: 2957, Start Num: 72

Candidate Starts for Clarkson_8:

(Start: 72 @2580 has 153 MA's), (Start: 80 @2592 has 4 MA's), (140, 2748), (170, 2826), (179, 2838), (180, 2841),

Gene: Coco12_75 Start: 48324, Stop: 48701, Start Num: 94

Candidate Starts for Coco12_75:

(Start: 94 @48324 has 13 MA's), (101, 48339), (140, 48495), (154, 48537), (192, 48603), (194, 48606), (228, 48675),

Gene: Constella_64 Start: 46367, Stop: 45930, Start Num: 77

Candidate Starts for Constella_64:

(Start: 77 @46367 has 148 MA's), (130, 46205), (132, 46202), (140, 46145), (153, 46109), (156, 46103), (223, 45971),

Gene: Corazon_7 Start: 2530, Stop: 2910, Start Num: 72

Candidate Starts for Corazon_7:

(Start: 72 @2530 has 153 MA's), (Start: 80 @2545 has 4 MA's), (140, 2701), (170, 2779), (179, 2791), (180, 2794),

Gene: Cornie_74 Start: 46648, Stop: 46998, Start Num: 72

Candidate Starts for Cornie_74:

(Start: 72 @46648 has 153 MA's), (Start: 80 @46663 has 4 MA's), (170, 46861), (179, 46873), (180, 46876), (228, 46969),

Gene: Corvo_62 Start: 41848, Stop: 41459, Start Num: 77

Candidate Starts for Corvo_62:

(8, 42049), (50, 41905), (51, 41902), (Start: 77 @41848 has 148 MA's), (Start: 80 @41836 has 4 MA's), (133, 41749), (140, 41716), (164, 41638), (179, 41614), (210, 41542),

Gene: Courthouse_75 Start: 48166, Stop: 47780, Start Num: 77

Candidate Starts for Courthouse_75:

(Start: 77 @48166 has 148 MA's), (Start: 80 @48154 has 4 MA's), (140, 47998), (153, 47962), (156, 47956), (223, 47824),

Gene: Craff_55 Start: 47790, Stop: 47347, Start Num: 77

Candidate Starts for Craff_55:

(Start: 77 @47790 has 148 MA's), (Start: 80 @47778 has 4 MA's), (117, 47658), (130, 47628), (140, 47568), (153, 47532), (156, 47526), (223, 47394),

Gene: Crumble_76 Start: 44855, Stop: 45280, Start Num: 71

Candidate Starts for Crumble_76:

(Start: 71 @44855 has 42 MA's), (Start: 80 @44870 has 4 MA's), (140, 45050), (177, 45134), (180, 45140), (181, 45143), (220, 45227),

Gene: Cueyllyss_61 Start: 42165, Stop: 41785, Start Num: 77

Candidate Starts for Cueyllyss_61:

(9, 42366), (50, 42222), (51, 42219), (Start: 77 @42165 has 148 MA's), (Start: 80 @42153 has 4 MA's), (140, 41997), (153, 41961), (156, 41955), (223, 41823),

Gene: DLane_80 Start: 49512, Stop: 49868, Start Num: 86

Candidate Starts for DLane_80:

(Start: 86 @49512 has 2 MA's), (97, 49524), (140, 49644), (152, 49686), (210, 49782), (228, 49839),

Gene: DaWorst_79 Start: 47793, Stop: 48188, Start Num: 74

Candidate Starts for DaWorst_79:

(Start: 74 @47793 has 42 MA's), (Start: 80 @47808 has 4 MA's), (140, 47928), (164, 48000), (179, 48024), (210, 48096), (231, 48168),

Gene: DaddyDaniels_54 Start: 47322, Stop: 46879, Start Num: 77

Candidate Starts for DaddyDaniels_54:

(Start: 77 @47322 has 148 MA's), (Start: 80 @47310 has 4 MA's), (117, 47190), (130, 47160), (140, 47100), (153, 47064), (156, 47058), (223, 46926),

Gene: Daffodil_15 Start: 5050, Stop: 5400, Start Num: 72

Candidate Starts for Daffodil_15:

(Start: 72 @5050 has 153 MA's), (Start: 80 @5065 has 4 MA's), (140, 5185), (170, 5263), (179, 5275), (180, 5278), (228, 5371),

Gene: Dallas_72 Start: 49905, Stop: 49489, Start Num: 76

Candidate Starts for Dallas_72:

(Start: 76 @49905 has 29 MA's), (Start: 80 @49893 has 4 MA's), (113, 49809), (121, 49791), (140, 49713), (146, 49683), (166, 49644), (169, 49641),

Gene: Dante_78 Start: 50103, Stop: 50483, Start Num: 74

Candidate Starts for Dante_78:

(Start: 74 @50103 has 42 MA's), (Start: 80 @50118 has 4 MA's), (106, 50178), (133, 50250), (140, 50283), (228, 50460),

Gene: Darko_13 Start: 4940, Stop: 5305, Start Num: 72

Candidate Starts for Darko_13:

(Start: 72 @4940 has 153 MA's), (Start: 80 @4955 has 4 MA's), (140, 5090), (170, 5168), (179, 5180), (180, 5183), (228, 5276),

Gene: DeadP_80 Start: 47212, Stop: 47607, Start Num: 71

Candidate Starts for DeadP_80:

(Start: 71 @47212 has 42 MA's), (Start: 80 @47227 has 4 MA's), (179, 47449), (181, 47455), (191, 47479), (217, 47542), (228, 47581),

Gene: DeejaClivia_12 Start: 3961, Stop: 4326, Start Num: 72

Candidate Starts for DeejaClivia_12:

(Start: 72 @3961 has 153 MA's), (Start: 80 @3976 has 4 MA's), (140, 4111), (153, 4147), (156, 4153), (223, 4285),

Gene: Delilah_14 Start: 5050, Stop: 5400, Start Num: 72

Candidate Starts for Delilah_14:

(Start: 72 @5050 has 153 MA's), (Start: 80 @5065 has 4 MA's), (140, 5185), (170, 5263), (179, 5275), (180, 5278), (228, 5371),

Gene: Delton_83 Start: 59993, Stop: 60511, Start Num: 40

Candidate Starts for Delton_83:

(Start: 40 @59993 has 1 MA's), (88, 60116), (114, 60191), (137, 60263), (140, 60296), (153, 60332), (156, 60338), (223, 60470), (228, 60488),

Gene: Delylah_16 Start: 5077, Stop: 5427, Start Num: 72

Candidate Starts for Delylah_16:

(Start: 72 @5077 has 153 MA's), (Start: 80 @5092 has 4 MA's), (140, 5212), (170, 5290), (179, 5302), (180, 5305), (228, 5398),

Gene: Demsculpinboyz_94 Start: 48157, Stop: 48546, Start Num: 77

Candidate Starts for Demsculpinboyz_94:

(32, 48034), (62, 48127), (66, 48136), (Start: 77 @48157 has 148 MA's), (140, 48325), (153, 48361), (156, 48367), (223, 48499),

Gene: Derek_14 Start: 3966, Stop: 4331, Start Num: 72

Candidate Starts for Derek_14:

(Start: 72 @3966 has 153 MA's), (Start: 80 @3981 has 4 MA's), (140, 4116), (170, 4194), (179, 4206), (180, 4209), (228, 4302),

Gene: Dietrick_12 Start: 3968, Stop: 4333, Start Num: 72

Candidate Starts for Dietrick_12:

(Start: 72 @3968 has 153 MA's), (Start: 80 @3983 has 4 MA's), (140, 4118), (170, 4196), (179, 4208), (180, 4211), (228, 4304),

Gene: DirtMcgirt_76 Start: 45318, Stop: 45746, Start Num: 74

Candidate Starts for DirtMcgirt_76:

(Start: 74 @45318 has 42 MA's), (Start: 80 @45333 has 4 MA's), (93, 45387), (130, 45480), (140, 45540), (228, 45717),

Gene: DmpstrDiver_73 Start: 50332, Stop: 49916, Start Num: 76

Candidate Starts for DmpstrDiver_73:

(Start: 76 @50332 has 29 MA's), (Start: 80 @50320 has 4 MA's), (113, 50236), (121, 50218), (140, 50140), (146, 50110), (166, 50071), (169, 50068),

Gene: DolOn_56 Start: 48048, Stop: 47668, Start Num: 77

Candidate Starts for DolOn_56:

(Start: 77 @48048 has 148 MA's), (Start: 80 @48036 has 4 MA's), (140, 47880), (153, 47844), (156, 47838), (223, 47706),

Gene: Donkeykong_83 Start: 49734, Stop: 50111, Start Num: 71

Candidate Starts for Donkeykong_83:

(Start: 71 @49734 has 42 MA's), (Start: 80 @49749 has 4 MA's), (140, 49884), (177, 49968), (180, 49974), (181, 49977), (220, 50061),

Gene: Dorothy_81 Start: 50224, Stop: 50574, Start Num: 74

Candidate Starts for Dorothy_81:

(Start: 74 @50224 has 42 MA's), (Start: 80 @50239 has 4 MA's), (140, 50374), (228, 50551),

Gene: DrPhinkDaddy_14 Start: 5050, Stop: 5400, Start Num: 72

Candidate Starts for DrPhinkDaddy_14:

(Start: 72 @5050 has 153 MA's), (Start: 80 @5065 has 4 MA's), (140, 5185), (170, 5263), (179, 5275), (180, 5278), (228, 5371),

Gene: Drago_74 Start: 45321, Stop: 45749, Start Num: 74

Candidate Starts for Drago_74:

(Start: 74 @45321 has 42 MA's), (Start: 80 @45336 has 4 MA's), (93, 45390), (130, 45483), (140, 45543), (228, 45720),

Gene: Dreamboat_79 Start: 46273, Stop: 45872, Start Num: 76

Candidate Starts for Dreamboat_79:

(Start: 76 @46273 has 29 MA's), (140, 46081), (170, 46003), (179, 45991), (180, 45988), (230, 45895),

Gene: Dreamboat_62 Start: 40065, Stop: 39685, Start Num: 77

Candidate Starts for Dreamboat_62:

(9, 40266), (50, 40122), (51, 40119), (Start: 77 @40065 has 148 MA's), (Start: 80 @40053 has 4 MA's), (140, 39897), (153, 39861), (156, 39855), (223, 39723),

Gene: Duckfeet_6 Start: 1749, Stop: 2189, Start Num: 77

Candidate Starts for Duckfeet_6:

(Start: 77 @1749 has 148 MA's), (Start: 80 @1761 has 4 MA's), (119, 1881), (140, 1971), (152, 2013), (210, 2109), (219, 2133),

Gene: Dussy_79 Start: 47985, Stop: 47563, Start Num: 77

Candidate Starts for Dussy_79:

(Start: 77 @47985 has 148 MA's), (Start: 80 @47973 has 4 MA's), (136, 47817), (145, 47745), (158, 47721), (205, 47649), (228, 47586),

Gene: ET08_12 Start: 4991, Stop: 5341, Start Num: 72

Candidate Starts for ET08_12:

(Start: 72 @4991 has 153 MA's), (Start: 80 @5006 has 4 MA's), (140, 5126), (170, 5204), (179, 5216), (180, 5219), (228, 5312),

Gene: ET08_5 Start: 2600, Stop: 3040, Start Num: 77

Candidate Starts for ET08_5:

(Start: 77 @2600 has 148 MA's), (Start: 80 @2612 has 4 MA's), (119, 2732), (140, 2822), (152, 2864), (210, 2960), (219, 2984),

Gene: EasyJones_13 Start: 3951, Stop: 4316, Start Num: 72

Candidate Starts for EasyJones_13:

(Start: 72 @3951 has 153 MA's), (Start: 80 @3966 has 4 MA's), (140, 4101), (170, 4179), (179, 4191), (180, 4194), (228, 4287),

Gene: Eish_82 Start: 49234, Stop: 49629, Start Num: 72

Candidate Starts for Eish_82:

(Start: 72 @49234 has 153 MA's), (Start: 80 @49249 has 4 MA's), (101, 49297), (104, 49303), (131, 49366), (140, 49420), (170, 49498), (179, 49510), (180, 49513),

Gene: Ejimix_73 Start: 51773, Stop: 51354, Start Num: 76

Candidate Starts for Ejimix_73:

(Start: 76 @51773 has 29 MA's), (Start: 80 @51761 has 4 MA's), (113, 51677), (121, 51659), (140, 51581), (146, 51551), (166, 51512), (169, 51509),

Gene: EmToTheThree_17 Start: 6464, Stop: 6814, Start Num: 72

Candidate Starts for EmToTheThree_17:

(Start: 72 @6464 has 153 MA's), (Start: 80 @6479 has 4 MA's), (140, 6599), (170, 6677), (179, 6689), (180, 6692), (228, 6785),

Gene: Emma_82 Start: 47609, Stop: 47959, Start Num: 94

Candidate Starts for Emma_82:

(60, 47513), (Start: 94 @47609 has 13 MA's), (101, 47624), (140, 47744),

Gene: EmmaElysia_13 Start: 3966, Stop: 4331, Start Num: 72

Candidate Starts for EmmaElysia_13:

(Start: 72 @3966 has 153 MA's), (Start: 80 @3981 has 4 MA's), (140, 4116), (170, 4194), (179, 4206), (180, 4209), (228, 4302),

Gene: Emmaloid_89 Start: 50002, Stop: 50415, Start Num: 77

Candidate Starts for Emmaloid_89:

(14, 49828), (18, 49837), (25, 49861), (31, 49879), (62, 49972), (66, 49981), (Start: 77 @50002 has 148 MA's), (92, 50059), (109, 50098), (140, 50194), (153, 50230), (156, 50236), (223, 50368),

Gene: Enby_78 Start: 45597, Stop: 46025, Start Num: 74

Candidate Starts for Enby_78:

(Start: 74 @45597 has 42 MA's), (Start: 80 @45612 has 4 MA's), (93, 45666), (130, 45759), (140, 45819), (228, 45996),

Gene: Eradicator_69 Start: 46041, Stop: 46469, Start Num: 74

Candidate Starts for Eradicator_69:

(Start: 74 @46041 has 42 MA's), (Start: 80 @46056 has 4 MA's), (93, 46110), (130, 46203), (140, 46263), (228, 46440),

Gene: Erdmann_14 Start: 5050, Stop: 5400, Start Num: 72

Candidate Starts for Erdmann_14:

(Start: 72 @5050 has 153 MA's), (Start: 80 @5065 has 4 MA's), (140, 5185), (170, 5263), (179, 5275), (180, 5278), (228, 5371),

Gene: EricMillard_72 Start: 50977, Stop: 50564, Start Num: 77

Candidate Starts for EricMillard_72:

(Start: 77 @50977 has 148 MA's), (Start: 80 @50965 has 4 MA's), (109, 50881), (118, 50863), (140, 50785), (153, 50749), (156, 50743), (223, 50611),

Gene: ErnieJ_17 Start: 5141, Stop: 5506, Start Num: 72

Candidate Starts for ErnieJ_17:

(Start: 72 @5141 has 153 MA's), (Start: 80 @5156 has 4 MA's), (140, 5291), (170, 5369), (179, 5381), (180, 5384), (228, 5477),

Gene: Essence_13 Start: 3966, Stop: 4331, Start Num: 72

Candidate Starts for Essence_13:

(Start: 72 @3966 has 153 MA's), (Start: 80 @3981 has 4 MA's), (140, 4116), (170, 4194), (179, 4206), (180, 4209), (228, 4302),

Gene: Estave1_91 Start: 53006, Stop: 53392, Start Num: 77

Candidate Starts for Estave1_91:

(Start: 59 @52976 has 1 MA's), (65, 52985), (Start: 77 @53006 has 148 MA's), (140, 53192), (175, 53258), (227, 53366),

Gene: Euphoria_59 Start: 40555, Stop: 40109, Start Num: 76

Candidate Starts for Euphoria_59:

(45, 40612), (48, 40609), (Start: 76 @40555 has 29 MA's), (92, 40498), (113, 40459), (121, 40441), (140, 40363), (164, 40291), (178, 40267), (212, 40195), (230, 40132),

Gene: Eureka_44 Start: 36100, Stop: 35735, Start Num: 85

Candidate Starts for Eureka_44:

(83, 36112), (Start: 85 @36100 has 1 MA's), (Start: 86 @36091 has 2 MA's), (97, 36079), (140, 35959), (152, 35917), (210, 35821), (228, 35764),

Gene: Ewok_14 Start: 5050, Stop: 5400, Start Num: 72

Candidate Starts for Ewok_14:

(Start: 72 @5050 has 153 MA's), (Start: 80 @5065 has 4 MA's), (140, 5185), (170, 5263), (179, 5275), (180, 5278), (228, 5371),

Gene: FairyPath_42 Start: 35650, Stop: 35204, Start Num: 77

Candidate Starts for FairyPath_42:

(41, 35722), (Start: 77 @35650 has 148 MA's), (Start: 80 @35638 has 4 MA's), (130, 35488), (140, 35428), (146, 35398), (166, 35359), (169, 35356),

Gene: Fancypants_85 Start: 50404, Stop: 50835, Start Num: 77

Candidate Starts for Fancypants_85:

(Start: 77 @50404 has 148 MA's), (124, 50548), (165, 50683),

Gene: FeliMaine_8 Start: 2581, Stop: 2958, Start Num: 72

Candidate Starts for FeliMaine_8:

(Start: 72 @2581 has 153 MA's), (Start: 80 @2593 has 4 MA's), (140, 2749), (170, 2827), (179, 2839), (180, 2842),

Gene: FireRed_45 Start: 36025, Stop: 35591, Start Num: 77

Candidate Starts for FireRed_45:

(41, 36097), (Start: 77 @36025 has 148 MA's), (Start: 80 @36013 has 4 MA's), (130, 35863), (140, 35803),

Gene: Firehouse51_75 Start: 49196, Stop: 49573, Start Num: 72

Candidate Starts for Firehouse51_75:

(36, 49100), (Start: 72 @49196 has 153 MA's), (Start: 80 @49211 has 4 MA's), (140, 49346), (159, 49379), (169, 49400), (199, 49466), (230, 49550),

Gene: Fixie_12 Start: 3951, Stop: 4316, Start Num: 72

Candidate Starts for Fixie_12:

(Start: 72 @3951 has 153 MA's), (Start: 80 @3966 has 4 MA's), (140, 4101), (170, 4179), (179, 4191), (180, 4194), (228, 4287),

Gene: Flabslab_13 Start: 3966, Stop: 4331, Start Num: 72

Candidate Starts for Flabslab_13:

(Start: 72 @3966 has 153 MA's), (Start: 80 @3981 has 4 MA's), (140, 4116), (170, 4194), (179, 4206), (180, 4209), (228, 4302),

Gene: Flabslab_16 Start: 5015, Stop: 5452, Start Num: 77

Candidate Starts for Flabslab_16:

(17, 4853), (Start: 77 @5015 has 148 MA's), (Start: 80 @5027 has 4 MA's), (130, 5177), (140, 5237), (224, 5408),

Gene: Flathead_78 Start: 47777, Stop: 48157, Start Num: 71

Candidate Starts for Flathead_78:

(Start: 71 @47777 has 42 MA's), (Start: 80 @47792 has 4 MA's), (140, 47927), (177, 48011), (180, 48017), (181, 48020), (220, 48104),

Gene: Fludd_13 Start: 3952, Stop: 4317, Start Num: 72

Candidate Starts for Fludd_13:

(Start: 72 @3952 has 153 MA's), (Start: 80 @3967 has 4 MA's), (140, 4102), (170, 4180), (179, 4192), (180, 4195), (228, 4288),

Gene: FoxtrotP1_15 Start: 5609, Stop: 5959, Start Num: 72

Candidate Starts for FoxtrotP1_15:

(Start: 72 @5609 has 153 MA's), (Start: 80 @5624 has 4 MA's), (140, 5744), (170, 5822), (179, 5834), (180, 5837), (228, 5930),

Gene: FreddyB_88 Start: 49777, Stop: 50202, Start Num: 71

Candidate Starts for FreddyB_88:

(Start: 71 @49777 has 42 MA's), (Start: 80 @49792 has 4 MA's), (140, 49972), (177, 50056), (180, 50062), (181, 50065), (220, 50149),

Gene: Fringe_56 Start: 48267, Stop: 47878, Start Num: 77

Candidate Starts for Fringe_56:

(Start: 77 @48267 has 148 MA's), (Start: 80 @48255 has 4 MA's), (140, 48099), (153, 48063), (156, 48057), (223, 47925),

Gene: Fruitloop_74 Start: 47706, Stop: 48077, Start Num: 71

Candidate Starts for Fruitloop_74:

(33, 47610), (Start: 71 @47706 has 42 MA's), (Start: 80 @47721 has 4 MA's), (140, 47841), (161, 47895), (165, 47904), (187, 47952), (193, 47958), (211, 47994), (218, 48012), (228, 48048),

Gene: FudgeTart_14 Start: 5050, Stop: 5400, Start Num: 72

Candidate Starts for FudgeTart_14:

(Start: 72 @5050 has 153 MA's), (Start: 80 @5065 has 4 MA's), (140, 5185), (170, 5263), (179, 5275), (180, 5278), (228, 5371),

Gene: Fushigi_75 Start: 45357, Stop: 44953, Start Num: 77

Candidate Starts for Fushigi_75:

(Start: 77 @45357 has 148 MA's), (140, 45159), (160, 45108), (182, 45084), (197, 45057), (228, 44976),

Gene: Gabriel_14 Start: 3966, Stop: 4331, Start Num: 72

Candidate Starts for Gabriel_14:

(Start: 72 @3966 has 153 MA's), (Start: 80 @3981 has 4 MA's), (140, 4116), (170, 4194), (179, 4206), (180, 4209), (228, 4302),

Gene: GageAP_62 Start: 41383, Stop: 41024, Start Num: 77

Candidate Starts for GageAP_62:

(9, 41584), (50, 41440), (51, 41437), (Start: 77 @41383 has 148 MA's), (Start: 80 @41371 has 4 MA's), (140, 41236), (153, 41200), (156, 41194), (223, 41062),

Gene: Gamgam_13 Start: 3970, Stop: 4335, Start Num: 72

Candidate Starts for Gamgam_13:

(Start: 72 @3970 has 153 MA's), (Start: 80 @3985 has 4 MA's), (140, 4120), (170, 4198), (179, 4210), (180, 4213), (228, 4306),

Gene: Gandalph_77 Start: 45404, Stop: 45799, Start Num: 74

Candidate Starts for Gandalph_77:

(Start: 74 @45404 has 42 MA's), (Start: 80 @45419 has 4 MA's), (140, 45539), (164, 45617), (179, 45641), (210, 45713),

Gene: Gattaca_9 Start: 2524, Stop: 2901, Start Num: 72

Candidate Starts for Gattaca_9:

(Start: 72 @2524 has 153 MA's), (Start: 80 @2539 has 4 MA's), (140, 2674), (159, 2707), (169, 2728), (199, 2794), (230, 2878),

Gene: Gervas_51 Start: 45588, Stop: 45145, Start Num: 77

Candidate Starts for Gervas_51:

(Start: 77 @45588 has 148 MA's), (Start: 80 @45576 has 4 MA's), (117, 45456), (130, 45426), (140, 45366), (153, 45330), (156, 45324), (223, 45192),

Gene: Ghost_14 Start: 3970, Stop: 4335, Start Num: 72

Candidate Starts for Ghost_14:

(Start: 72 @3970 has 153 MA's), (Start: 80 @3985 has 4 MA's), (140, 4120), (170, 4198), (179, 4210), (180, 4213), (228, 4306),

Gene: Girr_75 Start: 48247, Stop: 48597, Start Num: 94

Candidate Starts for Girr_75:

(Start: 94 @48247 has 13 MA's), (101, 48262), (140, 48382),

Gene: Gizmo_15 Start: 5050, Stop: 5400, Start Num: 72

Candidate Starts for Gizmo_15:

(Start: 72 @5050 has 153 MA's), (Start: 80 @5065 has 4 MA's), (140, 5185), (170, 5263), (179, 5275), (180, 5278), (228, 5371),

Gene: GlutenPhree_13 Start: 3970, Stop: 4335, Start Num: 72

Candidate Starts for GlutenPhree_13:

(Start: 72 @3970 has 153 MA's), (Start: 80 @3985 has 4 MA's), (140, 4120), (170, 4198), (179, 4210), (180, 4213), (228, 4306),

Gene: Goku_44 Start: 35820, Stop: 35464, Start Num: 86

Candidate Starts for Goku_44:

(83, 35841), (Start: 85 @35829 has 1 MA's), (Start: 86 @35820 has 2 MA's), (97, 35808), (140, 35688), (152, 35646), (210, 35550), (228, 35493),

Gene: Gonephishing_73 Start: 48084, Stop: 47683, Start Num: 76

Candidate Starts for Gonephishing_73:

(Start: 76 @48084 has 29 MA's), (Start: 80 @48072 has 4 MA's), (113, 47988), (121, 47970), (140, 47892), (170, 47814), (179, 47802), (180, 47799), (230, 47706),

Gene: GoongGoong_8 Start: 2533, Stop: 2910, Start Num: 72

Candidate Starts for GoongGoong_8:

(Start: 72 @2533 has 153 MA's), (Start: 80 @2548 has 4 MA's), (140, 2683), (159, 2716), (169, 2737), (199, 2803), (230, 2887),

Gene: Gorge_80 Start: 49405, Stop: 49830, Start Num: 71

Candidate Starts for Gorge_80:

(Start: 71 @49405 has 42 MA's), (Start: 80 @49420 has 4 MA's), (140, 49600), (177, 49684), (180, 49690), (181, 49693), (220, 49777),

Gene: Graduation_65 Start: 42237, Stop: 41857, Start Num: 77

Candidate Starts for Graduation_65:

(9, 42438), (50, 42294), (51, 42291), (Start: 77 @42237 has 148 MA's), (Start: 80 @42225 has 4 MA's), (140, 42069), (153, 42033), (156, 42027), (223, 41895),

Gene: Greep_46 Start: 36317, Stop: 35883, Start Num: 77

Candidate Starts for Greep_46:

(41, 36389), (Start: 77 @36317 has 148 MA's), (Start: 80 @36305 has 4 MA's), (130, 36155), (140, 36095),

Gene: Grungle_6 Start: 1770, Stop: 2210, Start Num: 77

Candidate Starts for Grungle_6:

(Start: 77 @1770 has 148 MA's), (Start: 80 @1782 has 4 MA's), (119, 1902), (140, 1992), (152, 2034), (210, 2130), (219, 2154),

Gene: Guwapp_13 Start: 3966, Stop: 4331, Start Num: 72

Candidate Starts for Guwapp_13:

(Start: 72 @3966 has 153 MA's), (Start: 80 @3981 has 4 MA's), (140, 4116), (170, 4194), (179, 4206), (180, 4209), (228, 4302),

Gene: Gwilliam_53 Start: 47683, Stop: 47303, Start Num: 77

Candidate Starts for Gwilliam_53:

(Start: 77 @47683 has 148 MA's), (Start: 80 @47671 has 4 MA's), (140, 47515), (153, 47479), (156, 47473), (223, 47341),

Gene: Gyzlar_56 Start: 38713, Stop: 38327, Start Num: 77

Candidate Starts for Gyzlar_56:

(Start: 77 @38713 has 148 MA's), (Start: 80 @38701 has 4 MA's), (140, 38581), (164, 38509), (179, 38485), (210, 38413), (228, 38350),

Gene: Halldule_6 Start: 1766, Stop: 2206, Start Num: 77

Candidate Starts for Halldule_6:

(Start: 77 @1766 has 148 MA's), (Start: 80 @1778 has 4 MA's), (119, 1898), (140, 1988), (141, 1991), (152, 2030), (210, 2126), (219, 2150),

Gene: Halley_75 Start: 50984, Stop: 50568, Start Num: 76

Candidate Starts for Halley_75:

(Start: 76 @50984 has 29 MA's), (Start: 80 @50972 has 4 MA's), (113, 50888), (121, 50870), (140, 50792), (146, 50762), (166, 50723), (169, 50720),

Gene: Harley_78 Start: 47547, Stop: 47975, Start Num: 72

Candidate Starts for Harley_78:

(Start: 72 @47547 has 153 MA's), (122, 47694), (140, 47766), (170, 47844), (179, 47856), (180, 47859),

Gene: Harley_88 Start: 50437, Stop: 50829, Start Num: 77

Candidate Starts for Harley_88:

(1, 50143), (2, 50176), (13, 50263), (17, 50272), (24, 50296), (30, 50314), (Start: 59 @50407 has 1 MA's), (65, 50416), (Start: 77 @50437 has 148 MA's), (140, 50623), (155, 50665),

Gene: Hegedechwinu_80 Start: 46978, Stop: 47358, Start Num: 71

Candidate Starts for Hegedechwinu_80:

(Start: 71 @46978 has 42 MA's), (Start: 80 @46993 has 4 MA's), (140, 47128), (177, 47212), (180, 47218), (181, 47221), (220, 47305),

Gene: HenryJackson_52 Start: 47354, Stop: 46911, Start Num: 77

Candidate Starts for HenryJackson_52:

(Start: 77 @47354 has 148 MA's), (Start: 80 @47342 has 4 MA's), (117, 47222), (130, 47192), (140, 47132), (153, 47096), (156, 47090), (223, 46958),

Gene: Hidrated_70 Start: 50826, Stop: 50383, Start Num: 75

Candidate Starts for Hidrated_70:

(38, 50907), (57, 50865), (58, 50862), (Start: 75 @50826 has 10 MA's), (Start: 80 @50814 has 4 MA's), (98, 50760), (140, 50616), (144, 50589), (153, 50571), (167, 50544), (200, 50475), (202, 50472), (220, 50436),

Gene: HighStump_54 Start: 47890, Stop: 47447, Start Num: 77

Candidate Starts for HighStump_54:

(43, 47962), (53, 47941), (54, 47935), (Start: 77 @47890 has 148 MA's), (Start: 80 @47878 has 4 MA's), (117, 47758), (130, 47728), (140, 47668), (153, 47632), (156, 47626), (223, 47494),

Gene: Highbury_43 Start: 34897, Stop: 34421, Start Num: 77

Candidate Starts for Highbury_43:

(41, 34969), (Start: 77 @34897 has 148 MA's), (Start: 80 @34885 has 4 MA's), (130, 34735), (140, 34675), (164, 34603), (179, 34579), (210, 34507), (230, 34444),

Gene: HokkenD_66 Start: 49253, Stop: 48837, Start Num: 76

Candidate Starts for HokkenD_66:

(Start: 76 @49253 has 29 MA's), (Start: 80 @49241 has 4 MA's), (113, 49157), (121, 49139), (140, 49061), (146, 49031), (166, 48992), (169, 48989),

Gene: Holt_45 Start: 35325, Stop: 34888, Start Num: 77

Candidate Starts for Holt_45:

(Start: 40 @35397 has 1 MA's), (Start: 77 @35325 has 148 MA's), (Start: 80 @35313 has 4 MA's), (130, 35163), (140, 35103), (224, 34932),

Gene: HufflyPuff_44 Start: 35981, Stop: 35547, Start Num: 77

Candidate Starts for HufflyPuff_44:

(41, 36053), (Start: 77 @35981 has 148 MA's), (Start: 80 @35969 has 4 MA's), (130, 35819), (140, 35759),

Gene: Hughesyang_72 Start: 50943, Stop: 50497, Start Num: 76

Candidate Starts for Hughesyang_72:

(Start: 76 @50943 has 29 MA's), (Start: 80 @50931 has 4 MA's), (113, 50847), (121, 50829), (140, 50751), (164, 50679), (178, 50655), (212, 50583),

Gene: Huphleuff_7 Start: 2307, Stop: 2687, Start Num: 72

Candidate Starts for Huphleuff_7:

(Start: 72 @2307 has 153 MA's), (Start: 80 @2322 has 4 MA's), (140, 2478), (170, 2556), (179, 2568), (180, 2571),

Gene: HyRo_11 Start: 4892, Stop: 5257, Start Num: 72

Candidate Starts for HyRo_11:

(Start: 72 @4892 has 153 MA's), (Start: 80 @4907 has 4 MA's), (140, 5042), (170, 5120), (179, 5132), (180, 5135), (228, 5228),

Gene: I3_7 Start: 2438, Stop: 2830, Start Num: 77

Candidate Starts for I3_7:

(Start: 77 @2438 has 148 MA's), (101, 2498), (104, 2504), (123, 2564), (125, 2567), (140, 2621), (193, 2723),

Gene: IMpilo_74 Start: 45725, Stop: 46135, Start Num: 74

Candidate Starts for IMpilo_74:

(Start: 74 @45725 has 42 MA's), (Start: 80 @45740 has 4 MA's), (103, 45800), (135, 45872), (140, 45905), (183, 46001), (214, 46067), (222, 46091), (228, 46112),

Gene: IbOuu_74 Start: 46622, Stop: 47065, Start Num: 71

Candidate Starts for IbOuu_74:

(Start: 71 @46622 has 42 MA's), (Start: 80 @46637 has 4 MA's), (140, 46817), (179, 46904), (181, 46910), (191, 46934), (228, 47036),

Gene: IkeLoa_6 Start: 2612, Stop: 3052, Start Num: 77

Candidate Starts for IkeLoa_6:

(Start: 77 @2612 has 148 MA's), (Start: 80 @2624 has 4 MA's), (119, 2744), (140, 2834), (152, 2876), (210, 2972), (219, 2996),

Gene: InigoMontoya_14 Start: 3970, Stop: 4335, Start Num: 72

Candidate Starts for InigoMontoya_14:

(Start: 72 @3970 has 153 MA's), (Start: 80 @3985 has 4 MA's), (140, 4120), (170, 4198), (179, 4210), (180, 4213), (228, 4306),

Gene: Inventum_78 Start: 48409, Stop: 48759, Start Num: 74

Candidate Starts for Inventum_78:

(Start: 74 @48409 has 42 MA's), (Start: 80 @48424 has 4 MA's), (140, 48559), (228, 48736),

Gene: Inyanga_56 Start: 40763, Stop: 40362, Start Num: 77

Candidate Starts for Inyanga_56:

(Start: 77 @40763 has 148 MA's), (Start: 80 @40751 has 4 MA's), (95, 40706), (112, 40667), (140, 40571),

Gene: Iqorha_56 Start: 40762, Stop: 40361, Start Num: 77

Candidate Starts for Iqorha_56:

(Start: 77 @40762 has 148 MA's), (Start: 80 @40750 has 4 MA's), (95, 40705), (112, 40666), (140, 40570),

Gene: Iridessa_53 Start: 47334, Stop: 46891, Start Num: 77

Candidate Starts for Iridessa_53:

(43, 47406), (53, 47385), (54, 47379), (Start: 77 @47334 has 148 MA's), (Start: 80 @47322 has 4 MA's), (117, 47202), (130, 47172), (140, 47112), (153, 47076), (156, 47070), (223, 46938),

Gene: IrishSherpFalk_79 Start: 48781, Stop: 49194, Start Num: 71

Candidate Starts for IrishSherpFalk_79:

(Start: 71 @48781 has 42 MA's), (Start: 80 @48796 has 4 MA's), (140, 48952), (179, 49039), (181, 49045), (191, 49069), (217, 49132), (228, 49171),

Gene: Issimir_14 Start: 5044, Stop: 5394, Start Num: 72

Candidate Starts for Issimir_14:

(Start: 72 @5044 has 153 MA's), (Start: 80 @5059 has 4 MA's), (140, 5179), (170, 5257), (179, 5269), (180, 5272), (228, 5365),

Gene: Izajani_14 Start: 5050, Stop: 5400, Start Num: 72

Candidate Starts for Izajani_14:

(Start: 72 @5050 has 153 MA's), (Start: 80 @5065 has 4 MA's), (140, 5185), (170, 5263), (179, 5275), (180, 5278), (228, 5371),

Gene: JPickles_13 Start: 3970, Stop: 4335, Start Num: 72

Candidate Starts for JPickles_13:

(Start: 72 @3970 has 153 MA's), (Start: 80 @3985 has 4 MA's), (140, 4120), (170, 4198), (179, 4210), (180, 4213), (228, 4306),

Gene: Jabbawokkie_88 Start: 46909, Stop: 47265, Start Num: 71

Candidate Starts for Jabbawokkie_88:

(Start: 71 @46909 has 42 MA's), (Start: 80 @46924 has 4 MA's), (140, 47044), (222, 47215), (228, 47236),

Gene: JalFarm20_87 Start: 48995, Stop: 49375, Start Num: 71

Candidate Starts for JalFarm20_87:

(36, 48899), (Start: 71 @48995 has 42 MA's), (Start: 80 @49010 has 4 MA's), (140, 49145), (177, 49229), (180, 49235), (181, 49238), (220, 49322),

Gene: Janiyra_13 Start: 3949, Stop: 4314, Start Num: 72

Candidate Starts for Janiyra_13:

(Start: 72 @3949 has 153 MA's), (Start: 80 @3964 has 4 MA's), (140, 4099), (170, 4177), (179, 4189), (180, 4192), (228, 4285),

Gene: Jant_80 Start: 46925, Stop: 47389, Start Num: 71

Candidate Starts for Jant_80:

(Start: 71 @46925 has 42 MA's), (Start: 80 @46940 has 4 MA's), (97, 46994), (131, 47087), (179, 47234), (181, 47240), (191, 47264), (217, 47327), (228, 47366),

Gene: Jant_84 Start: 48028, Stop: 48438, Start Num: 77

Candidate Starts for Jant_84:

(Start: 77 @48028 has 148 MA's), (Start: 80 @48040 has 4 MA's), (112, 48124), (120, 48142), (140, 48220),

Gene: Jasper_78 Start: 46159, Stop: 45758, Start Num: 76

Candidate Starts for Jasper_78:

(Start: 76 @46159 has 29 MA's), (140, 45967), (170, 45889), (179, 45877), (180, 45874), (230, 45781),

Gene: Jasper_61 Start: 39951, Stop: 39571, Start Num: 77

Candidate Starts for Jasper_61:

(9, 40152), (50, 40008), (51, 40005), (Start: 77 @39951 has 148 MA's), (Start: 80 @39939 has 4 MA's), (140, 39783), (153, 39747), (156, 39741), (223, 39609),

Gene: Jaygup_13 Start: 3966, Stop: 4331, Start Num: 72

Candidate Starts for Jaygup_13:

(Start: 72 @3966 has 153 MA's), (Start: 80 @3981 has 4 MA's), (140, 4116), (170, 4194), (179, 4206), (180, 4209), (228, 4302),

Gene: Jedediah_13 Start: 3970, Stop: 4335, Start Num: 72

Candidate Starts for Jedediah_13:

(Start: 72 @3970 has 153 MA's), (Start: 80 @3985 has 4 MA's), (140, 4120), (170, 4198), (179, 4210), (180, 4213), (228, 4306),

Gene: Jemmno_12 Start: 3970, Stop: 4335, Start Num: 72

Candidate Starts for Jemmno_12:

(Start: 72 @3970 has 153 MA's), (Start: 80 @3985 has 4 MA's), (140, 4120), (170, 4198), (179, 4210), (180, 4213), (228, 4306),

Gene: Jessibeth14_14 Start: 5050, Stop: 5400, Start Num: 72

Candidate Starts for Jessibeth14_14:

(Start: 72 @5050 has 153 MA's), (Start: 80 @5065 has 4 MA's), (140, 5185), (170, 5263), (179, 5275), (180, 5278), (228, 5371),

Gene: JigglyPuff_6 Start: 1982, Stop: 2365, Start Num: 77

Candidate Starts for JigglyPuff_6:

(53, 1931), (Start: 77 @1982 has 148 MA's), (Start: 80 @1994 has 4 MA's), (140, 2150), (153, 2186), (156, 2192), (198, 2270), (223, 2324),

Gene: Jinglebell_93 Start: 50985, Stop: 51386, Start Num: 75

Candidate Starts for Jinglebell_93:

(26, 50862), (57, 50955), (61, 50964), (Start: 75 @50985 has 10 MA's), (140, 51153), (144, 51180), (153, 51198), (167, 51225), (200, 51294), (202, 51297), (220, 51333),

Gene: JoieB_8 Start: 2529, Stop: 2909, Start Num: 72

Candidate Starts for JoieB_8:

(Start: 72 @2529 has 153 MA's), (Start: 80 @2544 has 4 MA's), (140, 2700), (170, 2778), (179, 2790), (180, 2793),

Gene: JuicyJay_72 Start: 52118, Stop: 51702, Start Num: 76

Candidate Starts for JuicyJay_72:

(Start: 76 @52118 has 29 MA's), (Start: 80 @52106 has 4 MA's), (113, 52022), (121, 52004), (140, 51926), (146, 51896), (166, 51857), (169, 51854),

Gene: JustHall_13 Start: 4965, Stop: 5330, Start Num: 72

Candidate Starts for JustHall_13:

(Start: 72 @4965 has 153 MA's), (Start: 80 @4980 has 4 MA's), (140, 5115), (170, 5193), (179, 5205), (180, 5208), (228, 5301),

Gene: KBG_62 Start: 42879, Stop: 42511, Start Num: 77

Candidate Starts for KBG_62:

(50, 42936), (51, 42933), (Start: 77 @42879 has 148 MA's), (Start: 80 @42867 has 4 MA's), (140, 42732), (168, 42672), (184, 42636), (208, 42588), (211, 42585), (230, 42522),

Gene: Kahve_52 Start: 47351, Stop: 46908, Start Num: 77

Candidate Starts for Kahve_52:

(Start: 77 @47351 has 148 MA's), (Start: 80 @47339 has 4 MA's), (117, 47219), (130, 47189), (140, 47129), (153, 47093), (156, 47087), (223, 46955),

Gene: Kalah2_68 Start: 50277, Stop: 49861, Start Num: 76

Candidate Starts for Kalah2_68:

(Start: 76 @50277 has 29 MA's), (Start: 80 @50265 has 4 MA's), (113, 50181), (121, 50163), (140, 50085), (146, 50055), (166, 50016), (169, 50013),

Gene: Kamryn_6 Start: 1771, Stop: 2151, Start Num: 80

Candidate Starts for Kamryn_6:

(Start: 75 @1759 has 10 MA's), (Start: 80 @1771 has 4 MA's), (101, 1819), (104, 1825), (131, 1888), (140, 1942), (170, 2020), (179, 2032), (180, 2035),

Gene: KashFlow_71 Start: 46755, Stop: 46327, Start Num: 74

Candidate Starts for KashFlow_71:

(Start: 74 @46755 has 42 MA's), (Start: 80 @46740 has 4 MA's), (93, 46686), (130, 46593), (140, 46533), (228, 46356),

Gene: KashFlow_72 Start: 47258, Stop: 46752, Start Num: 74

Candidate Starts for KashFlow_72:

(Start: 74 @47258 has 42 MA's), (139, 47087), (140, 47072), (144, 47045), (153, 47027), (167, 47000), (200, 46931), (202, 46928), (220, 46892), (235, 46811), (236, 46805), (237, 46802),

Gene: Kboogie_13 Start: 3968, Stop: 4333, Start Num: 72

Candidate Starts for Kboogie_13:

(Start: 72 @3968 has 153 MA's), (Start: 80 @3983 has 4 MA's), (140, 4118), (170, 4196), (179, 4208), (180, 4211), (228, 4304),

Gene: Kenmech_82 Start: 49111, Stop: 48689, Start Num: 77

Candidate Starts for Kenmech_82:

(Start: 77 @49111 has 148 MA's), (Start: 80 @49099 has 4 MA's), (136, 48943), (145, 48871), (158, 48847), (205, 48775), (228, 48712),

Gene: Kenuha5_75 Start: 48762, Stop: 49157, Start Num: 74

Candidate Starts for Kenuha5_75:

(Start: 74 @48762 has 42 MA's), (Start: 80 @48777 has 4 MA's), (140, 48897), (164, 48975), (179, 48999), (210, 49071),

Gene: Kersh_88 Start: 52115, Stop: 52522, Start Num: 77

Candidate Starts for Kersh_88:

(14, 51941), (18, 51950), (25, 51974), (62, 52085), (66, 52094), (Start: 77 @52115 has 148 MA's), (92, 52172), (109, 52211), (140, 52307), (153, 52343), (156, 52349), (223, 52481),

Gene: Khaleesi_14 Start: 5050, Stop: 5400, Start Num: 72

Candidate Starts for Khaleesi_14:

(Start: 72 @5050 has 153 MA's), (Start: 80 @5065 has 4 MA's), (140, 5185), (170, 5263), (179, 5275), (180, 5278), (228, 5371),

Gene: Khan1_53 Start: 47307, Stop: 46918, Start Num: 77

Candidate Starts for Khan1_53:

(Start: 77 @47307 has 148 MA's), (Start: 80 @47295 has 4 MA's), (140, 47139), (153, 47103), (156, 47097), (223, 46965),

Gene: Klein_78 Start: 51350, Stop: 50925, Start Num: 77

Candidate Starts for Klein_78:

(Start: 77 @51350 has 148 MA's), (Start: 80 @51338 has 4 MA's), (93, 51284), (130, 51191), (140, 51131), (228, 50954),

Gene: Koella_70 Start: 44029, Stop: 44454, Start Num: 71

Candidate Starts for Koella_70:

(Start: 71 @44029 has 42 MA's), (Start: 80 @44044 has 4 MA's), (140, 44224), (177, 44308), (180, 44314), (181, 44317), (220, 44401),

Gene: Koella_74 Start: 45585, Stop: 45968, Start Num: 77

Candidate Starts for Koella_74:

(13, 45411), (17, 45420), (24, 45444), (30, 45462), (Start: 59 @45555 has 1 MA's), (65, 45564), (Start: 77 @45585 has 148 MA's), (140, 45771), (149, 45801), (176, 45837), (210, 45888),

Gene: Koguma_6 Start: 1766, Stop: 2206, Start Num: 77

Candidate Starts for Koguma_6:

(Start: 77 @1766 has 148 MA's), (Start: 80 @1778 has 4 MA's), (119, 1898), (140, 1988), (152, 2030), (210, 2126), (219, 2150),

Gene: Kostya_43 Start: 35472, Stop: 35038, Start Num: 77

Candidate Starts for Kostya_43:

(41, 35544), (Start: 77 @35472 has 148 MA's), (Start: 80 @35460 has 4 MA's), (130, 35310), (140, 35250),

Gene: Krakatau_74 Start: 44687, Stop: 45067, Start Num: 71

Candidate Starts for Krakatau_74:

(Start: 71 @44687 has 42 MA's), (Start: 80 @44702 has 4 MA's), (140, 44822), (179, 44909), (181, 44915), (191, 44939), (217, 45002), (228, 45038),

Gene: KristaRAM_77 Start: 47329, Stop: 47721, Start Num: 71

Candidate Starts for KristaRAM_77:

(Start: 71 @47329 has 42 MA's), (Start: 80 @47344 has 4 MA's), (140, 47479), (179, 47566), (181, 47572), (191, 47596), (217, 47659), (228, 47698),

Gene: Kronus_50 Start: 46191, Stop: 45748, Start Num: 77

Candidate Starts for Kronus_50:

(Start: 77 @46191 has 148 MA's), (Start: 80 @46179 has 4 MA's), (117, 46059), (130, 46029), (140, 45969), (153, 45933), (156, 45927), (223, 45795),

Gene: Kugel_63 Start: 41957, Stop: 41598, Start Num: 77

Candidate Starts for Kugel_63:

(8, 42158), (50, 42014), (51, 42011), (Start: 77 @41957 has 148 MA's), (140, 41825), (148, 41792), (161, 41771), (194, 41705), (226, 41621),

Gene: LRRHood_6 Start: 2751, Stop: 3191, Start Num: 77

Candidate Starts for LRRHood_6:

(Start: 77 @2751 has 148 MA's), (Start: 80 @2763 has 4 MA's), (119, 2883), (140, 2973), (152, 3015), (210, 3111), (219, 3135),

Gene: LRRHood_14 Start: 5702, Stop: 6052, Start Num: 72

Candidate Starts for LRRHood_14:

(Start: 72 @5702 has 153 MA's), (Start: 80 @5717 has 4 MA's), (140, 5837), (170, 5915), (179, 5927), (180, 5930), (228, 6023),

Gene: Labradorite_12 Start: 3966, Stop: 4331, Start Num: 72

Candidate Starts for Labradorite_12:

(Start: 72 @3966 has 153 MA's), (Start: 80 @3981 has 4 MA's), (140, 4116), (170, 4194), (179, 4206), (180, 4209), (228, 4302),

Gene: LastJedi_70 Start: 46604, Stop: 47029, Start Num: 71

Candidate Starts for LastJedi_70:

(Start: 71 @46604 has 42 MA's), (Start: 80 @46619 has 4 MA's), (140, 46799), (177, 46883), (180, 46889), (181, 46892), (220, 46976),

Gene: Latch_13 Start: 3970, Stop: 4335, Start Num: 72

Candidate Starts for Latch_13:

(Start: 72 @3970 has 153 MA's), (Start: 80 @3985 has 4 MA's), (140, 4120), (170, 4198), (179, 4210), (180, 4213), (228, 4306),

Gene: Latretium_78 Start: 47174, Stop: 47560, Start Num: 77

Candidate Starts for Latretium_78:

(Start: 77 @47174 has 148 MA's), (Start: 80 @47186 has 4 MA's), (140, 47342), (153, 47378), (156, 47384), (223, 47516),

Gene: Legolas_54 Start: 47787, Stop: 47344, Start Num: 77

Candidate Starts for Legolas_54:

(43, 47859), (53, 47838), (54, 47832), (Start: 77 @47787 has 148 MA's), (Start: 80 @47775 has 4 MA's), (117, 47655), (130, 47625), (140, 47565), (153, 47529), (156, 47523), (223, 47391),

Gene: Leozinho_78 Start: 46065, Stop: 46445, Start Num: 74

Candidate Starts for Leozinho_78:

(Start: 74 @46065 has 42 MA's), (Start: 80 @46080 has 4 MA's), (106, 46140), (133, 46212), (140, 46245), (228, 46422),

Gene: Lethe_6 Start: 1613, Stop: 2053, Start Num: 77

Candidate Starts for Lethe_6:

(Start: 77 @1613 has 148 MA's), (Start: 80 @1625 has 4 MA's), (119, 1745), (140, 1835), (152, 1877), (210, 1973), (219, 1997),

Gene: LifeSavor_14 Start: 3966, Stop: 4331, Start Num: 72

Candidate Starts for LifeSavor_14:

(Start: 72 @3966 has 153 MA's), (Start: 80 @3981 has 4 MA's), (140, 4116), (170, 4194), (179, 4206), (180, 4209), (228, 4302),

Gene: Lilbit_8 Start: 2581, Stop: 2958, Start Num: 72

Candidate Starts for Lilbit_8:

(Start: 72 @2581 has 153 MA's), (Start: 80 @2593 has 4 MA's), (140, 2749), (170, 2827), (179, 2839), (180, 2842),

Gene: LittleE_79 Start: 51011, Stop: 50637, Start Num: 80

Candidate Starts for LittleE_79:

(Start: 77 @51023 has 148 MA's), (Start: 80 @51011 has 4 MA's), (140, 50891), (164, 50819), (179, 50795), (210, 50723),

Gene: LittleLaf_7 Start: 2307, Stop: 2687, Start Num: 72

Candidate Starts for LittleLaf_7:

(Start: 72 @2307 has 153 MA's), (Start: 80 @2322 has 4 MA's), (140, 2478), (170, 2556), (179, 2568), (180, 2571),

Gene: Littleton_14 Start: 3970, Stop: 4335, Start Num: 72

Candidate Starts for Littleton_14:

(Start: 72 @3970 has 153 MA's), (Start: 80 @3985 has 4 MA's), (140, 4120), (170, 4198), (179, 4210), (180, 4213), (228, 4306),

Gene: Livelyaughbron_46 Start: 36111, Stop: 35677, Start Num: 77

Candidate Starts for Livelyaughbron_46:

(41, 36183), (Start: 77 @36111 has 148 MA's), (Start: 80 @36099 has 4 MA's), (130, 35949), (140, 35889),

Gene: Lizziana_83 Start: 49853, Stop: 50278, Start Num: 71

Candidate Starts for Lizziana_83:

(Start: 71 @49853 has 42 MA's), (Start: 80 @49868 has 4 MA's), (140, 50048), (177, 50132), (180, 50138), (181, 50141), (220, 50225),

Gene: Llama_93 Start: 50841, Stop: 51242, Start Num: 75

Candidate Starts for Llama_93:

(26, 50718), (57, 50811), (61, 50820), (Start: 75 @50841 has 10 MA's), (140, 51009), (144, 51036), (153, 51054), (167, 51081), (200, 51150), (202, 51153), (220, 51189),

Gene: Llij_73 Start: 45475, Stop: 45903, Start Num: 74

Candidate Starts for Llij_73:

(Start: 74 @45475 has 42 MA's), (Start: 80 @45490 has 4 MA's), (93, 45544), (130, 45637), (140, 45697), (228, 45874),

Gene: Loanshark_14 Start: 5050, Stop: 5400, Start Num: 72

Candidate Starts for Loanshark_14:

(Start: 72 @5050 has 153 MA's), (Start: 80 @5065 has 4 MA's), (140, 5185), (170, 5263), (179, 5275), (180, 5278), (228, 5371),

Gene: Longacauda_53 Start: 47750, Stop: 47307, Start Num: 77

Candidate Starts for Longacauda_53:

(43, 47822), (53, 47801), (54, 47795), (Start: 77 @47750 has 148 MA's), (Start: 80 @47738 has 4 MA's), (117, 47618), (130, 47588), (140, 47528), (153, 47492), (156, 47486), (223, 47354),

Gene: Lorde_77 Start: 44762, Stop: 45190, Start Num: 74

Candidate Starts for Lorde_77:

(Start: 74 @44762 has 42 MA's), (Start: 80 @44777 has 4 MA's), (93, 44831), (130, 44924), (140, 44984), (228, 45161),

Gene: Lucia_76 Start: 45610, Stop: 46038, Start Num: 74

Candidate Starts for Lucia_76:

(Start: 74 @45610 has 42 MA's), (Start: 80 @45625 has 4 MA's), (93, 45679), (130, 45772), (140, 45832), (228, 46009),

Gene: Lucky2013_77 Start: 48582, Stop: 48184, Start Num: 74

Candidate Starts for Lucky2013_77:

(Start: 74 @48582 has 42 MA's), (Start: 80 @48570 has 4 MA's), (140, 48414), (177, 48330), (180, 48324), (181, 48321), (220, 48237),

Gene: Lucky2013_71 Start: 46711, Stop: 46307, Start Num: 80

Candidate Starts for Lucky2013_71:

(Start: 76 @46723 has 29 MA's), (Start: 80 @46711 has 4 MA's), (113, 46627), (121, 46609), (140, 46531), (146, 46501), (166, 46462), (169, 46459),

Gene: Lukilu_6 Start: 2765, Stop: 3205, Start Num: 77

Candidate Starts for Lukilu_6:

(Start: 77 @2765 has 148 MA's), (Start: 80 @2777 has 4 MA's), (119, 2897), (140, 2987), (152, 3029), (210, 3125), (219, 3149),

Gene: Lumine_53 Start: 47538, Stop: 47155, Start Num: 77

Candidate Starts for Lumine_53:

(Start: 77 @47538 has 148 MA's), (Start: 80 @47526 has 4 MA's), (140, 47370), (153, 47334), (156, 47328), (223, 47196),

Gene: LunaBlu_82 Start: 48900, Stop: 49268, Start Num: 72

Candidate Starts for LunaBlu_82:

(Start: 72 @48900 has 153 MA's), (Start: 80 @48915 has 4 MA's), (140, 49050), (148, 49080), (171, 49119), (173, 49122), (228, 49245),

Gene: MISSy_42 Start: 35034, Stop: 34591, Start Num: 77

Candidate Starts for MISSy_42:

(43, 35106), (Start: 77 @35034 has 148 MA's), (Start: 80 @35022 has 4 MA's), (130, 34872), (140, 34812), (153, 34776), (156, 34770), (223, 34638),

Gene: MPhalcon_42 Start: 35027, Stop: 34584, Start Num: 77

Candidate Starts for MPhalcon_42:

(43, 35099), (Start: 77 @35027 has 148 MA's), (Start: 80 @35015 has 4 MA's), (130, 34865), (140, 34805), (153, 34769), (156, 34763), (223, 34631),

Gene: Maby2021_14 Start: 5050, Stop: 5400, Start Num: 72

Candidate Starts for Maby2021_14:

(Start: 72 @5050 has 153 MA's), (Start: 80 @5065 has 4 MA's), (140, 5185), (170, 5263), (179, 5275), (180, 5278), (228, 5371),

Gene: MadKillah_102 Start: 61818, Stop: 61405, Start Num: 77

Candidate Starts for MadKillah_102:

(29, 61950), (42, 61890), (52, 61869), (Start: 77 @61818 has 148 MA's), (92, 61761), (109, 61722), (140, 61626), (153, 61590), (156, 61584), (223, 61452),

Gene: Makemake_63 Start: 42339, Stop: 41959, Start Num: 77

Candidate Starts for Makemake_63:

(9, 42540), (50, 42396), (51, 42393), (Start: 77 @42339 has 148 MA's), (Start: 80 @42327 has 4 MA's), (140, 42171), (153, 42135), (156, 42129), (223, 41997),

Gene: Manda_46 Start: 36625, Stop: 36245, Start Num: 70

Candidate Starts for Manda_46:

(60, 36646), (67, 36634), (Start: 70 @36625 has 1 MA's), (Start: 80 @36613 has 4 MA's), (140, 36493), (179, 36406), (181, 36400), (217, 36313), (228, 36274),

Gene: Mantra_76 Start: 47820, Stop: 48170, Start Num: 94

Candidate Starts for Mantra_76:

(60, 47724), (Start: 94 @47820 has 13 MA's), (101, 47835), (140, 47955),

Gene: Marker_82 Start: 48016, Stop: 48423, Start Num: 77

Candidate Starts for Marker_82:

(23, 47893), (58, 47986), (63, 47995), (Start: 77 @48016 has 148 MA's), (90, 48055), (111, 48100), (140, 48163), (164, 48241), (179, 48265), (210, 48337),

Gene: Marleymoo_67 Start: 49139, Stop: 48684, Start Num: 74

Candidate Starts for Marleymoo_67:

(Start: 74 @49139 has 42 MA's), (127, 48977), (129, 48974), (140, 48917), (144, 48890), (153, 48872), (167, 48845), (200, 48776), (202, 48773), (220, 48737),

Gene: Marlia_51 Start: 45592, Stop: 45149, Start Num: 77

Candidate Starts for Marlia_51:

(Start: 77 @45592 has 148 MA's), (Start: 80 @45580 has 4 MA's), (117, 45460), (130, 45430), (140, 45370), (153, 45334), (156, 45328), (223, 45196),

Gene: Marsha_82 Start: 50494, Stop: 50108, Start Num: 77

Candidate Starts for Marsha_82:

(Start: 77 @50494 has 148 MA's), (Start: 80 @50482 has 4 MA's), (140, 50326), (153, 50290), (156, 50284), (223, 50152),

Gene: Martik_80 Start: 50276, Stop: 50662, Start Num: 74

Candidate Starts for Martik_80:

(Start: 74 @50276 has 42 MA's), (Start: 80 @50291 has 4 MA's), (106, 50351), (133, 50423), (140, 50456), (228, 50633),

Gene: Marvin_10 Start: 3597, Stop: 3977, Start Num: 77

Candidate Starts for Marvin_10:

(37, 3501), (43, 3525), (Start: 77 @3597 has 148 MA's), (Start: 80 @3609 has 4 MA's), (140, 3765), (153, 3801), (156, 3807), (223, 3939),

Gene: MaryBeth_59 Start: 41225, Stop: 40836, Start Num: 77

Candidate Starts for MaryBeth_59:

(8, 41426), (50, 41282), (51, 41279), (Start: 77 @41225 has 148 MA's), (Start: 80 @41213 has 4 MA's), (133, 41126), (140, 41093), (164, 41015), (179, 40991), (210, 40919),

Gene: Matsumoto_13 Start: 3970, Stop: 4335, Start Num: 72

Candidate Starts for Matsumoto_13:

(Start: 72 @3970 has 153 MA's), (Start: 80 @3985 has 4 MA's), (140, 4120), (170, 4198), (179, 4210), (180, 4213), (228, 4306),

Gene: McGee_13 Start: 3968, Stop: 4333, Start Num: 72

Candidate Starts for McGee_13:

(Start: 72 @3968 has 153 MA's), (Start: 80 @3983 has 4 MA's), (140, 4118), (170, 4196), (179, 4208), (180, 4211), (228, 4304),

Gene: McWolfish_14 Start: 5050, Stop: 5400, Start Num: 72

Candidate Starts for McWolfish_14:

(Start: 72 @5050 has 153 MA's), (Start: 80 @5065 has 4 MA's), (140, 5185), (170, 5263), (179, 5275), (180, 5278), (228, 5371),

Gene: Medindi_83 Start: 49245, Stop: 49694, Start Num: 76

Candidate Starts for Medindi_83:

(Start: 76 @49245 has 29 MA's), (Start: 80 @49257 has 4 MA's), (132, 49407), (140, 49464), (183, 49560), (214, 49626), (222, 49650), (228, 49671),

Gene: Megamind_14 Start: 5050, Stop: 5400, Start Num: 72

Candidate Starts for Megamind_14:

(Start: 72 @5050 has 153 MA's), (Start: 80 @5065 has 4 MA's), (140, 5185), (170, 5263), (179, 5275), (180, 5278), (228, 5371),

Gene: Melpomini_13 Start: 3949, Stop: 4314, Start Num: 72

Candidate Starts for Melpomini_13:

(Start: 72 @3949 has 153 MA's), (Start: 80 @3964 has 4 MA's), (140, 4099), (170, 4177), (179, 4189), (180, 4192), (228, 4285),

Gene: MetalQZJ_58 Start: 41225, Stop: 40836, Start Num: 77

Candidate Starts for MetalQZJ_58:

(8, 41426), (50, 41282), (51, 41279), (Start: 77 @41225 has 148 MA's), (Start: 80 @41213 has 4 MA's), (133, 41126), (140, 41093), (164, 41015), (179, 40991), (210, 40919),

Gene: MiaZeal_80 Start: 49238, Stop: 48840, Start Num: 74

Candidate Starts for MiaZeal_80:

(Start: 74 @49238 has 42 MA's), (Start: 80 @49226 has 4 MA's), (140, 49070), (177, 48986), (180, 48980), (181, 48977), (220, 48893),

Gene: MiaZeal_74 Start: 47379, Stop: 46963, Start Num: 76

Candidate Starts for MiaZeal_74:

(Start: 76 @47379 has 29 MA's), (Start: 80 @47367 has 4 MA's), (113, 47283), (121, 47265), (140, 47187), (146, 47157), (166, 47118), (169, 47115),

Gene: MikeLiesIn_15 Start: 5050, Stop: 5400, Start Num: 72

Candidate Starts for MikeLiesIn_15:

(Start: 72 @5050 has 153 MA's), (Start: 80 @5065 has 4 MA's), (140, 5185), (170, 5263), (179, 5275), (180, 5278), (228, 5371),

Gene: MinionDave_75 Start: 47890, Stop: 48285, Start Num: 76

Candidate Starts for MinionDave_75:

(Start: 76 @47890 has 29 MA's), (Start: 80 @47902 has 4 MA's), (140, 48037), (172, 48115), (196, 48166), (206, 48190), (215, 48208), (220, 48223), (230, 48262),

Gene: Minnie_76 Start: 50008, Stop: 50400, Start Num: 71

Candidate Starts for Minnie_76:

(Start: 71 @50008 has 42 MA's), (Start: 80 @50023 has 4 MA's), (141, 50161), (179, 50245), (181, 50251), (191, 50275), (217, 50338), (228, 50377),

Gene: Misfit_44 Start: 36046, Stop: 35612, Start Num: 77

Candidate Starts for Misfit_44:

(41, 36118), (Start: 77 @36046 has 148 MA's), (Start: 80 @36034 has 4 MA's), (130, 35884), (140, 35824),

Gene: MisterCuddles_76 Start: 48247, Stop: 48597, Start Num: 94

Candidate Starts for MisterCuddles_76:

(Start: 94 @48247 has 13 MA's), (101, 48262), (140, 48382),

Gene: MmasiCarm_51 Start: 45638, Stop: 45195, Start Num: 77

Candidate Starts for MmasiCarm_51:

(Start: 77 @45638 has 148 MA's), (Start: 80 @45626 has 4 MA's), (117, 45506), (130, 45476), (140, 45416), (153, 45380), (156, 45374), (223, 45242),

Gene: Moby_10 Start: 2543, Stop: 2995, Start Num: 71

Candidate Starts for Moby_10:

(Start: 71 @2543 has 42 MA's), (Start: 80 @2558 has 4 MA's), (128, 2708), (140, 2765), (177, 2849), (180, 2855), (181, 2858), (220, 2942),

Gene: Modragons_91 Start: 50829, Stop: 51230, Start Num: 75

Candidate Starts for Modragons_91:

(26, 50706), (57, 50799), (61, 50808), (Start: 75 @50829 has 10 MA's), (140, 50997), (144, 51024), (153, 51042), (167, 51069), (200, 51138), (202, 51141), (220, 51177),

Gene: Moiqah_10 Start: 2543, Stop: 2995, Start Num: 71

Candidate Starts for Moiqah_10:

(Start: 71 @2543 has 42 MA's), (Start: 80 @2558 has 4 MA's), (128, 2708), (140, 2765), (177, 2849), (180, 2855), (181, 2858), (220, 2942),

Gene: Momo_13 Start: 3970, Stop: 4335, Start Num: 72

Candidate Starts for Momo_13:

(Start: 72 @3970 has 153 MA's), (Start: 80 @3985 has 4 MA's), (140, 4120), (170, 4198), (179, 4210), (180, 4213), (228, 4306),

Gene: Moonbeam_87 Start: 50558, Stop: 50971, Start Num: 77

Candidate Starts for Moonbeam_87:

(31, 50435), (62, 50528), (66, 50537), (Start: 77 @50558 has 148 MA's), (92, 50615), (109, 50654), (140, 50750), (153, 50786), (156, 50792), (223, 50924),

Gene: Morizzled23_13 Start: 3949, Stop: 4314, Start Num: 72

Candidate Starts for Morizzled23_13:

(Start: 72 @3949 has 153 MA's), (Start: 80 @3964 has 4 MA's), (140, 4099), (170, 4177), (179, 4189), (180, 4192), (228, 4285),

Gene: Mortcellus_50 Start: 46245, Stop: 45802, Start Num: 77

Candidate Starts for Mortcellus_50:

(Start: 77 @46245 has 148 MA's), (Start: 80 @46233 has 4 MA's), (117, 46113), (130, 46083), (140, 46023), (153, 45987), (156, 45981), (223, 45849),

Gene: MosMoris_9 Start: 2524, Stop: 2901, Start Num: 72

Candidate Starts for MosMoris_9:

(Start: 72 @2524 has 153 MA's), (Start: 80 @2539 has 4 MA's), (140, 2674), (159, 2707), (169, 2728), (199, 2794), (230, 2878),

Gene: Mova_78 Start: 47116, Stop: 47487, Start Num: 100

Candidate Starts for Mova_78:

(Start: 100 @47116 has 1 MA's), (105, 47131), (140, 47251), (144, 47278), (153, 47296), (167, 47323), (200, 47392), (202, 47395), (220, 47431),

Gene: MrPhizzler_54 Start: 47284, Stop: 46895, Start Num: 77

Candidate Starts for MrPhizzler_54:

(Start: 77 @47284 has 148 MA's), (Start: 80 @47272 has 4 MA's), (140, 47116), (153, 47080), (156, 47074), (223, 46942),

Gene: Ms6_78 Start: 44647, Stop: 45045, Start Num: 97

Candidate Starts for Ms6_78:

(Start: 75 @44581 has 10 MA's), (Start: 80 @44593 has 4 MA's), (97, 44647), (131, 44740), (179, 44887), (181, 44893), (191, 44917), (228, 45016),

Gene: Mulaychimus_51 Start: 45574, Stop: 45131, Start Num: 77

Candidate Starts for Mulaychimus_51:

(Start: 77 @45574 has 148 MA's), (Start: 80 @45562 has 4 MA's), (117, 45442), (130, 45412), (140, 45352), (153, 45316), (156, 45310), (223, 45178),

Gene: Murica_44 Start: 35981, Stop: 35547, Start Num: 77

Candidate Starts for Murica_44:

(41, 36053), (Start: 77 @35981 has 148 MA's), (Start: 80 @35969 has 4 MA's), (130, 35819), (140, 35759),

Gene: NEHalo_58 Start: 40784, Stop: 40425, Start Num: 77

Candidate Starts for NEHalo_58:

(9, 40985), (50, 40841), (51, 40838), (Start: 77 @40784 has 148 MA's), (Start: 80 @40772 has 4 MA's), (140, 40637), (153, 40601), (156, 40595), (223, 40463),

Gene: Naija_13 Start: 3970, Stop: 4335, Start Num: 72

Candidate Starts for Naija_13:

(Start: 72 @3970 has 153 MA's), (Start: 80 @3985 has 4 MA's), (140, 4120), (170, 4198), (179, 4210), (180, 4213), (228, 4306),

Gene: Nala_43 Start: 35539, Stop: 35096, Start Num: 77

Candidate Starts for Nala_43:

(43, 35611), (Start: 77 @35539 has 148 MA's), (Start: 80 @35527 has 4 MA's), (130, 35377), (140, 35317), (153, 35281), (156, 35275), (223, 35143),

Gene: Napoleon13_13 Start: 3968, Stop: 4333, Start Num: 72

Candidate Starts for Napoleon13_13:

(Start: 72 @3968 has 153 MA's), (Start: 80 @3983 has 4 MA's), (140, 4118), (170, 4196), (179, 4208), (180, 4211), (228, 4304),

Gene: NedWong_14 Start: 5050, Stop: 5400, Start Num: 72

Candidate Starts for NedWong_14:

(Start: 72 @5050 has 153 MA's), (Start: 80 @5065 has 4 MA's), (140, 5185), (170, 5263), (179, 5275), (180, 5278), (228, 5371),

Gene: Ngannou_13 Start: 3949, Stop: 4314, Start Num: 72

Candidate Starts for Ngannou_13:

(Start: 72 @3949 has 153 MA's), (Start: 80 @3964 has 4 MA's), (140, 4099), (170, 4177), (179, 4189), (180, 4192), (228, 4285),

Gene: Nibley_68 Start: 46367, Stop: 45957, Start Num: 55

Candidate Starts for Nibley_68:

(55, 46367), (60, 46355), (140, 46175), (153, 46139), (156, 46133), (223, 46001),

Gene: Nichirin_86 Start: 50184, Stop: 50606, Start Num: 61

Candidate Starts for Nichirin_86:

(26, 50082), (57, 50175), (61, 50184), (Start: 75 @50205 has 10 MA's), (140, 50373), (144, 50400), (153, 50418), (167, 50445), (200, 50514), (202, 50517), (220, 50553),

Gene: Nicole21_53 Start: 47623, Stop: 47051, Start Num: 77

Candidate Starts for Nicole21_53:

(43, 47695), (53, 47674), (54, 47668), (Start: 77 @47623 has 148 MA's), (Start: 80 @47611 has 4 MA's), (117, 47491), (130, 47461), (140, 47401), (153, 47365), (156, 47359), (223, 47227), (233, 47185),

Gene: NihilNomen_74 Start: 51071, Stop: 50655, Start Num: 76

Candidate Starts for NihilNomen_74:

(Start: 76 @51071 has 29 MA's), (Start: 80 @51059 has 4 MA's), (113, 50975), (121, 50957), (140, 50879), (146, 50849), (166, 50810), (169, 50807),

Gene: Nimrod_45 Start: 36239, Stop: 35805, Start Num: 77

Candidate Starts for Nimrod_45:

(41, 36311), (Start: 77 @36239 has 148 MA's), (Start: 80 @36227 has 4 MA's), (130, 36077), (140, 36017),

Gene: Nitzel_73 Start: 45555, Stop: 45947, Start Num: 71

Candidate Starts for Nitzel_73:

(Start: 71 @45555 has 42 MA's), (Start: 80 @45570 has 4 MA's), (140, 45705), (179, 45792), (181, 45798), (191, 45822), (217, 45885), (228, 45924),

Gene: NonchalantPear_46 Start: 35570, Stop: 35184, Start Num: 64

Candidate Starts for NonchalantPear_46:

(3, 35774), (22, 35690), (Start: 64 @35570 has 2 MA's), (Start: 75 @35546 has 10 MA's), (Start: 80 @35534 has 4 MA's), (140, 35414), (161, 35360), (165, 35351), (187, 35303), (193, 35297), (211, 35261), (218, 35243), (228, 35207),

Gene: Norm_14 Start: 5050, Stop: 5400, Start Num: 72

Candidate Starts for Norm_14:

(Start: 72 @5050 has 153 MA's), (Start: 80 @5065 has 4 MA's), (140, 5185), (170, 5263), (179, 5275), (180, 5278), (228, 5371),

Gene: NormanBulbieJr_75 Start: 48043, Stop: 48468, Start Num: 71

Candidate Starts for NormanBulbieJr_75:

(Start: 71 @48043 has 42 MA's), (Start: 80 @48058 has 4 MA's), (140, 48238), (177, 48322), (180, 48328), (181, 48331), (220, 48415),

Gene: NormanBulbieJr_80 Start: 49599, Stop: 49982, Start Num: 77

Candidate Starts for NormanBulbieJr_80:

(13, 49425), (17, 49434), (24, 49458), (30, 49476), (Start: 59 @49569 has 1 MA's), (65, 49578), (Start: 77 @49599 has 148 MA's), (140, 49785), (149, 49815), (176, 49851), (210, 49902),

Gene: Obutu_51 Start: 45593, Stop: 45150, Start Num: 77

Candidate Starts for Obutu_51:

(Start: 77 @45593 has 148 MA's), (Start: 80 @45581 has 4 MA's), (117, 45461), (130, 45431), (140, 45371), (153, 45335), (156, 45329), (223, 45197),

Gene: Ochi17_92 Start: 50436, Stop: 50837, Start Num: 75

Candidate Starts for Ochi17_92:

(26, 50313), (57, 50406), (61, 50415), (Start: 75 @50436 has 10 MA's), (140, 50604), (144, 50631), (153, 50649), (167, 50676), (200, 50745), (202, 50748), (220, 50784),

Gene: Odette_72 Start: 50114, Stop: 49698, Start Num: 76

Candidate Starts for Odette_72:

(Start: 76 @50114 has 29 MA's), (Start: 80 @50102 has 4 MA's), (113, 50018), (121, 50000), (140, 49922), (146, 49892), (166, 49853), (169, 49850),

Gene: OfUltron_94 Start: 50985, Stop: 51386, Start Num: 75

Candidate Starts for OfUltron_94:

(26, 50862), (57, 50955), (61, 50964), (Start: 75 @50985 has 10 MA's), (140, 51153), (144, 51180), (153, 51198), (167, 51225), (200, 51294), (202, 51297), (220, 51333),

Gene: Ohno789_61 Start: 41528, Stop: 41148, Start Num: 77

Candidate Starts for Ohno789_61:

(9, 41729), (50, 41585), (51, 41582), (Start: 77 @41528 has 148 MA's), (Start: 80 @41516 has 4 MA's), (140, 41360), (153, 41324), (156, 41318), (223, 41186),

Gene: Oksu_89 Start: 51566, Stop: 51967, Start Num: 75

Candidate Starts for Oksu_89:

(10, 51392), (12, 51401), (21, 51425), (57, 51536), (61, 51545), (Start: 75 @51566 has 10 MA's), (140, 51734), (144, 51761), (153, 51779), (167, 51806), (200, 51875), (202, 51878), (220, 51914),

Gene: Orwigg_52 Start: 47308, Stop: 46766, Start Num: 77

Candidate Starts for Orwigg_52:

(43, 47380), (53, 47359), (54, 47353), (Start: 77 @47308 has 148 MA's), (Start: 80 @47296 has 4 MA's), (117, 47176), (130, 47146), (140, 47086), (153, 47050), (156, 47044), (223, 46912),

Gene: Ovechkin_85 Start: 49845, Stop: 50309, Start Num: 59

Candidate Starts for Ovechkin_85:

(Start: 59 @49845 has 1 MA's), (Start: 77 @49878 has 148 MA's), (124, 50022), (140, 50094), (165, 50157),

Gene: Ovechkin_81 Start: 48812, Stop: 49225, Start Num: 74

Candidate Starts for Ovechkin_81:

(Start: 74 @48812 has 42 MA's), (Start: 80 @48827 has 4 MA's), (103, 48887), (135, 48959), (140, 48992), (183, 49088), (214, 49154), (222, 49178),

Gene: PMC_74 Start: 46932, Stop: 47360, Start Num: 74

Candidate Starts for PMC_74:

(Start: 74 @46932 has 42 MA's), (Start: 80 @46947 has 4 MA's), (93, 47001), (130, 47094), (140, 47154), (228, 47331),

Gene: Palpatine_45 Start: 36011, Stop: 35577, Start Num: 77

Candidate Starts for Palpatine_45:

(41, 36083), (Start: 77 @36011 has 148 MA's), (Start: 80 @35999 has 4 MA's), (130, 35849), (140, 35789),

Gene: ParkTD_14 Start: 5050, Stop: 5400, Start Num: 72

Candidate Starts for ParkTD_14:

(Start: 72 @5050 has 153 MA's), (Start: 80 @5065 has 4 MA's), (140, 5185), (170, 5263), (179, 5275), (180, 5278), (228, 5371),

Gene: Peterson_65 Start: 43369, Stop: 42962, Start Num: 77

Candidate Starts for Peterson_65:

(8, 43570), (50, 43426), (51, 43423), (Start: 77 @43369 has 148 MA's), (Start: 80 @43357 has 4 MA's), (101, 43318), (139, 43216), (166, 43138), (195, 43084), (209, 43051), (213, 43042), (225, 42994),

Gene: Peterson_79 Start: 49024, Stop: 48623, Start Num: 77

Candidate Starts for Peterson_79:

(Start: 77 @49024 has 148 MA's), (Start: 80 @49012 has 4 MA's), (106, 48949), (108, 48940), (140, 48847), (152, 48805), (210, 48709), (228, 48652),

Gene: Petra64142_47 Start: 36475, Stop: 36041, Start Num: 77

Candidate Starts for Petra64142_47:

(41, 36547), (Start: 77 @36475 has 148 MA's), (Start: 80 @36463 has 4 MA's), (130, 36313), (140, 36253),

Gene: Petruccio_60 Start: 40166, Stop: 39780, Start Num: 77

Candidate Starts for Petruccio_60:

(Start: 77 @40166 has 148 MA's), (Start: 80 @40154 has 4 MA's), (140, 40034), (164, 39962), (179, 39938), (210, 39866), (228, 39803),

Gene: Phalconet_76 Start: 47337, Stop: 47762, Start Num: 71

Candidate Starts for Phalconet_76:

(Start: 71 @47337 has 42 MA's), (Start: 80 @47352 has 4 MA's), (111, 47436), (119, 47454), (140, 47532), (177, 47616), (180, 47622), (181, 47625), (220, 47709),

Gene: PhatBacter_45 Start: 36025, Stop: 35591, Start Num: 77

Candidate Starts for PhatBacter_45:

(41, 36097), (Start: 77 @36025 has 148 MA's), (Start: 80 @36013 has 4 MA's), (130, 35863), (140, 35803),

Gene: Phatniss_74 Start: 46570, Stop: 46998, Start Num: 74

Candidate Starts for Phatniss_74:

(Start: 74 @46570 has 42 MA's), (Start: 80 @46585 has 4 MA's), (93, 46639), (130, 46732), (140, 46792), (228, 46969),

Gene: Phaux_44 Start: 36023, Stop: 35589, Start Num: 77

Candidate Starts for Phaux_44:

(41, 36095), (Start: 77 @36023 has 148 MA's), (Start: 80 @36011 has 4 MA's), (130, 35861), (140, 35801),

Gene: Phayeta_52 Start: 45475, Stop: 45032, Start Num: 77

Candidate Starts for Phayeta_52:

(Start: 77 @45475 has 148 MA's), (Start: 80 @45463 has 4 MA's), (117, 45343), (130, 45313), (140, 45253), (153, 45217), (156, 45211), (223, 45079),

Gene: PherrisBueller_60 Start: 39602, Stop: 39222, Start Num: 77

Candidate Starts for PherrisBueller_60:

(9, 39803), (50, 39659), (51, 39656), (Start: 77 @39602 has 148 MA's), (Start: 80 @39590 has 4 MA's), (140, 39434), (153, 39398), (156, 39392), (223, 39260),

Gene: PherrisBueller_78 Start: 45810, Stop: 45409, Start Num: 76

Candidate Starts for PherrisBueller_78:

(Start: 76 @45810 has 29 MA's), (140, 45618), (170, 45540), (179, 45528), (180, 45525), (230, 45432),

Gene: PhesterPhotato_83 Start: 48607, Stop: 48993, Start Num: 77

Candidate Starts for PhesterPhotato_83:

(Start: 77 @48607 has 148 MA's), (Start: 80 @48619 has 4 MA's), (140, 48739), (164, 48811), (179, 48835), (210, 48907),

Gene: PhesterPhotato_82 Start: 48233, Stop: 48610, Start Num: 71

Candidate Starts for PhesterPhotato_82:

(Start: 71 @48233 has 42 MA's), (Start: 80 @48248 has 4 MA's), (140, 48383), (179, 48470), (181, 48476), (191, 48500),

Gene: Phlegm_14 Start: 3970, Stop: 4335, Start Num: 72

Candidate Starts for Phlegm_14:

(Start: 72 @3970 has 153 MA's), (Start: 80 @3985 has 4 MA's), (140, 4120), (170, 4198), (179, 4210), (180, 4213), (228, 4306),

Gene: Phoebus_76 Start: 52253, Stop: 51837, Start Num: 76

Candidate Starts for Phoebus_76:

(Start: 76 @52253 has 29 MA's), (Start: 80 @52241 has 4 MA's), (113, 52157), (121, 52139), (140, 52061), (146, 52031), (166, 51992), (169, 51989),

Gene: Phox_6 Start: 2748, Stop: 3188, Start Num: 77

Candidate Starts for Phox_6:

(Start: 77 @2748 has 148 MA's), (Start: 80 @2760 has 4 MA's), (119, 2880), (140, 2970), (152, 3012), (210, 3108), (219, 3132),

Gene: Phox_14 Start: 5699, Stop: 6049, Start Num: 72

Candidate Starts for Phox_14:

(Start: 72 @5699 has 153 MA's), (Start: 80 @5714 has 4 MA's), (140, 5834), (170, 5912), (179, 5924), (180, 5927), (228, 6020),

Gene: Phusco_13 Start: 3966, Stop: 4331, Start Num: 72

Candidate Starts for Phusco_13:

(Start: 72 @3966 has 153 MA's), (Start: 80 @3981 has 4 MA's), (140, 4116), (170, 4194), (179, 4206), (180, 4209), (228, 4302),

Gene: Pinkcreek_9 Start: 4088, Stop: 4453, Start Num: 72

Candidate Starts for Pinkcreek_9:

(Start: 72 @4088 has 153 MA's), (Start: 80 @4103 has 4 MA's), (140, 4238), (170, 4316), (179, 4328), (180, 4331), (228, 4424),

Gene: Pippy_75 Start: 47171, Stop: 47551, Start Num: 74

Candidate Starts for Pippy_75:

(Start: 74 @47171 has 42 MA's), (Start: 80 @47186 has 4 MA's), (106, 47246), (133, 47318), (140, 47351), (228, 47528),

Gene: Pivoine_13 Start: 3970, Stop: 4335, Start Num: 72

Candidate Starts for Pivoine_13:

(Start: 72 @3970 has 153 MA's), (Start: 80 @3985 has 4 MA's), (140, 4120), (170, 4198), (179, 4210), (180, 4213), (228, 4306),

Gene: Pleione_15 Start: 5050, Stop: 5400, Start Num: 72

Candidate Starts for Pleione_15:

(Start: 72 @5050 has 153 MA's), (Start: 80 @5065 has 4 MA's), (140, 5185), (170, 5263), (179, 5275), (180, 5278), (228, 5371),

Gene: Plumbus_81 Start: 45998, Stop: 46525, Start Num: 34

Candidate Starts for Plumbus_81:

(Start: 34 @45998 has 1 MA's), (35, 46001), (54, 46058), (56, 46061), (62, 46073), (107, 46163), (140, 46265), (164, 46337), (179, 46361), (210, 46433), (228, 46496),

Gene: Policronamos_45 Start: 36023, Stop: 35589, Start Num: 77

Candidate Starts for Policronamos_45:

(41, 36095), (Start: 77 @36023 has 148 MA's), (Start: 80 @36011 has 4 MA's), (130, 35861), (140, 35801),

Gene: PopTart_69 Start: 45137, Stop: 45511, Start Num: 72

Candidate Starts for PopTart_69:

(Start: 72 @45137 has 153 MA's), (Start: 80 @45152 has 4 MA's), (139, 45272), (140, 45287), (157, 45329), (204, 45425), (216, 45449),

Gene: Porcelain_79 Start: 49238, Stop: 48840, Start Num: 74

Candidate Starts for Porcelain_79:

(Start: 74 @49238 has 42 MA's), (Start: 80 @49226 has 4 MA's), (140, 49070), (177, 48986), (180, 48980), (181, 48977), (220, 48893),

Gene: Porcelain_73 Start: 47379, Stop: 46963, Start Num: 76

Candidate Starts for Porcelain_73:

(Start: 76 @47379 has 29 MA's), (Start: 80 @47367 has 4 MA's), (113, 47283), (121, 47265), (140, 47187), (146, 47157), (166, 47118), (169, 47115),

Gene: PowerRanger_59 Start: 41974, Stop: 41528, Start Num: 76

Candidate Starts for PowerRanger_59:

(45, 42031), (48, 42028), (Start: 76 @41974 has 29 MA's), (92, 41917), (113, 41878), (121, 41860), (140, 41782), (164, 41710), (178, 41686), (212, 41614), (230, 41551),

Gene: Pringar_7 Start: 2135, Stop: 2512, Start Num: 72

Candidate Starts for Pringar_7:

(Start: 72 @2135 has 153 MA's), (Start: 80 @2147 has 4 MA's), (140, 2303), (170, 2381), (179, 2393), (180, 2396),

Gene: Priscilla_82 Start: 49697, Stop: 50080, Start Num: 77

Candidate Starts for Priscilla_82:

(13, 49523), (17, 49532), (24, 49556), (30, 49574), (Start: 59 @49667 has 1 MA's), (65, 49676), (Start: 77 @49697 has 148 MA's), (140, 49883), (149, 49913), (176, 49949), (210, 50000),

Gene: Priscilla_76 Start: 48141, Stop: 48566, Start Num: 71

Candidate Starts for Priscilla_76:

(Start: 71 @48141 has 42 MA's), (Start: 80 @48156 has 4 MA's), (140, 48336), (177, 48420), (180, 48426), (181, 48429), (220, 48513),

Gene: PurduePete_14 Start: 5050, Stop: 5400, Start Num: 72

Candidate Starts for PurduePete_14:

(Start: 72 @5050 has 153 MA's), (Start: 80 @5065 has 4 MA's), (140, 5185), (170, 5263), (179, 5275), (180, 5278), (228, 5371),

Gene: Quallification_43 Start: 35661, Stop: 35215, Start Num: 77

Candidate Starts for Quallification_43:

(41, 35733), (Start: 77 @35661 has 148 MA's), (Start: 80 @35649 has 4 MA's), (130, 35499), (140, 35439), (146, 35409), (166, 35370), (169, 35367),

Gene: Quasimodo_13 Start: 4969, Stop: 5334, Start Num: 72

Candidate Starts for Quasimodo_13:

(Start: 72 @4969 has 153 MA's), (Start: 80 @4984 has 4 MA's), (140, 5119), (170, 5197), (179, 5209), (180, 5212), (228, 5305),

Gene: Rabinovish_12 Start: 4755, Stop: 5105, Start Num: 72

Candidate Starts for Rabinovish_12:

(Start: 72 @4755 has 153 MA's), (Start: 80 @4770 has 4 MA's), (140, 4890), (170, 4968), (179, 4980), (180, 4983), (228, 5076),

Gene: Radiance_78 Start: 48851, Stop: 49231, Start Num: 74

Candidate Starts for Radiance_78:

(Start: 74 @48851 has 42 MA's), (Start: 80 @48866 has 4 MA's), (106, 48926), (133, 48998), (140, 49031), (228, 49208),

Gene: Raela_7 Start: 2533, Stop: 2922, Start Num: 74

Candidate Starts for Raela_7:

(Start: 74 @2533 has 42 MA's), (Start: 80 @2548 has 4 MA's), (140, 2668), (164, 2740), (179, 2764), (210, 2836), (228, 2899),

Gene: Rahel_13 Start: 3966, Stop: 4331, Start Num: 72

Candidate Starts for Rahel_13:

(Start: 72 @3966 has 153 MA's), (Start: 80 @3981 has 4 MA's), (140, 4116), (170, 4194), (179, 4206), (180, 4209), (228, 4302),

Gene: Raid_77 Start: 47398, Stop: 46961, Start Num: 76

Candidate Starts for Raid_77:

(Start: 76 @47398 has 29 MA's), (Start: 80 @47386 has 4 MA's), (105, 47302), (140, 47206), (172, 47128), (196, 47077), (206, 47053), (215, 47035), (220, 47020), (230, 46984),

Gene: Ramsey_83 Start: 50333, Stop: 50683, Start Num: 74

Candidate Starts for Ramsey_83:

(Start: 74 @50333 has 42 MA's), (Start: 80 @50348 has 4 MA's), (140, 50483), (228, 50660),

Gene: RedBird_81 Start: 50091, Stop: 50441, Start Num: 74

Candidate Starts for RedBird_81:

(Start: 74 @50091 has 42 MA's), (Start: 80 @50106 has 4 MA's), (140, 50241), (228, 50418),

Gene: RedRaider77_8 Start: 2530, Stop: 2889, Start Num: 72

Candidate Starts for RedRaider77_8:

(Start: 72 @2530 has 153 MA's), (Start: 80 @2545 has 4 MA's), (140, 2680), (170, 2758), (179, 2770), (180, 2773), (228, 2866), (232, 2884),

Gene: RedRaider77_10 Start: 3149, Stop: 3538, Start Num: 77

Candidate Starts for RedRaider77_10:

(Start: 77 @3149 has 148 MA's), (Start: 80 @3161 has 4 MA's), (140, 3317), (153, 3353), (156, 3359), (223, 3491),

Gene: Redno2_70 Start: 47867, Stop: 47451, Start Num: 76

Candidate Starts for Redno2_70:

(Start: 76 @47867 has 29 MA's), (Start: 80 @47855 has 4 MA's), (113, 47771), (121, 47753), (140, 47675), (146, 47645), (166, 47606), (169, 47603),

Gene: Renaud18_89 Start: 49475, Stop: 49831, Start Num: 71

Candidate Starts for Renaud18_89:

(15, 49322), (20, 49337), (Start: 71 @49475 has 42 MA's), (Start: 80 @49490 has 4 MA's), (140, 49610), (163, 49670), (172, 49685), (186, 49709), (190, 49715), (207, 49748), (228, 49802),

Gene: Rialto_90 Start: 50654, Stop: 51067, Start Num: 77

Candidate Starts for Rialto_90:

(31, 50531), (62, 50624), (66, 50633), (Start: 77 @50654 has 148 MA's), (92, 50711), (109, 50750), (140, 50846), (153, 50882), (156, 50888), (223, 51020),

Gene: Rimmer_43 Start: 35365, Stop: 34928, Start Num: 77

Candidate Starts for Rimmer_43:

(43, 35437), (Start: 77 @35365 has 148 MA's), (Start: 80 @35353 has 4 MA's), (130, 35203), (140, 35143), (153, 35107), (156, 35101), (223, 34969),

Gene: Rimu_53 Start: 47304, Stop: 46915, Start Num: 77

Candidate Starts for Rimu_53:

(Start: 77 @47304 has 148 MA's), (Start: 80 @47292 has 4 MA's), (140, 47136), (153, 47100), (156, 47094), (223, 46962),

Gene: Ringer_61 Start: 42004, Stop: 41573, Start Num: 76

Candidate Starts for Ringer_61:

(6, 42205), (45, 42061), (48, 42058), (Start: 76 @42004 has 29 MA's), (Start: 80 @41992 has 4 MA's), (127, 41842), (129, 41839), (140, 41782), (170, 41704), (179, 41692), (180, 41689),

Gene: Rita_85 Start: 50514, Stop: 50948, Start Num: 68

Candidate Starts for Rita_85:

(11, 50340), (16, 50355), (19, 50364), (29, 50394), (Start: 68 @50514 has 1 MA's), (Start: 80 @50538 has 4 MA's), (140, 50718), (183, 50814), (214, 50880), (222, 50904), (228, 50925),

Gene: Rita1961_51 Start: 45594, Stop: 45151, Start Num: 77

Candidate Starts for Rita1961_51:

(Start: 77 @45594 has 148 MA's), (Start: 80 @45582 has 4 MA's), (117, 45462), (130, 45432), (140, 45372), (153, 45336), (156, 45330), (223, 45198),

Gene: Rizal_13 Start: 3965, Stop: 4330, Start Num: 72

Candidate Starts for Rizal_13:

(Start: 72 @3965 has 153 MA's), (Start: 80 @3980 has 4 MA's), (140, 4115), (170, 4193), (179, 4205), (180, 4208), (228, 4301),

Gene: RoMag_5 Start: 2623, Stop: 3003, Start Num: 80

Candidate Starts for RoMag_5:

(Start: 75 @2611 has 10 MA's), (Start: 80 @2623 has 4 MA's), (101, 2671), (104, 2677), (131, 2740), (140, 2794), (170, 2872), (179, 2884), (180, 2887),

Gene: Rockne_78 Start: 46944, Stop: 47372, Start Num: 74

Candidate Starts for Rockne_78:

(Start: 74 @46944 has 42 MA's), (Start: 80 @46959 has 4 MA's), (93, 47013), (130, 47106), (140, 47166), (228, 47343),

Gene: Ronan_6 Start: 1749, Stop: 2189, Start Num: 77

Candidate Starts for Ronan_6:

(Start: 77 @1749 has 148 MA's), (Start: 80 @1761 has 4 MA's), (119, 1881), (140, 1971), (152, 2013), (210, 2109), (219, 2133),

Gene: Roots515_14 Start: 5049, Stop: 5399, Start Num: 72

Candidate Starts for Roots515_14:

(Start: 72 @5049 has 153 MA's), (Start: 80 @5064 has 4 MA's), (140, 5184), (170, 5262), (179, 5274), (180, 5277), (228, 5370),

Gene: Ruby_73 Start: 48248, Stop: 48598, Start Num: 94

Candidate Starts for Ruby_73:

(Start: 94 @48248 has 13 MA's), (101, 48263), (140, 48383),

Gene: SG4_76 Start: 47114, Stop: 47569, Start Num: 71

Candidate Starts for SG4_76:

(Start: 71 @47114 has 42 MA's), (Start: 80 @47129 has 4 MA's), (126, 47279), (128, 47282), (140, 47339), (177, 47423), (180, 47429), (181, 47432), (220, 47516),

Gene: STLscum_69 Start: 42972, Stop: 42544, Start Num: 77

Candidate Starts for STLscum_69:

(8, 43173), (50, 43029), (51, 43026), (Start: 77 @42972 has 148 MA's), (Start: 80 @42960 has 4 MA's), (140, 42804), (164, 42726), (179, 42702), (210, 42630),

Gene: SVoro_14 Start: 5044, Stop: 5394, Start Num: 72

Candidate Starts for SVoro_14:

(Start: 72 @5044 has 153 MA's), (Start: 80 @5059 has 4 MA's), (140, 5179), (170, 5257), (179, 5269), (180, 5272), (228, 5365),

Gene: Saal_78 Start: 49224, Stop: 49649, Start Num: 71

Candidate Starts for Saal_78:

(Start: 71 @49224 has 42 MA's), (Start: 80 @49239 has 4 MA's), (140, 49419), (177, 49503), (180, 49509), (181, 49512), (220, 49596),

Gene: Sabbb_88 Start: 48209, Stop: 48622, Start Num: 77

Candidate Starts for Sabbb_88:

(14, 48035), (18, 48044), (25, 48068), (31, 48086), (62, 48179), (66, 48188), (Start: 77 @48209 has 148 MA's), (92, 48266), (109, 48305), (140, 48401), (153, 48437), (156, 48443), (223, 48575),

Gene: Saints25_43 Start: 34897, Stop: 34421, Start Num: 77

Candidate Starts for Saints25_43:

(41, 34969), (Start: 77 @34897 has 148 MA's), (Start: 80 @34885 has 4 MA's), (130, 34735), (140, 34675), (164, 34603), (179, 34579), (210, 34507), (230, 34444),

Gene: Salacia_15 Start: 5050, Stop: 5400, Start Num: 72

Candidate Starts for Salacia_15:

(Start: 72 @5050 has 153 MA's), (Start: 80 @5065 has 4 MA's), (140, 5185), (170, 5263), (179, 5275), (180, 5278), (228, 5371),

Gene: Sandaddy_57 Start: 40445, Stop: 40086, Start Num: 77

Candidate Starts for Sandaddy_57:

(9, 40646), (50, 40502), (51, 40499), (Start: 77 @40445 has 148 MA's), (Start: 80 @40433 has 4 MA's), (140, 40298), (153, 40262), (156, 40256), (223, 40124),

Gene: Sandalphon_74 Start: 47993, Stop: 48385, Start Num: 71

Candidate Starts for Sandalphon_74:

(Start: 71 @47993 has 42 MA's), (Start: 80 @48008 has 4 MA's), (141, 48146), (179, 48230), (181, 48236), (191, 48260), (217, 48323), (228, 48362),

Gene: SarFire_60 Start: 40901, Stop: 40488, Start Num: 77

Candidate Starts for SarFire_60:

(8, 41102), (50, 40958), (51, 40955), (Start: 77 @40901 has 148 MA's), (90, 40862), (111, 40817), (140, 40754), (164, 40676), (179, 40652), (210, 40580),

Gene: Sarma624_77 Start: 44943, Stop: 45320, Start Num: 94

Candidate Starts for Sarma624_77:

(Start: 94 @44943 has 13 MA's), (101, 44958), (140, 45114), (154, 45156), (192, 45222), (194, 45225), (228, 45294),

Gene: Saskia_69 Start: 41717, Stop: 41358, Start Num: 102

Candidate Starts for Saskia_69:

(Start: 71 @41786 has 42 MA's), (82, 41762), (102, 41717), (106, 41705), (140, 41585), (177, 41501), (180, 41495), (181, 41492), (220, 41408),

Gene: Sassafras_81 Start: 48408, Stop: 48758, Start Num: 74

Candidate Starts for Sassafras_81:

(Start: 74 @48408 has 42 MA's), (Start: 80 @48423 has 4 MA's), (140, 48558), (228, 48735),

Gene: SassyB_69 Start: 45137, Stop: 45511, Start Num: 72

Candidate Starts for SassyB_69:

(Start: 72 @45137 has 153 MA's), (Start: 80 @45152 has 4 MA's), (139, 45272), (140, 45287), (157, 45329), (204, 45425), (216, 45449),

Gene: Schatzie_68 Start: 49861, Stop: 49445, Start Num: 76

Candidate Starts for Schatzie_68:

(Start: 76 @49861 has 29 MA's), (Start: 80 @49849 has 4 MA's), (113, 49765), (121, 49747), (140, 49669), (146, 49639), (166, 49600), (169, 49597),

Gene: ScoobyDoobyDoo_2 Start: 227, Stop: 613, Start Num: 77

Candidate Starts for ScoobyDoobyDoo_2:

(Start: 77 @227 has 148 MA's), (Start: 80 @239 has 4 MA's), (140, 395), (153, 431), (156, 437), (198, 515), (223, 569),

Gene: ScottMcG_15 Start: 5206, Stop: 5562, Start Num: 71

Candidate Starts for ScottMcG_15:

(Start: 71 @5206 has 42 MA's), (Start: 80 @5221 has 4 MA's), (140, 5341), (222, 5512), (228, 5533),

Gene: Scowl_62 Start: 40833, Stop: 40453, Start Num: 77

Candidate Starts for Scowl_62:

(50, 40890), (51, 40887), (Start: 77 @40833 has 148 MA's), (Start: 80 @40821 has 4 MA's), (140, 40665), (153, 40629), (156, 40623), (223, 40491),

Gene: Seabastian_94 Start: 50986, Stop: 51387, Start Num: 75

Candidate Starts for Seabastian_94:

(26, 50863), (57, 50956), (61, 50965), (Start: 75 @50986 has 10 MA's), (140, 51154), (144, 51181), (153, 51199), (167, 51226), (200, 51295), (202, 51298), (220, 51334),

Gene: Seanderson_63 Start: 42839, Stop: 42384, Start Num: 75

Candidate Starts for Seanderson_63:

(8, 43040), (47, 42896), (50, 42893), (Start: 75 @42839 has 10 MA's), (127, 42677), (129, 42674), (140, 42617), (144, 42590), (153, 42572), (167, 42545), (200, 42476), (202, 42473), (220, 42437),

Gene: Shaboozey_67 Start: 45344, Stop: 44943, Start Num: 76

Candidate Starts for Shaboozey_67:

(Start: 76 @45344 has 29 MA's), (Start: 80 @45332 has 4 MA's), (113, 45248), (121, 45230), (140, 45152), (170, 45074), (179, 45062), (180, 45059), (230, 44966),

Gene: Shaboozey_74 Start: 47299, Stop: 46889, Start Num: 55

Candidate Starts for Shaboozey_74:

(55, 47299), (60, 47287), (140, 47107), (153, 47071), (156, 47065), (223, 46933),

Gene: Shaqnato_6 Start: 1766, Stop: 2206, Start Num: 77

Candidate Starts for Shaqnato_6:

(Start: 77 @1766 has 148 MA's), (Start: 80 @1778 has 4 MA's), (119, 1898), (140, 1988), (152, 2030), (210, 2126), (219, 2150),

Gene: Shelob_17 Start: 6224, Stop: 6574, Start Num: 72

Candidate Starts for Shelob_17:

(Start: 72 @6224 has 153 MA's), (Start: 80 @6239 has 4 MA's), (140, 6359), (170, 6437), (179, 6449), (180, 6452), (228, 6545),

Gene: ShiaLabeouf_13 Start: 3966, Stop: 4331, Start Num: 72

Candidate Starts for ShiaLabeouf_13:

(Start: 72 @3966 has 153 MA's), (Start: 80 @3981 has 4 MA's), (140, 4116), (170, 4194), (179, 4206), (180, 4209), (228, 4302),

Gene: Shifa_10 Start: 4323, Stop: 4688, Start Num: 72

Candidate Starts for Shifa_10:

(Start: 72 @4323 has 153 MA's), (Start: 80 @4338 has 4 MA's), (140, 4473), (170, 4551), (179, 4563), (180, 4566), (228, 4659),

Gene: Shnickers_13 Start: 3966, Stop: 4331, Start Num: 72

Candidate Starts for Shnickers_13:

(Start: 72 @3966 has 153 MA's), (Start: 80 @3981 has 4 MA's), (140, 4116), (170, 4194), (179, 4206), (180, 4209), (228, 4302),

Gene: Shrimp_14 Start: 5054, Stop: 5404, Start Num: 72

Candidate Starts for Shrimp_14:

(Start: 72 @5054 has 153 MA's), (Start: 80 @5069 has 4 MA's), (140, 5189), (170, 5267), (179, 5279), (180, 5282), (228, 5375),

Gene: ShroomBoi_80 Start: 48740, Stop: 49138, Start Num: 71

Candidate Starts for ShroomBoi_80:

(Start: 71 @48740 has 42 MA's), (Start: 80 @48755 has 4 MA's), (140, 48911), (179, 48998), (181, 49004), (191, 49028),

Gene: SiSi_75 Start: 47345, Stop: 47695, Start Num: 94

Candidate Starts for SiSi_75:

(Start: 94 @47345 has 13 MA's), (101, 47360), (140, 47480),

Gene: SilverDipper_13 Start: 3970, Stop: 4335, Start Num: 72

Candidate Starts for SilverDipper_13:

(Start: 72 @3970 has 153 MA's), (Start: 80 @3985 has 4 MA's), (140, 4120), (170, 4198), (179, 4210), (180, 4213), (228, 4306),

Gene: Simpliphy_43 Start: 34882, Stop: 34496, Start Num: 77

Candidate Starts for Simpliphy_43:

(Start: 77 @34882 has 148 MA's), (Start: 80 @34870 has 4 MA's), (140, 34750), (164, 34678), (179, 34654), (210, 34582), (228, 34519),

Gene: SirDuracell_42 Start: 34192, Stop: 33677, Start Num: 39

Candidate Starts for SirDuracell_42:

(Start: 39 @34192 has 1 MA's), (Start: 71 @34120 has 42 MA's), (78, 34108), (130, 33952), (140, 33892), (224, 33721), (229, 33700),

Gene: SkiPole_69 Start: 42424, Stop: 42029, Start Num: 77

Candidate Starts for SkiPole_69:

(4, 42634), (8, 42625), (50, 42481), (51, 42478), (Start: 77 @42424 has 148 MA's), (140, 42256), (148, 42223), (161, 42202), (194, 42136), (226, 42052),

Gene: Slim_89 Start: 49993, Stop: 50406, Start Num: 77

Candidate Starts for Slim_89:

(14, 49819), (18, 49828), (25, 49852), (31, 49870), (62, 49963), (66, 49972), (Start: 77 @49993 has 148 MA's), (92, 50050), (109, 50089), (140, 50185), (153, 50221), (156, 50227), (223, 50359),

Gene: SlippinJimmy_52 Start: 46376, Stop: 45933, Start Num: 77

Candidate Starts for SlippinJimmy_52:

(Start: 77 @46376 has 148 MA's), (Start: 80 @46364 has 4 MA's), (117, 46244), (130, 46214), (140, 46154), (153, 46118), (156, 46112), (223, 45980),

Gene: SmallFry_13 Start: 3966, Stop: 4331, Start Num: 72

Candidate Starts for SmallFry_13:

(Start: 72 @3966 has 153 MA's), (Start: 80 @3981 has 4 MA's), (140, 4116), (170, 4194), (179, 4206), (180, 4209), (228, 4302),

Gene: Soile_53 Start: 47351, Stop: 46908, Start Num: 77

Candidate Starts for Soile_53:

(Start: 77 @47351 has 148 MA's), (Start: 80 @47339 has 4 MA's), (117, 47219), (130, 47189), (140, 47129), (153, 47093), (156, 47087), (223, 46955),

Gene: Sorpresa_58 Start: 40447, Stop: 40088, Start Num: 77

Candidate Starts for Sorpresa_58:

(9, 40648), (50, 40504), (51, 40501), (Start: 77 @40447 has 148 MA's), (Start: 80 @40435 has 4 MA's), (140, 40300), (153, 40264), (156, 40258), (223, 40126),

Gene: Soul22_81 Start: 46673, Stop: 47050, Start Num: 71

Candidate Starts for Soul22_81:

(Start: 71 @46673 has 42 MA's), (Start: 80 @46688 has 4 MA's), (140, 46808), (179, 46895), (181, 46901), (191, 46925), (217, 46988), (228, 47027),

Gene: SpikeBT_59 Start: 40641, Stop: 40282, Start Num: 77

Candidate Starts for SpikeBT_59:

(9, 40842), (50, 40698), (51, 40695), (Start: 77 @40641 has 148 MA's), (Start: 80 @40629 has 4 MA's), (140, 40494), (153, 40458), (156, 40452), (223, 40320),

Gene: Sprinklers_13 Start: 4140, Stop: 4490, Start Num: 72

Candidate Starts for Sprinklers_13:

(Start: 72 @4140 has 153 MA's), (Start: 80 @4155 has 4 MA's), (140, 4275), (170, 4353), (179, 4365), (180, 4368), (228, 4461),

Gene: Sprinklers_6 Start: 1749, Stop: 2189, Start Num: 77

Candidate Starts for Sprinklers_6:

(Start: 77 @1749 has 148 MA's), (Start: 80 @1761 has 4 MA's), (119, 1881), (140, 1971), (152, 2013), (210, 2109), (219, 2133),

Gene: Squint_74 Start: 47498, Stop: 47082, Start Num: 76

Candidate Starts for Squint_74:

(Start: 76 @47498 has 29 MA's), (Start: 80 @47486 has 4 MA's), (113, 47402), (121, 47384), (140, 47306), (146, 47276), (166, 47237), (169, 47234),

Gene: Squint_80 Start: 49357, Stop: 48959, Start Num: 74

Candidate Starts for Squint_80:

(Start: 74 @49357 has 42 MA's), (Start: 80 @49345 has 4 MA's), (140, 49189), (177, 49105), (180, 49099), (181, 49096), (220, 49012),

Gene: SrishMeg2525_14 Start: 5050, Stop: 5400, Start Num: 72

Candidate Starts for SrishMeg2525_14:

(Start: 72 @5050 has 153 MA's), (Start: 80 @5065 has 4 MA's), (140, 5185), (170, 5263), (179, 5275), (180, 5278), (228, 5371),

Gene: StAnnes_81 Start: 49578, Stop: 49967, Start Num: 74

Candidate Starts for StAnnes_81:

(Start: 74 @49578 has 42 MA's), (Start: 80 @49593 has 4 MA's), (140, 49713), (164, 49785), (179, 49809), (210, 49881), (228, 49944),

Gene: StormChicken_44 Start: 35973, Stop: 35536, Start Num: 77

Candidate Starts for StormChicken_44:

(43, 36045), (Start: 77 @35973 has 148 MA's), (Start: 80 @35961 has 4 MA's), (130, 35811), (140, 35751), (153, 35715), (156, 35709), (223, 35577),

Gene: StrongArm_59 Start: 41777, Stop: 41397, Start Num: 77

Candidate Starts for StrongArm_59:

(50, 41834), (51, 41831), (Start: 77 @41777 has 148 MA's), (Start: 80 @41765 has 4 MA's), (140, 41609), (153, 41573), (156, 41567), (223, 41435),

Gene: Stubby_14 Start: 5456, Stop: 5821, Start Num: 72

Candidate Starts for Stubby_14:

(Start: 72 @5456 has 153 MA's), (Start: 80 @5471 has 4 MA's), (140, 5606), (170, 5684), (179, 5696), (180, 5699), (228, 5792),

Gene: StubbySaigey_13 Start: 3970, Stop: 4335, Start Num: 72

Candidate Starts for StubbySaigey_13:

(Start: 72 @3970 has 153 MA's), (Start: 80 @3985 has 4 MA's), (140, 4120), (170, 4198), (179, 4210), (180, 4213), (228, 4306),

Gene: Substance289_12 Start: 3966, Stop: 4331, Start Num: 72
Candidate Starts for Substance289_12:
(Start: 72 @3966 has 153 MA's), (Start: 80 @3981 has 4 MA's), (140, 4116), (170, 4194), (179, 4206),
(180, 4209), (228, 4302),

Gene: Sunshine924_66 Start: 41648, Stop: 41211, Start Num: 77
Candidate Starts for Sunshine924_66:
(8, 41849), (50, 41705), (51, 41702), (Start: 77 @41648 has 148 MA's), (Start: 80 @41636 has 4 MA's),
(130, 41486), (140, 41426), (224, 41255),

Gene: SuperGrey_79 Start: 50245, Stop: 50601, Start Num: 74
Candidate Starts for SuperGrey_79:
(Start: 74 @50245 has 42 MA's), (Start: 80 @50260 has 4 MA's), (140, 50395), (228, 50572),

Gene: Superphikiman_77 Start: 48448, Stop: 48050, Start Num: 74
Candidate Starts for Superphikiman_77:
(Start: 74 @48448 has 42 MA's), (Start: 80 @48436 has 4 MA's), (140, 48280), (177, 48196), (180,
48190), (181, 48187), (220, 48103),

Gene: Superphikiman_71 Start: 46589, Stop: 46173, Start Num: 76
Candidate Starts for Superphikiman_71:
(Start: 76 @46589 has 29 MA's), (Start: 80 @46577 has 4 MA's), (113, 46493), (121, 46475), (140,
46397), (146, 46367), (166, 46328), (169, 46325),

Gene: SwagPigglett_82 Start: 50360, Stop: 50785, Start Num: 71
Candidate Starts for SwagPigglett_82:
(Start: 71 @50360 has 42 MA's), (Start: 80 @50375 has 4 MA's), (140, 50555), (177, 50639), (180,
50645), (181, 50648), (220, 50732),

Gene: SwainyDoc_51 Start: 45606, Stop: 45163, Start Num: 77
Candidate Starts for SwainyDoc_51:
(Start: 77 @45606 has 148 MA's), (Start: 80 @45594 has 4 MA's), (117, 45474), (130, 45444), (140,
45384), (153, 45348), (156, 45342), (223, 45210),

Gene: TDanisky_93 Start: 48927, Stop: 49307, Start Num: 77
Candidate Starts for TDanisky_93:
(Start: 77 @48927 has 148 MA's), (140, 49092), (153, 49128), (156, 49134), (223, 49266),

Gene: Target_63 Start: 40851, Stop: 40456, Start Num: 77
Candidate Starts for Target_63:
(8, 41052), (50, 40908), (51, 40905), (Start: 77 @40851 has 148 MA's), (Start: 80 @40839 has 4 MA's),
(140, 40683), (148, 40650), (161, 40629), (194, 40563), (226, 40479),

Gene: Target_79 Start: 46689, Stop: 46291, Start Num: 77
Candidate Starts for Target_79:
(Start: 77 @46689 has 148 MA's), (Start: 80 @46677 has 4 MA's), (136, 46521), (142, 46467), (143,
46458), (174, 46410), (182, 46404), (205, 46368), (215, 46350), (228, 46314),

Gene: Tchotchke_73 Start: 46858, Stop: 47286, Start Num: 74
Candidate Starts for Tchotchke_73:
(Start: 74 @46858 has 42 MA's), (Start: 80 @46873 has 4 MA's), (93, 46927), (130, 47020), (140,
47080), (228, 47257),

Gene: TeamEdward_44 Start: 35970, Stop: 35533, Start Num: 77

Candidate Starts for TeamEdward_44:

(43, 36042), (Start: 77 @35970 has 148 MA's), (Start: 80 @35958 has 4 MA's), (130, 35808), (140, 35748), (153, 35712), (156, 35706), (223, 35574),

Gene: Teardrop_13 Start: 3966, Stop: 4331, Start Num: 72

Candidate Starts for Teardrop_13:

(Start: 72 @3966 has 153 MA's), (Start: 80 @3981 has 4 MA's), (140, 4116), (170, 4194), (179, 4206), (180, 4209), (228, 4302),

Gene: Terminus_44 Start: 36046, Stop: 35612, Start Num: 77

Candidate Starts for Terminus_44:

(41, 36118), (Start: 77 @36046 has 148 MA's), (Start: 80 @36034 has 4 MA's), (130, 35884), (140, 35824),

Gene: TheloniousMonk_64 Start: 43165, Stop: 42755, Start Num: 77

Candidate Starts for TheloniousMonk_64:

(46, 43222), (49, 43219), (Start: 77 @43165 has 148 MA's), (95, 43108), (112, 43069), (140, 42973),

Gene: Thibault_74 Start: 51276, Stop: 51677, Start Num: 75

Candidate Starts for Thibault_74:

(27, 51156), (28, 51159), (38, 51207), (44, 51222), (Start: 75 @51276 has 10 MA's), (140, 51444), (144, 51471), (153, 51489), (167, 51516), (200, 51585), (202, 51588), (220, 51624),

Gene: Thibault_65 Start: 47312, Stop: 46869, Start Num: 77

Candidate Starts for Thibault_65:

(Start: 77 @47312 has 148 MA's), (130, 47150), (132, 47147), (140, 47090), (153, 47054), (156, 47048), (223, 46916),

Gene: Thor_60 Start: 40259, Stop: 39846, Start Num: 77

Candidate Starts for Thor_60:

(8, 40460), (50, 40316), (51, 40313), (Start: 77 @40259 has 148 MA's), (90, 40220), (111, 40175), (140, 40112), (164, 40034), (179, 40010), (210, 39938),

Gene: TinyTerror_51 Start: 45641, Stop: 45198, Start Num: 77

Candidate Starts for TinyTerror_51:

(Start: 77 @45641 has 148 MA's), (Start: 80 @45629 has 4 MA's), (117, 45509), (130, 45479), (140, 45419), (153, 45383), (156, 45377), (223, 45245),

Gene: TinyTim_14 Start: 5050, Stop: 5400, Start Num: 72

Candidate Starts for TinyTim_14:

(Start: 72 @5050 has 153 MA's), (Start: 80 @5065 has 4 MA's), (140, 5185), (170, 5263), (179, 5275), (180, 5278), (228, 5371),

Gene: Topiatin_85 Start: 49548, Stop: 49946, Start Num: 76

Candidate Starts for Topiatin_85:

(Start: 76 @49548 has 29 MA's), (140, 49734),

Gene: Tortoise16_12 Start: 3966, Stop: 4331, Start Num: 72

Candidate Starts for Tortoise16_12:

(Start: 72 @3966 has 153 MA's), (Start: 80 @3981 has 4 MA's), (140, 4116), (170, 4194), (179, 4206), (180, 4209), (228, 4302),

Gene: Trinitium_13 Start: 3966, Stop: 4331, Start Num: 72

Candidate Starts for Trinitium_13:

(Start: 72 @3966 has 153 MA's), (Start: 80 @3981 has 4 MA's), (140, 4116), (170, 4194), (179, 4206), (180, 4209), (228, 4302),

Gene: Tripl3t_83 Start: 50856, Stop: 50458, Start Num: 77

Candidate Starts for Tripl3t_83:

(Start: 77 @50856 has 148 MA's), (140, 50664), (160, 50613), (182, 50589), (197, 50562), (228, 50481),

Gene: Turret_13 Start: 3949, Stop: 4314, Start Num: 72

Candidate Starts for Turret_13:

(Start: 72 @3949 has 153 MA's), (Start: 80 @3964 has 4 MA's), (140, 4099), (170, 4177), (179, 4189), (180, 4192), (228, 4285),

Gene: Tweety_79 Start: 48958, Stop: 49341, Start Num: 71

Candidate Starts for Tweety_79:

(Start: 71 @48958 has 42 MA's), (Start: 80 @48973 has 4 MA's), (140, 49093), (179, 49180), (181, 49186), (191, 49210), (228, 49312),

Gene: Ukulele_42 Start: 35251, Stop: 34865, Start Num: 64

Candidate Starts for Ukulele_42:

(3, 35455), (22, 35371), (Start: 64 @35251 has 2 MA's), (Start: 75 @35227 has 10 MA's), (Start: 80 @35215 has 4 MA's), (140, 35095), (161, 35041), (165, 35032), (187, 34984), (193, 34978), (211, 34942), (218, 34924), (228, 34888),

Gene: UncleRicky_76 Start: 46818, Stop: 47246, Start Num: 74

Candidate Starts for UncleRicky_76:

(Start: 74 @46818 has 42 MA's), (Start: 80 @46833 has 4 MA's), (93, 46887), (130, 46980), (140, 47040), (228, 47217),

Gene: ValleyTerrace_13 Start: 3970, Stop: 4335, Start Num: 72

Candidate Starts for ValleyTerrace_13:

(Start: 72 @3970 has 153 MA's), (Start: 80 @3985 has 4 MA's), (140, 4120), (170, 4198), (179, 4210), (180, 4213), (228, 4306),

Gene: VasuNzinga_9 Start: 2804, Stop: 3184, Start Num: 77

Candidate Starts for VasuNzinga_9:

(Start: 77 @2804 has 148 MA's), (Start: 80 @2816 has 4 MA's), (140, 2972), (153, 3008), (156, 3014), (223, 3146),

Gene: Velveteen_73 Start: 44943, Stop: 45320, Start Num: 94

Candidate Starts for Velveteen_73:

(Start: 94 @44943 has 13 MA's), (101, 44958), (140, 45114), (154, 45156), (192, 45222), (194, 45225), (228, 45294),

Gene: Veteran_71 Start: 47213, Stop: 47563, Start Num: 94

Candidate Starts for Veteran_71:

(Start: 94 @47213 has 13 MA's), (101, 47228), (140, 47348),

Gene: Wachhund_78 Start: 45999, Stop: 46379, Start Num: 72

Candidate Starts for Wachhund_78:

(Start: 72 @45999 has 153 MA's), (Start: 80 @46014 has 4 MA's), (140, 46149), (160, 46203), (162, 46212), (185, 46260), (197, 46278), (208, 46302), (216, 46320),

Gene: Wally_13 Start: 3970, Stop: 4335, Start Num: 72

Candidate Starts for Wally_13:

(Start: 72 @3970 has 153 MA's), (Start: 80 @3985 has 4 MA's), (140, 4120), (170, 4198), (179, 4210), (180, 4213), (228, 4306),

Gene: Wanda_82 Start: 51659, Stop: 51234, Start Num: 77

Candidate Starts for Wanda_82:

(Start: 77 @51659 has 148 MA's), (Start: 80 @51647 has 4 MA's), (93, 51593), (130, 51500), (140, 51440), (228, 51263),

Gene: Whatsapiecost_73 Start: 43853, Stop: 44332, Start Num: 74

Candidate Starts for Whatsapiecost_73:

(Start: 74 @43853 has 42 MA's), (Start: 80 @43868 has 4 MA's), (130, 44018), (132, 44021), (140, 44078), (164, 44150), (179, 44174), (210, 44246), (228, 44309),

Gene: WillSterrel_78 Start: 48814, Stop: 49227, Start Num: 71

Candidate Starts for WillSterrel_78:

(Start: 71 @48814 has 42 MA's), (Start: 80 @48829 has 4 MA's), (140, 48985), (179, 49072), (181, 49078), (191, 49102), (217, 49165), (228, 49204),

Gene: Willis_14 Start: 4975, Stop: 5340, Start Num: 72

Candidate Starts for Willis_14:

(Start: 72 @4975 has 153 MA's), (Start: 80 @4990 has 4 MA's), (140, 5125), (170, 5203), (179, 5215), (180, 5218), (228, 5311),

Gene: XFactor_74 Start: 47423, Stop: 47782, Start Num: 87

Candidate Starts for XFactor_74:

(Start: 87 @47423 has 1 MA's), (97, 47438), (140, 47558), (152, 47600), (210, 47696), (228, 47753),

Gene: Xiaokay_68 Start: 48228, Stop: 47791, Start Num: 77

Candidate Starts for Xiaokay_68:

(Start: 77 @48228 has 148 MA's), (130, 48066), (132, 48063), (140, 48006), (153, 47970), (156, 47964), (223, 47832),

Gene: Yassified_6 Start: 1770, Stop: 2210, Start Num: 77

Candidate Starts for Yassified_6:

(Start: 77 @1770 has 148 MA's), (Start: 80 @1782 has 4 MA's), (119, 1902), (140, 1992), (152, 2034), (210, 2130), (219, 2154),

Gene: YemiJoy2021_14 Start: 5050, Stop: 5400, Start Num: 72

Candidate Starts for YemiJoy2021_14:

(Start: 72 @5050 has 153 MA's), (Start: 80 @5065 has 4 MA's), (140, 5185), (170, 5263), (179, 5275), (180, 5278), (228, 5371),

Gene: YoungMoneyMata_13 Start: 3968, Stop: 4333, Start Num: 72

Candidate Starts for YoungMoneyMata_13:

(Start: 72 @3968 has 153 MA's), (Start: 80 @3983 has 4 MA's), (140, 4118), (170, 4196), (179, 4208), (180, 4211), (228, 4304),

Gene: Youngblood_44 Start: 35976, Stop: 35539, Start Num: 77

Candidate Starts for Youngblood_44:

(43, 36048), (Start: 77 @35976 has 148 MA's), (Start: 80 @35964 has 4 MA's), (130, 35814), (140, 35754), (153, 35718), (156, 35712), (223, 35580),

Gene: Yucca_13 Start: 4972, Stop: 5322, Start Num: 72

Candidate Starts for Yucca_13:

(Start: 72 @4972 has 153 MA's), (Start: 80 @4987 has 4 MA's), (140, 5107), (170, 5185), (179, 5197), (180, 5200), (228, 5293),

Gene: Zalkecks_15 Start: 5050, Stop: 5400, Start Num: 72

Candidate Starts for Zalkecks_15:

(Start: 72 @5050 has 153 MA's), (Start: 80 @5065 has 4 MA's), (140, 5185), (170, 5263), (179, 5275), (180, 5278), (228, 5371),

Gene: Zapner_87 Start: 47003, Stop: 47359, Start Num: 71

Candidate Starts for Zapner_87:

(Start: 71 @47003 has 42 MA's), (Start: 80 @47018 has 4 MA's), (140, 47138), (222, 47309), (228, 47330),

Gene: Zeeculate_77 Start: 48542, Stop: 48138, Start Num: 74

Candidate Starts for Zeeculate_77:

(Start: 74 @48542 has 42 MA's), (Start: 80 @48530 has 4 MA's), (105, 48467), (127, 48410), (140, 48368), (177, 48284), (180, 48278), (181, 48275), (220, 48191),

Gene: Zeenon_16 Start: 5051, Stop: 5401, Start Num: 72

Candidate Starts for Zeenon_16:

(Start: 72 @5051 has 153 MA's), (Start: 80 @5066 has 4 MA's), (140, 5186), (170, 5264), (179, 5276), (180, 5279), (228, 5372),

Gene: Zelink_71 Start: 51457, Stop: 51044, Start Num: 76

Candidate Starts for Zelink_71:

(Start: 76 @51457 has 29 MA's), (Start: 80 @51445 has 4 MA's), (113, 51361), (121, 51343), (140, 51265), (146, 51235), (166, 51196), (169, 51193),

Gene: ZygoTaiga_15 Start: 5050, Stop: 5400, Start Num: 72

Candidate Starts for ZygoTaiga_15:

(Start: 72 @5050 has 153 MA's), (Start: 80 @5065 has 4 MA's), (140, 5185), (170, 5263), (179, 5275), (180, 5278), (228, 5371),

Gene: xkcd_46 Start: 36166, Stop: 35732, Start Num: 77

Candidate Starts for xkcd_46:

(41, 36238), (Start: 77 @36166 has 148 MA's), (Start: 80 @36154 has 4 MA's), (130, 36004), (140, 35944),