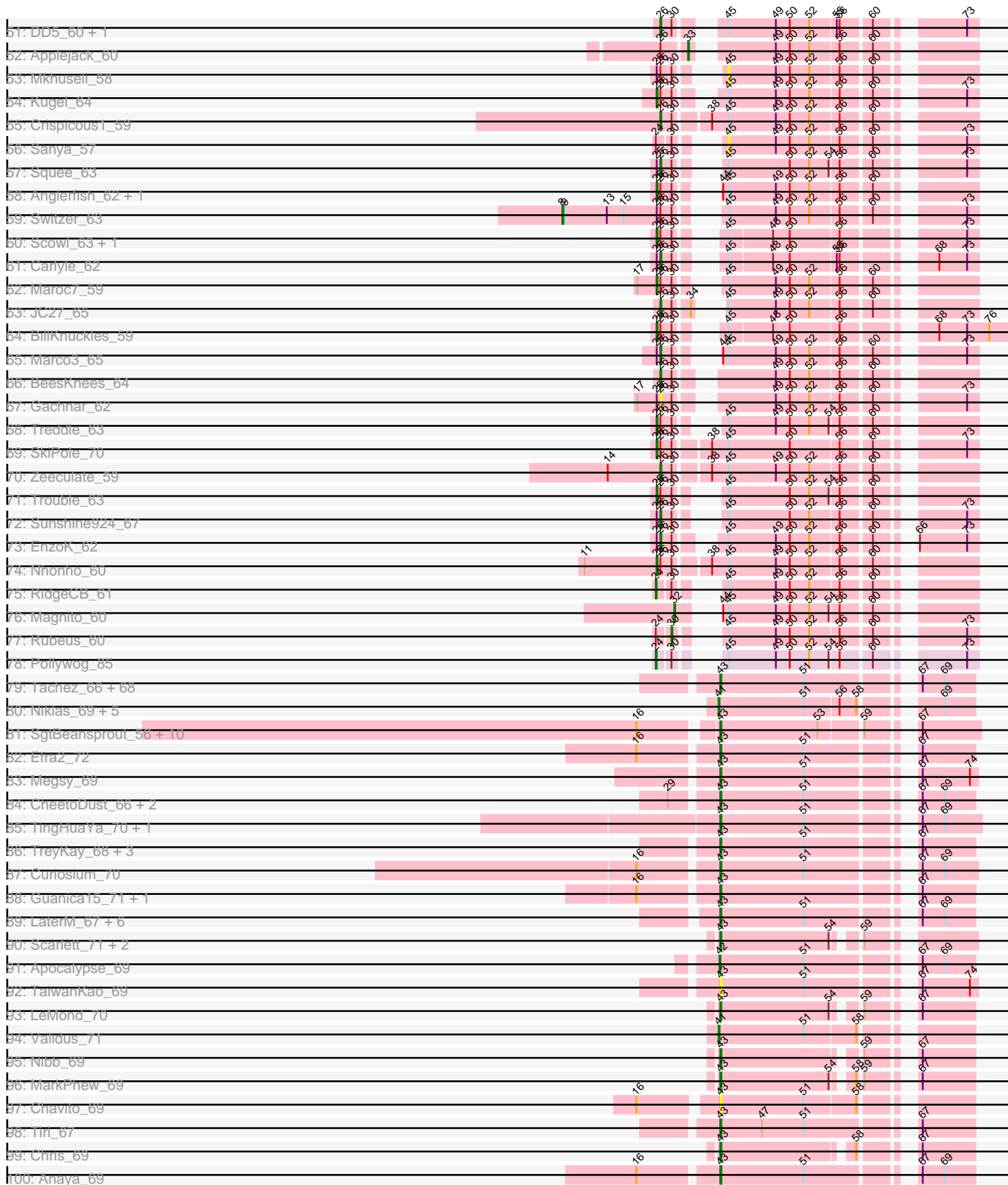


Pham 304597



Note: Tracks are now grouped by subcluster and scaled. Switching in subcluster is indicated by changes in track color. Track scale is now set by default to display the region 30 bp upstream of start 1 to 30 bp downstream of the last possible start. If this default region is judged to be packed too tightly with annotated starts, the track will be further scaled to only show that region of the ORF with annotated starts. This action will be indicated by adding "Zoomed" to the title. For starts, yellow indicates the location of called starts comprised solely of Glimmer/GeneMark auto-annotations, green indicates the location of called starts with at least 1 manual gene annotation.

Pham 304597 Report

This analysis was run 06/08/26 on database version 649.

Pham number 304597 has 507 members, 39 are drafts.

Phages represented in each track:

- Track 1 : Gompeii16_61, Bircsak_61, Agaliana_56, Francis47_60
- Track 2 : GrecoEtereo_61, Sagefire_64, Swole_63, Marge_59, Hami1_57, Phlippers_58, JuliaChild_63, BarrowTuph_63, PSullivan_60, QTRLifeCrisis_62, Tote_58, A6_54, CartmannCramer_60, ConceptII_64, Gandalf20_64, Violet_60, Licorice_63, Smairt_64, Abbyshoes_63, BigPaolini_59, PascalRango_60, Dussy_62, Chanagan_56, CactusRose_62, Perseus_61, GroundGoblin_59, Aldrich_58, Mule_59, Nerujay_64, DirtDevil_60, Doom_60, LilBib_62, Edtherson_61, Noxious_61, KikiBouba_61, CatBus_58, BaconJack_66, ChristmasHams_56, Ashballer_65, Hermia_60, BK1_54, Rajelicia_62, Blesser_58, Bigfoot_54, Norz_62, LunarLander_62, Ciao_60
- Track 3 : Ohno789_62, Dreamboat_63, PherrisBueller_61, Jasper_62
- Track 4 : Homines_54, Froghopper_60, MaryBeth_60, Jerm2_64, Corvo_63, MetalQZJ_59, MrGordo_64, PinkPlastic_62, GageAP_63, Alsfro_68, Barriga_65, Solon_61, Petruchio_62, Niza_64, NEHalo_59, Burton_63, Hope4ever_63, Graduation_66, Ajay_62, Bxb1_56, Big3_63, Whitspit_58, Ichabod_66, Target_64, Dexes_62, SpikeBT_60, Blackflame_58, Pelly_63, Jorgensen_65, AFIS_58
- Track 5 : Monet_65, Marchy_56, Payneful_60, Puppet_60
- Track 6 : Pinto_62, Rufus_63, Makemake_64, Atkinbua_64
- Track 7 : Gwendoluna_65
- Track 8 : Buttons_59, Kenmech_65, HarryOW_60, KSSJEB_62, Pita2_63, Papez_64, Aeneas_65, PattyP_64, Fushigi_58, Fascinus_56, PhrostyMug_62, Pippin_62, Espresso_59
- Track 9 : Oogway_61
- Track 10 : Wilkins_61, Topgun_60
- Track 11 : PacerPaul_61
- Track 12 : KyMonks1A_65, Tripl3t_65, Sorpresa_59, Sandaddy_58, Magnar_60
- Track 13 : Levia_60, PhineBark_62
- Track 14 : Marcell_58
- Track 15 : MilleFeuille_63
- Track 16 : Petp2012_65, Tasp14_66, MPlant7149_62, DreamCatcher_65, BluSpix_60, Rohr_64, Museum_64, Paphu_62
- Track 17 : Fajezeel_63, Acme_64, Greg_63, Lamina13_66
- Track 18 : Beatrix_61
- Track 19 : Peterson_66, Lesedi_58
- Track 20 : Sumter_58, Turj99_60, Thor_61, Pari_65
- Track 21 : Eyeball_64
- Track 22 : StrongArm_60, Bexan_59

- Track 23 : GMonster_59, Briton15_66, Zephyr_63, McGuire_63, Molly_63, Killigrew_61
- Track 24 : HermioneGrange_64, SwissCheese_65, Moose_63, IgnatiusPatJac_62, Bruns_63, Bones_61, Forsytheast_63, BigMau_64, Kykar_63, Parliament_64, Adahisdi_62, Arlo_60, Cueylyss_62, U2_60, Bob3_63
- Track 25 : STLscum_70, Ringer_62
- Track 26 : Seabiscuit_65, HanShotFirst_63, Sibs6_64, Watermelon_62
- Track 27 : Zeuska_67
- Track 28 : Paraselene_60, Iqorha_57, Inyanga_57
- Track 29 : SarFire_61, Bethlehem_61
- Track 30 : Pepe_60
- Track 31 : Naira_64, Fenn_64
- Track 32 : Mryolo_58
- Track 33 : TheloniousMonk_65
- Track 34 : Arcanine_64, TwoPeat_63, Slagathor_64
- Track 35 : Dulcie_62, DrFeelGood_58, Ruotula_64, Traft412_64
- Track 36 : StewieG_57
- Track 37 : Rutherford_64, Rhynn_60
- Track 38 : Gyzlar_57
- Track 39 : Abrogate_610
- Track 40 : BPBiebs31_64
- Track 41 : Wheeler_64, Michley_65
- Track 42 : Lopton_60
- Track 43 : Marsha_61
- Track 44 : ProMouse_61
- Track 45 : PowerRanger_60, Euphoria_60
- Track 46 : ILeeKay_64, Bigchunggi_61, ShortQueendom_56, McSinger_60, Kanely_63, Altman_64, Snazzy_60
- Track 47 : Dynamix_64
- Track 48 : Alvin_62
- Track 49 : Seanderson_64
- Track 50 : Teodoridan_60, Smeagol_64
- Track 51 : DD5_60, Lockley_59
- Track 52 : Applejack_60
- Track 53 : Mkhuseleli_58
- Track 54 : Kugel_64
- Track 55 : Crispicous1_59
- Track 56 : Sanya_57
- Track 57 : Squee_63
- Track 58 : Anglerfish_62, Manatee_62
- Track 59 : Switzer_63
- Track 60 : Scowl_63, KBG_63
- Track 61 : Carlyle_62
- Track 62 : Maroc7_59
- Track 63 : JC27_65
- Track 64 : BillKnuckles_59
- Track 65 : Marco3_65
- Track 66 : BeesKnees_64
- Track 67 : Gachnar_62
- Track 68 : Treddle_63
- Track 69 : SkiPole_70
- Track 70 : Zeeculate_59
- Track 71 : Trouble_63

- Track 72 : Sunshine924_67
- Track 73 : EnzoK_62
- Track 74 : Nhonho_60
- Track 75 : RidgeCB_61
- Track 76 : Magnito_60
- Track 77 : Rubeus_60
- Track 78 : Pollywog_85
- Track 79 : Tachez_66, Padpat_69, Peel_66, Blizzard_66, Zabiza_61, DrHayes_67, Ramen_67, Homura_66, Pokerus_66, Clipper_70, Rosmarinus_66, Lunahalos_66, Joy99_66, Zavala_69, Belladonna_66, Padfoot_66, Angelica_66, Jayhawk_68, Deby_67, Jeckyll_66, HedwigODU_66, Geraldini_69, Veliki_68, BGIluviae_66, Inky_66, TiniBug_67, Llorens_66, CallaLilly_66, Rapunzel97_68, CaseJules_68, YoureAdopted_66, BoiIII_66, Piatt_66, Beezoo_68, Mynx_68, Asayake_66, Ganymede_66, MacKat_62, AlishaPH_66, BEEST_66, Pisa4_60, Anma_68, Twitch_66, Jarvi_66, Emerson_68, Adephagia_66, Urkel_67, BarrelRoll_67, TruffulaTree_67, Pisa1_66, Bella96_67, ActinUp_66, ShiaSurprise_67, CREW_66, Dalmuri_66, DartGoblin_68, JAWS_67, Atiba_67, Hyperbowlee_66, Spock_66, QuincyRose_64, Durfee_66, Sulley_66, SamuelLPlaqson_67, Slimphazie_67, Adonis_66, Topper_66, Capricorn_66, MeaningOfLife_67
- Track 80 : Niklas_69, Dartin_69, Shaobing_69, McMater_69, Peanam_69, Richo_69
- Track 81 : SgtBeansprout_56, LilPharaoh_56, Trice_55, Enkosi_57, Amelie_55, Nutello_55, Teejan_57, Biglebops_55, Mdavu_56, Torres_58, Nikao_58
- Track 82 : Efra2_72
- Track 83 : Megsy_69
- Track 84 : CheetoDust_66, BaghaKamala_66, Bern_68
- Track 85 : TingHuaYa_70, LastHope_71
- Track 86 : TreyKay_68, Prithvi_68, CrimD_68, LindNT_66
- Track 87 : Curiosium_70
- Track 88 : Guanica15_71, Yunkel11_71
- Track 89 : LaterM_67, Stinson_68, Devera_74, Murucutumbu_68, Illumine_72, Ageofdapage_70, Dole_72
- Track 90 : Scarlett_71, Oscar_70, KiSi_71
- Track 91 : Apocalypse_69
- Track 92 : TaiwanKao_69
- Track 93 : LeMond_70
- Track 94 : Validus_71
- Track 95 : Nibb_69
- Track 96 : MarkPhew_69
- Track 97 : Chavito_69
- Track 98 : Tiri_67
- Track 99 : Chris_69
- Track 100 : Anaya_69
- Track 101 : Marcoliusprime_69, DismalStressor_69, DismalFunk_69
- Track 102 : Strobilo_70, Milly_69, Doughnut_69, Findley_69
- Track 103 : ZoeJ_68
- Track 104 : Mufasa_69
- Track 105 : BoostSeason_69
- Track 106 : TM4_67
- Track 107 : Keshu_70
- Track 108 : DanSyl44_73, Qhanda_72, Kraw_70, Chancellor_70, Cheetobro_70, Juliette_72, Wintermute_70, Lebo14_69, Malthus_71, Fionnbharth_70, SamScheppers_68, Slarp_70
- Track 109 : Eponine_72

- Track 110 : Reptar3000_67
- Track 111 : Taquito_69
- Track 112 : MissDaisy_67
- Track 113 : Bobquesha_71, Patt_66
- Track 114 : Mitti_70
- Track 115 : Ruthiejr_71, OmniCritical_69, JF1_70, Y10_67, Y2_67
- Track 116 : YasnayaPolyana_69
- Track 117 : Edugator_59, Paola_60, Guillsminger_61, Dadosky_62, Leston_60, Psycho_60, Neighly_62, AlleyCat_62, Larva_61
- Track 118 : Rando14_62
- Track 119 : Omnicron_64
- Track 120 : SoSeph_61, Heftyboy_61, Feyre_63, Thyatira_63, Waterfoul_62
- Track 121 : Shadow1_71, Tigress9_71, Sunflower1121_72, Syra333_70
- Track 122 : Unicorn_68, PhelpsODU_68
- Track 123 : SirPhilip_66
- Track 124 : Applecrisp_63, Lavahound_64, Ellie_62
- Track 125 : Bryler_70, Tierra_70, Cain_70, Phrank_70
- Track 126 : Amohntion_66, DARTH_P_66, Hammy_66
- Track 127 : Ekdilam_63
- Track 128 : Ximenita_72
- Track 129 : TClif_68
- Track 130 : Marshawn_66
- Track 131 : November_64
- Track 132 : Fefferhead_64
- Track 133 : Amgine_65
- Track 134 : Krueger_71
- Track 135 : Yuna_71
- Track 136 : Aminay_66
- Track 137 : Boilgate_63
- Track 138 : Skinny_40, Glaske16_40, Diminimus_40, Bongo_39, LilhomieP_38, Dulcita_40, TyDawg_39, Bricole_39, IPhone7_39, Izel_40, PegLeg_39
- Track 139 : Auspice_39, SlimJimmy_38, TpudiCK_41, FreakyGoo_40, KleverKiS_40
- Track 140 : Reindeer_39
- Track 141 : Rey_44
- Track 142 : GardenSalsa_44, MrMagoo_44
- Track 143 : Estes_45
- Track 144 : GenevaB15_44, Aziz_44
- Track 145 : Nanosmite_44
- Track 146 : EGUnicorn_48, Phloss_48, Pipsqueaks_50, Tortoise12_49, Gex_50, Magsby_50, Schnauzer_51, Xerxes_50, Carcharodon_50, Melville_53, Fulbright_49, Chewbacca_52, Tessdabest_51, Parmesanjohn_50, Silvafighter_51, Duplicity_50, Smurph_50
- Track 147 : Spinach_55, BabeRuth_56, ShrimpFriedEgg_55, Jamie19_49, Redi_55, PhancyPhin_55, SpongeBob_49, Phrann_52, Nenae_55, Raymond7_49, Hanako_55, Purgamenstris_55, Andies_48, Tapioca_52, Snekmaggedon_49
- Track 148 : Panchino_48, Butters_53, Rubeelu_53, Kevin1_52
- Track 149 : Charlie_51, Bosection6_49
- Track 150 : Impisi_56

Summary of Final Annotations (See graph section above for start numbers):

The start number called the most often in the published annotations is 43, it was called in 154 of the 468 non-draft genes in the pham.

Genes that call this "Most Annotated" start:

- ActinUp_66, Adephagia_66, Adonis_66, Ageofdapage_70, AlishaPH_66, AlleyCat_62, Amelie_55, Amohnition_66, Anaya_69, Angelica_66, Anma_68, Applecrisp_63, Asayake_66, Atiba_67, BEEST_66, BGlluviae_66, BaghaKamala_66, BarrelRoll_67, Beezoo_68, Bella96_67, Belladonna_66, Bern_68, Biglebops_55, Blizzard_66, Boiii_66, BoostSeason_69, Bryler_70, CREW_66, Cain_70, CallaLilly_66, Capricorn_66, CaseJules_68, Chavito_69, CheetoDust_66, Chris_69, Clipper_70, CrimD_68, Curiosium_70, Dadosky_62, Dalmuri_66, DartGoblin_68, DarthP_66, Deby_67, Devera_74, DismalFunk_69, DismalStressor_69, Dole_72, Doughnut_69, DrHayes_67, Durfee_66, Edugator_59, Efra2_72, Ekdilam_63, Ellie_62, Emerson_68, Enkosi_57, Fefferhead_64, Feyre_63, Findley_69, Ganymede_66, Geraldini_69, Guanica15_71, Guillsminger_61, Hammy_66, HedwigODU_66, Heftyboy_61, Homura_66, Hyperbowlee_66, Illumine_72, Inky_66, JAWS_67, Jarvi_66, Jayhawk_68, Jeckyll_66, Joy99_66, KiSi_71, Larva_61, LastHope_71, LaterM_67, Lavahound_64, LeMond_70, Leston_60, LilPharaoh_56, LindNT_66, Llorens_66, Lunahalos_66, MacKat_62, Marcoliusprime_69, MarkPhew_69, Marshawn_66, Mdavu_56, MeaningOfLife_67, Megsy_69, Milly_69, Mufasa_69, Murucutumbu_68, Mynx_68, Neighly_62, Nibb_69, Nikao_58, November_64, Nutello_55, Omnicron_64, Oscar_70, Padfoot_66, Padpat_69, Paola_60, Peel_66, PhelpsODU_68, Phrank_70, Piatt_66, Pisa1_66, Pisa4_60, Pokerus_66, Prithvi_68, Psycho_60, QuincyRose_64, Ramen_67, Rando14_62, Rapunzel97_68, Rosmarinus_66, SamuelLPlaqson_67, Scarlett_71, SgtBeansprout_56, Shadow1_71, ShiaSurprise_67, SirPhilip_66, Slimphazie_67, SoSeph_61, Spock_66, Stinson_68, Strobilo_70, Sulley_66, Sunflower1121_72, Syra333_70, TClif_68, TM4_67, Tachez_66, TaiwanKao_69, Teejan_57, Thyatira_63, Tierra_70, Tigress9_71, TingHuaYa_70, TiniBug_67, Tiri_67, Topper_66, Torres_58, TreyKay_68, Trice_55, TruffulaTree_67, Twitch_66, Unicorn_68, Urkel_67, Veliki_68, Waterfoul_62, Ximenita_72, YoureAdopted_66, Yuna_71, Yunkel11_71, Zabiza_61, Zavala_69, ZoeJ_68,

Genes that have the "Most Annotated" start but do not call it:

- Amgine_65, Keshu_70, Krueger_71,

Genes that do not have the "Most Annotated" start:

- A6_54, AFIS_58, Abbyshoes_63, Abrogate_610, Acme_64, Adahisdi_62, Aeneas_65, Agaliana_56, Ajay_62, Aldrich_58, Alsfro_68, Altman_64, Alvin_62, Aminay_66, Andies_48, Anglerfish_62, Apocalypse_69, Applejack_60, Arcanine_64, Arlo_60, Ashballer_65, Atkinbua_64, Auspice_39, Aziz_44, BK1_54, BPBiebs31_64, BabeRuth_56, BaconJack_66, Barriga_65, BarrowTuph_63, Beatrix_61, BeesKnees_64, Bethlehem_61, Bexan_59, Big3_63, BigMau_64, BigPaolini_59, Bigchung_61, Bigfoot_54, BillKnuckles_59, Bircsak_61, Blackflame_58, Blesser_58, BluSpix_60, Bob3_63, Bobquesha_71, Boilgate_63, Bones_61, Bongo_39, Bosection6_49, Bricole_39, Briton15_66, Bruns_63, Burton_63, Butters_53, Buttons_59, Bxb1_56, CactusRose_62, Carcharodon_50, Carlyle_62, CartmannCramer_60, CatBus_58, Chanagan_56, Chancellor_70, Charlie_51, Cheetobro_70, Chewbacca_52, ChristmasHams_56, Ciao_60, ConceptII_64, Corvo_63, Crispicous1_59, Cueylyss_62, DD5_60, DanSyl44_73, Dartin_69, Dexes_62, Diminimus_40, DirtDevil_60, Doom_60, DrFeelGood_58, DreamCatcher_65, Dreamboat_63, Dulcie_62, Dulcita_40, Duplicity_50, Dussy_62,

Dynamix_64, EGUunicorn_48, Edtherson_61, EnzoK_62, Eponine_72, Espresso_59, Estes_45, Euphoria_60, Eyeball_64, Fajezeel_63, Fascinus_56, Fenn_64, Fionnbharth_70, Forsytheast_63, Francis47_60, FreakyGoo_40, Froghopper_60, Fulbright_49, Fushigi_58, GMonster_59, Gachnar_62, GageAP_63, Gandalf20_64, GardenSalsa_44, GenevaB15_44, Gex_50, Glaske16_40, Gompeii16_61, Graduation_66, GrecoEtereo_61, Greg_63, GroundGoblin_59, Gwendoluna_65, Gyzlar_57, Hami1_57, HanShotFirst_63, Hanako_55, HarryOW_60, Hermia_60, HermioneGrange_64, Homines_54, Hope4ever_63, ILeeKay_64, IPhane7_39, Ichabod_66, IgnatiusPatJac_62, Impisi_56, Inyanga_57, Iqorha_57, Izel_40, JC27_65, JF1_70, Jamie19_49, Jasper_62, Jerm2_64, Jorgensen_65, JuliaChild_63, Juliette_72, KBG_63, KSSJEB_62, Kanely_63, Kenmech_65, Kevin1_52, KikiBouba_61, Killigrew_61, KleverKiS_40, Kraw_70, Kugel_64, KyMonks1A_65, Kykar_63, Lamina13_66, Lebo14_69, Lesedi_58, Levia_60, Licorice_63, LilBib_62, LilhomieP_38, Lockley_59, Lopton_60, LunarLander_62, MPlant7149_62, Magnar_60, Magnito_60, Magsby_50, Makemake_64, Malthus_71, Manatee_62, Marcell_58, Marchy_56, Marco3_65, Marge_59, Maroc7_59, Marsha_61, MaryBeth_60, McGuire_63, McMater_69, McSinger_60, Melville_53, MetalQZJ_59, Michley_65, MilleFeuille_63, MissDaisy_67, Mitti_70, Mkhuseleli_58, Molly_63, Monet_65, Moose_63, MrGordo_64, MrMagoo_44, Mryolo_58, Mule_59, Museum_64, NEHalo_59, Naira_64, Nanosmite_44, Nенаe_55, Nerujay_64, Nhonho_60, Niklas_69, Niza_64, Norz_62, Noxious_61, Ohno789_62, OmniCritical_69, Oogway_61, PSullivan_60, PacerPaul_61, Panchino_48, Papez_64, Paphu_62, Paraselene_60, Pari_65, Parliament_64, Parmesanjohn_50, PascalRango_60, Patt_66, PattyP_64, Payneful_60, Peanam_69, PegLeg_39, Pelly_63, Pepe_60, Perseus_61, Peterson_66, Petp2012_65, Petruchio_62, PhancyPhin_55, PherrisBueller_61, PhineBark_62, Phlippers_58, Phloss_48, Phrann_52, PhrostyMug_62, PinkPlastic_62, Pinto_62, Pippin_62, Pipsqueaks_50, Pita2_63, Pollywog_85, PowerRanger_60, ProMouse_61, Puppet_60, Purgamenstris_55, QTRlifeCrisis_62, Qhanda_72, Rajelicia_62, Raymond7_49, Redi_55, Reindeer_39, Reptar3000_67, Rey_44, Rhynn_60, Richo_69, RidgeCB_61, Ringer_62, Rohr_64, Rubeelu_53, Rubeus_60, Rufus_63, Ruotula_64, Rutherferd_64, Ruthiejr_71, STLscum_70, Sagefire_64, SamScheppers_68, Sandaddy_58, Sanya_57, SarFire_61, Schnauzer_51, Scowl_63, Seabiscuit_65, Seanderson_64, Shaobing_69, ShortQueendom_56, ShrimpFriedEgg_55, Sibs6_64, Silvafighter_51, SkiPole_70, Skinny_40, Slagathor_64, Slarp_70, SlimJimmy_38, Smairt_64, Smeagol_64, Smurph_50, Snazzy_60, Snekmaggon_49, Solon_61, Sorpresa_59, SpikeBT_60, Spinach_55, SpongeBob_49, Squee_63, StewieG_57, StrongArm_60, Sumter_58, Sunshine924_67, SwissCheese_65, Switzer_63, Swole_63, Tapioca_52, Taquito_69, Target_64, Tasp14_66, Teodoridan_60, Tessdabest_51, TheloniousMonk_65, Thor_61, Topgun_60, Tortoise12_49, Tote_58, TpudiCK_41, Traft412_64, Treddle_63, Tripl3t_65, Trouble_63, Turj99_60, TwoPeat_63, TyDawg_39, U2_60, Validus_71, Violet_60, Watermelon_62, Wheeler_64, Whitspit_58, Wilkins_61, Wintermute_70, Xerxes_50, Y10_67, Y2_67, YasnayaPolyana_69, Zeeculate_59, Zephyr_63, Zeuska_67,

Summary by start number:

Start 8:

- Found in 4 of 507 (0.8%) of genes in pham
- Manual Annotations of this start: 1 of 468
- Called 25.0% of time when present
- Phage (with cluster) where this start called: Switzer_63 (A1),

Start 16:

- Found in 27 of 507 (5.3%) of genes in pham
- Manual Annotations of this start: 1 of 468
- Called 3.7% of time when present
- Phage (with cluster) where this start called: Krueger_71 (K6),

Start 19:

- Found in 5 of 507 (1.0%) of genes in pham
- Manual Annotations of this start: 1 of 468
- Called 20.0% of time when present
- Phage (with cluster) where this start called: Amgine_65 (K6),

Start 21:

- Found in 1 of 507 (0.2%) of genes in pham
- Manual Annotations of this start: 1 of 468
- Called 100.0% of time when present
- Phage (with cluster) where this start called: Seanderson_64 (A1),

Start 22:

- Found in 1 of 507 (0.2%) of genes in pham
- Manual Annotations of this start: 1 of 468
- Called 100.0% of time when present
- Phage (with cluster) where this start called: Keshu_70 (K3),

Start 24:

- Found in 10 of 507 (2.0%) of genes in pham
- Manual Annotations of this start: 6 of 468
- Called 60.0% of time when present
- Phage (with cluster) where this start called: Atkinbua_64 (A1), Makemake_64 (A1), Pinto_62 (A1), Pollywog_85 (F1), RidgeCB_61 (A1), Rufus_63 (A1),

Start 25:

- Found in 196 of 507 (38.7%) of genes in pham
- Manual Annotations of this start: 47 of 468
- Called 24.0% of time when present
- Phage (with cluster) where this start called: Acme_64 (A1), Aeneas_65 (A1), Anglerfish_62 (A1), BPBiebs31_64 (A1), Bethlehem_61 (A1), BillKnuckles_59 (A1), BluSpix_60 (A1), Buttons_59 (A1), DreamCatcher_65 (A1), Dynamix_64 (A1), Espresso_59 (A1), Fajezeel_63 (A1), Fascinus_56 (A1), Fushigi_58 (A1), Greg_63 (A1), HanShotFirst_63 (A1), HarryOW_60 (A1), KBG_63 (A1), KSSJEB_62 (A1), Kenmech_65 (A1), Kugel_64 (A1), Lamina13_66 (A1), MPlant7149_62 (A1), Manatee_62 (A1), Maroc7_59 (A1), Museum_64 (A1), Nhonho_60 (A1), PacerPaul_61 (A1), Papez_64 (A1), Paphu_62 (A1), PattyP_64 (A1), Petp2012_65 (A1), PhrostyMug_62 (A1), Pippin_62 (A1), Pita2_63 (A1), Rhynn_60 (A1), Rohr_64 (A1), Rutherford_64 (A1), SarFire_61 (A1), Scowl_63 (A1), Seabiscuit_65 (A1), Sibs6_64 (A1), SkiPole_70 (A1), Tasp14_66 (A1), Treddle_63 (A1), Trouble_63 (A1), Watermelon_62 (A1),

Start 26:

- Found in 220 of 507 (43.4%) of genes in pham
- Manual Annotations of this start: 148 of 468
- Called 75.0% of time when present

- Phage (with cluster) where this start called: A6_54 (A1), AFIS_58 (A1), Abbyshoes_63 (A1), Adahisdi_62 (A1), Agaliana_56 (A1), Ajay_62 (A1), Aldrich_58 (A1), Alsfro_68 (A1), Altman_64 (A1), Alvin_62 (A1), Arcanine_64 (A1), Arlo_60 (A1), Ashballer_65 (A1), BK1_54 (A1), BaconJack_66 (A1), Barriga_65 (A1), BarrowTuph_63 (A1), Beatrix_61 (A1), BeesKnees_64 (A1), Bexan_59 (A1), Big3_63 (A1), BigMau_64 (A1), BigPaolini_59 (A1), Bigchungj_61 (A1), Bigfoot_54 (A1), Bircsak_61 (A1), Blackflame_58 (A1), Blesser_58 (A1), Bob3_63 (A1), Bones_61 (A1), Briton15_66 (A1), Bruns_63 (A1), Burton_63 (A1), Bxb1_56 (A1), CactusRose_62 (A1), Carlyle_62 (A1), CartmannCramer_60 (A1), CatBus_58 (A1), Chanagan_56 (A1), ChristmasHams_56 (A1), Ciao_60 (A1), ConceptII_64 (A1), Corvo_63 (A1), Crispicous1_59 (A1), Cueylyss_62 (A1), DD5_60 (A1), Dexes_62 (A1), DirtDevil_60 (A1), Doom_60 (A1), Dreamboat_63 (A1), Dussy_62 (A1), Edtherson_61 (A1), EnzoK_62 (A1), Euphoria_60 (A1), Eyeball_64 (A1), Fenn_64 (A1), Forsytheast_63 (A1), Francis47_60 (A1), Froghopper_60 (A1), GMonster_59 (A1), Gachnar_62 (A1), GageAP_63 (A1), Gandalf20_64 (A1), Gompeii16_61 (A1), Graduation_66 (A1), GrecoEtereo_61 (A1), GroundGoblin_59 (A1), Hami1_57 (A1), Hermia_60 (A1), HermioneGrange_64 (A1), Homines_54 (A1), Hope4ever_63 (A1), ILeeKay_64 (A1), Ichabod_66 (A1), IgnatiusPatJac_62 (A1), Inyanga_57 (A1), Iqorha_57 (A1), JC27_65 (A1), Jasper_62 (A1), Jerm2_64 (A1), Jorgensen_65 (A1), JuliaChild_63 (A1), Kanely_63 (A1), KikiBouba_61 (A1), Killigrew_61 (A1), Kykar_63 (A1), Lesedi_58 (A1), Levia_60 (A1), Licorice_63 (A1), LilBib_62 (A1), Lockley_59 (A1), LunarLander_62 (A1), Marcell_58 (A1), Marchy_56 (A1), Marco3_65 (A1), Marge_59 (A1), Marsha_61 (A1), MaryBeth_60 (A1), McGuire_63 (A1), McSinger_60 (A1), MetalQZJ_59 (A1), Michley_65 (A1), Molly_63 (A1), Monet_65 (A1), Moose_63 (A1), MrGordo_64 (A1), Mule_59 (A1), NEHalo_59 (A1), Naira_64 (A1), Nerujay_64 (A1), Niza_64 (A1), Norz_62 (A1), Noxious_61 (A1), Ohno789_62 (A1), PSullivan_60 (A1), Paraselene_60 (A1), Pari_65 (A1), Parliament_64 (A1), PascalRango_60 (A1), Payneful_60 (A1), Pelly_63 (A1), Pepe_60 (A1), Perseus_61 (A1), Peterson_66 (A1), Petruccio_62 (A1), PherrisBueller_61 (A1), PhineBark_62 (A1), Phlippers_58 (A1), PinkPlastic_62 (A1), PowerRanger_60 (A1), ProMouse_61 (A1), Puppet_60 (A1), QTRLifeCrisis_62 (A1), Rajelicia_62 (A1), Sagefire_64 (A1), ShortQueendom_56 (A1), Slagathor_64 (A1), Smairt_64 (A1), Smeagol_64 (A1), Snazzy_60 (A1), Solon_61 (A1), SpikeBT_60 (A1), Squee_63 (A1), StewieG_57 (A1), StrongArm_60 (A1), Sumter_58 (A1), Sunshine924_67 (A1), SwissCheese_65 (A1), Swole_63 (A1), Target_64 (A1), Teodoridan_60 (A1), TheloniousMonk_65 (A1), Thor_61 (A1), Topgun_60 (A1), Tote_58 (A1), Turj99_60 (A1), TwoPeat_63 (A1), U2_60 (A1), Violet_60 (A1), Wheeler_64 (A1), Whitspit_58 (A1), Wilkins_61 (A1), Zeeculate_59 (A1), Zephyr_63 (A1), Zeuska_67 (A1),

Start 30:

- Found in 226 of 507 (44.6%) of genes in pham
- Manual Annotations of this start: 4 of 468
- Called 1.8% of time when present
- Phage (with cluster) where this start called: Gwendoluna_65 (A1), Gyzlar_57 (A1), Lopton_60 (A1), Rubeus_60 (A1),

Start 32:

- Found in 11 of 507 (2.2%) of genes in pham
- Manual Annotations of this start: 10 of 468
- Called 100.0% of time when present
- Phage (with cluster) where this start called: DrFeelGood_58 (A1), Dulcie_62 (A1), KyMonks1A_65 (A1), Magnar_60 (A1), Magnito_60 (A1), Mryolo_58 (A1), Ruotula_64 (A1), Sandaddy_58 (A1), Sorpresa_59 (A1), Traft412_64 (A1), Tripl3t_65 (A1),

Start 33:

- Found in 5 of 507 (1.0%) of genes in pham
- Manual Annotations of this start: 5 of 468
- Called 100.0% of time when present
- Phage (with cluster) where this start called: Abrogate_610 (A1), Applejack_60 (A1), MilleFeuille_63 (A1), Ringer_62 (A1), STLscum_70 (A1),

Start 35:

- Found in 17 of 507 (3.4%) of genes in pham
- Manual Annotations of this start: 12 of 468
- Called 70.6% of time when present
- Phage (with cluster) where this start called: Bongo_39 (M1), Bricole_39 (M1), Diminimus_40 (M1), Dulcita_40 (M1), Glaske16_40 (M1), IPhone7_39 (M1), Izel_40 (M1), LilhomieP_38 (M1), PegLeg_39 (M1), Reindeer_39 (M1), Skinny_40 (M1), TyDawg_39 (M1),

Start 36:

- Found in 21 of 507 (4.1%) of genes in pham
- Manual Annotations of this start: 17 of 468
- Called 95.2% of time when present
- Phage (with cluster) where this start called: Aminay_66 (K7), Bobquesha_71 (K4), Chancellor_70 (K4), Cheetobro_70 (K4), DanSyl44_73 (K4), Eponine_72 (K4), Fionnbharth_70 (K4), Juliette_72 (K4), Kraw_70 (K4), Lebo14_69 (K4), Malthus_71 (K4), Mitti_70 (K4), Patt_66 (K4), Qhanda_72 (K4), Reptar3000_67 (K4), SamScheppers_68 (K4), Slarp_70 (K4), Taquito_69 (K4), Wintermute_70 (K4), YasnayaPolyana_69 (K4),

Start 37:

- Found in 6 of 507 (1.2%) of genes in pham
- Manual Annotations of this start: 6 of 468
- Called 100.0% of time when present
- Phage (with cluster) where this start called: Boilgate_63 (K8), JF1_70 (K4), OmniCritical_69 (K4), Ruthiejr_71 (K4), Y10_67 (K4), Y2_67 (K4),

Start 38:

- Found in 80 of 507 (15.8%) of genes in pham
- Manual Annotations of this start: 38 of 468
- Called 50.0% of time when present
- Phage (with cluster) where this start called: Andies_48 (N), BabeRuth_56 (N), Bosection6_49 (N), Butters_53 (N), Carcharodon_50 (N), Charlie_51 (N), Chewbacca_52 (N), Duplicity_50 (N), EGUnicorn_48 (N), Fulbright_49 (N), Gex_50 (N), Hanako_55 (N), Impisi_56 (N), Jamie19_49 (N), Kevin1_52 (N), Magsby_50 (N), Melville_53 (N), Nenae_55 (N), Oogway_61 (A1), Panchino_48 (N), Parmesanjohn_50 (N), PhancyPhin_55 (N), Phloss_48 (N), Phrann_52 (N), Pipsqueaks_50 (N), Purgamenstris_55 (N), Raymond7_49 (N), Redi_55 (N), Rubeelu_53 (N), Schnauzer_51 (N), ShrimpFriedEgg_55 (N), Silvafighter_51 (N), Smurph_50 (N), Snekmaggedon_49 (N), Spinach_55 (N), SpongeBob_49 (N), Tapioca_52 (N), Tessdabest_51 (N), Tortoise12_49 (N), Xerxes_50 (N),

Start 39:

- Found in 1 of 507 (0.2%) of genes in pham
- Manual Annotations of this start: 1 of 468

- Called 100.0% of time when present
- Phage (with cluster) where this start called: Rey_44 (M2),

Start 40:

- Found in 23 of 507 (4.5%) of genes in pham
- Manual Annotations of this start: 9 of 468
- Called 47.8% of time when present
- Phage (with cluster) where this start called: Auspice_39 (M1), Aziz_44 (M2), Estes_45 (M2), FreakyGoo_40 (M1), GardenSalsa_44 (M2), GenevaB15_44 (M2), KleverKiS_40 (M1), MrMagoo_44 (M2), Nanosmite_44 (M3), SlimJimmy_38 (M1), TpudiCK_41 (M1),

Start 41:

- Found in 7 of 507 (1.4%) of genes in pham
- Manual Annotations of this start: 4 of 468
- Called 100.0% of time when present
- Phage (with cluster) where this start called: Dartin_69 (K1), McMater_69 (K1), Niklas_69 (K1), Peanam_69 (K1), Richo_69 (K1), Shaobing_69 (K1), Validus_71 (K1),

Start 42:

- Found in 1 of 507 (0.2%) of genes in pham
- Manual Annotations of this start: 1 of 468
- Called 100.0% of time when present
- Phage (with cluster) where this start called: Apocalypse_69 (K1),

Start 43:

- Found in 166 of 507 (32.7%) of genes in pham
- Manual Annotations of this start: 154 of 468
- Called 98.2% of time when present
- Phage (with cluster) where this start called: ActinUp_66 (K1), Adephegia_66 (K1), Adonis_66 (K1), Ageofdapage_70 (K1), AlishaPH_66 (K1), AlleyCat_62 (K5), Amelie_55 (K1), Amohnition_66 (K6), Anaya_69 (K1), Angelica_66 (K1), Anma_68 (K1), Applecrisp_63 (K6), Asayake_66 (K1), Atiba_67 (K1), BEEST_66 (K1), BGlluviae_66 (K1), BaghaKamala_66 (K1), BarrelRoll_67 (K1), Beezoo_68 (K1), Bella96_67 (K1), Belladonna_66 (K1), Bern_68 (K1), Binglebops_55 (K1), Blizzard_66 (K1), Boiiii_66 (K1), BoostSeason_69 (K2), Bryler_70 (K6), CREW_66 (K1), Cain_70 (K6), CallaLilly_66 (K1), Capricorn_66 (K1), CaseJules_68 (K1), Chavito_69 (K1), CheetoDust_66 (K1), Chris_69 (K1), Clipper_70 (K1), CrimD_68 (K1), Curiosium_70 (K1), Dadosky_62 (K5), Dalmuri_66 (K1), DartGoblin_68 (K1), DarthP_66 (K6), Deby_67 (K1), Devera_74 (K1), DismalFunk_69 (K2), DismalStressor_69 (K2), Dole_72 (K1), Doughnut_69 (K2), DrHayes_67 (K1), Durfee_66 (K1), Edugator_59 (K5), Efra2_72 (K1), Ekdilam_63 (K6), Ellie_62 (K6), Emerson_68 (K1), Enkosi_57 (K1), Fefferhead_64 (K6), Feyre_63 (K5), Findley_69 (K2), Ganymede_66 (K1), Geraldini_69 (K1), Guanica15_71 (K1), Guillsminger_61 (K5), Hammy_66 (K6), HedwigODU_66 (K1), Heftyboy_61 (K5), Homura_66 (K1), Hyperbowlee_66 (K1), Illumine_72 (K1), Inky_66 (K1), JAWS_67 (K1), Jarvi_66 (K1), Jayhawk_68 (K1), Jeckyll_66 (K1), Joy99_66 (K1), KiSi_71 (K1), Larva_61 (K5), LastHope_71 (K1), LaterM_67 (K1), Lavahound_64 (K6), LeMond_70 (K1), Leston_60 (K5), LilPharaoh_56 (K1), LindNT_66 (K1), Llorens_66 (K1), Lunahalos_66 (K1), MacKat_62 (K1), Marcoliusprime_69 (K2), MarkPhew_69 (K1), Marshawn_66 (K6), Mdavu_56 (K1), MeaningOfLife_67 (K1), Megsy_69 (K1), Milly_69 (K2), Mufasa_69 (K2), Murucutumbu_68 (K1), Mynx_68 (K1), Neighly_62 (K3), Nibb_69 (K1),

Nikao_58 (K1), November_64 (K6), Nutello_55 (K1), Omnicron_64 (K5), Oscar_70 (K1), Padfoot_66 (K1), Padpat_69 (K1), Paola_60 (K5), Peel_66 (K1), PhelpsODU_68 (K6), Phrank_70 (K6), Piatt_66 (K1), Pisa1_66 (K1), Pisa4_60 (K1), Pokerus_66 (K1), Prithvi_68 (K1), Psycho_60 (K5), QuincyRose_64 (K1), Ramen_67 (K1), Rando14_62 (K5), Rapunzel97_68 (K1), Rosmarinus_66 (K1), SamuelLPlaqson_67 (K1), Scarlett_71 (K1), SgtBeansprout_56 (K1), Shadow1_71 (K6), ShiaSurprise_67 (K1), SirPhilip_66 (K6), Slimphazie_67 (K1), SoSeph_61 (K5), Spock_66 (K1), Stinson_68 (K1), Strobilo_70 (K2), Sulley_66 (K1), Sunflower1121_72 (K6), Syra333_70 (K6), TClif_68 (K6), TM4_67 (K2), Tachez_66 (K1), TaiwanKao_69 (K1), Teejan_57 (K1), Thyatira_63 (K5), Tierra_70 (K6), Tigress9_71 (K6), TingHuaYa_70 (K1), TiniBug_67 (K1), Tiri_67 (K1), Topper_66 (K1), Torres_58 (K1), TreyKay_68 (K1), Trice_55 (K1), TruffulaTree_67 (K1), Twitch_66 (K1), Unicorn_68 (K6), Urkel_67 (K1), Veliki_68 (K1), Waterfoul_62 (K5), Ximenita_72 (K6), YoureAdopted_66 (K1), Yuna_71 (K6), Yunkel11_71 (K1), Zabiza_61 (K1), Zavala_69 (K1), ZoeJ_68 (K2),

Start 44:

- Found in 91 of 507 (17.9%) of genes in pham
- Manual Annotations of this start: 1 of 468
- Called 1.1% of time when present
- Phage (with cluster) where this start called: MissDaisy_67 (K4),

Start 45:

- Found in 263 of 507 (51.9%) of genes in pham
- No Manual Annotations of this start.
- Called 0.8% of time when present
- Phage (with cluster) where this start called: Mkhusele_58 (A1), Sanya_57 (A1),

Summary by clusters:

There are 14 clusters represented in this pham: F1, M3, M2, N, A1, K2, K1, M1, K6, K5, K4, K7, K8, K3,

Info for manual annotations of cluster A1:

- Start number 8 was manually annotated 1 time for cluster A1.
- Start number 21 was manually annotated 1 time for cluster A1.
- Start number 24 was manually annotated 5 times for cluster A1.
- Start number 25 was manually annotated 47 times for cluster A1.
- Start number 26 was manually annotated 148 times for cluster A1.
- Start number 30 was manually annotated 4 times for cluster A1.
- Start number 32 was manually annotated 10 times for cluster A1.
- Start number 33 was manually annotated 5 times for cluster A1.
- Start number 38 was manually annotated 1 time for cluster A1.

Info for manual annotations of cluster F1:

- Start number 24 was manually annotated 1 time for cluster F1.

Info for manual annotations of cluster K1:

- Start number 41 was manually annotated 4 times for cluster K1.
- Start number 42 was manually annotated 1 time for cluster K1.
- Start number 43 was manually annotated 104 times for cluster K1.

Info for manual annotations of cluster K2:

- Start number 43 was manually annotated 11 times for cluster K2.

Info for manual annotations of cluster K3:

- Start number 22 was manually annotated 1 time for cluster K3.

Info for manual annotations of cluster K4:

- Start number 36 was manually annotated 16 times for cluster K4.
- Start number 37 was manually annotated 5 times for cluster K4.
- Start number 44 was manually annotated 1 time for cluster K4.

Info for manual annotations of cluster K5:

- Start number 43 was manually annotated 15 times for cluster K5.

Info for manual annotations of cluster K6:

- Start number 16 was manually annotated 1 time for cluster K6.
- Start number 19 was manually annotated 1 time for cluster K6.
- Start number 43 was manually annotated 24 times for cluster K6.

Info for manual annotations of cluster K7:

- Start number 36 was manually annotated 1 time for cluster K7.

Info for manual annotations of cluster K8:

- Start number 37 was manually annotated 1 time for cluster K8.

Info for manual annotations of cluster M1:

- Start number 35 was manually annotated 12 times for cluster M1.
- Start number 40 was manually annotated 3 times for cluster M1.

Info for manual annotations of cluster M2:

- Start number 39 was manually annotated 1 time for cluster M2.
- Start number 40 was manually annotated 5 times for cluster M2.

Info for manual annotations of cluster M3:

- Start number 40 was manually annotated 1 time for cluster M3.

Info for manual annotations of cluster N:

- Start number 38 was manually annotated 37 times for cluster N.

Gene Information:

Gene: A6_54 Start: 38910, Stop: 38635, Start Num: 26

Candidate Starts for A6_54:

(Start: 25 @38913 has 47 MA's), (Start: 26 @38910 has 148 MA's), (Start: 30 @38898 has 4 MA's), (45, 38868), (49, 38817), (50, 38802), (52, 38781), (56, 38751), (60, 38721),

Gene: AFIS_58 Start: 39979, Stop: 39713, Start Num: 26

Candidate Starts for AFIS_58:

(Start: 25 @39982 has 47 MA's), (Start: 26 @39979 has 148 MA's), (Start: 30 @39967 has 4 MA's), (45, 39946), (49, 39895), (50, 39880), (52, 39859), (56, 39829), (60, 39799), (73, 39724),

Gene: Abbyshoes_63 Start: 41669, Stop: 41403, Start Num: 26

Candidate Starts for Abbyshoes_63:

(Start: 25 @41672 has 47 MA's), (Start: 26 @41669 has 148 MA's), (Start: 30 @41657 has 4 MA's), (45, 41636), (49, 41585), (50, 41570), (52, 41549), (56, 41519), (60, 41489),

Gene: Abrogate_610 Start: 42660, Stop: 42409, Start Num: 33

Candidate Starts for Abrogate_610:

(Start: 26 @42684 has 148 MA's), (Start: 33 @42660 has 5 MA's), (49, 42591), (50, 42576), (52, 42555), (54, 42534), (56, 42525), (60, 42495),

Gene: Acme_64 Start: 41595, Stop: 41326, Start Num: 25

Candidate Starts for Acme_64:

(Start: 25 @41595 has 47 MA's), (Start: 26 @41592 has 148 MA's), (Start: 30 @41580 has 4 MA's), (45, 41559), (49, 41508), (50, 41493), (52, 41472), (56, 41442), (60, 41412), (73, 41337),

Gene: ActinUp_66 Start: 43467, Stop: 43709, Start Num: 43

Candidate Starts for ActinUp_66:

(Start: 43 @43467 has 154 MA's), (51, 43557), (67, 43653), (69, 43677),

Gene: Adahisdi_62 Start: 42536, Stop: 42240, Start Num: 26

Candidate Starts for Adahisdi_62:

(Start: 25 @42539 has 47 MA's), (Start: 26 @42536 has 148 MA's), (Start: 30 @42524 has 4 MA's), (Start: 38 @42491 has 38 MA's), (45, 42473), (49, 42422), (50, 42407), (52, 42386), (56, 42356), (60, 42326), (73, 42251),

Gene: Adephagia_66 Start: 43504, Stop: 43746, Start Num: 43

Candidate Starts for Adephagia_66:

(Start: 43 @43504 has 154 MA's), (51, 43594), (67, 43690), (69, 43714),

Gene: Adonis_66 Start: 43739, Stop: 43981, Start Num: 43

Candidate Starts for Adonis_66:

(Start: 43 @43739 has 154 MA's), (51, 43829), (67, 43925), (69, 43949),

Gene: Aeneas_65 Start: 43097, Stop: 42828, Start Num: 25

Candidate Starts for Aeneas_65:

(Start: 25 @43097 has 47 MA's), (Start: 26 @43094 has 148 MA's), (Start: 30 @43082 has 4 MA's), (45, 43061), (49, 43010), (50, 42995), (52, 42974), (56, 42944), (60, 42914),

Gene: Agaliana_56 Start: 37891, Stop: 37616, Start Num: 26

Candidate Starts for Agaliana_56:

(Start: 25 @37894 has 47 MA's), (Start: 26 @37891 has 148 MA's), (Start: 30 @37879 has 4 MA's), (45, 37849), (49, 37798), (50, 37783), (52, 37762), (56, 37732), (60, 37702),

Gene: Ageofdapage_70 Start: 44895, Stop: 45137, Start Num: 43

Candidate Starts for Ageofdapage_70:

(Start: 43 @44895 has 154 MA's), (51, 44985), (67, 45081), (69, 45105),

Gene: Ajay_62 Start: 41482, Stop: 41216, Start Num: 26

Candidate Starts for Ajay_62:

(Start: 25 @41485 has 47 MA's), (Start: 26 @41482 has 148 MA's), (Start: 30 @41470 has 4 MA's), (45, 41449), (49, 41398), (50, 41383), (52, 41362), (56, 41332), (60, 41302), (73, 41227),

Gene: Aldrich_58 Start: 40769, Stop: 40503, Start Num: 26

Candidate Starts for Aldrich_58:

(Start: 25 @40772 has 47 MA's), (Start: 26 @40769 has 148 MA's), (Start: 30 @40757 has 4 MA's), (45, 40736), (49, 40685), (50, 40670), (52, 40649), (56, 40619), (60, 40589),

Gene: AlishaPH_66 Start: 43765, Stop: 44007, Start Num: 43

Candidate Starts for AlishaPH_66:

(Start: 43 @43765 has 154 MA's), (51, 43855), (67, 43951), (69, 43975),

Gene: AlleyCat_62 Start: 41081, Stop: 41329, Start Num: 43

Candidate Starts for AlleyCat_62:

(Start: 43 @41081 has 154 MA's), (50, 41156), (59, 41228),

Gene: Alsfro_68 Start: 41762, Stop: 41487, Start Num: 26

Candidate Starts for Alsfro_68:

(Start: 25 @41765 has 47 MA's), (Start: 26 @41762 has 148 MA's), (Start: 30 @41750 has 4 MA's), (45, 41720), (49, 41669), (50, 41654), (52, 41633), (56, 41603), (60, 41573), (73, 41498),

Gene: Altman_64 Start: 41400, Stop: 41125, Start Num: 26

Candidate Starts for Altman_64:

(Start: 25 @41403 has 47 MA's), (Start: 26 @41400 has 148 MA's), (Start: 30 @41388 has 4 MA's), (49, 41307), (50, 41292), (52, 41271), (56, 41241), (60, 41211),

Gene: Alvin_62 Start: 41227, Stop: 40952, Start Num: 26

Candidate Starts for Alvin_62:

(Start: 8 @41332 has 1 MA's), (9, 41329), (13, 41284), (15, 41266), (Start: 25 @41230 has 47 MA's), (Start: 26 @41227 has 148 MA's), (Start: 30 @41215 has 4 MA's), (45, 41185), (49, 41134), (50, 41119), (52, 41098), (56, 41068), (60, 41038), (68, 40993), (73, 40963),

Gene: Amelie_55 Start: 40941, Stop: 41186, Start Num: 43

Candidate Starts for Amelie_55:

(Start: 16 @40869 has 1 MA's), (Start: 43 @40941 has 154 MA's), (53, 41046), (59, 41088), (67, 41124),

Gene: Amgine_65 Start: 44496, Stop: 44807, Start Num: 19

Candidate Starts for Amgine_65:

(Start: 19 @44496 has 1 MA's), (Start: 43 @44565 has 154 MA's), (45, 44574), (49, 44625), (51, 44655), (67, 44751), (69, 44775),

Gene: Aminay_66 Start: 43144, Stop: 43401, Start Num: 36

Candidate Starts for Aminay_66:

(Start: 36 @43144 has 17 MA's), (46, 43189), (62, 43321), (64, 43339), (73, 43393),

Gene: Amohnition_66 Start: 44113, Stop: 44352, Start Num: 43

Candidate Starts for Amohnition_66:

(Start: 43 @44113 has 154 MA's), (51, 44203), (59, 44263),

Gene: Anaya_69 Start: 44458, Stop: 44700, Start Num: 43

Candidate Starts for Anaya_69:

(Start: 16 @44380 has 1 MA's), (Start: 43 @44458 has 154 MA's), (51, 44548), (67, 44644), (69, 44668),

Gene: Andies_48 Start: 34452, Stop: 34700, Start Num: 38

Candidate Starts for Andies_48:

(Start: 38 @34452 has 38 MA's), (Start: 44 @34464 has 1 MA's), (60, 34614), (61, 34617), (73, 34692),

Gene: Angelica_66 Start: 43657, Stop: 43899, Start Num: 43
Candidate Starts for Angelica_66:
(Start: 43 @43657 has 154 MA's), (51, 43747), (67, 43843), (69, 43867),

Gene: Anglerfish_62 Start: 41575, Stop: 41306, Start Num: 25
Candidate Starts for Anglerfish_62:
(Start: 25 @41575 has 47 MA's), (Start: 26 @41572 has 148 MA's), (Start: 30 @41560 has 4 MA's),
(Start: 44 @41545 has 1 MA's), (45, 41539), (49, 41488), (50, 41473), (52, 41452), (56, 41422), (60,
41392),

Gene: Anma_68 Start: 44362, Stop: 44604, Start Num: 43
Candidate Starts for Anma_68:
(Start: 43 @44362 has 154 MA's), (51, 44452), (67, 44548), (69, 44572),

Gene: Apocalypse_69 Start: 44420, Stop: 44662, Start Num: 42
Candidate Starts for Apocalypse_69:
(Start: 42 @44420 has 1 MA's), (51, 44510), (67, 44606), (69, 44630),

Gene: Applecrisp_63 Start: 43695, Stop: 43937, Start Num: 43
Candidate Starts for Applecrisp_63:
(Start: 19 @43626 has 1 MA's), (Start: 43 @43695 has 154 MA's), (45, 43704), (49, 43755), (51,
43785), (67, 43881), (69, 43905),

Gene: Applejack_60 Start: 39669, Stop: 39418, Start Num: 33
Candidate Starts for Applejack_60:
(Start: 26 @39693 has 148 MA's), (Start: 33 @39669 has 5 MA's), (49, 39600), (50, 39585), (52,
39564), (56, 39534), (60, 39504),

Gene: Arcanine_64 Start: 42296, Stop: 42030, Start Num: 26
Candidate Starts for Arcanine_64:
(Start: 25 @42299 has 47 MA's), (Start: 26 @42296 has 148 MA's), (Start: 30 @42284 has 4 MA's),
(Start: 44 @42269 has 1 MA's), (45, 42263), (49, 42212), (50, 42197), (52, 42176), (56, 42146), (60,
42116),

Gene: Arlo_60 Start: 40881, Stop: 40585, Start Num: 26
Candidate Starts for Arlo_60:
(Start: 25 @40884 has 47 MA's), (Start: 26 @40881 has 148 MA's), (Start: 30 @40869 has 4 MA's),
(Start: 38 @40836 has 38 MA's), (45, 40818), (49, 40767), (50, 40752), (52, 40731), (56, 40701), (60,
40671), (73, 40596),

Gene: Asayake_66 Start: 43819, Stop: 44061, Start Num: 43
Candidate Starts for Asayake_66:
(Start: 43 @43819 has 154 MA's), (51, 43909), (67, 44005), (69, 44029),

Gene: Ashballer_65 Start: 42043, Stop: 41777, Start Num: 26
Candidate Starts for Ashballer_65:
(Start: 25 @42046 has 47 MA's), (Start: 26 @42043 has 148 MA's), (Start: 30 @42031 has 4 MA's),
(45, 42010), (49, 41959), (50, 41944), (52, 41923), (56, 41893), (60, 41863),

Gene: Atiba_67 Start: 43467, Stop: 43709, Start Num: 43
Candidate Starts for Atiba_67:
(Start: 43 @43467 has 154 MA's), (51, 43557), (67, 43653), (69, 43677),

Gene: Atkinbua_64 Start: 41089, Stop: 40823, Start Num: 24

Candidate Starts for Atkinbua_64:

(Start: 24 @41089 has 6 MA's), (Start: 30 @41077 has 4 MA's), (45, 41056), (49, 41005), (50, 40990), (52, 40969), (56, 40939), (60, 40909), (73, 40834),

Gene: Auspice_39 Start: 32780, Stop: 33040, Start Num: 40

Candidate Starts for Auspice_39:

(12, 32651), (Start: 35 @32762 has 12 MA's), (Start: 40 @32780 has 9 MA's), (49, 32843), (59, 32930), (60, 32939), (62, 32948),

Gene: Aziz_44 Start: 33930, Stop: 34181, Start Num: 40

Candidate Starts for Aziz_44:

(Start: 40 @33930 has 9 MA's), (51, 34023), (57, 34074), (58, 34077), (61, 34092), (70, 34146),

Gene: BEEST_66 Start: 43819, Stop: 44061, Start Num: 43

Candidate Starts for BEEST_66:

(Start: 43 @43819 has 154 MA's), (51, 43909), (67, 44005), (69, 44029),

Gene: BGlluviae_66 Start: 43622, Stop: 43864, Start Num: 43

Candidate Starts for BGlluviae_66:

(Start: 43 @43622 has 154 MA's), (51, 43712), (67, 43808), (69, 43832),

Gene: BK1_54 Start: 38910, Stop: 38635, Start Num: 26

Candidate Starts for BK1_54:

(Start: 25 @38913 has 47 MA's), (Start: 26 @38910 has 148 MA's), (Start: 30 @38898 has 4 MA's), (45, 38868), (49, 38817), (50, 38802), (52, 38781), (56, 38751), (60, 38721),

Gene: BPBiebs31_64 Start: 41826, Stop: 41557, Start Num: 25

Candidate Starts for BPBiebs31_64:

(Start: 25 @41826 has 47 MA's), (Start: 26 @41823 has 148 MA's), (Start: 30 @41811 has 4 MA's), (34, 41796), (45, 41790), (50, 41724), (52, 41703), (56, 41673), (60, 41643),

Gene: BabeRuth_56 Start: 36173, Stop: 36421, Start Num: 38

Candidate Starts for BabeRuth_56:

(Start: 38 @36173 has 38 MA's), (Start: 44 @36185 has 1 MA's), (60, 36335), (61, 36338), (73, 36413),

Gene: BaconJack_66 Start: 44013, Stop: 43747, Start Num: 26

Candidate Starts for BaconJack_66:

(Start: 25 @44016 has 47 MA's), (Start: 26 @44013 has 148 MA's), (Start: 30 @44001 has 4 MA's), (45, 43980), (49, 43929), (50, 43914), (52, 43893), (56, 43863), (60, 43833),

Gene: BaghaKamala_66 Start: 43286, Stop: 43528, Start Num: 43

Candidate Starts for BaghaKamala_66:

(29, 43241), (Start: 43 @43286 has 154 MA's), (51, 43376), (67, 43472), (69, 43496),

Gene: BarrelRoll_67 Start: 43905, Stop: 44147, Start Num: 43

Candidate Starts for BarrelRoll_67:

(Start: 43 @43905 has 154 MA's), (51, 43995), (67, 44091), (69, 44115),

Gene: Barriga_65 Start: 40220, Stop: 39954, Start Num: 26

Candidate Starts for Barriga_65:

(Start: 25 @40223 has 47 MA's), (Start: 26 @40220 has 148 MA's), (Start: 30 @40208 has 4 MA's), (45, 40187), (49, 40136), (50, 40121), (52, 40100), (56, 40070), (60, 40040), (73, 39965),

Gene: BarrowTuph_63 Start: 41075, Stop: 40809, Start Num: 26

Candidate Starts for BarrowTuph_63:

(Start: 25 @41078 has 47 MA's), (Start: 26 @41075 has 148 MA's), (Start: 30 @41063 has 4 MA's), (45, 41042), (49, 40991), (50, 40976), (52, 40955), (56, 40925), (60, 40895),

Gene: Beatrix_61 Start: 42133, Stop: 41867, Start Num: 26

Candidate Starts for Beatrix_61:

(Start: 25 @42136 has 47 MA's), (Start: 26 @42133 has 148 MA's), (Start: 30 @42121 has 4 MA's), (45, 42097), (48, 42052), (50, 42034), (52, 42013), (56, 41983), (60, 41953), (73, 41878),

Gene: BeesKnees_64 Start: 40665, Stop: 40390, Start Num: 26

Candidate Starts for BeesKnees_64:

(Start: 26 @40665 has 148 MA's), (Start: 30 @40653 has 4 MA's), (49, 40572), (50, 40557), (52, 40536), (56, 40506), (60, 40476),

Gene: Beezoo_68 Start: 44417, Stop: 44659, Start Num: 43

Candidate Starts for Beezoo_68:

(Start: 43 @44417 has 154 MA's), (51, 44507), (67, 44603), (69, 44627),

Gene: Bella96_67 Start: 44208, Stop: 44450, Start Num: 43

Candidate Starts for Bella96_67:

(Start: 43 @44208 has 154 MA's), (51, 44298), (67, 44394), (69, 44418),

Gene: Belladonna_66 Start: 43622, Stop: 43864, Start Num: 43

Candidate Starts for Belladonna_66:

(Start: 43 @43622 has 154 MA's), (51, 43712), (67, 43808), (69, 43832),

Gene: Bern_68 Start: 42879, Stop: 43121, Start Num: 43

Candidate Starts for Bern_68:

(29, 42834), (Start: 43 @42879 has 154 MA's), (51, 42969), (67, 43065), (69, 43089),

Gene: Bethlehem_61 Start: 42502, Stop: 42233, Start Num: 25

Candidate Starts for Bethlehem_61:

(Start: 25 @42502 has 47 MA's), (Start: 26 @42499 has 148 MA's), (Start: 30 @42487 has 4 MA's), (Start: 44 @42472 has 1 MA's), (45, 42466), (49, 42415), (50, 42400), (52, 42379), (56, 42349), (60, 42319), (73, 42244),

Gene: Bexan_59 Start: 41912, Stop: 41646, Start Num: 26

Candidate Starts for Bexan_59:

(Start: 25 @41915 has 47 MA's), (Start: 26 @41912 has 148 MA's), (Start: 30 @41900 has 4 MA's), (45, 41876), (48, 41831), (50, 41813), (56, 41762), (73, 41657),

Gene: Big3_63 Start: 42551, Stop: 42288, Start Num: 26

Candidate Starts for Big3_63:

(Start: 25 @42554 has 47 MA's), (Start: 26 @42551 has 148 MA's), (Start: 30 @42539 has 4 MA's), (45, 42518), (49, 42467), (50, 42452), (52, 42431), (56, 42401), (60, 42371), (73, 42299),

Gene: BigMau_64 Start: 41801, Stop: 41505, Start Num: 26

Candidate Starts for BigMau_64:

(Start: 25 @41804 has 47 MA's), (Start: 26 @41801 has 148 MA's), (Start: 30 @41789 has 4 MA's), (Start: 38 @41756 has 38 MA's), (45, 41738), (49, 41687), (50, 41672), (52, 41651), (56, 41621), (60, 41591), (73, 41516),

Gene: BigPaolini_59 Start: 39208, Stop: 38933, Start Num: 26

Candidate Starts for BigPaolini_59:

(Start: 25 @39211 has 47 MA's), (Start: 26 @39208 has 148 MA's), (Start: 30 @39196 has 4 MA's), (45, 39166), (49, 39115), (50, 39100), (52, 39079), (56, 39049), (60, 39019),

Gene: Bigchungj_61 Start: 41000, Stop: 40725, Start Num: 26

Candidate Starts for Bigchungj_61:

(Start: 25 @41003 has 47 MA's), (Start: 26 @41000 has 148 MA's), (Start: 30 @40988 has 4 MA's), (49, 40907), (50, 40892), (52, 40871), (56, 40841), (60, 40811),

Gene: Bigfoot_54 Start: 40154, Stop: 39888, Start Num: 26

Candidate Starts for Bigfoot_54:

(Start: 25 @40157 has 47 MA's), (Start: 26 @40154 has 148 MA's), (Start: 30 @40142 has 4 MA's), (45, 40121), (49, 40070), (50, 40055), (52, 40034), (56, 40004), (60, 39974),

Gene: Biglebops_55 Start: 40941, Stop: 41186, Start Num: 43

Candidate Starts for Biglebops_55:

(Start: 16 @40869 has 1 MA's), (Start: 43 @40941 has 154 MA's), (53, 41046), (59, 41088), (67, 41124),

Gene: BillKnuckles_59 Start: 42435, Stop: 42130, Start Num: 25

Candidate Starts for BillKnuckles_59:

(Start: 25 @42435 has 47 MA's), (Start: 26 @42432 has 148 MA's), (Start: 30 @42420 has 4 MA's), (45, 42396), (48, 42351), (50, 42333), (56, 42282), (68, 42207), (73, 42177), (76, 42153),

Gene: Bircsak_61 Start: 42809, Stop: 42543, Start Num: 26

Candidate Starts for Bircsak_61:

(Start: 25 @42812 has 47 MA's), (Start: 26 @42809 has 148 MA's), (Start: 30 @42797 has 4 MA's), (45, 42776), (49, 42725), (50, 42710), (52, 42689), (56, 42659), (60, 42629),

Gene: Blackflame_58 Start: 40747, Stop: 40481, Start Num: 26

Candidate Starts for Blackflame_58:

(Start: 25 @40750 has 47 MA's), (Start: 26 @40747 has 148 MA's), (Start: 30 @40735 has 4 MA's), (45, 40714), (49, 40663), (50, 40648), (52, 40627), (56, 40597), (60, 40567), (73, 40492),

Gene: Blesser_58 Start: 40182, Stop: 39916, Start Num: 26

Candidate Starts for Blesser_58:

(Start: 25 @40185 has 47 MA's), (Start: 26 @40182 has 148 MA's), (Start: 30 @40170 has 4 MA's), (45, 40149), (49, 40098), (50, 40083), (52, 40062), (56, 40032), (60, 40002),

Gene: Blizzard_66 Start: 43819, Stop: 44061, Start Num: 43

Candidate Starts for Blizzard_66:

(Start: 43 @43819 has 154 MA's), (51, 43909), (67, 44005), (69, 44029),

Gene: BluSpix_60 Start: 37016, Stop: 36717, Start Num: 25

Candidate Starts for BluSpix_60:

(Start: 25 @37016 has 47 MA's), (Start: 26 @37013 has 148 MA's), (Start: 30 @37001 has 4 MA's), (Start: 38 @36968 has 38 MA's), (45, 36950), (49, 36899), (50, 36884), (52, 36863), (56, 36833), (60, 36803), (73, 36728),

Gene: Bob3_63 Start: 41074, Stop: 40778, Start Num: 26

Candidate Starts for Bob3_63:

(Start: 25 @41077 has 47 MA's), (Start: 26 @41074 has 148 MA's), (Start: 30 @41062 has 4 MA's), (Start: 38 @41029 has 38 MA's), (45, 41011), (49, 40960), (50, 40945), (52, 40924), (56, 40894), (60, 40864), (73, 40789),

Gene: Bobquesha_71 Start: 42269, Stop: 42532, Start Num: 36

Candidate Starts for Bobquesha_71:

(6, 42086), (Start: 36 @42269 has 17 MA's), (51, 42371), (65, 42467), (73, 42521),

Gene: Boiiii_66 Start: 43821, Stop: 44063, Start Num: 43

Candidate Starts for Boiiii_66:

(Start: 43 @43821 has 154 MA's), (51, 43911), (67, 44007), (69, 44031),

Gene: Boilgate_63 Start: 45255, Stop: 45500, Start Num: 37

Candidate Starts for Boilgate_63:

(Start: 37 @45255 has 6 MA's), (Start: 44 @45270 has 1 MA's), (72, 45486), (73, 45489),

Gene: Bones_61 Start: 42258, Stop: 41962, Start Num: 26

Candidate Starts for Bones_61:

(Start: 25 @42261 has 47 MA's), (Start: 26 @42258 has 148 MA's), (Start: 30 @42246 has 4 MA's), (Start: 38 @42213 has 38 MA's), (45, 42195), (49, 42144), (50, 42129), (52, 42108), (56, 42078), (60, 42048), (73, 41973),

Gene: Bongo_39 Start: 32762, Stop: 33040, Start Num: 35

Candidate Starts for Bongo_39:

(12, 32651), (Start: 35 @32762 has 12 MA's), (Start: 40 @32780 has 9 MA's), (49, 32843), (59, 32930), (60, 32939), (62, 32948),

Gene: BoostSeason_69 Start: 45667, Stop: 45912, Start Num: 43

Candidate Starts for BoostSeason_69:

(28, 45610), (31, 45616), (Start: 43 @45667 has 154 MA's), (51, 45757), (61, 45826), (67, 45850), (75, 45904),

Gene: Bosection6_49 Start: 33918, Stop: 34166, Start Num: 38

Candidate Starts for Bosection6_49:

(2, 33354), (4, 33573), (5, 33711), (7, 33744), (18, 33840), (Start: 38 @33918 has 38 MA's), (Start: 44 @33930 has 1 MA's), (51, 34014), (60, 34080), (61, 34083),

Gene: Bricole_39 Start: 32748, Stop: 33026, Start Num: 35

Candidate Starts for Bricole_39:

(12, 32637), (Start: 35 @32748 has 12 MA's), (Start: 40 @32766 has 9 MA's), (49, 32829), (59, 32916), (60, 32925), (62, 32934),

Gene: Briton15_66 Start: 42878, Stop: 42582, Start Num: 26

Candidate Starts for Briton15_66:

(Start: 25 @42881 has 47 MA's), (Start: 26 @42878 has 148 MA's), (Start: 30 @42866 has 4 MA's), (Start: 38 @42833 has 38 MA's), (45, 42815), (49, 42764), (50, 42749), (52, 42728), (56, 42698), (60, 42668),

Gene: Bruns_63 Start: 40455, Stop: 40159, Start Num: 26

Candidate Starts for Bruns_63:

(Start: 25 @40458 has 47 MA's), (Start: 26 @40455 has 148 MA's), (Start: 30 @40443 has 4 MA's), (Start: 38 @40410 has 38 MA's), (45, 40392), (49, 40341), (50, 40326), (52, 40305), (56, 40275), (60, 40245), (73, 40170),

Gene: Bryler_70 Start: 43476, Stop: 43715, Start Num: 43

Candidate Starts for Bryler_70:

(Start: 16 @43392 has 1 MA's), (Start: 43 @43476 has 154 MA's), (45, 43485), (51, 43566), (58, 43620),

Gene: Burton_63 Start: 42834, Stop: 42568, Start Num: 26

Candidate Starts for Burton_63:

(Start: 25 @42837 has 47 MA's), (Start: 26 @42834 has 148 MA's), (Start: 30 @42822 has 4 MA's), (45, 42801), (49, 42750), (50, 42735), (52, 42714), (56, 42684), (60, 42654), (73, 42579),

Gene: Butters_53 Start: 35513, Stop: 35761, Start Num: 38

Candidate Starts for Butters_53:

(7, 35339), (18, 35435), (Start: 38 @35513 has 38 MA's), (Start: 44 @35525 has 1 MA's), (51, 35609), (60, 35675), (61, 35678),

Gene: Buttons_59 Start: 38725, Stop: 38456, Start Num: 25

Candidate Starts for Buttons_59:

(Start: 25 @38725 has 47 MA's), (Start: 26 @38722 has 148 MA's), (Start: 30 @38710 has 4 MA's), (45, 38689), (49, 38638), (50, 38623), (52, 38602), (56, 38572), (60, 38542),

Gene: Bxb1_56 Start: 39835, Stop: 39569, Start Num: 26

Candidate Starts for Bxb1_56:

(Start: 25 @39838 has 47 MA's), (Start: 26 @39835 has 148 MA's), (Start: 30 @39823 has 4 MA's), (45, 39802), (49, 39751), (50, 39736), (52, 39715), (56, 39685), (60, 39655), (73, 39580),

Gene: CREW_66 Start: 43622, Stop: 43864, Start Num: 43

Candidate Starts for CREW_66:

(Start: 43 @43622 has 154 MA's), (51, 43712), (67, 43808), (69, 43832),

Gene: CactusRose_62 Start: 41174, Stop: 40908, Start Num: 26

Candidate Starts for CactusRose_62:

(Start: 25 @41177 has 47 MA's), (Start: 26 @41174 has 148 MA's), (Start: 30 @41162 has 4 MA's), (45, 41141), (49, 41090), (50, 41075), (52, 41054), (56, 41024), (60, 40994),

Gene: Cain_70 Start: 43464, Stop: 43703, Start Num: 43

Candidate Starts for Cain_70:

(Start: 16 @43380 has 1 MA's), (Start: 43 @43464 has 154 MA's), (45, 43473), (51, 43554), (58, 43608),

Gene: CallaLilly_66 Start: 43545, Stop: 43787, Start Num: 43

Candidate Starts for CallaLilly_66:

(Start: 43 @43545 has 154 MA's), (51, 43635), (67, 43731), (69, 43755),

Gene: Capricorn_66 Start: 43622, Stop: 43864, Start Num: 43

Candidate Starts for Capricorn_66:

(Start: 43 @43622 has 154 MA's), (51, 43712), (67, 43808), (69, 43832),

Gene: Carcharodon_50 Start: 34905, Stop: 35153, Start Num: 38

Candidate Starts for Carcharodon_50:

(3, 34491), (5, 34698), (7, 34731), (18, 34827), (Start: 38 @34905 has 38 MA's), (Start: 44 @34917 has 1 MA's), (45, 34923), (51, 35001), (60, 35067), (61, 35070),

Gene: Carlyle_62 Start: 39960, Stop: 39694, Start Num: 26

Candidate Starts for Carlyle_62:

(Start: 25 @39963 has 47 MA's), (Start: 26 @39960 has 148 MA's), (Start: 30 @39948 has 4 MA's), (45, 39924), (48, 39879), (50, 39861), (55, 39813), (56, 39810), (68, 39735), (73, 39705),

Gene: CartmannCramer_60 Start: 42923, Stop: 42648, Start Num: 26

Candidate Starts for CartmannCramer_60:

(Start: 25 @42926 has 47 MA's), (Start: 26 @42923 has 148 MA's), (Start: 30 @42911 has 4 MA's), (45, 42881), (49, 42830), (50, 42815), (52, 42794), (56, 42764), (60, 42734),

Gene: CaseJules_68 Start: 43819, Stop: 44061, Start Num: 43

Candidate Starts for CaseJules_68:

(Start: 43 @43819 has 154 MA's), (51, 43909), (67, 44005), (69, 44029),

Gene: CatBus_58 Start: 40961, Stop: 40695, Start Num: 26

Candidate Starts for CatBus_58:

(Start: 25 @40964 has 47 MA's), (Start: 26 @40961 has 148 MA's), (Start: 30 @40949 has 4 MA's), (45, 40928), (49, 40877), (50, 40862), (52, 40841), (56, 40811), (60, 40781),

Gene: Chanagan_56 Start: 38816, Stop: 38541, Start Num: 26

Candidate Starts for Chanagan_56:

(Start: 25 @38819 has 47 MA's), (Start: 26 @38816 has 148 MA's), (Start: 30 @38804 has 4 MA's), (45, 38774), (49, 38723), (50, 38708), (52, 38687), (56, 38657), (60, 38627),

Gene: Chancellor_70 Start: 43377, Stop: 43640, Start Num: 36

Candidate Starts for Chancellor_70:

(Start: 36 @43377 has 17 MA's), (Start: 44 @43392 has 1 MA's), (51, 43479), (65, 43575), (73, 43629),

Gene: Charlie_51 Start: 33657, Stop: 33905, Start Num: 38

Candidate Starts for Charlie_51:

(2, 33093), (4, 33312), (5, 33450), (7, 33483), (18, 33579), (Start: 38 @33657 has 38 MA's), (Start: 44 @33669 has 1 MA's), (51, 33753), (60, 33819), (61, 33822),

Gene: Chavito_69 Start: 44664, Stop: 44903, Start Num: 43

Candidate Starts for Chavito_69:

(Start: 16 @44589 has 1 MA's), (Start: 43 @44664 has 154 MA's), (51, 44754), (58, 44808),

Gene: CheetoDust_66 Start: 43333, Stop: 43575, Start Num: 43

Candidate Starts for CheetoDust_66:

(29, 43288), (Start: 43 @43333 has 154 MA's), (51, 43423), (67, 43519), (69, 43543),

Gene: Cheetobro_70 Start: 43374, Stop: 43637, Start Num: 36

Candidate Starts for Cheetobro_70:

(Start: 36 @43374 has 17 MA's), (Start: 44 @43389 has 1 MA's), (51, 43476), (65, 43572), (73, 43626),

Gene: Chewbacca_52 Start: 34905, Stop: 35153, Start Num: 38

Candidate Starts for Chewbacca_52:

(3, 34491), (5, 34698), (7, 34731), (18, 34827), (Start: 38 @34905 has 38 MA's), (Start: 44 @34917 has 1 MA's), (45, 34923), (51, 35001), (60, 35067), (61, 35070),

Gene: Chris_69 Start: 44665, Stop: 44892, Start Num: 43
Candidate Starts for Chris_69:
(Start: 43 @44665 has 154 MA's), (58, 44797), (67, 44836),

Gene: ChristmasHams_56 Start: 38811, Stop: 38536, Start Num: 26
Candidate Starts for ChristmasHams_56:
(Start: 25 @38814 has 47 MA's), (Start: 26 @38811 has 148 MA's), (Start: 30 @38799 has 4 MA's),
(45, 38769), (49, 38718), (50, 38703), (52, 38682), (56, 38652), (60, 38622),

Gene: Ciao_60 Start: 40180, Stop: 39914, Start Num: 26
Candidate Starts for Ciao_60:
(Start: 25 @40183 has 47 MA's), (Start: 26 @40180 has 148 MA's), (Start: 30 @40168 has 4 MA's),
(45, 40147), (49, 40096), (50, 40081), (52, 40060), (56, 40030), (60, 40000),

Gene: Clipper_70 Start: 44521, Stop: 44763, Start Num: 43
Candidate Starts for Clipper_70:
(Start: 43 @44521 has 154 MA's), (51, 44611), (67, 44707), (69, 44731),

Gene: ConceptII_64 Start: 42246, Stop: 41980, Start Num: 26
Candidate Starts for ConceptII_64:
(Start: 25 @42249 has 47 MA's), (Start: 26 @42246 has 148 MA's), (Start: 30 @42234 has 4 MA's),
(45, 42213), (49, 42162), (50, 42147), (52, 42126), (56, 42096), (60, 42066),

Gene: Corvo_63 Start: 42111, Stop: 41845, Start Num: 26
Candidate Starts for Corvo_63:
(Start: 25 @42114 has 47 MA's), (Start: 26 @42111 has 148 MA's), (Start: 30 @42099 has 4 MA's),
(45, 42078), (49, 42027), (50, 42012), (52, 41991), (56, 41961), (60, 41931), (73, 41856),

Gene: CrimD_68 Start: 44444, Stop: 44686, Start Num: 43
Candidate Starts for CrimD_68:
(Start: 43 @44444 has 154 MA's), (51, 44534), (67, 44630),

Gene: Crispicous1_59 Start: 39995, Stop: 39699, Start Num: 26
Candidate Starts for Crispicous1_59:
(Start: 26 @39995 has 148 MA's), (Start: 30 @39983 has 4 MA's), (Start: 38 @39950 has 38 MA's),
(45, 39932), (49, 39881), (50, 39866), (52, 39845), (56, 39815), (60, 39785),

Gene: Cueylyss_62 Start: 42458, Stop: 42162, Start Num: 26
Candidate Starts for Cueylyss_62:
(Start: 25 @42461 has 47 MA's), (Start: 26 @42458 has 148 MA's), (Start: 30 @42446 has 4 MA's),
(Start: 38 @42413 has 38 MA's), (45, 42395), (49, 42344), (50, 42329), (52, 42308), (56, 42278), (60,
42248), (73, 42173),

Gene: Curiosium_70 Start: 43138, Stop: 43380, Start Num: 43
Candidate Starts for Curiosium_70:
(Start: 16 @43060 has 1 MA's), (Start: 43 @43138 has 154 MA's), (51, 43228), (67, 43324), (69,
43348),

Gene: DD5_60 Start: 41693, Stop: 41418, Start Num: 26
Candidate Starts for DD5_60:
(Start: 26 @41693 has 148 MA's), (Start: 30 @41681 has 4 MA's), (45, 41651), (49, 41600), (50,
41585), (52, 41564), (55, 41537), (56, 41534), (60, 41504), (73, 41429),

Gene: Dadosky_62 Start: 41083, Stop: 41331, Start Num: 43

Candidate Starts for Dadosky_62:

(Start: 43 @41083 has 154 MA's), (50, 41158), (59, 41230),

Gene: Dalmuri_66 Start: 43622, Stop: 43864, Start Num: 43

Candidate Starts for Dalmuri_66:

(Start: 43 @43622 has 154 MA's), (51, 43712), (67, 43808), (69, 43832),

Gene: DanSyl44_73 Start: 44568, Stop: 44831, Start Num: 36

Candidate Starts for DanSyl44_73:

(Start: 36 @44568 has 17 MA's), (Start: 44 @44583 has 1 MA's), (51, 44670), (65, 44766), (73, 44820),

Gene: DartGoblin_68 Start: 44180, Stop: 44422, Start Num: 43

Candidate Starts for DartGoblin_68:

(Start: 43 @44180 has 154 MA's), (51, 44270), (67, 44366), (69, 44390),

Gene: DarthP_66 Start: 43967, Stop: 44206, Start Num: 43

Candidate Starts for DarthP_66:

(Start: 43 @43967 has 154 MA's), (51, 44057), (59, 44117),

Gene: Dartin_69 Start: 44123, Stop: 44362, Start Num: 41

Candidate Starts for Dartin_69:

(Start: 41 @44123 has 4 MA's), (51, 44213), (56, 44249), (58, 44267), (69, 44330),

Gene: Deby_67 Start: 44105, Stop: 44347, Start Num: 43

Candidate Starts for Deby_67:

(Start: 43 @44105 has 154 MA's), (51, 44195), (67, 44291), (69, 44315),

Gene: Devera_74 Start: 45458, Stop: 45700, Start Num: 43

Candidate Starts for Devera_74:

(Start: 43 @45458 has 154 MA's), (51, 45548), (67, 45644), (69, 45668),

Gene: Dexes_62 Start: 41896, Stop: 41630, Start Num: 26

Candidate Starts for Dexes_62:

(Start: 25 @41899 has 47 MA's), (Start: 26 @41896 has 148 MA's), (Start: 30 @41884 has 4 MA's), (45, 41863), (49, 41812), (50, 41797), (52, 41776), (56, 41746), (60, 41716), (73, 41641),

Gene: Diminimus_40 Start: 32761, Stop: 33039, Start Num: 35

Candidate Starts for Diminimus_40:

(12, 32650), (Start: 35 @32761 has 12 MA's), (Start: 40 @32779 has 9 MA's), (49, 32842), (59, 32929), (60, 32938), (62, 32947),

Gene: DirtDevil_60 Start: 40769, Stop: 40503, Start Num: 26

Candidate Starts for DirtDevil_60:

(Start: 25 @40772 has 47 MA's), (Start: 26 @40769 has 148 MA's), (Start: 30 @40757 has 4 MA's), (45, 40736), (49, 40685), (50, 40670), (52, 40649), (56, 40619), (60, 40589),

Gene: DismalFunk_69 Start: 46092, Stop: 46337, Start Num: 43

Candidate Starts for DismalFunk_69:

(28, 46035), (31, 46041), (Start: 43 @46092 has 154 MA's), (51, 46182), (56, 46218), (61, 46251),

Gene: DismalStressor_69 Start: 46092, Stop: 46337, Start Num: 43

Candidate Starts for DismalStressor_69:

(28, 46035), (31, 46041), (Start: 43 @46092 has 154 MA's), (51, 46182), (56, 46218), (61, 46251),

Gene: Dole_72 Start: 45461, Stop: 45703, Start Num: 43

Candidate Starts for Dole_72:

(Start: 43 @45461 has 154 MA's), (51, 45551), (67, 45647), (69, 45671),

Gene: Doom_60 Start: 41667, Stop: 41392, Start Num: 26

Candidate Starts for Doom_60:

(Start: 25 @41670 has 47 MA's), (Start: 26 @41667 has 148 MA's), (Start: 30 @41655 has 4 MA's), (45, 41625), (49, 41574), (50, 41559), (52, 41538), (56, 41508), (60, 41478),

Gene: Doughnut_69 Start: 45708, Stop: 45953, Start Num: 43

Candidate Starts for Doughnut_69:

(27, 45645), (Start: 43 @45708 has 154 MA's), (51, 45798), (61, 45867),

Gene: DrFeelGood_58 Start: 40034, Stop: 39777, Start Num: 32

Candidate Starts for DrFeelGood_58:

(Start: 32 @40034 has 10 MA's), (Start: 44 @40016 has 1 MA's), (45, 40010), (49, 39959), (50, 39944), (52, 39923), (56, 39893), (60, 39863),

Gene: DrHayes_67 Start: 44362, Stop: 44604, Start Num: 43

Candidate Starts for DrHayes_67:

(Start: 43 @44362 has 154 MA's), (51, 44452), (67, 44548), (69, 44572),

Gene: DreamCatcher_65 Start: 41754, Stop: 41455, Start Num: 25

Candidate Starts for DreamCatcher_65:

(Start: 25 @41754 has 47 MA's), (Start: 26 @41751 has 148 MA's), (Start: 30 @41739 has 4 MA's), (Start: 38 @41706 has 38 MA's), (45, 41688), (49, 41637), (50, 41622), (52, 41601), (56, 41571), (60, 41541), (73, 41466),

Gene: Dreamboat_63 Start: 40328, Stop: 40062, Start Num: 26

Candidate Starts for Dreamboat_63:

(Start: 26 @40328 has 148 MA's), (Start: 30 @40316 has 4 MA's), (Start: 44 @40301 has 1 MA's), (45, 40295), (49, 40244), (50, 40229), (52, 40208), (56, 40178), (60, 40148), (73, 40073),

Gene: Dulcie_62 Start: 42668, Stop: 42411, Start Num: 32

Candidate Starts for Dulcie_62:

(Start: 32 @42668 has 10 MA's), (Start: 44 @42650 has 1 MA's), (45, 42644), (49, 42593), (50, 42578), (52, 42557), (56, 42527), (60, 42497),

Gene: Dulcita_40 Start: 32761, Stop: 33039, Start Num: 35

Candidate Starts for Dulcita_40:

(12, 32650), (Start: 35 @32761 has 12 MA's), (Start: 40 @32779 has 9 MA's), (49, 32842), (59, 32929), (60, 32938), (62, 32947),

Gene: Duplicity_50 Start: 34914, Stop: 35162, Start Num: 38

Candidate Starts for Duplicity_50:

(3, 34500), (5, 34707), (7, 34740), (18, 34836), (Start: 38 @34914 has 38 MA's), (Start: 44 @34926 has 1 MA's), (45, 34932), (51, 35010), (60, 35076), (61, 35079),

Gene: Durfee_66 Start: 43819, Stop: 44061, Start Num: 43

Candidate Starts for Durfee_66:

(Start: 43 @43819 has 154 MA's), (51, 43909), (67, 44005), (69, 44029),

Gene: Dussy_62 Start: 41689, Stop: 41423, Start Num: 26

Candidate Starts for Dussy_62:

(Start: 25 @41692 has 47 MA's), (Start: 26 @41689 has 148 MA's), (Start: 30 @41677 has 4 MA's), (45, 41656), (49, 41605), (50, 41590), (52, 41569), (56, 41539), (60, 41509),

Gene: Dynamix_64 Start: 40678, Stop: 40409, Start Num: 25

Candidate Starts for Dynamix_64:

(Start: 25 @40678 has 47 MA's), (Start: 26 @40675 has 148 MA's), (Start: 30 @40663 has 4 MA's), (45, 40642), (50, 40576), (52, 40555), (56, 40525), (60, 40495), (73, 40420),

Gene: EGUunicorn_48 Start: 33605, Stop: 33853, Start Num: 38

Candidate Starts for EGUunicorn_48:

(3, 33191), (5, 33398), (7, 33431), (18, 33527), (Start: 38 @33605 has 38 MA's), (Start: 44 @33617 has 1 MA's), (45, 33623), (51, 33701), (60, 33767), (61, 33770),

Gene: Edtherson_61 Start: 41661, Stop: 41386, Start Num: 26

Candidate Starts for Edtherson_61:

(Start: 25 @41664 has 47 MA's), (Start: 26 @41661 has 148 MA's), (Start: 30 @41649 has 4 MA's), (45, 41619), (49, 41568), (50, 41553), (52, 41532), (56, 41502), (60, 41472),

Gene: Edugator_59 Start: 42504, Stop: 42752, Start Num: 43

Candidate Starts for Edugator_59:

(Start: 43 @42504 has 154 MA's), (50, 42579), (59, 42651),

Gene: Efra2_72 Start: 44206, Stop: 44448, Start Num: 43

Candidate Starts for Efra2_72:

(Start: 16 @44128 has 1 MA's), (Start: 43 @44206 has 154 MA's), (51, 44296), (67, 44392),

Gene: Ekdilam_63 Start: 44192, Stop: 44431, Start Num: 43

Candidate Starts for Ekdilam_63:

(Start: 43 @44192 has 154 MA's), (45, 44201), (51, 44282),

Gene: Ellie_62 Start: 43425, Stop: 43667, Start Num: 43

Candidate Starts for Ellie_62:

(Start: 19 @43356 has 1 MA's), (Start: 43 @43425 has 154 MA's), (45, 43434), (49, 43485), (51, 43515), (67, 43611), (69, 43635),

Gene: Emerson_68 Start: 43939, Stop: 44181, Start Num: 43

Candidate Starts for Emerson_68:

(Start: 43 @43939 has 154 MA's), (51, 44029), (67, 44125), (69, 44149),

Gene: Enkosi_57 Start: 43554, Stop: 43799, Start Num: 43

Candidate Starts for Enkosi_57:

(Start: 16 @43482 has 1 MA's), (Start: 43 @43554 has 154 MA's), (53, 43659), (59, 43701), (67, 43737),

Gene: EnzoK_62 Start: 38636, Stop: 38361, Start Num: 26

Candidate Starts for EnzoK_62:

(Start: 25 @38639 has 47 MA's), (Start: 26 @38636 has 148 MA's), (Start: 30 @38624 has 4 MA's), (45, 38594), (49, 38543), (50, 38528), (52, 38507), (56, 38477), (60, 38447), (66, 38423), (73, 38372),

Gene: Eponine_72 Start: 44220, Stop: 44483, Start Num: 36

Candidate Starts for Eponine_72:

(Start: 36 @44220 has 17 MA's), (Start: 44 @44235 has 1 MA's), (51, 44322), (65, 44418), (71, 44463), (73, 44472),

Gene: Espresso_59 Start: 41111, Stop: 40833, Start Num: 25

Candidate Starts for Espresso_59:

(Start: 25 @41111 has 47 MA's), (Start: 26 @41108 has 148 MA's), (Start: 30 @41096 has 4 MA's), (45, 41066), (49, 41015), (50, 41000), (52, 40979), (56, 40949), (60, 40919),

Gene: Estes_45 Start: 34058, Stop: 34309, Start Num: 40

Candidate Starts for Estes_45:

(Start: 40 @34058 has 9 MA's), (51, 34151), (57, 34202), (58, 34205), (70, 34274),

Gene: Euphoria_60 Start: 40818, Stop: 40552, Start Num: 26

Candidate Starts for Euphoria_60:

(Start: 25 @40821 has 47 MA's), (Start: 26 @40818 has 148 MA's), (Start: 30 @40806 has 4 MA's), (45, 40785), (49, 40734), (50, 40719), (56, 40668), (68, 40593), (73, 40563),

Gene: Eyeball_64 Start: 42166, Stop: 41900, Start Num: 26

Candidate Starts for Eyeball_64:

(Start: 25 @42169 has 47 MA's), (Start: 26 @42166 has 148 MA's), (Start: 30 @42154 has 4 MA's), (45, 42133), (49, 42082), (50, 42067), (52, 42046), (54, 42025), (56, 42016), (60, 41986), (73, 41911),

Gene: Fajezeel_63 Start: 40885, Stop: 40616, Start Num: 25

Candidate Starts for Fajezeel_63:

(Start: 25 @40885 has 47 MA's), (Start: 26 @40882 has 148 MA's), (Start: 30 @40870 has 4 MA's), (45, 40849), (49, 40798), (50, 40783), (52, 40762), (56, 40732), (60, 40702), (73, 40627),

Gene: Fascinus_56 Start: 40671, Stop: 40402, Start Num: 25

Candidate Starts for Fascinus_56:

(Start: 25 @40671 has 47 MA's), (Start: 26 @40668 has 148 MA's), (Start: 30 @40656 has 4 MA's), (45, 40635), (49, 40584), (50, 40569), (52, 40548), (56, 40518), (60, 40488),

Gene: Fefferhead_64 Start: 43334, Stop: 43576, Start Num: 43

Candidate Starts for Fefferhead_64:

(Start: 19 @43265 has 1 MA's), (Start: 43 @43334 has 154 MA's), (45, 43343), (49, 43394), (51, 43424), (67, 43520),

Gene: Fenn_64 Start: 42653, Stop: 42378, Start Num: 26

Candidate Starts for Fenn_64:

(Start: 26 @42653 has 148 MA's), (Start: 30 @42641 has 4 MA's), (45, 42611), (49, 42560), (50, 42545), (52, 42524), (54, 42503), (56, 42494), (60, 42464), (73, 42389),

Gene: Feyre_63 Start: 44492, Stop: 44740, Start Num: 43

Candidate Starts for Feyre_63:

(Start: 43 @44492 has 154 MA's), (50, 44567), (59, 44639), (63, 44663),

Gene: Findley_69 Start: 46086, Stop: 46331, Start Num: 43

Candidate Starts for Findley_69:

(27, 46023), (Start: 43 @46086 has 154 MA's), (51, 46176), (61, 46245),

Gene: Fionnbharth_70 Start: 43618, Stop: 43881, Start Num: 36

Candidate Starts for Fionnbharth_70:

(Start: 36 @43618 has 17 MA's), (Start: 44 @43633 has 1 MA's), (51, 43720), (65, 43816), (73, 43870),

Gene: Forsytheast_63 Start: 40623, Stop: 40327, Start Num: 26

Candidate Starts for Forsytheast_63:

(Start: 25 @40626 has 47 MA's), (Start: 26 @40623 has 148 MA's), (Start: 30 @40611 has 4 MA's), (Start: 38 @40578 has 38 MA's), (45, 40560), (49, 40509), (50, 40494), (52, 40473), (56, 40443), (60, 40413), (73, 40338),

Gene: Francis47_60 Start: 41735, Stop: 41460, Start Num: 26

Candidate Starts for Francis47_60:

(Start: 25 @41738 has 47 MA's), (Start: 26 @41735 has 148 MA's), (Start: 30 @41723 has 4 MA's), (45, 41693), (49, 41642), (50, 41627), (52, 41606), (56, 41576), (60, 41546),

Gene: FreakyGoo_40 Start: 32780, Stop: 33040, Start Num: 40

Candidate Starts for FreakyGoo_40:

(12, 32651), (Start: 35 @32762 has 12 MA's), (Start: 40 @32780 has 9 MA's), (49, 32843), (59, 32930), (60, 32939), (62, 32948),

Gene: Froghopper_60 Start: 40239, Stop: 39964, Start Num: 26

Candidate Starts for Froghopper_60:

(Start: 25 @40242 has 47 MA's), (Start: 26 @40239 has 148 MA's), (Start: 30 @40227 has 4 MA's), (45, 40197), (49, 40146), (50, 40131), (52, 40110), (56, 40080), (60, 40050), (73, 39975),

Gene: Fulbright_49 Start: 33994, Stop: 34242, Start Num: 38

Candidate Starts for Fulbright_49:

(3, 33580), (5, 33787), (7, 33820), (18, 33916), (Start: 38 @33994 has 38 MA's), (Start: 44 @34006 has 1 MA's), (45, 34012), (51, 34090), (60, 34156), (61, 34159),

Gene: Fushigi_58 Start: 39205, Stop: 38936, Start Num: 25

Candidate Starts for Fushigi_58:

(Start: 25 @39205 has 47 MA's), (Start: 26 @39202 has 148 MA's), (Start: 30 @39190 has 4 MA's), (45, 39169), (49, 39118), (50, 39103), (52, 39082), (56, 39052), (60, 39022),

Gene: GMonster_59 Start: 40681, Stop: 40385, Start Num: 26

Candidate Starts for GMonster_59:

(Start: 25 @40684 has 47 MA's), (Start: 26 @40681 has 148 MA's), (Start: 30 @40669 has 4 MA's), (Start: 38 @40636 has 38 MA's), (45, 40618), (49, 40567), (50, 40552), (52, 40531), (56, 40501), (60, 40471),

Gene: Gachnar_62 Start: 41366, Stop: 41091, Start Num: 26

Candidate Starts for Gachnar_62:

(17, 41390), (Start: 25 @41369 has 47 MA's), (Start: 26 @41366 has 148 MA's), (Start: 30 @41354 has 4 MA's), (49, 41273), (50, 41258), (52, 41237), (56, 41207), (60, 41177), (73, 41102),

Gene: GageAP_63 Start: 41646, Stop: 41380, Start Num: 26

Candidate Starts for GageAP_63:

(Start: 25 @41649 has 47 MA's), (Start: 26 @41646 has 148 MA's), (Start: 30 @41634 has 4 MA's), (45, 41613), (49, 41562), (50, 41547), (52, 41526), (56, 41496), (60, 41466), (73, 41391),

Gene: Gandalf20_64 Start: 42393, Stop: 42118, Start Num: 26

Candidate Starts for Gandalf20_64:

(Start: 25 @42396 has 47 MA's), (Start: 26 @42393 has 148 MA's), (Start: 30 @42381 has 4 MA's), (45, 42351), (49, 42300), (50, 42285), (52, 42264), (56, 42234), (60, 42204),

Gene: Ganymede_66 Start: 43845, Stop: 44087, Start Num: 43
Candidate Starts for Ganymede_66:
(Start: 43 @43845 has 154 MA's), (51, 43935), (67, 44031), (69, 44055),

Gene: GardenSalsa_44 Start: 33882, Stop: 34133, Start Num: 40
Candidate Starts for GardenSalsa_44:
(Start: 40 @33882 has 9 MA's), (57, 34026), (58, 34029), (61, 34044), (70, 34098),

Gene: GenevaB15_44 Start: 33930, Stop: 34181, Start Num: 40
Candidate Starts for GenevaB15_44:
(Start: 40 @33930 has 9 MA's), (51, 34023), (57, 34074), (58, 34077), (61, 34092), (70, 34146),

Gene: Geraldini_69 Start: 44501, Stop: 44743, Start Num: 43
Candidate Starts for Geraldini_69:
(Start: 43 @44501 has 154 MA's), (51, 44591), (67, 44687), (69, 44711),

Gene: Gex_50 Start: 34921, Stop: 35169, Start Num: 38
Candidate Starts for Gex_50:
(3, 34507), (5, 34714), (7, 34747), (18, 34843), (Start: 38 @34921 has 38 MA's), (Start: 44 @34933 has 1 MA's), (45, 34939), (51, 35017), (60, 35083), (61, 35086),

Gene: Glaske16_40 Start: 32761, Stop: 33039, Start Num: 35
Candidate Starts for Glaske16_40:
(12, 32650), (Start: 35 @32761 has 12 MA's), (Start: 40 @32779 has 9 MA's), (49, 32842), (59, 32929), (60, 32938), (62, 32947),

Gene: Gompeii16_61 Start: 42810, Stop: 42544, Start Num: 26
Candidate Starts for Gompeii16_61:
(Start: 25 @42813 has 47 MA's), (Start: 26 @42810 has 148 MA's), (Start: 30 @42798 has 4 MA's), (45, 42777), (49, 42726), (50, 42711), (52, 42690), (56, 42660), (60, 42630),

Gene: Graduation_66 Start: 42500, Stop: 42234, Start Num: 26
Candidate Starts for Graduation_66:
(Start: 25 @42503 has 47 MA's), (Start: 26 @42500 has 148 MA's), (Start: 30 @42488 has 4 MA's), (45, 42467), (49, 42416), (50, 42401), (52, 42380), (56, 42350), (60, 42320), (73, 42245),

Gene: GrecoEtereo_61 Start: 40288, Stop: 40022, Start Num: 26
Candidate Starts for GrecoEtereo_61:
(Start: 25 @40291 has 47 MA's), (Start: 26 @40288 has 148 MA's), (Start: 30 @40276 has 4 MA's), (45, 40255), (49, 40204), (50, 40189), (52, 40168), (56, 40138), (60, 40108),

Gene: Greg_63 Start: 40885, Stop: 40616, Start Num: 25
Candidate Starts for Greg_63:
(Start: 25 @40885 has 47 MA's), (Start: 26 @40882 has 148 MA's), (Start: 30 @40870 has 4 MA's), (45, 40849), (49, 40798), (50, 40783), (52, 40762), (56, 40732), (60, 40702), (73, 40627),

Gene: GroundGoblin_59 Start: 40911, Stop: 40645, Start Num: 26
Candidate Starts for GroundGoblin_59:
(Start: 25 @40914 has 47 MA's), (Start: 26 @40911 has 148 MA's), (Start: 30 @40899 has 4 MA's), (45, 40878), (49, 40827), (50, 40812), (52, 40791), (56, 40761), (60, 40731),

Gene: Guanica15_71 Start: 43944, Stop: 44186, Start Num: 43

Candidate Starts for Guanica15_71:

(Start: 16 @43866 has 1 MA's), (Start: 43 @43944 has 154 MA's), (67, 44130),

Gene: Guillsminger_61 Start: 42432, Stop: 42680, Start Num: 43

Candidate Starts for Guillsminger_61:

(Start: 43 @42432 has 154 MA's), (50, 42507), (59, 42579),

Gene: Gwendoluna_65 Start: 43032, Stop: 42778, Start Num: 30

Candidate Starts for Gwendoluna_65:

(Start: 24 @43044 has 6 MA's), (Start: 30 @43032 has 4 MA's), (45, 43011), (49, 42960), (50, 42945), (52, 42924), (54, 42903), (56, 42894), (60, 42864),

Gene: Gyzlar_57 Start: 38964, Stop: 38710, Start Num: 30

Candidate Starts for Gyzlar_57:

(Start: 26 @38976 has 148 MA's), (Start: 30 @38964 has 4 MA's), (45, 38943), (49, 38892), (50, 38877), (52, 38856), (56, 38826), (60, 38796), (73, 38721),

Gene: Hami1_57 Start: 36945, Stop: 36679, Start Num: 26

Candidate Starts for Hami1_57:

(Start: 25 @36948 has 47 MA's), (Start: 26 @36945 has 148 MA's), (Start: 30 @36933 has 4 MA's), (45, 36912), (49, 36861), (50, 36846), (52, 36825), (56, 36795), (60, 36765),

Gene: Hammy_66 Start: 43955, Stop: 44194, Start Num: 43

Candidate Starts for Hammy_66:

(Start: 43 @43955 has 154 MA's), (51, 44045), (59, 44105),

Gene: HanShotFirst_63 Start: 42830, Stop: 42531, Start Num: 25

Candidate Starts for HanShotFirst_63:

(Start: 25 @42830 has 47 MA's), (Start: 26 @42827 has 148 MA's), (Start: 30 @42815 has 4 MA's), (Start: 38 @42782 has 38 MA's), (45, 42764), (49, 42713), (50, 42698), (52, 42677), (56, 42647), (60, 42617),

Gene: Hanako_55 Start: 36173, Stop: 36421, Start Num: 38

Candidate Starts for Hanako_55:

(Start: 38 @36173 has 38 MA's), (Start: 44 @36185 has 1 MA's), (60, 36335), (61, 36338), (73, 36413),

Gene: HarryOW_60 Start: 40966, Stop: 40688, Start Num: 25

Candidate Starts for HarryOW_60:

(Start: 25 @40966 has 47 MA's), (Start: 26 @40963 has 148 MA's), (Start: 30 @40951 has 4 MA's), (45, 40921), (49, 40870), (50, 40855), (52, 40834), (56, 40804), (60, 40774),

Gene: HedwigODU_66 Start: 43467, Stop: 43709, Start Num: 43

Candidate Starts for HedwigODU_66:

(Start: 43 @43467 has 154 MA's), (51, 43557), (67, 43653), (69, 43677),

Gene: Heftyboy_61 Start: 42799, Stop: 43047, Start Num: 43

Candidate Starts for Heftyboy_61:

(Start: 43 @42799 has 154 MA's), (50, 42874), (59, 42946), (63, 42970),

Gene: Hermia_60 Start: 40961, Stop: 40695, Start Num: 26

Candidate Starts for Hermia_60:

(Start: 25 @40964 has 47 MA's), (Start: 26 @40961 has 148 MA's), (Start: 30 @40949 has 4 MA's), (45, 40928), (49, 40877), (50, 40862), (52, 40841), (56, 40811), (60, 40781),

Gene: HermioneGrange_64 Start: 42295, Stop: 41999, Start Num: 26

Candidate Starts for HermioneGrange_64:

(Start: 25 @42298 has 47 MA's), (Start: 26 @42295 has 148 MA's), (Start: 30 @42283 has 4 MA's), (Start: 38 @42250 has 38 MA's), (45, 42232), (49, 42181), (50, 42166), (52, 42145), (56, 42115), (60, 42085), (73, 42010),

Gene: Homines_54 Start: 37291, Stop: 37025, Start Num: 26

Candidate Starts for Homines_54:

(Start: 25 @37294 has 47 MA's), (Start: 26 @37291 has 148 MA's), (Start: 30 @37279 has 4 MA's), (45, 37258), (49, 37207), (50, 37192), (52, 37171), (56, 37141), (60, 37111), (73, 37036),

Gene: Homura_66 Start: 43622, Stop: 43864, Start Num: 43

Candidate Starts for Homura_66:

(Start: 43 @43622 has 154 MA's), (51, 43712), (67, 43808), (69, 43832),

Gene: Hope4ever_63 Start: 41279, Stop: 41004, Start Num: 26

Candidate Starts for Hope4ever_63:

(Start: 25 @41282 has 47 MA's), (Start: 26 @41279 has 148 MA's), (Start: 30 @41267 has 4 MA's), (45, 41237), (49, 41186), (50, 41171), (52, 41150), (56, 41120), (60, 41090), (73, 41015),

Gene: Hyperbowlee_66 Start: 43819, Stop: 44061, Start Num: 43

Candidate Starts for Hyperbowlee_66:

(Start: 43 @43819 has 154 MA's), (51, 43909), (67, 44005), (69, 44029),

Gene: ILeeKay_64 Start: 41170, Stop: 40895, Start Num: 26

Candidate Starts for ILeeKay_64:

(Start: 25 @41173 has 47 MA's), (Start: 26 @41170 has 148 MA's), (Start: 30 @41158 has 4 MA's), (49, 41077), (50, 41062), (52, 41041), (56, 41011), (60, 40981),

Gene: IPhane7_39 Start: 32762, Stop: 33040, Start Num: 35

Candidate Starts for IPhane7_39:

(12, 32651), (Start: 35 @32762 has 12 MA's), (Start: 40 @32780 has 9 MA's), (49, 32843), (59, 32930), (60, 32939), (62, 32948),

Gene: Ichabod_66 Start: 42392, Stop: 42126, Start Num: 26

Candidate Starts for Ichabod_66:

(Start: 25 @42395 has 47 MA's), (Start: 26 @42392 has 148 MA's), (Start: 30 @42380 has 4 MA's), (45, 42359), (49, 42308), (50, 42293), (52, 42272), (56, 42242), (60, 42212), (73, 42137),

Gene: IgnatiusPatJac_62 Start: 40958, Stop: 40662, Start Num: 26

Candidate Starts for IgnatiusPatJac_62:

(Start: 25 @40961 has 47 MA's), (Start: 26 @40958 has 148 MA's), (Start: 30 @40946 has 4 MA's), (Start: 38 @40913 has 38 MA's), (45, 40895), (49, 40844), (50, 40829), (52, 40808), (56, 40778), (60, 40748), (73, 40673),

Gene: Illumine_72 Start: 45460, Stop: 45702, Start Num: 43

Candidate Starts for Illumine_72:

(Start: 43 @45460 has 154 MA's), (51, 45550), (67, 45646), (69, 45670),

Gene: Impisi_56 Start: 35970, Stop: 36218, Start Num: 38

Candidate Starts for Impisi_56:

(Start: 38 @35970 has 38 MA's), (Start: 44 @35982 has 1 MA's), (51, 36066), (60, 36132), (61, 36135), (73, 36210),

Gene: Inky_66 Start: 43622, Stop: 43864, Start Num: 43

Candidate Starts for Inky_66:

(Start: 43 @43622 has 154 MA's), (51, 43712), (67, 43808), (69, 43832),

Gene: Inyanga_57 Start: 41026, Stop: 40760, Start Num: 26

Candidate Starts for Inyanga_57:

(Start: 25 @41029 has 47 MA's), (Start: 26 @41026 has 148 MA's), (Start: 30 @41014 has 4 MA's), (45, 40993), (49, 40942), (50, 40927), (52, 40906), (56, 40876), (60, 40846), (73, 40771),

Gene: Iqorha_57 Start: 41025, Stop: 40759, Start Num: 26

Candidate Starts for Iqorha_57:

(Start: 25 @41028 has 47 MA's), (Start: 26 @41025 has 148 MA's), (Start: 30 @41013 has 4 MA's), (45, 40992), (49, 40941), (50, 40926), (52, 40905), (56, 40875), (60, 40845), (73, 40770),

Gene: Izel_40 Start: 32761, Stop: 33039, Start Num: 35

Candidate Starts for Izel_40:

(12, 32650), (Start: 35 @32761 has 12 MA's), (Start: 40 @32779 has 9 MA's), (49, 32842), (59, 32929), (60, 32938), (62, 32947),

Gene: JAWS_67 Start: 43898, Stop: 44140, Start Num: 43

Candidate Starts for JAWS_67:

(Start: 43 @43898 has 154 MA's), (51, 43988), (67, 44084), (69, 44108),

Gene: JC27_65 Start: 41732, Stop: 41466, Start Num: 26

Candidate Starts for JC27_65:

(Start: 26 @41732 has 148 MA's), (Start: 30 @41720 has 4 MA's), (34, 41705), (45, 41699), (49, 41648), (50, 41633), (52, 41612), (56, 41582), (60, 41552),

Gene: JF1_70 Start: 43533, Stop: 43847, Start Num: 37

Candidate Starts for JF1_70:

(Start: 37 @43533 has 6 MA's), (Start: 44 @43548 has 1 MA's), (46, 43578), (51, 43635),

Gene: Jamie19_49 Start: 34464, Stop: 34712, Start Num: 38

Candidate Starts for Jamie19_49:

(Start: 38 @34464 has 38 MA's), (Start: 44 @34476 has 1 MA's), (60, 34626), (61, 34629), (73, 34704),

Gene: Jarvi_66 Start: 43622, Stop: 43864, Start Num: 43

Candidate Starts for Jarvi_66:

(Start: 43 @43622 has 154 MA's), (51, 43712), (67, 43808), (69, 43832),

Gene: Jasper_62 Start: 40214, Stop: 39948, Start Num: 26

Candidate Starts for Jasper_62:

(Start: 26 @40214 has 148 MA's), (Start: 30 @40202 has 4 MA's), (Start: 44 @40187 has 1 MA's), (45, 40181), (49, 40130), (50, 40115), (52, 40094), (56, 40064), (60, 40034), (73, 39959),

Gene: Jayhawk_68 Start: 43965, Stop: 44207, Start Num: 43

Candidate Starts for Jayhawk_68:

(Start: 43 @43965 has 154 MA's), (51, 44055), (67, 44151), (69, 44175),

Gene: Jeckyll_66 Start: 43622, Stop: 43864, Start Num: 43

Candidate Starts for Jeckyll_66:

(Start: 43 @43622 has 154 MA's), (51, 43712), (67, 43808), (69, 43832),

Gene: Jerm2_64 Start: 42536, Stop: 42270, Start Num: 26

Candidate Starts for Jerm2_64:

(Start: 25 @42539 has 47 MA's), (Start: 26 @42536 has 148 MA's), (Start: 30 @42524 has 4 MA's), (45, 42503), (49, 42452), (50, 42437), (52, 42416), (56, 42386), (60, 42356), (73, 42281),

Gene: Jorgensen_65 Start: 41384, Stop: 41109, Start Num: 26

Candidate Starts for Jorgensen_65:

(Start: 25 @41387 has 47 MA's), (Start: 26 @41384 has 148 MA's), (Start: 30 @41372 has 4 MA's), (45, 41342), (49, 41291), (50, 41276), (52, 41255), (56, 41225), (60, 41195), (73, 41120),

Gene: Joy99_66 Start: 43551, Stop: 43793, Start Num: 43

Candidate Starts for Joy99_66:

(Start: 43 @43551 has 154 MA's), (51, 43641), (67, 43737), (69, 43761),

Gene: JuliaChild_63 Start: 41613, Stop: 41338, Start Num: 26

Candidate Starts for JuliaChild_63:

(Start: 25 @41616 has 47 MA's), (Start: 26 @41613 has 148 MA's), (Start: 30 @41601 has 4 MA's), (45, 41571), (49, 41520), (50, 41505), (52, 41484), (56, 41454), (60, 41424),

Gene: Juliette_72 Start: 43682, Stop: 43945, Start Num: 36

Candidate Starts for Juliette_72:

(Start: 36 @43682 has 17 MA's), (Start: 44 @43697 has 1 MA's), (51, 43784), (65, 43880), (73, 43934),

Gene: KBG_63 Start: 43145, Stop: 42876, Start Num: 25

Candidate Starts for KBG_63:

(Start: 25 @43145 has 47 MA's), (Start: 26 @43142 has 148 MA's), (Start: 30 @43130 has 4 MA's), (45, 43106), (48, 43061), (50, 43043), (56, 42992), (73, 42887),

Gene: KSSJEB_62 Start: 40592, Stop: 40323, Start Num: 25

Candidate Starts for KSSJEB_62:

(Start: 25 @40592 has 47 MA's), (Start: 26 @40589 has 148 MA's), (Start: 30 @40577 has 4 MA's), (45, 40556), (49, 40505), (50, 40490), (52, 40469), (56, 40439), (60, 40409),

Gene: Kanely_63 Start: 41177, Stop: 40902, Start Num: 26

Candidate Starts for Kanely_63:

(Start: 25 @41180 has 47 MA's), (Start: 26 @41177 has 148 MA's), (Start: 30 @41165 has 4 MA's), (49, 41084), (50, 41069), (52, 41048), (56, 41018), (60, 40988),

Gene: Kenmech_65 Start: 42818, Stop: 42549, Start Num: 25

Candidate Starts for Kenmech_65:

(Start: 25 @42818 has 47 MA's), (Start: 26 @42815 has 148 MA's), (Start: 30 @42803 has 4 MA's), (45, 42782), (49, 42731), (50, 42716), (52, 42695), (56, 42665), (60, 42635),

Gene: Keshu_70 Start: 44135, Stop: 44440, Start Num: 22

Candidate Starts for Keshu_70:

(20, 44129), (Start: 22 @44135 has 1 MA's), (29, 44156), (Start: 43 @44198 has 154 MA's), (46, 44231), (51, 44288), (59, 44348), (61, 44360),

Gene: Kevin1_52 Start: 34949, Stop: 35200, Start Num: 38

Candidate Starts for Kevin1_52:

(7, 34775), (18, 34871), (Start: 38 @34949 has 38 MA's), (Start: 44 @34961 has 1 MA's), (51, 35045), (60, 35111), (61, 35114),

Gene: KiSi_71 Start: 44647, Stop: 44877, Start Num: 43

Candidate Starts for KiSi_71:

(Start: 43 @44647 has 154 MA's), (54, 44764), (59, 44782),

Gene: KikiBouba_61 Start: 40770, Stop: 40504, Start Num: 26

Candidate Starts for KikiBouba_61:

(Start: 25 @40773 has 47 MA's), (Start: 26 @40770 has 148 MA's), (Start: 30 @40758 has 4 MA's), (45, 40737), (49, 40686), (50, 40671), (52, 40650), (56, 40620), (60, 40590),

Gene: Killigrew_61 Start: 41393, Stop: 41097, Start Num: 26

Candidate Starts for Killigrew_61:

(Start: 25 @41396 has 47 MA's), (Start: 26 @41393 has 148 MA's), (Start: 30 @41381 has 4 MA's), (Start: 38 @41348 has 38 MA's), (45, 41330), (49, 41279), (50, 41264), (52, 41243), (56, 41213), (60, 41183),

Gene: KleverKiS_40 Start: 32760, Stop: 33020, Start Num: 40

Candidate Starts for KleverKiS_40:

(12, 32631), (Start: 35 @32742 has 12 MA's), (Start: 40 @32760 has 9 MA's), (49, 32823), (59, 32910), (60, 32919), (62, 32928),

Gene: Kraw_70 Start: 43370, Stop: 43633, Start Num: 36

Candidate Starts for Kraw_70:

(Start: 36 @43370 has 17 MA's), (Start: 44 @43385 has 1 MA's), (51, 43472), (65, 43568), (73, 43622),

Gene: Krueger_71 Start: 43668, Stop: 43991, Start Num: 16

Candidate Starts for Krueger_71:

(Start: 16 @43668 has 1 MA's), (Start: 43 @43752 has 154 MA's), (45, 43761), (51, 43842), (58, 43896), (61, 43911),

Gene: Kugel_64 Start: 42232, Stop: 41954, Start Num: 25

Candidate Starts for Kugel_64:

(Start: 25 @42232 has 47 MA's), (Start: 26 @42229 has 148 MA's), (Start: 30 @42217 has 4 MA's), (45, 42187), (49, 42136), (50, 42121), (52, 42100), (56, 42070), (60, 42040), (73, 41965),

Gene: KyMonks1A_65 Start: 41158, Stop: 40901, Start Num: 32

Candidate Starts for KyMonks1A_65:

(Start: 32 @41158 has 10 MA's), (Start: 44 @41140 has 1 MA's), (45, 41134), (49, 41083), (50, 41068), (52, 41047), (56, 41017), (60, 40987), (73, 40912),

Gene: Kykar_63 Start: 41758, Stop: 41462, Start Num: 26

Candidate Starts for Kykar_63:

(Start: 25 @41761 has 47 MA's), (Start: 26 @41758 has 148 MA's), (Start: 30 @41746 has 4 MA's), (Start: 38 @41713 has 38 MA's), (45, 41695), (49, 41644), (50, 41629), (52, 41608), (56, 41578), (60, 41548), (73, 41473),

Gene: Lamina13_66 Start: 42549, Stop: 42280, Start Num: 25

Candidate Starts for Lamina13_66:

(Start: 25 @42549 has 47 MA's), (Start: 26 @42546 has 148 MA's), (Start: 30 @42534 has 4 MA's), (45, 42513), (49, 42462), (50, 42447), (52, 42426), (56, 42396), (60, 42366), (73, 42291),

Gene: Larva_61 Start: 41955, Stop: 42203, Start Num: 43
Candidate Starts for Larva_61:
(Start: 43 @41955 has 154 MA's), (50, 42030), (59, 42102),

Gene: LastHope_71 Start: 43062, Stop: 43310, Start Num: 43
Candidate Starts for LastHope_71:
(Start: 43 @43062 has 154 MA's), (51, 43152), (67, 43248), (69, 43272),

Gene: LaterM_67 Start: 44313, Stop: 44555, Start Num: 43
Candidate Starts for LaterM_67:
(Start: 43 @44313 has 154 MA's), (51, 44403), (67, 44499), (69, 44523),

Gene: Lavahound_64 Start: 44702, Stop: 44944, Start Num: 43
Candidate Starts for Lavahound_64:
(Start: 19 @44633 has 1 MA's), (Start: 43 @44702 has 154 MA's), (45, 44711), (49, 44762), (51, 44792), (67, 44888), (69, 44912),

Gene: LeMond_70 Start: 44281, Stop: 44508, Start Num: 43
Candidate Starts for LeMond_70:
(Start: 43 @44281 has 154 MA's), (54, 44398), (59, 44416), (67, 44452),

Gene: Lebo14_69 Start: 43703, Stop: 43966, Start Num: 36
Candidate Starts for Lebo14_69:
(Start: 36 @43703 has 17 MA's), (Start: 44 @43718 has 1 MA's), (51, 43805), (65, 43901), (73, 43955),

Gene: Lesedi_58 Start: 39515, Stop: 39249, Start Num: 26
Candidate Starts for Lesedi_58:
(Start: 26 @39515 has 148 MA's), (Start: 30 @39503 has 4 MA's), (45, 39482), (49, 39431), (50, 39416), (52, 39395), (56, 39365), (60, 39335), (73, 39260),

Gene: Leston_60 Start: 42561, Stop: 42809, Start Num: 43
Candidate Starts for Leston_60:
(Start: 43 @42561 has 154 MA's), (50, 42636), (59, 42708),

Gene: Levia_60 Start: 40538, Stop: 40263, Start Num: 26
Candidate Starts for Levia_60:
(Start: 25 @40541 has 47 MA's), (Start: 26 @40538 has 148 MA's), (Start: 30 @40526 has 4 MA's), (45, 40496), (50, 40430), (52, 40409), (56, 40379), (60, 40349),

Gene: Licorice_63 Start: 42655, Stop: 42389, Start Num: 26
Candidate Starts for Licorice_63:
(Start: 25 @42658 has 47 MA's), (Start: 26 @42655 has 148 MA's), (Start: 30 @42643 has 4 MA's), (45, 42622), (49, 42571), (50, 42556), (52, 42535), (56, 42505), (60, 42475),

Gene: LilBib_62 Start: 42639, Stop: 42373, Start Num: 26
Candidate Starts for LilBib_62:
(Start: 25 @42642 has 47 MA's), (Start: 26 @42639 has 148 MA's), (Start: 30 @42627 has 4 MA's), (45, 42606), (49, 42555), (50, 42540), (52, 42519), (56, 42489), (60, 42459),

Gene: LilPharaoh_56 Start: 40669, Stop: 40914, Start Num: 43
Candidate Starts for LilPharaoh_56:
(Start: 16 @40597 has 1 MA's), (Start: 43 @40669 has 154 MA's), (53, 40774), (59, 40816), (67, 40852),

Gene: LilhomieP_38 Start: 32762, Stop: 33040, Start Num: 35

Candidate Starts for LilhomieP_38:

(12, 32651), (Start: 35 @32762 has 12 MA's), (Start: 40 @32780 has 9 MA's), (49, 32843), (59, 32930), (60, 32939), (62, 32948),

Gene: LindNT_66 Start: 44110, Stop: 44352, Start Num: 43

Candidate Starts for LindNT_66:

(Start: 43 @44110 has 154 MA's), (51, 44200), (67, 44296),

Gene: Llorens_66 Start: 43622, Stop: 43864, Start Num: 43

Candidate Starts for Llorens_66:

(Start: 43 @43622 has 154 MA's), (51, 43712), (67, 43808), (69, 43832),

Gene: Lockley_59 Start: 40855, Stop: 40580, Start Num: 26

Candidate Starts for Lockley_59:

(Start: 26 @40855 has 148 MA's), (Start: 30 @40843 has 4 MA's), (45, 40813), (49, 40762), (50, 40747), (52, 40726), (55, 40699), (56, 40696), (60, 40666), (73, 40591),

Gene: Lopton_60 Start: 42624, Stop: 42370, Start Num: 30

Candidate Starts for Lopton_60:

(Start: 24 @42636 has 6 MA's), (Start: 30 @42624 has 4 MA's), (45, 42603), (49, 42552), (50, 42537), (52, 42516), (56, 42486), (60, 42456),

Gene: Lunahalos_66 Start: 43622, Stop: 43864, Start Num: 43

Candidate Starts for Lunahalos_66:

(Start: 43 @43622 has 154 MA's), (51, 43712), (67, 43808), (69, 43832),

Gene: LunarLander_62 Start: 41834, Stop: 41568, Start Num: 26

Candidate Starts for LunarLander_62:

(Start: 25 @41837 has 47 MA's), (Start: 26 @41834 has 148 MA's), (Start: 30 @41822 has 4 MA's), (45, 41801), (49, 41750), (50, 41735), (52, 41714), (56, 41684), (60, 41654),

Gene: MPlant7149_62 Start: 40186, Stop: 39887, Start Num: 25

Candidate Starts for MPlant7149_62:

(Start: 25 @40186 has 47 MA's), (Start: 26 @40183 has 148 MA's), (Start: 30 @40171 has 4 MA's), (Start: 38 @40138 has 38 MA's), (45, 40120), (49, 40069), (50, 40054), (52, 40033), (56, 40003), (60, 39973), (73, 39898),

Gene: MacKat_62 Start: 39405, Stop: 39647, Start Num: 43

Candidate Starts for MacKat_62:

(Start: 43 @39405 has 154 MA's), (51, 39495), (67, 39591), (69, 39615),

Gene: Magnar_60 Start: 41031, Stop: 40774, Start Num: 32

Candidate Starts for Magnar_60:

(Start: 32 @41031 has 10 MA's), (Start: 44 @41013 has 1 MA's), (45, 41007), (49, 40956), (50, 40941), (52, 40920), (56, 40890), (60, 40860), (73, 40785),

Gene: Magnito_60 Start: 40895, Stop: 40638, Start Num: 32

Candidate Starts for Magnito_60:

(Start: 32 @40895 has 10 MA's), (Start: 44 @40877 has 1 MA's), (45, 40871), (49, 40820), (50, 40805), (52, 40784), (54, 40763), (56, 40754), (60, 40724),

Gene: Magsby_50 Start: 34922, Stop: 35170, Start Num: 38
Candidate Starts for Magsby_50:
(3, 34508), (5, 34715), (7, 34748), (18, 34844), (Start: 38 @34922 has 38 MA's), (Start: 44 @34934 has 1 MA's), (45, 34940), (51, 35018), (60, 35084), (61, 35087),

Gene: Makemake_64 Start: 42602, Stop: 42336, Start Num: 24
Candidate Starts for Makemake_64:
(Start: 24 @42602 has 6 MA's), (Start: 30 @42590 has 4 MA's), (45, 42569), (49, 42518), (50, 42503), (52, 42482), (56, 42452), (60, 42422), (73, 42347),

Gene: Malthus_71 Start: 43370, Stop: 43633, Start Num: 36
Candidate Starts for Malthus_71:
(Start: 36 @43370 has 17 MA's), (Start: 44 @43385 has 1 MA's), (51, 43472), (65, 43568), (73, 43622),

Gene: Manatee_62 Start: 40921, Stop: 40652, Start Num: 25
Candidate Starts for Manatee_62:
(Start: 25 @40921 has 47 MA's), (Start: 26 @40918 has 148 MA's), (Start: 30 @40906 has 4 MA's), (Start: 44 @40891 has 1 MA's), (45, 40885), (49, 40834), (50, 40819), (52, 40798), (56, 40768), (60, 40738),

Gene: Marcell_58 Start: 39784, Stop: 39509, Start Num: 26
Candidate Starts for Marcell_58:
(17, 39808), (Start: 25 @39787 has 47 MA's), (Start: 26 @39784 has 148 MA's), (Start: 30 @39772 has 4 MA's), (45, 39742), (49, 39691), (50, 39676), (52, 39655), (56, 39625), (60, 39595),

Gene: Marchy_56 Start: 37872, Stop: 37597, Start Num: 26
Candidate Starts for Marchy_56:
(Start: 25 @37875 has 47 MA's), (Start: 26 @37872 has 148 MA's), (Start: 30 @37860 has 4 MA's), (45, 37830), (49, 37779), (50, 37764), (52, 37743), (54, 37722), (56, 37713), (60, 37683),

Gene: Marco3_65 Start: 42801, Stop: 42535, Start Num: 26
Candidate Starts for Marco3_65:
(Start: 25 @42804 has 47 MA's), (Start: 26 @42801 has 148 MA's), (Start: 30 @42789 has 4 MA's), (Start: 44 @42774 has 1 MA's), (45, 42768), (49, 42717), (50, 42702), (52, 42681), (56, 42651), (60, 42621), (73, 42546),

Gene: Marcoliusprime_69 Start: 46092, Stop: 46337, Start Num: 43
Candidate Starts for Marcoliusprime_69:
(28, 46035), (31, 46041), (Start: 43 @46092 has 154 MA's), (51, 46182), (56, 46218), (61, 46251),

Gene: Marge_59 Start: 40664, Stop: 40398, Start Num: 26
Candidate Starts for Marge_59:
(Start: 25 @40667 has 47 MA's), (Start: 26 @40664 has 148 MA's), (Start: 30 @40652 has 4 MA's), (45, 40631), (49, 40580), (50, 40565), (52, 40544), (56, 40514), (60, 40484),

Gene: MarkPhew_69 Start: 43780, Stop: 44007, Start Num: 43
Candidate Starts for MarkPhew_69:
(Start: 43 @43780 has 154 MA's), (54, 43897), (58, 43912), (59, 43915), (67, 43951),

Gene: Maroc7_59 Start: 41311, Stop: 41042, Start Num: 25
Candidate Starts for Maroc7_59:
(17, 41332), (Start: 25 @41311 has 47 MA's), (Start: 26 @41308 has 148 MA's), (Start: 30 @41296 has 4 MA's), (45, 41275), (49, 41224), (50, 41209), (52, 41188), (56, 41158), (60, 41128),

Gene: Marsha_61 Start: 42250, Stop: 41984, Start Num: 26

Candidate Starts for Marsha_61:

(Start: 25 @42253 has 47 MA's), (Start: 26 @42250 has 148 MA's), (45, 42217), (49, 42166), (50, 42151), (52, 42130), (54, 42109), (56, 42100), (60, 42070),

Gene: Marshawn_66 Start: 44145, Stop: 44384, Start Num: 43

Candidate Starts for Marshawn_66:

(Start: 43 @44145 has 154 MA's), (51, 44235),

Gene: MaryBeth_60 Start: 41488, Stop: 41222, Start Num: 26

Candidate Starts for MaryBeth_60:

(Start: 25 @41491 has 47 MA's), (Start: 26 @41488 has 148 MA's), (Start: 30 @41476 has 4 MA's), (45, 41455), (49, 41404), (50, 41389), (52, 41368), (56, 41338), (60, 41308), (73, 41233),

Gene: McGuire_63 Start: 40458, Stop: 40162, Start Num: 26

Candidate Starts for McGuire_63:

(Start: 25 @40461 has 47 MA's), (Start: 26 @40458 has 148 MA's), (Start: 30 @40446 has 4 MA's), (Start: 38 @40413 has 38 MA's), (45, 40395), (49, 40344), (50, 40329), (52, 40308), (56, 40278), (60, 40248),

Gene: McMater_69 Start: 44123, Stop: 44362, Start Num: 41

Candidate Starts for McMater_69:

(Start: 41 @44123 has 4 MA's), (51, 44213), (56, 44249), (58, 44267), (69, 44330),

Gene: McSinger_60 Start: 40407, Stop: 40132, Start Num: 26

Candidate Starts for McSinger_60:

(Start: 25 @40410 has 47 MA's), (Start: 26 @40407 has 148 MA's), (Start: 30 @40395 has 4 MA's), (49, 40314), (50, 40299), (52, 40278), (56, 40248), (60, 40218),

Gene: Mdavu_56 Start: 40930, Stop: 41175, Start Num: 43

Candidate Starts for Mdavu_56:

(Start: 16 @40858 has 1 MA's), (Start: 43 @40930 has 154 MA's), (53, 41035), (59, 41077), (67, 41113),

Gene: MeaningOfLife_67 Start: 44374, Stop: 44616, Start Num: 43

Candidate Starts for MeaningOfLife_67:

(Start: 43 @44374 has 154 MA's), (51, 44464), (67, 44560), (69, 44584),

Gene: Megsy_69 Start: 44032, Stop: 44277, Start Num: 43

Candidate Starts for Megsy_69:

(Start: 43 @44032 has 154 MA's), (51, 44122), (67, 44218), (74, 44269),

Gene: Melville_53 Start: 34906, Stop: 35154, Start Num: 38

Candidate Starts for Melville_53:

(3, 34492), (5, 34699), (7, 34732), (18, 34828), (Start: 38 @34906 has 38 MA's), (Start: 44 @34918 has 1 MA's), (45, 34924), (51, 35002), (60, 35068), (61, 35071),

Gene: MetalQZJ_59 Start: 41488, Stop: 41222, Start Num: 26

Candidate Starts for MetalQZJ_59:

(Start: 25 @41491 has 47 MA's), (Start: 26 @41488 has 148 MA's), (Start: 30 @41476 has 4 MA's), (45, 41455), (49, 41404), (50, 41389), (52, 41368), (56, 41338), (60, 41308), (73, 41233),

Gene: Michley_65 Start: 41769, Stop: 41494, Start Num: 26

Candidate Starts for Michley_65:

(Start: 26 @41769 has 148 MA's), (Start: 30 @41757 has 4 MA's), (49, 41676), (50, 41661), (52, 41640), (56, 41610), (60, 41580), (73, 41505),

Gene: MilleFeuille_63 Start: 40825, Stop: 40574, Start Num: 33

Candidate Starts for MilleFeuille_63:

(10, 40930), (Start: 26 @40849 has 148 MA's), (Start: 33 @40825 has 5 MA's), (49, 40756), (50, 40741), (52, 40720), (54, 40699), (56, 40690), (60, 40660), (73, 40585),

Gene: Milly_69 Start: 46066, Stop: 46311, Start Num: 43

Candidate Starts for Milly_69:

(27, 46003), (Start: 43 @46066 has 154 MA's), (51, 46156), (61, 46225),

Gene: MissDaisy_67 Start: 42299, Stop: 42547, Start Num: 44

Candidate Starts for MissDaisy_67:

(6, 42101), (Start: 36 @42284 has 17 MA's), (Start: 44 @42299 has 1 MA's), (51, 42386), (65, 42482), (73, 42536),

Gene: Mitti_70 Start: 43525, Stop: 43788, Start Num: 36

Candidate Starts for Mitti_70:

(Start: 36 @43525 has 17 MA's), (Start: 44 @43540 has 1 MA's), (51, 43627), (65, 43723), (73, 43777),

Gene: Mkhuseleli_58 Start: 39493, Stop: 39260, Start Num: 45

Candidate Starts for Mkhuseleli_58:

(Start: 25 @39529 has 47 MA's), (Start: 26 @39526 has 148 MA's), (Start: 30 @39514 has 4 MA's), (45, 39493), (49, 39442), (50, 39427), (52, 39406), (56, 39376), (60, 39346),

Gene: Molly_63 Start: 41563, Stop: 41267, Start Num: 26

Candidate Starts for Molly_63:

(Start: 25 @41566 has 47 MA's), (Start: 26 @41563 has 148 MA's), (Start: 30 @41551 has 4 MA's), (Start: 38 @41518 has 38 MA's), (45, 41500), (49, 41449), (50, 41434), (52, 41413), (56, 41383), (60, 41353),

Gene: Monet_65 Start: 43052, Stop: 42786, Start Num: 26

Candidate Starts for Monet_65:

(Start: 25 @43055 has 47 MA's), (Start: 26 @43052 has 148 MA's), (Start: 30 @43040 has 4 MA's), (45, 43019), (49, 42968), (50, 42953), (52, 42932), (54, 42911), (56, 42902), (60, 42872),

Gene: Moose_63 Start: 40623, Stop: 40327, Start Num: 26

Candidate Starts for Moose_63:

(Start: 25 @40626 has 47 MA's), (Start: 26 @40623 has 148 MA's), (Start: 30 @40611 has 4 MA's), (Start: 38 @40578 has 38 MA's), (45, 40560), (49, 40509), (50, 40494), (52, 40473), (56, 40443), (60, 40413), (73, 40338),

Gene: MrGordo_64 Start: 41635, Stop: 41360, Start Num: 26

Candidate Starts for MrGordo_64:

(Start: 25 @41638 has 47 MA's), (Start: 26 @41635 has 148 MA's), (Start: 30 @41623 has 4 MA's), (45, 41593), (49, 41542), (50, 41527), (52, 41506), (56, 41476), (60, 41446), (73, 41371),

Gene: MrMagoo_44 Start: 33882, Stop: 34133, Start Num: 40

Candidate Starts for MrMagoo_44:

(Start: 40 @33882 has 9 MA's), (57, 34026), (58, 34029), (61, 34044), (70, 34098),

Gene: Mryolo_58 Start: 40629, Stop: 40372, Start Num: 32

Candidate Starts for Mryolo_58:

(Start: 32 @40629 has 10 MA's), (Start: 44 @40611 has 1 MA's), (45, 40605), (49, 40554), (50, 40539), (52, 40518), (56, 40488), (60, 40458),

Gene: Mufasa_69 Start: 45652, Stop: 45897, Start Num: 43

Candidate Starts for Mufasa_69:

(28, 45595), (31, 45601), (Start: 43 @45652 has 154 MA's), (51, 45742), (61, 45811), (67, 45835), (75, 45889),

Gene: Mule_59 Start: 40467, Stop: 40201, Start Num: 26

Candidate Starts for Mule_59:

(Start: 25 @40470 has 47 MA's), (Start: 26 @40467 has 148 MA's), (Start: 30 @40455 has 4 MA's), (45, 40434), (49, 40383), (50, 40368), (52, 40347), (56, 40317), (60, 40287),

Gene: Murucutumbu_68 Start: 44888, Stop: 45130, Start Num: 43

Candidate Starts for Murucutumbu_68:

(Start: 43 @44888 has 154 MA's), (51, 44978), (67, 45074), (69, 45098),

Gene: Museum_64 Start: 42785, Stop: 42486, Start Num: 25

Candidate Starts for Museum_64:

(Start: 25 @42785 has 47 MA's), (Start: 26 @42782 has 148 MA's), (Start: 30 @42770 has 4 MA's), (Start: 38 @42737 has 38 MA's), (45, 42719), (49, 42668), (50, 42653), (52, 42632), (56, 42602), (60, 42572), (73, 42497),

Gene: Mynx_68 Start: 44234, Stop: 44476, Start Num: 43

Candidate Starts for Mynx_68:

(Start: 43 @44234 has 154 MA's), (51, 44324), (67, 44420), (69, 44444),

Gene: NEHalo_59 Start: 41047, Stop: 40781, Start Num: 26

Candidate Starts for NEHalo_59:

(Start: 25 @41050 has 47 MA's), (Start: 26 @41047 has 148 MA's), (Start: 30 @41035 has 4 MA's), (45, 41014), (49, 40963), (50, 40948), (52, 40927), (56, 40897), (60, 40867), (73, 40792),

Gene: Naira_64 Start: 42709, Stop: 42434, Start Num: 26

Candidate Starts for Naira_64:

(Start: 26 @42709 has 148 MA's), (Start: 30 @42697 has 4 MA's), (45, 42667), (49, 42616), (50, 42601), (52, 42580), (54, 42559), (56, 42550), (60, 42520), (73, 42445),

Gene: Nanosmite_44 Start: 33715, Stop: 33966, Start Num: 40

Candidate Starts for Nanosmite_44:

(Start: 40 @33715 has 9 MA's), (49, 33778), (51, 33808), (57, 33859),

Gene: Neighly_62 Start: 41954, Stop: 42202, Start Num: 43

Candidate Starts for Neighly_62:

(Start: 43 @41954 has 154 MA's), (50, 42029), (59, 42101),

Gene: Nenae_55 Start: 36175, Stop: 36423, Start Num: 38

Candidate Starts for Nenae_55:

(Start: 38 @36175 has 38 MA's), (Start: 44 @36187 has 1 MA's), (60, 36337), (61, 36340), (73, 36415),

Gene: Nerujay_64 Start: 42393, Stop: 42118, Start Num: 26

Candidate Starts for Nerujay_64:

(Start: 25 @42396 has 47 MA's), (Start: 26 @42393 has 148 MA's), (Start: 30 @42381 has 4 MA's), (45, 42351), (49, 42300), (50, 42285), (52, 42264), (56, 42234), (60, 42204),

Gene: Nhonho_60 Start: 41685, Stop: 41386, Start Num: 25

Candidate Starts for Nhonho_60:

(11, 41763), (Start: 25 @41685 has 47 MA's), (Start: 26 @41682 has 148 MA's), (Start: 30 @41670 has 4 MA's), (Start: 38 @41637 has 38 MA's), (45, 41619), (49, 41568), (50, 41553), (52, 41532), (56, 41502), (60, 41472),

Gene: Nibb_69 Start: 43994, Stop: 44221, Start Num: 43

Candidate Starts for Nibb_69:

(Start: 43 @43994 has 154 MA's), (59, 44129), (67, 44165),

Gene: Nikao_58 Start: 43554, Stop: 43799, Start Num: 43

Candidate Starts for Nikao_58:

(Start: 16 @43482 has 1 MA's), (Start: 43 @43554 has 154 MA's), (53, 43659), (59, 43701), (67, 43737),

Gene: Niklas_69 Start: 44184, Stop: 44423, Start Num: 41

Candidate Starts for Niklas_69:

(Start: 41 @44184 has 4 MA's), (51, 44274), (56, 44310), (58, 44328), (69, 44391),

Gene: Niza_64 Start: 43063, Stop: 42797, Start Num: 26

Candidate Starts for Niza_64:

(Start: 25 @43066 has 47 MA's), (Start: 26 @43063 has 148 MA's), (Start: 30 @43051 has 4 MA's), (45, 43030), (49, 42979), (50, 42964), (52, 42943), (56, 42913), (60, 42883), (73, 42808),

Gene: Norz_62 Start: 43480, Stop: 43214, Start Num: 26

Candidate Starts for Norz_62:

(Start: 25 @43483 has 47 MA's), (Start: 26 @43480 has 148 MA's), (Start: 30 @43468 has 4 MA's), (45, 43447), (49, 43396), (50, 43381), (52, 43360), (56, 43330), (60, 43300),

Gene: November_64 Start: 43864, Stop: 44103, Start Num: 43

Candidate Starts for November_64:

(23, 43798), (Start: 43 @43864 has 154 MA's), (45, 43873), (67, 44050),

Gene: Noxious_61 Start: 40961, Stop: 40695, Start Num: 26

Candidate Starts for Noxious_61:

(Start: 25 @40964 has 47 MA's), (Start: 26 @40961 has 148 MA's), (Start: 30 @40949 has 4 MA's), (45, 40928), (49, 40877), (50, 40862), (52, 40841), (56, 40811), (60, 40781),

Gene: Nutello_55 Start: 40941, Stop: 41186, Start Num: 43

Candidate Starts for Nutello_55:

(Start: 16 @40869 has 1 MA's), (Start: 43 @40941 has 154 MA's), (53, 41046), (59, 41088), (67, 41124),

Gene: Ohno789_62 Start: 41791, Stop: 41525, Start Num: 26

Candidate Starts for Ohno789_62:

(Start: 26 @41791 has 148 MA's), (Start: 30 @41779 has 4 MA's), (Start: 44 @41764 has 1 MA's), (45, 41758), (49, 41707), (50, 41692), (52, 41671), (56, 41641), (60, 41611), (73, 41536),

Gene: OmniCritical_69 Start: 43407, Stop: 43721, Start Num: 37

Candidate Starts for OmniCritical_69:

(Start: 37 @43407 has 6 MA's), (Start: 44 @43422 has 1 MA's), (46, 43452), (51, 43509),

Gene: Omnicron_64 Start: 42953, Stop: 43201, Start Num: 43

Candidate Starts for Omnicron_64:

(Start: 43 @42953 has 154 MA's), (47, 42998),

Gene: Oogway_61 Start: 42078, Stop: 41827, Start Num: 38

Candidate Starts for Oogway_61:

(Start: 25 @42126 has 47 MA's), (Start: 26 @42123 has 148 MA's), (Start: 30 @42111 has 4 MA's),
(Start: 38 @42078 has 38 MA's), (45, 42060), (49, 42009), (50, 41994), (52, 41973), (56, 41943), (60,
41913), (73, 41838),

Gene: Oscar_70 Start: 44198, Stop: 44425, Start Num: 43

Candidate Starts for Oscar_70:

(Start: 43 @44198 has 154 MA's), (54, 44315), (59, 44333),

Gene: PSullivan_60 Start: 39680, Stop: 39405, Start Num: 26

Candidate Starts for PSullivan_60:

(Start: 25 @39683 has 47 MA's), (Start: 26 @39680 has 148 MA's), (Start: 30 @39668 has 4 MA's),
(45, 39638), (49, 39587), (50, 39572), (52, 39551), (56, 39521), (60, 39491),

Gene: PacerPaul_61 Start: 41105, Stop: 40827, Start Num: 25

Candidate Starts for PacerPaul_61:

(Start: 25 @41105 has 47 MA's), (Start: 26 @41102 has 148 MA's), (Start: 30 @41090 has 4 MA's),
(45, 41060), (49, 41009), (50, 40994), (52, 40973), (56, 40943), (60, 40913),

Gene: Padfoot_66 Start: 43819, Stop: 44061, Start Num: 43

Candidate Starts for Padfoot_66:

(Start: 43 @43819 has 154 MA's), (51, 43909), (67, 44005), (69, 44029),

Gene: Padpat_69 Start: 43939, Stop: 44181, Start Num: 43

Candidate Starts for Padpat_69:

(Start: 43 @43939 has 154 MA's), (51, 44029), (67, 44125), (69, 44149),

Gene: Panchino_48 Start: 35810, Stop: 36058, Start Num: 38

Candidate Starts for Panchino_48:

(7, 35636), (18, 35732), (Start: 38 @35810 has 38 MA's), (Start: 44 @35822 has 1 MA's), (51, 35906),
(60, 35972), (61, 35975),

Gene: Paola_60 Start: 42432, Stop: 42680, Start Num: 43

Candidate Starts for Paola_60:

(Start: 43 @42432 has 154 MA's), (50, 42507), (59, 42579),

Gene: Papez_64 Start: 42624, Stop: 42355, Start Num: 25

Candidate Starts for Papez_64:

(Start: 25 @42624 has 47 MA's), (Start: 26 @42621 has 148 MA's), (Start: 30 @42609 has 4 MA's),
(45, 42588), (49, 42537), (50, 42522), (52, 42501), (56, 42471), (60, 42441),

Gene: Paphu_62 Start: 41937, Stop: 41638, Start Num: 25

Candidate Starts for Paphu_62:

(Start: 25 @41937 has 47 MA's), (Start: 26 @41934 has 148 MA's), (Start: 30 @41922 has 4 MA's),
(Start: 38 @41889 has 38 MA's), (45, 41871), (49, 41820), (50, 41805), (52, 41784), (56, 41754), (60,

41724), (73, 41649),

Gene: Paraselene_60 Start: 41399, Stop: 41133, Start Num: 26

Candidate Starts for Paraselene_60:

(Start: 25 @41402 has 47 MA's), (Start: 26 @41399 has 148 MA's), (Start: 30 @41387 has 4 MA's), (45, 41366), (49, 41315), (50, 41300), (52, 41279), (56, 41249), (60, 41219), (73, 41144),

Gene: Pari_65 Start: 40809, Stop: 40543, Start Num: 26

Candidate Starts for Pari_65:

(Start: 25 @40812 has 47 MA's), (Start: 26 @40809 has 148 MA's), (Start: 30 @40797 has 4 MA's), (Start: 44 @40782 has 1 MA's), (45, 40776), (49, 40725), (50, 40710), (52, 40689), (56, 40659), (60, 40629), (73, 40554),

Gene: Parliament_64 Start: 43726, Stop: 43430, Start Num: 26

Candidate Starts for Parliament_64:

(Start: 25 @43729 has 47 MA's), (Start: 26 @43726 has 148 MA's), (Start: 30 @43714 has 4 MA's), (Start: 38 @43681 has 38 MA's), (45, 43663), (49, 43612), (50, 43597), (52, 43576), (56, 43546), (60, 43516), (73, 43441),

Gene: Parmesanjohn_50 Start: 34925, Stop: 35173, Start Num: 38

Candidate Starts for Parmesanjohn_50:

(3, 34511), (5, 34718), (7, 34751), (18, 34847), (Start: 38 @34925 has 38 MA's), (Start: 44 @34937 has 1 MA's), (45, 34943), (51, 35021), (60, 35087), (61, 35090),

Gene: PascalRango_60 Start: 40921, Stop: 40646, Start Num: 26

Candidate Starts for PascalRango_60:

(Start: 25 @40924 has 47 MA's), (Start: 26 @40921 has 148 MA's), (Start: 30 @40909 has 4 MA's), (45, 40879), (49, 40828), (50, 40813), (52, 40792), (56, 40762), (60, 40732),

Gene: Patt_66 Start: 42008, Stop: 42271, Start Num: 36

Candidate Starts for Patt_66:

(6, 41825), (Start: 36 @42008 has 17 MA's), (51, 42110), (65, 42206), (73, 42260),

Gene: PattyP_64 Start: 42323, Stop: 42045, Start Num: 25

Candidate Starts for PattyP_64:

(Start: 25 @42323 has 47 MA's), (Start: 26 @42320 has 148 MA's), (Start: 30 @42308 has 4 MA's), (45, 42278), (49, 42227), (50, 42212), (52, 42191), (56, 42161), (60, 42131),

Gene: Payneful_60 Start: 40589, Stop: 40314, Start Num: 26

Candidate Starts for Payneful_60:

(Start: 25 @40592 has 47 MA's), (Start: 26 @40589 has 148 MA's), (Start: 30 @40577 has 4 MA's), (45, 40547), (49, 40496), (50, 40481), (52, 40460), (54, 40439), (56, 40430), (60, 40400),

Gene: Peanam_69 Start: 44141, Stop: 44380, Start Num: 41

Candidate Starts for Peanam_69:

(Start: 41 @44141 has 4 MA's), (51, 44231), (56, 44267), (58, 44285), (69, 44348),

Gene: Peel_66 Start: 43624, Stop: 43866, Start Num: 43

Candidate Starts for Peel_66:

(Start: 43 @43624 has 154 MA's), (51, 43714), (67, 43810), (69, 43834),

Gene: PegLeg_39 Start: 32761, Stop: 33039, Start Num: 35

Candidate Starts for PegLeg_39:

(12, 32650), (Start: 35 @32761 has 12 MA's), (Start: 40 @32779 has 9 MA's), (49, 32842), (59, 32929), (60, 32938), (62, 32947),

Gene: Pelly_63 Start: 43135, Stop: 42869, Start Num: 26

Candidate Starts for Pelly_63:

(Start: 25 @43138 has 47 MA's), (Start: 26 @43135 has 148 MA's), (Start: 30 @43123 has 4 MA's), (45, 43102), (49, 43051), (50, 43036), (52, 43015), (56, 42985), (60, 42955), (73, 42880),

Gene: Pepe_60 Start: 40251, Stop: 39985, Start Num: 26

Candidate Starts for Pepe_60:

(Start: 25 @40254 has 47 MA's), (Start: 26 @40251 has 148 MA's), (Start: 30 @40239 has 4 MA's), (Start: 44 @40224 has 1 MA's), (45, 40218), (49, 40167), (50, 40152), (56, 40101), (60, 40071),

Gene: Perseus_61 Start: 42872, Stop: 42606, Start Num: 26

Candidate Starts for Perseus_61:

(Start: 25 @42875 has 47 MA's), (Start: 26 @42872 has 148 MA's), (Start: 30 @42860 has 4 MA's), (45, 42839), (49, 42788), (50, 42773), (52, 42752), (56, 42722), (60, 42692),

Gene: Peterson_66 Start: 43632, Stop: 43366, Start Num: 26

Candidate Starts for Peterson_66:

(Start: 26 @43632 has 148 MA's), (Start: 30 @43620 has 4 MA's), (45, 43599), (49, 43548), (50, 43533), (52, 43512), (56, 43482), (60, 43452), (73, 43377),

Gene: Petp2012_65 Start: 43269, Stop: 42970, Start Num: 25

Candidate Starts for Petp2012_65:

(Start: 25 @43269 has 47 MA's), (Start: 26 @43266 has 148 MA's), (Start: 30 @43254 has 4 MA's), (Start: 38 @43221 has 38 MA's), (45, 43203), (49, 43152), (50, 43137), (52, 43116), (56, 43086), (60, 43056), (73, 42981),

Gene: Petruccio_62 Start: 40710, Stop: 40435, Start Num: 26

Candidate Starts for Petruccio_62:

(Start: 25 @40713 has 47 MA's), (Start: 26 @40710 has 148 MA's), (Start: 30 @40698 has 4 MA's), (45, 40668), (49, 40617), (50, 40602), (52, 40581), (56, 40551), (60, 40521), (73, 40446),

Gene: PhancyPhin_55 Start: 36169, Stop: 36417, Start Num: 38

Candidate Starts for PhancyPhin_55:

(Start: 38 @36169 has 38 MA's), (Start: 44 @36181 has 1 MA's), (60, 36331), (61, 36334), (73, 36409),

Gene: PhelpsODU_68 Start: 43391, Stop: 43630, Start Num: 43

Candidate Starts for PhelpsODU_68:

(Start: 43 @43391 has 154 MA's), (45, 43400), (51, 43481), (61, 43550),

Gene: PherrisBueller_61 Start: 39865, Stop: 39599, Start Num: 26

Candidate Starts for PherrisBueller_61:

(Start: 26 @39865 has 148 MA's), (Start: 30 @39853 has 4 MA's), (Start: 44 @39838 has 1 MA's), (45, 39832), (49, 39781), (50, 39766), (52, 39745), (56, 39715), (60, 39685), (73, 39610),

Gene: PhineBark_62 Start: 41556, Stop: 41281, Start Num: 26

Candidate Starts for PhineBark_62:

(Start: 25 @41559 has 47 MA's), (Start: 26 @41556 has 148 MA's), (Start: 30 @41544 has 4 MA's), (45, 41514), (50, 41448), (52, 41427), (56, 41397), (60, 41367),

Gene: Phlippers_58 Start: 41400, Stop: 41134, Start Num: 26

Candidate Starts for Phlipppers_58:

(Start: 25 @41403 has 47 MA's), (Start: 26 @41400 has 148 MA's), (Start: 30 @41388 has 4 MA's), (45, 41367), (49, 41316), (50, 41301), (52, 41280), (56, 41250), (60, 41220),

Gene: Phloss_48 Start: 34332, Stop: 34580, Start Num: 38

Candidate Starts for Phloss_48:

(3, 33918), (5, 34125), (7, 34158), (18, 34254), (Start: 38 @34332 has 38 MA's), (Start: 44 @34344 has 1 MA's), (45, 34350), (51, 34428), (60, 34494), (61, 34497),

Gene: Phrank_70 Start: 43454, Stop: 43693, Start Num: 43

Candidate Starts for Phrank_70:

(Start: 16 @43370 has 1 MA's), (Start: 43 @43454 has 154 MA's), (45, 43463), (51, 43544), (58, 43598),

Gene: Phrann_52 Start: 36452, Stop: 36700, Start Num: 38

Candidate Starts for Phrann_52:

(Start: 38 @36452 has 38 MA's), (Start: 44 @36464 has 1 MA's), (60, 36614), (61, 36617), (73, 36692),

Gene: PhrostyMug_62 Start: 42644, Stop: 42375, Start Num: 25

Candidate Starts for PhrostyMug_62:

(Start: 25 @42644 has 47 MA's), (Start: 26 @42641 has 148 MA's), (Start: 30 @42629 has 4 MA's), (45, 42608), (49, 42557), (50, 42542), (52, 42521), (56, 42491), (60, 42461),

Gene: Piatt_66 Start: 43819, Stop: 44061, Start Num: 43

Candidate Starts for Piatt_66:

(Start: 43 @43819 has 154 MA's), (51, 43909), (67, 44005), (69, 44029),

Gene: PinkPlastic_62 Start: 41194, Stop: 40919, Start Num: 26

Candidate Starts for PinkPlastic_62:

(Start: 25 @41197 has 47 MA's), (Start: 26 @41194 has 148 MA's), (Start: 30 @41182 has 4 MA's), (45, 41152), (49, 41101), (50, 41086), (52, 41065), (56, 41035), (60, 41005), (73, 40930),

Gene: Pinto_62 Start: 40971, Stop: 40705, Start Num: 24

Candidate Starts for Pinto_62:

(Start: 24 @40971 has 6 MA's), (Start: 30 @40959 has 4 MA's), (45, 40938), (49, 40887), (50, 40872), (52, 40851), (56, 40821), (60, 40791), (73, 40716),

Gene: Pippin_62 Start: 40576, Stop: 40307, Start Num: 25

Candidate Starts for Pippin_62:

(Start: 25 @40576 has 47 MA's), (Start: 26 @40573 has 148 MA's), (Start: 30 @40561 has 4 MA's), (45, 40540), (49, 40489), (50, 40474), (52, 40453), (56, 40423), (60, 40393),

Gene: Pipsqueaks_50 Start: 34902, Stop: 35150, Start Num: 38

Candidate Starts for Pipsqueaks_50:

(3, 34488), (5, 34695), (7, 34728), (18, 34824), (Start: 38 @34902 has 38 MA's), (Start: 44 @34914 has 1 MA's), (45, 34920), (51, 34998), (60, 35064), (61, 35067),

Gene: Pisa1_66 Start: 44437, Stop: 44682, Start Num: 43

Candidate Starts for Pisa1_66:

(Start: 43 @44437 has 154 MA's), (51, 44527), (67, 44623), (69, 44647),

Gene: Pisa4_60 Start: 39806, Stop: 40051, Start Num: 43

Candidate Starts for Pisa4_60:

(Start: 43 @39806 has 154 MA's), (51, 39896), (67, 39992), (69, 40016),

Gene: Pita2_63 Start: 41180, Stop: 40902, Start Num: 25

Candidate Starts for Pita2_63:

(Start: 25 @41180 has 47 MA's), (Start: 26 @41177 has 148 MA's), (Start: 30 @41165 has 4 MA's), (45, 41135), (49, 41084), (50, 41069), (52, 41048), (56, 41018), (60, 40988),

Gene: Pokerus_66 Start: 43964, Stop: 44206, Start Num: 43

Candidate Starts for Pokerus_66:

(Start: 43 @43964 has 154 MA's), (51, 44054), (67, 44150), (69, 44174),

Gene: Pollywog_85 Start: 50811, Stop: 51077, Start Num: 24

Candidate Starts for Pollywog_85:

(Start: 24 @50811 has 6 MA's), (Start: 30 @50823 has 4 MA's), (45, 50844), (49, 50895), (50, 50910), (52, 50931), (54, 50952), (56, 50961), (60, 50991), (73, 51066),

Gene: PowerRanger_60 Start: 42237, Stop: 41971, Start Num: 26

Candidate Starts for PowerRanger_60:

(Start: 25 @42240 has 47 MA's), (Start: 26 @42237 has 148 MA's), (Start: 30 @42225 has 4 MA's), (45, 42204), (49, 42153), (50, 42138), (56, 42087), (68, 42012), (73, 41982),

Gene: Prithvi_68 Start: 44110, Stop: 44352, Start Num: 43

Candidate Starts for Prithvi_68:

(Start: 43 @44110 has 154 MA's), (51, 44200), (67, 44296),

Gene: ProMouse_61 Start: 41373, Stop: 41077, Start Num: 26

Candidate Starts for ProMouse_61:

(14, 41430), (Start: 26 @41373 has 148 MA's), (Start: 30 @41361 has 4 MA's), (Start: 38 @41328 has 38 MA's), (45, 41310), (50, 41244), (52, 41223), (56, 41193), (60, 41163), (73, 41088),

Gene: Psycho_60 Start: 41080, Stop: 41328, Start Num: 43

Candidate Starts for Psycho_60:

(Start: 43 @41080 has 154 MA's), (50, 41155), (59, 41227),

Gene: Puppet_60 Start: 42578, Stop: 42312, Start Num: 26

Candidate Starts for Puppet_60:

(Start: 25 @42581 has 47 MA's), (Start: 26 @42578 has 148 MA's), (Start: 30 @42566 has 4 MA's), (45, 42545), (49, 42494), (50, 42479), (52, 42458), (54, 42437), (56, 42428), (60, 42398),

Gene: Purgamenstris_55 Start: 36173, Stop: 36421, Start Num: 38

Candidate Starts for Purgamenstris_55:

(Start: 38 @36173 has 38 MA's), (Start: 44 @36185 has 1 MA's), (60, 36335), (61, 36338), (73, 36413),

Gene: QTRlifeCrisis_62 Start: 41518, Stop: 41243, Start Num: 26

Candidate Starts for QTRlifeCrisis_62:

(Start: 25 @41521 has 47 MA's), (Start: 26 @41518 has 148 MA's), (Start: 30 @41506 has 4 MA's), (45, 41476), (49, 41425), (50, 41410), (52, 41389), (56, 41359), (60, 41329),

Gene: Qhanda_72 Start: 43386, Stop: 43649, Start Num: 36

Candidate Starts for Qhanda_72:

(Start: 36 @43386 has 17 MA's), (Start: 44 @43401 has 1 MA's), (51, 43488), (65, 43584), (73, 43638),

Gene: QuincyRose_64 Start: 43845, Stop: 44087, Start Num: 43

Candidate Starts for QuincyRose_64:
(Start: 43 @43845 has 154 MA's), (51, 43935), (67, 44031), (69, 44055),

Gene: Rajelicia_62 Start: 42806, Stop: 42531, Start Num: 26
Candidate Starts for Rajelicia_62:
(Start: 25 @42809 has 47 MA's), (Start: 26 @42806 has 148 MA's), (Start: 30 @42794 has 4 MA's),
(45, 42764), (49, 42713), (50, 42698), (52, 42677), (56, 42647), (60, 42617),

Gene: Ramen_67 Start: 43469, Stop: 43711, Start Num: 43
Candidate Starts for Ramen_67:
(Start: 43 @43469 has 154 MA's), (51, 43559), (67, 43655), (69, 43679),

Gene: Rando14_62 Start: 40667, Stop: 40915, Start Num: 43
Candidate Starts for Rando14_62:
(Start: 43 @40667 has 154 MA's),

Gene: Rapunzel97_68 Start: 43920, Stop: 44162, Start Num: 43
Candidate Starts for Rapunzel97_68:
(Start: 43 @43920 has 154 MA's), (51, 44010), (67, 44106), (69, 44130),

Gene: Raymond7_49 Start: 35961, Stop: 36209, Start Num: 38
Candidate Starts for Raymond7_49:
(Start: 38 @35961 has 38 MA's), (Start: 44 @35973 has 1 MA's), (60, 36123), (61, 36126), (73, 36201),

Gene: Redi_55 Start: 36172, Stop: 36420, Start Num: 38
Candidate Starts for Redi_55:
(Start: 38 @36172 has 38 MA's), (Start: 44 @36184 has 1 MA's), (60, 36334), (61, 36337), (73, 36412),

Gene: Reindeer_39 Start: 33229, Stop: 33507, Start Num: 35
Candidate Starts for Reindeer_39:
(Start: 35 @33229 has 12 MA's), (Start: 40 @33247 has 9 MA's), (49, 33310), (50, 33325), (59, 33397),
(60, 33406), (61, 33409), (62, 33415),

Gene: Reptar3000_67 Start: 41997, Stop: 42260, Start Num: 36
Candidate Starts for Reptar3000_67:
(Start: 36 @41997 has 17 MA's), (51, 42099), (65, 42195), (73, 42249),

Gene: Rey_44 Start: 34155, Stop: 34406, Start Num: 39
Candidate Starts for Rey_44:
(Start: 39 @34155 has 1 MA's), (51, 34248), (57, 34299), (58, 34302), (60, 34314),

Gene: Rhynn_60 Start: 40743, Stop: 40474, Start Num: 25
Candidate Starts for Rhynn_60:
(Start: 8 @40845 has 1 MA's), (9, 40842), (13, 40797), (15, 40779), (Start: 25 @40743 has 47 MA's),
(Start: 26 @40740 has 148 MA's), (Start: 30 @40728 has 4 MA's), (45, 40707), (49, 40656), (50,
40641), (52, 40620), (56, 40590), (60, 40560),

Gene: Richo_69 Start: 44123, Stop: 44362, Start Num: 41
Candidate Starts for Richo_69:
(Start: 41 @44123 has 4 MA's), (51, 44213), (56, 44249), (58, 44267), (69, 44330),

Gene: RidgeCB_61 Start: 40947, Stop: 40681, Start Num: 24
Candidate Starts for RidgeCB_61:

(Start: 24 @40947 has 6 MA's), (Start: 30 @40935 has 4 MA's), (45, 40914), (49, 40863), (50, 40848), (52, 40827), (56, 40797), (60, 40767),

Gene: Ringer_62 Start: 42252, Stop: 42001, Start Num: 33

Candidate Starts for Ringer_62:

(10, 42357), (Start: 33 @42252 has 5 MA's), (49, 42183), (50, 42168), (52, 42147), (56, 42117), (60, 42087), (73, 42012),

Gene: Rohr_64 Start: 42615, Stop: 42316, Start Num: 25

Candidate Starts for Rohr_64:

(Start: 25 @42615 has 47 MA's), (Start: 26 @42612 has 148 MA's), (Start: 30 @42600 has 4 MA's), (Start: 38 @42567 has 38 MA's), (45, 42549), (49, 42498), (50, 42483), (52, 42462), (56, 42432), (60, 42402), (73, 42327),

Gene: Rosmarinus_66 Start: 43610, Stop: 43852, Start Num: 43

Candidate Starts for Rosmarinus_66:

(Start: 43 @43610 has 154 MA's), (51, 43700), (67, 43796), (69, 43820),

Gene: Rubeelu_53 Start: 35513, Stop: 35761, Start Num: 38

Candidate Starts for Rubeelu_53:

(7, 35339), (18, 35435), (Start: 38 @35513 has 38 MA's), (Start: 44 @35525 has 1 MA's), (51, 35609), (60, 35675), (61, 35678),

Gene: Rubeus_60 Start: 38752, Stop: 38498, Start Num: 30

Candidate Starts for Rubeus_60:

(Start: 24 @38764 has 6 MA's), (Start: 30 @38752 has 4 MA's), (45, 38731), (49, 38680), (50, 38665), (52, 38644), (56, 38614), (60, 38584), (73, 38509),

Gene: Rufus_63 Start: 41448, Stop: 41182, Start Num: 24

Candidate Starts for Rufus_63:

(Start: 24 @41448 has 6 MA's), (Start: 30 @41436 has 4 MA's), (45, 41415), (49, 41364), (50, 41349), (52, 41328), (56, 41298), (60, 41268), (73, 41193),

Gene: Ruotula_64 Start: 42952, Stop: 42695, Start Num: 32

Candidate Starts for Ruotula_64:

(Start: 32 @42952 has 10 MA's), (Start: 44 @42934 has 1 MA's), (45, 42928), (49, 42877), (50, 42862), (52, 42841), (56, 42811), (60, 42781),

Gene: Rutherferd_64 Start: 42559, Stop: 42290, Start Num: 25

Candidate Starts for Rutherferd_64:

(Start: 8 @42661 has 1 MA's), (9, 42658), (13, 42613), (15, 42595), (Start: 25 @42559 has 47 MA's), (Start: 26 @42556 has 148 MA's), (Start: 30 @42544 has 4 MA's), (45, 42523), (49, 42472), (50, 42457), (52, 42436), (56, 42406), (60, 42376),

Gene: Ruthiejr_71 Start: 43418, Stop: 43732, Start Num: 37

Candidate Starts for Ruthiejr_71:

(Start: 37 @43418 has 6 MA's), (Start: 44 @43433 has 1 MA's), (46, 43463), (51, 43520),

Gene: STLscum_70 Start: 43220, Stop: 42969, Start Num: 33

Candidate Starts for STLscum_70:

(10, 43325), (Start: 33 @43220 has 5 MA's), (49, 43151), (50, 43136), (52, 43115), (56, 43085), (60, 43055), (73, 42980),

Gene: Sagefire_64 Start: 42827, Stop: 42561, Start Num: 26

Candidate Starts for Sagefire_64:

(Start: 25 @42830 has 47 MA's), (Start: 26 @42827 has 148 MA's), (Start: 30 @42815 has 4 MA's), (45, 42794), (49, 42743), (50, 42728), (52, 42707), (56, 42677), (60, 42647),

Gene: SamScheppers_68 Start: 43849, Stop: 44112, Start Num: 36

Candidate Starts for SamScheppers_68:

(Start: 36 @43849 has 17 MA's), (Start: 44 @43864 has 1 MA's), (51, 43951), (65, 44047), (73, 44101),

Gene: SamuelLPlaqson_67 Start: 44362, Stop: 44604, Start Num: 43

Candidate Starts for SamuelLPlaqson_67:

(Start: 43 @44362 has 154 MA's), (51, 44452), (67, 44548), (69, 44572),

Gene: Sandaddy_58 Start: 40699, Stop: 40442, Start Num: 32

Candidate Starts for Sandaddy_58:

(Start: 32 @40699 has 10 MA's), (Start: 44 @40681 has 1 MA's), (45, 40675), (49, 40624), (50, 40609), (52, 40588), (56, 40558), (60, 40528), (73, 40453),

Gene: Sanya_57 Start: 41974, Stop: 41741, Start Num: 45

Candidate Starts for Sanya_57:

(Start: 24 @42007 has 6 MA's), (Start: 30 @41995 has 4 MA's), (45, 41974), (49, 41923), (50, 41908), (52, 41887), (56, 41857), (60, 41827), (73, 41752),

Gene: SarFire_61 Start: 41167, Stop: 40898, Start Num: 25

Candidate Starts for SarFire_61:

(Start: 25 @41167 has 47 MA's), (Start: 26 @41164 has 148 MA's), (Start: 30 @41152 has 4 MA's), (Start: 44 @41137 has 1 MA's), (45, 41131), (49, 41080), (50, 41065), (52, 41044), (56, 41014), (60, 40984), (73, 40909),

Gene: Scarlett_71 Start: 44528, Stop: 44758, Start Num: 43

Candidate Starts for Scarlett_71:

(Start: 43 @44528 has 154 MA's), (54, 44645), (59, 44663),

Gene: Schnauzer_51 Start: 34925, Stop: 35173, Start Num: 38

Candidate Starts for Schnauzer_51:

(3, 34511), (5, 34718), (7, 34751), (18, 34847), (Start: 38 @34925 has 38 MA's), (Start: 44 @34937 has 1 MA's), (45, 34943), (51, 35021), (60, 35087), (61, 35090),

Gene: Scowl_63 Start: 41099, Stop: 40830, Start Num: 25

Candidate Starts for Scowl_63:

(Start: 25 @41099 has 47 MA's), (Start: 26 @41096 has 148 MA's), (Start: 30 @41084 has 4 MA's), (45, 41060), (48, 41015), (50, 40997), (56, 40946), (73, 40841),

Gene: Seabiscuit_65 Start: 40723, Stop: 40424, Start Num: 25

Candidate Starts for Seabiscuit_65:

(Start: 25 @40723 has 47 MA's), (Start: 26 @40720 has 148 MA's), (Start: 30 @40708 has 4 MA's), (Start: 38 @40675 has 38 MA's), (45, 40657), (49, 40606), (50, 40591), (52, 40570), (56, 40540), (60, 40510),

Gene: Seanderson_64 Start: 43120, Stop: 42836, Start Num: 21

Candidate Starts for Seanderson_64:

(Start: 21 @43120 has 1 MA's), (Start: 26 @43102 has 148 MA's), (Start: 30 @43090 has 4 MA's), (Start: 44 @43075 has 1 MA's), (45, 43069), (49, 43018), (50, 43003), (52, 42982), (56, 42952), (60,

42922), (68, 42877), (73, 42847),

Gene: SgtBeansprout_56 Start: 40941, Stop: 41186, Start Num: 43

Candidate Starts for SgtBeansprout_56:

(Start: 16 @40869 has 1 MA's), (Start: 43 @40941 has 154 MA's), (53, 41046), (59, 41088), (67, 41124),

Gene: Shadow1_71 Start: 43904, Stop: 44143, Start Num: 43

Candidate Starts for Shadow1_71:

(Start: 16 @43820 has 1 MA's), (Start: 43 @43904 has 154 MA's), (45, 43913), (51, 43994), (58, 44048), (61, 44063),

Gene: Shaobing_69 Start: 44159, Stop: 44398, Start Num: 41

Candidate Starts for Shaobing_69:

(Start: 41 @44159 has 4 MA's), (51, 44249), (56, 44285), (58, 44303), (69, 44366),

Gene: ShiaSurprise_67 Start: 43819, Stop: 44061, Start Num: 43

Candidate Starts for ShiaSurprise_67:

(Start: 43 @43819 has 154 MA's), (51, 43909), (67, 44005), (69, 44029),

Gene: ShortQueendom_56 Start: 38806, Stop: 38531, Start Num: 26

Candidate Starts for ShortQueendom_56:

(Start: 25 @38809 has 47 MA's), (Start: 26 @38806 has 148 MA's), (Start: 30 @38794 has 4 MA's), (49, 38713), (50, 38698), (52, 38677), (56, 38647), (60, 38617),

Gene: ShrimpFriedEgg_55 Start: 36172, Stop: 36420, Start Num: 38

Candidate Starts for ShrimpFriedEgg_55:

(Start: 38 @36172 has 38 MA's), (Start: 44 @36184 has 1 MA's), (60, 36334), (61, 36337), (73, 36412),

Gene: Sibs6_64 Start: 39832, Stop: 39533, Start Num: 25

Candidate Starts for Sibs6_64:

(Start: 25 @39832 has 47 MA's), (Start: 26 @39829 has 148 MA's), (Start: 30 @39817 has 4 MA's), (Start: 38 @39784 has 38 MA's), (45, 39766), (49, 39715), (50, 39700), (52, 39679), (56, 39649), (60, 39619),

Gene: Silvafighter_51 Start: 34898, Stop: 35146, Start Num: 38

Candidate Starts for Silvafighter_51:

(3, 34484), (5, 34691), (7, 34724), (18, 34820), (Start: 38 @34898 has 38 MA's), (Start: 44 @34910 has 1 MA's), (45, 34916), (51, 34994), (60, 35060), (61, 35063),

Gene: SirPhilip_66 Start: 44298, Stop: 44537, Start Num: 43

Candidate Starts for SirPhilip_66:

(Start: 43 @44298 has 154 MA's), (51, 44388), (56, 44424), (58, 44442), (60, 44454),

Gene: SkiPole_70 Start: 42720, Stop: 42421, Start Num: 25

Candidate Starts for SkiPole_70:

(Start: 25 @42720 has 47 MA's), (Start: 26 @42717 has 148 MA's), (Start: 30 @42705 has 4 MA's), (Start: 38 @42672 has 38 MA's), (45, 42654), (50, 42588), (56, 42537), (60, 42507), (73, 42432),

Gene: Skinny_40 Start: 33191, Stop: 33469, Start Num: 35

Candidate Starts for Skinny_40:

(12, 33080), (Start: 35 @33191 has 12 MA's), (Start: 40 @33209 has 9 MA's), (49, 33272), (59, 33359), (60, 33368), (62, 33377),

Gene: Slagathor_64 Start: 43192, Stop: 42926, Start Num: 26

Candidate Starts for Slagathor_64:

(Start: 25 @43195 has 47 MA's), (Start: 26 @43192 has 148 MA's), (Start: 30 @43180 has 4 MA's), (Start: 44 @43165 has 1 MA's), (45, 43159), (49, 43108), (50, 43093), (52, 43072), (56, 43042), (60, 43012),

Gene: Slarp_70 Start: 43377, Stop: 43640, Start Num: 36

Candidate Starts for Slarp_70:

(Start: 36 @43377 has 17 MA's), (Start: 44 @43392 has 1 MA's), (51, 43479), (65, 43575), (73, 43629),

Gene: SlimJimmy_38 Start: 32763, Stop: 33023, Start Num: 40

Candidate Starts for SlimJimmy_38:

(12, 32634), (Start: 35 @32745 has 12 MA's), (Start: 40 @32763 has 9 MA's), (49, 32826), (59, 32913), (60, 32922), (62, 32931),

Gene: Slimphazie_67 Start: 43920, Stop: 44162, Start Num: 43

Candidate Starts for Slimphazie_67:

(Start: 43 @43920 has 154 MA's), (51, 44010), (67, 44106), (69, 44130),

Gene: Smairt_64 Start: 43635, Stop: 43369, Start Num: 26

Candidate Starts for Smairt_64:

(Start: 25 @43638 has 47 MA's), (Start: 26 @43635 has 148 MA's), (Start: 30 @43623 has 4 MA's), (45, 43602), (49, 43551), (50, 43536), (52, 43515), (56, 43485), (60, 43455),

Gene: Smeagol_64 Start: 43015, Stop: 42749, Start Num: 26

Candidate Starts for Smeagol_64:

(Start: 26 @43015 has 148 MA's), (Start: 30 @43003 has 4 MA's), (45, 42982), (49, 42931), (50, 42916), (52, 42895), (56, 42865), (60, 42835),

Gene: Smurph_50 Start: 34925, Stop: 35173, Start Num: 38

Candidate Starts for Smurph_50:

(3, 34511), (5, 34718), (7, 34751), (18, 34847), (Start: 38 @34925 has 38 MA's), (Start: 44 @34937 has 1 MA's), (45, 34943), (51, 35021), (60, 35087), (61, 35090),

Gene: Snazzy_60 Start: 40262, Stop: 39987, Start Num: 26

Candidate Starts for Snazzy_60:

(Start: 25 @40265 has 47 MA's), (Start: 26 @40262 has 148 MA's), (Start: 30 @40250 has 4 MA's), (49, 40169), (50, 40154), (52, 40133), (56, 40103), (60, 40073),

Gene: Snekmaggedon_49 Start: 34464, Stop: 34712, Start Num: 38

Candidate Starts for Snekmaggedon_49:

(Start: 38 @34464 has 38 MA's), (Start: 44 @34476 has 1 MA's), (60, 34626), (61, 34629), (73, 34704),

Gene: SoSeph_61 Start: 42799, Stop: 43047, Start Num: 43

Candidate Starts for SoSeph_61:

(Start: 43 @42799 has 154 MA's), (50, 42874), (59, 42946), (63, 42970),

Gene: Solon_61 Start: 40838, Stop: 40563, Start Num: 26

Candidate Starts for Solon_61:

(Start: 25 @40841 has 47 MA's), (Start: 26 @40838 has 148 MA's), (Start: 30 @40826 has 4 MA's), (45, 40796), (49, 40745), (50, 40730), (52, 40709), (56, 40679), (60, 40649), (73, 40574),

Gene: Sorpresa_59 Start: 40701, Stop: 40444, Start Num: 32

Candidate Starts for Sorpresa_59:

(Start: 32 @40701 has 10 MA's), (Start: 44 @40683 has 1 MA's), (45, 40677), (49, 40626), (50, 40611), (52, 40590), (56, 40560), (60, 40530), (73, 40455),

Gene: SpikeBT_60 Start: 40904, Stop: 40638, Start Num: 26

Candidate Starts for SpikeBT_60:

(Start: 25 @40907 has 47 MA's), (Start: 26 @40904 has 148 MA's), (Start: 30 @40892 has 4 MA's), (45, 40871), (49, 40820), (50, 40805), (52, 40784), (56, 40754), (60, 40724), (73, 40649),

Gene: Spinach_55 Start: 36172, Stop: 36420, Start Num: 38

Candidate Starts for Spinach_55:

(Start: 38 @36172 has 38 MA's), (Start: 44 @36184 has 1 MA's), (60, 36334), (61, 36337), (73, 36412),

Gene: Spock_66 Start: 43623, Stop: 43865, Start Num: 43

Candidate Starts for Spock_66:

(Start: 43 @43623 has 154 MA's), (51, 43713), (67, 43809), (69, 43833),

Gene: SpongeBob_49 Start: 34464, Stop: 34712, Start Num: 38

Candidate Starts for SpongeBob_49:

(Start: 38 @34464 has 38 MA's), (Start: 44 @34476 has 1 MA's), (60, 34626), (61, 34629), (73, 34704),

Gene: Squee_63 Start: 41158, Stop: 40892, Start Num: 26

Candidate Starts for Squee_63:

(Start: 25 @41161 has 47 MA's), (Start: 26 @41158 has 148 MA's), (Start: 30 @41146 has 4 MA's), (45, 41125), (50, 41059), (52, 41038), (54, 41017), (56, 41008), (60, 40978), (73, 40903),

Gene: StewieG_57 Start: 37645, Stop: 37379, Start Num: 26

Candidate Starts for StewieG_57:

(Start: 25 @37648 has 47 MA's), (Start: 26 @37645 has 148 MA's), (Start: 30 @37633 has 4 MA's), (45, 37612), (49, 37561), (50, 37546), (52, 37525), (56, 37495),

Gene: Stinson_68 Start: 44248, Stop: 44490, Start Num: 43

Candidate Starts for Stinson_68:

(Start: 43 @44248 has 154 MA's), (51, 44338), (67, 44434), (69, 44458),

Gene: Strobilo_70 Start: 46068, Stop: 46313, Start Num: 43

Candidate Starts for Strobilo_70:

(27, 46005), (Start: 43 @46068 has 154 MA's), (51, 46158), (61, 46227),

Gene: StrongArm_60 Start: 42040, Stop: 41774, Start Num: 26

Candidate Starts for StrongArm_60:

(Start: 25 @42043 has 47 MA's), (Start: 26 @42040 has 148 MA's), (Start: 30 @42028 has 4 MA's), (45, 42004), (48, 41959), (50, 41941), (56, 41890), (73, 41785),

Gene: Sulley_66 Start: 43683, Stop: 43925, Start Num: 43

Candidate Starts for Sulley_66:

(Start: 43 @43683 has 154 MA's), (51, 43773), (67, 43869), (69, 43893),

Gene: Sumter_58 Start: 41278, Stop: 41012, Start Num: 26

Candidate Starts for Sumter_58:

(Start: 25 @41281 has 47 MA's), (Start: 26 @41278 has 148 MA's), (Start: 30 @41266 has 4 MA's), (Start: 44 @41251 has 1 MA's), (45, 41245), (49, 41194), (50, 41179), (52, 41158), (56, 41128), (60,

41098), (73, 41023),

Gene: Sunflower1121_72 Start: 44050, Stop: 44289, Start Num: 43

Candidate Starts for Sunflower1121_72:

(Start: 16 @43966 has 1 MA's), (Start: 43 @44050 has 154 MA's), (45, 44059), (51, 44140), (58, 44194), (61, 44209),

Gene: Sunshine924_67 Start: 41911, Stop: 41645, Start Num: 26

Candidate Starts for Sunshine924_67:

(Start: 25 @41914 has 47 MA's), (Start: 26 @41911 has 148 MA's), (Start: 30 @41899 has 4 MA's), (45, 41878), (50, 41812), (52, 41791), (56, 41761), (60, 41731), (73, 41656),

Gene: SwissCheese_65 Start: 41123, Stop: 40827, Start Num: 26

Candidate Starts for SwissCheese_65:

(Start: 25 @41126 has 47 MA's), (Start: 26 @41123 has 148 MA's), (Start: 30 @41111 has 4 MA's), (Start: 38 @41078 has 38 MA's), (45, 41060), (49, 41009), (50, 40994), (52, 40973), (56, 40943), (60, 40913), (73, 40838),

Gene: Switzer_63 Start: 42783, Stop: 42412, Start Num: 8

Candidate Starts for Switzer_63:

(Start: 8 @42783 has 1 MA's), (9, 42780), (13, 42735), (15, 42717), (Start: 25 @42681 has 47 MA's), (Start: 26 @42678 has 148 MA's), (Start: 30 @42666 has 4 MA's), (45, 42645), (49, 42594), (50, 42579), (52, 42558), (56, 42528), (60, 42498), (73, 42423),

Gene: Swole_63 Start: 41087, Stop: 40812, Start Num: 26

Candidate Starts for Swole_63:

(Start: 25 @41090 has 47 MA's), (Start: 26 @41087 has 148 MA's), (Start: 30 @41075 has 4 MA's), (45, 41045), (49, 40994), (50, 40979), (52, 40958), (56, 40928), (60, 40898),

Gene: Syra333_70 Start: 43764, Stop: 44003, Start Num: 43

Candidate Starts for Syra333_70:

(Start: 16 @43680 has 1 MA's), (Start: 43 @43764 has 154 MA's), (45, 43773), (51, 43854), (58, 43908), (61, 43923),

Gene: TClif_68 Start: 43725, Stop: 43964, Start Num: 43

Candidate Starts for TClif_68:

(Start: 43 @43725 has 154 MA's), (45, 43734), (51, 43815), (61, 43884), (69, 43932),

Gene: TM4_67 Start: 40730, Stop: 40975, Start Num: 43

Candidate Starts for TM4_67:

(1, 39989), (28, 40673), (31, 40679), (Start: 43 @40730 has 154 MA's), (51, 40820), (61, 40889), (67, 40913), (75, 40967),

Gene: Tachez_66 Start: 43467, Stop: 43709, Start Num: 43

Candidate Starts for Tachez_66:

(Start: 43 @43467 has 154 MA's), (51, 43557), (67, 43653), (69, 43677),

Gene: TaiwanKao_69 Start: 44172, Stop: 44417, Start Num: 43

Candidate Starts for TaiwanKao_69:

(Start: 43 @44172 has 154 MA's), (51, 44262), (67, 44358), (74, 44409),

Gene: Tapioca_52 Start: 34891, Stop: 35139, Start Num: 38

Candidate Starts for Tapioca_52:

(Start: 38 @34891 has 38 MA's), (Start: 44 @34903 has 1 MA's), (60, 35053), (61, 35056), (73, 35131),

Gene: Taquito_69 Start: 43582, Stop: 43845, Start Num: 36

Candidate Starts for Taquito_69:

(Start: 36 @43582 has 17 MA's), (Start: 44 @43597 has 1 MA's), (51, 43684), (65, 43780), (73, 43834),

Gene: Target_64 Start: 41123, Stop: 40848, Start Num: 26

Candidate Starts for Target_64:

(Start: 25 @41126 has 47 MA's), (Start: 26 @41123 has 148 MA's), (Start: 30 @41111 has 4 MA's), (45, 41081), (49, 41030), (50, 41015), (52, 40994), (56, 40964), (60, 40934), (73, 40859),

Gene: Tasp14_66 Start: 43218, Stop: 42919, Start Num: 25

Candidate Starts for Tasp14_66:

(Start: 25 @43218 has 47 MA's), (Start: 26 @43215 has 148 MA's), (Start: 30 @43203 has 4 MA's), (Start: 38 @43170 has 38 MA's), (45, 43152), (49, 43101), (50, 43086), (52, 43065), (56, 43035), (60, 43005), (73, 42930),

Gene: Teejan_57 Start: 43554, Stop: 43799, Start Num: 43

Candidate Starts for Teejan_57:

(Start: 16 @43482 has 1 MA's), (Start: 43 @43554 has 154 MA's), (53, 43659), (59, 43701), (67, 43737),

Gene: Teodoridan_60 Start: 40295, Stop: 40029, Start Num: 26

Candidate Starts for Teodoridan_60:

(Start: 26 @40295 has 148 MA's), (Start: 30 @40283 has 4 MA's), (45, 40262), (49, 40211), (50, 40196), (52, 40175), (56, 40145), (60, 40115),

Gene: Tessdabest_51 Start: 34922, Stop: 35170, Start Num: 38

Candidate Starts for Tessdabest_51:

(3, 34508), (5, 34715), (7, 34748), (18, 34844), (Start: 38 @34922 has 38 MA's), (Start: 44 @34934 has 1 MA's), (45, 34940), (51, 35018), (60, 35084), (61, 35087),

Gene: TheloniousMonk_65 Start: 43428, Stop: 43162, Start Num: 26

Candidate Starts for TheloniousMonk_65:

(Start: 25 @43431 has 47 MA's), (Start: 26 @43428 has 148 MA's), (Start: 30 @43416 has 4 MA's), (45, 43392), (48, 43347), (50, 43329), (56, 43278), (68, 43203), (73, 43173),

Gene: Thor_61 Start: 40522, Stop: 40256, Start Num: 26

Candidate Starts for Thor_61:

(Start: 25 @40525 has 47 MA's), (Start: 26 @40522 has 148 MA's), (Start: 30 @40510 has 4 MA's), (Start: 44 @40495 has 1 MA's), (45, 40489), (49, 40438), (50, 40423), (52, 40402), (56, 40372), (60, 40342), (73, 40267),

Gene: Thyatira_63 Start: 44764, Stop: 45012, Start Num: 43

Candidate Starts for Thyatira_63:

(Start: 43 @44764 has 154 MA's), (50, 44839), (59, 44911), (63, 44935),

Gene: Tierra_70 Start: 44265, Stop: 44504, Start Num: 43

Candidate Starts for Tierra_70:

(Start: 16 @44181 has 1 MA's), (Start: 43 @44265 has 154 MA's), (45, 44274), (51, 44355), (58, 44409),

Gene: Tigress9_71 Start: 44081, Stop: 44320, Start Num: 43

Candidate Starts for Tigress9_71:

(Start: 16 @43997 has 1 MA's), (Start: 43 @44081 has 154 MA's), (45, 44090), (51, 44171), (58, 44225), (61, 44240),

Gene: TingHuaYa_70 Start: 43428, Stop: 43676, Start Num: 43

Candidate Starts for TingHuaYa_70:

(Start: 43 @43428 has 154 MA's), (51, 43518), (67, 43614), (69, 43638),

Gene: TiniBug_67 Start: 44358, Stop: 44600, Start Num: 43

Candidate Starts for TiniBug_67:

(Start: 43 @44358 has 154 MA's), (51, 44448), (67, 44544), (69, 44568),

Gene: Tiri_67 Start: 43756, Stop: 43998, Start Num: 43

Candidate Starts for Tiri_67:

(Start: 43 @43756 has 154 MA's), (47, 43801), (51, 43846), (67, 43942),

Gene: Topgun_60 Start: 40325, Stop: 40029, Start Num: 26

Candidate Starts for Topgun_60:

(Start: 25 @40328 has 47 MA's), (Start: 26 @40325 has 148 MA's), (Start: 30 @40313 has 4 MA's), (Start: 38 @40280 has 38 MA's), (45, 40262), (50, 40196), (52, 40175), (56, 40145), (60, 40115),

Gene: Topper_66 Start: 43622, Stop: 43864, Start Num: 43

Candidate Starts for Topper_66:

(Start: 43 @43622 has 154 MA's), (51, 43712), (67, 43808), (69, 43832),

Gene: Torres_58 Start: 43555, Stop: 43800, Start Num: 43

Candidate Starts for Torres_58:

(Start: 16 @43483 has 1 MA's), (Start: 43 @43555 has 154 MA's), (53, 43660), (59, 43702), (67, 43738),

Gene: Tortoise12_49 Start: 33608, Stop: 33856, Start Num: 38

Candidate Starts for Tortoise12_49:

(3, 33194), (5, 33401), (7, 33434), (18, 33530), (Start: 38 @33608 has 38 MA's), (Start: 44 @33620 has 1 MA's), (45, 33626), (51, 33704), (60, 33770), (61, 33773),

Gene: Tote_58 Start: 38354, Stop: 38079, Start Num: 26

Candidate Starts for Tote_58:

(Start: 25 @38357 has 47 MA's), (Start: 26 @38354 has 148 MA's), (Start: 30 @38342 has 4 MA's), (45, 38312), (49, 38261), (50, 38246), (52, 38225), (56, 38195), (60, 38165),

Gene: TpudiCK_41 Start: 32779, Stop: 33039, Start Num: 40

Candidate Starts for TpudiCK_41:

(12, 32650), (Start: 35 @32761 has 12 MA's), (Start: 40 @32779 has 9 MA's), (49, 32842), (59, 32929), (60, 32938), (62, 32947),

Gene: Traft412_64 Start: 41743, Stop: 41486, Start Num: 32

Candidate Starts for Traft412_64:

(Start: 32 @41743 has 10 MA's), (Start: 44 @41725 has 1 MA's), (45, 41719), (49, 41668), (50, 41653), (52, 41632), (56, 41602), (60, 41572),

Gene: Treddle_63 Start: 42567, Stop: 42298, Start Num: 25

Candidate Starts for Treddle_63:

(Start: 25 @42567 has 47 MA's), (Start: 26 @42564 has 148 MA's), (Start: 30 @42552 has 4 MA's), (45, 42531), (49, 42480), (50, 42465), (52, 42444), (54, 42423), (56, 42414), (60, 42384),

Gene: TreyKay_68 Start: 44110, Stop: 44352, Start Num: 43

Candidate Starts for TreyKay_68:

(Start: 43 @44110 has 154 MA's), (51, 44200), (67, 44296),

Gene: Trice_55 Start: 40942, Stop: 41187, Start Num: 43

Candidate Starts for Trice_55:

(Start: 16 @40870 has 1 MA's), (Start: 43 @40942 has 154 MA's), (53, 41047), (59, 41089), (67, 41125),

Gene: Tripl3t_65 Start: 43651, Stop: 43394, Start Num: 32

Candidate Starts for Tripl3t_65:

(Start: 32 @43651 has 10 MA's), (Start: 44 @43633 has 1 MA's), (45, 43627), (49, 43576), (50, 43561), (52, 43540), (56, 43510), (60, 43480), (73, 43405),

Gene: Trouble_63 Start: 41668, Stop: 41399, Start Num: 25

Candidate Starts for Trouble_63:

(Start: 25 @41668 has 47 MA's), (Start: 26 @41665 has 148 MA's), (Start: 30 @41653 has 4 MA's), (45, 41632), (50, 41566), (52, 41545), (54, 41524), (56, 41515), (60, 41485),

Gene: TruffulaTree_67 Start: 43916, Stop: 44158, Start Num: 43

Candidate Starts for TruffulaTree_67:

(Start: 43 @43916 has 154 MA's), (51, 44006), (67, 44102), (69, 44126),

Gene: Turj99_60 Start: 42063, Stop: 41797, Start Num: 26

Candidate Starts for Turj99_60:

(Start: 25 @42066 has 47 MA's), (Start: 26 @42063 has 148 MA's), (Start: 30 @42051 has 4 MA's), (Start: 44 @42036 has 1 MA's), (45, 42030), (49, 41979), (50, 41964), (52, 41943), (56, 41913), (60, 41883), (73, 41808),

Gene: Twitch_66 Start: 43624, Stop: 43866, Start Num: 43

Candidate Starts for Twitch_66:

(Start: 43 @43624 has 154 MA's), (51, 43714), (67, 43810), (69, 43834),

Gene: TwoPeat_63 Start: 41915, Stop: 41649, Start Num: 26

Candidate Starts for TwoPeat_63:

(Start: 25 @41918 has 47 MA's), (Start: 26 @41915 has 148 MA's), (Start: 30 @41903 has 4 MA's), (Start: 44 @41888 has 1 MA's), (45, 41882), (49, 41831), (50, 41816), (52, 41795), (56, 41765), (60, 41735),

Gene: TyDawg_39 Start: 32762, Stop: 33040, Start Num: 35

Candidate Starts for TyDawg_39:

(12, 32651), (Start: 35 @32762 has 12 MA's), (Start: 40 @32780 has 9 MA's), (49, 32843), (59, 32930), (60, 32939), (62, 32948),

Gene: U2_60 Start: 41888, Stop: 41592, Start Num: 26

Candidate Starts for U2_60:

(Start: 25 @41891 has 47 MA's), (Start: 26 @41888 has 148 MA's), (Start: 30 @41876 has 4 MA's), (Start: 38 @41843 has 38 MA's), (45, 41825), (49, 41774), (50, 41759), (52, 41738), (56, 41708), (60, 41678), (73, 41603),

Gene: Unicorn_68 Start: 43391, Stop: 43630, Start Num: 43
Candidate Starts for Unicorn_68:
(Start: 43 @43391 has 154 MA's), (45, 43400), (51, 43481), (61, 43550),

Gene: Urkel_67 Start: 44362, Stop: 44604, Start Num: 43
Candidate Starts for Urkel_67:
(Start: 43 @44362 has 154 MA's), (51, 44452), (67, 44548), (69, 44572),

Gene: Validus_71 Start: 44494, Stop: 44733, Start Num: 41
Candidate Starts for Validus_71:
(Start: 41 @44494 has 4 MA's), (51, 44584), (58, 44638),

Gene: Veliki_68 Start: 43889, Stop: 44131, Start Num: 43
Candidate Starts for Veliki_68:
(Start: 43 @43889 has 154 MA's), (51, 43979), (67, 44075), (69, 44099),

Gene: Violet_60 Start: 42922, Stop: 42656, Start Num: 26
Candidate Starts for Violet_60:
(Start: 25 @42925 has 47 MA's), (Start: 26 @42922 has 148 MA's), (Start: 30 @42910 has 4 MA's),
(45, 42889), (49, 42838), (50, 42823), (52, 42802), (56, 42772), (60, 42742),

Gene: Waterfoul_62 Start: 42861, Stop: 43109, Start Num: 43
Candidate Starts for Waterfoul_62:
(Start: 43 @42861 has 154 MA's), (50, 42936), (59, 43008), (63, 43032),

Gene: Watermelon_62 Start: 40661, Stop: 40362, Start Num: 25
Candidate Starts for Watermelon_62:
(Start: 25 @40661 has 47 MA's), (Start: 26 @40658 has 148 MA's), (Start: 30 @40646 has 4 MA's),
(Start: 38 @40613 has 38 MA's), (45, 40595), (49, 40544), (50, 40529), (52, 40508), (56, 40478), (60,
40448),

Gene: Wheeler_64 Start: 41819, Stop: 41544, Start Num: 26
Candidate Starts for Wheeler_64:
(Start: 26 @41819 has 148 MA's), (Start: 30 @41807 has 4 MA's), (49, 41726), (50, 41711), (52,
41690), (56, 41660), (60, 41630), (73, 41555),

Gene: Whitspit_58 Start: 39003, Stop: 38737, Start Num: 26
Candidate Starts for Whitspit_58:
(Start: 25 @39006 has 47 MA's), (Start: 26 @39003 has 148 MA's), (Start: 30 @38991 has 4 MA's),
(45, 38970), (49, 38919), (50, 38904), (52, 38883), (56, 38853), (60, 38823), (73, 38748),

Gene: Wilkins_61 Start: 40255, Stop: 39959, Start Num: 26
Candidate Starts for Wilkins_61:
(Start: 25 @40258 has 47 MA's), (Start: 26 @40255 has 148 MA's), (Start: 30 @40243 has 4 MA's),
(Start: 38 @40210 has 38 MA's), (45, 40192), (50, 40126), (52, 40105), (56, 40075), (60, 40045),

Gene: Wintermute_70 Start: 43607, Stop: 43870, Start Num: 36
Candidate Starts for Wintermute_70:
(Start: 36 @43607 has 17 MA's), (Start: 44 @43622 has 1 MA's), (51, 43709), (65, 43805), (73, 43859),

Gene: Xerxes_50 Start: 34922, Stop: 35170, Start Num: 38
Candidate Starts for Xerxes_50:

(3, 34508), (5, 34715), (7, 34748), (18, 34844), (Start: 38 @34922 has 38 MA's), (Start: 44 @34934 has 1 MA's), (45, 34940), (51, 35018), (60, 35084), (61, 35087),

Gene: Ximenita_72 Start: 44093, Stop: 44332, Start Num: 43

Candidate Starts for Ximenita_72:

(Start: 16 @44009 has 1 MA's), (Start: 43 @44093 has 154 MA's), (45, 44102), (51, 44183), (61, 44252),

Gene: Y10_67 Start: 43533, Stop: 43847, Start Num: 37

Candidate Starts for Y10_67:

(Start: 37 @43533 has 6 MA's), (Start: 44 @43548 has 1 MA's), (46, 43578), (51, 43635),

Gene: Y2_67 Start: 43533, Stop: 43847, Start Num: 37

Candidate Starts for Y2_67:

(Start: 37 @43533 has 6 MA's), (Start: 44 @43548 has 1 MA's), (46, 43578), (51, 43635),

Gene: YasnayaPolyana_69 Start: 43433, Stop: 43696, Start Num: 36

Candidate Starts for YasnayaPolyana_69:

(Start: 36 @43433 has 17 MA's), (Start: 44 @43448 has 1 MA's), (51, 43535), (65, 43631), (73, 43685),

Gene: YoureAdopted_66 Start: 44035, Stop: 44277, Start Num: 43

Candidate Starts for YoureAdopted_66:

(Start: 43 @44035 has 154 MA's), (51, 44125), (67, 44221), (69, 44245),

Gene: Yuna_71 Start: 45201, Stop: 45449, Start Num: 43

Candidate Starts for Yuna_71:

(18, 45129), (Start: 43 @45201 has 154 MA's), (51, 45291), (59, 45351), (69, 45411),

Gene: Yunkel11_71 Start: 43949, Stop: 44191, Start Num: 43

Candidate Starts for Yunkel11_71:

(Start: 16 @43871 has 1 MA's), (Start: 43 @43949 has 154 MA's), (67, 44135),

Gene: Zabiza_61 Start: 39772, Stop: 40014, Start Num: 43

Candidate Starts for Zabiza_61:

(Start: 43 @39772 has 154 MA's), (51, 39862), (67, 39958), (69, 39982),

Gene: Zavala_69 Start: 44194, Stop: 44436, Start Num: 43

Candidate Starts for Zavala_69:

(Start: 43 @44194 has 154 MA's), (51, 44284), (67, 44380), (69, 44404),

Gene: Zeeculate_59 Start: 41408, Stop: 41112, Start Num: 26

Candidate Starts for Zeeculate_59:

(14, 41465), (Start: 26 @41408 has 148 MA's), (Start: 30 @41396 has 4 MA's), (Start: 38 @41363 has 38 MA's), (45, 41345), (49, 41294), (50, 41279), (52, 41258), (56, 41228), (60, 41198),

Gene: Zephyr_63 Start: 40825, Stop: 40529, Start Num: 26

Candidate Starts for Zephyr_63:

(Start: 25 @40828 has 47 MA's), (Start: 26 @40825 has 148 MA's), (Start: 30 @40813 has 4 MA's), (Start: 38 @40780 has 38 MA's), (45, 40762), (49, 40711), (50, 40696), (52, 40675), (56, 40645), (60, 40615),

Gene: Zeuska_67 Start: 44044, Stop: 43775, Start Num: 26

Candidate Starts for Zeuska_67:

(Start: 25 @44047 has 47 MA's), (Start: 26 @44044 has 148 MA's), (Start: 30 @44032 has 4 MA's),
(50, 43942), (52, 43921), (56, 43891), (60, 43861),

Gene: ZoeJ_68 Start: 45471, Stop: 45716, Start Num: 43

Candidate Starts for ZoeJ_68:

(28, 45414), (31, 45420), (Start: 43 @45471 has 154 MA's), (51, 45561), (56, 45597), (61, 45630),