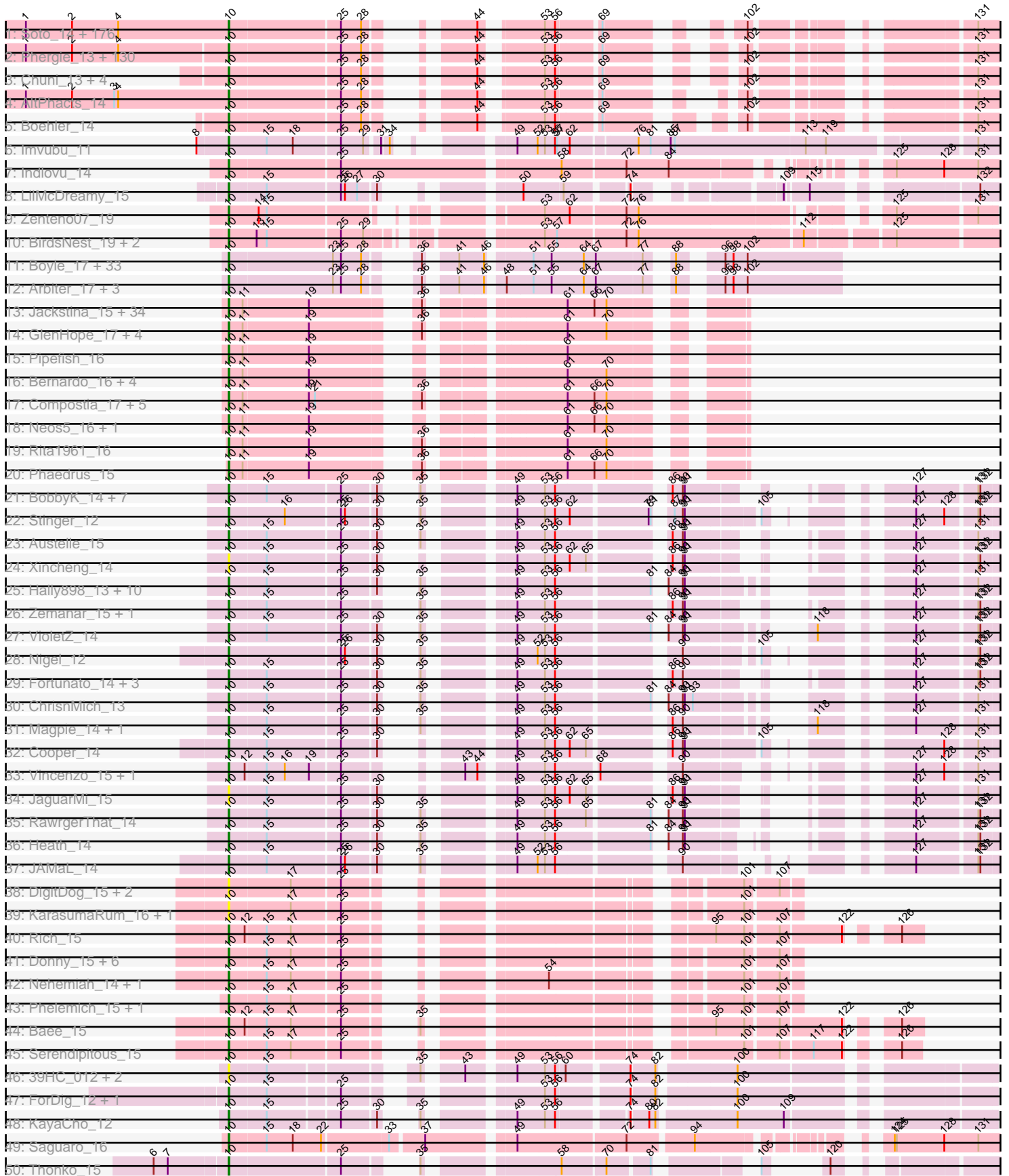


Pham 304601



Note: Tracks are now grouped by subcluster and scaled. Switching in subcluster is indicated by changes in track color. Track scale is now set by default to display the region 30 bp upstream of start 1 to 30 bp downstream of the last possible start. If this default region is judged to be packed too tightly with annotated starts, the track will be further scaled to only show that region of the ORF with annotated starts. This action will be indicated by adding "Zoomed" to the title. For starts, yellow indicates the location of called starts comprised solely of Glimmer/GeneMark auto-annotations, green indicates the location of called starts with at least 1 manual gene annotation.

Pham 304601 Report

This analysis was run 06/08/26 on database version 649.

Pham number 304601 has 492 members, 59 are drafts.

Phages represented in each track:

- Track 1 : Soto_14, TallGrassMM_14, HSavage_14, Puhltonio_14, HenryJackson_13, Gyarad_0014, Cornobble_13, FugateOSU_13, Numberten_14, Vaishali24_13, Carthage_13, Phamished_14, OliverWalter_14, Doddsville_14, NiaNia_14, OSmaximus_14, Gwilliam_14, Yoshand_14, Virgeve_13, Vivaldi_14, Plmatters_14, Newman_14, Khan1_14, Nacho_0014, Karn_13, JakeO_13, Piglet_0013, Daffy_14, Morty_14, Windsor_13, Antonia_13, TooFast2Furius_15, DelRivs_13, Serpentine_0014, BlueHusk_14, SallyH_14, KlimbOn_14, ShadowBud_14, Suffolk_14, Mikota_14, Rimu_14, ThreeOh3D2_14, Grand2040_13, DonSanchon_13, Kikipoo_14, Jesabah_14, Solosis_13, Mutante_13, Aonishiki_14, Crownjwl_14, Maru_13, Aelin_13, Serendipity_14, Dati_14, DirtJuice_14, Pherdinand_14, Jiraiya_13, Altwerkus_13, Jillium_13, Surely_14, Hetaeria_14, Chorkpop_14, Slatt_14, KLucky39_14, Selr12_14, Chipette_15, DaddyDaniels_14, MrPhizzler_14, Frankicide_14, Pipsqueak_14, UncleHowie_14, Childish_13, MiniBoss_14, Ricotta_13, Soile_14, Prickles_14, Duggie_13, IsaacEli_14, Iridessa_14, Horchata_14, RedRaider89_15, Mana_13, Morgushi_14, Timmi_13, MitKao_14, FleetyMac_13, Thunderbird_13, Taraxa_14, BlackStallion_14, SDcharge11_14, Mesh1_14, AbsoluteMadLad_13, Quisquiliae_14, Riverton_14, Craff_14, Phipps_14, UAch1_14, Manad_13, Kwksand96_13, JDog_13, GreenChile_14, Beaglebox_13, Robyn_13, FriarPreacher_14, Scoot17C_14, Lasso_14, Sheila_14, LostAndPhound_13, Lopsy_13, Tooj_14, Schadenfreude_13, Scrick_13, Haleema_13, Olive_14, Chaelin_13, Xavier_13, Lulwa_14, Vortex_14, PG1_14, Podrick_14, Megatron_14, Cobra_14, Telesworld_13, Omniscient_14, Kahve_13, DoOn_15, KingTut_13, HogWash_13, ElvisPhasley_14, Potter_13, PinheadLarry_14, Chunky_14, Pops_14, Held_14, OneBrain_14, Lego3393_14, Kimbrough_14, Dingo_14, CheetO_14, Roliet_14, Harvey_14, Legolas_13, LemonSlice_14, Phareon_14, Triad_14, Inverness_14, Fozzie_13, Badfish_14, SirBeauregard_13, MRabcd_13, Thora_14, Hekos_13, Eremos_14, Basato_15, Cornbread_13, Apizium_13, LuckyMarjie_13, Katniss_14, Cher_13, Buckeye_14, Colbert_14, Aleia_14, Mosaic_13, FluffyNinja_14, Plata_13, Usavi_14, LeiMonet_14, RedMaple_13, Nova1_13, Cosmolli16_13, KingVeVeVe_14, Megamind20_14, Chah_14, Lehmann_14, Kloppinator_14, PhatCats2014_14, Nathan_14
- Track 2 : Phergie_13, Zaider_15, Simielle_13, Struggle_13, Fringe_14, JacAttac_14, Andre_14, Mesmerelda_13, Etaye_14, Toni_13, Hocus_13, Hartsy_14, Spartan300_14, Squid_14, CamL_14, Roscoe_15, ABU_14, Hamish_14, PhenghisKhan_13, Vista_14, Sophia_13, ImtiyazSitla_13, PhatLouie_14, PhrankReynolds_13, Roy17_14, TomBombadil_14, Maskar_13, Inchworm_14, CharlieGBrown_13, Placalicious_13, BatteryCK_13, Swish_14, Gwennie1_14,

Haimas_14, Oline_13, DuchessDung_13, Orwigg_13, LeeLot_14, Nicole21_14, Pinkman_13, Orfeu_13, Phleuron_13, Derpp_13, Burr_13, Valjean_14, Virapocalypse_14, Mulan_13, Dione_13, MichaelPhcott_13, Gophee_14, Schueller_13, AngelCake_14, PallasAthena_14, Magic8_14, Zonia_14, TyrionL_13, True_13, Olak_13, JangoPhett_14, DoesntMatter_14, Durga_14, Sigman_14, MelsMeow_13, Riggan_14, Bishoperium_13, Mcshane_13, Mecca_13, Fang_14, Labeouficaum_13, Happabalu_14, Wallhey_13, Kwadwo_13, Waterdiva_14, PhrodoBaggins_13, Gareth_13, FremontTroll_14, Chute_13, Mag7_13, Cannibal_14, Bluephacebaby_13, Ashraf_13, Freya_13, Melc17_14, Pacifista_13, Lulumae_13, Kailash_14, BoogieWoogie_13, Orion_14, SassyCat97_13, Charles1_14, Emiris_14, QueenBeane_14, Giraffe_14, Murdoc_14, Vaticameos_14, Iridoclysis_14, ProfessorX_14, Longacauda_13, CampRoach_14, Lumine_13, Oosterbaan_14, Anderson_14, Tomlarah_14, Matalotodo_14, GeneCoco_14, SilverBell_14, Caspiboi_13, Hertubise_14, Jiminy_13, Samaymay_14, Banjo_13, Zelda_14, EmpTee_14, Adriana_14, HighStump_13, LasagnaCat_14, Daka_14, Dice_13, Nyala_13, Trypo_14, Brilliant_14, Veritas_13, Skippy_14, Coletti_14, Swiphy_14, Phunky_14, Weher20_14, YouGoGlencoco_14, Squiggle_14, Eugenia_14, ShiVal_14

- Track 3 : Chuni_13, Keitherie_14, BlacksBerry_13, Flake_14, Larson_15
- Track 4 : AltPhacts_14
- Track 5 : Boehler_14
- Track 6 : Imvubu_11
- Track 7 : Indlovu_14
- Track 8 : LilMcDreamy_15
- Track 9 : Zenteno07_19
- Track 10 : BirdsNest_19, LittleMinkey_20, Hashim76_19
- Track 11 : Boyle_17, LizLemon_17, Kheth_17, Ares_17, Eaglehorse_17, ItsyBitsy1_17, Godines_17, FrenchFry_17, Calamitous_17, Blocker23_17, Phantasmagoria_17, TA17A_17, Laurie_17, Faze9_17, Vic9_00017, Tinciduntolum_18, Lars_17, Kaleb_17, Tres_17, Brownie5_17, Rosebush_17, PrinceCharming_17, Glass_17, West99_17, LilSmirk_17, Kolhan_17, Opia_17, Allegro_17, Sabella_17, Rhinoforte_17, Bananafish_17, Holeinone_17, Hedgerow_17, Coffee_17
- Track 12 : Arbitr_17, Lephleur_17, Qyrzula_16, MasterPo_17
- Track 13 : Jackstina_15, Yinz_16, SynergyX_16, RagingRooster_16, Chentzyk_15, Audrey_16, Ben11_15, Mulaychimus_16, Corofin_16, Briakila_16, Heathcliff_16, Baloo_16, Kronus_15, Halfpint_15, Athena_17, Daisy_16, RomaT_16, Nozo_16, Glubnar_16, Kamiyu_16, OrangeOswald_16, Phlyer_16, Tydolla_16, LestyG_16, SlippinJimmy_16, TinyTerror_16, Olivio_15, Abinghost_16, Gadget_17, Deenasa_16, Devonte_16, Obutu_16, MmasiCarm_16, Phayeta_16, Shenandoah_16
- Track 14 : GlenHope_17, Marlia_16, Gervas_16, ChaChing_16, Mortcellus_15
- Track 15 : Pipefish_16
- Track 16 : Bernardo_16, Yahalom_16, Morty007_16, Marley1013_16, Akoma_16
- Track 17 : Compostia_17, HarveySr_16, SwainyDoc_16, Philly_15, Casbah_15, Chandler_16
- Track 18 : Neos5_16, Chalmers_16
- Track 19 : Rita1961_16
- Track 20 : Phaedruss_15
- Track 21 : BobbyK_14, Hangman_14, Frederick_14, Hydro_14, JoyceMaria_14, Mithril_14, Lolalove_14, BrownCNA_15
- Track 22 : Stinger_12
- Track 23 : Austelle_15
- Track 24 : Xincheng_14

- Track 25 : Hally898_13, Lambano_13, Nanao_13, Epah_13, Poster_13, GinPorsche_13, LittleDigger_13, Antihero_13, QueenPie_14, Renkei_13, Ahwei_13
- Track 26 : Zemanar_15, Waleliano_14
- Track 27 : VioletZ_14
- Track 28 : Nigel_12
- Track 29 : Fortunato_14, Apex_14, Mudslide_14, Prince_14
- Track 30 : ChrisnMich_13
- Track 31 : Magpie_14, Fanaw_14
- Track 32 : Cooper_14
- Track 33 : Vincenzo_15, AlanGrant_15
- Track 34 : JaguarMi_15
- Track 35 : RawrgerThat_14
- Track 36 : Heath_14
- Track 37 : JAMaL_14
- Track 38 : DigitDog_15, Shenyu_15, Nangang_15
- Track 39 : KarasumaRum_16, StinkyVeggy_16
- Track 40 : Rich_15
- Track 41 : Donny_15, SirJeffery_15, Acadian_15, Suigeneris_15, Rita130_15, EastView9101_15, Reccee_15
- Track 42 : Nehemiah_14, Mysterious_15
- Track 43 : Phelemich_15, Reprobate_15
- Track 44 : Bae_15
- Track 45 : Serendipitous_15
- Track 46 : 39HC_012, Hosp_010, 40BC_012
- Track 47 : ForDig_12, Jolie1_012
- Track 48 : KayaCho_12
- Track 49 : Saguaro_16
- Track 50 : Thonko_15
- Track 51 : PenguinLover67_17
- Track 52 : Knocker_19
- Track 53 : Quesadilla_16
- Track 54 : Funsized_19
- Track 55 : CRB2_17
- Track 56 : Rinkes_19
- Track 57 : LittleMunchkin_14
- Track 58 : Sour_16
- Track 59 : TPA2_23

Summary of Final Annotations (See graph section above for start numbers):

The start number called the most often in the published annotations is 10, it was called in 433 of the 433 non-draft genes in the pham.

Genes that call this "Most Annotated" start:

- 39HC_012, 40BC_012, ABU_14, Abinghost_16, AbsoluteMadLad_13, Acadian_15, Adriana_14, Aelin_13, Ahwei_13, Akoma_16, AlanGrant_15, Aleia_14, Allegro_17, AltPhacts_14, Altwerkus_13, Anderson_14, Andre_14, AngelCake_14, Antihero_13, Antonia_13, Aonishiki_14, Apex_14, Apizium_13, Arbiter_17, Ares_17, Ashraf_13, Athena_17, Audrey_16, Austelle_15, Badfish_14, Bae_15, Baloo_16, Bananafish_17, Banjo_13, Basato_15, BatteryCK_13, Beaglebox_13, Ben11_15,

Bernardo_16, BirdsNest_19, Bishoperium_13, BlackStallion_14, BlacksBerry_13, Blocker23_17, BlueHusk_14, Bluephacebaby_13, BobbyK_14, Boehler_14, BoogieWoogie_13, Boyle_17, Briakila_16, Brilliant_14, BrownCNA_15, Brownie5_17, Buckeye_14, Burr_13, CRB2_17, Calamitous_17, CamL_14, CampRoach_14, Cannibal_14, Carthage_13, Casbah_15, Caspiboi_13, ChaChing_16, Chaelin_13, Chah_14, Chalmers_16, Chandler_16, Charles1_14, CharlieGBrown_13, CheetO_14, Chentzyk_15, Cher_13, Childish_13, Chipette_15, Chorkpop_14, ChrisnMich_13, Chuni_13, Chunky_14, Chute_13, Cobra_14, Coffee_17, Colbert_14, Coletti_14, Compostia_17, Cooper_14, Cornbread_13, Cornobble_13, Corofin_16, Cosmolli16_13, Craff_14, Crownjwl_14, DaddyDaniels_14, Daffy_14, Daisy_16, Daka_14, Dati_14, Deenasa_16, DelRivs_13, Derpp_13, Devonte_16, Dice_13, DigitDog_15, Dingo_14, Dione_13, DirtJuice_14, Doddsville_14, DoesntMatter_14, DoIOn_15, DonSanchon_13, Donny_15, DuchessDung_13, Duggie_13, Durga_14, Eaglehorse_17, EastView9101_15, ElvisPhasley_14, Emiris_14, EmpTee_14, Epah_13, Eremos_14, Etaye_14, Eugenia_14, Fanaw_14, Fang_14, Faze9_17, Flake_14, FleetyMac_13, FluffyNinja_14, ForDig_12, Fortunato_14, Fozzie_13, Frankicide_14, Frederick_14, FremontTroll_14, FrenchFry_17, Freya_13, FriarPreacher_14, Fringe_14, FugateOSU_13, Funsized_19, Gadget_17, Gareth_13, GeneCoco_14, Gervas_16, GinPorsche_13, Giraffe_14, Glass_17, GlenHope_17, Glubnar_16, Godines_17, Gophee_14, Grand2040_13, GreenChile_14, Gwennie1_14, Gwilliam_14, Gyarad_0014, HSavage_14, Haimas_14, Haleema_13, Halfpint_15, Hally898_13, Hamish_14, Hangman_14, Happabalu_14, Hartsy_14, HarveySr_16, Harvey_14, Hashim76_19, Heath_14, Heathcliff_16, Hedgerow_17, Hekos_13, Held_14, HenryJackson_13, Hertubise_14, Hetaeria_14, HighStump_13, Hocus_13, HogWash_13, Holeinone_17, Horchata_14, Hosp_010, Hydro_14, ImtiyazSitla_13, Imvubu_11, Inchworm_14, Indlovu_14, Inverness_14, Iridessa_14, Iridoclysis_14, IsaacEli_14, ItsyBitsy1_17, JAMaL_14, JDog_13, JacAttac_14, Jackstina_15, JaguarMi_15, JakeO_13, JangoPhett_14, Jesabah_14, Jillium_13, Jiminy_13, Jiraiya_13, Jolie1_012, JoyceMaria_14, KLucky39_14, Kahve_13, Kailash_14, Kaleb_17, Kamiyu_16, KarasumaRum_16, Karn_13, Katniss_14, KayaCho_12, Keitherie_14, Khan1_14, Kheth_17, Kikipoo_14, Kimbrough_14, KingTut_13, KingVeVeVe_14, KlimbOn_14, Kloppinator_14, Knocker_19, Kolhan_17, Kronus_15, Kwadwo_13, Kwksand96_13, Labeouficaum_13, Lambano_13, Lars_17, Larson_15, LasagnaCat_14, Lasso_14, Laurie_17, LeeLot_14, Lego3393_14, Legolas_13, Lehmann_14, LeiMonet_14, LemonSlice_14, Lephleur_17, LestyG_16, LilMcDreamy_15, LilSmirk_17, LittleDigger_13, LittleMinkey_20, LittleMunchkin_14, LizLemon_17, Lolalove_14, Longacauda_13, Lopsy_13, LostAndPhound_13, LuckyMarjie_13, Lulumae_13, Lulwa_14, Lumine_13, MRabcd_13, Mag7_13, Magic8_14, Magpie_14, Mana_13, Manad_13, Marley1013_16, Marlia_16, Maru_13, Maskar_13, MasterPo_17, Matalotodo_14, Mcshane_13, Mecca_13, Megamind20_14, Megatron_14, Melc17_14, MelsMeow_13, Mesh1_14, Mesmerelda_13, MichaelPhcott_13, Mikota_14, MiniBoss_14, MitKao_14, Mithril_14, MmasiCarm_16, Morgushi_14, Mortcellus_15, Morty007_16, Morty_14, Mosaic_13, MrPhizzler_14, Mudslide_14, Mulan_13, Mulaychimus_16, Murdoc_14, Mutante_13, Mysterious_15, Nacho_0014, Nanao_13, Nangang_15, Nathan_14, Nehemiah_14, Neos5_16, Newman_14, NiaNia_14, Nicole21_14, Nigel_12, Nova1_13, Nozo_16, Numberten_14, Nyala_13, OSmaximus_14, Obutu_16, Olak_13, Oline_13, Olive_14, OliverWalter_14, Olivio_15, Omniscient_14, OneBrain_14, Oosterbaan_14, Opia_17, OrangeOswald_16, Orfeu_13, Orion_14, Orwigg_13, PG1_14, Pacifista_13, PallasAthena_14, PenguinLover67_17, Phaedrus_15, Phamished_14, Phantasmagoria_17, Phareon_14, PhatCats2014_14, PhatLouie_14, Phayeta_16, Phelemich_15, PhenghisKhan_13, Pherdinand_14, Phergie_13, Philly_15, Phipps_14, Phleuron_13, Phlyer_16, PhrankReynolds_13, PhrodoBaggins_13,

Phunky_14, Piglet_0013, PinheadLarry_14, Pinkman_13, Pipefish_16, Pipsqueak_14, Placalicious_13, Plata_13, Plmatters_14, Podrick_14, Pops_14, Poster_13, Potter_13, Prickles_14, PrinceCharming_17, Prince_14, ProfessorX_14, Puhltonio_14, QueenBeane_14, QueenPie_14, Quesadilla_16, Quisquilliae_14, Qyrzula_16, RagingRooster_16, RawrgerThat_14, Reccee_15, RedMaple_13, RedRaider89_15, Renkei_13, Reprobate_15, Rhinoforte_17, Rich_15, Ricotta_13, Riggan_14, Rimu_14, Rinkes_19, Rita130_15, Rita1961_16, Riverton_14, Robyn_13, Roliet_14, RomaT_16, Roscoe_15, Rosebush_17, Roy17_14, SDcharge11_14, Sabella_17, Saguaro_16, SallyH_14, Samaymay_14, SassyCat97_13, Schadenfreude_13, Schueller_13, Scoot17C_14, Scrick_13, Selr12_14, Serendipitous_15, Serendipity_14, Serpentine_0014, ShadowBud_14, Sheila_14, Shenandoah_16, Shenyu_15, ShiVal_14, Sigman_14, SilverBell_14, Simielle_13, SirBeauregard_13, SirJeffery_15, Skippy_14, Slatt_14, SlippinJimmy_16, Soile_14, Solosis_13, Sophia_13, Soto_14, Sour_16, Spartan300_14, Squid_14, Squiggle_14, Stinger_12, StinkyVeggy_16, Struggle_13, Suffolk_14, Suigeneris_15, Surely_14, SwainyDoc_16, Swiphy_14, Swish_14, SynergyX_16, TA17A_17, TPA2_23, TallGrassMM_14, Taraxa_14, Telesworld_13, Thonko_15, Thora_14, ThreeOh3D2_14, Thunderbird_13, Timmi_13, Tinciduntolum_18, TinyTerror_16, TomBombadil_14, Tomlarah_14, Toni_13, TooFast2Furius_15, Tooj_14, Tres_17, Triad_14, True_13, Trypo_14, Tydolla_16, TyrionL_13, UAch1_14, UncleHowie_14, Usavi_14, Vaishali24_13, Valjean_14, Vaticameos_14, Veritas_13, Vic9_00017, Vincenzo_15, VioletZ_14, Virapocalypse_14, Virgeve_13, Vista_14, Vivaldi_14, Vortex_14, Waleliano_14, Wallhey_13, Waterdiva_14, Weher20_14, West99_17, Windsor_13, Xavier_13, Xincheng_14, Yahalom_16, Yinz_16, Yoshand_14, YouGoGlencoco_14, Zaider_15, Zelda_14, Zemanar_15, Zenteno07_19, Zonia_14,

Genes that have the "Most Annotated" start but do not call it:

-

Genes that do not have the "Most Annotated" start:

-

Summary by start number:

Start 10:

- Found in 492 of 492 (100.0%) of genes in pham
- Manual Annotations of this start: 433 of 433
- Called 100.0% of time when present
- Phage (with cluster) where this start called: 39HC_012 (B6), 40BC_012 (B6), ABU_14 (B1), Abinghost_16 (B3), AbsoluteMadLad_13 (B1), Acadian_15 (B5), Adriana_14 (B1), Aelin_13 (B1), Ahwei_13 (B4), Akoma_16 (B3), AlanGrant_15 (B4), Aleia_14 (B1), Allegro_17 (B2), AltPhacts_14 (B1), Altwerkus_13 (B1), Anderson_14 (B1), Andre_14 (B1), AngelCake_14 (B1), Antihero_13 (B4), Antonia_13 (B1), Aonishiki_14 (B1), Apex_14 (B4), Apizium_13 (B1), Arbiter_17 (B2), Ares_17 (B2), Ashraf_13 (B1), Athena_17 (B3), Audrey_16 (B3), Austelle_15 (B4), Badfish_14 (B1), Bae_15 (B5), Baloo_16 (B3), Bananafish_17 (B2), Banjo_13 (B1), Basato_15 (B1), BatteryCK_13 (B1), Beaglebox_13 (B1), Ben11_15 (B3), Bernardo_16 (B3), BirdsNest_19 (B13), Bishoperium_13 (B1), BlackStallion_14 (B1), BlacksBerry_13 (B1), Blocker23_17 (B2), BlueHusk_14 (B1), Bluephacebaby_13 (B1), BobbyK_14 (B4), Boehler_14 (B1), BoogieWoogie_13 (B1), Boyle_17 (B2), Briakila_16 (B3), Brilliant_14 (B1), BrownCNA_15 (B4), Brownie5_17 (B2), Buckeye_14 (B1), Burr_13 (B1), CRB2_17 (B9), Calamitous_17 (B2), CamL_14 (B1), CampRoach_14 (B1), Cannibal_14 (B1), Carthage_13 (B1), Casbah_15 (B3), Caspiboi_13 (B1),

ChaChing_16 (B3), Chaelin_13 (B1), Chah_14 (B1), Chalmers_16 (B3), Chandler_16 (B3), Charles1_14 (B1), CharlieGBrown_13 (B1), CheetO_14 (B1), Chentzyk_15 (B3), Cher_13 (B1), Childish_13 (B1), Chipette_15 (B1), Chorkpop_14 (B1), ChrisnMich_13 (B4), Chuni_13 (B1), Chunky_14 (B1), Chute_13 (B1), Cobra_14 (B1), Coffee_17 (B2), Colbert_14 (B1), Coletti_14 (B1), Compostia_17 (B3), Cooper_14 (B4), Cornbread_13 (B1), Cornobble_13 (B1), Corofin_16 (B3), Cosmolli16_13 (B1), Craff_14 (B1), Crownjwl_14 (B1), DaddyDaniels_14 (B1), Daffy_14 (B1), Daisy_16 (B3), Daka_14 (B1), Dati_14 (B1), Deenasa_16 (B3), DelRivs_13 (B1), Derpp_13 (B1), Devonte_16 (B3), Dice_13 (B1), DigitDog_15 (B5), Dingo_14 (B1), Dione_13 (B1), DirtJuice_14 (B1), Doddsville_14 (B1), DoesntMatter_14 (B1), DolOn_15 (B1), DonSanchon_13 (B1), Donny_15 (B5), DuchessDung_13 (B1), Duggie_13 (B1), Durga_14 (B1), Eaglehorse_17 (B2), EastView9101_15 (B5), ElvisPhasley_14 (B1), Emiris_14 (B1), EmpTee_14 (B1), Epah_13 (B4), Eremos_14 (B1), Etaye_14 (B1), Eugenia_14 (B1), Fanaw_14 (B4), Fang_14 (B1), Faze9_17 (B2), Flake_14 (B1), FleetyMac_13 (B1), FluffyNinja_14 (B1), ForDig_12 (B6), Fortunato_14 (B4), Fozzie_13 (B1), Frankicide_14 (B1), Frederick_14 (B4), FremontTroll_14 (B1), FrenchFry_17 (B2), Freya_13 (B1), FriarPreacher_14 (B1), Fringe_14 (B1), FugateOSU_13 (B1), Funsized_19 (B9), Gadget_17 (B3), Gareth_13 (B1), GeneCoco_14 (B1), Gervas_16 (B3), GinPorsche_13 (B4), Giraffe_14 (B1), Glass_17 (B2), GlenHope_17 (B3), Glubnar_16 (B3), Godines_17 (B2), Gophee_14 (B1), Grand2040_13 (B1), GreenChile_14 (B1), Gwennie1_14 (B1), Gwilliam_14 (B1), Gyarad_0014 (B1), HSavage_14 (B1), Haimas_14 (B1), Haleema_13 (B1), Halfpint_15 (B3), Hally898_13 (B4), Hamish_14 (B1), Hangman_14 (B4), Happabalu_14 (B1), Hartsy_14 (B1), HarveySr_16 (B3), Harvey_14 (B1), Hashim76_19 (B13), Heath_14 (B4), Heathcliff_16 (B3), Hedgerow_17 (B2), Hekos_13 (B1), Held_14 (B1), HenryJackson_13 (B1), Hertubise_14 (B1), Hetaeria_14 (B1), HighStump_13 (B1), Hocus_13 (B1), HogWash_13 (B1), Holeinone_17 (B2), Horchata_14 (B1), Hosp_010 (B6), Hydro_14 (B4), ImtiyazSitla_13 (B1), Imvubu_11 (B10), Inchworm_14 (B1), Indlovu_14 (B11), Inverness_14 (B1), Iridessa_14 (B1), Iridoclysis_14 (B1), IsaacEli_14 (B1), ItsyBitsy1_17 (B2), JAMaL_14 (B4), JDog_13 (B1), JacAttac_14 (B1), Jackstina_15 (B3), JaguarMi_15 (B4), JakeO_13 (B1), JangoPhett_14 (B1), Jesabah_14 (B1), Jillium_13 (B1), Jiminy_13 (B1), Jiraiya_13 (B1), Jolie1_012 (B6), JoyceMaria_14 (B4), KLucky39_14 (B1), Kahve_13 (B1), Kailash_14 (B1), Kaleb_17 (B2), Kamiyu_16 (B3), KarasumaRum_16 (B5), Karn_13 (B1), Katniss_14 (B1), KayaCho_12 (B6), Keitherie_14 (B1), Khan1_14 (B1), Kheth_17 (B2), Kikipoo_14 (B1), Kimbrough_14 (B1), KingTut_13 (B1), KingVeVeVe_14 (B1), KlimbOn_14 (B1), Kloppinator_14 (B1), Knocker_19 (B9), Kolhan_17 (B2), Kronus_15 (B3), Kwadwo_13 (B1), Kwksand96_13 (B1), Labeouficaum_13 (B1), Lambano_13 (B4), Lars_17 (B2), Larson_15 (B1), LasagnaCat_14 (B1), Lasso_14 (B1), Laurie_17 (B2), LeeLot_14 (B1), Lego3393_14 (B1), Legolas_13 (B1), Lehmann_14 (B1), LeiMonet_14 (B1), LemonSlice_14 (B1), Lephleur_17 (B2), LestyG_16 (B3), LilMcDreamy_15 (B12), LilSmirk_17 (B2), LittleDigger_13 (B4), LittleMinkey_20 (B13), LittleMunchkin_14 (DR), LizLemon_17 (B2), Lolalove_14 (B4), Longacauda_13 (B1), Lopsy_13 (B1), LostAndPhound_13 (B1), LuckyMarjie_13 (B1), Lulumae_13 (B1), Lulwa_14 (B1), Lumine_13 (B1), MRabcd_13 (B1), Mag7_13 (B1), Magic8_14 (B1), Magpie_14 (B4), Mana_13 (B1), Manad_13 (B1), Marley1013_16 (B3), Marlia_16 (B3), Maru_13 (B1), Maskar_13 (B1), MasterPo_17 (B2), Matalotodo_14 (B1), Mcshane_13 (B1), Mecca_13 (B1), Megamind20_14 (B1), Megatron_14 (B1), Melc17_14 (B1), MelsMeow_13 (B1), Mesh1_14 (B1), Mesmerelda_13 (B1), MichaelPhcott_13 (B1), Mikota_14 (B1), MiniBoss_14 (B1), MitKao_14 (B1), Mithril_14 (B4), MmasiCarm_16 (B3), Morgushi_14 (B1), Mortcellus_15 (B3), Morty007_16 (B3), Morty_14 (B1), Mosaic_13 (B1), MrPhizzler_14 (B1), Mudslide_14 (B4), Mulan_13 (B1),

Mulaychimus_16 (B3), Murdoc_14 (B1), Mutante_13 (B1), Mysterious_15 (B5), Nacho_0014 (B1), Nanao_13 (B4), Nangang_15 (B5), Nathan_14 (B1), Nehemiah_14 (B5), Neos5_16 (B3), Newman_14 (B1), NiaNia_14 (B1), Nicole21_14 (B1), Nigel_12 (B4), Nova1_13 (B1), Nozo_16 (B3), Numberten_14 (B1), Nyala_13 (B1), OSmaximus_14 (B1), Obutu_16 (B3), Olak_13 (B1), Oline_13 (B1), Olive_14 (B1), OliverWalter_14 (B1), Olivio_15 (B3), Omniscient_14 (B1), OneBrain_14 (B1), Oosterbaan_14 (B1), Opia_17 (B2), OrangeOswald_16 (B3), Orfeu_13 (B1), Orion_14 (B1), Orwigg_13 (B1), PG1_14 (B1), Pacifista_13 (B1), PallasAthena_14 (B1), PenguinLover67_17 (B9), Phaedrus_15 (B3), Phamished_14 (B1), Phantasmagoria_17 (B2), Phareon_14 (B1), PhatCats2014_14 (B1), PhatLouie_14 (B1), Phayeta_16 (B3), Phelemich_15 (B5), PhenghisKhan_13 (B1), Pherdinand_14 (B1), Phergie_13 (B1), Philly_15 (B3), Phipps_14 (B1), Phleuron_13 (B1), Phlyer_16 (B3), PhrankReynolds_13 (B1), PhrodoBaggins_13 (B1), Phunky_14 (B1), Piglet_0013 (B1), PinheadLarry_14 (B1), Pinkman_13 (B1), Pipefish_16 (B3), Pipsqueak_14 (B1), Placalicious_13 (B1), Plata_13 (B1), Plmatters_14 (B1), Podrick_14 (B1), Pops_14 (B1), Poster_13 (B4), Potter_13 (B1), Prickles_14 (B1), PrinceCharming_17 (B2), Prince_14 (B4), ProfessorX_14 (B1), Puhltonio_14 (B1), QueenBeane_14 (B1), QueenPie_14 (B4), Quesadilla_16 (B9), Quisquillae_14 (B1), Qyrzula_16 (B2), RagingRooster_16 (B3), RawrgerThat_14 (B4), Reccee_15 (B5), RedMaple_13 (B1), RedRaider89_15 (B1), Renkei_13 (B4), Reprobate_15 (B5), Rhinoforte_17 (B2), Rich_15 (B5), Ricotta_13 (B1), Riggan_14 (B1), Rimu_14 (B1), Rinkes_19 (B9), Rita130_15 (B5), Rita1961_16 (B3), Riverton_14 (B1), Robyn_13 (B1), Roliet_14 (B1), RomaT_16 (B3), Roscoe_15 (B1), Rosebush_17 (B2), Roy17_14 (B1), SDcharge11_14 (B1), Sabella_17 (B2), Saguario_16 (B7), SallyH_14 (B1), Samaymay_14 (B1), SassyCat97_13 (B1), Schadenfreude_13 (B1), Schueller_13 (B1), Scoot17C_14 (B1), Scrick_13 (B1), Selr12_14 (B1), Serendipitous_15 (B5), Serendipity_14 (B1), Serpentine_0014 (B1), ShadowBud_14 (B1), Sheila_14 (B1), Shenandoah_16 (B3), Shenyu_15 (B5), ShiVal_14 (B1), Sigman_14 (B1), SilverBell_14 (B1), Simielle_13 (B1), SirBeauregard_13 (B1), SirJeffery_15 (B5), Skippy_14 (B1), Slatt_14 (B1), SlippinJimmy_16 (B3), Soile_14 (B1), Solosis_13 (B1), Sophia_13 (B1), Soto_14 (B1), Sour_16 (DR), Spartan300_14 (B1), Squid_14 (B1), Squiggle_14 (B1), Stinger_12 (B4), StinkyVeggy_16 (B5), Struggle_13 (B1), Suffolk_14 (B1), Suigeneris_15 (B5), Surely_14 (B1), SwainyDoc_16 (B3), Swiphy_14 (B1), Swish_14 (B1), SynergyX_16 (B3), TA17A_17 (B2), TPA2_23 (singleton), TallGrassMM_14 (B1), Taraxa_14 (B1), Telesworld_13 (B1), Thonko_15 (B8), Thora_14 (B1), ThreeOh3D2_14 (B1), Thunderbird_13 (B1), Timmi_13 (B1), Tinciduntolum_18 (B2), TinyTerror_16 (B3), TomBombadil_14 (B1), Tomlarah_14 (B1), Toni_13 (B1), TooFast2Furius_15 (B1), Tooj_14 (B1), Tres_17 (B2), Triad_14 (B1), True_13 (B1), Trypo_14 (B1), Tydolla_16 (B3), TyrionL_13 (B1), UAch1_14 (B1), UncleHowie_14 (B1), Usavi_14 (B1), Vaishali24_13 (B1), Valjean_14 (B1), Vaticameos_14 (B1), Veritas_13 (B1), Vic9_00017 (B2), Vincenzo_15 (B4), VioletZ_14 (B4), Virapocalypse_14 (B1), Virgeve_13 (B1), Vista_14 (B1), Vivaldi_14 (B1), Vortex_14 (B1), Waleliano_14 (B4), Wallhey_13 (B1), Waterdiva_14 (B1), Weher20_14 (B1), West99_17 (B2), Windsor_13 (B1), Xavier_13 (B1), Xincheng_14 (B4), Yahalom_16 (B3), Yinz_16 (B3), Yoshand_14 (B1), YouGoGlencoco_14 (B1), Zaider_15 (B1), Zelda_14 (B1), Zemanar_15 (B4), Zenteno07_19 (B13), Zonia_14 (B1),

Summary by clusters:

There are 15 clusters represented in this pham: singleton, B10, B8, B11, B4, B5, B6, B7, B12, B13, B2, B3, DR, B9, B1,

Info for manual annotations of cluster B1:

- Start number 10 was manually annotated 288 times for cluster B1.

Info for manual annotations of cluster B10:

- Start number 10 was manually annotated 1 time for cluster B10.

Info for manual annotations of cluster B11:

- Start number 10 was manually annotated 1 time for cluster B11.

Info for manual annotations of cluster B12:

- Start number 10 was manually annotated 1 time for cluster B12.

Info for manual annotations of cluster B13:

- Start number 10 was manually annotated 3 times for cluster B13.

Info for manual annotations of cluster B2:

- Start number 10 was manually annotated 37 times for cluster B2.

Info for manual annotations of cluster B3:

- Start number 10 was manually annotated 51 times for cluster B3.

Info for manual annotations of cluster B4:

- Start number 10 was manually annotated 28 times for cluster B4.

Info for manual annotations of cluster B5:

- Start number 10 was manually annotated 11 times for cluster B5.

Info for manual annotations of cluster B6:

- Start number 10 was manually annotated 2 times for cluster B6.

Info for manual annotations of cluster B7:

- Start number 10 was manually annotated 1 time for cluster B7.

Info for manual annotations of cluster B8:

- Start number 10 was manually annotated 1 time for cluster B8.

Info for manual annotations of cluster B9:

- Start number 10 was manually annotated 6 times for cluster B9.

Info for manual annotations of cluster DR:

- Start number 10 was manually annotated 2 times for cluster DR.

Gene Information:

Gene: 39HC_012 Start: 12612, Stop: 13553, Start Num: 10

Candidate Starts for 39HC_012:

(Start: 10 @12612 has 433 MA's), (15, 12666), (35, 12840), (43, 12882), (49, 12939), (53, 12978), (56, 12993), (60, 13005), (74, 13089), (82, 13122), (100, 13227),

Gene: 40BC_012 Start: 12612, Stop: 13553, Start Num: 10

Candidate Starts for 40BC_012:

(Start: 10 @12612 has 433 MA's), (15, 12666), (35, 12840), (43, 12882), (49, 12939), (53, 12978), (56, 12993), (60, 13005), (74, 13089), (82, 13122), (100, 13227),

Gene: ABU_14 Start: 12409, Stop: 13245, Start Num: 10

Candidate Starts for ABU_14:

(1, 12112), (2, 12181), (4, 12250), (Start: 10 @12409 has 433 MA's), (25, 12568), (28, 12598), (44, 12685), (53, 12754), (56, 12769), (69, 12826), (102, 12952), (131, 13198),

Gene: Abinghost_16 Start: 13964, Stop: 14569, Start Num: 10

Candidate Starts for Abinghost_16:

(Start: 10 @13964 has 433 MA's), (11, 13985), (19, 14081), (36, 14201), (61, 14363), (66, 14402), (70, 14420),

Gene: AbsoluteMadLad_13 Start: 12413, Stop: 13249, Start Num: 10

Candidate Starts for AbsoluteMadLad_13:

(1, 12110), (2, 12179), (4, 12248), (Start: 10 @12413 has 433 MA's), (25, 12572), (28, 12602), (44, 12689), (53, 12758), (56, 12773), (69, 12830), (102, 12956), (131, 13202),

Gene: Acadian_15 Start: 14167, Stop: 14832, Start Num: 10

Candidate Starts for Acadian_15:

(Start: 10 @14167 has 433 MA's), (15, 14221), (17, 14257), (25, 14326), (101, 14758), (107, 14803),

Gene: Adriana_14 Start: 12411, Stop: 13247, Start Num: 10

Candidate Starts for Adriana_14:

(1, 12114), (2, 12183), (4, 12252), (Start: 10 @12411 has 433 MA's), (25, 12570), (28, 12600), (44, 12687), (53, 12756), (56, 12771), (69, 12828), (102, 12954), (131, 13200),

Gene: Aelin_13 Start: 11964, Stop: 12812, Start Num: 10

Candidate Starts for Aelin_13:

(1, 11661), (2, 11730), (4, 11799), (Start: 10 @11964 has 433 MA's), (25, 12123), (28, 12153), (44, 12240), (53, 12309), (56, 12324), (69, 12381), (102, 12519), (131, 12765),

Gene: Ahwei_13 Start: 13057, Stop: 13908, Start Num: 10

Candidate Starts for Ahwei_13:

(Start: 10 @13057 has 433 MA's), (15, 13111), (25, 13216), (30, 13264), (35, 13273), (49, 13372), (53, 13411), (56, 13426), (81, 13558), (84, 13561), (90, 13582), (91, 13585), (127, 13792), (131, 13876),

Gene: Akoma_16 Start: 13964, Stop: 14569, Start Num: 10

Candidate Starts for Akoma_16:

(Start: 10 @13964 has 433 MA's), (11, 13985), (19, 14081), (61, 14363), (70, 14420),

Gene: AlanGrant_15 Start: 14918, Stop: 15751, Start Num: 10

Candidate Starts for AlanGrant_15:

(Start: 10 @14918 has 433 MA's), (12, 14942), (15, 14972), (16, 14999), (19, 15035), (25, 15077), (43, 15176), (44, 15194), (49, 15233), (53, 15272), (56, 15287), (68, 15344), (90, 15443), (127, 15632), (128, 15674), (131, 15716),

Gene: Aleia_14 Start: 11984, Stop: 12826, Start Num: 10

Candidate Starts for Aleia_14:

(1, 11681), (2, 11750), (4, 11819), (Start: 10 @11984 has 433 MA's), (25, 12143), (28, 12173), (44, 12260), (53, 12329), (56, 12344), (69, 12401), (102, 12533), (131, 12779),

Gene: Allegro_17 Start: 15353, Stop: 16102, Start Num: 10

Candidate Starts for Allegro_17:

(Start: 10 @15353 has 433 MA's), (23, 15506), (25, 15518), (28, 15548), (36, 15584), (41, 15617), (46, 15650), (51, 15704), (55, 15731), (64, 15779), (67, 15797), (77, 15863), (88, 15884), (96, 15929), (98, 15941), (102, 15962),

Gene: AltPhacts_14 Start: 12418, Stop: 13242, Start Num: 10

Candidate Starts for AltPhacts_14:

(1, 12115), (2, 12184), (3, 12247), (4, 12253), (Start: 10 @12418 has 433 MA's), (25, 12577), (28, 12607), (44, 12694), (53, 12763), (56, 12778), (69, 12835), (102, 12949), (131, 13195),

Gene: Altwerkus_13 Start: 12124, Stop: 12942, Start Num: 10

Candidate Starts for Altwerkus_13:

(1, 11821), (2, 11890), (4, 11959), (Start: 10 @12124 has 433 MA's), (25, 12283), (28, 12313), (44, 12400), (53, 12469), (56, 12484), (69, 12541), (102, 12649), (131, 12895),

Gene: Anderson_14 Start: 12414, Stop: 13238, Start Num: 10

Candidate Starts for Anderson_14:

(1, 12117), (2, 12186), (4, 12255), (Start: 10 @12414 has 433 MA's), (25, 12573), (28, 12603), (44, 12690), (53, 12759), (56, 12774), (69, 12831), (102, 12945), (131, 13191),

Gene: Andre_14 Start: 12412, Stop: 13236, Start Num: 10

Candidate Starts for Andre_14:

(1, 12115), (2, 12184), (4, 12253), (Start: 10 @12412 has 433 MA's), (25, 12571), (28, 12601), (44, 12688), (53, 12757), (56, 12772), (69, 12829), (102, 12943), (131, 13189),

Gene: AngelCake_14 Start: 12408, Stop: 13250, Start Num: 10

Candidate Starts for AngelCake_14:

(1, 12111), (2, 12180), (4, 12249), (Start: 10 @12408 has 433 MA's), (25, 12567), (28, 12597), (44, 12684), (53, 12753), (56, 12768), (69, 12825), (102, 12957), (131, 13203),

Gene: Antihero_13 Start: 13057, Stop: 13908, Start Num: 10

Candidate Starts for Antihero_13:

(Start: 10 @13057 has 433 MA's), (15, 13111), (25, 13216), (30, 13264), (35, 13273), (49, 13372), (53, 13411), (56, 13426), (81, 13558), (84, 13561), (90, 13582), (91, 13585), (127, 13792), (131, 13876),

Gene: Antonia_13 Start: 11964, Stop: 12812, Start Num: 10

Candidate Starts for Antonia_13:

(1, 11661), (2, 11730), (4, 11799), (Start: 10 @11964 has 433 MA's), (25, 12123), (28, 12153), (44, 12240), (53, 12309), (56, 12324), (69, 12381), (102, 12519), (131, 12765),

Gene: Aonishiki_14 Start: 12420, Stop: 13268, Start Num: 10

Candidate Starts for Aonishiki_14:

(1, 12117), (2, 12186), (4, 12255), (Start: 10 @12420 has 433 MA's), (25, 12579), (28, 12609), (44, 12696), (53, 12765), (56, 12780), (69, 12837), (102, 12975), (131, 13221),

Gene: Apex_14 Start: 14332, Stop: 15153, Start Num: 10

Candidate Starts for Apex_14:

(Start: 10 @14332 has 433 MA's), (15, 14386), (25, 14491), (30, 14539), (35, 14548), (49, 14647), (53, 14686), (56, 14701), (86, 14842), (90, 14857), (127, 15037), (131, 15121), (132, 15124),

Gene: Apizium_13 Start: 12122, Stop: 12982, Start Num: 10

Candidate Starts for Apizium_13:

(1, 11819), (2, 11888), (4, 11957), (Start: 10 @12122 has 433 MA's), (25, 12281), (28, 12311), (44, 12398), (53, 12467), (56, 12482), (69, 12539), (102, 12677), (131, 12923),

Gene: Arbiter_17 Start: 15440, Stop: 16189, Start Num: 10

Candidate Starts for Arbiter_17:

(Start: 10 @15440 has 433 MA's), (23, 15593), (25, 15605), (28, 15635), (36, 15671), (41, 15704), (46, 15737), (48, 15752), (51, 15791), (55, 15818), (64, 15866), (67, 15884), (77, 15950), (88, 15971), (96, 16016), (98, 16028), (102, 16049),

Gene: Ares_17 Start: 15353, Stop: 16102, Start Num: 10

Candidate Starts for Ares_17:

(Start: 10 @15353 has 433 MA's), (23, 15506), (25, 15518), (28, 15548), (36, 15584), (41, 15617), (46, 15650), (51, 15704), (55, 15731), (64, 15779), (67, 15797), (77, 15863), (88, 15884), (96, 15929), (98, 15941), (102, 15962),

Gene: Ashraf_13 Start: 11958, Stop: 12800, Start Num: 10

Candidate Starts for Ashraf_13:

(1, 11661), (2, 11730), (4, 11799), (Start: 10 @11958 has 433 MA's), (25, 12117), (28, 12147), (44, 12234), (53, 12303), (56, 12318), (69, 12375), (102, 12507), (131, 12753),

Gene: Athena_17 Start: 14727, Stop: 15332, Start Num: 10

Candidate Starts for Athena_17:

(Start: 10 @14727 has 433 MA's), (11, 14748), (19, 14844), (36, 14964), (61, 15126), (66, 15165), (70, 15183),

Gene: Audrey_16 Start: 13964, Stop: 14569, Start Num: 10

Candidate Starts for Audrey_16:

(Start: 10 @13964 has 433 MA's), (11, 13985), (19, 14081), (36, 14201), (61, 14363), (66, 14402), (70, 14420),

Gene: Austelle_15 Start: 14785, Stop: 15609, Start Num: 10

Candidate Starts for Austelle_15:

(Start: 10 @14785 has 433 MA's), (15, 14839), (25, 14944), (30, 14992), (35, 15001), (49, 15100), (53, 15139), (56, 15154), (86, 15295), (90, 15310), (91, 15313), (127, 15493), (131, 15577),

Gene: Badfish_14 Start: 12417, Stop: 13271, Start Num: 10

Candidate Starts for Badfish_14:

(1, 12114), (2, 12183), (4, 12252), (Start: 10 @12417 has 433 MA's), (25, 12576), (28, 12606), (44, 12693), (53, 12762), (56, 12777), (69, 12834), (102, 12978), (131, 13224),

Gene: Bae_15 Start: 14169, Stop: 14978, Start Num: 10

Candidate Starts for Bae_15:

(Start: 10 @14169 has 433 MA's), (12, 14193), (15, 14223), (17, 14259), (25, 14328), (35, 14385), (95, 14727), (101, 14769), (107, 14814), (122, 14901), (126, 14946),

Gene: Baloo_16 Start: 13964, Stop: 14569, Start Num: 10

Candidate Starts for Baloo_16:

(Start: 10 @13964 has 433 MA's), (11, 13985), (19, 14081), (36, 14201), (61, 14363), (66, 14402), (70, 14420),

Gene: Bananafish_17 Start: 15350, Stop: 16099, Start Num: 10

Candidate Starts for Bananafish_17:

(Start: 10 @15350 has 433 MA's), (23, 15503), (25, 15515), (28, 15545), (36, 15581), (41, 15614), (46, 15647), (51, 15701), (55, 15728), (64, 15776), (67, 15794), (77, 15860), (88, 15881), (96, 15926), (98, 15938), (102, 15959),

Gene: Banjo_13 Start: 12119, Stop: 12949, Start Num: 10

Candidate Starts for Banjo_13:

(1, 11822), (2, 11891), (4, 11960), (Start: 10 @12119 has 433 MA's), (25, 12278), (28, 12308), (44, 12395), (53, 12464), (56, 12479), (69, 12536), (102, 12656), (131, 12902),

Gene: Basato_15 Start: 12651, Stop: 13475, Start Num: 10

Candidate Starts for Basato_15:

(1, 12348), (2, 12417), (4, 12486), (Start: 10 @12651 has 433 MA's), (25, 12810), (28, 12840), (44, 12927), (53, 12996), (56, 13011), (69, 13068), (102, 13182), (131, 13428),

Gene: BatteryCK_13 Start: 11964, Stop: 12806, Start Num: 10

Candidate Starts for BatteryCK_13:

(1, 11667), (2, 11736), (4, 11805), (Start: 10 @11964 has 433 MA's), (25, 12123), (28, 12153), (44, 12240), (53, 12309), (56, 12324), (69, 12381), (102, 12513), (131, 12759),

Gene: Beaglebox_13 Start: 12124, Stop: 12966, Start Num: 10

Candidate Starts for Beaglebox_13:

(1, 11821), (2, 11890), (4, 11959), (Start: 10 @12124 has 433 MA's), (25, 12283), (28, 12313), (44, 12400), (53, 12469), (56, 12484), (69, 12541), (102, 12673), (131, 12919),

Gene: Ben11_15 Start: 13788, Stop: 14393, Start Num: 10

Candidate Starts for Ben11_15:

(Start: 10 @13788 has 433 MA's), (11, 13809), (19, 13905), (36, 14025), (61, 14187), (66, 14226), (70, 14244),

Gene: Bernardo_16 Start: 13963, Stop: 14568, Start Num: 10

Candidate Starts for Bernardo_16:

(Start: 10 @13963 has 433 MA's), (11, 13984), (19, 14080), (61, 14362), (70, 14419),

Gene: BirdsNest_19 Start: 13243, Stop: 14265, Start Num: 10

Candidate Starts for BirdsNest_19:

(Start: 10 @13243 has 433 MA's), (13, 13285), (15, 13300), (25, 13405), (29, 13438), (53, 13639), (57, 13657), (72, 13753), (76, 13771), (112, 14005), (125, 14119),

Gene: Bishoperium_13 Start: 12119, Stop: 12955, Start Num: 10

Candidate Starts for Bishoperium_13:

(1, 11822), (2, 11891), (4, 11960), (Start: 10 @12119 has 433 MA's), (25, 12278), (28, 12308), (44, 12395), (53, 12464), (56, 12479), (69, 12536), (102, 12662), (131, 12908),

Gene: BlackStallion_14 Start: 12415, Stop: 13257, Start Num: 10

Candidate Starts for BlackStallion_14:

(1, 12112), (2, 12181), (4, 12250), (Start: 10 @12415 has 433 MA's), (25, 12574), (28, 12604), (44, 12691), (53, 12760), (56, 12775), (69, 12832), (102, 12964), (131, 13210),

Gene: BlacksBerry_13 Start: 12118, Stop: 12960, Start Num: 10

Candidate Starts for BlacksBerry_13:

(Start: 10 @12118 has 433 MA's), (25, 12277), (28, 12307), (44, 12394), (53, 12463), (56, 12478), (69, 12535), (102, 12667), (131, 12913),

Gene: Blocker23_17 Start: 15470, Stop: 16219, Start Num: 10

Candidate Starts for Blocker23_17:

(Start: 10 @15470 has 433 MA's), (23, 15623), (25, 15635), (28, 15665), (36, 15701), (41, 15734), (46, 15767), (51, 15821), (55, 15848), (64, 15896), (67, 15914), (77, 15980), (88, 16001), (96, 16046), (98, 16058), (102, 16079),

Gene: BlueHusk_14 Start: 12414, Stop: 13238, Start Num: 10

Candidate Starts for BlueHusk_14:

(1, 12111), (2, 12180), (4, 12249), (Start: 10 @12414 has 433 MA's), (25, 12573), (28, 12603), (44, 12690), (53, 12759), (56, 12774), (69, 12831), (102, 12945), (131, 13191),

Gene: Bluephacebaby_13 Start: 12119, Stop: 12955, Start Num: 10

Candidate Starts for Bluephacebaby_13:

(1, 11822), (2, 11891), (4, 11960), (Start: 10 @12119 has 433 MA's), (25, 12278), (28, 12308), (44, 12395), (53, 12464), (56, 12479), (69, 12536), (102, 12662), (131, 12908),

Gene: BobbyK_14 Start: 14148, Stop: 14972, Start Num: 10

Candidate Starts for BobbyK_14:

(Start: 10 @14148 has 433 MA's), (15, 14202), (25, 14307), (30, 14355), (35, 14364), (49, 14463), (53, 14502), (56, 14517), (86, 14658), (90, 14673), (91, 14676), (127, 14856), (131, 14940), (132, 14943),

Gene: Boehler_14 Start: 12417, Stop: 13265, Start Num: 10

Candidate Starts for Boehler_14:

(Start: 10 @12417 has 433 MA's), (25, 12576), (28, 12606), (44, 12693), (53, 12762), (56, 12777), (69, 12834), (102, 12972), (131, 13218),

Gene: BoogieWoogie_13 Start: 12118, Stop: 12942, Start Num: 10

Candidate Starts for BoogieWoogie_13:

(1, 11821), (2, 11890), (4, 11959), (Start: 10 @12118 has 433 MA's), (25, 12277), (28, 12307), (44, 12394), (53, 12463), (56, 12478), (69, 12535), (102, 12649), (131, 12895),

Gene: Boyle_17 Start: 15471, Stop: 16220, Start Num: 10

Candidate Starts for Boyle_17:

(Start: 10 @15471 has 433 MA's), (23, 15624), (25, 15636), (28, 15666), (36, 15702), (41, 15735), (46, 15768), (51, 15822), (55, 15849), (64, 15897), (67, 15915), (77, 15981), (88, 16002), (96, 16047), (98, 16059), (102, 16080),

Gene: Briakila_16 Start: 14729, Stop: 15334, Start Num: 10

Candidate Starts for Briakila_16:

(Start: 10 @14729 has 433 MA's), (11, 14750), (19, 14846), (36, 14966), (61, 15128), (66, 15167), (70, 15185),

Gene: Brilliant_14 Start: 12117, Stop: 12959, Start Num: 10

Candidate Starts for Brilliant_14:

(1, 11820), (2, 11889), (4, 11958), (Start: 10 @12117 has 433 MA's), (25, 12276), (28, 12306), (44, 12393), (53, 12462), (56, 12477), (69, 12534), (102, 12666), (131, 12912),

Gene: BrownCNA_15 Start: 14402, Stop: 15226, Start Num: 10

Candidate Starts for BrownCNA_15:

(Start: 10 @14402 has 433 MA's), (15, 14456), (25, 14561), (30, 14609), (35, 14618), (49, 14717), (53, 14756), (56, 14771), (86, 14912), (90, 14927), (91, 14930), (127, 15110), (131, 15194), (132, 15197),

Gene: Brownie5_17 Start: 15470, Stop: 16219, Start Num: 10

Candidate Starts for Brownie5_17:

(Start: 10 @15470 has 433 MA's), (23, 15623), (25, 15635), (28, 15665), (36, 15701), (41, 15734), (46, 15767), (51, 15821), (55, 15848), (64, 15896), (67, 15914), (77, 15980), (88, 16001), (96, 16046), (98, 16058), (102, 16079),

Gene: Buckeye_14 Start: 12419, Stop: 13273, Start Num: 10

Candidate Starts for Buckeye_14:

(1, 12116), (2, 12185), (4, 12254), (Start: 10 @12419 has 433 MA's), (25, 12578), (28, 12608), (44, 12695), (53, 12764), (56, 12779), (69, 12836), (102, 12980), (131, 13226),

Gene: Burr_13 Start: 12119, Stop: 12955, Start Num: 10

Candidate Starts for Burr_13:

(1, 11822), (2, 11891), (4, 11960), (Start: 10 @12119 has 433 MA's), (25, 12278), (28, 12308), (44, 12395), (53, 12464), (56, 12479), (69, 12536), (102, 12662), (131, 12908),

Gene: CRB2_17 Start: 15034, Stop: 16038, Start Num: 10

Candidate Starts for CRB2_17:

(Start: 10 @15034 has 433 MA's), (15, 15088), (25, 15193), (37, 15304), (40, 15337), (54, 15466), (70, 15544), (104, 15754), (131, 16009),

Gene: Calamitous_17 Start: 15350, Stop: 16099, Start Num: 10

Candidate Starts for Calamitous_17:

(Start: 10 @15350 has 433 MA's), (23, 15503), (25, 15515), (28, 15545), (36, 15581), (41, 15614), (46, 15647), (51, 15701), (55, 15728), (64, 15776), (67, 15794), (77, 15860), (88, 15881), (96, 15926), (98, 15938), (102, 15959),

Gene: CamL_14 Start: 12411, Stop: 13253, Start Num: 10

Candidate Starts for CamL_14:

(1, 12114), (2, 12183), (4, 12252), (Start: 10 @12411 has 433 MA's), (25, 12570), (28, 12600), (44, 12687), (53, 12756), (56, 12771), (69, 12828), (102, 12960), (131, 13206),

Gene: CampRoach_14 Start: 12408, Stop: 13244, Start Num: 10

Candidate Starts for CampRoach_14:

(1, 12111), (2, 12180), (4, 12249), (Start: 10 @12408 has 433 MA's), (25, 12567), (28, 12597), (44, 12684), (53, 12753), (56, 12768), (69, 12825), (102, 12951), (131, 13197),

Gene: Cannibal_14 Start: 12414, Stop: 13238, Start Num: 10

Candidate Starts for Cannibal_14:

(1, 12117), (2, 12186), (4, 12255), (Start: 10 @12414 has 433 MA's), (25, 12573), (28, 12603), (44, 12690), (53, 12759), (56, 12774), (69, 12831), (102, 12945), (131, 13191),

Gene: Carthage_13 Start: 12092, Stop: 12916, Start Num: 10

Candidate Starts for Carthage_13:

(1, 11789), (2, 11858), (4, 11927), (Start: 10 @12092 has 433 MA's), (25, 12251), (28, 12281), (44, 12368), (53, 12437), (56, 12452), (69, 12509), (102, 12623), (131, 12869),

Gene: Casbah_15 Start: 13816, Stop: 14421, Start Num: 10

Candidate Starts for Casbah_15:

(Start: 10 @13816 has 433 MA's), (11, 13837), (19, 13933), (21, 13942), (36, 14053), (61, 14215), (66, 14254), (70, 14272),

Gene: Caspiboi_13 Start: 12118, Stop: 12960, Start Num: 10

Candidate Starts for Caspiboi_13:

(1, 11821), (2, 11890), (4, 11959), (Start: 10 @12118 has 433 MA's), (25, 12277), (28, 12307), (44, 12394), (53, 12463), (56, 12478), (69, 12535), (102, 12667), (131, 12913),

Gene: ChaChing_16 Start: 13979, Stop: 14584, Start Num: 10

Candidate Starts for ChaChing_16:

(Start: 10 @13979 has 433 MA's), (11, 14000), (19, 14096), (36, 14216), (61, 14378), (70, 14435),

Gene: Chaelin_13 Start: 12078, Stop: 12920, Start Num: 10

Candidate Starts for Chaelin_13:

(1, 11775), (2, 11844), (4, 11913), (Start: 10 @12078 has 433 MA's), (25, 12237), (28, 12267), (44, 12354), (53, 12423), (56, 12438), (69, 12495), (102, 12627), (131, 12873),

Gene: Chah_14 Start: 12418, Stop: 13272, Start Num: 10

Candidate Starts for Chah_14:

(1, 12115), (2, 12184), (4, 12253), (Start: 10 @12418 has 433 MA's), (25, 12577), (28, 12607), (44, 12694), (53, 12763), (56, 12778), (69, 12835), (102, 12979), (131, 13225),

Gene: Chalmers_16 Start: 14772, Stop: 15377, Start Num: 10

Candidate Starts for Chalmers_16:

(Start: 10 @14772 has 433 MA's), (11, 14793), (19, 14889), (61, 15171), (66, 15210), (70, 15228),

Gene: Chandler_16 Start: 14738, Stop: 15343, Start Num: 10

Candidate Starts for Chandler_16:

(Start: 10 @14738 has 433 MA's), (11, 14759), (19, 14855), (21, 14864), (36, 14975), (61, 15137), (66, 15176), (70, 15194),

Gene: Charles1_14 Start: 12411, Stop: 13235, Start Num: 10

Candidate Starts for Charles1_14:

(1, 12114), (2, 12183), (4, 12252), (Start: 10 @12411 has 433 MA's), (25, 12570), (28, 12600), (44, 12687), (53, 12756), (56, 12771), (69, 12828), (102, 12942), (131, 13188),

Gene: CharlieGBrown_13 Start: 11982, Stop: 12824, Start Num: 10

Candidate Starts for CharlieGBrown_13:

(1, 11685), (2, 11754), (4, 11823), (Start: 10 @11982 has 433 MA's), (25, 12141), (28, 12171), (44, 12258), (53, 12327), (56, 12342), (69, 12399), (102, 12531), (131, 12777),

Gene: CheetO_14 Start: 12417, Stop: 13253, Start Num: 10

Candidate Starts for CheetO_14:

(1, 12114), (2, 12183), (4, 12252), (Start: 10 @12417 has 433 MA's), (25, 12576), (28, 12606), (44, 12693), (53, 12762), (56, 12777), (69, 12834), (102, 12960), (131, 13206),

Gene: Chentzyk_15 Start: 13834, Stop: 14439, Start Num: 10

Candidate Starts for Chentzyk_15:

(Start: 10 @13834 has 433 MA's), (11, 13855), (19, 13951), (36, 14071), (61, 14233), (66, 14272), (70, 14290),

Gene: Cher_13 Start: 12124, Stop: 12978, Start Num: 10

Candidate Starts for Cher_13:

(1, 11821), (2, 11890), (4, 11959), (Start: 10 @12124 has 433 MA's), (25, 12283), (28, 12313), (44, 12400), (53, 12469), (56, 12484), (69, 12541), (102, 12685), (131, 12931),

Gene: Childish_13 Start: 12124, Stop: 12966, Start Num: 10

Candidate Starts for Childish_13:

(1, 11821), (2, 11890), (4, 11959), (Start: 10 @12124 has 433 MA's), (25, 12283), (28, 12313), (44, 12400), (53, 12469), (56, 12484), (69, 12541), (102, 12673), (131, 12919),

Gene: Chipette_15 Start: 12652, Stop: 13476, Start Num: 10

Candidate Starts for Chipette_15:

(1, 12349), (2, 12418), (4, 12487), (Start: 10 @12652 has 433 MA's), (25, 12811), (28, 12841), (44, 12928), (53, 12997), (56, 13012), (69, 13069), (102, 13183), (131, 13429),

Gene: Chorkpop_14 Start: 12124, Stop: 12978, Start Num: 10

Candidate Starts for Chorkpop_14:

(1, 11821), (2, 11890), (4, 11959), (Start: 10 @12124 has 433 MA's), (25, 12283), (28, 12313), (44, 12400), (53, 12469), (56, 12484), (69, 12541), (102, 12685), (131, 12931),

Gene: ChrisnMich_13 Start: 13057, Stop: 13908, Start Num: 10

Candidate Starts for ChrisnMich_13:

(Start: 10 @13057 has 433 MA's), (15, 13111), (25, 13216), (30, 13264), (35, 13273), (49, 13372), (53, 13411), (56, 13426), (81, 13558), (84, 13561), (90, 13582), (91, 13585), (93, 13597), (127, 13792), (131, 13876),

Gene: Chuni_13 Start: 12427, Stop: 13269, Start Num: 10

Candidate Starts for Chuni_13:

(Start: 10 @12427 has 433 MA's), (25, 12586), (28, 12616), (44, 12703), (53, 12772), (56, 12787), (69, 12844), (102, 12976), (131, 13222),

Gene: Chunky_14 Start: 12417, Stop: 13265, Start Num: 10

Candidate Starts for Chunky_14:

(1, 12114), (2, 12183), (4, 12252), (Start: 10 @12417 has 433 MA's), (25, 12576), (28, 12606), (44, 12693), (53, 12762), (56, 12777), (69, 12834), (102, 12972), (131, 13218),

Gene: Chute_13 Start: 12426, Stop: 13268, Start Num: 10

Candidate Starts for Chute_13:

(1, 12129), (2, 12198), (4, 12267), (Start: 10 @12426 has 433 MA's), (25, 12585), (28, 12615), (44, 12702), (53, 12771), (56, 12786), (69, 12843), (102, 12975), (131, 13221),

Gene: Cobra_14 Start: 12414, Stop: 13256, Start Num: 10

Candidate Starts for Cobra_14:

(1, 12111), (2, 12180), (4, 12249), (Start: 10 @12414 has 433 MA's), (25, 12573), (28, 12603), (44, 12690), (53, 12759), (56, 12774), (69, 12831), (102, 12963), (131, 13209),

Gene: Coffee_17 Start: 15467, Stop: 16216, Start Num: 10

Candidate Starts for Coffee_17:

(Start: 10 @15467 has 433 MA's), (23, 15620), (25, 15632), (28, 15662), (36, 15698), (41, 15731), (46, 15764), (51, 15818), (55, 15845), (64, 15893), (67, 15911), (77, 15977), (88, 15998), (96, 16043), (98, 16055), (102, 16076),

Gene: Colbert_14 Start: 12414, Stop: 13256, Start Num: 10

Candidate Starts for Colbert_14:

(1, 12111), (2, 12180), (4, 12249), (Start: 10 @12414 has 433 MA's), (25, 12573), (28, 12603), (44, 12690), (53, 12759), (56, 12774), (69, 12831), (102, 12963), (131, 13209),

Gene: Coletti_14 Start: 12426, Stop: 13268, Start Num: 10

Candidate Starts for Coletti_14:

(1, 12129), (2, 12198), (4, 12267), (Start: 10 @12426 has 433 MA's), (25, 12585), (28, 12615), (44, 12702), (53, 12771), (56, 12786), (69, 12843), (102, 12975), (131, 13221),

Gene: Compostia_17 Start: 14397, Stop: 15002, Start Num: 10

Candidate Starts for Compostia_17:

(Start: 10 @14397 has 433 MA's), (11, 14418), (19, 14514), (21, 14523), (36, 14634), (61, 14796), (66, 14835), (70, 14853),

Gene: Cooper_14 Start: 13153, Stop: 14016, Start Num: 10

Candidate Starts for Cooper_14:

(Start: 10 @13153 has 433 MA's), (15, 13207), (25, 13312), (30, 13360), (49, 13468), (53, 13507), (56, 13522), (62, 13543), (65, 13567), (86, 13663), (90, 13678), (91, 13681), (105, 13780), (128, 13942), (131, 13984),

Gene: Cornbread_13 Start: 12121, Stop: 12969, Start Num: 10

Candidate Starts for Cornbread_13:

(1, 11818), (2, 11887), (4, 11956), (Start: 10 @12121 has 433 MA's), (25, 12280), (28, 12310), (44, 12397), (53, 12466), (56, 12481), (69, 12538), (102, 12676), (131, 12922),

Gene: Cornobble_13 Start: 11965, Stop: 12813, Start Num: 10

Candidate Starts for Cornobble_13:

(1, 11662), (2, 11731), (4, 11800), (Start: 10 @11965 has 433 MA's), (25, 12124), (28, 12154), (44, 12241), (53, 12310), (56, 12325), (69, 12382), (102, 12520), (131, 12766),

Gene: Corofin_16 Start: 13989, Stop: 14594, Start Num: 10

Candidate Starts for Corofin_16:

(Start: 10 @13989 has 433 MA's), (11, 14010), (19, 14106), (36, 14226), (61, 14388), (66, 14427), (70, 14445),

Gene: Cosmolli16_13 Start: 12122, Stop: 12970, Start Num: 10

Candidate Starts for Cosmolli16_13:

(1, 11819), (2, 11888), (4, 11957), (Start: 10 @12122 has 433 MA's), (25, 12281), (28, 12311), (44, 12398), (53, 12467), (56, 12482), (69, 12539), (102, 12677), (131, 12923),

Gene: Craff_14 Start: 12417, Stop: 13259, Start Num: 10

Candidate Starts for Craff_14:

(1, 12114), (2, 12183), (4, 12252), (Start: 10 @12417 has 433 MA's), (25, 12576), (28, 12606), (44, 12693), (53, 12762), (56, 12777), (69, 12834), (102, 12966), (131, 13212),

Gene: Crownjwl_14 Start: 12202, Stop: 13026, Start Num: 10

Candidate Starts for Crownjwl_14:

(1, 11899), (2, 11968), (4, 12037), (Start: 10 @12202 has 433 MA's), (25, 12361), (28, 12391), (44, 12478), (53, 12547), (56, 12562), (69, 12619), (102, 12733), (131, 12979),

Gene: DaddyDaniels_14 Start: 12120, Stop: 12962, Start Num: 10

Candidate Starts for DaddyDaniels_14:

(1, 11817), (2, 11886), (4, 11955), (Start: 10 @12120 has 433 MA's), (25, 12279), (28, 12309), (44, 12396), (53, 12465), (56, 12480), (69, 12537), (102, 12669), (131, 12915),

Gene: Daffy_14 Start: 12124, Stop: 12978, Start Num: 10

Candidate Starts for Daffy_14:

(1, 11821), (2, 11890), (4, 11959), (Start: 10 @12124 has 433 MA's), (25, 12283), (28, 12313), (44, 12400), (53, 12469), (56, 12484), (69, 12541), (102, 12685), (131, 12931),

Gene: Daisy_16 Start: 13985, Stop: 14590, Start Num: 10

Candidate Starts for Daisy_16:

(Start: 10 @13985 has 433 MA's), (11, 14006), (19, 14102), (36, 14222), (61, 14384), (66, 14423), (70, 14441),

Gene: Daka_14 Start: 12414, Stop: 13256, Start Num: 10

Candidate Starts for Daka_14:

(1, 12117), (2, 12186), (4, 12255), (Start: 10 @12414 has 433 MA's), (25, 12573), (28, 12603), (44, 12690), (53, 12759), (56, 12774), (69, 12831), (102, 12963), (131, 13209),

Gene: Dati_14 Start: 12118, Stop: 12966, Start Num: 10

Candidate Starts for Dati_14:

(1, 11815), (2, 11884), (4, 11953), (Start: 10 @12118 has 433 MA's), (25, 12277), (28, 12307), (44, 12394), (53, 12463), (56, 12478), (69, 12535), (102, 12673), (131, 12919),

Gene: Deenasa_16 Start: 14727, Stop: 15332, Start Num: 10

Candidate Starts for Deenasa_16:

(Start: 10 @14727 has 433 MA's), (11, 14748), (19, 14844), (36, 14964), (61, 15126), (66, 15165), (70, 15183),

Gene: DelRivs_13 Start: 12123, Stop: 12965, Start Num: 10

Candidate Starts for DelRivs_13:

(1, 11820), (2, 11889), (4, 11958), (Start: 10 @12123 has 433 MA's), (25, 12282), (28, 12312), (44, 12399), (53, 12468), (56, 12483), (69, 12540), (102, 12672), (131, 12918),

Gene: Derpp_13 Start: 11970, Stop: 12812, Start Num: 10

Candidate Starts for Derpp_13:

(1, 11673), (2, 11742), (4, 11811), (Start: 10 @11970 has 433 MA's), (25, 12129), (28, 12159), (44, 12246), (53, 12315), (56, 12330), (69, 12387), (102, 12519), (131, 12765),

Gene: Devonte_16 Start: 13964, Stop: 14569, Start Num: 10

Candidate Starts for Devonte_16:

(Start: 10 @13964 has 433 MA's), (11, 13985), (19, 14081), (36, 14201), (61, 14363), (66, 14402), (70, 14420),

Gene: Dice_13 Start: 12117, Stop: 12953, Start Num: 10

Candidate Starts for Dice_13:

(1, 11820), (2, 11889), (4, 11958), (Start: 10 @12117 has 433 MA's), (25, 12276), (28, 12306), (44, 12393), (53, 12462), (56, 12477), (69, 12534), (102, 12660), (131, 12906),

Gene: DigitDog_15 Start: 14152, Stop: 14817, Start Num: 10

Candidate Starts for DigitDog_15:

(Start: 10 @14152 has 433 MA's), (17, 14242), (25, 14311), (101, 14743), (107, 14788),

Gene: Dingo_14 Start: 12414, Stop: 13238, Start Num: 10

Candidate Starts for Dingo_14:

(1, 12111), (2, 12180), (4, 12249), (Start: 10 @12414 has 433 MA's), (25, 12573), (28, 12603), (44, 12690), (53, 12759), (56, 12774), (69, 12831), (102, 12945), (131, 13191),

Gene: Dione_13 Start: 12118, Stop: 12954, Start Num: 10

Candidate Starts for Dione_13:

(1, 11821), (2, 11890), (4, 11959), (Start: 10 @12118 has 433 MA's), (25, 12277), (28, 12307), (44, 12394), (53, 12463), (56, 12478), (69, 12535), (102, 12661), (131, 12907),

Gene: DirtJuice_14 Start: 12417, Stop: 13241, Start Num: 10

Candidate Starts for DirtJuice_14:

(1, 12114), (2, 12183), (4, 12252), (Start: 10 @12417 has 433 MA's), (25, 12576), (28, 12606), (44, 12693), (53, 12762), (56, 12777), (69, 12834), (102, 12948), (131, 13194),

Gene: Doddsville_14 Start: 12118, Stop: 12966, Start Num: 10

Candidate Starts for Doddsville_14:

(1, 11815), (2, 11884), (4, 11953), (Start: 10 @12118 has 433 MA's), (25, 12277), (28, 12307), (44, 12394), (53, 12463), (56, 12478), (69, 12535), (102, 12673), (131, 12919),

Gene: DoesntMatter_14 Start: 12411, Stop: 13235, Start Num: 10

Candidate Starts for DoesntMatter_14:

(1, 12114), (2, 12183), (4, 12252), (Start: 10 @12411 has 433 MA's), (25, 12570), (28, 12600), (44, 12687), (53, 12756), (56, 12771), (69, 12828), (102, 12942), (131, 13188),

Gene: DolOn_15 Start: 12652, Stop: 13488, Start Num: 10

Candidate Starts for DolOn_15:

(1, 12349), (2, 12418), (4, 12487), (Start: 10 @12652 has 433 MA's), (25, 12811), (28, 12841), (44, 12928), (53, 12997), (56, 13012), (69, 13069), (102, 13195), (131, 13441),

Gene: DonSanchon_13 Start: 12124, Stop: 12954, Start Num: 10

Candidate Starts for DonSanchon_13:

(1, 11821), (2, 11890), (4, 11959), (Start: 10 @12124 has 433 MA's), (25, 12283), (28, 12313), (44, 12400), (53, 12469), (56, 12484), (69, 12541), (102, 12661), (131, 12907),

Gene: Donny_15 Start: 14169, Stop: 14834, Start Num: 10

Candidate Starts for Donny_15:

(Start: 10 @14169 has 433 MA's), (15, 14223), (17, 14259), (25, 14328), (101, 14760), (107, 14805),

Gene: DuchessDung_13 Start: 11964, Stop: 12806, Start Num: 10

Candidate Starts for DuchessDung_13:

(1, 11667), (2, 11736), (4, 11805), (Start: 10 @11964 has 433 MA's), (25, 12123), (28, 12153), (44, 12240), (53, 12309), (56, 12324), (69, 12381), (102, 12513), (131, 12759),

Gene: Duggie_13 Start: 12120, Stop: 12968, Start Num: 10

Candidate Starts for Duggie_13:

(1, 11817), (2, 11886), (4, 11955), (Start: 10 @12120 has 433 MA's), (25, 12279), (28, 12309), (44, 12396), (53, 12465), (56, 12480), (69, 12537), (102, 12675), (131, 12921),

Gene: Durga_14 Start: 12425, Stop: 13267, Start Num: 10

Candidate Starts for Durga_14:

(1, 12128), (2, 12197), (4, 12266), (Start: 10 @12425 has 433 MA's), (25, 12584), (28, 12614), (44, 12701), (53, 12770), (56, 12785), (69, 12842), (102, 12974), (131, 13220),

Gene: Eaglehorse_17 Start: 15374, Stop: 16123, Start Num: 10

Candidate Starts for Eaglehorse_17:

(Start: 10 @15374 has 433 MA's), (23, 15527), (25, 15539), (28, 15569), (36, 15605), (41, 15638), (46, 15671), (51, 15725), (55, 15752), (64, 15800), (67, 15818), (77, 15884), (88, 15905), (96, 15950), (98, 15962), (102, 15983),

Gene: EastView9101_15 Start: 14176, Stop: 14841, Start Num: 10
Candidate Starts for EastView9101_15:
(Start: 10 @14176 has 433 MA's), (15, 14230), (17, 14266), (25, 14335), (101, 14767), (107, 14812),

Gene: ElvisPhasley_14 Start: 12418, Stop: 13266, Start Num: 10
Candidate Starts for ElvisPhasley_14:
(1, 12115), (2, 12184), (4, 12253), (Start: 10 @12418 has 433 MA's), (25, 12577), (28, 12607), (44, 12694), (53, 12763), (56, 12778), (69, 12835), (102, 12973), (131, 13219),

Gene: Emiris_14 Start: 12412, Stop: 13248, Start Num: 10
Candidate Starts for Emiris_14:
(1, 12115), (2, 12184), (4, 12253), (Start: 10 @12412 has 433 MA's), (25, 12571), (28, 12601), (44, 12688), (53, 12757), (56, 12772), (69, 12829), (102, 12955), (131, 13201),

Gene: EmpTee_14 Start: 12412, Stop: 13254, Start Num: 10
Candidate Starts for EmpTee_14:
(1, 12115), (2, 12184), (4, 12253), (Start: 10 @12412 has 433 MA's), (25, 12571), (28, 12601), (44, 12688), (53, 12757), (56, 12772), (69, 12829), (102, 12961), (131, 13207),

Gene: Epah_13 Start: 13057, Stop: 13908, Start Num: 10
Candidate Starts for Epah_13:
(Start: 10 @13057 has 433 MA's), (15, 13111), (25, 13216), (30, 13264), (35, 13273), (49, 13372), (53, 13411), (56, 13426), (81, 13558), (84, 13561), (90, 13582), (91, 13585), (127, 13792), (131, 13876),

Gene: Eremos_14 Start: 12411, Stop: 13253, Start Num: 10
Candidate Starts for Eremos_14:
(1, 12108), (2, 12177), (4, 12246), (Start: 10 @12411 has 433 MA's), (25, 12570), (28, 12600), (44, 12687), (53, 12756), (56, 12771), (69, 12828), (102, 12960), (131, 13206),

Gene: Etaye_14 Start: 12408, Stop: 13238, Start Num: 10
Candidate Starts for Etaye_14:
(1, 12111), (2, 12180), (4, 12249), (Start: 10 @12408 has 433 MA's), (25, 12567), (28, 12597), (44, 12684), (53, 12753), (56, 12768), (69, 12825), (102, 12945), (131, 13191),

Gene: Eugenia_14 Start: 12412, Stop: 13266, Start Num: 10
Candidate Starts for Eugenia_14:
(1, 12115), (2, 12184), (4, 12253), (Start: 10 @12412 has 433 MA's), (25, 12571), (28, 12601), (44, 12688), (53, 12757), (56, 12772), (69, 12829), (102, 12973), (131, 13219),

Gene: Fanaw_14 Start: 14151, Stop: 15002, Start Num: 10
Candidate Starts for Fanaw_14:
(Start: 10 @14151 has 433 MA's), (15, 14205), (25, 14310), (30, 14358), (35, 14367), (49, 14466), (53, 14505), (56, 14520), (86, 14661), (90, 14676), (118, 14793), (127, 14886), (131, 14970),

Gene: Fang_14 Start: 12415, Stop: 13269, Start Num: 10
Candidate Starts for Fang_14:
(1, 12118), (2, 12187), (4, 12256), (Start: 10 @12415 has 433 MA's), (25, 12574), (28, 12604), (44, 12691), (53, 12760), (56, 12775), (69, 12832), (102, 12976), (131, 13222),

Gene: Faze9_17 Start: 15467, Stop: 16216, Start Num: 10
Candidate Starts for Faze9_17:
(Start: 10 @15467 has 433 MA's), (23, 15620), (25, 15632), (28, 15662), (36, 15698), (41, 15731), (46, 15764), (51, 15818), (55, 15845), (64, 15893), (67, 15911), (77, 15977), (88, 15998), (96, 16043), (98,

16055), (102, 16076),

Gene: Flake_14 Start: 12428, Stop: 13270, Start Num: 10

Candidate Starts for Flake_14:

(Start: 10 @12428 has 433 MA's), (25, 12587), (28, 12617), (44, 12704), (53, 12773), (56, 12788), (69, 12845), (102, 12977), (131, 13223),

Gene: FleetyMac_13 Start: 12415, Stop: 13251, Start Num: 10

Candidate Starts for FleetyMac_13:

(1, 12112), (2, 12181), (4, 12250), (Start: 10 @12415 has 433 MA's), (25, 12574), (28, 12604), (44, 12691), (53, 12760), (56, 12775), (69, 12832), (102, 12958), (131, 13204),

Gene: FluffyNinja_14 Start: 12415, Stop: 13257, Start Num: 10

Candidate Starts for FluffyNinja_14:

(1, 12112), (2, 12181), (4, 12250), (Start: 10 @12415 has 433 MA's), (25, 12574), (28, 12604), (44, 12691), (53, 12760), (56, 12775), (69, 12832), (102, 12964), (131, 13210),

Gene: ForDig_12 Start: 12599, Stop: 13540, Start Num: 10

Candidate Starts for ForDig_12:

(Start: 10 @12599 has 433 MA's), (15, 12653), (25, 12752), (53, 12965), (56, 12980), (74, 13076), (82, 13109), (100, 13214),

Gene: Fortunato_14 Start: 14145, Stop: 14966, Start Num: 10

Candidate Starts for Fortunato_14:

(Start: 10 @14145 has 433 MA's), (15, 14199), (25, 14304), (30, 14352), (35, 14361), (49, 14460), (53, 14499), (56, 14514), (86, 14655), (90, 14670), (127, 14850), (131, 14934), (132, 14937),

Gene: Fozzie_13 Start: 12415, Stop: 13263, Start Num: 10

Candidate Starts for Fozzie_13:

(1, 12112), (2, 12181), (4, 12250), (Start: 10 @12415 has 433 MA's), (25, 12574), (28, 12604), (44, 12691), (53, 12760), (56, 12775), (69, 12832), (102, 12970), (131, 13216),

Gene: Frankicide_14 Start: 12419, Stop: 13255, Start Num: 10

Candidate Starts for Frankicide_14:

(1, 12116), (2, 12185), (4, 12254), (Start: 10 @12419 has 433 MA's), (25, 12578), (28, 12608), (44, 12695), (53, 12764), (56, 12779), (69, 12836), (102, 12962), (131, 13208),

Gene: Frederick_14 Start: 14151, Stop: 14975, Start Num: 10

Candidate Starts for Frederick_14:

(Start: 10 @14151 has 433 MA's), (15, 14205), (25, 14310), (30, 14358), (35, 14367), (49, 14466), (53, 14505), (56, 14520), (86, 14661), (90, 14676), (91, 14679), (127, 14859), (131, 14943), (132, 14946),

Gene: FremontTroll_14 Start: 12116, Stop: 12952, Start Num: 10

Candidate Starts for FremontTroll_14:

(1, 11819), (2, 11888), (4, 11957), (Start: 10 @12116 has 433 MA's), (25, 12275), (28, 12305), (44, 12392), (53, 12461), (56, 12476), (69, 12533), (102, 12659), (131, 12905),

Gene: FrenchFry_17 Start: 15470, Stop: 16219, Start Num: 10

Candidate Starts for FrenchFry_17:

(Start: 10 @15470 has 433 MA's), (23, 15623), (25, 15635), (28, 15665), (36, 15701), (41, 15734), (46, 15767), (51, 15821), (55, 15848), (64, 15896), (67, 15914), (77, 15980), (88, 16001), (96, 16046), (98, 16058), (102, 16079),

Gene: Freya_13 Start: 12119, Stop: 12949, Start Num: 10

Candidate Starts for Freya_13:

(1, 11822), (2, 11891), (4, 11960), (Start: 10 @12119 has 433 MA's), (25, 12278), (28, 12308), (44, 12395), (53, 12464), (56, 12479), (69, 12536), (102, 12656), (131, 12902),

Gene: FriarPreacher_14 Start: 12420, Stop: 13274, Start Num: 10

Candidate Starts for FriarPreacher_14:

(1, 12117), (2, 12186), (4, 12255), (Start: 10 @12420 has 433 MA's), (25, 12579), (28, 12609), (44, 12696), (53, 12765), (56, 12780), (69, 12837), (102, 12981), (131, 13227),

Gene: Fringe_14 Start: 12412, Stop: 13236, Start Num: 10

Candidate Starts for Fringe_14:

(1, 12115), (2, 12184), (4, 12253), (Start: 10 @12412 has 433 MA's), (25, 12571), (28, 12601), (44, 12688), (53, 12757), (56, 12772), (69, 12829), (102, 12943), (131, 13189),

Gene: FugateOSU_13 Start: 12124, Stop: 12960, Start Num: 10

Candidate Starts for FugateOSU_13:

(1, 11821), (2, 11890), (4, 11959), (Start: 10 @12124 has 433 MA's), (25, 12283), (28, 12313), (44, 12400), (53, 12469), (56, 12484), (69, 12541), (102, 12667), (131, 12913),

Gene: Funsized_19 Start: 16242, Stop: 17348, Start Num: 10

Candidate Starts for Funsized_19:

(Start: 10 @16242 has 433 MA's), (15, 16299), (29, 16437), (38, 16533), (39, 16545), (42, 16584), (45, 16614), (47, 16647), (49, 16665), (52, 16695), (53, 16704), (56, 16719), (76, 16842), (89, 16902), (103, 17010), (108, 17055), (111, 17079), (114, 17091), (121, 17118), (123, 17133), (124, 17208), (125, 17211), (131, 17322),

Gene: Gadget_17 Start: 13968, Stop: 14573, Start Num: 10

Candidate Starts for Gadget_17:

(Start: 10 @13968 has 433 MA's), (11, 13989), (19, 14085), (36, 14205), (61, 14367), (66, 14406), (70, 14424),

Gene: Gareth_13 Start: 12115, Stop: 12957, Start Num: 10

Candidate Starts for Gareth_13:

(1, 11818), (2, 11887), (4, 11956), (Start: 10 @12115 has 433 MA's), (25, 12274), (28, 12304), (44, 12391), (53, 12460), (56, 12475), (69, 12532), (102, 12664), (131, 12910),

Gene: GeneCoco_14 Start: 12417, Stop: 13259, Start Num: 10

Candidate Starts for GeneCoco_14:

(1, 12120), (2, 12189), (4, 12258), (Start: 10 @12417 has 433 MA's), (25, 12576), (28, 12606), (44, 12693), (53, 12762), (56, 12777), (69, 12834), (102, 12966), (131, 13212),

Gene: Gervas_16 Start: 13947, Stop: 14552, Start Num: 10

Candidate Starts for Gervas_16:

(Start: 10 @13947 has 433 MA's), (11, 13968), (19, 14064), (36, 14184), (61, 14346), (70, 14403),

Gene: GinPorsche_13 Start: 13057, Stop: 13908, Start Num: 10

Candidate Starts for GinPorsche_13:

(Start: 10 @13057 has 433 MA's), (15, 13111), (25, 13216), (30, 13264), (35, 13273), (49, 13372), (53, 13411), (56, 13426), (81, 13558), (84, 13561), (90, 13582), (91, 13585), (127, 13792), (131, 13876),

Gene: Giraffe_14 Start: 12119, Stop: 12961, Start Num: 10

Candidate Starts for Giraffe_14:

(1, 11822), (2, 11891), (4, 11960), (Start: 10 @12119 has 433 MA's), (25, 12278), (28, 12308), (44, 12395), (53, 12464), (56, 12479), (69, 12536), (102, 12668), (131, 12914),

Gene: Glass_17 Start: 15470, Stop: 16219, Start Num: 10

Candidate Starts for Glass_17:

(Start: 10 @15470 has 433 MA's), (23, 15623), (25, 15635), (28, 15665), (36, 15701), (41, 15734), (46, 15767), (51, 15821), (55, 15848), (64, 15896), (67, 15914), (77, 15980), (88, 16001), (96, 16046), (98, 16058), (102, 16079),

Gene: GlenHope_17 Start: 13954, Stop: 14559, Start Num: 10

Candidate Starts for GlenHope_17:

(Start: 10 @13954 has 433 MA's), (11, 13975), (19, 14071), (36, 14191), (61, 14353), (70, 14410),

Gene: Glubnar_16 Start: 13968, Stop: 14573, Start Num: 10

Candidate Starts for Glubnar_16:

(Start: 10 @13968 has 433 MA's), (11, 13989), (19, 14085), (36, 14205), (61, 14367), (66, 14406), (70, 14424),

Gene: Godines_17 Start: 15353, Stop: 16102, Start Num: 10

Candidate Starts for Godines_17:

(Start: 10 @15353 has 433 MA's), (23, 15506), (25, 15518), (28, 15548), (36, 15584), (41, 15617), (46, 15650), (51, 15704), (55, 15731), (64, 15779), (67, 15797), (77, 15863), (88, 15884), (96, 15929), (98, 15941), (102, 15962),

Gene: Gophee_14 Start: 12414, Stop: 13238, Start Num: 10

Candidate Starts for Gophee_14:

(1, 12117), (2, 12186), (4, 12255), (Start: 10 @12414 has 433 MA's), (25, 12573), (28, 12603), (44, 12690), (53, 12759), (56, 12774), (69, 12831), (102, 12945), (131, 13191),

Gene: Grand2040_13 Start: 12122, Stop: 12976, Start Num: 10

Candidate Starts for Grand2040_13:

(1, 11819), (2, 11888), (4, 11957), (Start: 10 @12122 has 433 MA's), (25, 12281), (28, 12311), (44, 12398), (53, 12467), (56, 12482), (69, 12539), (102, 12683), (131, 12929),

Gene: GreenChile_14 Start: 12419, Stop: 13255, Start Num: 10

Candidate Starts for GreenChile_14:

(1, 12116), (2, 12185), (4, 12254), (Start: 10 @12419 has 433 MA's), (25, 12578), (28, 12608), (44, 12695), (53, 12764), (56, 12779), (69, 12836), (102, 12962), (131, 13208),

Gene: Gwennie1_14 Start: 12429, Stop: 13277, Start Num: 10

Candidate Starts for Gwennie1_14:

(1, 12132), (2, 12201), (4, 12270), (Start: 10 @12429 has 433 MA's), (25, 12588), (28, 12618), (44, 12705), (53, 12774), (56, 12789), (69, 12846), (102, 12984), (131, 13230),

Gene: Gwilliam_14 Start: 12414, Stop: 13250, Start Num: 10

Candidate Starts for Gwilliam_14:

(1, 12111), (2, 12180), (4, 12249), (Start: 10 @12414 has 433 MA's), (25, 12573), (28, 12603), (44, 12690), (53, 12759), (56, 12774), (69, 12831), (102, 12957), (131, 13203),

Gene: Gyarad_0014 Start: 12417, Stop: 13253, Start Num: 10

Candidate Starts for Gyarad_0014:

(1, 12114), (2, 12183), (4, 12252), (Start: 10 @12417 has 433 MA's), (25, 12576), (28, 12606), (44, 12693), (53, 12762), (56, 12777), (69, 12834), (102, 12960), (131, 13206),

Gene: HSavage_14 Start: 12419, Stop: 13261, Start Num: 10

Candidate Starts for HSavage_14:

(1, 12116), (2, 12185), (4, 12254), (Start: 10 @12419 has 433 MA's), (25, 12578), (28, 12608), (44, 12695), (53, 12764), (56, 12779), (69, 12836), (102, 12968), (131, 13214),

Gene: Haimas_14 Start: 12411, Stop: 13253, Start Num: 10

Candidate Starts for Haimas_14:

(1, 12114), (2, 12183), (4, 12252), (Start: 10 @12411 has 433 MA's), (25, 12570), (28, 12600), (44, 12687), (53, 12756), (56, 12771), (69, 12828), (102, 12960), (131, 13206),

Gene: Haleema_13 Start: 12124, Stop: 12978, Start Num: 10

Candidate Starts for Haleema_13:

(1, 11821), (2, 11890), (4, 11959), (Start: 10 @12124 has 433 MA's), (25, 12283), (28, 12313), (44, 12400), (53, 12469), (56, 12484), (69, 12541), (102, 12685), (131, 12931),

Gene: Halfpint_15 Start: 13789, Stop: 14394, Start Num: 10

Candidate Starts for Halfpint_15:

(Start: 10 @13789 has 433 MA's), (11, 13810), (19, 13906), (36, 14026), (61, 14188), (66, 14227), (70, 14245),

Gene: Hally898_13 Start: 13057, Stop: 13908, Start Num: 10

Candidate Starts for Hally898_13:

(Start: 10 @13057 has 433 MA's), (15, 13111), (25, 13216), (30, 13264), (35, 13273), (49, 13372), (53, 13411), (56, 13426), (81, 13558), (84, 13561), (90, 13582), (91, 13585), (127, 13792), (131, 13876),

Gene: Hamish_14 Start: 12411, Stop: 13247, Start Num: 10

Candidate Starts for Hamish_14:

(1, 12114), (2, 12183), (4, 12252), (Start: 10 @12411 has 433 MA's), (25, 12570), (28, 12600), (44, 12687), (53, 12756), (56, 12771), (69, 12828), (102, 12954), (131, 13200),

Gene: Hangman_14 Start: 14151, Stop: 14975, Start Num: 10

Candidate Starts for Hangman_14:

(Start: 10 @14151 has 433 MA's), (15, 14205), (25, 14310), (30, 14358), (35, 14367), (49, 14466), (53, 14505), (56, 14520), (86, 14661), (90, 14676), (91, 14679), (127, 14859), (131, 14943), (132, 14946),

Gene: Happabalu_14 Start: 12111, Stop: 12947, Start Num: 10

Candidate Starts for Happabalu_14:

(1, 11814), (2, 11883), (4, 11952), (Start: 10 @12111 has 433 MA's), (25, 12270), (28, 12300), (44, 12387), (53, 12456), (56, 12471), (69, 12528), (102, 12654), (131, 12900),

Gene: Hartsy_14 Start: 12408, Stop: 13250, Start Num: 10

Candidate Starts for Hartsy_14:

(1, 12111), (2, 12180), (4, 12249), (Start: 10 @12408 has 433 MA's), (25, 12567), (28, 12597), (44, 12684), (53, 12753), (56, 12768), (69, 12825), (102, 12957), (131, 13203),

Gene: Harvey_14 Start: 12421, Stop: 13275, Start Num: 10

Candidate Starts for Harvey_14:

(1, 12118), (2, 12187), (4, 12256), (Start: 10 @12421 has 433 MA's), (25, 12580), (28, 12610), (44, 12697), (53, 12766), (56, 12781), (69, 12838), (102, 12982), (131, 13228),

Gene: HarveySr_16 Start: 13941, Stop: 14546, Start Num: 10

Candidate Starts for HarveySr_16:

(Start: 10 @13941 has 433 MA's), (11, 13962), (19, 14058), (21, 14067), (36, 14178), (61, 14340), (66, 14379), (70, 14397),

Gene: Hashim76_19 Start: 13526, Stop: 14509, Start Num: 10

Candidate Starts for Hashim76_19:

(Start: 10 @13526 has 433 MA's), (13, 13568), (15, 13583), (25, 13688), (29, 13721), (53, 13922), (57, 13940), (72, 14036), (76, 14054), (112, 14288), (125, 14372),

Gene: Heath_14 Start: 14151, Stop: 14972, Start Num: 10

Candidate Starts for Heath_14:

(Start: 10 @14151 has 433 MA's), (15, 14205), (25, 14310), (30, 14358), (35, 14367), (49, 14466), (53, 14505), (56, 14520), (81, 14652), (84, 14655), (90, 14676), (91, 14679), (127, 14856), (131, 14940), (132, 14943),

Gene: Heathcliff_16 Start: 13926, Stop: 14531, Start Num: 10

Candidate Starts for Heathcliff_16:

(Start: 10 @13926 has 433 MA's), (11, 13947), (19, 14043), (36, 14163), (61, 14325), (66, 14364), (70, 14382),

Gene: Hedgerow_17 Start: 15452, Stop: 16201, Start Num: 10

Candidate Starts for Hedgerow_17:

(Start: 10 @15452 has 433 MA's), (23, 15605), (25, 15617), (28, 15647), (36, 15683), (41, 15716), (46, 15749), (51, 15803), (55, 15830), (64, 15878), (67, 15896), (77, 15962), (88, 15983), (96, 16028), (98, 16040), (102, 16061),

Gene: Hekos_13 Start: 12123, Stop: 12977, Start Num: 10

Candidate Starts for Hekos_13:

(1, 11820), (2, 11889), (4, 11958), (Start: 10 @12123 has 433 MA's), (25, 12282), (28, 12312), (44, 12399), (53, 12468), (56, 12483), (69, 12540), (102, 12684), (131, 12930),

Gene: Held_14 Start: 12125, Stop: 12961, Start Num: 10

Candidate Starts for Held_14:

(1, 11822), (2, 11891), (4, 11960), (Start: 10 @12125 has 433 MA's), (25, 12284), (28, 12314), (44, 12401), (53, 12470), (56, 12485), (69, 12542), (102, 12668), (131, 12914),

Gene: HenryJackson_13 Start: 12127, Stop: 12975, Start Num: 10

Candidate Starts for HenryJackson_13:

(1, 11824), (2, 11893), (4, 11962), (Start: 10 @12127 has 433 MA's), (25, 12286), (28, 12316), (44, 12403), (53, 12472), (56, 12487), (69, 12544), (102, 12682), (131, 12928),

Gene: Hertubise_14 Start: 12414, Stop: 13268, Start Num: 10

Candidate Starts for Hertubise_14:

(1, 12117), (2, 12186), (4, 12255), (Start: 10 @12414 has 433 MA's), (25, 12573), (28, 12603), (44, 12690), (53, 12759), (56, 12774), (69, 12831), (102, 12975), (131, 13221),

Gene: Hetaeria_14 Start: 12417, Stop: 13271, Start Num: 10

Candidate Starts for Hetaeria_14:

(1, 12114), (2, 12183), (4, 12252), (Start: 10 @12417 has 433 MA's), (25, 12576), (28, 12606), (44, 12693), (53, 12762), (56, 12777), (69, 12834), (102, 12978), (131, 13224),

Gene: HighStump_13 Start: 12118, Stop: 12960, Start Num: 10

Candidate Starts for HighStump_13:

(1, 11821), (2, 11890), (4, 11959), (Start: 10 @12118 has 433 MA's), (25, 12277), (28, 12307), (44, 12394), (53, 12463), (56, 12478), (69, 12535), (102, 12667), (131, 12913),

Gene: Hocus_13 Start: 12118, Stop: 12960, Start Num: 10

Candidate Starts for Hocus_13:

(1, 11821), (2, 11890), (4, 11959), (Start: 10 @12118 has 433 MA's), (25, 12277), (28, 12307), (44, 12394), (53, 12463), (56, 12478), (69, 12535), (102, 12667), (131, 12913),

Gene: HogWash_13 Start: 12414, Stop: 13256, Start Num: 10

Candidate Starts for HogWash_13:

(1, 12111), (2, 12180), (4, 12249), (Start: 10 @12414 has 433 MA's), (25, 12573), (28, 12603), (44, 12690), (53, 12759), (56, 12774), (69, 12831), (102, 12963), (131, 13209),

Gene: Holeinone_17 Start: 15352, Stop: 16101, Start Num: 10

Candidate Starts for Holeinone_17:

(Start: 10 @15352 has 433 MA's), (23, 15505), (25, 15517), (28, 15547), (36, 15583), (41, 15616), (46, 15649), (51, 15703), (55, 15730), (64, 15778), (67, 15796), (77, 15862), (88, 15883), (96, 15928), (98, 15940), (102, 15961),

Gene: Horchata_14 Start: 12416, Stop: 13240, Start Num: 10

Candidate Starts for Horchata_14:

(1, 12113), (2, 12182), (4, 12251), (Start: 10 @12416 has 433 MA's), (25, 12575), (28, 12605), (44, 12692), (53, 12761), (56, 12776), (69, 12833), (102, 12947), (131, 13193),

Gene: Hosp_010 Start: 10814, Stop: 11755, Start Num: 10

Candidate Starts for Hosp_010:

(Start: 10 @10814 has 433 MA's), (15, 10868), (35, 11042), (43, 11084), (49, 11141), (53, 11180), (56, 11195), (60, 11207), (74, 11291), (82, 11324), (100, 11429),

Gene: Hydro_14 Start: 14148, Stop: 14972, Start Num: 10

Candidate Starts for Hydro_14:

(Start: 10 @14148 has 433 MA's), (15, 14202), (25, 14307), (30, 14355), (35, 14364), (49, 14463), (53, 14502), (56, 14517), (86, 14658), (90, 14673), (91, 14676), (127, 14856), (131, 14940), (132, 14943),

Gene: ImtiyazSitla_13 Start: 11958, Stop: 12800, Start Num: 10

Candidate Starts for ImtiyazSitla_13:

(1, 11661), (2, 11730), (4, 11799), (Start: 10 @11958 has 433 MA's), (25, 12117), (28, 12147), (44, 12234), (53, 12303), (56, 12318), (69, 12375), (102, 12507), (131, 12753),

Gene: Imvubu_11 Start: 11532, Stop: 12530, Start Num: 10

Candidate Starts for Imvubu_11:

(8, 11487), (Start: 10 @11532 has 433 MA's), (15, 11589), (18, 11628), (25, 11694), (29, 11727), (31, 11745), (34, 11754), (49, 11853), (52, 11883), (53, 11892), (56, 11907), (57, 11910), (62, 11925), (76, 12015), (81, 12033), (85, 12063), (87, 12069), (113, 12261), (119, 12291), (131, 12492),

Gene: Inchworm_14 Start: 12408, Stop: 13244, Start Num: 10

Candidate Starts for Inchworm_14:

(1, 12111), (2, 12180), (4, 12249), (Start: 10 @12408 has 433 MA's), (25, 12567), (28, 12597), (44, 12684), (53, 12753), (56, 12768), (69, 12825), (102, 12951), (131, 13197),

Gene: Indlovu_14 Start: 13853, Stop: 14830, Start Num: 10

Candidate Starts for Indlovu_14:

(Start: 10 @13853 has 433 MA's), (25, 14012), (58, 14318), (72, 14408), (84, 14471), (125, 14681), (128, 14750), (131, 14801),

Gene: Inverness_14 Start: 12419, Stop: 13261, Start Num: 10

Candidate Starts for Inverness_14:

(1, 12116), (2, 12185), (4, 12254), (Start: 10 @12419 has 433 MA's), (25, 12578), (28, 12608), (44, 12695), (53, 12764), (56, 12779), (69, 12836), (102, 12968), (131, 13214),

Gene: Iridessa_14 Start: 12120, Stop: 12929, Start Num: 10

Candidate Starts for Iridessa_14:

(1, 11817), (2, 11886), (4, 11955), (Start: 10 @12120 has 433 MA's), (25, 12279), (28, 12309), (44, 12363), (53, 12432), (56, 12447), (69, 12504), (102, 12636), (131, 12882),

Gene: Iridoclysis_14 Start: 12415, Stop: 13233, Start Num: 10

Candidate Starts for Iridoclysis_14:

(1, 12118), (2, 12187), (4, 12256), (Start: 10 @12415 has 433 MA's), (25, 12574), (28, 12604), (44, 12691), (53, 12760), (56, 12775), (69, 12832), (102, 12940), (131, 13186),

Gene: IsaacEli_14 Start: 12417, Stop: 13265, Start Num: 10

Candidate Starts for IsaacEli_14:

(1, 12114), (2, 12183), (4, 12252), (Start: 10 @12417 has 433 MA's), (25, 12576), (28, 12606), (44, 12693), (53, 12762), (56, 12777), (69, 12834), (102, 12972), (131, 13218),

Gene: ItsyBitsy1_17 Start: 15344, Stop: 16093, Start Num: 10

Candidate Starts for ItsyBitsy1_17:

(Start: 10 @15344 has 433 MA's), (23, 15497), (25, 15509), (28, 15539), (36, 15575), (41, 15608), (46, 15641), (51, 15695), (55, 15722), (64, 15770), (67, 15788), (77, 15854), (88, 15875), (96, 15920), (98, 15932), (102, 15953),

Gene: JAMaL_14 Start: 14326, Stop: 15156, Start Num: 10

Candidate Starts for JAMaL_14:

(Start: 10 @14326 has 433 MA's), (15, 14380), (25, 14485), (26, 14491), (30, 14533), (35, 14542), (49, 14641), (52, 14671), (53, 14680), (56, 14695), (90, 14851), (127, 15040), (131, 15124), (132, 15127),

Gene: JDog_13 Start: 12120, Stop: 12968, Start Num: 10

Candidate Starts for JDog_13:

(1, 11817), (2, 11886), (4, 11955), (Start: 10 @12120 has 433 MA's), (25, 12279), (28, 12309), (44, 12396), (53, 12465), (56, 12480), (69, 12537), (102, 12675), (131, 12921),

Gene: JacAttac_14 Start: 12408, Stop: 13244, Start Num: 10

Candidate Starts for JacAttac_14:

(1, 12111), (2, 12180), (4, 12249), (Start: 10 @12408 has 433 MA's), (25, 12567), (28, 12597), (44, 12684), (53, 12753), (56, 12768), (69, 12825), (102, 12951), (131, 13197),

Gene: Jackstina_15 Start: 13890, Stop: 14495, Start Num: 10

Candidate Starts for Jackstina_15:

(Start: 10 @13890 has 433 MA's), (11, 13911), (19, 14007), (36, 14127), (61, 14289), (66, 14328), (70, 14346),

Gene: JaguarMi_15 Start: 13981, Stop: 14802, Start Num: 10

Candidate Starts for JaguarMi_15:

(Start: 10 @13981 has 433 MA's), (15, 14035), (25, 14140), (30, 14188), (49, 14296), (53, 14335), (56, 14350), (62, 14371), (65, 14395), (86, 14491), (90, 14506), (91, 14509), (127, 14686), (131, 14770),

Gene: JakeO_13 Start: 12120, Stop: 12968, Start Num: 10

Candidate Starts for JakeO_13:

(1, 11817), (2, 11886), (4, 11955), (Start: 10 @12120 has 433 MA's), (25, 12279), (28, 12309), (44, 12396), (53, 12465), (56, 12480), (69, 12537), (102, 12675), (131, 12921),

Gene: JangoPhett_14 Start: 12409, Stop: 13245, Start Num: 10

Candidate Starts for JangoPhett_14:

(1, 12112), (2, 12181), (4, 12250), (Start: 10 @12409 has 433 MA's), (25, 12568), (28, 12598), (44, 12685), (53, 12754), (56, 12769), (69, 12826), (102, 12952), (131, 13198),

Gene: Jesabah_14 Start: 12125, Stop: 12973, Start Num: 10

Candidate Starts for Jesabah_14:

(1, 11822), (2, 11891), (4, 11960), (Start: 10 @12125 has 433 MA's), (25, 12284), (28, 12314), (44, 12401), (53, 12470), (56, 12485), (69, 12542), (102, 12680), (131, 12926),

Gene: Jillium_13 Start: 12124, Stop: 12966, Start Num: 10

Candidate Starts for Jillium_13:

(1, 11821), (2, 11890), (4, 11959), (Start: 10 @12124 has 433 MA's), (25, 12283), (28, 12313), (44, 12400), (53, 12469), (56, 12484), (69, 12541), (102, 12673), (131, 12919),

Gene: Jiminy_13 Start: 11966, Stop: 12808, Start Num: 10

Candidate Starts for Jiminy_13:

(1, 11669), (2, 11738), (4, 11807), (Start: 10 @11966 has 433 MA's), (25, 12125), (28, 12155), (44, 12242), (53, 12311), (56, 12326), (69, 12383), (102, 12515), (131, 12761),

Gene: Jiraiya_13 Start: 12120, Stop: 12968, Start Num: 10

Candidate Starts for Jiraiya_13:

(1, 11817), (2, 11886), (4, 11955), (Start: 10 @12120 has 433 MA's), (25, 12279), (28, 12309), (44, 12396), (53, 12465), (56, 12480), (69, 12537), (102, 12675), (131, 12921),

Gene: Jolie1_012 Start: 12596, Stop: 13534, Start Num: 10

Candidate Starts for Jolie1_012:

(Start: 10 @12596 has 433 MA's), (15, 12650), (25, 12749), (53, 12962), (56, 12977), (74, 13067), (82, 13100), (100, 13208),

Gene: JoyceMaria_14 Start: 14151, Stop: 14975, Start Num: 10

Candidate Starts for JoyceMaria_14:

(Start: 10 @14151 has 433 MA's), (15, 14205), (25, 14310), (30, 14358), (35, 14367), (49, 14466), (53, 14505), (56, 14520), (86, 14661), (90, 14676), (91, 14679), (127, 14859), (131, 14943), (132, 14946),

Gene: KLucky39_14 Start: 12417, Stop: 13253, Start Num: 10

Candidate Starts for KLucky39_14:

(1, 12114), (2, 12183), (4, 12252), (Start: 10 @12417 has 433 MA's), (25, 12576), (28, 12606), (44, 12693), (53, 12762), (56, 12777), (69, 12834), (102, 12960), (131, 13206),

Gene: Kahve_13 Start: 12127, Stop: 12975, Start Num: 10

Candidate Starts for Kahve_13:

(1, 11824), (2, 11893), (4, 11962), (Start: 10 @12127 has 433 MA's), (25, 12286), (28, 12316), (44, 12403), (53, 12472), (56, 12487), (69, 12544), (102, 12682), (131, 12928),

Gene: Kailash_14 Start: 12420, Stop: 13262, Start Num: 10

Candidate Starts for Kailash_14:

(1, 12123), (2, 12192), (4, 12261), (Start: 10 @12420 has 433 MA's), (25, 12579), (28, 12609), (44, 12696), (53, 12765), (56, 12780), (69, 12837), (102, 12969), (131, 13215),

Gene: Kaleb_17 Start: 15470, Stop: 16219, Start Num: 10

Candidate Starts for Kaleb_17:

(Start: 10 @15470 has 433 MA's), (23, 15623), (25, 15635), (28, 15665), (36, 15701), (41, 15734), (46, 15767), (51, 15821), (55, 15848), (64, 15896), (67, 15914), (77, 15980), (88, 16001), (96, 16046), (98, 16058), (102, 16079),

Gene: Kamiyu_16 Start: 13935, Stop: 14540, Start Num: 10

Candidate Starts for Kamiyu_16:

(Start: 10 @13935 has 433 MA's), (11, 13956), (19, 14052), (36, 14172), (61, 14334), (66, 14373), (70, 14391),

Gene: KarasumaRum_16 Start: 14308, Stop: 14973, Start Num: 10

Candidate Starts for KarasumaRum_16:

(Start: 10 @14308 has 433 MA's), (17, 14398), (25, 14467), (101, 14899),

Gene: Karn_13 Start: 12120, Stop: 12968, Start Num: 10

Candidate Starts for Karn_13:

(1, 11817), (2, 11886), (4, 11955), (Start: 10 @12120 has 433 MA's), (25, 12279), (28, 12309), (44, 12396), (53, 12465), (56, 12480), (69, 12537), (102, 12675), (131, 12921),

Gene: Katniss_14 Start: 12418, Stop: 13272, Start Num: 10

Candidate Starts for Katniss_14:

(1, 12115), (2, 12184), (4, 12253), (Start: 10 @12418 has 433 MA's), (25, 12577), (28, 12607), (44, 12694), (53, 12763), (56, 12778), (69, 12835), (102, 12979), (131, 13225),

Gene: KayaCho_12 Start: 12607, Stop: 13527, Start Num: 10

Candidate Starts for KayaCho_12:

(Start: 10 @12607 has 433 MA's), (15, 12661), (25, 12760), (30, 12808), (35, 12817), (49, 12916), (53, 12955), (56, 12970), (74, 13060), (80, 13084), (82, 13093), (100, 13201), (109, 13270),

Gene: Keitherie_14 Start: 12425, Stop: 13273, Start Num: 10

Candidate Starts for Keitherie_14:

(Start: 10 @12425 has 433 MA's), (25, 12584), (28, 12614), (44, 12701), (53, 12770), (56, 12785), (69, 12842), (102, 12980), (131, 13226),

Gene: Khan1_14 Start: 12120, Stop: 12968, Start Num: 10

Candidate Starts for Khan1_14:

(1, 11817), (2, 11886), (4, 11955), (Start: 10 @12120 has 433 MA's), (25, 12279), (28, 12309), (44, 12396), (53, 12465), (56, 12480), (69, 12537), (102, 12675), (131, 12921),

Gene: Kheth_17 Start: 15353, Stop: 16102, Start Num: 10

Candidate Starts for Kheth_17:

(Start: 10 @15353 has 433 MA's), (23, 15506), (25, 15518), (28, 15548), (36, 15584), (41, 15617), (46, 15650), (51, 15704), (55, 15731), (64, 15779), (67, 15797), (77, 15863), (88, 15884), (96, 15929), (98, 15941), (102, 15962),

Gene: Kikipoo_14 Start: 12417, Stop: 13265, Start Num: 10

Candidate Starts for Kikipoo_14:

(1, 12114), (2, 12183), (4, 12252), (Start: 10 @12417 has 433 MA's), (25, 12576), (28, 12606), (44, 12693), (53, 12762), (56, 12777), (69, 12834), (102, 12972), (131, 13218),

Gene: Kimbrough_14 Start: 12127, Stop: 12963, Start Num: 10

Candidate Starts for Kimbrough_14:

(1, 11824), (2, 11893), (4, 11962), (Start: 10 @12127 has 433 MA's), (25, 12286), (28, 12316), (44, 12403), (53, 12472), (56, 12487), (69, 12544), (102, 12670), (131, 12916),

Gene: KingTut_13 Start: 12125, Stop: 12955, Start Num: 10

Candidate Starts for KingTut_13:

(1, 11822), (2, 11891), (4, 11960), (Start: 10 @12125 has 433 MA's), (25, 12284), (28, 12314), (44, 12401), (53, 12470), (56, 12485), (69, 12542), (102, 12662), (131, 12908),

Gene: KingVeVeVe_14 Start: 12418, Stop: 13242, Start Num: 10

Candidate Starts for KingVeVeVe_14:

(1, 12115), (2, 12184), (4, 12253), (Start: 10 @12418 has 433 MA's), (25, 12577), (28, 12607), (44, 12694), (53, 12763), (56, 12778), (69, 12835), (102, 12949), (131, 13195),

Gene: KlimbOn_14 Start: 12417, Stop: 13253, Start Num: 10

Candidate Starts for KlimbOn_14:

(1, 12114), (2, 12183), (4, 12252), (Start: 10 @12417 has 433 MA's), (25, 12576), (28, 12606), (44, 12693), (53, 12762), (56, 12777), (69, 12834), (102, 12960), (131, 13206),

Gene: Kloppinator_14 Start: 12415, Stop: 13269, Start Num: 10

Candidate Starts for Kloppinator_14:

(1, 12112), (2, 12181), (4, 12250), (Start: 10 @12415 has 433 MA's), (25, 12574), (28, 12604), (44, 12691), (53, 12760), (56, 12775), (69, 12832), (102, 12976), (131, 13222),

Gene: Knocker_19 Start: 16707, Stop: 17675, Start Num: 10

Candidate Starts for Knocker_19:

(Start: 10 @16707 has 433 MA's), (14, 16752), (15, 16764), (24, 16860), (25, 16869), (29, 16902), (32, 16920), (49, 17025), (53, 17064), (56, 17079), (72, 17169), (86, 17214), (87, 17217), (89, 17223), (92, 17241), (106, 17358), (108, 17376), (110, 17394), (124, 17529), (127, 17559), (129, 17610), (131, 17643),

Gene: Kolhan_17 Start: 15350, Stop: 16099, Start Num: 10

Candidate Starts for Kolhan_17:

(Start: 10 @15350 has 433 MA's), (23, 15503), (25, 15515), (28, 15545), (36, 15581), (41, 15614), (46, 15647), (51, 15701), (55, 15728), (64, 15776), (67, 15794), (77, 15860), (88, 15881), (96, 15926), (98, 15938), (102, 15959),

Gene: Kronus_15 Start: 14547, Stop: 15152, Start Num: 10

Candidate Starts for Kronus_15:

(Start: 10 @14547 has 433 MA's), (11, 14568), (19, 14664), (36, 14784), (61, 14946), (66, 14985), (70, 15003),

Gene: Kwadwo_13 Start: 12118, Stop: 12954, Start Num: 10

Candidate Starts for Kwadwo_13:

(1, 11821), (2, 11890), (4, 11959), (Start: 10 @12118 has 433 MA's), (25, 12277), (28, 12307), (44, 12394), (53, 12463), (56, 12478), (69, 12535), (102, 12661), (131, 12907),

Gene: Kwksand96_13 Start: 11970, Stop: 12818, Start Num: 10

Candidate Starts for Kwksand96_13:

(1, 11667), (2, 11736), (4, 11805), (Start: 10 @11970 has 433 MA's), (25, 12129), (28, 12159), (44, 12246), (53, 12315), (56, 12330), (69, 12387), (102, 12525), (131, 12771),

Gene: Labeouficaum_13 Start: 11970, Stop: 12812, Start Num: 10

Candidate Starts for Labeouficaum_13:

(1, 11673), (2, 11742), (4, 11811), (Start: 10 @11970 has 433 MA's), (25, 12129), (28, 12159), (44, 12246), (53, 12315), (56, 12330), (69, 12387), (102, 12519), (131, 12765),

Gene: Lambano_13 Start: 13057, Stop: 13908, Start Num: 10

Candidate Starts for Lambano_13:

(Start: 10 @13057 has 433 MA's), (15, 13111), (25, 13216), (30, 13264), (35, 13273), (49, 13372), (53, 13411), (56, 13426), (81, 13558), (84, 13561), (90, 13582), (91, 13585), (127, 13792), (131, 13876),

Gene: Lars_17 Start: 15470, Stop: 16219, Start Num: 10

Candidate Starts for Lars_17:

(Start: 10 @15470 has 433 MA's), (23, 15623), (25, 15635), (28, 15665), (36, 15701), (41, 15734), (46, 15767), (51, 15821), (55, 15848), (64, 15896), (67, 15914), (77, 15980), (88, 16001), (96, 16046), (98, 16058), (102, 16079),

Gene: Larson_15 Start: 12428, Stop: 13270, Start Num: 10

Candidate Starts for Larson_15:

(Start: 10 @12428 has 433 MA's), (25, 12587), (28, 12617), (44, 12704), (53, 12773), (56, 12788), (69, 12845), (102, 12977), (131, 13223),

Gene: LasagnaCat_14 Start: 12420, Stop: 13256, Start Num: 10

Candidate Starts for LasagnaCat_14:

(1, 12123), (2, 12192), (4, 12261), (Start: 10 @12420 has 433 MA's), (25, 12579), (28, 12609), (44, 12696), (53, 12765), (56, 12780), (69, 12837), (102, 12963), (131, 13209),

Gene: Lasso_14 Start: 12408, Stop: 13232, Start Num: 10

Candidate Starts for Lasso_14:

(1, 12105), (2, 12174), (4, 12243), (Start: 10 @12408 has 433 MA's), (25, 12567), (28, 12597), (44, 12684), (53, 12753), (56, 12768), (69, 12825), (102, 12939), (131, 13185),

Gene: Laurie_17 Start: 15348, Stop: 16097, Start Num: 10

Candidate Starts for Laurie_17:

(Start: 10 @15348 has 433 MA's), (23, 15501), (25, 15513), (28, 15543), (36, 15579), (41, 15612), (46, 15645), (51, 15699), (55, 15726), (64, 15774), (67, 15792), (77, 15858), (88, 15879), (96, 15924), (98, 15936), (102, 15957),

Gene: LeeLot_14 Start: 12411, Stop: 13253, Start Num: 10

Candidate Starts for LeeLot_14:

(1, 12114), (2, 12183), (4, 12252), (Start: 10 @12411 has 433 MA's), (25, 12570), (28, 12600), (44, 12687), (53, 12756), (56, 12771), (69, 12828), (102, 12960), (131, 13206),

Gene: Lego3393_14 Start: 12415, Stop: 13269, Start Num: 10

Candidate Starts for Lego3393_14:

(1, 12112), (2, 12181), (4, 12250), (Start: 10 @12415 has 433 MA's), (25, 12574), (28, 12604), (44, 12691), (53, 12760), (56, 12775), (69, 12832), (102, 12976), (131, 13222),

Gene: Legolas_13 Start: 12122, Stop: 12970, Start Num: 10

Candidate Starts for Legolas_13:

(1, 11819), (2, 11888), (4, 11957), (Start: 10 @12122 has 433 MA's), (25, 12281), (28, 12311), (44, 12398), (53, 12467), (56, 12482), (69, 12539), (102, 12677), (131, 12923),

Gene: Lehmann_14 Start: 11967, Stop: 12797, Start Num: 10

Candidate Starts for Lehmann_14:

(1, 11664), (2, 11733), (4, 11802), (Start: 10 @11967 has 433 MA's), (25, 12126), (28, 12156), (44, 12243), (53, 12312), (56, 12327), (69, 12384), (102, 12504), (131, 12750),

Gene: LeiMonet_14 Start: 12120, Stop: 12962, Start Num: 10

Candidate Starts for LeiMonet_14:

(1, 11817), (2, 11886), (4, 11955), (Start: 10 @12120 has 433 MA's), (25, 12279), (28, 12309), (44, 12396), (53, 12465), (56, 12480), (69, 12537), (102, 12669), (131, 12915),

Gene: LemonSlice_14 Start: 12128, Stop: 12964, Start Num: 10

Candidate Starts for LemonSlice_14:

(1, 11825), (2, 11894), (4, 11963), (Start: 10 @12128 has 433 MA's), (25, 12287), (28, 12317), (44, 12404), (53, 12473), (56, 12488), (69, 12545), (102, 12671), (131, 12917),

Gene: Lephleur_17 Start: 15350, Stop: 16099, Start Num: 10

Candidate Starts for Lephleur_17:

(Start: 10 @15350 has 433 MA's), (23, 15503), (25, 15515), (28, 15545), (36, 15581), (41, 15614), (46, 15647), (48, 15662), (51, 15701), (55, 15728), (64, 15776), (67, 15794), (77, 15860), (88, 15881), (96, 15926), (98, 15938), (102, 15959),

Gene: LestyG_16 Start: 13968, Stop: 14573, Start Num: 10

Candidate Starts for LestyG_16:

(Start: 10 @13968 has 433 MA's), (11, 13989), (19, 14085), (36, 14205), (61, 14367), (66, 14406), (70, 14424),

Gene: LilMcDreamy_15 Start: 14910, Stop: 15785, Start Num: 10

Candidate Starts for LilMcDreamy_15:

(Start: 10 @14910 has 433 MA's), (15, 14964), (25, 15069), (26, 15075), (27, 15093), (30, 15117), (50, 15234), (59, 15288), (74, 15366), (109, 15525), (115, 15552), (132, 15753),

Gene: LilSmirk_17 Start: 15350, Stop: 16099, Start Num: 10

Candidate Starts for LilSmirk_17:

(Start: 10 @15350 has 433 MA's), (23, 15503), (25, 15515), (28, 15545), (36, 15581), (41, 15614), (46, 15647), (51, 15701), (55, 15728), (64, 15776), (67, 15794), (77, 15860), (88, 15881), (96, 15926), (98, 15938), (102, 15959),

Gene: LittleDigger_13 Start: 13064, Stop: 13915, Start Num: 10

Candidate Starts for LittleDigger_13:

(Start: 10 @13064 has 433 MA's), (15, 13118), (25, 13223), (30, 13271), (35, 13280), (49, 13379), (53, 13418), (56, 13433), (81, 13565), (84, 13568), (90, 13589), (91, 13592), (127, 13799), (131, 13883),

Gene: LittleMinkey_20 Start: 13704, Stop: 14687, Start Num: 10

Candidate Starts for LittleMinkey_20:

(Start: 10 @13704 has 433 MA's), (13, 13746), (15, 13761), (25, 13866), (29, 13899), (53, 14100), (57, 14118), (72, 14214), (76, 14232), (112, 14466), (125, 14550),

Gene: LittleMunchkin_14 Start: 13719, Stop: 14384, Start Num: 10

Candidate Starts for LittleMunchkin_14:

(Start: 10 @13719 has 433 MA's), (15, 13773), (20, 13842), (35, 13935), (59, 14049), (61, 14055), (73, 14136), (75, 14142), (88, 14175), (97, 14226), (107, 14286), (110, 14307),

Gene: LizLemon_17 Start: 15470, Stop: 16219, Start Num: 10

Candidate Starts for LizLemon_17:

(Start: 10 @15470 has 433 MA's), (23, 15623), (25, 15635), (28, 15665), (36, 15701), (41, 15734), (46, 15767), (51, 15821), (55, 15848), (64, 15896), (67, 15914), (77, 15980), (88, 16001), (96, 16046), (98, 16058), (102, 16079),

Gene: Lolalove_14 Start: 14148, Stop: 14972, Start Num: 10

Candidate Starts for Lolalove_14:

(Start: 10 @14148 has 433 MA's), (15, 14202), (25, 14307), (30, 14355), (35, 14364), (49, 14463), (53, 14502), (56, 14517), (86, 14658), (90, 14673), (91, 14676), (127, 14856), (131, 14940), (132, 14943),

Gene: Longacauda_13 Start: 12114, Stop: 12956, Start Num: 10

Candidate Starts for Longacauda_13:

(1, 11817), (2, 11886), (4, 11955), (Start: 10 @12114 has 433 MA's), (25, 12273), (28, 12303), (44, 12390), (53, 12459), (56, 12474), (69, 12531), (102, 12663), (131, 12909),

Gene: Lopsy_13 Start: 11964, Stop: 12812, Start Num: 10

Candidate Starts for Lopsy_13:

(1, 11661), (2, 11730), (4, 11799), (Start: 10 @11964 has 433 MA's), (25, 12123), (28, 12153), (44, 12240), (53, 12309), (56, 12324), (69, 12381), (102, 12519), (131, 12765),

Gene: LostAndPhound_13 Start: 12124, Stop: 12966, Start Num: 10

Candidate Starts for LostAndPhound_13:

(1, 11821), (2, 11890), (4, 11959), (Start: 10 @12124 has 433 MA's), (25, 12283), (28, 12313), (44, 12400), (53, 12469), (56, 12484), (69, 12541), (102, 12673), (131, 12919),

Gene: LuckyMarjie_13 Start: 12124, Stop: 12978, Start Num: 10

Candidate Starts for LuckyMarjie_13:

(1, 11821), (2, 11890), (4, 11959), (Start: 10 @12124 has 433 MA's), (25, 12283), (28, 12313), (44, 12400), (53, 12469), (56, 12484), (69, 12541), (102, 12685), (131, 12931),

Gene: Lulumae_13 Start: 12119, Stop: 12955, Start Num: 10

Candidate Starts for Lulumae_13:

(1, 11822), (2, 11891), (4, 11960), (Start: 10 @12119 has 433 MA's), (25, 12278), (28, 12308), (44, 12395), (53, 12464), (56, 12479), (69, 12536), (102, 12662), (131, 12908),

Gene: Lulwa_14 Start: 12420, Stop: 13244, Start Num: 10

Candidate Starts for Lulwa_14:

(1, 12117), (2, 12186), (4, 12255), (Start: 10 @12420 has 433 MA's), (25, 12579), (28, 12609), (44, 12696), (53, 12765), (56, 12780), (69, 12837), (102, 12951), (131, 13197),

Gene: Lumine_13 Start: 12106, Stop: 12948, Start Num: 10

Candidate Starts for Lumine_13:

(1, 11809), (2, 11878), (4, 11947), (Start: 10 @12106 has 433 MA's), (25, 12265), (28, 12295), (44, 12382), (53, 12451), (56, 12466), (69, 12523), (102, 12655), (131, 12901),

Gene: MRabcd_13 Start: 12121, Stop: 12957, Start Num: 10

Candidate Starts for MRabcd_13:

(1, 11818), (2, 11887), (4, 11956), (Start: 10 @12121 has 433 MA's), (25, 12280), (28, 12310), (44, 12397), (53, 12466), (56, 12481), (69, 12538), (102, 12664), (131, 12910),

Gene: Mag7_13 Start: 11970, Stop: 12812, Start Num: 10

Candidate Starts for Mag7_13:

(1, 11673), (2, 11742), (4, 11811), (Start: 10 @11970 has 433 MA's), (25, 12129), (28, 12159), (44, 12246), (53, 12315), (56, 12330), (69, 12387), (102, 12519), (131, 12765),

Gene: Magic8_14 Start: 12408, Stop: 13250, Start Num: 10

Candidate Starts for Magic8_14:

(1, 12111), (2, 12180), (4, 12249), (Start: 10 @12408 has 433 MA's), (25, 12567), (28, 12597), (44, 12684), (53, 12753), (56, 12768), (69, 12825), (102, 12957), (131, 13203),

Gene: Magpie_14 Start: 14306, Stop: 15157, Start Num: 10

Candidate Starts for Magpie_14:

(Start: 10 @14306 has 433 MA's), (15, 14360), (25, 14465), (30, 14513), (35, 14522), (49, 14621), (53, 14660), (56, 14675), (86, 14816), (90, 14831), (118, 14948), (127, 15041), (131, 15125),

Gene: Mana_13 Start: 12124, Stop: 12960, Start Num: 10

Candidate Starts for Mana_13:

(1, 11821), (2, 11890), (4, 11959), (Start: 10 @12124 has 433 MA's), (25, 12283), (28, 12313), (44, 12400), (53, 12469), (56, 12484), (69, 12541), (102, 12667), (131, 12913),

Gene: Manad_13 Start: 11968, Stop: 12810, Start Num: 10

Candidate Starts for Manad_13:

(1, 11665), (2, 11734), (4, 11803), (Start: 10 @11968 has 433 MA's), (25, 12127), (28, 12157), (44, 12244), (53, 12313), (56, 12328), (69, 12385), (102, 12517), (131, 12763),

Gene: Marley1013_16 Start: 14748, Stop: 15353, Start Num: 10

Candidate Starts for Marley1013_16:

(Start: 10 @14748 has 433 MA's), (11, 14769), (19, 14865), (61, 15147), (70, 15204),

Gene: Marlia_16 Start: 13950, Stop: 14555, Start Num: 10

Candidate Starts for Marlia_16:

(Start: 10 @13950 has 433 MA's), (11, 13971), (19, 14067), (36, 14187), (61, 14349), (70, 14406),

Gene: Maru_13 Start: 12122, Stop: 12958, Start Num: 10

Candidate Starts for Maru_13:

(1, 11819), (2, 11888), (4, 11957), (Start: 10 @12122 has 433 MA's), (25, 12281), (28, 12311), (44, 12398), (53, 12467), (56, 12482), (69, 12539), (102, 12665), (131, 12911),

Gene: Maskar_13 Start: 11958, Stop: 12800, Start Num: 10

Candidate Starts for Maskar_13:

(1, 11661), (2, 11730), (4, 11799), (Start: 10 @11958 has 433 MA's), (25, 12117), (28, 12147), (44, 12234), (53, 12303), (56, 12318), (69, 12375), (102, 12507), (131, 12753),

Gene: MasterPo_17 Start: 15350, Stop: 16099, Start Num: 10

Candidate Starts for MasterPo_17:

(Start: 10 @15350 has 433 MA's), (23, 15503), (25, 15515), (28, 15545), (36, 15581), (41, 15614), (46, 15647), (48, 15662), (51, 15701), (55, 15728), (64, 15776), (67, 15794), (77, 15860), (88, 15881), (96, 15926), (98, 15938), (102, 15959),

Gene: Matalotodo_14 Start: 12412, Stop: 13248, Start Num: 10

Candidate Starts for Matalotodo_14:

(1, 12115), (2, 12184), (4, 12253), (Start: 10 @12412 has 433 MA's), (25, 12571), (28, 12601), (44, 12688), (53, 12757), (56, 12772), (69, 12829), (102, 12955), (131, 13201),

Gene: Mcshane_13 Start: 12118, Stop: 12954, Start Num: 10

Candidate Starts for Mcshane_13:

(1, 11821), (2, 11890), (4, 11959), (Start: 10 @12118 has 433 MA's), (25, 12277), (28, 12307), (44, 12394), (53, 12463), (56, 12478), (69, 12535), (102, 12661), (131, 12907),

Gene: Mecca_13 Start: 12115, Stop: 12951, Start Num: 10

Candidate Starts for Mecca_13:

(1, 11818), (2, 11887), (4, 11956), (Start: 10 @12115 has 433 MA's), (25, 12274), (28, 12304), (44, 12391), (53, 12460), (56, 12475), (69, 12532), (102, 12658), (131, 12904),

Gene: Megamind20_14 Start: 12125, Stop: 12973, Start Num: 10

Candidate Starts for Megamind20_14:

(1, 11822), (2, 11891), (4, 11960), (Start: 10 @12125 has 433 MA's), (25, 12284), (28, 12314), (44, 12401), (53, 12470), (56, 12485), (69, 12542), (102, 12680), (131, 12926),

Gene: Megatron_14 Start: 12417, Stop: 13253, Start Num: 10

Candidate Starts for Megatron_14:

(1, 12114), (2, 12183), (4, 12252), (Start: 10 @12417 has 433 MA's), (25, 12576), (28, 12606), (44, 12693), (53, 12762), (56, 12777), (69, 12834), (102, 12960), (131, 13206),

Gene: Melc17_14 Start: 12408, Stop: 13244, Start Num: 10

Candidate Starts for Melc17_14:

(1, 12111), (2, 12180), (4, 12249), (Start: 10 @12408 has 433 MA's), (25, 12567), (28, 12597), (44, 12684), (53, 12753), (56, 12768), (69, 12825), (102, 12951), (131, 13197),

Gene: MelsMeow_13 Start: 11964, Stop: 12812, Start Num: 10

Candidate Starts for MelsMeow_13:

(1, 11667), (2, 11736), (4, 11805), (Start: 10 @11964 has 433 MA's), (25, 12123), (28, 12153), (44, 12240), (53, 12309), (56, 12324), (69, 12381), (102, 12519), (131, 12765),

Gene: Mesh1_14 Start: 12420, Stop: 13262, Start Num: 10

Candidate Starts for Mesh1_14:

(1, 12117), (2, 12186), (4, 12255), (Start: 10 @12420 has 433 MA's), (25, 12579), (28, 12609), (44, 12696), (53, 12765), (56, 12780), (69, 12837), (102, 12969), (131, 13215),

Gene: Mesmerelda_13 Start: 12118, Stop: 12954, Start Num: 10

Candidate Starts for Mesmerelda_13:

(1, 11821), (2, 11890), (4, 11959), (Start: 10 @12118 has 433 MA's), (25, 12277), (28, 12307), (44, 12394), (53, 12463), (56, 12478), (69, 12535), (102, 12661), (131, 12907),

Gene: MichaelPhcott_13 Start: 11970, Stop: 12812, Start Num: 10

Candidate Starts for MichaelPhcott_13:

(1, 11673), (2, 11742), (4, 11811), (Start: 10 @11970 has 433 MA's), (25, 12129), (28, 12159), (44, 12246), (53, 12315), (56, 12330), (69, 12387), (102, 12519), (131, 12765),

Gene: Mikota_14 Start: 12415, Stop: 13239, Start Num: 10

Candidate Starts for Mikota_14:

(1, 12112), (2, 12181), (4, 12250), (Start: 10 @12415 has 433 MA's), (25, 12574), (28, 12604), (44, 12691), (53, 12760), (56, 12775), (69, 12832), (102, 12946), (131, 13192),

Gene: MiniBoss_14 Start: 12417, Stop: 13241, Start Num: 10

Candidate Starts for MiniBoss_14:

(1, 12114), (2, 12183), (4, 12252), (Start: 10 @12417 has 433 MA's), (25, 12576), (28, 12606), (44, 12693), (53, 12762), (56, 12777), (69, 12834), (102, 12948), (131, 13194),

Gene: MitKao_14 Start: 12124, Stop: 12960, Start Num: 10

Candidate Starts for MitKao_14:

(1, 11821), (2, 11890), (4, 11959), (Start: 10 @12124 has 433 MA's), (25, 12283), (28, 12313), (44, 12400), (53, 12469), (56, 12484), (69, 12541), (102, 12667), (131, 12913),

Gene: Mithril_14 Start: 14151, Stop: 14975, Start Num: 10

Candidate Starts for Mithril_14:

(Start: 10 @14151 has 433 MA's), (15, 14205), (25, 14310), (30, 14358), (35, 14367), (49, 14466), (53, 14505), (56, 14520), (86, 14661), (90, 14676), (91, 14679), (127, 14859), (131, 14943), (132, 14946),

Gene: MmasiCarm_16 Start: 13961, Stop: 14566, Start Num: 10

Candidate Starts for MmasiCarm_16:

(Start: 10 @13961 has 433 MA's), (11, 13982), (19, 14078), (36, 14198), (61, 14360), (66, 14399), (70, 14417),

Gene: Morgushi_14 Start: 12122, Stop: 12964, Start Num: 10

Candidate Starts for Morgushi_14:

(1, 11819), (2, 11888), (4, 11957), (Start: 10 @12122 has 433 MA's), (25, 12281), (28, 12311), (44, 12398), (53, 12467), (56, 12482), (69, 12539), (102, 12671), (131, 12917),

Gene: Mortcellus_15 Start: 14602, Stop: 15207, Start Num: 10

Candidate Starts for Mortcellus_15:

(Start: 10 @14602 has 433 MA's), (11, 14623), (19, 14719), (36, 14839), (61, 15001), (70, 15058),

Gene: Morty_14 Start: 12414, Stop: 13262, Start Num: 10

Candidate Starts for Morty_14:

(1, 12111), (2, 12180), (4, 12249), (Start: 10 @12414 has 433 MA's), (25, 12573), (28, 12603), (44, 12690), (53, 12759), (56, 12774), (69, 12831), (102, 12969), (131, 13215),

Gene: Morty007_16 Start: 14748, Stop: 15353, Start Num: 10

Candidate Starts for Morty007_16:

(Start: 10 @14748 has 433 MA's), (11, 14769), (19, 14865), (61, 15147), (70, 15204),

Gene: Mosaic_13 Start: 12125, Stop: 12967, Start Num: 10

Candidate Starts for Mosaic_13:

(1, 11822), (2, 11891), (4, 11960), (Start: 10 @12125 has 433 MA's), (25, 12284), (28, 12314), (44, 12401), (53, 12470), (56, 12485), (69, 12542), (102, 12674), (131, 12920),

Gene: MrPhizzler_14 Start: 12117, Stop: 12965, Start Num: 10

Candidate Starts for MrPhizzler_14:

(1, 11814), (2, 11883), (4, 11952), (Start: 10 @12117 has 433 MA's), (25, 12276), (28, 12306), (44, 12393), (53, 12462), (56, 12477), (69, 12534), (102, 12672), (131, 12918),

Gene: Mudslide_14 Start: 14399, Stop: 15220, Start Num: 10

Candidate Starts for Mudslide_14:

(Start: 10 @14399 has 433 MA's), (15, 14453), (25, 14558), (30, 14606), (35, 14615), (49, 14714), (53, 14753), (56, 14768), (86, 14909), (90, 14924), (127, 15104), (131, 15188), (132, 15191),

Gene: Mulan_13 Start: 12118, Stop: 12960, Start Num: 10

Candidate Starts for Mulan_13:

(1, 11821), (2, 11890), (4, 11959), (Start: 10 @12118 has 433 MA's), (25, 12277), (28, 12307), (44, 12394), (53, 12463), (56, 12478), (69, 12535), (102, 12667), (131, 12913),

Gene: Mulaychimus_16 Start: 13941, Stop: 14546, Start Num: 10

Candidate Starts for Mulaychimus_16:

(Start: 10 @13941 has 433 MA's), (11, 13962), (19, 14058), (36, 14178), (61, 14340), (66, 14379), (70, 14397),

Gene: Murdoc_14 Start: 12411, Stop: 13253, Start Num: 10

Candidate Starts for Murdoc_14:

(1, 12114), (2, 12183), (4, 12252), (Start: 10 @12411 has 433 MA's), (25, 12570), (28, 12600), (44, 12687), (53, 12756), (56, 12771), (69, 12828), (102, 12960), (131, 13206),

Gene: Mutante_13 Start: 12121, Stop: 12963, Start Num: 10

Candidate Starts for Mutante_13:

(1, 11818), (2, 11887), (4, 11956), (Start: 10 @12121 has 433 MA's), (25, 12280), (28, 12310), (44, 12397), (53, 12466), (56, 12481), (69, 12538), (102, 12670), (131, 12916),

Gene: Mysterious_15 Start: 14410, Stop: 15075, Start Num: 10

Candidate Starts for Mysterious_15:

(Start: 10 @14410 has 433 MA's), (15, 14464), (17, 14500), (25, 14569), (54, 14770), (101, 15001), (107, 15046),

Gene: Nacho_0014 Start: 12417, Stop: 13253, Start Num: 10

Candidate Starts for Nacho_0014:

(1, 12114), (2, 12183), (4, 12252), (Start: 10 @12417 has 433 MA's), (25, 12576), (28, 12606), (44, 12693), (53, 12762), (56, 12777), (69, 12834), (102, 12960), (131, 13206),

Gene: Nanao_13 Start: 13057, Stop: 13908, Start Num: 10

Candidate Starts for Nanao_13:

(Start: 10 @13057 has 433 MA's), (15, 13111), (25, 13216), (30, 13264), (35, 13273), (49, 13372), (53, 13411), (56, 13426), (81, 13558), (84, 13561), (90, 13582), (91, 13585), (127, 13792), (131, 13876),

Gene: Nangang_15 Start: 14152, Stop: 14817, Start Num: 10

Candidate Starts for Nangang_15:

(Start: 10 @14152 has 433 MA's), (17, 14242), (25, 14311), (101, 14743), (107, 14788),

Gene: Nathan_14 Start: 12415, Stop: 13263, Start Num: 10

Candidate Starts for Nathan_14:

(1, 12112), (2, 12181), (4, 12250), (Start: 10 @12415 has 433 MA's), (25, 12574), (28, 12604), (44, 12691), (53, 12760), (56, 12775), (69, 12832), (102, 12970), (131, 13216),

Gene: Nehemiah_14 Start: 14410, Stop: 15075, Start Num: 10

Candidate Starts for Nehemiah_14:

(Start: 10 @14410 has 433 MA's), (15, 14464), (17, 14500), (25, 14569), (54, 14770), (101, 15001), (107, 15046),

Gene: Neos5_16 Start: 14754, Stop: 15359, Start Num: 10

Candidate Starts for Neos5_16:

(Start: 10 @14754 has 433 MA's), (11, 14775), (19, 14871), (61, 15153), (66, 15192), (70, 15210),

Gene: Newman_14 Start: 12417, Stop: 13253, Start Num: 10

Candidate Starts for Newman_14:

(1, 12114), (2, 12183), (4, 12252), (Start: 10 @12417 has 433 MA's), (25, 12576), (28, 12606), (44, 12693), (53, 12762), (56, 12777), (69, 12834), (102, 12960), (131, 13206),

Gene: NiaNia_14 Start: 12124, Stop: 12978, Start Num: 10

Candidate Starts for NiaNia_14:

(1, 11821), (2, 11890), (4, 11959), (Start: 10 @12124 has 433 MA's), (25, 12283), (28, 12313), (44, 12400), (53, 12469), (56, 12484), (69, 12541), (102, 12685), (131, 12931),

Gene: Nicole21_14 Start: 12409, Stop: 13245, Start Num: 10

Candidate Starts for Nicole21_14:

(1, 12112), (2, 12181), (4, 12250), (Start: 10 @12409 has 433 MA's), (25, 12568), (28, 12598), (44, 12685), (53, 12754), (56, 12769), (69, 12826), (102, 12952), (131, 13198),

Gene: Nigel_12 Start: 12973, Stop: 13824, Start Num: 10

Candidate Starts for Nigel_12:

(Start: 10 @12973 has 433 MA's), (25, 13132), (26, 13138), (30, 13180), (35, 13189), (49, 13288), (52, 13318), (53, 13327), (56, 13342), (90, 13498), (105, 13588), (127, 13708), (131, 13792), (132, 13795),

Gene: Nova1_13 Start: 11978, Stop: 12826, Start Num: 10

Candidate Starts for Nova1_13:

(1, 11675), (2, 11744), (4, 11813), (Start: 10 @11978 has 433 MA's), (25, 12137), (28, 12167), (44, 12254), (53, 12323), (56, 12338), (69, 12395), (102, 12533), (131, 12779),

Gene: Nozo_16 Start: 14729, Stop: 15334, Start Num: 10

Candidate Starts for Nozo_16:

(Start: 10 @14729 has 433 MA's), (11, 14750), (19, 14846), (36, 14966), (61, 15128), (66, 15167), (70, 15185),

Gene: Numberten_14 Start: 12420, Stop: 13256, Start Num: 10

Candidate Starts for Numberten_14:

(1, 12117), (2, 12186), (4, 12255), (Start: 10 @12420 has 433 MA's), (25, 12579), (28, 12609), (44, 12696), (53, 12765), (56, 12780), (69, 12837), (102, 12963), (131, 13209),

Gene: Nyala_13 Start: 12119, Stop: 12955, Start Num: 10

Candidate Starts for Nyala_13:

(1, 11822), (2, 11891), (4, 11960), (Start: 10 @12119 has 433 MA's), (25, 12278), (28, 12308), (44, 12395), (53, 12464), (56, 12479), (69, 12536), (102, 12662), (131, 12908),

Gene: OSmaximus_14 Start: 12415, Stop: 13263, Start Num: 10

Candidate Starts for OSmaximus_14:

(1, 12112), (2, 12181), (4, 12250), (Start: 10 @12415 has 433 MA's), (25, 12574), (28, 12604), (44, 12691), (53, 12760), (56, 12775), (69, 12832), (102, 12970), (131, 13216),

Gene: Obutu_16 Start: 13959, Stop: 14564, Start Num: 10

Candidate Starts for Obutu_16:

(Start: 10 @13959 has 433 MA's), (11, 13980), (19, 14076), (36, 14196), (61, 14358), (66, 14397), (70, 14415),

Gene: Olak_13 Start: 12116, Stop: 12952, Start Num: 10

Candidate Starts for Olak_13:

(1, 11819), (2, 11888), (4, 11957), (Start: 10 @12116 has 433 MA's), (25, 12275), (28, 12305), (44, 12392), (53, 12461), (56, 12476), (69, 12533), (102, 12659), (131, 12905),

Gene: Oline_13 Start: 11970, Stop: 12812, Start Num: 10

Candidate Starts for Oline_13:

(1, 11673), (2, 11742), (4, 11811), (Start: 10 @11970 has 433 MA's), (25, 12129), (28, 12159), (44, 12246), (53, 12315), (56, 12330), (69, 12387), (102, 12519), (131, 12765),

Gene: Olive_14 Start: 12414, Stop: 13244, Start Num: 10

Candidate Starts for Olive_14:

(1, 12111), (2, 12180), (4, 12249), (Start: 10 @12414 has 433 MA's), (25, 12573), (28, 12603), (44, 12690), (53, 12759), (56, 12774), (69, 12831), (102, 12951), (131, 13197),

Gene: OliverWalter_14 Start: 12413, Stop: 13261, Start Num: 10

Candidate Starts for OliverWalter_14:

(1, 12110), (2, 12179), (4, 12248), (Start: 10 @12413 has 433 MA's), (25, 12572), (28, 12602), (44, 12689), (53, 12758), (56, 12773), (69, 12830), (102, 12968), (131, 13214),

Gene: Olivio_15 Start: 13813, Stop: 14418, Start Num: 10

Candidate Starts for Olivio_15:

(Start: 10 @13813 has 433 MA's), (11, 13834), (19, 13930), (36, 14050), (61, 14212), (66, 14251), (70, 14269),

Gene: Omniscient_14 Start: 12420, Stop: 13262, Start Num: 10

Candidate Starts for Omniscient_14:

(1, 12117), (2, 12186), (4, 12255), (Start: 10 @12420 has 433 MA's), (25, 12579), (28, 12609), (44, 12696), (53, 12765), (56, 12780), (69, 12837), (102, 12969), (131, 13215),

Gene: OneBrain_14 Start: 12120, Stop: 12956, Start Num: 10

Candidate Starts for OneBrain_14:

(1, 11817), (2, 11886), (4, 11955), (Start: 10 @12120 has 433 MA's), (25, 12279), (28, 12309), (44, 12396), (53, 12465), (56, 12480), (69, 12537), (102, 12663), (131, 12909),

Gene: Oosterbaan_14 Start: 12412, Stop: 13254, Start Num: 10

Candidate Starts for Oosterbaan_14:

(1, 12115), (2, 12184), (4, 12253), (Start: 10 @12412 has 433 MA's), (25, 12571), (28, 12601), (44, 12688), (53, 12757), (56, 12772), (69, 12829), (102, 12961), (131, 13207),

Gene: Opia_17 Start: 15350, Stop: 16099, Start Num: 10

Candidate Starts for Opia_17:

(Start: 10 @15350 has 433 MA's), (23, 15503), (25, 15515), (28, 15545), (36, 15581), (41, 15614), (46, 15647), (51, 15701), (55, 15728), (64, 15776), (67, 15794), (77, 15860), (88, 15881), (96, 15926), (98, 15938), (102, 15959),

Gene: OrangeOswald_16 Start: 13964, Stop: 14569, Start Num: 10

Candidate Starts for OrangeOswald_16:

(Start: 10 @13964 has 433 MA's), (11, 13985), (19, 14081), (36, 14201), (61, 14363), (66, 14402), (70, 14420),

Gene: Orfeu_13 Start: 12117, Stop: 12953, Start Num: 10

Candidate Starts for Orfeu_13:

(1, 11820), (2, 11889), (4, 11958), (Start: 10 @12117 has 433 MA's), (25, 12276), (28, 12306), (44, 12393), (53, 12462), (56, 12477), (69, 12534), (102, 12660), (131, 12906),

Gene: Orion_14 Start: 12412, Stop: 13254, Start Num: 10

Candidate Starts for Orion_14:

(1, 12115), (2, 12184), (4, 12253), (Start: 10 @12412 has 433 MA's), (25, 12571), (28, 12601), (44, 12688), (53, 12757), (56, 12772), (69, 12829), (102, 12961), (131, 13207),

Gene: Orwigg_13 Start: 12122, Stop: 12946, Start Num: 10

Candidate Starts for Orwigg_13:

(1, 11825), (2, 11894), (4, 11963), (Start: 10 @12122 has 433 MA's), (25, 12281), (28, 12311), (44, 12398), (53, 12467), (56, 12482), (69, 12539), (102, 12653), (131, 12899),

Gene: PG1_14 Start: 12418, Stop: 13266, Start Num: 10

Candidate Starts for PG1_14:

(1, 12115), (2, 12184), (4, 12253), (Start: 10 @12418 has 433 MA's), (25, 12577), (28, 12607), (44, 12694), (53, 12763), (56, 12778), (69, 12835), (102, 12973), (131, 13219),

Gene: Pacifista_13 Start: 12115, Stop: 12957, Start Num: 10

Candidate Starts for Pacifista_13:

(1, 11818), (2, 11887), (4, 11956), (Start: 10 @12115 has 433 MA's), (25, 12274), (28, 12304), (44, 12391), (53, 12460), (56, 12475), (69, 12532), (102, 12664), (131, 12910),

Gene: PallasAthena_14 Start: 12119, Stop: 12961, Start Num: 10

Candidate Starts for PallasAthena_14:

(1, 11822), (2, 11891), (4, 11960), (Start: 10 @12119 has 433 MA's), (25, 12278), (28, 12308), (44, 12395), (53, 12464), (56, 12479), (69, 12536), (102, 12668), (131, 12914),

Gene: PenguinLover67_17 Start: 15047, Stop: 16012, Start Num: 10

Candidate Starts for PenguinLover67_17:

(Start: 10 @15047 has 433 MA's), (15, 15101), (25, 15206), (37, 15317), (99, 15737), (124, 15869), (125, 15872),

Gene: Phaedrus_15 Start: 13882, Stop: 14487, Start Num: 10

Candidate Starts for Phaedrus_15:

(Start: 10 @13882 has 433 MA's), (11, 13903), (19, 13999), (36, 14119), (61, 14281), (66, 14320), (70, 14338),

Gene: Phamished_14 Start: 12417, Stop: 13259, Start Num: 10

Candidate Starts for Phamished_14:

(1, 12114), (2, 12183), (4, 12252), (Start: 10 @12417 has 433 MA's), (25, 12576), (28, 12606), (44, 12693), (53, 12762), (56, 12777), (69, 12834), (102, 12966), (131, 13212),

Gene: Phantasmagoria_17 Start: 15350, Stop: 16099, Start Num: 10

Candidate Starts for Phantasmagoria_17:

(Start: 10 @15350 has 433 MA's), (23, 15503), (25, 15515), (28, 15545), (36, 15581), (41, 15614), (46, 15647), (51, 15701), (55, 15728), (64, 15776), (67, 15794), (77, 15860), (88, 15881), (96, 15926), (98, 15938), (102, 15959),

Gene: Phareon_14 Start: 12124, Stop: 12960, Start Num: 10

Candidate Starts for Phareon_14:

(1, 11821), (2, 11890), (4, 11959), (Start: 10 @12124 has 433 MA's), (25, 12283), (28, 12313), (44, 12400), (53, 12469), (56, 12484), (69, 12541), (102, 12667), (131, 12913),

Gene: PhatCats2014_14 Start: 12421, Stop: 13269, Start Num: 10

Candidate Starts for PhatCats2014_14:

(1, 12118), (2, 12187), (4, 12256), (Start: 10 @12421 has 433 MA's), (25, 12580), (28, 12610), (44, 12697), (53, 12766), (56, 12781), (69, 12838), (102, 12976), (131, 13222),

Gene: PhatLouie_14 Start: 12411, Stop: 13253, Start Num: 10

Candidate Starts for PhatLouie_14:

(1, 12114), (2, 12183), (4, 12252), (Start: 10 @12411 has 433 MA's), (25, 12570), (28, 12600), (44, 12687), (53, 12756), (56, 12771), (69, 12828), (102, 12960), (131, 13206),

Gene: Phayeta_16 Start: 13840, Stop: 14445, Start Num: 10

Candidate Starts for Phayeta_16:

(Start: 10 @13840 has 433 MA's), (11, 13861), (19, 13957), (36, 14077), (61, 14239), (66, 14278), (70, 14296),

Gene: Phelemich_15 Start: 14414, Stop: 15079, Start Num: 10

Candidate Starts for Phelemich_15:

(Start: 10 @14414 has 433 MA's), (15, 14468), (17, 14504), (25, 14573), (101, 15005), (107, 15050),

Gene: PhenghisKhan_13 Start: 11970, Stop: 12812, Start Num: 10

Candidate Starts for PhenghisKhan_13:

(1, 11673), (2, 11742), (4, 11811), (Start: 10 @11970 has 433 MA's), (25, 12129), (28, 12159), (44, 12246), (53, 12315), (56, 12330), (69, 12387), (102, 12519), (131, 12765),

Gene: Pherdinand_14 Start: 12415, Stop: 13257, Start Num: 10

Candidate Starts for Pherdinand_14:

(1, 12112), (2, 12181), (4, 12250), (Start: 10 @12415 has 433 MA's), (25, 12574), (28, 12604), (44, 12691), (53, 12760), (56, 12775), (69, 12832), (102, 12964), (131, 13210),

Gene: Phergie_13 Start: 11964, Stop: 12806, Start Num: 10

Candidate Starts for Phergie_13:

(1, 11667), (2, 11736), (4, 11805), (Start: 10 @11964 has 433 MA's), (25, 12123), (28, 12153), (44, 12240), (53, 12309), (56, 12324), (69, 12381), (102, 12513), (131, 12759),

Gene: Philly_15 Start: 13830, Stop: 14435, Start Num: 10

Candidate Starts for Philly_15:

(Start: 10 @13830 has 433 MA's), (11, 13851), (19, 13947), (21, 13956), (36, 14067), (61, 14229), (66, 14268), (70, 14286),

Gene: Phipps_14 Start: 12408, Stop: 13232, Start Num: 10

Candidate Starts for Phipps_14:

(1, 12105), (2, 12174), (4, 12243), (Start: 10 @12408 has 433 MA's), (25, 12567), (28, 12597), (44, 12684), (53, 12753), (56, 12768), (69, 12825), (102, 12939), (131, 13185),

Gene: Phleuron_13 Start: 11970, Stop: 12812, Start Num: 10

Candidate Starts for Phleuron_13:

(1, 11673), (2, 11742), (4, 11811), (Start: 10 @11970 has 433 MA's), (25, 12129), (28, 12159), (44, 12246), (53, 12315), (56, 12330), (69, 12387), (102, 12519), (131, 12765),

Gene: Phlyer_16 Start: 14698, Stop: 15303, Start Num: 10

Candidate Starts for Phlyer_16:

(Start: 10 @14698 has 433 MA's), (11, 14719), (19, 14815), (36, 14935), (61, 15097), (66, 15136), (70, 15154),

Gene: PhrankReynolds_13 Start: 11970, Stop: 12812, Start Num: 10

Candidate Starts for PhrankReynolds_13:

(1, 11673), (2, 11742), (4, 11811), (Start: 10 @11970 has 433 MA's), (25, 12129), (28, 12159), (44, 12246), (53, 12315), (56, 12330), (69, 12387), (102, 12519), (131, 12765),

Gene: PhrodoBaggins_13 Start: 12411, Stop: 13247, Start Num: 10

Candidate Starts for PhrodoBaggins_13:

(1, 12114), (2, 12183), (4, 12252), (Start: 10 @12411 has 433 MA's), (25, 12570), (28, 12600), (44, 12687), (53, 12756), (56, 12771), (69, 12828), (102, 12954), (131, 13200),

Gene: Phunky_14 Start: 12411, Stop: 13253, Start Num: 10

Candidate Starts for Phunky_14:

(1, 12114), (2, 12183), (4, 12252), (Start: 10 @12411 has 433 MA's), (25, 12570), (28, 12600), (44, 12687), (53, 12756), (56, 12771), (69, 12828), (102, 12960), (131, 13206),

Gene: Piglet_0013 Start: 12420, Stop: 13256, Start Num: 10

Candidate Starts for Piglet_0013:

(1, 12117), (2, 12186), (4, 12255), (Start: 10 @12420 has 433 MA's), (25, 12579), (28, 12609), (44, 12696), (53, 12765), (56, 12780), (69, 12837), (102, 12963), (131, 13209),

Gene: PinheadLarry_14 Start: 12124, Stop: 12972, Start Num: 10

Candidate Starts for PinheadLarry_14:

(1, 11821), (2, 11890), (4, 11959), (Start: 10 @12124 has 433 MA's), (25, 12283), (28, 12313), (44, 12400), (53, 12469), (56, 12484), (69, 12541), (102, 12679), (131, 12925),

Gene: Pinkman_13 Start: 11970, Stop: 12812, Start Num: 10

Candidate Starts for Pinkman_13:

(1, 11673), (2, 11742), (4, 11811), (Start: 10 @11970 has 433 MA's), (25, 12129), (28, 12159), (44, 12246), (53, 12315), (56, 12330), (69, 12387), (102, 12519), (131, 12765),

Gene: Pipefish_16 Start: 14848, Stop: 15453, Start Num: 10

Candidate Starts for Pipefish_16:

(Start: 10 @14848 has 433 MA's), (11, 14869), (19, 14965), (61, 15247),

Gene: Pipsqueak_14 Start: 12417, Stop: 13259, Start Num: 10

Candidate Starts for Pipsqueak_14:

(1, 12114), (2, 12183), (4, 12252), (Start: 10 @12417 has 433 MA's), (25, 12576), (28, 12606), (44, 12693), (53, 12762), (56, 12777), (69, 12834), (102, 12966), (131, 13212),

Gene: Placalicious_13 Start: 12118, Stop: 12954, Start Num: 10

Candidate Starts for Placalicious_13:

(1, 11821), (2, 11890), (4, 11959), (Start: 10 @12118 has 433 MA's), (25, 12277), (28, 12307), (44, 12394), (53, 12463), (56, 12478), (69, 12535), (102, 12661), (131, 12907),

Gene: Plata_13 Start: 12120, Stop: 12968, Start Num: 10

Candidate Starts for Plata_13:

(1, 11817), (2, 11886), (4, 11955), (Start: 10 @12120 has 433 MA's), (25, 12279), (28, 12309), (44, 12396), (53, 12465), (56, 12480), (69, 12537), (102, 12675), (131, 12921),

Gene: Plmatters_14 Start: 12417, Stop: 13253, Start Num: 10

Candidate Starts for Plmatters_14:

(1, 12114), (2, 12183), (4, 12252), (Start: 10 @12417 has 433 MA's), (25, 12576), (28, 12606), (44, 12693), (53, 12762), (56, 12777), (69, 12834), (102, 12960), (131, 13206),

Gene: Podrick_14 Start: 12420, Stop: 13244, Start Num: 10

Candidate Starts for Podrick_14:

(1, 12117), (2, 12186), (4, 12255), (Start: 10 @12420 has 433 MA's), (25, 12579), (28, 12609), (44, 12696), (53, 12765), (56, 12780), (69, 12837), (102, 12951), (131, 13197),

Gene: Pops_14 Start: 12414, Stop: 13256, Start Num: 10

Candidate Starts for Pops_14:

(1, 12111), (2, 12180), (4, 12249), (Start: 10 @12414 has 433 MA's), (25, 12573), (28, 12603), (44, 12690), (53, 12759), (56, 12774), (69, 12831), (102, 12963), (131, 13209),

Gene: Poster_13 Start: 13057, Stop: 13908, Start Num: 10

Candidate Starts for Poster_13:

(Start: 10 @13057 has 433 MA's), (15, 13111), (25, 13216), (30, 13264), (35, 13273), (49, 13372), (53, 13411), (56, 13426), (81, 13558), (84, 13561), (90, 13582), (91, 13585), (127, 13792), (131, 13876),

Gene: Potter_13 Start: 12125, Stop: 12967, Start Num: 10

Candidate Starts for Potter_13:

(1, 11822), (2, 11891), (4, 11960), (Start: 10 @12125 has 433 MA's), (25, 12284), (28, 12314), (44, 12401), (53, 12470), (56, 12485), (69, 12542), (102, 12674), (131, 12920),

Gene: Prickles_14 Start: 12423, Stop: 13247, Start Num: 10

Candidate Starts for Prickles_14:

(1, 12120), (2, 12189), (4, 12258), (Start: 10 @12423 has 433 MA's), (25, 12582), (28, 12612), (44, 12699), (53, 12768), (56, 12783), (69, 12840), (102, 12954), (131, 13200),

Gene: Prince_14 Start: 14311, Stop: 15132, Start Num: 10

Candidate Starts for Prince_14:

(Start: 10 @14311 has 433 MA's), (15, 14365), (25, 14470), (30, 14518), (35, 14527), (49, 14626), (53, 14665), (56, 14680), (86, 14821), (90, 14836), (127, 15016), (131, 15100), (132, 15103),

Gene: PrinceCharming_17 Start: 15470, Stop: 16219, Start Num: 10

Candidate Starts for PrinceCharming_17:

(Start: 10 @15470 has 433 MA's), (23, 15623), (25, 15635), (28, 15665), (36, 15701), (41, 15734), (46, 15767), (51, 15821), (55, 15848), (64, 15896), (67, 15914), (77, 15980), (88, 16001), (96, 16046), (98, 16058), (102, 16079),

Gene: ProfessorX_14 Start: 12409, Stop: 13245, Start Num: 10

Candidate Starts for ProfessorX_14:

(1, 12112), (2, 12181), (4, 12250), (Start: 10 @12409 has 433 MA's), (25, 12568), (28, 12598), (44, 12685), (53, 12754), (56, 12769), (69, 12826), (102, 12952), (131, 13198),

Gene: Puhltonio_14 Start: 12408, Stop: 13262, Start Num: 10

Candidate Starts for Puhltonio_14:

(1, 12105), (2, 12174), (4, 12243), (Start: 10 @12408 has 433 MA's), (25, 12567), (28, 12597), (44, 12684), (53, 12753), (56, 12768), (69, 12825), (102, 12969), (131, 13215),

Gene: QueenBeane_14 Start: 12411, Stop: 13253, Start Num: 10

Candidate Starts for QueenBeane_14:

(1, 12114), (2, 12183), (4, 12252), (Start: 10 @12411 has 433 MA's), (25, 12570), (28, 12600), (44, 12687), (53, 12756), (56, 12771), (69, 12828), (102, 12960), (131, 13206),

Gene: QueenPie_14 Start: 14655, Stop: 15506, Start Num: 10

Candidate Starts for QueenPie_14:

(Start: 10 @14655 has 433 MA's), (15, 14709), (25, 14814), (30, 14862), (35, 14871), (49, 14970), (53, 15009), (56, 15024), (81, 15156), (84, 15159), (90, 15180), (91, 15183), (127, 15390), (131, 15474),

Gene: Quesadilla_16 Start: 14845, Stop: 15846, Start Num: 10

Candidate Starts for Quesadilla_16:

(Start: 10 @14845 has 433 MA's), (15, 14899), (25, 15004), (37, 15118), (72, 15391), (99, 15541), (116, 15634), (124, 15703), (125, 15706), (130, 15799), (131, 15817),

Gene: Quisquilliae_14 Start: 12420, Stop: 13268, Start Num: 10

Candidate Starts for Quisquilliae_14:

(1, 12117), (2, 12186), (4, 12255), (Start: 10 @12420 has 433 MA's), (25, 12579), (28, 12609), (44, 12696), (53, 12765), (56, 12780), (69, 12837), (102, 12975), (131, 13221),

Gene: Qyrzula_16 Start: 15440, Stop: 16189, Start Num: 10

Candidate Starts for Qyrzula_16:

(Start: 10 @15440 has 433 MA's), (23, 15593), (25, 15605), (28, 15635), (36, 15671), (41, 15704), (46, 15737), (48, 15752), (51, 15791), (55, 15818), (64, 15866), (67, 15884), (77, 15950), (88, 15971), (96, 16016), (98, 16028), (102, 16049),

Gene: RagingRooster_16 Start: 13965, Stop: 14570, Start Num: 10

Candidate Starts for RagingRooster_16:

(Start: 10 @13965 has 433 MA's), (11, 13986), (19, 14082), (36, 14202), (61, 14364), (66, 14403), (70, 14421),

Gene: RawrgerThat_14 Start: 14145, Stop: 14969, Start Num: 10

Candidate Starts for RawrgerThat_14:

(Start: 10 @14145 has 433 MA's), (15, 14199), (25, 14304), (30, 14352), (35, 14361), (49, 14460), (53, 14499), (56, 14514), (65, 14559), (81, 14646), (84, 14649), (90, 14670), (91, 14673), (127, 14853), (131, 14937), (132, 14940),

Gene: Reccee_15 Start: 14348, Stop: 15013, Start Num: 10

Candidate Starts for Reccee_15:

(Start: 10 @14348 has 433 MA's), (15, 14402), (17, 14438), (25, 14507), (101, 14939), (107, 14984),

Gene: RedMaple_13 Start: 12411, Stop: 13265, Start Num: 10

Candidate Starts for RedMaple_13:

(1, 12108), (2, 12177), (4, 12246), (Start: 10 @12411 has 433 MA's), (25, 12570), (28, 12600), (44, 12687), (53, 12756), (56, 12771), (69, 12828), (102, 12972), (131, 13218),

Gene: RedRaider89_15 Start: 12649, Stop: 13485, Start Num: 10

Candidate Starts for RedRaider89_15:

(1, 12346), (2, 12415), (4, 12484), (Start: 10 @12649 has 433 MA's), (25, 12808), (28, 12838), (44, 12925), (53, 12994), (56, 13009), (69, 13066), (102, 13192), (131, 13438),

Gene: Renkei_13 Start: 13064, Stop: 13915, Start Num: 10

Candidate Starts for Renkei_13:

(Start: 10 @13064 has 433 MA's), (15, 13118), (25, 13223), (30, 13271), (35, 13280), (49, 13379), (53, 13418), (56, 13433), (81, 13565), (84, 13568), (90, 13589), (91, 13592), (127, 13799), (131, 13883),

Gene: Reprobate_15 Start: 14411, Stop: 15076, Start Num: 10

Candidate Starts for Reprobate_15:

(Start: 10 @14411 has 433 MA's), (15, 14465), (17, 14501), (25, 14570), (101, 15002), (107, 15047),

Gene: Rhinoforte_17 Start: 15467, Stop: 16216, Start Num: 10

Candidate Starts for Rhinoforte_17:

(Start: 10 @15467 has 433 MA's), (23, 15620), (25, 15632), (28, 15662), (36, 15698), (41, 15731), (46, 15764), (51, 15818), (55, 15845), (64, 15893), (67, 15911), (77, 15977), (88, 15998), (96, 16043), (98,

16055), (102, 16076),

Gene: Rich_15 Start: 14166, Stop: 14975, Start Num: 10

Candidate Starts for Rich_15:

(Start: 10 @14166 has 433 MA's), (12, 14190), (15, 14220), (17, 14256), (25, 14325), (95, 14724), (101, 14766), (107, 14811), (122, 14898), (126, 14943),

Gene: Ricotta_13 Start: 12123, Stop: 12977, Start Num: 10

Candidate Starts for Ricotta_13:

(1, 11820), (2, 11889), (4, 11958), (Start: 10 @12123 has 433 MA's), (25, 12282), (28, 12312), (44, 12399), (53, 12468), (56, 12483), (69, 12540), (102, 12684), (131, 12930),

Gene: Riggan_14 Start: 12415, Stop: 13233, Start Num: 10

Candidate Starts for Riggan_14:

(1, 12118), (2, 12187), (4, 12256), (Start: 10 @12415 has 433 MA's), (25, 12574), (28, 12604), (44, 12691), (53, 12760), (56, 12775), (69, 12832), (102, 12940), (131, 13186),

Gene: Rimu_14 Start: 12117, Stop: 12965, Start Num: 10

Candidate Starts for Rimu_14:

(1, 11814), (2, 11883), (4, 11952), (Start: 10 @12117 has 433 MA's), (25, 12276), (28, 12306), (44, 12393), (53, 12462), (56, 12477), (69, 12534), (102, 12672), (131, 12918),

Gene: Rinkes_19 Start: 16207, Stop: 17280, Start Num: 10

Candidate Starts for Rinkes_19:

(Start: 10 @16207 has 433 MA's), (15, 16264), (16, 16291), (25, 16369), (28, 16399), (31, 16420), (52, 16627), (53, 16636), (56, 16651), (76, 16774), (81, 16792), (83, 16810), (89, 16834), (100, 16921), (103, 16942), (108, 16987), (110, 17002), (121, 17059), (124, 17140), (125, 17143), (131, 17254),

Gene: Rita130_15 Start: 14168, Stop: 14833, Start Num: 10

Candidate Starts for Rita130_15:

(Start: 10 @14168 has 433 MA's), (15, 14222), (17, 14258), (25, 14327), (101, 14759), (107, 14804),

Gene: Rita1961_16 Start: 13960, Stop: 14565, Start Num: 10

Candidate Starts for Rita1961_16:

(Start: 10 @13960 has 433 MA's), (11, 13981), (19, 14077), (36, 14197), (61, 14359), (70, 14416),

Gene: Riverton_14 Start: 12417, Stop: 13259, Start Num: 10

Candidate Starts for Riverton_14:

(1, 12114), (2, 12183), (4, 12252), (Start: 10 @12417 has 433 MA's), (25, 12576), (28, 12606), (44, 12693), (53, 12762), (56, 12777), (69, 12834), (102, 12966), (131, 13212),

Gene: Robyn_13 Start: 11972, Stop: 12826, Start Num: 10

Candidate Starts for Robyn_13:

(1, 11669), (2, 11738), (4, 11807), (Start: 10 @11972 has 433 MA's), (25, 12131), (28, 12161), (44, 12248), (53, 12317), (56, 12332), (69, 12389), (102, 12533), (131, 12779),

Gene: Roliet_14 Start: 12417, Stop: 13253, Start Num: 10

Candidate Starts for Roliet_14:

(1, 12114), (2, 12183), (4, 12252), (Start: 10 @12417 has 433 MA's), (25, 12576), (28, 12606), (44, 12693), (53, 12762), (56, 12777), (69, 12834), (102, 12960), (131, 13206),

Gene: RomaT_16 Start: 14745, Stop: 15350, Start Num: 10

Candidate Starts for RomaT_16:

(Start: 10 @14745 has 433 MA's), (11, 14766), (19, 14862), (36, 14982), (61, 15144), (66, 15183), (70, 15201),

Gene: Roscoe_15 Start: 12646, Stop: 13494, Start Num: 10

Candidate Starts for Roscoe_15:

(1, 12349), (2, 12418), (4, 12487), (Start: 10 @12646 has 433 MA's), (25, 12805), (28, 12835), (44, 12922), (53, 12991), (56, 13006), (69, 13063), (102, 13201), (131, 13447),

Gene: Rosebush_17 Start: 15467, Stop: 16216, Start Num: 10

Candidate Starts for Rosebush_17:

(Start: 10 @15467 has 433 MA's), (23, 15620), (25, 15632), (28, 15662), (36, 15698), (41, 15731), (46, 15764), (51, 15818), (55, 15845), (64, 15893), (67, 15911), (77, 15977), (88, 15998), (96, 16043), (98, 16055), (102, 16076),

Gene: Roy17_14 Start: 12119, Stop: 12955, Start Num: 10

Candidate Starts for Roy17_14:

(1, 11822), (2, 11891), (4, 11960), (Start: 10 @12119 has 433 MA's), (25, 12278), (28, 12308), (44, 12395), (53, 12464), (56, 12479), (69, 12536), (102, 12662), (131, 12908),

Gene: SDcharge11_14 Start: 12410, Stop: 13234, Start Num: 10

Candidate Starts for SDcharge11_14:

(1, 12107), (2, 12176), (4, 12245), (Start: 10 @12410 has 433 MA's), (25, 12569), (28, 12599), (44, 12686), (53, 12755), (56, 12770), (69, 12827), (102, 12941), (131, 13187),

Gene: Sabella_17 Start: 15353, Stop: 16102, Start Num: 10

Candidate Starts for Sabella_17:

(Start: 10 @15353 has 433 MA's), (23, 15506), (25, 15518), (28, 15548), (36, 15584), (41, 15617), (46, 15650), (51, 15704), (55, 15731), (64, 15779), (67, 15797), (77, 15863), (88, 15884), (96, 15929), (98, 15941), (102, 15962),

Gene: Saguaro_16 Start: 15049, Stop: 16023, Start Num: 10

Candidate Starts for Saguaro_16:

(Start: 10 @15049 has 433 MA's), (15, 15103), (18, 15142), (22, 15184), (33, 15277), (37, 15322), (49, 15439), (72, 15592), (94, 15682), (124, 15871), (125, 15874), (128, 15943), (131, 15994),

Gene: SallyH_14 Start: 12415, Stop: 13263, Start Num: 10

Candidate Starts for SallyH_14:

(1, 12112), (2, 12181), (4, 12250), (Start: 10 @12415 has 433 MA's), (25, 12574), (28, 12604), (44, 12691), (53, 12760), (56, 12775), (69, 12832), (102, 12970), (131, 13216),

Gene: Samaymay_14 Start: 12411, Stop: 13253, Start Num: 10

Candidate Starts for Samaymay_14:

(1, 12114), (2, 12183), (4, 12252), (Start: 10 @12411 has 433 MA's), (25, 12570), (28, 12600), (44, 12687), (53, 12756), (56, 12771), (69, 12828), (102, 12960), (131, 13206),

Gene: SassyCat97_13 Start: 12118, Stop: 12960, Start Num: 10

Candidate Starts for SassyCat97_13:

(1, 11821), (2, 11890), (4, 11959), (Start: 10 @12118 has 433 MA's), (25, 12277), (28, 12307), (44, 12394), (53, 12463), (56, 12478), (69, 12535), (102, 12667), (131, 12913),

Gene: Schadenfreude_13 Start: 11962, Stop: 12810, Start Num: 10

Candidate Starts for Schadenfreude_13:

(1, 11659), (2, 11728), (4, 11797), (Start: 10 @11962 has 433 MA's), (25, 12121), (28, 12151), (44, 12238), (53, 12307), (56, 12322), (69, 12379), (102, 12517), (131, 12763),

Gene: Schueller_13 Start: 12115, Stop: 12951, Start Num: 10

Candidate Starts for Schueller_13:

(1, 11818), (2, 11887), (4, 11956), (Start: 10 @12115 has 433 MA's), (25, 12274), (28, 12304), (44, 12391), (53, 12460), (56, 12475), (69, 12532), (102, 12658), (131, 12904),

Gene: Scoot17C_14 Start: 12418, Stop: 13254, Start Num: 10

Candidate Starts for Scoot17C_14:

(1, 12115), (2, 12184), (4, 12253), (Start: 10 @12418 has 433 MA's), (25, 12577), (28, 12607), (44, 12694), (53, 12763), (56, 12778), (69, 12835), (102, 12961), (131, 13207),

Gene: Scrick_13 Start: 12125, Stop: 12973, Start Num: 10

Candidate Starts for Scrick_13:

(1, 11822), (2, 11891), (4, 11960), (Start: 10 @12125 has 433 MA's), (25, 12284), (28, 12314), (44, 12401), (53, 12470), (56, 12485), (69, 12542), (102, 12680), (131, 12926),

Gene: Selr12_14 Start: 12124, Stop: 12978, Start Num: 10

Candidate Starts for Selr12_14:

(1, 11821), (2, 11890), (4, 11959), (Start: 10 @12124 has 433 MA's), (25, 12283), (28, 12313), (44, 12400), (53, 12469), (56, 12484), (69, 12541), (102, 12685), (131, 12931),

Gene: Serendipitous_15 Start: 14216, Stop: 15022, Start Num: 10

Candidate Starts for Serendipitous_15:

(Start: 10 @14216 has 433 MA's), (15, 14270), (17, 14306), (25, 14375), (101, 14816), (107, 14861), (117, 14906), (122, 14948), (126, 14993),

Gene: Serendipity_14 Start: 12420, Stop: 13274, Start Num: 10

Candidate Starts for Serendipity_14:

(1, 12117), (2, 12186), (4, 12255), (Start: 10 @12420 has 433 MA's), (25, 12579), (28, 12609), (44, 12696), (53, 12765), (56, 12780), (69, 12837), (102, 12981), (131, 13227),

Gene: Serpentine_0014 Start: 12420, Stop: 13256, Start Num: 10

Candidate Starts for Serpentine_0014:

(1, 12117), (2, 12186), (4, 12255), (Start: 10 @12420 has 433 MA's), (25, 12579), (28, 12609), (44, 12696), (53, 12765), (56, 12780), (69, 12837), (102, 12963), (131, 13209),

Gene: ShadowBud_14 Start: 12420, Stop: 13268, Start Num: 10

Candidate Starts for ShadowBud_14:

(1, 12117), (2, 12186), (4, 12255), (Start: 10 @12420 has 433 MA's), (25, 12579), (28, 12609), (44, 12696), (53, 12765), (56, 12780), (69, 12837), (102, 12975), (131, 13221),

Gene: Sheila_14 Start: 12415, Stop: 13245, Start Num: 10

Candidate Starts for Sheila_14:

(1, 12112), (2, 12181), (4, 12250), (Start: 10 @12415 has 433 MA's), (25, 12574), (28, 12604), (44, 12691), (53, 12760), (56, 12775), (69, 12832), (102, 12952), (131, 13198),

Gene: Shenandoah_16 Start: 13943, Stop: 14548, Start Num: 10

Candidate Starts for Shenandoah_16:

(Start: 10 @13943 has 433 MA's), (11, 13964), (19, 14060), (36, 14180), (61, 14342), (66, 14381), (70, 14399),

Gene: Shenyu_15 Start: 14152, Stop: 14817, Start Num: 10
Candidate Starts for Shenyu_15:
(Start: 10 @14152 has 433 MA's), (17, 14242), (25, 14311), (101, 14743), (107, 14788),

Gene: ShiVal_14 Start: 12411, Stop: 13247, Start Num: 10
Candidate Starts for ShiVal_14:
(1, 12114), (2, 12183), (4, 12252), (Start: 10 @12411 has 433 MA's), (25, 12570), (28, 12600), (44, 12687), (53, 12756), (56, 12771), (69, 12828), (102, 12954), (131, 13200),

Gene: Sigman_14 Start: 12408, Stop: 13244, Start Num: 10
Candidate Starts for Sigman_14:
(1, 12111), (2, 12180), (4, 12249), (Start: 10 @12408 has 433 MA's), (25, 12567), (28, 12597), (44, 12684), (53, 12753), (56, 12768), (69, 12825), (102, 12951), (131, 13197),

Gene: SilverBell_14 Start: 12411, Stop: 13259, Start Num: 10
Candidate Starts for SilverBell_14:
(1, 12114), (2, 12183), (4, 12252), (Start: 10 @12411 has 433 MA's), (25, 12570), (28, 12600), (44, 12687), (53, 12756), (56, 12771), (69, 12828), (102, 12966), (131, 13212),

Gene: Simielle_13 Start: 12109, Stop: 12945, Start Num: 10
Candidate Starts for Simielle_13:
(1, 11812), (2, 11881), (4, 11950), (Start: 10 @12109 has 433 MA's), (25, 12268), (28, 12298), (44, 12385), (53, 12454), (56, 12469), (69, 12526), (102, 12652), (131, 12898),

Gene: SirBeauregard_13 Start: 12078, Stop: 12920, Start Num: 10
Candidate Starts for SirBeauregard_13:
(1, 11775), (2, 11844), (4, 11913), (Start: 10 @12078 has 433 MA's), (25, 12237), (28, 12267), (44, 12354), (53, 12423), (56, 12438), (69, 12495), (102, 12627), (131, 12873),

Gene: SirJeffery_15 Start: 14169, Stop: 14834, Start Num: 10
Candidate Starts for SirJeffery_15:
(Start: 10 @14169 has 433 MA's), (15, 14223), (17, 14259), (25, 14328), (101, 14760), (107, 14805),

Gene: Skippy_14 Start: 12414, Stop: 13238, Start Num: 10
Candidate Starts for Skippy_14:
(1, 12117), (2, 12186), (4, 12255), (Start: 10 @12414 has 433 MA's), (25, 12573), (28, 12603), (44, 12690), (53, 12759), (56, 12774), (69, 12831), (102, 12945), (131, 13191),

Gene: Slatt_14 Start: 12422, Stop: 13270, Start Num: 10
Candidate Starts for Slatt_14:
(1, 12119), (2, 12188), (4, 12257), (Start: 10 @12422 has 433 MA's), (25, 12581), (28, 12611), (44, 12698), (53, 12767), (56, 12782), (69, 12839), (102, 12977), (131, 13223),

Gene: SlippinJimmy_16 Start: 14729, Stop: 15334, Start Num: 10
Candidate Starts for SlippinJimmy_16:
(Start: 10 @14729 has 433 MA's), (11, 14750), (19, 14846), (36, 14966), (61, 15128), (66, 15167), (70, 15185),

Gene: Soile_14 Start: 12123, Stop: 12965, Start Num: 10
Candidate Starts for Soile_14:
(1, 11820), (2, 11889), (4, 11958), (Start: 10 @12123 has 433 MA's), (25, 12282), (28, 12312), (44, 12399), (53, 12468), (56, 12483), (69, 12540), (102, 12672), (131, 12918),

Gene: Solosis_13 Start: 12124, Stop: 12972, Start Num: 10

Candidate Starts for Solosis_13:

(1, 11821), (2, 11890), (4, 11959), (Start: 10 @12124 has 433 MA's), (25, 12283), (28, 12313), (44, 12400), (53, 12469), (56, 12484), (69, 12541), (102, 12679), (131, 12925),

Gene: Sophia_13 Start: 12118, Stop: 12960, Start Num: 10

Candidate Starts for Sophia_13:

(1, 11821), (2, 11890), (4, 11959), (Start: 10 @12118 has 433 MA's), (25, 12277), (28, 12307), (44, 12394), (53, 12463), (56, 12478), (69, 12535), (102, 12667), (131, 12913),

Gene: Soto_14 Start: 12414, Stop: 13250, Start Num: 10

Candidate Starts for Soto_14:

(1, 12111), (2, 12180), (4, 12249), (Start: 10 @12414 has 433 MA's), (25, 12573), (28, 12603), (44, 12690), (53, 12759), (56, 12774), (69, 12831), (102, 12957), (131, 13203),

Gene: Sour_16 Start: 14097, Stop: 14714, Start Num: 10

Candidate Starts for Sour_16:

(5, 13965), (9, 14076), (Start: 10 @14097 has 433 MA's), (15, 14151), (35, 14310), (78, 14553),

Gene: Spartan300_14 Start: 12408, Stop: 13250, Start Num: 10

Candidate Starts for Spartan300_14:

(1, 12111), (2, 12180), (4, 12249), (Start: 10 @12408 has 433 MA's), (25, 12567), (28, 12597), (44, 12684), (53, 12753), (56, 12768), (69, 12825), (102, 12957), (131, 13203),

Gene: Squid_14 Start: 12118, Stop: 12960, Start Num: 10

Candidate Starts for Squid_14:

(1, 11821), (2, 11890), (4, 11959), (Start: 10 @12118 has 433 MA's), (25, 12277), (28, 12307), (44, 12394), (53, 12463), (56, 12478), (69, 12535), (102, 12667), (131, 12913),

Gene: Squiggle_14 Start: 12118, Stop: 12960, Start Num: 10

Candidate Starts for Squiggle_14:

(1, 11821), (2, 11890), (4, 11959), (Start: 10 @12118 has 433 MA's), (25, 12277), (28, 12307), (44, 12394), (53, 12463), (56, 12478), (69, 12535), (102, 12667), (131, 12913),

Gene: Stinger_12 Start: 12611, Stop: 13471, Start Num: 10

Candidate Starts for Stinger_12:

(Start: 10 @12611 has 433 MA's), (16, 12692), (25, 12770), (26, 12776), (30, 12818), (35, 12827), (49, 12926), (53, 12965), (56, 12980), (62, 13001), (79, 13109), (81, 13112), (87, 13124), (90, 13136), (91, 13139), (105, 13235), (127, 13355), (128, 13397), (131, 13439), (132, 13442),

Gene: StinkyVeggy_16 Start: 14308, Stop: 14973, Start Num: 10

Candidate Starts for StinkyVeggy_16:

(Start: 10 @14308 has 433 MA's), (17, 14398), (25, 14467), (101, 14899),

Gene: Struggle_13 Start: 11964, Stop: 12806, Start Num: 10

Candidate Starts for Struggle_13:

(1, 11667), (2, 11736), (4, 11805), (Start: 10 @11964 has 433 MA's), (25, 12123), (28, 12153), (44, 12240), (53, 12309), (56, 12324), (69, 12381), (102, 12513), (131, 12759),

Gene: Suffolk_14 Start: 12416, Stop: 13252, Start Num: 10

Candidate Starts for Suffolk_14:

(1, 12113), (2, 12182), (4, 12251), (Start: 10 @12416 has 433 MA's), (25, 12575), (28, 12605), (44, 12692), (53, 12761), (56, 12776), (69, 12833), (102, 12959), (131, 13205),

Gene: Suigeneris_15 Start: 14169, Stop: 14834, Start Num: 10
Candidate Starts for Suigeneris_15:
(Start: 10 @14169 has 433 MA's), (15, 14223), (17, 14259), (25, 14328), (101, 14760), (107, 14805),

Gene: Surely_14 Start: 12420, Stop: 13262, Start Num: 10
Candidate Starts for Surely_14:
(1, 12117), (2, 12186), (4, 12255), (Start: 10 @12420 has 433 MA's), (25, 12579), (28, 12609), (44, 12696), (53, 12765), (56, 12780), (69, 12837), (102, 12969), (131, 13215),

Gene: SwainyDoc_16 Start: 13962, Stop: 14567, Start Num: 10
Candidate Starts for SwainyDoc_16:
(Start: 10 @13962 has 433 MA's), (11, 13983), (19, 14079), (21, 14088), (36, 14199), (61, 14361), (66, 14400), (70, 14418),

Gene: Swiphy_14 Start: 12411, Stop: 13253, Start Num: 10
Candidate Starts for Swiphy_14:
(1, 12114), (2, 12183), (4, 12252), (Start: 10 @12411 has 433 MA's), (25, 12570), (28, 12600), (44, 12687), (53, 12756), (56, 12771), (69, 12828), (102, 12960), (131, 13206),

Gene: Swish_14 Start: 12412, Stop: 13248, Start Num: 10
Candidate Starts for Swish_14:
(1, 12115), (2, 12184), (4, 12253), (Start: 10 @12412 has 433 MA's), (25, 12571), (28, 12601), (44, 12688), (53, 12757), (56, 12772), (69, 12829), (102, 12955), (131, 13201),

Gene: SynergyX_16 Start: 13965, Stop: 14570, Start Num: 10
Candidate Starts for SynergyX_16:
(Start: 10 @13965 has 433 MA's), (11, 13986), (19, 14082), (36, 14202), (61, 14364), (66, 14403), (70, 14421),

Gene: TA17A_17 Start: 15350, Stop: 16099, Start Num: 10
Candidate Starts for TA17A_17:
(Start: 10 @15350 has 433 MA's), (23, 15503), (25, 15515), (28, 15545), (36, 15581), (41, 15614), (46, 15647), (51, 15701), (55, 15728), (64, 15776), (67, 15794), (77, 15860), (88, 15881), (96, 15926), (98, 15938), (102, 15959),

Gene: TPA2_23 Start: 15116, Stop: 15712, Start Num: 10
Candidate Starts for TPA2_23:
(Start: 10 @15116 has 433 MA's), (15, 15170), (25, 15275), (35, 15335), (63, 15494), (71, 15530),

Gene: TallGrassMM_14 Start: 12124, Stop: 12978, Start Num: 10
Candidate Starts for TallGrassMM_14:
(1, 11821), (2, 11890), (4, 11959), (Start: 10 @12124 has 433 MA's), (25, 12283), (28, 12313), (44, 12400), (53, 12469), (56, 12484), (69, 12541), (102, 12685), (131, 12931),

Gene: Taraxa_14 Start: 11984, Stop: 12832, Start Num: 10
Candidate Starts for Taraxa_14:
(1, 11681), (2, 11750), (4, 11819), (Start: 10 @11984 has 433 MA's), (25, 12143), (28, 12173), (44, 12260), (53, 12329), (56, 12344), (69, 12401), (102, 12539), (131, 12785),

Gene: Telesworld_13 Start: 12124, Stop: 12960, Start Num: 10
Candidate Starts for Telesworld_13:

(1, 11821), (2, 11890), (4, 11959), (Start: 10 @12124 has 433 MA's), (25, 12283), (28, 12313), (44, 12400), (53, 12469), (56, 12484), (69, 12541), (102, 12667), (131, 12913),

Gene: Thonko_15 Start: 12057, Stop: 12863, Start Num: 10

Candidate Starts for Thonko_15:

(6, 11952), (7, 11973), (Start: 10 @12057 has 433 MA's), (25, 12216), (35, 12273), (58, 12435), (70, 12495), (81, 12552), (105, 12657), (120, 12681),

Gene: Thora_14 Start: 12414, Stop: 13262, Start Num: 10

Candidate Starts for Thora_14:

(1, 12111), (2, 12180), (4, 12249), (Start: 10 @12414 has 433 MA's), (25, 12573), (28, 12603), (44, 12690), (53, 12759), (56, 12774), (69, 12831), (102, 12969), (131, 13215),

Gene: ThreeOh3D2_14 Start: 12415, Stop: 13263, Start Num: 10

Candidate Starts for ThreeOh3D2_14:

(1, 12112), (2, 12181), (4, 12250), (Start: 10 @12415 has 433 MA's), (25, 12574), (28, 12604), (44, 12691), (53, 12760), (56, 12775), (69, 12832), (102, 12970), (131, 13216),

Gene: Thunderbird_13 Start: 12120, Stop: 12962, Start Num: 10

Candidate Starts for Thunderbird_13:

(1, 11817), (2, 11886), (4, 11955), (Start: 10 @12120 has 433 MA's), (25, 12279), (28, 12309), (44, 12396), (53, 12465), (56, 12480), (69, 12537), (102, 12669), (131, 12915),

Gene: Timmi_13 Start: 12124, Stop: 12972, Start Num: 10

Candidate Starts for Timmi_13:

(1, 11821), (2, 11890), (4, 11959), (Start: 10 @12124 has 433 MA's), (25, 12283), (28, 12313), (44, 12400), (53, 12469), (56, 12484), (69, 12541), (102, 12679), (131, 12925),

Gene: Tinciduntolum_18 Start: 15469, Stop: 16218, Start Num: 10

Candidate Starts for Tinciduntolum_18:

(Start: 10 @15469 has 433 MA's), (23, 15622), (25, 15634), (28, 15664), (36, 15700), (41, 15733), (46, 15766), (51, 15820), (55, 15847), (64, 15895), (67, 15913), (77, 15979), (88, 16000), (96, 16045), (98, 16057), (102, 16078),

Gene: TinyTerror_16 Start: 13964, Stop: 14569, Start Num: 10

Candidate Starts for TinyTerror_16:

(Start: 10 @13964 has 433 MA's), (11, 13985), (19, 14081), (36, 14201), (61, 14363), (66, 14402), (70, 14420),

Gene: TomBombadil_14 Start: 12414, Stop: 13256, Start Num: 10

Candidate Starts for TomBombadil_14:

(1, 12117), (2, 12186), (4, 12255), (Start: 10 @12414 has 433 MA's), (25, 12573), (28, 12603), (44, 12690), (53, 12759), (56, 12774), (69, 12831), (102, 12963), (131, 13209),

Gene: Tomlarah_14 Start: 12411, Stop: 13247, Start Num: 10

Candidate Starts for Tomlarah_14:

(1, 12114), (2, 12183), (4, 12252), (Start: 10 @12411 has 433 MA's), (25, 12570), (28, 12600), (44, 12687), (53, 12756), (56, 12771), (69, 12828), (102, 12954), (131, 13200),

Gene: Toni_13 Start: 12122, Stop: 12958, Start Num: 10

Candidate Starts for Toni_13:

(1, 11825), (2, 11894), (4, 11963), (Start: 10 @12122 has 433 MA's), (25, 12281), (28, 12311), (44, 12398), (53, 12467), (56, 12482), (69, 12539), (102, 12665), (131, 12911),

Gene: TooFast2Furius_15 Start: 12652, Stop: 13494, Start Num: 10

Candidate Starts for TooFast2Furius_15:

(1, 12349), (2, 12418), (4, 12487), (Start: 10 @12652 has 433 MA's), (25, 12811), (28, 12841), (44, 12928), (53, 12997), (56, 13012), (69, 13069), (102, 13201), (131, 13447),

Gene: Tooj_14 Start: 12418, Stop: 13260, Start Num: 10

Candidate Starts for Tooj_14:

(1, 12115), (2, 12184), (4, 12253), (Start: 10 @12418 has 433 MA's), (25, 12577), (28, 12607), (44, 12694), (53, 12763), (56, 12778), (69, 12835), (102, 12967), (131, 13213),

Gene: Tres_17 Start: 15350, Stop: 16099, Start Num: 10

Candidate Starts for Tres_17:

(Start: 10 @15350 has 433 MA's), (23, 15503), (25, 15515), (28, 15545), (36, 15581), (41, 15614), (46, 15647), (51, 15701), (55, 15728), (64, 15776), (67, 15794), (77, 15860), (88, 15881), (96, 15926), (98, 15938), (102, 15959),

Gene: Triad_14 Start: 11967, Stop: 12797, Start Num: 10

Candidate Starts for Triad_14:

(1, 11664), (2, 11733), (4, 11802), (Start: 10 @11967 has 433 MA's), (25, 12126), (28, 12156), (44, 12243), (53, 12312), (56, 12327), (69, 12384), (102, 12504), (131, 12750),

Gene: True_13 Start: 12119, Stop: 12961, Start Num: 10

Candidate Starts for True_13:

(1, 11822), (2, 11891), (4, 11960), (Start: 10 @12119 has 433 MA's), (25, 12278), (28, 12308), (44, 12395), (53, 12464), (56, 12479), (69, 12536), (102, 12668), (131, 12914),

Gene: Trypo_14 Start: 12408, Stop: 13250, Start Num: 10

Candidate Starts for Trypo_14:

(1, 12111), (2, 12180), (4, 12249), (Start: 10 @12408 has 433 MA's), (25, 12567), (28, 12597), (44, 12684), (53, 12753), (56, 12768), (69, 12825), (102, 12957), (131, 13203),

Gene: Tydolla_16 Start: 14702, Stop: 15307, Start Num: 10

Candidate Starts for Tydolla_16:

(Start: 10 @14702 has 433 MA's), (11, 14723), (19, 14819), (36, 14939), (61, 15101), (66, 15140), (70, 15158),

Gene: TyrionL_13 Start: 11970, Stop: 12812, Start Num: 10

Candidate Starts for TyrionL_13:

(1, 11673), (2, 11742), (4, 11811), (Start: 10 @11970 has 433 MA's), (25, 12129), (28, 12159), (44, 12246), (53, 12315), (56, 12330), (69, 12387), (102, 12519), (131, 12765),

Gene: UAch1_14 Start: 12417, Stop: 13271, Start Num: 10

Candidate Starts for UAch1_14:

(1, 12114), (2, 12183), (4, 12252), (Start: 10 @12417 has 433 MA's), (25, 12576), (28, 12606), (44, 12693), (53, 12762), (56, 12777), (69, 12834), (102, 12978), (131, 13224),

Gene: UncleHowie_14 Start: 12124, Stop: 12960, Start Num: 10

Candidate Starts for UncleHowie_14:

(1, 11821), (2, 11890), (4, 11959), (Start: 10 @12124 has 433 MA's), (25, 12283), (28, 12313), (44, 12400), (53, 12469), (56, 12484), (69, 12541), (102, 12667), (131, 12913),

Gene: Usavi_14 Start: 12414, Stop: 13262, Start Num: 10

Candidate Starts for Usavi_14:

(1, 12111), (2, 12180), (4, 12249), (Start: 10 @12414 has 433 MA's), (25, 12573), (28, 12603), (44, 12690), (53, 12759), (56, 12774), (69, 12831), (102, 12969), (131, 13215),

Gene: Vaishali24_13 Start: 12089, Stop: 12913, Start Num: 10

Candidate Starts for Vaishali24_13:

(1, 11786), (2, 11855), (4, 11924), (Start: 10 @12089 has 433 MA's), (25, 12248), (28, 12278), (44, 12365), (53, 12434), (56, 12449), (69, 12506), (102, 12620), (131, 12866),

Gene: Valjean_14 Start: 12411, Stop: 13253, Start Num: 10

Candidate Starts for Valjean_14:

(1, 12114), (2, 12183), (4, 12252), (Start: 10 @12411 has 433 MA's), (25, 12570), (28, 12600), (44, 12687), (53, 12756), (56, 12771), (69, 12828), (102, 12960), (131, 13206),

Gene: Vaticameos_14 Start: 12115, Stop: 12951, Start Num: 10

Candidate Starts for Vaticameos_14:

(1, 11818), (2, 11887), (4, 11956), (Start: 10 @12115 has 433 MA's), (25, 12274), (28, 12304), (44, 12391), (53, 12460), (56, 12475), (69, 12532), (102, 12658), (131, 12904),

Gene: Veritas_13 Start: 11958, Stop: 12800, Start Num: 10

Candidate Starts for Veritas_13:

(1, 11661), (2, 11730), (4, 11799), (Start: 10 @11958 has 433 MA's), (25, 12117), (28, 12147), (44, 12234), (53, 12303), (56, 12318), (69, 12375), (102, 12507), (131, 12753),

Gene: Vic9_00017 Start: 15790, Stop: 16539, Start Num: 10

Candidate Starts for Vic9_00017:

(Start: 10 @15790 has 433 MA's), (23, 15943), (25, 15955), (28, 15985), (36, 16021), (41, 16054), (46, 16087), (51, 16141), (55, 16168), (64, 16216), (67, 16234), (77, 16300), (88, 16321), (96, 16366), (98, 16378), (102, 16399),

Gene: Vincenzo_15 Start: 14918, Stop: 15751, Start Num: 10

Candidate Starts for Vincenzo_15:

(Start: 10 @14918 has 433 MA's), (12, 14942), (15, 14972), (16, 14999), (19, 15035), (25, 15077), (43, 15176), (44, 15194), (49, 15233), (53, 15272), (56, 15287), (68, 15344), (90, 15443), (127, 15632), (128, 15674), (131, 15716),

Gene: VioletZ_14 Start: 14154, Stop: 15005, Start Num: 10

Candidate Starts for VioletZ_14:

(Start: 10 @14154 has 433 MA's), (15, 14208), (25, 14313), (30, 14361), (35, 14370), (49, 14469), (53, 14508), (56, 14523), (81, 14655), (84, 14658), (90, 14679), (91, 14682), (118, 14796), (127, 14889), (131, 14973), (132, 14976),

Gene: Virapocalypse_14 Start: 12409, Stop: 13245, Start Num: 10

Candidate Starts for Virapocalypse_14:

(1, 12112), (2, 12181), (4, 12250), (Start: 10 @12409 has 433 MA's), (25, 12568), (28, 12598), (44, 12685), (53, 12754), (56, 12769), (69, 12826), (102, 12952), (131, 13198),

Gene: Virgeve_13 Start: 12124, Stop: 12966, Start Num: 10

Candidate Starts for Virgeve_13:

(1, 11821), (2, 11890), (4, 11959), (Start: 10 @12124 has 433 MA's), (25, 12283), (28, 12313), (44, 12400), (53, 12469), (56, 12484), (69, 12541), (102, 12673), (131, 12919),

Gene: Vista_14 Start: 12414, Stop: 13256, Start Num: 10

Candidate Starts for Vista_14:

(1, 12117), (2, 12186), (4, 12255), (Start: 10 @12414 has 433 MA's), (25, 12573), (28, 12603), (44, 12690), (53, 12759), (56, 12774), (69, 12831), (102, 12963), (131, 13209),

Gene: Vivaldi_14 Start: 12415, Stop: 13287, Start Num: 10

Candidate Starts for Vivaldi_14:

(1, 12112), (2, 12181), (4, 12250), (Start: 10 @12415 has 433 MA's), (25, 12574), (28, 12604), (44, 12691), (53, 12760), (56, 12775), (69, 12832), (102, 12994), (131, 13240),

Gene: Vortex_14 Start: 12125, Stop: 12967, Start Num: 10

Candidate Starts for Vortex_14:

(1, 11822), (2, 11891), (4, 11960), (Start: 10 @12125 has 433 MA's), (25, 12284), (28, 12314), (44, 12401), (53, 12470), (56, 12485), (69, 12542), (102, 12674), (131, 12920),

Gene: Waleliano_14 Start: 14151, Stop: 14975, Start Num: 10

Candidate Starts for Waleliano_14:

(Start: 10 @14151 has 433 MA's), (15, 14205), (25, 14310), (35, 14367), (49, 14466), (53, 14505), (56, 14520), (86, 14661), (90, 14676), (91, 14679), (127, 14859), (131, 14943), (132, 14946),

Gene: Wallhey_13 Start: 11970, Stop: 12818, Start Num: 10

Candidate Starts for Wallhey_13:

(1, 11673), (2, 11742), (4, 11811), (Start: 10 @11970 has 433 MA's), (25, 12129), (28, 12159), (44, 12246), (53, 12315), (56, 12330), (69, 12387), (102, 12525), (131, 12771),

Gene: Waterdiva_14 Start: 12412, Stop: 13254, Start Num: 10

Candidate Starts for Waterdiva_14:

(1, 12115), (2, 12184), (4, 12253), (Start: 10 @12412 has 433 MA's), (25, 12571), (28, 12601), (44, 12688), (53, 12757), (56, 12772), (69, 12829), (102, 12961), (131, 13207),

Gene: Weher20_14 Start: 12408, Stop: 13244, Start Num: 10

Candidate Starts for Weher20_14:

(1, 12111), (2, 12180), (4, 12249), (Start: 10 @12408 has 433 MA's), (25, 12567), (28, 12597), (44, 12684), (53, 12753), (56, 12768), (69, 12825), (102, 12951), (131, 13197),

Gene: West99_17 Start: 15470, Stop: 16219, Start Num: 10

Candidate Starts for West99_17:

(Start: 10 @15470 has 433 MA's), (23, 15623), (25, 15635), (28, 15665), (36, 15701), (41, 15734), (46, 15767), (51, 15821), (55, 15848), (64, 15896), (67, 15914), (77, 15980), (88, 16001), (96, 16046), (98, 16058), (102, 16079),

Gene: Windsor_13 Start: 12078, Stop: 12920, Start Num: 10

Candidate Starts for Windsor_13:

(1, 11775), (2, 11844), (4, 11913), (Start: 10 @12078 has 433 MA's), (25, 12237), (28, 12267), (44, 12354), (53, 12423), (56, 12438), (69, 12495), (102, 12627), (131, 12873),

Gene: Xavier_13 Start: 12124, Stop: 12972, Start Num: 10

Candidate Starts for Xavier_13:

(1, 11821), (2, 11890), (4, 11959), (Start: 10 @12124 has 433 MA's), (25, 12283), (28, 12313), (44, 12400), (53, 12469), (56, 12484), (69, 12541), (102, 12679), (131, 12925),

Gene: Xincheng_14 Start: 13975, Stop: 14796, Start Num: 10

Candidate Starts for Xincheng_14:

(Start: 10 @13975 has 433 MA's), (15, 14029), (25, 14134), (30, 14182), (49, 14290), (53, 14329), (56, 14344), (62, 14365), (65, 14389), (86, 14485), (90, 14500), (91, 14503), (127, 14680), (131, 14764), (132, 14767),

Gene: Yahalom_16 Start: 13976, Stop: 14581, Start Num: 10

Candidate Starts for Yahalom_16:

(Start: 10 @13976 has 433 MA's), (11, 13997), (19, 14093), (61, 14375), (70, 14432),

Gene: Yinz_16 Start: 14003, Stop: 14608, Start Num: 10

Candidate Starts for Yinz_16:

(Start: 10 @14003 has 433 MA's), (11, 14024), (19, 14120), (36, 14240), (61, 14402), (66, 14441), (70, 14459),

Gene: Yoshand_14 Start: 12415, Stop: 13257, Start Num: 10

Candidate Starts for Yoshand_14:

(1, 12112), (2, 12181), (4, 12250), (Start: 10 @12415 has 433 MA's), (25, 12574), (28, 12604), (44, 12691), (53, 12760), (56, 12775), (69, 12832), (102, 12964), (131, 13210),

Gene: YouGoGlencoco_14 Start: 12408, Stop: 13250, Start Num: 10

Candidate Starts for YouGoGlencoco_14:

(1, 12111), (2, 12180), (4, 12249), (Start: 10 @12408 has 433 MA's), (25, 12567), (28, 12597), (44, 12684), (53, 12753), (56, 12768), (69, 12825), (102, 12957), (131, 13203),

Gene: Zaider_15 Start: 12641, Stop: 13483, Start Num: 10

Candidate Starts for Zaider_15:

(1, 12344), (2, 12413), (4, 12482), (Start: 10 @12641 has 433 MA's), (25, 12800), (28, 12830), (44, 12917), (53, 12986), (56, 13001), (69, 13058), (102, 13190), (131, 13436),

Gene: Zelda_14 Start: 12411, Stop: 13253, Start Num: 10

Candidate Starts for Zelda_14:

(1, 12114), (2, 12183), (4, 12252), (Start: 10 @12411 has 433 MA's), (25, 12570), (28, 12600), (44, 12687), (53, 12756), (56, 12771), (69, 12828), (102, 12960), (131, 13206),

Gene: Zemanar_15 Start: 14151, Stop: 14975, Start Num: 10

Candidate Starts for Zemanar_15:

(Start: 10 @14151 has 433 MA's), (15, 14205), (25, 14310), (35, 14367), (49, 14466), (53, 14505), (56, 14520), (86, 14661), (90, 14676), (91, 14679), (127, 14859), (131, 14943), (132, 14946),

Gene: Zenteno07_19 Start: 13531, Stop: 14463, Start Num: 10

Candidate Starts for Zenteno07_19:

(Start: 10 @13531 has 433 MA's), (14, 13576), (15, 13588), (53, 13894), (62, 13930), (72, 14008), (76, 14026), (125, 14326), (131, 14437),

Gene: Zonia_14 Start: 12425, Stop: 13267, Start Num: 10

Candidate Starts for Zonia_14:

(1, 12128), (2, 12197), (4, 12266), (Start: 10 @12425 has 433 MA's), (25, 12584), (28, 12614), (44, 12701), (53, 12770), (56, 12785), (69, 12842), (102, 12974), (131, 13220),