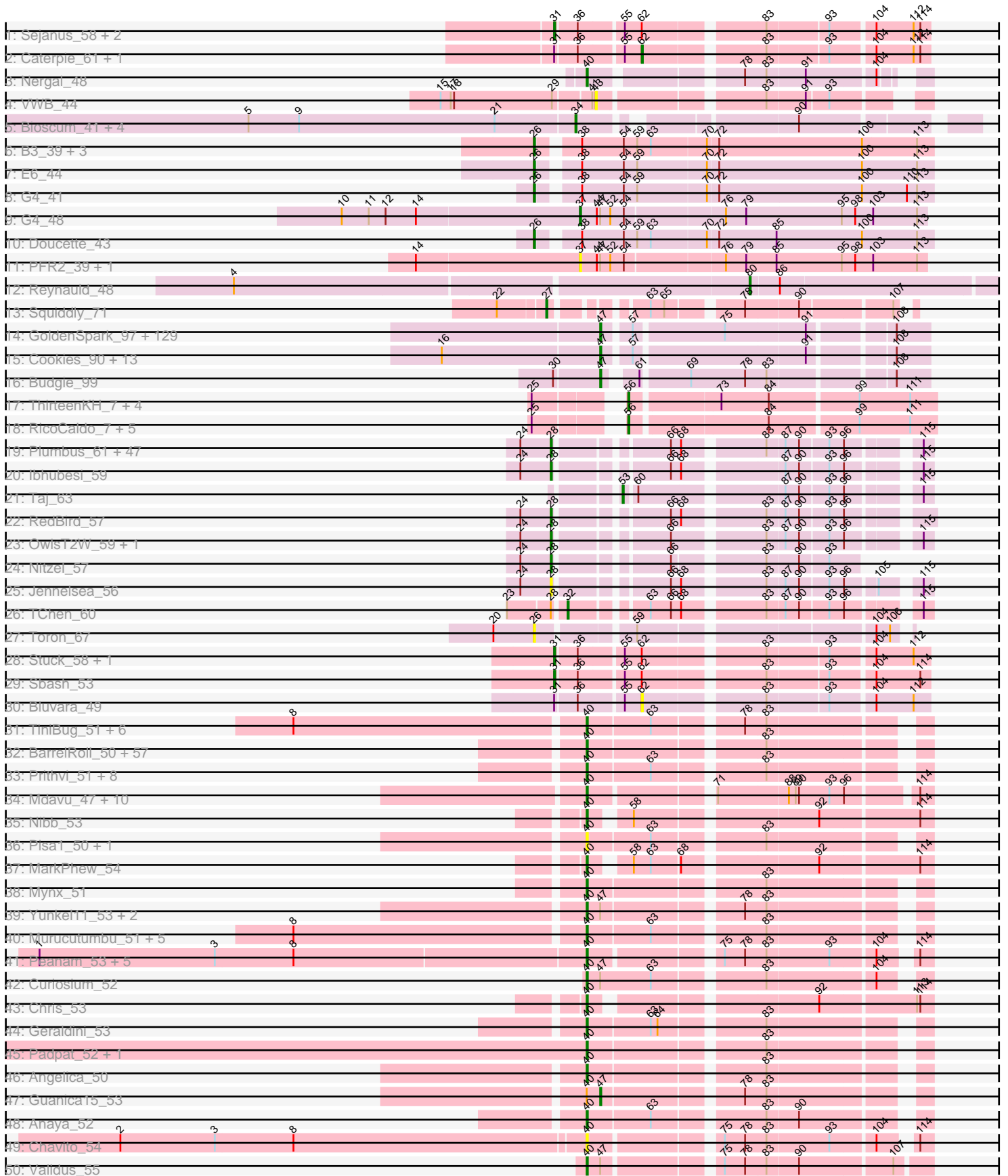
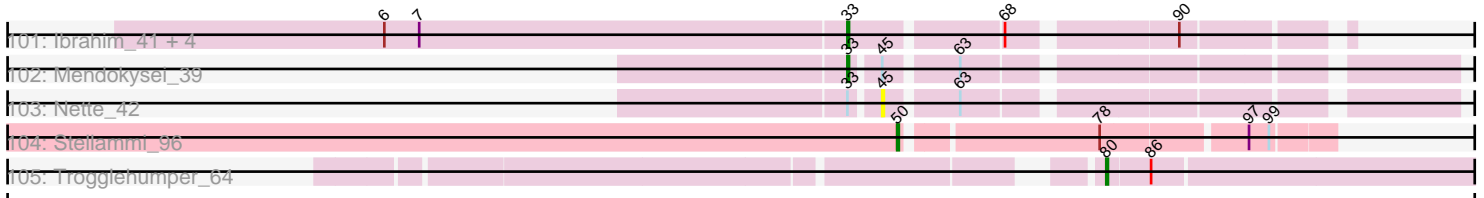


Pham 304603



Pham 304603



Note: Tracks are now grouped by subcluster and scaled. Switching in subcluster is indicated by changes in track color. Track scale is now set by default to display the region 30 bp upstream of start 1 to 30 bp downstream of the last possible start. If this default region is judged to be packed too tightly with annotated starts, the track will be further scaled to only show that region of the ORF with annotated starts. This action will be indicated by adding "Zoomed" to the title. For starts, yellow indicates the location of called starts comprised solely of Glimmer/GeneMark auto-annotations, green indicates the location of called starts with at least 1 manual gene annotation.

Pham 304603 Report

This analysis was run 06/08/26 on database version 649.

Pham number 304603 has 482 members, 56 are drafts.

Phages represented in each track:

- Track 1 : Sejanus_58, Charlie_44, Journey_43
- Track 2 : Caterpie_61, SkinnyPete_42
- Track 3 : Nergal_48
- Track 4 : VWB_44
- Track 5 : Bioscum_41, Lishka_37, PapayaSalad_40, Ididsumtinwong_41, Austintatious_37
- Track 6 : B3_39, B22_42, E1_40, Anatole_40
- Track 7 : E6_44
- Track 8 : G4_41
- Track 9 : G4_48
- Track 10 : Doucette_43
- Track 11 : PFR2_39, PFR1_37
- Track 12 : Reynauld_48
- Track 13 : Squiddly_71
- Track 14 : GoldenSpark_97, Thimble_95, HanKaySha_94, Lilpickle_92, BigBubba_93, BilboSwaggins_91, Terminus_96, Highbury_92, CrystalP_92, Cjw1_94, YassJohnny_90, ShamWow_93, Cactus_96, ChosenOne_93, TeardropMSU_89, Inca_90, Youngblood_96, Henry_91, Simpliphy_92, GooberAzure_96, Xandras_92, Brewer_89, Holt_98, Contagion_89, MadamMonkfish_93, Murica_96, Paperbeatsrock_92, NoSleep_94, Nala_95, Flypotenuse_89, JeTaime_94, PaddyBaddy_94, Command613_95, OrionPax_92, Greep_97, Lilizi_94, Porky_92, Icee_94, Gemini_98, Kimchi_97, Tarkin_92, Gage_95, ShereKhan_91, Willez_88, Hopey_94, FireRed_97, Dusk_90, Harella_93, PhatBacter_97, Quallification_94, Palpatine_95, FairyPath_94, Stark_95, Easy2Say_94, NelitzaMV_91, Eureka_92, Kanye_90, Hoonter_96, SirDuracell_93, BaboJay_93, Sotrice96_94, Murphy_93, MollyToe_88, Lilac_96, StolenFromERC_96, Tuco_94, NonchalantPear_93, Miniwave_88, Amao_93, MISSy_94, Phrux_91, Glexan_92, Bruin_90, Thresher_96, Bench_96, Becksu_92, Rakim_94, Mosby_89, Marshmallow_91, Misfit_94, 244_94, AmericanBeauty_97, Myrale_93, Manda_95, Teaspoon_94, Nimrod_94, Pumpkin_97, SophKB_90, Tomaszewski_88, ABCat_90, Sassay_88, Phaja_91, Goku_92, Argent26_97, BadStone_90, Saints25_92, Asriel_91, Elph10_94, DrDrey_93, TBrady12_96, Dumbo_93, Toto_91, HuffyPuff_95, xkcd_96, Goldilocks_96, MPhalcon_94, Adnama_97, Traaww1_89, IHOP_91, Pharsalus_90, BugsBunny_93, Filch_95, Policronamos_96, StellaBean_91, Wiggyn_95, Ukulele_88, Czyszccon1_94, Mindy_92, Kostya_93, Moldemort_96, Liveloughbron_95, Stank_95, Emmina_93, RiverMonster_94, Elite2014_92, Bogg_93, Maxxinista_96, Barbarian_92, Ptowny_90, Phaux_96

- Track 15 : Cookies_90, Buck_94, FoghornLeghorn_87, TeamEdward_93, Balomoji_93, Rimmer_91, Bask21_93, DoctorDiddles_92, Gator_91, Daikon_94, StormChicken_95, Petra64142_98, Pat3_90, ChotaBhai_93
- Track 16 : Budgie_99
- Track 17 : ThirteenKH_7, Atraxi_7, Yafa_7, TrippleS_7, Morrill_7
- Track 18 : RicoCaldo_7, StagePhright_7, Astartes_7, PhriedRice_7, Fullmetal_7, Moleficent_7
- Track 19 : Plumbus_61, Daenerys_53, AlpineSix_64, Doomslug_68, Pacc40_53, LunaBlu_61, Dorothy_57, KingMidas_58, Avani_67, Seabastian_64, Jinglebell_64, Ochi17_62, Leozinho_58, SimranZ1_59, DosHalletts_61, SeaLumen_63, Stap_57, Nichirin_66, Modragons_63, Inventum_54, Clank_64, Phasih_57, Leperchaun_51, Girr_57, JoeyJr_54, PHappiness_54, Ruby_55, Mwanjiwa_65, Cornucopia_61, NewHope4_60, Polo2Bam_64, Doomphist_59, Empress_57, Fastidio_59, Poenanya_59, Estave1_62, Sassafras_57, OfUltron_64, Oksu_63, Spoonbill_56, Llama_64, RitaG_54, DillTech15_56, MisterCuddles_57, Galactic_58, Enzomatic_65, Polka14_57, BodEinwohner17_59
- Track 20 : lbhubesi_59
- Track 21 : Taj_63
- Track 22 : RedBird_57
- Track 23 : OwlsT2W_59, Grimmer_69
- Track 24 : Nitzel_57
- Track 25 : Jennelsea_56
- Track 26 : TChen_60
- Track 27 : Toron_67
- Track 28 : Stuck_58, Shweta_42
- Track 29 : Sbash_53
- Track 30 : Bluvara_49
- Track 31 : TiniBug_51, SamuelLPlaqson_51, DartGoblin_52, DrHayes_51, Bella96_51, Anma_52, Urkel_51
- Track 32 : BarrelRoll_50, MacKat_45, AlishaPH_50, TruffulaTree_50, BaghaKamala_49, Bern_51, Asayake_50, Atiba_51, Adephagia_50, Veliki_51, Beezoo_52, JAWS_50, Ramen_51, ActinUp_50, Hyperbowlee_50, CREW_50, Slimphazie_50, Zavala_52, Adonis_50, Capricorn_50, MeaningOfLife_51, Spock_50, QuincyRose_49, Clipper_53, Peel_50, Durfee_50, Sulley_50, Tachez_50, Jayhawk_51, Rapunzel97_51, CaseJules_52, Topper_50, Dalmuri_50, Rosmarinus_50, Apocalypse_53, Joy99_50, CheetoDust_49, Blizzard_50, Belladonna_50, Homura_50, YoureAdopted_49, Inky_50, Zabiza_45, Lunahalos_50, TaiwanKao_52, HedwigODU_50, CallaLilly_50, Llorens_50, Padfoot_50, Jeckyll_50, Boiiii_50, BGlluviae_50, BEEEST_50, Ganymede_51, Piatt_50, ShiaSurprise_51, Jarvi_50, Twitch_50
- Track 33 : Prithvi_51, CrimD_50, Megsy_52, LindNT_49, TreyKay_51, LaterM_51, Deby_50, Tiri_51, Pokerus_49
- Track 34 : Mdavu_47, Torres_49, Nutello_46, SgtBeansprout_46, Trice_46, Enkosi_48, Amelie_46, Teejan_48, LilPharaoh_46, Biglebops_46, Nikao_49
- Track 35 : Nibb_53
- Track 36 : Pisa1_50, Pisa4_44
- Track 37 : MarkPhew_54
- Track 38 : Mynx_51
- Track 39 : Yunkel11_53, Efra2_53, TingHuaYa_51
- Track 40 : Murucutumbu_51, Illumine_53, Dole_53, Ageofdapage_52, Devera_55, Stinson_51
- Track 41 : Peanam_53, Dartin_53, Shaobing_53, Richo_53, McMater_53, Niklas_53
- Track 42 : Curiosium_52

- Track 43 : Chris_53
- Track 44 : Geraldini_53
- Track 45 : Padpat_52, Emerson_51
- Track 46 : Angelica_50
- Track 47 : Guanica15_53
- Track 48 : Anaya_52
- Track 49 : Chavito_54
- Track 50 : Validus_55
- Track 51 : LastHope_53
- Track 52 : Findley_54, DismalFunk_54, Milly_54, Marcoliusprime_54, DismalStressor_54
- Track 53 : ZoeJ_53
- Track 54 : Strobilo_54, TM4_49
- Track 55 : BoostSeason_54, Doughnut_54
- Track 56 : Mufasa_54
- Track 57 : Hurricane_53
- Track 58 : Lea83_53
- Track 59 : Pixie_52, ShedlockHolmes_54, Keshu_55, TBond007_51
- Track 60 : Pharb_50
- Track 61 : Bryler_54, Cain_54, Tierra_54, PhelpsODU_53, Phrank_54, Unicorn_53
- Track 62 : Ekdilam_50
- Track 63 : TClif_54
- Track 64 : Fefferhead_51, Applecrisp_50, Ellie_49
- Track 65 : Amohnition_53, DarthP_53, Hammy_53, November_51
- Track 66 : Krueger_57
- Track 67 : Shadow1_56, Sunflower1121_57, Ximenita_57
- Track 68 : Tigress9_56, Syra333_56
- Track 69 : Marshawn_53
- Track 70 : Lavahound_50, Amgine_51
- Track 71 : SirPhilip_53
- Track 72 : Acquire49_78, MAckerman_76, Zaria_79, Wyatt2_79
- Track 73 : Enceladus_75
- Track 74 : DirkDirk_75, OhShagHennessy_75, JoeDirt_78, Appletree2_77, Poochiewood_76
- Track 75 : Wamburgrxpress_78, LeBron_77, CicholasNage_75, UPIE_77, AvadaKedavra_78, Rose5_78
- Track 76 : Halena_76, Calm_80, Tyson_79, Silverleaf_78
- Track 77 : Itos_80, Breezona_81, Gardann_81, MkaliMitinis3_82, Winky_81, Miley16_81, Rumpelstiltskin_78, Faith1_81, Zakai_82, Wilder_82, Kahlid_81
- Track 78 : Archie_78
- Track 79 : Tourach_80
- Track 80 : Claus_80
- Track 81 : Finemlucis_80
- Track 82 : Bazzle_78
- Track 83 : Whirlwind_80, Krypton555_80
- Track 84 : Nicholas_77, Clautastrophe_77, Kingsolomon_77, Snenia_78, Finnry_79, TriFive_80, Bellis_79, Jobypre_79, MsGreen_79, Jubie_78
- Track 85 : Lolly9_78, MiniMac_83
- Track 86 : Ellson_78, KirDoubleO7_77, BourbonZero_80, LiyuLake_78
- Track 87 : Moostard_77, Red305_80, Samty_78
- Track 88 : DuncansLeg_79
- Track 89 : MiniLon_83
- Track 90 : Quby_79

- Track 91 : Kropertea_76, DyoEdafos_83
- Track 92 : Douge_78
- Track 93 : PYPDinur_78, BrainDrainer_79
- Track 94 : ChutneyChips_79
- Track 95 : Sheng711_80
- Track 96 : Chaser_77
- Track 97 : FarmResident_80
- Track 98 : Douzhi_79
- Track 99 : Bromden_79
- Track 100 : Aegeus_88, Baudelaire_88
- Track 101 : Ibrahim_41, Nairb_40, ZenTime222_40, Bernal13_41, RonRayGun_41
- Track 102 : Mendokysei_39
- Track 103 : Nette_42
- Track 104 : Stellammi_96
- Track 105 : Trogglehumper_64

Summary of Final Annotations (See graph section above for start numbers):

The start number called the most often in the published annotations is 47, it was called in 134 of the 426 non-draft genes in the pham.

Genes that call this "Most Annotated" start:

- 244_94, ABCat_90, Adnama_97, Amao_93, AmericanBeauty_97, Argent26_97, Asriel_91, BaboJay_93, BadStone_90, Balomoji_93, Barbarian_92, Bask21_93, Becksu_92, Bench_96, BigBubba_93, BilboSwaggins_91, Bogg_93, Brewer_89, Bruin_90, Buck_94, Budgie_99, BugsBunny_93, Cactus_96, ChosenOne_93, ChotaBhai_93, Cjw1_94, Command613_95, Contagion_89, Cookies_90, CrystalP_92, Czyszczonek_94, Daikon_94, DoctorDiddles_92, DrDrey_93, Dumbo_93, Dusk_90, Easy2Say_94, Elite2014_92, Elph10_94, Emmina_93, Eureka_92, FairyPath_94, Filch_95, FireRed_97, Flypotenuse_89, FoghornLeghorn_87, Gage_95, Gator_91, Gemini_98, Glexan_92, Goku_92, GoldenSpark_97, Goldilocks_96, GooberAzure_96, Greep_97, Guanica15_53, HanKaySha_94, Harella_93, Henry_91, Highbury_92, Holt_98, Hoonter_96, Hopey_94, HufflyPuff_95, IHOP_91, Icee_94, Inca_90, JeTaime_94, Kanye_90, Kimchi_97, Kostya_93, LastHope_53, Lilac_96, Lilizi_94, Lilpickle_92, Liveloughbron_95, MISSy_94, MPhalcon_94, MadamMonkfish_93, Manda_95, Marshmallow_91, Maxxinista_96, Mindy_92, Miniwave_88, Misfit_94, Moldemort_96, MollyToe_88, Mosby_89, Murica_96, Murphy_93, Myrale_93, Nala_95, NelitzaMV_91, Nimrod_94, NoSleep_94, NonchalantPear_93, OrionPax_92, PaddyBaddy_94, Palpatine_95, Paperbeatsrock_92, Pat3_90, Petra64142_98, Phaja_91, Pharsalus_90, PhatBacter_97, Phaux_96, Phrux_91, Policronamos_96, Porcky_92, Ptowny_90, Pumpkin_97, Quallification_94, Rakim_94, Rimmer_91, RiverMonster_94, Saints25_92, Sassay_88, ShamWow_93, ShereKhan_91, Simpliphy_92, SirDuracell_93, SophKB_90, Sotrice96_94, Stank_95, Stark_95, StellaBean_91, StolenFromERC_96, StormChicken_95, TBrady12_96, Tarkin_92, TeamEdward_93, TeardropMSU_89, Teaspoon_94, Terminus_96, Thimble_95, Thresher_96, Tomaszewski_88, Toto_91, Traaww1_89, Tuco_94, Ukulele_88, Wiggin_95, Willez_88, Xandras_92, YassJohnny_90, Youngblood_96, xkcd_96,

Genes that have the "Most Annotated" start but do not call it:

• Curiosium_52, Efra2_53, G4_48, PFR1_37, PFR2_39, TingHuaYa_51, Validus_55, Yunkel11_53,

Genes that do not have the "Most Annotated" start:

• Acquire49_78, ActinUp_50, Adephagia_50, Adonis_50, Aegeus_88, Ageofdapage_52, AlishaPH_50, AlpineSix_64, Amelie_46, Amgine_51, Amohntion_53, Anatole_40, Anaya_52, Angelica_50, Anma_52, Apocalypse_53, Applecrisp_50, Appletree2_77, Archie_78, Asayake_50, Astartes_7, Atiba_51, Atraxi_7, Austintatious_37, AvadaKedavra_78, Avani_67, B22_42, B3_39, BEEST_50, BGIlluviae_50, BaghaKamala_49, BarrelRoll_50, Baudelaire_88, Bazzle_78, Beezoo_52, Bella96_51, Belladonna_50, Bellis_79, Bern_51, Bernal13_41, Biglebops_46, Bioscum_41, Blizzard_50, Bluvava_49, BodEinwohner17_59, Boiiii_50, BoostSeason_54, BourbonZero_80, BrainDrainer_79, Breezona_81, Bromden_79, Bryler_54, CREW_50, Cain_54, CallaLilly_50, Calm_80, Capricorn_50, CaseJules_52, Caterpie_61, Charlie_44, Chaser_77, Chavito_54, CheetoDust_49, Chris_53, ChutneyChips_79, CicholasNage_75, Clank_64, Claus_80, Clautastrophe_77, Clipper_53, Cornucopia_61, CrimD_50, Daenerys_53, Dalmuri_50, DartGoblin_52, DarthP_53, Dartin_53, Deby_50, Devera_55, DillTech15_56, DirkDirk_75, DismalFunk_54, DismalStressor_54, Dole_53, Doomphist_59, Doomslug_68, Dorothy_57, DosHalletts_61, Doucette_43, Douge_78, Doughnut_54, Douzhi_79, DrHayes_51, DuncansLeg_79, Durfee_50, DyoEdafos_83, E1_40, E6_44, Ekdilam_50, Ellie_49, Ellson_78, Emerson_51, Empress_57, Enceladus_75, Enkosi_48, Enzomatic_65, Estave1_62, Faith1_81, FarmResident_80, Fastidio_59, Fefferhead_51, Findley_54, Finemlucis_80, Finny_79, Fullmetal_7, G4_41, Galactic_58, Ganymede_51, Gardann_81, Geraldini_53, Girr_57, Grimmer_69, Halena_76, Hammy_53, HedwigODU_50, Homura_50, Hurricane_53, Hyperbowlee_50, Ibhubesi_59, Ibrahim_41, Ididsumtinwong_41, Illumine_53, Inky_50, Inventum_54, Itos_80, JAWS_50, Jarvi_50, Jayhawk_51, Jeckyll_50, Jennelsea_56, Jinglebell_64, Jobypre_79, JoeDirt_78, JoeyJr_54, Journey_43, Joy99_50, Jubie_78, Kahlid_81, Keshu_55, KingMidas_58, Kingsolomon_77, KirDoubleO7_77, Kropertea_76, Krueger_57, Krypton555_80, LaterM_51, Lavahound_50, LeBron_77, Lea83_53, Leozinho_58, Leperchaun_51, LilPharaoh_46, LindNT_49, Lishka_37, LiyuLake_78, Llama_64, Llorens_50, Lolly9_78, LunaBlu_61, Lunahalos_50, MAckerman_76, MacKat_45, Marcoliusprime_54, MarkPhew_54, Marshawn_53, McMater_53, Mdavu_47, MeaningOfLife_51, Megsy_52, Mendokyse_39, Miley16_81, Milly_54, MiniLon_83, MiniMac_83, MisterCuddles_57, MkaliMitinis3_82, Modragons_63, Moleficent_7, Moostard_77, Morrill_7, MsGreen_79, Mufasa_54, Murucutumbu_51, Mwanjiwa_65, Mynx_51, Nairb_40, Nergal_48, Nette_42, NewHope4_60, Nibb_53, Nichirin_66, Nicholas_77, Nikao_49, Niklas_53, Nitzel_57, November_51, Nutello_46, Ochi17_62, OfUltron_64, OhShagHennessy_75, Oksu_63, OwlsT2W_59, PHappiness_54, PYPDinur_78, Pacc40_53, Padfoot_50, Padpat_52, PapayaSalad_40, Peanam_53, Peel_50, Pharb_50, Phasih_57, PhelpsODU_53, Phrank_54, PhriedRice_7, Piatt_50, Pisa1_50, Pisa4_44, Pixie_52, Plumbus_61, Poenanya_59, Pokerus_49, Polka14_57, Polo2Bam_64, Poochiewood_76, Prithvi_51, Quby_79, QuincyRose_49, Ramen_51, Rapunzel97_51, Red305_80, RedBird_57, Reynauld_48, Richo_53, RicoCaldo_7, RitaG_54, RonRayGun_41, Rose5_78, Rosmarinus_50, Ruby_55, Rumpelstiltskin_78, Samty_78, SamuelLPlaqson_51, Sassafras_57, Sbash_53, SeaLumen_63, Seabastian_64, Sejanus_58, SgtBeansprout_46, Shadow1_56, Shaobing_53, ShedlockHolmes_54, Sheng711_80, ShiaSurprise_51, Shweta_42, Silverleaf_78, SimranZ1_59, SirPhilip_53, SkinnyPete_42, Slimphazie_50, Snenia_78, Spock_50, Spoonbill_56, Squiddly_71, StagePhright_7, Stap_57, Stellammi_96, Stinson_51, Strobilo_54, Stuck_58, Sulley_50, Sunflower1121_57,

Syra333_56, TBond007_51, TChen_60, TClif_54, TM4_49, Tachez_50, TaiwanKao_52, Taj_63, Teejan_48, ThirteenKH_7, Tierra_54, Tigress9_56, TiniBug_51, Tiri_51, Topper_50, Toron_67, Torres_49, Tourach_80, TreyKay_51, TriFive_80, Trice_46, TrippleS_7, Trogglehumper_64, TruffulaTree_50, Twitch_50, Tyson_79, UPIE_77, Unicorn_53, Urkel_51, VWB_44, Veliki_51, Wamburgxpress_78, Whirlwind_80, Wilder_82, Winky_81, Wyatt2_79, Ximenita_57, Yafa_7, YoureAdopted_49, Zabiza_45, Zakai_82, Zaria_79, Zavala_52, ZenTime222_40, ZoeJ_53,

Summary by start number:

Start 26:

- Found in 8 of 482 (1.7%) of genes in pham
- Manual Annotations of this start: 7 of 426
- Called 100.0% of time when present
- Phage (with cluster) where this start called: Anatole_40 (BV), B22_42 (BW), B3_39 (BV), Doucette_43 (BW), E1_40 (BV), E6_44 (BW), G4_41 (BW), Toron_67 (F6),

Start 27:

- Found in 1 of 482 (0.2%) of genes in pham
- Manual Annotations of this start: 1 of 426
- Called 100.0% of time when present
- Phage (with cluster) where this start called: Squiddly_71 (DN2),

Start 28:

- Found in 55 of 482 (11.4%) of genes in pham
- Manual Annotations of this start: 44 of 426
- Called 98.2% of time when present
- Phage (with cluster) where this start called: AlpineSix_64 (F1), Avani_67 (F2), BodEinwohner17_59 (F1), Clank_64 (F), Cornucopia_61 (F1), Daenerys_53 (F1), DillTech15_56 (F1), Doomphist_59 (F1), Doomslug_68 (F), Dorothy_57 (F1), DosHalletts_61 (F1), Empress_57 (F1), Enzomatic_65 (F1), Estave1_62 (F1), Fastidio_59 (F1), Galactic_58 (F1), Girr_57 (F1), Grimmer_69 (F1), Ibhubesi_59 (F1), Inventum_54 (F1), Jennelsea_56 (F1), Jinglebell_64 (F1), JoeyJr_54 (F1), KingMidas_58 (F1), Leozinho_58 (F1), Leperchaun_51 (F1), Llama_64 (F1), LunaBlu_61 (F1), MisterCuddles_57 (F1), Modragons_63 (F1), Mwanjiwa_65 (F1), NewHope4_60 (F1), Nichirin_66 (F1), Nitzel_57 (F1), Ochi17_62 (F1), OfUltron_64 (F1), Oksu_63 (F1), OwlsT2W_59 (F1), PHappiness_54 (F1), Pacc40_53 (F1), Phasih_57 (F1), Plumbus_61 (F1), Poenanya_59 (F1), Polka14_57 (F1), Polo2Bam_64 (F1), RedBird_57 (F1), RitaG_54 (F1), Ruby_55 (F1), Sassafras_57 (F1), SeaLumen_63 (F1), Seabastian_64 (F1), SimranZ1_59 (F1), Spoonbill_56 (F1), Stap_57 (F1),

Start 31:

- Found in 9 of 482 (1.9%) of genes in pham
- Manual Annotations of this start: 5 of 426
- Called 66.7% of time when present
- Phage (with cluster) where this start called: Charlie_44 (N), Journey_43 (N), Sbash_53 (I2), Sejanus_58 (AD), Shweta_42 (N), Stuck_58 (I2),

Start 32:

- Found in 1 of 482 (0.2%) of genes in pham
- Manual Annotations of this start: 1 of 426

- Called 100.0% of time when present
- Phage (with cluster) where this start called: TChen_60 (F4),

Start 33:

- Found in 7 of 482 (1.5%) of genes in pham
- Manual Annotations of this start: 6 of 426
- Called 85.7% of time when present
- Phage (with cluster) where this start called: Bernal13_41 (T), Ibrahim_41 (T), Mendokysej_39 (T), Nairb_40 (T), RonRayGun_41 (T), ZenTime222_40 (T),

Start 34:

- Found in 6 of 482 (1.2%) of genes in pham
- Manual Annotations of this start: 5 of 426
- Called 83.3% of time when present
- Phage (with cluster) where this start called: Austintatious_37 (BC3), Bioscum_41 (BC3), Ididsumtinwong_41 (BC3), Lishka_37 (BC3), PapayaSalad_40 (BC3),

Start 35:

- Found in 7 of 482 (1.5%) of genes in pham
- Manual Annotations of this start: 7 of 426
- Called 100.0% of time when present
- Phage (with cluster) where this start called: Hurricane_53 (K3), Keshu_55 (K3), Lea83_53 (K3), Pharb_50 (K3), Pixie_52 (K3), ShedlockHolmes_54 (K3), TBond007_51 (K3),

Start 37:

- Found in 3 of 482 (0.6%) of genes in pham
- Manual Annotations of this start: 1 of 426
- Called 100.0% of time when present
- Phage (with cluster) where this start called: G4_48 (BW), PFR1_37 (BX), PFR2_39 (BX),

Start 38:

- Found in 66 of 482 (13.7%) of genes in pham
- Manual Annotations of this start: 37 of 426
- Called 57.6% of time when present
- Phage (with cluster) where this start called: Acquire49_78 (L1), Appletree2_77 (L1), Archie_78 (L2), Bazzle_78 (L2), Bellis_79 (L3), Breezona_81 (L2), Claus_80 (L2), Clautastrophe_77 (L3), DirkDirk_75 (L1), DuncansLeg_79 (L3), Faith1_81 (L2), Finemlucis_80 (L2), Finnry_79 (L3), Gardann_81 (L2), Itos_80 (L2), Jobypre_79 (L3), JoeDirt_78 (L1), Jubie_78 (L3), Kahlid_81 (L2), Kingsolomon_77 (L3), Krypton555_80 (L3), MAckerman_76 (L1), Miley16_81 (L2), MiniLon_83 (L3), MkaliMitinis3_82 (L2), MsGreen_79 (L3), Nicholas_77 (L3), OhShagHennessy_75 (L1), Poochiewood_76 (L1), Rumpelstiltskin_78 (L2), Snenia_78 (L3), TriFive_80 (L3), Whirlwind_80 (L3), Wilder_82 (L2), Winky_81 (L2), Wyatt2_79 (L1), Zakai_82 (L2), Zaria_79 (L1),

Start 39:

- Found in 12 of 482 (2.5%) of genes in pham
- Manual Annotations of this start: 6 of 426
- Called 100.0% of time when present
- Phage (with cluster) where this start called: BrainDrainer_79 (L4), Bromden_79 (L4), Chaser_77 (L4), ChutneyChips_79 (L4), Douge_78 (L4), Douzhi_79 (L4), DyoEdafos_83 (L4), FarmResident_80 (L4), Kropertea_76 (L4), PYPDinur_78 (L4),

Quby_79 (L4), Sheng711_80 (L4),

Start 40:

- Found in 142 of 482 (29.5%) of genes in pham
- Manual Annotations of this start: 129 of 426
- Called 98.6% of time when present
- Phage (with cluster) where this start called: ActinUp_50 (K1), Adephagia_50 (K1), Adonis_50 (K1), Ageofdapage_52 (K1), AlishaPH_50 (K1), Amelie_46 (K1), Amgine_51 (K6), Amohnition_53 (K6), Anaya_52 (K1), Angelica_50 (K1), Anma_52 (K1), Apocalypse_53 (K1), Applecrisp_50 (K6), Asayake_50 (K1), Atiba_51 (K1), BEEST_50 (K1), BGlluviae_50 (K1), BaghaKamala_49 (K1), BarrelRoll_50 (K1), Beezoo_52 (K1), Bella96_51 (K1), Belladonna_50 (K1), Bern_51 (K1), Biglebops_46 (K1), Blizzard_50 (K1), Boiiii_50 (K1), Bryler_54 (K6), CREW_50 (K1), Cain_54 (K6), CallaLilly_50 (K1), Capricorn_50 (K1), CaseJules_52 (K1), Chavito_54 (K1), CheetoDust_49 (K1), Chris_53 (K1), Clipper_53 (K1), CrimD_50 (K1), Curiosium_52 (K1), Dalmuri_50 (K1), DartGoblin_52 (K1), DARTH_P_53 (K6), Dartin_53 (K1), Deby_50 (K1), Devera_55 (K1), Dole_53 (K1), DrHayes_51 (K1), Durfee_50 (K1), Efra2_53 (K1), Ekdilam_50 (K6), Ellie_49 (K6), Emerson_51 (K1), Enkosi_48 (K1), Fefferhead_51 (K6), Ganymede_51 (K1), Geraldini_53 (K1), Hammy_53 (K6), HedwigODU_50 (K1), Homura_50 (K1), Hyperbowlee_50 (K1), Illumine_53 (K1), Inky_50 (K1), JAWS_50 (K1), Jarvi_50 (K1), Jayhawk_51 (K1), Jeckyll_50 (K1), Joy99_50 (K1), Krueger_57 (K6), LaterM_51 (K1), Lavahound_50 (K6), LilPharaoh_46 (K1), LindNT_49 (K1), Llorens_50 (K1), Lunahalos_50 (K1), MacKat_45 (K1), MarkPheW_54 (K1), Marshawn_53 (K6), McMater_53 (K1), Mdavu_47 (K1), MeaningOfLife_51 (K1), Megsy_52 (K1), Murucutumbu_51 (K1), Mynx_51 (K1), Nergal_48 (AG), Nibb_53 (K1), Nikao_49 (K1), Niklas_53 (K1), November_51 (K6), Nutello_46 (K1), Padfoot_50 (K1), Padpat_52 (K1), Peanam_53 (K1), Peel_50 (K1), PhelpsODU_53 (K6), Phrank_54 (K6), Piatt_50 (K1), Pisa1_50 (K1), Pisa4_44 (K1), Pokerus_49 (K1), Prithvi_51 (K1), QuincyRose_49 (K1), Ramen_51 (K1), Rapunzel97_51 (K1), Richo_53 (K1), Rosmarinus_50 (K1), SamuelLPlaQson_51 (K1), SgtBeansprout_46 (K1), Shadow1_56 (K6), Shaobing_53 (K1), ShiaSurprise_51 (K1), SirPhilip_53 (K6), Slimphazie_50 (K1), Spock_50 (K1), Stinson_51 (K1), Sulley_50 (K1), Sunflower1121_57 (K6), Syra333_56 (K6), TClif_54 (K6), Tachez_50 (K1), TaiwanKao_52 (K1), Teejan_48 (K1), Tierra_54 (K6), Tigress9_56 (K6), TingHuaYa_51 (K1), TiniBug_51 (K1), Tiri_51 (K1), Topper_50 (K1), Torres_49 (K1), TreyKay_51 (K1), Trice_46 (K1), TruffulaTree_50 (K1), Twitch_50 (K1), Unicorn_53 (K6), Urkel_51 (K1), Validus_55 (K1), Veliki_51 (K1), Ximenita_57 (K6), YoureAdopted_49 (K1), Yunkel11_53 (K1), Zabiza_45 (K1), Zavala_52 (K1),

Start 41:

- Found in 12 of 482 (2.5%) of genes in pham
- Manual Annotations of this start: 7 of 426
- Called 58.3% of time when present
- Phage (with cluster) where this start called: BoostSeason_54 (K2), DismalFunk_54 (K2), DismalStressor_54 (K2), Doughnut_54 (K2), Findley_54 (K2), Marcoliusprime_54 (K2), Milly_54 (K2),

Start 43:

- Found in 12 of 482 (2.5%) of genes in pham
- Manual Annotations of this start: 4 of 426
- Called 41.7% of time when present

- Phage (with cluster) where this start called: Mufasa_54 (K2), Strobilo_54 (K2), TM4_49 (K2), VWB_44 (BA), ZoeJ_53 (K2),

Start 45:

- Found in 2 of 482 (0.4%) of genes in pham
- No Manual Annotations of this start.
- Called 50.0% of time when present
- Phage (with cluster) where this start called: Nette_42 (T),

Start 46:

- Found in 48 of 482 (10.0%) of genes in pham
- Manual Annotations of this start: 12 of 426
- Called 35.4% of time when present
- Phage (with cluster) where this start called: Aegeus_88 (L5), Baudelaire_88 (L5), BourbonZero_80 (L3), Calm_80 (L1), Ellson_78 (L3), Enceladus_75 (L1), Halena_76 (L1), KirDoubleO7_77 (L3), LiyuLake_78 (L3), Lolly9_78 (L3), MiniMac_83 (L3), Moostard_77 (L3), Red305_80 (L3), Samty_78 (L3), Silverleaf_78 (L1), Tourach_80 (L2), Tyson_79 (L1),

Start 47:

- Found in 155 of 482 (32.2%) of genes in pham
- Manual Annotations of this start: 134 of 426
- Called 94.8% of time when present
- Phage (with cluster) where this start called: 244_94 (E), ABCat_90 (E), Adnama_97 (E), Amao_93 (E), AmericanBeauty_97 (E), Argent26_97 (E), Asriel_91 (E), BaboJay_93 (E), BadStone_90 (E), Balomoji_93 (E), Barbarian_92 (E), Bask21_93 (E), Becksu_92 (E), Bench_96 (E), BigBubba_93 (E), BilboSwaggins_91 (E), Bogg_93 (E), Brewer_89 (E), Bruin_90 (E), Buck_94 (E), Budgie_99 (E), BugsBunny_93 (E), Cactus_96 (E), ChosenOne_93 (E), ChotaBhai_93 (E), Cjw1_94 (E), Command613_95 (E), Contagion_89 (E), Cookies_90 (E), CrystalP_92 (E), Czystczon1_94 (E), Daikon_94 (E), DoctorDiddles_92 (E), DrDrey_93 (E), Dumbo_93 (E), Dusk_90 (E), Easy2Say_94 (E), Elite2014_92 (E), Elph10_94 (E), Emmina_93 (E), Eureka_92 (E), FairyPath_94 (E), Filch_95 (E), FireRed_97 (E), Flypotenuse_89 (E), FoghornLeghorn_87 (E), Gage_95 (E), Gator_91 (E), Gemini_98 (E), Glexan_92 (E), Goku_92 (E), GoldenSpark_97 (E), Goldilocks_96 (E), GooberAzure_96 (E), Greep_97 (E), Guanica15_53 (K1), HanKaySha_94 (E), Harella_93 (E), Henry_91 (E), Highbury_92 (E), Holt_98 (E), Hoonter_96 (E), Hopey_94 (E), HufflyPuff_95 (E), IHOP_91 (E), Icee_94 (E), Inca_90 (E), JeTaime_94 (E), Kanye_90 (E), Kimchi_97 (E), Kostya_93 (E), LastHope_53 (K1), Lilac_96 (E), Lilizi_94 (E), Lilpickle_92 (E), Liveloughbron_95 (E), MISSy_94 (E), MPhalcon_94 (E), MadamMonkfish_93 (E), Manda_95 (E), Marshmallow_91 (E), Maxxinista_96 (E), Mindy_92 (E), Miniwave_88 (E), Misfit_94 (E), Moldemort_96 (E), MollyToe_88 (E), Mosby_89 (E), Murica_96 (E), Murphy_93 (E), Myrale_93 (E), Nala_95 (E), NelitzaMV_91 (E), Nimrod_94 (E), NoSleep_94 (E), NonchalantPear_93 (E), OrionPax_92 (E), PaddyBaddy_94 (E), Palpatine_95 (E), Paperbeatsrock_92 (E), Pat3_90 (E), Petra64142_98 (E), Phaja_91 (E), Pharsalus_90 (E), PhatBacter_97 (E), Phaux_96 (E), Phrux_91 (E), Policronamos_96 (E), Porky_92 (E), Ptowny_90 (E), Pumpkin_97 (E), Quallification_94 (E), Rakim_94 (E), Rimmer_91 (E), RiverMonster_94 (E), Saints25_92 (E), Sassay_88 (E), ShamWow_93 (E), ShereKhan_91 (E), Simpliphy_92 (E), SirDuracell_93 (E), SophKB_90 (E), Sotrice96_94 (E), Stank_95 (E), Stark_95 (E), StellaBean_91 (E), StolenFromERC_96 (E), StormChicken_95 (E), TBrady12_96 (E), Tarkin_92 (E), TeamEdward_93 (E), TeardropMSU_89 (E), Teaspoon_94 (E), Terminus_96 (E),

Thimble_95 (E), Thresher_96 (E), Tomaszewski_88 (E), Toto_91 (E), Traaww1_89 (E), Tuco_94 (E), Ukulele_88 (E), Wiggin_95 (E), Willez_88 (E), Xandras_92 (E), YassJohnny_90 (E), Youngblood_96 (E), xkcd_96 (E),

Start 50:

- Found in 1 of 482 (0.2%) of genes in pham
- Manual Annotations of this start: 1 of 426
- Called 100.0% of time when present
- Phage (with cluster) where this start called: Stellammi_96 (UNK),

Start 53:

- Found in 1 of 482 (0.2%) of genes in pham
- Manual Annotations of this start: 1 of 426
- Called 100.0% of time when present
- Phage (with cluster) where this start called: Taj_63 (F1),

Start 56:

- Found in 11 of 482 (2.3%) of genes in pham
- Manual Annotations of this start: 9 of 426
- Called 100.0% of time when present
- Phage (with cluster) where this start called: Astartes_7 (EK2), Atraxi_7 (EK2), Fullmetal_7 (EK2), Moleficent_7 (EK2), Morrill_7 (EK2), PhriedRice_7 (EK2), RicoCaldo_7 (EK2), StagePhright_7 (EK2), ThirteenKH_7 (EK2), TrippleS_7 (EK2), Yafa_7 (EK2),

Start 62:

- Found in 9 of 482 (1.9%) of genes in pham
- Manual Annotations of this start: 1 of 426
- Called 33.3% of time when present
- Phage (with cluster) where this start called: Bluvara_49 (I3), Caterpie_61 (AD), SkinnyPete_42 (N),

Start 67:

- Found in 42 of 482 (8.7%) of genes in pham
- Manual Annotations of this start: 6 of 426
- Called 14.3% of time when present
- Phage (with cluster) where this start called: AvadaKedavra_78 (L1), CicholasNage_75 (L1), LeBron_77 (L1), Rose5_78 (L1), UPIE_77 (L1), Wamburgxpress_78 (L1),

Start 80:

- Found in 2 of 482 (0.4%) of genes in pham
- Manual Annotations of this start: 2 of 426
- Called 100.0% of time when present
- Phage (with cluster) where this start called: Reynauld_48 (CH), Trogglehumper_64 (singleton),

Summary by clusters:

There are 31 clusters represented in this pham: singleton, BA, K3, K2, BV, BW, K6, BX, I3, I2, DN2, CH, E, AD, AG, F, N, L4, L5, L2, L3, L1, UNK, F1, F2, F4, F6, K1, T, EK2, BC3,

Info for manual annotations of cluster AD:

- Start number 31 was manually annotated 1 time for cluster AD.

Info for manual annotations of cluster AG:

- Start number 40 was manually annotated 1 time for cluster AG.

Info for manual annotations of cluster BC3:

- Start number 34 was manually annotated 5 times for cluster BC3.

Info for manual annotations of cluster BV:

- Start number 26 was manually annotated 3 times for cluster BV.

Info for manual annotations of cluster BW:

- Start number 26 was manually annotated 4 times for cluster BW.
- Start number 37 was manually annotated 1 time for cluster BW.

Info for manual annotations of cluster CH:

- Start number 80 was manually annotated 1 time for cluster CH.

Info for manual annotations of cluster DN2:

- Start number 27 was manually annotated 1 time for cluster DN2.

Info for manual annotations of cluster E:

- Start number 47 was manually annotated 132 times for cluster E.

Info for manual annotations of cluster EK2:

- Start number 56 was manually annotated 9 times for cluster EK2.

Info for manual annotations of cluster F1:

- Start number 28 was manually annotated 43 times for cluster F1.
- Start number 53 was manually annotated 1 time for cluster F1.

Info for manual annotations of cluster F2:

- Start number 28 was manually annotated 1 time for cluster F2.

Info for manual annotations of cluster F4:

- Start number 32 was manually annotated 1 time for cluster F4.

Info for manual annotations of cluster I2:

- Start number 31 was manually annotated 1 time for cluster I2.

Info for manual annotations of cluster K1:

- Start number 40 was manually annotated 103 times for cluster K1.
- Start number 47 was manually annotated 2 times for cluster K1.

Info for manual annotations of cluster K2:

- Start number 41 was manually annotated 7 times for cluster K2.
- Start number 43 was manually annotated 4 times for cluster K2.

Info for manual annotations of cluster K3:

- Start number 35 was manually annotated 7 times for cluster K3.

Info for manual annotations of cluster K6:

- Start number 40 was manually annotated 25 times for cluster K6.

Info for manual annotations of cluster L1:

- Start number 38 was manually annotated 8 times for cluster L1.
- Start number 46 was manually annotated 5 times for cluster L1.
- Start number 67 was manually annotated 6 times for cluster L1.

Info for manual annotations of cluster L2:

- Start number 38 was manually annotated 15 times for cluster L2.
- Start number 46 was manually annotated 1 time for cluster L2.

Info for manual annotations of cluster L3:

- Start number 38 was manually annotated 14 times for cluster L3.
- Start number 46 was manually annotated 4 times for cluster L3.

Info for manual annotations of cluster L4:

- Start number 39 was manually annotated 6 times for cluster L4.

Info for manual annotations of cluster L5:

- Start number 46 was manually annotated 2 times for cluster L5.

Info for manual annotations of cluster N:

- Start number 31 was manually annotated 3 times for cluster N.
- Start number 62 was manually annotated 1 time for cluster N.

Info for manual annotations of cluster T:

- Start number 33 was manually annotated 6 times for cluster T.

Info for manual annotations of cluster UNK:

- Start number 50 was manually annotated 1 time for cluster UNK.

Gene Information:

Gene: 244_94 Start: 56440, Stop: 56700, Start Num: 47

Candidate Starts for 244_94:

(Start: 47 @56440 has 134 MA's), (57, 56461), (75, 56536), (91, 56605), (108, 56671),

Gene: ABCat_90 Start: 57128, Stop: 57388, Start Num: 47

Candidate Starts for ABCat_90:

(Start: 47 @57128 has 134 MA's), (57, 57149), (75, 57224), (91, 57293), (108, 57359),

Gene: Acquire49_78 Start: 52009, Stop: 52314, Start Num: 38

Candidate Starts for Acquire49_78:

(Start: 38 @52009 has 37 MA's), (Start: 46 @52024 has 12 MA's), (Start: 67 @52084 has 6 MA's), (83, 52147), (90, 52174), (119, 52297), (120, 52300),

Gene: ActinUp_50 Start: 37356, Stop: 37619, Start Num: 40

Candidate Starts for ActinUp_50:

(Start: 40 @37356 has 129 MA's), (83, 37497),

Gene: Adephagia_50 Start: 37353, Stop: 37616, Start Num: 40

Candidate Starts for Adephagia_50:

(Start: 40 @37353 has 129 MA's), (83, 37494),

Gene: Adnama_97 Start: 56736, Stop: 56996, Start Num: 47

Candidate Starts for Adnama_97:

(Start: 47 @56736 has 134 MA's), (57, 56757), (75, 56832), (91, 56901), (108, 56967),

Gene: Adonis_50 Start: 37651, Stop: 37914, Start Num: 40

Candidate Starts for Adonis_50:

(Start: 40 @37651 has 129 MA's), (83, 37792),

Gene: Aegeus_88 Start: 54840, Stop: 55091, Start Num: 46

Candidate Starts for Aegeus_88:

(Start: 46 @54840 has 12 MA's), (Start: 67 @54885 has 6 MA's), (90, 54978), (101, 55032),

Gene: Ageofdapage_52 Start: 38336, Stop: 38599, Start Num: 40

Candidate Starts for Ageofdapage_52:

(8, 38084), (Start: 40 @38336 has 129 MA's), (63, 38390), (83, 38477),

Gene: AlishaPH_50 Start: 37626, Stop: 37889, Start Num: 40

Candidate Starts for AlishaPH_50:

(Start: 40 @37626 has 129 MA's), (83, 37767),

Gene: AlpineSix_64 Start: 42541, Stop: 42819, Start Num: 28

Candidate Starts for AlpineSix_64:

(24, 42514), (Start: 28 @42541 has 44 MA's), (66, 42625), (68, 42634), (83, 42697), (87, 42712), (90, 42724), (93, 42748), (96, 42760), (115, 42811),

Gene: Amao_93 Start: 56248, Stop: 56508, Start Num: 47

Candidate Starts for Amao_93:

(Start: 47 @56248 has 134 MA's), (57, 56269), (75, 56344), (91, 56413), (108, 56479),

Gene: Amelie_46 Start: 37040, Stop: 37309, Start Num: 40

Candidate Starts for Amelie_46:

(Start: 40 @37040 has 129 MA's), (71, 37136), (88, 37196), (89, 37202), (90, 37205), (93, 37232), (96, 37244), (114, 37298),

Gene: AmericanBeauty_97 Start: 57297, Stop: 57557, Start Num: 47

Candidate Starts for AmericanBeauty_97:

(Start: 47 @57297 has 134 MA's), (57, 57318), (75, 57393), (91, 57462), (108, 57528),

Gene: Amgine_51 Start: 38553, Stop: 38807, Start Num: 40

Candidate Starts for Amgine_51:

(13, 38403), (Start: 40 @38553 has 129 MA's), (68, 38619), (92, 38727),

Gene: Amohnition_53 Start: 38560, Stop: 38814, Start Num: 40

Candidate Starts for Amohnition_53:

(3, 38242), (8, 38311), (13, 38407), (Start: 40 @38560 has 129 MA's), (68, 38626), (83, 38689), (92, 38734),

Gene: Anatole_40 Start: 28483, Stop: 28815, Start Num: 26

Candidate Starts for Anatole_40:

(Start: 26 @28483 has 7 MA's), (Start: 38 @28510 has 37 MA's), (54, 28546), (59, 28558), (63, 28570), (70, 28618), (72, 28627), (100, 28753), (113, 28801),

Gene: Anaya_52 Start: 37953, Stop: 38216, Start Num: 40

Candidate Starts for Anaya_52:

(Start: 40 @37953 has 129 MA's), (63, 38007), (83, 38094), (90, 38121),

Gene: Angelica_50 Start: 37583, Stop: 37846, Start Num: 40

Candidate Starts for Angelica_50:

(Start: 40 @37583 has 129 MA's), (83, 37724),

Gene: Anma_52 Start: 38242, Stop: 38505, Start Num: 40

Candidate Starts for Anma_52:

(8, 37990), (Start: 40 @38242 has 129 MA's), (63, 38296), (78, 38365), (83, 38383),

Gene: Apocalypse_53 Start: 38362, Stop: 38625, Start Num: 40

Candidate Starts for Apocalypse_53:

(Start: 40 @38362 has 129 MA's), (83, 38503),

Gene: Applecrisp_50 Start: 38049, Stop: 38303, Start Num: 40

Candidate Starts for Applecrisp_50:

(13, 37899), (Start: 40 @38049 has 129 MA's), (68, 38115), (92, 38223), (104, 38268),

Gene: Appletree2_77 Start: 51620, Stop: 51925, Start Num: 38

Candidate Starts for Appletree2_77:

(Start: 38 @51620 has 37 MA's), (Start: 46 @51635 has 12 MA's), (Start: 67 @51695 has 6 MA's), (83, 51758), (90, 51785), (101, 51839), (119, 51908), (120, 51911),

Gene: Archie_78 Start: 53502, Stop: 53798, Start Num: 38

Candidate Starts for Archie_78:

(Start: 38 @53502 has 37 MA's), (77, 53607), (82, 53619), (90, 53655), (102, 53712),

Gene: Argent26_97 Start: 56657, Stop: 56917, Start Num: 47

Candidate Starts for Argent26_97:

(Start: 47 @56657 has 134 MA's), (57, 56678), (75, 56753), (91, 56822), (108, 56888),

Gene: Asayake_50 Start: 37668, Stop: 37931, Start Num: 40

Candidate Starts for Asayake_50:

(Start: 40 @37668 has 129 MA's), (83, 37809),

Gene: Asriel_91 Start: 55073, Stop: 55333, Start Num: 47

Candidate Starts for Asriel_91:

(Start: 47 @55073 has 134 MA's), (57, 55094), (75, 55169), (91, 55238), (108, 55304),

Gene: Astartes_7 Start: 5219, Stop: 4962, Start Num: 56

Candidate Starts for Astartes_7:

(25, 5279), (Start: 56 @5219 has 9 MA's), (84, 5105), (99, 5030), (111, 4985),

Gene: Atiba_51 Start: 37316, Stop: 37579, Start Num: 40

Candidate Starts for Atiba_51:

(Start: 40 @37316 has 129 MA's), (83, 37457),

Gene: Atraxi_7 Start: 5184, Stop: 4927, Start Num: 56

Candidate Starts for Atraxi_7:

(25, 5244), (Start: 56 @5184 has 9 MA's), (73, 5112), (84, 5070), (99, 4995), (111, 4950),

Gene: Austintatious_37 Start: 25254, Stop: 25553, Start Num: 34

Candidate Starts for Austintatious_37:

(5, 24966), (9, 25011), (21, 25185), (Start: 34 @25254 has 5 MA's), (90, 25416),

Gene: AvadaKedavra_78 Start: 52163, Stop: 52393, Start Num: 67

Candidate Starts for AvadaKedavra_78:

(Start: 38 @52088 has 37 MA's), (Start: 46 @52103 has 12 MA's), (Start: 67 @52163 has 6 MA's), (83, 52226), (90, 52253), (119, 52376), (120, 52379),

Gene: Avani_67 Start: 40740, Stop: 41018, Start Num: 28

Candidate Starts for Avani_67:

(24, 40713), (Start: 28 @40740 has 44 MA's), (66, 40824), (68, 40833), (83, 40896), (87, 40911), (90, 40923), (93, 40947), (96, 40959), (115, 41010),

Gene: B22_42 Start: 28248, Stop: 28580, Start Num: 26

Candidate Starts for B22_42:

(Start: 26 @28248 has 7 MA's), (Start: 38 @28275 has 37 MA's), (54, 28311), (59, 28323), (63, 28335), (70, 28383), (72, 28392), (100, 28518), (113, 28566),

Gene: B3_39 Start: 27767, Stop: 28099, Start Num: 26

Candidate Starts for B3_39:

(Start: 26 @27767 has 7 MA's), (Start: 38 @27794 has 37 MA's), (54, 27830), (59, 27842), (63, 27854), (70, 27902), (72, 27911), (100, 28037), (113, 28085),

Gene: BEEST_50 Start: 37668, Stop: 37931, Start Num: 40

Candidate Starts for BEEST_50:

(Start: 40 @37668 has 129 MA's), (83, 37809),

Gene: BGlluviae_50 Start: 37471, Stop: 37734, Start Num: 40

Candidate Starts for BGlluviae_50:

(Start: 40 @37471 has 129 MA's), (83, 37612),

Gene: BaboJay_93 Start: 57319, Stop: 57579, Start Num: 47

Candidate Starts for BaboJay_93:

(Start: 47 @57319 has 134 MA's), (57, 57340), (75, 57415), (91, 57484), (108, 57550),

Gene: BadStone_90 Start: 56697, Stop: 56957, Start Num: 47

Candidate Starts for BadStone_90:

(Start: 47 @56697 has 134 MA's), (57, 56718), (75, 56793), (91, 56862), (108, 56928),

Gene: BaghaKamala_49 Start: 36791, Stop: 37054, Start Num: 40

Candidate Starts for BaghaKamala_49:

(Start: 40 @36791 has 129 MA's), (83, 36932),

Gene: Balomoji_93 Start: 56855, Stop: 57115, Start Num: 47

Candidate Starts for Balomoji_93:

(16, 56717), (Start: 47 @56855 has 134 MA's), (57, 56876), (91, 57020), (108, 57086),

Gene: Barbarian_92 Start: 55073, Stop: 55333, Start Num: 47

Candidate Starts for Barbarian_92:

(Start: 47 @55073 has 134 MA's), (57, 55094), (75, 55169), (91, 55238), (108, 55304),

Gene: BarrelRoll_50 Start: 37339, Stop: 37602, Start Num: 40

Candidate Starts for BarrelRoll_50:

(Start: 40 @37339 has 129 MA's), (83, 37480),

Gene: Bask21_93 Start: 55708, Stop: 55968, Start Num: 47

Candidate Starts for Bask21_93:

(16, 55570), (Start: 47 @55708 has 134 MA's), (57, 55729), (91, 55873), (108, 55939),

Gene: Baudelaire_88 Start: 54840, Stop: 55091, Start Num: 46

Candidate Starts for Baudelaire_88:

(Start: 46 @54840 has 12 MA's), (Start: 67 @54885 has 6 MA's), (90, 54978), (101, 55032),

Gene: Bazzle_78 Start: 53691, Stop: 53987, Start Num: 38

Candidate Starts for Bazzle_78:

(Start: 38 @53691 has 37 MA's), (Start: 46 @53706 has 12 MA's), (Start: 67 @53751 has 6 MA's), (82, 53808), (83, 53817), (90, 53844), (102, 53901), (109, 53928),

Gene: Becksu_92 Start: 57049, Stop: 57309, Start Num: 47

Candidate Starts for Becksu_92:

(Start: 47 @57049 has 134 MA's), (57, 57070), (75, 57145), (91, 57214), (108, 57280),

Gene: Beezoo_52 Start: 38314, Stop: 38577, Start Num: 40

Candidate Starts for Beezoo_52:

(Start: 40 @38314 has 129 MA's), (83, 38455),

Gene: Bella96_51 Start: 38180, Stop: 38443, Start Num: 40

Candidate Starts for Bella96_51:

(8, 37928), (Start: 40 @38180 has 129 MA's), (63, 38234), (78, 38303), (83, 38321),

Gene: Belladonna_50 Start: 37471, Stop: 37734, Start Num: 40

Candidate Starts for Belladonna_50:

(Start: 40 @37471 has 129 MA's), (83, 37612),

Gene: Bellis_79 Start: 53796, Stop: 54065, Start Num: 38

Candidate Starts for Bellis_79:

(Start: 38 @53796 has 37 MA's), (Start: 46 @53811 has 12 MA's), (90, 53946), (97, 53988), (108, 54024), (116, 54048),

Gene: Bench_96 Start: 56792, Stop: 57052, Start Num: 47

Candidate Starts for Bench_96:

(Start: 47 @56792 has 134 MA's), (57, 56813), (75, 56888), (91, 56957), (108, 57023),

Gene: Bern_51 Start: 36386, Stop: 36649, Start Num: 40

Candidate Starts for Bern_51:

(Start: 40 @36386 has 129 MA's), (83, 36527),

Gene: Bernal13_41 Start: 31446, Stop: 31703, Start Num: 33

Candidate Starts for Bernal13_41:

(6, 31170), (7, 31191), (Start: 33 @31446 has 6 MA's), (68, 31530), (90, 31620),

Gene: BigBubba_93 Start: 56089, Stop: 56349, Start Num: 47

Candidate Starts for BigBubba_93:

(Start: 47 @56089 has 134 MA's), (57, 56110), (75, 56185), (91, 56254), (108, 56320),

Gene: Biglebops_46 Start: 37040, Stop: 37309, Start Num: 40

Candidate Starts for Biglebops_46:

(Start: 40 @37040 has 129 MA's), (71, 37136), (88, 37196), (89, 37202), (90, 37205), (93, 37232), (96, 37244), (114, 37298),

Gene: BilboSwaggins_91 Start: 57094, Stop: 57354, Start Num: 47

Candidate Starts for BilboSwaggins_91:

(Start: 47 @57094 has 134 MA's), (57, 57115), (75, 57190), (91, 57259), (108, 57325),

Gene: Bioscum_41 Start: 27555, Stop: 27854, Start Num: 34

Candidate Starts for Bioscum_41:

(5, 27267), (9, 27312), (21, 27486), (Start: 34 @27555 has 5 MA's), (90, 27717),

Gene: Blizzard_50 Start: 37668, Stop: 37931, Start Num: 40

Candidate Starts for Blizzard_50:

(Start: 40 @37668 has 129 MA's), (83, 37809),

Gene: Bluvara_49 Start: 36316, Stop: 36546, Start Num: 62

Candidate Starts for Bluvara_49:

(Start: 31 @36247 has 5 MA's), (36, 36265), (55, 36301), (Start: 62 @36316 has 1 MA's), (83, 36412), (93, 36463), (104, 36499), (112, 36532),

Gene: BodEinwohner17_59 Start: 39462, Stop: 39740, Start Num: 28

Candidate Starts for BodEinwohner17_59:

(24, 39435), (Start: 28 @39462 has 44 MA's), (66, 39546), (68, 39555), (83, 39618), (87, 39633), (90, 39645), (93, 39669), (96, 39681), (115, 39732),

Gene: Bogg_93 Start: 56007, Stop: 56267, Start Num: 47

Candidate Starts for Bogg_93:

(Start: 47 @56007 has 134 MA's), (57, 56028), (75, 56103), (91, 56172), (108, 56238),

Gene: Boiiii_50 Start: 37670, Stop: 37933, Start Num: 40

Candidate Starts for Boiiii_50:

(Start: 40 @37670 has 129 MA's), (83, 37811),

Gene: BoostSeason_54 Start: 39128, Stop: 39364, Start Num: 41

Candidate Starts for BoostSeason_54:

(Start: 41 @39128 has 7 MA's), (Start: 43 @39131 has 4 MA's), (48, 39137), (51, 39143), (78, 39233), (81, 39239), (93, 39302), (114, 39353),

Gene: BourbonZero_80 Start: 53807, Stop: 54094, Start Num: 46

Candidate Starts for BourbonZero_80:

(Start: 38 @53792 has 37 MA's), (Start: 46 @53807 has 12 MA's), (90, 53945),

Gene: BrainDrainer_79 Start: 52733, Stop: 53023, Start Num: 39

Candidate Starts for BrainDrainer_79:

(Start: 39 @52733 has 6 MA's), (74, 52817), (77, 52832), (82, 52844), (90, 52880), (92, 52898), (94, 52910), (102, 52937),

Gene: Breezona_81 Start: 53918, Stop: 54214, Start Num: 38

Candidate Starts for Breezona_81:

(Start: 38 @53918 has 37 MA's), (Start: 67 @53978 has 6 MA's), (77, 54023), (82, 54035), (90, 54071), (101, 54125), (102, 54128),

Gene: Brewer_89 Start: 55594, Stop: 55854, Start Num: 47

Candidate Starts for Brewer_89:

(Start: 47 @55594 has 134 MA's), (57, 55615), (75, 55690), (91, 55759), (108, 55825),

Gene: Bromden_79 Start: 53366, Stop: 53650, Start Num: 39

Candidate Starts for Bromden_79:

(Start: 34 @53357 has 5 MA's), (Start: 39 @53366 has 6 MA's), (Start: 67 @53420 has 6 MA's), (82, 53477), (83, 53486), (90, 53513), (94, 53543), (102, 53570),

Gene: Bruin_90 Start: 55671, Stop: 55931, Start Num: 47

Candidate Starts for Bruin_90:

(Start: 47 @55671 has 134 MA's), (57, 55692), (75, 55767), (91, 55836), (108, 55902),

Gene: Bryler_54 Start: 37154, Stop: 37411, Start Num: 40

Candidate Starts for Bryler_54:

(Start: 40 @37154 has 129 MA's), (52, 37175), (68, 37229), (83, 37292), (85, 37301), (104, 37379),

Gene: Buck_94 Start: 57360, Stop: 57620, Start Num: 47

Candidate Starts for Buck_94:

(16, 57222), (Start: 47 @57360 has 134 MA's), (57, 57381), (91, 57525), (108, 57591),

Gene: Budgie_99 Start: 56700, Stop: 56954, Start Num: 47

Candidate Starts for Budgie_99:

(30, 56661), (Start: 47 @56700 has 134 MA's), (61, 56721), (69, 56760), (78, 56808), (83, 56826), (108, 56925),

Gene: BugsBunny_93 Start: 57200, Stop: 57460, Start Num: 47

Candidate Starts for BugsBunny_93:

(Start: 47 @57200 has 134 MA's), (57, 57221), (75, 57296), (91, 57365), (108, 57431),

Gene: CREW_50 Start: 37471, Stop: 37734, Start Num: 40

Candidate Starts for CREW_50:

(Start: 40 @37471 has 129 MA's), (83, 37612),

Gene: Cactus_96 Start: 55737, Stop: 55997, Start Num: 47

Candidate Starts for Cactus_96:

(Start: 47 @55737 has 134 MA's), (57, 55758), (75, 55833), (91, 55902), (108, 55968),

Gene: Cain_54 Start: 37142, Stop: 37399, Start Num: 40

Candidate Starts for Cain_54:

(Start: 40 @37142 has 129 MA's), (52, 37163), (68, 37217), (83, 37280), (85, 37289), (104, 37367),

Gene: CallaLilly_50 Start: 37394, Stop: 37657, Start Num: 40

Candidate Starts for CallaLilly_50:

(Start: 40 @37394 has 129 MA's), (83, 37535),

Gene: Calm_80 Start: 52346, Stop: 52636, Start Num: 46

Candidate Starts for Calm_80:

(Start: 38 @52331 has 37 MA's), (Start: 46 @52346 has 12 MA's), (Start: 67 @52406 has 6 MA's), (83, 52469), (90, 52496), (119, 52619), (120, 52622),

Gene: Capricorn_50 Start: 37471, Stop: 37734, Start Num: 40

Candidate Starts for Capricorn_50:

(Start: 40 @37471 has 129 MA's), (83, 37612),

Gene: CaseJules_52 Start: 37668, Stop: 37931, Start Num: 40

Candidate Starts for CaseJules_52:

(Start: 40 @37668 has 129 MA's), (83, 37809),

Gene: Caterpie_61 Start: 46837, Stop: 47067, Start Num: 62

Candidate Starts for Caterpie_61:

(Start: 31 @46768 has 5 MA's), (36, 46786), (55, 46822), (Start: 62 @46837 has 1 MA's), (83, 46933), (93, 46984), (104, 47020), (112, 47053), (114, 47059),

Gene: Charlie_44 Start: 30217, Stop: 30516, Start Num: 31

Candidate Starts for Charlie_44:

(Start: 31 @30217 has 5 MA's), (36, 30235), (55, 30271), (Start: 62 @30286 has 1 MA's), (83, 30382), (93, 30433), (104, 30469), (112, 30502), (114, 30508),

Gene: Chaser_77 Start: 52365, Stop: 52655, Start Num: 39

Candidate Starts for Chaser_77:

(Start: 39 @52365 has 6 MA's), (Start: 46 @52374 has 12 MA's), (Start: 67 @52419 has 6 MA's), (77, 52464), (82, 52476), (90, 52512), (92, 52530), (102, 52569),

Gene: Chavito_54 Start: 38944, Stop: 39207, Start Num: 40

Candidate Starts for Chavito_54:

(2, 38536), (3, 38620), (8, 38689), (Start: 40 @38944 has 129 MA's), (75, 39046), (78, 39064), (83, 39082), (93, 39136), (104, 39172), (114, 39196),

Gene: CheetoDust_49 Start: 36840, Stop: 37103, Start Num: 40

Candidate Starts for CheetoDust_49:

(Start: 40 @36840 has 129 MA's), (83, 36981),

Gene: ChosenOne_93 Start: 56152, Stop: 56412, Start Num: 47

Candidate Starts for ChosenOne_93:

(Start: 47 @56152 has 134 MA's), (57, 56173), (75, 56248), (91, 56317), (108, 56383),

Gene: ChotaBhai_93 Start: 56073, Stop: 56333, Start Num: 47

Candidate Starts for ChotaBhai_93:

(16, 55935), (Start: 47 @56073 has 134 MA's), (57, 56094), (91, 56238), (108, 56304),

Gene: Chris_53 Start: 38292, Stop: 38561, Start Num: 40

Candidate Starts for Chris_53:

(Start: 40 @38292 has 129 MA's), (92, 38466), (113, 38547), (114, 38550),

Gene: ChutneyChips_79 Start: 52710, Stop: 52994, Start Num: 39

Candidate Starts for ChutneyChips_79:

(Start: 39 @52710 has 6 MA's), (Start: 67 @52764 has 6 MA's), (77, 52809), (82, 52821), (90, 52857), (92, 52875), (94, 52887),

Gene: CicholasNage_75 Start: 51748, Stop: 51978, Start Num: 67

Candidate Starts for CicholasNage_75:

(Start: 38 @51673 has 37 MA's), (Start: 46 @51688 has 12 MA's), (Start: 67 @51748 has 6 MA's), (83, 51811), (90, 51838), (119, 51961), (120, 51964),

Gene: Cjw1_94 Start: 58116, Stop: 58376, Start Num: 47

Candidate Starts for Cjw1_94:

(Start: 47 @58116 has 134 MA's), (57, 58137), (75, 58212), (91, 58281), (108, 58347),

Gene: Clank_64 Start: 40984, Stop: 41262, Start Num: 28

Candidate Starts for Clank_64:

(24, 40957), (Start: 28 @40984 has 44 MA's), (66, 41068), (68, 41077), (83, 41140), (87, 41155), (90, 41167), (93, 41191), (96, 41203), (115, 41254),

Gene: Claus_80 Start: 53853, Stop: 54149, Start Num: 38

Candidate Starts for Claus_80:

(Start: 38 @53853 has 37 MA's), (Start: 67 @53913 has 6 MA's), (77, 53958), (82, 53970), (90, 54006), (97, 54048), (101, 54060), (102, 54063),

Gene: Clautastrophe_77 Start: 53794, Stop: 54063, Start Num: 38

Candidate Starts for Clautastrophe_77:

(Start: 38 @53794 has 37 MA's), (Start: 46 @53809 has 12 MA's), (90, 53944), (97, 53986), (108, 54022), (116, 54046),

Gene: Clipper_53 Start: 37987, Stop: 38250, Start Num: 40

Candidate Starts for Clipper_53:

(Start: 40 @37987 has 129 MA's), (83, 38128),

Gene: Command613_95 Start: 57191, Stop: 57451, Start Num: 47

Candidate Starts for Command613_95:

(Start: 47 @57191 has 134 MA's), (57, 57212), (75, 57287), (91, 57356), (108, 57422),

Gene: Contagion_89 Start: 55952, Stop: 56212, Start Num: 47

Candidate Starts for Contagion_89:

(Start: 47 @55952 has 134 MA's), (57, 55973), (75, 56048), (91, 56117), (108, 56183),

Gene: Cookies_90 Start: 55930, Stop: 56190, Start Num: 47

Candidate Starts for Cookies_90:

(16, 55792), (Start: 47 @55930 has 134 MA's), (57, 55951), (91, 56095), (108, 56161),

Gene: Cornucopia_61 Start: 40668, Stop: 40946, Start Num: 28

Candidate Starts for Cornucopia_61:

(24, 40641), (Start: 28 @40668 has 44 MA's), (66, 40752), (68, 40761), (83, 40824), (87, 40839), (90, 40851), (93, 40875), (96, 40887), (115, 40938),

Gene: CrimD_50 Start: 37577, Stop: 37840, Start Num: 40

Candidate Starts for CrimD_50:

(Start: 40 @37577 has 129 MA's), (63, 37631), (83, 37718),

Gene: CrystalP_92 Start: 57094, Stop: 57354, Start Num: 47

Candidate Starts for CrystalP_92:

(Start: 47 @57094 has 134 MA's), (57, 57115), (75, 57190), (91, 57259), (108, 57325),

Gene: Curiosium_52 Start: 36255, Stop: 36521, Start Num: 40

Candidate Starts for Curiosium_52:

(Start: 40 @36255 has 129 MA's), (Start: 47 @36267 has 134 MA's), (63, 36312), (83, 36399), (104, 36489),

Gene: Czyszczone1_94 Start: 56655, Stop: 56915, Start Num: 47

Candidate Starts for Czyszczone1_94:

(Start: 47 @56655 has 134 MA's), (57, 56676), (75, 56751), (91, 56820), (108, 56886),

Gene: Daenerys_53 Start: 38267, Stop: 38545, Start Num: 28

Candidate Starts for Daenerys_53:

(24, 38240), (Start: 28 @38267 has 44 MA's), (66, 38351), (68, 38360), (83, 38423), (87, 38438), (90, 38450), (93, 38474), (96, 38486), (115, 38537),

Gene: Daikon_94 Start: 56682, Stop: 56942, Start Num: 47

Candidate Starts for Daikon_94:

(16, 56544), (Start: 47 @56682 has 134 MA's), (57, 56703), (91, 56847), (108, 56913),

Gene: Dalmuri_50 Start: 37471, Stop: 37734, Start Num: 40

Candidate Starts for Dalmuri_50:

(Start: 40 @37471 has 129 MA's), (83, 37612),

Gene: DartGoblin_52 Start: 38152, Stop: 38415, Start Num: 40

Candidate Starts for DartGoblin_52:

(8, 37900), (Start: 40 @38152 has 129 MA's), (63, 38206), (78, 38275), (83, 38293),

Gene: DarthP_53 Start: 38444, Stop: 38698, Start Num: 40

Candidate Starts for DarthP_53:

(3, 38126), (8, 38195), (13, 38291), (Start: 40 @38444 has 129 MA's), (68, 38510), (83, 38573), (92, 38618),

Gene: Dartin_53 Start: 38285, Stop: 38548, Start Num: 40

Candidate Starts for Dartin_53:

(1, 37805), (3, 37961), (8, 38030), (Start: 40 @38285 has 129 MA's), (75, 38387), (78, 38405), (83, 38423), (93, 38477), (104, 38513), (114, 38537),

Gene: Deby_50 Start: 37599, Stop: 37862, Start Num: 40

Candidate Starts for Deby_50:

(Start: 40 @37599 has 129 MA's), (63, 37653), (83, 37740),

Gene: Devera_55 Start: 38103, Stop: 38366, Start Num: 40

Candidate Starts for Devera_55:

(8, 37851), (Start: 40 @38103 has 129 MA's), (63, 38157), (83, 38244),

Gene: DillTech15_56 Start: 38601, Stop: 38879, Start Num: 28

Candidate Starts for DillTech15_56:

(24, 38574), (Start: 28 @38601 has 44 MA's), (66, 38685), (68, 38694), (83, 38757), (87, 38772), (90, 38784), (93, 38808), (96, 38820), (115, 38871),

Gene: DirkDirk_75 Start: 51200, Stop: 51505, Start Num: 38

Candidate Starts for DirkDirk_75:

(Start: 38 @51200 has 37 MA's), (Start: 46 @51215 has 12 MA's), (Start: 67 @51275 has 6 MA's), (83, 51338), (90, 51365), (101, 51419), (119, 51488), (120, 51491),

Gene: DismalFunk_54 Start: 39559, Stop: 39792, Start Num: 41

Candidate Starts for DismalFunk_54:

(Start: 41 @39559 has 7 MA's), (Start: 43 @39562 has 4 MA's), (48, 39568), (51, 39574), (78, 39664), (81, 39670), (93, 39733),

Gene: DismalStressor_54 Start: 39559, Stop: 39792, Start Num: 41

Candidate Starts for DismalStressor_54:

(Start: 41 @39559 has 7 MA's), (Start: 43 @39562 has 4 MA's), (48, 39568), (51, 39574), (78, 39664), (81, 39670), (93, 39733),

Gene: DoctorDiddles_92 Start: 56117, Stop: 56377, Start Num: 47

Candidate Starts for DoctorDiddles_92:

(16, 55979), (Start: 47 @56117 has 134 MA's), (57, 56138), (91, 56282), (108, 56348),

Gene: Dole_53 Start: 38105, Stop: 38368, Start Num: 40

Candidate Starts for Dole_53:

(8, 37853), (Start: 40 @38105 has 129 MA's), (63, 38159), (83, 38246),

Gene: Doomphist_59 Start: 41112, Stop: 41390, Start Num: 28

Candidate Starts for Doomphist_59:

(24, 41085), (Start: 28 @41112 has 44 MA's), (66, 41196), (68, 41205), (83, 41268), (87, 41283), (90, 41295), (93, 41319), (96, 41331), (115, 41382),

Gene: Doomslug_68 Start: 40532, Stop: 40810, Start Num: 28

Candidate Starts for Doomslug_68:

(24, 40505), (Start: 28 @40532 has 44 MA's), (66, 40616), (68, 40625), (83, 40688), (87, 40703), (90, 40715), (93, 40739), (96, 40751), (115, 40802),

Gene: Dorothy_57 Start: 39331, Stop: 39609, Start Num: 28

Candidate Starts for Dorothy_57:

(24, 39304), (Start: 28 @39331 has 44 MA's), (66, 39415), (68, 39424), (83, 39487), (87, 39502), (90, 39514), (93, 39538), (96, 39550), (115, 39601),

Gene: DosHalletts_61 Start: 41467, Stop: 41745, Start Num: 28

Candidate Starts for DosHalletts_61:

(24, 41440), (Start: 28 @41467 has 44 MA's), (66, 41551), (68, 41560), (83, 41623), (87, 41638), (90, 41650), (93, 41674), (96, 41686), (115, 41737),

Gene: Doucette_43 Start: 29654, Stop: 29986, Start Num: 26

Candidate Starts for Doucette_43:

(Start: 26 @29654 has 7 MA's), (Start: 38 @29681 has 37 MA's), (54, 29717), (59, 29729), (63, 29741), (70, 29789), (72, 29798), (85, 29849), (100, 29924), (113, 29972),

Gene: Douge_78 Start: 52288, Stop: 52587, Start Num: 39

Candidate Starts for Douge_78:

(Start: 39 @52288 has 6 MA's), (63, 52318), (Start: 67 @52342 has 6 MA's), (82, 52399), (83, 52408), (90, 52435), (94, 52465),

Gene: Doughnut_54 Start: 39169, Stop: 39405, Start Num: 41

Candidate Starts for Doughnut_54:

(Start: 41 @39169 has 7 MA's), (Start: 43 @39172 has 4 MA's), (48, 39178), (51, 39184), (78, 39274), (81, 39280), (93, 39343), (114, 39394),

Gene: Douzhi_79 Start: 52550, Stop: 52840, Start Num: 39

Candidate Starts for Douzhi_79:

(Start: 39 @52550 has 6 MA's), (74, 52634), (77, 52649), (82, 52661), (90, 52697), (94, 52727), (102, 52754),

Gene: DrDrey_93 Start: 57574, Stop: 57834, Start Num: 47

Candidate Starts for DrDrey_93:

(Start: 47 @57574 has 134 MA's), (57, 57595), (75, 57670), (91, 57739), (108, 57805),

Gene: DrHayes_51 Start: 38242, Stop: 38505, Start Num: 40

Candidate Starts for DrHayes_51:

(8, 37990), (Start: 40 @38242 has 129 MA's), (63, 38296), (78, 38365), (83, 38383),

Gene: Dumbo_93 Start: 56054, Stop: 56314, Start Num: 47

Candidate Starts for Dumbo_93:

(Start: 47 @56054 has 134 MA's), (57, 56075), (75, 56150), (91, 56219), (108, 56285),

Gene: DuncansLeg_79 Start: 53780, Stop: 54082, Start Num: 38

Candidate Starts for DuncansLeg_79:

(Start: 38 @53780 has 37 MA's), (Start: 46 @53795 has 12 MA's), (90, 53933),

Gene: Durfee_50 Start: 37668, Stop: 37931, Start Num: 40

Candidate Starts for Durfee_50:

(Start: 40 @37668 has 129 MA's), (83, 37809),

Gene: Dusk_90 Start: 56357, Stop: 56617, Start Num: 47

Candidate Starts for Dusk_90:

(Start: 47 @56357 has 134 MA's), (57, 56378), (75, 56453), (91, 56522), (108, 56588),

Gene: DyoEdafos_83 Start: 53198, Stop: 53488, Start Num: 39

Candidate Starts for DyoEdafos_83:

(Start: 39 @53198 has 6 MA's), (63, 53228), (Start: 67 @53252 has 6 MA's), (82, 53309), (83, 53318), (90, 53345), (94, 53375), (102, 53402),

Gene: E1_40 Start: 28483, Stop: 28815, Start Num: 26

Candidate Starts for E1_40:

(Start: 26 @28483 has 7 MA's), (Start: 38 @28510 has 37 MA's), (54, 28546), (59, 28558), (63, 28570), (70, 28618), (72, 28627), (100, 28753), (113, 28801),

Gene: E6_44 Start: 31064, Stop: 31396, Start Num: 26

Candidate Starts for E6_44:

(Start: 26 @31064 has 7 MA's), (Start: 38 @31091 has 37 MA's), (54, 31127), (59, 31139), (70, 31199), (72, 31208), (100, 31334), (113, 31382),

Gene: Easy2Say_94 Start: 57556, Stop: 57816, Start Num: 47

Candidate Starts for Easy2Say_94:

(Start: 47 @57556 has 134 MA's), (57, 57577), (75, 57652), (91, 57721), (108, 57787),

Gene: Efra2_53 Start: 37187, Stop: 37450, Start Num: 40

Candidate Starts for Efra2_53:

(Start: 40 @37187 has 129 MA's), (Start: 47 @37199 has 134 MA's), (78, 37310), (83, 37328),

Gene: Ekdilam_50 Start: 37991, Stop: 38245, Start Num: 40

Candidate Starts for Ekdilam_50:

(3, 37673), (8, 37742), (13, 37838), (Start: 40 @37991 has 129 MA's), (83, 38120), (92, 38165),

Gene: Elite2014_92 Start: 56151, Stop: 56411, Start Num: 47

Candidate Starts for Elite2014_92:

(Start: 47 @56151 has 134 MA's), (57, 56172), (75, 56247), (91, 56316), (108, 56382),

Gene: Ellie_49 Start: 37741, Stop: 37995, Start Num: 40

Candidate Starts for Ellie_49:

(13, 37591), (Start: 40 @37741 has 129 MA's), (68, 37807), (92, 37915), (104, 37960),

Gene: Ellson_78 Start: 54110, Stop: 54397, Start Num: 46

Candidate Starts for Ellson_78:

(Start: 38 @54095 has 37 MA's), (Start: 46 @54110 has 12 MA's), (90, 54248),

Gene: Elph10_94 Start: 56144, Stop: 56404, Start Num: 47

Candidate Starts for Elph10_94:

(Start: 47 @56144 has 134 MA's), (57, 56165), (75, 56240), (91, 56309), (108, 56375),

Gene: Emerson_51 Start: 37347, Stop: 37610, Start Num: 40

Candidate Starts for Emerson_51:

(Start: 40 @37347 has 129 MA's), (83, 37488),

Gene: Emmina_93 Start: 55777, Stop: 56037, Start Num: 47

Candidate Starts for Emmina_93:

(Start: 47 @55777 has 134 MA's), (57, 55798), (75, 55873), (91, 55942), (108, 56008),

Gene: Empress_57 Start: 39681, Stop: 39959, Start Num: 28

Candidate Starts for Empress_57:

(24, 39654), (Start: 28 @39681 has 44 MA's), (66, 39765), (68, 39774), (83, 39837), (87, 39852), (90, 39864), (93, 39888), (96, 39900), (115, 39951),

Gene: Enceladus_75 Start: 51992, Stop: 52282, Start Num: 46

Candidate Starts for Enceladus_75:

(Start: 38 @51977 has 37 MA's), (Start: 46 @51992 has 12 MA's), (Start: 67 @52052 has 6 MA's), (83, 52115), (90, 52142), (101, 52196), (119, 52265), (120, 52268),

Gene: Enkosi_48 Start: 39653, Stop: 39922, Start Num: 40

Candidate Starts for Enkosi_48:

(Start: 40 @39653 has 129 MA's), (71, 39749), (88, 39809), (89, 39815), (90, 39818), (93, 39845), (96, 39857), (114, 39911),

Gene: Enzomatic_65 Start: 39785, Stop: 40063, Start Num: 28

Candidate Starts for Enzomatic_65:

(24, 39758), (Start: 28 @39785 has 44 MA's), (66, 39869), (68, 39878), (83, 39941), (87, 39956), (90, 39968), (93, 39992), (96, 40004), (115, 40055),

Gene: Estave1_62 Start: 41132, Stop: 41410, Start Num: 28

Candidate Starts for Estave1_62:

(24, 41105), (Start: 28 @41132 has 44 MA's), (66, 41216), (68, 41225), (83, 41288), (87, 41303), (90, 41315), (93, 41339), (96, 41351), (115, 41402),

Gene: Eureka_92 Start: 57064, Stop: 57324, Start Num: 47

Candidate Starts for Eureka_92:

(Start: 47 @57064 has 134 MA's), (57, 57085), (75, 57160), (91, 57229), (108, 57295),

Gene: FairyPath_94 Start: 57270, Stop: 57530, Start Num: 47

Candidate Starts for FairyPath_94:

(Start: 47 @57270 has 134 MA's), (57, 57291), (75, 57366), (91, 57435), (108, 57501),

Gene: Faith1_81 Start: 53918, Stop: 54214, Start Num: 38

Candidate Starts for Faith1_81:

(Start: 38 @53918 has 37 MA's), (Start: 67 @53978 has 6 MA's), (77, 54023), (82, 54035), (90, 54071), (101, 54125), (102, 54128),

Gene: FarmResident_80 Start: 52292, Stop: 52576, Start Num: 39

Candidate Starts for FarmResident_80:

(Start: 39 @52292 has 6 MA's), (Start: 67 @52346 has 6 MA's), (77, 52391), (82, 52403), (90, 52439), (92, 52457), (102, 52496),

Gene: Fastidio_59 Start: 38748, Stop: 39026, Start Num: 28

Candidate Starts for Fastidio_59:

(24, 38721), (Start: 28 @38748 has 44 MA's), (66, 38832), (68, 38841), (83, 38904), (87, 38919), (90, 38931), (93, 38955), (96, 38967), (115, 39018),

Gene: Fefferhead_51 Start: 37691, Stop: 37945, Start Num: 40

Candidate Starts for Fefferhead_51:

(13, 37541), (Start: 40 @37691 has 129 MA's), (68, 37757), (92, 37865), (104, 37910),

Gene: Filch_95 Start: 56349, Stop: 56609, Start Num: 47

Candidate Starts for Filch_95:

(Start: 47 @56349 has 134 MA's), (57, 56370), (75, 56445), (91, 56514), (108, 56580),

Gene: Findley_54 Start: 39552, Stop: 39785, Start Num: 41

Candidate Starts for Findley_54:

(Start: 41 @39552 has 7 MA's), (Start: 43 @39555 has 4 MA's), (48, 39561), (51, 39567), (78, 39657), (81, 39663), (93, 39726),

Gene: Finemlucis_80 Start: 54386, Stop: 54682, Start Num: 38

Candidate Starts for Finemlucis_80:

(Start: 38 @54386 has 37 MA's), (83, 54512), (90, 54539), (94, 54569), (101, 54593),

Gene: Finnry_79 Start: 54045, Stop: 54314, Start Num: 38

Candidate Starts for Finnry_79:

(Start: 38 @54045 has 37 MA's), (Start: 46 @54060 has 12 MA's), (90, 54195), (97, 54237), (108, 54273), (116, 54297),

Gene: FireRed_97 Start: 57367, Stop: 57627, Start Num: 47

Candidate Starts for FireRed_97:

(Start: 47 @57367 has 134 MA's), (57, 57388), (75, 57463), (91, 57532), (108, 57598),

Gene: Flypotenuse_89 Start: 55727, Stop: 55987, Start Num: 47

Candidate Starts for Flypotenuse_89:
(Start: 47 @55727 has 134 MA's), (57, 55748), (75, 55823), (91, 55892), (108, 55958),

Gene: FoghornLeghorn_87 Start: 54752, Stop: 55012, Start Num: 47
Candidate Starts for FoghornLeghorn_87:
(16, 54614), (Start: 47 @54752 has 134 MA's), (57, 54773), (91, 54917), (108, 54983),

Gene: Fullmetal_7 Start: 5216, Stop: 4959, Start Num: 56
Candidate Starts for Fullmetal_7:
(25, 5276), (Start: 56 @5216 has 9 MA's), (84, 5102), (99, 5027), (111, 4982),

Gene: G4_41 Start: 28598, Stop: 28930, Start Num: 26
Candidate Starts for G4_41:
(Start: 26 @28598 has 7 MA's), (Start: 38 @28625 has 37 MA's), (54, 28661), (59, 28673), (70, 28733),
(72, 28742), (100, 28868), (110, 28907), (113, 28916),

Gene: G4_48 Start: 30679, Stop: 30978, Start Num: 37
Candidate Starts for G4_48:
(10, 30469), (11, 30493), (12, 30508), (14, 30535), (Start: 37 @30679 has 1 MA's), (44, 30694), (Start:
47 @30697 has 134 MA's), (52, 30706), (54, 30718), (76, 30802), (79, 30820), (95, 30904), (98,
30916), (103, 30931), (113, 30970),

Gene: Gage_95 Start: 56798, Stop: 57058, Start Num: 47
Candidate Starts for Gage_95:
(Start: 47 @56798 has 134 MA's), (57, 56819), (75, 56894), (91, 56963), (108, 57029),

Gene: Galactic_58 Start: 39901, Stop: 40179, Start Num: 28
Candidate Starts for Galactic_58:
(24, 39874), (Start: 28 @39901 has 44 MA's), (66, 39985), (68, 39994), (83, 40057), (87, 40072), (90,
40084), (93, 40108), (96, 40120), (115, 40171),

Gene: Ganymede_51 Start: 37786, Stop: 38049, Start Num: 40
Candidate Starts for Ganymede_51:
(Start: 40 @37786 has 129 MA's), (83, 37927),

Gene: Gardann_81 Start: 53753, Stop: 54049, Start Num: 38
Candidate Starts for Gardann_81:
(Start: 38 @53753 has 37 MA's), (Start: 67 @53813 has 6 MA's), (77, 53858), (82, 53870), (90, 53906),
(101, 53960), (102, 53963),

Gene: Gator_91 Start: 56582, Stop: 56842, Start Num: 47
Candidate Starts for Gator_91:
(16, 56444), (Start: 47 @56582 has 134 MA's), (57, 56603), (91, 56747), (108, 56813),

Gene: Gemini_98 Start: 57174, Stop: 57434, Start Num: 47
Candidate Starts for Gemini_98:
(Start: 47 @57174 has 134 MA's), (57, 57195), (75, 57270), (91, 57339), (108, 57405),

Gene: Geraldini_53 Start: 38403, Stop: 38666, Start Num: 40
Candidate Starts for Geraldini_53:
(Start: 40 @38403 has 129 MA's), (63, 38457), (64, 38463), (83, 38544),

Gene: Girr_57 Start: 39742, Stop: 40020, Start Num: 28

Candidate Starts for Girr_57:

(24, 39715), (Start: 28 @39742 has 44 MA's), (66, 39826), (68, 39835), (83, 39898), (87, 39913), (90, 39925), (93, 39949), (96, 39961), (115, 40012),

Gene: Glexan_92 Start: 56857, Stop: 57117, Start Num: 47

Candidate Starts for Glexan_92:

(Start: 47 @56857 has 134 MA's), (57, 56878), (75, 56953), (91, 57022), (108, 57088),

Gene: Goku_92 Start: 56793, Stop: 57053, Start Num: 47

Candidate Starts for Goku_92:

(Start: 47 @56793 has 134 MA's), (57, 56814), (75, 56889), (91, 56958), (108, 57024),

Gene: GoldenSpark_97 Start: 56657, Stop: 56917, Start Num: 47

Candidate Starts for GoldenSpark_97:

(Start: 47 @56657 has 134 MA's), (57, 56678), (75, 56753), (91, 56822), (108, 56888),

Gene: Goldilocks_96 Start: 56015, Stop: 56275, Start Num: 47

Candidate Starts for Goldilocks_96:

(Start: 47 @56015 has 134 MA's), (57, 56036), (75, 56111), (91, 56180), (108, 56246),

Gene: GooberAzure_96 Start: 56657, Stop: 56917, Start Num: 47

Candidate Starts for GooberAzure_96:

(Start: 47 @56657 has 134 MA's), (57, 56678), (75, 56753), (91, 56822), (108, 56888),

Gene: Greep_97 Start: 57931, Stop: 58191, Start Num: 47

Candidate Starts for Greep_97:

(Start: 47 @57931 has 134 MA's), (57, 57952), (75, 58027), (91, 58096), (108, 58162),

Gene: Grimmer_69 Start: 41537, Stop: 41815, Start Num: 28

Candidate Starts for Grimmer_69:

(24, 41510), (Start: 28 @41537 has 44 MA's), (66, 41621), (83, 41693), (87, 41708), (90, 41720), (93, 41744), (96, 41756), (115, 41807),

Gene: Guanica15_53 Start: 37156, Stop: 37407, Start Num: 47

Candidate Starts for Guanica15_53:

(Start: 40 @37144 has 129 MA's), (Start: 47 @37156 has 134 MA's), (78, 37267), (83, 37285),

Gene: Halena_76 Start: 51262, Stop: 51552, Start Num: 46

Candidate Starts for Halena_76:

(Start: 38 @51247 has 37 MA's), (Start: 46 @51262 has 12 MA's), (Start: 67 @51322 has 6 MA's), (83, 51385), (90, 51412), (119, 51535), (120, 51538),

Gene: Hammy_53 Start: 38432, Stop: 38686, Start Num: 40

Candidate Starts for Hammy_53:

(3, 38114), (8, 38183), (13, 38279), (Start: 40 @38432 has 129 MA's), (68, 38498), (83, 38561), (92, 38606),

Gene: HanKaySha_94 Start: 56224, Stop: 56484, Start Num: 47

Candidate Starts for HanKaySha_94:

(Start: 47 @56224 has 134 MA's), (57, 56245), (75, 56320), (91, 56389), (108, 56455),

Gene: Harella_93 Start: 57373, Stop: 57633, Start Num: 47

Candidate Starts for Harella_93:

(Start: 47 @57373 has 134 MA's), (57, 57394), (75, 57469), (91, 57538), (108, 57604),

Gene: HedwigODU_50 Start: 37356, Stop: 37619, Start Num: 40

Candidate Starts for HedwigODU_50:

(Start: 40 @37356 has 129 MA's), (83, 37497),

Gene: Henry_91 Start: 56534, Stop: 56794, Start Num: 47

Candidate Starts for Henry_91:

(Start: 47 @56534 has 134 MA's), (57, 56555), (75, 56630), (91, 56699), (108, 56765),

Gene: Highbury_92 Start: 56224, Stop: 56484, Start Num: 47

Candidate Starts for Highbury_92:

(Start: 47 @56224 has 134 MA's), (57, 56245), (75, 56320), (91, 56389), (108, 56455),

Gene: Holt_98 Start: 57071, Stop: 57331, Start Num: 47

Candidate Starts for Holt_98:

(Start: 47 @57071 has 134 MA's), (57, 57092), (75, 57167), (91, 57236), (108, 57302),

Gene: Homura_50 Start: 37471, Stop: 37734, Start Num: 40

Candidate Starts for Homura_50:

(Start: 40 @37471 has 129 MA's), (83, 37612),

Gene: Hoonter_96 Start: 56529, Stop: 56789, Start Num: 47

Candidate Starts for Hoonter_96:

(Start: 47 @56529 has 134 MA's), (57, 56550), (75, 56625), (91, 56694), (108, 56760),

Gene: Hokey_94 Start: 57035, Stop: 57295, Start Num: 47

Candidate Starts for Hokey_94:

(Start: 47 @57035 has 134 MA's), (57, 57056), (75, 57131), (91, 57200), (108, 57266),

Gene: HufflyPuff_95 Start: 57119, Stop: 57379, Start Num: 47

Candidate Starts for HufflyPuff_95:

(Start: 47 @57119 has 134 MA's), (57, 57140), (75, 57215), (91, 57284), (108, 57350),

Gene: Hurricane_53 Start: 37919, Stop: 38188, Start Num: 35

Candidate Starts for Hurricane_53:

(8, 37679), (19, 37823), (Start: 35 @37919 has 7 MA's), (49, 37943), (83, 38063), (93, 38117),

Gene: Hyperbowlee_50 Start: 37668, Stop: 37931, Start Num: 40

Candidate Starts for Hyperbowlee_50:

(Start: 40 @37668 has 129 MA's), (83, 37809),

Gene: IHOP_91 Start: 56697, Stop: 56957, Start Num: 47

Candidate Starts for IHOP_91:

(Start: 47 @56697 has 134 MA's), (57, 56718), (75, 56793), (91, 56862), (108, 56928),

Gene: Ibhubesi_59 Start: 40025, Stop: 40303, Start Num: 28

Candidate Starts for Ibhubesi_59:

(24, 39998), (Start: 28 @40025 has 44 MA's), (66, 40109), (68, 40118), (87, 40196), (90, 40208), (93, 40232), (96, 40244), (115, 40295),

Gene: Ibrahim_41 Start: 31892, Stop: 32149, Start Num: 33

Candidate Starts for Ibrahim_41:

(6, 31616), (7, 31637), (Start: 33 @31892 has 6 MA's), (68, 31976), (90, 32066),

Gene: Icee_94 Start: 56184, Stop: 56444, Start Num: 47

Candidate Starts for Icee_94:

(Start: 47 @56184 has 134 MA's), (57, 56205), (75, 56280), (91, 56349), (108, 56415),

Gene: Ididsumtinwong_41 Start: 27555, Stop: 27854, Start Num: 34

Candidate Starts for Ididsumtinwong_41:

(5, 27267), (9, 27312), (21, 27486), (Start: 34 @27555 has 5 MA's), (90, 27717),

Gene: Illumine_53 Start: 38105, Stop: 38368, Start Num: 40

Candidate Starts for Illumine_53:

(8, 37853), (Start: 40 @38105 has 129 MA's), (63, 38159), (83, 38246),

Gene: Inca_90 Start: 55186, Stop: 55446, Start Num: 47

Candidate Starts for Inca_90:

(Start: 47 @55186 has 134 MA's), (57, 55207), (75, 55282), (91, 55351), (108, 55417),

Gene: Inky_50 Start: 37471, Stop: 37734, Start Num: 40

Candidate Starts for Inky_50:

(Start: 40 @37471 has 129 MA's), (83, 37612),

Gene: Inventum_54 Start: 39529, Stop: 39807, Start Num: 28

Candidate Starts for Inventum_54:

(24, 39502), (Start: 28 @39529 has 44 MA's), (66, 39613), (68, 39622), (83, 39685), (87, 39700), (90, 39712), (93, 39736), (96, 39748), (115, 39799),

Gene: Itos_80 Start: 52824, Stop: 53120, Start Num: 38

Candidate Starts for Itos_80:

(Start: 38 @52824 has 37 MA's), (Start: 67 @52884 has 6 MA's), (77, 52929), (82, 52941), (90, 52977), (101, 53031), (102, 53034),

Gene: JAWS_50 Start: 37345, Stop: 37608, Start Num: 40

Candidate Starts for JAWS_50:

(Start: 40 @37345 has 129 MA's), (83, 37486),

Gene: Jarvi_50 Start: 37471, Stop: 37734, Start Num: 40

Candidate Starts for Jarvi_50:

(Start: 40 @37471 has 129 MA's), (83, 37612),

Gene: Jayhawk_51 Start: 37354, Stop: 37617, Start Num: 40

Candidate Starts for Jayhawk_51:

(Start: 40 @37354 has 129 MA's), (83, 37495),

Gene: JeTaime_94 Start: 57387, Stop: 57647, Start Num: 47

Candidate Starts for JeTaime_94:

(Start: 47 @57387 has 134 MA's), (57, 57408), (75, 57483), (91, 57552), (108, 57618),

Gene: Jeckyll_50 Start: 37471, Stop: 37734, Start Num: 40

Candidate Starts for Jeckyll_50:

(Start: 40 @37471 has 129 MA's), (83, 37612),

Gene: Jennelsea_56 Start: 38665, Stop: 38943, Start Num: 28

Candidate Starts for Jennelsea_56:

(24, 38638), (Start: 28 @38665 has 44 MA's), (66, 38749), (68, 38758), (83, 38821), (87, 38836), (90, 38848), (93, 38872), (96, 38884), (105, 38908), (115, 38935),

Gene: Jinglebell_64 Start: 42540, Stop: 42818, Start Num: 28

Candidate Starts for Jinglebell_64:

(24, 42513), (Start: 28 @42540 has 44 MA's), (66, 42624), (68, 42633), (83, 42696), (87, 42711), (90, 42723), (93, 42747), (96, 42759), (115, 42810),

Gene: Jobypre_79 Start: 53794, Stop: 54063, Start Num: 38

Candidate Starts for Jobypre_79:

(Start: 38 @53794 has 37 MA's), (Start: 46 @53809 has 12 MA's), (90, 53944), (97, 53986), (108, 54022), (116, 54046),

Gene: JoeDirt_78 Start: 52575, Stop: 52880, Start Num: 38

Candidate Starts for JoeDirt_78:

(Start: 38 @52575 has 37 MA's), (Start: 46 @52590 has 12 MA's), (Start: 67 @52650 has 6 MA's), (83, 52713), (90, 52740), (101, 52794), (119, 52863), (120, 52866),

Gene: JoeyJr_54 Start: 38435, Stop: 38713, Start Num: 28

Candidate Starts for JoeyJr_54:

(24, 38408), (Start: 28 @38435 has 44 MA's), (66, 38519), (68, 38528), (83, 38591), (87, 38606), (90, 38618), (93, 38642), (96, 38654), (115, 38705),

Gene: Journey_43 Start: 30217, Stop: 30516, Start Num: 31

Candidate Starts for Journey_43:

(Start: 31 @30217 has 5 MA's), (36, 30235), (55, 30271), (Start: 62 @30286 has 1 MA's), (83, 30382), (93, 30433), (104, 30469), (112, 30502), (114, 30508),

Gene: Joy99_50 Start: 37400, Stop: 37663, Start Num: 40

Candidate Starts for Joy99_50:

(Start: 40 @37400 has 129 MA's), (83, 37541),

Gene: Jubie_78 Start: 53929, Stop: 54198, Start Num: 38

Candidate Starts for Jubie_78:

(Start: 38 @53929 has 37 MA's), (Start: 46 @53944 has 12 MA's), (90, 54079), (97, 54121), (108, 54157), (116, 54181),

Gene: Kahlid_81 Start: 53924, Stop: 54220, Start Num: 38

Candidate Starts for Kahlid_81:

(Start: 38 @53924 has 37 MA's), (Start: 67 @53984 has 6 MA's), (77, 54029), (82, 54041), (90, 54077), (101, 54131), (102, 54134),

Gene: Kanye_90 Start: 56281, Stop: 56541, Start Num: 47

Candidate Starts for Kanye_90:

(Start: 47 @56281 has 134 MA's), (57, 56302), (75, 56377), (91, 56446), (108, 56512),

Gene: Keshu_55 Start: 37986, Stop: 38255, Start Num: 35

Candidate Starts for Keshu_55:

(8, 37746), (Start: 35 @37986 has 7 MA's), (49, 38010), (83, 38130), (93, 38184),

Gene: Kimchi_97 Start: 56801, Stop: 57061, Start Num: 47

Candidate Starts for Kimchi_97:

(Start: 47 @56801 has 134 MA's), (57, 56822), (75, 56897), (91, 56966), (108, 57032),

Gene: KingMidas_58 Start: 40097, Stop: 40375, Start Num: 28

Candidate Starts for KingMidas_58:

(24, 40070), (Start: 28 @40097 has 44 MA's), (66, 40181), (68, 40190), (83, 40253), (87, 40268), (90, 40280), (93, 40304), (96, 40316), (115, 40367),

Gene: Kingsolomon_77 Start: 53801, Stop: 54070, Start Num: 38

Candidate Starts for Kingsolomon_77:

(Start: 38 @53801 has 37 MA's), (Start: 46 @53816 has 12 MA's), (90, 53951), (97, 53993), (108, 54029), (116, 54053),

Gene: KirDoubleO7_77 Start: 53797, Stop: 54084, Start Num: 46

Candidate Starts for KirDoubleO7_77:

(Start: 38 @53782 has 37 MA's), (Start: 46 @53797 has 12 MA's), (90, 53935),

Gene: Kostya_93 Start: 56799, Stop: 57059, Start Num: 47

Candidate Starts for Kostya_93:

(Start: 47 @56799 has 134 MA's), (57, 56820), (75, 56895), (91, 56964), (108, 57030),

Gene: Kropertea_76 Start: 52480, Stop: 52770, Start Num: 39

Candidate Starts for Kropertea_76:

(Start: 39 @52480 has 6 MA's), (63, 52510), (Start: 67 @52534 has 6 MA's), (82, 52591), (83, 52600), (90, 52627), (94, 52657), (102, 52684),

Gene: Krueger_57 Start: 38145, Stop: 38396, Start Num: 40

Candidate Starts for Krueger_57:

(Start: 40 @38145 has 129 MA's), (42, 38151), (78, 38265), (81, 38271), (83, 38283),

Gene: Krypton555_80 Start: 54028, Stop: 54342, Start Num: 38

Candidate Starts for Krypton555_80:

(Start: 38 @54028 has 37 MA's), (Start: 46 @54043 has 12 MA's), (82, 54154), (90, 54190), (118, 54322),

Gene: LastHope_53 Start: 36640, Stop: 36891, Start Num: 47

Candidate Starts for LastHope_53:

(Start: 40 @36628 has 129 MA's), (Start: 47 @36640 has 134 MA's), (63, 36682), (78, 36751), (83, 36769),

Gene: LaterM_51 Start: 38233, Stop: 38496, Start Num: 40

Candidate Starts for LaterM_51:

(Start: 40 @38233 has 129 MA's), (63, 38287), (83, 38374),

Gene: Lavahound_50 Start: 38674, Stop: 38928, Start Num: 40

Candidate Starts for Lavahound_50:

(13, 38524), (Start: 40 @38674 has 129 MA's), (68, 38740), (92, 38848),

Gene: LeBron_77 Start: 51321, Stop: 51551, Start Num: 67

Candidate Starts for LeBron_77:

(Start: 38 @51246 has 37 MA's), (Start: 46 @51261 has 12 MA's), (Start: 67 @51321 has 6 MA's), (83, 51384), (90, 51411), (119, 51534), (120, 51537),

Gene: Lea83_53 Start: 37972, Stop: 38241, Start Num: 35

Candidate Starts for Lea83_53:

(1, 37507), (8, 37732), (Start: 35 @37972 has 7 MA's), (49, 37996), (83, 38116), (93, 38170),

Gene: Leozinho_58 Start: 39315, Stop: 39593, Start Num: 28

Candidate Starts for Leozinho_58:

(24, 39288), (Start: 28 @39315 has 44 MA's), (66, 39399), (68, 39408), (83, 39471), (87, 39486), (90, 39498), (93, 39522), (96, 39534), (115, 39585),

Gene: Leperchaun_51 Start: 37665, Stop: 37943, Start Num: 28

Candidate Starts for Leperchaun_51:

(24, 37638), (Start: 28 @37665 has 44 MA's), (66, 37749), (68, 37758), (83, 37821), (87, 37836), (90, 37848), (93, 37872), (96, 37884), (115, 37935),

Gene: LilPharaoh_46 Start: 36768, Stop: 37037, Start Num: 40

Candidate Starts for LilPharaoh_46:

(Start: 40 @36768 has 129 MA's), (71, 36864), (88, 36924), (89, 36930), (90, 36933), (93, 36960), (96, 36972), (114, 37026),

Gene: Lilac_96 Start: 56626, Stop: 56886, Start Num: 47

Candidate Starts for Lilac_96:

(Start: 47 @56626 has 134 MA's), (57, 56647), (75, 56722), (91, 56791), (108, 56857),

Gene: Lilizi_94 Start: 56263, Stop: 56523, Start Num: 47

Candidate Starts for Lilizi_94:

(Start: 47 @56263 has 134 MA's), (57, 56284), (75, 56359), (91, 56428), (108, 56494),

Gene: Lilpickle_92 Start: 56151, Stop: 56411, Start Num: 47

Candidate Starts for Lilpickle_92:

(Start: 47 @56151 has 134 MA's), (57, 56172), (75, 56247), (91, 56316), (108, 56382),

Gene: LindNT_49 Start: 37556, Stop: 37819, Start Num: 40

Candidate Starts for LindNT_49:

(Start: 40 @37556 has 129 MA's), (63, 37610), (83, 37697),

Gene: Lishka_37 Start: 25254, Stop: 25553, Start Num: 34

Candidate Starts for Lishka_37:

(5, 24966), (9, 25011), (21, 25185), (Start: 34 @25254 has 5 MA's), (90, 25416),

Gene: Liveloughbron_95 Start: 57726, Stop: 57986, Start Num: 47

Candidate Starts for Liveloughbron_95:

(Start: 47 @57726 has 134 MA's), (57, 57747), (75, 57822), (91, 57891), (108, 57957),

Gene: LiyuLake_78 Start: 53870, Stop: 54157, Start Num: 46

Candidate Starts for LiyuLake_78:

(Start: 38 @53855 has 37 MA's), (Start: 46 @53870 has 12 MA's), (90, 54008),

Gene: Llama_64 Start: 42394, Stop: 42672, Start Num: 28

Candidate Starts for Llama_64:

(24, 42367), (Start: 28 @42394 has 44 MA's), (66, 42478), (68, 42487), (83, 42550), (87, 42565), (90, 42577), (93, 42601), (96, 42613), (115, 42664),

Gene: Llorens_50 Start: 37471, Stop: 37734, Start Num: 40

Candidate Starts for Llorens_50:

(Start: 40 @37471 has 129 MA's), (83, 37612),

Gene: Lolly9_78 Start: 53913, Stop: 54164, Start Num: 46

Candidate Starts for Lolly9_78:

(Start: 38 @53898 has 37 MA's), (Start: 46 @53913 has 12 MA's), (97, 54090), (116, 54150),

Gene: LunaBlu_61 Start: 40560, Stop: 40838, Start Num: 28

Candidate Starts for LunaBlu_61:

(24, 40533), (Start: 28 @40560 has 44 MA's), (66, 40644), (68, 40653), (83, 40716), (87, 40731), (90, 40743), (93, 40767), (96, 40779), (115, 40830),

Gene: Lunahalos_50 Start: 37471, Stop: 37734, Start Num: 40

Candidate Starts for Lunahalos_50:

(Start: 40 @37471 has 129 MA's), (83, 37612),

Gene: MAckerman_76 Start: 51240, Stop: 51545, Start Num: 38

Candidate Starts for MAckerman_76:

(Start: 38 @51240 has 37 MA's), (Start: 46 @51255 has 12 MA's), (Start: 67 @51315 has 6 MA's), (83, 51378), (90, 51405), (119, 51528), (120, 51531),

Gene: MISSy_94 Start: 56379, Stop: 56639, Start Num: 47

Candidate Starts for MISSy_94:

(Start: 47 @56379 has 134 MA's), (57, 56400), (75, 56475), (91, 56544), (108, 56610),

Gene: MPhalcon_94 Start: 56372, Stop: 56632, Start Num: 47

Candidate Starts for MPhalcon_94:

(Start: 47 @56372 has 134 MA's), (57, 56393), (75, 56468), (91, 56537), (108, 56603),

Gene: MacKat_45 Start: 32871, Stop: 33134, Start Num: 40

Candidate Starts for MacKat_45:

(Start: 40 @32871 has 129 MA's), (83, 33012),

Gene: MadamMonkfish_93 Start: 55878, Stop: 56138, Start Num: 47

Candidate Starts for MadamMonkfish_93:

(Start: 47 @55878 has 134 MA's), (57, 55899), (75, 55974), (91, 56043), (108, 56109),

Gene: Manda_95 Start: 57955, Stop: 58215, Start Num: 47

Candidate Starts for Manda_95:

(Start: 47 @57955 has 134 MA's), (57, 57976), (75, 58051), (91, 58120), (108, 58186),

Gene: Marcoliusprime_54 Start: 39559, Stop: 39792, Start Num: 41

Candidate Starts for Marcoliusprime_54:

(Start: 41 @39559 has 7 MA's), (Start: 43 @39562 has 4 MA's), (48, 39568), (51, 39574), (78, 39664), (81, 39670), (93, 39733),

Gene: MarkPhew_54 Start: 38124, Stop: 38393, Start Num: 40

Candidate Starts for MarkPhew_54:

(Start: 40 @38124 has 129 MA's), (58, 38151), (63, 38166), (68, 38190), (92, 38298), (114, 38382),

Gene: Marshawn_53 Start: 38262, Stop: 38522, Start Num: 40

Candidate Starts for Marshawn_53:

(3, 37941), (8, 38010), (13, 38106), (Start: 40 @38262 has 129 MA's), (64, 38319), (90, 38427), (104, 38490),

Gene: Marshmallow_91 Start: 57427, Stop: 57687, Start Num: 47
Candidate Starts for Marshmallow_91:
(Start: 47 @57427 has 134 MA's), (57, 57448), (75, 57523), (91, 57592), (108, 57658),

Gene: Maxxinista_96 Start: 56793, Stop: 57053, Start Num: 47
Candidate Starts for Maxxinista_96:
(Start: 47 @56793 has 134 MA's), (57, 56814), (75, 56889), (91, 56958), (108, 57024),

Gene: McMater_53 Start: 38285, Stop: 38548, Start Num: 40
Candidate Starts for McMater_53:
(1, 37805), (3, 37961), (8, 38030), (Start: 40 @38285 has 129 MA's), (75, 38387), (78, 38405), (83, 38423), (93, 38477), (104, 38513), (114, 38537),

Gene: Mdavu_47 Start: 37029, Stop: 37298, Start Num: 40
Candidate Starts for Mdavu_47:
(Start: 40 @37029 has 129 MA's), (71, 37125), (88, 37185), (89, 37191), (90, 37194), (93, 37221), (96, 37233), (114, 37287),

Gene: MeaningOfLife_51 Start: 38280, Stop: 38543, Start Num: 40
Candidate Starts for MeaningOfLife_51:
(Start: 40 @38280 has 129 MA's), (83, 38421),

Gene: Megsy_52 Start: 37615, Stop: 37878, Start Num: 40
Candidate Starts for Megsy_52:
(Start: 40 @37615 has 129 MA's), (63, 37669), (83, 37756),

Gene: Mendokysei_39 Start: 30983, Stop: 31297, Start Num: 33
Candidate Starts for Mendokysei_39:
(Start: 33 @30983 has 6 MA's), (45, 30998), (63, 31037),

Gene: Miley16_81 Start: 53918, Stop: 54214, Start Num: 38
Candidate Starts for Miley16_81:
(Start: 38 @53918 has 37 MA's), (Start: 67 @53978 has 6 MA's), (77, 54023), (82, 54035), (90, 54071), (101, 54125), (102, 54128),

Gene: Milly_54 Start: 39532, Stop: 39765, Start Num: 41
Candidate Starts for Milly_54:
(Start: 41 @39532 has 7 MA's), (Start: 43 @39535 has 4 MA's), (48, 39541), (51, 39547), (78, 39637), (81, 39643), (93, 39706),

Gene: Mindy_92 Start: 55700, Stop: 55960, Start Num: 47
Candidate Starts for Mindy_92:
(Start: 47 @55700 has 134 MA's), (57, 55721), (75, 55796), (91, 55865), (108, 55931),

Gene: MiniLon_83 Start: 53899, Stop: 54165, Start Num: 38
Candidate Starts for MiniLon_83:
(Start: 38 @53899 has 37 MA's), (Start: 46 @53914 has 12 MA's), (97, 54091), (116, 54151),

Gene: MiniMac_83 Start: 53909, Stop: 54160, Start Num: 46
Candidate Starts for MiniMac_83:
(Start: 38 @53894 has 37 MA's), (Start: 46 @53909 has 12 MA's), (97, 54086), (116, 54146),

Gene: Miniwave_88 Start: 56195, Stop: 56455, Start Num: 47
Candidate Starts for Miniwave_88:
(Start: 47 @56195 has 134 MA's), (57, 56216), (75, 56291), (91, 56360), (108, 56426),

Gene: Misfit_94 Start: 57669, Stop: 57929, Start Num: 47
Candidate Starts for Misfit_94:
(Start: 47 @57669 has 134 MA's), (57, 57690), (75, 57765), (91, 57834), (108, 57900),

Gene: MisterCuddles_57 Start: 39742, Stop: 40020, Start Num: 28
Candidate Starts for MisterCuddles_57:
(24, 39715), (Start: 28 @39742 has 44 MA's), (66, 39826), (68, 39835), (83, 39898), (87, 39913), (90, 39925), (93, 39949), (96, 39961), (115, 40012),

Gene: MkaliMitinis3_82 Start: 53987, Stop: 54283, Start Num: 38
Candidate Starts for MkaliMitinis3_82:
(Start: 38 @53987 has 37 MA's), (Start: 67 @54047 has 6 MA's), (77, 54092), (82, 54104), (90, 54140), (101, 54194), (102, 54197),

Gene: Modragons_63 Start: 42384, Stop: 42662, Start Num: 28
Candidate Starts for Modragons_63:
(24, 42357), (Start: 28 @42384 has 44 MA's), (66, 42468), (68, 42477), (83, 42540), (87, 42555), (90, 42567), (93, 42591), (96, 42603), (115, 42654),

Gene: Moldemort_96 Start: 56336, Stop: 56596, Start Num: 47
Candidate Starts for Moldemort_96:
(Start: 47 @56336 has 134 MA's), (57, 56357), (75, 56432), (91, 56501), (108, 56567),

Gene: Moleficent_7 Start: 5213, Stop: 4956, Start Num: 56
Candidate Starts for Moleficent_7:
(25, 5273), (Start: 56 @5213 has 9 MA's), (84, 5099), (99, 5024), (111, 4979),

Gene: MollyToe_88 Start: 55218, Stop: 55478, Start Num: 47
Candidate Starts for MollyToe_88:
(Start: 47 @55218 has 134 MA's), (57, 55239), (75, 55314), (91, 55383), (108, 55449),

Gene: Moostard_77 Start: 53811, Stop: 54065, Start Num: 46
Candidate Starts for Moostard_77:
(Start: 38 @53796 has 37 MA's), (Start: 46 @53811 has 12 MA's), (90, 53946), (97, 53988), (108, 54024), (116, 54048),

Gene: Morrill_7 Start: 5168, Stop: 4911, Start Num: 56
Candidate Starts for Morrill_7:
(25, 5228), (Start: 56 @5168 has 9 MA's), (73, 5096), (84, 5054), (99, 4979), (111, 4934),

Gene: Mosby_89 Start: 55952, Stop: 56212, Start Num: 47
Candidate Starts for Mosby_89:
(Start: 47 @55952 has 134 MA's), (57, 55973), (75, 56048), (91, 56117), (108, 56183),

Gene: MsGreen_79 Start: 53793, Stop: 54062, Start Num: 38
Candidate Starts for MsGreen_79:
(Start: 38 @53793 has 37 MA's), (Start: 46 @53808 has 12 MA's), (90, 53943), (97, 53985), (108, 54021), (116, 54045),

Gene: Mufasa_54 Start: 39116, Stop: 39349, Start Num: 43

Candidate Starts for Mufasa_54:

(Start: 41 @39113 has 7 MA's), (Start: 43 @39116 has 4 MA's), (48, 39122), (51, 39128), (78, 39218), (81, 39224), (93, 39287), (114, 39338),

Gene: Murica_96 Start: 57595, Stop: 57855, Start Num: 47

Candidate Starts for Murica_96:

(Start: 47 @57595 has 134 MA's), (57, 57616), (75, 57691), (91, 57760), (108, 57826),

Gene: Murphy_93 Start: 57036, Stop: 57296, Start Num: 47

Candidate Starts for Murphy_93:

(Start: 47 @57036 has 134 MA's), (57, 57057), (75, 57132), (91, 57201), (108, 57267),

Gene: Murucutumbu_51 Start: 38326, Stop: 38589, Start Num: 40

Candidate Starts for Murucutumbu_51:

(8, 38074), (Start: 40 @38326 has 129 MA's), (63, 38380), (83, 38467),

Gene: Mwanjiwa_65 Start: 40617, Stop: 40895, Start Num: 28

Candidate Starts for Mwanjiwa_65:

(24, 40590), (Start: 28 @40617 has 44 MA's), (66, 40701), (68, 40710), (83, 40773), (87, 40788), (90, 40800), (93, 40824), (96, 40836), (115, 40887),

Gene: Mynx_51 Start: 37672, Stop: 37935, Start Num: 40

Candidate Starts for Mynx_51:

(Start: 40 @37672 has 129 MA's), (83, 37813),

Gene: Myrale_93 Start: 57158, Stop: 57418, Start Num: 47

Candidate Starts for Myrale_93:

(Start: 47 @57158 has 134 MA's), (57, 57179), (75, 57254), (91, 57323), (108, 57389),

Gene: Nairb_40 Start: 31446, Stop: 31703, Start Num: 33

Candidate Starts for Nairb_40:

(6, 31170), (7, 31191), (Start: 33 @31446 has 6 MA's), (68, 31530), (90, 31620),

Gene: Nala_95 Start: 56881, Stop: 57141, Start Num: 47

Candidate Starts for Nala_95:

(Start: 47 @56881 has 134 MA's), (57, 56902), (75, 56977), (91, 57046), (108, 57112),

Gene: NelitzaMV_91 Start: 56241, Stop: 56501, Start Num: 47

Candidate Starts for NelitzaMV_91:

(Start: 47 @56241 has 134 MA's), (57, 56262), (75, 56337), (91, 56406), (108, 56472),

Gene: Nergal_48 Start: 36024, Stop: 36272, Start Num: 40

Candidate Starts for Nergal_48:

(Start: 40 @36024 has 129 MA's), (78, 36138), (83, 36156), (91, 36189), (104, 36246),

Gene: Nette_42 Start: 31007, Stop: 31306, Start Num: 45

Candidate Starts for Nette_42:

(Start: 33 @30992 has 6 MA's), (45, 31007), (63, 31046),

Gene: NewHope4_60 Start: 39931, Stop: 40209, Start Num: 28

Candidate Starts for NewHope4_60:

(24, 39904), (Start: 28 @39931 has 44 MA's), (66, 40015), (68, 40024), (83, 40087), (87, 40102), (90, 40114), (93, 40138), (96, 40150), (115, 40201),

Gene: Nibb_53 Start: 37813, Stop: 38082, Start Num: 40

Candidate Starts for Nibb_53:

(Start: 40 @37813 has 129 MA's), (58, 37840), (92, 37987), (114, 38071),

Gene: Nichirin_66 Start: 43925, Stop: 44203, Start Num: 28

Candidate Starts for Nichirin_66:

(24, 43898), (Start: 28 @43925 has 44 MA's), (66, 44009), (68, 44018), (83, 44081), (87, 44096), (90, 44108), (93, 44132), (96, 44144), (115, 44195),

Gene: Nicholas_77 Start: 53801, Stop: 54070, Start Num: 38

Candidate Starts for Nicholas_77:

(Start: 38 @53801 has 37 MA's), (Start: 46 @53816 has 12 MA's), (90, 53951), (97, 53993), (108, 54029), (116, 54053),

Gene: Nikao_49 Start: 39653, Stop: 39922, Start Num: 40

Candidate Starts for Nikao_49:

(Start: 40 @39653 has 129 MA's), (71, 39749), (88, 39809), (89, 39815), (90, 39818), (93, 39845), (96, 39857), (114, 39911),

Gene: Niklas_53 Start: 38346, Stop: 38609, Start Num: 40

Candidate Starts for Niklas_53:

(1, 37866), (3, 38022), (8, 38091), (Start: 40 @38346 has 129 MA's), (75, 38448), (78, 38466), (83, 38484), (93, 38538), (104, 38574), (114, 38598),

Gene: Nimrod_94 Start: 57584, Stop: 57844, Start Num: 47

Candidate Starts for Nimrod_94:

(Start: 47 @57584 has 134 MA's), (57, 57605), (75, 57680), (91, 57749), (108, 57815),

Gene: Nitzel_57 Start: 39291, Stop: 39521, Start Num: 28

Candidate Starts for Nitzel_57:

(24, 39264), (Start: 28 @39291 has 44 MA's), (66, 39375), (83, 39444), (90, 39471), (93, 39495),

Gene: NoSleep_94 Start: 56218, Stop: 56478, Start Num: 47

Candidate Starts for NoSleep_94:

(Start: 47 @56218 has 134 MA's), (57, 56239), (75, 56314), (91, 56383), (108, 56449),

Gene: NonchalantPear_93 Start: 56074, Stop: 56334, Start Num: 47

Candidate Starts for NonchalantPear_93:

(Start: 47 @56074 has 134 MA's), (57, 56095), (75, 56170), (91, 56239), (108, 56305),

Gene: November_51 Start: 38195, Stop: 38449, Start Num: 40

Candidate Starts for November_51:

(3, 37877), (8, 37946), (13, 38042), (Start: 40 @38195 has 129 MA's), (68, 38261), (83, 38324), (92, 38369),

Gene: Nutello_46 Start: 37040, Stop: 37309, Start Num: 40

Candidate Starts for Nutello_46:

(Start: 40 @37040 has 129 MA's), (71, 37136), (88, 37196), (89, 37202), (90, 37205), (93, 37232), (96, 37244), (114, 37298),

Gene: Ochi17_62 Start: 41991, Stop: 42269, Start Num: 28

Candidate Starts for Ochi17_62:

(24, 41964), (Start: 28 @41991 has 44 MA's), (66, 42075), (68, 42084), (83, 42147), (87, 42162), (90, 42174), (93, 42198), (96, 42210), (115, 42261),

Gene: OfUltron_64 Start: 42540, Stop: 42818, Start Num: 28

Candidate Starts for OfUltron_64:

(24, 42513), (Start: 28 @42540 has 44 MA's), (66, 42624), (68, 42633), (83, 42696), (87, 42711), (90, 42723), (93, 42747), (96, 42759), (115, 42810),

Gene: OhShagHennessy_75 Start: 51278, Stop: 51583, Start Num: 38

Candidate Starts for OhShagHennessy_75:

(Start: 38 @51278 has 37 MA's), (Start: 46 @51293 has 12 MA's), (Start: 67 @51353 has 6 MA's), (83, 51416), (90, 51443), (101, 51497), (119, 51566), (120, 51569),

Gene: Oksu_63 Start: 42803, Stop: 43081, Start Num: 28

Candidate Starts for Oksu_63:

(24, 42776), (Start: 28 @42803 has 44 MA's), (66, 42887), (68, 42896), (83, 42959), (87, 42974), (90, 42986), (93, 43010), (96, 43022), (115, 43073),

Gene: OrionPax_92 Start: 55969, Stop: 56229, Start Num: 47

Candidate Starts for OrionPax_92:

(Start: 47 @55969 has 134 MA's), (57, 55990), (75, 56065), (91, 56134), (108, 56200),

Gene: OwlsT2W_59 Start: 40166, Stop: 40444, Start Num: 28

Candidate Starts for OwlsT2W_59:

(24, 40139), (Start: 28 @40166 has 44 MA's), (66, 40250), (83, 40322), (87, 40337), (90, 40349), (93, 40373), (96, 40385), (115, 40436),

Gene: PFR1_37 Start: 28506, Stop: 28805, Start Num: 37

Candidate Starts for PFR1_37:

(14, 28362), (Start: 37 @28506 has 1 MA's), (44, 28521), (Start: 47 @28524 has 134 MA's), (52, 28533), (54, 28545), (76, 28629), (79, 28647), (85, 28674), (95, 28731), (98, 28743), (103, 28758), (113, 28797),

Gene: PFR2_39 Start: 30075, Stop: 30374, Start Num: 37

Candidate Starts for PFR2_39:

(14, 29931), (Start: 37 @30075 has 1 MA's), (44, 30090), (Start: 47 @30093 has 134 MA's), (52, 30102), (54, 30114), (76, 30198), (79, 30216), (85, 30243), (95, 30300), (98, 30312), (103, 30327), (113, 30366),

Gene: PHappiness_54 Start: 38211, Stop: 38489, Start Num: 28

Candidate Starts for PHappiness_54:

(24, 38184), (Start: 28 @38211 has 44 MA's), (66, 38295), (68, 38304), (83, 38367), (87, 38382), (90, 38394), (93, 38418), (96, 38430), (115, 38481),

Gene: PYPDinur_78 Start: 52985, Stop: 53275, Start Num: 39

Candidate Starts for PYPDinur_78:

(Start: 39 @52985 has 6 MA's), (74, 53069), (77, 53084), (82, 53096), (90, 53132), (92, 53150), (94, 53162), (102, 53189),

Gene: Pacc40_53 Start: 38285, Stop: 38563, Start Num: 28

Candidate Starts for Pacc40_53:

(24, 38258), (Start: 28 @38285 has 44 MA's), (66, 38369), (68, 38378), (83, 38441), (87, 38456), (90, 38468), (93, 38492), (96, 38504), (115, 38555),

Gene: PaddyBaddy_94 Start: 56517, Stop: 56777, Start Num: 47

Candidate Starts for PaddyBaddy_94:

(Start: 47 @56517 has 134 MA's), (57, 56538), (75, 56613), (91, 56682), (108, 56748),

Gene: Padfoot_50 Start: 37668, Stop: 37931, Start Num: 40

Candidate Starts for Padfoot_50:

(Start: 40 @37668 has 129 MA's), (83, 37809),

Gene: Padpat_52 Start: 37347, Stop: 37610, Start Num: 40

Candidate Starts for Padpat_52:

(Start: 40 @37347 has 129 MA's), (83, 37488),

Gene: Palpatine_95 Start: 57622, Stop: 57882, Start Num: 47

Candidate Starts for Palpatine_95:

(Start: 47 @57622 has 134 MA's), (57, 57643), (75, 57718), (91, 57787), (108, 57853),

Gene: PapayaSalad_40 Start: 27840, Stop: 28139, Start Num: 34

Candidate Starts for PapayaSalad_40:

(5, 27552), (9, 27597), (21, 27771), (Start: 34 @27840 has 5 MA's), (90, 28002),

Gene: Paperbeatsrock_92 Start: 56873, Stop: 57133, Start Num: 47

Candidate Starts for Paperbeatsrock_92:

(Start: 47 @56873 has 134 MA's), (57, 56894), (75, 56969), (91, 57038), (108, 57104),

Gene: Pat3_90 Start: 55071, Stop: 55331, Start Num: 47

Candidate Starts for Pat3_90:

(16, 54933), (Start: 47 @55071 has 134 MA's), (57, 55092), (91, 55236), (108, 55302),

Gene: Peanam_53 Start: 38304, Stop: 38567, Start Num: 40

Candidate Starts for Peanam_53:

(1, 37824), (3, 37980), (8, 38049), (Start: 40 @38304 has 129 MA's), (75, 38406), (78, 38424), (83, 38442), (93, 38496), (104, 38532), (114, 38556),

Gene: Peel_50 Start: 37473, Stop: 37736, Start Num: 40

Candidate Starts for Peel_50:

(Start: 40 @37473 has 129 MA's), (83, 37614),

Gene: Petra64142_98 Start: 58076, Stop: 58336, Start Num: 47

Candidate Starts for Petra64142_98:

(16, 57938), (Start: 47 @58076 has 134 MA's), (57, 58097), (91, 58241), (108, 58307),

Gene: Phaja_91 Start: 56699, Stop: 56959, Start Num: 47

Candidate Starts for Phaja_91:

(Start: 47 @56699 has 134 MA's), (57, 56720), (75, 56795), (91, 56864), (108, 56930),

Gene: Pharb_50 Start: 36682, Stop: 36942, Start Num: 35

Candidate Starts for Pharb_50:

(1, 36217), (8, 36442), (Start: 35 @36682 has 7 MA's), (49, 36697), (93, 36871),

Gene: Pharsalus_90 Start: 56673, Stop: 56933, Start Num: 47

Candidate Starts for Pharsalus_90:

(Start: 47 @56673 has 134 MA's), (57, 56694), (75, 56769), (91, 56838), (108, 56904),

Gene: Phasih_57 Start: 40355, Stop: 40633, Start Num: 28

Candidate Starts for Phasih_57:

(24, 40328), (Start: 28 @40355 has 44 MA's), (66, 40439), (68, 40448), (83, 40511), (87, 40526), (90, 40538), (93, 40562), (96, 40574), (115, 40625),

Gene: PhatBacter_97 Start: 57367, Stop: 57627, Start Num: 47

Candidate Starts for PhatBacter_97:

(Start: 47 @57367 has 134 MA's), (57, 57388), (75, 57463), (91, 57532), (108, 57598),

Gene: Phaux_96 Start: 57909, Stop: 58169, Start Num: 47

Candidate Starts for Phaux_96:

(Start: 47 @57909 has 134 MA's), (57, 57930), (75, 58005), (91, 58074), (108, 58140),

Gene: PhelpsODU_53 Start: 37175, Stop: 37432, Start Num: 40

Candidate Starts for PhelpsODU_53:

(Start: 40 @37175 has 129 MA's), (52, 37196), (68, 37250), (83, 37313), (85, 37322), (104, 37400),

Gene: Phrank_54 Start: 37132, Stop: 37389, Start Num: 40

Candidate Starts for Phrank_54:

(Start: 40 @37132 has 129 MA's), (52, 37153), (68, 37207), (83, 37270), (85, 37279), (104, 37357),

Gene: PhriedRice_7 Start: 5180, Stop: 4923, Start Num: 56

Candidate Starts for PhriedRice_7:

(25, 5240), (Start: 56 @5180 has 9 MA's), (84, 5066), (99, 4991), (111, 4946),

Gene: Phrux_91 Start: 56185, Stop: 56445, Start Num: 47

Candidate Starts for Phrux_91:

(Start: 47 @56185 has 134 MA's), (57, 56206), (75, 56281), (91, 56350), (108, 56416),

Gene: Piatt_50 Start: 37668, Stop: 37931, Start Num: 40

Candidate Starts for Piatt_50:

(Start: 40 @37668 has 129 MA's), (83, 37809),

Gene: Pisa1_50 Start: 38627, Stop: 38890, Start Num: 40

Candidate Starts for Pisa1_50:

(Start: 40 @38627 has 129 MA's), (63, 38681), (83, 38768),

Gene: Pisa4_44 Start: 33996, Stop: 34259, Start Num: 40

Candidate Starts for Pisa4_44:

(Start: 40 @33996 has 129 MA's), (63, 34050), (83, 34137),

Gene: Pixie_52 Start: 37451, Stop: 37720, Start Num: 35

Candidate Starts for Pixie_52:

(8, 37211), (Start: 35 @37451 has 7 MA's), (49, 37475), (83, 37595), (93, 37649),

Gene: Plumbus_61 Start: 40255, Stop: 40533, Start Num: 28

Candidate Starts for Plumbus_61:

(24, 40228), (Start: 28 @40255 has 44 MA's), (66, 40339), (68, 40348), (83, 40411), (87, 40426), (90, 40438), (93, 40462), (96, 40474), (115, 40525),

Gene: Poenanya_59 Start: 41112, Stop: 41390, Start Num: 28

Candidate Starts for Poenanya_59:

(24, 41085), (Start: 28 @41112 has 44 MA's), (66, 41196), (68, 41205), (83, 41268), (87, 41283), (90, 41295), (93, 41319), (96, 41331), (115, 41382),

Gene: Pokerus_49 Start: 37394, Stop: 37657, Start Num: 40

Candidate Starts for Pokerus_49:

(Start: 40 @37394 has 129 MA's), (63, 37448), (83, 37535),

Gene: Policronamos_96 Start: 57640, Stop: 57900, Start Num: 47

Candidate Starts for Policronamos_96:

(Start: 47 @57640 has 134 MA's), (57, 57661), (75, 57736), (91, 57805), (108, 57871),

Gene: Polka14_57 Start: 39308, Stop: 39586, Start Num: 28

Candidate Starts for Polka14_57:

(24, 39281), (Start: 28 @39308 has 44 MA's), (66, 39392), (68, 39401), (83, 39464), (87, 39479), (90, 39491), (93, 39515), (96, 39527), (115, 39578),

Gene: Polo2Bam_64 Start: 39785, Stop: 40063, Start Num: 28

Candidate Starts for Polo2Bam_64:

(24, 39758), (Start: 28 @39785 has 44 MA's), (66, 39869), (68, 39878), (83, 39941), (87, 39956), (90, 39968), (93, 39992), (96, 40004), (115, 40055),

Gene: Poochiewood_76 Start: 52583, Stop: 52888, Start Num: 38

Candidate Starts for Poochiewood_76:

(Start: 38 @52583 has 37 MA's), (Start: 46 @52598 has 12 MA's), (Start: 67 @52658 has 6 MA's), (83, 52721), (90, 52748), (101, 52802), (119, 52871), (120, 52874),

Gene: Porky_92 Start: 55785, Stop: 56045, Start Num: 47

Candidate Starts for Porky_92:

(Start: 47 @55785 has 134 MA's), (57, 55806), (75, 55881), (91, 55950), (108, 56016),

Gene: Prithvi_51 Start: 37556, Stop: 37819, Start Num: 40

Candidate Starts for Prithvi_51:

(Start: 40 @37556 has 129 MA's), (63, 37610), (83, 37697),

Gene: Ptowny_90 Start: 55535, Stop: 55795, Start Num: 47

Candidate Starts for Ptowny_90:

(Start: 47 @55535 has 134 MA's), (57, 55556), (75, 55631), (91, 55700), (108, 55766),

Gene: Pumpkin_97 Start: 57561, Stop: 57821, Start Num: 47

Candidate Starts for Pumpkin_97:

(Start: 47 @57561 has 134 MA's), (57, 57582), (75, 57657), (91, 57726), (108, 57792),

Gene: Quallification_94 Start: 57281, Stop: 57541, Start Num: 47

Candidate Starts for Quallification_94:

(Start: 47 @57281 has 134 MA's), (57, 57302), (75, 57377), (91, 57446), (108, 57512),

Gene: Quby_79 Start: 52316, Stop: 52600, Start Num: 39

Candidate Starts for Quby_79:

(Start: 39 @52316 has 6 MA's), (77, 52415), (82, 52427), (90, 52463), (92, 52481), (102, 52520),

Gene: QuincyRose_49 Start: 37786, Stop: 38049, Start Num: 40

Candidate Starts for QuincyRose_49:
(Start: 40 @37786 has 129 MA's), (83, 37927),

Gene: Rakim_94 Start: 56610, Stop: 56870, Start Num: 47
Candidate Starts for Rakim_94:
(Start: 47 @56610 has 134 MA's), (57, 56631), (75, 56706), (91, 56775), (108, 56841),

Gene: Ramen_51 Start: 37358, Stop: 37621, Start Num: 40
Candidate Starts for Ramen_51:
(Start: 40 @37358 has 129 MA's), (83, 37499),

Gene: Rapunzel97_51 Start: 37354, Stop: 37617, Start Num: 40
Candidate Starts for Rapunzel97_51:
(Start: 40 @37354 has 129 MA's), (83, 37495),

Gene: Red305_80 Start: 53809, Stop: 54063, Start Num: 46
Candidate Starts for Red305_80:
(Start: 38 @53794 has 37 MA's), (Start: 46 @53809 has 12 MA's), (90, 53944), (97, 53986), (108, 54022), (116, 54046),

Gene: RedBird_57 Start: 39343, Stop: 39624, Start Num: 28
Candidate Starts for RedBird_57:
(24, 39316), (Start: 28 @39343 has 44 MA's), (66, 39427), (68, 39436), (83, 39499), (87, 39514), (90, 39526), (93, 39550), (96, 39562),

Gene: Reynauld_48 Start: 45364, Stop: 45140, Start Num: 80
Candidate Starts for Reynauld_48:
(4, 45808), (Start: 80 @45364 has 2 MA's), (86, 45340),

Gene: Richo_53 Start: 38285, Stop: 38548, Start Num: 40
Candidate Starts for Richo_53:
(1, 37805), (3, 37961), (8, 38030), (Start: 40 @38285 has 129 MA's), (75, 38387), (78, 38405), (83, 38423), (93, 38477), (104, 38513), (114, 38537),

Gene: RicoCaldo_7 Start: 5210, Stop: 4953, Start Num: 56
Candidate Starts for RicoCaldo_7:
(25, 5270), (Start: 56 @5210 has 9 MA's), (84, 5096), (99, 5021), (111, 4976),

Gene: Rimmer_91 Start: 56182, Stop: 56442, Start Num: 47
Candidate Starts for Rimmer_91:
(16, 56044), (Start: 47 @56182 has 134 MA's), (57, 56203), (91, 56347), (108, 56413),

Gene: RitaG_54 Start: 38556, Stop: 38834, Start Num: 28
Candidate Starts for RitaG_54:
(24, 38529), (Start: 28 @38556 has 44 MA's), (66, 38640), (68, 38649), (83, 38712), (87, 38727), (90, 38739), (93, 38763), (96, 38775), (115, 38826),

Gene: RiverMonster_94 Start: 57081, Stop: 57341, Start Num: 47
Candidate Starts for RiverMonster_94:
(Start: 47 @57081 has 134 MA's), (57, 57102), (75, 57177), (91, 57246), (108, 57312),

Gene: RonRayGun_41 Start: 31892, Stop: 32149, Start Num: 33
Candidate Starts for RonRayGun_41:

(6, 31616), (7, 31637), (Start: 33 @31892 has 6 MA's), (68, 31976), (90, 32066),

Gene: Rose5_78 Start: 52495, Stop: 52725, Start Num: 67

Candidate Starts for Rose5_78:

(Start: 38 @52420 has 37 MA's), (Start: 46 @52435 has 12 MA's), (Start: 67 @52495 has 6 MA's), (83, 52558), (90, 52585), (119, 52708), (120, 52711),

Gene: Rosmarinus_50 Start: 37459, Stop: 37722, Start Num: 40

Candidate Starts for Rosmarinus_50:

(Start: 40 @37459 has 129 MA's), (83, 37600),

Gene: Ruby_55 Start: 39743, Stop: 40021, Start Num: 28

Candidate Starts for Ruby_55:

(24, 39716), (Start: 28 @39743 has 44 MA's), (66, 39827), (68, 39836), (83, 39899), (87, 39914), (90, 39926), (93, 39950), (96, 39962), (115, 40013),

Gene: Rumpelstiltskin_78 Start: 53546, Stop: 53842, Start Num: 38

Candidate Starts for Rumpelstiltskin_78:

(Start: 38 @53546 has 37 MA's), (Start: 67 @53606 has 6 MA's), (77, 53651), (82, 53663), (90, 53699), (101, 53753), (102, 53756),

Gene: Saints25_92 Start: 56224, Stop: 56484, Start Num: 47

Candidate Starts for Saints25_92:

(Start: 47 @56224 has 134 MA's), (57, 56245), (75, 56320), (91, 56389), (108, 56455),

Gene: Samty_78 Start: 53804, Stop: 54058, Start Num: 46

Candidate Starts for Samty_78:

(Start: 38 @53789 has 37 MA's), (Start: 46 @53804 has 12 MA's), (90, 53939), (97, 53981), (108, 54017), (116, 54041),

Gene: SamuelLPlaqson_51 Start: 38242, Stop: 38505, Start Num: 40

Candidate Starts for SamuelLPlaqson_51:

(8, 37990), (Start: 40 @38242 has 129 MA's), (63, 38296), (78, 38365), (83, 38383),

Gene: Sassafras_57 Start: 39528, Stop: 39806, Start Num: 28

Candidate Starts for Sassafras_57:

(24, 39501), (Start: 28 @39528 has 44 MA's), (66, 39612), (68, 39621), (83, 39684), (87, 39699), (90, 39711), (93, 39735), (96, 39747), (115, 39798),

Gene: Sassay_88 Start: 54914, Stop: 55174, Start Num: 47

Candidate Starts for Sassay_88:

(Start: 47 @54914 has 134 MA's), (57, 54935), (75, 55010), (91, 55079), (108, 55145),

Gene: Sbash_53 Start: 39707, Stop: 40006, Start Num: 31

Candidate Starts for Sbash_53:

(Start: 31 @39707 has 5 MA's), (36, 39725), (55, 39761), (Start: 62 @39776 has 1 MA's), (83, 39872), (93, 39923), (104, 39959), (114, 39998),

Gene: SeaLumen_63 Start: 39785, Stop: 40063, Start Num: 28

Candidate Starts for SeaLumen_63:

(24, 39758), (Start: 28 @39785 has 44 MA's), (66, 39869), (68, 39878), (83, 39941), (87, 39956), (90, 39968), (93, 39992), (96, 40004), (115, 40055),

Gene: Seabastian_64 Start: 42541, Stop: 42819, Start Num: 28

Candidate Starts for Seabastian_64:

(24, 42514), (Start: 28 @42541 has 44 MA's), (66, 42625), (68, 42634), (83, 42697), (87, 42712), (90, 42724), (93, 42748), (96, 42760), (115, 42811),

Gene: Sejanus_58 Start: 47696, Stop: 47995, Start Num: 31

Candidate Starts for Sejanus_58:

(Start: 31 @47696 has 5 MA's), (36, 47714), (55, 47750), (Start: 62 @47765 has 1 MA's), (83, 47861), (93, 47912), (104, 47948), (112, 47981), (114, 47987),

Gene: SgtBeansprout_46 Start: 37040, Stop: 37309, Start Num: 40

Candidate Starts for SgtBeansprout_46:

(Start: 40 @37040 has 129 MA's), (71, 37136), (88, 37196), (89, 37202), (90, 37205), (93, 37232), (96, 37244), (114, 37298),

Gene: Shadow1_56 Start: 38290, Stop: 38541, Start Num: 40

Candidate Starts for Shadow1_56:

(Start: 40 @38290 has 129 MA's), (42, 38296), (83, 38428),

Gene: ShamWow_93 Start: 57094, Stop: 57354, Start Num: 47

Candidate Starts for ShamWow_93:

(Start: 47 @57094 has 134 MA's), (57, 57115), (75, 57190), (91, 57259), (108, 57325),

Gene: Shaobing_53 Start: 38322, Stop: 38585, Start Num: 40

Candidate Starts for Shaobing_53:

(1, 37842), (3, 37998), (8, 38067), (Start: 40 @38322 has 129 MA's), (75, 38424), (78, 38442), (83, 38460), (93, 38514), (104, 38550), (114, 38574),

Gene: ShedlockHolmes_54 Start: 37976, Stop: 38245, Start Num: 35

Candidate Starts for ShedlockHolmes_54:

(8, 37736), (Start: 35 @37976 has 7 MA's), (49, 38000), (83, 38120), (93, 38174),

Gene: Sheng711_80 Start: 52619, Stop: 52909, Start Num: 39

Candidate Starts for Sheng711_80:

(Start: 39 @52619 has 6 MA's), (74, 52703), (82, 52730), (90, 52766), (92, 52784), (94, 52796), (102, 52823),

Gene: ShereKhan_91 Start: 57206, Stop: 57466, Start Num: 47

Candidate Starts for ShereKhan_91:

(Start: 47 @57206 has 134 MA's), (57, 57227), (75, 57302), (91, 57371), (108, 57437),

Gene: ShiaSurprise_51 Start: 37668, Stop: 37931, Start Num: 40

Candidate Starts for ShiaSurprise_51:

(Start: 40 @37668 has 129 MA's), (83, 37809),

Gene: Shweta_42 Start: 30626, Stop: 30925, Start Num: 31

Candidate Starts for Shweta_42:

(Start: 31 @30626 has 5 MA's), (36, 30644), (55, 30680), (Start: 62 @30695 has 1 MA's), (83, 30791), (93, 30842), (104, 30878), (112, 30911),

Gene: Silverleaf_78 Start: 51891, Stop: 52181, Start Num: 46

Candidate Starts for Silverleaf_78:

(Start: 38 @51876 has 37 MA's), (Start: 46 @51891 has 12 MA's), (Start: 67 @51951 has 6 MA's), (83, 52014), (90, 52041), (119, 52164), (120, 52167),

Gene: Simpliphy_92 Start: 56214, Stop: 56474, Start Num: 47

Candidate Starts for Simpliphy_92:

(Start: 47 @56214 has 134 MA's), (57, 56235), (75, 56310), (91, 56379), (108, 56445),

Gene: SimranZ1_59 Start: 40122, Stop: 40400, Start Num: 28

Candidate Starts for SimranZ1_59:

(24, 40095), (Start: 28 @40122 has 44 MA's), (66, 40206), (68, 40215), (83, 40278), (87, 40293), (90, 40305), (93, 40329), (96, 40341), (115, 40392),

Gene: SirDuracell_93 Start: 55587, Stop: 55847, Start Num: 47

Candidate Starts for SirDuracell_93:

(Start: 47 @55587 has 134 MA's), (57, 55608), (75, 55683), (91, 55752), (108, 55818),

Gene: SirPhilip_53 Start: 38679, Stop: 38936, Start Num: 40

Candidate Starts for SirPhilip_53:

(Start: 40 @38679 has 129 MA's), (78, 38799), (82, 38808), (83, 38817), (96, 38880), (104, 38904),

Gene: SkinnyPete_42 Start: 29948, Stop: 30178, Start Num: 62

Candidate Starts for SkinnyPete_42:

(Start: 31 @29879 has 5 MA's), (36, 29897), (55, 29933), (Start: 62 @29948 has 1 MA's), (83, 30044), (93, 30095), (104, 30131), (112, 30164), (114, 30170),

Gene: Slimphazie_50 Start: 37354, Stop: 37617, Start Num: 40

Candidate Starts for Slimphazie_50:

(Start: 40 @37354 has 129 MA's), (83, 37495),

Gene: Snenia_78 Start: 53795, Stop: 54064, Start Num: 38

Candidate Starts for Snenia_78:

(Start: 38 @53795 has 37 MA's), (Start: 46 @53810 has 12 MA's), (90, 53945), (97, 53987), (108, 54023), (116, 54047),

Gene: SophKB_90 Start: 55892, Stop: 56152, Start Num: 47

Candidate Starts for SophKB_90:

(Start: 47 @55892 has 134 MA's), (57, 55913), (75, 55988), (91, 56057), (108, 56123),

Gene: Sotrice96_94 Start: 56480, Stop: 56740, Start Num: 47

Candidate Starts for Sotrice96_94:

(Start: 47 @56480 has 134 MA's), (57, 56501), (75, 56576), (91, 56645), (108, 56711),

Gene: Spock_50 Start: 37472, Stop: 37735, Start Num: 40

Candidate Starts for Spock_50:

(Start: 40 @37472 has 129 MA's), (83, 37613),

Gene: Spoonbill_56 Start: 38516, Stop: 38794, Start Num: 28

Candidate Starts for Spoonbill_56:

(24, 38489), (Start: 28 @38516 has 44 MA's), (66, 38600), (68, 38609), (83, 38672), (87, 38687), (90, 38699), (93, 38723), (96, 38735), (115, 38786),

Gene: Squiddly_71 Start: 45719, Stop: 45979, Start Num: 27

Candidate Starts for Squiddly_71:

(22, 45680), (Start: 27 @45719 has 1 MA's), (63, 45782), (65, 45794), (78, 45851), (90, 45896), (107, 45971),

Gene: StagePhright_7 Start: 5180, Stop: 4923, Start Num: 56

Candidate Starts for StagePhright_7:

(25, 5240), (Start: 56 @5180 has 9 MA's), (84, 5066), (99, 4991), (111, 4946),

Gene: Stank_95 Start: 56873, Stop: 57133, Start Num: 47

Candidate Starts for Stank_95:

(Start: 47 @56873 has 134 MA's), (57, 56894), (75, 56969), (91, 57038), (108, 57104),

Gene: Stap_57 Start: 39317, Stop: 39595, Start Num: 28

Candidate Starts for Stap_57:

(24, 39290), (Start: 28 @39317 has 44 MA's), (66, 39401), (68, 39410), (83, 39473), (87, 39488), (90, 39500), (93, 39524), (96, 39536), (115, 39587),

Gene: Stark_95 Start: 56964, Stop: 57224, Start Num: 47

Candidate Starts for Stark_95:

(Start: 47 @56964 has 134 MA's), (57, 56985), (75, 57060), (91, 57129), (108, 57195),

Gene: StellaBean_91 Start: 56418, Stop: 56678, Start Num: 47

Candidate Starts for StellaBean_91:

(Start: 47 @56418 has 134 MA's), (57, 56439), (75, 56514), (91, 56583), (108, 56649),

Gene: Stellammi_96 Start: 48442, Stop: 48678, Start Num: 50

Candidate Starts for Stellammi_96:

(Start: 50 @48442 has 1 MA's), (78, 48550), (97, 48631), (99, 48643),

Gene: Stinson_51 Start: 37846, Stop: 38109, Start Num: 40

Candidate Starts for Stinson_51:

(8, 37594), (Start: 40 @37846 has 129 MA's), (63, 37900), (83, 37987),

Gene: StolenFromERC_96 Start: 56798, Stop: 57058, Start Num: 47

Candidate Starts for StolenFromERC_96:

(Start: 47 @56798 has 134 MA's), (57, 56819), (75, 56894), (91, 56963), (108, 57029),

Gene: StormChicken_95 Start: 57577, Stop: 57837, Start Num: 47

Candidate Starts for StormChicken_95:

(16, 57439), (Start: 47 @57577 has 134 MA's), (57, 57598), (91, 57742), (108, 57808),

Gene: Strobilo_54 Start: 39537, Stop: 39767, Start Num: 43

Candidate Starts for Strobilo_54:

(Start: 41 @39534 has 7 MA's), (Start: 43 @39537 has 4 MA's), (48, 39543), (51, 39549), (78, 39639), (81, 39645), (93, 39708),

Gene: Stuck_58 Start: 41100, Stop: 41399, Start Num: 31

Candidate Starts for Stuck_58:

(Start: 31 @41100 has 5 MA's), (36, 41118), (55, 41154), (Start: 62 @41169 has 1 MA's), (83, 41265), (93, 41316), (104, 41352), (112, 41385),

Gene: Sulley_50 Start: 37598, Stop: 37861, Start Num: 40

Candidate Starts for Sulley_50:

(Start: 40 @37598 has 129 MA's), (83, 37739),

Gene: Sunflower1121_57 Start: 38391, Stop: 38642, Start Num: 40

Candidate Starts for Sunflower1121_57:

(Start: 40 @38391 has 129 MA's), (42, 38397), (83, 38529),

Gene: Syra333_56 Start: 38055, Stop: 38306, Start Num: 40

Candidate Starts for Syra333_56:

(Start: 40 @38055 has 129 MA's), (42, 38061), (81, 38181), (83, 38193),

Gene: TBond007_51 Start: 37450, Stop: 37719, Start Num: 35

Candidate Starts for TBond007_51:

(8, 37210), (Start: 35 @37450 has 7 MA's), (49, 37474), (83, 37594), (93, 37648),

Gene: TBrady12_96 Start: 56634, Stop: 56894, Start Num: 47

Candidate Starts for TBrady12_96:

(Start: 47 @56634 has 134 MA's), (57, 56655), (75, 56730), (91, 56799), (108, 56865),

Gene: TChen_60 Start: 41367, Stop: 41636, Start Num: 32

Candidate Starts for TChen_60:

(23, 41322), (Start: 28 @41358 has 44 MA's), (Start: 32 @41367 has 1 MA's), (63, 41424), (66, 41442), (68, 41451), (83, 41514), (87, 41529), (90, 41541), (93, 41565), (96, 41577), (115, 41628),

Gene: TClif_54 Start: 38425, Stop: 38685, Start Num: 40

Candidate Starts for TClif_54:

(Start: 40 @38425 has 129 MA's), (63, 38467), (90, 38581), (92, 38599), (114, 38674),

Gene: TM4_49 Start: 33917, Stop: 34147, Start Num: 43

Candidate Starts for TM4_49:

(Start: 41 @33914 has 7 MA's), (Start: 43 @33917 has 4 MA's), (48, 33923), (51, 33929), (78, 34019), (81, 34025), (93, 34088),

Gene: Tachez_50 Start: 37316, Stop: 37579, Start Num: 40

Candidate Starts for Tachez_50:

(Start: 40 @37316 has 129 MA's), (83, 37457),

Gene: TaiwanKao_52 Start: 37612, Stop: 37875, Start Num: 40

Candidate Starts for TaiwanKao_52:

(Start: 40 @37612 has 129 MA's), (83, 37753),

Gene: Taj_63 Start: 41748, Stop: 41978, Start Num: 53

Candidate Starts for Taj_63:

(Start: 53 @41748 has 1 MA's), (60, 41757), (87, 41871), (90, 41883), (93, 41907), (96, 41919), (115, 41970),

Gene: Tarkin_92 Start: 56882, Stop: 57142, Start Num: 47

Candidate Starts for Tarkin_92:

(Start: 47 @56882 has 134 MA's), (57, 56903), (75, 56978), (91, 57047), (108, 57113),

Gene: TeamEdward_93 Start: 56783, Stop: 57043, Start Num: 47

Candidate Starts for TeamEdward_93:

(16, 56645), (Start: 47 @56783 has 134 MA's), (57, 56804), (91, 56948), (108, 57014),

Gene: TeardropMSU_89 Start: 55882, Stop: 56142, Start Num: 47

Candidate Starts for TeardropMSU_89:

(Start: 47 @55882 has 134 MA's), (57, 55903), (75, 55978), (91, 56047), (108, 56113),

Gene: Teaspoon_94 Start: 56734, Stop: 56994, Start Num: 47

Candidate Starts for Teaspoon_94:

(Start: 47 @56734 has 134 MA's), (57, 56755), (75, 56830), (91, 56899), (108, 56965),

Gene: Teejan_48 Start: 39653, Stop: 39922, Start Num: 40

Candidate Starts for Teejan_48:

(Start: 40 @39653 has 129 MA's), (71, 39749), (88, 39809), (89, 39815), (90, 39818), (93, 39845), (96, 39857), (114, 39911),

Gene: Terminus_96 Start: 57669, Stop: 57929, Start Num: 47

Candidate Starts for Terminus_96:

(Start: 47 @57669 has 134 MA's), (57, 57690), (75, 57765), (91, 57834), (108, 57900),

Gene: Thimble_95 Start: 56384, Stop: 56644, Start Num: 47

Candidate Starts for Thimble_95:

(Start: 47 @56384 has 134 MA's), (57, 56405), (75, 56480), (91, 56549), (108, 56615),

Gene: ThirteenKH_7 Start: 5168, Stop: 4911, Start Num: 56

Candidate Starts for ThirteenKH_7:

(25, 5228), (Start: 56 @5168 has 9 MA's), (73, 5096), (84, 5054), (99, 4979), (111, 4934),

Gene: Thresher_96 Start: 57744, Stop: 58004, Start Num: 47

Candidate Starts for Thresher_96:

(Start: 47 @57744 has 134 MA's), (57, 57765), (75, 57840), (91, 57909), (108, 57975),

Gene: Tierra_54 Start: 37943, Stop: 38200, Start Num: 40

Candidate Starts for Tierra_54:

(Start: 40 @37943 has 129 MA's), (52, 37964), (68, 38018), (83, 38081), (85, 38090), (104, 38168),

Gene: Tigress9_56 Start: 38145, Stop: 38396, Start Num: 40

Candidate Starts for Tigress9_56:

(Start: 40 @38145 has 129 MA's), (42, 38151), (81, 38271), (83, 38283),

Gene: TingHuaYa_51 Start: 36397, Stop: 36660, Start Num: 40

Candidate Starts for TingHuaYa_51:

(Start: 40 @36397 has 129 MA's), (Start: 47 @36409 has 134 MA's), (78, 36520), (83, 36538),

Gene: TiniBug_51 Start: 38238, Stop: 38501, Start Num: 40

Candidate Starts for TiniBug_51:

(8, 37986), (Start: 40 @38238 has 129 MA's), (63, 38292), (78, 38361), (83, 38379),

Gene: Tiri_51 Start: 37646, Stop: 37909, Start Num: 40

Candidate Starts for Tiri_51:

(Start: 40 @37646 has 129 MA's), (63, 37700), (83, 37787),

Gene: Tomaszewski_88 Start: 56045, Stop: 56305, Start Num: 47

Candidate Starts for Tomaszewski_88:

(Start: 47 @56045 has 134 MA's), (57, 56066), (75, 56141), (91, 56210), (108, 56276),

Gene: Topper_50 Start: 37471, Stop: 37734, Start Num: 40

Candidate Starts for Topper_50:
(Start: 40 @37471 has 129 MA's), (83, 37612),

Gene: Toron_67 Start: 42166, Stop: 42447, Start Num: 26
Candidate Starts for Toron_67:
(20, 42130), (Start: 26 @42166 has 7 MA's), (59, 42241), (104, 42427), (106, 42439),

Gene: Torres_49 Start: 39654, Stop: 39923, Start Num: 40
Candidate Starts for Torres_49:
(Start: 40 @39654 has 129 MA's), (71, 39750), (88, 39810), (89, 39816), (90, 39819), (93, 39846), (96, 39858), (114, 39912),

Gene: Toto_91 Start: 57094, Stop: 57354, Start Num: 47
Candidate Starts for Toto_91:
(Start: 47 @57094 has 134 MA's), (57, 57115), (75, 57190), (91, 57259), (108, 57325),

Gene: Tourach_80 Start: 54051, Stop: 54332, Start Num: 46
Candidate Starts for Tourach_80:
(Start: 38 @54036 has 37 MA's), (Start: 46 @54051 has 12 MA's), (83, 54162), (90, 54189), (94, 54219), (117, 54306),

Gene: Traaww1_89 Start: 55902, Stop: 56162, Start Num: 47
Candidate Starts for Traaww1_89:
(Start: 47 @55902 has 134 MA's), (57, 55923), (75, 55998), (91, 56067), (108, 56133),

Gene: TreyKay_51 Start: 37556, Stop: 37819, Start Num: 40
Candidate Starts for TreyKay_51:
(Start: 40 @37556 has 129 MA's), (63, 37610), (83, 37697),

Gene: TriFive_80 Start: 53794, Stop: 54063, Start Num: 38
Candidate Starts for TriFive_80:
(Start: 38 @53794 has 37 MA's), (Start: 46 @53809 has 12 MA's), (90, 53944), (97, 53986), (108, 54022), (116, 54046),

Gene: Trice_46 Start: 37041, Stop: 37310, Start Num: 40
Candidate Starts for Trice_46:
(Start: 40 @37041 has 129 MA's), (71, 37137), (88, 37197), (89, 37203), (90, 37206), (93, 37233), (96, 37245), (114, 37299),

Gene: TrippleS_7 Start: 5168, Stop: 4911, Start Num: 56
Candidate Starts for TrippleS_7:
(25, 5228), (Start: 56 @5168 has 9 MA's), (73, 5096), (84, 5054), (99, 4979), (111, 4934),

Gene: Trogglehumper_64 Start: 53677, Stop: 53435, Start Num: 80
Candidate Starts for Trogglehumper_64:
(Start: 80 @53677 has 2 MA's), (86, 53653),

Gene: TruffulaTree_50 Start: 37350, Stop: 37613, Start Num: 40
Candidate Starts for TruffulaTree_50:
(Start: 40 @37350 has 129 MA's), (83, 37491),

Gene: Tuco_94 Start: 57641, Stop: 57901, Start Num: 47
Candidate Starts for Tuco_94:

(Start: 47 @57641 has 134 MA's), (57, 57662), (75, 57737), (91, 57806), (108, 57872),

Gene: Twitch_50 Start: 37473, Stop: 37736, Start Num: 40

Candidate Starts for Twitch_50:

(Start: 40 @37473 has 129 MA's), (83, 37614),

Gene: Tyson_79 Start: 52361, Stop: 52651, Start Num: 46

Candidate Starts for Tyson_79:

(Start: 38 @52346 has 37 MA's), (Start: 46 @52361 has 12 MA's), (Start: 67 @52421 has 6 MA's), (83, 52484), (90, 52511), (119, 52634), (120, 52637),

Gene: UPIE_77 Start: 52017, Stop: 52247, Start Num: 67

Candidate Starts for UPIE_77:

(Start: 38 @51942 has 37 MA's), (Start: 46 @51957 has 12 MA's), (Start: 67 @52017 has 6 MA's), (83, 52080), (90, 52107), (119, 52230), (120, 52233),

Gene: Ukulele_88 Start: 56027, Stop: 56287, Start Num: 47

Candidate Starts for Ukulele_88:

(Start: 47 @56027 has 134 MA's), (57, 56048), (75, 56123), (91, 56192), (108, 56258),

Gene: Unicorn_53 Start: 37175, Stop: 37432, Start Num: 40

Candidate Starts for Unicorn_53:

(Start: 40 @37175 has 129 MA's), (52, 37196), (68, 37250), (83, 37313), (85, 37322), (104, 37400),

Gene: Urkel_51 Start: 38242, Stop: 38505, Start Num: 40

Candidate Starts for Urkel_51:

(8, 37990), (Start: 40 @38242 has 129 MA's), (63, 38296), (78, 38365), (83, 38383),

Gene: VWB_44 Start: 35402, Stop: 35647, Start Num: 43

Candidate Starts for VWB_44:

(15, 35270), (17, 35279), (18, 35282), (29, 35369), (Start: 41 @35399 has 7 MA's), (Start: 43 @35402 has 4 MA's), (83, 35531), (91, 35564), (93, 35582),

Gene: Validus_55 Start: 38351, Stop: 38623, Start Num: 40

Candidate Starts for Validus_55:

(Start: 40 @38351 has 129 MA's), (Start: 47 @38363 has 134 MA's), (75, 38453), (78, 38471), (83, 38489), (90, 38516), (107, 38594),

Gene: Veliki_51 Start: 37390, Stop: 37653, Start Num: 40

Candidate Starts for Veliki_51:

(Start: 40 @37390 has 129 MA's), (83, 37531),

Gene: Wamburgexpress_78 Start: 52456, Stop: 52686, Start Num: 67

Candidate Starts for Wamburgexpress_78:

(Start: 38 @52381 has 37 MA's), (Start: 46 @52396 has 12 MA's), (Start: 67 @52456 has 6 MA's), (83, 52519), (90, 52546), (119, 52669), (120, 52672),

Gene: Whirlwind_80 Start: 53994, Stop: 54305, Start Num: 38

Candidate Starts for Whirlwind_80:

(Start: 38 @53994 has 37 MA's), (Start: 46 @54009 has 12 MA's), (82, 54120), (90, 54156), (118, 54285),

Gene: Wiggin_95 Start: 56303, Stop: 56563, Start Num: 47

Candidate Starts for Wiggin_95:
(Start: 47 @56303 has 134 MA's), (57, 56324), (75, 56399), (91, 56468), (108, 56534),

Gene: Wilder_82 Start: 53924, Stop: 54220, Start Num: 38
Candidate Starts for Wilder_82:
(Start: 38 @53924 has 37 MA's), (Start: 67 @53984 has 6 MA's), (77, 54029), (82, 54041), (90, 54077),
(101, 54131), (102, 54134),

Gene: Willez_88 Start: 54914, Stop: 55174, Start Num: 47
Candidate Starts for Willez_88:
(Start: 47 @54914 has 134 MA's), (57, 54935), (75, 55010), (91, 55079), (108, 55145),

Gene: Winky_81 Start: 53918, Stop: 54214, Start Num: 38
Candidate Starts for Winky_81:
(Start: 38 @53918 has 37 MA's), (Start: 67 @53978 has 6 MA's), (77, 54023), (82, 54035), (90, 54071),
(101, 54125), (102, 54128),

Gene: Wyatt2_79 Start: 52344, Stop: 52649, Start Num: 38
Candidate Starts for Wyatt2_79:
(Start: 38 @52344 has 37 MA's), (Start: 46 @52359 has 12 MA's), (Start: 67 @52419 has 6 MA's), (83,
52482), (90, 52509), (119, 52632), (120, 52635),

Gene: Xandras_92 Start: 56126, Stop: 56386, Start Num: 47
Candidate Starts for Xandras_92:
(Start: 47 @56126 has 134 MA's), (57, 56147), (75, 56222), (91, 56291), (108, 56357),

Gene: Ximenita_57 Start: 38244, Stop: 38495, Start Num: 40
Candidate Starts for Ximenita_57:
(Start: 40 @38244 has 129 MA's), (42, 38250), (83, 38382),

Gene: Yafa_7 Start: 5183, Stop: 4926, Start Num: 56
Candidate Starts for Yafa_7:
(25, 5243), (Start: 56 @5183 has 9 MA's), (73, 5111), (84, 5069), (99, 4994), (111, 4949),

Gene: YassJohnny_90 Start: 55767, Stop: 56027, Start Num: 47
Candidate Starts for YassJohnny_90:
(Start: 47 @55767 has 134 MA's), (57, 55788), (75, 55863), (91, 55932), (108, 55998),

Gene: Youngblood_96 Start: 57596, Stop: 57856, Start Num: 47
Candidate Starts for Youngblood_96:
(Start: 47 @57596 has 134 MA's), (57, 57617), (75, 57692), (91, 57761), (108, 57827),

Gene: YoureAdopted_49 Start: 37555, Stop: 37818, Start Num: 40
Candidate Starts for YoureAdopted_49:
(Start: 40 @37555 has 129 MA's), (83, 37696),

Gene: Yunkel11_53 Start: 37143, Stop: 37406, Start Num: 40
Candidate Starts for Yunkel11_53:
(Start: 40 @37143 has 129 MA's), (Start: 47 @37155 has 134 MA's), (78, 37266), (83, 37284),

Gene: Zabiza_45 Start: 33661, Stop: 33924, Start Num: 40
Candidate Starts for Zabiza_45:
(Start: 40 @33661 has 129 MA's), (83, 33802),

Gene: Zakai_82 Start: 54244, Stop: 54540, Start Num: 38

Candidate Starts for Zakai_82:

(Start: 38 @54244 has 37 MA's), (Start: 67 @54304 has 6 MA's), (77, 54349), (82, 54361), (90, 54397), (101, 54451), (102, 54454),

Gene: Zaria_79 Start: 51796, Stop: 52101, Start Num: 38

Candidate Starts for Zaria_79:

(Start: 38 @51796 has 37 MA's), (Start: 46 @51811 has 12 MA's), (Start: 67 @51871 has 6 MA's), (83, 51934), (90, 51961), (119, 52084), (120, 52087),

Gene: Zavala_52 Start: 37632, Stop: 37895, Start Num: 40

Candidate Starts for Zavala_52:

(Start: 40 @37632 has 129 MA's), (83, 37773),

Gene: ZenTime222_40 Start: 31446, Stop: 31703, Start Num: 33

Candidate Starts for ZenTime222_40:

(6, 31170), (7, 31191), (Start: 33 @31446 has 6 MA's), (68, 31530), (90, 31620),

Gene: ZoeJ_53 Start: 39008, Stop: 39238, Start Num: 43

Candidate Starts for ZoeJ_53:

(Start: 41 @39005 has 7 MA's), (Start: 43 @39008 has 4 MA's), (48, 39014), (51, 39020), (78, 39110), (81, 39116), (93, 39179),

Gene: xkcd_96 Start: 57780, Stop: 58040, Start Num: 47

Candidate Starts for xkcd_96:

(Start: 47 @57780 has 134 MA's), (57, 57801), (75, 57876), (91, 57945), (108, 58011),