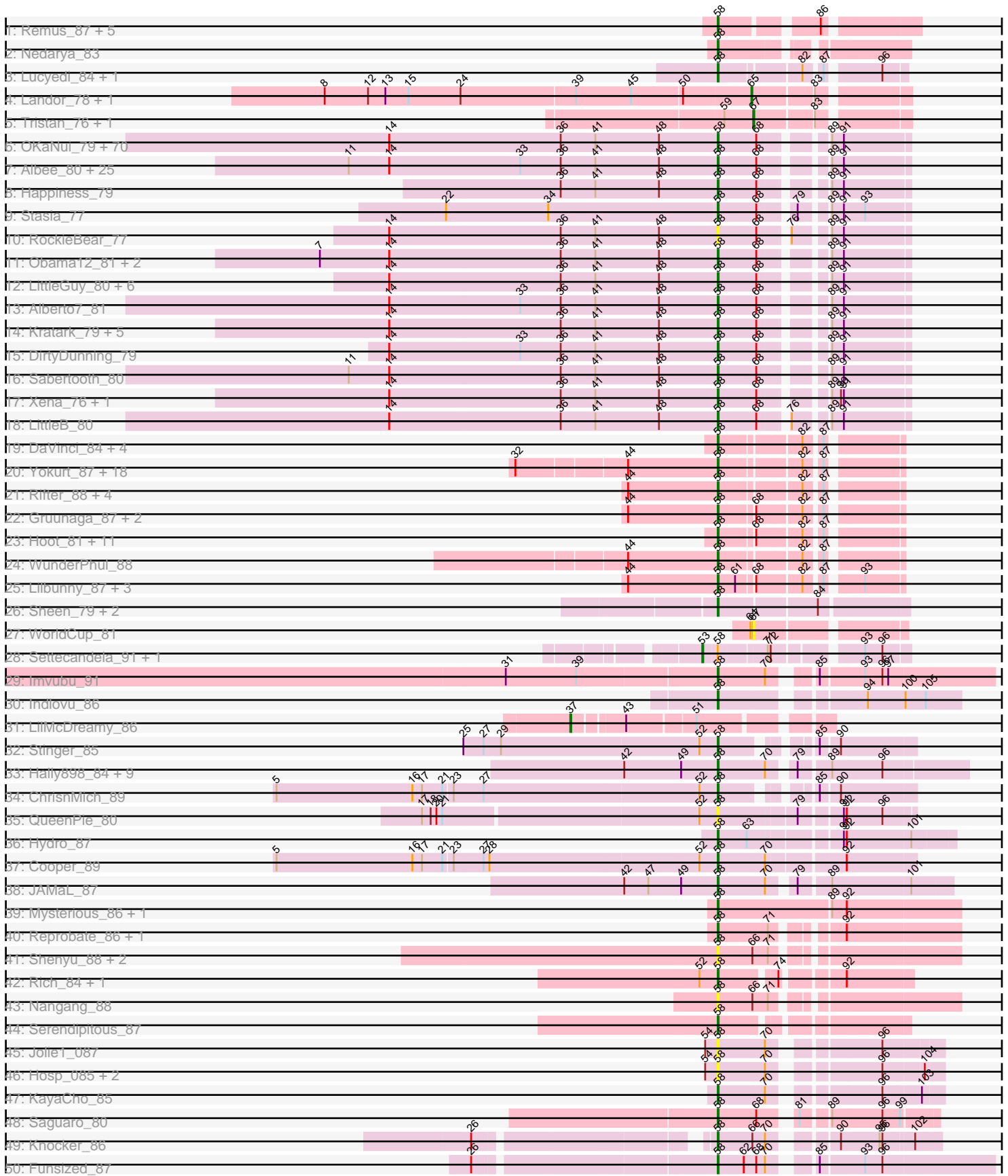
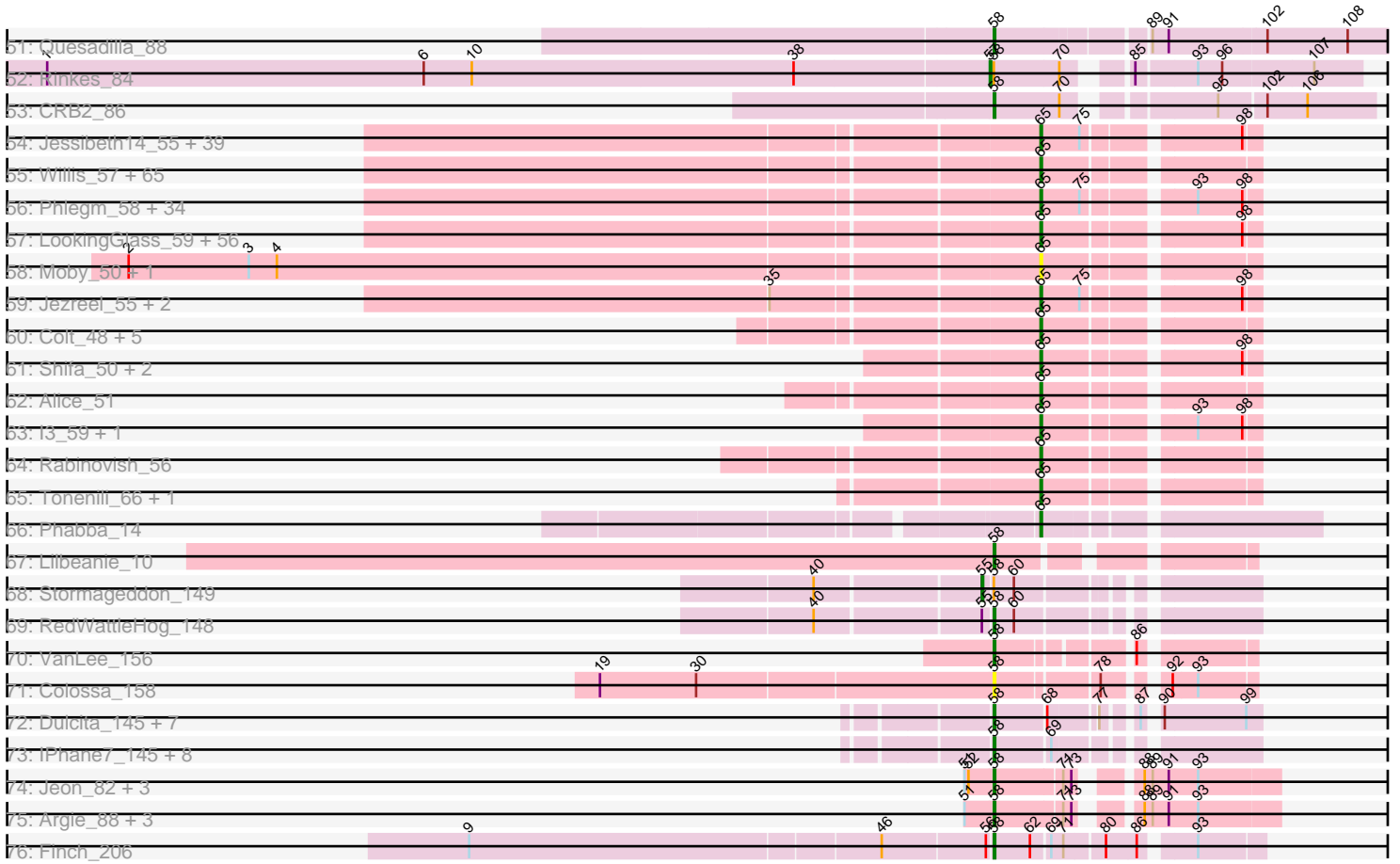


Pham 304604



Pham 304604



Note: Tracks are now grouped by subcluster and scaled. Switching in subcluster is indicated by changes in track color. Track scale is now set by default to display the region 30 bp upstream of start 1 to 30 bp downstream of the last possible start. If this default region is judged to be packed too tightly with annotated starts, the track will be further scaled to only show that region of the ORF with annotated starts. This action will be indicated by adding "Zoomed" to the title. For starts, yellow indicates the location of called starts comprised solely of Glimmer/GeneMark auto-annotations, green indicates the location of called starts with at least 1 manual gene annotation.

Pham 304604 Report

This analysis was run 06/08/26 on database version 649.

Pham number 304604 has 481 members, 69 are drafts.

Phages represented in each track:

- Track 1 : Remus_87, Soups_86, Epsocamisio_84, Rosalind_85, Ravana_88, Strosahl_87
- Track 2 : Nedarya_83
- Track 3 : Lucyedi_84, EagleEye_85
- Track 4 : Landor_78, Bactobuster_72
- Track 5 : Tristan_76, Jaan_78
- Track 6 : OKaNui_79, Eurydice_81, JoongJeon_79, Burger_78, LochMonster_81, Houdini22_79, Chaph_80, Mazhar510_80, Caelakin_78, Melvin_82, Bombshell_80, Millski_79, Relief_79, Wilbur_80, SenorClean_81, SteMason_76, Nemo27_79, Eapen_80, Huxley_72, KekoraPapaka_77, Medusa_79, Romney_79, Phighter1804_80, Eris_79, CentreCat_80, Nebs_81, Lorenzo_80, SheldonCooper_80, Cerulean_82, Bruiser_79, Thanksgivukkah_79, Ulysses_79, Scamp_80, Kremtemulon_77, Flux_81, Skipitt_79, Kampy_79, Dhanush_80, ChampagnePapi_83, Kyee_80, Palestino_79, Spino_79, PeterPeter_80, Ruin_80, Cocoaberry_80, TygerBlood_80, Pipcraft_76, Avle17_80, Phacado_80, MeeZee_79, Ohfah_81, Maverick_79, Eagle_79, Koan_77, Maxo_82, Cintron_80, NorthStar_77, Gadost_80, Clarenza_79, Kingmustik0402_80, KFPoly_79, Sultana_80, BangNhom_77, ICleared_79, Wander_80, TroyPia_81, Arturo_77, Koreni_79, NotAPhaseMom_79, Iracema64_80, Funston_79
- Track 7 : Albee_80, Pumbaa_80, Connomayer_80, TinaFeyge_78, TiroTheta9_79, Jaykayelowell_77, Polymorphads_81, Florean_80, Holli_79, Baby16_80, BubbleTrouble_79, Sparxx_81, Roosevelt_78, JetBlade_81, Morrow_82, LappelDuVide_80, Abdiel_79, Citius_80, Broseidon_80, Blackmoor_79, Shaka_78, Deano_77, HamSlice_76, Lunsford_80, Bartimeaus_80, Annyong_79
- Track 8 : Happiness_79
- Track 9 : Stasia_77
- Track 10 : RockieBear_77
- Track 11 : Obama12_81, Tinybot_79, LHTSCC_82
- Track 12 : LittleGuy_80, Eros_80, Phontbonne_80, Nyxis_79, Taquarus_79, Commander_78, Peaches_78
- Track 13 : Alberto7_81
- Track 14 : Kratak_79, Iceman_78, Shygu2_78, YoSam321_80, Rosa24_76, Lemur_80
- Track 15 : DirtyDunning_79
- Track 16 : Sabertooth_80
- Track 17 : Xena_76, Datway_77
- Track 18 : LittleB_80

- Track 19 : DaVinci_84, McFly_86, Chartreuse_85, Dorothea_86, Kipper29_86
- Track 20 : Yokurt_87, Neeharika16_85, Koko_89, Cookiedough_86, Helmet_90, Temprado_89, Pmask_85, SuperAwesome_86, Jordennis_84, GreedyLawyer_79, Blue7_89, Newrala_85, Indra_91, Zaka_88, BABullseye_79, BennyP_88, JewelBug_78, Garak_89, Wiks_87
- Track 21 : Rifter_88, Artemis2UCLA_87, CloudWang3_88, Hexamo_87, Roksolana_88
- Track 22 : Gruunaga_87, Hammer_88, Gladiator_84
- Track 23 : Hoot_81, Priamo_87, Kazan_87, Zulu_89, EricB_84, Polyphemus_79, DelvinSonDorr_81, Candra_84, SuperCallie99_82, VohminGhazi_86, Isiphiwo_82, SmellyB_86
- Track 24 : WunderPhul_88
- Track 25 : Lilbunny_87, BlessJoy_88, Tucker_88, ToneTone_85
- Track 26 : Sheen_79, Toro_80, FlyCatcher_82
- Track 27 : WorldCup_81
- Track 28 : Settecandela_91, Phrappuccino_91
- Track 29 : Imvubu_91
- Track 30 : Indlovu_86
- Track 31 : LilMcDreamy_86
- Track 32 : Stinger_85
- Track 33 : Hally898_84, Nanao_86, Renkei_86, Epah_86, Poster_85, GinPorsche_88, LittleDigger_86, Lambano_84, Antihero_86, Ahwei_85
- Track 34 : ChrisnMich_89
- Track 35 : QueenPie_80
- Track 36 : Hydro_87
- Track 37 : Cooper_89
- Track 38 : JAMaL_87
- Track 39 : Mysterious_86, Nehemiah_86
- Track 40 : Reprobate_86, Phelemich_84
- Track 41 : Shenyu_88, KarasumaRum_85, StinkyVeggy_85
- Track 42 : Rich_84, Bae_85
- Track 43 : Nangang_88
- Track 44 : Serendipitous_87
- Track 45 : Jolie1_087
- Track 46 : Hosp_085, 39HC_090, 40BC_090
- Track 47 : KayaCho_85
- Track 48 : Saguaro_80
- Track 49 : Knocker_86
- Track 50 : Funsized_87
- Track 51 : Quesadilla_88
- Track 52 : Rinkes_84
- Track 53 : CRB2_86
- Track 54 : Jessibeth14_55, BadAgartude_56, QBert_51, Janiyra_58, ChickenPhender_52, Pupusa_62, Bezza_49, LinStu_58, Dietrick_50, Cali_54, Nidhogg_57, Trinitium_52, BigCity_62, Iota_51, MoMoMixon_57, ET08_48, CharlieB_54, LRRHood_53, ScottMcG_55, Turret_51, Grasshills_62, Koguma_53, JulietS_52, IkeLoa_51, Catera_55, ChaylaJr_52, Ronan_51, Izajani_58, Grungle_48, Lukilu_50, Shelob_59, Phox_55, Sebata_59, BeanWater_50, Rahel_57, Shaqnato_51, EggyFarm_62, Lethe_56, NoodleTree_57, Yassified_54
- Track 55 : Willis_57, NedWong_58, Mikro_55, ZygoTaiga_57, ErnieJ_56, Fludd_56, Lee7_55, Flabslab_53, Cactojaque_51, Loanshark_57, Rizal_55, Salacia_59, FoxtrotP1_57, StubbySaigey_56, BananaFence_58, Daffodil_59, Bowman_56, Ewok_57, Cleatunium_53, PharkleMinkus_62, Pinkcreek_49, MikeLiesIn_57,

Darko_56, Bread_57, Kboogie_57, Naval22_63, Ava3_58, Astraea_58, Delilah_57, McWolfish_55, PurduePete_56, FrayBell_63, Shrimp_57, TinyTim_57, Khaleesi_56, Napoleon13_54, YemiJoy2021_57, OrediggerDelux_55, Zalkecks_58, Wally_55, Norm_57, Basquiat_52, Maby2021_57, Tainan_62, Bipolarisk_56, EmToTheThree_60, Megamind_56, SoilZilla_53, LordLeafolot_63, ParkTD_56, Blackbrain_51, Gizmo_58, Delylah_57, Erdmann_58, Stubby_52, SrishMeg2525_56, Spud_57, Yucca_57, Zeenon_59, FudgeTart_58, Chargie21_52, Ablatia_53, SVoro_56, Issimir_57, Pleione_59, Bonray_57

- Track 56 : Phlegm_58, Gamgam_56, Pivoine_55, Patter_56, InigoMontoya_57, Derek_57, Capablanca_58, Atlantean_55, Naija_55, ValleyTerrace_56, Amataga_56, Littleton_56, Latch_56, YoungMoneyMata_56, SilverDipper_57, JPickles_54, Fixie_52, Babyland_55, CindyLou_57, SmallFry_56, JustHall_52, Audrick_58, GlutenPhree_57, McGee_55, Jemmno_56, Momo_55, Quasimodo_56, Ghost_56, Substance289_53, Dessert_54, Ading_56, Tyke_58, Ngannou_51, Fongie_56, Belieber_51
- Track 57 : LookingGlass_59, Pier_59, Bangla1971_57, Adlitam_56, Bigswole_63, Gabriel_58, Primadonna_53, Morizzled23_59, Specks_62, Essence_55, DTDevon_57, Concombre_62, LifeSavor_56, DirtMonster_53, Matsumoto_55, Sauce_58, BackyardAgain_54, RoMag_51, Breeniome_58, Halldule_51, Labradorite_57, Guwapp_55, ShiaLabeouf_56, ArcherS7_56, Domi_51, Sprinklers_53, StephanieG_57, Drazdys_56, BobaPhatt_53, Jaygup_56, EasyJones_59, Chomp_55, JigglyPuff_61, Demodog_61, Bxz1_57, Pio_61, Tortoise16_54, JayJay_62, Shnickers_56, Roots515_56, Caravan_53, Nappy_59, Jedediah_57, Asterius_57, Melpomini_52, Burrough_57, InterFolia_65, Rocha_55, Blackdragon_53, Dandelion_62, LolaVinca_60, Phusco_56, Duckfeet_50, Teardrop_56, NuevoMundo_62, Spec_54, EmmaElysia_55
- Track 58 : Moby_50, Moiqah_50
- Track 59 : Jezreel_55, DrPhinkDaddy_56, Kamryn_56
- Track 60 : Colt_48, Lunareta_54, Maturis_55, Blubba_47, Cane17_46, Montpel_54
- Track 61 : Shifa_50, HyRo_52, DeejaClivia_49
- Track 62 : Alice_51
- Track 63 : I3_59, Mangeria_60
- Track 64 : Rabinovish_56
- Track 65 : Tonenili_66, Vortrix_69
- Track 66 : Phabba_14
- Track 67 : Lilbeanie_10
- Track 68 : Stormageddon_149
- Track 69 : RedWattleHog_148
- Track 70 : VanLee_156
- Track 71 : Colossa_158
- Track 72 : Dulcita_145, Skinny_151, LilhomieP_144, Diminimus_145, PegLeg_148, Izel_144, Glaske16_147, Bongo_142
- Track 73 : IPhone7_145, Bricole_150, SlimJimmy_145, Auspice_148, FreakyGoo_147, KleverKiS_150, RoseMarie_152, TyDawg_141, TpudiCK_148
- Track 74 : Jeon_82, Taptic_88, Cepens_87, GodPhather_87
- Track 75 : Argie_88, Megabear_85, D12_85, PR_86
- Track 76 : Finch_206

Summary of Final Annotations (See graph section above for start numbers):

The start number called the most often in the published annotations is 58, it was called in 222 of the 412 non-draft genes in the pham.

Genes that call this "Most Annotated" start:

- 39HC_090, 40BC_090, Abdiel_79, Ahwei_85, Albee_80, Alberto7_81, Annyong_79, Antihero_86, Argie_88, Artemis2UCLA_87, Arturo_77, Auspice_148, Avle17_80, BABullseye_79, Baby16_80, Bae_85, BangNhom_77, Bartimeaus_80, BennyP_88, Blackmoor_79, BlessJoy_88, Blue7_89, Bombshell_80, Bongo_142, Bricole_150, Broseidon_80, Bruiser_79, BubbleTrouble_79, Burger_78, CRB2_86, Caelakin_78, Candra_84, CentreCat_80, Cepens_87, Cerulean_82, ChampagnePapi_83, Chaph_80, Chartreuse_85, ChrisMich_89, Cintron_80, Citius_80, Clarenza_79, CloudWang3_88, Cocoaberry_80, Colossa_158, Commander_78, Connomayer_80, Cookiedough_86, Cooper_89, D12_85, DaVinci_84, Datway_77, Deano_77, DelvinSonDorr_81, Dhanush_80, Diminimus_145, DirtyDunning_79, Dorothea_86, Dulcita_145, EagleEye_85, Eagle_79, Eapen_80, Epah_86, Epsocamisio_84, EricB_84, Eris_79, Eros_80, Eurydice_81, Finch_206, Florean_80, Flux_81, FlyCatcher_82, FreakyGoo_147, Funsized_87, Funston_79, Gadost_80, Garak_89, GinPorsche_88, Gladiator_84, Glaske16_147, GodPhather_87, GreedyLawyer_79, Gruunaga_87, Hally898_84, HamSlice_76, Hammer_88, Happiness_79, Helmet_90, Hexamo_87, Holli_79, Hoot_81, Hosp_085, Houdini22_79, Huxley_72, Hydro_87, ICleared_79, IPhane7_145, Iceman_78, Imvubu_91, Indlovu_86, Indra_91, Iracema64_80, Isiphiwo_82, Izel_144, JAMaL_87, Jaykayelowell_77, Jeon_82, JetBlade_81, JewelBug_78, Jolie1_087, JoongJeon_79, Jordennis_84, KFPoly_79, Kamy_79, KarasumaRum_85, KayaCho_85, Kazan_87, KekoraPapaka_77, Kingmustik0402_80, Kipper29_86, KleverKiS_150, Knocker_86, Koan_77, Koko_89, Koreni_79, Kratak_79, Kremtemulon_77, Kyee_80, LHTSCC_82, Lambano_84, LappelDuVide_80, Lemur_80, Lilbeanie_10, Lilbunny_87, LilhomieP_144, LittleB_80, LittleDigger_86, LittleGuy_80, LochMonster_81, Lorenzo_80, Lucyedi_84, Lunsford_80, Maverick_79, Maxo_82, Mazhar510_80, McFly_86, Medusa_79, MeeZee_79, Megabear_85, Melvin_82, Millski_79, Morrow_82, Mysterious_86, Nanao_86, Nangang_88, Nebs_81, Nedarya_83, Neeharika16_85, Nehemiah_86, Nemo27_79, Newrala_85, NorthStar_77, NotAPhaseMom_79, Nyxis_79, OKaNui_79, Obama12_81, Ohfah_81, PR_86, Palestino_79, Peaches_78, PegLeg_148, PeterPeter_80, Phacado_80, Phelemich_84, Phighter1804_80, Phontbonne_80, Pipcraft_76, Pmask_85, Polymorphads_81, Polyphemus_79, Poster_85, Priamo_87, Pumbaa_80, QueenPie_80, Quesadilla_88, Ravana_88, RedWattleHog_148, Relief_79, Remus_87, Renkei_86, Reprobate_86, Rich_84, Rifter_88, RockieBear_77, Roksolana_88, Romney_79, Roosevelt_78, Rosa24_76, Rosalind_85, RoseMarie_152, Ruin_80, Sabertooth_80, Saguaro_80, Scamp_80, SenorClean_81, Serendipitous_87, Shaka_78, Sheen_79, SheldonCooper_80, Shenyu_88, Shygu2_78, Skinny_151, Skipitt_79, SlimJimmy_145, SmellyB_86, Soups_86, Sparxx_81, Spino_79, Stasia_77, SteMason_76, Stinger_85, StinkyVeggy_85, Strosahl_87, Sultana_80, SuperAwesome_86, SuperCallie99_82, Taptic_88, Taquarus_79, Temprado_89, Thanksgivukkah_79, TinaFeyge_78, Tinybot_79, TiroTheta9_79, ToneTone_85, Toro_80, TpudiCK_148, TroyPia_81, Tucker_88, TyDawg_141, TygerBlood_80, Ulysses_79, VanLee_156, VohminGhazi_86, Wander_80, Wiks_87, Wilbur_80, WunderPhul_88, Xena_76, YoSam321_80, Yokurt_87, Zaka_88, Zulu_89,

Genes that have the "Most Annotated" start but do not call it:

- Phrappuccino_91, Rinkes_84, Settecandela_91, Stormageddon_149,

Genes that do not have the "Most Annotated" start:

• Ablatia_53, Ading_56, Adlitam_56, Alice_51, Amataga_56, ArcherS7_56, Asterius_57, Astraea_58, Atlantean_55, Audrick_58, Ava3_58, Babyland_55, BackyardAgain_54, Bactobuster_72, BadAgartude_56, BananaFence_58, Bangla1971_57, Basquiat_52, BeanWater_50, Belieber_51, Bezza_49, BigCity_62, Bigswole_63, Bipolarisk_56, Blackbrain_51, Blackdragon_53, Blubba_47, BobaPhatt_53, Bonray_57, Bowman_56, Bread_57, Breeniome_58, Burrough_57, Bxz1_57, Cactojaque_51, Cali_54, Cane17_46, Capablanca_58, Caravan_53, Catera_55, Chargie21_52, CharlieB_54, ChaylaJr_52, ChickenPhender_52, Chomp_55, CindyLou_57, Cleatunium_53, Colt_48, Concombre_62, DTDevon_57, Daffodil_59, Dandelion_62, Darko_56, DeejaClivia_49, Delilah_57, Delylah_57, Demodog_61, Derek_57, Dessert_54, Dietrick_50, DirtMonster_53, Domi_51, DrPhinkDaddy_56, Drazdys_56, Duckfeet_50, ET08_48, EasyJones_59, EggyFarm_62, EmToTheThree_60, EmmaElysia_55, Erdmann_58, ErnieJ_56, Essence_55, Ewok_57, Fixie_52, Flabslab_53, Fludd_56, Fongie_56, FoxtrotP1_57, FrayBell_63, FudgeTart_58, Gabriel_58, Gamgam_56, Ghost_56, Gizmo_58, GlutenPhree_57, Grasshills_62, Grungle_48, Guwapp_55, Halldule_51, HyRo_52, I3_59, IkeLoa_51, InigoMontoya_57, InterFolia_65, Iota_51, Issimir_57, Izajani_58, JPickles_54, Jaan_78, Janiyra_58, JayJay_62, Jaygup_56, Jedediah_57, Jemmno_56, Jessibeth14_55, Jezreel_55, JigglyPuff_61, JulietS_52, JustHall_52, Kamryn_56, Kboogie_57, Khaleesi_56, Koguma_53, LRRHood_53, Labradorite_57, Landor_78, Latch_56, Lee7_55, Lethe_56, LifeSavor_56, LilMcDreamy_86, LinStu_58, Littleton_56, Loanshark_57, LolaVinca_60, LookingGlass_59, LordLeafolot_63, Lukilu_50, Lunareta_54, Maby2021_57, Mangeria_60, Matsumoto_55, Maturis_55, McGee_55, McWolfish_55, Megamind_56, Melpomini_52, MikeLiesIn_57, Mikro_55, MoMoMixon_57, Moby_50, Moiqah_50, Momo_55, Montpel_54, Morizzled23_59, Naija_55, Napoleon13_54, Nappy_59, Naval22_63, NedWong_58, Ngannou_51, Nidhogg_57, NoodleTree_57, Norm_57, NuevoMundo_62, OrediggerDelux_55, ParkTD_56, Patter_56, Phabba_14, PharkleMinkus_62, Phlegm_58, Phox_55, Phusco_56, Pier_59, Pinkcreek_49, Pio_61, Pivoine_55, Pleione_59, Primadonna_53, Pupusa_62, PurduePete_56, QBert_51, Quasimodo_56, Rabinovish_56, Rahel_57, Rizal_55, RoMag_51, Rocha_55, Ronan_51, Roots515_56, SVoro_56, Salacia_59, Sauce_58, ScottMcG_55, Sebata_59, Shaq nato_51, Shelob_59, ShiaLabeouf_56, Shifa_50, Shnickers_56, Shrimp_57, SilverDipper_57, SmallFry_56, SoilZilla_53, Spec_54, Specks_62, Sprinklers_53, Spud_57, SrishMeg2525_56, StephanieG_57, StubbySaigey_56, Stubby_52, Substance289_53, Tainan_62, Teardrop_56, TinyTim_57, Tonenili_66, Tortoise16_54, Trinitium_52, Tristan_76, Turret_51, Tyke_58, ValleyTerrace_56, Vortex_69, Wally_55, Willis_57, WorldCup_81, Yassified_54, YemiJoy2021_57, YoungMoneyMata_56, Yucca_57, Zalkecks_58, Zeenon_59, ZygoTaiga_57,

Summary by start number:

Start 37:

- Found in 1 of 481 (0.2%) of genes in pham
- Manual Annotations of this start: 1 of 412
- Called 100.0% of time when present
- Phage (with cluster) where this start called: LilMcDreamy_86 (B12),

Start 53:

- Found in 2 of 481 (0.4%) of genes in pham
- Manual Annotations of this start: 2 of 412
- Called 100.0% of time when present

- Phage (with cluster) where this start called: Phrappuccino_91 (AA), Settecandela_91 (AA),

Start 55:

- Found in 2 of 481 (0.4%) of genes in pham
- Manual Annotations of this start: 1 of 412
- Called 50.0% of time when present
- Phage (with cluster) where this start called: Stormageddon_149 (DX),

Start 57:

- Found in 1 of 481 (0.2%) of genes in pham
- Manual Annotations of this start: 1 of 412
- Called 100.0% of time when present
- Phage (with cluster) where this start called: Rinkes_84 (B9),

Start 58:

- Found in 256 of 481 (53.2%) of genes in pham
- Manual Annotations of this start: 222 of 412
- Called 98.4% of time when present
- Phage (with cluster) where this start called: 39HC_090 (B6), 40BC_090 (B6), Abdiel_79 (A4), Ahwei_85 (B4), Albee_80 (A4), Alberto7_81 (A4), Anyong_79 (A4), Antihero_86 (B4), Argie_88 (W), Artemis2UCLA_87 (A6), Arturo_77 (A4), Auspice_148 (M1), Avle17_80 (A4), BABullseye_79 (A6), Baby16_80 (A4), Bae_85 (B5), BangNhom_77 (A4), Bartimeaus_80 (A4), BennyP_88 (A6), Blackmoor_79 (A4), BlessJoy_88 (A6), Blue7_89 (A6), Bombshell_80 (A4), Bongo_142 (M1), Bricole_150 (M1), Broseidon_80 (A4), Bruiser_79 (A4), BubbleTrouble_79 (A4), Burger_78 (A4), CRB2_86 (B9), Caelakin_78 (A4), Candra_84 (A6), CentreCat_80 (A4), Cepens_87 (W), Cerulean_82 (A4), ChampagnePapi_83 (A4), Chaph_80 (A4), Chartreuse_85 (A6), ChrisnMich_89 (B4), Cintron_80 (A4), Citius_80 (A4), Clarenza_79 (A4), CloudWang3_88 (A6), Cocoaberry_80 (A4), Colossa_158 (KA), Commander_78 (A4), Connomayer_80 (A4), Cookiedough_86 (A6), Cooper_89 (B4), D12_85 (W), DaVinci_84 (A6), Datway_77 (A4), Deano_77 (A4), DelvinSonDorr_81 (A6), Dhanush_80 (A4), Diminimus_145 (M1), DirtyDunning_79 (A4), Dorothea_86 (A6), Dulcita_145 (M1), EagleEye_85 (A16), Eagle_79 (A4), Eapen_80 (A4), Epah_86 (B4), Epsocamisio_84 (A15), EricB_84 (A6), Eris_79 (A4), Eros_80 (A4), Eurydice_81 (A4), Finch_206 (singleton), Florean_80 (A4), Flux_81 (A4), FlyCatcher_82 (A7), FreakyGoo_147 (M1), Funsized_87 (B9), Funston_79 (A4), Gadost_80 (A4), Garak_89 (A6), GinPorsche_88 (B4), Gladiator_84 (A6), Glaske16_147 (M1), GodPhather_87 (W), GreedyLawyer_79 (A6), Gruunaga_87 (A6), Hally898_84 (B4), HamSlice_76 (A4), Hammer_88 (A6), Happiness_79 (A4), Helmet_90 (A6), Hexamo_87 (A6), Holli_79 (A4), Hoot_81 (A6), Hosp_085 (B6), Houdini22_79 (A4), Huxley_72 (A4), Hydro_87 (B4), ICleared_79 (A4), IPhane7_145 (M1), Iceman_78 (A4), Imvubu_91 (B10), Indlovu_86 (B11), Indra_91 (A6), Iracema64_80 (A4), Isiphiwo_82 (A6), Izel_144 (M1), JAMaL_87 (B4), Jaykayelowell_77 (A4), Jeon_82 (W), JetBlade_81 (A4), JewelBug_78 (A6), Jolie1_087 (B6), JoongJeon_79 (A4), Jordennis_84 (A6), KFPoly_79 (A4), Kamy_79 (A4), KarasumaRum_85 (B5), KayaCho_85 (B6), Kazan_87 (A6), KekoraPapaka_77 (A4), Kingmustik0402_80 (A4), Kipper29_86 (A6), KleverKiS_150 (M1), Knocker_86 (B9), Koan_77 (A4), Koko_89 (A6), Koreni_79 (A4), Kratark_79 (A4), Kremtemulon_77 (A4), Kyee_80 (A4), LHTSCC_82 (A4), Lambano_84 (B4), LappelDuVide_80 (A4), Lemur_80 (A4), Lilbeanie_10 (DE5), Lilbunny_87 (A6), LilhomieP_144 (M1), LittleB_80 (A4), LittleDigger_86 (B4), LittleGuy_80 (A4), LochMonster_81 (A4), Lorenzo_80 (A4), Lucyedi_84 (A16), Lunsford_80 (A4), Maverick_79 (A4), Maxo_82 (A4),

Mazhar510_80 (A4), McFly_86 (A6), Medusa_79 (A4), MeeZee_79 (A4), Megabear_85 (W), Melvin_82 (A4), Millski_79 (A4), Morrow_82 (A4), Mysterious_86 (B5), Nanao_86 (B4), Nangang_88 (B5), Nebs_81 (A4), Nedarya_83 (A15), Neeharika16_85 (A6), Nehemiah_86 (B5), Nemo27_79 (A4), Newrala_85 (A6), NorthStar_77 (A4), NotAPhaseMom_79 (A4), Nyxis_79 (A4), OKaNui_79 (A4), Obama12_81 (A4), Ohfah_81 (A4), PR_86 (W), Palestino_79 (A4), Peaches_78 (A4), PegLeg_148 (M1), PeterPeter_80 (A4), Phacado_80 (A4), Phelemich_84 (B5), Phighter1804_80 (A4), Phontbonne_80 (A4), Pipcraft_76 (A4), Pmask_85 (A6), Polymorphads_81 (A4), Polyphemus_79 (A6), Poster_85 (B4), Priamo_87 (A6), Pumbaa_80 (A4), QueenPie_80 (B4), Quesadilla_88 (B9), Ravana_88 (A15), RedWattleHog_148 (DX), Relief_79 (A4), Remus_87 (A15), Renkei_86 (B4), Reprobate_86 (B5), Rich_84 (B5), Rifter_88 (A6), RockieBear_77 (A4), Roksolana_88 (A6), Romney_79 (A4), Roosevelt_78 (A4), Rosa24_76 (A4), Rosalind_85 (A15), RoseMarie_152 (M1), Ruin_80 (A4), Sabertooth_80 (A4), Saguaro_80 (B7), Scamp_80 (A4), SenorClean_81 (A4), Serendipitous_87 (B5), Shaka_78 (A4), Sheen_79 (A7), SheldonCooper_80 (A4), Shenyu_88 (B5), Shygu2_78 (A4), Skinny_151 (M1), Skipitt_79 (A4), SlimJimmy_145 (M1), SmellyB_86 (A6), Soups_86 (A15), Sparxx_81 (A4), Spino_79 (A4), Stasia_77 (A4), SteMason_76 (A4), Stinger_85 (B4), StinkyVeggy_85 (B5), Strosahl_87 (A15), Sultana_80 (A4), SuperAwesome_86 (A6), SuperCallie99_82 (A6), Taptic_88 (W), Taquarus_79 (A4), Temprado_89 (A6), Thanksgivukkah_79 (A4), TinaFeyge_78 (A4), Tinybot_79 (A4), TiroTheta9_79 (A4), ToneTone_85 (A6), Toro_80 (A7), TpudiCK_148 (M1), TroyPia_81 (A4), Tucker_88 (A6), TyDawg_141 (M1), TygerBlood_80 (A4), Ulysses_79 (A4), VanLee_156 (KA), VohminGhazi_86 (A6), Wander_80 (A4), Wiks_87 (A6), Wilbur_80 (A4), WunderPhul_88 (A6), Xena_76 (A4), YoSam321_80 (A4), Yokurt_87 (A6), Zaka_88 (A6), Zulu_89 (A6),

Start 65:

- Found in 221 of 481 (45.9%) of genes in pham
- Manual Annotations of this start: 183 of 412
- Called 100.0% of time when present
- Phage (with cluster) where this start called: Ablatia_53 (C1), Ading_56 (C1), Adlitam_56 (C1), Alice_51 (C1), Amataga_56 (C1), ArcherS7_56 (C1), Asterius_57 (C1), Astraea_58 (C1), Atlantean_55 (C1), Audrick_58 (C1), Ava3_58 (C1), Babyland_55 (C1), BackyardAgain_54 (C1), Bactobuster_72 (A2), BadAgartude_56 (C1), BananaFence_58 (C1), Bangla1971_57 (C1), Basquiat_52 (C1), BeanWater_50 (C1), Belieber_51 (C1), Bezza_49 (C1), BigCity_62 (C1), Bigswole_63 (C1), Bipolarisk_56 (C1), Blackbrain_51 (C1), Blackdragon_53 (C1), Blubba_47 (C1), BobaPhatt_53 (C1), Bonray_57 (C1), Bowman_56 (C1), Bread_57 (C1), Breeniome_58 (C1), Burrough_57 (C1), Bxz1_57 (C1), Cactojaque_51 (C1), Cali_54 (C1), Cane17_46 (C1), Capablanca_58 (C1), Caravan_53 (C1), Catera_55 (C1), Chargie21_52 (C1), CharlieB_54 (C1), ChaylaJr_52 (C1), ChickenPhender_52 (C1), Chomp_55 (C1), CindyLou_57 (C1), Cleatunium_53 (C1), Colt_48 (C1), Concombre_62 (C1), DTDevon_57 (C1), Daffodil_59 (C1), Dandelion_62 (C1), Darko_56 (C1), DeejaClivia_49 (C1), Delilah_57 (C1), Delylah_57 (C1), Demodog_61 (C1), Derek_57 (C1), Dessert_54 (C1), Dietrick_50 (C1), DirtMonster_53 (C1), Domi_51 (C1), DrPhinkDaddy_56 (C1), Drazdys_56 (C1), Duckfeet_50 (C1), ET08_48 (C1), EasyJones_59 (C1), EggyFarm_62 (C1), EmToTheThree_60 (C1), EmmaElysia_55 (C1), Erdmann_58 (C1), ErnieJ_56 (C1), Essence_55 (C1), Ewok_57 (C1), Fixie_52 (C1), Flabslab_53 (C1), Fludd_56 (C1), Fongie_56 (C1), FoxtrotP1_57 (C1), FrayBell_63 (C1), FudgeTart_58 (C1), Gabriel_58 (C1), Gamgam_56 (C1), Ghost_56 (C1), Gizmo_58 (C1), GlutenPhree_57 (C1), Grasshills_62 (C1), Grungle_48 (C1), Guwapp_55 (C1), Halldule_51 (C1), HyRo_52

(C1), I3_59 (C1), IkeLoa_51 (C1), InigoMontoya_57 (C1), InterFolia_65 (C1), Iota_51 (C1), Issimir_57 (C1), Izajani_58 (C1), JPickles_54 (C1), Janiyra_58 (C1), JayJay_62 (C1), Jaygup_56 (C1), Jedediah_57 (C1), Jemmno_56 (C1), Jessibeth14_55 (C1), Jezreel_55 (C1), JigglyPuff_61 (C1), JulietS_52 (C1), JustHall_52 (C1), Kamryn_56 (C1), Kboogie_57 (C1), Khaleesi_56 (C1), Koguma_53 (C1), LRRHood_53 (C1), Labradorite_57 (C1), Landor_78 (A2), Latch_56 (C1), Lee7_55 (C1), Lethe_56 (C1), LifeSavor_56 (C1), LinStu_58 (C1), Littleton_56 (C1), Loanshark_57 (C1), LolaVince_60 (C1), LookingGlass_59 (C1), LordLeafot_63 (C1), Lukilu_50 (C1), Lunareta_54 (C1), Maby2021_57 (C1), Mangeria_60 (C1), Matsumoto_55 (C1), Maturis_55 (C1), McGee_55 (C1), McWolfish_55 (C1), Megamind_56 (C1), Melpomini_52 (C1), MikeLiesIn_57 (C1), Mikro_55 (C1), MoMoMixon_57 (C1), Moby_50 (C1), Moiqah_50 (C1), Momo_55 (C1), Montpel_54 (C1), Morizzled23_59 (C1), Naija_55 (C1), Napoleon13_54 (C1), Nappy_59 (C1), Naval22_63 (C1), NedWong_58 (C1), Ngannou_51 (C1), Nidhogg_57 (C1), NoodleTree_57 (C1), Norm_57 (C1), NuevoMundo_62 (C1), OrediggerDelux_55 (C1), ParkTD_56 (C1), Patter_56 (C1), Phabba_14 (C2), PharkleMinkus_62 (C1), Phlegm_58 (C1), Phox_55 (C1), Phusco_56 (C1), Pier_59 (C1), Pinkcreek_49 (C1), Pio_61 (C1), Pivoine_55 (C1), Pleione_59 (C1), Primadonna_53 (C1), Pupusa_62 (C1), PurduePete_56 (C1), QBert_51 (C1), Quasimodo_56 (C1), Rabinovish_56 (C1), Rahel_57 (C1), Rizal_55 (C1), RoMag_51 (C1), Rocha_55 (C1), Ronan_51 (C1), Roots515_56 (C1), SVoro_56 (C1), Salacia_59 (C1), Sauce_58 (C1), ScottMcG_55 (C1), Sebata_59 (C1), Shaqato_51 (C1), Shelob_59 (C1), ShiaLabeouf_56 (C1), Shifa_50 (C1), Shnickers_56 (C1), Shrimp_57 (C1), SilverDipper_57 (C1), SmallFry_56 (C1), SoilZilla_53 (C1), Spec_54 (C1), Specks_62 (C1), Sprinklers_53 (C1), Spud_57 (C1), SrishMeg2525_56 (C1), StephanieG_57 (C1), StubbySaigey_56 (C1), Stubby_52 (C1), Substance289_53 (C1), Tainan_62 (C1), Teardrop_56 (C1), TinyTim_57 (C1), Tonenili_66 (C1), Tortoise16_54 (C1), Trinitium_52 (C1), Turret_51 (C1), Tyke_58 (C1), ValleyTerrace_56 (C1), Vortrix_69 (C1), Wally_55 (C1), Willis_57 (C1), Yassified_54 (C1), YemiJoy2021_57 (C1), YoungMoneyMata_56 (C1), Yucca_57 (C1), Zalkecks_58 (C1), Zeenon_59 (C1), ZygoTaiga_57 (C1),

Start 67:

- Found in 3 of 481 (0.6%) of genes in pham
- Manual Annotations of this start: 2 of 412
- Called 100.0% of time when present
- Phage (with cluster) where this start called: Jaan_78 (A2), Tristan_76 (A2), WorldCup_81 (A9),

Summary by clusters:

There are 24 clusters represented in this pham: singleton, DX, B12, B10, B11, A15, A16, A2, A4, A7, A6, A9, C2, C1, AA, W, KA, DE5, B4, B5, B6, B7, M1, B9,

Info for manual annotations of cluster A15:

- Start number 58 was manually annotated 7 times for cluster A15.

Info for manual annotations of cluster A16:

- Start number 58 was manually annotated 2 times for cluster A16.

Info for manual annotations of cluster A2:

- Start number 65 was manually annotated 2 times for cluster A2.
- Start number 67 was manually annotated 2 times for cluster A2.

Info for manual annotations of cluster A4:

- Start number 58 was manually annotated 118 times for cluster A4.

Info for manual annotations of cluster A6:

- Start number 58 was manually annotated 46 times for cluster A6.

Info for manual annotations of cluster A7:

- Start number 58 was manually annotated 1 time for cluster A7.

Info for manual annotations of cluster AA:

- Start number 53 was manually annotated 2 times for cluster AA.

Info for manual annotations of cluster B10:

- Start number 58 was manually annotated 1 time for cluster B10.

Info for manual annotations of cluster B11:

- Start number 58 was manually annotated 1 time for cluster B11.

Info for manual annotations of cluster B12:

- Start number 37 was manually annotated 1 time for cluster B12.

Info for manual annotations of cluster B4:

- Start number 58 was manually annotated 8 times for cluster B4.

Info for manual annotations of cluster B5:

- Start number 58 was manually annotated 6 times for cluster B5.

Info for manual annotations of cluster B6:

- Start number 58 was manually annotated 1 time for cluster B6.

Info for manual annotations of cluster B7:

- Start number 58 was manually annotated 1 time for cluster B7.

Info for manual annotations of cluster B9:

- Start number 57 was manually annotated 1 time for cluster B9.
- Start number 58 was manually annotated 4 times for cluster B9.

Info for manual annotations of cluster C1:

- Start number 65 was manually annotated 180 times for cluster C1.

Info for manual annotations of cluster C2:

- Start number 65 was manually annotated 1 time for cluster C2.

Info for manual annotations of cluster DE5:

- Start number 58 was manually annotated 1 time for cluster DE5.

Info for manual annotations of cluster DX:

- Start number 55 was manually annotated 1 time for cluster DX.
- Start number 58 was manually annotated 1 time for cluster DX.

Info for manual annotations of cluster KA:

- Start number 58 was manually annotated 1 time for cluster KA.

Info for manual annotations of cluster M1:

- Start number 58 was manually annotated 14 times for cluster M1.

Info for manual annotations of cluster W:

- Start number 58 was manually annotated 8 times for cluster W.

Gene Information:

Gene: 39HC_090 Start: 66017, Stop: 65820, Start Num: 58

Candidate Starts for 39HC_090:

(54, 66029), (Start: 58 @66017 has 222 MA's), (70, 65969), (96, 65876), (104, 65837),

Gene: 40BC_090 Start: 66017, Stop: 65820, Start Num: 58

Candidate Starts for 40BC_090:

(54, 66029), (Start: 58 @66017 has 222 MA's), (70, 65969), (96, 65876), (104, 65837),

Gene: Abdiel_79 Start: 47438, Stop: 47268, Start Num: 58

Candidate Starts for Abdiel_79:

(11, 47819), (14, 47777), (33, 47642), (36, 47600), (41, 47564), (48, 47498), (Start: 58 @47438 has 222 MA's), (68, 47399), (89, 47345), (91, 47333),

Gene: Ablatia_53 Start: 17047, Stop: 17187, Start Num: 65

Candidate Starts for Ablatia_53:

(Start: 65 @17047 has 183 MA's),

Gene: Ading_56 Start: 17144, Stop: 17284, Start Num: 65

Candidate Starts for Ading_56:

(Start: 65 @17144 has 183 MA's), (75, 17171), (93, 17240), (98, 17273),

Gene: Adlitam_56 Start: 17161, Stop: 17301, Start Num: 65

Candidate Starts for Adlitam_56:

(Start: 65 @17161 has 183 MA's), (98, 17290),

Gene: Ahwei_85 Start: 65422, Stop: 65189, Start Num: 58

Candidate Starts for Ahwei_85:

(42, 65515), (49, 65458), (Start: 58 @65422 has 222 MA's), (70, 65374), (79, 65353), (89, 65323), (96, 65272),

Gene: Albee_80 Start: 47426, Stop: 47256, Start Num: 58

Candidate Starts for Albee_80:

(11, 47807), (14, 47765), (33, 47630), (36, 47588), (41, 47552), (48, 47486), (Start: 58 @47426 has 222 MA's), (68, 47387), (89, 47333), (91, 47321),

Gene: Alberto7_81 Start: 47763, Stop: 47593, Start Num: 58

Candidate Starts for Alberto7_81:

(14, 48102), (33, 47967), (36, 47925), (41, 47889), (48, 47823), (Start: 58 @47763 has 222 MA's), (68, 47724), (89, 47670), (91, 47658),

Gene: Alice_51 Start: 17217, Stop: 17357, Start Num: 65

Candidate Starts for Alice_51:

(Start: 65 @17217 has 183 MA's),

Gene: Amataga_56 Start: 17165, Stop: 17305, Start Num: 65

Candidate Starts for Amataga_56:

(Start: 65 @17165 has 183 MA's), (75, 17192), (93, 17261), (98, 17294),

Gene: Annyong_79 Start: 47471, Stop: 47301, Start Num: 58

Candidate Starts for Annyong_79:

(11, 47852), (14, 47810), (33, 47675), (36, 47633), (41, 47597), (48, 47531), (Start: 58 @47471 has 222 MA's), (68, 47432), (89, 47378), (91, 47366),

Gene: Antihero_86 Start: 65345, Stop: 65112, Start Num: 58

Candidate Starts for Antihero_86:

(42, 65438), (49, 65381), (Start: 58 @65345 has 222 MA's), (70, 65297), (79, 65276), (89, 65246), (96, 65195),

Gene: ArcherS7_56 Start: 17528, Stop: 17668, Start Num: 65

Candidate Starts for ArcherS7_56:

(Start: 65 @17528 has 183 MA's), (98, 17657),

Gene: Argie_88 Start: 59134, Stop: 59316, Start Num: 58

Candidate Starts for Argie_88:

(51, 59113), (Start: 58 @59134 has 222 MA's), (71, 59182), (73, 59188), (88, 59218), (89, 59224), (91, 59236), (93, 59257),

Gene: Artemis2UCLA_87 Start: 46325, Stop: 46167, Start Num: 58

Candidate Starts for Artemis2UCLA_87:

(44, 46418), (Start: 58 @46325 has 222 MA's), (82, 46250), (87, 46235),

Gene: Arturo_77 Start: 47554, Stop: 47384, Start Num: 58

Candidate Starts for Arturo_77:

(14, 47893), (36, 47716), (41, 47680), (48, 47614), (Start: 58 @47554 has 222 MA's), (68, 47515), (89, 47461), (91, 47449),

Gene: Asterius_57 Start: 17623, Stop: 17763, Start Num: 65

Candidate Starts for Asterius_57:

(Start: 65 @17623 has 183 MA's), (98, 17752),

Gene: Astraea_58 Start: 18620, Stop: 18760, Start Num: 65

Candidate Starts for Astraea_58:

(Start: 65 @18620 has 183 MA's),

Gene: Atlantean_55 Start: 17165, Stop: 17305, Start Num: 65

Candidate Starts for Atlantean_55:

(Start: 65 @17165 has 183 MA's), (75, 17192), (93, 17261), (98, 17294),

Gene: Audrick_58 Start: 17144, Stop: 17284, Start Num: 65

Candidate Starts for Audrick_58:

(Start: 65 @17144 has 183 MA's), (75, 17171), (93, 17240), (98, 17273),

Gene: Auspice_148 Start: 74560, Stop: 74396, Start Num: 58

Candidate Starts for Auspice_148:

(Start: 58 @74560 has 222 MA's), (69, 74521),

Gene: Ava3_58 Start: 18222, Stop: 18362, Start Num: 65

Candidate Starts for Ava3_58:

(Start: 65 @18222 has 183 MA's),

Gene: Avle17_80 Start: 47420, Stop: 47250, Start Num: 58

Candidate Starts for Avle17_80:

(14, 47759), (36, 47582), (41, 47546), (48, 47480), (Start: 58 @47420 has 222 MA's), (68, 47381), (89, 47327), (91, 47315),

Gene: BABullseye_79 Start: 44645, Stop: 44487, Start Num: 58

Candidate Starts for BABullseye_79:

(32, 44846), (44, 44738), (Start: 58 @44645 has 222 MA's), (82, 44570), (87, 44555),

Gene: Baby16_80 Start: 47437, Stop: 47267, Start Num: 58

Candidate Starts for Baby16_80:

(11, 47818), (14, 47776), (33, 47641), (36, 47599), (41, 47563), (48, 47497), (Start: 58 @47437 has 222 MA's), (68, 47398), (89, 47344), (91, 47332),

Gene: Babyland_55 Start: 16603, Stop: 16743, Start Num: 65

Candidate Starts for Babyland_55:

(Start: 65 @16603 has 183 MA's), (75, 16630), (93, 16699), (98, 16732),

Gene: BackyardAgain_54 Start: 17096, Stop: 17236, Start Num: 65

Candidate Starts for BackyardAgain_54:

(Start: 65 @17096 has 183 MA's), (98, 17225),

Gene: Bactobuster_72 Start: 46044, Stop: 45904, Start Num: 65

Candidate Starts for Bactobuster_72:

(8, 46479), (12, 46434), (13, 46416), (15, 46392), (24, 46338), (39, 46221), (45, 46164), (50, 46113), (Start: 65 @46044 has 183 MA's), (83, 45987),

Gene: BadAgartude_56 Start: 19083, Stop: 19223, Start Num: 65

Candidate Starts for BadAgartude_56:

(Start: 65 @19083 has 183 MA's), (75, 19110), (98, 19212),

Gene: Bae_85 Start: 65223, Stop: 65053, Start Num: 58

Candidate Starts for Bae_85:

(52, 65241), (Start: 58 @65223 has 222 MA's), (74, 65172), (92, 65118),

Gene: BananaFence_58 Start: 18106, Stop: 18246, Start Num: 65

Candidate Starts for BananaFence_58:

(Start: 65 @18106 has 183 MA's),

Gene: BangNhom_77 Start: 47863, Stop: 47693, Start Num: 58

Candidate Starts for BangNhom_77:

(14, 48202), (36, 48025), (41, 47989), (48, 47923), (Start: 58 @47863 has 222 MA's), (68, 47824), (89, 47770), (91, 47758),

Gene: Bangla1971_57 Start: 17658, Stop: 17798, Start Num: 65

Candidate Starts for Bangla1971_57:

(Start: 65 @17658 has 183 MA's), (98, 17787),

Gene: Bartimeaus_80 Start: 47428, Stop: 47258, Start Num: 58
Candidate Starts for Bartimeaus_80:
(11, 47809), (14, 47767), (33, 47632), (36, 47590), (41, 47554), (48, 47488), (Start: 58 @47428 has 222 MA's), (68, 47389), (89, 47335), (91, 47323),

Gene: Basquiat_52 Start: 16592, Stop: 16732, Start Num: 65
Candidate Starts for Basquiat_52:
(Start: 65 @16592 has 183 MA's),

Gene: BeanWater_50 Start: 17632, Stop: 17772, Start Num: 65
Candidate Starts for BeanWater_50:
(Start: 65 @17632 has 183 MA's), (75, 17659), (98, 17761),

Gene: Belieber_51 Start: 16517, Stop: 16657, Start Num: 65
Candidate Starts for Belieber_51:
(Start: 65 @16517 has 183 MA's), (75, 16544), (93, 16613), (98, 16646),

Gene: BennyP_88 Start: 46490, Stop: 46332, Start Num: 58
Candidate Starts for BennyP_88:
(32, 46691), (44, 46583), (Start: 58 @46490 has 222 MA's), (82, 46415), (87, 46400),

Gene: Bezza_49 Start: 17513, Stop: 17653, Start Num: 65
Candidate Starts for Bezza_49:
(Start: 65 @17513 has 183 MA's), (75, 17540), (98, 17642),

Gene: BigCity_62 Start: 19426, Stop: 19566, Start Num: 65
Candidate Starts for BigCity_62:
(Start: 65 @19426 has 183 MA's), (75, 19453), (98, 19555),

Gene: Bigswole_63 Start: 20460, Stop: 20600, Start Num: 65
Candidate Starts for Bigswole_63:
(Start: 65 @20460 has 183 MA's), (98, 20589),

Gene: Bipolarisk_56 Start: 17933, Stop: 18073, Start Num: 65
Candidate Starts for Bipolarisk_56:
(Start: 65 @17933 has 183 MA's),

Gene: Blackbrain_51 Start: 16409, Stop: 16549, Start Num: 65
Candidate Starts for Blackbrain_51:
(Start: 65 @16409 has 183 MA's),

Gene: Blackdragon_53 Start: 17551, Stop: 17691, Start Num: 65
Candidate Starts for Blackdragon_53:
(Start: 65 @17551 has 183 MA's), (98, 17680),

Gene: Blackmoor_79 Start: 47428, Stop: 47258, Start Num: 58
Candidate Starts for Blackmoor_79:
(11, 47809), (14, 47767), (33, 47632), (36, 47590), (41, 47554), (48, 47488), (Start: 58 @47428 has 222 MA's), (68, 47389), (89, 47335), (91, 47323),

Gene: BlessJoy_88 Start: 46846, Stop: 46688, Start Num: 58
Candidate Starts for BlessJoy_88:

(44, 46939), (Start: 58 @46846 has 222 MA's), (61, 46828), (68, 46813), (82, 46771), (87, 46756), (93, 46726),

Gene: Blubba_47 Start: 15453, Stop: 15593, Start Num: 65
Candidate Starts for Blubba_47:
(Start: 65 @15453 has 183 MA's),

Gene: Blue7_89 Start: 46544, Stop: 46386, Start Num: 58
Candidate Starts for Blue7_89:
(32, 46745), (44, 46637), (Start: 58 @46544 has 222 MA's), (82, 46469), (87, 46454),

Gene: BobaPhatt_53 Start: 17135, Stop: 17275, Start Num: 65
Candidate Starts for BobaPhatt_53:
(Start: 65 @17135 has 183 MA's), (98, 17264),

Gene: Bombshell_80 Start: 47423, Stop: 47253, Start Num: 58
Candidate Starts for Bombshell_80:
(14, 47762), (36, 47585), (41, 47549), (48, 47483), (Start: 58 @47423 has 222 MA's), (68, 47384), (89, 47330), (91, 47318),

Gene: Bongo_142 Start: 73417, Stop: 73256, Start Num: 58
Candidate Starts for Bongo_142:
(Start: 58 @73417 has 222 MA's), (68, 73381), (77, 73351), (87, 73333), (90, 73327), (99, 73267),

Gene: Bonray_57 Start: 18210, Stop: 18350, Start Num: 65
Candidate Starts for Bonray_57:
(Start: 65 @18210 has 183 MA's),

Gene: Bowman_56 Start: 18222, Stop: 18362, Start Num: 65
Candidate Starts for Bowman_56:
(Start: 65 @18222 has 183 MA's),

Gene: Bread_57 Start: 17903, Stop: 18043, Start Num: 65
Candidate Starts for Bread_57:
(Start: 65 @17903 has 183 MA's),

Gene: Breeniome_58 Start: 17407, Stop: 17547, Start Num: 65
Candidate Starts for Breeniome_58:
(Start: 65 @17407 has 183 MA's), (98, 17536),

Gene: Bricole_150 Start: 74323, Stop: 74159, Start Num: 58
Candidate Starts for Bricole_150:
(Start: 58 @74323 has 222 MA's), (69, 74284),

Gene: Broseidon_80 Start: 47429, Stop: 47259, Start Num: 58
Candidate Starts for Broseidon_80:
(11, 47810), (14, 47768), (33, 47633), (36, 47591), (41, 47555), (48, 47489), (Start: 58 @47429 has 222 MA's), (68, 47390), (89, 47336), (91, 47324),

Gene: Bruiser_79 Start: 47426, Stop: 47256, Start Num: 58
Candidate Starts for Bruiser_79:
(14, 47765), (36, 47588), (41, 47552), (48, 47486), (Start: 58 @47426 has 222 MA's), (68, 47387), (89, 47333), (91, 47321),

Gene: BubbleTrouble_79 Start: 47453, Stop: 47283, Start Num: 58
Candidate Starts for BubbleTrouble_79:
(11, 47834), (14, 47792), (33, 47657), (36, 47615), (41, 47579), (48, 47513), (Start: 58 @47453 has 222 MA's), (68, 47414), (89, 47360), (91, 47348),

Gene: Burger_78 Start: 47426, Stop: 47256, Start Num: 58
Candidate Starts for Burger_78:
(14, 47765), (36, 47588), (41, 47552), (48, 47486), (Start: 58 @47426 has 222 MA's), (68, 47387), (89, 47333), (91, 47321),

Gene: Burrough_57 Start: 17933, Stop: 18073, Start Num: 65
Candidate Starts for Burrough_57:
(Start: 65 @17933 has 183 MA's), (98, 18062),

Gene: Bxz1_57 Start: 18984, Stop: 19124, Start Num: 65
Candidate Starts for Bxz1_57:
(Start: 65 @18984 has 183 MA's), (98, 19113),

Gene: CRB2_86 Start: 67074, Stop: 66823, Start Num: 58
Candidate Starts for CRB2_86:
(Start: 58 @67074 has 222 MA's), (70, 67026), (95, 66936), (102, 66903), (106, 66873),

Gene: Cactojaque_51 Start: 16516, Stop: 16656, Start Num: 65
Candidate Starts for Cactojaque_51:
(Start: 65 @16516 has 183 MA's),

Gene: Caelakin_78 Start: 47426, Stop: 47256, Start Num: 58
Candidate Starts for Caelakin_78:
(14, 47765), (36, 47588), (41, 47552), (48, 47486), (Start: 58 @47426 has 222 MA's), (68, 47387), (89, 47333), (91, 47321),

Gene: Cali_54 Start: 18869, Stop: 19009, Start Num: 65
Candidate Starts for Cali_54:
(Start: 65 @18869 has 183 MA's), (75, 18896), (98, 18998),

Gene: Candra_84 Start: 46350, Stop: 46192, Start Num: 58
Candidate Starts for Candra_84:
(Start: 58 @46350 has 222 MA's), (68, 46317), (82, 46275), (87, 46260),

Gene: Cane17_46 Start: 15171, Stop: 15311, Start Num: 65
Candidate Starts for Cane17_46:
(Start: 65 @15171 has 183 MA's),

Gene: Capablanca_58 Start: 18290, Stop: 18430, Start Num: 65
Candidate Starts for Capablanca_58:
(Start: 65 @18290 has 183 MA's), (75, 18317), (93, 18386), (98, 18419),

Gene: Caravan_53 Start: 17274, Stop: 17414, Start Num: 65
Candidate Starts for Caravan_53:
(Start: 65 @17274 has 183 MA's), (98, 17403),

Gene: Catera_55 Start: 17100, Stop: 17240, Start Num: 65

Candidate Starts for Catera_55:

(Start: 65 @17100 has 183 MA's), (75, 17127), (98, 17229),

Gene: CentreCat_80 Start: 47466, Stop: 47296, Start Num: 58

Candidate Starts for CentreCat_80:

(14, 47805), (36, 47628), (41, 47592), (48, 47526), (Start: 58 @47466 has 222 MA's), (68, 47427), (89, 47373), (91, 47361),

Gene: Cepens_87 Start: 58243, Stop: 58425, Start Num: 58

Candidate Starts for Cepens_87:

(51, 58222), (52, 58225), (Start: 58 @58243 has 222 MA's), (71, 58291), (73, 58297), (88, 58327), (89, 58333), (91, 58345), (93, 58366),

Gene: Cerulean_82 Start: 47864, Stop: 47694, Start Num: 58

Candidate Starts for Cerulean_82:

(14, 48203), (36, 48026), (41, 47990), (48, 47924), (Start: 58 @47864 has 222 MA's), (68, 47825), (89, 47771), (91, 47759),

Gene: ChampagnePapi_83 Start: 47866, Stop: 47696, Start Num: 58

Candidate Starts for ChampagnePapi_83:

(14, 48205), (36, 48028), (41, 47992), (48, 47926), (Start: 58 @47866 has 222 MA's), (68, 47827), (89, 47773), (91, 47761),

Gene: Chaph_80 Start: 47437, Stop: 47267, Start Num: 58

Candidate Starts for Chaph_80:

(14, 47776), (36, 47599), (41, 47563), (48, 47497), (Start: 58 @47437 has 222 MA's), (68, 47398), (89, 47344), (91, 47332),

Gene: Chargie21_52 Start: 16592, Stop: 16732, Start Num: 65

Candidate Starts for Chargie21_52:

(Start: 65 @16592 has 183 MA's),

Gene: CharlieB_54 Start: 16867, Stop: 17007, Start Num: 65

Candidate Starts for CharlieB_54:

(Start: 65 @16867 has 183 MA's), (75, 16894), (98, 16996),

Gene: Chartreuse_85 Start: 45651, Stop: 45493, Start Num: 58

Candidate Starts for Chartreuse_85:

(Start: 58 @45651 has 222 MA's), (82, 45576), (87, 45561),

Gene: ChaylaJr_52 Start: 16679, Stop: 16819, Start Num: 65

Candidate Starts for ChaylaJr_52:

(Start: 65 @16679 has 183 MA's), (75, 16706), (98, 16808),

Gene: ChickenPhender_52 Start: 16638, Stop: 16778, Start Num: 65

Candidate Starts for ChickenPhender_52:

(Start: 65 @16638 has 183 MA's), (75, 16665), (98, 16767),

Gene: Chomp_55 Start: 17165, Stop: 17305, Start Num: 65

Candidate Starts for Chomp_55:

(Start: 65 @17165 has 183 MA's), (98, 17294),

Gene: ChrisnMich_89 Start: 65230, Stop: 65066, Start Num: 58

Candidate Starts for ChrisnMich_89:
(5, 65677), (16, 65536), (17, 65527), (21, 65506), (23, 65497), (27, 65467), (52, 65248), (Start: 58 @65230 has 222 MA's), (85, 65158), (90, 65140),

Gene: CindyLou_57 Start: 17690, Stop: 17830, Start Num: 65
Candidate Starts for CindyLou_57:
(Start: 65 @17690 has 183 MA's), (75, 17717), (93, 17786), (98, 17819),

Gene: Cintron_80 Start: 47542, Stop: 47372, Start Num: 58
Candidate Starts for Cintron_80:
(14, 47881), (36, 47704), (41, 47668), (48, 47602), (Start: 58 @47542 has 222 MA's), (68, 47503), (89, 47449), (91, 47437),

Gene: Citius_80 Start: 47447, Stop: 47277, Start Num: 58
Candidate Starts for Citius_80:
(11, 47828), (14, 47786), (33, 47651), (36, 47609), (41, 47573), (48, 47507), (Start: 58 @47447 has 222 MA's), (68, 47408), (89, 47354), (91, 47342),

Gene: Clarenza_79 Start: 47423, Stop: 47253, Start Num: 58
Candidate Starts for Clarenza_79:
(14, 47762), (36, 47585), (41, 47549), (48, 47483), (Start: 58 @47423 has 222 MA's), (68, 47384), (89, 47330), (91, 47318),

Gene: Cleatunium_53 Start: 17318, Stop: 17458, Start Num: 65
Candidate Starts for Cleatunium_53:
(Start: 65 @17318 has 183 MA's),

Gene: CloudWang3_88 Start: 46854, Stop: 46696, Start Num: 58
Candidate Starts for CloudWang3_88:
(44, 46947), (Start: 58 @46854 has 222 MA's), (82, 46779), (87, 46764),

Gene: Cocoaberry_80 Start: 47427, Stop: 47257, Start Num: 58
Candidate Starts for Cocoaberry_80:
(14, 47766), (36, 47589), (41, 47553), (48, 47487), (Start: 58 @47427 has 222 MA's), (68, 47388), (89, 47334), (91, 47322),

Gene: Colossa_158 Start: 79537, Stop: 79376, Start Num: 58
Candidate Starts for Colossa_158:
(19, 79825), (30, 79753), (Start: 58 @79537 has 222 MA's), (78, 79468), (92, 79435), (93, 79417),

Gene: Colt_48 Start: 16038, Stop: 16178, Start Num: 65
Candidate Starts for Colt_48:
(Start: 65 @16038 has 183 MA's),

Gene: Commander_78 Start: 47424, Stop: 47254, Start Num: 58
Candidate Starts for Commander_78:
(14, 47763), (36, 47586), (41, 47550), (48, 47484), (Start: 58 @47424 has 222 MA's), (68, 47385), (89, 47331), (91, 47319),

Gene: Concombres_62 Start: 20107, Stop: 20247, Start Num: 65
Candidate Starts for Concombres_62:
(Start: 65 @20107 has 183 MA's), (98, 20236),

Gene: Connomayer_80 Start: 47426, Stop: 47256, Start Num: 58
Candidate Starts for Connomayer_80:
(11, 47807), (14, 47765), (33, 47630), (36, 47588), (41, 47552), (48, 47486), (Start: 58 @47426 has 222 MA's), (68, 47387), (89, 47333), (91, 47321),

Gene: Cookiedough_86 Start: 46958, Stop: 46800, Start Num: 58
Candidate Starts for Cookiedough_86:
(32, 47159), (44, 47051), (Start: 58 @46958 has 222 MA's), (82, 46883), (87, 46868),

Gene: Cooper_89 Start: 65767, Stop: 65579, Start Num: 58
Candidate Starts for Cooper_89:
(5, 66214), (16, 66073), (17, 66064), (21, 66043), (23, 66034), (27, 66004), (28, 65998), (52, 65785), (Start: 58 @65767 has 222 MA's), (70, 65719), (92, 65647),

Gene: D12_85 Start: 58877, Stop: 59059, Start Num: 58
Candidate Starts for D12_85:
(51, 58856), (Start: 58 @58877 has 222 MA's), (71, 58925), (73, 58931), (88, 58961), (89, 58967), (91, 58979), (93, 59000),

Gene: DTDevon_57 Start: 18329, Stop: 18469, Start Num: 65
Candidate Starts for DTDevon_57:
(Start: 65 @18329 has 183 MA's), (98, 18458),

Gene: DaVinci_84 Start: 45705, Stop: 45547, Start Num: 58
Candidate Starts for DaVinci_84:
(Start: 58 @45705 has 222 MA's), (82, 45630), (87, 45615),

Gene: Daffodil_59 Start: 18222, Stop: 18362, Start Num: 65
Candidate Starts for Daffodil_59:
(Start: 65 @18222 has 183 MA's),

Gene: Dandelion_62 Start: 20004, Stop: 20144, Start Num: 65
Candidate Starts for Dandelion_62:
(Start: 65 @20004 has 183 MA's), (98, 20133),

Gene: Darko_56 Start: 18075, Stop: 18215, Start Num: 65
Candidate Starts for Darko_56:
(Start: 65 @18075 has 183 MA's),

Gene: Datway_77 Start: 47237, Stop: 47067, Start Num: 58
Candidate Starts for Datway_77:
(14, 47576), (36, 47399), (41, 47363), (48, 47297), (Start: 58 @47237 has 222 MA's), (68, 47198), (89, 47144), (90, 47135), (91, 47132),

Gene: Deano_77 Start: 47434, Stop: 47264, Start Num: 58
Candidate Starts for Deano_77:
(11, 47815), (14, 47773), (33, 47638), (36, 47596), (41, 47560), (48, 47494), (Start: 58 @47434 has 222 MA's), (68, 47395), (89, 47341), (91, 47329),

Gene: DeejaClivia_49 Start: 15662, Stop: 15802, Start Num: 65
Candidate Starts for DeejaClivia_49:
(Start: 65 @15662 has 183 MA's), (98, 15791),

Gene: Delilah_57 Start: 18222, Stop: 18362, Start Num: 65
Candidate Starts for Delilah_57:
(Start: 65 @18222 has 183 MA's),

Gene: DelvinSonDorr_81 Start: 45914, Stop: 45756, Start Num: 58
Candidate Starts for DelvinSonDorr_81:
(Start: 58 @45914 has 222 MA's), (68, 45881), (82, 45839), (87, 45824),

Gene: Delylah_57 Start: 18000, Stop: 18140, Start Num: 65
Candidate Starts for Delylah_57:
(Start: 65 @18000 has 183 MA's),

Gene: Demodog_61 Start: 20107, Stop: 20247, Start Num: 65
Candidate Starts for Demodog_61:
(Start: 65 @20107 has 183 MA's), (98, 20236),

Gene: Derek_57 Start: 17496, Stop: 17636, Start Num: 65
Candidate Starts for Derek_57:
(Start: 65 @17496 has 183 MA's), (75, 17523), (93, 17592), (98, 17625),

Gene: Dessert_54 Start: 17165, Stop: 17305, Start Num: 65
Candidate Starts for Dessert_54:
(Start: 65 @17165 has 183 MA's), (75, 17192), (93, 17261), (98, 17294),

Gene: Dhanush_80 Start: 47429, Stop: 47259, Start Num: 58
Candidate Starts for Dhanush_80:
(14, 47768), (36, 47591), (41, 47555), (48, 47489), (Start: 58 @47429 has 222 MA's), (68, 47390), (89, 47336), (91, 47324),

Gene: Dietrick_50 Start: 16338, Stop: 16478, Start Num: 65
Candidate Starts for Dietrick_50:
(Start: 65 @16338 has 183 MA's), (75, 16365), (98, 16467),

Gene: Diminimus_145 Start: 73233, Stop: 73072, Start Num: 58
Candidate Starts for Diminimus_145:
(Start: 58 @73233 has 222 MA's), (68, 73197), (77, 73167), (87, 73149), (90, 73143), (99, 73083),

Gene: DirtMonster_53 Start: 18135, Stop: 18275, Start Num: 65
Candidate Starts for DirtMonster_53:
(Start: 65 @18135 has 183 MA's), (98, 18264),

Gene: DirtyDunning_79 Start: 47438, Stop: 47268, Start Num: 58
Candidate Starts for DirtyDunning_79:
(14, 47777), (33, 47642), (36, 47600), (41, 47564), (48, 47498), (Start: 58 @47438 has 222 MA's), (68, 47399), (89, 47345), (91, 47333),

Gene: Domi_51 Start: 17103, Stop: 17243, Start Num: 65
Candidate Starts for Domi_51:
(Start: 65 @17103 has 183 MA's), (98, 17232),

Gene: Dorothea_86 Start: 46951, Stop: 46793, Start Num: 58
Candidate Starts for Dorothea_86:
(Start: 58 @46951 has 222 MA's), (82, 46876), (87, 46861),

Gene: DrPhinkDaddy_56 Start: 18271, Stop: 18411, Start Num: 65
Candidate Starts for DrPhinkDaddy_56:
(35, 18082), (Start: 65 @18271 has 183 MA's), (75, 18298), (98, 18400),

Gene: Drazdys_56 Start: 18002, Stop: 18142, Start Num: 65
Candidate Starts for Drazdys_56:
(Start: 65 @18002 has 183 MA's), (98, 18131),

Gene: Duckfeet_50 Start: 16834, Stop: 16974, Start Num: 65
Candidate Starts for Duckfeet_50:
(Start: 65 @16834 has 183 MA's), (98, 16963),

Gene: Dulcita_145 Start: 73234, Stop: 73073, Start Num: 58
Candidate Starts for Dulcita_145:
(Start: 58 @73234 has 222 MA's), (68, 73198), (77, 73168), (87, 73150), (90, 73144), (99, 73084),

Gene: ET08_48 Start: 16735, Stop: 16875, Start Num: 65
Candidate Starts for ET08_48:
(Start: 65 @16735 has 183 MA's), (75, 16762), (98, 16864),

Gene: Eagle_79 Start: 47488, Stop: 47318, Start Num: 58
Candidate Starts for Eagle_79:
(14, 47827), (36, 47650), (41, 47614), (48, 47548), (Start: 58 @47488 has 222 MA's), (68, 47449), (89, 47395), (91, 47383),

Gene: EagleEye_85 Start: 47807, Stop: 47646, Start Num: 58
Candidate Starts for EagleEye_85:
(Start: 58 @47807 has 222 MA's), (82, 47732), (87, 47717), (96, 47669),

Gene: Eapen_80 Start: 47421, Stop: 47251, Start Num: 58
Candidate Starts for Eapen_80:
(14, 47760), (36, 47583), (41, 47547), (48, 47481), (Start: 58 @47421 has 222 MA's), (68, 47382), (89, 47328), (91, 47316),

Gene: EasyJones_59 Start: 18298, Stop: 18438, Start Num: 65
Candidate Starts for EasyJones_59:
(Start: 65 @18298 has 183 MA's), (98, 18427),

Gene: EggyFarm_62 Start: 19426, Stop: 19566, Start Num: 65
Candidate Starts for EggyFarm_62:
(Start: 65 @19426 has 183 MA's), (75, 19453), (98, 19555),

Gene: EmToTheThree_60 Start: 19636, Stop: 19776, Start Num: 65
Candidate Starts for EmToTheThree_60:
(Start: 65 @19636 has 183 MA's),

Gene: EmmaElysia_55 Start: 16735, Stop: 16875, Start Num: 65
Candidate Starts for EmmaElysia_55:
(Start: 65 @16735 has 183 MA's), (98, 16864),

Gene: Epah_86 Start: 65345, Stop: 65112, Start Num: 58
Candidate Starts for Epah_86:

(42, 65438), (49, 65381), (Start: 58 @65345 has 222 MA's), (70, 65297), (79, 65276), (89, 65246), (96, 65195),

Gene: Epsocamisio_84 Start: 46230, Stop: 46054, Start Num: 58
Candidate Starts for Epsocamisio_84:
(Start: 58 @46230 has 222 MA's), (86, 46143),

Gene: Erdmann_58 Start: 18222, Stop: 18362, Start Num: 65
Candidate Starts for Erdmann_58:
(Start: 65 @18222 has 183 MA's),

Gene: EricB_84 Start: 45848, Stop: 45690, Start Num: 58
Candidate Starts for EricB_84:
(Start: 58 @45848 has 222 MA's), (68, 45815), (82, 45773), (87, 45758),

Gene: Eris_79 Start: 47438, Stop: 47268, Start Num: 58
Candidate Starts for Eris_79:
(14, 47777), (36, 47600), (41, 47564), (48, 47498), (Start: 58 @47438 has 222 MA's), (68, 47399), (89, 47345), (91, 47333),

Gene: ErnieJ_56 Start: 17511, Stop: 17651, Start Num: 65
Candidate Starts for ErnieJ_56:
(Start: 65 @17511 has 183 MA's),

Gene: Eros_80 Start: 47428, Stop: 47258, Start Num: 58
Candidate Starts for Eros_80:
(14, 47767), (36, 47590), (41, 47554), (48, 47488), (Start: 58 @47428 has 222 MA's), (68, 47389), (89, 47335), (91, 47323),

Gene: Essence_55 Start: 17019, Stop: 17159, Start Num: 65
Candidate Starts for Essence_55:
(Start: 65 @17019 has 183 MA's), (98, 17148),

Gene: Eurydice_81 Start: 47463, Stop: 47293, Start Num: 58
Candidate Starts for Eurydice_81:
(14, 47802), (36, 47625), (41, 47589), (48, 47523), (Start: 58 @47463 has 222 MA's), (68, 47424), (89, 47370), (91, 47358),

Gene: Ewok_57 Start: 18225, Stop: 18365, Start Num: 65
Candidate Starts for Ewok_57:
(Start: 65 @18225 has 183 MA's),

Gene: Finch_206 Start: 120593, Stop: 120769, Start Num: 58
Candidate Starts for Finch_206:
(9, 120215), (46, 120515), (56, 120590), (Start: 58 @120593 has 222 MA's), (62, 120620), (69, 120632), (71, 120641), (80, 120668), (86, 120689), (93, 120722),

Gene: Fixie_52 Start: 16364, Stop: 16504, Start Num: 65
Candidate Starts for Fixie_52:
(Start: 65 @16364 has 183 MA's), (75, 16391), (93, 16460), (98, 16493),

Gene: Flabslab_53 Start: 17244, Stop: 17384, Start Num: 65
Candidate Starts for Flabslab_53:

(Start: 65 @17244 has 183 MA's),

Gene: Florean_80 Start: 47425, Stop: 47255, Start Num: 58

Candidate Starts for Florean_80:

(11, 47806), (14, 47764), (33, 47629), (36, 47587), (41, 47551), (48, 47485), (Start: 58 @47425 has 222 MA's), (68, 47386), (89, 47332), (91, 47320),

Gene: Fludd_56 Start: 17097, Stop: 17237, Start Num: 65

Candidate Starts for Fludd_56:

(Start: 65 @17097 has 183 MA's),

Gene: Flux_81 Start: 47424, Stop: 47254, Start Num: 58

Candidate Starts for Flux_81:

(14, 47763), (36, 47586), (41, 47550), (48, 47484), (Start: 58 @47424 has 222 MA's), (68, 47385), (89, 47331), (91, 47319),

Gene: FlyCatcher_82 Start: 50617, Stop: 50435, Start Num: 58

Candidate Starts for FlyCatcher_82:

(Start: 58 @50617 has 222 MA's), (84, 50521),

Gene: Fongie_56 Start: 18438, Stop: 18578, Start Num: 65

Candidate Starts for Fongie_56:

(Start: 65 @18438 has 183 MA's), (75, 18465), (93, 18534), (98, 18567),

Gene: FoxtrotP1_57 Start: 18550, Stop: 18690, Start Num: 65

Candidate Starts for FoxtrotP1_57:

(Start: 65 @18550 has 183 MA's),

Gene: FrayBell_63 Start: 19736, Stop: 19876, Start Num: 65

Candidate Starts for FrayBell_63:

(Start: 65 @19736 has 183 MA's),

Gene: FreakyGoo_147 Start: 74475, Stop: 74311, Start Num: 58

Candidate Starts for FreakyGoo_147:

(Start: 58 @74475 has 222 MA's), (69, 74436),

Gene: FudgeTart_58 Start: 18086, Stop: 18226, Start Num: 65

Candidate Starts for FudgeTart_58:

(Start: 65 @18086 has 183 MA's),

Gene: Funsized_87 Start: 67824, Stop: 67570, Start Num: 58

Candidate Starts for Funsized_87:

(26, 68058), (Start: 58 @67824 has 222 MA's), (62, 67797), (68, 67785), (70, 67776), (85, 67743), (93, 67701), (96, 67683),

Gene: Funston_79 Start: 47423, Stop: 47253, Start Num: 58

Candidate Starts for Funston_79:

(14, 47762), (36, 47585), (41, 47549), (48, 47483), (Start: 58 @47423 has 222 MA's), (68, 47384), (89, 47330), (91, 47318),

Gene: Gabriel_58 Start: 17398, Stop: 17538, Start Num: 65

Candidate Starts for Gabriel_58:

(Start: 65 @17398 has 183 MA's), (98, 17527),

Gene: Gadost_80 Start: 47427, Stop: 47257, Start Num: 58

Candidate Starts for Gadost_80:

(14, 47766), (36, 47589), (41, 47553), (48, 47487), (Start: 58 @47427 has 222 MA's), (68, 47388), (89, 47334), (91, 47322),

Gene: Gamgam_56 Start: 17165, Stop: 17305, Start Num: 65

Candidate Starts for Gamgam_56:

(Start: 65 @17165 has 183 MA's), (75, 17192), (93, 17261), (98, 17294),

Gene: Garak_89 Start: 46787, Stop: 46629, Start Num: 58

Candidate Starts for Garak_89:

(32, 46988), (44, 46880), (Start: 58 @46787 has 222 MA's), (82, 46712), (87, 46697),

Gene: Ghost_56 Start: 17165, Stop: 17305, Start Num: 65

Candidate Starts for Ghost_56:

(Start: 65 @17165 has 183 MA's), (75, 17192), (93, 17261), (98, 17294),

Gene: GinPorsche_88 Start: 65342, Stop: 65109, Start Num: 58

Candidate Starts for GinPorsche_88:

(42, 65435), (49, 65378), (Start: 58 @65342 has 222 MA's), (70, 65294), (79, 65273), (89, 65243), (96, 65192),

Gene: Gizmo_58 Start: 17905, Stop: 18045, Start Num: 65

Candidate Starts for Gizmo_58:

(Start: 65 @17905 has 183 MA's),

Gene: Gladiator_84 Start: 46510, Stop: 46352, Start Num: 58

Candidate Starts for Gladiator_84:

(44, 46603), (Start: 58 @46510 has 222 MA's), (68, 46477), (82, 46435), (87, 46420),

Gene: Glaske16_147 Start: 74352, Stop: 74191, Start Num: 58

Candidate Starts for Glaske16_147:

(Start: 58 @74352 has 222 MA's), (68, 74316), (77, 74286), (87, 74268), (90, 74262), (99, 74202),

Gene: GlutenPhree_57 Start: 17165, Stop: 17305, Start Num: 65

Candidate Starts for GlutenPhree_57:

(Start: 65 @17165 has 183 MA's), (75, 17192), (93, 17261), (98, 17294),

Gene: GodPhather_87 Start: 59020, Stop: 59202, Start Num: 58

Candidate Starts for GodPhather_87:

(51, 58999), (52, 59002), (Start: 58 @59020 has 222 MA's), (71, 59068), (73, 59074), (88, 59104), (89, 59110), (91, 59122), (93, 59143),

Gene: Grasshills_62 Start: 19426, Stop: 19566, Start Num: 65

Candidate Starts for Grasshills_62:

(Start: 65 @19426 has 183 MA's), (75, 19453), (98, 19555),

Gene: GreedyLawyer_79 Start: 46280, Stop: 46122, Start Num: 58

Candidate Starts for GreedyLawyer_79:

(32, 46481), (44, 46373), (Start: 58 @46280 has 222 MA's), (82, 46205), (87, 46190),

Gene: Grungle_48 Start: 15817, Stop: 15957, Start Num: 65

Candidate Starts for Grungle_48:
(Start: 65 @15817 has 183 MA's), (75, 15844), (98, 15946),

Gene: Gruunaga_87 Start: 46465, Stop: 46307, Start Num: 58
Candidate Starts for Gruunaga_87:
(44, 46558), (Start: 58 @46465 has 222 MA's), (68, 46432), (82, 46390), (87, 46375),

Gene: Guwapp_55 Start: 17260, Stop: 17400, Start Num: 65
Candidate Starts for Guwapp_55:
(Start: 65 @17260 has 183 MA's), (98, 17389),

Gene: Halldule_51 Start: 16269, Stop: 16409, Start Num: 65
Candidate Starts for Halldule_51:
(Start: 65 @16269 has 183 MA's), (98, 16398),

Gene: Hally898_84 Start: 65182, Stop: 64949, Start Num: 58
Candidate Starts for Hally898_84:
(42, 65275), (49, 65218), (Start: 58 @65182 has 222 MA's), (70, 65134), (79, 65113), (89, 65083), (96, 65032),

Gene: HamSlice_76 Start: 47425, Stop: 47255, Start Num: 58
Candidate Starts for HamSlice_76:
(11, 47806), (14, 47764), (33, 47629), (36, 47587), (41, 47551), (48, 47485), (Start: 58 @47425 has 222 MA's), (68, 47386), (89, 47332), (91, 47320),

Gene: Hammer_88 Start: 46172, Stop: 46014, Start Num: 58
Candidate Starts for Hammer_88:
(44, 46265), (Start: 58 @46172 has 222 MA's), (68, 46139), (82, 46097), (87, 46082),

Gene: Happiness_79 Start: 47449, Stop: 47279, Start Num: 58
Candidate Starts for Happiness_79:
(36, 47611), (41, 47575), (48, 47509), (Start: 58 @47449 has 222 MA's), (68, 47410), (89, 47356), (91, 47344),

Gene: Helmet_90 Start: 46787, Stop: 46629, Start Num: 58
Candidate Starts for Helmet_90:
(32, 46988), (44, 46880), (Start: 58 @46787 has 222 MA's), (82, 46712), (87, 46697),

Gene: Hexamo_87 Start: 46340, Stop: 46182, Start Num: 58
Candidate Starts for Hexamo_87:
(44, 46433), (Start: 58 @46340 has 222 MA's), (82, 46265), (87, 46250),

Gene: Holli_79 Start: 47216, Stop: 47046, Start Num: 58
Candidate Starts for Holli_79:
(11, 47597), (14, 47555), (33, 47420), (36, 47378), (41, 47342), (48, 47276), (Start: 58 @47216 has 222 MA's), (68, 47177), (89, 47123), (91, 47111),

Gene: Hoot_81 Start: 44165, Stop: 44007, Start Num: 58
Candidate Starts for Hoot_81:
(Start: 58 @44165 has 222 MA's), (68, 44132), (82, 44090), (87, 44075),

Gene: Hosp_085 Start: 63309, Stop: 63112, Start Num: 58
Candidate Starts for Hosp_085:

(54, 63321), (Start: 58 @63309 has 222 MA's), (70, 63261), (96, 63168), (104, 63129),

Gene: Houdini22_79 Start: 47427, Stop: 47257, Start Num: 58

Candidate Starts for Houdini22_79:

(14, 47766), (36, 47589), (41, 47553), (48, 47487), (Start: 58 @47427 has 222 MA's), (68, 47388), (89, 47334), (91, 47322),

Gene: Huxley_72 Start: 45319, Stop: 45149, Start Num: 58

Candidate Starts for Huxley_72:

(14, 45658), (36, 45481), (41, 45445), (48, 45379), (Start: 58 @45319 has 222 MA's), (68, 45280), (89, 45226), (91, 45214),

Gene: HyRo_52 Start: 17627, Stop: 17767, Start Num: 65

Candidate Starts for HyRo_52:

(Start: 65 @17627 has 183 MA's), (98, 17756),

Gene: Hydro_87 Start: 66400, Stop: 66179, Start Num: 58

Candidate Starts for Hydro_87:

(Start: 58 @66400 has 222 MA's), (63, 66370), (91, 66286), (92, 66283), (101, 66220),

Gene: I3_59 Start: 17958, Stop: 18098, Start Num: 65

Candidate Starts for I3_59:

(Start: 65 @17958 has 183 MA's), (93, 18054), (98, 18087),

Gene: ICleared_79 Start: 47494, Stop: 47324, Start Num: 58

Candidate Starts for ICleared_79:

(14, 47833), (36, 47656), (41, 47620), (48, 47554), (Start: 58 @47494 has 222 MA's), (68, 47455), (89, 47401), (91, 47389),

Gene: IPhone7_145 Start: 74176, Stop: 74012, Start Num: 58

Candidate Starts for IPhone7_145:

(Start: 58 @74176 has 222 MA's), (69, 74137),

Gene: Iceman_78 Start: 47716, Stop: 47546, Start Num: 58

Candidate Starts for Iceman_78:

(14, 48055), (36, 47878), (41, 47842), (48, 47776), (Start: 58 @47716 has 222 MA's), (68, 47677), (89, 47623), (91, 47611),

Gene: IkeLoa_51 Start: 17025, Stop: 17165, Start Num: 65

Candidate Starts for IkeLoa_51:

(Start: 65 @17025 has 183 MA's), (75, 17052), (98, 17154),

Gene: Imvubu_91 Start: 65831, Stop: 65577, Start Num: 58

Candidate Starts for Imvubu_91:

(31, 66041), (39, 65969), (Start: 58 @65831 has 222 MA's), (70, 65783), (85, 65750), (93, 65708), (96, 65690), (97, 65684),

Gene: Indlovu_86 Start: 66392, Stop: 66171, Start Num: 58

Candidate Starts for Indlovu_86:

(Start: 58 @66392 has 222 MA's), (94, 66266), (100, 66227), (105, 66206),

Gene: Indra_91 Start: 46788, Stop: 46630, Start Num: 58

Candidate Starts for Indra_91:

(32, 46989), (44, 46881), (Start: 58 @46788 has 222 MA's), (82, 46713), (87, 46698),

Gene: InigoMontoya_57 Start: 17126, Stop: 17266, Start Num: 65

Candidate Starts for InigoMontoya_57:

(Start: 65 @17126 has 183 MA's), (75, 17153), (93, 17222), (98, 17255),

Gene: InterFolia_65 Start: 20791, Stop: 20931, Start Num: 65

Candidate Starts for InterFolia_65:

(Start: 65 @20791 has 183 MA's), (98, 20920),

Gene: Iota_51 Start: 17323, Stop: 17463, Start Num: 65

Candidate Starts for Iota_51:

(Start: 65 @17323 has 183 MA's), (75, 17350), (98, 17452),

Gene: Iracema64_80 Start: 47690, Stop: 47520, Start Num: 58

Candidate Starts for Iracema64_80:

(14, 48029), (36, 47852), (41, 47816), (48, 47750), (Start: 58 @47690 has 222 MA's), (68, 47651), (89, 47597), (91, 47585),

Gene: Isiphiwo_82 Start: 45876, Stop: 45718, Start Num: 58

Candidate Starts for Isiphiwo_82:

(Start: 58 @45876 has 222 MA's), (68, 45843), (82, 45801), (87, 45786),

Gene: Issimir_57 Start: 18165, Stop: 18305, Start Num: 65

Candidate Starts for Issimir_57:

(Start: 65 @18165 has 183 MA's),

Gene: Izajani_58 Start: 18235, Stop: 18375, Start Num: 65

Candidate Starts for Izajani_58:

(Start: 65 @18235 has 183 MA's), (75, 18262), (98, 18364),

Gene: Izel_144 Start: 73233, Stop: 73072, Start Num: 58

Candidate Starts for Izel_144:

(Start: 58 @73233 has 222 MA's), (68, 73197), (77, 73167), (87, 73149), (90, 73143), (99, 73083),

Gene: JAMaL_87 Start: 65869, Stop: 65651, Start Num: 58

Candidate Starts for JAMaL_87:

(42, 65962), (47, 65938), (49, 65905), (Start: 58 @65869 has 222 MA's), (70, 65821), (79, 65800), (89, 65770), (101, 65692),

Gene: JPickles_54 Start: 16359, Stop: 16499, Start Num: 65

Candidate Starts for JPickles_54:

(Start: 65 @16359 has 183 MA's), (75, 16386), (93, 16455), (98, 16488),

Gene: Jaan_78 Start: 47674, Stop: 47534, Start Num: 67

Candidate Starts for Jaan_78:

(59, 47704), (Start: 67 @47674 has 2 MA's), (83, 47617),

Gene: Janiyra_58 Start: 17925, Stop: 18065, Start Num: 65

Candidate Starts for Janiyra_58:

(Start: 65 @17925 has 183 MA's), (75, 17952), (98, 18054),

Gene: JayJay_62 Start: 18713, Stop: 18853, Start Num: 65

Candidate Starts for JayJay_62:
(Start: 65 @18713 has 183 MA's), (98, 18842),

Gene: Jaygup_56 Start: 17161, Stop: 17301, Start Num: 65
Candidate Starts for Jaygup_56:
(Start: 65 @17161 has 183 MA's), (98, 17290),

Gene: Jaykayelowell_77 Start: 47419, Stop: 47249, Start Num: 58
Candidate Starts for Jaykayelowell_77:
(11, 47800), (14, 47758), (33, 47623), (36, 47581), (41, 47545), (48, 47479), (Start: 58 @47419 has 222 MA's), (68, 47380), (89, 47326), (91, 47314),

Gene: Jedediah_57 Start: 17662, Stop: 17802, Start Num: 65
Candidate Starts for Jedediah_57:
(Start: 65 @17662 has 183 MA's), (98, 17791),

Gene: Jemmno_56 Start: 17165, Stop: 17305, Start Num: 65
Candidate Starts for Jemmno_56:
(Start: 65 @17165 has 183 MA's), (75, 17192), (93, 17261), (98, 17294),

Gene: Jeon_82 Start: 58513, Stop: 58695, Start Num: 58
Candidate Starts for Jeon_82:
(51, 58492), (52, 58495), (Start: 58 @58513 has 222 MA's), (71, 58561), (73, 58567), (88, 58597), (89, 58603), (91, 58615), (93, 58636),

Gene: Jessibeth14_55 Start: 17623, Stop: 17763, Start Num: 65
Candidate Starts for Jessibeth14_55:
(Start: 65 @17623 has 183 MA's), (75, 17650), (98, 17752),

Gene: JetBlade_81 Start: 47454, Stop: 47284, Start Num: 58
Candidate Starts for JetBlade_81:
(11, 47835), (14, 47793), (33, 47658), (36, 47616), (41, 47580), (48, 47514), (Start: 58 @47454 has 222 MA's), (68, 47415), (89, 47361), (91, 47349),

Gene: JewelBug_78 Start: 44643, Stop: 44485, Start Num: 58
Candidate Starts for JewelBug_78:
(32, 44844), (44, 44736), (Start: 58 @44643 has 222 MA's), (82, 44568), (87, 44553),

Gene: Jezreel_55 Start: 17478, Stop: 17618, Start Num: 65
Candidate Starts for Jezreel_55:
(35, 17289), (Start: 65 @17478 has 183 MA's), (75, 17505), (98, 17607),

Gene: JigglyPuff_61 Start: 19500, Stop: 19640, Start Num: 65
Candidate Starts for JigglyPuff_61:
(Start: 65 @19500 has 183 MA's), (98, 19629),

Gene: Jolie1_087 Start: 65336, Stop: 65139, Start Num: 58
Candidate Starts for Jolie1_087:
(54, 65348), (Start: 58 @65336 has 222 MA's), (70, 65288), (96, 65195),

Gene: JoongJeon_79 Start: 47420, Stop: 47250, Start Num: 58
Candidate Starts for JoongJeon_79:

(14, 47759), (36, 47582), (41, 47546), (48, 47480), (Start: 58 @47420 has 222 MA's), (68, 47381), (89, 47327), (91, 47315),

Gene: Jordennis_84 Start: 46547, Stop: 46389, Start Num: 58

Candidate Starts for Jordennis_84:

(32, 46748), (44, 46640), (Start: 58 @46547 has 222 MA's), (82, 46472), (87, 46457),

Gene: JulietS_52 Start: 16120, Stop: 16260, Start Num: 65

Candidate Starts for JulietS_52:

(Start: 65 @16120 has 183 MA's), (75, 16147), (98, 16249),

Gene: JustHall_52 Start: 17484, Stop: 17624, Start Num: 65

Candidate Starts for JustHall_52:

(Start: 65 @17484 has 183 MA's), (75, 17511), (93, 17580), (98, 17613),

Gene: KFPoly_79 Start: 47420, Stop: 47250, Start Num: 58

Candidate Starts for KFPoly_79:

(14, 47759), (36, 47582), (41, 47546), (48, 47480), (Start: 58 @47420 has 222 MA's), (68, 47381), (89, 47327), (91, 47315),

Gene: Kamy_79 Start: 47429, Stop: 47259, Start Num: 58

Candidate Starts for Kamy_79:

(14, 47768), (36, 47591), (41, 47555), (48, 47489), (Start: 58 @47429 has 222 MA's), (68, 47390), (89, 47336), (91, 47324),

Gene: Kamryn_56 Start: 17838, Stop: 17978, Start Num: 65

Candidate Starts for Kamryn_56:

(35, 17649), (Start: 65 @17838 has 183 MA's), (75, 17865), (98, 17967),

Gene: KarasumaRum_85 Start: 64809, Stop: 64591, Start Num: 58

Candidate Starts for KarasumaRum_85:

(Start: 58 @64809 has 222 MA's), (66, 64773), (71, 64758),

Gene: KayaCho_85 Start: 65227, Stop: 65030, Start Num: 58

Candidate Starts for KayaCho_85:

(Start: 58 @65227 has 222 MA's), (70, 65179), (96, 65086), (103, 65050),

Gene: Kazan_87 Start: 46320, Stop: 46162, Start Num: 58

Candidate Starts for Kazan_87:

(Start: 58 @46320 has 222 MA's), (68, 46287), (82, 46245), (87, 46230),

Gene: Kboogie_57 Start: 17151, Stop: 17291, Start Num: 65

Candidate Starts for Kboogie_57:

(Start: 65 @17151 has 183 MA's),

Gene: KekoraPapaka_77 Start: 47426, Stop: 47256, Start Num: 58

Candidate Starts for KekoraPapaka_77:

(14, 47765), (36, 47588), (41, 47552), (48, 47486), (Start: 58 @47426 has 222 MA's), (68, 47387), (89, 47333), (91, 47321),

Gene: Khaleesi_56 Start: 17969, Stop: 18109, Start Num: 65

Candidate Starts for Khaleesi_56:

(Start: 65 @17969 has 183 MA's),

Gene: Kingmustik0402_80 Start: 47415, Stop: 47245, Start Num: 58

Candidate Starts for Kingmustik0402_80:

(14, 47754), (36, 47577), (41, 47541), (48, 47475), (Start: 58 @47415 has 222 MA's), (68, 47376), (89, 47322), (91, 47310),

Gene: Kipper29_86 Start: 46323, Stop: 46165, Start Num: 58

Candidate Starts for Kipper29_86:

(Start: 58 @46323 has 222 MA's), (82, 46248), (87, 46233),

Gene: KleverKiS_150 Start: 75233, Stop: 75069, Start Num: 58

Candidate Starts for KleverKiS_150:

(Start: 58 @75233 has 222 MA's), (69, 75194),

Gene: Knocker_86 Start: 66737, Stop: 66540, Start Num: 58

Candidate Starts for Knocker_86:

(26, 66950), (Start: 58 @66737 has 222 MA's), (66, 66701), (70, 66689), (90, 66638), (95, 66599), (96, 66596), (102, 66566),

Gene: Koan_77 Start: 47426, Stop: 47256, Start Num: 58

Candidate Starts for Koan_77:

(14, 47765), (36, 47588), (41, 47552), (48, 47486), (Start: 58 @47426 has 222 MA's), (68, 47387), (89, 47333), (91, 47321),

Gene: Koguma_53 Start: 16463, Stop: 16603, Start Num: 65

Candidate Starts for Koguma_53:

(Start: 65 @16463 has 183 MA's), (75, 16490), (98, 16592),

Gene: Koko_89 Start: 47177, Stop: 47019, Start Num: 58

Candidate Starts for Koko_89:

(32, 47378), (44, 47270), (Start: 58 @47177 has 222 MA's), (82, 47102), (87, 47087),

Gene: Koreni_79 Start: 47107, Stop: 46937, Start Num: 58

Candidate Starts for Koreni_79:

(14, 47446), (36, 47269), (41, 47233), (48, 47167), (Start: 58 @47107 has 222 MA's), (68, 47068), (89, 47014), (91, 47002),

Gene: Kratark_79 Start: 47460, Stop: 47290, Start Num: 58

Candidate Starts for Kratark_79:

(14, 47799), (36, 47622), (41, 47586), (48, 47520), (Start: 58 @47460 has 222 MA's), (68, 47421), (89, 47367), (91, 47355),

Gene: Kremtemulon_77 Start: 47306, Stop: 47136, Start Num: 58

Candidate Starts for Kremtemulon_77:

(14, 47645), (36, 47468), (41, 47432), (48, 47366), (Start: 58 @47306 has 222 MA's), (68, 47267), (89, 47213), (91, 47201),

Gene: Kyee_80 Start: 47421, Stop: 47251, Start Num: 58

Candidate Starts for Kyee_80:

(14, 47760), (36, 47583), (41, 47547), (48, 47481), (Start: 58 @47421 has 222 MA's), (68, 47382), (89, 47328), (91, 47316),

Gene: LHTSCC_82 Start: 47866, Stop: 47696, Start Num: 58

Candidate Starts for LHTSCC_82:

(7, 48277), (14, 48205), (36, 48028), (41, 47992), (48, 47926), (Start: 58 @47866 has 222 MA's), (68, 47827), (89, 47773), (91, 47761),

Gene: LRRHood_53 Start: 18386, Stop: 18526, Start Num: 65

Candidate Starts for LRRHood_53:

(Start: 65 @18386 has 183 MA's), (75, 18413), (98, 18515),

Gene: Labradorite_57 Start: 17282, Stop: 17422, Start Num: 65

Candidate Starts for Labradorite_57:

(Start: 65 @17282 has 183 MA's), (98, 17411),

Gene: Lambano_84 Start: 65182, Stop: 64949, Start Num: 58

Candidate Starts for Lambano_84:

(42, 65275), (49, 65218), (Start: 58 @65182 has 222 MA's), (70, 65134), (79, 65113), (89, 65083), (96, 65032),

Gene: Landor_78 Start: 47601, Stop: 47461, Start Num: 65

Candidate Starts for Landor_78:

(8, 48036), (12, 47991), (13, 47973), (15, 47949), (24, 47895), (39, 47778), (45, 47721), (50, 47670), (Start: 65 @47601 has 183 MA's), (83, 47544),

Gene: LappelDuVide_80 Start: 47426, Stop: 47256, Start Num: 58

Candidate Starts for LappelDuVide_80:

(11, 47807), (14, 47765), (33, 47630), (36, 47588), (41, 47552), (48, 47486), (Start: 58 @47426 has 222 MA's), (68, 47387), (89, 47333), (91, 47321),

Gene: Latch_56 Start: 17165, Stop: 17305, Start Num: 65

Candidate Starts for Latch_56:

(Start: 65 @17165 has 183 MA's), (75, 17192), (93, 17261), (98, 17294),

Gene: Lee7_55 Start: 17900, Stop: 18040, Start Num: 65

Candidate Starts for Lee7_55:

(Start: 65 @17900 has 183 MA's),

Gene: Lemur_80 Start: 47423, Stop: 47253, Start Num: 58

Candidate Starts for Lemur_80:

(14, 47762), (36, 47585), (41, 47549), (48, 47483), (Start: 58 @47423 has 222 MA's), (68, 47384), (89, 47330), (91, 47318),

Gene: Lethe_56 Start: 18280, Stop: 18420, Start Num: 65

Candidate Starts for Lethe_56:

(Start: 65 @18280 has 183 MA's), (75, 18307), (98, 18409),

Gene: LifeSavor_56 Start: 16884, Stop: 17024, Start Num: 65

Candidate Starts for LifeSavor_56:

(Start: 65 @16884 has 183 MA's), (98, 17013),

Gene: LilMcDreamy_86 Start: 65203, Stop: 64979, Start Num: 37

Candidate Starts for LilMcDreamy_86:

(Start: 37 @65203 has 1 MA's), (43, 65155), (51, 65092),

Gene: Lilbeanie_10 Start: 4272, Stop: 4433, Start Num: 58

Candidate Starts for Lilbeanie_10:
(Start: 58 @4272 has 222 MA's),

Gene: Lilbunny_87 Start: 46419, Stop: 46261, Start Num: 58
Candidate Starts for Lilbunny_87:
(44, 46512), (Start: 58 @46419 has 222 MA's), (61, 46401), (68, 46386), (82, 46344), (87, 46329), (93, 46299),

Gene: LilhomieP_144 Start: 74263, Stop: 74102, Start Num: 58
Candidate Starts for LilhomieP_144:
(Start: 58 @74263 has 222 MA's), (68, 74227), (77, 74197), (87, 74179), (90, 74173), (99, 74113),

Gene: LinStu_58 Start: 18972, Stop: 19112, Start Num: 65
Candidate Starts for LinStu_58:
(Start: 65 @18972 has 183 MA's), (75, 18999), (98, 19101),

Gene: LittleB_80 Start: 47427, Stop: 47257, Start Num: 58
Candidate Starts for LittleB_80:
(14, 47766), (36, 47589), (41, 47553), (48, 47487), (Start: 58 @47427 has 222 MA's), (68, 47388), (76, 47364), (89, 47334), (91, 47322),

Gene: LittleDigger_86 Start: 65282, Stop: 65049, Start Num: 58
Candidate Starts for LittleDigger_86:
(42, 65375), (49, 65318), (Start: 58 @65282 has 222 MA's), (70, 65234), (79, 65213), (89, 65183), (96, 65132),

Gene: LittleGuy_80 Start: 47311, Stop: 47141, Start Num: 58
Candidate Starts for LittleGuy_80:
(14, 47650), (36, 47473), (41, 47437), (48, 47371), (Start: 58 @47311 has 222 MA's), (68, 47272), (89, 47218), (91, 47206),

Gene: Littleton_56 Start: 17165, Stop: 17305, Start Num: 65
Candidate Starts for Littleton_56:
(Start: 65 @17165 has 183 MA's), (75, 17192), (93, 17261), (98, 17294),

Gene: Loanshark_57 Start: 18222, Stop: 18362, Start Num: 65
Candidate Starts for Loanshark_57:
(Start: 65 @18222 has 183 MA's),

Gene: LochMonster_81 Start: 47663, Stop: 47493, Start Num: 58
Candidate Starts for LochMonster_81:
(14, 48002), (36, 47825), (41, 47789), (48, 47723), (Start: 58 @47663 has 222 MA's), (68, 47624), (89, 47570), (91, 47558),

Gene: LolaVince_60 Start: 19380, Stop: 19520, Start Num: 65
Candidate Starts for LolaVince_60:
(Start: 65 @19380 has 183 MA's), (98, 19509),

Gene: LookingGlass_59 Start: 18658, Stop: 18798, Start Num: 65
Candidate Starts for LookingGlass_59:
(Start: 65 @18658 has 183 MA's), (98, 18787),

Gene: LordLeafolot_63 Start: 19735, Stop: 19875, Start Num: 65

Candidate Starts for LordLeafolot_63:

(Start: 65 @19735 has 183 MA's),

Gene: Lorenzo_80 Start: 47424, Stop: 47254, Start Num: 58

Candidate Starts for Lorenzo_80:

(14, 47763), (36, 47586), (41, 47550), (48, 47484), (Start: 58 @47424 has 222 MA's), (68, 47385), (89, 47331), (91, 47319),

Gene: Lucyedi_84 Start: 48006, Stop: 47845, Start Num: 58

Candidate Starts for Lucyedi_84:

(Start: 58 @48006 has 222 MA's), (82, 47931), (87, 47916), (96, 47868),

Gene: Lukilu_50 Start: 17588, Stop: 17728, Start Num: 65

Candidate Starts for Lukilu_50:

(Start: 65 @17588 has 183 MA's), (75, 17615), (98, 17717),

Gene: Lunareta_54 Start: 18112, Stop: 18252, Start Num: 65

Candidate Starts for Lunareta_54:

(Start: 65 @18112 has 183 MA's),

Gene: Lunsford_80 Start: 47419, Stop: 47249, Start Num: 58

Candidate Starts for Lunsford_80:

(11, 47800), (14, 47758), (33, 47623), (36, 47581), (41, 47545), (48, 47479), (Start: 58 @47419 has 222 MA's), (68, 47380), (89, 47326), (91, 47314),

Gene: Maby2021_57 Start: 17903, Stop: 18043, Start Num: 65

Candidate Starts for Maby2021_57:

(Start: 65 @17903 has 183 MA's),

Gene: Mangeria_60 Start: 19250, Stop: 19390, Start Num: 65

Candidate Starts for Mangeria_60:

(Start: 65 @19250 has 183 MA's), (93, 19346), (98, 19379),

Gene: Matsumoto_55 Start: 17126, Stop: 17266, Start Num: 65

Candidate Starts for Matsumoto_55:

(Start: 65 @17126 has 183 MA's), (98, 17255),

Gene: Maturis_55 Start: 18097, Stop: 18237, Start Num: 65

Candidate Starts for Maturis_55:

(Start: 65 @18097 has 183 MA's),

Gene: Maverick_79 Start: 47423, Stop: 47253, Start Num: 58

Candidate Starts for Maverick_79:

(14, 47762), (36, 47585), (41, 47549), (48, 47483), (Start: 58 @47423 has 222 MA's), (68, 47384), (89, 47330), (91, 47318),

Gene: Maxo_82 Start: 47429, Stop: 47259, Start Num: 58

Candidate Starts for Maxo_82:

(14, 47768), (36, 47591), (41, 47555), (48, 47489), (Start: 58 @47429 has 222 MA's), (68, 47390), (89, 47336), (91, 47324),

Gene: Mazhar510_80 Start: 47424, Stop: 47254, Start Num: 58

Candidate Starts for Mazhar510_80:

(14, 47763), (36, 47586), (41, 47550), (48, 47484), (Start: 58 @47424 has 222 MA's), (68, 47385), (89, 47331), (91, 47319),

Gene: McFly_86 Start: 46659, Stop: 46501, Start Num: 58
Candidate Starts for McFly_86:
(Start: 58 @46659 has 222 MA's), (82, 46584), (87, 46569),

Gene: McGee_55 Start: 16349, Stop: 16489, Start Num: 65
Candidate Starts for McGee_55:
(Start: 65 @16349 has 183 MA's), (75, 16376), (93, 16445), (98, 16478),

Gene: McWolfish_55 Start: 17650, Stop: 17790, Start Num: 65
Candidate Starts for McWolfish_55:
(Start: 65 @17650 has 183 MA's),

Gene: Medusa_79 Start: 47439, Stop: 47269, Start Num: 58
Candidate Starts for Medusa_79:
(14, 47778), (36, 47601), (41, 47565), (48, 47499), (Start: 58 @47439 has 222 MA's), (68, 47400), (89, 47346), (91, 47334),

Gene: MeeZee_79 Start: 47420, Stop: 47250, Start Num: 58
Candidate Starts for MeeZee_79:
(14, 47759), (36, 47582), (41, 47546), (48, 47480), (Start: 58 @47420 has 222 MA's), (68, 47381), (89, 47327), (91, 47315),

Gene: Megabear_85 Start: 58166, Stop: 58348, Start Num: 58
Candidate Starts for Megabear_85:
(51, 58145), (Start: 58 @58166 has 222 MA's), (71, 58214), (73, 58220), (88, 58250), (89, 58256), (91, 58268), (93, 58289),

Gene: Megamind_56 Start: 17888, Stop: 18028, Start Num: 65
Candidate Starts for Megamind_56:
(Start: 65 @17888 has 183 MA's),

Gene: Melpomini_52 Start: 16576, Stop: 16716, Start Num: 65
Candidate Starts for Melpomini_52:
(Start: 65 @16576 has 183 MA's), (98, 16705),

Gene: Melvin_82 Start: 47421, Stop: 47251, Start Num: 58
Candidate Starts for Melvin_82:
(14, 47760), (36, 47583), (41, 47547), (48, 47481), (Start: 58 @47421 has 222 MA's), (68, 47382), (89, 47328), (91, 47316),

Gene: MikeLiesIn_57 Start: 18235, Stop: 18375, Start Num: 65
Candidate Starts for MikeLiesIn_57:
(Start: 65 @18235 has 183 MA's),

Gene: Mikro_55 Start: 18709, Stop: 18849, Start Num: 65
Candidate Starts for Mikro_55:
(Start: 65 @18709 has 183 MA's),

Gene: Millski_79 Start: 47427, Stop: 47257, Start Num: 58
Candidate Starts for Millski_79:

(14, 47766), (36, 47589), (41, 47553), (48, 47487), (Start: 58 @47427 has 222 MA's), (68, 47388), (89, 47334), (91, 47322),

Gene: MoMoMixon_57 Start: 18317, Stop: 18457, Start Num: 65

Candidate Starts for MoMoMixon_57:

(Start: 65 @18317 has 183 MA's), (75, 18344), (98, 18446),

Gene: Moby_50 Start: 15067, Stop: 15207, Start Num: 65

Candidate Starts for Moby_50:

(2, 14401), (3, 14491), (4, 14512), (Start: 65 @15067 has 183 MA's),

Gene: Moiqah_50 Start: 15067, Stop: 15207, Start Num: 65

Candidate Starts for Moiqah_50:

(2, 14401), (3, 14491), (4, 14512), (Start: 65 @15067 has 183 MA's),

Gene: Momo_55 Start: 17165, Stop: 17305, Start Num: 65

Candidate Starts for Momo_55:

(Start: 65 @17165 has 183 MA's), (75, 17192), (93, 17261), (98, 17294),

Gene: Montpel_54 Start: 18112, Stop: 18252, Start Num: 65

Candidate Starts for Montpel_54:

(Start: 65 @18112 has 183 MA's),

Gene: Morizzled23_59 Start: 18311, Stop: 18451, Start Num: 65

Candidate Starts for Morizzled23_59:

(Start: 65 @18311 has 183 MA's), (98, 18440),

Gene: Morrow_82 Start: 47466, Stop: 47296, Start Num: 58

Candidate Starts for Morrow_82:

(11, 47847), (14, 47805), (33, 47670), (36, 47628), (41, 47592), (48, 47526), (Start: 58 @47466 has 222 MA's), (68, 47427), (89, 47373), (91, 47361),

Gene: Mysterious_86 Start: 64978, Stop: 64736, Start Num: 58

Candidate Starts for Mysterious_86:

(Start: 58 @64978 has 222 MA's), (89, 64864), (92, 64849),

Gene: Naija_55 Start: 17165, Stop: 17305, Start Num: 65

Candidate Starts for Naija_55:

(Start: 65 @17165 has 183 MA's), (75, 17192), (93, 17261), (98, 17294),

Gene: Nanao_86 Start: 65195, Stop: 64962, Start Num: 58

Candidate Starts for Nanao_86:

(42, 65288), (49, 65231), (Start: 58 @65195 has 222 MA's), (70, 65147), (79, 65126), (89, 65096), (96, 65045),

Gene: Nangang_88 Start: 65412, Stop: 65194, Start Num: 58

Candidate Starts for Nangang_88:

(Start: 58 @65412 has 222 MA's), (66, 65376), (71, 65361),

Gene: Napoleon13_54 Start: 16561, Stop: 16701, Start Num: 65

Candidate Starts for Napoleon13_54:

(Start: 65 @16561 has 183 MA's),

Gene: Nappy_59 Start: 18520, Stop: 18660, Start Num: 65

Candidate Starts for Nappy_59:

(Start: 65 @18520 has 183 MA's), (98, 18649),

Gene: Naval22_63 Start: 19245, Stop: 19385, Start Num: 65

Candidate Starts for Naval22_63:

(Start: 65 @19245 has 183 MA's),

Gene: Nebs_81 Start: 47466, Stop: 47296, Start Num: 58

Candidate Starts for Nebs_81:

(14, 47805), (36, 47628), (41, 47592), (48, 47526), (Start: 58 @47466 has 222 MA's), (68, 47427), (89, 47373), (91, 47361),

Gene: NedWong_58 Start: 18222, Stop: 18362, Start Num: 65

Candidate Starts for NedWong_58:

(Start: 65 @18222 has 183 MA's),

Gene: Nedarya_83 Start: 46655, Stop: 46488, Start Num: 58

Candidate Starts for Nedarya_83:

(Start: 58 @46655 has 222 MA's),

Gene: Neeharika16_85 Start: 46409, Stop: 46251, Start Num: 58

Candidate Starts for Neeharika16_85:

(32, 46610), (44, 46502), (Start: 58 @46409 has 222 MA's), (82, 46334), (87, 46319),

Gene: Nehemiah_86 Start: 64858, Stop: 64616, Start Num: 58

Candidate Starts for Nehemiah_86:

(Start: 58 @64858 has 222 MA's), (89, 64744), (92, 64729),

Gene: Nemo27_79 Start: 47422, Stop: 47252, Start Num: 58

Candidate Starts for Nemo27_79:

(14, 47761), (36, 47584), (41, 47548), (48, 47482), (Start: 58 @47422 has 222 MA's), (68, 47383), (89, 47329), (91, 47317),

Gene: Newrala_85 Start: 46755, Stop: 46597, Start Num: 58

Candidate Starts for Newrala_85:

(32, 46956), (44, 46848), (Start: 58 @46755 has 222 MA's), (82, 46680), (87, 46665),

Gene: Ngannou_51 Start: 16147, Stop: 16287, Start Num: 65

Candidate Starts for Ngannou_51:

(Start: 65 @16147 has 183 MA's), (75, 16174), (93, 16243), (98, 16276),

Gene: Nidhogg_57 Start: 18073, Stop: 18213, Start Num: 65

Candidate Starts for Nidhogg_57:

(Start: 65 @18073 has 183 MA's), (75, 18100), (98, 18202),

Gene: NoodleTree_57 Start: 18143, Stop: 18283, Start Num: 65

Candidate Starts for NoodleTree_57:

(Start: 65 @18143 has 183 MA's), (75, 18170), (98, 18272),

Gene: Norm_57 Start: 18223, Stop: 18363, Start Num: 65

Candidate Starts for Norm_57:

(Start: 65 @18223 has 183 MA's),

Gene: NorthStar_77 Start: 47426, Stop: 47256, Start Num: 58

Candidate Starts for NorthStar_77:

(14, 47765), (36, 47588), (41, 47552), (48, 47486), (Start: 58 @47426 has 222 MA's), (68, 47387), (89, 47333), (91, 47321),

Gene: NotAPhaseMom_79 Start: 47427, Stop: 47257, Start Num: 58

Candidate Starts for NotAPhaseMom_79:

(14, 47766), (36, 47589), (41, 47553), (48, 47487), (Start: 58 @47427 has 222 MA's), (68, 47388), (89, 47334), (91, 47322),

Gene: NuevoMundo_62 Start: 19221, Stop: 19361, Start Num: 65

Candidate Starts for NuevoMundo_62:

(Start: 65 @19221 has 183 MA's), (98, 19350),

Gene: Nyxis_79 Start: 47305, Stop: 47135, Start Num: 58

Candidate Starts for Nyxis_79:

(14, 47644), (36, 47467), (41, 47431), (48, 47365), (Start: 58 @47305 has 222 MA's), (68, 47266), (89, 47212), (91, 47200),

Gene: OKaNui_79 Start: 47477, Stop: 47307, Start Num: 58

Candidate Starts for OKaNui_79:

(14, 47816), (36, 47639), (41, 47603), (48, 47537), (Start: 58 @47477 has 222 MA's), (68, 47438), (89, 47384), (91, 47372),

Gene: Obama12_81 Start: 47850, Stop: 47680, Start Num: 58

Candidate Starts for Obama12_81:

(7, 48261), (14, 48189), (36, 48012), (41, 47976), (48, 47910), (Start: 58 @47850 has 222 MA's), (68, 47811), (89, 47757), (91, 47745),

Gene: Ohfah_81 Start: 47466, Stop: 47296, Start Num: 58

Candidate Starts for Ohfah_81:

(14, 47805), (36, 47628), (41, 47592), (48, 47526), (Start: 58 @47466 has 222 MA's), (68, 47427), (89, 47373), (91, 47361),

Gene: OrediggerDelux_55 Start: 17904, Stop: 18044, Start Num: 65

Candidate Starts for OrediggerDelux_55:

(Start: 65 @17904 has 183 MA's),

Gene: PR_86 Start: 58854, Stop: 59036, Start Num: 58

Candidate Starts for PR_86:

(51, 58833), (Start: 58 @58854 has 222 MA's), (71, 58902), (73, 58908), (88, 58938), (89, 58944), (91, 58956), (93, 58977),

Gene: Palestino_79 Start: 47423, Stop: 47253, Start Num: 58

Candidate Starts for Palestino_79:

(14, 47762), (36, 47585), (41, 47549), (48, 47483), (Start: 58 @47423 has 222 MA's), (68, 47384), (89, 47330), (91, 47318),

Gene: ParkTD_56 Start: 18222, Stop: 18362, Start Num: 65

Candidate Starts for ParkTD_56:

(Start: 65 @18222 has 183 MA's),

Gene: Patter_56 Start: 17182, Stop: 17322, Start Num: 65
Candidate Starts for Patter_56:
(Start: 65 @17182 has 183 MA's), (75, 17209), (93, 17278), (98, 17311),

Gene: Peaches_78 Start: 47425, Stop: 47255, Start Num: 58
Candidate Starts for Peaches_78:
(14, 47764), (36, 47587), (41, 47551), (48, 47485), (Start: 58 @47425 has 222 MA's), (68, 47386), (89, 47332), (91, 47320),

Gene: PegLeg_148 Start: 74147, Stop: 73986, Start Num: 58
Candidate Starts for PegLeg_148:
(Start: 58 @74147 has 222 MA's), (68, 74111), (77, 74081), (87, 74063), (90, 74057), (99, 73997),

Gene: PeterPeter_80 Start: 47420, Stop: 47250, Start Num: 58
Candidate Starts for PeterPeter_80:
(14, 47759), (36, 47582), (41, 47546), (48, 47480), (Start: 58 @47420 has 222 MA's), (68, 47381), (89, 47327), (91, 47315),

Gene: Phabba_14 Start: 5257, Stop: 5442, Start Num: 65
Candidate Starts for Phabba_14:
(Start: 65 @5257 has 183 MA's),

Gene: Phacado_80 Start: 47422, Stop: 47252, Start Num: 58
Candidate Starts for Phacado_80:
(14, 47761), (36, 47584), (41, 47548), (48, 47482), (Start: 58 @47422 has 222 MA's), (68, 47383), (89, 47329), (91, 47317),

Gene: PharkleMinkus_62 Start: 19736, Stop: 19876, Start Num: 65
Candidate Starts for PharkleMinkus_62:
(Start: 65 @19736 has 183 MA's),

Gene: Phelemich_84 Start: 64879, Stop: 64661, Start Num: 58
Candidate Starts for Phelemich_84:
(Start: 58 @64879 has 222 MA's), (71, 64828), (92, 64774),

Gene: Phighter1804_80 Start: 47487, Stop: 47317, Start Num: 58
Candidate Starts for Phighter1804_80:
(14, 47826), (36, 47649), (41, 47613), (48, 47547), (Start: 58 @47487 has 222 MA's), (68, 47448), (89, 47394), (91, 47382),

Gene: Phlegm_58 Start: 17165, Stop: 17305, Start Num: 65
Candidate Starts for Phlegm_58:
(Start: 65 @17165 has 183 MA's), (75, 17192), (93, 17261), (98, 17294),

Gene: Phontbonne_80 Start: 47321, Stop: 47151, Start Num: 58
Candidate Starts for Phontbonne_80:
(14, 47660), (36, 47483), (41, 47447), (48, 47381), (Start: 58 @47321 has 222 MA's), (68, 47282), (89, 47228), (91, 47216),

Gene: Phox_55 Start: 19068, Stop: 19208, Start Num: 65
Candidate Starts for Phox_55:
(Start: 65 @19068 has 183 MA's), (75, 19095), (98, 19197),

Gene: Phrappuccino_91 Start: 70787, Stop: 70966, Start Num: 53
Candidate Starts for Phrappuccino_91:
(Start: 53 @70787 has 2 MA's), (Start: 58 @70799 has 222 MA's), (71, 70844), (72, 70847), (93, 70922), (96, 70940),

Gene: Phusco_56 Start: 17975, Stop: 18115, Start Num: 65
Candidate Starts for Phusco_56:
(Start: 65 @17975 has 183 MA's), (98, 18104),

Gene: Pier_59 Start: 18039, Stop: 18179, Start Num: 65
Candidate Starts for Pier_59:
(Start: 65 @18039 has 183 MA's), (98, 18168),

Gene: Pinkcreek_49 Start: 16524, Stop: 16664, Start Num: 65
Candidate Starts for Pinkcreek_49:
(Start: 65 @16524 has 183 MA's),

Gene: Pio_61 Start: 19373, Stop: 19513, Start Num: 65
Candidate Starts for Pio_61:
(Start: 65 @19373 has 183 MA's), (98, 19502),

Gene: Pipcraft_76 Start: 47427, Stop: 47257, Start Num: 58
Candidate Starts for Pipcraft_76:
(14, 47766), (36, 47589), (41, 47553), (48, 47487), (Start: 58 @47427 has 222 MA's), (68, 47388), (89, 47334), (91, 47322),

Gene: Pivoine_55 Start: 17165, Stop: 17305, Start Num: 65
Candidate Starts for Pivoine_55:
(Start: 65 @17165 has 183 MA's), (75, 17192), (93, 17261), (98, 17294),

Gene: Pleione_59 Start: 18221, Stop: 18361, Start Num: 65
Candidate Starts for Pleione_59:
(Start: 65 @18221 has 183 MA's),

Gene: Pmask_85 Start: 46956, Stop: 46798, Start Num: 58
Candidate Starts for Pmask_85:
(32, 47157), (44, 47049), (Start: 58 @46956 has 222 MA's), (82, 46881), (87, 46866),

Gene: Polymorphads_81 Start: 47447, Stop: 47277, Start Num: 58
Candidate Starts for Polymorphads_81:
(11, 47828), (14, 47786), (33, 47651), (36, 47609), (41, 47573), (48, 47507), (Start: 58 @47447 has 222 MA's), (68, 47408), (89, 47354), (91, 47342),

Gene: Polyphemus_79 Start: 44728, Stop: 44570, Start Num: 58
Candidate Starts for Polyphemus_79:
(Start: 58 @44728 has 222 MA's), (68, 44695), (82, 44653), (87, 44638),

Gene: Poster_85 Start: 65196, Stop: 64963, Start Num: 58
Candidate Starts for Poster_85:
(42, 65289), (49, 65232), (Start: 58 @65196 has 222 MA's), (70, 65148), (79, 65127), (89, 65097), (96, 65046),

Gene: Priamo_87 Start: 46200, Stop: 46042, Start Num: 58

Candidate Starts for Priamo_87:
(Start: 58 @46200 has 222 MA's), (68, 46167), (82, 46125), (87, 46110),

Gene: Primadonna_53 Start: 17564, Stop: 17704, Start Num: 65
Candidate Starts for Primadonna_53:
(Start: 65 @17564 has 183 MA's), (98, 17693),

Gene: Pumbaa_80 Start: 47371, Stop: 47201, Start Num: 58
Candidate Starts for Pumbaa_80:
(11, 47752), (14, 47710), (33, 47575), (36, 47533), (41, 47497), (48, 47431), (Start: 58 @47371 has 222 MA's), (68, 47332), (89, 47278), (91, 47266),

Gene: Pupusa_62 Start: 20221, Stop: 20361, Start Num: 65
Candidate Starts for Pupusa_62:
(Start: 65 @20221 has 183 MA's), (75, 20248), (98, 20350),

Gene: PurduePete_56 Start: 17946, Stop: 18086, Start Num: 65
Candidate Starts for PurduePete_56:
(Start: 65 @17946 has 183 MA's),

Gene: QBert_51 Start: 17952, Stop: 18092, Start Num: 65
Candidate Starts for QBert_51:
(Start: 65 @17952 has 183 MA's), (75, 17979), (98, 18081),

Gene: Quasimodo_56 Start: 18183, Stop: 18323, Start Num: 65
Candidate Starts for Quasimodo_56:
(Start: 65 @18183 has 183 MA's), (75, 18210), (93, 18279), (98, 18312),

Gene: QueenPie_80 Start: 64873, Stop: 64691, Start Num: 58
Candidate Starts for QueenPie_80:
(17, 65167), (18, 65158), (20, 65152), (21, 65146), (52, 64891), (Start: 58 @64873 has 222 MA's), (79, 64798), (91, 64759), (92, 64756), (96, 64720),

Gene: Quesadilla_88 Start: 65998, Stop: 65714, Start Num: 58
Candidate Starts for Quesadilla_88:
(Start: 58 @65998 has 222 MA's), (89, 65896), (91, 65884), (102, 65815), (108, 65755),

Gene: Rabinovish_56 Start: 19242, Stop: 19382, Start Num: 65
Candidate Starts for Rabinovish_56:
(Start: 65 @19242 has 183 MA's),

Gene: Rahel_57 Start: 17534, Stop: 17674, Start Num: 65
Candidate Starts for Rahel_57:
(Start: 65 @17534 has 183 MA's), (75, 17561), (98, 17663),

Gene: Ravana_88 Start: 48018, Stop: 47842, Start Num: 58
Candidate Starts for Ravana_88:
(Start: 58 @48018 has 222 MA's), (86, 47931),

Gene: RedWattleHog_148 Start: 102235, Stop: 102399, Start Num: 58
Candidate Starts for RedWattleHog_148:
(40, 102112), (Start: 55 @102229 has 1 MA's), (Start: 58 @102235 has 222 MA's), (60, 102250),

Gene: Relief_79 Start: 47423, Stop: 47253, Start Num: 58
Candidate Starts for Relief_79:
(14, 47762), (36, 47585), (41, 47549), (48, 47483), (Start: 58 @47423 has 222 MA's), (68, 47384), (89, 47330), (91, 47318),

Gene: Remus_87 Start: 46685, Stop: 46509, Start Num: 58
Candidate Starts for Remus_87:
(Start: 58 @46685 has 222 MA's), (86, 46598),

Gene: Renkei_86 Start: 65276, Stop: 65043, Start Num: 58
Candidate Starts for Renkei_86:
(42, 65369), (49, 65312), (Start: 58 @65276 has 222 MA's), (70, 65228), (79, 65207), (89, 65177), (96, 65126),

Gene: Reprobate_86 Start: 64884, Stop: 64666, Start Num: 58
Candidate Starts for Reprobate_86:
(Start: 58 @64884 has 222 MA's), (71, 64833), (92, 64779),

Gene: Rich_84 Start: 65290, Stop: 65120, Start Num: 58
Candidate Starts for Rich_84:
(52, 65308), (Start: 58 @65290 has 222 MA's), (74, 65239), (92, 65185),

Gene: Rifter_88 Start: 45967, Stop: 45809, Start Num: 58
Candidate Starts for Rifter_88:
(44, 46060), (Start: 58 @45967 has 222 MA's), (82, 45892), (87, 45877),

Gene: Rinkes_84 Start: 65665, Stop: 65420, Start Num: 57
Candidate Starts for Rinkes_84:
(1, 66364), (6, 66082), (10, 66046), (38, 65806), (Start: 57 @65665 has 1 MA's), (Start: 58 @65662 has 222 MA's), (70, 65614), (85, 65581), (93, 65539), (96, 65521), (107, 65455),

Gene: Rizal_55 Start: 17139, Stop: 17279, Start Num: 65
Candidate Starts for Rizal_55:
(Start: 65 @17139 has 183 MA's),

Gene: RoMag_51 Start: 17134, Stop: 17274, Start Num: 65
Candidate Starts for RoMag_51:
(Start: 65 @17134 has 183 MA's), (98, 17263),

Gene: Rocha_55 Start: 17167, Stop: 17307, Start Num: 65
Candidate Starts for Rocha_55:
(Start: 65 @17167 has 183 MA's), (98, 17296),

Gene: RockieBear_77 Start: 47425, Stop: 47255, Start Num: 58
Candidate Starts for RockieBear_77:
(14, 47764), (36, 47587), (41, 47551), (48, 47485), (Start: 58 @47425 has 222 MA's), (68, 47386), (76, 47362), (89, 47332), (91, 47320),

Gene: Roksolana_88 Start: 46683, Stop: 46525, Start Num: 58
Candidate Starts for Roksolana_88:
(44, 46776), (Start: 58 @46683 has 222 MA's), (82, 46608), (87, 46593),

Gene: Romney_79 Start: 47423, Stop: 47253, Start Num: 58

Candidate Starts for Romney_79:

(14, 47762), (36, 47585), (41, 47549), (48, 47483), (Start: 58 @47423 has 222 MA's), (68, 47384), (89, 47330), (91, 47318),

Gene: Ronan_51 Start: 15885, Stop: 16025, Start Num: 65

Candidate Starts for Ronan_51:

(Start: 65 @15885 has 183 MA's), (75, 15912), (98, 16014),

Gene: Roosevelt_78 Start: 47428, Stop: 47258, Start Num: 58

Candidate Starts for Roosevelt_78:

(11, 47809), (14, 47767), (33, 47632), (36, 47590), (41, 47554), (48, 47488), (Start: 58 @47428 has 222 MA's), (68, 47389), (89, 47335), (91, 47323),

Gene: Roots515_56 Start: 18020, Stop: 18160, Start Num: 65

Candidate Starts for Roots515_56:

(Start: 65 @18020 has 183 MA's), (98, 18149),

Gene: Rosa24_76 Start: 47454, Stop: 47284, Start Num: 58

Candidate Starts for Rosa24_76:

(14, 47793), (36, 47616), (41, 47580), (48, 47514), (Start: 58 @47454 has 222 MA's), (68, 47415), (89, 47361), (91, 47349),

Gene: Rosalind_85 Start: 46579, Stop: 46403, Start Num: 58

Candidate Starts for Rosalind_85:

(Start: 58 @46579 has 222 MA's), (86, 46492),

Gene: RoseMarie_152 Start: 76872, Stop: 76708, Start Num: 58

Candidate Starts for RoseMarie_152:

(Start: 58 @76872 has 222 MA's), (69, 76833),

Gene: Ruin_80 Start: 47419, Stop: 47249, Start Num: 58

Candidate Starts for Ruin_80:

(14, 47758), (36, 47581), (41, 47545), (48, 47479), (Start: 58 @47419 has 222 MA's), (68, 47380), (89, 47326), (91, 47314),

Gene: SVoro_56 Start: 18216, Stop: 18356, Start Num: 65

Candidate Starts for SVoro_56:

(Start: 65 @18216 has 183 MA's),

Gene: Sabertooth_80 Start: 47431, Stop: 47261, Start Num: 58

Candidate Starts for Sabertooth_80:

(11, 47812), (14, 47770), (36, 47593), (41, 47557), (48, 47491), (Start: 58 @47431 has 222 MA's), (68, 47392), (89, 47338), (91, 47326),

Gene: Saguaro_80 Start: 63591, Stop: 63397, Start Num: 58

Candidate Starts for Saguaro_80:

(Start: 58 @63591 has 222 MA's), (68, 63552), (81, 63525), (89, 63501), (96, 63450), (99, 63432),

Gene: Salacia_59 Start: 18222, Stop: 18362, Start Num: 65

Candidate Starts for Salacia_59:

(Start: 65 @18222 has 183 MA's),

Gene: Sauce_58 Start: 18161, Stop: 18301, Start Num: 65

Candidate Starts for Sauce_58:
(Start: 65 @18161 has 183 MA's), (98, 18290),

Gene: Scamp_80 Start: 47428, Stop: 47258, Start Num: 58
Candidate Starts for Scamp_80:
(14, 47767), (36, 47590), (41, 47554), (48, 47488), (Start: 58 @47428 has 222 MA's), (68, 47389), (89, 47335), (91, 47323),

Gene: ScottMcG_55 Start: 17998, Stop: 18138, Start Num: 65
Candidate Starts for ScottMcG_55:
(Start: 65 @17998 has 183 MA's), (75, 18025), (98, 18127),

Gene: Sebata_59 Start: 19091, Stop: 19231, Start Num: 65
Candidate Starts for Sebata_59:
(Start: 65 @19091 has 183 MA's), (75, 19118), (98, 19220),

Gene: SenorClean_81 Start: 47426, Stop: 47256, Start Num: 58
Candidate Starts for SenorClean_81:
(14, 47765), (36, 47588), (41, 47552), (48, 47486), (Start: 58 @47426 has 222 MA's), (68, 47387), (89, 47333), (91, 47321),

Gene: Serendipitous_87 Start: 64709, Stop: 64542, Start Num: 58
Candidate Starts for Serendipitous_87:
(Start: 58 @64709 has 222 MA's),

Gene: Settecandela_91 Start: 70787, Stop: 70966, Start Num: 53
Candidate Starts for Settecandela_91:
(Start: 53 @70787 has 2 MA's), (Start: 58 @70799 has 222 MA's), (71, 70844), (72, 70847), (93, 70922), (96, 70940),

Gene: Shaka_78 Start: 47424, Stop: 47254, Start Num: 58
Candidate Starts for Shaka_78:
(11, 47805), (14, 47763), (33, 47628), (36, 47586), (41, 47550), (48, 47484), (Start: 58 @47424 has 222 MA's), (68, 47385), (89, 47331), (91, 47319),

Gene: Shaqnato_51 Start: 16808, Stop: 16948, Start Num: 65
Candidate Starts for Shaqnato_51:
(Start: 65 @16808 has 183 MA's), (75, 16835), (98, 16937),

Gene: Sheen_79 Start: 49954, Stop: 49772, Start Num: 58
Candidate Starts for Sheen_79:
(Start: 58 @49954 has 222 MA's), (84, 49858),

Gene: SheldonCooper_80 Start: 47864, Stop: 47694, Start Num: 58
Candidate Starts for SheldonCooper_80:
(14, 48203), (36, 48026), (41, 47990), (48, 47924), (Start: 58 @47864 has 222 MA's), (68, 47825), (89, 47771), (91, 47759),

Gene: Shelob_59 Start: 19331, Stop: 19471, Start Num: 65
Candidate Starts for Shelob_59:
(Start: 65 @19331 has 183 MA's), (75, 19358), (98, 19460),

Gene: Shenyu_88 Start: 65410, Stop: 65192, Start Num: 58

Candidate Starts for Shenyu_88:
(Start: 58 @65410 has 222 MA's), (66, 65374), (71, 65359),

Gene: ShiaLabeouf_56 Start: 17602, Stop: 17742, Start Num: 65
Candidate Starts for ShiaLabeouf_56:
(Start: 65 @17602 has 183 MA's), (98, 17731),

Gene: Shifa_50 Start: 17073, Stop: 17213, Start Num: 65
Candidate Starts for Shifa_50:
(Start: 65 @17073 has 183 MA's), (98, 17202),

Gene: Shnickers_56 Start: 17161, Stop: 17301, Start Num: 65
Candidate Starts for Shnickers_56:
(Start: 65 @17161 has 183 MA's), (98, 17290),

Gene: Shrimp_57 Start: 18226, Stop: 18366, Start Num: 65
Candidate Starts for Shrimp_57:
(Start: 65 @18226 has 183 MA's),

Gene: Shygu2_78 Start: 47370, Stop: 47200, Start Num: 58
Candidate Starts for Shygu2_78:
(14, 47709), (36, 47532), (41, 47496), (48, 47430), (Start: 58 @47370 has 222 MA's), (68, 47331), (89, 47277), (91, 47265),

Gene: SilverDipper_57 Start: 17165, Stop: 17305, Start Num: 65
Candidate Starts for SilverDipper_57:
(Start: 65 @17165 has 183 MA's), (75, 17192), (93, 17261), (98, 17294),

Gene: Skinny_151 Start: 75264, Stop: 75103, Start Num: 58
Candidate Starts for Skinny_151:
(Start: 58 @75264 has 222 MA's), (68, 75228), (77, 75198), (87, 75180), (90, 75174), (99, 75114),

Gene: Skipitt_79 Start: 47420, Stop: 47250, Start Num: 58
Candidate Starts for Skipitt_79:
(14, 47759), (36, 47582), (41, 47546), (48, 47480), (Start: 58 @47420 has 222 MA's), (68, 47381), (89, 47327), (91, 47315),

Gene: SlimJimmy_145 Start: 74734, Stop: 74570, Start Num: 58
Candidate Starts for SlimJimmy_145:
(Start: 58 @74734 has 222 MA's), (69, 74695),

Gene: SmallFry_56 Start: 17161, Stop: 17301, Start Num: 65
Candidate Starts for SmallFry_56:
(Start: 65 @17161 has 183 MA's), (75, 17188), (93, 17257), (98, 17290),

Gene: SmellyB_86 Start: 46314, Stop: 46156, Start Num: 58
Candidate Starts for SmellyB_86:
(Start: 58 @46314 has 222 MA's), (68, 46281), (82, 46239), (87, 46224),

Gene: SoilZilla_53 Start: 17608, Stop: 17748, Start Num: 65
Candidate Starts for SoilZilla_53:
(Start: 65 @17608 has 183 MA's),

Gene: Soups_86 Start: 46474, Stop: 46298, Start Num: 58

Candidate Starts for Soups_86:

(Start: 58 @46474 has 222 MA's), (86, 46387),

Gene: Sparxx_81 Start: 47422, Stop: 47252, Start Num: 58

Candidate Starts for Sparxx_81:

(11, 47803), (14, 47761), (33, 47626), (36, 47584), (41, 47548), (48, 47482), (Start: 58 @47422 has 222 MA's), (68, 47383), (89, 47329), (91, 47317),

Gene: Spec_54 Start: 17305, Stop: 17445, Start Num: 65

Candidate Starts for Spec_54:

(Start: 65 @17305 has 183 MA's), (98, 17434),

Gene: Specks_62 Start: 19814, Stop: 19954, Start Num: 65

Candidate Starts for Specks_62:

(Start: 65 @19814 has 183 MA's), (98, 19943),

Gene: Spino_79 Start: 47426, Stop: 47256, Start Num: 58

Candidate Starts for Spino_79:

(14, 47765), (36, 47588), (41, 47552), (48, 47486), (Start: 58 @47426 has 222 MA's), (68, 47387), (89, 47333), (91, 47321),

Gene: Sprinklers_53 Start: 17133, Stop: 17273, Start Num: 65

Candidate Starts for Sprinklers_53:

(Start: 65 @17133 has 183 MA's), (98, 17262),

Gene: Spud_57 Start: 18537, Stop: 18677, Start Num: 65

Candidate Starts for Spud_57:

(Start: 65 @18537 has 183 MA's),

Gene: SrishMeg2525_56 Start: 17933, Stop: 18073, Start Num: 65

Candidate Starts for SrishMeg2525_56:

(Start: 65 @17933 has 183 MA's),

Gene: Stasia_77 Start: 47383, Stop: 47213, Start Num: 58

Candidate Starts for Stasia_77:

(22, 47662), (34, 47557), (Start: 58 @47383 has 222 MA's), (68, 47344), (79, 47314), (89, 47290), (91, 47278), (93, 47257),

Gene: SteMason_76 Start: 47423, Stop: 47253, Start Num: 58

Candidate Starts for SteMason_76:

(14, 47762), (36, 47585), (41, 47549), (48, 47483), (Start: 58 @47423 has 222 MA's), (68, 47384), (89, 47330), (91, 47318),

Gene: StephanieG_57 Start: 18533, Stop: 18673, Start Num: 65

Candidate Starts for StephanieG_57:

(Start: 65 @18533 has 183 MA's), (98, 18662),

Gene: Stinger_85 Start: 64772, Stop: 64608, Start Num: 58

Candidate Starts for Stinger_85:

(25, 65030), (27, 65009), (29, 64991), (52, 64790), (Start: 58 @64772 has 222 MA's), (85, 64700), (90, 64682),

Gene: StinkyVeggy_85 Start: 64809, Stop: 64591, Start Num: 58

Candidate Starts for StinkyVeggy_85:

(Start: 58 @64809 has 222 MA's), (66, 64773), (71, 64758),

Gene: Stormageddon_149 Start: 103193, Stop: 103363, Start Num: 55

Candidate Starts for Stormageddon_149:

(40, 103076), (Start: 55 @103193 has 1 MA's), (Start: 58 @103199 has 222 MA's), (60, 103214),

Gene: Strosahl_87 Start: 46685, Stop: 46509, Start Num: 58

Candidate Starts for Strosahl_87:

(Start: 58 @46685 has 222 MA's), (86, 46598),

Gene: Stubby_52 Start: 17855, Stop: 17995, Start Num: 65

Candidate Starts for Stubby_52:

(Start: 65 @17855 has 183 MA's),

Gene: StubbySaigey_56 Start: 16862, Stop: 17002, Start Num: 65

Candidate Starts for StubbySaigey_56:

(Start: 65 @16862 has 183 MA's),

Gene: Substance289_53 Start: 16635, Stop: 16775, Start Num: 65

Candidate Starts for Substance289_53:

(Start: 65 @16635 has 183 MA's), (75, 16662), (93, 16731), (98, 16764),

Gene: Sultana_80 Start: 47423, Stop: 47253, Start Num: 58

Candidate Starts for Sultana_80:

(14, 47762), (36, 47585), (41, 47549), (48, 47483), (Start: 58 @47423 has 222 MA's), (68, 47384), (89, 47330), (91, 47318),

Gene: SuperAwesome_86 Start: 46995, Stop: 46837, Start Num: 58

Candidate Starts for SuperAwesome_86:

(32, 47196), (44, 47088), (Start: 58 @46995 has 222 MA's), (82, 46920), (87, 46905),

Gene: SuperCallie99_82 Start: 46377, Stop: 46219, Start Num: 58

Candidate Starts for SuperCallie99_82:

(Start: 58 @46377 has 222 MA's), (68, 46344), (82, 46302), (87, 46287),

Gene: Tainan_62 Start: 19735, Stop: 19875, Start Num: 65

Candidate Starts for Tainan_62:

(Start: 65 @19735 has 183 MA's),

Gene: Taptic_88 Start: 58560, Stop: 58742, Start Num: 58

Candidate Starts for Taptic_88:

(51, 58539), (52, 58542), (Start: 58 @58560 has 222 MA's), (71, 58608), (73, 58614), (88, 58644), (89, 58650), (91, 58662), (93, 58683),

Gene: Taquarus_79 Start: 47429, Stop: 47259, Start Num: 58

Candidate Starts for Taquarus_79:

(14, 47768), (36, 47591), (41, 47555), (48, 47489), (Start: 58 @47429 has 222 MA's), (68, 47390), (89, 47336), (91, 47324),

Gene: Teardrop_56 Start: 17138, Stop: 17278, Start Num: 65

Candidate Starts for Teardrop_56:

(Start: 65 @17138 has 183 MA's), (98, 17267),

Gene: Temprado_89 Start: 46787, Stop: 46629, Start Num: 58

Candidate Starts for Temprado_89:

(32, 46988), (44, 46880), (Start: 58 @46787 has 222 MA's), (82, 46712), (87, 46697),

Gene: Thanksgivukkah_79 Start: 47424, Stop: 47254, Start Num: 58

Candidate Starts for Thanksgivukkah_79:

(14, 47763), (36, 47586), (41, 47550), (48, 47484), (Start: 58 @47424 has 222 MA's), (68, 47385), (89, 47331), (91, 47319),

Gene: TinaFeyge_78 Start: 47421, Stop: 47251, Start Num: 58

Candidate Starts for TinaFeyge_78:

(11, 47802), (14, 47760), (33, 47625), (36, 47583), (41, 47547), (48, 47481), (Start: 58 @47421 has 222 MA's), (68, 47382), (89, 47328), (91, 47316),

Gene: TinyTim_57 Start: 18222, Stop: 18362, Start Num: 65

Candidate Starts for TinyTim_57:

(Start: 65 @18222 has 183 MA's),

Gene: Tinybot_79 Start: 47453, Stop: 47283, Start Num: 58

Candidate Starts for Tinybot_79:

(7, 47864), (14, 47792), (36, 47615), (41, 47579), (48, 47513), (Start: 58 @47453 has 222 MA's), (68, 47414), (89, 47360), (91, 47348),

Gene: TiroTheta9_79 Start: 47420, Stop: 47250, Start Num: 58

Candidate Starts for TiroTheta9_79:

(11, 47801), (14, 47759), (33, 47624), (36, 47582), (41, 47546), (48, 47480), (Start: 58 @47420 has 222 MA's), (68, 47381), (89, 47327), (91, 47315),

Gene: ToneTone_85 Start: 46347, Stop: 46189, Start Num: 58

Candidate Starts for ToneTone_85:

(44, 46440), (Start: 58 @46347 has 222 MA's), (61, 46329), (68, 46314), (82, 46272), (87, 46257), (93, 46227),

Gene: Tonenili_66 Start: 20565, Stop: 20705, Start Num: 65

Candidate Starts for Tonenili_66:

(Start: 65 @20565 has 183 MA's),

Gene: Toro_80 Start: 50617, Stop: 50435, Start Num: 58

Candidate Starts for Toro_80:

(Start: 58 @50617 has 222 MA's), (84, 50521),

Gene: Tortoise16_54 Start: 17669, Stop: 17809, Start Num: 65

Candidate Starts for Tortoise16_54:

(Start: 65 @17669 has 183 MA's), (98, 17798),

Gene: TpudiCK_148 Start: 73994, Stop: 73830, Start Num: 58

Candidate Starts for TpudiCK_148:

(Start: 58 @73994 has 222 MA's), (69, 73955),

Gene: Trinitium_52 Start: 16623, Stop: 16763, Start Num: 65

Candidate Starts for Trinitium_52:

(Start: 65 @16623 has 183 MA's), (75, 16650), (98, 16752),

Gene: Tristan_76 Start: 47411, Stop: 47271, Start Num: 67

Candidate Starts for Tristan_76:

(59, 47441), (Start: 67 @47411 has 2 MA's), (83, 47354),

Gene: TroyPia_81 Start: 47461, Stop: 47291, Start Num: 58

Candidate Starts for TroyPia_81:

(14, 47800), (36, 47623), (41, 47587), (48, 47521), (Start: 58 @47461 has 222 MA's), (68, 47422), (89, 47368), (91, 47356),

Gene: Tucker_88 Start: 46550, Stop: 46392, Start Num: 58

Candidate Starts for Tucker_88:

(44, 46643), (Start: 58 @46550 has 222 MA's), (61, 46532), (68, 46517), (82, 46475), (87, 46460), (93, 46430),

Gene: Turret_51 Start: 16347, Stop: 16487, Start Num: 65

Candidate Starts for Turret_51:

(Start: 65 @16347 has 183 MA's), (75, 16374), (98, 16476),

Gene: TyDawg_141 Start: 74179, Stop: 74015, Start Num: 58

Candidate Starts for TyDawg_141:

(Start: 58 @74179 has 222 MA's), (69, 74140),

Gene: TygerBlood_80 Start: 47426, Stop: 47256, Start Num: 58

Candidate Starts for TygerBlood_80:

(14, 47765), (36, 47588), (41, 47552), (48, 47486), (Start: 58 @47426 has 222 MA's), (68, 47387), (89, 47333), (91, 47321),

Gene: Tyke_58 Start: 18573, Stop: 18713, Start Num: 65

Candidate Starts for Tyke_58:

(Start: 65 @18573 has 183 MA's), (75, 18600), (93, 18669), (98, 18702),

Gene: Ulysses_79 Start: 47109, Stop: 46939, Start Num: 58

Candidate Starts for Ulysses_79:

(14, 47448), (36, 47271), (41, 47235), (48, 47169), (Start: 58 @47109 has 222 MA's), (68, 47070), (89, 47016), (91, 47004),

Gene: ValleyTerrace_56 Start: 17165, Stop: 17305, Start Num: 65

Candidate Starts for ValleyTerrace_56:

(Start: 65 @17165 has 183 MA's), (75, 17192), (93, 17261), (98, 17294),

Gene: VanLee_156 Start: 79104, Stop: 78949, Start Num: 58

Candidate Starts for VanLee_156:

(Start: 58 @79104 has 222 MA's), (86, 79023),

Gene: VohminGhazi_86 Start: 46315, Stop: 46157, Start Num: 58

Candidate Starts for VohminGhazi_86:

(Start: 58 @46315 has 222 MA's), (68, 46282), (82, 46240), (87, 46225),

Gene: Vortrix_69 Start: 21490, Stop: 21630, Start Num: 65

Candidate Starts for Vortrix_69:

(Start: 65 @21490 has 183 MA's),

Gene: Wally_55 Start: 16778, Stop: 16918, Start Num: 65

Candidate Starts for Wally_55:

(Start: 65 @16778 has 183 MA's),

Gene: Wander_80 Start: 47420, Stop: 47250, Start Num: 58

Candidate Starts for Wander_80:

(14, 47759), (36, 47582), (41, 47546), (48, 47480), (Start: 58 @47420 has 222 MA's), (68, 47381), (89, 47327), (91, 47315),

Gene: Wiks_87 Start: 46418, Stop: 46260, Start Num: 58

Candidate Starts for Wiks_87:

(32, 46619), (44, 46511), (Start: 58 @46418 has 222 MA's), (82, 46343), (87, 46328),

Gene: Wilbur_80 Start: 47423, Stop: 47253, Start Num: 58

Candidate Starts for Wilbur_80:

(14, 47762), (36, 47585), (41, 47549), (48, 47483), (Start: 58 @47423 has 222 MA's), (68, 47384), (89, 47330), (91, 47318),

Gene: Willis_57 Start: 18117, Stop: 18257, Start Num: 65

Candidate Starts for Willis_57:

(Start: 65 @18117 has 183 MA's),

Gene: WorldCup_81 Start: 45926, Stop: 45786, Start Num: 67

Candidate Starts for WorldCup_81:

(64, 45929), (Start: 67 @45926 has 2 MA's),

Gene: WunderPhul_88 Start: 46416, Stop: 46258, Start Num: 58

Candidate Starts for WunderPhul_88:

(44, 46509), (Start: 58 @46416 has 222 MA's), (82, 46341), (87, 46326),

Gene: Xena_76 Start: 47245, Stop: 47075, Start Num: 58

Candidate Starts for Xena_76:

(14, 47584), (36, 47407), (41, 47371), (48, 47305), (Start: 58 @47245 has 222 MA's), (68, 47206), (89, 47152), (90, 47143), (91, 47140),

Gene: Yassified_54 Start: 17645, Stop: 17785, Start Num: 65

Candidate Starts for Yassified_54:

(Start: 65 @17645 has 183 MA's), (75, 17672), (98, 17774),

Gene: YemiJoy2021_57 Start: 17903, Stop: 18043, Start Num: 65

Candidate Starts for YemiJoy2021_57:

(Start: 65 @17903 has 183 MA's),

Gene: YoSam321_80 Start: 47421, Stop: 47251, Start Num: 58

Candidate Starts for YoSam321_80:

(14, 47760), (36, 47583), (41, 47547), (48, 47481), (Start: 58 @47421 has 222 MA's), (68, 47382), (89, 47328), (91, 47316),

Gene: Yokurt_87 Start: 46418, Stop: 46260, Start Num: 58

Candidate Starts for Yokurt_87:

(32, 46619), (44, 46511), (Start: 58 @46418 has 222 MA's), (82, 46343), (87, 46328),

Gene: YoungMoneyMata_56 Start: 16916, Stop: 17056, Start Num: 65
Candidate Starts for YoungMoneyMata_56:
(Start: 65 @16916 has 183 MA's), (75, 16943), (93, 17012), (98, 17045),

Gene: Yucca_57 Start: 18144, Stop: 18284, Start Num: 65
Candidate Starts for Yucca_57:
(Start: 65 @18144 has 183 MA's),

Gene: Zaka_88 Start: 46418, Stop: 46260, Start Num: 58
Candidate Starts for Zaka_88:
(32, 46619), (44, 46511), (Start: 58 @46418 has 222 MA's), (82, 46343), (87, 46328),

Gene: Zalkecks_58 Start: 17907, Stop: 18047, Start Num: 65
Candidate Starts for Zalkecks_58:
(Start: 65 @17907 has 183 MA's),

Gene: Zeenon_59 Start: 18209, Stop: 18349, Start Num: 65
Candidate Starts for Zeenon_59:
(Start: 65 @18209 has 183 MA's),

Gene: Zulu_89 Start: 46796, Stop: 46638, Start Num: 58
Candidate Starts for Zulu_89:
(Start: 58 @46796 has 222 MA's), (68, 46763), (82, 46721), (87, 46706),

Gene: ZygoTaiga_57 Start: 18223, Stop: 18363, Start Num: 65
Candidate Starts for ZygoTaiga_57:
(Start: 65 @18223 has 183 MA's),