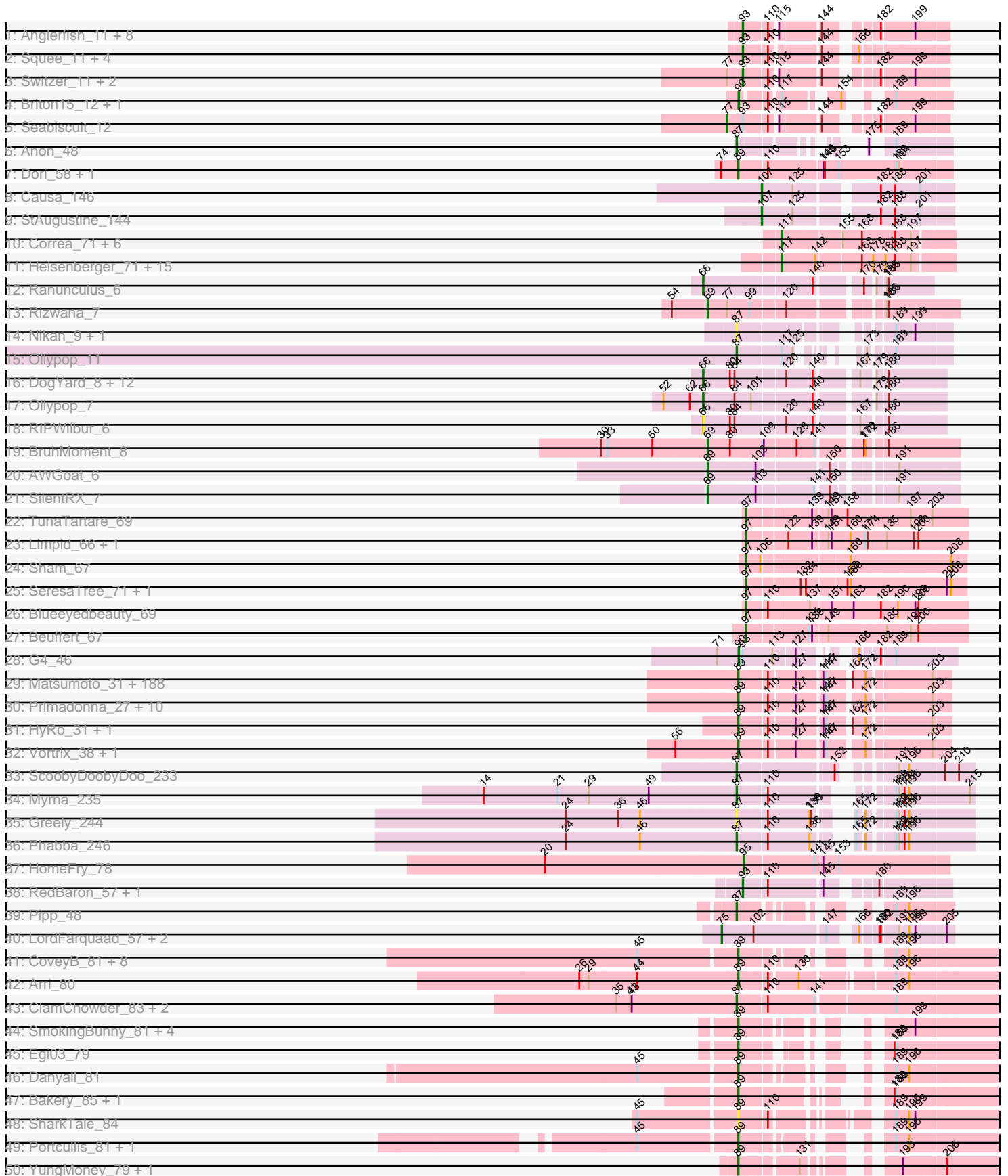
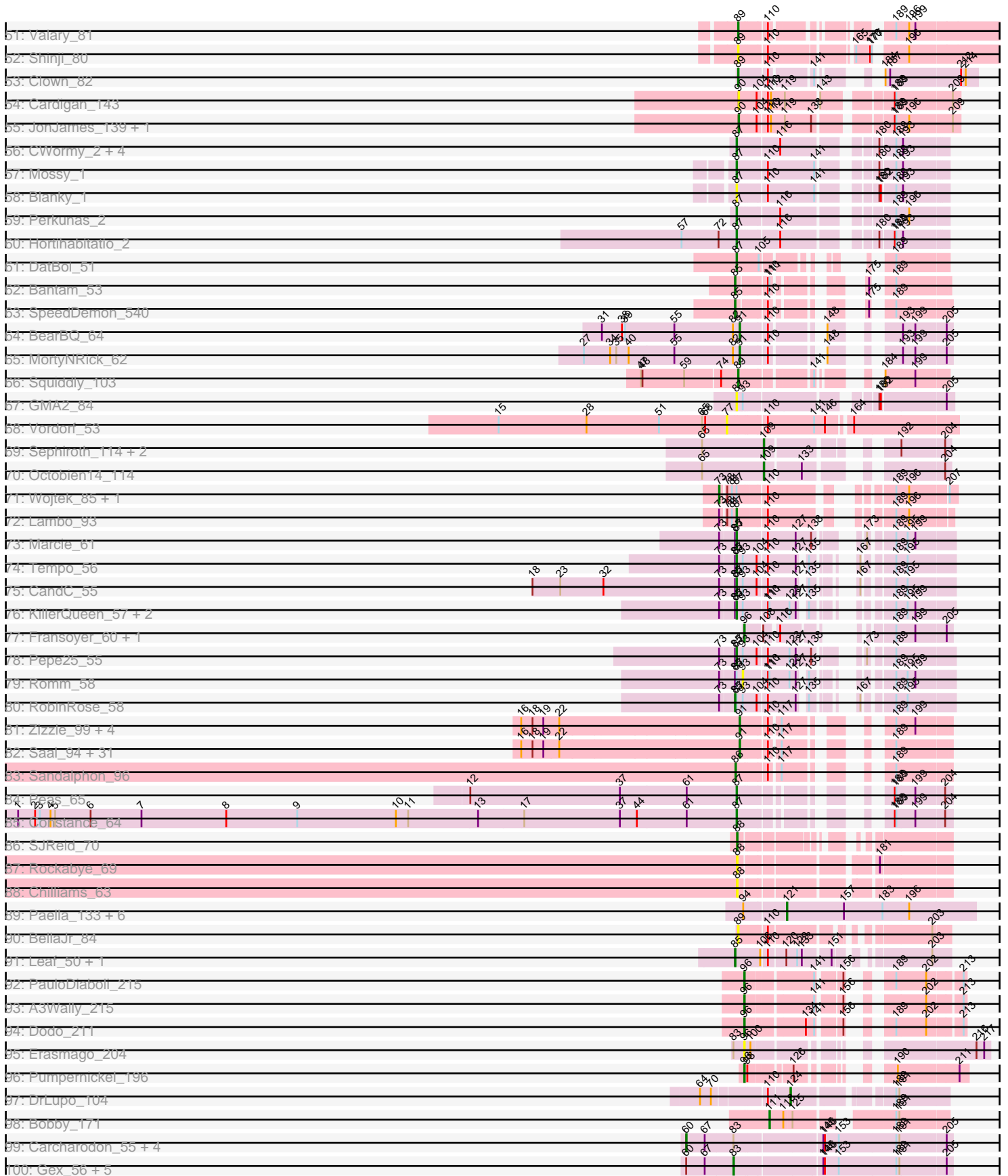


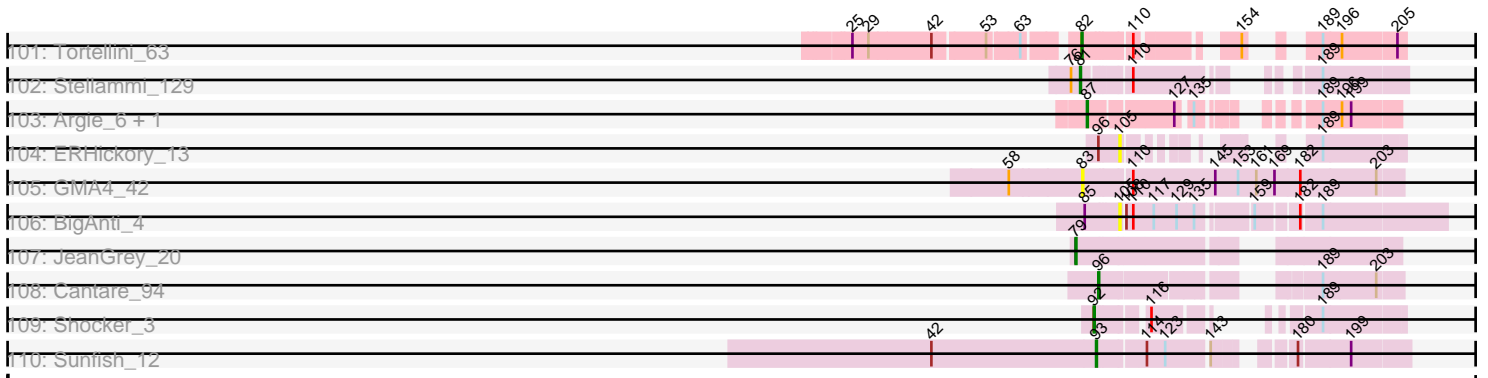
Pham 304610



Pham 304610



Pham 304610



Note: Tracks are now grouped by subcluster and scaled. Switching in subcluster is indicated by changes in track color. Track scale is now set by default to display the region 30 bp upstream of start 1 to 30 bp downstream of the last possible start. If this default region is judged to be packed too tightly with annotated starts, the track will be further scaled to only show that region of the ORF with annotated starts. This action will be indicated by adding "Zoomed" to the title. For starts, yellow indicates the location of called starts comprised solely of Glimmer/GeneMark auto-annotations, green indicates the location of called starts with at least 1 manual gene annotation.

Pham 304610 Report

This analysis was run 06/08/26 on database version 649.

Pham number 304610 has 445 members, 69 are drafts.

Phages represented in each track:

- Track 1 : Anglerfish_11, DreamCatcher_12, Dynamix_11, Arcanine_11, Rajelicia_10, PinkPlastic_9, McGuire_11, Slagathor_11, Manatee_11
- Track 2 : Squee_11, BeesKnees_11, Atkinbua_11, Naira_11, Fenn_11
- Track 3 : Switzer_11, KSSJEB_10, U2_10
- Track 4 : Briton15_12, Ichabod_11
- Track 5 : Seabiscuit_12
- Track 6 : Anon_48
- Track 7 : Dori_58, Mask_58
- Track 8 : Causa_146
- Track 9 : StAugustine_144
- Track 10 : Correa_71, Xenomorph_69, Arcadia_72, Cheesy_73, Nason_72, Elsa_72, Tribby_76
- Track 11 : Heisenberger_71, Mooshroom_73, Hankly_72, GoCrazy_69, Bowling_74, JEGGS_71, Circum_74, Kardesai_72, YoshiYama_74, NapoleonB_73, BenitoAntonio_71, Benllo_70, Dynamite_72, Mudcat_68, KeaneyLin_68, Stardom_72
- Track 12 : Ranunculus_6
- Track 13 : Rizwana_7
- Track 14 : Nikan_9, Ren19_8
- Track 15 : Ollypop_11
- Track 16 : DogYard_8, Forrestell_8, Pureglobe5_10, RazzB_7, MellowYellow_8, Pointis_8, Odyssey395_10, Beagle_10, PhuzzTulsa_6, NyleyClemson_7, Kubulix_9, BetaFish_8, Popstraw_8
- Track 17 : Ollypop_7
- Track 18 : RIPWilbur_6
- Track 19 : BruhMoment_8
- Track 20 : AWGoat_6
- Track 21 : SilentRX_7
- Track 22 : TunaTartare_69
- Track 23 : Limpid_66, Annadreamy_67
- Track 24 : Sham_67
- Track 25 : SeresaTree_71, Faust_71
- Track 26 : Blueeyedbeauty_69
- Track 27 : Beuffert_67
- Track 28 : G4_46
- Track 29 : Matsumoto_31, EmmaElysia_30, JayJay_35, ArcherS7_31, Napoleon13_31, Erdmann_33, Specks_37, Tortoise16_31, Issimir_32, Shrimp_32, EmToTheThree_35, Koguma_28, CindyLou_32, Shnickers_32, CharlieB_32,

SrishMeg2525_31, Daffodil_34, TinyTim_32, Cali_32, Spec_30, Atlantean_32, Norm_32, Sauce_33, NuevoMundo_35, BobaPhatt_29, Cactojaque_29, Audrick_34, Littleton_32, Chomp_32, BigCity_36, Breeniome_32, Jedediah_32, Halldule_28, Ewok_32, EasyJones_31, Dessert_30, Guwapp_32, DTDevon_33, FudgeTart_33, Demodog_30, Sebata_32, Quasimodo_32, Ngannou_30, Babyland_31, Ghost_32, BackyardAgain_29, Chargie21_31, Belieber_28, Roots515_32, Gizmo_34, Blackbrain_30, Maby2021_33, Catera_30, MikeLiesIn_32, Grungle_25, Drazdys_32, Mangeria_35, Montpel_31, Asterius_33, ET08_27, JustHall_31, Bigswole_38, Derek_33, Izajani_33, Bxz1_32, Iota_29, SmallFry_32, Phusco_32, EggyFarm_36, Concombre_31, ParkTD_31, Lunareta_31, Burrough_32, Lukilu_25, Jezreel_31, JulietS_27, JigglyPuff_32, YoungMoneyMata_32, Jessibeth14_31, Gabriel_32, Fludd_31, RoMag_27, Melpomini_31, Willis_32, Jemmno_32, Naval22_34, Nappy_33, Salacia_34, BadAgartude_33, Mikro_30, QBert_30, McGee_31, BeanWater_28, Teardrop_31, BananaFence_33, GlutenPhree_33, Fixie_29, Ablatia_31, SVoro_31, Rahel_32, IkeLoa_28, LifeSavor_33, Essence_31, Momo_31, Lethe_31, SoilZilla_29, Bangla1971_31, Kboogie_32, Pleione_34, Lee7_31, Kamryn_32, Bonray_32, Ading_32, Yucca_32, Loanshark_32, Substance289_29, NedWong_33, Tyke_34, Trinitium_31, Delilah_32, StubbySaigey_31, Janiyra_32, ErnieJ_33, LolaVinca_35, Shaqnato_28, Maturis_32, Gamgam_32, Capablanca_34, Pivoine_32, Zeenon_34, NoodleTree_31, Nidhogg_33, Duckfeet_29, Rocha_30, Spud_34, Labradorite_31, Yassified_29, Grasshills_36, Naija_32, LookingGlass_35, Phox_31, LRRHood_29, ZygoTaiga_32, MoMoMixon_33, InterFolia_39, Astraea_33, Bezza_24, Caravan_30, Pio_35, McWolfish_31, Phlegm_34, YemiJoy2021_33, OrediggerDelux_31, InigoMontoya_33, Morizzled23_31, Adlitam_32, ChickenPhender_31, Amataga_32, PurduePete_31, Sprinklers_32, Rizal_30, Patter_32, Zalkecks_34, Darko_31, Pier_34, Bread_33, Khaleesi_31, Bowman_31, Ronan_27, Fongie_32, Latch_32, FoxtrotP1_32, ShiaLabeouf_32, ValleyTerrace_32, ScottMcG_32, Basquiat_31, StephanieG_32, Turret_30, Blackdragon_27, Dandelion_36, SilverDipper_33, DrPhinkDaddy_32, Bipolarisk_31, JPickles_30, Wally_31, ChaylaJr_31, Megamind_32, Ava3_33, Jaygup_32

- Track 30 : Primadonna_27, Cleatunium_28, Tainan_37, Blubba_26, PharkleMinkus_37, LordLeafolot_38, FrayBell_38, I3_34, DirtMonster_31, Dietrick_27, Domi_27
- Track 31 : HyRo_31, Shifa_29
- Track 32 : Vortrix_38, Tonenili_36
- Track 33 : ScoobyDoobyDoo_233
- Track 34 : Myrna_235
- Track 35 : Greely_244
- Track 36 : Phabba_246
- Track 37 : HomeFry_78
- Track 38 : RedBaron_57, Nina_52
- Track 39 : Pipp_48
- Track 40 : LordFarquaad_57, Attis_55, SoilAssassin_55
- Track 41 : CoveyB_81, Gezellig_77, Phlop_78, CherryCola_80, RogerDodger_84, KimmyK_80, PullumCavea_79, Wizard_77, Halo3_78
- Track 42 : Arri_80
- Track 43 : ClamChowder_83, Fugax_84, Barb_83
- Track 44 : SmokingBunny_81, Salvador_80, Evamon_80, Togo_80, Twister6_81
- Track 45 : Egi03_79
- Track 46 : Danyall_81
- Track 47 : Bakery_85, Sixsevenium_82
- Track 48 : SharkTale_84
- Track 49 : Portcullis_81, JohnPork_82

- Track 50 : YungMoney_79, Mutzi_78
- Track 51 : Valary_81
- Track 52 : Shinji_80
- Track 53 : Clown_82
- Track 54 : Cardigan_143
- Track 55 : JonJames_139, Yvonnetastic_136
- Track 56 : CWormy_2, ArtetaBall_2, Dialga_2, Untouchable_2, Crocheter_2
- Track 57 : Mossy_1
- Track 58 : Blanky_1
- Track 59 : Perkunas_2
- Track 60 : Hortihabitatio_2
- Track 61 : DatBoi_51
- Track 62 : Bantam_53
- Track 63 : SpeedDemon_540
- Track 64 : BearBQ_64
- Track 65 : MortyNRick_62
- Track 66 : Squiddly_103
- Track 67 : GMA2_84
- Track 68 : Vordorf_53
- Track 69 : Sephiroth_114, Kudefre_118, Syleon_119
- Track 70 : Octobien14_114
- Track 71 : Wojtek_85, ParvusTarda_93
- Track 72 : Lambo_93
- Track 73 : Marcie_61
- Track 74 : Tempo_56
- Track 75 : CandC_55
- Track 76 : KillerQueen_57, Kelcole_54, OneinaGillian_56
- Track 77 : Fransoyer_60, SadLad_63
- Track 78 : Pepe25_55
- Track 79 : Romm_58
- Track 80 : RobinRose_58
- Track 81 : Zizzle_99, Jennelsea_93, BobaPhett_98, ShiLan_99, Mattes_97
- Track 82 : Saal_94, Clifton_88, Nivrat_96, Philus_98, Burwell21_90, Whouxphf_100, Lizziana_97, NormanBulbieJr_94, Latretium_99, Brocalys_88, Yorick_92, Spoonbill_96, FreddyB_106, Maravista_93, Martik_95, LastJedi_87, Crumble_91, Pippy_94, LilMoolah_99, Cabrinians_93, Vivum_96, Minnie_91, James_100, OlympiaSaint_100, Blexus_93, SwagPiggett_98, Priscilla_97, ShowerHandel_97, Gorge_95, ByChance_87, Jarcob_99, Koella_89
- Track 83 : Sandalphon_96
- Track 84 : Peas_65
- Track 85 : Constance_64
- Track 86 : SJReid_70
- Track 87 : Rockabye_69
- Track 88 : Chilliams_63
- Track 89 : Paella_133, Gandionco_129, Marianna39_130, Elver_133, Qui_133, JeNeSaisPas_127, Kureo_130
- Track 90 : BellaJr_84
- Track 91 : Leaf_50, Dewdrop_50
- Track 92 : PauloDiaboli_215
- Track 93 : A3Wally_215
- Track 94 : Dodo_211
- Track 95 : Erasmago_204
- Track 96 : Pumpernickel_196

- Track 97 : DrLupo_104
- Track 98 : Bobby_171
- Track 99 : Carcharodon_55, Schnauzer_56, Phloss_53, Parmesanjohn_55, Smurph_55
- Track 100 : Gex_56, EGUicorn_51, Magsby_55, Xerxes_55, Pipsqueaks_56, Tessdabest_55
- Track 101 : Tortellini_63
- Track 102 : Stellammi_129
- Track 103 : Argie_6, GodPhather_6
- Track 104 : ERHickory_13
- Track 105 : GMA4_42
- Track 106 : BigAnti_4
- Track 107 : JeanGrey_20
- Track 108 : Cantare_94
- Track 109 : Shocker_3
- Track 110 : Sunfish_12

Summary of Final Annotations (See graph section above for start numbers):

The start number called the most often in the published annotations is 89, it was called in 196 of the 376 non-draft genes in the pham.

Genes that call this "Most Annotated" start:

- Ablatia_31, Ading_32, Adlitam_32, Amataga_32, ArcherS7_31, Arri_80, Asterius_33, Astraea_33, Atlantean_32, Audrick_34, Ava3_33, Babyland_31, BackyardAgain_29, BadAgartude_33, Bakery_85, BananaFence_33, Bangla1971_31, Basquiat_31, BeanWater_28, Belieber_28, BellaJr_84, Bezza_24, BigCity_36, Bigswole_38, Bipolarisk_31, Blackbrain_30, Blackdragon_27, Blubba_26, BobaPhatt_29, Bonray_32, Bowman_31, Bread_33, Breeniome_32, Burrough_32, Bxz1_32, Cactojaque_29, Cali_32, Capablanca_34, Caravan_30, Catera_30, Chargie21_31, CharlieB_32, ChaylaJr_31, CherryCola_80, ChickenPhender_31, Chomp_32, CindyLou_32, Cleatunium_28, Clown_82, Concombre_31, CoveyB_81, DTDevon_33, Daffodil_34, Dandelion_36, Danyall_81, Darko_31, Delilah_32, Demodog_30, Derek_33, Dessert_30, Dietrick_27, DirtMonster_31, Domi_27, Dori_58, DrPhinkDaddy_32, Drazdys_32, Duckfeet_29, ET08_27, EasyJones_31, EggyFarm_36, Egi03_79, EmToTheThree_35, EmmaElysia_30, Erdmann_33, ErnieJ_33, Essence_31, Evamon_80, Ewok_32, Fixie_29, Fludd_31, Fongie_32, FoxtrotP1_32, FrayBell_38, FudgeTart_33, Gabriel_32, Gamgam_32, Gezellig_77, Ghost_32, Gizmo_34, GlutenPhree_33, Grasshills_36, Grungle_25, Guwapp_32, Halldule_28, Halo3_78, HyRo_31, I3_34, IkeLoa_28, InigoMontoya_33, InterFolia_39, Iota_29, Issimir_32, Izajani_33, JPickles_30, Janiyra_32, JayJay_35, Jaygup_32, Jedediah_32, Jemmno_32, Jessibeth14_31, Jezreel_31, JigglyPuff_32, JohnPork_82, JulietS_27, JustHall_31, Kamryn_32, Kboogie_32, Khaleesi_31, KimmyK_80, Koguma_28, LRRHood_29, Labradorite_31, Latch_32, Lee7_31, Lethe_31, LifeSavor_33, Littleton_32, Loanshark_32, LolaVinca_35, LookingGlass_35, LordLeafolot_38, Lukilu_25, Lunareta_31, Maby2021_33, Mangeria_35, Mask_58, Matsumoto_31, Maturis_32, McGee_31, McWolfish_31, Megamind_32, Melpomini_31, MikeLiesIn_32, Mikro_30, MoMoMixon_33, Momo_31, Montpel_31, Morizzled23_31, Mutzi_78, Naija_32, Napoleon13_31, Nappy_33, Naval22_34, NedWong_33, Ngannou_30, Nidhogg_33, NoodleTree_31, Norm_32,

NuevoMundo_35, OrediggerDelux_31, ParkTD_31, Patter_32, PharkleMinkus_37, Phlegm_34, Phlop_78, Phox_31, Phusco_32, Pier_34, Pio_35, Pivoine_32, Pleione_34, Portcullis_81, Primadonna_27, PullumCavea_79, PurduePete_31, QBert_30, Quasimodo_32, Rahel_32, Rizal_30, RoMag_27, Rocha_30, RogerDodger_84, Ronan_27, Roots515_32, SVoro_31, Salacia_34, Salvador_80, Sauce_33, ScottMcG_32, Sebata_32, Shaq nato_28, SharkTale_84, ShiaLabeouf_32, Shifa_29, Shinji_80, Shnickers_32, Shrimp_32, SilverDipper_33, Sixsevenium_82, SmallFry_32, SmokingBunny_81, SoilZilla_29, Spec_30, Specks_37, Sprinklers_32, Spud_34, Squiddly_103, SrishMeg2525_31, StephanieG_32, StubbySaigey_31, Substance289_29, Tainan_37, Teardrop_31, TinyTim_32, Togo_80, Tonenili_36, Tortoise16_31, Trinitium_31, Turret_30, Twister6_81, Tyke_34, Valary_81, ValleyTerrace_32, Vortrix_38, Wally_31, Willis_32, Wizard_77, Yassified_29, YemiJoy2021_33, YoungMoneyMata_32, Yucca_32, YungMoney_79, Zalkecks_34, Zeenon_34, ZygoTaiga_32,

Genes that have the "Most Annotated" start but do not call it:

-

Genes that do not have the "Most Annotated" start:

- A3Wally_215, AWGoat_6, Anglerfish_11, Annadreamy_67, Anon_48, Arcadia_72, Arcanine_11, Argie_6, ArtetaBall_2, Atkinbua_11, Attis_55, Bantam_53, Barb_83, Beagle_10, BearBQ_64, BeesKnees_11, BenitoAntonio_71, Benllo_70, BetaFish_8, Beuffert_67, BigAnti_4, Blanky_1, Blexus_93, Blueeyedbeauty_69, BobaPhett_98, Bobby_171, Bowling_74, Briton15_12, Brocalys_88, BruhMoment_8, Burwell21_90, ByChance_87, CWormy_2, Cabrinians_93, CandC_55, Cantare_94, Carcharodon_55, Cardigan_143, Causa_146, Cheesy_73, Chilliams_63, Circum_74, ClamChowder_83, Clifton_88, Constance_64, Correa_71, Crocheter_2, Crumble_91, DatBoi_51, Dewdrop_50, Dialga_2, Dodo_211, DogYard_8, DrLupo_104, DreamCatcher_12, Dynamite_72, Dynamix_11, EGUnicorn_51, ERHickory_13, Elsa_72, Elver_133, Erasmago_204, Faust_71, Fenn_11, Forrestell_8, Fransoyer_60, FreddyB_106, Fugax_84, G4_46, GMA2_84, GMA4_42, Gandionco_129, Gex_56, GoCrazy_69, GodPhather_6, Gorge_95, Greely_244, Hankly_72, Heisenberger_71, HomeFry_78, Hortihabitatio_2, Ichabod_11, JEGGS_71, James_100, Jarcob_99, JeNeSaisPas_127, JeanGrey_20, Jennelsea_93, JonJames_139, KSSJEB_10, Kardesai_72, KeaneyLin_68, Kelcole_54, KillerQueen_57, Koella_89, Kubulix_9, Kudrefre_118, Kureo_130, Lambo_93, LastJedi_87, Latretium_99, Leaf_50, LilMoolah_99, Limpid_66, Lizziana_97, LordFarquaad_57, Magsby_55, Manatee_11, Maravista_93, Marcie_61, Marianna39_130, Martik_95, Mattes_97, McGuire_11, MellowYellow_8, Minnie_91, Mooshroom_73, MortyNRick_62, Mossy_1, Mudcat_68, Myrna_235, Naira_11, NapoleonB_73, Nason_72, Nikan_9, Nina_52, Nivrat_96, NormanBulbieJr_94, NyleyClemson_7, Octobien14_114, Odyssey395_10, Ollypop_11, Ollypop_7, OlympiaSaint_100, OneinaGillian_56, Paella_133, ParmesanJohn_55, ParvusTarda_93, PauloDiaboli_215, Peas_65, Pepe25_55, Perkunas_2, Phabba_246, Philus_98, Phloss_53, PhuzzTulsa_6, PinkPlastic_9, Pipp_48, Pippy_94, Pipsqueaks_56, Pointis_8, Popstraw_8, Priscilla_97, Pumpnickel_196, Pureglobe5_10, Qui_133, RIPWilbur_6, Rajelicia_10, Ranunculus_6, RazzB_7, RedBaron_57, Ren19_8, Rizwana_7, RobinRose_58, Rockabye_69, Romm_58, SJReid_70, Saal_94, SadLad_63, Sandalphon_96, Schnauzer_56, ScoobyDoobyDoo_233, Seabiscuit_12, Sephiroth_114, SeresaTree_71, Sham_67, ShiLan_99, Shocker_3, ShowerHandel_97, SilentRX_7, Slagathor_11, Smurph_55, SoilAssassin_55, SpeedDemon_540, Spoonbill_96, Squee_11, StAugustine_144, Stardom_72, Stellammi_129, Sunfish_12, SwagPiggett_98, Switzer_11, Syleon_119,

Tempo_56, Tessdabest_55, Tortellini_63, Tribby_76, TunaTartare_69, U2_10, Untouchable_2, Vivum_96, Vordorf_53, Whouxphf_100, Wojtek_85, Xenomorph_69, Xerxes_55, Yorick_92, YoshiYama_74, Yvonnetastic_136, Zizzle_99,

Summary by start number:

Start 60:

- Found in 11 of 445 (2.5%) of genes in pham
- Manual Annotations of this start: 5 of 376
- Called 45.5% of time when present
- Phage (with cluster) where this start called: Carcharodon_55 (N), Parmesanjohn_55 (N), Phloss_53 (N), Schnauzer_56 (N), Smurph_55 (N),

Start 66:

- Found in 16 of 445 (3.6%) of genes in pham
- Manual Annotations of this start: 12 of 376
- Called 100.0% of time when present
- Phage (with cluster) where this start called: Beagle_10 (AP2), BetaFish_8 (AP2), DogYard_8 (AP2), Forrestell_8 (AP2), Kubulix_9 (AP2), MellowYellow_8 (AP2), NyleyClemson_7 (AP2), Odyssey395_10 (AP2), Ollypop_7 (AP2), PhuzzTulsa_6 (AP2), Pointis_8 (AP2), Popstraw_8 (AP2), Pureglobe5_10 (AP2), RIPWilbur_6 (AP2), Ranunculus_6 (AP), RazzB_7 (AP2),

Start 69:

- Found in 4 of 445 (0.9%) of genes in pham
- Manual Annotations of this start: 4 of 376
- Called 100.0% of time when present
- Phage (with cluster) where this start called: AWGoat_6 (AP4), BruhMoment_8 (AP3), Rizwana_7 (AP1), SilentRX_7 (AP4),

Start 73:

- Found in 12 of 445 (2.7%) of genes in pham
- Manual Annotations of this start: 2 of 376
- Called 16.7% of time when present
- Phage (with cluster) where this start called: ParvusTarda_93 (DV), Wojtek_85 (DV),

Start 75:

- Found in 3 of 445 (0.7%) of genes in pham
- Manual Annotations of this start: 3 of 376
- Called 100.0% of time when present
- Phage (with cluster) where this start called: Attis_55 (CZ2), LordFarquaad_57 (CZ2), SoilAssassin_55 (CZ2),

Start 77:

- Found in 6 of 445 (1.3%) of genes in pham
- Manual Annotations of this start: 1 of 376
- Called 33.3% of time when present
- Phage (with cluster) where this start called: Seabiscuit_12 (A1), Vordorf_53 (DT),

Start 79:

- Found in 1 of 445 (0.2%) of genes in pham
- Manual Annotations of this start: 1 of 376
- Called 100.0% of time when present

- Phage (with cluster) where this start called: JeanGrey_20 (singleton),

Start 81:

- Found in 4 of 445 (0.9%) of genes in pham
- Manual Annotations of this start: 1 of 376
- Called 25.0% of time when present
- Phage (with cluster) where this start called: Stellammi_129 (UNK),

Start 82:

- Found in 3 of 445 (0.7%) of genes in pham
- Manual Annotations of this start: 1 of 376
- Called 33.3% of time when present
- Phage (with cluster) where this start called: Tortellini_63 (P2),

Start 83:

- Found in 13 of 445 (2.9%) of genes in pham
- Manual Annotations of this start: 5 of 376
- Called 53.8% of time when present
- Phage (with cluster) where this start called: EGUnicorn_51 (N), GMA4_42 (singleton), Gex_56 (N), Magsby_55 (N), Pipsqueaks_56 (N), Tessdabest_55 (N), Xerxes_55 (N),

Start 85:

- Found in 14 of 445 (3.1%) of genes in pham
- Manual Annotations of this start: 5 of 376
- Called 35.7% of time when present
- Phage (with cluster) where this start called: Bantam_53 (DL), Dewdrop_50 (GC), Leaf_50 (GC), RobinRose_58 (EG), SpeedDemon_540 (DL),

Start 86:

- Found in 1 of 445 (0.2%) of genes in pham
- Manual Annotations of this start: 1 of 376
- Called 100.0% of time when present
- Phage (with cluster) where this start called: Sandalphon_96 (F1),

Start 87:

- Found in 39 of 445 (8.8%) of genes in pham
- Manual Annotations of this start: 27 of 376
- Called 89.7% of time when present
- Phage (with cluster) where this start called: Anon_48 (A15), Argie_6 (W), ArtetaBall_2 (DJ), Barb_83 (DC1), Blanky_1 (DJ), CWormy_2 (DJ), CandC_55 (EG), ClamChowder_83 (DC1), Constance_64 (FA), Crocheter_2 (DJ), DatBoi_51 (DL), Dialga_2 (DJ), Fugax_84 (DC1), GMA2_84 (DS), GodPhather_6 (W), Greely_244 (C2), Hortihabitatio_2 (DJ), Kelcole_54 (EG), KillerQueen_57 (EG), Lambo_93 (DV), Marcie_61 (EG), Mossy_1 (DJ), Myrna_235 (C2), Nikan_9 (AP2), Ollypop_11 (AP2), OneinaGillian_56 (EG), Peas_65 (FA), Pepe25_55 (EG), Perkunas_2 (DJ), Phabba_246 (C2), Pipp_48 (CV), Ren19_8 (AP2), ScoobyDoobyDoo_233 (C2), Tempo_56 (EG), Untouchable_2 (DJ),

Start 88:

- Found in 3 of 445 (0.7%) of genes in pham
- Manual Annotations of this start: 1 of 376
- Called 100.0% of time when present

- Phage (with cluster) where this start called: Chilliams_63 (FC), Rockabye_69 (FC), SJReid_70 (FC),

Start 89:

- Found in 235 of 445 (52.8%) of genes in pham
- Manual Annotations of this start: 196 of 376
- Called 100.0% of time when present
- Phage (with cluster) where this start called: Ablatia_31 (C1), Ading_32 (C1), Adlitam_32 (C1), Amataga_32 (C1), ArcherS7_31 (C1), Arri_80 (DC1), Asterius_33 (C1), Astraea_33 (C1), Atlantean_32 (C1), Audrick_34 (C1), Ava3_33 (C1), Babyland_31 (C1), BackyardAgain_29 (C1), BadAgartude_33 (C1), Bakery_85 (DC1), BananaFence_33 (C1), Bangla1971_31 (C1), Basquiat_31 (C1), BeanWater_28 (C1), Belieber_28 (C1), BellaJr_84 (FN), Bezza_24 (C1), BigCity_36 (C1), Bigswole_38 (C1), Bipolarisk_31 (C1), Blackbrain_30 (C1), Blackdragon_27 (C1), Blubba_26 (C1), BobaPhatt_29 (C1), Bonray_32 (C1), Bowman_31 (C1), Bread_33 (C1), Breeniome_32 (C1), Burrough_32 (C1), Bxz1_32 (C1), Cactojaque_29 (C1), Cali_32 (C1), Capablanca_34 (C1), Caravan_30 (C1), Catera_30 (C1), Chargie21_31 (C1), CharlieB_32 (C1), ChaylaJr_31 (C1), CherryCola_80 (DC1), ChickenPhender_31 (C1), Chomp_32 (C1), CindyLou_32 (C1), Cleatunium_28 (C1), Clown_82 (DC2), Concombre_31 (C1), CoveyB_81 (DC1), DTDevon_33 (C1), Daffodil_34 (C1), Dandelion_36 (C1), Danyall_81 (DC1), Darko_31 (C1), Delilah_32 (C1), Demodog_30 (C1), Derek_33 (C1), Dessert_30 (C1), Dietrick_27 (C1), DirtMonster_31 (C1), Domi_27 (C1), Dori_58 (AD), DrPhinkDaddy_32 (C1), Drazdys_32 (C1), Duckfeet_29 (C1), ET08_27 (C1), EasyJones_31 (C1), EggyFarm_36 (C1), Egi03_79 (DC1), EmToTheThree_35 (C1), EmmaElysia_30 (C1), Erdmann_33 (C1), ErnieJ_33 (C1), Essence_31 (C1), Evamon_80 (DC1), Ewok_32 (C1), Fixie_29 (C1), Fludd_31 (C1), Fongie_32 (C1), FoxtrotP1_32 (C1), FrayBell_38 (C1), FudgeTart_33 (C1), Gabriel_32 (C1), Gamgam_32 (C1), Gezellig_77 (DC1), Ghost_32 (C1), Gizmo_34 (C1), GlutenPhree_33 (C1), Grasshills_36 (C1), Grungle_25 (C1), Guwapp_32 (C1), Haldule_28 (C1), Halo3_78 (DC1), HyRo_31 (C1), I3_34 (C1), IkeLoa_28 (C1), InigoMontoya_33 (C1), InterFolia_39 (C1), Iota_29 (C1), Issimir_32 (C1), Izajani_33 (C1), JPickles_30 (C1), Janiyra_32 (C1), JayJay_35 (C1), Jaygup_32 (C1), Jedediah_32 (C1), Jemmno_32 (C1), Jessibeth14_31 (C1), Jezreel_31 (C1), JigglyPuff_32 (C1), JohnPork_82 (DC1), JulietS_27 (C1), JustHall_31 (C1), Kamryn_32 (C1), Kboogie_32 (C1), Khaleesi_31 (C1), KimmyK_80 (DC1), Koguma_28 (C1), LRRHood_29 (C1), Labradorite_31 (C1), Latch_32 (C1), Lee7_31 (C1), Lethe_31 (C1), LifeSavor_33 (C1), Littleton_32 (C1), Loanshark_32 (C1), LolaVince_35 (C1), LookingGlass_35 (C1), LordLeafot_38 (C1), Lukilu_25 (C1), Lunareta_31 (C1), Maby2021_33 (C1), Mangeria_35 (C1), Mask_58 (AD), Matsumoto_31 (C1), Maturis_32 (C1), McGee_31 (C1), McWolfish_31 (C1), Megamind_32 (C1), Melpomini_31 (C1), MikeLiesIn_32 (C1), Mikro_30 (C1), MoMoMixon_33 (C1), Momo_31 (C1), Montpel_31 (C1), Morizzled23_31 (C1), Mutzi_78 (DC1), Naija_32 (C1), Napoleon13_31 (C1), Nappy_33 (C1), Naval22_34 (C1), NedWong_33 (C1), Ngannou_30 (C1), Nidhogg_33 (C1), NoodleTree_31 (C1), Norm_32 (C1), NuevoMundo_35 (C1), OrediggerDelux_31 (C1), ParkTD_31 (C1), Patter_32 (C1), PharkleMinkus_37 (C1), Phlegm_34 (C1), Phlop_78 (DC1), Phox_31 (C1), Phusco_32 (C1), Pier_34 (C1), Pio_35 (C1), Pivoine_32 (C1), Pleione_34 (C1), Portcullis_81 (DC1), Primadonna_27 (C1), PullumCavea_79 (DC1), PurduePete_31 (C1), QBert_30 (C1), Quasimodo_32 (C1), Rahel_32 (C1), Rizal_30 (C1), RoMag_27 (C1), Rocha_30 (C1), RogerDodger_84 (DC1), Ronan_27 (C1), Roots515_32 (C1), SVoro_31 (C1), Salacia_34 (C1), Salvador_80 (DC1), Sauce_33 (C1), ScottMcG_32 (C1), Sebata_32 (C1), Shaqnato_28 (C1), SharkTale_84 (DC1), ShiaLabeouf_32 (C1), Shifa_29 (C1), Shinji_80 (DC1), Shnickers_32 (C1), Shrimp_32 (C1),

SilverDipper_33 (C1), Sixsevenium_82 (DC1), SmallFry_32 (C1), SmokingBunny_81 (DC1), SoilZilla_29 (C1), Spec_30 (C1), Specks_37 (C1), Sprinklers_32 (C1), Spud_34 (C1), Squiddly_103 (DN2), SrishMeg2525_31 (C1), StephanieG_32 (C1), StubbySaigey_31 (C1), Substance289_29 (C1), Tainan_37 (C1), Teardrop_31 (C1), TinyTim_32 (C1), Togo_80 (DC1), Tonenili_36 (C1), Tortoise16_31 (C1), Trinitium_31 (C1), Turret_30 (C1), Twister6_81 (DC1), Tyke_34 (C1), Valary_81 (DC1), ValleyTerrace_32 (C1), Vortrix_38 (C1), Wally_31 (C1), Willis_32 (C1), Wizard_77 (DC1), Yassified_29 (C1), YemiJoy2021_33 (C1), YoungMoneyMata_32 (C1), Yucca_32 (C1), YungMoney_79 (DC1), Zalkecks_34 (C1), Zeenon_34 (C1), ZygoTaiga_32 (C1),

Start 90:

- Found in 6 of 445 (1.3%) of genes in pham
- Manual Annotations of this start: 5 of 376
- Called 100.0% of time when present
- Phage (with cluster) where this start called: Briton15_12 (A1), Cardigan_143 (DD), G4_46 (BW), Ichabod_11 (A1), JonJames_139 (DD), Yvonnestic_136 (DD),

Start 91:

- Found in 39 of 445 (8.8%) of genes in pham
- Manual Annotations of this start: 38 of 376
- Called 100.0% of time when present
- Phage (with cluster) where this start called: BearBQ_64 (DN), Blexus_93 (F1), BobaPhett_98 (F1), Brocalys_88 (F1), Burwell21_90 (F1), ByChance_87 (F1), Cabrinians_93 (F1), Clifton_88 (F1), Crumble_91 (F1), FreddyB_106 (F1), Gorge_95 (F1), James_100 (F1), Jarcob_99 (F1), Jennelsea_93 (F1), Koella_89 (F1), LastJedi_87 (F1), Latretium_99 (F1), LilMoolah_99 (F1), Lizziana_97 (F1), Maravista_93 (F1), Martik_95 (F1), Mattes_97 (F1), Minnie_91 (F1), MortyNRick_62 (DN), Nivrat_96 (F1), NormanBulbieJr_94 (F1), OlympiaSaint_100 (F1), Philus_98 (F1), Pippy_94 (F1), Priscilla_97 (F1), Saal_94 (F1), ShiLan_99 (F1), ShowerHandel_97 (F1), Spoonbill_96 (F1), SwagPigglett_98 (F1), Vivum_96 (F1), Whouxphf_100 (F1), Yorick_92 (F1), Zizzle_99 (F1),

Start 92:

- Found in 1 of 445 (0.2%) of genes in pham
- Manual Annotations of this start: 1 of 376
- Called 100.0% of time when present
- Phage (with cluster) where this start called: Shocker_3 (singleton),

Start 93:

- Found in 31 of 445 (7.0%) of genes in pham
- Manual Annotations of this start: 20 of 376
- Called 67.7% of time when present
- Phage (with cluster) where this start called: Anglerfish_11 (A1), Arcanine_11 (A1), Atkinbua_11 (A1), BeesKnees_11 (A1), DreamCatcher_12 (A1), Dynamix_11 (A1), Fenn_11 (A1), KSSJEB_10 (A1), Manatee_11 (A1), McGuire_11 (A1), Naira_11 (A1), Nina_52 (CT), PinkPlastic_9 (A1), Rajelicia_10 (A1), RedBaron_57 (CT), Romm_58 (EG), Slagathor_11 (A1), Squee_11 (A1), Sunfish_12 (singleton), Switzer_11 (A1), U2_10 (A1),

Start 95:

- Found in 1 of 445 (0.2%) of genes in pham
- Manual Annotations of this start: 1 of 376

- Called 100.0% of time when present
- Phage (with cluster) where this start called: HomeFry_78 (CR5),

Start 96:

- Found in 9 of 445 (2.0%) of genes in pham
- Manual Annotations of this start: 7 of 376
- Called 88.9% of time when present
- Phage (with cluster) where this start called: A3Wally_215 (GD1), Cantare_94 (singleton), Dodo_211 (GD1), Erasmago_204 (GD2), Fransoyer_60 (EG), PauloDiaboli_215 (GD1), Pumpnickel_196 (GD4), SadLad_63 (EG),

Start 97:

- Found in 8 of 445 (1.8%) of genes in pham
- Manual Annotations of this start: 7 of 376
- Called 100.0% of time when present
- Phage (with cluster) where this start called: Annadreamy_67 (BK1), Beuffert_67 (BK1), Blueeyedbeauty_69 (BK1), Faust_71 (BK1), Limpid_66 (BK1), SeresaTree_71 (BK1), Sham_67 (BK1), TunaTartare_69 (BK1),

Start 105:

- Found in 3 of 445 (0.7%) of genes in pham
- No Manual Annotations of this start.
- Called 66.7% of time when present
- Phage (with cluster) where this start called: BigAnti_4 (singleton), ERHickory_13 (singleton),

Start 107:

- Found in 2 of 445 (0.4%) of genes in pham
- Manual Annotations of this start: 2 of 376
- Called 100.0% of time when present
- Phage (with cluster) where this start called: Causa_146 (AI), StAugustine_144 (AI),

Start 109:

- Found in 5 of 445 (1.1%) of genes in pham
- Manual Annotations of this start: 4 of 376
- Called 80.0% of time when present
- Phage (with cluster) where this start called: Kudrefre_118 (DU1), Octobien14_114 (DU1), Sephiroth_114 (DU1), Syleon_119 (DU1),

Start 111:

- Found in 6 of 445 (1.3%) of genes in pham
- Manual Annotations of this start: 1 of 376
- Called 16.7% of time when present
- Phage (with cluster) where this start called: Bobby_171 (J),

Start 117:

- Found in 65 of 445 (14.6%) of genes in pham
- Manual Annotations of this start: 21 of 376
- Called 35.4% of time when present
- Phage (with cluster) where this start called: Arcadia_72 (AM), BenitoAntonio_71 (AM), Benllo_70 (AM), Bowling_74 (AM), Cheesy_73 (AM), Circum_74 (AM), Correa_71 (AM), Dynamite_72 (AM), Elsa_72 (AM), GoCrazy_69 (AM), Hankly_72 (AM), Heisenberger_71 (AM), JEGGS_71 (AM), Kardesai_72 (AM), KeaneyLin_68

(AM), Mooshroom_73 (AM), Mudcat_68 (AM), NapoleonB_73 (AM), Nason_72 (AM), Stardom_72 (AM), Tribby_76 (AM), Xenomorph_69 (AM), YoshiYama_74 (AM),

Start 121:

- Found in 7 of 445 (1.6%) of genes in pham
- Manual Annotations of this start: 3 of 376
- Called 100.0% of time when present
- Phage (with cluster) where this start called: Elver_133 (FK), Gandionco_129 (FK), JeNeSaisPas_127 (FK), Kureo_130 (FK), Marianna39_130 (FK), Paella_133 (FK), Qui_133 (FK),

Start 124:

- Found in 1 of 445 (0.2%) of genes in pham
- Manual Annotations of this start: 1 of 376
- Called 100.0% of time when present
- Phage (with cluster) where this start called: DrLupo_104 (H2),

Summary by clusters:

There are 46 clusters represented in this pham: DN, GD1, singleton, DJ, AP2, AP3, DD, AP1, DL, AP4, FA, BW, DV, GD4, DT, FK, DS, FN, A15, A1, CZ2, DN2, C2, C1, CT, P2, AD, AI, EG, J, AM, N, AP, GC, BK1, W, DU1, UNK, DC2, CV, DC1, F1, CR5, H2, FC, GD2,

Info for manual annotations of cluster A1:

- Start number 77 was manually annotated 1 time for cluster A1.
- Start number 90 was manually annotated 2 times for cluster A1.
- Start number 93 was manually annotated 17 times for cluster A1.

Info for manual annotations of cluster A15:

- Start number 87 was manually annotated 1 time for cluster A15.

Info for manual annotations of cluster AD:

- Start number 89 was manually annotated 2 times for cluster AD.

Info for manual annotations of cluster AI:

- Start number 107 was manually annotated 2 times for cluster AI.

Info for manual annotations of cluster AM:

- Start number 117 was manually annotated 21 times for cluster AM.

Info for manual annotations of cluster AP:

- Start number 66 was manually annotated 1 time for cluster AP.

Info for manual annotations of cluster AP1:

- Start number 69 was manually annotated 1 time for cluster AP1.

Info for manual annotations of cluster AP2:

- Start number 66 was manually annotated 11 times for cluster AP2.
- Start number 87 was manually annotated 1 time for cluster AP2.

Info for manual annotations of cluster AP3:

- Start number 69 was manually annotated 1 time for cluster AP3.

Info for manual annotations of cluster AP4:

- Start number 69 was manually annotated 2 times for cluster AP4.

Info for manual annotations of cluster BK1:

- Start number 97 was manually annotated 7 times for cluster BK1.

Info for manual annotations of cluster BW:

- Start number 90 was manually annotated 1 time for cluster BW.

Info for manual annotations of cluster C1:

- Start number 89 was manually annotated 170 times for cluster C1.

Info for manual annotations of cluster C2:

- Start number 87 was manually annotated 3 times for cluster C2.

Info for manual annotations of cluster CR5:

- Start number 95 was manually annotated 1 time for cluster CR5.

Info for manual annotations of cluster CT:

- Start number 93 was manually annotated 2 times for cluster CT.

Info for manual annotations of cluster CV:

- Start number 87 was manually annotated 1 time for cluster CV.

Info for manual annotations of cluster CZ2:

- Start number 75 was manually annotated 3 times for cluster CZ2.

Info for manual annotations of cluster DC1:

- Start number 87 was manually annotated 3 times for cluster DC1.
- Start number 89 was manually annotated 22 times for cluster DC1.

Info for manual annotations of cluster DC2:

- Start number 89 was manually annotated 1 time for cluster DC2.

Info for manual annotations of cluster DD:

- Start number 90 was manually annotated 2 times for cluster DD.

Info for manual annotations of cluster DJ:

- Start number 87 was manually annotated 5 times for cluster DJ.

Info for manual annotations of cluster DL:

- Start number 85 was manually annotated 2 times for cluster DL.
- Start number 87 was manually annotated 1 time for cluster DL.

Info for manual annotations of cluster DN:

- Start number 91 was manually annotated 2 times for cluster DN.

Info for manual annotations of cluster DN2:

- Start number 89 was manually annotated 1 time for cluster DN2.

Info for manual annotations of cluster DU1:

- Start number 109 was manually annotated 4 times for cluster DU1.

Info for manual annotations of cluster DV:

- Start number 73 was manually annotated 2 times for cluster DV.
- Start number 87 was manually annotated 1 time for cluster DV.

Info for manual annotations of cluster EG:

- Start number 85 was manually annotated 1 time for cluster EG.
- Start number 87 was manually annotated 7 times for cluster EG.
- Start number 96 was manually annotated 2 times for cluster EG.

Info for manual annotations of cluster F1:

- Start number 86 was manually annotated 1 time for cluster F1.
- Start number 91 was manually annotated 36 times for cluster F1.

Info for manual annotations of cluster FA:

- Start number 87 was manually annotated 2 times for cluster FA.

Info for manual annotations of cluster FC:

- Start number 88 was manually annotated 1 time for cluster FC.

Info for manual annotations of cluster FK:

- Start number 121 was manually annotated 3 times for cluster FK.

Info for manual annotations of cluster GC:

- Start number 85 was manually annotated 2 times for cluster GC.

Info for manual annotations of cluster GD1:

- Start number 96 was manually annotated 3 times for cluster GD1.

Info for manual annotations of cluster GD4:

- Start number 96 was manually annotated 1 time for cluster GD4.

Info for manual annotations of cluster H2:

- Start number 124 was manually annotated 1 time for cluster H2.

Info for manual annotations of cluster J:

- Start number 111 was manually annotated 1 time for cluster J.

Info for manual annotations of cluster N:

- Start number 60 was manually annotated 5 times for cluster N.
- Start number 83 was manually annotated 5 times for cluster N.

Info for manual annotations of cluster P2:

- Start number 82 was manually annotated 1 time for cluster P2.

Info for manual annotations of cluster UNK:

- Start number 81 was manually annotated 1 time for cluster UNK.

Info for manual annotations of cluster W:

- Start number 87 was manually annotated 2 times for cluster W.

Gene Information:

Gene: A3Wally_215 Start: 115440, Stop: 115123, Start Num: 96

Candidate Starts for A3Wally_215:

(Start: 96 @115440 has 7 MA's), (141, 115323), (156, 115284), (202, 115188), (213, 115128),

Gene: AWGoat_6 Start: 2566, Stop: 2979, Start Num: 69

Candidate Starts for AWGoat_6:

(Start: 69 @2566 has 4 MA's), (103, 2656), (150, 2773), (191, 2869),

Gene: Ablatia_31 Start: 10089, Stop: 10439, Start Num: 89

Candidate Starts for Ablatia_31:

(Start: 89 @10089 has 196 MA's), (110, 10137), (127, 10185), (145, 10230), (147, 10236), (162, 10272), (172, 10296), (203, 10407),

Gene: Ading_32 Start: 10352, Stop: 10702, Start Num: 89

Candidate Starts for Ading_32:

(Start: 89 @10352 has 196 MA's), (110, 10400), (127, 10448), (145, 10493), (147, 10499), (162, 10535), (172, 10559), (203, 10670),

Gene: Adlitam_32 Start: 10369, Stop: 10719, Start Num: 89

Candidate Starts for Adlitam_32:

(Start: 89 @10369 has 196 MA's), (110, 10417), (127, 10465), (145, 10510), (147, 10516), (162, 10552), (172, 10576), (203, 10687),

Gene: Amataga_32 Start: 10373, Stop: 10723, Start Num: 89

Candidate Starts for Amataga_32:

(Start: 89 @10373 has 196 MA's), (110, 10421), (127, 10469), (145, 10514), (147, 10520), (162, 10556), (172, 10580), (203, 10691),

Gene: Anglerfish_11 Start: 6625, Stop: 6939, Start Num: 93

Candidate Starts for Anglerfish_11:

(Start: 93 @6625 has 20 MA's), (110, 6664), (115, 6673), (144, 6742), (182, 6817), (199, 6877),

Gene: Annadreamy_67 Start: 53881, Stop: 54282, Start Num: 97

Candidate Starts for Annadreamy_67:

(Start: 97 @53881 has 7 MA's), (122, 53947), (139, 53992), (149, 54019), (151, 54025), (160, 54061), (171, 54088), (174, 54094), (185, 54130), (198, 54181), (200, 54187),

Gene: Anon_48 Start: 31013, Stop: 30756, Start Num: 87

Candidate Starts for Anon_48:

(Start: 87 @31013 has 27 MA's), (175, 30884), (189, 30860),

Gene: Arcadia_72 Start: 44474, Stop: 44782, Start Num: 117

Candidate Starts for Arcadia_72:

(Start: 117 @44474 has 21 MA's), (155, 44576), (168, 44612), (188, 44675), (197, 44705),

Gene: Arcanine_11 Start: 6591, Stop: 6905, Start Num: 93

Candidate Starts for Arcanine_11:

(Start: 93 @6591 has 20 MA's), (110, 6630), (115, 6639), (144, 6708), (182, 6783), (199, 6843),

Gene: ArcherS7_31 Start: 10363, Stop: 10713, Start Num: 89

Candidate Starts for ArcherS7_31:

(Start: 89 @10363 has 196 MA's), (110, 10411), (127, 10459), (145, 10504), (147, 10510), (162, 10546), (172, 10570), (203, 10681),

Gene: Argie_6 Start: 3283, Stop: 3579, Start Num: 87

Candidate Starts for Argie_6:

(Start: 87 @3283 has 27 MA's), (127, 3376), (135, 3391), (189, 3481), (196, 3505), (199, 3517),

Gene: Arri_80 Start: 52921, Stop: 53367, Start Num: 89

Candidate Starts for Arri_80:

(26, 52615), (29, 52633), (44, 52726), (Start: 89 @52921 has 196 MA's), (110, 52969), (130, 53017), (189, 53173), (196, 53197),

Gene: ArtetaBall_2 Start: 479, Stop: 808, Start Num: 87

Candidate Starts for ArtetaBall_2:

(Start: 87 @479 has 27 MA's), (116, 545), (180, 686), (189, 713), (193, 725),

Gene: Asterius_33 Start: 10638, Stop: 10988, Start Num: 89

Candidate Starts for Asterius_33:

(Start: 89 @10638 has 196 MA's), (110, 10686), (127, 10734), (145, 10779), (147, 10785), (162, 10821), (172, 10845), (203, 10956),

Gene: Astraea_33 Start: 10543, Stop: 10893, Start Num: 89

Candidate Starts for Astraea_33:

(Start: 89 @10543 has 196 MA's), (110, 10591), (127, 10639), (145, 10684), (147, 10690), (162, 10726), (172, 10750), (203, 10861),

Gene: Atkinbua_11 Start: 6636, Stop: 6950, Start Num: 93

Candidate Starts for Atkinbua_11:

(Start: 93 @6636 has 20 MA's), (110, 6675), (144, 6753), (166, 6798),

Gene: Atlantean_32 Start: 10373, Stop: 10723, Start Num: 89

Candidate Starts for Atlantean_32:

(Start: 89 @10373 has 196 MA's), (110, 10421), (127, 10469), (145, 10514), (147, 10520), (162, 10556), (172, 10580), (203, 10691),

Gene: Attis_55 Start: 39035, Stop: 39415, Start Num: 75

Candidate Starts for Attis_55:

(Start: 75 @39035 has 3 MA's), (102, 39089), (147, 39218), (166, 39254), (180, 39281), (182, 39284), (191, 39314), (196, 39332), (199, 39344), (205, 39401),

Gene: Audrick_34 Start: 10352, Stop: 10702, Start Num: 89

Candidate Starts for Audrick_34:

(Start: 89 @10352 has 196 MA's), (110, 10400), (127, 10448), (145, 10493), (147, 10499), (162, 10535), (172, 10559), (203, 10670),

Gene: Ava3_33 Start: 10918, Stop: 11268, Start Num: 89

Candidate Starts for Ava3_33:

(Start: 89 @10918 has 196 MA's), (110, 10966), (127, 11014), (145, 11059), (147, 11065), (162, 11101), (172, 11125), (203, 11236),

Gene: Babyland_31 Start: 9811, Stop: 10161, Start Num: 89

Candidate Starts for Babyland_31:

(Start: 89 @9811 has 196 MA's), (110, 9859), (127, 9907), (145, 9952), (147, 9958), (162, 9994), (172, 10018), (203, 10129),

Gene: BackyardAgain_29 Start: 9792, Stop: 10142, Start Num: 89

Candidate Starts for BackyardAgain_29:

(Start: 89 @9792 has 196 MA's), (110, 9840), (127, 9888), (145, 9933), (147, 9939), (162, 9975), (172, 9999), (203, 10110),

Gene: BadAgartude_33 Start: 11005, Stop: 11355, Start Num: 89

Candidate Starts for BadAgartude_33:

(Start: 89 @11005 has 196 MA's), (110, 11053), (127, 11101), (145, 11146), (147, 11152), (162, 11188), (172, 11212), (203, 11323),

Gene: Bakery_85 Start: 55359, Stop: 55733, Start Num: 89

Candidate Starts for Bakery_85:

(Start: 89 @55359 has 196 MA's), (188, 55536), (189, 55539),

Gene: BananaFence_33 Start: 10802, Stop: 11152, Start Num: 89

Candidate Starts for BananaFence_33:

(Start: 89 @10802 has 196 MA's), (110, 10850), (127, 10898), (145, 10943), (147, 10949), (162, 10985), (172, 11009), (203, 11120),

Gene: Bangla1971_31 Start: 10369, Stop: 10719, Start Num: 89

Candidate Starts for Bangla1971_31:

(Start: 89 @10369 has 196 MA's), (110, 10417), (127, 10465), (145, 10510), (147, 10516), (162, 10552), (172, 10576), (203, 10687),

Gene: Bantam_53 Start: 43734, Stop: 44000, Start Num: 85

Candidate Starts for Bantam_53:

(Start: 85 @43734 has 5 MA's), (110, 43782), (Start: 111 @43785 has 1 MA's), (175, 43878), (189, 43902),

Gene: Barb_83 Start: 53513, Stop: 53983, Start Num: 87

Candidate Starts for Barb_83:

(35, 53279), (41, 53306), (43, 53309), (Start: 87 @53513 has 27 MA's), (110, 53561), (141, 53645), (189, 53789),

Gene: Basquiat_31 Start: 9792, Stop: 10142, Start Num: 89

Candidate Starts for Basquiat_31:

(Start: 89 @9792 has 196 MA's), (110, 9840), (127, 9888), (145, 9933), (147, 9939), (162, 9975), (172, 9999), (203, 10110),

Gene: Beagle_10 Start: 3455, Stop: 3862, Start Num: 66

Candidate Starts for Beagle_10:

(Start: 66 @3455 has 12 MA's), (80, 3506), (84, 3515), (120, 3602), (140, 3650), (167, 3716), (179, 3734), (186, 3752),

Gene: BeanWater_28 Start: 10762, Stop: 11112, Start Num: 89

Candidate Starts for BeanWater_28:

(Start: 89 @10762 has 196 MA's), (110, 10810), (127, 10858), (145, 10903), (147, 10909), (162, 10945), (172, 10969), (203, 11080),

Gene: BearBQ_64 Start: 41458, Stop: 41745, Start Num: 91

Candidate Starts for BearBQ_64:

(31, 41194), (38, 41230), (39, 41236), (55, 41332), (Start: 82 @41446 has 1 MA's), (Start: 91 @41458 has 38 MA's), (110, 41503), (148, 41575), (193, 41653), (199, 41677), (205, 41734),

Gene: BeesKnees_11 Start: 6720, Stop: 7034, Start Num: 93

Candidate Starts for BeesKnees_11:

(Start: 93 @6720 has 20 MA's), (110, 6759), (144, 6837), (166, 6882),

Gene: Belieber_28 Start: 9559, Stop: 9909, Start Num: 89

Candidate Starts for Belieber_28:

(Start: 89 @9559 has 196 MA's), (110, 9607), (127, 9655), (145, 9700), (147, 9706), (162, 9742), (172, 9766), (203, 9877),

Gene: BellaJr_84 Start: 48464, Stop: 48778, Start Num: 89

Candidate Starts for BellaJr_84:

(Start: 89 @48464 has 196 MA's), (110, 48512), (203, 48746),

Gene: BenitoAntonio_71 Start: 44114, Stop: 44425, Start Num: 117

Candidate Starts for BenitoAntonio_71:

(Start: 117 @44114 has 21 MA's), (142, 44177), (168, 44255), (178, 44276), (184, 44300), (188, 44318), (197, 44348),

Gene: Benllo_70 Start: 44792, Stop: 45103, Start Num: 117

Candidate Starts for Benllo_70:

(Start: 117 @44792 has 21 MA's), (142, 44855), (168, 44933), (178, 44954), (184, 44978), (188, 44996), (197, 45026),

Gene: BetaFish_8 Start: 3461, Stop: 3868, Start Num: 66

Candidate Starts for BetaFish_8:

(Start: 66 @3461 has 12 MA's), (80, 3512), (84, 3521), (120, 3608), (140, 3656), (167, 3722), (179, 3740), (186, 3758),

Gene: Beuffert_67 Start: 55006, Stop: 55407, Start Num: 97

Candidate Starts for Beuffert_67:

(Start: 97 @55006 has 7 MA's), (135, 55111), (139, 55117), (149, 55144), (185, 55255), (197, 55300), (200, 55312),

Gene: Bezza_24 Start: 9438, Stop: 9788, Start Num: 89

Candidate Starts for Bezza_24:

(Start: 89 @9438 has 196 MA's), (110, 9486), (127, 9534), (145, 9579), (147, 9585), (162, 9621), (172, 9645), (203, 9756),

Gene: BigAnti_4 Start: 2585, Stop: 2959, Start Num: 105

Candidate Starts for BigAnti_4:

(Start: 85 @2546 has 5 MA's), (105, 2585), (108, 2588), (110, 2597), (Start: 117 @2618 has 21 MA's), (129, 2648), (135, 2669), (159, 2729), (182, 2777), (189, 2801),

Gene: BigCity_36 Start: 11898, Stop: 12248, Start Num: 89

Candidate Starts for BigCity_36:

(Start: 89 @11898 has 196 MA's), (110, 11946), (127, 11994), (145, 12039), (147, 12045), (162, 12081), (172, 12105), (203, 12216),

Gene: Bigswole_38 Start: 12708, Stop: 13058, Start Num: 89

Candidate Starts for Bigswole_38:

(Start: 89 @12708 has 196 MA's), (110, 12756), (127, 12804), (145, 12849), (147, 12855), (162, 12891), (172, 12915), (203, 13026),

Gene: Bipolarisk_31 Start: 10629, Stop: 10979, Start Num: 89

Candidate Starts for Bipolarisk_31:

(Start: 89 @10629 has 196 MA's), (110, 10677), (127, 10725), (145, 10770), (147, 10776), (162, 10812), (172, 10836), (203, 10947),

Gene: Blackbrain_30 Start: 9608, Stop: 9958, Start Num: 89

Candidate Starts for Blackbrain_30:

(Start: 89 @9608 has 196 MA's), (110, 9656), (127, 9704), (145, 9749), (147, 9755), (162, 9791), (172, 9815), (203, 9926),

Gene: Blackdragon_27 Start: 9394, Stop: 9744, Start Num: 89

Candidate Starts for Blackdragon_27:

(Start: 89 @9394 has 196 MA's), (110, 9442), (127, 9490), (145, 9535), (147, 9541), (162, 9577), (172, 9601), (203, 9712),

Gene: Blanky_1 Start: 220, Stop: 549, Start Num: 87

Candidate Starts for Blanky_1:

(Start: 87 @220 has 27 MA's), (110, 268), (141, 352), (180, 427), (182, 430), (189, 454), (193, 466),

Gene: Blexus_93 Start: 53556, Stop: 53837, Start Num: 91

Candidate Starts for Blexus_93:

(16, 53145), (18, 53166), (19, 53187), (22, 53217), (Start: 91 @53556 has 38 MA's), (110, 53601), (Start: 117 @53619 has 21 MA's), (189, 53736),

Gene: Blubba_26 Start: 9089, Stop: 9439, Start Num: 89

Candidate Starts for Blubba_26:

(Start: 89 @9089 has 196 MA's), (110, 9137), (127, 9185), (145, 9230), (147, 9236), (172, 9296), (203, 9407),

Gene: Blueeyedbeauty_69 Start: 54393, Stop: 54800, Start Num: 97

Candidate Starts for Blueeyedbeauty_69:

(Start: 97 @54393 has 7 MA's), (110, 54429), (137, 54507), (151, 54543), (163, 54582), (182, 54633), (190, 54666), (199, 54699), (200, 54705),

Gene: BobaPhatt_29 Start: 9803, Stop: 10153, Start Num: 89

Candidate Starts for BobaPhatt_29:

(Start: 89 @9803 has 196 MA's), (110, 9851), (127, 9899), (145, 9944), (147, 9950), (162, 9986), (172, 10010), (203, 10121),

Gene: BobaPhett_98 Start: 55238, Stop: 55519, Start Num: 91

Candidate Starts for BobaPhett_98:

(16, 54827), (18, 54848), (19, 54869), (22, 54899), (Start: 91 @55238 has 38 MA's), (110, 55283), (Start: 117 @55301 has 21 MA's), (189, 55418), (199, 55454),

Gene: Bobby_171 Start: 94727, Stop: 95017, Start Num: 111

Candidate Starts for Bobby_171:

(Start: 111 @94727 has 1 MA's), (118, 94751), (125, 94766), (189, 94919), (191, 94925),

Gene: Bonray_32 Start: 10906, Stop: 11256, Start Num: 89

Candidate Starts for Bonray_32:

(Start: 89 @10906 has 196 MA's), (110, 10954), (127, 11002), (145, 11047), (147, 11053), (162, 11089), (172, 11113), (203, 11224),

Gene: Bowling_74 Start: 45068, Stop: 45379, Start Num: 117

Candidate Starts for Bowling_74:

(Start: 117 @45068 has 21 MA's), (142, 45131), (168, 45209), (178, 45230), (184, 45254), (188, 45272), (197, 45302),

Gene: Bowman_31 Start: 10918, Stop: 11268, Start Num: 89

Candidate Starts for Bowman_31:

(Start: 89 @10918 has 196 MA's), (110, 10966), (127, 11014), (145, 11059), (147, 11065), (162, 11101), (172, 11125), (203, 11236),

Gene: Bread_33 Start: 10918, Stop: 11268, Start Num: 89

Candidate Starts for Bread_33:

(Start: 89 @10918 has 196 MA's), (110, 10966), (127, 11014), (145, 11059), (147, 11065), (162, 11101), (172, 11125), (203, 11236),

Gene: Breeniome_32 Start: 9801, Stop: 10151, Start Num: 89

Candidate Starts for Breeniome_32:

(Start: 89 @9801 has 196 MA's), (110, 9849), (127, 9897), (145, 9942), (147, 9948), (162, 9984), (172, 10008), (203, 10119),

Gene: Briton15_12 Start: 6774, Stop: 7046, Start Num: 90

Candidate Starts for Briton15_12:

(Start: 90 @6774 has 5 MA's), (110, 6813), (Start: 117 @6831 has 21 MA's), (154, 6909), (189, 6948),

Gene: Brocalys_88 Start: 50717, Stop: 50998, Start Num: 91

Candidate Starts for Brocalys_88:

(16, 50306), (18, 50327), (19, 50348), (22, 50378), (Start: 91 @50717 has 38 MA's), (110, 50762), (Start: 117 @50780 has 21 MA's), (189, 50897),

Gene: BruhMoment_8 Start: 3480, Stop: 3902, Start Num: 69

Candidate Starts for BruhMoment_8:

(30, 3276), (33, 3288), (50, 3375), (Start: 69 @3480 has 4 MA's), (80, 3522), (Start: 109 @3579 has 4 MA's), (128, 3636), (141, 3669), (170, 3735), (172, 3738), (186, 3768),

Gene: Burrough_32 Start: 10629, Stop: 10979, Start Num: 89

Candidate Starts for Burrough_32:

(Start: 89 @10629 has 196 MA's), (110, 10677), (127, 10725), (145, 10770), (147, 10776), (162, 10812), (172, 10836), (203, 10947),

Gene: Burwell21_90 Start: 53003, Stop: 53284, Start Num: 91

Candidate Starts for Burwell21_90:

(16, 52592), (18, 52613), (19, 52634), (22, 52664), (Start: 91 @53003 has 38 MA's), (110, 53048), (Start: 117 @53066 has 21 MA's), (189, 53183),

Gene: Bxz1_32 Start: 11378, Stop: 11728, Start Num: 89

Candidate Starts for Bxz1_32:

(Start: 89 @11378 has 196 MA's), (110, 11426), (127, 11474), (145, 11519), (147, 11525), (162, 11561), (172, 11585), (203, 11696),

Gene: ByChance_87 Start: 49075, Stop: 49356, Start Num: 91

Candidate Starts for ByChance_87:

(16, 48664), (18, 48685), (19, 48706), (22, 48736), (Start: 91 @49075 has 38 MA's), (110, 49120), (Start: 117 @49138 has 21 MA's), (189, 49255),

Gene: CWormy_2 Start: 479, Stop: 808, Start Num: 87

Candidate Starts for CWormy_2:

(Start: 87 @479 has 27 MA's), (116, 545), (180, 686), (189, 713), (193, 725),

Gene: Cabrinians_93 Start: 52638, Stop: 52919, Start Num: 91

Candidate Starts for Cabrinians_93:

(16, 52227), (18, 52248), (19, 52269), (22, 52299), (Start: 91 @52638 has 38 MA's), (110, 52683), (Start: 117 @52701 has 21 MA's), (189, 52818),

Gene: Cactojaque_29 Start: 9497, Stop: 9847, Start Num: 89

Candidate Starts for Cactojaque_29:

(Start: 89 @9497 has 196 MA's), (110, 9545), (127, 9593), (145, 9638), (147, 9644), (162, 9680), (172, 9704), (203, 9815),

Gene: Cali_32 Start: 11939, Stop: 12289, Start Num: 89

Candidate Starts for Cali_32:

(Start: 89 @11939 has 196 MA's), (110, 11987), (127, 12035), (145, 12080), (147, 12086), (162, 12122), (172, 12146), (203, 12257),

Gene: CandC_55 Start: 37729, Stop: 37433, Start Num: 87

Candidate Starts for CandC_55:

(18, 38122), (23, 38068), (32, 37984), (Start: 73 @37759 has 2 MA's), (Start: 85 @37732 has 5 MA's), (Start: 87 @37729 has 27 MA's), (Start: 93 @37717 has 20 MA's), (104, 37693), (110, 37678), (127, 37630), (135, 37621), (167, 37585), (189, 37543), (195, 37522),

Gene: Cantare_94 Start: 71064, Stop: 71369, Start Num: 96

Candidate Starts for Cantare_94:

(Start: 96 @71064 has 7 MA's), (189, 71268), (203, 71337),

Gene: Capablanca_34 Start: 11498, Stop: 11848, Start Num: 89

Candidate Starts for Capablanca_34:

(Start: 89 @11498 has 196 MA's), (110, 11546), (127, 11594), (145, 11639), (147, 11645), (162, 11681), (172, 11705), (203, 11816),

Gene: Caravan_30 Start: 10188, Stop: 10538, Start Num: 89

Candidate Starts for Caravan_30:

(Start: 89 @10188 has 196 MA's), (110, 10236), (127, 10284), (145, 10329), (147, 10335), (162, 10371), (172, 10395), (203, 10506),

Gene: Carcharodon_55 Start: 36177, Stop: 36665, Start Num: 60

Candidate Starts for Carcharodon_55:

(Start: 60 @36177 has 5 MA's), (67, 36213), (Start: 83 @36267 has 5 MA's), (145, 36420), (146, 36423), (153, 36450), (189, 36561), (191, 36567), (205, 36654),

Gene: Cardigan_143 Start: 79014, Stop: 79379, Start Num: 90

Candidate Starts for Cardigan_143:

(Start: 90 @79014 has 5 MA's), (104, 79044), (110, 79059), (112, 79065), (119, 79089), (143, 79149), (188, 79257), (189, 79260), (209, 79365),

Gene: Catera_30 Start: 9796, Stop: 10146, Start Num: 89

Candidate Starts for Catera_30:

(Start: 89 @9796 has 196 MA's), (110, 9844), (127, 9892), (145, 9937), (147, 9943), (162, 9979), (172, 10003), (203, 10114),

Gene: Causa_146 Start: 84210, Stop: 83881, Start Num: 107

Candidate Starts for Causa_146:

(Start: 107 @84210 has 2 MA's), (125, 84153), (182, 84015), (188, 83991), (201, 83943),

Gene: Chargie21_31 Start: 9792, Stop: 10142, Start Num: 89

Candidate Starts for Chargie21_31:

(Start: 89 @9792 has 196 MA's), (110, 9840), (127, 9888), (145, 9933), (147, 9939), (162, 9975), (172, 9999), (203, 10110),

Gene: CharlieB_32 Start: 9937, Stop: 10287, Start Num: 89

Candidate Starts for CharlieB_32:

(Start: 89 @9937 has 196 MA's), (110, 9985), (127, 10033), (145, 10078), (147, 10084), (162, 10120), (172, 10144), (203, 10255),

Gene: ChaylaJr_31 Start: 9879, Stop: 10229, Start Num: 89

Candidate Starts for ChaylaJr_31:

(Start: 89 @9879 has 196 MA's), (110, 9927), (127, 9975), (145, 10020), (147, 10026), (162, 10062), (172, 10086), (203, 10197),

Gene: Cheesy_73 Start: 44267, Stop: 44575, Start Num: 117

Candidate Starts for Cheesy_73:

(Start: 117 @44267 has 21 MA's), (155, 44369), (168, 44405), (188, 44468), (197, 44498),

Gene: CherryCola_80 Start: 53607, Stop: 53978, Start Num: 89

Candidate Starts for CherryCola_80:

(45, 53424), (Start: 89 @53607 has 196 MA's), (189, 53784), (196, 53808),

Gene: ChickenPhender_31 Start: 9837, Stop: 10187, Start Num: 89

Candidate Starts for ChickenPhender_31:

(Start: 89 @9837 has 196 MA's), (110, 9885), (127, 9933), (145, 9978), (147, 9984), (162, 10020), (172, 10044), (203, 10155),

Gene: Chilliams_63 Start: 29204, Stop: 29557, Start Num: 88

Candidate Starts for Chilliams_63:

(Start: 88 @29204 has 1 MA's),

Gene: Chomp_32 Start: 10373, Stop: 10723, Start Num: 89

Candidate Starts for Chomp_32:

(Start: 89 @10373 has 196 MA's), (110, 10421), (127, 10469), (145, 10514), (147, 10520), (162, 10556), (172, 10580), (203, 10691),

Gene: CindyLou_32 Start: 10373, Stop: 10723, Start Num: 89

Candidate Starts for CindyLou_32:

(Start: 89 @10373 has 196 MA's), (110, 10421), (127, 10469), (145, 10514), (147, 10520), (162, 10556), (172, 10580), (203, 10691),

Gene: Circum_74 Start: 44882, Stop: 45193, Start Num: 117

Candidate Starts for Circum_74:

(Start: 117 @44882 has 21 MA's), (142, 44945), (168, 45023), (178, 45044), (184, 45068), (188, 45086), (197, 45116),

Gene: ClamChowder_83 Start: 53513, Stop: 53983, Start Num: 87

Candidate Starts for ClamChowder_83:

(35, 53279), (41, 53306), (43, 53309), (Start: 87 @53513 has 27 MA's), (110, 53561), (141, 53645), (189, 53789),

Gene: Cleatunium_28 Start: 10068, Stop: 10418, Start Num: 89

Candidate Starts for Cleatunium_28:

(Start: 89 @10068 has 196 MA's), (110, 10116), (127, 10164), (145, 10209), (147, 10215), (172, 10275), (203, 10386),

Gene: Clifton_88 Start: 51692, Stop: 51973, Start Num: 91

Candidate Starts for Clifton_88:

(16, 51281), (18, 51302), (19, 51323), (22, 51353), (Start: 91 @51692 has 38 MA's), (110, 51737), (Start: 117 @51755 has 21 MA's), (189, 51872),

Gene: Clown_82 Start: 53661, Stop: 54005, Start Num: 89

Candidate Starts for Clown_82:

(Start: 89 @53661 has 196 MA's), (110, 53709), (141, 53778), (184, 53832), (187, 53841), (212, 53973), (214, 53982),

Gene: Concombres_31 Start: 11144, Stop: 11494, Start Num: 89

Candidate Starts for Concombres_31:

(Start: 89 @11144 has 196 MA's), (110, 11192), (127, 11240), (145, 11285), (147, 11291), (162, 11327), (172, 11351), (203, 11462),

Gene: Constance_64 Start: 41355, Stop: 41633, Start Num: 87

Candidate Starts for Constance_64:

(1, 39963), (2, 39996), (3, 40005), (4, 40026), (5, 40035), (6, 40104), (7, 40203), (8, 40368), (9, 40506), (10, 40698), (11, 40722), (13, 40857), (17, 40944), (37, 41130), (44, 41163), (61, 41259), (Start: 87 @41355 has 27 MA's), (188, 41529), (189, 41532), (199, 41568), (204, 41622),

Gene: Correa_71 Start: 43841, Stop: 44149, Start Num: 117

Candidate Starts for Correa_71:

(Start: 117 @43841 has 21 MA's), (155, 43943), (168, 43979), (188, 44042), (197, 44072),

Gene: CoveyB_81 Start: 53099, Stop: 53470, Start Num: 89

Candidate Starts for CoveyB_81:

(45, 52916), (Start: 89 @53099 has 196 MA's), (189, 53276), (196, 53300),

Gene: Crocheter_2 Start: 479, Stop: 808, Start Num: 87

Candidate Starts for Crocheter_2:

(Start: 87 @479 has 27 MA's), (116, 545), (180, 686), (189, 713), (193, 725),

Gene: Crumble_91 Start: 49362, Stop: 49643, Start Num: 91

Candidate Starts for Crumble_91:

(16, 48951), (18, 48972), (19, 48993), (22, 49023), (Start: 91 @49362 has 38 MA's), (110, 49407), (Start: 117 @49425 has 21 MA's), (189, 49542),

Gene: DTDevon_33 Start: 11537, Stop: 11887, Start Num: 89

Candidate Starts for DTDevon_33:

(Start: 89 @11537 has 196 MA's), (110, 11585), (127, 11633), (145, 11678), (147, 11684), (162, 11720), (172, 11744), (203, 11855),

Gene: Daffodil_34 Start: 10918, Stop: 11268, Start Num: 89

Candidate Starts for Daffodil_34:

(Start: 89 @10918 has 196 MA's), (110, 10966), (127, 11014), (145, 11059), (147, 11065), (162, 11101), (172, 11125), (203, 11236),

Gene: Dandelion_36 Start: 12233, Stop: 12583, Start Num: 89

Candidate Starts for Dandelion_36:

(Start: 89 @12233 has 196 MA's), (110, 12281), (127, 12329), (145, 12374), (147, 12380), (162, 12416), (172, 12440), (203, 12551),

Gene: Danyall_81 Start: 52793, Stop: 53164, Start Num: 89

Candidate Starts for Danyall_81:

(45, 52610), (Start: 89 @52793 has 196 MA's), (189, 52970), (196, 52994),

Gene: Darko_31 Start: 10771, Stop: 11121, Start Num: 89

Candidate Starts for Darko_31:

(Start: 89 @10771 has 196 MA's), (110, 10819), (127, 10867), (145, 10912), (147, 10918), (162, 10954), (172, 10978), (203, 11089),

Gene: DatBoi_51 Start: 43635, Stop: 43889, Start Num: 87

Candidate Starts for DatBoi_51:

(Start: 87 @43635 has 27 MA's), (105, 43674), (189, 43791),

Gene: Delilah_32 Start: 10918, Stop: 11268, Start Num: 89

Candidate Starts for Delilah_32:

(Start: 89 @10918 has 196 MA's), (110, 10966), (127, 11014), (145, 11059), (147, 11065), (162, 11101), (172, 11125), (203, 11236),

Gene: Demodog_30 Start: 11144, Stop: 11494, Start Num: 89

Candidate Starts for Demodog_30:

(Start: 89 @11144 has 196 MA's), (110, 11192), (127, 11240), (145, 11285), (147, 11291), (162, 11327), (172, 11351), (203, 11462),

Gene: Derek_33 Start: 10330, Stop: 10680, Start Num: 89

Candidate Starts for Derek_33:

(Start: 89 @10330 has 196 MA's), (110, 10378), (127, 10426), (145, 10471), (147, 10477), (162, 10513), (172, 10537), (203, 10648),

Gene: Dessert_30 Start: 10373, Stop: 10723, Start Num: 89

Candidate Starts for Dessert_30:

(Start: 89 @10373 has 196 MA's), (110, 10421), (127, 10469), (145, 10514), (147, 10520), (162, 10556), (172, 10580), (203, 10691),

Gene: Dewdrop_50 Start: 22009, Stop: 22341, Start Num: 85

Candidate Starts for Dewdrop_50:

(Start: 85 @22009 has 5 MA's), (106, 22054), (110, 22063), (120, 22093), (129, 22114), (133, 22123), (151, 22168), (203, 22306),

Gene: Dialga_2 Start: 479, Stop: 808, Start Num: 87

Candidate Starts for Dialga_2:

(Start: 87 @479 has 27 MA's), (116, 545), (180, 686), (189, 713), (193, 725),

Gene: Dietrick_27 Start: 9565, Stop: 9915, Start Num: 89

Candidate Starts for Dietrick_27:

(Start: 89 @9565 has 196 MA's), (110, 9613), (127, 9661), (145, 9706), (147, 9712), (172, 9772), (203, 9883),

Gene: DirtMonster_31 Start: 11456, Stop: 11806, Start Num: 89

Candidate Starts for DirtMonster_31:

(Start: 89 @11456 has 196 MA's), (110, 11504), (127, 11552), (145, 11597), (147, 11603), (172, 11663), (203, 11774),

Gene: Dodo_211 Start: 115242, Stop: 114925, Start Num: 96

Candidate Starts for Dodo_211:

(Start: 96 @115242 has 7 MA's), (134, 115140), (141, 115125), (156, 115086), (189, 115047), (202, 114990), (213, 114930),

Gene: DogYard_8 Start: 3331, Stop: 3738, Start Num: 66

Candidate Starts for DogYard_8:

(Start: 66 @3331 has 12 MA's), (80, 3382), (84, 3391), (120, 3478), (140, 3526), (167, 3592), (179, 3610), (186, 3628),

Gene: Domi_27 Start: 10190, Stop: 10540, Start Num: 89

Candidate Starts for Domi_27:

(Start: 89 @10190 has 196 MA's), (110, 10238), (127, 10286), (145, 10331), (147, 10337), (172, 10397), (203, 10508),

Gene: Dori_58 Start: 47703, Stop: 48095, Start Num: 89

Candidate Starts for Dori_58:

(74, 47673), (Start: 89 @47703 has 196 MA's), (110, 47751), (145, 47850), (146, 47853), (153, 47880), (189, 47991), (191, 47997),

Gene: DrLupo_104 Start: 65399, Stop: 65650, Start Num: 124

Candidate Starts for DrLupo_104:

(64, 65246), (70, 65267), (110, 65360), (Start: 124 @65399 has 1 MA's), (189, 65552), (191, 65558),

Gene: DrPhinkDaddy_32 Start: 10915, Stop: 11265, Start Num: 89

Candidate Starts for DrPhinkDaddy_32:

(Start: 89 @10915 has 196 MA's), (110, 10963), (127, 11011), (145, 11056), (147, 11062), (162, 11098), (172, 11122), (203, 11233),

Gene: Drazdys_32 Start: 10703, Stop: 11053, Start Num: 89

Candidate Starts for Drazdys_32:

(Start: 89 @10703 has 196 MA's), (110, 10751), (127, 10799), (145, 10844), (147, 10850), (162, 10886), (172, 10910), (203, 11021),

Gene: DreamCatcher_12 Start: 7365, Stop: 7679, Start Num: 93

Candidate Starts for DreamCatcher_12:

(Start: 93 @7365 has 20 MA's), (110, 7404), (115, 7413), (144, 7482), (182, 7557), (199, 7617),

Gene: Duckfeet_29 Start: 10109, Stop: 10459, Start Num: 89

Candidate Starts for Duckfeet_29:

(Start: 89 @10109 has 196 MA's), (110, 10157), (127, 10205), (145, 10250), (147, 10256), (162, 10292), (172, 10316), (203, 10427),

Gene: Dynamite_72 Start: 44325, Stop: 44636, Start Num: 117

Candidate Starts for Dynamite_72:

(Start: 117 @44325 has 21 MA's), (142, 44388), (168, 44466), (178, 44487), (184, 44511), (188, 44529), (197, 44559),

Gene: Dynamix_11 Start: 6722, Stop: 7036, Start Num: 93

Candidate Starts for Dynamix_11:

(Start: 93 @6722 has 20 MA's), (110, 6761), (115, 6770), (144, 6839), (182, 6914), (199, 6974),

Gene: EGUunicorn_51 Start: 35104, Stop: 35502, Start Num: 83

Candidate Starts for EGUunicorn_51:

(Start: 60 @35014 has 5 MA's), (67, 35050), (Start: 83 @35104 has 5 MA's), (145, 35257), (146, 35260), (153, 35287), (189, 35398), (191, 35404), (205, 35491),

Gene: ERHickory_13 Start: 5618, Stop: 5839, Start Num: 105

Candidate Starts for ERHickory_13:

(Start: 96 @5594 has 7 MA's), (105, 5618), (189, 5738),

Gene: ET08_27 Start: 10374, Stop: 10724, Start Num: 89

Candidate Starts for ET08_27:

(Start: 89 @10374 has 196 MA's), (110, 10422), (127, 10470), (145, 10515), (147, 10521), (162, 10557), (172, 10581), (203, 10692),

Gene: EasyJones_31 Start: 9542, Stop: 9892, Start Num: 89

Candidate Starts for EasyJones_31:

(Start: 89 @9542 has 196 MA's), (110, 9590), (127, 9638), (145, 9683), (147, 9689), (162, 9725), (172, 9749), (203, 9860),

Gene: EggyFarm_36 Start: 11898, Stop: 12248, Start Num: 89

Candidate Starts for EggyFarm_36:

(Start: 89 @11898 has 196 MA's), (110, 11946), (127, 11994), (145, 12039), (147, 12045), (162, 12081), (172, 12105), (203, 12216),

Gene: Egi03_79 Start: 52659, Stop: 53000, Start Num: 89

Candidate Starts for Egi03_79:

(Start: 89 @52659 has 196 MA's), (188, 52803), (189, 52806),

Gene: Elsa_72 Start: 44474, Stop: 44782, Start Num: 117

Candidate Starts for Elsa_72:

(Start: 117 @44474 has 21 MA's), (155, 44576), (168, 44612), (188, 44675), (197, 44705),

Gene: Elver_133 Start: 70843, Stop: 71208, Start Num: 121

Candidate Starts for Elver_133:

(94, 70765), (Start: 121 @70843 has 3 MA's), (157, 70954), (183, 71029), (196, 71080),

Gene: EmToTheThree_35 Start: 12332, Stop: 12682, Start Num: 89

Candidate Starts for EmToTheThree_35:

(Start: 89 @12332 has 196 MA's), (110, 12380), (127, 12428), (145, 12473), (147, 12479), (162, 12515), (172, 12539), (203, 12650),

Gene: EmmaElysia_30 Start: 9557, Stop: 9907, Start Num: 89

Candidate Starts for EmmaElysia_30:

(Start: 89 @9557 has 196 MA's), (110, 9605), (127, 9653), (145, 9698), (147, 9704), (162, 9740), (172, 9764), (203, 9875),

Gene: Erasmago_204 Start: 109961, Stop: 109605, Start Num: 96

Candidate Starts for Erasmago_204:

(Start: 83 @109982 has 5 MA's), (Start: 96 @109961 has 7 MA's), (100, 109949), (216, 109631), (217, 109616),

Gene: Erdmann_33 Start: 10918, Stop: 11268, Start Num: 89

Candidate Starts for Erdmann_33:

(Start: 89 @10918 has 196 MA's), (110, 10966), (127, 11014), (145, 11059), (147, 11065), (162, 11101), (172, 11125), (203, 11236),

Gene: ErnieJ_33 Start: 10738, Stop: 11088, Start Num: 89

Candidate Starts for ErnieJ_33:

(Start: 89 @10738 has 196 MA's), (110, 10786), (127, 10834), (145, 10879), (147, 10885), (162, 10921), (172, 10945), (203, 11056),

Gene: Essence_31 Start: 10092, Stop: 10442, Start Num: 89

Candidate Starts for Essence_31:

(Start: 89 @10092 has 196 MA's), (110, 10140), (127, 10188), (145, 10233), (147, 10239), (162, 10275), (172, 10299), (203, 10410),

Gene: Evamon_80 Start: 53024, Stop: 53377, Start Num: 89

Candidate Starts for Evamon_80:

(Start: 89 @53024 has 196 MA's), (199, 53219),

Gene: Ewok_32 Start: 10921, Stop: 11271, Start Num: 89

Candidate Starts for Ewok_32:

(Start: 89 @10921 has 196 MA's), (110, 10969), (127, 11017), (145, 11062), (147, 11068), (162, 11104), (172, 11128), (203, 11239),

Gene: Faust_71 Start: 56000, Stop: 56389, Start Num: 97

Candidate Starts for Faust_71:

(Start: 97 @56000 has 7 MA's), (132, 56087), (134, 56096), (158, 56168), (160, 56174), (205, 56351), (208, 56360),

Gene: Fenn_11 Start: 6952, Stop: 7266, Start Num: 93

Candidate Starts for Fenn_11:

(Start: 93 @6952 has 20 MA's), (110, 6991), (144, 7069), (166, 7114),

Gene: Fixie_29 Start: 9540, Stop: 9890, Start Num: 89

Candidate Starts for Fixie_29:

(Start: 89 @9540 has 196 MA's), (110, 9588), (127, 9636), (145, 9681), (147, 9687), (162, 9723), (172, 9747), (203, 9858),

Gene: Fludd_31 Start: 9793, Stop: 10143, Start Num: 89

Candidate Starts for Fludd_31:

(Start: 89 @9793 has 196 MA's), (110, 9841), (127, 9889), (145, 9934), (147, 9940), (162, 9976), (172, 10000), (203, 10111),

Gene: Fongie_32 Start: 11453, Stop: 11803, Start Num: 89

Candidate Starts for Fongie_32:

(Start: 89 @11453 has 196 MA's), (110, 11501), (127, 11549), (145, 11594), (147, 11600), (162, 11636), (172, 11660), (203, 11771),

Gene: Forrestell_8 Start: 3035, Stop: 3442, Start Num: 66

Candidate Starts for Forrestell_8:

(Start: 66 @3035 has 12 MA's), (80, 3086), (84, 3095), (120, 3182), (140, 3230), (167, 3296), (179, 3314), (186, 3332),

Gene: FoxtrotP1_32 Start: 11246, Stop: 11596, Start Num: 89

Candidate Starts for FoxtrotP1_32:

(Start: 89 @11246 has 196 MA's), (110, 11294), (127, 11342), (145, 11387), (147, 11393), (162, 11429), (172, 11453), (203, 11564),

Gene: Fransoyer_60 Start: 45317, Stop: 45054, Start Num: 96

Candidate Starts for Fransoyer_60:

(Start: 96 @45317 has 7 MA's), (108, 45290), (116, 45269), (189, 45158), (199, 45122), (205, 45065),

Gene: FrayBell_38 Start: 12486, Stop: 12836, Start Num: 89

Candidate Starts for FrayBell_38:

(Start: 89 @12486 has 196 MA's), (110, 12534), (127, 12582), (145, 12627), (147, 12633), (172, 12693), (203, 12804),

Gene: FreddyB_106 Start: 54284, Stop: 54565, Start Num: 91

Candidate Starts for FreddyB_106:

(16, 53873), (18, 53894), (19, 53915), (22, 53945), (Start: 91 @54284 has 38 MA's), (110, 54329), (Start: 117 @54347 has 21 MA's), (189, 54464),

Gene: FudgeTart_33 Start: 10918, Stop: 11268, Start Num: 89

Candidate Starts for FudgeTart_33:

(Start: 89 @10918 has 196 MA's), (110, 10966), (127, 11014), (145, 11059), (147, 11065), (162, 11101), (172, 11125), (203, 11236),

Gene: Fugax_84 Start: 53505, Stop: 53975, Start Num: 87

Candidate Starts for Fugax_84:

(35, 53271), (41, 53298), (43, 53301), (Start: 87 @53505 has 27 MA's), (110, 53553), (141, 53637), (189, 53781),

Gene: G4_46 Start: 30222, Stop: 30545, Start Num: 90

Candidate Starts for G4_46:

(71, 30180), (Start: 90 @30222 has 5 MA's), (Start: 93 @30228 has 20 MA's), (113, 30276), (127, 30312), (166, 30378), (182, 30408), (189, 30432),

Gene: GMA2_84 Start: 80351, Stop: 80010, Start Num: 87

Candidate Starts for GMA2_84:

(Start: 87 @80351 has 27 MA's), (Start: 93 @80342 has 20 MA's), (180, 80141), (182, 80138), (205, 80021),

Gene: GMA4_42 Start: 31658, Stop: 32065, Start Num: 83

Candidate Starts for GMA4_42:

(58, 31565), (Start: 83 @31658 has 5 MA's), (110, 31715), (145, 31823), (153, 31853), (161, 31877), (169, 31901), (182, 31934), (203, 32033),

Gene: Gabriel_32 Start: 9792, Stop: 10142, Start Num: 89

Candidate Starts for Gabriel_32:

(Start: 89 @9792 has 196 MA's), (110, 9840), (127, 9888), (145, 9933), (147, 9939), (162, 9975), (172, 9999), (203, 10110),

Gene: Gamgam_32 Start: 10373, Stop: 10723, Start Num: 89

Candidate Starts for Gamgam_32:

(Start: 89 @10373 has 196 MA's), (110, 10421), (127, 10469), (145, 10514), (147, 10520), (162, 10556), (172, 10580), (203, 10691),

Gene: Gandionco_129 Start: 69661, Stop: 70026, Start Num: 121

Candidate Starts for Gandionco_129:

(94, 69583), (Start: 121 @69661 has 3 MA's), (157, 69772), (183, 69847), (196, 69898),

Gene: Gex_56 Start: 36283, Stop: 36681, Start Num: 83

Candidate Starts for Gex_56:

(Start: 60 @36193 has 5 MA's), (67, 36229), (Start: 83 @36283 has 5 MA's), (145, 36436), (146, 36439), (153, 36466), (189, 36577), (191, 36583), (205, 36670),

Gene: Gezellig_77 Start: 52852, Stop: 53223, Start Num: 89

Candidate Starts for Gezellig_77:

(45, 52669), (Start: 89 @52852 has 196 MA's), (189, 53029), (196, 53053),

Gene: Ghost_32 Start: 10373, Stop: 10723, Start Num: 89

Candidate Starts for Ghost_32:

(Start: 89 @10373 has 196 MA's), (110, 10421), (127, 10469), (145, 10514), (147, 10520), (162, 10556), (172, 10580), (203, 10691),

Gene: Gizmo_34 Start: 10920, Stop: 11270, Start Num: 89

Candidate Starts for Gizmo_34:

(Start: 89 @10920 has 196 MA's), (110, 10968), (127, 11016), (145, 11061), (147, 11067), (162, 11103), (172, 11127), (203, 11238),

Gene: GlutenPhree_33 Start: 10373, Stop: 10723, Start Num: 89

Candidate Starts for GlutenPhree_33:

(Start: 89 @10373 has 196 MA's), (110, 10421), (127, 10469), (145, 10514), (147, 10520), (162, 10556), (172, 10580), (203, 10691),

Gene: GoCrazy_69 Start: 43769, Stop: 44080, Start Num: 117

Candidate Starts for GoCrazy_69:

(Start: 117 @43769 has 21 MA's), (142, 43832), (168, 43910), (178, 43931), (184, 43955), (188, 43973), (197, 44003),

Gene: GodPhather_6 Start: 3283, Stop: 3579, Start Num: 87

Candidate Starts for GodPhather_6:

(Start: 87 @3283 has 27 MA's), (127, 3376), (135, 3391), (189, 3481), (196, 3505), (199, 3517),

Gene: Gorge_95 Start: 53911, Stop: 54192, Start Num: 91

Candidate Starts for Gorge_95:

(16, 53500), (18, 53521), (19, 53542), (22, 53572), (Start: 91 @53911 has 38 MA's), (110, 53956), (Start: 117 @53974 has 21 MA's), (189, 54091),

Gene: Grasshills_36 Start: 11898, Stop: 12248, Start Num: 89

Candidate Starts for Grasshills_36:

(Start: 89 @11898 has 196 MA's), (110, 11946), (127, 11994), (145, 12039), (147, 12045), (162, 12081), (172, 12105), (203, 12216),

Gene: Greely_244 Start: 137695, Stop: 138051, Start Num: 87

Candidate Starts for Greely_244:

(24, 137374), (36, 137473), (46, 137515), (Start: 87 @137695 has 27 MA's), (110, 137746), (136, 137821), (138, 137824), (165, 137854), (172, 137863), (189, 137905), (191, 137911), (194, 137920), (196, 137929),

Gene: Grungle_25 Start: 8489, Stop: 8839, Start Num: 89

Candidate Starts for Grungle_25:

(Start: 89 @8489 has 196 MA's), (110, 8537), (127, 8585), (145, 8630), (147, 8636), (162, 8672), (172, 8696), (203, 8807),

Gene: Guwapp_32 Start: 10330, Stop: 10680, Start Num: 89

Candidate Starts for Guwapp_32:

(Start: 89 @10330 has 196 MA's), (110, 10378), (127, 10426), (145, 10471), (147, 10477), (162, 10513), (172, 10537), (203, 10648),

Gene: Halldule_28 Start: 9159, Stop: 9509, Start Num: 89

Candidate Starts for Halldule_28:

(Start: 89 @9159 has 196 MA's), (110, 9207), (127, 9255), (145, 9300), (147, 9306), (162, 9342), (172, 9366), (203, 9477),

Gene: Halo3_78 Start: 53437, Stop: 53808, Start Num: 89

Candidate Starts for Halo3_78:

(45, 53254), (Start: 89 @53437 has 196 MA's), (189, 53614), (196, 53638),

Gene: Hankly_72 Start: 43963, Stop: 44274, Start Num: 117

Candidate Starts for Hankly_72:

(Start: 117 @43963 has 21 MA's), (142, 44026), (168, 44104), (178, 44125), (184, 44149), (188, 44167), (197, 44197),

Gene: Heisenberger_71 Start: 43731, Stop: 44042, Start Num: 117

Candidate Starts for Heisenberger_71:

(Start: 117 @43731 has 21 MA's), (142, 43794), (168, 43872), (178, 43893), (184, 43917), (188, 43935), (197, 43965),

Gene: HomeFry_78 Start: 53143, Stop: 52757, Start Num: 95

Candidate Starts for HomeFry_78:

(20, 53527), (Start: 95 @53143 has 1 MA's), (141, 53014), (145, 52996), (153, 52966),

Gene: Hortihabitatio_2 Start: 447, Stop: 776, Start Num: 87

Candidate Starts for Hortihabitatio_2:

(57, 342), (72, 414), (Start: 87 @447 has 27 MA's), (116, 513), (180, 654), (188, 678), (189, 681), (193, 693),

Gene: HyRo_31 Start: 11105, Stop: 11455, Start Num: 89

Candidate Starts for HyRo_31:

(Start: 89 @11105 has 196 MA's), (110, 11153), (127, 11201), (145, 11246), (147, 11252), (162, 11288), (172, 11312), (203, 11423),

Gene: I3_34 Start: 11467, Stop: 11817, Start Num: 89

Candidate Starts for I3_34:

(Start: 89 @11467 has 196 MA's), (110, 11515), (127, 11563), (145, 11608), (147, 11614), (172, 11674), (203, 11785),

Gene: Ichabod_11 Start: 6739, Stop: 7011, Start Num: 90

Candidate Starts for Ichabod_11:

(Start: 90 @6739 has 5 MA's), (110, 6778), (Start: 117 @6796 has 21 MA's), (154, 6874), (189, 6913),

Gene: IkeLoa_28 Start: 10216, Stop: 10566, Start Num: 89

Candidate Starts for IkeLoa_28:

(Start: 89 @10216 has 196 MA's), (110, 10264), (127, 10312), (145, 10357), (147, 10363), (162, 10399), (172, 10423), (203, 10534),

Gene: InigoMontoya_33 Start: 10334, Stop: 10684, Start Num: 89

Candidate Starts for InigoMontoya_33:

(Start: 89 @10334 has 196 MA's), (110, 10382), (127, 10430), (145, 10475), (147, 10481), (162, 10517), (172, 10541), (203, 10652),

Gene: InterFolia_39 Start: 13024, Stop: 13374, Start Num: 89

Candidate Starts for InterFolia_39:

(Start: 89 @13024 has 196 MA's), (110, 13072), (127, 13120), (145, 13165), (147, 13171), (162, 13207), (172, 13231), (203, 13342),

Gene: Iota_29 Start: 10453, Stop: 10803, Start Num: 89

Candidate Starts for Iota_29:

(Start: 89 @10453 has 196 MA's), (110, 10501), (127, 10549), (145, 10594), (147, 10600), (162, 10636), (172, 10660), (203, 10771),

Gene: Issimir_32 Start: 10913, Stop: 11263, Start Num: 89

Candidate Starts for Issimir_32:

(Start: 89 @10913 has 196 MA's), (110, 10961), (127, 11009), (145, 11054), (147, 11060), (162, 11096), (172, 11120), (203, 11231),

Gene: Izajani_33 Start: 10918, Stop: 11268, Start Num: 89

Candidate Starts for Izajani_33:

(Start: 89 @10918 has 196 MA's), (110, 10966), (127, 11014), (145, 11059), (147, 11065), (162, 11101), (172, 11125), (203, 11236),

Gene: JEGGS_71 Start: 43810, Stop: 44121, Start Num: 117

Candidate Starts for JEGGS_71:

(Start: 117 @43810 has 21 MA's), (142, 43873), (168, 43951), (178, 43972), (184, 43996), (188, 44014), (197, 44044),

Gene: JPickles_30 Start: 9567, Stop: 9917, Start Num: 89

Candidate Starts for JPickles_30:

(Start: 89 @9567 has 196 MA's), (110, 9615), (127, 9663), (145, 9708), (147, 9714), (162, 9750), (172, 9774), (203, 9885),

Gene: James_100 Start: 55293, Stop: 55574, Start Num: 91
Candidate Starts for James_100:
(16, 54882), (18, 54903), (19, 54924), (22, 54954), (Start: 91 @55293 has 38 MA's), (110, 55338),
(Start: 117 @55356 has 21 MA's), (189, 55473),

Gene: Janiyra_32 Start: 10352, Stop: 10702, Start Num: 89
Candidate Starts for Janiyra_32:
(Start: 89 @10352 has 196 MA's), (110, 10400), (127, 10448), (145, 10493), (147, 10499), (162,
10535), (172, 10559), (203, 10670),

Gene: Jarcob_99 Start: 54892, Stop: 55173, Start Num: 91
Candidate Starts for Jarcob_99:
(16, 54481), (18, 54502), (19, 54523), (22, 54553), (Start: 91 @54892 has 38 MA's), (110, 54937),
(Start: 117 @54955 has 21 MA's), (189, 55072),

Gene: JayJay_35 Start: 10883, Stop: 11233, Start Num: 89
Candidate Starts for JayJay_35:
(Start: 89 @10883 has 196 MA's), (110, 10931), (127, 10979), (145, 11024), (147, 11030), (162,
11066), (172, 11090), (203, 11201),

Gene: Jaygup_32 Start: 10369, Stop: 10719, Start Num: 89
Candidate Starts for Jaygup_32:
(Start: 89 @10369 has 196 MA's), (110, 10417), (127, 10465), (145, 10510), (147, 10516), (162,
10552), (172, 10576), (203, 10687),

Gene: JeNeSaisPas_127 Start: 70257, Stop: 70622, Start Num: 121
Candidate Starts for JeNeSaisPas_127:
(94, 70179), (Start: 121 @70257 has 3 MA's), (157, 70368), (183, 70443), (196, 70494),

Gene: JeanGrey_20 Start: 10459, Stop: 10809, Start Num: 79
Candidate Starts for JeanGrey_20:
(Start: 79 @10459 has 1 MA's),

Gene: Jedediah_32 Start: 9838, Stop: 10188, Start Num: 89
Candidate Starts for Jedediah_32:
(Start: 89 @9838 has 196 MA's), (110, 9886), (127, 9934), (145, 9979), (147, 9985), (162, 10021),
(172, 10045), (203, 10156),

Gene: Jemmno_32 Start: 10373, Stop: 10723, Start Num: 89
Candidate Starts for Jemmno_32:
(Start: 89 @10373 has 196 MA's), (110, 10421), (127, 10469), (145, 10514), (147, 10520), (162,
10556), (172, 10580), (203, 10691),

Gene: Jennelsea_93 Start: 52193, Stop: 52474, Start Num: 91
Candidate Starts for Jennelsea_93:
(16, 51782), (18, 51803), (19, 51824), (22, 51854), (Start: 91 @52193 has 38 MA's), (110, 52238),
(Start: 117 @52256 has 21 MA's), (189, 52373), (199, 52409),

Gene: Jessibeth14_31 Start: 10638, Stop: 10988, Start Num: 89
Candidate Starts for Jessibeth14_31:
(Start: 89 @10638 has 196 MA's), (110, 10686), (127, 10734), (145, 10779), (147, 10785), (162,
10821), (172, 10845), (203, 10956),

Gene: Jezreel_31 Start: 10387, Stop: 10737, Start Num: 89

Candidate Starts for Jezreel_31:

(Start: 89 @10387 has 196 MA's), (110, 10435), (127, 10483), (145, 10528), (147, 10534), (162, 10570), (172, 10594), (203, 10705),

Gene: JigglyPuff_32 Start: 11194, Stop: 11544, Start Num: 89

Candidate Starts for JigglyPuff_32:

(Start: 89 @11194 has 196 MA's), (110, 11242), (127, 11290), (145, 11335), (147, 11341), (162, 11377), (172, 11401), (203, 11512),

Gene: JohnPork_82 Start: 52908, Stop: 53279, Start Num: 89

Candidate Starts for JohnPork_82:

(45, 52725), (Start: 89 @52908 has 196 MA's), (189, 53085), (196, 53109),

Gene: JonJames_139 Start: 79256, Stop: 79624, Start Num: 90

Candidate Starts for JonJames_139:

(Start: 90 @79256 has 5 MA's), (104, 79286), (110, 79301), (112, 79307), (119, 79331), (138, 79382), (188, 79502), (189, 79505), (196, 79529), (209, 79610),

Gene: JulietS_27 Start: 8792, Stop: 9142, Start Num: 89

Candidate Starts for JulietS_27:

(Start: 89 @8792 has 196 MA's), (110, 8840), (127, 8888), (145, 8933), (147, 8939), (162, 8975), (172, 8999), (203, 9110),

Gene: JustHall_31 Start: 10818, Stop: 11168, Start Num: 89

Candidate Starts for JustHall_31:

(Start: 89 @10818 has 196 MA's), (110, 10866), (127, 10914), (145, 10959), (147, 10965), (162, 11001), (172, 11025), (203, 11136),

Gene: KSSJEB_10 Start: 6483, Stop: 6797, Start Num: 93

Candidate Starts for KSSJEB_10:

(Start: 77 @6456 has 1 MA's), (Start: 93 @6483 has 20 MA's), (110, 6522), (115, 6531), (144, 6600), (182, 6675), (199, 6735),

Gene: Kamryn_32 Start: 10691, Stop: 11041, Start Num: 89

Candidate Starts for Kamryn_32:

(Start: 89 @10691 has 196 MA's), (110, 10739), (127, 10787), (145, 10832), (147, 10838), (162, 10874), (172, 10898), (203, 11009),

Gene: Kardesai_72 Start: 44083, Stop: 44394, Start Num: 117

Candidate Starts for Kardesai_72:

(Start: 117 @44083 has 21 MA's), (142, 44146), (168, 44224), (178, 44245), (184, 44269), (188, 44287), (197, 44317),

Gene: Kboogie_32 Start: 9848, Stop: 10198, Start Num: 89

Candidate Starts for Kboogie_32:

(Start: 89 @9848 has 196 MA's), (110, 9896), (127, 9944), (145, 9989), (147, 9995), (162, 10031), (172, 10055), (203, 10166),

Gene: KeaneyLin_68 Start: 43769, Stop: 44080, Start Num: 117

Candidate Starts for KeaneyLin_68:

(Start: 117 @43769 has 21 MA's), (142, 43832), (168, 43910), (178, 43931), (184, 43955), (188, 43973), (197, 44003),

Gene: Kelcole_54 Start: 37921, Stop: 37628, Start Num: 87

Candidate Starts for Kelcole_54:

(Start: 73 @37951 has 2 MA's), (Start: 85 @37924 has 5 MA's), (Start: 87 @37921 has 27 MA's), (Start: 93 @37909 has 20 MA's), (110, 37870), (Start: 111 @37867 has 1 MA's), (123, 37834), (127, 37822), (135, 37813), (189, 37735), (195, 37714), (199, 37699),

Gene: Khaleesi_31 Start: 10665, Stop: 11015, Start Num: 89

Candidate Starts for Khaleesi_31:

(Start: 89 @10665 has 196 MA's), (110, 10713), (127, 10761), (145, 10806), (147, 10812), (162, 10848), (172, 10872), (203, 10983),

Gene: KillerQueen_57 Start: 38171, Stop: 37878, Start Num: 87

Candidate Starts for KillerQueen_57:

(Start: 73 @38201 has 2 MA's), (Start: 85 @38174 has 5 MA's), (Start: 87 @38171 has 27 MA's), (Start: 93 @38159 has 20 MA's), (110, 38120), (Start: 111 @38117 has 1 MA's), (123, 38084), (127, 38072), (135, 38063), (189, 37985), (195, 37964), (199, 37949),

Gene: KimmyK_80 Start: 53299, Stop: 53670, Start Num: 89

Candidate Starts for KimmyK_80:

(45, 53116), (Start: 89 @53299 has 196 MA's), (189, 53476), (196, 53500),

Gene: Koella_89 Start: 50055, Stop: 50336, Start Num: 91

Candidate Starts for Koella_89:

(16, 49644), (18, 49665), (19, 49686), (22, 49716), (Start: 91 @50055 has 38 MA's), (110, 50100), (Start: 117 @50118 has 21 MA's), (189, 50235),

Gene: Koguma_28 Start: 9135, Stop: 9485, Start Num: 89

Candidate Starts for Koguma_28:

(Start: 89 @9135 has 196 MA's), (110, 9183), (127, 9231), (145, 9276), (147, 9282), (162, 9318), (172, 9342), (203, 9453),

Gene: Kubulix_9 Start: 3460, Stop: 3867, Start Num: 66

Candidate Starts for Kubulix_9:

(Start: 66 @3460 has 12 MA's), (80, 3511), (84, 3520), (120, 3607), (140, 3655), (167, 3721), (179, 3739), (186, 3757),

Gene: Kudefre_118 Start: 64805, Stop: 65071, Start Num: 109

Candidate Starts for Kudefre_118:

(65, 64688), (Start: 109 @64805 has 4 MA's), (192, 64979), (204, 65060),

Gene: Kureo_130 Start: 69857, Stop: 70222, Start Num: 121

Candidate Starts for Kureo_130:

(94, 69779), (Start: 121 @69857 has 3 MA's), (157, 69968), (183, 70043), (196, 70094),

Gene: LRRHood_29 Start: 11058, Stop: 11408, Start Num: 89

Candidate Starts for LRRHood_29:

(Start: 89 @11058 has 196 MA's), (110, 11106), (127, 11154), (145, 11199), (147, 11205), (162, 11241), (172, 11265), (203, 11376),

Gene: Labradorite_31 Start: 10369, Stop: 10719, Start Num: 89

Candidate Starts for Labradorite_31:

(Start: 89 @10369 has 196 MA's), (110, 10417), (127, 10465), (145, 10510), (147, 10516), (162, 10552), (172, 10576), (203, 10687),

Gene: Lambo_93 Start: 64770, Stop: 65072, Start Num: 87

Candidate Starts for Lambo_93:

(Start: 73 @64743 has 2 MA's), (78, 64752), (Start: 81 @64761 has 1 MA's), (Start: 87 @64770 has 27 MA's), (110, 64818), (189, 64971), (196, 64995),

Gene: LastJedi_87 Start: 51112, Stop: 51393, Start Num: 91

Candidate Starts for LastJedi_87:

(16, 50701), (18, 50722), (19, 50743), (22, 50773), (Start: 91 @51112 has 38 MA's), (110, 51157), (Start: 117 @51175 has 21 MA's), (189, 51292),

Gene: Latch_32 Start: 10373, Stop: 10723, Start Num: 89

Candidate Starts for Latch_32:

(Start: 89 @10373 has 196 MA's), (110, 10421), (127, 10469), (145, 10514), (147, 10520), (162, 10556), (172, 10580), (203, 10691),

Gene: Latretium_99 Start: 54158, Stop: 54439, Start Num: 91

Candidate Starts for Latretium_99:

(16, 53747), (18, 53768), (19, 53789), (22, 53819), (Start: 91 @54158 has 38 MA's), (110, 54203), (Start: 117 @54221 has 21 MA's), (189, 54338),

Gene: Leaf_50 Start: 22009, Stop: 22341, Start Num: 85

Candidate Starts for Leaf_50:

(Start: 85 @22009 has 5 MA's), (106, 22054), (110, 22063), (120, 22093), (129, 22114), (133, 22123), (151, 22168), (203, 22306),

Gene: Lee7_31 Start: 10915, Stop: 11265, Start Num: 89

Candidate Starts for Lee7_31:

(Start: 89 @10915 has 196 MA's), (110, 10963), (127, 11011), (145, 11056), (147, 11062), (162, 11098), (172, 11122), (203, 11233),

Gene: Lethe_31 Start: 10609, Stop: 10959, Start Num: 89

Candidate Starts for Lethe_31:

(Start: 89 @10609 has 196 MA's), (110, 10657), (127, 10705), (145, 10750), (147, 10756), (162, 10792), (172, 10816), (203, 10927),

Gene: LifeSavor_33 Start: 10369, Stop: 10719, Start Num: 89

Candidate Starts for LifeSavor_33:

(Start: 89 @10369 has 196 MA's), (110, 10417), (127, 10465), (145, 10510), (147, 10516), (162, 10552), (172, 10576), (203, 10687),

Gene: LilMoolah_99 Start: 54092, Stop: 54373, Start Num: 91

Candidate Starts for LilMoolah_99:

(16, 53681), (18, 53702), (19, 53723), (22, 53753), (Start: 91 @54092 has 38 MA's), (110, 54137), (Start: 117 @54155 has 21 MA's), (189, 54272),

Gene: Limpid_66 Start: 53880, Stop: 54281, Start Num: 97

Candidate Starts for Limpid_66:

(Start: 97 @53880 has 7 MA's), (122, 53946), (139, 53991), (149, 54018), (151, 54024), (160, 54060), (171, 54087), (174, 54093), (185, 54129), (198, 54180), (200, 54186),

Gene: Littleton_32 Start: 10373, Stop: 10723, Start Num: 89

Candidate Starts for Littleton_32:

(Start: 89 @10373 has 196 MA's), (110, 10421), (127, 10469), (145, 10514), (147, 10520), (162, 10556), (172, 10580), (203, 10691),

Gene: Lizziana_97 Start: 54360, Stop: 54641, Start Num: 91

Candidate Starts for Lizziana_97:

(16, 53949), (18, 53970), (19, 53991), (22, 54021), (Start: 91 @54360 has 38 MA's), (110, 54405), (Start: 117 @54423 has 21 MA's), (189, 54540),

Gene: Loanshark_32 Start: 10918, Stop: 11268, Start Num: 89

Candidate Starts for Loanshark_32:

(Start: 89 @10918 has 196 MA's), (110, 10966), (127, 11014), (145, 11059), (147, 11065), (162, 11101), (172, 11125), (203, 11236),

Gene: LolaVinca_35 Start: 12130, Stop: 12480, Start Num: 89

Candidate Starts for LolaVinca_35:

(Start: 89 @12130 has 196 MA's), (110, 12178), (127, 12226), (145, 12271), (147, 12277), (162, 12313), (172, 12337), (203, 12448),

Gene: LookingGlass_35 Start: 11689, Stop: 12039, Start Num: 89

Candidate Starts for LookingGlass_35:

(Start: 89 @11689 has 196 MA's), (110, 11737), (127, 11785), (145, 11830), (147, 11836), (162, 11872), (172, 11896), (203, 12007),

Gene: LordFarquaad_57 Start: 39016, Stop: 39396, Start Num: 75

Candidate Starts for LordFarquaad_57:

(Start: 75 @39016 has 3 MA's), (102, 39070), (147, 39199), (166, 39235), (180, 39262), (182, 39265), (191, 39295), (196, 39313), (199, 39325), (205, 39382),

Gene: LordLeafolot_38 Start: 12485, Stop: 12835, Start Num: 89

Candidate Starts for LordLeafolot_38:

(Start: 89 @12485 has 196 MA's), (110, 12533), (127, 12581), (145, 12626), (147, 12632), (172, 12692), (203, 12803),

Gene: Lukilu_25 Start: 9509, Stop: 9859, Start Num: 89

Candidate Starts for Lukilu_25:

(Start: 89 @9509 has 196 MA's), (110, 9557), (127, 9605), (145, 9650), (147, 9656), (162, 9692), (172, 9716), (203, 9827),

Gene: Lunareta_31 Start: 10649, Stop: 10999, Start Num: 89

Candidate Starts for Lunareta_31:

(Start: 89 @10649 has 196 MA's), (110, 10697), (127, 10745), (145, 10790), (147, 10796), (162, 10832), (172, 10856), (203, 10967),

Gene: Maby2021_33 Start: 10918, Stop: 11268, Start Num: 89

Candidate Starts for Maby2021_33:

(Start: 89 @10918 has 196 MA's), (110, 10966), (127, 11014), (145, 11059), (147, 11065), (162, 11101), (172, 11125), (203, 11236),

Gene: Magsby_55 Start: 36284, Stop: 36682, Start Num: 83

Candidate Starts for Magsby_55:

(Start: 60 @36194 has 5 MA's), (67, 36230), (Start: 83 @36284 has 5 MA's), (145, 36437), (146, 36440), (153, 36467), (189, 36578), (191, 36584), (205, 36671),

Gene: Manatee_11 Start: 6673, Stop: 6987, Start Num: 93

Candidate Starts for Manatee_11:

(Start: 93 @6673 has 20 MA's), (110, 6712), (115, 6721), (144, 6790), (182, 6865), (199, 6925),

Gene: Mangeria_35 Start: 11441, Stop: 11791, Start Num: 89

Candidate Starts for Mangeria_35:

(Start: 89 @11441 has 196 MA's), (110, 11489), (127, 11537), (145, 11582), (147, 11588), (162, 11624), (172, 11648), (203, 11759),

Gene: Maravista_93 Start: 55020, Stop: 55301, Start Num: 91

Candidate Starts for Maravista_93:

(16, 54609), (18, 54630), (19, 54651), (22, 54681), (Start: 91 @55020 has 38 MA's), (110, 55065), (Start: 117 @55083 has 21 MA's), (189, 55200),

Gene: Marcie_61 Start: 38811, Stop: 38491, Start Num: 87

Candidate Starts for Marcie_61:

(Start: 73 @38841 has 2 MA's), (Start: 85 @38814 has 5 MA's), (Start: 87 @38811 has 27 MA's), (110, 38760), (127, 38712), (138, 38682), (173, 38637), (189, 38598), (195, 38577), (199, 38562),

Gene: Marianna39_130 Start: 70266, Stop: 70631, Start Num: 121

Candidate Starts for Marianna39_130:

(94, 70188), (Start: 121 @70266 has 3 MA's), (157, 70377), (183, 70452), (196, 70503),

Gene: Martik_95 Start: 54823, Stop: 55104, Start Num: 91

Candidate Starts for Martik_95:

(16, 54412), (18, 54433), (19, 54454), (22, 54484), (Start: 91 @54823 has 38 MA's), (110, 54868), (Start: 117 @54886 has 21 MA's), (189, 55003),

Gene: Mask_58 Start: 48446, Stop: 48838, Start Num: 89

Candidate Starts for Mask_58:

(74, 48416), (Start: 89 @48446 has 196 MA's), (110, 48494), (145, 48593), (146, 48596), (153, 48623), (189, 48734), (191, 48740),

Gene: Matsumoto_31 Start: 10334, Stop: 10684, Start Num: 89

Candidate Starts for Matsumoto_31:

(Start: 89 @10334 has 196 MA's), (110, 10382), (127, 10430), (145, 10475), (147, 10481), (162, 10517), (172, 10541), (203, 10652),

Gene: Mattes_97 Start: 54029, Stop: 54310, Start Num: 91

Candidate Starts for Mattes_97:

(16, 53618), (18, 53639), (19, 53660), (22, 53690), (Start: 91 @54029 has 38 MA's), (110, 54074), (Start: 117 @54092 has 21 MA's), (189, 54209), (199, 54245),

Gene: Maturis_32 Start: 10688, Stop: 11038, Start Num: 89

Candidate Starts for Maturis_32:

(Start: 89 @10688 has 196 MA's), (110, 10736), (127, 10784), (145, 10829), (147, 10835), (162, 10871), (172, 10895), (203, 11006),

Gene: McGee_31 Start: 9557, Stop: 9907, Start Num: 89

Candidate Starts for McGee_31:

(Start: 89 @9557 has 196 MA's), (110, 9605), (127, 9653), (145, 9698), (147, 9704), (162, 9740), (172, 9764), (203, 9875),

Gene: McGuire_11 Start: 6718, Stop: 7032, Start Num: 93

Candidate Starts for McGuire_11:

(Start: 93 @6718 has 20 MA's), (110, 6757), (115, 6766), (144, 6835), (182, 6910), (199, 6970),

Gene: McWolfish_31 Start: 10665, Stop: 11015, Start Num: 89

Candidate Starts for McWolfish_31:

(Start: 89 @10665 has 196 MA's), (110, 10713), (127, 10761), (145, 10806), (147, 10812), (162, 10848), (172, 10872), (203, 10983),

Gene: Megamind_32 Start: 10903, Stop: 11253, Start Num: 89

Candidate Starts for Megamind_32:

(Start: 89 @10903 has 196 MA's), (110, 10951), (127, 10999), (145, 11044), (147, 11050), (162, 11086), (172, 11110), (203, 11221),

Gene: MellowYellow_8 Start: 3065, Stop: 3472, Start Num: 66

Candidate Starts for MellowYellow_8:

(Start: 66 @3065 has 12 MA's), (80, 3116), (84, 3125), (120, 3212), (140, 3260), (167, 3326), (179, 3344), (186, 3362),

Gene: Melpomini_31 Start: 9775, Stop: 10125, Start Num: 89

Candidate Starts for Melpomini_31:

(Start: 89 @9775 has 196 MA's), (110, 9823), (127, 9871), (145, 9916), (147, 9922), (162, 9958), (172, 9982), (203, 10093),

Gene: MikeLiesIn_32 Start: 10918, Stop: 11268, Start Num: 89

Candidate Starts for MikeLiesIn_32:

(Start: 89 @10918 has 196 MA's), (110, 10966), (127, 11014), (145, 11059), (147, 11065), (162, 11101), (172, 11125), (203, 11236),

Gene: Mikro_30 Start: 11404, Stop: 11754, Start Num: 89

Candidate Starts for Mikro_30:

(Start: 89 @11404 has 196 MA's), (110, 11452), (127, 11500), (145, 11545), (147, 11551), (162, 11587), (172, 11611), (203, 11722),

Gene: Minnie_91 Start: 54441, Stop: 54722, Start Num: 91

Candidate Starts for Minnie_91:

(16, 54030), (18, 54051), (19, 54072), (22, 54102), (Start: 91 @54441 has 38 MA's), (110, 54486), (Start: 117 @54504 has 21 MA's), (189, 54621),

Gene: MoMoMixon_33 Start: 11232, Stop: 11582, Start Num: 89

Candidate Starts for MoMoMixon_33:

(Start: 89 @11232 has 196 MA's), (110, 11280), (127, 11328), (145, 11373), (147, 11379), (162, 11415), (172, 11439), (203, 11550),

Gene: Momo_31 Start: 10373, Stop: 10723, Start Num: 89

Candidate Starts for Momo_31:

(Start: 89 @10373 has 196 MA's), (110, 10421), (127, 10469), (145, 10514), (147, 10520), (162, 10556), (172, 10580), (203, 10691),

Gene: Montpel_31 Start: 10649, Stop: 10999, Start Num: 89

Candidate Starts for Montpel_31:

(Start: 89 @10649 has 196 MA's), (110, 10697), (127, 10745), (145, 10790), (147, 10796), (162, 10832), (172, 10856), (203, 10967),

Gene: Mooshroom_73 Start: 44083, Stop: 44394, Start Num: 117

Candidate Starts for Mooshroom_73:

(Start: 117 @44083 has 21 MA's), (142, 44146), (168, 44224), (178, 44245), (184, 44269), (188, 44287), (197, 44317),

Gene: Morizzled23_31 Start: 9769, Stop: 10119, Start Num: 89

Candidate Starts for Morizzled23_31:

(Start: 89 @9769 has 196 MA's), (110, 9817), (127, 9865), (145, 9910), (147, 9916), (162, 9952), (172, 9976), (203, 10087),

Gene: MortyNRick_62 Start: 41583, Stop: 41870, Start Num: 91

Candidate Starts for MortyNRick_62:

(27, 41283), (34, 41334), (35, 41346), (40, 41370), (55, 41457), (Start: 82 @41571 has 1 MA's), (Start: 91 @41583 has 38 MA's), (110, 41628), (148, 41700), (193, 41778), (199, 41802), (205, 41859),

Gene: Mossy_1 Start: 220, Stop: 549, Start Num: 87

Candidate Starts for Mossy_1:

(Start: 87 @220 has 27 MA's), (110, 268), (141, 352), (180, 427), (189, 454), (193, 466),

Gene: Mudcat_68 Start: 45168, Stop: 45479, Start Num: 117

Candidate Starts for Mudcat_68:

(Start: 117 @45168 has 21 MA's), (142, 45231), (168, 45309), (178, 45330), (184, 45354), (188, 45372), (197, 45402),

Gene: Mutzi_78 Start: 53560, Stop: 53943, Start Num: 89

Candidate Starts for Mutzi_78:

(Start: 89 @53560 has 196 MA's), (131, 53656), (193, 53764), (206, 53842),

Gene: Myrna_235 Start: 137260, Stop: 137607, Start Num: 87

Candidate Starts for Myrna_235:

(14, 136774), (21, 136918), (29, 136978), (49, 137095), (Start: 87 @137260 has 27 MA's), (110, 137311), (189, 137461), (191, 137467), (194, 137476), (196, 137485), (215, 137599),

Gene: Naija_32 Start: 10373, Stop: 10723, Start Num: 89

Candidate Starts for Naija_32:

(Start: 89 @10373 has 196 MA's), (110, 10421), (127, 10469), (145, 10514), (147, 10520), (162, 10556), (172, 10580), (203, 10691),

Gene: Naira_11 Start: 6952, Stop: 7266, Start Num: 93

Candidate Starts for Naira_11:

(Start: 93 @6952 has 20 MA's), (110, 6991), (144, 7069), (166, 7114),

Gene: Napoleon13_31 Start: 9788, Stop: 10138, Start Num: 89

Candidate Starts for Napoleon13_31:

(Start: 89 @9788 has 196 MA's), (110, 9836), (127, 9884), (145, 9929), (147, 9935), (162, 9971), (172, 9995), (203, 10106),

Gene: NapoleonB_73 Start: 44325, Stop: 44636, Start Num: 117

Candidate Starts for NapoleonB_73:

(Start: 117 @44325 has 21 MA's), (142, 44388), (168, 44466), (178, 44487), (184, 44511), (188, 44529), (197, 44559),

Gene: Nappy_33 Start: 11083, Stop: 11433, Start Num: 89

Candidate Starts for Nappy_33:

(Start: 89 @11083 has 196 MA's), (110, 11131), (127, 11179), (145, 11224), (147, 11230), (162, 11266), (172, 11290), (203, 11401),

Gene: Nason_72 Start: 44474, Stop: 44782, Start Num: 117

Candidate Starts for Nason_72:

(Start: 117 @44474 has 21 MA's), (155, 44576), (168, 44612), (188, 44675), (197, 44705),

Gene: Naval22_34 Start: 10958, Stop: 11308, Start Num: 89

Candidate Starts for Naval22_34:

(Start: 89 @10958 has 196 MA's), (110, 11006), (127, 11054), (145, 11099), (147, 11105), (162, 11141), (172, 11165), (203, 11276),

Gene: NedWong_33 Start: 10918, Stop: 11268, Start Num: 89

Candidate Starts for NedWong_33:

(Start: 89 @10918 has 196 MA's), (110, 10966), (127, 11014), (145, 11059), (147, 11065), (162, 11101), (172, 11125), (203, 11236),

Gene: Ngannou_30 Start: 9549, Stop: 9899, Start Num: 89

Candidate Starts for Ngannou_30:

(Start: 89 @9549 has 196 MA's), (110, 9597), (127, 9645), (145, 9690), (147, 9696), (162, 9732), (172, 9756), (203, 9867),

Gene: Nidhogg_33 Start: 10982, Stop: 11332, Start Num: 89

Candidate Starts for Nidhogg_33:

(Start: 89 @10982 has 196 MA's), (110, 11030), (127, 11078), (145, 11123), (147, 11129), (162, 11165), (172, 11189), (203, 11300),

Gene: Nikan_9 Start: 4093, Stop: 4401, Start Num: 87

Candidate Starts for Nikan_9:

(Start: 87 @4093 has 27 MA's), (189, 4297), (199, 4333),

Gene: Nina_52 Start: 37854, Stop: 37525, Start Num: 93

Candidate Starts for Nina_52:

(Start: 93 @37854 has 20 MA's), (110, 37815), (145, 37722), (180, 37653),

Gene: Nivrat_96 Start: 53965, Stop: 54246, Start Num: 91

Candidate Starts for Nivrat_96:

(16, 53554), (18, 53575), (19, 53596), (22, 53626), (Start: 91 @53965 has 38 MA's), (110, 54010), (Start: 117 @54028 has 21 MA's), (189, 54145),

Gene: NoodleTree_31 Start: 10680, Stop: 11030, Start Num: 89

Candidate Starts for NoodleTree_31:

(Start: 89 @10680 has 196 MA's), (110, 10728), (127, 10776), (145, 10821), (147, 10827), (162, 10863), (172, 10887), (203, 10998),

Gene: Norm_32 Start: 10918, Stop: 11268, Start Num: 89

Candidate Starts for Norm_32:

(Start: 89 @10918 has 196 MA's), (110, 10966), (127, 11014), (145, 11059), (147, 11065), (162, 11101), (172, 11125), (203, 11236),

Gene: NormanBulbieJr_94 Start: 54069, Stop: 54350, Start Num: 91

Candidate Starts for NormanBulbieJr_94:

(16, 53658), (18, 53679), (19, 53700), (22, 53730), (Start: 91 @54069 has 38 MA's), (110, 54114), (Start: 117 @54132 has 21 MA's), (189, 54249),

Gene: NuevoMundo_35 Start: 11972, Stop: 12322, Start Num: 89

Candidate Starts for NuevoMundo_35:

(Start: 89 @11972 has 196 MA's), (110, 12020), (127, 12068), (145, 12113), (147, 12119), (162, 12155), (172, 12179), (203, 12290),

Gene: NyleyClemson_7 Start: 3007, Stop: 3414, Start Num: 66

Candidate Starts for NyleyClemson_7:

(Start: 66 @3007 has 12 MA's), (80, 3058), (84, 3067), (120, 3154), (140, 3202), (167, 3268), (179, 3286), (186, 3304),

Gene: Octobien14_114 Start: 63585, Stop: 63860, Start Num: 109

Candidate Starts for Octobien14_114:

(65, 63468), (Start: 109 @63585 has 4 MA's), (133, 63651), (204, 63849),

Gene: Odyssey395_10 Start: 3459, Stop: 3866, Start Num: 66

Candidate Starts for Odyssey395_10:

(Start: 66 @3459 has 12 MA's), (80, 3510), (84, 3519), (120, 3606), (140, 3654), (167, 3720), (179, 3738), (186, 3756),

Gene: Ollypop_11 Start: 4172, Stop: 4435, Start Num: 87

Candidate Starts for Ollypop_11:

(Start: 87 @4172 has 27 MA's), (Start: 117 @4235 has 21 MA's), (125, 4256), (173, 4292), (189, 4331),

Gene: Ollypop_7 Start: 3116, Stop: 3523, Start Num: 66

Candidate Starts for Ollypop_7:

(52, 3041), (62, 3092), (Start: 66 @3116 has 12 MA's), (84, 3176), (101, 3206), (140, 3311), (179, 3395), (186, 3413),

Gene: OlympiaSaint_100 Start: 54235, Stop: 54516, Start Num: 91

Candidate Starts for OlympiaSaint_100:

(16, 53824), (18, 53845), (19, 53866), (22, 53896), (Start: 91 @54235 has 38 MA's), (110, 54280), (Start: 117 @54298 has 21 MA's), (189, 54415),

Gene: OneinaGillian_56 Start: 37823, Stop: 37530, Start Num: 87

Candidate Starts for OneinaGillian_56:

(Start: 73 @37853 has 2 MA's), (Start: 85 @37826 has 5 MA's), (Start: 87 @37823 has 27 MA's), (Start: 93 @37811 has 20 MA's), (110, 37772), (Start: 111 @37769 has 1 MA's), (123, 37736), (127, 37724), (135, 37715), (189, 37637), (195, 37616), (199, 37601),

Gene: OrediggerDelux_31 Start: 10918, Stop: 11268, Start Num: 89

Candidate Starts for OrediggerDelux_31:

(Start: 89 @10918 has 196 MA's), (110, 10966), (127, 11014), (145, 11059), (147, 11065), (162, 11101), (172, 11125), (203, 11236),

Gene: Paella_133 Start: 71406, Stop: 71771, Start Num: 121

Candidate Starts for Paella_133:

(94, 71328), (Start: 121 @71406 has 3 MA's), (157, 71517), (183, 71592), (196, 71643),

Gene: ParkTD_31 Start: 10918, Stop: 11268, Start Num: 89

Candidate Starts for ParkTD_31:

(Start: 89 @10918 has 196 MA's), (110, 10966), (127, 11014), (145, 11059), (147, 11065), (162, 11101), (172, 11125), (203, 11236),

Gene: Parmesanjohn_55 Start: 36197, Stop: 36685, Start Num: 60

Candidate Starts for Parmesanjohn_55:

(Start: 60 @36197 has 5 MA's), (67, 36233), (Start: 83 @36287 has 5 MA's), (145, 36440), (146, 36443), (153, 36470), (189, 36581), (191, 36587), (205, 36674),

Gene: ParvusTarda_93 Start: 64024, Stop: 64359, Start Num: 73

Candidate Starts for ParvusTarda_93:

(Start: 73 @64024 has 2 MA's), (78, 64033), (Start: 81 @64042 has 1 MA's), (Start: 87 @64051 has 27 MA's), (110, 64099), (189, 64252), (196, 64276), (207, 64345),

Gene: Patter_32 Start: 10390, Stop: 10740, Start Num: 89

Candidate Starts for Patter_32:

(Start: 89 @10390 has 196 MA's), (110, 10438), (127, 10486), (145, 10531), (147, 10537), (162, 10573), (172, 10597), (203, 10708),

Gene: PauloDiaboli_215 Start: 113653, Stop: 113336, Start Num: 96

Candidate Starts for PauloDiaboli_215:

(Start: 96 @113653 has 7 MA's), (141, 113536), (156, 113497), (189, 113458), (202, 113401), (213, 113341),

Gene: Peas_65 Start: 41993, Stop: 42271, Start Num: 87

Candidate Starts for Peas_65:

(12, 41477), (37, 41768), (61, 41897), (Start: 87 @41993 has 27 MA's), (188, 42167), (189, 42170), (199, 42206), (204, 42260),

Gene: Pepe25_55 Start: 37387, Stop: 37064, Start Num: 87

Candidate Starts for Pepe25_55:

(Start: 73 @37417 has 2 MA's), (Start: 85 @37390 has 5 MA's), (Start: 87 @37387 has 27 MA's), (Start: 93 @37375 has 20 MA's), (104, 37351), (110, 37336), (123, 37300), (127, 37288), (138, 37258), (173, 37213), (189, 37174),

Gene: Perkunas_2 Start: 448, Stop: 780, Start Num: 87

Candidate Starts for Perkunas_2:

(Start: 87 @448 has 27 MA's), (116, 514), (189, 682), (196, 706),

Gene: Phabba_246 Start: 137077, Stop: 137433, Start Num: 87

Candidate Starts for Phabba_246:

(24, 136756), (46, 136897), (Start: 87 @137077 has 27 MA's), (110, 137128), (136, 137203), (165, 137236), (172, 137245), (189, 137287), (191, 137293), (194, 137302), (196, 137311),

Gene: PharkleMinkus_37 Start: 12486, Stop: 12836, Start Num: 89

Candidate Starts for PharkleMinkus_37:

(Start: 89 @12486 has 196 MA's), (110, 12534), (127, 12582), (145, 12627), (147, 12633), (172, 12693), (203, 12804),

Gene: Philus_98 Start: 54977, Stop: 55258, Start Num: 91
Candidate Starts for Philus_98:
(16, 54566), (18, 54587), (19, 54608), (22, 54638), (Start: 91 @54977 has 38 MA's), (110, 55022),
(Start: 117 @55040 has 21 MA's), (189, 55157),

Gene: Phlegm_34 Start: 10373, Stop: 10723, Start Num: 89
Candidate Starts for Phlegm_34:
(Start: 89 @10373 has 196 MA's), (110, 10421), (127, 10469), (145, 10514), (147, 10520), (162,
10556), (172, 10580), (203, 10691),

Gene: Phlop_78 Start: 52902, Stop: 53273, Start Num: 89
Candidate Starts for Phlop_78:
(45, 52719), (Start: 89 @52902 has 196 MA's), (189, 53079), (196, 53103),

Gene: Phloss_53 Start: 35604, Stop: 36092, Start Num: 60
Candidate Starts for Phloss_53:
(Start: 60 @35604 has 5 MA's), (67, 35640), (Start: 83 @35694 has 5 MA's), (145, 35847), (146,
35850), (153, 35877), (189, 35988), (191, 35994), (205, 36081),

Gene: Phox_31 Start: 11082, Stop: 11432, Start Num: 89
Candidate Starts for Phox_31:
(Start: 89 @11082 has 196 MA's), (110, 11130), (127, 11178), (145, 11223), (147, 11229), (162,
11265), (172, 11289), (203, 11400),

Gene: Phusco_32 Start: 10369, Stop: 10719, Start Num: 89
Candidate Starts for Phusco_32:
(Start: 89 @10369 has 196 MA's), (110, 10417), (127, 10465), (145, 10510), (147, 10516), (162,
10552), (172, 10576), (203, 10687),

Gene: PhuzzTulsa_6 Start: 3249, Stop: 3656, Start Num: 66
Candidate Starts for PhuzzTulsa_6:
(Start: 66 @3249 has 12 MA's), (80, 3300), (84, 3309), (120, 3396), (140, 3444), (167, 3510), (179,
3528), (186, 3546),

Gene: Pier_34 Start: 11076, Stop: 11426, Start Num: 89
Candidate Starts for Pier_34:
(Start: 89 @11076 has 196 MA's), (110, 11124), (127, 11172), (145, 11217), (147, 11223), (162,
11259), (172, 11283), (203, 11394),

Gene: PinkPlastic_9 Start: 6480, Stop: 6794, Start Num: 93
Candidate Starts for PinkPlastic_9:
(Start: 93 @6480 has 20 MA's), (110, 6519), (115, 6528), (144, 6597), (182, 6672), (199, 6732),

Gene: Pio_35 Start: 11767, Stop: 12117, Start Num: 89
Candidate Starts for Pio_35:
(Start: 89 @11767 has 196 MA's), (110, 11815), (127, 11863), (145, 11908), (147, 11914), (162,
11950), (172, 11974), (203, 12085),

Gene: Pipp_48 Start: 34437, Stop: 34712, Start Num: 87
Candidate Starts for Pipp_48:
(Start: 87 @34437 has 27 MA's), (189, 34608), (196, 34632),

Gene: Pippy_94 Start: 52340, Stop: 52621, Start Num: 91

Candidate Starts for Pippy_94:

(16, 51929), (18, 51950), (19, 51971), (22, 52001), (Start: 91 @52340 has 38 MA's), (110, 52385), (Start: 117 @52403 has 21 MA's), (189, 52520),

Gene: Pipsqueaks_56 Start: 36265, Stop: 36663, Start Num: 83

Candidate Starts for Pipsqueaks_56:

(Start: 60 @36175 has 5 MA's), (67, 36211), (Start: 83 @36265 has 5 MA's), (145, 36418), (146, 36421), (153, 36448), (189, 36559), (191, 36565), (205, 36652),

Gene: Pivoine_32 Start: 10373, Stop: 10723, Start Num: 89

Candidate Starts for Pivoine_32:

(Start: 89 @10373 has 196 MA's), (110, 10421), (127, 10469), (145, 10514), (147, 10520), (162, 10556), (172, 10580), (203, 10691),

Gene: Pleione_34 Start: 10918, Stop: 11268, Start Num: 89

Candidate Starts for Pleione_34:

(Start: 89 @10918 has 196 MA's), (110, 10966), (127, 11014), (145, 11059), (147, 11065), (162, 11101), (172, 11125), (203, 11236),

Gene: Pointis_8 Start: 3460, Stop: 3867, Start Num: 66

Candidate Starts for Pointis_8:

(Start: 66 @3460 has 12 MA's), (80, 3511), (84, 3520), (120, 3607), (140, 3655), (167, 3721), (179, 3739), (186, 3757),

Gene: Popstraw_8 Start: 3443, Stop: 3850, Start Num: 66

Candidate Starts for Popstraw_8:

(Start: 66 @3443 has 12 MA's), (80, 3494), (84, 3503), (120, 3590), (140, 3638), (167, 3704), (179, 3722), (186, 3740),

Gene: Portcullis_81 Start: 52908, Stop: 53279, Start Num: 89

Candidate Starts for Portcullis_81:

(45, 52725), (Start: 89 @52908 has 196 MA's), (189, 53085), (196, 53109),

Gene: Primadonna_27 Start: 10022, Stop: 10372, Start Num: 89

Candidate Starts for Primadonna_27:

(Start: 89 @10022 has 196 MA's), (110, 10070), (127, 10118), (145, 10163), (147, 10169), (172, 10229), (203, 10340),

Gene: Priscilla_97 Start: 54167, Stop: 54448, Start Num: 91

Candidate Starts for Priscilla_97:

(16, 53756), (18, 53777), (19, 53798), (22, 53828), (Start: 91 @54167 has 38 MA's), (110, 54212), (Start: 117 @54230 has 21 MA's), (189, 54347),

Gene: PullumCavea_79 Start: 53079, Stop: 53450, Start Num: 89

Candidate Starts for PullumCavea_79:

(45, 52896), (Start: 89 @53079 has 196 MA's), (189, 53256), (196, 53280),

Gene: Pumpernickel_196 Start: 112347, Stop: 112042, Start Num: 96

Candidate Starts for Pumpernickel_196:

(Start: 96 @112347 has 7 MA's), (98, 112341), (126, 112272), (190, 112170), (211, 112059),

Gene: PurduePete_31 Start: 10629, Stop: 10979, Start Num: 89

Candidate Starts for PurduePete_31:

(Start: 89 @10629 has 196 MA's), (110, 10677), (127, 10725), (145, 10770), (147, 10776), (162, 10812), (172, 10836), (203, 10947),

Gene: Pureglobe5_10 Start: 3473, Stop: 3880, Start Num: 66

Candidate Starts for Pureglobe5_10:

(Start: 66 @3473 has 12 MA's), (80, 3524), (84, 3533), (120, 3620), (140, 3668), (167, 3734), (179, 3752), (186, 3770),

Gene: QBert_30 Start: 11082, Stop: 11432, Start Num: 89

Candidate Starts for QBert_30:

(Start: 89 @11082 has 196 MA's), (110, 11130), (127, 11178), (145, 11223), (147, 11229), (162, 11265), (172, 11289), (203, 11400),

Gene: Quasimodo_32 Start: 11333, Stop: 11683, Start Num: 89

Candidate Starts for Quasimodo_32:

(Start: 89 @11333 has 196 MA's), (110, 11381), (127, 11429), (145, 11474), (147, 11480), (162, 11516), (172, 11540), (203, 11651),

Gene: Qui_133 Start: 71406, Stop: 71771, Start Num: 121

Candidate Starts for Qui_133:

(94, 71328), (Start: 121 @71406 has 3 MA's), (157, 71517), (183, 71592), (196, 71643),

Gene: RIPWilbur_6 Start: 2867, Stop: 3274, Start Num: 66

Candidate Starts for RIPWilbur_6:

(Start: 66 @2867 has 12 MA's), (80, 2918), (84, 2927), (120, 3014), (140, 3062), (167, 3128), (186, 3164),

Gene: Rahel_32 Start: 10369, Stop: 10719, Start Num: 89

Candidate Starts for Rahel_32:

(Start: 89 @10369 has 196 MA's), (110, 10417), (127, 10465), (145, 10510), (147, 10516), (162, 10552), (172, 10576), (203, 10687),

Gene: Rajelicia_10 Start: 6620, Stop: 6934, Start Num: 93

Candidate Starts for Rajelicia_10:

(Start: 93 @6620 has 20 MA's), (110, 6659), (115, 6668), (144, 6737), (182, 6812), (199, 6872),

Gene: Ranunculus_6 Start: 3041, Stop: 3424, Start Num: 66

Candidate Starts for Ranunculus_6:

(Start: 66 @3041 has 12 MA's), (140, 3236), (170, 3305), (179, 3320), (185, 3335), (186, 3338),

Gene: RazzB_7 Start: 2835, Stop: 3242, Start Num: 66

Candidate Starts for RazzB_7:

(Start: 66 @2835 has 12 MA's), (80, 2886), (84, 2895), (120, 2982), (140, 3030), (167, 3096), (179, 3114), (186, 3132),

Gene: RedBaron_57 Start: 37907, Stop: 37578, Start Num: 93

Candidate Starts for RedBaron_57:

(Start: 93 @37907 has 20 MA's), (110, 37868), (145, 37775), (180, 37706),

Gene: Ren19_8 Start: 4093, Stop: 4401, Start Num: 87

Candidate Starts for Ren19_8:

(Start: 87 @4093 has 27 MA's), (189, 4297), (199, 4333),

Gene: Rizal_30 Start: 9835, Stop: 10185, Start Num: 89

Candidate Starts for Rizal_30:

(Start: 89 @9835 has 196 MA's), (110, 9883), (127, 9931), (145, 9976), (147, 9982), (162, 10018), (172, 10042), (203, 10153),

Gene: Rizwana_7 Start: 3422, Stop: 3844, Start Num: 69

Candidate Starts for Rizwana_7:

(54, 3356), (Start: 69 @3422 has 4 MA's), (Start: 77 @3458 has 1 MA's), (99, 3500), (120, 3560), (185, 3707), (186, 3710),

Gene: RoMag_27 Start: 10167, Stop: 10517, Start Num: 89

Candidate Starts for RoMag_27:

(Start: 89 @10167 has 196 MA's), (110, 10215), (127, 10263), (145, 10308), (147, 10314), (162, 10350), (172, 10374), (203, 10485),

Gene: RobinRose_58 Start: 38338, Stop: 38039, Start Num: 85

Candidate Starts for RobinRose_58:

(Start: 73 @38365 has 2 MA's), (Start: 85 @38338 has 5 MA's), (Start: 87 @38335 has 27 MA's), (Start: 93 @38323 has 20 MA's), (104, 38299), (110, 38284), (127, 38236), (135, 38227), (167, 38191), (189, 38149), (195, 38128),

Gene: Rocha_30 Start: 9863, Stop: 10213, Start Num: 89

Candidate Starts for Rocha_30:

(Start: 89 @9863 has 196 MA's), (110, 9911), (127, 9959), (145, 10004), (147, 10010), (162, 10046), (172, 10070), (203, 10181),

Gene: Rockabye_69 Start: 29857, Stop: 30210, Start Num: 88

Candidate Starts for Rockabye_69:

(Start: 88 @29857 has 1 MA's), (181, 30079),

Gene: RogerDodger_84 Start: 53667, Stop: 54038, Start Num: 89

Candidate Starts for RogerDodger_84:

(45, 53484), (Start: 89 @53667 has 196 MA's), (189, 53844), (196, 53868),

Gene: Romm_58 Start: 38320, Stop: 38039, Start Num: 93

Candidate Starts for Romm_58:

(Start: 73 @38362 has 2 MA's), (Start: 85 @38335 has 5 MA's), (Start: 87 @38332 has 27 MA's), (Start: 93 @38320 has 20 MA's), (110, 38281), (Start: 111 @38278 has 1 MA's), (123, 38245), (127, 38233), (135, 38224), (189, 38146), (195, 38125), (199, 38110),

Gene: Ronan_27 Start: 8475, Stop: 8825, Start Num: 89

Candidate Starts for Ronan_27:

(Start: 89 @8475 has 196 MA's), (110, 8523), (127, 8571), (145, 8616), (147, 8622), (162, 8658), (172, 8682), (203, 8793),

Gene: Roots515_32 Start: 10917, Stop: 11267, Start Num: 89

Candidate Starts for Roots515_32:

(Start: 89 @10917 has 196 MA's), (110, 10965), (127, 11013), (145, 11058), (147, 11064), (162, 11100), (172, 11124), (203, 11235),

Gene: SJReid_70 Start: 30780, Stop: 31085, Start Num: 88

Candidate Starts for SJReid_70:

(Start: 88 @30780 has 1 MA's),

Gene: SVoro_31 Start: 10912, Stop: 11262, Start Num: 89

Candidate Starts for SVoro_31:

(Start: 89 @10912 has 196 MA's), (110, 10960), (127, 11008), (145, 11053), (147, 11059), (162, 11095), (172, 11119), (203, 11230),

Gene: Saal_94 Start: 53731, Stop: 54012, Start Num: 91

Candidate Starts for Saal_94:

(16, 53320), (18, 53341), (19, 53362), (22, 53392), (Start: 91 @53731 has 38 MA's), (110, 53776), (Start: 117 @53794 has 21 MA's), (189, 53911),

Gene: SadLad_63 Start: 46437, Stop: 46174, Start Num: 96

Candidate Starts for SadLad_63:

(Start: 96 @46437 has 7 MA's), (108, 46410), (116, 46389), (189, 46278), (199, 46242), (205, 46185),

Gene: Salacia_34 Start: 10918, Stop: 11268, Start Num: 89

Candidate Starts for Salacia_34:

(Start: 89 @10918 has 196 MA's), (110, 10966), (127, 11014), (145, 11059), (147, 11065), (162, 11101), (172, 11125), (203, 11236),

Gene: Salvador_80 Start: 53022, Stop: 53375, Start Num: 89

Candidate Starts for Salvador_80:

(Start: 89 @53022 has 196 MA's), (199, 53217),

Gene: Sandalphon_96 Start: 54715, Stop: 55005, Start Num: 86

Candidate Starts for Sandalphon_96:

(Start: 86 @54715 has 1 MA's), (110, 54769), (Start: 117 @54787 has 21 MA's), (189, 54904),

Gene: Sauce_33 Start: 11045, Stop: 11395, Start Num: 89

Candidate Starts for Sauce_33:

(Start: 89 @11045 has 196 MA's), (110, 11093), (127, 11141), (145, 11186), (147, 11192), (162, 11228), (172, 11252), (203, 11363),

Gene: Schnauzer_56 Start: 36197, Stop: 36685, Start Num: 60

Candidate Starts for Schnauzer_56:

(Start: 60 @36197 has 5 MA's), (67, 36233), (Start: 83 @36287 has 5 MA's), (145, 36440), (146, 36443), (153, 36470), (189, 36581), (191, 36587), (205, 36674),

Gene: ScoobyDoobyDoo_233 Start: 134075, Stop: 134443, Start Num: 87

Candidate Starts for ScoobyDoobyDoo_233:

(Start: 87 @134075 has 27 MA's), (152, 134234), (191, 134303), (196, 134321), (204, 134387), (210, 134414),

Gene: ScottMcG_32 Start: 11225, Stop: 11575, Start Num: 89

Candidate Starts for ScottMcG_32:

(Start: 89 @11225 has 196 MA's), (110, 11273), (127, 11321), (145, 11366), (147, 11372), (162, 11408), (172, 11432), (203, 11543),

Gene: Seabiscuit_12 Start: 6693, Stop: 7034, Start Num: 77

Candidate Starts for Seabiscuit_12:

(Start: 77 @6693 has 1 MA's), (Start: 93 @6720 has 20 MA's), (110, 6759), (115, 6768), (144, 6837), (182, 6912), (199, 6972),

Gene: Sebata_32 Start: 11268, Stop: 11618, Start Num: 89

Candidate Starts for Sebata_32:

(Start: 89 @11268 has 196 MA's), (110, 11316), (127, 11364), (145, 11409), (147, 11415), (162, 11451), (172, 11475), (203, 11586),

Gene: Sephiroth_114 Start: 64560, Stop: 64826, Start Num: 109

Candidate Starts for Sephiroth_114:

(65, 64443), (Start: 109 @64560 has 4 MA's), (192, 64734), (204, 64815),

Gene: SeresaTree_71 Start: 55390, Stop: 55779, Start Num: 97

Candidate Starts for SeresaTree_71:

(Start: 97 @55390 has 7 MA's), (132, 55477), (134, 55486), (158, 55558), (160, 55564), (205, 55741), (208, 55750),

Gene: Sham_67 Start: 56064, Stop: 56453, Start Num: 97

Candidate Starts for Sham_67:

(Start: 97 @56064 has 7 MA's), (106, 56091), (160, 56238), (208, 56424),

Gene: Shaqnato_28 Start: 9480, Stop: 9830, Start Num: 89

Candidate Starts for Shaqnato_28:

(Start: 89 @9480 has 196 MA's), (110, 9528), (127, 9576), (145, 9621), (147, 9627), (162, 9663), (172, 9687), (203, 9798),

Gene: SharkTale_84 Start: 55255, Stop: 55656, Start Num: 89

Candidate Starts for SharkTale_84:

(45, 55072), (Start: 89 @55255 has 196 MA's), (110, 55303), (189, 55462), (196, 55486), (199, 55498),

Gene: ShiLan_99 Start: 55748, Stop: 56029, Start Num: 91

Candidate Starts for ShiLan_99:

(16, 55337), (18, 55358), (19, 55379), (22, 55409), (Start: 91 @55748 has 38 MA's), (110, 55793), (Start: 117 @55811 has 21 MA's), (189, 55928), (199, 55964),

Gene: ShiaLabeouf_32 Start: 10369, Stop: 10719, Start Num: 89

Candidate Starts for ShiaLabeouf_32:

(Start: 89 @10369 has 196 MA's), (110, 10417), (127, 10465), (145, 10510), (147, 10516), (162, 10552), (172, 10576), (203, 10687),

Gene: Shifa_29 Start: 10551, Stop: 10901, Start Num: 89

Candidate Starts for Shifa_29:

(Start: 89 @10551 has 196 MA's), (110, 10599), (127, 10647), (145, 10692), (147, 10698), (162, 10734), (172, 10758), (203, 10869),

Gene: Shinji_80 Start: 53025, Stop: 53456, Start Num: 89

Candidate Starts for Shinji_80:

(Start: 89 @53025 has 196 MA's), (110, 53073), (165, 53208), (176, 53235), (177, 53238), (196, 53286),

Gene: Shnickers_32 Start: 10369, Stop: 10719, Start Num: 89

Candidate Starts for Shnickers_32:

(Start: 89 @10369 has 196 MA's), (110, 10417), (127, 10465), (145, 10510), (147, 10516), (162, 10552), (172, 10576), (203, 10687),

Gene: Shocker_3 Start: 902, Stop: 1168, Start Num: 92

Candidate Starts for Shocker_3:

(Start: 92 @902 has 1 MA's), (116, 956), (189, 1067),

Gene: ShowerHandel_97 Start: 53013, Stop: 53294, Start Num: 91

Candidate Starts for ShowerHandel_97:

(16, 52602), (18, 52623), (19, 52644), (22, 52674), (Start: 91 @53013 has 38 MA's), (110, 53058), (Start: 117 @53076 has 21 MA's), (189, 53193),

Gene: Shrimp_32 Start: 10922, Stop: 11272, Start Num: 89

Candidate Starts for Shrimp_32:

(Start: 89 @10922 has 196 MA's), (110, 10970), (127, 11018), (145, 11063), (147, 11069), (162, 11105), (172, 11129), (203, 11240),

Gene: SilentRX_7 Start: 2575, Stop: 2988, Start Num: 69

Candidate Starts for SilentRX_7:

(Start: 69 @2575 has 4 MA's), (103, 2665), (141, 2764), (150, 2782), (191, 2878),

Gene: SilverDipper_33 Start: 10373, Stop: 10723, Start Num: 89

Candidate Starts for SilverDipper_33:

(Start: 89 @10373 has 196 MA's), (110, 10421), (127, 10469), (145, 10514), (147, 10520), (162, 10556), (172, 10580), (203, 10691),

Gene: Sixsevenium_82 Start: 54340, Stop: 54714, Start Num: 89

Candidate Starts for Sixsevenium_82:

(Start: 89 @54340 has 196 MA's), (188, 54517), (189, 54520),

Gene: Slagathor_11 Start: 6591, Stop: 6905, Start Num: 93

Candidate Starts for Slagathor_11:

(Start: 93 @6591 has 20 MA's), (110, 6630), (115, 6639), (144, 6708), (182, 6783), (199, 6843),

Gene: SmallFry_32 Start: 10369, Stop: 10719, Start Num: 89

Candidate Starts for SmallFry_32:

(Start: 89 @10369 has 196 MA's), (110, 10417), (127, 10465), (145, 10510), (147, 10516), (162, 10552), (172, 10576), (203, 10687),

Gene: SmokingBunny_81 Start: 54018, Stop: 54371, Start Num: 89

Candidate Starts for SmokingBunny_81:

(Start: 89 @54018 has 196 MA's), (199, 54213),

Gene: Smurph_55 Start: 36197, Stop: 36685, Start Num: 60

Candidate Starts for Smurph_55:

(Start: 60 @36197 has 5 MA's), (67, 36233), (Start: 83 @36287 has 5 MA's), (145, 36440), (146, 36443), (153, 36470), (189, 36581), (191, 36587), (205, 36674),

Gene: SoilAssassin_55 Start: 39034, Stop: 39414, Start Num: 75

Candidate Starts for SoilAssassin_55:

(Start: 75 @39034 has 3 MA's), (102, 39088), (147, 39217), (166, 39253), (180, 39280), (182, 39283), (191, 39313), (196, 39331), (199, 39343), (205, 39400),

Gene: SoilZilla_29 Start: 10623, Stop: 10973, Start Num: 89

Candidate Starts for SoilZilla_29:

(Start: 89 @10623 has 196 MA's), (110, 10671), (127, 10719), (145, 10764), (147, 10770), (162, 10806), (172, 10830), (203, 10941),

Gene: Spec_30 Start: 10375, Stop: 10725, Start Num: 89

Candidate Starts for Spec_30:

(Start: 89 @10375 has 196 MA's), (110, 10423), (127, 10471), (145, 10516), (147, 10522), (162, 10558), (172, 10582), (203, 10693),

Gene: Specks_37 Start: 12207, Stop: 12557, Start Num: 89

Candidate Starts for Specks_37:

(Start: 89 @12207 has 196 MA's), (110, 12255), (127, 12303), (145, 12348), (147, 12354), (162, 12390), (172, 12414), (203, 12525),

Gene: SpeedDemon_540 Start: 45518, Stop: 45787, Start Num: 85

Candidate Starts for SpeedDemon_540:

(Start: 85 @45518 has 5 MA's), (110, 45566), (175, 45662), (189, 45686),

Gene: Spoonbill_96 Start: 51661, Stop: 51942, Start Num: 91

Candidate Starts for Spoonbill_96:

(16, 51250), (18, 51271), (19, 51292), (22, 51322), (Start: 91 @51661 has 38 MA's), (110, 51706), (Start: 117 @51724 has 21 MA's), (189, 51841),

Gene: Sprinklers_32 Start: 10407, Stop: 10757, Start Num: 89

Candidate Starts for Sprinklers_32:

(Start: 89 @10407 has 196 MA's), (110, 10455), (127, 10503), (145, 10548), (147, 10554), (162, 10590), (172, 10614), (203, 10725),

Gene: Spud_34 Start: 11764, Stop: 12114, Start Num: 89

Candidate Starts for Spud_34:

(Start: 89 @11764 has 196 MA's), (110, 11812), (127, 11860), (145, 11905), (147, 11911), (162, 11947), (172, 11971), (203, 12082),

Gene: Squee_11 Start: 7115, Stop: 7429, Start Num: 93

Candidate Starts for Squee_11:

(Start: 93 @7115 has 20 MA's), (110, 7154), (144, 7232), (166, 7277),

Gene: Squiddly_103 Start: 56800, Stop: 57090, Start Num: 89

Candidate Starts for Squiddly_103:

(47, 56620), (48, 56623), (59, 56704), (74, 56770), (Start: 89 @56800 has 196 MA's), (141, 56917), (184, 56971), (199, 57028),

Gene: SrishMeg2525_31 Start: 10629, Stop: 10979, Start Num: 89

Candidate Starts for SrishMeg2525_31:

(Start: 89 @10629 has 196 MA's), (110, 10677), (127, 10725), (145, 10770), (147, 10776), (162, 10812), (172, 10836), (203, 10947),

Gene: StAugustine_144 Start: 85407, Stop: 85078, Start Num: 107

Candidate Starts for StAugustine_144:

(Start: 107 @85407 has 2 MA's), (125, 85350), (182, 85212), (188, 85188), (201, 85140),

Gene: Stardom_72 Start: 43676, Stop: 43987, Start Num: 117

Candidate Starts for Stardom_72:

(Start: 117 @43676 has 21 MA's), (142, 43739), (168, 43817), (178, 43838), (184, 43862), (188, 43880), (197, 43910),

Gene: Stellammi_129 Start: 61212, Stop: 61520, Start Num: 81
Candidate Starts for Stellammi_129:
(76, 61200), (Start: 81 @61212 has 1 MA's), (110, 61263), (189, 61413),

Gene: StephanieG_32 Start: 11098, Stop: 11448, Start Num: 89
Candidate Starts for StephanieG_32:
(Start: 89 @11098 has 196 MA's), (110, 11146), (127, 11194), (145, 11239), (147, 11245), (162, 11281), (172, 11305), (203, 11416),

Gene: StubbySaigey_31 Start: 9558, Stop: 9908, Start Num: 89
Candidate Starts for StubbySaigey_31:
(Start: 89 @9558 has 196 MA's), (110, 9606), (127, 9654), (145, 9699), (147, 9705), (162, 9741), (172, 9765), (203, 9876),

Gene: Substance289_29 Start: 9843, Stop: 10193, Start Num: 89
Candidate Starts for Substance289_29:
(Start: 89 @9843 has 196 MA's), (110, 9891), (127, 9939), (145, 9984), (147, 9990), (162, 10026), (172, 10050), (203, 10161),

Gene: Sunfish_12 Start: 3876, Stop: 4208, Start Num: 93
Candidate Starts for Sunfish_12:
(42, 3663), (Start: 93 @3876 has 20 MA's), (114, 3927), (123, 3951), (143, 4002), (180, 4071), (199, 4134),

Gene: SwagPigglett_98 Start: 54867, Stop: 55148, Start Num: 91
Candidate Starts for SwagPigglett_98:
(16, 54456), (18, 54477), (19, 54498), (22, 54528), (Start: 91 @54867 has 38 MA's), (110, 54912), (Start: 117 @54930 has 21 MA's), (189, 55047),

Gene: Switzer_11 Start: 6599, Stop: 6913, Start Num: 93
Candidate Starts for Switzer_11:
(Start: 77 @6572 has 1 MA's), (Start: 93 @6599 has 20 MA's), (110, 6638), (115, 6647), (144, 6716), (182, 6791), (199, 6851),

Gene: Syleon_119 Start: 65342, Stop: 65608, Start Num: 109
Candidate Starts for Syleon_119:
(65, 65225), (Start: 109 @65342 has 4 MA's), (192, 65516), (204, 65597),

Gene: Tainan_37 Start: 12485, Stop: 12835, Start Num: 89
Candidate Starts for Tainan_37:
(Start: 89 @12485 has 196 MA's), (110, 12533), (127, 12581), (145, 12626), (147, 12632), (172, 12692), (203, 12803),

Gene: Teardrop_31 Start: 9834, Stop: 10184, Start Num: 89
Candidate Starts for Teardrop_31:
(Start: 89 @9834 has 196 MA's), (110, 9882), (127, 9930), (145, 9975), (147, 9981), (162, 10017), (172, 10041), (203, 10152),

Gene: Tempo_56 Start: 38215, Stop: 37919, Start Num: 87
Candidate Starts for Tempo_56:
(Start: 73 @38245 has 2 MA's), (Start: 85 @38218 has 5 MA's), (Start: 87 @38215 has 27 MA's), (Start: 93 @38203 has 20 MA's), (104, 38179), (110, 38164), (127, 38116), (135, 38107), (167, 38071), (189, 38029), (195, 38008),

Gene: Tessdabest_55 Start: 36420, Stop: 36818, Start Num: 83

Candidate Starts for Tessdabest_55:

(Start: 60 @36330 has 5 MA's), (67, 36366), (Start: 83 @36420 has 5 MA's), (145, 36573), (146, 36576), (153, 36603), (189, 36714), (191, 36720), (205, 36807),

Gene: TinyTim_32 Start: 10918, Stop: 11268, Start Num: 89

Candidate Starts for TinyTim_32:

(Start: 89 @10918 has 196 MA's), (110, 10966), (127, 11014), (145, 11059), (147, 11065), (162, 11101), (172, 11125), (203, 11236),

Gene: Togo_80 Start: 54018, Stop: 54371, Start Num: 89

Candidate Starts for Togo_80:

(Start: 89 @54018 has 196 MA's), (199, 54213),

Gene: Tonenili_36 Start: 12007, Stop: 12357, Start Num: 89

Candidate Starts for Tonenili_36:

(56, 11887), (Start: 89 @12007 has 196 MA's), (110, 12055), (127, 12103), (145, 12148), (147, 12154), (172, 12214), (203, 12325),

Gene: Tortellini_63 Start: 43457, Stop: 43750, Start Num: 82

Candidate Starts for Tortellini_63:

(25, 43202), (29, 43223), (42, 43301), (53, 43364), (63, 43400), (Start: 82 @43457 has 1 MA's), (110, 43511), (154, 43607), (189, 43646), (196, 43670), (205, 43739),

Gene: Tortoise16_31 Start: 10369, Stop: 10719, Start Num: 89

Candidate Starts for Tortoise16_31:

(Start: 89 @10369 has 196 MA's), (110, 10417), (127, 10465), (145, 10510), (147, 10516), (162, 10552), (172, 10576), (203, 10687),

Gene: Tribby_76 Start: 45227, Stop: 45535, Start Num: 117

Candidate Starts for Tribby_76:

(Start: 117 @45227 has 21 MA's), (155, 45329), (168, 45365), (188, 45428), (197, 45458),

Gene: Trinitium_31 Start: 9823, Stop: 10173, Start Num: 89

Candidate Starts for Trinitium_31:

(Start: 89 @9823 has 196 MA's), (110, 9871), (127, 9919), (145, 9964), (147, 9970), (162, 10006), (172, 10030), (203, 10141),

Gene: TunaTartare_69 Start: 56371, Stop: 56772, Start Num: 97

Candidate Starts for TunaTartare_69:

(Start: 97 @56371 has 7 MA's), (139, 56482), (149, 56509), (151, 56515), (158, 56545), (197, 56665), (203, 56704),

Gene: Turret_30 Start: 9546, Stop: 9896, Start Num: 89

Candidate Starts for Turret_30:

(Start: 89 @9546 has 196 MA's), (110, 9594), (127, 9642), (145, 9687), (147, 9693), (162, 9729), (172, 9753), (203, 9864),

Gene: Twister6_81 Start: 52367, Stop: 52720, Start Num: 89

Candidate Starts for Twister6_81:

(Start: 89 @52367 has 196 MA's), (199, 52562),

Gene: Tyke_34 Start: 11781, Stop: 12131, Start Num: 89

Candidate Starts for Tyke_34:

(Start: 89 @11781 has 196 MA's), (110, 11829), (127, 11877), (145, 11922), (147, 11928), (162, 11964), (172, 11988), (203, 12099),

Gene: U2_10 Start: 6601, Stop: 6915, Start Num: 93

Candidate Starts for U2_10:

(Start: 77 @6574 has 1 MA's), (Start: 93 @6601 has 20 MA's), (110, 6640), (115, 6649), (144, 6718), (182, 6793), (199, 6853),

Gene: Untouchable_2 Start: 479, Stop: 808, Start Num: 87

Candidate Starts for Untouchable_2:

(Start: 87 @479 has 27 MA's), (116, 545), (180, 686), (189, 713), (193, 725),

Gene: Valary_81 Start: 53764, Stop: 54165, Start Num: 89

Candidate Starts for Valary_81:

(Start: 89 @53764 has 196 MA's), (110, 53812), (189, 53971), (196, 53995), (199, 54007),

Gene: ValleyTerrace_32 Start: 10373, Stop: 10723, Start Num: 89

Candidate Starts for ValleyTerrace_32:

(Start: 89 @10373 has 196 MA's), (110, 10421), (127, 10469), (145, 10514), (147, 10520), (162, 10556), (172, 10580), (203, 10691),

Gene: Vivum_96 Start: 55102, Stop: 55383, Start Num: 91

Candidate Starts for Vivum_96:

(16, 54691), (18, 54712), (19, 54733), (22, 54763), (Start: 91 @55102 has 38 MA's), (110, 55147), (Start: 117 @55165 has 21 MA's), (189, 55282),

Gene: Vordorf_53 Start: 39065, Stop: 39475, Start Num: 77

Candidate Starts for Vordorf_53:

(15, 38624), (28, 38795), (51, 38936), (65, 39017), (68, 39023), (Start: 77 @39065 has 1 MA's), (110, 39131), (141, 39221), (146, 39242), (164, 39278),

Gene: Vortrix_38 Start: 12468, Stop: 12818, Start Num: 89

Candidate Starts for Vortrix_38:

(56, 12348), (Start: 89 @12468 has 196 MA's), (110, 12516), (127, 12564), (145, 12609), (147, 12615), (172, 12675), (203, 12786),

Gene: Wally_31 Start: 9790, Stop: 10140, Start Num: 89

Candidate Starts for Wally_31:

(Start: 89 @9790 has 196 MA's), (110, 9838), (127, 9886), (145, 9931), (147, 9937), (162, 9973), (172, 9997), (203, 10108),

Gene: Whouxphf_100 Start: 54173, Stop: 54454, Start Num: 91

Candidate Starts for Whouxphf_100:

(16, 53762), (18, 53783), (19, 53804), (22, 53834), (Start: 91 @54173 has 38 MA's), (110, 54218), (Start: 117 @54236 has 21 MA's), (189, 54353),

Gene: Willis_32 Start: 10813, Stop: 11163, Start Num: 89

Candidate Starts for Willis_32:

(Start: 89 @10813 has 196 MA's), (110, 10861), (127, 10909), (145, 10954), (147, 10960), (162, 10996), (172, 11020), (203, 11131),

Gene: Wizard_77 Start: 52852, Stop: 53223, Start Num: 89
Candidate Starts for Wizard_77:
(45, 52669), (Start: 89 @52852 has 196 MA's), (189, 53029), (196, 53053),

Gene: Wojtek_85 Start: 64679, Stop: 65014, Start Num: 73
Candidate Starts for Wojtek_85:
(Start: 73 @64679 has 2 MA's), (78, 64688), (Start: 81 @64697 has 1 MA's), (Start: 87 @64706 has 27 MA's), (110, 64754), (189, 64907), (196, 64931), (207, 65000),

Gene: Xenomorph_69 Start: 44753, Stop: 45061, Start Num: 117
Candidate Starts for Xenomorph_69:
(Start: 117 @44753 has 21 MA's), (155, 44855), (168, 44891), (188, 44954), (197, 44984),

Gene: Xerxes_55 Start: 36284, Stop: 36682, Start Num: 83
Candidate Starts for Xerxes_55:
(Start: 60 @36194 has 5 MA's), (67, 36230), (Start: 83 @36284 has 5 MA's), (145, 36437), (146, 36440), (153, 36467), (189, 36578), (191, 36584), (205, 36671),

Gene: Yassified_29 Start: 9570, Stop: 9920, Start Num: 89
Candidate Starts for Yassified_29:
(Start: 89 @9570 has 196 MA's), (110, 9618), (127, 9666), (145, 9711), (147, 9717), (162, 9753), (172, 9777), (203, 9888),

Gene: YemiJoy2021_33 Start: 10918, Stop: 11268, Start Num: 89
Candidate Starts for YemiJoy2021_33:
(Start: 89 @10918 has 196 MA's), (110, 10966), (127, 11014), (145, 11059), (147, 11065), (162, 11101), (172, 11125), (203, 11236),

Gene: Yorick_92 Start: 54408, Stop: 54689, Start Num: 91
Candidate Starts for Yorick_92:
(16, 53997), (18, 54018), (19, 54039), (22, 54069), (Start: 91 @54408 has 38 MA's), (110, 54453), (Start: 117 @54471 has 21 MA's), (189, 54588),

Gene: YoshiYama_74 Start: 45322, Stop: 45633, Start Num: 117
Candidate Starts for YoshiYama_74:
(Start: 117 @45322 has 21 MA's), (142, 45385), (168, 45463), (178, 45484), (184, 45508), (188, 45526), (197, 45556),

Gene: YoungMoneyMata_32 Start: 10124, Stop: 10474, Start Num: 89
Candidate Starts for YoungMoneyMata_32:
(Start: 89 @10124 has 196 MA's), (110, 10172), (127, 10220), (145, 10265), (147, 10271), (162, 10307), (172, 10331), (203, 10442),

Gene: Yucca_32 Start: 10840, Stop: 11190, Start Num: 89
Candidate Starts for Yucca_32:
(Start: 89 @10840 has 196 MA's), (110, 10888), (127, 10936), (145, 10981), (147, 10987), (162, 11023), (172, 11047), (203, 11158),

Gene: YungMoney_79 Start: 54400, Stop: 54783, Start Num: 89
Candidate Starts for YungMoney_79:
(Start: 89 @54400 has 196 MA's), (131, 54496), (193, 54604), (206, 54682),

Gene: Yvonnetastic_136 Start: 75890, Stop: 76258, Start Num: 90

Candidate Starts for Yvonnetastic_136:

(Start: 90 @75890 has 5 MA's), (104, 75920), (110, 75935), (112, 75941), (119, 75965), (138, 76016), (188, 76136), (189, 76139), (196, 76163), (209, 76244),

Gene: Zalkecks_34 Start: 10922, Stop: 11272, Start Num: 89

Candidate Starts for Zalkecks_34:

(Start: 89 @10922 has 196 MA's), (110, 10970), (127, 11018), (145, 11063), (147, 11069), (162, 11105), (172, 11129), (203, 11240),

Gene: Zeenon_34 Start: 10904, Stop: 11254, Start Num: 89

Candidate Starts for Zeenon_34:

(Start: 89 @10904 has 196 MA's), (110, 10952), (127, 11000), (145, 11045), (147, 11051), (162, 11087), (172, 11111), (203, 11222),

Gene: Zizzle_99 Start: 55058, Stop: 55339, Start Num: 91

Candidate Starts for Zizzle_99:

(16, 54647), (18, 54668), (19, 54689), (22, 54719), (Start: 91 @55058 has 38 MA's), (110, 55103), (Start: 117 @55121 has 21 MA's), (189, 55238), (199, 55274),

Gene: ZygoTaiga_32 Start: 10918, Stop: 11268, Start Num: 89

Candidate Starts for ZygoTaiga_32:

(Start: 89 @10918 has 196 MA's), (110, 10966), (127, 11014), (145, 11059), (147, 11065), (162, 11101), (172, 11125), (203, 11236),