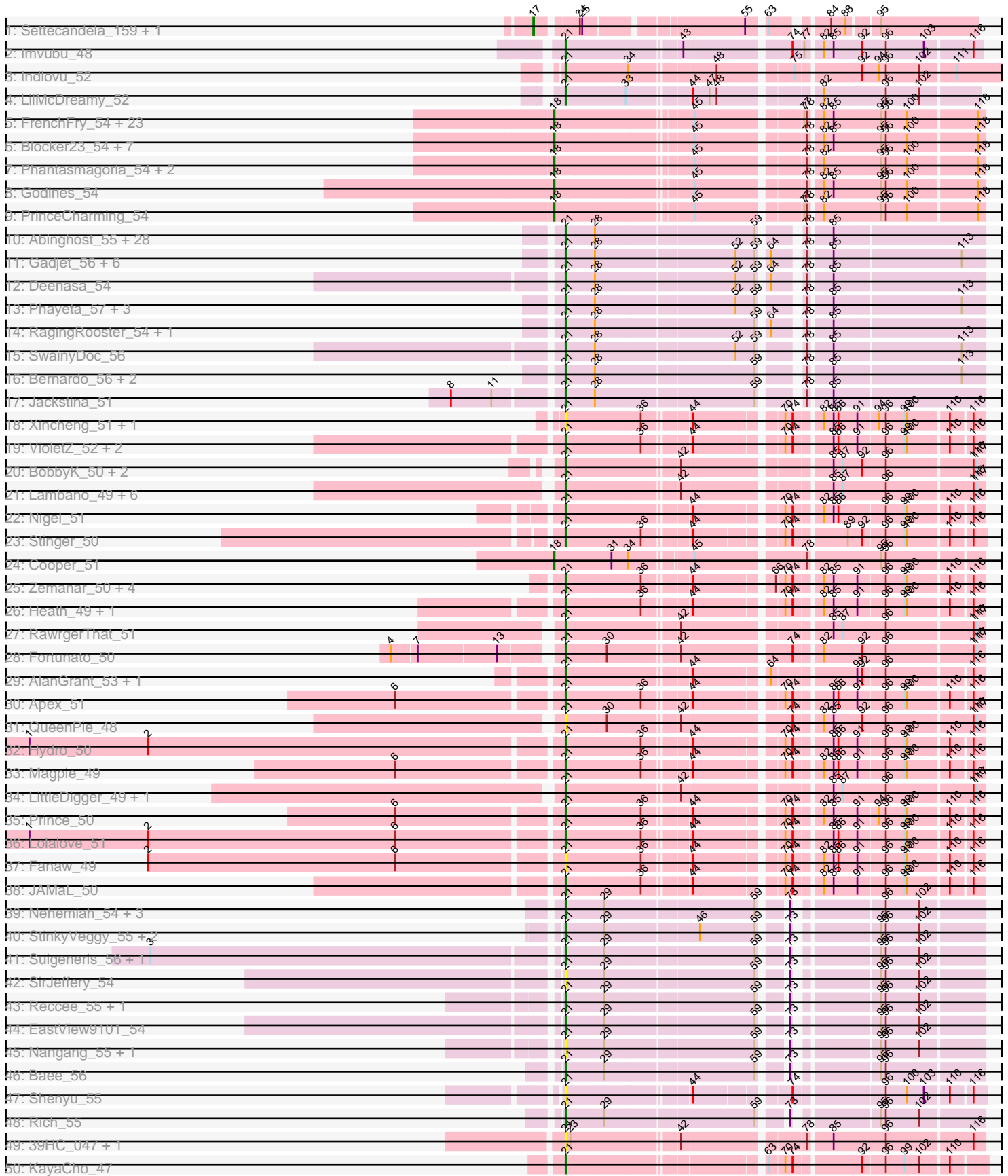
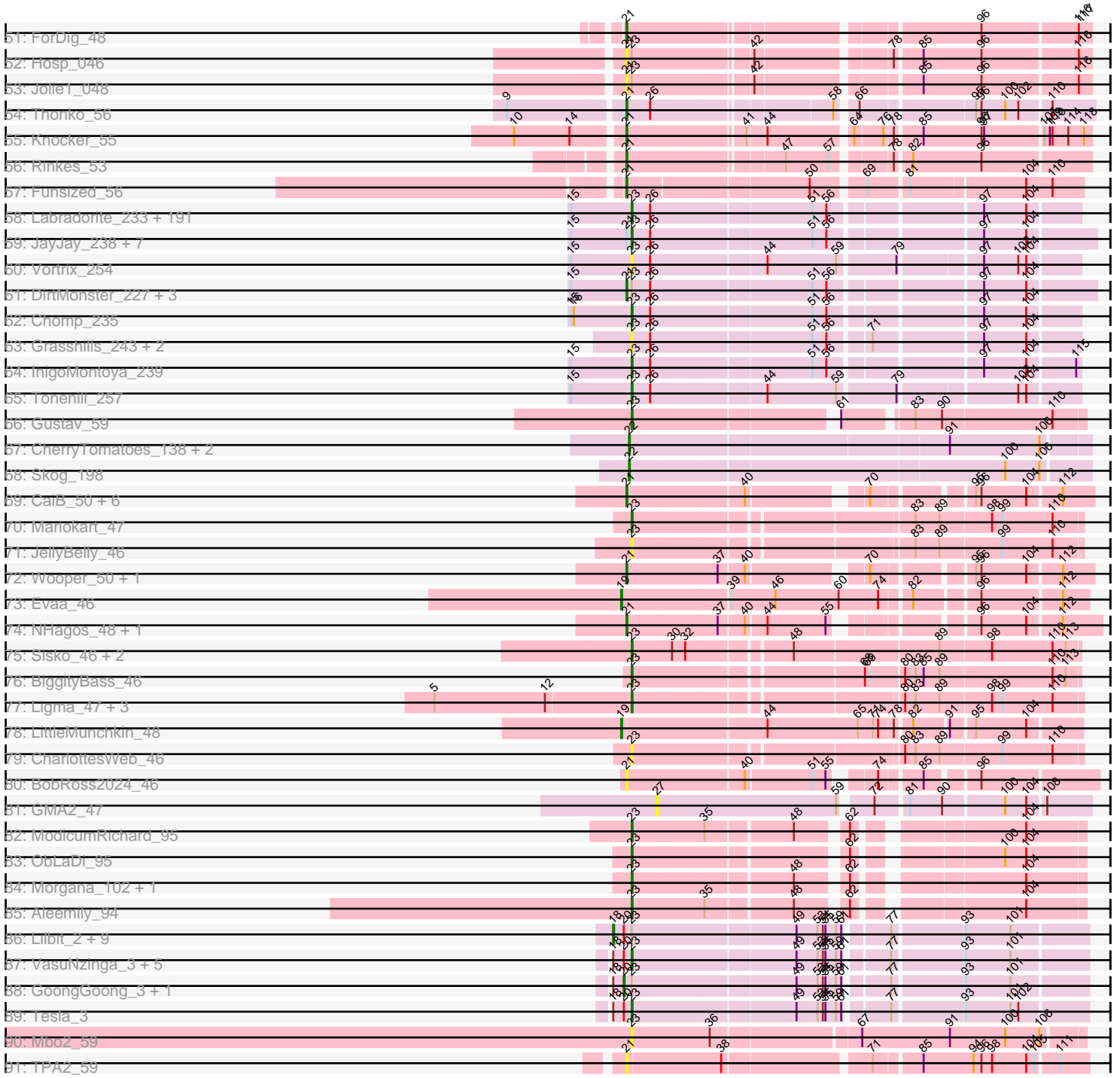


Pham 304615



Pham 304615



Note: Tracks are now grouped by subcluster and scaled. Switching in subcluster is indicated by changes in track color. Track scale is now set by default to display the region 30 bp upstream of start 1 to 30 bp downstream of the last possible start. If this default region is judged to be packed too tightly with annotated starts, the track will be further scaled to only show that region of the ORF with annotated starts. This action will be indicated by adding "Zoomed" to the title. For starts, yellow indicates the location of called starts comprised solely of Glimmer/GeneMark auto-annotations, green indicates the location of called starts with at least 1 manual gene annotation.

Pham 304615 Report

This analysis was run 06/08/26 on database version 649.

Pham number 304615 has 425 members, 75 are drafts.

Phages represented in each track:

- Track 1 : Settecandela_159, Phrappuccino_159
- Track 2 : Imvubu_48
- Track 3 : Indlovu_52
- Track 4 : LilMcDreamy_52
- Track 5 : FrenchFry_54, Bananafish_54, Calamitous_54, Tinciduntolum_55, Holeinone_54, Lephleur_54, ItsyBitsy1_54, Kaleb_54, Lars_54, Brownie5_54, Rhinoforte_54, Tres_54, Kolhan_54, Sabella_53, Rosebush_53, Opia_54, Allegro_54, Glass_54, Hedgerow_54, LilSmirk_54, Eaglehorse_54, Kheth_54, Arbiter_53, Ares_54
- Track 6 : Blocker23_54, Coffee_54, MasterPo_54, Laurie_53, TA17A_55, Vic9_00053, Boyle_54, LizLemon_54
- Track 7 : Phantasmagoria_54, Faze9_53, West99_54
- Track 8 : Godines_54
- Track 9 : PrinceCharming_54
- Track 10 : Abinghost_55, Devonte_54, Philly_54, Compostia_55, HarveySr_54, Mulaychimus_56, GlenHope_56, Chalmers_54, Kronus_55, Nozo_55, Athena_57, Yahalom_54, Gervas_56, Ben11_55, Marlia_56, Corofin_55, Morty007_55, Glubnar_56, Mortcellus_55, RomaT_55, OrangeOswald_55, Akoma_55, Marley1013_56, LestyG_54, SlippinJimmy_57, Rita1961_56, Obutu_56, Kamiyu_55, Phlyer_55
- Track 11 : Gadget_56, SynergyX_55, Baloo_55, Audrey_55, ChaChing_55, Heathcliff_55, Yinz_55
- Track 12 : Deenasa_54
- Track 13 : Phayeta_57, Chentzyk_56, MmasiCarm_56, Olivio_55
- Track 14 : RagingRooster_54, Casbah_55
- Track 15 : SwainyDoc_56
- Track 16 : Bernardo_56, Halfpint_54, Chandler_55
- Track 17 : Jackstina_51
- Track 18 : Xincheng_51, JaguarMi_52
- Track 19 : VioletZ_52, Austelle_51, Mudslide_50
- Track 20 : BobbyK_50, Frederick_50, Mithril_49
- Track 21 : Lambano_49, Antihero_49, Epah_49, Hally898_49, Nanao_49, GinPorsche_50, Poster_49
- Track 22 : Nigel_51
- Track 23 : Stinger_50
- Track 24 : Cooper_51

- Track 25 : Zemanar_50, JoyceMaria_49, Waleliano_49, Hangman_49, BrownCNA_51
- Track 26 : Heath_49, ChrisnMich_50
- Track 27 : RawrgerThat_51
- Track 28 : Fortunato_50
- Track 29 : AlanGrant_53, Vincenzo_52
- Track 30 : Apex_51
- Track 31 : QueenPie_48
- Track 32 : Hydro_50
- Track 33 : Magpie_49
- Track 34 : LittleDigger_49, Renkei_49
- Track 35 : Prince_50
- Track 36 : Lolalove_51
- Track 37 : Fanaw_49
- Track 38 : JAMaL_50
- Track 39 : Nehemiah_54, Phelemich_53, Mysterious_53, Reprobate_54
- Track 40 : StinkyVeggy_55, KarasumaRum_55, Acadian_55
- Track 41 : Suigeneris_56, Donny_56
- Track 42 : SirJeffery_54
- Track 43 : Reccee_55, Rita130_54
- Track 44 : EastView9101_54
- Track 45 : Nangang_55, DigitDog_55
- Track 46 : Bae_56
- Track 47 : Shenyu_55
- Track 48 : Rich_55
- Track 49 : 39HC_047, 40BC_047
- Track 50 : KayaCho_47
- Track 51 : ForDig_48
- Track 52 : Hosp_046
- Track 53 : Jolie1_048
- Track 54 : Thonko_56
- Track 55 : Knocker_55
- Track 56 : Rinkes_53
- Track 57 : Funsized_56
- Track 58 : Labradorite_233, Spud_229, SilverDipper_240, Babyland_239, Blackdragon_230, Tainan_236, Momo_237, Ablatia_235, InterFolia_237, Quasimodo_239, LifeSavor_236, Darko_235, Capablanca_241, LordLeafolot_237, Tortoise16_234, Erdmann_236, Yassified_233, Adlitam_236, Shelob_237, Sauce_233, ParkTD_235, Bipolarisk_234, SmallFry_237, Rahel_238, Guwapp_232, ZygoTaiga_231, Audrick_238, Derek_232, Cane17_226, Cali_227, BananaFence_233, Turret_227, Jezreel_233, NuevoMundo_237, TinyTim_234, Fixie_235, FrayBell_239, Ava3_233, Dessert_233, Cactojaque_230, Lee7_235, Wally_234, Rizal_226, DTDevon_237, Ewok_235, BeanWater_229, GlutenPhree_237, Yucca_235, Fludd_236, LinStu_234, LolaVinca_232, Breeniome_235, Mangeria_237, Ghost_235, SVoro_231, PharkleMinkus_238, Burrough_236, OrediggerDelux_231, NedWong_235, Jemmno_236, ScottMcG_228, Amataga_237, Jaygup_233, Grungle_218, Naija_237, DrPhinkDaddy_233, ChaylaJr_235, Daffodil_241, Megamind_233, MoMoMixon_232, Delylah_238, Shaqnato_227, Pleione_240, Chargie21_233, Norm_236, Shrimp_238, Salacia_237, Gabriel_239, Fongie_236, Pupusa_239, Zalkecks_235, JustHall_230, McWolfish_233, YoungMoneyMata_236, Concombre_241, Pio_242, FoxtrotP1_234, EmmaElysia_241, Bxz1_223, BadAgartude_230, Phlegm_240, Dietrick_225, Domi_230, Halldule_228, Maby2021_236, Roots515_239, Lukilu_225,

YemiJoy2021_237, Melpomini_231, Mikro_230, ShiaLabeouf_234, StephanieG_230, Kamryn_235, Bread_231, CATERA_226, Basquiat_233, Ngannou_231, Spec_230, Napoleon13_233, Nidhogg_237, ArcherS7_237, Patter_238, Blubba_224, Astraea_230, Izajani_232, Bonray_238, Bezza_224, BackyardAgain_231, Trinitium_232, McGee_237, Matsumoto_234, Essence_234, EmToTheThree_236, Specks_240, Primadonna_230, Phox_237, Demodog_242, Substance289_232, Willis_236, Morizzled23_233, LRRHood_228, I3_246, Latch_236, Pivoine_237, Bangla1971_237, Pier_235, Iota_233, Jedediah_237, Littleton_239, Koguma_235, Teardrop_234, Jessibeth14_236, Kboogie_240, ValleyTerrace_237, Issimir_229, QBert_228, Cleatunium_228, Colt_227, JPickles_233, Phusco_235, Drazdys_233, Atlantean_236, Blackbrain_234, Gizmo_241, Loanshark_233, Rocha_232, Shnickers_235, Ronan_232, EasyJones_237, Nappy_236, MikeLiesIn_236, PurduePete_236, Janiyra_239, Ading_238, ChickenPhender_232, Bowman_233, Lethe_234, JulietS_225, ErnieJ_229, Sprinklers_234, Belieber_228, Dandelion_242, LookingGlass_234, Bigswole_241, Zeenon_236, Delilah_234, Asterius_236, StubbySaigey_242, Khaleesi_235, CharlieB_230, SrishMeg2525_233, FudgeTart_230, Naval22_241, Gamgam_238, Tyke_233, JigglyPuff_242, Caravan_226, Duckfeet_229, IkeLoa_230, CindyLou_237, BobaPhatt_227, RoMag_231

- Track 59 : JayJay_238, Lunareta_235, Shifa_213, Flabslab_232, Moiqah_233, Sebata_238, Moby_233, Montpel_235

- Track 60 : Vortrix_254

- Track 61 : DirtMonster_227, DeejaClivia_225, HyRo_221, Maturis_232

- Track 62 : Chomp_235

- Track 63 : Grasshills_243, EggyFarm_244, BigCity_244

- Track 64 : InigoMontoya_239

- Track 65 : Tonenili_257

- Track 66 : Gustav_59

- Track 67 : CherryTomatoes_138, Pupper_137, SCentae_136

- Track 68 : Skog_198

- Track 69 : CaiB_50, MossRose_49, TraderJ_50, AnarQue_49, FelixTres_49, CloverMinnie_49, Blackpen_49

- Track 70 : Mariokart_47

- Track 71 : JellyBelly_46

- Track 72 : Wooper_50, Yeshua_50

- Track 73 : Evaa_46

- Track 74 : NHagos_48, AksarBAT_48

- Track 75 : Sisko_46, AnClar_47, Yago84_46

- Track 76 : BiggityBass_46

- Track 77 : Ligma_47, Fresco_47, Axumite_47, Shatter_47

- Track 78 : LittleMunchkin_48

- Track 79 : CharlottesWeb_46

- Track 80 : BobRoss2024_46

- Track 81 : GMA2_47

- Track 82 : ModicumRichard_95

- Track 83 : ObLaDi_95

- Track 84 : Morgana_102, Cafasso_96

- Track 85 : Aleemily_94

- Track 86 : Lilbit_2, Poise_3, RedRaider77_3, Raela_2, JoieB_3, Beelzebub_3, Blackbeetle_3, Huphlepuuff_2, LittleLaf_2, Clarkson_2

- Track 87 : VasuNzinga_3, Gattaca_4, MosMoris_4, Marvin_2, FeliMaine_2, Corazon_2

- Track 88 : GoongGoong_3, Caprice_3

- Track 89 : Tesla_3
- Track 90 : Mbo2_59
- Track 91 : TPA2_59

Summary of Final Annotations (See graph section above for start numbers):

The start number called the most often in the published annotations is 23, it was called in 194 of the 350 non-draft genes in the pham.

Genes that call this "Most Annotated" start:

- Ablatia_235, Ading_238, Adlitam_236, Aleemily_94, Amataga_237, AnClar_47, ArcherS7_237, Asterius_236, Astraea_230, Atlantean_236, Audrick_238, Ava3_233, Axumite_47, Babyland_239, BackyardAgain_231, BadAgartude_230, BananaFence_233, Bangla1971_237, Basquiat_233, BeanWater_229, Belieber_228, Bezza_224, BigCity_244, BiggityBass_46, Bigswole_241, Bipolarisk_234, Blackbrain_234, Blackdragon_230, Blubba_224, BobaPhatt_227, Bonray_238, Bowman_233, Bread_231, Breeniome_235, Burrough_236, Bxz1_223, Cactojaque_230, Cafasso_96, Cali_227, Cane17_226, Capablanca_241, Caravan_226, Catera_226, Chargie21_233, CharlieB_230, CharlottesWeb_46, ChaylaJr_235, ChickenPhender_232, Chomp_235, CindyLou_237, Cleatunium_228, Colt_227, Concombre_241, Corazon_2, DTDevon_237, Daffodil_241, Dandelion_242, Darko_235, Delilah_234, Delylah_238, Demodog_242, Derek_232, Dessert_233, Dietrick_225, Domi_230, DrPhinkDaddy_233, Drazdys_233, Duckfeet_229, EasyJones_237, EggyFarm_244, EmToTheThree_236, EmmaElysia_241, Erdmann_236, ErnieJ_229, Essence_234, Ewok_235, FeliMaine_2, Fixie_235, Flabslab_232, Fludd_236, Fongie_236, FoxtrotP1_234, FrayBell_239, Fresco_47, FudgeTart_230, Gabriel_239, Gamgam_238, Gattaca_4, Ghost_235, Gizmo_241, GlutenPhree_237, Grasshills_243, Grungle_218, Gustav_59, Guwapp_232, Halldule_228, I3_246, IkeLoa_230, InigoMontoya_239, InterFolia_237, Iota_233, Issimir_229, Izajani_232, JPickles_233, Janiyra_239, JayJay_238, Jaygup_233, Jedediah_237, JellyBelly_46, Jemmno_236, Jessibeth14_236, Jezreel_233, JigglyPuff_242, JulietS_225, JustHall_230, Kamryn_235, Kboogie_240, Khaleesi_235, Koguma_235, LRRHood_228, Labradorite_233, Latch_236, Lee7_235, Lethe_234, LifeSavor_236, Ligma_47, LinStu_234, Littleton_239, Loanshark_233, LolaVinca_232, LookingGlass_234, LordLeafolot_237, Lukilu_225, Lunareta_235, Maby2021_236, Mangeria_237, Mariokart_47, Marvin_2, Matsumoto_234, Mbo2_59, McGee_237, McWolfish_233, Megamind_233, Melpomini_231, MikeLiesIn_236, Mikro_230, MoMoMixon_232, Moby_233, ModicumRichard_95, Moiqah_233, Momo_237, Montpel_235, Morgana_102, Morizzled23_233, MosMoris_4, Naija_237, Napoleon13_233, Nappy_236, Naval22_241, NedWong_235, Ngannou_231, Nidhogg_237, Norm_236, NuevoMundo_237, ObLaDi_95, OrediggerDelux_231, ParkTD_235, Patter_238, PharkleMinkus_238, Phlegm_240, Phox_237, Phusco_235, Pier_235, Pio_242, Pivoine_237, Pleione_240, Primadonna_230, Pupusa_239, PurduePete_236, QBert_228, Quasimodo_239, Rahel_238, Rizal_226, RoMag_231, Rocha_232, Ronan_232, Roots515_239, SVoro_231, Salacia_237, Sauce_233, ScottMcG_228, Sebata_238, Shaqnato_227, Shatter_47, Shelob_237, ShiaLabeouf_234, Shifa_213, Shnickers_235, Shrimp_238, SilverDipper_240, Sisko_46, SmallFry_237, Spec_230, Specks_240, Sprinklers_234, Spud_229, SrishMeg2525_233, StephanieG_230, StubbySaigey_242, Substance289_232, Tainan_236, Teardrop_234, Tesla_3,

TinyTim_234, Tonenili_257, Tortoise16_234, Trinitium_232, Turret_227, Tyke_233, ValleyTerrace_237, VasuNzinga_3, Vortrix_254, Wally_234, Willis_236, Yago84_46, Yassified_233, YemiJoy2021_237, YoungMoneyMata_236, Yucca_235, Zalkecks_235, Zeenon_236, ZygoTaiga_231,

Genes that have the "Most Annotated" start but do not call it:

- 39HC_047, 40BC_047, Beelzebub_3, Blackbeetle_3, Caprice_3, Clarkson_2, DeejaClivia_225, DirtMonster_227, GoongGoong_3, Hosp_046, Huphlepuuff_2, HyRo_221, JoieB_3, Jolie1_048, Lilbit_2, LittleLaf_2, Maturis_232, Poise_3, Raela_2, RedRaider77_3,

Genes that do not have the "Most Annotated" start:

- Abinghost_55, Acadian_55, Akoma_55, AksarBAT_48, AlanGrant_53, Allegro_54, AnarQue_49, Antihero_49, Apex_51, Arbitr_53, Ares_54, Athena_57, Audrey_55, Austelle_51, Bae_56, Baloo_55, Bananafish_54, Ben11_55, Bernardo_56, Blackpen_49, Blocker23_54, BobRoss2024_46, BobbyK_50, Boyle_54, BrownCNA_51, Brownie5_54, CaiB_50, Calamitous_54, Casbah_55, ChaChing_55, Chalmers_54, Chandler_55, Chentzyk_56, CherryTomatoes_138, ChrisnMich_50, CloverMinnie_49, Coffee_54, Compostia_55, Cooper_51, Corofin_55, Deenasa_54, Devonte_54, DigitDog_55, Donny_56, Eaglehorse_54, EastView9101_54, Epah_49, Evaa_46, Fanaw_49, Faze9_53, FelixTres_49, ForDig_48, Fortunato_50, Frederick_50, FrenchFry_54, Funsized_56, GMA2_47, Gadget_56, Gervas_56, GinPorsche_50, Glass_54, GlenHope_56, Glubnar_56, Godines_54, Halfpint_54, Hally898_49, Hangman_49, HarveySr_54, Heath_49, Heathcliff_55, Hedgerow_54, Holeinone_54, Hydro_50, Imvubu_48, Indlovu_52, ItsyBitsy1_54, JAMaL_50, Jackstina_51, JaguarMi_52, JoyceMaria_49, Kaleb_54, Kamiyu_55, KarasumaRum_55, KayaCho_47, Kheth_54, Knocker_55, Kolhan_54, Kronus_55, Lambano_49, Lars_54, Laurie_53, Lephleur_54, LestyG_54, LilMcDreamy_52, LilSmirk_54, LittleDigger_49, LittleMunchkin_48, LizLemon_54, Lolalove_51, Magpie_49, Marley1013_56, Marlia_56, MasterPo_54, Mithril_49, MmasiCarm_56, Mortcellus_55, Morty007_55, MossRose_49, Mudslide_50, Mulaychimus_56, Mysterious_53, NHagos_48, Nanao_49, Nangang_55, Nehemiah_54, Nigel_51, Nozo_55, Obutu_56, Olivio_55, Opia_54, OrangeOswald_55, Phantasmagoria_54, Phayeta_57, Phelemich_53, Philly_54, Phlyer_55, Phrappuccino_159, Poster_49, PrinceCharming_54, Prince_50, Pupper_137, QueenPie_48, RagingRooster_54, RawrgerThat_51, Reccee_55, Renkei_49, Reprobate_54, Rhinoforte_54, Rich_55, Rinkes_53, Rita130_54, Rita1961_56, RomaT_55, Rosebush_53, SCentae_136, Sabella_53, Settecandela_159, Shenyu_55, SirJeffery_54, Skog_198, SlippinJimmy_57, Stinger_50, StinkyVeggy_55, Suigeneris_56, SwainyDoc_56, SynergyX_55, TA17A_55, TPA2_59, Thonko_56, Tinciduntolum_55, TraderJ_50, Tres_54, Vic9_00053, Vincenzo_52, VioletZ_52, Waleliano_49, West99_54, Wooper_50, Xincheng_51, Yahalom_54, Yeshua_50, Yinz_55, Zemanar_50,

Summary by start number:

Start 17:

- Found in 2 of 425 (0.5%) of genes in pham
- Manual Annotations of this start: 2 of 350
- Called 100.0% of time when present
- Phage (with cluster) where this start called: Phrappuccino_159 (AA), Settecandela_159 (AA),

Start 18:

- Found in 57 of 425 (13.4%) of genes in pham
- Manual Annotations of this start: 47 of 350
- Called 84.2% of time when present
- Phage (with cluster) where this start called: Allegro_54 (B2), Arbiter_53 (B2), Ares_54 (B2), Bananafish_54 (B2), Beelzebub_3 (S), Blackbeetle_3 (S), Blocker23_54 (B2), Boyle_54 (B2), Brownie5_54 (B2), Calamitous_54 (B2), Clarkson_2 (S), Coffee_54 (B2), Cooper_51 (B4), Eaglehorse_54 (B2), Faze9_53 (B2), FrenchFry_54 (B2), Glass_54 (B2), Godines_54 (B2), Hedgerow_54 (B2), Holeinone_54 (B2), Huphlepuuff_2 (S), ItsyBitsy1_54 (B2), JoieB_3 (S), Kaleb_54 (B2), Kheth_54 (B2), Kolhan_54 (B2), Lars_54 (B2), Laurie_53 (B2), Lephleur_54 (B2), LilSmirk_54 (B2), Lilbit_2 (S), LittleLaf_2 (S), LizLemon_54 (B2), MasterPo_54 (B2), Opia_54 (B2), Phantasmagoria_54 (B2), Poise_3 (S), PrinceCharming_54 (B2), Raela_2 (S), RedRaider77_3 (S), Rhinoforte_54 (B2), Rosebush_53 (B2), Sabella_53 (B2), TA17A_55 (B2), Tinciduntolum_55 (B2), Tres_54 (B2), Vic9_00053 (B2), West99_54 (B2),

Start 19:

- Found in 2 of 425 (0.5%) of genes in pham
- Manual Annotations of this start: 2 of 350
- Called 100.0% of time when present
- Phage (with cluster) where this start called: Evaa_46 (DR), LittleMunchkin_48 (DR),

Start 20:

- Found in 19 of 425 (4.5%) of genes in pham
- Manual Annotations of this start: 1 of 350
- Called 10.5% of time when present
- Phage (with cluster) where this start called: Caprice_3 (S), GoongGoong_3 (S),

Start 21:

- Found in 142 of 425 (33.4%) of genes in pham
- Manual Annotations of this start: 100 of 350
- Called 94.4% of time when present
- Phage (with cluster) where this start called: 39HC_047 (B6), 40BC_047 (B6), Abinghost_55 (B3), Acadian_55 (B5), Akoma_55 (B3), AksarBAT_48 (DR), AlanGrant_53 (B4), AnarQue_49 (DR), Antihero_49 (B4), Apex_51 (B4), Athena_57 (B3), Audrey_55 (B3), Austelle_51 (B4), Bae_56 (B5), Baloo_55 (B3), Ben11_55 (B3), Bernardo_56 (B3), Blackpen_49 (DR), BobRoss2024_46 (DR), BobbyK_50 (B4), BrownCNA_51 (B4), CaiB_50 (DR), Casbah_55 (B3), ChaChing_55 (B3), Chalmers_54 (B3), Chandler_55 (B3), Chentzyk_56 (B3), ChrisnMich_50 (B4), CloverMinnie_49 (DR), Compostia_55 (B3), Corofin_55 (B3), DeejaClivia_225 (C1), Deenasa_54 (B3), Devonte_54 (B3), DigitDog_55 (B5), DirtMonster_227 (C1), Donny_56 (B5), EastView9101_54 (B5), Epah_49 (B4), Fanaw_49 (B4), FelixTres_49 (DR), ForDig_48 (B6), Fortunato_50 (B4), Frederick_50 (B4), Funsized_56 (B9), Gadget_56 (B3), Gervas_56 (B3), GinPorsche_50 (B4), GlenHope_56 (B3), Glubnar_56 (B3), Halfpint_54 (B3), Hally898_49 (B4), Hangman_49 (B4), HarveySr_54 (B3), Heath_49 (B4), Heathcliff_55 (B3), Hosp_046 (B6), HyRo_221 (C1), Hydro_50 (B4), Imvubu_48 (B10), Indlovu_52 (B11), JAMaL_50 (B4), Jackstina_51 (B3), JaguarMi_52 (B4), Jolie1_048 (B6), JoyceMaria_49 (B4), Kamiyu_55 (B3), KarasumaRum_55 (B5), KayaCho_47 (B6), Knocker_55 (B9), Kronus_55 (B3), Lambano_49 (B4), LestyG_54 (B3), LilMcDreamy_52 (B12), LittleDigger_49 (B4), Lolalove_51 (B4), Magpie_49 (B4), Marley1013_56 (B3), Marlia_56 (B3), Maturis_232 (C1), Mithril_49 (B4), MmasiCarm_56 (B3), Mortcellus_55 (B3), Morty007_55 (B3), MossRose_49 (DR), Mudslide_50 (B4),

Mulaychimus_56 (B3), Mysterious_53 (B5), NHagos_48 (DR), Nanao_49 (B4), Nangang_55 (B5), Nehemiah_54 (B5), Nigel_51 (B4), Nozo_55 (B3), Obutu_56 (B3), Olivio_55 (B3), OrangeOswald_55 (B3), Phayeta_57 (B3), Phelemich_53 (B5), Philly_54 (B3), Phlyer_55 (B3), Poster_49 (B4), Prince_50 (B4), QueenPie_48 (B4), RagingRooster_54 (B3), RawrgerThat_51 (B4), Reccee_55 (B5), Renkei_49 (B4), Reprobate_54 (B5), Rich_55 (B5), Rinkes_53 (B9), Rita130_54 (B5), Rita1961_56 (B3), RomaT_55 (B3), Shenyu_55 (B5), SirJeffery_54 (B5), SlippinJimmy_57 (B3), Stinger_50 (B4), StinkyVeggy_55 (B5), Suigeneris_56 (B5), SwainyDoc_56 (B3), SynergyX_55 (B3), TPA2_59 (singleton), Thonko_56 (B8), TraderJ_50 (DR), Vincenzo_52 (B4), VioletZ_52 (B4), Waleliano_49 (B4), Wooper_50 (DR), Xincheng_51 (B4), Yahalom_54 (B3), Yeshua_50 (DR), Yinz_55 (B3), Zemanar_50 (B4),

Start 22:

- Found in 4 of 425 (0.9%) of genes in pham
- Manual Annotations of this start: 4 of 350
- Called 100.0% of time when present
- Phage (with cluster) where this start called: CherryTomatoes_138 (DO), Pupper_137 (DO), SCentae_136 (DO), Skog_198 (DO),

Start 23:

- Found in 252 of 425 (59.3%) of genes in pham
- Manual Annotations of this start: 194 of 350
- Called 92.1% of time when present
- Phage (with cluster) where this start called: Ablatia_235 (C1), Ading_238 (C1), Adlitam_236 (C1), Aleemily_94 (DZ), Amataga_237 (C1), AnClar_47 (DR), ArcherS7_237 (C1), Asterius_236 (C1), Astraea_230 (C1), Atlantean_236 (C1), Audrick_238 (C1), Ava3_233 (C1), Axumite_47 (DR), Babyland_239 (C1), BackyardAgain_231 (C1), BadAgartude_230 (C1), BananaFence_233 (C1), Bangla1971_237 (C1), Basquiat_233 (C1), BeanWater_229 (C1), Belieber_228 (C1), Bezza_224 (C1), BigCity_244 (C1), BiggityBass_46 (DR), Bigswole_241 (C1), Bipolarisk_234 (C1), Blackbrain_234 (C1), Blackdragon_230 (C1), Blubba_224 (C1), BobaPhatt_227 (C1), Bonray_238 (C1), Bowman_233 (C1), Bread_231 (C1), Breeniome_235 (C1), Burrough_236 (C1), Bxz1_223 (C1), Cactojaque_230 (C1), Cafasso_96 (DZ), Cali_227 (C1), Cane17_226 (C1), Capablanca_241 (C1), Caravan_226 (C1), Catera_226 (C1), Chargie21_233 (C1), CharlieB_230 (C1), CharlottesWeb_46 (DR), ChaylaJr_235 (C1), ChickenPhender_232 (C1), Chomp_235 (C1), CindyLou_237 (C1), Cleatunium_228 (C1), Colt_227 (C1), Concombre_241 (C1), Corazon_2 (S), DTDevon_237 (C1), Daffodil_241 (C1), Dandelion_242 (C1), Darko_235 (C1), Delilah_234 (C1), Delylah_238 (C1), Demodog_242 (C1), Derek_232 (C1), Dessert_233 (C1), Dietrick_225 (C1), Domi_230 (C1), DrPhinkDaddy_233 (C1), Drazdys_233 (C1), Duckfeet_229 (C1), EasyJones_237 (C1), EggypFarm_244 (C1), EmToTheThree_236 (C1), EmmaElysia_241 (C1), Erdmann_236 (C1), ErnieJ_229 (C1), Essence_234 (C1), Ewok_235 (C1), FeliMaine_2 (S), Fixie_235 (C1), Flabslab_232 (C1), Fludd_236 (C1), Fongie_236 (C1), FoxtrotP1_234 (C1), FrayBell_239 (C1), Fresco_47 (DR), FudgeTart_230 (C1), Gabriel_239 (C1), Gamgam_238 (C1), Gattaca_4 (S), Ghost_235 (C1), Gizmo_241 (C1), GlutenPhree_237 (C1), Grasshills_243 (C1), Grungle_218 (C1), Gustav_59 (CD), Guwapp_232 (C1), Halldule_228 (C1), I3_246 (C1), IkeLoa_230 (C1), InigoMontoya_239 (C1), InterFolia_237 (C1), Iota_233 (C1), Issimir_229 (C1), Izajani_232 (C1), JPickles_233 (C1), Janiyr_239 (C1), JayJay_238 (C1), Jaygup_233 (C1), Jedediah_237 (C1), JellyBelly_46 (DR), Jemmno_236 (C1), Jessibeth14_236 (C1), Jezreel_233 (C1), JigglyPuff_242 (C1), JulietS_225 (C1),

JustHall_230 (C1), Kamryn_235 (C1), Kboogie_240 (C1), Khaleesi_235 (C1), Koguma_235 (C1), LRRHood_228 (C1), Labradorite_233 (C1), Latch_236 (C1), Lee7_235 (C1), Letha_234 (C1), LifeSavor_236 (C1), Ligma_47 (DR), LinStu_234 (C1), Littleton_239 (C1), Loanshark_233 (C1), LolaVinca_232 (C1), LookingGlass_234 (C1), LordLeafot_237 (C1), Lukilu_225 (C1), Lunareta_235 (C1), Maby2021_236 (C1), Mangeria_237 (C1), Mariokart_47 (DR), Marvin_2 (S), Matsumoto_234 (C1), Mbo2_59 (singleton), McGee_237 (C1), McWolfish_233 (C1), Megamind_233 (C1), Melpomini_231 (C1), MikeLiesIn_236 (C1), Mikro_230 (C1), MoMoMixon_232 (C1), Moby_233 (C1), ModicumRichard_95 (DZ), Moiqah_233 (C1), Momo_237 (C1), Montpel_235 (C1), Morgana_102 (DZ), Morizzled23_233 (C1), MosMoris_4 (S), Naija_237 (C1), Napoleon13_233 (C1), Nappy_236 (C1), Naval22_241 (C1), NedWong_235 (C1), Ngannou_231 (C1), Nidhogg_237 (C1), Norm_236 (C1), NuevoMundo_237 (C1), ObLaDi_95 (DZ), OrediggerDelux_231 (C1), ParkTD_235 (C1), Patter_238 (C1), PharkleMinkus_238 (C1), Phlegm_240 (C1), Phox_237 (C1), Phusco_235 (C1), Pier_235 (C1), Pio_242 (C1), Pivoine_237 (C1), Pleione_240 (C1), Primadonna_230 (C1), Pupusa_239 (C1), PurduePete_236 (C1), QBert_228 (C1), Quasimodo_239 (C1), Rahel_238 (C1), Rizal_226 (C1), RoMag_231 (C1), Rocha_232 (C1), Ronan_232 (C1), Roots515_239 (C1), SVoro_231 (C1), Salacia_237 (C1), Sauce_233 (C1), ScottMcG_228 (C1), Sebata_238 (C1), Shaqato_227 (C1), Shatter_47 (DR), Shelob_237 (C1), ShiaLabeouf_234 (C1), Shifa_213 (C1), Shnickers_235 (C1), Shrimp_238 (C1), SilverDipper_240 (C1), Sisko_46 (DR), SmallFry_237 (C1), Spec_230 (C1), Specks_240 (C1), Sprinklers_234 (C1), Spud_229 (C1), SrishMeg2525_233 (C1), StephanieG_230 (C1), StubbySaigey_242 (C1), Substance289_232 (C1), Tainan_236 (C1), Teardrop_234 (C1), Tesla_3 (S), TinyTim_234 (C1), Tonenili_257 (C1), Tortoise16_234 (C1), Trinitium_232 (C1), Turret_227 (C1), Tyke_233 (C1), ValleyTerrace_237 (C1), VasuNzinga_3 (S), Vortrix_254 (C1), Wally_234 (C1), Willis_236 (C1), Yago84_46 (DR), Yassified_233 (C1), YemiJoy2021_237 (C1), YoungMoneyMata_236 (C1), Yucca_235 (C1), Zalkecks_235 (C1), Zeenon_236 (C1), ZygoTaiga_231 (C1),

Start 27:

- Found in 1 of 425 (0.2%) of genes in pham
- No Manual Annotations of this start.
- Called 100.0% of time when present
- Phage (with cluster) where this start called: GMA2_47 (DS),

Summary by clusters:

There are 19 clusters represented in this pham: AA, DO, singleton, B10, DS, B8, B11, B6, CD, B4, B5, S, DZ, B2, B3, B12, C1, DR, B9,

Info for manual annotations of cluster AA:

- Start number 17 was manually annotated 2 times for cluster AA.

Info for manual annotations of cluster B10:

- Start number 21 was manually annotated 1 time for cluster B10.

Info for manual annotations of cluster B11:

- Start number 21 was manually annotated 1 time for cluster B11.

Info for manual annotations of cluster B12:

- Start number 21 was manually annotated 1 time for cluster B12.

Info for manual annotations of cluster B2:

- Start number 18 was manually annotated 36 times for cluster B2.

Info for manual annotations of cluster B3:

- Start number 21 was manually annotated 44 times for cluster B3.

Info for manual annotations of cluster B4:

- Start number 18 was manually annotated 1 time for cluster B4.
- Start number 21 was manually annotated 27 times for cluster B4.

Info for manual annotations of cluster B5:

- Start number 21 was manually annotated 10 times for cluster B5.

Info for manual annotations of cluster B6:

- Start number 21 was manually annotated 2 times for cluster B6.

Info for manual annotations of cluster B8:

- Start number 21 was manually annotated 1 time for cluster B8.

Info for manual annotations of cluster B9:

- Start number 21 was manually annotated 3 times for cluster B9.

Info for manual annotations of cluster C1:

- Start number 21 was manually annotated 2 times for cluster C1.
- Start number 23 was manually annotated 172 times for cluster C1.

Info for manual annotations of cluster CD:

- Start number 23 was manually annotated 1 time for cluster CD.

Info for manual annotations of cluster DO:

- Start number 22 was manually annotated 4 times for cluster DO.

Info for manual annotations of cluster DR:

- Start number 19 was manually annotated 2 times for cluster DR.
- Start number 21 was manually annotated 8 times for cluster DR.
- Start number 23 was manually annotated 9 times for cluster DR.

Info for manual annotations of cluster DZ:

- Start number 23 was manually annotated 5 times for cluster DZ.

Info for manual annotations of cluster S:

- Start number 18 was manually annotated 10 times for cluster S.
- Start number 20 was manually annotated 1 time for cluster S.
- Start number 23 was manually annotated 7 times for cluster S.

Gene Information:

Gene: 39HC_047 Start: 46065, Stop: 45586, Start Num: 21

Candidate Starts for 39HC_047:

(Start: 21 @46065 has 100 MA's), (Start: 23 @46059 has 194 MA's), (42, 45933), (78, 45795), (85, 45768), (96, 45705), (116, 45600),

Gene: 40BC_047 Start: 46065, Stop: 45586, Start Num: 21

Candidate Starts for 40BC_047:

(Start: 21 @46065 has 100 MA's), (Start: 23 @46059 has 194 MA's), (42, 45933), (78, 45795), (85, 45768), (96, 45705), (116, 45600),

Gene: Abinghost_55 Start: 48403, Stop: 47930, Start Num: 21

Candidate Starts for Abinghost_55:

(Start: 21 @48403 has 100 MA's), (28, 48367), (59, 48175), (78, 48139), (85, 48112),

Gene: Ablatia_235 Start: 130787, Stop: 131254, Start Num: 23

Candidate Starts for Ablatia_235:

(15, 130718), (Start: 23 @130787 has 194 MA's), (26, 130808), (51, 130982), (56, 130997), (97, 131150), (104, 131198),

Gene: Acadian_55 Start: 48973, Stop: 48512, Start Num: 21

Candidate Starts for Acadian_55:

(Start: 21 @48973 has 100 MA's), (29, 48925), (46, 48814), (59, 48745), (73, 48724), (95, 48637), (96, 48631), (102, 48589),

Gene: Ading_238 Start: 133220, Stop: 133687, Start Num: 23

Candidate Starts for Ading_238:

(15, 133151), (Start: 23 @133220 has 194 MA's), (26, 133241), (51, 133415), (56, 133430), (97, 133583), (104, 133631),

Gene: Adlitam_236 Start: 131824, Stop: 132291, Start Num: 23

Candidate Starts for Adlitam_236:

(15, 131755), (Start: 23 @131824 has 194 MA's), (26, 131845), (51, 132019), (56, 132034), (97, 132187), (104, 132235),

Gene: Akoma_55 Start: 48418, Stop: 47945, Start Num: 21

Candidate Starts for Akoma_55:

(Start: 21 @48418 has 100 MA's), (28, 48382), (59, 48190), (78, 48154), (85, 48127),

Gene: AksarBAT_48 Start: 41599, Stop: 41123, Start Num: 21

Candidate Starts for AksarBAT_48:

(Start: 21 @41599 has 100 MA's), (37, 41497), (40, 41470), (44, 41449), (55, 41383), (96, 41254), (104, 41203), (112, 41167),

Gene: AlanGrant_53 Start: 49377, Stop: 48913, Start Num: 21

Candidate Starts for AlanGrant_53:

(Start: 21 @49377 has 100 MA's), (44, 49236), (64, 49152), (91, 49056), (92, 49050), (96, 49023), (116, 48924),

Gene: Aleemily_94 Start: 55554, Stop: 56000, Start Num: 23

Candidate Starts for Aleemily_94:

(Start: 23 @55554 has 194 MA's), (35, 55635), (48, 55725), (62, 55770), (104, 55935),

Gene: Allegro_54 Start: 47624, Stop: 47133, Start Num: 18

Candidate Starts for Allegro_54:

(Start: 18 @47624 has 47 MA's), (45, 47465), (77, 47345), (78, 47342), (82, 47327), (85, 47315), (95, 47258), (96, 47252), (100, 47225), (118, 47141),

Gene: Amataga_237 Start: 130823, Stop: 131290, Start Num: 23

Candidate Starts for Amataga_237:

(15, 130754), (Start: 23 @130823 has 194 MA's), (26, 130844), (51, 131018), (56, 131033), (97, 131186), (104, 131234),

Gene: AnClar_47 Start: 43032, Stop: 42556, Start Num: 23

Candidate Starts for AnClar_47:

(Start: 23 @43032 has 194 MA's), (30, 42987), (32, 42972), (48, 42867), (89, 42711), (98, 42654), (110, 42585), (113, 42570),

Gene: AnarQue_49 Start: 42622, Stop: 42155, Start Num: 21

Candidate Starts for AnarQue_49:

(Start: 21 @42622 has 100 MA's), (40, 42493), (70, 42379), (95, 42283), (96, 42277), (104, 42226), (112, 42190),

Gene: Antihero_49 Start: 47622, Stop: 47143, Start Num: 21

Candidate Starts for Antihero_49:

(Start: 21 @47622 has 100 MA's), (42, 47490), (85, 47325), (87, 47313), (96, 47262), (116, 47157), (117, 47154),

Gene: Apex_51 Start: 48844, Stop: 48383, Start Num: 21

Candidate Starts for Apex_51:

(6, 49039), (Start: 21 @48844 has 100 MA's), (36, 48751), (44, 48703), (70, 48607), (74, 48598), (85, 48556), (86, 48550), (91, 48526), (96, 48493), (99, 48469), (100, 48466), (110, 48418), (116, 48394),

Gene: Arbiter_53 Start: 47730, Stop: 47239, Start Num: 18

Candidate Starts for Arbiter_53:

(Start: 18 @47730 has 47 MA's), (45, 47571), (77, 47451), (78, 47448), (82, 47433), (85, 47421), (95, 47364), (96, 47358), (100, 47331), (118, 47247),

Gene: ArcherS7_237 Start: 132568, Stop: 133035, Start Num: 23

Candidate Starts for ArcherS7_237:

(15, 132499), (Start: 23 @132568 has 194 MA's), (26, 132589), (51, 132763), (56, 132778), (97, 132931), (104, 132979),

Gene: Ares_54 Start: 47699, Stop: 47208, Start Num: 18

Candidate Starts for Ares_54:

(Start: 18 @47699 has 47 MA's), (45, 47540), (77, 47420), (78, 47417), (82, 47402), (85, 47390), (95, 47333), (96, 47327), (100, 47300), (118, 47216),

Gene: Asterius_236 Start: 131232, Stop: 131699, Start Num: 23

Candidate Starts for Asterius_236:

(15, 131163), (Start: 23 @131232 has 194 MA's), (26, 131253), (51, 131427), (56, 131442), (97, 131595), (104, 131643),

Gene: Astraea_230 Start: 130427, Stop: 130894, Start Num: 23

Candidate Starts for Astraea_230:

(15, 130358), (Start: 23 @130427 has 194 MA's), (26, 130448), (51, 130622), (56, 130637), (97, 130790), (104, 130838),

Gene: Athena_57 Start: 49161, Stop: 48688, Start Num: 21

Candidate Starts for Athena_57:

(Start: 21 @49161 has 100 MA's), (28, 49125), (59, 48933), (78, 48897), (85, 48870),

Gene: Atlantean_236 Start: 130823, Stop: 131290, Start Num: 23

Candidate Starts for Atlantean_236:

(15, 130754), (Start: 23 @130823 has 194 MA's), (26, 130844), (51, 131018), (56, 131033), (97, 131186), (104, 131234),

Gene: Audrey_55 Start: 48409, Stop: 47936, Start Num: 21

Candidate Starts for Audrey_55:

(Start: 21 @48409 has 100 MA's), (28, 48373), (52, 48205), (59, 48181), (64, 48172), (78, 48145), (85, 48118), (113, 47965),

Gene: Audrick_238 Start: 130713, Stop: 131180, Start Num: 23

Candidate Starts for Audrick_238:

(15, 130644), (Start: 23 @130713 has 194 MA's), (26, 130734), (51, 130908), (56, 130923), (97, 131076), (104, 131124),

Gene: Austelle_51 Start: 49294, Stop: 48833, Start Num: 21

Candidate Starts for Austelle_51:

(Start: 21 @49294 has 100 MA's), (36, 49201), (44, 49153), (70, 49057), (74, 49048), (85, 49006), (86, 49000), (91, 48976), (96, 48943), (99, 48919), (100, 48916), (110, 48868), (116, 48844),

Gene: Ava3_233 Start: 131283, Stop: 131750, Start Num: 23

Candidate Starts for Ava3_233:

(15, 131214), (Start: 23 @131283 has 194 MA's), (26, 131304), (51, 131478), (56, 131493), (97, 131646), (104, 131694),

Gene: Axumite_47 Start: 40708, Stop: 40232, Start Num: 23

Candidate Starts for Axumite_47:

(5, 40930), (12, 40804), (Start: 23 @40708 has 194 MA's), (80, 40429), (83, 40417), (89, 40390), (98, 40333), (99, 40321), (110, 40264),

Gene: Babyland_239 Start: 131600, Stop: 132067, Start Num: 23

Candidate Starts for Babyland_239:

(15, 131531), (Start: 23 @131600 has 194 MA's), (26, 131621), (51, 131795), (56, 131810), (97, 131963), (104, 132011),

Gene: BackyardAgain_231 Start: 128973, Stop: 129440, Start Num: 23

Candidate Starts for BackyardAgain_231:

(15, 128904), (Start: 23 @128973 has 194 MA's), (26, 128994), (51, 129168), (56, 129183), (97, 129336), (104, 129384),

Gene: BadAgartude_230 Start: 130913, Stop: 131380, Start Num: 23

Candidate Starts for BadAgartude_230:

(15, 130844), (Start: 23 @130913 has 194 MA's), (26, 130934), (51, 131108), (56, 131123), (97, 131276), (104, 131324),

Gene: Bae_56 Start: 50252, Stop: 49791, Start Num: 21

Candidate Starts for Bae_56:

(Start: 21 @50252 has 100 MA's), (29, 50204), (59, 50024), (73, 50003), (95, 49916), (96, 49910),

Gene: Baloo_55 Start: 48412, Stop: 47939, Start Num: 21
Candidate Starts for Baloo_55:
(Start: 21 @48412 has 100 MA's), (28, 48376), (52, 48208), (59, 48184), (64, 48175), (78, 48148), (85, 48121), (113, 47968),

Gene: BananaFence_233 Start: 131056, Stop: 131523, Start Num: 23
Candidate Starts for BananaFence_233:
(15, 130987), (Start: 23 @131056 has 194 MA's), (26, 131077), (51, 131251), (56, 131266), (97, 131419), (104, 131467),

Gene: Bananafish_54 Start: 47633, Stop: 47142, Start Num: 18
Candidate Starts for Bananafish_54:
(Start: 18 @47633 has 47 MA's), (45, 47474), (77, 47354), (78, 47351), (82, 47336), (85, 47324), (95, 47267), (96, 47261), (100, 47234), (118, 47150),

Gene: Bangla1971_237 Start: 131532, Stop: 131999, Start Num: 23
Candidate Starts for Bangla1971_237:
(15, 131463), (Start: 23 @131532 has 194 MA's), (26, 131553), (51, 131727), (56, 131742), (97, 131895), (104, 131943),

Gene: Basquiat_233 Start: 129342, Stop: 129809, Start Num: 23
Candidate Starts for Basquiat_233:
(15, 129273), (Start: 23 @129342 has 194 MA's), (26, 129363), (51, 129537), (56, 129552), (97, 129705), (104, 129753),

Gene: BeanWater_229 Start: 130669, Stop: 131136, Start Num: 23
Candidate Starts for BeanWater_229:
(15, 130600), (Start: 23 @130669 has 194 MA's), (26, 130690), (51, 130864), (56, 130879), (97, 131032), (104, 131080),

Gene: Beelzebub_3 Start: 781, Stop: 1281, Start Num: 18
Candidate Starts for Beelzebub_3:
(Start: 18 @781 has 47 MA's), (Start: 20 @793 has 1 MA's), (Start: 23 @802 has 194 MA's), (49, 979), (53, 1003), (54, 1009), (55, 1012), (59, 1024), (61, 1030), (77, 1072), (93, 1147), (101, 1198),

Gene: Belieber_228 Start: 129469, Stop: 129936, Start Num: 23
Candidate Starts for Belieber_228:
(15, 129400), (Start: 23 @129469 has 194 MA's), (26, 129490), (51, 129664), (56, 129679), (97, 129832), (104, 129880),

Gene: Ben11_55 Start: 48694, Stop: 48221, Start Num: 21
Candidate Starts for Ben11_55:
(Start: 21 @48694 has 100 MA's), (28, 48658), (59, 48466), (78, 48430), (85, 48403),

Gene: Bernardo_56 Start: 48845, Stop: 48372, Start Num: 21
Candidate Starts for Bernardo_56:
(Start: 21 @48845 has 100 MA's), (28, 48809), (59, 48617), (78, 48581), (85, 48554), (113, 48401),

Gene: Bezza_224 Start: 130368, Stop: 130835, Start Num: 23
Candidate Starts for Bezza_224:
(15, 130299), (Start: 23 @130368 has 194 MA's), (26, 130389), (51, 130563), (56, 130578), (97, 130731), (104, 130779),

Gene: BigCity_244 Start: 133429, Stop: 133896, Start Num: 23
Candidate Starts for BigCity_244:
(Start: 23 @133429 has 194 MA's), (26, 133450), (51, 133624), (56, 133639), (71, 133678), (97, 133792), (104, 133840),

Gene: BiggityBass_46 Start: 42504, Stop: 42028, Start Num: 23
Candidate Starts for BiggityBass_46:
(Start: 23 @42504 has 194 MA's), (68, 42264), (69, 42261), (80, 42222), (83, 42210), (85, 42201), (89, 42183), (110, 42057), (113, 42042),

Gene: Bigswole_241 Start: 133391, Stop: 133858, Start Num: 23
Candidate Starts for Bigswole_241:
(15, 133322), (Start: 23 @133391 has 194 MA's), (26, 133412), (51, 133586), (56, 133601), (97, 133754), (104, 133802),

Gene: Bipolarisk_234 Start: 131551, Stop: 132018, Start Num: 23
Candidate Starts for Bipolarisk_234:
(15, 131482), (Start: 23 @131551 has 194 MA's), (26, 131572), (51, 131746), (56, 131761), (97, 131914), (104, 131962),

Gene: Blackbeetle_3 Start: 790, Stop: 1290, Start Num: 18
Candidate Starts for Blackbeetle_3:
(Start: 18 @790 has 47 MA's), (Start: 20 @802 has 1 MA's), (Start: 23 @811 has 194 MA's), (49, 988), (53, 1012), (54, 1018), (55, 1021), (59, 1033), (61, 1039), (77, 1081), (93, 1156), (101, 1207),

Gene: Blackbrain_234 Start: 131119, Stop: 131586, Start Num: 23
Candidate Starts for Blackbrain_234:
(15, 131050), (Start: 23 @131119 has 194 MA's), (26, 131140), (51, 131314), (56, 131329), (97, 131482), (104, 131530),

Gene: Blackdragon_230 Start: 131144, Stop: 131611, Start Num: 23
Candidate Starts for Blackdragon_230:
(15, 131075), (Start: 23 @131144 has 194 MA's), (26, 131165), (51, 131339), (56, 131354), (97, 131507), (104, 131555),

Gene: Blackpen_49 Start: 42040, Stop: 41573, Start Num: 21
Candidate Starts for Blackpen_49:
(Start: 21 @42040 has 100 MA's), (40, 41911), (70, 41797), (95, 41701), (96, 41695), (104, 41644), (112, 41608),

Gene: Blocker23_54 Start: 47746, Stop: 47255, Start Num: 18
Candidate Starts for Blocker23_54:
(Start: 18 @47746 has 47 MA's), (45, 47587), (78, 47464), (82, 47449), (85, 47437), (95, 47380), (96, 47374), (100, 47347), (118, 47263),

Gene: Blubba_224 Start: 134689, Stop: 135174, Start Num: 23
Candidate Starts for Blubba_224:
(15, 134620), (Start: 23 @134689 has 194 MA's), (26, 134710), (51, 134884), (56, 134899), (97, 135052), (104, 135100),

Gene: BobRoss2024_46 Start: 40623, Stop: 40150, Start Num: 21
Candidate Starts for BobRoss2024_46:

(Start: 21 @40623 has 100 MA's), (40, 40494), (51, 40422), (55, 40407), (74, 40371), (85, 40329), (96, 40278),

Gene: BobaPhatt_227 Start: 130237, Stop: 130704, Start Num: 23

Candidate Starts for BobaPhatt_227:

(15, 130168), (Start: 23 @130237 has 194 MA's), (26, 130258), (51, 130432), (56, 130447), (97, 130600), (104, 130648),

Gene: BobbyK_50 Start: 48250, Stop: 47771, Start Num: 21

Candidate Starts for BobbyK_50:

(Start: 21 @48250 has 100 MA's), (42, 48118), (85, 47953), (87, 47941), (92, 47917), (96, 47890), (116, 47785), (117, 47782),

Gene: Bonray_238 Start: 132919, Stop: 133386, Start Num: 23

Candidate Starts for Bonray_238:

(15, 132850), (Start: 23 @132919 has 194 MA's), (26, 132940), (51, 133114), (56, 133129), (97, 133282), (104, 133330),

Gene: Bowman_233 Start: 132034, Stop: 132501, Start Num: 23

Candidate Starts for Bowman_233:

(15, 131965), (Start: 23 @132034 has 194 MA's), (26, 132055), (51, 132229), (56, 132244), (97, 132397), (104, 132445),

Gene: Boyle_54 Start: 47766, Stop: 47275, Start Num: 18

Candidate Starts for Boyle_54:

(Start: 18 @47766 has 47 MA's), (45, 47607), (78, 47484), (82, 47469), (85, 47457), (95, 47400), (96, 47394), (100, 47367), (118, 47283),

Gene: Bread_231 Start: 130926, Stop: 131393, Start Num: 23

Candidate Starts for Bread_231:

(15, 130857), (Start: 23 @130926 has 194 MA's), (26, 130947), (51, 131121), (56, 131136), (97, 131289), (104, 131337),

Gene: Breeniome_235 Start: 130380, Stop: 130847, Start Num: 23

Candidate Starts for Breeniome_235:

(15, 130311), (Start: 23 @130380 has 194 MA's), (26, 130401), (51, 130575), (56, 130590), (97, 130743), (104, 130791),

Gene: BrownCNA_51 Start: 48520, Stop: 48059, Start Num: 21

Candidate Starts for BrownCNA_51:

(Start: 21 @48520 has 100 MA's), (36, 48427), (44, 48379), (66, 48292), (70, 48283), (74, 48274), (82, 48244), (85, 48232), (91, 48202), (96, 48169), (99, 48145), (100, 48142), (110, 48094), (116, 48070),

Gene: Brownie5_54 Start: 47782, Stop: 47291, Start Num: 18

Candidate Starts for Brownie5_54:

(Start: 18 @47782 has 47 MA's), (45, 47623), (77, 47503), (78, 47500), (82, 47485), (85, 47473), (95, 47416), (96, 47410), (100, 47383), (118, 47299),

Gene: Burrough_236 Start: 132696, Stop: 133163, Start Num: 23

Candidate Starts for Burrough_236:

(15, 132627), (Start: 23 @132696 has 194 MA's), (26, 132717), (51, 132891), (56, 132906), (97, 133059), (104, 133107),

Gene: Bxz1_223 Start: 132901, Stop: 133368, Start Num: 23

Candidate Starts for Bxz1_223:

(15, 132832), (Start: 23 @132901 has 194 MA's), (26, 132922), (51, 133096), (56, 133111), (97, 133264), (104, 133312),

Gene: Cactojaque_230 Start: 130065, Stop: 130532, Start Num: 23

Candidate Starts for Cactojaque_230:

(15, 129996), (Start: 23 @130065 has 194 MA's), (26, 130086), (51, 130260), (56, 130275), (97, 130428), (104, 130476),

Gene: Cafasso_96 Start: 56105, Stop: 56551, Start Num: 23

Candidate Starts for Cafasso_96:

(Start: 23 @56105 has 194 MA's), (48, 56276), (62, 56321), (104, 56486),

Gene: CaiB_50 Start: 43465, Stop: 42998, Start Num: 21

Candidate Starts for CaiB_50:

(Start: 21 @43465 has 100 MA's), (40, 43336), (70, 43222), (95, 43126), (96, 43120), (104, 43069), (112, 43033),

Gene: Calamitous_54 Start: 47632, Stop: 47141, Start Num: 18

Candidate Starts for Calamitous_54:

(Start: 18 @47632 has 47 MA's), (45, 47473), (77, 47353), (78, 47350), (82, 47335), (85, 47323), (95, 47266), (96, 47260), (100, 47233), (118, 47149),

Gene: Cali_227 Start: 131294, Stop: 131761, Start Num: 23

Candidate Starts for Cali_227:

(15, 131225), (Start: 23 @131294 has 194 MA's), (26, 131315), (51, 131489), (56, 131504), (97, 131657), (104, 131705),

Gene: Cane17_226 Start: 135098, Stop: 135583, Start Num: 23

Candidate Starts for Cane17_226:

(15, 135029), (Start: 23 @135098 has 194 MA's), (26, 135119), (51, 135293), (56, 135308), (97, 135461), (104, 135509),

Gene: Capablanca_241 Start: 133548, Stop: 134015, Start Num: 23

Candidate Starts for Capablanca_241:

(15, 133479), (Start: 23 @133548 has 194 MA's), (26, 133569), (51, 133743), (56, 133758), (97, 133911), (104, 133959),

Gene: Caprice_3 Start: 802, Stop: 1290, Start Num: 20

Candidate Starts for Caprice_3:

(Start: 18 @790 has 47 MA's), (Start: 20 @802 has 1 MA's), (Start: 23 @811 has 194 MA's), (49, 988), (53, 1012), (54, 1018), (55, 1021), (59, 1033), (61, 1039), (77, 1081), (93, 1156), (101, 1207),

Gene: Caravan_226 Start: 131634, Stop: 132101, Start Num: 23

Candidate Starts for Caravan_226:

(15, 131565), (Start: 23 @131634 has 194 MA's), (26, 131655), (51, 131829), (56, 131844), (97, 131997), (104, 132045),

Gene: Casbah_55 Start: 48727, Stop: 48254, Start Num: 21

Candidate Starts for Casbah_55:

(Start: 21 @48727 has 100 MA's), (28, 48691), (59, 48499), (64, 48490), (78, 48463), (85, 48436),

Gene: Catera_226 Start: 130036, Stop: 130503, Start Num: 23

Candidate Starts for Catera_226:

(15, 129967), (Start: 23 @130036 has 194 MA's), (26, 130057), (51, 130231), (56, 130246), (97, 130399), (104, 130447),

Gene: ChaChing_55 Start: 48426, Stop: 47953, Start Num: 21

Candidate Starts for ChaChing_55:

(Start: 21 @48426 has 100 MA's), (28, 48390), (52, 48222), (59, 48198), (64, 48189), (78, 48162), (85, 48135), (113, 47982),

Gene: Chalmers_54 Start: 48901, Stop: 48428, Start Num: 21

Candidate Starts for Chalmers_54:

(Start: 21 @48901 has 100 MA's), (28, 48865), (59, 48673), (78, 48637), (85, 48610),

Gene: Chandler_55 Start: 49197, Stop: 48724, Start Num: 21

Candidate Starts for Chandler_55:

(Start: 21 @49197 has 100 MA's), (28, 49161), (59, 48969), (78, 48933), (85, 48906), (113, 48753),

Gene: Chargie21_233 Start: 129342, Stop: 129809, Start Num: 23

Candidate Starts for Chargie21_233:

(15, 129273), (Start: 23 @129342 has 194 MA's), (26, 129363), (51, 129537), (56, 129552), (97, 129705), (104, 129753),

Gene: CharlieB_230 Start: 131048, Stop: 131515, Start Num: 23

Candidate Starts for CharlieB_230:

(15, 130979), (Start: 23 @131048 has 194 MA's), (26, 131069), (51, 131243), (56, 131258), (97, 131411), (104, 131459),

Gene: CharlottesWeb_46 Start: 40078, Stop: 39602, Start Num: 23

Candidate Starts for CharlottesWeb_46:

(Start: 23 @40078 has 194 MA's), (80, 39799), (83, 39787), (89, 39760), (99, 39691), (110, 39634),

Gene: ChaylaJr_235 Start: 130733, Stop: 131200, Start Num: 23

Candidate Starts for ChaylaJr_235:

(15, 130664), (Start: 23 @130733 has 194 MA's), (26, 130754), (51, 130928), (56, 130943), (97, 131096), (104, 131144),

Gene: Chentzyk_56 Start: 49236, Stop: 48763, Start Num: 21

Candidate Starts for Chentzyk_56:

(Start: 21 @49236 has 100 MA's), (28, 49200), (52, 49032), (59, 49008), (78, 48972), (85, 48945), (113, 48792),

Gene: CherryTomatoes_138 Start: 95998, Stop: 96492, Start Num: 22

Candidate Starts for CherryTomatoes_138:

(Start: 22 @95998 has 4 MA's), (91, 96340), (106, 96442),

Gene: ChickenPhender_232 Start: 129489, Stop: 129956, Start Num: 23

Candidate Starts for ChickenPhender_232:

(15, 129420), (Start: 23 @129489 has 194 MA's), (26, 129510), (51, 129684), (56, 129699), (97, 129852), (104, 129900),

Gene: Chomp_235 Start: 132925, Stop: 133392, Start Num: 23

Candidate Starts for Chomp_235:

(15, 132856), (16, 132859), (Start: 23 @132925 has 194 MA's), (26, 132946), (51, 133120), (56, 133135), (97, 133288), (104, 133336),

Gene: ChrisnMich_50 Start: 47606, Stop: 47145, Start Num: 21

Candidate Starts for ChrisnMich_50:

(Start: 21 @47606 has 100 MA's), (36, 47513), (44, 47465), (70, 47369), (74, 47360), (82, 47330), (85, 47318), (91, 47288), (96, 47255), (99, 47231), (100, 47228), (110, 47180), (116, 47156),

Gene: CindyLou_237 Start: 133185, Stop: 133652, Start Num: 23

Candidate Starts for CindyLou_237:

(15, 133116), (Start: 23 @133185 has 194 MA's), (26, 133206), (51, 133380), (56, 133395), (97, 133548), (104, 133596),

Gene: Clarkson_2 Start: 557, Stop: 1057, Start Num: 18

Candidate Starts for Clarkson_2:

(Start: 18 @557 has 47 MA's), (Start: 20 @569 has 1 MA's), (Start: 23 @578 has 194 MA's), (49, 755), (53, 779), (54, 785), (55, 788), (59, 800), (61, 806), (77, 848), (93, 923), (101, 974),

Gene: Cleatunium_228 Start: 130746, Stop: 131213, Start Num: 23

Candidate Starts for Cleatunium_228:

(15, 130677), (Start: 23 @130746 has 194 MA's), (26, 130767), (51, 130941), (56, 130956), (97, 131109), (104, 131157),

Gene: CloverMinnie_49 Start: 42548, Stop: 42081, Start Num: 21

Candidate Starts for CloverMinnie_49:

(Start: 21 @42548 has 100 MA's), (40, 42419), (70, 42305), (95, 42209), (96, 42203), (104, 42152), (112, 42116),

Gene: Coffee_54 Start: 47741, Stop: 47250, Start Num: 18

Candidate Starts for Coffee_54:

(Start: 18 @47741 has 47 MA's), (45, 47582), (78, 47459), (82, 47444), (85, 47432), (95, 47375), (96, 47369), (100, 47342), (118, 47258),

Gene: Colt_227 Start: 134329, Stop: 134814, Start Num: 23

Candidate Starts for Colt_227:

(15, 134260), (Start: 23 @134329 has 194 MA's), (26, 134350), (51, 134524), (56, 134539), (97, 134692), (104, 134740),

Gene: Compostia_55 Start: 48846, Stop: 48373, Start Num: 21

Candidate Starts for Compostia_55:

(Start: 21 @48846 has 100 MA's), (28, 48810), (59, 48618), (78, 48582), (85, 48555),

Gene: Concombres_241 Start: 133081, Stop: 133548, Start Num: 23

Candidate Starts for Concombres_241:

(15, 133012), (Start: 23 @133081 has 194 MA's), (26, 133102), (51, 133276), (56, 133291), (97, 133444), (104, 133492),

Gene: Cooper_51 Start: 47858, Stop: 47370, Start Num: 18

Candidate Starts for Cooper_51:

(Start: 18 @47858 has 47 MA's), (31, 47786), (34, 47765), (45, 47699), (78, 47573), (95, 47489), (96, 47483),

Gene: Corazon_2 Start: 802, Stop: 1281, Start Num: 23

Candidate Starts for Corazon_2:

(Start: 18 @781 has 47 MA's), (Start: 20 @793 has 1 MA's), (Start: 23 @802 has 194 MA's), (49, 979), (53, 1003), (54, 1009), (55, 1012), (59, 1024), (61, 1030), (77, 1072), (93, 1147), (101, 1198),

Gene: Corofin_55 Start: 48440, Stop: 47967, Start Num: 21

Candidate Starts for Corofin_55:

(Start: 21 @48440 has 100 MA's), (28, 48404), (59, 48212), (78, 48176), (85, 48149),

Gene: DTDevon_237 Start: 133564, Stop: 134031, Start Num: 23

Candidate Starts for DTDevon_237:

(15, 133495), (Start: 23 @133564 has 194 MA's), (26, 133585), (51, 133759), (56, 133774), (97, 133927), (104, 133975),

Gene: Daffodil_241 Start: 131851, Stop: 132318, Start Num: 23

Candidate Starts for Daffodil_241:

(15, 131782), (Start: 23 @131851 has 194 MA's), (26, 131872), (51, 132046), (56, 132061), (97, 132214), (104, 132262),

Gene: Dandelion_242 Start: 134454, Stop: 134921, Start Num: 23

Candidate Starts for Dandelion_242:

(15, 134385), (Start: 23 @134454 has 194 MA's), (26, 134475), (51, 134649), (56, 134664), (97, 134817), (104, 134865),

Gene: Darko_235 Start: 131060, Stop: 131527, Start Num: 23

Candidate Starts for Darko_235:

(15, 130991), (Start: 23 @131060 has 194 MA's), (26, 131081), (51, 131255), (56, 131270), (97, 131423), (104, 131471),

Gene: DeejaClivia_225 Start: 129891, Stop: 130382, Start Num: 21

Candidate Starts for DeejaClivia_225:

(15, 129828), (Start: 21 @129891 has 100 MA's), (Start: 23 @129897 has 194 MA's), (26, 129918), (51, 130092), (56, 130107), (97, 130260), (104, 130308),

Gene: Deenasa_54 Start: 48857, Stop: 48384, Start Num: 21

Candidate Starts for Deenasa_54:

(Start: 21 @48857 has 100 MA's), (28, 48821), (52, 48653), (59, 48629), (64, 48620), (78, 48593), (85, 48566),

Gene: Delilah_234 Start: 131944, Stop: 132411, Start Num: 23

Candidate Starts for Delilah_234:

(15, 131875), (Start: 23 @131944 has 194 MA's), (26, 131965), (51, 132139), (56, 132154), (97, 132307), (104, 132355),

Gene: Delylah_238 Start: 132258, Stop: 132725, Start Num: 23

Candidate Starts for Delylah_238:

(15, 132189), (Start: 23 @132258 has 194 MA's), (26, 132279), (51, 132453), (56, 132468), (97, 132621), (104, 132669),

Gene: Demodog_242 Start: 133091, Stop: 133558, Start Num: 23

Candidate Starts for Demodog_242:

(15, 133022), (Start: 23 @133091 has 194 MA's), (26, 133112), (51, 133286), (56, 133301), (97, 133454), (104, 133502),

Gene: Derek_232 Start: 132202, Stop: 132669, Start Num: 23

Candidate Starts for Derek_232:

(15, 132133), (Start: 23 @132202 has 194 MA's), (26, 132223), (51, 132397), (56, 132412), (97, 132565), (104, 132613),

Gene: Dessert_233 Start: 131201, Stop: 131668, Start Num: 23

Candidate Starts for Dessert_233:

(15, 131132), (Start: 23 @131201 has 194 MA's), (26, 131222), (51, 131396), (56, 131411), (97, 131564), (104, 131612),

Gene: Devonte_54 Start: 48085, Stop: 47612, Start Num: 21

Candidate Starts for Devonte_54:

(Start: 21 @48085 has 100 MA's), (28, 48049), (59, 47857), (78, 47821), (85, 47794),

Gene: Dietrick_225 Start: 130065, Stop: 130532, Start Num: 23

Candidate Starts for Dietrick_225:

(15, 129996), (Start: 23 @130065 has 194 MA's), (26, 130086), (51, 130260), (56, 130275), (97, 130428), (104, 130476),

Gene: DigitDog_55 Start: 48969, Stop: 48508, Start Num: 21

Candidate Starts for DigitDog_55:

(Start: 21 @48969 has 100 MA's), (29, 48921), (59, 48741), (73, 48720), (95, 48633), (96, 48627), (102, 48585),

Gene: DirtMonster_227 Start: 131397, Stop: 131888, Start Num: 21

Candidate Starts for DirtMonster_227:

(15, 131334), (Start: 21 @131397 has 100 MA's), (Start: 23 @131403 has 194 MA's), (26, 131424), (51, 131598), (56, 131613), (97, 131766), (104, 131814),

Gene: Domi_230 Start: 131404, Stop: 131871, Start Num: 23

Candidate Starts for Domi_230:

(15, 131335), (Start: 23 @131404 has 194 MA's), (26, 131425), (51, 131599), (56, 131614), (97, 131767), (104, 131815),

Gene: Donny_56 Start: 49263, Stop: 48802, Start Num: 21

Candidate Starts for Donny_56:

(3, 49764), (Start: 21 @49263 has 100 MA's), (29, 49215), (59, 49035), (73, 49014), (95, 48927), (96, 48921), (102, 48879),

Gene: DrPhinkDaddy_233 Start: 132629, Stop: 133096, Start Num: 23

Candidate Starts for DrPhinkDaddy_233:

(15, 132560), (Start: 23 @132629 has 194 MA's), (26, 132650), (51, 132824), (56, 132839), (97, 132992), (104, 133040),

Gene: Drazdys_233 Start: 132209, Stop: 132676, Start Num: 23

Candidate Starts for Drazdys_233:

(15, 132140), (Start: 23 @132209 has 194 MA's), (26, 132230), (51, 132404), (56, 132419), (97, 132572), (104, 132620),

Gene: Duckfeet_229 Start: 131017, Stop: 131484, Start Num: 23

Candidate Starts for Duckfeet_229:

(15, 130948), (Start: 23 @131017 has 194 MA's), (26, 131038), (51, 131212), (56, 131227), (97, 131380), (104, 131428),

Gene: Eaglehorse_54 Start: 47667, Stop: 47176, Start Num: 18
Candidate Starts for Eaglehorse_54:
(Start: 18 @47667 has 47 MA's), (45, 47508), (77, 47388), (78, 47385), (82, 47370), (85, 47358), (95, 47301), (96, 47295), (100, 47268), (118, 47184),

Gene: EastView9101_54 Start: 48910, Stop: 48449, Start Num: 21
Candidate Starts for EastView9101_54:
(Start: 21 @48910 has 100 MA's), (29, 48862), (59, 48682), (73, 48661), (95, 48574), (96, 48568), (102, 48526),

Gene: EasyJones_237 Start: 130585, Stop: 131052, Start Num: 23
Candidate Starts for EasyJones_237:
(15, 130516), (Start: 23 @130585 has 194 MA's), (26, 130606), (51, 130780), (56, 130795), (97, 130948), (104, 130996),

Gene: EggyFarm_244 Start: 133430, Stop: 133897, Start Num: 23
Candidate Starts for EggyFarm_244:
(Start: 23 @133430 has 194 MA's), (26, 133451), (51, 133625), (56, 133640), (71, 133679), (97, 133793), (104, 133841),

Gene: EmToTheThree_236 Start: 131968, Stop: 132435, Start Num: 23
Candidate Starts for EmToTheThree_236:
(15, 131899), (Start: 23 @131968 has 194 MA's), (26, 131989), (51, 132163), (56, 132178), (97, 132331), (104, 132379),

Gene: EmmaElysia_241 Start: 133080, Stop: 133547, Start Num: 23
Candidate Starts for EmmaElysia_241:
(15, 133011), (Start: 23 @133080 has 194 MA's), (26, 133101), (51, 133275), (56, 133290), (97, 133443), (104, 133491),

Gene: Epah_49 Start: 47622, Stop: 47143, Start Num: 21
Candidate Starts for Epah_49:
(Start: 21 @47622 has 100 MA's), (42, 47490), (85, 47325), (87, 47313), (96, 47262), (116, 47157), (117, 47154),

Gene: Erdmann_236 Start: 131936, Stop: 132403, Start Num: 23
Candidate Starts for Erdmann_236:
(15, 131867), (Start: 23 @131936 has 194 MA's), (26, 131957), (51, 132131), (56, 132146), (97, 132299), (104, 132347),

Gene: ErnieJ_229 Start: 128764, Stop: 129231, Start Num: 23
Candidate Starts for ErnieJ_229:
(15, 128695), (Start: 23 @128764 has 194 MA's), (26, 128785), (51, 128959), (56, 128974), (97, 129127), (104, 129175),

Gene: Essence_234 Start: 131421, Stop: 131888, Start Num: 23
Candidate Starts for Essence_234:
(15, 131352), (Start: 23 @131421 has 194 MA's), (26, 131442), (51, 131616), (56, 131631), (97, 131784), (104, 131832),

Gene: Evaa_46 Start: 41052, Stop: 40558, Start Num: 19
Candidate Starts for Evaa_46:

(Start: 19 @41052 has 2 MA's), (39, 40932), (46, 40884), (60, 40812), (74, 40770), (82, 40740), (96, 40674), (112, 40587),

Gene: Ewok_235 Start: 131879, Stop: 132346, Start Num: 23

Candidate Starts for Ewok_235:

(15, 131810), (Start: 23 @131879 has 194 MA's), (26, 131900), (51, 132074), (56, 132089), (97, 132242), (104, 132290),

Gene: Fanaw_49 Start: 48294, Stop: 47833, Start Num: 21

Candidate Starts for Fanaw_49:

(2, 48801), (6, 48489), (Start: 21 @48294 has 100 MA's), (36, 48201), (44, 48153), (70, 48057), (74, 48048), (82, 48018), (85, 48006), (86, 48000), (91, 47976), (96, 47943), (99, 47919), (100, 47916), (110, 47868), (116, 47844),

Gene: Faze9_53 Start: 47761, Stop: 47270, Start Num: 18

Candidate Starts for Faze9_53:

(Start: 18 @47761 has 47 MA's), (45, 47602), (78, 47479), (82, 47464), (95, 47395), (96, 47389), (100, 47362), (118, 47278),

Gene: FeliMaine_2 Start: 579, Stop: 1058, Start Num: 23

Candidate Starts for FeliMaine_2:

(Start: 18 @558 has 47 MA's), (Start: 20 @570 has 1 MA's), (Start: 23 @579 has 194 MA's), (49, 756), (53, 780), (54, 786), (55, 789), (59, 801), (61, 807), (77, 849), (93, 924), (101, 975),

Gene: FelixTres_49 Start: 42586, Stop: 42119, Start Num: 21

Candidate Starts for FelixTres_49:

(Start: 21 @42586 has 100 MA's), (40, 42457), (70, 42343), (95, 42247), (96, 42241), (104, 42190), (112, 42154),

Gene: Fixie_235 Start: 132201, Stop: 132668, Start Num: 23

Candidate Starts for Fixie_235:

(15, 132132), (Start: 23 @132201 has 194 MA's), (26, 132222), (51, 132396), (56, 132411), (97, 132564), (104, 132612),

Gene: Flabslab_232 Start: 129100, Stop: 129585, Start Num: 23

Candidate Starts for Flabslab_232:

(15, 129031), (Start: 21 @129094 has 100 MA's), (Start: 23 @129100 has 194 MA's), (26, 129121), (51, 129295), (56, 129310), (97, 129463), (104, 129511),

Gene: Fludd_236 Start: 130297, Stop: 130764, Start Num: 23

Candidate Starts for Fludd_236:

(15, 130228), (Start: 23 @130297 has 194 MA's), (26, 130318), (51, 130492), (56, 130507), (97, 130660), (104, 130708),

Gene: Fongie_236 Start: 131877, Stop: 132344, Start Num: 23

Candidate Starts for Fongie_236:

(15, 131808), (Start: 23 @131877 has 194 MA's), (26, 131898), (51, 132072), (56, 132087), (97, 132240), (104, 132288),

Gene: ForDig_48 Start: 46304, Stop: 45825, Start Num: 21

Candidate Starts for ForDig_48:

(Start: 21 @46304 has 100 MA's), (96, 45944), (116, 45839), (117, 45836),

Gene: Fortunato_50 Start: 48287, Stop: 47805, Start Num: 21
Candidate Starts for Fortunato_50:
(4, 48473), (7, 48443), (13, 48350), (Start: 21 @48287 has 100 MA's), (30, 48236), (42, 48155), (74, 48029), (82, 47999), (92, 47951), (96, 47924), (116, 47819), (117, 47816),

Gene: FoxtrotP1_234 Start: 132522, Stop: 132989, Start Num: 23
Candidate Starts for FoxtrotP1_234:
(15, 132453), (Start: 23 @132522 has 194 MA's), (26, 132543), (51, 132717), (56, 132732), (97, 132885), (104, 132933),

Gene: FrayBell_239 Start: 130485, Stop: 130952, Start Num: 23
Candidate Starts for FrayBell_239:
(15, 130416), (Start: 23 @130485 has 194 MA's), (26, 130506), (51, 130680), (56, 130695), (97, 130848), (104, 130896),

Gene: Frederick_50 Start: 48247, Stop: 47768, Start Num: 21
Candidate Starts for Frederick_50:
(Start: 21 @48247 has 100 MA's), (42, 48115), (85, 47950), (87, 47938), (92, 47914), (96, 47887), (116, 47782), (117, 47779),

Gene: FrenchFry_54 Start: 47740, Stop: 47249, Start Num: 18
Candidate Starts for FrenchFry_54:
(Start: 18 @47740 has 47 MA's), (45, 47581), (77, 47461), (78, 47458), (82, 47443), (85, 47431), (95, 47374), (96, 47368), (100, 47341), (118, 47257),

Gene: Fresco_47 Start: 40708, Stop: 40232, Start Num: 23
Candidate Starts for Fresco_47:
(5, 40930), (12, 40804), (Start: 23 @40708 has 194 MA's), (80, 40429), (83, 40417), (89, 40390), (98, 40333), (99, 40321), (110, 40264),

Gene: FudgeTart_230 Start: 131026, Stop: 131493, Start Num: 23
Candidate Starts for FudgeTart_230:
(15, 130957), (Start: 23 @131026 has 194 MA's), (26, 131047), (51, 131221), (56, 131236), (97, 131389), (104, 131437),

Gene: Funsized_56 Start: 50763, Stop: 50284, Start Num: 21
Candidate Starts for Funsized_56:
(Start: 21 @50763 has 100 MA's), (50, 50568), (69, 50514), (81, 50472), (104, 50349), (110, 50319),

Gene: GMA2_47 Start: 48456, Stop: 47995, Start Num: 27
Candidate Starts for GMA2_47:
(27, 48456), (59, 48252), (72, 48222), (81, 48189), (90, 48153), (100, 48087), (104, 48063), (108, 48045),

Gene: Gabriel_239 Start: 130456, Stop: 130923, Start Num: 23
Candidate Starts for Gabriel_239:
(15, 130387), (Start: 23 @130456 has 194 MA's), (26, 130477), (51, 130651), (56, 130666), (97, 130819), (104, 130867),

Gene: Gadget_56 Start: 48745, Stop: 48272, Start Num: 21
Candidate Starts for Gadget_56:
(Start: 21 @48745 has 100 MA's), (28, 48709), (52, 48541), (59, 48517), (64, 48508), (78, 48481), (85, 48454), (113, 48301),

Gene: Gamgam_238 Start: 130813, Stop: 131280, Start Num: 23

Candidate Starts for Gamgam_238:

(15, 130744), (Start: 23 @130813 has 194 MA's), (26, 130834), (51, 131008), (56, 131023), (97, 131176), (104, 131224),

Gene: Gattaca_4 Start: 802, Stop: 1281, Start Num: 23

Candidate Starts for Gattaca_4:

(Start: 18 @781 has 47 MA's), (Start: 20 @793 has 1 MA's), (Start: 23 @802 has 194 MA's), (49, 979), (53, 1003), (54, 1009), (55, 1012), (59, 1024), (61, 1030), (77, 1072), (93, 1147), (101, 1198),

Gene: Gervas_56 Start: 48853, Stop: 48380, Start Num: 21

Candidate Starts for Gervas_56:

(Start: 21 @48853 has 100 MA's), (28, 48817), (59, 48625), (78, 48589), (85, 48562),

Gene: Ghost_235 Start: 131437, Stop: 131904, Start Num: 23

Candidate Starts for Ghost_235:

(15, 131368), (Start: 23 @131437 has 194 MA's), (26, 131458), (51, 131632), (56, 131647), (97, 131800), (104, 131848),

Gene: GinPorsche_50 Start: 47622, Stop: 47143, Start Num: 21

Candidate Starts for GinPorsche_50:

(Start: 21 @47622 has 100 MA's), (42, 47490), (85, 47325), (87, 47313), (96, 47262), (116, 47157), (117, 47154),

Gene: Gizmo_241 Start: 133853, Stop: 134320, Start Num: 23

Candidate Starts for Gizmo_241:

(15, 133784), (Start: 23 @133853 has 194 MA's), (26, 133874), (51, 134048), (56, 134063), (97, 134216), (104, 134264),

Gene: Glass_54 Start: 47745, Stop: 47254, Start Num: 18

Candidate Starts for Glass_54:

(Start: 18 @47745 has 47 MA's), (45, 47586), (77, 47466), (78, 47463), (82, 47448), (85, 47436), (95, 47379), (96, 47373), (100, 47346), (118, 47262),

Gene: GlenHope_56 Start: 48408, Stop: 47935, Start Num: 21

Candidate Starts for GlenHope_56:

(Start: 21 @48408 has 100 MA's), (28, 48372), (59, 48180), (78, 48144), (85, 48117),

Gene: Glubnar_56 Start: 48404, Stop: 47931, Start Num: 21

Candidate Starts for Glubnar_56:

(Start: 21 @48404 has 100 MA's), (28, 48368), (59, 48176), (78, 48140), (85, 48113),

Gene: GlutenPhree_237 Start: 130824, Stop: 131291, Start Num: 23

Candidate Starts for GlutenPhree_237:

(15, 130755), (Start: 23 @130824 has 194 MA's), (26, 130845), (51, 131019), (56, 131034), (97, 131187), (104, 131235),

Gene: Godines_54 Start: 47697, Stop: 47206, Start Num: 18

Candidate Starts for Godines_54:

(Start: 18 @47697 has 47 MA's), (45, 47538), (78, 47415), (82, 47400), (85, 47388), (95, 47331), (96, 47325), (100, 47298), (118, 47214),

Gene: GoongGoong_3 Start: 802, Stop: 1290, Start Num: 20

Candidate Starts for GoongGoong_3:

(Start: 18 @790 has 47 MA's), (Start: 20 @802 has 1 MA's), (Start: 23 @811 has 194 MA's), (49, 988), (53, 1012), (54, 1018), (55, 1021), (59, 1033), (61, 1039), (77, 1081), (93, 1156), (101, 1207),

Gene: Grasshills_243 Start: 133429, Stop: 133896, Start Num: 23

Candidate Starts for Grasshills_243:

(Start: 23 @133429 has 194 MA's), (26, 133450), (51, 133624), (56, 133639), (71, 133678), (97, 133792), (104, 133840),

Gene: Grungle_218 Start: 128759, Stop: 129226, Start Num: 23

Candidate Starts for Grungle_218:

(15, 128690), (Start: 23 @128759 has 194 MA's), (26, 128780), (51, 128954), (56, 128969), (97, 129122), (104, 129170),

Gene: Gustav_59 Start: 40519, Stop: 40055, Start Num: 23

Candidate Starts for Gustav_59:

(Start: 23 @40519 has 194 MA's), (61, 40309), (83, 40243), (90, 40213), (110, 40090),

Gene: Guwapp_232 Start: 130271, Stop: 130738, Start Num: 23

Candidate Starts for Guwapp_232:

(15, 130202), (Start: 23 @130271 has 194 MA's), (26, 130292), (51, 130466), (56, 130481), (97, 130634), (104, 130682),

Gene: Halfpint_54 Start: 48229, Stop: 47756, Start Num: 21

Candidate Starts for Halfpint_54:

(Start: 21 @48229 has 100 MA's), (28, 48193), (59, 48001), (78, 47965), (85, 47938), (113, 47785),

Gene: Halldule_228 Start: 129941, Stop: 130408, Start Num: 23

Candidate Starts for Halldule_228:

(15, 129872), (Start: 23 @129941 has 194 MA's), (26, 129962), (51, 130136), (56, 130151), (97, 130304), (104, 130352),

Gene: Hally898_49 Start: 47637, Stop: 47158, Start Num: 21

Candidate Starts for Hally898_49:

(Start: 21 @47637 has 100 MA's), (42, 47505), (85, 47340), (87, 47328), (96, 47277), (116, 47172), (117, 47169),

Gene: Hangman_49 Start: 48338, Stop: 47877, Start Num: 21

Candidate Starts for Hangman_49:

(Start: 21 @48338 has 100 MA's), (36, 48245), (44, 48197), (66, 48110), (70, 48101), (74, 48092), (82, 48062), (85, 48050), (91, 48020), (96, 47987), (99, 47963), (100, 47960), (110, 47912), (116, 47888),

Gene: HarveySr_54 Start: 48081, Stop: 47608, Start Num: 21

Candidate Starts for HarveySr_54:

(Start: 21 @48081 has 100 MA's), (28, 48045), (59, 47853), (78, 47817), (85, 47790),

Gene: Heath_49 Start: 48246, Stop: 47785, Start Num: 21

Candidate Starts for Heath_49:

(Start: 21 @48246 has 100 MA's), (36, 48153), (44, 48105), (70, 48009), (74, 48000), (82, 47970), (85, 47958), (91, 47928), (96, 47895), (99, 47871), (100, 47868), (110, 47820), (116, 47796),

Gene: Heathcliff_55 Start: 48375, Stop: 47902, Start Num: 21

Candidate Starts for Heathcliff_55:

(Start: 21 @48375 has 100 MA's), (28, 48339), (52, 48171), (59, 48147), (64, 48138), (78, 48111), (85, 48084), (113, 47931),

Gene: Hedgerow_54 Start: 47754, Stop: 47263, Start Num: 18

Candidate Starts for Hedgerow_54:

(Start: 18 @47754 has 47 MA's), (45, 47595), (77, 47475), (78, 47472), (82, 47457), (85, 47445), (95, 47388), (96, 47382), (100, 47355), (118, 47271),

Gene: Holeinone_54 Start: 47605, Stop: 47114, Start Num: 18

Candidate Starts for Holeinone_54:

(Start: 18 @47605 has 47 MA's), (45, 47446), (77, 47326), (78, 47323), (82, 47308), (85, 47296), (95, 47239), (96, 47233), (100, 47206), (118, 47122),

Gene: Hosp_046 Start: 44495, Stop: 44016, Start Num: 21

Candidate Starts for Hosp_046:

(Start: 21 @44495 has 100 MA's), (Start: 23 @44489 has 194 MA's), (42, 44363), (78, 44225), (85, 44198), (96, 44135), (116, 44030),

Gene: Huphlepuuff_2 Start: 558, Stop: 1058, Start Num: 18

Candidate Starts for Huphlepuuff_2:

(Start: 18 @558 has 47 MA's), (Start: 20 @570 has 1 MA's), (Start: 23 @579 has 194 MA's), (49, 756), (53, 780), (54, 786), (55, 789), (59, 801), (61, 807), (77, 849), (93, 924), (101, 975),

Gene: HyRo_221 Start: 130778, Stop: 131269, Start Num: 21

Candidate Starts for HyRo_221:

(15, 130715), (Start: 21 @130778 has 100 MA's), (Start: 23 @130784 has 194 MA's), (26, 130805), (51, 130979), (56, 130994), (97, 131147), (104, 131195),

Gene: Hydro_50 Start: 48672, Stop: 48211, Start Num: 21

Candidate Starts for Hydro_50:

(1, 49329), (2, 49179), (Start: 21 @48672 has 100 MA's), (36, 48579), (44, 48531), (70, 48435), (74, 48426), (85, 48384), (86, 48378), (91, 48354), (96, 48321), (99, 48297), (100, 48294), (110, 48246), (116, 48222),

Gene: I3_246 Start: 132627, Stop: 133094, Start Num: 23

Candidate Starts for I3_246:

(15, 132558), (Start: 23 @132627 has 194 MA's), (26, 132648), (51, 132822), (56, 132837), (97, 132990), (104, 133038),

Gene: IkeLoa_230 Start: 131169, Stop: 131636, Start Num: 23

Candidate Starts for IkeLoa_230:

(15, 131100), (Start: 23 @131169 has 194 MA's), (26, 131190), (51, 131364), (56, 131379), (97, 131532), (104, 131580),

Gene: Imvubu_48 Start: 45835, Stop: 45356, Start Num: 21

Candidate Starts for Imvubu_48:

(Start: 21 @45835 has 100 MA's), (43, 45700), (74, 45577), (77, 45565), (82, 45547), (85, 45535), (92, 45499), (96, 45472), (103, 45424), (116, 45367),

Gene: Indlovu_52 Start: 48321, Stop: 47821, Start Num: 21

Candidate Starts for Indlovu_52:

(Start: 21 @48321 has 100 MA's), (34, 48243), (48, 48147), (75, 48063), (92, 47988), (94, 47970), (96, 47961), (102, 47919), (111, 47877),

Gene: InigoMontoya_239 Start: 131487, Stop: 131954, Start Num: 23

Candidate Starts for InigoMontoya_239:

(15, 131418), (Start: 23 @131487 has 194 MA's), (26, 131508), (51, 131682), (56, 131697), (97, 131850), (104, 131898), (115, 131949),

Gene: InterFolia_237 Start: 132290, Stop: 132757, Start Num: 23

Candidate Starts for InterFolia_237:

(15, 132221), (Start: 23 @132290 has 194 MA's), (26, 132311), (51, 132485), (56, 132500), (97, 132653), (104, 132701),

Gene: Iota_233 Start: 131199, Stop: 131666, Start Num: 23

Candidate Starts for Iota_233:

(15, 131130), (Start: 23 @131199 has 194 MA's), (26, 131220), (51, 131394), (56, 131409), (97, 131562), (104, 131610),

Gene: Issimir_229 Start: 131125, Stop: 131592, Start Num: 23

Candidate Starts for Issimir_229:

(15, 131056), (Start: 23 @131125 has 194 MA's), (26, 131146), (51, 131320), (56, 131335), (97, 131488), (104, 131536),

Gene: ItsyBitsy1_54 Start: 47622, Stop: 47131, Start Num: 18

Candidate Starts for ItsyBitsy1_54:

(Start: 18 @47622 has 47 MA's), (45, 47463), (77, 47343), (78, 47340), (82, 47325), (85, 47313), (95, 47256), (96, 47250), (100, 47223), (118, 47139),

Gene: Izajani_232 Start: 132019, Stop: 132486, Start Num: 23

Candidate Starts for Izajani_232:

(15, 131950), (Start: 23 @132019 has 194 MA's), (26, 132040), (51, 132214), (56, 132229), (97, 132382), (104, 132430),

Gene: JAMaL_50 Start: 48798, Stop: 48337, Start Num: 21

Candidate Starts for JAMaL_50:

(Start: 21 @48798 has 100 MA's), (36, 48705), (44, 48657), (70, 48561), (74, 48552), (82, 48522), (85, 48510), (91, 48480), (96, 48447), (99, 48423), (100, 48420), (110, 48372), (116, 48348),

Gene: JPickles_233 Start: 130175, Stop: 130642, Start Num: 23

Candidate Starts for JPickles_233:

(15, 130106), (Start: 23 @130175 has 194 MA's), (26, 130196), (51, 130370), (56, 130385), (97, 130538), (104, 130586),

Gene: Jackstina_51 Start: 48334, Stop: 47861, Start Num: 21

Candidate Starts for Jackstina_51:

(8, 48460), (11, 48409), (Start: 21 @48334 has 100 MA's), (28, 48298), (59, 48106), (78, 48070), (85, 48043),

Gene: JaguarMi_52 Start: 49739, Stop: 49278, Start Num: 21

Candidate Starts for JaguarMi_52:

(Start: 21 @49739 has 100 MA's), (36, 49646), (44, 49598), (70, 49502), (74, 49493), (82, 49463), (85, 49451), (86, 49445), (91, 49421), (94, 49397), (96, 49388), (99, 49364), (100, 49361), (110, 49313), (116, 49289),

Gene: Janiyra_239 Start: 131712, Stop: 132179, Start Num: 23

Candidate Starts for Janiyra_239:

(15, 131643), (Start: 23 @131712 has 194 MA's), (26, 131733), (51, 131907), (56, 131922), (97, 132075), (104, 132123),

Gene: JayJay_238 Start: 131602, Stop: 132087, Start Num: 23

Candidate Starts for JayJay_238:

(15, 131533), (Start: 21 @131596 has 100 MA's), (Start: 23 @131602 has 194 MA's), (26, 131623), (51, 131797), (56, 131812), (97, 131965), (104, 132013),

Gene: Jaygup_233 Start: 131346, Stop: 131813, Start Num: 23

Candidate Starts for Jaygup_233:

(15, 131277), (Start: 23 @131346 has 194 MA's), (26, 131367), (51, 131541), (56, 131556), (97, 131709), (104, 131757),

Gene: Jedediah_237 Start: 132399, Stop: 132866, Start Num: 23

Candidate Starts for Jedediah_237:

(15, 132330), (Start: 23 @132399 has 194 MA's), (26, 132420), (51, 132594), (56, 132609), (97, 132762), (104, 132810),

Gene: JellyBelly_46 Start: 40077, Stop: 39601, Start Num: 23

Candidate Starts for JellyBelly_46:

(Start: 23 @40077 has 194 MA's), (83, 39786), (89, 39759), (99, 39690), (110, 39633),

Gene: Jemmno_236 Start: 131118, Stop: 131585, Start Num: 23

Candidate Starts for Jemmno_236:

(15, 131049), (Start: 23 @131118 has 194 MA's), (26, 131139), (51, 131313), (56, 131328), (97, 131481), (104, 131529),

Gene: Jessibeth14_236 Start: 132594, Stop: 133061, Start Num: 23

Candidate Starts for Jessibeth14_236:

(15, 132525), (Start: 23 @132594 has 194 MA's), (26, 132615), (51, 132789), (56, 132804), (97, 132957), (104, 133005),

Gene: Jezreel_233 Start: 131663, Stop: 132130, Start Num: 23

Candidate Starts for Jezreel_233:

(15, 131594), (Start: 23 @131663 has 194 MA's), (26, 131684), (51, 131858), (56, 131873), (97, 132026), (104, 132074),

Gene: JigglyPuff_242 Start: 133089, Stop: 133556, Start Num: 23

Candidate Starts for JigglyPuff_242:

(15, 133020), (Start: 23 @133089 has 194 MA's), (26, 133110), (51, 133284), (56, 133299), (97, 133452), (104, 133500),

Gene: JoieB_3 Start: 780, Stop: 1280, Start Num: 18

Candidate Starts for JoieB_3:

(Start: 18 @780 has 47 MA's), (Start: 20 @792 has 1 MA's), (Start: 23 @801 has 194 MA's), (49, 978), (53, 1002), (54, 1008), (55, 1011), (59, 1023), (61, 1029), (77, 1071), (93, 1146), (101, 1197),

Gene: Jolie1_048 Start: 46283, Stop: 45804, Start Num: 21

Candidate Starts for Jolie1_048:

(Start: 21 @46283 has 100 MA's), (Start: 23 @46277 has 194 MA's), (42, 46151), (85, 45986), (96, 45923), (116, 45818),

Gene: JoyceMaria_49 Start: 48230, Stop: 47769, Start Num: 21

Candidate Starts for JoyceMaria_49:

(Start: 21 @48230 has 100 MA's), (36, 48137), (44, 48089), (66, 48002), (70, 47993), (74, 47984), (82, 47954), (85, 47942), (91, 47912), (96, 47879), (99, 47855), (100, 47852), (110, 47804), (116, 47780),

Gene: JulietS_225 Start: 128698, Stop: 129165, Start Num: 23

Candidate Starts for JulietS_225:

(15, 128629), (Start: 23 @128698 has 194 MA's), (26, 128719), (51, 128893), (56, 128908), (97, 129061), (104, 129109),

Gene: JustHall_230 Start: 130648, Stop: 131115, Start Num: 23

Candidate Starts for JustHall_230:

(15, 130579), (Start: 23 @130648 has 194 MA's), (26, 130669), (51, 130843), (56, 130858), (97, 131011), (104, 131059),

Gene: Kaleb_54 Start: 47769, Stop: 47278, Start Num: 18

Candidate Starts for Kaleb_54:

(Start: 18 @47769 has 47 MA's), (45, 47610), (77, 47490), (78, 47487), (82, 47472), (85, 47460), (95, 47403), (96, 47397), (100, 47370), (118, 47286),

Gene: Kamiyu_55 Start: 48385, Stop: 47912, Start Num: 21

Candidate Starts for Kamiyu_55:

(Start: 21 @48385 has 100 MA's), (28, 48349), (59, 48157), (78, 48121), (85, 48094),

Gene: Kamryn_235 Start: 132238, Stop: 132705, Start Num: 23

Candidate Starts for Kamryn_235:

(15, 132169), (Start: 23 @132238 has 194 MA's), (26, 132259), (51, 132433), (56, 132448), (97, 132601), (104, 132649),

Gene: KarasumaRum_55 Start: 49120, Stop: 48659, Start Num: 21

Candidate Starts for KarasumaRum_55:

(Start: 21 @49120 has 100 MA's), (29, 49072), (46, 48961), (59, 48892), (73, 48871), (95, 48784), (96, 48778), (102, 48736),

Gene: KayaCho_47 Start: 46059, Stop: 45589, Start Num: 21

Candidate Starts for KayaCho_47:

(Start: 21 @46059 has 100 MA's), (63, 45837), (70, 45819), (74, 45810), (92, 45732), (96, 45705), (99, 45681), (102, 45663), (110, 45630),

Gene: Kboogie_240 Start: 131277, Stop: 131744, Start Num: 23

Candidate Starts for Kboogie_240:

(15, 131208), (Start: 23 @131277 has 194 MA's), (26, 131298), (51, 131472), (56, 131487), (97, 131640), (104, 131688),

Gene: Khaleesi_235 Start: 132061, Stop: 132528, Start Num: 23

Candidate Starts for Khaleesi_235:

(15, 131992), (Start: 23 @132061 has 194 MA's), (26, 132082), (51, 132256), (56, 132271), (97, 132424), (104, 132472),

Gene: Kheth_54 Start: 47658, Stop: 47167, Start Num: 18

Candidate Starts for Kheth_54:

(Start: 18 @47658 has 47 MA's), (45, 47499), (77, 47379), (78, 47376), (82, 47361), (85, 47349), (95, 47292), (96, 47286), (100, 47259), (118, 47175),

Gene: Knocker_55 Start: 50204, Stop: 49725, Start Num: 21

Candidate Starts for Knocker_55:

(10, 50315), (14, 50255), (Start: 21 @50204 has 100 MA's), (41, 50078), (44, 50060), (64, 49973), (76, 49943), (78, 49934), (85, 49907), (96, 49844), (97, 49841), (107, 49778), (109, 49772), (110, 49769), (114, 49751), (118, 49733),

Gene: Koguma_235 Start: 130918, Stop: 131385, Start Num: 23

Candidate Starts for Koguma_235:

(15, 130849), (Start: 23 @130918 has 194 MA's), (26, 130939), (51, 131113), (56, 131128), (97, 131281), (104, 131329),

Gene: Kolhan_54 Start: 47622, Stop: 47131, Start Num: 18

Candidate Starts for Kolhan_54:

(Start: 18 @47622 has 47 MA's), (45, 47463), (77, 47343), (78, 47340), (82, 47325), (85, 47313), (95, 47256), (96, 47250), (100, 47223), (118, 47139),

Gene: Kronus_55 Start: 49462, Stop: 48989, Start Num: 21

Candidate Starts for Kronus_55:

(Start: 21 @49462 has 100 MA's), (28, 49426), (59, 49234), (78, 49198), (85, 49171),

Gene: LRRHood_228 Start: 130270, Stop: 130737, Start Num: 23

Candidate Starts for LRRHood_228:

(15, 130201), (Start: 23 @130270 has 194 MA's), (26, 130291), (51, 130465), (56, 130480), (97, 130633), (104, 130681),

Gene: Labradorite_233 Start: 130837, Stop: 131304, Start Num: 23

Candidate Starts for Labradorite_233:

(15, 130768), (Start: 23 @130837 has 194 MA's), (26, 130858), (51, 131032), (56, 131047), (97, 131200), (104, 131248),

Gene: Lambano_49 Start: 47637, Stop: 47158, Start Num: 21

Candidate Starts for Lambano_49:

(Start: 21 @47637 has 100 MA's), (42, 47505), (85, 47340), (87, 47328), (96, 47277), (116, 47172), (117, 47169),

Gene: Lars_54 Start: 47729, Stop: 47238, Start Num: 18

Candidate Starts for Lars_54:

(Start: 18 @47729 has 47 MA's), (45, 47570), (77, 47450), (78, 47447), (82, 47432), (85, 47420), (95, 47363), (96, 47357), (100, 47330), (118, 47246),

Gene: Latch_236 Start: 130823, Stop: 131290, Start Num: 23

Candidate Starts for Latch_236:

(15, 130754), (Start: 23 @130823 has 194 MA's), (26, 130844), (51, 131018), (56, 131033), (97, 131186), (104, 131234),

Gene: Laurie_53 Start: 47114, Stop: 46623, Start Num: 18

Candidate Starts for Laurie_53:

(Start: 18 @47114 has 47 MA's), (45, 46955), (78, 46832), (82, 46817), (85, 46805), (95, 46748), (96, 46742), (100, 46715), (118, 46631),

Gene: Lee7_235 Start: 133475, Stop: 133942, Start Num: 23

Candidate Starts for Lee7_235:

(15, 133406), (Start: 23 @133475 has 194 MA's), (26, 133496), (51, 133670), (56, 133685), (97, 133838), (104, 133886),

Gene: Lephleur_54 Start: 47635, Stop: 47144, Start Num: 18

Candidate Starts for Lephleur_54:

(Start: 18 @47635 has 47 MA's), (45, 47476), (77, 47356), (78, 47353), (82, 47338), (85, 47326), (95, 47269), (96, 47263), (100, 47236), (118, 47152),

Gene: LestyG_54 Start: 48098, Stop: 47625, Start Num: 21

Candidate Starts for LestyG_54:

(Start: 21 @48098 has 100 MA's), (28, 48062), (59, 47870), (78, 47834), (85, 47807),

Gene: Lethe_234 Start: 132714, Stop: 133181, Start Num: 23

Candidate Starts for Lethe_234:

(15, 132645), (Start: 23 @132714 has 194 MA's), (26, 132735), (51, 132909), (56, 132924), (97, 133077), (104, 133125),

Gene: LifeSavor_236 Start: 132051, Stop: 132518, Start Num: 23

Candidate Starts for LifeSavor_236:

(15, 131982), (Start: 23 @132051 has 194 MA's), (26, 132072), (51, 132246), (56, 132261), (97, 132414), (104, 132462),

Gene: Ligma_47 Start: 40708, Stop: 40232, Start Num: 23

Candidate Starts for Ligma_47:

(5, 40930), (12, 40804), (Start: 23 @40708 has 194 MA's), (80, 40429), (83, 40417), (89, 40390), (98, 40333), (99, 40321), (110, 40264),

Gene: LilMcDreamy_52 Start: 48261, Stop: 47788, Start Num: 21

Candidate Starts for LilMcDreamy_52:

(Start: 21 @48261 has 100 MA's), (33, 48186), (44, 48117), (47, 48096), (48, 48087), (82, 47976), (96, 47901), (102, 47859),

Gene: LilSmirk_54 Start: 47632, Stop: 47141, Start Num: 18

Candidate Starts for LilSmirk_54:

(Start: 18 @47632 has 47 MA's), (45, 47473), (77, 47353), (78, 47350), (82, 47335), (85, 47323), (95, 47266), (96, 47260), (100, 47233), (118, 47149),

Gene: Lilbit_2 Start: 558, Stop: 1058, Start Num: 18

Candidate Starts for Lilbit_2:

(Start: 18 @558 has 47 MA's), (Start: 20 @570 has 1 MA's), (Start: 23 @579 has 194 MA's), (49, 756), (53, 780), (54, 786), (55, 789), (59, 801), (61, 807), (77, 849), (93, 924), (101, 975),

Gene: LinStu_234 Start: 130556, Stop: 131041, Start Num: 23

Candidate Starts for LinStu_234:

(15, 130487), (Start: 23 @130556 has 194 MA's), (26, 130577), (51, 130751), (56, 130766), (97, 130919), (104, 130967),

Gene: LittleDigger_49 Start: 47650, Stop: 47171, Start Num: 21

Candidate Starts for LittleDigger_49:

(Start: 21 @47650 has 100 MA's), (42, 47518), (85, 47353), (87, 47341), (96, 47290), (116, 47185), (117, 47182),

Gene: LittleLaf_2 Start: 558, Stop: 1058, Start Num: 18

Candidate Starts for LittleLaf_2:

(Start: 18 @558 has 47 MA's), (Start: 20 @570 has 1 MA's), (Start: 23 @579 has 194 MA's), (49, 756), (53, 780), (54, 786), (55, 789), (59, 801), (61, 807), (77, 849), (93, 924), (101, 975),

Gene: LittleMunchkin_48 Start: 43521, Stop: 43039, Start Num: 19

Candidate Starts for LittleMunchkin_48:

(Start: 19 @43521 has 2 MA's), (44, 43365), (65, 43263), (71, 43248), (74, 43242), (78, 43227), (82, 43212), (91, 43176), (95, 43152), (104, 43095),

Gene: Littleton_239 Start: 132060, Stop: 132527, Start Num: 23

Candidate Starts for Littleton_239:

(15, 131991), (Start: 23 @132060 has 194 MA's), (26, 132081), (51, 132255), (56, 132270), (97, 132423), (104, 132471),

Gene: LizLemon_54 Start: 47751, Stop: 47260, Start Num: 18

Candidate Starts for LizLemon_54:

(Start: 18 @47751 has 47 MA's), (45, 47592), (78, 47469), (82, 47454), (85, 47442), (95, 47385), (96, 47379), (100, 47352), (118, 47268),

Gene: Loanshark_233 Start: 131410, Stop: 131877, Start Num: 23

Candidate Starts for Loanshark_233:

(15, 131341), (Start: 23 @131410 has 194 MA's), (26, 131431), (51, 131605), (56, 131620), (97, 131773), (104, 131821),

Gene: LolaVinca_232 Start: 131720, Stop: 132187, Start Num: 23

Candidate Starts for LolaVinca_232:

(15, 131651), (Start: 23 @131720 has 194 MA's), (26, 131741), (51, 131915), (56, 131930), (97, 132083), (104, 132131),

Gene: Lolalove_51 Start: 48640, Stop: 48179, Start Num: 21

Candidate Starts for Lolalove_51:

(1, 49297), (2, 49147), (6, 48835), (Start: 21 @48640 has 100 MA's), (36, 48547), (44, 48499), (70, 48403), (74, 48394), (85, 48352), (86, 48346), (91, 48322), (96, 48289), (99, 48265), (100, 48262), (110, 48214), (116, 48190),

Gene: LookingGlass_234 Start: 131568, Stop: 132035, Start Num: 23

Candidate Starts for LookingGlass_234:

(15, 131499), (Start: 23 @131568 has 194 MA's), (26, 131589), (51, 131763), (56, 131778), (97, 131931), (104, 131979),

Gene: LordLeafolot_237 Start: 131333, Stop: 131800, Start Num: 23

Candidate Starts for LordLeafolot_237:

(15, 131264), (Start: 23 @131333 has 194 MA's), (26, 131354), (51, 131528), (56, 131543), (97, 131696), (104, 131744),

Gene: Lukilu_225 Start: 132274, Stop: 132741, Start Num: 23

Candidate Starts for Lukilu_225:

(15, 132205), (Start: 23 @132274 has 194 MA's), (26, 132295), (51, 132469), (56, 132484), (97, 132637), (104, 132685),

Gene: Lunareta_235 Start: 132622, Stop: 133107, Start Num: 23

Candidate Starts for Lunareta_235:

(15, 132553), (Start: 21 @132616 has 100 MA's), (Start: 23 @132622 has 194 MA's), (26, 132643), (51, 132817), (56, 132832), (97, 132985), (104, 133033),

Gene: Maby2021_236 Start: 132514, Stop: 132981, Start Num: 23

Candidate Starts for Maby2021_236:

(15, 132445), (Start: 23 @132514 has 194 MA's), (26, 132535), (51, 132709), (56, 132724), (97, 132877), (104, 132925),

Gene: Magpie_49 Start: 48475, Stop: 48014, Start Num: 21

Candidate Starts for Magpie_49:

(6, 48670), (Start: 21 @48475 has 100 MA's), (36, 48382), (44, 48334), (70, 48238), (74, 48229), (82, 48199), (85, 48187), (86, 48181), (91, 48157), (96, 48124), (99, 48100), (100, 48097), (110, 48049), (116, 48025),

Gene: Mangeria_237 Start: 132616, Stop: 133101, Start Num: 23

Candidate Starts for Mangeria_237:

(15, 132547), (Start: 23 @132616 has 194 MA's), (26, 132637), (51, 132811), (56, 132826), (97, 132979), (104, 133027),

Gene: Mariokart_47 Start: 40855, Stop: 40379, Start Num: 23

Candidate Starts for Mariokart_47:

(Start: 23 @40855 has 194 MA's), (83, 40564), (89, 40537), (98, 40480), (99, 40468), (110, 40411),

Gene: Marley1013_56 Start: 49347, Stop: 48874, Start Num: 21

Candidate Starts for Marley1013_56:

(Start: 21 @49347 has 100 MA's), (28, 49311), (59, 49119), (78, 49083), (85, 49056),

Gene: Marlia_56 Start: 48857, Stop: 48384, Start Num: 21

Candidate Starts for Marlia_56:

(Start: 21 @48857 has 100 MA's), (28, 48821), (59, 48629), (78, 48593), (85, 48566),

Gene: Marvin_2 Start: 802, Stop: 1281, Start Num: 23

Candidate Starts for Marvin_2:

(Start: 18 @781 has 47 MA's), (Start: 20 @793 has 1 MA's), (Start: 23 @802 has 194 MA's), (49, 979), (53, 1003), (54, 1009), (55, 1012), (59, 1024), (61, 1030), (77, 1072), (93, 1147), (101, 1198),

Gene: MasterPo_54 Start: 47644, Stop: 47153, Start Num: 18

Candidate Starts for MasterPo_54:

(Start: 18 @47644 has 47 MA's), (45, 47485), (78, 47362), (82, 47347), (85, 47335), (95, 47278), (96, 47272), (100, 47245), (118, 47161),

Gene: Matsumoto_234 Start: 131265, Stop: 131732, Start Num: 23

Candidate Starts for Matsumoto_234:

(15, 131196), (Start: 23 @131265 has 194 MA's), (26, 131286), (51, 131460), (56, 131475), (97, 131628), (104, 131676),

Gene: Maturis_232 Start: 131582, Stop: 132073, Start Num: 21

Candidate Starts for Maturis_232:

(15, 131519), (Start: 21 @131582 has 100 MA's), (Start: 23 @131588 has 194 MA's), (26, 131609), (51, 131783), (56, 131798), (97, 131951), (104, 131999),

Gene: Mbo2_59 Start: 47195, Stop: 46707, Start Num: 23
Candidate Starts for Mbo2_59:
(Start: 23 @47195 has 194 MA's), (36, 47108), (67, 46952), (91, 46853), (100, 46790), (106, 46751),

Gene: McGee_237 Start: 131162, Stop: 131629, Start Num: 23
Candidate Starts for McGee_237:
(15, 131093), (Start: 23 @131162 has 194 MA's), (26, 131183), (51, 131357), (56, 131372), (97, 131525), (104, 131573),

Gene: McWolfish_233 Start: 131272, Stop: 131739, Start Num: 23
Candidate Starts for McWolfish_233:
(15, 131203), (Start: 23 @131272 has 194 MA's), (26, 131293), (51, 131467), (56, 131482), (97, 131635), (104, 131683),

Gene: Megamind_233 Start: 131597, Stop: 132064, Start Num: 23
Candidate Starts for Megamind_233:
(15, 131528), (Start: 23 @131597 has 194 MA's), (26, 131618), (51, 131792), (56, 131807), (97, 131960), (104, 132008),

Gene: Melpomini_231 Start: 130357, Stop: 130824, Start Num: 23
Candidate Starts for Melpomini_231:
(15, 130288), (Start: 23 @130357 has 194 MA's), (26, 130378), (51, 130552), (56, 130567), (97, 130720), (104, 130768),

Gene: MikeLiesIn_236 Start: 132733, Stop: 133200, Start Num: 23
Candidate Starts for MikeLiesIn_236:
(15, 132664), (Start: 23 @132733 has 194 MA's), (26, 132754), (51, 132928), (56, 132943), (97, 133096), (104, 133144),

Gene: Mikro_230 Start: 133245, Stop: 133712, Start Num: 23
Candidate Starts for Mikro_230:
(15, 133176), (Start: 23 @133245 has 194 MA's), (26, 133266), (51, 133440), (56, 133455), (97, 133608), (104, 133656),

Gene: Mithril_49 Start: 48260, Stop: 47781, Start Num: 21
Candidate Starts for Mithril_49:
(Start: 21 @48260 has 100 MA's), (42, 48128), (85, 47963), (87, 47951), (92, 47927), (96, 47900), (116, 47795), (117, 47792),

Gene: MmasiCarm_56 Start: 48903, Stop: 48430, Start Num: 21
Candidate Starts for MmasiCarm_56:
(Start: 21 @48903 has 100 MA's), (28, 48867), (52, 48699), (59, 48675), (78, 48639), (85, 48612), (113, 48459),

Gene: MoMoMixon_232 Start: 131738, Stop: 132205, Start Num: 23
Candidate Starts for MoMoMixon_232:
(15, 131669), (Start: 23 @131738 has 194 MA's), (26, 131759), (51, 131933), (56, 131948), (97, 132101), (104, 132149),

Gene: Moby_233 Start: 130423, Stop: 130908, Start Num: 23
Candidate Starts for Moby_233:

(15, 130354), (Start: 21 @130417 has 100 MA's), (Start: 23 @130423 has 194 MA's), (26, 130444), (51, 130618), (56, 130633), (97, 130786), (104, 130834),

Gene: ModicumRichard_95 Start: 55749, Stop: 56195, Start Num: 23

Candidate Starts for ModicumRichard_95:

(Start: 23 @55749 has 194 MA's), (35, 55830), (48, 55920), (62, 55965), (104, 56130),

Gene: Moiqah_233 Start: 130400, Stop: 130885, Start Num: 23

Candidate Starts for Moiqah_233:

(15, 130331), (Start: 21 @130394 has 100 MA's), (Start: 23 @130400 has 194 MA's), (26, 130421), (51, 130595), (56, 130610), (97, 130763), (104, 130811),

Gene: Momo_237 Start: 130823, Stop: 131290, Start Num: 23

Candidate Starts for Momo_237:

(15, 130754), (Start: 23 @130823 has 194 MA's), (26, 130844), (51, 131018), (56, 131033), (97, 131186), (104, 131234),

Gene: Montpel_235 Start: 132620, Stop: 133105, Start Num: 23

Candidate Starts for Montpel_235:

(15, 132551), (Start: 21 @132614 has 100 MA's), (Start: 23 @132620 has 194 MA's), (26, 132641), (51, 132815), (56, 132830), (97, 132983), (104, 133031),

Gene: Morgana_102 Start: 57954, Stop: 58400, Start Num: 23

Candidate Starts for Morgana_102:

(Start: 23 @57954 has 194 MA's), (48, 58125), (62, 58170), (104, 58335),

Gene: Morizzled23_233 Start: 130190, Stop: 130657, Start Num: 23

Candidate Starts for Morizzled23_233:

(15, 130121), (Start: 23 @130190 has 194 MA's), (26, 130211), (51, 130385), (56, 130400), (97, 130553), (104, 130601),

Gene: Mortcellus_55 Start: 49510, Stop: 49037, Start Num: 21

Candidate Starts for Mortcellus_55:

(Start: 21 @49510 has 100 MA's), (28, 49474), (59, 49282), (78, 49246), (85, 49219),

Gene: Morty007_55 Start: 49347, Stop: 48874, Start Num: 21

Candidate Starts for Morty007_55:

(Start: 21 @49347 has 100 MA's), (28, 49311), (59, 49119), (78, 49083), (85, 49056),

Gene: MosMoris_4 Start: 802, Stop: 1281, Start Num: 23

Candidate Starts for MosMoris_4:

(Start: 18 @781 has 47 MA's), (Start: 20 @793 has 1 MA's), (Start: 23 @802 has 194 MA's), (49, 979), (53, 1003), (54, 1009), (55, 1012), (59, 1024), (61, 1030), (77, 1072), (93, 1147), (101, 1198),

Gene: MossRose_49 Start: 42605, Stop: 42138, Start Num: 21

Candidate Starts for MossRose_49:

(Start: 21 @42605 has 100 MA's), (40, 42476), (70, 42362), (95, 42266), (96, 42260), (104, 42209), (112, 42173),

Gene: Mudslide_50 Start: 48905, Stop: 48444, Start Num: 21

Candidate Starts for Mudslide_50:

(Start: 21 @48905 has 100 MA's), (36, 48812), (44, 48764), (70, 48668), (74, 48659), (85, 48617), (86, 48611), (91, 48587), (96, 48554), (99, 48530), (100, 48527), (110, 48479), (116, 48455),

Gene: Mulaychimus_56 Start: 48839, Stop: 48366, Start Num: 21
Candidate Starts for Mulaychimus_56:
(Start: 21 @48839 has 100 MA's), (28, 48803), (59, 48611), (78, 48575), (85, 48548),

Gene: Mysterious_53 Start: 49105, Stop: 48644, Start Num: 21
Candidate Starts for Mysterious_53:
(Start: 21 @49105 has 100 MA's), (29, 49057), (59, 48877), (73, 48856), (96, 48763), (102, 48721),

Gene: NHagos_48 Start: 41598, Stop: 41122, Start Num: 21
Candidate Starts for NHagos_48:
(Start: 21 @41598 has 100 MA's), (37, 41496), (40, 41469), (44, 41448), (55, 41382), (96, 41253),
(104, 41202), (112, 41166),

Gene: Naija_237 Start: 131526, Stop: 131993, Start Num: 23
Candidate Starts for Naija_237:
(15, 131457), (Start: 23 @131526 has 194 MA's), (26, 131547), (51, 131721), (56, 131736), (97,
131889), (104, 131937),

Gene: Nanao_49 Start: 47627, Stop: 47148, Start Num: 21
Candidate Starts for Nanao_49:
(Start: 21 @47627 has 100 MA's), (42, 47495), (85, 47330), (87, 47318), (96, 47267), (116, 47162),
(117, 47159),

Gene: Nangang_55 Start: 49334, Stop: 48873, Start Num: 21
Candidate Starts for Nangang_55:
(Start: 21 @49334 has 100 MA's), (29, 49286), (59, 49106), (73, 49085), (95, 48998), (96, 48992),
(102, 48950),

Gene: Napoleon13_233 Start: 130555, Stop: 131022, Start Num: 23
Candidate Starts for Napoleon13_233:
(15, 130486), (Start: 23 @130555 has 194 MA's), (26, 130576), (51, 130750), (56, 130765), (97,
130918), (104, 130966),

Gene: Nappy_236 Start: 133028, Stop: 133513, Start Num: 23
Candidate Starts for Nappy_236:
(15, 132959), (Start: 23 @133028 has 194 MA's), (26, 133049), (51, 133223), (56, 133238), (97,
133391), (104, 133439),

Gene: Naval22_241 Start: 133306, Stop: 133773, Start Num: 23
Candidate Starts for Naval22_241:
(15, 133237), (Start: 23 @133306 has 194 MA's), (26, 133327), (51, 133501), (56, 133516), (97,
133669), (104, 133717),

Gene: NedWong_235 Start: 131984, Stop: 132451, Start Num: 23
Candidate Starts for NedWong_235:
(15, 131915), (Start: 23 @131984 has 194 MA's), (26, 132005), (51, 132179), (56, 132194), (97,
132347), (104, 132395),

Gene: Nehemiah_54 Start: 49105, Stop: 48644, Start Num: 21
Candidate Starts for Nehemiah_54:
(Start: 21 @49105 has 100 MA's), (29, 49057), (59, 48877), (73, 48856), (96, 48763), (102, 48721),

Gene: Ngannou_231 Start: 130508, Stop: 130975, Start Num: 23
Candidate Starts for Ngannou_231:
(15, 130439), (Start: 23 @130508 has 194 MA's), (26, 130529), (51, 130703), (56, 130718), (97, 130871), (104, 130919),

Gene: Nidhogg_237 Start: 132352, Stop: 132819, Start Num: 23
Candidate Starts for Nidhogg_237:
(15, 132283), (Start: 23 @132352 has 194 MA's), (26, 132373), (51, 132547), (56, 132562), (97, 132715), (104, 132763),

Gene: Nigel_51 Start: 48614, Stop: 48153, Start Num: 21
Candidate Starts for Nigel_51:
(Start: 21 @48614 has 100 MA's), (44, 48473), (70, 48377), (74, 48368), (82, 48338), (85, 48326), (86, 48320), (96, 48263), (99, 48239), (100, 48236), (110, 48188), (116, 48164),

Gene: Norm_236 Start: 132253, Stop: 132720, Start Num: 23
Candidate Starts for Norm_236:
(15, 132184), (Start: 23 @132253 has 194 MA's), (26, 132274), (51, 132448), (56, 132463), (97, 132616), (104, 132664),

Gene: Nozo_55 Start: 49176, Stop: 48703, Start Num: 21
Candidate Starts for Nozo_55:
(Start: 21 @49176 has 100 MA's), (28, 49140), (59, 48948), (78, 48912), (85, 48885),

Gene: NuevoMundo_237 Start: 132808, Stop: 133275, Start Num: 23
Candidate Starts for NuevoMundo_237:
(15, 132739), (Start: 23 @132808 has 194 MA's), (26, 132829), (51, 133003), (56, 133018), (97, 133171), (104, 133219),

Gene: ObLaDi_95 Start: 55798, Stop: 56244, Start Num: 23
Candidate Starts for ObLaDi_95:
(Start: 23 @55798 has 194 MA's), (62, 56014), (100, 56155), (104, 56179),

Gene: Obutu_56 Start: 48859, Stop: 48386, Start Num: 21
Candidate Starts for Obutu_56:
(Start: 21 @48859 has 100 MA's), (28, 48823), (59, 48631), (78, 48595), (85, 48568),

Gene: Olivio_55 Start: 48718, Stop: 48245, Start Num: 21
Candidate Starts for Olivio_55:
(Start: 21 @48718 has 100 MA's), (28, 48682), (52, 48514), (59, 48490), (78, 48454), (85, 48427), (113, 48274),

Gene: Opia_54 Start: 47638, Stop: 47147, Start Num: 18
Candidate Starts for Opia_54:
(Start: 18 @47638 has 47 MA's), (45, 47479), (77, 47359), (78, 47356), (82, 47341), (85, 47329), (95, 47272), (96, 47266), (100, 47239), (118, 47155),

Gene: OrangeOswald_55 Start: 48417, Stop: 47944, Start Num: 21
Candidate Starts for OrangeOswald_55:
(Start: 21 @48417 has 100 MA's), (28, 48381), (59, 48189), (78, 48153), (85, 48126),

Gene: OrediggerDelux_231 Start: 132479, Stop: 132946, Start Num: 23
Candidate Starts for OrediggerDelux_231:

(15, 132410), (Start: 23 @132479 has 194 MA's), (26, 132500), (51, 132674), (56, 132689), (97, 132842), (104, 132890),

Gene: ParkTD_235 Start: 131823, Stop: 132290, Start Num: 23

Candidate Starts for ParkTD_235:

(15, 131754), (Start: 23 @131823 has 194 MA's), (26, 131844), (51, 132018), (56, 132033), (97, 132186), (104, 132234),

Gene: Patter_238 Start: 131540, Stop: 132007, Start Num: 23

Candidate Starts for Patter_238:

(15, 131471), (Start: 23 @131540 has 194 MA's), (26, 131561), (51, 131735), (56, 131750), (97, 131903), (104, 131951),

Gene: Phantasmagoria_54 Start: 47636, Stop: 47145, Start Num: 18

Candidate Starts for Phantasmagoria_54:

(Start: 18 @47636 has 47 MA's), (45, 47477), (78, 47354), (82, 47339), (95, 47270), (96, 47264), (100, 47237), (118, 47153),

Gene: PharkleMinkus_238 Start: 130484, Stop: 130951, Start Num: 23

Candidate Starts for PharkleMinkus_238:

(15, 130415), (Start: 23 @130484 has 194 MA's), (26, 130505), (51, 130679), (56, 130694), (97, 130847), (104, 130895),

Gene: Phayeta_57 Start: 48740, Stop: 48267, Start Num: 21

Candidate Starts for Phayeta_57:

(Start: 21 @48740 has 100 MA's), (28, 48704), (52, 48536), (59, 48512), (78, 48476), (85, 48449), (113, 48296),

Gene: Phelemich_53 Start: 49104, Stop: 48643, Start Num: 21

Candidate Starts for Phelemich_53:

(Start: 21 @49104 has 100 MA's), (29, 49056), (59, 48876), (73, 48855), (96, 48762), (102, 48720),

Gene: Philly_54 Start: 48267, Stop: 47794, Start Num: 21

Candidate Starts for Philly_54:

(Start: 21 @48267 has 100 MA's), (28, 48231), (59, 48039), (78, 48003), (85, 47976),

Gene: Phlegm_240 Start: 132229, Stop: 132696, Start Num: 23

Candidate Starts for Phlegm_240:

(15, 132160), (Start: 23 @132229 has 194 MA's), (26, 132250), (51, 132424), (56, 132439), (97, 132592), (104, 132640),

Gene: Phlyer_55 Start: 49152, Stop: 48679, Start Num: 21

Candidate Starts for Phlyer_55:

(Start: 21 @49152 has 100 MA's), (28, 49116), (59, 48924), (78, 48888), (85, 48861),

Gene: Phox_237 Start: 131478, Stop: 131945, Start Num: 23

Candidate Starts for Phox_237:

(15, 131409), (Start: 23 @131478 has 194 MA's), (26, 131499), (51, 131673), (56, 131688), (97, 131841), (104, 131889),

Gene: Phrappuccino_159 Start: 108261, Stop: 108728, Start Num: 17

Candidate Starts for Phrappuccino_159:

(Start: 17 @108261 has 2 MA's), (24, 108306), (25, 108309), (55, 108486), (63, 108504), (84, 108558), (88, 108576), (95, 108606),

Gene: Phusco_235 Start: 131061, Stop: 131528, Start Num: 23

Candidate Starts for Phusco_235:

(15, 130992), (Start: 23 @131061 has 194 MA's), (26, 131082), (51, 131256), (56, 131271), (97, 131424), (104, 131472),

Gene: Pier_235 Start: 132354, Stop: 132821, Start Num: 23

Candidate Starts for Pier_235:

(15, 132285), (Start: 23 @132354 has 194 MA's), (26, 132375), (51, 132549), (56, 132564), (97, 132717), (104, 132765),

Gene: Pio_242 Start: 133557, Stop: 134024, Start Num: 23

Candidate Starts for Pio_242:

(15, 133488), (Start: 23 @133557 has 194 MA's), (26, 133578), (51, 133752), (56, 133767), (97, 133920), (104, 133968),

Gene: Pivoine_237 Start: 131526, Stop: 131993, Start Num: 23

Candidate Starts for Pivoine_237:

(15, 131457), (Start: 23 @131526 has 194 MA's), (26, 131547), (51, 131721), (56, 131736), (97, 131889), (104, 131937),

Gene: Pleione_240 Start: 132289, Stop: 132756, Start Num: 23

Candidate Starts for Pleione_240:

(15, 132220), (Start: 23 @132289 has 194 MA's), (26, 132310), (51, 132484), (56, 132499), (97, 132652), (104, 132700),

Gene: Poise_3 Start: 790, Stop: 1290, Start Num: 18

Candidate Starts for Poise_3:

(Start: 18 @790 has 47 MA's), (Start: 20 @802 has 1 MA's), (Start: 23 @811 has 194 MA's), (49, 988), (53, 1012), (54, 1018), (55, 1021), (59, 1033), (61, 1039), (77, 1081), (93, 1156), (101, 1207),

Gene: Poster_49 Start: 47628, Stop: 47149, Start Num: 21

Candidate Starts for Poster_49:

(Start: 21 @47628 has 100 MA's), (42, 47496), (85, 47331), (87, 47319), (96, 47268), (116, 47163), (117, 47160),

Gene: Primadonna_230 Start: 131189, Stop: 131656, Start Num: 23

Candidate Starts for Primadonna_230:

(15, 131120), (Start: 23 @131189 has 194 MA's), (26, 131210), (51, 131384), (56, 131399), (97, 131552), (104, 131600),

Gene: Prince_50 Start: 48815, Stop: 48354, Start Num: 21

Candidate Starts for Prince_50:

(6, 49010), (Start: 21 @48815 has 100 MA's), (36, 48722), (44, 48674), (70, 48578), (74, 48569), (82, 48539), (85, 48527), (91, 48497), (94, 48473), (96, 48464), (99, 48440), (100, 48437), (110, 48389), (116, 48365),

Gene: PrinceCharming_54 Start: 47735, Stop: 47244, Start Num: 18

Candidate Starts for PrinceCharming_54:

(Start: 18 @47735 has 47 MA's), (45, 47576), (77, 47456), (78, 47453), (82, 47438), (95, 47369), (96, 47363), (100, 47336), (118, 47252),

Gene: Pupper_137 Start: 96238, Stop: 96732, Start Num: 22

Candidate Starts for Pupper_137:

(Start: 22 @96238 has 4 MA's), (91, 96580), (106, 96682),

Gene: Pupusa_239 Start: 132853, Stop: 133320, Start Num: 23

Candidate Starts for Pupusa_239:

(15, 132784), (Start: 23 @132853 has 194 MA's), (26, 132874), (51, 133048), (56, 133063), (97, 133216), (104, 133264),

Gene: PurduePete_236 Start: 132554, Stop: 133021, Start Num: 23

Candidate Starts for PurduePete_236:

(15, 132485), (Start: 23 @132554 has 194 MA's), (26, 132575), (51, 132749), (56, 132764), (97, 132917), (104, 132965),

Gene: QBert_228 Start: 129877, Stop: 130344, Start Num: 23

Candidate Starts for QBert_228:

(15, 129808), (Start: 23 @129877 has 194 MA's), (26, 129898), (51, 130072), (56, 130087), (97, 130240), (104, 130288),

Gene: Quasimodo_239 Start: 131862, Stop: 132329, Start Num: 23

Candidate Starts for Quasimodo_239:

(15, 131793), (Start: 23 @131862 has 194 MA's), (26, 131883), (51, 132057), (56, 132072), (97, 132225), (104, 132273),

Gene: QueenPie_48 Start: 48361, Stop: 47879, Start Num: 21

Candidate Starts for QueenPie_48:

(Start: 21 @48361 has 100 MA's), (30, 48310), (42, 48229), (74, 48103), (82, 48073), (85, 48061), (92, 48025), (96, 47998), (116, 47893), (117, 47890),

Gene: Raela_2 Start: 790, Stop: 1290, Start Num: 18

Candidate Starts for Raela_2:

(Start: 18 @790 has 47 MA's), (Start: 20 @802 has 1 MA's), (Start: 23 @811 has 194 MA's), (49, 988), (53, 1012), (54, 1018), (55, 1021), (59, 1033), (61, 1039), (77, 1081), (93, 1156), (101, 1207),

Gene: RagingRooster_54 Start: 48098, Stop: 47625, Start Num: 21

Candidate Starts for RagingRooster_54:

(Start: 21 @48098 has 100 MA's), (28, 48062), (59, 47870), (64, 47861), (78, 47834), (85, 47807),

Gene: Rahel_238 Start: 131964, Stop: 132431, Start Num: 23

Candidate Starts for Rahel_238:

(15, 131895), (Start: 23 @131964 has 194 MA's), (26, 131985), (51, 132159), (56, 132174), (97, 132327), (104, 132375),

Gene: RawrgerThat_51 Start: 48688, Stop: 48209, Start Num: 21

Candidate Starts for RawrgerThat_51:

(Start: 21 @48688 has 100 MA's), (42, 48556), (85, 48391), (87, 48379), (96, 48328), (116, 48223), (117, 48220),

Gene: Reccee_55 Start: 49161, Stop: 48700, Start Num: 21

Candidate Starts for Reccee_55:

(Start: 21 @49161 has 100 MA's), (29, 49113), (59, 48933), (73, 48912), (95, 48825), (96, 48819), (102, 48777),

Gene: RedRaider77_3 Start: 781, Stop: 1281, Start Num: 18

Candidate Starts for RedRaider77_3:

(Start: 18 @781 has 47 MA's), (Start: 20 @793 has 1 MA's), (Start: 23 @802 has 194 MA's), (49, 979), (53, 1003), (54, 1009), (55, 1012), (59, 1024), (61, 1030), (77, 1072), (93, 1147), (101, 1198),

Gene: Renkei_49 Start: 47644, Stop: 47165, Start Num: 21

Candidate Starts for Renkei_49:

(Start: 21 @47644 has 100 MA's), (42, 47512), (85, 47347), (87, 47335), (96, 47284), (116, 47179), (117, 47176),

Gene: Reprobate_54 Start: 49109, Stop: 48648, Start Num: 21

Candidate Starts for Reprobate_54:

(Start: 21 @49109 has 100 MA's), (29, 49061), (59, 48881), (73, 48860), (96, 48767), (102, 48725),

Gene: Rhinoforte_54 Start: 47757, Stop: 47266, Start Num: 18

Candidate Starts for Rhinoforte_54:

(Start: 18 @47757 has 47 MA's), (45, 47598), (77, 47478), (78, 47475), (82, 47460), (85, 47448), (95, 47391), (96, 47385), (100, 47358), (118, 47274),

Gene: Rich_55 Start: 50543, Stop: 50082, Start Num: 21

Candidate Starts for Rich_55:

(Start: 21 @50543 has 100 MA's), (29, 50495), (59, 50315), (73, 50294), (95, 50207), (96, 50201), (102, 50159),

Gene: Rinkes_53 Start: 49227, Stop: 48748, Start Num: 21

Candidate Starts for Rinkes_53:

(Start: 21 @49227 has 100 MA's), (47, 49062), (57, 49014), (78, 48957), (82, 48942), (96, 48867),

Gene: Rita130_54 Start: 48981, Stop: 48520, Start Num: 21

Candidate Starts for Rita130_54:

(Start: 21 @48981 has 100 MA's), (29, 48933), (59, 48753), (73, 48732), (95, 48645), (96, 48639), (102, 48597),

Gene: Rita1961_56 Start: 48859, Stop: 48386, Start Num: 21

Candidate Starts for Rita1961_56:

(Start: 21 @48859 has 100 MA's), (28, 48823), (59, 48631), (78, 48595), (85, 48568),

Gene: Rizal_226 Start: 129779, Stop: 130246, Start Num: 23

Candidate Starts for Rizal_226:

(15, 129710), (Start: 23 @129779 has 194 MA's), (26, 129800), (51, 129974), (56, 129989), (97, 130142), (104, 130190),

Gene: RoMag_231 Start: 131560, Stop: 132027, Start Num: 23

Candidate Starts for RoMag_231:

(15, 131491), (Start: 23 @131560 has 194 MA's), (26, 131581), (51, 131755), (56, 131770), (97, 131923), (104, 131971),

Gene: Rocha_232 Start: 131113, Stop: 131580, Start Num: 23

Candidate Starts for Rocha_232:

(15, 131044), (Start: 23 @131113 has 194 MA's), (26, 131134), (51, 131308), (56, 131323), (97, 131476), (104, 131524),

Gene: RomaT_55 Start: 49007, Stop: 48534, Start Num: 21
Candidate Starts for RomaT_55:
(Start: 21 @49007 has 100 MA's), (28, 48971), (59, 48779), (78, 48743), (85, 48716),

Gene: Ronan_232 Start: 129949, Stop: 130416, Start Num: 23
Candidate Starts for Ronan_232:
(15, 129880), (Start: 23 @129949 has 194 MA's), (26, 129970), (51, 130144), (56, 130159), (97, 130312), (104, 130360),

Gene: Roots515_239 Start: 133105, Stop: 133572, Start Num: 23
Candidate Starts for Roots515_239:
(15, 133036), (Start: 23 @133105 has 194 MA's), (26, 133126), (51, 133300), (56, 133315), (97, 133468), (104, 133516),

Gene: Rosebush_53 Start: 47769, Stop: 47278, Start Num: 18
Candidate Starts for Rosebush_53:
(Start: 18 @47769 has 47 MA's), (45, 47610), (77, 47490), (78, 47487), (82, 47472), (85, 47460), (95, 47403), (96, 47397), (100, 47370), (118, 47286),

Gene: SCentae_136 Start: 96389, Stop: 96883, Start Num: 22
Candidate Starts for SCentae_136:
(Start: 22 @96389 has 4 MA's), (91, 96731), (106, 96833),

Gene: SVoro_231 Start: 131862, Stop: 132329, Start Num: 23
Candidate Starts for SVoro_231:
(15, 131793), (Start: 23 @131862 has 194 MA's), (26, 131883), (51, 132057), (56, 132072), (97, 132225), (104, 132273),

Gene: Sabella_53 Start: 47620, Stop: 47129, Start Num: 18
Candidate Starts for Sabella_53:
(Start: 18 @47620 has 47 MA's), (45, 47461), (77, 47341), (78, 47338), (82, 47323), (85, 47311), (95, 47254), (96, 47248), (100, 47221), (118, 47137),

Gene: Salacia_237 Start: 132980, Stop: 133447, Start Num: 23
Candidate Starts for Salacia_237:
(15, 132911), (Start: 23 @132980 has 194 MA's), (26, 133001), (51, 133175), (56, 133190), (97, 133343), (104, 133391),

Gene: Sauce_233 Start: 131288, Stop: 131755, Start Num: 23
Candidate Starts for Sauce_233:
(15, 131219), (Start: 23 @131288 has 194 MA's), (26, 131309), (51, 131483), (56, 131498), (97, 131651), (104, 131699),

Gene: ScottMcG_228 Start: 130558, Stop: 131025, Start Num: 23
Candidate Starts for ScottMcG_228:
(15, 130489), (Start: 23 @130558 has 194 MA's), (26, 130579), (51, 130753), (56, 130768), (97, 130921), (104, 130969),

Gene: Sebata_238 Start: 132793, Stop: 133278, Start Num: 23
Candidate Starts for Sebata_238:
(15, 132724), (Start: 21 @132787 has 100 MA's), (Start: 23 @132793 has 194 MA's), (26, 132814), (51, 132988), (56, 133003), (97, 133156), (104, 133204),

Gene: Settecandela_159 Start: 108261, Stop: 108728, Start Num: 17
Candidate Starts for Settecandela_159:
(Start: 17 @108261 has 2 MA's), (24, 108306), (25, 108309), (55, 108486), (63, 108504), (84, 108558),
(88, 108576), (95, 108606),

Gene: Shaqnato_227 Start: 130686, Stop: 131153, Start Num: 23
Candidate Starts for Shaqnato_227:
(15, 130617), (Start: 23 @130686 has 194 MA's), (26, 130707), (51, 130881), (56, 130896), (97,
131049), (104, 131097),

Gene: Shatter_47 Start: 40708, Stop: 40232, Start Num: 23
Candidate Starts for Shatter_47:
(5, 40930), (12, 40804), (Start: 23 @40708 has 194 MA's), (80, 40429), (83, 40417), (89, 40390), (98,
40333), (99, 40321), (110, 40264),

Gene: Shelob_237 Start: 133423, Stop: 133890, Start Num: 23
Candidate Starts for Shelob_237:
(15, 133354), (Start: 23 @133423 has 194 MA's), (26, 133444), (51, 133618), (56, 133633), (97,
133786), (104, 133834),

Gene: Shenyu_55 Start: 49334, Stop: 48873, Start Num: 21
Candidate Starts for Shenyu_55:
(Start: 21 @49334 has 100 MA's), (44, 49193), (74, 49091), (96, 48986), (100, 48959), (103, 48938),
(110, 48911), (116, 48887),

Gene: ShiaLabeouf_234 Start: 131282, Stop: 131749, Start Num: 23
Candidate Starts for ShiaLabeouf_234:
(15, 131213), (Start: 23 @131282 has 194 MA's), (26, 131303), (51, 131477), (56, 131492), (97,
131645), (104, 131693),

Gene: Shifa_213 Start: 130752, Stop: 131237, Start Num: 23
Candidate Starts for Shifa_213:
(15, 130683), (Start: 21 @130746 has 100 MA's), (Start: 23 @130752 has 194 MA's), (26, 130773),
(51, 130947), (56, 130962), (97, 131115), (104, 131163),

Gene: Shnickers_235 Start: 131346, Stop: 131813, Start Num: 23
Candidate Starts for Shnickers_235:
(15, 131277), (Start: 23 @131346 has 194 MA's), (26, 131367), (51, 131541), (56, 131556), (97,
131709), (104, 131757),

Gene: Shrimp_238 Start: 132591, Stop: 133058, Start Num: 23
Candidate Starts for Shrimp_238:
(15, 132522), (Start: 23 @132591 has 194 MA's), (26, 132612), (51, 132786), (56, 132801), (97,
132954), (104, 133002),

Gene: SilverDipper_240 Start: 132082, Stop: 132549, Start Num: 23
Candidate Starts for SilverDipper_240:
(15, 132013), (Start: 23 @132082 has 194 MA's), (26, 132103), (51, 132277), (56, 132292), (97,
132445), (104, 132493),

Gene: SirJeffery_54 Start: 48983, Stop: 48522, Start Num: 21
Candidate Starts for SirJeffery_54:

(Start: 21 @48983 has 100 MA's), (29, 48935), (59, 48755), (73, 48734), (95, 48647), (96, 48641), (102, 48599),

Gene: Sisko_46 Start: 41036, Stop: 40560, Start Num: 23

Candidate Starts for Sisko_46:

(Start: 23 @41036 has 194 MA's), (30, 40991), (32, 40976), (48, 40871), (89, 40715), (98, 40658), (110, 40589), (113, 40574),

Gene: Skog_198 Start: 125939, Stop: 126439, Start Num: 22

Candidate Starts for Skog_198:

(Start: 22 @125939 has 4 MA's), (100, 126347), (106, 126386),

Gene: SlippinJimmy_57 Start: 49641, Stop: 49168, Start Num: 21

Candidate Starts for SlippinJimmy_57:

(Start: 21 @49641 has 100 MA's), (28, 49605), (59, 49413), (78, 49377), (85, 49350),

Gene: SmallFry_237 Start: 131440, Stop: 131907, Start Num: 23

Candidate Starts for SmallFry_237:

(15, 131371), (Start: 23 @131440 has 194 MA's), (26, 131461), (51, 131635), (56, 131650), (97, 131803), (104, 131851),

Gene: Spec_230 Start: 131509, Stop: 131976, Start Num: 23

Candidate Starts for Spec_230:

(15, 131440), (Start: 23 @131509 has 194 MA's), (26, 131530), (51, 131704), (56, 131719), (97, 131872), (104, 131920),

Gene: Specks_240 Start: 131931, Stop: 132398, Start Num: 23

Candidate Starts for Specks_240:

(15, 131862), (Start: 23 @131931 has 194 MA's), (26, 131952), (51, 132126), (56, 132141), (97, 132294), (104, 132342),

Gene: Sprinklers_234 Start: 131176, Stop: 131643, Start Num: 23

Candidate Starts for Sprinklers_234:

(15, 131107), (Start: 23 @131176 has 194 MA's), (26, 131197), (51, 131371), (56, 131386), (97, 131539), (104, 131587),

Gene: Spud_229 Start: 130897, Stop: 131364, Start Num: 23

Candidate Starts for Spud_229:

(15, 130828), (Start: 23 @130897 has 194 MA's), (26, 130918), (51, 131092), (56, 131107), (97, 131260), (104, 131308),

Gene: SrishMeg2525_233 Start: 132086, Stop: 132553, Start Num: 23

Candidate Starts for SrishMeg2525_233:

(15, 132017), (Start: 23 @132086 has 194 MA's), (26, 132107), (51, 132281), (56, 132296), (97, 132449), (104, 132497),

Gene: StephanieG_230 Start: 132083, Stop: 132550, Start Num: 23

Candidate Starts for StephanieG_230:

(15, 132014), (Start: 23 @132083 has 194 MA's), (26, 132104), (51, 132278), (56, 132293), (97, 132446), (104, 132494),

Gene: Stinger_50 Start: 47346, Stop: 46885, Start Num: 21

Candidate Starts for Stinger_50:

(Start: 21 @47346 has 100 MA's), (36, 47253), (44, 47205), (70, 47112), (74, 47103), (89, 47043), (92, 47025), (96, 46998), (99, 46974), (100, 46971), (110, 46923), (116, 46899),

Gene: StinkyVeggy_55 Start: 49120, Stop: 48659, Start Num: 21

Candidate Starts for StinkyVeggy_55:

(Start: 21 @49120 has 100 MA's), (29, 49072), (46, 48961), (59, 48892), (73, 48871), (95, 48784), (96, 48778), (102, 48736),

Gene: StubbySaigey_242 Start: 131616, Stop: 132083, Start Num: 23

Candidate Starts for StubbySaigey_242:

(15, 131547), (Start: 23 @131616 has 194 MA's), (26, 131637), (51, 131811), (56, 131826), (97, 131979), (104, 132027),

Gene: Substance289_232 Start: 131488, Stop: 131955, Start Num: 23

Candidate Starts for Substance289_232:

(15, 131419), (Start: 23 @131488 has 194 MA's), (26, 131509), (51, 131683), (56, 131698), (97, 131851), (104, 131899),

Gene: Suigeneris_56 Start: 49263, Stop: 48802, Start Num: 21

Candidate Starts for Suigeneris_56:

(3, 49764), (Start: 21 @49263 has 100 MA's), (29, 49215), (59, 49035), (73, 49014), (95, 48927), (96, 48921), (102, 48879),

Gene: SwainyDoc_56 Start: 48871, Stop: 48398, Start Num: 21

Candidate Starts for SwainyDoc_56:

(Start: 21 @48871 has 100 MA's), (28, 48835), (52, 48667), (59, 48643), (78, 48607), (85, 48580), (113, 48427),

Gene: SynergyX_55 Start: 48414, Stop: 47941, Start Num: 21

Candidate Starts for SynergyX_55:

(Start: 21 @48414 has 100 MA's), (28, 48378), (52, 48210), (59, 48186), (64, 48177), (78, 48150), (85, 48123), (113, 47970),

Gene: TA17A_55 Start: 47619, Stop: 47128, Start Num: 18

Candidate Starts for TA17A_55:

(Start: 18 @47619 has 47 MA's), (45, 47460), (78, 47337), (82, 47322), (85, 47310), (95, 47253), (96, 47247), (100, 47220), (118, 47136),

Gene: TPA2_59 Start: 47083, Stop: 46601, Start Num: 21

Candidate Starts for TPA2_59:

(Start: 21 @47083 has 100 MA's), (38, 46981), (71, 46828), (85, 46780), (94, 46726), (96, 46717), (98, 46705), (104, 46666), (105, 46657), (111, 46633),

Gene: Tainan_236 Start: 131060, Stop: 131527, Start Num: 23

Candidate Starts for Tainan_236:

(15, 130991), (Start: 23 @131060 has 194 MA's), (26, 131081), (51, 131255), (56, 131270), (97, 131423), (104, 131471),

Gene: Teardrop_234 Start: 130943, Stop: 131410, Start Num: 23

Candidate Starts for Teardrop_234:

(15, 130874), (Start: 23 @130943 has 194 MA's), (26, 130964), (51, 131138), (56, 131153), (97, 131306), (104, 131354),

Gene: Tesla_3 Start: 802, Stop: 1281, Start Num: 23

Candidate Starts for Tesla_3:

(Start: 18 @781 has 47 MA's), (Start: 20 @793 has 1 MA's), (Start: 23 @802 has 194 MA's), (49, 979), (53, 1003), (54, 1009), (55, 1012), (59, 1024), (61, 1030), (77, 1072), (93, 1147), (101, 1198), (102, 1207),

Gene: Thonko_56 Start: 47465, Stop: 46986, Start Num: 21

Candidate Starts for Thonko_56:

(9, 47591), (Start: 21 @47465 has 100 MA's), (26, 47438), (58, 47249), (66, 47231), (95, 47114), (96, 47108), (100, 47081), (102, 47066), (110, 47033),

Gene: Tinciduntolum_55 Start: 47781, Stop: 47290, Start Num: 18

Candidate Starts for Tinciduntolum_55:

(Start: 18 @47781 has 47 MA's), (45, 47622), (77, 47502), (78, 47499), (82, 47484), (85, 47472), (95, 47415), (96, 47409), (100, 47382), (118, 47298),

Gene: TinyTim_234 Start: 130910, Stop: 131377, Start Num: 23

Candidate Starts for TinyTim_234:

(15, 130841), (Start: 23 @130910 has 194 MA's), (26, 130931), (51, 131105), (56, 131120), (97, 131273), (104, 131321),

Gene: Tonenili_257 Start: 136733, Stop: 137203, Start Num: 23

Candidate Starts for Tonenili_257:

(15, 136664), (Start: 23 @136733 has 194 MA's), (26, 136754), (44, 136877), (59, 136955), (79, 137015), (102, 137138), (104, 137147),

Gene: Tortoise16_234 Start: 131372, Stop: 131839, Start Num: 23

Candidate Starts for Tortoise16_234:

(15, 131303), (Start: 23 @131372 has 194 MA's), (26, 131393), (51, 131567), (56, 131582), (97, 131735), (104, 131783),

Gene: TraderJ_50 Start: 42928, Stop: 42461, Start Num: 21

Candidate Starts for TraderJ_50:

(Start: 21 @42928 has 100 MA's), (40, 42799), (70, 42685), (95, 42589), (96, 42583), (104, 42532), (112, 42496),

Gene: Tres_54 Start: 47632, Stop: 47141, Start Num: 18

Candidate Starts for Tres_54:

(Start: 18 @47632 has 47 MA's), (45, 47473), (77, 47353), (78, 47350), (82, 47335), (85, 47323), (95, 47266), (96, 47260), (100, 47233), (118, 47149),

Gene: Trinitium_232 Start: 129664, Stop: 130131, Start Num: 23

Candidate Starts for Trinitium_232:

(15, 129595), (Start: 23 @129664 has 194 MA's), (26, 129685), (51, 129859), (56, 129874), (97, 130027), (104, 130075),

Gene: Turret_227 Start: 129246, Stop: 129713, Start Num: 23

Candidate Starts for Turret_227:

(15, 129177), (Start: 23 @129246 has 194 MA's), (26, 129267), (51, 129441), (56, 129456), (97, 129609), (104, 129657),

Gene: Tyke_233 Start: 133552, Stop: 134019, Start Num: 23

Candidate Starts for Tyke_233:

(15, 133483), (Start: 23 @133552 has 194 MA's), (26, 133573), (51, 133747), (56, 133762), (97, 133915), (104, 133963),

Gene: ValleyTerrace_237 Start: 130823, Stop: 131290, Start Num: 23

Candidate Starts for ValleyTerrace_237:

(15, 130754), (Start: 23 @130823 has 194 MA's), (26, 130844), (51, 131018), (56, 131033), (97, 131186), (104, 131234),

Gene: VasuNzinga_3 Start: 802, Stop: 1281, Start Num: 23

Candidate Starts for VasuNzinga_3:

(Start: 18 @781 has 47 MA's), (Start: 20 @793 has 1 MA's), (Start: 23 @802 has 194 MA's), (49, 979), (53, 1003), (54, 1009), (55, 1012), (59, 1024), (61, 1030), (77, 1072), (93, 1147), (101, 1198),

Gene: Vic9_00053 Start: 48150, Stop: 47659, Start Num: 18

Candidate Starts for Vic9_00053:

(Start: 18 @48150 has 47 MA's), (45, 47991), (78, 47868), (82, 47853), (85, 47841), (95, 47784), (96, 47778), (100, 47751), (118, 47667),

Gene: Vincenzo_52 Start: 49377, Stop: 48913, Start Num: 21

Candidate Starts for Vincenzo_52:

(Start: 21 @49377 has 100 MA's), (44, 49236), (64, 49152), (91, 49056), (92, 49050), (96, 49023), (116, 48924),

Gene: VioletZ_52 Start: 48734, Stop: 48273, Start Num: 21

Candidate Starts for VioletZ_52:

(Start: 21 @48734 has 100 MA's), (36, 48641), (44, 48593), (70, 48497), (74, 48488), (85, 48446), (86, 48440), (91, 48416), (96, 48383), (99, 48359), (100, 48356), (110, 48308), (116, 48284),

Gene: Vortrix_254 Start: 135520, Stop: 135990, Start Num: 23

Candidate Starts for Vortrix_254:

(15, 135451), (Start: 23 @135520 has 194 MA's), (26, 135541), (44, 135664), (59, 135742), (79, 135802), (97, 135886), (102, 135925), (104, 135934),

Gene: Waleliano_49 Start: 48252, Stop: 47791, Start Num: 21

Candidate Starts for Waleliano_49:

(Start: 21 @48252 has 100 MA's), (36, 48159), (44, 48111), (66, 48024), (70, 48015), (74, 48006), (82, 47976), (85, 47964), (91, 47934), (96, 47901), (99, 47877), (100, 47874), (110, 47826), (116, 47802),

Gene: Wally_234 Start: 130807, Stop: 131274, Start Num: 23

Candidate Starts for Wally_234:

(15, 130738), (Start: 23 @130807 has 194 MA's), (26, 130828), (51, 131002), (56, 131017), (97, 131170), (104, 131218),

Gene: West99_54 Start: 47778, Stop: 47287, Start Num: 18

Candidate Starts for West99_54:

(Start: 18 @47778 has 47 MA's), (45, 47619), (78, 47496), (82, 47481), (95, 47412), (96, 47406), (100, 47379), (118, 47295),

Gene: Willis_236 Start: 131746, Stop: 132213, Start Num: 23

Candidate Starts for Willis_236:

(15, 131677), (Start: 23 @131746 has 194 MA's), (26, 131767), (51, 131941), (56, 131956), (97, 132109), (104, 132157),

Gene: Wooper_50 Start: 42937, Stop: 42470, Start Num: 21
Candidate Starts for Wooper_50:
(Start: 21 @42937 has 100 MA's), (37, 42835), (40, 42808), (70, 42694), (95, 42598), (96, 42592),
(104, 42541), (112, 42505),

Gene: Xincheng_51 Start: 49715, Stop: 49254, Start Num: 21
Candidate Starts for Xincheng_51:
(Start: 21 @49715 has 100 MA's), (36, 49622), (44, 49574), (70, 49478), (74, 49469), (82, 49439), (85,
49427), (86, 49421), (91, 49397), (94, 49373), (96, 49364), (99, 49340), (100, 49337), (110, 49289),
(116, 49265),

Gene: Yago84_46 Start: 41111, Stop: 40635, Start Num: 23
Candidate Starts for Yago84_46:
(Start: 23 @41111 has 194 MA's), (30, 41066), (32, 41051), (48, 40946), (89, 40790), (98, 40733),
(110, 40664), (113, 40649),

Gene: Yahalom_54 Start: 48424, Stop: 47951, Start Num: 21
Candidate Starts for Yahalom_54:
(Start: 21 @48424 has 100 MA's), (28, 48388), (59, 48196), (78, 48160), (85, 48133),

Gene: Yassified_233 Start: 131159, Stop: 131626, Start Num: 23
Candidate Starts for Yassified_233:
(15, 131090), (Start: 23 @131159 has 194 MA's), (26, 131180), (51, 131354), (56, 131369), (97,
131522), (104, 131570),

Gene: YemiJoy2021_237 Start: 132477, Stop: 132944, Start Num: 23
Candidate Starts for YemiJoy2021_237:
(15, 132408), (Start: 23 @132477 has 194 MA's), (26, 132498), (51, 132672), (56, 132687), (97,
132840), (104, 132888),

Gene: Yeshua_50 Start: 42914, Stop: 42447, Start Num: 21
Candidate Starts for Yeshua_50:
(Start: 21 @42914 has 100 MA's), (37, 42812), (40, 42785), (70, 42671), (95, 42575), (96, 42569),
(104, 42518), (112, 42482),

Gene: Yinz_55 Start: 48270, Stop: 47797, Start Num: 21
Candidate Starts for Yinz_55:
(Start: 21 @48270 has 100 MA's), (28, 48234), (52, 48066), (59, 48042), (64, 48033), (78, 48006), (85,
47979), (113, 47826),

Gene: YoungMoneyMata_236 Start: 131995, Stop: 132462, Start Num: 23
Candidate Starts for YoungMoneyMata_236:
(15, 131926), (Start: 23 @131995 has 194 MA's), (26, 132016), (51, 132190), (56, 132205), (97,
132358), (104, 132406),

Gene: Yucca_235 Start: 132469, Stop: 132936, Start Num: 23
Candidate Starts for Yucca_235:
(15, 132400), (Start: 23 @132469 has 194 MA's), (26, 132490), (51, 132664), (56, 132679), (97,
132832), (104, 132880),

Gene: Zalkecks_235 Start: 131575, Stop: 132042, Start Num: 23
Candidate Starts for Zalkecks_235:

(15, 131506), (Start: 23 @131575 has 194 MA's), (26, 131596), (51, 131770), (56, 131785), (97, 131938), (104, 131986),

Gene: Zeenon_236 Start: 132109, Stop: 132576, Start Num: 23

Candidate Starts for Zeenon_236:

(15, 132040), (Start: 23 @132109 has 194 MA's), (26, 132130), (51, 132304), (56, 132319), (97, 132472), (104, 132520),

Gene: Zemanar_50 Start: 48233, Stop: 47772, Start Num: 21

Candidate Starts for Zemanar_50:

(Start: 21 @48233 has 100 MA's), (36, 48140), (44, 48092), (66, 48005), (70, 47996), (74, 47987), (82, 47957), (85, 47945), (91, 47915), (96, 47882), (99, 47858), (100, 47855), (110, 47807), (116, 47783),

Gene: ZygoTaiga_231 Start: 132766, Stop: 133233, Start Num: 23

Candidate Starts for ZygoTaiga_231:

(15, 132697), (Start: 23 @132766 has 194 MA's), (26, 132787), (51, 132961), (56, 132976), (97, 133129), (104, 133177),