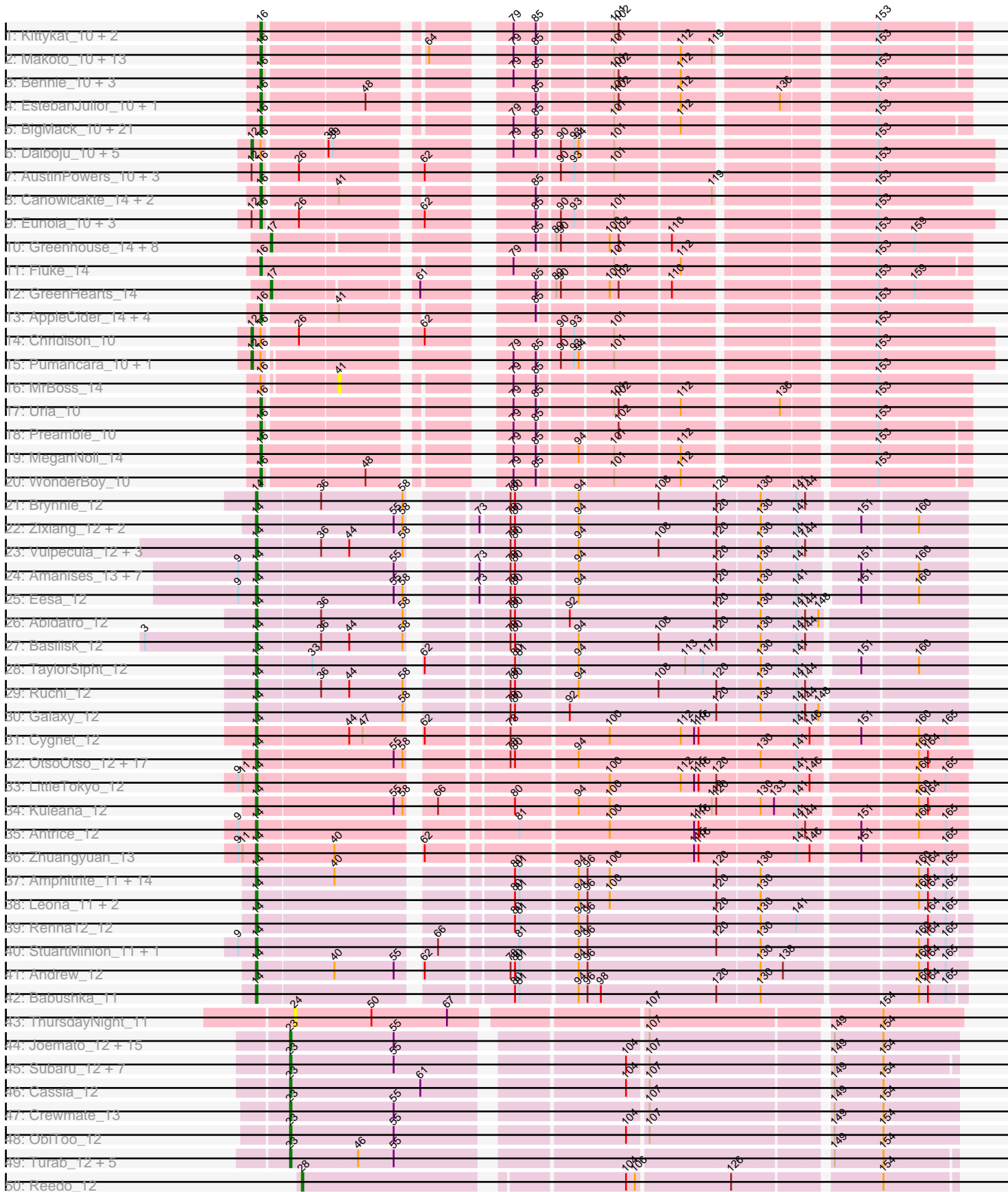
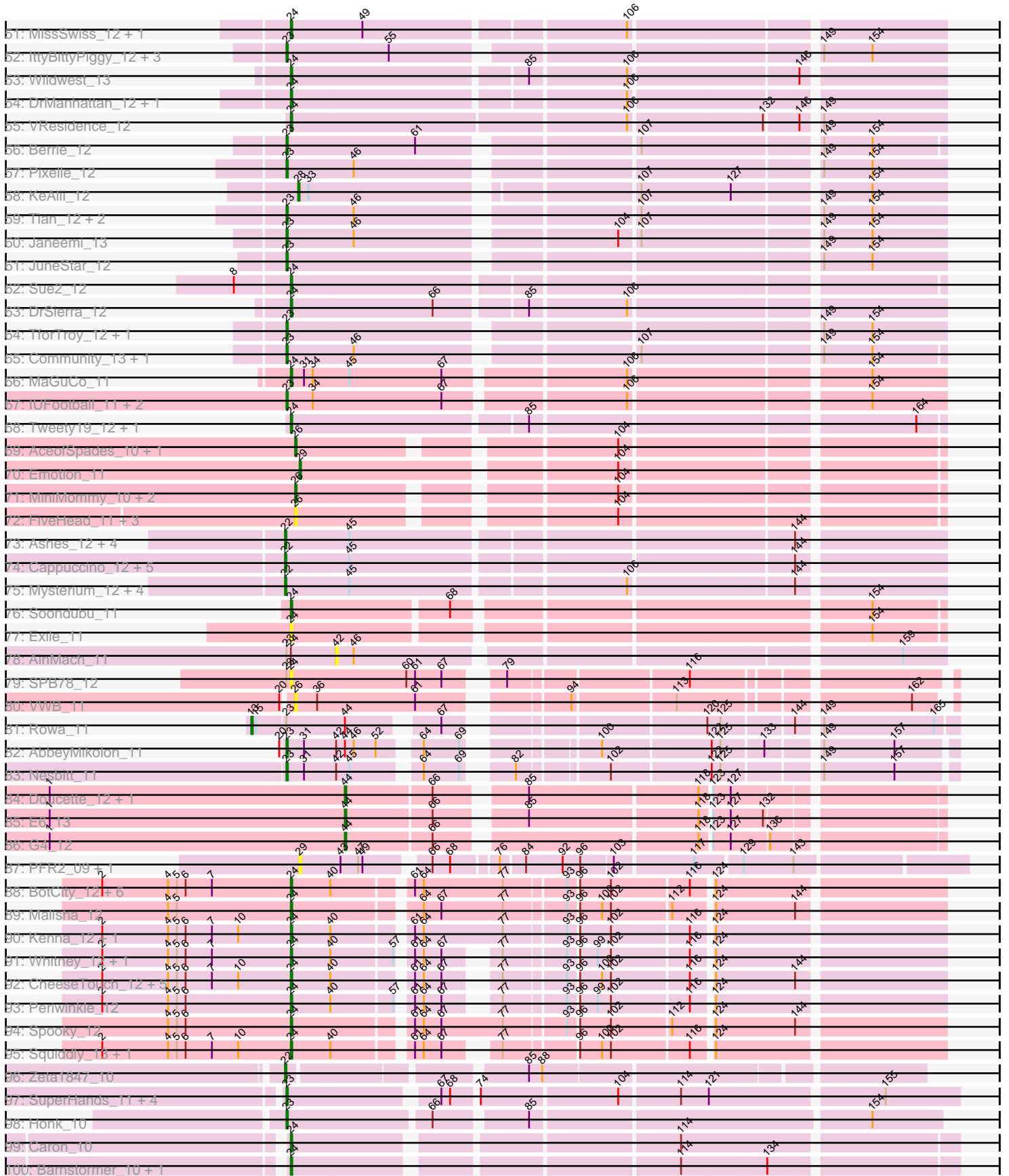


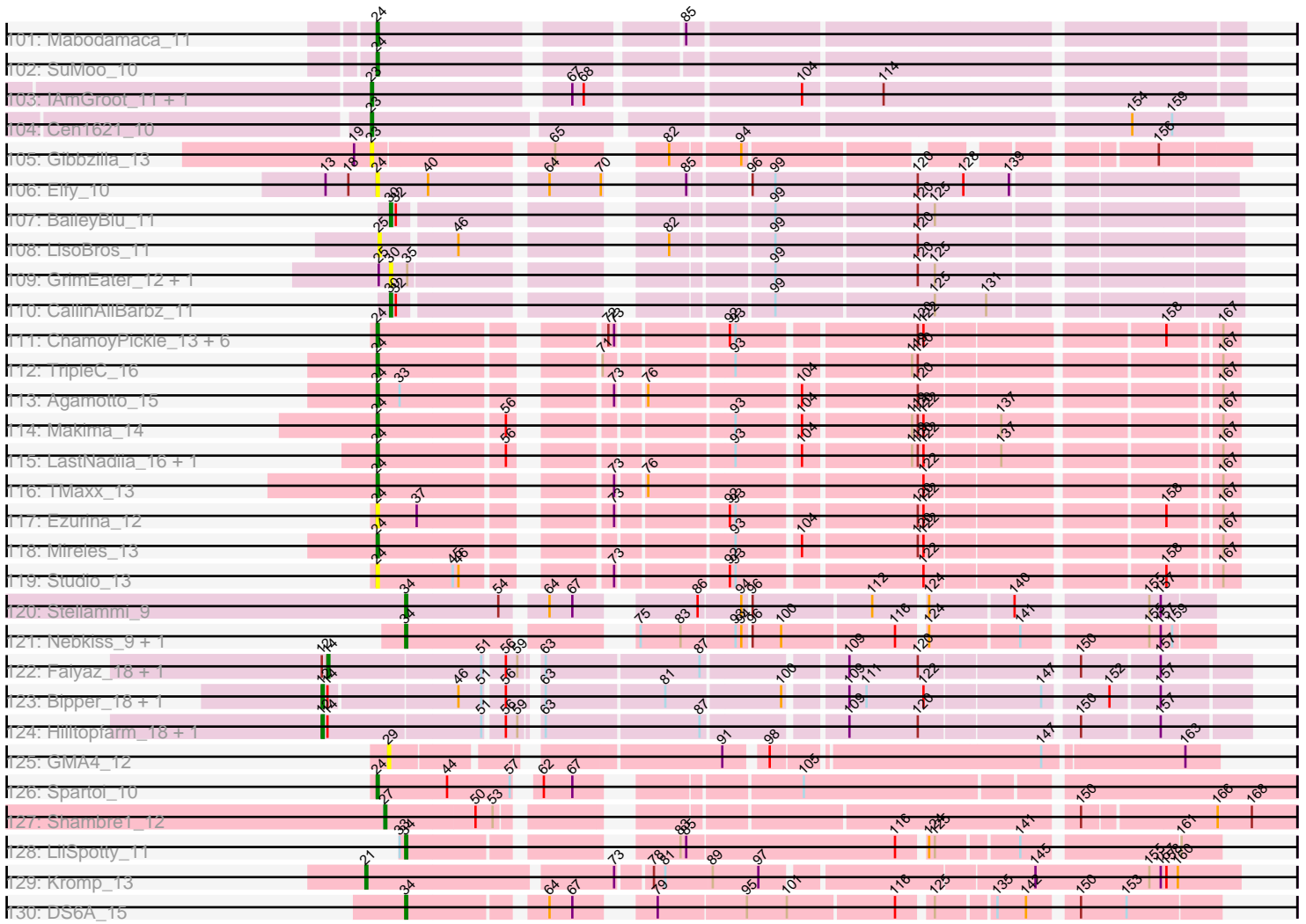
Pham 304643



Pham 304643



Pham 304643



Note: Tracks are now grouped by subcluster and scaled. Switching in subcluster is indicated by changes in track color. Track scale is now set by default to display the region 30 bp upstream of start 1 to 30 bp downstream of the last possible start. If this default region is judged to be packed too tightly with annotated starts, the track will be further scaled to only show that region of the ORF with annotated starts. This action will be indicated by adding "Zoomed" to the title. For starts, yellow indicates the location of called starts comprised solely of Glimmer/GeneMark auto-annotations, green indicates the location of called starts with at least 1 manual gene annotation.

Pham 304643 Report

This analysis was run 06/08/26 on database version 649.

WARNING: Pham size does not match number of genes in report. Either unphamerated genes have been added (by you) or starterator has removed genes due to invalid start codon.

Pham number 304643 has 334 members, 59 are drafts.

Phages represented in each track:

- Track 1 : Kittykat_10, DreamTeam_10, Gisselle_10
- Track 2 : Makoto_10, CristinaYang_10, PitaDog_10, Lasagna_10, Pterodactyl_10, DrRobert_10, Nancia_10, OurGirlNessie_10, LilStuart_10, Bodacious_10, Christian_10, Lucy_10, Lennox_10, ChewChew_10
- Track 3 : Bennie_10, HeadNerd_10, Huckleberry_10, Moki_10
- Track 4 : EstebanJulior_10, MamaPearl_10
- Track 5 : BigMack_10, Carpal_14, Beethoven_14, RAP15_14, Wawa_14, Immaculata_14, Potatoes_14, Cholula_14, Korra_14, Dino_14, Glenn_14, Scuttle_14, TattModd_14, Jumboset_14, Vallejo_14, Rozby_14, MrGloopy_14, Riverdale_14, Savage2526_14, BrotherBLo_14, Kalizoi_14, Zorro_14
- Track 6 : Daiboju_10, Sergei_10, KingBob_10, Herb_10, Temper16_10, Maria1952_10
- Track 7 : AustinPowers_10, HunterDalle_10, Vulture_10, Supakev_10
- Track 8 : Canowicakte_14, Wayne_14, Suppi_14
- Track 9 : Eunoia_10, Aledel_10, OMalley_10, Riovina_10
- Track 10 : Greenhouse_14, Lakshmi_14, Albanese_14, RcigaStruga_14, Huntingdon_14, Joann_14, Oxynfrius_14, Nubia_14, Misaeng_14
- Track 11 : Fluke_14
- Track 12 : GreenHearts_14
- Track 13 : AppleCider_14, Litotes_14, PartyCup_14, Graynor_14, CallieOMalley_14
- Track 14 : Chridison_10
- Track 15 : Pumancara_10, PinkFriday_10
- Track 16 : MrBoss_14
- Track 17 : Urla_10
- Track 18 : Preamble_10
- Track 19 : MeganNoll_14
- Track 20 : WonderBoy_10
- Track 21 : Brynnie_12
- Track 22 : Zixiang_12, Niblet_12, Chicken_12
- Track 23 : Vulpecula_12, Chickaboom_11, Jamun_12, WileyE_11
- Track 24 : Amanises_13, KendraB23_13, Pelletreau_13, Gravel_13, Toad24_13, Westrich_13, Shen_13, Orcanus_12
- Track 25 : Eesa_12

- Track 26 : Abidatro_12
- Track 27 : Basilisk_12
- Track 28 : TaylorSipht_12
- Track 29 : Ruchi_12
- Track 30 : Galaxy_12
- Track 31 : Cygnet_12
- Track 32 : OtsoOtso_12, Melons_13, Pineda_13, Cote_13, Damocles_13, Bible12_13, Polka_12, Bedetta_13, PhirstandPhine_13, Lunar_13, Daob_13, Coral_12, Jerole_13, Kepler_12, HannahPhantana_13, GramZayde_12, Colusalem_12, Amelia_13
- Track 33 : LittleTokyo_12
- Track 34 : Kuleana_12
- Track 35 : Antrice_12
- Track 36 : Zhuangyuan_13
- Track 37 : Amphitrite_11, Juno112_11, HamCheese_11, Glotell_11, Fingolfin_11, Camara_11, PhluffyCoco_11, AmiCi24_11, Laphuphu24k_11, DanHam62_11, AdoptaAdorbs_11, KHumphrey_11, Atlantica_11, RedFox_11, Oppalora_11
- Track 38 : Leona_11, Azaz_11, Rattail_11
- Track 39 : Renna12_12
- Track 40 : StuartMinion_11, AlexMinion_11
- Track 41 : Andrew_12
- Track 42 : Babushka_11
- Track 43 : ThursdayNight_11
- Track 44 : Joemato_12, Iter_12, AGrandiflora_12, YesChef_12, Lizalica_12, JohnDoe_12, Simpson_13, Kaylissa_12, Lego_12, Ascela_12, Warda_12, Tutumahutu_12, Tbone_12, Powerpuff_12, Cyan_12, Mudpuppy_12
- Track 45 : Subaru_12, Elezi_12, Asa16_12, Eraser_12, London_12, Niobe_12, Skelbel_12, Jstan_12
- Track 46 : Cassia_12
- Track 47 : Crewmate_13
- Track 48 : ObiToo_12
- Track 49 : Turab_12, Tallboi_12, Adumb2043_12, Amploria_12, AEgle_12, Nitro_12
- Track 50 : Reedo_12
- Track 51 : MissSwiss_12, PandaPo_12
- Track 52 : IttyBittyPiggy_12, Flutur_12, Pumpkins_12, Schaffner_12
- Track 53 : Wildwest_13
- Track 54 : DrManhattan_12, Adolin_12
- Track 55 : VResidence_12
- Track 56 : Berrie_12
- Track 57 : Pixelle_12
- Track 58 : KeAlii_12
- Track 59 : Tian_12, Amyev_12, Phives_13
- Track 60 : Janeemi_13
- Track 61 : JuneStar_12
- Track 62 : Sue2_12
- Track 63 : DrSierra_12
- Track 64 : TforTroy_12, Yang_12
- Track 65 : Community_13, Tuck_13
- Track 66 : MaGuCo_11
- Track 67 : IUFootball_11, Maureen_11, Liebe_11
- Track 68 : Tweety19_12, Snek_12
- Track 69 : AceofSpades_10, VroomVroom_11
- Track 70 : Emotion_11

- Track 71 : MiniMommy_10, JasmineDragon_11, ShakeltOph_11
- Track 72 : FiveHead_11, LadyAstra_11, JohnThicc_11, Origami_11
- Track 73 : Ashes_12, RockScotty_12, SpecialK_12, Halsey_12, Moss_12
- Track 74 : Cappuccino_12, Donkey_12, Gambol_12, Kalimba_12, Sooty_12, Sabourin_12
- Track 75 : Mysterium_12, Beaupre_12, Gumpizza_12, Giorgio_12, Stuu_12
- Track 76 : Soondubu_11
- Track 77 : Exile_11
- Track 78 : AinMach_11
- Track 79 : SPB78_12
- Track 80 : VWB_11
- Track 81 : Rowa_11
- Track 82 : AbbeyMikolon_11
- Track 83 : Nesbitt_11
- Track 84 : Doucette_12, B22_12
- Track 85 : E6_13
- Track 86 : G4_12
- Track 87 : PFR2_09, PFR1_09
- Track 88 : BotCity_12, Horus_12, Leroy_12, ShawBrad_12, Frickyeah_12, BENTherdunthat_12, Asapag_12
- Track 89 : Malisha_12
- Track 90 : Kenna_12, Lutum_12
- Track 91 : Whitney_12, Getalong_12
- Track 92 : CheeseTouch_12, Budski_12, Phabuloso_12, LitninMcQueen_12, Kamaru_12, Holliday_12
- Track 93 : Periwinkle_12
- Track 94 : Spooky_12
- Track 95 : Squiddly_13, Phistory_12
- Track 96 : Zeta1847_10
- Track 97 : SuperHands_11, Forester_11, Floof_11, Percival_11, Gretchen_11
- Track 98 : Honk_10
- Track 99 : Caron_10
- Track 100 : Barnstormer_10, UtzChips_10
- Track 101 : Mabodamaca_11
- Track 102 : SuMoo_10
- Track 103 : IAmGroot_11, GardenState_11
- Track 104 : Cen1621_10
- Track 105 : Gibbzilla_13
- Track 106 : Elfy_10
- Track 107 : BaileyBlu_11
- Track 108 : LisoBros_11
- Track 109 : GrimEater_12, Jankie_13
- Track 110 : CallinAllBarbz_11
- Track 111 : ChamoyPickle_13, AnnabelLee_13, Gerri43_13, Neuville_13, CardboardBox_13, ChipsNGuac_13, Roberts_13
- Track 112 : TripleC_16
- Track 113 : Agamoto_15
- Track 114 : Makima_14
- Track 115 : LastNadiia_16, Audell_16
- Track 116 : TMaxx_13
- Track 117 : Ezurina_12
- Track 118 : Mireles_13
- Track 119 : Studio_13

- Track 120 : Stellammi_9
- Track 121 : Nebkiss_9, Gaia_9
- Track 122 : Faiyaz_18, AuntGwenStacy_18
- Track 123 : Bipper_18, Cracklewink_18
- Track 124 : Hilltopfarm_18, Typha_18
- Track 125 : GMA4_12
- Track 126 : Spartoi_10
- Track 127 : Shambre1_12
- Track 128 : LilSpotty_11
- Track 129 : Kromp_13
- Track 130 : DS6A_15

Summary of Final Annotations (See graph section above for start numbers):

The start number called the most often in the published annotations is 16, it was called in 65 of the 275 non-draft genes in the pham.

Genes that call this "Most Annotated" start:

- Aledel_10, AppleCider_14, AustinPowers_10, Beethoven_14, Bennie_10, BigMack_10, Bodacious_10, BrotherBLo_14, CallieOMalley_14, Canowicakte_14, Carpal_14, ChewChew_10, Cholula_14, Christian_10, CristinaYang_10, Dino_14, DrRobert_10, DreamTeam_10, EstebanJulior_10, Eunoia_10, Fluke_14, Gisselle_10, Glenn_14, Graynor_14, HeadNerd_10, Huckleberry_10, HunterDalle_10, Immaculata_14, Jumboset_14, Kalizoi_14, Kittykat_10, Korra_14, Lasagna_10, Lennox_10, LilStuart_10, Litotes_14, Lucy_10, Makoto_10, MamaPearl_10, MeganNoll_14, Moki_10, MrGloopy_14, Nancia_10, OMalley_10, OurGirlNessie_10, PartyCup_14, PitaDog_10, Potatoes_14, Preamble_10, Pterodactyl_10, RAP15_14, Rivovina_10, Riverdale_14, Rozby_14, Savage2526_14, Scuttle_14, Supakev_10, Suppi_14, TattModd_14, Urla_10, Vallejo_14, Vulture_10, Wawa_14, Wayne_14, WonderBoy_10, Zorro_14,

Genes that have the "Most Annotated" start but do not call it:

- Chridison_10, Daiboju_10, Herb_10, KingBob_10, Maria1952_10, MrBoss_14, PinkFriday_10, Pumancara_10, Sergei_10, Temper16_10,

Genes that do not have the "Most Annotated" start:

- AEgle_12, AGrandiflora_12, AbbeyMikolon_11, Abidatro_12, AceofSpades_10, Adolin_12, AdoptaAdorbs_11, Adumb2043_12, Agamoto_15, AinMach_11, Albanese_14, AlexMinion_11, Amanises_13, Amelia_13, AmiCi24_11, Amphitrite_11, Amploria_12, Amyev_12, Andrew_12, AnnabelLee_13, Antrice_12, Asa16_12, Asapag_12, Ascela_12, Ashes_12, Atlantica_11, Audell_16, AuntGwenStacy_18, Azaz_11, B22_12, BENtherdunthat_12, Babushka_11, BaileyBlu_11, Barnstormer_10, Basilisk_12, Beaupre_12, Bedetta_13, Berrie_12, Bibble12_13, Bipper_18, BotCity_12, Brynnie_12, Budski_12, CallinAllBarbz_11, Camara_11, Cappuccino_12, CardboardBox_13, Caron_10, Cassia_12, Cen1621_10, ChamoyPickle_13, CheeseTouch_12, Chickaboom_11, Chicken_12, ChipsNGuac_13, Colusalem_12, Community_13, Coral_12, Cote_13, Cracklewink_18, Crewmate_13, Cyan_12, Cygnet_12, DS6A_15, Damocles_13, DanHam62_11, Daob_13, Donkey_12, Doucette_12, DrManhattan_12, DrSierra_12, E6_13, Eesa_12, Elezi_12, Elfy_10, Emotion_11, Eraser_12, Exile_11, Ezurina_12,

Faiyaz_18, Fingolfin_11, FiveHead_11, Floof_11, Flutur_12, Forester_11, Frickyeah_12, G4_12, GMA4_12, Gaia_9, Galaxy_12, Gambol_12, GardenState_11, Gerri43_13, Getalong_12, Gibbzilla_13, Giorgio_12, Glotell_11, GramZayde_12, Gravel_13, GreenHearts_14, Greenhouse_14, Gretchen_11, GrimEater_12, Gumpizza_12, Halsey_12, HamCheese_11, HannahPhantana_13, Hilltopfarm_18, Holliday_12, Honk_10, Horus_12, Huntingdon_14, IAmGroot_11, IUFootball_11, Iter_12, IttyBittyPiggy_12, Jamun_12, Janeemi_13, Jankie_13, JasmineDragon_11, Jerole_13, Joann_14, Joemato_12, JohnDoe_12, JohnThicc_11, Jstan_12, JuneStar_12, Juno112_11, KHumphrey_11, Kalimba_12, Kamaru_12, Kaylissa_12, KeAlii_12, KendraB23_13, Kenna_12, Kepler_12, Kromp_13, Kuleana_12, LadyAstra_11, Lakshmi_14, Laphuphu24k_11, LastNadiia_16, Lego_12, Leona_11, Leroy_12, Liebe_11, LilSpotty_11, LisoBros_11, LitninMcQueen_12, LittleTokyo_12, Lizalica_12, London_12, Lunar_13, Lutum_12, MaGuCo_11, Mabodamaca_11, Makima_14, Malisha_12, Maureen_11, Melons_13, MiniMommy_10, Mireles_13, Misaeng_14, MissSwiss_12, Moss_12, Mudpuppy_12, Mysterium_12, Nebkiss_9, Nesbitt_11, Neuville_13, Niblet_12, Niobe_12, Nitro_12, Nubia_14, ObiToo_12, Oppalora_11, Orcanus_12, Origami_11, OtsoOtso_12, Oxynfrius_14, PFR1_09, PFR2_09, PandaPo_12, Pelletreau_13, Percival_11, Periwinkle_12, Phabuloso_12, PhirstandPhine_13, Phistory_12, Phives_13, PhluffyCoco_11, Pineda_13, Pixelle_12, Polka_12, Powerpuff_12, Pumpkins_12, Rattail_11, RcigaStruga_14, RedFox_11, Reedo_12, Renna12_12, Roberts_13, RockScotty_12, Rowa_11, Ruchi_12, SPB78_12, Sabourin_12, Schaffner_12, ShakeltOph_11, Shambre1_12, ShawBrad_12, Shen_13, Simpson_13, Skelbel_12, Sneak_12, Soondubu_11, Sooty_12, Spartoi_10, SpecialK_12, Spooky_12, Squiddly_13, Stellammi_9, StuartMinion_11, Studio_13, Stuu_12, SuMoo_10, Subaru_12, Sue2_12, SuperHands_11, TMaxx_13, Tallboi_12, TaylorSipht_12, Tbone_12, TforTroy_12, ThursdayNight_11, Tian_12, Toad24_13, TripleC_16, Tuck_13, Turab_12, Tutumahutu_12, Tweety19_12, Typha_18, UtzChips_10, VResidence_12, VWB_11, VroomVroom_11, Vulpecula_12, Warda_12, Westrich_13, Whitney_12, Wildwest_13, WileyE_11, Yang_12, YesChef_12, Zeta1847_10, Zhuangyuan_13, Zixiang_12,

Summary by start number:

Start 12:

- Found in 23 of 334 (6.9%) of genes in pham
- Manual Annotations of this start: 13 of 275
- Called 56.5% of time when present
- Phage (with cluster) where this start called: Bipper_18 (Y), Chridison_10 (AK), Cracklewink_18 (Y), Daiboju_10 (AK), Herb_10 (AK), Hilltopfarm_18 (Y), KingBob_10 (AK), Maria1952_10 (AK), PinkFriday_10 (AK), Pumancara_10 (AK), Sergei_10 (AK), Temper16_10 (AK), Typha_18 (Y),

Start 13:

- Found in 2 of 334 (0.6%) of genes in pham
- Manual Annotations of this start: 1 of 275
- Called 50.0% of time when present
- Phage (with cluster) where this start called: Rowa_11 (BL),

Start 14:

- Found in 74 of 334 (22.2%) of genes in pham
- Manual Annotations of this start: 51 of 275
- Called 94.6% of time when present

- Phage (with cluster) where this start called: Abidatro_12 (AS1), AdoptaAdorbs_11 (AS3), AlexMinion_11 (AS3), Amanises_13 (AS1), Amelia_13 (AS2), AmiCi24_11 (AS3), Amphitrite_11 (AS3), Andrew_12 (AS3), Antrice_12 (AS2), Atlantica_11 (AS3), AuntGwenStacy_18 (Y), Azaz_11 (AS3), Babushka_11 (AS3), Basilisk_12 (AS1), Bedetta_13 (AS2), Bibble12_13 (AS2), Brynnie_12 (AS1), Camara_11 (AS3), Chickaboom_11 (AS1), Chicken_12 (AS1), Colusalem_12 (AS2), Coral_12 (AS2), Cote_13 (AS2), Cygnet_12 (AS2), Damocles_13 (AS2), DanHam62_11 (AS3), Daob_13 (AS2), Eesa_12 (AS1), Faiyaz_18 (Y), Fingolfin_11 (AS3), Galaxy_12 (AS1), Glotell_11 (AS3), GramZayde_12 (AS2), Gravel_13 (AS1), HamCheese_11 (AS3), HannahPhantana_13 (AS2), Jamun_12 (AS1), Jerole_13 (AS2), Juno112_11 (AS3), KHumphrey_11 (AS3), KendraB23_13 (AS1), Kepler_12 (AS2), Kuleana_12 (AS2), Laphuphu24k_11 (AS3), Leona_11 (AS3), LittleTokyo_12 (AS2), Lunar_13 (AS2), Melons_13 (AS2), Niblet_12 (AS1), Oppalora_11 (AS3), Orcanus_12 (AS1), OtsoOtso_12 (AS2), Pelletreau_13 (AS1), PhirstandPhine_13 (AS2), PhluffyCoco_11 (AS3), Pineda_13 (AS2), Polka_12 (AS2), Rattail_11 (AS3), RedFox_11 (AS3), Renna12_12 (AS3), Ruchi_12 (AS1), Shen_13 (AS1), StuartMinion_11 (AS3), TaylorSipt_12 (AS1), Toad24_13 (AS1), Vulpecula_12 (AS1), Westrich_13 (AS1), WileyE_11 (AS1), Zhuangyuan_13 (AS2), Zixiang_12 (AS1),

Start 16:

- Found in 76 of 334 (22.8%) of genes in pham
- Manual Annotations of this start: 65 of 275
- Called 86.8% of time when present
- Phage (with cluster) where this start called: Aledel_10 (AK), AppleCider_14 (AK), AustinPowers_10 (AK), Beethoven_14 (AK), Bennie_10 (AK), BigMack_10 (AK), Bodacious_10 (AK), BrotherBLo_14 (AK), CallieOMalley_14 (AK), Canowicakte_14 (AK), Carpal_14 (AK), ChewChew_10 (AK), Cholula_14 (AK), Christian_10 (AK), CristinaYang_10 (AK), Dino_14 (AK), DrRobert_10 (AK), DreamTeam_10 (AK), EstebanJulior_10 (AK), Eunoia_10 (AK), Fluke_14 (AK), Gisselle_10 (AK), Glenn_14 (AK), Graynor_14 (AK), HeadNerd_10 (AK), Huckleberry_10 (AK), HunterDalle_10 (AK), Immaculata_14 (AK), Jumboset_14 (AK), Kalizoi_14 (AK), Kittykat_10 (AK), Korra_14 (AK), Lasagna_10 (AK), Lennox_10 (AK), LilStuart_10 (AK), Litotes_14 (AK), Lucy_10 (AK), Makoto_10 (AK), MamaPearl_10 (AK), MeganNoll_14 (AK), Moki_10 (AK), MrGloopy_14 (AK), Nancia_10 (AK), OMalley_10 (AK), OurGirlNessie_10 (AK), PartyCup_14 (AK), PitaDog_10 (AK), Potatoes_14 (AK), Preamble_10 (AK), Pterodactyl_10 (AK), RAP15_14 (AK), Rivovina_10 (AK), Riverdale_14 (AK), Rozby_14 (AK), Savage2526_14 (AK), Scuttle_14 (AK), Supakev_10 (AK), Suppi_14 (AK), TattModd_14 (AK), Uria_10 (AK), Vallejo_14 (AK), Vulture_10 (AK), Wawa_14 (AK), Wayne_14 (AK), WonderBoy_10 (AK), Zorro_14 (AK),

Start 17:

- Found in 10 of 334 (3.0%) of genes in pham
- Manual Annotations of this start: 10 of 275
- Called 100.0% of time when present
- Phage (with cluster) where this start called: Albanese_14 (AK), GreenHearts_14 (AK), Greenhouse_14 (AK), Huntingdon_14 (AK), Joann_14 (AK), Lakshmi_14 (AK), Misaeng_14 (AK), Nubia_14 (AK), Oxynfrius_14 (AK), RcigaStruga_14 (AK),

Start 21:

- Found in 1 of 334 (0.3%) of genes in pham
- Manual Annotations of this start: 1 of 275
- Called 100.0% of time when present

- Phage (with cluster) where this start called: Kromp_13 (singleton),

Start 22:

- Found in 17 of 334 (5.1%) of genes in pham
- Manual Annotations of this start: 17 of 275
- Called 100.0% of time when present
- Phage (with cluster) where this start called: Ashes_12 (AZ5), Beaupre_12 (AZ5), Cappuccino_12 (AZ5), Donkey_12 (AZ5), Gambol_12 (AZ5), Giorgio_12 (AZ5), Gumpizza_12 (AZ5), Halsey_12 (AZ5), Kalimba_12 (AZ5), Moss_12 (AZ5), Mysterium_12 (AZ5), RockScotty_12 (AZ5), Sabourin_12 (AZ5), Sooty_12 (AZ5), SpecialK_12 (AZ5), Stuu_12 (AZ5), Zeta1847_10 (EH),

Start 23:

- Found in 66 of 334 (19.8%) of genes in pham
- Manual Annotations of this start: 50 of 275
- Called 95.5% of time when present
- Phage (with cluster) where this start called: AEgle_12 (AZ1), AGrandiflora_12 (AZ1), AbbeyMikolon_11 (BL), Adumb2043_12 (AZ1), Amploria_12 (AZ1), Amyev_12 (AZ1), Asa16_12 (AZ1), Ascela_12 (AZ1), Berrie_12 (AZ1), Cassia_12 (AZ1), Cen1621_10 (EH), Community_13 (AZ1), Crewmate_13 (AZ1), Cyan_12 (AZ1), Elezi_12 (AZ1), Eraser_12 (AZ1), Floof_11 (EH), Flutur_12 (AZ), Forester_11 (EH), GardenState_11 (EH), Gibbzilla_13 (FB), Gretchen_11 (EH), Honk_10 (EH), IAmGroot_11 (EH), IUFootball_11 (AZ2), Iter_12 (AZ1), IttyBittyPiggy_12 (AZ1), Janeemi_13 (AZ1), Joemato_12 (AZ1), JohnDoe_12 (AZ1), Jstan_12 (AZ1), JuneStar_12 (AZ1), Kaylissa_12 (AZ1), Lego_12 (AZ1), Liebe_11 (AZ2), Lizalica_12 (AZ1), London_12 (AZ1), Maureen_11 (AZ2), Mudpuppy_12 (AZ1), Nesbitt_11 (BL), Niobe_12 (AZ1), Nitro_12 (AZ1), ObiToo_12 (AZ1), Percival_11 (EH), Phives_13 (AZ1), Pixelle_12 (AZ1), Powerpuff_12 (AZ1), Pumpkins_12 (AZ1), Schaffner_12 (AZ1), Simpson_13 (AZ1), Skelbel_12 (AZ1), Subaru_12 (AZ1), SuperHands_11 (EH), Tallboi_12 (AZ1), Tbone_12 (AZ1), TforTroy_12 (AZ1), Tian_12 (AZ1), Tuck_13 (AZ1), Turab_12 (AZ1), Tutumahutu_12 (AZ1), Warda_12 (AZ1), Yang_12 (AZ1), YesChef_12 (AZ1),

Start 24:

- Found in 61 of 334 (18.3%) of genes in pham
- Manual Annotations of this start: 48 of 275
- Called 98.4% of time when present
- Phage (with cluster) where this start called: Adolin_12 (AZ1), Agamoto_15 (FR), AnnabelLee_13 (FR), Asapag_12 (DN1), Audell_16 (FR), BENtherdunthat_12 (DN1), Barnstormer_10 (EH), BotCity_12 (DN), Budski_12 (DN), CardboardBox_13 (FR), Caron_10 (EH), ChamoyPickle_13 (FR), CheeseTouch_12 (DN1), ChipsNGuac_13 (FR), DrManhattan_12 (AZ1), DrSierra_12 (AZ1), Elfy_10 (FP), Exile_11 (AZ6), Ezurina_12 (FR), Frickyeah_12 (DN1), Gerri43_13 (FR), Getalong_12 (DN1), Holliday_12 (DN1), Horus_12 (DN1), Kamaru_12 (DN1), Kenna_12 (DN1), LastNadiia_16 (FR), Leroy_12 (DN1), LitninMcQueen_12 (DN1), Lutum_12 (DN1), MaGuCo_11 (AZ2), Mabodamaca_11 (EH), Makima_14 (FR), Malisha_12 (DN), Mireles_13 (FR), MissSwiss_12 (AZ1), Neuville_13 (FR), PandaPo_12 (AZ1), Periwinkle_12 (DN1), Phabuloso_12 (DN1), Phistory_12 (DN1), Roberts_13 (FR), SPB78_12 (BA), ShawBrad_12 (DN1), Snek_12 (AZ3), Soondubu_11 (AZ6), Spartoi_10 (singleton), Spooky_12 (DN2), Squiddly_13 (DN2), Studio_13 (FR), SuMoo_10 (EH), Sue2_12 (AZ1), TMaxx_13 (FR), ThursdayNight_11 (AZ), TripleC_16 (FR), Tweety19_12 (AZ3), UtzChips_10 (EH), VResidence_12 (AZ1), Whitney_12 (DN1), Wildwest_13 (AZ1),

Start 25:

- Found in 3 of 334 (0.9%) of genes in pham
- No Manual Annotations of this start.
- Called 33.3% of time when present
- Phage (with cluster) where this start called: LisoBros_11 (FP),

Start 26:

- Found in 19 of 334 (5.7%) of genes in pham
- Manual Annotations of this start: 4 of 275
- Called 52.6% of time when present
- Phage (with cluster) where this start called: AceofSpades_10 (AZ4), FiveHead_11 (AZ4), JasmineDragon_11 (AZ4), JohnThicc_11 (AZ4), LadyAstra_11 (AZ4), MiniMommy_10 (AZ4), Origami_11 (AZ4), ShakeltOph_11 (AZ4), VWB_11 (BA), VroomVroom_11 (AZ4),

Start 27:

- Found in 1 of 334 (0.3%) of genes in pham
- Manual Annotations of this start: 1 of 275
- Called 100.0% of time when present
- Phage (with cluster) where this start called: Shambre1_12 (singleton),

Start 28:

- Found in 2 of 334 (0.6%) of genes in pham
- Manual Annotations of this start: 2 of 275
- Called 100.0% of time when present
- Phage (with cluster) where this start called: KeAlii_12 (AZ1), Reedo_12 (AZ1),

Start 29:

- Found in 4 of 334 (1.2%) of genes in pham
- Manual Annotations of this start: 1 of 275
- Called 100.0% of time when present
- Phage (with cluster) where this start called: Emotion_11 (AZ4), GMA4_12 (singleton), PFR1_09 (BX), PFR2_09 (BX),

Start 30:

- Found in 4 of 334 (1.2%) of genes in pham
- Manual Annotations of this start: 2 of 275
- Called 100.0% of time when present
- Phage (with cluster) where this start called: BaileyBlu_11 (FP), CallinAllBarbz_11 (FP), GrimEater_12 (FP), Jankie_13 (FP),

Start 34:

- Found in 9 of 334 (2.7%) of genes in pham
- Manual Annotations of this start: 5 of 275
- Called 55.6% of time when present
- Phage (with cluster) where this start called: DS6A_15 (singleton), Gaia_9 (X), LilSpotty_11 (singleton), Nebkiss_9 (X), Stellammi_9 (UNK),

Start 41:

- Found in 9 of 334 (2.7%) of genes in pham
- No Manual Annotations of this start.
- Called 11.1% of time when present
- Phage (with cluster) where this start called: MrBoss_14 (AK),

Start 42:

- Found in 3 of 334 (0.9%) of genes in pham
- No Manual Annotations of this start.
- Called 33.3% of time when present
- Phage (with cluster) where this start called: AinMach_11 (AZ7),

Start 44:

- Found in 14 of 334 (4.2%) of genes in pham
- Manual Annotations of this start: 4 of 275
- Called 28.6% of time when present
- Phage (with cluster) where this start called: B22_12 (BW), Doucette_12 (BW), E6_13 (BW), G4_12 (BW),

Summary by clusters:

There are 27 clusters represented in this pham: DN, FP, FR, BA, BL, singleton, FB, BW, BX, AZ, DN1, DN2, AS3, AS2, AS1, EH, AK, Y, X, UNK, AZ1, AZ2, AZ3, AZ4, AZ5, AZ6, AZ7,

Info for manual annotations of cluster AK:

- Start number 12 was manually annotated 9 times for cluster AK.
- Start number 16 was manually annotated 65 times for cluster AK.
- Start number 17 was manually annotated 10 times for cluster AK.

Info for manual annotations of cluster AS1:

- Start number 14 was manually annotated 17 times for cluster AS1.

Info for manual annotations of cluster AS2:

- Start number 14 was manually annotated 17 times for cluster AS2.

Info for manual annotations of cluster AS3:

- Start number 14 was manually annotated 16 times for cluster AS3.

Info for manual annotations of cluster AZ1:

- Start number 23 was manually annotated 37 times for cluster AZ1.
- Start number 24 was manually annotated 7 times for cluster AZ1.
- Start number 28 was manually annotated 2 times for cluster AZ1.

Info for manual annotations of cluster AZ2:

- Start number 23 was manually annotated 2 times for cluster AZ2.
- Start number 24 was manually annotated 1 time for cluster AZ2.

Info for manual annotations of cluster AZ3:

- Start number 24 was manually annotated 2 times for cluster AZ3.

Info for manual annotations of cluster AZ4:

- Start number 26 was manually annotated 4 times for cluster AZ4.
- Start number 29 was manually annotated 1 time for cluster AZ4.

Info for manual annotations of cluster AZ5:

- Start number 22 was manually annotated 16 times for cluster AZ5.

Info for manual annotations of cluster AZ6:

- Start number 24 was manually annotated 1 time for cluster AZ6.

Info for manual annotations of cluster BL:

- Start number 13 was manually annotated 1 time for cluster BL.
- Start number 23 was manually annotated 2 times for cluster BL.

Info for manual annotations of cluster BW:

- Start number 44 was manually annotated 4 times for cluster BW.

Info for manual annotations of cluster DN:

- Start number 24 was manually annotated 3 times for cluster DN.

Info for manual annotations of cluster DN1:

- Start number 24 was manually annotated 15 times for cluster DN1.

Info for manual annotations of cluster DN2:

- Start number 24 was manually annotated 2 times for cluster DN2.

Info for manual annotations of cluster EH:

- Start number 22 was manually annotated 1 time for cluster EH.
- Start number 23 was manually annotated 9 times for cluster EH.
- Start number 24 was manually annotated 5 times for cluster EH.

Info for manual annotations of cluster FP:

- Start number 30 was manually annotated 2 times for cluster FP.

Info for manual annotations of cluster FR:

- Start number 24 was manually annotated 11 times for cluster FR.

Info for manual annotations of cluster UNK:

- Start number 34 was manually annotated 1 time for cluster UNK.

Info for manual annotations of cluster X:

- Start number 34 was manually annotated 2 times for cluster X.

Info for manual annotations of cluster Y:

- Start number 12 was manually annotated 4 times for cluster Y.
- Start number 14 was manually annotated 1 time for cluster Y.

Gene Information:

Gene: AEgle_12 Start: 9049, Stop: 9459, Start Num: 23

Candidate Starts for AEgle_12:

(Start: 23 @9049 has 50 MA's), (46, 9094), (55, 9118), (149, 9379), (154, 9412),

Gene: AGrandiflora_12 Start: 9036, Stop: 9449, Start Num: 23
Candidate Starts for AGrandiflora_12:
(Start: 23 @9036 has 50 MA's), (55, 9105), (107, 9255), (149, 9366), (154, 9399),

Gene: AbbeyMikolon_11 Start: 7783, Stop: 8178, Start Num: 23
Candidate Starts for AbbeyMikolon_11:
(20, 7780), (Start: 23 @7783 has 50 MA's), (31, 7795), (42, 7816), (Start: 44 @7822 has 4 MA's), (46, 7828), (52, 7843), (64, 7864), (69, 7888), (100, 7957), (122, 8029), (125, 8035), (133, 8062), (149, 8092), (157, 8140),

Gene: Abidatro_12 Start: 8321, Stop: 8764, Start Num: 14
Candidate Starts for Abidatro_12:
(Start: 14 @8321 has 51 MA's), (36, 8363), (58, 8417), (78, 8471), (80, 8474), (92, 8507), (120, 8606), (130, 8633), (141, 8657), (144, 8663), (148, 8672),

Gene: AceofSpades_10 Start: 7298, Stop: 7693, Start Num: 26
Candidate Starts for AceofSpades_10:
(Start: 26 @7298 has 4 MA's), (104, 7490),

Gene: Adolin_12 Start: 9024, Stop: 9440, Start Num: 24
Candidate Starts for Adolin_12:
(Start: 24 @9024 has 48 MA's), (106, 9240),

Gene: AdoptaAdorbs_11 Start: 7902, Stop: 8342, Start Num: 14
Candidate Starts for AdoptaAdorbs_11:
(Start: 14 @7902 has 51 MA's), (40, 7953), (80, 8055), (81, 8058), (94, 8094), (96, 8100), (100, 8115), (120, 8187), (130, 8214), (160, 8313), (164, 8319), (165, 8331),

Gene: Adumb2043_12 Start: 9048, Stop: 9458, Start Num: 23
Candidate Starts for Adumb2043_12:
(Start: 23 @9048 has 50 MA's), (46, 9093), (55, 9117), (149, 9378), (154, 9411),

Gene: Agamoto_15 Start: 10788, Stop: 11180, Start Num: 24
Candidate Starts for Agamoto_15:
(Start: 24 @10788 has 48 MA's), (33, 10800), (73, 10890), (76, 10902), (104, 10974), (120, 11031), (167, 11172),

Gene: AinMach_11 Start: 8183, Stop: 8566, Start Num: 42
Candidate Starts for AinMach_11:
(Start: 23 @8150 has 50 MA's), (Start: 24 @8153 has 48 MA's), (42, 8183), (46, 8195), (159, 8537),

Gene: Albanese_14 Start: 10476, Stop: 10886, Start Num: 17
Candidate Starts for Albanese_14:
(Start: 17 @10476 has 10 MA's), (85, 10620), (89, 10629), (90, 10632), (100, 10662), (102, 10668), (110, 10701), (153, 10824), (159, 10848),

Gene: Aledel_10 Start: 7551, Stop: 7982, Start Num: 16
Candidate Starts for Aledel_10:
(Start: 12 @7545 has 13 MA's), (Start: 16 @7551 has 65 MA's), (Start: 26 @7572 has 4 MA's), (62, 7644), (85, 7701), (90, 7713), (93, 7722), (101, 7746), (153, 7905),

Gene: AlexMinion_11 Start: 7928, Stop: 8371, Start Num: 14
Candidate Starts for AlexMinion_11:

(9, 7916), (Start: 14 @7928 has 51 MA's), (66, 8036), (81, 8084), (94, 8120), (96, 8126), (120, 8213), (130, 8240), (160, 8339), (164, 8345), (165, 8357),

Gene: Amanises_13 Start: 8492, Stop: 8932, Start Num: 14

Candidate Starts for Amanises_13:

(9, 8480), (Start: 14 @8492 has 51 MA's), (55, 8582), (73, 8624), (78, 8642), (80, 8645), (94, 8684), (120, 8777), (130, 8804), (141, 8828), (151, 8864), (160, 8900),

Gene: Amelia_13 Start: 8497, Stop: 8940, Start Num: 14

Candidate Starts for Amelia_13:

(Start: 14 @8497 has 51 MA's), (55, 8587), (58, 8593), (78, 8647), (80, 8650), (94, 8689), (130, 8809), (141, 8833), (160, 8905), (164, 8911),

Gene: AmiCi24_11 Start: 7902, Stop: 8342, Start Num: 14

Candidate Starts for AmiCi24_11:

(Start: 14 @7902 has 51 MA's), (40, 7953), (80, 8055), (81, 8058), (94, 8094), (96, 8100), (100, 8115), (120, 8187), (130, 8214), (160, 8313), (164, 8319), (165, 8331),

Gene: Amphitrite_11 Start: 7900, Stop: 8340, Start Num: 14

Candidate Starts for Amphitrite_11:

(Start: 14 @7900 has 51 MA's), (40, 7951), (80, 8053), (81, 8056), (94, 8092), (96, 8098), (100, 8113), (120, 8185), (130, 8212), (160, 8311), (164, 8317), (165, 8329),

Gene: Amploria_12 Start: 9048, Stop: 9458, Start Num: 23

Candidate Starts for Amploria_12:

(Start: 23 @9048 has 50 MA's), (46, 9093), (55, 9117), (149, 9378), (154, 9411),

Gene: Amyev_12 Start: 9064, Stop: 9477, Start Num: 23

Candidate Starts for Amyev_12:

(Start: 23 @9064 has 50 MA's), (46, 9109), (107, 9283), (149, 9394), (154, 9427),

Gene: Andrew_12 Start: 8281, Stop: 8724, Start Num: 14

Candidate Starts for Andrew_12:

(Start: 14 @8281 has 51 MA's), (40, 8332), (55, 8371), (62, 8380), (78, 8431), (80, 8434), (81, 8437), (94, 8473), (96, 8479), (130, 8593), (138, 8608), (160, 8692), (164, 8698), (165, 8710),

Gene: AnnabelLee_13 Start: 7727, Stop: 8119, Start Num: 24

Candidate Starts for AnnabelLee_13:

(Start: 24 @7727 has 48 MA's), (72, 7826), (73, 7829), (92, 7880), (93, 7883), (120, 7970), (122, 7973), (158, 8087), (167, 8111),

Gene: Antrice_12 Start: 8237, Stop: 8680, Start Num: 14

Candidate Starts for Antrice_12:

(9, 8225), (Start: 14 @8237 has 51 MA's), (81, 8393), (100, 8450), (115, 8507), (116, 8510), (141, 8573), (144, 8579), (151, 8612), (160, 8648), (165, 8666),

Gene: AppleCider_14 Start: 10411, Stop: 10824, Start Num: 16

Candidate Starts for AppleCider_14:

(Start: 16 @10411 has 65 MA's), (41, 10456), (85, 10558), (153, 10762),

Gene: Asa16_12 Start: 9018, Stop: 9428, Start Num: 23

Candidate Starts for Asa16_12:

(Start: 23 @9018 has 50 MA's), (55, 9087), (104, 9225), (107, 9237), (149, 9348), (154, 9381),

Gene: Asapag_12 Start: 7041, Stop: 7451, Start Num: 24

Candidate Starts for Asapag_12:

(2, 6912), (4, 6957), (5, 6963), (6, 6969), (7, 6987), (Start: 24 @7041 has 48 MA's), (40, 7068), (61, 7113), (64, 7119), (77, 7173), (93, 7212), (96, 7218), (102, 7239), (116, 7290), (124, 7302),

Gene: Ascela_12 Start: 9053, Stop: 9463, Start Num: 23

Candidate Starts for Ascela_12:

(Start: 23 @9053 has 50 MA's), (55, 9122), (107, 9272), (149, 9383), (154, 9416),

Gene: Ashes_12 Start: 8547, Stop: 8966, Start Num: 22

Candidate Starts for Ashes_12:

(Start: 22 @8547 has 17 MA's), (45, 8589), (144, 8871),

Gene: Atlantica_11 Start: 7902, Stop: 8342, Start Num: 14

Candidate Starts for Atlantica_11:

(Start: 14 @7902 has 51 MA's), (40, 7953), (80, 8055), (81, 8058), (94, 8094), (96, 8100), (100, 8115), (120, 8187), (130, 8214), (160, 8313), (164, 8319), (165, 8331),

Gene: Audell_16 Start: 11067, Stop: 11459, Start Num: 24

Candidate Starts for Audell_16:

(Start: 24 @11067 has 48 MA's), (56, 11130), (93, 11223), (104, 11253), (119, 11307), (120, 11310), (122, 11313), (137, 11349), (167, 11451),

Gene: AuntGwenStacy_18 Start: 11997, Stop: 12434, Start Num: 14

Candidate Starts for AuntGwenStacy_18:

(Start: 12 @11994 has 13 MA's), (Start: 14 @11997 has 51 MA's), (51, 12075), (56, 12084), (59, 12090), (63, 12096), (87, 12174), (109, 12240), (120, 12276), (150, 12351), (157, 12390),

Gene: AustinPowers_10 Start: 7552, Stop: 7983, Start Num: 16

Candidate Starts for AustinPowers_10:

(Start: 12 @7546 has 13 MA's), (Start: 16 @7552 has 65 MA's), (Start: 26 @7573 has 4 MA's), (62, 7645), (90, 7714), (93, 7723), (101, 7747), (153, 7906),

Gene: Azaz_11 Start: 7953, Stop: 8393, Start Num: 14

Candidate Starts for Azaz_11:

(Start: 14 @7953 has 51 MA's), (80, 8106), (81, 8109), (94, 8145), (96, 8151), (100, 8166), (120, 8238), (130, 8265), (160, 8364), (164, 8370), (165, 8382),

Gene: B22_12 Start: 7687, Stop: 8055, Start Num: 44

Candidate Starts for B22_12:

(1, 7486), (Start: 44 @7687 has 4 MA's), (66, 7744), (85, 7795), (118, 7906), (123, 7912), (127, 7924),

Gene: BENtherdunthat_12 Start: 7041, Stop: 7451, Start Num: 24

Candidate Starts for BENtherdunthat_12:

(2, 6912), (4, 6957), (5, 6963), (6, 6969), (7, 6987), (Start: 24 @7041 has 48 MA's), (40, 7068), (61, 7113), (64, 7119), (77, 7173), (93, 7212), (96, 7218), (102, 7239), (116, 7290), (124, 7302),

Gene: Babushka_11 Start: 7950, Stop: 8390, Start Num: 14

Candidate Starts for Babushka_11:

(Start: 14 @7950 has 51 MA's), (80, 8103), (81, 8106), (94, 8142), (96, 8148), (98, 8157), (120, 8235), (130, 8262), (160, 8361), (164, 8367), (165, 8379),

Gene: BaileyBlu_11 Start: 6789, Stop: 7178, Start Num: 30

Candidate Starts for BaileyBlu_11:

(Start: 30 @6789 has 2 MA's), (32, 6792), (99, 6951), (120, 7023), (125, 7032),

Gene: Barnstormer_10 Start: 8216, Stop: 8632, Start Num: 24

Candidate Starts for Barnstormer_10:

(Start: 24 @8216 has 48 MA's), (114, 8456), (134, 8513),

Gene: Basilisk_12 Start: 8645, Stop: 9088, Start Num: 14

Candidate Starts for Basilisk_12:

(3, 8570), (Start: 14 @8645 has 51 MA's), (36, 8687), (Start: 44 @8705 has 4 MA's), (58, 8741), (78, 8795), (80, 8798), (94, 8837), (108, 8891), (120, 8930), (130, 8957), (141, 8981), (144, 8987),

Gene: Beaupre_12 Start: 8548, Stop: 8967, Start Num: 22

Candidate Starts for Beaupre_12:

(Start: 22 @8548 has 17 MA's), (45, 8590), (106, 8767), (144, 8872),

Gene: Bedetta_13 Start: 8497, Stop: 8940, Start Num: 14

Candidate Starts for Bedetta_13:

(Start: 14 @8497 has 51 MA's), (55, 8587), (58, 8593), (78, 8647), (80, 8650), (94, 8689), (130, 8809), (141, 8833), (160, 8905), (164, 8911),

Gene: Beethoven_14 Start: 10371, Stop: 10784, Start Num: 16

Candidate Starts for Beethoven_14:

(Start: 16 @10371 has 65 MA's), (79, 10506), (85, 10521), (101, 10566), (112, 10608), (153, 10725),

Gene: Bennie_10 Start: 7516, Stop: 7926, Start Num: 16

Candidate Starts for Bennie_10:

(Start: 16 @7516 has 65 MA's), (79, 7648), (85, 7663), (101, 7708), (102, 7711), (112, 7750), (153, 7867),

Gene: Berrie_12 Start: 9020, Stop: 9430, Start Num: 23

Candidate Starts for Berrie_12:

(Start: 23 @9020 has 50 MA's), (61, 9107), (107, 9239), (149, 9350), (154, 9383),

Gene: Bible12_13 Start: 8500, Stop: 8943, Start Num: 14

Candidate Starts for Bible12_13:

(Start: 14 @8500 has 51 MA's), (55, 8590), (58, 8596), (78, 8650), (80, 8653), (94, 8692), (130, 8812), (141, 8836), (160, 8908), (164, 8914),

Gene: BigMack_10 Start: 7516, Stop: 7926, Start Num: 16

Candidate Starts for BigMack_10:

(Start: 16 @7516 has 65 MA's), (79, 7648), (85, 7663), (101, 7708), (112, 7750), (153, 7867),

Gene: Bipper_18 Start: 12080, Stop: 12517, Start Num: 12

Candidate Starts for Bipper_18:

(Start: 12 @12080 has 13 MA's), (Start: 14 @12083 has 51 MA's), (46, 12146), (51, 12158), (56, 12167), (63, 12179), (81, 12239), (100, 12296), (109, 12323), (111, 12332), (122, 12362), (147, 12419), (152, 12449), (157, 12473),

Gene: Bodacious_10 Start: 7514, Stop: 7924, Start Num: 16

Candidate Starts for Bodacious_10:

(Start: 16 @7514 has 65 MA's), (64, 7607), (79, 7646), (85, 7661), (101, 7706), (112, 7748), (119, 7769), (153, 7865),

Gene: BotCity_12 Start: 7039, Stop: 7449, Start Num: 24

Candidate Starts for BotCity_12:

(2, 6910), (4, 6955), (5, 6961), (6, 6967), (7, 6985), (Start: 24 @7039 has 48 MA's), (40, 7066), (61, 7111), (64, 7117), (77, 7171), (93, 7210), (96, 7216), (102, 7237), (116, 7288), (124, 7300),

Gene: BrotherBLo_14 Start: 10378, Stop: 10791, Start Num: 16

Candidate Starts for BrotherBLo_14:

(Start: 16 @10378 has 65 MA's), (79, 10513), (85, 10528), (101, 10573), (112, 10615), (153, 10732),

Gene: Brynnie_12 Start: 8457, Stop: 8900, Start Num: 14

Candidate Starts for Brynnie_12:

(Start: 14 @8457 has 51 MA's), (36, 8499), (58, 8553), (78, 8607), (80, 8610), (94, 8649), (108, 8703), (120, 8742), (130, 8769), (141, 8793), (144, 8799),

Gene: Budski_12 Start: 7046, Stop: 7438, Start Num: 24

Candidate Starts for Budski_12:

(2, 6917), (4, 6962), (5, 6968), (6, 6974), (7, 6992), (10, 7010), (Start: 24 @7046 has 48 MA's), (40, 7073), (61, 7118), (64, 7124), (67, 7136), (77, 7160), (93, 7199), (96, 7205), (100, 7220), (102, 7226), (116, 7277), (124, 7289), (144, 7343),

Gene: CallieOMalley_14 Start: 10411, Stop: 10824, Start Num: 16

Candidate Starts for CallieOMalley_14:

(Start: 16 @10411 has 65 MA's), (41, 10456), (85, 10558), (153, 10762),

Gene: CallinAllBarbz_11 Start: 6799, Stop: 7188, Start Num: 30

Candidate Starts for CallinAllBarbz_11:

(Start: 30 @6799 has 2 MA's), (32, 6802), (99, 6961), (125, 7042), (131, 7069),

Gene: Camara_11 Start: 7903, Stop: 8343, Start Num: 14

Candidate Starts for Camara_11:

(Start: 14 @7903 has 51 MA's), (40, 7954), (80, 8056), (81, 8059), (94, 8095), (96, 8101), (100, 8116), (120, 8188), (130, 8215), (160, 8314), (164, 8320), (165, 8332),

Gene: Canowicakte_14 Start: 10446, Stop: 10859, Start Num: 16

Candidate Starts for Canowicakte_14:

(Start: 16 @10446 has 65 MA's), (41, 10491), (85, 10593), (119, 10701), (153, 10797),

Gene: Cappuccino_12 Start: 8456, Stop: 8875, Start Num: 22

Candidate Starts for Cappuccino_12:

(Start: 22 @8456 has 17 MA's), (45, 8498), (144, 8780),

Gene: CardboardBox_13 Start: 7727, Stop: 8119, Start Num: 24

Candidate Starts for CardboardBox_13:

(Start: 24 @7727 has 48 MA's), (72, 7826), (73, 7829), (92, 7880), (93, 7883), (120, 7970), (122, 7973), (158, 8087), (167, 8111),

Gene: Caron_10 Start: 8244, Stop: 8660, Start Num: 24

Candidate Starts for Caron_10:

(Start: 24 @8244 has 48 MA's), (114, 8484),

Gene: Carpal_14 Start: 10378, Stop: 10791, Start Num: 16
Candidate Starts for Carpal_14:
(Start: 16 @10378 has 65 MA's), (79, 10513), (85, 10528), (101, 10573), (112, 10615), (153, 10732),

Gene: Cassia_12 Start: 9139, Stop: 9552, Start Num: 23
Candidate Starts for Cassia_12:
(Start: 23 @9139 has 50 MA's), (61, 9226), (104, 9346), (107, 9358), (149, 9469), (154, 9502),

Gene: Cen1621_10 Start: 7355, Stop: 7771, Start Num: 23
Candidate Starts for Cen1621_10:
(Start: 23 @7355 has 50 MA's), (154, 7724), (159, 7745),

Gene: ChamoyPickle_13 Start: 7727, Stop: 8119, Start Num: 24
Candidate Starts for ChamoyPickle_13:
(Start: 24 @7727 has 48 MA's), (72, 7826), (73, 7829), (92, 7880), (93, 7883), (120, 7970), (122, 7973),
(158, 8087), (167, 8111),

Gene: CheeseTouch_12 Start: 7046, Stop: 7438, Start Num: 24
Candidate Starts for CheeseTouch_12:
(2, 6917), (4, 6962), (5, 6968), (6, 6974), (7, 6992), (10, 7010), (Start: 24 @7046 has 48 MA's), (40,
7073), (61, 7118), (64, 7124), (67, 7136), (77, 7160), (93, 7199), (96, 7205), (100, 7220), (102, 7226),
(116, 7277), (124, 7289), (144, 7343),

Gene: ChewChew_10 Start: 7513, Stop: 7923, Start Num: 16
Candidate Starts for ChewChew_10:
(Start: 16 @7513 has 65 MA's), (64, 7606), (79, 7645), (85, 7660), (101, 7705), (112, 7747), (119,
7768), (153, 7864),

Gene: Chickaboom_11 Start: 8002, Stop: 8445, Start Num: 14
Candidate Starts for Chickaboom_11:
(Start: 14 @8002 has 51 MA's), (36, 8044), (Start: 44 @8062 has 4 MA's), (58, 8098), (78, 8152), (80,
8155), (94, 8194), (108, 8248), (120, 8287), (130, 8314), (141, 8338), (144, 8344),

Gene: Chicken_12 Start: 8281, Stop: 8721, Start Num: 14
Candidate Starts for Chicken_12:
(Start: 14 @8281 has 51 MA's), (55, 8371), (58, 8377), (73, 8413), (78, 8431), (80, 8434), (94, 8473),
(120, 8566), (130, 8593), (141, 8617), (151, 8653), (160, 8689),

Gene: ChipsNGuac_13 Start: 7727, Stop: 8119, Start Num: 24
Candidate Starts for ChipsNGuac_13:
(Start: 24 @7727 has 48 MA's), (72, 7826), (73, 7829), (92, 7880), (93, 7883), (120, 7970), (122, 7973),
(158, 8087), (167, 8111),

Gene: Cholula_14 Start: 10423, Stop: 10836, Start Num: 16
Candidate Starts for Cholula_14:
(Start: 16 @10423 has 65 MA's), (79, 10558), (85, 10573), (101, 10618), (112, 10660), (153, 10777),

Gene: Chridison_10 Start: 7546, Stop: 7983, Start Num: 12
Candidate Starts for Chridison_10:
(Start: 12 @7546 has 13 MA's), (Start: 16 @7552 has 65 MA's), (Start: 26 @7573 has 4 MA's), (62,
7645), (90, 7714), (93, 7723), (101, 7747), (153, 7906),

Gene: Christian_10 Start: 7514, Stop: 7924, Start Num: 16

Candidate Starts for Christian_10:

(Start: 16 @7514 has 65 MA's), (64, 7607), (79, 7646), (85, 7661), (101, 7706), (112, 7748), (119, 7769), (153, 7865),

Gene: Colusalem_12 Start: 8336, Stop: 8779, Start Num: 14

Candidate Starts for Colusalem_12:

(Start: 14 @8336 has 51 MA's), (55, 8426), (58, 8432), (78, 8486), (80, 8489), (94, 8528), (130, 8648), (141, 8672), (160, 8744), (164, 8750),

Gene: Community_13 Start: 10099, Stop: 10509, Start Num: 23

Candidate Starts for Community_13:

(Start: 23 @10099 has 50 MA's), (46, 10144), (107, 10318), (149, 10429), (154, 10462),

Gene: Coral_12 Start: 8336, Stop: 8779, Start Num: 14

Candidate Starts for Coral_12:

(Start: 14 @8336 has 51 MA's), (55, 8426), (58, 8432), (78, 8486), (80, 8489), (94, 8528), (130, 8648), (141, 8672), (160, 8744), (164, 8750),

Gene: Cote_13 Start: 8497, Stop: 8940, Start Num: 14

Candidate Starts for Cote_13:

(Start: 14 @8497 has 51 MA's), (55, 8587), (58, 8593), (78, 8647), (80, 8650), (94, 8689), (130, 8809), (141, 8833), (160, 8905), (164, 8911),

Gene: Cracklewink_18 Start: 12080, Stop: 12517, Start Num: 12

Candidate Starts for Cracklewink_18:

(Start: 12 @12080 has 13 MA's), (Start: 14 @12083 has 51 MA's), (46, 12146), (51, 12158), (56, 12167), (63, 12179), (81, 12239), (100, 12296), (109, 12323), (111, 12332), (122, 12362), (147, 12419), (152, 12449), (157, 12473),

Gene: Crewmate_13 Start: 9485, Stop: 9898, Start Num: 23

Candidate Starts for Crewmate_13:

(Start: 23 @9485 has 50 MA's), (55, 9554), (107, 9704), (149, 9815), (154, 9848),

Gene: CristinaYang_10 Start: 7514, Stop: 7924, Start Num: 16

Candidate Starts for CristinaYang_10:

(Start: 16 @7514 has 65 MA's), (64, 7607), (79, 7646), (85, 7661), (101, 7706), (112, 7748), (119, 7769), (153, 7865),

Gene: Cyan_12 Start: 9040, Stop: 9453, Start Num: 23

Candidate Starts for Cyan_12:

(Start: 23 @9040 has 50 MA's), (55, 9109), (107, 9259), (149, 9370), (154, 9403),

Gene: Cygnet_12 Start: 8279, Stop: 8722, Start Num: 14

Candidate Starts for Cygnet_12:

(Start: 14 @8279 has 51 MA's), (Start: 44 @8339 has 4 MA's), (47, 8348), (62, 8378), (78, 8429), (100, 8492), (112, 8540), (115, 8549), (116, 8552), (141, 8615), (146, 8624), (151, 8654), (160, 8690), (165, 8708),

Gene: DS6A_15 Start: 10364, Stop: 10735, Start Num: 34

Candidate Starts for DS6A_15:

(Start: 34 @10364 has 5 MA's), (64, 10427), (67, 10439), (79, 10466), (95, 10511), (101, 10532), (116, 10586), (125, 10601), (135, 10628), (142, 10643), (150, 10664), (153, 10688),

Gene: Daiboju_10 Start: 7547, Stop: 7984, Start Num: 12

Candidate Starts for Daiboju_10:

(Start: 12 @7547 has 13 MA's), (Start: 16 @7553 has 65 MA's), (38, 7592), (39, 7595), (79, 7688), (85, 7703), (90, 7715), (93, 7724), (94, 7727), (101, 7748), (153, 7907),

Gene: Damocles_13 Start: 8497, Stop: 8940, Start Num: 14

Candidate Starts for Damocles_13:

(Start: 14 @8497 has 51 MA's), (55, 8587), (58, 8593), (78, 8647), (80, 8650), (94, 8689), (130, 8809), (141, 8833), (160, 8905), (164, 8911),

Gene: DanHam62_11 Start: 7902, Stop: 8342, Start Num: 14

Candidate Starts for DanHam62_11:

(Start: 14 @7902 has 51 MA's), (40, 7953), (80, 8055), (81, 8058), (94, 8094), (96, 8100), (100, 8115), (120, 8187), (130, 8214), (160, 8313), (164, 8319), (165, 8331),

Gene: Daob_13 Start: 8500, Stop: 8943, Start Num: 14

Candidate Starts for Daob_13:

(Start: 14 @8500 has 51 MA's), (55, 8590), (58, 8596), (78, 8650), (80, 8653), (94, 8692), (130, 8812), (141, 8836), (160, 8908), (164, 8914),

Gene: Dino_14 Start: 10377, Stop: 10790, Start Num: 16

Candidate Starts for Dino_14:

(Start: 16 @10377 has 65 MA's), (79, 10512), (85, 10527), (101, 10572), (112, 10614), (153, 10731),

Gene: Donkey_12 Start: 8456, Stop: 8875, Start Num: 22

Candidate Starts for Donkey_12:

(Start: 22 @8456 has 17 MA's), (45, 8498), (144, 8780),

Gene: Doucette_12 Start: 7747, Stop: 8115, Start Num: 44

Candidate Starts for Doucette_12:

(1, 7546), (Start: 44 @7747 has 4 MA's), (66, 7804), (85, 7855), (118, 7966), (123, 7972), (127, 7984),

Gene: DrManhattan_12 Start: 9014, Stop: 9430, Start Num: 24

Candidate Starts for DrManhattan_12:

(Start: 24 @9014 has 48 MA's), (106, 9230),

Gene: DrRobert_10 Start: 7514, Stop: 7924, Start Num: 16

Candidate Starts for DrRobert_10:

(Start: 16 @7514 has 65 MA's), (64, 7607), (79, 7646), (85, 7661), (101, 7706), (112, 7748), (119, 7769), (153, 7865),

Gene: DrSierra_12 Start: 9047, Stop: 9463, Start Num: 24

Candidate Starts for DrSierra_12:

(Start: 24 @9047 has 48 MA's), (66, 9143), (85, 9200), (106, 9263),

Gene: DreamTeam_10 Start: 7581, Stop: 7991, Start Num: 16

Candidate Starts for DreamTeam_10:

(Start: 16 @7581 has 65 MA's), (79, 7713), (85, 7728), (101, 7773), (102, 7776), (153, 7932),

Gene: E6_13 Start: 7798, Stop: 8166, Start Num: 44

Candidate Starts for E6_13:

(1, 7597), (Start: 44 @7798 has 4 MA's), (66, 7855), (85, 7906), (118, 8017), (123, 8023), (127, 8035), (132, 8056),

Gene: Eesa_12 Start: 8495, Stop: 8935, Start Num: 14

Candidate Starts for Eesa_12:

(9, 8483), (Start: 14 @8495 has 51 MA's), (55, 8585), (58, 8591), (73, 8627), (78, 8645), (80, 8648), (94, 8687), (120, 8780), (130, 8807), (141, 8831), (151, 8867), (160, 8903),

Gene: Elezi_12 Start: 9019, Stop: 9429, Start Num: 23

Candidate Starts for Elezi_12:

(Start: 23 @9019 has 50 MA's), (55, 9088), (104, 9226), (107, 9238), (149, 9349), (154, 9382),

Gene: Elfy_10 Start: 6715, Stop: 7113, Start Num: 24

Candidate Starts for Elfy_10:

(Start: 13 @6688 has 1 MA's), (18, 6700), (Start: 24 @6715 has 48 MA's), (40, 6742), (64, 6796), (70, 6823), (85, 6850), (96, 6877), (99, 6889), (120, 6961), (128, 6985), (139, 7009),

Gene: Emotion_11 Start: 7354, Stop: 7758, Start Num: 29

Candidate Starts for Emotion_11:

(Start: 29 @7354 has 1 MA's), (104, 7555),

Gene: Eraser_12 Start: 9019, Stop: 9429, Start Num: 23

Candidate Starts for Eraser_12:

(Start: 23 @9019 has 50 MA's), (55, 9088), (104, 9226), (107, 9238), (149, 9349), (154, 9382),

Gene: EstebanJulior_10 Start: 7558, Stop: 7971, Start Num: 16

Candidate Starts for EstebanJulior_10:

(Start: 16 @7558 has 65 MA's), (48, 7621), (85, 7705), (101, 7750), (102, 7753), (112, 7792), (136, 7852), (153, 7909),

Gene: Eunoia_10 Start: 7551, Stop: 7982, Start Num: 16

Candidate Starts for Eunoia_10:

(Start: 12 @7545 has 13 MA's), (Start: 16 @7551 has 65 MA's), (Start: 26 @7572 has 4 MA's), (62, 7644), (85, 7701), (90, 7713), (93, 7722), (101, 7746), (153, 7905),

Gene: Exile_11 Start: 8927, Stop: 9337, Start Num: 24

Candidate Starts for Exile_11:

(Start: 24 @8927 has 48 MA's), (154, 9290),

Gene: Ezurina_12 Start: 7295, Stop: 7687, Start Num: 24

Candidate Starts for Ezurina_12:

(Start: 24 @7295 has 48 MA's), (37, 7316), (73, 7397), (92, 7448), (93, 7451), (120, 7538), (122, 7541), (158, 7655), (167, 7679),

Gene: Faiyaz_18 Start: 11997, Stop: 12434, Start Num: 14

Candidate Starts for Faiyaz_18:

(Start: 12 @11994 has 13 MA's), (Start: 14 @11997 has 51 MA's), (51, 12075), (56, 12084), (59, 12090), (63, 12096), (87, 12174), (109, 12240), (120, 12276), (150, 12351), (157, 12390),

Gene: Fingolfin_11 Start: 7903, Stop: 8343, Start Num: 14

Candidate Starts for Fingolfin_11:

(Start: 14 @7903 has 51 MA's), (40, 7954), (80, 8056), (81, 8059), (94, 8095), (96, 8101), (100, 8116), (120, 8188), (130, 8215), (160, 8314), (164, 8320), (165, 8332),

Gene: FiveHead_11 Start: 7283, Stop: 7678, Start Num: 26

Candidate Starts for FiveHead_11:
(Start: 26 @7283 has 4 MA's), (104, 7475),

Gene: Floof_11 Start: 7791, Stop: 8213, Start Num: 23
Candidate Starts for Floof_11:
(Start: 23 @7791 has 50 MA's), (67, 7884), (68, 7890), (74, 7905), (104, 7995), (114, 8034), (121, 8052), (155, 8163),

Gene: Fluke_14 Start: 10419, Stop: 10832, Start Num: 16
Candidate Starts for Fluke_14:
(Start: 16 @10419 has 65 MA's), (79, 10554), (101, 10614), (112, 10656), (153, 10773),

Gene: Flutur_12 Start: 9039, Stop: 9452, Start Num: 23
Candidate Starts for Flutur_12:
(Start: 23 @9039 has 50 MA's), (55, 9108), (149, 9369), (154, 9402),

Gene: Forester_11 Start: 9343, Stop: 9765, Start Num: 23
Candidate Starts for Forester_11:
(Start: 23 @9343 has 50 MA's), (67, 9436), (68, 9442), (74, 9457), (104, 9547), (114, 9586), (121, 9604), (155, 9715),

Gene: Frickyeah_12 Start: 7041, Stop: 7451, Start Num: 24
Candidate Starts for Frickyeah_12:
(2, 6912), (4, 6957), (5, 6963), (6, 6969), (7, 6987), (Start: 24 @7041 has 48 MA's), (40, 7068), (61, 7113), (64, 7119), (77, 7173), (93, 7212), (96, 7218), (102, 7239), (116, 7290), (124, 7302),

Gene: G4_12 Start: 7735, Stop: 8103, Start Num: 44
Candidate Starts for G4_12:
(1, 7534), (Start: 44 @7735 has 4 MA's), (66, 7792), (118, 7954), (123, 7960), (127, 7972), (136, 7996),

Gene: GMA4_12 Start: 8487, Stop: 8873, Start Num: 29
Candidate Starts for GMA4_12:
(Start: 29 @8487 has 1 MA's), (91, 8637), (98, 8655), (147, 8787), (163, 8856),

Gene: Gaia_9 Start: 7642, Stop: 8013, Start Num: 34
Candidate Starts for Gaia_9:
(Start: 34 @7642 has 5 MA's), (75, 7738), (83, 7759), (93, 7786), (94, 7789), (96, 7792), (100, 7807), (116, 7864), (124, 7876), (141, 7921), (155, 7981), (157, 7987), (159, 7993),

Gene: Galaxy_12 Start: 8328, Stop: 8771, Start Num: 14
Candidate Starts for Galaxy_12:
(Start: 14 @8328 has 51 MA's), (58, 8424), (78, 8478), (80, 8481), (92, 8514), (120, 8613), (130, 8640), (141, 8664), (144, 8670), (148, 8679),

Gene: Gambol_12 Start: 8456, Stop: 8875, Start Num: 22
Candidate Starts for Gambol_12:
(Start: 22 @8456 has 17 MA's), (45, 8498), (144, 8780),

Gene: GardenState_11 Start: 8458, Stop: 8877, Start Num: 23
Candidate Starts for GardenState_11:
(Start: 23 @8458 has 50 MA's), (67, 8551), (68, 8557), (104, 8662), (114, 8701),

Gene: Gerri43_13 Start: 7727, Stop: 8119, Start Num: 24

Candidate Starts for Gerri43_13:

(Start: 24 @7727 has 48 MA's), (72, 7826), (73, 7829), (92, 7880), (93, 7883), (120, 7970), (122, 7973), (158, 8087), (167, 8111),

Gene: Getalong_12 Start: 7041, Stop: 7433, Start Num: 24

Candidate Starts for Getalong_12:

(2, 6912), (4, 6957), (5, 6963), (6, 6969), (7, 6987), (Start: 24 @7041 has 48 MA's), (40, 7068), (57, 7107), (61, 7113), (64, 7119), (67, 7131), (77, 7155), (93, 7194), (96, 7200), (99, 7212), (102, 7221), (116, 7272), (124, 7284),

Gene: Gibbzilla_13 Start: 7779, Stop: 8162, Start Num: 23

Candidate Starts for Gibbzilla_13:

(19, 7770), (Start: 23 @7779 has 50 MA's), (65, 7863), (82, 7905), (94, 7938), (156, 8118),

Gene: Giorgio_12 Start: 8549, Stop: 8968, Start Num: 22

Candidate Starts for Giorgio_12:

(Start: 22 @8549 has 17 MA's), (45, 8591), (106, 8768), (144, 8873),

Gene: Gisselle_10 Start: 7581, Stop: 7991, Start Num: 16

Candidate Starts for Gisselle_10:

(Start: 16 @7581 has 65 MA's), (79, 7713), (85, 7728), (101, 7773), (102, 7776), (153, 7932),

Gene: Glenn_14 Start: 10429, Stop: 10842, Start Num: 16

Candidate Starts for Glenn_14:

(Start: 16 @10429 has 65 MA's), (79, 10564), (85, 10579), (101, 10624), (112, 10666), (153, 10783),

Gene: Glotell_11 Start: 7902, Stop: 8342, Start Num: 14

Candidate Starts for Glotell_11:

(Start: 14 @7902 has 51 MA's), (40, 7953), (80, 8055), (81, 8058), (94, 8094), (96, 8100), (100, 8115), (120, 8187), (130, 8214), (160, 8313), (164, 8319), (165, 8331),

Gene: GramZayde_12 Start: 8336, Stop: 8779, Start Num: 14

Candidate Starts for GramZayde_12:

(Start: 14 @8336 has 51 MA's), (55, 8426), (58, 8432), (78, 8486), (80, 8489), (94, 8528), (130, 8648), (141, 8672), (160, 8744), (164, 8750),

Gene: Gravel_13 Start: 8491, Stop: 8931, Start Num: 14

Candidate Starts for Gravel_13:

(9, 8479), (Start: 14 @8491 has 51 MA's), (55, 8581), (73, 8623), (78, 8641), (80, 8644), (94, 8683), (120, 8776), (130, 8803), (141, 8827), (151, 8863), (160, 8899),

Gene: Graynor_14 Start: 10435, Stop: 10845, Start Num: 16

Candidate Starts for Graynor_14:

(Start: 16 @10435 has 65 MA's), (41, 10477), (85, 10579), (153, 10783),

Gene: GreenHearts_14 Start: 10522, Stop: 10932, Start Num: 17

Candidate Starts for GreenHearts_14:

(Start: 17 @10522 has 10 MA's), (61, 10606), (85, 10666), (89, 10675), (90, 10678), (100, 10708), (102, 10714), (110, 10747), (153, 10870), (159, 10894),

Gene: Greenhouse_14 Start: 10447, Stop: 10857, Start Num: 17

Candidate Starts for Greenhouse_14:

(Start: 17 @10447 has 10 MA's), (85, 10591), (89, 10600), (90, 10603), (100, 10633), (102, 10639), (110, 10672), (153, 10795), (159, 10819),

Gene: Gretchen_11 Start: 9337, Stop: 9759, Start Num: 23

Candidate Starts for Gretchen_11:

(Start: 23 @9337 has 50 MA's), (67, 9430), (68, 9436), (74, 9451), (104, 9541), (114, 9580), (121, 9598), (155, 9709),

Gene: GrimEater_12 Start: 6797, Stop: 7189, Start Num: 30

Candidate Starts for GrimEater_12:

(25, 6791), (Start: 30 @6797 has 2 MA's), (35, 6806), (99, 6962), (120, 7034), (125, 7043),

Gene: Gumpizza_12 Start: 8548, Stop: 8967, Start Num: 22

Candidate Starts for Gumpizza_12:

(Start: 22 @8548 has 17 MA's), (45, 8590), (106, 8767), (144, 8872),

Gene: Halsey_12 Start: 8547, Stop: 8966, Start Num: 22

Candidate Starts for Halsey_12:

(Start: 22 @8547 has 17 MA's), (45, 8589), (144, 8871),

Gene: HamCheese_11 Start: 7902, Stop: 8342, Start Num: 14

Candidate Starts for HamCheese_11:

(Start: 14 @7902 has 51 MA's), (40, 7953), (80, 8055), (81, 8058), (94, 8094), (96, 8100), (100, 8115), (120, 8187), (130, 8214), (160, 8313), (164, 8319), (165, 8331),

Gene: HannahPhantana_13 Start: 8500, Stop: 8943, Start Num: 14

Candidate Starts for HannahPhantana_13:

(Start: 14 @8500 has 51 MA's), (55, 8590), (58, 8596), (78, 8650), (80, 8653), (94, 8692), (130, 8812), (141, 8836), (160, 8908), (164, 8914),

Gene: HeadNerd_10 Start: 7516, Stop: 7926, Start Num: 16

Candidate Starts for HeadNerd_10:

(Start: 16 @7516 has 65 MA's), (79, 7648), (85, 7663), (101, 7708), (102, 7711), (112, 7750), (153, 7867),

Gene: Herb_10 Start: 7547, Stop: 7984, Start Num: 12

Candidate Starts for Herb_10:

(Start: 12 @7547 has 13 MA's), (Start: 16 @7553 has 65 MA's), (38, 7592), (39, 7595), (79, 7688), (85, 7703), (90, 7715), (93, 7724), (94, 7727), (101, 7748), (153, 7907),

Gene: Hilltopfarm_18 Start: 12024, Stop: 12464, Start Num: 12

Candidate Starts for Hilltopfarm_18:

(Start: 12 @12024 has 13 MA's), (Start: 14 @12027 has 51 MA's), (51, 12105), (56, 12114), (59, 12120), (63, 12126), (87, 12204), (109, 12270), (120, 12306), (150, 12381), (157, 12420),

Gene: Holliday_12 Start: 7046, Stop: 7438, Start Num: 24

Candidate Starts for Holliday_12:

(2, 6917), (4, 6962), (5, 6968), (6, 6974), (7, 6992), (10, 7010), (Start: 24 @7046 has 48 MA's), (40, 7073), (61, 7118), (64, 7124), (67, 7136), (77, 7160), (93, 7199), (96, 7205), (100, 7220), (102, 7226), (116, 7277), (124, 7289), (144, 7343),

Gene: Honk_10 Start: 7323, Stop: 7739, Start Num: 23

Candidate Starts for Honk_10:

(Start: 23 @7323 has 50 MA's), (66, 7416), (85, 7473), (154, 7692),

Gene: Horus_12 Start: 7041, Stop: 7451, Start Num: 24

Candidate Starts for Horus_12:

(2, 6912), (4, 6957), (5, 6963), (6, 6969), (7, 6987), (Start: 24 @7041 has 48 MA's), (40, 7068), (61, 7113), (64, 7119), (77, 7173), (93, 7212), (96, 7218), (102, 7239), (116, 7290), (124, 7302),

Gene: Huckleberry_10 Start: 7516, Stop: 7926, Start Num: 16

Candidate Starts for Huckleberry_10:

(Start: 16 @7516 has 65 MA's), (79, 7648), (85, 7663), (101, 7708), (102, 7711), (112, 7750), (153, 7867),

Gene: HunterDalle_10 Start: 7551, Stop: 7982, Start Num: 16

Candidate Starts for HunterDalle_10:

(Start: 12 @7545 has 13 MA's), (Start: 16 @7551 has 65 MA's), (Start: 26 @7572 has 4 MA's), (62, 7644), (90, 7713), (93, 7722), (101, 7746), (153, 7905),

Gene: Huntingdon_14 Start: 10433, Stop: 10843, Start Num: 17

Candidate Starts for Huntingdon_14:

(Start: 17 @10433 has 10 MA's), (85, 10577), (89, 10586), (90, 10589), (100, 10619), (102, 10625), (110, 10658), (153, 10781), (159, 10805),

Gene: IAmGroot_11 Start: 9102, Stop: 9521, Start Num: 23

Candidate Starts for IAmGroot_11:

(Start: 23 @9102 has 50 MA's), (67, 9195), (68, 9201), (104, 9306), (114, 9345),

Gene: IUFootball_11 Start: 7496, Stop: 7915, Start Num: 23

Candidate Starts for IUFootball_11:

(Start: 23 @7496 has 50 MA's), (Start: 34 @7514 has 5 MA's), (67, 7601), (106, 7715), (154, 7865),

Gene: Immaculata_14 Start: 10423, Stop: 10836, Start Num: 16

Candidate Starts for Immaculata_14:

(Start: 16 @10423 has 65 MA's), (79, 10558), (85, 10573), (101, 10618), (112, 10660), (153, 10777),

Gene: Iter_12 Start: 9053, Stop: 9463, Start Num: 23

Candidate Starts for Iter_12:

(Start: 23 @9053 has 50 MA's), (55, 9122), (107, 9272), (149, 9383), (154, 9416),

Gene: IttyBittyPiggy_12 Start: 9041, Stop: 9454, Start Num: 23

Candidate Starts for IttyBittyPiggy_12:

(Start: 23 @9041 has 50 MA's), (55, 9110), (149, 9371), (154, 9404),

Gene: Jamun_12 Start: 8669, Stop: 9112, Start Num: 14

Candidate Starts for Jamun_12:

(Start: 14 @8669 has 51 MA's), (36, 8711), (Start: 44 @8729 has 4 MA's), (58, 8765), (78, 8819), (80, 8822), (94, 8861), (108, 8915), (120, 8954), (130, 8981), (141, 9005), (144, 9011),

Gene: Janeemi_13 Start: 10130, Stop: 10543, Start Num: 23

Candidate Starts for Janeemi_13:

(Start: 23 @10130 has 50 MA's), (46, 10175), (104, 10337), (107, 10349), (149, 10460), (154, 10493),

Gene: Jankie_13 Start: 6796, Stop: 7188, Start Num: 30

Candidate Starts for Jankie_13:

(25, 6790), (Start: 30 @6796 has 2 MA's), (35, 6805), (99, 6961), (120, 7033), (125, 7042),

Gene: JasmineDragon_11 Start: 7286, Stop: 7681, Start Num: 26

Candidate Starts for JasmineDragon_11:

(Start: 26 @7286 has 4 MA's), (104, 7478),

Gene: Jerole_13 Start: 8497, Stop: 8940, Start Num: 14

Candidate Starts for Jerole_13:

(Start: 14 @8497 has 51 MA's), (55, 8587), (58, 8593), (78, 8647), (80, 8650), (94, 8689), (130, 8809), (141, 8833), (160, 8905), (164, 8911),

Gene: Joann_14 Start: 10425, Stop: 10835, Start Num: 17

Candidate Starts for Joann_14:

(Start: 17 @10425 has 10 MA's), (85, 10569), (89, 10578), (90, 10581), (100, 10611), (102, 10617), (110, 10650), (153, 10773), (159, 10797),

Gene: Joemato_12 Start: 9040, Stop: 9453, Start Num: 23

Candidate Starts for Joemato_12:

(Start: 23 @9040 has 50 MA's), (55, 9109), (107, 9259), (149, 9370), (154, 9403),

Gene: JohnDoe_12 Start: 9038, Stop: 9451, Start Num: 23

Candidate Starts for JohnDoe_12:

(Start: 23 @9038 has 50 MA's), (55, 9107), (107, 9257), (149, 9368), (154, 9401),

Gene: JohnThicc_11 Start: 7283, Stop: 7678, Start Num: 26

Candidate Starts for JohnThicc_11:

(Start: 26 @7283 has 4 MA's), (104, 7475),

Gene: Jstan_12 Start: 9019, Stop: 9429, Start Num: 23

Candidate Starts for Jstan_12:

(Start: 23 @9019 has 50 MA's), (55, 9088), (104, 9226), (107, 9238), (149, 9349), (154, 9382),

Gene: Jumboset_14 Start: 10372, Stop: 10785, Start Num: 16

Candidate Starts for Jumboset_14:

(Start: 16 @10372 has 65 MA's), (79, 10507), (85, 10522), (101, 10567), (112, 10609), (153, 10726),

Gene: JuneStar_12 Start: 9135, Stop: 9548, Start Num: 23

Candidate Starts for JuneStar_12:

(Start: 23 @9135 has 50 MA's), (149, 9465), (154, 9498),

Gene: Juno112_11 Start: 7903, Stop: 8343, Start Num: 14

Candidate Starts for Juno112_11:

(Start: 14 @7903 has 51 MA's), (40, 7954), (80, 8056), (81, 8059), (94, 8095), (96, 8101), (100, 8116), (120, 8188), (130, 8215), (160, 8314), (164, 8320), (165, 8332),

Gene: KHumphrey_11 Start: 7902, Stop: 8342, Start Num: 14

Candidate Starts for KHumphrey_11:

(Start: 14 @7902 has 51 MA's), (40, 7953), (80, 8055), (81, 8058), (94, 8094), (96, 8100), (100, 8115), (120, 8187), (130, 8214), (160, 8313), (164, 8319), (165, 8331),

Gene: Kalimba_12 Start: 8456, Stop: 8875, Start Num: 22

Candidate Starts for Kalimba_12:

(Start: 22 @8456 has 17 MA's), (45, 8498), (144, 8780),

Gene: Kalizoi_14 Start: 10371, Stop: 10784, Start Num: 16

Candidate Starts for Kalizoi_14:

(Start: 16 @10371 has 65 MA's), (79, 10506), (85, 10521), (101, 10566), (112, 10608), (153, 10725),

Gene: Kamaru_12 Start: 7046, Stop: 7438, Start Num: 24

Candidate Starts for Kamaru_12:

(2, 6917), (4, 6962), (5, 6968), (6, 6974), (7, 6992), (10, 7010), (Start: 24 @7046 has 48 MA's), (40, 7073), (61, 7118), (64, 7124), (67, 7136), (77, 7160), (93, 7199), (96, 7205), (100, 7220), (102, 7226), (116, 7277), (124, 7289), (144, 7343),

Gene: Kaylissa_12 Start: 9041, Stop: 9454, Start Num: 23

Candidate Starts for Kaylissa_12:

(Start: 23 @9041 has 50 MA's), (55, 9110), (107, 9260), (149, 9371), (154, 9404),

Gene: KeAlii_12 Start: 9073, Stop: 9474, Start Num: 28

Candidate Starts for KeAlii_12:

(Start: 28 @9073 has 2 MA's), (33, 9079), (107, 9280), (127, 9340), (154, 9424),

Gene: KendraB23_13 Start: 8492, Stop: 8932, Start Num: 14

Candidate Starts for KendraB23_13:

(9, 8480), (Start: 14 @8492 has 51 MA's), (55, 8582), (73, 8624), (78, 8642), (80, 8645), (94, 8684), (120, 8777), (130, 8804), (141, 8828), (151, 8864), (160, 8900),

Gene: Kenna_12 Start: 7041, Stop: 7451, Start Num: 24

Candidate Starts for Kenna_12:

(2, 6912), (4, 6957), (5, 6963), (6, 6969), (7, 6987), (10, 7005), (Start: 24 @7041 has 48 MA's), (40, 7068), (61, 7113), (64, 7119), (77, 7173), (93, 7212), (96, 7218), (102, 7239), (116, 7290), (124, 7302),

Gene: Kepler_12 Start: 8335, Stop: 8778, Start Num: 14

Candidate Starts for Kepler_12:

(Start: 14 @8335 has 51 MA's), (55, 8425), (58, 8431), (78, 8485), (80, 8488), (94, 8527), (130, 8647), (141, 8671), (160, 8743), (164, 8749),

Gene: KingBob_10 Start: 7547, Stop: 7984, Start Num: 12

Candidate Starts for KingBob_10:

(Start: 12 @7547 has 13 MA's), (Start: 16 @7553 has 65 MA's), (38, 7592), (39, 7595), (79, 7688), (85, 7703), (90, 7715), (93, 7724), (94, 7727), (101, 7748), (153, 7907),

Gene: Kittykat_10 Start: 7557, Stop: 7967, Start Num: 16

Candidate Starts for Kittykat_10:

(Start: 16 @7557 has 65 MA's), (79, 7689), (85, 7704), (101, 7749), (102, 7752), (153, 7908),

Gene: Korra_14 Start: 10377, Stop: 10790, Start Num: 16

Candidate Starts for Korra_14:

(Start: 16 @10377 has 65 MA's), (79, 10512), (85, 10527), (101, 10572), (112, 10614), (153, 10731),

Gene: Kromp_13 Start: 9303, Stop: 9734, Start Num: 21

Candidate Starts for Kromp_13:

(Start: 21 @9303 has 1 MA's), (73, 9426), (78, 9441), (81, 9447), (89, 9471), (97, 9495), (145, 9627), (155, 9687), (157, 9693), (158, 9696), (160, 9702),

Gene: Kuleana_12 Start: 8295, Stop: 8735, Start Num: 14

Candidate Starts for Kuleana_12:

(Start: 14 @8295 has 51 MA's), (55, 8385), (58, 8391), (66, 8403), (80, 8448), (94, 8487), (100, 8508), (119, 8577), (120, 8580), (130, 8607), (133, 8616), (141, 8631), (160, 8703), (164, 8709),

Gene: LadyAstra_11 Start: 7283, Stop: 7678, Start Num: 26

Candidate Starts for LadyAstra_11:

(Start: 26 @7283 has 4 MA's), (104, 7475),

Gene: Lakshmi_14 Start: 10452, Stop: 10862, Start Num: 17

Candidate Starts for Lakshmi_14:

(Start: 17 @10452 has 10 MA's), (85, 10596), (89, 10605), (90, 10608), (100, 10638), (102, 10644), (110, 10677), (153, 10800), (159, 10824),

Gene: Laphuphu24k_11 Start: 7902, Stop: 8342, Start Num: 14

Candidate Starts for Laphuphu24k_11:

(Start: 14 @7902 has 51 MA's), (40, 7953), (80, 8055), (81, 8058), (94, 8094), (96, 8100), (100, 8115), (120, 8187), (130, 8214), (160, 8313), (164, 8319), (165, 8331),

Gene: Lasagna_10 Start: 7514, Stop: 7924, Start Num: 16

Candidate Starts for Lasagna_10:

(Start: 16 @7514 has 65 MA's), (64, 7607), (79, 7646), (85, 7661), (101, 7706), (112, 7748), (119, 7769), (153, 7865),

Gene: LastNadiia_16 Start: 10019, Stop: 10411, Start Num: 24

Candidate Starts for LastNadiia_16:

(Start: 24 @10019 has 48 MA's), (56, 10082), (93, 10175), (104, 10205), (119, 10259), (120, 10262), (122, 10265), (137, 10301), (167, 10403),

Gene: Lego_12 Start: 9039, Stop: 9452, Start Num: 23

Candidate Starts for Lego_12:

(Start: 23 @9039 has 50 MA's), (55, 9108), (107, 9258), (149, 9369), (154, 9402),

Gene: Lennox_10 Start: 7514, Stop: 7924, Start Num: 16

Candidate Starts for Lennox_10:

(Start: 16 @7514 has 65 MA's), (64, 7607), (79, 7646), (85, 7661), (101, 7706), (112, 7748), (119, 7769), (153, 7865),

Gene: Leona_11 Start: 7953, Stop: 8393, Start Num: 14

Candidate Starts for Leona_11:

(Start: 14 @7953 has 51 MA's), (80, 8106), (81, 8109), (94, 8145), (96, 8151), (100, 8166), (120, 8238), (130, 8265), (160, 8364), (164, 8370), (165, 8382),

Gene: Leroy_12 Start: 7042, Stop: 7452, Start Num: 24

Candidate Starts for Leroy_12:

(2, 6913), (4, 6958), (5, 6964), (6, 6970), (7, 6988), (Start: 24 @7042 has 48 MA's), (40, 7069), (61, 7114), (64, 7120), (77, 7174), (93, 7213), (96, 7219), (102, 7240), (116, 7291), (124, 7303),

Gene: Liebe_11 Start: 7496, Stop: 7915, Start Num: 23

Candidate Starts for Liebe_11:

(Start: 23 @7496 has 50 MA's), (Start: 34 @7514 has 5 MA's), (67, 7601), (106, 7715), (154, 7865),

Gene: LilSpotty_11 Start: 7105, Stop: 7479, Start Num: 34

Candidate Starts for LilSpotty_11:

(33, 7102), (Start: 34 @7105 has 5 MA's), (83, 7219), (85, 7222), (116, 7330), (124, 7342), (125, 7345), (141, 7384), (161, 7459),

Gene: LilStuart_10 Start: 7514, Stop: 7924, Start Num: 16

Candidate Starts for LilStuart_10:

(Start: 16 @7514 has 65 MA's), (64, 7607), (79, 7646), (85, 7661), (101, 7706), (112, 7748), (119, 7769), (153, 7865),

Gene: LisoBros_11 Start: 7066, Stop: 7461, Start Num: 25

Candidate Starts for LisoBros_11:

(25, 7066), (46, 7102), (82, 7186), (99, 7234), (120, 7306),

Gene: LitninMcQueen_12 Start: 7046, Stop: 7438, Start Num: 24

Candidate Starts for LitninMcQueen_12:

(2, 6917), (4, 6962), (5, 6968), (6, 6974), (7, 6992), (10, 7010), (Start: 24 @7046 has 48 MA's), (40, 7073), (61, 7118), (64, 7124), (67, 7136), (77, 7160), (93, 7199), (96, 7205), (100, 7220), (102, 7226), (116, 7277), (124, 7289), (144, 7343),

Gene: Litotes_14 Start: 10399, Stop: 10809, Start Num: 16

Candidate Starts for Litotes_14:

(Start: 16 @10399 has 65 MA's), (41, 10441), (85, 10543), (153, 10747),

Gene: LittleTokyo_12 Start: 8235, Stop: 8678, Start Num: 14

Candidate Starts for LittleTokyo_12:

(9, 8223), (11, 8226), (Start: 14 @8235 has 51 MA's), (100, 8448), (112, 8496), (115, 8505), (116, 8508), (120, 8520), (141, 8571), (146, 8580), (160, 8646), (165, 8664),

Gene: Lizalica_12 Start: 9025, Stop: 9438, Start Num: 23

Candidate Starts for Lizalica_12:

(Start: 23 @9025 has 50 MA's), (55, 9094), (107, 9244), (149, 9355), (154, 9388),

Gene: London_12 Start: 9019, Stop: 9429, Start Num: 23

Candidate Starts for London_12:

(Start: 23 @9019 has 50 MA's), (55, 9088), (104, 9226), (107, 9238), (149, 9349), (154, 9382),

Gene: Lucy_10 Start: 7505, Stop: 7915, Start Num: 16

Candidate Starts for Lucy_10:

(Start: 16 @7505 has 65 MA's), (64, 7598), (79, 7637), (85, 7652), (101, 7697), (112, 7739), (119, 7760), (153, 7856),

Gene: Lunar_13 Start: 8497, Stop: 8940, Start Num: 14

Candidate Starts for Lunar_13:

(Start: 14 @8497 has 51 MA's), (55, 8587), (58, 8593), (78, 8647), (80, 8650), (94, 8689), (130, 8809), (141, 8833), (160, 8905), (164, 8911),

Gene: Lutum_12 Start: 7041, Stop: 7451, Start Num: 24

Candidate Starts for Lutum_12:

(2, 6912), (4, 6957), (5, 6963), (6, 6969), (7, 6987), (10, 7005), (Start: 24 @7041 has 48 MA's), (40, 7068), (61, 7113), (64, 7119), (77, 7173), (93, 7212), (96, 7218), (102, 7239), (116, 7290), (124, 7302),

Gene: MaGuCo_11 Start: 7435, Stop: 7851, Start Num: 24

Candidate Starts for MaGuCo_11:

(Start: 24 @7435 has 48 MA's), (31, 7444), (Start: 34 @7450 has 5 MA's), (45, 7474), (67, 7537), (106, 7651), (154, 7801),

Gene: Mabodamaca_11 Start: 8555, Stop: 8968, Start Num: 24
Candidate Starts for Mabodamaca_11:
(Start: 24 @8555 has 48 MA's), (85, 8696),

Gene: Makima_14 Start: 9103, Stop: 9495, Start Num: 24
Candidate Starts for Makima_14:
(Start: 24 @9103 has 48 MA's), (56, 9166), (93, 9259), (104, 9289), (119, 9343), (120, 9346), (122, 9349), (137, 9385), (167, 9487),

Gene: Makoto_10 Start: 7514, Stop: 7924, Start Num: 16
Candidate Starts for Makoto_10:
(Start: 16 @7514 has 65 MA's), (64, 7607), (79, 7646), (85, 7661), (101, 7706), (112, 7748), (119, 7769), (153, 7865),

Gene: Malisha_12 Start: 8091, Stop: 8501, Start Num: 24
Candidate Starts for Malisha_12:
(4, 8007), (5, 8013), (Start: 24 @8091 has 48 MA's), (64, 8169), (67, 8181), (77, 8223), (93, 8262), (96, 8268), (100, 8283), (102, 8289), (112, 8328), (124, 8352), (144, 8406),

Gene: MamaPearl_10 Start: 7558, Stop: 7971, Start Num: 16
Candidate Starts for MamaPearl_10:
(Start: 16 @7558 has 65 MA's), (48, 7621), (85, 7705), (101, 7750), (102, 7753), (112, 7792), (136, 7852), (153, 7909),

Gene: Maria1952_10 Start: 7547, Stop: 7984, Start Num: 12
Candidate Starts for Maria1952_10:
(Start: 12 @7547 has 13 MA's), (Start: 16 @7553 has 65 MA's), (38, 7592), (39, 7595), (79, 7688), (85, 7703), (90, 7715), (93, 7724), (94, 7727), (101, 7748), (153, 7907),

Gene: Maureen_11 Start: 7496, Stop: 7915, Start Num: 23
Candidate Starts for Maureen_11:
(Start: 23 @7496 has 50 MA's), (Start: 34 @7514 has 5 MA's), (67, 7601), (106, 7715), (154, 7865),

Gene: MeganNoll_14 Start: 10429, Stop: 10842, Start Num: 16
Candidate Starts for MeganNoll_14:
(Start: 16 @10429 has 65 MA's), (79, 10564), (85, 10579), (94, 10603), (101, 10624), (112, 10666), (153, 10783),

Gene: Melons_13 Start: 8497, Stop: 8940, Start Num: 14
Candidate Starts for Melons_13:
(Start: 14 @8497 has 51 MA's), (55, 8587), (58, 8593), (78, 8647), (80, 8650), (94, 8689), (130, 8809), (141, 8833), (160, 8905), (164, 8911),

Gene: MiniMommy_10 Start: 7286, Stop: 7681, Start Num: 26
Candidate Starts for MiniMommy_10:
(Start: 26 @7286 has 4 MA's), (104, 7478),

Gene: Mireles_13 Start: 7499, Stop: 7891, Start Num: 24
Candidate Starts for Mireles_13:
(Start: 24 @7499 has 48 MA's), (93, 7655), (104, 7685), (120, 7742), (122, 7745), (167, 7883),

Gene: Misaeng_14 Start: 10498, Stop: 10908, Start Num: 17

Candidate Starts for Misaeng_14:

(Start: 17 @10498 has 10 MA's), (85, 10642), (89, 10651), (90, 10654), (100, 10684), (102, 10690), (110, 10723), (153, 10846), (159, 10870),

Gene: MissSwiss_12 Start: 9018, Stop: 9434, Start Num: 24

Candidate Starts for MissSwiss_12:

(Start: 24 @9018 has 48 MA's), (49, 9066), (106, 9234),

Gene: Moki_10 Start: 7516, Stop: 7926, Start Num: 16

Candidate Starts for Moki_10:

(Start: 16 @7516 has 65 MA's), (79, 7648), (85, 7663), (101, 7708), (102, 7711), (112, 7750), (153, 7867),

Gene: Moss_12 Start: 8547, Stop: 8966, Start Num: 22

Candidate Starts for Moss_12:

(Start: 22 @8547 has 17 MA's), (45, 8589), (144, 8871),

Gene: MrBoss_14 Start: 10441, Stop: 10809, Start Num: 41

Candidate Starts for MrBoss_14:

(Start: 16 @10399 has 65 MA's), (41, 10441), (79, 10528), (85, 10543), (153, 10747),

Gene: MrGloopy_14 Start: 10362, Stop: 10775, Start Num: 16

Candidate Starts for MrGloopy_14:

(Start: 16 @10362 has 65 MA's), (79, 10497), (85, 10512), (101, 10557), (112, 10599), (153, 10716),

Gene: Mudpuppy_12 Start: 9039, Stop: 9452, Start Num: 23

Candidate Starts for Mudpuppy_12:

(Start: 23 @9039 has 50 MA's), (55, 9108), (107, 9258), (149, 9369), (154, 9402),

Gene: Mysterium_12 Start: 8548, Stop: 8967, Start Num: 22

Candidate Starts for Mysterium_12:

(Start: 22 @8548 has 17 MA's), (45, 8590), (106, 8767), (144, 8872),

Gene: Nancia_10 Start: 7514, Stop: 7924, Start Num: 16

Candidate Starts for Nancia_10:

(Start: 16 @7514 has 65 MA's), (64, 7607), (79, 7646), (85, 7661), (101, 7706), (112, 7748), (119, 7769), (153, 7865),

Gene: Nebkiss_9 Start: 7643, Stop: 8014, Start Num: 34

Candidate Starts for Nebkiss_9:

(Start: 34 @7643 has 5 MA's), (75, 7739), (83, 7760), (93, 7787), (94, 7790), (96, 7793), (100, 7808), (116, 7865), (124, 7877), (141, 7922), (155, 7982), (157, 7988), (159, 7994),

Gene: Nesbitt_11 Start: 7855, Stop: 8250, Start Num: 23

Candidate Starts for Nesbitt_11:

(Start: 23 @7855 has 50 MA's), (31, 7867), (42, 7888), (45, 7897), (64, 7936), (69, 7960), (82, 7981), (102, 8035), (122, 8101), (125, 8107), (149, 8164), (157, 8212),

Gene: Neuville_13 Start: 7727, Stop: 8119, Start Num: 24

Candidate Starts for Neuville_13:

(Start: 24 @7727 has 48 MA's), (72, 7826), (73, 7829), (92, 7880), (93, 7883), (120, 7970), (122, 7973), (158, 8087), (167, 8111),

Gene: Niblet_12 Start: 8281, Stop: 8721, Start Num: 14

Candidate Starts for Niblet_12:

(Start: 14 @8281 has 51 MA's), (55, 8371), (58, 8377), (73, 8413), (78, 8431), (80, 8434), (94, 8473), (120, 8566), (130, 8593), (141, 8617), (151, 8653), (160, 8689),

Gene: Niobe_12 Start: 9019, Stop: 9429, Start Num: 23

Candidate Starts for Niobe_12:

(Start: 23 @9019 has 50 MA's), (55, 9088), (104, 9226), (107, 9238), (149, 9349), (154, 9382),

Gene: Nitro_12 Start: 9042, Stop: 9452, Start Num: 23

Candidate Starts for Nitro_12:

(Start: 23 @9042 has 50 MA's), (46, 9087), (55, 9111), (149, 9372), (154, 9405),

Gene: Nubia_14 Start: 10412, Stop: 10822, Start Num: 17

Candidate Starts for Nubia_14:

(Start: 17 @10412 has 10 MA's), (85, 10556), (89, 10565), (90, 10568), (100, 10598), (102, 10604), (110, 10637), (153, 10760), (159, 10784),

Gene: OMalley_10 Start: 7551, Stop: 7982, Start Num: 16

Candidate Starts for OMalley_10:

(Start: 12 @7545 has 13 MA's), (Start: 16 @7551 has 65 MA's), (Start: 26 @7572 has 4 MA's), (62, 7644), (85, 7701), (90, 7713), (93, 7722), (101, 7746), (153, 7905),

Gene: ObiToo_12 Start: 9222, Stop: 9635, Start Num: 23

Candidate Starts for ObiToo_12:

(Start: 23 @9222 has 50 MA's), (55, 9291), (104, 9429), (107, 9441), (149, 9552), (154, 9585),

Gene: Oppalora_11 Start: 7902, Stop: 8342, Start Num: 14

Candidate Starts for Oppalora_11:

(Start: 14 @7902 has 51 MA's), (40, 7953), (80, 8055), (81, 8058), (94, 8094), (96, 8100), (100, 8115), (120, 8187), (130, 8214), (160, 8313), (164, 8319), (165, 8331),

Gene: Orcanus_12 Start: 8285, Stop: 8725, Start Num: 14

Candidate Starts for Orcanus_12:

(9, 8273), (Start: 14 @8285 has 51 MA's), (55, 8375), (73, 8417), (78, 8435), (80, 8438), (94, 8477), (120, 8570), (130, 8597), (141, 8621), (151, 8657), (160, 8693),

Gene: Origami_11 Start: 7283, Stop: 7678, Start Num: 26

Candidate Starts for Origami_11:

(Start: 26 @7283 has 4 MA's), (104, 7475),

Gene: OtsoOtso_12 Start: 8336, Stop: 8779, Start Num: 14

Candidate Starts for OtsoOtso_12:

(Start: 14 @8336 has 51 MA's), (55, 8426), (58, 8432), (78, 8486), (80, 8489), (94, 8528), (130, 8648), (141, 8672), (160, 8744), (164, 8750),

Gene: OurGirlNessie_10 Start: 7505, Stop: 7915, Start Num: 16

Candidate Starts for OurGirlNessie_10:

(Start: 16 @7505 has 65 MA's), (64, 7598), (79, 7637), (85, 7652), (101, 7697), (112, 7739), (119, 7760), (153, 7856),

Gene: Oxynfrius_14 Start: 10425, Stop: 10835, Start Num: 17

Candidate Starts for Oxynfrius_14:

(Start: 17 @10425 has 10 MA's), (85, 10569), (89, 10578), (90, 10581), (100, 10611), (102, 10617), (110, 10650), (153, 10773), (159, 10797),

Gene: PFR1_09 Start: 7693, Stop: 8106, Start Num: 29

Candidate Starts for PFR1_09:

(Start: 29 @7693 has 1 MA's), (43, 7720), (47, 7732), (49, 7735), (66, 7771), (68, 7783), (76, 7810), (84, 7825), (92, 7849), (96, 7861), (103, 7882), (117, 7933), (129, 7963), (143, 7996),

Gene: PFR2_09 Start: 7693, Stop: 8106, Start Num: 29

Candidate Starts for PFR2_09:

(Start: 29 @7693 has 1 MA's), (43, 7720), (47, 7732), (49, 7735), (66, 7771), (68, 7783), (76, 7810), (84, 7825), (92, 7849), (96, 7861), (103, 7882), (117, 7933), (129, 7963), (143, 7996),

Gene: PandaPo_12 Start: 9018, Stop: 9434, Start Num: 24

Candidate Starts for PandaPo_12:

(Start: 24 @9018 has 48 MA's), (49, 9066), (106, 9234),

Gene: PartyCup_14 Start: 10446, Stop: 10856, Start Num: 16

Candidate Starts for PartyCup_14:

(Start: 16 @10446 has 65 MA's), (41, 10488), (85, 10590), (153, 10794),

Gene: Pelletreau_13 Start: 8491, Stop: 8931, Start Num: 14

Candidate Starts for Pelletreau_13:

(9, 8479), (Start: 14 @8491 has 51 MA's), (55, 8581), (73, 8623), (78, 8641), (80, 8644), (94, 8683), (120, 8776), (130, 8803), (141, 8827), (151, 8863), (160, 8899),

Gene: Percival_11 Start: 9171, Stop: 9593, Start Num: 23

Candidate Starts for Percival_11:

(Start: 23 @9171 has 50 MA's), (67, 9264), (68, 9270), (74, 9285), (104, 9375), (114, 9414), (121, 9432), (155, 9543),

Gene: Periwinkle_12 Start: 7041, Stop: 7433, Start Num: 24

Candidate Starts for Periwinkle_12:

(2, 6912), (4, 6957), (5, 6963), (6, 6969), (Start: 24 @7041 has 48 MA's), (40, 7068), (57, 7107), (61, 7113), (64, 7119), (67, 7131), (77, 7155), (93, 7194), (96, 7200), (99, 7212), (102, 7221), (116, 7272), (124, 7284),

Gene: Phabuloso_12 Start: 7046, Stop: 7438, Start Num: 24

Candidate Starts for Phabuloso_12:

(2, 6917), (4, 6962), (5, 6968), (6, 6974), (7, 6992), (10, 7010), (Start: 24 @7046 has 48 MA's), (40, 7073), (61, 7118), (64, 7124), (67, 7136), (77, 7160), (93, 7199), (96, 7205), (100, 7220), (102, 7226), (116, 7277), (124, 7289), (144, 7343),

Gene: PhirstandPhine_13 Start: 8497, Stop: 8940, Start Num: 14

Candidate Starts for PhirstandPhine_13:

(Start: 14 @8497 has 51 MA's), (55, 8587), (58, 8593), (78, 8647), (80, 8650), (94, 8689), (130, 8809), (141, 8833), (160, 8905), (164, 8911),

Gene: Phistory_12 Start: 7030, Stop: 7422, Start Num: 24

Candidate Starts for Phistory_12:

(2, 6901), (4, 6946), (5, 6952), (6, 6958), (7, 6976), (10, 6994), (Start: 24 @7030 has 48 MA's), (40, 7057), (61, 7102), (64, 7108), (67, 7120), (77, 7144), (96, 7189), (100, 7204), (102, 7210), (116, 7261), (124, 7273),

Gene: Phives_13 Start: 10124, Stop: 10537, Start Num: 23

Candidate Starts for Phives_13:

(Start: 23 @10124 has 50 MA's), (46, 10169), (107, 10343), (149, 10454), (154, 10487),

Gene: PhluffyCoco_11 Start: 7902, Stop: 8342, Start Num: 14

Candidate Starts for PhluffyCoco_11:

(Start: 14 @7902 has 51 MA's), (40, 7953), (80, 8055), (81, 8058), (94, 8094), (96, 8100), (100, 8115), (120, 8187), (130, 8214), (160, 8313), (164, 8319), (165, 8331),

Gene: Pineda_13 Start: 8497, Stop: 8940, Start Num: 14

Candidate Starts for Pineda_13:

(Start: 14 @8497 has 51 MA's), (55, 8587), (58, 8593), (78, 8647), (80, 8650), (94, 8689), (130, 8809), (141, 8833), (160, 8905), (164, 8911),

Gene: PinkFriday_10 Start: 7548, Stop: 7982, Start Num: 12

Candidate Starts for PinkFriday_10:

(Start: 12 @7548 has 13 MA's), (Start: 16 @7554 has 65 MA's), (79, 7686), (85, 7701), (90, 7713), (93, 7722), (94, 7725), (101, 7746), (153, 7905),

Gene: PitaDog_10 Start: 7505, Stop: 7915, Start Num: 16

Candidate Starts for PitaDog_10:

(Start: 16 @7505 has 65 MA's), (64, 7598), (79, 7637), (85, 7652), (101, 7697), (112, 7739), (119, 7760), (153, 7856),

Gene: Pixelle_12 Start: 9067, Stop: 9480, Start Num: 23

Candidate Starts for Pixelle_12:

(Start: 23 @9067 has 50 MA's), (46, 9112), (149, 9397), (154, 9430),

Gene: Polka_12 Start: 8336, Stop: 8779, Start Num: 14

Candidate Starts for Polka_12:

(Start: 14 @8336 has 51 MA's), (55, 8426), (58, 8432), (78, 8486), (80, 8489), (94, 8528), (130, 8648), (141, 8672), (160, 8744), (164, 8750),

Gene: Potatoes_14 Start: 10423, Stop: 10836, Start Num: 16

Candidate Starts for Potatoes_14:

(Start: 16 @10423 has 65 MA's), (79, 10558), (85, 10573), (101, 10618), (112, 10660), (153, 10777),

Gene: Powerpuff_12 Start: 9090, Stop: 9503, Start Num: 23

Candidate Starts for Powerpuff_12:

(Start: 23 @9090 has 50 MA's), (55, 9159), (107, 9309), (149, 9420), (154, 9453),

Gene: Preamble_10 Start: 7515, Stop: 7925, Start Num: 16

Candidate Starts for Preamble_10:

(Start: 16 @7515 has 65 MA's), (79, 7647), (85, 7662), (102, 7710), (153, 7866),

Gene: Pterodactyl_10 Start: 7506, Stop: 7916, Start Num: 16

Candidate Starts for Pterodactyl_10:

(Start: 16 @7506 has 65 MA's), (64, 7599), (79, 7638), (85, 7653), (101, 7698), (112, 7740), (119, 7761), (153, 7857),

Gene: Pumancara_10 Start: 7547, Stop: 7981, Start Num: 12

Candidate Starts for Pumancara_10:

(Start: 12 @7547 has 13 MA's), (Start: 16 @7553 has 65 MA's), (79, 7685), (85, 7700), (90, 7712), (93, 7721), (94, 7724), (101, 7745), (153, 7904),

Gene: Pumpkins_12 Start: 9144, Stop: 9557, Start Num: 23

Candidate Starts for Pumpkins_12:

(Start: 23 @9144 has 50 MA's), (55, 9213), (149, 9474), (154, 9507),

Gene: RAP15_14 Start: 10429, Stop: 10842, Start Num: 16

Candidate Starts for RAP15_14:

(Start: 16 @10429 has 65 MA's), (79, 10564), (85, 10579), (101, 10624), (112, 10666), (153, 10783),

Gene: Rattail_11 Start: 7953, Stop: 8393, Start Num: 14

Candidate Starts for Rattail_11:

(Start: 14 @7953 has 51 MA's), (80, 8106), (81, 8109), (94, 8145), (96, 8151), (100, 8166), (120, 8238), (130, 8265), (160, 8364), (164, 8370), (165, 8382),

Gene: RcigaStruga_14 Start: 10433, Stop: 10843, Start Num: 17

Candidate Starts for RcigaStruga_14:

(Start: 17 @10433 has 10 MA's), (85, 10577), (89, 10586), (90, 10589), (100, 10619), (102, 10625), (110, 10658), (153, 10781), (159, 10805),

Gene: RedFox_11 Start: 7902, Stop: 8342, Start Num: 14

Candidate Starts for RedFox_11:

(Start: 14 @7902 has 51 MA's), (40, 7953), (80, 8055), (81, 8058), (94, 8094), (96, 8100), (100, 8115), (120, 8187), (130, 8214), (160, 8313), (164, 8319), (165, 8331),

Gene: Reedo_12 Start: 9091, Stop: 9489, Start Num: 28

Candidate Starts for Reedo_12:

(Start: 28 @9091 has 2 MA's), (104, 9286), (106, 9292), (126, 9352), (154, 9442),

Gene: Renna12_12 Start: 8102, Stop: 8545, Start Num: 14

Candidate Starts for Renna12_12:

(Start: 14 @8102 has 51 MA's), (80, 8255), (81, 8258), (94, 8294), (96, 8300), (120, 8387), (130, 8414), (141, 8438), (164, 8519), (165, 8531),

Gene: Riovina_10 Start: 7551, Stop: 7982, Start Num: 16

Candidate Starts for Riovina_10:

(Start: 12 @7545 has 13 MA's), (Start: 16 @7551 has 65 MA's), (Start: 26 @7572 has 4 MA's), (62, 7644), (85, 7701), (90, 7713), (93, 7722), (101, 7746), (153, 7905),

Gene: Riverdale_14 Start: 10360, Stop: 10773, Start Num: 16

Candidate Starts for Riverdale_14:

(Start: 16 @10360 has 65 MA's), (79, 10495), (85, 10510), (101, 10555), (112, 10597), (153, 10714),

Gene: Roberts_13 Start: 7727, Stop: 8119, Start Num: 24

Candidate Starts for Roberts_13:

(Start: 24 @7727 has 48 MA's), (72, 7826), (73, 7829), (92, 7880), (93, 7883), (120, 7970), (122, 7973), (158, 8087), (167, 8111),

Gene: RockScotty_12 Start: 8547, Stop: 8966, Start Num: 22

Candidate Starts for RockScotty_12:
(Start: 22 @8547 has 17 MA's), (45, 8589), (144, 8871),

Gene: Rowa_11 Start: 7599, Stop: 8018, Start Num: 13
Candidate Starts for Rowa_11:
(Start: 13 @7599 has 1 MA's), (15, 7602), (Start: 23 @7620 has 50 MA's), (Start: 44 @7659 has 4 MA's), (67, 7710), (120, 7863), (125, 7872), (144, 7917), (149, 7929), (165, 8004),

Gene: Rozby_14 Start: 10360, Stop: 10773, Start Num: 16
Candidate Starts for Rozby_14:
(Start: 16 @10360 has 65 MA's), (79, 10495), (85, 10510), (101, 10555), (112, 10597), (153, 10714),

Gene: Ruchi_12 Start: 8591, Stop: 9034, Start Num: 14
Candidate Starts for Ruchi_12:
(Start: 14 @8591 has 51 MA's), (36, 8633), (Start: 44 @8651 has 4 MA's), (58, 8687), (78, 8741), (80, 8744), (94, 8783), (108, 8837), (120, 8876), (130, 8903), (141, 8927), (144, 8933),

Gene: SPB78_12 Start: 8026, Stop: 8427, Start Num: 24
Candidate Starts for SPB78_12:
(Start: 23 @8023 has 50 MA's), (Start: 24 @8026 has 48 MA's), (60, 8104), (61, 8110), (67, 8128), (79, 8155), (116, 8269),

Gene: Sabourin_12 Start: 8456, Stop: 8875, Start Num: 22
Candidate Starts for Sabourin_12:
(Start: 22 @8456 has 17 MA's), (45, 8498), (144, 8780),

Gene: Savage2526_14 Start: 10423, Stop: 10836, Start Num: 16
Candidate Starts for Savage2526_14:
(Start: 16 @10423 has 65 MA's), (79, 10558), (85, 10573), (101, 10618), (112, 10660), (153, 10777),

Gene: Schaffner_12 Start: 9132, Stop: 9545, Start Num: 23
Candidate Starts for Schaffner_12:
(Start: 23 @9132 has 50 MA's), (55, 9201), (149, 9462), (154, 9495),

Gene: Scuttle_14 Start: 10429, Stop: 10842, Start Num: 16
Candidate Starts for Scuttle_14:
(Start: 16 @10429 has 65 MA's), (79, 10564), (85, 10579), (101, 10624), (112, 10666), (153, 10783),

Gene: Sergei_10 Start: 7547, Stop: 7984, Start Num: 12
Candidate Starts for Sergei_10:
(Start: 12 @7547 has 13 MA's), (Start: 16 @7553 has 65 MA's), (38, 7592), (39, 7595), (79, 7688), (85, 7703), (90, 7715), (93, 7724), (94, 7727), (101, 7748), (153, 7907),

Gene: ShakeltOph_11 Start: 7286, Stop: 7681, Start Num: 26
Candidate Starts for ShakeltOph_11:
(Start: 26 @7286 has 4 MA's), (104, 7478),

Gene: Shambre1_12 Start: 8782, Stop: 9204, Start Num: 27
Candidate Starts for Shambre1_12:
(Start: 27 @8782 has 1 MA's), (50, 8827), (53, 8836), (150, 9097), (166, 9163), (168, 9181),

Gene: ShawBrad_12 Start: 7046, Stop: 7456, Start Num: 24
Candidate Starts for ShawBrad_12:

(2, 6917), (4, 6962), (5, 6968), (6, 6974), (7, 6992), (Start: 24 @7046 has 48 MA's), (40, 7073), (61, 7118), (64, 7124), (77, 7178), (93, 7217), (96, 7223), (102, 7244), (116, 7295), (124, 7307),

Gene: Shen_13 Start: 8492, Stop: 8932, Start Num: 14

Candidate Starts for Shen_13:

(9, 8480), (Start: 14 @8492 has 51 MA's), (55, 8582), (73, 8624), (78, 8642), (80, 8645), (94, 8684), (120, 8777), (130, 8804), (141, 8828), (151, 8864), (160, 8900),

Gene: Simpson_13 Start: 9040, Stop: 9453, Start Num: 23

Candidate Starts for Simpson_13:

(Start: 23 @9040 has 50 MA's), (55, 9109), (107, 9259), (149, 9370), (154, 9403),

Gene: Skelbel_12 Start: 9019, Stop: 9429, Start Num: 23

Candidate Starts for Skelbel_12:

(Start: 23 @9019 has 50 MA's), (55, 9088), (104, 9226), (107, 9238), (149, 9349), (154, 9382),

Gene: Snek_12 Start: 8127, Stop: 8540, Start Num: 24

Candidate Starts for Snek_12:

(Start: 24 @8127 has 48 MA's), (85, 8280), (164, 8523),

Gene: Soondubu_11 Start: 8928, Stop: 9338, Start Num: 24

Candidate Starts for Soondubu_11:

(Start: 24 @8928 has 48 MA's), (68, 9030), (154, 9291),

Gene: Sooty_12 Start: 8457, Stop: 8876, Start Num: 22

Candidate Starts for Sooty_12:

(Start: 22 @8457 has 17 MA's), (45, 8499), (144, 8781),

Gene: Spartoi_10 Start: 6599, Stop: 7030, Start Num: 24

Candidate Starts for Spartoi_10:

(Start: 24 @6599 has 48 MA's), (Start: 44 @6635 has 4 MA's), (57, 6668), (62, 6674), (67, 6689), (105, 6785),

Gene: SpecialK_12 Start: 8454, Stop: 8873, Start Num: 22

Candidate Starts for SpecialK_12:

(Start: 22 @8454 has 17 MA's), (45, 8496), (144, 8778),

Gene: Spooky_12 Start: 7039, Stop: 7449, Start Num: 24

Candidate Starts for Spooky_12:

(4, 6955), (5, 6961), (6, 6967), (Start: 24 @7039 has 48 MA's), (61, 7111), (64, 7117), (67, 7129), (77, 7171), (93, 7210), (96, 7216), (102, 7237), (112, 7276), (124, 7300), (144, 7354),

Gene: Squiddly_13 Start: 7726, Stop: 8118, Start Num: 24

Candidate Starts for Squiddly_13:

(2, 7597), (4, 7642), (5, 7648), (6, 7654), (7, 7672), (10, 7690), (Start: 24 @7726 has 48 MA's), (40, 7753), (61, 7798), (64, 7804), (67, 7816), (77, 7840), (96, 7885), (100, 7900), (102, 7906), (116, 7957), (124, 7969),

Gene: Stellammi_9 Start: 6533, Stop: 6904, Start Num: 34

Candidate Starts for Stellammi_9:

(Start: 34 @6533 has 5 MA's), (54, 6581), (64, 6599), (67, 6611), (86, 6659), (94, 6680), (96, 6683), (112, 6743), (124, 6767), (140, 6809), (155, 6872), (157, 6878),

Gene: StuartMinion_11 Start: 7928, Stop: 8371, Start Num: 14

Candidate Starts for StuartMinion_11:

(9, 7916), (Start: 14 @7928 has 51 MA's), (66, 8036), (81, 8084), (94, 8120), (96, 8126), (120, 8213), (130, 8240), (160, 8339), (164, 8345), (165, 8357),

Gene: Studio_13 Start: 7486, Stop: 7878, Start Num: 24

Candidate Starts for Studio_13:

(Start: 24 @7486 has 48 MA's), (45, 7525), (46, 7528), (73, 7588), (92, 7639), (93, 7642), (122, 7732), (158, 7846), (167, 7870),

Gene: Stuu_12 Start: 8547, Stop: 8966, Start Num: 22

Candidate Starts for Stuu_12:

(Start: 22 @8547 has 17 MA's), (45, 8589), (106, 8766), (144, 8871),

Gene: SuMoo_10 Start: 7515, Stop: 7928, Start Num: 24

Candidate Starts for SuMoo_10:

(Start: 24 @7515 has 48 MA's),

Gene: Subaru_12 Start: 9019, Stop: 9429, Start Num: 23

Candidate Starts for Subaru_12:

(Start: 23 @9019 has 50 MA's), (55, 9088), (104, 9226), (107, 9238), (149, 9349), (154, 9382),

Gene: Sue2_12 Start: 9043, Stop: 9456, Start Num: 24

Candidate Starts for Sue2_12:

(8, 9007), (Start: 24 @9043 has 48 MA's),

Gene: Supakev_10 Start: 7553, Stop: 7984, Start Num: 16

Candidate Starts for Supakev_10:

(Start: 12 @7547 has 13 MA's), (Start: 16 @7553 has 65 MA's), (Start: 26 @7574 has 4 MA's), (62, 7646), (90, 7715), (93, 7724), (101, 7748), (153, 7907),

Gene: SuperHands_11 Start: 9343, Stop: 9765, Start Num: 23

Candidate Starts for SuperHands_11:

(Start: 23 @9343 has 50 MA's), (67, 9436), (68, 9442), (74, 9457), (104, 9547), (114, 9586), (121, 9604), (155, 9715),

Gene: Suppi_14 Start: 10446, Stop: 10859, Start Num: 16

Candidate Starts for Suppi_14:

(Start: 16 @10446 has 65 MA's), (41, 10491), (85, 10593), (119, 10701), (153, 10797),

Gene: TMaxx_13 Start: 7597, Stop: 7989, Start Num: 24

Candidate Starts for TMaxx_13:

(Start: 24 @7597 has 48 MA's), (73, 7699), (76, 7711), (122, 7843), (167, 7981),

Gene: Tallboi_12 Start: 9050, Stop: 9463, Start Num: 23

Candidate Starts for Tallboi_12:

(Start: 23 @9050 has 50 MA's), (46, 9095), (55, 9119), (149, 9380), (154, 9413),

Gene: TattModd_14 Start: 10423, Stop: 10836, Start Num: 16

Candidate Starts for TattModd_14:

(Start: 16 @10423 has 65 MA's), (79, 10558), (85, 10573), (101, 10618), (112, 10660), (153, 10777),

Gene: TaylorSipht_12 Start: 8370, Stop: 8810, Start Num: 14

Candidate Starts for TaylorSipt_12:

(Start: 14 @8370 has 51 MA's), (33, 8406), (62, 8469), (80, 8523), (81, 8526), (94, 8562), (113, 8634), (117, 8646), (130, 8682), (141, 8706), (151, 8742), (160, 8778),

Gene: Tbone_12 Start: 9033, Stop: 9446, Start Num: 23

Candidate Starts for Tbone_12:

(Start: 23 @9033 has 50 MA's), (55, 9102), (107, 9252), (149, 9363), (154, 9396),

Gene: Temper16_10 Start: 7547, Stop: 7984, Start Num: 12

Candidate Starts for Temper16_10:

(Start: 12 @7547 has 13 MA's), (Start: 16 @7553 has 65 MA's), (38, 7592), (39, 7595), (79, 7688), (85, 7703), (90, 7715), (93, 7724), (94, 7727), (101, 7748), (153, 7907),

Gene: TforTroy_12 Start: 9164, Stop: 9577, Start Num: 23

Candidate Starts for TforTroy_12:

(Start: 23 @9164 has 50 MA's), (149, 9494), (154, 9527),

Gene: ThursdayNight_11 Start: 7530, Stop: 7949, Start Num: 24

Candidate Starts for ThursdayNight_11:

(Start: 24 @7530 has 48 MA's), (50, 7581), (67, 7632), (107, 7752), (154, 7896),

Gene: Tian_12 Start: 9064, Stop: 9477, Start Num: 23

Candidate Starts for Tian_12:

(Start: 23 @9064 has 50 MA's), (46, 9109), (107, 9283), (149, 9394), (154, 9427),

Gene: Toad24_13 Start: 8492, Stop: 8932, Start Num: 14

Candidate Starts for Toad24_13:

(9, 8480), (Start: 14 @8492 has 51 MA's), (55, 8582), (73, 8624), (78, 8642), (80, 8645), (94, 8684), (120, 8777), (130, 8804), (141, 8828), (151, 8864), (160, 8900),

Gene: TripleC_16 Start: 11103, Stop: 11495, Start Num: 24

Candidate Starts for TripleC_16:

(Start: 24 @11103 has 48 MA's), (71, 11199), (93, 11259), (119, 11343), (120, 11346), (167, 11487),

Gene: Tuck_13 Start: 10079, Stop: 10489, Start Num: 23

Candidate Starts for Tuck_13:

(Start: 23 @10079 has 50 MA's), (46, 10124), (107, 10298), (149, 10409), (154, 10442),

Gene: Turab_12 Start: 9048, Stop: 9458, Start Num: 23

Candidate Starts for Turab_12:

(Start: 23 @9048 has 50 MA's), (46, 9093), (55, 9117), (149, 9378), (154, 9411),

Gene: Tutumahutu_12 Start: 9090, Stop: 9503, Start Num: 23

Candidate Starts for Tutumahutu_12:

(Start: 23 @9090 has 50 MA's), (55, 9159), (107, 9309), (149, 9420), (154, 9453),

Gene: Tweety19_12 Start: 8126, Stop: 8539, Start Num: 24

Candidate Starts for Tweety19_12:

(Start: 24 @8126 has 48 MA's), (85, 8279), (164, 8522),

Gene: Typha_18 Start: 11994, Stop: 12434, Start Num: 12

Candidate Starts for Typha_18:

(Start: 12 @11994 has 13 MA's), (Start: 14 @11997 has 51 MA's), (51, 12075), (56, 12084), (59, 12090), (63, 12096), (87, 12174), (109, 12240), (120, 12276), (150, 12351), (157, 12390),

Gene: Urla_10 Start: 7561, Stop: 7974, Start Num: 16

Candidate Starts for Urla_10:

(Start: 16 @7561 has 65 MA's), (79, 7693), (85, 7708), (101, 7753), (102, 7756), (112, 7795), (136, 7855), (153, 7912),

Gene: UtzChips_10 Start: 8204, Stop: 8620, Start Num: 24

Candidate Starts for UtzChips_10:

(Start: 24 @8204 has 48 MA's), (114, 8444), (134, 8501),

Gene: VResidence_12 Start: 9113, Stop: 9535, Start Num: 24

Candidate Starts for VResidence_12:

(Start: 24 @9113 has 48 MA's), (106, 9335), (132, 9422), (146, 9443), (149, 9452),

Gene: VWB_11 Start: 8079, Stop: 8474, Start Num: 26

Candidate Starts for VWB_11:

(20, 8073), (Start: 26 @8079 has 4 MA's), (36, 8094), (61, 8160), (94, 8244), (113, 8310), (162, 8454),

Gene: Vallejo_14 Start: 10361, Stop: 10774, Start Num: 16

Candidate Starts for Vallejo_14:

(Start: 16 @10361 has 65 MA's), (79, 10496), (85, 10511), (101, 10556), (112, 10598), (153, 10715),

Gene: VroomVroom_11 Start: 7298, Stop: 7693, Start Num: 26

Candidate Starts for VroomVroom_11:

(Start: 26 @7298 has 4 MA's), (104, 7490),

Gene: Vulpecula_12 Start: 8667, Stop: 9110, Start Num: 14

Candidate Starts for Vulpecula_12:

(Start: 14 @8667 has 51 MA's), (36, 8709), (Start: 44 @8727 has 4 MA's), (58, 8763), (78, 8817), (80, 8820), (94, 8859), (108, 8913), (120, 8952), (130, 8979), (141, 9003), (144, 9009),

Gene: Vulture_10 Start: 7551, Stop: 7982, Start Num: 16

Candidate Starts for Vulture_10:

(Start: 12 @7545 has 13 MA's), (Start: 16 @7551 has 65 MA's), (Start: 26 @7572 has 4 MA's), (62, 7644), (90, 7713), (93, 7722), (101, 7746), (153, 7905),

Gene: Warda_12 Start: 9036, Stop: 9449, Start Num: 23

Candidate Starts for Warda_12:

(Start: 23 @9036 has 50 MA's), (55, 9105), (107, 9255), (149, 9366), (154, 9399),

Gene: Wawa_14 Start: 10398, Stop: 10811, Start Num: 16

Candidate Starts for Wawa_14:

(Start: 16 @10398 has 65 MA's), (79, 10533), (85, 10548), (101, 10593), (112, 10635), (153, 10752),

Gene: Wayne_14 Start: 10492, Stop: 10905, Start Num: 16

Candidate Starts for Wayne_14:

(Start: 16 @10492 has 65 MA's), (41, 10537), (85, 10639), (119, 10747), (153, 10843),

Gene: Westrich_13 Start: 8480, Stop: 8920, Start Num: 14

Candidate Starts for Westrich_13:

(9, 8468), (Start: 14 @8480 has 51 MA's), (55, 8570), (73, 8612), (78, 8630), (80, 8633), (94, 8672), (120, 8765), (130, 8792), (141, 8816), (151, 8852), (160, 8888),

Gene: Whitney_12 Start: 7041, Stop: 7433, Start Num: 24

Candidate Starts for Whitney_12:

(2, 6912), (4, 6957), (5, 6963), (6, 6969), (7, 6987), (Start: 24 @7041 has 48 MA's), (40, 7068), (57, 7107), (61, 7113), (64, 7119), (67, 7131), (77, 7155), (93, 7194), (96, 7200), (99, 7212), (102, 7221), (116, 7272), (124, 7284),

Gene: Wildwest_13 Start: 9954, Stop: 10370, Start Num: 24

Candidate Starts for Wildwest_13:

(Start: 24 @9954 has 48 MA's), (85, 10107), (106, 10170), (146, 10278),

Gene: WileyE_11 Start: 8002, Stop: 8445, Start Num: 14

Candidate Starts for WileyE_11:

(Start: 14 @8002 has 51 MA's), (36, 8044), (Start: 44 @8062 has 4 MA's), (58, 8098), (78, 8152), (80, 8155), (94, 8194), (108, 8248), (120, 8287), (130, 8314), (141, 8338), (144, 8344),

Gene: WonderBoy_10 Start: 7514, Stop: 7924, Start Num: 16

Candidate Starts for WonderBoy_10:

(Start: 16 @7514 has 65 MA's), (48, 7577), (79, 7646), (85, 7661), (101, 7706), (112, 7748), (153, 7865),

Gene: Yang_12 Start: 9134, Stop: 9547, Start Num: 23

Candidate Starts for Yang_12:

(Start: 23 @9134 has 50 MA's), (149, 9464), (154, 9497),

Gene: YesChef_12 Start: 9090, Stop: 9503, Start Num: 23

Candidate Starts for YesChef_12:

(Start: 23 @9090 has 50 MA's), (55, 9159), (107, 9309), (149, 9420), (154, 9453),

Gene: Zeta1847_10 Start: 7300, Stop: 7692, Start Num: 22

Candidate Starts for Zeta1847_10:

(Start: 22 @7300 has 17 MA's), (85, 7444), (88, 7453),

Gene: Zhuangyuan_13 Start: 8659, Stop: 9102, Start Num: 14

Candidate Starts for Zhuangyuan_13:

(9, 8647), (11, 8650), (Start: 14 @8659 has 51 MA's), (40, 8710), (62, 8758), (115, 8929), (116, 8932), (141, 8995), (146, 9004), (151, 9034), (165, 9088),

Gene: Zixiang_12 Start: 8281, Stop: 8721, Start Num: 14

Candidate Starts for Zixiang_12:

(Start: 14 @8281 has 51 MA's), (55, 8371), (58, 8377), (73, 8413), (78, 8431), (80, 8434), (94, 8473), (120, 8566), (130, 8593), (141, 8617), (151, 8653), (160, 8689),

Gene: Zorro_14 Start: 10377, Stop: 10790, Start Num: 16

Candidate Starts for Zorro_14:

(Start: 16 @10377 has 65 MA's), (79, 10512), (85, 10527), (101, 10572), (112, 10614), (153, 10731),