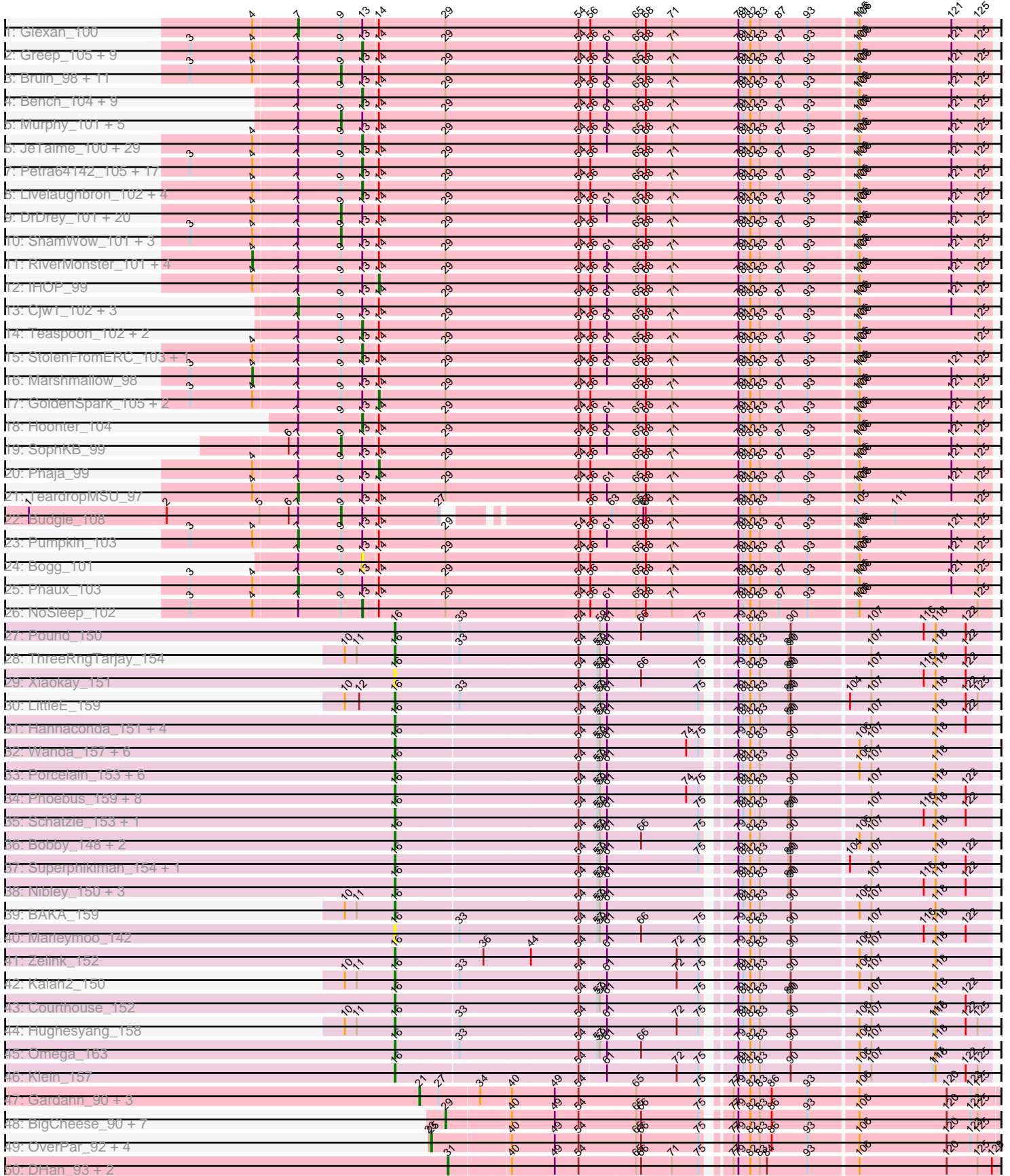
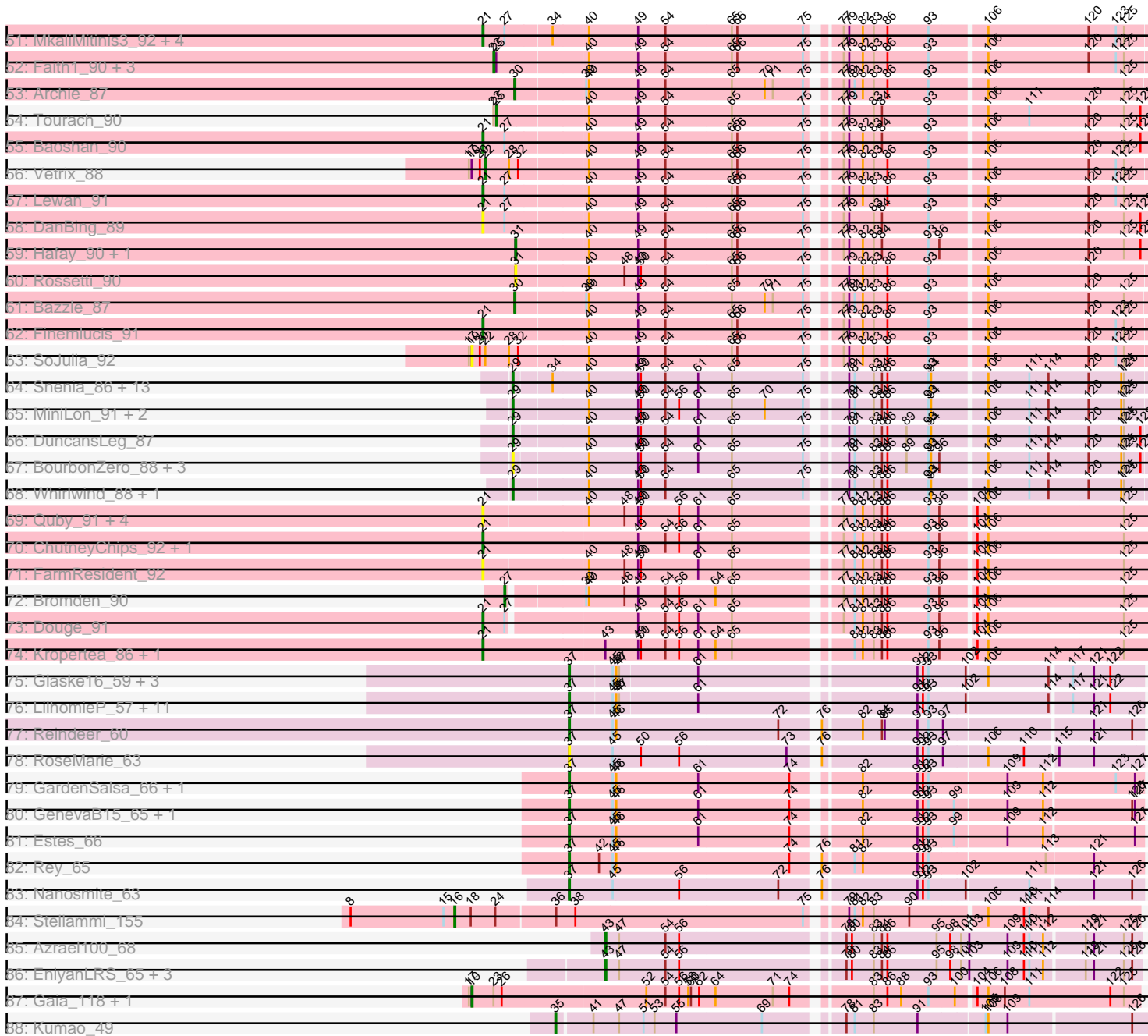


Pham 304657



Pham 304657



Note: Tracks are now grouped by subcluster and scaled. Switching in subcluster is indicated by changes in track color. Track scale is now set by default to display the region 30 bp upstream of start 1 to 30 bp downstream of the last possible start. If this default region is judged to be packed too tightly with annotated starts, the track will be further scaled to only show that region of the ORF with annotated starts. This action will be indicated by adding "Zoomed" to the title. For starts, yellow indicates the location of called starts comprised solely of Glimmer/GeneMark auto-annotations, green indicates the location of called starts with at least 1 manual gene annotation.

Pham 304657 Report

This analysis was run 06/08/26 on database version 649.

Pham number 304657 has 307 members, 48 are drafts.

Phages represented in each track:

- Track 1 : Glexan_100
- Track 2 : Greep_105, Misfit_102, Becksu_99, Manda_102, xkcd_104, Icee_102, Command613_103, Paperbeatsrock_100, FoghornLeghorn_94, Myrale_101
- Track 3 : Bruin_98, Miniwave_96, Murica_104, Mosby_97, YassJohnny_98, Sassay_96, MPhalcon_102, Youngblood_104, Terminus_104, Contagion_97, MISSy_102, Willez_96
- Track 4 : Bench_104, Stark_102, Lilizi_102, Thresher_103, ChosenOne_101, Lilac_103, OrionPax_100, AmericanBeauty_105, Elph10_101, Filch_103
- Track 5 : Murphy_101, Lilpickle_100, Dumbo_101, BigBubba_101, BugsBunny_100, Phrux_98
- Track 6 : JeTaimé_100, Moldemort_104, Ukulele_96, Asriel_99, HanKaySha_102, Highbury_98, ChotaBhai_101, Mindy_100, Quallification_102, Cookies_98, DoctorDiddles_100, PaddyBaddy_101, Cactus_105, Amao_101, Inca_98, FairyPath_102, Sotrice96_102, Goldilocks_104, Maxxinista_103, ShereKhan_99, Czystczon1_102, StellaBean_100, BadStone_98, Saints25_98, Xandras_100, MadamMonkfish_101, Palpatine_102, Kimchi_105, Simpliphy_100, Traaww1_97
- Track 7 : Petra64142_105, Emmina_101, Buck_102, Stank_103, CrystalP_100, NelitzaMV_98, Easy2Say_101, Gemini_106, BilboSwaggins_99, TeamEdward_101, Argent26_105, TBrady12_104, Thimble_103, Holt_106, Toto_99, GooberAzure_104, Wiggin_103, Rakim_102
- Track 8 : Liveloughbron_102, Harella_101, Rimmer_99, Brewer_97, MollyToe_95
- Track 9 : DrDrey_101, Nala_103, Pharsalus_98, Dusk_98, SirDuracell_101, Bask21_101, Tarkin_100, PhatBacter_104, Kostya_101, Barbarian_100, FireRed_104, ABCat_98, Goku_100, Pat3_98, NonchalantPear_101, Tuco_102, Kanye_98, HufflyPuff_103, Eureka_100, Ptowny_97, Flypotenuse_97
- Track 10 : ShamWow_101, Adnama_105, Henry_98, StormChicken_102
- Track 11 : RiverMonster_101, Tomaszewski_96, Nimrod_101, Gator_99, Balomoji_101
- Track 12 : IHOP_99
- Track 13 : Cjw1_102, Elite2014_100, Hopey_102, 244_102
- Track 14 : Teaspoon_102, BaboJay_101, Porky_100
- Track 15 : StolenFromERC_103, Gage_103
- Track 16 : Marshmallow_98
- Track 17 : GoldenSpark_105, Policronamos_103, Daikon_101
- Track 18 : Hoonter_104
- Track 19 : SophKB_99
- Track 20 : Phaja_99

- Track 21 : TeardropMSU_97
- Track 22 : Budgie_108
- Track 23 : Pumpkin_103
- Track 24 : Bogg_101
- Track 25 : Phaux_103
- Track 26 : NoSleep_102
- Track 27 : Pound_150
- Track 28 : ThreeRngTarjay_154
- Track 29 : Xiaokay_151
- Track 30 : LittleE_159
- Track 31 : Hannaconda_151, Squint_149, Gonephishing_151, Rearden_151, Nekros_155
- Track 32 : Wanda_157, Ejimix_150, Beem_159, DmpstrDiver_158, Minerva_157, Halley_159, Dallas_158
- Track 33 : Porcelain_153, Optimus_150, Duke13_156, MiaZeal_156, Lucky2013_149, EricMillard_152, Bagrid_162
- Track 34 : Phoebus_159, Dove_145, NihilNomen_160, HokkenD_153, Redno2_152, Yeet_151, Bombitas_145, JuicyJay_153, Hidrated_146
- Track 35 : Schatzie_153, Odette_162
- Track 36 : Bobby_148, Thibault_140, Constella_150
- Track 37 : Superphikiman_154, Ariel_156
- Track 38 : Nibley_150, BronnyJames_151, Shaboozey_154, KashFlow_156
- Track 39 : BAKA_159
- Track 40 : Marleymoo_142
- Track 41 : Zelink_152
- Track 42 : Kalah2_150
- Track 43 : Courthouse_152
- Track 44 : Hughesyang_158
- Track 45 : Omega_163
- Track 46 : Klein_157
- Track 47 : Gardann_90, Nicholasp3_90, Rumpelstiltskin_86, Underpass_82
- Track 48 : BigCheese_90, Breezona_90, BobsGarage_89, Miley16_90, DrSeegs_89, Sarshaun_91, Soap141_90, Winky_90
- Track 49 : OverPar_92, Loadrie_89, Itos_90, GuuelaD_87, Gabriela_90
- Track 50 : DHan_93, LilDestine_88, ZhongYanYuan_87
- Track 51 : MkaliMitinis3_92, Wigglewiggle_90, Kahlid_89, Wilder_91, Lynnae_91
- Track 52 : Faith1_90, Zakai_91, Netyap_89, Crossroads_90
- Track 53 : Archie_87
- Track 54 : Tourach_90
- Track 55 : Baoshan_90
- Track 56 : Vetrix_88
- Track 57 : Lewan_91
- Track 58 : DanBing_89
- Track 59 : Hafay_90, Claus_88
- Track 60 : Rossetti_90
- Track 61 : Bazzle_87
- Track 62 : Finemlucis_91
- Track 63 : SoJulia_92
- Track 64 : Snenia_86, Jubie_86, Moostard_85, TriFive_88, Finnry_87, Clautastrophe_85, Nicholas_85, Jobypre_87, Red305_88, Samty_86, MsGreen_87, Kingsolomon_85, Lumos_87, Bellis_87
- Track 65 : MiniLon_91, MiniMac_91, Lolly9_86
- Track 66 : DuncansLeg_87

- Track 67 : BourbonZero_88, KirDoubleO7_85, Ellson_86, LiyuLake_86
- Track 68 : Whirlwind_88, Krypton555_88
- Track 69 : Quby_91, Douzhi_91, Sheng711_92, BrainDrainer_92, PYPDinur_91
- Track 70 : ChutneyChips_92, Chaser_89
- Track 71 : FarmResident_92
- Track 72 : Bromden_90
- Track 73 : Douge_91
- Track 74 : Kropertea_86, DyoEdafos_93
- Track 75 : Glaske16_59, KleverKiS_59, PegLeg_58, Bricole_58
- Track 76 : LilhomieP_57, Diminimus_59, TyDawg_58, Bongo_58, SlimJimmy_57, Skinny_60, Dulcita_59, FreakyGoo_59, Auspice_58, TpudiCK_60, Izel_59, IPhane7_58
- Track 77 : Reindeer_60
- Track 78 : RoseMarie_63
- Track 79 : GardenSalsa_66, MrMagoo_67
- Track 80 : GenevaB15_65, Aziz_64
- Track 81 : Estes_66
- Track 82 : Rey_65
- Track 83 : Nanosmite_63
- Track 84 : Stellammi_155
- Track 85 : Azrael100_68
- Track 86 : EniyanLRS_65, MaryV_68, Wildcat_68, Cosmo_69
- Track 87 : Gaia_118, Nebkiss_119
- Track 88 : Kumao_49

Summary of Final Annotations (See graph section above for start numbers):

The start number called the most often in the published annotations is 13, it was called in 72 of the 259 non-draft genes in the pham.

Genes that call this "Most Annotated" start:

- Amao_101, AmericanBeauty_105, Argent26_105, Asriel_99, BaboJay_101, BadStone_98, Becksu_99, Bench_104, BilboSwaggins_99, Bogg_101, Brewer_97, Buck_102, Cactus_105, ChosenOne_101, ChotaBhai_101, Command613_103, Cookies_98, CrystalP_100, Czyszczonek_102, DoctorDiddles_100, Easy2Say_101, Elph10_101, Emmina_101, FairyPath_102, Filch_103, FoghornLeghorn_94, Gage_103, Gemini_106, Goldilocks_104, GooberAzure_104, Greep_105, HanKaySha_102, Harella_101, Highbury_98, Holt_106, Hoonter_104, Icee_102, Inca_98, JeTaime_100, Kimchi_105, Lilac_103, Lilizi_102, Liveloughbron_102, MadamMonkfish_101, Manda_102, Maxxinista_103, Mindy_100, Misfit_102, Moldemort_104, MollyToe_95, Myrale_101, NelitzaMV_98, NoSleep_102, OrionPax_100, PaddyBaddy_101, Palpatine_102, Paperbeatsrock_100, Petra64142_105, Porky_100, Quallification_102, Rakim_102, Rimmer_99, Saints25_98, ShereKhan_99, Simpliphy_100, Sotrice96_102, Stank_103, Stark_102, StellaBean_100, StolenFromERC_103, TBrady12_104, TeamEdward_101, Teaspoon_102, Thimble_103, Thresher_103, Toto_99, Traaww1_97, Ukulele_96, Wiggin_103, Xandras_100, xkcd_104,

Genes that have the "Most Annotated" start but do not call it:

- 244_102, ABCat_98, Adnama_105, Balomoji_101, Barbarian_100, Bask21_101, BigBubba_101, Bruin_98, Budgie_108, BugsBunny_100, Cjw1_102, Contagion_97, Daikon_101, DrDrey_101, Dumbo_101, Dusk_98, Elite2014_100, Eureka_100, FireRed_104, Flypotenuse_97, Gator_99, Glexan_100, Goku_100, GoldenSpark_105, Henry_98, Hopey_102, HufflyPuff_103, IHOP_99, Kanye_98, Kostya_101, Lilpickle_100, MISSy_102, MPhalcon_102, Marshmallow_98, Miniwave_96, Mosby_97, Murica_104, Murphy_101, Nala_103, Nimrod_101, NonchalantPear_101, Pat3_98, Phaja_99, Pharsalus_98, PhatBacter_104, Phaux_103, Phrux_98, Policronamos_103, Ptowny_97, Pumpkin_103, RiverMonster_101, Sassay_96, ShamWow_101, SirDuracell_101, SophKB_99, StormChicken_102, Tarkin_100, TeardropMSU_97, Terminus_104, Tomaszewski_96, Tucu_102, Willez_96, YassJohnny_98, Youngblood_104,

Genes that do not have the "Most Annotated" start:

- Archie_87, Ariel_156, Auspice_58, Aziz_64, Azrael100_68, BAKA_159, Bagrid_162, Baoshan_90, Bazzle_87, Beem_159, Bellis_87, BigCheese_90, Bobby_148, BobsGarage_89, Bombitas_145, Bongo_58, BourbonZero_88, BrainDrainer_92, Breezona_90, Bricole_58, Bromden_90, BronnyJames_151, Chaser_89, ChutneyChips_92, Claus_88, Clautastrophe_85, Constella_150, Cosmo_69, Courthouse_152, Crossroads_90, DHan_93, Dallas_158, DanBing_89, Diminimus_59, DmpstrDiver_158, Douge_91, Douzhi_91, Dove_145, DrSeegs_89, Duke13_156, Dulcita_59, DuncansLeg_87, DyoEdafos_93, Ejimix_150, Ellson_86, EniyanLRS_65, EricMillard_152, Estes_66, Faith1_90, FarmResident_92, Finemlucis_91, Finnry_87, FreakyGoo_59, Gabriela_90, Gaia_118, Gardann_90, GardenSalsa_66, GenevaB15_65, Glaske16_59, Gonephishing_151, GuuelaD_87, Hafay_90, Halley_159, Hannaconda_151, Hidrated_146, HokkenD_153, Hughesyang_158, IPhone7_58, Itos_90, Izel_59, Jobypre_87, Jubie_86, JuicyJay_153, Kahlid_89, Kalah2_150, KashFlow_156, Kingsolomon_85, KirDoubleO7_85, Klein_157, KleverKiS_59, Kropertea_86, Krypton555_88, Kumao_49, Lewan_91, LilDestine_88, LilhomieP_57, LittleE_159, LiyuLake_86, Loadrie_89, Lolly9_86, Lucky2013_149, Lumos_87, Lynnae_91, Marleymoo_142, MaryV_68, MiaZeal_156, Miley16_90, Minerva_157, MiniLon_91, MiniMac_91, MkaliMitinis3_92, Moostard_85, MrMagoo_67, MsGreen_87, Nanosmite_63, Nebkiss_119, Nekros_155, Netyap_89, Nibley_150, Nicholas_85, Nicholasp3_90, NihilNomen_160, Odette_162, Omega_163, Optimus_150, OverPar_92, PYPDinur_91, PegLeg_58, Phoebus_159, Porcelain_153, Pound_150, Quby_91, Rearden_151, Red305_88, Redno2_152, Reindeer_60, Rey_65, RoseMarie_63, Rossetti_90, Rumpelstiltskin_86, Samty_86, Sarshaun_91, Schatzie_153, Shaboozey_154, Sheng711_92, Skinny_60, SlimJimmy_57, Snenia_86, SoJulia_92, Soap141_90, Squint_149, Stellammi_155, Superphikiman_154, Thibault_140, ThreeRngTarjay_154, Tourach_90, TpudiCK_60, TriFive_88, TyDawg_58, Underpass_82, Vetrix_88, Wanda_157, Whirlwind_88, Wigglewiggle_90, Wildcat_68, Wilder_91, Winky_90, Xiaokay_151, Yeet_151, Zakai_91, Zelink_152, ZhongYanYuan_87,

Summary by start number:

Start 4:

- Found in 118 of 307 (38.4%) of genes in pham
- Manual Annotations of this start: 6 of 259
- Called 5.1% of time when present
- Phage (with cluster) where this start called: Balomoji_101 (E), Gator_99 (E), Marshmallow_98 (E), Nimrod_101 (E), RiverMonster_101 (E), Tomaszewski_96 (E),

Start 7:

- Found in 145 of 307 (47.2%) of genes in pham
- Manual Annotations of this start: 8 of 259
- Called 5.5% of time when present
- Phage (with cluster) where this start called: 244_102 (E), Cjw1_102 (E), Elite2014_100 (E), Glexan_100 (E), Hopey_102 (E), Phaux_103 (E), Pumpkin_103 (E), TeardropMSU_97 (E),

Start 9:

- Found in 145 of 307 (47.2%) of genes in pham
- Manual Annotations of this start: 42 of 259
- Called 31.0% of time when present
- Phage (with cluster) where this start called: ABCat_98 (E), Adnama_105 (E), Barbarian_100 (E), Bask21_101 (E), BigBubba_101 (E), Bruin_98 (E), Budgie_108 (E), BugsBunny_100 (E), Contagion_97 (E), DrDrey_101 (E), Dumbo_101 (E), Dusk_98 (E), Eureka_100 (E), FireRed_104 (E), Flypotenuse_97 (E), Goku_100 (E), Henry_98 (E), HufflyPuff_103 (E), Kanye_98 (E), Kostya_101 (E), Lilpickle_100 (E), MISSy_102 (E), MPhalcon_102 (E), Miniwave_96 (E), Mosby_97 (E), Murica_104 (E), Murphy_101 (E), Nala_103 (E), NonchalantPear_101 (E), Pat3_98 (E), Pharsalus_98 (E), PhatBacter_104 (E), Phrux_98 (E), Ptowny_97 (E), Sassay_96 (E), ShamWow_101 (E), SirDuracell_101 (E), SophKB_99 (E), StormChicken_102 (E), Tarkin_100 (E), Terminus_104 (E), Tuco_102 (E), Willez_96 (E), YassJohnny_98 (E), Youngblood_104 (E),

Start 13:

- Found in 145 of 307 (47.2%) of genes in pham
- Manual Annotations of this start: 72 of 259
- Called 55.9% of time when present
- Phage (with cluster) where this start called: Amao_101 (E), AmericanBeauty_105 (E), Argent26_105 (E), Asriel_99 (E), BaboJay_101 (E), BadStone_98 (E), Becksu_99 (E), Bench_104 (E), BilboSwaggins_99 (E), Bogg_101 (E), Brewer_97 (E), Buck_102 (E), Cactus_105 (E), ChosenOne_101 (E), ChotaBhai_101 (E), Command613_103 (E), Cookies_98 (E), CrystalP_100 (E), Czyszczonek_102 (E), DoctorDiddles_100 (E), Easy2Say_101 (E), Elph10_101 (E), Emmina_101 (E), FairyPath_102 (E), Filch_103 (E), FoghornLeghorn_94 (E), Gage_103 (E), Gemini_106 (E), Goldilocks_104 (E), GooberAzure_104 (E), Greep_105 (E), HanKaySha_102 (E), Harella_101 (E), Highbury_98 (E), Holt_106 (E), Hoonter_104 (E), Icee_102 (E), Inca_98 (E), JeTaime_100 (E), Kimchi_105 (E), Lilac_103 (E), Lilizi_102 (E), Liveloughbron_102 (E), MadamMonkfish_101 (E), Manda_102 (E), Maxxinista_103 (E), Mindy_100 (E), Misfit_102 (E), Moldemort_104 (E), MollyToe_95 (E), Myrale_101 (E), NelitzaMV_98 (E), NoSleep_102 (E), OrionPax_100 (E), PaddyBaddy_101 (E), Palpatine_102 (E), Paperbeatsrock_100 (E), Petra64142_105 (E), Porky_100 (E), Quallification_102 (E), Rakim_102 (E), Rimmer_99 (E), Saints25_98 (E), ShereKhan_99 (E), Simpliphy_100 (E), Sotrice96_102 (E), Stank_103 (E), Stark_102 (E), StellaBean_100 (E), StolenFromERC_103 (E), TBrady12_104 (E), TeamEdward_101 (E), Teaspoon_102 (E), Thimble_103 (E), Thresher_103 (E), Toto_99 (E), Traaww1_97 (E), Ukulele_96 (E), Wiggin_103 (E), Xandras_100 (E), xkcd_104 (E),

Start 14:

- Found in 145 of 307 (47.2%) of genes in pham
- Manual Annotations of this start: 4 of 259

- Called 3.4% of time when present
- Phage (with cluster) where this start called: Daikon_101 (E), GoldenSpark_105 (E), IHOP_99 (E), Phaja_99 (E), Policronamos_103 (E),

Start 16:

- Found in 52 of 307 (16.9%) of genes in pham
- Manual Annotations of this start: 41 of 259
- Called 100.0% of time when present
- Phage (with cluster) where this start called: Ariel_156 (J), BAKA_159 (J), Bagrid_162 (J), Beem_159 (J), Bobby_148 (J), Bombitas_145 (J), BronnyJames_151 (J), Constella_150 (J), Courthouse_152 (J), Dallas_158 (J), DmpstrDiver_158 (J), Dove_145 (J), Duke13_156 (J), Ejimix_150 (J), EricMillard_152 (J), Gonephishing_151 (J), Halley_159 (J), Hannaconda_151 (J), Hidrated_146 (J), HokkenD_153 (J), Hughesyang_158 (J), JuicyJay_153 (J), Kalah2_150 (J), KashFlow_156 (J), Klein_157 (J), LittleE_159 (J), Lucky2013_149 (J), Marleymoo_142 (J), MiaZeal_156 (J), Minerva_157 (J), Nekros_155 (J), Nibley_150 (J), NihilNomen_160 (J), Odette_162 (J), Omega_163 (J), Optimus_150 (J), Phoebus_159 (J), Porcelain_153 (J), Pound_150 (J), Rearden_151 (J), Redno2_152 (J), Schatzie_153 (J), Shaboozey_154 (J), Squint_149 (J), Stellammi_155 (UNK), Superphikiman_154 (J), Thibault_140 (J), ThreeRngTarjay_154 (J), Wanda_157 (J), Xiaokay_151 (J), Yeet_151 (J), Zelink_152 (J),

Start 19:

- Found in 4 of 307 (1.3%) of genes in pham
- Manual Annotations of this start: 2 of 259
- Called 75.0% of time when present
- Phage (with cluster) where this start called: Gaia_118 (X), Nebkiss_119 (X), SoJulia_92 (L2),

Start 21:

- Found in 24 of 307 (7.8%) of genes in pham
- Manual Annotations of this start: 16 of 259
- Called 100.0% of time when present
- Phage (with cluster) where this start called: Baoshan_90 (L2), BrainDrainer_92 (L4), Chaser_89 (L4), ChutneyChips_92 (L4), DanBing_89 (L2), Douge_91 (L4), Douzhi_91 (L4), DyoEdafos_93 (L4), FarmResident_92 (L4), Finemlucis_91 (L2), Gardann_90 (L2), Kahlid_89 (L2), Kropertea_86 (L4), Lewan_91 (L2), Lynnae_91 (L2), MkaliMitinis3_92 (L2), Nicholasp3_90 (L2), PYPDinur_91 (L4), Quby_91 (L4), Rumpelstiltskin_86 (L2), Sheng711_92 (L4), Underpass_82 (L2), Wigglewiggle_90 (L2), Wilder_91 (L2),

Start 22:

- Found in 2 of 307 (0.7%) of genes in pham
- Manual Annotations of this start: 1 of 259
- Called 50.0% of time when present
- Phage (with cluster) where this start called: Vetrix_88 (L2),

Start 23:

- Found in 12 of 307 (3.9%) of genes in pham
- Manual Annotations of this start: 4 of 259
- Called 33.3% of time when present
- Phage (with cluster) where this start called: Crossroads_90 (L2), Faith1_90 (L2), Netyap_89 (L2), Zakai_91 (L2),

Start 25:

- Found in 10 of 307 (3.3%) of genes in pham
- Manual Annotations of this start: 5 of 259
- Called 60.0% of time when present
- Phage (with cluster) where this start called: Gabriela_90 (L2), GuuelaD_87 (L2), Itos_90 (L2), Loadrie_89 (L2), OverPar_92 (L2), Tourach_90 (L2),

Start 27:

- Found in 15 of 307 (4.9%) of genes in pham
- Manual Annotations of this start: 1 of 259
- Called 6.7% of time when present
- Phage (with cluster) where this start called: Bromden_90 (L4),

Start 29:

- Found in 176 of 307 (57.3%) of genes in pham
- Manual Annotations of this start: 25 of 259
- Called 18.2% of time when present
- Phage (with cluster) where this start called: Bellis_87 (L3), BigCheese_90 (L2), BobsGarage_89 (L2), BourbonZero_88 (L3), Breezona_90 (L2), Clautastrophe_85 (L3), DrSeegs_89 (L2), DuncansLeg_87 (L3), Ellson_86 (L3), Finnry_87 (L3), Jobypre_87 (L3), Jubie_86 (L3), Kingsolomon_85 (L3), KirDoubleO7_85 (L3), Krypton555_88 (L3), LiyuLake_86 (L3), Lolly9_86 (L3), Lumos_87 (L3), Miley16_90 (L2), MiniLon_91 (L3), MiniMac_91 (L3), Moostard_85 (L3), MsGreen_87 (L3), Nicholas_85 (L3), Red305_88 (L3), Samty_86 (L3), Sarshaun_91 (L2), Snenia_86 (L3), Soap141_90 (L2), TriFive_88 (L3), Whirlwind_88 (L3), Winky_90 (L2),

Start 30:

- Found in 2 of 307 (0.7%) of genes in pham
- Manual Annotations of this start: 2 of 259
- Called 100.0% of time when present
- Phage (with cluster) where this start called: Archie_87 (L2), Bazzle_87 (L2),

Start 31:

- Found in 6 of 307 (2.0%) of genes in pham
- Manual Annotations of this start: 2 of 259
- Called 100.0% of time when present
- Phage (with cluster) where this start called: Claus_88 (L2), DHan_93 (L2), Hafay_90 (L2), LilDestine_88 (L2), Rossetti_90 (L2), ZhongYanYuan_87 (L2),

Start 35:

- Found in 1 of 307 (0.3%) of genes in pham
- Manual Annotations of this start: 1 of 259
- Called 100.0% of time when present
- Phage (with cluster) where this start called: Kumao_49 (singleton),

Start 37:

- Found in 25 of 307 (8.1%) of genes in pham
- Manual Annotations of this start: 22 of 259
- Called 100.0% of time when present
- Phage (with cluster) where this start called: Auspice_58 (M1), Aziz_64 (M2), Bongo_58 (M1), Bricole_58 (M1), Diminimus_59 (M1), Dulcita_59 (M1), Estes_66 (M2), FreakyGoo_59 (M1), GardenSalsa_66 (M2), GenevaB15_65 (M2),

Glask16_59 (M1), IPhane7_58 (M1), Izel_59 (M1), KleverKiS_59 (M1), LilhomieP_57 (M1), MrMagoo_67 (M2), Nanosmite_63 (M3), PegLeg_58 (M1), Reindeer_60 (M1), Rey_65 (M2), RoseMarie_63 (M1), Skinny_60 (M1), SlimJimmy_57 (M1), TpudiCK_60 (M1), TyDawg_58 (M1),

Start 43:

- Found in 7 of 307 (2.3%) of genes in pham
- Manual Annotations of this start: 5 of 259
- Called 71.4% of time when present
- Phage (with cluster) where this start called: Azrael100_68 (V), Cosmo_69 (V), EniyanLRS_65 (V), MaryV_68 (V), Wildcat_68 (V),

Summary by clusters:

There are 12 clusters represented in this pham: V, E, M3, J, singleton, L4, L2, L3, X, M2, M1, UNK,

Info for manual annotations of cluster E:

- Start number 4 was manually annotated 6 times for cluster E.
- Start number 7 was manually annotated 8 times for cluster E.
- Start number 9 was manually annotated 42 times for cluster E.
- Start number 13 was manually annotated 72 times for cluster E.
- Start number 14 was manually annotated 4 times for cluster E.

Info for manual annotations of cluster J:

- Start number 16 was manually annotated 40 times for cluster J.

Info for manual annotations of cluster L2:

- Start number 21 was manually annotated 11 times for cluster L2.
- Start number 22 was manually annotated 1 time for cluster L2.
- Start number 23 was manually annotated 4 times for cluster L2.
- Start number 25 was manually annotated 5 times for cluster L2.
- Start number 29 was manually annotated 6 times for cluster L2.
- Start number 30 was manually annotated 2 times for cluster L2.
- Start number 31 was manually annotated 2 times for cluster L2.

Info for manual annotations of cluster L3:

- Start number 29 was manually annotated 19 times for cluster L3.

Info for manual annotations of cluster L4:

- Start number 21 was manually annotated 5 times for cluster L4.
- Start number 27 was manually annotated 1 time for cluster L4.

Info for manual annotations of cluster M1:

- Start number 37 was manually annotated 15 times for cluster M1.

Info for manual annotations of cluster M2:

- Start number 37 was manually annotated 6 times for cluster M2.

Info for manual annotations of cluster M3:

- Start number 37 was manually annotated 1 time for cluster M3.

Info for manual annotations of cluster UNK:

- Start number 16 was manually annotated 1 time for cluster UNK.

Info for manual annotations of cluster V:

- Start number 43 was manually annotated 5 times for cluster V.

Info for manual annotations of cluster X:

- Start number 19 was manually annotated 2 times for cluster X.

Gene Information:

Gene: 244_102 Start: 59715, Stop: 60575, Start Num: 7

Candidate Starts for 244_102:

(Start: 7 @59715 has 8 MA's), (Start: 9 @59769 has 42 MA's), (Start: 13 @59796 has 72 MA's), (Start: 14 @59814 has 4 MA's), (Start: 29 @59898 has 25 MA's), (54, 60066), (56, 60081), (61, 60102), (65, 60138), (68, 60150), (71, 60183), (79, 60267), (81, 60273), (82, 60282), (83, 60294), (87, 60318), (93, 60354), (105, 60408), (106, 60411), (121, 60525), (125, 60558),

Gene: ABCat_98 Start: 60753, Stop: 61559, Start Num: 9

Candidate Starts for ABCat_98:

(Start: 4 @60645 has 6 MA's), (Start: 7 @60699 has 8 MA's), (Start: 9 @60753 has 42 MA's), (Start: 13 @60780 has 72 MA's), (Start: 14 @60798 has 4 MA's), (Start: 29 @60882 has 25 MA's), (54, 61050), (56, 61065), (61, 61086), (65, 61122), (68, 61134), (71, 61167), (79, 61251), (81, 61257), (82, 61266), (83, 61278), (87, 61302), (93, 61338), (105, 61392), (106, 61395), (121, 61509), (125, 61542),

Gene: Adnama_105 Start: 60063, Stop: 60869, Start Num: 9

Candidate Starts for Adnama_105:

(3, 59877), (Start: 4 @59955 has 6 MA's), (Start: 7 @60009 has 8 MA's), (Start: 9 @60063 has 42 MA's), (Start: 13 @60090 has 72 MA's), (Start: 14 @60108 has 4 MA's), (Start: 29 @60192 has 25 MA's), (54, 60360), (56, 60375), (65, 60432), (68, 60444), (71, 60477), (79, 60561), (81, 60567), (82, 60576), (83, 60588), (87, 60612), (93, 60648), (105, 60702), (106, 60705), (121, 60819), (125, 60852),

Gene: Amao_101 Start: 60204, Stop: 60983, Start Num: 13

Candidate Starts for Amao_101:

(Start: 4 @60069 has 6 MA's), (Start: 7 @60123 has 8 MA's), (Start: 9 @60177 has 42 MA's), (Start: 13 @60204 has 72 MA's), (Start: 14 @60222 has 4 MA's), (Start: 29 @60306 has 25 MA's), (54, 60474), (56, 60489), (61, 60510), (65, 60546), (68, 60558), (71, 60591), (79, 60675), (81, 60681), (82, 60690), (83, 60702), (87, 60726), (93, 60762), (105, 60816), (106, 60819), (121, 60933), (125, 60966),

Gene: AmericanBeauty_105 Start: 60331, Stop: 61110, Start Num: 13

Candidate Starts for AmericanBeauty_105:

(Start: 7 @60250 has 8 MA's), (Start: 9 @60304 has 42 MA's), (Start: 13 @60331 has 72 MA's), (Start: 14 @60349 has 4 MA's), (Start: 29 @60433 has 25 MA's), (54, 60601), (56, 60616), (61, 60637), (65, 60673), (68, 60685), (71, 60718), (79, 60802), (81, 60808), (82, 60817), (83, 60829), (87, 60853), (93, 60889), (105, 60943), (106, 60946), (121, 61060), (125, 61093),

Gene: Archie_87 Start: 57239, Stop: 57889, Start Num: 30

Candidate Starts for Archie_87:

(Start: 30 @57239 has 2 MA's), (39, 57308), (40, 57311), (49, 57365), (54, 57395), (65, 57467), (70, 57503), (71, 57512), (75, 57545), (77, 57569), (79, 57575), (81, 57581), (82, 57590), (83, 57602), (86, 57617), (93, 57662), (106, 57719), (125, 57866),

Gene: Argent26_105 Start: 60014, Stop: 60793, Start Num: 13

Candidate Starts for Argent26_105:

(3, 59801), (Start: 4 @59879 has 6 MA's), (Start: 7 @59933 has 8 MA's), (Start: 9 @59987 has 42 MA's), (Start: 13 @60014 has 72 MA's), (Start: 14 @60032 has 4 MA's), (Start: 29 @60116 has 25 MA's), (54, 60284), (56, 60299), (65, 60356), (68, 60368), (71, 60401), (79, 60485), (81, 60491), (82, 60500), (83, 60512), (87, 60536), (93, 60572), (105, 60626), (106, 60629), (121, 60743), (125, 60776),

Gene: Ariel_156 Start: 80329, Stop: 81039, Start Num: 16

Candidate Starts for Ariel_156:

(Start: 16 @80329 has 41 MA's), (54, 80551), (57, 80575), (59, 80578), (61, 80587), (75, 80701), (79, 80731), (81, 80737), (82, 80746), (83, 80758), (89, 80794), (90, 80797), (104, 80863), (107, 80890), (118, 80971), (122, 81007),

Gene: Asriel_99 Start: 58427, Stop: 59206, Start Num: 13

Candidate Starts for Asriel_99:

(Start: 4 @58292 has 6 MA's), (Start: 7 @58346 has 8 MA's), (Start: 9 @58400 has 42 MA's), (Start: 13 @58427 has 72 MA's), (Start: 14 @58445 has 4 MA's), (Start: 29 @58529 has 25 MA's), (54, 58697), (56, 58712), (61, 58733), (65, 58769), (68, 58781), (71, 58814), (79, 58898), (81, 58904), (82, 58913), (83, 58925), (87, 58949), (93, 58985), (105, 59039), (106, 59042), (121, 59156), (125, 59189),

Gene: Auspice_58 Start: 40662, Stop: 41249, Start Num: 37

Candidate Starts for Auspice_58:

(Start: 37 @40662 has 22 MA's), (45, 40707), (46, 40710), (47, 40713), (61, 40797), (91, 41016), (92, 41022), (93, 41028), (102, 41067), (114, 41154), (117, 41175), (121, 41196), (122, 41214),

Gene: Aziz_64 Start: 42683, Stop: 43279, Start Num: 37

Candidate Starts for Aziz_64:

(Start: 37 @42683 has 22 MA's), (45, 42731), (46, 42734), (61, 42824), (74, 42923), (82, 42983), (91, 43043), (92, 43049), (93, 43055), (99, 43082), (109, 43136), (112, 43175), (126, 43268), (127, 43271),

Gene: Azrael100_68 Start: 45596, Stop: 46153, Start Num: 43

Candidate Starts for Azrael100_68:

(Start: 43 @45596 has 5 MA's), (47, 45611), (54, 45662), (56, 45677), (78, 45839), (80, 45845), (83, 45869), (84, 45878), (86, 45884), (95, 45938), (98, 45953), (101, 45965), (103, 45974), (109, 46016), (110, 46034), (111, 46040), (112, 46055), (119, 46094), (121, 46103), (125, 46136), (126, 46145),

Gene: BAKA_159 Start: 84277, Stop: 84987, Start Num: 16

Candidate Starts for BAKA_159:

(10, 84214), (11, 84229), (Start: 16 @84277 has 41 MA's), (54, 84499), (57, 84523), (59, 84526), (61, 84535), (79, 84679), (81, 84685), (82, 84694), (83, 84706), (90, 84745), (106, 84823), (107, 84838), (118, 84919),

Gene: BaboJay_101 Start: 60969, Stop: 61748, Start Num: 13

Candidate Starts for BaboJay_101:

(Start: 7 @60888 has 8 MA's), (Start: 9 @60942 has 42 MA's), (Start: 13 @60969 has 72 MA's), (Start: 14 @60987 has 4 MA's), (Start: 29 @61071 has 25 MA's), (54, 61239), (56, 61254), (61, 61275), (65, 61311), (68, 61323), (71, 61356), (79, 61440), (81, 61446), (82, 61455), (83, 61467), (87, 61491), (93, 61527), (105, 61581), (106, 61584), (125, 61731),

Gene: BadStone_98 Start: 60349, Stop: 61128, Start Num: 13

Candidate Starts for BadStone_98:

(Start: 4 @60214 has 6 MA's), (Start: 7 @60268 has 8 MA's), (Start: 9 @60322 has 42 MA's), (Start: 13 @60349 has 72 MA's), (Start: 14 @60367 has 4 MA's), (Start: 29 @60451 has 25 MA's), (54, 60619),

(56, 60634), (61, 60655), (65, 60691), (68, 60703), (71, 60736), (79, 60820), (81, 60826), (82, 60835), (83, 60847), (87, 60871), (93, 60907), (105, 60961), (106, 60964), (121, 61078), (125, 61111),

Gene: Bagrid_162 Start: 85506, Stop: 86216, Start Num: 16

Candidate Starts for Bagrid_162:

(Start: 16 @85506 has 41 MA's), (54, 85728), (57, 85752), (59, 85755), (61, 85764), (79, 85908), (81, 85914), (82, 85923), (83, 85935), (90, 85974), (106, 86052), (107, 86067), (118, 86148),

Gene: Balomoji_101 Start: 60075, Stop: 60989, Start Num: 4

Candidate Starts for Balomoji_101:

(Start: 4 @60075 has 6 MA's), (Start: 7 @60129 has 8 MA's), (Start: 9 @60183 has 42 MA's), (Start: 13 @60210 has 72 MA's), (Start: 14 @60228 has 4 MA's), (Start: 29 @60312 has 25 MA's), (54, 60480), (56, 60495), (61, 60516), (65, 60552), (68, 60564), (71, 60597), (79, 60681), (81, 60687), (82, 60696), (83, 60708), (87, 60732), (93, 60768), (105, 60822), (106, 60825), (121, 60939), (125, 60972),

Gene: Baoshan_90 Start: 57893, Stop: 58579, Start Num: 21

Candidate Starts for Baoshan_90:

(Start: 21 @57893 has 16 MA's), (Start: 27 @57917 has 1 MA's), (40, 57998), (49, 58052), (54, 58082), (65, 58154), (66, 58160), (75, 58232), (77, 58256), (79, 58262), (82, 58277), (83, 58289), (84, 58298), (93, 58349), (106, 58406), (120, 58514), (125, 58553), (128, 58571),

Gene: Barbarian_100 Start: 58400, Stop: 59206, Start Num: 9

Candidate Starts for Barbarian_100:

(Start: 4 @58292 has 6 MA's), (Start: 7 @58346 has 8 MA's), (Start: 9 @58400 has 42 MA's), (Start: 13 @58427 has 72 MA's), (Start: 14 @58445 has 4 MA's), (Start: 29 @58529 has 25 MA's), (54, 58697), (56, 58712), (61, 58733), (65, 58769), (68, 58781), (71, 58814), (79, 58898), (81, 58904), (82, 58913), (83, 58925), (87, 58949), (93, 58985), (105, 59039), (106, 59042), (121, 59156), (125, 59189),

Gene: Bask21_101 Start: 59039, Stop: 59845, Start Num: 9

Candidate Starts for Bask21_101:

(Start: 4 @58931 has 6 MA's), (Start: 7 @58985 has 8 MA's), (Start: 9 @59039 has 42 MA's), (Start: 13 @59066 has 72 MA's), (Start: 14 @59084 has 4 MA's), (Start: 29 @59168 has 25 MA's), (54, 59336), (56, 59351), (61, 59372), (65, 59408), (68, 59420), (71, 59453), (79, 59537), (81, 59543), (82, 59552), (83, 59564), (87, 59588), (93, 59624), (105, 59678), (106, 59681), (121, 59795), (125, 59828),

Gene: Bazzle_87 Start: 57795, Stop: 58445, Start Num: 30

Candidate Starts for Bazzle_87:

(Start: 30 @57795 has 2 MA's), (39, 57864), (40, 57867), (49, 57921), (54, 57951), (65, 58023), (70, 58059), (71, 58068), (75, 58101), (77, 58125), (79, 58131), (81, 58137), (82, 58146), (83, 58158), (86, 58173), (93, 58218), (106, 58275), (120, 58383), (125, 58422),

Gene: Becksu_99 Start: 60403, Stop: 61182, Start Num: 13

Candidate Starts for Becksu_99:

(3, 60190), (Start: 4 @60268 has 6 MA's), (Start: 7 @60322 has 8 MA's), (Start: 9 @60376 has 42 MA's), (Start: 13 @60403 has 72 MA's), (Start: 14 @60421 has 4 MA's), (Start: 29 @60505 has 25 MA's), (54, 60673), (56, 60688), (61, 60709), (65, 60745), (68, 60757), (71, 60790), (79, 60874), (81, 60880), (82, 60889), (83, 60901), (87, 60925), (93, 60961), (105, 61015), (106, 61018), (121, 61132), (125, 61165),

Gene: Beem_159 Start: 85469, Stop: 86179, Start Num: 16

Candidate Starts for Beem_159:

(Start: 16 @85469 has 41 MA's), (54, 85691), (57, 85715), (59, 85718), (61, 85727), (74, 85826), (75, 85841), (79, 85871), (82, 85886), (83, 85898), (90, 85937), (106, 86015), (107, 86030), (118, 86111),

Gene: Bellis_87 Start: 57329, Stop: 57982, Start Num: 29

Candidate Starts for Bellis_87:

(Start: 29 @57329 has 25 MA's), (34, 57368), (40, 57404), (49, 57458), (50, 57461), (54, 57488), (61, 57524), (65, 57560), (75, 57638), (79, 57668), (81, 57674), (83, 57695), (84, 57704), (86, 57710), (93, 57755), (94, 57758), (106, 57812), (111, 57857), (114, 57878), (120, 57920), (124, 57956), (125, 57959),

Gene: Bench_104 Start: 60970, Stop: 61749, Start Num: 13

Candidate Starts for Bench_104:

(Start: 7 @60889 has 8 MA's), (Start: 9 @60943 has 42 MA's), (Start: 13 @60970 has 72 MA's), (Start: 14 @60988 has 4 MA's), (Start: 29 @61072 has 25 MA's), (54, 61240), (56, 61255), (61, 61276), (65, 61312), (68, 61324), (71, 61357), (79, 61441), (81, 61447), (82, 61456), (83, 61468), (87, 61492), (93, 61528), (105, 61582), (106, 61585), (121, 61699), (125, 61732),

Gene: BigBubba_101 Start: 59096, Stop: 59902, Start Num: 9

Candidate Starts for BigBubba_101:

(Start: 7 @59042 has 8 MA's), (Start: 9 @59096 has 42 MA's), (Start: 13 @59123 has 72 MA's), (Start: 14 @59141 has 4 MA's), (Start: 29 @59225 has 25 MA's), (54, 59393), (56, 59408), (61, 59429), (65, 59465), (68, 59477), (71, 59510), (79, 59594), (81, 59600), (82, 59609), (83, 59621), (87, 59645), (93, 59681), (105, 59735), (106, 59738), (121, 59852), (125, 59885),

Gene: BigCheese_90 Start: 58042, Stop: 58695, Start Num: 29

Candidate Starts for BigCheese_90:

(Start: 29 @58042 has 25 MA's), (40, 58117), (49, 58171), (54, 58201), (65, 58273), (66, 58279), (75, 58351), (77, 58375), (79, 58381), (82, 58396), (83, 58408), (86, 58423), (93, 58468), (106, 58525), (120, 58633), (123, 58663), (125, 58672),

Gene: BilboSwaggins_99 Start: 60749, Stop: 61528, Start Num: 13

Candidate Starts for BilboSwaggins_99:

(3, 60536), (Start: 4 @60614 has 6 MA's), (Start: 7 @60668 has 8 MA's), (Start: 9 @60722 has 42 MA's), (Start: 13 @60749 has 72 MA's), (Start: 14 @60767 has 4 MA's), (Start: 29 @60851 has 25 MA's), (54, 61019), (56, 61034), (65, 61091), (68, 61103), (71, 61136), (79, 61220), (81, 61226), (82, 61235), (83, 61247), (87, 61271), (93, 61307), (105, 61361), (106, 61364), (121, 61478), (125, 61511),

Gene: Bobby_148 Start: 85819, Stop: 86529, Start Num: 16

Candidate Starts for Bobby_148:

(Start: 16 @85819 has 41 MA's), (54, 86041), (57, 86065), (59, 86068), (61, 86077), (66, 86119), (75, 86191), (79, 86221), (82, 86236), (83, 86248), (90, 86287), (106, 86365), (107, 86380), (118, 86461),

Gene: BobsGarage_89 Start: 58042, Stop: 58695, Start Num: 29

Candidate Starts for BobsGarage_89:

(Start: 29 @58042 has 25 MA's), (40, 58117), (49, 58171), (54, 58201), (65, 58273), (66, 58279), (75, 58351), (77, 58375), (79, 58381), (82, 58396), (83, 58408), (86, 58423), (93, 58468), (106, 58525), (120, 58633), (123, 58663), (125, 58672),

Gene: Bogg_101 Start: 60290, Stop: 61069, Start Num: 13

Candidate Starts for Bogg_101:

(Start: 7 @60209 has 8 MA's), (Start: 9 @60263 has 42 MA's), (Start: 13 @60290 has 72 MA's), (Start: 14 @60308 has 4 MA's), (Start: 29 @60392 has 25 MA's), (54, 60560), (56, 60575), (65, 60632), (68, 60644), (71, 60677), (79, 60761), (81, 60767), (82, 60776), (83, 60788), (87, 60812), (93, 60848), (105, 60902), (106, 60905), (121, 61019), (125, 61052),

Gene: Bombitas_145 Start: 81475, Stop: 82185, Start Num: 16

Candidate Starts for Bombitas_145:

(Start: 16 @81475 has 41 MA's), (54, 81697), (57, 81721), (59, 81724), (61, 81733), (74, 81832), (75, 81847), (79, 81877), (81, 81883), (82, 81892), (83, 81904), (90, 81943), (107, 82036), (118, 82117), (122, 82153),

Gene: Bongo_58 Start: 40666, Stop: 41253, Start Num: 37

Candidate Starts for Bongo_58:

(Start: 37 @40666 has 22 MA's), (45, 40711), (46, 40714), (47, 40717), (61, 40801), (91, 41020), (92, 41026), (93, 41032), (102, 41071), (114, 41158), (117, 41179), (121, 41200), (122, 41218),

Gene: BourbonZero_88 Start: 57358, Stop: 58008, Start Num: 29

Candidate Starts for BourbonZero_88:

(Start: 29 @57358 has 25 MA's), (40, 57430), (49, 57484), (50, 57487), (54, 57514), (61, 57550), (65, 57586), (75, 57664), (79, 57694), (81, 57700), (83, 57721), (84, 57730), (86, 57736), (89, 57757), (93, 57781), (94, 57784), (96, 57793), (106, 57838), (111, 57883), (114, 57904), (120, 57946), (124, 57982), (125, 57985), (128, 58003),

Gene: BrainDrainer_92 Start: 57521, Stop: 58210, Start Num: 21

Candidate Starts for BrainDrainer_92:

(Start: 21 @57521 has 16 MA's), (40, 57629), (48, 57668), (49, 57683), (50, 57686), (56, 57728), (61, 57749), (65, 57785), (77, 57887), (81, 57899), (82, 57908), (83, 57920), (84, 57929), (86, 57935), (93, 57980), (96, 57992), (104, 58025), (106, 58037), (125, 58184),

Gene: Breezona_90 Start: 58042, Stop: 58695, Start Num: 29

Candidate Starts for Breezona_90:

(Start: 29 @58042 has 25 MA's), (40, 58117), (49, 58171), (54, 58201), (65, 58273), (66, 58279), (75, 58351), (77, 58375), (79, 58381), (82, 58396), (83, 58408), (86, 58423), (93, 58468), (106, 58525), (120, 58633), (123, 58663), (125, 58672),

Gene: Brewer_97 Start: 58948, Stop: 59727, Start Num: 13

Candidate Starts for Brewer_97:

(Start: 4 @58813 has 6 MA's), (Start: 7 @58867 has 8 MA's), (Start: 9 @58921 has 42 MA's), (Start: 13 @58948 has 72 MA's), (Start: 14 @58966 has 4 MA's), (Start: 29 @59050 has 25 MA's), (54, 59218), (56, 59233), (65, 59290), (68, 59302), (71, 59335), (79, 59419), (81, 59425), (82, 59434), (83, 59446), (87, 59470), (93, 59506), (105, 59560), (106, 59563), (121, 59677), (125, 59710),

Gene: Bricole_58 Start: 40648, Stop: 41235, Start Num: 37

Candidate Starts for Bricole_58:

(Start: 37 @40648 has 22 MA's), (45, 40693), (46, 40696), (47, 40699), (61, 40783), (91, 41002), (92, 41008), (93, 41014), (102, 41053), (106, 41074), (114, 41140), (117, 41161), (121, 41182), (122, 41200),

Gene: Bromden_90 Start: 58275, Stop: 58931, Start Num: 27

Candidate Starts for Bromden_90:

(Start: 27 @58275 has 1 MA's), (39, 58347), (40, 58350), (48, 58389), (49, 58404), (54, 58434), (56, 58449), (64, 58488), (65, 58506), (77, 58608), (81, 58620), (82, 58629), (83, 58641), (84, 58650), (86, 58656), (93, 58701), (96, 58713), (104, 58746), (106, 58758), (125, 58905),

Gene: BronnyJames_151 Start: 80590, Stop: 81300, Start Num: 16

Candidate Starts for BronnyJames_151:

(Start: 16 @80590 has 41 MA's), (54, 80812), (57, 80836), (59, 80839), (61, 80848), (79, 80992), (81, 80998), (82, 81007), (83, 81019), (89, 81055), (90, 81058), (107, 81151), (116, 81217), (118, 81232),

(122, 81268),

Gene: Bruin_98 Start: 59428, Stop: 60234, Start Num: 9

Candidate Starts for Bruin_98:

(3, 59242), (Start: 4 @59320 has 6 MA's), (Start: 7 @59374 has 8 MA's), (Start: 9 @59428 has 42 MA's), (Start: 13 @59455 has 72 MA's), (Start: 14 @59473 has 4 MA's), (Start: 29 @59557 has 25 MA's), (54, 59725), (56, 59740), (61, 59761), (65, 59797), (68, 59809), (71, 59842), (79, 59926), (81, 59932), (82, 59941), (83, 59953), (87, 59977), (93, 60013), (105, 60067), (106, 60070), (121, 60184), (125, 60217),

Gene: Buck_102 Start: 61292, Stop: 62071, Start Num: 13

Candidate Starts for Buck_102:

(3, 61079), (Start: 4 @61157 has 6 MA's), (Start: 7 @61211 has 8 MA's), (Start: 9 @61265 has 42 MA's), (Start: 13 @61292 has 72 MA's), (Start: 14 @61310 has 4 MA's), (Start: 29 @61394 has 25 MA's), (54, 61562), (56, 61577), (65, 61634), (68, 61646), (71, 61679), (79, 61763), (81, 61769), (82, 61778), (83, 61790), (87, 61814), (93, 61850), (105, 61904), (106, 61907), (121, 62021), (125, 62054),

Gene: Budgie_108 Start: 60629, Stop: 61396, Start Num: 9

Candidate Starts for Budgie_108:

(1, 60236), (2, 60410), (5, 60527), (6, 60563), (Start: 7 @60575 has 8 MA's), (Start: 9 @60629 has 42 MA's), (Start: 13 @60656 has 72 MA's), (Start: 14 @60677 has 4 MA's), (Start: 27 @60752 has 1 MA's), (56, 60902), (63, 60929), (65, 60959), (67, 60968), (68, 60971), (71, 61004), (79, 61088), (81, 61094), (82, 61103), (83, 61115), (93, 61175), (105, 61229), (111, 61277), (125, 61379),

Gene: BugsBunny_100 Start: 60742, Stop: 61548, Start Num: 9

Candidate Starts for BugsBunny_100:

(Start: 7 @60688 has 8 MA's), (Start: 9 @60742 has 42 MA's), (Start: 13 @60769 has 72 MA's), (Start: 14 @60787 has 4 MA's), (Start: 29 @60871 has 25 MA's), (54, 61039), (56, 61054), (61, 61075), (65, 61111), (68, 61123), (71, 61156), (79, 61240), (81, 61246), (82, 61255), (83, 61267), (87, 61291), (93, 61327), (105, 61381), (106, 61384), (121, 61498), (125, 61531),

Gene: Cactus_105 Start: 59709, Stop: 60488, Start Num: 13

Candidate Starts for Cactus_105:

(Start: 4 @59574 has 6 MA's), (Start: 7 @59628 has 8 MA's), (Start: 9 @59682 has 42 MA's), (Start: 13 @59709 has 72 MA's), (Start: 14 @59727 has 4 MA's), (Start: 29 @59811 has 25 MA's), (54, 59979), (56, 59994), (61, 60015), (65, 60051), (68, 60063), (71, 60096), (79, 60180), (81, 60186), (82, 60195), (83, 60207), (87, 60231), (93, 60267), (105, 60321), (106, 60324), (121, 60438), (125, 60471),

Gene: Chaser_89 Start: 56649, Stop: 57341, Start Num: 21

Candidate Starts for Chaser_89:

(Start: 21 @56649 has 16 MA's), (49, 56814), (54, 56844), (56, 56859), (61, 56880), (65, 56916), (77, 57018), (81, 57030), (82, 57039), (83, 57051), (84, 57060), (86, 57066), (93, 57111), (96, 57123), (104, 57156), (106, 57168), (125, 57315),

Gene: ChosenOne_101 Start: 59658, Stop: 60437, Start Num: 13

Candidate Starts for ChosenOne_101:

(Start: 7 @59577 has 8 MA's), (Start: 9 @59631 has 42 MA's), (Start: 13 @59658 has 72 MA's), (Start: 14 @59676 has 4 MA's), (Start: 29 @59760 has 25 MA's), (54, 59928), (56, 59943), (61, 59964), (65, 60000), (68, 60012), (71, 60045), (79, 60129), (81, 60135), (82, 60144), (83, 60156), (87, 60180), (93, 60216), (105, 60270), (106, 60273), (121, 60387), (125, 60420),

Gene: ChotaBhai_101 Start: 60068, Stop: 60847, Start Num: 13

Candidate Starts for ChotaBhai_101:

(Start: 4 @59933 has 6 MA's), (Start: 7 @59987 has 8 MA's), (Start: 9 @60041 has 42 MA's), (Start: 13 @60068 has 72 MA's), (Start: 14 @60086 has 4 MA's), (Start: 29 @60170 has 25 MA's), (54, 60338), (56, 60353), (61, 60374), (65, 60410), (68, 60422), (71, 60455), (79, 60539), (81, 60545), (82, 60554), (83, 60566), (87, 60590), (93, 60626), (105, 60680), (106, 60683), (121, 60797), (125, 60830),

Gene: ChutneyChips_92 Start: 57398, Stop: 58090, Start Num: 21

Candidate Starts for ChutneyChips_92:

(Start: 21 @57398 has 16 MA's), (49, 57563), (54, 57593), (56, 57608), (61, 57629), (65, 57665), (77, 57767), (81, 57779), (82, 57788), (83, 57800), (84, 57809), (86, 57815), (93, 57860), (96, 57872), (104, 57905), (106, 57917), (125, 58064),

Gene: Cjw1_102 Start: 61582, Stop: 62442, Start Num: 7

Candidate Starts for Cjw1_102:

(Start: 7 @61582 has 8 MA's), (Start: 9 @61636 has 42 MA's), (Start: 13 @61663 has 72 MA's), (Start: 14 @61681 has 4 MA's), (Start: 29 @61765 has 25 MA's), (54, 61933), (56, 61948), (61, 61969), (65, 62005), (68, 62017), (71, 62050), (79, 62134), (81, 62140), (82, 62149), (83, 62161), (87, 62185), (93, 62221), (105, 62275), (106, 62278), (121, 62392), (125, 62425),

Gene: Claus_88 Start: 57577, Stop: 58230, Start Num: 31

Candidate Starts for Claus_88:

(Start: 31 @57577 has 2 MA's), (40, 57649), (49, 57703), (54, 57733), (65, 57805), (66, 57811), (75, 57883), (77, 57907), (79, 57913), (82, 57928), (83, 57940), (84, 57949), (93, 58000), (96, 58012), (106, 58057), (120, 58165), (125, 58204), (128, 58222),

Gene: Clautastrophe_85 Start: 57327, Stop: 57977, Start Num: 29

Candidate Starts for Clautastrophe_85:

(Start: 29 @57327 has 25 MA's), (34, 57363), (40, 57399), (49, 57453), (50, 57456), (54, 57483), (61, 57519), (65, 57555), (75, 57633), (79, 57663), (81, 57669), (83, 57690), (84, 57699), (86, 57705), (93, 57750), (94, 57753), (106, 57807), (111, 57852), (114, 57873), (120, 57915), (124, 57951), (125, 57954),

Gene: Command613_103 Start: 60224, Stop: 61003, Start Num: 13

Candidate Starts for Command613_103:

(3, 60011), (Start: 4 @60089 has 6 MA's), (Start: 7 @60143 has 8 MA's), (Start: 9 @60197 has 42 MA's), (Start: 13 @60224 has 72 MA's), (Start: 14 @60242 has 4 MA's), (Start: 29 @60326 has 25 MA's), (54, 60494), (56, 60509), (61, 60530), (65, 60566), (68, 60578), (71, 60611), (79, 60695), (81, 60701), (82, 60710), (83, 60722), (87, 60746), (93, 60782), (105, 60836), (106, 60839), (121, 60953), (125, 60986),

Gene: Constella_150 Start: 82508, Stop: 83218, Start Num: 16

Candidate Starts for Constella_150:

(Start: 16 @82508 has 41 MA's), (54, 82730), (57, 82754), (59, 82757), (61, 82766), (66, 82808), (75, 82880), (79, 82910), (82, 82925), (83, 82937), (90, 82976), (106, 83054), (107, 83069), (118, 83150),

Gene: Contagion_97 Start: 59790, Stop: 60596, Start Num: 9

Candidate Starts for Contagion_97:

(3, 59604), (Start: 4 @59682 has 6 MA's), (Start: 7 @59736 has 8 MA's), (Start: 9 @59790 has 42 MA's), (Start: 13 @59817 has 72 MA's), (Start: 14 @59835 has 4 MA's), (Start: 29 @59919 has 25 MA's), (54, 60087), (56, 60102), (61, 60123), (65, 60159), (68, 60171), (71, 60204), (79, 60288), (81, 60294), (82, 60303), (83, 60315), (87, 60339), (93, 60375), (105, 60429), (106, 60432), (121, 60546), (125, 60579),

Gene: Cookies_98 Start: 59994, Stop: 60773, Start Num: 13

Candidate Starts for Cookies_98:

(Start: 4 @59859 has 6 MA's), (Start: 7 @59913 has 8 MA's), (Start: 9 @59967 has 42 MA's), (Start: 13 @59994 has 72 MA's), (Start: 14 @60012 has 4 MA's), (Start: 29 @60096 has 25 MA's), (54, 60264), (56, 60279), (61, 60300), (65, 60336), (68, 60348), (71, 60381), (79, 60465), (81, 60471), (82, 60480), (83, 60492), (87, 60516), (93, 60552), (105, 60606), (106, 60609), (121, 60723), (125, 60756),

Gene: Cosmo_69 Start: 45597, Stop: 46154, Start Num: 43

Candidate Starts for Cosmo_69:

(Start: 43 @45597 has 5 MA's), (47, 45612), (54, 45663), (56, 45678), (78, 45840), (80, 45846), (83, 45870), (84, 45879), (86, 45885), (95, 45939), (98, 45954), (101, 45966), (103, 45975), (109, 46017), (110, 46035), (111, 46041), (112, 46056), (119, 46095), (121, 46104), (125, 46137), (126, 46146),

Gene: Courthouse_152 Start: 80187, Stop: 80897, Start Num: 16

Candidate Starts for Courthouse_152:

(Start: 16 @80187 has 41 MA's), (54, 80409), (57, 80433), (59, 80436), (61, 80445), (75, 80559), (79, 80589), (81, 80595), (82, 80604), (83, 80616), (89, 80652), (90, 80655), (107, 80748), (118, 80829), (122, 80865),

Gene: Crossroads_90 Start: 57736, Stop: 58407, Start Num: 23

Candidate Starts for Crossroads_90:

(Start: 23 @57736 has 4 MA's), (Start: 25 @57739 has 5 MA's), (40, 57829), (49, 57883), (54, 57913), (65, 57985), (66, 57991), (75, 58063), (77, 58087), (79, 58093), (82, 58108), (83, 58120), (86, 58135), (93, 58180), (106, 58237), (120, 58345), (123, 58375), (125, 58384),

Gene: CrystalP_100 Start: 60749, Stop: 61528, Start Num: 13

Candidate Starts for CrystalP_100:

(3, 60536), (Start: 4 @60614 has 6 MA's), (Start: 7 @60668 has 8 MA's), (Start: 9 @60722 has 42 MA's), (Start: 13 @60749 has 72 MA's), (Start: 14 @60767 has 4 MA's), (Start: 29 @60851 has 25 MA's), (54, 61019), (56, 61034), (65, 61091), (68, 61103), (71, 61136), (79, 61220), (81, 61226), (82, 61235), (83, 61247), (87, 61271), (93, 61307), (105, 61361), (106, 61364), (121, 61478), (125, 61511),

Gene: Czyszczone1_102 Start: 60009, Stop: 60788, Start Num: 13

Candidate Starts for Czyszczone1_102:

(Start: 4 @59874 has 6 MA's), (Start: 7 @59928 has 8 MA's), (Start: 9 @59982 has 42 MA's), (Start: 13 @60009 has 72 MA's), (Start: 14 @60027 has 4 MA's), (Start: 29 @60111 has 25 MA's), (54, 60279), (56, 60294), (61, 60315), (65, 60351), (68, 60363), (71, 60396), (79, 60480), (81, 60486), (82, 60495), (83, 60507), (87, 60531), (93, 60567), (105, 60621), (106, 60624), (121, 60738), (125, 60771),

Gene: DHan_93 Start: 57956, Stop: 58609, Start Num: 31

Candidate Starts for DHan_93:

(Start: 31 @57956 has 2 MA's), (40, 58028), (49, 58082), (54, 58112), (65, 58184), (66, 58190), (71, 58229), (75, 58262), (77, 58286), (79, 58292), (82, 58307), (83, 58319), (84, 58328), (93, 58379), (106, 58436), (120, 58544), (125, 58583), (128, 58601),

Gene: Daikon_101 Start: 59641, Stop: 60402, Start Num: 14

Candidate Starts for Daikon_101:

(3, 59410), (Start: 4 @59488 has 6 MA's), (Start: 7 @59542 has 8 MA's), (Start: 9 @59596 has 42 MA's), (Start: 13 @59623 has 72 MA's), (Start: 14 @59641 has 4 MA's), (Start: 29 @59725 has 25 MA's), (54, 59893), (56, 59908), (65, 59965), (68, 59977), (71, 60010), (79, 60094), (81, 60100), (82, 60109), (83, 60121), (87, 60145), (93, 60181), (105, 60235), (106, 60238), (121, 60352), (125, 60385),

Gene: Dallas_158 Start: 84692, Stop: 85402, Start Num: 16

Candidate Starts for Dallas_158:

(Start: 16 @84692 has 41 MA's), (54, 84914), (57, 84938), (59, 84941), (61, 84950), (74, 85049), (75, 85064), (79, 85094), (82, 85109), (83, 85121), (90, 85160), (106, 85238), (107, 85253), (118, 85334),

Gene: DanBing_89 Start: 57454, Stop: 58140, Start Num: 21

Candidate Starts for DanBing_89:

(Start: 21 @57454 has 16 MA's), (Start: 27 @57478 has 1 MA's), (40, 57559), (49, 57613), (54, 57643), (65, 57715), (66, 57721), (75, 57793), (77, 57817), (79, 57823), (83, 57850), (84, 57859), (93, 57910), (106, 57967), (120, 58075), (125, 58114), (128, 58132),

Gene: Diminimus_59 Start: 40661, Stop: 41248, Start Num: 37

Candidate Starts for Diminimus_59:

(Start: 37 @40661 has 22 MA's), (45, 40706), (46, 40709), (47, 40712), (61, 40796), (91, 41015), (92, 41021), (93, 41027), (102, 41066), (114, 41153), (117, 41174), (121, 41195), (122, 41213),

Gene: DmpstrDiver_158 Start: 83419, Stop: 84129, Start Num: 16

Candidate Starts for DmpstrDiver_158:

(Start: 16 @83419 has 41 MA's), (54, 83641), (57, 83665), (59, 83668), (61, 83677), (74, 83776), (75, 83791), (79, 83821), (82, 83836), (83, 83848), (90, 83887), (106, 83965), (107, 83980), (118, 84061),

Gene: DoctorDiddles_100 Start: 59472, Stop: 60251, Start Num: 13

Candidate Starts for DoctorDiddles_100:

(Start: 4 @59337 has 6 MA's), (Start: 7 @59391 has 8 MA's), (Start: 9 @59445 has 42 MA's), (Start: 13 @59472 has 72 MA's), (Start: 14 @59490 has 4 MA's), (Start: 29 @59574 has 25 MA's), (54, 59742), (56, 59757), (61, 59778), (65, 59814), (68, 59826), (71, 59859), (79, 59943), (81, 59949), (82, 59958), (83, 59970), (87, 59994), (93, 60030), (105, 60084), (106, 60087), (121, 60201), (125, 60234),

Gene: Douge_91 Start: 56944, Stop: 57627, Start Num: 21

Candidate Starts for Douge_91:

(Start: 21 @56944 has 16 MA's), (Start: 27 @56968 has 1 MA's), (49, 57100), (54, 57130), (56, 57145), (61, 57166), (65, 57202), (77, 57304), (81, 57316), (82, 57325), (83, 57337), (84, 57346), (86, 57352), (93, 57397), (96, 57409), (104, 57442), (106, 57454), (125, 57601),

Gene: Douzhi_91 Start: 57210, Stop: 57899, Start Num: 21

Candidate Starts for Douzhi_91:

(Start: 21 @57210 has 16 MA's), (40, 57318), (48, 57357), (49, 57372), (50, 57375), (56, 57417), (61, 57438), (65, 57474), (77, 57576), (81, 57588), (82, 57597), (83, 57609), (84, 57618), (86, 57624), (93, 57669), (96, 57681), (104, 57714), (106, 57726), (125, 57873),

Gene: Dove_145 Start: 79831, Stop: 80541, Start Num: 16

Candidate Starts for Dove_145:

(Start: 16 @79831 has 41 MA's), (54, 80053), (57, 80077), (59, 80080), (61, 80089), (74, 80188), (75, 80203), (79, 80233), (81, 80239), (82, 80248), (83, 80260), (90, 80299), (107, 80392), (118, 80473), (122, 80509),

Gene: DrDrey_101 Start: 61460, Stop: 62266, Start Num: 9

Candidate Starts for DrDrey_101:

(Start: 4 @61352 has 6 MA's), (Start: 7 @61406 has 8 MA's), (Start: 9 @61460 has 42 MA's), (Start: 13 @61487 has 72 MA's), (Start: 14 @61505 has 4 MA's), (Start: 29 @61589 has 25 MA's), (54, 61757), (56, 61772), (61, 61793), (65, 61829), (68, 61841), (71, 61874), (79, 61958), (81, 61964), (82, 61973), (83, 61985), (87, 62009), (93, 62045), (105, 62099), (106, 62102), (121, 62216), (125, 62249),

Gene: DrSeegs_89 Start: 58042, Stop: 58695, Start Num: 29

Candidate Starts for DrSeegs_89:

(Start: 29 @58042 has 25 MA's), (40, 58117), (49, 58171), (54, 58201), (65, 58273), (66, 58279), (75, 58351), (77, 58375), (79, 58381), (82, 58396), (83, 58408), (86, 58423), (93, 58468), (106, 58525), (120, 58633), (123, 58663), (125, 58672),

Gene: Duke13_156 Start: 82773, Stop: 83483, Start Num: 16

Candidate Starts for Duke13_156:

(Start: 16 @82773 has 41 MA's), (54, 82995), (57, 83019), (59, 83022), (61, 83031), (79, 83175), (81, 83181), (82, 83190), (83, 83202), (90, 83241), (106, 83319), (107, 83334), (118, 83415),

Gene: Dulcita_59 Start: 40662, Stop: 41249, Start Num: 37

Candidate Starts for Dulcita_59:

(Start: 37 @40662 has 22 MA's), (45, 40707), (46, 40710), (47, 40713), (61, 40797), (91, 41016), (92, 41022), (93, 41028), (102, 41067), (114, 41154), (117, 41175), (121, 41196), (122, 41214),

Gene: Dumbo_101 Start: 60019, Stop: 60825, Start Num: 9

Candidate Starts for Dumbo_101:

(Start: 7 @59965 has 8 MA's), (Start: 9 @60019 has 42 MA's), (Start: 13 @60046 has 72 MA's), (Start: 14 @60064 has 4 MA's), (Start: 29 @60148 has 25 MA's), (54, 60316), (56, 60331), (61, 60352), (65, 60388), (68, 60400), (71, 60433), (79, 60517), (81, 60523), (82, 60532), (83, 60544), (87, 60568), (93, 60604), (105, 60658), (106, 60661), (121, 60775), (125, 60808),

Gene: DuncansLeg_87 Start: 57346, Stop: 57996, Start Num: 29

Candidate Starts for DuncansLeg_87:

(Start: 29 @57346 has 25 MA's), (40, 57418), (49, 57472), (50, 57475), (54, 57502), (61, 57538), (65, 57574), (75, 57652), (79, 57682), (81, 57688), (83, 57709), (84, 57718), (86, 57724), (89, 57745), (93, 57769), (94, 57772), (106, 57826), (111, 57871), (114, 57892), (120, 57934), (124, 57970), (125, 57973), (128, 57991),

Gene: Dusk_98 Start: 59982, Stop: 60788, Start Num: 9

Candidate Starts for Dusk_98:

(Start: 4 @59874 has 6 MA's), (Start: 7 @59928 has 8 MA's), (Start: 9 @59982 has 42 MA's), (Start: 13 @60009 has 72 MA's), (Start: 14 @60027 has 4 MA's), (Start: 29 @60111 has 25 MA's), (54, 60279), (56, 60294), (61, 60315), (65, 60351), (68, 60363), (71, 60396), (79, 60480), (81, 60486), (82, 60495), (83, 60507), (87, 60531), (93, 60567), (105, 60621), (106, 60624), (121, 60738), (125, 60771),

Gene: DyoEdafos_93 Start: 57362, Stop: 58051, Start Num: 21

Candidate Starts for DyoEdafos_93:

(Start: 21 @57362 has 16 MA's), (Start: 43 @57491 has 5 MA's), (49, 57527), (50, 57530), (54, 57557), (56, 57572), (61, 57593), (64, 57611), (65, 57629), (81, 57743), (82, 57752), (83, 57764), (84, 57773), (86, 57779), (93, 57824), (96, 57836), (104, 57869), (106, 57881), (125, 58028),

Gene: Easy2Say_101 Start: 60481, Stop: 61260, Start Num: 13

Candidate Starts for Easy2Say_101:

(3, 60268), (Start: 4 @60346 has 6 MA's), (Start: 7 @60400 has 8 MA's), (Start: 9 @60454 has 42 MA's), (Start: 13 @60481 has 72 MA's), (Start: 14 @60499 has 4 MA's), (Start: 29 @60583 has 25 MA's), (54, 60751), (56, 60766), (65, 60823), (68, 60835), (71, 60868), (79, 60952), (81, 60958), (82, 60967), (83, 60979), (87, 61003), (93, 61039), (105, 61093), (106, 61096), (121, 61210), (125, 61243),

Gene: Ejimix_150 Start: 83680, Stop: 84390, Start Num: 16

Candidate Starts for Ejimix_150:

(Start: 16 @83680 has 41 MA's), (54, 83902), (57, 83926), (59, 83929), (61, 83938), (74, 84037), (75, 84052), (79, 84082), (82, 84097), (83, 84109), (90, 84148), (106, 84226), (107, 84241), (118, 84322),

Gene: Elite2014_100 Start: 59576, Stop: 60436, Start Num: 7

Candidate Starts for Elite2014_100:

(Start: 7 @59576 has 8 MA's), (Start: 9 @59630 has 42 MA's), (Start: 13 @59657 has 72 MA's), (Start: 14 @59675 has 4 MA's), (Start: 29 @59759 has 25 MA's), (54, 59927), (56, 59942), (61, 59963), (65, 59999), (68, 60011), (71, 60044), (79, 60128), (81, 60134), (82, 60143), (83, 60155), (87, 60179), (93, 60215), (105, 60269), (106, 60272), (121, 60386), (125, 60419),

Gene: Ellson_86 Start: 57661, Stop: 58311, Start Num: 29

Candidate Starts for Ellson_86:

(Start: 29 @57661 has 25 MA's), (40, 57733), (49, 57787), (50, 57790), (54, 57817), (61, 57853), (65, 57889), (75, 57967), (79, 57997), (81, 58003), (83, 58024), (84, 58033), (86, 58039), (89, 58060), (93, 58084), (94, 58087), (96, 58096), (106, 58141), (111, 58186), (114, 58207), (120, 58249), (124, 58285), (125, 58288), (128, 58306),

Gene: Elph10_101 Start: 59692, Stop: 60471, Start Num: 13

Candidate Starts for Elph10_101:

(Start: 7 @59611 has 8 MA's), (Start: 9 @59665 has 42 MA's), (Start: 13 @59692 has 72 MA's), (Start: 14 @59710 has 4 MA's), (Start: 29 @59794 has 25 MA's), (54, 59962), (56, 59977), (61, 59998), (65, 60034), (68, 60046), (71, 60079), (79, 60163), (81, 60169), (82, 60178), (83, 60190), (87, 60214), (93, 60250), (105, 60304), (106, 60307), (121, 60421), (125, 60454),

Gene: Emmina_101 Start: 59432, Stop: 60211, Start Num: 13

Candidate Starts for Emmina_101:

(3, 59219), (Start: 4 @59297 has 6 MA's), (Start: 7 @59351 has 8 MA's), (Start: 9 @59405 has 42 MA's), (Start: 13 @59432 has 72 MA's), (Start: 14 @59450 has 4 MA's), (Start: 29 @59534 has 25 MA's), (54, 59702), (56, 59717), (65, 59774), (68, 59786), (71, 59819), (79, 59903), (81, 59909), (82, 59918), (83, 59930), (87, 59954), (93, 59990), (105, 60044), (106, 60047), (121, 60161), (125, 60194),

Gene: EniyanLRS_65 Start: 45336, Stop: 45893, Start Num: 43

Candidate Starts for EniyanLRS_65:

(Start: 43 @45336 has 5 MA's), (47, 45351), (54, 45402), (56, 45417), (78, 45579), (80, 45585), (83, 45609), (84, 45618), (86, 45624), (95, 45678), (98, 45693), (101, 45705), (103, 45714), (109, 45756), (110, 45774), (111, 45780), (112, 45795), (119, 45834), (121, 45843), (125, 45876), (126, 45885),

Gene: EricMillard_152 Start: 84116, Stop: 84826, Start Num: 16

Candidate Starts for EricMillard_152:

(Start: 16 @84116 has 41 MA's), (54, 84338), (57, 84362), (59, 84365), (61, 84374), (79, 84518), (81, 84524), (82, 84533), (83, 84545), (90, 84584), (106, 84662), (107, 84677), (118, 84758),

Gene: Estes_66 Start: 42955, Stop: 43551, Start Num: 37

Candidate Starts for Estes_66:

(Start: 37 @42955 has 22 MA's), (45, 43003), (46, 43006), (61, 43096), (74, 43195), (82, 43255), (91, 43315), (92, 43321), (93, 43327), (99, 43354), (109, 43408), (112, 43447), (127, 43543),

Gene: Eureka_100 Start: 60593, Stop: 61399, Start Num: 9

Candidate Starts for Eureka_100:

(Start: 4 @60485 has 6 MA's), (Start: 7 @60539 has 8 MA's), (Start: 9 @60593 has 42 MA's), (Start: 13 @60620 has 72 MA's), (Start: 14 @60638 has 4 MA's), (Start: 29 @60722 has 25 MA's), (54, 60890), (56, 60905), (61, 60926), (65, 60962), (68, 60974), (71, 61007), (79, 61091), (81, 61097), (82, 61106), (83, 61118), (87, 61142), (93, 61178), (105, 61232), (106, 61235), (121, 61349), (125, 61382),

Gene: FairyPath_102 Start: 60925, Stop: 61704, Start Num: 13

Candidate Starts for FairyPath_102:

(Start: 4 @60790 has 6 MA's), (Start: 7 @60844 has 8 MA's), (Start: 9 @60898 has 42 MA's), (Start: 13 @60925 has 72 MA's), (Start: 14 @60943 has 4 MA's), (Start: 29 @61027 has 25 MA's), (54, 61195), (56, 61210), (61, 61231), (65, 61267), (68, 61279), (71, 61312), (79, 61396), (81, 61402), (82, 61411), (83, 61423), (87, 61447), (93, 61483), (105, 61537), (106, 61540), (121, 61654), (125, 61687),

Gene: Faith1_90 Start: 57661, Stop: 58332, Start Num: 23

Candidate Starts for Faith1_90:

(Start: 23 @57661 has 4 MA's), (Start: 25 @57664 has 5 MA's), (40, 57754), (49, 57808), (54, 57838), (65, 57910), (66, 57916), (75, 57988), (77, 58012), (79, 58018), (82, 58033), (83, 58045), (86, 58060), (93, 58105), (106, 58162), (120, 58270), (123, 58300), (125, 58309),

Gene: FarmResident_92 Start: 56922, Stop: 57611, Start Num: 21

Candidate Starts for FarmResident_92:

(Start: 21 @56922 has 16 MA's), (40, 57030), (48, 57069), (49, 57084), (50, 57087), (61, 57150), (65, 57186), (77, 57288), (81, 57300), (82, 57309), (83, 57321), (84, 57330), (86, 57336), (93, 57381), (96, 57393), (104, 57426), (106, 57438), (125, 57585),

Gene: Filch_103 Start: 60005, Stop: 60784, Start Num: 13

Candidate Starts for Filch_103:

(Start: 7 @59924 has 8 MA's), (Start: 9 @59978 has 42 MA's), (Start: 13 @60005 has 72 MA's), (Start: 14 @60023 has 4 MA's), (Start: 29 @60107 has 25 MA's), (54, 60275), (56, 60290), (61, 60311), (65, 60347), (68, 60359), (71, 60392), (79, 60476), (81, 60482), (82, 60491), (83, 60503), (87, 60527), (93, 60563), (105, 60617), (106, 60620), (121, 60734), (125, 60767),

Gene: Finemlucis_91 Start: 58780, Stop: 59463, Start Num: 21

Candidate Starts for Finemlucis_91:

(Start: 21 @58780 has 16 MA's), (40, 58885), (49, 58939), (54, 58969), (65, 59041), (66, 59047), (75, 59119), (77, 59143), (79, 59149), (82, 59164), (83, 59176), (86, 59191), (93, 59236), (106, 59293), (120, 59401), (123, 59431), (125, 59440),

Gene: Finnry_87 Start: 57677, Stop: 58330, Start Num: 29

Candidate Starts for Finnry_87:

(Start: 29 @57677 has 25 MA's), (34, 57716), (40, 57752), (49, 57806), (50, 57809), (54, 57836), (61, 57872), (65, 57908), (75, 57986), (79, 58016), (81, 58022), (83, 58043), (84, 58052), (86, 58058), (93, 58103), (94, 58106), (106, 58160), (111, 58205), (114, 58226), (120, 58268), (124, 58304), (125, 58307),

Gene: FireRed_104 Start: 60869, Stop: 61675, Start Num: 9

Candidate Starts for FireRed_104:

(Start: 4 @60761 has 6 MA's), (Start: 7 @60815 has 8 MA's), (Start: 9 @60869 has 42 MA's), (Start: 13 @60896 has 72 MA's), (Start: 14 @60914 has 4 MA's), (Start: 29 @60998 has 25 MA's), (54, 61166), (56, 61181), (61, 61202), (65, 61238), (68, 61250), (71, 61283), (79, 61367), (81, 61373), (82, 61382), (83, 61394), (87, 61418), (93, 61454), (105, 61508), (106, 61511), (121, 61625), (125, 61658),

Gene: Flypotenuse_97 Start: 59054, Stop: 59860, Start Num: 9

Candidate Starts for Flypotenuse_97:

(Start: 4 @58946 has 6 MA's), (Start: 7 @59000 has 8 MA's), (Start: 9 @59054 has 42 MA's), (Start: 13 @59081 has 72 MA's), (Start: 14 @59099 has 4 MA's), (Start: 29 @59183 has 25 MA's), (54, 59351), (56, 59366), (61, 59387), (65, 59423), (68, 59435), (71, 59468), (79, 59552), (81, 59558), (82, 59567), (83, 59579), (87, 59603), (93, 59639), (105, 59693), (106, 59696), (121, 59810), (125, 59843),

Gene: FoghornLeghorn_94 Start: 57786, Stop: 58565, Start Num: 13

Candidate Starts for FoghornLeghorn_94:

(3, 57573), (Start: 4 @57651 has 6 MA's), (Start: 7 @57705 has 8 MA's), (Start: 9 @57759 has 42 MA's), (Start: 13 @57786 has 72 MA's), (Start: 14 @57804 has 4 MA's), (Start: 29 @57888 has 25 MA's), (54, 58056), (56, 58071), (61, 58092), (65, 58128), (68, 58140), (71, 58173), (79, 58257), (81, 58263), (82, 58272), (83, 58284), (87, 58308), (93, 58344), (105, 58398), (106, 58401), (121, 58515), (125, 58548),

Gene: FreakyGoo_59 Start: 40662, Stop: 41249, Start Num: 37

Candidate Starts for FreakyGoo_59:

(Start: 37 @40662 has 22 MA's), (45, 40707), (46, 40710), (47, 40713), (61, 40797), (91, 41016), (92, 41022), (93, 41028), (102, 41067), (114, 41154), (117, 41175), (121, 41196), (122, 41214),

Gene: Gabriela_90 Start: 57010, Stop: 57678, Start Num: 25

Candidate Starts for Gabriela_90:

(Start: 23 @57007 has 4 MA's), (Start: 25 @57010 has 5 MA's), (40, 57100), (49, 57154), (54, 57184), (65, 57256), (66, 57262), (75, 57334), (77, 57358), (79, 57364), (82, 57379), (83, 57391), (86, 57406), (93, 57451), (106, 57508), (120, 57616), (123, 57646), (125, 57655),

Gene: Gage_103 Start: 60152, Stop: 60931, Start Num: 13

Candidate Starts for Gage_103:

(Start: 4 @60017 has 6 MA's), (Start: 7 @60071 has 8 MA's), (Start: 9 @60125 has 42 MA's), (Start: 13 @60152 has 72 MA's), (Start: 14 @60170 has 4 MA's), (Start: 29 @60254 has 25 MA's), (54, 60422), (56, 60437), (61, 60458), (65, 60494), (68, 60506), (71, 60539), (79, 60623), (81, 60629), (82, 60638), (83, 60650), (87, 60674), (93, 60710), (105, 60764), (106, 60767), (125, 60914),

Gene: Gaia_118 Start: 66289, Stop: 66987, Start Num: 19

Candidate Starts for Gaia_118:

(17, 66286), (Start: 19 @66289 has 2 MA's), (Start: 23 @66313 has 4 MA's), (26, 66322), (52, 66478), (54, 66499), (56, 66514), (58, 66523), (60, 66526), (62, 66535), (64, 66553), (71, 66616), (74, 66634), (83, 66706), (86, 66721), (88, 66736), (93, 66766), (100, 66793), (104, 66811), (106, 66823), (108, 66841), (111, 66868), (122, 66955), (125, 66970),

Gene: Gardann_90 Start: 57496, Stop: 58179, Start Num: 21

Candidate Starts for Gardann_90:

(Start: 21 @57496 has 16 MA's), (Start: 27 @57520 has 1 MA's), (34, 57565), (40, 57601), (49, 57655), (54, 57685), (65, 57757), (75, 57835), (77, 57859), (79, 57865), (82, 57880), (83, 57892), (86, 57907), (93, 57952), (106, 58009), (120, 58117), (123, 58147), (125, 58156),

Gene: GardenSalsa_66 Start: 43117, Stop: 43713, Start Num: 37

Candidate Starts for GardenSalsa_66:

(Start: 37 @43117 has 22 MA's), (45, 43165), (46, 43168), (61, 43258), (74, 43357), (82, 43417), (91, 43477), (92, 43483), (93, 43489), (109, 43570), (112, 43609), (123, 43684), (127, 43705),

Gene: Gator_99 Start: 59802, Stop: 60716, Start Num: 4

Candidate Starts for Gator_99:

(Start: 4 @59802 has 6 MA's), (Start: 7 @59856 has 8 MA's), (Start: 9 @59910 has 42 MA's), (Start: 13 @59937 has 72 MA's), (Start: 14 @59955 has 4 MA's), (Start: 29 @60039 has 25 MA's), (54, 60207), (56, 60222), (61, 60243), (65, 60279), (68, 60291), (71, 60324), (79, 60408), (81, 60414), (82, 60423), (83, 60435), (87, 60459), (93, 60495), (105, 60549), (106, 60552), (121, 60666), (125, 60699),

Gene: Gemini_106 Start: 60531, Stop: 61310, Start Num: 13

Candidate Starts for Gemini_106:

(3, 60318), (Start: 4 @60396 has 6 MA's), (Start: 7 @60450 has 8 MA's), (Start: 9 @60504 has 42 MA's), (Start: 13 @60531 has 72 MA's), (Start: 14 @60549 has 4 MA's), (Start: 29 @60633 has 25

MA's), (54, 60801), (56, 60816), (65, 60873), (68, 60885), (71, 60918), (79, 61002), (81, 61008), (82, 61017), (83, 61029), (87, 61053), (93, 61089), (105, 61143), (106, 61146), (121, 61260), (125, 61293),

Gene: GenevaB15_65 Start: 42683, Stop: 43279, Start Num: 37

Candidate Starts for GenevaB15_65:

(Start: 37 @42683 has 22 MA's), (45, 42731), (46, 42734), (61, 42824), (74, 42923), (82, 42983), (91, 43043), (92, 43049), (93, 43055), (99, 43082), (109, 43136), (112, 43175), (126, 43268), (127, 43271),

Gene: Glaske16_59 Start: 40661, Stop: 41248, Start Num: 37

Candidate Starts for Glaske16_59:

(Start: 37 @40661 has 22 MA's), (45, 40706), (46, 40709), (47, 40712), (61, 40796), (91, 41015), (92, 41021), (93, 41027), (102, 41066), (106, 41087), (114, 41153), (117, 41174), (121, 41195), (122, 41213),

Gene: Glexan_100 Start: 60130, Stop: 60990, Start Num: 7

Candidate Starts for Glexan_100:

(Start: 4 @60076 has 6 MA's), (Start: 7 @60130 has 8 MA's), (Start: 9 @60184 has 42 MA's), (Start: 13 @60211 has 72 MA's), (Start: 14 @60229 has 4 MA's), (Start: 29 @60313 has 25 MA's), (54, 60481), (56, 60496), (65, 60553), (68, 60565), (71, 60598), (79, 60682), (81, 60688), (82, 60697), (83, 60709), (87, 60733), (93, 60769), (105, 60823), (106, 60826), (121, 60940), (125, 60973),

Gene: Goku_100 Start: 60322, Stop: 61128, Start Num: 9

Candidate Starts for Goku_100:

(Start: 4 @60214 has 6 MA's), (Start: 7 @60268 has 8 MA's), (Start: 9 @60322 has 42 MA's), (Start: 13 @60349 has 72 MA's), (Start: 14 @60367 has 4 MA's), (Start: 29 @60451 has 25 MA's), (54, 60619), (56, 60634), (61, 60655), (65, 60691), (68, 60703), (71, 60736), (79, 60820), (81, 60826), (82, 60835), (83, 60847), (87, 60871), (93, 60907), (105, 60961), (106, 60964), (121, 61078), (125, 61111),

Gene: GoldenSpark_105 Start: 60032, Stop: 60793, Start Num: 14

Candidate Starts for GoldenSpark_105:

(3, 59801), (Start: 4 @59879 has 6 MA's), (Start: 7 @59933 has 8 MA's), (Start: 9 @59987 has 42 MA's), (Start: 13 @60014 has 72 MA's), (Start: 14 @60032 has 4 MA's), (Start: 29 @60116 has 25 MA's), (54, 60284), (56, 60299), (65, 60356), (68, 60368), (71, 60401), (79, 60485), (81, 60491), (82, 60500), (83, 60512), (87, 60536), (93, 60572), (105, 60626), (106, 60629), (121, 60743), (125, 60776),

Gene: Goldilocks_104 Start: 59931, Stop: 60710, Start Num: 13

Candidate Starts for Goldilocks_104:

(Start: 4 @59796 has 6 MA's), (Start: 7 @59850 has 8 MA's), (Start: 9 @59904 has 42 MA's), (Start: 13 @59931 has 72 MA's), (Start: 14 @59949 has 4 MA's), (Start: 29 @60033 has 25 MA's), (54, 60201), (56, 60216), (61, 60237), (65, 60273), (68, 60285), (71, 60318), (79, 60402), (81, 60408), (82, 60417), (83, 60429), (87, 60453), (93, 60489), (105, 60543), (106, 60546), (121, 60660), (125, 60693),

Gene: Gonephishing_151 Start: 82284, Stop: 82994, Start Num: 16

Candidate Starts for Gonephishing_151:

(Start: 16 @82284 has 41 MA's), (54, 82506), (57, 82530), (59, 82533), (61, 82542), (79, 82686), (81, 82692), (82, 82701), (83, 82713), (89, 82749), (90, 82752), (107, 82845), (118, 82926), (122, 82962),

Gene: GooberAzure_104 Start: 60014, Stop: 60793, Start Num: 13

Candidate Starts for GooberAzure_104:

(3, 59801), (Start: 4 @59879 has 6 MA's), (Start: 7 @59933 has 8 MA's), (Start: 9 @59987 has 42 MA's), (Start: 13 @60014 has 72 MA's), (Start: 14 @60032 has 4 MA's), (Start: 29 @60116 has 25 MA's), (54, 60284), (56, 60299), (65, 60356), (68, 60368), (71, 60401), (79, 60485), (81, 60491), (82, 60500), (83, 60512), (87, 60536), (93, 60572), (105, 60626), (106, 60629), (121, 60743), (125, 60776),

Gene: Greep_105 Start: 61586, Stop: 62365, Start Num: 13

Candidate Starts for Greep_105:

(3, 61373), (Start: 4 @61451 has 6 MA's), (Start: 7 @61505 has 8 MA's), (Start: 9 @61559 has 42 MA's), (Start: 13 @61586 has 72 MA's), (Start: 14 @61604 has 4 MA's), (Start: 29 @61688 has 25 MA's), (54, 61856), (56, 61871), (61, 61892), (65, 61928), (68, 61940), (71, 61973), (79, 62057), (81, 62063), (82, 62072), (83, 62084), (87, 62108), (93, 62144), (105, 62198), (106, 62201), (121, 62315), (125, 62348),

Gene: GuuelaD_87 Start: 57623, Stop: 58291, Start Num: 25

Candidate Starts for GuuelaD_87:

(Start: 23 @57620 has 4 MA's), (Start: 25 @57623 has 5 MA's), (40, 57713), (49, 57767), (54, 57797), (65, 57869), (66, 57875), (75, 57947), (77, 57971), (79, 57977), (82, 57992), (83, 58004), (86, 58019), (93, 58064), (106, 58121), (120, 58229), (123, 58259), (125, 58268),

Gene: Hafay_90 Start: 57572, Stop: 58225, Start Num: 31

Candidate Starts for Hafay_90:

(Start: 31 @57572 has 2 MA's), (40, 57644), (49, 57698), (54, 57728), (65, 57800), (66, 57806), (75, 57878), (77, 57902), (79, 57908), (82, 57923), (83, 57935), (84, 57944), (93, 57995), (96, 58007), (106, 58052), (120, 58160), (125, 58199), (128, 58217),

Gene: Halley_159 Start: 83996, Stop: 84706, Start Num: 16

Candidate Starts for Halley_159:

(Start: 16 @83996 has 41 MA's), (54, 84218), (57, 84242), (59, 84245), (61, 84254), (74, 84353), (75, 84368), (79, 84398), (82, 84413), (83, 84425), (90, 84464), (106, 84542), (107, 84557), (118, 84638),

Gene: HanKaySha_102 Start: 60401, Stop: 61180, Start Num: 13

Candidate Starts for HanKaySha_102:

(Start: 4 @60266 has 6 MA's), (Start: 7 @60320 has 8 MA's), (Start: 9 @60374 has 42 MA's), (Start: 13 @60401 has 72 MA's), (Start: 14 @60419 has 4 MA's), (Start: 29 @60503 has 25 MA's), (54, 60671), (56, 60686), (61, 60707), (65, 60743), (68, 60755), (71, 60788), (79, 60872), (81, 60878), (82, 60887), (83, 60899), (87, 60923), (93, 60959), (105, 61013), (106, 61016), (121, 61130), (125, 61163),

Gene: Hannaconda_151 Start: 84288, Stop: 84998, Start Num: 16

Candidate Starts for Hannaconda_151:

(Start: 16 @84288 has 41 MA's), (54, 84510), (57, 84534), (59, 84537), (61, 84546), (79, 84690), (81, 84696), (82, 84705), (83, 84717), (89, 84753), (90, 84756), (107, 84849), (118, 84930), (122, 84966),

Gene: Harella_101 Start: 60727, Stop: 61506, Start Num: 13

Candidate Starts for Harella_101:

(Start: 4 @60592 has 6 MA's), (Start: 7 @60646 has 8 MA's), (Start: 9 @60700 has 42 MA's), (Start: 13 @60727 has 72 MA's), (Start: 14 @60745 has 4 MA's), (Start: 29 @60829 has 25 MA's), (54, 60997), (56, 61012), (65, 61069), (68, 61081), (71, 61114), (79, 61198), (81, 61204), (82, 61213), (83, 61225), (87, 61249), (93, 61285), (105, 61339), (106, 61342), (121, 61456), (125, 61489),

Gene: Henry_98 Start: 60027, Stop: 60833, Start Num: 9

Candidate Starts for Henry_98:

(3, 59841), (Start: 4 @59919 has 6 MA's), (Start: 7 @59973 has 8 MA's), (Start: 9 @60027 has 42 MA's), (Start: 13 @60054 has 72 MA's), (Start: 14 @60072 has 4 MA's), (Start: 29 @60156 has 25 MA's), (54, 60324), (56, 60339), (65, 60396), (68, 60408), (71, 60441), (79, 60525), (81, 60531), (82, 60540), (83, 60552), (87, 60576), (93, 60612), (105, 60666), (106, 60669), (121, 60783), (125, 60816),

Gene: Hidrated_146 Start: 83298, Stop: 84008, Start Num: 16

Candidate Starts for Hidrated_146:

(Start: 16 @83298 has 41 MA's), (54, 83520), (57, 83544), (59, 83547), (61, 83556), (74, 83655), (75, 83670), (79, 83700), (81, 83706), (82, 83715), (83, 83727), (90, 83766), (107, 83859), (118, 83940), (122, 83976),

Gene: Highbury_98 Start: 58558, Stop: 59337, Start Num: 13

Candidate Starts for Highbury_98:

(Start: 4 @58423 has 6 MA's), (Start: 7 @58477 has 8 MA's), (Start: 9 @58531 has 42 MA's), (Start: 13 @58558 has 72 MA's), (Start: 14 @58576 has 4 MA's), (Start: 29 @58660 has 25 MA's), (54, 58828), (56, 58843), (61, 58864), (65, 58900), (68, 58912), (71, 58945), (79, 59029), (81, 59035), (82, 59044), (83, 59056), (87, 59080), (93, 59116), (105, 59170), (106, 59173), (121, 59287), (125, 59320),

Gene: HokkenD_153 Start: 85553, Stop: 86263, Start Num: 16

Candidate Starts for HokkenD_153:

(Start: 16 @85553 has 41 MA's), (54, 85775), (57, 85799), (59, 85802), (61, 85811), (74, 85910), (75, 85925), (79, 85955), (81, 85961), (82, 85970), (83, 85982), (90, 86021), (107, 86114), (118, 86195), (122, 86231),

Gene: Holt_106 Start: 60428, Stop: 61207, Start Num: 13

Candidate Starts for Holt_106:

(3, 60215), (Start: 4 @60293 has 6 MA's), (Start: 7 @60347 has 8 MA's), (Start: 9 @60401 has 42 MA's), (Start: 13 @60428 has 72 MA's), (Start: 14 @60446 has 4 MA's), (Start: 29 @60530 has 25 MA's), (54, 60698), (56, 60713), (65, 60770), (68, 60782), (71, 60815), (79, 60899), (81, 60905), (82, 60914), (83, 60926), (87, 60950), (93, 60986), (105, 61040), (106, 61043), (121, 61157), (125, 61190),

Gene: Hoonter_104 Start: 60507, Stop: 61286, Start Num: 13

Candidate Starts for Hoonter_104:

(Start: 7 @60426 has 8 MA's), (Start: 9 @60480 has 42 MA's), (Start: 13 @60507 has 72 MA's), (Start: 14 @60525 has 4 MA's), (Start: 29 @60609 has 25 MA's), (54, 60777), (56, 60792), (61, 60813), (65, 60849), (68, 60861), (71, 60894), (79, 60978), (81, 60984), (82, 60993), (83, 61005), (87, 61029), (93, 61065), (105, 61119), (106, 61122), (121, 61236), (125, 61269),

Gene: Hokey_102 Start: 60931, Stop: 61791, Start Num: 7

Candidate Starts for Hokey_102:

(Start: 7 @60931 has 8 MA's), (Start: 9 @60985 has 42 MA's), (Start: 13 @61012 has 72 MA's), (Start: 14 @61030 has 4 MA's), (Start: 29 @61114 has 25 MA's), (54, 61282), (56, 61297), (61, 61318), (65, 61354), (68, 61366), (71, 61399), (79, 61483), (81, 61489), (82, 61498), (83, 61510), (87, 61534), (93, 61570), (105, 61624), (106, 61627), (121, 61741), (125, 61774),

Gene: HufflyPuff_103 Start: 61095, Stop: 61901, Start Num: 9

Candidate Starts for HufflyPuff_103:

(Start: 4 @60987 has 6 MA's), (Start: 7 @61041 has 8 MA's), (Start: 9 @61095 has 42 MA's), (Start: 13 @61122 has 72 MA's), (Start: 14 @61140 has 4 MA's), (Start: 29 @61224 has 25 MA's), (54, 61392), (56, 61407), (61, 61428), (65, 61464), (68, 61476), (71, 61509), (79, 61593), (81, 61599), (82, 61608), (83, 61620), (87, 61644), (93, 61680), (105, 61734), (106, 61737), (121, 61851), (125, 61884),

Gene: Hughesyang_158 Start: 84577, Stop: 85284, Start Num: 16

Candidate Starts for Hughesyang_158:

(10, 84514), (11, 84529), (Start: 16 @84577 has 41 MA's), (33, 84652), (54, 84799), (61, 84832), (72, 84919), (75, 84946), (79, 84976), (81, 84982), (82, 84991), (83, 85003), (90, 85042), (106, 85120), (107, 85135), (117, 85213), (118, 85216), (122, 85252), (125, 85267),

Gene: IHOP_99 Start: 59748, Stop: 60509, Start Num: 14

Candidate Starts for IHOP_99:

(Start: 4 @59595 has 6 MA's), (Start: 7 @59649 has 8 MA's), (Start: 9 @59703 has 42 MA's), (Start: 13 @59730 has 72 MA's), (Start: 14 @59748 has 4 MA's), (Start: 29 @59832 has 25 MA's), (54, 60000), (56, 60015), (61, 60036), (65, 60072), (68, 60084), (71, 60117), (79, 60201), (81, 60207), (82, 60216), (83, 60228), (87, 60252), (93, 60288), (105, 60342), (106, 60345), (121, 60459), (125, 60492),

Gene: IPhane7_58 Start: 40666, Stop: 41253, Start Num: 37

Candidate Starts for IPhane7_58:

(Start: 37 @40666 has 22 MA's), (45, 40711), (46, 40714), (47, 40717), (61, 40801), (91, 41020), (92, 41026), (93, 41032), (102, 41071), (114, 41158), (117, 41179), (121, 41200), (122, 41218),

Gene: Icee_102 Start: 59538, Stop: 60317, Start Num: 13

Candidate Starts for Icee_102:

(3, 59325), (Start: 4 @59403 has 6 MA's), (Start: 7 @59457 has 8 MA's), (Start: 9 @59511 has 42 MA's), (Start: 13 @59538 has 72 MA's), (Start: 14 @59556 has 4 MA's), (Start: 29 @59640 has 25 MA's), (54, 59808), (56, 59823), (61, 59844), (65, 59880), (68, 59892), (71, 59925), (79, 60009), (81, 60015), (82, 60024), (83, 60036), (87, 60060), (93, 60096), (105, 60150), (106, 60153), (121, 60267), (125, 60300),

Gene: Inca_98 Start: 58219, Stop: 58998, Start Num: 13

Candidate Starts for Inca_98:

(Start: 4 @58084 has 6 MA's), (Start: 7 @58138 has 8 MA's), (Start: 9 @58192 has 42 MA's), (Start: 13 @58219 has 72 MA's), (Start: 14 @58237 has 4 MA's), (Start: 29 @58321 has 25 MA's), (54, 58489), (56, 58504), (61, 58525), (65, 58561), (68, 58573), (71, 58606), (79, 58690), (81, 58696), (82, 58705), (83, 58717), (87, 58741), (93, 58777), (105, 58831), (106, 58834), (121, 58948), (125, 58981),

Gene: Itos_90 Start: 56570, Stop: 57238, Start Num: 25

Candidate Starts for Itos_90:

(Start: 23 @56567 has 4 MA's), (Start: 25 @56570 has 5 MA's), (40, 56660), (49, 56714), (54, 56744), (65, 56816), (66, 56822), (75, 56894), (77, 56918), (79, 56924), (82, 56939), (83, 56951), (86, 56966), (93, 57011), (106, 57068), (120, 57176), (123, 57206), (125, 57215),

Gene: Izel_59 Start: 40661, Stop: 41248, Start Num: 37

Candidate Starts for Izel_59:

(Start: 37 @40661 has 22 MA's), (45, 40706), (46, 40709), (47, 40712), (61, 40796), (91, 41015), (92, 41021), (93, 41027), (102, 41066), (114, 41153), (117, 41174), (121, 41195), (122, 41213),

Gene: JeTaime_100 Start: 59837, Stop: 60616, Start Num: 13

Candidate Starts for JeTaime_100:

(Start: 4 @59702 has 6 MA's), (Start: 7 @59756 has 8 MA's), (Start: 9 @59810 has 42 MA's), (Start: 13 @59837 has 72 MA's), (Start: 14 @59855 has 4 MA's), (Start: 29 @59939 has 25 MA's), (54, 60107), (56, 60122), (61, 60143), (65, 60179), (68, 60191), (71, 60224), (79, 60308), (81, 60314), (82, 60323), (83, 60335), (87, 60359), (93, 60395), (105, 60449), (106, 60452), (121, 60566), (125, 60599),

Gene: Jobypre_87 Start: 57327, Stop: 57977, Start Num: 29

Candidate Starts for Jobypre_87:

(Start: 29 @57327 has 25 MA's), (34, 57363), (40, 57399), (49, 57453), (50, 57456), (54, 57483), (61, 57519), (65, 57555), (75, 57633), (79, 57663), (81, 57669), (83, 57690), (84, 57699), (86, 57705), (93, 57750), (94, 57753), (106, 57807), (111, 57852), (114, 57873), (120, 57915), (124, 57951), (125, 57954),

Gene: Jubie_86 Start: 57462, Stop: 58112, Start Num: 29

Candidate Starts for Jubie_86:

(Start: 29 @57462 has 25 MA's), (34, 57498), (40, 57534), (49, 57588), (50, 57591), (54, 57618), (61, 57654), (65, 57690), (75, 57768), (79, 57798), (81, 57804), (83, 57825), (84, 57834), (86, 57840), (93, 57885), (94, 57888), (106, 57942), (111, 57987), (114, 58008), (120, 58050), (124, 58086), (125, 58089),

Gene: JuicyJay_153 Start: 85200, Stop: 85910, Start Num: 16

Candidate Starts for JuicyJay_153:

(Start: 16 @85200 has 41 MA's), (54, 85422), (57, 85446), (59, 85449), (61, 85458), (74, 85557), (75, 85572), (79, 85602), (81, 85608), (82, 85617), (83, 85629), (90, 85668), (107, 85761), (118, 85842), (122, 85878),

Gene: Kahlid_89 Start: 57414, Stop: 58097, Start Num: 21

Candidate Starts for Kahlid_89:

(Start: 21 @57414 has 16 MA's), (Start: 27 @57438 has 1 MA's), (34, 57483), (40, 57519), (49, 57573), (54, 57603), (65, 57675), (66, 57681), (75, 57753), (77, 57777), (79, 57783), (82, 57798), (83, 57810), (86, 57825), (93, 57870), (106, 57927), (120, 58035), (123, 58065), (125, 58074),

Gene: Kalah2_150 Start: 83707, Stop: 84414, Start Num: 16

Candidate Starts for Kalah2_150:

(10, 83644), (11, 83659), (Start: 16 @83707 has 41 MA's), (33, 83782), (54, 83929), (61, 83962), (72, 84049), (75, 84076), (79, 84106), (81, 84112), (82, 84121), (83, 84133), (90, 84172), (106, 84250), (107, 84265), (118, 84346),

Gene: Kanye_98 Start: 60236, Stop: 61042, Start Num: 9

Candidate Starts for Kanye_98:

(Start: 4 @60128 has 6 MA's), (Start: 7 @60182 has 8 MA's), (Start: 9 @60236 has 42 MA's), (Start: 13 @60263 has 72 MA's), (Start: 14 @60281 has 4 MA's), (Start: 29 @60365 has 25 MA's), (54, 60533), (56, 60548), (61, 60569), (65, 60605), (68, 60617), (71, 60650), (79, 60734), (81, 60740), (82, 60749), (83, 60761), (87, 60785), (93, 60821), (105, 60875), (106, 60878), (121, 60992), (125, 61025),

Gene: KashFlow_156 Start: 84101, Stop: 84811, Start Num: 16

Candidate Starts for KashFlow_156:

(Start: 16 @84101 has 41 MA's), (54, 84323), (57, 84347), (59, 84350), (61, 84359), (79, 84503), (81, 84509), (82, 84518), (83, 84530), (89, 84566), (90, 84569), (107, 84662), (116, 84728), (118, 84743), (122, 84779),

Gene: Kimchi_105 Start: 60155, Stop: 60934, Start Num: 13

Candidate Starts for Kimchi_105:

(Start: 4 @60020 has 6 MA's), (Start: 7 @60074 has 8 MA's), (Start: 9 @60128 has 42 MA's), (Start: 13 @60155 has 72 MA's), (Start: 14 @60173 has 4 MA's), (Start: 29 @60257 has 25 MA's), (54, 60425), (56, 60440), (61, 60461), (65, 60497), (68, 60509), (71, 60542), (79, 60626), (81, 60632), (82, 60641), (83, 60653), (87, 60677), (93, 60713), (105, 60767), (106, 60770), (121, 60884), (125, 60917),

Gene: Kingsolomon_85 Start: 57433, Stop: 58086, Start Num: 29

Candidate Starts for Kingsolomon_85:

(Start: 29 @57433 has 25 MA's), (34, 57472), (40, 57508), (49, 57562), (50, 57565), (54, 57592), (61, 57628), (65, 57664), (75, 57742), (79, 57772), (81, 57778), (83, 57799), (84, 57808), (86, 57814), (93, 57859), (94, 57862), (106, 57916), (111, 57961), (114, 57982), (120, 58024), (124, 58060), (125, 58063),

Gene: KirDoubleO7_85 Start: 57348, Stop: 57998, Start Num: 29

Candidate Starts for KirDoubleO7_85:

(Start: 29 @57348 has 25 MA's), (40, 57420), (49, 57474), (50, 57477), (54, 57504), (61, 57540), (65, 57576), (75, 57654), (79, 57684), (81, 57690), (83, 57711), (84, 57720), (86, 57726), (89, 57747), (93, 57771), (94, 57774), (96, 57783), (106, 57828), (111, 57873), (114, 57894), (120, 57936), (124, 57972), (125, 57975), (128, 57993),

Gene: Klein_157 Start: 82067, Stop: 82774, Start Num: 16

Candidate Starts for Klein_157:

(Start: 16 @82067 has 41 MA's), (54, 82289), (61, 82322), (72, 82409), (75, 82436), (79, 82466), (81, 82472), (82, 82481), (83, 82493), (90, 82532), (106, 82610), (107, 82625), (117, 82703), (118, 82706), (122, 82742), (125, 82757),

Gene: KleverKiS_59 Start: 40642, Stop: 41229, Start Num: 37

Candidate Starts for KleverKiS_59:

(Start: 37 @40642 has 22 MA's), (45, 40687), (46, 40690), (47, 40693), (61, 40777), (91, 40996), (92, 41002), (93, 41008), (102, 41047), (106, 41068), (114, 41134), (117, 41155), (121, 41176), (122, 41194),

Gene: Kostya_101 Start: 59805, Stop: 60611, Start Num: 9

Candidate Starts for Kostya_101:

(Start: 4 @59697 has 6 MA's), (Start: 7 @59751 has 8 MA's), (Start: 9 @59805 has 42 MA's), (Start: 13 @59832 has 72 MA's), (Start: 14 @59850 has 4 MA's), (Start: 29 @59934 has 25 MA's), (54, 60102), (56, 60117), (61, 60138), (65, 60174), (68, 60186), (71, 60219), (79, 60303), (81, 60309), (82, 60318), (83, 60330), (87, 60354), (93, 60390), (105, 60444), (106, 60447), (121, 60561), (125, 60594),

Gene: Kropertea_86 Start: 56642, Stop: 57334, Start Num: 21

Candidate Starts for Kropertea_86:

(Start: 21 @56642 has 16 MA's), (Start: 43 @56771 has 5 MA's), (49, 56807), (50, 56810), (54, 56837), (56, 56852), (61, 56873), (64, 56891), (65, 56909), (81, 57023), (82, 57032), (83, 57044), (84, 57053), (86, 57059), (93, 57104), (96, 57116), (104, 57149), (106, 57161), (125, 57308),

Gene: Krypton555_88 Start: 57701, Stop: 58354, Start Num: 29

Candidate Starts for Krypton555_88:

(Start: 29 @57701 has 25 MA's), (40, 57776), (49, 57830), (50, 57833), (54, 57860), (65, 57932), (75, 58010), (79, 58040), (81, 58046), (83, 58067), (84, 58076), (86, 58082), (93, 58127), (94, 58130), (106, 58184), (111, 58229), (114, 58250), (120, 58292), (124, 58328), (125, 58331),

Gene: Kumao_49 Start: 39571, Stop: 40182, Start Num: 35

Candidate Starts for Kumao_49:

(Start: 35 @39571 has 1 MA's), (41, 39607), (47, 39634), (51, 39661), (53, 39673), (55, 39697), (69, 39790), (78, 39862), (81, 39871), (83, 39892), (91, 39940), (105, 40009), (106, 40012), (109, 40033), (126, 40162),

Gene: Lewan_91 Start: 57620, Stop: 58306, Start Num: 21

Candidate Starts for Lewan_91:

(Start: 21 @57620 has 16 MA's), (Start: 27 @57644 has 1 MA's), (40, 57725), (49, 57779), (54, 57809), (65, 57881), (66, 57887), (75, 57959), (77, 57983), (79, 57989), (82, 58004), (83, 58016), (86, 58031), (93, 58076), (106, 58133), (120, 58241), (123, 58271), (125, 58280),

Gene: LilDestine_88 Start: 57333, Stop: 57986, Start Num: 31

Candidate Starts for LilDestine_88:

(Start: 31 @57333 has 2 MA's), (40, 57405), (49, 57459), (54, 57489), (65, 57561), (66, 57567), (71, 57606), (75, 57639), (77, 57663), (79, 57669), (82, 57684), (83, 57696), (84, 57705), (93, 57756), (106, 57813), (120, 57921), (125, 57960), (128, 57978),

Gene: Lilac_103 Start: 61155, Stop: 61934, Start Num: 13

Candidate Starts for Lilac_103:

(Start: 7 @61074 has 8 MA's), (Start: 9 @61128 has 42 MA's), (Start: 13 @61155 has 72 MA's), (Start: 14 @61173 has 4 MA's), (Start: 29 @61257 has 25 MA's), (54, 61425), (56, 61440), (61, 61461), (65, 61497), (68, 61509), (71, 61542), (79, 61626), (81, 61632), (82, 61641), (83, 61653), (87, 61677), (93, 61713), (105, 61767), (106, 61770), (121, 61884), (125, 61917),

Gene: LilhomieP_57 Start: 40666, Stop: 41253, Start Num: 37

Candidate Starts for LilhomieP_57:

(Start: 37 @40666 has 22 MA's), (45, 40711), (46, 40714), (47, 40717), (61, 40801), (91, 41020), (92, 41026), (93, 41032), (102, 41071), (114, 41158), (117, 41179), (121, 41200), (122, 41218),

Gene: Lilizi_102 Start: 60441, Stop: 61220, Start Num: 13

Candidate Starts for Lilizi_102:

(Start: 7 @60360 has 8 MA's), (Start: 9 @60414 has 42 MA's), (Start: 13 @60441 has 72 MA's), (Start: 14 @60459 has 4 MA's), (Start: 29 @60543 has 25 MA's), (54, 60711), (56, 60726), (61, 60747), (65, 60783), (68, 60795), (71, 60828), (79, 60912), (81, 60918), (82, 60927), (83, 60939), (87, 60963), (93, 60999), (105, 61053), (106, 61056), (121, 61170), (125, 61203),

Gene: Lilpickle_100 Start: 59630, Stop: 60436, Start Num: 9

Candidate Starts for Lilpickle_100:

(Start: 7 @59576 has 8 MA's), (Start: 9 @59630 has 42 MA's), (Start: 13 @59657 has 72 MA's), (Start: 14 @59675 has 4 MA's), (Start: 29 @59759 has 25 MA's), (54, 59927), (56, 59942), (61, 59963), (65, 59999), (68, 60011), (71, 60044), (79, 60128), (81, 60134), (82, 60143), (83, 60155), (87, 60179), (93, 60215), (105, 60269), (106, 60272), (121, 60386), (125, 60419),

Gene: LittleE_159 Start: 83924, Stop: 84634, Start Num: 16

Candidate Starts for LittleE_159:

(10, 83861), (12, 83879), (Start: 16 @83924 has 41 MA's), (33, 83999), (54, 84146), (57, 84170), (59, 84173), (61, 84182), (75, 84296), (79, 84326), (81, 84332), (82, 84341), (83, 84353), (89, 84389), (90, 84392), (104, 84458), (107, 84485), (118, 84566), (122, 84602), (125, 84617),

Gene: Liveloughbron_102 Start: 61255, Stop: 62034, Start Num: 13

Candidate Starts for Liveloughbron_102:

(Start: 4 @61120 has 6 MA's), (Start: 7 @61174 has 8 MA's), (Start: 9 @61228 has 42 MA's), (Start: 13 @61255 has 72 MA's), (Start: 14 @61273 has 4 MA's), (Start: 29 @61357 has 25 MA's), (54, 61525), (56, 61540), (65, 61597), (68, 61609), (71, 61642), (79, 61726), (81, 61732), (82, 61741), (83, 61753), (87, 61777), (93, 61813), (105, 61867), (106, 61870), (121, 61984), (125, 62017),

Gene: LiyuLake_86 Start: 57421, Stop: 58071, Start Num: 29

Candidate Starts for LiyuLake_86:

(Start: 29 @57421 has 25 MA's), (40, 57493), (49, 57547), (50, 57550), (54, 57577), (61, 57613), (65, 57649), (75, 57727), (79, 57757), (81, 57763), (83, 57784), (84, 57793), (86, 57799), (89, 57820), (93, 57844), (94, 57847), (96, 57856), (106, 57901), (111, 57946), (114, 57967), (120, 58009), (124, 58045), (125, 58048), (128, 58066),

Gene: Loadrie_89 Start: 57831, Stop: 58499, Start Num: 25

Candidate Starts for Loadrie_89:

(Start: 23 @57828 has 4 MA's), (Start: 25 @57831 has 5 MA's), (40, 57921), (49, 57975), (54, 58005), (65, 58077), (66, 58083), (75, 58155), (77, 58179), (79, 58185), (82, 58200), (83, 58212), (86, 58227), (93, 58272), (106, 58329), (120, 58437), (123, 58467), (125, 58476),

Gene: Lolly9_86 Start: 57509, Stop: 58162, Start Num: 29

Candidate Starts for Lolly9_86:

(Start: 29 @57509 has 25 MA's), (40, 57584), (49, 57638), (50, 57641), (54, 57668), (56, 57683), (61, 57704), (65, 57740), (70, 57776), (75, 57818), (79, 57848), (81, 57854), (83, 57875), (84, 57884), (86, 57890), (93, 57935), (94, 57938), (106, 57992), (111, 58037), (114, 58058), (120, 58100), (124, 58136), (125, 58139),

Gene: Lucky2013_149 Start: 79061, Stop: 79771, Start Num: 16

Candidate Starts for Lucky2013_149:

(Start: 16 @79061 has 41 MA's), (54, 79283), (57, 79307), (59, 79310), (61, 79319), (79, 79463), (81, 79469), (82, 79478), (83, 79490), (90, 79529), (106, 79607), (107, 79622), (118, 79703),

Gene: Lumos_87 Start: 57324, Stop: 57974, Start Num: 29

Candidate Starts for Lumos_87:

(Start: 29 @57324 has 25 MA's), (34, 57360), (40, 57396), (49, 57450), (50, 57453), (54, 57480), (61, 57516), (65, 57552), (75, 57630), (79, 57660), (81, 57666), (83, 57687), (84, 57696), (86, 57702), (93, 57747), (94, 57750), (106, 57804), (111, 57849), (114, 57870), (120, 57912), (124, 57948), (125, 57951),

Gene: Lynnae_91 Start: 57426, Stop: 58109, Start Num: 21

Candidate Starts for Lynnae_91:

(Start: 21 @57426 has 16 MA's), (Start: 27 @57450 has 1 MA's), (34, 57495), (40, 57531), (49, 57585), (54, 57615), (65, 57687), (66, 57693), (75, 57765), (77, 57789), (79, 57795), (82, 57810), (83, 57822), (86, 57837), (93, 57882), (106, 57939), (120, 58047), (123, 58077), (125, 58086),

Gene: MISSy_102 Start: 60913, Stop: 61719, Start Num: 9

Candidate Starts for MISSy_102:

(3, 60727), (Start: 4 @60805 has 6 MA's), (Start: 7 @60859 has 8 MA's), (Start: 9 @60913 has 42 MA's), (Start: 13 @60940 has 72 MA's), (Start: 14 @60958 has 4 MA's), (Start: 29 @61042 has 25 MA's), (54, 61210), (56, 61225), (61, 61246), (65, 61282), (68, 61294), (71, 61327), (79, 61411), (81, 61417), (82, 61426), (83, 61438), (87, 61462), (93, 61498), (105, 61552), (106, 61555), (121, 61669), (125, 61702),

Gene: MPhalcon_102 Start: 60330, Stop: 61136, Start Num: 9

Candidate Starts for MPhalcon_102:

(3, 60144), (Start: 4 @60222 has 6 MA's), (Start: 7 @60276 has 8 MA's), (Start: 9 @60330 has 42 MA's), (Start: 13 @60357 has 72 MA's), (Start: 14 @60375 has 4 MA's), (Start: 29 @60459 has 25 MA's), (54, 60627), (56, 60642), (61, 60663), (65, 60699), (68, 60711), (71, 60744), (79, 60828), (81, 60834), (82, 60843), (83, 60855), (87, 60879), (93, 60915), (105, 60969), (106, 60972), (121, 61086), (125, 61119),

Gene: MadamMonkfish_101 Start: 59863, Stop: 60642, Start Num: 13

Candidate Starts for MadamMonkfish_101:

(Start: 4 @59728 has 6 MA's), (Start: 7 @59782 has 8 MA's), (Start: 9 @59836 has 42 MA's), (Start: 13 @59863 has 72 MA's), (Start: 14 @59881 has 4 MA's), (Start: 29 @59965 has 25 MA's), (54, 60133), (56, 60148), (61, 60169), (65, 60205), (68, 60217), (71, 60250), (79, 60334), (81, 60340), (82, 60349), (83, 60361), (87, 60385), (93, 60421), (105, 60475), (106, 60478), (121, 60592), (125, 60625),

Gene: Manda_102 Start: 60394, Stop: 61173, Start Num: 13

Candidate Starts for Manda_102:

(3, 60181), (Start: 4 @60259 has 6 MA's), (Start: 7 @60313 has 8 MA's), (Start: 9 @60367 has 42 MA's), (Start: 13 @60394 has 72 MA's), (Start: 14 @60412 has 4 MA's), (Start: 29 @60496 has 25 MA's), (54, 60664), (56, 60679), (61, 60700), (65, 60736), (68, 60748), (71, 60781), (79, 60865), (81,

60871), (82, 60880), (83, 60892), (87, 60916), (93, 60952), (105, 61006), (106, 61009), (121, 61123), (125, 61156),

Gene: Marleymoo_142 Start: 81207, Stop: 81917, Start Num: 16

Candidate Starts for Marleymoo_142:

(Start: 16 @81207 has 41 MA's), (33, 81282), (54, 81429), (57, 81453), (59, 81456), (61, 81465), (66, 81507), (75, 81579), (79, 81609), (82, 81624), (83, 81636), (90, 81675), (107, 81768), (116, 81834), (118, 81849), (122, 81885),

Gene: Marshmallow_98 Start: 60217, Stop: 61131, Start Num: 4

Candidate Starts for Marshmallow_98:

(3, 60139), (Start: 4 @60217 has 6 MA's), (Start: 7 @60271 has 8 MA's), (Start: 9 @60325 has 42 MA's), (Start: 13 @60352 has 72 MA's), (Start: 14 @60370 has 4 MA's), (Start: 29 @60454 has 25 MA's), (54, 60622), (56, 60637), (61, 60658), (65, 60694), (68, 60706), (71, 60739), (79, 60823), (81, 60829), (82, 60838), (83, 60850), (87, 60874), (93, 60910), (105, 60964), (106, 60967), (121, 61081), (125, 61114),

Gene: MaryV_68 Start: 45418, Stop: 45975, Start Num: 43

Candidate Starts for MaryV_68:

(Start: 43 @45418 has 5 MA's), (47, 45433), (54, 45484), (56, 45499), (78, 45661), (80, 45667), (83, 45691), (84, 45700), (86, 45706), (95, 45760), (98, 45775), (101, 45787), (103, 45796), (109, 45838), (110, 45856), (111, 45862), (112, 45877), (119, 45916), (121, 45925), (125, 45958), (126, 45967),

Gene: Maxxinista_103 Start: 60340, Stop: 61119, Start Num: 13

Candidate Starts for Maxxinista_103:

(Start: 4 @60205 has 6 MA's), (Start: 7 @60259 has 8 MA's), (Start: 9 @60313 has 42 MA's), (Start: 13 @60340 has 72 MA's), (Start: 14 @60358 has 4 MA's), (Start: 29 @60442 has 25 MA's), (54, 60610), (56, 60625), (61, 60646), (65, 60682), (68, 60694), (71, 60727), (79, 60811), (81, 60817), (82, 60826), (83, 60838), (87, 60862), (93, 60898), (105, 60952), (106, 60955), (121, 61069), (125, 61102),

Gene: MiaZeal_156 Start: 80208, Stop: 80918, Start Num: 16

Candidate Starts for MiaZeal_156:

(Start: 16 @80208 has 41 MA's), (54, 80430), (57, 80454), (59, 80457), (61, 80466), (79, 80610), (81, 80616), (82, 80625), (83, 80637), (90, 80676), (106, 80754), (107, 80769), (118, 80850),

Gene: Miley16_90 Start: 58042, Stop: 58695, Start Num: 29

Candidate Starts for Miley16_90:

(Start: 29 @58042 has 25 MA's), (40, 58117), (49, 58171), (54, 58201), (65, 58273), (66, 58279), (75, 58351), (77, 58375), (79, 58381), (82, 58396), (83, 58408), (86, 58423), (93, 58468), (106, 58525), (120, 58633), (123, 58663), (125, 58672),

Gene: Mindy_100 Start: 59673, Stop: 60452, Start Num: 13

Candidate Starts for Mindy_100:

(Start: 4 @59538 has 6 MA's), (Start: 7 @59592 has 8 MA's), (Start: 9 @59646 has 42 MA's), (Start: 13 @59673 has 72 MA's), (Start: 14 @59691 has 4 MA's), (Start: 29 @59775 has 25 MA's), (54, 59943), (56, 59958), (61, 59979), (65, 60015), (68, 60027), (71, 60060), (79, 60144), (81, 60150), (82, 60159), (83, 60171), (87, 60195), (93, 60231), (105, 60285), (106, 60288), (121, 60402), (125, 60435),

Gene: Minerva_157 Start: 83303, Stop: 84013, Start Num: 16

Candidate Starts for Minerva_157:

(Start: 16 @83303 has 41 MA's), (54, 83525), (57, 83549), (59, 83552), (61, 83561), (74, 83660), (75, 83675), (79, 83705), (82, 83720), (83, 83732), (90, 83771), (106, 83849), (107, 83864), (118, 83945),

Gene: MiniLon_91 Start: 57510, Stop: 58163, Start Num: 29

Candidate Starts for MiniLon_91:

(Start: 29 @57510 has 25 MA's), (40, 57585), (49, 57639), (50, 57642), (54, 57669), (56, 57684), (61, 57705), (65, 57741), (70, 57777), (75, 57819), (79, 57849), (81, 57855), (83, 57876), (84, 57885), (86, 57891), (93, 57936), (94, 57939), (106, 57993), (111, 58038), (114, 58059), (120, 58101), (124, 58137), (125, 58140),

Gene: MiniMac_91 Start: 57505, Stop: 58158, Start Num: 29

Candidate Starts for MiniMac_91:

(Start: 29 @57505 has 25 MA's), (40, 57580), (49, 57634), (50, 57637), (54, 57664), (56, 57679), (61, 57700), (65, 57736), (70, 57772), (75, 57814), (79, 57844), (81, 57850), (83, 57871), (84, 57880), (86, 57886), (93, 57931), (94, 57934), (106, 57988), (111, 58033), (114, 58054), (120, 58096), (124, 58132), (125, 58135),

Gene: Miniwave_96 Start: 59823, Stop: 60629, Start Num: 9

Candidate Starts for Miniwave_96:

(3, 59637), (Start: 4 @59715 has 6 MA's), (Start: 7 @59769 has 8 MA's), (Start: 9 @59823 has 42 MA's), (Start: 13 @59850 has 72 MA's), (Start: 14 @59868 has 4 MA's), (Start: 29 @59952 has 25 MA's), (54, 60120), (56, 60135), (61, 60156), (65, 60192), (68, 60204), (71, 60237), (79, 60321), (81, 60327), (82, 60336), (83, 60348), (87, 60372), (93, 60408), (105, 60462), (106, 60465), (121, 60579), (125, 60612),

Gene: Misfit_102 Start: 61453, Stop: 62232, Start Num: 13

Candidate Starts for Misfit_102:

(3, 61240), (Start: 4 @61318 has 6 MA's), (Start: 7 @61372 has 8 MA's), (Start: 9 @61426 has 42 MA's), (Start: 13 @61453 has 72 MA's), (Start: 14 @61471 has 4 MA's), (Start: 29 @61555 has 25 MA's), (54, 61723), (56, 61738), (61, 61759), (65, 61795), (68, 61807), (71, 61840), (79, 61924), (81, 61930), (82, 61939), (83, 61951), (87, 61975), (93, 62011), (105, 62065), (106, 62068), (121, 62182), (125, 62215),

Gene: MkaliMitinis3_92 Start: 57779, Stop: 58462, Start Num: 21

Candidate Starts for MkaliMitinis3_92:

(Start: 21 @57779 has 16 MA's), (Start: 27 @57803 has 1 MA's), (34, 57848), (40, 57884), (49, 57938), (54, 57968), (65, 58040), (66, 58046), (75, 58118), (77, 58142), (79, 58148), (82, 58163), (83, 58175), (86, 58190), (93, 58235), (106, 58292), (120, 58400), (123, 58430), (125, 58439),

Gene: Moldemort_104 Start: 60321, Stop: 61100, Start Num: 13

Candidate Starts for Moldemort_104:

(Start: 4 @60186 has 6 MA's), (Start: 7 @60240 has 8 MA's), (Start: 9 @60294 has 42 MA's), (Start: 13 @60321 has 72 MA's), (Start: 14 @60339 has 4 MA's), (Start: 29 @60423 has 25 MA's), (54, 60591), (56, 60606), (61, 60627), (65, 60663), (68, 60675), (71, 60708), (79, 60792), (81, 60798), (82, 60807), (83, 60819), (87, 60843), (93, 60879), (105, 60933), (106, 60936), (121, 61050), (125, 61083),

Gene: MollyToe_95 Start: 58251, Stop: 59030, Start Num: 13

Candidate Starts for MollyToe_95:

(Start: 4 @58116 has 6 MA's), (Start: 7 @58170 has 8 MA's), (Start: 9 @58224 has 42 MA's), (Start: 13 @58251 has 72 MA's), (Start: 14 @58269 has 4 MA's), (Start: 29 @58353 has 25 MA's), (54, 58521), (56, 58536), (65, 58593), (68, 58605), (71, 58638), (79, 58722), (81, 58728), (82, 58737), (83, 58749), (87, 58773), (93, 58809), (105, 58863), (106, 58866), (121, 58980), (125, 59013),

Gene: Moostard_85 Start: 57428, Stop: 58081, Start Num: 29

Candidate Starts for Moostard_85:

(Start: 29 @57428 has 25 MA's), (34, 57467), (40, 57503), (49, 57557), (50, 57560), (54, 57587), (61, 57623), (65, 57659), (75, 57737), (79, 57767), (81, 57773), (83, 57794), (84, 57803), (86, 57809), (93, 57854), (94, 57857), (106, 57911), (111, 57956), (114, 57977), (120, 58019), (124, 58055), (125, 58058),

Gene: Mosby_97 Start: 59790, Stop: 60596, Start Num: 9

Candidate Starts for Mosby_97:

(3, 59604), (Start: 4 @59682 has 6 MA's), (Start: 7 @59736 has 8 MA's), (Start: 9 @59790 has 42 MA's), (Start: 13 @59817 has 72 MA's), (Start: 14 @59835 has 4 MA's), (Start: 29 @59919 has 25 MA's), (54, 60087), (56, 60102), (61, 60123), (65, 60159), (68, 60171), (71, 60204), (79, 60288), (81, 60294), (82, 60303), (83, 60315), (87, 60339), (93, 60375), (105, 60429), (106, 60432), (121, 60546), (125, 60579),

Gene: MrMagoo_67 Start: 43117, Stop: 43713, Start Num: 37

Candidate Starts for MrMagoo_67:

(Start: 37 @43117 has 22 MA's), (45, 43165), (46, 43168), (61, 43258), (74, 43357), (82, 43417), (91, 43477), (92, 43483), (93, 43489), (109, 43570), (112, 43609), (123, 43684), (127, 43705),

Gene: MsGreen_87 Start: 57326, Stop: 57976, Start Num: 29

Candidate Starts for MsGreen_87:

(Start: 29 @57326 has 25 MA's), (34, 57362), (40, 57398), (49, 57452), (50, 57455), (54, 57482), (61, 57518), (65, 57554), (75, 57632), (79, 57662), (81, 57668), (83, 57689), (84, 57698), (86, 57704), (93, 57749), (94, 57752), (106, 57806), (111, 57851), (114, 57872), (120, 57914), (124, 57950), (125, 57953),

Gene: Murica_104 Start: 62129, Stop: 62935, Start Num: 9

Candidate Starts for Murica_104:

(3, 61943), (Start: 4 @62021 has 6 MA's), (Start: 7 @62075 has 8 MA's), (Start: 9 @62129 has 42 MA's), (Start: 13 @62156 has 72 MA's), (Start: 14 @62174 has 4 MA's), (Start: 29 @62258 has 25 MA's), (54, 62426), (56, 62441), (61, 62462), (65, 62498), (68, 62510), (71, 62543), (79, 62627), (81, 62633), (82, 62642), (83, 62654), (87, 62678), (93, 62714), (105, 62768), (106, 62771), (121, 62885), (125, 62918),

Gene: Murphy_101 Start: 60686, Stop: 61492, Start Num: 9

Candidate Starts for Murphy_101:

(Start: 7 @60632 has 8 MA's), (Start: 9 @60686 has 42 MA's), (Start: 13 @60713 has 72 MA's), (Start: 14 @60731 has 4 MA's), (Start: 29 @60815 has 25 MA's), (54, 60983), (56, 60998), (61, 61019), (65, 61055), (68, 61067), (71, 61100), (79, 61184), (81, 61190), (82, 61199), (83, 61211), (87, 61235), (93, 61271), (105, 61325), (106, 61328), (121, 61442), (125, 61475),

Gene: Myrale_101 Start: 60512, Stop: 61291, Start Num: 13

Candidate Starts for Myrale_101:

(3, 60299), (Start: 4 @60377 has 6 MA's), (Start: 7 @60431 has 8 MA's), (Start: 9 @60485 has 42 MA's), (Start: 13 @60512 has 72 MA's), (Start: 14 @60530 has 4 MA's), (Start: 29 @60614 has 25 MA's), (54, 60782), (56, 60797), (61, 60818), (65, 60854), (68, 60866), (71, 60899), (79, 60983), (81, 60989), (82, 60998), (83, 61010), (87, 61034), (93, 61070), (105, 61124), (106, 61127), (121, 61241), (125, 61274),

Gene: Nala_103 Start: 60839, Stop: 61645, Start Num: 9

Candidate Starts for Nala_103:

(Start: 4 @60731 has 6 MA's), (Start: 7 @60785 has 8 MA's), (Start: 9 @60839 has 42 MA's), (Start: 13 @60866 has 72 MA's), (Start: 14 @60884 has 4 MA's), (Start: 29 @60968 has 25 MA's), (54, 61136), (56, 61151), (61, 61172), (65, 61208), (68, 61220), (71, 61253), (79, 61337), (81, 61343), (82, 61352),

(83, 61364), (87, 61388), (93, 61424), (105, 61478), (106, 61481), (121, 61595), (125, 61628),

Gene: Nanosmite_63 Start: 42310, Stop: 42903, Start Num: 37

Candidate Starts for Nanosmite_63:

(Start: 37 @42310 has 22 MA's), (45, 42358), (56, 42430), (72, 42538), (76, 42571), (91, 42670), (92, 42676), (93, 42682), (102, 42721), (111, 42787), (121, 42850), (126, 42892),

Gene: Nebkiss_119 Start: 65215, Stop: 65913, Start Num: 19

Candidate Starts for Nebkiss_119:

(17, 65212), (Start: 19 @65215 has 2 MA's), (Start: 23 @65239 has 4 MA's), (26, 65248), (52, 65404), (54, 65425), (56, 65440), (58, 65449), (60, 65452), (62, 65461), (64, 65479), (71, 65542), (74, 65560), (83, 65632), (86, 65647), (88, 65662), (93, 65692), (100, 65719), (104, 65737), (106, 65749), (108, 65767), (111, 65794), (122, 65881), (125, 65896),

Gene: Nekros_155 Start: 83601, Stop: 84311, Start Num: 16

Candidate Starts for Nekros_155:

(Start: 16 @83601 has 41 MA's), (54, 83823), (57, 83847), (59, 83850), (61, 83859), (79, 84003), (81, 84009), (82, 84018), (83, 84030), (89, 84066), (90, 84069), (107, 84162), (118, 84243), (122, 84279),

Gene: NelitzaMV_98 Start: 58860, Stop: 59639, Start Num: 13

Candidate Starts for NelitzaMV_98:

(3, 58647), (Start: 4 @58725 has 6 MA's), (Start: 7 @58779 has 8 MA's), (Start: 9 @58833 has 42 MA's), (Start: 13 @58860 has 72 MA's), (Start: 14 @58878 has 4 MA's), (Start: 29 @58962 has 25 MA's), (54, 59130), (56, 59145), (65, 59202), (68, 59214), (71, 59247), (79, 59331), (81, 59337), (82, 59346), (83, 59358), (87, 59382), (93, 59418), (105, 59472), (106, 59475), (121, 59589), (125, 59622),

Gene: Netyap_89 Start: 57662, Stop: 58333, Start Num: 23

Candidate Starts for Netyap_89:

(Start: 23 @57662 has 4 MA's), (Start: 25 @57665 has 5 MA's), (40, 57755), (49, 57809), (54, 57839), (65, 57911), (66, 57917), (75, 57989), (77, 58013), (79, 58019), (82, 58034), (83, 58046), (86, 58061), (93, 58106), (106, 58163), (120, 58271), (123, 58301), (125, 58310),

Gene: Nibley_150 Start: 80167, Stop: 80877, Start Num: 16

Candidate Starts for Nibley_150:

(Start: 16 @80167 has 41 MA's), (54, 80389), (57, 80413), (59, 80416), (61, 80425), (79, 80569), (81, 80575), (82, 80584), (83, 80596), (89, 80632), (90, 80635), (107, 80728), (116, 80794), (118, 80809), (122, 80845),

Gene: Nicholas_85 Start: 57433, Stop: 58086, Start Num: 29

Candidate Starts for Nicholas_85:

(Start: 29 @57433 has 25 MA's), (34, 57472), (40, 57508), (49, 57562), (50, 57565), (54, 57592), (61, 57628), (65, 57664), (75, 57742), (79, 57772), (81, 57778), (83, 57799), (84, 57808), (86, 57814), (93, 57859), (94, 57862), (106, 57916), (111, 57961), (114, 57982), (120, 58024), (124, 58060), (125, 58063),

Gene: Nicholasp3_90 Start: 57496, Stop: 58179, Start Num: 21

Candidate Starts for Nicholasp3_90:

(Start: 21 @57496 has 16 MA's), (Start: 27 @57520 has 1 MA's), (34, 57565), (40, 57601), (49, 57655), (54, 57685), (65, 57757), (75, 57835), (77, 57859), (79, 57865), (82, 57880), (83, 57892), (86, 57907), (93, 57952), (106, 58009), (120, 58117), (123, 58147), (125, 58156),

Gene: NihilNomen_160 Start: 83326, Stop: 84036, Start Num: 16

Candidate Starts for NihilNomen_160:

(Start: 16 @83326 has 41 MA's), (54, 83548), (57, 83572), (59, 83575), (61, 83584), (74, 83683), (75, 83698), (79, 83728), (81, 83734), (82, 83743), (83, 83755), (90, 83794), (107, 83887), (118, 83968), (122, 84004),

Gene: Nimrod_101 Start: 60344, Stop: 61258, Start Num: 4

Candidate Starts for Nimrod_101:

(Start: 4 @60344 has 6 MA's), (Start: 7 @60398 has 8 MA's), (Start: 9 @60452 has 42 MA's), (Start: 13 @60479 has 72 MA's), (Start: 14 @60497 has 4 MA's), (Start: 29 @60581 has 25 MA's), (54, 60749), (56, 60764), (61, 60785), (65, 60821), (68, 60833), (71, 60866), (79, 60950), (81, 60956), (82, 60965), (83, 60977), (87, 61001), (93, 61037), (105, 61091), (106, 61094), (121, 61208), (125, 61241),

Gene: NoSleep_102 Start: 59873, Stop: 60652, Start Num: 13

Candidate Starts for NoSleep_102:

(3, 59660), (Start: 4 @59738 has 6 MA's), (Start: 7 @59792 has 8 MA's), (Start: 9 @59846 has 42 MA's), (Start: 13 @59873 has 72 MA's), (Start: 14 @59891 has 4 MA's), (Start: 29 @59975 has 25 MA's), (54, 60143), (56, 60158), (61, 60179), (65, 60215), (68, 60227), (71, 60260), (79, 60344), (81, 60350), (82, 60359), (83, 60371), (87, 60395), (93, 60431), (105, 60485), (106, 60488), (125, 60635),

Gene: NonchalantPear_101 Start: 59080, Stop: 59886, Start Num: 9

Candidate Starts for NonchalantPear_101:

(Start: 4 @58972 has 6 MA's), (Start: 7 @59026 has 8 MA's), (Start: 9 @59080 has 42 MA's), (Start: 13 @59107 has 72 MA's), (Start: 14 @59125 has 4 MA's), (Start: 29 @59209 has 25 MA's), (54, 59377), (56, 59392), (61, 59413), (65, 59449), (68, 59461), (71, 59494), (79, 59578), (81, 59584), (82, 59593), (83, 59605), (87, 59629), (93, 59665), (105, 59719), (106, 59722), (121, 59836), (125, 59869),

Gene: Odette_162 Start: 85622, Stop: 86332, Start Num: 16

Candidate Starts for Odette_162:

(Start: 16 @85622 has 41 MA's), (54, 85844), (57, 85868), (59, 85871), (61, 85880), (75, 85994), (79, 86024), (81, 86030), (82, 86039), (83, 86051), (89, 86087), (90, 86090), (107, 86183), (116, 86249), (118, 86264), (122, 86300),

Gene: Omega_163 Start: 85097, Stop: 85807, Start Num: 16

Candidate Starts for Omega_163:

(Start: 16 @85097 has 41 MA's), (33, 85172), (54, 85319), (57, 85343), (59, 85346), (61, 85355), (66, 85397), (79, 85499), (82, 85514), (83, 85526), (90, 85565), (106, 85643), (107, 85658), (118, 85739),

Gene: Optimus_150 Start: 82593, Stop: 83303, Start Num: 16

Candidate Starts for Optimus_150:

(Start: 16 @82593 has 41 MA's), (54, 82815), (57, 82839), (59, 82842), (61, 82851), (79, 82995), (81, 83001), (82, 83010), (83, 83022), (90, 83061), (106, 83139), (107, 83154), (118, 83235),

Gene: OrionPax_100 Start: 59946, Stop: 60725, Start Num: 13

Candidate Starts for OrionPax_100:

(Start: 7 @59865 has 8 MA's), (Start: 9 @59919 has 42 MA's), (Start: 13 @59946 has 72 MA's), (Start: 14 @59964 has 4 MA's), (Start: 29 @60048 has 25 MA's), (54, 60216), (56, 60231), (61, 60252), (65, 60288), (68, 60300), (71, 60333), (79, 60417), (81, 60423), (82, 60432), (83, 60444), (87, 60468), (93, 60504), (105, 60558), (106, 60561), (121, 60675), (125, 60708),

Gene: OverPar_92 Start: 57831, Stop: 58499, Start Num: 25

Candidate Starts for OverPar_92:

(Start: 23 @57828 has 4 MA's), (Start: 25 @57831 has 5 MA's), (40, 57921), (49, 57975), (54, 58005), (65, 58077), (66, 58083), (75, 58155), (77, 58179), (79, 58185), (82, 58200), (83, 58212), (86, 58227), (93, 58272), (106, 58329), (120, 58437), (123, 58467), (125, 58476),

Gene: PYPDinur_91 Start: 57773, Stop: 58462, Start Num: 21

Candidate Starts for PYPDinur_91:

(Start: 21 @57773 has 16 MA's), (40, 57881), (48, 57920), (49, 57935), (50, 57938), (56, 57980), (61, 58001), (65, 58037), (77, 58139), (81, 58151), (82, 58160), (83, 58172), (84, 58181), (86, 58187), (93, 58232), (96, 58244), (104, 58277), (106, 58289), (125, 58436),

Gene: PaddyBaddy_101 Start: 60064, Stop: 60843, Start Num: 13

Candidate Starts for PaddyBaddy_101:

(Start: 4 @59929 has 6 MA's), (Start: 7 @59983 has 8 MA's), (Start: 9 @60037 has 42 MA's), (Start: 13 @60064 has 72 MA's), (Start: 14 @60082 has 4 MA's), (Start: 29 @60166 has 25 MA's), (54, 60334), (56, 60349), (61, 60370), (65, 60406), (68, 60418), (71, 60451), (79, 60535), (81, 60541), (82, 60550), (83, 60562), (87, 60586), (93, 60622), (105, 60676), (106, 60679), (121, 60793), (125, 60826),

Gene: Palpatine_102 Start: 61151, Stop: 61930, Start Num: 13

Candidate Starts for Palpatine_102:

(Start: 4 @61016 has 6 MA's), (Start: 7 @61070 has 8 MA's), (Start: 9 @61124 has 42 MA's), (Start: 13 @61151 has 72 MA's), (Start: 14 @61169 has 4 MA's), (Start: 29 @61253 has 25 MA's), (54, 61421), (56, 61436), (61, 61457), (65, 61493), (68, 61505), (71, 61538), (79, 61622), (81, 61628), (82, 61637), (83, 61649), (87, 61673), (93, 61709), (105, 61763), (106, 61766), (121, 61880), (125, 61913),

Gene: Paperbeatsrock_100 Start: 60528, Stop: 61307, Start Num: 13

Candidate Starts for Paperbeatsrock_100:

(3, 60315), (Start: 4 @60393 has 6 MA's), (Start: 7 @60447 has 8 MA's), (Start: 9 @60501 has 42 MA's), (Start: 13 @60528 has 72 MA's), (Start: 14 @60546 has 4 MA's), (Start: 29 @60630 has 25 MA's), (54, 60798), (56, 60813), (61, 60834), (65, 60870), (68, 60882), (71, 60915), (79, 60999), (81, 61005), (82, 61014), (83, 61026), (87, 61050), (93, 61086), (105, 61140), (106, 61143), (121, 61257), (125, 61290),

Gene: Pat3_98 Start: 59018, Stop: 59824, Start Num: 9

Candidate Starts for Pat3_98:

(Start: 4 @58910 has 6 MA's), (Start: 7 @58964 has 8 MA's), (Start: 9 @59018 has 42 MA's), (Start: 13 @59045 has 72 MA's), (Start: 14 @59063 has 4 MA's), (Start: 29 @59147 has 25 MA's), (54, 59315), (56, 59330), (61, 59351), (65, 59387), (68, 59399), (71, 59432), (79, 59516), (81, 59522), (82, 59531), (83, 59543), (87, 59567), (93, 59603), (105, 59657), (106, 59660), (121, 59774), (125, 59807),

Gene: PegLeg_58 Start: 40665, Stop: 41252, Start Num: 37

Candidate Starts for PegLeg_58:

(Start: 37 @40665 has 22 MA's), (45, 40710), (46, 40713), (47, 40716), (61, 40800), (91, 41019), (92, 41025), (93, 41031), (102, 41070), (106, 41091), (114, 41157), (117, 41178), (121, 41199), (122, 41217),

Gene: Petra64142_105 Start: 61017, Stop: 61796, Start Num: 13

Candidate Starts for Petra64142_105:

(3, 60804), (Start: 4 @60882 has 6 MA's), (Start: 7 @60936 has 8 MA's), (Start: 9 @60990 has 42 MA's), (Start: 13 @61017 has 72 MA's), (Start: 14 @61035 has 4 MA's), (Start: 29 @61119 has 25 MA's), (54, 61287), (56, 61302), (65, 61359), (68, 61371), (71, 61404), (79, 61488), (81, 61494), (82, 61503), (83, 61515), (87, 61539), (93, 61575), (105, 61629), (106, 61632), (121, 61746), (125, 61779),

Gene: Phaja_99 Start: 59750, Stop: 60511, Start Num: 14

Candidate Starts for Phaja_99:

(Start: 4 @59597 has 6 MA's), (Start: 7 @59651 has 8 MA's), (Start: 9 @59705 has 42 MA's), (Start: 13 @59732 has 72 MA's), (Start: 14 @59750 has 4 MA's), (Start: 29 @59834 has 25 MA's), (54, 60002),

(56, 60017), (65, 60074), (68, 60086), (71, 60119), (79, 60203), (81, 60209), (82, 60218), (83, 60230), (87, 60254), (93, 60290), (105, 60344), (106, 60347), (121, 60461), (125, 60494),

Gene: Pharsalus_98 Start: 60200, Stop: 61006, Start Num: 9

Candidate Starts for Pharsalus_98:

(Start: 4 @60092 has 6 MA's), (Start: 7 @60146 has 8 MA's), (Start: 9 @60200 has 42 MA's), (Start: 13 @60227 has 72 MA's), (Start: 14 @60245 has 4 MA's), (Start: 29 @60329 has 25 MA's), (54, 60497), (56, 60512), (61, 60533), (65, 60569), (68, 60581), (71, 60614), (79, 60698), (81, 60704), (82, 60713), (83, 60725), (87, 60749), (93, 60785), (105, 60839), (106, 60842), (121, 60956), (125, 60989),

Gene: PhatBacter_104 Start: 60869, Stop: 61675, Start Num: 9

Candidate Starts for PhatBacter_104:

(Start: 4 @60761 has 6 MA's), (Start: 7 @60815 has 8 MA's), (Start: 9 @60869 has 42 MA's), (Start: 13 @60896 has 72 MA's), (Start: 14 @60914 has 4 MA's), (Start: 29 @60998 has 25 MA's), (54, 61166), (56, 61181), (61, 61202), (65, 61238), (68, 61250), (71, 61283), (79, 61367), (81, 61373), (82, 61382), (83, 61394), (87, 61418), (93, 61454), (105, 61508), (106, 61511), (121, 61625), (125, 61658),

Gene: Phaux_103 Start: 61375, Stop: 62235, Start Num: 7

Candidate Starts for Phaux_103:

(3, 61243), (Start: 4 @61321 has 6 MA's), (Start: 7 @61375 has 8 MA's), (Start: 9 @61429 has 42 MA's), (Start: 13 @61456 has 72 MA's), (Start: 14 @61474 has 4 MA's), (Start: 29 @61558 has 25 MA's), (54, 61726), (56, 61741), (65, 61798), (68, 61810), (71, 61843), (79, 61927), (81, 61933), (82, 61942), (83, 61954), (87, 61978), (93, 62014), (105, 62068), (106, 62071), (121, 62185), (125, 62218),

Gene: Phoebus_159 Start: 87013, Stop: 87723, Start Num: 16

Candidate Starts for Phoebus_159:

(Start: 16 @87013 has 41 MA's), (54, 87235), (57, 87259), (59, 87262), (61, 87271), (74, 87370), (75, 87385), (79, 87415), (81, 87421), (82, 87430), (83, 87442), (90, 87481), (107, 87574), (118, 87655), (122, 87691),

Gene: Phrux_98 Start: 59706, Stop: 60512, Start Num: 9

Candidate Starts for Phrux_98:

(Start: 7 @59652 has 8 MA's), (Start: 9 @59706 has 42 MA's), (Start: 13 @59733 has 72 MA's), (Start: 14 @59751 has 4 MA's), (Start: 29 @59835 has 25 MA's), (54, 60003), (56, 60018), (61, 60039), (65, 60075), (68, 60087), (71, 60120), (79, 60204), (81, 60210), (82, 60219), (83, 60231), (87, 60255), (93, 60291), (105, 60345), (106, 60348), (121, 60462), (125, 60495),

Gene: Policronamos_103 Start: 61178, Stop: 61939, Start Num: 14

Candidate Starts for Policronamos_103:

(3, 60947), (Start: 4 @61025 has 6 MA's), (Start: 7 @61079 has 8 MA's), (Start: 9 @61133 has 42 MA's), (Start: 13 @61160 has 72 MA's), (Start: 14 @61178 has 4 MA's), (Start: 29 @61262 has 25 MA's), (54, 61430), (56, 61445), (65, 61502), (68, 61514), (71, 61547), (79, 61631), (81, 61637), (82, 61646), (83, 61658), (87, 61682), (93, 61718), (105, 61772), (106, 61775), (121, 61889), (125, 61922),

Gene: Porcelain_153 Start: 80007, Stop: 80717, Start Num: 16

Candidate Starts for Porcelain_153:

(Start: 16 @80007 has 41 MA's), (54, 80229), (57, 80253), (59, 80256), (61, 80265), (79, 80409), (81, 80415), (82, 80424), (83, 80436), (90, 80475), (106, 80553), (107, 80568), (118, 80649),

Gene: Porky_100 Start: 59477, Stop: 60256, Start Num: 13

Candidate Starts for Porky_100:

(Start: 7 @59396 has 8 MA's), (Start: 9 @59450 has 42 MA's), (Start: 13 @59477 has 72 MA's), (Start: 14 @59495 has 4 MA's), (Start: 29 @59579 has 25 MA's), (54, 59747), (56, 59762), (61, 59783), (65,

59819), (68, 59831), (71, 59864), (79, 59948), (81, 59954), (82, 59963), (83, 59975), (87, 59999), (93, 60035), (105, 60089), (106, 60092), (125, 60239),

Gene: Pound_150 Start: 82016, Stop: 82726, Start Num: 16

Candidate Starts for Pound_150:

(Start: 16 @82016 has 41 MA's), (33, 82091), (54, 82238), (59, 82265), (61, 82274), (66, 82316), (75, 82388), (79, 82418), (82, 82433), (83, 82445), (90, 82484), (107, 82577), (116, 82643), (118, 82658), (122, 82694),

Gene: Ptowny_97 Start: 58541, Stop: 59347, Start Num: 9

Candidate Starts for Ptowny_97:

(Start: 4 @58433 has 6 MA's), (Start: 7 @58487 has 8 MA's), (Start: 9 @58541 has 42 MA's), (Start: 13 @58568 has 72 MA's), (Start: 14 @58586 has 4 MA's), (Start: 29 @58670 has 25 MA's), (54, 58838), (56, 58853), (61, 58874), (65, 58910), (68, 58922), (71, 58955), (79, 59039), (81, 59045), (82, 59054), (83, 59066), (87, 59090), (93, 59126), (105, 59180), (106, 59183), (121, 59297), (125, 59330),

Gene: Pumpkin_103 Start: 59992, Stop: 60852, Start Num: 7

Candidate Starts for Pumpkin_103:

(3, 59860), (Start: 4 @59938 has 6 MA's), (Start: 7 @59992 has 8 MA's), (Start: 9 @60046 has 42 MA's), (Start: 13 @60073 has 72 MA's), (Start: 14 @60091 has 4 MA's), (Start: 29 @60175 has 25 MA's), (54, 60343), (56, 60358), (61, 60379), (65, 60415), (68, 60427), (71, 60460), (79, 60544), (81, 60550), (82, 60559), (83, 60571), (87, 60595), (93, 60631), (105, 60685), (106, 60688), (121, 60802), (125, 60835),

Gene: Quallification_102 Start: 60942, Stop: 61721, Start Num: 13

Candidate Starts for Quallification_102:

(Start: 4 @60807 has 6 MA's), (Start: 7 @60861 has 8 MA's), (Start: 9 @60915 has 42 MA's), (Start: 13 @60942 has 72 MA's), (Start: 14 @60960 has 4 MA's), (Start: 29 @61044 has 25 MA's), (54, 61212), (56, 61227), (61, 61248), (65, 61284), (68, 61296), (71, 61329), (79, 61413), (81, 61419), (82, 61428), (83, 61440), (87, 61464), (93, 61500), (105, 61554), (106, 61557), (121, 61671), (125, 61704),

Gene: Quby_91 Start: 57008, Stop: 57697, Start Num: 21

Candidate Starts for Quby_91:

(Start: 21 @57008 has 16 MA's), (40, 57116), (48, 57155), (49, 57170), (50, 57173), (56, 57215), (61, 57236), (65, 57272), (77, 57374), (81, 57386), (82, 57395), (83, 57407), (84, 57416), (86, 57422), (93, 57467), (96, 57479), (104, 57512), (106, 57524), (125, 57671),

Gene: Rakim_102 Start: 59964, Stop: 60743, Start Num: 13

Candidate Starts for Rakim_102:

(3, 59751), (Start: 4 @59829 has 6 MA's), (Start: 7 @59883 has 8 MA's), (Start: 9 @59937 has 42 MA's), (Start: 13 @59964 has 72 MA's), (Start: 14 @59982 has 4 MA's), (Start: 29 @60066 has 25 MA's), (54, 60234), (56, 60249), (65, 60306), (68, 60318), (71, 60351), (79, 60435), (81, 60441), (82, 60450), (83, 60462), (87, 60486), (93, 60522), (105, 60576), (106, 60579), (121, 60693), (125, 60726),

Gene: Rearden_151 Start: 80837, Stop: 81547, Start Num: 16

Candidate Starts for Rearden_151:

(Start: 16 @80837 has 41 MA's), (54, 81059), (57, 81083), (59, 81086), (61, 81095), (79, 81239), (81, 81245), (82, 81254), (83, 81266), (89, 81302), (90, 81305), (107, 81398), (118, 81479), (122, 81515),

Gene: Red305_88 Start: 57327, Stop: 57977, Start Num: 29

Candidate Starts for Red305_88:

(Start: 29 @57327 has 25 MA's), (34, 57363), (40, 57399), (49, 57453), (50, 57456), (54, 57483), (61, 57519), (65, 57555), (75, 57633), (79, 57663), (81, 57669), (83, 57690), (84, 57699), (86, 57705), (93,

57750), (94, 57753), (106, 57807), (111, 57852), (114, 57873), (120, 57915), (124, 57951), (125, 57954),

Gene: Redno2_152 Start: 81126, Stop: 81836, Start Num: 16

Candidate Starts for Redno2_152:

(Start: 16 @81126 has 41 MA's), (54, 81348), (57, 81372), (59, 81375), (61, 81384), (74, 81483), (75, 81498), (79, 81528), (81, 81534), (82, 81543), (83, 81555), (90, 81594), (107, 81687), (118, 81768), (122, 81804),

Gene: Reindeer_60 Start: 41854, Stop: 42447, Start Num: 37

Candidate Starts for Reindeer_60:

(Start: 37 @41854 has 22 MA's), (45, 41902), (46, 41905), (72, 42082), (76, 42115), (82, 42154), (84, 42175), (85, 42178), (91, 42214), (93, 42226), (97, 42241), (121, 42394), (126, 42436),

Gene: Rey_65 Start: 42924, Stop: 43520, Start Num: 37

Candidate Starts for Rey_65:

(Start: 37 @42924 has 22 MA's), (42, 42957), (45, 42972), (46, 42975), (74, 43164), (76, 43185), (81, 43215), (82, 43224), (91, 43284), (92, 43290), (93, 43296), (113, 43419), (121, 43467),

Gene: Rimmer_99 Start: 60354, Stop: 61133, Start Num: 13

Candidate Starts for Rimmer_99:

(Start: 4 @60219 has 6 MA's), (Start: 7 @60273 has 8 MA's), (Start: 9 @60327 has 42 MA's), (Start: 13 @60354 has 72 MA's), (Start: 14 @60372 has 4 MA's), (Start: 29 @60456 has 25 MA's), (54, 60624), (56, 60639), (65, 60696), (68, 60708), (71, 60741), (79, 60825), (81, 60831), (82, 60840), (83, 60852), (87, 60876), (93, 60912), (105, 60966), (106, 60969), (121, 61083), (125, 61116),

Gene: RiverMonster_101 Start: 60493, Stop: 61407, Start Num: 4

Candidate Starts for RiverMonster_101:

(Start: 4 @60493 has 6 MA's), (Start: 7 @60547 has 8 MA's), (Start: 9 @60601 has 42 MA's), (Start: 13 @60628 has 72 MA's), (Start: 14 @60646 has 4 MA's), (Start: 29 @60730 has 25 MA's), (54, 60898), (56, 60913), (61, 60934), (65, 60970), (68, 60982), (71, 61015), (79, 61099), (81, 61105), (82, 61114), (83, 61126), (87, 61150), (93, 61186), (105, 61240), (106, 61243), (121, 61357), (125, 61390),

Gene: RoseMarie_63 Start: 44122, Stop: 44715, Start Num: 37

Candidate Starts for RoseMarie_63:

(Start: 37 @44122 has 22 MA's), (45, 44170), (50, 44200), (56, 44242), (73, 44359), (76, 44383), (91, 44482), (92, 44488), (93, 44494), (97, 44509), (106, 44554), (110, 44593), (115, 44626), (121, 44662),

Gene: Rossetti_90 Start: 57847, Stop: 58497, Start Num: 31

Candidate Starts for Rossetti_90:

(Start: 31 @57847 has 2 MA's), (40, 57919), (48, 57958), (49, 57973), (50, 57976), (54, 58003), (65, 58075), (66, 58081), (75, 58153), (79, 58183), (82, 58198), (83, 58210), (86, 58225), (93, 58270), (106, 58327), (120, 58435),

Gene: Rumpelstiltskin_86 Start: 57289, Stop: 57972, Start Num: 21

Candidate Starts for Rumpelstiltskin_86:

(Start: 21 @57289 has 16 MA's), (Start: 27 @57313 has 1 MA's), (34, 57358), (40, 57394), (49, 57448), (54, 57478), (65, 57550), (75, 57628), (77, 57652), (79, 57658), (82, 57673), (83, 57685), (86, 57700), (93, 57745), (106, 57802), (120, 57910), (123, 57940), (125, 57949),

Gene: Saints25_98 Start: 58558, Stop: 59337, Start Num: 13

Candidate Starts for Saints25_98:

(Start: 4 @58423 has 6 MA's), (Start: 7 @58477 has 8 MA's), (Start: 9 @58531 has 42 MA's), (Start: 13 @58558 has 72 MA's), (Start: 14 @58576 has 4 MA's), (Start: 29 @58660 has 25 MA's), (54, 58828), (56, 58843), (61, 58864), (65, 58900), (68, 58912), (71, 58945), (79, 59029), (81, 59035), (82, 59044), (83, 59056), (87, 59080), (93, 59116), (105, 59170), (106, 59173), (121, 59287), (125, 59320),

Gene: Samty_86 Start: 57421, Stop: 58074, Start Num: 29

Candidate Starts for Samty_86:

(Start: 29 @57421 has 25 MA's), (34, 57460), (40, 57496), (49, 57550), (50, 57553), (54, 57580), (61, 57616), (65, 57652), (75, 57730), (79, 57760), (81, 57766), (83, 57787), (84, 57796), (86, 57802), (93, 57847), (94, 57850), (106, 57904), (111, 57949), (114, 57970), (120, 58012), (124, 58048), (125, 58051),

Gene: Sarshaun_91 Start: 58437, Stop: 59090, Start Num: 29

Candidate Starts for Sarshaun_91:

(Start: 29 @58437 has 25 MA's), (40, 58512), (49, 58566), (54, 58596), (65, 58668), (66, 58674), (75, 58746), (77, 58770), (79, 58776), (82, 58791), (83, 58803), (86, 58818), (93, 58863), (106, 58920), (120, 59028), (123, 59058), (125, 59067),

Gene: Sassay_96 Start: 58752, Stop: 59558, Start Num: 9

Candidate Starts for Sassay_96:

(3, 58566), (Start: 4 @58644 has 6 MA's), (Start: 7 @58698 has 8 MA's), (Start: 9 @58752 has 42 MA's), (Start: 13 @58779 has 72 MA's), (Start: 14 @58797 has 4 MA's), (Start: 29 @58881 has 25 MA's), (54, 59049), (56, 59064), (61, 59085), (65, 59121), (68, 59133), (71, 59166), (79, 59250), (81, 59256), (82, 59265), (83, 59277), (87, 59301), (93, 59337), (105, 59391), (106, 59394), (121, 59508), (125, 59541),

Gene: Schatzie_153 Start: 83676, Stop: 84386, Start Num: 16

Candidate Starts for Schatzie_153:

(Start: 16 @83676 has 41 MA's), (54, 83898), (57, 83922), (59, 83925), (61, 83934), (75, 84048), (79, 84078), (81, 84084), (82, 84093), (83, 84105), (89, 84141), (90, 84144), (107, 84237), (116, 84303), (118, 84318), (122, 84354),

Gene: Shaboozey_154 Start: 80611, Stop: 81321, Start Num: 16

Candidate Starts for Shaboozey_154:

(Start: 16 @80611 has 41 MA's), (54, 80833), (57, 80857), (59, 80860), (61, 80869), (79, 81013), (81, 81019), (82, 81028), (83, 81040), (89, 81076), (90, 81079), (107, 81172), (116, 81238), (118, 81253), (122, 81289),

Gene: ShamWow_101 Start: 60722, Stop: 61528, Start Num: 9

Candidate Starts for ShamWow_101:

(3, 60536), (Start: 4 @60614 has 6 MA's), (Start: 7 @60668 has 8 MA's), (Start: 9 @60722 has 42 MA's), (Start: 13 @60749 has 72 MA's), (Start: 14 @60767 has 4 MA's), (Start: 29 @60851 has 25 MA's), (54, 61019), (56, 61034), (65, 61091), (68, 61103), (71, 61136), (79, 61220), (81, 61226), (82, 61235), (83, 61247), (87, 61271), (93, 61307), (105, 61361), (106, 61364), (121, 61478), (125, 61511),

Gene: Sheng711_92 Start: 57249, Stop: 57938, Start Num: 21

Candidate Starts for Sheng711_92:

(Start: 21 @57249 has 16 MA's), (40, 57357), (48, 57396), (49, 57411), (50, 57414), (56, 57456), (61, 57477), (65, 57513), (77, 57615), (81, 57627), (82, 57636), (83, 57648), (84, 57657), (86, 57663), (93, 57708), (96, 57720), (104, 57753), (106, 57765), (125, 57912),

Gene: ShereKhan_99 Start: 61188, Stop: 61967, Start Num: 13

Candidate Starts for ShereKhan_99:

(Start: 4 @61053 has 6 MA's), (Start: 7 @61107 has 8 MA's), (Start: 9 @61161 has 42 MA's), (Start: 13 @61188 has 72 MA's), (Start: 14 @61206 has 4 MA's), (Start: 29 @61290 has 25 MA's), (54, 61458), (56, 61473), (61, 61494), (65, 61530), (68, 61542), (71, 61575), (79, 61659), (81, 61665), (82, 61674), (83, 61686), (87, 61710), (93, 61746), (105, 61800), (106, 61803), (121, 61917), (125, 61950),

Gene: Simpliphy_100 Start: 60199, Stop: 60978, Start Num: 13

Candidate Starts for Simpliphy_100:

(Start: 4 @60064 has 6 MA's), (Start: 7 @60118 has 8 MA's), (Start: 9 @60172 has 42 MA's), (Start: 13 @60199 has 72 MA's), (Start: 14 @60217 has 4 MA's), (Start: 29 @60301 has 25 MA's), (54, 60469), (56, 60484), (61, 60505), (65, 60541), (68, 60553), (71, 60586), (79, 60670), (81, 60676), (82, 60685), (83, 60697), (87, 60721), (93, 60757), (105, 60811), (106, 60814), (121, 60928), (125, 60961),

Gene: SirDuracell_101 Start: 59539, Stop: 60345, Start Num: 9

Candidate Starts for SirDuracell_101:

(Start: 4 @59431 has 6 MA's), (Start: 7 @59485 has 8 MA's), (Start: 9 @59539 has 42 MA's), (Start: 13 @59566 has 72 MA's), (Start: 14 @59584 has 4 MA's), (Start: 29 @59668 has 25 MA's), (54, 59836), (56, 59851), (61, 59872), (65, 59908), (68, 59920), (71, 59953), (79, 60037), (81, 60043), (82, 60052), (83, 60064), (87, 60088), (93, 60124), (105, 60178), (106, 60181), (121, 60295), (125, 60328),

Gene: Skinny_60 Start: 41095, Stop: 41682, Start Num: 37

Candidate Starts for Skinny_60:

(Start: 37 @41095 has 22 MA's), (45, 41140), (46, 41143), (47, 41146), (61, 41230), (91, 41449), (92, 41455), (93, 41461), (102, 41500), (114, 41587), (117, 41608), (121, 41629), (122, 41647),

Gene: SlimJimmy_57 Start: 40650, Stop: 41237, Start Num: 37

Candidate Starts for SlimJimmy_57:

(Start: 37 @40650 has 22 MA's), (45, 40695), (46, 40698), (47, 40701), (61, 40785), (91, 41004), (92, 41010), (93, 41016), (102, 41055), (114, 41142), (117, 41163), (121, 41184), (122, 41202),

Gene: Snenia_86 Start: 57328, Stop: 57978, Start Num: 29

Candidate Starts for Snenia_86:

(Start: 29 @57328 has 25 MA's), (34, 57364), (40, 57400), (49, 57454), (50, 57457), (54, 57484), (61, 57520), (65, 57556), (75, 57634), (79, 57664), (81, 57670), (83, 57691), (84, 57700), (86, 57706), (93, 57751), (94, 57754), (106, 57808), (111, 57853), (114, 57874), (120, 57916), (124, 57952), (125, 57955),

Gene: SoJulia_92 Start: 59160, Stop: 59855, Start Num: 19

Candidate Starts for SoJulia_92:

(17, 59157), (Start: 19 @59160 has 2 MA's), (20, 59169), (Start: 22 @59175 has 1 MA's), (28, 59199), (32, 59208), (40, 59277), (49, 59331), (54, 59361), (65, 59433), (66, 59439), (75, 59511), (77, 59535), (79, 59541), (82, 59556), (83, 59568), (86, 59583), (93, 59628), (106, 59685), (120, 59793), (123, 59823), (125, 59832),

Gene: Soap141_90 Start: 58437, Stop: 59090, Start Num: 29

Candidate Starts for Soap141_90:

(Start: 29 @58437 has 25 MA's), (40, 58512), (49, 58566), (54, 58596), (65, 58668), (66, 58674), (75, 58746), (77, 58770), (79, 58776), (82, 58791), (83, 58803), (86, 58818), (93, 58863), (106, 58920), (120, 59028), (123, 59058), (125, 59067),

Gene: SophKB_99 Start: 59962, Stop: 60768, Start Num: 9

Candidate Starts for SophKB_99:

(6, 59896), (Start: 7 @59908 has 8 MA's), (Start: 9 @59962 has 42 MA's), (Start: 13 @59989 has 72 MA's), (Start: 14 @60007 has 4 MA's), (Start: 29 @60091 has 25 MA's), (54, 60259), (56, 60274), (61,

60295), (65, 60331), (68, 60343), (71, 60376), (79, 60460), (81, 60466), (82, 60475), (83, 60487), (87, 60511), (93, 60547), (105, 60601), (106, 60604), (121, 60718), (125, 60751),

Gene: Sotrice96_102 Start: 60453, Stop: 61232, Start Num: 13

Candidate Starts for Sotrice96_102:

(Start: 4 @60318 has 6 MA's), (Start: 7 @60372 has 8 MA's), (Start: 9 @60426 has 42 MA's), (Start: 13 @60453 has 72 MA's), (Start: 14 @60471 has 4 MA's), (Start: 29 @60555 has 25 MA's), (54, 60723), (56, 60738), (61, 60759), (65, 60795), (68, 60807), (71, 60840), (79, 60924), (81, 60930), (82, 60939), (83, 60951), (87, 60975), (93, 61011), (105, 61065), (106, 61068), (121, 61182), (125, 61215),

Gene: Squint_149 Start: 79996, Stop: 80706, Start Num: 16

Candidate Starts for Squint_149:

(Start: 16 @79996 has 41 MA's), (54, 80218), (57, 80242), (59, 80245), (61, 80254), (79, 80398), (81, 80404), (82, 80413), (83, 80425), (89, 80461), (90, 80464), (107, 80557), (118, 80638), (122, 80674),

Gene: Stank_103 Start: 60227, Stop: 61006, Start Num: 13

Candidate Starts for Stank_103:

(3, 60014), (Start: 4 @60092 has 6 MA's), (Start: 7 @60146 has 8 MA's), (Start: 9 @60200 has 42 MA's), (Start: 13 @60227 has 72 MA's), (Start: 14 @60245 has 4 MA's), (Start: 29 @60329 has 25 MA's), (54, 60497), (56, 60512), (65, 60569), (68, 60581), (71, 60614), (79, 60698), (81, 60704), (82, 60713), (83, 60725), (87, 60749), (93, 60785), (105, 60839), (106, 60842), (121, 60956), (125, 60989),

Gene: Stark_102 Start: 60512, Stop: 61291, Start Num: 13

Candidate Starts for Stark_102:

(Start: 7 @60431 has 8 MA's), (Start: 9 @60485 has 42 MA's), (Start: 13 @60512 has 72 MA's), (Start: 14 @60530 has 4 MA's), (Start: 29 @60614 has 25 MA's), (54, 60782), (56, 60797), (61, 60818), (65, 60854), (68, 60866), (71, 60899), (79, 60983), (81, 60989), (82, 60998), (83, 61010), (87, 61034), (93, 61070), (105, 61124), (106, 61127), (121, 61241), (125, 61274),

Gene: StellaBean_100 Start: 60589, Stop: 61368, Start Num: 13

Candidate Starts for StellaBean_100:

(Start: 4 @60454 has 6 MA's), (Start: 7 @60508 has 8 MA's), (Start: 9 @60562 has 42 MA's), (Start: 13 @60589 has 72 MA's), (Start: 14 @60607 has 4 MA's), (Start: 29 @60691 has 25 MA's), (54, 60859), (56, 60874), (61, 60895), (65, 60931), (68, 60943), (71, 60976), (79, 61060), (81, 61066), (82, 61075), (83, 61087), (87, 61111), (93, 61147), (105, 61201), (106, 61204), (121, 61318), (125, 61351),

Gene: Stellammi_155 Start: 70885, Stop: 71595, Start Num: 16

Candidate Starts for Stellammi_155:

(8, 70771), (15, 70873), (Start: 16 @70885 has 41 MA's), (18, 70903), (24, 70930), (36, 70993), (38, 71014), (75, 71257), (79, 71287), (81, 71293), (82, 71302), (83, 71314), (90, 71353), (106, 71431), (110, 71470), (111, 71476), (114, 71497),

Gene: StolenFromERC_103 Start: 60152, Stop: 60931, Start Num: 13

Candidate Starts for StolenFromERC_103:

(Start: 4 @60017 has 6 MA's), (Start: 7 @60071 has 8 MA's), (Start: 9 @60125 has 42 MA's), (Start: 13 @60152 has 72 MA's), (Start: 14 @60170 has 4 MA's), (Start: 29 @60254 has 25 MA's), (54, 60422), (56, 60437), (61, 60458), (65, 60494), (68, 60506), (71, 60539), (79, 60623), (81, 60629), (82, 60638), (83, 60650), (87, 60674), (93, 60710), (105, 60764), (106, 60767), (125, 60914),

Gene: StormChicken_102 Start: 60491, Stop: 61297, Start Num: 9

Candidate Starts for StormChicken_102:

(3, 60305), (Start: 4 @60383 has 6 MA's), (Start: 7 @60437 has 8 MA's), (Start: 9 @60491 has 42 MA's), (Start: 13 @60518 has 72 MA's), (Start: 14 @60536 has 4 MA's), (Start: 29 @60620 has 25

MA's), (54, 60788), (56, 60803), (65, 60860), (68, 60872), (71, 60905), (79, 60989), (81, 60995), (82, 61004), (83, 61016), (87, 61040), (93, 61076), (105, 61130), (106, 61133), (121, 61247), (125, 61280),

Gene: Superphikiman_154 Start: 80469, Stop: 81179, Start Num: 16

Candidate Starts for Superphikiman_154:

(Start: 16 @80469 has 41 MA's), (54, 80691), (57, 80715), (59, 80718), (61, 80727), (75, 80841), (79, 80871), (81, 80877), (82, 80886), (83, 80898), (89, 80934), (90, 80937), (104, 81003), (107, 81030), (118, 81111), (122, 81147),

Gene: TBrady12_104 Start: 59667, Stop: 60446, Start Num: 13

Candidate Starts for TBrady12_104:

(3, 59454), (Start: 4 @59532 has 6 MA's), (Start: 7 @59586 has 8 MA's), (Start: 9 @59640 has 42 MA's), (Start: 13 @59667 has 72 MA's), (Start: 14 @59685 has 4 MA's), (Start: 29 @59769 has 25 MA's), (54, 59937), (56, 59952), (65, 60009), (68, 60021), (71, 60054), (79, 60138), (81, 60144), (82, 60153), (83, 60165), (87, 60189), (93, 60225), (105, 60279), (106, 60282), (121, 60396), (125, 60429),

Gene: Tarkin_100 Start: 61026, Stop: 61832, Start Num: 9

Candidate Starts for Tarkin_100:

(Start: 4 @60918 has 6 MA's), (Start: 7 @60972 has 8 MA's), (Start: 9 @61026 has 42 MA's), (Start: 13 @61053 has 72 MA's), (Start: 14 @61071 has 4 MA's), (Start: 29 @61155 has 25 MA's), (54, 61323), (56, 61338), (61, 61359), (65, 61395), (68, 61407), (71, 61440), (79, 61524), (81, 61530), (82, 61539), (83, 61551), (87, 61575), (93, 61611), (105, 61665), (106, 61668), (121, 61782), (125, 61815),

Gene: TeamEdward_101 Start: 60715, Stop: 61494, Start Num: 13

Candidate Starts for TeamEdward_101:

(3, 60502), (Start: 4 @60580 has 6 MA's), (Start: 7 @60634 has 8 MA's), (Start: 9 @60688 has 42 MA's), (Start: 13 @60715 has 72 MA's), (Start: 14 @60733 has 4 MA's), (Start: 29 @60817 has 25 MA's), (54, 60985), (56, 61000), (65, 61057), (68, 61069), (71, 61102), (79, 61186), (81, 61192), (82, 61201), (83, 61213), (87, 61237), (93, 61273), (105, 61327), (106, 61330), (121, 61444), (125, 61477),

Gene: TeardropMSU_97 Start: 59453, Stop: 60313, Start Num: 7

Candidate Starts for TeardropMSU_97:

(Start: 4 @59399 has 6 MA's), (Start: 7 @59453 has 8 MA's), (Start: 9 @59507 has 42 MA's), (Start: 13 @59534 has 72 MA's), (Start: 14 @59552 has 4 MA's), (Start: 29 @59636 has 25 MA's), (54, 59804), (56, 59819), (61, 59840), (65, 59876), (68, 59888), (71, 59921), (79, 60005), (81, 60011), (82, 60020), (83, 60032), (87, 60056), (93, 60092), (105, 60146), (106, 60149), (121, 60263), (125, 60296),

Gene: Teaspoon_102 Start: 60411, Stop: 61190, Start Num: 13

Candidate Starts for Teaspoon_102:

(Start: 7 @60330 has 8 MA's), (Start: 9 @60384 has 42 MA's), (Start: 13 @60411 has 72 MA's), (Start: 14 @60429 has 4 MA's), (Start: 29 @60513 has 25 MA's), (54, 60681), (56, 60696), (61, 60717), (65, 60753), (68, 60765), (71, 60798), (79, 60882), (81, 60888), (82, 60897), (83, 60909), (87, 60933), (93, 60969), (105, 61023), (106, 61026), (125, 61173),

Gene: Terminus_104 Start: 61426, Stop: 62232, Start Num: 9

Candidate Starts for Terminus_104:

(3, 61240), (Start: 4 @61318 has 6 MA's), (Start: 7 @61372 has 8 MA's), (Start: 9 @61426 has 42 MA's), (Start: 13 @61453 has 72 MA's), (Start: 14 @61471 has 4 MA's), (Start: 29 @61555 has 25 MA's), (54, 61723), (56, 61738), (61, 61759), (65, 61795), (68, 61807), (71, 61840), (79, 61924), (81, 61930), (82, 61939), (83, 61951), (87, 61975), (93, 62011), (105, 62065), (106, 62068), (121, 62182), (125, 62215),

Gene: Thibault_140 Start: 80399, Stop: 81109, Start Num: 16

Candidate Starts for Thibault_140:

(Start: 16 @80399 has 41 MA's), (54, 80621), (57, 80645), (59, 80648), (61, 80657), (66, 80699), (75, 80771), (79, 80801), (82, 80816), (83, 80828), (90, 80867), (106, 80945), (107, 80960), (118, 81041),

Gene: Thimble_103 Start: 59417, Stop: 60196, Start Num: 13

Candidate Starts for Thimble_103:

(3, 59204), (Start: 4 @59282 has 6 MA's), (Start: 7 @59336 has 8 MA's), (Start: 9 @59390 has 42 MA's), (Start: 13 @59417 has 72 MA's), (Start: 14 @59435 has 4 MA's), (Start: 29 @59519 has 25 MA's), (54, 59687), (56, 59702), (65, 59759), (68, 59771), (71, 59804), (79, 59888), (81, 59894), (82, 59903), (83, 59915), (87, 59939), (93, 59975), (105, 60029), (106, 60032), (121, 60146), (125, 60179),

Gene: ThreeRngTarjay_154 Start: 84534, Stop: 85244, Start Num: 16

Candidate Starts for ThreeRngTarjay_154:

(10, 84471), (11, 84486), (Start: 16 @84534 has 41 MA's), (33, 84609), (54, 84756), (57, 84780), (59, 84783), (61, 84792), (79, 84936), (81, 84942), (82, 84951), (83, 84963), (89, 84999), (90, 85002), (107, 85095), (118, 85176), (122, 85212),

Gene: Thresher_103 Start: 61292, Stop: 62071, Start Num: 13

Candidate Starts for Thresher_103:

(Start: 7 @61211 has 8 MA's), (Start: 9 @61265 has 42 MA's), (Start: 13 @61292 has 72 MA's), (Start: 14 @61310 has 4 MA's), (Start: 29 @61394 has 25 MA's), (54, 61562), (56, 61577), (61, 61598), (65, 61634), (68, 61646), (71, 61679), (79, 61763), (81, 61769), (82, 61778), (83, 61790), (87, 61814), (93, 61850), (105, 61904), (106, 61907), (121, 62021), (125, 62054),

Gene: Tomaszewski_96 Start: 59856, Stop: 60770, Start Num: 4

Candidate Starts for Tomaszewski_96:

(Start: 4 @59856 has 6 MA's), (Start: 7 @59910 has 8 MA's), (Start: 9 @59964 has 42 MA's), (Start: 13 @59991 has 72 MA's), (Start: 14 @60009 has 4 MA's), (Start: 29 @60093 has 25 MA's), (54, 60261), (56, 60276), (61, 60297), (65, 60333), (68, 60345), (71, 60378), (79, 60462), (81, 60468), (82, 60477), (83, 60489), (87, 60513), (93, 60549), (105, 60603), (106, 60606), (121, 60720), (125, 60753),

Gene: Toto_99 Start: 60749, Stop: 61528, Start Num: 13

Candidate Starts for Toto_99:

(3, 60536), (Start: 4 @60614 has 6 MA's), (Start: 7 @60668 has 8 MA's), (Start: 9 @60722 has 42 MA's), (Start: 13 @60749 has 72 MA's), (Start: 14 @60767 has 4 MA's), (Start: 29 @60851 has 25 MA's), (54, 61019), (56, 61034), (65, 61091), (68, 61103), (71, 61136), (79, 61220), (81, 61226), (82, 61235), (83, 61247), (87, 61271), (93, 61307), (105, 61361), (106, 61364), (121, 61478), (125, 61511),

Gene: Tourach_90 Start: 58204, Stop: 58875, Start Num: 25

Candidate Starts for Tourach_90:

(Start: 23 @58201 has 4 MA's), (Start: 25 @58204 has 5 MA's), (40, 58294), (49, 58348), (54, 58378), (65, 58450), (75, 58528), (77, 58552), (79, 58558), (83, 58585), (84, 58594), (93, 58645), (106, 58702), (111, 58747), (120, 58810), (125, 58849), (128, 58867),

Gene: TpudiCK_60 Start: 40665, Stop: 41252, Start Num: 37

Candidate Starts for TpudiCK_60:

(Start: 37 @40665 has 22 MA's), (45, 40710), (46, 40713), (47, 40716), (61, 40800), (91, 41019), (92, 41025), (93, 41031), (102, 41070), (114, 41157), (117, 41178), (121, 41199), (122, 41217),

Gene: Traaww1_97 Start: 59256, Stop: 60035, Start Num: 13

Candidate Starts for Traaww1_97:

(Start: 4 @59121 has 6 MA's), (Start: 7 @59175 has 8 MA's), (Start: 9 @59229 has 42 MA's), (Start: 13 @59256 has 72 MA's), (Start: 14 @59274 has 4 MA's), (Start: 29 @59358 has 25 MA's), (54, 59526),

(56, 59541), (61, 59562), (65, 59598), (68, 59610), (71, 59643), (79, 59727), (81, 59733), (82, 59742), (83, 59754), (87, 59778), (93, 59814), (105, 59868), (106, 59871), (121, 59985), (125, 60018),

Gene: TriFive_88 Start: 57440, Stop: 58090, Start Num: 29

Candidate Starts for TriFive_88:

(Start: 29 @57440 has 25 MA's), (34, 57476), (40, 57512), (49, 57566), (50, 57569), (54, 57596), (61, 57632), (65, 57668), (75, 57746), (79, 57776), (81, 57782), (83, 57803), (84, 57812), (86, 57818), (93, 57863), (94, 57866), (106, 57920), (111, 57965), (114, 57986), (120, 58028), (124, 58064), (125, 58067),

Gene: Tuco_102 Start: 61587, Stop: 62393, Start Num: 9

Candidate Starts for Tuco_102:

(Start: 4 @61479 has 6 MA's), (Start: 7 @61533 has 8 MA's), (Start: 9 @61587 has 42 MA's), (Start: 13 @61614 has 72 MA's), (Start: 14 @61632 has 4 MA's), (Start: 29 @61716 has 25 MA's), (54, 61884), (56, 61899), (61, 61920), (65, 61956), (68, 61968), (71, 62001), (79, 62085), (81, 62091), (82, 62100), (83, 62112), (87, 62136), (93, 62172), (105, 62226), (106, 62229), (121, 62343), (125, 62376),

Gene: TyDawg_58 Start: 40666, Stop: 41253, Start Num: 37

Candidate Starts for TyDawg_58:

(Start: 37 @40666 has 22 MA's), (45, 40711), (46, 40714), (47, 40717), (61, 40801), (91, 41020), (92, 41026), (93, 41032), (102, 41071), (114, 41158), (117, 41179), (121, 41200), (122, 41218),

Gene: Ukulele_96 Start: 60011, Stop: 60790, Start Num: 13

Candidate Starts for Ukulele_96:

(Start: 4 @59876 has 6 MA's), (Start: 7 @59930 has 8 MA's), (Start: 9 @59984 has 42 MA's), (Start: 13 @60011 has 72 MA's), (Start: 14 @60029 has 4 MA's), (Start: 29 @60113 has 25 MA's), (54, 60281), (56, 60296), (61, 60317), (65, 60353), (68, 60365), (71, 60398), (79, 60482), (81, 60488), (82, 60497), (83, 60509), (87, 60533), (93, 60569), (105, 60623), (106, 60626), (121, 60740), (125, 60773),

Gene: Underpass_82 Start: 52532, Stop: 53215, Start Num: 21

Candidate Starts for Underpass_82:

(Start: 21 @52532 has 16 MA's), (Start: 27 @52556 has 1 MA's), (34, 52601), (40, 52637), (49, 52691), (54, 52721), (65, 52793), (75, 52871), (77, 52895), (79, 52901), (82, 52916), (83, 52928), (86, 52943), (93, 52988), (106, 53045), (120, 53153), (123, 53183), (125, 53192),

Gene: Vetrrix_88 Start: 57273, Stop: 57953, Start Num: 22

Candidate Starts for Vetrrix_88:

(17, 57255), (Start: 19 @57258 has 2 MA's), (20, 57267), (Start: 22 @57273 has 1 MA's), (28, 57297), (32, 57306), (40, 57375), (49, 57429), (54, 57459), (65, 57531), (66, 57537), (75, 57609), (77, 57633), (79, 57639), (82, 57654), (83, 57666), (86, 57681), (93, 57726), (106, 57783), (120, 57891), (123, 57921), (125, 57930),

Gene: Wanda_157 Start: 81775, Stop: 82485, Start Num: 16

Candidate Starts for Wanda_157:

(Start: 16 @81775 has 41 MA's), (54, 81997), (57, 82021), (59, 82024), (61, 82033), (74, 82132), (75, 82147), (79, 82177), (82, 82192), (83, 82204), (90, 82243), (106, 82321), (107, 82336), (118, 82417),

Gene: Whirlwind_88 Start: 57664, Stop: 58317, Start Num: 29

Candidate Starts for Whirlwind_88:

(Start: 29 @57664 has 25 MA's), (40, 57739), (49, 57793), (50, 57796), (54, 57823), (65, 57895), (75, 57973), (79, 58003), (81, 58009), (83, 58030), (84, 58039), (86, 58045), (93, 58090), (94, 58093), (106, 58147), (111, 58192), (114, 58213), (120, 58255), (124, 58291), (125, 58294),

Gene: Wiggin_103 Start: 59657, Stop: 60436, Start Num: 13

Candidate Starts for Wiggin_103:

(3, 59444), (Start: 4 @59522 has 6 MA's), (Start: 7 @59576 has 8 MA's), (Start: 9 @59630 has 42 MA's), (Start: 13 @59657 has 72 MA's), (Start: 14 @59675 has 4 MA's), (Start: 29 @59759 has 25 MA's), (54, 59927), (56, 59942), (65, 59999), (68, 60011), (71, 60044), (79, 60128), (81, 60134), (82, 60143), (83, 60155), (87, 60179), (93, 60215), (105, 60269), (106, 60272), (121, 60386), (125, 60419),

Gene: Wigglewigggle_90 Start: 57572, Stop: 58255, Start Num: 21

Candidate Starts for Wigglewigggle_90:

(Start: 21 @57572 has 16 MA's), (Start: 27 @57596 has 1 MA's), (34, 57641), (40, 57677), (49, 57731), (54, 57761), (65, 57833), (66, 57839), (75, 57911), (77, 57935), (79, 57941), (82, 57956), (83, 57968), (86, 57983), (93, 58028), (106, 58085), (120, 58193), (123, 58223), (125, 58232),

Gene: Wildcat_68 Start: 45428, Stop: 45985, Start Num: 43

Candidate Starts for Wildcat_68:

(Start: 43 @45428 has 5 MA's), (47, 45443), (54, 45494), (56, 45509), (78, 45671), (80, 45677), (83, 45701), (84, 45710), (86, 45716), (95, 45770), (98, 45785), (101, 45797), (103, 45806), (109, 45848), (110, 45866), (111, 45872), (112, 45887), (119, 45926), (121, 45935), (125, 45968), (126, 45977),

Gene: Wilder_91 Start: 57414, Stop: 58097, Start Num: 21

Candidate Starts for Wilder_91:

(Start: 21 @57414 has 16 MA's), (Start: 27 @57438 has 1 MA's), (34, 57483), (40, 57519), (49, 57573), (54, 57603), (65, 57675), (66, 57681), (75, 57753), (77, 57777), (79, 57783), (82, 57798), (83, 57810), (86, 57825), (93, 57870), (106, 57927), (120, 58035), (123, 58065), (125, 58074),

Gene: Willez_96 Start: 58752, Stop: 59558, Start Num: 9

Candidate Starts for Willez_96:

(3, 58566), (Start: 4 @58644 has 6 MA's), (Start: 7 @58698 has 8 MA's), (Start: 9 @58752 has 42 MA's), (Start: 13 @58779 has 72 MA's), (Start: 14 @58797 has 4 MA's), (Start: 29 @58881 has 25 MA's), (54, 59049), (56, 59064), (61, 59085), (65, 59121), (68, 59133), (71, 59166), (79, 59250), (81, 59256), (82, 59265), (83, 59277), (87, 59301), (93, 59337), (105, 59391), (106, 59394), (121, 59508), (125, 59541),

Gene: Winky_90 Start: 58042, Stop: 58695, Start Num: 29

Candidate Starts for Winky_90:

(Start: 29 @58042 has 25 MA's), (40, 58117), (49, 58171), (54, 58201), (65, 58273), (66, 58279), (75, 58351), (77, 58375), (79, 58381), (82, 58396), (83, 58408), (86, 58423), (93, 58468), (106, 58525), (120, 58633), (123, 58663), (125, 58672),

Gene: Xandras_100 Start: 59480, Stop: 60259, Start Num: 13

Candidate Starts for Xandras_100:

(Start: 4 @59345 has 6 MA's), (Start: 7 @59399 has 8 MA's), (Start: 9 @59453 has 42 MA's), (Start: 13 @59480 has 72 MA's), (Start: 14 @59498 has 4 MA's), (Start: 29 @59582 has 25 MA's), (54, 59750), (56, 59765), (61, 59786), (65, 59822), (68, 59834), (71, 59867), (79, 59951), (81, 59957), (82, 59966), (83, 59978), (87, 60002), (93, 60038), (105, 60092), (106, 60095), (121, 60209), (125, 60242),

Gene: Xiaokay_151 Start: 83339, Stop: 84049, Start Num: 16

Candidate Starts for Xiaokay_151:

(Start: 16 @83339 has 41 MA's), (54, 83561), (57, 83585), (59, 83588), (61, 83597), (66, 83639), (75, 83711), (79, 83741), (82, 83756), (83, 83768), (89, 83804), (90, 83807), (107, 83900), (116, 83966), (118, 83981), (122, 84017),

Gene: YassJohnny_98 Start: 58773, Stop: 59579, Start Num: 9

Candidate Starts for YassJohnny_98:

(3, 58587), (Start: 4 @58665 has 6 MA's), (Start: 7 @58719 has 8 MA's), (Start: 9 @58773 has 42 MA's), (Start: 13 @58800 has 72 MA's), (Start: 14 @58818 has 4 MA's), (Start: 29 @58902 has 25 MA's), (54, 59070), (56, 59085), (61, 59106), (65, 59142), (68, 59154), (71, 59187), (79, 59271), (81, 59277), (82, 59286), (83, 59298), (87, 59322), (93, 59358), (105, 59412), (106, 59415), (121, 59529), (125, 59562),

Gene: Yeet_151 Start: 83070, Stop: 83780, Start Num: 16

Candidate Starts for Yeet_151:

(Start: 16 @83070 has 41 MA's), (54, 83292), (57, 83316), (59, 83319), (61, 83328), (74, 83427), (75, 83442), (79, 83472), (81, 83478), (82, 83487), (83, 83499), (90, 83538), (107, 83631), (118, 83712), (122, 83748),

Gene: Youngblood_104 Start: 60923, Stop: 61729, Start Num: 9

Candidate Starts for Youngblood_104:

(3, 60737), (Start: 4 @60815 has 6 MA's), (Start: 7 @60869 has 8 MA's), (Start: 9 @60923 has 42 MA's), (Start: 13 @60950 has 72 MA's), (Start: 14 @60968 has 4 MA's), (Start: 29 @61052 has 25 MA's), (54, 61220), (56, 61235), (61, 61256), (65, 61292), (68, 61304), (71, 61337), (79, 61421), (81, 61427), (82, 61436), (83, 61448), (87, 61472), (93, 61508), (105, 61562), (106, 61565), (121, 61679), (125, 61712),

Gene: Zakai_91 Start: 58069, Stop: 58740, Start Num: 23

Candidate Starts for Zakai_91:

(Start: 23 @58069 has 4 MA's), (Start: 25 @58072 has 5 MA's), (40, 58162), (49, 58216), (54, 58246), (65, 58318), (66, 58324), (75, 58396), (77, 58420), (79, 58426), (82, 58441), (83, 58453), (86, 58468), (93, 58513), (106, 58570), (120, 58678), (123, 58708), (125, 58717),

Gene: Zelink_152 Start: 83501, Stop: 84208, Start Num: 16

Candidate Starts for Zelink_152:

(Start: 16 @83501 has 41 MA's), (36, 83606), (44, 83663), (54, 83723), (61, 83756), (72, 83843), (75, 83870), (79, 83900), (82, 83915), (83, 83927), (90, 83966), (106, 84044), (107, 84059), (118, 84140),

Gene: ZhongYanYuan_87 Start: 57476, Stop: 58129, Start Num: 31

Candidate Starts for ZhongYanYuan_87:

(Start: 31 @57476 has 2 MA's), (40, 57548), (49, 57602), (54, 57632), (65, 57704), (66, 57710), (71, 57749), (75, 57782), (77, 57806), (79, 57812), (82, 57827), (83, 57839), (84, 57848), (93, 57899), (106, 57956), (120, 58064), (125, 58103), (128, 58121),

Gene: xkcd_104 Start: 61134, Stop: 61913, Start Num: 13

Candidate Starts for xkcd_104:

(3, 60921), (Start: 4 @60999 has 6 MA's), (Start: 7 @61053 has 8 MA's), (Start: 9 @61107 has 42 MA's), (Start: 13 @61134 has 72 MA's), (Start: 14 @61152 has 4 MA's), (Start: 29 @61236 has 25 MA's), (54, 61404), (56, 61419), (61, 61440), (65, 61476), (68, 61488), (71, 61521), (79, 61605), (81, 61611), (82, 61620), (83, 61632), (87, 61656), (93, 61692), (105, 61746), (106, 61749), (121, 61863), (125, 61896),