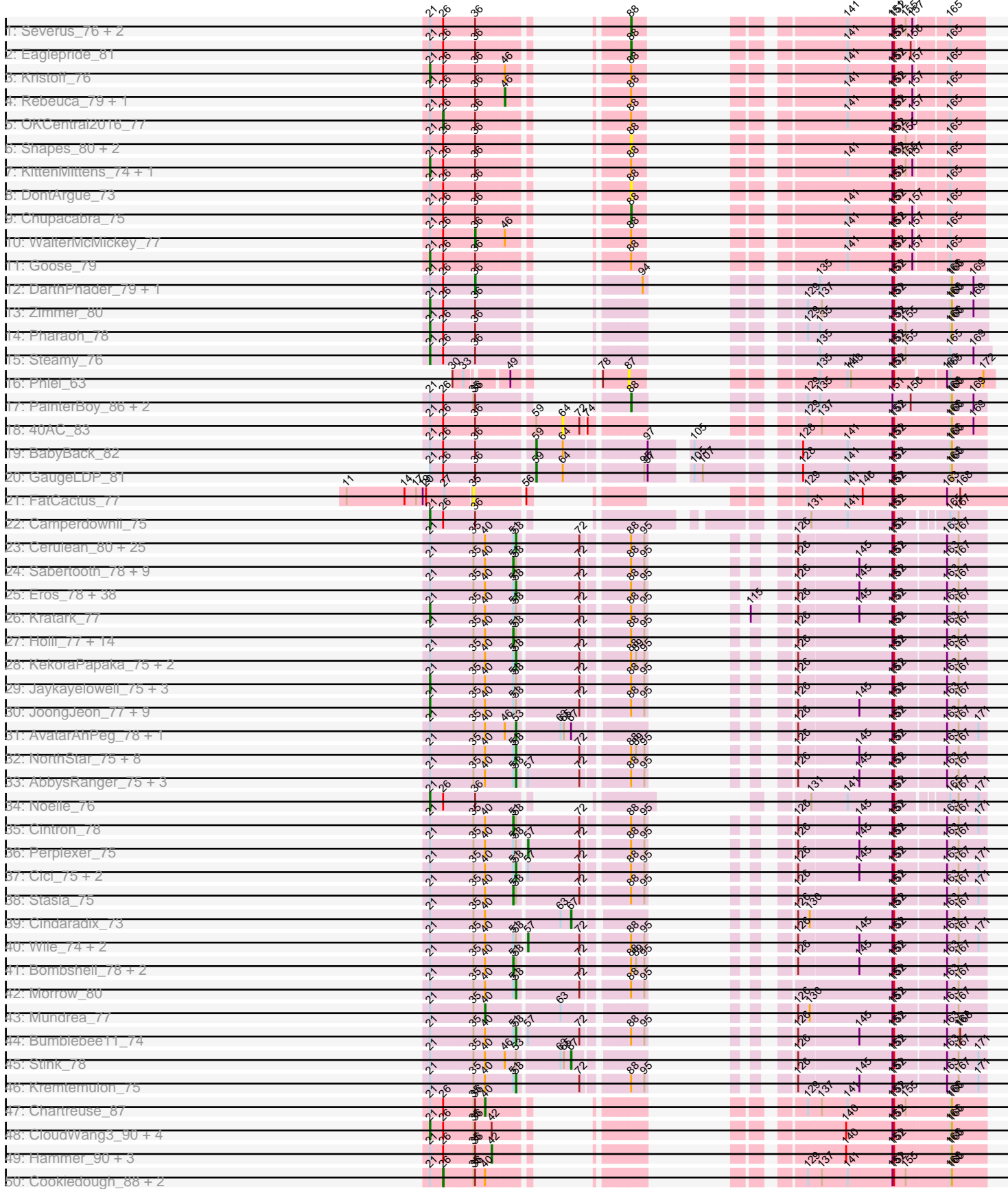
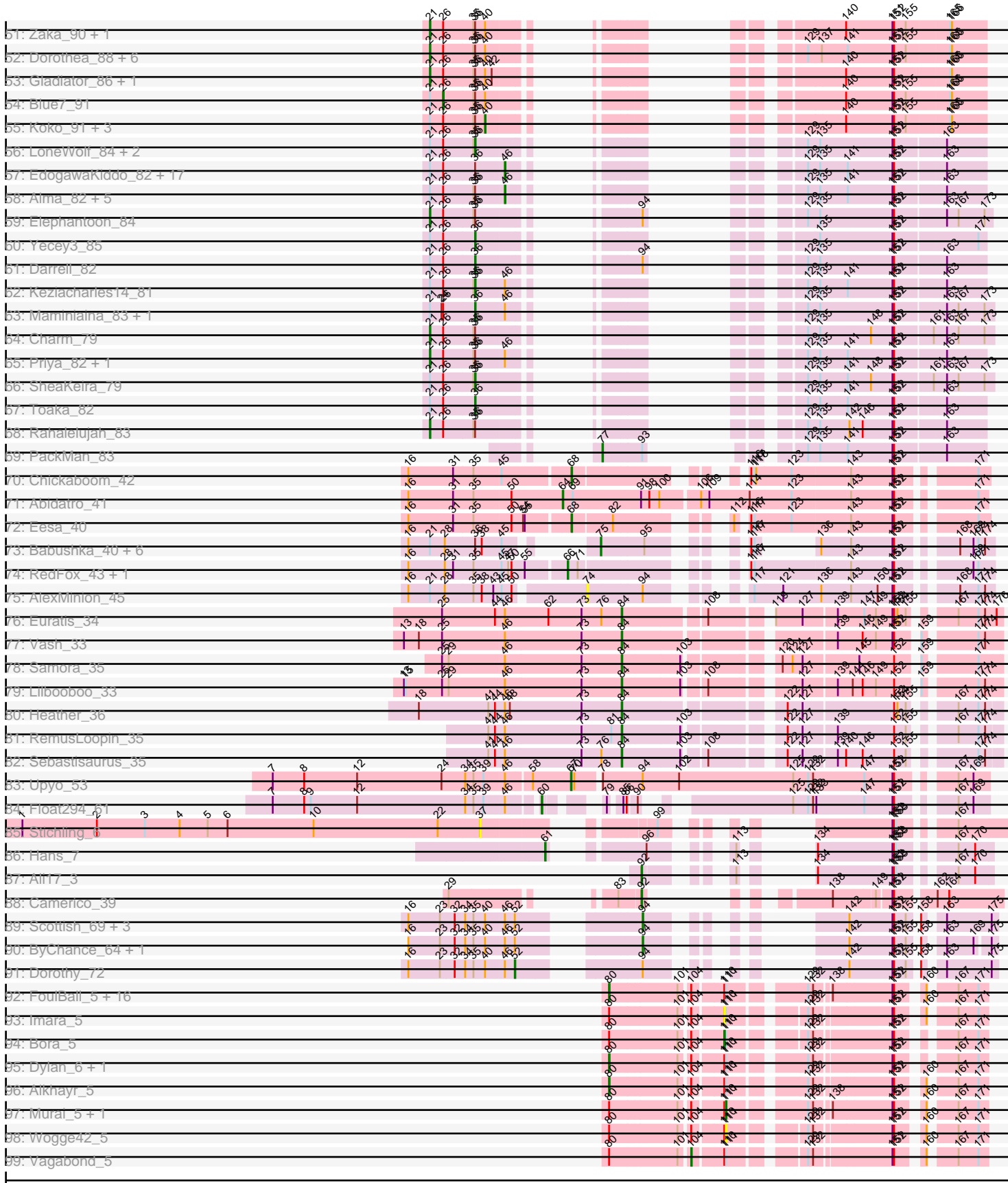


Pham 304660



Pham 304660



Note: Tracks are now grouped by subcluster and scaled. Switching in subcluster is indicated by changes in track color. Track scale is now set by default to display the region 30 bp upstream of start 1 to 30 bp downstream of the last possible start. If this default region is judged to be packed too tightly with annotated starts, the track will be further scaled to only show that region of the ORF with annotated starts. This action will be indicated by adding "Zoomed" to the title. For starts, yellow indicates the location of called starts comprised solely of Glimmer/GeneMark auto-annotations, green indicates the location of called starts with at least 1 manual gene annotation.

Pham 304660 Report

This analysis was run 06/08/26 on database version 649.

Pham number 304660 has 301 members, 28 are drafts.

Phages represented in each track:

- Track 1 : Severus_76, PeaceMeal1_75, Poompha_75
- Track 2 : Eaglepride_81
- Track 3 : Kristoff_76
- Track 4 : Rebeuca_79, Twister_78
- Track 5 : OKCentral2016_77
- Track 6 : Shapes_80, DustyMartin_80, Rowdy_80
- Track 7 : KittenMittens_74, Drake94_75
- Track 8 : DontArgue_73
- Track 9 : Chupacabra_75
- Track 10 : WalterMcMickey_77
- Track 11 : Goose_79
- Track 12 : DARTHPhader_79, Refuge_81
- Track 13 : Zimmer_80
- Track 14 : Pharaoh_78
- Track 15 : Steamy_76
- Track 16 : Phlei_63
- Track 17 : PainterBoy_86, Lucyedi_87, EagleEye_88
- Track 18 : 40AC_83
- Track 19 : BabyBack_82
- Track 20 : GaugeLDP_81
- Track 21 : FatCactus_77
- Track 22 : Camperdownii_75
- Track 23 : Cerulean_80, Deano_75, TiroTheta9_77, Caelakin_76, LochMonster_79, CentreCat_78, Kamy_77, Eagle_77, Iracema64_78, Spino_77, Shaka_76, Lunsford_78, BellusTerra_79, SenorClean_79, Roosevelt_76, Felipe_79, Abdiel_77, SheldonCooper_78, Taquarus_77, Citius_78, Phontbonne_78, Nebs_79, Medusa_77, Ulysses_77, Druantia_77, ChampagnePapi_81
- Track 24 : Sabertooth_78, Polymorphads_79, Pumbaa_78, Mazhar510_78, Connomayer_78, TygerBlood_78, Koreni_77, LHTSCC_80, Tinybot_77, Sultana_78
- Track 25 : Eros_78, DirtyDunning_77, Iceman_76, MeeZee_77, Obama12_79, Huxley_70, OKaNui_77, Maverick_77, Koan_75, Happiness_77, Burger_76, Phacado_78, Houdini22_77, Millski_77, Peaches_76, PeterPeter_78, Avle17_78, Wander_78, Broseidon_78, Datway_75, Commander_76, Lorenzo_78, Cocoaberry_78, ICleared_77, Anyong_77, Alberto7_79, Relief_77, Kyee_78, Arturo_75, LittleGuy_78, Scamp_78, HamSlice_74, Nemo27_77, LappelDuVide_78, Eapen_78, Gadost_78, NotAPhaseMom_77, Phighter1804_78, Xena_74
- Track 26 : Kratak_77

- Track 27 : Holli_77, Kingmustik0402_78, Maxo_80, Blackmoor_77, Eurydice_79, Ohfah_79, JetBlade_79, Nyxis_77, Bartimeaus_78, TroyPia_79, Sparxx_79, BangNhom_75, YoSam321_78, Baby16_78, Rosa24_74
- Track 28 : KekoraPapaka_75, Dhanush_78, Chaph_78
- Track 29 : Jaykayelowell_75, Florean_78, Bruiser_77, TinaFeyge_76
- Track 30 : JoongJeon_77, Funston_77, Clarenza_77, BubbleTrouble_77, Palestino_77, KFPoly_77, Albee_78, Thanksgivukkah_77, LittleB_78, Eris_77
- Track 31 : AvatarAhPeg_78, Miramae_78
- Track 32 : NorthStar_75, Romney_77, Wilbur_78, Pipcraft_74, Ruin_78, SteMason_74, Lemur_78, Flux_79, Melvin_80
- Track 33 : AbbysRanger_75, Badger_74, PetiteSangsue_75, Backyardigan_73
- Track 34 : Noelle_76
- Track 35 : Cintron_78
- Track 36 : Perplexer_75
- Track 37 : Cici_75, Morpher26_75, Shygu2_76
- Track 38 : Stasia_75
- Track 39 : Cindaradix_73
- Track 40 : Wile_74, Wizard007_75, Katalie136_75
- Track 41 : Bombshell_78, Skipitt_77, RockieBear_75
- Track 42 : Morrow_80
- Track 43 : Mundrea_77
- Track 44 : Bumblebee11_74
- Track 45 : Stink_78
- Track 46 : Kremtemulon_75
- Track 47 : Chartreuse_87
- Track 48 : CloudWang3_90, Roksolana_90, Hexamo_89, Artemis2UCLA_89, Rifter_90
- Track 49 : Hammer_90, BlessJoy_90, ToneTone_87, Tucker_90
- Track 50 : Cookiedough_88, Kazan_89, SmellyB_88
- Track 51 : Zaka_90, Wiks_89
- Track 52 : Dorothea_88, Hoot_83, Polyphemus_81, BABullseye_81, Jordennis_86, Isiphiwo_84, JewelBug_80
- Track 53 : Gladiator_86, Gruunaga_89
- Track 54 : Blue7_91
- Track 55 : Koko_91, Temprado_91, Yokurt_89, Helmet_92
- Track 56 : LoneWolf_84, Vanisoa_79, Arissanae_79
- Track 57 : EdogawaKiddo_82, HortumSL17_85, Scherzo_82, Phonnegut_84, Fayely_82, Jiawan_81, Tubs_84, Sachima_80, Catalina_86, RyeScarlet_85, Beemo_84, Onglai_82, Myxus_84, Halex_82, Phaeder_84, Pioneer_84, Hanray_82, Lilleskat_81
- Track 58 : Alma_82, Conquerage_82, Eidsmoe_82, EmyBug_81, Qobbit_82, Ayanochan_82
- Track 59 : Elephantoon_84
- Track 60 : Yecey3_85
- Track 61 : Darrell_82
- Track 62 : Keziacharles14_81
- Track 63 : Maminiaina_83, BogosyJay_83
- Track 64 : Charm_79
- Track 65 : Priya_82, Spouty_82
- Track 66 : SheaKeira_79
- Track 67 : Toaka_82
- Track 68 : Rahalelujah_83
- Track 69 : PackMan_83

- Track 70 : Chickaboom_42
- Track 71 : Abidatro_41
- Track 72 : Eesa_40
- Track 73 : Babushka_40, Camara_43, Glotell_44, AdoptaAdorbs_42, Amphitrite_43, Renna12_42, KHumphrey_43
- Track 74 : RedFox_43, PhluffyCoco_43
- Track 75 : AlexMinion_45
- Track 76 : Euratis_34
- Track 77 : Vash_33
- Track 78 : Samora_35
- Track 79 : Lilbooboo_33
- Track 80 : Heather_36
- Track 81 : RemusLoopin_35
- Track 82 : Sebastisaurus_35
- Track 83 : Upyo_53
- Track 84 : Float294_61
- Track 85 : Stichling_6
- Track 86 : Hans_7
- Track 87 : Ali17_3
- Track 88 : Camerico_39
- Track 89 : Scottish_69, KingMidas_70, Inventum_69, Sassafras_72
- Track 90 : ByChance_64, ShowerHandel_74
- Track 91 : Dorothy_72
- Track 92 : FoulBall_5, Zebo_5, Ryadel_7, Mori_5, Familton_6, Schuy_5, Idergollasper_5, Shida_5, TelAviv_5, Krili_5, MadKillah_5, NiebruSaylor_5, Blessica_5, Catdawg_5, SchoolBus_5, Vorrps_5, YoyoKar_5
- Track 93 : Imara_5
- Track 94 : Bora_5
- Track 95 : Dylan_6, Zakhe101_6
- Track 96 : Alkhayr_5
- Track 97 : Murai_5, KingPhillip3_5
- Track 98 : Wogge42_5
- Track 99 : Vagabond_5

Summary of Final Annotations (See graph section above for start numbers):

The start number called the most often in the published annotations is 53, it was called in 87 of the 273 non-draft genes in the pham.

Genes that call this "Most Annotated" start:

- AbbysRanger_75, Abdiel_77, Alberto7_79, Annyong_77, Arturo_75, AvatarAhPeg_78, Avle17_78, Backyardigan_73, Badger_74, BellusTerra_79, Broseidon_78, Bumblebee11_74, Burger_76, Caelakin_76, CentreCat_78, Cerulean_80, ChampagnePapi_81, Chaph_78, Cici_75, Citius_78, Cocoaberry_78, Commander_76, Datway_75, Deano_75, Dhanush_78, DirtyDunning_77, Druantia_77, Eagle_77, Eapen_78, Eros_78, Flux_79, Gadost_78, HamSlice_74, Happiness_77, Houdini22_77, Huxley_70, ICleared_77, Iceman_76, Iracema64_78, Kampy_77, KekoraPapaka_75, Koan_75, Kremtemulon_75, Kyee_78, LappelDuVide_78, Lemur_78, LittleGuy_78, LochMonster_79, Lorenzo_78, Lunsford_78, Maverick_77, Medusa_77, MeeZee_77, Melvin_80, Millski_77,

Miramae_78, Morpher26_75, Morrow_80, Nebs_79, Nemo27_77, NorthStar_75, NotAPhaseMom_77, OKaNui_77, Obama12_79, Peaches_76, PeterPeter_78, PetiteSangsue_75, Phacado_78, Phelipe_79, Phighter1804_78, Phontbonne_78, Pipcraft_74, Relief_77, Romney_77, Roosevelt_76, Ruin_78, Scamp_78, SenorClean_79, Shaka_76, SheldonCooper_78, Shygu2_76, Spino_77, SteMason_74, Taquarus_77, TiroTheta9_77, Ulysses_77, Wander_78, Wilbur_78, Xena_74,

Genes that have the "Most Annotated" start but do not call it:

- Albee_78, Baby16_78, BangNhom_75, Bartimeaus_78, Blackmoor_77, Bombshell_78, Bruiser_77, BubbleTrouble_77, Cintron_78, Clarenza_77, Connomayer_78, Eris_77, Eurydice_79, Florean_78, Funston_77, Holli_77, Jaykayelowell_75, JetBlade_79, JoongJeon_77, KFPoly_77, Katalie136_75, Kingmustik0402_78, Koreni_77, Kratak_77, LHTSCC_80, LittleB_78, Maxo_80, Mazhar510_78, Nyxis_77, Ohfah_79, Palestino_77, Perplexer_75, Polymorphads_79, Pumbaa_78, RockieBear_75, Rosa24_74, Sabertooth_78, Skipitt_77, Sparxx_79, Stasia_75, Stink_78, Sultana_78, Thanksgivukkah_77, TinaFeyge_76, Tinybot_77, TroyPia_79, TygerBlood_78, Wile_74, Wizard007_75, YoSam321_78,

Genes that do not have the "Most Annotated" start:

- 40AC_83, Abidatro_41, AdoptaAdorbs_42, AlexMinion_45, Ali17_3, Alkhayr_5, Alma_82, Amphitrite_43, Arissanae_79, Artemis2UCLA_89, Ayanochan_82, BABullseye_81, Babushka_40, BabyBack_82, Beemo_84, BlessJoy_90, Blessica_5, Blue7_91, BogosyJay_83, Bora_5, ByChance_64, Camara_43, Camerico_39, Camperdownii_75, Catalina_86, Catdawg_5, Charm_79, Chartreuse_87, Chickaboom_42, Chupacabra_75, Cindaradix_73, CloudWang3_90, Conquerage_82, Cookiedough_88, Darrell_82, DARTHPhader_79, DontArgue_73, Dorothea_88, Dorothy_72, Drake94_75, DustyMartin_80, Dylan_6, EagleEye_88, Eaglepride_81, EdogawaKiddo_82, Eesa_40, Eidsmoe_82, Elephantoon_84, EmyBug_81, Euratis_34, Familton_6, FatCactus_77, Fayely_82, Float294_61, FoulBall_5, GaugeLDP_81, Gladiator_86, Glotell_44, Goose_79, Gruunaga_89, Hammer_90, Hanray_82, Hans_7, Heather_36, Helmet_92, Hexamo_89, Horex_82, Hoot_83, HortumSL17_85, Idergollasper_5, Imara_5, Inventum_69, Isiphiwo_84, JewelBug_80, Jiawan_81, Jordennis_86, KHumphrey_43, Kazan_89, Keziacharles14_81, KingMidas_70, KingPhillip3_5, KittenMittens_74, Koko_91, Krili_5, Kristoff_76, Lilbooboo_33, Lilleskat_81, LoneWolf_84, Lucyedi_87, MadKillah_5, Maminiaina_83, Mori_5, Mundrea_77, Murai_5, Myxus_84, NiebruSaylor_5, Noelle_76, OKCentral2016_77, Onglai_82, PackMan_83, PainterBoy_86, PeaceMeal1_75, Phaeder_84, Pharaoh_78, Phlei_63, PhluffyCoco_43, Phonnegut_84, Pioneer_84, Polyphemus_81, Poompha_75, Priya_82, Qobbit_82, Rahalelujah_83, Rebeuca_79, RedFox_43, Refuge_81, RemusLoopin_35, Renna12_42, Rifter_90, Roksolana_90, Rowdy_80, Ryadel_7, RyeScarlet_85, Sachima_80, Samora_35, Sassafras_72, Scherzo_82, SchoolBus_5, Schuy_5, Scottish_69, Sebastisaurus_35, Severus_76, Shapes_80, SheaKeira_79, Shida_5, ShowerHandel_74, SmellyB_88, Spouty_82, Steamy_76, Stichling_6, TelAviv_5, Temprado_91, Toaka_82, ToneTone_87, Tubs_84, Tucker_90, Twister_78, Upyo_53, Vagabond_5, Vanisoa_79, Vash_33, Vorrrps_5, WalterMcMickey_77, Wiks_89, Wogge42_5, Yecey3_85, Yokurt_89, YoyoKar_5, Zaka_90, Zakhe101_6, Zebo_5, Zimmer_80,

Summary by start number:

Start 21:

- Found in 247 of 301 (82.1%) of genes in pham

- Manual Annotations of this start: 45 of 273
- Called 18.2% of time when present
- Phage (with cluster) where this start called: Albee_78 (A4), Artemis2UCLA_89 (A6), BABullseye_81 (A6), Bruiser_77 (A4), BubbleTrouble_77 (A4), Camperdownii_75 (A4), Charm_79 (A9), Clarenza_77 (A4), CloudWang3_90 (A6), Dorothea_88 (A6), Drake94_75 (A10), Elephantoon_84 (A9), Eris_77 (A4), Florean_78 (A4), Funston_77 (A4), Gladiator_86 (A6), Goose_79 (A10), Gruunaga_89 (A6), Hexamo_89 (A6), Hoot_83 (A6), Isiphiwo_84 (A6), Jaykayelowell_75 (A4), JewelBug_80 (A6), JoongJeon_77 (A4), Jordennis_86 (A6), KFPoly_77 (A4), KittenMittens_74 (A10), Kratark_77 (A4), Kristoff_76 (A10), LittleB_78 (A4), Noelle_76 (A4), Palestino_77 (A4), Pharaoh_78 (A12), Polyphemus_81 (A6), Priya_82 (A9), Rahalelujah_83 (A9), Rifter_90 (A6), Roksolana_90 (A6), Spouty_82 (A9), Steamy_76 (A12), Thanksgivukkah_77 (A4), TinaFeyge_76 (A4), Wiks_89 (A6), Zaka_90 (A6), Zimmer_80 (A12),

Start 26:

- Found in 98 of 301 (32.6%) of genes in pham
- Manual Annotations of this start: 5 of 273
- Called 5.1% of time when present
- Phage (with cluster) where this start called: Blue7_91 (A6), Cookiedough_88 (A6), Kazan_89 (A6), OKCentral2016_77 (A10), SmellyB_88 (A6),

Start 35:

- Found in 205 of 301 (68.1%) of genes in pham
- No Manual Annotations of this start.
- Called 0.5% of time when present
- Phage (with cluster) where this start called: FatCactus_77 (A20),

Start 36:

- Found in 105 of 301 (34.9%) of genes in pham
- Manual Annotations of this start: 13 of 273
- Called 12.4% of time when present
- Phage (with cluster) where this start called: Arissanee_79 (A9), BogosyJay_83 (A9), Darrell_82 (A9), DarthPhader_79 (A12), Keziacharles14_81 (A9), LoneWolf_84 (A9), Maminiaina_83 (A9), Refuge_81 (A12), SheaKeira_79 (A9), Toaka_82 (A9), Vanisoa_79 (A9), WalterMcMickey_77 (A10), Yecy3_85 (A9),

Start 37:

- Found in 1 of 301 (0.3%) of genes in pham
- No Manual Annotations of this start.
- Called 100.0% of time when present
- Phage (with cluster) where this start called: Stichling_6 (DE1),

Start 40:

- Found in 168 of 301 (55.8%) of genes in pham
- Manual Annotations of this start: 6 of 273
- Called 3.6% of time when present
- Phage (with cluster) where this start called: Chartreuse_87 (A6), Helmet_92 (A6), Koko_91 (A6), Mundrea_77 (A4), Temprado_91 (A6), Yokurt_89 (A6),

Start 42:

- Found in 11 of 301 (3.7%) of genes in pham
- Manual Annotations of this start: 4 of 273

- Called 36.4% of time when present
- Phage (with cluster) where this start called: BlessJoy_90 (A6), Hammer_90 (A6), ToneTone_87 (A6), Tucker_90 (A6),

Start 46:

- Found in 52 of 301 (17.3%) of genes in pham
- Manual Annotations of this start: 17 of 273
- Called 50.0% of time when present
- Phage (with cluster) where this start called: Alma_82 (A9), Ayanochan_82 (A9), Beemo_84 (A9), Catalina_86 (A9), Conquerage_82 (A9), EdogawaKiddo_82 (A9), Eidsmoe_82 (A9), EmyBug_81 (A9), Fayely_82 (A9), Hanray_82 (A9), Holes_82 (A9), HortumSL17_85 (A9), Jiawan_81 (A9), Lilleskat_81 (A9), Myxus_84 (A9), Onglai_82 (A9), Phaeder_84 (A9), Phonnegut_84 (A9), Pioneer_84 (A9), Qobbit_82 (A9), Rebeuca_79 (A10), RyeScarlet_85 (A9), Sachima_80 (A9), Scherzo_82 (A9), Tubs_84 (A9), Twister_78 (A10),

Start 51:

- Found in 136 of 301 (45.2%) of genes in pham
- Manual Annotations of this start: 28 of 273
- Called 22.1% of time when present
- Phage (with cluster) where this start called: Baby16_78 (A4), BangNhom_75 (A4), Bartimeaus_78 (A4), Blackmoor_77 (A4), Bombshell_78 (A4), Cintron_78 (A4), Connomayer_78 (A4), Eurydice_79 (A4), Holli_77 (A4), JetBlade_79 (A4), Kingmustik0402_78 (A4), Koreni_77 (A4), LHTSCC_80 (A4), Maxo_80 (A4), Mazhar510_78 (A4), Nyxis_77 (A4), Ohfah_79 (A4), Polymorphads_79 (A4), Pumbaa_78 (A4), RockieBear_75 (A4), Rosa24_74 (A4), Sabertooth_78 (A4), Skipitt_77 (A4), Sparxx_79 (A4), Stasia_75 (A4), Sultana_78 (A4), Tinybot_77 (A4), TroyPia_79 (A4), TygerBlood_78 (A4), YoSam321_78 (A4),

Start 52:

- Found in 7 of 301 (2.3%) of genes in pham
- Manual Annotations of this start: 1 of 273
- Called 14.3% of time when present
- Phage (with cluster) where this start called: Dorothy_72 (F1),

Start 53:

- Found in 139 of 301 (46.2%) of genes in pham
- Manual Annotations of this start: 87 of 273
- Called 64.0% of time when present
- Phage (with cluster) where this start called: AbbysRanger_75 (A4), Abdiel_77 (A4), Alberto7_79 (A4), Annyong_77 (A4), Arturo_75 (A4), AvatarAhPeg_78 (A4), Avle17_78 (A4), Backyardigan_73 (A4), Badger_74 (A4), BellusTerra_79 (A4), Broseidon_78 (A4), Bumblebee11_74 (A4), Burger_76 (A4), Caelakin_76 (A4), CentreCat_78 (A4), Cerulean_80 (A4), ChampagnePapi_81 (A4), Chaph_78 (A4), Cici_75 (A4), Citius_78 (A4), Cocoaberry_78 (A4), Commander_76 (A4), Datway_75 (A4), Deano_75 (A4), Dhanush_78 (A4), DirtyDunning_77 (A4), Druantia_77 (A4), Eagle_77 (A4), Eapen_78 (A4), Eros_78 (A4), Flux_79 (A4), Gadost_78 (A4), HamSlice_74 (A4), Happiness_77 (A4), Houdini22_77 (A4), Huxley_70 (A4), ICleared_77 (A4), Iceman_76 (A4), Iracema64_78 (A4), Kampy_77 (A4), KekoraPapaka_75 (A4), Koan_75 (A4), Kremtemulon_75 (A4), Kyee_78 (A4), LappelDuVide_78 (A4), Lemur_78 (A4), LittleGuy_78 (A4), LochMonster_79 (A4), Lorenzo_78 (A4), Lunsford_78 (A4), Maverick_77 (A4), Medusa_77 (A4), MeeZee_77 (A4), Melvin_80 (A4), Millski_77 (A4), Miramae_78 (A4), Morpher26_75 (A4),

Morrow_80 (A4), Nebs_79 (A4), Nemo27_77 (A4), NorthStar_75 (A4), NotAPhaseMom_77 (A4), OKaNui_77 (A4), Obama12_79 (A4), Peaches_76 (A4), PeterPeter_78 (A4), PetiteSangsue_75 (A4), Phacado_78 (A4), Phelipe_79 (A4), Phighter1804_78 (A4), Phontbonne_78 (A4), Pipcraft_74 (A4), Relief_77 (A4), Romney_77 (A4), Roosevelt_76 (A4), Ruin_78 (A4), Scamp_78 (A4), SenorClean_79 (A4), Shaka_76 (A4), SheldonCooper_78 (A4), Shygu2_76 (A4), Spino_77 (A4), SteMason_74 (A4), Taquarus_77 (A4), TiroTheta9_77 (A4), Ulysses_77 (A4), Wander_78 (A4), Wilbur_78 (A4), Xena_74 (A4),

Start 57:

- Found in 12 of 301 (4.0%) of genes in pham
- Manual Annotations of this start: 4 of 273
- Called 33.3% of time when present
- Phage (with cluster) where this start called: Katalie136_75 (A4), Perplexer_75 (A4), Wile_74 (A4), Wizard007_75 (A4),

Start 59:

- Found in 3 of 301 (1.0%) of genes in pham
- Manual Annotations of this start: 2 of 273
- Called 66.7% of time when present
- Phage (with cluster) where this start called: BabyBack_82 (A2), GaugeLDP_81 (A2),

Start 60:

- Found in 1 of 301 (0.3%) of genes in pham
- Manual Annotations of this start: 1 of 273
- Called 100.0% of time when present
- Phage (with cluster) where this start called: Float294_61 (CR3),

Start 61:

- Found in 1 of 301 (0.3%) of genes in pham
- Manual Annotations of this start: 1 of 273
- Called 100.0% of time when present
- Phage (with cluster) where this start called: Hans_7 (DE2),

Start 64:

- Found in 4 of 301 (1.3%) of genes in pham
- Manual Annotations of this start: 1 of 273
- Called 50.0% of time when present
- Phage (with cluster) where this start called: 40AC_83 (A17), Abidatro_41 (AS1),

Start 66:

- Found in 2 of 301 (0.7%) of genes in pham
- Manual Annotations of this start: 2 of 273
- Called 100.0% of time when present
- Phage (with cluster) where this start called: PhluffyCoco_43 (AS3), RedFox_43 (AS3),

Start 67:

- Found in 5 of 301 (1.7%) of genes in pham
- Manual Annotations of this start: 3 of 273
- Called 60.0% of time when present
- Phage (with cluster) where this start called: Cindaradix_73 (A4), Stink_78 (A4), Upyo_53 (CD),

Start 68:

- Found in 2 of 301 (0.7%) of genes in pham
- Manual Annotations of this start: 2 of 273
- Called 100.0% of time when present
- Phage (with cluster) where this start called: Chickaboom_42 (AS1), Eesa_40 (AS1),

Start 74:

- Found in 2 of 301 (0.7%) of genes in pham
- No Manual Annotations of this start.
- Called 50.0% of time when present
- Phage (with cluster) where this start called: AlexMinion_45 (AS3),

Start 75:

- Found in 7 of 301 (2.3%) of genes in pham
- Manual Annotations of this start: 5 of 273
- Called 100.0% of time when present
- Phage (with cluster) where this start called: AdoptaAdorbs_42 (AS3), Amphitrite_43 (AS3), Babushka_40 (AS3), Camara_43 (AS3), Glotell_44 (AS3), KHumphrey_43 (AS3), Renna12_42 (AS3),

Start 77:

- Found in 1 of 301 (0.3%) of genes in pham
- Manual Annotations of this start: 1 of 273
- Called 100.0% of time when present
- Phage (with cluster) where this start called: PackMan_83 (A9),

Start 80:

- Found in 26 of 301 (8.6%) of genes in pham
- Manual Annotations of this start: 19 of 273
- Called 76.9% of time when present
- Phage (with cluster) where this start called: Alkhayr_5 (O), Blessica_5 (O), Catdawg_5 (O), Dylan_6 (O), Familton_6 (O), FoulBall_5 (O), Idergollasper_5 (O), KriLi_5 (O), MadKillah_5 (O), Mori_5 (O), NiebruSaylor_5 (O), Ryadel_7 (O), SchoolBus_5 (O), Schuy_5 (O), Shida_5 (O), TelAviv_5 (O), Vorrrps_5 (O), YoyoKar_5 (O), Zakhe101_6 (O), Zebo_5 (O),

Start 84:

- Found in 7 of 301 (2.3%) of genes in pham
- Manual Annotations of this start: 7 of 273
- Called 100.0% of time when present
- Phage (with cluster) where this start called: Euratis_34 (BB1), Heather_36 (BB2), Lilbooboo_33 (BB1), RemusLoopin_35 (BB2), Samora_35 (BB1), Sebastisaurus_35 (BB2), Vash_33 (BB1),

Start 87:

- Found in 1 of 301 (0.3%) of genes in pham
- No Manual Annotations of this start.
- Called 100.0% of time when present
- Phage (with cluster) where this start called: Phlei_63 (A13),

Start 88:

- Found in 156 of 301 (51.8%) of genes in pham

- Manual Annotations of this start: 8 of 273
- Called 7.7% of time when present
- Phage (with cluster) where this start called: Chupacabra_75 (A10), DontArgue_73 (A10), DustyMartin_80 (A10), EagleEye_88 (A16), Eaglepride_81 (A10), Lucyedi_87 (A16), PainterBoy_86 (A16), PeaceMeal1_75 (A10), Poompha_75 (A10), Rowdy_80 (A10), Severus_76 (A10), Shapes_80 (A10),

Start 92:

- Found in 2 of 301 (0.7%) of genes in pham
- Manual Annotations of this start: 2 of 273
- Called 100.0% of time when present
- Phage (with cluster) where this start called: Ali17_3 (DE2), Camerico_39 (DF4),

Start 94:

- Found in 13 of 301 (4.3%) of genes in pham
- Manual Annotations of this start: 6 of 273
- Called 46.2% of time when present
- Phage (with cluster) where this start called: ByChance_64 (F1), Inventum_69 (F1), KingMidas_70 (F1), Sassafras_72 (F1), Scottish_69 (F1), ShowerHandel_74 (F1),

Start 104:

- Found in 26 of 301 (8.6%) of genes in pham
- Manual Annotations of this start: 1 of 273
- Called 3.8% of time when present
- Phage (with cluster) where this start called: Vagabond_5 (O),

Start 110:

- Found in 26 of 301 (8.6%) of genes in pham
- Manual Annotations of this start: 1 of 273
- Called 7.7% of time when present
- Phage (with cluster) where this start called: Bora_5 (O), Imara_5 (O),

Start 111:

- Found in 26 of 301 (8.6%) of genes in pham
- Manual Annotations of this start: 1 of 273
- Called 11.5% of time when present
- Phage (with cluster) where this start called: KingPhillip3_5 (O), Murai_5 (O), Wogge42_5 (O),

Summary by clusters:

There are 21 clusters represented in this pham: AS3, F1, A17, A16, A10, A13, A12, DF4, DE1, DE2, CR3, AS1, O, CD, A20, A2, A4, A6, A9, BB2, BB1,

Info for manual annotations of cluster A10:

- Start number 21 was manually annotated 4 times for cluster A10.
- Start number 26 was manually annotated 1 time for cluster A10.
- Start number 36 was manually annotated 1 time for cluster A10.
- Start number 46 was manually annotated 2 times for cluster A10.
- Start number 88 was manually annotated 5 times for cluster A10.

Info for manual annotations of cluster A12:

- Start number 21 was manually annotated 3 times for cluster A12.

- Start number 36 was manually annotated 2 times for cluster A12.

Info for manual annotations of cluster A16:

- Start number 88 was manually annotated 3 times for cluster A16.

Info for manual annotations of cluster A2:

- Start number 59 was manually annotated 2 times for cluster A2.

Info for manual annotations of cluster A4:

- Start number 21 was manually annotated 17 times for cluster A4.
- Start number 40 was manually annotated 1 time for cluster A4.
- Start number 51 was manually annotated 28 times for cluster A4.
- Start number 53 was manually annotated 87 times for cluster A4.
- Start number 57 was manually annotated 4 times for cluster A4.
- Start number 67 was manually annotated 2 times for cluster A4.

Info for manual annotations of cluster A6:

- Start number 21 was manually annotated 16 times for cluster A6.
- Start number 26 was manually annotated 4 times for cluster A6.
- Start number 40 was manually annotated 5 times for cluster A6.
- Start number 42 was manually annotated 4 times for cluster A6.

Info for manual annotations of cluster A9:

- Start number 21 was manually annotated 5 times for cluster A9.
- Start number 36 was manually annotated 10 times for cluster A9.
- Start number 46 was manually annotated 15 times for cluster A9.
- Start number 77 was manually annotated 1 time for cluster A9.

Info for manual annotations of cluster AS1:

- Start number 64 was manually annotated 1 time for cluster AS1.
- Start number 68 was manually annotated 2 times for cluster AS1.

Info for manual annotations of cluster AS3:

- Start number 66 was manually annotated 2 times for cluster AS3.
- Start number 75 was manually annotated 5 times for cluster AS3.

Info for manual annotations of cluster BB1:

- Start number 84 was manually annotated 4 times for cluster BB1.

Info for manual annotations of cluster BB2:

- Start number 84 was manually annotated 3 times for cluster BB2.

Info for manual annotations of cluster CD:

- Start number 67 was manually annotated 1 time for cluster CD.

Info for manual annotations of cluster CR3:

- Start number 60 was manually annotated 1 time for cluster CR3.

Info for manual annotations of cluster DE2:

- Start number 61 was manually annotated 1 time for cluster DE2.
- Start number 92 was manually annotated 1 time for cluster DE2.

Info for manual annotations of cluster DF4:

- Start number 92 was manually annotated 1 time for cluster DF4.

Info for manual annotations of cluster F1:

- Start number 52 was manually annotated 1 time for cluster F1.
- Start number 94 was manually annotated 6 times for cluster F1.

Info for manual annotations of cluster O:

- Start number 80 was manually annotated 19 times for cluster O.
- Start number 104 was manually annotated 1 time for cluster O.
- Start number 110 was manually annotated 1 time for cluster O.
- Start number 111 was manually annotated 1 time for cluster O.

Gene Information:

Gene: 40AC_83 Start: 49035, Stop: 48499, Start Num: 64

Candidate Starts for 40AC_83:

(Start: 21 @49257 has 45 MA's), (Start: 26 @49233 has 5 MA's), (Start: 36 @49176 has 13 MA's), (Start: 59 @49083 has 2 MA's), (Start: 64 @49035 has 1 MA's), (72, 49005), (74, 48996), (129, 48810), (137, 48786), (151, 48663), (152, 48660), (165, 48564), (166, 48561), (169, 48522),

Gene: AbbysRanger_75 Start: 46560, Stop: 45976, Start Num: 53

Candidate Starts for AbbysRanger_75:

(Start: 21 @46710 has 45 MA's), (35, 46632), (Start: 40 @46611 has 6 MA's), (Start: 51 @46563 has 28 MA's), (Start: 53 @46560 has 87 MA's), (Start: 57 @46548 has 4 MA's), (72, 46455), (Start: 88 @46383 has 8 MA's), (95, 46365), (126, 46299), (145, 46194), (151, 46134), (152, 46131), (163, 46044), (167, 46023),

Gene: Abdiel_77 Start: 46760, Stop: 46176, Start Num: 53

Candidate Starts for Abdiel_77:

(Start: 21 @46910 has 45 MA's), (35, 46832), (Start: 40 @46811 has 6 MA's), (Start: 51 @46763 has 28 MA's), (Start: 53 @46760 has 87 MA's), (72, 46655), (Start: 88 @46583 has 8 MA's), (95, 46565), (126, 46499), (151, 46334), (152, 46331), (163, 46244), (167, 46223),

Gene: Abidatro_41 Start: 27763, Stop: 28476, Start Num: 64

Candidate Starts for Abidatro_41:

(16, 27487), (31, 27568), (35, 27604), (50, 27670), (Start: 64 @27763 has 1 MA's), (69, 27781), (91, 27901), (98, 27916), (100, 27934), (106, 28000), (109, 28015), (114, 28087), (123, 28162), (143, 28264), (151, 28339), (152, 28342), (171, 28459),

Gene: AdoptaAdorbs_42 Start: 27398, Stop: 27865, Start Num: 75

Candidate Starts for AdoptaAdorbs_42:

(16, 27170), (Start: 21 @27209 has 45 MA's), (28, 27236), (Start: 36 @27290 has 13 MA's), (38, 27302), (45, 27335), (Start: 75 @27398 has 5 MA's), (95, 27473), (116, 27563), (117, 27569), (136, 27590), (143, 27641), (151, 27716), (152, 27719), (168, 27803), (169, 27827), (171, 27836), (174, 27848),

Gene: Albee_78 Start: 46898, Stop: 46164, Start Num: 21

Candidate Starts for Albee_78:

(Start: 21 @46898 has 45 MA's), (35, 46820), (Start: 40 @46799 has 6 MA's), (Start: 51 @46751 has 28 MA's), (Start: 53 @46748 has 87 MA's), (72, 46643), (Start: 88 @46571 has 8 MA's), (95, 46553), (126, 46487), (145, 46382), (151, 46322), (152, 46319), (163, 46232), (167, 46211),

Gene: Alberto7_79 Start: 47085, Stop: 46501, Start Num: 53

Candidate Starts for Alberto7_79:

(Start: 21 @47235 has 45 MA's), (35, 47157), (Start: 40 @47136 has 6 MA's), (Start: 51 @47088 has 28 MA's), (Start: 53 @47085 has 87 MA's), (72, 46980), (Start: 88 @46908 has 8 MA's), (95, 46890), (126, 46824), (145, 46719), (151, 46659), (152, 46656), (163, 46569), (167, 46548),

Gene: AlexMinion_45 Start: 27531, Stop: 28121, Start Num: 74

Candidate Starts for AlexMinion_45:

(16, 27336), (Start: 21 @27375 has 45 MA's), (28, 27402), (35, 27453), (38, 27468), (43, 27489), (45, 27501), (50, 27519), (74, 27531), (Start: 94 @27627 has 6 MA's), (117, 27726), (121, 27777), (136, 27846), (143, 27897), (150, 27945), (151, 27972), (152, 27975), (168, 28059), (171, 28092), (174, 28104),

Gene: Ali17_3 Start: 3303, Stop: 3692, Start Num: 92

Candidate Starts for Ali17_3:

(Start: 92 @3303 has 2 MA's), (113, 3387), (134, 3414), (151, 3546), (152, 3549), (153, 3552), (167, 3630), (170, 3660),

Gene: Alkhayr_5 Start: 1855, Stop: 1286, Start Num: 80

Candidate Starts for Alkhayr_5:

(Start: 80 @1855 has 19 MA's), (101, 1738), (Start: 104 @1723 has 1 MA's), (Start: 110 @1672 has 1 MA's), (Start: 111 @1669 has 1 MA's), (129, 1555), (132, 1546), (151, 1417), (152, 1414), (160, 1378), (167, 1339), (171, 1303),

Gene: Alma_82 Start: 46797, Stop: 46282, Start Num: 46

Candidate Starts for Alma_82:

(Start: 21 @46929 has 45 MA's), (Start: 26 @46905 has 5 MA's), (35, 46851), (Start: 36 @46848 has 13 MA's), (Start: 46 @46797 has 17 MA's), (129, 46590), (135, 46569), (141, 46521), (151, 46443), (152, 46440), (163, 46353),

Gene: Amphitrite_43 Start: 27397, Stop: 27864, Start Num: 75

Candidate Starts for Amphitrite_43:

(16, 27169), (Start: 21 @27208 has 45 MA's), (28, 27235), (Start: 36 @27289 has 13 MA's), (38, 27301), (45, 27334), (Start: 75 @27397 has 5 MA's), (95, 27472), (116, 27562), (117, 27568), (136, 27589), (143, 27640), (151, 27715), (152, 27718), (168, 27802), (169, 27826), (171, 27835), (174, 27847),

Gene: Annyong_77 Start: 46793, Stop: 46209, Start Num: 53

Candidate Starts for Annyong_77:

(Start: 21 @46943 has 45 MA's), (35, 46865), (Start: 40 @46844 has 6 MA's), (Start: 51 @46796 has 28 MA's), (Start: 53 @46793 has 87 MA's), (72, 46688), (Start: 88 @46616 has 8 MA's), (95, 46598), (126, 46532), (145, 46427), (151, 46367), (152, 46364), (163, 46277), (167, 46256),

Gene: Arissanae_79 Start: 46740, Stop: 46174, Start Num: 36

Candidate Starts for Arissanae_79:

(Start: 21 @46821 has 45 MA's), (Start: 26 @46797 has 5 MA's), (35, 46743), (Start: 36 @46740 has 13 MA's), (129, 46482), (135, 46461), (151, 46335), (152, 46332), (163, 46245),

Gene: Artemis2UCLA_89 Start: 47205, Stop: 46558, Start Num: 21

Candidate Starts for Artemis2UCLA_89:

(Start: 21 @47205 has 45 MA's), (Start: 26 @47181 has 5 MA's), (35, 47127), (Start: 36 @47124 has 13 MA's), (Start: 42 @47094 has 4 MA's), (140, 46800), (151, 46719), (152, 46716), (165, 46623), (166, 46620),

Gene: Arturo_75 Start: 46876, Stop: 46292, Start Num: 53

Candidate Starts for Arturo_75:

(Start: 21 @47026 has 45 MA's), (35, 46948), (Start: 40 @46927 has 6 MA's), (Start: 51 @46879 has 28 MA's), (Start: 53 @46876 has 87 MA's), (72, 46771), (Start: 88 @46699 has 8 MA's), (95, 46681), (126, 46615), (145, 46510), (151, 46450), (152, 46447), (163, 46360), (167, 46339),

Gene: AvatarAhPeg_78 Start: 46909, Stop: 46328, Start Num: 53

Candidate Starts for AvatarAhPeg_78:

(Start: 21 @47059 has 45 MA's), (35, 46981), (Start: 40 @46960 has 6 MA's), (Start: 46 @46927 has 17 MA's), (Start: 53 @46909 has 87 MA's), (63, 46840), (65, 46834), (Start: 67 @46822 has 3 MA's), (126, 46651), (151, 46486), (152, 46483), (163, 46396), (167, 46375), (171, 46339),

Gene: Avle17_78 Start: 46742, Stop: 46158, Start Num: 53

Candidate Starts for Avle17_78:

(Start: 21 @46892 has 45 MA's), (35, 46814), (Start: 40 @46793 has 6 MA's), (Start: 51 @46745 has 28 MA's), (Start: 53 @46742 has 87 MA's), (72, 46637), (Start: 88 @46565 has 8 MA's), (95, 46547), (126, 46481), (145, 46376), (151, 46316), (152, 46313), (163, 46226), (167, 46205),

Gene: Ayanochan_82 Start: 46580, Stop: 46065, Start Num: 46

Candidate Starts for Ayanochan_82:

(Start: 21 @46712 has 45 MA's), (Start: 26 @46688 has 5 MA's), (35, 46634), (Start: 36 @46631 has 13 MA's), (Start: 46 @46580 has 17 MA's), (129, 46373), (135, 46352), (141, 46304), (151, 46226), (152, 46223), (163, 46136),

Gene: BABullseye_81 Start: 45537, Stop: 44887, Start Num: 21

Candidate Starts for BABullseye_81:

(Start: 21 @45537 has 45 MA's), (Start: 26 @45513 has 5 MA's), (35, 45459), (Start: 36 @45456 has 13 MA's), (Start: 40 @45438 has 6 MA's), (129, 45198), (137, 45174), (141, 45129), (151, 45051), (152, 45048), (155, 45027), (165, 44952), (166, 44949),

Gene: Babushka_40 Start: 27331, Stop: 27798, Start Num: 75

Candidate Starts for Babushka_40:

(16, 27103), (Start: 21 @27142 has 45 MA's), (28, 27169), (Start: 36 @27223 has 13 MA's), (38, 27235), (45, 27268), (Start: 75 @27331 has 5 MA's), (95, 27406), (116, 27496), (117, 27502), (136, 27523), (143, 27574), (151, 27649), (152, 27652), (168, 27736), (169, 27760), (171, 27769), (174, 27781),

Gene: Baby16_78 Start: 46762, Stop: 46175, Start Num: 51

Candidate Starts for Baby16_78:

(Start: 21 @46909 has 45 MA's), (35, 46831), (Start: 40 @46810 has 6 MA's), (Start: 51 @46762 has 28 MA's), (Start: 53 @46759 has 87 MA's), (72, 46654), (Start: 88 @46582 has 8 MA's), (95, 46564), (126, 46498), (151, 46333), (152, 46330), (163, 46243), (167, 46222),

Gene: BabyBack_82 Start: 48998, Stop: 48291, Start Num: 59

Candidate Starts for BabyBack_82:

(Start: 21 @49172 has 45 MA's), (Start: 26 @49148 has 5 MA's), (Start: 36 @49091 has 13 MA's), (Start: 59 @48998 has 2 MA's), (Start: 64 @48950 has 1 MA's), (97, 48821), (105, 48764), (128,

48611), (141, 48533), (151, 48455), (152, 48452), (165, 48356), (166, 48353),

Gene: Backyardigan_73 Start: 46576, Stop: 45992, Start Num: 53

Candidate Starts for Backyardigan_73:

(Start: 21 @46726 has 45 MA's), (35, 46648), (Start: 40 @46627 has 6 MA's), (Start: 51 @46579 has 28 MA's), (Start: 53 @46576 has 87 MA's), (Start: 57 @46564 has 4 MA's), (72, 46471), (Start: 88 @46399 has 8 MA's), (95, 46381), (126, 46315), (145, 46210), (151, 46150), (152, 46147), (163, 46060), (167, 46039),

Gene: Badger_74 Start: 46542, Stop: 45958, Start Num: 53

Candidate Starts for Badger_74:

(Start: 21 @46692 has 45 MA's), (35, 46614), (Start: 40 @46593 has 6 MA's), (Start: 51 @46545 has 28 MA's), (Start: 53 @46542 has 87 MA's), (Start: 57 @46530 has 4 MA's), (72, 46437), (Start: 88 @46365 has 8 MA's), (95, 46347), (126, 46281), (145, 46176), (151, 46116), (152, 46113), (163, 46026), (167, 46005),

Gene: BangNhom_75 Start: 47188, Stop: 46601, Start Num: 51

Candidate Starts for BangNhom_75:

(Start: 21 @47335 has 45 MA's), (35, 47257), (Start: 40 @47236 has 6 MA's), (Start: 51 @47188 has 28 MA's), (Start: 53 @47185 has 87 MA's), (72, 47080), (Start: 88 @47008 has 8 MA's), (95, 46990), (126, 46924), (151, 46759), (152, 46756), (163, 46669), (167, 46648),

Gene: Bartimeaus_78 Start: 46753, Stop: 46166, Start Num: 51

Candidate Starts for Bartimeaus_78:

(Start: 21 @46900 has 45 MA's), (35, 46822), (Start: 40 @46801 has 6 MA's), (Start: 51 @46753 has 28 MA's), (Start: 53 @46750 has 87 MA's), (72, 46645), (Start: 88 @46573 has 8 MA's), (95, 46555), (126, 46489), (151, 46324), (152, 46321), (163, 46234), (167, 46213),

Gene: Beemo_84 Start: 46790, Stop: 46275, Start Num: 46

Candidate Starts for Beemo_84:

(Start: 21 @46922 has 45 MA's), (Start: 26 @46898 has 5 MA's), (Start: 36 @46841 has 13 MA's), (Start: 46 @46790 has 17 MA's), (129, 46583), (135, 46562), (141, 46514), (151, 46436), (152, 46433), (163, 46346),

Gene: BellusTerra_79 Start: 46789, Stop: 46205, Start Num: 53

Candidate Starts for BellusTerra_79:

(Start: 21 @46939 has 45 MA's), (35, 46861), (Start: 40 @46840 has 6 MA's), (Start: 51 @46792 has 28 MA's), (Start: 53 @46789 has 87 MA's), (72, 46684), (Start: 88 @46612 has 8 MA's), (95, 46594), (126, 46528), (151, 46363), (152, 46360), (163, 46273), (167, 46252),

Gene: Blackmoor_77 Start: 46753, Stop: 46166, Start Num: 51

Candidate Starts for Blackmoor_77:

(Start: 21 @46900 has 45 MA's), (35, 46822), (Start: 40 @46801 has 6 MA's), (Start: 51 @46753 has 28 MA's), (Start: 53 @46750 has 87 MA's), (72, 46645), (Start: 88 @46573 has 8 MA's), (95, 46555), (126, 46489), (151, 46324), (152, 46321), (163, 46234), (167, 46213),

Gene: BlessJoy_90 Start: 47615, Stop: 47079, Start Num: 42

Candidate Starts for BlessJoy_90:

(Start: 21 @47726 has 45 MA's), (Start: 26 @47702 has 5 MA's), (35, 47648), (Start: 36 @47645 has 13 MA's), (Start: 42 @47615 has 4 MA's), (140, 47321), (151, 47240), (152, 47237), (165, 47144), (166, 47141),

Gene: Blessica_5 Start: 1714, Stop: 1145, Start Num: 80

Candidate Starts for Blessica_5:

(Start: 80 @1714 has 19 MA's), (101, 1597), (Start: 104 @1582 has 1 MA's), (Start: 110 @1531 has 1 MA's), (Start: 111 @1528 has 1 MA's), (129, 1414), (132, 1405), (138, 1381), (151, 1276), (152, 1273), (160, 1237), (167, 1198), (171, 1162),

Gene: Blue7_91 Start: 47412, Stop: 46786, Start Num: 26

Candidate Starts for Blue7_91:

(Start: 21 @47436 has 45 MA's), (Start: 26 @47412 has 5 MA's), (35, 47358), (Start: 36 @47355 has 13 MA's), (Start: 40 @47337 has 6 MA's), (140, 47031), (151, 46950), (152, 46947), (155, 46926), (165, 46851), (166, 46848),

Gene: BogosyJay_83 Start: 46896, Stop: 46318, Start Num: 36

Candidate Starts for BogosyJay_83:

(Start: 21 @46977 has 45 MA's), (24, 46956), (Start: 26 @46953 has 5 MA's), (Start: 36 @46896 has 13 MA's), (Start: 46 @46845 has 17 MA's), (129, 46638), (135, 46617), (151, 46491), (152, 46488), (163, 46401), (167, 46380), (173, 46335),

Gene: Bombshell_78 Start: 46748, Stop: 46161, Start Num: 51

Candidate Starts for Bombshell_78:

(Start: 21 @46895 has 45 MA's), (35, 46817), (Start: 40 @46796 has 6 MA's), (Start: 51 @46748 has 28 MA's), (Start: 53 @46745 has 87 MA's), (72, 46640), (Start: 88 @46568 has 8 MA's), (89, 46562), (95, 46550), (126, 46484), (145, 46379), (151, 46319), (152, 46316), (163, 46229), (167, 46208),

Gene: Bora_5 Start: 1666, Stop: 1286, Start Num: 110

Candidate Starts for Bora_5:

(Start: 80 @1849 has 19 MA's), (101, 1732), (Start: 104 @1717 has 1 MA's), (Start: 110 @1666 has 1 MA's), (Start: 111 @1663 has 1 MA's), (129, 1555), (132, 1546), (151, 1417), (152, 1414), (167, 1339), (171, 1303),

Gene: Broseidon_78 Start: 46751, Stop: 46167, Start Num: 53

Candidate Starts for Broseidon_78:

(Start: 21 @46901 has 45 MA's), (35, 46823), (Start: 40 @46802 has 6 MA's), (Start: 51 @46754 has 28 MA's), (Start: 53 @46751 has 87 MA's), (72, 46646), (Start: 88 @46574 has 8 MA's), (95, 46556), (126, 46490), (145, 46385), (151, 46325), (152, 46322), (163, 46235), (167, 46214),

Gene: Bruiser_77 Start: 46898, Stop: 46164, Start Num: 21

Candidate Starts for Bruiser_77:

(Start: 21 @46898 has 45 MA's), (35, 46820), (Start: 40 @46799 has 6 MA's), (Start: 51 @46751 has 28 MA's), (Start: 53 @46748 has 87 MA's), (72, 46643), (Start: 88 @46571 has 8 MA's), (95, 46553), (126, 46487), (151, 46322), (152, 46319), (163, 46232), (167, 46211),

Gene: BubbleTrouble_77 Start: 46925, Stop: 46191, Start Num: 21

Candidate Starts for BubbleTrouble_77:

(Start: 21 @46925 has 45 MA's), (35, 46847), (Start: 40 @46826 has 6 MA's), (Start: 51 @46778 has 28 MA's), (Start: 53 @46775 has 87 MA's), (72, 46670), (Start: 88 @46598 has 8 MA's), (95, 46580), (126, 46514), (145, 46409), (151, 46349), (152, 46346), (163, 46259), (167, 46238),

Gene: Bumblebee11_74 Start: 46542, Stop: 45958, Start Num: 53

Candidate Starts for Bumblebee11_74:

(Start: 21 @46692 has 45 MA's), (35, 46614), (Start: 40 @46593 has 6 MA's), (Start: 51 @46545 has 28 MA's), (Start: 53 @46542 has 87 MA's), (Start: 57 @46530 has 4 MA's), (72, 46437), (Start: 88 @46365 has 8 MA's), (95, 46347), (126, 46281), (145, 46176), (151, 46116), (152, 46113), (163, 46026), (167, 46005), (168, 46002),

Gene: Burger_76 Start: 46748, Stop: 46164, Start Num: 53

Candidate Starts for Burger_76:

(Start: 21 @46898 has 45 MA's), (35, 46820), (Start: 40 @46799 has 6 MA's), (Start: 51 @46751 has 28 MA's), (Start: 53 @46748 has 87 MA's), (72, 46643), (Start: 88 @46571 has 8 MA's), (95, 46553), (126, 46487), (145, 46382), (151, 46322), (152, 46319), (163, 46232), (167, 46211),

Gene: ByChance_64 Start: 42129, Stop: 42512, Start Num: 94

Candidate Starts for ByChance_64:

(16, 41784), (23, 41841), (32, 41865), (34, 41883), (35, 41898), (Start: 40 @41919 has 6 MA's), (Start: 46 @41952 has 17 MA's), (Start: 52 @41970 has 1 MA's), (Start: 94 @42129 has 6 MA's), (142, 42291), (151, 42369), (152, 42372), (155, 42393), (158, 42402), (163, 42429), (169, 42477), (175, 42501),

Gene: Caelakin_76 Start: 46748, Stop: 46164, Start Num: 53

Candidate Starts for Caelakin_76:

(Start: 21 @46898 has 45 MA's), (35, 46820), (Start: 40 @46799 has 6 MA's), (Start: 51 @46751 has 28 MA's), (Start: 53 @46748 has 87 MA's), (72, 46643), (Start: 88 @46571 has 8 MA's), (95, 46553), (126, 46487), (151, 46322), (152, 46319), (163, 46232), (167, 46211),

Gene: Camara_43 Start: 27400, Stop: 27867, Start Num: 75

Candidate Starts for Camara_43:

(16, 27172), (Start: 21 @27211 has 45 MA's), (28, 27238), (Start: 36 @27292 has 13 MA's), (38, 27304), (45, 27337), (Start: 75 @27400 has 5 MA's), (95, 27475), (116, 27565), (117, 27571), (136, 27592), (143, 27643), (151, 27718), (152, 27721), (168, 27805), (169, 27829), (171, 27838), (174, 27850),

Gene: Camerico_39 Start: 42850, Stop: 43254, Start Num: 92

Candidate Starts for Camerico_39:

(29, 42643), (83, 42814), (Start: 92 @42850 has 2 MA's), (138, 42979), (149, 43048), (151, 43072), (152, 43075), (162, 43135), (164, 43156),

Gene: Camperdownii_75 Start: 46323, Stop: 45583, Start Num: 21

Candidate Starts for Camperdownii_75:

(Start: 21 @46323 has 45 MA's), (Start: 26 @46299 has 5 MA's), (Start: 36 @46242 has 13 MA's), (131, 45870), (141, 45807), (151, 45729), (152, 45726), (165, 45645), (167, 45630),

Gene: Catalina_86 Start: 46900, Stop: 46385, Start Num: 46

Candidate Starts for Catalina_86:

(Start: 21 @47032 has 45 MA's), (Start: 26 @47008 has 5 MA's), (Start: 36 @46951 has 13 MA's), (Start: 46 @46900 has 17 MA's), (129, 46693), (135, 46672), (141, 46624), (151, 46546), (152, 46543), (163, 46456),

Gene: Catdawg_5 Start: 1764, Stop: 1195, Start Num: 80

Candidate Starts for Catdawg_5:

(Start: 80 @1764 has 19 MA's), (101, 1647), (Start: 104 @1632 has 1 MA's), (Start: 110 @1581 has 1 MA's), (Start: 111 @1578 has 1 MA's), (129, 1464), (132, 1455), (138, 1431), (151, 1326), (152, 1323), (160, 1287), (167, 1248), (171, 1212),

Gene: CentreCat_78 Start: 46788, Stop: 46204, Start Num: 53

Candidate Starts for CentreCat_78:

(Start: 21 @46938 has 45 MA's), (35, 46860), (Start: 40 @46839 has 6 MA's), (Start: 51 @46791 has 28 MA's), (Start: 53 @46788 has 87 MA's), (72, 46683), (Start: 88 @46611 has 8 MA's), (95, 46593),

(126, 46527), (151, 46362), (152, 46359), (163, 46272), (167, 46251),

Gene: Cerulean_80 Start: 47186, Stop: 46602, Start Num: 53

Candidate Starts for Cerulean_80:

(Start: 21 @47336 has 45 MA's), (35, 47258), (Start: 40 @47237 has 6 MA's), (Start: 51 @47189 has 28 MA's), (Start: 53 @47186 has 87 MA's), (72, 47081), (Start: 88 @47009 has 8 MA's), (95, 46991), (126, 46925), (151, 46760), (152, 46757), (163, 46670), (167, 46649),

Gene: ChampagnePapi_81 Start: 47188, Stop: 46604, Start Num: 53

Candidate Starts for ChampagnePapi_81:

(Start: 21 @47338 has 45 MA's), (35, 47260), (Start: 40 @47239 has 6 MA's), (Start: 51 @47191 has 28 MA's), (Start: 53 @47188 has 87 MA's), (72, 47083), (Start: 88 @47011 has 8 MA's), (95, 46993), (126, 46927), (151, 46762), (152, 46759), (163, 46672), (167, 46651),

Gene: Chaph_78 Start: 46759, Stop: 46175, Start Num: 53

Candidate Starts for Chaph_78:

(Start: 21 @46909 has 45 MA's), (35, 46831), (Start: 40 @46810 has 6 MA's), (Start: 51 @46762 has 28 MA's), (Start: 53 @46759 has 87 MA's), (72, 46654), (Start: 88 @46582 has 8 MA's), (89, 46576), (95, 46564), (126, 46498), (151, 46333), (152, 46330), (163, 46243), (167, 46222),

Gene: Charm_79 Start: 46368, Stop: 45709, Start Num: 21

Candidate Starts for Charm_79:

(Start: 21 @46368 has 45 MA's), (Start: 26 @46344 has 5 MA's), (35, 46290), (Start: 36 @46287 has 13 MA's), (129, 46029), (135, 46008), (148, 45921), (151, 45882), (152, 45879), (161, 45813), (163, 45792), (167, 45771), (173, 45726),

Gene: Chartreuse_87 Start: 46443, Stop: 45892, Start Num: 40

Candidate Starts for Chartreuse_87:

(Start: 21 @46542 has 45 MA's), (Start: 26 @46518 has 5 MA's), (35, 46464), (Start: 36 @46461 has 13 MA's), (Start: 40 @46443 has 6 MA's), (129, 46203), (137, 46179), (141, 46134), (151, 46056), (152, 46053), (155, 46032), (165, 45957), (166, 45954),

Gene: Chickaboom_42 Start: 27783, Stop: 28385, Start Num: 68

Candidate Starts for Chickaboom_42:

(16, 27504), (31, 27585), (35, 27621), (45, 27669), (Start: 68 @27783 has 2 MA's), (116, 27996), (117, 28002), (118, 28005), (123, 28068), (143, 28170), (151, 28245), (152, 28248), (171, 28365),

Gene: Chupacabra_75 Start: 46471, Stop: 46052, Start Num: 88

Candidate Starts for Chupacabra_75:

(Start: 21 @46687 has 45 MA's), (Start: 26 @46663 has 5 MA's), (Start: 36 @46606 has 13 MA's), (Start: 88 @46471 has 8 MA's), (141, 46282), (151, 46204), (152, 46201), (157, 46168), (165, 46114),

Gene: Cici_75 Start: 46555, Stop: 45971, Start Num: 53

Candidate Starts for Cici_75:

(Start: 21 @46705 has 45 MA's), (35, 46627), (Start: 40 @46606 has 6 MA's), (Start: 51 @46558 has 28 MA's), (Start: 53 @46555 has 87 MA's), (Start: 57 @46543 has 4 MA's), (72, 46450), (Start: 88 @46378 has 8 MA's), (95, 46360), (126, 46294), (145, 46189), (151, 46129), (152, 46126), (163, 46039), (167, 46018), (171, 45982),

Gene: Cindaradix_73 Start: 46788, Stop: 46300, Start Num: 67

Candidate Starts for Cindaradix_73:

(Start: 21 @47025 has 45 MA's), (35, 46947), (Start: 40 @46926 has 6 MA's), (63, 46806), (Start: 67 @46788 has 3 MA's), (126, 46623), (130, 46602), (151, 46458), (152, 46455), (163, 46368), (167,

46347),

Gene: Cintron_78 Start: 46867, Stop: 46280, Start Num: 51

Candidate Starts for Cintron_78:

(Start: 21 @47014 has 45 MA's), (35, 46936), (Start: 40 @46915 has 6 MA's), (Start: 51 @46867 has 28 MA's), (Start: 53 @46864 has 87 MA's), (72, 46759), (Start: 88 @46687 has 8 MA's), (95, 46669), (126, 46603), (145, 46498), (151, 46438), (152, 46435), (163, 46348), (167, 46327), (171, 46291),

Gene: Citius_78 Start: 46769, Stop: 46185, Start Num: 53

Candidate Starts for Citius_78:

(Start: 21 @46919 has 45 MA's), (35, 46841), (Start: 40 @46820 has 6 MA's), (Start: 51 @46772 has 28 MA's), (Start: 53 @46769 has 87 MA's), (72, 46664), (Start: 88 @46592 has 8 MA's), (95, 46574), (126, 46508), (151, 46343), (152, 46340), (163, 46253), (167, 46232),

Gene: Clarenza_77 Start: 46895, Stop: 46161, Start Num: 21

Candidate Starts for Clarenza_77:

(Start: 21 @46895 has 45 MA's), (35, 46817), (Start: 40 @46796 has 6 MA's), (Start: 51 @46748 has 28 MA's), (Start: 53 @46745 has 87 MA's), (72, 46640), (Start: 88 @46568 has 8 MA's), (95, 46550), (126, 46484), (145, 46379), (151, 46319), (152, 46316), (163, 46229), (167, 46208),

Gene: CloudWang3_90 Start: 47734, Stop: 47087, Start Num: 21

Candidate Starts for CloudWang3_90:

(Start: 21 @47734 has 45 MA's), (Start: 26 @47710 has 5 MA's), (35, 47656), (Start: 36 @47653 has 13 MA's), (Start: 42 @47623 has 4 MA's), (140, 47329), (151, 47248), (152, 47245), (165, 47152), (166, 47149),

Gene: Cocoaberry_78 Start: 46749, Stop: 46165, Start Num: 53

Candidate Starts for Cocoaberry_78:

(Start: 21 @46899 has 45 MA's), (35, 46821), (Start: 40 @46800 has 6 MA's), (Start: 51 @46752 has 28 MA's), (Start: 53 @46749 has 87 MA's), (72, 46644), (Start: 88 @46572 has 8 MA's), (95, 46554), (126, 46488), (145, 46383), (151, 46323), (152, 46320), (163, 46233), (167, 46212),

Gene: Commander_76 Start: 46746, Stop: 46162, Start Num: 53

Candidate Starts for Commander_76:

(Start: 21 @46896 has 45 MA's), (35, 46818), (Start: 40 @46797 has 6 MA's), (Start: 51 @46749 has 28 MA's), (Start: 53 @46746 has 87 MA's), (72, 46641), (Start: 88 @46569 has 8 MA's), (95, 46551), (126, 46485), (145, 46380), (151, 46320), (152, 46317), (163, 46230), (167, 46209),

Gene: Connomayer_78 Start: 46751, Stop: 46164, Start Num: 51

Candidate Starts for Connomayer_78:

(Start: 21 @46898 has 45 MA's), (35, 46820), (Start: 40 @46799 has 6 MA's), (Start: 51 @46751 has 28 MA's), (Start: 53 @46748 has 87 MA's), (72, 46643), (Start: 88 @46571 has 8 MA's), (95, 46553), (126, 46487), (145, 46382), (151, 46322), (152, 46319), (163, 46232), (167, 46211),

Gene: Conquerage_82 Start: 46566, Stop: 46051, Start Num: 46

Candidate Starts for Conquerage_82:

(Start: 21 @46698 has 45 MA's), (Start: 26 @46674 has 5 MA's), (35, 46620), (Start: 36 @46617 has 13 MA's), (Start: 46 @46566 has 17 MA's), (129, 46359), (135, 46338), (141, 46290), (151, 46212), (152, 46209), (163, 46122),

Gene: Cookiedough_88 Start: 47826, Stop: 47200, Start Num: 26

Candidate Starts for Cookiedough_88:

(Start: 21 @47850 has 45 MA's), (Start: 26 @47826 has 5 MA's), (35, 47772), (Start: 36 @47769 has 13 MA's), (Start: 40 @47751 has 6 MA's), (129, 47511), (137, 47487), (141, 47442), (151, 47364), (152, 47361), (155, 47340), (165, 47265), (166, 47262),

Gene: Darrell_82 Start: 46051, Stop: 45485, Start Num: 36

Candidate Starts for Darrell_82:

(Start: 21 @46132 has 45 MA's), (Start: 26 @46108 has 5 MA's), (Start: 36 @46051 has 13 MA's), (Start: 94 @45898 has 6 MA's), (129, 45793), (135, 45772), (151, 45646), (152, 45643), (163, 45556),

Gene: DarthPhader_79 Start: 47620, Stop: 47048, Start Num: 36

Candidate Starts for DarthPhader_79:

(Start: 21 @47701 has 45 MA's), (Start: 26 @47677 has 5 MA's), (Start: 36 @47620 has 13 MA's), (Start: 94 @47464 has 6 MA's), (135, 47338), (151, 47212), (152, 47209), (165, 47116), (166, 47113), (169, 47074),

Gene: Datway_75 Start: 46559, Stop: 45975, Start Num: 53

Candidate Starts for Datway_75:

(Start: 21 @46709 has 45 MA's), (35, 46631), (Start: 40 @46610 has 6 MA's), (Start: 51 @46562 has 28 MA's), (Start: 53 @46559 has 87 MA's), (72, 46454), (Start: 88 @46382 has 8 MA's), (95, 46364), (126, 46298), (145, 46193), (151, 46133), (152, 46130), (163, 46043), (167, 46022),

Gene: Deano_75 Start: 46756, Stop: 46172, Start Num: 53

Candidate Starts for Deano_75:

(Start: 21 @46906 has 45 MA's), (35, 46828), (Start: 40 @46807 has 6 MA's), (Start: 51 @46759 has 28 MA's), (Start: 53 @46756 has 87 MA's), (72, 46651), (Start: 88 @46579 has 8 MA's), (95, 46561), (126, 46495), (151, 46330), (152, 46327), (163, 46240), (167, 46219),

Gene: Dhanush_78 Start: 46751, Stop: 46167, Start Num: 53

Candidate Starts for Dhanush_78:

(Start: 21 @46901 has 45 MA's), (35, 46823), (Start: 40 @46802 has 6 MA's), (Start: 51 @46754 has 28 MA's), (Start: 53 @46751 has 87 MA's), (72, 46646), (Start: 88 @46574 has 8 MA's), (89, 46568), (95, 46556), (126, 46490), (151, 46325), (152, 46322), (163, 46235), (167, 46214),

Gene: DirtyDunning_77 Start: 46760, Stop: 46176, Start Num: 53

Candidate Starts for DirtyDunning_77:

(Start: 21 @46910 has 45 MA's), (35, 46832), (Start: 40 @46811 has 6 MA's), (Start: 51 @46763 has 28 MA's), (Start: 53 @46760 has 87 MA's), (72, 46655), (Start: 88 @46583 has 8 MA's), (95, 46565), (126, 46499), (145, 46394), (151, 46334), (152, 46331), (163, 46244), (167, 46223),

Gene: DontArgue_73 Start: 45331, Stop: 44912, Start Num: 88

Candidate Starts for DontArgue_73:

(Start: 21 @45547 has 45 MA's), (Start: 26 @45523 has 5 MA's), (Start: 36 @45466 has 13 MA's), (Start: 88 @45331 has 8 MA's), (151, 45064), (152, 45061), (165, 44974),

Gene: Dorothea_88 Start: 47842, Stop: 47192, Start Num: 21

Candidate Starts for Dorothea_88:

(Start: 21 @47842 has 45 MA's), (Start: 26 @47818 has 5 MA's), (35, 47764), (Start: 36 @47761 has 13 MA's), (Start: 40 @47743 has 6 MA's), (129, 47503), (137, 47479), (141, 47434), (151, 47356), (152, 47353), (155, 47332), (165, 47257), (166, 47254),

Gene: Dorothy_72 Start: 44809, Stop: 45360, Start Num: 52

Candidate Starts for Dorothy_72:

(16, 44623), (23, 44680), (32, 44704), (34, 44722), (35, 44737), (Start: 40 @44758 has 6 MA's), (Start: 46 @44791 has 17 MA's), (Start: 52 @44809 has 1 MA's), (Start: 94 @44968 has 6 MA's), (142, 45130), (151, 45208), (152, 45211), (155, 45232), (158, 45241), (163, 45268), (175, 45349),

Gene: Drake94_75 Start: 45844, Stop: 45209, Start Num: 21

Candidate Starts for Drake94_75:

(Start: 21 @45844 has 45 MA's), (Start: 26 @45820 has 5 MA's), (Start: 36 @45763 has 13 MA's), (Start: 88 @45628 has 8 MA's), (141, 45439), (151, 45361), (152, 45358), (155, 45337), (157, 45325), (165, 45271),

Gene: Druantia_77 Start: 46751, Stop: 46167, Start Num: 53

Candidate Starts for Druantia_77:

(Start: 21 @46901 has 45 MA's), (35, 46823), (Start: 40 @46802 has 6 MA's), (Start: 51 @46754 has 28 MA's), (Start: 53 @46751 has 87 MA's), (72, 46646), (Start: 88 @46574 has 8 MA's), (95, 46556), (126, 46490), (151, 46325), (152, 46322), (163, 46235), (167, 46214),

Gene: DustyMartin_80 Start: 46614, Stop: 46195, Start Num: 88

Candidate Starts for DustyMartin_80:

(Start: 21 @46830 has 45 MA's), (Start: 26 @46806 has 5 MA's), (Start: 36 @46749 has 13 MA's), (Start: 88 @46614 has 8 MA's), (151, 46347), (152, 46344), (155, 46323), (165, 46257),

Gene: Dylan_6 Start: 2163, Stop: 1594, Start Num: 80

Candidate Starts for Dylan_6:

(Start: 80 @2163 has 19 MA's), (101, 2046), (Start: 104 @2031 has 1 MA's), (Start: 110 @1980 has 1 MA's), (Start: 111 @1977 has 1 MA's), (129, 1863), (132, 1854), (151, 1725), (152, 1722), (167, 1647), (171, 1611),

Gene: Eagle_77 Start: 46810, Stop: 46226, Start Num: 53

Candidate Starts for Eagle_77:

(Start: 21 @46960 has 45 MA's), (35, 46882), (Start: 40 @46861 has 6 MA's), (Start: 51 @46813 has 28 MA's), (Start: 53 @46810 has 87 MA's), (72, 46705), (Start: 88 @46633 has 8 MA's), (95, 46615), (126, 46549), (151, 46384), (152, 46381), (163, 46294), (167, 46273),

Gene: EagleEye_88 Start: 48605, Stop: 48168, Start Num: 88

Candidate Starts for EagleEye_88:

(Start: 21 @48824 has 45 MA's), (Start: 26 @48800 has 5 MA's), (35, 48746), (Start: 36 @48743 has 13 MA's), (Start: 88 @48605 has 8 MA's), (129, 48482), (135, 48461), (151, 48335), (156, 48302), (165, 48233), (166, 48230), (169, 48191),

Gene: Eaglepride_81 Start: 46551, Stop: 46135, Start Num: 88

Candidate Starts for Eaglepride_81:

(Start: 21 @46767 has 45 MA's), (Start: 26 @46743 has 5 MA's), (Start: 36 @46686 has 13 MA's), (Start: 88 @46551 has 8 MA's), (141, 46362), (151, 46284), (152, 46281), (156, 46251), (165, 46197),

Gene: Eapen_78 Start: 46743, Stop: 46159, Start Num: 53

Candidate Starts for Eapen_78:

(Start: 21 @46893 has 45 MA's), (35, 46815), (Start: 40 @46794 has 6 MA's), (Start: 51 @46746 has 28 MA's), (Start: 53 @46743 has 87 MA's), (72, 46638), (Start: 88 @46566 has 8 MA's), (95, 46548), (126, 46482), (145, 46377), (151, 46317), (152, 46314), (163, 46227), (167, 46206),

Gene: EdogawaKiddo_82 Start: 46868, Stop: 46353, Start Num: 46

Candidate Starts for EdogawaKiddo_82:

(Start: 21 @47000 has 45 MA's), (Start: 26 @46976 has 5 MA's), (Start: 36 @46919 has 13 MA's), (Start: 46 @46868 has 17 MA's), (129, 46661), (135, 46640), (141, 46592), (151, 46514), (152, 46511), (163, 46424),

Gene: Eesa_40 Start: 28668, Stop: 29270, Start Num: 68

Candidate Starts for Eesa_40:

(16, 28389), (31, 28470), (35, 28506), (50, 28572), (54, 28593), (55, 28596), (Start: 68 @28668 has 2 MA's), (82, 28734), (112, 28869), (116, 28881), (117, 28887), (123, 28953), (143, 29055), (151, 29130), (152, 29133), (171, 29250),

Gene: Eidsmoe_82 Start: 46558, Stop: 46043, Start Num: 46

Candidate Starts for Eidsmoe_82:

(Start: 21 @46690 has 45 MA's), (Start: 26 @46666 has 5 MA's), (35, 46612), (Start: 36 @46609 has 13 MA's), (Start: 46 @46558 has 17 MA's), (129, 46351), (135, 46330), (141, 46282), (151, 46204), (152, 46201), (163, 46114),

Gene: Elephantoon_84 Start: 46848, Stop: 46192, Start Num: 21

Candidate Starts for Elephantoon_84:

(Start: 21 @46848 has 45 MA's), (Start: 26 @46824 has 5 MA's), (35, 46770), (Start: 36 @46767 has 13 MA's), (Start: 94 @46614 has 6 MA's), (129, 46509), (135, 46488), (151, 46362), (152, 46359), (163, 46272), (167, 46251), (173, 46206),

Gene: EmyBug_81 Start: 46560, Stop: 46045, Start Num: 46

Candidate Starts for EmyBug_81:

(Start: 21 @46692 has 45 MA's), (Start: 26 @46668 has 5 MA's), (35, 46614), (Start: 36 @46611 has 13 MA's), (Start: 46 @46560 has 17 MA's), (129, 46353), (135, 46332), (141, 46284), (151, 46206), (152, 46203), (163, 46116),

Gene: Eris_77 Start: 46910, Stop: 46176, Start Num: 21

Candidate Starts for Eris_77:

(Start: 21 @46910 has 45 MA's), (35, 46832), (Start: 40 @46811 has 6 MA's), (Start: 51 @46763 has 28 MA's), (Start: 53 @46760 has 87 MA's), (72, 46655), (Start: 88 @46583 has 8 MA's), (95, 46565), (126, 46499), (145, 46394), (151, 46334), (152, 46331), (163, 46244), (167, 46223),

Gene: Eros_78 Start: 46750, Stop: 46166, Start Num: 53

Candidate Starts for Eros_78:

(Start: 21 @46900 has 45 MA's), (35, 46822), (Start: 40 @46801 has 6 MA's), (Start: 51 @46753 has 28 MA's), (Start: 53 @46750 has 87 MA's), (72, 46645), (Start: 88 @46573 has 8 MA's), (95, 46555), (126, 46489), (145, 46384), (151, 46324), (152, 46321), (163, 46234), (167, 46213),

Gene: Euratis_34 Start: 26257, Stop: 26847, Start Num: 84

Candidate Starts for Euratis_34:

(25, 25936), (44, 26032), (Start: 46 @26047 has 17 MA's), (62, 26125), (73, 26185), (76, 26221), (Start: 84 @26257 has 7 MA's), (108, 26392), (119, 26482), (127, 26530), (139, 26587), (147, 26635), (149, 26656), (151, 26686), (152, 26689), (154, 26695), (155, 26710), (167, 26767), (171, 26803), (174, 26815), (176, 26836),

Gene: Eurydice_79 Start: 46788, Stop: 46201, Start Num: 51

Candidate Starts for Eurydice_79:

(Start: 21 @46935 has 45 MA's), (35, 46857), (Start: 40 @46836 has 6 MA's), (Start: 51 @46788 has 28 MA's), (Start: 53 @46785 has 87 MA's), (72, 46680), (Start: 88 @46608 has 8 MA's), (95, 46590), (126, 46524), (151, 46359), (152, 46356), (163, 46269), (167, 46248),

Gene: Familton_6 Start: 1765, Stop: 1196, Start Num: 80

Candidate Starts for Familton_6:

(Start: 80 @1765 has 19 MA's), (101, 1648), (Start: 104 @1633 has 1 MA's), (Start: 110 @1582 has 1 MA's), (Start: 111 @1579 has 1 MA's), (129, 1465), (132, 1456), (138, 1432), (151, 1327), (152, 1324), (160, 1288), (167, 1249), (171, 1213),

Gene: FatCactus_77 Start: 46761, Stop: 46126, Start Num: 35

Candidate Starts for FatCactus_77:

(11, 46983), (14, 46878), (17, 46857), (19, 46845), (20, 46839), (27, 46806), (35, 46761), (56, 46677), (129, 46497), (141, 46428), (146, 46404), (151, 46350), (152, 46347), (163, 46254), (168, 46230),

Gene: Fayely_82 Start: 46533, Stop: 46018, Start Num: 46

Candidate Starts for Fayely_82:

(Start: 21 @46665 has 45 MA's), (Start: 26 @46641 has 5 MA's), (Start: 36 @46584 has 13 MA's), (Start: 46 @46533 has 17 MA's), (129, 46326), (135, 46305), (141, 46257), (151, 46179), (152, 46176), (163, 46089),

Gene: Float294_61 Start: 49716, Stop: 49099, Start Num: 60

Candidate Starts for Float294_61:

(7, 50178), (8, 50121), (9, 50109), (12, 50025), (34, 49830), (35, 49815), (39, 49797), (Start: 46 @49761 has 17 MA's), (Start: 60 @49716 has 1 MA's), (79, 49653), (85, 49638), (86, 49632), (90, 49617), (125, 49413), (129, 49386), (132, 49377), (133, 49371), (147, 49287), (151, 49236), (152, 49233), (167, 49155), (169, 49128),

Gene: Florean_78 Start: 46897, Stop: 46163, Start Num: 21

Candidate Starts for Florean_78:

(Start: 21 @46897 has 45 MA's), (35, 46819), (Start: 40 @46798 has 6 MA's), (Start: 51 @46750 has 28 MA's), (Start: 53 @46747 has 87 MA's), (72, 46642), (Start: 88 @46570 has 8 MA's), (95, 46552), (126, 46486), (151, 46321), (152, 46318), (163, 46231), (167, 46210),

Gene: Flux_79 Start: 46746, Stop: 46162, Start Num: 53

Candidate Starts for Flux_79:

(Start: 21 @46896 has 45 MA's), (35, 46818), (Start: 40 @46797 has 6 MA's), (Start: 51 @46749 has 28 MA's), (Start: 53 @46746 has 87 MA's), (72, 46641), (Start: 88 @46569 has 8 MA's), (89, 46563), (95, 46551), (126, 46485), (145, 46380), (151, 46320), (152, 46317), (163, 46230), (167, 46209),

Gene: FoulBall_5 Start: 1765, Stop: 1196, Start Num: 80

Candidate Starts for FoulBall_5:

(Start: 80 @1765 has 19 MA's), (101, 1648), (Start: 104 @1633 has 1 MA's), (Start: 110 @1582 has 1 MA's), (Start: 111 @1579 has 1 MA's), (129, 1465), (132, 1456), (138, 1432), (151, 1327), (152, 1324), (160, 1288), (167, 1249), (171, 1213),

Gene: Funston_77 Start: 46895, Stop: 46161, Start Num: 21

Candidate Starts for Funston_77:

(Start: 21 @46895 has 45 MA's), (35, 46817), (Start: 40 @46796 has 6 MA's), (Start: 51 @46748 has 28 MA's), (Start: 53 @46745 has 87 MA's), (72, 46640), (Start: 88 @46568 has 8 MA's), (95, 46550), (126, 46484), (145, 46379), (151, 46319), (152, 46316), (163, 46229), (167, 46208),

Gene: Gadost_78 Start: 46749, Stop: 46165, Start Num: 53

Candidate Starts for Gadost_78:

(Start: 21 @46899 has 45 MA's), (35, 46821), (Start: 40 @46800 has 6 MA's), (Start: 51 @46752 has 28 MA's), (Start: 53 @46749 has 87 MA's), (72, 46644), (Start: 88 @46572 has 8 MA's), (95, 46554), (126, 46488), (145, 46383), (151, 46323), (152, 46320), (163, 46233), (167, 46212),

Gene: GaugeLDP_81 Start: 48551, Stop: 47844, Start Num: 59

Candidate Starts for GaugeLDP_81:

(Start: 21 @48725 has 45 MA's), (Start: 26 @48701 has 5 MA's), (Start: 36 @48644 has 13 MA's), (Start: 59 @48551 has 2 MA's), (Start: 64 @48503 has 1 MA's), (95, 48380), (97, 48374), (105, 48317), (107, 48302), (128, 48164), (141, 48086), (151, 48008), (152, 48005), (165, 47909), (166, 47906),

Gene: Gladiator_86 Start: 47390, Stop: 46743, Start Num: 21

Candidate Starts for Gladiator_86:

(Start: 21 @47390 has 45 MA's), (Start: 26 @47366 has 5 MA's), (35, 47312), (Start: 36 @47309 has 13 MA's), (Start: 40 @47291 has 6 MA's), (Start: 42 @47279 has 4 MA's), (140, 46985), (151, 46904), (152, 46901), (165, 46808), (166, 46805),

Gene: Glotell_44 Start: 27556, Stop: 28023, Start Num: 75

Candidate Starts for Glotell_44:

(16, 27328), (Start: 21 @27367 has 45 MA's), (28, 27394), (Start: 36 @27448 has 13 MA's), (38, 27460), (45, 27493), (Start: 75 @27556 has 5 MA's), (95, 27631), (116, 27721), (117, 27727), (136, 27748), (143, 27799), (151, 27874), (152, 27877), (168, 27961), (169, 27985), (171, 27994), (174, 28006),

Gene: Goose_79 Start: 46498, Stop: 45863, Start Num: 21

Candidate Starts for Goose_79:

(Start: 21 @46498 has 45 MA's), (Start: 26 @46474 has 5 MA's), (Start: 36 @46417 has 13 MA's), (Start: 88 @46282 has 8 MA's), (141, 46093), (151, 46015), (152, 46012), (157, 45979), (165, 45925),

Gene: Gruunaga_89 Start: 47345, Stop: 46698, Start Num: 21

Candidate Starts for Gruunaga_89:

(Start: 21 @47345 has 45 MA's), (Start: 26 @47321 has 5 MA's), (35, 47267), (Start: 36 @47264 has 13 MA's), (Start: 40 @47246 has 6 MA's), (Start: 42 @47234 has 4 MA's), (140, 46940), (151, 46859), (152, 46856), (165, 46763), (166, 46760),

Gene: HamSlice_74 Start: 46747, Stop: 46163, Start Num: 53

Candidate Starts for HamSlice_74:

(Start: 21 @46897 has 45 MA's), (35, 46819), (Start: 40 @46798 has 6 MA's), (Start: 51 @46750 has 28 MA's), (Start: 53 @46747 has 87 MA's), (72, 46642), (Start: 88 @46570 has 8 MA's), (95, 46552), (126, 46486), (145, 46381), (151, 46321), (152, 46318), (163, 46231), (167, 46210),

Gene: Hammer_90 Start: 46941, Stop: 46405, Start Num: 42

Candidate Starts for Hammer_90:

(Start: 21 @47052 has 45 MA's), (Start: 26 @47028 has 5 MA's), (35, 46974), (Start: 36 @46971 has 13 MA's), (Start: 42 @46941 has 4 MA's), (140, 46647), (151, 46566), (152, 46563), (165, 46470), (166, 46467),

Gene: Hanray_82 Start: 46844, Stop: 46329, Start Num: 46

Candidate Starts for Hanray_82:

(Start: 21 @46976 has 45 MA's), (Start: 26 @46952 has 5 MA's), (Start: 36 @46895 has 13 MA's), (Start: 46 @46844 has 17 MA's), (129, 46637), (135, 46616), (141, 46568), (151, 46490), (152, 46487), (163, 46400),

Gene: Hans_7 Start: 4390, Stop: 4869, Start Num: 61

Candidate Starts for Hans_7:

(Start: 61 @4390 has 1 MA's), (96, 4486), (113, 4564), (134, 4591), (151, 4723), (152, 4726), (153, 4729), (167, 4807), (170, 4837),

Gene: Happiness_77 Start: 46771, Stop: 46187, Start Num: 53

Candidate Starts for Happiness_77:

(Start: 21 @46921 has 45 MA's), (35, 46843), (Start: 40 @46822 has 6 MA's), (Start: 51 @46774 has 28 MA's), (Start: 53 @46771 has 87 MA's), (72, 46666), (Start: 88 @46594 has 8 MA's), (95, 46576), (126, 46510), (145, 46405), (151, 46345), (152, 46342), (163, 46255), (167, 46234),

Gene: Heather_36 Start: 27272, Stop: 27856, Start Num: 84

Candidate Starts for Heather_36:

(18, 26909), (41, 27035), (44, 27047), (Start: 46 @27062 has 17 MA's), (48, 27071), (73, 27200), (Start: 84 @27272 has 7 MA's), (122, 27518), (127, 27545), (152, 27704), (154, 27710), (155, 27725), (167, 27782), (171, 27818), (174, 27830),

Gene: Helmet_92 Start: 47580, Stop: 47029, Start Num: 40

Candidate Starts for Helmet_92:

(Start: 21 @47679 has 45 MA's), (Start: 26 @47655 has 5 MA's), (35, 47601), (Start: 36 @47598 has 13 MA's), (Start: 40 @47580 has 6 MA's), (140, 47274), (151, 47193), (152, 47190), (155, 47169), (165, 47094), (166, 47091),

Gene: Hexamo_89 Start: 47220, Stop: 46573, Start Num: 21

Candidate Starts for Hexamo_89:

(Start: 21 @47220 has 45 MA's), (Start: 26 @47196 has 5 MA's), (35, 47142), (Start: 36 @47139 has 13 MA's), (Start: 42 @47109 has 4 MA's), (140, 46815), (151, 46734), (152, 46731), (165, 46638), (166, 46635),

Gene: Holec_82 Start: 46860, Stop: 46345, Start Num: 46

Candidate Starts for Holec_82:

(Start: 21 @46992 has 45 MA's), (Start: 26 @46968 has 5 MA's), (Start: 36 @46911 has 13 MA's), (Start: 46 @46860 has 17 MA's), (129, 46653), (135, 46632), (141, 46584), (151, 46506), (152, 46503), (163, 46416),

Gene: Holli_77 Start: 46541, Stop: 45954, Start Num: 51

Candidate Starts for Holli_77:

(Start: 21 @46688 has 45 MA's), (35, 46610), (Start: 40 @46589 has 6 MA's), (Start: 51 @46541 has 28 MA's), (Start: 53 @46538 has 87 MA's), (72, 46433), (Start: 88 @46361 has 8 MA's), (95, 46343), (126, 46277), (151, 46112), (152, 46109), (163, 46022), (167, 46001),

Gene: Hoot_83 Start: 45056, Stop: 44406, Start Num: 21

Candidate Starts for Hoot_83:

(Start: 21 @45056 has 45 MA's), (Start: 26 @45032 has 5 MA's), (35, 44978), (Start: 36 @44975 has 13 MA's), (Start: 40 @44957 has 6 MA's), (129, 44717), (137, 44693), (141, 44648), (151, 44570), (152, 44567), (155, 44546), (165, 44471), (166, 44468),

Gene: HortumSL17_85 Start: 46898, Stop: 46383, Start Num: 46

Candidate Starts for HortumSL17_85:

(Start: 21 @47030 has 45 MA's), (Start: 26 @47006 has 5 MA's), (Start: 36 @46949 has 13 MA's), (Start: 46 @46898 has 17 MA's), (129, 46691), (135, 46670), (141, 46622), (151, 46544), (152, 46541), (163, 46454),

Gene: Houdini22_77 Start: 46749, Stop: 46165, Start Num: 53

Candidate Starts for Houdini22_77:

(Start: 21 @46899 has 45 MA's), (35, 46821), (Start: 40 @46800 has 6 MA's), (Start: 51 @46752 has 28 MA's), (Start: 53 @46749 has 87 MA's), (72, 46644), (Start: 88 @46572 has 8 MA's), (95, 46554), (126, 46488), (145, 46383), (151, 46323), (152, 46320), (163, 46233), (167, 46212),

Gene: Huxley_70 Start: 44641, Stop: 44057, Start Num: 53

Candidate Starts for Huxley_70:

(Start: 21 @44791 has 45 MA's), (35, 44713), (Start: 40 @44692 has 6 MA's), (Start: 51 @44644 has 28 MA's), (Start: 53 @44641 has 87 MA's), (72, 44536), (Start: 88 @44464 has 8 MA's), (95, 44446), (126, 44380), (145, 44275), (151, 44215), (152, 44212), (163, 44125), (167, 44104),

Gene: ICleared_77 Start: 46816, Stop: 46232, Start Num: 53

Candidate Starts for ICleared_77:

(Start: 21 @46966 has 45 MA's), (35, 46888), (Start: 40 @46867 has 6 MA's), (Start: 51 @46819 has 28 MA's), (Start: 53 @46816 has 87 MA's), (72, 46711), (Start: 88 @46639 has 8 MA's), (95, 46621), (126, 46555), (145, 46450), (151, 46390), (152, 46387), (163, 46300), (167, 46279),

Gene: Iceman_76 Start: 47038, Stop: 46454, Start Num: 53

Candidate Starts for Iceman_76:

(Start: 21 @47188 has 45 MA's), (35, 47110), (Start: 40 @47089 has 6 MA's), (Start: 51 @47041 has 28 MA's), (Start: 53 @47038 has 87 MA's), (72, 46933), (Start: 88 @46861 has 8 MA's), (95, 46843), (126, 46777), (145, 46672), (151, 46612), (152, 46609), (163, 46522), (167, 46501),

Gene: Idergollasper_5 Start: 1765, Stop: 1196, Start Num: 80

Candidate Starts for Idergollasper_5:

(Start: 80 @1765 has 19 MA's), (101, 1648), (Start: 104 @1633 has 1 MA's), (Start: 110 @1582 has 1 MA's), (Start: 111 @1579 has 1 MA's), (129, 1465), (132, 1456), (138, 1432), (151, 1327), (152, 1324), (160, 1288), (167, 1249), (171, 1213),

Gene: Imara_5 Start: 1667, Stop: 1287, Start Num: 110

Candidate Starts for Imara_5:

(Start: 80 @1850 has 19 MA's), (101, 1733), (Start: 104 @1718 has 1 MA's), (Start: 110 @1667 has 1 MA's), (Start: 111 @1664 has 1 MA's), (129, 1556), (132, 1547), (151, 1418), (152, 1415), (160, 1379), (167, 1340), (171, 1304),

Gene: Inventum_69 Start: 45166, Stop: 45558, Start Num: 94

Candidate Starts for Inventum_69:

(16, 44821), (23, 44878), (32, 44902), (34, 44920), (35, 44935), (Start: 40 @44956 has 6 MA's), (Start: 46 @44989 has 17 MA's), (Start: 52 @45007 has 1 MA's), (Start: 94 @45166 has 6 MA's), (142, 45328), (151, 45406), (152, 45409), (155, 45430), (158, 45439), (163, 45466), (175, 45547),

Gene: Iracema64_78 Start: 47012, Stop: 46428, Start Num: 53

Candidate Starts for Iracema64_78:

(Start: 21 @47162 has 45 MA's), (35, 47084), (Start: 40 @47063 has 6 MA's), (Start: 51 @47015 has 28 MA's), (Start: 53 @47012 has 87 MA's), (72, 46907), (Start: 88 @46835 has 8 MA's), (95, 46817), (126, 46751), (151, 46586), (152, 46583), (163, 46496), (167, 46475),

Gene: Isiphiwo_84 Start: 46767, Stop: 46117, Start Num: 21

Candidate Starts for Isiphiwo_84:

(Start: 21 @46767 has 45 MA's), (Start: 26 @46743 has 5 MA's), (35, 46689), (Start: 36 @46686 has 13 MA's), (Start: 40 @46668 has 6 MA's), (129, 46428), (137, 46404), (141, 46359), (151, 46281), (152, 46278), (155, 46257), (165, 46182), (166, 46179),

Gene: Jaykayelowell_75 Start: 46891, Stop: 46157, Start Num: 21

Candidate Starts for Jaykayelowell_75:

(Start: 21 @46891 has 45 MA's), (35, 46813), (Start: 40 @46792 has 6 MA's), (Start: 51 @46744 has 28 MA's), (Start: 53 @46741 has 87 MA's), (72, 46636), (Start: 88 @46564 has 8 MA's), (95, 46546), (126, 46480), (151, 46315), (152, 46312), (163, 46225), (167, 46204),

Gene: JetBlade_79 Start: 46779, Stop: 46192, Start Num: 51

Candidate Starts for JetBlade_79:

(Start: 21 @46926 has 45 MA's), (35, 46848), (Start: 40 @46827 has 6 MA's), (Start: 51 @46779 has 28 MA's), (Start: 53 @46776 has 87 MA's), (72, 46671), (Start: 88 @46599 has 8 MA's), (95, 46581), (126, 46515), (151, 46350), (152, 46347), (163, 46260), (167, 46239),

Gene: JewelBug_80 Start: 45535, Stop: 44885, Start Num: 21

Candidate Starts for JewelBug_80:

(Start: 21 @45535 has 45 MA's), (Start: 26 @45511 has 5 MA's), (35, 45457), (Start: 36 @45454 has 13 MA's), (Start: 40 @45436 has 6 MA's), (129, 45196), (137, 45172), (141, 45127), (151, 45049), (152, 45046), (155, 45025), (165, 44950), (166, 44947),

Gene: Jiawan_81 Start: 46876, Stop: 46361, Start Num: 46

Candidate Starts for Jiawan_81:

(Start: 21 @47008 has 45 MA's), (Start: 26 @46984 has 5 MA's), (Start: 36 @46927 has 13 MA's), (Start: 46 @46876 has 17 MA's), (129, 46669), (135, 46648), (141, 46600), (151, 46522), (152, 46519), (163, 46432),

Gene: JoongJeon_77 Start: 46892, Stop: 46158, Start Num: 21

Candidate Starts for JoongJeon_77:

(Start: 21 @46892 has 45 MA's), (35, 46814), (Start: 40 @46793 has 6 MA's), (Start: 51 @46745 has 28 MA's), (Start: 53 @46742 has 87 MA's), (72, 46637), (Start: 88 @46565 has 8 MA's), (95, 46547), (126, 46481), (145, 46376), (151, 46316), (152, 46313), (163, 46226), (167, 46205),

Gene: Jordennis_86 Start: 47439, Stop: 46789, Start Num: 21

Candidate Starts for Jordennis_86:

(Start: 21 @47439 has 45 MA's), (Start: 26 @47415 has 5 MA's), (35, 47361), (Start: 36 @47358 has 13 MA's), (Start: 40 @47340 has 6 MA's), (129, 47100), (137, 47076), (141, 47031), (151, 46953), (152, 46950), (155, 46929), (165, 46854), (166, 46851),

Gene: KFPoly_77 Start: 46892, Stop: 46158, Start Num: 21

Candidate Starts for KFPoly_77:

(Start: 21 @46892 has 45 MA's), (35, 46814), (Start: 40 @46793 has 6 MA's), (Start: 51 @46745 has 28 MA's), (Start: 53 @46742 has 87 MA's), (72, 46637), (Start: 88 @46565 has 8 MA's), (95, 46547), (126, 46481), (145, 46376), (151, 46316), (152, 46313), (163, 46226), (167, 46205),

Gene: KHumphrey_43 Start: 27399, Stop: 27866, Start Num: 75

Candidate Starts for KHumphrey_43:

(16, 27171), (Start: 21 @27210 has 45 MA's), (28, 27237), (Start: 36 @27291 has 13 MA's), (38, 27303), (45, 27336), (Start: 75 @27399 has 5 MA's), (95, 27474), (116, 27564), (117, 27570), (136, 27591), (143, 27642), (151, 27717), (152, 27720), (168, 27804), (169, 27828), (171, 27837), (174, 27849),

Gene: Kampy_77 Start: 46751, Stop: 46167, Start Num: 53

Candidate Starts for Kampy_77:

(Start: 21 @46901 has 45 MA's), (35, 46823), (Start: 40 @46802 has 6 MA's), (Start: 51 @46754 has 28 MA's), (Start: 53 @46751 has 87 MA's), (72, 46646), (Start: 88 @46574 has 8 MA's), (95, 46556), (126, 46490), (151, 46325), (152, 46322), (163, 46235), (167, 46214),

Gene: Katalie136_75 Start: 46530, Stop: 45958, Start Num: 57

Candidate Starts for Katalie136_75:

(Start: 21 @46692 has 45 MA's), (35, 46614), (Start: 40 @46593 has 6 MA's), (Start: 51 @46545 has 28 MA's), (Start: 53 @46542 has 87 MA's), (Start: 57 @46530 has 4 MA's), (72, 46437), (Start: 88 @46365 has 8 MA's), (95, 46347), (126, 46281), (145, 46176), (151, 46116), (152, 46113), (163, 46026), (167, 46005), (171, 45969),

Gene: Kazan_89 Start: 47187, Stop: 46561, Start Num: 26

Candidate Starts for Kazan_89:

(Start: 21 @47211 has 45 MA's), (Start: 26 @47187 has 5 MA's), (35, 47133), (Start: 36 @47130 has 13 MA's), (Start: 40 @47112 has 6 MA's), (129, 46872), (137, 46848), (141, 46803), (151, 46725), (152, 46722), (155, 46701), (165, 46626), (166, 46623),

Gene: KekoraPapaka_75 Start: 46748, Stop: 46164, Start Num: 53

Candidate Starts for KekoraPapaka_75:

(Start: 21 @46898 has 45 MA's), (35, 46820), (Start: 40 @46799 has 6 MA's), (Start: 51 @46751 has 28 MA's), (Start: 53 @46748 has 87 MA's), (72, 46643), (Start: 88 @46571 has 8 MA's), (89, 46565), (95, 46553), (126, 46487), (151, 46322), (152, 46319), (163, 46232), (167, 46211),

Gene: Keziacharles14_81 Start: 47447, Stop: 46881, Start Num: 36

Candidate Starts for Keziacharles14_81:

(Start: 21 @47528 has 45 MA's), (Start: 26 @47504 has 5 MA's), (35, 47450), (Start: 36 @47447 has 13 MA's), (Start: 46 @47396 has 17 MA's), (129, 47189), (135, 47168), (141, 47120), (151, 47042), (152, 47039), (163, 46952),

Gene: KingMidas_70 Start: 45569, Stop: 45961, Start Num: 94

Candidate Starts for KingMidas_70:

(16, 45224), (23, 45281), (32, 45305), (34, 45323), (35, 45338), (Start: 40 @45359 has 6 MA's), (Start: 46 @45392 has 17 MA's), (Start: 52 @45410 has 1 MA's), (Start: 94 @45569 has 6 MA's), (142, 45731), (151, 45809), (152, 45812), (155, 45833), (158, 45842), (163, 45869), (175, 45950),

Gene: KingPhillip3_5 Start: 1579, Stop: 1196, Start Num: 111

Candidate Starts for KingPhillip3_5:

(Start: 80 @1765 has 19 MA's), (101, 1648), (Start: 104 @1633 has 1 MA's), (Start: 110 @1582 has 1 MA's), (Start: 111 @1579 has 1 MA's), (129, 1465), (132, 1456), (138, 1432), (151, 1327), (152, 1324), (160, 1288), (167, 1249), (171, 1213),

Gene: Kingmustik0402_78 Start: 46740, Stop: 46153, Start Num: 51

Candidate Starts for Kingmustik0402_78:

(Start: 21 @46887 has 45 MA's), (35, 46809), (Start: 40 @46788 has 6 MA's), (Start: 51 @46740 has 28 MA's), (Start: 53 @46737 has 87 MA's), (72, 46632), (Start: 88 @46560 has 8 MA's), (95, 46542), (126, 46476), (151, 46311), (152, 46308), (163, 46221), (167, 46200),

Gene: KittenMittens_74 Start: 45854, Stop: 45219, Start Num: 21

Candidate Starts for KittenMittens_74:

(Start: 21 @45854 has 45 MA's), (Start: 26 @45830 has 5 MA's), (Start: 36 @45773 has 13 MA's), (Start: 88 @45638 has 8 MA's), (141, 45449), (151, 45371), (152, 45368), (155, 45347), (157, 45335), (165, 45281),

Gene: Koan_75 Start: 46748, Stop: 46164, Start Num: 53

Candidate Starts for Koan_75:

(Start: 21 @46898 has 45 MA's), (35, 46820), (Start: 40 @46799 has 6 MA's), (Start: 51 @46751 has 28 MA's), (Start: 53 @46748 has 87 MA's), (72, 46643), (Start: 88 @46571 has 8 MA's), (95, 46553), (126, 46487), (145, 46382), (151, 46322), (152, 46319), (163, 46232), (167, 46211),

Gene: Koko_91 Start: 47970, Stop: 47419, Start Num: 40

Candidate Starts for Koko_91:

(Start: 21 @48069 has 45 MA's), (Start: 26 @48045 has 5 MA's), (35, 47991), (Start: 36 @47988 has 13 MA's), (Start: 40 @47970 has 6 MA's), (140, 47664), (151, 47583), (152, 47580), (155, 47559), (165, 47484), (166, 47481),

Gene: Koreni_77 Start: 46432, Stop: 45845, Start Num: 51

Candidate Starts for Koreni_77:

(Start: 21 @46579 has 45 MA's), (35, 46501), (Start: 40 @46480 has 6 MA's), (Start: 51 @46432 has 28 MA's), (Start: 53 @46429 has 87 MA's), (72, 46324), (Start: 88 @46252 has 8 MA's), (95, 46234), (126, 46168), (145, 46063), (151, 46003), (152, 46000), (163, 45913), (167, 45892),

Gene: Kratak_77 Start: 46932, Stop: 46198, Start Num: 21

Candidate Starts for Kratak_77:

(Start: 21 @46932 has 45 MA's), (35, 46854), (Start: 40 @46833 has 6 MA's), (Start: 51 @46785 has 28 MA's), (Start: 53 @46782 has 87 MA's), (72, 46677), (Start: 88 @46605 has 8 MA's), (95, 46587), (115, 46566), (126, 46521), (145, 46416), (151, 46356), (152, 46353), (163, 46266), (167, 46245),

Gene: Kremtemulon_75 Start: 46628, Stop: 46044, Start Num: 53

Candidate Starts for Kremtemulon_75:

(Start: 21 @46778 has 45 MA's), (35, 46700), (Start: 40 @46679 has 6 MA's), (Start: 51 @46631 has 28 MA's), (Start: 53 @46628 has 87 MA's), (72, 46523), (Start: 88 @46451 has 8 MA's), (95, 46433), (126, 46367), (145, 46262), (151, 46202), (152, 46199), (163, 46112), (167, 46091), (171, 46055),

Gene: Krili_5 Start: 1716, Stop: 1147, Start Num: 80

Candidate Starts for Krili_5:

(Start: 80 @1716 has 19 MA's), (101, 1599), (Start: 104 @1584 has 1 MA's), (Start: 110 @1533 has 1 MA's), (Start: 111 @1530 has 1 MA's), (129, 1416), (132, 1407), (138, 1383), (151, 1278), (152, 1275), (160, 1239), (167, 1200), (171, 1164),

Gene: Kristoff_76 Start: 47122, Stop: 46487, Start Num: 21

Candidate Starts for Kristoff_76:

(Start: 21 @47122 has 45 MA's), (Start: 26 @47098 has 5 MA's), (Start: 36 @47041 has 13 MA's), (Start: 46 @46990 has 17 MA's), (Start: 88 @46906 has 8 MA's), (141, 46717), (151, 46639), (152, 46636), (157, 46603), (165, 46549),

Gene: Kyee_78 Start: 46743, Stop: 46159, Start Num: 53

Candidate Starts for Kyee_78:

(Start: 21 @46893 has 45 MA's), (35, 46815), (Start: 40 @46794 has 6 MA's), (Start: 51 @46746 has 28 MA's), (Start: 53 @46743 has 87 MA's), (72, 46638), (Start: 88 @46566 has 8 MA's), (95, 46548), (126, 46482), (145, 46377), (151, 46317), (152, 46314), (163, 46227), (167, 46206),

Gene: LHTSCC_80 Start: 47191, Stop: 46604, Start Num: 51

Candidate Starts for LHTSCC_80:

(Start: 21 @47338 has 45 MA's), (35, 47260), (Start: 40 @47239 has 6 MA's), (Start: 51 @47191 has 28 MA's), (Start: 53 @47188 has 87 MA's), (72, 47083), (Start: 88 @47011 has 8 MA's), (95, 46993), (126, 46927), (145, 46822), (151, 46762), (152, 46759), (163, 46672), (167, 46651),

Gene: LappelDuVide_78 Start: 46748, Stop: 46164, Start Num: 53

Candidate Starts for LappelDuVide_78:

(Start: 21 @46898 has 45 MA's), (35, 46820), (Start: 40 @46799 has 6 MA's), (Start: 51 @46751 has 28 MA's), (Start: 53 @46748 has 87 MA's), (72, 46643), (Start: 88 @46571 has 8 MA's), (95, 46553), (126, 46487), (145, 46382), (151, 46322), (152, 46319), (163, 46232), (167, 46211),

Gene: Lemur_78 Start: 46745, Stop: 46161, Start Num: 53

Candidate Starts for Lemur_78:

(Start: 21 @46895 has 45 MA's), (35, 46817), (Start: 40 @46796 has 6 MA's), (Start: 51 @46748 has 28 MA's), (Start: 53 @46745 has 87 MA's), (72, 46640), (Start: 88 @46568 has 8 MA's), (89, 46562), (95, 46550), (126, 46484), (145, 46379), (151, 46319), (152, 46316), (163, 46229), (167, 46208),

Gene: Lilbooboo_33 Start: 26272, Stop: 26859, Start Num: 84

Candidate Starts for Lilbooboo_33:

(13, 25882), (15, 25885), (25, 25951), (29, 25963), (Start: 46 @26062 has 17 MA's), (73, 26200), (Start: 84 @26272 has 7 MA's), (103, 26374), (108, 26407), (127, 26545), (139, 26602), (144, 26629), (146, 26647), (149, 26671), (152, 26704), (159, 26734), (171, 26818), (174, 26830),

Gene: Lilleskat_81 Start: 46857, Stop: 46342, Start Num: 46

Candidate Starts for Lilleskat_81:

(Start: 21 @46989 has 45 MA's), (Start: 26 @46965 has 5 MA's), (Start: 36 @46908 has 13 MA's), (Start: 46 @46857 has 17 MA's), (129, 46650), (135, 46629), (141, 46581), (151, 46503), (152, 46500), (163, 46413),

Gene: LittleB_78 Start: 46899, Stop: 46165, Start Num: 21

Candidate Starts for LittleB_78:

(Start: 21 @46899 has 45 MA's), (35, 46821), (Start: 40 @46800 has 6 MA's), (Start: 51 @46752 has 28 MA's), (Start: 53 @46749 has 87 MA's), (72, 46644), (Start: 88 @46572 has 8 MA's), (95, 46554), (126, 46488), (145, 46383), (151, 46323), (152, 46320), (163, 46233), (167, 46212),

Gene: LittleGuy_78 Start: 46633, Stop: 46049, Start Num: 53

Candidate Starts for LittleGuy_78:

(Start: 21 @46783 has 45 MA's), (35, 46705), (Start: 40 @46684 has 6 MA's), (Start: 51 @46636 has 28 MA's), (Start: 53 @46633 has 87 MA's), (72, 46528), (Start: 88 @46456 has 8 MA's), (95, 46438), (126, 46372), (145, 46267), (151, 46207), (152, 46204), (163, 46117), (167, 46096),

Gene: LochMonster_79 Start: 46985, Stop: 46401, Start Num: 53

Candidate Starts for LochMonster_79:

(Start: 21 @47135 has 45 MA's), (35, 47057), (Start: 40 @47036 has 6 MA's), (Start: 51 @46988 has 28 MA's), (Start: 53 @46985 has 87 MA's), (72, 46880), (Start: 88 @46808 has 8 MA's), (95, 46790), (126, 46724), (151, 46559), (152, 46556), (163, 46469), (167, 46448),

Gene: LoneWolf_84 Start: 46963, Stop: 46397, Start Num: 36

Candidate Starts for LoneWolf_84:

(Start: 21 @47044 has 45 MA's), (Start: 26 @47020 has 5 MA's), (35, 46966), (Start: 36 @46963 has 13 MA's), (129, 46705), (135, 46684), (151, 46558), (152, 46555), (163, 46468),

Gene: Lorenzo_78 Start: 46746, Stop: 46162, Start Num: 53

Candidate Starts for Lorenzo_78:

(Start: 21 @46896 has 45 MA's), (35, 46818), (Start: 40 @46797 has 6 MA's), (Start: 51 @46749 has 28 MA's), (Start: 53 @46746 has 87 MA's), (72, 46641), (Start: 88 @46569 has 8 MA's), (95, 46551), (126, 46485), (145, 46380), (151, 46320), (152, 46317), (163, 46230), (167, 46209),

Gene: Lucyedi_87 Start: 48804, Stop: 48367, Start Num: 88

Candidate Starts for Lucyedi_87:

(Start: 21 @49023 has 45 MA's), (Start: 26 @48999 has 5 MA's), (35, 48945), (Start: 36 @48942 has 13 MA's), (Start: 88 @48804 has 8 MA's), (129, 48681), (135, 48660), (151, 48534), (156, 48501), (165, 48432), (166, 48429), (169, 48390),

Gene: Lunsford_78 Start: 46741, Stop: 46157, Start Num: 53

Candidate Starts for Lunsford_78:

(Start: 21 @46891 has 45 MA's), (35, 46813), (Start: 40 @46792 has 6 MA's), (Start: 51 @46744 has 28 MA's), (Start: 53 @46741 has 87 MA's), (72, 46636), (Start: 88 @46564 has 8 MA's), (95, 46546), (126, 46480), (151, 46315), (152, 46312), (163, 46225), (167, 46204),

Gene: MadKillah_5 Start: 1716, Stop: 1147, Start Num: 80

Candidate Starts for MadKillah_5:

(Start: 80 @1716 has 19 MA's), (101, 1599), (Start: 104 @1584 has 1 MA's), (Start: 110 @1533 has 1 MA's), (Start: 111 @1530 has 1 MA's), (129, 1416), (132, 1407), (138, 1383), (151, 1278), (152, 1275), (160, 1239), (167, 1200), (171, 1164),

Gene: Maminiaina_83 Start: 46878, Stop: 46300, Start Num: 36

Candidate Starts for Maminiaina_83:

(Start: 21 @46959 has 45 MA's), (24, 46938), (Start: 26 @46935 has 5 MA's), (Start: 36 @46878 has 13 MA's), (Start: 46 @46827 has 17 MA's), (129, 46620), (135, 46599), (151, 46473), (152, 46470), (163, 46383), (167, 46362), (173, 46317),

Gene: Maverick_77 Start: 46745, Stop: 46161, Start Num: 53

Candidate Starts for Maverick_77:

(Start: 21 @46895 has 45 MA's), (35, 46817), (Start: 40 @46796 has 6 MA's), (Start: 51 @46748 has 28 MA's), (Start: 53 @46745 has 87 MA's), (72, 46640), (Start: 88 @46568 has 8 MA's), (95, 46550), (126, 46484), (145, 46379), (151, 46319), (152, 46316), (163, 46229), (167, 46208),

Gene: Maxo_80 Start: 46754, Stop: 46167, Start Num: 51

Candidate Starts for Maxo_80:

(Start: 21 @46901 has 45 MA's), (35, 46823), (Start: 40 @46802 has 6 MA's), (Start: 51 @46754 has 28 MA's), (Start: 53 @46751 has 87 MA's), (72, 46646), (Start: 88 @46574 has 8 MA's), (95, 46556), (126, 46490), (151, 46325), (152, 46322), (163, 46235), (167, 46214),

Gene: Mazhar510_78 Start: 46749, Stop: 46162, Start Num: 51

Candidate Starts for Mazhar510_78:

(Start: 21 @46896 has 45 MA's), (35, 46818), (Start: 40 @46797 has 6 MA's), (Start: 51 @46749 has 28 MA's), (Start: 53 @46746 has 87 MA's), (72, 46641), (Start: 88 @46569 has 8 MA's), (95, 46551), (126, 46485), (145, 46380), (151, 46320), (152, 46317), (163, 46230), (167, 46209),

Gene: Medusa_77 Start: 46761, Stop: 46177, Start Num: 53

Candidate Starts for Medusa_77:

(Start: 21 @46911 has 45 MA's), (35, 46833), (Start: 40 @46812 has 6 MA's), (Start: 51 @46764 has 28 MA's), (Start: 53 @46761 has 87 MA's), (72, 46656), (Start: 88 @46584 has 8 MA's), (95, 46566), (126, 46500), (151, 46335), (152, 46332), (163, 46245), (167, 46224),

Gene: MeeZee_77 Start: 46742, Stop: 46158, Start Num: 53

Candidate Starts for MeeZee_77:

(Start: 21 @46892 has 45 MA's), (35, 46814), (Start: 40 @46793 has 6 MA's), (Start: 51 @46745 has 28 MA's), (Start: 53 @46742 has 87 MA's), (72, 46637), (Start: 88 @46565 has 8 MA's), (95, 46547), (126, 46481), (145, 46376), (151, 46316), (152, 46313), (163, 46226), (167, 46205),

Gene: Melvin_80 Start: 46743, Stop: 46159, Start Num: 53

Candidate Starts for Melvin_80:

(Start: 21 @46893 has 45 MA's), (35, 46815), (Start: 40 @46794 has 6 MA's), (Start: 51 @46746 has 28 MA's), (Start: 53 @46743 has 87 MA's), (72, 46638), (Start: 88 @46566 has 8 MA's), (89, 46560), (95, 46548), (126, 46482), (145, 46377), (151, 46317), (152, 46314), (163, 46227), (167, 46206),

Gene: Millski_77 Start: 46749, Stop: 46165, Start Num: 53

Candidate Starts for Millski_77:

(Start: 21 @46899 has 45 MA's), (35, 46821), (Start: 40 @46800 has 6 MA's), (Start: 51 @46752 has 28 MA's), (Start: 53 @46749 has 87 MA's), (72, 46644), (Start: 88 @46572 has 8 MA's), (95, 46554), (126, 46488), (145, 46383), (151, 46323), (152, 46320), (163, 46233), (167, 46212),

Gene: Miramae_78 Start: 46572, Stop: 45991, Start Num: 53

Candidate Starts for Miramae_78:

(Start: 21 @46722 has 45 MA's), (35, 46644), (Start: 40 @46623 has 6 MA's), (Start: 46 @46590 has 17 MA's), (Start: 53 @46572 has 87 MA's), (63, 46503), (65, 46497), (Start: 67 @46485 has 3 MA's), (126, 46314), (151, 46149), (152, 46146), (163, 46059), (167, 46038), (171, 46002),

Gene: Mori_5 Start: 1716, Stop: 1147, Start Num: 80

Candidate Starts for Mori_5:

(Start: 80 @1716 has 19 MA's), (101, 1599), (Start: 104 @1584 has 1 MA's), (Start: 110 @1533 has 1 MA's), (Start: 111 @1530 has 1 MA's), (129, 1416), (132, 1407), (138, 1383), (151, 1278), (152, 1275), (160, 1239), (167, 1200), (171, 1164),

Gene: Morpher26_75 Start: 46563, Stop: 45979, Start Num: 53

Candidate Starts for Morpher26_75:

(Start: 21 @46713 has 45 MA's), (35, 46635), (Start: 40 @46614 has 6 MA's), (Start: 51 @46566 has 28 MA's), (Start: 53 @46563 has 87 MA's), (Start: 57 @46551 has 4 MA's), (72, 46458), (Start: 88 @46386 has 8 MA's), (95, 46368), (126, 46302), (145, 46197), (151, 46137), (152, 46134), (163, 46047), (167, 46026), (171, 45990),

Gene: Morrow_80 Start: 46788, Stop: 46204, Start Num: 53

Candidate Starts for Morrow_80:

(Start: 21 @46938 has 45 MA's), (35, 46860), (Start: 40 @46839 has 6 MA's), (Start: 51 @46791 has 28 MA's), (Start: 53 @46788 has 87 MA's), (72, 46683), (Start: 88 @46611 has 8 MA's), (95, 46593), (151, 46362), (152, 46359), (163, 46272), (167, 46251),

Gene: Mundrea_77 Start: 46850, Stop: 46224, Start Num: 40

Candidate Starts for Mundrea_77:

(Start: 21 @46949 has 45 MA's), (35, 46871), (Start: 40 @46850 has 6 MA's), (63, 46730), (126, 46547), (130, 46526), (151, 46382), (152, 46379), (163, 46292), (167, 46271),

Gene: Murai_5 Start: 1530, Stop: 1147, Start Num: 111

Candidate Starts for Murai_5:

(Start: 80 @1716 has 19 MA's), (101, 1599), (Start: 104 @1584 has 1 MA's), (Start: 110 @1533 has 1 MA's), (Start: 111 @1530 has 1 MA's), (129, 1416), (132, 1407), (138, 1383), (151, 1278), (152, 1275), (160, 1239), (167, 1200), (171, 1164),

Gene: Myxus_84 Start: 46898, Stop: 46383, Start Num: 46

Candidate Starts for Myxus_84:

(Start: 21 @47030 has 45 MA's), (Start: 26 @47006 has 5 MA's), (Start: 36 @46949 has 13 MA's), (Start: 46 @46898 has 17 MA's), (129, 46691), (135, 46670), (141, 46622), (151, 46544), (152, 46541), (163, 46454),

Gene: Nebs_79 Start: 46788, Stop: 46204, Start Num: 53

Candidate Starts for Nebs_79:

(Start: 21 @46938 has 45 MA's), (35, 46860), (Start: 40 @46839 has 6 MA's), (Start: 51 @46791 has 28 MA's), (Start: 53 @46788 has 87 MA's), (72, 46683), (Start: 88 @46611 has 8 MA's), (95, 46593), (126, 46527), (151, 46362), (152, 46359), (163, 46272), (167, 46251),

Gene: Nemo27_77 Start: 46744, Stop: 46160, Start Num: 53

Candidate Starts for Nemo27_77:

(Start: 21 @46894 has 45 MA's), (35, 46816), (Start: 40 @46795 has 6 MA's), (Start: 51 @46747 has 28 MA's), (Start: 53 @46744 has 87 MA's), (72, 46639), (Start: 88 @46567 has 8 MA's), (95, 46549), (126, 46483), (145, 46378), (151, 46318), (152, 46315), (163, 46228), (167, 46207),

Gene: NiebruSaylor_5 Start: 1716, Stop: 1147, Start Num: 80

Candidate Starts for NiebruSaylor_5:

(Start: 80 @1716 has 19 MA's), (101, 1599), (Start: 104 @1584 has 1 MA's), (Start: 110 @1533 has 1 MA's), (Start: 111 @1530 has 1 MA's), (129, 1416), (132, 1407), (138, 1383), (151, 1278), (152, 1275), (160, 1239), (167, 1200), (171, 1164),

Gene: Noelle_76 Start: 46925, Stop: 46305, Start Num: 21

Candidate Starts for Noelle_76:

(Start: 21 @46925 has 45 MA's), (Start: 26 @46901 has 5 MA's), (Start: 36 @46844 has 13 MA's), (131, 46592), (141, 46529), (151, 46451), (152, 46448), (165, 46367), (167, 46352), (171, 46316),

Gene: NorthStar_75 Start: 46748, Stop: 46164, Start Num: 53

Candidate Starts for NorthStar_75:

(Start: 21 @46898 has 45 MA's), (35, 46820), (Start: 40 @46799 has 6 MA's), (Start: 51 @46751 has 28 MA's), (Start: 53 @46748 has 87 MA's), (72, 46643), (Start: 88 @46571 has 8 MA's), (89, 46565), (95, 46553), (126, 46487), (145, 46382), (151, 46322), (152, 46319), (163, 46232), (167, 46211),

Gene: NotAPhaseMom_77 Start: 46749, Stop: 46165, Start Num: 53

Candidate Starts for NotAPhaseMom_77:

(Start: 21 @46899 has 45 MA's), (35, 46821), (Start: 40 @46800 has 6 MA's), (Start: 51 @46752 has 28 MA's), (Start: 53 @46749 has 87 MA's), (72, 46644), (Start: 88 @46572 has 8 MA's), (95, 46554), (126, 46488), (145, 46383), (151, 46323), (152, 46320), (163, 46233), (167, 46212),

Gene: Nyxis_77 Start: 46630, Stop: 46043, Start Num: 51

Candidate Starts for Nyxis_77:

(Start: 21 @46777 has 45 MA's), (35, 46699), (Start: 40 @46678 has 6 MA's), (Start: 51 @46630 has 28 MA's), (Start: 53 @46627 has 87 MA's), (72, 46522), (Start: 88 @46450 has 8 MA's), (95, 46432), (126, 46366), (151, 46201), (152, 46198), (163, 46111), (167, 46090),

Gene: OKCentral2016_77 Start: 45901, Stop: 45290, Start Num: 26

Candidate Starts for OKCentral2016_77:

(Start: 21 @45925 has 45 MA's), (Start: 26 @45901 has 5 MA's), (Start: 36 @45844 has 13 MA's), (Start: 88 @45709 has 8 MA's), (141, 45520), (151, 45442), (152, 45439), (157, 45406), (165, 45352),

Gene: OKaNui_77 Start: 46799, Stop: 46215, Start Num: 53

Candidate Starts for OKaNui_77:

(Start: 21 @46949 has 45 MA's), (35, 46871), (Start: 40 @46850 has 6 MA's), (Start: 51 @46802 has 28 MA's), (Start: 53 @46799 has 87 MA's), (72, 46694), (Start: 88 @46622 has 8 MA's), (95, 46604), (126, 46538), (145, 46433), (151, 46373), (152, 46370), (163, 46283), (167, 46262),

Gene: Obama12_79 Start: 47172, Stop: 46588, Start Num: 53

Candidate Starts for Obama12_79:

(Start: 21 @47322 has 45 MA's), (35, 47244), (Start: 40 @47223 has 6 MA's), (Start: 51 @47175 has 28 MA's), (Start: 53 @47172 has 87 MA's), (72, 47067), (Start: 88 @46995 has 8 MA's), (95, 46977), (126, 46911), (145, 46806), (151, 46746), (152, 46743), (163, 46656), (167, 46635),

Gene: Ohfah_79 Start: 46791, Stop: 46204, Start Num: 51

Candidate Starts for Ohfah_79:

(Start: 21 @46938 has 45 MA's), (35, 46860), (Start: 40 @46839 has 6 MA's), (Start: 51 @46791 has 28 MA's), (Start: 53 @46788 has 87 MA's), (72, 46683), (Start: 88 @46611 has 8 MA's), (95, 46593), (126, 46527), (151, 46362), (152, 46359), (163, 46272), (167, 46251),

Gene: Onglai_82 Start: 45048, Stop: 44533, Start Num: 46

Candidate Starts for Onglai_82:

(Start: 21 @45180 has 45 MA's), (Start: 26 @45156 has 5 MA's), (Start: 36 @45099 has 13 MA's), (Start: 46 @45048 has 17 MA's), (129, 44841), (135, 44820), (141, 44772), (151, 44694), (152, 44691), (163, 44604),

Gene: PackMan_83 Start: 46722, Stop: 46258, Start Num: 77

Candidate Starts for PackMan_83:

(Start: 77 @46722 has 1 MA's), (93, 46662), (129, 46566), (135, 46545), (141, 46497), (151, 46419), (152, 46416), (163, 46329),

Gene: PainterBoy_86 Start: 48515, Stop: 48078, Start Num: 88

Candidate Starts for PainterBoy_86:

(Start: 21 @48734 has 45 MA's), (Start: 26 @48710 has 5 MA's), (35, 48656), (Start: 36 @48653 has 13 MA's), (Start: 88 @48515 has 8 MA's), (129, 48392), (135, 48371), (151, 48245), (156, 48212), (165, 48143), (166, 48140), (169, 48101),

Gene: Palestino_77 Start: 46895, Stop: 46161, Start Num: 21

Candidate Starts for Palestino_77:

(Start: 21 @46895 has 45 MA's), (35, 46817), (Start: 40 @46796 has 6 MA's), (Start: 51 @46748 has 28 MA's), (Start: 53 @46745 has 87 MA's), (72, 46640), (Start: 88 @46568 has 8 MA's), (95, 46550), (126, 46484), (145, 46379), (151, 46319), (152, 46316), (163, 46229), (167, 46208),

Gene: PeaceMeal1_75 Start: 45639, Stop: 45220, Start Num: 88

Candidate Starts for PeaceMeal1_75:

(Start: 21 @45855 has 45 MA's), (Start: 26 @45831 has 5 MA's), (Start: 36 @45774 has 13 MA's), (Start: 88 @45639 has 8 MA's), (141, 45450), (151, 45372), (152, 45369), (155, 45348), (157, 45336), (165, 45282),

Gene: Peaches_76 Start: 46747, Stop: 46163, Start Num: 53

Candidate Starts for Peaches_76:

(Start: 21 @46897 has 45 MA's), (35, 46819), (Start: 40 @46798 has 6 MA's), (Start: 51 @46750 has 28 MA's), (Start: 53 @46747 has 87 MA's), (72, 46642), (Start: 88 @46570 has 8 MA's), (95, 46552), (126, 46486), (145, 46381), (151, 46321), (152, 46318), (163, 46231), (167, 46210),

Gene: Perplexer_75 Start: 46531, Stop: 45959, Start Num: 57

Candidate Starts for Perplexer_75:

(Start: 21 @46693 has 45 MA's), (35, 46615), (Start: 40 @46594 has 6 MA's), (Start: 51 @46546 has 28 MA's), (Start: 53 @46543 has 87 MA's), (Start: 57 @46531 has 4 MA's), (72, 46438), (Start: 88 @46366 has 8 MA's), (95, 46348), (126, 46282), (145, 46177), (151, 46117), (152, 46114), (163, 46027), (167, 46006),

Gene: PeterPeter_78 Start: 46742, Stop: 46158, Start Num: 53

Candidate Starts for PeterPeter_78:

(Start: 21 @46892 has 45 MA's), (35, 46814), (Start: 40 @46793 has 6 MA's), (Start: 51 @46745 has 28 MA's), (Start: 53 @46742 has 87 MA's), (72, 46637), (Start: 88 @46565 has 8 MA's), (95, 46547), (126, 46481), (145, 46376), (151, 46316), (152, 46313), (163, 46226), (167, 46205),

Gene: PetiteSangsue_75 Start: 46546, Stop: 45962, Start Num: 53

Candidate Starts for PetiteSangsue_75:

(Start: 21 @46696 has 45 MA's), (35, 46618), (Start: 40 @46597 has 6 MA's), (Start: 51 @46549 has 28 MA's), (Start: 53 @46546 has 87 MA's), (Start: 57 @46534 has 4 MA's), (72, 46441), (Start: 88 @46369 has 8 MA's), (95, 46351), (126, 46285), (145, 46180), (151, 46120), (152, 46117), (163, 46030), (167, 46009),

Gene: Phacado_78 Start: 46744, Stop: 46160, Start Num: 53

Candidate Starts for Phacado_78:

(Start: 21 @46894 has 45 MA's), (35, 46816), (Start: 40 @46795 has 6 MA's), (Start: 51 @46747 has 28 MA's), (Start: 53 @46744 has 87 MA's), (72, 46639), (Start: 88 @46567 has 8 MA's), (95, 46549), (126, 46483), (145, 46378), (151, 46318), (152, 46315), (163, 46228), (167, 46207),

Gene: Phaeder_84 Start: 46773, Stop: 46258, Start Num: 46

Candidate Starts for Phaeder_84:

(Start: 21 @46905 has 45 MA's), (Start: 26 @46881 has 5 MA's), (Start: 36 @46824 has 13 MA's), (Start: 46 @46773 has 17 MA's), (129, 46566), (135, 46545), (141, 46497), (151, 46419), (152, 46416), (163, 46329),

Gene: Pharaoh_78 Start: 47942, Stop: 47292, Start Num: 21

Candidate Starts for Pharaoh_78:

(Start: 21 @47942 has 45 MA's), (Start: 26 @47918 has 5 MA's), (Start: 36 @47861 has 13 MA's), (129, 47600), (135, 47579), (151, 47456), (152, 47453), (155, 47432), (165, 47360), (166, 47357),

Gene: Phelipe_79 Start: 46788, Stop: 46204, Start Num: 53

Candidate Starts for Phelipe_79:

(Start: 21 @46938 has 45 MA's), (35, 46860), (Start: 40 @46839 has 6 MA's), (Start: 51 @46791 has 28 MA's), (Start: 53 @46788 has 87 MA's), (72, 46683), (Start: 88 @46611 has 8 MA's), (95, 46593), (126, 46527), (151, 46362), (152, 46359), (163, 46272), (167, 46251),

Gene: Phighter1804_78 Start: 46809, Stop: 46225, Start Num: 53

Candidate Starts for Phighter1804_78:

(Start: 21 @46959 has 45 MA's), (35, 46881), (Start: 40 @46860 has 6 MA's), (Start: 51 @46812 has 28 MA's), (Start: 53 @46809 has 87 MA's), (72, 46704), (Start: 88 @46632 has 8 MA's), (95, 46614), (126, 46548), (145, 46443), (151, 46383), (152, 46380), (163, 46293), (167, 46272),

Gene: Phlei_63 Start: 43732, Stop: 43292, Start Num: 87

Candidate Starts for Phlei_63:

(30, 43876), (33, 43858), (49, 43804), (78, 43771), (87, 43732), (135, 43588), (141, 43540), (143, 43534), (151, 43462), (152, 43459), (163, 43378), (165, 43372), (172, 43312),

Gene: PhluffyCoco_43 Start: 27444, Stop: 28064, Start Num: 66

Candidate Starts for PhluffyCoco_43:

(16, 27168), (28, 27234), (31, 27249), (35, 27285), (45, 27333), (47, 27345), (50, 27351), (55, 27375), (Start: 66 @27444 has 2 MA's), (71, 27462), (116, 27666), (117, 27672), (143, 27840), (151, 27915), (152, 27918), (169, 28026), (171, 28035),

Gene: Phonnegut_84 Start: 46789, Stop: 46274, Start Num: 46

Candidate Starts for Phonnegut_84:

(Start: 21 @46921 has 45 MA's), (Start: 26 @46897 has 5 MA's), (Start: 36 @46840 has 13 MA's),
(Start: 46 @46789 has 17 MA's), (129, 46582), (135, 46561), (141, 46513), (151, 46435), (152, 46432),
(163, 46345),

Gene: Phontbonne_78 Start: 46643, Stop: 46059, Start Num: 53

Candidate Starts for Phontbonne_78:

(Start: 21 @46793 has 45 MA's), (35, 46715), (Start: 40 @46694 has 6 MA's), (Start: 51 @46646 has
28 MA's), (Start: 53 @46643 has 87 MA's), (72, 46538), (Start: 88 @46466 has 8 MA's), (95, 46448),
(126, 46382), (151, 46217), (152, 46214), (163, 46127), (167, 46106),

Gene: Pioneer_84 Start: 46789, Stop: 46274, Start Num: 46

Candidate Starts for Pioneer_84:

(Start: 21 @46921 has 45 MA's), (Start: 26 @46897 has 5 MA's), (Start: 36 @46840 has 13 MA's),
(Start: 46 @46789 has 17 MA's), (129, 46582), (135, 46561), (141, 46513), (151, 46435), (152, 46432),
(163, 46345),

Gene: Pipcraft_74 Start: 46749, Stop: 46165, Start Num: 53

Candidate Starts for Pipcraft_74:

(Start: 21 @46899 has 45 MA's), (35, 46821), (Start: 40 @46800 has 6 MA's), (Start: 51 @46752 has
28 MA's), (Start: 53 @46749 has 87 MA's), (72, 46644), (Start: 88 @46572 has 8 MA's), (89, 46566),
(95, 46554), (126, 46488), (145, 46383), (151, 46323), (152, 46320), (163, 46233), (167, 46212),

Gene: Polymorphads_79 Start: 46772, Stop: 46185, Start Num: 51

Candidate Starts for Polymorphads_79:

(Start: 21 @46919 has 45 MA's), (35, 46841), (Start: 40 @46820 has 6 MA's), (Start: 51 @46772 has
28 MA's), (Start: 53 @46769 has 87 MA's), (72, 46664), (Start: 88 @46592 has 8 MA's), (95, 46574),
(126, 46508), (145, 46403), (151, 46343), (152, 46340), (163, 46253), (167, 46232),

Gene: Polyphemus_81 Start: 45619, Stop: 44969, Start Num: 21

Candidate Starts for Polyphemus_81:

(Start: 21 @45619 has 45 MA's), (Start: 26 @45595 has 5 MA's), (35, 45541), (Start: 36 @45538 has
13 MA's), (Start: 40 @45520 has 6 MA's), (129, 45280), (137, 45256), (141, 45211), (151, 45133),
(152, 45130), (155, 45109), (165, 45034), (166, 45031),

Gene: Poompha_75 Start: 45637, Stop: 45218, Start Num: 88

Candidate Starts for Poompha_75:

(Start: 21 @45853 has 45 MA's), (Start: 26 @45829 has 5 MA's), (Start: 36 @45772 has 13 MA's),
(Start: 88 @45637 has 8 MA's), (141, 45448), (151, 45370), (152, 45367), (155, 45346), (157, 45334),
(165, 45280),

Gene: Priya_82 Start: 46693, Stop: 46046, Start Num: 21

Candidate Starts for Priya_82:

(Start: 21 @46693 has 45 MA's), (Start: 26 @46669 has 5 MA's), (35, 46615), (Start: 36 @46612 has
13 MA's), (Start: 46 @46561 has 17 MA's), (129, 46354), (135, 46333), (141, 46285), (151, 46207),
(152, 46204), (163, 46117),

Gene: Pumbaa_78 Start: 46696, Stop: 46109, Start Num: 51

Candidate Starts for Pumbaa_78:

(Start: 21 @46843 has 45 MA's), (35, 46765), (Start: 40 @46744 has 6 MA's), (Start: 51 @46696 has
28 MA's), (Start: 53 @46693 has 87 MA's), (72, 46588), (Start: 88 @46516 has 8 MA's), (95, 46498),

(126, 46432), (145, 46327), (151, 46267), (152, 46264), (163, 46177), (167, 46156),

Gene: Qobbit_82 Start: 46523, Stop: 46008, Start Num: 46

Candidate Starts for Qobbit_82:

(Start: 21 @46655 has 45 MA's), (Start: 26 @46631 has 5 MA's), (35, 46577), (Start: 36 @46574 has 13 MA's), (Start: 46 @46523 has 17 MA's), (129, 46316), (135, 46295), (141, 46247), (151, 46169), (152, 46166), (163, 46079),

Gene: Rahalelujah_83 Start: 46456, Stop: 45809, Start Num: 21

Candidate Starts for Rahalelujah_83:

(Start: 21 @46456 has 45 MA's), (Start: 26 @46432 has 5 MA's), (35, 46378), (Start: 36 @46375 has 13 MA's), (129, 46117), (135, 46096), (142, 46045), (146, 46024), (151, 45970), (152, 45967), (163, 45880),

Gene: Rebeuca_79 Start: 46991, Stop: 46488, Start Num: 46

Candidate Starts for Rebeuca_79:

(Start: 21 @47123 has 45 MA's), (Start: 26 @47099 has 5 MA's), (Start: 36 @47042 has 13 MA's), (Start: 46 @46991 has 17 MA's), (Start: 88 @46907 has 8 MA's), (141, 46718), (151, 46640), (152, 46637), (157, 46604), (165, 46550),

Gene: RedFox_43 Start: 27443, Stop: 28063, Start Num: 66

Candidate Starts for RedFox_43:

(16, 27167), (28, 27233), (31, 27248), (35, 27284), (45, 27332), (47, 27344), (50, 27350), (55, 27374), (Start: 66 @27443 has 2 MA's), (71, 27461), (116, 27665), (117, 27671), (143, 27839), (151, 27914), (152, 27917), (169, 28025), (171, 28034),

Gene: Refuge_81 Start: 48475, Stop: 47903, Start Num: 36

Candidate Starts for Refuge_81:

(Start: 21 @48556 has 45 MA's), (Start: 26 @48532 has 5 MA's), (Start: 36 @48475 has 13 MA's), (Start: 94 @48319 has 6 MA's), (135, 48193), (151, 48067), (152, 48064), (165, 47971), (166, 47968), (169, 47929),

Gene: Relief_77 Start: 46745, Stop: 46161, Start Num: 53

Candidate Starts for Relief_77:

(Start: 21 @46895 has 45 MA's), (35, 46817), (Start: 40 @46796 has 6 MA's), (Start: 51 @46748 has 28 MA's), (Start: 53 @46745 has 87 MA's), (72, 46640), (Start: 88 @46568 has 8 MA's), (95, 46550), (126, 46484), (145, 46379), (151, 46319), (152, 46316), (163, 46229), (167, 46208),

Gene: RemusLoopin_35 Start: 27467, Stop: 28051, Start Num: 84

Candidate Starts for RemusLoopin_35:

(41, 27230), (44, 27242), (Start: 46 @27257 has 17 MA's), (73, 27395), (81, 27449), (Start: 84 @27467 has 7 MA's), (103, 27569), (122, 27713), (127, 27740), (139, 27797), (152, 27899), (155, 27920), (167, 27977), (171, 28013), (174, 28025),

Gene: Renna12_42 Start: 27456, Stop: 27923, Start Num: 75

Candidate Starts for Renna12_42:

(16, 27228), (Start: 21 @27267 has 45 MA's), (28, 27294), (Start: 36 @27348 has 13 MA's), (38, 27360), (45, 27393), (Start: 75 @27456 has 5 MA's), (95, 27531), (116, 27621), (117, 27627), (136, 27648), (143, 27699), (151, 27774), (152, 27777), (168, 27861), (169, 27885), (171, 27894), (174, 27906),

Gene: Rifter_90 Start: 46847, Stop: 46200, Start Num: 21

Candidate Starts for Rifter_90:

(Start: 21 @46847 has 45 MA's), (Start: 26 @46823 has 5 MA's), (35, 46769), (Start: 36 @46766 has 13 MA's), (Start: 42 @46736 has 4 MA's), (140, 46442), (151, 46361), (152, 46358), (165, 46265), (166, 46262),

Gene: RockieBear_75 Start: 46750, Stop: 46163, Start Num: 51

Candidate Starts for RockieBear_75:

(Start: 21 @46897 has 45 MA's), (35, 46819), (Start: 40 @46798 has 6 MA's), (Start: 51 @46750 has 28 MA's), (Start: 53 @46747 has 87 MA's), (72, 46642), (Start: 88 @46570 has 8 MA's), (89, 46564), (95, 46552), (126, 46486), (145, 46381), (151, 46321), (152, 46318), (163, 46231), (167, 46210),

Gene: Roksolana_90 Start: 47563, Stop: 46916, Start Num: 21

Candidate Starts for Roksolana_90:

(Start: 21 @47563 has 45 MA's), (Start: 26 @47539 has 5 MA's), (35, 47485), (Start: 36 @47482 has 13 MA's), (Start: 42 @47452 has 4 MA's), (140, 47158), (151, 47077), (152, 47074), (165, 46981), (166, 46978),

Gene: Romney_77 Start: 46745, Stop: 46161, Start Num: 53

Candidate Starts for Romney_77:

(Start: 21 @46895 has 45 MA's), (35, 46817), (Start: 40 @46796 has 6 MA's), (Start: 51 @46748 has 28 MA's), (Start: 53 @46745 has 87 MA's), (72, 46640), (Start: 88 @46568 has 8 MA's), (89, 46562), (95, 46550), (126, 46484), (145, 46379), (151, 46319), (152, 46316), (163, 46229), (167, 46208),

Gene: Roosevelt_76 Start: 46750, Stop: 46166, Start Num: 53

Candidate Starts for Roosevelt_76:

(Start: 21 @46900 has 45 MA's), (35, 46822), (Start: 40 @46801 has 6 MA's), (Start: 51 @46753 has 28 MA's), (Start: 53 @46750 has 87 MA's), (72, 46645), (Start: 88 @46573 has 8 MA's), (95, 46555), (126, 46489), (151, 46324), (152, 46321), (163, 46234), (167, 46213),

Gene: Rosa24_74 Start: 46779, Stop: 46192, Start Num: 51

Candidate Starts for Rosa24_74:

(Start: 21 @46926 has 45 MA's), (35, 46848), (Start: 40 @46827 has 6 MA's), (Start: 51 @46779 has 28 MA's), (Start: 53 @46776 has 87 MA's), (72, 46671), (Start: 88 @46599 has 8 MA's), (95, 46581), (126, 46515), (151, 46350), (152, 46347), (163, 46260), (167, 46239),

Gene: Rowdy_80 Start: 46614, Stop: 46195, Start Num: 88

Candidate Starts for Rowdy_80:

(Start: 21 @46830 has 45 MA's), (Start: 26 @46806 has 5 MA's), (Start: 36 @46749 has 13 MA's), (Start: 88 @46614 has 8 MA's), (151, 46347), (152, 46344), (155, 46323), (165, 46257),

Gene: Ruin_78 Start: 46741, Stop: 46157, Start Num: 53

Candidate Starts for Ruin_78:

(Start: 21 @46891 has 45 MA's), (35, 46813), (Start: 40 @46792 has 6 MA's), (Start: 51 @46744 has 28 MA's), (Start: 53 @46741 has 87 MA's), (72, 46636), (Start: 88 @46564 has 8 MA's), (89, 46558), (95, 46546), (126, 46480), (145, 46375), (151, 46315), (152, 46312), (163, 46225), (167, 46204),

Gene: Ryadel_7 Start: 2296, Stop: 1727, Start Num: 80

Candidate Starts for Ryadel_7:

(Start: 80 @2296 has 19 MA's), (101, 2179), (Start: 104 @2164 has 1 MA's), (Start: 110 @2113 has 1 MA's), (Start: 111 @2110 has 1 MA's), (129, 1996), (132, 1987), (138, 1963), (151, 1858), (152, 1855), (160, 1819), (167, 1780), (171, 1744),

Gene: RyeScarlet_85 Start: 46764, Stop: 46249, Start Num: 46

Candidate Starts for RyeScarlet_85:

(Start: 21 @46896 has 45 MA's), (Start: 26 @46872 has 5 MA's), (Start: 36 @46815 has 13 MA's), (Start: 46 @46764 has 17 MA's), (129, 46557), (135, 46536), (141, 46488), (151, 46410), (152, 46407), (163, 46320),

Gene: Sabertooth_78 Start: 46756, Stop: 46169, Start Num: 51

Candidate Starts for Sabertooth_78:

(Start: 21 @46903 has 45 MA's), (35, 46825), (Start: 40 @46804 has 6 MA's), (Start: 51 @46756 has 28 MA's), (Start: 53 @46753 has 87 MA's), (72, 46648), (Start: 88 @46576 has 8 MA's), (95, 46558), (126, 46492), (145, 46387), (151, 46327), (152, 46324), (163, 46237), (167, 46216),

Gene: Sachima_80 Start: 46801, Stop: 46286, Start Num: 46

Candidate Starts for Sachima_80:

(Start: 21 @46933 has 45 MA's), (Start: 26 @46909 has 5 MA's), (Start: 36 @46852 has 13 MA's), (Start: 46 @46801 has 17 MA's), (129, 46594), (135, 46573), (141, 46525), (151, 46447), (152, 46444), (163, 46357),

Gene: Samora_35 Start: 26872, Stop: 27459, Start Num: 84

Candidate Starts for Samora_35:

(25, 26551), (29, 26563), (Start: 46 @26662 has 17 MA's), (73, 26800), (Start: 84 @26872 has 7 MA's), (103, 26974), (120, 27109), (124, 27127), (127, 27145), (145, 27241), (152, 27304), (159, 27334), (171, 27418),

Gene: Sassafras_72 Start: 45165, Stop: 45557, Start Num: 94

Candidate Starts for Sassafras_72:

(16, 44820), (23, 44877), (32, 44901), (34, 44919), (35, 44934), (Start: 40 @44955 has 6 MA's), (Start: 46 @44988 has 17 MA's), (Start: 52 @45006 has 1 MA's), (Start: 94 @45165 has 6 MA's), (142, 45327), (151, 45405), (152, 45408), (155, 45429), (158, 45438), (163, 45465), (175, 45546),

Gene: Scamp_78 Start: 46750, Stop: 46166, Start Num: 53

Candidate Starts for Scamp_78:

(Start: 21 @46900 has 45 MA's), (35, 46822), (Start: 40 @46801 has 6 MA's), (Start: 51 @46753 has 28 MA's), (Start: 53 @46750 has 87 MA's), (72, 46645), (Start: 88 @46573 has 8 MA's), (95, 46555), (126, 46489), (145, 46384), (151, 46324), (152, 46321), (163, 46234), (167, 46213),

Gene: Scherzo_82 Start: 46821, Stop: 46306, Start Num: 46

Candidate Starts for Scherzo_82:

(Start: 21 @46953 has 45 MA's), (Start: 26 @46929 has 5 MA's), (Start: 36 @46872 has 13 MA's), (Start: 46 @46821 has 17 MA's), (129, 46614), (135, 46593), (141, 46545), (151, 46467), (152, 46464), (163, 46377),

Gene: SchoolBus_5 Start: 1765, Stop: 1196, Start Num: 80

Candidate Starts for SchoolBus_5:

(Start: 80 @1765 has 19 MA's), (101, 1648), (Start: 104 @1633 has 1 MA's), (Start: 110 @1582 has 1 MA's), (Start: 111 @1579 has 1 MA's), (129, 1465), (132, 1456), (138, 1432), (151, 1327), (152, 1324), (160, 1288), (167, 1249), (171, 1213),

Gene: Schuy_5 Start: 1716, Stop: 1147, Start Num: 80

Candidate Starts for Schuy_5:

(Start: 80 @1716 has 19 MA's), (101, 1599), (Start: 104 @1584 has 1 MA's), (Start: 110 @1533 has 1 MA's), (Start: 111 @1530 has 1 MA's), (129, 1416), (132, 1407), (138, 1383), (151, 1278), (152, 1275), (160, 1239), (167, 1200), (171, 1164),

Gene: Scottish_69 Start: 44824, Stop: 45216, Start Num: 94

Candidate Starts for Scottish_69:

(16, 44479), (23, 44536), (32, 44560), (34, 44578), (35, 44593), (Start: 40 @44614 has 6 MA's), (Start: 46 @44647 has 17 MA's), (Start: 52 @44665 has 1 MA's), (Start: 94 @44824 has 6 MA's), (142, 44986), (151, 45064), (152, 45067), (155, 45088), (158, 45097), (163, 45124), (175, 45205),

Gene: Sebastisaurus_35 Start: 27189, Stop: 27773, Start Num: 84

Candidate Starts for Sebastisaurus_35:

(41, 26952), (44, 26964), (Start: 46 @26979 has 17 MA's), (73, 27117), (76, 27153), (Start: 84 @27189 has 7 MA's), (103, 27291), (108, 27324), (122, 27435), (127, 27462), (139, 27519), (140, 27534), (146, 27564), (152, 27621), (155, 27642), (171, 27735), (174, 27747),

Gene: SenorClean_79 Start: 46748, Stop: 46164, Start Num: 53

Candidate Starts for SenorClean_79:

(Start: 21 @46898 has 45 MA's), (35, 46820), (Start: 40 @46799 has 6 MA's), (Start: 51 @46751 has 28 MA's), (Start: 53 @46748 has 87 MA's), (72, 46643), (Start: 88 @46571 has 8 MA's), (95, 46553), (126, 46487), (151, 46322), (152, 46319), (163, 46232), (167, 46211),

Gene: Severus_76 Start: 45637, Stop: 45218, Start Num: 88

Candidate Starts for Severus_76:

(Start: 21 @45853 has 45 MA's), (Start: 26 @45829 has 5 MA's), (Start: 36 @45772 has 13 MA's), (Start: 88 @45637 has 8 MA's), (141, 45448), (151, 45370), (152, 45367), (155, 45346), (157, 45334), (165, 45280),

Gene: Shaka_76 Start: 46746, Stop: 46162, Start Num: 53

Candidate Starts for Shaka_76:

(Start: 21 @46896 has 45 MA's), (35, 46818), (Start: 40 @46797 has 6 MA's), (Start: 51 @46749 has 28 MA's), (Start: 53 @46746 has 87 MA's), (72, 46641), (Start: 88 @46569 has 8 MA's), (95, 46551), (126, 46485), (151, 46320), (152, 46317), (163, 46230), (167, 46209),

Gene: Shapes_80 Start: 46614, Stop: 46195, Start Num: 88

Candidate Starts for Shapes_80:

(Start: 21 @46830 has 45 MA's), (Start: 26 @46806 has 5 MA's), (Start: 36 @46749 has 13 MA's), (Start: 88 @46614 has 8 MA's), (151, 46347), (152, 46344), (155, 46323), (165, 46257),

Gene: SheaKeira_79 Start: 46163, Stop: 45585, Start Num: 36

Candidate Starts for SheaKeira_79:

(Start: 21 @46244 has 45 MA's), (Start: 26 @46220 has 5 MA's), (35, 46166), (Start: 36 @46163 has 13 MA's), (129, 45905), (135, 45884), (141, 45836), (148, 45797), (151, 45758), (152, 45755), (161, 45689), (163, 45668), (167, 45647), (173, 45602),

Gene: SheldonCooper_78 Start: 47186, Stop: 46602, Start Num: 53

Candidate Starts for SheldonCooper_78:

(Start: 21 @47336 has 45 MA's), (35, 47258), (Start: 40 @47237 has 6 MA's), (Start: 51 @47189 has 28 MA's), (Start: 53 @47186 has 87 MA's), (72, 47081), (Start: 88 @47009 has 8 MA's), (95, 46991), (126, 46925), (151, 46760), (152, 46757), (163, 46670), (167, 46649),

Gene: Shida_5 Start: 1765, Stop: 1196, Start Num: 80

Candidate Starts for Shida_5:

(Start: 80 @1765 has 19 MA's), (101, 1648), (Start: 104 @1633 has 1 MA's), (Start: 110 @1582 has 1 MA's), (Start: 111 @1579 has 1 MA's), (129, 1465), (132, 1456), (138, 1432), (151, 1327), (152, 1324), (160, 1288), (167, 1249), (171, 1213),

Gene: ShowerHandel_74 Start: 46069, Stop: 46452, Start Num: 94

Candidate Starts for ShowerHandel_74:

(16, 45724), (23, 45781), (32, 45805), (34, 45823), (35, 45838), (Start: 40 @45859 has 6 MA's), (Start: 46 @45892 has 17 MA's), (Start: 52 @45910 has 1 MA's), (Start: 94 @46069 has 6 MA's), (142, 46231), (151, 46309), (152, 46312), (155, 46333), (158, 46342), (163, 46369), (169, 46417), (175, 46441),

Gene: Shygu2_76 Start: 46692, Stop: 46108, Start Num: 53

Candidate Starts for Shygu2_76:

(Start: 21 @46842 has 45 MA's), (35, 46764), (Start: 40 @46743 has 6 MA's), (Start: 51 @46695 has 28 MA's), (Start: 53 @46692 has 87 MA's), (Start: 57 @46680 has 4 MA's), (72, 46587), (Start: 88 @46515 has 8 MA's), (95, 46497), (126, 46431), (145, 46326), (151, 46266), (152, 46263), (163, 46176), (167, 46155), (171, 46119),

Gene: Skipitt_77 Start: 46745, Stop: 46158, Start Num: 51

Candidate Starts for Skipitt_77:

(Start: 21 @46892 has 45 MA's), (35, 46814), (Start: 40 @46793 has 6 MA's), (Start: 51 @46745 has 28 MA's), (Start: 53 @46742 has 87 MA's), (72, 46637), (Start: 88 @46565 has 8 MA's), (89, 46559), (95, 46547), (126, 46481), (145, 46376), (151, 46316), (152, 46313), (163, 46226), (167, 46205),

Gene: SmellyB_88 Start: 47181, Stop: 46555, Start Num: 26

Candidate Starts for SmellyB_88:

(Start: 21 @47205 has 45 MA's), (Start: 26 @47181 has 5 MA's), (35, 47127), (Start: 36 @47124 has 13 MA's), (Start: 40 @47106 has 6 MA's), (129, 46866), (137, 46842), (141, 46797), (151, 46719), (152, 46716), (155, 46695), (165, 46620), (166, 46617),

Gene: Sparxx_79 Start: 46747, Stop: 46160, Start Num: 51

Candidate Starts for Sparxx_79:

(Start: 21 @46894 has 45 MA's), (35, 46816), (Start: 40 @46795 has 6 MA's), (Start: 51 @46747 has 28 MA's), (Start: 53 @46744 has 87 MA's), (72, 46639), (Start: 88 @46567 has 8 MA's), (95, 46549), (126, 46483), (151, 46318), (152, 46315), (163, 46228), (167, 46207),

Gene: Spino_77 Start: 46748, Stop: 46164, Start Num: 53

Candidate Starts for Spino_77:

(Start: 21 @46898 has 45 MA's), (35, 46820), (Start: 40 @46799 has 6 MA's), (Start: 51 @46751 has 28 MA's), (Start: 53 @46748 has 87 MA's), (72, 46643), (Start: 88 @46571 has 8 MA's), (95, 46553), (126, 46487), (151, 46322), (152, 46319), (163, 46232), (167, 46211),

Gene: Spouty_82 Start: 46692, Stop: 46045, Start Num: 21

Candidate Starts for Spouty_82:

(Start: 21 @46692 has 45 MA's), (Start: 26 @46668 has 5 MA's), (35, 46614), (Start: 36 @46611 has 13 MA's), (Start: 46 @46560 has 17 MA's), (129, 46353), (135, 46332), (141, 46284), (151, 46206), (152, 46203), (163, 46116),

Gene: Stasia_75 Start: 46708, Stop: 46121, Start Num: 51

Candidate Starts for Stasia_75:

(Start: 21 @46855 has 45 MA's), (35, 46777), (Start: 40 @46756 has 6 MA's), (Start: 51 @46708 has 28 MA's), (Start: 53 @46705 has 87 MA's), (72, 46600), (Start: 88 @46528 has 8 MA's), (95, 46510), (126, 46444), (151, 46279), (152, 46276), (163, 46189), (167, 46168), (171, 46132),

Gene: SteMason_74 Start: 46745, Stop: 46161, Start Num: 53

Candidate Starts for SteMason_74:

(Start: 21 @46895 has 45 MA's), (35, 46817), (Start: 40 @46796 has 6 MA's), (Start: 51 @46748 has 28 MA's), (Start: 53 @46745 has 87 MA's), (72, 46640), (Start: 88 @46568 has 8 MA's), (89, 46562),

(95, 46550), (126, 46484), (145, 46379), (151, 46319), (152, 46316), (163, 46229), (167, 46208),

Gene: Steamy_76 Start: 47037, Stop: 46378, Start Num: 21

Candidate Starts for Steamy_76:

(Start: 21 @47037 has 45 MA's), (Start: 26 @47013 has 5 MA's), (Start: 36 @46956 has 13 MA's), (135, 46674), (151, 46548), (152, 46545), (155, 46524), (165, 46452), (169, 46410),

Gene: Stichling_6 Start: 3233, Stop: 3850, Start Num: 37

Candidate Starts for Stichling_6:

(1, 2405), (2, 2540), (3, 2627), (4, 2690), (5, 2741), (6, 2777), (10, 2933), (22, 3158), (37, 3233), (99, 3452), (151, 3677), (152, 3680), (153, 3683), (167, 3761),

Gene: Stink_78 Start: 46793, Stop: 46299, Start Num: 67

Candidate Starts for Stink_78:

(Start: 21 @47030 has 45 MA's), (35, 46952), (Start: 40 @46931 has 6 MA's), (Start: 46 @46898 has 17 MA's), (Start: 53 @46880 has 87 MA's), (63, 46811), (65, 46805), (Start: 67 @46793 has 3 MA's), (126, 46622), (151, 46457), (152, 46454), (163, 46367), (167, 46346), (171, 46310),

Gene: Sultana_78 Start: 46748, Stop: 46161, Start Num: 51

Candidate Starts for Sultana_78:

(Start: 21 @46895 has 45 MA's), (35, 46817), (Start: 40 @46796 has 6 MA's), (Start: 51 @46748 has 28 MA's), (Start: 53 @46745 has 87 MA's), (72, 46640), (Start: 88 @46568 has 8 MA's), (95, 46550), (126, 46484), (145, 46379), (151, 46319), (152, 46316), (163, 46229), (167, 46208),

Gene: Taquarus_77 Start: 46751, Stop: 46167, Start Num: 53

Candidate Starts for Taquarus_77:

(Start: 21 @46901 has 45 MA's), (35, 46823), (Start: 40 @46802 has 6 MA's), (Start: 51 @46754 has 28 MA's), (Start: 53 @46751 has 87 MA's), (72, 46646), (Start: 88 @46574 has 8 MA's), (95, 46556), (126, 46490), (151, 46325), (152, 46322), (163, 46235), (167, 46214),

Gene: TelAviv_5 Start: 1762, Stop: 1193, Start Num: 80

Candidate Starts for TelAviv_5:

(Start: 80 @1762 has 19 MA's), (101, 1645), (Start: 104 @1630 has 1 MA's), (Start: 110 @1579 has 1 MA's), (Start: 111 @1576 has 1 MA's), (129, 1462), (132, 1453), (138, 1429), (151, 1324), (152, 1321), (160, 1285), (167, 1246), (171, 1210),

Gene: Temprado_91 Start: 47580, Stop: 47029, Start Num: 40

Candidate Starts for Temprado_91:

(Start: 21 @47679 has 45 MA's), (Start: 26 @47655 has 5 MA's), (35, 47601), (Start: 36 @47598 has 13 MA's), (Start: 40 @47580 has 6 MA's), (140, 47274), (151, 47193), (152, 47190), (155, 47169), (165, 47094), (166, 47091),

Gene: Thanksgivukkah_77 Start: 46896, Stop: 46162, Start Num: 21

Candidate Starts for Thanksgivukkah_77:

(Start: 21 @46896 has 45 MA's), (35, 46818), (Start: 40 @46797 has 6 MA's), (Start: 51 @46749 has 28 MA's), (Start: 53 @46746 has 87 MA's), (72, 46641), (Start: 88 @46569 has 8 MA's), (95, 46551), (126, 46485), (145, 46380), (151, 46320), (152, 46317), (163, 46230), (167, 46209),

Gene: TinaFeyge_76 Start: 46893, Stop: 46159, Start Num: 21

Candidate Starts for TinaFeyge_76:

(Start: 21 @46893 has 45 MA's), (35, 46815), (Start: 40 @46794 has 6 MA's), (Start: 51 @46746 has 28 MA's), (Start: 53 @46743 has 87 MA's), (72, 46638), (Start: 88 @46566 has 8 MA's), (95, 46548), (126, 46482), (151, 46317), (152, 46314), (163, 46227), (167, 46206),

Gene: Tinybot_77 Start: 46778, Stop: 46191, Start Num: 51

Candidate Starts for Tinybot_77:

(Start: 21 @46925 has 45 MA's), (35, 46847), (Start: 40 @46826 has 6 MA's), (Start: 51 @46778 has 28 MA's), (Start: 53 @46775 has 87 MA's), (72, 46670), (Start: 88 @46598 has 8 MA's), (95, 46580), (126, 46514), (145, 46409), (151, 46349), (152, 46346), (163, 46259), (167, 46238),

Gene: TiroTheta9_77 Start: 46742, Stop: 46158, Start Num: 53

Candidate Starts for TiroTheta9_77:

(Start: 21 @46892 has 45 MA's), (35, 46814), (Start: 40 @46793 has 6 MA's), (Start: 51 @46745 has 28 MA's), (Start: 53 @46742 has 87 MA's), (72, 46637), (Start: 88 @46565 has 8 MA's), (95, 46547), (126, 46481), (151, 46316), (152, 46313), (163, 46226), (167, 46205),

Gene: Toaka_82 Start: 46732, Stop: 46166, Start Num: 36

Candidate Starts for Toaka_82:

(Start: 21 @46813 has 45 MA's), (Start: 26 @46789 has 5 MA's), (Start: 36 @46732 has 13 MA's), (129, 46474), (135, 46453), (141, 46405), (151, 46327), (152, 46324), (163, 46237),

Gene: ToneTone_87 Start: 47116, Stop: 46580, Start Num: 42

Candidate Starts for ToneTone_87:

(Start: 21 @47227 has 45 MA's), (Start: 26 @47203 has 5 MA's), (35, 47149), (Start: 36 @47146 has 13 MA's), (Start: 42 @47116 has 4 MA's), (140, 46822), (151, 46741), (152, 46738), (165, 46645), (166, 46642),

Gene: TroyPia_79 Start: 46786, Stop: 46199, Start Num: 51

Candidate Starts for TroyPia_79:

(Start: 21 @46933 has 45 MA's), (35, 46855), (Start: 40 @46834 has 6 MA's), (Start: 51 @46786 has 28 MA's), (Start: 53 @46783 has 87 MA's), (72, 46678), (Start: 88 @46606 has 8 MA's), (95, 46588), (126, 46522), (151, 46357), (152, 46354), (163, 46267), (167, 46246),

Gene: Tubs_84 Start: 46773, Stop: 46258, Start Num: 46

Candidate Starts for Tubs_84:

(Start: 21 @46905 has 45 MA's), (Start: 26 @46881 has 5 MA's), (Start: 36 @46824 has 13 MA's), (Start: 46 @46773 has 17 MA's), (129, 46566), (135, 46545), (141, 46497), (151, 46419), (152, 46416), (163, 46329),

Gene: Tucker_90 Start: 47319, Stop: 46783, Start Num: 42

Candidate Starts for Tucker_90:

(Start: 21 @47430 has 45 MA's), (Start: 26 @47406 has 5 MA's), (35, 47352), (Start: 36 @47349 has 13 MA's), (Start: 42 @47319 has 4 MA's), (140, 47025), (151, 46944), (152, 46941), (165, 46848), (166, 46845),

Gene: Twister_78 Start: 46549, Stop: 46046, Start Num: 46

Candidate Starts for Twister_78:

(Start: 21 @46681 has 45 MA's), (Start: 26 @46657 has 5 MA's), (Start: 36 @46600 has 13 MA's), (Start: 46 @46549 has 17 MA's), (Start: 88 @46465 has 8 MA's), (141, 46276), (151, 46198), (152, 46195), (157, 46162), (165, 46108),

Gene: TygerBlood_78 Start: 46751, Stop: 46164, Start Num: 51

Candidate Starts for TygerBlood_78:

(Start: 21 @46898 has 45 MA's), (35, 46820), (Start: 40 @46799 has 6 MA's), (Start: 51 @46751 has 28 MA's), (Start: 53 @46748 has 87 MA's), (72, 46643), (Start: 88 @46571 has 8 MA's), (95, 46553), (126, 46487), (145, 46382), (151, 46322), (152, 46319), (163, 46232), (167, 46211),

Gene: Ulysses_77 Start: 46431, Stop: 45847, Start Num: 53

Candidate Starts for Ulysses_77:

(Start: 21 @46581 has 45 MA's), (35, 46503), (Start: 40 @46482 has 6 MA's), (Start: 51 @46434 has 28 MA's), (Start: 53 @46431 has 87 MA's), (72, 46326), (Start: 88 @46254 has 8 MA's), (95, 46236), (126, 46170), (151, 46005), (152, 46002), (163, 45915), (167, 45894),

Gene: Upyo_53 Start: 39312, Stop: 38611, Start Num: 67

Candidate Starts for Upyo_53:

(7, 39840), (8, 39783), (12, 39687), (24, 39534), (34, 39492), (35, 39477), (39, 39459), (Start: 46 @39423 has 17 MA's), (58, 39381), (Start: 67 @39312 has 3 MA's), (70, 39306), (78, 39270), (Start: 94 @39198 has 6 MA's), (102, 39132), (125, 38925), (129, 38898), (132, 38889), (147, 38799), (151, 38748), (152, 38745), (167, 38667), (169, 38640),

Gene: Vagabond_5 Start: 1719, Stop: 1288, Start Num: 104

Candidate Starts for Vagabond_5:

(Start: 80 @1851 has 19 MA's), (101, 1734), (Start: 104 @1719 has 1 MA's), (Start: 110 @1668 has 1 MA's), (Start: 111 @1665 has 1 MA's), (129, 1557), (132, 1548), (151, 1419), (152, 1416), (160, 1380), (167, 1341), (171, 1305),

Gene: Vanisoa_79 Start: 47062, Stop: 46496, Start Num: 36

Candidate Starts for Vanisoa_79:

(Start: 21 @47143 has 45 MA's), (Start: 26 @47119 has 5 MA's), (35, 47065), (Start: 36 @47062 has 13 MA's), (129, 46804), (135, 46783), (151, 46657), (152, 46654), (163, 46567),

Gene: Vash_33 Start: 26115, Stop: 26702, Start Num: 84

Candidate Starts for Vash_33:

(13, 25725), (18, 25752), (25, 25794), (Start: 46 @25905 has 17 MA's), (73, 26043), (Start: 84 @26115 has 7 MA's), (139, 26445), (146, 26490), (149, 26514), (151, 26544), (152, 26547), (159, 26577), (171, 26661), (174, 26673),

Gene: Vorrps_5 Start: 1716, Stop: 1147, Start Num: 80

Candidate Starts for Vorrps_5:

(Start: 80 @1716 has 19 MA's), (101, 1599), (Start: 104 @1584 has 1 MA's), (Start: 110 @1533 has 1 MA's), (Start: 111 @1530 has 1 MA's), (129, 1416), (132, 1407), (138, 1383), (151, 1278), (152, 1275), (160, 1239), (167, 1200), (171, 1164),

Gene: WalterMcMickey_77 Start: 46600, Stop: 46046, Start Num: 36

Candidate Starts for WalterMcMickey_77:

(Start: 21 @46681 has 45 MA's), (Start: 26 @46657 has 5 MA's), (Start: 36 @46600 has 13 MA's), (Start: 46 @46549 has 17 MA's), (Start: 88 @46465 has 8 MA's), (141, 46276), (151, 46198), (152, 46195), (157, 46162), (165, 46108),

Gene: Wander_78 Start: 46742, Stop: 46158, Start Num: 53

Candidate Starts for Wander_78:

(Start: 21 @46892 has 45 MA's), (35, 46814), (Start: 40 @46793 has 6 MA's), (Start: 51 @46745 has 28 MA's), (Start: 53 @46742 has 87 MA's), (72, 46637), (Start: 88 @46565 has 8 MA's), (95, 46547), (126, 46481), (145, 46376), (151, 46316), (152, 46313), (163, 46226), (167, 46205),

Gene: Wiks_89 Start: 47310, Stop: 46660, Start Num: 21

Candidate Starts for Wiks_89:

(Start: 21 @47310 has 45 MA's), (Start: 26 @47286 has 5 MA's), (35, 47232), (Start: 36 @47229 has 13 MA's), (Start: 40 @47211 has 6 MA's), (140, 46905), (151, 46824), (152, 46821), (155, 46800),

(165, 46725), (166, 46722),

Gene: Wilbur_78 Start: 46745, Stop: 46161, Start Num: 53

Candidate Starts for Wilbur_78:

(Start: 21 @46895 has 45 MA's), (35, 46817), (Start: 40 @46796 has 6 MA's), (Start: 51 @46748 has 28 MA's), (Start: 53 @46745 has 87 MA's), (72, 46640), (Start: 88 @46568 has 8 MA's), (89, 46562), (95, 46550), (126, 46484), (145, 46379), (151, 46319), (152, 46316), (163, 46229), (167, 46208),

Gene: Wile_74 Start: 46560, Stop: 45988, Start Num: 57

Candidate Starts for Wile_74:

(Start: 21 @46722 has 45 MA's), (35, 46644), (Start: 40 @46623 has 6 MA's), (Start: 51 @46575 has 28 MA's), (Start: 53 @46572 has 87 MA's), (Start: 57 @46560 has 4 MA's), (72, 46467), (Start: 88 @46395 has 8 MA's), (95, 46377), (126, 46311), (145, 46206), (151, 46146), (152, 46143), (163, 46056), (167, 46035), (171, 45999),

Gene: Wizard007_75 Start: 46286, Stop: 45714, Start Num: 57

Candidate Starts for Wizard007_75:

(Start: 21 @46448 has 45 MA's), (35, 46370), (Start: 40 @46349 has 6 MA's), (Start: 51 @46301 has 28 MA's), (Start: 53 @46298 has 87 MA's), (Start: 57 @46286 has 4 MA's), (72, 46193), (Start: 88 @46121 has 8 MA's), (95, 46103), (126, 46037), (145, 45932), (151, 45872), (152, 45869), (163, 45782), (167, 45761), (171, 45725),

Gene: Wogge42_5 Start: 1668, Stop: 1291, Start Num: 111

Candidate Starts for Wogge42_5:

(Start: 80 @1854 has 19 MA's), (101, 1737), (Start: 104 @1722 has 1 MA's), (Start: 110 @1671 has 1 MA's), (Start: 111 @1668 has 1 MA's), (129, 1560), (132, 1551), (151, 1422), (152, 1419), (160, 1383), (167, 1344), (171, 1308),

Gene: Xena_74 Start: 46567, Stop: 45983, Start Num: 53

Candidate Starts for Xena_74:

(Start: 21 @46717 has 45 MA's), (35, 46639), (Start: 40 @46618 has 6 MA's), (Start: 51 @46570 has 28 MA's), (Start: 53 @46567 has 87 MA's), (72, 46462), (Start: 88 @46390 has 8 MA's), (95, 46372), (126, 46306), (145, 46201), (151, 46141), (152, 46138), (163, 46051), (167, 46030),

Gene: Yecey3_85 Start: 46628, Stop: 46062, Start Num: 36

Candidate Starts for Yecey3_85:

(Start: 21 @46709 has 45 MA's), (Start: 26 @46685 has 5 MA's), (Start: 36 @46628 has 13 MA's), (135, 46349), (151, 46223), (152, 46220), (171, 46076),

Gene: YoSam321_78 Start: 46746, Stop: 46159, Start Num: 51

Candidate Starts for YoSam321_78:

(Start: 21 @46893 has 45 MA's), (35, 46815), (Start: 40 @46794 has 6 MA's), (Start: 51 @46746 has 28 MA's), (Start: 53 @46743 has 87 MA's), (72, 46638), (Start: 88 @46566 has 8 MA's), (95, 46548), (126, 46482), (151, 46317), (152, 46314), (163, 46227), (167, 46206),

Gene: Yokurt_89 Start: 47211, Stop: 46660, Start Num: 40

Candidate Starts for Yokurt_89:

(Start: 21 @47310 has 45 MA's), (Start: 26 @47286 has 5 MA's), (35, 47232), (Start: 36 @47229 has 13 MA's), (Start: 40 @47211 has 6 MA's), (140, 46905), (151, 46824), (152, 46821), (155, 46800), (165, 46725), (166, 46722),

Gene: YoyoKar_5 Start: 1772, Stop: 1203, Start Num: 80

Candidate Starts for YoyoKar_5:

(Start: 80 @1772 has 19 MA's), (101, 1655), (Start: 104 @1640 has 1 MA's), (Start: 110 @1589 has 1 MA's), (Start: 111 @1586 has 1 MA's), (129, 1472), (132, 1463), (138, 1439), (151, 1334), (152, 1331), (160, 1295), (167, 1256), (171, 1220),

Gene: Zaka_90 Start: 47310, Stop: 46660, Start Num: 21

Candidate Starts for Zaka_90:

(Start: 21 @47310 has 45 MA's), (Start: 26 @47286 has 5 MA's), (35, 47232), (Start: 36 @47229 has 13 MA's), (Start: 40 @47211 has 6 MA's), (140, 46905), (151, 46824), (152, 46821), (155, 46800), (165, 46725), (166, 46722),

Gene: Zakhe101_6 Start: 2163, Stop: 1594, Start Num: 80

Candidate Starts for Zakhe101_6:

(Start: 80 @2163 has 19 MA's), (101, 2046), (Start: 104 @2031 has 1 MA's), (Start: 110 @1980 has 1 MA's), (Start: 111 @1977 has 1 MA's), (129, 1863), (132, 1854), (151, 1725), (152, 1722), (167, 1647), (171, 1611),

Gene: Zebo_5 Start: 1765, Stop: 1196, Start Num: 80

Candidate Starts for Zebo_5:

(Start: 80 @1765 has 19 MA's), (101, 1648), (Start: 104 @1633 has 1 MA's), (Start: 110 @1582 has 1 MA's), (Start: 111 @1579 has 1 MA's), (129, 1465), (132, 1456), (138, 1432), (151, 1327), (152, 1324), (160, 1288), (167, 1249), (171, 1213),

Gene: Zimmer_80 Start: 47793, Stop: 47140, Start Num: 21

Candidate Starts for Zimmer_80:

(Start: 21 @47793 has 45 MA's), (Start: 26 @47769 has 5 MA's), (Start: 36 @47712 has 13 MA's), (129, 47451), (137, 47427), (151, 47304), (152, 47301), (165, 47208), (166, 47205), (169, 47166),