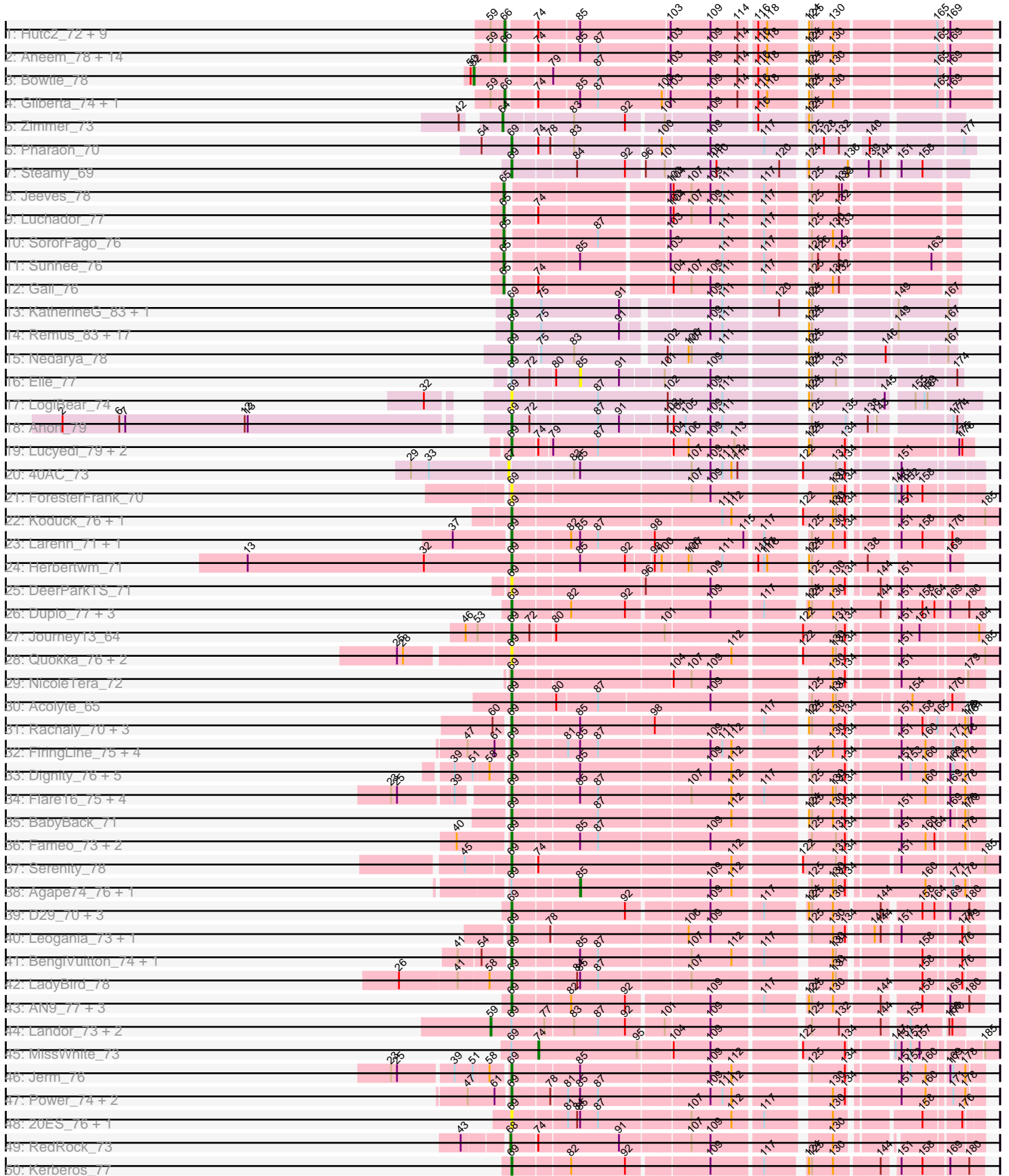
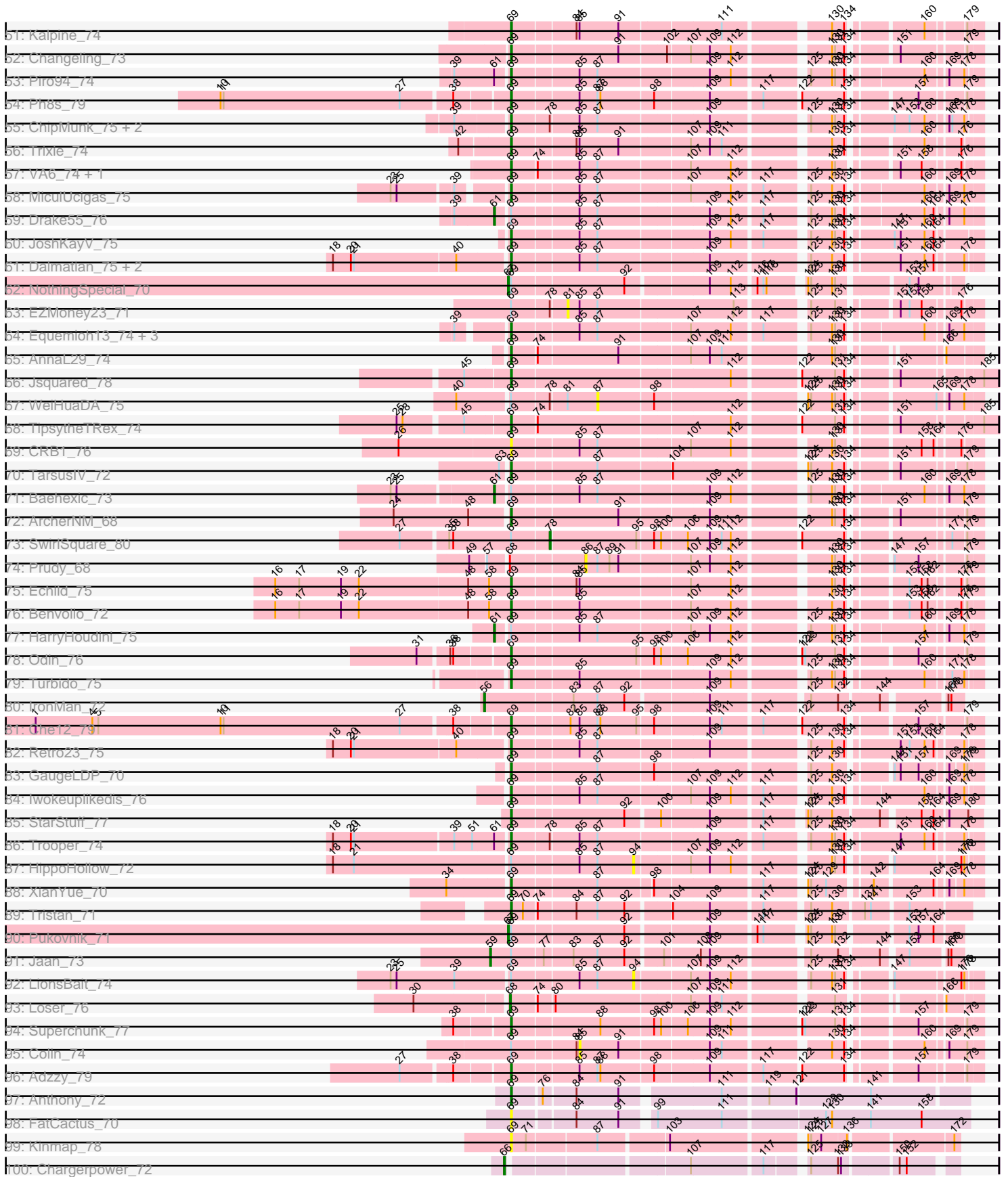


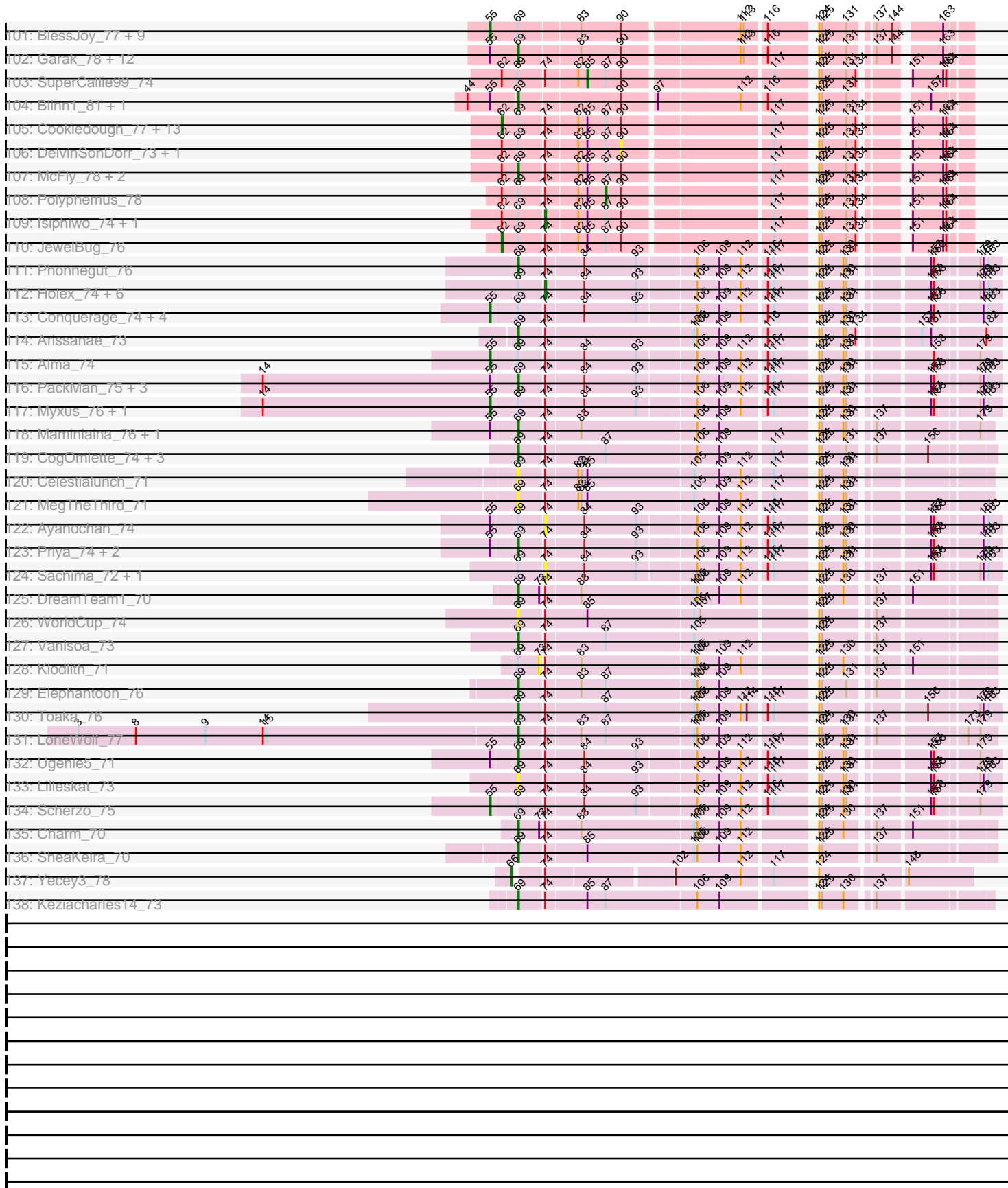
Pham 304663



Pham 304663



Pham 304663



Note: Tracks are now grouped by subcluster and scaled. Switching in subcluster is indicated by changes in track color. Track scale is now set by default to display the region 30 bp upstream of start 1 to 30 bp downstream of the last possible start. If this default region is judged to be packed too tightly with annotated starts, the track will be further scaled to only show that region of the ORF with annotated starts. This action will be indicated by adding "Zoomed" to the title. For starts, yellow indicates the location of called starts comprised solely of Glimmer/GeneMark auto-annotations, green indicates the location of called starts with at least 1 manual gene annotation.

Pham 304663 Report

This analysis was run 06/08/26 on database version 649.

Pham number 304663 has 289 members, 45 are drafts.

Phages represented in each track:

- Track 1 : Hutc2_72, Wolpertinger_76, Sham4_73, Salz_72, Saskia_74, Fibonacci_76, Insomnia_76, Ebony_77, Jabith_76, Petersenfast_71
- Track 2 : Aneem_78, Mabel_77, Et2Brutus_76, Bud_72, Flaverint_78, Mulciber_75, Timothy_77, TinyTimmy_75, Snape_77, Joselito_76, Kimba_75, Bachome_75, Orange_76, Munch_77, Lucivia_78
- Track 3 : Bowtie_78
- Track 4 : Gilberta_74, MaCh_77
- Track 5 : Zimmer_73
- Track 6 : Pharaoh_70
- Track 7 : Steamy_69
- Track 8 : Jeeves_78
- Track 9 : Luchador_77
- Track 10 : SororFago_76
- Track 11 : Sunhee_76
- Track 12 : Gail_76
- Track 13 : KatherineG_83, Looper_82
- Track 14 : Remus_83, Rosalind_81, Battleship_85, Epsocamisio_80, MinecraftSteve_83, ReMo_81, Ravana_84, Strosahl_83, DekHockey33_84, Soups_82, Nebulosus_80, Switzerland_82, Waits_82, Warrior24_83, LastResort_81, Anaysia_83, Oofda_82, JSwag_83
- Track 15 : Nedarya_78
- Track 16 : Elle_77
- Track 17 : LogiBear_74
- Track 18 : Anon_79
- Track 19 : Lucyedi_79, PainterBoy_78, EagleEye_80
- Track 20 : 40AC_73
- Track 21 : ForesterFrank_70
- Track 22 : Koduck_76, L5_70
- Track 23 : Larenn_71, Malec_72
- Track 24 : Herbertwm_71
- Track 25 : DeerParkTS_71
- Track 26 : Duplo_77, DBQu4n_77, Pomar16_77, Tomathan_77
- Track 27 : Journey13_64
- Track 28 : Quokka_76, Bradman_77, MajorMajor_76
- Track 29 : NicoleTera_72
- Track 30 : Acolyte_65
- Track 31 : Rachaly_70, BobSwaget_67, Miko_68, Lokk_68

- Track 32 : FiringLine_75, Crucio_75, SemperFi_75, SweetiePie_74, QueenBeesly_75
- Track 33 : Dignity_76, Leviathan_76, Smeagan_77, Whabigail7_75, LilTurb_75, Buggy_76
- Track 34 : Flare16_75, Terrific_75, Sknot_75, NaSiaTalie_75, Centaur_75
- Track 35 : BabyBack_71
- Track 36 : Fameo_73, Heffalump_72, QueenB2_72
- Track 37 : Serenity_78
- Track 38 : Agape74_76, AbbyPaige_76
- Track 39 : D29_70, D32_76, Travvers_76, Naji_77
- Track 40 : Leogania_73, BiancaTri92_73
- Track 41 : BengiVuitton_74, Deloris_74
- Track 42 : LadyBird_78
- Track 43 : AN9_77, C3_70, VC3_76, ANI8_77
- Track 44 : Landor_73, Phaded_70, Bactobuster_67
- Track 45 : MissWhite_73
- Track 46 : Jerm_76
- Track 47 : Power_74, Georgie2_76, SnapTap_74
- Track 48 : 20ES_76, First_0075
- Track 49 : RedRock_73
- Track 50 : Kerberos_77
- Track 51 : Kalpine_74
- Track 52 : Changeling_73
- Track 53 : Piro94_74
- Track 54 : Ph8s_79
- Track 55 : ChipMunk_75, EvilGenius_74, KingCyrus_74
- Track 56 : Trixie_74
- Track 57 : VA6_74, AN3_76
- Track 58 : MiculUcigas_75
- Track 59 : Drake55_76
- Track 60 : JoshKayV_75
- Track 61 : Dalmatian_75, DudeLittle_73, Anselm_76
- Track 62 : NothingSpecial_70
- Track 63 : EZMoney23_71
- Track 64 : Equemioh13_74, Gratitude_72, Updawg_75, WideWale_75
- Track 65 : AnnaL29_74
- Track 66 : Jsquared_78
- Track 67 : WeiHuaDA_75
- Track 68 : TipsytheTRex_74
- Track 69 : CRB1_76
- Track 70 : TarsusIV_72
- Track 71 : Baehexic_73
- Track 72 : ArcherNM_68
- Track 73 : SwirlSquare_80
- Track 74 : Prudy_68
- Track 75 : Echild_75
- Track 76 : Benvolio_72
- Track 77 : HarryHoudini_75
- Track 78 : Odin_76
- Track 79 : Turbido_75
- Track 80 : IronMan_72
- Track 81 : Che12_79
- Track 82 : Retro23_75

- Track 83 : GaugeLDP_70
- Track 84 : Iwokeuplikedis_76
- Track 85 : StarStuff_77
- Track 86 : Trooper_74
- Track 87 : HippoHollow_72
- Track 88 : XianYue_70
- Track 89 : Tristan_71
- Track 90 : Pukovnik_71
- Track 91 : Jaan_73
- Track 92 : LionsBait_74
- Track 93 : Loser_76
- Track 94 : Superchunk_77
- Track 95 : Colin_74
- Track 96 : Adzzy_79
- Track 97 : Anthony_72
- Track 98 : FatCactus_70
- Track 99 : Kinmap_78
- Track 100 : Chargerpower_72
- Track 101 : BlessJoy_77, Zaka_77, CloudWang3_77, BennyP_77, Artemis2UCLA_76, WunderPhul_77, Lilbunny_76, Blue7_78, Gladiator_74, Helmet_79
- Track 102 : Garak_78, Rifter_77, Tucker_77, Hexamo_76, Hammer_77, ToneTone_74, Yokurt_76, Zulu_78, Koko_78, Temprado_78, Roksolana_77, Gruunaga_76, Wiks_76
- Track 103 : SuperCallie99_74
- Track 104 : Blinn1_81, Priamo_78
- Track 105 : Cookiedough_77, DaVinci_75, Kazan_78, Neeharika16_76, GreedyLawyer_72, EricB_76, Chartreuse_76, Jordennis_75, Newrala_76, VohminGhazi_77, Kipper29_77, Dorothea_77, Pmask_76, SuperAwesome_77
- Track 106 : DelvinSonDorr_73, Candra_75
- Track 107 : McFly_78, Hoot_72, BABullseye_70
- Track 108 : Polyphemus_78
- Track 109 : Isiphiwo_74, SmellyB_77
- Track 110 : JewelBug_76
- Track 111 : Phonnegut_76
- Track 112 : Horex_74, Beemo_76, Jiawan_73, Pioneer_76, Hanray_74, RyeScarlet_77, Onglai_74
- Track 113 : Conquerage_74, Spouty_74, Fayely_74, Qobbit_74, EmyBug_73
- Track 114 : Arissanae_73
- Track 115 : Alma_74
- Track 116 : PackMan_75, Tubs_76, Catalina_78, Phaeder_76
- Track 117 : Myxus_76, HortumSL17_77
- Track 118 : Maminiaina_76, BogosyJay_76
- Track 119 : CogOmlette_74, Bellris_74, Minispark_74, Rahalelujah_76
- Track 120 : Celestiallunch_71
- Track 121 : MegTheThird_71
- Track 122 : Ayanochan_74
- Track 123 : Priya_74, ExplosioNervosa_74, Eidsmoe_74
- Track 124 : Sachima_72, EdogawaKiddo_74
- Track 125 : DreamTeam1_70
- Track 126 : WorldCup_74
- Track 127 : Vanisoa_73
- Track 128 : Klodlith_71

- Track 129 : Elephantoon_76
- Track 130 : Toaka_76
- Track 131 : LoneWolf_77
- Track 132 : Ugenie5_71
- Track 133 : Lilleskat_73
- Track 134 : Scherzo_75
- Track 135 : Charm_70
- Track 136 : SheaKeira_70
- Track 137 : Yecey3_78
- Track 138 : Keziacharles14_73

Summary of Final Annotations (See graph section above for start numbers):

The start number called the most often in the published annotations is 69, it was called in 156 of the 244 non-draft genes in the pham.

Genes that call this "Most Annotated" start:

- 20ES_76, AN3_76, AN9_77, ANI8_77, Acolyte_65, Adzzy_79, Anaysia_83, AnnaL29_74, Anon_79, Anselm_76, Anthony_72, ArcherNM_68, Arissanae_73, BABullseye_70, BabyBack_71, Battleship_85, Bellris_74, BengiVuitton_74, Benvolio_72, BiancaTri92_73, Blinn1_81, BobSwaget_67, BogosyJay_76, Bradman_77, Buggy_76, C3_70, CRB1_76, Catalina_78, Celestiallunch_71, Centaur_75, Changeling_73, Charm_70, Che12_79, ChipMunk_75, CogOmlette_74, Crucio_75, D29_70, D32_76, DBQu4n_77, Dalmatian_75, DeerParkTS_71, DekHockey33_84, Deloris_74, Dignity_76, DreamTeam1_70, DudeLittle_73, Duplo_77, EagleEye_80, Echild_75, Eidsmoe_74, Elephantoon_76, Epsocamisio_80, Equemioh13_74, EvilGenius_74, ExplosioNervosa_74, Fameo_73, FatCactus_70, FiringLine_75, First_0075, Flare16_75, ForesterFrank_70, Garak_78, GaugeLDP_70, Georgie2_76, Gratitude_72, Gruunaga_76, Hammer_77, Heffalump_72, Herbertwm_71, Hexamo_76, Hoot_72, Iwokeuplikedis_76, JSwag_83, Jerm_76, JoshKayV_75, Journey13_64, Jsquared_78, Kalpine_74, KatherineG_83, Kerberos_77, Keziacharles14_73, KingCyrus_74, Kinmap_78, Koduck_76, Koko_78, L5_70, LadyBird_78, Larenn_71, LastResort_81, Leogania_73, Leviathan_76, LilTurb_75, Lilleskat_73, LogiBear_74, Lokk_68, LoneWolf_77, Looper_82, Lucyedi_79, MajorMajor_76, Malec_72, Maminiaina_76, McFly_78, MegTheThird_71, MiculUcigas_75, Miko_68, MinecraftSteve_83, Minispark_74, NaSiaTalie_75, Naji_77, Nebulosus_80, Nedarya_78, NicoleTera_72, Odin_76, Oofda_82, PackMan_75, PainterBoy_78, Ph8s_79, Phaeder_76, Pharaoh_70, Phonnegut_76, Piro94_74, Pomar16_77, Power_74, Priamo_78, Priya_74, QueenB2_72, QueenBeesly_75, Quokka_76, Rachaly_70, Rahalelujah_76, Ravana_84, ReMo_81, Remus_83, Retro23_75, Rifter_77, Roksolana_77, Rosalind_81, SemperFi_75, Serenity_78, SheaKeira_70, Sknot_75, Smeagan_77, SnapTap_74, Soups_82, StarStuff_77, Steamy_69, Strosahl_83, Superchunk_77, SweetiePie_74, Switzerland_82, TarsusIV_72, Temprado_78, Terrific_75, TopsytheTRex_74, Toaka_76, Tomathan_77, ToneTone_74, Travvers_76, Tristan_71, Trixie_74, Trooper_74, Tubs_76, Tucker_77, Turbido_75, Ugenie5_71, Updawg_75, VA6_74, VC3_76, Vanisoa_73, Waits_82, Warrior24_83, Whabigail7_75, WideWale_75, Wiks_76, WorldCup_74, XianYue_70, Yokurt_76, Zulu_78,

Genes that have the "Most Annotated" start but do not call it:

- AbbyPaige_76, Agape74_76, Alma_74, Artemis2UCLA_76, Ayanochan_74, Bactobuster_67, Baehexic_73, Beemo_76, BennyP_77, BlessJoy_77, Blue7_78, Candra_75, Chartreuse_76, CloudWang3_77, Colin_74, Conquerage_74, Cookiedough_77, DaVinci_75, DelvinSonDorr_73, Dorothea_77, Drake55_76, EZMoney23_71, EdogawaKiddo_74, Elle_77, EmyBug_73, EricB_76, Fayely_74, Gladiator_74, GreedyLawyer_72, Hanray_74, HarryHoudini_75, Helmet_79, HippoHollow_72, Halex_74, HortumSL17_77, Isiphiwo_74, Jaan_73, JewelBug_76, Jiawan_73, Jordennis_75, Kazan_78, Kipper29_77, Klodlith_71, Landor_73, Lilbunny_76, LionsBait_74, MissWhite_73, Myxus_76, Neeharika16_76, Newrala_76, NothingSpecial_70, Onglai_74, Phaded_70, Pioneer_76, Pmask_76, Polyphemus_78, Pukovnik_71, Qobbit_74, RyeScarlet_77, Sachima_72, Scherzo_75, SmellyB_77, Spouty_74, SuperAwesome_77, SuperCallie99_74, SwirlSquare_80, VohminGhazi_77, WeiHuaDA_75, WunderPhul_77, Zaka_77,

Genes that do not have the "Most Annotated" start:

- 40AC_73, Aneem_78, Bachome_75, Bowtie_78, Bud_72, Chargerpower_72, Ebony_77, Et2Brutus_76, Fibonacci_76, Flaverint_78, Gail_76, Gilberta_74, Hut2_72, Insomnia_76, IronMan_72, Jabith_76, Jeeves_78, Joselito_76, Kimba_75, Loser_76, Luchador_77, Lucivia_78, MaCh_77, Mabel_77, Mulciber_75, Munch_77, Orange_76, Petersenfast_71, Prudy_68, RedRock_73, Salz_72, Saskia_74, Sham4_73, Snape_77, SororFago_76, Sunhee_76, Timothy_77, TinyTimmy_75, Wolpertinger_76, Yecey3_78, Zimmer_73,

Summary by start number:

Start 52:

- Found in 1 of 289 (0.3%) of genes in pham
- Manual Annotations of this start: 1 of 244
- Called 100.0% of time when present
- Phage (with cluster) where this start called: Bowtie_78 (A11),

Start 55:

- Found in 45 of 289 (15.6%) of genes in pham
- Manual Annotations of this start: 19 of 244
- Called 42.2% of time when present
- Phage (with cluster) where this start called: Alma_74 (A9), Artemis2UCLA_76 (A6), BennyP_77 (A6), BlessJoy_77 (A6), Blue7_78 (A6), CloudWang3_77 (A6), Conquerage_74 (A9), EmyBug_73 (A9), Fayely_74 (A9), Gladiator_74 (A6), Helmet_79 (A6), HortumSL17_77 (A9), Lilbunny_76 (A6), Myxus_76 (A9), Qobbit_74 (A9), Scherzo_75 (A9), Spouty_74 (A9), WunderPhul_77 (A6), Zaka_77 (A6),

Start 56:

- Found in 1 of 289 (0.3%) of genes in pham
- Manual Annotations of this start: 1 of 244
- Called 100.0% of time when present
- Phage (with cluster) where this start called: IronMan_72 (A2),

Start 59:

- Found in 31 of 289 (10.7%) of genes in pham
- Manual Annotations of this start: 4 of 244
- Called 12.9% of time when present
- Phage (with cluster) where this start called: Bactobuster_67 (A2), Jaan_73 (A2), Landor_73 (A2), Phaded_70 (A2),

Start 61:

- Found in 13 of 289 (4.5%) of genes in pham
- Manual Annotations of this start: 3 of 244
- Called 23.1% of time when present
- Phage (with cluster) where this start called: Baehexic_73 (A2), Drake55_76 (A2), HarryHoudini_75 (A2),

Start 62:

- Found in 24 of 289 (8.3%) of genes in pham
- Manual Annotations of this start: 15 of 244
- Called 62.5% of time when present
- Phage (with cluster) where this start called: Chartreuse_76 (A6), Cookiedough_77 (A6), DaVinci_75 (A6), Dorothea_77 (A6), EricB_76 (A6), GreedyLawyer_72 (A6), JewelBug_76 (A6), Jordennis_75 (A6), Kazan_78 (A6), Kipper29_77 (A6), Neeharika16_76 (A6), Newrala_76 (A6), Pmask_76 (A6), SuperAwesome_77 (A6), VohminGhazi_77 (A6),

Start 64:

- Found in 1 of 289 (0.3%) of genes in pham
- Manual Annotations of this start: 1 of 244
- Called 100.0% of time when present
- Phage (with cluster) where this start called: Zimmer_73 (A12),

Start 65:

- Found in 5 of 289 (1.7%) of genes in pham
- Manual Annotations of this start: 5 of 244
- Called 100.0% of time when present
- Phage (with cluster) where this start called: Gail_76 (A14), Jeeves_78 (A14), Luchador_77 (A14), SororFago_76 (A14), Sunhee_76 (A14),

Start 66:

- Found in 29 of 289 (10.0%) of genes in pham
- Manual Annotations of this start: 25 of 244
- Called 100.0% of time when present
- Phage (with cluster) where this start called: Aneem_78 (A11), Bachome_75 (A11), Bud_72 (A11), Chargerpower_72 (A22), Ebony_77 (A11), Et2Brutus_76 (A11), Fibonacci_76 (A11), Flaverint_78 (A11), Gilberta_74 (A11), Hutc2_72 (A11), Insomnia_76 (A11), Jabith_76 (A11), Joselito_76 (A11), Kimba_75 (A11), Lucivia_78 (A11), MaCh_77 (A11), Mabel_77 (A11), Mulciber_75 (A11), Munch_77 (A11), Orange_76 (A11), Petersenfast_71 (A11), Salz_72 (A11), Saskia_74 (A11), Sham4_73 (A11), Snape_77 (A11), Timothy_77 (A11), TinyTimmy_75 (A11), Wolpertinger_76 (A11), Yecey3_78 (A9),

Start 67:

- Found in 3 of 289 (1.0%) of genes in pham
- Manual Annotations of this start: 2 of 244
- Called 100.0% of time when present
- Phage (with cluster) where this start called: 40AC_73 (A17), NothingSpecial_70 (A2), Pukovnik_71 (A2),

Start 68:

- Found in 3 of 289 (1.0%) of genes in pham

- Manual Annotations of this start: 2 of 244
- Called 66.7% of time when present
- Phage (with cluster) where this start called: Loser_76 (A2), RedRock_73 (A2),

Start 69:

- Found in 248 of 289 (85.8%) of genes in pham
- Manual Annotations of this start: 156 of 244
- Called 71.8% of time when present
- Phage (with cluster) where this start called: 20ES_76 (A2), AN3_76 (A2), AN9_77 (A2), AN18_77 (A2), Acolyte_65 (A2), Adzzy_79 (A2), Anaysia_83 (A15), AnnaL29_74 (A2), Anon_79 (A15), Anselm_76 (A2), Anthony_72 (A20), ArcherNM_68 (A2), Arissanae_73 (A9), BABullseye_70 (A6), BabyBack_71 (A2), Battleship_85 (A15), Bellris_74 (A9), BengiVuitton_74 (A2), Benvolio_72 (A2), BiancaTri92_73 (A2), Blinn1_81 (A6), BobSwaget_67 (A2), BogosyJay_76 (A9), Bradman_77 (A2), Buggy_76 (A2), C3_70 (A2), CRB1_76 (A2), Catalina_78 (A9), Celestiallunch_71 (A9), Centaur_75 (A2), Changeling_73 (A2), Charm_70 (A9), Che12_79 (A2), ChipMunk_75 (A2), CogOmlette_74 (A9), Crucio_75 (A2), D29_70 (A2), D32_76 (A2), DBQu4n_77 (A2), Dalmatian_75 (A2), DeerParkTS_71 (A2), DekHockey33_84 (A15), Deloris_74 (A2), Dignity_76 (A2), DreamTeam1_70 (A9), DudeLittle_73 (A2), Duplo_77 (A2), EagleEye_80 (A16), Echild_75 (A2), Eidsmoe_74 (A9), Elephantoon_76 (A9), Epsocamisio_80 (A15), Equemioh13_74 (A2), EvilGenius_74 (A2), ExplosioNervosa_74 (A9), Fameo_73 (A2), FatCactus_70 (A20), FiringLine_75 (A2), First_0075 (A2), Flare16_75 (A2), ForesterFrank_70 (A2), Garak_78 (A6), GaugeLDP_70 (A2), Georgie2_76 (A2), Gratitude_72 (A2), Gruunaga_76 (A6), Hammer_77 (A6), Heffalump_72 (A2), Herbertwm_71 (A2), Hexamo_76 (A6), Hoot_72 (A6), Iwokeuplikedis_76 (A2), JSwag_83 (A15), Jerm_76 (A2), JoshKayV_75 (A2), Journey13_64 (A2), Jsquared_78 (A2), Kalpine_74 (A2), KatherineG_83 (A15), Kerberos_77 (A2), Keziacharles14_73 (A9), KingCyrus_74 (A2), Kinmap_78 (A21), Koduck_76 (A2), Koko_78 (A6), L5_70 (A2), LadyBird_78 (A2), Larenn_71 (A2), LastResort_81 (A15), Leogania_73 (A2), Leviathan_76 (A2), LilTurb_75 (A2), Lilleskat_73 (A9), LogiBear_74 (A15), Lokk_68 (A2), LoneWolf_77 (A9), Looper_82 (A15), Lucyedi_79 (A16), MajorMajor_76 (A2), Malec_72 (A2), Maminiaina_76 (A9), McFly_78 (A6), MegTheThird_71 (A9), MiculUcigas_75 (A2), Miko_68 (A2), MinecraftSteve_83 (A15), Minispark_74 (A9), NaSiaTalie_75 (A2), Naji_77 (A2), Nebulosus_80 (A15), Nedarya_78 (A15), NicoleTera_72 (A2), Odin_76 (A2), Oofda_82 (A15), PackMan_75 (A9), PainterBoy_78 (A16), Ph8s_79 (A2), Phaeder_76 (A9), Pharaoh_70 (A12), Phonnegut_76 (A9), Piro94_74 (A2), Pomar16_77 (A2), Power_74 (A2), Priamo_78 (A6), Priya_74 (A9), QueenB2_72 (A2), QueenBeesly_75 (A2), Quokka_76 (A2), Rachaly_70 (A2), Rahalelujah_76 (A9), Ravana_84 (A15), ReMo_81 (A15), Remus_83 (A15), Retro23_75 (A2), Rifter_77 (A6), Roksolana_77 (A6), Rosalind_81 (A15), SemperFi_75 (A2), Serenity_78 (A2), SheaKeira_70 (A9), Sknot_75 (A2), Smeagan_77 (A2), SnapTap_74 (A2), Soups_82 (A15), StarStuff_77 (A2), Steamy_69 (A12), Strosahl_83 (A15), Superchunk_77 (A2), SweetiePie_74 (A2), Switzerland_82 (A15), TarsusIV_72 (A2), Temprado_78 (A6), Terrific_75 (A2), TopsytheTRex_74 (A2), Toaka_76 (A9), Tomathan_77 (A2), ToneTone_74 (A6), Travvers_76 (A2), Tristan_71 (A2), Trixie_74 (A2), Trooper_74 (A2), Tubs_76 (A9), Tucker_77 (A6), Turbido_75 (A2), Ugenie5_71 (A9), Updawg_75 (A2), VA6_74 (A2), VC3_76 (A2), Vanisoa_73 (A9), Waits_82 (A15), Warrior24_83 (A15), Whabigail7_75 (A2), WideWale_75 (A2), Wiks_76 (A6), WorldCup_74 (A9), XianYue_70 (A2), Yokurt_76 (A6), Zulu_78 (A6),

Start 73:

- Found in 3 of 289 (1.0%) of genes in pham

- No Manual Annotations of this start.
- Called 33.3% of time when present
- Phage (with cluster) where this start called: Klodlith_71 (A9),

Start 74:

- Found in 115 of 289 (39.8%) of genes in pham
- Manual Annotations of this start: 5 of 244
- Called 11.3% of time when present
- Phage (with cluster) where this start called: Ayanochan_74 (A9), Beemo_76 (A9), EdogawaKiddo_74 (A9), Hanray_74 (A9), Halex_74 (A9), Isiphiwo_74 (A6), Jiawan_73 (A9), MissWhite_73 (A2), Onglai_74 (A9), Pioneer_76 (A9), RyeScarlet_77 (A9), Sachima_72 (A9), SmellyB_77 (A6),

Start 78:

- Found in 13 of 289 (4.5%) of genes in pham
- Manual Annotations of this start: 1 of 244
- Called 7.7% of time when present
- Phage (with cluster) where this start called: SwirlSquare_80 (A2),

Start 81:

- Found in 12 of 289 (4.2%) of genes in pham
- No Manual Annotations of this start.
- Called 8.3% of time when present
- Phage (with cluster) where this start called: EZMoney23_71 (A2),

Start 85:

- Found in 130 of 289 (45.0%) of genes in pham
- Manual Annotations of this start: 3 of 244
- Called 3.8% of time when present
- Phage (with cluster) where this start called: AbbyPaige_76 (A2), Agape74_76 (A2), Colin_74 (A2), Elle_77 (A15), SuperCallie99_74 (A6),

Start 86:

- Found in 1 of 289 (0.3%) of genes in pham
- No Manual Annotations of this start.
- Called 100.0% of time when present
- Phage (with cluster) where this start called: Prudy_68 (A2),

Start 87:

- Found in 122 of 289 (42.2%) of genes in pham
- Manual Annotations of this start: 1 of 244
- Called 1.6% of time when present
- Phage (with cluster) where this start called: Polyphemus_78 (A6), WeiHuaDA_75 (A2),

Start 90:

- Found in 49 of 289 (17.0%) of genes in pham
- No Manual Annotations of this start.
- Called 4.1% of time when present
- Phage (with cluster) where this start called: Candra_75 (A6), DelvinSonDorr_73 (A6),

Start 94:

- Found in 2 of 289 (0.7%) of genes in pham
- No Manual Annotations of this start.
- Called 100.0% of time when present
- Phage (with cluster) where this start called: HippoHollow_72 (A2), LionsBait_74 (A2),

Summary by clusters:

There are 12 clusters represented in this pham: A15, A14, A22, A16, A11, A12, A17, A21, A20, A2, A6, A9,

Info for manual annotations of cluster A11:

- Start number 52 was manually annotated 1 time for cluster A11.
- Start number 66 was manually annotated 23 times for cluster A11.

Info for manual annotations of cluster A12:

- Start number 64 was manually annotated 1 time for cluster A12.
- Start number 69 was manually annotated 2 times for cluster A12.

Info for manual annotations of cluster A14:

- Start number 65 was manually annotated 5 times for cluster A14.

Info for manual annotations of cluster A15:

- Start number 69 was manually annotated 22 times for cluster A15.

Info for manual annotations of cluster A16:

- Start number 69 was manually annotated 3 times for cluster A16.

Info for manual annotations of cluster A2:

- Start number 56 was manually annotated 1 time for cluster A2.
- Start number 59 was manually annotated 4 times for cluster A2.
- Start number 61 was manually annotated 3 times for cluster A2.
- Start number 67 was manually annotated 2 times for cluster A2.
- Start number 68 was manually annotated 2 times for cluster A2.
- Start number 69 was manually annotated 90 times for cluster A2.
- Start number 74 was manually annotated 1 time for cluster A2.
- Start number 78 was manually annotated 1 time for cluster A2.
- Start number 85 was manually annotated 2 times for cluster A2.

Info for manual annotations of cluster A20:

- Start number 69 was manually annotated 1 time for cluster A20.

Info for manual annotations of cluster A22:

- Start number 66 was manually annotated 1 time for cluster A22.

Info for manual annotations of cluster A6:

- Start number 55 was manually annotated 10 times for cluster A6.
- Start number 62 was manually annotated 15 times for cluster A6.
- Start number 69 was manually annotated 17 times for cluster A6.
- Start number 74 was manually annotated 2 times for cluster A6.
- Start number 85 was manually annotated 1 time for cluster A6.

- Start number 87 was manually annotated 1 time for cluster A6.

Info for manual annotations of cluster A9:

- Start number 55 was manually annotated 9 times for cluster A9.
- Start number 66 was manually annotated 1 time for cluster A9.
- Start number 69 was manually annotated 21 times for cluster A9.
- Start number 74 was manually annotated 2 times for cluster A9.

Gene Information:

Gene: 20ES_76 Start: 44872, Stop: 44459, Start Num: 69

Candidate Starts for 20ES_76:

(Start: 69 @44872 has 156 MA's), (81, 44821), (84, 44812), (Start: 85 @44809 has 3 MA's), (Start: 87 @44791 has 1 MA's), (107, 44704), (112, 44665), (117, 44638), (130, 44581), (158, 44509), (176, 44476),

Gene: 40AC_73 Start: 45297, Stop: 44878, Start Num: 67

Candidate Starts for 40AC_73:

(29, 45390), (33, 45372), (Start: 67 @45297 has 2 MA's), (83, 45240), (Start: 85 @45234 has 3 MA's), (107, 45129), (109, 45111), (111, 45099), (112, 45090), (114, 45084), (122, 45030), (131, 44997), (134, 44988), (151, 44949),

Gene: AN3_76 Start: 43653, Stop: 43240, Start Num: 69

Candidate Starts for AN3_76:

(Start: 69 @43653 has 156 MA's), (Start: 74 @43629 has 5 MA's), (Start: 85 @43590 has 3 MA's), (Start: 87 @43572 has 1 MA's), (107, 43485), (112, 43446), (130, 43362), (131, 43359), (151, 43311), (158, 43290), (176, 43257),

Gene: AN9_77 Start: 44797, Stop: 44378, Start Num: 69

Candidate Starts for AN9_77:

(Start: 69 @44797 has 156 MA's), (82, 44743), (92, 44689), (109, 44614), (117, 44566), (124, 44533), (125, 44530), (130, 44509), (144, 44467), (158, 44434), (169, 44410), (180, 44392),

Gene: ANI8_77 Start: 44797, Stop: 44378, Start Num: 69

Candidate Starts for ANI8_77:

(Start: 69 @44797 has 156 MA's), (82, 44743), (92, 44689), (109, 44614), (117, 44566), (124, 44533), (125, 44530), (130, 44509), (144, 44467), (158, 44434), (169, 44410), (180, 44392),

Gene: AbbyPaige_76 Start: 45068, Stop: 44712, Start Num: 85

Candidate Starts for AbbyPaige_76:

(Start: 69 @45131 has 156 MA's), (Start: 85 @45068 has 3 MA's), (109, 44945), (112, 44924), (125, 44861), (130, 44840), (131, 44837), (134, 44828), (160, 44759), (171, 44738), (178, 44726),

Gene: Acolyte_65 Start: 42788, Stop: 42381, Start Num: 69

Candidate Starts for Acolyte_65:

(Start: 69 @42788 has 156 MA's), (80, 42746), (Start: 87 @42707 has 1 MA's), (109, 42599), (125, 42515), (130, 42494), (131, 42491), (154, 42428), (170, 42392),

Gene: Adzzy_79 Start: 44582, Stop: 44163, Start Num: 69

Candidate Starts for Adzzy_79:

(27, 44675), (38, 44630), (Start: 69 @44582 has 156 MA's), (Start: 85 @44519 has 3 MA's), (Start: 87 @44501 has 1 MA's), (88, 44498), (98, 44447), (109, 44396), (117, 44348), (122, 44315), (134, 44273), (157, 44216), (179, 44177),

Gene: Agape74_76 Start: 45063, Stop: 44707, Start Num: 85

Candidate Starts for Agape74_76:

(Start: 69 @45126 has 156 MA's), (Start: 85 @45063 has 3 MA's), (109, 44940), (112, 44919), (125, 44856), (130, 44835), (131, 44832), (134, 44823), (160, 44754), (171, 44733), (178, 44721),

Gene: Alma_74 Start: 44144, Stop: 43698, Start Num: 55

Candidate Starts for Alma_74:

(Start: 55 @44144 has 19 MA's), (Start: 69 @44120 has 156 MA's), (Start: 74 @44096 has 5 MA's), (84, 44060), (93, 44009), (106, 43955), (109, 43934), (112, 43913), (116, 43892), (117, 43886), (124, 43853), (125, 43850), (130, 43829), (131, 43826), (158, 43757), (179, 43718),

Gene: Anaysia_83 Start: 45370, Stop: 44972, Start Num: 69

Candidate Starts for Anaysia_83:

(Start: 69 @45370 has 156 MA's), (75, 45340), (91, 45262), (109, 45187), (111, 45175), (124, 45106), (125, 45103), (149, 45028), (167, 44980),

Gene: Aneem_78 Start: 44778, Stop: 44341, Start Num: 66

Candidate Starts for Aneem_78:

(Start: 59 @44790 has 4 MA's), (Start: 66 @44778 has 25 MA's), (Start: 74 @44754 has 5 MA's), (Start: 85 @44715 has 3 MA's), (Start: 87 @44697 has 1 MA's), (103, 44628), (109, 44589), (114, 44562), (116, 44547), (118, 44538), (124, 44508), (125, 44505), (130, 44484), (165, 44391), (169, 44382),

Gene: AnnaL29_74 Start: 45079, Stop: 44672, Start Num: 69

Candidate Starts for AnnaL29_74:

(Start: 69 @45079 has 156 MA's), (Start: 74 @45055 has 5 MA's), (91, 44977), (107, 44911), (109, 44893), (111, 44881), (130, 44788), (131, 44785), (166, 44704),

Gene: Anon_79 Start: 44695, Stop: 44303, Start Num: 69

Candidate Starts for Anon_79:

(2, 45103), (6, 45046), (7, 45040), (12, 44920), (13, 44917), (Start: 69 @44695 has 156 MA's), (72, 44677), (Start: 87 @44614 has 1 MA's), (91, 44593), (102, 44551), (104, 44548), (105, 44536), (109, 44512), (111, 44500), (125, 44428), (135, 44395), (138, 44380), (143, 44374), (171, 44311), (174, 44308),

Gene: Anselm_76 Start: 45193, Stop: 44774, Start Num: 69

Candidate Starts for Anselm_76:

(18, 45361), (20, 45343), (21, 45340), (40, 45241), (Start: 69 @45193 has 156 MA's), (Start: 85 @45130 has 3 MA's), (Start: 87 @45112 has 1 MA's), (109, 45007), (125, 44923), (130, 44902), (134, 44890), (151, 44845), (160, 44821), (164, 44812), (178, 44788),

Gene: Anthony_72 Start: 44226, Stop: 43804, Start Num: 69

Candidate Starts for Anthony_72:

(Start: 69 @44226 has 156 MA's), (76, 44199), (84, 44169), (91, 44127), (111, 44037), (119, 43995), (121, 43968), (141, 43896),

Gene: ArcherNM_68 Start: 44346, Stop: 43933, Start Num: 69

Candidate Starts for ArcherNM_68:

(24, 44457), (48, 44382), (Start: 69 @44346 has 156 MA's), (91, 44244), (109, 44160), (130, 44055), (131, 44052), (134, 44043), (151, 44004), (179, 43947),

Gene: Arissanae_73 Start: 44444, Stop: 44019, Start Num: 69

Candidate Starts for Arissanae_73:

(Start: 69 @44444 has 156 MA's), (Start: 74 @44420 has 5 MA's), (105, 44279), (106, 44276), (109, 44255), (116, 44213), (124, 44174), (125, 44171), (130, 44150), (131, 44147), (134, 44138), (153, 44090), (157, 44081), (182, 44033),

Gene: Artemis2UCLA_76 Start: 43341, Stop: 42928, Start Num: 55

Candidate Starts for Artemis2UCLA_76:

(Start: 55 @43341 has 19 MA's), (Start: 69 @43314 has 156 MA's), (83, 43257), (90, 43218), (112, 43110), (113, 43107), (116, 43089), (124, 43050), (125, 43047), (131, 43023), (137, 43005), (144, 42990), (163, 42951),

Gene: Ayanochan_74 Start: 43879, Stop: 43484, Start Num: 74

Candidate Starts for Ayanochan_74:

(Start: 55 @43927 has 19 MA's), (Start: 69 @43903 has 156 MA's), (Start: 74 @43879 has 5 MA's), (84, 43843), (93, 43792), (106, 43738), (109, 43717), (112, 43696), (116, 43675), (117, 43669), (124, 43636), (125, 43633), (130, 43612), (131, 43609), (157, 43543), (158, 43540), (181, 43498), (183, 43495),

Gene: BABullseye_70 Start: 41954, Stop: 41568, Start Num: 69

Candidate Starts for BABullseye_70:

(Start: 62 @41969 has 15 MA's), (Start: 69 @41954 has 156 MA's), (Start: 74 @41930 has 5 MA's), (82, 41900), (Start: 85 @41891 has 3 MA's), (Start: 87 @41873 has 1 MA's), (90, 41858), (117, 41723), (124, 41690), (125, 41687), (131, 41663), (134, 41654), (151, 41621), (163, 41591), (164, 41588),

Gene: BabyBack_71 Start: 44781, Stop: 44368, Start Num: 69

Candidate Starts for BabyBack_71:

(Start: 69 @44781 has 156 MA's), (Start: 87 @44700 has 1 MA's), (112, 44574), (124, 44514), (125, 44511), (130, 44490), (134, 44478), (151, 44439), (169, 44397), (178, 44385), (179, 44382),

Gene: Bachome_75 Start: 43657, Stop: 43220, Start Num: 66

Candidate Starts for Bachome_75:

(Start: 59 @43669 has 4 MA's), (Start: 66 @43657 has 25 MA's), (Start: 74 @43633 has 5 MA's), (Start: 85 @43594 has 3 MA's), (Start: 87 @43576 has 1 MA's), (103, 43507), (109, 43468), (114, 43441), (116, 43426), (118, 43417), (124, 43387), (125, 43384), (130, 43363), (165, 43270), (169, 43261),

Gene: Bactobuster_67 Start: 44476, Stop: 44054, Start Num: 59

Candidate Starts for Bactobuster_67:

(Start: 59 @44476 has 4 MA's), (Start: 69 @44455 has 156 MA's), (77, 44425), (83, 44398), (Start: 87 @44374 has 1 MA's), (92, 44347), (101, 44314), (109, 44272), (125, 44185), (132, 44158), (144, 44122), (153, 44101), (168, 44068), (170, 44065),

Gene: Baehexic_73 Start: 44533, Stop: 44102, Start Num: 61

Candidate Starts for Baehexic_73:

(23, 44629), (25, 44623), (Start: 61 @44533 has 3 MA's), (Start: 69 @44521 has 156 MA's), (Start: 85 @44458 has 3 MA's), (Start: 87 @44440 has 1 MA's), (109, 44335), (112, 44314), (125, 44251), (130, 44230), (131, 44227), (134, 44218), (160, 44152), (169, 44134), (178, 44119),

Gene: Battleship_85 Start: 45243, Stop: 44845, Start Num: 69

Candidate Starts for Battleship_85:

(Start: 69 @45243 has 156 MA's), (75, 45213), (91, 45135), (109, 45060), (111, 45048), (124, 44979), (125, 44976), (149, 44901), (167, 44853),

Gene: Beemo_76 Start: 44134, Stop: 43739, Start Num: 74

Candidate Starts for Beemo_76:

(Start: 69 @44158 has 156 MA's), (Start: 74 @44134 has 5 MA's), (84, 44098), (93, 44047), (106, 43993), (109, 43972), (112, 43951), (116, 43930), (117, 43924), (124, 43891), (125, 43888), (130, 43867), (131, 43864), (157, 43798), (158, 43795), (179, 43756), (181, 43753), (183, 43750),

Gene: Bellris_74 Start: 44011, Stop: 43592, Start Num: 69

Candidate Starts for Bellris_74:

(Start: 69 @44011 has 156 MA's), (Start: 74 @43987 has 5 MA's), (Start: 87 @43930 has 1 MA's), (106, 43843), (109, 43822), (117, 43774), (124, 43741), (125, 43738), (131, 43714), (137, 43696), (156, 43651),

Gene: BengiVuitton_74 Start: 44822, Stop: 44409, Start Num: 69

Candidate Starts for BengiVuitton_74:

(41, 44867), (54, 44846), (Start: 69 @44822 has 156 MA's), (Start: 85 @44759 has 3 MA's), (Start: 87 @44741 has 1 MA's), (107, 44654), (112, 44615), (117, 44588), (130, 44531), (131, 44528), (158, 44459), (176, 44426),

Gene: BennyP_77 Start: 43507, Stop: 43094, Start Num: 55

Candidate Starts for BennyP_77:

(Start: 55 @43507 has 19 MA's), (Start: 69 @43480 has 156 MA's), (83, 43423), (90, 43384), (112, 43276), (113, 43273), (116, 43255), (124, 43216), (125, 43213), (131, 43189), (137, 43171), (144, 43156), (163, 43117),

Gene: Benvolio_72 Start: 44419, Stop: 44006, Start Num: 69

Candidate Starts for Benvolio_72:

(16, 44644), (17, 44620), (19, 44578), (22, 44560), (48, 44452), (58, 44431), (Start: 69 @44419 has 156 MA's), (Start: 85 @44356 has 3 MA's), (107, 44251), (112, 44212), (130, 44128), (134, 44116), (153, 44068), (158, 44056), (162, 44050), (176, 44023), (179, 44020),

Gene: BiancaTri92_73 Start: 44785, Stop: 44372, Start Num: 69

Candidate Starts for BiancaTri92_73:

(Start: 69 @44785 has 156 MA's), (Start: 78 @44749 has 1 MA's), (106, 44620), (109, 44599), (125, 44515), (130, 44494), (134, 44482), (142, 44464), (144, 44458), (151, 44443), (176, 44389), (179, 44386),

Gene: BlessJoy_77 Start: 43863, Stop: 43450, Start Num: 55

Candidate Starts for BlessJoy_77:

(Start: 55 @43863 has 19 MA's), (Start: 69 @43836 has 156 MA's), (83, 43779), (90, 43740), (112, 43632), (113, 43629), (116, 43611), (124, 43572), (125, 43569), (131, 43545), (137, 43527), (144, 43512), (163, 43473),

Gene: Blinn1_81 Start: 44565, Stop: 44179, Start Num: 69

Candidate Starts for Blinn1_81:

(44, 44610), (Start: 55 @44589 has 19 MA's), (Start: 69 @44565 has 156 MA's), (90, 44469), (97, 44439), (112, 44361), (116, 44340), (124, 44301), (125, 44298), (131, 44274), (157, 44214),

Gene: Blue7_78 Start: 43561, Stop: 43148, Start Num: 55

Candidate Starts for Blue7_78:

(Start: 55 @43561 has 19 MA's), (Start: 69 @43534 has 156 MA's), (83, 43477), (90, 43438), (112, 43330), (113, 43327), (116, 43309), (124, 43270), (125, 43267), (131, 43243), (137, 43225), (144, 43210), (163, 43171),

Gene: BobSwaget_67 Start: 42656, Stop: 42240, Start Num: 69

Candidate Starts for BobSwaget_67:

(60, 42668), (Start: 69 @42656 has 156 MA's), (Start: 85 @42593 has 3 MA's), (98, 42521), (117, 42422), (124, 42389), (125, 42386), (130, 42365), (134, 42353), (151, 42311), (158, 42290), (165, 42278), (178, 42257), (179, 42254), (181, 42251),

Gene: BogosyJay_76 Start: 44392, Stop: 43976, Start Num: 69

Candidate Starts for BogosyJay_76:

(Start: 55 @44416 has 19 MA's), (Start: 69 @44392 has 156 MA's), (Start: 74 @44368 has 5 MA's), (83, 44335), (106, 44224), (109, 44203), (124, 44122), (125, 44119), (130, 44098), (131, 44095), (137, 44077), (179, 43987),

Gene: Bowtie_78 Start: 44818, Stop: 44348, Start Num: 52

Candidate Starts for Bowtie_78:

(50, 44821), (Start: 52 @44818 has 1 MA's), (79, 44749), (Start: 87 @44704 has 1 MA's), (103, 44635), (109, 44596), (114, 44569), (116, 44554), (118, 44545), (124, 44515), (125, 44512), (130, 44491), (165, 44398), (169, 44389),

Gene: Bradman_77 Start: 44213, Stop: 43776, Start Num: 69

Candidate Starts for Bradman_77:

(25, 44315), (28, 44309), (Start: 69 @44213 has 156 MA's), (112, 44003), (122, 43943), (130, 43913), (131, 43910), (134, 43901), (151, 43862), (185, 43790),

Gene: Bud_72 Start: 43215, Stop: 42778, Start Num: 66

Candidate Starts for Bud_72:

(Start: 59 @43227 has 4 MA's), (Start: 66 @43215 has 25 MA's), (Start: 74 @43191 has 5 MA's), (Start: 85 @43152 has 3 MA's), (Start: 87 @43134 has 1 MA's), (103, 43065), (109, 43026), (114, 42999), (116, 42984), (118, 42975), (124, 42945), (125, 42942), (130, 42921), (165, 42828), (169, 42819),

Gene: Buggy_76 Start: 45178, Stop: 44759, Start Num: 69

Candidate Starts for Buggy_76:

(39, 45226), (51, 45208), (58, 45193), (Start: 69 @45178 has 156 MA's), (Start: 85 @45115 has 3 MA's), (109, 44992), (112, 44971), (125, 44908), (134, 44875), (151, 44830), (153, 44821), (160, 44806), (169, 44788), (171, 44785), (178, 44773),

Gene: C3_70 Start: 44797, Stop: 44378, Start Num: 69

Candidate Starts for C3_70:

(Start: 69 @44797 has 156 MA's), (82, 44743), (92, 44689), (109, 44614), (117, 44566), (124, 44533), (125, 44530), (130, 44509), (144, 44467), (158, 44434), (169, 44410), (180, 44392),

Gene: CRB1_76 Start: 45367, Stop: 44954, Start Num: 69

Candidate Starts for CRB1_76:

(26, 45469), (Start: 69 @45367 has 156 MA's), (Start: 85 @45304 has 3 MA's), (Start: 87 @45286 has 1 MA's), (107, 45199), (112, 45160), (130, 45076), (131, 45073), (158, 45004), (164, 44992), (176, 44971),

Gene: Candra_75 Start: 43553, Stop: 43263, Start Num: 90

Candidate Starts for Candra_75:

(Start: 62 @43664 has 15 MA's), (Start: 69 @43649 has 156 MA's), (Start: 74 @43625 has 5 MA's), (82, 43595), (Start: 85 @43586 has 3 MA's), (Start: 87 @43568 has 1 MA's), (90, 43553), (117, 43418), (124, 43385), (125, 43382), (131, 43358), (134, 43349), (151, 43316), (163, 43286), (164, 43283),

Gene: Catalina_78 Start: 44214, Stop: 43795, Start Num: 69

Candidate Starts for Catalina_78:

(14, 44463), (Start: 55 @44238 has 19 MA's), (Start: 69 @44214 has 156 MA's), (Start: 74 @44190 has 5 MA's), (84, 44154), (93, 44103), (106, 44049), (109, 44028), (112, 44007), (116, 43986), (117, 43980), (124, 43947), (125, 43944), (130, 43923), (131, 43920), (157, 43854), (158, 43851), (179, 43812), (181, 43809), (183, 43806),

Gene: Celestiallunch_71 Start: 43395, Stop: 42979, Start Num: 69

Candidate Starts for Celestiallunch_71:

(Start: 69 @43395 has 156 MA's), (Start: 74 @43371 has 5 MA's), (82, 43341), (83, 43338), (Start: 85 @43332 has 3 MA's), (105, 43230), (109, 43206), (112, 43185), (117, 43158), (124, 43125), (125, 43122), (130, 43101), (131, 43098),

Gene: Centaur_75 Start: 44736, Stop: 44317, Start Num: 69

Candidate Starts for Centaur_75:

(23, 44835), (25, 44829), (39, 44778), (Start: 69 @44736 has 156 MA's), (Start: 85 @44673 has 3 MA's), (Start: 87 @44655 has 1 MA's), (107, 44568), (112, 44529), (117, 44502), (125, 44466), (130, 44445), (131, 44442), (134, 44433), (160, 44367), (169, 44349), (178, 44334),

Gene: Changeling_73 Start: 45069, Stop: 44656, Start Num: 69

Candidate Starts for Changeling_73:

(Start: 69 @45069 has 156 MA's), (91, 44967), (102, 44922), (107, 44901), (109, 44883), (112, 44862), (130, 44778), (131, 44775), (134, 44766), (151, 44727), (179, 44670),

Gene: Chargerpower_72 Start: 43217, Stop: 42828, Start Num: 66

Candidate Starts for Chargerpower_72:

(Start: 66 @43217 has 25 MA's), (107, 43052), (117, 42986), (125, 42953), (132, 42926), (133, 42923), (150, 42875), (152, 42869),

Gene: Charm_70 Start: 43332, Stop: 42913, Start Num: 69

Candidate Starts for Charm_70:

(Start: 69 @43332 has 156 MA's), (73, 43311), (Start: 74 @43308 has 5 MA's), (83, 43275), (105, 43167), (106, 43164), (109, 43143), (112, 43122), (124, 43062), (125, 43059), (130, 43038), (137, 43017), (151, 42987),

Gene: Chartreuse_76 Start: 42975, Stop: 42574, Start Num: 62

Candidate Starts for Chartreuse_76:

(Start: 62 @42975 has 15 MA's), (Start: 69 @42960 has 156 MA's), (Start: 74 @42936 has 5 MA's), (82, 42906), (Start: 85 @42897 has 3 MA's), (Start: 87 @42879 has 1 MA's), (90, 42864), (117, 42729), (124, 42696), (125, 42693), (131, 42669), (134, 42660), (151, 42627), (163, 42597), (164, 42594),

Gene: Che12_79 Start: 44481, Stop: 44062, Start Num: 69

Candidate Starts for Che12_79:

(1, 44940), (4, 44883), (5, 44877), (10, 44754), (11, 44751), (27, 44574), (38, 44529), (Start: 69 @44481 has 156 MA's), (82, 44427), (Start: 85 @44418 has 3 MA's), (Start: 87 @44400 has 1 MA's), (88, 44397), (95, 44361), (98, 44346), (109, 44295), (111, 44283), (117, 44247), (122, 44214), (134,

44172), (157, 44115), (179, 44076),

Gene: ChipMunk_75 Start: 46219, Stop: 45800, Start Num: 69

Candidate Starts for ChipMunk_75:

(39, 46267), (Start: 69 @46219 has 156 MA's), (Start: 78 @46183 has 1 MA's), (Start: 85 @46156 has 3 MA's), (Start: 87 @46138 has 1 MA's), (109, 46033), (125, 45949), (130, 45928), (131, 45925), (134, 45916), (147, 45877), (153, 45862), (160, 45847), (169, 45829), (171, 45826), (178, 45814),

Gene: CloudWang3_77 Start: 43853, Stop: 43440, Start Num: 55

Candidate Starts for CloudWang3_77:

(Start: 55 @43853 has 19 MA's), (Start: 69 @43826 has 156 MA's), (83, 43769), (90, 43730), (112, 43622), (113, 43619), (116, 43601), (124, 43562), (125, 43559), (131, 43535), (137, 43517), (144, 43502), (163, 43463),

Gene: CogOmlette_74 Start: 44008, Stop: 43589, Start Num: 69

Candidate Starts for CogOmlette_74:

(Start: 69 @44008 has 156 MA's), (Start: 74 @43984 has 5 MA's), (Start: 87 @43927 has 1 MA's), (106, 43840), (109, 43819), (117, 43771), (124, 43738), (125, 43735), (131, 43711), (137, 43693), (156, 43648),

Gene: Colin_74 Start: 45728, Stop: 45375, Start Num: 85

Candidate Starts for Colin_74:

(Start: 69 @45791 has 156 MA's), (84, 45731), (Start: 85 @45728 has 3 MA's), (91, 45689), (109, 45605), (111, 45593), (130, 45500), (134, 45488), (160, 45425), (169, 45407), (179, 45389),

Gene: Conquerage_74 Start: 43913, Stop: 43470, Start Num: 55

Candidate Starts for Conquerage_74:

(Start: 55 @43913 has 19 MA's), (Start: 69 @43889 has 156 MA's), (Start: 74 @43865 has 5 MA's), (84, 43829), (93, 43778), (106, 43724), (109, 43703), (112, 43682), (116, 43661), (117, 43655), (124, 43622), (125, 43619), (130, 43598), (131, 43595), (157, 43529), (158, 43526), (181, 43484), (183, 43481),

Gene: Cookiedough_77 Start: 44279, Stop: 43878, Start Num: 62

Candidate Starts for Cookiedough_77:

(Start: 62 @44279 has 15 MA's), (Start: 69 @44264 has 156 MA's), (Start: 74 @44240 has 5 MA's), (82, 44210), (Start: 85 @44201 has 3 MA's), (Start: 87 @44183 has 1 MA's), (90, 44168), (117, 44033), (124, 44000), (125, 43997), (131, 43973), (134, 43964), (151, 43931), (163, 43901), (164, 43898),

Gene: Crucio_75 Start: 45094, Stop: 44675, Start Num: 69

Candidate Starts for Crucio_75:

(47, 45133), (Start: 61 @45106 has 3 MA's), (Start: 69 @45094 has 156 MA's), (81, 45043), (Start: 85 @45031 has 3 MA's), (Start: 87 @45013 has 1 MA's), (109, 44908), (111, 44896), (112, 44887), (130, 44803), (134, 44791), (151, 44746), (160, 44722), (171, 44701), (178, 44689),

Gene: D29_70 Start: 45277, Stop: 44858, Start Num: 69

Candidate Starts for D29_70:

(Start: 69 @45277 has 156 MA's), (92, 45169), (109, 45094), (117, 45046), (124, 45013), (125, 45010), (130, 44989), (144, 44947), (158, 44914), (164, 44902), (169, 44890), (180, 44872),

Gene: D32_76 Start: 45277, Stop: 44858, Start Num: 69

Candidate Starts for D32_76:

(Start: 69 @45277 has 156 MA's), (92, 45169), (109, 45094), (117, 45046), (124, 45013), (125, 45010), (130, 44989), (144, 44947), (158, 44914), (164, 44902), (169, 44890), (180, 44872),

Gene: DBQu4n_77 Start: 45257, Stop: 44838, Start Num: 69

Candidate Starts for DBQu4n_77:

(Start: 69 @45257 has 156 MA's), (82, 45203), (92, 45149), (109, 45074), (117, 45026), (124, 44993), (125, 44990), (130, 44969), (144, 44927), (151, 44915), (158, 44894), (164, 44882), (169, 44870), (180, 44852),

Gene: DaVinci_75 Start: 43029, Stop: 42628, Start Num: 62

Candidate Starts for DaVinci_75:

(Start: 62 @43029 has 15 MA's), (Start: 69 @43014 has 156 MA's), (Start: 74 @42990 has 5 MA's), (82, 42960), (Start: 85 @42951 has 3 MA's), (Start: 87 @42933 has 1 MA's), (90, 42918), (117, 42783), (124, 42750), (125, 42747), (131, 42723), (134, 42714), (151, 42681), (163, 42651), (164, 42648),

Gene: Dalmatian_75 Start: 44912, Stop: 44493, Start Num: 69

Candidate Starts for Dalmatian_75:

(18, 45080), (20, 45062), (21, 45059), (40, 44960), (Start: 69 @44912 has 156 MA's), (Start: 85 @44849 has 3 MA's), (Start: 87 @44831 has 1 MA's), (109, 44726), (125, 44642), (130, 44621), (134, 44609), (151, 44564), (160, 44540), (164, 44531), (178, 44507),

Gene: DeerParkTS_71 Start: 43815, Stop: 43402, Start Num: 69

Candidate Starts for DeerParkTS_71:

(Start: 69 @43815 has 156 MA's), (96, 43689), (109, 43629), (125, 43545), (130, 43524), (134, 43512), (144, 43488), (151, 43473),

Gene: DekHockey33_84 Start: 45328, Stop: 44930, Start Num: 69

Candidate Starts for DekHockey33_84:

(Start: 69 @45328 has 156 MA's), (75, 45298), (91, 45220), (109, 45145), (111, 45133), (124, 45064), (125, 45061), (149, 44986), (167, 44938),

Gene: Deloris_74 Start: 44518, Stop: 44105, Start Num: 69

Candidate Starts for Deloris_74:

(41, 44563), (54, 44542), (Start: 69 @44518 has 156 MA's), (Start: 85 @44455 has 3 MA's), (Start: 87 @44437 has 1 MA's), (107, 44350), (112, 44311), (117, 44284), (130, 44227), (131, 44224), (158, 44155), (176, 44122),

Gene: DelvinSonDorr_73 Start: 43573, Stop: 43283, Start Num: 90

Candidate Starts for DelvinSonDorr_73:

(Start: 62 @43684 has 15 MA's), (Start: 69 @43669 has 156 MA's), (Start: 74 @43645 has 5 MA's), (82, 43615), (Start: 85 @43606 has 3 MA's), (Start: 87 @43588 has 1 MA's), (90, 43573), (117, 43438), (124, 43405), (125, 43402), (131, 43378), (134, 43369), (151, 43336), (163, 43306), (164, 43303),

Gene: Dignity_76 Start: 45216, Stop: 44797, Start Num: 69

Candidate Starts for Dignity_76:

(39, 45264), (51, 45246), (58, 45231), (Start: 69 @45216 has 156 MA's), (Start: 85 @45153 has 3 MA's), (109, 45030), (112, 45009), (125, 44946), (134, 44913), (151, 44868), (153, 44859), (160, 44844), (169, 44826), (171, 44823), (178, 44811),

Gene: Dorothea_77 Start: 44275, Stop: 43874, Start Num: 62

Candidate Starts for Dorothea_77:

(Start: 62 @44275 has 15 MA's), (Start: 69 @44260 has 156 MA's), (Start: 74 @44236 has 5 MA's), (82, 44206), (Start: 85 @44197 has 3 MA's), (Start: 87 @44179 has 1 MA's), (90, 44164), (117, 44029), (124, 43996), (125, 43993), (131, 43969), (134, 43960), (151, 43927), (163, 43897), (164, 43894),

Gene: Drake55_76 Start: 44822, Stop: 44391, Start Num: 61

Candidate Starts for Drake55_76:

(39, 44861), (Start: 61 @44822 has 3 MA's), (Start: 69 @44810 has 156 MA's), (Start: 85 @44747 has 3 MA's), (Start: 87 @44729 has 1 MA's), (109, 44624), (112, 44603), (117, 44576), (125, 44540), (130, 44519), (131, 44516), (134, 44507), (160, 44441), (164, 44432), (169, 44423), (178, 44408),

Gene: DreamTeam1_70 Start: 43179, Stop: 42760, Start Num: 69

Candidate Starts for DreamTeam1_70:

(Start: 69 @43179 has 156 MA's), (73, 43158), (Start: 74 @43155 has 5 MA's), (83, 43122), (105, 43014), (106, 43011), (109, 42990), (112, 42969), (124, 42909), (125, 42906), (130, 42885), (137, 42864), (151, 42834),

Gene: DudeLittle_73 Start: 44678, Stop: 44259, Start Num: 69

Candidate Starts for DudeLittle_73:

(18, 44846), (20, 44828), (21, 44825), (40, 44726), (Start: 69 @44678 has 156 MA's), (Start: 85 @44615 has 3 MA's), (Start: 87 @44597 has 1 MA's), (109, 44492), (125, 44408), (130, 44387), (134, 44375), (151, 44330), (160, 44306), (164, 44297), (178, 44273),

Gene: Duplo_77 Start: 45314, Stop: 44895, Start Num: 69

Candidate Starts for Duplo_77:

(Start: 69 @45314 has 156 MA's), (82, 45260), (92, 45206), (109, 45131), (117, 45083), (124, 45050), (125, 45047), (130, 45026), (144, 44984), (151, 44972), (158, 44951), (164, 44939), (169, 44927), (180, 44909),

Gene: EZMoney23_71 Start: 44532, Stop: 44167, Start Num: 81

Candidate Starts for EZMoney23_71:

(Start: 69 @44583 has 156 MA's), (Start: 78 @44547 has 1 MA's), (81, 44532), (Start: 85 @44520 has 3 MA's), (Start: 87 @44502 has 1 MA's), (113, 44370), (125, 44310), (131, 44286), (151, 44238), (153, 44229), (158, 44217), (176, 44184),

Gene: EagleEye_80 Start: 45356, Stop: 44949, Start Num: 69

Candidate Starts for EagleEye_80:

(Start: 69 @45356 has 156 MA's), (Start: 74 @45332 has 5 MA's), (79, 45320), (Start: 87 @45275 has 1 MA's), (104, 45206), (106, 45191), (109, 45170), (113, 45146), (124, 45089), (125, 45086), (134, 45053), (175, 44963), (176, 44960),

Gene: Ebony_77 Start: 44349, Stop: 43912, Start Num: 66

Candidate Starts for Ebony_77:

(Start: 59 @44361 has 4 MA's), (Start: 66 @44349 has 25 MA's), (Start: 74 @44325 has 5 MA's), (Start: 85 @44286 has 3 MA's), (103, 44199), (109, 44160), (114, 44133), (116, 44118), (118, 44109), (124, 44079), (125, 44076), (130, 44055), (165, 43962), (169, 43953),

Gene: Echild_75 Start: 44443, Stop: 44030, Start Num: 69

Candidate Starts for Echild_75:

(16, 44668), (17, 44644), (19, 44602), (22, 44584), (48, 44476), (58, 44455), (Start: 69 @44443 has 156 MA's), (84, 44383), (Start: 85 @44380 has 3 MA's), (107, 44275), (112, 44236), (130, 44152), (131, 44149), (134, 44140), (153, 44092), (158, 44080), (162, 44074), (176, 44047), (179, 44044),

Gene: EdogawaKiddo_74 Start: 44156, Stop: 43761, Start Num: 74

Candidate Starts for EdogawaKiddo_74:

(Start: 69 @44180 has 156 MA's), (Start: 74 @44156 has 5 MA's), (84, 44120), (93, 44069), (106, 44015), (109, 43994), (112, 43973), (116, 43952), (117, 43946), (124, 43913), (125, 43910), (130, 43889), (131, 43886), (157, 43820), (158, 43817), (179, 43778), (181, 43775), (183, 43772),

Gene: Eidsmoe_74 Start: 43881, Stop: 43462, Start Num: 69

Candidate Starts for Eidsmoe_74:

(Start: 55 @43905 has 19 MA's), (Start: 69 @43881 has 156 MA's), (Start: 74 @43857 has 5 MA's), (84, 43821), (93, 43770), (106, 43716), (109, 43695), (112, 43674), (116, 43653), (117, 43647), (124, 43614), (125, 43611), (130, 43590), (131, 43587), (157, 43521), (158, 43518), (181, 43476), (183, 43473),

Gene: Elephantoon_76 Start: 44034, Stop: 43615, Start Num: 69

Candidate Starts for Elephantoon_76:

(Start: 69 @44034 has 156 MA's), (Start: 74 @44010 has 5 MA's), (83, 43977), (Start: 87 @43953 has 1 MA's), (105, 43869), (106, 43866), (109, 43845), (124, 43764), (125, 43761), (131, 43737), (137, 43719),

Gene: Elle_77 Start: 43986, Stop: 43657, Start Num: 85

Candidate Starts for Elle_77:

(Start: 69 @44049 has 156 MA's), (72, 44031), (80, 44010), (Start: 85 @43986 has 3 MA's), (91, 43947), (101, 43908), (109, 43866), (124, 43785), (125, 43782), (131, 43758), (174, 43662),

Gene: EmyBug_73 Start: 43907, Stop: 43464, Start Num: 55

Candidate Starts for EmyBug_73:

(Start: 55 @43907 has 19 MA's), (Start: 69 @43883 has 156 MA's), (Start: 74 @43859 has 5 MA's), (84, 43823), (93, 43772), (106, 43718), (109, 43697), (112, 43676), (116, 43655), (117, 43649), (124, 43616), (125, 43613), (130, 43592), (131, 43589), (157, 43523), (158, 43520), (181, 43478), (183, 43475),

Gene: Epsocamisio_80 Start: 44618, Stop: 44220, Start Num: 69

Candidate Starts for Epsocamisio_80:

(Start: 69 @44618 has 156 MA's), (75, 44588), (91, 44510), (109, 44435), (111, 44423), (124, 44354), (125, 44351), (149, 44276), (167, 44228),

Gene: Equemioh13_74 Start: 44641, Stop: 44222, Start Num: 69

Candidate Starts for Equemioh13_74:

(39, 44683), (Start: 69 @44641 has 156 MA's), (Start: 85 @44578 has 3 MA's), (Start: 87 @44560 has 1 MA's), (107, 44473), (112, 44434), (117, 44407), (125, 44371), (130, 44350), (131, 44347), (134, 44338), (160, 44272), (169, 44254), (178, 44239),

Gene: EricB_76 Start: 43621, Stop: 43220, Start Num: 62

Candidate Starts for EricB_76:

(Start: 62 @43621 has 15 MA's), (Start: 69 @43606 has 156 MA's), (Start: 74 @43582 has 5 MA's), (82, 43552), (Start: 85 @43543 has 3 MA's), (Start: 87 @43525 has 1 MA's), (90, 43510), (117, 43375), (124, 43342), (125, 43339), (131, 43315), (134, 43306), (151, 43273), (163, 43243), (164, 43240),

Gene: Et2Brutus_76 Start: 44312, Stop: 43875, Start Num: 66

Candidate Starts for Et2Brutus_76:

(Start: 59 @44324 has 4 MA's), (Start: 66 @44312 has 25 MA's), (Start: 74 @44288 has 5 MA's), (Start: 85 @44249 has 3 MA's), (Start: 87 @44231 has 1 MA's), (103, 44162), (109, 44123), (114,

44096), (116, 44081), (118, 44072), (124, 44042), (125, 44039), (130, 44018), (165, 43925), (169, 43916),

Gene: EvilGenius_74 Start: 46220, Stop: 45801, Start Num: 69

Candidate Starts for EvilGenius_74:

(39, 46268), (Start: 69 @46220 has 156 MA's), (Start: 78 @46184 has 1 MA's), (Start: 85 @46157 has 3 MA's), (Start: 87 @46139 has 1 MA's), (109, 46034), (125, 45950), (130, 45929), (131, 45926), (134, 45917), (147, 45878), (153, 45863), (160, 45848), (169, 45830), (171, 45827), (178, 45815),

Gene: ExplosioNervosa_74 Start: 43949, Stop: 43530, Start Num: 69

Candidate Starts for ExplosioNervosa_74:

(Start: 55 @43973 has 19 MA's), (Start: 69 @43949 has 156 MA's), (Start: 74 @43925 has 5 MA's), (84, 43889), (93, 43838), (106, 43784), (109, 43763), (112, 43742), (116, 43721), (117, 43715), (124, 43682), (125, 43679), (130, 43658), (131, 43655), (157, 43589), (158, 43586), (181, 43544), (183, 43541),

Gene: Fameo_73 Start: 44721, Stop: 44302, Start Num: 69

Candidate Starts for Fameo_73:

(40, 44769), (Start: 69 @44721 has 156 MA's), (Start: 85 @44658 has 3 MA's), (Start: 87 @44640 has 1 MA's), (109, 44535), (125, 44451), (131, 44427), (134, 44418), (151, 44373), (160, 44349), (164, 44340), (178, 44316),

Gene: FatCactus_70 Start: 43678, Stop: 43250, Start Num: 69

Candidate Starts for FatCactus_70:

(Start: 69 @43678 has 156 MA's), (84, 43621), (91, 43579), (99, 43552), (111, 43489), (129, 43393), (130, 43387), (141, 43348), (158, 43297),

Gene: Fayely_74 Start: 43874, Stop: 43431, Start Num: 55

Candidate Starts for Fayely_74:

(Start: 55 @43874 has 19 MA's), (Start: 69 @43850 has 156 MA's), (Start: 74 @43826 has 5 MA's), (84, 43790), (93, 43739), (106, 43685), (109, 43664), (112, 43643), (116, 43622), (117, 43616), (124, 43583), (125, 43580), (130, 43559), (131, 43556), (157, 43490), (158, 43487), (181, 43445), (183, 43442),

Gene: Fibonacci_76 Start: 44318, Stop: 43881, Start Num: 66

Candidate Starts for Fibonacci_76:

(Start: 59 @44330 has 4 MA's), (Start: 66 @44318 has 25 MA's), (Start: 74 @44294 has 5 MA's), (Start: 85 @44255 has 3 MA's), (103, 44168), (109, 44129), (114, 44102), (116, 44087), (118, 44078), (124, 44048), (125, 44045), (130, 44024), (165, 43931), (169, 43922),

Gene: FiringLine_75 Start: 45076, Stop: 44657, Start Num: 69

Candidate Starts for FiringLine_75:

(47, 45115), (Start: 61 @45088 has 3 MA's), (Start: 69 @45076 has 156 MA's), (81, 45025), (Start: 85 @45013 has 3 MA's), (Start: 87 @44995 has 1 MA's), (109, 44890), (111, 44878), (112, 44869), (130, 44785), (134, 44773), (151, 44728), (160, 44704), (171, 44683), (178, 44671),

Gene: First_0075 Start: 44772, Stop: 44359, Start Num: 69

Candidate Starts for First_0075:

(Start: 69 @44772 has 156 MA's), (81, 44721), (84, 44712), (Start: 85 @44709 has 3 MA's), (Start: 87 @44691 has 1 MA's), (107, 44604), (112, 44565), (117, 44538), (130, 44481), (158, 44409), (176, 44376),

Gene: Flare16_75 Start: 44780, Stop: 44361, Start Num: 69

Candidate Starts for Flare16_75:

(23, 44879), (25, 44873), (39, 44822), (Start: 69 @44780 has 156 MA's), (Start: 85 @44717 has 3 MA's), (Start: 87 @44699 has 1 MA's), (107, 44612), (112, 44573), (117, 44546), (125, 44510), (130, 44489), (131, 44486), (134, 44477), (160, 44411), (169, 44393), (178, 44378),

Gene: Flaverint_78 Start: 44776, Stop: 44339, Start Num: 66

Candidate Starts for Flaverint_78:

(Start: 59 @44788 has 4 MA's), (Start: 66 @44776 has 25 MA's), (Start: 74 @44752 has 5 MA's), (Start: 85 @44713 has 3 MA's), (Start: 87 @44695 has 1 MA's), (103, 44626), (109, 44587), (114, 44560), (116, 44545), (118, 44536), (124, 44506), (125, 44503), (130, 44482), (165, 44389), (169, 44380),

Gene: ForesterFrank_70 Start: 44873, Stop: 44457, Start Num: 69

Candidate Starts for ForesterFrank_70:

(Start: 69 @44873 has 156 MA's), (107, 44702), (109, 44684), (130, 44579), (131, 44576), (134, 44567), (147, 44534), (151, 44528), (152, 44522), (158, 44507),

Gene: Gail_76 Start: 45154, Stop: 44759, Start Num: 65

Candidate Starts for Gail_76:

(Start: 65 @45154 has 5 MA's), (Start: 74 @45130 has 5 MA's), (104, 45007), (107, 44989), (109, 44971), (111, 44959), (117, 44923), (125, 44890), (130, 44869), (132, 44863),

Gene: Garak_78 Start: 43777, Stop: 43391, Start Num: 69

Candidate Starts for Garak_78:

(Start: 55 @43804 has 19 MA's), (Start: 69 @43777 has 156 MA's), (83, 43720), (90, 43681), (112, 43573), (113, 43570), (116, 43552), (124, 43513), (125, 43510), (131, 43486), (137, 43468), (144, 43453), (163, 43414),

Gene: GaugeLDP_70 Start: 44348, Stop: 43935, Start Num: 69

Candidate Starts for GaugeLDP_70:

(Start: 69 @44348 has 156 MA's), (Start: 87 @44267 has 1 MA's), (98, 44213), (125, 44078), (130, 44057), (147, 44012), (151, 44006), (157, 43988), (169, 43964), (178, 43952), (179, 43949),

Gene: Georgie2_76 Start: 45121, Stop: 44702, Start Num: 69

Candidate Starts for Georgie2_76:

(47, 45160), (Start: 61 @45133 has 3 MA's), (Start: 69 @45121 has 156 MA's), (Start: 78 @45085 has 1 MA's), (81, 45070), (Start: 85 @45058 has 3 MA's), (Start: 87 @45040 has 1 MA's), (109, 44935), (111, 44923), (112, 44914), (130, 44830), (134, 44818), (151, 44773), (160, 44749), (171, 44728), (178, 44716),

Gene: Gilberta_74 Start: 43652, Stop: 43215, Start Num: 66

Candidate Starts for Gilberta_74:

(Start: 59 @43664 has 4 MA's), (Start: 66 @43652 has 25 MA's), (Start: 74 @43628 has 5 MA's), (Start: 85 @43589 has 3 MA's), (Start: 87 @43571 has 1 MA's), (100, 43508), (103, 43502), (109, 43463), (114, 43436), (116, 43421), (118, 43412), (124, 43382), (125, 43379), (130, 43358), (165, 43265), (169, 43256),

Gene: Gladiator_74 Start: 43707, Stop: 43294, Start Num: 55

Candidate Starts for Gladiator_74:

(Start: 55 @43707 has 19 MA's), (Start: 69 @43680 has 156 MA's), (83, 43623), (90, 43584), (112, 43476), (113, 43473), (116, 43455), (124, 43416), (125, 43413), (131, 43389), (137, 43371), (144, 43356), (163, 43317),

Gene: Gratitude_72 Start: 44641, Stop: 44222, Start Num: 69

Candidate Starts for Gratitude_72:

(39, 44683), (Start: 69 @44641 has 156 MA's), (Start: 85 @44578 has 3 MA's), (Start: 87 @44560 has 1 MA's), (107, 44473), (112, 44434), (117, 44407), (125, 44371), (130, 44350), (131, 44347), (134, 44338), (160, 44272), (169, 44254), (178, 44239),

Gene: GreedyLawyer_72 Start: 43594, Stop: 43193, Start Num: 62

Candidate Starts for GreedyLawyer_72:

(Start: 62 @43594 has 15 MA's), (Start: 69 @43579 has 156 MA's), (Start: 74 @43555 has 5 MA's), (82, 43525), (Start: 85 @43516 has 3 MA's), (Start: 87 @43498 has 1 MA's), (90, 43483), (117, 43348), (124, 43315), (125, 43312), (131, 43288), (134, 43279), (151, 43246), (163, 43216), (164, 43213),

Gene: Gruunaga_76 Start: 43635, Stop: 43249, Start Num: 69

Candidate Starts for Gruunaga_76:

(Start: 55 @43662 has 19 MA's), (Start: 69 @43635 has 156 MA's), (83, 43578), (90, 43539), (112, 43431), (113, 43428), (116, 43410), (124, 43371), (125, 43368), (131, 43344), (137, 43326), (144, 43311), (163, 43272),

Gene: Hammer_77 Start: 43342, Stop: 42956, Start Num: 69

Candidate Starts for Hammer_77:

(Start: 55 @43369 has 19 MA's), (Start: 69 @43342 has 156 MA's), (83, 43285), (90, 43246), (112, 43138), (113, 43135), (116, 43117), (124, 43078), (125, 43075), (131, 43051), (137, 43033), (144, 43018), (163, 42979),

Gene: Hanray_74 Start: 44188, Stop: 43793, Start Num: 74

Candidate Starts for Hanray_74:

(Start: 69 @44212 has 156 MA's), (Start: 74 @44188 has 5 MA's), (84, 44152), (93, 44101), (106, 44047), (109, 44026), (112, 44005), (116, 43984), (117, 43978), (124, 43945), (125, 43942), (130, 43921), (131, 43918), (157, 43852), (158, 43849), (179, 43810), (181, 43807), (183, 43804),

Gene: HarryHoudini_75 Start: 44820, Stop: 44392, Start Num: 61

Candidate Starts for HarryHoudini_75:

(Start: 61 @44820 has 3 MA's), (Start: 69 @44808 has 156 MA's), (Start: 85 @44745 has 3 MA's), (Start: 87 @44727 has 1 MA's), (107, 44640), (109, 44622), (112, 44601), (125, 44538), (130, 44517), (131, 44514), (134, 44505), (160, 44439), (169, 44421), (178, 44406),

Gene: Heffalump_72 Start: 45189, Stop: 44770, Start Num: 69

Candidate Starts for Heffalump_72:

(40, 45237), (Start: 69 @45189 has 156 MA's), (Start: 85 @45126 has 3 MA's), (Start: 87 @45108 has 1 MA's), (109, 45003), (125, 44919), (131, 44895), (134, 44886), (151, 44841), (160, 44817), (164, 44808), (178, 44784),

Gene: Helmet_79 Start: 43804, Stop: 43391, Start Num: 55

Candidate Starts for Helmet_79:

(Start: 55 @43804 has 19 MA's), (Start: 69 @43777 has 156 MA's), (83, 43720), (90, 43681), (112, 43573), (113, 43570), (116, 43552), (124, 43513), (125, 43510), (131, 43486), (137, 43468), (144, 43453), (163, 43414),

Gene: Herbertwm_71 Start: 44474, Stop: 44079, Start Num: 69

Candidate Starts for Herbertwm_71:

(13, 44738), (32, 44561), (Start: 69 @44474 has 156 MA's), (Start: 85 @44411 has 3 MA's), (92, 44366), (98, 44342), (100, 44336), (106, 44312), (107, 44309), (111, 44279), (116, 44249), (117,

44243), (118, 44240), (124, 44210), (125, 44207), (138, 44159), (169, 44090),

Gene: Hexamo_76 Start: 43311, Stop: 42925, Start Num: 69

Candidate Starts for Hexamo_76:

(Start: 55 @43338 has 19 MA's), (Start: 69 @43311 has 156 MA's), (83, 43254), (90, 43215), (112, 43107), (113, 43104), (116, 43086), (124, 43047), (125, 43044), (131, 43020), (137, 43002), (144, 42987), (163, 42948),

Gene: HippoHollow_72 Start: 45776, Stop: 45480, Start Num: 94

Candidate Starts for HippoHollow_72:

(18, 46067), (21, 46046), (Start: 69 @45893 has 156 MA's), (Start: 85 @45830 has 3 MA's), (Start: 87 @45812 has 1 MA's), (94, 45776), (107, 45725), (109, 45707), (112, 45686), (130, 45602), (131, 45599), (134, 45590), (147, 45557), (176, 45497), (178, 45494),

Gene: Holec_74 Start: 44204, Stop: 43809, Start Num: 74

Candidate Starts for Holec_74:

(Start: 69 @44228 has 156 MA's), (Start: 74 @44204 has 5 MA's), (84, 44168), (93, 44117), (106, 44063), (109, 44042), (112, 44021), (116, 44000), (117, 43994), (124, 43961), (125, 43958), (130, 43937), (131, 43934), (157, 43868), (158, 43865), (179, 43826), (181, 43823), (183, 43820),

Gene: Hoot_72 Start: 41464, Stop: 41078, Start Num: 69

Candidate Starts for Hoot_72:

(Start: 62 @41479 has 15 MA's), (Start: 69 @41464 has 156 MA's), (Start: 74 @41440 has 5 MA's), (82, 41410), (Start: 85 @41401 has 3 MA's), (Start: 87 @41383 has 1 MA's), (90, 41368), (117, 41233), (124, 41200), (125, 41197), (131, 41173), (134, 41164), (151, 41131), (163, 41101), (164, 41098),

Gene: HortumSL17_77 Start: 44236, Stop: 43793, Start Num: 55

Candidate Starts for HortumSL17_77:

(14, 44461), (Start: 55 @44236 has 19 MA's), (Start: 69 @44212 has 156 MA's), (Start: 74 @44188 has 5 MA's), (84, 44152), (93, 44101), (106, 44047), (109, 44026), (112, 44005), (116, 43984), (117, 43978), (124, 43945), (125, 43942), (130, 43921), (131, 43918), (157, 43852), (158, 43849), (179, 43810), (181, 43807), (183, 43804),

Gene: Hutc2_72 Start: 43201, Stop: 42764, Start Num: 66

Candidate Starts for Hutc2_72:

(Start: 59 @43213 has 4 MA's), (Start: 66 @43201 has 25 MA's), (Start: 74 @43177 has 5 MA's), (Start: 85 @43138 has 3 MA's), (103, 43051), (109, 43012), (114, 42985), (116, 42970), (118, 42961), (124, 42931), (125, 42928), (130, 42907), (165, 42814), (169, 42805),

Gene: Insomnia_76 Start: 44493, Stop: 44056, Start Num: 66

Candidate Starts for Insomnia_76:

(Start: 59 @44505 has 4 MA's), (Start: 66 @44493 has 25 MA's), (Start: 74 @44469 has 5 MA's), (Start: 85 @44430 has 3 MA's), (103, 44343), (109, 44304), (114, 44277), (116, 44262), (118, 44253), (124, 44223), (125, 44220), (130, 44199), (165, 44106), (169, 44097),

Gene: IronMan_72 Start: 45946, Stop: 45518, Start Num: 56

Candidate Starts for IronMan_72:

(Start: 56 @45946 has 1 MA's), (83, 45862), (Start: 87 @45838 has 1 MA's), (92, 45811), (109, 45736), (125, 45649), (132, 45622), (144, 45586), (168, 45532), (170, 45529),

Gene: Isiphiwo_74 Start: 43606, Stop: 43244, Start Num: 74

Candidate Starts for Isiphiwo_74:

(Start: 62 @43645 has 15 MA's), (Start: 69 @43630 has 156 MA's), (Start: 74 @43606 has 5 MA's), (82, 43576), (Start: 85 @43567 has 3 MA's), (Start: 87 @43549 has 1 MA's), (90, 43534), (117, 43399), (124, 43366), (125, 43363), (131, 43339), (134, 43330), (151, 43297), (163, 43267), (164, 43264),

Gene: Iwokeuplikedis_76 Start: 45258, Stop: 44842, Start Num: 69

Candidate Starts for Iwokeuplikedis_76:

(Start: 69 @45258 has 156 MA's), (Start: 85 @45195 has 3 MA's), (Start: 87 @45177 has 1 MA's), (107, 45090), (109, 45072), (112, 45051), (117, 45024), (125, 44988), (130, 44967), (134, 44955), (160, 44889), (169, 44871), (178, 44856),

Gene: JSwag_83 Start: 44903, Stop: 44505, Start Num: 69

Candidate Starts for JSwag_83:

(Start: 69 @44903 has 156 MA's), (75, 44873), (91, 44795), (109, 44720), (111, 44708), (124, 44639), (125, 44636), (149, 44561), (167, 44513),

Gene: Jaan_73 Start: 46110, Stop: 45688, Start Num: 59

Candidate Starts for Jaan_73:

(Start: 59 @46110 has 4 MA's), (Start: 69 @46089 has 156 MA's), (77, 46059), (83, 46032), (Start: 87 @46008 has 1 MA's), (92, 45981), (101, 45948), (108, 45915), (109, 45906), (125, 45819), (132, 45792), (144, 45756), (153, 45735), (168, 45702), (170, 45699),

Gene: Jabith_76 Start: 44510, Stop: 44073, Start Num: 66

Candidate Starts for Jabith_76:

(Start: 59 @44522 has 4 MA's), (Start: 66 @44510 has 25 MA's), (Start: 74 @44486 has 5 MA's), (Start: 85 @44447 has 3 MA's), (103, 44360), (109, 44321), (114, 44294), (116, 44279), (118, 44270), (124, 44240), (125, 44237), (130, 44216), (165, 44123), (169, 44114),

Gene: Jeeves_78 Start: 44070, Stop: 43675, Start Num: 65

Candidate Starts for Jeeves_78:

(Start: 65 @44070 has 5 MA's), (103, 43926), (104, 43923), (107, 43905), (109, 43887), (111, 43875), (117, 43839), (125, 43806), (132, 43779), (133, 43776),

Gene: Jerm_76 Start: 45198, Stop: 44779, Start Num: 69

Candidate Starts for Jerm_76:

(23, 45303), (25, 45297), (39, 45246), (51, 45228), (58, 45213), (Start: 69 @45198 has 156 MA's), (Start: 85 @45135 has 3 MA's), (109, 45012), (112, 44991), (125, 44928), (134, 44895), (151, 44850), (153, 44841), (160, 44826), (169, 44808), (171, 44805), (178, 44793),

Gene: JewelBug_76 Start: 44366, Stop: 43965, Start Num: 62

Candidate Starts for JewelBug_76:

(Start: 62 @44366 has 15 MA's), (Start: 69 @44351 has 156 MA's), (Start: 74 @44327 has 5 MA's), (82, 44297), (Start: 85 @44288 has 3 MA's), (Start: 87 @44270 has 1 MA's), (90, 44255), (117, 44120), (124, 44087), (125, 44084), (131, 44060), (134, 44051), (151, 44018), (163, 43988), (164, 43985),

Gene: Jiawan_73 Start: 44220, Stop: 43825, Start Num: 74

Candidate Starts for Jiawan_73:

(Start: 69 @44244 has 156 MA's), (Start: 74 @44220 has 5 MA's), (84, 44184), (93, 44133), (106, 44079), (109, 44058), (112, 44037), (116, 44016), (117, 44010), (124, 43977), (125, 43974), (130, 43953), (131, 43950), (157, 43884), (158, 43881), (179, 43842), (181, 43839), (183, 43836),

Gene: Jordennis_75 Start: 43860, Stop: 43459, Start Num: 62

Candidate Starts for Jordennis_75:

(Start: 62 @43860 has 15 MA's), (Start: 69 @43845 has 156 MA's), (Start: 74 @43821 has 5 MA's), (82, 43791), (Start: 85 @43782 has 3 MA's), (Start: 87 @43764 has 1 MA's), (90, 43749), (117, 43614), (124, 43581), (125, 43578), (131, 43554), (134, 43545), (151, 43512), (163, 43482), (164, 43479),

Gene: Joselito_76 Start: 44530, Stop: 44093, Start Num: 66

Candidate Starts for Joselito_76:

(Start: 59 @44542 has 4 MA's), (Start: 66 @44530 has 25 MA's), (Start: 74 @44506 has 5 MA's), (Start: 85 @44467 has 3 MA's), (Start: 87 @44449 has 1 MA's), (103, 44380), (109, 44341), (114, 44314), (116, 44299), (118, 44290), (124, 44260), (125, 44257), (130, 44236), (165, 44143), (169, 44134),

Gene: JoshKayV_75 Start: 45230, Stop: 44811, Start Num: 69

Candidate Starts for JoshKayV_75:

(Start: 69 @45230 has 156 MA's), (Start: 85 @45167 has 3 MA's), (Start: 87 @45149 has 1 MA's), (109, 45044), (112, 45023), (117, 44996), (125, 44960), (130, 44939), (131, 44936), (134, 44927), (147, 44888), (151, 44882), (160, 44858), (164, 44849),

Gene: Journey13_64 Start: 41400, Stop: 40975, Start Num: 69

Candidate Starts for Journey13_64:

(46, 41442), (53, 41430), (Start: 69 @41400 has 156 MA's), (72, 41382), (80, 41361), (101, 41256), (122, 41127), (131, 41094), (134, 41085), (151, 41046), (157, 41028), (184, 40980),

Gene: Jsquared_78 Start: 44346, Stop: 43909, Start Num: 69

Candidate Starts for Jsquared_78:

(45, 44388), (Start: 69 @44346 has 156 MA's), (112, 44136), (122, 44076), (131, 44043), (134, 44034), (151, 43995), (185, 43923),

Gene: Kalpine_74 Start: 45137, Stop: 44724, Start Num: 69

Candidate Starts for Kalpine_74:

(Start: 69 @45137 has 156 MA's), (84, 45077), (Start: 85 @45074 has 3 MA's), (91, 45035), (111, 44939), (130, 44846), (134, 44834), (160, 44771), (179, 44738),

Gene: KatherineG_83 Start: 45215, Stop: 44817, Start Num: 69

Candidate Starts for KatherineG_83:

(Start: 69 @45215 has 156 MA's), (75, 45185), (91, 45107), (109, 45032), (111, 45020), (120, 44969), (124, 44951), (125, 44948), (149, 44873), (167, 44825),

Gene: Kazan_78 Start: 43634, Stop: 43233, Start Num: 62

Candidate Starts for Kazan_78:

(Start: 62 @43634 has 15 MA's), (Start: 69 @43619 has 156 MA's), (Start: 74 @43595 has 5 MA's), (82, 43565), (Start: 85 @43556 has 3 MA's), (Start: 87 @43538 has 1 MA's), (90, 43523), (117, 43388), (124, 43355), (125, 43352), (131, 43328), (134, 43319), (151, 43286), (163, 43256), (164, 43253),

Gene: Kerberos_77 Start: 45276, Stop: 44857, Start Num: 69

Candidate Starts for Kerberos_77:

(Start: 69 @45276 has 156 MA's), (82, 45222), (92, 45168), (109, 45093), (117, 45045), (124, 45012), (125, 45009), (130, 44988), (144, 44946), (151, 44934), (158, 44913), (169, 44889), (180, 44871),

Gene: Keziacharles14_73 Start: 44835, Stop: 44419, Start Num: 69

Candidate Starts for Keziacharles14_73:

(Start: 69 @44835 has 156 MA's), (Start: 74 @44811 has 5 MA's), (Start: 85 @44772 has 3 MA's), (Start: 87 @44754 has 1 MA's), (106, 44667), (109, 44646), (124, 44565), (125, 44562), (130, 44541), (137, 44520),

Gene: Kimba_75 Start: 44030, Stop: 43593, Start Num: 66

Candidate Starts for Kimba_75:

(Start: 59 @44042 has 4 MA's), (Start: 66 @44030 has 25 MA's), (Start: 74 @44006 has 5 MA's), (Start: 85 @43967 has 3 MA's), (Start: 87 @43949 has 1 MA's), (103, 43880), (109, 43841), (114, 43814), (116, 43799), (118, 43790), (124, 43760), (125, 43757), (130, 43736), (165, 43643), (169, 43634),

Gene: KingCyrus_74 Start: 46215, Stop: 45796, Start Num: 69

Candidate Starts for KingCyrus_74:

(39, 46263), (Start: 69 @46215 has 156 MA's), (Start: 78 @46179 has 1 MA's), (Start: 85 @46152 has 3 MA's), (Start: 87 @46134 has 1 MA's), (109, 46029), (125, 45945), (130, 45924), (131, 45921), (134, 45912), (147, 45873), (153, 45858), (160, 45843), (169, 45825), (171, 45822), (178, 45810),

Gene: Kinmap_78 Start: 43580, Stop: 43182, Start Num: 69

Candidate Starts for Kinmap_78:

(Start: 69 @43580 has 156 MA's), (71, 43565), (Start: 87 @43499 has 1 MA's), (103, 43436), (124, 43316), (125, 43313), (127, 43304), (136, 43280), (172, 43187),

Gene: Kipper29_77 Start: 43647, Stop: 43246, Start Num: 62

Candidate Starts for Kipper29_77:

(Start: 62 @43647 has 15 MA's), (Start: 69 @43632 has 156 MA's), (Start: 74 @43608 has 5 MA's), (82, 43578), (Start: 85 @43569 has 3 MA's), (Start: 87 @43551 has 1 MA's), (90, 43536), (117, 43401), (124, 43368), (125, 43365), (131, 43341), (134, 43332), (151, 43299), (163, 43269), (164, 43266),

Gene: Klodlith_71 Start: 43378, Stop: 42980, Start Num: 73

Candidate Starts for Klodlith_71:

(Start: 69 @43399 has 156 MA's), (73, 43378), (Start: 74 @43375 has 5 MA's), (83, 43342), (105, 43234), (106, 43231), (109, 43210), (112, 43189), (124, 43129), (125, 43126), (130, 43105), (137, 43084), (151, 43054),

Gene: Koduck_76 Start: 44123, Stop: 43686, Start Num: 69

Candidate Starts for Koduck_76:

(Start: 69 @44123 has 156 MA's), (111, 43922), (112, 43913), (122, 43853), (130, 43823), (131, 43820), (134, 43811), (151, 43772), (185, 43700),

Gene: Koko_78 Start: 44166, Stop: 43780, Start Num: 69

Candidate Starts for Koko_78:

(Start: 55 @44193 has 19 MA's), (Start: 69 @44166 has 156 MA's), (83, 44109), (90, 44070), (112, 43962), (113, 43959), (116, 43941), (124, 43902), (125, 43899), (131, 43875), (137, 43857), (144, 43842), (163, 43803),

Gene: L5_70 Start: 44276, Stop: 43839, Start Num: 69

Candidate Starts for L5_70:

(Start: 69 @44276 has 156 MA's), (111, 44075), (112, 44066), (122, 44006), (130, 43976), (131, 43973), (134, 43964), (151, 43925), (185, 43853),

Gene: LadyBird_78 Start: 45434, Stop: 45021, Start Num: 69

Candidate Starts for LadyBird_78:

(26, 45533), (41, 45476), (58, 45446), (Start: 69 @45434 has 156 MA's), (84, 45374), (Start: 85 @45371 has 3 MA's), (Start: 87 @45353 has 1 MA's), (107, 45266), (130, 45143), (131, 45140), (158, 45071), (176, 45038),

Gene: Landor_73 Start: 46033, Stop: 45611, Start Num: 59

Candidate Starts for Landor_73:

(Start: 59 @46033 has 4 MA's), (Start: 69 @46012 has 156 MA's), (77, 45982), (83, 45955), (Start: 87 @45931 has 1 MA's), (92, 45904), (101, 45871), (109, 45829), (125, 45742), (132, 45715), (144, 45679), (153, 45658), (168, 45625), (170, 45622),

Gene: Larenn_71 Start: 44473, Stop: 44057, Start Num: 69

Candidate Starts for Larenn_71:

(37, 44524), (Start: 69 @44473 has 156 MA's), (82, 44419), (Start: 85 @44410 has 3 MA's), (Start: 87 @44392 has 1 MA's), (98, 44338), (115, 44254), (117, 44239), (125, 44203), (130, 44182), (134, 44170), (151, 44131), (158, 44110), (170, 44086),

Gene: LastResort_81 Start: 45146, Stop: 44748, Start Num: 69

Candidate Starts for LastResort_81:

(Start: 69 @45146 has 156 MA's), (75, 45116), (91, 45038), (109, 44963), (111, 44951), (124, 44882), (125, 44879), (149, 44804), (167, 44756),

Gene: Leogania_73 Start: 45163, Stop: 44750, Start Num: 69

Candidate Starts for Leogania_73:

(Start: 69 @45163 has 156 MA's), (Start: 78 @45127 has 1 MA's), (106, 44998), (109, 44977), (125, 44893), (130, 44872), (134, 44860), (142, 44842), (144, 44836), (151, 44821), (176, 44767), (179, 44764),

Gene: Leviathan_76 Start: 45265, Stop: 44846, Start Num: 69

Candidate Starts for Leviathan_76:

(39, 45313), (51, 45295), (58, 45280), (Start: 69 @45265 has 156 MA's), (Start: 85 @45202 has 3 MA's), (109, 45079), (112, 45058), (125, 44995), (134, 44962), (151, 44917), (153, 44908), (160, 44893), (169, 44875), (171, 44872), (178, 44860),

Gene: LilTurb_75 Start: 45079, Stop: 44660, Start Num: 69

Candidate Starts for LilTurb_75:

(39, 45127), (51, 45109), (58, 45094), (Start: 69 @45079 has 156 MA's), (Start: 85 @45016 has 3 MA's), (109, 44893), (112, 44872), (125, 44809), (134, 44776), (151, 44731), (153, 44722), (160, 44707), (169, 44689), (171, 44686), (178, 44674),

Gene: Lilbunny_76 Start: 43435, Stop: 43022, Start Num: 55

Candidate Starts for Lilbunny_76:

(Start: 55 @43435 has 19 MA's), (Start: 69 @43408 has 156 MA's), (83, 43351), (90, 43312), (112, 43204), (113, 43201), (116, 43183), (124, 43144), (125, 43141), (131, 43117), (137, 43099), (144, 43084), (163, 43045),

Gene: Lilleskat_73 Start: 44169, Stop: 43750, Start Num: 69

Candidate Starts for Lilleskat_73:

(Start: 69 @44169 has 156 MA's), (Start: 74 @44145 has 5 MA's), (84, 44109), (93, 44058), (106, 44004), (109, 43983), (112, 43962), (116, 43941), (117, 43935), (124, 43902), (125, 43899), (130, 43878), (131, 43875), (157, 43809), (158, 43806), (179, 43767), (181, 43764), (183, 43761),

Gene: LionsBait_74 Start: 45777, Stop: 45481, Start Num: 94

Candidate Starts for LionsBait_74:

(23, 46008), (25, 46002), (39, 45945), (Start: 69 @45894 has 156 MA's), (Start: 85 @45831 has 3 MA's), (Start: 87 @45813 has 1 MA's), (94, 45777), (107, 45726), (109, 45708), (112, 45687), (125, 45624), (130, 45603), (131, 45600), (134, 45591), (147, 45558), (176, 45498), (178, 45495),

Gene: LogiBear_74 Start: 43138, Stop: 42716, Start Num: 69

Candidate Starts for LogiBear_74:

(32, 43186), (Start: 69 @43138 has 156 MA's), (Start: 87 @43057 has 1 MA's), (102, 42988), (109, 42949), (111, 42937), (124, 42868), (125, 42865), (145, 42799), (155, 42778), (159, 42769), (161, 42766),

Gene: Lokk_68 Start: 43280, Stop: 42864, Start Num: 69

Candidate Starts for Lokk_68:

(60, 43292), (Start: 69 @43280 has 156 MA's), (Start: 85 @43217 has 3 MA's), (98, 43145), (117, 43046), (124, 43013), (125, 43010), (130, 42989), (134, 42977), (151, 42935), (158, 42914), (165, 42902), (178, 42881), (179, 42878), (181, 42875),

Gene: LoneWolf_77 Start: 44460, Stop: 44041, Start Num: 69

Candidate Starts for LoneWolf_77:

(3, 44889), (8, 44832), (9, 44763), (14, 44706), (15, 44703), (Start: 69 @44460 has 156 MA's), (Start: 74 @44436 has 5 MA's), (83, 44403), (Start: 87 @44379 has 1 MA's), (105, 44295), (106, 44292), (109, 44271), (124, 44190), (125, 44187), (130, 44166), (131, 44163), (137, 44145), (173, 44067), (179, 44055),

Gene: Looper_82 Start: 45058, Stop: 44660, Start Num: 69

Candidate Starts for Looper_82:

(Start: 69 @45058 has 156 MA's), (75, 45028), (91, 44950), (109, 44875), (111, 44863), (120, 44812), (124, 44794), (125, 44791), (149, 44716), (167, 44668),

Gene: Loser_76 Start: 45354, Stop: 44947, Start Num: 68

Candidate Starts for Loser_76:

(30, 45441), (Start: 68 @45354 has 2 MA's), (Start: 74 @45330 has 5 MA's), (80, 45315), (107, 45186), (109, 45168), (111, 45156), (131, 45060), (166, 44979),

Gene: Luchador_77 Start: 45554, Stop: 45159, Start Num: 65

Candidate Starts for Luchador_77:

(Start: 65 @45554 has 5 MA's), (Start: 74 @45530 has 5 MA's), (103, 45410), (104, 45407), (107, 45389), (109, 45371), (111, 45359), (117, 45323), (125, 45290), (132, 45263),

Gene: Lucivia_78 Start: 44809, Stop: 44372, Start Num: 66

Candidate Starts for Lucivia_78:

(Start: 59 @44821 has 4 MA's), (Start: 66 @44809 has 25 MA's), (Start: 74 @44785 has 5 MA's), (Start: 85 @44746 has 3 MA's), (Start: 87 @44728 has 1 MA's), (103, 44659), (109, 44620), (114, 44593), (116, 44578), (118, 44569), (124, 44539), (125, 44536), (130, 44515), (165, 44422), (169, 44413),

Gene: Lucyedi_79 Start: 45552, Stop: 45145, Start Num: 69

Candidate Starts for Lucyedi_79:

(Start: 69 @45552 has 156 MA's), (Start: 74 @45528 has 5 MA's), (79, 45516), (Start: 87 @45471 has 1 MA's), (104, 45402), (106, 45387), (109, 45366), (113, 45342), (124, 45285), (125, 45282), (134, 45249), (175, 45159), (176, 45156),

Gene: MaCh_77 Start: 44773, Stop: 44336, Start Num: 66

Candidate Starts for MaCh_77:

(Start: 59 @44785 has 4 MA's), (Start: 66 @44773 has 25 MA's), (Start: 74 @44749 has 5 MA's), (Start: 85 @44710 has 3 MA's), (Start: 87 @44692 has 1 MA's), (100, 44629), (103, 44623), (109, 44584), (114, 44557), (116, 44542), (118, 44533), (124, 44503), (125, 44500), (130, 44479), (165, 44386), (169, 44377),

Gene: Mabel_77 Start: 44774, Stop: 44337, Start Num: 66

Candidate Starts for Mabel_77:

(Start: 59 @44786 has 4 MA's), (Start: 66 @44774 has 25 MA's), (Start: 74 @44750 has 5 MA's), (Start: 85 @44711 has 3 MA's), (Start: 87 @44693 has 1 MA's), (103, 44624), (109, 44585), (114, 44558), (116, 44543), (118, 44534), (124, 44504), (125, 44501), (130, 44480), (165, 44387), (169, 44378),

Gene: MajorMajor_76 Start: 44213, Stop: 43776, Start Num: 69

Candidate Starts for MajorMajor_76:

(25, 44315), (28, 44309), (Start: 69 @44213 has 156 MA's), (112, 44003), (122, 43943), (130, 43913), (131, 43910), (134, 43901), (151, 43862), (185, 43790),

Gene: Malec_72 Start: 45040, Stop: 44624, Start Num: 69

Candidate Starts for Malec_72:

(37, 45091), (Start: 69 @45040 has 156 MA's), (82, 44986), (Start: 85 @44977 has 3 MA's), (Start: 87 @44959 has 1 MA's), (98, 44905), (115, 44821), (117, 44806), (125, 44770), (130, 44749), (134, 44737), (151, 44698), (158, 44677), (170, 44653),

Gene: Maminiaina_76 Start: 44374, Stop: 43958, Start Num: 69

Candidate Starts for Maminiaina_76:

(Start: 55 @44398 has 19 MA's), (Start: 69 @44374 has 156 MA's), (Start: 74 @44350 has 5 MA's), (83, 44317), (106, 44206), (109, 44185), (124, 44104), (125, 44101), (130, 44080), (131, 44077), (137, 44059), (179, 43969),

Gene: McFly_78 Start: 44248, Stop: 43862, Start Num: 69

Candidate Starts for McFly_78:

(Start: 62 @44263 has 15 MA's), (Start: 69 @44248 has 156 MA's), (Start: 74 @44224 has 5 MA's), (82, 44194), (Start: 85 @44185 has 3 MA's), (Start: 87 @44167 has 1 MA's), (90, 44152), (117, 44017), (124, 43984), (125, 43981), (131, 43957), (134, 43948), (151, 43915), (163, 43885), (164, 43882),

Gene: MegTheThird_71 Start: 43394, Stop: 42978, Start Num: 69

Candidate Starts for MegTheThird_71:

(Start: 69 @43394 has 156 MA's), (Start: 74 @43370 has 5 MA's), (82, 43340), (83, 43337), (Start: 85 @43331 has 3 MA's), (105, 43229), (109, 43205), (112, 43184), (117, 43157), (124, 43124), (125, 43121), (130, 43100), (131, 43097),

Gene: MiculUcigas_75 Start: 44683, Stop: 44264, Start Num: 69

Candidate Starts for MiculUcigas_75:

(23, 44782), (25, 44776), (39, 44725), (Start: 69 @44683 has 156 MA's), (Start: 85 @44620 has 3 MA's), (Start: 87 @44602 has 1 MA's), (107, 44515), (112, 44476), (117, 44449), (125, 44413), (130, 44392), (134, 44380), (160, 44314), (169, 44296), (178, 44281),

Gene: Miko_68 Start: 44058, Stop: 43642, Start Num: 69

Candidate Starts for Miko_68:

(60, 44070), (Start: 69 @44058 has 156 MA's), (Start: 85 @43995 has 3 MA's), (98, 43923), (117, 43824), (124, 43791), (125, 43788), (130, 43767), (134, 43755), (151, 43713), (158, 43692), (165, 43680), (178, 43659), (179, 43656), (181, 43653),

Gene: MinecraftSteve_83 Start: 45039, Stop: 44641, Start Num: 69

Candidate Starts for MinecraftSteve_83:

(Start: 69 @45039 has 156 MA's), (75, 45009), (91, 44931), (109, 44856), (111, 44844), (124, 44775), (125, 44772), (149, 44697), (167, 44649),

Gene: Minispark_74 Start: 44005, Stop: 43586, Start Num: 69

Candidate Starts for Minispark_74:

(Start: 69 @44005 has 156 MA's), (Start: 74 @43981 has 5 MA's), (Start: 87 @43924 has 1 MA's), (106, 43837), (109, 43816), (117, 43768), (124, 43735), (125, 43732), (131, 43708), (137, 43690), (156, 43645),

Gene: MissWhite_73 Start: 43236, Stop: 42826, Start Num: 74

Candidate Starts for MissWhite_73:

(Start: 69 @43263 has 156 MA's), (Start: 74 @43236 has 5 MA's), (95, 43137), (104, 43107), (109, 43071), (122, 42990), (134, 42948), (147, 42915), (151, 42909), (153, 42900), (157, 42891), (185, 42840),

Gene: Mulciber_75 Start: 44315, Stop: 43878, Start Num: 66

Candidate Starts for Mulciber_75:

(Start: 59 @44327 has 4 MA's), (Start: 66 @44315 has 25 MA's), (Start: 74 @44291 has 5 MA's), (Start: 85 @44252 has 3 MA's), (Start: 87 @44234 has 1 MA's), (103, 44165), (109, 44126), (114, 44099), (116, 44084), (118, 44075), (124, 44045), (125, 44042), (130, 44021), (165, 43928), (169, 43919),

Gene: Munch_77 Start: 44778, Stop: 44341, Start Num: 66

Candidate Starts for Munch_77:

(Start: 59 @44790 has 4 MA's), (Start: 66 @44778 has 25 MA's), (Start: 74 @44754 has 5 MA's), (Start: 85 @44715 has 3 MA's), (Start: 87 @44697 has 1 MA's), (103, 44628), (109, 44589), (114, 44562), (116, 44547), (118, 44538), (124, 44508), (125, 44505), (130, 44484), (165, 44391), (169, 44382),

Gene: Myxus_76 Start: 44236, Stop: 43793, Start Num: 55

Candidate Starts for Myxus_76:

(14, 44461), (Start: 55 @44236 has 19 MA's), (Start: 69 @44212 has 156 MA's), (Start: 74 @44188 has 5 MA's), (84, 44152), (93, 44101), (106, 44047), (109, 44026), (112, 44005), (116, 43984), (117, 43978), (124, 43945), (125, 43942), (130, 43921), (131, 43918), (157, 43852), (158, 43849), (179, 43810), (181, 43807), (183, 43804),

Gene: NaSiaTalie_75 Start: 44777, Stop: 44358, Start Num: 69

Candidate Starts for NaSiaTalie_75:

(23, 44876), (25, 44870), (39, 44819), (Start: 69 @44777 has 156 MA's), (Start: 85 @44714 has 3 MA's), (Start: 87 @44696 has 1 MA's), (107, 44609), (112, 44570), (117, 44543), (125, 44507), (130, 44486), (131, 44483), (134, 44474), (160, 44408), (169, 44390), (178, 44375),

Gene: Naji_77 Start: 45277, Stop: 44858, Start Num: 69

Candidate Starts for Naji_77:

(Start: 69 @45277 has 156 MA's), (92, 45169), (109, 45094), (117, 45046), (124, 45013), (125, 45010), (130, 44989), (144, 44947), (158, 44914), (164, 44902), (169, 44890), (180, 44872),

Gene: Nebulosus_80 Start: 44703, Stop: 44305, Start Num: 69

Candidate Starts for Nebulosus_80:

(Start: 69 @44703 has 156 MA's), (75, 44673), (91, 44595), (109, 44520), (111, 44508), (124, 44439), (125, 44436), (149, 44361), (167, 44313),

Gene: Nedarya_78 Start: 44930, Stop: 44535, Start Num: 69

Candidate Starts for Nedarya_78:

(Start: 69 @44930 has 156 MA's), (75, 44903), (83, 44870), (102, 44786), (106, 44768), (107, 44765), (111, 44735), (124, 44666), (125, 44663), (146, 44597), (167, 44543),

Gene: Neeharika16_76 Start: 43730, Stop: 43329, Start Num: 62

Candidate Starts for Neeharika16_76:

(Start: 62 @43730 has 15 MA's), (Start: 69 @43715 has 156 MA's), (Start: 74 @43691 has 5 MA's), (82, 43661), (Start: 85 @43652 has 3 MA's), (Start: 87 @43634 has 1 MA's), (90, 43619), (117, 43484), (124, 43451), (125, 43448), (131, 43424), (134, 43415), (151, 43382), (163, 43352), (164, 43349),

Gene: Newrala_76 Start: 44069, Stop: 43668, Start Num: 62

Candidate Starts for Newrala_76:

(Start: 62 @44069 has 15 MA's), (Start: 69 @44054 has 156 MA's), (Start: 74 @44030 has 5 MA's), (82, 44000), (Start: 85 @43991 has 3 MA's), (Start: 87 @43973 has 1 MA's), (90, 43958), (117, 43823), (124, 43790), (125, 43787), (131, 43763), (134, 43754), (151, 43721), (163, 43691), (164, 43688),

Gene: NicoleTera_72 Start: 44794, Stop: 44381, Start Num: 69

Candidate Starts for NicoleTera_72:

(Start: 69 @44794 has 156 MA's), (104, 44644), (107, 44626), (109, 44608), (130, 44503), (134, 44491), (151, 44452), (179, 44395),

Gene: NothingSpecial_70 Start: 44782, Stop: 44381, Start Num: 67

Candidate Starts for NothingSpecial_70:

(Start: 67 @44782 has 2 MA's), (Start: 69 @44779 has 156 MA's), (92, 44671), (109, 44596), (112, 44575), (116, 44554), (117, 44548), (118, 44545), (124, 44515), (125, 44512), (130, 44491), (131, 44488), (153, 44428), (157, 44419),

Gene: Odin_76 Start: 44758, Stop: 44339, Start Num: 69

Candidate Starts for Odin_76:

(31, 44836), (36, 44809), (38, 44806), (Start: 69 @44758 has 156 MA's), (95, 44638), (98, 44623), (100, 44617), (106, 44593), (112, 44551), (122, 44491), (123, 44488), (131, 44458), (134, 44449), (157, 44392), (179, 44353),

Gene: Onglai_74 Start: 42392, Stop: 41997, Start Num: 74

Candidate Starts for Onglai_74:

(Start: 69 @42416 has 156 MA's), (Start: 74 @42392 has 5 MA's), (84, 42356), (93, 42305), (106, 42251), (109, 42230), (112, 42209), (116, 42188), (117, 42182), (124, 42149), (125, 42146), (130, 42125), (131, 42122), (157, 42056), (158, 42053), (179, 42014), (181, 42011), (183, 42008),

Gene: Oofda_82 Start: 44994, Stop: 44596, Start Num: 69

Candidate Starts for Oofda_82:

(Start: 69 @44994 has 156 MA's), (75, 44964), (91, 44886), (109, 44811), (111, 44799), (124, 44730), (125, 44727), (149, 44652), (167, 44604),

Gene: Orange_76 Start: 44327, Stop: 43890, Start Num: 66

Candidate Starts for Orange_76:

(Start: 59 @44339 has 4 MA's), (Start: 66 @44327 has 25 MA's), (Start: 74 @44303 has 5 MA's), (Start: 85 @44264 has 3 MA's), (Start: 87 @44246 has 1 MA's), (103, 44177), (109, 44138), (114, 44111), (116, 44096), (118, 44087), (124, 44057), (125, 44054), (130, 44033), (165, 43940), (169, 43931),

Gene: PackMan_75 Start: 44087, Stop: 43668, Start Num: 69

Candidate Starts for PackMan_75:

(14, 44336), (Start: 55 @44111 has 19 MA's), (Start: 69 @44087 has 156 MA's), (Start: 74 @44063 has 5 MA's), (84, 44027), (93, 43976), (106, 43922), (109, 43901), (112, 43880), (116, 43859), (117, 43853), (124, 43820), (125, 43817), (130, 43796), (131, 43793), (157, 43727), (158, 43724), (179, 43685), (181, 43682), (183, 43679),

Gene: PainterBoy_78 Start: 45261, Stop: 44854, Start Num: 69

Candidate Starts for PainterBoy_78:

(Start: 69 @45261 has 156 MA's), (Start: 74 @45237 has 5 MA's), (79, 45225), (Start: 87 @45180 has 1 MA's), (104, 45111), (106, 45096), (109, 45075), (113, 45051), (124, 44994), (125, 44991), (134, 44958), (175, 44868), (176, 44865),

Gene: Petersenfast_71 Start: 43209, Stop: 42772, Start Num: 66

Candidate Starts for Petersenfast_71:

(Start: 59 @43221 has 4 MA's), (Start: 66 @43209 has 25 MA's), (Start: 74 @43185 has 5 MA's), (Start: 85 @43146 has 3 MA's), (103, 43059), (109, 43020), (114, 42993), (116, 42978), (118, 42969), (124, 42939), (125, 42936), (130, 42915), (165, 42822), (169, 42813),

Gene: Ph8s_79 Start: 44796, Stop: 44377, Start Num: 69

Candidate Starts for Ph8s_79:

(10, 45069), (11, 45066), (27, 44889), (38, 44844), (Start: 69 @44796 has 156 MA's), (Start: 85 @44733 has 3 MA's), (Start: 87 @44715 has 1 MA's), (88, 44712), (98, 44661), (109, 44610), (117, 44562), (122, 44529), (134, 44487), (157, 44430), (179, 44391),

Gene: Phaded_70 Start: 45992, Stop: 45570, Start Num: 59

Candidate Starts for Phaded_70:

(Start: 59 @45992 has 4 MA's), (Start: 69 @45971 has 156 MA's), (77, 45941), (83, 45914), (Start: 87 @45890 has 1 MA's), (92, 45863), (101, 45830), (109, 45788), (125, 45701), (132, 45674), (144, 45638), (153, 45617), (168, 45584), (170, 45581),

Gene: Phaeder_76 Start: 44087, Stop: 43668, Start Num: 69

Candidate Starts for Phaeder_76:

(14, 44336), (Start: 55 @44111 has 19 MA's), (Start: 69 @44087 has 156 MA's), (Start: 74 @44063 has 5 MA's), (84, 44027), (93, 43976), (106, 43922), (109, 43901), (112, 43880), (116, 43859), (117, 43853), (124, 43820), (125, 43817), (130, 43796), (131, 43793), (157, 43727), (158, 43724), (179, 43685), (181, 43682), (183, 43679),

Gene: Pharaoh_70 Start: 44179, Stop: 43772, Start Num: 69

Candidate Starts for Pharaoh_70:

(54, 44209), (Start: 69 @44179 has 156 MA's), (Start: 74 @44155 has 5 MA's), (Start: 78 @44143 has 1 MA's), (83, 44122), (100, 44041), (109, 43996), (117, 43942), (125, 43906), (128, 43894), (132, 43879), (140, 43864), (177, 43783),

Gene: Phonnegut_76 Start: 44157, Stop: 43738, Start Num: 69

Candidate Starts for Phonnegut_76:

(Start: 69 @44157 has 156 MA's), (Start: 74 @44133 has 5 MA's), (84, 44097), (93, 44046), (106, 43992), (109, 43971), (112, 43950), (116, 43929), (117, 43923), (124, 43890), (125, 43887), (130,

43866), (131, 43863), (157, 43797), (158, 43794), (179, 43755), (181, 43752), (183, 43749),

Gene: Pioneer_76 Start: 44133, Stop: 43738, Start Num: 74

Candidate Starts for Pioneer_76:

(Start: 69 @44157 has 156 MA's), (Start: 74 @44133 has 5 MA's), (84, 44097), (93, 44046), (106, 43992), (109, 43971), (112, 43950), (116, 43929), (117, 43923), (124, 43890), (125, 43887), (130, 43866), (131, 43863), (157, 43797), (158, 43794), (179, 43755), (181, 43752), (183, 43749),

Gene: Piro94_74 Start: 44742, Stop: 44326, Start Num: 69

Candidate Starts for Piro94_74:

(39, 44793), (Start: 61 @44754 has 3 MA's), (Start: 69 @44742 has 156 MA's), (Start: 85 @44679 has 3 MA's), (Start: 87 @44661 has 1 MA's), (109, 44556), (112, 44535), (125, 44472), (130, 44451), (131, 44448), (134, 44439), (160, 44373), (169, 44355), (178, 44340),

Gene: Pmask_76 Start: 44267, Stop: 43866, Start Num: 62

Candidate Starts for Pmask_76:

(Start: 62 @44267 has 15 MA's), (Start: 69 @44252 has 156 MA's), (Start: 74 @44228 has 5 MA's), (82, 44198), (Start: 85 @44189 has 3 MA's), (Start: 87 @44171 has 1 MA's), (90, 44156), (117, 44021), (124, 43988), (125, 43985), (131, 43961), (134, 43952), (151, 43919), (163, 43889), (164, 43886),

Gene: Polyphemus_78 Start: 44355, Stop: 44050, Start Num: 87

Candidate Starts for Polyphemus_78:

(Start: 62 @44451 has 15 MA's), (Start: 69 @44436 has 156 MA's), (Start: 74 @44412 has 5 MA's), (82, 44382), (Start: 85 @44373 has 3 MA's), (Start: 87 @44355 has 1 MA's), (90, 44340), (117, 44205), (124, 44172), (125, 44169), (131, 44145), (134, 44136), (151, 44103), (163, 44073), (164, 44070),

Gene: Pomar16_77 Start: 45317, Stop: 44898, Start Num: 69

Candidate Starts for Pomar16_77:

(Start: 69 @45317 has 156 MA's), (82, 45263), (92, 45209), (109, 45134), (117, 45086), (124, 45053), (125, 45050), (130, 45029), (144, 44987), (151, 44975), (158, 44954), (164, 44942), (169, 44930), (180, 44912),

Gene: Power_74 Start: 45119, Stop: 44700, Start Num: 69

Candidate Starts for Power_74:

(47, 45158), (Start: 61 @45131 has 3 MA's), (Start: 69 @45119 has 156 MA's), (Start: 78 @45083 has 1 MA's), (81, 45068), (Start: 85 @45056 has 3 MA's), (Start: 87 @45038 has 1 MA's), (109, 44933), (111, 44921), (112, 44912), (130, 44828), (134, 44816), (151, 44771), (160, 44747), (171, 44726), (178, 44714),

Gene: Priamo_78 Start: 43907, Stop: 43521, Start Num: 69

Candidate Starts for Priamo_78:

(44, 43952), (Start: 55 @43931 has 19 MA's), (Start: 69 @43907 has 156 MA's), (90, 43811), (97, 43781), (112, 43703), (116, 43682), (124, 43643), (125, 43640), (131, 43616), (157, 43556),

Gene: Priya_74 Start: 43884, Stop: 43465, Start Num: 69

Candidate Starts for Priya_74:

(Start: 55 @43908 has 19 MA's), (Start: 69 @43884 has 156 MA's), (Start: 74 @43860 has 5 MA's), (84, 43824), (93, 43773), (106, 43719), (109, 43698), (112, 43677), (116, 43656), (117, 43650), (124, 43617), (125, 43614), (130, 43593), (131, 43590), (157, 43524), (158, 43521), (181, 43479), (183, 43476),

Gene: Prudy_68 Start: 44804, Stop: 44460, Start Num: 86

Candidate Starts for Prudy_68:

(49, 44906), (57, 44891), (Start: 68 @44873 has 2 MA's), (86, 44804), (Start: 87 @44792 has 1 MA's), (89, 44780), (91, 44771), (107, 44705), (109, 44687), (112, 44666), (130, 44582), (131, 44579), (134, 44570), (147, 44537), (157, 44513), (179, 44474),

Gene: Pukovnik_71 Start: 45610, Stop: 45206, Start Num: 67

Candidate Starts for Pukovnik_71:

(Start: 67 @45610 has 2 MA's), (Start: 69 @45607 has 156 MA's), (92, 45499), (109, 45424), (116, 45382), (117, 45376), (124, 45343), (125, 45340), (130, 45319), (131, 45316), (153, 45256), (157, 45247), (164, 45232),

Gene: Qobbit_74 Start: 43870, Stop: 43427, Start Num: 55

Candidate Starts for Qobbit_74:

(Start: 55 @43870 has 19 MA's), (Start: 69 @43846 has 156 MA's), (Start: 74 @43822 has 5 MA's), (84, 43786), (93, 43735), (106, 43681), (109, 43660), (112, 43639), (116, 43618), (117, 43612), (124, 43579), (125, 43576), (130, 43555), (131, 43552), (157, 43486), (158, 43483), (181, 43441), (183, 43438),

Gene: QueenB2_72 Start: 44402, Stop: 43983, Start Num: 69

Candidate Starts for QueenB2_72:

(40, 44450), (Start: 69 @44402 has 156 MA's), (Start: 85 @44339 has 3 MA's), (Start: 87 @44321 has 1 MA's), (109, 44216), (125, 44132), (131, 44108), (134, 44099), (151, 44054), (160, 44030), (164, 44021), (178, 43997),

Gene: QueenBeesly_75 Start: 45076, Stop: 44657, Start Num: 69

Candidate Starts for QueenBeesly_75:

(47, 45115), (Start: 61 @45088 has 3 MA's), (Start: 69 @45076 has 156 MA's), (81, 45025), (Start: 85 @45013 has 3 MA's), (Start: 87 @44995 has 1 MA's), (109, 44890), (111, 44878), (112, 44869), (130, 44785), (134, 44773), (151, 44728), (160, 44704), (171, 44683), (178, 44671),

Gene: Quokka_76 Start: 44213, Stop: 43776, Start Num: 69

Candidate Starts for Quokka_76:

(25, 44315), (28, 44309), (Start: 69 @44213 has 156 MA's), (112, 44003), (122, 43943), (130, 43913), (131, 43910), (134, 43901), (151, 43862), (185, 43790),

Gene: Rachaly_70 Start: 44203, Stop: 43787, Start Num: 69

Candidate Starts for Rachaly_70:

(60, 44215), (Start: 69 @44203 has 156 MA's), (Start: 85 @44140 has 3 MA's), (98, 44068), (117, 43969), (124, 43936), (125, 43933), (130, 43912), (134, 43900), (151, 43858), (158, 43837), (165, 43825), (178, 43804), (179, 43801), (181, 43798),

Gene: Rahalelujah_76 Start: 44020, Stop: 43601, Start Num: 69

Candidate Starts for Rahalelujah_76:

(Start: 69 @44020 has 156 MA's), (Start: 74 @43996 has 5 MA's), (Start: 87 @43939 has 1 MA's), (106, 43852), (109, 43831), (117, 43783), (124, 43750), (125, 43747), (131, 43723), (137, 43705), (156, 43660),

Gene: Ravana_84 Start: 46406, Stop: 46008, Start Num: 69

Candidate Starts for Ravana_84:

(Start: 69 @46406 has 156 MA's), (75, 46376), (91, 46298), (109, 46223), (111, 46211), (124, 46142), (125, 46139), (149, 46064), (167, 46016),

Gene: ReMo_81 Start: 45143, Stop: 44745, Start Num: 69

Candidate Starts for ReMo_81:

(Start: 69 @45143 has 156 MA's), (75, 45113), (91, 45035), (109, 44960), (111, 44948), (124, 44879), (125, 44876), (149, 44801), (167, 44753),

Gene: RedRock_73 Start: 45123, Stop: 44716, Start Num: 68

Candidate Starts for RedRock_73:

(43, 45162), (Start: 68 @45123 has 2 MA's), (Start: 74 @45099 has 5 MA's), (91, 45021), (107, 44955), (109, 44937), (130, 44832),

Gene: Remus_83 Start: 45073, Stop: 44675, Start Num: 69

Candidate Starts for Remus_83:

(Start: 69 @45073 has 156 MA's), (75, 45043), (91, 44965), (109, 44890), (111, 44878), (124, 44809), (125, 44806), (149, 44731), (167, 44683),

Gene: Retro23_75 Start: 44806, Stop: 44387, Start Num: 69

Candidate Starts for Retro23_75:

(18, 44974), (20, 44956), (21, 44953), (40, 44854), (Start: 69 @44806 has 156 MA's), (Start: 85 @44743 has 3 MA's), (Start: 87 @44725 has 1 MA's), (109, 44620), (125, 44536), (130, 44515), (134, 44503), (151, 44458), (153, 44449), (160, 44434), (164, 44425), (178, 44401),

Gene: Rifter_77 Start: 42938, Stop: 42552, Start Num: 69

Candidate Starts for Rifter_77:

(Start: 55 @42965 has 19 MA's), (Start: 69 @42938 has 156 MA's), (83, 42881), (90, 42842), (112, 42734), (113, 42731), (116, 42713), (124, 42674), (125, 42671), (131, 42647), (137, 42629), (144, 42614), (163, 42575),

Gene: Roksolana_77 Start: 43672, Stop: 43286, Start Num: 69

Candidate Starts for Roksolana_77:

(Start: 55 @43699 has 19 MA's), (Start: 69 @43672 has 156 MA's), (83, 43615), (90, 43576), (112, 43468), (113, 43465), (116, 43447), (124, 43408), (125, 43405), (131, 43381), (137, 43363), (144, 43348), (163, 43309),

Gene: Rosalind_81 Start: 44967, Stop: 44569, Start Num: 69

Candidate Starts for Rosalind_81:

(Start: 69 @44967 has 156 MA's), (75, 44937), (91, 44859), (109, 44784), (111, 44772), (124, 44703), (125, 44700), (149, 44625), (167, 44577),

Gene: RyeScarlet_77 Start: 44108, Stop: 43713, Start Num: 74

Candidate Starts for RyeScarlet_77:

(Start: 69 @44132 has 156 MA's), (Start: 74 @44108 has 5 MA's), (84, 44072), (93, 44021), (106, 43967), (109, 43946), (112, 43925), (116, 43904), (117, 43898), (124, 43865), (125, 43862), (130, 43841), (131, 43838), (157, 43772), (158, 43769), (179, 43730), (181, 43727), (183, 43724),

Gene: Sachima_72 Start: 44089, Stop: 43694, Start Num: 74

Candidate Starts for Sachima_72:

(Start: 69 @44113 has 156 MA's), (Start: 74 @44089 has 5 MA's), (84, 44053), (93, 44002), (106, 43948), (109, 43927), (112, 43906), (116, 43885), (117, 43879), (124, 43846), (125, 43843), (130, 43822), (131, 43819), (157, 43753), (158, 43750), (179, 43711), (181, 43708), (183, 43705),

Gene: Salz_72 Start: 43124, Stop: 42687, Start Num: 66

Candidate Starts for Salz_72:

(Start: 59 @43136 has 4 MA's), (Start: 66 @43124 has 25 MA's), (Start: 74 @43100 has 5 MA's),
(Start: 85 @43061 has 3 MA's), (103, 42974), (109, 42935), (114, 42908), (116, 42893), (118, 42884),
(124, 42854), (125, 42851), (130, 42830), (165, 42737), (169, 42728),

Gene: Saskia_74 Start: 43672, Stop: 43235, Start Num: 66

Candidate Starts for Saskia_74:

(Start: 59 @43684 has 4 MA's), (Start: 66 @43672 has 25 MA's), (Start: 74 @43648 has 5 MA's),
(Start: 85 @43609 has 3 MA's), (103, 43522), (109, 43483), (114, 43456), (116, 43441), (118, 43432),
(124, 43402), (125, 43399), (130, 43378), (165, 43285), (169, 43276),

Gene: Scherzo_75 Start: 44403, Stop: 43957, Start Num: 55

Candidate Starts for Scherzo_75:

(Start: 55 @44403 has 19 MA's), (Start: 69 @44379 has 156 MA's), (Start: 74 @44355 has 5 MA's),
(84, 44319), (93, 44268), (106, 44214), (109, 44193), (112, 44172), (116, 44151), (117, 44145), (124,
44112), (125, 44109), (130, 44088), (131, 44085), (157, 44019), (158, 44016), (179, 43977),

Gene: SemperFi_75 Start: 44964, Stop: 44545, Start Num: 69

Candidate Starts for SemperFi_75:

(47, 45003), (Start: 61 @44976 has 3 MA's), (Start: 69 @44964 has 156 MA's), (81, 44913), (Start: 85
@44901 has 3 MA's), (Start: 87 @44883 has 1 MA's), (109, 44778), (111, 44766), (112, 44757), (130,
44673), (134, 44661), (151, 44616), (160, 44592), (171, 44571), (178, 44559),

Gene: Serenity_78 Start: 44410, Stop: 43973, Start Num: 69

Candidate Starts for Serenity_78:

(45, 44452), (Start: 69 @44410 has 156 MA's), (Start: 74 @44386 has 5 MA's), (112, 44200), (122,
44140), (131, 44107), (134, 44098), (151, 44059), (185, 43987),

Gene: Sham4_73 Start: 43208, Stop: 42771, Start Num: 66

Candidate Starts for Sham4_73:

(Start: 59 @43220 has 4 MA's), (Start: 66 @43208 has 25 MA's), (Start: 74 @43184 has 5 MA's),
(Start: 85 @43145 has 3 MA's), (103, 43058), (109, 43019), (114, 42992), (116, 42977), (118, 42968),
(124, 42938), (125, 42935), (130, 42914), (165, 42821), (169, 42812),

Gene: SheaKeira_70 Start: 43202, Stop: 42783, Start Num: 69

Candidate Starts for SheaKeira_70:

(Start: 69 @43202 has 156 MA's), (Start: 74 @43178 has 5 MA's), (Start: 85 @43139 has 3 MA's),
(105, 43037), (106, 43034), (109, 43013), (112, 42992), (124, 42932), (125, 42929), (137, 42887),

Gene: Sknot_75 Start: 44777, Stop: 44358, Start Num: 69

Candidate Starts for Sknot_75:

(23, 44876), (25, 44870), (39, 44819), (Start: 69 @44777 has 156 MA's), (Start: 85 @44714 has 3
MA's), (Start: 87 @44696 has 1 MA's), (107, 44609), (112, 44570), (117, 44543), (125, 44507), (130,
44486), (131, 44483), (134, 44474), (160, 44408), (169, 44390), (178, 44375),

Gene: Smeagan_77 Start: 45356, Stop: 44937, Start Num: 69

Candidate Starts for Smeagan_77:

(39, 45404), (51, 45386), (58, 45371), (Start: 69 @45356 has 156 MA's), (Start: 85 @45293 has 3
MA's), (109, 45170), (112, 45149), (125, 45086), (134, 45053), (151, 45008), (153, 44999), (160,
44984), (169, 44966), (171, 44963), (178, 44951),

Gene: SmellyB_77 Start: 43589, Stop: 43227, Start Num: 74

Candidate Starts for SmellyB_77:

(Start: 62 @43628 has 15 MA's), (Start: 69 @43613 has 156 MA's), (Start: 74 @43589 has 5 MA's), (82, 43559), (Start: 85 @43550 has 3 MA's), (Start: 87 @43532 has 1 MA's), (90, 43517), (117, 43382), (124, 43349), (125, 43346), (131, 43322), (134, 43313), (151, 43280), (163, 43250), (164, 43247),

Gene: SnapTap_74 Start: 44775, Stop: 44356, Start Num: 69

Candidate Starts for SnapTap_74:

(47, 44814), (Start: 61 @44787 has 3 MA's), (Start: 69 @44775 has 156 MA's), (Start: 78 @44739 has 1 MA's), (81, 44724), (Start: 85 @44712 has 3 MA's), (Start: 87 @44694 has 1 MA's), (109, 44589), (111, 44577), (112, 44568), (130, 44484), (134, 44472), (151, 44427), (160, 44403), (171, 44382), (178, 44370),

Gene: Snape_77 Start: 44317, Stop: 43880, Start Num: 66

Candidate Starts for Snape_77:

(Start: 59 @44329 has 4 MA's), (Start: 66 @44317 has 25 MA's), (Start: 74 @44293 has 5 MA's), (Start: 85 @44254 has 3 MA's), (Start: 87 @44236 has 1 MA's), (103, 44167), (109, 44128), (114, 44101), (116, 44086), (118, 44077), (124, 44047), (125, 44044), (130, 44023), (165, 43930), (169, 43921),

Gene: SororFago_76 Start: 45272, Stop: 44877, Start Num: 65

Candidate Starts for SororFago_76:

(Start: 65 @45272 has 5 MA's), (Start: 87 @45191 has 1 MA's), (103, 45128), (111, 45077), (117, 45041), (125, 45008), (130, 44987), (133, 44978),

Gene: Soups_82 Start: 44862, Stop: 44464, Start Num: 69

Candidate Starts for Soups_82:

(Start: 69 @44862 has 156 MA's), (75, 44832), (91, 44754), (109, 44679), (111, 44667), (124, 44598), (125, 44595), (149, 44520), (167, 44472),

Gene: Spouty_74 Start: 43907, Stop: 43464, Start Num: 55

Candidate Starts for Spouty_74:

(Start: 55 @43907 has 19 MA's), (Start: 69 @43883 has 156 MA's), (Start: 74 @43859 has 5 MA's), (84, 43823), (93, 43772), (106, 43718), (109, 43697), (112, 43676), (116, 43655), (117, 43649), (124, 43616), (125, 43613), (130, 43592), (131, 43589), (157, 43523), (158, 43520), (181, 43478), (183, 43475),

Gene: StarStuff_77 Start: 45279, Stop: 44860, Start Num: 69

Candidate Starts for StarStuff_77:

(Start: 69 @45279 has 156 MA's), (92, 45171), (100, 45141), (109, 45096), (117, 45048), (124, 45015), (125, 45012), (130, 44991), (144, 44949), (158, 44916), (164, 44904), (169, 44892), (180, 44874),

Gene: Steamy_69 Start: 43627, Stop: 43226, Start Num: 69

Candidate Starts for Steamy_69:

(Start: 69 @43627 has 156 MA's), (84, 43567), (92, 43519), (96, 43504), (101, 43486), (109, 43444), (110, 43438), (120, 43381), (124, 43363), (136, 43324), (139, 43309), (144, 43297), (151, 43285), (158, 43264),

Gene: Strosahl_83 Start: 45073, Stop: 44675, Start Num: 69

Candidate Starts for Strosahl_83:

(Start: 69 @45073 has 156 MA's), (75, 45043), (91, 44965), (109, 44890), (111, 44878), (124, 44809), (125, 44806), (149, 44731), (167, 44683),

Gene: Sunhee_76 Start: 43354, Stop: 42959, Start Num: 65

Candidate Starts for Sunhee_76:

(Start: 65 @43354 has 5 MA's), (Start: 85 @43291 has 3 MA's), (103, 43210), (111, 43159), (117, 43123), (125, 43090), (126, 43084), (132, 43063), (163, 42982),

Gene: SuperAwesome_77 Start: 44306, Stop: 43905, Start Num: 62

Candidate Starts for SuperAwesome_77:

(Start: 62 @44306 has 15 MA's), (Start: 69 @44291 has 156 MA's), (Start: 74 @44267 has 5 MA's), (82, 44237), (Start: 85 @44228 has 3 MA's), (Start: 87 @44210 has 1 MA's), (90, 44195), (117, 44060), (124, 44027), (125, 44024), (131, 44000), (134, 43991), (151, 43958), (163, 43928), (164, 43925),

Gene: SuperCallie99_74 Start: 44072, Stop: 43749, Start Num: 85

Candidate Starts for SuperCallie99_74:

(Start: 62 @44150 has 15 MA's), (Start: 69 @44135 has 156 MA's), (Start: 74 @44111 has 5 MA's), (82, 44081), (Start: 85 @44072 has 3 MA's), (Start: 87 @44054 has 1 MA's), (90, 44039), (117, 43904), (124, 43871), (125, 43868), (131, 43844), (134, 43835), (151, 43802), (163, 43772), (164, 43769),

Gene: Superchunk_77 Start: 44436, Stop: 44017, Start Num: 69

Candidate Starts for Superchunk_77:

(38, 44484), (Start: 69 @44436 has 156 MA's), (88, 44352), (98, 44301), (100, 44295), (106, 44271), (109, 44250), (112, 44229), (122, 44169), (123, 44166), (131, 44136), (134, 44127), (157, 44070), (179, 44031),

Gene: SweetiePie_74 Start: 44907, Stop: 44488, Start Num: 69

Candidate Starts for SweetiePie_74:

(47, 44946), (Start: 61 @44919 has 3 MA's), (Start: 69 @44907 has 156 MA's), (81, 44856), (Start: 85 @44844 has 3 MA's), (Start: 87 @44826 has 1 MA's), (109, 44721), (111, 44709), (112, 44700), (130, 44616), (134, 44604), (151, 44559), (160, 44535), (171, 44514), (178, 44502),

Gene: SwirlSquare_80 Start: 44189, Stop: 43806, Start Num: 78

Candidate Starts for SwirlSquare_80:

(27, 44327), (35, 44285), (38, 44282), (Start: 69 @44225 has 156 MA's), (Start: 78 @44189 has 1 MA's), (95, 44105), (98, 44090), (100, 44084), (106, 44060), (109, 44039), (111, 44027), (112, 44018), (122, 43958), (134, 43916), (171, 43832), (179, 43820),

Gene: Switzerland_82 Start: 45135, Stop: 44737, Start Num: 69

Candidate Starts for Switzerland_82:

(Start: 69 @45135 has 156 MA's), (75, 45105), (91, 45027), (109, 44952), (111, 44940), (124, 44871), (125, 44868), (149, 44793), (167, 44745),

Gene: TarsusIV_72 Start: 44821, Stop: 44408, Start Num: 69

Candidate Starts for TarsusIV_72:

(63, 44827), (Start: 69 @44821 has 156 MA's), (Start: 87 @44740 has 1 MA's), (104, 44671), (124, 44554), (125, 44551), (130, 44530), (134, 44518), (151, 44479), (179, 44422),

Gene: Temprado_78 Start: 43777, Stop: 43391, Start Num: 69

Candidate Starts for Temprado_78:

(Start: 55 @43804 has 19 MA's), (Start: 69 @43777 has 156 MA's), (83, 43720), (90, 43681), (112, 43573), (113, 43570), (116, 43552), (124, 43513), (125, 43510), (131, 43486), (137, 43468), (144, 43453), (163, 43414),

Gene: Terrific_75 Start: 44751, Stop: 44332, Start Num: 69

Candidate Starts for Terrific_75:

(23, 44850), (25, 44844), (39, 44793), (Start: 69 @44751 has 156 MA's), (Start: 85 @44688 has 3 MA's), (Start: 87 @44670 has 1 MA's), (107, 44583), (112, 44544), (117, 44517), (125, 44481), (130, 44460), (131, 44457), (134, 44448), (160, 44382), (169, 44364), (178, 44349),

Gene: Timothy_77 Start: 44294, Stop: 43857, Start Num: 66

Candidate Starts for Timothy_77:

(Start: 59 @44306 has 4 MA's), (Start: 66 @44294 has 25 MA's), (Start: 74 @44270 has 5 MA's), (Start: 85 @44231 has 3 MA's), (Start: 87 @44213 has 1 MA's), (103, 44144), (109, 44105), (114, 44078), (116, 44063), (118, 44054), (124, 44024), (125, 44021), (130, 44000), (165, 43907), (169, 43898),

Gene: TinyTimmy_75 Start: 44023, Stop: 43586, Start Num: 66

Candidate Starts for TinyTimmy_75:

(Start: 59 @44035 has 4 MA's), (Start: 66 @44023 has 25 MA's), (Start: 74 @43999 has 5 MA's), (Start: 85 @43960 has 3 MA's), (Start: 87 @43942 has 1 MA's), (103, 43873), (109, 43834), (114, 43807), (116, 43792), (118, 43783), (124, 43753), (125, 43750), (130, 43729), (165, 43636), (169, 43627),

Gene: TipsytheTRex_74 Start: 44412, Stop: 43975, Start Num: 69

Candidate Starts for TipsytheTRex_74:

(25, 44514), (28, 44508), (45, 44454), (Start: 69 @44412 has 156 MA's), (Start: 74 @44388 has 5 MA's), (112, 44202), (122, 44142), (131, 44109), (134, 44100), (151, 44061), (185, 43989),

Gene: Toaka_76 Start: 44412, Stop: 43990, Start Num: 69

Candidate Starts for Toaka_76:

(Start: 69 @44412 has 156 MA's), (Start: 74 @44388 has 5 MA's), (Start: 87 @44331 has 1 MA's), (105, 44247), (106, 44244), (109, 44223), (112, 44202), (114, 44196), (116, 44181), (117, 44175), (124, 44142), (125, 44139), (156, 44052), (179, 44007), (181, 44004), (183, 44001),

Gene: Tomathan_77 Start: 45390, Stop: 44971, Start Num: 69

Candidate Starts for Tomathan_77:

(Start: 69 @45390 has 156 MA's), (82, 45336), (92, 45282), (109, 45207), (117, 45159), (124, 45126), (125, 45123), (130, 45102), (144, 45060), (151, 45048), (158, 45027), (164, 45015), (169, 45003), (180, 44985),

Gene: ToneTone_74 Start: 43337, Stop: 42951, Start Num: 69

Candidate Starts for ToneTone_74:

(Start: 55 @43364 has 19 MA's), (Start: 69 @43337 has 156 MA's), (83, 43280), (90, 43241), (112, 43133), (113, 43130), (116, 43112), (124, 43073), (125, 43070), (131, 43046), (137, 43028), (144, 43013), (163, 42974),

Gene: Travvers_76 Start: 45276, Stop: 44857, Start Num: 69

Candidate Starts for Travvers_76:

(Start: 69 @45276 has 156 MA's), (92, 45168), (109, 45093), (117, 45045), (124, 45012), (125, 45009), (130, 44988), (144, 44946), (158, 44913), (164, 44901), (169, 44889), (180, 44871),

Gene: Tristan_71 Start: 45843, Stop: 45430, Start Num: 69

Candidate Starts for Tristan_71:

(Start: 69 @45843 has 156 MA's), (70, 45831), (Start: 74 @45819 has 5 MA's), (84, 45783), (Start: 87 @45762 has 1 MA's), (92, 45735), (104, 45696), (109, 45660), (117, 45612), (125, 45573), (130, 45552), (137, 45525), (141, 45519), (153, 45486),

Gene: Trixie_74 Start: 45538, Stop: 45125, Start Num: 69

Candidate Starts for Trixie_74:

(42, 45586), (Start: 69 @45538 has 156 MA's), (84, 45478), (Start: 85 @45475 has 3 MA's), (91, 45436), (107, 45370), (109, 45352), (111, 45340), (130, 45247), (134, 45235), (160, 45172), (176, 45142),

Gene: Trooper_74 Start: 44793, Stop: 44374, Start Num: 69

Candidate Starts for Trooper_74:

(18, 44961), (20, 44943), (21, 44940), (39, 44844), (51, 44826), (Start: 61 @44805 has 3 MA's), (Start: 69 @44793 has 156 MA's), (Start: 78 @44757 has 1 MA's), (Start: 85 @44730 has 3 MA's), (Start: 87 @44712 has 1 MA's), (109, 44607), (117, 44559), (125, 44523), (130, 44502), (131, 44499), (134, 44490), (151, 44445), (160, 44421), (164, 44412), (178, 44388),

Gene: Tubs_76 Start: 44087, Stop: 43668, Start Num: 69

Candidate Starts for Tubs_76:

(14, 44336), (Start: 55 @44111 has 19 MA's), (Start: 69 @44087 has 156 MA's), (Start: 74 @44063 has 5 MA's), (84, 44027), (93, 43976), (106, 43922), (109, 43901), (112, 43880), (116, 43859), (117, 43853), (124, 43820), (125, 43817), (130, 43796), (131, 43793), (157, 43727), (158, 43724), (179, 43685), (181, 43682), (183, 43679),

Gene: Tucker_77 Start: 43540, Stop: 43154, Start Num: 69

Candidate Starts for Tucker_77:

(Start: 55 @43567 has 19 MA's), (Start: 69 @43540 has 156 MA's), (83, 43483), (90, 43444), (112, 43336), (113, 43333), (116, 43315), (124, 43276), (125, 43273), (131, 43249), (137, 43231), (144, 43216), (163, 43177),

Gene: Turbido_75 Start: 45075, Stop: 44656, Start Num: 69

Candidate Starts for Turbido_75:

(Start: 69 @45075 has 156 MA's), (Start: 85 @45012 has 3 MA's), (109, 44889), (112, 44868), (125, 44805), (130, 44784), (131, 44781), (134, 44772), (160, 44703), (171, 44682), (178, 44670),

Gene: Ugenie5_71 Start: 44378, Stop: 43956, Start Num: 69

Candidate Starts for Ugenie5_71:

(Start: 55 @44402 has 19 MA's), (Start: 69 @44378 has 156 MA's), (Start: 74 @44354 has 5 MA's), (84, 44318), (93, 44267), (106, 44213), (109, 44192), (112, 44171), (116, 44150), (117, 44144), (124, 44111), (125, 44108), (130, 44087), (131, 44084), (157, 44018), (158, 44015), (179, 43976),

Gene: Updawg_75 Start: 44641, Stop: 44222, Start Num: 69

Candidate Starts for Updawg_75:

(39, 44683), (Start: 69 @44641 has 156 MA's), (Start: 85 @44578 has 3 MA's), (Start: 87 @44560 has 1 MA's), (107, 44473), (112, 44434), (117, 44407), (125, 44371), (130, 44350), (131, 44347), (134, 44338), (160, 44272), (169, 44254), (178, 44239),

Gene: VA6_74 Start: 44831, Stop: 44418, Start Num: 69

Candidate Starts for VA6_74:

(Start: 69 @44831 has 156 MA's), (Start: 74 @44807 has 5 MA's), (Start: 85 @44768 has 3 MA's), (Start: 87 @44750 has 1 MA's), (107, 44663), (112, 44624), (130, 44540), (131, 44537), (151, 44489), (158, 44468), (176, 44435),

Gene: VC3_76 Start: 44797, Stop: 44378, Start Num: 69

Candidate Starts for VC3_76:

(Start: 69 @44797 has 156 MA's), (82, 44743), (92, 44689), (109, 44614), (117, 44566), (124, 44533), (125, 44530), (130, 44509), (144, 44467), (158, 44434), (169, 44410), (180, 44392),

Gene: Vanisoa_73 Start: 44752, Stop: 44333, Start Num: 69

Candidate Starts for Vanisoa_73:

(Start: 69 @44752 has 156 MA's), (Start: 74 @44728 has 5 MA's), (Start: 87 @44671 has 1 MA's), (105, 44587), (124, 44482), (125, 44479), (137, 44437),

Gene: VohminGhazi_77 Start: 43629, Stop: 43228, Start Num: 62

Candidate Starts for VohminGhazi_77:

(Start: 62 @43629 has 15 MA's), (Start: 69 @43614 has 156 MA's), (Start: 74 @43590 has 5 MA's), (82, 43560), (Start: 85 @43551 has 3 MA's), (Start: 87 @43533 has 1 MA's), (90, 43518), (117, 43383), (124, 43350), (125, 43347), (131, 43323), (134, 43314), (151, 43281), (163, 43251), (164, 43248),

Gene: Waits_82 Start: 44973, Stop: 44575, Start Num: 69

Candidate Starts for Waits_82:

(Start: 69 @44973 has 156 MA's), (75, 44943), (91, 44865), (109, 44790), (111, 44778), (124, 44709), (125, 44706), (149, 44631), (167, 44583),

Gene: Warrior24_83 Start: 45450, Stop: 45052, Start Num: 69

Candidate Starts for Warrior24_83:

(Start: 69 @45450 has 156 MA's), (75, 45420), (91, 45342), (109, 45267), (111, 45255), (124, 45186), (125, 45183), (149, 45108), (167, 45060),

Gene: WeiHuaDA_75 Start: 45500, Stop: 45162, Start Num: 87

Candidate Starts for WeiHuaDA_75:

(40, 45629), (Start: 69 @45581 has 156 MA's), (Start: 78 @45545 has 1 MA's), (81, 45530), (Start: 87 @45500 has 1 MA's), (98, 45446), (124, 45314), (125, 45311), (130, 45290), (131, 45287), (134, 45278), (165, 45203), (169, 45194), (178, 45179),

Gene: Whabigail7_75 Start: 45075, Stop: 44656, Start Num: 69

Candidate Starts for Whabigail7_75:

(39, 45123), (51, 45105), (58, 45090), (Start: 69 @45075 has 156 MA's), (Start: 85 @45012 has 3 MA's), (109, 44889), (112, 44868), (125, 44805), (134, 44772), (151, 44727), (153, 44718), (160, 44703), (169, 44685), (171, 44682), (178, 44670),

Gene: WideWale_75 Start: 44641, Stop: 44222, Start Num: 69

Candidate Starts for WideWale_75:

(39, 44683), (Start: 69 @44641 has 156 MA's), (Start: 85 @44578 has 3 MA's), (Start: 87 @44560 has 1 MA's), (107, 44473), (112, 44434), (117, 44407), (125, 44371), (130, 44350), (131, 44347), (134, 44338), (160, 44272), (169, 44254), (178, 44239),

Gene: Wiks_76 Start: 43408, Stop: 43022, Start Num: 69

Candidate Starts for Wiks_76:

(Start: 55 @43435 has 19 MA's), (Start: 69 @43408 has 156 MA's), (83, 43351), (90, 43312), (112, 43204), (113, 43201), (116, 43183), (124, 43144), (125, 43141), (131, 43117), (137, 43099), (144, 43084), (163, 43045),

Gene: Wolpertinger_76 Start: 44326, Stop: 43889, Start Num: 66

Candidate Starts for Wolpertinger_76:

(Start: 59 @44338 has 4 MA's), (Start: 66 @44326 has 25 MA's), (Start: 74 @44302 has 5 MA's), (Start: 85 @44263 has 3 MA's), (103, 44176), (109, 44137), (114, 44110), (116, 44095), (118, 44086), (124, 44056), (125, 44053), (130, 44032), (165, 43939), (169, 43930),

Gene: WorldCup_74 Start: 44017, Stop: 43595, Start Num: 69

Candidate Starts for WorldCup_74:

(Start: 69 @44017 has 156 MA's), (Start: 74 @43993 has 5 MA's), (Start: 85 @43951 has 3 MA's), (105, 43849), (107, 43843), (124, 43744), (125, 43741), (137, 43699),

Gene: WunderPhul_77 Start: 43433, Stop: 43020, Start Num: 55

Candidate Starts for WunderPhul_77:

(Start: 55 @43433 has 19 MA's), (Start: 69 @43406 has 156 MA's), (83, 43349), (90, 43310), (112, 43202), (113, 43199), (116, 43181), (124, 43142), (125, 43139), (131, 43115), (137, 43097), (144, 43082), (163, 43043),

Gene: XianYue_70 Start: 44566, Stop: 44156, Start Num: 69

Candidate Starts for XianYue_70:

(34, 44623), (Start: 69 @44566 has 156 MA's), (Start: 87 @44485 has 1 MA's), (98, 44434), (117, 44335), (124, 44302), (125, 44299), (129, 44284), (142, 44248), (164, 44194), (169, 44185), (178, 44173),

Gene: Yecey3_78 Start: 44191, Stop: 43790, Start Num: 66

Candidate Starts for Yecey3_78:

(Start: 66 @44191 has 25 MA's), (Start: 74 @44167 has 5 MA's), (102, 44050), (112, 43987), (117, 43960), (124, 43927), (148, 43852),

Gene: Yokurt_76 Start: 43408, Stop: 43022, Start Num: 69

Candidate Starts for Yokurt_76:

(Start: 55 @43435 has 19 MA's), (Start: 69 @43408 has 156 MA's), (83, 43351), (90, 43312), (112, 43204), (113, 43201), (116, 43183), (124, 43144), (125, 43141), (131, 43117), (137, 43099), (144, 43084), (163, 43045),

Gene: Zaka_77 Start: 43435, Stop: 43022, Start Num: 55

Candidate Starts for Zaka_77:

(Start: 55 @43435 has 19 MA's), (Start: 69 @43408 has 156 MA's), (83, 43351), (90, 43312), (112, 43204), (113, 43201), (116, 43183), (124, 43144), (125, 43141), (131, 43117), (137, 43099), (144, 43084), (163, 43045),

Gene: Zimmer_73 Start: 45201, Stop: 44794, Start Num: 64

Candidate Starts for Zimmer_73:

(42, 45228), (Start: 64 @45201 has 1 MA's), (83, 45138), (92, 45087), (101, 45054), (109, 45012), (116, 44970), (124, 44928), (125, 44925),

Gene: Zulu_78 Start: 43786, Stop: 43400, Start Num: 69

Candidate Starts for Zulu_78:

(Start: 55 @43813 has 19 MA's), (Start: 69 @43786 has 156 MA's), (83, 43729), (90, 43690), (112, 43582), (113, 43579), (116, 43561), (124, 43522), (125, 43519), (131, 43495), (137, 43477), (144, 43462), (163, 43423),