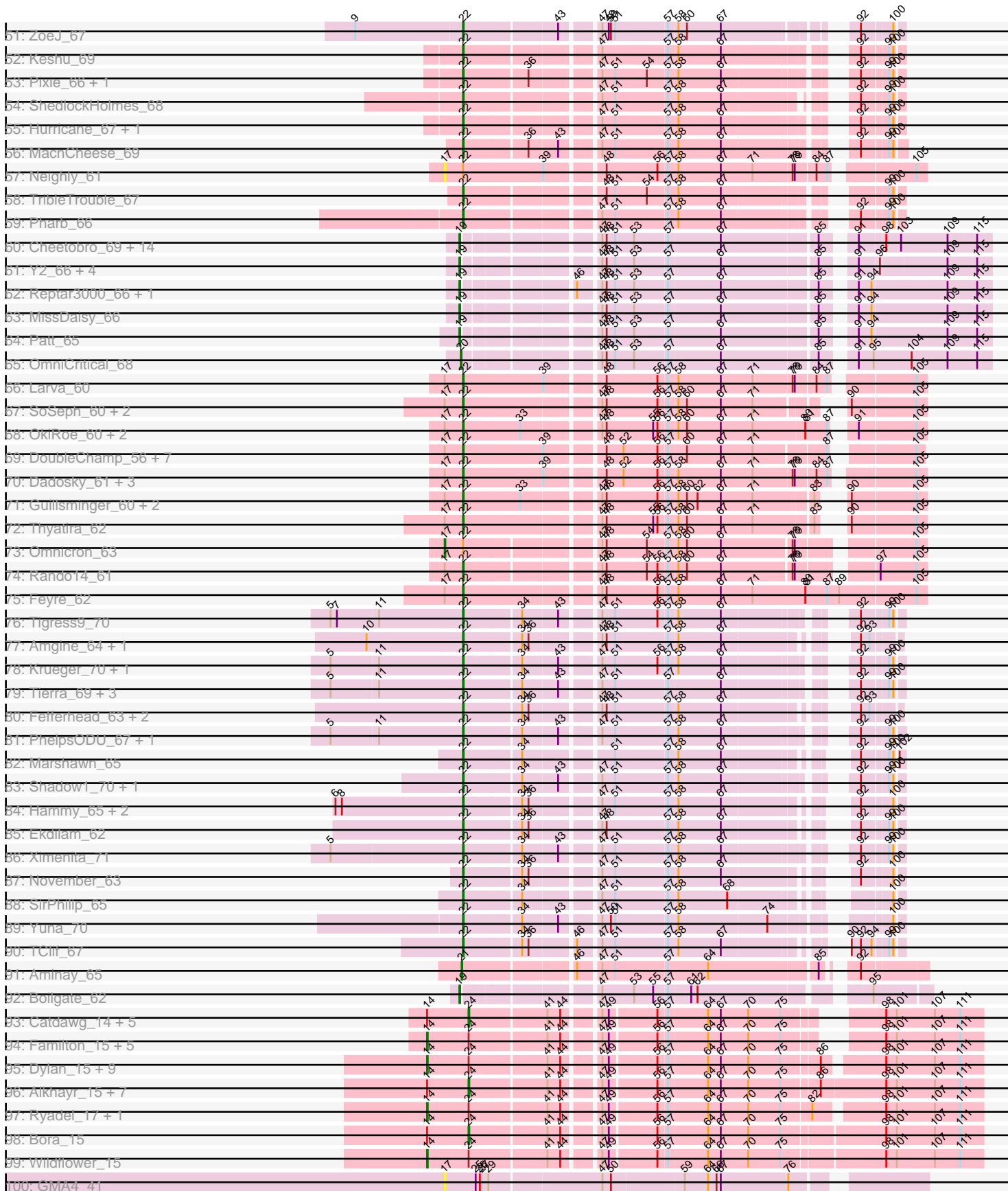
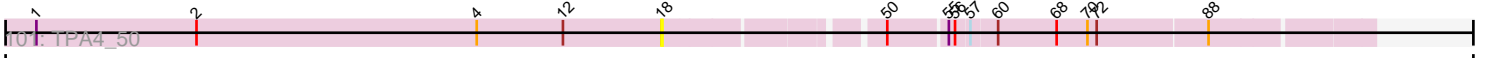


Pham 304664



Pham 304664



A series of horizontal lines for writing, spanning the width of the page below the genomic map.

Note: Tracks are now grouped by subcluster and scaled. Switching in subcluster is indicated by changes in track color. Track scale is now set by default to display the region 30 bp upstream of start 1 to 30 bp downstream of the last possible start. If this default region is judged to be packed too tightly with annotated starts, the track will be further scaled to only show that region of the ORF with annotated starts. This action will be indicated by adding "Zoomed" to the title. For starts, yellow indicates the location of called starts comprised solely of Glimmer/GeneMark auto-annotations, green indicates the location of called starts with at least 1 manual gene annotation.

Pham 304664 Report

This analysis was run 06/08/26 on database version 649.

Pham number 304664 has 288 members, 25 are drafts.

Phages represented in each track:

- Track 1 : MalagasyRose_66
- Track 2 : Nergal_58
- Track 3 : Madraxi_75
- Track 4 : Jflix2_71
- Track 5 : SFuller_69
- Track 6 : CurlyFries_83
- Track 7 : Shagrat_82
- Track 8 : RegnumDei_78
- Track 9 : Hamood_51, Chop_51, GrandSlam_51
- Track 10 : Brylie_51, NancyRae_50, Mulch_51, Nadeem_51, WheatThin_50, Parada_51, Ayotoya_51
- Track 11 : BetterKatz_51
- Track 12 : DelRio_52
- Track 13 : Bock_51
- Track 14 : Francois_50
- Track 15 : Pimento_52
- Track 16 : DonkeyMan_42, Tarzan_42
- Track 17 : DearBasketball_44, DinoNuggs_42, Reyja_42
- Track 18 : Jojo24_41
- Track 19 : Hibiscus_43, Heinz_42
- Track 20 : Santhid_41
- Track 21 : Richo_68, Dartin_68, Niklas_68, McMater_68
- Track 22 : Veliki_67, LaterM_66, Apocalypse_68, Stinson_67, JAWS_66, Ageofdapage_69, Devera_73, BarrelRoll_66, Rapunzel97_67, TruffulaTree_66, Dole_71, Slimphazie_66, Illumine_71, MeaningOfLife_66, Deby_66, Zavala_68, Mynx_67
- Track 23 : DartGoblin_67
- Track 24 : Jarvi_65, Tachez_65, Clipper_69, BGlluviae_65, Inky_65, Durfee_65, Padpat_68, Twitch_65, CREW_65, Pokerus_65, Adonis_65, Emerson_67, Blizzard_65, LindNT_65, Atiba_66, CaseJules_67, Adephegia_65, Llorens_65, Hyperbowlee_65, Asayake_65, Homura_65, Spock_65, Rosmarinus_65, Megsy_68, Lunahalos_65, YoureAdopted_65, Boiiii_65, Piatt_65, Joy99_65, CrimD_67, Tiri_66, Peel_65, Belladonna_65, Beezoo_67, Padfoot_65, Topper_65, Jayhawk_67, Dalmuri_65, ShiaSurprise_66, Capricorn_65, CallaLilly_65, TreyKay_67, Jeckyll_65, MacKat_61, Prithvi_67, AlishaPH_65, Geraldini_68, BEEEST_65
- Track 25 : Pisa4_59, Pisa1_65

- Track 26 : Nutello_54, SgtBeansprout_55, Binglebops_54, LilPharaoh_55, Nikao_57, Torres_57, Mdavu_55, Enkosi_56, Amelie_54, Teejan_56, Trice_54
- Track 27 : Anma_67, Urkel_66, Bella96_66, DrHayes_66, SamuelLPlaqson_66, TiniBug_66
- Track 28 : Scarlett_70, KiSi_70
- Track 29 : Bern_67, BaghaKamala_65, CheetoDust_65
- Track 30 : Chris_68
- Track 31 : Ganymede_65, QuincyRose_63
- Track 32 : Ramen_66, ActinUp_65, Zabiza_60, HedwigODU_65
- Track 33 : Nibb_68
- Track 34 : LeMond_69, Oscar_69
- Track 35 : Shaobing_68, Peanam_68
- Track 36 : Chavito_68
- Track 37 : Efra2_71, Yunkel11_70, Guanica15_70
- Track 38 : MarkPhew_68
- Track 39 : LastHope_70
- Track 40 : Sulley_65, Angelica_65
- Track 41 : TaiwanKao_68
- Track 42 : Murucutumbu_67
- Track 43 : Anaya_68
- Track 44 : TingHuaYa_69
- Track 45 : Validus_70
- Track 46 : Curiosium_69
- Track 47 : Marcoliusprime_68, DismalFunk_68, TM4_66, Findley_68, DismalStressor_68, Strobilo_69
- Track 48 : Mufasa_68, BoostSeason_68
- Track 49 : Doughnut_68
- Track 50 : Milly_68
- Track 51 : ZoeJ_67
- Track 52 : Keshu_69
- Track 53 : Pixie_66, TBond007_63
- Track 54 : ShedlockHolmes_68
- Track 55 : Hurricane_67, Lea83_67
- Track 56 : MacnCheese_69
- Track 57 : Neighly_61
- Track 58 : TribbleTrouble_67
- Track 59 : Pharb_66
- Track 60 : Cheetobro_69, Mitti_69, DanSyl44_72, Eponine_71, Chancellor_69, Malthus_70, Taquito_68, Juliette_71, Slarp_69, Fionnbharth_69, Wintermute_69, Qhanda_71, Kraw_69, SamScheppers_67, Lebo14_68
- Track 61 : Y2_66, Ruthiejr_70, Y10_66, YasnayaPolyana_68, JF1_69
- Track 62 : Reptar3000_66, Bobquesha_70
- Track 63 : MissDaisy_66
- Track 64 : Patt_65
- Track 65 : OmniCritical_68
- Track 66 : Larva_60
- Track 67 : SoSeph_60, Heftyboy_60, Waterfoul_61
- Track 68 : OkiRoe_60, Gengar_59, Miryou_63
- Track 69 : DoubleChamp_56, Agent47_59, BananenDer11_59, LilDirt_58, Collard_57, Kratio_57, InvictusManeo_57, ViviJ_58
- Track 70 : Dadosky_61, Edugator_58, AlleyCat_61, Psycho_59
- Track 71 : Guillsminger_60, Paola_59, Leston_59
- Track 72 : Thyatira_62

- Track 73 : Omnicron_63
- Track 74 : Rando14_61
- Track 75 : Feyre_62
- Track 76 : Tigress9_70
- Track 77 : Amgine_64, Lavahound_63
- Track 78 : Krueger_70, Syra333_69
- Track 79 : Tierra_69, Cain_69, Phrank_69, Bryler_69
- Track 80 : Fefferhead_63, Ellie_61, Applecrisp_62
- Track 81 : PhelpsODU_67, Unicorn_67
- Track 82 : Marshawn_65
- Track 83 : Shadow1_70, Sunflower1121_71
- Track 84 : Hammy_65, Amohnition_65, DarthP_65
- Track 85 : Ekdilam_62
- Track 86 : Ximenita_71
- Track 87 : November_63
- Track 88 : SirPhilip_65
- Track 89 : Yuna_70
- Track 90 : TClif_67
- Track 91 : Aminay_65
- Track 92 : Boilgate_62
- Track 93 : Catdawg_14, JangDynasty_14, FoulBall_14, KingPhillip3_14, Imara_15, YoyoKar_15
- Track 94 : Familton_15, Blessica_15, Idergollasper_14, TelAviv_14, SchoolBus_14, Zebo_14
- Track 95 : Dylan_15, YungJamal_16, Zakhe101_16, Ashwin_16, Murai_15, MadKillah_16, Vagabond_15, Firecracker_15, Smooch_16, Winget_15
- Track 96 : Alkhayr_15, Vorrrps_15, Mori_15, Shida_15, Schuy_16, Corndog_17, Wogge42_15, NiebruSaylor_15
- Track 97 : Ryadel_17, Krili_15
- Track 98 : Bora_15
- Track 99 : Wildflower_15
- Track 100 : GMA4_41
- Track 101 : TPA4_50

Summary of Final Annotations (See graph section above for start numbers):

The start number called the most often in the published annotations is 22, it was called in 180 of the 263 non-draft genes in the pham.

Genes that call this "Most Annotated" start:

- ActinUp_65, Adephegia_65, Adonis_65, Agent47_59, Ageofdapage_69, AlishaPH_65, AlleyCat_61, Amelie_54, Amgine_64, Amohnition_65, Anaya_68, Angelica_65, Anma_67, Apocalypse_68, Applecrisp_62, Asayake_65, Atiba_66, BEEST_65, BGlluviae_65, BaghaKamala_65, BananenDer11_59, BarrelRoll_66, Beezoo_67, Bella96_66, Belladonna_65, Bern_67, Binglebops_54, Blizzard_65, Boiiii_65, BoostSeason_68, Bryler_69, CREW_65, Cain_69, CallaLilly_65, Capricorn_65, CaseJules_67, Chavito_68, CheetoDust_65, Chris_68, Clipper_69, Collard_57, CrimD_67, Curiosium_69, Dadosky_61, Dalmuri_65, DartGoblin_67, DarthP_65, Dartin_68, Deby_66, Devera_73, DismalFunk_68, DismalStressor_68, Dole_71, DoubleChamp_56, Doughnut_68, DrHayes_66, Durfee_65, Edugator_58,

Efra2_71, Ekdilam_62, Ellie_61, Emerson_67, Enkosi_56, Fefferhead_63, Feyre_62, Findley_68, Ganymede_65, Gengar_59, Geraldini_68, Guanica15_70, Guillsminger_60, Hammy_65, HedwigODU_65, Heftyboy_60, Homura_65, Hurricane_67, Hyperbowlee_65, Illumine_71, Inky_65, InvictusManeo_57, JAWS_66, Jarvi_65, Jayhawk_67, Jeckyll_65, Joy99_65, Keshu_69, KiSi_70, Kratio_57, Krueger_70, Larva_60, LastHope_70, LaterM_66, Lavahound_63, LeMond_69, Lea83_67, Leston_59, LilDirt_58, LilPharaoh_55, LindNT_65, Llorens_65, Lunahalos_65, MacKat_61, MacnCheese_69, Marcoliusprime_68, MarkPhew_68, Marshawn_65, McMater_68, Mdavu_55, MeaningOfLife_66, Megsy_68, Milly_68, Miryou_63, Mufasa_68, Murucutumbu_67, Mynx_67, Nergal_58, Nibb_68, Nikao_57, Niklas_68, November_63, Nutello_54, OkiRoe_60, Oscar_69, Padfoot_65, Padpat_68, Paola_59, Peanam_68, Peel_65, Pharb_66, PhelpsODU_67, Phrank_69, Piatt_65, Pisa1_65, Pisa4_59, Pixie_66, Pokerus_65, Prithvi_67, Psycho_59, QuincyRose_63, Ramen_66, Rando14_61, Rapunzel97_67, Richo_68, Rosmarinus_65, SamuelLPlaqson_66, Scarlett_70, SgtBeansprout_55, Shadow1_70, Shaobing_68, ShedlockHolmes_68, ShiaSurprise_66, SirPhilip_65, Slimphazie_66, SoSeph_60, Spock_65, Stinson_67, Strobilo_69, Sulley_65, Sunflower1121_71, Syra333_69, TBond007_63, TClif_67, TM4_66, Tachez_65, TaiwanKao_68, Teejan_56, Thyatira_62, Tierra_69, Tigress9_70, TingHuaYa_69, TiniBug_66, Tiri_66, Topper_65, Torres_57, TreyKay_67, TribbleTrouble_67, Trice_54, TruffulaTree_66, Twitch_65, Unicorn_67, Urkel_66, Validus_70, Veliki_67, ViviJ_58, Waterfoul_61, Ximenita_71, YoureAdopted_65, Yuna_70, Yunkel11_70, Zabiza_60, Zavala_68, ZoeJ_67,

Genes that have the "Most Annotated" start but do not call it:

- Neighly_61, Omnicron_63,

Genes that do not have the "Most Annotated" start:

- Alkhayr_15, Aminay_65, Ashwin_16, Ayotoya_51, BetterKatz_51, Blessica_15, Bobquesha_70, Bock_51, Boilgate_62, Bora_15, Brylie_51, Catdawg_14, Chancellor_69, Cheetobro_69, Chop_51, Corndog_17, CurlyFries_83, DanSyl44_72, DearBasketball_44, DelRio_52, DinoNuggs_42, DonkeyMan_42, Dylan_15, Eponine_71, Familton_15, Fionnbharth_69, Firecracker_15, FoulBall_14, Francois_50, GMA4_41, GrandSlam_51, Hamood_51, Heinz_42, Hibiscus_43, Idergollasper_14, Imara_15, JF1_69, JangDynasty_14, Jflix2_71, Jojo24_41, Juliette_71, KingPhillip3_14, Kraw_69, Kriili_15, Lebo14_68, MadKillah_16, Madraxi_75, MalagasyRose_66, Malthus_70, MissDaisy_66, Mitti_69, Mori_15, Mulch_51, Murai_15, Nadeem_51, NancyRae_50, NiebruSaylor_15, OmniCritical_68, Parada_51, Patt_65, Pimento_52, Qhanda_71, RegnumDei_78, Reptar3000_66, Reyja_42, Ruthiejr_70, Ryadel_17, SFuller_69, SamScheppers_67, Santhid_41, SchoolBus_14, Schuy_16, Shagrat_82, Shida_15, Slarp_69, Smooch_16, TPA4_50, Taquito_68, Tarzan_42, TelAviv_14, Vagabond_15, Vorrps_15, WheatThin_50, Wildflower_15, Winget_15, Wintermute_69, Wogge42_15, Y10_66, Y2_66, YasnayaPolyana_68, YoyoKar_15, YungJamal_16, Zakhe101_16, Zebo_14,

Summary by start number:

Start 14:

- Found in 34 of 288 (11.8%) of genes in pham
- Manual Annotations of this start: 19 of 263
- Called 55.9% of time when present
- Phage (with cluster) where this start called: Ashwin_16 (O), Blessica_15 (O), Dylan_15 (O), Familton_15 (O), Firecracker_15 (O), Idergollasper_14 (O), Kriili_15

(O), MadKillah_16 (O), Murai_15 (O), Ryadel_17 (O), SchoolBus_14 (O), Smooch_16 (O), TelAviv_14 (O), Vagabond_15 (O), Wildflower_15 (O), Winget_15 (O), YungJamal_16 (O), Zakhe101_16 (O), Zebo_14 (O),

Start 17:

- Found in 28 of 288 (9.7%) of genes in pham
- Manual Annotations of this start: 1 of 263
- Called 10.7% of time when present
- Phage (with cluster) where this start called: GMA4_41 (singleton), Neighly_61 (K3), Omnicron_63 (K5),

Start 18:

- Found in 16 of 288 (5.6%) of genes in pham
- Manual Annotations of this start: 15 of 263
- Called 100.0% of time when present
- Phage (with cluster) where this start called: Ayotoya_51 (DI), BetterKatz_51 (DI), Bock_51 (DI), Brylie_51 (DI), Chop_51 (DI), DelRio_52 (DI), Francois_50 (DI), GrandSlam_51 (DI), Hamood_51 (DI), Mulch_51 (DI), Nadeem_51 (DI), NancyRae_50 (DI), Parada_51 (DI), Pimento_52 (DI), TPA4_50 (singleton), WheatThin_50 (DI),

Start 19:

- Found in 25 of 288 (8.7%) of genes in pham
- Manual Annotations of this start: 22 of 263
- Called 100.0% of time when present
- Phage (with cluster) where this start called: Bobquesha_70 (K4), Boilgate_62 (K8), Chancellor_69 (K4), Cheetobro_69 (K4), DanSyl44_72 (K4), Eponine_71 (K4), Fionnbharth_69 (K4), JF1_69 (K4), Juliette_71 (K4), Kraw_69 (K4), Lebo14_68 (K4), Malthus_70 (K4), MissDaisy_66 (K4), Mitti_69 (K4), Patt_65 (K4), Qhanda_71 (K4), Reptar3000_66 (K4), Ruthiejr_70 (K4), SamScheppers_67 (K4), Slarp_69 (K4), Taquito_68 (K4), Wintermute_69 (K4), Y10_66 (K4), Y2_66 (K4), YasnayaPolyana_68 (K4),

Start 20:

- Found in 2 of 288 (0.7%) of genes in pham
- Manual Annotations of this start: 2 of 263
- Called 100.0% of time when present
- Phage (with cluster) where this start called: MalagasyRose_66 (AG), OmniCritical_68 (K4),

Start 21:

- Found in 4 of 288 (1.4%) of genes in pham
- Manual Annotations of this start: 3 of 263
- Called 100.0% of time when present
- Phage (with cluster) where this start called: Aminay_65 (K7), Jflix2_71 (CF), Madraxi_75 (CF), SFuller_69 (CF),

Start 22:

- Found in 194 of 288 (67.4%) of genes in pham
- Manual Annotations of this start: 180 of 263
- Called 99.0% of time when present
- Phage (with cluster) where this start called: ActinUp_65 (K1), Adephegia_65 (K1), Adonis_65 (K1), Agent47_59 (K5), Ageofdapage_69 (K1), AlishaPH_65 (K1),

AlleyCat_61 (K5), Amelie_54 (K1), Amgine_64 (K6), Amohnition_65 (K6), Anaya_68 (K1), Angelica_65 (K1), Anma_67 (K1), Apocalypse_68 (K1), Applecrisp_62 (K6), Asayake_65 (K1), Atiba_66 (K1), BEEST_65 (K1), BGIlluviae_65 (K1), BaghaKamala_65 (K1), BananenDer11_59 (K5), BarrelRoll_66 (K1), Beezoo_67 (K1), Bella96_66 (K1), Belladonna_65 (K1), Bern_67 (K1), Binglebops_54 (K1), Blizzard_65 (K1), Boiiii_65 (K1), BoostSeason_68 (K2), Bryler_69 (K6), CREW_65 (K1), Cain_69 (K6), CallaLilly_65 (K1), Capricorn_65 (K1), CaseJules_67 (K1), Chavito_68 (K1), CheetoDust_65 (K1), Chris_68 (K1), Clipper_69 (K1), Collard_57 (K5), CrimD_67 (K1), Curiosium_69 (K1), Dadosky_61 (K5), Dalmuri_65 (K1), DartGoblin_67 (K1), DarthP_65 (K6), Dartin_68 (K1), Deby_66 (K1), Devera_73 (K1), DismalFunk_68 (K2), DismalStressor_68 (K2), Dole_71 (K1), DoubleChamp_56 (K5), Doughnut_68 (K2), DrHayes_66 (K1), Durfee_65 (K1), Edugator_58 (K5), Efra2_71 (K1), Ekdilam_62 (K6), Ellie_61 (K6), Emerson_67 (K1), Enkosi_56 (K1), Fefferhead_63 (K6), Feyre_62 (K5), Findley_68 (K2), Ganymede_65 (K1), Gengar_59 (K5), Geraldini_68 (K1), Guanica15_70 (K1), Guillsminger_60 (K5), Hammy_65 (K6), HedwigODU_65 (K1), Heftyboy_60 (K5), Homura_65 (K1), Hurricane_67 (K3), Hyperbowlee_65 (K1), Illumine_71 (K1), Inky_65 (K1), InvictusManeo_57 (K5), JAWS_66 (K1), Jarvi_65 (K1), Jayhawk_67 (K1), Jeckyll_65 (K1), Joy99_65 (K1), Keshu_69 (K3), KiSi_70 (K1), Kratio_57 (K5), Krueger_70 (K6), Larva_60 (K5), LastHope_70 (K1), LaterM_66 (K1), Lavahound_63 (K6), LeMond_69 (K1), Lea83_67 (K3), Leston_59 (K5), LilDirt_58 (K5), LilPharaoh_55 (K1), LindNT_65 (K1), Llorens_65 (K1), Lunahalos_65 (K1), MacKat_61 (K1), MacnCheese_69 (K3), Marcoliusprime_68 (K2), MarkPhew_68 (K1), Marshawn_65 (K6), McMater_68 (K1), Mdavu_55 (K1), MeaningOfLife_66 (K1), Megsy_68 (K1), Milly_68 (K2), Miryou_63 (K5), Mufasa_68 (K2), Murucutumbu_67 (K1), Mynx_67 (K1), Nergal_58 (AG), Nibb_68 (K1), Nikao_57 (K1), Niklas_68 (K1), November_63 (K6), Nutello_54 (K1), OkiRoe_60 (K5), Oscar_69 (K1), Padfoot_65 (K1), Padpat_68 (K1), Paola_59 (K5), Peanam_68 (K1), Peel_65 (K1), Pharb_66 (K3), PhelpsODU_67 (K6), Phrank_69 (K6), Piatt_65 (K1), Pisa1_65 (K1), Pisa4_59 (K1), Pixie_66 (K3), Pokerus_65 (K1), Prithvi_67 (K1), Psycho_59 (K5), QuincyRose_63 (K1), Ramen_66 (K1), Rando14_61 (K5), Rapunzel97_67 (K1), Richo_68 (K1), Rosmarinus_65 (K1), SamuelLPlaqson_66 (K1), Scarlett_70 (K1), SgtBeansprout_55 (K1), Shadow1_70 (K6), Shaobing_68 (K1), ShedlockHolmes_68 (K3), ShiaSurprise_66 (K1), SirPhilip_65 (K6), Slimphazie_66 (K1), SoSeph_60 (K5), Spock_65 (K1), Stinson_67 (K1), Strobilo_69 (K2), Sulley_65 (K1), Sunflower1121_71 (K6), Syra333_69 (K6), TBond007_63 (K3), TClif_67 (K6), TM4_66 (K2), Tachez_65 (K1), TaiwanKao_68 (K1), Teejan_56 (K1), Thyatira_62 (K5), Tierra_69 (K6), Tigress9_70 (K6), TingHuaYa_69 (K1), TiniBug_66 (K1), Tiri_66 (K1), Topper_65 (K1), Torres_57 (K1), TreyKay_67 (K1), TribbleTrouble_67 (K3), Trice_54 (K1), TruffulaTree_66 (K1), Twitch_65 (K1), Unicorn_67 (K6), Urkel_66 (K1), Validus_70 (K1), Veliki_67 (K1), ViviJ_58 (K5), Waterfoul_61 (K5), Ximenita_71 (K6), YoureAdopted_65 (K1), Yuna_70 (K6), Yunkel11_70 (K1), Zabiza_60 (K1), Zavala_68 (K1), ZoeJ_67 (K2),

Start 23:

- Found in 12 of 288 (4.2%) of genes in pham
- Manual Annotations of this start: 10 of 263
- Called 100.0% of time when present
- Phage (with cluster) where this start called: CurlyFries_83 (CF), DearBasketball_44 (DY), DinoNuggs_42 (DY), DonkeyMan_42 (DY), Heinz_42 (DY), Hibiscus_43 (DY), Jojo24_41 (DY), RegnumDei_78 (CF), Reyja_42 (DY), Santhid_41 (DY), Shagrat_82 (CF), Tarzan_42 (DY),

Start 24:

- Found in 38 of 288 (13.2%) of genes in pham
- Manual Annotations of this start: 11 of 263
- Called 39.5% of time when present
- Phage (with cluster) where this start called: Alkhayr_15 (O), Bora_15 (O), Catdawg_14 (O), Corndog_17 (O), FoulBall_14 (O), Imara_15 (O), JangDynasty_14 (O), KingPhillip3_14 (O), Mori_15 (O), NiebruSaylor_15 (O), Schuy_16 (O), Shida_15 (O), Vorrps_15 (O), Wogge42_15 (O), YoyoKar_15 (O),

Summary by clusters:

There are 14 clusters represented in this pham: singleton, AG, DI, DY, CF, O, K3, K2, K1, K7, K6, K5, K4, K8,

Info for manual annotations of cluster AG:

- Start number 20 was manually annotated 1 time for cluster AG.
- Start number 22 was manually annotated 1 time for cluster AG.

Info for manual annotations of cluster CF:

- Start number 21 was manually annotated 2 times for cluster CF.
- Start number 23 was manually annotated 3 times for cluster CF.

Info for manual annotations of cluster DI:

- Start number 18 was manually annotated 15 times for cluster DI.

Info for manual annotations of cluster DY:

- Start number 23 was manually annotated 7 times for cluster DY.

Info for manual annotations of cluster K1:

- Start number 22 was manually annotated 109 times for cluster K1.

Info for manual annotations of cluster K2:

- Start number 22 was manually annotated 11 times for cluster K2.

Info for manual annotations of cluster K3:

- Start number 22 was manually annotated 9 times for cluster K3.

Info for manual annotations of cluster K4:

- Start number 19 was manually annotated 21 times for cluster K4.
- Start number 20 was manually annotated 1 time for cluster K4.

Info for manual annotations of cluster K5:

- Start number 17 was manually annotated 1 time for cluster K5.
- Start number 22 was manually annotated 24 times for cluster K5.

Info for manual annotations of cluster K6:

- Start number 22 was manually annotated 26 times for cluster K6.

Info for manual annotations of cluster K7:

- Start number 21 was manually annotated 1 time for cluster K7.

Info for manual annotations of cluster K8:

- Start number 19 was manually annotated 1 time for cluster K8.

Info for manual annotations of cluster O:

- Start number 14 was manually annotated 19 times for cluster O.
- Start number 24 was manually annotated 11 times for cluster O.

Gene Information:

Gene: ActinUp_65 Start: 42856, Stop: 43365, Start Num: 22

Candidate Starts for ActinUp_65:

(Start: 22 @42856 has 180 MA's), (34, 42931), (36, 42940), (42, 42970), (47, 43024), (56, 43102), (57, 43114), (76, 43273), (92, 43315),

Gene: Adephagia_65 Start: 42893, Stop: 43402, Start Num: 22

Candidate Starts for Adephagia_65:

(Start: 22 @42893 has 180 MA's), (34, 42968), (42, 43007), (47, 43061), (56, 43139), (57, 43151), (92, 43352),

Gene: Adonis_65 Start: 43128, Stop: 43637, Start Num: 22

Candidate Starts for Adonis_65:

(Start: 22 @43128 has 180 MA's), (34, 43203), (42, 43242), (47, 43296), (56, 43374), (57, 43386), (92, 43587),

Gene: Agent47_59 Start: 40081, Stop: 40656, Start Num: 22

Candidate Starts for Agent47_59:

(Start: 17 @40057 has 1 MA's), (Start: 22 @40081 has 180 MA's), (39, 40189), (48, 40261), (52, 40285), (56, 40333), (57, 40345), (60, 40369), (67, 40417), (71, 40462), (87, 40552), (105, 40645),

Gene: Ageofdapage_69 Start: 44287, Stop: 44796, Start Num: 22

Candidate Starts for Ageofdapage_69:

(Start: 22 @44287 has 180 MA's), (34, 44362), (36, 44371), (42, 44401), (47, 44455), (56, 44533), (57, 44545), (92, 44746),

Gene: AlishaPH_65 Start: 43154, Stop: 43663, Start Num: 22

Candidate Starts for AlishaPH_65:

(Start: 22 @43154 has 180 MA's), (34, 43229), (42, 43268), (47, 43322), (56, 43400), (57, 43412), (92, 43613),

Gene: Alkhayr_15 Start: 6062, Stop: 6742, Start Num: 24

Candidate Starts for Alkhayr_15:

(Start: 14 @6005 has 19 MA's), (Start: 24 @6062 has 11 MA's), (41, 6167), (44, 6185), (47, 6227), (49, 6236), (56, 6299), (57, 6311), (64, 6365), (67, 6383), (70, 6422), (75, 6467), (86, 6515), (98, 6605), (101, 6620), (107, 6674), (111, 6710),

Gene: AlleyCat_61 Start: 40379, Stop: 40972, Start Num: 22

Candidate Starts for AlleyCat_61:

(Start: 17 @40355 has 1 MA's), (Start: 22 @40379 has 180 MA's), (39, 40487), (48, 40559), (52, 40583), (56, 40631), (57, 40643), (58, 40655), (67, 40715), (71, 40760), (78, 40814), (79, 40817), (84, 40844), (87, 40859), (105, 40958),

Gene: Amelie_54 Start: 40324, Stop: 40845, Start Num: 22

Candidate Starts for Amelie_54:

(Start: 22 @40324 has 180 MA's), (34, 40399), (36, 40408), (47, 40492), (57, 40582), (67, 40654), (74, 40717), (77, 40744), (90, 40783),

Gene: Amgine_64 Start: 43961, Stop: 44473, Start Num: 22

Candidate Starts for Amgine_64:

(10, 43832), (Start: 22 @43961 has 180 MA's), (34, 44036), (36, 44045), (47, 44129), (48, 44135), (51, 44147), (57, 44219), (58, 44231), (67, 44291), (92, 44426), (93, 44438),

Gene: Aminay_65 Start: 42473, Stop: 43045, Start Num: 21

Candidate Starts for Aminay_65:

(Start: 21 @42473 has 3 MA's), (46, 42614), (47, 42641), (51, 42659), (57, 42731), (64, 42785), (85, 42932), (92, 42959),

Gene: Amohnition_65 Start: 43500, Stop: 44012, Start Num: 22

Candidate Starts for Amohnition_65:

(6, 43323), (8, 43332), (Start: 22 @43500 has 180 MA's), (34, 43575), (36, 43584), (47, 43668), (51, 43686), (57, 43758), (58, 43770), (67, 43830), (92, 43962), (100, 44001),

Gene: Anaya_68 Start: 43839, Stop: 44357, Start Num: 22

Candidate Starts for Anaya_68:

(Start: 22 @43839 has 180 MA's), (30, 43878), (34, 43914), (36, 43923), (47, 44007), (51, 44025), (56, 44085), (57, 44097), (58, 44109), (67, 44169), (92, 44301),

Gene: Angelica_65 Start: 43046, Stop: 43555, Start Num: 22

Candidate Starts for Angelica_65:

(Start: 22 @43046 has 180 MA's), (34, 43121), (42, 43160), (47, 43214), (57, 43304), (92, 43505),

Gene: Anma_67 Start: 43745, Stop: 44260, Start Num: 22

Candidate Starts for Anma_67:

(Start: 22 @43745 has 180 MA's), (34, 43820), (47, 43913), (51, 43931), (56, 43991), (57, 44003), (92, 44204),

Gene: Apocalypse_68 Start: 43810, Stop: 44319, Start Num: 22

Candidate Starts for Apocalypse_68:

(Start: 22 @43810 has 180 MA's), (34, 43885), (36, 43894), (42, 43924), (47, 43978), (56, 44056), (57, 44068), (92, 44269),

Gene: Applecrisp_62 Start: 43091, Stop: 43603, Start Num: 22

Candidate Starts for Applecrisp_62:

(Start: 22 @43091 has 180 MA's), (34, 43166), (36, 43175), (47, 43259), (48, 43265), (51, 43277), (57, 43349), (58, 43361), (67, 43421), (92, 43556), (93, 43568),

Gene: Asayake_65 Start: 43208, Stop: 43717, Start Num: 22

Candidate Starts for Asayake_65:

(Start: 22 @43208 has 180 MA's), (34, 43283), (42, 43322), (47, 43376), (56, 43454), (57, 43466), (92, 43667),

Gene: Ashwin_16 Start: 6240, Stop: 6962, Start Num: 14

Candidate Starts for Ashwin_16:

(Start: 14 @6240 has 19 MA's), (Start: 24 @6297 has 11 MA's), (41, 6402), (44, 6420), (47, 6462), (49, 6471), (56, 6534), (57, 6546), (64, 6600), (67, 6618), (70, 6657), (75, 6702), (86, 6750), (98, 6825), (101, 6840), (107, 6894), (111, 6930),

Gene: Atiba_66 Start: 42856, Stop: 43365, Start Num: 22

Candidate Starts for Atiba_66:

(Start: 22 @42856 has 180 MA's), (34, 42931), (42, 42970), (47, 43024), (56, 43102), (57, 43114), (92, 43315),

Gene: Ayotoya_51 Start: 37282, Stop: 38049, Start Num: 18

Candidate Starts for Ayotoya_51:

(3, 36928), (Start: 18 @37282 has 15 MA's), (37, 37381), (38, 37390), (45, 37429), (46, 37432), (57, 37549), (65, 37612), (67, 37621), (70, 37660), (72, 37669), (94, 37831), (112, 37942), (116, 37978),

Gene: BEEST_65 Start: 43208, Stop: 43717, Start Num: 22

Candidate Starts for BEEST_65:

(Start: 22 @43208 has 180 MA's), (34, 43283), (42, 43322), (47, 43376), (56, 43454), (57, 43466), (92, 43667),

Gene: BGlluviae_65 Start: 43011, Stop: 43520, Start Num: 22

Candidate Starts for BGlluviae_65:

(Start: 22 @43011 has 180 MA's), (34, 43086), (42, 43125), (47, 43179), (56, 43257), (57, 43269), (92, 43470),

Gene: BaghaKamala_65 Start: 42675, Stop: 43184, Start Num: 22

Candidate Starts for BaghaKamala_65:

(Start: 22 @42675 has 180 MA's), (34, 42750), (36, 42759), (42, 42789), (47, 42843), (51, 42861), (56, 42921), (57, 42933), (78, 43098), (92, 43134),

Gene: BananenDer11_59 Start: 40042, Stop: 40617, Start Num: 22

Candidate Starts for BananenDer11_59:

(Start: 17 @40018 has 1 MA's), (Start: 22 @40042 has 180 MA's), (39, 40150), (48, 40222), (52, 40246), (56, 40294), (57, 40306), (60, 40330), (67, 40378), (71, 40423), (87, 40513), (105, 40606),

Gene: BarrelRoll_66 Start: 43294, Stop: 43803, Start Num: 22

Candidate Starts for BarrelRoll_66:

(Start: 22 @43294 has 180 MA's), (34, 43369), (36, 43378), (42, 43408), (47, 43462), (56, 43540), (57, 43552), (92, 43753),

Gene: Beezoo_67 Start: 43806, Stop: 44315, Start Num: 22

Candidate Starts for Beezoo_67:

(Start: 22 @43806 has 180 MA's), (34, 43881), (42, 43920), (47, 43974), (56, 44052), (57, 44064), (92, 44265),

Gene: Bella96_66 Start: 43591, Stop: 44106, Start Num: 22

Candidate Starts for Bella96_66:

(Start: 22 @43591 has 180 MA's), (34, 43666), (47, 43759), (51, 43777), (56, 43837), (57, 43849), (92, 44050),

Gene: Belladonna_65 Start: 43011, Stop: 43520, Start Num: 22

Candidate Starts for Belladonna_65:

(Start: 22 @43011 has 180 MA's), (34, 43086), (42, 43125), (47, 43179), (56, 43257), (57, 43269), (92, 43470),

Gene: Bern_67 Start: 42268, Stop: 42777, Start Num: 22

Candidate Starts for Bern_67:

(Start: 22 @42268 has 180 MA's), (34, 42343), (36, 42352), (42, 42382), (47, 42436), (51, 42454), (56, 42514), (57, 42526), (78, 42691), (92, 42727),

Gene: BetterKatz_51 Start: 36768, Stop: 37547, Start Num: 18

Candidate Starts for BetterKatz_51:

(Start: 18 @36768 has 15 MA's), (38, 36876), (45, 36915), (46, 36918), (57, 37035), (65, 37098), (67, 37107), (70, 37146), (72, 37155), (94, 37317), (112, 37440), (116, 37476),

Gene: Biglebops_54 Start: 40324, Stop: 40845, Start Num: 22

Candidate Starts for Biglebops_54:

(Start: 22 @40324 has 180 MA's), (34, 40399), (36, 40408), (47, 40492), (57, 40582), (67, 40654), (74, 40717), (77, 40744), (90, 40783),

Gene: Blessica_15 Start: 6070, Stop: 6765, Start Num: 14

Candidate Starts for Blessica_15:

(Start: 14 @6070 has 19 MA's), (Start: 24 @6127 has 11 MA's), (41, 6232), (44, 6250), (47, 6292), (49, 6301), (56, 6364), (57, 6376), (64, 6430), (67, 6448), (70, 6487), (75, 6532), (98, 6628), (101, 6643), (107, 6697), (111, 6733),

Gene: Blizzard_65 Start: 43208, Stop: 43717, Start Num: 22

Candidate Starts for Blizzard_65:

(Start: 22 @43208 has 180 MA's), (34, 43283), (42, 43322), (47, 43376), (56, 43454), (57, 43466), (92, 43667),

Gene: Bobquesha_70 Start: 41491, Stop: 42162, Start Num: 19

Candidate Starts for Bobquesha_70:

(Start: 19 @41491 has 22 MA's), (46, 41626), (47, 41653), (48, 41659), (51, 41671), (53, 41698), (57, 41743), (67, 41815), (85, 41944), (91, 41977), (94, 41995), (109, 42100), (115, 42142),

Gene: Bock_51 Start: 36502, Stop: 37281, Start Num: 18

Candidate Starts for Bock_51:

(3, 36148), (Start: 18 @36502 has 15 MA's), (37, 36601), (38, 36610), (45, 36649), (46, 36652), (57, 36769), (67, 36841), (70, 36880), (72, 36889), (94, 37051), (112, 37174), (116, 37210),

Gene: Boiiii_65 Start: 43210, Stop: 43719, Start Num: 22

Candidate Starts for Boiiii_65:

(Start: 22 @43210 has 180 MA's), (34, 43285), (42, 43324), (47, 43378), (56, 43456), (57, 43468), (92, 43669),

Gene: Boilgate_62 Start: 44590, Stop: 45171, Start Num: 19

Candidate Starts for Boilgate_62:

(Start: 19 @44590 has 22 MA's), (47, 44755), (53, 44800), (55, 44827), (57, 44845), (61, 44875), (62, 44884), (95, 45094),

Gene: BoostSeason_68 Start: 45062, Stop: 45580, Start Num: 22

Candidate Starts for BoostSeason_68:

(9, 44912), (Start: 22 @45062 has 180 MA's), (43, 45185), (47, 45227), (50, 45239), (51, 45245), (57, 45317), (58, 45329), (60, 45341), (67, 45389), (92, 45530), (100, 45569),

Gene: Bora_15 Start: 6095, Stop: 6772, Start Num: 24

Candidate Starts for Bora_15:

(Start: 14 @6038 has 19 MA's), (Start: 24 @6095 has 11 MA's), (41, 6200), (44, 6218), (47, 6260), (49, 6269), (56, 6332), (57, 6344), (64, 6398), (67, 6416), (70, 6455), (75, 6500), (98, 6635), (101, 6650),

(107, 6704), (111, 6740),

Gene: Bryler_69 Start: 42843, Stop: 43361, Start Num: 22

Candidate Starts for Bryler_69:

(5, 42663), (11, 42729), (Start: 22 @42843 has 180 MA's), (34, 42918), (43, 42966), (47, 43011), (51, 43029), (57, 43101), (67, 43173), (92, 43311), (99, 43344), (100, 43350),

Gene: Brylie_51 Start: 36552, Stop: 37343, Start Num: 18

Candidate Starts for Brylie_51:

(3, 36198), (Start: 18 @36552 has 15 MA's), (37, 36651), (38, 36660), (45, 36699), (46, 36702), (57, 36819), (65, 36882), (67, 36891), (70, 36930), (72, 36939), (94, 37101), (112, 37236), (116, 37272),

Gene: CREW_65 Start: 43011, Stop: 43520, Start Num: 22

Candidate Starts for CREW_65:

(Start: 22 @43011 has 180 MA's), (34, 43086), (42, 43125), (47, 43179), (56, 43257), (57, 43269), (92, 43470),

Gene: Cain_69 Start: 42831, Stop: 43349, Start Num: 22

Candidate Starts for Cain_69:

(5, 42651), (11, 42717), (Start: 22 @42831 has 180 MA's), (34, 42906), (43, 42954), (47, 42999), (51, 43017), (57, 43089), (67, 43161), (92, 43299), (99, 43332), (100, 43338),

Gene: CallaLilly_65 Start: 42934, Stop: 43443, Start Num: 22

Candidate Starts for CallaLilly_65:

(Start: 22 @42934 has 180 MA's), (34, 43009), (42, 43048), (47, 43102), (56, 43180), (57, 43192), (92, 43393),

Gene: Capricorn_65 Start: 43011, Stop: 43520, Start Num: 22

Candidate Starts for Capricorn_65:

(Start: 22 @43011 has 180 MA's), (34, 43086), (42, 43125), (47, 43179), (56, 43257), (57, 43269), (92, 43470),

Gene: CaseJules_67 Start: 43208, Stop: 43717, Start Num: 22

Candidate Starts for CaseJules_67:

(Start: 22 @43208 has 180 MA's), (34, 43283), (42, 43322), (47, 43376), (56, 43454), (57, 43466), (92, 43667),

Gene: Catdawg_14 Start: 5733, Stop: 6371, Start Num: 24

Candidate Starts for Catdawg_14:

(Start: 14 @5676 has 19 MA's), (Start: 24 @5733 has 11 MA's), (41, 5838), (44, 5856), (47, 5898), (49, 5907), (56, 5970), (57, 5982), (64, 6036), (67, 6054), (70, 6093), (75, 6138), (98, 6234), (101, 6249), (107, 6303), (111, 6339),

Gene: Chancellor_69 Start: 42601, Stop: 43269, Start Num: 19

Candidate Starts for Chancellor_69:

(Start: 19 @42601 has 22 MA's), (47, 42763), (48, 42769), (51, 42781), (53, 42808), (57, 42853), (67, 42925), (85, 43054), (91, 43087), (98, 43120), (103, 43141), (109, 43207), (115, 43249),

Gene: Chavito_68 Start: 44040, Stop: 44564, Start Num: 22

Candidate Starts for Chavito_68:

(Start: 22 @44040 has 180 MA's), (34, 44115), (47, 44208), (51, 44226), (57, 44298), (58, 44310), (64, 44352), (67, 44370),

Gene: CheetoDust_65 Start: 42722, Stop: 43231, Start Num: 22

Candidate Starts for CheetoDust_65:

(Start: 22 @42722 has 180 MA's), (34, 42797), (36, 42806), (42, 42836), (47, 42890), (51, 42908), (56, 42968), (57, 42980), (78, 43145), (92, 43181),

Gene: Cheetobro_69 Start: 42598, Stop: 43266, Start Num: 19

Candidate Starts for Cheetobro_69:

(Start: 19 @42598 has 22 MA's), (47, 42760), (48, 42766), (51, 42778), (53, 42805), (57, 42850), (67, 42922), (85, 43051), (91, 43084), (98, 43117), (103, 43138), (109, 43204), (115, 43246),

Gene: Chop_51 Start: 37033, Stop: 37800, Start Num: 18

Candidate Starts for Chop_51:

(Start: 18 @37033 has 15 MA's), (Start: 24 @37051 has 11 MA's), (38, 37141), (45, 37180), (46, 37183), (57, 37300), (67, 37372), (70, 37411), (72, 37420), (94, 37582), (112, 37693), (116, 37729),

Gene: Chris_68 Start: 44067, Stop: 44573, Start Num: 22

Candidate Starts for Chris_68:

(Start: 22 @44067 has 180 MA's), (34, 44142), (36, 44151), (47, 44235), (54, 44298), (57, 44325), (58, 44337), (92, 44526),

Gene: Clipper_69 Start: 43910, Stop: 44419, Start Num: 22

Candidate Starts for Clipper_69:

(Start: 22 @43910 has 180 MA's), (34, 43985), (42, 44024), (47, 44078), (56, 44156), (57, 44168), (92, 44369),

Gene: Collard_57 Start: 40042, Stop: 40617, Start Num: 22

Candidate Starts for Collard_57:

(Start: 17 @40018 has 1 MA's), (Start: 22 @40042 has 180 MA's), (39, 40150), (48, 40222), (52, 40246), (56, 40294), (57, 40306), (60, 40330), (67, 40378), (71, 40423), (87, 40513), (105, 40606),

Gene: Corndog_17 Start: 6409, Stop: 7074, Start Num: 24

Candidate Starts for Corndog_17:

(Start: 14 @6352 has 19 MA's), (Start: 24 @6409 has 11 MA's), (41, 6514), (44, 6532), (47, 6574), (49, 6583), (56, 6646), (57, 6658), (64, 6712), (67, 6730), (70, 6769), (75, 6814), (86, 6862), (98, 6937), (101, 6952), (107, 7006), (111, 7042),

Gene: CrimD_67 Start: 43833, Stop: 44342, Start Num: 22

Candidate Starts for CrimD_67:

(Start: 22 @43833 has 180 MA's), (34, 43908), (42, 43947), (47, 44001), (56, 44079), (57, 44091), (92, 44292),

Gene: Curiosium_69 Start: 42524, Stop: 43036, Start Num: 22

Candidate Starts for Curiosium_69:

(Start: 22 @42524 has 180 MA's), (34, 42599), (47, 42692), (51, 42710), (55, 42764), (57, 42782), (58, 42794), (64, 42836), (92, 42983),

Gene: CurlyFries_83 Start: 45467, Stop: 46030, Start Num: 23

Candidate Starts for CurlyFries_83:

(Start: 23 @45467 has 10 MA's), (31, 45521), (47, 45629), (58, 45731), (67, 45791), (69, 45821), (73, 45845),

Gene: Dadosky_61 Start: 40381, Stop: 40974, Start Num: 22

Candidate Starts for Dadosky_61:

(Start: 17 @40357 has 1 MA's), (Start: 22 @40381 has 180 MA's), (39, 40489), (48, 40561), (52, 40585), (56, 40633), (57, 40645), (58, 40657), (67, 40717), (71, 40762), (78, 40816), (79, 40819), (84, 40846), (87, 40861), (105, 40960),

Gene: Dalmuri_65 Start: 43011, Stop: 43520, Start Num: 22

Candidate Starts for Dalmuri_65:

(Start: 22 @43011 has 180 MA's), (34, 43086), (42, 43125), (47, 43179), (56, 43257), (57, 43269), (92, 43470),

Gene: DanSyl44_72 Start: 43792, Stop: 44460, Start Num: 19

Candidate Starts for DanSyl44_72:

(Start: 19 @43792 has 22 MA's), (47, 43954), (48, 43960), (51, 43972), (53, 43999), (57, 44044), (67, 44116), (85, 44245), (91, 44278), (98, 44311), (103, 44332), (109, 44398), (115, 44440),

Gene: DartGoblin_67 Start: 43563, Stop: 44078, Start Num: 22

Candidate Starts for DartGoblin_67:

(Start: 22 @43563 has 180 MA's), (34, 43638), (36, 43647), (47, 43731), (51, 43749), (56, 43809), (57, 43821), (58, 43833), (92, 44022),

Gene: DarthP_65 Start: 43354, Stop: 43866, Start Num: 22

Candidate Starts for DarthP_65:

(6, 43177), (8, 43186), (Start: 22 @43354 has 180 MA's), (34, 43429), (36, 43438), (47, 43522), (51, 43540), (57, 43612), (58, 43624), (67, 43684), (92, 43816), (100, 43855),

Gene: Dartin_68 Start: 43499, Stop: 44026, Start Num: 22

Candidate Starts for Dartin_68:

(Start: 22 @43499 has 180 MA's), (34, 43574), (47, 43667), (51, 43685), (57, 43757), (58, 43769), (64, 43811), (67, 43829), (90, 43961),

Gene: DearBasketball_44 Start: 29665, Stop: 30348, Start Num: 23

Candidate Starts for DearBasketball_44:

(Start: 23 @29665 has 10 MA's), (47, 29827), (51, 29845), (70, 30034), (104, 30244), (108, 30286), (110, 30298), (113, 30325), (114, 30331),

Gene: Deby_66 Start: 43494, Stop: 44003, Start Num: 22

Candidate Starts for Deby_66:

(Start: 22 @43494 has 180 MA's), (34, 43569), (36, 43578), (42, 43608), (47, 43662), (56, 43740), (57, 43752), (92, 43953),

Gene: DelRio_52 Start: 37746, Stop: 38525, Start Num: 18

Candidate Starts for DelRio_52:

(Start: 18 @37746 has 15 MA's), (37, 37845), (38, 37854), (45, 37893), (46, 37896), (57, 38013), (65, 38076), (67, 38085), (70, 38124), (72, 38133), (94, 38295), (112, 38418), (116, 38454),

Gene: Devera_73 Start: 44850, Stop: 45359, Start Num: 22

Candidate Starts for Devera_73:

(Start: 22 @44850 has 180 MA's), (34, 44925), (36, 44934), (42, 44964), (47, 45018), (56, 45096), (57, 45108), (92, 45309),

Gene: DinoNuggs_42 Start: 29334, Stop: 30017, Start Num: 23

Candidate Starts for DinoNuggs_42:

(Start: 23 @29334 has 10 MA's), (47, 29496), (51, 29514), (70, 29703), (104, 29913), (108, 29955), (110, 29967), (113, 29994), (114, 30000),

Gene: DismalFunk_68 Start: 45487, Stop: 46005, Start Num: 22

Candidate Starts for DismalFunk_68:

(9, 45337), (16, 45460), (Start: 22 @45487 has 180 MA's), (43, 45610), (47, 45652), (50, 45664), (51, 45670), (57, 45742), (58, 45754), (60, 45766), (67, 45814), (92, 45955), (100, 45994),

Gene: DismalStressor_68 Start: 45487, Stop: 46005, Start Num: 22

Candidate Starts for DismalStressor_68:

(9, 45337), (16, 45460), (Start: 22 @45487 has 180 MA's), (43, 45610), (47, 45652), (50, 45664), (51, 45670), (57, 45742), (58, 45754), (60, 45766), (67, 45814), (92, 45955), (100, 45994),

Gene: Dole_71 Start: 44853, Stop: 45362, Start Num: 22

Candidate Starts for Dole_71:

(Start: 22 @44853 has 180 MA's), (34, 44928), (36, 44937), (42, 44967), (47, 45021), (56, 45099), (57, 45111), (92, 45312),

Gene: DonkeyMan_42 Start: 30250, Stop: 30930, Start Num: 23

Candidate Starts for DonkeyMan_42:

(Start: 23 @30250 has 10 MA's), (47, 30412), (51, 30430), (70, 30619), (106, 30856), (108, 30868), (110, 30880), (113, 30907), (114, 30913),

Gene: DoubleChamp_56 Start: 40042, Stop: 40617, Start Num: 22

Candidate Starts for DoubleChamp_56:

(Start: 17 @40018 has 1 MA's), (Start: 22 @40042 has 180 MA's), (39, 40150), (48, 40222), (52, 40246), (56, 40294), (57, 40306), (60, 40330), (67, 40378), (71, 40423), (87, 40513), (105, 40606),

Gene: Doughnut_68 Start: 45102, Stop: 45620, Start Num: 22

Candidate Starts for Doughnut_68:

(Start: 22 @45102 has 180 MA's), (43, 45225), (47, 45267), (50, 45279), (51, 45285), (57, 45357), (58, 45369), (60, 45381), (67, 45429), (92, 45570), (100, 45609),

Gene: DrHayes_66 Start: 43745, Stop: 44260, Start Num: 22

Candidate Starts for DrHayes_66:

(Start: 22 @43745 has 180 MA's), (34, 43820), (47, 43913), (51, 43931), (56, 43991), (57, 44003), (92, 44204),

Gene: Durfee_65 Start: 43208, Stop: 43717, Start Num: 22

Candidate Starts for Durfee_65:

(Start: 22 @43208 has 180 MA's), (34, 43283), (42, 43322), (47, 43376), (56, 43454), (57, 43466), (92, 43667),

Gene: Dylan_15 Start: 6240, Stop: 6962, Start Num: 14

Candidate Starts for Dylan_15:

(Start: 14 @6240 has 19 MA's), (Start: 24 @6297 has 11 MA's), (41, 6402), (44, 6420), (47, 6462), (49, 6471), (56, 6534), (57, 6546), (64, 6600), (67, 6618), (70, 6657), (75, 6702), (86, 6750), (98, 6825), (101, 6840), (107, 6894), (111, 6930),

Gene: Edugator_58 Start: 41802, Stop: 42395, Start Num: 22

Candidate Starts for Edugator_58:

(Start: 17 @41778 has 1 MA's), (Start: 22 @41802 has 180 MA's), (39, 41910), (48, 41982), (52, 42006), (56, 42054), (57, 42066), (58, 42078), (67, 42138), (71, 42183), (78, 42237), (79, 42240), (84, 42267), (87, 42282), (105, 42381),

Gene: Efra2_71 Start: 43581, Stop: 44105, Start Num: 22

Candidate Starts for Efra2_71:

(Start: 22 @43581 has 180 MA's), (34, 43656), (47, 43749), (51, 43767), (57, 43839), (58, 43851), (64, 43893), (92, 44049),

Gene: Ekdilam_62 Start: 43584, Stop: 44096, Start Num: 22

Candidate Starts for Ekdilam_62:

(Start: 22 @43584 has 180 MA's), (34, 43659), (36, 43668), (47, 43752), (48, 43758), (57, 43842), (58, 43854), (67, 43914), (92, 44046), (99, 44079), (100, 44085),

Gene: Ellie_61 Start: 42821, Stop: 43333, Start Num: 22

Candidate Starts for Ellie_61:

(Start: 22 @42821 has 180 MA's), (34, 42896), (36, 42905), (47, 42989), (48, 42995), (51, 43007), (57, 43079), (58, 43091), (67, 43151), (92, 43286), (93, 43298),

Gene: Emerson_67 Start: 43328, Stop: 43837, Start Num: 22

Candidate Starts for Emerson_67:

(Start: 22 @43328 has 180 MA's), (34, 43403), (42, 43442), (47, 43496), (56, 43574), (57, 43586), (92, 43787),

Gene: Enkosi_56 Start: 42937, Stop: 43458, Start Num: 22

Candidate Starts for Enkosi_56:

(Start: 22 @42937 has 180 MA's), (34, 43012), (36, 43021), (47, 43105), (57, 43195), (67, 43267), (74, 43330), (77, 43357), (90, 43396),

Gene: Eponine_71 Start: 43444, Stop: 44112, Start Num: 19

Candidate Starts for Eponine_71:

(Start: 19 @43444 has 22 MA's), (47, 43606), (48, 43612), (51, 43624), (53, 43651), (57, 43696), (67, 43768), (85, 43897), (91, 43930), (98, 43963), (103, 43984), (109, 44050), (115, 44092),

Gene: Familton_15 Start: 5677, Stop: 6372, Start Num: 14

Candidate Starts for Familton_15:

(Start: 14 @5677 has 19 MA's), (Start: 24 @5734 has 11 MA's), (41, 5839), (44, 5857), (47, 5899), (49, 5908), (56, 5971), (57, 5983), (64, 6037), (67, 6055), (70, 6094), (75, 6139), (98, 6235), (101, 6250), (107, 6304), (111, 6340),

Gene: Fefferhead_63 Start: 42730, Stop: 43242, Start Num: 22

Candidate Starts for Fefferhead_63:

(Start: 22 @42730 has 180 MA's), (34, 42805), (36, 42814), (47, 42898), (48, 42904), (51, 42916), (57, 42988), (58, 43000), (67, 43060), (92, 43195), (93, 43207),

Gene: Feyre_62 Start: 43763, Stop: 44383, Start Num: 22

Candidate Starts for Feyre_62:

(Start: 17 @43739 has 1 MA's), (Start: 22 @43763 has 180 MA's), (47, 43937), (48, 43943), (56, 44015), (57, 44027), (58, 44039), (67, 44099), (71, 44144), (80, 44219), (81, 44222), (87, 44249), (89, 44264), (105, 44369),

Gene: Findley_68 Start: 45480, Stop: 45998, Start Num: 22

Candidate Starts for Findley_68:

(9, 45330), (16, 45453), (Start: 22 @45480 has 180 MA's), (43, 45603), (47, 45645), (50, 45657), (51, 45663), (57, 45735), (58, 45747), (60, 45759), (67, 45807), (92, 45948), (100, 45987),

Gene: Fionnbharth_69 Start: 42842, Stop: 43510, Start Num: 19

Candidate Starts for Fionnbharth_69:

(Start: 19 @42842 has 22 MA's), (47, 43004), (48, 43010), (51, 43022), (53, 43049), (57, 43094), (67, 43166), (85, 43295), (91, 43328), (98, 43361), (103, 43382), (109, 43448), (115, 43490),

Gene: Firecracker_15 Start: 5973, Stop: 6695, Start Num: 14

Candidate Starts for Firecracker_15:

(Start: 14 @5973 has 19 MA's), (Start: 24 @6030 has 11 MA's), (41, 6135), (44, 6153), (47, 6195), (49, 6204), (56, 6267), (57, 6279), (64, 6333), (67, 6351), (70, 6390), (75, 6435), (86, 6483), (98, 6558), (101, 6573), (107, 6627), (111, 6663),

Gene: FoulBall_14 Start: 5734, Stop: 6372, Start Num: 24

Candidate Starts for FoulBall_14:

(Start: 14 @5677 has 19 MA's), (Start: 24 @5734 has 11 MA's), (41, 5839), (44, 5857), (47, 5899), (49, 5908), (56, 5971), (57, 5983), (64, 6037), (67, 6055), (70, 6094), (75, 6139), (98, 6235), (101, 6250), (107, 6304), (111, 6340),

Gene: Francois_50 Start: 36554, Stop: 37309, Start Num: 18

Candidate Starts for Francois_50:

(Start: 18 @36554 has 15 MA's), (38, 36662), (46, 36704), (57, 36821), (65, 36884), (67, 36893), (70, 36932), (72, 36941), (94, 37103), (116, 37238),

Gene: GMA4_41 Start: 30857, Stop: 31489, Start Num: 17

Candidate Starts for GMA4_41:

(Start: 17 @30857 has 1 MA's), (25, 30899), (26, 30905), (27, 30908), (29, 30917), (47, 31070), (50, 31082), (59, 31181), (64, 31214), (66, 31226), (67, 31232), (76, 31328),

Gene: Ganymede_65 Start: 43234, Stop: 43743, Start Num: 22

Candidate Starts for Ganymede_65:

(Start: 22 @43234 has 180 MA's), (34, 43309), (36, 43318), (42, 43348), (47, 43402), (56, 43480), (57, 43492), (92, 43693), (99, 43726),

Gene: Gengar_59 Start: 41780, Stop: 42370, Start Num: 22

Candidate Starts for Gengar_59:

(Start: 17 @41756 has 1 MA's), (Start: 22 @41780 has 180 MA's), (33, 41858), (47, 41954), (48, 41960), (55, 42026), (56, 42032), (57, 42044), (58, 42056), (60, 42068), (67, 42116), (71, 42161), (80, 42233), (81, 42236), (87, 42263), (91, 42278), (105, 42356),

Gene: Geraldini_68 Start: 43890, Stop: 44399, Start Num: 22

Candidate Starts for Geraldini_68:

(Start: 22 @43890 has 180 MA's), (34, 43965), (42, 44004), (47, 44058), (56, 44136), (57, 44148), (92, 44349),

Gene: GrandSlam_51 Start: 37033, Stop: 37800, Start Num: 18

Candidate Starts for GrandSlam_51:

(Start: 18 @37033 has 15 MA's), (Start: 24 @37051 has 11 MA's), (38, 37141), (45, 37180), (46, 37183), (57, 37300), (67, 37372), (70, 37411), (72, 37420), (94, 37582), (112, 37693), (116, 37729),

Gene: Guanica15_70 Start: 43322, Stop: 43843, Start Num: 22

Candidate Starts for Guanica15_70:

(Start: 22 @43322 has 180 MA's), (34, 43397), (47, 43490), (51, 43508), (57, 43580), (58, 43592), (64, 43634), (92, 43790),

Gene: Guillsminger_60 Start: 41751, Stop: 42323, Start Num: 22

Candidate Starts for Guillsminger_60:

(Start: 17 @41727 has 1 MA's), (Start: 22 @41751 has 180 MA's), (33, 41829), (47, 41925), (48, 41931), (56, 42003), (57, 42015), (58, 42027), (60, 42039), (62, 42054), (67, 42087), (71, 42132), (83, 42210), (90, 42222), (105, 42309),

Gene: Hammy_65 Start: 43342, Stop: 43854, Start Num: 22

Candidate Starts for Hammy_65:

(6, 43165), (8, 43174), (Start: 22 @43342 has 180 MA's), (34, 43417), (36, 43426), (47, 43510), (51, 43528), (57, 43600), (58, 43612), (67, 43672), (92, 43804), (100, 43843),

Gene: Hamood_51 Start: 37033, Stop: 37800, Start Num: 18

Candidate Starts for Hamood_51:

(Start: 18 @37033 has 15 MA's), (Start: 24 @37051 has 11 MA's), (38, 37141), (45, 37180), (46, 37183), (57, 37300), (67, 37372), (70, 37411), (72, 37420), (94, 37582), (112, 37693), (116, 37729),

Gene: HedwigODU_65 Start: 42856, Stop: 43365, Start Num: 22

Candidate Starts for HedwigODU_65:

(Start: 22 @42856 has 180 MA's), (34, 42931), (36, 42940), (42, 42970), (47, 43024), (56, 43102), (57, 43114), (76, 43273), (92, 43315),

Gene: Heftyboy_60 Start: 42125, Stop: 42691, Start Num: 22

Candidate Starts for Heftyboy_60:

(Start: 17 @42101 has 1 MA's), (Start: 22 @42125 has 180 MA's), (47, 42299), (48, 42305), (56, 42377), (57, 42389), (58, 42401), (60, 42413), (67, 42461), (71, 42506), (90, 42590), (105, 42677),

Gene: Heinz_42 Start: 28349, Stop: 29047, Start Num: 23

Candidate Starts for Heinz_42:

(Start: 23 @28349 has 10 MA's), (47, 28511), (51, 28529), (54, 28574), (106, 28973), (108, 28985), (110, 28997), (113, 29024), (114, 29030),

Gene: Hibiscus_43 Start: 28298, Stop: 28996, Start Num: 23

Candidate Starts for Hibiscus_43:

(Start: 23 @28298 has 10 MA's), (47, 28460), (51, 28478), (54, 28523), (106, 28922), (108, 28934), (110, 28946), (113, 28973), (114, 28979),

Gene: Homura_65 Start: 43011, Stop: 43520, Start Num: 22

Candidate Starts for Homura_65:

(Start: 22 @43011 has 180 MA's), (34, 43086), (42, 43125), (47, 43179), (56, 43257), (57, 43269), (92, 43470),

Gene: Hurricane_67 Start: 43488, Stop: 44006, Start Num: 22

Candidate Starts for Hurricane_67:

(Start: 22 @43488 has 180 MA's), (47, 43656), (51, 43674), (57, 43746), (58, 43758), (67, 43818), (92, 43956), (99, 43989), (100, 43995),

Gene: Hyperbowlee_65 Start: 43208, Stop: 43717, Start Num: 22

Candidate Starts for Hyperbowlee_65:

(Start: 22 @43208 has 180 MA's), (34, 43283), (42, 43322), (47, 43376), (56, 43454), (57, 43466), (92, 43667),

Gene: Idergollasper_14 Start: 5677, Stop: 6372, Start Num: 14

Candidate Starts for Idergollasper_14:

(Start: 14 @5677 has 19 MA's), (Start: 24 @5734 has 11 MA's), (41, 5839), (44, 5857), (47, 5899), (49, 5908), (56, 5971), (57, 5983), (64, 6037), (67, 6055), (70, 6094), (75, 6139), (98, 6235), (101, 6250), (107, 6304), (111, 6340),

Gene: Illumine_71 Start: 44852, Stop: 45361, Start Num: 22

Candidate Starts for Illumine_71:

(Start: 22 @44852 has 180 MA's), (34, 44927), (36, 44936), (42, 44966), (47, 45020), (56, 45098), (57, 45110), (92, 45311),

Gene: Imara_15 Start: 5987, Stop: 6625, Start Num: 24

Candidate Starts for Imara_15:

(Start: 14 @5930 has 19 MA's), (Start: 24 @5987 has 11 MA's), (41, 6092), (44, 6110), (47, 6152), (49, 6161), (56, 6224), (57, 6236), (64, 6290), (67, 6308), (70, 6347), (75, 6392), (98, 6488), (101, 6503), (107, 6557), (111, 6593),

Gene: Inky_65 Start: 43011, Stop: 43520, Start Num: 22

Candidate Starts for Inky_65:

(Start: 22 @43011 has 180 MA's), (34, 43086), (42, 43125), (47, 43179), (56, 43257), (57, 43269), (92, 43470),

Gene: InvictusManeo_57 Start: 40085, Stop: 40660, Start Num: 22

Candidate Starts for InvictusManeo_57:

(Start: 17 @40061 has 1 MA's), (Start: 22 @40085 has 180 MA's), (39, 40193), (48, 40265), (52, 40289), (56, 40337), (57, 40349), (60, 40373), (67, 40421), (71, 40466), (87, 40556), (105, 40649),

Gene: JAWS_66 Start: 43287, Stop: 43796, Start Num: 22

Candidate Starts for JAWS_66:

(Start: 22 @43287 has 180 MA's), (34, 43362), (36, 43371), (42, 43401), (47, 43455), (56, 43533), (57, 43545), (92, 43746),

Gene: JF1_69 Start: 42759, Stop: 43424, Start Num: 19

Candidate Starts for JF1_69:

(Start: 19 @42759 has 22 MA's), (47, 42921), (48, 42927), (51, 42939), (53, 42966), (57, 43011), (67, 43083), (85, 43212), (91, 43245), (96, 43272), (109, 43362), (115, 43404),

Gene: JangDynasty_14 Start: 5823, Stop: 6461, Start Num: 24

Candidate Starts for JangDynasty_14:

(Start: 14 @5766 has 19 MA's), (Start: 24 @5823 has 11 MA's), (41, 5928), (44, 5946), (47, 5988), (49, 5997), (56, 6060), (57, 6072), (64, 6126), (67, 6144), (70, 6183), (75, 6228), (98, 6324), (101, 6339), (107, 6393), (111, 6429),

Gene: Jarvi_65 Start: 43011, Stop: 43520, Start Num: 22

Candidate Starts for Jarvi_65:

(Start: 22 @43011 has 180 MA's), (34, 43086), (42, 43125), (47, 43179), (56, 43257), (57, 43269), (92, 43470),

Gene: Jayhawk_67 Start: 43354, Stop: 43863, Start Num: 22

Candidate Starts for Jayhawk_67:

(Start: 22 @43354 has 180 MA's), (34, 43429), (42, 43468), (47, 43522), (56, 43600), (57, 43612), (92, 43813),

Gene: Jeckyll_65 Start: 43011, Stop: 43520, Start Num: 22

Candidate Starts for Jeckyll_65:

(Start: 22 @43011 has 180 MA's), (34, 43086), (42, 43125), (47, 43179), (56, 43257), (57, 43269), (92, 43470),

Gene: Jflix2_71 Start: 44931, Stop: 45539, Start Num: 21

Candidate Starts for Jflix2_71:

(Start: 21 @44931 has 3 MA's), (28, 44961), (33, 45003), (35, 45009), (36, 45015), (47, 45105), (57, 45198), (67, 45270),

Gene: Jojo24_41 Start: 28906, Stop: 29589, Start Num: 23

Candidate Starts for Jojo24_41:

(Start: 23 @28906 has 10 MA's), (47, 29068), (51, 29086), (70, 29275), (104, 29485), (106, 29515), (108, 29527), (110, 29539), (113, 29566), (114, 29572),

Gene: Joy99_65 Start: 42940, Stop: 43449, Start Num: 22

Candidate Starts for Joy99_65:

(Start: 22 @42940 has 180 MA's), (34, 43015), (42, 43054), (47, 43108), (56, 43186), (57, 43198), (92, 43399),

Gene: Juliette_71 Start: 42906, Stop: 43574, Start Num: 19

Candidate Starts for Juliette_71:

(Start: 19 @42906 has 22 MA's), (47, 43068), (48, 43074), (51, 43086), (53, 43113), (57, 43158), (67, 43230), (85, 43359), (91, 43392), (98, 43425), (103, 43446), (109, 43512), (115, 43554),

Gene: Keshu_69 Start: 43586, Stop: 44104, Start Num: 22

Candidate Starts for Keshu_69:

(Start: 22 @43586 has 180 MA's), (47, 43754), (57, 43844), (58, 43856), (67, 43916), (92, 44054), (99, 44087), (100, 44093),

Gene: KiSi_70 Start: 44046, Stop: 44552, Start Num: 22

Candidate Starts for KiSi_70:

(Start: 22 @44046 has 180 MA's), (33, 44118), (34, 44121), (36, 44130), (47, 44214), (54, 44277), (56, 44292), (57, 44304), (58, 44316), (60, 44328), (92, 44505),

Gene: KingPhillip3_14 Start: 5734, Stop: 6372, Start Num: 24

Candidate Starts for KingPhillip3_14:

(Start: 14 @5677 has 19 MA's), (Start: 24 @5734 has 11 MA's), (41, 5839), (44, 5857), (47, 5899), (49, 5908), (56, 5971), (57, 5983), (64, 6037), (67, 6055), (70, 6094), (75, 6139), (98, 6235), (101, 6250), (107, 6304), (111, 6340),

Gene: Kratio_57 Start: 39821, Stop: 40396, Start Num: 22

Candidate Starts for Kratio_57:

(Start: 17 @39797 has 1 MA's), (Start: 22 @39821 has 180 MA's), (39, 39929), (48, 40001), (52, 40025), (56, 40073), (57, 40085), (60, 40109), (67, 40157), (71, 40202), (87, 40292), (105, 40385),

Gene: Kraw_69 Start: 42594, Stop: 43262, Start Num: 19

Candidate Starts for Kraw_69:

(Start: 19 @42594 has 22 MA's), (47, 42756), (48, 42762), (51, 42774), (53, 42801), (57, 42846), (67, 42918), (85, 43047), (91, 43080), (98, 43113), (103, 43134), (109, 43200), (115, 43242),

Gene: Krili_15 Start: 6006, Stop: 6731, Start Num: 14

Candidate Starts for Krili_15:

(Start: 14 @6006 has 19 MA's), (Start: 24 @6063 has 11 MA's), (41, 6168), (44, 6186), (47, 6228), (49, 6237), (56, 6300), (57, 6312), (64, 6366), (67, 6384), (70, 6423), (75, 6468), (82, 6507), (98, 6594),

(101, 6609), (107, 6663), (111, 6699),

Gene: Krueger_70 Start: 43119, Stop: 43637, Start Num: 22

Candidate Starts for Krueger_70:

(5, 42939), (11, 43005), (Start: 22 @43119 has 180 MA's), (34, 43194), (43, 43242), (47, 43287), (51, 43305), (56, 43365), (57, 43377), (58, 43389), (67, 43449), (92, 43587), (99, 43620), (100, 43626),

Gene: Larva_60 Start: 41253, Stop: 41846, Start Num: 22

Candidate Starts for Larva_60:

(Start: 17 @41229 has 1 MA's), (Start: 22 @41253 has 180 MA's), (39, 41361), (48, 41433), (56, 41505), (57, 41517), (58, 41529), (67, 41589), (71, 41634), (78, 41688), (79, 41691), (84, 41718), (87, 41733), (105, 41832),

Gene: LastHope_70 Start: 42442, Stop: 42954, Start Num: 22

Candidate Starts for LastHope_70:

(Start: 22 @42442 has 180 MA's), (34, 42517), (47, 42610), (51, 42628), (57, 42700), (64, 42754), (92, 42901),

Gene: LaterM_66 Start: 43705, Stop: 44214, Start Num: 22

Candidate Starts for LaterM_66:

(Start: 22 @43705 has 180 MA's), (34, 43780), (36, 43789), (42, 43819), (47, 43873), (56, 43951), (57, 43963), (92, 44164),

Gene: Lavahound_63 Start: 44098, Stop: 44610, Start Num: 22

Candidate Starts for Lavahound_63:

(10, 43969), (Start: 22 @44098 has 180 MA's), (34, 44173), (36, 44182), (47, 44266), (48, 44272), (51, 44284), (57, 44356), (58, 44368), (67, 44428), (92, 44563), (93, 44575),

Gene: LeMond_69 Start: 43680, Stop: 44186, Start Num: 22

Candidate Starts for LeMond_69:

(Start: 22 @43680 has 180 MA's), (33, 43752), (34, 43755), (36, 43764), (47, 43848), (54, 43911), (57, 43938), (58, 43950), (60, 43962), (92, 44139),

Gene: Lea83_67 Start: 43524, Stop: 44036, Start Num: 22

Candidate Starts for Lea83_67:

(Start: 22 @43524 has 180 MA's), (47, 43692), (51, 43710), (57, 43782), (58, 43794), (67, 43854), (92, 43986), (99, 44019), (100, 44025),

Gene: Lebo14_68 Start: 42927, Stop: 43595, Start Num: 19

Candidate Starts for Lebo14_68:

(Start: 19 @42927 has 22 MA's), (47, 43089), (48, 43095), (51, 43107), (53, 43134), (57, 43179), (67, 43251), (85, 43380), (91, 43413), (98, 43446), (103, 43467), (109, 43533), (115, 43575),

Gene: Leston_59 Start: 41880, Stop: 42452, Start Num: 22

Candidate Starts for Leston_59:

(Start: 17 @41856 has 1 MA's), (Start: 22 @41880 has 180 MA's), (33, 41958), (47, 42054), (48, 42060), (56, 42132), (57, 42144), (58, 42156), (60, 42168), (62, 42183), (67, 42216), (71, 42261), (83, 42339), (90, 42351), (105, 42438),

Gene: LilDirt_58 Start: 39843, Stop: 40418, Start Num: 22

Candidate Starts for LilDirt_58:

(Start: 17 @39819 has 1 MA's), (Start: 22 @39843 has 180 MA's), (39, 39951), (48, 40023), (52, 40047), (56, 40095), (57, 40107), (60, 40131), (67, 40179), (71, 40224), (87, 40314), (105, 40407),

Gene: LilPharaoh_55 Start: 40052, Stop: 40573, Start Num: 22

Candidate Starts for LilPharaoh_55:

(Start: 22 @40052 has 180 MA's), (34, 40127), (36, 40136), (47, 40220), (57, 40310), (67, 40382), (74, 40445), (77, 40472), (90, 40511),

Gene: LindNT_65 Start: 43499, Stop: 44008, Start Num: 22

Candidate Starts for LindNT_65:

(Start: 22 @43499 has 180 MA's), (34, 43574), (42, 43613), (47, 43667), (56, 43745), (57, 43757), (92, 43958),

Gene: Llorens_65 Start: 43011, Stop: 43520, Start Num: 22

Candidate Starts for Llorens_65:

(Start: 22 @43011 has 180 MA's), (34, 43086), (42, 43125), (47, 43179), (56, 43257), (57, 43269), (92, 43470),

Gene: Lunahalos_65 Start: 43011, Stop: 43520, Start Num: 22

Candidate Starts for Lunahalos_65:

(Start: 22 @43011 has 180 MA's), (34, 43086), (42, 43125), (47, 43179), (56, 43257), (57, 43269), (92, 43470),

Gene: MacKat_61 Start: 38794, Stop: 39303, Start Num: 22

Candidate Starts for MacKat_61:

(Start: 22 @38794 has 180 MA's), (34, 38869), (42, 38908), (47, 38962), (56, 39040), (57, 39052), (92, 39253),

Gene: MacnCheese_69 Start: 44105, Stop: 44629, Start Num: 22

Candidate Starts for MacnCheese_69:

(Start: 22 @44105 has 180 MA's), (36, 44189), (43, 44228), (47, 44273), (51, 44291), (57, 44363), (58, 44375), (67, 44435), (92, 44576), (99, 44609), (100, 44615),

Gene: MadKillah_16 Start: 6027, Stop: 6764, Start Num: 14

Candidate Starts for MadKillah_16:

(Start: 14 @6027 has 19 MA's), (Start: 24 @6084 has 11 MA's), (41, 6189), (44, 6207), (47, 6249), (49, 6258), (56, 6321), (57, 6333), (64, 6387), (67, 6405), (70, 6444), (75, 6489), (86, 6537), (98, 6627), (101, 6642), (107, 6696), (111, 6732),

Gene: Madraxi_75 Start: 47623, Stop: 48270, Start Num: 21

Candidate Starts for Madraxi_75:

(Start: 21 @47623 has 3 MA's), (28, 47653), (47, 47797), (57, 47890), (67, 47962),

Gene: MalagasyRose_66 Start: 42483, Stop: 43022, Start Num: 20

Candidate Starts for MalagasyRose_66:

(Start: 20 @42483 has 2 MA's), (34, 42558), (43, 42606), (50, 42660), (51, 42666), (58, 42750), (64, 42792), (67, 42810), (92, 42966), (94, 42981), (99, 42999),

Gene: Malthus_70 Start: 42594, Stop: 43262, Start Num: 19

Candidate Starts for Malthus_70:

(Start: 19 @42594 has 22 MA's), (47, 42756), (48, 42762), (51, 42774), (53, 42801), (57, 42846), (67, 42918), (85, 43047), (91, 43080), (98, 43113), (103, 43134), (109, 43200), (115, 43242),

Gene: Marcoliusprime_68 Start: 45487, Stop: 46005, Start Num: 22

Candidate Starts for Marcoliusprime_68:

(9, 45337), (16, 45460), (Start: 22 @45487 has 180 MA's), (43, 45610), (47, 45652), (50, 45664), (51, 45670), (57, 45742), (58, 45754), (60, 45766), (67, 45814), (92, 45955), (100, 45994),

Gene: MarkPhew_68 Start: 43181, Stop: 43687, Start Num: 22

Candidate Starts for MarkPhew_68:

(Start: 22 @43181 has 180 MA's), (34, 43256), (36, 43265), (47, 43349), (54, 43412), (55, 43421), (57, 43439), (58, 43451), (66, 43505), (92, 43640),

Gene: Marshawn_65 Start: 43539, Stop: 44048, Start Num: 22

Candidate Starts for Marshawn_65:

(Start: 22 @43539 has 180 MA's), (34, 43614), (51, 43725), (57, 43797), (58, 43809), (67, 43869), (92, 43998), (99, 44031), (100, 44037), (102, 44040),

Gene: McMater_68 Start: 43499, Stop: 44026, Start Num: 22

Candidate Starts for McMater_68:

(Start: 22 @43499 has 180 MA's), (34, 43574), (47, 43667), (51, 43685), (57, 43757), (58, 43769), (64, 43811), (67, 43829), (90, 43961),

Gene: Mdavu_55 Start: 40313, Stop: 40834, Start Num: 22

Candidate Starts for Mdavu_55:

(Start: 22 @40313 has 180 MA's), (34, 40388), (36, 40397), (47, 40481), (57, 40571), (67, 40643), (74, 40706), (77, 40733), (90, 40772),

Gene: MeaningOfLife_66 Start: 43763, Stop: 44272, Start Num: 22

Candidate Starts for MeaningOfLife_66:

(Start: 22 @43763 has 180 MA's), (34, 43838), (36, 43847), (42, 43877), (47, 43931), (56, 44009), (57, 44021), (92, 44222),

Gene: Megsy_68 Start: 43420, Stop: 43929, Start Num: 22

Candidate Starts for Megsy_68:

(Start: 22 @43420 has 180 MA's), (34, 43495), (42, 43534), (47, 43588), (56, 43666), (57, 43678), (92, 43879),

Gene: Milly_68 Start: 45460, Stop: 45978, Start Num: 22

Candidate Starts for Milly_68:

(9, 45310), (16, 45433), (Start: 22 @45460 has 180 MA's), (43, 45583), (47, 45625), (50, 45637), (51, 45643), (57, 45715), (58, 45727), (60, 45739), (67, 45787), (73, 45841), (92, 45928), (100, 45967),

Gene: Miryou_63 Start: 44477, Stop: 45067, Start Num: 22

Candidate Starts for Miryou_63:

(Start: 17 @44453 has 1 MA's), (Start: 22 @44477 has 180 MA's), (33, 44555), (47, 44651), (48, 44657), (55, 44723), (56, 44729), (57, 44741), (58, 44753), (60, 44765), (67, 44813), (71, 44858), (80, 44930), (81, 44933), (87, 44960), (91, 44975), (105, 45053),

Gene: MissDaisy_66 Start: 41506, Stop: 42177, Start Num: 19

Candidate Starts for MissDaisy_66:

(Start: 19 @41506 has 22 MA's), (47, 41668), (48, 41674), (51, 41686), (53, 41713), (57, 41758), (67, 41830), (85, 41959), (91, 41992), (94, 42010), (109, 42115), (115, 42157),

Gene: Mitti_69 Start: 42773, Stop: 43417, Start Num: 19

Candidate Starts for Mitti_69:

(Start: 19 @42773 has 22 MA's), (47, 42935), (48, 42941), (51, 42953), (53, 42980), (57, 43025), (67, 43097), (85, 43226), (91, 43259), (98, 43292), (103, 43313), (109, 43355), (115, 43397),

Gene: Mori_15 Start: 5923, Stop: 6603, Start Num: 24

Candidate Starts for Mori_15:

(Start: 14 @5866 has 19 MA's), (Start: 24 @5923 has 11 MA's), (41, 6028), (44, 6046), (47, 6088), (49, 6097), (56, 6160), (57, 6172), (64, 6226), (67, 6244), (70, 6283), (75, 6328), (86, 6376), (98, 6466), (101, 6481), (107, 6535), (111, 6571),

Gene: Mufasa_68 Start: 45047, Stop: 45565, Start Num: 22

Candidate Starts for Mufasa_68:

(9, 44897), (Start: 22 @45047 has 180 MA's), (43, 45170), (47, 45212), (50, 45224), (51, 45230), (57, 45302), (58, 45314), (60, 45326), (67, 45374), (92, 45515), (100, 45554),

Gene: Mulch_51 Start: 36552, Stop: 37343, Start Num: 18

Candidate Starts for Mulch_51:

(3, 36198), (Start: 18 @36552 has 15 MA's), (37, 36651), (38, 36660), (45, 36699), (46, 36702), (57, 36819), (65, 36882), (67, 36891), (70, 36930), (72, 36939), (94, 37101), (112, 37236), (116, 37272),

Gene: Murai_15 Start: 5866, Stop: 6603, Start Num: 14

Candidate Starts for Murai_15:

(Start: 14 @5866 has 19 MA's), (Start: 24 @5923 has 11 MA's), (41, 6028), (44, 6046), (47, 6088), (49, 6097), (56, 6160), (57, 6172), (64, 6226), (67, 6244), (70, 6283), (75, 6328), (86, 6376), (98, 6466), (101, 6481), (107, 6535), (111, 6571),

Gene: Murucutumbu_67 Start: 44280, Stop: 44789, Start Num: 22

Candidate Starts for Murucutumbu_67:

(Start: 22 @44280 has 180 MA's), (34, 44355), (36, 44364), (42, 44394), (47, 44448), (56, 44526), (57, 44538), (70, 44646), (92, 44739),

Gene: Mynx_67 Start: 43623, Stop: 44132, Start Num: 22

Candidate Starts for Mynx_67:

(Start: 22 @43623 has 180 MA's), (34, 43698), (36, 43707), (42, 43737), (47, 43791), (56, 43869), (57, 43881), (92, 44082),

Gene: Nadeem_51 Start: 36552, Stop: 37331, Start Num: 18

Candidate Starts for Nadeem_51:

(3, 36198), (Start: 18 @36552 has 15 MA's), (37, 36651), (38, 36660), (45, 36699), (46, 36702), (57, 36819), (65, 36882), (67, 36891), (70, 36930), (72, 36939), (94, 37101), (112, 37224), (116, 37260),

Gene: NancyRae_50 Start: 36571, Stop: 37350, Start Num: 18

Candidate Starts for NancyRae_50:

(3, 36217), (Start: 18 @36571 has 15 MA's), (37, 36670), (38, 36679), (45, 36718), (46, 36721), (57, 36838), (65, 36901), (67, 36910), (70, 36949), (72, 36958), (94, 37120), (112, 37243), (116, 37279),

Gene: Neighly_61 Start: 41228, Stop: 41845, Start Num: 17

Candidate Starts for Neighly_61:

(Start: 17 @41228 has 1 MA's), (Start: 22 @41252 has 180 MA's), (39, 41360), (48, 41432), (56, 41504), (57, 41516), (58, 41528), (67, 41588), (71, 41633), (78, 41687), (79, 41690), (84, 41717), (87, 41732), (105, 41831),

Gene: Nergal_58 Start: 39813, Stop: 40349, Start Num: 22

Candidate Starts for Nergal_58:

(Start: 22 @39813 has 180 MA's), (30, 39852), (43, 39936), (47, 39978), (57, 40068), (58, 40080), (64, 40122), (68, 40149), (92, 40299), (100, 40338),

Gene: Nibb_68 Start: 43393, Stop: 43899, Start Num: 22

Candidate Starts for Nibb_68:

(Start: 22 @43393 has 180 MA's), (34, 43468), (36, 43477), (47, 43561), (54, 43624), (55, 43633), (57, 43651), (58, 43663), (92, 43852),

Gene: NiebruSaylor_15 Start: 5923, Stop: 6603, Start Num: 24

Candidate Starts for NiebruSaylor_15:

(Start: 14 @5866 has 19 MA's), (Start: 24 @5923 has 11 MA's), (41, 6028), (44, 6046), (47, 6088), (49, 6097), (56, 6160), (57, 6172), (64, 6226), (67, 6244), (70, 6283), (75, 6328), (86, 6376), (98, 6466), (101, 6481), (107, 6535), (111, 6571),

Gene: Nikao_57 Start: 42937, Stop: 43458, Start Num: 22

Candidate Starts for Nikao_57:

(Start: 22 @42937 has 180 MA's), (34, 43012), (36, 43021), (47, 43105), (57, 43195), (67, 43267), (74, 43330), (77, 43357), (90, 43396),

Gene: Niklas_68 Start: 43560, Stop: 44087, Start Num: 22

Candidate Starts for Niklas_68:

(Start: 22 @43560 has 180 MA's), (34, 43635), (47, 43728), (51, 43746), (57, 43818), (58, 43830), (64, 43872), (67, 43890), (90, 44022),

Gene: November_63 Start: 43249, Stop: 43761, Start Num: 22

Candidate Starts for November_63:

(Start: 22 @43249 has 180 MA's), (34, 43324), (36, 43333), (47, 43417), (51, 43435), (57, 43507), (58, 43519), (67, 43579), (92, 43711), (100, 43750),

Gene: Nutello_54 Start: 40324, Stop: 40845, Start Num: 22

Candidate Starts for Nutello_54:

(Start: 22 @40324 has 180 MA's), (34, 40399), (36, 40408), (47, 40492), (57, 40582), (67, 40654), (74, 40717), (77, 40744), (90, 40783),

Gene: OkiRoe_60 Start: 42149, Stop: 42739, Start Num: 22

Candidate Starts for OkiRoe_60:

(Start: 17 @42125 has 1 MA's), (Start: 22 @42149 has 180 MA's), (33, 42227), (47, 42323), (48, 42329), (55, 42395), (56, 42401), (57, 42413), (58, 42425), (60, 42437), (67, 42485), (71, 42530), (80, 42602), (81, 42605), (87, 42632), (91, 42647), (105, 42725),

Gene: OmniCritical_68 Start: 42624, Stop: 43298, Start Num: 20

Candidate Starts for OmniCritical_68:

(Start: 20 @42624 has 2 MA's), (47, 42786), (48, 42792), (51, 42804), (53, 42831), (57, 42876), (67, 42948), (85, 43077), (91, 43110), (95, 43131), (104, 43185), (109, 43236), (115, 43278),

Gene: Omnicron_63 Start: 42235, Stop: 42843, Start Num: 17

Candidate Starts for Omnicron_63:

(Start: 17 @42235 has 1 MA's), (Start: 22 @42259 has 180 MA's), (47, 42427), (48, 42433), (54, 42490), (57, 42517), (58, 42529), (60, 42541), (67, 42589), (78, 42685), (79, 42688), (105, 42829),

Gene: Oscar_69 Start: 43597, Stop: 44103, Start Num: 22

Candidate Starts for Oscar_69:

(Start: 22 @43597 has 180 MA's), (33, 43669), (34, 43672), (36, 43681), (47, 43765), (54, 43828), (57, 43855), (58, 43867), (60, 43879), (92, 44056),

Gene: Padfoot_65 Start: 43208, Stop: 43717, Start Num: 22

Candidate Starts for Padfoot_65:

(Start: 22 @43208 has 180 MA's), (34, 43283), (42, 43322), (47, 43376), (56, 43454), (57, 43466), (92, 43667),

Gene: Padpat_68 Start: 43328, Stop: 43837, Start Num: 22

Candidate Starts for Padpat_68:

(Start: 22 @43328 has 180 MA's), (34, 43403), (42, 43442), (47, 43496), (56, 43574), (57, 43586), (92, 43787),

Gene: Paola_59 Start: 41751, Stop: 42323, Start Num: 22

Candidate Starts for Paola_59:

(Start: 17 @41727 has 1 MA's), (Start: 22 @41751 has 180 MA's), (33, 41829), (47, 41925), (48, 41931), (56, 42003), (57, 42015), (58, 42027), (60, 42039), (62, 42054), (67, 42087), (71, 42132), (83, 42210), (90, 42222), (105, 42309),

Gene: Parada_51 Start: 36552, Stop: 37343, Start Num: 18

Candidate Starts for Parada_51:

(3, 36198), (Start: 18 @36552 has 15 MA's), (37, 36651), (38, 36660), (45, 36699), (46, 36702), (57, 36819), (65, 36882), (67, 36891), (70, 36930), (72, 36939), (94, 37101), (112, 37236), (116, 37272),

Gene: Patt_65 Start: 41230, Stop: 41901, Start Num: 19

Candidate Starts for Patt_65:

(Start: 19 @41230 has 22 MA's), (47, 41392), (48, 41398), (51, 41410), (53, 41437), (57, 41482), (67, 41554), (85, 41683), (91, 41716), (94, 41734), (109, 41839), (115, 41881),

Gene: Peanam_68 Start: 43517, Stop: 44044, Start Num: 22

Candidate Starts for Peanam_68:

(Start: 22 @43517 has 180 MA's), (34, 43592), (47, 43685), (51, 43703), (57, 43775), (58, 43787), (64, 43829), (67, 43847), (90, 43979),

Gene: Peel_65 Start: 43013, Stop: 43522, Start Num: 22

Candidate Starts for Peel_65:

(Start: 22 @43013 has 180 MA's), (34, 43088), (42, 43127), (47, 43181), (56, 43259), (57, 43271), (92, 43472),

Gene: Pharb_66 Start: 42835, Stop: 43353, Start Num: 22

Candidate Starts for Pharb_66:

(Start: 22 @42835 has 180 MA's), (47, 43003), (51, 43021), (57, 43093), (58, 43105), (67, 43165), (92, 43303), (99, 43336), (100, 43342),

Gene: PhelpsODU_67 Start: 42757, Stop: 43275, Start Num: 22

Candidate Starts for PhelpsODU_67:

(5, 42577), (11, 42643), (Start: 22 @42757 has 180 MA's), (34, 42832), (43, 42880), (47, 42925), (51, 42943), (57, 43015), (58, 43027), (67, 43087), (92, 43225), (99, 43258), (100, 43264),

Gene: Phrank_69 Start: 42821, Stop: 43339, Start Num: 22

Candidate Starts for Phrank_69:

(5, 42641), (11, 42707), (Start: 22 @42821 has 180 MA's), (34, 42896), (43, 42944), (47, 42989), (51, 43007), (57, 43079), (67, 43151), (92, 43289), (99, 43322), (100, 43328),

Gene: Piatt_65 Start: 43208, Stop: 43717, Start Num: 22

Candidate Starts for Piatt_65:

(Start: 22 @43208 has 180 MA's), (34, 43283), (42, 43322), (47, 43376), (56, 43454), (57, 43466), (92, 43667),

Gene: Pimento_52 Start: 36149, Stop: 36928, Start Num: 18

Candidate Starts for Pimento_52:

(13, 36059), (Start: 18 @36149 has 15 MA's), (Start: 24 @36167 has 11 MA's), (38, 36257), (45, 36296), (46, 36299), (57, 36416), (67, 36488), (70, 36527), (72, 36536), (94, 36698), (112, 36821), (116, 36857),

Gene: Pisa1_65 Start: 43826, Stop: 44335, Start Num: 22

Candidate Starts for Pisa1_65:

(Start: 22 @43826 has 180 MA's), (34, 43901), (47, 43994), (51, 44012), (57, 44084), (58, 44096), (92, 44285),

Gene: Pisa4_59 Start: 39195, Stop: 39704, Start Num: 22

Candidate Starts for Pisa4_59:

(Start: 22 @39195 has 180 MA's), (34, 39270), (47, 39363), (51, 39381), (57, 39453), (58, 39465), (92, 39654),

Gene: Pixie_66 Start: 43008, Stop: 43526, Start Num: 22

Candidate Starts for Pixie_66:

(Start: 22 @43008 has 180 MA's), (36, 43092), (47, 43176), (51, 43194), (54, 43239), (57, 43266), (58, 43278), (67, 43338), (92, 43476), (99, 43509), (100, 43515),

Gene: Pokerus_65 Start: 43353, Stop: 43862, Start Num: 22

Candidate Starts for Pokerus_65:

(Start: 22 @43353 has 180 MA's), (34, 43428), (42, 43467), (47, 43521), (56, 43599), (57, 43611), (92, 43812),

Gene: Prithvi_67 Start: 43499, Stop: 44008, Start Num: 22

Candidate Starts for Prithvi_67:

(Start: 22 @43499 has 180 MA's), (34, 43574), (42, 43613), (47, 43667), (56, 43745), (57, 43757), (92, 43958),

Gene: Psycho_59 Start: 40378, Stop: 40971, Start Num: 22

Candidate Starts for Psycho_59:

(Start: 17 @40354 has 1 MA's), (Start: 22 @40378 has 180 MA's), (39, 40486), (48, 40558), (52, 40582), (56, 40630), (57, 40642), (58, 40654), (67, 40714), (71, 40759), (78, 40813), (79, 40816), (84, 40843), (87, 40858), (105, 40957),

Gene: Qhanda_71 Start: 42610, Stop: 43278, Start Num: 19

Candidate Starts for Qhanda_71:

(Start: 19 @42610 has 22 MA's), (47, 42772), (48, 42778), (51, 42790), (53, 42817), (57, 42862), (67, 42934), (85, 43063), (91, 43096), (98, 43129), (103, 43150), (109, 43216), (115, 43258),

Gene: QuincyRose_63 Start: 43234, Stop: 43743, Start Num: 22

Candidate Starts for QuincyRose_63:

(Start: 22 @43234 has 180 MA's), (34, 43309), (36, 43318), (42, 43348), (47, 43402), (56, 43480), (57, 43492), (92, 43693), (99, 43726),

Gene: Ramen_66 Start: 42858, Stop: 43367, Start Num: 22

Candidate Starts for Ramen_66:

(Start: 22 @42858 has 180 MA's), (34, 42933), (36, 42942), (42, 42972), (47, 43026), (56, 43104), (57, 43116), (76, 43275), (92, 43317),

Gene: Rando14_61 Start: 39976, Stop: 40557, Start Num: 22

Candidate Starts for Rando14_61:

(Start: 17 @39952 has 1 MA's), (Start: 22 @39976 has 180 MA's), (47, 40144), (48, 40150), (54, 40207), (56, 40222), (57, 40234), (58, 40246), (60, 40258), (67, 40306), (78, 40402), (79, 40405), (97, 40492), (105, 40543),

Gene: Rapunzel97_67 Start: 43309, Stop: 43818, Start Num: 22

Candidate Starts for Rapunzel97_67:

(Start: 22 @43309 has 180 MA's), (34, 43384), (36, 43393), (42, 43423), (47, 43477), (56, 43555), (57, 43567), (92, 43768),

Gene: RegnumDei_78 Start: 46080, Stop: 46646, Start Num: 23

Candidate Starts for RegnumDei_78:

(15, 46044), (Start: 23 @46080 has 10 MA's), (31, 46134), (47, 46242), (58, 46344), (67, 46404), (69, 46434), (73, 46458),

Gene: Reptar3000_66 Start: 41218, Stop: 41889, Start Num: 19

Candidate Starts for Reptar3000_66:

(Start: 19 @41218 has 22 MA's), (46, 41353), (47, 41380), (48, 41386), (51, 41398), (53, 41425), (57, 41470), (67, 41542), (85, 41671), (91, 41704), (94, 41722), (109, 41827), (115, 41869),

Gene: Reyja_42 Start: 29334, Stop: 30017, Start Num: 23

Candidate Starts for Reyja_42:

(Start: 23 @29334 has 10 MA's), (47, 29496), (51, 29514), (70, 29703), (104, 29913), (108, 29955), (110, 29967), (113, 29994), (114, 30000),

Gene: Richo_68 Start: 43499, Stop: 44026, Start Num: 22

Candidate Starts for Richo_68:

(Start: 22 @43499 has 180 MA's), (34, 43574), (47, 43667), (51, 43685), (57, 43757), (58, 43769), (64, 43811), (67, 43829), (90, 43961),

Gene: Rosmarinus_65 Start: 42999, Stop: 43508, Start Num: 22

Candidate Starts for Rosmarinus_65:

(Start: 22 @42999 has 180 MA's), (34, 43074), (42, 43113), (47, 43167), (56, 43245), (57, 43257), (92, 43458),

Gene: Ruthiejr_70 Start: 42644, Stop: 43309, Start Num: 19

Candidate Starts for Ruthiejr_70:

(Start: 19 @42644 has 22 MA's), (47, 42806), (48, 42812), (51, 42824), (53, 42851), (57, 42896), (67, 42968), (85, 43097), (91, 43130), (96, 43157), (109, 43247), (115, 43289),

Gene: Ryadel_17 Start: 6460, Stop: 7185, Start Num: 14

Candidate Starts for Ryadel_17:

(Start: 14 @6460 has 19 MA's), (Start: 24 @6517 has 11 MA's), (41, 6622), (44, 6640), (47, 6682), (49, 6691), (56, 6754), (57, 6766), (64, 6820), (67, 6838), (70, 6877), (75, 6922), (82, 6961), (98, 7048), (101, 7063), (107, 7117), (111, 7153),

Gene: SFuller_69 Start: 45080, Stop: 45724, Start Num: 21

Candidate Starts for SFuller_69:

(Start: 21 @45080 has 3 MA's), (28, 45110), (34, 45155), (35, 45158), (40, 45185), (47, 45254), (57, 45347), (67, 45419),

Gene: SamScheppers_67 Start: 43073, Stop: 43741, Start Num: 19

Candidate Starts for SamScheppers_67:

(Start: 19 @43073 has 22 MA's), (47, 43235), (48, 43241), (51, 43253), (53, 43280), (57, 43325), (67, 43397), (85, 43526), (91, 43559), (98, 43592), (103, 43613), (109, 43679), (115, 43721),

Gene: SamuelLPlaqson_66 Start: 43745, Stop: 44260, Start Num: 22

Candidate Starts for SamuelLPlaqson_66:

(Start: 22 @43745 has 180 MA's), (34, 43820), (47, 43913), (51, 43931), (56, 43991), (57, 44003), (92, 44204),

Gene: Santhid_41 Start: 27625, Stop: 28305, Start Num: 23

Candidate Starts for Santhid_41:

(Start: 23 @27625 has 10 MA's), (47, 27787), (51, 27805), (70, 27994), (104, 28201), (106, 28231), (108, 28243), (110, 28255), (113, 28282), (114, 28288),

Gene: Scarlett_70 Start: 43927, Stop: 44433, Start Num: 22

Candidate Starts for Scarlett_70:

(Start: 22 @43927 has 180 MA's), (33, 43999), (34, 44002), (36, 44011), (47, 44095), (54, 44158), (56, 44173), (57, 44185), (58, 44197), (60, 44209), (92, 44386),

Gene: SchoolBus_14 Start: 5677, Stop: 6372, Start Num: 14

Candidate Starts for SchoolBus_14:

(Start: 14 @5677 has 19 MA's), (Start: 24 @5734 has 11 MA's), (41, 5839), (44, 5857), (47, 5899), (49, 5908), (56, 5971), (57, 5983), (64, 6037), (67, 6055), (70, 6094), (75, 6139), (98, 6235), (101, 6250), (107, 6304), (111, 6340),

Gene: Schuy_16 Start: 6084, Stop: 6764, Start Num: 24

Candidate Starts for Schuy_16:

(Start: 14 @6027 has 19 MA's), (Start: 24 @6084 has 11 MA's), (41, 6189), (44, 6207), (47, 6249), (49, 6258), (56, 6321), (57, 6333), (64, 6387), (67, 6405), (70, 6444), (75, 6489), (86, 6537), (98, 6627), (101, 6642), (107, 6696), (111, 6732),

Gene: SgtBeansprout_55 Start: 40324, Stop: 40845, Start Num: 22

Candidate Starts for SgtBeansprout_55:

(Start: 22 @40324 has 180 MA's), (34, 40399), (36, 40408), (47, 40492), (57, 40582), (67, 40654), (74, 40717), (77, 40744), (90, 40783),

Gene: Shadow1_70 Start: 43271, Stop: 43789, Start Num: 22

Candidate Starts for Shadow1_70:

(Start: 22 @43271 has 180 MA's), (34, 43346), (43, 43394), (47, 43439), (51, 43457), (57, 43529), (58, 43541), (67, 43601), (92, 43739), (99, 43772), (100, 43778),

Gene: Shagrat_82 Start: 45931, Stop: 46494, Start Num: 23

Candidate Starts for Shagrat_82:

(Start: 23 @45931 has 10 MA's), (31, 45985), (47, 46093), (50, 46105), (58, 46195), (69, 46285), (73, 46309),

Gene: Shaobing_68 Start: 43535, Stop: 44062, Start Num: 22

Candidate Starts for Shaobing_68:

(Start: 22 @43535 has 180 MA's), (34, 43610), (47, 43703), (51, 43721), (57, 43793), (58, 43805), (64, 43847), (67, 43865), (90, 43997),

Gene: ShedlockHolmes_68 Start: 43528, Stop: 44040, Start Num: 22

Candidate Starts for ShedlockHolmes_68:

(Start: 22 @43528 has 180 MA's), (47, 43696), (51, 43714), (57, 43786), (58, 43798), (67, 43858), (92, 43990), (99, 44023), (100, 44029),

Gene: ShiaSurprise_66 Start: 43208, Stop: 43717, Start Num: 22

Candidate Starts for ShiaSurprise_66:

(Start: 22 @43208 has 180 MA's), (34, 43283), (42, 43322), (47, 43376), (56, 43454), (57, 43466), (92, 43667),

Gene: Shida_15 Start: 5989, Stop: 6669, Start Num: 24

Candidate Starts for Shida_15:

(Start: 14 @5932 has 19 MA's), (Start: 24 @5989 has 11 MA's), (41, 6094), (44, 6112), (47, 6154), (49, 6163), (56, 6226), (57, 6238), (64, 6292), (67, 6310), (70, 6349), (75, 6394), (86, 6442), (98, 6532), (101, 6547), (107, 6601), (111, 6637),

Gene: SirPhilip_65 Start: 43696, Stop: 44205, Start Num: 22

Candidate Starts for SirPhilip_65:

(Start: 22 @43696 has 180 MA's), (34, 43771), (47, 43864), (51, 43882), (57, 43954), (58, 43966), (68, 44035), (100, 44194),

Gene: Slarp_69 Start: 42601, Stop: 43269, Start Num: 19

Candidate Starts for Slarp_69:

(Start: 19 @42601 has 22 MA's), (47, 42763), (48, 42769), (51, 42781), (53, 42808), (57, 42853), (67, 42925), (85, 43054), (91, 43087), (98, 43120), (103, 43141), (109, 43207), (115, 43249),

Gene: Slimphazie_66 Start: 43309, Stop: 43818, Start Num: 22

Candidate Starts for Slimphazie_66:

(Start: 22 @43309 has 180 MA's), (34, 43384), (36, 43393), (42, 43423), (47, 43477), (56, 43555), (57, 43567), (92, 43768),

Gene: Smooch_16 Start: 6196, Stop: 6918, Start Num: 14

Candidate Starts for Smooch_16:

(Start: 14 @6196 has 19 MA's), (Start: 24 @6253 has 11 MA's), (41, 6358), (44, 6376), (47, 6418), (49, 6427), (56, 6490), (57, 6502), (64, 6556), (67, 6574), (70, 6613), (75, 6658), (86, 6706), (98, 6781), (101, 6796), (107, 6850), (111, 6886),

Gene: SoSeph_60 Start: 42125, Stop: 42691, Start Num: 22

Candidate Starts for SoSeph_60:

(Start: 17 @42101 has 1 MA's), (Start: 22 @42125 has 180 MA's), (47, 42299), (48, 42305), (56, 42377), (57, 42389), (58, 42401), (60, 42413), (67, 42461), (71, 42506), (90, 42590), (105, 42677),

Gene: Spock_65 Start: 43012, Stop: 43521, Start Num: 22

Candidate Starts for Spock_65:

(Start: 22 @43012 has 180 MA's), (34, 43087), (42, 43126), (47, 43180), (56, 43258), (57, 43270), (92, 43471),

Gene: Stinson_67 Start: 43637, Stop: 44149, Start Num: 22

Candidate Starts for Stinson_67:

(Start: 22 @43637 has 180 MA's), (34, 43712), (36, 43721), (42, 43751), (47, 43805), (56, 43883), (57, 43895), (92, 44096),

Gene: Strobilo_69 Start: 45462, Stop: 45980, Start Num: 22

Candidate Starts for Strobilo_69:

(9, 45312), (16, 45435), (Start: 22 @45462 has 180 MA's), (43, 45585), (47, 45627), (50, 45639), (51, 45645), (57, 45717), (58, 45729), (60, 45741), (67, 45789), (92, 45930), (100, 45969),

Gene: Sulley_65 Start: 43072, Stop: 43581, Start Num: 22

Candidate Starts for Sulley_65:

(Start: 22 @43072 has 180 MA's), (34, 43147), (42, 43186), (47, 43240), (57, 43330), (92, 43531),

Gene: Sunflower1121_71 Start: 43417, Stop: 43935, Start Num: 22

Candidate Starts for Sunflower1121_71:

(Start: 22 @43417 has 180 MA's), (34, 43492), (43, 43540), (47, 43585), (51, 43603), (57, 43675), (58, 43687), (67, 43747), (92, 43885), (99, 43918), (100, 43924),

Gene: Syra333_69 Start: 43131, Stop: 43649, Start Num: 22

Candidate Starts for Syra333_69:

(5, 42951), (11, 43017), (Start: 22 @43131 has 180 MA's), (34, 43206), (43, 43254), (47, 43299), (51, 43317), (56, 43377), (57, 43389), (58, 43401), (67, 43461), (92, 43599), (99, 43632), (100, 43638),

Gene: TBond007_63 Start: 43007, Stop: 43525, Start Num: 22

Candidate Starts for TBond007_63:

(Start: 22 @43007 has 180 MA's), (36, 43091), (47, 43175), (51, 43193), (54, 43238), (57, 43265), (58, 43277), (67, 43337), (92, 43475), (99, 43508), (100, 43514),

Gene: TClif_67 Start: 43102, Stop: 43614, Start Num: 22

Candidate Starts for TClif_67:

(Start: 22 @43102 has 180 MA's), (34, 43177), (36, 43186), (46, 43243), (47, 43270), (51, 43288), (57, 43360), (58, 43372), (67, 43432), (90, 43552), (92, 43564), (94, 43579), (99, 43597), (100, 43603),

Gene: TM4_66 Start: 40125, Stop: 40643, Start Num: 22

Candidate Starts for TM4_66:

(9, 39975), (16, 40098), (Start: 22 @40125 has 180 MA's), (43, 40248), (47, 40290), (50, 40302), (51, 40308), (57, 40380), (58, 40392), (60, 40404), (67, 40452), (92, 40593), (100, 40632),

Gene: TPA4_50 Start: 38139, Stop: 38771, Start Num: 18

Candidate Starts for TPA4_50:

(1, 37530), (2, 37686), (4, 37959), (12, 38043), (Start: 18 @38139 has 15 MA's), (50, 38325), (55, 38379), (56, 38385), (57, 38397), (60, 38421), (68, 38478), (70, 38508), (72, 38517), (88, 38622),

Gene: Tachez_65 Start: 42856, Stop: 43365, Start Num: 22

Candidate Starts for Tachez_65:

(Start: 22 @42856 has 180 MA's), (34, 42931), (42, 42970), (47, 43024), (56, 43102), (57, 43114), (92, 43315),

Gene: TaiwanKao_68 Start: 43561, Stop: 44070, Start Num: 22

Candidate Starts for TaiwanKao_68:

(Start: 22 @43561 has 180 MA's), (34, 43636), (42, 43675), (47, 43729), (56, 43807), (57, 43819), (63, 43867), (92, 44020),

Gene: Taquito_68 Start: 42836, Stop: 43474, Start Num: 19

Candidate Starts for Taquito_68:

(Start: 19 @42836 has 22 MA's), (47, 42998), (48, 43004), (51, 43016), (53, 43043), (57, 43088), (67, 43160), (85, 43289), (91, 43322), (98, 43355), (103, 43376), (109, 43412), (115, 43454),

Gene: Tarzan_42 Start: 28732, Stop: 29412, Start Num: 23

Candidate Starts for Tarzan_42:

(Start: 23 @28732 has 10 MA's), (47, 28894), (51, 28912), (70, 29101), (106, 29338), (108, 29350), (110, 29362), (113, 29389), (114, 29395),

Gene: Teejan_56 Start: 42937, Stop: 43458, Start Num: 22

Candidate Starts for Teejan_56:

(Start: 22 @42937 has 180 MA's), (34, 43012), (36, 43021), (47, 43105), (57, 43195), (67, 43267), (74, 43330), (77, 43357), (90, 43396),

Gene: TelAviv_14 Start: 5674, Stop: 6369, Start Num: 14

Candidate Starts for TelAviv_14:

(Start: 14 @5674 has 19 MA's), (Start: 24 @5731 has 11 MA's), (41, 5836), (44, 5854), (47, 5896), (49, 5905), (56, 5968), (57, 5980), (64, 6034), (67, 6052), (70, 6091), (75, 6136), (98, 6232), (101, 6247), (107, 6301), (111, 6337),

Gene: Thyatira_62 Start: 44083, Stop: 44655, Start Num: 22

Candidate Starts for Thyatira_62:

(Start: 17 @44059 has 1 MA's), (Start: 22 @44083 has 180 MA's), (47, 44257), (48, 44263), (55, 44329), (56, 44335), (57, 44347), (58, 44359), (60, 44371), (67, 44419), (71, 44464), (83, 44542), (90, 44554), (105, 44641),

Gene: Tierra_69 Start: 43632, Stop: 44150, Start Num: 22

Candidate Starts for Tierra_69:

(5, 43452), (11, 43518), (Start: 22 @43632 has 180 MA's), (34, 43707), (43, 43755), (47, 43800), (51, 43818), (57, 43890), (67, 43962), (92, 44100), (99, 44133), (100, 44139),

Gene: Tigress9_70 Start: 43448, Stop: 43966, Start Num: 22

Candidate Starts for Tigress9_70:

(5, 43268), (7, 43277), (11, 43334), (Start: 22 @43448 has 180 MA's), (34, 43523), (43, 43571), (47, 43616), (51, 43634), (56, 43694), (57, 43706), (58, 43718), (67, 43778), (92, 43916), (99, 43949), (100, 43955),

Gene: TingHuaYa_69 Start: 42808, Stop: 43320, Start Num: 22

Candidate Starts for TingHuaYa_69:

(Start: 22 @42808 has 180 MA's), (34, 42883), (36, 42892), (47, 42976), (51, 42994), (57, 43066), (58, 43078), (64, 43120), (92, 43267),

Gene: TiniBug_66 Start: 43741, Stop: 44256, Start Num: 22

Candidate Starts for TiniBug_66:

(Start: 22 @43741 has 180 MA's), (34, 43816), (47, 43909), (51, 43927), (56, 43987), (57, 43999), (92, 44200),

Gene: Tiri_66 Start: 43145, Stop: 43654, Start Num: 22

Candidate Starts for Tiri_66:

(Start: 22 @43145 has 180 MA's), (34, 43220), (42, 43259), (47, 43313), (56, 43391), (57, 43403), (92, 43604),

Gene: Topper_65 Start: 43011, Stop: 43520, Start Num: 22

Candidate Starts for Topper_65:

(Start: 22 @43011 has 180 MA's), (34, 43086), (42, 43125), (47, 43179), (56, 43257), (57, 43269), (92, 43470),

Gene: Torres_57 Start: 42938, Stop: 43459, Start Num: 22

Candidate Starts for Torres_57:

(Start: 22 @42938 has 180 MA's), (34, 43013), (36, 43022), (47, 43106), (57, 43196), (67, 43268), (74, 43331), (77, 43358), (90, 43397),

Gene: TreyKay_67 Start: 43499, Stop: 44008, Start Num: 22

Candidate Starts for TreyKay_67:

(Start: 22 @43499 has 180 MA's), (34, 43574), (42, 43613), (47, 43667), (56, 43745), (57, 43757), (92, 43958),

Gene: TribbleTrouble_67 Start: 44010, Stop: 44528, Start Num: 22

Candidate Starts for TribbleTrouble_67:

(Start: 22 @44010 has 180 MA's), (48, 44184), (51, 44196), (54, 44241), (57, 44268), (58, 44280), (67, 44340), (99, 44511), (100, 44517),

Gene: Trice_54 Start: 40325, Stop: 40846, Start Num: 22

Candidate Starts for Trice_54:

(Start: 22 @40325 has 180 MA's), (34, 40400), (36, 40409), (47, 40493), (57, 40583), (67, 40655), (74, 40718), (77, 40745), (90, 40784),

Gene: TruffulaTree_66 Start: 43305, Stop: 43814, Start Num: 22

Candidate Starts for TruffulaTree_66:

(Start: 22 @43305 has 180 MA's), (34, 43380), (36, 43389), (42, 43419), (47, 43473), (56, 43551), (57, 43563), (92, 43764),

Gene: Twitch_65 Start: 43013, Stop: 43522, Start Num: 22

Candidate Starts for Twitch_65:

(Start: 22 @43013 has 180 MA's), (34, 43088), (42, 43127), (47, 43181), (56, 43259), (57, 43271), (92, 43472),

Gene: Unicorn_67 Start: 42757, Stop: 43275, Start Num: 22

Candidate Starts for Unicorn_67:

(5, 42577), (11, 42643), (Start: 22 @42757 has 180 MA's), (34, 42832), (43, 42880), (47, 42925), (51, 42943), (57, 43015), (58, 43027), (67, 43087), (92, 43225), (99, 43258), (100, 43264),

Gene: Urkel_66 Start: 43745, Stop: 44260, Start Num: 22

Candidate Starts for Urkel_66:

(Start: 22 @43745 has 180 MA's), (34, 43820), (47, 43913), (51, 43931), (56, 43991), (57, 44003), (92, 44204),

Gene: Vagabond_15 Start: 5932, Stop: 6645, Start Num: 14

Candidate Starts for Vagabond_15:

(Start: 14 @5932 has 19 MA's), (Start: 24 @5989 has 11 MA's), (41, 6094), (44, 6112), (47, 6154), (49, 6163), (56, 6226), (57, 6238), (64, 6292), (67, 6310), (70, 6349), (75, 6394), (86, 6442), (98, 6508), (101, 6523), (107, 6577), (111, 6613),

Gene: Validus_70 Start: 43876, Stop: 44394, Start Num: 22

Candidate Starts for Validus_70:

(Start: 22 @43876 has 180 MA's), (32, 43939), (34, 43951), (36, 43960), (43, 43999), (47, 44044), (51, 44062), (57, 44134), (58, 44146), (64, 44188), (67, 44206), (90, 44332),

Gene: Veliki_67 Start: 43278, Stop: 43787, Start Num: 22

Candidate Starts for Veliki_67:

(Start: 22 @43278 has 180 MA's), (34, 43353), (36, 43362), (42, 43392), (47, 43446), (56, 43524), (57, 43536), (92, 43737),

Gene: ViviJ_58 Start: 39842, Stop: 40417, Start Num: 22

Candidate Starts for ViviJ_58:

(Start: 17 @39818 has 1 MA's), (Start: 22 @39842 has 180 MA's), (39, 39950), (48, 40022), (52, 40046), (56, 40094), (57, 40106), (60, 40130), (67, 40178), (71, 40223), (87, 40313), (105, 40406),

Gene: Vorrps_15 Start: 5923, Stop: 6603, Start Num: 24

Candidate Starts for Vorrps_15:

(Start: 14 @5866 has 19 MA's), (Start: 24 @5923 has 11 MA's), (41, 6028), (44, 6046), (47, 6088), (49, 6097), (56, 6160), (57, 6172), (64, 6226), (67, 6244), (70, 6283), (75, 6328), (86, 6376), (98, 6466), (101, 6481), (107, 6535), (111, 6571),

Gene: Waterfoul_61 Start: 42187, Stop: 42753, Start Num: 22

Candidate Starts for Waterfoul_61:

(Start: 17 @42163 has 1 MA's), (Start: 22 @42187 has 180 MA's), (47, 42361), (48, 42367), (56, 42439), (57, 42451), (58, 42463), (60, 42475), (67, 42523), (71, 42568), (90, 42652), (105, 42739),

Gene: WheatThin_50 Start: 36552, Stop: 37331, Start Num: 18

Candidate Starts for WheatThin_50:

(3, 36198), (Start: 18 @36552 has 15 MA's), (37, 36651), (38, 36660), (45, 36699), (46, 36702), (57, 36819), (65, 36882), (67, 36891), (70, 36930), (72, 36939), (94, 37101), (112, 37224), (116, 37260),

Gene: Wildflower_15 Start: 5892, Stop: 6626, Start Num: 14

Candidate Starts for Wildflower_15:

(Start: 14 @5892 has 19 MA's), (Start: 24 @5949 has 11 MA's), (41, 6054), (44, 6072), (47, 6114), (49, 6123), (56, 6186), (57, 6198), (64, 6252), (67, 6270), (70, 6309), (75, 6354), (98, 6489), (101, 6504), (107, 6558), (111, 6594),

Gene: Winget_15 Start: 5931, Stop: 6644, Start Num: 14

Candidate Starts for Winget_15:

(Start: 14 @5931 has 19 MA's), (Start: 24 @5988 has 11 MA's), (41, 6093), (44, 6111), (47, 6153), (49, 6162), (56, 6225), (57, 6237), (64, 6291), (67, 6309), (70, 6348), (75, 6393), (86, 6441), (98, 6507), (101, 6522), (107, 6576), (111, 6612),

Gene: Wintermute_69 Start: 42831, Stop: 43499, Start Num: 19

Candidate Starts for Wintermute_69:

(Start: 19 @42831 has 22 MA's), (47, 42993), (48, 42999), (51, 43011), (53, 43038), (57, 43083), (67, 43155), (85, 43284), (91, 43317), (98, 43350), (103, 43371), (109, 43437), (115, 43479),

Gene: Wogge42_15 Start: 6078, Stop: 6734, Start Num: 24

Candidate Starts for Wogge42_15:

(Start: 14 @6021 has 19 MA's), (Start: 24 @6078 has 11 MA's), (41, 6183), (44, 6201), (47, 6243), (49, 6252), (56, 6315), (57, 6327), (64, 6381), (67, 6399), (70, 6438), (75, 6483), (86, 6531), (98, 6597), (101, 6612), (107, 6666), (111, 6702),

Gene: Ximenita_71 Start: 43457, Stop: 43978, Start Num: 22

Candidate Starts for Ximenita_71:

(5, 43277), (Start: 22 @43457 has 180 MA's), (34, 43532), (43, 43580), (47, 43625), (51, 43643), (57, 43715), (58, 43727), (67, 43787), (92, 43928), (99, 43961), (100, 43967),

Gene: Y10_66 Start: 42759, Stop: 43424, Start Num: 19

Candidate Starts for Y10_66:

(Start: 19 @42759 has 22 MA's), (47, 42921), (48, 42927), (51, 42939), (53, 42966), (57, 43011), (67, 43083), (85, 43212), (91, 43245), (96, 43272), (109, 43362), (115, 43404),

Gene: Y2_66 Start: 42759, Stop: 43424, Start Num: 19

Candidate Starts for Y2_66:

(Start: 19 @42759 has 22 MA's), (47, 42921), (48, 42927), (51, 42939), (53, 42966), (57, 43011), (67, 43083), (85, 43212), (91, 43245), (96, 43272), (109, 43362), (115, 43404),

Gene: YasnayaPolyana_68 Start: 42684, Stop: 43325, Start Num: 19

Candidate Starts for YasnayaPolyana_68:

(Start: 19 @42684 has 22 MA's), (47, 42846), (48, 42852), (51, 42864), (53, 42891), (57, 42936), (67, 43008), (85, 43137), (91, 43170), (96, 43197), (109, 43263), (115, 43305),

Gene: YoureAdopted_65 Start: 43424, Stop: 43933, Start Num: 22

Candidate Starts for YoureAdopted_65:

(Start: 22 @43424 has 180 MA's), (34, 43499), (42, 43538), (47, 43592), (56, 43670), (57, 43682), (92, 43883),

Gene: YoyoKar_15 Start: 5735, Stop: 6373, Start Num: 24

Candidate Starts for YoyoKar_15:

(Start: 14 @5678 has 19 MA's), (Start: 24 @5735 has 11 MA's), (41, 5840), (44, 5858), (47, 5900), (49, 5909), (56, 5972), (57, 5984), (64, 6038), (67, 6056), (70, 6095), (75, 6140), (98, 6236), (101, 6251), (107, 6305), (111, 6341),

Gene: Yuna_70 Start: 44572, Stop: 45099, Start Num: 22

Candidate Starts for Yuna_70:

(Start: 22 @44572 has 180 MA's), (34, 44647), (43, 44695), (47, 44740), (50, 44752), (51, 44758), (57, 44830), (58, 44842), (74, 44965), (100, 45088),

Gene: YungJamal_16 Start: 6232, Stop: 6954, Start Num: 14

Candidate Starts for YungJamal_16:

(Start: 14 @6232 has 19 MA's), (Start: 24 @6289 has 11 MA's), (41, 6394), (44, 6412), (47, 6454), (49, 6463), (56, 6526), (57, 6538), (64, 6592), (67, 6610), (70, 6649), (75, 6694), (86, 6742), (98, 6817), (101, 6832), (107, 6886), (111, 6922),

Gene: Yunkel11_70 Start: 43327, Stop: 43848, Start Num: 22

Candidate Starts for Yunkel11_70:

(Start: 22 @43327 has 180 MA's), (34, 43402), (47, 43495), (51, 43513), (57, 43585), (58, 43597), (64, 43639), (92, 43795),

Gene: Zabiza_60 Start: 39161, Stop: 39670, Start Num: 22

Candidate Starts for Zabiza_60:

(Start: 22 @39161 has 180 MA's), (34, 39236), (36, 39245), (42, 39275), (47, 39329), (56, 39407), (57, 39419), (76, 39578), (92, 39620),

Gene: Zakhe101_16 Start: 6244, Stop: 6966, Start Num: 14

Candidate Starts for Zakhe101_16:

(Start: 14 @6244 has 19 MA's), (Start: 24 @6301 has 11 MA's), (41, 6406), (44, 6424), (47, 6466), (49, 6475), (56, 6538), (57, 6550), (64, 6604), (67, 6622), (70, 6661), (75, 6706), (86, 6754), (98, 6829), (101, 6844), (107, 6898), (111, 6934),

Gene: Zavala_68 Start: 43583, Stop: 44092, Start Num: 22

Candidate Starts for Zavala_68:

(Start: 22 @43583 has 180 MA's), (34, 43658), (36, 43667), (42, 43697), (47, 43751), (56, 43829), (57, 43841), (92, 44042),

Gene: Zebo_14 Start: 5677, Stop: 6372, Start Num: 14

Candidate Starts for Zebo_14:

(Start: 14 @5677 has 19 MA's), (Start: 24 @5734 has 11 MA's), (41, 5839), (44, 5857), (47, 5899), (49, 5908), (56, 5971), (57, 5983), (64, 6037), (67, 6055), (70, 6094), (75, 6139), (98, 6235), (101, 6250), (107, 6304), (111, 6340),

Gene: ZoeJ_67 Start: 44866, Stop: 45384, Start Num: 22

Candidate Starts for ZoeJ_67:

(9, 44716), (Start: 22 @44866 has 180 MA's), (43, 44989), (47, 45031), (49, 45040), (50, 45043), (51, 45049), (57, 45121), (58, 45133), (60, 45145), (67, 45193), (92, 45334), (100, 45373),