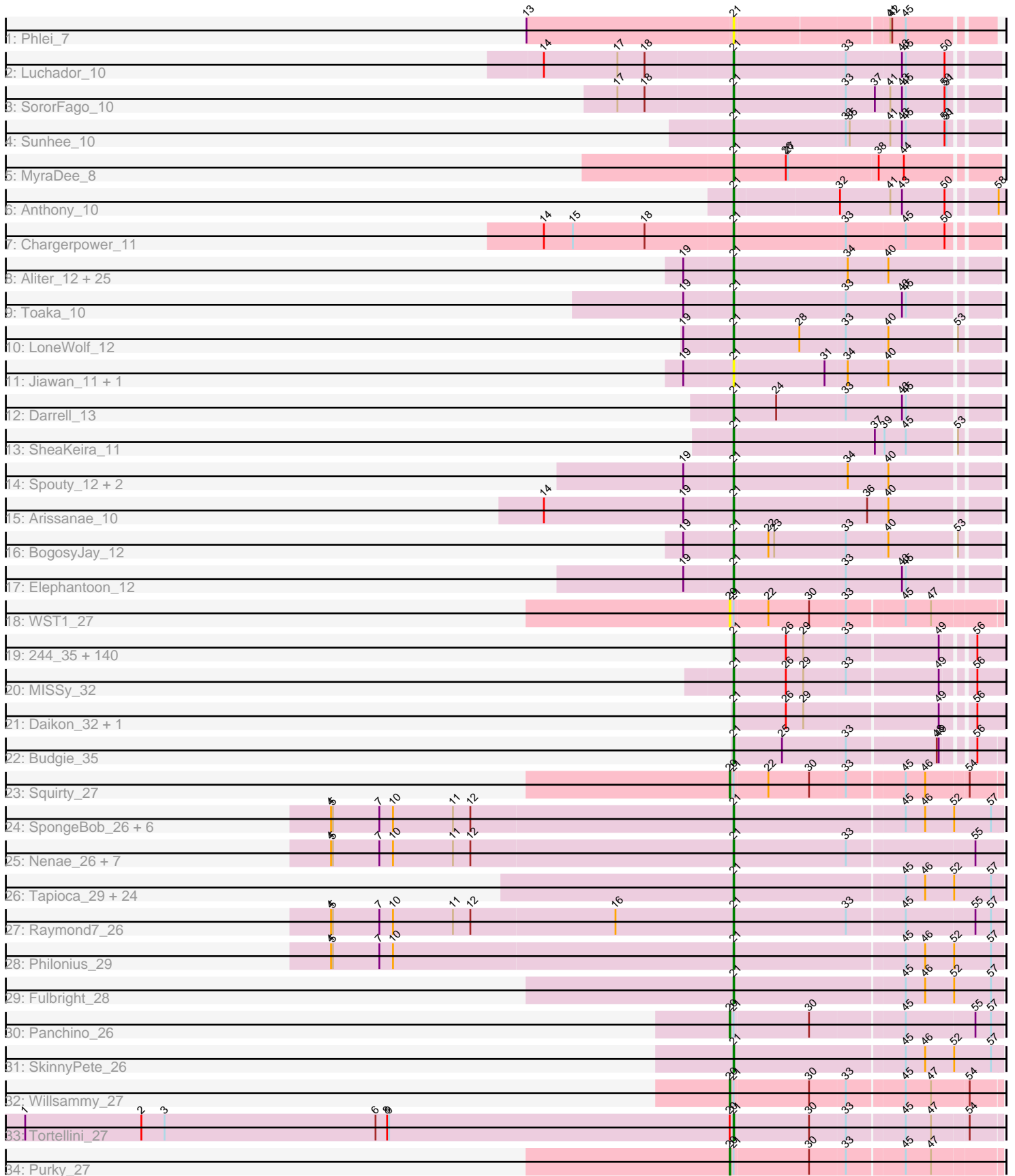


Pham 304689



Note: Tracks are now grouped by subcluster and scaled. Switching in subcluster is indicated by changes in track color. Track scale is now set by default to display the region 30 bp upstream of start 1 to 30 bp downstream of the last possible start. If this default region is judged to be packed too tightly with annotated starts, the track will be further scaled to only show that region of the ORF with annotated starts. This action will be indicated by adding "Zoomed" to the title. For starts, yellow indicates the location of called starts comprised solely of Glimmer/GeneMark auto-annotations, green indicates the location of called starts with at least 1 manual gene annotation.

Pham 304689 Report

This analysis was run 06/08/26 on database version 649.

Pham number 304689 has 240 members, 27 are drafts.

Phages represented in each track:

- Track 1 : Phlei_7
- Track 2 : Luchador_10
- Track 3 : SororFago_10
- Track 4 : Sunhee_10
- Track 5 : MyraDee_8
- Track 6 : Anthony_10
- Track 7 : Chargerpower_11
- Track 8 : Aliter_12, Ayanochan_13, EdogawaKiddo_10, Onglai_11, Scherzo_12, HortumSL17_12, Qobbit_12, Alma_12, Conquerage_12, Fayely_12, Ugenie5_9, Phonnegut_12, EmyBug_12, Pioneer_12, Phaeder_12, Beemo_12, RyeScarlet_13, Maminiaina_12, Tubs_12, Lilleskat_10, ExplosioNervosa_12, Myxus_12, Hanray_11, Catalina_12, Sachima_10, PackMan_12
- Track 9 : Toaka_10
- Track 10 : LoneWolf_12
- Track 11 : Jiawan_11, Halex_11
- Track 12 : Darrell_13
- Track 13 : SheaKeira_11
- Track 14 : Spouty_12, Priya_12, Eidsmoe_12
- Track 15 : Arissanae_10
- Track 16 : BogosyJay_12
- Track 17 : Elephantoon_12
- Track 18 : WST1_27
- Track 19 : 244_35, CrystalP_33, Stark_34, Phrux_33, Gemini_36, Lilizi_35, IHOP_33, PhatBacter_33, ChotaBhai_33, Elite2014_32, BugsBunny_31, Cjw1_33, Harella_32, Maxxinsta_34, Elph10_34, Misfit_33, Icee_32, Moldemort_34, Emmina_34, Ptowny_34, BaboJay_32, MPhalcon_32, Tomaszewski_32, Goku_33, Eureka_33, Traaww1_31, Gage_35, BadStone_32, StormChicken_33, Buck_32, Saints25_34, Mosby_32, HufflyPuff_32, Liveloughbron_34, ChosenOne_33, Highbury_34, Asriel_32, HanKaySha_34, Petra64142_35, Balomoji_32, Lilpickle_32, Miniwave_33, Phaja_33, OrionPax_34, Bask21_33, FireRed_33, Bruin_33, ABCat_32, Argent26_35, Wiggin_36, Xandras_35, Willez_32, Becksu_33, Nimrod_33, MollyToe_33, Quallification_34, Rakim_34, DrDrey_34, Paperbeatsrock_35, Easy2Say_35, StolenFromERC_35, Tuco_34, Contagion_32, NonchalantPear_33, Holt_34, StellaBean_33, Palpatine_33, MadamMonkfish_33, Dumbo_33, Ukulele_33, Kimchi_35, JeTaime_35, BilboSwaggins_33, Nala_33, Mindy_33, Hoonter_35, Stank_36, FairyPath_33, Flypotenuse_31, Manda_34, Myrale_33, Lilac_35, ShereKhan_35, TeamEdward_33, Bogg_33, Marshmallow_33,

ShamWow_33, Cookies_33, Phaux_32, Porky_33, YassJohnny_34, Rimmer_32, DoctorDiddles_33, Barbarian_32, Sotrice96_33, Henry_34, Teaspoon_34, Pumpkin_35, PaddyBaddy_34, Glexan_31, Amao_33, FoghornLeghorn_32, Kostya_34, xkcd_34, NoSleep_34, Czyszczonek_34, Pharsalus_34, Cactus_34, Kanye_35, SirDuracell_32, Youngblood_33, Tarkin_35, Adnama_36, RiverMonster_33, Policronamos_33, BigBubba_34, TeardropMSU_32, GooberAzure_35, GoldenSpark_35, Thresher_34, Greep_34, Simpliphy_34, Thimble_33, Hopey_35, AmericanBeauty_35, Terminus_33, Inca_32, Toto_33, Sassay_32, Goldilocks_34, Pat3_32, Murica_32, Brewer_33, Dusk_32, Bench_35, TBrady12_35, SophKB_33, Murphy_34, Command613_34, Filch_34, Gator_31

- Track 20 : MISSy_32
- Track 21 : Daikon_32, NelitzaMV_33
- Track 22 : Budgie_35
- Track 23 : Squirty_27
- Track 24 : SpongeBob_26, Snekmaggon_26, Andies_26, Shweta_26, MichelleMyBell_27, Jamie19_26, Rebel_26
- Track 25 : Nenae_26, BabeRuth_26, PhancyPhin_26, Hanako_26, Spinach_26, Redi_26, ShrimpFriedEgg_26, Purgamenstris_26
- Track 26 : Tapioca_29, Duplicity_29, Xerxes_29, Phloss_26, Charlie_29, Journey_29, Silvafighter_29, ParmesanJohn_29, Smurph_29, Tortoise12_29, Pipsqueaks_29, Gex_29, Bosection6_29, Tessdabest_28, Carcharodon_29, Aggie_29, Magsby_29, EGUunicorn_29, Scitech_26, Xeno_28, Melville_29, Schnauzer_29, Chewbacca_29, Silvy_29, Cubone_29
- Track 27 : Raymond7_26
- Track 28 : Philonius_29
- Track 29 : Fulbright_28
- Track 30 : Panchino_26
- Track 31 : SkinnyPete_26
- Track 32 : Willsammy_27
- Track 33 : Tortellini_27
- Track 34 : Purky_27

Summary of Final Annotations (See graph section above for start numbers):

The start number called the most often in the published annotations is 21, it was called in 209 of the 213 non-draft genes in the pham.

Genes that call this "Most Annotated" start:

- 244_35, ABCat_32, Adnama_36, Aggie_29, Aliter_12, Alma_12, Amao_33, AmericanBeauty_35, Andies_26, Anthony_10, Argent26_35, Arissanae_10, Asriel_32, Ayanochan_13, BabeRuth_26, BaboJay_32, BadStone_32, Balomoji_32, Barbarian_32, Bask21_33, Becksu_33, Beemo_12, Bench_35, BigBubba_34, BilboSwaggins_33, Bogg_33, BogosyJay_12, Bosection6_29, Brewer_33, Bruin_33, Buck_32, Budgie_35, BugsBunny_31, Cactus_34, Carcharodon_29, Catalina_12, Chargerpower_11, Charlie_29, Chewbacca_29, ChosenOne_33, ChotaBhai_33, Cjw1_33, Command613_34, Conquerage_12, Contagion_32, Cookies_33, CrystalP_33, Cubone_29, Czyszczonek_34, Daikon_32, Darrell_13, DoctorDiddles_33, DrDrey_34, Dumbo_33, Duplicity_29, Dusk_32, EGUunicorn_29, Easy2Say_35, EdogawaKiddo_10, Eidsmoe_12, Elephantoon_12, Elite2014_32, Elph10_34, Emmina_34, EmyBug_12, Eureka_33, ExplosioNervosa_12,

FairyPath_33, Fayely_12, Filch_34, FireRed_33, Flypotenuse_31, FoghornLeghorn_32, Fulbright_28, Gage_35, Gator_31, Gemini_36, Gex_29, Glexan_31, Goku_33, GoldenSpark_35, Goldilocks_34, GooberAzure_35, Greep_34, HanKaySha_34, Hanako_26, Hanray_11, Harella_32, Henry_34, Highbury_34, Horex_11, Holt_34, Hoonter_35, Hopey_35, HortumSL17_12, HuffyPuff_32, IHOP_33, Icee_32, Inca_32, Jamie19_26, JeTaimé_35, Jiawan_11, Journey_29, Kanye_35, Kimchi_35, Kostya_34, Lilac_35, Lilizi_35, Lilleskat_10, Lilpickle_32, Liveloughbron_34, LoneWolf_12, Luchador_10, MISSy_32, MPhalcon_32, MadamMonkfish_33, Magsby_29, Maminaiaina_12, Manda_34, Marshmallow_33, Maxxinista_34, Melville_29, MichelleMyBell_27, Mindy_33, Miniwave_33, Misfit_33, Moldemort_34, MollyToe_33, Mosby_32, Murica_32, Murphy_34, MyraDee_8, Myrale_33, Myxus_12, Nala_33, NelitzaMV_33, Nenae_26, Nimrod_33, NoSleep_34, NonchalantPear_33, Onglai_11, OrionPax_34, PackMan_12, PaddyBaddy_34, Palpatine_33, Paperbeatsrock_35, ParmesanJohn_29, Pat3_32, Petra64142_35, Phaeder_12, Phaja_33, PhancyPhin_26, Pharsalus_34, PhatBacter_33, Phaux_32, Philonius_29, Phlei_7, Phloss_26, Phonnegut_12, Phrux_33, Pioneer_12, Pipsqueaks_29, Policronamos_33, Porky_33, Priya_12, Ptowny_34, Pumpkin_35, Purgamenstris_26, Qobbit_12, Quallification_34, Rakim_34, Raymond7_26, Rebel_26, Redi_26, Rimmer_32, RiverMonster_33, RyeScarlet_13, Sachima_10, Saints25_34, Sassay_32, Scherzo_12, Schnauzer_29, Scitech_26, ShamWow_33, SheaKeira_11, ShereKhan_35, ShrimpFriedEgg_26, Shweta_26, Silvafighter_29, Silvy_29, Simpliphy_34, SirDuracell_32, SkinnyPete_26, Smurph_29, Snekmaggon_26, SophKB_33, SororFago_10, Sotrice96_33, Spinach_26, SpongeBob_26, Spouty_12, Stank_36, Stark_34, StellaBean_33, StolenFromERC_35, StormChicken_33, Sunhee_10, TBrady12_35, Tapioca_29, Tarkin_35, TeamEdward_33, TeardropMSU_32, Teaspoon_34, Terminus_33, Tessdabest_28, Thimble_33, Thresher_34, Toaka_10, Tomaszewski_32, Tortellini_27, Tortoise12_29, Toto_33, Traaww1_31, Tubs_12, Tuco_34, Ugenie5_9, Ukulele_33, Wiggin_36, Willez_32, Xandras_35, Xeno_28, Xerxes_29, YassJohnny_34, Youngblood_33, xkcd_34,

Genes that have the "Most Annotated" start but do not call it:

- Panchino_26, Purky_27, Squirty_27, WST1_27, Willsammy_27,

Genes that do not have the "Most Annotated" start:

-

Summary by start number:

Start 20:

- Found in 6 of 240 (2.5%) of genes in pham
- Manual Annotations of this start: 4 of 213
- Called 83.3% of time when present
- Phage (with cluster) where this start called: Panchino_26 (N), Purky_27 (P6), Squirty_27 (F3), WST1_27 (AJ), Willsammy_27 (P1),

Start 21:

- Found in 240 of 240 (100.0%) of genes in pham
- Manual Annotations of this start: 209 of 213
- Called 97.9% of time when present
- Phage (with cluster) where this start called: 244_35 (E), ABCat_32 (E), Adnama_36 (E), Aggie_29 (N), Aliter_12 (A9), Alma_12 (A9), Amao_33 (E), AmericanBeauty_35 (E), Andies_26 (N), Anthony_10 (A20), Argent26_35 (E), Arissanae_10 (A9),

Asriel_32 (E), Ayanochan_13 (A9), BabeRuth_26 (N), BaboJay_32 (E), BadStone_32 (E), Balomoji_32 (E), Barbarian_32 (E), Bask21_33 (E), Becksu_33 (E), Beemo_12 (A9), Bench_35 (E), BigBubba_34 (E), BilboSwaggins_33 (E), Bogg_33 (E), BogosyJay_12 (A9), Bosection6_29 (N), Brewer_33 (E), Bruin_33 (E), Buck_32 (E), Budgie_35 (E), BugsBunny_31 (E), Cactus_34 (E), Carcharodon_29 (N), Catalina_12 (A9), Chargerpower_11 (A22), Charlie_29 (N), Chewbacca_29 (N), ChosenOne_33 (E), ChotaBhai_33 (E), Cjw1_33 (E), Command613_34 (E), Conquerage_12 (A9), Contagion_32 (E), Cookies_33 (E), CrystalP_33 (E), Cubone_29 (N), Czyszczonek_34 (E), Daikon_32 (E), Darrell_13 (A9), DoctorDiddles_33 (E), DrDrey_34 (E), Dumbo_33 (E), Duplicity_29 (N), Dusk_32 (E), EGUnicorn_29 (N), Easy2Say_35 (E), EdogawaKiddo_10 (A9), Eidsmoe_12 (A9), Elephantoon_12 (A9), Elite2014_32 (E), Elph10_34 (E), Emmina_34 (E), EmyBug_12 (A9), Eureka_33 (E), ExplosioNervosa_12 (A9), FairyPath_33 (E), Fayely_12 (A9), Filch_34 (E), FireRed_33 (E), Flypotenuse_31 (E), FoghornLeghorn_32 (E), Fulbright_28 (N), Gage_35 (E), Gator_31 (E), Gemini_36 (E), Gex_29 (N), Glexan_31 (E), Goku_33 (E), GoldenSpark_35 (E), Goldilocks_34 (E), GooberAzure_35 (E), Greep_34 (E), HanKaySha_34 (E), Hanako_26 (N), Hanray_11 (A9), Harella_32 (E), Henry_34 (E), Highbury_34 (E), Horex_11 (A9), Holt_34 (E), Hoonter_35 (E), Hopey_35 (E), HortumSL17_12 (A9), HufflyPuff_32 (E), IHOP_33 (E), Icee_32 (E), Inca_32 (E), Jamie19_26 (N), JeTaime_35 (E), Jiawan_11 (A9), Journey_29 (N), Kanye_35 (E), Kimchi_35 (E), Kostya_34 (E), Lilac_35 (E), Lilizi_35 (E), Lilleskat_10 (A9), Lilpickle_32 (E), Liveloughbron_34 (E), LoneWolf_12 (A9), Luchador_10 (A14), MISSy_32 (E), MPhalcon_32 (E), MadamMonkfish_33 (E), Magsby_29 (N), Maminiaina_12 (A9), Manda_34 (E), Marshmallow_33 (E), Maxxinista_34 (E), Melville_29 (N), MichelleMyBell_27 (N), Mindy_33 (E), Miniwave_33 (E), Misfit_33 (E), Moldemort_34 (E), MollyToe_33 (E), Mosby_32 (E), Murica_32 (E), Murphy_34 (E), MyraDee_8 (A18), Myrale_33 (E), Myxus_12 (A9), Nala_33 (E), NelitzaMV_33 (E), Nenae_26 (N), Nimrod_33 (E), NoSleep_34 (E), NonchalantPear_33 (E), Onglai_11 (A9), OrionPax_34 (E), PackMan_12 (A9), PaddyBaddy_34 (E), Palpatine_33 (E), Paperbeatsrock_35 (E), Parmesanjohn_29 (N), Pat3_32 (E), Petra64142_35 (E), Phaeder_12 (A9), Phaja_33 (E), PhancyPhin_26 (N), Pharsalus_34 (E), PhatBacter_33 (E), Phaux_32 (E), Philonius_29 (N), Phlei_7 (A13), Phloss_26 (N), Phonnegut_12 (A9), Phrux_33 (E), Pioneer_12 (A9), Pipsqueaks_29 (N), Policronamos_33 (E), Porky_33 (E), Priya_12 (A9), Ptowny_34 (E), Pumpkin_35 (E), Purgamenstris_26 (N), Qobbit_12 (A9), Qualification_34 (E), Rakim_34 (E), Raymond7_26 (N), Rebel_26 (N), Redi_26 (N), Rimmer_32 (E), RiverMonster_33 (E), RyeScarlet_13 (A9), Sachima_10 (A9), Saints25_34 (E), Sassay_32 (E), Scherzo_12 (A9), Schnauzer_29 (N), Scitech_26 (N), ShamWow_33 (E), SheaKeira_11 (A9), ShereKhan_35 (E), ShrimpFriedEgg_26 (N), Shweta_26 (N), Silvafighter_29 (N), Silvy_29 (N), Simpliphy_34 (E), SirDuracell_32 (E), SkinnyPete_26 (N), Smurph_29 (N), Snekmaggon_26 (N), SophKB_33 (E), SororFago_10 (A14), Sotrice96_33 (E), Spinach_26 (N), SpongeBob_26 (N), Spouty_12 (A9), Stank_36 (E), Stark_34 (E), StellaBean_33 (E), StolenFromERC_35 (E), StormChicken_33 (E), Sunhee_10 (A14), TBrady12_35 (E), Tapioca_29 (N), Tarkin_35 (E), TeamEdward_33 (E), TeardropMSU_32 (E), Teaspoon_34 (E), Terminus_33 (E), Tessdabest_28 (N), Thimble_33 (E), Thresher_34 (E), Toaka_10 (A9), Tomaszewski_32 (E), Tortellini_27 (P2), Tortoise12_29 (N), Toto_33 (E), Traaww1_31 (E), Tubs_12 (A9), Tuco_34 (E), Ugenie5_9 (A9), Ukulele_33 (E), Wiggin_36 (E), Willez_32 (E), Xandras_35 (E), Xeno_28 (N), Xerxes_29 (N), YassJohnny_34 (E), Youngblood_33 (E), xkcd_34 (E),

Summary by clusters:

There are 13 clusters represented in this pham: A20, A14, A22, P1, E, A13, AJ, P2, A18, N, F3, A9, P6,

Info for manual annotations of cluster A14:

- Start number 21 was manually annotated 3 times for cluster A14.

Info for manual annotations of cluster A18:

- Start number 21 was manually annotated 1 time for cluster A18.

Info for manual annotations of cluster A20:

- Start number 21 was manually annotated 1 time for cluster A20.

Info for manual annotations of cluster A22:

- Start number 21 was manually annotated 1 time for cluster A22.

Info for manual annotations of cluster A9:

- Start number 21 was manually annotated 29 times for cluster A9.

Info for manual annotations of cluster E:

- Start number 21 was manually annotated 132 times for cluster E.

Info for manual annotations of cluster F3:

- Start number 20 was manually annotated 1 time for cluster F3.

Info for manual annotations of cluster N:

- Start number 20 was manually annotated 1 time for cluster N.
- Start number 21 was manually annotated 41 times for cluster N.

Info for manual annotations of cluster P1:

- Start number 20 was manually annotated 1 time for cluster P1.

Info for manual annotations of cluster P2:

- Start number 21 was manually annotated 1 time for cluster P2.

Info for manual annotations of cluster P6:

- Start number 20 was manually annotated 1 time for cluster P6.

Gene Information:

Gene: 244_35 Start: 31427, Stop: 31810, Start Num: 21

Candidate Starts for 244_35:

(Start: 21 @31427 has 209 MA's), (26, 31505), (29, 31532), (33, 31595), (49, 31730), (56, 31769),

Gene: ABCat_32 Start: 31139, Stop: 31522, Start Num: 21

Candidate Starts for ABCat_32:

(Start: 21 @31139 has 209 MA's), (26, 31217), (29, 31244), (33, 31307), (49, 31442), (56, 31481),

Gene: Adnama_36 Start: 31654, Stop: 32037, Start Num: 21

Candidate Starts for Adnama_36:

(Start: 21 @31654 has 209 MA's), (26, 31732), (29, 31759), (33, 31822), (49, 31957), (56, 31996),

Gene: Aggie_29 Start: 24340, Stop: 24744, Start Num: 21

Candidate Starts for Aggie_29:

(Start: 21 @24340 has 209 MA's), (45, 24598), (46, 24628), (52, 24670), (57, 24727),

Gene: Aliter_12 Start: 7651, Stop: 8037, Start Num: 21

Candidate Starts for Aliter_12:

(19, 7576), (Start: 21 @7651 has 209 MA's), (34, 7822), (40, 7882),

Gene: Alma_12 Start: 7730, Stop: 8116, Start Num: 21

Candidate Starts for Alma_12:

(19, 7655), (Start: 21 @7730 has 209 MA's), (34, 7901), (40, 7961),

Gene: Amao_33 Start: 30351, Stop: 30734, Start Num: 21

Candidate Starts for Amao_33:

(Start: 21 @30351 has 209 MA's), (26, 30429), (29, 30456), (33, 30519), (49, 30654), (56, 30693),

Gene: AmericanBeauty_35 Start: 31134, Stop: 31517, Start Num: 21

Candidate Starts for AmericanBeauty_35:

(Start: 21 @31134 has 209 MA's), (26, 31212), (29, 31239), (33, 31302), (49, 31437), (56, 31476),

Gene: Andies_26 Start: 23507, Stop: 23911, Start Num: 21

Candidate Starts for Andies_26:

(4, 22886), (5, 22889), (7, 22961), (10, 22982), (11, 23075), (12, 23102), (Start: 21 @23507 has 209 MA's), (45, 23765), (46, 23795), (52, 23837), (57, 23894),

Gene: Anthony_10 Start: 5261, Stop: 5653, Start Num: 21

Candidate Starts for Anthony_10:

(Start: 21 @5261 has 209 MA's), (32, 5414), (41, 5492), (43, 5510), (50, 5576), (58, 5642),

Gene: Argent26_35 Start: 31137, Stop: 31520, Start Num: 21

Candidate Starts for Argent26_35:

(Start: 21 @31137 has 209 MA's), (26, 31215), (29, 31242), (33, 31305), (49, 31440), (56, 31479),

Gene: Arissanae_10 Start: 5852, Stop: 6238, Start Num: 21

Candidate Starts for Arissanae_10:

(14, 5561), (19, 5777), (Start: 21 @5852 has 209 MA's), (36, 6053), (40, 6083),

Gene: Asriel_32 Start: 30008, Stop: 30391, Start Num: 21

Candidate Starts for Asriel_32:

(Start: 21 @30008 has 209 MA's), (26, 30086), (29, 30113), (33, 30176), (49, 30311), (56, 30350),

Gene: Ayanochan_13 Start: 7756, Stop: 8142, Start Num: 21

Candidate Starts for Ayanochan_13:

(19, 7681), (Start: 21 @7756 has 209 MA's), (34, 7927), (40, 7987),

Gene: BabeRuth_26 Start: 23389, Stop: 23793, Start Num: 21

Candidate Starts for BabeRuth_26:

(4, 22768), (5, 22771), (7, 22843), (10, 22864), (11, 22957), (12, 22984), (Start: 21 @23389 has 209 MA's), (33, 23563), (55, 23752),

Gene: BaboJay_32 Start: 30697, Stop: 31080, Start Num: 21

Candidate Starts for BaboJay_32:

(Start: 21 @30697 has 209 MA's), (26, 30775), (29, 30802), (33, 30865), (49, 31000), (56, 31039),

Gene: BadStone_32 Start: 31139, Stop: 31522, Start Num: 21

Candidate Starts for BadStone_32:

(Start: 21 @31139 has 209 MA's), (26, 31217), (29, 31244), (33, 31307), (49, 31442), (56, 31481),

Gene: Balomoji_32 Start: 30873, Stop: 31256, Start Num: 21

Candidate Starts for Balomoji_32:

(Start: 21 @30873 has 209 MA's), (26, 30951), (29, 30978), (33, 31041), (49, 31176), (56, 31215),

Gene: Barbarian_32 Start: 30008, Stop: 30391, Start Num: 21

Candidate Starts for Barbarian_32:

(Start: 21 @30008 has 209 MA's), (26, 30086), (29, 30113), (33, 30176), (49, 30311), (56, 30350),

Gene: Bask21_33 Start: 30325, Stop: 30708, Start Num: 21

Candidate Starts for Bask21_33:

(Start: 21 @30325 has 209 MA's), (26, 30403), (29, 30430), (33, 30493), (49, 30628), (56, 30667),

Gene: Becksu_33 Start: 31330, Stop: 31713, Start Num: 21

Candidate Starts for Becksu_33:

(Start: 21 @31330 has 209 MA's), (26, 31408), (29, 31435), (33, 31498), (49, 31633), (56, 31672),

Gene: Beemo_12 Start: 7757, Stop: 8143, Start Num: 21

Candidate Starts for Beemo_12:

(19, 7682), (Start: 21 @7757 has 209 MA's), (34, 7928), (40, 7988),

Gene: Bench_35 Start: 31007, Stop: 31390, Start Num: 21

Candidate Starts for Bench_35:

(Start: 21 @31007 has 209 MA's), (26, 31085), (29, 31112), (33, 31175), (49, 31310), (56, 31349),

Gene: BigBubba_34 Start: 30910, Stop: 31293, Start Num: 21

Candidate Starts for BigBubba_34:

(Start: 21 @30910 has 209 MA's), (26, 30988), (29, 31015), (33, 31078), (49, 31213), (56, 31252),

Gene: BilboSwaggins_33 Start: 31147, Stop: 31530, Start Num: 21

Candidate Starts for BilboSwaggins_33:

(Start: 21 @31147 has 209 MA's), (26, 31225), (29, 31252), (33, 31315), (49, 31450), (56, 31489),

Gene: Bogg_33 Start: 30047, Stop: 30430, Start Num: 21

Candidate Starts for Bogg_33:

(Start: 21 @30047 has 209 MA's), (26, 30125), (29, 30152), (33, 30215), (49, 30350), (56, 30389),

Gene: BogosyJay_12 Start: 7514, Stop: 7900, Start Num: 21

Candidate Starts for BogosyJay_12:

(19, 7439), (Start: 21 @7514 has 209 MA's), (22, 7565), (23, 7574), (33, 7682), (40, 7745), (53, 7844),

Gene: Bosection6_29 Start: 24339, Stop: 24743, Start Num: 21

Candidate Starts for Bosection6_29:

(Start: 21 @24339 has 209 MA's), (45, 24597), (46, 24627), (52, 24669), (57, 24726),

Gene: Brewer_33 Start: 31395, Stop: 31778, Start Num: 21

Candidate Starts for Brewer_33:

(Start: 21 @31395 has 209 MA's), (26, 31473), (29, 31500), (33, 31563), (49, 31698), (56, 31737),

Gene: Bruin_33 Start: 31167, Stop: 31550, Start Num: 21

Candidate Starts for Bruin_33:

(Start: 21 @31167 has 209 MA's), (26, 31245), (29, 31272), (33, 31335), (49, 31470), (56, 31509),

Gene: Buck_32 Start: 31103, Stop: 31486, Start Num: 21

Candidate Starts for Buck_32:

(Start: 21 @31103 has 209 MA's), (26, 31181), (29, 31208), (33, 31271), (49, 31406), (56, 31445),

Gene: Budgie_35 Start: 30697, Stop: 31077, Start Num: 21

Candidate Starts for Budgie_35:

(Start: 21 @30697 has 209 MA's), (25, 30769), (33, 30865), (48, 30997), (49, 31000), (56, 31039),

Gene: BugsBunny_31 Start: 30736, Stop: 31119, Start Num: 21

Candidate Starts for BugsBunny_31:

(Start: 21 @30736 has 209 MA's), (26, 30814), (29, 30841), (33, 30904), (49, 31039), (56, 31078),

Gene: Cactus_34 Start: 30358, Stop: 30741, Start Num: 21

Candidate Starts for Cactus_34:

(Start: 21 @30358 has 209 MA's), (26, 30436), (29, 30463), (33, 30526), (49, 30661), (56, 30700),

Gene: Carcharodon_29 Start: 24339, Stop: 24743, Start Num: 21

Candidate Starts for Carcharodon_29:

(Start: 21 @24339 has 209 MA's), (45, 24597), (46, 24627), (52, 24669), (57, 24726),

Gene: Catalina_12 Start: 7724, Stop: 8110, Start Num: 21

Candidate Starts for Catalina_12:

(19, 7649), (Start: 21 @7724 has 209 MA's), (34, 7895), (40, 7955),

Gene: Chargerpower_11 Start: 6184, Stop: 6570, Start Num: 21

Candidate Starts for Chargerpower_11:

(14, 5893), (15, 5938), (18, 6049), (Start: 21 @6184 has 209 MA's), (33, 6352), (45, 6442), (50, 6502),

Gene: Charlie_29 Start: 24339, Stop: 24743, Start Num: 21

Candidate Starts for Charlie_29:

(Start: 21 @24339 has 209 MA's), (45, 24597), (46, 24627), (52, 24669), (57, 24726),

Gene: Chewbacca_29 Start: 24339, Stop: 24743, Start Num: 21

Candidate Starts for Chewbacca_29:

(Start: 21 @24339 has 209 MA's), (45, 24597), (46, 24627), (52, 24669), (57, 24726),

Gene: ChosenOne_33 Start: 30355, Stop: 30738, Start Num: 21

Candidate Starts for ChosenOne_33:

(Start: 21 @30355 has 209 MA's), (26, 30433), (29, 30460), (33, 30523), (49, 30658), (56, 30697),

Gene: ChotaBhai_33 Start: 30393, Stop: 30776, Start Num: 21

Candidate Starts for ChotaBhai_33:

(Start: 21 @30393 has 209 MA's), (26, 30471), (29, 30498), (33, 30561), (49, 30696), (56, 30735),

Gene: Cjw1_33 Start: 31907, Stop: 32290, Start Num: 21

Candidate Starts for Cjw1_33:

(Start: 21 @31907 has 209 MA's), (26, 31985), (29, 32012), (33, 32075), (49, 32210), (56, 32249),

Gene: Command613_34 Start: 31414, Stop: 31797, Start Num: 21
Candidate Starts for Command613_34:
(Start: 21 @31414 has 209 MA's), (26, 31492), (29, 31519), (33, 31582), (49, 31717), (56, 31756),

Gene: Conquerage_12 Start: 7753, Stop: 8139, Start Num: 21
Candidate Starts for Conquerage_12:
(19, 7678), (Start: 21 @7753 has 209 MA's), (34, 7924), (40, 7984),

Gene: Contagion_32 Start: 30651, Stop: 31034, Start Num: 21
Candidate Starts for Contagion_32:
(Start: 21 @30651 has 209 MA's), (26, 30729), (29, 30756), (33, 30819), (49, 30954), (56, 30993),

Gene: Cookies_33 Start: 31016, Stop: 31399, Start Num: 21
Candidate Starts for Cookies_33:
(Start: 21 @31016 has 209 MA's), (26, 31094), (29, 31121), (33, 31184), (49, 31319), (56, 31358),

Gene: CrystalP_33 Start: 31147, Stop: 31530, Start Num: 21
Candidate Starts for CrystalP_33:
(Start: 21 @31147 has 209 MA's), (26, 31225), (29, 31252), (33, 31315), (49, 31450), (56, 31489),

Gene: Cubone_29 Start: 24361, Stop: 24765, Start Num: 21
Candidate Starts for Cubone_29:
(Start: 21 @24361 has 209 MA's), (45, 24619), (46, 24649), (52, 24691), (57, 24748),

Gene: Czyszczonek1_34 Start: 30892, Stop: 31275, Start Num: 21
Candidate Starts for Czyszczonek1_34:
(Start: 21 @30892 has 209 MA's), (26, 30970), (29, 30997), (33, 31060), (49, 31195), (56, 31234),

Gene: Daikon_32 Start: 30885, Stop: 31268, Start Num: 21
Candidate Starts for Daikon_32:
(Start: 21 @30885 has 209 MA's), (26, 30963), (29, 30990), (49, 31188), (56, 31227),

Gene: Darrell_13 Start: 7946, Stop: 8335, Start Num: 21
Candidate Starts for Darrell_13:
(Start: 21 @7946 has 209 MA's), (24, 8009), (33, 8114), (43, 8201), (45, 8207),

Gene: DoctorDiddles_33 Start: 30309, Stop: 30692, Start Num: 21
Candidate Starts for DoctorDiddles_33:
(Start: 21 @30309 has 209 MA's), (26, 30387), (29, 30414), (33, 30477), (49, 30612), (56, 30651),

Gene: DrDrey_34 Start: 31639, Stop: 32022, Start Num: 21
Candidate Starts for DrDrey_34:
(Start: 21 @31639 has 209 MA's), (26, 31717), (29, 31744), (33, 31807), (49, 31942), (56, 31981),

Gene: Dumbo_33 Start: 30614, Stop: 30997, Start Num: 21
Candidate Starts for Dumbo_33:
(Start: 21 @30614 has 209 MA's), (26, 30692), (29, 30719), (33, 30782), (49, 30917), (56, 30956),

Gene: Duplicity_29 Start: 24339, Stop: 24743, Start Num: 21
Candidate Starts for Duplicity_29:
(Start: 21 @24339 has 209 MA's), (45, 24597), (46, 24627), (52, 24669), (57, 24726),

Gene: Dusk_32 Start: 30799, Stop: 31182, Start Num: 21
Candidate Starts for Dusk_32:
(Start: 21 @30799 has 209 MA's), (26, 30877), (29, 30904), (33, 30967), (49, 31102), (56, 31141),

Gene: EGUunicorn_29 Start: 24339, Stop: 24743, Start Num: 21
Candidate Starts for EGUunicorn_29:
(Start: 21 @24339 has 209 MA's), (45, 24597), (46, 24627), (52, 24669), (57, 24726),

Gene: Easy2Say_35 Start: 32397, Stop: 32780, Start Num: 21
Candidate Starts for Easy2Say_35:
(Start: 21 @32397 has 209 MA's), (26, 32475), (29, 32502), (33, 32565), (49, 32700), (56, 32739),

Gene: EdogawaKiddo_10 Start: 7723, Stop: 8109, Start Num: 21
Candidate Starts for EdogawaKiddo_10:
(19, 7648), (Start: 21 @7723 has 209 MA's), (34, 7894), (40, 7954),

Gene: Eidsmoe_12 Start: 7753, Stop: 8139, Start Num: 21
Candidate Starts for Eidsmoe_12:
(19, 7678), (Start: 21 @7753 has 209 MA's), (34, 7924), (40, 7984),

Gene: Elephantoon_12 Start: 7375, Stop: 7764, Start Num: 21
Candidate Starts for Elephantoon_12:
(19, 7300), (Start: 21 @7375 has 209 MA's), (33, 7543), (43, 7630), (45, 7636),

Gene: Elite2014_32 Start: 30354, Stop: 30737, Start Num: 21
Candidate Starts for Elite2014_32:
(Start: 21 @30354 has 209 MA's), (26, 30432), (29, 30459), (33, 30522), (49, 30657), (56, 30696),

Gene: Elph10_34 Start: 30617, Stop: 31000, Start Num: 21
Candidate Starts for Elph10_34:
(Start: 21 @30617 has 209 MA's), (26, 30695), (29, 30722), (33, 30785), (49, 30920), (56, 30959),

Gene: Emmina_34 Start: 30975, Stop: 31358, Start Num: 21
Candidate Starts for Emmina_34:
(Start: 21 @30975 has 209 MA's), (26, 31053), (29, 31080), (33, 31143), (49, 31278), (56, 31317),

Gene: EmyBug_12 Start: 7753, Stop: 8139, Start Num: 21
Candidate Starts for EmyBug_12:
(19, 7678), (Start: 21 @7753 has 209 MA's), (34, 7924), (40, 7984),

Gene: Eureka_33 Start: 31130, Stop: 31513, Start Num: 21
Candidate Starts for Eureka_33:
(Start: 21 @31130 has 209 MA's), (26, 31208), (29, 31235), (33, 31298), (49, 31433), (56, 31472),

Gene: ExplosioNervosa_12 Start: 7756, Stop: 8142, Start Num: 21
Candidate Starts for ExplosioNervosa_12:
(19, 7681), (Start: 21 @7756 has 209 MA's), (34, 7927), (40, 7987),

Gene: FairyPath_33 Start: 31342, Stop: 31725, Start Num: 21
Candidate Starts for FairyPath_33:
(Start: 21 @31342 has 209 MA's), (26, 31420), (29, 31447), (33, 31510), (49, 31645), (56, 31684),

Gene: Fayely_12 Start: 7756, Stop: 8142, Start Num: 21

Candidate Starts for Fayely_12:

(19, 7681), (Start: 21 @7756 has 209 MA's), (34, 7927), (40, 7987),

Gene: Filch_34 Start: 30905, Stop: 31288, Start Num: 21

Candidate Starts for Filch_34:

(Start: 21 @30905 has 209 MA's), (26, 30983), (29, 31010), (33, 31073), (49, 31208), (56, 31247),

Gene: FireRed_33 Start: 31175, Stop: 31558, Start Num: 21

Candidate Starts for FireRed_33:

(Start: 21 @31175 has 209 MA's), (26, 31253), (29, 31280), (33, 31343), (49, 31478), (56, 31517),

Gene: Flypotenuse_31 Start: 30743, Stop: 31126, Start Num: 21

Candidate Starts for Flypotenuse_31:

(Start: 21 @30743 has 209 MA's), (26, 30821), (29, 30848), (33, 30911), (49, 31046), (56, 31085),

Gene: FoghornLeghorn_32 Start: 30651, Stop: 31034, Start Num: 21

Candidate Starts for FoghornLeghorn_32:

(Start: 21 @30651 has 209 MA's), (26, 30729), (29, 30756), (33, 30819), (49, 30954), (56, 30993),

Gene: Fulbright_28 Start: 24162, Stop: 24566, Start Num: 21

Candidate Starts for Fulbright_28:

(Start: 21 @24162 has 209 MA's), (45, 24420), (46, 24450), (52, 24492), (57, 24549),

Gene: Gage_35 Start: 31137, Stop: 31520, Start Num: 21

Candidate Starts for Gage_35:

(Start: 21 @31137 has 209 MA's), (26, 31215), (29, 31242), (33, 31305), (49, 31440), (56, 31479),

Gene: Gator_31 Start: 30755, Stop: 31138, Start Num: 21

Candidate Starts for Gator_31:

(Start: 21 @30755 has 209 MA's), (26, 30833), (29, 30860), (33, 30923), (49, 31058), (56, 31097),

Gene: Gemini_36 Start: 31654, Stop: 32037, Start Num: 21

Candidate Starts for Gemini_36:

(Start: 21 @31654 has 209 MA's), (26, 31732), (29, 31759), (33, 31822), (49, 31957), (56, 31996),

Gene: Gex_29 Start: 24335, Stop: 24739, Start Num: 21

Candidate Starts for Gex_29:

(Start: 21 @24335 has 209 MA's), (45, 24593), (46, 24623), (52, 24665), (57, 24722),

Gene: Glexan_31 Start: 30743, Stop: 31126, Start Num: 21

Candidate Starts for Glexan_31:

(Start: 21 @30743 has 209 MA's), (26, 30821), (29, 30848), (33, 30911), (49, 31046), (56, 31085),

Gene: Goku_33 Start: 30859, Stop: 31242, Start Num: 21

Candidate Starts for Goku_33:

(Start: 21 @30859 has 209 MA's), (26, 30937), (29, 30964), (33, 31027), (49, 31162), (56, 31201),

Gene: GoldenSpark_35 Start: 31137, Stop: 31520, Start Num: 21

Candidate Starts for GoldenSpark_35:

(Start: 21 @31137 has 209 MA's), (26, 31215), (29, 31242), (33, 31305), (49, 31440), (56, 31479),

Gene: Goldilocks_34 Start: 30557, Stop: 30940, Start Num: 21

Candidate Starts for Goldilocks_34:

(Start: 21 @30557 has 209 MA's), (26, 30635), (29, 30662), (33, 30725), (49, 30860), (56, 30899),

Gene: GooberAzure_35 Start: 31137, Stop: 31520, Start Num: 21

Candidate Starts for GooberAzure_35:

(Start: 21 @31137 has 209 MA's), (26, 31215), (29, 31242), (33, 31305), (49, 31440), (56, 31479),

Gene: Greep_34 Start: 31467, Stop: 31850, Start Num: 21

Candidate Starts for Greep_34:

(Start: 21 @31467 has 209 MA's), (26, 31545), (29, 31572), (33, 31635), (49, 31770), (56, 31809),

Gene: HanKaySha_34 Start: 30889, Stop: 31272, Start Num: 21

Candidate Starts for HanKaySha_34:

(Start: 21 @30889 has 209 MA's), (26, 30967), (29, 30994), (33, 31057), (49, 31192), (56, 31231),

Gene: Hanako_26 Start: 23389, Stop: 23793, Start Num: 21

Candidate Starts for Hanako_26:

(4, 22768), (5, 22771), (7, 22843), (10, 22864), (11, 22957), (12, 22984), (Start: 21 @23389 has 209 MA's), (33, 23563), (55, 23752),

Gene: Hanray_11 Start: 7759, Stop: 8145, Start Num: 21

Candidate Starts for Hanray_11:

(19, 7684), (Start: 21 @7759 has 209 MA's), (34, 7930), (40, 7990),

Gene: Harella_32 Start: 31259, Stop: 31642, Start Num: 21

Candidate Starts for Harella_32:

(Start: 21 @31259 has 209 MA's), (26, 31337), (29, 31364), (33, 31427), (49, 31562), (56, 31601),

Gene: Henry_34 Start: 31147, Stop: 31530, Start Num: 21

Candidate Starts for Henry_34:

(Start: 21 @31147 has 209 MA's), (26, 31225), (29, 31252), (33, 31315), (49, 31450), (56, 31489),

Gene: Highbury_34 Start: 30805, Stop: 31188, Start Num: 21

Candidate Starts for Highbury_34:

(Start: 21 @30805 has 209 MA's), (26, 30883), (29, 30910), (33, 30973), (49, 31108), (56, 31147),

Gene: Horex_11 Start: 7759, Stop: 8145, Start Num: 21

Candidate Starts for Horex_11:

(19, 7684), (Start: 21 @7759 has 209 MA's), (31, 7897), (34, 7930), (40, 7990),

Gene: Holt_34 Start: 30424, Stop: 30807, Start Num: 21

Candidate Starts for Holt_34:

(Start: 21 @30424 has 209 MA's), (26, 30502), (29, 30529), (33, 30592), (49, 30727), (56, 30766),

Gene: Hoonter_35 Start: 31137, Stop: 31520, Start Num: 21

Candidate Starts for Hoonter_35:

(Start: 21 @31137 has 209 MA's), (26, 31215), (29, 31242), (33, 31305), (49, 31440), (56, 31479),

Gene: Hokey_35 Start: 31424, Stop: 31807, Start Num: 21

Candidate Starts for Hokey_35:

(Start: 21 @31424 has 209 MA's), (26, 31502), (29, 31529), (33, 31592), (49, 31727), (56, 31766),

Gene: HortumSL17_12 Start: 7723, Stop: 8109, Start Num: 21

Candidate Starts for HortumSL17_12:

(19, 7648), (Start: 21 @7723 has 209 MA's), (34, 7894), (40, 7954),

Gene: HufflyPuff_32 Start: 31131, Stop: 31514, Start Num: 21

Candidate Starts for HufflyPuff_32:

(Start: 21 @31131 has 209 MA's), (26, 31209), (29, 31236), (33, 31299), (49, 31434), (56, 31473),

Gene: IHOP_33 Start: 31324, Stop: 31707, Start Num: 21

Candidate Starts for IHOP_33:

(Start: 21 @31324 has 209 MA's), (26, 31402), (29, 31429), (33, 31492), (49, 31627), (56, 31666),

Gene: Icee_32 Start: 30805, Stop: 31188, Start Num: 21

Candidate Starts for Icee_32:

(Start: 21 @30805 has 209 MA's), (26, 30883), (29, 30910), (33, 30973), (49, 31108), (56, 31147),

Gene: Inca_32 Start: 29826, Stop: 30209, Start Num: 21

Candidate Starts for Inca_32:

(Start: 21 @29826 has 209 MA's), (26, 29904), (29, 29931), (33, 29994), (49, 30129), (56, 30168),

Gene: Jamie19_26 Start: 23389, Stop: 23793, Start Num: 21

Candidate Starts for Jamie19_26:

(4, 22768), (5, 22771), (7, 22843), (10, 22864), (11, 22957), (12, 22984), (Start: 21 @23389 has 209 MA's), (45, 23647), (46, 23677), (52, 23719), (57, 23776),

Gene: JeTaime_35 Start: 31948, Stop: 32331, Start Num: 21

Candidate Starts for JeTaime_35:

(Start: 21 @31948 has 209 MA's), (26, 32026), (29, 32053), (33, 32116), (49, 32251), (56, 32290),

Gene: Jiawan_11 Start: 7759, Stop: 8145, Start Num: 21

Candidate Starts for Jiawan_11:

(19, 7684), (Start: 21 @7759 has 209 MA's), (31, 7897), (34, 7930), (40, 7990),

Gene: Journey_29 Start: 24339, Stop: 24743, Start Num: 21

Candidate Starts for Journey_29:

(Start: 21 @24339 has 209 MA's), (45, 24597), (46, 24627), (52, 24669), (57, 24726),

Gene: Kanye_35 Start: 32133, Stop: 32516, Start Num: 21

Candidate Starts for Kanye_35:

(Start: 21 @32133 has 209 MA's), (26, 32211), (29, 32238), (33, 32301), (49, 32436), (56, 32475),

Gene: Kimchi_35 Start: 31140, Stop: 31523, Start Num: 21

Candidate Starts for Kimchi_35:

(Start: 21 @31140 has 209 MA's), (26, 31218), (29, 31245), (33, 31308), (49, 31443), (56, 31482),

Gene: Kostya_34 Start: 31148, Stop: 31531, Start Num: 21

Candidate Starts for Kostya_34:

(Start: 21 @31148 has 209 MA's), (26, 31226), (29, 31253), (33, 31316), (49, 31451), (56, 31490),

Gene: Lilac_35 Start: 30644, Stop: 31027, Start Num: 21

Candidate Starts for Lilac_35:

(Start: 21 @30644 has 209 MA's), (26, 30722), (29, 30749), (33, 30812), (49, 30947), (56, 30986),

Gene: Lilizi_35 Start: 30852, Stop: 31235, Start Num: 21

Candidate Starts for Lilizi_35:

(Start: 21 @30852 has 209 MA's), (26, 30930), (29, 30957), (33, 31020), (49, 31155), (56, 31194),

Gene: Lilleskat_10 Start: 7723, Stop: 8109, Start Num: 21

Candidate Starts for Lilleskat_10:

(19, 7648), (Start: 21 @7723 has 209 MA's), (34, 7894), (40, 7954),

Gene: Lilpickle_32 Start: 30354, Stop: 30737, Start Num: 21

Candidate Starts for Lilpickle_32:

(Start: 21 @30354 has 209 MA's), (26, 30432), (29, 30459), (33, 30522), (49, 30657), (56, 30696),

Gene: Livelyaughbron_34 Start: 31261, Stop: 31644, Start Num: 21

Candidate Starts for Livelyaughbron_34:

(Start: 21 @31261 has 209 MA's), (26, 31339), (29, 31366), (33, 31429), (49, 31564), (56, 31603),

Gene: LoneWolf_12 Start: 7570, Stop: 7956, Start Num: 21

Candidate Starts for LoneWolf_12:

(19, 7495), (Start: 21 @7570 has 209 MA's), (28, 7669), (33, 7738), (40, 7801), (53, 7900),

Gene: Luchador_10 Start: 6145, Stop: 6531, Start Num: 21

Candidate Starts for Luchador_10:

(14, 5857), (17, 5971), (18, 6013), (Start: 21 @6145 has 209 MA's), (33, 6313), (43, 6397), (45, 6403), (50, 6463),

Gene: MISSy_32 Start: 30660, Stop: 31043, Start Num: 21

Candidate Starts for MISSy_32:

(Start: 21 @30660 has 209 MA's), (26, 30738), (29, 30765), (33, 30828), (49, 30963), (56, 31002),

Gene: MPhalcon_32 Start: 30653, Stop: 31036, Start Num: 21

Candidate Starts for MPhalcon_32:

(Start: 21 @30653 has 209 MA's), (26, 30731), (29, 30758), (33, 30821), (49, 30956), (56, 30995),

Gene: MadamMonkfish_33 Start: 30565, Stop: 30948, Start Num: 21

Candidate Starts for MadamMonkfish_33:

(Start: 21 @30565 has 209 MA's), (26, 30643), (29, 30670), (33, 30733), (49, 30868), (56, 30907),

Gene: Magsby_29 Start: 24336, Stop: 24740, Start Num: 21

Candidate Starts for Magsby_29:

(Start: 21 @24336 has 209 MA's), (45, 24594), (46, 24624), (52, 24666), (57, 24723),

Gene: Maminiaina_12 Start: 7493, Stop: 7879, Start Num: 21

Candidate Starts for Maminiaina_12:

(19, 7418), (Start: 21 @7493 has 209 MA's), (34, 7664), (40, 7724),

Gene: Manda_34 Start: 31632, Stop: 32015, Start Num: 21

Candidate Starts for Manda_34:

(Start: 21 @31632 has 209 MA's), (26, 31710), (29, 31737), (33, 31800), (49, 31935), (56, 31974),

Gene: Marshmallow_33 Start: 31145, Stop: 31528, Start Num: 21

Candidate Starts for Marshmallow_33:

(Start: 21 @31145 has 209 MA's), (26, 31223), (29, 31250), (33, 31313), (49, 31448), (56, 31487),

Gene: Maxxinista_34 Start: 30614, Stop: 30997, Start Num: 21

Candidate Starts for Maxxinista_34:

(Start: 21 @30614 has 209 MA's), (26, 30692), (29, 30719), (33, 30782), (49, 30917), (56, 30956),

Gene: Melville_29 Start: 24339, Stop: 24743, Start Num: 21

Candidate Starts for Melville_29:

(Start: 21 @24339 has 209 MA's), (45, 24597), (46, 24627), (52, 24669), (57, 24726),

Gene: MichelleMyBell_27 Start: 23327, Stop: 23731, Start Num: 21

Candidate Starts for MichelleMyBell_27:

(4, 22706), (5, 22709), (7, 22781), (10, 22802), (11, 22895), (12, 22922), (Start: 21 @23327 has 209 MA's), (45, 23585), (46, 23615), (52, 23657), (57, 23714),

Gene: Mindy_33 Start: 30925, Stop: 31308, Start Num: 21

Candidate Starts for Mindy_33:

(Start: 21 @30925 has 209 MA's), (26, 31003), (29, 31030), (33, 31093), (49, 31228), (56, 31267),

Gene: Miniwave_33 Start: 31344, Stop: 31727, Start Num: 21

Candidate Starts for Miniwave_33:

(Start: 21 @31344 has 209 MA's), (26, 31422), (29, 31449), (33, 31512), (49, 31647), (56, 31686),

Gene: Misfit_33 Start: 31234, Stop: 31617, Start Num: 21

Candidate Starts for Misfit_33:

(Start: 21 @31234 has 209 MA's), (26, 31312), (29, 31339), (33, 31402), (49, 31537), (56, 31576),

Gene: Moldemort_34 Start: 30889, Stop: 31272, Start Num: 21

Candidate Starts for Moldemort_34:

(Start: 21 @30889 has 209 MA's), (26, 30967), (29, 30994), (33, 31057), (49, 31192), (56, 31231),

Gene: MollyToe_33 Start: 31318, Stop: 31701, Start Num: 21

Candidate Starts for MollyToe_33:

(Start: 21 @31318 has 209 MA's), (26, 31396), (29, 31423), (33, 31486), (49, 31621), (56, 31660),

Gene: Mosby_32 Start: 30651, Stop: 31034, Start Num: 21

Candidate Starts for Mosby_32:

(Start: 21 @30651 has 209 MA's), (26, 30729), (29, 30756), (33, 30819), (49, 30954), (56, 30993),

Gene: Murica_32 Start: 31131, Stop: 31514, Start Num: 21

Candidate Starts for Murica_32:

(Start: 21 @31131 has 209 MA's), (26, 31209), (29, 31236), (33, 31299), (49, 31434), (56, 31473),

Gene: Murphy_34 Start: 31126, Stop: 31509, Start Num: 21

Candidate Starts for Murphy_34:

(Start: 21 @31126 has 209 MA's), (26, 31204), (29, 31231), (33, 31294), (49, 31429), (56, 31468),

Gene: MyraDee_8 Start: 4622, Stop: 5008, Start Num: 21

Candidate Starts for MyraDee_8:

(Start: 21 @4622 has 209 MA's), (26, 4700), (27, 4703), (38, 4838), (44, 4877),

Gene: Myrale_33 Start: 31010, Stop: 31393, Start Num: 21

Candidate Starts for Myrale_33:

(Start: 21 @31010 has 209 MA's), (26, 31088), (29, 31115), (33, 31178), (49, 31313), (56, 31352),

Gene: Myxus_12 Start: 7723, Stop: 8109, Start Num: 21

Candidate Starts for Myxus_12:

(19, 7648), (Start: 21 @7723 has 209 MA's), (34, 7894), (40, 7954),

Gene: Nala_33 Start: 31165, Stop: 31548, Start Num: 21

Candidate Starts for Nala_33:

(Start: 21 @31165 has 209 MA's), (26, 31243), (29, 31270), (33, 31333), (49, 31468), (56, 31507),

Gene: NelitzaMV_33 Start: 31215, Stop: 31598, Start Num: 21

Candidate Starts for NelitzaMV_33:

(Start: 21 @31215 has 209 MA's), (26, 31293), (29, 31320), (49, 31518), (56, 31557),

Gene: Nenae_26 Start: 23389, Stop: 23793, Start Num: 21

Candidate Starts for Nenae_26:

(4, 22768), (5, 22771), (7, 22843), (10, 22864), (11, 22957), (12, 22984), (Start: 21 @23389 has 209 MA's), (33, 23563), (55, 23752),

Gene: Nimrod_33 Start: 31389, Stop: 31772, Start Num: 21

Candidate Starts for Nimrod_33:

(Start: 21 @31389 has 209 MA's), (26, 31467), (29, 31494), (33, 31557), (49, 31692), (56, 31731),

Gene: NoSleep_34 Start: 30886, Stop: 31269, Start Num: 21

Candidate Starts for NoSleep_34:

(Start: 21 @30886 has 209 MA's), (26, 30964), (29, 30991), (33, 31054), (49, 31189), (56, 31228),

Gene: NonchalantPear_33 Start: 30839, Stop: 31222, Start Num: 21

Candidate Starts for NonchalantPear_33:

(Start: 21 @30839 has 209 MA's), (26, 30917), (29, 30944), (33, 31007), (49, 31142), (56, 31181),

Gene: Onglai_11 Start: 6089, Stop: 6475, Start Num: 21

Candidate Starts for Onglai_11:

(19, 6014), (Start: 21 @6089 has 209 MA's), (34, 6260), (40, 6320),

Gene: OrionPax_34 Start: 30892, Stop: 31275, Start Num: 21

Candidate Starts for OrionPax_34:

(Start: 21 @30892 has 209 MA's), (26, 30970), (29, 30997), (33, 31060), (49, 31195), (56, 31234),

Gene: PackMan_12 Start: 7723, Stop: 8109, Start Num: 21

Candidate Starts for PackMan_12:

(19, 7648), (Start: 21 @7723 has 209 MA's), (34, 7894), (40, 7954),

Gene: PaddyBaddy_34 Start: 30902, Stop: 31285, Start Num: 21

Candidate Starts for PaddyBaddy_34:

(Start: 21 @30902 has 209 MA's), (26, 30980), (29, 31007), (33, 31070), (49, 31205), (56, 31244),

Gene: Palpatine_33 Start: 31161, Stop: 31544, Start Num: 21

Candidate Starts for Palpatine_33:

(Start: 21 @31161 has 209 MA's), (26, 31239), (29, 31266), (33, 31329), (49, 31464), (56, 31503),

Gene: Panchino_26 Start: 23349, Stop: 23753, Start Num: 20

Candidate Starts for Panchino_26:

(Start: 20 @23349 has 4 MA's), (Start: 21 @23355 has 209 MA's), (30, 23469), (45, 23607), (55, 23712), (57, 23736),

Gene: Paperbeatsrock_35 Start: 32127, Stop: 32510, Start Num: 21

Candidate Starts for Paperbeatsrock_35:

(Start: 21 @32127 has 209 MA's), (26, 32205), (29, 32232), (33, 32295), (49, 32430), (56, 32469),

Gene: Parmesanjohn_29 Start: 24339, Stop: 24743, Start Num: 21

Candidate Starts for Parmesanjohn_29:

(Start: 21 @24339 has 209 MA's), (45, 24597), (46, 24627), (52, 24669), (57, 24726),

Gene: Pat3_32 Start: 29873, Stop: 30256, Start Num: 21

Candidate Starts for Pat3_32:

(Start: 21 @29873 has 209 MA's), (26, 29951), (29, 29978), (33, 30041), (49, 30176), (56, 30215),

Gene: Petra64142_35 Start: 31607, Stop: 31990, Start Num: 21

Candidate Starts for Petra64142_35:

(Start: 21 @31607 has 209 MA's), (26, 31685), (29, 31712), (33, 31775), (49, 31910), (56, 31949),

Gene: Phaeder_12 Start: 7723, Stop: 8109, Start Num: 21

Candidate Starts for Phaeder_12:

(19, 7648), (Start: 21 @7723 has 209 MA's), (34, 7894), (40, 7954),

Gene: Phaja_33 Start: 31323, Stop: 31706, Start Num: 21

Candidate Starts for Phaja_33:

(Start: 21 @31323 has 209 MA's), (26, 31401), (29, 31428), (33, 31491), (49, 31626), (56, 31665),

Gene: PhancyPhin_26 Start: 23386, Stop: 23790, Start Num: 21

Candidate Starts for PhancyPhin_26:

(4, 22765), (5, 22768), (7, 22840), (10, 22861), (11, 22954), (12, 22981), (Start: 21 @23386 has 209 MA's), (33, 23560), (55, 23749),

Gene: Pharsalus_34 Start: 31927, Stop: 32310, Start Num: 21

Candidate Starts for Pharsalus_34:

(Start: 21 @31927 has 209 MA's), (26, 32005), (29, 32032), (33, 32095), (49, 32230), (56, 32269),

Gene: PhatBacter_33 Start: 31175, Stop: 31558, Start Num: 21

Candidate Starts for PhatBacter_33:

(Start: 21 @31175 has 209 MA's), (26, 31253), (29, 31280), (33, 31343), (49, 31478), (56, 31517),

Gene: Phaux_32 Start: 31173, Stop: 31556, Start Num: 21

Candidate Starts for Phaux_32:

(Start: 21 @31173 has 209 MA's), (26, 31251), (29, 31278), (33, 31341), (49, 31476), (56, 31515),

Gene: Philonius_29 Start: 24330, Stop: 24734, Start Num: 21

Candidate Starts for Philonius_29:

(4, 23709), (5, 23712), (7, 23784), (10, 23805), (Start: 21 @24330 has 209 MA's), (45, 24588), (46, 24618), (52, 24660), (57, 24717),

Gene: Phlei_7 Start: 7530, Stop: 7898, Start Num: 21

Candidate Starts for Phlei_7:

(13, 7212), (Start: 21 @7530 has 209 MA's), (41, 7752), (42, 7755), (45, 7776),

Gene: Phloss_26 Start: 23766, Stop: 24170, Start Num: 21

Candidate Starts for Phloss_26:

(Start: 21 @23766 has 209 MA's), (45, 24024), (46, 24054), (52, 24096), (57, 24153),

Gene: Phonnegut_12 Start: 7756, Stop: 8142, Start Num: 21
Candidate Starts for Phonnegut_12:
(19, 7681), (Start: 21 @7756 has 209 MA's), (34, 7927), (40, 7987),

Gene: Phrux_33 Start: 30888, Stop: 31271, Start Num: 21
Candidate Starts for Phrux_33:
(Start: 21 @30888 has 209 MA's), (26, 30966), (29, 30993), (33, 31056), (49, 31191), (56, 31230),

Gene: Pioneer_12 Start: 7756, Stop: 8142, Start Num: 21
Candidate Starts for Pioneer_12:
(19, 7681), (Start: 21 @7756 has 209 MA's), (34, 7927), (40, 7987),

Gene: Pipsqueaks_29 Start: 24339, Stop: 24743, Start Num: 21
Candidate Starts for Pipsqueaks_29:
(Start: 21 @24339 has 209 MA's), (45, 24597), (46, 24627), (52, 24669), (57, 24726),

Gene: Policronamos_33 Start: 31173, Stop: 31556, Start Num: 21
Candidate Starts for Policronamos_33:
(Start: 21 @31173 has 209 MA's), (26, 31251), (29, 31278), (33, 31341), (49, 31476), (56, 31515),

Gene: Porky_33 Start: 30984, Stop: 31367, Start Num: 21
Candidate Starts for Porky_33:
(Start: 21 @30984 has 209 MA's), (26, 31062), (29, 31089), (33, 31152), (49, 31287), (56, 31326),

Gene: Priya_12 Start: 7754, Stop: 8140, Start Num: 21
Candidate Starts for Priya_12:
(19, 7679), (Start: 21 @7754 has 209 MA's), (34, 7925), (40, 7985),

Gene: Ptowny_34 Start: 30529, Stop: 30912, Start Num: 21
Candidate Starts for Ptowny_34:
(Start: 21 @30529 has 209 MA's), (26, 30607), (29, 30634), (33, 30697), (49, 30832), (56, 30871),

Gene: Pumpkin_35 Start: 31224, Stop: 31607, Start Num: 21
Candidate Starts for Pumpkin_35:
(Start: 21 @31224 has 209 MA's), (26, 31302), (29, 31329), (33, 31392), (49, 31527), (56, 31566),

Gene: Purgamenstris_26 Start: 23389, Stop: 23793, Start Num: 21
Candidate Starts for Purgamenstris_26:
(4, 22768), (5, 22771), (7, 22843), (10, 22864), (11, 22957), (12, 22984), (Start: 21 @23389 has 209 MA's), (33, 23563), (55, 23752),

Gene: Purky_27 Start: 24726, Stop: 25124, Start Num: 20
Candidate Starts for Purky_27:
(Start: 20 @24726 has 4 MA's), (Start: 21 @24732 has 209 MA's), (30, 24846), (33, 24900), (45, 24984), (47, 25023),

Gene: Qobbit_12 Start: 7753, Stop: 8139, Start Num: 21
Candidate Starts for Qobbit_12:
(19, 7678), (Start: 21 @7753 has 209 MA's), (34, 7924), (40, 7984),

Gene: Quallification_34 Start: 31353, Stop: 31736, Start Num: 21
Candidate Starts for Quallification_34:
(Start: 21 @31353 has 209 MA's), (26, 31431), (29, 31458), (33, 31521), (49, 31656), (56, 31695),

Gene: Rakim_34 Start: 31253, Stop: 31636, Start Num: 21
Candidate Starts for Rakim_34:
(Start: 21 @31253 has 209 MA's), (26, 31331), (29, 31358), (33, 31421), (49, 31556), (56, 31595),

Gene: Raymond7_26 Start: 23716, Stop: 24120, Start Num: 21
Candidate Starts for Raymond7_26:
(4, 23095), (5, 23098), (7, 23170), (10, 23191), (11, 23284), (12, 23311), (16, 23533), (Start: 21 @23716 has 209 MA's), (33, 23890), (45, 23974), (55, 24079), (57, 24103),

Gene: Rebel_26 Start: 23178, Stop: 23582, Start Num: 21
Candidate Starts for Rebel_26:
(4, 22557), (5, 22560), (7, 22632), (10, 22653), (11, 22746), (12, 22773), (Start: 21 @23178 has 209 MA's), (45, 23436), (46, 23466), (52, 23508), (57, 23565),

Gene: Redi_26 Start: 23389, Stop: 23793, Start Num: 21
Candidate Starts for Redi_26:
(4, 22768), (5, 22771), (7, 22843), (10, 22864), (11, 22957), (12, 22984), (Start: 21 @23389 has 209 MA's), (33, 23563), (55, 23752),

Gene: Rimmer_32 Start: 30713, Stop: 31096, Start Num: 21
Candidate Starts for Rimmer_32:
(Start: 21 @30713 has 209 MA's), (26, 30791), (29, 30818), (33, 30881), (49, 31016), (56, 31055),

Gene: RiverMonster_33 Start: 30902, Stop: 31285, Start Num: 21
Candidate Starts for RiverMonster_33:
(Start: 21 @30902 has 209 MA's), (26, 30980), (29, 31007), (33, 31070), (49, 31205), (56, 31244),

Gene: RyeScarlet_13 Start: 7759, Stop: 8145, Start Num: 21
Candidate Starts for RyeScarlet_13:
(19, 7684), (Start: 21 @7759 has 209 MA's), (34, 7930), (40, 7990),

Gene: Sachima_10 Start: 7723, Stop: 8109, Start Num: 21
Candidate Starts for Sachima_10:
(19, 7648), (Start: 21 @7723 has 209 MA's), (34, 7894), (40, 7954),

Gene: Saints25_34 Start: 30805, Stop: 31188, Start Num: 21
Candidate Starts for Saints25_34:
(Start: 21 @30805 has 209 MA's), (26, 30883), (29, 30910), (33, 30973), (49, 31108), (56, 31147),

Gene: Sassay_32 Start: 30651, Stop: 31034, Start Num: 21
Candidate Starts for Sassay_32:
(Start: 21 @30651 has 209 MA's), (26, 30729), (29, 30756), (33, 30819), (49, 30954), (56, 30993),

Gene: Scherzo_12 Start: 7756, Stop: 8142, Start Num: 21
Candidate Starts for Scherzo_12:
(19, 7681), (Start: 21 @7756 has 209 MA's), (34, 7927), (40, 7987),

Gene: Schnauzer_29 Start: 24339, Stop: 24743, Start Num: 21
Candidate Starts for Schnauzer_29:
(Start: 21 @24339 has 209 MA's), (45, 24597), (46, 24627), (52, 24669), (57, 24726),

Gene: Scitech_26 Start: 23516, Stop: 23920, Start Num: 21

Candidate Starts for Scitech_26:

(Start: 21 @23516 has 209 MA's), (45, 23774), (46, 23804), (52, 23846), (57, 23903),

Gene: ShamWow_33 Start: 31147, Stop: 31530, Start Num: 21

Candidate Starts for ShamWow_33:

(Start: 21 @31147 has 209 MA's), (26, 31225), (29, 31252), (33, 31315), (49, 31450), (56, 31489),

Gene: SheaKeira_11 Start: 5924, Stop: 6310, Start Num: 21

Candidate Starts for SheaKeira_11:

(Start: 21 @5924 has 209 MA's), (37, 6137), (39, 6149), (45, 6182), (53, 6254),

Gene: ShereKhan_35 Start: 32130, Stop: 32513, Start Num: 21

Candidate Starts for ShereKhan_35:

(Start: 21 @32130 has 209 MA's), (26, 32208), (29, 32235), (33, 32298), (49, 32433), (56, 32472),

Gene: ShrimpFriedEgg_26 Start: 23389, Stop: 23793, Start Num: 21

Candidate Starts for ShrimpFriedEgg_26:

(4, 22768), (5, 22771), (7, 22843), (10, 22864), (11, 22957), (12, 22984), (Start: 21 @23389 has 209 MA's), (33, 23563), (55, 23752),

Gene: Shweta_26 Start: 23517, Stop: 23921, Start Num: 21

Candidate Starts for Shweta_26:

(4, 22896), (5, 22899), (7, 22971), (10, 22992), (11, 23085), (12, 23112), (Start: 21 @23517 has 209 MA's), (45, 23775), (46, 23805), (52, 23847), (57, 23904),

Gene: Silvafighter_29 Start: 24339, Stop: 24743, Start Num: 21

Candidate Starts for Silvafighter_29:

(Start: 21 @24339 has 209 MA's), (45, 24597), (46, 24627), (52, 24669), (57, 24726),

Gene: Silvy_29 Start: 24340, Stop: 24744, Start Num: 21

Candidate Starts for Silvy_29:

(Start: 21 @24340 has 209 MA's), (45, 24598), (46, 24628), (52, 24670), (57, 24727),

Gene: Simpliphy_34 Start: 30892, Stop: 31275, Start Num: 21

Candidate Starts for Simpliphy_34:

(Start: 21 @30892 has 209 MA's), (26, 30970), (29, 30997), (33, 31060), (49, 31195), (56, 31234),

Gene: SirDuracell_32 Start: 29812, Stop: 30195, Start Num: 21

Candidate Starts for SirDuracell_32:

(Start: 21 @29812 has 209 MA's), (26, 29890), (29, 29917), (33, 29980), (49, 30115), (56, 30154),

Gene: SkinnyPete_26 Start: 23379, Stop: 23783, Start Num: 21

Candidate Starts for SkinnyPete_26:

(Start: 21 @23379 has 209 MA's), (45, 23637), (46, 23667), (52, 23709), (57, 23766),

Gene: Smurph_29 Start: 24339, Stop: 24743, Start Num: 21

Candidate Starts for Smurph_29:

(Start: 21 @24339 has 209 MA's), (45, 24597), (46, 24627), (52, 24669), (57, 24726),

Gene: Snekmaggedon_26 Start: 23389, Stop: 23793, Start Num: 21

Candidate Starts for Snekmaggedon_26:

(4, 22768), (5, 22771), (7, 22843), (10, 22864), (11, 22957), (12, 22984), (Start: 21 @23389 has 209 MA's), (45, 23647), (46, 23677), (52, 23719), (57, 23776),

Gene: SophKB_33 Start: 31146, Stop: 31529, Start Num: 21
Candidate Starts for SophKB_33:
(Start: 21 @31146 has 209 MA's), (26, 31224), (29, 31251), (33, 31314), (49, 31449), (56, 31488),

Gene: SororFago_10 Start: 6135, Stop: 6521, Start Num: 21
Candidate Starts for SororFago_10:
(17, 5961), (18, 6003), (Start: 21 @6135 has 209 MA's), (33, 6303), (37, 6348), (41, 6369), (43, 6387),
(45, 6393), (50, 6453), (51, 6456),

Gene: Sotrice96_33 Start: 31101, Stop: 31484, Start Num: 21
Candidate Starts for Sotrice96_33:
(Start: 21 @31101 has 209 MA's), (26, 31179), (29, 31206), (33, 31269), (49, 31404), (56, 31443),

Gene: Spinach_26 Start: 23389, Stop: 23793, Start Num: 21
Candidate Starts for Spinach_26:
(4, 22768), (5, 22771), (7, 22843), (10, 22864), (11, 22957), (12, 22984), (Start: 21 @23389 has 209
MA's), (33, 23563), (55, 23752),

Gene: SpongeBob_26 Start: 23389, Stop: 23793, Start Num: 21
Candidate Starts for SpongeBob_26:
(4, 22768), (5, 22771), (7, 22843), (10, 22864), (11, 22957), (12, 22984), (Start: 21 @23389 has 209
MA's), (45, 23647), (46, 23677), (52, 23719), (57, 23776),

Gene: Spouty_12 Start: 7753, Stop: 8139, Start Num: 21
Candidate Starts for Spouty_12:
(19, 7678), (Start: 21 @7753 has 209 MA's), (34, 7924), (40, 7984),

Gene: Squirty_27 Start: 23877, Stop: 24275, Start Num: 20
Candidate Starts for Squirty_27:
(Start: 20 @23877 has 4 MA's), (Start: 21 @23883 has 209 MA's), (22, 23934), (30, 23997), (33,
24051), (45, 24135), (46, 24165), (54, 24228),

Gene: Stank_36 Start: 31653, Stop: 32036, Start Num: 21
Candidate Starts for Stank_36:
(Start: 21 @31653 has 209 MA's), (26, 31731), (29, 31758), (33, 31821), (49, 31956), (56, 31995),

Gene: Stark_34 Start: 30905, Stop: 31288, Start Num: 21
Candidate Starts for Stark_34:
(Start: 21 @30905 has 209 MA's), (26, 30983), (29, 31010), (33, 31073), (49, 31208), (56, 31247),

Gene: StellaBean_33 Start: 31146, Stop: 31529, Start Num: 21
Candidate Starts for StellaBean_33:
(Start: 21 @31146 has 209 MA's), (26, 31224), (29, 31251), (33, 31314), (49, 31449), (56, 31488),

Gene: StolenFromERC_35 Start: 31137, Stop: 31520, Start Num: 21
Candidate Starts for StolenFromERC_35:
(Start: 21 @31137 has 209 MA's), (26, 31215), (29, 31242), (33, 31305), (49, 31440), (56, 31479),

Gene: StormChicken_33 Start: 31321, Stop: 31704, Start Num: 21
Candidate Starts for StormChicken_33:
(Start: 21 @31321 has 209 MA's), (26, 31399), (29, 31426), (33, 31489), (49, 31624), (56, 31663),

Gene: Sunhee_10 Start: 6154, Stop: 6540, Start Num: 21
Candidate Starts for Sunhee_10:
(Start: 21 @6154 has 209 MA's), (33, 6322), (35, 6328), (41, 6388), (43, 6406), (45, 6412), (50, 6472),
(51, 6475),

Gene: TBrady12_35 Start: 31137, Stop: 31520, Start Num: 21
Candidate Starts for TBrady12_35:
(Start: 21 @31137 has 209 MA's), (26, 31215), (29, 31242), (33, 31305), (49, 31440), (56, 31479),

Gene: Tapioca_29 Start: 24339, Stop: 24743, Start Num: 21
Candidate Starts for Tapioca_29:
(Start: 21 @24339 has 209 MA's), (45, 24597), (46, 24627), (52, 24669), (57, 24726),

Gene: Tarkin_35 Start: 32136, Stop: 32519, Start Num: 21
Candidate Starts for Tarkin_35:
(Start: 21 @32136 has 209 MA's), (26, 32214), (29, 32241), (33, 32304), (49, 32439), (56, 32478),

Gene: TeamEdward_33 Start: 31318, Stop: 31701, Start Num: 21
Candidate Starts for TeamEdward_33:
(Start: 21 @31318 has 209 MA's), (26, 31396), (29, 31423), (33, 31486), (49, 31621), (56, 31660),

Gene: TeardropMSU_32 Start: 31047, Stop: 31430, Start Num: 21
Candidate Starts for TeardropMSU_32:
(Start: 21 @31047 has 209 MA's), (26, 31125), (29, 31152), (33, 31215), (49, 31350), (56, 31389),

Gene: Teaspoon_34 Start: 31100, Stop: 31483, Start Num: 21
Candidate Starts for Teaspoon_34:
(Start: 21 @31100 has 209 MA's), (26, 31178), (29, 31205), (33, 31268), (49, 31403), (56, 31442),

Gene: Terminus_33 Start: 31234, Stop: 31617, Start Num: 21
Candidate Starts for Terminus_33:
(Start: 21 @31234 has 209 MA's), (26, 31312), (29, 31339), (33, 31402), (49, 31537), (56, 31576),

Gene: Tessdabest_28 Start: 24336, Stop: 24740, Start Num: 21
Candidate Starts for Tessdabest_28:
(Start: 21 @24336 has 209 MA's), (45, 24594), (46, 24624), (52, 24666), (57, 24723),

Gene: Thimble_33 Start: 30097, Stop: 30480, Start Num: 21
Candidate Starts for Thimble_33:
(Start: 21 @30097 has 209 MA's), (26, 30175), (29, 30202), (33, 30265), (49, 30400), (56, 30439),

Gene: Thresher_34 Start: 31901, Stop: 32284, Start Num: 21
Candidate Starts for Thresher_34:
(Start: 21 @31901 has 209 MA's), (26, 31979), (29, 32006), (33, 32069), (49, 32204), (56, 32243),

Gene: Toaka_10 Start: 6100, Stop: 6489, Start Num: 21
Candidate Starts for Toaka_10:
(19, 6025), (Start: 21 @6100 has 209 MA's), (33, 6268), (43, 6355), (45, 6361),

Gene: Tomaszewski_32 Start: 30744, Stop: 31127, Start Num: 21
Candidate Starts for Tomaszewski_32:
(Start: 21 @30744 has 209 MA's), (26, 30822), (29, 30849), (33, 30912), (49, 31047), (56, 31086),

Gene: Tortellini_27 Start: 25084, Stop: 25476, Start Num: 21
Candidate Starts for Tortellini_27:
(1, 23986), (2, 24166), (3, 24202), (6, 24529), (8, 24547), (9, 24550), (Start: 20 @25078 has 4 MA's),
(Start: 21 @25084 has 209 MA's), (30, 25198), (33, 25252), (45, 25336), (47, 25375), (54, 25429),

Gene: Tortoise12_29 Start: 24339, Stop: 24743, Start Num: 21
Candidate Starts for Tortoise12_29:
(Start: 21 @24339 has 209 MA's), (45, 24597), (46, 24627), (52, 24669), (57, 24726),

Gene: Toto_33 Start: 31147, Stop: 31530, Start Num: 21
Candidate Starts for Toto_33:
(Start: 21 @31147 has 209 MA's), (26, 31225), (29, 31252), (33, 31315), (49, 31450), (56, 31489),

Gene: Traaww1_31 Start: 30785, Stop: 31168, Start Num: 21
Candidate Starts for Traaww1_31:
(Start: 21 @30785 has 209 MA's), (26, 30863), (29, 30890), (33, 30953), (49, 31088), (56, 31127),

Gene: Tubs_12 Start: 7723, Stop: 8109, Start Num: 21
Candidate Starts for Tubs_12:
(19, 7648), (Start: 21 @7723 has 209 MA's), (34, 7894), (40, 7954),

Gene: Tuco_34 Start: 31655, Stop: 32038, Start Num: 21
Candidate Starts for Tuco_34:
(Start: 21 @31655 has 209 MA's), (26, 31733), (29, 31760), (33, 31823), (49, 31958), (56, 31997),

Gene: Ugenie5_9 Start: 7756, Stop: 8142, Start Num: 21
Candidate Starts for Ugenie5_9:
(19, 7681), (Start: 21 @7756 has 209 MA's), (34, 7927), (40, 7987),

Gene: Ukulele_33 Start: 30905, Stop: 31288, Start Num: 21
Candidate Starts for Ukulele_33:
(Start: 21 @30905 has 209 MA's), (26, 30983), (29, 31010), (33, 31073), (49, 31208), (56, 31247),

Gene: WST1_27 Start: 22231, Stop: 22629, Start Num: 20
Candidate Starts for WST1_27:
(Start: 20 @22231 has 4 MA's), (Start: 21 @22237 has 209 MA's), (22, 22288), (30, 22351), (33, 22405), (45, 22489), (47, 22528),

Gene: Wiggin_36 Start: 31651, Stop: 32034, Start Num: 21
Candidate Starts for Wiggin_36:
(Start: 21 @31651 has 209 MA's), (26, 31729), (29, 31756), (33, 31819), (49, 31954), (56, 31993),

Gene: Willez_32 Start: 30651, Stop: 31034, Start Num: 21
Candidate Starts for Willez_32:
(Start: 21 @30651 has 209 MA's), (26, 30729), (29, 30756), (33, 30819), (49, 30954), (56, 30993),

Gene: Willsammy_27 Start: 24742, Stop: 25143, Start Num: 20
Candidate Starts for Willsammy_27:
(Start: 20 @24742 has 4 MA's), (Start: 21 @24748 has 209 MA's), (30, 24862), (33, 24916), (45, 25000), (47, 25039), (54, 25096),

Gene: Xandras_35 Start: 31137, Stop: 31520, Start Num: 21
Candidate Starts for Xandras_35:

(Start: 21 @31137 has 209 MA's), (26, 31215), (29, 31242), (33, 31305), (49, 31440), (56, 31479),

Gene: Xeno_28 Start: 24105, Stop: 24509, Start Num: 21

Candidate Starts for Xeno_28:

(Start: 21 @24105 has 209 MA's), (45, 24363), (46, 24393), (52, 24435), (57, 24492),

Gene: Xerxes_29 Start: 24336, Stop: 24740, Start Num: 21

Candidate Starts for Xerxes_29:

(Start: 21 @24336 has 209 MA's), (45, 24594), (46, 24624), (52, 24666), (57, 24723),

Gene: YassJohnny_34 Start: 31662, Stop: 32045, Start Num: 21

Candidate Starts for YassJohnny_34:

(Start: 21 @31662 has 209 MA's), (26, 31740), (29, 31767), (33, 31830), (49, 31965), (56, 32004),

Gene: Youngblood_33 Start: 31307, Stop: 31690, Start Num: 21

Candidate Starts for Youngblood_33:

(Start: 21 @31307 has 209 MA's), (26, 31385), (29, 31412), (33, 31475), (49, 31610), (56, 31649),

Gene: xkcd_34 Start: 31316, Stop: 31699, Start Num: 21

Candidate Starts for xkcd_34:

(Start: 21 @31316 has 209 MA's), (26, 31394), (29, 31421), (33, 31484), (49, 31619), (56, 31658),