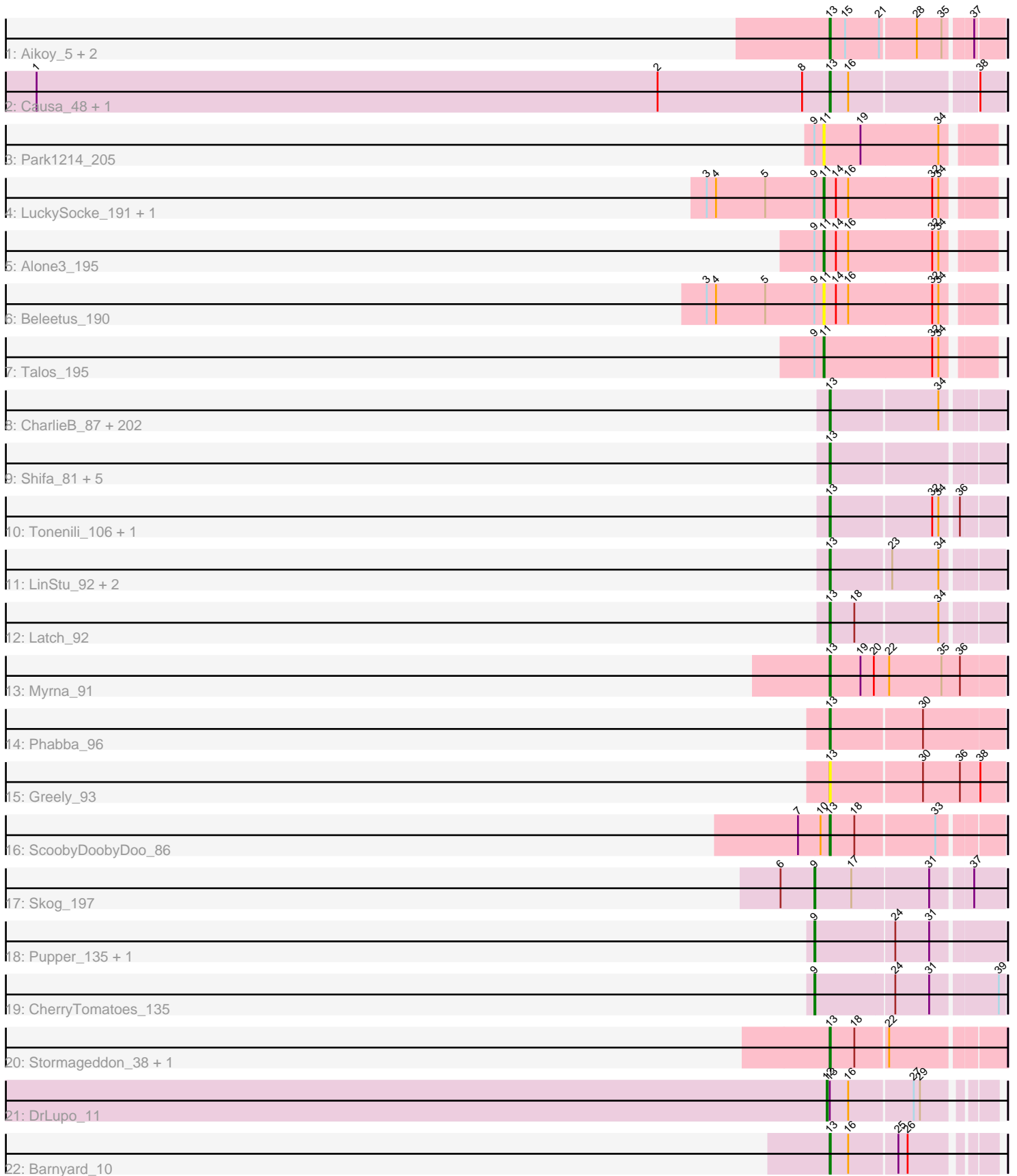


Pham 304691



Note: Tracks are now grouped by subcluster and scaled. Switching in subcluster is indicated by changes in track color. Track scale is now set by default to display the region 30 bp upstream of start 1 to 30 bp downstream of the last possible start. If this default region is judged to be packed too tightly with annotated starts, the track will be further scaled to only show that region of the ORF with annotated starts. This action will be indicated by adding "Zoomed" to the title. For starts, yellow indicates the location of called starts comprised solely of Glimmer/GeneMark auto-annotations, green indicates the location of called starts with at least 1 manual gene annotation.

Pham 304691 Report

This analysis was run 06/08/26 on database version 649.

Pham number 304691 has 238 members, 41 are drafts.

Phages represented in each track:

- Track 1 : Aikoy_5, Leopard_6, Onyinye_6
- Track 2 : Causa_48, StAugustine_46
- Track 3 : Park1214_205
- Track 4 : LuckySocke_191, Fudan_190
- Track 5 : Alone3_195
- Track 6 : Beleetus_190
- Track 7 : Talos_195
- Track 8 : CharlieB_87, JulietS_85, EggyFarm_100, Lethe_91, Chargie21_88, Flabslab_87, Belieber_86, Shrimp_92, Ading_92, StubbySaigey_94, ChaylaJr_87, I3_98, Moby_83, Tyke_94, Khaleesi_91, ErnieJ_88, Moiqah_83, FrayBell_98, Montpel_89, PurduePete_92, Ngannou_88, Salacia_96, Iota_86, Gabriel_94, Duckfeet_83, Bangla1971_93, Fludd_92, Lee7_90, Amataga_92, Rahel_91, Labradorite_92, Nidhogg_93, JPickles_90, BeanWater_84, Guwapp_91, Rabinovich_89, BackyardAgain_89, NuevoMundo_98, Alice_85, Fixie_87, Caravan_87, Essence_89, Haldule_85, Naija_91, Melpomini_86, Napoleon13_88, ScottMcG_89, Audrick_94, Lunareta_89, Bowman_90, ParkTD_93, DTDevon_93, Ewok_93, Substance289_89, Asterius_95, TinyTim_92, Phox_89, Fongie_90, Loanshark_92, Concombre_99, Grasshills_99, Zalkecks_93, IkeLoa_86, Bigswole_97, Primadonna_86, Jemmno_92, Blackdragon_86, Kamryn_92, LifeSavor_91, ValleyTerrace_92, SoilZilla_88, Ablatia_90, Jaygup_92, LRRHood_86, SilverDipper_93, Sauce_92, Bezza_81, OrediggerDelux_90, LolaVince_94, Pinkcreek_83, Issimir_91, Cali_87, Willis_93, NedWong_93, Naval22_97, BadAgartude_89, JigglyPuff_98, Nappy_94, Domi_86, EmToTheThree_95, DrPhinkDaddy_91, Pleione_95, Jedediah_95, ShiaLabeouf_92, Bipolarisk_91, Gizmo_96, Delylah_95, Derek_92, NoodleTree_100, ZygoTaiga_91, FoxtrotP1_92, Pupusa_97, Yucca_92, Pivoine_91, Basquiat_88, Dietrick_84, Quasimodo_92, Spud_92, Pier_96, Norm_93, SrishMeg2525_91, Mangeria_92, ArcherS7_91, Bonray_92, ET08_81, Phusco_92, Demodog_99, Izajani_92, Lukilu_83, Kboogie_95, Spec_87, Turret_87, Specks_98, InterFolia_101, Erdmann_93, SVoro_90, EmmaElysia_91, InigoMontoya_93, StephanieG_91, JustHall_88, Blackbrain_87, Stubby_85, JayJay_98, Tortoise16_90, Pio_96, McWolfish_90, Janiyr_94, Cactojaque_87, Trinitium_88, Darko_92, LordLeafolot_98, CindyLou_93, Gamgam_92, BananaFence_91, FudgeTart_92, Grungle_79, YemiJoy2021_93, EasyJones_95, Mikro_90, Rocha_91, Megamind_91, Ava3_93, SmallFry_92, Bread_92, Cleatunium_87, Zeenon_94, Patter_92, Delilah_92, Capablanca_94, Ronan_85, BigCity_100, MikeLiesIn_93, Koguma_88, Dessert_90, Drazdys_92, Littleton_92, Shaqnato_84, Shelob_94, Daffodil_97, Phlegm_94, Adlitam_92,

LookingGlass_93, Jessibeth14_91, Ghost_91, Burrough_92, Breeniome_92, GlutenPhree_93, Tainan_97, DirtMonster_85, Astraea_90, Morizzled23_92, Maturis_90, Roots515_91, Atlantean_91, Teardrop_92, ChickenPhender_88, Babyland_92, Matsumoto_91, Sprinklers_87, Wally_91, Yassified_88, RoMag_87, BobaPhatt_86, Momo_91, QBert_86, McGee_93, Maby2021_92, PharkleMinkus_97, YoungMoneyMata_92, Shnickers_92, MoMoMixon_93, Chomp_91, Jezreel_92

- Track 9 : Shifa_81, DeejaClivia_81, Blubba_81, HyRo_84, Cane17_81, Colt_82
- Track 10 : Tonenili_106, Vortrix_107
- Track 11 : LinStu_92, Dandelion_99, Sebata_93
- Track 12 : Latch_92
- Track 13 : Myrna_91
- Track 14 : Phabba_96
- Track 15 : Greely_93
- Track 16 : ScoobyDoobyDoo_86
- Track 17 : Skog_197
- Track 18 : Pupper_135, SCentae_134
- Track 19 : CherryTomatoes_135
- Track 20 : Stormageddon_38, RedWattleHog_41
- Track 21 : DrLupo_11
- Track 22 : Barnyard_10

Summary of Final Annotations (See graph section above for start numbers):

The start number called the most often in the published annotations is 13, it was called in 188 of the 197 non-draft genes in the pham.

Genes that call this "Most Annotated" start:

- Ablatia_90, Ading_92, Adlitam_92, Aikoy_5, Alice_85, Amataga_92, ArcherS7_91, Asterius_95, Astraea_90, Atlantean_91, Audrick_94, Ava3_93, Babyland_92, BackyardAgain_89, BadAgartude_89, BananaFence_91, Bangla1971_93, Barnyard_10, Basquiat_88, BeanWater_84, Belieber_86, Bezza_81, BigCity_100, Bigswole_97, Bipolarisk_91, Blackbrain_87, Blackdragon_86, Blubba_81, BobaPhatt_86, Bonray_92, Bowman_90, Bread_92, Breeniome_92, Burrough_92, Cactojaque_87, Cali_87, Cane17_81, Capablanca_94, Caravan_87, Causa_48, Chergie21_88, CharlieB_87, ChaylaJr_87, ChickenPhender_88, Chomp_91, CindyLou_93, Cleatunium_87, Colt_82, Concombre_99, DTDevon_93, Daffodil_97, Dandelion_99, Darko_92, DeejaClivia_81, Delilah_92, Delylah_95, Demodog_99, Derek_92, Dessert_90, Dietrick_84, DirtMonster_85, Domi_86, DrPhinkDaddy_91, Drazdys_92, Duckfeet_83, ET08_81, EasyJones_95, EggyFarm_100, EmToTheThree_95, EmmaElysia_91, Erdmann_93, ErnieJ_88, Essence_89, Ewok_93, Fixie_87, Flabslab_87, Fludd_92, Fongie_90, FoxtrotP1_92, FrayBell_98, FudgeTart_92, Gabriel_94, Gamgam_92, Ghost_91, Gizmo_96, GlutenPhree_93, Grasshills_99, Greely_93, Grungle_79, Guwapp_91, Halldule_85, HyRo_84, I3_98, IkeLoa_86, InigoMontoya_93, InterFolia_101, Iota_86, Issimir_91, Izajani_92, JPickles_90, Janiyra_94, JayJay_98, Jaygup_92, Jedediah_95, Jemmno_92, Jessibeth14_91, Jezreel_92, JigglyPuff_98, JulietS_85, JustHall_88, Kamryn_92, Kboogie_95, Khaleesi_91, Koguma_88, LRRHood_86, Labradorite_92, Latch_92, Lee7_90, Leopard_6, Lethe_91, LifeSavor_91, LinStu_92, Littleton_92, Loanshark_92, LolaVinca_94, LookingGlass_93, LordLeafolot_98, Lukilu_83, Lunareta_89, Maby2021_92, Mangeria_92, Matsumoto_91, Maturis_90, McGee_93,

McWolfish_90, Megamind_91, Melpomini_86, MikeLiesIn_93, Mikro_90, MoMoMixon_93, Moby_83, Moiqah_83, Momo_91, Montpel_89, Morizzled23_92, Myrna_91, Naija_91, Napoleon13_88, Nappy_94, Naval22_97, NedWong_93, Ngannou_88, Nidhogg_93, NoodleTree_100, Norm_93, NuevoMundo_98, Onyinye_6, OrediggerDelux_90, ParkTD_93, Patter_92, Phabba_96, PharkleMinkus_97, Phlegm_94, Phox_89, Phusco_92, Pier_96, Pinkcreek_83, Pio_96, Pivoine_91, Pleione_95, Primadonna_86, Pupusa_97, PurduePete_92, QBert_86, Quasimodo_92, Rabinovish_89, Rahel_91, RedWattleHog_41, RoMag_87, Rocha_91, Ronan_85, Roots515_91, SVoro_90, Salacia_96, Sauce_92, ScoobyDoobyDoo_86, ScottMcG_89, Sebata_93, Shaqnato_84, Shelob_94, ShiaLabeouf_92, Shifa_81, Shnickers_92, Shrimp_92, SilverDipper_93, SmallFry_92, SoilZilla_88, Spec_87, Specks_98, Sprinklers_87, Spud_92, SrishMeg2525_91, StAugustine_46, StephanieG_91, Stormageddon_38, StubbySaigey_94, Stubby_85, Substance289_89, Tainan_97, Teardrop_92, TinyTim_92, Tonenili_106, Tortoise16_90, Trinitium_88, Turret_87, Tyke_94, ValleyTerrace_92, Vortrix_107, Wally_91, Willis_93, Yassified_88, YemiJoy2021_93, YoungMoneyMata_92, Yucca_92, Zalkecks_93, Zeenon_94, ZygoTaiga_91,

Genes that have the "Most Annotated" start but do not call it:

- DrLupo_11,

Genes that do not have the "Most Annotated" start:

- Alone3_195, Beleetus_190, CherryTomatoes_135, Fudan_190, LuckySocke_191, Park1214_205, Pupper_135, SCentae_134, Skog_197, Talos_195,

Summary by start number:

Start 9:

- Found in 10 of 238 (4.2%) of genes in pham
- Manual Annotations of this start: 4 of 197
- Called 40.0% of time when present
- Phage (with cluster) where this start called: CherryTomatoes_135 (DO), Pupper_135 (DO), SCentae_134 (DO), Skog_197 (DO),

Start 11:

- Found in 6 of 238 (2.5%) of genes in pham
- Manual Annotations of this start: 4 of 197
- Called 100.0% of time when present
- Phage (with cluster) where this start called: Alone3_195 (BS), Beleetus_190 (BS), Fudan_190 (BS), LuckySocke_191 (BS), Park1214_205 (BS), Talos_195 (BS),

Start 12:

- Found in 1 of 238 (0.4%) of genes in pham
- Manual Annotations of this start: 1 of 197
- Called 100.0% of time when present
- Phage (with cluster) where this start called: DrLupo_11 (H2),

Start 13:

- Found in 228 of 238 (95.8%) of genes in pham
- Manual Annotations of this start: 188 of 197
- Called 99.6% of time when present
- Phage (with cluster) where this start called: Ablatia_90 (C1), Ading_92 (C1), Adlitam_92 (C1), Aikoy_5 (AE), Alice_85 (C1), Amataga_92 (C1), ArcherS7_91 (C1),

Asterius_95 (C1), Astraea_90 (C1), Atlantean_91 (C1), Audrick_94 (C1), Ava3_93 (C1), Babyland_92 (C1), BackyardAgain_89 (C1), BadAgartude_89 (C1), BananaFence_91 (C1), Bangla1971_93 (C1), Barnyard_10 (H2), Basquiat_88 (C1), BeanWater_84 (C1), Belieber_86 (C1), Bezza_81 (C1), BigCity_100 (C1), Bigswole_97 (C1), Bipolarisk_91 (C1), Blackbrain_87 (C1), Blackdragon_86 (C1), Blubba_81 (C1), BobaPhatt_86 (C1), Bonray_92 (C1), Bowman_90 (C1), Bread_92 (C1), Breeniome_92 (C1), Burrough_92 (C1), Cactojaque_87 (C1), Cali_87 (C1), Cane17_81 (C1), Capablanca_94 (C1), Caravan_87 (C1), Causa_48 (AI), Chargie21_88 (C1), CharlieB_87 (C1), ChaylaJr_87 (C1), ChickenPhender_88 (C1), Chomp_91 (C1), CindyLou_93 (C1), Cleatunium_87 (C1), Colt_82 (C1), Concombre_99 (C1), DTDevon_93 (C1), Daffodil_97 (C1), Dandelion_99 (C1), Darko_92 (C1), DeejaClivia_81 (C1), Delilah_92 (C1), Delylah_95 (C1), Demodog_99 (C1), Derek_92 (C1), Dessert_90 (C1), Dietrick_84 (C1), DirtMonster_85 (C1), Domi_86 (C1), DrPhinkDaddy_91 (C1), Drazdys_92 (C1), Duckfeet_83 (C1), ET08_81 (C1), EasyJones_95 (C1), EggyFarm_100 (C1), EmToTheThree_95 (C1), EmmaElysia_91 (C1), Erdmann_93 (C1), ErnieJ_88 (C1), Essence_89 (C1), Ewok_93 (C1), Fixie_87 (C1), Flabslab_87 (C1), Fludd_92 (C1), Fongie_90 (C1), FoxtrotP1_92 (C1), FrayBell_98 (C1), FudgeTart_92 (C1), Gabriel_94 (C1), Gamgam_92 (C1), Ghost_91 (C1), Gizmo_96 (C1), GlutenPhree_93 (C1), Grasshills_99 (C1), Greely_93 (C2), Grungle_79 (C1), Guwapp_91 (C1), Halldule_85 (C1), HyRo_84 (C1), I3_98 (C1), IkeLoa_86 (C1), InigoMontoya_93 (C1), InterFolia_101 (C1), Iota_86 (C1), Issimir_91 (C1), Izajani_92 (C1), JPickles_90 (C1), Janiyra_94 (C1), JayJay_98 (C1), Jaygup_92 (C1), Jedediah_95 (C1), Jemmno_92 (C1), Jessibeth14_91 (C1), Jezreel_92 (C1), JigglyPuff_98 (C1), JulietS_85 (C1), JustHall_88 (C1), Kamryn_92 (C1), Kboogie_95 (C1), Khaleesi_91 (C1), Koguma_88 (C1), LRRHood_86 (C1), Labradorite_92 (C1), Latch_92 (C1), Lee7_90 (C1), Leopard_6 (AE), Lethe_91 (C1), LifeSavor_91 (C1), LinStu_92 (C1), Littleton_92 (C1), Loanshark_92 (C1), LolaVinca_94 (C1), LookingGlass_93 (C1), LordLeafolot_98 (C1), Lukilu_83 (C1), Lunareta_89 (C1), Maby2021_92 (C1), Mangeria_92 (C1), Matsumoto_91 (C1), Maturis_90 (C1), McGee_93 (C1), McWolfish_90 (C1), Megamind_91 (C1), Melpomini_86 (C1), MikeLiesIn_93 (C1), Mikro_90 (C1), MoMoMixon_93 (C1), Moby_83 (C1), Moiqah_83 (C1), Momo_91 (C1), Montpel_89 (C1), Morizzled23_92 (C1), Myrna_91 (C2), Naija_91 (C1), Napoleon13_88 (C1), Nappy_94 (C1), Naval22_97 (C1), NedWong_93 (C1), Ngannou_88 (C1), Nidhogg_93 (C1), NoodleTree_100 (C1), Norm_93 (C1), NuevoMundo_98 (C1), Onyinye_6 (AE), OrediggerDelux_90 (C1), ParkTD_93 (C1), Patter_92 (C1), Phabba_96 (C2), PharkleMinkus_97 (C1), Phlegm_94 (C1), Phox_89 (C1), Phusco_92 (C1), Pier_96 (C1), Pinkcreek_83 (C1), Pio_96 (C1), Pivoine_91 (C1), Pleione_95 (C1), Primadonna_86 (C1), Pupusa_97 (C1), PurduePete_92 (C1), QBert_86 (C1), Quasimodo_92 (C1), Rabinovish_89 (C1), Rahel_91 (C1), RedWattleHog_41 (DX), RoMag_87 (C1), Rocha_91 (C1), Ronan_85 (C1), Roots515_91 (C1), SVoro_90 (C1), Salacia_96 (C1), Sauce_92 (C1), ScoobyDoobyDoo_86 (C2), ScottMcG_89 (C1), Sebata_93 (C1), Shaqnato_84 (C1), Shelob_94 (C1), ShiaLabeouf_92 (C1), Shifa_81 (C1), Shnickers_92 (C1), Shrimp_92 (C1), SilverDipper_93 (C1), SmallFry_92 (C1), SoilZilla_88 (C1), Spec_87 (C1), Specks_98 (C1), Sprinklers_87 (C1), Spud_92 (C1), SrishMeg2525_91 (C1), StAugustine_46 (AI), StephanieG_91 (C1), Stormageddon_38 (DX), StubbySaigey_94 (C1), Stubby_85 (C1), Substance289_89 (C1), Tainan_97 (C1), Teardrop_92 (C1), TinyTim_92 (C1), Tonenili_106 (C1), Tortoise16_90 (C1), Trinitium_88 (C1), Turret_87 (C1), Tyke_94 (C1), ValleyTerrace_92 (C1), Vortrix_107 (C1), Wally_91 (C1), Willis_93 (C1), Yassified_88 (C1), YemiJoy2021_93 (C1), YoungMoneyMata_92 (C1), Yucca_92 (C1), Zalkecks_93 (C1), Zeenon_94 (C1), ZygoTaiga_91 (C1),

Summary by clusters:

There are 8 clusters represented in this pham: DO, AE, H2, AI, DX, BS, C2, C1,

Info for manual annotations of cluster AE:

- Start number 13 was manually annotated 3 times for cluster AE.

Info for manual annotations of cluster AI:

- Start number 13 was manually annotated 2 times for cluster AI.

Info for manual annotations of cluster BS:

- Start number 11 was manually annotated 4 times for cluster BS.

Info for manual annotations of cluster C1:

- Start number 13 was manually annotated 177 times for cluster C1.

Info for manual annotations of cluster C2:

- Start number 13 was manually annotated 3 times for cluster C2.

Info for manual annotations of cluster DO:

- Start number 9 was manually annotated 4 times for cluster DO.

Info for manual annotations of cluster DX:

- Start number 13 was manually annotated 2 times for cluster DX.

Info for manual annotations of cluster H2:

- Start number 12 was manually annotated 1 time for cluster H2.
- Start number 13 was manually annotated 1 time for cluster H2.

Gene Information:

Gene: Ablatia_90 Start: 37880, Stop: 38035, Start Num: 13

Candidate Starts for Ablatia_90:

(Start: 13 @37880 has 188 MA's), (34, 37982),

Gene: Ading_92 Start: 39148, Stop: 39303, Start Num: 13

Candidate Starts for Ading_92:

(Start: 13 @39148 has 188 MA's), (34, 39250),

Gene: Adlitam_92 Start: 39165, Stop: 39320, Start Num: 13

Candidate Starts for Adlitam_92:

(Start: 13 @39165 has 188 MA's), (34, 39267),

Gene: Aikoy_5 Start: 2260, Stop: 2415, Start Num: 13

Candidate Starts for Aikoy_5:

(Start: 13 @2260 has 188 MA's), (15, 2275), (21, 2308), (28, 2341), (35, 2365), (37, 2389),

Gene: Alice_85 Start: 37028, Stop: 37183, Start Num: 13

Candidate Starts for Alice_85:

(Start: 13 @37028 has 188 MA's), (34, 37130),

Gene: Alone3_195 Start: 101782, Stop: 101937, Start Num: 11
Candidate Starts for Alone3_195:
(Start: 9 @101773 has 4 MA's), (Start: 11 @101782 has 4 MA's), (14, 101794), (16, 101806), (32, 101887), (34, 101893),

Gene: Amataga_92 Start: 38410, Stop: 38565, Start Num: 13
Candidate Starts for Amataga_92:
(Start: 13 @38410 has 188 MA's), (34, 38512),

Gene: ArcherS7_91 Start: 38728, Stop: 38883, Start Num: 13
Candidate Starts for ArcherS7_91:
(Start: 13 @38728 has 188 MA's), (34, 38830),

Gene: Asterius_95 Start: 38713, Stop: 38868, Start Num: 13
Candidate Starts for Asterius_95:
(Start: 13 @38713 has 188 MA's), (34, 38815),

Gene: Astraea_90 Start: 38589, Stop: 38744, Start Num: 13
Candidate Starts for Astraea_90:
(Start: 13 @38589 has 188 MA's), (34, 38691),

Gene: Atlantean_91 Start: 38410, Stop: 38565, Start Num: 13
Candidate Starts for Atlantean_91:
(Start: 13 @38410 has 188 MA's), (34, 38512),

Gene: Audrick_94 Start: 38389, Stop: 38544, Start Num: 13
Candidate Starts for Audrick_94:
(Start: 13 @38389 has 188 MA's), (34, 38491),

Gene: Ava3_93 Start: 39086, Stop: 39241, Start Num: 13
Candidate Starts for Ava3_93:
(Start: 13 @39086 has 188 MA's), (34, 39188),

Gene: Babyland_92 Start: 37849, Stop: 38004, Start Num: 13
Candidate Starts for Babyland_92:
(Start: 13 @37849 has 188 MA's), (34, 37951),

Gene: BackyardAgain_89 Start: 37907, Stop: 38062, Start Num: 13
Candidate Starts for BackyardAgain_89:
(Start: 13 @37907 has 188 MA's), (34, 38009),

Gene: BadAgartude_89 Start: 39469, Stop: 39624, Start Num: 13
Candidate Starts for BadAgartude_89:
(Start: 13 @39469 has 188 MA's), (34, 39571),

Gene: BananaFence_91 Start: 38951, Stop: 39106, Start Num: 13
Candidate Starts for BananaFence_91:
(Start: 13 @38951 has 188 MA's), (34, 39053),

Gene: Bangla1971_93 Start: 38858, Stop: 39013, Start Num: 13
Candidate Starts for Bangla1971_93:
(Start: 13 @38858 has 188 MA's), (34, 38960),

Gene: Barnyard_10 Start: 6469, Stop: 6612, Start Num: 13
Candidate Starts for Barnyard_10:
(Start: 13 @6469 has 188 MA's), (16, 6487), (25, 6532), (26, 6541),

Gene: Basquiat_88 Start: 37404, Stop: 37559, Start Num: 13
Candidate Starts for Basquiat_88:
(Start: 13 @37404 has 188 MA's), (34, 37506),

Gene: BeanWater_84 Start: 38802, Stop: 38957, Start Num: 13
Candidate Starts for BeanWater_84:
(Start: 13 @38802 has 188 MA's), (34, 38904),

Gene: Beleetus_190 Start: 99682, Stop: 99837, Start Num: 11
Candidate Starts for Beleetus_190:
(3, 99568), (4, 99577), (5, 99625), (Start: 9 @99673 has 4 MA's), (Start: 11 @99682 has 4 MA's), (14, 99694), (16, 99706), (32, 99787), (34, 99793),

Gene: Belieber_86 Start: 37762, Stop: 37917, Start Num: 13
Candidate Starts for Belieber_86:
(Start: 13 @37762 has 188 MA's), (34, 37864),

Gene: Bezza_81 Start: 37719, Stop: 37874, Start Num: 13
Candidate Starts for Bezza_81:
(Start: 13 @37719 has 188 MA's), (34, 37821),

Gene: BigCity_100 Start: 41462, Stop: 41617, Start Num: 13
Candidate Starts for BigCity_100:
(Start: 13 @41462 has 188 MA's), (34, 41564),

Gene: Bigswole_97 Start: 41810, Stop: 41965, Start Num: 13
Candidate Starts for Bigswole_97:
(Start: 13 @41810 has 188 MA's), (34, 41912),

Gene: Bipolarisk_91 Start: 39116, Stop: 39271, Start Num: 13
Candidate Starts for Bipolarisk_91:
(Start: 13 @39116 has 188 MA's), (34, 39218),

Gene: Blackbrain_87 Start: 37221, Stop: 37376, Start Num: 13
Candidate Starts for Blackbrain_87:
(Start: 13 @37221 has 188 MA's), (34, 37323),

Gene: Blackdragon_86 Start: 37934, Stop: 38089, Start Num: 13
Candidate Starts for Blackdragon_86:
(Start: 13 @37934 has 188 MA's), (34, 38036),

Gene: Blubba_81 Start: 37002, Stop: 37157, Start Num: 13
Candidate Starts for Blubba_81:
(Start: 13 @37002 has 188 MA's),

Gene: BobaPhatt_86 Start: 37043, Stop: 37198, Start Num: 13
Candidate Starts for BobaPhatt_86:
(Start: 13 @37043 has 188 MA's), (34, 37145),

Gene: Bonray_92 Start: 39513, Stop: 39668, Start Num: 13
Candidate Starts for Bonray_92:
(Start: 13 @39513 has 188 MA's), (34, 39615),

Gene: Bowman_90 Start: 39704, Stop: 39859, Start Num: 13
Candidate Starts for Bowman_90:
(Start: 13 @39704 has 188 MA's), (34, 39806),

Gene: Bread_92 Start: 39008, Stop: 39163, Start Num: 13
Candidate Starts for Bread_92:
(Start: 13 @39008 has 188 MA's), (34, 39110),

Gene: Breeniome_92 Start: 38231, Stop: 38386, Start Num: 13
Candidate Starts for Breeniome_92:
(Start: 13 @38231 has 188 MA's), (34, 38333),

Gene: Burrough_92 Start: 39665, Stop: 39820, Start Num: 13
Candidate Starts for Burrough_92:
(Start: 13 @39665 has 188 MA's), (34, 39767),

Gene: Cactojaque_87 Start: 37328, Stop: 37483, Start Num: 13
Candidate Starts for Cactojaque_87:
(Start: 13 @37328 has 188 MA's), (34, 37430),

Gene: Cali_87 Start: 39242, Stop: 39397, Start Num: 13
Candidate Starts for Cali_87:
(Start: 13 @39242 has 188 MA's), (34, 39344),

Gene: Cane17_81 Start: 37075, Stop: 37230, Start Num: 13
Candidate Starts for Cane17_81:
(Start: 13 @37075 has 188 MA's),

Gene: Capablanca_94 Start: 39535, Stop: 39690, Start Num: 13
Candidate Starts for Capablanca_94:
(Start: 13 @39535 has 188 MA's), (34, 39637),

Gene: Caravan_87 Start: 39039, Stop: 39194, Start Num: 13
Candidate Starts for Caravan_87:
(Start: 13 @39039 has 188 MA's), (34, 39141),

Gene: Causa_48 Start: 43096, Stop: 43251, Start Num: 13
Candidate Starts for Causa_48:
(1, 42322), (2, 42928), (8, 43069), (Start: 13 @43096 has 188 MA's), (16, 43114), (38, 43228),

Gene: Chargie21_88 Start: 37404, Stop: 37559, Start Num: 13
Candidate Starts for Chargie21_88:
(Start: 13 @37404 has 188 MA's), (34, 37506),

Gene: CharlieB_87 Start: 37240, Stop: 37395, Start Num: 13
Candidate Starts for CharlieB_87:
(Start: 13 @37240 has 188 MA's), (34, 37342),

Gene: ChaylaJr_87 Start: 37119, Stop: 37274, Start Num: 13
Candidate Starts for ChaylaJr_87:
(Start: 13 @37119 has 188 MA's), (34, 37221),

Gene: CherryTomatoes_135 Start: 94647, Stop: 94820, Start Num: 9
Candidate Starts for CherryTomatoes_135:
(Start: 9 @94647 has 4 MA's), (24, 94722), (31, 94755), (39, 94815),

Gene: ChickenPhender_88 Start: 37452, Stop: 37607, Start Num: 13
Candidate Starts for ChickenPhender_88:
(Start: 13 @37452 has 188 MA's), (34, 37554),

Gene: Chomp_91 Start: 39698, Stop: 39853, Start Num: 13
Candidate Starts for Chomp_91:
(Start: 13 @39698 has 188 MA's), (34, 39800),

Gene: CindyLou_93 Start: 39739, Stop: 39894, Start Num: 13
Candidate Starts for CindyLou_93:
(Start: 13 @39739 has 188 MA's), (34, 39841),

Gene: Cleatunium_87 Start: 38800, Stop: 38955, Start Num: 13
Candidate Starts for Cleatunium_87:
(Start: 13 @38800 has 188 MA's), (34, 38902),

Gene: Colt_82 Start: 37671, Stop: 37826, Start Num: 13
Candidate Starts for Colt_82:
(Start: 13 @37671 has 188 MA's),

Gene: Concombre_99 Start: 41651, Stop: 41806, Start Num: 13
Candidate Starts for Concombre_99:
(Start: 13 @41651 has 188 MA's), (34, 41753),

Gene: DTDevon_93 Start: 39571, Stop: 39726, Start Num: 13
Candidate Starts for DTDevon_93:
(Start: 13 @39571 has 188 MA's), (34, 39673),

Gene: Daffodil_97 Start: 39404, Stop: 39559, Start Num: 13
Candidate Starts for Daffodil_97:
(Start: 13 @39404 has 188 MA's), (34, 39506),

Gene: Dandelion_99 Start: 42101, Stop: 42256, Start Num: 13
Candidate Starts for Dandelion_99:
(Start: 13 @42101 has 188 MA's), (23, 42158), (34, 42203),

Gene: Darko_92 Start: 39339, Stop: 39494, Start Num: 13
Candidate Starts for Darko_92:
(Start: 13 @39339 has 188 MA's), (34, 39441),

Gene: DeejaClivia_81 Start: 35256, Stop: 35411, Start Num: 13
Candidate Starts for DeejaClivia_81:
(Start: 13 @35256 has 188 MA's),

Gene: Delilah_92 Start: 39405, Stop: 39560, Start Num: 13

Candidate Starts for Delilah_92:
(Start: 13 @39405 has 188 MA's), (34, 39507),

Gene: Delylah_95 Start: 39198, Stop: 39353, Start Num: 13
Candidate Starts for Delylah_95:
(Start: 13 @39198 has 188 MA's), (34, 39300),

Gene: Demodog_99 Start: 41651, Stop: 41806, Start Num: 13
Candidate Starts for Demodog_99:
(Start: 13 @41651 has 188 MA's), (34, 41753),

Gene: Derek_92 Start: 39500, Stop: 39655, Start Num: 13
Candidate Starts for Derek_92:
(Start: 13 @39500 has 188 MA's), (34, 39602),

Gene: Dessert_90 Start: 38410, Stop: 38565, Start Num: 13
Candidate Starts for Dessert_90:
(Start: 13 @38410 has 188 MA's), (34, 38512),

Gene: Dietrick_84 Start: 37155, Stop: 37310, Start Num: 13
Candidate Starts for Dietrick_84:
(Start: 13 @37155 has 188 MA's), (34, 37257),

Gene: DirtMonster_85 Start: 37997, Stop: 38152, Start Num: 13
Candidate Starts for DirtMonster_85:
(Start: 13 @37997 has 188 MA's), (34, 38099),

Gene: Domi_86 Start: 38733, Stop: 38888, Start Num: 13
Candidate Starts for Domi_86:
(Start: 13 @38733 has 188 MA's), (34, 38835),

Gene: DrLupo_11 Start: 6407, Stop: 6553, Start Num: 12
Candidate Starts for DrLupo_11:
(Start: 12 @6407 has 1 MA's), (Start: 13 @6410 has 188 MA's), (16, 6428), (27, 6488), (29, 6494),

Gene: DrPhinkDaddy_91 Start: 39460, Stop: 39615, Start Num: 13
Candidate Starts for DrPhinkDaddy_91:
(Start: 13 @39460 has 188 MA's), (34, 39562),

Gene: Drazdys_92 Start: 39202, Stop: 39357, Start Num: 13
Candidate Starts for Drazdys_92:
(Start: 13 @39202 has 188 MA's), (34, 39304),

Gene: Duckfeet_83 Start: 37207, Stop: 37362, Start Num: 13
Candidate Starts for Duckfeet_83:
(Start: 13 @37207 has 188 MA's), (34, 37309),

Gene: ET08_81 Start: 38176, Stop: 38331, Start Num: 13
Candidate Starts for ET08_81:
(Start: 13 @38176 has 188 MA's), (34, 38278),

Gene: EasyJones_95 Start: 38511, Stop: 38666, Start Num: 13
Candidate Starts for EasyJones_95:

(Start: 13 @38511 has 188 MA's), (34, 38613),

Gene: EggyFarm_100 Start: 41462, Stop: 41617, Start Num: 13

Candidate Starts for EggyFarm_100:

(Start: 13 @41462 has 188 MA's), (34, 41564),

Gene: EmToTheThree_95 Start: 40856, Stop: 41011, Start Num: 13

Candidate Starts for EmToTheThree_95:

(Start: 13 @40856 has 188 MA's), (34, 40958),

Gene: EmmaElysia_91 Start: 37977, Stop: 38132, Start Num: 13

Candidate Starts for EmmaElysia_91:

(Start: 13 @37977 has 188 MA's), (34, 38079),

Gene: Erdmann_93 Start: 39405, Stop: 39560, Start Num: 13

Candidate Starts for Erdmann_93:

(Start: 13 @39405 has 188 MA's), (34, 39507),

Gene: ErnieJ_88 Start: 37433, Stop: 37588, Start Num: 13

Candidate Starts for ErnieJ_88:

(Start: 13 @37433 has 188 MA's), (34, 37535),

Gene: Essence_89 Start: 38964, Stop: 39119, Start Num: 13

Candidate Starts for Essence_89:

(Start: 13 @38964 has 188 MA's), (34, 39066),

Gene: Ewok_93 Start: 39032, Stop: 39187, Start Num: 13

Candidate Starts for Ewok_93:

(Start: 13 @39032 has 188 MA's), (34, 39134),

Gene: Fixie_87 Start: 37610, Stop: 37765, Start Num: 13

Candidate Starts for Fixie_87:

(Start: 13 @37610 has 188 MA's), (34, 37712),

Gene: Flabslab_87 Start: 37189, Stop: 37344, Start Num: 13

Candidate Starts for Flabslab_87:

(Start: 13 @37189 has 188 MA's), (34, 37291),

Gene: Fludd_92 Start: 37851, Stop: 38006, Start Num: 13

Candidate Starts for Fludd_92:

(Start: 13 @37851 has 188 MA's), (34, 37953),

Gene: Fongie_90 Start: 39245, Stop: 39400, Start Num: 13

Candidate Starts for Fongie_90:

(Start: 13 @39245 has 188 MA's), (34, 39347),

Gene: FoxtrotP1_92 Start: 39804, Stop: 39959, Start Num: 13

Candidate Starts for FoxtrotP1_92:

(Start: 13 @39804 has 188 MA's), (34, 39906),

Gene: FrayBell_98 Start: 40854, Stop: 41009, Start Num: 13

Candidate Starts for FrayBell_98:

(Start: 13 @40854 has 188 MA's), (34, 40956),

Gene: Fudan_190 Start: 99593, Stop: 99748, Start Num: 11

Candidate Starts for Fudan_190:

(3, 99479), (4, 99488), (5, 99536), (Start: 9 @99584 has 4 MA's), (Start: 11 @99593 has 4 MA's), (14, 99605), (16, 99617), (32, 99698), (34, 99704),

Gene: FudgeTart_92 Start: 38598, Stop: 38753, Start Num: 13

Candidate Starts for FudgeTart_92:

(Start: 13 @38598 has 188 MA's), (34, 38700),

Gene: Gabriel_94 Start: 38640, Stop: 38795, Start Num: 13

Candidate Starts for Gabriel_94:

(Start: 13 @38640 has 188 MA's), (34, 38742),

Gene: Gamgam_92 Start: 38410, Stop: 38565, Start Num: 13

Candidate Starts for Gamgam_92:

(Start: 13 @38410 has 188 MA's), (34, 38512),

Gene: Ghost_91 Start: 38410, Stop: 38565, Start Num: 13

Candidate Starts for Ghost_91:

(Start: 13 @38410 has 188 MA's), (34, 38512),

Gene: Gizmo_96 Start: 39781, Stop: 39936, Start Num: 13

Candidate Starts for Gizmo_96:

(Start: 13 @39781 has 188 MA's), (34, 39883),

Gene: GlutenPhree_93 Start: 38410, Stop: 38565, Start Num: 13

Candidate Starts for GlutenPhree_93:

(Start: 13 @38410 has 188 MA's), (34, 38512),

Gene: Grasshills_99 Start: 41462, Stop: 41617, Start Num: 13

Candidate Starts for Grasshills_99:

(Start: 13 @41462 has 188 MA's), (34, 41564),

Gene: Greely_93 Start: 40118, Stop: 40282, Start Num: 13

Candidate Starts for Greely_93:

(Start: 13 @40118 has 188 MA's), (30, 40205), (36, 40241), (38, 40259),

Gene: Grungle_79 Start: 35792, Stop: 35947, Start Num: 13

Candidate Starts for Grungle_79:

(Start: 13 @35792 has 188 MA's), (34, 35894),

Gene: Guwapp_91 Start: 38505, Stop: 38660, Start Num: 13

Candidate Starts for Guwapp_91:

(Start: 13 @38505 has 188 MA's), (34, 38607),

Gene: Halldule_85 Start: 36822, Stop: 36977, Start Num: 13

Candidate Starts for Halldule_85:

(Start: 13 @36822 has 188 MA's), (34, 36924),

Gene: HyRo_84 Start: 37580, Stop: 37735, Start Num: 13

Candidate Starts for HyRo_84:

(Start: 13 @37580 has 188 MA's),

Gene: I3_98 Start: 39372, Stop: 39527, Start Num: 13

Candidate Starts for I3_98:

(Start: 13 @39372 has 188 MA's), (34, 39474),

Gene: IkeLoa_86 Start: 37770, Stop: 37925, Start Num: 13

Candidate Starts for IkeLoa_86:

(Start: 13 @37770 has 188 MA's), (34, 37872),

Gene: InigoMontoya_93 Start: 38371, Stop: 38526, Start Num: 13

Candidate Starts for InigoMontoya_93:

(Start: 13 @38371 has 188 MA's), (34, 38473),

Gene: InterFolia_101 Start: 41792, Stop: 41947, Start Num: 13

Candidate Starts for InterFolia_101:

(Start: 13 @41792 has 188 MA's), (34, 41894),

Gene: Iota_86 Start: 38151, Stop: 38306, Start Num: 13

Candidate Starts for Iota_86:

(Start: 13 @38151 has 188 MA's), (34, 38253),

Gene: Issimir_91 Start: 39348, Stop: 39503, Start Num: 13

Candidate Starts for Issimir_91:

(Start: 13 @39348 has 188 MA's), (34, 39450),

Gene: Izajani_92 Start: 39421, Stop: 39576, Start Num: 13

Candidate Starts for Izajani_92:

(Start: 13 @39421 has 188 MA's), (34, 39523),

Gene: JPickles_90 Start: 37641, Stop: 37796, Start Num: 13

Candidate Starts for JPickles_90:

(Start: 13 @37641 has 188 MA's), (34, 37743),

Gene: Janiyra_94 Start: 38681, Stop: 38836, Start Num: 13

Candidate Starts for Janiyra_94:

(Start: 13 @38681 has 188 MA's), (34, 38783),

Gene: JayJay_98 Start: 40709, Stop: 40864, Start Num: 13

Candidate Starts for JayJay_98:

(Start: 13 @40709 has 188 MA's), (34, 40811),

Gene: Jaygup_92 Start: 39166, Stop: 39321, Start Num: 13

Candidate Starts for Jaygup_92:

(Start: 13 @39166 has 188 MA's), (34, 39268),

Gene: Jedediah_95 Start: 39666, Stop: 39821, Start Num: 13

Candidate Starts for Jedediah_95:

(Start: 13 @39666 has 188 MA's), (34, 39768),

Gene: Jemmno_92 Start: 39116, Stop: 39271, Start Num: 13

Candidate Starts for Jemmno_92:

(Start: 13 @39116 has 188 MA's), (34, 39218),

Gene: Jessibeth14_91 Start: 39190, Stop: 39345, Start Num: 13
Candidate Starts for Jessibeth14_91:
(Start: 13 @39190 has 188 MA's), (34, 39292),

Gene: Jezreel_92 Start: 39104, Stop: 39259, Start Num: 13
Candidate Starts for Jezreel_92:
(Start: 13 @39104 has 188 MA's), (34, 39206),

Gene: JigglyPuff_98 Start: 40965, Stop: 41120, Start Num: 13
Candidate Starts for JigglyPuff_98:
(Start: 13 @40965 has 188 MA's), (34, 41067),

Gene: JulietS_85 Start: 36673, Stop: 36828, Start Num: 13
Candidate Starts for JulietS_85:
(Start: 13 @36673 has 188 MA's), (34, 36775),

Gene: JustHall_88 Start: 38319, Stop: 38474, Start Num: 13
Candidate Starts for JustHall_88:
(Start: 13 @38319 has 188 MA's), (34, 38421),

Gene: Kamryn_92 Start: 39929, Stop: 40084, Start Num: 13
Candidate Starts for Kamryn_92:
(Start: 13 @39929 has 188 MA's), (34, 40031),

Gene: Kboogie_95 Start: 37963, Stop: 38118, Start Num: 13
Candidate Starts for Kboogie_95:
(Start: 13 @37963 has 188 MA's), (34, 38065),

Gene: Khaleesi_91 Start: 39152, Stop: 39307, Start Num: 13
Candidate Starts for Khaleesi_91:
(Start: 13 @39152 has 188 MA's), (34, 39254),

Gene: Koguma_88 Start: 36893, Stop: 37048, Start Num: 13
Candidate Starts for Koguma_88:
(Start: 13 @36893 has 188 MA's), (34, 36995),

Gene: LRRHood_86 Start: 38712, Stop: 38867, Start Num: 13
Candidate Starts for LRRHood_86:
(Start: 13 @38712 has 188 MA's), (34, 38814),

Gene: Labradorite_92 Start: 38489, Stop: 38644, Start Num: 13
Candidate Starts for Labradorite_92:
(Start: 13 @38489 has 188 MA's), (34, 38591),

Gene: Latch_92 Start: 38410, Stop: 38565, Start Num: 13
Candidate Starts for Latch_92:
(Start: 13 @38410 has 188 MA's), (18, 38434), (34, 38512),

Gene: Lee7_90 Start: 39015, Stop: 39170, Start Num: 13
Candidate Starts for Lee7_90:
(Start: 13 @39015 has 188 MA's), (34, 39117),

Gene: Leopard_6 Start: 2486, Stop: 2641, Start Num: 13

Candidate Starts for Leopard_6:
(Start: 13 @2486 has 188 MA's), (15, 2501), (21, 2534), (28, 2567), (35, 2591), (37, 2615),

Gene: Lethe_91 Start: 39600, Stop: 39755, Start Num: 13
Candidate Starts for Lethe_91:
(Start: 13 @39600 has 188 MA's), (34, 39702),

Gene: LifeSavor_91 Start: 38931, Stop: 39086, Start Num: 13
Candidate Starts for LifeSavor_91:
(Start: 13 @38931 has 188 MA's), (34, 39033),

Gene: LinStu_92 Start: 39776, Stop: 39931, Start Num: 13
Candidate Starts for LinStu_92:
(Start: 13 @39776 has 188 MA's), (23, 39833), (34, 39878),

Gene: Littleton_92 Start: 38365, Stop: 38520, Start Num: 13
Candidate Starts for Littleton_92:
(Start: 13 @38365 has 188 MA's), (34, 38467),

Gene: Loanshark_92 Start: 39405, Stop: 39560, Start Num: 13
Candidate Starts for Loanshark_92:
(Start: 13 @39405 has 188 MA's), (34, 39507),

Gene: LolaVinca_94 Start: 40511, Stop: 40666, Start Num: 13
Candidate Starts for LolaVinca_94:
(Start: 13 @40511 has 188 MA's), (34, 40613),

Gene: LookingGlass_93 Start: 39514, Stop: 39669, Start Num: 13
Candidate Starts for LookingGlass_93:
(Start: 13 @39514 has 188 MA's), (34, 39616),

Gene: LordLeafolot_98 Start: 41502, Stop: 41657, Start Num: 13
Candidate Starts for LordLeafolot_98:
(Start: 13 @41502 has 188 MA's), (34, 41604),

Gene: LuckySocke_191 Start: 99534, Stop: 99689, Start Num: 11
Candidate Starts for LuckySocke_191:
(3, 99420), (4, 99429), (5, 99477), (Start: 9 @99525 has 4 MA's), (Start: 11 @99534 has 4 MA's), (14, 99546), (16, 99558), (32, 99639), (34, 99645),

Gene: Lukilu_83 Start: 38245, Stop: 38400, Start Num: 13
Candidate Starts for Lukilu_83:
(Start: 13 @38245 has 188 MA's), (34, 38347),

Gene: Lunareta_89 Start: 40031, Stop: 40186, Start Num: 13
Candidate Starts for Lunareta_89:
(Start: 13 @40031 has 188 MA's), (34, 40133),

Gene: Maby2021_92 Start: 39086, Stop: 39241, Start Num: 13
Candidate Starts for Maby2021_92:
(Start: 13 @39086 has 188 MA's), (34, 39188),

Gene: Mangeria_92 Start: 39367, Stop: 39522, Start Num: 13

Candidate Starts for Mangeria_92:
(Start: 13 @39367 has 188 MA's), (34, 39469),

Gene: Matsumoto_91 Start: 39130, Stop: 39285, Start Num: 13
Candidate Starts for Matsumoto_91:
(Start: 13 @39130 has 188 MA's), (34, 39232),

Gene: Maturis_90 Start: 39527, Stop: 39682, Start Num: 13
Candidate Starts for Maturis_90:
(Start: 13 @39527 has 188 MA's), (34, 39629),

Gene: McGee_93 Start: 37594, Stop: 37749, Start Num: 13
Candidate Starts for McGee_93:
(Start: 13 @37594 has 188 MA's), (34, 37696),

Gene: McWolfish_90 Start: 38812, Stop: 38967, Start Num: 13
Candidate Starts for McWolfish_90:
(Start: 13 @38812 has 188 MA's), (34, 38914),

Gene: Megamind_91 Start: 39071, Stop: 39226, Start Num: 13
Candidate Starts for Megamind_91:
(Start: 13 @39071 has 188 MA's), (34, 39173),

Gene: Melpomini_86 Start: 36596, Stop: 36751, Start Num: 13
Candidate Starts for Melpomini_86:
(Start: 13 @36596 has 188 MA's), (34, 36698),

Gene: MikeLiesIn_93 Start: 39418, Stop: 39573, Start Num: 13
Candidate Starts for MikeLiesIn_93:
(Start: 13 @39418 has 188 MA's), (34, 39520),

Gene: Mikro_90 Start: 40329, Stop: 40484, Start Num: 13
Candidate Starts for Mikro_90:
(Start: 13 @40329 has 188 MA's), (34, 40431),

Gene: MoMoMixon_93 Start: 39143, Stop: 39298, Start Num: 13
Candidate Starts for MoMoMixon_93:
(Start: 13 @39143 has 188 MA's), (34, 39245),

Gene: Moby_83 Start: 34671, Stop: 34826, Start Num: 13
Candidate Starts for Moby_83:
(Start: 13 @34671 has 188 MA's), (34, 34773),

Gene: Moiqah_83 Start: 34671, Stop: 34826, Start Num: 13
Candidate Starts for Moiqah_83:
(Start: 13 @34671 has 188 MA's), (34, 34773),

Gene: Momo_91 Start: 38410, Stop: 38565, Start Num: 13
Candidate Starts for Momo_91:
(Start: 13 @38410 has 188 MA's), (34, 38512),

Gene: Montpel_89 Start: 40031, Stop: 40186, Start Num: 13
Candidate Starts for Montpel_89:

(Start: 13 @40031 has 188 MA's), (34, 40133),

Gene: Morizzled23_92 Start: 38116, Stop: 38271, Start Num: 13

Candidate Starts for Morizzled23_92:

(Start: 13 @38116 has 188 MA's), (34, 38218),

Gene: Myrna_91 Start: 40892, Stop: 41059, Start Num: 13

Candidate Starts for Myrna_91:

(Start: 13 @40892 has 188 MA's), (19, 40922), (20, 40934), (22, 40949), (35, 41000), (36, 41018),

Gene: Naija_91 Start: 38410, Stop: 38565, Start Num: 13

Candidate Starts for Naija_91:

(Start: 13 @38410 has 188 MA's), (34, 38512),

Gene: Napoleon13_88 Start: 37213, Stop: 37368, Start Num: 13

Candidate Starts for Napoleon13_88:

(Start: 13 @37213 has 188 MA's), (34, 37315),

Gene: Nappy_94 Start: 39969, Stop: 40124, Start Num: 13

Candidate Starts for Nappy_94:

(Start: 13 @39969 has 188 MA's), (34, 40071),

Gene: Naval22_97 Start: 41009, Stop: 41164, Start Num: 13

Candidate Starts for Naval22_97:

(Start: 13 @41009 has 188 MA's), (34, 41111),

Gene: NedWong_93 Start: 39405, Stop: 39560, Start Num: 13

Candidate Starts for NedWong_93:

(Start: 13 @39405 has 188 MA's), (34, 39507),

Gene: Ngannou_88 Start: 37392, Stop: 37547, Start Num: 13

Candidate Starts for Ngannou_88:

(Start: 13 @37392 has 188 MA's), (34, 37494),

Gene: Nidhogg_93 Start: 39259, Stop: 39414, Start Num: 13

Candidate Starts for Nidhogg_93:

(Start: 13 @39259 has 188 MA's), (34, 39361),

Gene: NoodleTree_100 Start: 40436, Stop: 40591, Start Num: 13

Candidate Starts for NoodleTree_100:

(Start: 13 @40436 has 188 MA's), (34, 40538),

Gene: Norm_93 Start: 39407, Stop: 39562, Start Num: 13

Candidate Starts for Norm_93:

(Start: 13 @39407 has 188 MA's), (34, 39509),

Gene: NuevoMundo_98 Start: 41366, Stop: 41521, Start Num: 13

Candidate Starts for NuevoMundo_98:

(Start: 13 @41366 has 188 MA's), (34, 41468),

Gene: Onyinye_6 Start: 2474, Stop: 2629, Start Num: 13

Candidate Starts for Onyinye_6:

(Start: 13 @2474 has 188 MA's), (15, 2489), (21, 2522), (28, 2555), (35, 2579), (37, 2603),

Gene: OrediggerDelux_90 Start: 39404, Stop: 39559, Start Num: 13
Candidate Starts for OrediggerDelux_90:
(Start: 13 @39404 has 188 MA's), (34, 39506),

Gene: Park1214_205 Start: 101624, Stop: 101779, Start Num: 11
Candidate Starts for Park1214_205:
(Start: 9 @101615 has 4 MA's), (Start: 11 @101624 has 4 MA's), (19, 101660), (34, 101735),

Gene: ParkTD_93 Start: 39401, Stop: 39556, Start Num: 13
Candidate Starts for ParkTD_93:
(Start: 13 @39401 has 188 MA's), (34, 39503),

Gene: Patter_92 Start: 38427, Stop: 38582, Start Num: 13
Candidate Starts for Patter_92:
(Start: 13 @38427 has 188 MA's), (34, 38529),

Gene: Phabba_96 Start: 39961, Stop: 40125, Start Num: 13
Candidate Starts for Phabba_96:
(Start: 13 @39961 has 188 MA's), (30, 40048),

Gene: PharkleMinkus_97 Start: 40854, Stop: 41009, Start Num: 13
Candidate Starts for PharkleMinkus_97:
(Start: 13 @40854 has 188 MA's), (34, 40956),

Gene: Phlegm_94 Start: 38410, Stop: 38565, Start Num: 13
Candidate Starts for Phlegm_94:
(Start: 13 @38410 has 188 MA's), (34, 38512),

Gene: Phox_89 Start: 39274, Stop: 39429, Start Num: 13
Candidate Starts for Phox_89:
(Start: 13 @39274 has 188 MA's), (34, 39376),

Gene: Phusco_92 Start: 39175, Stop: 39330, Start Num: 13
Candidate Starts for Phusco_92:
(Start: 13 @39175 has 188 MA's), (34, 39277),

Gene: Pier_96 Start: 40406, Stop: 40561, Start Num: 13
Candidate Starts for Pier_96:
(Start: 13 @40406 has 188 MA's), (34, 40508),

Gene: Pinkcreek_83 Start: 36360, Stop: 36515, Start Num: 13
Candidate Starts for Pinkcreek_83:
(Start: 13 @36360 has 188 MA's), (34, 36462),

Gene: Pio_96 Start: 41138, Stop: 41293, Start Num: 13
Candidate Starts for Pio_96:
(Start: 13 @41138 has 188 MA's), (34, 41240),

Gene: Pivoine_91 Start: 38410, Stop: 38565, Start Num: 13
Candidate Starts for Pivoine_91:
(Start: 13 @38410 has 188 MA's), (34, 38512),

Gene: Pleione_95 Start: 39404, Stop: 39559, Start Num: 13
Candidate Starts for Pleione_95:
(Start: 13 @39404 has 188 MA's), (34, 39506),

Gene: Primadonna_86 Start: 38296, Stop: 38451, Start Num: 13
Candidate Starts for Primadonna_86:
(Start: 13 @38296 has 188 MA's), (34, 38398),

Gene: Pupper_135 Start: 95110, Stop: 95283, Start Num: 9
Candidate Starts for Pupper_135:
(Start: 9 @95110 has 4 MA's), (24, 95185), (31, 95218),

Gene: Pupusa_97 Start: 41221, Stop: 41376, Start Num: 13
Candidate Starts for Pupusa_97:
(Start: 13 @41221 has 188 MA's), (34, 41323),

Gene: PurduePete_92 Start: 39449, Stop: 39604, Start Num: 13
Candidate Starts for PurduePete_92:
(Start: 13 @39449 has 188 MA's), (34, 39551),

Gene: QBert_86 Start: 38905, Stop: 39060, Start Num: 13
Candidate Starts for QBert_86:
(Start: 13 @38905 has 188 MA's), (34, 39007),

Gene: Quasimodo_92 Start: 38940, Stop: 39095, Start Num: 13
Candidate Starts for Quasimodo_92:
(Start: 13 @38940 has 188 MA's), (34, 39042),

Gene: Rabinovish_89 Start: 39247, Stop: 39402, Start Num: 13
Candidate Starts for Rabinovish_89:
(Start: 13 @39247 has 188 MA's), (34, 39349),

Gene: Rahel_91 Start: 38767, Stop: 38922, Start Num: 13
Candidate Starts for Rahel_91:
(Start: 13 @38767 has 188 MA's), (34, 38869),

Gene: RedWattleHog_41 Start: 41152, Stop: 41310, Start Num: 13
Candidate Starts for RedWattleHog_41:
(Start: 13 @41152 has 188 MA's), (18, 41176), (22, 41206),

Gene: RoMag_87 Start: 38764, Stop: 38919, Start Num: 13
Candidate Starts for RoMag_87:
(Start: 13 @38764 has 188 MA's), (34, 38866),

Gene: Rocha_91 Start: 38847, Stop: 39002, Start Num: 13
Candidate Starts for Rocha_91:
(Start: 13 @38847 has 188 MA's), (34, 38949),

Gene: Ronan_85 Start: 36211, Stop: 36366, Start Num: 13
Candidate Starts for Ronan_85:
(Start: 13 @36211 has 188 MA's), (34, 36313),

Gene: Roots515_91 Start: 38827, Stop: 38982, Start Num: 13

Candidate Starts for Roots515_91:
(Start: 13 @38827 has 188 MA's), (34, 38929),

Gene: SCentae_134 Start: 95261, Stop: 95434, Start Num: 9
Candidate Starts for SCentae_134:
(Start: 9 @95261 has 4 MA's), (24, 95336), (31, 95369),

Gene: SVoro_90 Start: 39399, Stop: 39554, Start Num: 13
Candidate Starts for SVoro_90:
(Start: 13 @39399 has 188 MA's), (34, 39501),

Gene: Salacia_96 Start: 39519, Stop: 39674, Start Num: 13
Candidate Starts for Salacia_96:
(Start: 13 @39519 has 188 MA's), (34, 39621),

Gene: Sauce_92 Start: 38259, Stop: 38414, Start Num: 13
Candidate Starts for Sauce_92:
(Start: 13 @38259 has 188 MA's), (34, 38361),

Gene: ScoobyDoobyDoo_86 Start: 38013, Stop: 38168, Start Num: 13
Candidate Starts for ScoobyDoobyDoo_86:
(7, 37983), (10, 38004), (Start: 13 @38013 has 188 MA's), (18, 38037), (33, 38112),

Gene: ScottMcG_89 Start: 38391, Stop: 38546, Start Num: 13
Candidate Starts for ScottMcG_89:
(Start: 13 @38391 has 188 MA's), (34, 38493),

Gene: Sebata_93 Start: 39895, Stop: 40050, Start Num: 13
Candidate Starts for Sebata_93:
(Start: 13 @39895 has 188 MA's), (23, 39952), (34, 39997),

Gene: Shaqnato_84 Start: 37134, Stop: 37289, Start Num: 13
Candidate Starts for Shaqnato_84:
(Start: 13 @37134 has 188 MA's), (34, 37236),

Gene: Shelob_94 Start: 40397, Stop: 40552, Start Num: 13
Candidate Starts for Shelob_94:
(Start: 13 @40397 has 188 MA's), (34, 40499),

Gene: ShiaLabeouf_92 Start: 39606, Stop: 39761, Start Num: 13
Candidate Starts for ShiaLabeouf_92:
(Start: 13 @39606 has 188 MA's), (34, 39708),

Gene: Shifa_81 Start: 36847, Stop: 37002, Start Num: 13
Candidate Starts for Shifa_81:
(Start: 13 @36847 has 188 MA's),

Gene: Shnickers_92 Start: 39166, Stop: 39321, Start Num: 13
Candidate Starts for Shnickers_92:
(Start: 13 @39166 has 188 MA's), (34, 39268),

Gene: Shrimp_92 Start: 39409, Stop: 39564, Start Num: 13
Candidate Starts for Shrimp_92:

(Start: 13 @39409 has 188 MA's), (34, 39511),

Gene: SilverDipper_93 Start: 38410, Stop: 38565, Start Num: 13

Candidate Starts for SilverDipper_93:

(Start: 13 @38410 has 188 MA's), (34, 38512),

Gene: Skog_197 Start: 125040, Stop: 125213, Start Num: 9

Candidate Starts for Skog_197:

(6, 125007), (Start: 9 @125040 has 4 MA's), (17, 125076), (31, 125148), (37, 125184),

Gene: SmallFry_92 Start: 38361, Stop: 38516, Start Num: 13

Candidate Starts for SmallFry_92:

(Start: 13 @38361 has 188 MA's), (34, 38463),

Gene: SoilZilla_88 Start: 38496, Stop: 38651, Start Num: 13

Candidate Starts for SoilZilla_88:

(Start: 13 @38496 has 188 MA's), (34, 38598),

Gene: Spec_87 Start: 38931, Stop: 39086, Start Num: 13

Candidate Starts for Spec_87:

(Start: 13 @38931 has 188 MA's), (34, 39033),

Gene: Specks_98 Start: 41145, Stop: 41300, Start Num: 13

Candidate Starts for Specks_98:

(Start: 13 @41145 has 188 MA's), (34, 41247),

Gene: Sprinklers_87 Start: 37631, Stop: 37786, Start Num: 13

Candidate Starts for Sprinklers_87:

(Start: 13 @37631 has 188 MA's), (34, 37733),

Gene: Spud_92 Start: 39352, Stop: 39507, Start Num: 13

Candidate Starts for Spud_92:

(Start: 13 @39352 has 188 MA's), (34, 39454),

Gene: SrishMeg2525_91 Start: 38741, Stop: 38896, Start Num: 13

Candidate Starts for SrishMeg2525_91:

(Start: 13 @38741 has 188 MA's), (34, 38843),

Gene: StAugustine_46 Start: 43111, Stop: 43266, Start Num: 13

Candidate Starts for StAugustine_46:

(1, 42337), (2, 42943), (8, 43084), (Start: 13 @43111 has 188 MA's), (16, 43129), (38, 43243),

Gene: StephanieG_91 Start: 40221, Stop: 40376, Start Num: 13

Candidate Starts for StephanieG_91:

(Start: 13 @40221 has 188 MA's), (34, 40323),

Gene: Stormageddon_38 Start: 41135, Stop: 41293, Start Num: 13

Candidate Starts for Stormageddon_38:

(Start: 13 @41135 has 188 MA's), (18, 41159), (22, 41189),

Gene: Stubby_85 Start: 37438, Stop: 37593, Start Num: 13

Candidate Starts for Stubby_85:

(Start: 13 @37438 has 188 MA's), (34, 37540),

Gene: StubbySaigey_94 Start: 37698, Stop: 37853, Start Num: 13
Candidate Starts for StubbySaigey_94:
(Start: 13 @37698 has 188 MA's), (34, 37800),

Gene: Substance289_89 Start: 38684, Stop: 38839, Start Num: 13
Candidate Starts for Substance289_89:
(Start: 13 @38684 has 188 MA's), (34, 38786),

Gene: Tainan_97 Start: 40795, Stop: 40950, Start Num: 13
Candidate Starts for Tainan_97:
(Start: 13 @40795 has 188 MA's), (34, 40897),

Gene: Talos_195 Start: 100312, Stop: 100467, Start Num: 11
Candidate Starts for Talos_195:
(Start: 9 @100303 has 4 MA's), (Start: 11 @100312 has 4 MA's), (32, 100417), (34, 100423),

Gene: Teardrop_92 Start: 38469, Stop: 38624, Start Num: 13
Candidate Starts for Teardrop_92:
(Start: 13 @38469 has 188 MA's), (34, 38571),

Gene: TinyTim_92 Start: 39405, Stop: 39560, Start Num: 13
Candidate Starts for TinyTim_92:
(Start: 13 @39405 has 188 MA's), (34, 39507),

Gene: Tonenili_106 Start: 43411, Stop: 43566, Start Num: 13
Candidate Starts for Tonenili_106:
(Start: 13 @43411 has 188 MA's), (32, 43507), (34, 43513), (36, 43528),

Gene: Tortoise16_90 Start: 39263, Stop: 39418, Start Num: 13
Candidate Starts for Tortoise16_90:
(Start: 13 @39263 has 188 MA's), (34, 39365),

Gene: Trinitium_88 Start: 37437, Stop: 37592, Start Num: 13
Candidate Starts for Trinitium_88:
(Start: 13 @37437 has 188 MA's), (34, 37539),

Gene: Turret_87 Start: 37103, Stop: 37258, Start Num: 13
Candidate Starts for Turret_87:
(Start: 13 @37103 has 188 MA's), (34, 37205),

Gene: Tyke_94 Start: 40971, Stop: 41126, Start Num: 13
Candidate Starts for Tyke_94:
(Start: 13 @40971 has 188 MA's), (34, 41073),

Gene: ValleyTerrace_92 Start: 38410, Stop: 38565, Start Num: 13
Candidate Starts for ValleyTerrace_92:
(Start: 13 @38410 has 188 MA's), (34, 38512),

Gene: Vortrix_107 Start: 42817, Stop: 42972, Start Num: 13
Candidate Starts for Vortrix_107:
(Start: 13 @42817 has 188 MA's), (32, 42913), (34, 42919), (36, 42934),

Gene: Wally_91 Start: 37960, Stop: 38115, Start Num: 13
Candidate Starts for Wally_91:
(Start: 13 @37960 has 188 MA's), (34, 38062),

Gene: Willis_93 Start: 39300, Stop: 39455, Start Num: 13
Candidate Starts for Willis_93:
(Start: 13 @39300 has 188 MA's), (34, 39402),

Gene: Yassified_88 Start: 37670, Stop: 37825, Start Num: 13
Candidate Starts for Yassified_88:
(Start: 13 @37670 has 188 MA's), (34, 37772),

Gene: YemiJoy2021_93 Start: 39402, Stop: 39557, Start Num: 13
Candidate Starts for YemiJoy2021_93:
(Start: 13 @39402 has 188 MA's), (34, 39504),

Gene: YoungMoneyMata_92 Start: 38161, Stop: 38316, Start Num: 13
Candidate Starts for YoungMoneyMata_92:
(Start: 13 @38161 has 188 MA's), (34, 38263),

Gene: Yucca_92 Start: 39324, Stop: 39479, Start Num: 13
Candidate Starts for Yucca_92:
(Start: 13 @39324 has 188 MA's), (34, 39426),

Gene: Zalkecks_93 Start: 39090, Stop: 39245, Start Num: 13
Candidate Starts for Zalkecks_93:
(Start: 13 @39090 has 188 MA's), (34, 39192),

Gene: Zeenon_94 Start: 39017, Stop: 39172, Start Num: 13
Candidate Starts for Zeenon_94:
(Start: 13 @39017 has 188 MA's), (34, 39119),

Gene: ZygoTaiga_91 Start: 39406, Stop: 39561, Start Num: 13
Candidate Starts for ZygoTaiga_91:
(Start: 13 @39406 has 188 MA's), (34, 39508),