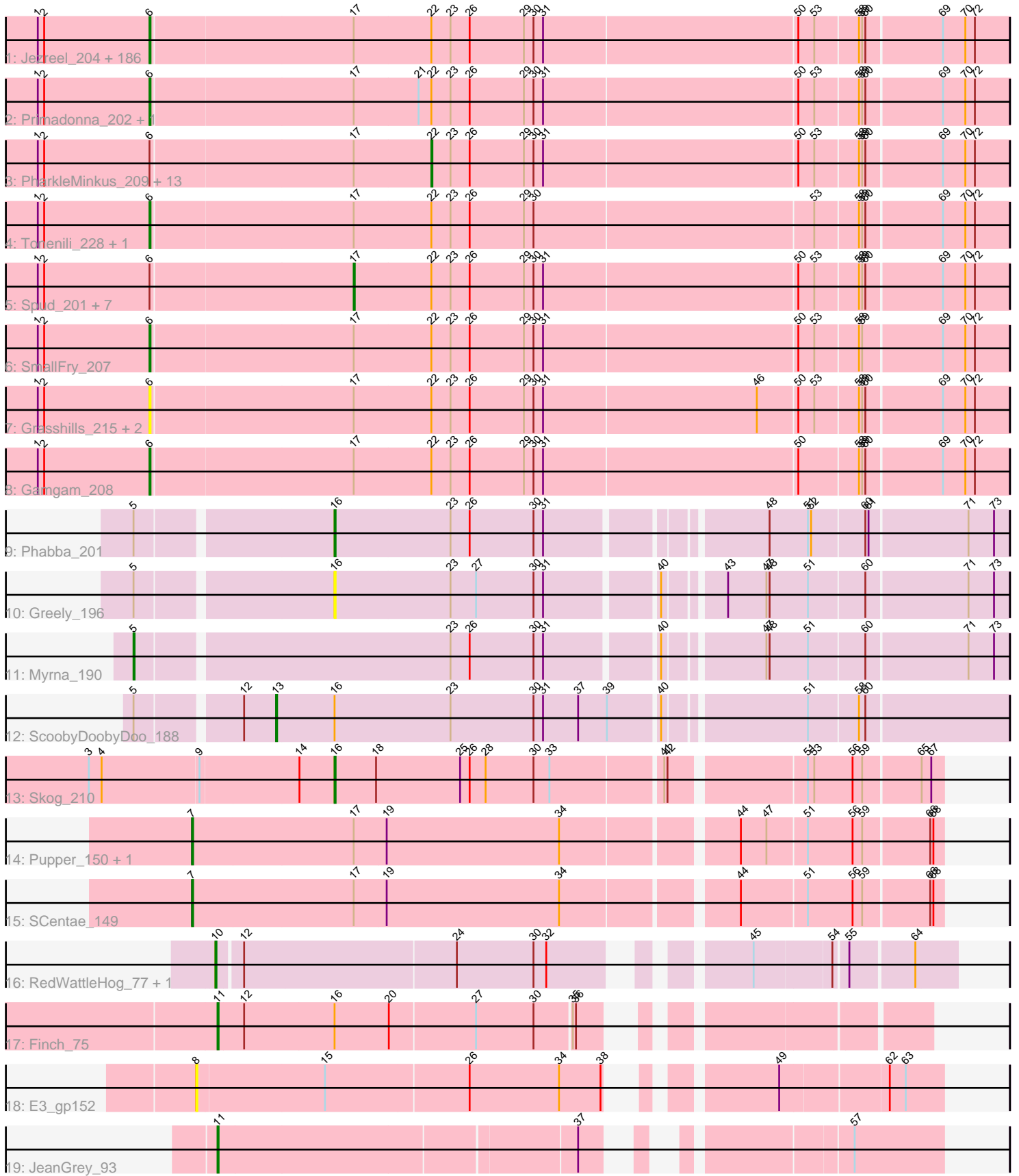


Pham 304696



Note: Tracks are now grouped by subcluster and scaled. Switching in subcluster is indicated by changes in track color. Track scale is now set by default to display the region 30 bp upstream of start 1 to 30 bp downstream of the last possible start. If this default region is judged to be packed too tightly with annotated starts, the track will be further scaled to only show that region of the ORF with annotated starts. This action will be indicated by adding "Zoomed" to the title. For starts, yellow indicates the location of called starts comprised solely of Glimmer/GeneMark auto-annotations, green indicates the location of called starts with at least 1 manual gene annotation.

## Pham 304696 Report

This analysis was run 06/08/26 on database version 649.

Pham number 304696 has 231 members, 40 are drafts.

Phages represented in each track:

- Track 1 : Jezreel\_204, Stubby\_191, RoMag\_202, Amataga\_208, Burrough\_209, Concombre\_212, Bezza\_196, Napoleon13\_204, Morizzled23\_204, InigoMontoya\_210, Drazdys\_205, JustHall\_201, Breeniome\_206, NuevoMundo\_210, Shelob\_208, Iota\_202, Ghost\_207, Bonray\_209, BeanWater\_199, ParkTD\_206, MikeLiesIn\_209, Derek\_204, LifeSavor\_206, Rahel\_208, Basquiat\_204, Littleton\_210, Demodog\_213, Yassified\_204, Patter\_208, JigglyPuff\_214, I3\_217, SilverDipper\_211, CindyLou\_208, Latch\_207, Naval22\_212, Ngannou\_204, LolaVinca\_205, Teardrop\_204, Daffodil\_212, Colt\_198, Khaleesi\_206, Bipolarisk\_205, HyRo\_195, Chomp\_207, Babyland\_210, Melpomini\_202, Fludd\_207, BadAgartude\_201, Shrimp\_209, Dietrick\_196, SrishMeg2525\_204, Issimir\_200, Janiyra\_210, Turret\_200, Blackdragon\_202, Lethe\_207, Norm\_207, Megamind\_204, SoilZilla\_202, Audrick\_209, ZygoTaiga\_204, Koguma\_206, Phusco\_205, Erdmann\_208, Cleatunium\_200, Quasimodo\_209, Astraea\_201, Kboogie\_211, ChickenPhender\_203, DeejaClivia\_195, MoMoMixon\_205, ChaylaJr\_204, Dessert\_205, Zeenon\_209, FudgeTart\_202, Willis\_208, Moby\_203, Gabriel\_210, JayJay\_209, EmToTheThree\_207, Belieber\_200, Shaqnato\_198, Bigswole\_212, Sauce\_203, FrayBell\_210, Naija\_208, Chargie21\_204, Delylah\_209, Salacia\_207, Asterius\_209, Mikro\_203, Pinkcreek\_191, Lukilu\_198, Capablanca\_212, Delilah\_205, Halldule\_200, Ava3\_206, Grungle\_191, Zalkecks\_206, Maby2021\_207, Cactojaque\_202, EasyJones\_210, Ewok\_206, DrPhinkDaddy\_204, BananaFence\_204, Maturis\_204, LookingGlass\_206, ErnieJ\_200, EmmaElysia\_210, Fixie\_207, Phox\_208, Momo\_208, NoodleTree\_213, Alice\_194, DirtMonster\_200, Gizmo\_213, Mangeria\_208, BackyardAgain\_202, Darko\_206, Ading\_208, Tyke\_205, Cane17\_198, Phlegm\_211, Domi\_201, Pio\_215, StephanieG\_203, Pleione\_211, Wally\_205, Jemmno\_206, Yucca\_207, QBert\_199, Pier\_208, Ablatia\_206, Bread\_202, Atlantean\_207, Shnickers\_205, Blackbrain\_204, McGee\_206, Trinitium\_203, FoxtrotP1\_205, Tortoise16\_205, LordLeafolot\_208, YemiJoy2021\_208, NedWong\_206, Izajani\_205, YoungMoneyMata\_205, InterFolia\_210, Moiqah\_202, Kamryn\_206, Pivoine\_208, Blubba\_196, Montpel\_205, Jessibeth14\_207, LRRHood\_200, Lunareta\_205, LinStu\_206, Ronan\_203, Nappy\_208, Jedediah\_207, Lee7\_207, Essence\_204, JulietS\_198, Dandelion\_215, Flabslab\_202, ShiaLabeouf\_204, GlutenPhree\_208, Roots515\_209, Guwapp\_202, IkeLoa\_199, Rabinovish\_200, Nidhogg\_208, McWolfish\_204, Adlitam\_206, BobaPhatt\_199, Loanshark\_204, Duckfeet\_201, ValleyTerrace\_208, Sprinklers\_205, Matsumoto\_205, CharlieB\_201, StubbySaigey\_212, Shifa\_184, Sebata\_208, OrediggerDelux\_203, TinyTim\_205, Caravan\_198, PurduePete\_207
- Track 2 : Primadonna\_202, Specks\_211

- Track 3 : PharkleMinkus\_209, Jaygup\_203, ArcherS7\_207, Tainan\_208, Spec\_202, Bowman\_205, Pupusa\_211, ET08\_195, SVoro\_203, Substance289\_204, Labradorite\_205, Fongie\_208, Bangla1971\_207, Rocha\_204
- Track 4 : Tonenili\_228, Vortrix\_226
- Track 5 : Spud\_201, Cali\_200, Rizal\_199, JPickles\_203, Bxz1\_197, DTDevon\_209, ScottMcG\_200, Catera\_199
- Track 6 : SmallFry\_207
- Track 7 : Grasshills\_215, EggyFarm\_216, BigCity\_216
- Track 8 : Gamgam\_208
- Track 9 : Phabba\_201
- Track 10 : Greely\_196
- Track 11 : Myrna\_190
- Track 12 : ScoobyDoobyDoo\_188
- Track 13 : Skog\_210
- Track 14 : Pupper\_150, CherryTomatoes\_151
- Track 15 : SCentae\_149
- Track 16 : RedWattleHog\_77, Stormageddon\_74
- Track 17 : Finch\_75
- Track 18 : E3\_gp152
- Track 19 : JeanGrey\_93

***Summary of Final Annotations (See graph section above for start numbers):***

The start number called the most often in the published annotations is 6, it was called in 167 of the 191 non-draft genes in the pham.

Genes that call this "Most Annotated" start:

- Ablatia\_206, Ading\_208, Adlitam\_206, Alice\_194, Amataga\_208, Asterius\_209, Astraea\_201, Atlantean\_207, Audrick\_209, Ava3\_206, Babyland\_210, BackyardAgain\_202, BadAgartude\_201, BananaFence\_204, Basquiat\_204, BeanWater\_199, Belieber\_200, Bezza\_196, BigCity\_216, Bigswole\_212, Bipolarisk\_205, Blackbrain\_204, Blackdragon\_202, Blubba\_196, BobaPhatt\_199, Bonray\_209, Bread\_202, Breeniome\_206, Burrough\_209, Cactojaque\_202, Cane17\_198, Capablanca\_212, Caravan\_198, Chargie21\_204, CharlieB\_201, ChaylaJr\_204, ChickenPhender\_203, Chomp\_207, CindyLou\_208, Cleatunium\_200, Colt\_198, Concombre\_212, Daffodil\_212, Dandelion\_215, Darko\_206, DeejaClivia\_195, Delilah\_205, Delylah\_209, Demodog\_213, Derek\_204, Dessert\_205, Dietrick\_196, DirtMonster\_200, Domi\_201, DrPhinkDaddy\_204, Drazdys\_205, Duckfeet\_201, EasyJones\_210, EggyFarm\_216, EmToTheThree\_207, EmmaElysia\_210, Erdmann\_208, ErnieJ\_200, Essence\_204, Ewok\_206, Fixie\_207, Flabslab\_202, Fludd\_207, FoxtrotP1\_205, FrayBell\_210, FudgeTart\_202, Gabriel\_210, Gamgam\_208, Ghost\_207, Gizmo\_213, GlutenPhree\_208, Grasshills\_215, Grungle\_191, Guwapp\_202, Halldule\_200, HyRo\_195, I3\_217, IkeLoa\_199, InigoMontoya\_210, InterFolia\_210, Iota\_202, Issimir\_200, Izajani\_205, Janiyra\_210, JayJay\_209, Jediah\_207, Jemmno\_206, Jessibeth14\_207, Jezreel\_204, JigglyPuff\_214, JulietS\_198, JustHall\_201, Kamryn\_206, Kboogie\_211, Khaleesi\_206, Koguma\_206, LRRHood\_200, Latch\_207, Lee7\_207, Lethe\_207, LifeSavor\_206, LinStu\_206, Littleton\_210, Loanshark\_204, LolaVinca\_205, LookingGlass\_206, LordLeafolot\_208, Lukilu\_198, Lunareta\_205, Maby2021\_207, Mangeria\_208, Matsumoto\_205, Maturis\_204, McGee\_206, McWolfish\_204,

Megamind\_204, Melpomini\_202, MikeLiesIn\_209, Mikro\_203, MoMoMixon\_205, Moby\_203, Moiqah\_202, Momo\_208, Montpel\_205, Morizzled23\_204, Naija\_208, Napoleon13\_204, Nappy\_208, Naval22\_212, NedWong\_206, Ngannou\_204, Nidhogg\_208, NoodleTree\_213, Norm\_207, NuevoMundo\_210, OrediggerDelux\_203, ParkTD\_206, Patter\_208, Phlegm\_211, Phox\_208, Phusco\_205, Pier\_208, Pinkcreek\_191, Pio\_215, Pivoine\_208, Pleione\_211, Primadonna\_202, PurduePete\_207, QBert\_199, Quasimodo\_209, Rabinovish\_200, Rahel\_208, RoMag\_202, Ronan\_203, Roots515\_209, Salacia\_207, Sauce\_203, Sebata\_208, Shaqnato\_198, Shelob\_208, ShiaLabeouf\_204, Shifa\_184, Shnickers\_205, Shrimp\_209, SilverDipper\_211, SmallFry\_207, SoilZilla\_202, Specks\_211, Sprinklers\_205, SrishMeg2525\_204, StephanieG\_203, StubbySaigey\_212, Stubby\_191, Teardrop\_204, TinyTim\_205, Tonenili\_228, Tortoise16\_205, Trinitium\_203, Turret\_200, Tyke\_205, ValleyTerrace\_208, Vortex\_226, Wally\_205, Willis\_208, Yassified\_204, YemiJoy2021\_208, YoungMoneyMata\_205, Yucca\_207, Zalkecks\_206, Zeenon\_209, ZygoTaiga\_204,

Genes that have the "Most Annotated" start but do not call it:

- ArcherS7\_207, Bangla1971\_207, Bowman\_205, Bxz1\_197, Cali\_200, Catera\_199, DTDevon\_209, ET08\_195, Fongie\_208, JPickles\_203, Jaygup\_203, Labradorite\_205, PharkleMinkus\_209, Pupusa\_211, Rizal\_199, Rocha\_204, SVoro\_203, ScottMcG\_200, Spec\_202, Spud\_201, Substance289\_204, Tainan\_208,

Genes that do not have the "Most Annotated" start:

- CherryTomatoes\_151, E3\_gp152, Finch\_75, Greely\_196, JeanGrey\_93, Myrna\_190, Phabba\_201, Pupper\_150, RedWattleHog\_77, SCentae\_149, ScoobyDoobyDoo\_188, Skog\_210, Stormageddon\_74,

### Summary by start number:

Start 5:

- Found in 4 of 231 ( 1.7% ) of genes in pham
- Manual Annotations of this start: 1 of 191
- Called 25.0% of time when present
- Phage (with cluster) where this start called: Myrna\_190 (C2),

Start 6:

- Found in 218 of 231 ( 94.4% ) of genes in pham
- Manual Annotations of this start: 167 of 191
- Called 89.9% of time when present
- Phage (with cluster) where this start called: Ablatia\_206 (C1), Ading\_208 (C1), Adlitam\_206 (C1), Alice\_194 (C1), Amataga\_208 (C1), Asterius\_209 (C1), Astraea\_201 (C1), Atlantean\_207 (C1), Audrick\_209 (C1), Ava3\_206 (C1), Babyland\_210 (C1), BackyardAgain\_202 (C1), BadAgartude\_201 (C1), BananaFence\_204 (C1), Basquiat\_204 (C1), BeanWater\_199 (C1), Belieber\_200 (C1), Bezza\_196 (C1), BigCity\_216 (C1), Bigswole\_212 (C1), Bipolarisk\_205 (C1), Blackbrain\_204 (C1), Blackdragon\_202 (C1), Blubba\_196 (C1), BobaPhatt\_199 (C1), Bonray\_209 (C1), Bread\_202 (C1), Breeniome\_206 (C1), Burrough\_209 (C1), Cactojaque\_202 (C1), Cane17\_198 (C1), Capablanca\_212 (C1), Caravan\_198 (C1), Chargie21\_204 (C1), CharlieB\_201 (C1), ChaylaJr\_204 (C1), ChickenPhender\_203 (C1), Chomp\_207 (C1), CindyLou\_208 (C1), Cleatunium\_200 (C1), Colt\_198 (C1), Concombre\_212 (C1), Daffodil\_212 (C1), Dandelion\_215 (C1), Darko\_206 (C1), DeejaClivia\_195 (C1), Delilah\_205 (C1), Delylah\_209 (C1), Demodog\_213 (C1), Derek\_204 (C1), Dessert\_205 (C1), Dietrick\_196 (C1), DirtMonster\_200 (C1),

Domi\_201 (C1), DrPhinkDaddy\_204 (C1), Drazdys\_205 (C1), Duckfeet\_201 (C1), EasyJones\_210 (C1), EggyFarm\_216 (C1), EmToTheThree\_207 (C1), EmmaElysia\_210 (C1), Erdmann\_208 (C1), ErnieJ\_200 (C1), Essence\_204 (C1), Ewok\_206 (C1), Fixie\_207 (C1), Flabslab\_202 (C1), Fludd\_207 (C1), FoxtrotP1\_205 (C1), FrayBell\_210 (C1), FudgeTart\_202 (C1), Gabriel\_210 (C1), Gamgam\_208 (C1), Ghost\_207 (C1), Gizmo\_213 (C1), GlutenPhree\_208 (C1), Grasshills\_215 (C1), Grungle\_191 (C1), Guwapp\_202 (C1), Halldule\_200 (C1), HyRo\_195 (C1), I3\_217 (C1), IkeLoa\_199 (C1), InigoMontoya\_210 (C1), InterFolia\_210 (C1), Iota\_202 (C1), Issimir\_200 (C1), Izajani\_205 (C1), Janiyra\_210 (C1), JayJay\_209 (C1), Jedediah\_207 (C1), Jemmno\_206 (C1), Jessibeth14\_207 (C1), Jezreel\_204 (C1), JigglyPuff\_214 (C1), JulietS\_198 (C1), JustHall\_201 (C1), Kamryn\_206 (C1), Kboogie\_211 (C1), Khaleesi\_206 (C1), Koguma\_206 (C1), LRRHood\_200 (C1), Latch\_207 (C1), Lee7\_207 (C1), Lethe\_207 (C1), LifeSavor\_206 (C1), LinStu\_206 (C1), Littleton\_210 (C1), Loanshark\_204 (C1), LolaVinca\_205 (C1), LookingGlass\_206 (C1), LordLeafolot\_208 (C1), Lukilu\_198 (C1), Lunareta\_205 (C1), Maby2021\_207 (C1), Mangeria\_208 (C1), Matsumoto\_205 (C1), Maturis\_204 (C1), McGee\_206 (C1), McWolfish\_204 (C1), Megamind\_204 (C1), Melpomini\_202 (C1), MikeLiesIn\_209 (C1), Mikro\_203 (C1), MoMoMixon\_205 (C1), Moby\_203 (C1), Moiqah\_202 (C1), Momo\_208 (C1), Montpel\_205 (C1), Morizzled23\_204 (C1), Naija\_208 (C1), Napoleon13\_204 (C1), Nappy\_208 (C1), Naval22\_212 (C1), NedWong\_206 (C1), Ngannou\_204 (C1), Nidhogg\_208 (C1), NoodleTree\_213 (C1), Norm\_207 (C1), NuevoMundo\_210 (C1), OrediggerDelux\_203 (C1), ParkTD\_206 (C1), Patter\_208 (C1), Phlegm\_211 (C1), Phox\_208 (C1), Phusco\_205 (C1), Pier\_208 (C1), Pinkcreek\_191 (C1), Pio\_215 (C1), Pivoine\_208 (C1), Pleione\_211 (C1), Primadonna\_202 (C1), PurduePete\_207 (C1), QBert\_199 (C1), Quasimodo\_209 (C1), Rabinovish\_200 (C1), Rahel\_208 (C1), RoMag\_202 (C1), Ronan\_203 (C1), Roots515\_209 (C1), Salacia\_207 (C1), Sauce\_203 (C1), Sebata\_208 (C1), Shaqnato\_198 (C1), Shelob\_208 (C1), ShiaLabeouf\_204 (C1), Shifa\_184 (C1), Shnickers\_205 (C1), Shrimp\_209 (C1), SilverDipper\_211 (C1), SmallFry\_207 (C1), SoilZilla\_202 (C1), Specks\_211 (C1), Sprinklers\_205 (C1), SrishMeg2525\_204 (C1), StephanieG\_203 (C1), StubbySaigey\_212 (C1), Stubby\_191 (C1), Teardrop\_204 (C1), TinyTim\_205 (C1), Tonenili\_228 (C1), Tortoise16\_205 (C1), Trinitium\_203 (C1), Turret\_200 (C1), Tyke\_205 (C1), ValleyTerrace\_208 (C1), Vortrix\_226 (C1), Wally\_205 (C1), Willis\_208 (C1), Yassified\_204 (C1), YemiJoy2021\_208 (C1), YoungMoneyMata\_205 (C1), Yucca\_207 (C1), Zalkecks\_206 (C1), Zeenon\_209 (C1), ZygoTaiga\_204 (C1),

#### Start 7:

- Found in 3 of 231 ( 1.3% ) of genes in pham
- Manual Annotations of this start: 3 of 191
- Called 100.0% of time when present
- Phage (with cluster) where this start called: CherryTomatoes\_151 (DO), Pupper\_150 (DO), SCentae\_149 (DO),

#### Start 8:

- Found in 1 of 231 ( 0.4% ) of genes in pham
- No Manual Annotations of this start.
- Called 100.0% of time when present
- Phage (with cluster) where this start called: E3\_gp152 (singleton),

#### Start 10:

- Found in 2 of 231 ( 0.9% ) of genes in pham
- Manual Annotations of this start: 2 of 191

- Called 100.0% of time when present
- Phage (with cluster) where this start called: RedWattleHog\_77 (DX), Stormageddon\_74 (DX),

Start 11:

- Found in 2 of 231 ( 0.9% ) of genes in pham
- Manual Annotations of this start: 2 of 191
- Called 100.0% of time when present
- Phage (with cluster) where this start called: Finch\_75 (singleton), JeanGrey\_93 (singleton),

Start 13:

- Found in 1 of 231 ( 0.4% ) of genes in pham
- Manual Annotations of this start: 1 of 191
- Called 100.0% of time when present
- Phage (with cluster) where this start called: ScoobyDoobyDoo\_188 (C2),

Start 16:

- Found in 5 of 231 ( 2.2% ) of genes in pham
- Manual Annotations of this start: 2 of 191
- Called 60.0% of time when present
- Phage (with cluster) where this start called: Greely\_196 (C2), Phabba\_201 (C2), Skog\_210 (DO),

Start 17:

- Found in 221 of 231 ( 95.7% ) of genes in pham
- Manual Annotations of this start: 8 of 191
- Called 3.6% of time when present
- Phage (with cluster) where this start called: Bxz1\_197 (C1), Cali\_200 (C1), Catera\_199 (C1), DTDevon\_209 (C1), JPickles\_203 (C1), Rizal\_199 (C1), ScottMcG\_200 (C1), Spud\_201 (C1),

Start 22:

- Found in 218 of 231 ( 94.4% ) of genes in pham
- Manual Annotations of this start: 5 of 191
- Called 6.4% of time when present
- Phage (with cluster) where this start called: ArcherS7\_207 (C1), Bangla1971\_207 (C1), Bowman\_205 (C1), ET08\_195 (C1), Fongie\_208 (C1), Jaygup\_203 (C1), Labradorite\_205 (C1), PharkleMinkus\_209 (C1), Pupusa\_211 (C1), Rocha\_204 (C1), SVoro\_203 (C1), Spec\_202 (C1), Substance289\_204 (C1), Tainan\_208 (C1),

### Summary by clusters:

There are 5 clusters represented in this pham: DO, C1, singleton, DX, C2,

Info for manual annotations of cluster C1:

- Start number 6 was manually annotated 167 times for cluster C1.
- Start number 17 was manually annotated 8 times for cluster C1.
- Start number 22 was manually annotated 5 times for cluster C1.

Info for manual annotations of cluster C2:

- Start number 5 was manually annotated 1 time for cluster C2.
- Start number 13 was manually annotated 1 time for cluster C2.

- Start number 16 was manually annotated 1 time for cluster C2.

Info for manual annotations of cluster DO:

- Start number 7 was manually annotated 3 times for cluster DO.
- Start number 16 was manually annotated 1 time for cluster DO.

Info for manual annotations of cluster DX:

- Start number 10 was manually annotated 2 times for cluster DX.

### **Gene Information:**

Gene: Ablatia\_206 Start: 111301, Stop: 112089, Start Num: 6

Candidate Starts for Ablatia\_206:

(1, 111196), (2, 111202), (Start: 6 @111301 has 167 MA's), (Start: 17 @111487 has 8 MA's), (Start: 22 @111559 has 5 MA's), (23, 111577), (26, 111595), (29, 111646), (30, 111655), (31, 111664), (50, 111898), (53, 111913), (58, 111952), (59, 111955), (60, 111958), (69, 112027), (70, 112048), (72, 112057),

Gene: Ading\_208 Start: 111928, Stop: 112716, Start Num: 6

Candidate Starts for Ading\_208:

(1, 111823), (2, 111829), (Start: 6 @111928 has 167 MA's), (Start: 17 @112114 has 8 MA's), (Start: 22 @112186 has 5 MA's), (23, 112204), (26, 112222), (29, 112273), (30, 112282), (31, 112291), (50, 112525), (53, 112540), (58, 112579), (59, 112582), (60, 112585), (69, 112654), (70, 112675), (72, 112684),

Gene: Adlitam\_206 Start: 110532, Stop: 111320, Start Num: 6

Candidate Starts for Adlitam\_206:

(1, 110427), (2, 110433), (Start: 6 @110532 has 167 MA's), (Start: 17 @110718 has 8 MA's), (Start: 22 @110790 has 5 MA's), (23, 110808), (26, 110826), (29, 110877), (30, 110886), (31, 110895), (50, 111129), (53, 111144), (58, 111183), (59, 111186), (60, 111189), (69, 111258), (70, 111279), (72, 111288),

Gene: Alice\_194 Start: 110500, Stop: 111288, Start Num: 6

Candidate Starts for Alice\_194:

(1, 110395), (2, 110401), (Start: 6 @110500 has 167 MA's), (Start: 17 @110686 has 8 MA's), (Start: 22 @110758 has 5 MA's), (23, 110776), (26, 110794), (29, 110845), (30, 110854), (31, 110863), (50, 111097), (53, 111112), (58, 111151), (59, 111154), (60, 111157), (69, 111226), (70, 111247), (72, 111256),

Gene: Amataga\_208 Start: 110344, Stop: 111132, Start Num: 6

Candidate Starts for Amataga\_208:

(1, 110239), (2, 110245), (Start: 6 @110344 has 167 MA's), (Start: 17 @110530 has 8 MA's), (Start: 22 @110602 has 5 MA's), (23, 110620), (26, 110638), (29, 110689), (30, 110698), (31, 110707), (50, 110941), (53, 110956), (58, 110995), (59, 110998), (60, 111001), (69, 111070), (70, 111091), (72, 111100),

Gene: ArcherS7\_207 Start: 111644, Stop: 112174, Start Num: 22

Candidate Starts for ArcherS7\_207:

(1, 111281), (2, 111287), (Start: 6 @111386 has 167 MA's), (Start: 17 @111572 has 8 MA's), (Start: 22 @111644 has 5 MA's), (23, 111662), (26, 111680), (29, 111731), (30, 111740), (31, 111749), (50, 111983), (53, 111998), (58, 112037), (59, 112040), (60, 112043), (69, 112112), (70, 112133), (72,

112142),

Gene: Asterius\_209 Start: 110753, Stop: 111541, Start Num: 6

Candidate Starts for Asterius\_209:

(1, 110648), (2, 110654), (Start: 6 @110753 has 167 MA's), (Start: 17 @110939 has 8 MA's), (Start: 22 @111011 has 5 MA's), (23, 111029), (26, 111047), (29, 111098), (30, 111107), (31, 111116), (50, 111350), (53, 111365), (58, 111404), (59, 111407), (60, 111410), (69, 111479), (70, 111500), (72, 111509),

Gene: Astraea\_201 Start: 109948, Stop: 110736, Start Num: 6

Candidate Starts for Astraea\_201:

(1, 109843), (2, 109849), (Start: 6 @109948 has 167 MA's), (Start: 17 @110134 has 8 MA's), (Start: 22 @110206 has 5 MA's), (23, 110224), (26, 110242), (29, 110293), (30, 110302), (31, 110311), (50, 110545), (53, 110560), (58, 110599), (59, 110602), (60, 110605), (69, 110674), (70, 110695), (72, 110704),

Gene: Atlantean\_207 Start: 110344, Stop: 111132, Start Num: 6

Candidate Starts for Atlantean\_207:

(1, 110239), (2, 110245), (Start: 6 @110344 has 167 MA's), (Start: 17 @110530 has 8 MA's), (Start: 22 @110602 has 5 MA's), (23, 110620), (26, 110638), (29, 110689), (30, 110698), (31, 110707), (50, 110941), (53, 110956), (58, 110995), (59, 110998), (60, 111001), (69, 111070), (70, 111091), (72, 111100),

Gene: Audrick\_209 Start: 110234, Stop: 111022, Start Num: 6

Candidate Starts for Audrick\_209:

(1, 110129), (2, 110135), (Start: 6 @110234 has 167 MA's), (Start: 17 @110420 has 8 MA's), (Start: 22 @110492 has 5 MA's), (23, 110510), (26, 110528), (29, 110579), (30, 110588), (31, 110597), (50, 110831), (53, 110846), (58, 110885), (59, 110888), (60, 110891), (69, 110960), (70, 110981), (72, 110990),

Gene: Ava3\_206 Start: 110778, Stop: 111566, Start Num: 6

Candidate Starts for Ava3\_206:

(1, 110673), (2, 110679), (Start: 6 @110778 has 167 MA's), (Start: 17 @110964 has 8 MA's), (Start: 22 @111036 has 5 MA's), (23, 111054), (26, 111072), (29, 111123), (30, 111132), (31, 111141), (50, 111375), (53, 111390), (58, 111429), (59, 111432), (60, 111435), (69, 111504), (70, 111525), (72, 111534),

Gene: Babyland\_210 Start: 111121, Stop: 111909, Start Num: 6

Candidate Starts for Babyland\_210:

(1, 111016), (2, 111022), (Start: 6 @111121 has 167 MA's), (Start: 17 @111307 has 8 MA's), (Start: 22 @111379 has 5 MA's), (23, 111397), (26, 111415), (29, 111466), (30, 111475), (31, 111484), (50, 111718), (53, 111733), (58, 111772), (59, 111775), (60, 111778), (69, 111847), (70, 111868), (72, 111877),

Gene: BackyardAgain\_202 Start: 109030, Stop: 109818, Start Num: 6

Candidate Starts for BackyardAgain\_202:

(1, 108925), (2, 108931), (Start: 6 @109030 has 167 MA's), (Start: 17 @109216 has 8 MA's), (Start: 22 @109288 has 5 MA's), (23, 109306), (26, 109324), (29, 109375), (30, 109384), (31, 109393), (50, 109627), (53, 109642), (58, 109681), (59, 109684), (60, 109687), (69, 109756), (70, 109777), (72, 109786),

Gene: BadAgartude\_201 Start: 110443, Stop: 111231, Start Num: 6

Candidate Starts for BadAgartude\_201:

(1, 110338), (2, 110344), (Start: 6 @110443 has 167 MA's), (Start: 17 @110629 has 8 MA's), (Start: 22 @110701 has 5 MA's), (23, 110719), (26, 110737), (29, 110788), (30, 110797), (31, 110806), (50, 111040), (53, 111055), (58, 111094), (59, 111097), (60, 111100), (69, 111169), (70, 111190), (72, 111199),

Gene: BananaFence\_204 Start: 110577, Stop: 111365, Start Num: 6

Candidate Starts for BananaFence\_204:

(1, 110472), (2, 110478), (Start: 6 @110577 has 167 MA's), (Start: 17 @110763 has 8 MA's), (Start: 22 @110835 has 5 MA's), (23, 110853), (26, 110871), (29, 110922), (30, 110931), (31, 110940), (50, 111174), (53, 111189), (58, 111228), (59, 111231), (60, 111234), (69, 111303), (70, 111324), (72, 111333),

Gene: Bangla1971\_207 Start: 110608, Stop: 111138, Start Num: 22

Candidate Starts for Bangla1971\_207:

(1, 110245), (2, 110251), (Start: 6 @110350 has 167 MA's), (Start: 17 @110536 has 8 MA's), (Start: 22 @110608 has 5 MA's), (23, 110626), (26, 110644), (29, 110695), (30, 110704), (31, 110713), (50, 110947), (53, 110962), (58, 111001), (59, 111004), (60, 111007), (69, 111076), (70, 111097), (72, 111106),

Gene: Basquiat\_204 Start: 109856, Stop: 110644, Start Num: 6

Candidate Starts for Basquiat\_204:

(1, 109751), (2, 109757), (Start: 6 @109856 has 167 MA's), (Start: 17 @110042 has 8 MA's), (Start: 22 @110114 has 5 MA's), (23, 110132), (26, 110150), (29, 110201), (30, 110210), (31, 110219), (50, 110453), (53, 110468), (58, 110507), (59, 110510), (60, 110513), (69, 110582), (70, 110603), (72, 110612),

Gene: BeanWater\_199 Start: 110382, Stop: 111170, Start Num: 6

Candidate Starts for BeanWater\_199:

(1, 110277), (2, 110283), (Start: 6 @110382 has 167 MA's), (Start: 17 @110568 has 8 MA's), (Start: 22 @110640 has 5 MA's), (23, 110658), (26, 110676), (29, 110727), (30, 110736), (31, 110745), (50, 110979), (53, 110994), (58, 111033), (59, 111036), (60, 111039), (69, 111108), (70, 111129), (72, 111138),

Gene: Belieber\_200 Start: 109170, Stop: 109958, Start Num: 6

Candidate Starts for Belieber\_200:

(1, 109065), (2, 109071), (Start: 6 @109170 has 167 MA's), (Start: 17 @109356 has 8 MA's), (Start: 22 @109428 has 5 MA's), (23, 109446), (26, 109464), (29, 109515), (30, 109524), (31, 109533), (50, 109767), (53, 109782), (58, 109821), (59, 109824), (60, 109827), (69, 109896), (70, 109917), (72, 109926),

Gene: Bezza\_196 Start: 110894, Stop: 111682, Start Num: 6

Candidate Starts for Bezza\_196:

(1, 110789), (2, 110795), (Start: 6 @110894 has 167 MA's), (Start: 17 @111080 has 8 MA's), (Start: 22 @111152 has 5 MA's), (23, 111170), (26, 111188), (29, 111239), (30, 111248), (31, 111257), (50, 111491), (53, 111506), (58, 111545), (59, 111548), (60, 111551), (69, 111620), (70, 111641), (72, 111650),

Gene: BigCity\_216 Start: 113953, Stop: 114741, Start Num: 6

Candidate Starts for BigCity\_216:

(1, 113848), (2, 113854), (Start: 6 @113953 has 167 MA's), (Start: 17 @114139 has 8 MA's), (Start: 22 @114211 has 5 MA's), (23, 114229), (26, 114247), (29, 114298), (30, 114307), (31, 114316), (46, 114514), (50, 114550), (53, 114565), (58, 114604), (59, 114607), (60, 114610), (69, 114679), (70, 114700), (72, 114709),

Gene: Bigswole\_212 Start: 113804, Stop: 114592, Start Num: 6

Candidate Starts for Bigswole\_212:

(1, 113699), (2, 113705), (Start: 6 @113804 has 167 MA's), (Start: 17 @113990 has 8 MA's), (Start: 22 @114062 has 5 MA's), (23, 114080), (26, 114098), (29, 114149), (30, 114158), (31, 114167), (50, 114401), (53, 114416), (58, 114455), (59, 114458), (60, 114461), (69, 114530), (70, 114551), (72, 114560),

Gene: Bipolarisk\_205 Start: 111047, Stop: 111835, Start Num: 6

Candidate Starts for Bipolarisk\_205:

(1, 110942), (2, 110948), (Start: 6 @111047 has 167 MA's), (Start: 17 @111233 has 8 MA's), (Start: 22 @111305 has 5 MA's), (23, 111323), (26, 111341), (29, 111392), (30, 111401), (31, 111410), (50, 111644), (53, 111659), (58, 111698), (59, 111701), (60, 111704), (69, 111773), (70, 111794), (72, 111803),

Gene: Blackbrain\_204 Start: 110941, Stop: 111729, Start Num: 6

Candidate Starts for Blackbrain\_204:

(1, 110836), (2, 110842), (Start: 6 @110941 has 167 MA's), (Start: 17 @111127 has 8 MA's), (Start: 22 @111199 has 5 MA's), (23, 111217), (26, 111235), (29, 111286), (30, 111295), (31, 111304), (50, 111538), (53, 111553), (58, 111592), (59, 111595), (60, 111598), (69, 111667), (70, 111688), (72, 111697),

Gene: Blackdragon\_202 Start: 110680, Stop: 111468, Start Num: 6

Candidate Starts for Blackdragon\_202:

(1, 110575), (2, 110581), (Start: 6 @110680 has 167 MA's), (Start: 17 @110866 has 8 MA's), (Start: 22 @110938 has 5 MA's), (23, 110956), (26, 110974), (29, 111025), (30, 111034), (31, 111043), (50, 111277), (53, 111292), (58, 111331), (59, 111334), (60, 111337), (69, 111406), (70, 111427), (72, 111436),

Gene: Blubba\_196 Start: 114066, Stop: 114854, Start Num: 6

Candidate Starts for Blubba\_196:

(1, 113961), (2, 113967), (Start: 6 @114066 has 167 MA's), (Start: 17 @114252 has 8 MA's), (Start: 22 @114324 has 5 MA's), (23, 114342), (26, 114360), (29, 114411), (30, 114420), (31, 114429), (50, 114663), (53, 114678), (58, 114717), (59, 114720), (60, 114723), (69, 114792), (70, 114813), (72, 114822),

Gene: BobaPhatt\_199 Start: 109055, Stop: 109843, Start Num: 6

Candidate Starts for BobaPhatt\_199:

(1, 108950), (2, 108956), (Start: 6 @109055 has 167 MA's), (Start: 17 @109241 has 8 MA's), (Start: 22 @109313 has 5 MA's), (23, 109331), (26, 109349), (29, 109400), (30, 109409), (31, 109418), (50, 109652), (53, 109667), (58, 109706), (59, 109709), (60, 109712), (69, 109781), (70, 109802), (72, 109811),

Gene: Bonray\_209 Start: 112449, Stop: 113237, Start Num: 6

Candidate Starts for Bonray\_209:

(1, 112344), (2, 112350), (Start: 6 @112449 has 167 MA's), (Start: 17 @112635 has 8 MA's), (Start: 22 @112707 has 5 MA's), (23, 112725), (26, 112743), (29, 112794), (30, 112803), (31, 112812), (50, 113046), (53, 113061), (58, 113100), (59, 113103), (60, 113106), (69, 113175), (70, 113196), (72, 113205),

Gene: Bowman\_205 Start: 111812, Stop: 112342, Start Num: 22

Candidate Starts for Bowman\_205:

(1, 111449), (2, 111455), (Start: 6 @111554 has 167 MA's), (Start: 17 @111740 has 8 MA's), (Start: 22 @111812 has 5 MA's), (23, 111830), (26, 111848), (29, 111899), (30, 111908), (31, 111917), (50, 112151), (53, 112166), (58, 112205), (59, 112208), (60, 112211), (69, 112280), (70, 112301), (72, 112310),

Gene: Bread\_202 Start: 110447, Stop: 111235, Start Num: 6

Candidate Starts for Bread\_202:

(1, 110342), (2, 110348), (Start: 6 @110447 has 167 MA's), (Start: 17 @110633 has 8 MA's), (Start: 22 @110705 has 5 MA's), (23, 110723), (26, 110741), (29, 110792), (30, 110801), (31, 110810), (50, 111044), (53, 111059), (58, 111098), (59, 111101), (60, 111104), (69, 111173), (70, 111194), (72, 111203),

Gene: Breeniome\_206 Start: 109901, Stop: 110689, Start Num: 6

Candidate Starts for Breeniome\_206:

(1, 109796), (2, 109802), (Start: 6 @109901 has 167 MA's), (Start: 17 @110087 has 8 MA's), (Start: 22 @110159 has 5 MA's), (23, 110177), (26, 110195), (29, 110246), (30, 110255), (31, 110264), (50, 110498), (53, 110513), (58, 110552), (59, 110555), (60, 110558), (69, 110627), (70, 110648), (72, 110657),

Gene: Burrough\_209 Start: 112217, Stop: 113005, Start Num: 6

Candidate Starts for Burrough\_209:

(1, 112112), (2, 112118), (Start: 6 @112217 has 167 MA's), (Start: 17 @112403 has 8 MA's), (Start: 22 @112475 has 5 MA's), (23, 112493), (26, 112511), (29, 112562), (30, 112571), (31, 112580), (50, 112814), (53, 112829), (58, 112868), (59, 112871), (60, 112874), (69, 112943), (70, 112964), (72, 112973),

Gene: Bxz1\_197 Start: 113602, Stop: 114204, Start Num: 17

Candidate Starts for Bxz1\_197:

(1, 113311), (2, 113317), (Start: 6 @113416 has 167 MA's), (Start: 17 @113602 has 8 MA's), (Start: 22 @113674 has 5 MA's), (23, 113692), (26, 113710), (29, 113761), (30, 113770), (31, 113779), (50, 114013), (53, 114028), (58, 114067), (59, 114070), (60, 114073), (69, 114142), (70, 114163), (72, 114172),

Gene: Cactojaque\_202 Start: 109876, Stop: 110664, Start Num: 6

Candidate Starts for Cactojaque\_202:

(1, 109771), (2, 109777), (Start: 6 @109876 has 167 MA's), (Start: 17 @110062 has 8 MA's), (Start: 22 @110134 has 5 MA's), (23, 110152), (26, 110170), (29, 110221), (30, 110230), (31, 110239), (50, 110473), (53, 110488), (58, 110527), (59, 110530), (60, 110533), (69, 110602), (70, 110623), (72, 110632),

Gene: Cali\_200 Start: 112009, Stop: 112611, Start Num: 17

Candidate Starts for Cali\_200:

(1, 111718), (2, 111724), (Start: 6 @111823 has 167 MA's), (Start: 17 @112009 has 8 MA's), (Start: 22 @112081 has 5 MA's), (23, 112099), (26, 112117), (29, 112168), (30, 112177), (31, 112186), (50, 112420), (53, 112435), (58, 112474), (59, 112477), (60, 112480), (69, 112549), (70, 112570), (72, 112579),

Gene: Cane17\_198 Start: 114475, Stop: 115263, Start Num: 6

Candidate Starts for Cane17\_198:

(1, 114370), (2, 114376), (Start: 6 @114475 has 167 MA's), (Start: 17 @114661 has 8 MA's), (Start: 22 @114733 has 5 MA's), (23, 114751), (26, 114769), (29, 114820), (30, 114829), (31, 114838), (50, 115072), (53, 115087), (58, 115126), (59, 115129), (60, 115132), (69, 115201), (70, 115222), (72, 115231),

Gene: Capablanca\_212 Start: 113044, Stop: 113832, Start Num: 6

Candidate Starts for Capablanca\_212:

(1, 112939), (2, 112945), (Start: 6 @113044 has 167 MA's), (Start: 17 @113230 has 8 MA's), (Start: 22 @113302 has 5 MA's), (23, 113320), (26, 113338), (29, 113389), (30, 113398), (31, 113407), (50, 113641), (53, 113656), (58, 113695), (59, 113698), (60, 113701), (69, 113770), (70, 113791), (72, 113800),

Gene: Caravan\_198 Start: 111164, Stop: 111952, Start Num: 6

Candidate Starts for Caravan\_198:

(1, 111059), (2, 111065), (Start: 6 @111164 has 167 MA's), (Start: 17 @111350 has 8 MA's), (Start: 22 @111422 has 5 MA's), (23, 111440), (26, 111458), (29, 111509), (30, 111518), (31, 111527), (50, 111761), (53, 111776), (58, 111815), (59, 111818), (60, 111821), (69, 111890), (70, 111911), (72, 111920),

Gene: Catera\_199 Start: 109743, Stop: 110345, Start Num: 17

Candidate Starts for Catera\_199:

(1, 109452), (2, 109458), (Start: 6 @109557 has 167 MA's), (Start: 17 @109743 has 8 MA's), (Start: 22 @109815 has 5 MA's), (23, 109833), (26, 109851), (29, 109902), (30, 109911), (31, 109920), (50, 110154), (53, 110169), (58, 110208), (59, 110211), (60, 110214), (69, 110283), (70, 110304), (72, 110313),

Gene: Chargie21\_204 Start: 109856, Stop: 110644, Start Num: 6

Candidate Starts for Chargie21\_204:

(1, 109751), (2, 109757), (Start: 6 @109856 has 167 MA's), (Start: 17 @110042 has 8 MA's), (Start: 22 @110114 has 5 MA's), (23, 110132), (26, 110150), (29, 110201), (30, 110210), (31, 110219), (50, 110453), (53, 110468), (58, 110507), (59, 110510), (60, 110513), (69, 110582), (70, 110603), (72, 110612),

Gene: CharlieB\_201 Start: 110584, Stop: 111372, Start Num: 6

Candidate Starts for CharlieB\_201:

(1, 110479), (2, 110485), (Start: 6 @110584 has 167 MA's), (Start: 17 @110770 has 8 MA's), (Start: 22 @110842 has 5 MA's), (23, 110860), (26, 110878), (29, 110929), (30, 110938), (31, 110947), (50, 111181), (53, 111196), (58, 111235), (59, 111238), (60, 111241), (69, 111310), (70, 111331), (72, 111340),

Gene: ChaylaJr\_204 Start: 110284, Stop: 111072, Start Num: 6

Candidate Starts for ChaylaJr\_204:

(1, 110179), (2, 110185), (Start: 6 @110284 has 167 MA's), (Start: 17 @110470 has 8 MA's), (Start: 22 @110542 has 5 MA's), (23, 110560), (26, 110578), (29, 110629), (30, 110638), (31, 110647), (50, 110881), (53, 110896), (58, 110935), (59, 110938), (60, 110941), (69, 111010), (70, 111031), (72, 111040),

Gene: CherryTomatoes\_151 Start: 104131, Stop: 104805, Start Num: 7

Candidate Starts for CherryTomatoes\_151:

(Start: 7 @104131 has 3 MA's), (Start: 17 @104281 has 8 MA's), (19, 104311), (34, 104473), (44, 104623), (47, 104647), (51, 104683), (56, 104725), (59, 104734), (66, 104794), (68, 104797),

Gene: ChickenPhender\_203 Start: 110003, Stop: 110791, Start Num: 6

Candidate Starts for ChickenPhender\_203:

(1, 109898), (2, 109904), (Start: 6 @110003 has 167 MA's), (Start: 17 @110189 has 8 MA's), (Start: 22 @110261 has 5 MA's), (23, 110279), (26, 110297), (29, 110348), (30, 110357), (31, 110366), (50, 110600), (53, 110615), (58, 110654), (59, 110657), (60, 110660), (69, 110729), (70, 110750), (72,

110759),

Gene: Chomp\_207 Start: 111633, Stop: 112421, Start Num: 6

Candidate Starts for Chomp\_207:

(1, 111528), (2, 111534), (Start: 6 @111633 has 167 MA's), (Start: 17 @111819 has 8 MA's), (Start: 22 @111891 has 5 MA's), (23, 111909), (26, 111927), (29, 111978), (30, 111987), (31, 111996), (50, 112230), (53, 112245), (58, 112284), (59, 112287), (60, 112290), (69, 112359), (70, 112380), (72, 112389),

Gene: CindyLou\_208 Start: 111893, Stop: 112681, Start Num: 6

Candidate Starts for CindyLou\_208:

(1, 111788), (2, 111794), (Start: 6 @111893 has 167 MA's), (Start: 17 @112079 has 8 MA's), (Start: 22 @112151 has 5 MA's), (23, 112169), (26, 112187), (29, 112238), (30, 112247), (31, 112256), (50, 112490), (53, 112505), (58, 112544), (59, 112547), (60, 112550), (69, 112619), (70, 112640), (72, 112649),

Gene: Cleatunium\_200 Start: 110276, Stop: 111064, Start Num: 6

Candidate Starts for Cleatunium\_200:

(1, 110171), (2, 110177), (Start: 6 @110276 has 167 MA's), (Start: 17 @110462 has 8 MA's), (Start: 22 @110534 has 5 MA's), (23, 110552), (26, 110570), (29, 110621), (30, 110630), (31, 110639), (50, 110873), (53, 110888), (58, 110927), (59, 110930), (60, 110933), (69, 111002), (70, 111023), (72, 111032),

Gene: Colt\_198 Start: 113706, Stop: 114494, Start Num: 6

Candidate Starts for Colt\_198:

(1, 113601), (2, 113607), (Start: 6 @113706 has 167 MA's), (Start: 17 @113892 has 8 MA's), (Start: 22 @113964 has 5 MA's), (23, 113982), (26, 114000), (29, 114051), (30, 114060), (31, 114069), (50, 114303), (53, 114318), (58, 114357), (59, 114360), (60, 114363), (69, 114432), (70, 114453), (72, 114462),

Gene: Concombres\_212 Start: 113496, Stop: 114284, Start Num: 6

Candidate Starts for Concombres\_212:

(1, 113391), (2, 113397), (Start: 6 @113496 has 167 MA's), (Start: 17 @113682 has 8 MA's), (Start: 22 @113754 has 5 MA's), (23, 113772), (26, 113790), (29, 113841), (30, 113850), (31, 113859), (50, 114093), (53, 114108), (58, 114147), (59, 114150), (60, 114153), (69, 114222), (70, 114243), (72, 114252),

Gene: DTDevon\_209 Start: 112568, Stop: 113170, Start Num: 17

Candidate Starts for DTDevon\_209:

(1, 112277), (2, 112283), (Start: 6 @112382 has 167 MA's), (Start: 17 @112568 has 8 MA's), (Start: 22 @112640 has 5 MA's), (23, 112658), (26, 112676), (29, 112727), (30, 112736), (31, 112745), (50, 112979), (53, 112994), (58, 113033), (59, 113036), (60, 113039), (69, 113108), (70, 113129), (72, 113138),

Gene: Daffodil\_212 Start: 111347, Stop: 112135, Start Num: 6

Candidate Starts for Daffodil\_212:

(1, 111242), (2, 111248), (Start: 6 @111347 has 167 MA's), (Start: 17 @111533 has 8 MA's), (Start: 22 @111605 has 5 MA's), (23, 111623), (26, 111641), (29, 111692), (30, 111701), (31, 111710), (50, 111944), (53, 111959), (58, 111998), (59, 112001), (60, 112004), (69, 112073), (70, 112094), (72, 112103),

Gene: Dandelion\_215 Start: 114980, Stop: 115768, Start Num: 6

Candidate Starts for Dandelion\_215:

(1, 114875), (2, 114881), (Start: 6 @114980 has 167 MA's), (Start: 17 @115166 has 8 MA's), (Start: 22 @115238 has 5 MA's), (23, 115256), (26, 115274), (29, 115325), (30, 115334), (31, 115343), (50, 115577), (53, 115592), (58, 115631), (59, 115634), (60, 115637), (69, 115706), (70, 115727), (72, 115736),

Gene: Darko\_206 Start: 110581, Stop: 111369, Start Num: 6

Candidate Starts for Darko\_206:

(1, 110476), (2, 110482), (Start: 6 @110581 has 167 MA's), (Start: 17 @110767 has 8 MA's), (Start: 22 @110839 has 5 MA's), (23, 110857), (26, 110875), (29, 110926), (30, 110935), (31, 110944), (50, 111178), (53, 111193), (58, 111232), (59, 111235), (60, 111238), (69, 111307), (70, 111328), (72, 111337),

Gene: DeejaClivia\_195 Start: 109716, Stop: 110504, Start Num: 6

Candidate Starts for DeejaClivia\_195:

(1, 109611), (2, 109617), (Start: 6 @109716 has 167 MA's), (Start: 17 @109902 has 8 MA's), (Start: 22 @109974 has 5 MA's), (23, 109992), (26, 110010), (29, 110061), (30, 110070), (31, 110079), (50, 110313), (53, 110328), (58, 110367), (59, 110370), (60, 110373), (69, 110442), (70, 110463), (72, 110472),

Gene: Delilah\_205 Start: 111465, Stop: 112253, Start Num: 6

Candidate Starts for Delilah\_205:

(1, 111360), (2, 111366), (Start: 6 @111465 has 167 MA's), (Start: 17 @111651 has 8 MA's), (Start: 22 @111723 has 5 MA's), (23, 111741), (26, 111759), (29, 111810), (30, 111819), (31, 111828), (50, 112062), (53, 112077), (58, 112116), (59, 112119), (60, 112122), (69, 112191), (70, 112212), (72, 112221),

Gene: Delylah\_209 Start: 111754, Stop: 112542, Start Num: 6

Candidate Starts for Delylah\_209:

(1, 111649), (2, 111655), (Start: 6 @111754 has 167 MA's), (Start: 17 @111940 has 8 MA's), (Start: 22 @112012 has 5 MA's), (23, 112030), (26, 112048), (29, 112099), (30, 112108), (31, 112117), (50, 112351), (53, 112366), (58, 112405), (59, 112408), (60, 112411), (69, 112480), (70, 112501), (72, 112510),

Gene: Demodog\_213 Start: 113506, Stop: 114294, Start Num: 6

Candidate Starts for Demodog\_213:

(1, 113401), (2, 113407), (Start: 6 @113506 has 167 MA's), (Start: 17 @113692 has 8 MA's), (Start: 22 @113764 has 5 MA's), (23, 113782), (26, 113800), (29, 113851), (30, 113860), (31, 113869), (50, 114103), (53, 114118), (58, 114157), (59, 114160), (60, 114163), (69, 114232), (70, 114253), (72, 114262),

Gene: Derek\_204 Start: 110910, Stop: 111698, Start Num: 6

Candidate Starts for Derek\_204:

(1, 110805), (2, 110811), (Start: 6 @110910 has 167 MA's), (Start: 17 @111096 has 8 MA's), (Start: 22 @111168 has 5 MA's), (23, 111186), (26, 111204), (29, 111255), (30, 111264), (31, 111273), (50, 111507), (53, 111522), (58, 111561), (59, 111564), (60, 111567), (69, 111636), (70, 111657), (72, 111666),

Gene: Dessert\_205 Start: 109910, Stop: 110698, Start Num: 6

Candidate Starts for Dessert\_205:

(1, 109805), (2, 109811), (Start: 6 @109910 has 167 MA's), (Start: 17 @110096 has 8 MA's), (Start: 22 @110168 has 5 MA's), (23, 110186), (26, 110204), (29, 110255), (30, 110264), (31, 110273), (50, 110507), (53, 110522), (58, 110561), (59, 110564), (60, 110567), (69, 110636), (70, 110657), (72, 110666),

Gene: Dietrick\_196 Start: 109586, Stop: 110374, Start Num: 6

Candidate Starts for Dietrick\_196:

(1, 109481), (2, 109487), (Start: 6 @109586 has 167 MA's), (Start: 17 @109772 has 8 MA's), (Start: 22 @109844 has 5 MA's), (23, 109862), (26, 109880), (29, 109931), (30, 109940), (31, 109949), (50, 110183), (53, 110198), (58, 110237), (59, 110240), (60, 110243), (69, 110312), (70, 110333), (72, 110342),

Gene: DirtMonster\_200 Start: 110826, Stop: 111614, Start Num: 6

Candidate Starts for DirtMonster\_200:

(1, 110721), (2, 110727), (Start: 6 @110826 has 167 MA's), (Start: 17 @111012 has 8 MA's), (Start: 22 @111084 has 5 MA's), (23, 111102), (26, 111120), (29, 111171), (30, 111180), (31, 111189), (50, 111423), (53, 111438), (58, 111477), (59, 111480), (60, 111483), (69, 111552), (70, 111573), (72, 111582),

Gene: Domi\_201 Start: 110937, Stop: 111725, Start Num: 6

Candidate Starts for Domi\_201:

(1, 110832), (2, 110838), (Start: 6 @110937 has 167 MA's), (Start: 17 @111123 has 8 MA's), (Start: 22 @111195 has 5 MA's), (23, 111213), (26, 111231), (29, 111282), (30, 111291), (31, 111300), (50, 111534), (53, 111549), (58, 111588), (59, 111591), (60, 111594), (69, 111663), (70, 111684), (72, 111693),

Gene: DrPhinkDaddy\_204 Start: 112125, Stop: 112913, Start Num: 6

Candidate Starts for DrPhinkDaddy\_204:

(1, 112020), (2, 112026), (Start: 6 @112125 has 167 MA's), (Start: 17 @112311 has 8 MA's), (Start: 22 @112383 has 5 MA's), (23, 112401), (26, 112419), (29, 112470), (30, 112479), (31, 112488), (50, 112722), (53, 112737), (58, 112776), (59, 112779), (60, 112782), (69, 112851), (70, 112872), (72, 112881),

Gene: Drazdys\_205 Start: 111027, Stop: 111815, Start Num: 6

Candidate Starts for Drazdys\_205:

(1, 110922), (2, 110928), (Start: 6 @111027 has 167 MA's), (Start: 17 @111213 has 8 MA's), (Start: 22 @111285 has 5 MA's), (23, 111303), (26, 111321), (29, 111372), (30, 111381), (31, 111390), (50, 111624), (53, 111639), (58, 111678), (59, 111681), (60, 111684), (69, 111753), (70, 111774), (72, 111783),

Gene: Duckfeet\_201 Start: 110553, Stop: 111341, Start Num: 6

Candidate Starts for Duckfeet\_201:

(1, 110448), (2, 110454), (Start: 6 @110553 has 167 MA's), (Start: 17 @110739 has 8 MA's), (Start: 22 @110811 has 5 MA's), (23, 110829), (26, 110847), (29, 110898), (30, 110907), (31, 110916), (50, 111150), (53, 111165), (58, 111204), (59, 111207), (60, 111210), (69, 111279), (70, 111300), (72, 111309),

Gene: E3\_gp152 Start: 101849, Stop: 102472, Start Num: 8

Candidate Starts for E3\_gp152:

(8, 101849), (15, 101966), (26, 102098), (34, 102182), (38, 102221), (49, 102326), (62, 102422), (63, 102437),

Gene: ET08\_195 Start: 110876, Stop: 111406, Start Num: 22

Candidate Starts for ET08\_195:

(1, 110513), (2, 110519), (Start: 6 @110618 has 167 MA's), (Start: 17 @110804 has 8 MA's), (Start: 22 @110876 has 5 MA's), (23, 110894), (26, 110912), (29, 110963), (30, 110972), (31, 110981), (50, 111215), (53, 111230), (58, 111269), (59, 111272), (60, 111275), (69, 111344), (70, 111365), (72,

111374),

Gene: EasyJones\_210 Start: 111099, Stop: 111887, Start Num: 6

Candidate Starts for EasyJones\_210:

(1, 110994), (2, 111000), (Start: 6 @111099 has 167 MA's), (Start: 17 @111285 has 8 MA's), (Start: 22 @111357 has 5 MA's), (23, 111375), (26, 111393), (29, 111444), (30, 111453), (31, 111462), (50, 111696), (53, 111711), (58, 111750), (59, 111753), (60, 111756), (69, 111825), (70, 111846), (72, 111855),

Gene: EggyFarm\_216 Start: 113954, Stop: 114742, Start Num: 6

Candidate Starts for EggyFarm\_216:

(1, 113849), (2, 113855), (Start: 6 @113954 has 167 MA's), (Start: 17 @114140 has 8 MA's), (Start: 22 @114212 has 5 MA's), (23, 114230), (26, 114248), (29, 114299), (30, 114308), (31, 114317), (46, 114515), (50, 114551), (53, 114566), (58, 114605), (59, 114608), (60, 114611), (69, 114680), (70, 114701), (72, 114710),

Gene: EmToTheThree\_207 Start: 111498, Stop: 112286, Start Num: 6

Candidate Starts for EmToTheThree\_207:

(1, 111393), (2, 111399), (Start: 6 @111498 has 167 MA's), (Start: 17 @111684 has 8 MA's), (Start: 22 @111756 has 5 MA's), (23, 111774), (26, 111792), (29, 111843), (30, 111852), (31, 111861), (50, 112095), (53, 112110), (58, 112149), (59, 112152), (60, 112155), (69, 112224), (70, 112245), (72, 112254),

Gene: EmmaElysia\_210 Start: 111517, Stop: 112305, Start Num: 6

Candidate Starts for EmmaElysia\_210:

(1, 111412), (2, 111418), (Start: 6 @111517 has 167 MA's), (Start: 17 @111703 has 8 MA's), (Start: 22 @111775 has 5 MA's), (23, 111793), (26, 111811), (29, 111862), (30, 111871), (31, 111880), (50, 112114), (53, 112129), (58, 112168), (59, 112171), (60, 112174), (69, 112243), (70, 112264), (72, 112273),

Gene: Erdmann\_208 Start: 111456, Stop: 112244, Start Num: 6

Candidate Starts for Erdmann\_208:

(1, 111351), (2, 111357), (Start: 6 @111456 has 167 MA's), (Start: 17 @111642 has 8 MA's), (Start: 22 @111714 has 5 MA's), (23, 111732), (26, 111750), (29, 111801), (30, 111810), (31, 111819), (50, 112053), (53, 112068), (58, 112107), (59, 112110), (60, 112113), (69, 112182), (70, 112203), (72, 112212),

Gene: ErnieJ\_200 Start: 109278, Stop: 110066, Start Num: 6

Candidate Starts for ErnieJ\_200:

(1, 109173), (2, 109179), (Start: 6 @109278 has 167 MA's), (Start: 17 @109464 has 8 MA's), (Start: 22 @109536 has 5 MA's), (23, 109554), (26, 109572), (29, 109623), (30, 109632), (31, 109641), (50, 109875), (53, 109890), (58, 109929), (59, 109932), (60, 109935), (69, 110004), (70, 110025), (72, 110034),

Gene: Essence\_204 Start: 110239, Stop: 111027, Start Num: 6

Candidate Starts for Essence\_204:

(1, 110134), (2, 110140), (Start: 6 @110239 has 167 MA's), (Start: 17 @110425 has 8 MA's), (Start: 22 @110497 has 5 MA's), (23, 110515), (26, 110533), (29, 110584), (30, 110593), (31, 110602), (50, 110836), (53, 110851), (58, 110890), (59, 110893), (60, 110896), (69, 110965), (70, 110986), (72, 110995),

Gene: Ewok\_206 Start: 111375, Stop: 112163, Start Num: 6

Candidate Starts for Ewok\_206:

(1, 111270), (2, 111276), (Start: 6 @111375 has 167 MA's), (Start: 17 @111561 has 8 MA's), (Start: 22 @111633 has 5 MA's), (23, 111651), (26, 111669), (29, 111720), (30, 111729), (31, 111738), (50, 111972), (53, 111987), (58, 112026), (59, 112029), (60, 112032), (69, 112101), (70, 112122), (72, 112131),

Gene: Finch\_75 Start: 63700, Stop: 64284, Start Num: 11

Candidate Starts for Finch\_75:

(Start: 11 @63700 has 2 MA's), (12, 63724), (Start: 16 @63808 has 2 MA's), (20, 63859), (27, 63937), (30, 63991), (35, 64024), (36, 64027),

Gene: Fixie\_207 Start: 111019, Stop: 111807, Start Num: 6

Candidate Starts for Fixie\_207:

(1, 110914), (2, 110920), (Start: 6 @111019 has 167 MA's), (Start: 17 @111205 has 8 MA's), (Start: 22 @111277 has 5 MA's), (23, 111295), (26, 111313), (29, 111364), (30, 111373), (31, 111382), (50, 111616), (53, 111631), (58, 111670), (59, 111673), (60, 111676), (69, 111745), (70, 111766), (72, 111775),

Gene: Flabslab\_202 Start: 109420, Stop: 110208, Start Num: 6

Candidate Starts for Flabslab\_202:

(1, 109315), (2, 109321), (Start: 6 @109420 has 167 MA's), (Start: 17 @109606 has 8 MA's), (Start: 22 @109678 has 5 MA's), (23, 109696), (26, 109714), (29, 109765), (30, 109774), (31, 109783), (50, 110017), (53, 110032), (58, 110071), (59, 110074), (60, 110077), (69, 110146), (70, 110167), (72, 110176),

Gene: Fludd\_207 Start: 110811, Stop: 111599, Start Num: 6

Candidate Starts for Fludd\_207:

(1, 110706), (2, 110712), (Start: 6 @110811 has 167 MA's), (Start: 17 @110997 has 8 MA's), (Start: 22 @111069 has 5 MA's), (23, 111087), (26, 111105), (29, 111156), (30, 111165), (31, 111174), (50, 111408), (53, 111423), (58, 111462), (59, 111465), (60, 111468), (69, 111537), (70, 111558), (72, 111567),

Gene: Fongie\_208 Start: 111656, Stop: 112186, Start Num: 22

Candidate Starts for Fongie\_208:

(1, 111293), (2, 111299), (Start: 6 @111398 has 167 MA's), (Start: 17 @111584 has 8 MA's), (Start: 22 @111656 has 5 MA's), (23, 111674), (26, 111692), (29, 111743), (30, 111752), (31, 111761), (50, 111995), (53, 112010), (58, 112049), (59, 112052), (60, 112055), (69, 112124), (70, 112145), (72, 112154),

Gene: FoxtrotP1\_205 Start: 112055, Stop: 112843, Start Num: 6

Candidate Starts for FoxtrotP1\_205:

(1, 111950), (2, 111956), (Start: 6 @112055 has 167 MA's), (Start: 17 @112241 has 8 MA's), (Start: 22 @112313 has 5 MA's), (23, 112331), (26, 112349), (29, 112400), (30, 112409), (31, 112418), (50, 112652), (53, 112667), (58, 112706), (59, 112709), (60, 112712), (69, 112781), (70, 112802), (72, 112811),

Gene: FrayBell\_210 Start: 110900, Stop: 111688, Start Num: 6

Candidate Starts for FrayBell\_210:

(1, 110795), (2, 110801), (Start: 6 @110900 has 167 MA's), (Start: 17 @111086 has 8 MA's), (Start: 22 @111158 has 5 MA's), (23, 111176), (26, 111194), (29, 111245), (30, 111254), (31, 111263), (50, 111497), (53, 111512), (58, 111551), (59, 111554), (60, 111557), (69, 111626), (70, 111647), (72, 111656),

Gene: FudgeTart\_202 Start: 110522, Stop: 111310, Start Num: 6

Candidate Starts for FudgeTart\_202:

(1, 110417), (2, 110423), (Start: 6 @110522 has 167 MA's), (Start: 17 @110708 has 8 MA's), (Start: 22 @110780 has 5 MA's), (23, 110798), (26, 110816), (29, 110867), (30, 110876), (31, 110885), (50, 111119), (53, 111134), (58, 111173), (59, 111176), (60, 111179), (69, 111248), (70, 111269), (72, 111278),

Gene: Gabriel\_210 Start: 109977, Stop: 110765, Start Num: 6

Candidate Starts for Gabriel\_210:

(1, 109872), (2, 109878), (Start: 6 @109977 has 167 MA's), (Start: 17 @110163 has 8 MA's), (Start: 22 @110235 has 5 MA's), (23, 110253), (26, 110271), (29, 110322), (30, 110331), (31, 110340), (50, 110574), (53, 110589), (58, 110628), (59, 110631), (60, 110634), (69, 110703), (70, 110724), (72, 110733),

Gene: Gamgam\_208 Start: 110334, Stop: 111122, Start Num: 6

Candidate Starts for Gamgam\_208:

(1, 110229), (2, 110235), (Start: 6 @110334 has 167 MA's), (Start: 17 @110520 has 8 MA's), (Start: 22 @110592 has 5 MA's), (23, 110610), (26, 110628), (29, 110679), (30, 110688), (31, 110697), (50, 110931), (58, 110985), (59, 110988), (60, 110991), (69, 111060), (70, 111081), (72, 111090),

Gene: Ghost\_207 Start: 110255, Stop: 111043, Start Num: 6

Candidate Starts for Ghost\_207:

(1, 110150), (2, 110156), (Start: 6 @110255 has 167 MA's), (Start: 17 @110441 has 8 MA's), (Start: 22 @110513 has 5 MA's), (23, 110531), (26, 110549), (29, 110600), (30, 110609), (31, 110618), (50, 110852), (53, 110867), (58, 110906), (59, 110909), (60, 110912), (69, 110981), (70, 111002), (72, 111011),

Gene: Gizmo\_213 Start: 113373, Stop: 114161, Start Num: 6

Candidate Starts for Gizmo\_213:

(1, 113268), (2, 113274), (Start: 6 @113373 has 167 MA's), (Start: 17 @113559 has 8 MA's), (Start: 22 @113631 has 5 MA's), (23, 113649), (26, 113667), (29, 113718), (30, 113727), (31, 113736), (50, 113970), (53, 113985), (58, 114024), (59, 114027), (60, 114030), (69, 114099), (70, 114120), (72, 114129),

Gene: GlutenPhree\_208 Start: 110345, Stop: 111133, Start Num: 6

Candidate Starts for GlutenPhree\_208:

(1, 110240), (2, 110246), (Start: 6 @110345 has 167 MA's), (Start: 17 @110531 has 8 MA's), (Start: 22 @110603 has 5 MA's), (23, 110621), (26, 110639), (29, 110690), (30, 110699), (31, 110708), (50, 110942), (53, 110957), (58, 110996), (59, 110999), (60, 111002), (69, 111071), (70, 111092), (72, 111101),

Gene: Grasshills\_215 Start: 113953, Stop: 114741, Start Num: 6

Candidate Starts for Grasshills\_215:

(1, 113848), (2, 113854), (Start: 6 @113953 has 167 MA's), (Start: 17 @114139 has 8 MA's), (Start: 22 @114211 has 5 MA's), (23, 114229), (26, 114247), (29, 114298), (30, 114307), (31, 114316), (46, 114514), (50, 114550), (53, 114565), (58, 114604), (59, 114607), (60, 114610), (69, 114679), (70, 114700), (72, 114709),

Gene: Greely\_196 Start: 108382, Stop: 108978, Start Num: 16

Candidate Starts for Greely\_196:

(Start: 5 @108208 has 1 MA's), (Start: 16 @108382 has 2 MA's), (23, 108490), (27, 108514), (30, 108568), (31, 108577), (40, 108673), (43, 108721), (47, 108757), (48, 108760), (51, 108796), (60, 108847), (71, 108940), (73, 108964),

Gene: Grungle\_191 Start: 108292, Stop: 109080, Start Num: 6

Candidate Starts for Grungle\_191:

(1, 108187), (2, 108193), (Start: 6 @108292 has 167 MA's), (Start: 17 @108478 has 8 MA's), (Start: 22 @108550 has 5 MA's), (23, 108568), (26, 108586), (29, 108637), (30, 108646), (31, 108655), (50, 108889), (53, 108904), (58, 108943), (59, 108946), (60, 108949), (69, 109018), (70, 109039), (72, 109048),

Gene: Guwapp\_202 Start: 109089, Stop: 109877, Start Num: 6

Candidate Starts for Guwapp\_202:

(1, 108984), (2, 108990), (Start: 6 @109089 has 167 MA's), (Start: 17 @109275 has 8 MA's), (Start: 22 @109347 has 5 MA's), (23, 109365), (26, 109383), (29, 109434), (30, 109443), (31, 109452), (50, 109686), (53, 109701), (58, 109740), (59, 109743), (60, 109746), (69, 109815), (70, 109836), (72, 109845),

Gene: Halldule\_200 Start: 109474, Stop: 110262, Start Num: 6

Candidate Starts for Halldule\_200:

(1, 109369), (2, 109375), (Start: 6 @109474 has 167 MA's), (Start: 17 @109660 has 8 MA's), (Start: 22 @109732 has 5 MA's), (23, 109750), (26, 109768), (29, 109819), (30, 109828), (31, 109837), (50, 110071), (53, 110086), (58, 110125), (59, 110128), (60, 110131), (69, 110200), (70, 110221), (72, 110230),

Gene: HyRo\_195 Start: 110598, Stop: 111386, Start Num: 6

Candidate Starts for HyRo\_195:

(1, 110493), (2, 110499), (Start: 6 @110598 has 167 MA's), (Start: 17 @110784 has 8 MA's), (Start: 22 @110856 has 5 MA's), (23, 110874), (26, 110892), (29, 110943), (30, 110952), (31, 110961), (50, 111195), (53, 111210), (58, 111249), (59, 111252), (60, 111255), (69, 111324), (70, 111345), (72, 111354),

Gene: I3\_217 Start: 113334, Stop: 114122, Start Num: 6

Candidate Starts for I3\_217:

(1, 113229), (2, 113235), (Start: 6 @113334 has 167 MA's), (Start: 17 @113520 has 8 MA's), (Start: 22 @113592 has 5 MA's), (23, 113610), (26, 113628), (29, 113679), (30, 113688), (31, 113697), (50, 113931), (53, 113946), (58, 113985), (59, 113988), (60, 113991), (69, 114060), (70, 114081), (72, 114090),

Gene: IkeLoa\_199 Start: 109996, Stop: 110784, Start Num: 6

Candidate Starts for IkeLoa\_199:

(1, 109891), (2, 109897), (Start: 6 @109996 has 167 MA's), (Start: 17 @110182 has 8 MA's), (Start: 22 @110254 has 5 MA's), (23, 110272), (26, 110290), (29, 110341), (30, 110350), (31, 110359), (50, 110593), (53, 110608), (58, 110647), (59, 110650), (60, 110653), (69, 110722), (70, 110743), (72, 110752),

Gene: InigoMontoya\_210 Start: 111008, Stop: 111796, Start Num: 6

Candidate Starts for InigoMontoya\_210:

(1, 110903), (2, 110909), (Start: 6 @111008 has 167 MA's), (Start: 17 @111194 has 8 MA's), (Start: 22 @111266 has 5 MA's), (23, 111284), (26, 111302), (29, 111353), (30, 111362), (31, 111371), (50, 111605), (53, 111620), (58, 111659), (59, 111662), (60, 111665), (69, 111734), (70, 111755), (72, 111764),

Gene: InterFolia\_210 Start: 112706, Stop: 113494, Start Num: 6

Candidate Starts for InterFolia\_210:

(1, 112601), (2, 112607), (Start: 6 @112706 has 167 MA's), (Start: 17 @112892 has 8 MA's), (Start: 22 @112964 has 5 MA's), (23, 112982), (26, 113000), (29, 113051), (30, 113060), (31, 113069), (50,

113303), (53, 113318), (58, 113357), (59, 113360), (60, 113363), (69, 113432), (70, 113453), (72, 113462),

Gene: Iota\_202 Start: 110693, Stop: 111481, Start Num: 6

Candidate Starts for Iota\_202:

(1, 110588), (2, 110594), (Start: 6 @110693 has 167 MA's), (Start: 17 @110879 has 8 MA's), (Start: 22 @110951 has 5 MA's), (23, 110969), (26, 110987), (29, 111038), (30, 111047), (31, 111056), (50, 111290), (53, 111305), (58, 111344), (59, 111347), (60, 111350), (69, 111419), (70, 111440), (72, 111449),

Gene: Issimir\_200 Start: 110646, Stop: 111434, Start Num: 6

Candidate Starts for Issimir\_200:

(1, 110541), (2, 110547), (Start: 6 @110646 has 167 MA's), (Start: 17 @110832 has 8 MA's), (Start: 22 @110904 has 5 MA's), (23, 110922), (26, 110940), (29, 110991), (30, 111000), (31, 111009), (50, 111243), (53, 111258), (58, 111297), (59, 111300), (60, 111303), (69, 111372), (70, 111393), (72, 111402),

Gene: Izajani\_205 Start: 111515, Stop: 112303, Start Num: 6

Candidate Starts for Izajani\_205:

(1, 111410), (2, 111416), (Start: 6 @111515 has 167 MA's), (Start: 17 @111701 has 8 MA's), (Start: 22 @111773 has 5 MA's), (23, 111791), (26, 111809), (29, 111860), (30, 111869), (31, 111878), (50, 112112), (53, 112127), (58, 112166), (59, 112169), (60, 112172), (69, 112241), (70, 112262), (72, 112271),

Gene: JPickles\_203 Start: 109179, Stop: 109781, Start Num: 17

Candidate Starts for JPickles\_203:

(1, 108888), (2, 108894), (Start: 6 @108993 has 167 MA's), (Start: 17 @109179 has 8 MA's), (Start: 22 @109251 has 5 MA's), (23, 109269), (26, 109287), (29, 109338), (30, 109347), (31, 109356), (50, 109590), (53, 109605), (58, 109644), (59, 109647), (60, 109650), (69, 109719), (70, 109740), (72, 109749),

Gene: Janiyra\_210 Start: 111233, Stop: 112021, Start Num: 6

Candidate Starts for Janiyra\_210:

(1, 111128), (2, 111134), (Start: 6 @111233 has 167 MA's), (Start: 17 @111419 has 8 MA's), (Start: 22 @111491 has 5 MA's), (23, 111509), (26, 111527), (29, 111578), (30, 111587), (31, 111596), (50, 111830), (53, 111845), (58, 111884), (59, 111887), (60, 111890), (69, 111959), (70, 111980), (72, 111989),

Gene: JayJay\_209 Start: 111930, Stop: 112718, Start Num: 6

Candidate Starts for JayJay\_209:

(1, 111825), (2, 111831), (Start: 6 @111930 has 167 MA's), (Start: 17 @112116 has 8 MA's), (Start: 22 @112188 has 5 MA's), (23, 112206), (26, 112224), (29, 112275), (30, 112284), (31, 112293), (50, 112527), (53, 112542), (58, 112581), (59, 112584), (60, 112587), (69, 112656), (70, 112677), (72, 112686),

Gene: Jaygup\_203 Start: 110312, Stop: 110842, Start Num: 22

Candidate Starts for Jaygup\_203:

(1, 109949), (2, 109955), (Start: 6 @110054 has 167 MA's), (Start: 17 @110240 has 8 MA's), (Start: 22 @110312 has 5 MA's), (23, 110330), (26, 110348), (29, 110399), (30, 110408), (31, 110417), (50, 110651), (53, 110666), (58, 110705), (59, 110708), (60, 110711), (69, 110780), (70, 110801), (72, 110810),

Gene: JeanGrey\_93 Start: 73402, Stop: 73989, Start Num: 11

Candidate Starts for JeanGrey\_93:

(Start: 11 @73402 has 2 MA's), (37, 73726), (57, 73906),

Gene: Jedediah\_207 Start: 111107, Stop: 111895, Start Num: 6

Candidate Starts for Jedediah\_207:

(1, 111002), (2, 111008), (Start: 6 @111107 has 167 MA's), (Start: 17 @111293 has 8 MA's), (Start: 22 @111365 has 5 MA's), (23, 111383), (26, 111401), (29, 111452), (30, 111461), (31, 111470), (50, 111704), (53, 111719), (58, 111758), (59, 111761), (60, 111764), (69, 111833), (70, 111854), (72, 111863),

Gene: Jemmno\_206 Start: 109936, Stop: 110724, Start Num: 6

Candidate Starts for Jemmno\_206:

(1, 109831), (2, 109837), (Start: 6 @109936 has 167 MA's), (Start: 17 @110122 has 8 MA's), (Start: 22 @110194 has 5 MA's), (23, 110212), (26, 110230), (29, 110281), (30, 110290), (31, 110299), (50, 110533), (53, 110548), (58, 110587), (59, 110590), (60, 110593), (69, 110662), (70, 110683), (72, 110692),

Gene: Jessibeth14\_207 Start: 112124, Stop: 112912, Start Num: 6

Candidate Starts for Jessibeth14\_207:

(1, 112019), (2, 112025), (Start: 6 @112124 has 167 MA's), (Start: 17 @112310 has 8 MA's), (Start: 22 @112382 has 5 MA's), (23, 112400), (26, 112418), (29, 112469), (30, 112478), (31, 112487), (50, 112721), (53, 112736), (58, 112775), (59, 112778), (60, 112781), (69, 112850), (70, 112871), (72, 112880),

Gene: Jezreel\_204 Start: 111193, Stop: 111981, Start Num: 6

Candidate Starts for Jezreel\_204:

(1, 111088), (2, 111094), (Start: 6 @111193 has 167 MA's), (Start: 17 @111379 has 8 MA's), (Start: 22 @111451 has 5 MA's), (23, 111469), (26, 111487), (29, 111538), (30, 111547), (31, 111556), (50, 111790), (53, 111805), (58, 111844), (59, 111847), (60, 111850), (69, 111919), (70, 111940), (72, 111949),

Gene: JigglyPuff\_214 Start: 113504, Stop: 114292, Start Num: 6

Candidate Starts for JigglyPuff\_214:

(1, 113399), (2, 113405), (Start: 6 @113504 has 167 MA's), (Start: 17 @113690 has 8 MA's), (Start: 22 @113762 has 5 MA's), (23, 113780), (26, 113798), (29, 113849), (30, 113858), (31, 113867), (50, 114101), (53, 114116), (58, 114155), (59, 114158), (60, 114161), (69, 114230), (70, 114251), (72, 114260),

Gene: JulietS\_198 Start: 108225, Stop: 109013, Start Num: 6

Candidate Starts for JulietS\_198:

(1, 108120), (2, 108126), (Start: 6 @108225 has 167 MA's), (Start: 17 @108411 has 8 MA's), (Start: 22 @108483 has 5 MA's), (23, 108501), (26, 108519), (29, 108570), (30, 108579), (31, 108588), (50, 108822), (53, 108837), (58, 108876), (59, 108879), (60, 108882), (69, 108951), (70, 108972), (72, 108981),

Gene: JustHall\_201 Start: 110140, Stop: 110928, Start Num: 6

Candidate Starts for JustHall\_201:

(1, 110035), (2, 110041), (Start: 6 @110140 has 167 MA's), (Start: 17 @110326 has 8 MA's), (Start: 22 @110398 has 5 MA's), (23, 110416), (26, 110434), (29, 110485), (30, 110494), (31, 110503), (50, 110737), (53, 110752), (58, 110791), (59, 110794), (60, 110797), (69, 110866), (70, 110887), (72, 110896),

Gene: Kamryn\_206 Start: 111770, Stop: 112558, Start Num: 6

Candidate Starts for Kamryn\_206:

(1, 111665), (2, 111671), (Start: 6 @111770 has 167 MA's), (Start: 17 @111956 has 8 MA's), (Start: 22 @112028 has 5 MA's), (23, 112046), (26, 112064), (29, 112115), (30, 112124), (31, 112133), (50, 112367), (53, 112382), (58, 112421), (59, 112424), (60, 112427), (69, 112496), (70, 112517), (72, 112526),

Gene: Kboogie\_211 Start: 110798, Stop: 111586, Start Num: 6

Candidate Starts for Kboogie\_211:

(1, 110693), (2, 110699), (Start: 6 @110798 has 167 MA's), (Start: 17 @110984 has 8 MA's), (Start: 22 @111056 has 5 MA's), (23, 111074), (26, 111092), (29, 111143), (30, 111152), (31, 111161), (50, 111395), (53, 111410), (58, 111449), (59, 111452), (60, 111455), (69, 111524), (70, 111545), (72, 111554),

Gene: Khaleesi\_206 Start: 111591, Stop: 112379, Start Num: 6

Candidate Starts for Khaleesi\_206:

(1, 111486), (2, 111492), (Start: 6 @111591 has 167 MA's), (Start: 17 @111777 has 8 MA's), (Start: 22 @111849 has 5 MA's), (23, 111867), (26, 111885), (29, 111936), (30, 111945), (31, 111954), (50, 112188), (53, 112203), (58, 112242), (59, 112245), (60, 112248), (69, 112317), (70, 112338), (72, 112347),

Gene: Koguma\_206 Start: 110451, Stop: 111239, Start Num: 6

Candidate Starts for Koguma\_206:

(1, 110346), (2, 110352), (Start: 6 @110451 has 167 MA's), (Start: 17 @110637 has 8 MA's), (Start: 22 @110709 has 5 MA's), (23, 110727), (26, 110745), (29, 110796), (30, 110805), (31, 110814), (50, 111048), (53, 111063), (58, 111102), (59, 111105), (60, 111108), (69, 111177), (70, 111198), (72, 111207),

Gene: LRRHood\_200 Start: 110796, Stop: 111584, Start Num: 6

Candidate Starts for LRRHood\_200:

(1, 110691), (2, 110697), (Start: 6 @110796 has 167 MA's), (Start: 17 @110982 has 8 MA's), (Start: 22 @111054 has 5 MA's), (23, 111072), (26, 111090), (29, 111141), (30, 111150), (31, 111159), (50, 111393), (53, 111408), (58, 111447), (59, 111450), (60, 111453), (69, 111522), (70, 111543), (72, 111552),

Gene: Labradorite\_205 Start: 109802, Stop: 110332, Start Num: 22

Candidate Starts for Labradorite\_205:

(1, 109439), (2, 109445), (Start: 6 @109544 has 167 MA's), (Start: 17 @109730 has 8 MA's), (Start: 22 @109802 has 5 MA's), (23, 109820), (26, 109838), (29, 109889), (30, 109898), (31, 109907), (50, 110141), (53, 110156), (58, 110195), (59, 110198), (60, 110201), (69, 110270), (70, 110291), (72, 110300),

Gene: Latch\_207 Start: 110344, Stop: 111132, Start Num: 6

Candidate Starts for Latch\_207:

(1, 110239), (2, 110245), (Start: 6 @110344 has 167 MA's), (Start: 17 @110530 has 8 MA's), (Start: 22 @110602 has 5 MA's), (23, 110620), (26, 110638), (29, 110689), (30, 110698), (31, 110707), (50, 110941), (53, 110956), (58, 110995), (59, 110998), (60, 111001), (69, 111070), (70, 111091), (72, 111100),

Gene: Lee7\_207 Start: 112971, Stop: 113759, Start Num: 6

Candidate Starts for Lee7\_207:

(1, 112866), (2, 112872), (Start: 6 @112971 has 167 MA's), (Start: 17 @113157 has 8 MA's), (Start: 22 @113229 has 5 MA's), (23, 113247), (26, 113265), (29, 113316), (30, 113325), (31, 113334), (50, 113568), (53, 113583), (58, 113622), (59, 113625), (60, 113628), (69, 113697), (70, 113718), (72,

113727),

Gene: Lethe\_207 Start: 112234, Stop: 113022, Start Num: 6

Candidate Starts for Lethe\_207:

(1, 112129), (2, 112135), (Start: 6 @112234 has 167 MA's), (Start: 17 @112420 has 8 MA's), (Start: 22 @112492 has 5 MA's), (23, 112510), (26, 112528), (29, 112579), (30, 112588), (31, 112597), (50, 112831), (53, 112846), (58, 112885), (59, 112888), (60, 112891), (69, 112960), (70, 112981), (72, 112990),

Gene: LifeSavor\_206 Start: 110869, Stop: 111657, Start Num: 6

Candidate Starts for LifeSavor\_206:

(1, 110764), (2, 110770), (Start: 6 @110869 has 167 MA's), (Start: 17 @111055 has 8 MA's), (Start: 22 @111127 has 5 MA's), (23, 111145), (26, 111163), (29, 111214), (30, 111223), (31, 111232), (50, 111466), (53, 111481), (58, 111520), (59, 111523), (60, 111526), (69, 111595), (70, 111616), (72, 111625),

Gene: LinStu\_206 Start: 111083, Stop: 111871, Start Num: 6

Candidate Starts for LinStu\_206:

(1, 110978), (2, 110984), (Start: 6 @111083 has 167 MA's), (Start: 17 @111269 has 8 MA's), (Start: 22 @111341 has 5 MA's), (23, 111359), (26, 111377), (29, 111428), (30, 111437), (31, 111446), (50, 111680), (53, 111695), (58, 111734), (59, 111737), (60, 111740), (69, 111809), (70, 111830), (72, 111839),

Gene: Littleton\_210 Start: 111581, Stop: 112369, Start Num: 6

Candidate Starts for Littleton\_210:

(1, 111476), (2, 111482), (Start: 6 @111581 has 167 MA's), (Start: 17 @111767 has 8 MA's), (Start: 22 @111839 has 5 MA's), (23, 111857), (26, 111875), (29, 111926), (30, 111935), (31, 111944), (50, 112178), (53, 112193), (58, 112232), (59, 112235), (60, 112238), (69, 112307), (70, 112328), (72, 112337),

Gene: Loanshark\_204 Start: 110906, Stop: 111694, Start Num: 6

Candidate Starts for Loanshark\_204:

(1, 110801), (2, 110807), (Start: 6 @110906 has 167 MA's), (Start: 17 @111092 has 8 MA's), (Start: 22 @111164 has 5 MA's), (23, 111182), (26, 111200), (29, 111251), (30, 111260), (31, 111269), (50, 111503), (53, 111518), (58, 111557), (59, 111560), (60, 111563), (69, 111632), (70, 111653), (72, 111662),

Gene: LolaVinca\_205 Start: 112136, Stop: 112924, Start Num: 6

Candidate Starts for LolaVinca\_205:

(1, 112031), (2, 112037), (Start: 6 @112136 has 167 MA's), (Start: 17 @112322 has 8 MA's), (Start: 22 @112394 has 5 MA's), (23, 112412), (26, 112430), (29, 112481), (30, 112490), (31, 112499), (50, 112733), (53, 112748), (58, 112787), (59, 112790), (60, 112793), (69, 112862), (70, 112883), (72, 112892),

Gene: LookingGlass\_206 Start: 111098, Stop: 111886, Start Num: 6

Candidate Starts for LookingGlass\_206:

(1, 110993), (2, 110999), (Start: 6 @111098 has 167 MA's), (Start: 17 @111284 has 8 MA's), (Start: 22 @111356 has 5 MA's), (23, 111374), (26, 111392), (29, 111443), (30, 111452), (31, 111461), (50, 111695), (53, 111710), (58, 111749), (59, 111752), (60, 111755), (69, 111824), (70, 111845), (72, 111854),

Gene: LordLeafolot\_208 Start: 111748, Stop: 112536, Start Num: 6

Candidate Starts for LordLeafolot\_208:

(1, 111643), (2, 111649), (Start: 6 @111748 has 167 MA's), (Start: 17 @111934 has 8 MA's), (Start: 22 @112006 has 5 MA's), (23, 112024), (26, 112042), (29, 112093), (30, 112102), (31, 112111), (50, 112345), (53, 112360), (58, 112399), (59, 112402), (60, 112405), (69, 112474), (70, 112495), (72, 112504),

Gene: Lukilu\_198 Start: 111806, Stop: 112594, Start Num: 6

Candidate Starts for Lukilu\_198:

(1, 111701), (2, 111707), (Start: 6 @111806 has 167 MA's), (Start: 17 @111992 has 8 MA's), (Start: 22 @112064 has 5 MA's), (23, 112082), (26, 112100), (29, 112151), (30, 112160), (31, 112169), (50, 112403), (53, 112418), (58, 112457), (59, 112460), (60, 112463), (69, 112532), (70, 112553), (72, 112562),

Gene: Lunareta\_205 Start: 112442, Stop: 113230, Start Num: 6

Candidate Starts for Lunareta\_205:

(1, 112337), (2, 112343), (Start: 6 @112442 has 167 MA's), (Start: 17 @112628 has 8 MA's), (Start: 22 @112700 has 5 MA's), (23, 112718), (26, 112736), (29, 112787), (30, 112796), (31, 112805), (50, 113039), (53, 113054), (58, 113093), (59, 113096), (60, 113099), (69, 113168), (70, 113189), (72, 113198),

Gene: Maby2021\_207 Start: 112035, Stop: 112823, Start Num: 6

Candidate Starts for Maby2021\_207:

(1, 111930), (2, 111936), (Start: 6 @112035 has 167 MA's), (Start: 17 @112221 has 8 MA's), (Start: 22 @112293 has 5 MA's), (23, 112311), (26, 112329), (29, 112380), (30, 112389), (31, 112398), (50, 112632), (53, 112647), (58, 112686), (59, 112689), (60, 112692), (69, 112761), (70, 112782), (72, 112791),

Gene: Mangeria\_208 Start: 112137, Stop: 112925, Start Num: 6

Candidate Starts for Mangeria\_208:

(1, 112032), (2, 112038), (Start: 6 @112137 has 167 MA's), (Start: 17 @112323 has 8 MA's), (Start: 22 @112395 has 5 MA's), (23, 112413), (26, 112431), (29, 112482), (30, 112491), (31, 112500), (50, 112734), (53, 112749), (58, 112788), (59, 112791), (60, 112794), (69, 112863), (70, 112884), (72, 112893),

Gene: Matsumoto\_205 Start: 110786, Stop: 111574, Start Num: 6

Candidate Starts for Matsumoto\_205:

(1, 110681), (2, 110687), (Start: 6 @110786 has 167 MA's), (Start: 17 @110972 has 8 MA's), (Start: 22 @111044 has 5 MA's), (23, 111062), (26, 111080), (29, 111131), (30, 111140), (31, 111149), (50, 111383), (53, 111398), (58, 111437), (59, 111440), (60, 111443), (69, 111512), (70, 111533), (72, 111542),

Gene: Maturis\_204 Start: 111298, Stop: 112086, Start Num: 6

Candidate Starts for Maturis\_204:

(1, 111193), (2, 111199), (Start: 6 @111298 has 167 MA's), (Start: 17 @111484 has 8 MA's), (Start: 22 @111556 has 5 MA's), (23, 111574), (26, 111592), (29, 111643), (30, 111652), (31, 111661), (50, 111895), (53, 111910), (58, 111949), (59, 111952), (60, 111955), (69, 112024), (70, 112045), (72, 112054),

Gene: McGee\_206 Start: 109980, Stop: 110768, Start Num: 6

Candidate Starts for McGee\_206:

(1, 109875), (2, 109881), (Start: 6 @109980 has 167 MA's), (Start: 17 @110166 has 8 MA's), (Start: 22 @110238 has 5 MA's), (23, 110256), (26, 110274), (29, 110325), (30, 110334), (31, 110343), (50, 110577), (53, 110592), (58, 110631), (59, 110634), (60, 110637), (69, 110706), (70, 110727), (72, 110736),

Gene: McWolfish\_204 Start: 110802, Stop: 111590, Start Num: 6

Candidate Starts for McWolfish\_204:

(1, 110697), (2, 110703), (Start: 6 @110802 has 167 MA's), (Start: 17 @110988 has 8 MA's), (Start: 22 @111060 has 5 MA's), (23, 111078), (26, 111096), (29, 111147), (30, 111156), (31, 111165), (50, 111399), (53, 111414), (58, 111453), (59, 111456), (60, 111459), (69, 111528), (70, 111549), (72, 111558),

Gene: Megamind\_204 Start: 111093, Stop: 111881, Start Num: 6

Candidate Starts for Megamind\_204:

(1, 110988), (2, 110994), (Start: 6 @111093 has 167 MA's), (Start: 17 @111279 has 8 MA's), (Start: 22 @111351 has 5 MA's), (23, 111369), (26, 111387), (29, 111438), (30, 111447), (31, 111456), (50, 111690), (53, 111705), (58, 111744), (59, 111747), (60, 111750), (69, 111819), (70, 111840), (72, 111849),

Gene: Melpomini\_202 Start: 109878, Stop: 110666, Start Num: 6

Candidate Starts for Melpomini\_202:

(1, 109773), (2, 109779), (Start: 6 @109878 has 167 MA's), (Start: 17 @110064 has 8 MA's), (Start: 22 @110136 has 5 MA's), (23, 110154), (26, 110172), (29, 110223), (30, 110232), (31, 110241), (50, 110475), (53, 110490), (58, 110529), (59, 110532), (60, 110535), (69, 110604), (70, 110625), (72, 110634),

Gene: MikeLiesIn\_209 Start: 112229, Stop: 113017, Start Num: 6

Candidate Starts for MikeLiesIn\_209:

(1, 112124), (2, 112130), (Start: 6 @112229 has 167 MA's), (Start: 17 @112415 has 8 MA's), (Start: 22 @112487 has 5 MA's), (23, 112505), (26, 112523), (29, 112574), (30, 112583), (31, 112592), (50, 112826), (53, 112841), (58, 112880), (59, 112883), (60, 112886), (69, 112955), (70, 112976), (72, 112985),

Gene: Mikro\_203 Start: 112778, Stop: 113566, Start Num: 6

Candidate Starts for Mikro\_203:

(1, 112673), (2, 112679), (Start: 6 @112778 has 167 MA's), (Start: 17 @112964 has 8 MA's), (Start: 22 @113036 has 5 MA's), (23, 113054), (26, 113072), (29, 113123), (30, 113132), (31, 113141), (50, 113375), (53, 113390), (58, 113429), (59, 113432), (60, 113435), (69, 113504), (70, 113525), (72, 113534),

Gene: MoMoMixon\_205 Start: 111268, Stop: 112056, Start Num: 6

Candidate Starts for MoMoMixon\_205:

(1, 111163), (2, 111169), (Start: 6 @111268 has 167 MA's), (Start: 17 @111454 has 8 MA's), (Start: 22 @111526 has 5 MA's), (23, 111544), (26, 111562), (29, 111613), (30, 111622), (31, 111631), (50, 111865), (53, 111880), (58, 111919), (59, 111922), (60, 111925), (69, 111994), (70, 112015), (72, 112024),

Gene: Moby\_203 Start: 110243, Stop: 111031, Start Num: 6

Candidate Starts for Moby\_203:

(1, 110138), (2, 110144), (Start: 6 @110243 has 167 MA's), (Start: 17 @110429 has 8 MA's), (Start: 22 @110501 has 5 MA's), (23, 110519), (26, 110537), (29, 110588), (30, 110597), (31, 110606), (50, 110840), (53, 110855), (58, 110894), (59, 110897), (60, 110900), (69, 110969), (70, 110990), (72, 110999),

Gene: Moiqah\_202 Start: 110220, Stop: 111008, Start Num: 6

Candidate Starts for Moiqah\_202:

(1, 110115), (2, 110121), (Start: 6 @110220 has 167 MA's), (Start: 17 @110406 has 8 MA's), (Start: 22 @110478 has 5 MA's), (23, 110496), (26, 110514), (29, 110565), (30, 110574), (31, 110583), (50, 110817), (53, 110832), (58, 110871), (59, 110874), (60, 110877), (69, 110946), (70, 110967), (72, 110976),

Gene: Momo\_208 Start: 110344, Stop: 111132, Start Num: 6

Candidate Starts for Momo\_208:

(1, 110239), (2, 110245), (Start: 6 @110344 has 167 MA's), (Start: 17 @110530 has 8 MA's), (Start: 22 @110602 has 5 MA's), (23, 110620), (26, 110638), (29, 110689), (30, 110698), (31, 110707), (50, 110941), (53, 110956), (58, 110995), (59, 110998), (60, 111001), (69, 111070), (70, 111091), (72, 111100),

Gene: Montpel\_205 Start: 112440, Stop: 113228, Start Num: 6

Candidate Starts for Montpel\_205:

(1, 112335), (2, 112341), (Start: 6 @112440 has 167 MA's), (Start: 17 @112626 has 8 MA's), (Start: 22 @112698 has 5 MA's), (23, 112716), (26, 112734), (29, 112785), (30, 112794), (31, 112803), (50, 113037), (53, 113052), (58, 113091), (59, 113094), (60, 113097), (69, 113166), (70, 113187), (72, 113196),

Gene: Morizzled23\_204 Start: 109711, Stop: 110499, Start Num: 6

Candidate Starts for Morizzled23\_204:

(1, 109606), (2, 109612), (Start: 6 @109711 has 167 MA's), (Start: 17 @109897 has 8 MA's), (Start: 22 @109969 has 5 MA's), (23, 109987), (26, 110005), (29, 110056), (30, 110065), (31, 110074), (50, 110308), (53, 110323), (58, 110362), (59, 110365), (60, 110368), (69, 110437), (70, 110458), (72, 110467),

Gene: Myrna\_190 Start: 107878, Stop: 108648, Start Num: 5

Candidate Starts for Myrna\_190:

(Start: 5 @107878 has 1 MA's), (23, 108160), (26, 108178), (30, 108238), (31, 108247), (40, 108343), (47, 108427), (48, 108430), (51, 108466), (60, 108517), (71, 108610), (73, 108634),

Gene: Naija\_208 Start: 111047, Stop: 111835, Start Num: 6

Candidate Starts for Naija\_208:

(1, 110942), (2, 110948), (Start: 6 @111047 has 167 MA's), (Start: 17 @111233 has 8 MA's), (Start: 22 @111305 has 5 MA's), (23, 111323), (26, 111341), (29, 111392), (30, 111401), (31, 111410), (50, 111644), (53, 111659), (58, 111698), (59, 111701), (60, 111704), (69, 111773), (70, 111794), (72, 111803),

Gene: Napoleon13\_204 Start: 110075, Stop: 110863, Start Num: 6

Candidate Starts for Napoleon13\_204:

(1, 109970), (2, 109976), (Start: 6 @110075 has 167 MA's), (Start: 17 @110261 has 8 MA's), (Start: 22 @110333 has 5 MA's), (23, 110351), (26, 110369), (29, 110420), (30, 110429), (31, 110438), (50, 110672), (53, 110687), (58, 110726), (59, 110729), (60, 110732), (69, 110801), (70, 110822), (72, 110831),

Gene: Nappy\_208 Start: 112741, Stop: 113529, Start Num: 6

Candidate Starts for Nappy\_208:

(1, 112636), (2, 112642), (Start: 6 @112741 has 167 MA's), (Start: 17 @112927 has 8 MA's), (Start: 22 @112999 has 5 MA's), (23, 113017), (26, 113035), (29, 113086), (30, 113095), (31, 113104), (50, 113338), (53, 113353), (58, 113392), (59, 113395), (60, 113398), (69, 113467), (70, 113488), (72, 113497),

Gene: Naval22\_212 Start: 112824, Stop: 113612, Start Num: 6

Candidate Starts for Naval22\_212:

(1, 112719), (2, 112725), (Start: 6 @112824 has 167 MA's), (Start: 17 @113010 has 8 MA's), (Start: 22 @113082 has 5 MA's), (23, 113100), (26, 113118), (29, 113169), (30, 113178), (31, 113187), (50, 113421), (53, 113436), (58, 113475), (59, 113478), (60, 113481), (69, 113550), (70, 113571), (72, 113580),

Gene: NedWong\_206 Start: 111480, Stop: 112268, Start Num: 6

Candidate Starts for NedWong\_206:

(1, 111375), (2, 111381), (Start: 6 @111480 has 167 MA's), (Start: 17 @111666 has 8 MA's), (Start: 22 @111738 has 5 MA's), (23, 111756), (26, 111774), (29, 111825), (30, 111834), (31, 111843), (50, 112077), (53, 112092), (58, 112131), (59, 112134), (60, 112137), (69, 112206), (70, 112227), (72, 112236),

Gene: Ngannou\_204 Start: 109326, Stop: 110114, Start Num: 6

Candidate Starts for Ngannou\_204:

(1, 109221), (2, 109227), (Start: 6 @109326 has 167 MA's), (Start: 17 @109512 has 8 MA's), (Start: 22 @109584 has 5 MA's), (23, 109602), (26, 109620), (29, 109671), (30, 109680), (31, 109689), (50, 109923), (53, 109938), (58, 109977), (59, 109980), (60, 109983), (69, 110052), (70, 110073), (72, 110082),

Gene: Nidhogg\_208 Start: 111873, Stop: 112661, Start Num: 6

Candidate Starts for Nidhogg\_208:

(1, 111768), (2, 111774), (Start: 6 @111873 has 167 MA's), (Start: 17 @112059 has 8 MA's), (Start: 22 @112131 has 5 MA's), (23, 112149), (26, 112167), (29, 112218), (30, 112227), (31, 112236), (50, 112470), (53, 112485), (58, 112524), (59, 112527), (60, 112530), (69, 112599), (70, 112620), (72, 112629),

Gene: NoodleTree\_213 Start: 111780, Stop: 112568, Start Num: 6

Candidate Starts for NoodleTree\_213:

(1, 111675), (2, 111681), (Start: 6 @111780 has 167 MA's), (Start: 17 @111966 has 8 MA's), (Start: 22 @112038 has 5 MA's), (23, 112056), (26, 112074), (29, 112125), (30, 112134), (31, 112143), (50, 112377), (53, 112392), (58, 112431), (59, 112434), (60, 112437), (69, 112506), (70, 112527), (72, 112536),

Gene: Norm\_207 Start: 111782, Stop: 112570, Start Num: 6

Candidate Starts for Norm\_207:

(1, 111677), (2, 111683), (Start: 6 @111782 has 167 MA's), (Start: 17 @111968 has 8 MA's), (Start: 22 @112040 has 5 MA's), (23, 112058), (26, 112076), (29, 112127), (30, 112136), (31, 112145), (50, 112379), (53, 112394), (58, 112433), (59, 112436), (60, 112439), (69, 112508), (70, 112529), (72, 112538),

Gene: NuevoMundo\_210 Start: 113334, Stop: 114122, Start Num: 6

Candidate Starts for NuevoMundo\_210:

(1, 113229), (2, 113235), (Start: 6 @113334 has 167 MA's), (Start: 17 @113520 has 8 MA's), (Start: 22 @113592 has 5 MA's), (23, 113610), (26, 113628), (29, 113679), (30, 113688), (31, 113697), (50, 113931), (53, 113946), (58, 113985), (59, 113988), (60, 113991), (69, 114060), (70, 114081), (72, 114090),

Gene: OrediggerDelux\_203 Start: 112012, Stop: 112800, Start Num: 6

Candidate Starts for OrediggerDelux\_203:

(1, 111907), (2, 111913), (Start: 6 @112012 has 167 MA's), (Start: 17 @112198 has 8 MA's), (Start: 22 @112270 has 5 MA's), (23, 112288), (26, 112306), (29, 112357), (30, 112366), (31, 112375), (50, 112609), (53, 112624), (58, 112663), (59, 112666), (60, 112669), (69, 112738), (70, 112759), (72,

112768),

Gene: ParkTD\_206 Start: 111344, Stop: 112132, Start Num: 6

Candidate Starts for ParkTD\_206:

(1, 111239), (2, 111245), (Start: 6 @111344 has 167 MA's), (Start: 17 @111530 has 8 MA's), (Start: 22 @111602 has 5 MA's), (23, 111620), (26, 111638), (29, 111689), (30, 111698), (31, 111707), (50, 111941), (53, 111956), (58, 111995), (59, 111998), (60, 112001), (69, 112070), (70, 112091), (72, 112100),

Gene: Patter\_208 Start: 110358, Stop: 111146, Start Num: 6

Candidate Starts for Patter\_208:

(1, 110253), (2, 110259), (Start: 6 @110358 has 167 MA's), (Start: 17 @110544 has 8 MA's), (Start: 22 @110616 has 5 MA's), (23, 110634), (26, 110652), (29, 110703), (30, 110712), (31, 110721), (50, 110955), (53, 110970), (58, 111009), (59, 111012), (60, 111015), (69, 111084), (70, 111105), (72, 111114),

Gene: Phabba\_201 Start: 107957, Stop: 108553, Start Num: 16

Candidate Starts for Phabba\_201:

(Start: 5 @107783 has 1 MA's), (Start: 16 @107957 has 2 MA's), (23, 108065), (26, 108083), (30, 108143), (31, 108152), (48, 108335), (51, 108371), (52, 108374), (60, 108422), (61, 108425), (71, 108515), (73, 108539),

Gene: PharkleMinkus\_209 Start: 111157, Stop: 111687, Start Num: 22

Candidate Starts for PharkleMinkus\_209:

(1, 110794), (2, 110800), (Start: 6 @110899 has 167 MA's), (Start: 17 @111085 has 8 MA's), (Start: 22 @111157 has 5 MA's), (23, 111175), (26, 111193), (29, 111244), (30, 111253), (31, 111262), (50, 111496), (53, 111511), (58, 111550), (59, 111553), (60, 111556), (69, 111625), (70, 111646), (72, 111655),

Gene: Phlegm\_211 Start: 111047, Stop: 111835, Start Num: 6

Candidate Starts for Phlegm\_211:

(1, 110942), (2, 110948), (Start: 6 @111047 has 167 MA's), (Start: 17 @111233 has 8 MA's), (Start: 22 @111305 has 5 MA's), (23, 111323), (26, 111341), (29, 111392), (30, 111401), (31, 111410), (50, 111644), (53, 111659), (58, 111698), (59, 111701), (60, 111704), (69, 111773), (70, 111794), (72, 111803),

Gene: Phox\_208 Start: 112002, Stop: 112790, Start Num: 6

Candidate Starts for Phox\_208:

(1, 111897), (2, 111903), (Start: 6 @112002 has 167 MA's), (Start: 17 @112188 has 8 MA's), (Start: 22 @112260 has 5 MA's), (23, 112278), (26, 112296), (29, 112347), (30, 112356), (31, 112365), (50, 112599), (53, 112614), (58, 112653), (59, 112656), (60, 112659), (69, 112728), (70, 112749), (72, 112758),

Gene: Phusco\_205 Start: 109879, Stop: 110667, Start Num: 6

Candidate Starts for Phusco\_205:

(1, 109774), (2, 109780), (Start: 6 @109879 has 167 MA's), (Start: 17 @110065 has 8 MA's), (Start: 22 @110137 has 5 MA's), (23, 110155), (26, 110173), (29, 110224), (30, 110233), (31, 110242), (50, 110476), (53, 110491), (58, 110530), (59, 110533), (60, 110536), (69, 110605), (70, 110626), (72, 110635),

Gene: Pier\_208 Start: 112876, Stop: 113664, Start Num: 6

Candidate Starts for Pier\_208:

(1, 112771), (2, 112777), (Start: 6 @112876 has 167 MA's), (Start: 17 @113062 has 8 MA's), (Start: 22 @113134 has 5 MA's), (23, 113152), (26, 113170), (29, 113221), (30, 113230), (31, 113239), (50, 113473), (53, 113488), (58, 113527), (59, 113530), (60, 113533), (69, 113602), (70, 113623), (72, 113632),

Gene: Pinkcreek\_191 Start: 110255, Stop: 111043, Start Num: 6

Candidate Starts for Pinkcreek\_191:

(1, 110150), (2, 110156), (Start: 6 @110255 has 167 MA's), (Start: 17 @110441 has 8 MA's), (Start: 22 @110513 has 5 MA's), (23, 110531), (26, 110549), (29, 110600), (30, 110609), (31, 110618), (50, 110852), (53, 110867), (58, 110906), (59, 110909), (60, 110912), (69, 110981), (70, 111002), (72, 111011),

Gene: Pio\_215 Start: 114071, Stop: 114859, Start Num: 6

Candidate Starts for Pio\_215:

(1, 113966), (2, 113972), (Start: 6 @114071 has 167 MA's), (Start: 17 @114257 has 8 MA's), (Start: 22 @114329 has 5 MA's), (23, 114347), (26, 114365), (29, 114416), (30, 114425), (31, 114434), (50, 114668), (53, 114683), (58, 114722), (59, 114725), (60, 114728), (69, 114797), (70, 114818), (72, 114827),

Gene: Pivoine\_208 Start: 111047, Stop: 111835, Start Num: 6

Candidate Starts for Pivoine\_208:

(1, 110942), (2, 110948), (Start: 6 @111047 has 167 MA's), (Start: 17 @111233 has 8 MA's), (Start: 22 @111305 has 5 MA's), (23, 111323), (26, 111341), (29, 111392), (30, 111401), (31, 111410), (50, 111644), (53, 111659), (58, 111698), (59, 111701), (60, 111704), (69, 111773), (70, 111794), (72, 111803),

Gene: Pleione\_211 Start: 111822, Stop: 112610, Start Num: 6

Candidate Starts for Pleione\_211:

(1, 111717), (2, 111723), (Start: 6 @111822 has 167 MA's), (Start: 17 @112008 has 8 MA's), (Start: 22 @112080 has 5 MA's), (23, 112098), (26, 112116), (29, 112167), (30, 112176), (31, 112185), (50, 112419), (53, 112434), (58, 112473), (59, 112476), (60, 112479), (69, 112548), (70, 112569), (72, 112578),

Gene: Primadonna\_202 Start: 110708, Stop: 111496, Start Num: 6

Candidate Starts for Primadonna\_202:

(1, 110603), (2, 110609), (Start: 6 @110708 has 167 MA's), (Start: 17 @110894 has 8 MA's), (21, 110954), (Start: 22 @110966 has 5 MA's), (23, 110984), (26, 111002), (29, 111053), (30, 111062), (31, 111071), (50, 111305), (53, 111320), (58, 111359), (59, 111362), (60, 111365), (69, 111434), (70, 111455), (72, 111464),

Gene: Pupper\_150 Start: 104371, Stop: 105045, Start Num: 7

Candidate Starts for Pupper\_150:

(Start: 7 @104371 has 3 MA's), (Start: 17 @104521 has 8 MA's), (19, 104551), (34, 104713), (44, 104863), (47, 104887), (51, 104923), (56, 104965), (59, 104974), (66, 105034), (68, 105037),

Gene: Pupusa\_211 Start: 112634, Stop: 113164, Start Num: 22

Candidate Starts for Pupusa\_211:

(1, 112271), (2, 112277), (Start: 6 @112376 has 167 MA's), (Start: 17 @112562 has 8 MA's), (Start: 22 @112634 has 5 MA's), (23, 112652), (26, 112670), (29, 112721), (30, 112730), (31, 112739), (50, 112973), (53, 112988), (58, 113027), (59, 113030), (60, 113033), (69, 113102), (70, 113123), (72, 113132),

Gene: PurduePete\_207 Start: 112050, Stop: 112838, Start Num: 6

Candidate Starts for PurduePete\_207:

(1, 111945), (2, 111951), (Start: 6 @112050 has 167 MA's), (Start: 17 @112236 has 8 MA's), (Start: 22 @112308 has 5 MA's), (23, 112326), (26, 112344), (29, 112395), (30, 112404), (31, 112413), (50, 112647), (53, 112662), (58, 112701), (59, 112704), (60, 112707), (69, 112776), (70, 112797), (72, 112806),

Gene: QBert\_199 Start: 110403, Stop: 111191, Start Num: 6

Candidate Starts for QBert\_199:

(1, 110298), (2, 110304), (Start: 6 @110403 has 167 MA's), (Start: 17 @110589 has 8 MA's), (Start: 22 @110661 has 5 MA's), (23, 110679), (26, 110697), (29, 110748), (30, 110757), (31, 110766), (50, 111000), (53, 111015), (58, 111054), (59, 111057), (60, 111060), (69, 111129), (70, 111150), (72, 111159),

Gene: Quasimodo\_209 Start: 111673, Stop: 112461, Start Num: 6

Candidate Starts for Quasimodo\_209:

(1, 111568), (2, 111574), (Start: 6 @111673 has 167 MA's), (Start: 17 @111859 has 8 MA's), (Start: 22 @111931 has 5 MA's), (23, 111949), (26, 111967), (29, 112018), (30, 112027), (31, 112036), (50, 112270), (53, 112285), (58, 112324), (59, 112327), (60, 112330), (69, 112399), (70, 112420), (72, 112429),

Gene: Rabinovish\_200 Start: 111948, Stop: 112736, Start Num: 6

Candidate Starts for Rabinovish\_200:

(1, 111843), (2, 111849), (Start: 6 @111948 has 167 MA's), (Start: 17 @112134 has 8 MA's), (Start: 22 @112206 has 5 MA's), (23, 112224), (26, 112242), (29, 112293), (30, 112302), (31, 112311), (50, 112545), (53, 112560), (58, 112599), (59, 112602), (60, 112605), (69, 112674), (70, 112695), (72, 112704),

Gene: Rahel\_208 Start: 110782, Stop: 111570, Start Num: 6

Candidate Starts for Rahel\_208:

(1, 110677), (2, 110683), (Start: 6 @110782 has 167 MA's), (Start: 17 @110968 has 8 MA's), (Start: 22 @111040 has 5 MA's), (23, 111058), (26, 111076), (29, 111127), (30, 111136), (31, 111145), (50, 111379), (53, 111394), (58, 111433), (59, 111436), (60, 111439), (69, 111508), (70, 111529), (72, 111538),

Gene: RedWattleHog\_77 Start: 69602, Stop: 70216, Start Num: 10

Candidate Starts for RedWattleHog\_77:

(Start: 10 @69602 has 2 MA's), (12, 69623), (24, 69818), (30, 69890), (32, 69902), (45, 70040), (54, 70109), (55, 70121), (64, 70178),

Gene: Rizal\_199 Start: 109486, Stop: 110088, Start Num: 17

Candidate Starts for Rizal\_199:

(1, 109195), (2, 109201), (Start: 6 @109300 has 167 MA's), (Start: 17 @109486 has 8 MA's), (Start: 22 @109558 has 5 MA's), (23, 109576), (26, 109594), (29, 109645), (30, 109654), (31, 109663), (50, 109897), (53, 109912), (58, 109951), (59, 109954), (60, 109957), (69, 110026), (70, 110047), (72, 110056),

Gene: RoMag\_202 Start: 111093, Stop: 111881, Start Num: 6

Candidate Starts for RoMag\_202:

(1, 110988), (2, 110994), (Start: 6 @111093 has 167 MA's), (Start: 17 @111279 has 8 MA's), (Start: 22 @111351 has 5 MA's), (23, 111369), (26, 111387), (29, 111438), (30, 111447), (31, 111456), (50, 111690), (53, 111705), (58, 111744), (59, 111747), (60, 111750), (69, 111819), (70, 111840), (72, 111849),

Gene: Rocha\_204 Start: 110793, Stop: 111323, Start Num: 22

Candidate Starts for Rocha\_204:

(1, 110430), (2, 110436), (Start: 6 @110535 has 167 MA's), (Start: 17 @110721 has 8 MA's), (Start: 22 @110793 has 5 MA's), (23, 110811), (26, 110829), (29, 110880), (30, 110889), (31, 110898), (50, 111132), (53, 111147), (58, 111186), (59, 111189), (60, 111192), (69, 111261), (70, 111282), (72, 111291),

Gene: Ronan\_203 Start: 109485, Stop: 110273, Start Num: 6

Candidate Starts for Ronan\_203:

(1, 109380), (2, 109386), (Start: 6 @109485 has 167 MA's), (Start: 17 @109671 has 8 MA's), (Start: 22 @109743 has 5 MA's), (23, 109761), (26, 109779), (29, 109830), (30, 109839), (31, 109848), (50, 110082), (53, 110097), (58, 110136), (59, 110139), (60, 110142), (69, 110211), (70, 110232), (72, 110241),

Gene: Roots515\_209 Start: 112601, Stop: 113389, Start Num: 6

Candidate Starts for Roots515\_209:

(1, 112496), (2, 112502), (Start: 6 @112601 has 167 MA's), (Start: 17 @112787 has 8 MA's), (Start: 22 @112859 has 5 MA's), (23, 112877), (26, 112895), (29, 112946), (30, 112955), (31, 112964), (50, 113198), (53, 113213), (58, 113252), (59, 113255), (60, 113258), (69, 113327), (70, 113348), (72, 113357),

Gene: SCentae\_149 Start: 104522, Stop: 105196, Start Num: 7

Candidate Starts for SCentae\_149:

(Start: 7 @104522 has 3 MA's), (Start: 17 @104672 has 8 MA's), (19, 104702), (34, 104864), (44, 105014), (51, 105074), (56, 105116), (59, 105125), (66, 105185), (68, 105188),

Gene: SVoro\_203 Start: 111652, Stop: 112182, Start Num: 22

Candidate Starts for SVoro\_203:

(1, 111289), (2, 111295), (Start: 6 @111394 has 167 MA's), (Start: 17 @111580 has 8 MA's), (Start: 22 @111652 has 5 MA's), (23, 111670), (26, 111688), (29, 111739), (30, 111748), (31, 111757), (50, 111991), (53, 112006), (58, 112045), (59, 112048), (60, 112051), (69, 112120), (70, 112141), (72, 112150),

Gene: Salacia\_207 Start: 111185, Stop: 111973, Start Num: 6

Candidate Starts for Salacia\_207:

(1, 111080), (2, 111086), (Start: 6 @111185 has 167 MA's), (Start: 17 @111371 has 8 MA's), (Start: 22 @111443 has 5 MA's), (23, 111461), (26, 111479), (29, 111530), (30, 111539), (31, 111548), (50, 111782), (53, 111797), (58, 111836), (59, 111839), (60, 111842), (69, 111911), (70, 111932), (72, 111941),

Gene: Sauce\_203 Start: 109999, Stop: 110787, Start Num: 6

Candidate Starts for Sauce\_203:

(1, 109894), (2, 109900), (Start: 6 @109999 has 167 MA's), (Start: 17 @110185 has 8 MA's), (Start: 22 @110257 has 5 MA's), (23, 110275), (26, 110293), (29, 110344), (30, 110353), (31, 110362), (50, 110596), (53, 110611), (58, 110650), (59, 110653), (60, 110656), (69, 110725), (70, 110746), (72, 110755),

Gene: ScoobyDoobyDoo\_188 Start: 105071, Stop: 105730, Start Num: 13

Candidate Starts for ScoobyDoobyDoo\_188:

(Start: 5 @104951 has 1 MA's), (12, 105041), (Start: 13 @105071 has 1 MA's), (Start: 16 @105125 has 2 MA's), (23, 105233), (30, 105311), (31, 105320), (37, 105353), (39, 105380), (40, 105425), (51, 105548), (58, 105593), (60, 105599),

Gene: ScottMcG\_200 Start: 109992, Stop: 110594, Start Num: 17

Candidate Starts for ScottMcG\_200:

(1, 109701), (2, 109707), (Start: 6 @109806 has 167 MA's), (Start: 17 @109992 has 8 MA's), (Start: 22 @110064 has 5 MA's), (23, 110082), (26, 110100), (29, 110151), (30, 110160), (31, 110169), (50, 110403), (53, 110418), (58, 110457), (59, 110460), (60, 110463), (69, 110532), (70, 110553), (72, 110562),

Gene: Sebata\_208 Start: 112508, Stop: 113296, Start Num: 6

Candidate Starts for Sebata\_208:

(1, 112403), (2, 112409), (Start: 6 @112508 has 167 MA's), (Start: 17 @112694 has 8 MA's), (Start: 22 @112766 has 5 MA's), (23, 112784), (26, 112802), (29, 112853), (30, 112862), (31, 112871), (50, 113105), (53, 113120), (58, 113159), (59, 113162), (60, 113165), (69, 113234), (70, 113255), (72, 113264),

Gene: Shaqnato\_198 Start: 110216, Stop: 111004, Start Num: 6

Candidate Starts for Shaqnato\_198:

(1, 110111), (2, 110117), (Start: 6 @110216 has 167 MA's), (Start: 17 @110402 has 8 MA's), (Start: 22 @110474 has 5 MA's), (23, 110492), (26, 110510), (29, 110561), (30, 110570), (31, 110579), (50, 110813), (53, 110828), (58, 110867), (59, 110870), (60, 110873), (69, 110942), (70, 110963), (72, 110972),

Gene: Shelob\_208 Start: 112956, Stop: 113744, Start Num: 6

Candidate Starts for Shelob\_208:

(1, 112851), (2, 112857), (Start: 6 @112956 has 167 MA's), (Start: 17 @113142 has 8 MA's), (Start: 22 @113214 has 5 MA's), (23, 113232), (26, 113250), (29, 113301), (30, 113310), (31, 113319), (50, 113553), (53, 113568), (58, 113607), (59, 113610), (60, 113613), (69, 113682), (70, 113703), (72, 113712),

Gene: ShiaLabeouf\_204 Start: 109990, Stop: 110778, Start Num: 6

Candidate Starts for ShiaLabeouf\_204:

(1, 109885), (2, 109891), (Start: 6 @109990 has 167 MA's), (Start: 17 @110176 has 8 MA's), (Start: 22 @110248 has 5 MA's), (23, 110266), (26, 110284), (29, 110335), (30, 110344), (31, 110353), (50, 110587), (53, 110602), (58, 110641), (59, 110644), (60, 110647), (69, 110716), (70, 110737), (72, 110746),

Gene: Shifa\_184 Start: 110567, Stop: 111355, Start Num: 6

Candidate Starts for Shifa\_184:

(1, 110462), (2, 110468), (Start: 6 @110567 has 167 MA's), (Start: 17 @110753 has 8 MA's), (Start: 22 @110825 has 5 MA's), (23, 110843), (26, 110861), (29, 110912), (30, 110921), (31, 110930), (50, 111164), (53, 111179), (58, 111218), (59, 111221), (60, 111224), (69, 111293), (70, 111314), (72, 111323),

Gene: Shnickers\_205 Start: 110054, Stop: 110842, Start Num: 6

Candidate Starts for Shnickers\_205:

(1, 109949), (2, 109955), (Start: 6 @110054 has 167 MA's), (Start: 17 @110240 has 8 MA's), (Start: 22 @110312 has 5 MA's), (23, 110330), (26, 110348), (29, 110399), (30, 110408), (31, 110417), (50, 110651), (53, 110666), (58, 110705), (59, 110708), (60, 110711), (69, 110780), (70, 110801), (72, 110810),

Gene: Shrimp\_209 Start: 112111, Stop: 112899, Start Num: 6

Candidate Starts for Shrimp\_209:

(1, 112006), (2, 112012), (Start: 6 @112111 has 167 MA's), (Start: 17 @112297 has 8 MA's), (Start: 22 @112369 has 5 MA's), (23, 112387), (26, 112405), (29, 112456), (30, 112465), (31, 112474), (50,

112708), (53, 112723), (58, 112762), (59, 112765), (60, 112768), (69, 112837), (70, 112858), (72, 112867),

Gene: SilverDipper\_211 Start: 111603, Stop: 112391, Start Num: 6

Candidate Starts for SilverDipper\_211:

(1, 111498), (2, 111504), (Start: 6 @111603 has 167 MA's), (Start: 17 @111789 has 8 MA's), (Start: 22 @111861 has 5 MA's), (23, 111879), (26, 111897), (29, 111948), (30, 111957), (31, 111966), (50, 112200), (53, 112215), (58, 112254), (59, 112257), (60, 112260), (69, 112329), (70, 112350), (72, 112359),

Gene: Skog\_210 Start: 133881, Stop: 134423, Start Num: 16

Candidate Starts for Skog\_210:

(3, 133656), (4, 133668), (9, 133758), (14, 133848), (Start: 16 @133881 has 2 MA's), (18, 133920), (25, 133998), (26, 134007), (28, 134022), (30, 134067), (33, 134082), (41, 134181), (42, 134184), (51, 134301), (53, 134307), (56, 134343), (59, 134352), (65, 134403), (67, 134412),

Gene: SmallFry\_207 Start: 110148, Stop: 110936, Start Num: 6

Candidate Starts for SmallFry\_207:

(1, 110043), (2, 110049), (Start: 6 @110148 has 167 MA's), (Start: 17 @110334 has 8 MA's), (Start: 22 @110406 has 5 MA's), (23, 110424), (26, 110442), (29, 110493), (30, 110502), (31, 110511), (50, 110745), (53, 110760), (58, 110799), (59, 110802), (69, 110874), (70, 110895), (72, 110904),

Gene: SoilZilla\_202 Start: 110701, Stop: 111489, Start Num: 6

Candidate Starts for SoilZilla\_202:

(1, 110596), (2, 110602), (Start: 6 @110701 has 167 MA's), (Start: 17 @110887 has 8 MA's), (Start: 22 @110959 has 5 MA's), (23, 110977), (26, 110995), (29, 111046), (30, 111055), (31, 111064), (50, 111298), (53, 111313), (58, 111352), (59, 111355), (60, 111358), (69, 111427), (70, 111448), (72, 111457),

Gene: Spec\_202 Start: 110597, Stop: 111127, Start Num: 22

Candidate Starts for Spec\_202:

(1, 110234), (2, 110240), (Start: 6 @110339 has 167 MA's), (Start: 17 @110525 has 8 MA's), (Start: 22 @110597 has 5 MA's), (23, 110615), (26, 110633), (29, 110684), (30, 110693), (31, 110702), (50, 110936), (53, 110951), (58, 110990), (59, 110993), (60, 110996), (69, 111065), (70, 111086), (72, 111095),

Gene: Specks\_211 Start: 112455, Stop: 113243, Start Num: 6

Candidate Starts for Specks\_211:

(1, 112350), (2, 112356), (Start: 6 @112455 has 167 MA's), (Start: 17 @112641 has 8 MA's), (21, 112701), (Start: 22 @112713 has 5 MA's), (23, 112731), (26, 112749), (29, 112800), (30, 112809), (31, 112818), (50, 113052), (53, 113067), (58, 113106), (59, 113109), (60, 113112), (69, 113181), (70, 113202), (72, 113211),

Gene: Sprinklers\_205 Start: 110706, Stop: 111494, Start Num: 6

Candidate Starts for Sprinklers\_205:

(1, 110601), (2, 110607), (Start: 6 @110706 has 167 MA's), (Start: 17 @110892 has 8 MA's), (Start: 22 @110964 has 5 MA's), (23, 110982), (26, 111000), (29, 111051), (30, 111060), (31, 111069), (50, 111303), (53, 111318), (58, 111357), (59, 111360), (60, 111363), (69, 111432), (70, 111453), (72, 111462),

Gene: Spud\_201 Start: 110604, Stop: 111206, Start Num: 17

Candidate Starts for Spud\_201:

(1, 110313), (2, 110319), (Start: 6 @110418 has 167 MA's), (Start: 17 @110604 has 8 MA's), (Start: 22 @110676 has 5 MA's), (23, 110694), (26, 110712), (29, 110763), (30, 110772), (31, 110781), (50, 111015), (53, 111030), (58, 111069), (59, 111072), (60, 111075), (69, 111144), (70, 111165), (72, 111174),

Gene: SrishMeg2525\_204 Start: 111582, Stop: 112370, Start Num: 6

Candidate Starts for SrishMeg2525\_204:

(1, 111477), (2, 111483), (Start: 6 @111582 has 167 MA's), (Start: 17 @111768 has 8 MA's), (Start: 22 @111840 has 5 MA's), (23, 111858), (26, 111876), (29, 111927), (30, 111936), (31, 111945), (50, 112179), (53, 112194), (58, 112233), (59, 112236), (60, 112239), (69, 112308), (70, 112329), (72, 112338),

Gene: StephanieG\_203 Start: 111613, Stop: 112401, Start Num: 6

Candidate Starts for StephanieG\_203:

(1, 111508), (2, 111514), (Start: 6 @111613 has 167 MA's), (Start: 17 @111799 has 8 MA's), (Start: 22 @111871 has 5 MA's), (23, 111889), (26, 111907), (29, 111958), (30, 111967), (31, 111976), (50, 112210), (53, 112225), (58, 112264), (59, 112267), (60, 112270), (69, 112339), (70, 112360), (72, 112369),

Gene: Stormageddon\_74 Start: 69583, Stop: 70197, Start Num: 10

Candidate Starts for Stormageddon\_74:

(Start: 10 @69583 has 2 MA's), (12, 69604), (24, 69799), (30, 69871), (32, 69883), (45, 70021), (54, 70090), (55, 70102), (64, 70159),

Gene: Stubby\_191 Start: 110458, Stop: 111246, Start Num: 6

Candidate Starts for Stubby\_191:

(1, 110353), (2, 110359), (Start: 6 @110458 has 167 MA's), (Start: 17 @110644 has 8 MA's), (Start: 22 @110716 has 5 MA's), (23, 110734), (26, 110752), (29, 110803), (30, 110812), (31, 110821), (50, 111055), (53, 111070), (58, 111109), (59, 111112), (60, 111115), (69, 111184), (70, 111205), (72, 111214),

Gene: StubbySaigey\_212 Start: 111137, Stop: 111925, Start Num: 6

Candidate Starts for StubbySaigey\_212:

(1, 111032), (2, 111038), (Start: 6 @111137 has 167 MA's), (Start: 17 @111323 has 8 MA's), (Start: 22 @111395 has 5 MA's), (23, 111413), (26, 111431), (29, 111482), (30, 111491), (31, 111500), (50, 111734), (53, 111749), (58, 111788), (59, 111791), (60, 111794), (69, 111863), (70, 111884), (72, 111893),

Gene: Substance289\_204 Start: 110454, Stop: 110984, Start Num: 22

Candidate Starts for Substance289\_204:

(1, 110091), (2, 110097), (Start: 6 @110196 has 167 MA's), (Start: 17 @110382 has 8 MA's), (Start: 22 @110454 has 5 MA's), (23, 110472), (26, 110490), (29, 110541), (30, 110550), (31, 110559), (50, 110793), (53, 110808), (58, 110847), (59, 110850), (60, 110853), (69, 110922), (70, 110943), (72, 110952),

Gene: Tainan\_208 Start: 111733, Stop: 112263, Start Num: 22

Candidate Starts for Tainan\_208:

(1, 111370), (2, 111376), (Start: 6 @111475 has 167 MA's), (Start: 17 @111661 has 8 MA's), (Start: 22 @111733 has 5 MA's), (23, 111751), (26, 111769), (29, 111820), (30, 111829), (31, 111838), (50, 112072), (53, 112087), (58, 112126), (59, 112129), (60, 112132), (69, 112201), (70, 112222), (72, 112231),

Gene: Teardrop\_204 Start: 109650, Stop: 110438, Start Num: 6

Candidate Starts for Teardrop\_204:

(1, 109545), (2, 109551), (Start: 6 @109650 has 167 MA's), (Start: 17 @109836 has 8 MA's), (Start: 22 @109908 has 5 MA's), (23, 109926), (26, 109944), (29, 109995), (30, 110004), (31, 110013), (50, 110247), (53, 110262), (58, 110301), (59, 110304), (60, 110307), (69, 110376), (70, 110397), (72, 110406),

Gene: TinyTim\_205 Start: 110431, Stop: 111219, Start Num: 6

Candidate Starts for TinyTim\_205:

(1, 110326), (2, 110332), (Start: 6 @110431 has 167 MA's), (Start: 17 @110617 has 8 MA's), (Start: 22 @110689 has 5 MA's), (23, 110707), (26, 110725), (29, 110776), (30, 110785), (31, 110794), (50, 111028), (53, 111043), (58, 111082), (59, 111085), (60, 111088), (69, 111157), (70, 111178), (72, 111187),

Gene: Tonenili\_228 Start: 117252, Stop: 118040, Start Num: 6

Candidate Starts for Tonenili\_228:

(1, 117147), (2, 117153), (Start: 6 @117252 has 167 MA's), (Start: 17 @117438 has 8 MA's), (Start: 22 @117510 has 5 MA's), (23, 117528), (26, 117546), (29, 117597), (30, 117606), (53, 117864), (58, 117903), (59, 117906), (60, 117909), (69, 117978), (70, 117999), (72, 118008),

Gene: Tortoise16\_205 Start: 110893, Stop: 111681, Start Num: 6

Candidate Starts for Tortoise16\_205:

(1, 110788), (2, 110794), (Start: 6 @110893 has 167 MA's), (Start: 17 @111079 has 8 MA's), (Start: 22 @111151 has 5 MA's), (23, 111169), (26, 111187), (29, 111238), (30, 111247), (31, 111256), (50, 111490), (53, 111505), (58, 111544), (59, 111547), (60, 111550), (69, 111619), (70, 111640), (72, 111649),

Gene: Trinitium\_203 Start: 110178, Stop: 110966, Start Num: 6

Candidate Starts for Trinitium\_203:

(1, 110073), (2, 110079), (Start: 6 @110178 has 167 MA's), (Start: 17 @110364 has 8 MA's), (Start: 22 @110436 has 5 MA's), (23, 110454), (26, 110472), (29, 110523), (30, 110532), (31, 110541), (50, 110775), (53, 110790), (58, 110829), (59, 110832), (60, 110835), (69, 110904), (70, 110925), (72, 110934),

Gene: Turret\_200 Start: 109760, Stop: 110548, Start Num: 6

Candidate Starts for Turret\_200:

(1, 109655), (2, 109661), (Start: 6 @109760 has 167 MA's), (Start: 17 @109946 has 8 MA's), (Start: 22 @110018 has 5 MA's), (23, 110036), (26, 110054), (29, 110105), (30, 110114), (31, 110123), (50, 110357), (53, 110372), (58, 110411), (59, 110414), (60, 110417), (69, 110486), (70, 110507), (72, 110516),

Gene: Tyke\_205 Start: 112260, Stop: 113048, Start Num: 6

Candidate Starts for Tyke\_205:

(1, 112155), (2, 112161), (Start: 6 @112260 has 167 MA's), (Start: 17 @112446 has 8 MA's), (Start: 22 @112518 has 5 MA's), (23, 112536), (26, 112554), (29, 112605), (30, 112614), (31, 112623), (50, 112857), (53, 112872), (58, 112911), (59, 112914), (60, 112917), (69, 112986), (70, 113007), (72, 113016),

Gene: ValleyTerrace\_208 Start: 110344, Stop: 111132, Start Num: 6

Candidate Starts for ValleyTerrace\_208:

(1, 110239), (2, 110245), (Start: 6 @110344 has 167 MA's), (Start: 17 @110530 has 8 MA's), (Start: 22 @110602 has 5 MA's), (23, 110620), (26, 110638), (29, 110689), (30, 110698), (31, 110707), (50, 110941), (53, 110956), (58, 110995), (59, 110998), (60, 111001), (69, 111070), (70, 111091), (72, 111100),

Gene: Vortrix\_226 Start: 116039, Stop: 116827, Start Num: 6

Candidate Starts for Vortrix\_226:

(1, 115934), (2, 115940), (Start: 6 @116039 has 167 MA's), (Start: 17 @116225 has 8 MA's), (Start: 22 @116297 has 5 MA's), (23, 116315), (26, 116333), (29, 116384), (30, 116393), (53, 116651), (58, 116690), (59, 116693), (60, 116696), (69, 116765), (70, 116786), (72, 116795),

Gene: Wally\_205 Start: 110328, Stop: 111116, Start Num: 6

Candidate Starts for Wally\_205:

(1, 110223), (2, 110229), (Start: 6 @110328 has 167 MA's), (Start: 17 @110514 has 8 MA's), (Start: 22 @110586 has 5 MA's), (23, 110604), (26, 110622), (29, 110673), (30, 110682), (31, 110691), (50, 110925), (53, 110940), (58, 110979), (59, 110982), (60, 110985), (69, 111054), (70, 111075), (72, 111084),

Gene: Willis\_208 Start: 111242, Stop: 112030, Start Num: 6

Candidate Starts for Willis\_208:

(1, 111137), (2, 111143), (Start: 6 @111242 has 167 MA's), (Start: 17 @111428 has 8 MA's), (Start: 22 @111500 has 5 MA's), (23, 111518), (26, 111536), (29, 111587), (30, 111596), (31, 111605), (50, 111839), (53, 111854), (58, 111893), (59, 111896), (60, 111899), (69, 111968), (70, 111989), (72, 111998),

Gene: Yassified\_204 Start: 110683, Stop: 111471, Start Num: 6

Candidate Starts for Yassified\_204:

(1, 110578), (2, 110584), (Start: 6 @110683 has 167 MA's), (Start: 17 @110869 has 8 MA's), (Start: 22 @110941 has 5 MA's), (23, 110959), (26, 110977), (29, 111028), (30, 111037), (31, 111046), (50, 111280), (53, 111295), (58, 111334), (59, 111337), (60, 111340), (69, 111409), (70, 111430), (72, 111439),

Gene: YemiJoy2021\_208 Start: 111998, Stop: 112786, Start Num: 6

Candidate Starts for YemiJoy2021\_208:

(1, 111893), (2, 111899), (Start: 6 @111998 has 167 MA's), (Start: 17 @112184 has 8 MA's), (Start: 22 @112256 has 5 MA's), (23, 112274), (26, 112292), (29, 112343), (30, 112352), (31, 112361), (50, 112595), (53, 112610), (58, 112649), (59, 112652), (60, 112655), (69, 112724), (70, 112745), (72, 112754),

Gene: YoungMoneyMata\_205 Start: 110540, Stop: 111328, Start Num: 6

Candidate Starts for YoungMoneyMata\_205:

(1, 110435), (2, 110441), (Start: 6 @110540 has 167 MA's), (Start: 17 @110726 has 8 MA's), (Start: 22 @110798 has 5 MA's), (23, 110816), (26, 110834), (29, 110885), (30, 110894), (31, 110903), (50, 111137), (53, 111152), (58, 111191), (59, 111194), (60, 111197), (69, 111266), (70, 111287), (72, 111296),

Gene: Yucca\_207 Start: 111990, Stop: 112778, Start Num: 6

Candidate Starts for Yucca\_207:

(1, 111885), (2, 111891), (Start: 6 @111990 has 167 MA's), (Start: 17 @112176 has 8 MA's), (Start: 22 @112248 has 5 MA's), (23, 112266), (26, 112284), (29, 112335), (30, 112344), (31, 112353), (50, 112587), (53, 112602), (58, 112641), (59, 112644), (60, 112647), (69, 112716), (70, 112737), (72, 112746),

Gene: Zalkecks\_206 Start: 111071, Stop: 111859, Start Num: 6

Candidate Starts for Zalkecks\_206:

(1, 110966), (2, 110972), (Start: 6 @111071 has 167 MA's), (Start: 17 @111257 has 8 MA's), (Start: 22 @111329 has 5 MA's), (23, 111347), (26, 111365), (29, 111416), (30, 111425), (31, 111434), (50,

111668), (53, 111683), (58, 111722), (59, 111725), (60, 111728), (69, 111797), (70, 111818), (72, 111827),

Gene: Zeenon\_209 Start: 111642, Stop: 112430, Start Num: 6

Candidate Starts for Zeenon\_209:

(1, 111537), (2, 111543), (Start: 6 @111642 has 167 MA's), (Start: 17 @111828 has 8 MA's), (Start: 22 @111900 has 5 MA's), (23, 111918), (26, 111936), (29, 111987), (30, 111996), (31, 112005), (50, 112239), (53, 112254), (58, 112293), (59, 112296), (60, 112299), (69, 112368), (70, 112389), (72, 112398),

Gene: ZygoTaiga\_204 Start: 112262, Stop: 113050, Start Num: 6

Candidate Starts for ZygoTaiga\_204:

(1, 112157), (2, 112163), (Start: 6 @112262 has 167 MA's), (Start: 17 @112448 has 8 MA's), (Start: 22 @112520 has 5 MA's), (23, 112538), (26, 112556), (29, 112607), (30, 112616), (31, 112625), (50, 112859), (53, 112874), (58, 112913), (59, 112916), (60, 112919), (69, 112988), (70, 113009), (72, 113018),