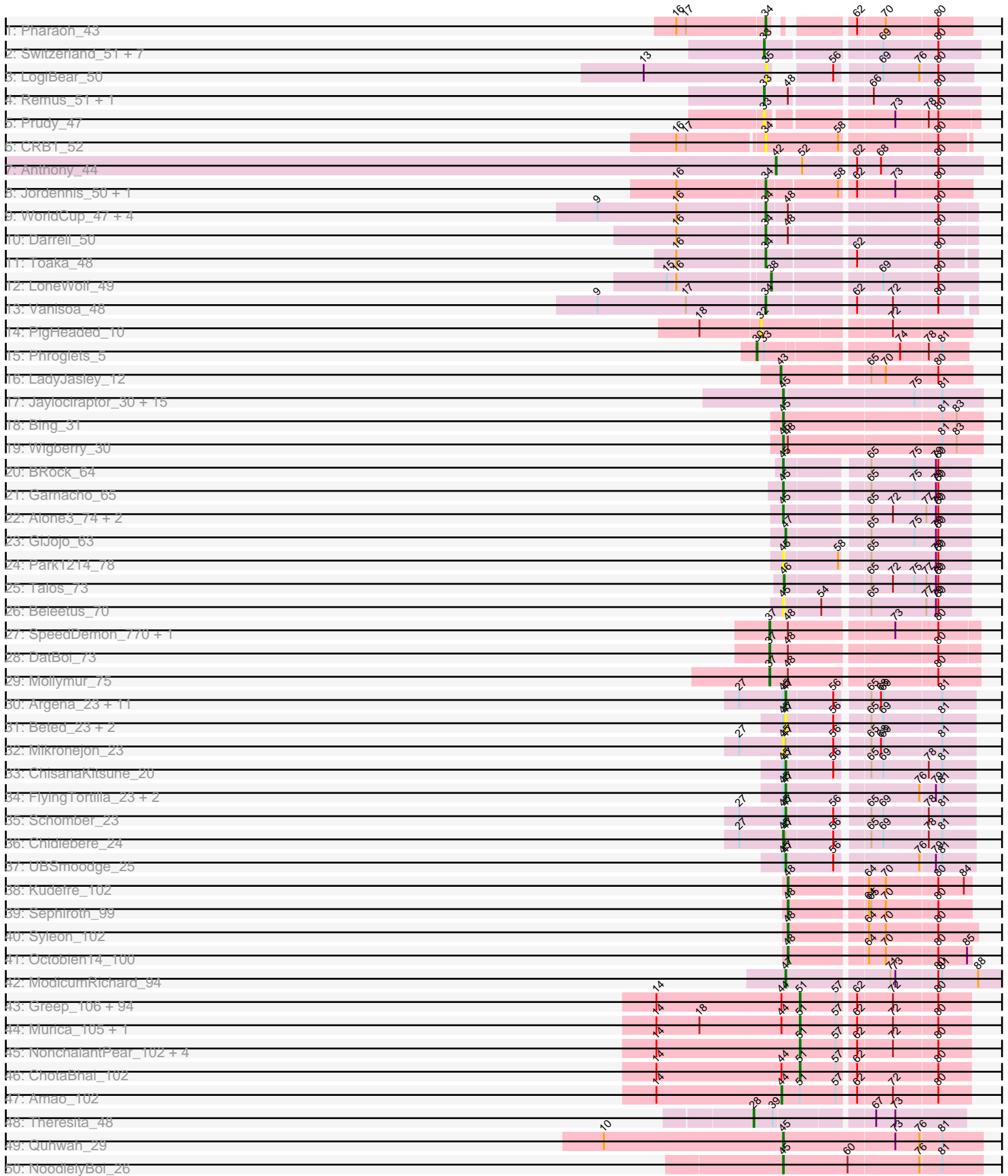


Pham 304698



Pham 304698



Note: Tracks are now grouped by subcluster and scaled. Switching in subcluster is indicated by changes in track color. Track scale is now set by default to display the region 30 bp upstream of start 1 to 30 bp downstream of the last possible start. If this default region is judged to be packed too tightly with annotated starts, the track will be further scaled to only show that region of the ORF with annotated starts. This action will be indicated by adding "Zoomed" to the title. For starts, yellow indicates the location of called starts comprised solely of Glimmer/GeneMark auto-annotations, green indicates the location of called starts with at least 1 manual gene annotation.

Pham 304698 Report

This analysis was run 06/08/26 on database version 649.

Pham number 304698 has 230 members, 39 are drafts.

Phages represented in each track:

- Track 1 : Pharaoh_43
- Track 2 : Switzerland_51, Warrior24_52, Anon_46, Waits_51, Battleship_52, MinecraftSteve_52, JSwag_50, Rosalind_50
- Track 3 : LogiBear_50
- Track 4 : Remus_51, Strosahl_51
- Track 5 : Prudy_47
- Track 6 : CRB1_52
- Track 7 : Anthony_44
- Track 8 : Jordennis_50, Polyphemus_52
- Track 9 : WorldCup_47, CogOmlette_47, Rahalelujah_48, Bellris_47, Minispark_47
- Track 10 : Darrell_50
- Track 11 : Toaka_48
- Track 12 : LoneWolf_49
- Track 13 : Vanisoa_48
- Track 14 : PigHeaded_10
- Track 15 : Phroglets_5
- Track 16 : LadyJasley_12
- Track 17 : Jaylociraptor_30, Hoshi_30, TaidaOne_30, Maya_30, Esketit_30, Namo_30, FidgetOrca_30, Spectropatronm_30, IceWarrior_30, TonyStarch_30, CherryBlossom_30, TieDye_29, Indigenous_30, Rima_30, OlympicHelado_30, Meibysrarus_30
- Track 18 : Bing_31
- Track 19 : Wigberry_30
- Track 20 : BRock_64
- Track 21 : Garnacho_65
- Track 22 : Alone3_74, Fudan_70, LuckySocke_72
- Track 23 : GiJojo_63
- Track 24 : Park1214_78
- Track 25 : Talos_73
- Track 26 : Beleetus_70
- Track 27 : SpeedDemon_770, Bantam_75
- Track 28 : DatBoi_73
- Track 29 : Mollymur_75
- Track 30 : Argena_23, EmoNemo_23, Hanem_24, Alok_23, Twin_23, Farrylious_22, Gray_24, Kabocha_25, Toneprano_23, Pakusa_23, Amoonguss_23, MintFritos_23
- Track 31 : Beted_23, Lenoshki_23, Oogie_23

- Track 32 : Mikronejon_23
- Track 33 : ChisanaKitsune_20
- Track 34 : FlyingTortilla_23, ScarletRaider_23, FruityLoops_22
- Track 35 : Schomber_23
- Track 36 : Chidiebere_24
- Track 37 : UBSmoodge_25
- Track 38 : Kudefre_102
- Track 39 : Sephiroth_99
- Track 40 : Syleon_102
- Track 41 : Octobien14_100
- Track 42 : ModicumRichard_94
- Track 43 : Greep_106, Bruin_99, Miniwave_97, Lilpickle_101, Nimrod_102, Petra64142_106, Eureka_101, Liveloughbron_103, Paperbeatsrock_101, DrDrey_102, ShamWow_102, BigBubba_102, Emmina_102, MPhalcon_103, SirDuracell_102, Pharsalus_99, Dusk_99, StormChicken_103, TBrady12_105, BilboSwaggins_100, Stank_104, Misfit_103, Contagion_98, Phaja_100, PhatBacter_105, Bask21_102, Adnama_106, Elite2014_101, Manda_103, Marshmallow_99, Buck_103, ChosenOne_102, Harella_102, Command613_104, Phaux_104, Nala_104, Mindy_101, Wiggin_104, Tarkin_101, Tomaszewski_97, Mosby_98, CrystalP_101, GoldenSpark_106, Barbarian_101, Qualification_103, xkcd_105, Cookies_99, DoctorDiddles_101, Gator_100, Easy2Say_102, Terminus_105, Cactus_106, Hoonter_105, Gemini_107, YassJohnny_99, Inca_99, FireRed_105, Brewer_98, ABCat_99, Henry_99, TeamEdward_102, Sotrice96_103, Argent26_106, Goldilocks_105, TeardropMSU_98, Sassay_97, SophKB_100, Icee_103, Bogg_102, Asriel_100, Pat3_99, Youngblood_105, Rimmer_100, StellaBean_101, Kanye_99, NelitzaMV_99, HufflyPuff_104, BadStone_99, Policronamos_104, Holt_107, ShereKhan_100, Kostya_102, Tuco_103, Goku_101, GooberAzure_105, Myrale_102, Daikon_102, Willez_97, Toto_100, IHOP_100, Kimchi_106, Rakim_103, Traaww1_98, Balomoji_102, Flypotenuse_98
- Track 44 : Murica_105, MISSy_103
- Track 45 : NonchalantPear_102, StolenFromERC_104, Gage_104, Xandras_101, Ptowny_98
- Track 46 : ChotaBhai_102
- Track 47 : Amao_102
- Track 48 : Theresita_48
- Track 49 : Quhwah_29
- Track 50 : NoodlelyBoi_26
- Track 51 : PSonyx_28
- Track 52 : MicyPS_26
- Track 53 : Taotie_24
- Track 54 : FloraSnap32_183, FrostedClock_189, Phrampa_178, Mimi_186, GoldenEssence_174, Patbob_185
- Track 55 : Bloom_190, Racecar_187, Talia1610_187
- Track 56 : Stewart25555_179
- Track 57 : Panchaali_179
- Track 58 : Marshawn_5
- Track 59 : Shadow1_3, Krueger_4, Ximenita_5, Tigress9_4, Syra333_4, Sunflower1121_3
- Track 60 : TClif_4
- Track 61 : Bernal13_1, Nairb_1, ZenTime222_1, Ibrahim_1, RonRayGun_1, Whitty_1
- Track 62 : Laure_187
- Track 63 : Bipper_125, Cracklewink_126

- Track 64 : Jace_19
- Track 65 : JeanGrey_137
- Track 66 : Ibantik_60
- Track 67 : BigAnti_27

Summary of Final Annotations (See graph section above for start numbers):

The start number called the most often in the published annotations is 51, it was called in 95 of the 191 non-draft genes in the pham.

Genes that call this "Most Annotated" start:

- ABCat_99, Adnama_106, Argent26_106, Asriel_100, BadStone_99, Balomoji_102, Barbarian_101, Bask21_102, BigBubba_102, BilboSwaggins_100, Bogg_102, Brewer_98, Bruin_99, Buck_103, Cactus_106, ChosenOne_102, ChotaBhai_102, Command613_104, Contagion_98, Cookies_99, CrystalP_101, Daikon_102, DoctorDiddles_101, DrDrey_102, Dusk_99, Easy2Say_102, Elite2014_101, Emmina_102, Eureka_101, FireRed_105, Flypotenuse_98, Gage_104, Gator_100, Gemini_107, Goku_101, GoldenSpark_106, Goldilocks_105, GooberAzure_105, Greep_106, Harella_102, Henry_99, Holt_107, Hoonter_105, HufflyPuff_104, IHOP_100, Icee_103, Inca_99, Kanye_99, Kimchi_106, Kostya_102, Lilpickle_101, Livilaughbron_103, MISSy_103, MPhalcon_103, Manda_103, Marshmallow_99, Mindy_101, Miniwave_97, Misfit_103, Mosby_98, Murica_105, Myrale_102, Nala_104, NelitzaMV_99, Nimrod_102, NonchalantPear_102, Paperbeatsrock_101, Pat3_99, Petra64142_106, Phaja_100, Pharsalus_99, PhatBacter_105, Phaux_104, Policronamos_104, Ptowny_98, Quallification_103, Rakim_103, Rimmer_100, Sassay_97, ShamWow_102, ShereKhan_100, SirDuracell_102, SophKB_100, Sotrice96_103, Stank_104, StellaBean_101, StolenFromERC_104, StormChicken_103, TBrady12_105, Tarkin_101, TeamEdward_102, TeardropMSU_98, Terminus_105, Tomaszewski_97, Toto_100, Traaww1_98, Tuco_103, Wiggin_104, Willez_97, Xandras_101, YassJohnny_99, Youngblood_105, xkcd_105,

Genes that have the "Most Annotated" start but do not call it:

- Amao_102,

Genes that do not have the "Most Annotated" start:

- Alok_23, Alone3_74, Amoonguss_23, Anon_46, Anthony_44, Argena_23, BRock_64, Bantam_75, Battleship_52, Beleetus_70, Bellris_47, Bernal13_1, Beted_23, BigAnti_27, Bing_31, Bipper_125, Bloom_190, CRB1_52, CherryBlossom_30, Chidiebere_24, ChisanaKitsune_20, CogOmlette_47, Cracklewink_126, Darrell_50, DatBoi_73, EmoNemo_23, Esketit_30, Farrylous_22, FidgetOrca_30, FloraSnap32_183, FlyingTortilla_23, FrostedClock_189, FruityLoops_22, Fudan_70, Garnacho_65, GiJojo_63, GoldenEssence_174, Gray_24, Hanem_24, Hoshi_30, Ibantik_60, Ibrahim_1, IceWarrior_30, Indigenous_30, JSwag_50, Jace_19, Jaylociraptor_30, JeanGrey_137, Jordennis_50, Kabocha_25, Krueger_4, Kudrefre_102, LadyJasley_12, Laure_187, Lenoshki_23, LogiBear_50, LoneWolf_49, LuckySocke_72, Marshawn_5, Maya_30, Meibysrarus_30, MicyPS_26, Mikronejon_23, Mimi_186, MinecraftSteve_52, Minispark_47, MintFritos_23, ModicumRichard_94, Mollymur_75, Nairb_1, Namu_30, NoodlelyBoi_26, Octobien14_100, OlympicHelado_30, Oogie_23, PSonyx_28,

Pakusa_23, Panchaali_179, Park1214_78, Patbob_185, Pharaoh_43, Phrampa_178, Phroglets_5, PigHeaded_10, Polyphemus_52, Prudy_47, Quhwah_29, Racecar_187, Rahalelujah_48, Remus_51, Rima_30, RonRayGun_1, Rosalind_50, ScarletRaider_23, Schomber_23, Sephiroth_99, Shadow1_3, Spectropatronm_30, SpeedDemon_770, Stewart25555_179, Strosahl_51, Sunflower1121_3, Switzerland_51, Syleon_102, Syra333_4, TClif_4, TaidaOne_30, Talia1610_187, Talos_73, Taotie_24, Theresita_48, TieDye_29, Tigress9_4, Toaka_48, Toneprano_23, TonyStarch_30, Twin_23, UBSmoodge_25, Vanisoa_48, Waits_51, Warrior24_52, Whitty_1, Wigberry_30, WorldCup_47, Ximenita_5, ZenTime222_1,

Summary by start number:

Start 28:

- Found in 1 of 230 (0.4%) of genes in pham
- Manual Annotations of this start: 1 of 191
- Called 100.0% of time when present
- Phage (with cluster) where this start called: Theresita_48 (EA7),

Start 30:

- Found in 1 of 230 (0.4%) of genes in pham
- Manual Annotations of this start: 1 of 191
- Called 100.0% of time when present
- Phage (with cluster) where this start called: Phroglets_5 (AV),

Start 32:

- Found in 1 of 230 (0.4%) of genes in pham
- No Manual Annotations of this start.
- Called 100.0% of time when present
- Phage (with cluster) where this start called: PigHeaded_10 (AV),

Start 33:

- Found in 12 of 230 (5.2%) of genes in pham
- Manual Annotations of this start: 10 of 191
- Called 91.7% of time when present
- Phage (with cluster) where this start called: Anon_46 (A15), Battleship_52 (A15), JSwag_50 (A15), MinecraftSteve_52 (A15), Prudy_47 (A2), Remus_51 (A15), Rosalind_50 (A15), Strosahl_51 (A15), Switzerland_51 (A15), Waits_51 (A15), Warrior24_52 (A15),

Start 34:

- Found in 12 of 230 (5.2%) of genes in pham
- Manual Annotations of this start: 7 of 191
- Called 100.0% of time when present
- Phage (with cluster) where this start called: Bellris_47 (A9), CRB1_52 (A2), CogOmlette_47 (A9), Darrell_50 (A9), Jordennis_50 (A6), Minispark_47 (A9), Pharaoh_43 (A12), Polyphemus_52 (A6), Rahalelujah_48 (A9), Toaka_48 (A9), Vanisoa_48 (A9), WorldCup_47 (A9),

Start 35:

- Found in 1 of 230 (0.4%) of genes in pham
- No Manual Annotations of this start.
- Called 100.0% of time when present
- Phage (with cluster) where this start called: LogiBear_50 (A15),

Start 36:

- Found in 6 of 230 (2.6%) of genes in pham
- Manual Annotations of this start: 6 of 191
- Called 100.0% of time when present
- Phage (with cluster) where this start called: Bernal13_1 (T), Ibrahim_1 (T), Nairb_1 (T), RonRayGun_1 (T), Whitty_1 (T), ZenTime222_1 (T),

Start 37:

- Found in 4 of 230 (1.7%) of genes in pham
- Manual Annotations of this start: 4 of 191
- Called 100.0% of time when present
- Phage (with cluster) where this start called: Bantam_75 (DL), DatBoi_73 (DL), Mollymur_75 (DL), SpeedDemon_770 (DL),

Start 38:

- Found in 7 of 230 (3.0%) of genes in pham
- Manual Annotations of this start: 1 of 191
- Called 14.3% of time when present
- Phage (with cluster) where this start called: LoneWolf_49 (A9),

Start 40:

- Found in 8 of 230 (3.5%) of genes in pham
- Manual Annotations of this start: 8 of 191
- Called 100.0% of time when present
- Phage (with cluster) where this start called: Krueger_4 (K6), Marshawn_5 (K6), Shadow1_3 (K6), Sunflower1121_3 (K6), Syra333_4 (K6), TClif_4 (K6), Tigress9_4 (K6), Ximenita_5 (K6),

Start 42:

- Found in 1 of 230 (0.4%) of genes in pham
- Manual Annotations of this start: 1 of 191
- Called 100.0% of time when present
- Phage (with cluster) where this start called: Anthony_44 (A20),

Start 43:

- Found in 1 of 230 (0.4%) of genes in pham
- Manual Annotations of this start: 1 of 191
- Called 100.0% of time when present
- Phage (with cluster) where this start called: LadyJasley_12 (AV),

Start 44:

- Found in 109 of 230 (47.4%) of genes in pham
- Manual Annotations of this start: 7 of 191
- Called 10.1% of time when present
- Phage (with cluster) where this start called: Amao_102 (E), Bloom_190 (FC), FloraSnap32_183 (FC), FrostedClock_189 (FC), GoldenEssence_174 (FC), Laure_187 (UNK), Mimi_186 (FC), Patbob_185 (FC), Phrampa_178 (FC), Racecar_187 (FC), Talia1610_187 (FC),

Start 45:

- Found in 54 of 230 (23.5%) of genes in pham
- Manual Annotations of this start: 28 of 191

- Called 61.1% of time when present
- Phage (with cluster) where this start called: Alone3_74 (BS), BRock_64 (BS), Beleetus_70 (BS), BigAnti_27 (singleton), Bing_31 (BI5), CherryBlossom_30 (BI1), Chidiebere_24 (DQ), Esketit_30 (BI1), FidgetOrca_30 (BI1), Fudan_70 (BS), Garnacho_65 (BS), Hoshi_30 (BI1), IceWarrior_30 (BI1), Indigenous_30 (BI1), Jaylociraptor_30 (BI1), LuckySocke_72 (BS), Maya_30 (BI1), Meibysrarus_30 (BI1), MicyPS_26 (EQ), Mikronejon_23 (DQ), Namu_30 (BI1), NoodlelyBoi_26 (EC), OlympicHelado_30 (BI1), PSonyx_28 (EQ), Park1214_78 (BS), Quhwah_29 (EC), Rima_30 (BI1), Spectropatronm_30 (BI1), TaidaOne_30 (BI1), Taotie_24 (EQ), TieDye_29 (BI1), TonyStarch_30 (BI1), Wigberry_30 (BI5),

Start 46:

- Found in 1 of 230 (0.4%) of genes in pham
- Manual Annotations of this start: 1 of 191
- Called 100.0% of time when present
- Phage (with cluster) where this start called: Talos_73 (BS),

Start 47:

- Found in 27 of 230 (11.7%) of genes in pham
- Manual Annotations of this start: 12 of 191
- Called 92.6% of time when present
- Phage (with cluster) where this start called: Alok_i_23 (DQ), Amoonguss_23 (DQ), Argena_23 (DQ), Beted_23 (DQ), Bipper_125 (Y), ChisanaKitsune_20 (DQ), Cracklewink_126 (Y), EmoNemo_23 (DQ), Farrylious_22 (DQ), FlyingTortilla_23 (DQ), FruityLoops_22 (DQ), GiJojo_63 (BS), Gray_24 (DQ), Hanem_24 (DQ), Kabocha_25 (DQ), Lenoshki_23 (DQ), MintFritos_23 (DQ), ModicumRichard_94 (DZ), Oogie_23 (DQ), Pakusa_23 (DQ), ScarletRaider_23 (DQ), Schomber_23 (DQ), Toneprano_23 (DQ), Twin_23 (DQ), UBSmoodge_25 (DQ),

Start 48:

- Found in 20 of 230 (8.7%) of genes in pham
- Manual Annotations of this start: 5 of 191
- Called 30.0% of time when present
- Phage (with cluster) where this start called: Ibantik_60 (singleton), Kudrefre_102 (DU1), Octobien14_100 (DU1), Sephiroth_99 (DU1), Stewart25555_179 (FC), Syleon_102 (DU1),

Start 49:

- Found in 2 of 230 (0.9%) of genes in pham
- Manual Annotations of this start: 2 of 191
- Called 100.0% of time when present
- Phage (with cluster) where this start called: Jace_19 (singleton), JeanGrey_137 (singleton),

Start 50:

- Found in 1 of 230 (0.4%) of genes in pham
- Manual Annotations of this start: 1 of 191
- Called 100.0% of time when present
- Phage (with cluster) where this start called: Panchaali_179 (FC),

Start 51:

- Found in 104 of 230 (45.2%) of genes in pham
- Manual Annotations of this start: 95 of 191

- Called 99.0% of time when present
- Phage (with cluster) where this start called: ABCat_99 (E), Adnama_106 (E), Argent26_106 (E), Asriel_100 (E), BadStone_99 (E), Balomoji_102 (E), Barbarian_101 (E), Bask21_102 (E), BigBubba_102 (E), BilboSwaggins_100 (E), Bogg_102 (E), Brewer_98 (E), Bruin_99 (E), Buck_103 (E), Cactus_106 (E), ChosenOne_102 (E), ChotaBhai_102 (E), Command613_104 (E), Contagion_98 (E), Cookies_99 (E), CrystalP_101 (E), Daikon_102 (E), DoctorDiddles_101 (E), DrDrey_102 (E), Dusk_99 (E), Easy2Say_102 (E), Elite2014_101 (E), Emmina_102 (E), Eureka_101 (E), FireRed_105 (E), Flypotenuse_98 (E), Gage_104 (E), Gator_100 (E), Gemini_107 (E), Goku_101 (E), GoldenSpark_106 (E), Goldilocks_105 (E), GooberAzure_105 (E), Greep_106 (E), Harella_102 (E), Henry_99 (E), Holt_107 (E), Hoonter_105 (E), HufflyPuff_104 (E), IHOP_100 (E), Icee_103 (E), Inca_99 (E), Kanye_99 (E), Kimchi_106 (E), Kostya_102 (E), Lilpickle_101 (E), Liveloughbron_103 (E), MISSy_103 (E), MPhalcon_103 (E), Manda_103 (E), Marshmallow_99 (E), Mindy_101 (E), Miniwave_97 (E), Misfit_103 (E), Mosby_98 (E), Murica_105 (E), Myrale_102 (E), Nala_104 (E), NelitzaMV_99 (E), Nimrod_102 (E), NonchalantPear_102 (E), Paperbeatsrock_101 (E), Pat3_99 (E), Petra64142_106 (E), Phaja_100 (E), Pharsalus_99 (E), PhatBacter_105 (E), Phaux_104 (E), Policronamos_104 (E), Ptowny_98 (E), Qualification_103 (E), Rakim_103 (E), Rimmer_100 (E), Sassay_97 (E), ShamWow_102 (E), ShereKhan_100 (E), SirDuracell_102 (E), SophKB_100 (E), Sotrice96_103 (E), Stank_104 (E), StellaBean_101 (E), StolenFromERC_104 (E), StormChicken_103 (E), TBrady12_105 (E), Tarkin_101 (E), TeamEdward_102 (E), TeardropMSU_98 (E), Terminus_105 (E), Tomaszewski_97 (E), Toto_100 (E), Traaww1_98 (E), Tuco_103 (E), Wiggin_104 (E), Willez_97 (E), Xandras_101 (E), YassJohnny_99 (E), Youngblood_105 (E), xkcd_105 (E),

Summary by clusters:

There are 24 clusters represented in this pham: DL, singleton, FC, DZ, K6, BS, DQ, A15, UNK, A12, A2, A6, A9, DU1, E, EC, T, AV, Y, B15, EQ, EA7, B11, A20,

Info for manual annotations of cluster A12:

- Start number 34 was manually annotated 1 time for cluster A12.

Info for manual annotations of cluster A15:

- Start number 33 was manually annotated 10 times for cluster A15.

Info for manual annotations of cluster A20:

- Start number 42 was manually annotated 1 time for cluster A20.

Info for manual annotations of cluster A6:

- Start number 34 was manually annotated 2 times for cluster A6.

Info for manual annotations of cluster A9:

- Start number 34 was manually annotated 4 times for cluster A9.
- Start number 38 was manually annotated 1 time for cluster A9.

Info for manual annotations of cluster AV:

- Start number 30 was manually annotated 1 time for cluster AV.
- Start number 43 was manually annotated 1 time for cluster AV.

Info for manual annotations of cluster B11:

- Start number 45 was manually annotated 16 times for cluster B11.

Info for manual annotations of cluster B15:

- Start number 45 was manually annotated 2 times for cluster B15.

Info for manual annotations of cluster BS:

- Start number 45 was manually annotated 5 times for cluster BS.
- Start number 46 was manually annotated 1 time for cluster BS.
- Start number 47 was manually annotated 1 time for cluster BS.

Info for manual annotations of cluster DL:

- Start number 37 was manually annotated 4 times for cluster DL.

Info for manual annotations of cluster DQ:

- Start number 45 was manually annotated 1 time for cluster DQ.
- Start number 47 was manually annotated 8 times for cluster DQ.

Info for manual annotations of cluster DU1:

- Start number 48 was manually annotated 4 times for cluster DU1.

Info for manual annotations of cluster DZ:

- Start number 47 was manually annotated 1 time for cluster DZ.

Info for manual annotations of cluster E:

- Start number 44 was manually annotated 1 time for cluster E.
- Start number 51 was manually annotated 95 times for cluster E.

Info for manual annotations of cluster EA7:

- Start number 28 was manually annotated 1 time for cluster EA7.

Info for manual annotations of cluster EC:

- Start number 45 was manually annotated 2 times for cluster EC.

Info for manual annotations of cluster EQ:

- Start number 45 was manually annotated 2 times for cluster EQ.

Info for manual annotations of cluster FC:

- Start number 44 was manually annotated 6 times for cluster FC.
- Start number 50 was manually annotated 1 time for cluster FC.

Info for manual annotations of cluster K6:

- Start number 40 was manually annotated 8 times for cluster K6.

Info for manual annotations of cluster T:

- Start number 36 was manually annotated 6 times for cluster T.

Info for manual annotations of cluster Y:

- Start number 47 was manually annotated 2 times for cluster Y.

Gene Information:

Gene: ABCat_99 Start: 61561, Stop: 61758, Start Num: 51

Candidate Starts for ABCat_99:

(14, 61384), (Start: 44 @61540 has 7 MA's), (Start: 51 @61561 has 95 MA's), (57, 61606), (62, 61624), (72, 61666), (80, 61720),

Gene: Adnama_106 Start: 60871, Stop: 61068, Start Num: 51

Candidate Starts for Adnama_106:

(14, 60694), (Start: 44 @60850 has 7 MA's), (Start: 51 @60871 has 95 MA's), (57, 60916), (62, 60934), (72, 60976), (80, 61030),

Gene: Aloki_23 Start: 11841, Stop: 12056, Start Num: 47

Candidate Starts for Aloki_23:

(27, 11784), (Start: 45 @11838 has 28 MA's), (Start: 47 @11841 has 12 MA's), (56, 11898), (65, 11931), (68, 11943), (69, 11946), (81, 12015),

Gene: Alone3_74 Start: 28535, Stop: 28747, Start Num: 45

Candidate Starts for Alone3_74:

(Start: 45 @28535 has 28 MA's), (65, 28625), (72, 28652), (77, 28694), (79, 28706), (80, 28709),

Gene: Amao_102 Start: 60964, Stop: 61182, Start Num: 44

Candidate Starts for Amao_102:

(14, 60808), (Start: 44 @60964 has 7 MA's), (Start: 51 @60985 has 95 MA's), (57, 61030), (62, 61048), (72, 61090), (80, 61144),

Gene: Amoonguss_23 Start: 11844, Stop: 12059, Start Num: 47

Candidate Starts for Amoonguss_23:

(27, 11787), (Start: 45 @11841 has 28 MA's), (Start: 47 @11844 has 12 MA's), (56, 11901), (65, 11934), (68, 11946), (69, 11949), (81, 12018),

Gene: Anon_46 Start: 30067, Stop: 29819, Start Num: 33

Candidate Starts for Anon_46:

(Start: 33 @30067 has 10 MA's), (69, 29935), (80, 29869),

Gene: Anthony_44 Start: 30206, Stop: 29964, Start Num: 42

Candidate Starts for Anthony_44:

(Start: 42 @30206 has 1 MA's), (52, 30173), (62, 30113), (68, 30086), (80, 30017),

Gene: Argena_23 Start: 11841, Stop: 12056, Start Num: 47

Candidate Starts for Argena_23:

(27, 11784), (Start: 45 @11838 has 28 MA's), (Start: 47 @11841 has 12 MA's), (56, 11898), (65, 11931), (68, 11943), (69, 11946), (81, 12015),

Gene: Argent26_106 Start: 60795, Stop: 60992, Start Num: 51

Candidate Starts for Argent26_106:

(14, 60618), (Start: 44 @60774 has 7 MA's), (Start: 51 @60795 has 95 MA's), (57, 60840), (62, 60858), (72, 60900), (80, 60954),

Gene: Asriel_100 Start: 59208, Stop: 59405, Start Num: 51

Candidate Starts for Asriel_100:

(14, 59031), (Start: 44 @59187 has 7 MA's), (Start: 51 @59208 has 95 MA's), (57, 59253), (62, 59271), (72, 59313), (80, 59367),

Gene: BRock_64 Start: 24495, Stop: 24707, Start Num: 45

Candidate Starts for BRock_64:

(Start: 45 @24495 has 28 MA's), (65, 24585), (75, 24639), (79, 24666), (80, 24669),

Gene: BadStone_99 Start: 61130, Stop: 61327, Start Num: 51

Candidate Starts for BadStone_99:

(14, 60953), (Start: 44 @61109 has 7 MA's), (Start: 51 @61130 has 95 MA's), (57, 61175), (62, 61193), (72, 61235), (80, 61289),

Gene: Balomoji_102 Start: 60991, Stop: 61188, Start Num: 51

Candidate Starts for Balomoji_102:

(14, 60814), (Start: 44 @60970 has 7 MA's), (Start: 51 @60991 has 95 MA's), (57, 61036), (62, 61054), (72, 61096), (80, 61150),

Gene: Bantam_75 Start: 53471, Stop: 53229, Start Num: 37

Candidate Starts for Bantam_75:

(Start: 37 @53471 has 4 MA's), (Start: 48 @53450 has 5 MA's), (73, 53327), (80, 53276),

Gene: Barbarian_101 Start: 59208, Stop: 59405, Start Num: 51

Candidate Starts for Barbarian_101:

(14, 59031), (Start: 44 @59187 has 7 MA's), (Start: 51 @59208 has 95 MA's), (57, 59253), (62, 59271), (72, 59313), (80, 59367),

Gene: Bask21_102 Start: 59847, Stop: 60044, Start Num: 51

Candidate Starts for Bask21_102:

(14, 59670), (Start: 44 @59826 has 7 MA's), (Start: 51 @59847 has 95 MA's), (57, 59892), (62, 59910), (72, 59952), (80, 60006),

Gene: Battleship_52 Start: 31061, Stop: 30813, Start Num: 33

Candidate Starts for Battleship_52:

(Start: 33 @31061 has 10 MA's), (69, 30929), (80, 30863),

Gene: Beleetus_70 Start: 26659, Stop: 26871, Start Num: 45

Candidate Starts for Beleetus_70:

(Start: 45 @26659 has 28 MA's), (54, 26701), (65, 26749), (77, 26818), (79, 26830), (80, 26833),

Gene: Bellris_47 Start: 31845, Stop: 31609, Start Num: 34

Candidate Starts for Bellris_47:

(9, 32046), (16, 31947), (Start: 34 @31845 has 7 MA's), (Start: 48 @31821 has 5 MA's), (80, 31653),

Gene: Bernal13_1 Start: 89, Stop: 325, Start Num: 36

Candidate Starts for Bernal13_1:

(20, 8), (26, 47), (Start: 36 @89 has 6 MA's), (Start: 38 @92 has 1 MA's), (62, 191), (63, 197), (64, 203), (80, 287),

Gene: Beted_23 Start: 11467, Stop: 11682, Start Num: 47

Candidate Starts for Beted_23:

(Start: 45 @11464 has 28 MA's), (Start: 47 @11467 has 12 MA's), (56, 11524), (65, 11557), (69, 11572), (81, 11641),

Gene: BigAnti_27 Start: 33173, Stop: 33421, Start Num: 45

Candidate Starts for BigAnti_27:

(Start: 45 @33173 has 28 MA's), (73, 33308), (81, 33362),

Gene: BigBubba_102 Start: 59904, Stop: 60101, Start Num: 51

Candidate Starts for BigBubba_102:

(14, 59727), (Start: 44 @59883 has 7 MA's), (Start: 51 @59904 has 95 MA's), (57, 59949), (62, 59967), (72, 60009), (80, 60063),

Gene: BilboSwaggins_100 Start: 61530, Stop: 61727, Start Num: 51

Candidate Starts for BilboSwaggins_100:

(14, 61353), (Start: 44 @61509 has 7 MA's), (Start: 51 @61530 has 95 MA's), (57, 61575), (62, 61593), (72, 61635), (80, 61689),

Gene: Bing_31 Start: 25537, Stop: 25779, Start Num: 45

Candidate Starts for Bing_31:

(Start: 45 @25537 has 28 MA's), (81, 25729), (83, 25747),

Gene: Bipper_125 Start: 73005, Stop: 73226, Start Num: 47

Candidate Starts for Bipper_125:

(8, 72744), (12, 72804), (Start: 47 @73005 has 12 MA's), (59, 73074), (79, 73182), (80, 73185), (82, 73197),

Gene: Bloom_190 Start: 124505, Stop: 124735, Start Num: 44

Candidate Starts for Bloom_190:

(Start: 44 @124505 has 7 MA's), (81, 124682),

Gene: Bogg_102 Start: 61071, Stop: 61268, Start Num: 51

Candidate Starts for Bogg_102:

(14, 60894), (Start: 44 @61050 has 7 MA's), (Start: 51 @61071 has 95 MA's), (57, 61116), (62, 61134), (72, 61176), (80, 61230),

Gene: Brewer_98 Start: 59729, Stop: 59926, Start Num: 51

Candidate Starts for Brewer_98:

(14, 59552), (Start: 44 @59708 has 7 MA's), (Start: 51 @59729 has 95 MA's), (57, 59774), (62, 59792), (72, 59834), (80, 59888),

Gene: Bruin_99 Start: 60236, Stop: 60433, Start Num: 51

Candidate Starts for Bruin_99:

(14, 60059), (Start: 44 @60215 has 7 MA's), (Start: 51 @60236 has 95 MA's), (57, 60281), (62, 60299), (72, 60341), (80, 60395),

Gene: Buck_103 Start: 62073, Stop: 62270, Start Num: 51

Candidate Starts for Buck_103:

(14, 61896), (Start: 44 @62052 has 7 MA's), (Start: 51 @62073 has 95 MA's), (57, 62118), (62, 62136), (72, 62178), (80, 62232),

Gene: CRB1_52 Start: 33225, Stop: 32989, Start Num: 34

Candidate Starts for CRB1_52:

(16, 33327), (17, 33315), (Start: 34 @33225 has 7 MA's), (58, 33135), (80, 33024),

Gene: Cactus_106 Start: 60490, Stop: 60687, Start Num: 51

Candidate Starts for Cactus_106:

(14, 60313), (Start: 44 @60469 has 7 MA's), (Start: 51 @60490 has 95 MA's), (57, 60535), (62, 60553), (72, 60595), (80, 60649),

Gene: CherryBlossom_30 Start: 25644, Stop: 25883, Start Num: 45

Candidate Starts for CherryBlossom_30:

(Start: 45 @25644 has 28 MA's), (75, 25803), (81, 25833),

Gene: Chidiebere_24 Start: 11838, Stop: 12056, Start Num: 45

Candidate Starts for Chidiebere_24:

(27, 11784), (Start: 45 @11838 has 28 MA's), (Start: 47 @11841 has 12 MA's), (56, 11898), (65, 11931), (69, 11946), (78, 12000), (81, 12015),

Gene: ChisanaKitsune_20 Start: 10536, Stop: 10751, Start Num: 47

Candidate Starts for ChisanaKitsune_20:

(Start: 45 @10533 has 28 MA's), (Start: 47 @10536 has 12 MA's), (56, 10593), (65, 10626), (69, 10641), (78, 10695), (81, 10710),

Gene: ChosenOne_102 Start: 60439, Stop: 60636, Start Num: 51

Candidate Starts for ChosenOne_102:

(14, 60262), (Start: 44 @60418 has 7 MA's), (Start: 51 @60439 has 95 MA's), (57, 60484), (62, 60502), (72, 60544), (80, 60598),

Gene: ChotaBhai_102 Start: 60849, Stop: 61046, Start Num: 51

Candidate Starts for ChotaBhai_102:

(14, 60672), (Start: 44 @60828 has 7 MA's), (Start: 51 @60849 has 95 MA's), (57, 60894), (62, 60912), (80, 61008),

Gene: CogOmlette_47 Start: 31842, Stop: 31606, Start Num: 34

Candidate Starts for CogOmlette_47:

(9, 32043), (16, 31944), (Start: 34 @31842 has 7 MA's), (Start: 48 @31818 has 5 MA's), (80, 31650),

Gene: Command613_104 Start: 61005, Stop: 61202, Start Num: 51

Candidate Starts for Command613_104:

(14, 60828), (Start: 44 @60984 has 7 MA's), (Start: 51 @61005 has 95 MA's), (57, 61050), (62, 61068), (72, 61110), (80, 61164),

Gene: Contagion_98 Start: 60598, Stop: 60795, Start Num: 51

Candidate Starts for Contagion_98:

(14, 60421), (Start: 44 @60577 has 7 MA's), (Start: 51 @60598 has 95 MA's), (57, 60643), (62, 60661), (72, 60703), (80, 60757),

Gene: Cookies_99 Start: 60775, Stop: 60972, Start Num: 51

Candidate Starts for Cookies_99:

(14, 60598), (Start: 44 @60754 has 7 MA's), (Start: 51 @60775 has 95 MA's), (57, 60820), (62, 60838), (72, 60880), (80, 60934),

Gene: Cracklewink_126 Start: 72157, Stop: 72378, Start Num: 47

Candidate Starts for Cracklewink_126:

(8, 71896), (12, 71956), (Start: 47 @72157 has 12 MA's), (59, 72226), (79, 72334), (80, 72337), (82, 72349),

Gene: CrystalP_101 Start: 61530, Stop: 61727, Start Num: 51

Candidate Starts for CrystalP_101:

(14, 61353), (Start: 44 @61509 has 7 MA's), (Start: 51 @61530 has 95 MA's), (57, 61575), (62, 61593), (72, 61635), (80, 61689),

Gene: Daikon_102 Start: 60404, Stop: 60601, Start Num: 51

Candidate Starts for Daikon_102:

(14, 60227), (Start: 44 @60383 has 7 MA's), (Start: 51 @60404 has 95 MA's), (57, 60449), (62, 60467), (72, 60509), (80, 60563),

Gene: Darrell_50 Start: 32937, Stop: 32701, Start Num: 34

Candidate Starts for Darrell_50:

(16, 33039), (Start: 34 @32937 has 7 MA's), (Start: 48 @32913 has 5 MA's), (80, 32745),

Gene: DatBoi_73 Start: 53464, Stop: 53222, Start Num: 37

Candidate Starts for DatBoi_73:

(Start: 37 @53464 has 4 MA's), (Start: 48 @53443 has 5 MA's), (80, 53269),

Gene: DoctorDiddles_101 Start: 60253, Stop: 60450, Start Num: 51

Candidate Starts for DoctorDiddles_101:

(14, 60076), (Start: 44 @60232 has 7 MA's), (Start: 51 @60253 has 95 MA's), (57, 60298), (62, 60316), (72, 60358), (80, 60412),

Gene: DrDrey_102 Start: 62268, Stop: 62465, Start Num: 51

Candidate Starts for DrDrey_102:

(14, 62091), (Start: 44 @62247 has 7 MA's), (Start: 51 @62268 has 95 MA's), (57, 62313), (62, 62331), (72, 62373), (80, 62427),

Gene: Dusk_99 Start: 60790, Stop: 60987, Start Num: 51

Candidate Starts for Dusk_99:

(14, 60613), (Start: 44 @60769 has 7 MA's), (Start: 51 @60790 has 95 MA's), (57, 60835), (62, 60853), (72, 60895), (80, 60949),

Gene: Easy2Say_102 Start: 61262, Stop: 61459, Start Num: 51

Candidate Starts for Easy2Say_102:

(14, 61085), (Start: 44 @61241 has 7 MA's), (Start: 51 @61262 has 95 MA's), (57, 61307), (62, 61325), (72, 61367), (80, 61421),

Gene: Elite2014_101 Start: 60438, Stop: 60635, Start Num: 51

Candidate Starts for Elite2014_101:

(14, 60261), (Start: 44 @60417 has 7 MA's), (Start: 51 @60438 has 95 MA's), (57, 60483), (62, 60501), (72, 60543), (80, 60597),

Gene: Emmina_102 Start: 60213, Stop: 60410, Start Num: 51

Candidate Starts for Emmina_102:

(14, 60036), (Start: 44 @60192 has 7 MA's), (Start: 51 @60213 has 95 MA's), (57, 60258), (62, 60276), (72, 60318), (80, 60372),

Gene: EmoNemo_23 Start: 11841, Stop: 12056, Start Num: 47

Candidate Starts for EmoNemo_23:

(27, 11784), (Start: 45 @11838 has 28 MA's), (Start: 47 @11841 has 12 MA's), (56, 11898), (65, 11931), (68, 11943), (69, 11946), (81, 12015),

Gene: Esketit_30 Start: 25627, Stop: 25866, Start Num: 45

Candidate Starts for Esketit_30:

(Start: 45 @25627 has 28 MA's), (75, 25786), (81, 25816),

Gene: Eureka_101 Start: 61401, Stop: 61598, Start Num: 51
Candidate Starts for Eureka_101:
(14, 61224), (Start: 44 @61380 has 7 MA's), (Start: 51 @61401 has 95 MA's), (57, 61446), (62, 61464),
(72, 61506), (80, 61560),

Gene: Farrylious_22 Start: 11594, Stop: 11809, Start Num: 47
Candidate Starts for Farrylious_22:
(27, 11537), (Start: 45 @11591 has 28 MA's), (Start: 47 @11594 has 12 MA's), (56, 11651), (65,
11684), (68, 11696), (69, 11699), (81, 11768),

Gene: FidgetOrca_30 Start: 25633, Stop: 25872, Start Num: 45
Candidate Starts for FidgetOrca_30:
(Start: 45 @25633 has 28 MA's), (75, 25792), (81, 25822),

Gene: FireRed_105 Start: 61677, Stop: 61874, Start Num: 51
Candidate Starts for FireRed_105:
(14, 61500), (Start: 44 @61656 has 7 MA's), (Start: 51 @61677 has 95 MA's), (57, 61722), (62, 61740),
(72, 61782), (80, 61836),

Gene: FloraSnap32_183 Start: 122836, Stop: 123066, Start Num: 44
Candidate Starts for FloraSnap32_183:
(Start: 44 @122836 has 7 MA's), (81, 123013),

Gene: FlyingTortilla_23 Start: 12855, Stop: 13073, Start Num: 47
Candidate Starts for FlyingTortilla_23:
(Start: 45 @12852 has 28 MA's), (Start: 47 @12855 has 12 MA's), (76, 13008), (79, 13026), (81,
13032),

Gene: Flypotenuse_98 Start: 59862, Stop: 60059, Start Num: 51
Candidate Starts for Flypotenuse_98:
(14, 59685), (Start: 44 @59841 has 7 MA's), (Start: 51 @59862 has 95 MA's), (57, 59907), (62, 59925),
(72, 59967), (80, 60021),

Gene: FrostedClock_189 Start: 125166, Stop: 125396, Start Num: 44
Candidate Starts for FrostedClock_189:
(Start: 44 @125166 has 7 MA's), (81, 125343),

Gene: FruityLoops_22 Start: 12860, Stop: 13078, Start Num: 47
Candidate Starts for FruityLoops_22:
(Start: 45 @12857 has 28 MA's), (Start: 47 @12860 has 12 MA's), (76, 13013), (79, 13031), (81,
13037),

Gene: Fudan_70 Start: 27328, Stop: 27540, Start Num: 45
Candidate Starts for Fudan_70:
(Start: 45 @27328 has 28 MA's), (65, 27418), (72, 27445), (77, 27487), (79, 27499), (80, 27502),

Gene: Gage_104 Start: 60933, Stop: 61130, Start Num: 51
Candidate Starts for Gage_104:
(14, 60756), (Start: 51 @60933 has 95 MA's), (57, 60978), (62, 60996), (72, 61038), (80, 61092),

Gene: Garnacho_65 Start: 26235, Stop: 26447, Start Num: 45
Candidate Starts for Garnacho_65:
(Start: 45 @26235 has 28 MA's), (65, 26325), (75, 26379), (79, 26406), (80, 26409),

Gene: Gator_100 Start: 60718, Stop: 60915, Start Num: 51

Candidate Starts for Gator_100:

(14, 60541), (Start: 44 @60697 has 7 MA's), (Start: 51 @60718 has 95 MA's), (57, 60763), (62, 60781), (72, 60823), (80, 60877),

Gene: Gemini_107 Start: 61312, Stop: 61509, Start Num: 51

Candidate Starts for Gemini_107:

(14, 61135), (Start: 44 @61291 has 7 MA's), (Start: 51 @61312 has 95 MA's), (57, 61357), (62, 61375), (72, 61417), (80, 61471),

Gene: GiJojo_63 Start: 26714, Stop: 26926, Start Num: 47

Candidate Starts for GiJojo_63:

(Start: 47 @26714 has 12 MA's), (65, 26804), (75, 26858), (79, 26885), (80, 26888),

Gene: Goku_101 Start: 61130, Stop: 61327, Start Num: 51

Candidate Starts for Goku_101:

(14, 60953), (Start: 44 @61109 has 7 MA's), (Start: 51 @61130 has 95 MA's), (57, 61175), (62, 61193), (72, 61235), (80, 61289),

Gene: GoldenEssence_174 Start: 118714, Stop: 118944, Start Num: 44

Candidate Starts for GoldenEssence_174:

(Start: 44 @118714 has 7 MA's), (81, 118891),

Gene: GoldenSpark_106 Start: 60795, Stop: 60992, Start Num: 51

Candidate Starts for GoldenSpark_106:

(14, 60618), (Start: 44 @60774 has 7 MA's), (Start: 51 @60795 has 95 MA's), (57, 60840), (62, 60858), (72, 60900), (80, 60954),

Gene: Goldilocks_105 Start: 60712, Stop: 60909, Start Num: 51

Candidate Starts for Goldilocks_105:

(14, 60535), (Start: 44 @60691 has 7 MA's), (Start: 51 @60712 has 95 MA's), (57, 60757), (62, 60775), (72, 60817), (80, 60871),

Gene: GooberAzure_105 Start: 60795, Stop: 60992, Start Num: 51

Candidate Starts for GooberAzure_105:

(14, 60618), (Start: 44 @60774 has 7 MA's), (Start: 51 @60795 has 95 MA's), (57, 60840), (62, 60858), (72, 60900), (80, 60954),

Gene: Gray_24 Start: 11841, Stop: 12056, Start Num: 47

Candidate Starts for Gray_24:

(27, 11784), (Start: 45 @11838 has 28 MA's), (Start: 47 @11841 has 12 MA's), (56, 11898), (65, 11931), (68, 11943), (69, 11946), (81, 12015),

Gene: Greep_106 Start: 62367, Stop: 62564, Start Num: 51

Candidate Starts for Greep_106:

(14, 62190), (Start: 44 @62346 has 7 MA's), (Start: 51 @62367 has 95 MA's), (57, 62412), (62, 62430), (72, 62472), (80, 62526),

Gene: Hanem_24 Start: 11841, Stop: 12056, Start Num: 47

Candidate Starts for Hanem_24:

(27, 11784), (Start: 45 @11838 has 28 MA's), (Start: 47 @11841 has 12 MA's), (56, 11898), (65, 11931), (68, 11943), (69, 11946), (81, 12015),

Gene: Harella_102 Start: 61508, Stop: 61705, Start Num: 51

Candidate Starts for Harella_102:

(14, 61331), (Start: 44 @61487 has 7 MA's), (Start: 51 @61508 has 95 MA's), (57, 61553), (62, 61571), (72, 61613), (80, 61667),

Gene: Henry_99 Start: 60835, Stop: 61032, Start Num: 51

Candidate Starts for Henry_99:

(14, 60658), (Start: 44 @60814 has 7 MA's), (Start: 51 @60835 has 95 MA's), (57, 60880), (62, 60898), (72, 60940), (80, 60994),

Gene: Holt_107 Start: 61209, Stop: 61406, Start Num: 51

Candidate Starts for Holt_107:

(14, 61032), (Start: 44 @61188 has 7 MA's), (Start: 51 @61209 has 95 MA's), (57, 61254), (62, 61272), (72, 61314), (80, 61368),

Gene: Hoonter_105 Start: 61288, Stop: 61485, Start Num: 51

Candidate Starts for Hoonter_105:

(14, 61111), (Start: 44 @61267 has 7 MA's), (Start: 51 @61288 has 95 MA's), (57, 61333), (62, 61351), (72, 61393), (80, 61447),

Gene: Hoshi_30 Start: 25627, Stop: 25866, Start Num: 45

Candidate Starts for Hoshi_30:

(Start: 45 @25627 has 28 MA's), (75, 25786), (81, 25816),

Gene: HufflyPuff_104 Start: 61903, Stop: 62100, Start Num: 51

Candidate Starts for HufflyPuff_104:

(14, 61726), (Start: 44 @61882 has 7 MA's), (Start: 51 @61903 has 95 MA's), (57, 61948), (62, 61966), (72, 62008), (80, 62062),

Gene: IHOP_100 Start: 60511, Stop: 60708, Start Num: 51

Candidate Starts for IHOP_100:

(14, 60334), (Start: 44 @60490 has 7 MA's), (Start: 51 @60511 has 95 MA's), (57, 60556), (62, 60574), (72, 60616), (80, 60670),

Gene: lbantik_60 Start: 25970, Stop: 26188, Start Num: 48

Candidate Starts for lbantik_60:

(11, 25754), (23, 25898), (24, 25901), (29, 25931), (Start: 48 @25970 has 5 MA's), (80, 26144),

Gene: Ibrahim_1 Start: 89, Stop: 325, Start Num: 36

Candidate Starts for Ibrahim_1:

(20, 8), (26, 47), (Start: 36 @89 has 6 MA's), (Start: 38 @92 has 1 MA's), (62, 191), (63, 197), (64, 203), (80, 287),

Gene: IceWarrior_30 Start: 25627, Stop: 25866, Start Num: 45

Candidate Starts for IceWarrior_30:

(Start: 45 @25627 has 28 MA's), (75, 25786), (81, 25816),

Gene: Icee_103 Start: 60319, Stop: 60516, Start Num: 51

Candidate Starts for Icee_103:

(14, 60142), (Start: 44 @60298 has 7 MA's), (Start: 51 @60319 has 95 MA's), (57, 60364), (62, 60382), (72, 60424), (80, 60478),

Gene: Inca_99 Start: 59000, Stop: 59197, Start Num: 51

Candidate Starts for Inca_99:

(14, 58823), (Start: 44 @58979 has 7 MA's), (Start: 51 @59000 has 95 MA's), (57, 59045), (62, 59063), (72, 59105), (80, 59159),

Gene: Indigenous_30 Start: 25627, Stop: 25866, Start Num: 45

Candidate Starts for Indigenous_30:

(Start: 45 @25627 has 28 MA's), (75, 25786), (81, 25816),

Gene: JSwag_50 Start: 30801, Stop: 30553, Start Num: 33

Candidate Starts for JSwag_50:

(Start: 33 @30801 has 10 MA's), (69, 30669), (80, 30603),

Gene: Jace_19 Start: 17315, Stop: 17536, Start Num: 49

Candidate Starts for Jace_19:

(1, 16346), (2, 16361), (3, 16439), (4, 16571), (5, 16844), (6, 17003), (7, 17018), (Start: 49 @17315 has 2 MA's), (55, 17357), (62, 17390), (73, 17435), (80, 17486),

Gene: Jaylociraptor_30 Start: 25627, Stop: 25866, Start Num: 45

Candidate Starts for Jaylociraptor_30:

(Start: 45 @25627 has 28 MA's), (75, 25786), (81, 25816),

Gene: JeanGrey_137 Start: 105656, Stop: 105889, Start Num: 49

Candidate Starts for JeanGrey_137:

(Start: 49 @105656 has 2 MA's), (80, 105827),

Gene: Jordennis_50 Start: 31033, Stop: 30803, Start Num: 34

Candidate Starts for Jordennis_50:

(16, 31141), (Start: 34 @31033 has 7 MA's), (58, 30952), (62, 30937), (73, 30892), (80, 30841),

Gene: Kabocha_25 Start: 12654, Stop: 12869, Start Num: 47

Candidate Starts for Kabocha_25:

(27, 12597), (Start: 45 @12651 has 28 MA's), (Start: 47 @12654 has 12 MA's), (56, 12711), (65, 12744), (68, 12756), (69, 12759), (81, 12828),

Gene: Kanye_99 Start: 61044, Stop: 61241, Start Num: 51

Candidate Starts for Kanye_99:

(14, 60867), (Start: 44 @61023 has 7 MA's), (Start: 51 @61044 has 95 MA's), (57, 61089), (62, 61107), (72, 61149), (80, 61203),

Gene: Kimchi_106 Start: 60936, Stop: 61133, Start Num: 51

Candidate Starts for Kimchi_106:

(14, 60759), (Start: 44 @60915 has 7 MA's), (Start: 51 @60936 has 95 MA's), (57, 60981), (62, 60999), (72, 61041), (80, 61095),

Gene: Kostya_102 Start: 60613, Stop: 60810, Start Num: 51

Candidate Starts for Kostya_102:

(14, 60436), (Start: 44 @60592 has 7 MA's), (Start: 51 @60613 has 95 MA's), (57, 60658), (62, 60676), (72, 60718), (80, 60772),

Gene: Krueger_4 Start: 823, Stop: 1062, Start Num: 40

Candidate Starts for Krueger_4:

(Start: 40 @823 has 8 MA's), (80, 1015),

Gene: Kudefre_102 Start: 58639, Stop: 58851, Start Num: 48
Candidate Starts for Kudefre_102:
(Start: 48 @58639 has 5 MA's), (64, 58729), (70, 58750), (80, 58813), (84, 58843),

Gene: LadyJasley_12 Start: 5128, Stop: 5349, Start Num: 43
Candidate Starts for LadyJasley_12:
(Start: 43 @5128 has 1 MA's), (65, 5230), (70, 5248), (80, 5311),

Gene: Laure_187 Start: 116319, Stop: 116528, Start Num: 44
Candidate Starts for Laure_187:
(Start: 44 @116319 has 7 MA's), (53, 116349), (76, 116472), (81, 116496),

Gene: Lenoshki_23 Start: 11467, Stop: 11682, Start Num: 47
Candidate Starts for Lenoshki_23:
(Start: 45 @11464 has 28 MA's), (Start: 47 @11467 has 12 MA's), (56, 11524), (65, 11557), (69, 11572), (81, 11641),

Gene: Lilpickle_101 Start: 60438, Stop: 60635, Start Num: 51
Candidate Starts for Lilpickle_101:
(14, 60261), (Start: 44 @60417 has 7 MA's), (Start: 51 @60438 has 95 MA's), (57, 60483), (62, 60501), (72, 60543), (80, 60597),

Gene: Liveloughbron_103 Start: 62036, Stop: 62233, Start Num: 51
Candidate Starts for Liveloughbron_103:
(14, 61859), (Start: 44 @62015 has 7 MA's), (Start: 51 @62036 has 95 MA's), (57, 62081), (62, 62099), (72, 62141), (80, 62195),

Gene: LogiBear_50 Start: 30793, Stop: 30587, Start Num: 35
Candidate Starts for LogiBear_50:
(13, 30946), (35, 30793), (56, 30742), (69, 30694), (76, 30649), (80, 30628),

Gene: LoneWolf_49 Start: 32307, Stop: 32071, Start Num: 38
Candidate Starts for LoneWolf_49:
(15, 32427), (16, 32415), (Start: 38 @32307 has 1 MA's), (69, 32184), (80, 32118),

Gene: LuckySocke_72 Start: 27277, Stop: 27489, Start Num: 45
Candidate Starts for LuckySocke_72:
(Start: 45 @27277 has 28 MA's), (65, 27367), (72, 27394), (77, 27436), (79, 27448), (80, 27451),

Gene: MISSy_103 Start: 61721, Stop: 61918, Start Num: 51
Candidate Starts for MISSy_103:
(14, 61544), (18, 61598), (Start: 44 @61700 has 7 MA's), (Start: 51 @61721 has 95 MA's), (57, 61766), (62, 61784), (72, 61826), (80, 61880),

Gene: MPhalcon_103 Start: 61138, Stop: 61335, Start Num: 51
Candidate Starts for MPhalcon_103:
(14, 60961), (Start: 44 @61117 has 7 MA's), (Start: 51 @61138 has 95 MA's), (57, 61183), (62, 61201), (72, 61243), (80, 61297),

Gene: Manda_103 Start: 61175, Stop: 61372, Start Num: 51
Candidate Starts for Manda_103:

(14, 60998), (Start: 44 @61154 has 7 MA's), (Start: 51 @61175 has 95 MA's), (57, 61220), (62, 61238), (72, 61280), (80, 61334),

Gene: Marshawn_5 Start: 936, Stop: 1178, Start Num: 40

Candidate Starts for Marshawn_5:

(Start: 40 @936 has 8 MA's), (58, 1017), (80, 1128),

Gene: Marshmallow_99 Start: 61133, Stop: 61330, Start Num: 51

Candidate Starts for Marshmallow_99:

(14, 60956), (Start: 44 @61112 has 7 MA's), (Start: 51 @61133 has 95 MA's), (57, 61178), (62, 61196), (72, 61238), (80, 61292),

Gene: Maya_30 Start: 25641, Stop: 25880, Start Num: 45

Candidate Starts for Maya_30:

(Start: 45 @25641 has 28 MA's), (75, 25800), (81, 25830),

Gene: Meibysrarus_30 Start: 25627, Stop: 25866, Start Num: 45

Candidate Starts for Meibysrarus_30:

(Start: 45 @25627 has 28 MA's), (75, 25786), (81, 25816),

Gene: MicyPS_26 Start: 28079, Stop: 28330, Start Num: 45

Candidate Starts for MicyPS_26:

(18, 27974), (19, 27977), (21, 27983), (22, 27998), (25, 28010), (31, 28049), (Start: 45 @28079 has 28 MA's), (56, 28139), (62, 28169), (69, 28199), (72, 28211), (73, 28214), (78, 28253), (81, 28268), (86, 28304),

Gene: Mikronejon_23 Start: 11838, Stop: 12056, Start Num: 45

Candidate Starts for Mikronejon_23:

(27, 11784), (Start: 45 @11838 has 28 MA's), (Start: 47 @11841 has 12 MA's), (56, 11898), (65, 11931), (68, 11943), (69, 11946), (81, 12015),

Gene: Mimi_186 Start: 124218, Stop: 124448, Start Num: 44

Candidate Starts for Mimi_186:

(Start: 44 @124218 has 7 MA's), (81, 124395),

Gene: Mindy_101 Start: 60454, Stop: 60651, Start Num: 51

Candidate Starts for Mindy_101:

(14, 60277), (Start: 44 @60433 has 7 MA's), (Start: 51 @60454 has 95 MA's), (57, 60499), (62, 60517), (72, 60559), (80, 60613),

Gene: MinecraftSteve_52 Start: 31065, Stop: 30817, Start Num: 33

Candidate Starts for MinecraftSteve_52:

(Start: 33 @31065 has 10 MA's), (69, 30933), (80, 30867),

Gene: Minispark_47 Start: 31839, Stop: 31603, Start Num: 34

Candidate Starts for Minispark_47:

(9, 32040), (16, 31941), (Start: 34 @31839 has 7 MA's), (Start: 48 @31815 has 5 MA's), (80, 31647),

Gene: Miniwave_97 Start: 60631, Stop: 60828, Start Num: 51

Candidate Starts for Miniwave_97:

(14, 60454), (Start: 44 @60610 has 7 MA's), (Start: 51 @60631 has 95 MA's), (57, 60676), (62, 60694), (72, 60736), (80, 60790),

Gene: MintFritos_23 Start: 11841, Stop: 12056, Start Num: 47

Candidate Starts for MintFritos_23:

(27, 11784), (Start: 45 @11838 has 28 MA's), (Start: 47 @11841 has 12 MA's), (56, 11898), (65, 11931), (68, 11943), (69, 11946), (81, 12015),

Gene: Misfit_103 Start: 62234, Stop: 62431, Start Num: 51

Candidate Starts for Misfit_103:

(14, 62057), (Start: 44 @62213 has 7 MA's), (Start: 51 @62234 has 95 MA's), (57, 62279), (62, 62297), (72, 62339), (80, 62393),

Gene: ModicumRichard_94 Start: 55434, Stop: 55703, Start Num: 47

Candidate Starts for ModicumRichard_94:

(Start: 47 @55434 has 12 MA's), (71, 55554), (73, 55560), (80, 55611), (81, 55614), (88, 55659),

Gene: Mollymur_75 Start: 54003, Stop: 53758, Start Num: 37

Candidate Starts for Mollymur_75:

(Start: 37 @54003 has 4 MA's), (Start: 48 @53982 has 5 MA's), (80, 53808),

Gene: Mosby_98 Start: 60598, Stop: 60795, Start Num: 51

Candidate Starts for Mosby_98:

(14, 60421), (Start: 44 @60577 has 7 MA's), (Start: 51 @60598 has 95 MA's), (57, 60643), (62, 60661), (72, 60703), (80, 60757),

Gene: Murica_105 Start: 62937, Stop: 63134, Start Num: 51

Candidate Starts for Murica_105:

(14, 62760), (18, 62814), (Start: 44 @62916 has 7 MA's), (Start: 51 @62937 has 95 MA's), (57, 62982), (62, 63000), (72, 63042), (80, 63096),

Gene: Myrale_102 Start: 61293, Stop: 61490, Start Num: 51

Candidate Starts for Myrale_102:

(14, 61116), (Start: 44 @61272 has 7 MA's), (Start: 51 @61293 has 95 MA's), (57, 61338), (62, 61356), (72, 61398), (80, 61452),

Gene: Nairb_1 Start: 89, Stop: 325, Start Num: 36

Candidate Starts for Nairb_1:

(20, 8), (26, 47), (Start: 36 @89 has 6 MA's), (Start: 38 @92 has 1 MA's), (62, 191), (63, 197), (64, 203), (80, 287),

Gene: Nala_104 Start: 61647, Stop: 61844, Start Num: 51

Candidate Starts for Nala_104:

(14, 61470), (Start: 44 @61626 has 7 MA's), (Start: 51 @61647 has 95 MA's), (57, 61692), (62, 61710), (72, 61752), (80, 61806),

Gene: Namo_30 Start: 25633, Stop: 25872, Start Num: 45

Candidate Starts for Namo_30:

(Start: 45 @25633 has 28 MA's), (75, 25792), (81, 25822),

Gene: NelitzaMV_99 Start: 59641, Stop: 59838, Start Num: 51

Candidate Starts for NelitzaMV_99:

(14, 59464), (Start: 44 @59620 has 7 MA's), (Start: 51 @59641 has 95 MA's), (57, 59686), (62, 59704), (72, 59746), (80, 59800),

Gene: Nimrod_102 Start: 61260, Stop: 61457, Start Num: 51

Candidate Starts for Nimrod_102:

(14, 61083), (Start: 44 @61239 has 7 MA's), (Start: 51 @61260 has 95 MA's), (57, 61305), (62, 61323), (72, 61365), (80, 61419),

Gene: NonchalantPear_102 Start: 59888, Stop: 60085, Start Num: 51

Candidate Starts for NonchalantPear_102:

(14, 59711), (Start: 51 @59888 has 95 MA's), (57, 59933), (62, 59951), (72, 59993), (80, 60047),

Gene: NoodlelyBoi_26 Start: 13691, Stop: 13933, Start Num: 45

Candidate Starts for NoodlelyBoi_26:

(Start: 45 @13691 has 28 MA's), (60, 13772), (76, 13859), (81, 13883),

Gene: Octobien14_100 Start: 58045, Stop: 58257, Start Num: 48

Candidate Starts for Octobien14_100:

(Start: 48 @58045 has 5 MA's), (64, 58135), (70, 58156), (80, 58219), (85, 58252),

Gene: OlympicHelado_30 Start: 25633, Stop: 25872, Start Num: 45

Candidate Starts for OlympicHelado_30:

(Start: 45 @25633 has 28 MA's), (75, 25792), (81, 25822),

Gene: Oogie_23 Start: 11493, Stop: 11708, Start Num: 47

Candidate Starts for Oogie_23:

(Start: 45 @11490 has 28 MA's), (Start: 47 @11493 has 12 MA's), (56, 11550), (65, 11583), (69, 11598), (81, 11667),

Gene: PSonyx_28 Start: 27311, Stop: 27562, Start Num: 45

Candidate Starts for PSonyx_28:

(Start: 45 @27311 has 28 MA's), (Start: 48 @27314 has 5 MA's), (56, 27371), (69, 27431), (70, 27434), (72, 27443), (73, 27446), (78, 27485), (81, 27500), (86, 27536), (87, 27539),

Gene: Pakusa_23 Start: 11583, Stop: 11798, Start Num: 47

Candidate Starts for Pakusa_23:

(27, 11526), (Start: 45 @11580 has 28 MA's), (Start: 47 @11583 has 12 MA's), (56, 11640), (65, 11673), (68, 11685), (69, 11688), (81, 11757),

Gene: Panchaali_179 Start: 122700, Stop: 122903, Start Num: 50

Candidate Starts for Panchaali_179:

(41, 122679), (Start: 50 @122700 has 1 MA's), (66, 122790), (81, 122871),

Gene: Paperbeatsrock_101 Start: 61309, Stop: 61506, Start Num: 51

Candidate Starts for Paperbeatsrock_101:

(14, 61132), (Start: 44 @61288 has 7 MA's), (Start: 51 @61309 has 95 MA's), (57, 61354), (62, 61372), (72, 61414), (80, 61468),

Gene: Park1214_78 Start: 27760, Stop: 27972, Start Num: 45

Candidate Starts for Park1214_78:

(Start: 45 @27760 has 28 MA's), (58, 27823), (65, 27850), (79, 27931), (80, 27934),

Gene: Pat3_99 Start: 59826, Stop: 60023, Start Num: 51

Candidate Starts for Pat3_99:

(14, 59649), (Start: 44 @59805 has 7 MA's), (Start: 51 @59826 has 95 MA's), (57, 59871), (62, 59889), (72, 59931), (80, 59985),

Gene: Patbob_185 Start: 125330, Stop: 125560, Start Num: 44
Candidate Starts for Patbob_185:
(Start: 44 @125330 has 7 MA's), (81, 125507),

Gene: Petra64142_106 Start: 61798, Stop: 61995, Start Num: 51
Candidate Starts for Petra64142_106:
(14, 61621), (Start: 44 @61777 has 7 MA's), (Start: 51 @61798 has 95 MA's), (57, 61843), (62, 61861),
(72, 61903), (80, 61957),

Gene: Phaja_100 Start: 60513, Stop: 60710, Start Num: 51
Candidate Starts for Phaja_100:
(14, 60336), (Start: 44 @60492 has 7 MA's), (Start: 51 @60513 has 95 MA's), (57, 60558), (62, 60576),
(72, 60618), (80, 60672),

Gene: Pharaoh_43 Start: 32085, Stop: 31876, Start Num: 34
Candidate Starts for Pharaoh_43:
(16, 32193), (17, 32181), (Start: 34 @32085 has 7 MA's), (62, 32010), (70, 31977), (80, 31914),

Gene: Pharsalus_99 Start: 61008, Stop: 61205, Start Num: 51
Candidate Starts for Pharsalus_99:
(14, 60831), (Start: 44 @60987 has 7 MA's), (Start: 51 @61008 has 95 MA's), (57, 61053), (62, 61071),
(72, 61113), (80, 61167),

Gene: PhatBacter_105 Start: 61677, Stop: 61874, Start Num: 51
Candidate Starts for PhatBacter_105:
(14, 61500), (Start: 44 @61656 has 7 MA's), (Start: 51 @61677 has 95 MA's), (57, 61722), (62, 61740),
(72, 61782), (80, 61836),

Gene: Phaux_104 Start: 62237, Stop: 62434, Start Num: 51
Candidate Starts for Phaux_104:
(14, 62060), (Start: 44 @62216 has 7 MA's), (Start: 51 @62237 has 95 MA's), (57, 62282), (62, 62300),
(72, 62342), (80, 62396),

Gene: Phrampa_178 Start: 126373, Stop: 126600, Start Num: 44
Candidate Starts for Phrampa_178:
(Start: 44 @126373 has 7 MA's), (81, 126550),

Gene: Phroglets_5 Start: 3497, Stop: 3736, Start Num: 30
Candidate Starts for Phroglets_5:
(Start: 30 @3497 has 1 MA's), (Start: 33 @3506 has 10 MA's), (74, 3656), (78, 3689), (81, 3704),

Gene: PigHeaded_10 Start: 4950, Stop: 5192, Start Num: 32
Candidate Starts for PigHeaded_10:
(18, 4878), (32, 4950), (72, 5100),

Gene: Policronamos_104 Start: 61941, Stop: 62138, Start Num: 51
Candidate Starts for Policronamos_104:
(14, 61764), (Start: 44 @61920 has 7 MA's), (Start: 51 @61941 has 95 MA's), (57, 61986), (62, 62004),
(72, 62046), (80, 62100),

Gene: Polyphemus_52 Start: 31731, Stop: 31501, Start Num: 34
Candidate Starts for Polyphemus_52:
(16, 31839), (Start: 34 @31731 has 7 MA's), (58, 31650), (62, 31635), (73, 31590), (80, 31539),

Gene: Prudy_47 Start: 33069, Stop: 32833, Start Num: 33
Candidate Starts for Prudy_47:
(Start: 33 @33069 has 10 MA's), (73, 32931), (78, 32892), (80, 32880),

Gene: Ptowny_98 Start: 59349, Stop: 59546, Start Num: 51
Candidate Starts for Ptowny_98:
(14, 59172), (Start: 51 @59349 has 95 MA's), (57, 59394), (62, 59412), (72, 59454), (80, 59508),

Gene: Quallification_103 Start: 61723, Stop: 61920, Start Num: 51
Candidate Starts for Quallification_103:
(14, 61546), (Start: 44 @61702 has 7 MA's), (Start: 51 @61723 has 95 MA's), (57, 61768), (62, 61786),
(72, 61828), (80, 61882),

Gene: Quhwah_29 Start: 14012, Stop: 14254, Start Num: 45
Candidate Starts for Quhwah_29:
(10, 13787), (Start: 45 @14012 has 28 MA's), (73, 14150), (76, 14180), (81, 14204),

Gene: Racecar_187 Start: 125098, Stop: 125328, Start Num: 44
Candidate Starts for Racecar_187:
(Start: 44 @125098 has 7 MA's), (81, 125275),

Gene: Rahalelujah_48 Start: 31854, Stop: 31618, Start Num: 34
Candidate Starts for Rahalelujah_48:
(9, 32055), (16, 31956), (Start: 34 @31854 has 7 MA's), (Start: 48 @31830 has 5 MA's), (80, 31662),

Gene: Rakim_103 Start: 60745, Stop: 60942, Start Num: 51
Candidate Starts for Rakim_103:
(14, 60568), (Start: 44 @60724 has 7 MA's), (Start: 51 @60745 has 95 MA's), (57, 60790), (62, 60808),
(72, 60850), (80, 60904),

Gene: Remus_51 Start: 30778, Stop: 30533, Start Num: 33
Candidate Starts for Remus_51:
(Start: 33 @30778 has 10 MA's), (Start: 48 @30751 has 5 MA's), (66, 30661), (80, 30583),

Gene: Rima_30 Start: 25633, Stop: 25872, Start Num: 45
Candidate Starts for Rima_30:
(Start: 45 @25633 has 28 MA's), (75, 25792), (81, 25822),

Gene: Rimmer_100 Start: 61135, Stop: 61332, Start Num: 51
Candidate Starts for Rimmer_100:
(14, 60958), (Start: 44 @61114 has 7 MA's), (Start: 51 @61135 has 95 MA's), (57, 61180), (62, 61198),
(72, 61240), (80, 61294),

Gene: RonRayGun_1 Start: 89, Stop: 325, Start Num: 36
Candidate Starts for RonRayGun_1:
(20, 8), (26, 47), (Start: 36 @89 has 6 MA's), (Start: 38 @92 has 1 MA's), (62, 191), (63, 197), (64,
203), (80, 287),

Gene: Rosalind_50 Start: 30984, Stop: 30736, Start Num: 33
Candidate Starts for Rosalind_50:
(Start: 33 @30984 has 10 MA's), (69, 30852), (80, 30786),

Gene: Sassay_97 Start: 59560, Stop: 59757, Start Num: 51

Candidate Starts for Sassay_97:

(14, 59383), (Start: 44 @59539 has 7 MA's), (Start: 51 @59560 has 95 MA's), (57, 59605), (62, 59623), (72, 59665), (80, 59719),

Gene: ScarletRaider_23 Start: 12882, Stop: 13100, Start Num: 47

Candidate Starts for ScarletRaider_23:

(Start: 45 @12879 has 28 MA's), (Start: 47 @12882 has 12 MA's), (76, 13035), (79, 13053), (81, 13059),

Gene: Schomber_23 Start: 11591, Stop: 11806, Start Num: 47

Candidate Starts for Schomber_23:

(27, 11534), (Start: 45 @11588 has 28 MA's), (Start: 47 @11591 has 12 MA's), (56, 11648), (65, 11681), (69, 11696), (78, 11750), (81, 11765),

Gene: Sephiroth_99 Start: 58611, Stop: 58823, Start Num: 48

Candidate Starts for Sephiroth_99:

(Start: 48 @58611 has 5 MA's), (64, 58701), (65, 58704), (70, 58722), (80, 58785),

Gene: Shadow1_3 Start: 728, Stop: 967, Start Num: 40

Candidate Starts for Shadow1_3:

(Start: 40 @728 has 8 MA's), (80, 920),

Gene: ShamWow_102 Start: 61530, Stop: 61727, Start Num: 51

Candidate Starts for ShamWow_102:

(14, 61353), (Start: 44 @61509 has 7 MA's), (Start: 51 @61530 has 95 MA's), (57, 61575), (62, 61593), (72, 61635), (80, 61689),

Gene: ShereKhan_100 Start: 61969, Stop: 62166, Start Num: 51

Candidate Starts for ShereKhan_100:

(14, 61792), (Start: 44 @61948 has 7 MA's), (Start: 51 @61969 has 95 MA's), (57, 62014), (62, 62032), (72, 62074), (80, 62128),

Gene: SirDuracell_102 Start: 60347, Stop: 60544, Start Num: 51

Candidate Starts for SirDuracell_102:

(14, 60170), (Start: 44 @60326 has 7 MA's), (Start: 51 @60347 has 95 MA's), (57, 60392), (62, 60410), (72, 60452), (80, 60506),

Gene: SophKB_100 Start: 60770, Stop: 60967, Start Num: 51

Candidate Starts for SophKB_100:

(14, 60593), (Start: 44 @60749 has 7 MA's), (Start: 51 @60770 has 95 MA's), (57, 60815), (62, 60833), (72, 60875), (80, 60929),

Gene: Sotrice96_103 Start: 61234, Stop: 61431, Start Num: 51

Candidate Starts for Sotrice96_103:

(14, 61057), (Start: 44 @61213 has 7 MA's), (Start: 51 @61234 has 95 MA's), (57, 61279), (62, 61297), (72, 61339), (80, 61393),

Gene: Spectropatronm_30 Start: 25627, Stop: 25866, Start Num: 45

Candidate Starts for Spectropatronm_30:

(Start: 45 @25627 has 28 MA's), (75, 25786), (81, 25816),

Gene: SpeedDemon_770 Start: 55702, Stop: 55460, Start Num: 37

Candidate Starts for SpeedDemon_770:

(Start: 37 @55702 has 4 MA's), (Start: 48 @55681 has 5 MA's), (73, 55558), (80, 55507),

Gene: Stank_104 Start: 61008, Stop: 61205, Start Num: 51

Candidate Starts for Stank_104:

(14, 60831), (Start: 44 @60987 has 7 MA's), (Start: 51 @61008 has 95 MA's), (57, 61053), (62, 61071), (72, 61113), (80, 61167),

Gene: StellaBean_101 Start: 61370, Stop: 61567, Start Num: 51

Candidate Starts for StellaBean_101:

(14, 61193), (Start: 44 @61349 has 7 MA's), (Start: 51 @61370 has 95 MA's), (57, 61415), (62, 61433), (72, 61475), (80, 61529),

Gene: Stewart25555_179 Start: 124346, Stop: 124552, Start Num: 48

Candidate Starts for Stewart25555_179:

(Start: 48 @124346 has 5 MA's), (81, 124520),

Gene: StolenFromERC_104 Start: 60933, Stop: 61130, Start Num: 51

Candidate Starts for StolenFromERC_104:

(14, 60756), (Start: 51 @60933 has 95 MA's), (57, 60978), (62, 60996), (72, 61038), (80, 61092),

Gene: StormChicken_103 Start: 61299, Stop: 61496, Start Num: 51

Candidate Starts for StormChicken_103:

(14, 61122), (Start: 44 @61278 has 7 MA's), (Start: 51 @61299 has 95 MA's), (57, 61344), (62, 61362), (72, 61404), (80, 61458),

Gene: Strosahl_51 Start: 30778, Stop: 30533, Start Num: 33

Candidate Starts for Strosahl_51:

(Start: 33 @30778 has 10 MA's), (Start: 48 @30751 has 5 MA's), (66, 30661), (80, 30583),

Gene: Sunflower1121_3 Start: 727, Stop: 966, Start Num: 40

Candidate Starts for Sunflower1121_3:

(Start: 40 @727 has 8 MA's), (80, 919),

Gene: Switzerland_51 Start: 31164, Stop: 30916, Start Num: 33

Candidate Starts for Switzerland_51:

(Start: 33 @31164 has 10 MA's), (69, 31032), (80, 30966),

Gene: Syleon_102 Start: 58815, Stop: 59036, Start Num: 48

Candidate Starts for Syleon_102:

(Start: 48 @58815 has 5 MA's), (64, 58905), (70, 58926), (80, 58989),

Gene: Syra333_4 Start: 832, Stop: 1071, Start Num: 40

Candidate Starts for Syra333_4:

(Start: 40 @832 has 8 MA's), (80, 1024),

Gene: TBrady12_105 Start: 60448, Stop: 60645, Start Num: 51

Candidate Starts for TBrady12_105:

(14, 60271), (Start: 44 @60427 has 7 MA's), (Start: 51 @60448 has 95 MA's), (57, 60493), (62, 60511), (72, 60553), (80, 60607),

Gene: TClif_4 Start: 786, Stop: 1025, Start Num: 40

Candidate Starts for TClif_4:

(Start: 40 @786 has 8 MA's), (79, 975), (80, 978),

Gene: TaidaOne_30 Start: 26275, Stop: 26514, Start Num: 45

Candidate Starts for TaidaOne_30:

(Start: 45 @26275 has 28 MA's), (75, 26434), (81, 26464),

Gene: Talia1610_187 Start: 124515, Stop: 124745, Start Num: 44

Candidate Starts for Talia1610_187:

(Start: 44 @124515 has 7 MA's), (81, 124692),

Gene: Talos_73 Start: 27089, Stop: 27301, Start Num: 46

Candidate Starts for Talos_73:

(Start: 46 @27089 has 1 MA's), (65, 27179), (72, 27206), (75, 27233), (77, 27248), (79, 27260), (80, 27263),

Gene: Taotie_24 Start: 24901, Stop: 25152, Start Num: 45

Candidate Starts for Taotie_24:

(Start: 45 @24901 has 28 MA's), (56, 24961), (61, 24988), (62, 24991), (69, 25021), (70, 25024), (72, 25033), (73, 25036), (78, 25075), (81, 25090), (86, 25126), (87, 25129),

Gene: Tarkin_101 Start: 61834, Stop: 62031, Start Num: 51

Candidate Starts for Tarkin_101:

(14, 61657), (Start: 44 @61813 has 7 MA's), (Start: 51 @61834 has 95 MA's), (57, 61879), (62, 61897), (72, 61939), (80, 61993),

Gene: TeamEdward_102 Start: 61496, Stop: 61693, Start Num: 51

Candidate Starts for TeamEdward_102:

(14, 61319), (Start: 44 @61475 has 7 MA's), (Start: 51 @61496 has 95 MA's), (57, 61541), (62, 61559), (72, 61601), (80, 61655),

Gene: TeardropMSU_98 Start: 60315, Stop: 60512, Start Num: 51

Candidate Starts for TeardropMSU_98:

(14, 60138), (Start: 44 @60294 has 7 MA's), (Start: 51 @60315 has 95 MA's), (57, 60360), (62, 60378), (72, 60420), (80, 60474),

Gene: Terminus_105 Start: 62234, Stop: 62431, Start Num: 51

Candidate Starts for Terminus_105:

(14, 62057), (Start: 44 @62213 has 7 MA's), (Start: 51 @62234 has 95 MA's), (57, 62279), (62, 62297), (72, 62339), (80, 62393),

Gene: Theresita_48 Start: 29943, Stop: 30182, Start Num: 28

Candidate Starts for Theresita_48:

(Start: 28 @29943 has 1 MA's), (39, 29967), (67, 30075), (73, 30099),

Gene: TieDye_29 Start: 25319, Stop: 25558, Start Num: 45

Candidate Starts for TieDye_29:

(Start: 45 @25319 has 28 MA's), (75, 25478), (81, 25508),

Gene: Tigress9_4 Start: 823, Stop: 1062, Start Num: 40

Candidate Starts for Tigress9_4:

(Start: 40 @823 has 8 MA's), (80, 1015),

Gene: Toaka_48 Start: 32116, Stop: 31880, Start Num: 34

Candidate Starts for Toaka_48:

(16, 32218), (Start: 34 @32116 has 7 MA's), (62, 32017), (80, 31921),

Gene: Tomaszewski_97 Start: 60772, Stop: 60969, Start Num: 51

Candidate Starts for Tomaszewski_97:

(14, 60595), (Start: 44 @60751 has 7 MA's), (Start: 51 @60772 has 95 MA's), (57, 60817), (62, 60835), (72, 60877), (80, 60931),

Gene: Toneprano_23 Start: 11841, Stop: 12056, Start Num: 47

Candidate Starts for Toneprano_23:

(27, 11784), (Start: 45 @11838 has 28 MA's), (Start: 47 @11841 has 12 MA's), (56, 11898), (65, 11931), (68, 11943), (69, 11946), (81, 12015),

Gene: TonyStarch_30 Start: 25633, Stop: 25872, Start Num: 45

Candidate Starts for TonyStarch_30:

(Start: 45 @25633 has 28 MA's), (75, 25792), (81, 25822),

Gene: Toto_100 Start: 61530, Stop: 61727, Start Num: 51

Candidate Starts for Toto_100:

(14, 61353), (Start: 44 @61509 has 7 MA's), (Start: 51 @61530 has 95 MA's), (57, 61575), (62, 61593), (72, 61635), (80, 61689),

Gene: Traaww1_98 Start: 60037, Stop: 60234, Start Num: 51

Candidate Starts for Traaww1_98:

(14, 59860), (Start: 44 @60016 has 7 MA's), (Start: 51 @60037 has 95 MA's), (57, 60082), (62, 60100), (72, 60142), (80, 60196),

Gene: Tuco_103 Start: 62395, Stop: 62592, Start Num: 51

Candidate Starts for Tuco_103:

(14, 62218), (Start: 44 @62374 has 7 MA's), (Start: 51 @62395 has 95 MA's), (57, 62440), (62, 62458), (72, 62500), (80, 62554),

Gene: Twin_23 Start: 11841, Stop: 12056, Start Num: 47

Candidate Starts for Twin_23:

(27, 11784), (Start: 45 @11838 has 28 MA's), (Start: 47 @11841 has 12 MA's), (56, 11898), (65, 11931), (68, 11943), (69, 11946), (81, 12015),

Gene: UBSmoodge_25 Start: 13351, Stop: 13569, Start Num: 47

Candidate Starts for UBSmoodge_25:

(Start: 45 @13348 has 28 MA's), (Start: 47 @13351 has 12 MA's), (56, 13411), (76, 13504), (79, 13522), (81, 13528),

Gene: Vanisoa_48 Start: 33142, Stop: 32909, Start Num: 34

Candidate Starts for Vanisoa_48:

(9, 33343), (17, 33232), (Start: 34 @33142 has 7 MA's), (62, 33043), (72, 33001), (80, 32947),

Gene: Waits_51 Start: 30953, Stop: 30705, Start Num: 33

Candidate Starts for Waits_51:

(Start: 33 @30953 has 10 MA's), (69, 30821), (80, 30755),

Gene: Warrior24_52 Start: 31163, Stop: 30915, Start Num: 33

Candidate Starts for Warrior24_52:

(Start: 33 @31163 has 10 MA's), (69, 31031), (80, 30965),

Gene: Whitty_1 Start: 89, Stop: 325, Start Num: 36

Candidate Starts for Whitty_1:

(20, 8), (26, 47), (Start: 36 @89 has 6 MA's), (Start: 38 @92 has 1 MA's), (62, 191), (63, 197), (64, 203), (80, 287),

Gene: Wigberry_30 Start: 25089, Stop: 25331, Start Num: 45

Candidate Starts for Wigberry_30:

(Start: 45 @25089 has 28 MA's), (Start: 48 @25095 has 5 MA's), (81, 25281), (83, 25299),

Gene: Wiggin_104 Start: 60438, Stop: 60635, Start Num: 51

Candidate Starts for Wiggin_104:

(14, 60261), (Start: 44 @60417 has 7 MA's), (Start: 51 @60438 has 95 MA's), (57, 60483), (62, 60501), (72, 60543), (80, 60597),

Gene: Willez_97 Start: 59560, Stop: 59757, Start Num: 51

Candidate Starts for Willez_97:

(14, 59383), (Start: 44 @59539 has 7 MA's), (Start: 51 @59560 has 95 MA's), (57, 59605), (62, 59623), (72, 59665), (80, 59719),

Gene: WorldCup_47 Start: 31848, Stop: 31612, Start Num: 34

Candidate Starts for WorldCup_47:

(9, 32049), (16, 31950), (Start: 34 @31848 has 7 MA's), (Start: 48 @31824 has 5 MA's), (80, 31656),

Gene: Xandras_101 Start: 60261, Stop: 60458, Start Num: 51

Candidate Starts for Xandras_101:

(14, 60084), (Start: 51 @60261 has 95 MA's), (57, 60306), (62, 60324), (72, 60366), (80, 60420),

Gene: Ximenita_5 Start: 995, Stop: 1234, Start Num: 40

Candidate Starts for Ximenita_5:

(Start: 40 @995 has 8 MA's), (80, 1187),

Gene: YassJohnny_99 Start: 59581, Stop: 59778, Start Num: 51

Candidate Starts for YassJohnny_99:

(14, 59404), (Start: 44 @59560 has 7 MA's), (Start: 51 @59581 has 95 MA's), (57, 59626), (62, 59644), (72, 59686), (80, 59740),

Gene: Youngblood_105 Start: 61731, Stop: 61928, Start Num: 51

Candidate Starts for Youngblood_105:

(14, 61554), (Start: 44 @61710 has 7 MA's), (Start: 51 @61731 has 95 MA's), (57, 61776), (62, 61794), (72, 61836), (80, 61890),

Gene: ZenTime222_1 Start: 89, Stop: 325, Start Num: 36

Candidate Starts for ZenTime222_1:

(20, 8), (26, 47), (Start: 36 @89 has 6 MA's), (Start: 38 @92 has 1 MA's), (62, 191), (63, 197), (64, 203), (80, 287),

Gene: xkcd_105 Start: 61915, Stop: 62112, Start Num: 51

Candidate Starts for xkcd_105:

(14, 61738), (Start: 44 @61894 has 7 MA's), (Start: 51 @61915 has 95 MA's), (57, 61960), (62, 61978), (72, 62020), (80, 62074),