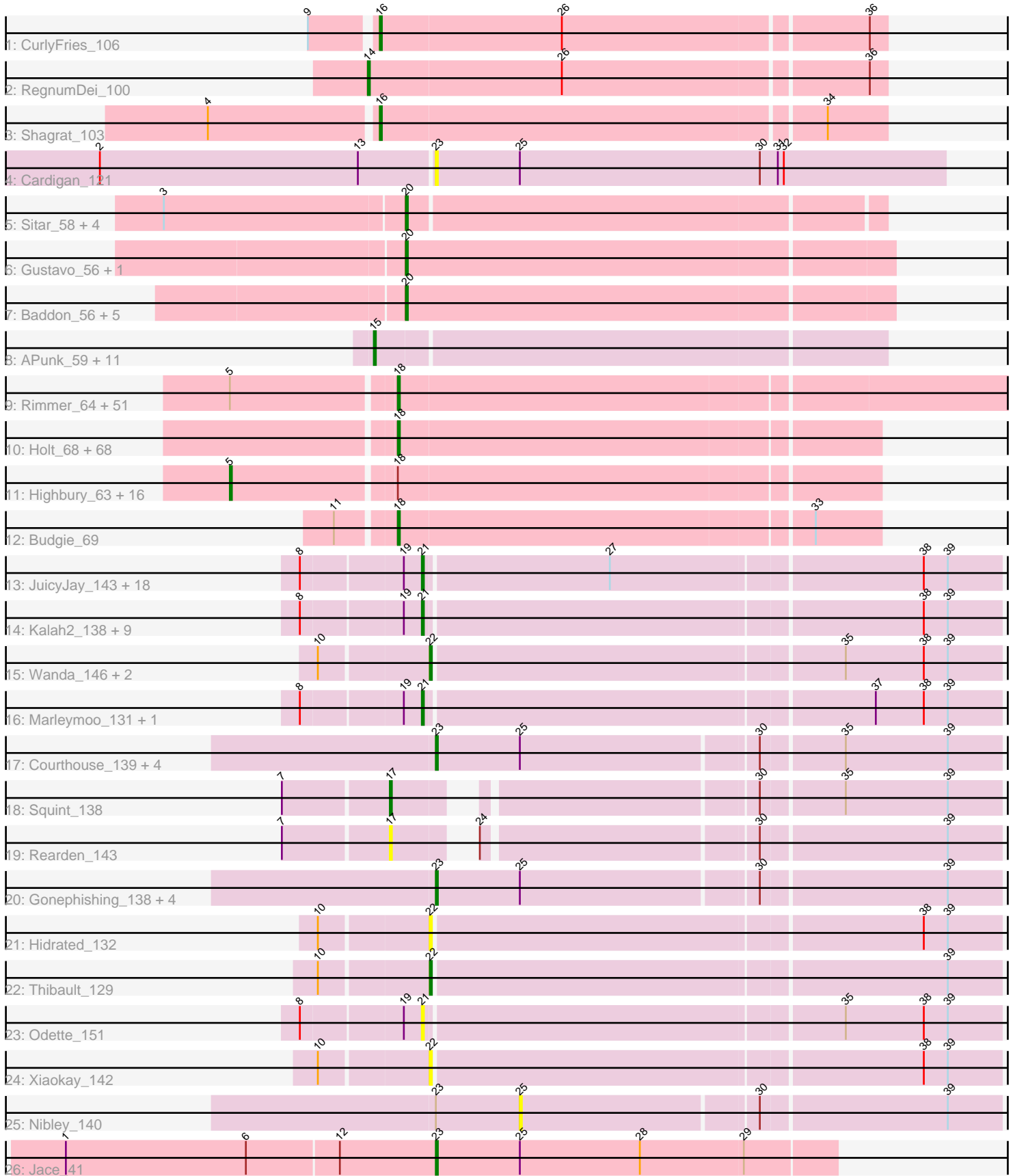


Pham 304712



Note: Tracks are now grouped by subcluster and scaled. Switching in subcluster is indicated by changes in track color. Track scale is now set by default to display the region 30 bp upstream of start 1 to 30 bp downstream of the last possible start. If this default region is judged to be packed too tightly with annotated starts, the track will be further scaled to only show that region of the ORF with annotated starts. This action will be indicated by adding "Zoomed" to the title. For starts, yellow indicates the location of called starts comprised solely of Glimmer/GeneMark auto-annotations, green indicates the location of called starts with at least 1 manual gene annotation.

## Pham 304712 Report

This analysis was run 06/08/26 on database version 649.

Pham number 304712 has 220 members, 22 are drafts.

Phages represented in each track:

- Track 1 : CurlyFries\_106
- Track 2 : RegnumDei\_100
- Track 3 : Shagrat\_103
- Track 4 : Cardigan\_121
- Track 5 : Sitar\_58, Barsten\_58, Geodirt\_57, Nordenberg\_54, McCrothy\_58
- Track 6 : Gustavo\_56, Saronaya\_56
- Track 7 : Baddon\_56, Bibwit\_57, Stichling\_53, JKSyngboy\_54, Kwobi\_58, Tangerine\_55
- Track 8 : APunk\_59, Zipp\_59, Sampson\_58, Delrey21\_58, BigHunkinEater\_61, Tardus\_60, DoctorFroggo\_58, Verity\_58, ViaConlectus\_58, Natkenzie\_58, Scioto\_59, Abblin\_58
- Track 9 : Rimmer\_64, BaboJay\_60, Phaux\_65, YassJohnny\_60, Quallification\_64, Sassay\_58, Amao\_63, MadamMonkfish\_64, Nala\_65, SirDuracell\_62, RiverMonster\_63, Pat3\_61, Lilac\_65, Icee\_64, Elph10\_63, Buck\_64, ChotaBhai\_62, Youngblood\_66, Bench\_66, Cactus\_66, Glexan\_62, Kanye\_60, PhatBacter\_67, Willez\_58, FairyPath\_64, Flypotenuse\_59, Hopey\_63, Cookies\_60, Misfit\_64, Harella\_63, Terminus\_66, MPhalcon\_64, Murica\_66, Murphy\_64, DrDrey\_63, Balomoji\_63, Command613\_65, Myrale\_63, Stark\_64, Phrux\_60, Policronamos\_66, Bask21\_63, Bruin\_60, Cjw1\_63, HanKaySha\_63, HufflyPuff\_66, Lilizi\_64, Ukulele\_59, FireRed\_67, Daikon\_65, MISSy\_64, ShereKhan\_62
- Track 10 : Holt\_68, OrionPax\_62, StolenFromERC\_66, Kimchi\_67, NelitzaMV\_61, Pumpkin\_66, Henry\_62, BilboSwaggins\_62, StellaBean\_62, Stank\_67, Adnama\_68, TeardropMSU\_60, Mindy\_63, Hoonter\_66, Dumbo\_63, Manda\_64, BigBubba\_64, TBrady12\_67, GoldenSpark\_67, IHOP\_62, ShamWow\_64, Bogg\_63, Brewer\_59, Easy2Say\_65, AmericanBeauty\_67, Teaspoon\_65, Emmina\_64, Porky\_63, Kostya\_64, SophKB\_61, Toto\_62, Eureka\_62, CrystalP\_63, 244\_64, Elite2014\_63, Thimble\_64, GooberAzure\_66, Thresher\_66, NoSleep\_65, ChosenOne\_64, Goldilocks\_66, Gage\_65, Goku\_62, Pharsalus\_61, Inca\_61, Dusk\_61, BadStone\_61, Gator\_62, Asriel\_63, Gemini\_68, DoctorDiddles\_62, Phaja\_62, Tuco\_65, JeTaime\_63, Miniwave\_59, Rakim\_65, Traaww1\_60, Moldemort\_67, Tarkin\_63, Paperbeatsrock\_63, Simpliphy\_63, Barbarian\_63, ABCat\_61, Lilpickle\_63, Argent26\_67, Wiggin\_66, Ptowny\_61, Filch\_65, Xandras\_63
- Track 11 : Highbury\_63, xkcd\_66, Czyszccon1\_64, Marshmallow\_61, Sotrice96\_64, Contagion\_59, StormChicken\_65, Greep\_67, Maxxinista\_65, PaddyBaddy\_63, MollyToe\_58, Tomaszewski\_58, Mosby\_59, NonchalantPear\_64, Saints25\_63, Nimrod\_64, TeamEdward\_65
- Track 12 : Budgie\_69

- Track 13 : JuicyJay\_143, Optimus\_138, Bagrid\_148, ThreeRngTarjay\_142, Halley\_149, Duke13\_143, BAKA\_147, DmpstrDiver\_148, Beem\_149, Constella\_141, Pound\_139, EricMillard\_139, Ejimix\_140, Dallas\_148, Klein\_145, Schatzie\_143, Hughesyang\_146, Phoebus\_147, Bombitas\_135
- Track 14 : Kalah2\_138, Porcelain\_143, MiaZeal\_146, Yeet\_141, HokkenD\_140, Dove\_133, NihilNomen\_149, Redno2\_142, Lucky2013\_139, KashFlow\_146
- Track 15 : Wanda\_146, Zelink\_141, Minerva\_146
- Track 16 : Marleymoo\_131, Bobby\_137
- Track 17 : Courthouse\_139, Superphikiman\_141, Ariel\_143, Hannaconda\_137, Omega\_151
- Track 18 : Squint\_138
- Track 19 : Rearden\_143
- Track 20 : Gonephishing\_138, BronnyJames\_141, LittleE\_147, Shaboozey\_144, Nekros\_142
- Track 21 : Hidrated\_132
- Track 22 : Thibault\_129
- Track 23 : Odette\_151
- Track 24 : Xiaokay\_142
- Track 25 : Nibley\_140
- Track 26 : Jace\_41

***Summary of Final Annotations (See graph section above for start numbers):***

The start number called the most often in the published annotations is 18, it was called in 119 of the 198 non-draft genes in the pham.

Genes that call this "Most Annotated" start:

- 244\_64, ABCat\_61, Adnama\_68, Amao\_63, AmericanBeauty\_67, Argent26\_67, Asriel\_63, BaboJay\_60, BadStone\_61, Balomoji\_63, Barbarian\_63, Bask21\_63, Bench\_66, BigBubba\_64, BilboSwaggins\_62, Bogg\_63, Brewer\_59, Bruin\_60, Buck\_64, Budgie\_69, Cactus\_66, ChosenOne\_64, ChotaBhai\_62, Cjw1\_63, Command613\_65, Cookies\_60, CrystalP\_63, Daikon\_65, DoctorDiddles\_62, DrDrey\_63, Dumbo\_63, Dusk\_61, Easy2Say\_65, Elite2014\_63, Elph10\_63, Emmina\_64, Eureka\_62, FairyPath\_64, Filch\_65, FireRed\_67, Flypotenuse\_59, Gage\_65, Gator\_62, Gemini\_68, Glexan\_62, Goku\_62, GoldenSpark\_67, Goldilocks\_66, GooberAzure\_66, HanKaySha\_63, Harella\_63, Henry\_62, Holt\_68, Hoonter\_66, Hopey\_63, HufflyPuff\_66, IHOP\_62, Icee\_64, Inca\_61, JeTaime\_63, Kanye\_60, Kimchi\_67, Kostya\_64, Lilac\_65, Lilizi\_64, Lilpickle\_63, MISSy\_64, MPhalcon\_64, MadamMonkfish\_64, Manda\_64, Mindy\_63, Miniwave\_59, Misfit\_64, Moldemort\_67, Murica\_66, Murphy\_64, Myrale\_63, Nala\_65, NelitzaMV\_61, NoSleep\_65, OrionPax\_62, Paperbeatsrock\_63, Pat3\_61, Phaja\_62, Pharsalus\_61, PhatBacter\_67, Phaux\_65, Phrux\_60, Policronamos\_66, Porky\_63, Ptowny\_61, Pumpkin\_66, Quallification\_64, Rakim\_65, Rimmer\_64, RiverMonster\_63, Sassay\_58, ShamWow\_64, ShereKhan\_62, Simpliphy\_63, SirDuracell\_62, SophKB\_61, Stank\_67, Stark\_64, StellaBean\_62, StolenFromERC\_66, TBrady12\_67, Tarkin\_63, TeardropMSU\_60, Teaspoon\_65, Terminus\_66, Thimble\_64, Thresher\_66, Toto\_62, Traaww1\_60, Tuco\_65, Ukulele\_59, Wiggin\_66, Willez\_58, Xandras\_63, YassJohnny\_60, Youngblood\_66,

Genes that have the "Most Annotated" start but do not call it:

- Contagion\_59, Czyszczone1\_64, Greep\_67, Highbury\_63, Marshmallow\_61, Maxxinista\_65, MollyToe\_58, Mosby\_59, Nimrod\_64, NonchalantPear\_64, PaddyBaddy\_63, Saints25\_63, Sotrice96\_64, StormChicken\_65, TeamEdward\_65, Tomaszewski\_58, xkcd\_66,

Genes that do not have the "Most Annotated" start:

- APunk\_59, Abblin\_58, Ariel\_143, BAKA\_147, Baddon\_56, Bagrid\_148, Barsten\_58, Beem\_149, Bibwit\_57, BigHunkinEater\_61, Bobby\_137, Bombitas\_135, BronnyJames\_141, Cardigan\_121, Constella\_141, Courthouse\_139, CurlyFries\_106, Dallas\_148, Delrey21\_58, DmpstrDiver\_148, DoctorFroggo\_58, Dove\_133, Duke13\_143, Ejimix\_140, EricMillard\_139, Geodirt\_57, Gonephishing\_138, Gustavo\_56, Halley\_149, Hannaconda\_137, Hidrated\_132, HokkenD\_140, Hughesyang\_146, JKSyngboy\_54, Jace\_41, JuicyJay\_143, Kalah2\_138, KashFlow\_146, Klein\_145, Kwobi\_58, LittleE\_147, Lucky2013\_139, Marleymoo\_131, McCrothy\_58, MiaZeal\_146, Minerva\_146, Natkenzie\_58, Nekros\_142, Nibley\_140, NihilNomen\_149, Nordenberg\_54, Odette\_151, Omega\_151, Optimus\_138, Phoebus\_147, Porcelain\_143, Pound\_139, Rearden\_143, Redno2\_142, RegnumDei\_100, Sampson\_58, Saronaya\_56, Schatzie\_143, Scioto\_59, Shaboozey\_144, Shagrat\_103, Sitar\_58, Squint\_138, Stichling\_53, Superphikiman\_141, Tangerine\_55, Tardus\_60, Thibault\_129, ThreeRngTarjay\_142, Verity\_58, ViaConlectus\_58, Wanda\_146, Xiaokay\_142, Yeet\_141, Zelink\_141, Zipp\_59,

### Summary by start number:

Start 5:

- Found in 69 of 220 ( 31.4% ) of genes in pham
- Manual Annotations of this start: 12 of 198
- Called 24.6% of time when present
- Phage (with cluster) where this start called: Contagion\_59 (E), Czyszczone1\_64 (E), Greep\_67 (E), Highbury\_63 (E), Marshmallow\_61 (E), Maxxinista\_65 (E), MollyToe\_58 (E), Mosby\_59 (E), Nimrod\_64 (E), NonchalantPear\_64 (E), PaddyBaddy\_63 (E), Saints25\_63 (E), Sotrice96\_64 (E), StormChicken\_65 (E), TeamEdward\_65 (E), Tomaszewski\_58 (E), xkcd\_66 (E),

Start 14:

- Found in 1 of 220 ( 0.5% ) of genes in pham
- Manual Annotations of this start: 1 of 198
- Called 100.0% of time when present
- Phage (with cluster) where this start called: RegnumDei\_100 (CF),

Start 15:

- Found in 12 of 220 ( 5.5% ) of genes in pham
- Manual Annotations of this start: 12 of 198
- Called 100.0% of time when present
- Phage (with cluster) where this start called: APunk\_59 (DE4), Abblin\_58 (DE4), BigHunkinEater\_61 (DE4), Delrey21\_58 (DE4), DoctorFroggo\_58 (DE4), Natkenzie\_58 (DE4), Sampson\_58 (DE4), Scioto\_59 (DE4), Tardus\_60 (DE4), Verity\_58 (DE4), ViaConlectus\_58 (DE4), Zipp\_59 (DE4),

Start 16:

- Found in 2 of 220 ( 0.9% ) of genes in pham
- Manual Annotations of this start: 2 of 198

- Called 100.0% of time when present
- Phage (with cluster) where this start called: CurlyFries\_106 (CF), Shagrat\_103 (CF),

#### Start 17:

- Found in 2 of 220 ( 0.9% ) of genes in pham
- Manual Annotations of this start: 1 of 198
- Called 100.0% of time when present
- Phage (with cluster) where this start called: Rearden\_143 (J), Squint\_138 (J),

#### Start 18:

- Found in 139 of 220 ( 63.2% ) of genes in pham
- Manual Annotations of this start: 119 of 198
- Called 87.8% of time when present
- Phage (with cluster) where this start called: 244\_64 (E), ABCat\_61 (E), Adnama\_68 (E), Amao\_63 (E), AmericanBeauty\_67 (E), Argent26\_67 (E), Asriel\_63 (E), BaboJay\_60 (E), BadStone\_61 (E), Balomoji\_63 (E), Barbarian\_63 (E), Bask21\_63 (E), Bench\_66 (E), BigBubba\_64 (E), BilboSwaggins\_62 (E), Bogg\_63 (E), Brewer\_59 (E), Bruin\_60 (E), Buck\_64 (E), Budgie\_69 (E), Cactus\_66 (E), ChosenOne\_64 (E), ChotaBhai\_62 (E), Cjw1\_63 (E), Command613\_65 (E), Cookies\_60 (E), CrystalP\_63 (E), Daikon\_65 (E), DoctorDiddles\_62 (E), DrDrey\_63 (E), Dumbo\_63 (E), Dusk\_61 (E), Easy2Say\_65 (E), Elite2014\_63 (E), Elph10\_63 (E), Emmina\_64 (E), Eureka\_62 (E), FairyPath\_64 (E), Filch\_65 (E), FireRed\_67 (E), Flypotenuse\_59 (E), Gage\_65 (E), Gator\_62 (E), Gemini\_68 (E), Glexan\_62 (E), Goku\_62 (E), GoldenSpark\_67 (E), Goldilocks\_66 (E), GooberAzure\_66 (E), HanKaySha\_63 (E), Harella\_63 (E), Henry\_62 (E), Holt\_68 (E), Hoonter\_66 (E), Hopey\_63 (E), HufflyPuff\_66 (E), IHOP\_62 (E), Icee\_64 (E), Inca\_61 (E), JeTaimie\_63 (E), Kanye\_60 (E), Kimchi\_67 (E), Kostya\_64 (E), Lilac\_65 (E), Lilizi\_64 (E), Lilpickle\_63 (E), MISSy\_64 (E), MPhalcon\_64 (E), MadamMonkfish\_64 (E), Manda\_64 (E), Mindy\_63 (E), Miniwave\_59 (E), Misfit\_64 (E), Moldemort\_67 (E), Murica\_66 (E), Murphy\_64 (E), Myrale\_63 (E), Nala\_65 (E), NelitzaMV\_61 (E), NoSleep\_65 (E), OrionPax\_62 (E), Paperbeatsrock\_63 (E), Pat3\_61 (E), Phaja\_62 (E), Pharsalus\_61 (E), PhatBacter\_67 (E), Phaux\_65 (E), Phrux\_60 (E), Policronamos\_66 (E), Porky\_63 (E), Ptowny\_61 (E), Pumpkin\_66 (E), Quallification\_64 (E), Rakim\_65 (E), Rimmer\_64 (E), RiverMonster\_63 (E), Sassay\_58 (E), ShamWow\_64 (E), ShereKhan\_62 (E), Simpliphy\_63 (E), SirDuracell\_62 (E), SophKB\_61 (E), Stank\_67 (E), Stark\_64 (E), StellaBean\_62 (E), StolenFromERC\_66 (E), TBrady12\_67 (E), Tarkin\_63 (E), TeardropMSU\_60 (E), Teaspoon\_65 (E), Terminus\_66 (E), Thimble\_64 (E), Thresher\_66 (E), Toto\_62 (E), Traaww1\_60 (E), Tuco\_65 (E), Ukulele\_59 (E), Wiggin\_66 (E), Willez\_58 (E), Xandras\_63 (E), YassJohnny\_60 (E), Youngblood\_66 (E),

#### Start 20:

- Found in 13 of 220 ( 5.9% ) of genes in pham
- Manual Annotations of this start: 11 of 198
- Called 100.0% of time when present
- Phage (with cluster) where this start called: Baddon\_56 (DE1), Barsten\_58 (DE1), Bibwit\_57 (DE1), Geodirt\_57 (DE1), Gustavo\_56 (DE1), JKSyngboy\_54 (DE1), Kwobi\_58 (DE1), McCrothy\_58 (DE1), Nordenberg\_54 (DE1), Saronaya\_56 (DE1), Sitar\_58 (DE1), Stichling\_53 (DE1), Tangerine\_55 (DE1),

#### Start 21:

- Found in 32 of 220 ( 14.5% ) of genes in pham
- Manual Annotations of this start: 29 of 198

- Called 100.0% of time when present
- Phage (with cluster) where this start called: BAKA\_147 (J), Bagrid\_148 (J), Beem\_149 (J), Bobby\_137 (J), Bombitas\_135 (J), Constella\_141 (J), Dallas\_148 (J), DmpstrDiver\_148 (J), Dove\_133 (J), Duke13\_143 (J), Ejimix\_140 (J), EricMillard\_139 (J), Halley\_149 (J), HokkenD\_140 (J), Hughesyang\_146 (J), JuicyJay\_143 (J), Kalah2\_138 (J), KashFlow\_146 (J), Klein\_145 (J), Lucky2013\_139 (J), Marleymoo\_131 (J), MiaZeal\_146 (J), NihilNomen\_149 (J), Odette\_151 (J), Optimus\_138 (J), Phoebus\_147 (J), Porcelain\_143 (J), Pound\_139 (J), Redno2\_142 (J), Schatzie\_143 (J), ThreeRngTarjay\_142 (J), Yeet\_141 (J),

#### Start 22:

- Found in 6 of 220 ( 2.7% ) of genes in pham
- Manual Annotations of this start: 4 of 198
- Called 100.0% of time when present
- Phage (with cluster) where this start called: Hidrated\_132 (J), Minerva\_146 (J), Thibault\_129 (J), Wanda\_146 (J), Xiaokay\_142 (J), Zelink\_141 (J),

#### Start 23:

- Found in 13 of 220 ( 5.9% ) of genes in pham
- Manual Annotations of this start: 7 of 198
- Called 92.3% of time when present
- Phage (with cluster) where this start called: Ariel\_143 (J), BronnyJames\_141 (J), Cardigan\_121 (DD), Courthouse\_139 (J), Gonephishing\_138 (J), Hannaconda\_137 (J), Jace\_41 (singleton), LittleE\_147 (J), Nekros\_142 (J), Omega\_151 (J), Shaboozey\_144 (J), Superphikiman\_141 (J),

#### Start 25:

- Found in 13 of 220 ( 5.9% ) of genes in pham
- No Manual Annotations of this start.
- Called 7.7% of time when present
- Phage (with cluster) where this start called: Nibley\_140 (J),

### Summary by clusters:

There are 7 clusters represented in this pham: singleton, E, DE1, DD, J, DE4, CF,

#### Info for manual annotations of cluster CF:

- Start number 14 was manually annotated 1 time for cluster CF.
- Start number 16 was manually annotated 2 times for cluster CF.

#### Info for manual annotations of cluster DE1:

- Start number 20 was manually annotated 11 times for cluster DE1.

#### Info for manual annotations of cluster DE4:

- Start number 15 was manually annotated 12 times for cluster DE4.

#### Info for manual annotations of cluster E:

- Start number 5 was manually annotated 12 times for cluster E.
- Start number 18 was manually annotated 119 times for cluster E.

#### Info for manual annotations of cluster J:

- Start number 17 was manually annotated 1 time for cluster J.

- Start number 21 was manually annotated 29 times for cluster J.
- Start number 22 was manually annotated 4 times for cluster J.
- Start number 23 was manually annotated 6 times for cluster J.

**Gene Information:**

Gene: 244\_64 Start: 42954, Stop: 43187, Start Num: 18

Candidate Starts for 244\_64:

(Start: 18 @42954 has 119 MA's),

Gene: ABCat\_61 Start: 43599, Stop: 43832, Start Num: 18

Candidate Starts for ABCat\_61:

(Start: 18 @43599 has 119 MA's),

Gene: APunk\_59 Start: 46515, Stop: 46763, Start Num: 15

Candidate Starts for APunk\_59:

(Start: 15 @46515 has 12 MA's),

Gene: Abblin\_58 Start: 47003, Stop: 47251, Start Num: 15

Candidate Starts for Abblin\_58:

(Start: 15 @47003 has 12 MA's),

Gene: Adnama\_68 Start: 43622, Stop: 43855, Start Num: 18

Candidate Starts for Adnama\_68:

(Start: 18 @43622 has 119 MA's),

Gene: Amao\_63 Start: 42712, Stop: 42945, Start Num: 18

Candidate Starts for Amao\_63:

(Start: 5 @42634 has 12 MA's), (Start: 18 @42712 has 119 MA's),

Gene: AmericanBeauty\_67 Start: 43467, Stop: 43700, Start Num: 18

Candidate Starts for AmericanBeauty\_67:

(Start: 18 @43467 has 119 MA's),

Gene: Argent26\_67 Start: 43105, Stop: 43338, Start Num: 18

Candidate Starts for Argent26\_67:

(Start: 18 @43105 has 119 MA's),

Gene: Ariel\_143 Start: 73283, Stop: 73555, Start Num: 23

Candidate Starts for Ariel\_143:

(Start: 23 @73283 has 7 MA's), (25, 73325), (30, 73439), (35, 73478), (39, 73529),

Gene: Asriel\_63 Start: 41959, Stop: 42192, Start Num: 18

Candidate Starts for Asriel\_63:

(Start: 18 @41959 has 119 MA's),

Gene: BAKA\_147 Start: 76909, Stop: 77187, Start Num: 21

Candidate Starts for BAKA\_147:

(8, 76852), (19, 76900), (Start: 21 @76909 has 29 MA's), (27, 76999), (38, 77149), (39, 77161),

Gene: BaboJay\_60 Start: 42499, Stop: 42732, Start Num: 18

Candidate Starts for BaboJay\_60:  
(Start: 5 @42421 has 12 MA's), (Start: 18 @42499 has 119 MA's),

Gene: BadStone\_61 Start: 43168, Stop: 43401, Start Num: 18  
Candidate Starts for BadStone\_61:  
(Start: 18 @43168 has 119 MA's),

Gene: Baddon\_56 Start: 46941, Stop: 47180, Start Num: 20  
Candidate Starts for Baddon\_56:  
(Start: 20 @46941 has 11 MA's),

Gene: Bagrid\_148 Start: 77604, Stop: 77882, Start Num: 21  
Candidate Starts for Bagrid\_148:  
(8, 77547), (19, 77595), (Start: 21 @77604 has 29 MA's), (27, 77694), (38, 77844), (39, 77856),

Gene: Balomoji\_63 Start: 43431, Stop: 43664, Start Num: 18  
Candidate Starts for Balomoji\_63:  
(Start: 5 @43353 has 12 MA's), (Start: 18 @43431 has 119 MA's),

Gene: Barbarian\_63 Start: 41959, Stop: 42192, Start Num: 18  
Candidate Starts for Barbarian\_63:  
(Start: 18 @41959 has 119 MA's),

Gene: Barsten\_58 Start: 46874, Stop: 47104, Start Num: 20  
Candidate Starts for Barsten\_58:  
(3, 46757), (Start: 20 @46874 has 11 MA's),

Gene: Bask21\_63 Start: 42272, Stop: 42505, Start Num: 18  
Candidate Starts for Bask21\_63:  
(Start: 5 @42194 has 12 MA's), (Start: 18 @42272 has 119 MA's),

Gene: Beem\_149 Start: 78507, Stop: 78785, Start Num: 21  
Candidate Starts for Beem\_149:  
(8, 78450), (19, 78498), (Start: 21 @78507 has 29 MA's), (27, 78597), (38, 78747), (39, 78759),

Gene: Bench\_66 Start: 42937, Stop: 43236, Start Num: 18  
Candidate Starts for Bench\_66:  
(Start: 5 @42859 has 12 MA's), (Start: 18 @42937 has 119 MA's),

Gene: Bibwit\_57 Start: 45842, Stop: 46075, Start Num: 20  
Candidate Starts for Bibwit\_57:  
(Start: 20 @45842 has 11 MA's),

Gene: BigBubba\_64 Start: 42978, Stop: 43211, Start Num: 18  
Candidate Starts for BigBubba\_64:  
(Start: 18 @42978 has 119 MA's),

Gene: BigHunkinEater\_61 Start: 46230, Stop: 46478, Start Num: 15  
Candidate Starts for BigHunkinEater\_61:  
(Start: 15 @46230 has 12 MA's),

Gene: BilboSwaggins\_62 Start: 43607, Stop: 43840, Start Num: 18  
Candidate Starts for BilboSwaggins\_62:

(Start: 18 @43607 has 119 MA's),

Gene: Bobby\_137 Start: 78377, Stop: 78655, Start Num: 21

Candidate Starts for Bobby\_137:

(8, 78320), (19, 78368), (Start: 21 @78377 has 29 MA's), (37, 78593), (38, 78617), (39, 78629),

Gene: Bogg\_63 Start: 42251, Stop: 42484, Start Num: 18

Candidate Starts for Bogg\_63:

(Start: 18 @42251 has 119 MA's),

Gene: Bombitas\_135 Start: 75918, Stop: 76196, Start Num: 21

Candidate Starts for Bombitas\_135:

(8, 75861), (19, 75909), (Start: 21 @75918 has 29 MA's), (27, 76008), (38, 76158), (39, 76170),

Gene: Brewer\_59 Start: 41767, Stop: 42000, Start Num: 18

Candidate Starts for Brewer\_59:

(Start: 18 @41767 has 119 MA's),

Gene: BronnyJames\_141 Start: 74958, Stop: 75230, Start Num: 23

Candidate Starts for BronnyJames\_141:

(Start: 23 @74958 has 7 MA's), (25, 75000), (30, 75114), (39, 75204),

Gene: Bruin\_60 Start: 41846, Stop: 42145, Start Num: 18

Candidate Starts for Bruin\_60:

(Start: 5 @41768 has 12 MA's), (Start: 18 @41846 has 119 MA's),

Gene: Buck\_64 Start: 43553, Stop: 43852, Start Num: 18

Candidate Starts for Buck\_64:

(Start: 5 @43475 has 12 MA's), (Start: 18 @43553 has 119 MA's),

Gene: Budgie\_69 Start: 43485, Stop: 43718, Start Num: 18

Candidate Starts for Budgie\_69:

(11, 43458), (Start: 18 @43485 has 119 MA's), (33, 43686),

Gene: Cactus\_66 Start: 42326, Stop: 42625, Start Num: 18

Candidate Starts for Cactus\_66:

(Start: 5 @42248 has 12 MA's), (Start: 18 @42326 has 119 MA's),

Gene: Cardigan\_121 Start: 69125, Stop: 69379, Start Num: 23

Candidate Starts for Cardigan\_121:

(2, 68960), (13, 69089), (Start: 23 @69125 has 7 MA's), (25, 69167), (30, 69287), (31, 69296), (32, 69299),

Gene: ChosenOne\_64 Start: 42626, Stop: 42859, Start Num: 18

Candidate Starts for ChosenOne\_64:

(Start: 18 @42626 has 119 MA's),

Gene: ChotaBhai\_62 Start: 42643, Stop: 42876, Start Num: 18

Candidate Starts for ChotaBhai\_62:

(Start: 5 @42565 has 12 MA's), (Start: 18 @42643 has 119 MA's),

Gene: Cjw1\_63 Start: 44027, Stop: 44326, Start Num: 18

Candidate Starts for Cjw1\_63:

(Start: 5 @43949 has 12 MA's), (Start: 18 @44027 has 119 MA's),

Gene: Command613\_65 Start: 43365, Stop: 43598, Start Num: 18

Candidate Starts for Command613\_65:

(Start: 5 @43287 has 12 MA's), (Start: 18 @43365 has 119 MA's),

Gene: Constella\_141 Start: 77160, Stop: 77438, Start Num: 21

Candidate Starts for Constella\_141:

(8, 77103), (19, 77151), (Start: 21 @77160 has 29 MA's), (27, 77250), (38, 77400), (39, 77412),

Gene: Contagion\_59 Start: 42049, Stop: 42426, Start Num: 5

Candidate Starts for Contagion\_59:

(Start: 5 @42049 has 12 MA's), (Start: 18 @42127 has 119 MA's),

Gene: Cookies\_60 Start: 42494, Stop: 42727, Start Num: 18

Candidate Starts for Cookies\_60:

(Start: 5 @42416 has 12 MA's), (Start: 18 @42494 has 119 MA's),

Gene: Courthouse\_139 Start: 73141, Stop: 73413, Start Num: 23

Candidate Starts for Courthouse\_139:

(Start: 23 @73141 has 7 MA's), (25, 73183), (30, 73297), (35, 73336), (39, 73387),

Gene: CrystalP\_63 Start: 43607, Stop: 43840, Start Num: 18

Candidate Starts for CrystalP\_63:

(Start: 18 @43607 has 119 MA's),

Gene: CurlyFries\_106 Start: 54825, Stop: 55070, Start Num: 16

Candidate Starts for CurlyFries\_106:

(9, 54795), (Start: 16 @54825 has 2 MA's), (26, 54915), (36, 55062),

Gene: Czyszczonek\_64 Start: 42758, Stop: 43135, Start Num: 5

Candidate Starts for Czyszczonek\_64:

(Start: 5 @42758 has 12 MA's), (Start: 18 @42836 has 119 MA's),

Gene: Daikon\_65 Start: 43452, Stop: 43685, Start Num: 18

Candidate Starts for Daikon\_65:

(Start: 5 @43374 has 12 MA's), (Start: 18 @43452 has 119 MA's),

Gene: Dallas\_148 Start: 77974, Stop: 78252, Start Num: 21

Candidate Starts for Dallas\_148:

(8, 77917), (19, 77965), (Start: 21 @77974 has 29 MA's), (27, 78064), (38, 78214), (39, 78226),

Gene: Delrey21\_58 Start: 47732, Stop: 47980, Start Num: 15

Candidate Starts for Delrey21\_58:

(Start: 15 @47732 has 12 MA's),

Gene: DmpstrDiver\_148 Start: 77893, Stop: 78171, Start Num: 21

Candidate Starts for DmpstrDiver\_148:

(8, 77836), (19, 77884), (Start: 21 @77893 has 29 MA's), (27, 77983), (38, 78133), (39, 78145),

Gene: DoctorDiddles\_62 Start: 42684, Stop: 42917, Start Num: 18

Candidate Starts for DoctorDiddles\_62:

(Start: 18 @42684 has 119 MA's),

Gene: DoctorFroggo\_58 Start: 47732, Stop: 47980, Start Num: 15  
Candidate Starts for DoctorFroggo\_58:  
(Start: 15 @47732 has 12 MA's),

Gene: Dove\_133 Start: 73492, Stop: 73770, Start Num: 21  
Candidate Starts for Dove\_133:  
(8, 73435), (19, 73483), (Start: 21 @73492 has 29 MA's), (38, 73732), (39, 73744),

Gene: DrDrey\_63 Start: 43755, Stop: 44054, Start Num: 18  
Candidate Starts for DrDrey\_63:  
(Start: 5 @43677 has 12 MA's), (Start: 18 @43755 has 119 MA's),

Gene: Duke13\_143 Start: 75194, Stop: 75472, Start Num: 21  
Candidate Starts for Duke13\_143:  
(8, 75137), (19, 75185), (Start: 21 @75194 has 29 MA's), (27, 75284), (38, 75434), (39, 75446),

Gene: Dumbo\_63 Start: 42531, Stop: 42764, Start Num: 18  
Candidate Starts for Dumbo\_63:  
(Start: 18 @42531 has 119 MA's),

Gene: Dusk\_61 Start: 42828, Stop: 43061, Start Num: 18  
Candidate Starts for Dusk\_61:  
(Start: 18 @42828 has 119 MA's),

Gene: Easy2Say\_65 Start: 44069, Stop: 44302, Start Num: 18  
Candidate Starts for Easy2Say\_65:  
(Start: 18 @44069 has 119 MA's),

Gene: Ejimix\_140 Start: 78042, Stop: 78320, Start Num: 21  
Candidate Starts for Ejimix\_140:  
(8, 77985), (19, 78033), (Start: 21 @78042 has 29 MA's), (27, 78132), (38, 78282), (39, 78294),

Gene: Elite2014\_63 Start: 42625, Stop: 42858, Start Num: 18  
Candidate Starts for Elite2014\_63:  
(Start: 18 @42625 has 119 MA's),

Gene: Elph10\_63 Start: 42334, Stop: 42633, Start Num: 18  
Candidate Starts for Elph10\_63:  
(Start: 5 @42256 has 12 MA's), (Start: 18 @42334 has 119 MA's),

Gene: Emmina\_64 Start: 42532, Stop: 42765, Start Num: 18  
Candidate Starts for Emmina\_64:  
(Start: 18 @42532 has 119 MA's),

Gene: EricMillard\_139 Start: 76546, Stop: 76824, Start Num: 21  
Candidate Starts for EricMillard\_139:  
(8, 76489), (19, 76537), (Start: 21 @76546 has 29 MA's), (27, 76636), (38, 76786), (39, 76798),

Gene: Eureka\_62 Start: 43096, Stop: 43329, Start Num: 18  
Candidate Starts for Eureka\_62:  
(Start: 18 @43096 has 119 MA's),

Gene: FairyPath\_64 Start: 43443, Stop: 43676, Start Num: 18  
Candidate Starts for FairyPath\_64:  
(Start: 5 @43365 has 12 MA's), (Start: 18 @43443 has 119 MA's),

Gene: Filch\_65 Start: 42557, Stop: 42790, Start Num: 18  
Candidate Starts for Filch\_65:  
(Start: 18 @42557 has 119 MA's),

Gene: FireRed\_67 Start: 43823, Stop: 44122, Start Num: 18  
Candidate Starts for FireRed\_67:  
(Start: 5 @43745 has 12 MA's), (Start: 18 @43823 has 119 MA's),

Gene: Flypotenuse\_59 Start: 42315, Stop: 42548, Start Num: 18  
Candidate Starts for Flypotenuse\_59:  
(Start: 5 @42237 has 12 MA's), (Start: 18 @42315 has 119 MA's),

Gene: Gage\_65 Start: 43105, Stop: 43338, Start Num: 18  
Candidate Starts for Gage\_65:  
(Start: 18 @43105 has 119 MA's),

Gene: Gator\_62 Start: 43459, Stop: 43692, Start Num: 18  
Candidate Starts for Gator\_62:  
(Start: 18 @43459 has 119 MA's),

Gene: Gemini\_68 Start: 43622, Stop: 43855, Start Num: 18  
Candidate Starts for Gemini\_68:  
(Start: 18 @43622 has 119 MA's),

Gene: Geodirt\_57 Start: 47622, Stop: 47852, Start Num: 20  
Candidate Starts for Geodirt\_57:  
(3, 47505), (Start: 20 @47622 has 11 MA's),

Gene: Glexan\_62 Start: 43442, Stop: 43675, Start Num: 18  
Candidate Starts for Glexan\_62:  
(Start: 5 @43364 has 12 MA's), (Start: 18 @43442 has 119 MA's),

Gene: Goku\_62 Start: 42825, Stop: 43058, Start Num: 18  
Candidate Starts for Goku\_62:  
(Start: 18 @42825 has 119 MA's),

Gene: GoldenSpark\_67 Start: 43105, Stop: 43338, Start Num: 18  
Candidate Starts for GoldenSpark\_67:  
(Start: 18 @43105 has 119 MA's),

Gene: Goldilocks\_66 Start: 42607, Stop: 42840, Start Num: 18  
Candidate Starts for Goldilocks\_66:  
(Start: 18 @42607 has 119 MA's),

Gene: Gonephishing\_138 Start: 73676, Stop: 73948, Start Num: 23  
Candidate Starts for Gonephishing\_138:  
(Start: 23 @73676 has 7 MA's), (25, 73718), (30, 73832), (39, 73922),

Gene: GooberAzure\_66 Start: 43105, Stop: 43338, Start Num: 18

Candidate Starts for GooberAzure\_66:

(Start: 18 @43105 has 119 MA's),

Gene: Greep\_67 Start: 44037, Stop: 44414, Start Num: 5

Candidate Starts for Greep\_67:

(Start: 5 @44037 has 12 MA's), (Start: 18 @44115 has 119 MA's),

Gene: Gustavo\_56 Start: 45880, Stop: 46119, Start Num: 20

Candidate Starts for Gustavo\_56:

(Start: 20 @45880 has 11 MA's),

Gene: Halley\_149 Start: 78358, Stop: 78636, Start Num: 21

Candidate Starts for Halley\_149:

(8, 78301), (19, 78349), (Start: 21 @78358 has 29 MA's), (27, 78448), (38, 78598), (39, 78610),

Gene: HanKaySha\_63 Start: 42415, Stop: 42648, Start Num: 18

Candidate Starts for HanKaySha\_63:

(Start: 5 @42337 has 12 MA's), (Start: 18 @42415 has 119 MA's),

Gene: Hannaconda\_137 Start: 73890, Stop: 74162, Start Num: 23

Candidate Starts for Hannaconda\_137:

(Start: 23 @73890 has 7 MA's), (25, 73932), (30, 74046), (35, 74085), (39, 74136),

Gene: Harella\_63 Start: 43958, Stop: 44191, Start Num: 18

Candidate Starts for Harella\_63:

(Start: 5 @43880 has 12 MA's), (Start: 18 @43958 has 119 MA's),

Gene: Henry\_62 Start: 43047, Stop: 43280, Start Num: 18

Candidate Starts for Henry\_62:

(Start: 18 @43047 has 119 MA's),

Gene: Hidrated\_132 Start: 76490, Stop: 76765, Start Num: 22

Candidate Starts for Hidrated\_132:

(10, 76439), (Start: 22 @76490 has 4 MA's), (38, 76727), (39, 76739),

Gene: Highbury\_63 Start: 42620, Stop: 42931, Start Num: 5

Candidate Starts for Highbury\_63:

(Start: 5 @42620 has 12 MA's), (Start: 18 @42698 has 119 MA's),

Gene: HokkenD\_140 Start: 77517, Stop: 77795, Start Num: 21

Candidate Starts for HokkenD\_140:

(8, 77460), (19, 77508), (Start: 21 @77517 has 29 MA's), (38, 77757), (39, 77769),

Gene: Holt\_68 Start: 43519, Stop: 43752, Start Num: 18

Candidate Starts for Holt\_68:

(Start: 18 @43519 has 119 MA's),

Gene: Hoonter\_66 Start: 43105, Stop: 43338, Start Num: 18

Candidate Starts for Hoonter\_66:

(Start: 18 @43105 has 119 MA's),

Gene: Hokey\_63 Start: 42949, Stop: 43248, Start Num: 18

Candidate Starts for Hokey\_63:

(Start: 5 @42871 has 12 MA's), (Start: 18 @42949 has 119 MA's),

Gene: HufflyPuff\_66 Start: 43779, Stop: 44078, Start Num: 18

Candidate Starts for HufflyPuff\_66:

(Start: 5 @43701 has 12 MA's), (Start: 18 @43779 has 119 MA's),

Gene: Hughesyang\_146 Start: 78128, Stop: 78406, Start Num: 21

Candidate Starts for Hughesyang\_146:

(8, 78071), (19, 78119), (Start: 21 @78128 has 29 MA's), (27, 78218), (38, 78368), (39, 78380),

Gene: IHOP\_62 Start: 43171, Stop: 43404, Start Num: 18

Candidate Starts for IHOP\_62:

(Start: 18 @43171 has 119 MA's),

Gene: Icee\_64 Start: 42773, Stop: 43072, Start Num: 18

Candidate Starts for Icee\_64:

(Start: 5 @42695 has 12 MA's), (Start: 18 @42773 has 119 MA's),

Gene: Inca\_61 Start: 41696, Stop: 41929, Start Num: 18

Candidate Starts for Inca\_61:

(Start: 18 @41696 has 119 MA's),

Gene: JKSyngboy\_54 Start: 46472, Stop: 46711, Start Num: 20

Candidate Starts for JKSyngboy\_54:

(Start: 20 @46472 has 11 MA's),

Gene: Jace\_41 Start: 29901, Stop: 30098, Start Num: 23

Candidate Starts for Jace\_41:

(1, 29718), (6, 29808), (12, 29853), (Start: 23 @29901 has 7 MA's), (25, 29943), (28, 30003), (29, 30054),

Gene: JeTaime\_63 Start: 43599, Stop: 43832, Start Num: 18

Candidate Starts for JeTaime\_63:

(Start: 18 @43599 has 119 MA's),

Gene: JuicyJay\_143 Start: 79643, Stop: 79921, Start Num: 21

Candidate Starts for JuicyJay\_143:

(8, 79586), (19, 79634), (Start: 21 @79643 has 29 MA's), (27, 79733), (38, 79883), (39, 79895),

Gene: Kalah2\_138 Start: 77249, Stop: 77527, Start Num: 21

Candidate Starts for Kalah2\_138:

(8, 77192), (19, 77240), (Start: 21 @77249 has 29 MA's), (38, 77489), (39, 77501),

Gene: Kanye\_60 Start: 42454, Stop: 42687, Start Num: 18

Candidate Starts for Kanye\_60:

(Start: 5 @42376 has 12 MA's), (Start: 18 @42454 has 119 MA's),

Gene: KashFlow\_146 Start: 76549, Stop: 76827, Start Num: 21

Candidate Starts for KashFlow\_146:

(8, 76492), (19, 76540), (Start: 21 @76549 has 29 MA's), (38, 76789), (39, 76801),

Gene: Kimchi\_67 Start: 43108, Stop: 43341, Start Num: 18

Candidate Starts for Kimchi\_67:

(Start: 18 @43108 has 119 MA's),

Gene: Klein\_145 Start: 75851, Stop: 76129, Start Num: 21

Candidate Starts for Klein\_145:

(8, 75794), (19, 75842), (Start: 21 @75851 has 29 MA's), (27, 75941), (38, 76091), (39, 76103),

Gene: Kostya\_64 Start: 43270, Stop: 43503, Start Num: 18

Candidate Starts for Kostya\_64:

(Start: 18 @43270 has 119 MA's),

Gene: Kwobi\_58 Start: 46585, Stop: 46824, Start Num: 20

Candidate Starts for Kwobi\_58:

(Start: 20 @46585 has 11 MA's),

Gene: Lilac\_65 Start: 42734, Stop: 43033, Start Num: 18

Candidate Starts for Lilac\_65:

(Start: 5 @42656 has 12 MA's), (Start: 18 @42734 has 119 MA's),

Gene: Lilizi\_64 Start: 42408, Stop: 42707, Start Num: 18

Candidate Starts for Lilizi\_64:

(Start: 5 @42330 has 12 MA's), (Start: 18 @42408 has 119 MA's),

Gene: Lilpickle\_63 Start: 42625, Stop: 42858, Start Num: 18

Candidate Starts for Lilpickle\_63:

(Start: 18 @42625 has 119 MA's),

Gene: LittleE\_147 Start: 76532, Stop: 76804, Start Num: 23

Candidate Starts for LittleE\_147:

(Start: 23 @76532 has 7 MA's), (25, 76574), (30, 76688), (39, 76778),

Gene: Lucky2013\_139 Start: 73595, Stop: 73873, Start Num: 21

Candidate Starts for Lucky2013\_139:

(8, 73538), (19, 73586), (Start: 21 @73595 has 29 MA's), (38, 73835), (39, 73847),

Gene: MISSy\_64 Start: 42832, Stop: 43131, Start Num: 18

Candidate Starts for MISSy\_64:

(Start: 5 @42754 has 12 MA's), (Start: 18 @42832 has 119 MA's),

Gene: MPhalcon\_64 Start: 42825, Stop: 43124, Start Num: 18

Candidate Starts for MPhalcon\_64:

(Start: 5 @42747 has 12 MA's), (Start: 18 @42825 has 119 MA's),

Gene: MadamMonkfish\_64 Start: 42349, Stop: 42582, Start Num: 18

Candidate Starts for MadamMonkfish\_64:

(Start: 5 @42271 has 12 MA's), (Start: 18 @42349 has 119 MA's),

Gene: Manda\_64 Start: 43630, Stop: 43863, Start Num: 18

Candidate Starts for Manda\_64:

(Start: 18 @43630 has 119 MA's),

Gene: Marleymoo\_131 Start: 74123, Stop: 74401, Start Num: 21

Candidate Starts for Marleymoo\_131:

(8, 74066), (19, 74114), (Start: 21 @74123 has 29 MA's), (37, 74339), (38, 74363), (39, 74375),

Gene: Marshmallow\_61 Start: 43522, Stop: 43833, Start Num: 5  
Candidate Starts for Marshmallow\_61:  
(Start: 5 @43522 has 12 MA's), (Start: 18 @43600 has 119 MA's),

Gene: Maxxinista\_65 Start: 42626, Stop: 43003, Start Num: 5  
Candidate Starts for Maxxinista\_65:  
(Start: 5 @42626 has 12 MA's), (Start: 18 @42704 has 119 MA's),

Gene: McCrothy\_58 Start: 47573, Stop: 47803, Start Num: 20  
Candidate Starts for McCrothy\_58:  
(3, 47456), (Start: 20 @47573 has 11 MA's),

Gene: MiaZeal\_146 Start: 74742, Stop: 75020, Start Num: 21  
Candidate Starts for MiaZeal\_146:  
(8, 74685), (19, 74733), (Start: 21 @74742 has 29 MA's), (38, 74982), (39, 74994),

Gene: Mindy\_63 Start: 42213, Stop: 42446, Start Num: 18  
Candidate Starts for Mindy\_63:  
(Start: 18 @42213 has 119 MA's),

Gene: Minerva\_146 Start: 77113, Stop: 77388, Start Num: 22  
Candidate Starts for Minerva\_146:  
(10, 77062), (Start: 22 @77113 has 4 MA's), (35, 77311), (38, 77350), (39, 77362),

Gene: Miniwave\_59 Start: 42666, Stop: 42899, Start Num: 18  
Candidate Starts for Miniwave\_59:  
(Start: 18 @42666 has 119 MA's),

Gene: Misfit\_64 Start: 43844, Stop: 44143, Start Num: 18  
Candidate Starts for Misfit\_64:  
(Start: 5 @43766 has 12 MA's), (Start: 18 @43844 has 119 MA's),

Gene: Moldemort\_67 Start: 43222, Stop: 43455, Start Num: 18  
Candidate Starts for Moldemort\_67:  
(Start: 18 @43222 has 119 MA's),

Gene: MollyToe\_58 Start: 41595, Stop: 41972, Start Num: 5  
Candidate Starts for MollyToe\_58:  
(Start: 5 @41595 has 12 MA's), (Start: 18 @41673 has 119 MA's),

Gene: Mosby\_59 Start: 42049, Stop: 42426, Start Num: 5  
Candidate Starts for Mosby\_59:  
(Start: 5 @42049 has 12 MA's), (Start: 18 @42127 has 119 MA's),

Gene: Murica\_66 Start: 43779, Stop: 44078, Start Num: 18  
Candidate Starts for Murica\_66:  
(Start: 5 @43701 has 12 MA's), (Start: 18 @43779 has 119 MA's),

Gene: Murphy\_64 Start: 43216, Stop: 43515, Start Num: 18  
Candidate Starts for Murphy\_64:  
(Start: 5 @43138 has 12 MA's), (Start: 18 @43216 has 119 MA's),

Gene: Myrale\_63 Start: 43465, Stop: 43698, Start Num: 18  
Candidate Starts for Myrale\_63:  
(Start: 5 @43387 has 12 MA's), (Start: 18 @43465 has 119 MA's),

Gene: Nala\_65 Start: 43337, Stop: 43636, Start Num: 18  
Candidate Starts for Nala\_65:  
(Start: 5 @43259 has 12 MA's), (Start: 18 @43337 has 119 MA's),

Gene: Natkenzie\_58 Start: 47003, Stop: 47251, Start Num: 15  
Candidate Starts for Natkenzie\_58:  
(Start: 15 @47003 has 12 MA's),

Gene: Nekros\_142 Start: 76782, Stop: 77054, Start Num: 23  
Candidate Starts for Nekros\_142:  
(Start: 23 @76782 has 7 MA's), (25, 76824), (30, 76938), (39, 77028),

Gene: NelitzaMV\_61 Start: 42414, Stop: 42647, Start Num: 18  
Candidate Starts for NelitzaMV\_61:  
(Start: 18 @42414 has 119 MA's),

Gene: Nibley\_140 Start: 74577, Stop: 74807, Start Num: 25  
Candidate Starts for Nibley\_140:  
(Start: 23 @74535 has 7 MA's), (25, 74577), (30, 74691), (39, 74781),

Gene: NihilNomen\_149 Start: 77588, Stop: 77866, Start Num: 21  
Candidate Starts for NihilNomen\_149:  
(8, 77531), (19, 77579), (Start: 21 @77588 has 29 MA's), (38, 77828), (39, 77840),

Gene: Nimrod\_64 Start: 43959, Stop: 44336, Start Num: 5  
Candidate Starts for Nimrod\_64:  
(Start: 5 @43959 has 12 MA's), (Start: 18 @44037 has 119 MA's),

Gene: NoSleep\_65 Start: 42970, Stop: 43203, Start Num: 18  
Candidate Starts for NoSleep\_65:  
(Start: 18 @42970 has 119 MA's),

Gene: NonchalantPear\_64 Start: 42742, Stop: 43053, Start Num: 5  
Candidate Starts for NonchalantPear\_64:  
(Start: 5 @42742 has 12 MA's), (Start: 18 @42820 has 119 MA's),

Gene: Nordenberg\_54 Start: 46353, Stop: 46583, Start Num: 20  
Candidate Starts for Nordenberg\_54:  
(3, 46236), (Start: 20 @46353 has 11 MA's),

Gene: Odette\_151 Start: 79731, Stop: 80009, Start Num: 21  
Candidate Starts for Odette\_151:  
(8, 79674), (19, 79722), (Start: 21 @79731 has 29 MA's), (35, 79932), (38, 79971), (39, 79983),

Gene: Omega\_151 Start: 77610, Stop: 77882, Start Num: 23  
Candidate Starts for Omega\_151:  
(Start: 23 @77610 has 7 MA's), (25, 77652), (30, 77766), (35, 77805), (39, 77856),

Gene: Optimus\_138 Start: 74868, Stop: 75146, Start Num: 21

Candidate Starts for Optimus\_138:  
(8, 74811), (19, 74859), (Start: 21 @74868 has 29 MA's), (27, 74958), (38, 75108), (39, 75120),

Gene: OrionPax\_62 Start: 42421, Stop: 42654, Start Num: 18  
Candidate Starts for OrionPax\_62:  
(Start: 18 @42421 has 119 MA's),

Gene: PaddyBaddy\_63 Start: 42350, Stop: 42727, Start Num: 5  
Candidate Starts for PaddyBaddy\_63:  
(Start: 5 @42350 has 12 MA's), (Start: 18 @42428 has 119 MA's),

Gene: Paperbeatsrock\_63 Start: 43344, Stop: 43577, Start Num: 18  
Candidate Starts for Paperbeatsrock\_63:  
(Start: 18 @43344 has 119 MA's),

Gene: Pat3\_61 Start: 41569, Stop: 41802, Start Num: 18  
Candidate Starts for Pat3\_61:  
(Start: 5 @41491 has 12 MA's), (Start: 18 @41569 has 119 MA's),

Gene: Phaja\_62 Start: 43170, Stop: 43403, Start Num: 18  
Candidate Starts for Phaja\_62:  
(Start: 18 @43170 has 119 MA's),

Gene: Pharsalus\_61 Start: 43144, Stop: 43377, Start Num: 18  
Candidate Starts for Pharsalus\_61:  
(Start: 18 @43144 has 119 MA's),

Gene: PhatBacter\_67 Start: 43823, Stop: 44122, Start Num: 18  
Candidate Starts for PhatBacter\_67:  
(Start: 5 @43745 has 12 MA's), (Start: 18 @43823 has 119 MA's),

Gene: Phaux\_65 Start: 43821, Stop: 44120, Start Num: 18  
Candidate Starts for Phaux\_65:  
(Start: 5 @43743 has 12 MA's), (Start: 18 @43821 has 119 MA's),

Gene: Phoebus\_147 Start: 79482, Stop: 79760, Start Num: 21  
Candidate Starts for Phoebus\_147:  
(8, 79425), (19, 79473), (Start: 21 @79482 has 29 MA's), (27, 79572), (38, 79722), (39, 79734),

Gene: Phrux\_60 Start: 42414, Stop: 42713, Start Num: 18  
Candidate Starts for Phrux\_60:  
(Start: 5 @42336 has 12 MA's), (Start: 18 @42414 has 119 MA's),

Gene: Policronamos\_66 Start: 43821, Stop: 44120, Start Num: 18  
Candidate Starts for Policronamos\_66:  
(Start: 5 @43743 has 12 MA's), (Start: 18 @43821 has 119 MA's),

Gene: Porcelain\_143 Start: 74541, Stop: 74819, Start Num: 21  
Candidate Starts for Porcelain\_143:  
(8, 74484), (19, 74532), (Start: 21 @74541 has 29 MA's), (38, 74781), (39, 74793),

Gene: Porky\_63 Start: 42540, Stop: 42773, Start Num: 18  
Candidate Starts for Porky\_63:

(Start: 18 @42540 has 119 MA's),

Gene: Pound\_139 Start: 77301, Stop: 77579, Start Num: 21

Candidate Starts for Pound\_139:

(8, 77244), (19, 77292), (Start: 21 @77301 has 29 MA's), (27, 77391), (38, 77541), (39, 77553),

Gene: Ptowny\_61 Start: 42006, Stop: 42239, Start Num: 18

Candidate Starts for Ptowny\_61:

(Start: 18 @42006 has 119 MA's),

Gene: Pumpkin\_66 Start: 43471, Stop: 43704, Start Num: 18

Candidate Starts for Pumpkin\_66:

(Start: 18 @43471 has 119 MA's),

Gene: Quallification\_64 Start: 43454, Stop: 43687, Start Num: 18

Candidate Starts for Quallification\_64:

(Start: 5 @43376 has 12 MA's), (Start: 18 @43454 has 119 MA's),

Gene: Rakim\_65 Start: 43221, Stop: 43454, Start Num: 18

Candidate Starts for Rakim\_65:

(Start: 18 @43221 has 119 MA's),

Gene: Rearden\_143 Start: 76191, Stop: 76463, Start Num: 17

Candidate Starts for Rearden\_143:

(7, 76140), (Start: 17 @76191 has 1 MA's), (24, 76218), (30, 76347), (39, 76437),

Gene: Redno2\_142 Start: 75590, Stop: 75868, Start Num: 21

Candidate Starts for Redno2\_142:

(8, 75533), (19, 75581), (Start: 21 @75590 has 29 MA's), (38, 75830), (39, 75842),

Gene: RegnumDei\_100 Start: 55451, Stop: 55702, Start Num: 14

Candidate Starts for RegnumDei\_100:

(Start: 14 @55451 has 1 MA's), (26, 55547), (36, 55694),

Gene: Rimmer\_64 Start: 43163, Stop: 43462, Start Num: 18

Candidate Starts for Rimmer\_64:

(Start: 5 @43085 has 12 MA's), (Start: 18 @43163 has 119 MA's),

Gene: RiverMonster\_63 Start: 42992, Stop: 43291, Start Num: 18

Candidate Starts for RiverMonster\_63:

(Start: 5 @42914 has 12 MA's), (Start: 18 @42992 has 119 MA's),

Gene: Saints25\_63 Start: 42620, Stop: 42931, Start Num: 5

Candidate Starts for Saints25\_63:

(Start: 5 @42620 has 12 MA's), (Start: 18 @42698 has 119 MA's),

Gene: Sampson\_58 Start: 46948, Stop: 47196, Start Num: 15

Candidate Starts for Sampson\_58:

(Start: 15 @46948 has 12 MA's),

Gene: Saronaya\_56 Start: 45880, Stop: 46119, Start Num: 20

Candidate Starts for Saronaya\_56:

(Start: 20 @45880 has 11 MA's),

Gene: Sassay\_58 Start: 41087, Stop: 41320, Start Num: 18  
Candidate Starts for Sassay\_58:  
(Start: 5 @41009 has 12 MA's), (Start: 18 @41087 has 119 MA's),

Gene: Schatzie\_143 Start: 78150, Stop: 78428, Start Num: 21  
Candidate Starts for Schatzie\_143:  
(8, 78093), (19, 78141), (Start: 21 @78150 has 29 MA's), (27, 78240), (38, 78390), (39, 78402),

Gene: Scioto\_59 Start: 47004, Stop: 47252, Start Num: 15  
Candidate Starts for Scioto\_59:  
(Start: 15 @47004 has 12 MA's),

Gene: Shaboozey\_144 Start: 74979, Stop: 75251, Start Num: 23  
Candidate Starts for Shaboozey\_144:  
(Start: 23 @74979 has 7 MA's), (25, 75021), (30, 75135), (39, 75225),

Gene: Shagrat\_103 Start: 54533, Stop: 54778, Start Num: 16  
Candidate Starts for Shagrat\_103:  
(4, 54452), (Start: 16 @54533 has 2 MA's), (34, 54749),

Gene: ShamWow\_64 Start: 43607, Stop: 43840, Start Num: 18  
Candidate Starts for ShamWow\_64:  
(Start: 18 @43607 has 119 MA's),

Gene: ShereKhan\_62 Start: 43378, Stop: 43611, Start Num: 18  
Candidate Starts for ShereKhan\_62:  
(Start: 5 @43300 has 12 MA's), (Start: 18 @43378 has 119 MA's),

Gene: Simpliphy\_63 Start: 42688, Stop: 42921, Start Num: 18  
Candidate Starts for Simpliphy\_63:  
(Start: 18 @42688 has 119 MA's),

Gene: SirDuracell\_62 Start: 41661, Stop: 41894, Start Num: 18  
Candidate Starts for SirDuracell\_62:  
(Start: 5 @41583 has 12 MA's), (Start: 18 @41661 has 119 MA's),

Gene: Sitar\_58 Start: 48071, Stop: 48301, Start Num: 20  
Candidate Starts for Sitar\_58:  
(3, 47954), (Start: 20 @48071 has 11 MA's),

Gene: SophKB\_61 Start: 42363, Stop: 42596, Start Num: 18  
Candidate Starts for SophKB\_61:  
(Start: 18 @42363 has 119 MA's),

Gene: Sotrice96\_64 Start: 42991, Stop: 43368, Start Num: 5  
Candidate Starts for Sotrice96\_64:  
(Start: 5 @42991 has 12 MA's), (Start: 18 @43069 has 119 MA's),

Gene: Squint\_138 Start: 73681, Stop: 73953, Start Num: 17  
Candidate Starts for Squint\_138:  
(7, 73630), (Start: 17 @73681 has 1 MA's), (30, 73837), (35, 73876), (39, 73927),

Gene: Stank\_67 Start: 43621, Stop: 43854, Start Num: 18  
Candidate Starts for Stank\_67:  
(Start: 18 @43621 has 119 MA's),

Gene: Stark\_64 Start: 42876, Stop: 43109, Start Num: 18  
Candidate Starts for Stark\_64:  
(Start: 5 @42798 has 12 MA's), (Start: 18 @42876 has 119 MA's),

Gene: StellaBean\_62 Start: 42931, Stop: 43164, Start Num: 18  
Candidate Starts for StellaBean\_62:  
(Start: 18 @42931 has 119 MA's),

Gene: Stichling\_53 Start: 44936, Stop: 45175, Start Num: 20  
Candidate Starts for Stichling\_53:  
(Start: 20 @44936 has 11 MA's),

Gene: StolenFromERC\_66 Start: 43105, Stop: 43338, Start Num: 18  
Candidate Starts for StolenFromERC\_66:  
(Start: 18 @43105 has 119 MA's),

Gene: StormChicken\_65 Start: 43693, Stop: 44070, Start Num: 5  
Candidate Starts for StormChicken\_65:  
(Start: 5 @43693 has 12 MA's), (Start: 18 @43771 has 119 MA's),

Gene: Superphikiman\_141 Start: 73423, Stop: 73695, Start Num: 23  
Candidate Starts for Superphikiman\_141:  
(Start: 23 @73423 has 7 MA's), (25, 73465), (30, 73579), (35, 73618), (39, 73669),

Gene: TBrady12\_67 Start: 43105, Stop: 43338, Start Num: 18  
Candidate Starts for TBrady12\_67:  
(Start: 18 @43105 has 119 MA's),

Gene: Tangerine\_55 Start: 45291, Stop: 45530, Start Num: 20  
Candidate Starts for Tangerine\_55:  
(Start: 20 @45291 has 11 MA's),

Gene: Tardus\_60 Start: 46703, Stop: 46951, Start Num: 15  
Candidate Starts for Tardus\_60:  
(Start: 15 @46703 has 12 MA's),

Gene: Tarkin\_63 Start: 43353, Stop: 43586, Start Num: 18  
Candidate Starts for Tarkin\_63:  
(Start: 18 @43353 has 119 MA's),

Gene: TeamEdward\_65 Start: 43690, Stop: 44067, Start Num: 5  
Candidate Starts for TeamEdward\_65:  
(Start: 5 @43690 has 12 MA's), (Start: 18 @43768 has 119 MA's),

Gene: TeardropMSU\_60 Start: 42353, Stop: 42586, Start Num: 18  
Candidate Starts for TeardropMSU\_60:  
(Start: 18 @42353 has 119 MA's),

Gene: Teaspoon\_65 Start: 43247, Stop: 43480, Start Num: 18

Candidate Starts for Teaspoon\_65:  
(Start: 18 @43247 has 119 MA's),

Gene: Terminus\_66 Start: 43844, Stop: 44143, Start Num: 18  
Candidate Starts for Terminus\_66:  
(Start: 5 @43766 has 12 MA's), (Start: 18 @43844 has 119 MA's),

Gene: Thibault\_129 Start: 74298, Stop: 74573, Start Num: 22  
Candidate Starts for Thibault\_129:  
(10, 74247), (Start: 22 @74298 has 4 MA's), (39, 74547),

Gene: Thimble\_64 Start: 42287, Stop: 42520, Start Num: 18  
Candidate Starts for Thimble\_64:  
(Start: 18 @42287 has 119 MA's),

Gene: ThreeRngTarjay\_142 Start: 78073, Stop: 78351, Start Num: 21  
Candidate Starts for ThreeRngTarjay\_142:  
(8, 78016), (19, 78064), (Start: 21 @78073 has 29 MA's), (27, 78163), (38, 78313), (39, 78325),

Gene: Thresher\_66 Start: 44230, Stop: 44463, Start Num: 18  
Candidate Starts for Thresher\_66:  
(Start: 18 @44230 has 119 MA's),

Gene: Tomaszewski\_58 Start: 42143, Stop: 42454, Start Num: 5  
Candidate Starts for Tomaszewski\_58:  
(Start: 5 @42143 has 12 MA's), (Start: 18 @42221 has 119 MA's),

Gene: Toto\_62 Start: 43607, Stop: 43840, Start Num: 18  
Candidate Starts for Toto\_62:  
(Start: 18 @43607 has 119 MA's),

Gene: Traaww1\_60 Start: 42788, Stop: 43021, Start Num: 18  
Candidate Starts for Traaww1\_60:  
(Start: 18 @42788 has 119 MA's),

Gene: Tuco\_65 Start: 44115, Stop: 44348, Start Num: 18  
Candidate Starts for Tuco\_65:  
(Start: 18 @44115 has 119 MA's),

Gene: Ukulele\_59 Start: 42501, Stop: 42734, Start Num: 18  
Candidate Starts for Ukulele\_59:  
(Start: 5 @42423 has 12 MA's), (Start: 18 @42501 has 119 MA's),

Gene: Verity\_58 Start: 47732, Stop: 47980, Start Num: 15  
Candidate Starts for Verity\_58:  
(Start: 15 @47732 has 12 MA's),

Gene: ViaConlectus\_58 Start: 45658, Stop: 45906, Start Num: 15  
Candidate Starts for ViaConlectus\_58:  
(Start: 15 @45658 has 12 MA's),

Gene: Wanda\_146 Start: 75593, Stop: 75868, Start Num: 22  
Candidate Starts for Wanda\_146:

(10, 75542), (Start: 22 @75593 has 4 MA's), (35, 75791), (38, 75830), (39, 75842),

Gene: Wiggin\_66 Start: 43189, Stop: 43422, Start Num: 18

Candidate Starts for Wiggin\_66:

(Start: 18 @43189 has 119 MA's),

Gene: Willez\_58 Start: 41087, Stop: 41320, Start Num: 18

Candidate Starts for Willez\_58:

(Start: 5 @41009 has 12 MA's), (Start: 18 @41087 has 119 MA's),

Gene: Xandras\_63 Start: 42600, Stop: 42833, Start Num: 18

Candidate Starts for Xandras\_63:

(Start: 18 @42600 has 119 MA's),

Gene: Xiaokay\_142 Start: 77426, Stop: 77701, Start Num: 22

Candidate Starts for Xiaokay\_142:

(10, 77375), (Start: 22 @77426 has 4 MA's), (38, 77663), (39, 77675),

Gene: YassJohnny\_60 Start: 42261, Stop: 42494, Start Num: 18

Candidate Starts for YassJohnny\_60:

(Start: 5 @42183 has 12 MA's), (Start: 18 @42261 has 119 MA's),

Gene: Yeet\_141 Start: 77546, Stop: 77824, Start Num: 21

Candidate Starts for Yeet\_141:

(8, 77489), (19, 77537), (Start: 21 @77546 has 29 MA's), (38, 77786), (39, 77798),

Gene: Youngblood\_66 Start: 43774, Stop: 44073, Start Num: 18

Candidate Starts for Youngblood\_66:

(Start: 5 @43696 has 12 MA's), (Start: 18 @43774 has 119 MA's),

Gene: Zelink\_141 Start: 78405, Stop: 78680, Start Num: 22

Candidate Starts for Zelink\_141:

(10, 78354), (Start: 22 @78405 has 4 MA's), (35, 78603), (38, 78642), (39, 78654),

Gene: Zipp\_59 Start: 47656, Stop: 47904, Start Num: 15

Candidate Starts for Zipp\_59:

(Start: 15 @47656 has 12 MA's),

Gene: xkcd\_66 Start: 43886, Stop: 44263, Start Num: 5

Candidate Starts for xkcd\_66:

(Start: 5 @43886 has 12 MA's), (Start: 18 @43964 has 119 MA's),