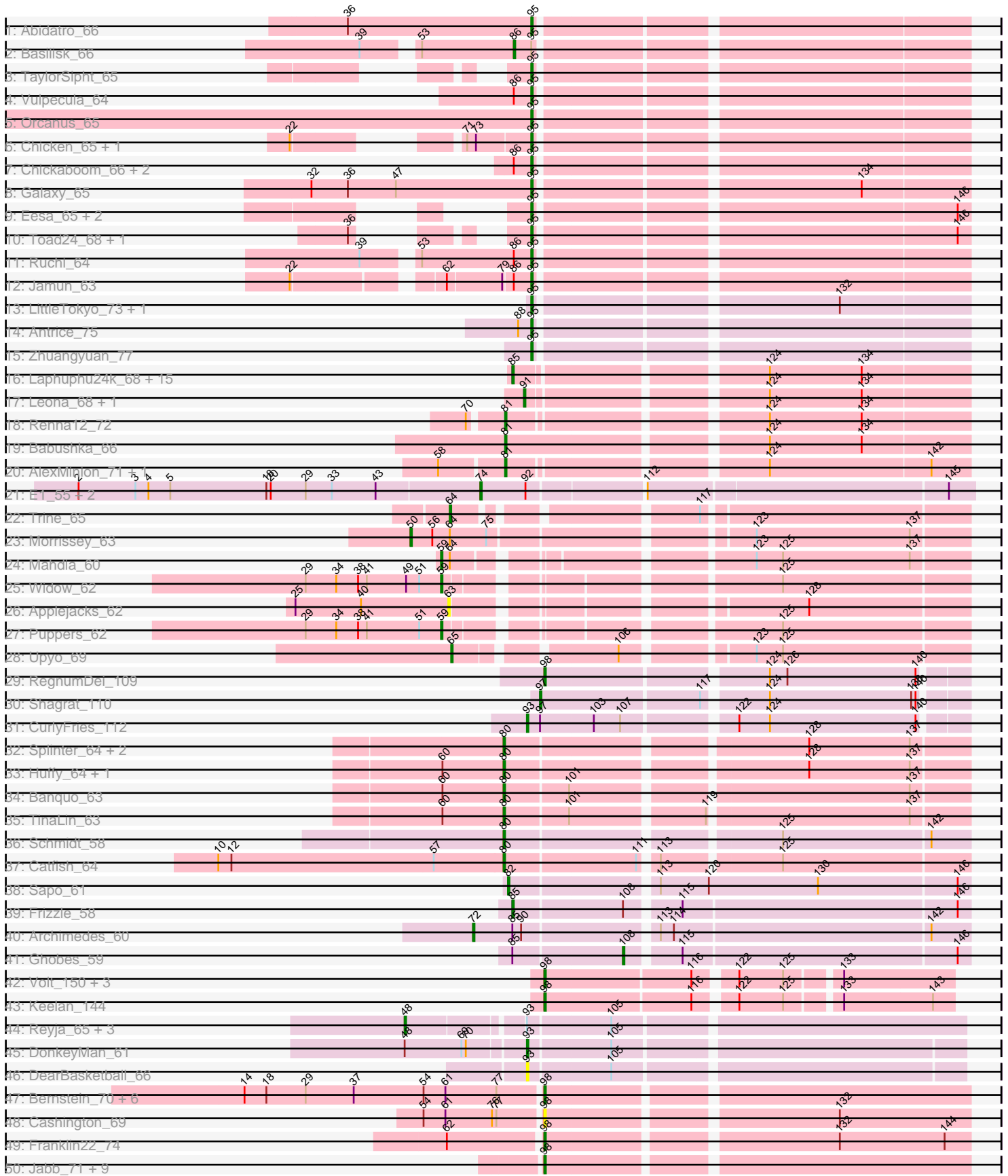
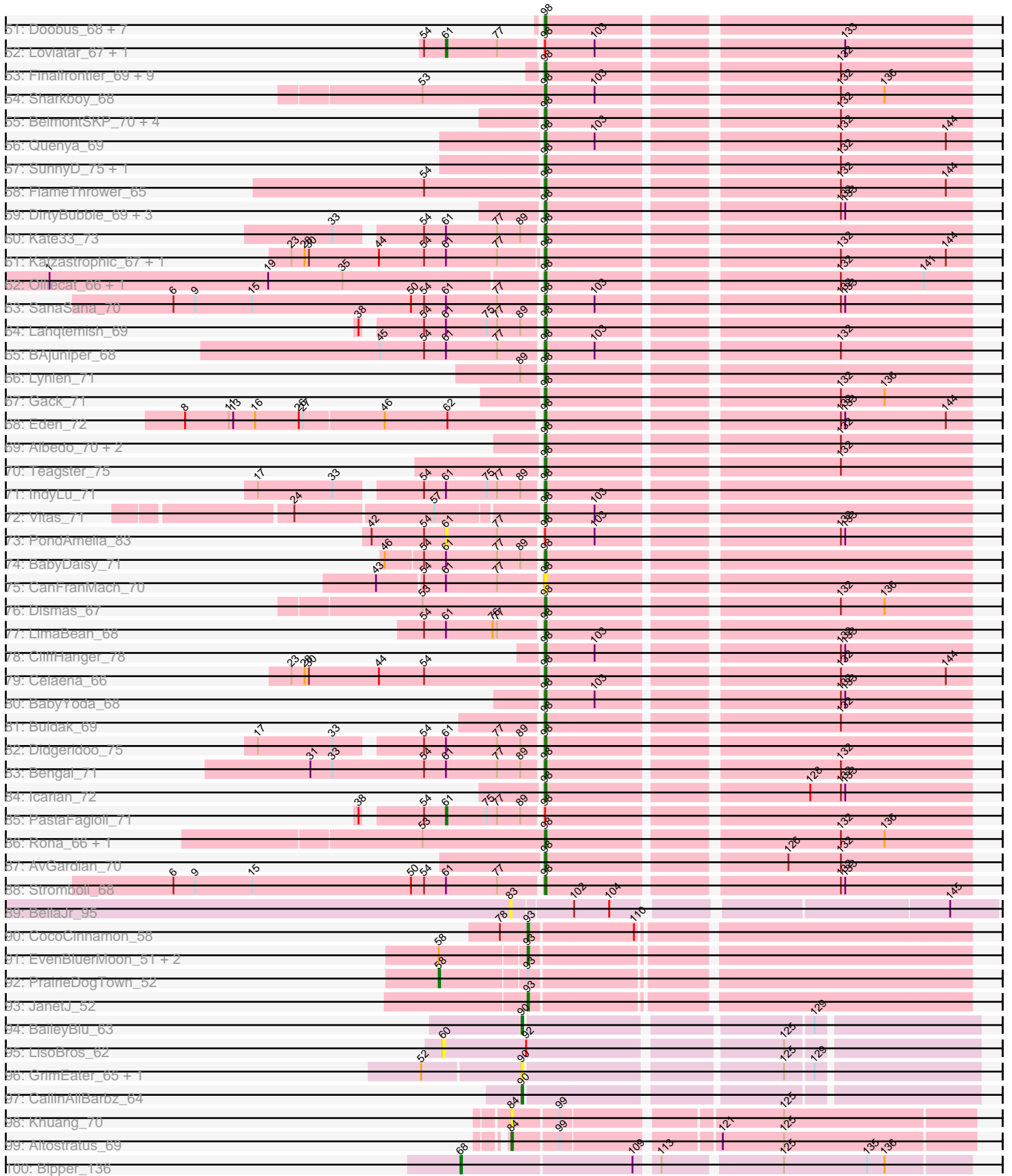


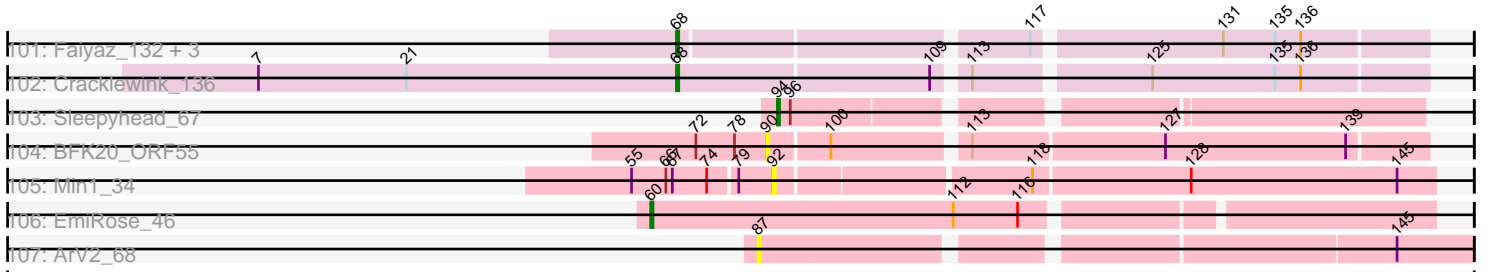
Pham 304733



Pham 304733



Pham 304733



Note: Tracks are now grouped by subcluster and scaled. Switching in subcluster is indicated by changes in track color. Track scale is now set by default to display the region 30 bp upstream of start 1 to 30 bp downstream of the last possible start. If this default region is judged to be packed too tightly with annotated starts, the track will be further scaled to only show that region of the ORF with annotated starts. This action will be indicated by adding "Zoomed" to the title. For starts, yellow indicates the location of called starts comprised solely of Glimmer/GeneMark auto-annotations, green indicates the location of called starts with at least 1 manual gene annotation.

Pham 304733 Report

This analysis was run 06/08/26 on database version 649.

Pham number 304733 has 193 members, 28 are drafts.

Phages represented in each track:

- Track 1 : Abidatro_66
- Track 2 : Basilisk_66
- Track 3 : TaylorSipht_65
- Track 4 : Vulpecula_64
- Track 5 : Orcanus_65
- Track 6 : Chicken_65, Niblet_63
- Track 7 : Chickaboom_66, Brynnie_64, WileyE_66
- Track 8 : Galaxy_65
- Track 9 : Eesa_65, Amanises_68, Zixiang_65
- Track 10 : Toad24_68, KendraB23_76
- Track 11 : Ruchi_64
- Track 12 : Jamun_63
- Track 13 : LittleTokyo_73, Cygnet_73
- Track 14 : Antrice_75
- Track 15 : Zhuangyuan_77
- Track 16 : Laphuphu24k_68, KHumphrey_70, Glotell_71, Rattail_71, Juno112_69, DanHam62_70, Fingolfin_71, PhluffyCoco_68, AmiCi24_68, RedFox_71, Atlantica_70, AdoptaAdorbs_68, Camara_69, Amphitrite_69, Oppalora_68, HamCheese_69
- Track 17 : Leona_68, Azaz_72
- Track 18 : Renna12_72
- Track 19 : Babushka_66
- Track 20 : AlexMinion_71, StuartMinion_61
- Track 21 : E1_55, Anatole_55, B3_57
- Track 22 : Trine_65
- Track 23 : Morrissey_63
- Track 24 : Mahdia_60
- Track 25 : Widow_62
- Track 26 : Applejacks_62
- Track 27 : Puppies_62
- Track 28 : Upyo_69
- Track 29 : RegnumDei_109
- Track 30 : Shagrat_110
- Track 31 : CurlyFries_112
- Track 32 : Splinter_64, TZGordon_65, Vendetta_64
- Track 33 : Huffy_64, DinoDaryn_64
- Track 34 : Banquo_63

- Track 35 : TinaLin_63
- Track 36 : Schmidt_58
- Track 37 : Catfish_64
- Track 38 : Sapo_61
- Track 39 : Frizzle_58
- Track 40 : Archimedes_60
- Track 41 : Ghobes_59
- Track 42 : Volt_150, Guey18_149, Fryberger_144, Ronaldo_147
- Track 43 : Keelan_144
- Track 44 : Reyja_65, DinoNuggs_64, Hibiscus_63, Jojo24_63
- Track 45 : DonkeyMan_61
- Track 46 : DearBasketball_66
- Track 47 : Bernstein_70, Coltrane_70, Brahms_70, Clayda5_72, Armstrong_70, Skylord_70, Rollins_70
- Track 48 : Cashington_69
- Track 49 : Franklin22_74
- Track 50 : Jabb_71, CroZenni_71, MsUbiquitous_71, CupcakePrincess_71, QMacho_72, Johnathan_70, Burritobowl_72, SarBear_72, Phisb_72, Abigail_70
- Track 51 : Doobus_68, Albright_69, Milomuff_72, Softsoap_71, BubbaBear_68, Solea_73, DickRichards_68, Avocadoman_69
- Track 52 : Loviatar_67, Akino08_66
- Track 53 : Finalfrontier_69, TukTuk_70, Pecas_70, Jovita_68, Nicky22_69, AylexOG_71, Swervy_70, Lilo27_70, Eula_69, Slay_70
- Track 54 : Sharkboy_68
- Track 55 : BelmontSKP_70, PhigPhack_73, SansAfet_72, AnnaLie_70, Arroyo_71
- Track 56 : Quenya_69
- Track 57 : SunnyD_75, Shayna_75
- Track 58 : FlameThrower_65
- Track 59 : DirtyBubble_69, Elva_73, Stoor_69, WalkingDead_71
- Track 60 : Kate33_73
- Track 61 : Katzastrophic_67, Bachaco_66
- Track 62 : Olliecat_66, Squirrel_66
- Track 63 : SanaSana_70
- Track 64 : Lahqtemish_69
- Track 65 : BAjuniper_68
- Track 66 : Lynlen_71
- Track 67 : Gack_71
- Track 68 : Eden_72
- Track 69 : Albedo_70, Kenzers_69, SirBeanington_70
- Track 70 : Teagster_75
- Track 71 : IndyLu_71
- Track 72 : Vitas_71
- Track 73 : PondAmelia_83
- Track 74 : BabyDaisy_71
- Track 75 : CanFranMach_70
- Track 76 : Dismas_67
- Track 77 : LimaBean_68
- Track 78 : CliffHanger_78
- Track 79 : Celaena_66
- Track 80 : BabyYoda_68
- Track 81 : Buldak_69
- Track 82 : Didgeridoo_75
- Track 83 : Bengal_71

- Track 84 : Icarian_72
- Track 85 : PastaFagioli_71
- Track 86 : Rona_66, Kieran_65
- Track 87 : AvGardian_70
- Track 88 : Stromboli_68
- Track 89 : BellaJr_95
- Track 90 : CocoCinnamon_58
- Track 91 : EvenBluerMoon_51, Hereford_52, Aoka_54
- Track 92 : PrairieDogTown_52
- Track 93 : JanetJ_52
- Track 94 : BaileyBlu_63
- Track 95 : LisoBros_62
- Track 96 : GrimEater_65, Jankie_67
- Track 97 : CallinAllBarbz_64
- Track 98 : Khuang_70
- Track 99 : Altostratus_69
- Track 100 : Bipper_136
- Track 101 : Faiyaz_132, Typha_129, AuntGwenStacy_132, Hilltopfarm_134
- Track 102 : Cracklewink_136
- Track 103 : Sleepyhead_67
- Track 104 : BFK20_ORF55
- Track 105 : Min1_34
- Track 106 : EmiRose_46
- Track 107 : ArV2_68

Summary of Final Annotations (See graph section above for start numbers):

The start number called the most often in the published annotations is 98, it was called in 82 of the 165 non-draft genes in the pham.

Genes that call this "Most Annotated" start:

- Abigail_70, Albedo_70, Albright_69, AnnaLie_70, Armstrong_70, Arroyo_71, AvGardian_70, Avocadoman_69, AylexOG_71, BAjuniper_68, BabyDaisy_71, BabyYoda_68, Bachaco_66, BelmontSKP_70, Bengal_71, Bernstein_70, Brahms_70, BubbaBear_68, Buldak_69, Burritobowl_72, CanFranMach_70, Cashington_69, Celaena_66, Clayda5_72, CliffHanger_78, Coltrane_70, CroZenni_71, CupcakePrincess_71, DickRichards_68, Didgeridoo_75, DirtyBubble_69, Dismas_67, Doobus_68, Eden_72, Elva_73, Eula_69, Finalfrontier_69, FlameThrower_65, Franklin22_74, Fryberger_144, Gack_71, Guey18_149, Icarian_72, IndyLu_71, Jabb_71, Johnathan_70, Jovita_68, Kate33_73, Katzastrophic_67, Keelan_144, Kenzers_69, Kieran_65, Lahqtemish_69, Lilo27_70, LimaBean_68, Lynlen_71, Milomuff_72, MsUbiquitous_71, Nicky22_69, Olliecat_66, Pecas_70, PhigPhack_73, Phisb_72, QMacho_72, Quenya_69, RegnumDei_109, Rollins_70, Rona_66, Ronaldo_147, SanaSana_70, SansAfet_72, SarBear_72, Sharkboy_68, Shayna_75, SirBeanington_70, Skylord_70, Slay_70, Softsoap_71, Solea_73, Squircle_66, Stoor_69, Stromboli_68, SunnyD_75, Swervy_70, Teagster_75, TukTuk_70, Vitas_71, Volt_150, WalkingDead_71,

Genes that have the "Most Annotated" start but do not call it:

- Akino08_66, Loviatar_67, PastaFagioli_71, PondAmelia_83,

Genes that do not have the "Most Annotated" start:

- Abidatro_66, AdoptaAdorbs_68, AlexMinion_71, Altostratus_69, Amanises_68, AmiCi24_68, Amphitrite_69, Anatole_55, Antrice_75, Aoka_54, Applejacks_62, ArV2_68, Archimedes_60, Atlantica_70, AuntGwenStacy_132, Azaz_72, B3_57, BFK20_ORF55, Babushka_66, BaileyBlu_63, Banquo_63, Basilisk_66, BellaJr_95, Bipper_136, Brynnie_64, CallinAllBarbz_64, Camara_69, Catfish_64, Chickaboom_66, Chicken_65, CocoCinnamon_58, Cracklewink_136, CurlyFries_112, Cygnet_73, DanHam62_70, DearBasketball_66, DinoDaryn_64, DinoNuggs_64, DonkeyMan_61, E1_55, Eesa_65, EmiRose_46, EvenBluerMoon_51, Faiyaz_132, Fingolfin_71, Frizzle_58, Galaxy_65, Ghobes_59, Glotell_71, GrimEater_65, HamCheese_69, Hereford_52, Hibiscus_63, Hilltopfarm_134, Huffy_64, Jamun_63, JanetJ_52, Jankie_67, Jojo24_63, Juno112_69, KHumphrey_70, KendraB23_76, Khuang_70, Laphuphu24k_68, Leona_68, LisoBros_62, LittleTokyo_73, Mahdia_60, Min1_34, Morrissey_63, Niblet_63, Oppalora_68, Orcanus_65, PhluffyCoco_68, PrairieDogTown_52, Puppies_62, Rattail_71, RedFox_71, Renna12_72, Reyja_65, Ruchi_64, Sapo_61, Schmidt_58, Shagrat_110, Sleepyhead_67, Splinter_64, StuartMinion_61, TZGordon_65, TaylorSipht_65, TinaLin_63, Toad24_68, Trine_65, Typha_129, Upyo_69, Vendetta_64, Vulpecula_64, Widow_62, WileyE_66, Zhuangyuan_77, Zixiang_65,

Summary by start number:

Start 48:

- Found in 5 of 193 (2.6%) of genes in pham
- Manual Annotations of this start: 3 of 165
- Called 80.0% of time when present
- Phage (with cluster) where this start called: DinoNuggs_64 (DY), Hibiscus_63 (DY), Jojo24_63 (DY), Reyja_65 (DY),

Start 50:

- Found in 3 of 193 (1.6%) of genes in pham
- Manual Annotations of this start: 1 of 165
- Called 33.3% of time when present
- Phage (with cluster) where this start called: Morrissey_63 (CD),

Start 58:

- Found in 6 of 193 (3.1%) of genes in pham
- Manual Annotations of this start: 1 of 165
- Called 16.7% of time when present
- Phage (with cluster) where this start called: PrairieDogTown_52 (FO),

Start 59:

- Found in 3 of 193 (1.6%) of genes in pham
- Manual Annotations of this start: 3 of 165
- Called 100.0% of time when present
- Phage (with cluster) where this start called: Mahdia_60 (CD), Puppies_62 (CD), Widow_62 (CD),

Start 60:

- Found in 6 of 193 (3.1%) of genes in pham
- Manual Annotations of this start: 1 of 165
- Called 33.3% of time when present

- Phage (with cluster) where this start called: EmiRose_46 (singleton), LisoBros_62 (FP),

Start 61:

- Found in 25 of 193 (13.0%) of genes in pham
- Manual Annotations of this start: 3 of 165
- Called 16.0% of time when present
- Phage (with cluster) where this start called: Akino08_66 (EB), Loviatar_67 (EB), PastaFagioli_71 (EB), PondAmelia_83 (EB),

Start 63:

- Found in 1 of 193 (0.5%) of genes in pham
- No Manual Annotations of this start.
- Called 100.0% of time when present
- Phage (with cluster) where this start called: Applejacks_62 (CD),

Start 64:

- Found in 3 of 193 (1.6%) of genes in pham
- Manual Annotations of this start: 1 of 165
- Called 33.3% of time when present
- Phage (with cluster) where this start called: Trine_65 (CD),

Start 65:

- Found in 1 of 193 (0.5%) of genes in pham
- Manual Annotations of this start: 1 of 165
- Called 100.0% of time when present
- Phage (with cluster) where this start called: Upyo_69 (CD),

Start 68:

- Found in 6 of 193 (3.1%) of genes in pham
- Manual Annotations of this start: 5 of 165
- Called 100.0% of time when present
- Phage (with cluster) where this start called: AuntGwenStacy_132 (Y), Bipper_136 (Y), Cracklewink_136 (Y), Faiyaz_132 (Y), Hilltopfarm_134 (Y), Typha_129 (Y),

Start 72:

- Found in 2 of 193 (1.0%) of genes in pham
- Manual Annotations of this start: 1 of 165
- Called 50.0% of time when present
- Phage (with cluster) where this start called: Archimedes_60 (DA),

Start 74:

- Found in 4 of 193 (2.1%) of genes in pham
- Manual Annotations of this start: 3 of 165
- Called 75.0% of time when present
- Phage (with cluster) where this start called: Anatole_55 (BV), B3_57 (BV), E1_55 (BV),

Start 80:

- Found in 9 of 193 (4.7%) of genes in pham
- Manual Annotations of this start: 9 of 165
- Called 100.0% of time when present

- Phage (with cluster) where this start called: Banquo_63 (CU1), Catfish_64 (CU5), DinoDaryn_64 (CU1), Huffy_64 (CU1), Schmidt_58 (CU4), Splinter_64 (CU1), TZGordon_65 (CU1), TinaLin_63 (CU1), Vendetta_64 (CU1),

Start 81:

- Found in 4 of 193 (2.1%) of genes in pham
- Manual Annotations of this start: 3 of 165
- Called 100.0% of time when present
- Phage (with cluster) where this start called: AlexMinion_71 (AS3), Babushka_66 (AS3), Renna12_72 (AS3), StuartMinion_61 (AS3),

Start 82:

- Found in 1 of 193 (0.5%) of genes in pham
- Manual Annotations of this start: 1 of 165
- Called 100.0% of time when present
- Phage (with cluster) where this start called: Sapo_61 (DA),

Start 83:

- Found in 1 of 193 (0.5%) of genes in pham
- No Manual Annotations of this start.
- Called 100.0% of time when present
- Phage (with cluster) where this start called: BellaJr_95 (FN),

Start 84:

- Found in 2 of 193 (1.0%) of genes in pham
- Manual Annotations of this start: 1 of 165
- Called 100.0% of time when present
- Phage (with cluster) where this start called: Altostratus_69 (FS), Khuang_70 (FS),

Start 85:

- Found in 19 of 193 (9.8%) of genes in pham
- Manual Annotations of this start: 12 of 165
- Called 89.5% of time when present
- Phage (with cluster) where this start called: AdoptaAdorbs_68 (AS3), AmiCi24_68 (AS3), Amphitrite_69 (AS3), Atlantica_70 (AS3), Camara_69 (AS3), DanHam62_70 (AS3), Fingolfin_71 (AS3), Frizzle_58 (DA), Glotell_71 (AS3), HamCheese_69 (AS3), Juno112_69 (AS3), KHumphrey_70 (AS3), Laphuphu24k_68 (AS3), Oppalora_68 (AS3), PhluffyCoco_68 (AS3), Rattail_71 (AS3), RedFox_71 (AS3),

Start 86:

- Found in 7 of 193 (3.6%) of genes in pham
- Manual Annotations of this start: 1 of 165
- Called 14.3% of time when present
- Phage (with cluster) where this start called: Basilisk_66 (AS1),

Start 87:

- Found in 1 of 193 (0.5%) of genes in pham
- No Manual Annotations of this start.
- Called 100.0% of time when present
- Phage (with cluster) where this start called: ArV2_68 (singleton),

Start 90:

- Found in 6 of 193 (3.1%) of genes in pham

- Manual Annotations of this start: 2 of 165
- Called 83.3% of time when present
- Phage (with cluster) where this start called: BFK20_ORF55 (singleton), BaileyBlu_63 (FP), CallinAllBarbz_64 (FP), GrimEater_65 (FP), Jankie_67 (FP),

Start 91:

- Found in 2 of 193 (1.0%) of genes in pham
- Manual Annotations of this start: 1 of 165
- Called 100.0% of time when present
- Phage (with cluster) where this start called: Azaz_72 (AS3), Leona_68 (AS3),

Start 92:

- Found in 5 of 193 (2.6%) of genes in pham
- No Manual Annotations of this start.
- Called 20.0% of time when present
- Phage (with cluster) where this start called: Min1_34 (singleton),

Start 93:

- Found in 13 of 193 (6.7%) of genes in pham
- Manual Annotations of this start: 7 of 165
- Called 61.5% of time when present
- Phage (with cluster) where this start called: Aoka_54 (FO), CocoCinnamon_58 (FO), CurlyFries_112 (CF), DearBasketball_66 (DY), DonkeyMan_61 (DY), EvenBluerMoon_51 (FO), Hereford_52 (FO), JanetJ_52 (FO),

Start 94:

- Found in 1 of 193 (0.5%) of genes in pham
- Manual Annotations of this start: 1 of 165
- Called 100.0% of time when present
- Phage (with cluster) where this start called: Sleepyhead_67 (singleton),

Start 95:

- Found in 22 of 193 (11.4%) of genes in pham
- Manual Annotations of this start: 20 of 165
- Called 95.5% of time when present
- Phage (with cluster) where this start called: Abidatro_66 (AS1), Amanises_68 (AS1), Antrice_75 (AS2), Brynnie_64 (AS1), Chickaboom_66 (AS1), Chicken_65 (AS1), Cygnet_73 (AS2), Eesa_65 (AS1), Galaxy_65 (AS1), Jamun_63 (AS1), KendraB23_76 (AS1), LittleTokyo_73 (AS2), Niblet_63 (AS1), Orcanus_65 (AS1), Ruchi_64 (AS1), TaylorSipt_65 (AS1), Toad24_68 (AS1), Vulpecula_64 (AS1), WileyE_66 (AS1), Zhuangyuan_77 (AS2), Zixiang_65 (AS1),

Start 97:

- Found in 2 of 193 (1.0%) of genes in pham
- Manual Annotations of this start: 1 of 165
- Called 50.0% of time when present
- Phage (with cluster) where this start called: Shagrat_110 (CF),

Start 98:

- Found in 93 of 193 (48.2%) of genes in pham
- Manual Annotations of this start: 82 of 165
- Called 95.7% of time when present

- Phage (with cluster) where this start called: Abigail_70 (EB), Albedo_70 (EB), Albright_69 (EB), AnnaLie_70 (EB), Armstrong_70 (EB), Arroyo_71 (EB), AvGardian_70 (EB), Avocadoman_69 (EB), AylexOG_71 (EB), BAjuniper_68 (EB), BabyDaisy_71 (EB), BabyYoda_68 (EB), Bachaco_66 (EB), BelmontSKP_70 (EB), Bengal_71 (EB), Bernstein_70 (EB), Brahms_70 (EB), BubbaBear_68 (EB), Buldak_69 (EB), Burritobowl_72 (EB), CanFranMach_70 (EB), Cashington_69 (EB), Celaena_66 (EB), Clayda5_72 (EB), CliffHanger_78 (EB), Coltrane_70 (EB), CroZenni_71 (EB), CupcakePrincess_71 (EB), DickRichards_68 (EB), Didgeridoo_75 (EB), DirtyBubble_69 (EB), Dismas_67 (EB), Doobus_68 (EB), Eden_72 (EB), Elva_73 (EB), Eula_69 (EB), Finalfrontier_69 (EB), FlameThrower_65 (EB), Franklin22_74 (EB), Fryberger_144 (DP), Gack_71 (EB), Guey18_149 (DP), Icarian_72 (EB), IndyLu_71 (EB), Jabb_71 (EB), Johnathan_70 (EB), Jovita_68 (EB), Kate33_73 (EB), Katzastrophic_67 (EB), Keelan_144 (DP), Kenzers_69 (EB), Kieran_65 (EB), Lahqtemish_69 (EB), Lilo27_70 (EB), LimaBean_68 (EB), Lynlen_71 (EB), Milomuff_72 (EB), MsUbiquitous_71 (EB), Nicky22_69 (EB), Olliecat_66 (EB), Pecas_70 (EB), PhigPhack_73 (EB), Phisb_72 (EB), QMacho_72 (EB), Quenya_69 (EB), RegnumDei_109 (CF), Rollins_70 (EB), Rona_66 (EB), Ronaldo_147 (DP), SanaSana_70 (EB), SansAfet_72 (EB), SarBear_72 (EB), Sharkboy_68 (EB), Shayna_75 (EB), SirBeannington_70 (EB), Skylord_70 (EB), Slay_70 (EB), Softsoap_71 (EB), Solea_73 (EB), Squircle_66 (EB), Stoor_69 (EB), Stromboli_68 (EB), SunnyD_75 (EB), Swervy_70 (EB), Teagster_75 (EB), TukTuk_70 (EB), Vitas_71 (EB), Volt_150 (DP), WalkingDead_71 (EB),

Start 108:

- Found in 2 of 193 (1.0%) of genes in pham
- Manual Annotations of this start: 1 of 165
- Called 50.0% of time when present
- Phage (with cluster) where this start called: Ghobes_59 (DA),

Summary by clusters:

There are 19 clusters represented in this pham: AS3, FP, AS1, FS, DA, CU1, AS2, CF, EB, CU5, BV, CU4, FN, DY, Y, singleton, CD, DP, FO,

Info for manual annotations of cluster AS1:

- Start number 86 was manually annotated 1 time for cluster AS1.
- Start number 95 was manually annotated 16 times for cluster AS1.

Info for manual annotations of cluster AS2:

- Start number 95 was manually annotated 4 times for cluster AS2.

Info for manual annotations of cluster AS3:

- Start number 81 was manually annotated 3 times for cluster AS3.
- Start number 85 was manually annotated 11 times for cluster AS3.
- Start number 91 was manually annotated 1 time for cluster AS3.

Info for manual annotations of cluster BV:

- Start number 74 was manually annotated 3 times for cluster BV.

Info for manual annotations of cluster CD:

- Start number 50 was manually annotated 1 time for cluster CD.
- Start number 59 was manually annotated 3 times for cluster CD.
- Start number 64 was manually annotated 1 time for cluster CD.

- Start number 65 was manually annotated 1 time for cluster CD.

Info for manual annotations of cluster CF:

- Start number 93 was manually annotated 1 time for cluster CF.
- Start number 97 was manually annotated 1 time for cluster CF.
- Start number 98 was manually annotated 1 time for cluster CF.

Info for manual annotations of cluster CU1:

- Start number 80 was manually annotated 7 times for cluster CU1.

Info for manual annotations of cluster CU4:

- Start number 80 was manually annotated 1 time for cluster CU4.

Info for manual annotations of cluster CU5:

- Start number 80 was manually annotated 1 time for cluster CU5.

Info for manual annotations of cluster DA:

- Start number 72 was manually annotated 1 time for cluster DA.
- Start number 82 was manually annotated 1 time for cluster DA.
- Start number 85 was manually annotated 1 time for cluster DA.
- Start number 108 was manually annotated 1 time for cluster DA.

Info for manual annotations of cluster DP:

- Start number 98 was manually annotated 5 times for cluster DP.

Info for manual annotations of cluster DY:

- Start number 48 was manually annotated 3 times for cluster DY.
- Start number 93 was manually annotated 1 time for cluster DY.

Info for manual annotations of cluster EB:

- Start number 61 was manually annotated 3 times for cluster EB.
- Start number 98 was manually annotated 76 times for cluster EB.

Info for manual annotations of cluster FO:

- Start number 58 was manually annotated 1 time for cluster FO.
- Start number 93 was manually annotated 5 times for cluster FO.

Info for manual annotations of cluster FP:

- Start number 90 was manually annotated 2 times for cluster FP.

Info for manual annotations of cluster FS:

- Start number 84 was manually annotated 1 time for cluster FS.

Info for manual annotations of cluster Y:

- Start number 68 was manually annotated 5 times for cluster Y.

Gene Information:

Gene: Abidatro_66 Start: 38766, Stop: 39044, Start Num: 95

Candidate Starts for Abidatro_66:

(36, 38640), (Start: 95 @38766 has 20 MA's),

Gene: Abigail_70 Start: 40540, Stop: 40815, Start Num: 98

Candidate Starts for Abigail_70:

(Start: 98 @40540 has 82 MA's),

Gene: AdoptaAdorbs_68 Start: 37992, Stop: 38279, Start Num: 85

Candidate Starts for AdoptaAdorbs_68:

(Start: 85 @37992 has 12 MA's), (124, 38145), (134, 38208),

Gene: Akino08_66 Start: 42028, Stop: 42363, Start Num: 61

Candidate Starts for Akino08_66:

(54, 42013), (Start: 61 @42028 has 3 MA's), (77, 42061), (Start: 98 @42088 has 82 MA's), (103, 42121), (133, 42277),

Gene: Albedo_70 Start: 41350, Stop: 41625, Start Num: 98

Candidate Starts for Albedo_70:

(Start: 98 @41350 has 82 MA's), (132, 41536),

Gene: Albright_69 Start: 40420, Stop: 40695, Start Num: 98

Candidate Starts for Albright_69:

(Start: 98 @40420 has 82 MA's),

Gene: AlexMinion_71 Start: 37930, Stop: 38223, Start Num: 81

Candidate Starts for AlexMinion_71:

(Start: 58 @37888 has 1 MA's), (Start: 81 @37930 has 3 MA's), (124, 38089), (142, 38197),

Gene: Altostratus_69 Start: 38971, Stop: 39267, Start Num: 84

Candidate Starts for Altostratus_69:

(Start: 84 @38971 has 1 MA's), (99, 39001), (121, 39097), (125, 39139),

Gene: Amanises_68 Start: 39398, Stop: 39676, Start Num: 95

Candidate Starts for Amanises_68:

(Start: 95 @39398 has 20 MA's), (146, 39668),

Gene: AmiCi24_68 Start: 38101, Stop: 38388, Start Num: 85

Candidate Starts for AmiCi24_68:

(Start: 85 @38101 has 12 MA's), (124, 38254), (134, 38317),

Gene: Amphitrite_69 Start: 38005, Stop: 38292, Start Num: 85

Candidate Starts for Amphitrite_69:

(Start: 85 @38005 has 12 MA's), (124, 38158), (134, 38221),

Gene: Anatole_55 Start: 34869, Stop: 35189, Start Num: 74

Candidate Starts for Anatole_55:

(2, 34596), (3, 34635), (4, 34644), (5, 34659), (18, 34725), (20, 34728), (29, 34752), (33, 34770), (43, 34800), (Start: 74 @34869 has 3 MA's), (92, 34899), (112, 34974), (145, 35172),

Gene: AnnaLie_70 Start: 41202, Stop: 41477, Start Num: 98

Candidate Starts for AnnaLie_70:

(Start: 98 @41202 has 82 MA's), (132, 41388),

Gene: Antrice_75 Start: 38862, Stop: 39140, Start Num: 95

Candidate Starts for Antrice_75:
(88, 38853), (Start: 95 @38862 has 20 MA's),

Gene: Aoka_54 Start: 36392, Stop: 36673, Start Num: 93
Candidate Starts for Aoka_54:
(Start: 58 @36335 has 1 MA's), (Start: 93 @36392 has 7 MA's),

Gene: Applejacks_62 Start: 41851, Stop: 42168, Start Num: 63
Candidate Starts for Applejacks_62:
(25, 41746), (40, 41791), (63, 41851), (128, 42061),

Gene: ArV2_68 Start: 37011, Stop: 37319, Start Num: 87
Candidate Starts for ArV2_68:
(87, 37011), (145, 37284),

Gene: Archimedes_60 Start: 44555, Stop: 44878, Start Num: 72
Candidate Starts for Archimedes_60:
(Start: 72 @44555 has 1 MA's), (Start: 85 @44582 has 12 MA's), (Start: 90 @44588 has 2 MA's), (113, 44672), (114, 44681), (142, 44852),

Gene: Armstrong_70 Start: 39580, Stop: 39855, Start Num: 98
Candidate Starts for Armstrong_70:
(14, 39382), (18, 39397), (29, 39424), (37, 39457), (54, 39505), (Start: 61 @39520 has 3 MA's), (77, 39553), (Start: 98 @39580 has 82 MA's),

Gene: Arroyo_71 Start: 41666, Stop: 41941, Start Num: 98
Candidate Starts for Arroyo_71:
(Start: 98 @41666 has 82 MA's), (132, 41852),

Gene: Atlantica_70 Start: 38103, Stop: 38390, Start Num: 85
Candidate Starts for Atlantica_70:
(Start: 85 @38103 has 12 MA's), (124, 38256), (134, 38319),

Gene: AuntGwenStacy_132 Start: 74981, Stop: 75304, Start Num: 68
Candidate Starts for AuntGwenStacy_132:
(Start: 68 @74981 has 5 MA's), (117, 75131), (131, 75212), (135, 75236), (136, 75248),

Gene: AvGardian_70 Start: 41184, Stop: 41459, Start Num: 98
Candidate Starts for AvGardian_70:
(Start: 98 @41184 has 82 MA's), (126, 41334), (132, 41370),

Gene: Avocadoman_69 Start: 40737, Stop: 41012, Start Num: 98
Candidate Starts for Avocadoman_69:
(Start: 98 @40737 has 82 MA's),

Gene: AylexOG_71 Start: 41421, Stop: 41696, Start Num: 98
Candidate Starts for AylexOG_71:
(Start: 98 @41421 has 82 MA's), (132, 41607),

Gene: Azaz_72 Start: 38251, Stop: 38532, Start Num: 91
Candidate Starts for Azaz_72:
(Start: 91 @38251 has 1 MA's), (124, 38398), (134, 38461),

Gene: B3_57 Start: 35532, Stop: 35852, Start Num: 74

Candidate Starts for B3_57:

(2, 35259), (3, 35298), (4, 35307), (5, 35322), (18, 35388), (20, 35391), (29, 35415), (33, 35433), (43, 35463), (Start: 74 @35532 has 3 MA's), (92, 35562), (112, 35637), (145, 35835),

Gene: BAjuniper_68 Start: 41633, Stop: 41908, Start Num: 98

Candidate Starts for BAjuniper_68:

(45, 41528), (54, 41558), (Start: 61 @41573 has 3 MA's), (77, 41606), (Start: 98 @41633 has 82 MA's), (103, 41666), (132, 41819),

Gene: BFK20_ORF55 Start: 42590, Stop: 42880, Start Num: 90

Candidate Starts for BFK20_ORF55:

(Start: 72 @42557 has 1 MA's), (78, 42575), (Start: 90 @42590 has 2 MA's), (100, 42617), (113, 42674), (127, 42761), (139, 42845),

Gene: Babushka_66 Start: 38003, Stop: 38302, Start Num: 81

Candidate Starts for Babushka_66:

(Start: 81 @38003 has 3 MA's), (124, 38168), (134, 38231),

Gene: BabyDaisy_71 Start: 41763, Stop: 42038, Start Num: 98

Candidate Starts for BabyDaisy_71:

(46, 41664), (54, 41688), (Start: 61 @41703 has 3 MA's), (77, 41736), (89, 41751), (Start: 98 @41763 has 82 MA's),

Gene: BabyYoda_68 Start: 41093, Stop: 41368, Start Num: 98

Candidate Starts for BabyYoda_68:

(Start: 98 @41093 has 82 MA's), (103, 41126), (132, 41279), (133, 41282),

Gene: Bachaco_66 Start: 42043, Stop: 42318, Start Num: 98

Candidate Starts for Bachaco_66:

(23, 41878), (28, 41887), (30, 41890), (44, 41938), (54, 41968), (Start: 61 @41983 has 3 MA's), (77, 42016), (Start: 98 @42043 has 82 MA's), (132, 42229), (144, 42301),

Gene: BaileyBlu_63 Start: 40002, Stop: 40289, Start Num: 90

Candidate Starts for BaileyBlu_63:

(Start: 90 @40002 has 2 MA's), (129, 40182),

Gene: Banquo_63 Start: 39126, Stop: 39422, Start Num: 80

Candidate Starts for Banquo_63:

(Start: 60 @39084 has 1 MA's), (Start: 80 @39126 has 9 MA's), (101, 39168), (137, 39384),

Gene: Basilisk_66 Start: 38281, Stop: 38571, Start Num: 86

Candidate Starts for Basilisk_66:

(39, 38188), (53, 38218), (Start: 86 @38281 has 1 MA's), (Start: 95 @38293 has 20 MA's),

Gene: BellaJr_95 Start: 51784, Stop: 52089, Start Num: 83

Candidate Starts for BellaJr_95:

(83, 51784), (102, 51823), (104, 51847), (145, 52057),

Gene: BelmontSKP_70 Start: 41202, Stop: 41477, Start Num: 98

Candidate Starts for BelmontSKP_70:

(Start: 98 @41202 has 82 MA's), (132, 41388),

Gene: Bengal_71 Start: 41208, Stop: 41483, Start Num: 98
Candidate Starts for Bengal_71:
(31, 41055), (33, 41070), (54, 41133), (Start: 61 @41148 has 3 MA's), (77, 41181), (89, 41196), (Start: 98 @41208 has 82 MA's), (132, 41394),

Gene: Bernstein_70 Start: 39578, Stop: 39853, Start Num: 98
Candidate Starts for Bernstein_70:
(14, 39380), (18, 39395), (29, 39422), (37, 39455), (54, 39503), (Start: 61 @39518 has 3 MA's), (77, 39551), (Start: 98 @39578 has 82 MA's),

Gene: Bipper_136 Start: 77103, Stop: 77429, Start Num: 68
Candidate Starts for Bipper_136:
(Start: 68 @77103 has 5 MA's), (109, 77217), (113, 77229), (125, 77304), (135, 77361), (136, 77373),

Gene: Brahms_70 Start: 39480, Stop: 39755, Start Num: 98
Candidate Starts for Brahms_70:
(14, 39282), (18, 39297), (29, 39324), (37, 39357), (54, 39405), (Start: 61 @39420 has 3 MA's), (77, 39453), (Start: 98 @39480 has 82 MA's),

Gene: Brynnie_64 Start: 38238, Stop: 38516, Start Num: 95
Candidate Starts for Brynnie_64:
(Start: 86 @38226 has 1 MA's), (Start: 95 @38238 has 20 MA's),

Gene: BubbaBear_68 Start: 41351, Stop: 41626, Start Num: 98
Candidate Starts for BubbaBear_68:
(Start: 98 @41351 has 82 MA's),

Gene: Buldak_69 Start: 39158, Stop: 39433, Start Num: 98
Candidate Starts for Buldak_69:
(Start: 98 @39158 has 82 MA's), (132, 39344),

Gene: Burritobowl_72 Start: 40954, Stop: 41229, Start Num: 98
Candidate Starts for Burritobowl_72:
(Start: 98 @40954 has 82 MA's),

Gene: CallinAllBarbz_64 Start: 40753, Stop: 41040, Start Num: 90
Candidate Starts for CallinAllBarbz_64:
(Start: 90 @40753 has 2 MA's),

Gene: Camara_69 Start: 37993, Stop: 38280, Start Num: 85
Candidate Starts for Camara_69:
(Start: 85 @37993 has 12 MA's), (124, 38146), (134, 38209),

Gene: CanFranMach_70 Start: 41004, Stop: 41279, Start Num: 98
Candidate Starts for CanFranMach_70:
(43, 40899), (54, 40929), (Start: 61 @40944 has 3 MA's), (77, 40977), (Start: 98 @41004 has 82 MA's),

Gene: Cashington_69 Start: 41137, Stop: 41412, Start Num: 98
Candidate Starts for Cashington_69:
(54, 41062), (Start: 61 @41077 has 3 MA's), (76, 41107), (77, 41110), (Start: 98 @41137 has 82 MA's), (132, 41323),

Gene: Catfish_64 Start: 41148, Stop: 41444, Start Num: 80

Candidate Starts for Catfish_64:

(10, 40959), (12, 40968), (57, 41106), (Start: 80 @41148 has 9 MA's), (111, 41235), (113, 41244), (125, 41319),

Gene: Celaena_66 Start: 41809, Stop: 42084, Start Num: 98

Candidate Starts for Celaena_66:

(23, 41641), (28, 41650), (30, 41653), (44, 41701), (54, 41731), (Start: 98 @41809 has 82 MA's), (132, 41995), (144, 42067),

Gene: Chickaboom_66 Start: 38402, Stop: 38680, Start Num: 95

Candidate Starts for Chickaboom_66:

(Start: 86 @38390 has 1 MA's), (Start: 95 @38402 has 20 MA's),

Gene: Chicken_65 Start: 39158, Stop: 39436, Start Num: 95

Candidate Starts for Chicken_65:

(22, 39047), (71, 39116), (73, 39122), (Start: 95 @39158 has 20 MA's),

Gene: Clayda5_72 Start: 39546, Stop: 39821, Start Num: 98

Candidate Starts for Clayda5_72:

(14, 39348), (18, 39363), (29, 39390), (37, 39423), (54, 39471), (Start: 61 @39486 has 3 MA's), (77, 39519), (Start: 98 @39546 has 82 MA's),

Gene: CliffHanger_78 Start: 40817, Stop: 41092, Start Num: 98

Candidate Starts for CliffHanger_78:

(Start: 98 @40817 has 82 MA's), (103, 40850), (132, 41003), (133, 41006),

Gene: CocoCinnamon_58 Start: 36037, Stop: 36318, Start Num: 93

Candidate Starts for CocoCinnamon_58:

(78, 36019), (Start: 93 @36037 has 7 MA's), (110, 36106),

Gene: Coltrane_70 Start: 39480, Stop: 39755, Start Num: 98

Candidate Starts for Coltrane_70:

(14, 39282), (18, 39297), (29, 39324), (37, 39357), (54, 39405), (Start: 61 @39420 has 3 MA's), (77, 39453), (Start: 98 @39480 has 82 MA's),

Gene: Cracklewink_136 Start: 76262, Stop: 76588, Start Num: 68

Candidate Starts for Cracklewink_136:

(7, 76067), (21, 76136), (Start: 68 @76262 has 5 MA's), (109, 76376), (113, 76388), (125, 76463), (135, 76520), (136, 76532),

Gene: CroZenni_71 Start: 41008, Stop: 41283, Start Num: 98

Candidate Starts for CroZenni_71:

(Start: 98 @41008 has 82 MA's),

Gene: CupcakePrincess_71 Start: 41251, Stop: 41526, Start Num: 98

Candidate Starts for CupcakePrincess_71:

(Start: 98 @41251 has 82 MA's),

Gene: CurlyFries_112 Start: 57829, Stop: 58110, Start Num: 93

Candidate Starts for CurlyFries_112:

(Start: 93 @57829 has 7 MA's), (Start: 97 @57838 has 1 MA's), (103, 57874), (107, 57892), (122, 57961), (124, 57982), (140, 58081),

Gene: Cygnet_73 Start: 39144, Stop: 39422, Start Num: 95

Candidate Starts for Cygnet_73:

(Start: 95 @39144 has 20 MA's), (132, 39336),

Gene: DanHam62_70 Start: 38102, Stop: 38389, Start Num: 85

Candidate Starts for DanHam62_70:

(Start: 85 @38102 has 12 MA's), (124, 38255), (134, 38318),

Gene: DearBasketball_66 Start: 41514, Stop: 41795, Start Num: 93

Candidate Starts for DearBasketball_66:

(Start: 93 @41514 has 7 MA's), (105, 41568),

Gene: DickRichards_68 Start: 40877, Stop: 41152, Start Num: 98

Candidate Starts for DickRichards_68:

(Start: 98 @40877 has 82 MA's),

Gene: Didgeridoo_75 Start: 42192, Stop: 42467, Start Num: 98

Candidate Starts for Didgeridoo_75:

(17, 42015), (33, 42066), (54, 42117), (Start: 61 @42132 has 3 MA's), (77, 42165), (89, 42180), (Start: 98 @42192 has 82 MA's),

Gene: DinoDaryn_64 Start: 39227, Stop: 39523, Start Num: 80

Candidate Starts for DinoDaryn_64:

(Start: 60 @39185 has 1 MA's), (Start: 80 @39227 has 9 MA's), (128, 39416), (137, 39485),

Gene: DinoNuggs_64 Start: 41077, Stop: 41433, Start Num: 48

Candidate Starts for DinoNuggs_64:

(Start: 48 @41077 has 3 MA's), (Start: 93 @41149 has 7 MA's), (105, 41203),

Gene: DirtyBubble_69 Start: 41228, Stop: 41503, Start Num: 98

Candidate Starts for DirtyBubble_69:

(Start: 98 @41228 has 82 MA's), (132, 41414), (133, 41417),

Gene: Dismas_67 Start: 41256, Stop: 41531, Start Num: 98

Candidate Starts for Dismas_67:

(53, 41181), (Start: 98 @41256 has 82 MA's), (132, 41442), (136, 41472),

Gene: DonkeyMan_61 Start: 39766, Stop: 40047, Start Num: 93

Candidate Starts for DonkeyMan_61:

(Start: 48 @39688 has 3 MA's), (69, 39727), (70, 39730), (Start: 93 @39766 has 7 MA's), (105, 39820),

Gene: Doobus_68 Start: 40732, Stop: 41007, Start Num: 98

Candidate Starts for Doobus_68:

(Start: 98 @40732 has 82 MA's),

Gene: E1_55 Start: 34794, Stop: 35114, Start Num: 74

Candidate Starts for E1_55:

(2, 34521), (3, 34560), (4, 34569), (5, 34584), (18, 34650), (20, 34653), (29, 34677), (33, 34695), (43, 34725), (Start: 74 @34794 has 3 MA's), (92, 34824), (112, 34899), (145, 35097),

Gene: Eden_72 Start: 40483, Stop: 40758, Start Num: 98

Candidate Starts for Eden_72:

(8, 40246), (11, 40276), (13, 40279), (16, 40294), (26, 40324), (27, 40327), (46, 40381), (62, 40423),
(Start: 98 @40483 has 82 MA's), (132, 40669), (133, 40672), (144, 40741),

Gene: Eesa_65 Start: 39439, Stop: 39717, Start Num: 95
Candidate Starts for Eesa_65:
(Start: 95 @39439 has 20 MA's), (146, 39709),

Gene: Elva_73 Start: 41675, Stop: 41950, Start Num: 98
Candidate Starts for Elva_73:
(Start: 98 @41675 has 82 MA's), (132, 41861), (133, 41864),

Gene: EmiRose_46 Start: 36892, Stop: 37236, Start Num: 60
Candidate Starts for EmiRose_46:
(Start: 60 @36892 has 1 MA's), (112, 37030), (116, 37060),

Gene: Eula_69 Start: 40916, Stop: 41191, Start Num: 98
Candidate Starts for Eula_69:
(Start: 98 @40916 has 82 MA's), (132, 41102),

Gene: EvenBluerMoon_51 Start: 35879, Stop: 36160, Start Num: 93
Candidate Starts for EvenBluerMoon_51:
(Start: 58 @35822 has 1 MA's), (Start: 93 @35879 has 7 MA's),

Gene: Faiyaz_132 Start: 75303, Stop: 75626, Start Num: 68
Candidate Starts for Faiyaz_132:
(Start: 68 @75303 has 5 MA's), (117, 75453), (131, 75534), (135, 75558), (136, 75570),

Gene: Finalfrontier_69 Start: 41583, Stop: 41858, Start Num: 98
Candidate Starts for Finalfrontier_69:
(Start: 98 @41583 has 82 MA's), (132, 41769),

Gene: Fingolfin_71 Start: 38104, Stop: 38391, Start Num: 85
Candidate Starts for Fingolfin_71:
(Start: 85 @38104 has 12 MA's), (124, 38257), (134, 38320),

Gene: FlameThrower_65 Start: 40846, Stop: 41121, Start Num: 98
Candidate Starts for FlameThrower_65:
(54, 40768), (Start: 98 @40846 has 82 MA's), (132, 41032), (144, 41104),

Gene: Franklin22_74 Start: 40216, Stop: 40491, Start Num: 98
Candidate Starts for Franklin22_74:
(62, 40156), (Start: 98 @40216 has 82 MA's), (132, 40402), (144, 40474),

Gene: Frizzle_58 Start: 45018, Stop: 45314, Start Num: 85
Candidate Starts for Frizzle_58:
(Start: 85 @45018 has 12 MA's), (Start: 108 @45090 has 1 MA's), (115, 45123), (146, 45306),

Gene: Fryberger_144 Start: 66223, Stop: 66480, Start Num: 98
Candidate Starts for Fryberger_144:
(Start: 98 @66223 has 82 MA's), (116, 66319), (122, 66343), (125, 66373), (133, 66406),

Gene: Gack_71 Start: 40197, Stop: 40472, Start Num: 98
Candidate Starts for Gack_71:

(Start: 98 @40197 has 82 MA's), (132, 40383), (136, 40413),

Gene: Galaxy_65 Start: 37453, Stop: 37731, Start Num: 95

Candidate Starts for Galaxy_65:

(32, 37303), (36, 37327), (47, 37360), (Start: 95 @37453 has 20 MA's), (134, 37660),

Gene: Ghobes_59 Start: 45003, Stop: 45227, Start Num: 108

Candidate Starts for Ghobes_59:

(Start: 85 @44931 has 12 MA's), (Start: 108 @45003 has 1 MA's), (115, 45036), (146, 45219),

Gene: Glotell_71 Start: 38150, Stop: 38437, Start Num: 85

Candidate Starts for Glotell_71:

(Start: 85 @38150 has 12 MA's), (124, 38303), (134, 38366),

Gene: GrimEater_65 Start: 41105, Stop: 41392, Start Num: 90

Candidate Starts for GrimEater_65:

(52, 41039), (Start: 90 @41105 has 2 MA's), (125, 41267), (129, 41285),

Gene: Guey18_149 Start: 67884, Stop: 68141, Start Num: 98

Candidate Starts for Guey18_149:

(Start: 98 @67884 has 82 MA's), (116, 67980), (122, 68004), (125, 68034), (133, 68067),

Gene: HamCheese_69 Start: 38089, Stop: 38376, Start Num: 85

Candidate Starts for HamCheese_69:

(Start: 85 @38089 has 12 MA's), (124, 38242), (134, 38305),

Gene: Hereford_52 Start: 35583, Stop: 35864, Start Num: 93

Candidate Starts for Hereford_52:

(Start: 58 @35526 has 1 MA's), (Start: 93 @35583 has 7 MA's),

Gene: Hibiscus_63 Start: 39480, Stop: 39836, Start Num: 48

Candidate Starts for Hibiscus_63:

(Start: 48 @39480 has 3 MA's), (Start: 93 @39552 has 7 MA's), (105, 39606),

Gene: Hilltopfarm_134 Start: 76128, Stop: 76451, Start Num: 68

Candidate Starts for Hilltopfarm_134:

(Start: 68 @76128 has 5 MA's), (117, 76278), (131, 76359), (135, 76383), (136, 76395),

Gene: Huff_64 Start: 39227, Stop: 39523, Start Num: 80

Candidate Starts for Huff_64:

(Start: 60 @39185 has 1 MA's), (Start: 80 @39227 has 9 MA's), (128, 39416), (137, 39485),

Gene: Icarian_72 Start: 41856, Stop: 42131, Start Num: 98

Candidate Starts for Icarian_72:

(Start: 98 @41856 has 82 MA's), (128, 42021), (132, 42042), (133, 42045),

Gene: IndyLu_71 Start: 41495, Stop: 41770, Start Num: 98

Candidate Starts for IndyLu_71:

(17, 41318), (33, 41369), (54, 41420), (Start: 61 @41435 has 3 MA's), (75, 41462), (77, 41468), (89, 41483), (Start: 98 @41495 has 82 MA's),

Gene: Jabb_71 Start: 41251, Stop: 41526, Start Num: 98

Candidate Starts for Jabb_71:

(Start: 98 @41251 has 82 MA's),

Gene: Jamun_63 Start: 38467, Stop: 38745, Start Num: 95

Candidate Starts for Jamun_63:

(22, 38326), (62, 38413), (79, 38449), (Start: 86 @38455 has 1 MA's), (Start: 95 @38467 has 20 MA's),

Gene: JanetJ_52 Start: 36634, Stop: 36915, Start Num: 93

Candidate Starts for JanetJ_52:

(Start: 93 @36634 has 7 MA's),

Gene: Jankie_67 Start: 41285, Stop: 41572, Start Num: 90

Candidate Starts for Jankie_67:

(52, 41219), (Start: 90 @41285 has 2 MA's), (125, 41447), (129, 41465),

Gene: Johnathan_70 Start: 40508, Stop: 40783, Start Num: 98

Candidate Starts for Johnathan_70:

(Start: 98 @40508 has 82 MA's),

Gene: Jojo24_63 Start: 40163, Stop: 40516, Start Num: 48

Candidate Starts for Jojo24_63:

(Start: 48 @40163 has 3 MA's), (Start: 93 @40235 has 7 MA's), (105, 40289),

Gene: Jovita_68 Start: 40684, Stop: 40959, Start Num: 98

Candidate Starts for Jovita_68:

(Start: 98 @40684 has 82 MA's), (132, 40870),

Gene: Juno112_69 Start: 38104, Stop: 38391, Start Num: 85

Candidate Starts for Juno112_69:

(Start: 85 @38104 has 12 MA's), (124, 38257), (134, 38320),

Gene: KHumphrey_70 Start: 37978, Stop: 38265, Start Num: 85

Candidate Starts for KHumphrey_70:

(Start: 85 @37978 has 12 MA's), (124, 38131), (134, 38194),

Gene: Kate33_73 Start: 41226, Stop: 41501, Start Num: 98

Candidate Starts for Kate33_73:

(33, 41100), (54, 41151), (Start: 61 @41166 has 3 MA's), (77, 41199), (89, 41214), (Start: 98 @41226 has 82 MA's),

Gene: Katzastrophic_67 Start: 41352, Stop: 41627, Start Num: 98

Candidate Starts for Katzastrophic_67:

(23, 41187), (28, 41196), (30, 41199), (44, 41247), (54, 41277), (Start: 61 @41292 has 3 MA's), (77, 41325), (Start: 98 @41352 has 82 MA's), (132, 41538), (144, 41610),

Gene: Keelan_144 Start: 66560, Stop: 66817, Start Num: 98

Candidate Starts for Keelan_144:

(Start: 98 @66560 has 82 MA's), (116, 66656), (122, 66680), (125, 66710), (133, 66743), (143, 66803),

Gene: KendraB23_76 Start: 39417, Stop: 39695, Start Num: 95

Candidate Starts for KendraB23_76:

(36, 39363), (Start: 95 @39417 has 20 MA's), (146, 39687),

Gene: Kenzers_69 Start: 40798, Stop: 41073, Start Num: 98

Candidate Starts for Kenzers_69:
(Start: 98 @40798 has 82 MA's), (132, 40984),

Gene: Khuang_70 Start: 39192, Stop: 39488, Start Num: 84
Candidate Starts for Khuang_70:
(Start: 84 @39192 has 1 MA's), (99, 39222), (125, 39360),

Gene: Kieran_65 Start: 41080, Stop: 41355, Start Num: 98
Candidate Starts for Kieran_65:
(53, 41005), (Start: 98 @41080 has 82 MA's), (132, 41266), (136, 41296),

Gene: Lahqtemish_69 Start: 41710, Stop: 41985, Start Num: 98
Candidate Starts for Lahqtemish_69:
(38, 41602), (54, 41635), (Start: 61 @41650 has 3 MA's), (75, 41677), (77, 41683), (89, 41698), (Start: 98 @41710 has 82 MA's),

Gene: Laphuphu24k_68 Start: 38089, Stop: 38376, Start Num: 85
Candidate Starts for Laphuphu24k_68:
(Start: 85 @38089 has 12 MA's), (124, 38242), (134, 38305),

Gene: Leona_68 Start: 38237, Stop: 38518, Start Num: 91
Candidate Starts for Leona_68:
(Start: 91 @38237 has 1 MA's), (124, 38384), (134, 38447),

Gene: Lilo27_70 Start: 41100, Stop: 41375, Start Num: 98
Candidate Starts for Lilo27_70:
(Start: 98 @41100 has 82 MA's), (132, 41286),

Gene: LimaBean_68 Start: 40790, Stop: 41065, Start Num: 98
Candidate Starts for LimaBean_68:
(54, 40715), (Start: 61 @40730 has 3 MA's), (76, 40760), (77, 40763), (Start: 98 @40790 has 82 MA's),

Gene: LisoBros_62 Start: 44198, Stop: 44542, Start Num: 60
Candidate Starts for LisoBros_62:
(Start: 60 @44198 has 1 MA's), (92, 44255), (125, 44417),

Gene: LittleTokyo_73 Start: 38604, Stop: 38882, Start Num: 95
Candidate Starts for LittleTokyo_73:
(Start: 95 @38604 has 20 MA's), (132, 38796),

Gene: Loviatar_67 Start: 42044, Stop: 42379, Start Num: 61
Candidate Starts for Loviatar_67:
(54, 42029), (Start: 61 @42044 has 3 MA's), (77, 42077), (Start: 98 @42104 has 82 MA's), (103, 42137), (133, 42293),

Gene: Lynlen_71 Start: 40984, Stop: 41259, Start Num: 98
Candidate Starts for Lynlen_71:
(89, 40972), (Start: 98 @40984 has 82 MA's),

Gene: Mahdia_60 Start: 41790, Stop: 42113, Start Num: 59
Candidate Starts for Mahdia_60:
(Start: 59 @41790 has 3 MA's), (Start: 64 @41796 has 1 MA's), (123, 41970), (125, 41988), (137, 42075),

Gene: Milomuff_72 Start: 41357, Stop: 41632, Start Num: 98

Candidate Starts for Milomuff_72:

(Start: 98 @41357 has 82 MA's),

Gene: Min1_34 Start: 16506, Stop: 16799, Start Num: 92

Candidate Starts for Min1_34:

(55, 16446), (66, 16461), (67, 16464), (Start: 74 @16479 has 3 MA's), (79, 16491), (92, 16506), (118, 16617), (128, 16686), (145, 16782),

Gene: Morrissey_63 Start: 43651, Stop: 44007, Start Num: 50

Candidate Starts for Morrissey_63:

(Start: 50 @43651 has 1 MA's), (56, 43666), (Start: 64 @43678 has 1 MA's), (75, 43702), (123, 43864), (137, 43969),

Gene: MsUbiquitous_71 Start: 41251, Stop: 41526, Start Num: 98

Candidate Starts for MsUbiquitous_71:

(Start: 98 @41251 has 82 MA's),

Gene: Niblet_63 Start: 38827, Stop: 39105, Start Num: 95

Candidate Starts for Niblet_63:

(22, 38716), (71, 38785), (73, 38791), (Start: 95 @38827 has 20 MA's),

Gene: Nicky22_69 Start: 41321, Stop: 41596, Start Num: 98

Candidate Starts for Nicky22_69:

(Start: 98 @41321 has 82 MA's), (132, 41507),

Gene: Olliecat_66 Start: 38762, Stop: 39037, Start Num: 98

Candidate Starts for Olliecat_66:

(1, 38429), (19, 38579), (35, 38630), (Start: 98 @38762 has 82 MA's), (132, 38948), (141, 39005),

Gene: Oppalora_68 Start: 38103, Stop: 38390, Start Num: 85

Candidate Starts for Oppalora_68:

(Start: 85 @38103 has 12 MA's), (124, 38256), (134, 38319),

Gene: Orcanus_65 Start: 39051, Stop: 39329, Start Num: 95

Candidate Starts for Orcanus_65:

(Start: 95 @39051 has 20 MA's),

Gene: PastaFagioli_71 Start: 41718, Stop: 42053, Start Num: 61

Candidate Starts for PastaFagioli_71:

(38, 41670), (54, 41703), (Start: 61 @41718 has 3 MA's), (75, 41745), (77, 41751), (89, 41766), (Start: 98 @41778 has 82 MA's),

Gene: Pecas_70 Start: 41217, Stop: 41492, Start Num: 98

Candidate Starts for Pecas_70:

(Start: 98 @41217 has 82 MA's), (132, 41403),

Gene: PhigPhack_73 Start: 41119, Stop: 41394, Start Num: 98

Candidate Starts for PhigPhack_73:

(Start: 98 @41119 has 82 MA's), (132, 41305),

Gene: Phisb_72 Start: 41092, Stop: 41367, Start Num: 98

Candidate Starts for Phisb_72:
(Start: 98 @41092 has 82 MA's),

Gene: PhluffyCoco_68 Start: 38203, Stop: 38490, Start Num: 85
Candidate Starts for PhluffyCoco_68:
(Start: 85 @38203 has 12 MA's), (124, 38356), (134, 38419),

Gene: PondAmelia_83 Start: 40965, Stop: 41300, Start Num: 61
Candidate Starts for PondAmelia_83:
(42, 40914), (54, 40950), (Start: 61 @40965 has 3 MA's), (77, 40998), (Start: 98 @41025 has 82 MA's),
(103, 41058), (132, 41211), (133, 41214),

Gene: PrairieDogTown_52 Start: 35824, Stop: 36162, Start Num: 58
Candidate Starts for PrairieDogTown_52:
(Start: 58 @35824 has 1 MA's), (Start: 93 @35881 has 7 MA's),

Gene: Puppies_62 Start: 41790, Stop: 42113, Start Num: 59
Candidate Starts for Puppies_62:
(29, 41697), (34, 41718), (38, 41733), (41, 41739), (51, 41775), (Start: 59 @41790 has 3 MA's), (125,
41988),

Gene: QMacho_72 Start: 41222, Stop: 41497, Start Num: 98
Candidate Starts for QMacho_72:
(Start: 98 @41222 has 82 MA's),

Gene: Quenya_69 Start: 41516, Stop: 41791, Start Num: 98
Candidate Starts for Quenya_69:
(Start: 98 @41516 has 82 MA's), (103, 41549), (132, 41702), (144, 41774),

Gene: Rattail_71 Start: 38499, Stop: 38786, Start Num: 85
Candidate Starts for Rattail_71:
(Start: 85 @38499 has 12 MA's), (124, 38652), (134, 38715),

Gene: RedFox_71 Start: 38363, Stop: 38650, Start Num: 85
Candidate Starts for RedFox_71:
(Start: 85 @38363 has 12 MA's), (124, 38516), (134, 38579),

Gene: RegnumDei_109 Start: 60267, Stop: 60536, Start Num: 98
Candidate Starts for RegnumDei_109:
(Start: 98 @60267 has 82 MA's), (124, 60408), (126, 60420), (140, 60507),

Gene: Renna12_72 Start: 38798, Stop: 39091, Start Num: 81
Candidate Starts for Renna12_72:
(70, 38777), (Start: 81 @38798 has 3 MA's), (124, 38957), (134, 39020),

Gene: Reyja_65 Start: 41077, Stop: 41433, Start Num: 48
Candidate Starts for Reyja_65:
(Start: 48 @41077 has 3 MA's), (Start: 93 @41149 has 7 MA's), (105, 41203),

Gene: Rollins_70 Start: 39578, Stop: 39853, Start Num: 98
Candidate Starts for Rollins_70:
(14, 39380), (18, 39395), (29, 39422), (37, 39455), (54, 39503), (Start: 61 @39518 has 3 MA's), (77,
39551), (Start: 98 @39578 has 82 MA's),

Gene: Rona_66 Start: 41247, Stop: 41522, Start Num: 98
Candidate Starts for Rona_66:
(53, 41172), (Start: 98 @41247 has 82 MA's), (132, 41433), (136, 41463),

Gene: Ronaldo_147 Start: 67378, Stop: 67635, Start Num: 98
Candidate Starts for Ronaldo_147:
(Start: 98 @67378 has 82 MA's), (116, 67474), (122, 67498), (125, 67528), (133, 67561),

Gene: Ruchi_64 Start: 38215, Stop: 38493, Start Num: 95
Candidate Starts for Ruchi_64:
(39, 38110), (53, 38140), (Start: 86 @38203 has 1 MA's), (Start: 95 @38215 has 20 MA's),

Gene: SanaSana_70 Start: 41542, Stop: 41817, Start Num: 98
Candidate Starts for SanaSana_70:
(6, 41296), (9, 41311), (15, 41350), (Start: 50 @41458 has 1 MA's), (54, 41467), (Start: 61 @41482 has 3 MA's), (77, 41515), (Start: 98 @41542 has 82 MA's), (103, 41575), (132, 41728), (133, 41731),

Gene: SansAfet_72 Start: 41068, Stop: 41343, Start Num: 98
Candidate Starts for SansAfet_72:
(Start: 98 @41068 has 82 MA's), (132, 41254),

Gene: Sapo_61 Start: 45211, Stop: 45513, Start Num: 82
Candidate Starts for Sapo_61:
(Start: 82 @45211 has 1 MA's), (113, 45304), (120, 45337), (130, 45412), (146, 45505),

Gene: SarBear_72 Start: 41148, Stop: 41423, Start Num: 98
Candidate Starts for SarBear_72:
(Start: 98 @41148 has 82 MA's),

Gene: Schmidt_58 Start: 36837, Stop: 37133, Start Num: 80
Candidate Starts for Schmidt_58:
(Start: 80 @36837 has 9 MA's), (125, 37008), (142, 37107),

Gene: Shagrat_110 Start: 58151, Stop: 58423, Start Num: 97
Candidate Starts for Shagrat_110:
(Start: 97 @58151 has 1 MA's), (117, 58256), (124, 58295), (138, 58391), (140, 58394),

Gene: Sharkboy_68 Start: 41611, Stop: 41886, Start Num: 98
Candidate Starts for Sharkboy_68:
(53, 41536), (Start: 98 @41611 has 82 MA's), (103, 41644), (132, 41797), (136, 41827),

Gene: Shayna_75 Start: 41004, Stop: 41279, Start Num: 98
Candidate Starts for Shayna_75:
(Start: 98 @41004 has 82 MA's), (132, 41190),

Gene: SirBeanington_70 Start: 41335, Stop: 41610, Start Num: 98
Candidate Starts for SirBeanington_70:
(Start: 98 @41335 has 82 MA's), (132, 41521),

Gene: Skylord_70 Start: 39495, Stop: 39770, Start Num: 98
Candidate Starts for Skylord_70:

(14, 39297), (18, 39312), (29, 39339), (37, 39372), (54, 39420), (Start: 61 @39435 has 3 MA's), (77, 39468), (Start: 98 @39495 has 82 MA's),

Gene: Slay_70 Start: 41458, Stop: 41733, Start Num: 98
Candidate Starts for Slay_70:
(Start: 98 @41458 has 82 MA's), (132, 41644),

Gene: Sleepyhead_67 Start: 43516, Stop: 43788, Start Num: 94
Candidate Starts for Sleepyhead_67:
(Start: 94 @43516 has 1 MA's), (96, 43522),

Gene: Softsoap_71 Start: 41189, Stop: 41464, Start Num: 98
Candidate Starts for Softsoap_71:
(Start: 98 @41189 has 82 MA's),

Gene: Solea_73 Start: 41356, Stop: 41631, Start Num: 98
Candidate Starts for Solea_73:
(Start: 98 @41356 has 82 MA's),

Gene: Splinter_64 Start: 40315, Stop: 40611, Start Num: 80
Candidate Starts for Splinter_64:
(Start: 80 @40315 has 9 MA's), (128, 40504), (137, 40573),

Gene: Squircle_66 Start: 38761, Stop: 39036, Start Num: 98
Candidate Starts for Squircle_66:
(1, 38428), (19, 38578), (35, 38629), (Start: 98 @38761 has 82 MA's), (132, 38947), (141, 39004),

Gene: Stoor_69 Start: 41350, Stop: 41625, Start Num: 98
Candidate Starts for Stoor_69:
(Start: 98 @41350 has 82 MA's), (132, 41536), (133, 41539),

Gene: Stromboli_68 Start: 41130, Stop: 41405, Start Num: 98
Candidate Starts for Stromboli_68:
(6, 40884), (9, 40899), (15, 40938), (Start: 50 @41046 has 1 MA's), (54, 41055), (Start: 61 @41070 has 3 MA's), (77, 41103), (Start: 98 @41130 has 82 MA's), (132, 41316), (133, 41319),

Gene: StuartMinion_61 Start: 34829, Stop: 35122, Start Num: 81
Candidate Starts for StuartMinion_61:
(Start: 58 @34787 has 1 MA's), (Start: 81 @34829 has 3 MA's), (124, 34988), (142, 35096),

Gene: SunnyD_75 Start: 41007, Stop: 41282, Start Num: 98
Candidate Starts for SunnyD_75:
(Start: 98 @41007 has 82 MA's), (132, 41193),

Gene: Swervy_70 Start: 41047, Stop: 41322, Start Num: 98
Candidate Starts for Swervy_70:
(Start: 98 @41047 has 82 MA's), (132, 41233),

Gene: TZGordon_65 Start: 39203, Stop: 39499, Start Num: 80
Candidate Starts for TZGordon_65:
(Start: 80 @39203 has 9 MA's), (128, 39392), (137, 39461),

Gene: TaylorSipht_65 Start: 38681, Stop: 38959, Start Num: 95

Candidate Starts for TaylorSipht_65:
(Start: 95 @38681 has 20 MA's),

Gene: Teagster_75 Start: 41426, Stop: 41701, Start Num: 98
Candidate Starts for Teagster_75:
(Start: 98 @41426 has 82 MA's), (132, 41612),

Gene: TinaLin_63 Start: 39046, Stop: 39342, Start Num: 80
Candidate Starts for TinaLin_63:
(Start: 60 @39004 has 1 MA's), (Start: 80 @39046 has 9 MA's), (101, 39088), (119, 39172), (137, 39304),

Gene: Toad24_68 Start: 39472, Stop: 39750, Start Num: 95
Candidate Starts for Toad24_68:
(36, 39418), (Start: 95 @39472 has 20 MA's), (146, 39742),

Gene: Trine_65 Start: 43058, Stop: 43372, Start Num: 64
Candidate Starts for Trine_65:
(Start: 64 @43058 has 1 MA's), (117, 43199),

Gene: TukTuk_70 Start: 41237, Stop: 41512, Start Num: 98
Candidate Starts for TukTuk_70:
(Start: 98 @41237 has 82 MA's), (132, 41423),

Gene: Typha_129 Start: 74982, Stop: 75305, Start Num: 68
Candidate Starts for Typha_129:
(Start: 68 @74982 has 5 MA's), (117, 75132), (131, 75213), (135, 75237), (136, 75249),

Gene: Upyo_69 Start: 44979, Stop: 45296, Start Num: 65
Candidate Starts for Upyo_69:
(Start: 65 @44979 has 1 MA's), (106, 45075), (123, 45153), (125, 45171),

Gene: Vendetta_64 Start: 40315, Stop: 40611, Start Num: 80
Candidate Starts for Vendetta_64:
(Start: 80 @40315 has 9 MA's), (128, 40504), (137, 40573),

Gene: Vitas_71 Start: 39646, Stop: 39921, Start Num: 98
Candidate Starts for Vitas_71:
(24, 39487), (57, 39580), (Start: 98 @39646 has 82 MA's), (103, 39679),

Gene: Volt_150 Start: 67542, Stop: 67799, Start Num: 98
Candidate Starts for Volt_150:
(Start: 98 @67542 has 82 MA's), (116, 67638), (122, 67662), (125, 67692), (133, 67725),

Gene: Vulpecula_64 Start: 37410, Stop: 37688, Start Num: 95
Candidate Starts for Vulpecula_64:
(Start: 86 @37398 has 1 MA's), (Start: 95 @37410 has 20 MA's),

Gene: WalkingDead_71 Start: 42012, Stop: 42287, Start Num: 98
Candidate Starts for WalkingDead_71:
(Start: 98 @42012 has 82 MA's), (132, 42198), (133, 42201),

Gene: Widow_62 Start: 42336, Stop: 42659, Start Num: 59

Candidate Starts for Widow_62:

(29, 42243), (34, 42264), (38, 42279), (41, 42285), (49, 42312), (51, 42321), (Start: 59 @42336 has 3 MA's), (125, 42534),

Gene: WileyE_66 Start: 38402, Stop: 38680, Start Num: 95

Candidate Starts for WileyE_66:

(Start: 86 @38390 has 1 MA's), (Start: 95 @38402 has 20 MA's),

Gene: Zhuangyuan_77 Start: 39902, Stop: 40180, Start Num: 95

Candidate Starts for Zhuangyuan_77:

(Start: 95 @39902 has 20 MA's),

Gene: Zixiang_65 Start: 38816, Stop: 39094, Start Num: 95

Candidate Starts for Zixiang_65:

(Start: 95 @38816 has 20 MA's), (146, 39086),