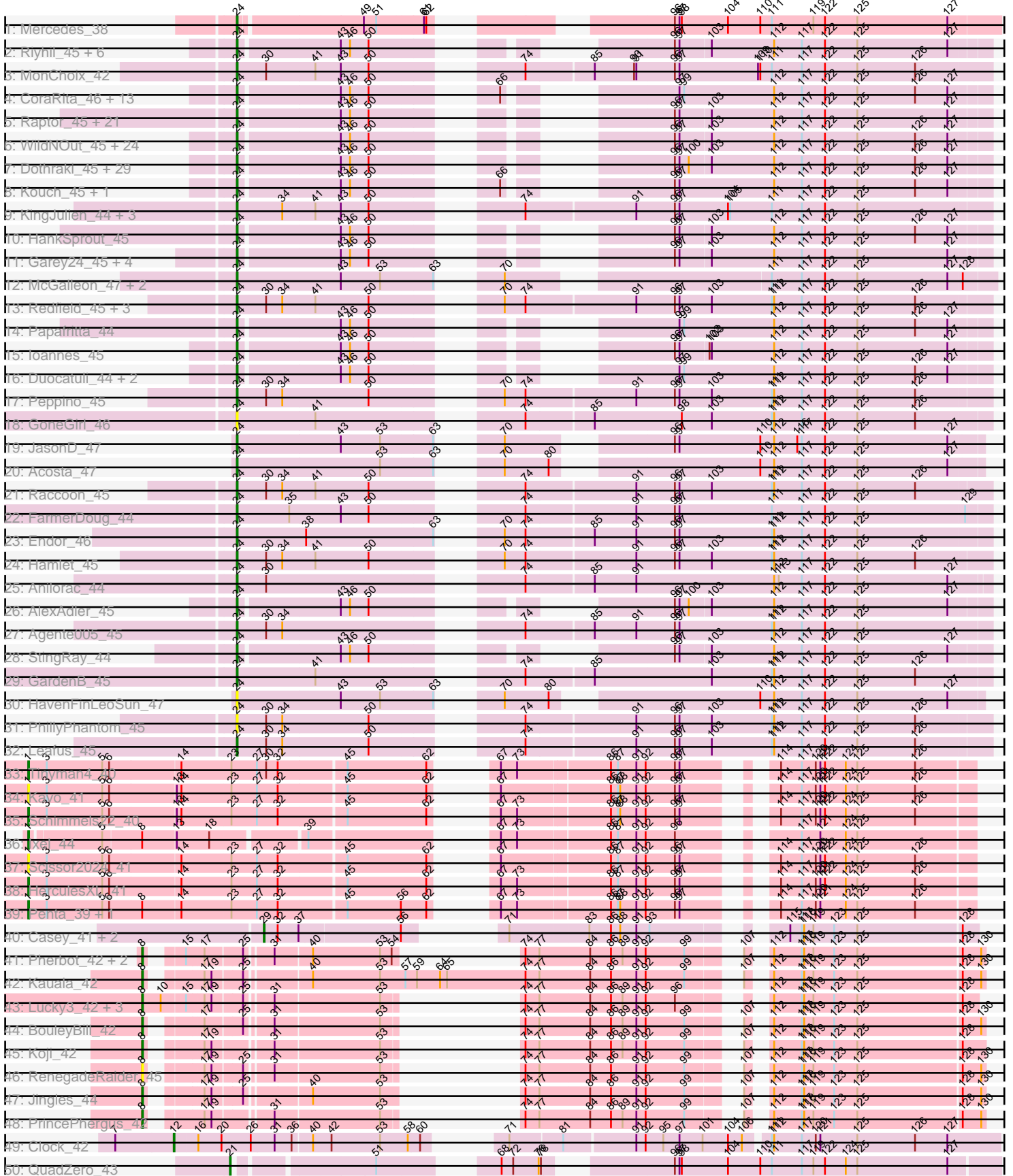
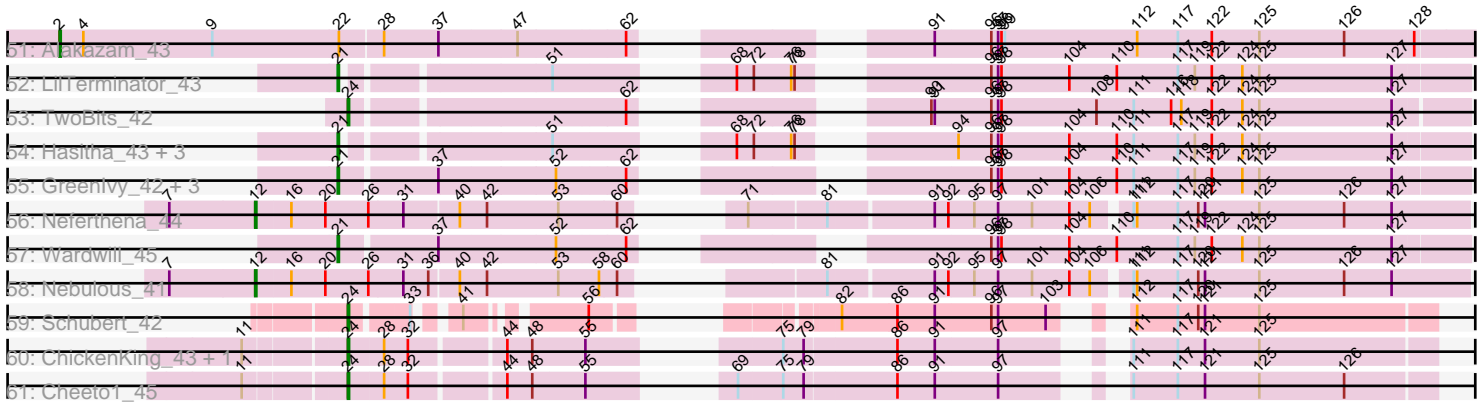


Pham 304737



Pham 304737



Note: Tracks are now grouped by subcluster and scaled. Switching in subcluster is indicated by changes in track color. Track scale is now set by default to display the region 30 bp upstream of start 1 to 30 bp downstream of the last possible start. If this default region is judged to be packed too tightly with annotated starts, the track will be further scaled to only show that region of the ORF with annotated starts. This action will be indicated by adding "Zoomed" to the title. For starts, yellow indicates the location of called starts comprised solely of Glimmer/GeneMark auto-annotations, green indicates the location of called starts with at least 1 manual gene annotation.

Pham 304737 Report

This analysis was run 06/08/26 on database version 649.

Pham number 304737 has 184 members, 15 are drafts.

Phages represented in each track:

- Track 1 : Mercedes_38
- Track 2 : Riyhil_45, Renzie_45, Dave_45, Robinson_45, Peep_45, Superfresh_45, Antoinette_45
- Track 3 : MonChoix_42
- Track 4 : CoraRita_46, StirfryIV_44, Benjalauren_45, Jerbirus_46, AranulaLuti_44, Rog141_44, HanSolo_44, Ilzat_44, KannH_44, JeriBeth_44, Clancy_44, Symere_44, HungryHenry_44, Sedgewig_44
- Track 5 : Raptor_45, Aubergine_44, Erla_44, Etta_44, KellyGreen_46, Kale_44, ManRay_44, Winzigespinne_44, Espinosa_44, Baines_44, Pocket_44, Bonino_44, Klimt_45, Chamuel_44, SonOfLevi_45, Calix_44, RosieMae_44, Christoph_44, Gelo_44, Oats_44, Tenda_44, Gubbabump_44
- Track 6 : WildNOut_45, BonesMcCoy_45, Ludgate_45, Greys_45, Thorongil_45, Strathdee_45, Vispistious_45, Thompsone_45, Oxtober96_46, Convict_45, Blage_45, Alyxandracam_45, Velene_45, Teagan_45, Figueroism_45, Gargoyle_45, PuppyEggo_45, Janus167_44, GoingMerry_46, Knox_45, Lovelyunicorn_45, BigRedClifford_45, Den3_45, ShaiHulud_45, AxiPup_45
- Track 7 : Dothraki_45, NickSell_45, Martin_46, Kurt1_45, Bandik_45, TatarkaPM_45, SJay_45, BeautPeep30_45, Phireproof_45, SoilGremlin_46, Inventa_45, SolidSnake_47, Rapheph_45, ParleG_45, OldNelly_46, Stanktossa_45, MillyPhilly_45, Delphidian_45, Merida02_47, Zada_46, Phiderman_45, MrWorldwide_45, Nagem_45, Phriends_45, Byron23_46, Pherferi_45, Shee_45, PhredFlintston_45, MaeLinda_45, TinSulphur_46
- Track 8 : Kouch_45, Exploradora_44
- Track 9 : KingJulien_44, Etna_45, Stormbreaker8_44, Soror1_44
- Track 10 : HankSprout_45
- Track 11 : Garey24_45, Asta_44, Nattles_44, Gershwin_44, TeddyBear_44
- Track 12 : McGalleon_47, CarisSwetlik_47, Jenos_48
- Track 13 : Redfield_45, Balsa_44, BeeBee8_46, Schnapsidee_45
- Track 14 : Papafritta_44
- Track 15 : Ioannes_45
- Track 16 : Duocatuli_44, Chako_44, JasperRussell_44
- Track 17 : Peppino_45
- Track 18 : GoneGirl_46
- Track 19 : JasonD_47
- Track 20 : Acosta_47
- Track 21 : Raccoon_45
- Track 22 : FarmerDoug_44

- Track 23 : Endor_46
- Track 24 : Hamlet_45
- Track 25 : Anilorac_44
- Track 26 : AlexAdler_45
- Track 27 : Agente005_45
- Track 28 : StingRay_44
- Track 29 : GardenB_45
- Track 30 : HavenFinLeoSun_47
- Track 31 : PhillyPhantom_45
- Track 32 : Leafus_45
- Track 33 : Tinyman4_40
- Track 34 : Kavo_41
- Track 35 : Schimmels22_40
- Track 36 : Ixel_44
- Track 37 : Scissor2024_41
- Track 38 : HerculesXL_41
- Track 39 : Penta_39, WestPM_39
- Track 40 : Casey_41, Pajaza_41, Pikmin_41
- Track 41 : Pherbot_42, Bustleton_42, Sinatra_43
- Track 42 : Kauala_42
- Track 43 : Lucky3_42, SirVictor_43, Golden_42, Guetzie_43
- Track 44 : BouleyBill_42
- Track 45 : Koji_42
- Track 46 : RenegadeRaider_45
- Track 47 : Jingles_44
- Track 48 : PrincePhergus_42
- Track 49 : Clock_42
- Track 50 : QuadZero_43
- Track 51 : Alakazam_43
- Track 52 : LilTerminator_43
- Track 53 : TwoBits_42
- Track 54 : Hasitha_43, Fulton_43, CaptainRex_43, Librie_43
- Track 55 : Greenlvy_42, BaronJohn_45, Zayuliv_43, Zepp_43
- Track 56 : Neferthena_44
- Track 57 : Wardwill_45
- Track 58 : Nebulous_41
- Track 59 : Schubert_42
- Track 60 : ChickenKing_43, GaeCeo_45
- Track 61 : Cheeto1_45

Summary of Final Annotations (See graph section above for start numbers):

The start number called the most often in the published annotations is 24, it was called in 135 of the 169 non-draft genes in the pham.

Genes that call this "Most Annotated" start:

• Acosta_47, Agente005_45, AlexAdler_45, Alyxandracam_45, Anilorac_44, Antoinette_45, AranulaLuti_44, Asta_44, Aubergine_44, AxiPup_45, Baines_44, Balsa_44, Bandik_45, BeautPeep30_45, BeeBee8_46, Benjalauren_45, BigRedClifford_45, Blage_45, BonesMcCoy_45, Bonino_44, Byron23_46, Calix_44,

CarisSwetlik_47, Chako_44, Chamuel_44, Cheeto1_45, ChickenKing_43, Christoph_44, Clancy_44, Convict_45, CoraRita_46, Dave_45, Delphidian_45, Den3_45, Dothraki_45, Duocatuli_44, Endor_46, Erla_44, Espinosa_44, Etna_45, Etta_44, Exploradora_44, FarmerDoug_44, Figueroism_45, GaeCeo_45, GardenB_45, Garey24_45, Gargoyle_45, Gelo_44, Gershwin_44, GoingMerry_46, GoneGirl_46, Greys_45, Gubbabump_44, Hamlet_45, HanSolo_44, HankSprout_45, HavenFinLeoSun_47, HungryHenry_44, Ilzat_44, Inventa_45, Ioannes_45, Janus167_44, JasonD_47, JasperRussell_44, Jenos_48, Jerbirus_46, JeriBeth_44, Kale_44, KannH_44, KellyGreen_46, KingJulien_44, Klimt_45, Knox_45, Kouch_45, Kurt1_45, Leafus_45, Lovelyunicorn_45, Ludgate_45, MaeLinda_45, ManRay_44, Martin_46, McGalleon_47, Mercedes_38, Merida02_47, MillyPhilly_45, MonChoix_42, MrWorldwide_45, Nagem_45, Nattles_44, NickSell_45, Oats_44, OldNelly_46, Oxtober96_46, Papafritta_44, ParleG_45, Peep_45, Peppino_45, Pherferi_45, Phiderman_45, PhillyPhantom_45, Phireproof_45, PhredFlintston_45, Phriends_45, Pocket_44, PuppyEggo_45, Raccoon_45, Rappheph_45, Raptor_45, Redfield_45, Renzie_45, Rihhil_45, Robinson_45, Rog141_44, RosieMae_44, SJay_45, Schnapsidee_45, Schubert_42, Sedgewig_44, ShaiHulud_45, Shee_45, SoilGremlin_46, SolidSnake_47, SonOfLevi_45, Soror1_44, Stanktossa_45, StingRay_44, StirfryIV_44, Stormbreaker8_44, Strathdee_45, Superfresh_45, Symere_44, TatarkaPM_45, Teagan_45, TeddyBear_44, Tenda_44, Thompsone_45, Thorongil_45, TinSulphur_46, TwoBits_42, Velene_45, Vispistious_45, WildNOut_45, Winzigespinne_44, Zada_46,

Genes that have the "Most Annotated" start but do not call it:

-

Genes that do not have the "Most Annotated" start:

- Alakazam_43, BaronJohn_45, BouleyBill_42, Bustleton_42, CaptainRex_43, Casey_41, Clock_42, Fulton_43, Golden_42, GreenIvy_42, Guetzie_43, Hasitha_43, HerculesXL_41, Ixel_44, Jingles_44, Kauala_42, Kav0_41, Koji_42, Librie_43, LilTerminator_43, Lucky3_42, Nebulous_41, Neferthena_44, Pajaza_41, Penta_39, Pherbot_42, Pikmin_41, PrincePhergus_42, QuadZero_43, RenegadeRaider_45, Schimmels22_40, Scissor2024_41, Sinatra_43, SirVictor_43, Tinyman4_40, Wardwill_45, WestPM_39, Zayuliv_43, Zepp_43,

Summary by start number:

Start 1:

- Found in 8 of 184 (4.3%) of genes in pham
- Manual Annotations of this start: 5 of 169
- Called 100.0% of time when present
- Phage (with cluster) where this start called: HerculesXL_41 (EA11), Ixel_44 (EA11), Kav0_41 (EA11), Penta_39 (EA11), Schimmels22_40 (EA11), Scissor2024_41 (EA11), Tinyman4_40 (EA11), WestPM_39 (EA11),

Start 2:

- Found in 1 of 184 (0.5%) of genes in pham
- Manual Annotations of this start: 1 of 169
- Called 100.0% of time when present
- Phage (with cluster) where this start called: Alakazam_43 (EA5),

Start 8:

- Found in 16 of 184 (8.7%) of genes in pham

- Manual Annotations of this start: 12 of 169
- Called 81.2% of time when present
- Phage (with cluster) where this start called: BouleyBill_42 (EA4), Bustleton_42 (EA4), Golden_42 (EA4), Guetzie_43 (EA4), Jingles_44 (EA4), Kauala_42 (EA4), Koji_42 (EA4), Lucky3_42 (EA4), Pherbot_42 (EA4), PrincePhergus_42 (EA4), RenegadeRaider_45 (EA4), Sinatra_43 (EA4), SirVictor_43 (EA4),

Start 12:

- Found in 3 of 184 (1.6%) of genes in pham
- Manual Annotations of this start: 3 of 169
- Called 100.0% of time when present
- Phage (with cluster) where this start called: Clock_42 (EA5), Nebulous_41 (EA5), Neferthena_44 (EA5),

Start 21:

- Found in 11 of 184 (6.0%) of genes in pham
- Manual Annotations of this start: 10 of 169
- Called 100.0% of time when present
- Phage (with cluster) where this start called: BaronJohn_45 (EA5), CaptainRex_43 (EA5), Fulton_43 (EA5), Greenlvy_42 (EA5), Hasitha_43 (EA5), Librie_43 (EA5), LilTerminator_43 (EA5), QuadZero_43 (EA5), Wardwill_45 (EA5), Zayuliv_43 (EA5), Zepp_43 (EA5),

Start 24:

- Found in 145 of 184 (78.8%) of genes in pham
- Manual Annotations of this start: 135 of 169
- Called 100.0% of time when present
- Phage (with cluster) where this start called: Acosta_47 (EA1), Agente005_45 (EA1), AlexAdler_45 (EA1), Alyxandracam_45 (EA1), Anilorac_44 (EA1), Antoinette_45 (EA1), AranulaLuti_44 (EA1), Asta_44 (EA1), Aubergine_44 (EA1), AxiPup_45 (EA1), Baines_44 (EA1), Balsa_44 (EA1), Bandik_45 (EA1), BeautPeep30_45 (EA1), BeeBee8_46 (EA1), Benjalauren_45 (EA1), BigRedClifford_45 (EA1), Blage_45 (EA1), BonesMcCoy_45 (EA1), Bonino_44 (EA1), Byron23_46 (EA1), Calix_44 (EA1), CarisSwetlik_47 (EA1), Chako_44 (EA1), Chamuel_44 (EA1), Cheeto1_45 (EA9), ChickenKing_43 (EA9), Christoph_44 (EA1), Clancy_44 (EA1), Convict_45 (EA1), CoraRita_46 (EA1), Dave_45 (EA1), Delphidian_45 (EA1), Den3_45 (EA1), Dothraki_45 (EA1), Duocatuli_44 (EA1), Endor_46 (EA1), Erla_44 (EA1), Espinosa_44 (EA1), Etna_45 (EA1), Etta_44 (EA1), Exploradora_44 (EA1), FarmerDoug_44 (EA1), Figueroism_45 (EA1), GaeCeo_45 (EA9), GardenB_45 (EA1), Garey24_45 (EA1), Gargoyle_45 (EA1), Gelo_44 (EA1), Gershwin_44 (EA1), GoingMerry_46 (EA1), GoneGirl_46 (EA1), Greys_45 (EA1), Gubbabump_44 (EA1), Hamlet_45 (EA1), HanSolo_44 (EA1), HankSprout_45 (EA1), HavenFinLeoSun_47 (EA1), HungryHenry_44 (EA1), Ilzat_44 (EA1), Inventa_45 (EA1), Ioannes_45 (EA1), Janus167_44 (EA1), JasonD_47 (EA1), JasperRussell_44 (EA1), Jenos_48 (EA1), Jerbirus_46 (EA1), JeriBeth_44 (EA1), Kale_44 (EA1), KannH_44 (EA1), KellyGreen_46 (EA1), KingJulien_44 (EA1), Klimt_45 (EA1), Knox_45 (EA1), Kouch_45 (EA1), Kurt1_45 (EA1), Leafus_45 (EA1), Lovelyunicorn_45 (EA1), Ludgate_45 (EA1), MaeLinda_45 (EA1), ManRay_44 (EA1), Martin_46 (EA1), McGalleon_47 (EA1), Mercedes_38 (EA), Merida02_47 (EA1), MillyPhilly_45 (EA1), MonChoix_42 (EA1), MrWorldwide_45 (EA1), Nagem_45 (EA1), Nattles_44 (EA1), NickSell_45 (EA1), Oats_44 (EA1), OldNelly_46 (EA1), Oxtober96_46 (EA1), Papafritta_44 (EA1), ParleG_45 (EA1), Peep_45 (EA1), Peppino_45 (EA1), Pherferi_45 (EA1), Phiderman_45 (EA1), PhillyPhantom_45 (EA1), Phireproof_45

(EA1), PhredFlintston_45 (EA1), Phriends_45 (EA1), Pocket_44 (EA1), PuppyEggo_45 (EA1), Raccoon_45 (EA1), Rapheph_45 (EA1), Raptor_45 (EA1), Redfield_45 (EA1), Renzie_45 (EA1), Riyhil_45 (EA1), Robinson_45 (EA1), Rog141_44 (EA1), RosieMae_44 (EA1), SJay_45 (EA1), Schnapsidee_45 (EA1), Schubert_42 (EA8), Sedgewig_44 (EA1), ShaiHulud_45 (EA1), Shee_45 (EA1), SoilGremlin_46 (EA1), SolidSnake_47 (EA1), SonOfLevi_45 (EA1), Soror1_44 (EA1), Stanktossa_45 (EA1), StingRay_44 (EA1), StirfryIV_44 (EA1), Stormbreaker8_44 (EA1), Strathdee_45 (EA1), Superfresh_45 (EA1), Symere_44 (EA1), TatarkaPM_45 (EA1), Teagan_45 (EA1), TeddyBear_44 (EA1), Tenda_44 (EA1), Thompsone_45 (EA1), Thorongil_45 (EA1), TinSulphur_46 (EA1), TwoBits_42 (EA5), Velene_45 (EA1), Vispistious_45 (EA1), WildNOut_45 (EA1), Winzigespinne_44 (EA1), Zada_46 (EA1),

Start 29:

- Found in 3 of 184 (1.6%) of genes in pham
- Manual Annotations of this start: 3 of 169
- Called 100.0% of time when present
- Phage (with cluster) where this start called: Casey_41 (EA3), Pajaza_41 (EA3), Pikmin_41 (EA3),

Summary by clusters:

There are 8 clusters represented in this pham: EA11, EA, EA9, EA8, EA1, EA3, EA5, EA4,

Info for manual annotations of cluster EA:

- Start number 24 was manually annotated 1 time for cluster EA.

Info for manual annotations of cluster EA1:

- Start number 24 was manually annotated 129 times for cluster EA1.

Info for manual annotations of cluster EA11:

- Start number 1 was manually annotated 5 times for cluster EA11.

Info for manual annotations of cluster EA3:

- Start number 29 was manually annotated 3 times for cluster EA3.

Info for manual annotations of cluster EA4:

- Start number 8 was manually annotated 12 times for cluster EA4.

Info for manual annotations of cluster EA5:

- Start number 2 was manually annotated 1 time for cluster EA5.
- Start number 12 was manually annotated 3 times for cluster EA5.
- Start number 21 was manually annotated 10 times for cluster EA5.
- Start number 24 was manually annotated 1 time for cluster EA5.

Info for manual annotations of cluster EA8:

- Start number 24 was manually annotated 1 time for cluster EA8.

Info for manual annotations of cluster EA9:

- Start number 24 was manually annotated 3 times for cluster EA9.

Gene Information:

Gene: Acosta_47 Start: 33265, Stop: 32417, Start Num: 24

Candidate Starts for Acosta_47:

(Start: 24 @33265 has 135 MA's), (53, 33082), (63, 33016), (70, 32980), (80, 32923), (110, 32701), (112, 32683), (117, 32647), (122, 32617), (125, 32575), (127, 32458),

Gene: Agente005_45 Start: 33051, Stop: 32146, Start Num: 24

Candidate Starts for Agente005_45:

(Start: 24 @33051 has 135 MA's), (30, 33015), (34, 32994), (74, 32739), (85, 32655), (91, 32601), (96, 32553), (97, 32547), (111, 32427), (112, 32424), (117, 32388), (122, 32358), (125, 32316),

Gene: Alakazam_43 Start: 32406, Stop: 31279, Start Num: 2

Candidate Starts for Alakazam_43:

(Start: 2 @32406 has 1 MA's), (4, 32385), (9, 32271), (22, 32160), (28, 32124), (37, 32076), (47, 32010), (62, 31920), (91, 31752), (96, 31704), (97, 31698), (98, 31695), (99, 31692), (112, 31575), (117, 31539), (122, 31509), (125, 31467), (126, 31392), (128, 31332),

Gene: AlexAdler_45 Start: 33079, Stop: 32273, Start Num: 24

Candidate Starts for AlexAdler_45:

(Start: 24 @33079 has 135 MA's), (43, 32953), (46, 32941), (50, 32917), (96, 32674), (97, 32668), (100, 32656), (103, 32629), (112, 32548), (117, 32512), (122, 32482), (125, 32440), (127, 32323),

Gene: Alyxandracam_45 Start: 33089, Stop: 32283, Start Num: 24

Candidate Starts for Alyxandracam_45:

(Start: 24 @33089 has 135 MA's), (43, 32963), (46, 32951), (50, 32927), (96, 32684), (97, 32678), (103, 32639), (112, 32558), (117, 32522), (122, 32492), (125, 32450), (126, 32375), (127, 32333),

Gene: Anilorac_44 Start: 32993, Stop: 32091, Start Num: 24

Candidate Starts for Anilorac_44:

(Start: 24 @32993 has 135 MA's), (30, 32957), (74, 32681), (85, 32597), (91, 32543), (112, 32366), (113, 32360), (117, 32330), (122, 32300), (125, 32258), (127, 32141),

Gene: Antoinette_45 Start: 33079, Stop: 32273, Start Num: 24

Candidate Starts for Antoinette_45:

(Start: 24 @33079 has 135 MA's), (43, 32953), (46, 32941), (50, 32917), (96, 32674), (97, 32668), (103, 32629), (112, 32548), (117, 32512), (122, 32482), (125, 32440), (127, 32323),

Gene: AranulaLuti_44 Start: 32776, Stop: 31967, Start Num: 24

Candidate Starts for AranulaLuti_44:

(Start: 24 @32776 has 135 MA's), (43, 32650), (46, 32638), (50, 32614), (66, 32503), (97, 32365), (99, 32359), (112, 32242), (117, 32206), (122, 32176), (125, 32134), (126, 32059), (127, 32017),

Gene: Asta_44 Start: 32786, Stop: 31980, Start Num: 24

Candidate Starts for Asta_44:

(Start: 24 @32786 has 135 MA's), (43, 32660), (46, 32648), (50, 32624), (96, 32381), (97, 32375), (103, 32336), (112, 32255), (117, 32219), (122, 32189), (125, 32147), (127, 32030),

Gene: Aubergine_44 Start: 32786, Stop: 31980, Start Num: 24

Candidate Starts for Aubergine_44:

(Start: 24 @32786 has 135 MA's), (43, 32660), (46, 32648), (50, 32624), (96, 32381), (97, 32375), (103, 32336), (112, 32255), (117, 32219), (122, 32189), (125, 32147), (127, 32030),

Gene: AxiPup_45 Start: 33058, Stop: 32252, Start Num: 24

Candidate Starts for AxiPup_45:

(Start: 24 @33058 has 135 MA's), (43, 32932), (46, 32920), (50, 32896), (96, 32653), (97, 32647), (103, 32608), (112, 32527), (117, 32491), (122, 32461), (125, 32419), (126, 32344), (127, 32302),

Gene: Baines_44 Start: 32779, Stop: 31973, Start Num: 24

Candidate Starts for Baines_44:

(Start: 24 @32779 has 135 MA's), (43, 32653), (46, 32641), (50, 32617), (96, 32374), (97, 32368), (103, 32329), (112, 32248), (117, 32212), (122, 32182), (125, 32140), (127, 32023),

Gene: Balsa_44 Start: 33038, Stop: 32133, Start Num: 24

Candidate Starts for Balsa_44:

(Start: 24 @33038 has 135 MA's), (30, 33002), (34, 32981), (41, 32939), (50, 32870), (70, 32753), (74, 32726), (91, 32588), (96, 32540), (97, 32534), (103, 32492), (111, 32414), (112, 32411), (117, 32375), (122, 32345), (125, 32303), (126, 32228),

Gene: Bandik_45 Start: 33084, Stop: 32278, Start Num: 24

Candidate Starts for Bandik_45:

(Start: 24 @33084 has 135 MA's), (43, 32958), (46, 32946), (50, 32922), (96, 32679), (97, 32673), (100, 32661), (103, 32634), (112, 32553), (117, 32517), (122, 32487), (125, 32445), (126, 32370), (127, 32328),

Gene: BaronJohn_45 Start: 31194, Stop: 30319, Start Num: 21

Candidate Starts for BaronJohn_45:

(Start: 21 @31194 has 10 MA's), (37, 31113), (52, 31014), (62, 30957), (96, 30741), (97, 30735), (98, 30732), (104, 30672), (110, 30630), (111, 30615), (117, 30576), (119, 30561), (122, 30546), (124, 30519), (125, 30504), (127, 30387),

Gene: BeautPeep30_45 Start: 33090, Stop: 32284, Start Num: 24

Candidate Starts for BeautPeep30_45:

(Start: 24 @33090 has 135 MA's), (43, 32964), (46, 32952), (50, 32928), (96, 32685), (97, 32679), (100, 32667), (103, 32640), (112, 32559), (117, 32523), (122, 32493), (125, 32451), (126, 32376), (127, 32334),

Gene: BeeBee8_46 Start: 33209, Stop: 32304, Start Num: 24

Candidate Starts for BeeBee8_46:

(Start: 24 @33209 has 135 MA's), (30, 33173), (34, 33152), (41, 33110), (50, 33041), (70, 32924), (74, 32897), (91, 32759), (96, 32711), (97, 32705), (103, 32663), (111, 32585), (112, 32582), (117, 32546), (122, 32516), (125, 32474), (126, 32399),

Gene: Benjalauren_45 Start: 32792, Stop: 31983, Start Num: 24

Candidate Starts for Benjalauren_45:

(Start: 24 @32792 has 135 MA's), (43, 32666), (46, 32654), (50, 32630), (66, 32519), (97, 32381), (99, 32375), (112, 32258), (117, 32222), (122, 32192), (125, 32150), (126, 32075), (127, 32033),

Gene: BigRedClifford_45 Start: 33088, Stop: 32282, Start Num: 24

Candidate Starts for BigRedClifford_45:

(Start: 24 @33088 has 135 MA's), (43, 32962), (46, 32950), (50, 32926), (96, 32683), (97, 32677), (103, 32638), (112, 32557), (117, 32521), (122, 32491), (125, 32449), (126, 32374), (127, 32332),

Gene: Blage_45 Start: 33088, Stop: 32282, Start Num: 24

Candidate Starts for Blage_45:

(Start: 24 @33088 has 135 MA's), (43, 32962), (46, 32950), (50, 32926), (96, 32683), (97, 32677), (103, 32638), (112, 32557), (117, 32521), (122, 32491), (125, 32449), (126, 32374), (127, 32332),

Gene: BonesMcCoy_45 Start: 33088, Stop: 32282, Start Num: 24

Candidate Starts for BonesMcCoy_45:

(Start: 24 @33088 has 135 MA's), (43, 32962), (46, 32950), (50, 32926), (96, 32683), (97, 32677), (103, 32638), (112, 32557), (117, 32521), (122, 32491), (125, 32449), (126, 32374), (127, 32332),

Gene: Bonino_44 Start: 32765, Stop: 31959, Start Num: 24

Candidate Starts for Bonino_44:

(Start: 24 @32765 has 135 MA's), (43, 32639), (46, 32627), (50, 32603), (96, 32360), (97, 32354), (103, 32315), (112, 32234), (117, 32198), (122, 32168), (125, 32126), (127, 32009),

Gene: BouleyBill_42 Start: 31954, Stop: 31139, Start Num: 8

Candidate Starts for BouleyBill_42:

(Start: 8 @31954 has 12 MA's), (17, 31903), (25, 31858), (31, 31828), (53, 31696), (74, 31669), (77, 31651), (84, 31588), (86, 31561), (89, 31546), (91, 31528), (92, 31516), (99, 31468), (107, 31423), (112, 31408), (117, 31372), (118, 31369), (119, 31357), (123, 31330), (125, 31300), (128, 31168), (130, 31144),

Gene: Bustleton_42 Start: 31748, Stop: 30930, Start Num: 8

Candidate Starts for Bustleton_42:

(Start: 8 @31748 has 12 MA's), (15, 31718), (17, 31697), (25, 31652), (31, 31622), (40, 31577), (53, 31490), (54, 31475), (74, 31460), (77, 31442), (84, 31379), (86, 31352), (89, 31337), (91, 31319), (92, 31307), (99, 31259), (107, 31214), (112, 31199), (117, 31163), (118, 31160), (119, 31148), (123, 31121), (125, 31091), (128, 30959), (130, 30935),

Gene: Byron23_46 Start: 33087, Stop: 32281, Start Num: 24

Candidate Starts for Byron23_46:

(Start: 24 @33087 has 135 MA's), (43, 32961), (46, 32949), (50, 32925), (96, 32682), (97, 32676), (100, 32664), (103, 32637), (112, 32556), (117, 32520), (122, 32490), (125, 32448), (126, 32373), (127, 32331),

Gene: Calix_44 Start: 32772, Stop: 31966, Start Num: 24

Candidate Starts for Calix_44:

(Start: 24 @32772 has 135 MA's), (43, 32646), (46, 32634), (50, 32610), (96, 32367), (97, 32361), (103, 32322), (112, 32241), (117, 32205), (122, 32175), (125, 32133), (127, 32016),

Gene: CaptainRex_43 Start: 30427, Stop: 29567, Start Num: 21

Candidate Starts for CaptainRex_43:

(Start: 21 @30427 has 10 MA's), (51, 30268), (68, 30163), (72, 30148), (76, 30115), (78, 30112), (94, 30016), (96, 29989), (97, 29983), (98, 29980), (104, 29920), (110, 29878), (111, 29863), (117, 29824), (119, 29809), (122, 29794), (124, 29767), (125, 29752), (127, 29635),

Gene: CarisSwetlik_47 Start: 33613, Stop: 32699, Start Num: 24

Candidate Starts for CarisSwetlik_47:

(Start: 24 @33613 has 135 MA's), (43, 33481), (53, 33430), (63, 33364), (70, 33328), (111, 32986), (117, 32947), (122, 32917), (125, 32875), (127, 32758), (128, 32740),

Gene: Casey_41 Start: 31268, Stop: 30519, Start Num: 29

Candidate Starts for Casey_41:

(Start: 29 @31268 has 3 MA's), (32, 31250), (37, 31223), (56, 31094), (71, 31058), (83, 30959), (86, 30932), (88, 30920), (91, 30899), (93, 30884), (115, 30758), (117, 30743), (118, 30740), (119, 30728),

(123, 30701), (125, 30671), (128, 30539),

Gene: Chako_44 Start: 32776, Stop: 31967, Start Num: 24

Candidate Starts for Chako_44:

(Start: 24 @32776 has 135 MA's), (43, 32650), (46, 32638), (50, 32614), (97, 32365), (99, 32359), (112, 32242), (117, 32206), (122, 32176), (125, 32134), (126, 32059), (127, 32017),

Gene: Chamuel_44 Start: 32798, Stop: 31992, Start Num: 24

Candidate Starts for Chamuel_44:

(Start: 24 @32798 has 135 MA's), (43, 32672), (46, 32660), (50, 32636), (96, 32393), (97, 32387), (103, 32348), (112, 32267), (117, 32231), (122, 32201), (125, 32159), (127, 32042),

Gene: Cheeto1_45 Start: 32549, Stop: 31746, Start Num: 24

Candidate Starts for Cheeto1_45:

(11, 32630), (Start: 24 @32549 has 135 MA's), (28, 32519), (32, 32498), (44, 32423), (48, 32402), (55, 32357), (69, 32294), (75, 32258), (79, 32240), (86, 32162), (91, 32129), (97, 32075), (111, 32009), (117, 31970), (121, 31946), (125, 31898), (126, 31823),

Gene: ChickenKing_43 Start: 32442, Stop: 31639, Start Num: 24

Candidate Starts for ChickenKing_43:

(11, 32523), (Start: 24 @32442 has 135 MA's), (28, 32412), (32, 32391), (44, 32316), (48, 32295), (55, 32250), (75, 32151), (79, 32133), (86, 32055), (91, 32022), (97, 31968), (111, 31902), (117, 31863), (121, 31839), (125, 31791),

Gene: Christoph_44 Start: 32785, Stop: 31979, Start Num: 24

Candidate Starts for Christoph_44:

(Start: 24 @32785 has 135 MA's), (43, 32659), (46, 32647), (50, 32623), (96, 32380), (97, 32374), (103, 32335), (112, 32254), (117, 32218), (122, 32188), (125, 32146), (127, 32029),

Gene: Clancy_44 Start: 32821, Stop: 32012, Start Num: 24

Candidate Starts for Clancy_44:

(Start: 24 @32821 has 135 MA's), (43, 32695), (46, 32683), (50, 32659), (66, 32548), (97, 32410), (99, 32404), (112, 32287), (117, 32251), (122, 32221), (125, 32179), (126, 32104), (127, 32062),

Gene: Clock_42 Start: 33154, Stop: 32201, Start Num: 12

Candidate Starts for Clock_42:

(7, 33229), (Start: 12 @33154 has 3 MA's), (16, 33124), (20, 33094), (26, 33058), (31, 33028), (36, 33007), (40, 32983), (42, 32959), (53, 32896), (58, 32860), (60, 32845), (71, 32812), (81, 32746), (91, 32659), (92, 32647), (95, 32626), (97, 32605), (101, 32575), (104, 32542), (106, 32524), (111, 32497), (112, 32494), (117, 32458), (120, 32440), (121, 32434), (125, 32386), (126, 32311), (127, 32269),

Gene: Convict_45 Start: 33088, Stop: 32282, Start Num: 24

Candidate Starts for Convict_45:

(Start: 24 @33088 has 135 MA's), (43, 32962), (46, 32950), (50, 32926), (96, 32683), (97, 32677), (103, 32638), (112, 32557), (117, 32521), (122, 32491), (125, 32449), (126, 32374), (127, 32332),

Gene: CoraRita_46 Start: 32791, Stop: 31982, Start Num: 24

Candidate Starts for CoraRita_46:

(Start: 24 @32791 has 135 MA's), (43, 32665), (46, 32653), (50, 32629), (66, 32518), (97, 32380), (99, 32374), (112, 32257), (117, 32221), (122, 32191), (125, 32149), (126, 32074), (127, 32032),

Gene: Dave_45 Start: 33079, Stop: 32273, Start Num: 24

Candidate Starts for Dave_45:

(Start: 24 @33079 has 135 MA's), (43, 32953), (46, 32941), (50, 32917), (96, 32674), (97, 32668), (103, 32629), (112, 32548), (117, 32512), (122, 32482), (125, 32440), (127, 32323),

Gene: Delphidian_45 Start: 33087, Stop: 32281, Start Num: 24

Candidate Starts for Delphidian_45:

(Start: 24 @33087 has 135 MA's), (43, 32961), (46, 32949), (50, 32925), (96, 32682), (97, 32676), (100, 32664), (103, 32637), (112, 32556), (117, 32520), (122, 32490), (125, 32448), (126, 32373), (127, 32331),

Gene: Den3_45 Start: 33093, Stop: 32287, Start Num: 24

Candidate Starts for Den3_45:

(Start: 24 @33093 has 135 MA's), (43, 32967), (46, 32955), (50, 32931), (96, 32688), (97, 32682), (103, 32643), (112, 32562), (117, 32526), (122, 32496), (125, 32454), (126, 32379), (127, 32337),

Gene: Dothraki_45 Start: 33087, Stop: 32281, Start Num: 24

Candidate Starts for Dothraki_45:

(Start: 24 @33087 has 135 MA's), (43, 32961), (46, 32949), (50, 32925), (96, 32682), (97, 32676), (100, 32664), (103, 32637), (112, 32556), (117, 32520), (122, 32490), (125, 32448), (126, 32373), (127, 32331),

Gene: Duocatuli_44 Start: 32776, Stop: 31967, Start Num: 24

Candidate Starts for Duocatuli_44:

(Start: 24 @32776 has 135 MA's), (43, 32650), (46, 32638), (50, 32614), (97, 32365), (99, 32359), (112, 32242), (117, 32206), (122, 32176), (125, 32134), (126, 32059), (127, 32017),

Gene: Endor_46 Start: 33281, Stop: 32376, Start Num: 24

Candidate Starts for Endor_46:

(Start: 24 @33281 has 135 MA's), (38, 33194), (63, 33032), (70, 32996), (74, 32969), (85, 32885), (91, 32831), (96, 32783), (97, 32777), (111, 32657), (112, 32654), (117, 32618), (122, 32588), (125, 32546),

Gene: Erla_44 Start: 32769, Stop: 31963, Start Num: 24

Candidate Starts for Erla_44:

(Start: 24 @32769 has 135 MA's), (43, 32643), (46, 32631), (50, 32607), (96, 32364), (97, 32358), (103, 32319), (112, 32238), (117, 32202), (122, 32172), (125, 32130), (127, 32013),

Gene: Espinosa_44 Start: 32784, Stop: 31978, Start Num: 24

Candidate Starts for Espinosa_44:

(Start: 24 @32784 has 135 MA's), (43, 32658), (46, 32646), (50, 32622), (96, 32379), (97, 32373), (103, 32334), (112, 32253), (117, 32217), (122, 32187), (125, 32145), (127, 32028),

Gene: Etna_45 Start: 33085, Stop: 32180, Start Num: 24

Candidate Starts for Etna_45:

(Start: 24 @33085 has 135 MA's), (34, 33028), (41, 32986), (43, 32953), (50, 32917), (74, 32773), (91, 32635), (96, 32587), (97, 32581), (104, 32518), (105, 32515), (111, 32461), (117, 32422), (122, 32392), (125, 32350),

Gene: Etta_44 Start: 32773, Stop: 31967, Start Num: 24

Candidate Starts for Etta_44:

(Start: 24 @32773 has 135 MA's), (43, 32647), (46, 32635), (50, 32611), (96, 32368), (97, 32362), (103, 32323), (112, 32242), (117, 32206), (122, 32176), (125, 32134), (127, 32017),

Gene: Exploradora_44 Start: 32776, Stop: 31967, Start Num: 24

Candidate Starts for Exploradora_44:

(Start: 24 @32776 has 135 MA's), (43, 32650), (46, 32638), (50, 32614), (66, 32503), (96, 32371), (97, 32365), (112, 32242), (117, 32206), (122, 32176), (125, 32134), (126, 32059), (127, 32017),

Gene: FarmerDoug_44 Start: 32791, Stop: 31886, Start Num: 24

Candidate Starts for FarmerDoug_44:

(Start: 24 @32791 has 135 MA's), (35, 32725), (43, 32659), (50, 32623), (74, 32479), (91, 32341), (96, 32293), (97, 32287), (111, 32167), (117, 32128), (122, 32098), (125, 32056), (129, 31918),

Gene: Figueroism_45 Start: 33078, Stop: 32272, Start Num: 24

Candidate Starts for Figueroism_45:

(Start: 24 @33078 has 135 MA's), (43, 32952), (46, 32940), (50, 32916), (96, 32673), (97, 32667), (103, 32628), (112, 32547), (117, 32511), (122, 32481), (125, 32439), (126, 32364), (127, 32322),

Gene: Fulton_43 Start: 30428, Stop: 29568, Start Num: 21

Candidate Starts for Fulton_43:

(Start: 21 @30428 has 10 MA's), (51, 30269), (68, 30164), (72, 30149), (76, 30116), (78, 30113), (94, 30017), (96, 29990), (97, 29984), (98, 29981), (104, 29921), (110, 29879), (111, 29864), (117, 29825), (119, 29810), (122, 29795), (124, 29768), (125, 29753), (127, 29636),

Gene: GaeCeo_45 Start: 32675, Stop: 31872, Start Num: 24

Candidate Starts for GaeCeo_45:

(11, 32756), (Start: 24 @32675 has 135 MA's), (28, 32645), (32, 32624), (44, 32549), (48, 32528), (55, 32483), (75, 32384), (79, 32366), (86, 32288), (91, 32255), (97, 32201), (111, 32135), (117, 32096), (121, 32072), (125, 32024),

Gene: GardenB_45 Start: 33026, Stop: 32121, Start Num: 24

Candidate Starts for GardenB_45:

(Start: 24 @33026 has 135 MA's), (41, 32927), (74, 32714), (85, 32630), (103, 32480), (111, 32402), (112, 32399), (117, 32363), (122, 32333), (125, 32291), (126, 32216),

Gene: Garey24_45 Start: 32752, Stop: 31946, Start Num: 24

Candidate Starts for Garey24_45:

(Start: 24 @32752 has 135 MA's), (43, 32626), (46, 32614), (50, 32590), (96, 32347), (97, 32341), (103, 32302), (112, 32221), (117, 32185), (122, 32155), (125, 32113), (127, 31996),

Gene: Gargoyle_45 Start: 33093, Stop: 32287, Start Num: 24

Candidate Starts for Gargoyle_45:

(Start: 24 @33093 has 135 MA's), (43, 32967), (46, 32955), (50, 32931), (96, 32688), (97, 32682), (103, 32643), (112, 32562), (117, 32526), (122, 32496), (125, 32454), (126, 32379), (127, 32337),

Gene: Gelo_44 Start: 32779, Stop: 31973, Start Num: 24

Candidate Starts for Gelo_44:

(Start: 24 @32779 has 135 MA's), (43, 32653), (46, 32641), (50, 32617), (96, 32374), (97, 32368), (103, 32329), (112, 32248), (117, 32212), (122, 32182), (125, 32140), (127, 32023),

Gene: Gershwin_44 Start: 32786, Stop: 31980, Start Num: 24

Candidate Starts for Gershwin_44:

(Start: 24 @32786 has 135 MA's), (43, 32660), (46, 32648), (50, 32624), (96, 32381), (97, 32375), (103, 32336), (112, 32255), (117, 32219), (122, 32189), (125, 32147), (127, 32030),

Gene: GoingMerry_46 Start: 33071, Stop: 32265, Start Num: 24

Candidate Starts for GoingMerry_46:

(Start: 24 @33071 has 135 MA's), (43, 32945), (46, 32933), (50, 32909), (96, 32666), (97, 32660), (103, 32621), (112, 32540), (117, 32504), (122, 32474), (125, 32432), (126, 32357), (127, 32315),

Gene: Golden_42 Start: 31840, Stop: 31010, Start Num: 8

Candidate Starts for Golden_42:

(Start: 8 @31840 has 12 MA's), (10, 31816), (15, 31786), (17, 31765), (19, 31756), (25, 31720), (31, 31690), (53, 31558), (74, 31531), (77, 31513), (84, 31450), (86, 31423), (89, 31408), (91, 31390), (92, 31378), (96, 31342), (112, 31270), (117, 31234), (118, 31231), (119, 31219), (123, 31192), (125, 31162), (128, 31030),

Gene: GoneGirl_46 Start: 33019, Stop: 32114, Start Num: 24

Candidate Starts for GoneGirl_46:

(Start: 24 @33019 has 135 MA's), (41, 32920), (74, 32707), (85, 32623), (98, 32512), (103, 32473), (111, 32395), (112, 32392), (117, 32356), (122, 32326), (125, 32284), (126, 32209),

Gene: Greenlvy_42 Start: 30783, Stop: 29908, Start Num: 21

Candidate Starts for Greenlvy_42:

(Start: 21 @30783 has 10 MA's), (37, 30702), (52, 30603), (62, 30546), (96, 30330), (97, 30324), (98, 30321), (104, 30261), (110, 30219), (111, 30204), (117, 30165), (119, 30150), (122, 30135), (124, 30108), (125, 30093), (127, 29976),

Gene: Greys_45 Start: 33086, Stop: 32280, Start Num: 24

Candidate Starts for Greys_45:

(Start: 24 @33086 has 135 MA's), (43, 32960), (46, 32948), (50, 32924), (96, 32681), (97, 32675), (103, 32636), (112, 32555), (117, 32519), (122, 32489), (125, 32447), (126, 32372), (127, 32330),

Gene: Gubbabump_44 Start: 32766, Stop: 31960, Start Num: 24

Candidate Starts for Gubbabump_44:

(Start: 24 @32766 has 135 MA's), (43, 32640), (46, 32628), (50, 32604), (96, 32361), (97, 32355), (103, 32316), (112, 32235), (117, 32199), (122, 32169), (125, 32127), (127, 32010),

Gene: Guetzie_43 Start: 31825, Stop: 30995, Start Num: 8

Candidate Starts for Guetzie_43:

(Start: 8 @31825 has 12 MA's), (10, 31801), (15, 31771), (17, 31750), (19, 31741), (25, 31705), (31, 31675), (53, 31543), (74, 31516), (77, 31498), (84, 31435), (86, 31408), (89, 31393), (91, 31375), (92, 31363), (96, 31327), (112, 31255), (117, 31219), (118, 31216), (119, 31204), (123, 31177), (125, 31147), (128, 31015),

Gene: Hamlet_45 Start: 33030, Stop: 32125, Start Num: 24

Candidate Starts for Hamlet_45:

(Start: 24 @33030 has 135 MA's), (30, 32994), (34, 32973), (41, 32931), (50, 32862), (70, 32745), (74, 32718), (91, 32580), (96, 32532), (97, 32526), (103, 32484), (111, 32406), (112, 32403), (117, 32367), (122, 32337), (125, 32295), (126, 32220),

Gene: HanSolo_44 Start: 32776, Stop: 31967, Start Num: 24

Candidate Starts for HanSolo_44:

(Start: 24 @32776 has 135 MA's), (43, 32650), (46, 32638), (50, 32614), (66, 32503), (97, 32365), (99, 32359), (112, 32242), (117, 32206), (122, 32176), (125, 32134), (126, 32059), (127, 32017),

Gene: HankSprout_45 Start: 32653, Stop: 31847, Start Num: 24

Candidate Starts for HankSprout_45:

(Start: 24 @32653 has 135 MA's), (43, 32527), (46, 32515), (50, 32491), (96, 32248), (97, 32242), (103, 32203), (112, 32122), (117, 32086), (122, 32056), (125, 32014), (126, 31939), (127, 31897),

Gene: Hasitha_43 Start: 30440, Stop: 29580, Start Num: 21

Candidate Starts for Hasitha_43:

(Start: 21 @30440 has 10 MA's), (51, 30281), (68, 30176), (72, 30161), (76, 30128), (78, 30125), (94, 30029), (96, 30002), (97, 29996), (98, 29993), (104, 29933), (110, 29891), (111, 29876), (117, 29837), (119, 29822), (122, 29807), (124, 29780), (125, 29765), (127, 29648),

Gene: HavenFinLeoSun_47 Start: 33212, Stop: 32364, Start Num: 24

Candidate Starts for HavenFinLeoSun_47:

(Start: 24 @33212 has 135 MA's), (43, 33080), (53, 33029), (63, 32963), (70, 32927), (80, 32870), (110, 32648), (112, 32630), (117, 32594), (122, 32564), (125, 32522), (127, 32405),

Gene: HerculesXL_41 Start: 30550, Stop: 29477, Start Num: 1

Candidate Starts for HerculesXL_41:

(Start: 1 @30550 has 5 MA's), (3, 30526), (5, 30454), (6, 30445), (14, 30355), (23, 30292), (27, 30259), (32, 30232), (45, 30148), (62, 30046), (67, 30025), (73, 30004), (86, 29890), (87, 29881), (91, 29857), (92, 29845), (96, 29809), (97, 29803), (114, 29725), (117, 29698), (120, 29680), (121, 29674), (122, 29668), (124, 29641), (125, 29626), (126, 29551),

Gene: HungryHenry_44 Start: 32781, Stop: 31972, Start Num: 24

Candidate Starts for HungryHenry_44:

(Start: 24 @32781 has 135 MA's), (43, 32655), (46, 32643), (50, 32619), (66, 32508), (97, 32370), (99, 32364), (112, 32247), (117, 32211), (122, 32181), (125, 32139), (126, 32064), (127, 32022),

Gene: Ilzat_44 Start: 32792, Stop: 31983, Start Num: 24

Candidate Starts for Ilzat_44:

(Start: 24 @32792 has 135 MA's), (43, 32666), (46, 32654), (50, 32630), (66, 32519), (97, 32381), (99, 32375), (112, 32258), (117, 32222), (122, 32192), (125, 32150), (126, 32075), (127, 32033),

Gene: Inventa_45 Start: 33084, Stop: 32278, Start Num: 24

Candidate Starts for Inventa_45:

(Start: 24 @33084 has 135 MA's), (43, 32958), (46, 32946), (50, 32922), (96, 32679), (97, 32673), (100, 32661), (103, 32634), (112, 32553), (117, 32517), (122, 32487), (125, 32445), (126, 32370), (127, 32328),

Gene: loannes_45 Start: 33088, Stop: 32282, Start Num: 24

Candidate Starts for loannes_45:

(Start: 24 @33088 has 135 MA's), (43, 32962), (46, 32950), (50, 32926), (96, 32683), (97, 32677), (102, 32641), (103, 32638), (112, 32557), (117, 32521), (122, 32491), (125, 32449), (127, 32332),

Gene: Ixel_44 Start: 32296, Stop: 31250, Start Num: 1

Candidate Starts for Ixel_44:

(Start: 1 @32296 has 5 MA's), (5, 32209), (Start: 8 @32161 has 12 MA's), (13, 32119), (18, 32077), (39, 31966), (67, 31798), (73, 31777), (86, 31663), (87, 31654), (91, 31630), (92, 31618), (96, 31582), (117, 31471), (121, 31447), (124, 31414), (125, 31399),

Gene: Janus167_44 Start: 32773, Stop: 31967, Start Num: 24

Candidate Starts for Janus167_44:

(Start: 24 @32773 has 135 MA's), (43, 32647), (46, 32635), (50, 32611), (96, 32368), (97, 32362), (103, 32323), (112, 32242), (117, 32206), (122, 32176), (125, 32134), (126, 32059), (127, 32017),

Gene: JasonD_47 Start: 33193, Stop: 32345, Start Num: 24

Candidate Starts for JasonD_47:

(Start: 24 @33193 has 135 MA's), (43, 33061), (53, 33010), (63, 32944), (70, 32908), (96, 32740), (97, 32734), (110, 32629), (112, 32611), (116, 32581), (117, 32575), (122, 32545), (125, 32503), (127, 32386),

Gene: JasperRussell_44 Start: 32776, Stop: 31967, Start Num: 24

Candidate Starts for JasperRussell_44:

(Start: 24 @32776 has 135 MA's), (43, 32650), (46, 32638), (50, 32614), (97, 32365), (99, 32359), (112, 32242), (117, 32206), (122, 32176), (125, 32134), (126, 32059), (127, 32017),

Gene: Jenos_48 Start: 33896, Stop: 32982, Start Num: 24

Candidate Starts for Jenos_48:

(Start: 24 @33896 has 135 MA's), (43, 33764), (53, 33713), (63, 33647), (70, 33611), (111, 33269), (117, 33230), (122, 33200), (125, 33158), (127, 33041), (128, 33023),

Gene: Jerbirus_46 Start: 32776, Stop: 31967, Start Num: 24

Candidate Starts for Jerbirus_46:

(Start: 24 @32776 has 135 MA's), (43, 32650), (46, 32638), (50, 32614), (66, 32503), (97, 32365), (99, 32359), (112, 32242), (117, 32206), (122, 32176), (125, 32134), (126, 32059), (127, 32017),

Gene: JeriBeth_44 Start: 32639, Stop: 31830, Start Num: 24

Candidate Starts for JeriBeth_44:

(Start: 24 @32639 has 135 MA's), (43, 32513), (46, 32501), (50, 32477), (66, 32366), (97, 32228), (99, 32222), (112, 32105), (117, 32069), (122, 32039), (125, 31997), (126, 31922), (127, 31880),

Gene: Jingles_44 Start: 31963, Stop: 31145, Start Num: 8

Candidate Starts for Jingles_44:

(Start: 8 @31963 has 12 MA's), (17, 31912), (19, 31903), (25, 31867), (40, 31792), (53, 31705), (74, 31675), (77, 31657), (84, 31594), (86, 31567), (91, 31534), (92, 31522), (99, 31474), (107, 31429), (112, 31414), (117, 31378), (118, 31375), (119, 31363), (123, 31336), (125, 31306), (128, 31174), (130, 31150),

Gene: Kale_44 Start: 32788, Stop: 31982, Start Num: 24

Candidate Starts for Kale_44:

(Start: 24 @32788 has 135 MA's), (43, 32662), (46, 32650), (50, 32626), (96, 32383), (97, 32377), (103, 32338), (112, 32257), (117, 32221), (122, 32191), (125, 32149), (127, 32032),

Gene: KannH_44 Start: 32776, Stop: 31967, Start Num: 24

Candidate Starts for KannH_44:

(Start: 24 @32776 has 135 MA's), (43, 32650), (46, 32638), (50, 32614), (66, 32503), (97, 32365), (99, 32359), (112, 32242), (117, 32206), (122, 32176), (125, 32134), (126, 32059), (127, 32017),

Gene: Kauala_42 Start: 32120, Stop: 31143, Start Num: 8

Candidate Starts for Kauala_42:

(Start: 8 @32120 has 12 MA's), (17, 32069), (19, 32060), (25, 32024), (40, 31949), (53, 31862), (57, 31829), (59, 31814), (64, 31784), (65, 31775), (74, 31673), (77, 31655), (84, 31592), (86, 31565), (91, 31532), (92, 31520), (99, 31472), (107, 31427), (112, 31412), (117, 31376), (118, 31373), (119, 31361), (123, 31334), (125, 31304), (128, 31172), (130, 31148),

Gene: Kavo_41 Start: 30672, Stop: 29599, Start Num: 1

Candidate Starts for Kavo_41:

(Start: 1 @30672 has 5 MA's), (3, 30648), (5, 30576), (6, 30567), (13, 30483), (14, 30477), (23, 30414), (27, 30381), (32, 30354), (45, 30270), (62, 30168), (67, 30147), (86, 30012), (87, 30003), (88, 30000), (91, 29979), (92, 29967), (96, 29931), (97, 29925), (114, 29847), (117, 29820), (120, 29802), (121,

29796), (122, 29790), (124, 29763), (125, 29748), (126, 29673),

Gene: KellyGreen_46 Start: 32770, Stop: 31964, Start Num: 24

Candidate Starts for KellyGreen_46:

(Start: 24 @32770 has 135 MA's), (43, 32644), (46, 32632), (50, 32608), (96, 32365), (97, 32359), (103, 32320), (112, 32239), (117, 32203), (122, 32173), (125, 32131), (127, 32014),

Gene: KingJulien_44 Start: 32921, Stop: 32016, Start Num: 24

Candidate Starts for KingJulien_44:

(Start: 24 @32921 has 135 MA's), (34, 32864), (41, 32822), (43, 32789), (50, 32753), (74, 32609), (91, 32471), (96, 32423), (97, 32417), (104, 32354), (105, 32351), (111, 32297), (117, 32258), (122, 32228), (125, 32186),

Gene: Klimt_45 Start: 32804, Stop: 31998, Start Num: 24

Candidate Starts for Klimt_45:

(Start: 24 @32804 has 135 MA's), (43, 32678), (46, 32666), (50, 32642), (96, 32399), (97, 32393), (103, 32354), (112, 32273), (117, 32237), (122, 32207), (125, 32165), (127, 32048),

Gene: Knox_45 Start: 33088, Stop: 32282, Start Num: 24

Candidate Starts for Knox_45:

(Start: 24 @33088 has 135 MA's), (43, 32962), (46, 32950), (50, 32926), (96, 32683), (97, 32677), (103, 32638), (112, 32557), (117, 32521), (122, 32491), (125, 32449), (126, 32374), (127, 32332),

Gene: Koji_42 Start: 32119, Stop: 31304, Start Num: 8

Candidate Starts for Koji_42:

(Start: 8 @32119 has 12 MA's), (17, 32068), (19, 32059), (31, 31993), (53, 31861), (74, 31834), (77, 31816), (84, 31753), (86, 31726), (89, 31711), (91, 31693), (92, 31681), (99, 31633), (107, 31588), (112, 31573), (117, 31537), (118, 31534), (119, 31522), (123, 31495), (125, 31465), (128, 31333),

Gene: Kouch_45 Start: 32776, Stop: 31967, Start Num: 24

Candidate Starts for Kouch_45:

(Start: 24 @32776 has 135 MA's), (43, 32650), (46, 32638), (50, 32614), (66, 32503), (96, 32371), (97, 32365), (112, 32242), (117, 32206), (122, 32176), (125, 32134), (126, 32059), (127, 32017),

Gene: Kurt1_45 Start: 33084, Stop: 32278, Start Num: 24

Candidate Starts for Kurt1_45:

(Start: 24 @33084 has 135 MA's), (43, 32958), (46, 32946), (50, 32922), (96, 32679), (97, 32673), (100, 32661), (103, 32634), (112, 32553), (117, 32517), (122, 32487), (125, 32445), (126, 32370), (127, 32328),

Gene: Leafus_45 Start: 33184, Stop: 32279, Start Num: 24

Candidate Starts for Leafus_45:

(Start: 24 @33184 has 135 MA's), (30, 33148), (34, 33127), (50, 33016), (74, 32872), (91, 32734), (96, 32686), (97, 32680), (103, 32638), (111, 32560), (112, 32557), (117, 32521), (122, 32491), (125, 32449), (126, 32374),

Gene: Librie_43 Start: 30427, Stop: 29567, Start Num: 21

Candidate Starts for Librie_43:

(Start: 21 @30427 has 10 MA's), (51, 30268), (68, 30163), (72, 30148), (76, 30115), (78, 30112), (94, 30016), (96, 29989), (97, 29983), (98, 29980), (104, 29920), (110, 29878), (111, 29863), (117, 29824), (119, 29809), (122, 29794), (124, 29767), (125, 29752), (127, 29635),

Gene: LilTerminator_43 Start: 30449, Stop: 29589, Start Num: 21

Candidate Starts for LilTerminator_43:

(Start: 21 @30449 has 10 MA's), (51, 30290), (68, 30185), (72, 30170), (76, 30137), (78, 30134), (96, 30011), (97, 30005), (98, 30002), (104, 29942), (110, 29900), (117, 29846), (119, 29831), (122, 29816), (124, 29789), (125, 29774), (127, 29657),

Gene: Lovelyunicorn_45 Start: 33089, Stop: 32283, Start Num: 24

Candidate Starts for Lovelyunicorn_45:

(Start: 24 @33089 has 135 MA's), (43, 32963), (46, 32951), (50, 32927), (96, 32684), (97, 32678), (103, 32639), (112, 32558), (117, 32522), (122, 32492), (125, 32450), (126, 32375), (127, 32333),

Gene: Lucky3_42 Start: 31840, Stop: 31010, Start Num: 8

Candidate Starts for Lucky3_42:

(Start: 8 @31840 has 12 MA's), (10, 31816), (15, 31786), (17, 31765), (19, 31756), (25, 31720), (31, 31690), (53, 31558), (74, 31531), (77, 31513), (84, 31450), (86, 31423), (89, 31408), (91, 31390), (92, 31378), (96, 31342), (112, 31270), (117, 31234), (118, 31231), (119, 31219), (123, 31192), (125, 31162), (128, 31030),

Gene: Ludgate_45 Start: 33087, Stop: 32281, Start Num: 24

Candidate Starts for Ludgate_45:

(Start: 24 @33087 has 135 MA's), (43, 32961), (46, 32949), (50, 32925), (96, 32682), (97, 32676), (103, 32637), (112, 32556), (117, 32520), (122, 32490), (125, 32448), (126, 32373), (127, 32331),

Gene: MaeLinda_45 Start: 33088, Stop: 32282, Start Num: 24

Candidate Starts for MaeLinda_45:

(Start: 24 @33088 has 135 MA's), (43, 32962), (46, 32950), (50, 32926), (96, 32683), (97, 32677), (100, 32665), (103, 32638), (112, 32557), (117, 32521), (122, 32491), (125, 32449), (126, 32374), (127, 32332),

Gene: ManRay_44 Start: 32786, Stop: 31980, Start Num: 24

Candidate Starts for ManRay_44:

(Start: 24 @32786 has 135 MA's), (43, 32660), (46, 32648), (50, 32624), (96, 32381), (97, 32375), (103, 32336), (112, 32255), (117, 32219), (122, 32189), (125, 32147), (127, 32030),

Gene: Martin_46 Start: 33093, Stop: 32287, Start Num: 24

Candidate Starts for Martin_46:

(Start: 24 @33093 has 135 MA's), (43, 32967), (46, 32955), (50, 32931), (96, 32688), (97, 32682), (100, 32670), (103, 32643), (112, 32562), (117, 32526), (122, 32496), (125, 32454), (126, 32379), (127, 32337),

Gene: McGalleon_47 Start: 34056, Stop: 33193, Start Num: 24

Candidate Starts for McGalleon_47:

(Start: 24 @34056 has 135 MA's), (43, 33924), (53, 33873), (63, 33807), (70, 33771), (111, 33480), (117, 33441), (122, 33411), (125, 33369), (127, 33252), (128, 33234),

Gene: Mercedes_38 Start: 30460, Stop: 29597, Start Num: 24

Candidate Starts for Mercedes_38:

(Start: 24 @30460 has 135 MA's), (49, 30310), (51, 30295), (61, 30238), (62, 30235), (96, 30019), (97, 30013), (98, 30010), (104, 29950), (110, 29908), (111, 29893), (119, 29839), (122, 29824), (125, 29782), (127, 29665),

Gene: Merida02_47 Start: 33087, Stop: 32281, Start Num: 24

Candidate Starts for Merida02_47:

(Start: 24 @33087 has 135 MA's), (43, 32961), (46, 32949), (50, 32925), (96, 32682), (97, 32676), (100, 32664), (103, 32637), (112, 32556), (117, 32520), (122, 32490), (125, 32448), (126, 32373), (127, 32331),

Gene: MillyPhilly_45 Start: 33081, Stop: 32275, Start Num: 24

Candidate Starts for MillyPhilly_45:

(Start: 24 @33081 has 135 MA's), (43, 32955), (46, 32943), (50, 32919), (96, 32676), (97, 32670), (100, 32658), (103, 32631), (112, 32550), (117, 32514), (122, 32484), (125, 32442), (126, 32367), (127, 32325),

Gene: MonChoix_42 Start: 32633, Stop: 31728, Start Num: 24

Candidate Starts for MonChoix_42:

(Start: 24 @32633 has 135 MA's), (30, 32597), (41, 32534), (43, 32501), (50, 32465), (74, 32321), (85, 32237), (90, 32186), (91, 32183), (96, 32135), (97, 32129), (109, 32027), (110, 32024), (111, 32009), (117, 31970), (122, 31940), (125, 31898), (126, 31823),

Gene: MrWorldwide_45 Start: 33091, Stop: 32285, Start Num: 24

Candidate Starts for MrWorldwide_45:

(Start: 24 @33091 has 135 MA's), (43, 32965), (46, 32953), (50, 32929), (96, 32686), (97, 32680), (100, 32668), (103, 32641), (112, 32560), (117, 32524), (122, 32494), (125, 32452), (126, 32377), (127, 32335),

Gene: Nagem_45 Start: 33084, Stop: 32278, Start Num: 24

Candidate Starts for Nagem_45:

(Start: 24 @33084 has 135 MA's), (43, 32958), (46, 32946), (50, 32922), (96, 32679), (97, 32673), (100, 32661), (103, 32634), (112, 32553), (117, 32517), (122, 32487), (125, 32445), (126, 32370), (127, 32328),

Gene: Nattles_44 Start: 32773, Stop: 31967, Start Num: 24

Candidate Starts for Nattles_44:

(Start: 24 @32773 has 135 MA's), (43, 32647), (46, 32635), (50, 32611), (96, 32368), (97, 32362), (103, 32323), (112, 32242), (117, 32206), (122, 32176), (125, 32134), (127, 32017),

Gene: Nebulous_41 Start: 33335, Stop: 32382, Start Num: 12

Candidate Starts for Nebulous_41:

(7, 33410), (Start: 12 @33335 has 3 MA's), (16, 33305), (20, 33275), (26, 33239), (31, 33209), (36, 33188), (40, 33164), (42, 33140), (53, 33077), (58, 33041), (60, 33026), (81, 32927), (91, 32840), (92, 32828), (95, 32807), (97, 32786), (101, 32756), (104, 32723), (106, 32705), (111, 32678), (112, 32675), (117, 32639), (120, 32621), (121, 32615), (125, 32567), (126, 32492), (127, 32450),

Gene: Neferthema_44 Start: 32676, Stop: 31723, Start Num: 12

Candidate Starts for Neferthema_44:

(7, 32751), (Start: 12 @32676 has 3 MA's), (16, 32646), (20, 32616), (26, 32580), (31, 32550), (40, 32505), (42, 32481), (53, 32418), (60, 32367), (71, 32334), (81, 32268), (91, 32181), (92, 32169), (95, 32148), (97, 32127), (101, 32097), (104, 32064), (106, 32046), (111, 32019), (112, 32016), (117, 31980), (120, 31962), (121, 31956), (125, 31908), (126, 31833), (127, 31791),

Gene: NickSell_45 Start: 33094, Stop: 32288, Start Num: 24

Candidate Starts for NickSell_45:

(Start: 24 @33094 has 135 MA's), (43, 32968), (46, 32956), (50, 32932), (96, 32689), (97, 32683), (100, 32671), (103, 32644), (112, 32563), (117, 32527), (122, 32497), (125, 32455), (126, 32380), (127, 32338),

Gene: Oats_44 Start: 32786, Stop: 31980, Start Num: 24

Candidate Starts for Oats_44:

(Start: 24 @32786 has 135 MA's), (43, 32660), (46, 32648), (50, 32624), (96, 32381), (97, 32375), (103, 32336), (112, 32255), (117, 32219), (122, 32189), (125, 32147), (127, 32030),

Gene: OldNelly_46 Start: 33090, Stop: 32284, Start Num: 24

Candidate Starts for OldNelly_46:

(Start: 24 @33090 has 135 MA's), (43, 32964), (46, 32952), (50, 32928), (96, 32685), (97, 32679), (100, 32667), (103, 32640), (112, 32559), (117, 32523), (122, 32493), (125, 32451), (126, 32376), (127, 32334),

Gene: Oxtober96_46 Start: 33089, Stop: 32283, Start Num: 24

Candidate Starts for Oxtober96_46:

(Start: 24 @33089 has 135 MA's), (43, 32963), (46, 32951), (50, 32927), (96, 32684), (97, 32678), (103, 32639), (112, 32558), (117, 32522), (122, 32492), (125, 32450), (126, 32375), (127, 32333),

Gene: Pajaza_41 Start: 31268, Stop: 30519, Start Num: 29

Candidate Starts for Pajaza_41:

(Start: 29 @31268 has 3 MA's), (32, 31250), (37, 31223), (56, 31094), (71, 31058), (83, 30959), (86, 30932), (88, 30920), (91, 30899), (93, 30884), (115, 30758), (117, 30743), (118, 30740), (119, 30728), (123, 30701), (125, 30671), (128, 30539),

Gene: Papafritta_44 Start: 32797, Stop: 31988, Start Num: 24

Candidate Starts for Papafritta_44:

(Start: 24 @32797 has 135 MA's), (43, 32671), (46, 32659), (50, 32635), (97, 32386), (99, 32380), (112, 32263), (117, 32227), (122, 32197), (125, 32155), (126, 32080), (127, 32038),

Gene: ParleG_45 Start: 33091, Stop: 32285, Start Num: 24

Candidate Starts for ParleG_45:

(Start: 24 @33091 has 135 MA's), (43, 32965), (46, 32953), (50, 32929), (96, 32686), (97, 32680), (100, 32668), (103, 32641), (112, 32560), (117, 32524), (122, 32494), (125, 32452), (126, 32377), (127, 32335),

Gene: Peep_45 Start: 33076, Stop: 32270, Start Num: 24

Candidate Starts for Peep_45:

(Start: 24 @33076 has 135 MA's), (43, 32950), (46, 32938), (50, 32914), (96, 32671), (97, 32665), (103, 32626), (112, 32545), (117, 32509), (122, 32479), (125, 32437), (127, 32320),

Gene: Penta_39 Start: 30531, Stop: 29458, Start Num: 1

Candidate Starts for Penta_39:

(Start: 1 @30531 has 5 MA's), (3, 30507), (5, 30435), (6, 30426), (Start: 8 @30384 has 12 MA's), (14, 30336), (23, 30273), (27, 30240), (32, 30213), (45, 30129), (56, 30060), (62, 30027), (67, 30006), (73, 29985), (86, 29871), (87, 29862), (88, 29859), (91, 29838), (92, 29826), (96, 29790), (97, 29784), (114, 29706), (117, 29679), (120, 29661), (121, 29655), (124, 29622), (125, 29607), (126, 29532),

Gene: Peppino_45 Start: 33030, Stop: 32125, Start Num: 24

Candidate Starts for Peppino_45:

(Start: 24 @33030 has 135 MA's), (30, 32994), (34, 32973), (50, 32862), (70, 32745), (74, 32718), (91, 32580), (96, 32532), (97, 32526), (103, 32484), (111, 32406), (112, 32403), (117, 32367), (122, 32337), (125, 32295), (126, 32220),

Gene: Pherbot_42 Start: 31735, Stop: 30917, Start Num: 8

Candidate Starts for Pherbot_42:

(Start: 8 @31735 has 12 MA's), (15, 31705), (17, 31684), (25, 31639), (31, 31609), (40, 31564), (53, 31477), (54, 31462), (74, 31447), (77, 31429), (84, 31366), (86, 31339), (89, 31324), (91, 31306), (92, 31294), (99, 31246), (107, 31201), (112, 31186), (117, 31150), (118, 31147), (119, 31135), (123, 31108), (125, 31078), (128, 30946), (130, 30922),

Gene: Pherferi_45 Start: 33084, Stop: 32278, Start Num: 24

Candidate Starts for Pherferi_45:

(Start: 24 @33084 has 135 MA's), (43, 32958), (46, 32946), (50, 32922), (96, 32679), (97, 32673), (100, 32661), (103, 32634), (112, 32553), (117, 32517), (122, 32487), (125, 32445), (126, 32370), (127, 32328),

Gene: Phiderman_45 Start: 33081, Stop: 32275, Start Num: 24

Candidate Starts for Phiderman_45:

(Start: 24 @33081 has 135 MA's), (43, 32955), (46, 32943), (50, 32919), (96, 32676), (97, 32670), (100, 32658), (103, 32631), (112, 32550), (117, 32514), (122, 32484), (125, 32442), (126, 32367), (127, 32325),

Gene: PhillyPhantom_45 Start: 33020, Stop: 32115, Start Num: 24

Candidate Starts for PhillyPhantom_45:

(Start: 24 @33020 has 135 MA's), (30, 32984), (34, 32963), (50, 32852), (74, 32708), (91, 32570), (96, 32522), (97, 32516), (103, 32474), (111, 32396), (112, 32393), (117, 32357), (122, 32327), (125, 32285), (126, 32210),

Gene: Phireproof_45 Start: 33090, Stop: 32284, Start Num: 24

Candidate Starts for Phireproof_45:

(Start: 24 @33090 has 135 MA's), (43, 32964), (46, 32952), (50, 32928), (96, 32685), (97, 32679), (100, 32667), (103, 32640), (112, 32559), (117, 32523), (122, 32493), (125, 32451), (126, 32376), (127, 32334),

Gene: PhredFlintston_45 Start: 33084, Stop: 32278, Start Num: 24

Candidate Starts for PhredFlintston_45:

(Start: 24 @33084 has 135 MA's), (43, 32958), (46, 32946), (50, 32922), (96, 32679), (97, 32673), (100, 32661), (103, 32634), (112, 32553), (117, 32517), (122, 32487), (125, 32445), (126, 32370), (127, 32328),

Gene: Phriends_45 Start: 33090, Stop: 32284, Start Num: 24

Candidate Starts for Phriends_45:

(Start: 24 @33090 has 135 MA's), (43, 32964), (46, 32952), (50, 32928), (96, 32685), (97, 32679), (100, 32667), (103, 32640), (112, 32559), (117, 32523), (122, 32493), (125, 32451), (126, 32376), (127, 32334),

Gene: Pikmin_41 Start: 31268, Stop: 30519, Start Num: 29

Candidate Starts for Pikmin_41:

(Start: 29 @31268 has 3 MA's), (32, 31250), (37, 31223), (56, 31094), (71, 31058), (83, 30959), (86, 30932), (88, 30920), (91, 30899), (93, 30884), (115, 30758), (117, 30743), (118, 30740), (119, 30728), (123, 30701), (125, 30671), (128, 30539),

Gene: Pocket_44 Start: 32813, Stop: 32007, Start Num: 24

Candidate Starts for Pocket_44:

(Start: 24 @32813 has 135 MA's), (43, 32687), (46, 32675), (50, 32651), (96, 32408), (97, 32402), (103, 32363), (112, 32282), (117, 32246), (122, 32216), (125, 32174), (127, 32057),

Gene: PrincePhergus_42 Start: 31751, Stop: 30936, Start Num: 8

Candidate Starts for PrincePhergus_42:

(Start: 8 @31751 has 12 MA's), (17, 31700), (19, 31691), (31, 31625), (53, 31493), (74, 31466), (77, 31448), (84, 31385), (86, 31358), (89, 31343), (91, 31325), (92, 31313), (99, 31265), (107, 31220), (112, 31205), (117, 31169), (118, 31166), (119, 31154), (123, 31127), (125, 31097), (128, 30965), (130, 30941),

Gene: PuppyEggo_45 Start: 33091, Stop: 32285, Start Num: 24

Candidate Starts for PuppyEggo_45:

(Start: 24 @33091 has 135 MA's), (43, 32965), (46, 32953), (50, 32929), (96, 32686), (97, 32680), (103, 32641), (112, 32560), (117, 32524), (122, 32494), (125, 32452), (126, 32377), (127, 32335),

Gene: QuadZero_43 Start: 30594, Stop: 29737, Start Num: 21

Candidate Starts for QuadZero_43:

(Start: 21 @30594 has 10 MA's), (51, 30435), (68, 30330), (72, 30315), (76, 30282), (78, 30279), (96, 30156), (97, 30150), (98, 30147), (104, 30087), (110, 30045), (111, 30030), (117, 29991), (119, 29976), (122, 29961), (124, 29934), (125, 29919), (127, 29802),

Gene: Raccoon_45 Start: 32987, Stop: 32082, Start Num: 24

Candidate Starts for Raccoon_45:

(Start: 24 @32987 has 135 MA's), (30, 32951), (34, 32930), (41, 32888), (50, 32819), (74, 32675), (91, 32537), (96, 32489), (97, 32483), (103, 32441), (111, 32363), (112, 32360), (117, 32324), (122, 32294), (125, 32252), (126, 32177),

Gene: Rapheph_45 Start: 33084, Stop: 32278, Start Num: 24

Candidate Starts for Rapheph_45:

(Start: 24 @33084 has 135 MA's), (43, 32958), (46, 32946), (50, 32922), (96, 32679), (97, 32673), (100, 32661), (103, 32634), (112, 32553), (117, 32517), (122, 32487), (125, 32445), (126, 32370), (127, 32328),

Gene: Raptor_45 Start: 33091, Stop: 32285, Start Num: 24

Candidate Starts for Raptor_45:

(Start: 24 @33091 has 135 MA's), (43, 32965), (46, 32953), (50, 32929), (96, 32686), (97, 32680), (103, 32641), (112, 32560), (117, 32524), (122, 32494), (125, 32452), (127, 32335),

Gene: Redfield_45 Start: 33038, Stop: 32133, Start Num: 24

Candidate Starts for Redfield_45:

(Start: 24 @33038 has 135 MA's), (30, 33002), (34, 32981), (41, 32939), (50, 32870), (70, 32753), (74, 32726), (91, 32588), (96, 32540), (97, 32534), (103, 32492), (111, 32414), (112, 32411), (117, 32375), (122, 32345), (125, 32303), (126, 32228),

Gene: RenegadeRaider_45 Start: 31806, Stop: 30991, Start Num: 8

Candidate Starts for RenegadeRaider_45:

(Start: 8 @31806 has 12 MA's), (17, 31755), (19, 31746), (25, 31710), (31, 31680), (53, 31548), (74, 31521), (77, 31503), (84, 31440), (86, 31413), (91, 31380), (92, 31368), (99, 31320), (107, 31275), (112, 31260), (117, 31224), (118, 31221), (119, 31209), (123, 31182), (125, 31152), (128, 31020), (130, 30996),

Gene: Renzie_45 Start: 33079, Stop: 32273, Start Num: 24

Candidate Starts for Renzie_45:

(Start: 24 @33079 has 135 MA's), (43, 32953), (46, 32941), (50, 32917), (96, 32674), (97, 32668), (103, 32629), (112, 32548), (117, 32512), (122, 32482), (125, 32440), (127, 32323),

Gene: Riyhil_45 Start: 33094, Stop: 32288, Start Num: 24

Candidate Starts for Riyhil_45:

(Start: 24 @33094 has 135 MA's), (43, 32968), (46, 32956), (50, 32932), (96, 32689), (97, 32683), (103, 32644), (112, 32563), (117, 32527), (122, 32497), (125, 32455), (127, 32338),

Gene: Robinson_45 Start: 33082, Stop: 32276, Start Num: 24

Candidate Starts for Robinson_45:

(Start: 24 @33082 has 135 MA's), (43, 32956), (46, 32944), (50, 32920), (96, 32677), (97, 32671), (103, 32632), (112, 32551), (117, 32515), (122, 32485), (125, 32443), (127, 32326),

Gene: Rog141_44 Start: 32776, Stop: 31967, Start Num: 24

Candidate Starts for Rog141_44:

(Start: 24 @32776 has 135 MA's), (43, 32650), (46, 32638), (50, 32614), (66, 32503), (97, 32365), (99, 32359), (112, 32242), (117, 32206), (122, 32176), (125, 32134), (126, 32059), (127, 32017),

Gene: RosieMae_44 Start: 32831, Stop: 32025, Start Num: 24

Candidate Starts for RosieMae_44:

(Start: 24 @32831 has 135 MA's), (43, 32705), (46, 32693), (50, 32669), (96, 32426), (97, 32420), (103, 32381), (112, 32300), (117, 32264), (122, 32234), (125, 32192), (127, 32075),

Gene: SJay_45 Start: 33085, Stop: 32279, Start Num: 24

Candidate Starts for SJay_45:

(Start: 24 @33085 has 135 MA's), (43, 32959), (46, 32947), (50, 32923), (96, 32680), (97, 32674), (100, 32662), (103, 32635), (112, 32554), (117, 32518), (122, 32488), (125, 32446), (126, 32371), (127, 32329),

Gene: Schimmels22_40 Start: 30924, Stop: 29851, Start Num: 1

Candidate Starts for Schimmels22_40:

(Start: 1 @30924 has 5 MA's), (3, 30900), (5, 30828), (6, 30819), (13, 30735), (14, 30729), (23, 30666), (27, 30633), (32, 30606), (45, 30522), (62, 30420), (67, 30399), (73, 30378), (86, 30264), (87, 30255), (88, 30252), (91, 30231), (92, 30219), (96, 30183), (97, 30177), (114, 30099), (117, 30072), (120, 30054), (121, 30048), (122, 30042), (124, 30015), (125, 30000), (126, 29925),

Gene: Schnapsidee_45 Start: 33045, Stop: 32140, Start Num: 24

Candidate Starts for Schnapsidee_45:

(Start: 24 @33045 has 135 MA's), (30, 33009), (34, 32988), (41, 32946), (50, 32877), (70, 32760), (74, 32733), (91, 32595), (96, 32547), (97, 32541), (103, 32499), (111, 32421), (112, 32418), (117, 32382), (122, 32352), (125, 32310), (126, 32235),

Gene: Schubert_42 Start: 31724, Stop: 30987, Start Num: 24

Candidate Starts for Schubert_42:

(Start: 24 @31724 has 135 MA's), (33, 31679), (41, 31655), (56, 31571), (82, 31451), (86, 31403), (91, 31370), (96, 31322), (97, 31316), (103, 31274), (112, 31247), (117, 31211), (120, 31193), (121, 31187), (125, 31139),

Gene: Scissor2024_41 Start: 30571, Stop: 29498, Start Num: 1

Candidate Starts for Scissor2024_41:

(Start: 1 @30571 has 5 MA's), (3, 30547), (5, 30475), (6, 30466), (14, 30376), (23, 30313), (27, 30280), (32, 30253), (45, 30169), (62, 30067), (67, 30046), (86, 29911), (87, 29902), (91, 29878), (92, 29866), (96, 29830), (97, 29824), (114, 29746), (117, 29719), (120, 29701), (121, 29695), (122, 29689), (124, 29662), (125, 29647), (126, 29572),

Gene: Sedgewig_44 Start: 32774, Stop: 31965, Start Num: 24

Candidate Starts for Sedgewig_44:

(Start: 24 @32774 has 135 MA's), (43, 32648), (46, 32636), (50, 32612), (66, 32501), (97, 32363), (99, 32357), (112, 32240), (117, 32204), (122, 32174), (125, 32132), (126, 32057), (127, 32015),

Gene: ShaiHulud_45 Start: 33100, Stop: 32294, Start Num: 24

Candidate Starts for ShaiHulud_45:

(Start: 24 @33100 has 135 MA's), (43, 32974), (46, 32962), (50, 32938), (96, 32695), (97, 32689), (103, 32650), (112, 32569), (117, 32533), (122, 32503), (125, 32461), (126, 32386), (127, 32344),

Gene: Shee_45 Start: 33081, Stop: 32275, Start Num: 24

Candidate Starts for Shee_45:

(Start: 24 @33081 has 135 MA's), (43, 32955), (46, 32943), (50, 32919), (96, 32676), (97, 32670), (100, 32658), (103, 32631), (112, 32550), (117, 32514), (122, 32484), (125, 32442), (126, 32367), (127, 32325),

Gene: Sinatra_43 Start: 31746, Stop: 30928, Start Num: 8

Candidate Starts for Sinatra_43:

(Start: 8 @31746 has 12 MA's), (15, 31716), (17, 31695), (25, 31650), (31, 31620), (40, 31575), (53, 31488), (54, 31473), (74, 31458), (77, 31440), (84, 31377), (86, 31350), (89, 31335), (91, 31317), (92, 31305), (99, 31257), (107, 31212), (112, 31197), (117, 31161), (118, 31158), (119, 31146), (123, 31119), (125, 31089), (128, 30957), (130, 30933),

Gene: SirVictor_43 Start: 31825, Stop: 30995, Start Num: 8

Candidate Starts for SirVictor_43:

(Start: 8 @31825 has 12 MA's), (10, 31801), (15, 31771), (17, 31750), (19, 31741), (25, 31705), (31, 31675), (53, 31543), (74, 31516), (77, 31498), (84, 31435), (86, 31408), (89, 31393), (91, 31375), (92, 31363), (96, 31327), (112, 31255), (117, 31219), (118, 31216), (119, 31204), (123, 31177), (125, 31147), (128, 31015),

Gene: SoilGremlin_46 Start: 33087, Stop: 32281, Start Num: 24

Candidate Starts for SoilGremlin_46:

(Start: 24 @33087 has 135 MA's), (43, 32961), (46, 32949), (50, 32925), (96, 32682), (97, 32676), (100, 32664), (103, 32637), (112, 32556), (117, 32520), (122, 32490), (125, 32448), (126, 32373), (127, 32331),

Gene: SolidSnake_47 Start: 33090, Stop: 32284, Start Num: 24

Candidate Starts for SolidSnake_47:

(Start: 24 @33090 has 135 MA's), (43, 32964), (46, 32952), (50, 32928), (96, 32685), (97, 32679), (100, 32667), (103, 32640), (112, 32559), (117, 32523), (122, 32493), (125, 32451), (126, 32376), (127, 32334),

Gene: SonOfLevi_45 Start: 32804, Stop: 31998, Start Num: 24

Candidate Starts for SonOfLevi_45:

(Start: 24 @32804 has 135 MA's), (43, 32678), (46, 32666), (50, 32642), (96, 32399), (97, 32393), (103, 32354), (112, 32273), (117, 32237), (122, 32207), (125, 32165), (127, 32048),

Gene: Soror1_44 Start: 32936, Stop: 32031, Start Num: 24

Candidate Starts for Soror1_44:

(Start: 24 @32936 has 135 MA's), (34, 32879), (41, 32837), (43, 32804), (50, 32768), (74, 32624), (91, 32486), (96, 32438), (97, 32432), (104, 32369), (105, 32366), (111, 32312), (117, 32273), (122, 32243), (125, 32201),

Gene: Stanktossa_45 Start: 33084, Stop: 32278, Start Num: 24

Candidate Starts for Stanktossa_45:

(Start: 24 @33084 has 135 MA's), (43, 32958), (46, 32946), (50, 32922), (96, 32679), (97, 32673), (100, 32661), (103, 32634), (112, 32553), (117, 32517), (122, 32487), (125, 32445), (126, 32370), (127, 32328),

Gene: StingRay_44 Start: 32789, Stop: 31983, Start Num: 24

Candidate Starts for StingRay_44:

(Start: 24 @32789 has 135 MA's), (43, 32663), (46, 32651), (50, 32627), (96, 32384), (97, 32378), (103, 32339), (112, 32258), (117, 32222), (122, 32192), (125, 32150), (127, 32033),

Gene: StirfryIV_44 Start: 32785, Stop: 31976, Start Num: 24

Candidate Starts for StirfryIV_44:

(Start: 24 @32785 has 135 MA's), (43, 32659), (46, 32647), (50, 32623), (66, 32512), (97, 32374), (99, 32368), (112, 32251), (117, 32215), (122, 32185), (125, 32143), (126, 32068), (127, 32026),

Gene: Stormbreaker8_44 Start: 32921, Stop: 32016, Start Num: 24

Candidate Starts for Stormbreaker8_44:

(Start: 24 @32921 has 135 MA's), (34, 32864), (41, 32822), (43, 32789), (50, 32753), (74, 32609), (91, 32471), (96, 32423), (97, 32417), (104, 32354), (105, 32351), (111, 32297), (117, 32258), (122, 32228), (125, 32186),

Gene: Strathdee_45 Start: 33090, Stop: 32284, Start Num: 24

Candidate Starts for Strathdee_45:

(Start: 24 @33090 has 135 MA's), (43, 32964), (46, 32952), (50, 32928), (96, 32685), (97, 32679), (103, 32640), (112, 32559), (117, 32523), (122, 32493), (125, 32451), (126, 32376), (127, 32334),

Gene: Superfresh_45 Start: 33079, Stop: 32273, Start Num: 24

Candidate Starts for Superfresh_45:

(Start: 24 @33079 has 135 MA's), (43, 32953), (46, 32941), (50, 32917), (96, 32674), (97, 32668), (103, 32629), (112, 32548), (117, 32512), (122, 32482), (125, 32440), (127, 32323),

Gene: Symere_44 Start: 32784, Stop: 31975, Start Num: 24

Candidate Starts for Symere_44:

(Start: 24 @32784 has 135 MA's), (43, 32658), (46, 32646), (50, 32622), (66, 32511), (97, 32373), (99, 32367), (112, 32250), (117, 32214), (122, 32184), (125, 32142), (126, 32067), (127, 32025),

Gene: TatarkaPM_45 Start: 33094, Stop: 32288, Start Num: 24

Candidate Starts for TatarkaPM_45:

(Start: 24 @33094 has 135 MA's), (43, 32968), (46, 32956), (50, 32932), (96, 32689), (97, 32683), (100, 32671), (103, 32644), (112, 32563), (117, 32527), (122, 32497), (125, 32455), (126, 32380), (127, 32338),

Gene: Teagan_45 Start: 33084, Stop: 32278, Start Num: 24

Candidate Starts for Teagan_45:

(Start: 24 @33084 has 135 MA's), (43, 32958), (46, 32946), (50, 32922), (96, 32679), (97, 32673), (103, 32634), (112, 32553), (117, 32517), (122, 32487), (125, 32445), (126, 32370), (127, 32328),

Gene: TeddyBear_44 Start: 32786, Stop: 31980, Start Num: 24

Candidate Starts for TeddyBear_44:

(Start: 24 @32786 has 135 MA's), (43, 32660), (46, 32648), (50, 32624), (96, 32381), (97, 32375), (103, 32336), (112, 32255), (117, 32219), (122, 32189), (125, 32147), (127, 32030),

Gene: Tenda_44 Start: 32784, Stop: 31978, Start Num: 24

Candidate Starts for Tenda_44:

(Start: 24 @32784 has 135 MA's), (43, 32658), (46, 32646), (50, 32622), (96, 32379), (97, 32373), (103, 32334), (112, 32253), (117, 32217), (122, 32187), (125, 32145), (127, 32028),

Gene: Thompsone_45 Start: 33091, Stop: 32285, Start Num: 24

Candidate Starts for Thompsone_45:

(Start: 24 @33091 has 135 MA's), (43, 32965), (46, 32953), (50, 32929), (96, 32686), (97, 32680), (103, 32641), (112, 32560), (117, 32524), (122, 32494), (125, 32452), (126, 32377), (127, 32335),

Gene: Thorongil_45 Start: 32605, Stop: 31799, Start Num: 24

Candidate Starts for Thorongil_45:

(Start: 24 @32605 has 135 MA's), (43, 32479), (46, 32467), (50, 32443), (96, 32200), (97, 32194), (103, 32155), (112, 32074), (117, 32038), (122, 32008), (125, 31966), (126, 31891), (127, 31849),

Gene: TinSulphur_46 Start: 33090, Stop: 32284, Start Num: 24

Candidate Starts for TinSulphur_46:

(Start: 24 @33090 has 135 MA's), (43, 32964), (46, 32952), (50, 32928), (96, 32685), (97, 32679), (100, 32667), (103, 32640), (112, 32559), (117, 32523), (122, 32493), (125, 32451), (126, 32376), (127, 32334),

Gene: Tinyman4_40 Start: 30550, Stop: 29477, Start Num: 1

Candidate Starts for Tinyman4_40:

(Start: 1 @30550 has 5 MA's), (3, 30526), (5, 30454), (6, 30445), (14, 30355), (23, 30292), (27, 30259), (30, 30247), (32, 30232), (45, 30148), (62, 30046), (67, 30025), (73, 30004), (86, 29890), (87, 29881), (91, 29857), (92, 29845), (96, 29809), (97, 29803), (114, 29725), (117, 29698), (120, 29680), (121, 29674), (122, 29668), (124, 29641), (125, 29626), (126, 29551),

Gene: TwoBits_42 Start: 30996, Stop: 30142, Start Num: 24

Candidate Starts for TwoBits_42:

(Start: 24 @30996 has 135 MA's), (62, 30777), (90, 30612), (91, 30609), (96, 30561), (97, 30555), (98, 30552), (108, 30468), (111, 30435), (116, 30402), (118, 30393), (122, 30366), (124, 30339), (125, 30324), (127, 30207),

Gene: Velene_45 Start: 33089, Stop: 32283, Start Num: 24

Candidate Starts for Velene_45:

(Start: 24 @33089 has 135 MA's), (43, 32963), (46, 32951), (50, 32927), (96, 32684), (97, 32678), (103, 32639), (112, 32558), (117, 32522), (122, 32492), (125, 32450), (126, 32375), (127, 32333),

Gene: Vispistious_45 Start: 33091, Stop: 32285, Start Num: 24

Candidate Starts for Vispistious_45:

(Start: 24 @33091 has 135 MA's), (43, 32965), (46, 32953), (50, 32929), (96, 32686), (97, 32680), (103, 32641), (112, 32560), (117, 32524), (122, 32494), (125, 32452), (126, 32377), (127, 32335),

Gene: Wardwill_45 Start: 30626, Stop: 29751, Start Num: 21

Candidate Starts for Wardwill_45:

(Start: 21 @30626 has 10 MA's), (37, 30545), (52, 30446), (62, 30389), (96, 30173), (97, 30167), (98, 30164), (104, 30104), (110, 30062), (117, 30008), (119, 29993), (122, 29978), (124, 29951), (125, 29936), (127, 29819),

Gene: WestPM_39 Start: 30694, Stop: 29621, Start Num: 1

Candidate Starts for WestPM_39:

(Start: 1 @30694 has 5 MA's), (3, 30670), (5, 30598), (6, 30589), (Start: 8 @30547 has 12 MA's), (14, 30499), (23, 30436), (27, 30403), (32, 30376), (45, 30292), (56, 30223), (62, 30190), (67, 30169), (73, 30148), (86, 30034), (87, 30025), (88, 30022), (91, 30001), (92, 29989), (96, 29953), (97, 29947), (114,

29869), (117, 29842), (120, 29824), (121, 29818), (124, 29785), (125, 29770), (126, 29695),

Gene: WildNOut_45 Start: 33087, Stop: 32281, Start Num: 24

Candidate Starts for WildNOut_45:

(Start: 24 @33087 has 135 MA's), (43, 32961), (46, 32949), (50, 32925), (96, 32682), (97, 32676), (103, 32637), (112, 32556), (117, 32520), (122, 32490), (125, 32448), (126, 32373), (127, 32331),

Gene: Winzigespinne_44 Start: 32772, Stop: 31966, Start Num: 24

Candidate Starts for Winzigespinne_44:

(Start: 24 @32772 has 135 MA's), (43, 32646), (46, 32634), (50, 32610), (96, 32367), (97, 32361), (103, 32322), (112, 32241), (117, 32205), (122, 32175), (125, 32133), (127, 32016),

Gene: Zada_46 Start: 33060, Stop: 32254, Start Num: 24

Candidate Starts for Zada_46:

(Start: 24 @33060 has 135 MA's), (43, 32934), (46, 32922), (50, 32898), (96, 32655), (97, 32649), (100, 32637), (103, 32610), (112, 32529), (117, 32493), (122, 32463), (125, 32421), (126, 32346), (127, 32304),

Gene: Zayuliv_43 Start: 31065, Stop: 30190, Start Num: 21

Candidate Starts for Zayuliv_43:

(Start: 21 @31065 has 10 MA's), (37, 30984), (52, 30885), (62, 30828), (96, 30612), (97, 30606), (98, 30603), (104, 30543), (110, 30501), (111, 30486), (117, 30447), (119, 30432), (122, 30417), (124, 30390), (125, 30375), (127, 30258),

Gene: Zepp_43 Start: 30499, Stop: 29624, Start Num: 21

Candidate Starts for Zepp_43:

(Start: 21 @30499 has 10 MA's), (37, 30418), (52, 30319), (62, 30262), (96, 30046), (97, 30040), (98, 30037), (104, 29977), (110, 29935), (111, 29920), (117, 29881), (119, 29866), (122, 29851), (124, 29824), (125, 29809), (127, 29692),