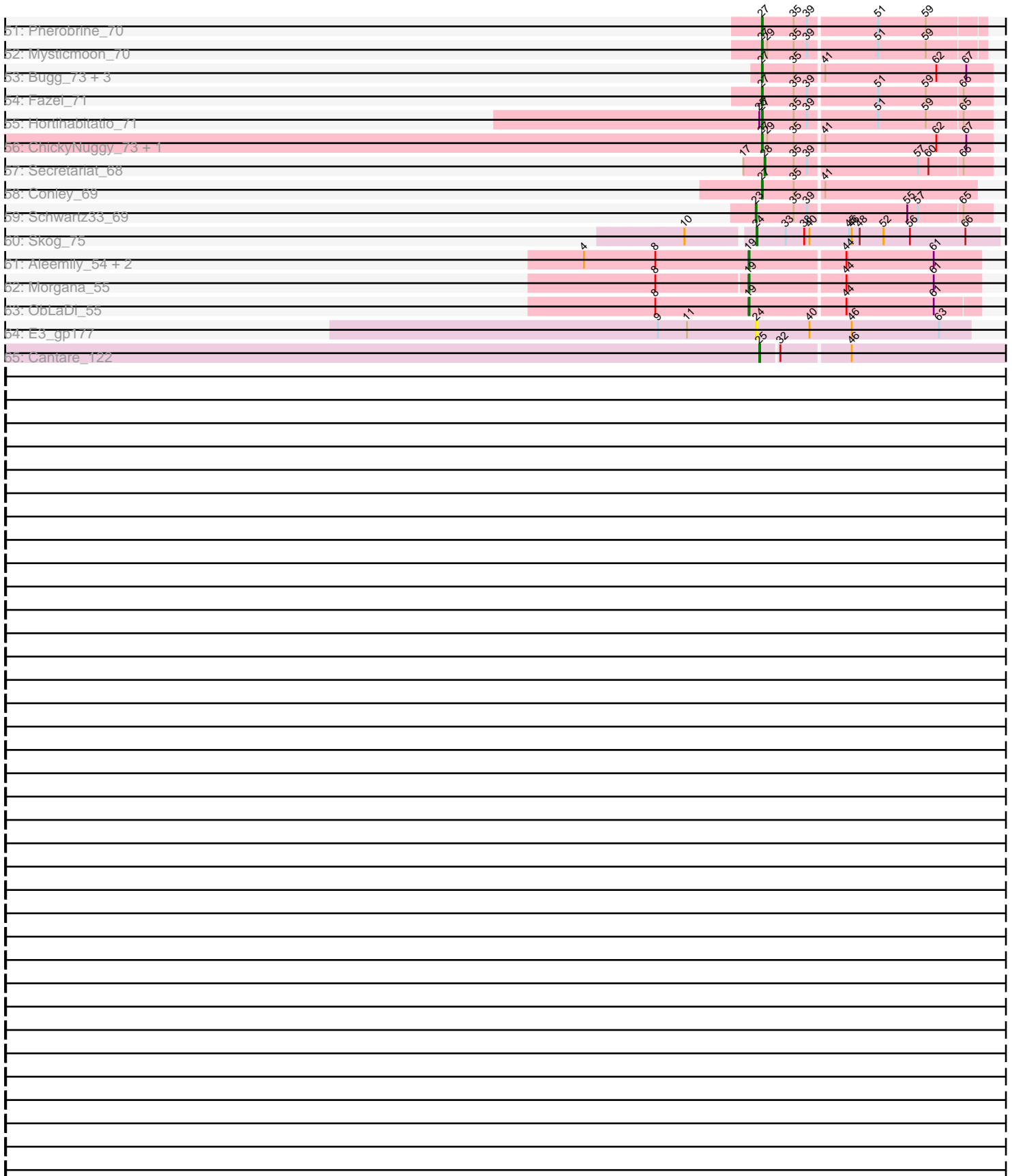


Pham 304759



Note: Tracks are now grouped by subcluster and scaled. Switching in subcluster is indicated by changes in track color. Track scale is now set by default to display the region 30 bp upstream of start 1 to 30 bp downstream of the last possible start. If this default region is judged to be packed too tightly with annotated starts, the track will be further scaled to only show that region of the ORF with annotated starts. This action will be indicated by adding "Zoomed" to the title. For starts, yellow indicates the location of called starts comprised solely of Glimmer/GeneMark auto-annotations, green indicates the location of called starts with at least 1 manual gene annotation.

Pham 304759 Report

This analysis was run 06/08/26 on database version 649.

Pham number 304759 has 163 members, 29 are drafts.

Phages represented in each track:

- Track 1 : GoCrazy_88, Hankly_93, Xenomorph_88, Kardesai_91, KeaneyLin_90, Dynamite_92, Bowling_94, Mooshroom_93, NapoleonB_93, Benllo_88
- Track 2 : Elsa_90, Arcadia_90, Nason_90, Correa_88, YoshiYama_91
- Track 3 : Heisenberger_91, BenitoAntonio_90, Tribby_94, Mudcat_87, Cheesy_93, JEGGS_91
- Track 4 : Circum_93
- Track 5 : Wilde_14
- Track 6 : Tank_14
- Track 7 : Rizwana_13
- Track 8 : RIPWilbur_17
- Track 9 : Renaldo_80
- Track 10 : PoeMe_72, BlackHoleSun_74
- Track 11 : Mardi_73
- Track 12 : Muglass_74, Biscute_72, Kinny_75, BarbieDoll_76
- Track 13 : GantcherGoblin_70
- Track 14 : Leathea_72
- Track 15 : Navi1117_75
- Track 16 : Uzumaki_69
- Track 17 : Tenney120_73
- Track 18 : Lewando_76
- Track 19 : TrixiePhattel_73
- Track 20 : Altjira_74, Argan_69, KevinMinion_70
- Track 21 : Barbonzobean_79
- Track 22 : Zeina_75
- Track 23 : Stardrop_72
- Track 24 : Phaila_72
- Track 25 : GalaxyEater_10
- Track 26 : Jasmine_8
- Track 27 : Westy_68, Comrade_67, Karp_65, Stigma_66, Belfort_69
- Track 28 : DeluluLabubu_67, Forrest_69, Jada_67, Maupel_67, Emma1919_69, Gilson_68
- Track 29 : Phredrick_67, Kenrey_69
- Track 30 : Moab_67, Patelgo_67
- Track 31 : MeganTheeKilla_66, Francob_66
- Track 32 : SparkleGoddess_67
- Track 33 : Satis_11
- Track 34 : GiJojo_106

- Track 35 : Tainan_244, InterFolia_246, Mikro_238, ScottMcG_236, LinStu_241, Breeniome_244, LordLeafolot_245, Spec_238, Grungle_226, PharkleMinkus_246, LolaVinca_240, Bigswole_249, Lethe_242, Nappy_243, YoungMoneyMata_244, FrayBell_247, Patter_246, Dandelion_250, NuevoMundo_246, Halldule_236, Koguma_243, Tyke_241
- Track 36 : Colt_234, Blubba_231, Cane17_233
- Track 37 : Sebata_244, DeejaClivia_231, JayJay_244, Maturis_238, DirtMonster_233, Lunareta_241, Montpel_241
- Track 38 : Mangeria_244
- Track 39 : l3_254
- Track 40 : PinkCoffee_74, Danyall_73
- Track 41 : KimmyK_72, Bakery_77, Valary_73, CherryCola_72, Gezellig_69, Sixsevenium_75, SharkTale_77, Wizard_69
- Track 42 : JohnPork_74, CoveyB_73, Arri_73, VanDeWege_74, Portcullis_73, Nubi_72, Sendy_73
- Track 43 : Phlop_70, PullumCavea_71
- Track 44 : Barb_74, ClamChowder_74, Fugax_75
- Track 45 : Salvador_72, Evamon_72, Mutzi_71, YungMoney_72
- Track 46 : Togo_72, SmokingBunny_73
- Track 47 : Twister6_73
- Track 48 : Halo3_70
- Track 49 : RogerDodger_76
- Track 50 : Talon44_72, Avazak_71, Captrips_69, NoPickles_69, Petit_72, Football_72, Tairn4Wing_72
- Track 51 : Pherobrine_70
- Track 52 : Mysticmoon_70
- Track 53 : Bugg_73, Artorias_70, FortCran_70, Dancer_70
- Track 54 : Fazel_71
- Track 55 : Hortihabitatio_71
- Track 56 : ChickyNuggy_73, JulesRay_70
- Track 57 : Secretariat_68
- Track 58 : Conley_69
- Track 59 : Schwartz33_69
- Track 60 : Skog_75
- Track 61 : Aleemily_54, ModicumRichard_55, Cafasso_55
- Track 62 : Morgana_55
- Track 63 : ObLaDi_55
- Track 64 : E3_gp177
- Track 65 : Cantare_122

Summary of Final Annotations (See graph section above for start numbers):

The start number called the most often in the published annotations is 24, it was called in 28 of the 134 non-draft genes in the pham.

Genes that call this "Most Annotated" start:

- Arri_73, Bakery_77, Barb_74, CherryCola_72, ClamChowder_74, CoveyB_73, Danyall_73, E3_gp177, Evamon_72, Fugax_75, Gezellig_69, Halo3_70, JohnPork_74, KimmyK_72, Mutzi_71, Nubi_72, Phlop_70, PinkCoffee_74, Portcullis_73, PullumCavea_71, RIPWilbur_17, RogerDodger_76, Salvador_72,

Sendy_73, SharkTale_77, Sixsevenium_75, Skog_75, SmokingBunny_73, Togo_72, Twister6_73, Valary_73, VanDeWege_74, Wizard_69, YungMoney_72,

Genes that have the "Most Annotated" start but do not call it:

- Rizwana_13, TrixiePhattel_73,

Genes that do not have the "Most Annotated" start:

- Aleemily_54, Altjira_74, Arcadia_90, Argan_69, Artorias_70, Avazak_71, BarbieDoll_76, Barbonzobean_79, Belfort_69, BenitoAntonio_90, Benllo_88, Bigswole_249, Biscute_72, BlackHoleSun_74, Blubba_231, Bowling_94, Breeniome_244, Bugg_73, Cafasso_55, Cane17_233, Cantare_122, Captrips_69, Cheesy_93, ChickyNuggy_73, Circum_93, Colt_234, Comrade_67, Conley_69, Correa_88, Dancer_70, Dandelion_250, DeejaClivia_231, DeluluLabubu_67, DirtMonster_233, Dynamite_92, Elsa_90, Emma1919_69, Fazel_71, Football_72, Forrest_69, FortCran_70, Francob_66, FrayBell_247, GalaxyEater_10, GantcherGoblin_70, GiJojo_106, Gilson_68, GoCrazy_88, Grungle_226, Halldule_236, Hankly_93, Heisenberger_91, Hortihabitatio_71, I3_254, InterFolia_246, JEGGS_91, Jada_67, Jasmine_8, JayJay_244, JulesRay_70, Kardesai_91, Karp_65, KeaneyLin_90, Kenrey_69, KevinMinion_70, Kinny_75, Koguma_243, Leatheia_72, Lethe_242, Lewando_76, LinStu_241, LolaVinca_240, LordLeafolot_245, Lunareta_241, Mangeria_244, Mardi_73, Maturis_238, Maupel_67, MeganTheeKilla_66, Mikro_238, Moab_67, ModicumRichard_55, Montpel_241, Mooshroom_93, Morgana_55, Mudcat_87, Muglass_74, Mysticmoon_70, NapoleonB_93, Nappy_243, Nason_90, Navi1117_75, NoPickles_69, NuevoMundo_246, ObLaDi_55, Patelgo_67, Patter_246, Petite_72, Phaila_72, PharkleMinkus_246, Pherobrine_70, Phredrick_67, PoeMe_72, Renaldo_80, Satis_11, Schwartz33_69, ScottMcG_236, Sebata_244, Secretariat_68, SparkleGoddess_67, Spec_238, Stardrop_72, Stigma_66, Tainan_244, Tairn4Wing_72, Talon44_72, Tank_14, Tenney120_73, Tribby_94, Tyke_241, Uzumaki_69, Westy_68, Wilde_14, Xenomorph_88, YoshiYama_91, YoungMoneyMata_244, Zeina_75,

Summary by start number:

Start 17:

- Found in 13 of 163 (8.0%) of genes in pham
- Manual Annotations of this start: 3 of 134
- Called 23.1% of time when present
- Phage (with cluster) where this start called: Rizwana_13 (AP1), Tank_14 (AP1), Wilde_14 (AP1),

Start 19:

- Found in 5 of 163 (3.1%) of genes in pham
- Manual Annotations of this start: 5 of 134
- Called 100.0% of time when present
- Phage (with cluster) where this start called: Aleemily_54 (DZ), Cafasso_55 (DZ), ModicumRichard_55 (DZ), Morgana_55 (DZ), ObLaDi_55 (DZ),

Start 20:

- Found in 7 of 163 (4.3%) of genes in pham
- Manual Annotations of this start: 3 of 134
- Called 100.0% of time when present

- Phage (with cluster) where this start called: DeejaClivia_231 (C1), DirtMonster_233 (C1), JayJay_244 (C1), Lunareta_241 (C1), Maturis_238 (C1), Montpel_241 (C1), Sebata_244 (C1),

Start 21:

- Found in 22 of 163 (13.5%) of genes in pham
- Manual Annotations of this start: 21 of 134
- Called 100.0% of time when present
- Phage (with cluster) where this start called: Arcadia_90 (AM), BenitoAntonio_90 (AM), Benllo_88 (AM), Bowling_94 (AM), Cheesy_93 (AM), Circum_93 (AM), Correa_88 (AM), Dynamite_92 (AM), Elsa_90 (AM), GoCrazy_88 (AM), Hankly_93 (AM), Heisenberger_91 (AM), JEGGS_91 (AM), Kardesai_91 (AM), KeaneyLin_90 (AM), Mooshroom_93 (AM), Mudcat_87 (AM), NapoleonB_93 (AM), Nason_90 (AM), Tribby_94 (AM), Xenomorph_88 (AM), YoshiYama_91 (AM),

Start 22:

- Found in 27 of 163 (16.6%) of genes in pham
- Manual Annotations of this start: 23 of 134
- Called 100.0% of time when present
- Phage (with cluster) where this start called: Bigswole_249 (C1), Blubba_231 (C1), Breeniome_244 (C1), Cane17_233 (C1), Colt_234 (C1), Dandelion_250 (C1), FrayBell_247 (C1), Grungle_226 (C1), Halldule_236 (C1), I3_254 (C1), InterFolia_246 (C1), Koguma_243 (C1), Letha_242 (C1), LinStu_241 (C1), LolaVinca_240 (C1), LordLeafolot_245 (C1), Mangeria_244 (C1), Mikro_238 (C1), Nappy_243 (C1), NuevoMundo_246 (C1), Patter_246 (C1), PharkleMinkus_246 (C1), ScottMcG_236 (C1), Spec_238 (C1), Tainan_244 (C1), Tyke_241 (C1), YoungMoneyMata_244 (C1),

Start 23:

- Found in 1 of 163 (0.6%) of genes in pham
- Manual Annotations of this start: 1 of 134
- Called 100.0% of time when present
- Phage (with cluster) where this start called: Schwartz33_69 (DJ),

Start 24:

- Found in 36 of 163 (22.1%) of genes in pham
- Manual Annotations of this start: 28 of 134
- Called 94.4% of time when present
- Phage (with cluster) where this start called: Arri_73 (DC1), Bakery_77 (DC1), Barb_74 (DC1), CherryCola_72 (DC1), ClamChowder_74 (DC1), CoveyB_73 (DC1), Danyall_73 (DC1), E3_gp177 (singleton), Evamon_72 (DC1), Fugax_75 (DC1), Gezellig_69 (DC1), Halo3_70 (DC1), JohnPork_74 (DC1), KimmyK_72 (DC1), Mutzi_71 (DC1), Nubi_72 (DC1), Phlop_70 (DC1), PinkCoffee_74 (DC1), Portcullis_73 (DC1), PullumCavea_71 (DC1), RIPWilbur_17 (AP2), RogerDodger_76 (DC1), Salvador_72 (DC1), Sendy_73 (DC1), SharkTale_77 (DC1), Sixsevenium_75 (DC1), Skog_75 (DO), SmokingBunny_73 (DC1), Togo_72 (DC1), Twister6_73 (DC1), Valary_73 (DC1), VanDeWege_74 (DC1), Wizard_69 (DC1), YungMoney_72 (DC1),

Start 25:

- Found in 25 of 163 (15.3%) of genes in pham
- Manual Annotations of this start: 16 of 134
- Called 96.0% of time when present

- Phage (with cluster) where this start called: Altjira_74 (AU6), Argan_69 (AU6), BarbieDoll_76 (AU6), Barbonzobean_79 (AU6), Biscute_72 (AU6), BlackHoleSun_74 (AU6), Cantare_122 (singleton), GantcherGoblin_70 (AU6), GiJojo_106 (BS), KevinMinion_70 (AU6), Kinny_75 (AU6), Leathea_72 (AU6), Lewando_76 (AU6), Mardi_73 (AU6), Muglass_74 (AU6), Navi1117_75 (AU6), Phaila_72 (AU6), PoeMe_72 (AU6), Renaldo_80 (AU6), Stardrop_72 (AU6), Tenney120_73 (AU6), TrixiePhattel_73 (AU6), Uzumaki_69 (AU6), Zeina_75 (AU6),

Start 26:

- Found in 20 of 163 (12.3%) of genes in pham
- Manual Annotations of this start: 17 of 134
- Called 95.0% of time when present
- Phage (with cluster) where this start called: Belfort_69 (BK1), Comrade_67 (BK1), DeluluLabubu_67 (BK1), Emma1919_69 (BK1), Forrest_69 (BK1), Francob_66 (BK1), GalaxyEater_10 (AV), Gilson_68 (BK1), Jada_67 (BK1), Jasmine_8 (AV), Karp_65 (BK1), Kenrey_69 (BK1), Maupel_67 (BK1), MeganTheeKilla_66 (BK1), Moab_67 (BK1), Patelgo_67 (BK1), Phredrick_67 (BK1), Stigma_66 (BK1), Westy_68 (BK1),

Start 27:

- Found in 19 of 163 (11.7%) of genes in pham
- Manual Annotations of this start: 15 of 134
- Called 100.0% of time when present
- Phage (with cluster) where this start called: Artorias_70 (DJ), Avazak_71 (DJ), Bugg_73 (DJ), Captrips_69 (DJ), ChickyNuggy_73 (DJ), Conley_69 (DJ), Dancer_70 (DJ), Fazel_71 (DJ), Football_72 (DJ), FortCran_70 (DJ), Hortihabitatio_71 (DJ), JulesRay_70 (DJ), Mysticmoon_70 (DJ), NoPickles_69 (DJ), Petite_72 (DJ), Pherobrine_70 (DJ), Satis_11 (BM), Tairn4Wing_72 (DJ), Talon44_72 (DJ),

Start 28:

- Found in 3 of 163 (1.8%) of genes in pham
- Manual Annotations of this start: 1 of 134
- Called 33.3% of time when present
- Phage (with cluster) where this start called: Secretariat_68 (DJ),

Start 32:

- Found in 20 of 163 (12.3%) of genes in pham
- Manual Annotations of this start: 1 of 134
- Called 5.0% of time when present
- Phage (with cluster) where this start called: SparkleGoddess_67 (BK1),

Summary by clusters:

There are 14 clusters represented in this pham: DO, singleton, AP1, DJ, AP2, BM, AU6, AM, DZ, BK1, AV, BS, C1, DC1,

Info for manual annotations of cluster AM:

- Start number 21 was manually annotated 21 times for cluster AM.

Info for manual annotations of cluster AP1:

- Start number 17 was manually annotated 3 times for cluster AP1.

Info for manual annotations of cluster AU6:

- Start number 25 was manually annotated 14 times for cluster AU6.

Info for manual annotations of cluster AV:

- Start number 26 was manually annotated 1 time for cluster AV.

Info for manual annotations of cluster BK1:

- Start number 26 was manually annotated 16 times for cluster BK1.
- Start number 32 was manually annotated 1 time for cluster BK1.

Info for manual annotations of cluster BM:

- Start number 27 was manually annotated 1 time for cluster BM.

Info for manual annotations of cluster BS:

- Start number 25 was manually annotated 1 time for cluster BS.

Info for manual annotations of cluster C1:

- Start number 20 was manually annotated 3 times for cluster C1.
- Start number 22 was manually annotated 23 times for cluster C1.

Info for manual annotations of cluster DC1:

- Start number 24 was manually annotated 27 times for cluster DC1.

Info for manual annotations of cluster DJ:

- Start number 23 was manually annotated 1 time for cluster DJ.
- Start number 27 was manually annotated 14 times for cluster DJ.
- Start number 28 was manually annotated 1 time for cluster DJ.

Info for manual annotations of cluster DO:

- Start number 24 was manually annotated 1 time for cluster DO.

Info for manual annotations of cluster DZ:

- Start number 19 was manually annotated 5 times for cluster DZ.

Gene Information:

Gene: Aleemily_54 Start: 39648, Stop: 39905, Start Num: 19

Candidate Starts for Aleemily_54:

(4, 39462), (8, 39543), (Start: 19 @39648 has 5 MA's), (44, 39753), (61, 39852),

Gene: Altjira_74 Start: 45409, Stop: 45696, Start Num: 25

Candidate Starts for Altjira_74:

(Start: 25 @45409 has 16 MA's), (48, 45517), (51, 45538), (69, 45640),

Gene: Arcadia_90 Start: 52556, Stop: 52813, Start Num: 21

Candidate Starts for Arcadia_90:

(Start: 21 @52556 has 21 MA's), (35, 52601),

Gene: Argan_69 Start: 44132, Stop: 44419, Start Num: 25

Candidate Starts for Argan_69:

(Start: 25 @44132 has 16 MA's), (48, 44240), (51, 44261), (69, 44363),

Gene: Arri_73 Start: 50476, Stop: 50718, Start Num: 24
Candidate Starts for Arri_73:
(13, 50419), (Start: 24 @50476 has 28 MA's), (40, 50536), (45, 50581), (48, 50593), (50, 50611), (56, 50650),

Gene: Artorias_70 Start: 48379, Stop: 48633, Start Num: 27
Candidate Starts for Artorias_70:
(Start: 27 @48379 has 15 MA's), (35, 48415), (41, 48445), (62, 48571), (67, 48604),

Gene: Avazak_71 Start: 48706, Stop: 48960, Start Num: 27
Candidate Starts for Avazak_71:
(Start: 27 @48706 has 15 MA's), (35, 48742), (41, 48772), (62, 48898), (67, 48931),

Gene: Bakery_77 Start: 52745, Stop: 52987, Start Num: 24
Candidate Starts for Bakery_77:
(7, 52613), (18, 52733), (Start: 24 @52745 has 28 MA's), (40, 52805), (45, 52850), (48, 52862), (56, 52919),

Gene: Barb_74 Start: 50409, Stop: 50657, Start Num: 24
Candidate Starts for Barb_74:
(1, 49578), (6, 50259), (Start: 17 @50394 has 3 MA's), (Start: 24 @50409 has 28 MA's), (40, 50469), (45, 50514), (48, 50526), (56, 50583),

Gene: BarbieDoll_76 Start: 45845, Stop: 46132, Start Num: 25
Candidate Starts for BarbieDoll_76:
(Start: 25 @45845 has 16 MA's), (48, 45953), (69, 46076),

Gene: Barbonzobean_79 Start: 46241, Stop: 46528, Start Num: 25
Candidate Starts for Barbonzobean_79:
(Start: 25 @46241 has 16 MA's), (43, 46328), (47, 46346), (48, 46349), (69, 46472),

Gene: Belfort_69 Start: 55718, Stop: 55945, Start Num: 26
Candidate Starts for Belfort_69:
(Start: 26 @55718 has 17 MA's), (Start: 32 @55736 has 1 MA's), (48, 55820), (58, 55889), (59, 55895),

Gene: BenitoAntonio_90 Start: 52281, Stop: 52538, Start Num: 21
Candidate Starts for BenitoAntonio_90:
(Start: 21 @52281 has 21 MA's),

Gene: Benllo_88 Start: 53121, Stop: 53378, Start Num: 21
Candidate Starts for Benllo_88:
(Start: 21 @53121 has 21 MA's),

Gene: Bigswole_249 Start: 137037, Stop: 137270, Start Num: 22
Candidate Starts for Bigswole_249:
(14, 136995), (Start: 22 @137037 has 23 MA's), (34, 137073), (35, 137079), (54, 137199), (58, 137217), (61, 137232),

Gene: Biscute_72 Start: 45497, Stop: 45784, Start Num: 25
Candidate Starts for Biscute_72:
(Start: 25 @45497 has 16 MA's), (48, 45605), (69, 45728),

Gene: BlackHoleSun_74 Start: 44250, Stop: 44537, Start Num: 25

Candidate Starts for BlackHoleSun_74:

(Start: 25 @44250 has 16 MA's), (48, 44358), (51, 44379), (53, 44403), (64, 44472), (69, 44481),

Gene: Blubba_231 Start: 137996, Stop: 138229, Start Num: 22

Candidate Starts for Blubba_231:

(14, 137954), (Start: 22 @137996 has 23 MA's), (34, 138032), (35, 138038), (54, 138158), (58, 138176),

Gene: Bowling_94 Start: 53654, Stop: 53911, Start Num: 21

Candidate Starts for Bowling_94:

(Start: 21 @53654 has 21 MA's),

Gene: Breeniome_244 Start: 134026, Stop: 134259, Start Num: 22

Candidate Starts for Breeniome_244:

(14, 133984), (Start: 22 @134026 has 23 MA's), (34, 134062), (35, 134068), (54, 134188), (58, 134206), (61, 134221),

Gene: Bugg_73 Start: 48424, Stop: 48678, Start Num: 27

Candidate Starts for Bugg_73:

(Start: 27 @48424 has 15 MA's), (35, 48460), (41, 48490), (62, 48616), (67, 48649),

Gene: Cafasso_55 Start: 40222, Stop: 40476, Start Num: 19

Candidate Starts for Cafasso_55:

(4, 40036), (8, 40117), (Start: 19 @40222 has 5 MA's), (44, 40327), (61, 40426),

Gene: Cane17_233 Start: 138405, Stop: 138638, Start Num: 22

Candidate Starts for Cane17_233:

(14, 138363), (Start: 22 @138405 has 23 MA's), (34, 138441), (35, 138447), (54, 138567), (58, 138585),

Gene: Cantare_122 Start: 85748, Stop: 86017, Start Num: 25

Candidate Starts for Cantare_122:

(Start: 25 @85748 has 16 MA's), (Start: 32 @85766 has 1 MA's), (46, 85841),

Gene: Captrips_69 Start: 47854, Stop: 48108, Start Num: 27

Candidate Starts for Captrips_69:

(Start: 27 @47854 has 15 MA's), (35, 47890), (41, 47920), (62, 48046), (67, 48079),

Gene: Cheesy_93 Start: 53026, Stop: 53283, Start Num: 21

Candidate Starts for Cheesy_93:

(Start: 21 @53026 has 21 MA's),

Gene: CherryCola_72 Start: 50799, Stop: 51047, Start Num: 24

Candidate Starts for CherryCola_72:

(7, 50667), (18, 50787), (Start: 24 @50799 has 28 MA's), (40, 50859), (45, 50904), (48, 50916), (56, 50973),

Gene: ChickyNuggy_73 Start: 48447, Stop: 48701, Start Num: 27

Candidate Starts for ChickyNuggy_73:

(Start: 27 @48447 has 15 MA's), (29, 48453), (35, 48483), (41, 48513), (62, 48639), (67, 48672),

Gene: Circum_93 Start: 53360, Stop: 53617, Start Num: 21

Candidate Starts for Circum_93:

(Start: 21 @53360 has 21 MA's), (51, 53495),

Gene: ClamChowder_74 Start: 50409, Stop: 50657, Start Num: 24

Candidate Starts for ClamChowder_74:

(1, 49578), (6, 50259), (Start: 17 @50394 has 3 MA's), (Start: 24 @50409 has 28 MA's), (40, 50469), (45, 50514), (48, 50526), (56, 50583),

Gene: Colt_234 Start: 137636, Stop: 137869, Start Num: 22

Candidate Starts for Colt_234:

(14, 137594), (Start: 22 @137636 has 23 MA's), (34, 137672), (35, 137678), (54, 137798), (58, 137816),

Gene: Comrade_67 Start: 55334, Stop: 55561, Start Num: 26

Candidate Starts for Comrade_67:

(Start: 26 @55334 has 17 MA's), (Start: 32 @55352 has 1 MA's), (48, 55436), (58, 55505), (59, 55511),

Gene: Conley_69 Start: 48997, Stop: 49233, Start Num: 27

Candidate Starts for Conley_69:

(Start: 27 @48997 has 15 MA's), (35, 49033), (41, 49063),

Gene: Correa_88 Start: 51905, Stop: 52162, Start Num: 21

Candidate Starts for Correa_88:

(Start: 21 @51905 has 21 MA's), (35, 51950),

Gene: CoveyB_73 Start: 50292, Stop: 50540, Start Num: 24

Candidate Starts for CoveyB_73:

(13, 50235), (Start: 24 @50292 has 28 MA's), (40, 50352), (45, 50397), (48, 50409), (50, 50427), (56, 50466),

Gene: Dancer_70 Start: 48116, Stop: 48370, Start Num: 27

Candidate Starts for Dancer_70:

(Start: 27 @48116 has 15 MA's), (35, 48152), (41, 48182), (62, 48308), (67, 48341),

Gene: Dandelion_250 Start: 138088, Stop: 138321, Start Num: 22

Candidate Starts for Dandelion_250:

(14, 138046), (Start: 22 @138088 has 23 MA's), (34, 138124), (35, 138130), (54, 138250), (58, 138268), (61, 138283),

Gene: Danyall_73 Start: 50390, Stop: 50638, Start Num: 24

Candidate Starts for Danyall_73:

(6, 50240), (Start: 17 @50375 has 3 MA's), (Start: 24 @50390 has 28 MA's), (40, 50450), (45, 50495), (48, 50507), (56, 50564),

Gene: DeejaClivia_231 Start: 132995, Stop: 133228, Start Num: 20

Candidate Starts for DeejaClivia_231:

(14, 132956), (Start: 20 @132995 has 3 MA's), (34, 133031), (35, 133037), (54, 133157), (58, 133175),

Gene: DeluluLabubu_67 Start: 53372, Stop: 53599, Start Num: 26

Candidate Starts for DeluluLabubu_67:

(Start: 26 @53372 has 17 MA's), (Start: 32 @53390 has 1 MA's), (35, 53405), (48, 53474),

Gene: DirtMonster_233 Start: 134501, Stop: 134734, Start Num: 20

Candidate Starts for DirtMonster_233:

(14, 134462), (Start: 20 @134501 has 3 MA's), (34, 134537), (35, 134543), (54, 134663), (58, 134681),

Gene: Dynamite_92 Start: 52622, Stop: 52879, Start Num: 21

Candidate Starts for Dynamite_92:

(Start: 21 @52622 has 21 MA's),

Gene: E3_gp177 Start: 119674, Stop: 119916, Start Num: 24

Candidate Starts for E3_gp177:

(9, 119563), (11, 119596), (Start: 24 @119674 has 28 MA's), (40, 119734), (46, 119782), (63, 119881),

Gene: Elsa_90 Start: 52556, Stop: 52813, Start Num: 21

Candidate Starts for Elsa_90:

(Start: 21 @52556 has 21 MA's), (35, 52601),

Gene: Emma1919_69 Start: 54046, Stop: 54273, Start Num: 26

Candidate Starts for Emma1919_69:

(Start: 26 @54046 has 17 MA's), (Start: 32 @54064 has 1 MA's), (35, 54079), (48, 54148),

Gene: Evamon_72 Start: 50173, Stop: 50421, Start Num: 24

Candidate Starts for Evamon_72:

(6, 50023), (Start: 17 @50158 has 3 MA's), (Start: 24 @50173 has 28 MA's), (40, 50233), (45, 50278), (48, 50290), (50, 50308), (56, 50347),

Gene: Fazel_71 Start: 48619, Stop: 48870, Start Num: 27

Candidate Starts for Fazel_71:

(Start: 27 @48619 has 15 MA's), (35, 48655), (39, 48670), (51, 48745), (59, 48799), (65, 48838),

Gene: Football_72 Start: 48005, Stop: 48259, Start Num: 27

Candidate Starts for Football_72:

(Start: 27 @48005 has 15 MA's), (35, 48041), (41, 48071), (62, 48197), (67, 48230),

Gene: Forrest_69 Start: 54752, Stop: 54979, Start Num: 26

Candidate Starts for Forrest_69:

(Start: 26 @54752 has 17 MA's), (Start: 32 @54770 has 1 MA's), (35, 54785), (48, 54854),

Gene: FortCran_70 Start: 48379, Stop: 48633, Start Num: 27

Candidate Starts for FortCran_70:

(Start: 27 @48379 has 15 MA's), (35, 48415), (41, 48445), (62, 48571), (67, 48604),

Gene: Francob_66 Start: 54109, Stop: 54336, Start Num: 26

Candidate Starts for Francob_66:

(Start: 26 @54109 has 17 MA's), (Start: 32 @54127 has 1 MA's), (35, 54142), (48, 54211), (59, 54286),

Gene: FrayBell_247 Start: 134131, Stop: 134364, Start Num: 22

Candidate Starts for FrayBell_247:

(14, 134089), (Start: 22 @134131 has 23 MA's), (34, 134167), (35, 134173), (54, 134293), (58, 134311), (61, 134326),

Gene: Fugax_75 Start: 50401, Stop: 50649, Start Num: 24

Candidate Starts for Fugax_75:

(1, 49570), (6, 50251), (Start: 17 @50386 has 3 MA's), (Start: 24 @50401 has 28 MA's), (40, 50461), (45, 50506), (48, 50518), (56, 50575),

Gene: GalaxyEater_10 Start: 4962, Stop: 5189, Start Num: 26
Candidate Starts for GalaxyEater_10:
(Start: 26 @4962 has 17 MA's),

Gene: GantcherGoblin_70 Start: 44191, Stop: 44478, Start Num: 25
Candidate Starts for GantcherGoblin_70:
(Start: 25 @44191 has 16 MA's), (48, 44299), (51, 44320), (64, 44413), (69, 44422),

Gene: Gezellig_69 Start: 50045, Stop: 50293, Start Num: 24
Candidate Starts for Gezellig_69:
(7, 49913), (18, 50033), (Start: 24 @50045 has 28 MA's), (40, 50105), (45, 50150), (48, 50162), (56, 50219),

Gene: GiJojo_106 Start: 62792, Stop: 63085, Start Num: 25
Candidate Starts for GiJojo_106:
(Start: 25 @62792 has 16 MA's), (49, 62909), (56, 62957), (58, 62969), (71, 63035),

Gene: Gilson_68 Start: 54008, Stop: 54235, Start Num: 26
Candidate Starts for Gilson_68:
(Start: 26 @54008 has 17 MA's), (Start: 32 @54026 has 1 MA's), (35, 54041), (48, 54110),

Gene: GoCrazy_88 Start: 51547, Stop: 51804, Start Num: 21
Candidate Starts for GoCrazy_88:
(Start: 21 @51547 has 21 MA's),

Gene: Grungle_226 Start: 132405, Stop: 132638, Start Num: 22
Candidate Starts for Grungle_226:
(14, 132363), (Start: 22 @132405 has 23 MA's), (34, 132441), (35, 132447), (54, 132567), (58, 132585), (61, 132600),

Gene: Halldule_236 Start: 133587, Stop: 133820, Start Num: 22
Candidate Starts for Halldule_236:
(14, 133545), (Start: 22 @133587 has 23 MA's), (34, 133623), (35, 133629), (54, 133749), (58, 133767), (61, 133782),

Gene: Halo3_70 Start: 50630, Stop: 50878, Start Num: 24
Candidate Starts for Halo3_70:
(7, 50498), (18, 50618), (Start: 24 @50630 has 28 MA's), (40, 50690), (45, 50735), (48, 50747), (50, 50765), (56, 50804),

Gene: Hankly_93 Start: 52732, Stop: 52989, Start Num: 21
Candidate Starts for Hankly_93:
(Start: 21 @52732 has 21 MA's),

Gene: Heisenberger_91 Start: 52491, Stop: 52748, Start Num: 21
Candidate Starts for Heisenberger_91:
(Start: 21 @52491 has 21 MA's),

Gene: Hortihabitatio_71 Start: 48995, Stop: 49246, Start Num: 27
Candidate Starts for Hortihabitatio_71:
(Start: 25 @48992 has 16 MA's), (Start: 27 @48995 has 15 MA's), (35, 49031), (39, 49046), (51, 49121), (59, 49175), (65, 49214),

Gene: I3_254 Start: 136279, Stop: 136512, Start Num: 22

Candidate Starts for I3_254:

(14, 136237), (Start: 22 @136279 has 23 MA's), (Start: 32 @136306 has 1 MA's), (33, 136312), (44, 136375), (58, 136459), (61, 136474),

Gene: InterFolia_246 Start: 135936, Stop: 136169, Start Num: 22

Candidate Starts for InterFolia_246:

(14, 135894), (Start: 22 @135936 has 23 MA's), (34, 135972), (35, 135978), (54, 136098), (58, 136116), (61, 136131),

Gene: JEGGS_91 Start: 52570, Stop: 52827, Start Num: 21

Candidate Starts for JEGGS_91:

(Start: 21 @52570 has 21 MA's),

Gene: Jada_67 Start: 53934, Stop: 54161, Start Num: 26

Candidate Starts for Jada_67:

(Start: 26 @53934 has 17 MA's), (Start: 32 @53952 has 1 MA's), (35, 53967), (48, 54036),

Gene: Jasmine_8 Start: 3920, Stop: 4156, Start Num: 26

Candidate Starts for Jasmine_8:

(Start: 26 @3920 has 17 MA's), (59, 4097),

Gene: JayJay_244 Start: 134700, Stop: 134933, Start Num: 20

Candidate Starts for JayJay_244:

(14, 134661), (Start: 20 @134700 has 3 MA's), (34, 134736), (35, 134742), (54, 134862), (58, 134880),

Gene: JohnPork_74 Start: 50182, Stop: 50424, Start Num: 24

Candidate Starts for JohnPork_74:

(13, 50125), (Start: 24 @50182 has 28 MA's), (40, 50242), (45, 50287), (48, 50299), (50, 50317), (56, 50356),

Gene: JulesRay_70 Start: 48372, Stop: 48626, Start Num: 27

Candidate Starts for JulesRay_70:

(Start: 27 @48372 has 15 MA's), (29, 48378), (35, 48408), (41, 48438), (62, 48564), (67, 48597),

Gene: Kardesai_91 Start: 52160, Stop: 52417, Start Num: 21

Candidate Starts for Kardesai_91:

(Start: 21 @52160 has 21 MA's),

Gene: Karp_65 Start: 54933, Stop: 55160, Start Num: 26

Candidate Starts for Karp_65:

(Start: 26 @54933 has 17 MA's), (Start: 32 @54951 has 1 MA's), (48, 55035), (58, 55104), (59, 55110),

Gene: KeaneyLin_90 Start: 52585, Stop: 52842, Start Num: 21

Candidate Starts for KeaneyLin_90:

(Start: 21 @52585 has 21 MA's),

Gene: Kenrey_69 Start: 54190, Stop: 54417, Start Num: 26

Candidate Starts for Kenrey_69:

(Start: 26 @54190 has 17 MA's), (Start: 32 @54208 has 1 MA's), (35, 54223), (48, 54292), (59, 54367), (62, 54379),

Gene: KevinMinion_70 Start: 45083, Stop: 45370, Start Num: 25

Candidate Starts for KevinMinion_70:
(Start: 25 @45083 has 16 MA's), (48, 45191), (51, 45212), (69, 45314),

Gene: KimmyK_72 Start: 50492, Stop: 50740, Start Num: 24
Candidate Starts for KimmyK_72:
(7, 50360), (18, 50480), (Start: 24 @50492 has 28 MA's), (40, 50552), (45, 50597), (48, 50609), (56, 50666),

Gene: Kinny_75 Start: 46325, Stop: 46612, Start Num: 25
Candidate Starts for Kinny_75:
(Start: 25 @46325 has 16 MA's), (48, 46433), (69, 46556),

Gene: Koguma_243 Start: 134564, Stop: 134797, Start Num: 22
Candidate Starts for Koguma_243:
(14, 134522), (Start: 22 @134564 has 23 MA's), (34, 134600), (35, 134606), (54, 134726), (58, 134744), (61, 134759),

Gene: Leathea_72 Start: 44099, Stop: 44386, Start Num: 25
Candidate Starts for Leathea_72:
(Start: 25 @44099 has 16 MA's), (53, 44252), (58, 44276), (70, 44333),

Gene: Lethe_242 Start: 136348, Stop: 136581, Start Num: 22
Candidate Starts for Lethe_242:
(14, 136306), (Start: 22 @136348 has 23 MA's), (34, 136384), (35, 136390), (54, 136510), (58, 136528), (61, 136543),

Gene: Lewando_76 Start: 46062, Stop: 46349, Start Num: 25
Candidate Starts for Lewando_76:
(Start: 25 @46062 has 16 MA's), (47, 46167), (48, 46170), (69, 46293),

Gene: LinStu_241 Start: 133863, Stop: 134096, Start Num: 22
Candidate Starts for LinStu_241:
(14, 133821), (Start: 22 @133863 has 23 MA's), (34, 133899), (35, 133905), (54, 134025), (58, 134043), (61, 134058),

Gene: LolaVince_240 Start: 135366, Stop: 135599, Start Num: 22
Candidate Starts for LolaVince_240:
(14, 135324), (Start: 22 @135366 has 23 MA's), (34, 135402), (35, 135408), (54, 135528), (58, 135546), (61, 135561),

Gene: LordLeafolot_245 Start: 134979, Stop: 135212, Start Num: 22
Candidate Starts for LordLeafolot_245:
(14, 134937), (Start: 22 @134979 has 23 MA's), (34, 135015), (35, 135021), (54, 135141), (58, 135159), (61, 135174),

Gene: Lunareta_241 Start: 135720, Stop: 135953, Start Num: 20
Candidate Starts for Lunareta_241:
(14, 135681), (Start: 20 @135720 has 3 MA's), (34, 135756), (35, 135762), (54, 135882), (58, 135900),

Gene: Mangeria_244 Start: 135923, Stop: 136156, Start Num: 22
Candidate Starts for Mangeria_244:
(14, 135881), (15, 135884), (Start: 22 @135923 has 23 MA's), (34, 135959), (35, 135965), (54, 136085), (58, 136103), (61, 136118),

Gene: Mardi_73 Start: 44835, Stop: 45122, Start Num: 25

Candidate Starts for Mardi_73:

(Start: 25 @44835 has 16 MA's), (48, 44943), (51, 44964), (57, 45009), (69, 45066),

Gene: Maturis_238 Start: 134686, Stop: 134919, Start Num: 20

Candidate Starts for Maturis_238:

(14, 134647), (Start: 20 @134686 has 3 MA's), (34, 134722), (35, 134728), (54, 134848), (58, 134866),

Gene: Maupel_67 Start: 54008, Stop: 54235, Start Num: 26

Candidate Starts for Maupel_67:

(Start: 26 @54008 has 17 MA's), (Start: 32 @54026 has 1 MA's), (35, 54041), (48, 54110),

Gene: MeganTheeKilla_66 Start: 53369, Stop: 53596, Start Num: 26

Candidate Starts for MeganTheeKilla_66:

(Start: 26 @53369 has 17 MA's), (Start: 32 @53387 has 1 MA's), (35, 53402), (48, 53471), (59, 53546),

Gene: Mikro_238 Start: 136879, Stop: 137112, Start Num: 22

Candidate Starts for Mikro_238:

(14, 136837), (Start: 22 @136879 has 23 MA's), (34, 136915), (35, 136921), (54, 137041), (58, 137059), (61, 137074),

Gene: Moab_67 Start: 55209, Stop: 55436, Start Num: 26

Candidate Starts for Moab_67:

(Start: 26 @55209 has 17 MA's), (Start: 32 @55227 has 1 MA's),

Gene: ModicumRichard_55 Start: 40221, Stop: 40475, Start Num: 19

Candidate Starts for ModicumRichard_55:

(4, 40035), (8, 40116), (Start: 19 @40221 has 5 MA's), (44, 40326), (61, 40425),

Gene: Montpel_241 Start: 135718, Stop: 135951, Start Num: 20

Candidate Starts for Montpel_241:

(14, 135679), (Start: 20 @135718 has 3 MA's), (34, 135754), (35, 135760), (54, 135880), (58, 135898),

Gene: Mooshroom_93 Start: 52160, Stop: 52417, Start Num: 21

Candidate Starts for Mooshroom_93:

(Start: 21 @52160 has 21 MA's),

Gene: Morgana_55 Start: 40172, Stop: 40429, Start Num: 19

Candidate Starts for Morgana_55:

(8, 40070), (Start: 19 @40172 has 5 MA's), (44, 40277), (61, 40376),

Gene: Mudcat_87 Start: 53725, Stop: 53982, Start Num: 21

Candidate Starts for Mudcat_87:

(Start: 21 @53725 has 21 MA's),

Gene: Muglass_74 Start: 45401, Stop: 45688, Start Num: 25

Candidate Starts for Muglass_74:

(Start: 25 @45401 has 16 MA's), (48, 45509), (69, 45632),

Gene: Mutzi_71 Start: 51265, Stop: 51513, Start Num: 24

Candidate Starts for Mutzi_71:

(6, 51115), (Start: 17 @51250 has 3 MA's), (Start: 24 @51265 has 28 MA's), (40, 51325), (45, 51370), (48, 51382), (50, 51400), (56, 51439),

Gene: Mysticmoon_70 Start: 49282, Stop: 49524, Start Num: 27

Candidate Starts for Mysticmoon_70:

(Start: 27 @49282 has 15 MA's), (29, 49288), (35, 49318), (39, 49333), (51, 49408), (59, 49462),

Gene: NapoleonB_93 Start: 52622, Stop: 52879, Start Num: 21

Candidate Starts for NapoleonB_93:

(Start: 21 @52622 has 21 MA's),

Gene: Nappy_243 Start: 136335, Stop: 136568, Start Num: 22

Candidate Starts for Nappy_243:

(14, 136293), (Start: 22 @136335 has 23 MA's), (34, 136371), (35, 136377), (54, 136497), (58, 136515), (61, 136530),

Gene: Nason_90 Start: 52556, Stop: 52813, Start Num: 21

Candidate Starts for Nason_90:

(Start: 21 @52556 has 21 MA's), (35, 52601),

Gene: Navi1117_75 Start: 45271, Stop: 45558, Start Num: 25

Candidate Starts for Navi1117_75:

(Start: 25 @45271 has 16 MA's), (48, 45379), (51, 45400), (69, 45502),

Gene: NoPickles_69 Start: 47540, Stop: 47794, Start Num: 27

Candidate Starts for NoPickles_69:

(Start: 27 @47540 has 15 MA's), (35, 47576), (41, 47606), (62, 47732), (67, 47765),

Gene: Nubi_72 Start: 50104, Stop: 50346, Start Num: 24

Candidate Starts for Nubi_72:

(13, 50047), (Start: 24 @50104 has 28 MA's), (40, 50164), (45, 50209), (48, 50221), (50, 50239), (56, 50278),

Gene: NuevoMundo_246 Start: 136442, Stop: 136675, Start Num: 22

Candidate Starts for NuevoMundo_246:

(14, 136400), (Start: 22 @136442 has 23 MA's), (34, 136478), (35, 136484), (54, 136604), (58, 136622), (61, 136637),

Gene: ObLaDi_55 Start: 40212, Stop: 40466, Start Num: 19

Candidate Starts for ObLaDi_55:

(8, 40107), (Start: 19 @40212 has 5 MA's), (44, 40317), (61, 40416),

Gene: Patelgo_67 Start: 55396, Stop: 55623, Start Num: 26

Candidate Starts for Patelgo_67:

(Start: 26 @55396 has 17 MA's), (Start: 32 @55414 has 1 MA's),

Gene: Patter_246 Start: 135186, Stop: 135419, Start Num: 22

Candidate Starts for Patter_246:

(14, 135144), (Start: 22 @135186 has 23 MA's), (34, 135222), (35, 135228), (54, 135348), (58, 135366), (61, 135381),

Gene: Petite_72 Start: 49631, Stop: 49885, Start Num: 27

Candidate Starts for Petite_72:

(Start: 27 @49631 has 15 MA's), (35, 49667), (41, 49697), (62, 49823), (67, 49856),

Gene: Phaila_72 Start: 44315, Stop: 44602, Start Num: 25

Candidate Starts for Phaila_72:

(Start: 25 @44315 has 16 MA's), (48, 44423), (51, 44444), (57, 44489), (69, 44546),

Gene: PharkleMinkus_246 Start: 134130, Stop: 134363, Start Num: 22

Candidate Starts for PharkleMinkus_246:

(14, 134088), (Start: 22 @134130 has 23 MA's), (34, 134166), (35, 134172), (54, 134292), (58, 134310), (61, 134325),

Gene: Pherobrine_70 Start: 49341, Stop: 49583, Start Num: 27

Candidate Starts for Pherobrine_70:

(Start: 27 @49341 has 15 MA's), (35, 49377), (39, 49392), (51, 49467), (59, 49521),

Gene: Phlop_70 Start: 50135, Stop: 50383, Start Num: 24

Candidate Starts for Phlop_70:

(7, 50003), (18, 50123), (Start: 24 @50135 has 28 MA's), (40, 50195), (45, 50240), (46, 50243), (48, 50252), (56, 50309),

Gene: Phredrick_67 Start: 53261, Stop: 53488, Start Num: 26

Candidate Starts for Phredrick_67:

(Start: 26 @53261 has 17 MA's), (Start: 32 @53279 has 1 MA's), (35, 53294), (48, 53363), (59, 53438), (62, 53450),

Gene: PinkCoffee_74 Start: 50431, Stop: 50679, Start Num: 24

Candidate Starts for PinkCoffee_74:

(6, 50281), (Start: 17 @50416 has 3 MA's), (Start: 24 @50431 has 28 MA's), (40, 50491), (45, 50536), (48, 50548), (56, 50605),

Gene: PoeMe_72 Start: 44803, Stop: 45090, Start Num: 25

Candidate Starts for PoeMe_72:

(Start: 25 @44803 has 16 MA's), (48, 44911), (51, 44932), (53, 44956), (64, 45025), (69, 45034),

Gene: Portcullis_73 Start: 50182, Stop: 50424, Start Num: 24

Candidate Starts for Portcullis_73:

(13, 50125), (Start: 24 @50182 has 28 MA's), (40, 50242), (45, 50287), (48, 50299), (50, 50317), (56, 50356),

Gene: PullumCavea_71 Start: 50312, Stop: 50560, Start Num: 24

Candidate Starts for PullumCavea_71:

(7, 50180), (18, 50300), (Start: 24 @50312 has 28 MA's), (40, 50372), (45, 50417), (46, 50420), (48, 50429), (56, 50486),

Gene: RIPWilbur_17 Start: 6338, Stop: 6580, Start Num: 24

Candidate Starts for RIPWilbur_17:

(Start: 24 @6338 has 28 MA's), (30, 6359), (34, 6374), (36, 6383), (37, 6389), (44, 6434),

Gene: Renaldo_80 Start: 46283, Stop: 46570, Start Num: 25

Candidate Starts for Renaldo_80:

(Start: 25 @46283 has 16 MA's), (47, 46388), (48, 46391),

Gene: Rizwana_13 Start: 5984, Stop: 6241, Start Num: 17

Candidate Starts for Rizwana_13:

(16, 5963), (Start: 17 @5984 has 3 MA's), (Start: 24 @5999 has 28 MA's), (48, 6110), (58, 6179),

Gene: RogerDodger_76 Start: 51380, Stop: 51628, Start Num: 24

Candidate Starts for RogerDodger_76:

(Start: 24 @51380 has 28 MA's), (40, 51440), (45, 51485), (48, 51497), (50, 51515), (56, 51554), (61, 51581),

Gene: Salvador_72 Start: 50171, Stop: 50419, Start Num: 24

Candidate Starts for Salvador_72:

(6, 50021), (Start: 17 @50156 has 3 MA's), (Start: 24 @50171 has 28 MA's), (40, 50231), (45, 50276), (48, 50288), (50, 50306), (56, 50345),

Gene: Satis_11 Start: 6337, Stop: 6606, Start Num: 27

Candidate Starts for Satis_11:

(2, 5710), (3, 6007), (5, 6142), (12, 6253), (16, 6295), (Start: 27 @6337 has 15 MA's), (34, 6367), (58, 6511), (60, 6520), (68, 6562),

Gene: Schwartz33_69 Start: 48060, Stop: 48317, Start Num: 23

Candidate Starts for Schwartz33_69:

(Start: 23 @48060 has 1 MA's), (35, 48102), (39, 48117), (55, 48225), (57, 48237), (65, 48285),

Gene: ScottMcG_236 Start: 134192, Stop: 134425, Start Num: 22

Candidate Starts for ScottMcG_236:

(14, 134150), (Start: 22 @134192 has 23 MA's), (34, 134228), (35, 134234), (54, 134354), (58, 134372), (61, 134387),

Gene: Sebata_244 Start: 135891, Stop: 136124, Start Num: 20

Candidate Starts for Sebata_244:

(14, 135852), (Start: 20 @135891 has 3 MA's), (34, 135927), (35, 135933), (54, 136053), (58, 136071),

Gene: Secretariat_68 Start: 47409, Stop: 47657, Start Num: 28

Candidate Starts for Secretariat_68:

(Start: 17 @47385 has 3 MA's), (Start: 28 @47409 has 1 MA's), (35, 47442), (39, 47457), (57, 47577), (60, 47589), (65, 47625),

Gene: Sendy_73 Start: 50305, Stop: 50547, Start Num: 24

Candidate Starts for Sendy_73:

(13, 50248), (Start: 24 @50305 has 28 MA's), (40, 50365), (45, 50410), (48, 50422), (50, 50440), (56, 50479),

Gene: SharkTale_77 Start: 53067, Stop: 53303, Start Num: 24

Candidate Starts for SharkTale_77:

(7, 52935), (18, 53055), (Start: 24 @53067 has 28 MA's), (40, 53127), (45, 53172), (48, 53184), (56, 53241),

Gene: Sixsevenium_75 Start: 51974, Stop: 52216, Start Num: 24

Candidate Starts for Sixsevenium_75:

(7, 51842), (18, 51962), (Start: 24 @51974 has 28 MA's), (40, 52034), (45, 52079), (48, 52091), (56, 52148),

Gene: Skog_75 Start: 30969, Stop: 31244, Start Num: 24

Candidate Starts for Skog_75:

(10, 30897), (Start: 24 @30969 has 28 MA's), (33, 31002), (38, 31023), (40, 31029), (45, 31074), (46, 31077), (48, 31086), (52, 31113), (56, 31143), (66, 31206),

Gene: SmokingBunny_73 Start: 51218, Stop: 51466, Start Num: 24

Candidate Starts for SmokingBunny_73:

(Start: 24 @51218 has 28 MA's), (33, 51251), (40, 51278), (45, 51323), (48, 51335), (50, 51353), (56, 51392), (61, 51419),

Gene: SparkleGoddess_67 Start: 55353, Stop: 55562, Start Num: 32

Candidate Starts for SparkleGoddess_67:

(Start: 26 @55335 has 17 MA's), (Start: 32 @55353 has 1 MA's), (48, 55437), (58, 55506), (59, 55512),

Gene: Spec_238 Start: 135155, Stop: 135388, Start Num: 22

Candidate Starts for Spec_238:

(14, 135113), (Start: 22 @135155 has 23 MA's), (34, 135191), (35, 135197), (54, 135317), (58, 135335), (61, 135350),

Gene: Stardrop_72 Start: 44905, Stop: 45192, Start Num: 25

Candidate Starts for Stardrop_72:

(Start: 25 @44905 has 16 MA's), (48, 45013), (51, 45034), (53, 45058), (69, 45136),

Gene: Stigma_66 Start: 55349, Stop: 55576, Start Num: 26

Candidate Starts for Stigma_66:

(Start: 26 @55349 has 17 MA's), (Start: 32 @55367 has 1 MA's), (48, 55451), (58, 55520), (59, 55526),

Gene: Tainan_244 Start: 134706, Stop: 134939, Start Num: 22

Candidate Starts for Tainan_244:

(14, 134664), (Start: 22 @134706 has 23 MA's), (34, 134742), (35, 134748), (54, 134868), (58, 134886), (61, 134901),

Gene: Tairn4Wing_72 Start: 48216, Stop: 48470, Start Num: 27

Candidate Starts for Tairn4Wing_72:

(Start: 27 @48216 has 15 MA's), (35, 48252), (41, 48282), (62, 48408), (67, 48441),

Gene: Talon44_72 Start: 48492, Stop: 48746, Start Num: 27

Candidate Starts for Talon44_72:

(Start: 27 @48492 has 15 MA's), (35, 48528), (41, 48558), (62, 48684), (67, 48717),

Gene: Tank_14 Start: 5999, Stop: 6256, Start Num: 17

Candidate Starts for Tank_14:

(Start: 17 @5999 has 3 MA's), (Start: 28 @6023 has 1 MA's), (42, 6092), (58, 6194),

Gene: Tenney120_73 Start: 44851, Stop: 45138, Start Num: 25

Candidate Starts for Tenney120_73:

(Start: 25 @44851 has 16 MA's), (48, 44959), (51, 44980), (69, 45082),

Gene: Togo_72 Start: 51218, Stop: 51466, Start Num: 24

Candidate Starts for Togo_72:

(Start: 24 @51218 has 28 MA's), (33, 51251), (40, 51278), (45, 51323), (48, 51335), (50, 51353), (56, 51392), (61, 51419),

Gene: Tribby_94 Start: 53361, Stop: 53618, Start Num: 21

Candidate Starts for Tribby_94:

(Start: 21 @53361 has 21 MA's),

Gene: TrixiePhattel_73 Start: 44473, Stop: 44778, Start Num: 25

Candidate Starts for TrixiePhattel_73:

(Start: 24 @44470 has 28 MA's), (Start: 25 @44473 has 16 MA's), (31, 44494), (48, 44581), (51, 44602), (57, 44647), (69, 44704),

Gene: Twister6_73 Start: 49567, Stop: 49815, Start Num: 24

Candidate Starts for Twister6_73:

(18, 49555), (Start: 24 @49567 has 28 MA's), (40, 49627), (45, 49672), (48, 49684), (56, 49741),

Gene: Tyke_241 Start: 137198, Stop: 137431, Start Num: 22

Candidate Starts for Tyke_241:

(14, 137156), (Start: 22 @137198 has 23 MA's), (34, 137234), (35, 137240), (54, 137360), (58, 137378), (61, 137393),

Gene: Uzumaki_69 Start: 44292, Stop: 44579, Start Num: 25

Candidate Starts for Uzumaki_69:

(Start: 25 @44292 has 16 MA's), (48, 44400), (51, 44421), (57, 44466), (69, 44523),

Gene: Valary_73 Start: 50867, Stop: 51115, Start Num: 24

Candidate Starts for Valary_73:

(7, 50735), (18, 50855), (Start: 24 @50867 has 28 MA's), (40, 50927), (45, 50972), (48, 50984), (56, 51041),

Gene: VanDeWege_74 Start: 50539, Stop: 50781, Start Num: 24

Candidate Starts for VanDeWege_74:

(13, 50482), (Start: 24 @50539 has 28 MA's), (40, 50599), (45, 50644), (48, 50656), (50, 50674), (56, 50713),

Gene: Westy_68 Start: 55335, Stop: 55562, Start Num: 26

Candidate Starts for Westy_68:

(Start: 26 @55335 has 17 MA's), (Start: 32 @55353 has 1 MA's), (48, 55437), (58, 55506), (59, 55512),

Gene: Wilde_14 Start: 5927, Stop: 6184, Start Num: 17

Candidate Starts for Wilde_14:

(Start: 17 @5927 has 3 MA's), (Start: 28 @5951 has 1 MA's), (29, 5954), (42, 6020), (58, 6122),

Gene: Wizard_69 Start: 50045, Stop: 50293, Start Num: 24

Candidate Starts for Wizard_69:

(7, 49913), (18, 50033), (Start: 24 @50045 has 28 MA's), (40, 50105), (45, 50150), (48, 50162), (56, 50219),

Gene: Xenomorph_88 Start: 53193, Stop: 53450, Start Num: 21

Candidate Starts for Xenomorph_88:

(Start: 21 @53193 has 21 MA's),

Gene: YoshiYama_91 Start: 53268, Stop: 53525, Start Num: 21

Candidate Starts for YoshiYama_91:

(Start: 21 @53268 has 21 MA's), (35, 53313),

Gene: YoungMoneyMata_244 Start: 135641, Stop: 135874, Start Num: 22

Candidate Starts for YoungMoneyMata_244:

(14, 135599), (Start: 22 @135641 has 23 MA's), (34, 135677), (35, 135683), (54, 135803), (58, 135821), (61, 135836),

Gene: YungMoney_72 Start: 52105, Stop: 52353, Start Num: 24

Candidate Starts for YungMoney_72:

(6, 51955), (Start: 17 @52090 has 3 MA's), (Start: 24 @52105 has 28 MA's), (40, 52165), (45, 52210), (48, 52222), (50, 52240), (56, 52279),

Gene: Zeina_75 Start: 45147, Stop: 45434, Start Num: 25

Candidate Starts for Zeina_75:

(Start: 25 @45147 has 16 MA's), (48, 45255), (51, 45276), (57, 45321), (69, 45378),