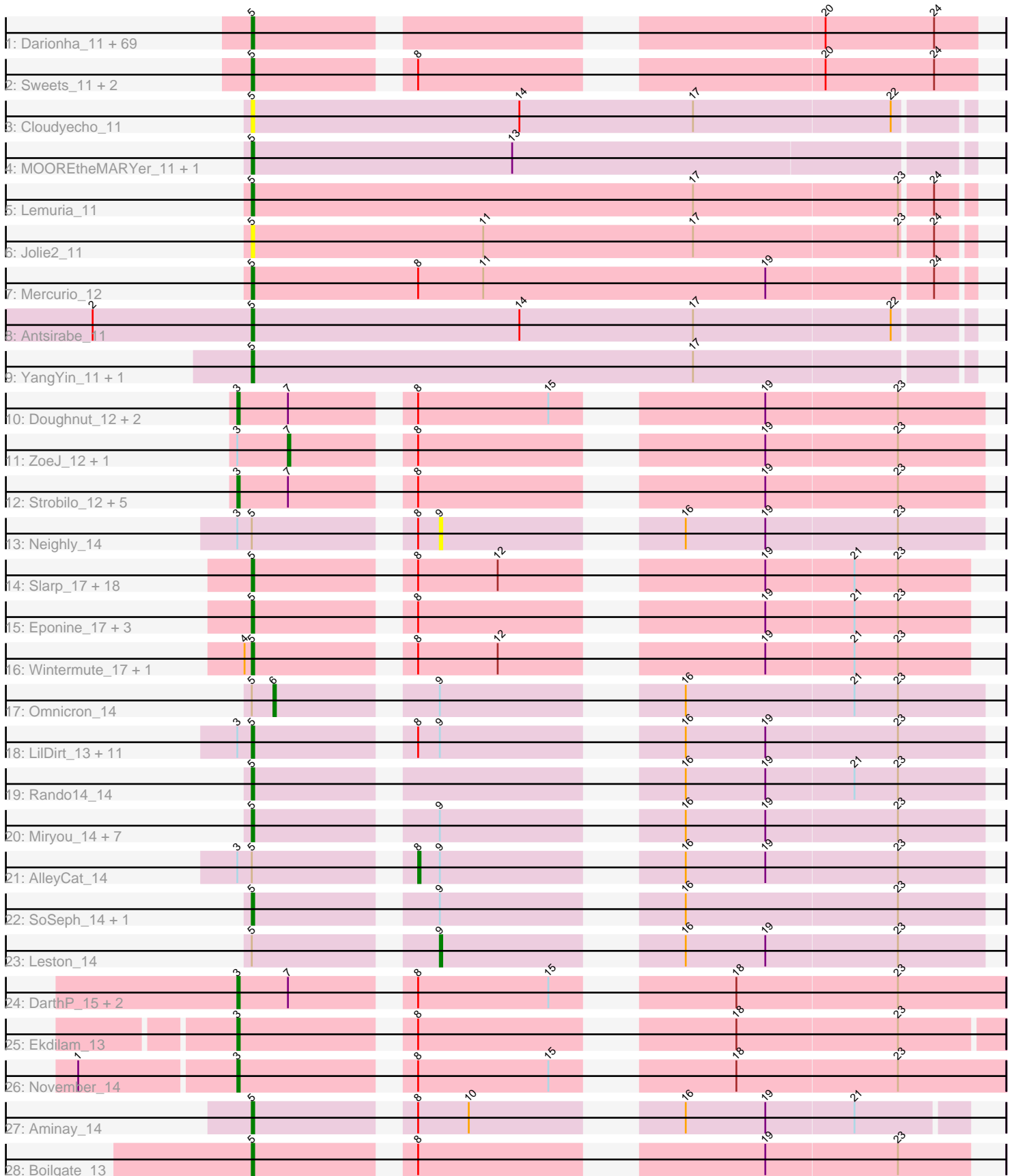


Pham 304770



Note: Tracks are now grouped by subcluster and scaled. Switching in subcluster is indicated by changes in track color. Track scale is now set by default to display the region 30 bp upstream of start 1 to 30 bp downstream of the last possible start. If this default region is judged to be packed too tightly with annotated starts, the track will be further scaled to only show that region of the ORF with annotated starts. This action will be indicated by adding "Zoomed" to the title. For starts, yellow indicates the location of called starts comprised solely of Glimmer/GeneMark auto-annotations, green indicates the location of called starts with at least 1 manual gene annotation.

Pham 304770 Report

This analysis was run 06/08/26 on database version 649.

Pham number 304770 has 152 members, 16 are drafts.

Phages represented in each track:

- Track 1 : Darionha_11, Crespo_11, PinkYoshi_11, Paito_11, Aroostook_11, ShaboiShabazz_11, Frosty24_11, Jeilious_11, Gomashi_11, Cedasite_11, DingDing_11, Ruriko_11, LouisV14_11, CLED96_11, Jolene_11, Richarlison_11, AizenPogi_11, Jane_11, BQuat_11, Peeb_11, Remy19_11, CassieYates_11, Angel_11, Coleslaw_11, ECartman_11, DMoney_11, OctaviousRex_11, Kasen3_11, ZoMa_11, Wendigo_11, Gideon_11, Avrafan_11, DNAIII_0011, Rattrick_11, Maliketh_11, Taheera_11, Terror_11, Phloodle_11, Periodt_11, Neoh_11, Rabbs_11, Jonghyun_11, Schiebel_11, Sizemore_11, Plagueis_11, Sneeze_11, Olga_11, Barkley26_11, Phish_11, Zombie_11, Hope_11, MZKinsey_11, Hotshotbaby7_11, Kareem_11, Mowgli_11, Chance64_11, BruceB_11, Marmie_11, Camri_11, JorRay_11, Renaissance_11, Cherrybomb426_11, Grizzly_11, TomBrady_11, Annihilator_11, Phreak_11, GoldenAsh_11, AzulaCat_11, Liefie_11, BPs_11
- Track 2 : Sweets_11, Halo_11, TinaBug_11
- Track 3 : Cloudyecho_11
- Track 4 : MOOREtheMARYer_11, Pinnie_12
- Track 5 : Lemuria_11
- Track 6 : Jolie2_11
- Track 7 : Mercurio_12
- Track 8 : Antsirabe_11
- Track 9 : YangYin_11, Stargaze_11
- Track 10 : Doughnut_12, BoostSeason_12, Mufasa_12
- Track 11 : ZoeJ_12, TM4_12
- Track 12 : Strobilo_12, Milly_12, DismalFunk_12, Marcoliusprime_12, Findley_12, DismalStressor_12
- Track 13 : Neighly_14
- Track 14 : Slarp_17, JF1_17, OmniCritical_17, YasnayaPolyana_17, Y10_17, Mitti_17, Y2_17, Chancellor_17, Kraw_17, MissDaisy_17, Malthus_17, Lebo14_17, Bobquesha_17, Qhanda_17, SamScheppers_15, DanSyl44_17, Cheetobro_17, Reptar3000_17, Patt_17
- Track 15 : Eponine_17, Taquito_15, Ruthiejr_16, Juliette_17
- Track 16 : Wintermute_17, Fionnbharth_17
- Track 17 : Omnicron_14
- Track 18 : LilDirt_13, Collard_14, Kratio_13, Psycho_14, Dadosky_14, InvictusManeo_14, ViviJ_13, Larva_14, DoubleChamp_14, Agent47_14, Edugator_13, BananenDer11_14
- Track 19 : Rando14_14

- Track 20 : Miryou_14, Thyatira_14, OkiRoe_14, Waterfoul_14, Guillsminger_14, Gengar_14, Feyre_14, Paola_14
- Track 21 : AlleyCat_14
- Track 22 : SoSeph_14, Heftyboy_14
- Track 23 : Leston_14
- Track 24 : DarthP_15, Amohnition_15, Hammy_15
- Track 25 : Ekdilam_13
- Track 26 : November_14
- Track 27 : Aminay_14
- Track 28 : Boilgate_13

Summary of Final Annotations (See graph section above for start numbers):

The start number called the most often in the published annotations is 5, it was called in 117 of the 136 non-draft genes in the pham.

Genes that call this "Most Annotated" start:

- Agent47_14, AizenPogi_11, Aminay_14, Angel_11, Annihilator_11, Antsirabe_11, Aroostook_11, Avrafan_11, AzulaCat_11, BPs_11, BQuat_11, BananenDer11_14, Barkley26_11, Bobquesha_17, Boilgate_13, BruceB_11, CLED96_11, Camri_11, CassieYates_11, Cedasite_11, Chance64_11, Chancellor_17, Cheetobro_17, Cherrybomb426_11, Cloudyecho_11, Coleslaw_11, Collard_14, Crespo_11, DMoney_11, DNAIII_0011, Dadosky_14, DanSyl44_17, Darionha_11, DingDing_11, DoubleChamp_14, ECartman_11, Edugator_13, Eponine_17, Feyre_14, Fionnbharth_17, Frosty24_11, Gengar_14, Gideon_11, GoldenAsh_11, Gomashi_11, Grizzly_11, Guillsminger_14, Halo_11, Heftyboy_14, Hope_11, Hotshotbaby7_11, InvictusManeo_14, JF1_17, Jane_11, Jeilious_11, Jolene_11, Jolie2_11, Jonghyun_11, JorRay_11, Juliette_17, Kareem_11, Kasen3_11, Kratio_13, Kraw_17, Larva_14, Lebo14_17, Lemuria_11, Liefie_11, LilDirt_13, LouisV14_11, MOOREtheMARYer_11, MZKinsey_11, Maliketh_11, Malthus_17, Marmie_11, Mercurio_12, Miryou_14, MissDaisy_17, Mitti_17, Mowgli_11, Neoh_11, OctaviousRex_11, OkiRoe_14, Olga_11, OmniCritical_17, Paito_11, Paola_14, Patt_17, Peeb_11, Periodt_11, Phish_11, Phloodle_11, Phreak_11, PinkYoshi_11, Pinnie_12, Plagueis_11, Psycho_14, Qhanda_17, Rabbs_11, Rando14_14, Rattrick_11, Remy19_11, Renaissance_11, Reptar3000_17, Richarlison_11, Ruriko_11, Ruthiejr_16, SamScheppers_15, Schiebel_11, ShaboiShabazz_11, Sizemore_11, Slarp_17, Sneeze_11, SoSeph_14, Stargaze_11, Sweets_11, Taheera_11, Taquito_15, Terror_11, Thyatira_14, TinaBug_11, TomBrady_11, ViviJ_13, Waterfoul_14, Wendigo_11, Wintermute_17, Y10_17, Y2_17, YangYin_11, YasnayaPolyana_17, ZoMa_11, Zombie_11,

Genes that have the "Most Annotated" start but do not call it:

- AlleyCat_14, Leston_14, Neighly_14, Omnicron_14,

Genes that do not have the "Most Annotated" start:

- Amohnition_15, BoostSeason_12, DarthP_15, DismalFunk_12, DismalStressor_12, Doughnut_12, Ekdilam_13, Findley_12, Hammy_15, Marcoliusprime_12, Milly_12, Mufasa_12, November_14, Strobilo_12, TM4_12, ZoeJ_12,

Summary by start number:

Start 3:

- Found in 30 of 152 (19.7%) of genes in pham
- Manual Annotations of this start: 14 of 136
- Called 46.7% of time when present
- Phage (with cluster) where this start called: Amohnition_15 (K6), BoostSeason_12 (K2), DarthP_15 (K6), DismalFunk_12 (K2), DismalStressor_12 (K2), Doughnut_12 (K2), Ekdilam_13 (K6), Findley_12 (K2), Hammy_15 (K6), Marcoliusprime_12 (K2), Milly_12 (K2), Mufasa_12 (K2), November_14 (K6), Strobilo_12 (K2),

Start 5:

- Found in 136 of 152 (89.5%) of genes in pham
- Manual Annotations of this start: 117 of 136
- Called 97.1% of time when present
- Phage (with cluster) where this start called: Agent47_14 (K5), AizenPogi_11 (G1), Aminay_14 (K7), Angel_11 (G1), Annihilator_11 (G1), Antsirabe_11 (G5), Aroostook_11 (G1), Avrafan_11 (G1), AzulaCat_11 (G1), BPs_11 (G1), BQuat_11 (G1), BananenDer11_14 (K5), Barkley26_11 (G1), Bobquesha_17 (K4), Boilgate_13 (K8), BruceB_11 (G1), CLED96_11 (G1), Camri_11 (G1), CassieYates_11 (G1), Cedasite_11 (G1), Chance64_11 (G1), Chancellor_17 (K4), Cheetobro_17 (K4), Cherrybomb426_11 (G1), Cloudyecho_11 (G3), Coleslaw_11 (G1), Collard_14 (K5), Crespo_11 (G1), DMoney_11 (G1), DNAIII_0011 (G1), Dadosky_14 (K5), DanSyl44_17 (K4), Darionha_11 (G1), DingDing_11 (G1), DoubleChamp_14 (K5), ECartman_11 (G1), Edugator_13 (K5), Eponine_17 (K4), Feyre_14 (K5), Fionnbharth_17 (K4), Frosty24_11 (G1), Gengar_14 (K5), Gideon_11 (G1), GoldenAsh_11 (G1), Gomashi_11 (G1), Grizzly_11 (G1), Guillsminger_14 (K5), Halo_11 (G1), Heftyboy_14 (K5), Hope_11 (G1), Hotshotbaby7_11 (G1), InvictusManeo_14 (K5), JF1_17 (K4), Jane_11 (G1), Jeilious_11 (G), Jolene_11 (G1), Jolie2_11 (G4), Jonghyun_11 (G1), JorRay_11 (G1), Juliette_17 (K4), Kareem_11 (G1), Kasen3_11 (G1), Kratio_13 (K5), Kraw_17 (K4), Larva_14 (K5), Lebo14_17 (K4), Lemuria_11 (G4), Liefie_11 (G1), LilDirt_13 (K5), LouisV14_11 (G1), MOOREtheMARYer_11 (G3), MZKinsey_11 (G1), Maliketh_11 (G1), Malthus_17 (K4), Marmie_11 (G1), Mercurio_12 (G4), Miryou_14 (K5), MissDaisy_17 (K4), Mitti_17 (K4), Mowgli_11 (G1), Neoh_11 (G), OctaviousRex_11 (G1), OkiRoe_14 (K5), Olga_11 (G1), OmniCritical_17 (K4), Paito_11 (G1), Paola_14 (K5), Patt_17 (K4), Peeb_11 (G1), Periodt_11 (G1), Phish_11 (G1), Phloodle_11 (G1), Phreak_11 (G1), PinkYoshi_11 (G1), Pinnie_12 (G3), Plagueis_11 (G1), Psycho_14 (K5), Qhanda_17 (K4), Rabbs_11 (G1), Rando14_14 (K5), Rattrick_11 (G1), Remy19_11 (G1), Renaissance_11 (G1), Reptar3000_17 (K4), Richarlison_11 (G1), Ruriko_11 (G1), Ruthiejr_16 (K4), SamScheppers_15 (K4), Schiebel_11 (G1), ShaboiShabazz_11 (G1), Sizemore_11 (G1), Slarp_17 (K4), Sneeze_11 (G1), SoSeph_14 (K5), Stargaze_11 (G5), Sweets_11 (G1), Taheera_11 (G1), Taquito_15 (K4), Terror_11 (G1), Thyatira_14 (K5), TinaBug_11 (G1), TomBrady_11 (G1), ViviJ_13 (K5), Waterfoul_14 (K5), Wendigo_11 (G1), Wintermute_17 (K4), Y10_17 (K4), Y2_17 (K4), YangYin_11 (G5), YasnayaPolyana_17 (K4), ZoMa_11 (G1), Zombie_11 (G1),

Start 6:

- Found in 1 of 152 (0.7%) of genes in pham
- Manual Annotations of this start: 1 of 136
- Called 100.0% of time when present
- Phage (with cluster) where this start called: Omnicron_14 (K5),

Start 7:

- Found in 14 of 152 (9.2%) of genes in pham
- Manual Annotations of this start: 2 of 136
- Called 14.3% of time when present
- Phage (with cluster) where this start called: TM4_12 (K2), ZoeJ_12 (K2),

Start 8:

- Found in 61 of 152 (40.1%) of genes in pham
- Manual Annotations of this start: 1 of 136
- Called 1.6% of time when present
- Phage (with cluster) where this start called: AlleyCat_14 (K5),

Start 9:

- Found in 26 of 152 (17.1%) of genes in pham
- Manual Annotations of this start: 1 of 136
- Called 7.7% of time when present
- Phage (with cluster) where this start called: Leston_14 (K5), Neighly_14 (K3),

Summary by clusters:

There are 12 clusters represented in this pham: G5, G4, G3, G1, G, K3, K2, K7, K6, K5, K4, K8,

Info for manual annotations of cluster G1:

- Start number 5 was manually annotated 65 times for cluster G1.

Info for manual annotations of cluster G3:

- Start number 5 was manually annotated 2 times for cluster G3.

Info for manual annotations of cluster G4:

- Start number 5 was manually annotated 2 times for cluster G4.

Info for manual annotations of cluster G5:

- Start number 5 was manually annotated 2 times for cluster G5.

Info for manual annotations of cluster K2:

- Start number 3 was manually annotated 9 times for cluster K2.
- Start number 7 was manually annotated 2 times for cluster K2.

Info for manual annotations of cluster K4:

- Start number 5 was manually annotated 22 times for cluster K4.

Info for manual annotations of cluster K5:

- Start number 5 was manually annotated 22 times for cluster K5.
- Start number 6 was manually annotated 1 time for cluster K5.
- Start number 8 was manually annotated 1 time for cluster K5.
- Start number 9 was manually annotated 1 time for cluster K5.

Info for manual annotations of cluster K6:

- Start number 3 was manually annotated 5 times for cluster K6.

Info for manual annotations of cluster K7:

- Start number 5 was manually annotated 1 time for cluster K7.

Info for manual annotations of cluster K8:

- Start number 5 was manually annotated 1 time for cluster K8.

Gene Information:

Gene: Agent47_14 Start: 9895, Stop: 10161, Start Num: 5

Candidate Starts for Agent47_14:

(Start: 3 @9889 has 14 MA's), (Start: 5 @9895 has 117 MA's), (Start: 8 @9952 has 1 MA's), (Start: 9 @9961 has 1 MA's), (16, 10039), (19, 10072), (23, 10126),

Gene: AizenPogi_11 Start: 9154, Stop: 9417, Start Num: 5

Candidate Starts for AizenPogi_11:

(Start: 5 @9154 has 117 MA's), (20, 9355), (24, 9400),

Gene: AlleyCat_14 Start: 9830, Stop: 10039, Start Num: 8

Candidate Starts for AlleyCat_14:

(Start: 3 @9767 has 14 MA's), (Start: 5 @9773 has 117 MA's), (Start: 8 @9830 has 1 MA's), (Start: 9 @9839 has 1 MA's), (16, 9917), (19, 9950), (23, 10004),

Gene: Aminay_14 Start: 9594, Stop: 9851, Start Num: 5

Candidate Starts for Aminay_14:

(Start: 5 @9594 has 117 MA's), (Start: 8 @9651 has 1 MA's), (10, 9672), (16, 9738), (19, 9771), (21, 9807),

Gene: Amohntion_15 Start: 9687, Stop: 9968, Start Num: 3

Candidate Starts for Amohntion_15:

(Start: 3 @9687 has 14 MA's), (Start: 7 @9708 has 2 MA's), (Start: 8 @9750 has 1 MA's), (15, 9804), (18, 9858), (23, 9924),

Gene: Angel_11 Start: 9154, Stop: 9417, Start Num: 5

Candidate Starts for Angel_11:

(Start: 5 @9154 has 117 MA's), (20, 9355), (24, 9400),

Gene: Annihilator_11 Start: 9154, Stop: 9417, Start Num: 5

Candidate Starts for Annihilator_11:

(Start: 5 @9154 has 117 MA's), (20, 9355), (24, 9400),

Gene: Antsirabe_11 Start: 9451, Stop: 9744, Start Num: 5

Candidate Starts for Antsirabe_11:

(2, 9385), (Start: 5 @9451 has 117 MA's), (14, 9562), (17, 9634), (22, 9715),

Gene: Aroostook_11 Start: 9154, Stop: 9417, Start Num: 5

Candidate Starts for Aroostook_11:

(Start: 5 @9154 has 117 MA's), (20, 9355), (24, 9400),

Gene: Avrafan_11 Start: 9154, Stop: 9417, Start Num: 5

Candidate Starts for Avrafan_11:

(Start: 5 @9154 has 117 MA's), (20, 9355), (24, 9400),

Gene: AzulaCat_11 Start: 9154, Stop: 9417, Start Num: 5

Candidate Starts for AzulaCat_11:

(Start: 5 @9154 has 117 MA's), (20, 9355), (24, 9400),

Gene: BPs_11 Start: 9154, Stop: 9417, Start Num: 5

Candidate Starts for BPs_11:

(Start: 5 @9154 has 117 MA's), (20, 9355), (24, 9400),

Gene: BQuat_11 Start: 9154, Stop: 9417, Start Num: 5

Candidate Starts for BQuat_11:

(Start: 5 @9154 has 117 MA's), (20, 9355), (24, 9400),

Gene: BananenDer11_14 Start: 9856, Stop: 10122, Start Num: 5

Candidate Starts for BananenDer11_14:

(Start: 3 @9850 has 14 MA's), (Start: 5 @9856 has 117 MA's), (Start: 8 @9913 has 1 MA's), (Start: 9 @9922 has 1 MA's), (16, 10000), (19, 10033), (23, 10087),

Gene: Barkley26_11 Start: 9154, Stop: 9417, Start Num: 5

Candidate Starts for Barkley26_11:

(Start: 5 @9154 has 117 MA's), (20, 9355), (24, 9400),

Gene: Bobquesha_17 Start: 10706, Stop: 10966, Start Num: 5

Candidate Starts for Bobquesha_17:

(Start: 5 @10706 has 117 MA's), (Start: 8 @10763 has 1 MA's), (12, 10796), (19, 10883), (21, 10919), (23, 10937),

Gene: Boilgate_13 Start: 9711, Stop: 9971, Start Num: 5

Candidate Starts for Boilgate_13:

(Start: 5 @9711 has 117 MA's), (Start: 8 @9768 has 1 MA's), (19, 9888), (23, 9942),

Gene: BoostSeason_12 Start: 7685, Stop: 7957, Start Num: 3

Candidate Starts for BoostSeason_12:

(Start: 3 @7685 has 14 MA's), (Start: 7 @7706 has 2 MA's), (Start: 8 @7748 has 1 MA's), (15, 7802), (19, 7868), (23, 7922),

Gene: BruceB_11 Start: 9154, Stop: 9417, Start Num: 5

Candidate Starts for BruceB_11:

(Start: 5 @9154 has 117 MA's), (20, 9355), (24, 9400),

Gene: CLED96_11 Start: 9154, Stop: 9417, Start Num: 5

Candidate Starts for CLED96_11:

(Start: 5 @9154 has 117 MA's), (20, 9355), (24, 9400),

Gene: Camri_11 Start: 9154, Stop: 9417, Start Num: 5

Candidate Starts for Camri_11:

(Start: 5 @9154 has 117 MA's), (20, 9355), (24, 9400),

Gene: CassieYates_11 Start: 9154, Stop: 9417, Start Num: 5

Candidate Starts for CassieYates_11:

(Start: 5 @9154 has 117 MA's), (20, 9355), (24, 9400),

Gene: Cedasite_11 Start: 9154, Stop: 9417, Start Num: 5

Candidate Starts for Cedasite_11:
(Start: 5 @9154 has 117 MA's), (20, 9355), (24, 9400),

Gene: Chance64_11 Start: 9154, Stop: 9417, Start Num: 5
Candidate Starts for Chance64_11:
(Start: 5 @9154 has 117 MA's), (20, 9355), (24, 9400),

Gene: Chancellor_17 Start: 10964, Stop: 11224, Start Num: 5
Candidate Starts for Chancellor_17:
(Start: 5 @10964 has 117 MA's), (Start: 8 @11021 has 1 MA's), (12, 11054), (19, 11141), (21, 11177),
(23, 11195),

Gene: Cheetobro_17 Start: 10964, Stop: 11224, Start Num: 5
Candidate Starts for Cheetobro_17:
(Start: 5 @10964 has 117 MA's), (Start: 8 @11021 has 1 MA's), (12, 11054), (19, 11141), (21, 11177),
(23, 11195),

Gene: Cherrybomb426_11 Start: 9154, Stop: 9417, Start Num: 5
Candidate Starts for Cherrybomb426_11:
(Start: 5 @9154 has 117 MA's), (20, 9355), (24, 9400),

Gene: Cloudyecho_11 Start: 9337, Stop: 9630, Start Num: 5
Candidate Starts for Cloudyecho_11:
(Start: 5 @9337 has 117 MA's), (14, 9448), (17, 9520), (22, 9601),

Gene: Coleslaw_11 Start: 9154, Stop: 9417, Start Num: 5
Candidate Starts for Coleslaw_11:
(Start: 5 @9154 has 117 MA's), (20, 9355), (24, 9400),

Gene: Collard_14 Start: 9856, Stop: 10122, Start Num: 5
Candidate Starts for Collard_14:
(Start: 3 @9850 has 14 MA's), (Start: 5 @9856 has 117 MA's), (Start: 8 @9913 has 1 MA's), (Start: 9
@9922 has 1 MA's), (16, 10000), (19, 10033), (23, 10087),

Gene: Crespo_11 Start: 9155, Stop: 9418, Start Num: 5
Candidate Starts for Crespo_11:
(Start: 5 @9155 has 117 MA's), (20, 9356), (24, 9401),

Gene: DMoney_11 Start: 9154, Stop: 9417, Start Num: 5
Candidate Starts for DMoney_11:
(Start: 5 @9154 has 117 MA's), (20, 9355), (24, 9400),

Gene: DNAIII_0011 Start: 9163, Stop: 9426, Start Num: 5
Candidate Starts for DNAIII_0011:
(Start: 5 @9163 has 117 MA's), (20, 9364), (24, 9409),

Gene: Dadosky_14 Start: 9774, Stop: 10040, Start Num: 5
Candidate Starts for Dadosky_14:
(Start: 3 @9768 has 14 MA's), (Start: 5 @9774 has 117 MA's), (Start: 8 @9831 has 1 MA's), (Start: 9
@9840 has 1 MA's), (16, 9918), (19, 9951), (23, 10005),

Gene: DanSyl44_17 Start: 10967, Stop: 11227, Start Num: 5
Candidate Starts for DanSyl44_17:

(Start: 5 @10967 has 117 MA's), (Start: 8 @11024 has 1 MA's), (12, 11057), (19, 11144), (21, 11180), (23, 11198),

Gene: Darionha_11 Start: 9154, Stop: 9417, Start Num: 5

Candidate Starts for Darionha_11:

(Start: 5 @9154 has 117 MA's), (20, 9355), (24, 9400),

Gene: DarthP_15 Start: 9687, Stop: 9968, Start Num: 3

Candidate Starts for DarthP_15:

(Start: 3 @9687 has 14 MA's), (Start: 7 @9708 has 2 MA's), (Start: 8 @9750 has 1 MA's), (15, 9804), (18, 9858), (23, 9924),

Gene: DingDing_11 Start: 9154, Stop: 9417, Start Num: 5

Candidate Starts for DingDing_11:

(Start: 5 @9154 has 117 MA's), (20, 9355), (24, 9400),

Gene: DismalFunk_12 Start: 7693, Stop: 7965, Start Num: 3

Candidate Starts for DismalFunk_12:

(Start: 3 @7693 has 14 MA's), (Start: 7 @7714 has 2 MA's), (Start: 8 @7756 has 1 MA's), (19, 7876), (23, 7930),

Gene: DismalStressor_12 Start: 7693, Stop: 7965, Start Num: 3

Candidate Starts for DismalStressor_12:

(Start: 3 @7693 has 14 MA's), (Start: 7 @7714 has 2 MA's), (Start: 8 @7756 has 1 MA's), (19, 7876), (23, 7930),

Gene: DoubleChamp_14 Start: 9856, Stop: 10122, Start Num: 5

Candidate Starts for DoubleChamp_14:

(Start: 3 @9850 has 14 MA's), (Start: 5 @9856 has 117 MA's), (Start: 8 @9913 has 1 MA's), (Start: 9 @9922 has 1 MA's), (16, 10000), (19, 10033), (23, 10087),

Gene: Doughnut_12 Start: 7679, Stop: 7951, Start Num: 3

Candidate Starts for Doughnut_12:

(Start: 3 @7679 has 14 MA's), (Start: 7 @7700 has 2 MA's), (Start: 8 @7742 has 1 MA's), (15, 7796), (19, 7862), (23, 7916),

Gene: ECartman_11 Start: 9154, Stop: 9417, Start Num: 5

Candidate Starts for ECartman_11:

(Start: 5 @9154 has 117 MA's), (20, 9355), (24, 9400),

Gene: Edugator_13 Start: 9774, Stop: 10040, Start Num: 5

Candidate Starts for Edugator_13:

(Start: 3 @9768 has 14 MA's), (Start: 5 @9774 has 117 MA's), (Start: 8 @9831 has 1 MA's), (Start: 9 @9840 has 1 MA's), (16, 9918), (19, 9951), (23, 10005),

Gene: Ekdilam_13 Start: 9408, Stop: 9686, Start Num: 3

Candidate Starts for Ekdilam_13:

(Start: 3 @9408 has 14 MA's), (Start: 8 @9471 has 1 MA's), (18, 9579), (23, 9645),

Gene: Eponine_17 Start: 10828, Stop: 11088, Start Num: 5

Candidate Starts for Eponine_17:

(Start: 5 @10828 has 117 MA's), (Start: 8 @10885 has 1 MA's), (19, 11005), (21, 11041), (23, 11059),

Gene: Feyre_14 Start: 9722, Stop: 9988, Start Num: 5
Candidate Starts for Feyre_14:
(Start: 5 @9722 has 117 MA's), (Start: 9 @9788 has 1 MA's), (16, 9866), (19, 9899), (23, 9953),

Gene: Findley_12 Start: 7693, Stop: 7965, Start Num: 3
Candidate Starts for Findley_12:
(Start: 3 @7693 has 14 MA's), (Start: 7 @7714 has 2 MA's), (Start: 8 @7756 has 1 MA's), (19, 7876), (23, 7930),

Gene: Fionnbharth_17 Start: 10954, Stop: 11214, Start Num: 5
Candidate Starts for Fionnbharth_17:
(4, 10951), (Start: 5 @10954 has 117 MA's), (Start: 8 @11011 has 1 MA's), (12, 11044), (19, 11131), (21, 11167), (23, 11185),

Gene: Frosty24_11 Start: 9154, Stop: 9417, Start Num: 5
Candidate Starts for Frosty24_11:
(Start: 5 @9154 has 117 MA's), (20, 9355), (24, 9400),

Gene: Gengar_14 Start: 9829, Stop: 10095, Start Num: 5
Candidate Starts for Gengar_14:
(Start: 5 @9829 has 117 MA's), (Start: 9 @9895 has 1 MA's), (16, 9973), (19, 10006), (23, 10060),

Gene: Gideon_11 Start: 9154, Stop: 9417, Start Num: 5
Candidate Starts for Gideon_11:
(Start: 5 @9154 has 117 MA's), (20, 9355), (24, 9400),

Gene: GoldenAsh_11 Start: 9154, Stop: 9417, Start Num: 5
Candidate Starts for GoldenAsh_11:
(Start: 5 @9154 has 117 MA's), (20, 9355), (24, 9400),

Gene: Gomashi_11 Start: 9155, Stop: 9418, Start Num: 5
Candidate Starts for Gomashi_11:
(Start: 5 @9155 has 117 MA's), (20, 9356), (24, 9401),

Gene: Grizzly_11 Start: 9154, Stop: 9417, Start Num: 5
Candidate Starts for Grizzly_11:
(Start: 5 @9154 has 117 MA's), (20, 9355), (24, 9400),

Gene: Guillsminger_14 Start: 9804, Stop: 10070, Start Num: 5
Candidate Starts for Guillsminger_14:
(Start: 5 @9804 has 117 MA's), (Start: 9 @9870 has 1 MA's), (16, 9948), (19, 9981), (23, 10035),

Gene: Halo_11 Start: 9149, Stop: 9412, Start Num: 5
Candidate Starts for Halo_11:
(Start: 5 @9149 has 117 MA's), (Start: 8 @9206 has 1 MA's), (20, 9350), (24, 9395),

Gene: Hammy_15 Start: 9681, Stop: 9962, Start Num: 3
Candidate Starts for Hammy_15:
(Start: 3 @9681 has 14 MA's), (Start: 7 @9702 has 2 MA's), (Start: 8 @9744 has 1 MA's), (15, 9798), (18, 9852), (23, 9918),

Gene: Heftyboy_14 Start: 9931, Stop: 10197, Start Num: 5
Candidate Starts for Heftyboy_14:

(Start: 5 @9931 has 117 MA's), (Start: 9 @9997 has 1 MA's), (16, 10075), (23, 10162),

Gene: Hope_11 Start: 9154, Stop: 9417, Start Num: 5

Candidate Starts for Hope_11:

(Start: 5 @9154 has 117 MA's), (20, 9355), (24, 9400),

Gene: Hotshotbaby7_11 Start: 9154, Stop: 9417, Start Num: 5

Candidate Starts for Hotshotbaby7_11:

(Start: 5 @9154 has 117 MA's), (20, 9355), (24, 9400),

Gene: InvictusManeo_14 Start: 9899, Stop: 10165, Start Num: 5

Candidate Starts for InvictusManeo_14:

(Start: 3 @9893 has 14 MA's), (Start: 5 @9899 has 117 MA's), (Start: 8 @9956 has 1 MA's), (Start: 9 @9965 has 1 MA's), (16, 10043), (19, 10076), (23, 10130),

Gene: JF1_17 Start: 10953, Stop: 11213, Start Num: 5

Candidate Starts for JF1_17:

(Start: 5 @10953 has 117 MA's), (Start: 8 @11010 has 1 MA's), (12, 11043), (19, 11130), (21, 11166), (23, 11184),

Gene: Jane_11 Start: 9154, Stop: 9417, Start Num: 5

Candidate Starts for Jane_11:

(Start: 5 @9154 has 117 MA's), (20, 9355), (24, 9400),

Gene: Jeilious_11 Start: 9153, Stop: 9416, Start Num: 5

Candidate Starts for Jeilious_11:

(Start: 5 @9153 has 117 MA's), (20, 9354), (24, 9399),

Gene: Jolene_11 Start: 9154, Stop: 9417, Start Num: 5

Candidate Starts for Jolene_11:

(Start: 5 @9154 has 117 MA's), (20, 9355), (24, 9400),

Gene: Jolie2_11 Start: 8394, Stop: 8687, Start Num: 5

Candidate Starts for Jolie2_11:

(Start: 5 @8394 has 117 MA's), (11, 8490), (17, 8577), (23, 8661), (24, 8673),

Gene: Jonghyun_11 Start: 9154, Stop: 9417, Start Num: 5

Candidate Starts for Jonghyun_11:

(Start: 5 @9154 has 117 MA's), (20, 9355), (24, 9400),

Gene: JorRay_11 Start: 9154, Stop: 9417, Start Num: 5

Candidate Starts for JorRay_11:

(Start: 5 @9154 has 117 MA's), (20, 9355), (24, 9400),

Gene: Juliette_17 Start: 10828, Stop: 11088, Start Num: 5

Candidate Starts for Juliette_17:

(Start: 5 @10828 has 117 MA's), (Start: 8 @10885 has 1 MA's), (19, 11005), (21, 11041), (23, 11059),

Gene: Kareem_11 Start: 9154, Stop: 9417, Start Num: 5

Candidate Starts for Kareem_11:

(Start: 5 @9154 has 117 MA's), (20, 9355), (24, 9400),

Gene: Kasen3_11 Start: 9155, Stop: 9418, Start Num: 5

Candidate Starts for Kasen3_11:
(Start: 5 @9155 has 117 MA's), (20, 9356), (24, 9401),

Gene: Kratio_13 Start: 9526, Stop: 9792, Start Num: 5
Candidate Starts for Kratio_13:
(Start: 3 @9520 has 14 MA's), (Start: 5 @9526 has 117 MA's), (Start: 8 @9583 has 1 MA's), (Start: 9 @9592 has 1 MA's), (16, 9670), (19, 9703), (23, 9757),

Gene: Kraw_17 Start: 10873, Stop: 11133, Start Num: 5
Candidate Starts for Kraw_17:
(Start: 5 @10873 has 117 MA's), (Start: 8 @10930 has 1 MA's), (12, 10963), (19, 11050), (21, 11086), (23, 11104),

Gene: Larva_14 Start: 9641, Stop: 9907, Start Num: 5
Candidate Starts for Larva_14:
(Start: 3 @9635 has 14 MA's), (Start: 5 @9641 has 117 MA's), (Start: 8 @9698 has 1 MA's), (Start: 9 @9707 has 1 MA's), (16, 9785), (19, 9818), (23, 9872),

Gene: Lebo14_17 Start: 10967, Stop: 11227, Start Num: 5
Candidate Starts for Lebo14_17:
(Start: 5 @10967 has 117 MA's), (Start: 8 @11024 has 1 MA's), (12, 11057), (19, 11144), (21, 11180), (23, 11198),

Gene: Lemuria_11 Start: 8447, Stop: 8740, Start Num: 5
Candidate Starts for Lemuria_11:
(Start: 5 @8447 has 117 MA's), (17, 8630), (23, 8714), (24, 8726),

Gene: Leston_14 Start: 10000, Stop: 10200, Start Num: 9
Candidate Starts for Leston_14:
(Start: 5 @9934 has 117 MA's), (Start: 9 @10000 has 1 MA's), (16, 10078), (19, 10111), (23, 10165),

Gene: Liefie_11 Start: 9153, Stop: 9416, Start Num: 5
Candidate Starts for Liefie_11:
(Start: 5 @9153 has 117 MA's), (20, 9354), (24, 9399),

Gene: LilDirt_13 Start: 9656, Stop: 9922, Start Num: 5
Candidate Starts for LilDirt_13:
(Start: 3 @9650 has 14 MA's), (Start: 5 @9656 has 117 MA's), (Start: 8 @9713 has 1 MA's), (Start: 9 @9722 has 1 MA's), (16, 9800), (19, 9833), (23, 9887),

Gene: LouisV14_11 Start: 9154, Stop: 9417, Start Num: 5
Candidate Starts for LouisV14_11:
(Start: 5 @9154 has 117 MA's), (20, 9355), (24, 9400),

Gene: MOOREtheMARYer_11 Start: 9335, Stop: 9628, Start Num: 5
Candidate Starts for MOOREtheMARYer_11:
(Start: 5 @9335 has 117 MA's), (13, 9443),

Gene: MZKinsey_11 Start: 9154, Stop: 9417, Start Num: 5
Candidate Starts for MZKinsey_11:
(Start: 5 @9154 has 117 MA's), (20, 9355), (24, 9400),

Gene: Maliketh_11 Start: 9154, Stop: 9417, Start Num: 5

Candidate Starts for Maliketh_11:
(Start: 5 @9154 has 117 MA's), (20, 9355), (24, 9400),

Gene: Malthus_17 Start: 10873, Stop: 11133, Start Num: 5
Candidate Starts for Malthus_17:
(Start: 5 @10873 has 117 MA's), (Start: 8 @10930 has 1 MA's), (12, 10963), (19, 11050), (21, 11086),
(23, 11104),

Gene: Marcoliusprime_12 Start: 7693, Stop: 7965, Start Num: 3
Candidate Starts for Marcoliusprime_12:
(Start: 3 @7693 has 14 MA's), (Start: 7 @7714 has 2 MA's), (Start: 8 @7756 has 1 MA's), (19, 7876),
(23, 7930),

Gene: Marmie_11 Start: 9154, Stop: 9417, Start Num: 5
Candidate Starts for Marmie_11:
(Start: 5 @9154 has 117 MA's), (20, 9355), (24, 9400),

Gene: Mercurio_12 Start: 9090, Stop: 9383, Start Num: 5
Candidate Starts for Mercurio_12:
(Start: 5 @9090 has 117 MA's), (Start: 8 @9159 has 1 MA's), (11, 9186), (19, 9303), (24, 9369),

Gene: Milly_12 Start: 7693, Stop: 7965, Start Num: 3
Candidate Starts for Milly_12:
(Start: 3 @7693 has 14 MA's), (Start: 7 @7714 has 2 MA's), (Start: 8 @7756 has 1 MA's), (19, 7876),
(23, 7930),

Gene: Miryou_14 Start: 9782, Stop: 10048, Start Num: 5
Candidate Starts for Miryou_14:
(Start: 5 @9782 has 117 MA's), (Start: 9 @9848 has 1 MA's), (16, 9926), (19, 9959), (23, 10013),

Gene: MissDaisy_17 Start: 10727, Stop: 10987, Start Num: 5
Candidate Starts for MissDaisy_17:
(Start: 5 @10727 has 117 MA's), (Start: 8 @10784 has 1 MA's), (12, 10817), (19, 10904), (21, 10940),
(23, 10958),

Gene: Mitti_17 Start: 10877, Stop: 11137, Start Num: 5
Candidate Starts for Mitti_17:
(Start: 5 @10877 has 117 MA's), (Start: 8 @10934 has 1 MA's), (12, 10967), (19, 11054), (21, 11090),
(23, 11108),

Gene: Mowgli_11 Start: 9154, Stop: 9417, Start Num: 5
Candidate Starts for Mowgli_11:
(Start: 5 @9154 has 117 MA's), (20, 9355), (24, 9400),

Gene: Mufasa_12 Start: 7679, Stop: 7951, Start Num: 3
Candidate Starts for Mufasa_12:
(Start: 3 @7679 has 14 MA's), (Start: 7 @7700 has 2 MA's), (Start: 8 @7742 has 1 MA's), (15, 7796),
(19, 7862), (23, 7916),

Gene: Neighly_14 Start: 9706, Stop: 9906, Start Num: 9
Candidate Starts for Neighly_14:
(Start: 3 @9634 has 14 MA's), (Start: 5 @9640 has 117 MA's), (Start: 8 @9697 has 1 MA's), (Start: 9
@9706 has 1 MA's), (16, 9784), (19, 9817), (23, 9871),

Gene: Neoh_11 Start: 9155, Stop: 9418, Start Num: 5

Candidate Starts for Neoh_11:

(Start: 5 @9155 has 117 MA's), (20, 9356), (24, 9401),

Gene: November_14 Start: 9529, Stop: 9810, Start Num: 3

Candidate Starts for November_14:

(1, 9466), (Start: 3 @9529 has 14 MA's), (Start: 8 @9592 has 1 MA's), (15, 9646), (18, 9700), (23, 9766),

Gene: OctaviousRex_11 Start: 9154, Stop: 9417, Start Num: 5

Candidate Starts for OctaviousRex_11:

(Start: 5 @9154 has 117 MA's), (20, 9355), (24, 9400),

Gene: OkiRoe_14 Start: 9804, Stop: 10070, Start Num: 5

Candidate Starts for OkiRoe_14:

(Start: 5 @9804 has 117 MA's), (Start: 9 @9870 has 1 MA's), (16, 9948), (19, 9981), (23, 10035),

Gene: Olga_11 Start: 9154, Stop: 9417, Start Num: 5

Candidate Starts for Olga_11:

(Start: 5 @9154 has 117 MA's), (20, 9355), (24, 9400),

Gene: OmniCritical_17 Start: 10864, Stop: 11124, Start Num: 5

Candidate Starts for OmniCritical_17:

(Start: 5 @10864 has 117 MA's), (Start: 8 @10921 has 1 MA's), (12, 10954), (19, 11041), (21, 11077), (23, 11095),

Gene: Omnicron_14 Start: 8879, Stop: 9136, Start Num: 6

Candidate Starts for Omnicron_14:

(Start: 5 @8870 has 117 MA's), (Start: 6 @8879 has 1 MA's), (Start: 9 @8936 has 1 MA's), (16, 9014), (21, 9083), (23, 9101),

Gene: Paito_11 Start: 9253, Stop: 9516, Start Num: 5

Candidate Starts for Paito_11:

(Start: 5 @9253 has 117 MA's), (20, 9454), (24, 9499),

Gene: Paola_14 Start: 9804, Stop: 10070, Start Num: 5

Candidate Starts for Paola_14:

(Start: 5 @9804 has 117 MA's), (Start: 9 @9870 has 1 MA's), (16, 9948), (19, 9981), (23, 10035),

Gene: Patt_17 Start: 10703, Stop: 10963, Start Num: 5

Candidate Starts for Patt_17:

(Start: 5 @10703 has 117 MA's), (Start: 8 @10760 has 1 MA's), (12, 10793), (19, 10880), (21, 10916), (23, 10934),

Gene: Peeb_11 Start: 9154, Stop: 9417, Start Num: 5

Candidate Starts for Peeb_11:

(Start: 5 @9154 has 117 MA's), (20, 9355), (24, 9400),

Gene: Periodt_11 Start: 9154, Stop: 9417, Start Num: 5

Candidate Starts for Periodt_11:

(Start: 5 @9154 has 117 MA's), (20, 9355), (24, 9400),

Gene: Phish_11 Start: 9154, Stop: 9417, Start Num: 5
Candidate Starts for Phish_11:
(Start: 5 @9154 has 117 MA's), (20, 9355), (24, 9400),

Gene: Phloodle_11 Start: 9154, Stop: 9417, Start Num: 5
Candidate Starts for Phloodle_11:
(Start: 5 @9154 has 117 MA's), (20, 9355), (24, 9400),

Gene: Phreak_11 Start: 9154, Stop: 9417, Start Num: 5
Candidate Starts for Phreak_11:
(Start: 5 @9154 has 117 MA's), (20, 9355), (24, 9400),

Gene: PinkYoshi_11 Start: 9154, Stop: 9417, Start Num: 5
Candidate Starts for PinkYoshi_11:
(Start: 5 @9154 has 117 MA's), (20, 9355), (24, 9400),

Gene: Pinnie_12 Start: 9801, Stop: 10094, Start Num: 5
Candidate Starts for Pinnie_12:
(Start: 5 @9801 has 117 MA's), (13, 9909),

Gene: Plagueis_11 Start: 9154, Stop: 9417, Start Num: 5
Candidate Starts for Plagueis_11:
(Start: 5 @9154 has 117 MA's), (20, 9355), (24, 9400),

Gene: Psycho_14 Start: 9771, Stop: 10037, Start Num: 5
Candidate Starts for Psycho_14:
(Start: 3 @9765 has 14 MA's), (Start: 5 @9771 has 117 MA's), (Start: 8 @9828 has 1 MA's), (Start: 9 @9837 has 1 MA's), (16, 9915), (19, 9948), (23, 10002),

Gene: Qhanda_17 Start: 10973, Stop: 11233, Start Num: 5
Candidate Starts for Qhanda_17:
(Start: 5 @10973 has 117 MA's), (Start: 8 @11030 has 1 MA's), (12, 11063), (19, 11150), (21, 11186), (23, 11204),

Gene: Rabbs_11 Start: 9137, Stop: 9400, Start Num: 5
Candidate Starts for Rabbs_11:
(Start: 5 @9137 has 117 MA's), (20, 9338), (24, 9383),

Gene: Rando14_14 Start: 8772, Stop: 9038, Start Num: 5
Candidate Starts for Rando14_14:
(Start: 5 @8772 has 117 MA's), (16, 8916), (19, 8949), (21, 8985), (23, 9003),

Gene: Rattrick_11 Start: 9154, Stop: 9417, Start Num: 5
Candidate Starts for Rattrick_11:
(Start: 5 @9154 has 117 MA's), (20, 9355), (24, 9400),

Gene: Remy19_11 Start: 9154, Stop: 9417, Start Num: 5
Candidate Starts for Remy19_11:
(Start: 5 @9154 has 117 MA's), (20, 9355), (24, 9400),

Gene: Renaissance_11 Start: 9154, Stop: 9417, Start Num: 5
Candidate Starts for Renaissance_11:
(Start: 5 @9154 has 117 MA's), (20, 9355), (24, 9400),

Gene: Reptar3000_17 Start: 10705, Stop: 10965, Start Num: 5

Candidate Starts for Reptar3000_17:

(Start: 5 @10705 has 117 MA's), (Start: 8 @10762 has 1 MA's), (12, 10795), (19, 10882), (21, 10918), (23, 10936),

Gene: Richarlison_11 Start: 9154, Stop: 9417, Start Num: 5

Candidate Starts for Richarlison_11:

(Start: 5 @9154 has 117 MA's), (20, 9355), (24, 9400),

Gene: Ruriko_11 Start: 9154, Stop: 9417, Start Num: 5

Candidate Starts for Ruriko_11:

(Start: 5 @9154 has 117 MA's), (20, 9355), (24, 9400),

Gene: Ruthiejr_16 Start: 10559, Stop: 10819, Start Num: 5

Candidate Starts for Ruthiejr_16:

(Start: 5 @10559 has 117 MA's), (Start: 8 @10616 has 1 MA's), (19, 10736), (21, 10772), (23, 10790),

Gene: SamScheppers_15 Start: 10480, Stop: 10740, Start Num: 5

Candidate Starts for SamScheppers_15:

(Start: 5 @10480 has 117 MA's), (Start: 8 @10537 has 1 MA's), (12, 10570), (19, 10657), (21, 10693), (23, 10711),

Gene: Schiebel_11 Start: 9154, Stop: 9417, Start Num: 5

Candidate Starts for Schiebel_11:

(Start: 5 @9154 has 117 MA's), (20, 9355), (24, 9400),

Gene: ShaboiShabazz_11 Start: 9154, Stop: 9417, Start Num: 5

Candidate Starts for ShaboiShabazz_11:

(Start: 5 @9154 has 117 MA's), (20, 9355), (24, 9400),

Gene: Sizemore_11 Start: 9155, Stop: 9418, Start Num: 5

Candidate Starts for Sizemore_11:

(Start: 5 @9155 has 117 MA's), (20, 9356), (24, 9401),

Gene: Slarp_17 Start: 10964, Stop: 11224, Start Num: 5

Candidate Starts for Slarp_17:

(Start: 5 @10964 has 117 MA's), (Start: 8 @11021 has 1 MA's), (12, 11054), (19, 11141), (21, 11177), (23, 11195),

Gene: Sneeze_11 Start: 9136, Stop: 9399, Start Num: 5

Candidate Starts for Sneeze_11:

(Start: 5 @9136 has 117 MA's), (20, 9337), (24, 9382),

Gene: SoSeph_14 Start: 9931, Stop: 10197, Start Num: 5

Candidate Starts for SoSeph_14:

(Start: 5 @9931 has 117 MA's), (Start: 9 @9997 has 1 MA's), (16, 10075), (23, 10162),

Gene: Stargaze_11 Start: 9410, Stop: 9703, Start Num: 5

Candidate Starts for Stargaze_11:

(Start: 5 @9410 has 117 MA's), (17, 9593),

Gene: Strobilo_12 Start: 7693, Stop: 7965, Start Num: 3

Candidate Starts for Strobilo_12:

(Start: 3 @7693 has 14 MA's), (Start: 7 @7714 has 2 MA's), (Start: 8 @7756 has 1 MA's), (19, 7876), (23, 7930),

Gene: Sweets_11 Start: 9149, Stop: 9412, Start Num: 5

Candidate Starts for Sweets_11:

(Start: 5 @9149 has 117 MA's), (Start: 8 @9206 has 1 MA's), (20, 9350), (24, 9395),

Gene: TM4_12 Start: 7766, Stop: 8017, Start Num: 7

Candidate Starts for TM4_12:

(Start: 3 @7745 has 14 MA's), (Start: 7 @7766 has 2 MA's), (Start: 8 @7808 has 1 MA's), (19, 7928), (23, 7982),

Gene: Taheera_11 Start: 9146, Stop: 9409, Start Num: 5

Candidate Starts for Taheera_11:

(Start: 5 @9146 has 117 MA's), (20, 9347), (24, 9392),

Gene: Taquito_15 Start: 10550, Stop: 10810, Start Num: 5

Candidate Starts for Taquito_15:

(Start: 5 @10550 has 117 MA's), (Start: 8 @10607 has 1 MA's), (19, 10727), (21, 10763), (23, 10781),

Gene: Terror_11 Start: 9146, Stop: 9409, Start Num: 5

Candidate Starts for Terror_11:

(Start: 5 @9146 has 117 MA's), (20, 9347), (24, 9392),

Gene: Thyatira_14 Start: 9803, Stop: 10069, Start Num: 5

Candidate Starts for Thyatira_14:

(Start: 5 @9803 has 117 MA's), (Start: 9 @9869 has 1 MA's), (16, 9947), (19, 9980), (23, 10034),

Gene: TinaBug_11 Start: 9149, Stop: 9412, Start Num: 5

Candidate Starts for TinaBug_11:

(Start: 5 @9149 has 117 MA's), (Start: 8 @9206 has 1 MA's), (20, 9350), (24, 9395),

Gene: TomBrady_11 Start: 9155, Stop: 9418, Start Num: 5

Candidate Starts for TomBrady_11:

(Start: 5 @9155 has 117 MA's), (20, 9356), (24, 9401),

Gene: ViviJ_13 Start: 9656, Stop: 9922, Start Num: 5

Candidate Starts for ViviJ_13:

(Start: 3 @9650 has 14 MA's), (Start: 5 @9656 has 117 MA's), (Start: 8 @9713 has 1 MA's), (Start: 9 @9722 has 1 MA's), (16, 9800), (19, 9833), (23, 9887),

Gene: Waterfoul_14 Start: 9825, Stop: 10091, Start Num: 5

Candidate Starts for Waterfoul_14:

(Start: 5 @9825 has 117 MA's), (Start: 9 @9891 has 1 MA's), (16, 9969), (19, 10002), (23, 10056),

Gene: Wendigo_11 Start: 9154, Stop: 9417, Start Num: 5

Candidate Starts for Wendigo_11:

(Start: 5 @9154 has 117 MA's), (20, 9355), (24, 9400),

Gene: Wintermute_17 Start: 10953, Stop: 11213, Start Num: 5

Candidate Starts for Wintermute_17:

(4, 10950), (Start: 5 @10953 has 117 MA's), (Start: 8 @11010 has 1 MA's), (12, 11043), (19, 11130), (21, 11166), (23, 11184),

Gene: Y10_17 Start: 10953, Stop: 11213, Start Num: 5

Candidate Starts for Y10_17:

(Start: 5 @10953 has 117 MA's), (Start: 8 @11010 has 1 MA's), (12, 11043), (19, 11130), (21, 11166), (23, 11184),

Gene: Y2_17 Start: 10953, Stop: 11213, Start Num: 5

Candidate Starts for Y2_17:

(Start: 5 @10953 has 117 MA's), (Start: 8 @11010 has 1 MA's), (12, 11043), (19, 11130), (21, 11166), (23, 11184),

Gene: YangYin_11 Start: 9410, Stop: 9703, Start Num: 5

Candidate Starts for YangYin_11:

(Start: 5 @9410 has 117 MA's), (17, 9593),

Gene: YasnayaPolyana_17 Start: 10954, Stop: 11214, Start Num: 5

Candidate Starts for YasnayaPolyana_17:

(Start: 5 @10954 has 117 MA's), (Start: 8 @11011 has 1 MA's), (12, 11044), (19, 11131), (21, 11167), (23, 11185),

Gene: ZoMa_11 Start: 9154, Stop: 9417, Start Num: 5

Candidate Starts for ZoMa_11:

(Start: 5 @9154 has 117 MA's), (20, 9355), (24, 9400),

Gene: ZoeJ_12 Start: 7662, Stop: 7913, Start Num: 7

Candidate Starts for ZoeJ_12:

(Start: 3 @7641 has 14 MA's), (Start: 7 @7662 has 2 MA's), (Start: 8 @7704 has 1 MA's), (19, 7824), (23, 7878),

Gene: Zombie_11 Start: 9154, Stop: 9417, Start Num: 5

Candidate Starts for Zombie_11:

(Start: 5 @9154 has 117 MA's), (20, 9355), (24, 9400),