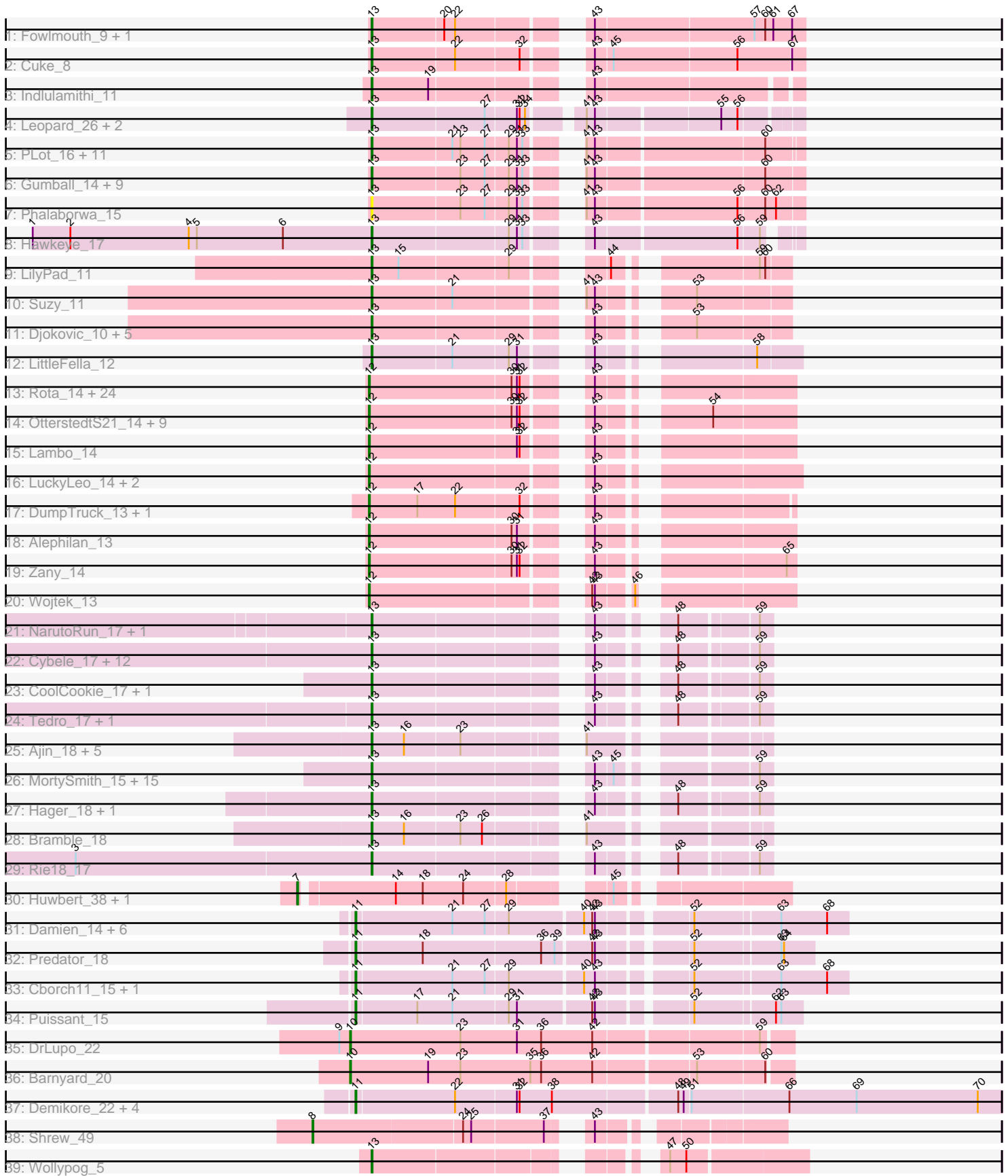


Pham 304773



Note: Tracks are now grouped by subcluster and scaled. Switching in subcluster is indicated by changes in track color. Track scale is now set by default to display the region 30 bp upstream of start 1 to 30 bp downstream of the last possible start. If this default region is judged to be packed too tightly with annotated starts, the track will be further scaled to only show that region of the ORF with annotated starts. This action will be indicated by adding "Zoomed" to the title. For starts, yellow indicates the location of called starts comprised solely of Glimmer/GeneMark auto-annotations, green indicates the location of called starts with at least 1 manual gene annotation.

## Pham 304773 Report

This analysis was run 06/08/26 on database version 649.

Pham number 304773 has 151 members, 11 are drafts.

Phages represented in each track:

- Track 1 : Fowlmouth\_9, MrMiyagi\_9
- Track 2 : Cuke\_8
- Track 3 : Indlulamithi\_11
- Track 4 : Leopard\_26, Onyinye\_27, Aikoy\_26
- Track 5 : PLOT\_16, Giuseppe\_15, WaldoWhy\_16, Helpful\_16, Delton\_15, Thoth\_15, Chill\_16, Visconti\_15, SuperheroCarly\_15, Penelope2018\_15, Troll4\_15, Mopey\_15
- Track 6 : Gumball\_14, KandZ\_15, SirHarley\_14, Nova\_15, BigMama\_13, Prager\_15, Erk16\_15, Adjutor\_16, PBI1\_16, Butterscotch\_15
- Track 7 : Phalaborwa\_15
- Track 8 : Hawkeye\_17
- Track 9 : LilyPad\_11
- Track 10 : Suzy\_11
- Track 11 : Djokovic\_10, Terapin\_10, BiteSize\_10, Madi\_10, Sienna\_10, Beyonage\_10
- Track 12 : LittleFella\_12
- Track 13 : Rota\_14, RazorC\_13, Ranch\_14, Charminar\_13, Alyssamiracle\_13, Stormer\_13, Sampudon\_15, Genamy16\_13, Patos\_15, DaviePasture\_14, Rumi\_13, Gretellyn\_14, Riduram\_13, Avian\_13, Sadboi\_14, Jalebi\_15, Astralis\_13, Pywacket\_14, NovaSharks\_13, Yikes\_15, Jamemuya19\_13, NorManre\_15, Erutan\_14, Rukungu\_15, Mima20\_14
- Track 14 : OtterstedtS21\_14, Fulcrum\_15, Lila22\_15, BirthdayBoy\_15, ParvusTarda\_14, DoobyDoo\_13, Gibbin\_15, MoiGyank\_16, LavAbarElk\_13, GOATification\_15
- Track 15 : Lambo\_14
- Track 16 : LuckyLeo\_14, Apeppi\_13, Tillicus\_15
- Track 17 : DumpTruck\_13, Xenia2\_14
- Track 18 : Alephilan\_13
- Track 19 : Zany\_14
- Track 20 : Wojtek\_13
- Track 21 : NarutoRun\_17, Anakin\_17
- Track 22 : Cybele\_17, Kate\_17, Krampus\_17, OhDear\_17, OverHedge\_17, Rachella\_17, PhunaPhoke\_17, Artiphact\_17, Gilda\_17, Pharpay\_17, Karate\_16, Neptune\_17, AnnaSerena\_17
- Track 23 : CoolCookie\_17, FountainFog\_16
- Track 24 : Tedro\_17, Haunter\_17
- Track 25 : Ajin\_18, TinyMiny\_18, RikSengupta\_18, Kors\_18, Sparcetus\_18, LordBart\_18

- Track 26 : MortySmith\_15, Chivey\_16, Dauntless\_16, Erudite\_16, FreddieHg\_16, Annapurna\_16, DannyDe\_16, Snakehole\_18, Aesir\_16, SilentWarrior\_16, JDawG\_16, Crestdrop\_16, JingleBells\_16, Tongui\_16, Hiddenleaf\_16, Poultruss\_16
- Track 27 : Hager\_18, Potty\_17
- Track 28 : Bramble\_18
- Track 29 : Rie18\_17
- Track 30 : Huwbart\_38, Triscuit\_37
- Track 31 : Damien\_14, Phreeze\_14, Beckerton\_14, BobtimousPrime\_16, Thumb\_14, Konstantine\_19, Oaker\_14
- Track 32 : Predator\_18
- Track 33 : Cborch11\_15, Megatron06\_16
- Track 34 : Puissant\_15
- Track 35 : DrLupo\_22
- Track 36 : Barnyard\_20
- Track 37 : Demikore\_22, Labelle\_21, SuperSonics\_21, Madrug\_20, Patience\_22
- Track 38 : Shrew\_49
- Track 39 : Wollypog\_5

***Summary of Final Annotations (See graph section above for start numbers):***

The start number called the most often in the published annotations is 13, it was called in 82 of the 140 non-draft genes in the pham.

Genes that call this "Most Annotated" start:

- Adjutor\_16, Aesir\_16, Aikoy\_26, Ajin\_18, Anakin\_17, AnnaSerena\_17, Annapurna\_16, Artiphact\_17, Beyoncage\_10, BigMama\_13, BiteSize\_10, Bramble\_18, Butterscotch\_15, Chill\_16, Chivey\_16, CoolCookie\_17, Crestdrop\_16, Cuke\_8, Cybele\_17, DannyDe\_16, Dauntless\_16, Delton\_15, Djokovic\_10, Erk16\_15, Erudite\_16, FountainFog\_16, Fowlmouth\_9, FreddieHg\_16, Gilda\_17, Giuseppe\_15, Gumball\_14, Hager\_18, Haunter\_17, Hawkeye\_17, Helpful\_16, Hiddenleaf\_16, Indlulamithi\_11, JDawG\_16, JingleBells\_16, KandZ\_15, Karate\_16, Kate\_17, Kors\_18, Krampus\_17, Leopard\_26, LilyPad\_11, LittleFella\_12, LordBart\_18, Madi\_10, Mopey\_15, MortySmith\_15, MrMiyagi\_9, NarutoRun\_17, Neptune\_17, Nova\_15, OhDear\_17, Onyinye\_27, OverHedge\_17, PBI1\_16, PLOT\_16, Penelope2018\_15, Phalaborwa\_15, Pharpay\_17, PhunaPhoke\_17, Potty\_17, Poultruss\_16, Prager\_15, Rachella\_17, Rie18\_17, RikSengupta\_18, Sienna\_10, SilentWarrior\_16, SirHarley\_14, Snakehole\_18, Sparcetus\_18, SuperheroCarly\_15, Suzy\_11, Tedro\_17, Terapin\_10, Thoth\_15, TinyMiny\_18, Tongui\_16, Troll4\_15, Visconti\_15, WaldoWhy\_16, Wollypog\_5,

Genes that have the "Most Annotated" start but do not call it:

- 

Genes that do not have the "Most Annotated" start:

- Alephlan\_13, Alyssamiracle\_13, Apeppi\_13, Astralis\_13, Avian\_13, Barnyard\_20, Beckerton\_14, BirthdayBoy\_15, BobtimousPrime\_16, Cborch11\_15, Charminar\_13, Damien\_14, DaviePasture\_14, Demikore\_22, DoobyDoo\_13, DrLupo\_22, DumpTruck\_13, Erutan\_14, Fulcrum\_15, GOATification\_15, Genamy16\_13, Gibbin\_15, Gretellyn\_14, Huwbart\_38, Jalebi\_15, Jamemuya19\_13, Konstantine\_19, Labelle\_21, Lambo\_14, LavAbarElk\_13, Lila22\_15, LuckyLeo\_14, Madrug\_20,

Megatron06\_16, Mima20\_14, MoiGyank\_16, NorManre\_15, NovaSharks\_13, Oaker\_14, OtterstedtS21\_14, ParvusTarda\_14, Patience\_22, Patos\_15, Phreeze\_14, Predator\_18, Puissant\_15, Pywacket\_14, Ranch\_14, RazorC\_13, Riduram\_13, Rota\_14, Rukungu\_15, Rumi\_13, Sadboi\_14, Sampudon\_15, Shrew\_49, Stormer\_13, SuperSonics\_21, Thumb\_14, Tillicus\_15, Triscuit\_37, Wojtek\_13, Xenia2\_14, Yikes\_15, Zany\_14,

### Summary by start number:

#### Start 7:

- Found in 2 of 151 ( 1.3% ) of genes in pham
- Manual Annotations of this start: 2 of 140
- Called 100.0% of time when present
- Phage (with cluster) where this start called: Huwbert\_38 (GG), Triscuit\_37 (GG),

#### Start 8:

- Found in 1 of 151 ( 0.7% ) of genes in pham
- Manual Annotations of this start: 1 of 140
- Called 100.0% of time when present
- Phage (with cluster) where this start called: Shrew\_49 (singleton),

#### Start 10:

- Found in 2 of 151 ( 1.3% ) of genes in pham
- Manual Annotations of this start: 2 of 140
- Called 100.0% of time when present
- Phage (with cluster) where this start called: Barnyard\_20 (H2), DrLupo\_22 (H2),

#### Start 11:

- Found in 16 of 151 ( 10.6% ) of genes in pham
- Manual Annotations of this start: 14 of 140
- Called 100.0% of time when present
- Phage (with cluster) where this start called: Beckerton\_14 (H1), BobtimousPrime\_16 (H1), Cborch11\_15 (H1), Damien\_14 (H1), Demikore\_22 (U), Konstantine\_19 (H1), Labelle\_21 (U), Madrugua\_20 (U), Megatron06\_16 (H1), Oaker\_14 (H1), Patience\_22 (U), Phreeze\_14 (H1), Predator\_18 (H1), Puissant\_15 (H1), SuperSonics\_21 (U), Thumb\_14 (H1),

#### Start 12:

- Found in 44 of 151 ( 29.1% ) of genes in pham
- Manual Annotations of this start: 39 of 140
- Called 100.0% of time when present
- Phage (with cluster) where this start called: Alephilan\_13 (DV), Alyssamiracle\_13 (DV), Apeppi\_13 (DV), Astralis\_13 (DV), Avian\_13 (DV), BirthdayBoy\_15 (DV), Charminar\_13 (DV), DaviePasture\_14 (DV), DoobyDoo\_13 (DV), DumpTruck\_13 (DV), Erutan\_14 (DV), Fulcrum\_15 (DV), GOATification\_15 (DV), Genamy16\_13 (DV), Gibbin\_15 (DV), GretelLyn\_14 (DV), Jalebi\_15 (DV), Jamemuya19\_13 (DV), Lambo\_14 (DV), LavAbarElk\_13 (DV), Lila22\_15 (DV), LuckyLeo\_14 (DV), Mima20\_14 (DV), MoiGyank\_16 (DV), NorManre\_15 (DV), NovaSharks\_13 (DV), OtterstedtS21\_14 (DV), ParvusTarda\_14 (DV), Patos\_15 (DV), Pywacket\_14 (DV), Ranch\_14 (DV), RazorC\_13 (DV), Riduram\_13 (DV), Rota\_14 (DV), Rukungu\_15 (DV), Rumi\_13 (DV), Sadboi\_14 (DV), Sampudon\_15 (DV), Stormer\_13 (DV), Tillicus\_15 (DV), Wojtek\_13 (DV), Xenia2\_14 (DV), Yikes\_15 (DV), Zany\_14 (DV),

Start 13:

- Found in 86 of 151 ( 57.0% ) of genes in pham
- Manual Annotations of this start: 82 of 140
- Called 100.0% of time when present
- Phage (with cluster) where this start called: Adjutor\_16 (D1), Aesir\_16 (EF), Aikoy\_26 (AE), Ajin\_18 (EF), Anakin\_17 (EF), AnnaSerena\_17 (EF), Annapurna\_16 (EF), Artiphact\_17 (EF), Beyoncage\_10 (DG1), BigMama\_13 (D1), BiteSize\_10 (DG1), Bramble\_18 (EF), Butterscotch\_15 (D1), Chill\_16 (D1), Chivey\_16 (EF), CoolCookie\_17 (EF), Crestdrop\_16 (EF), Cuke\_8 (AC), Cybele\_17 (EF), DannyDe\_16 (EF), Dauntless\_16 (EF), Delton\_15 (D1), Djokovic\_10 (DG1), Erk16\_15 (D1), Erudite\_16 (EF), FountainFog\_16 (EF), Fowlmouth\_9 (AC), FreddieHg\_16 (EF), Gilda\_17 (EF), Giuseppe\_15 (D1), Gumball\_14 (D1), Hager\_18 (EF), Haunter\_17 (EF), Hawkeye\_17 (D2), Helpful\_16 (D1), Hiddenleaf\_16 (EF), Indlulamithi\_11 (AC), JDawG\_16 (EF), JingleBells\_16 (EF), KandZ\_15 (D1), Karate\_16 (EF), Kate\_17 (EF), Kors\_18 (EF), Krampus\_17 (EF), Leopard\_26 (AE), LilyPad\_11 (DG1), LittleFella\_12 (DG2), LordBart\_18 (EF), Madi\_10 (DG1), Mopey\_15 (D1), MortySmith\_15 (EF), MrMiyagi\_9 (AC), NarutoRun\_17 (EF), Neptune\_17 (EF), Nova\_15 (D1), OhDear\_17 (EF), Onyinye\_27 (AE), OverHedge\_17 (EF), PBI1\_16 (D1), PLOt\_16 (D1), Penelope2018\_15 (D1), Phalaborwa\_15 (D1), Pharpay\_17 (EF), PhunaPhoke\_17 (EF), Potty\_17 (EF), Poultruss\_16 (EF), Prager\_15 (D1), Rachella\_17 (EF), Rie18\_17 (EF), RikSengupta\_18 (EF), Sienna\_10 (DG1), SilentWarrior\_16 (EF), SirHarley\_14 (D1), Snakehole\_18 (EF), Sparcetus\_18 (EF), SuperheroCarly\_15 (D1), Suzy\_11 (DG1), Tedro\_17 (EF), Terapin\_10 (DG1), Thoth\_15 (D1), TinyMiny\_18 (EF), Tongui\_16 (EF), Troll4\_15 (D1), Visconti\_15 (D1), WaldoWhy\_16 (D1), Wollypog\_5 (singleton),

### Summary by clusters:

There are 13 clusters represented in this pham: DG2, AC, H1, AE, H2, EF, singleton, GG, DG1, U, DV, D2, D1,

Info for manual annotations of cluster AC:

- Start number 13 was manually annotated 4 times for cluster AC.

Info for manual annotations of cluster AE:

- Start number 13 was manually annotated 3 times for cluster AE.

Info for manual annotations of cluster D1:

- Start number 13 was manually annotated 22 times for cluster D1.

Info for manual annotations of cluster D2:

- Start number 13 was manually annotated 1 time for cluster D2.

Info for manual annotations of cluster DG1:

- Start number 13 was manually annotated 8 times for cluster DG1.

Info for manual annotations of cluster DG2:

- Start number 13 was manually annotated 1 time for cluster DG2.

Info for manual annotations of cluster DV:

- Start number 12 was manually annotated 39 times for cluster DV.

Info for manual annotations of cluster EF:

- Start number 13 was manually annotated 42 times for cluster EF.

Info for manual annotations of cluster GG:

- Start number 7 was manually annotated 2 times for cluster GG.

Info for manual annotations of cluster H1:

- Start number 11 was manually annotated 11 times for cluster H1.

Info for manual annotations of cluster H2:

- Start number 10 was manually annotated 2 times for cluster H2.

Info for manual annotations of cluster U:

- Start number 11 was manually annotated 3 times for cluster U.

### ***Gene Information:***

Gene: Adjutor\_16 Start: 10392, Stop: 10811, Start Num: 13

Candidate Starts for Adjutor\_16:

(Start: 13 @10392 has 82 MA's), (23, 10488), (27, 10515), (29, 10539), (31, 10548), (33, 10554), (41, 10587), (43, 10596), (60, 10773),

Gene: Aesir\_16 Start: 9070, Stop: 9429, Start Num: 13

Candidate Starts for Aesir\_16:

(Start: 13 @9070 has 82 MA's), (43, 9277), (45, 9295), (59, 9415),

Gene: Aikoy\_26 Start: 16296, Stop: 16724, Start Num: 13

Candidate Starts for Aikoy\_26:

(Start: 13 @16296 has 82 MA's), (27, 16419), (31, 16452), (32, 16455), (34, 16461), (41, 16509), (43, 16518), (55, 16647), (56, 16665),

Gene: Ajin\_18 Start: 9126, Stop: 9482, Start Num: 13

Candidate Starts for Ajin\_18:

(Start: 13 @9126 has 82 MA's), (16, 9162), (23, 9222), (41, 9321),

Gene: Alephilan\_13 Start: 10817, Stop: 11206, Start Num: 12

Candidate Starts for Alephilan\_13:

(Start: 12 @10817 has 39 MA's), (30, 10973), (31, 10979), (43, 11027),

Gene: Alyssamiracle\_13 Start: 9224, Stop: 9613, Start Num: 12

Candidate Starts for Alyssamiracle\_13:

(Start: 12 @9224 has 39 MA's), (30, 9380), (31, 9386), (32, 9389), (43, 9434),

Gene: Anakin\_17 Start: 9282, Stop: 9638, Start Num: 13

Candidate Starts for Anakin\_17:

(Start: 13 @9282 has 82 MA's), (43, 9489), (48, 9546), (59, 9624),

Gene: AnnaSerena\_17 Start: 9288, Stop: 9644, Start Num: 13

Candidate Starts for AnnaSerena\_17:

(Start: 13 @9288 has 82 MA's), (43, 9495), (48, 9552), (59, 9630),

Gene: Annapurna\_16 Start: 8489, Stop: 8848, Start Num: 13

Candidate Starts for Annapurna\_16:  
(Start: 13 @8489 has 82 MA's), (43, 8696), (45, 8714), (59, 8834),

Gene: Apeppi\_13 Start: 10933, Stop: 11331, Start Num: 12  
Candidate Starts for Apeppi\_13:  
(Start: 12 @10933 has 39 MA's), (43, 11143),

Gene: Artiphact\_17 Start: 9280, Stop: 9636, Start Num: 13  
Candidate Starts for Artiphact\_17:  
(Start: 13 @9280 has 82 MA's), (43, 9487), (48, 9544), (59, 9622),

Gene: Astralis\_13 Start: 9224, Stop: 9613, Start Num: 12  
Candidate Starts for Astralis\_13:  
(Start: 12 @9224 has 39 MA's), (30, 9380), (31, 9386), (32, 9389), (43, 9434),

Gene: Avian\_13 Start: 9224, Stop: 9613, Start Num: 12  
Candidate Starts for Avian\_13:  
(Start: 12 @9224 has 39 MA's), (30, 9380), (31, 9386), (32, 9389), (43, 9434),

Gene: Barnyard\_20 Start: 11230, Stop: 11703, Start Num: 10  
Candidate Starts for Barnyard\_20:  
(Start: 10 @11230 has 2 MA's), (19, 11317), (23, 11353), (35, 11431), (36, 11443), (42, 11500), (53, 11605), (60, 11677),

Gene: Beckerton\_14 Start: 10316, Stop: 10822, Start Num: 11  
Candidate Starts for Beckerton\_14:  
(Start: 11 @10316 has 14 MA's), (21, 10421), (27, 10457), (29, 10481), (40, 10559), (42, 10568), (43, 10571), (52, 10658), (63, 10748), (68, 10799),

Gene: Beyoncage\_10 Start: 6697, Stop: 7074, Start Num: 13  
Candidate Starts for Beyoncage\_10:  
(Start: 13 @6697 has 82 MA's), (43, 6901), (53, 6976),

Gene: BigMama\_13 Start: 10465, Stop: 10884, Start Num: 13  
Candidate Starts for BigMama\_13:  
(Start: 13 @10465 has 82 MA's), (23, 10561), (27, 10588), (29, 10612), (31, 10621), (33, 10627), (41, 10660), (43, 10669), (60, 10846),

Gene: BirthdayBoy\_15 Start: 11670, Stop: 12059, Start Num: 12  
Candidate Starts for BirthdayBoy\_15:  
(Start: 12 @11670 has 39 MA's), (30, 11826), (31, 11832), (32, 11835), (43, 11880), (54, 11973),

Gene: BiteSize\_10 Start: 6697, Stop: 7074, Start Num: 13  
Candidate Starts for BiteSize\_10:  
(Start: 13 @6697 has 82 MA's), (43, 6901), (53, 6976),

Gene: BobtimousPrime\_16 Start: 10236, Stop: 10742, Start Num: 11  
Candidate Starts for BobtimousPrime\_16:  
(Start: 11 @10236 has 14 MA's), (21, 10341), (27, 10377), (29, 10401), (40, 10479), (42, 10488), (43, 10491), (52, 10578), (63, 10668), (68, 10719),

Gene: Bramble\_18 Start: 9093, Stop: 9449, Start Num: 13  
Candidate Starts for Bramble\_18:

(Start: 13 @9093 has 82 MA's), (16, 9129), (23, 9189), (26, 9213), (41, 9288),

Gene: Butterscotch\_15 Start: 10452, Stop: 10871, Start Num: 13

Candidate Starts for Butterscotch\_15:

(Start: 13 @10452 has 82 MA's), (23, 10548), (27, 10575), (29, 10599), (31, 10608), (33, 10614), (41, 10647), (43, 10656), (60, 10833),

Gene: Cborch11\_15 Start: 9778, Stop: 10284, Start Num: 11

Candidate Starts for Cborch11\_15:

(Start: 11 @9778 has 14 MA's), (21, 9883), (27, 9919), (29, 9943), (40, 10021), (43, 10033), (52, 10120), (63, 10210), (68, 10261),

Gene: Charminar\_13 Start: 9224, Stop: 9613, Start Num: 12

Candidate Starts for Charminar\_13:

(Start: 12 @9224 has 39 MA's), (30, 9380), (31, 9386), (32, 9389), (43, 9434),

Gene: Chill\_16 Start: 10455, Stop: 10874, Start Num: 13

Candidate Starts for Chill\_16:

(Start: 13 @10455 has 82 MA's), (21, 10542), (23, 10551), (27, 10578), (29, 10602), (31, 10611), (33, 10617), (41, 10650), (43, 10659), (60, 10836),

Gene: Chivey\_16 Start: 8482, Stop: 8841, Start Num: 13

Candidate Starts for Chivey\_16:

(Start: 13 @8482 has 82 MA's), (43, 8689), (45, 8707), (59, 8827),

Gene: CoolCookie\_17 Start: 9286, Stop: 9642, Start Num: 13

Candidate Starts for CoolCookie\_17:

(Start: 13 @9286 has 82 MA's), (43, 9493), (48, 9550), (59, 9628),

Gene: Crestdrop\_16 Start: 8356, Stop: 8715, Start Num: 13

Candidate Starts for Crestdrop\_16:

(Start: 13 @8356 has 82 MA's), (43, 8563), (45, 8581), (59, 8701),

Gene: Cuke\_8 Start: 5912, Stop: 6340, Start Num: 13

Candidate Starts for Cuke\_8:

(Start: 13 @5912 has 82 MA's), (22, 6002), (32, 6071), (43, 6116), (45, 6134), (56, 6269), (67, 6326),

Gene: Cybele\_17 Start: 9256, Stop: 9612, Start Num: 13

Candidate Starts for Cybele\_17:

(Start: 13 @9256 has 82 MA's), (43, 9463), (48, 9520), (59, 9598),

Gene: Damien\_14 Start: 9778, Stop: 10284, Start Num: 11

Candidate Starts for Damien\_14:

(Start: 11 @9778 has 14 MA's), (21, 9883), (27, 9919), (29, 9943), (40, 10021), (42, 10030), (43, 10033), (52, 10120), (63, 10210), (68, 10261),

Gene: DannyDe\_16 Start: 8474, Stop: 8833, Start Num: 13

Candidate Starts for DannyDe\_16:

(Start: 13 @8474 has 82 MA's), (43, 8681), (45, 8699), (59, 8819),

Gene: Dauntless\_16 Start: 8999, Stop: 9358, Start Num: 13

Candidate Starts for Dauntless\_16:

(Start: 13 @8999 has 82 MA's), (43, 9206), (45, 9224), (59, 9344),

Gene: DaviePasture\_14 Start: 11427, Stop: 11816, Start Num: 12

Candidate Starts for DaviePasture\_14:

(Start: 12 @11427 has 39 MA's), (30, 11583), (31, 11589), (32, 11592), (43, 11637),

Gene: Delton\_15 Start: 10461, Stop: 10880, Start Num: 13

Candidate Starts for Delton\_15:

(Start: 13 @10461 has 82 MA's), (21, 10548), (23, 10557), (27, 10584), (29, 10608), (31, 10617), (33, 10623), (41, 10656), (43, 10665), (60, 10842),

Gene: Demikore\_22 Start: 12751, Stop: 13449, Start Num: 11

Candidate Starts for Demikore\_22:

(Start: 11 @12751 has 14 MA's), (22, 12859), (31, 12925), (32, 12928), (38, 12964), (48, 13096), (49, 13102), (51, 13108), (66, 13213), (69, 13288), (70, 13423),

Gene: Djokovic\_10 Start: 6697, Stop: 7074, Start Num: 13

Candidate Starts for Djokovic\_10:

(Start: 13 @6697 has 82 MA's), (43, 6901), (53, 6976),

Gene: DoobyDoo\_13 Start: 10604, Stop: 10993, Start Num: 12

Candidate Starts for DoobyDoo\_13:

(Start: 12 @10604 has 39 MA's), (30, 10760), (31, 10766), (32, 10769), (43, 10814), (54, 10907),

Gene: DrLupo\_22 Start: 11658, Stop: 12131, Start Num: 10

Candidate Starts for DrLupo\_22:

(9, 11646), (Start: 10 @11658 has 2 MA's), (23, 11781), (31, 11844), (36, 11871), (42, 11928), (59, 12099),

Gene: DumpTruck\_13 Start: 10861, Stop: 11247, Start Num: 12

Candidate Starts for DumpTruck\_13:

(Start: 12 @10861 has 39 MA's), (17, 10915), (22, 10957), (32, 11026), (43, 11071),

Gene: Erk16\_15 Start: 10455, Stop: 10874, Start Num: 13

Candidate Starts for Erk16\_15:

(Start: 13 @10455 has 82 MA's), (23, 10551), (27, 10578), (29, 10602), (31, 10611), (33, 10617), (41, 10650), (43, 10659), (60, 10836),

Gene: Erudite\_16 Start: 8999, Stop: 9358, Start Num: 13

Candidate Starts for Erudite\_16:

(Start: 13 @8999 has 82 MA's), (43, 9206), (45, 9224), (59, 9344),

Gene: Erutan\_14 Start: 11117, Stop: 11506, Start Num: 12

Candidate Starts for Erutan\_14:

(Start: 12 @11117 has 39 MA's), (30, 11273), (31, 11279), (32, 11282), (43, 11327),

Gene: FountainFog\_16 Start: 8616, Stop: 8972, Start Num: 13

Candidate Starts for FountainFog\_16:

(Start: 13 @8616 has 82 MA's), (43, 8823), (48, 8880), (59, 8958),

Gene: Fowlmouth\_9 Start: 6076, Stop: 6507, Start Num: 13

Candidate Starts for Fowlmouth\_9:

(Start: 13 @6076 has 82 MA's), (20, 6154), (22, 6166), (43, 6280), (57, 6451), (60, 6463), (61, 6472), (67, 6493),

Gene: FreddieHg\_16 Start: 8498, Stop: 8857, Start Num: 13  
Candidate Starts for FreddieHg\_16:  
(Start: 13 @8498 has 82 MA's), (43, 8705), (45, 8723), (59, 8843),

Gene: Fulcrum\_15 Start: 11650, Stop: 12039, Start Num: 12  
Candidate Starts for Fulcrum\_15:  
(Start: 12 @11650 has 39 MA's), (30, 11806), (31, 11812), (32, 11815), (43, 11860), (54, 11953),

Gene: GOATification\_15 Start: 11650, Stop: 12039, Start Num: 12  
Candidate Starts for GOATification\_15:  
(Start: 12 @11650 has 39 MA's), (30, 11806), (31, 11812), (32, 11815), (43, 11860), (54, 11953),

Gene: Genamy16\_13 Start: 9224, Stop: 9613, Start Num: 12  
Candidate Starts for Genamy16\_13:  
(Start: 12 @9224 has 39 MA's), (30, 9380), (31, 9386), (32, 9389), (43, 9434),

Gene: Gibbin\_15 Start: 11710, Stop: 12099, Start Num: 12  
Candidate Starts for Gibbin\_15:  
(Start: 12 @11710 has 39 MA's), (30, 11866), (31, 11872), (32, 11875), (43, 11920), (54, 12013),

Gene: Gilda\_17 Start: 9280, Stop: 9636, Start Num: 13  
Candidate Starts for Gilda\_17:  
(Start: 13 @9280 has 82 MA's), (43, 9487), (48, 9544), (59, 9622),

Gene: Giuseppe\_15 Start: 10444, Stop: 10863, Start Num: 13  
Candidate Starts for Giuseppe\_15:  
(Start: 13 @10444 has 82 MA's), (21, 10531), (23, 10540), (27, 10567), (29, 10591), (31, 10600), (33, 10606), (41, 10639), (43, 10648), (60, 10825),

Gene: Gretellyn\_14 Start: 11984, Stop: 12373, Start Num: 12  
Candidate Starts for Gretellyn\_14:  
(Start: 12 @11984 has 39 MA's), (30, 12140), (31, 12146), (32, 12149), (43, 12194),

Gene: Gumball\_14 Start: 10399, Stop: 10821, Start Num: 13  
Candidate Starts for Gumball\_14:  
(Start: 13 @10399 has 82 MA's), (23, 10495), (27, 10522), (29, 10546), (31, 10555), (33, 10561), (41, 10594), (43, 10603), (60, 10780),

Gene: Hager\_18 Start: 8855, Stop: 9211, Start Num: 13  
Candidate Starts for Hager\_18:  
(Start: 13 @8855 has 82 MA's), (43, 9062), (48, 9119), (59, 9197),

Gene: Haunter\_17 Start: 8696, Stop: 9052, Start Num: 13  
Candidate Starts for Haunter\_17:  
(Start: 13 @8696 has 82 MA's), (43, 8903), (48, 8960), (59, 9038),

Gene: Hawkeye\_17 Start: 10361, Stop: 10765, Start Num: 13  
Candidate Starts for Hawkeye\_17:  
(1, 9983), (2, 10025), (4, 10157), (5, 10166), (6, 10262), (Start: 13 @10361 has 82 MA's), (29, 10508), (31, 10517), (33, 10523), (43, 10565), (56, 10715), (59, 10736),

Gene: Helpful\_16 Start: 10452, Stop: 10871, Start Num: 13

Candidate Starts for Helpful\_16:

(Start: 13 @10452 has 82 MA's), (21, 10539), (23, 10548), (27, 10575), (29, 10599), (31, 10608), (33, 10614), (41, 10647), (43, 10656), (60, 10833),

Gene: Hiddenleaf\_16 Start: 8482, Stop: 8841, Start Num: 13

Candidate Starts for Hiddenleaf\_16:

(Start: 13 @8482 has 82 MA's), (43, 8689), (45, 8707), (59, 8827),

Gene: Huwbert\_38 Start: 19477, Stop: 19938, Start Num: 7

Candidate Starts for Huwbert\_38:

(Start: 7 @19477 has 2 MA's), (14, 19573), (18, 19603), (24, 19648), (28, 19693), (45, 19774),

Gene: Indlulamithi\_11 Start: 7639, Stop: 8055, Start Num: 13

Candidate Starts for Indlulamithi\_11:

(Start: 13 @7639 has 82 MA's), (19, 7702), (43, 7843),

Gene: JDawG\_16 Start: 9064, Stop: 9423, Start Num: 13

Candidate Starts for JDawG\_16:

(Start: 13 @9064 has 82 MA's), (43, 9271), (45, 9289), (59, 9409),

Gene: Jalebi\_15 Start: 12160, Stop: 12549, Start Num: 12

Candidate Starts for Jalebi\_15:

(Start: 12 @12160 has 39 MA's), (30, 12316), (31, 12322), (32, 12325), (43, 12370),

Gene: Jamemuya19\_13 Start: 9224, Stop: 9613, Start Num: 12

Candidate Starts for Jamemuya19\_13:

(Start: 12 @9224 has 39 MA's), (30, 9380), (31, 9386), (32, 9389), (43, 9434),

Gene: JingleBells\_16 Start: 8559, Stop: 8918, Start Num: 13

Candidate Starts for JingleBells\_16:

(Start: 13 @8559 has 82 MA's), (43, 8766), (45, 8784), (59, 8904),

Gene: KandZ\_15 Start: 10549, Stop: 10971, Start Num: 13

Candidate Starts for KandZ\_15:

(Start: 13 @10549 has 82 MA's), (23, 10645), (27, 10672), (29, 10696), (31, 10705), (33, 10711), (41, 10744), (43, 10753), (60, 10930),

Gene: Karate\_16 Start: 8704, Stop: 9060, Start Num: 13

Candidate Starts for Karate\_16:

(Start: 13 @8704 has 82 MA's), (43, 8911), (48, 8968), (59, 9046),

Gene: Kate\_17 Start: 9288, Stop: 9644, Start Num: 13

Candidate Starts for Kate\_17:

(Start: 13 @9288 has 82 MA's), (43, 9495), (48, 9552), (59, 9630),

Gene: Konstantine\_19 Start: 10980, Stop: 11486, Start Num: 11

Candidate Starts for Konstantine\_19:

(Start: 11 @10980 has 14 MA's), (21, 11085), (27, 11121), (29, 11145), (40, 11223), (42, 11232), (43, 11235), (52, 11322), (63, 11412), (68, 11463),

Gene: Kors\_18 Start: 9156, Stop: 9512, Start Num: 13

Candidate Starts for Kors\_18:

(Start: 13 @9156 has 82 MA's), (16, 9192), (23, 9252), (41, 9351),

Gene: Krampus\_17 Start: 9286, Stop: 9642, Start Num: 13  
Candidate Starts for Krampus\_17:  
(Start: 13 @9286 has 82 MA's), (43, 9493), (48, 9550), (59, 9628),

Gene: Labelle\_21 Start: 12753, Stop: 13451, Start Num: 11  
Candidate Starts for Labelle\_21:  
(Start: 11 @12753 has 14 MA's), (22, 12861), (31, 12927), (32, 12930), (38, 12966), (48, 13098), (49, 13104), (51, 13110), (66, 13215), (69, 13290), (70, 13425),

Gene: Lambo\_14 Start: 11654, Stop: 12043, Start Num: 12  
Candidate Starts for Lambo\_14:  
(Start: 12 @11654 has 39 MA's), (31, 11816), (32, 11819), (43, 11864),

Gene: LavAbarElk\_13 Start: 10087, Stop: 10476, Start Num: 12  
Candidate Starts for LavAbarElk\_13:  
(Start: 12 @10087 has 39 MA's), (30, 10243), (31, 10249), (32, 10252), (43, 10297), (54, 10390),

Gene: Leopard\_26 Start: 16581, Stop: 17009, Start Num: 13  
Candidate Starts for Leopard\_26:  
(Start: 13 @16581 has 82 MA's), (27, 16704), (31, 16737), (32, 16740), (34, 16746), (41, 16794), (43, 16803), (55, 16932), (56, 16950),

Gene: Lila22\_15 Start: 11608, Stop: 11997, Start Num: 12  
Candidate Starts for Lila22\_15:  
(Start: 12 @11608 has 39 MA's), (30, 11764), (31, 11770), (32, 11773), (43, 11818), (54, 11911),

Gene: LilyPad\_11 Start: 7439, Stop: 7816, Start Num: 13  
Candidate Starts for LilyPad\_11:  
(Start: 13 @7439 has 82 MA's), (15, 7469), (29, 7586), (44, 7658), (59, 7784), (60, 7790),

Gene: LittleFella\_12 Start: 9274, Stop: 9663, Start Num: 13  
Candidate Starts for LittleFella\_12:  
(Start: 13 @9274 has 82 MA's), (21, 9361), (29, 9421), (31, 9430), (43, 9478), (58, 9616),

Gene: LordBart\_18 Start: 9129, Stop: 9485, Start Num: 13  
Candidate Starts for LordBart\_18:  
(Start: 13 @9129 has 82 MA's), (16, 9165), (23, 9225), (41, 9324),

Gene: LuckyLeo\_14 Start: 10933, Stop: 11331, Start Num: 12  
Candidate Starts for LuckyLeo\_14:  
(Start: 12 @10933 has 39 MA's), (43, 11143),

Gene: Madi\_10 Start: 6697, Stop: 7074, Start Num: 13  
Candidate Starts for Madi\_10:  
(Start: 13 @6697 has 82 MA's), (43, 6901), (53, 6976),

Gene: Madruga\_20 Start: 12421, Stop: 13119, Start Num: 11  
Candidate Starts for Madruga\_20:  
(Start: 11 @12421 has 14 MA's), (22, 12529), (31, 12595), (32, 12598), (38, 12634), (48, 12766), (49, 12772), (51, 12778), (66, 12883), (69, 12958), (70, 13093),

Gene: Megatron06\_16 Start: 10313, Stop: 10819, Start Num: 11

Candidate Starts for Megatron06\_16:

(Start: 11 @10313 has 14 MA's), (21, 10418), (27, 10454), (29, 10478), (40, 10556), (43, 10568), (52, 10655), (63, 10745), (68, 10796),

Gene: Mima20\_14 Start: 11337, Stop: 11726, Start Num: 12

Candidate Starts for Mima20\_14:

(Start: 12 @11337 has 39 MA's), (30, 11493), (31, 11499), (32, 11502), (43, 11547),

Gene: MoiGyank\_16 Start: 12021, Stop: 12410, Start Num: 12

Candidate Starts for MoiGyank\_16:

(Start: 12 @12021 has 39 MA's), (30, 12177), (31, 12183), (32, 12186), (43, 12231), (54, 12324),

Gene: Mopey\_15 Start: 10452, Stop: 10871, Start Num: 13

Candidate Starts for Mopey\_15:

(Start: 13 @10452 has 82 MA's), (21, 10539), (23, 10548), (27, 10575), (29, 10599), (31, 10608), (33, 10614), (41, 10647), (43, 10656), (60, 10833),

Gene: MortySmith\_15 Start: 8461, Stop: 8820, Start Num: 13

Candidate Starts for MortySmith\_15:

(Start: 13 @8461 has 82 MA's), (43, 8668), (45, 8686), (59, 8806),

Gene: MrMiyagi\_9 Start: 6076, Stop: 6507, Start Num: 13

Candidate Starts for MrMiyagi\_9:

(Start: 13 @6076 has 82 MA's), (20, 6154), (22, 6166), (43, 6280), (57, 6451), (60, 6463), (61, 6472), (67, 6493),

Gene: NarutoRun\_17 Start: 9282, Stop: 9638, Start Num: 13

Candidate Starts for NarutoRun\_17:

(Start: 13 @9282 has 82 MA's), (43, 9489), (48, 9546), (59, 9624),

Gene: Neptune\_17 Start: 9256, Stop: 9612, Start Num: 13

Candidate Starts for Neptune\_17:

(Start: 13 @9256 has 82 MA's), (43, 9463), (48, 9520), (59, 9598),

Gene: NorManre\_15 Start: 11216, Stop: 11605, Start Num: 12

Candidate Starts for NorManre\_15:

(Start: 12 @11216 has 39 MA's), (30, 11372), (31, 11378), (32, 11381), (43, 11426),

Gene: Nova\_15 Start: 10876, Stop: 11298, Start Num: 13

Candidate Starts for Nova\_15:

(Start: 13 @10876 has 82 MA's), (23, 10972), (27, 10999), (29, 11023), (31, 11032), (33, 11038), (41, 11071), (43, 11080), (60, 11257),

Gene: NovaSharks\_13 Start: 9224, Stop: 9613, Start Num: 12

Candidate Starts for NovaSharks\_13:

(Start: 12 @9224 has 39 MA's), (30, 9380), (31, 9386), (32, 9389), (43, 9434),

Gene: Oaker\_14 Start: 10037, Stop: 10543, Start Num: 11

Candidate Starts for Oaker\_14:

(Start: 11 @10037 has 14 MA's), (21, 10142), (27, 10178), (29, 10202), (40, 10280), (42, 10289), (43, 10292), (52, 10379), (63, 10469), (68, 10520),

Gene: OhDear\_17 Start: 9285, Stop: 9641, Start Num: 13

Candidate Starts for OhDear\_17:

(Start: 13 @9285 has 82 MA's), (43, 9492), (48, 9549), (59, 9627),

Gene: Onyinye\_27 Start: 16462, Stop: 16890, Start Num: 13

Candidate Starts for Onyinye\_27:

(Start: 13 @16462 has 82 MA's), (27, 16585), (31, 16618), (32, 16621), (34, 16627), (41, 16675), (43, 16684), (55, 16813), (56, 16831),

Gene: OtterstedtS21\_14 Start: 11306, Stop: 11695, Start Num: 12

Candidate Starts for OtterstedtS21\_14:

(Start: 12 @11306 has 39 MA's), (30, 11462), (31, 11468), (32, 11471), (43, 11516), (54, 11609),

Gene: OverHedge\_17 Start: 9253, Stop: 9609, Start Num: 13

Candidate Starts for OverHedge\_17:

(Start: 13 @9253 has 82 MA's), (43, 9460), (48, 9517), (59, 9595),

Gene: PBI1\_16 Start: 10383, Stop: 10802, Start Num: 13

Candidate Starts for PBI1\_16:

(Start: 13 @10383 has 82 MA's), (23, 10479), (27, 10506), (29, 10530), (31, 10539), (33, 10545), (41, 10578), (43, 10587), (60, 10764),

Gene: PLOT\_16 Start: 10455, Stop: 10874, Start Num: 13

Candidate Starts for PLOT\_16:

(Start: 13 @10455 has 82 MA's), (21, 10542), (23, 10551), (27, 10578), (29, 10602), (31, 10611), (33, 10617), (41, 10650), (43, 10659), (60, 10836),

Gene: ParvusTarda\_14 Start: 10788, Stop: 11177, Start Num: 12

Candidate Starts for ParvusTarda\_14:

(Start: 12 @10788 has 39 MA's), (30, 10944), (31, 10950), (32, 10953), (43, 10998), (54, 11091),

Gene: Patience\_22 Start: 13312, Stop: 14010, Start Num: 11

Candidate Starts for Patience\_22:

(Start: 11 @13312 has 14 MA's), (22, 13420), (31, 13486), (32, 13489), (38, 13525), (48, 13657), (49, 13663), (51, 13669), (66, 13774), (69, 13849), (70, 13984),

Gene: Patos\_15 Start: 11216, Stop: 11605, Start Num: 12

Candidate Starts for Patos\_15:

(Start: 12 @11216 has 39 MA's), (30, 11372), (31, 11378), (32, 11381), (43, 11426),

Gene: Penelope2018\_15 Start: 10452, Stop: 10871, Start Num: 13

Candidate Starts for Penelope2018\_15:

(Start: 13 @10452 has 82 MA's), (21, 10539), (23, 10548), (27, 10575), (29, 10599), (31, 10608), (33, 10614), (41, 10647), (43, 10656), (60, 10833),

Gene: Phalaborwa\_15 Start: 10494, Stop: 10916, Start Num: 13

Candidate Starts for Phalaborwa\_15:

(Start: 13 @10494 has 82 MA's), (23, 10590), (27, 10617), (29, 10641), (31, 10650), (33, 10656), (41, 10689), (43, 10698), (56, 10848), (60, 10875), (62, 10887),

Gene: Pharpay\_17 Start: 9301, Stop: 9657, Start Num: 13

Candidate Starts for Pharpay\_17:

(Start: 13 @9301 has 82 MA's), (43, 9508), (48, 9565), (59, 9643),

Gene: Phreeze\_14 Start: 9778, Stop: 10284, Start Num: 11

Candidate Starts for Phreeze\_14:

(Start: 11 @9778 has 14 MA's), (21, 9883), (27, 9919), (29, 9943), (40, 10021), (42, 10030), (43, 10033), (52, 10120), (63, 10210), (68, 10261),

Gene: PhunaPhoke\_17 Start: 9274, Stop: 9630, Start Num: 13

Candidate Starts for PhunaPhoke\_17:

(Start: 13 @9274 has 82 MA's), (43, 9481), (48, 9538), (59, 9616),

Gene: Potty\_17 Start: 9279, Stop: 9635, Start Num: 13

Candidate Starts for Potty\_17:

(Start: 13 @9279 has 82 MA's), (43, 9486), (48, 9543), (59, 9621),

Gene: Poultress\_16 Start: 9053, Stop: 9412, Start Num: 13

Candidate Starts for Poultress\_16:

(Start: 13 @9053 has 82 MA's), (43, 9260), (45, 9278), (59, 9398),

Gene: Prager\_15 Start: 10461, Stop: 10880, Start Num: 13

Candidate Starts for Prager\_15:

(Start: 13 @10461 has 82 MA's), (23, 10557), (27, 10584), (29, 10608), (31, 10617), (33, 10623), (41, 10656), (43, 10665), (60, 10842),

Gene: Predator\_18 Start: 11335, Stop: 11802, Start Num: 11

Candidate Starts for Predator\_18:

(Start: 11 @11335 has 14 MA's), (18, 11407), (36, 11536), (39, 11551), (42, 11587), (43, 11590), (52, 11677), (63, 11767), (64, 11770),

Gene: Puissant\_15 Start: 10247, Stop: 10702, Start Num: 11

Candidate Starts for Puissant\_15:

(Start: 11 @10247 has 14 MA's), (17, 10313), (21, 10352), (29, 10412), (31, 10421), (42, 10499), (43, 10502), (52, 10589), (62, 10673), (63, 10679),

Gene: Pywacket\_14 Start: 12145, Stop: 12534, Start Num: 12

Candidate Starts for Pywacket\_14:

(Start: 12 @12145 has 39 MA's), (30, 12301), (31, 12307), (32, 12310), (43, 12355),

Gene: Rachella\_17 Start: 9285, Stop: 9641, Start Num: 13

Candidate Starts for Rachella\_17:

(Start: 13 @9285 has 82 MA's), (43, 9492), (48, 9549), (59, 9627),

Gene: Ranch\_14 Start: 10154, Stop: 10543, Start Num: 12

Candidate Starts for Ranch\_14:

(Start: 12 @10154 has 39 MA's), (30, 10310), (31, 10316), (32, 10319), (43, 10364),

Gene: RazorC\_13 Start: 9224, Stop: 9613, Start Num: 12

Candidate Starts for RazorC\_13:

(Start: 12 @9224 has 39 MA's), (30, 9380), (31, 9386), (32, 9389), (43, 9434),

Gene: Riduram\_13 Start: 9194, Stop: 9583, Start Num: 12

Candidate Starts for Riduram\_13:

(Start: 12 @9194 has 39 MA's), (30, 9350), (31, 9356), (32, 9359), (43, 9404),

Gene: Rie18\_17 Start: 8639, Stop: 8995, Start Num: 13

Candidate Starts for Rie18\_17:  
(3, 8312), (Start: 13 @8639 has 82 MA's), (43, 8846), (48, 8903), (59, 8981),

Gene: RikSengupta\_18 Start: 9208, Stop: 9564, Start Num: 13  
Candidate Starts for RikSengupta\_18:  
(Start: 13 @9208 has 82 MA's), (16, 9244), (23, 9304), (41, 9403),

Gene: Rota\_14 Start: 11112, Stop: 11501, Start Num: 12  
Candidate Starts for Rota\_14:  
(Start: 12 @11112 has 39 MA's), (30, 11268), (31, 11274), (32, 11277), (43, 11322),

Gene: Rukungu\_15 Start: 11853, Stop: 12242, Start Num: 12  
Candidate Starts for Rukungu\_15:  
(Start: 12 @11853 has 39 MA's), (30, 12009), (31, 12015), (32, 12018), (43, 12063),

Gene: Rumi\_13 Start: 9224, Stop: 9613, Start Num: 12  
Candidate Starts for Rumi\_13:  
(Start: 12 @9224 has 39 MA's), (30, 9380), (31, 9386), (32, 9389), (43, 9434),

Gene: Sadboi\_14 Start: 11984, Stop: 12373, Start Num: 12  
Candidate Starts for Sadboi\_14:  
(Start: 12 @11984 has 39 MA's), (30, 12140), (31, 12146), (32, 12149), (43, 12194),

Gene: Sampudon\_15 Start: 12160, Stop: 12549, Start Num: 12  
Candidate Starts for Sampudon\_15:  
(Start: 12 @12160 has 39 MA's), (30, 12316), (31, 12322), (32, 12325), (43, 12370),

Gene: Shrew\_49 Start: 23926, Stop: 24369, Start Num: 8  
Candidate Starts for Shrew\_49:  
(Start: 8 @23926 has 1 MA's), (24, 24088), (25, 24097), (37, 24175), (43, 24199),

Gene: Sienna\_10 Start: 6697, Stop: 7074, Start Num: 13  
Candidate Starts for Sienna\_10:  
(Start: 13 @6697 has 82 MA's), (43, 6901), (53, 6976),

Gene: SilentWarrior\_16 Start: 8490, Stop: 8849, Start Num: 13  
Candidate Starts for SilentWarrior\_16:  
(Start: 13 @8490 has 82 MA's), (43, 8697), (45, 8715), (59, 8835),

Gene: SirHarley\_14 Start: 10381, Stop: 10803, Start Num: 13  
Candidate Starts for SirHarley\_14:  
(Start: 13 @10381 has 82 MA's), (23, 10477), (27, 10504), (29, 10528), (31, 10537), (33, 10543), (41, 10576), (43, 10585), (60, 10762),

Gene: Snakehole\_18 Start: 8578, Stop: 8937, Start Num: 13  
Candidate Starts for Snakehole\_18:  
(Start: 13 @8578 has 82 MA's), (43, 8785), (45, 8803), (59, 8923),

Gene: Sparcetus\_18 Start: 9087, Stop: 9443, Start Num: 13  
Candidate Starts for Sparcetus\_18:  
(Start: 13 @9087 has 82 MA's), (16, 9123), (23, 9183), (41, 9282),

Gene: Stormer\_13 Start: 9224, Stop: 9613, Start Num: 12

Candidate Starts for Stormer\_13:

(Start: 12 @9224 has 39 MA's), (30, 9380), (31, 9386), (32, 9389), (43, 9434),

Gene: SuperSonics\_21 Start: 12479, Stop: 13177, Start Num: 11

Candidate Starts for SuperSonics\_21:

(Start: 11 @12479 has 14 MA's), (22, 12587), (31, 12653), (32, 12656), (38, 12692), (48, 12824), (49, 12830), (51, 12836), (66, 12941), (69, 13016), (70, 13151),

Gene: SuperheroCarly\_15 Start: 10314, Stop: 10733, Start Num: 13

Candidate Starts for SuperheroCarly\_15:

(Start: 13 @10314 has 82 MA's), (21, 10401), (23, 10410), (27, 10437), (29, 10461), (31, 10470), (33, 10476), (41, 10509), (43, 10518), (60, 10695),

Gene: Suzy\_11 Start: 7940, Stop: 8317, Start Num: 13

Candidate Starts for Suzy\_11:

(Start: 13 @7940 has 82 MA's), (21, 8027), (41, 8135), (43, 8144), (53, 8219),

Gene: Tedro\_17 Start: 8752, Stop: 9108, Start Num: 13

Candidate Starts for Tedro\_17:

(Start: 13 @8752 has 82 MA's), (43, 8959), (48, 9016), (59, 9094),

Gene: Terapin\_10 Start: 6697, Stop: 7074, Start Num: 13

Candidate Starts for Terapin\_10:

(Start: 13 @6697 has 82 MA's), (43, 6901), (53, 6976),

Gene: Thoth\_15 Start: 10449, Stop: 10868, Start Num: 13

Candidate Starts for Thoth\_15:

(Start: 13 @10449 has 82 MA's), (21, 10536), (23, 10545), (27, 10572), (29, 10596), (31, 10605), (33, 10611), (41, 10644), (43, 10653), (60, 10830),

Gene: Thumb\_14 Start: 9779, Stop: 10285, Start Num: 11

Candidate Starts for Thumb\_14:

(Start: 11 @9779 has 14 MA's), (21, 9884), (27, 9920), (29, 9944), (40, 10022), (42, 10031), (43, 10034), (52, 10121), (63, 10211), (68, 10262),

Gene: Tillicus\_15 Start: 10534, Stop: 10923, Start Num: 12

Candidate Starts for Tillicus\_15:

(Start: 12 @10534 has 39 MA's), (43, 10744),

Gene: TinyMiny\_18 Start: 9106, Stop: 9462, Start Num: 13

Candidate Starts for TinyMiny\_18:

(Start: 13 @9106 has 82 MA's), (16, 9142), (23, 9202), (41, 9301),

Gene: Tongui\_16 Start: 8625, Stop: 8984, Start Num: 13

Candidate Starts for Tongui\_16:

(Start: 13 @8625 has 82 MA's), (43, 8832), (45, 8850), (59, 8970),

Gene: Triscuit\_37 Start: 19392, Stop: 19853, Start Num: 7

Candidate Starts for Triscuit\_37:

(Start: 7 @19392 has 2 MA's), (14, 19488), (18, 19518), (24, 19563), (28, 19608), (45, 19689),

Gene: Troll4\_15 Start: 10453, Stop: 10872, Start Num: 13

Candidate Starts for Troll4\_15:

(Start: 13 @10453 has 82 MA's), (21, 10540), (23, 10549), (27, 10576), (29, 10600), (31, 10609), (33, 10615), (41, 10648), (43, 10657), (60, 10834),

Gene: Visconti\_15 Start: 10462, Stop: 10881, Start Num: 13

Candidate Starts for Visconti\_15:

(Start: 13 @10462 has 82 MA's), (21, 10549), (23, 10558), (27, 10585), (29, 10609), (31, 10618), (33, 10624), (41, 10657), (43, 10666), (60, 10843),

Gene: WaldoWhy\_16 Start: 10455, Stop: 10874, Start Num: 13

Candidate Starts for WaldoWhy\_16:

(Start: 13 @10455 has 82 MA's), (21, 10542), (23, 10551), (27, 10578), (29, 10602), (31, 10611), (33, 10617), (41, 10650), (43, 10659), (60, 10836),

Gene: Wojtek\_13 Start: 10861, Stop: 11250, Start Num: 12

Candidate Starts for Wojtek\_13:

(Start: 12 @10861 has 39 MA's), (42, 11068), (43, 11071), (46, 11104),

Gene: Wollypog\_5 Start: 5809, Stop: 6210, Start Num: 13

Candidate Starts for Wollypog\_5:

(Start: 13 @5809 has 82 MA's), (47, 6064), (50, 6082),

Gene: Xenia2\_14 Start: 10903, Stop: 11289, Start Num: 12

Candidate Starts for Xenia2\_14:

(Start: 12 @10903 has 39 MA's), (17, 10957), (22, 10999), (32, 11068), (43, 11113),

Gene: Yikes\_15 Start: 12245, Stop: 12634, Start Num: 12

Candidate Starts for Yikes\_15:

(Start: 12 @12245 has 39 MA's), (30, 12401), (31, 12407), (32, 12410), (43, 12455),

Gene: Zany\_14 Start: 11374, Stop: 11763, Start Num: 12

Candidate Starts for Zany\_14:

(Start: 12 @11374 has 39 MA's), (30, 11530), (31, 11536), (32, 11539), (43, 11584), (65, 11755),