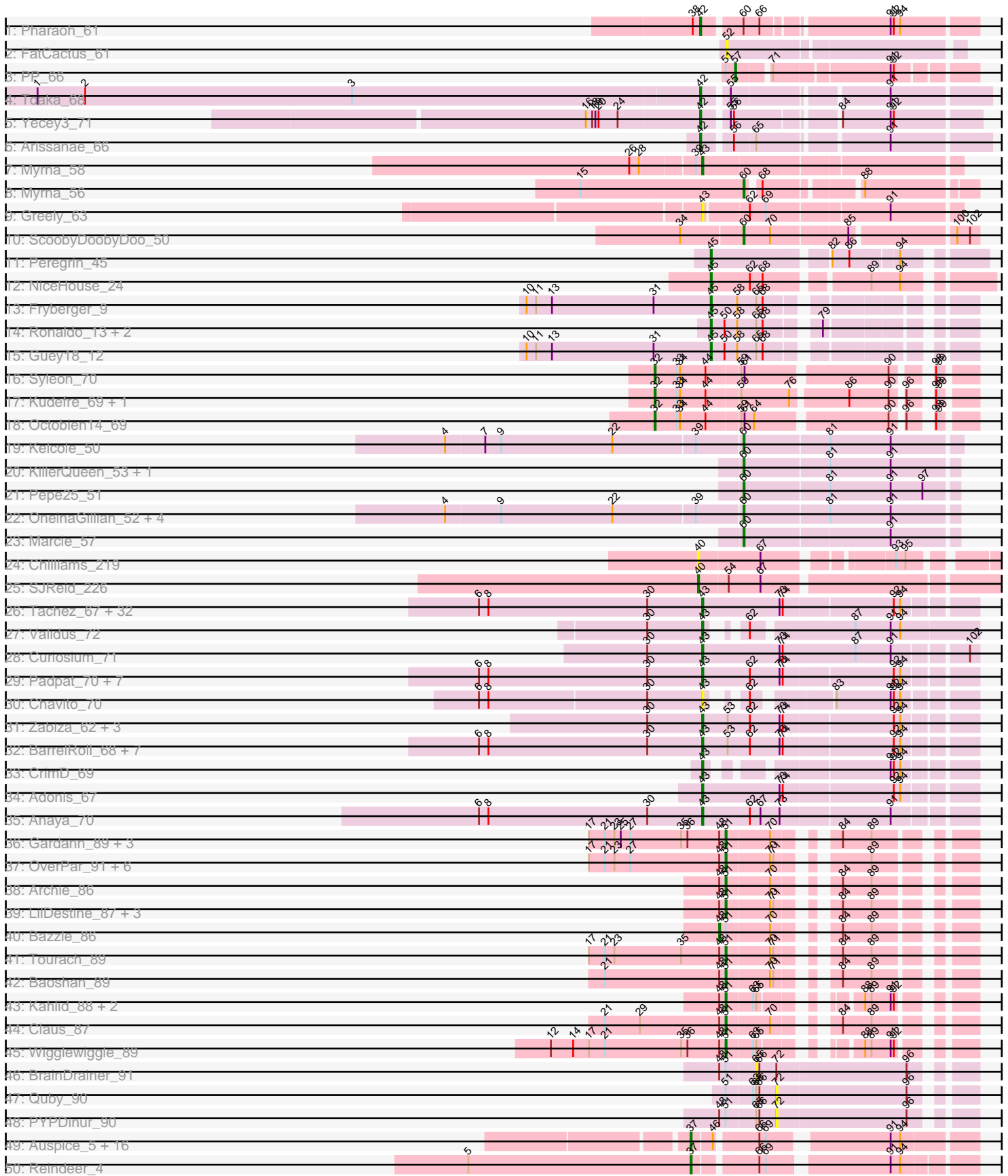
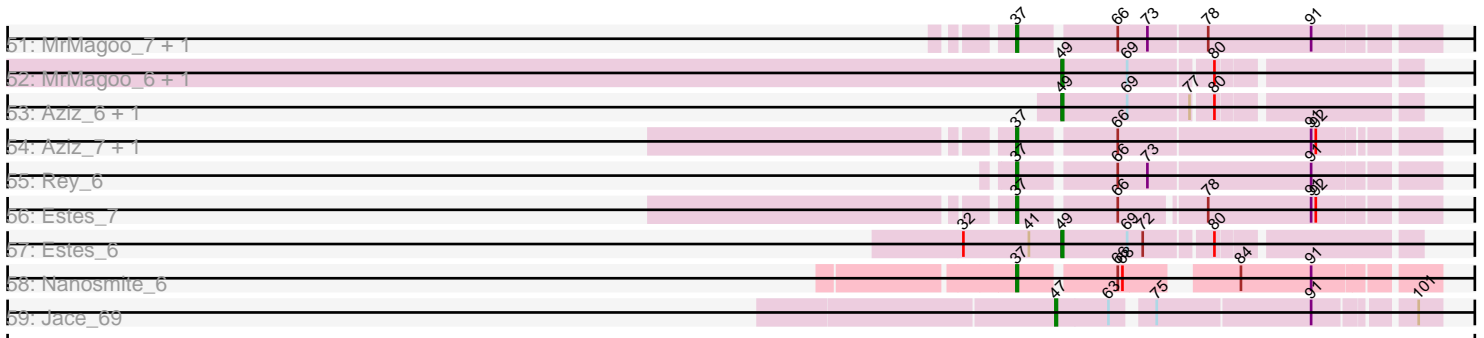


Pham 304775



Pham 304775



Note: Tracks are now grouped by subcluster and scaled. Switching in subcluster is indicated by changes in track color. Track scale is now set by default to display the region 30 bp upstream of start 1 to 30 bp downstream of the last possible start. If this default region is judged to be packed too tightly with annotated starts, the track will be further scaled to only show that region of the ORF with annotated starts. This action will be indicated by adding "Zoomed" to the title. For starts, yellow indicates the location of called starts comprised solely of Glimmer/GeneMark auto-annotations, green indicates the location of called starts with at least 1 manual gene annotation.

Pham 304775 Report

This analysis was run 06/08/26 on database version 649.

Pham number 304775 has 150 members, 14 are drafts.

Phages represented in each track:

- Track 1 : Pharaoh_61
- Track 2 : FatCactus_61
- Track 3 : PP_66
- Track 4 : Toaka_68
- Track 5 : Yecey3_71
- Track 6 : Arissanae_66
- Track 7 : Myrna_58
- Track 8 : Myrna_56
- Track 9 : Greely_63
- Track 10 : ScoobyDoobyDoo_50
- Track 11 : Peregrin_45
- Track 12 : NiceHouse_24
- Track 13 : Fryberger_9
- Track 14 : Ronaldo_13, Ziko_14, Volt_13
- Track 15 : Guey18_12
- Track 16 : Syleon_70
- Track 17 : Kudrefre_69, Sephiroth_68
- Track 18 : Octobien14_69
- Track 19 : Kelcole_50
- Track 20 : KillerQueen_53, Tempo_52
- Track 21 : Pepe25_51
- Track 22 : OneinaGillian_52, Romm_54, CandC_51, RobinRose_54, Fregley_53
- Track 23 : Marcie_57
- Track 24 : Chilliams_219
- Track 25 : SJReid_226
- Track 26 : Tachez_67, BGlluviae_67, Jarvi_67, Twitch_67, Blizzard_67, Atiba_68, Llorens_67, Adephagia_67, Hyperbowlee_67, Inky_67, CaseJules_69, Homura_67, Spock_67, Rosmarinus_67, ShiaSurprise_68, Boiivi_67, Durfee_67, Piatt_67, Capricorn_67, Joy99_67, Peel_67, Belladonna_67, Padfoot_67, Topper_67, Dalmuri_67, CallaLilly_67, Asayake_67, Jeckyll_67, Lunahalos_67, AlishaPH_67, CREW_67, BEEST_67, Geraldini_70
- Track 27 : Validus_72
- Track 28 : Curiosium_71
- Track 29 : Padpat_70, Emerson_69, Pokerus_67, QuincyRose_65, Clipper_71, Beezoo_69, Ganymede_67, MacKat_63
- Track 30 : Chavito_70
- Track 31 : Zabiza_62, Ramen_68, ActinUp_67, HedwigODU_67

- Track 32 : BarrelRoll_68, Rapunzel97_69, TruffulaTree_68, Slimphazie_68, Zavala_70, Mynx_69, Jayhawk_69, MeaningOfLife_68
- Track 33 : CrimD_69
- Track 34 : Adonis_67
- Track 35 : Anaya_70
- Track 36 : Gardann_89, Underpass_81, Nicholasp3_89, Rumpelstiltskin_85
- Track 37 : OverPar_91, Loadrie_88, Faith1_89, Zakai_90, Itos_89, Crossroads_89, Gabriela_89
- Track 38 : Archie_86
- Track 39 : LilDestine_87, GuuelaD_86, Douge_90, ZhongYanYuan_86
- Track 40 : Bazzle_86
- Track 41 : Tourach_89
- Track 42 : Baoshan_89
- Track 43 : Kahlid_88, Wilder_90, Lynnae_90
- Track 44 : Claus_87
- Track 45 : Wigglewiggles_89
- Track 46 : BrainDrainer_91
- Track 47 : Quby_90
- Track 48 : PYPDinur_90
- Track 49 : Auspice_5, Izel_6, RoseMarie_5, IPhane7_5, Dulcita_6, KleverKiS_5, Bongo_5, Bricole_5, Skinny_6, TyDawg_5, LilhomieP_5, SlimJimmy_5, FreakyGoo_6, Diminimus_6, PegLeg_5, Glaske16_6, TpudiCK_6
- Track 50 : Reindeer_4
- Track 51 : MrMagoo_7, GardenSalsa_7
- Track 52 : MrMagoo_6, GardenSalsa_6
- Track 53 : Aziz_6, GenevaB15_6
- Track 54 : Aziz_7, GenevaB15_7
- Track 55 : Rey_6
- Track 56 : Estes_7
- Track 57 : Estes_6
- Track 58 : Nanosmite_6
- Track 59 : Jace_69

Summary of Final Annotations (See graph section above for start numbers):

The start number called the most often in the published annotations is 43, it was called in 59 of the 136 non-draft genes in the pham.

Genes that call this "Most Annotated" start:

- ActinUp_67, Adephegia_67, Adonis_67, AlishaPH_67, Anaya_70, Asayake_67, Atiba_68, BEEST_67, BGlluviae_67, BarrelRoll_68, Beezoo_69, Belladonna_67, Blizzard_67, Boiiii_67, CREW_67, CallaLilly_67, Capricorn_67, CaseJules_69, Chavito_70, Clipper_71, CrimD_69, Curiosium_71, Dalmuri_67, Durfee_67, Emerson_69, Ganymede_67, Geraldini_70, Greely_63, HedwigODU_67, Homura_67, Hyperbowlee_67, Inky_67, Jarvi_67, Jayhawk_69, Jeckyll_67, Joy99_67, Llorens_67, Lunahalos_67, MacKat_63, MeaningOfLife_68, Mynx_69, Myrna_58, Padfoot_67, Padpat_70, Peel_67, Piatt_67, Pokerus_67, QuincyRose_65, Ramen_68, Rapunzel97_69, Rosmarinus_67, ShiaSurprise_68, Slimphazie_68, Spock_67, Tachez_67, Topper_67, TruffulaTree_68, Twitch_67, Validus_72, Zabiza_62, Zavala_70,

Genes that have the "Most Annotated" start but do not call it:

-

Genes that do not have the "Most Annotated" start:

- Archie_86, Arissanae_66, Auspice_5, Aziz_6, Aziz_7, Baoshan_89, Bazzle_86, Bongo_5, BrainDrainer_91, Bricole_5, CandC_51, Chilliams_219, Claus_87, Crossroads_89, Diminimus_6, Douge_90, Dulcita_6, Estes_6, Estes_7, Faith1_89, FatCactus_61, FreakyGoo_6, Fregley_53, Fryberger_9, Gabriela_89, Gardann_89, GardenSalsa_6, GardenSalsa_7, GenevaB15_6, GenevaB15_7, Glaske16_6, Guey18_12, GuuelaD_86, IPhane7_5, Itos_89, Izel_6, Jace_69, Kahlid_88, Kelcole_50, KillerQueen_53, KleverKiS_5, Kudrefre_69, LilDestine_87, LilhomieP_5, Loadrie_88, Lynnae_90, Marcie_57, MrMagoo_6, MrMagoo_7, Myrna_56, Nanosmite_6, NiceHouse_24, Nicholasp3_89, Octobien14_69, OneinaGillian_52, OverPar_91, PP_66, PYPDinur_90, PegLeg_5, Pepe25_51, Peregrin_45, Pharaoh_61, Quby_90, Reindeer_4, Rey_6, RobinRose_54, Romm_54, Ronaldo_13, RoseMarie_5, Rumpelstiltskin_85, SJReid_226, ScoobyDoobyDoo_50, Sephiroth_68, Skinny_6, SlimJimmy_5, Syleon_70, Tempo_52, Toaka_68, Tourach_89, TpudiCK_6, TyDawg_5, Underpass_81, Volt_13, Wigglewiggle_89, Wilder_90, Yecey3_71, Zakai_90, ZhongYanYuan_86, Ziko_14,

Summary by start number:

Start 32:

- Found in 5 of 150 (3.3%) of genes in pham
- Manual Annotations of this start: 4 of 136
- Called 80.0% of time when present
- Phage (with cluster) where this start called: Kudrefre_69 (DU1), Octobien14_69 (DU1), Sephiroth_68 (DU1), Syleon_70 (DU1),

Start 37:

- Found in 25 of 150 (16.7%) of genes in pham
- Manual Annotations of this start: 22 of 136
- Called 100.0% of time when present
- Phage (with cluster) where this start called: Auspice_5 (M1), Aziz_7 (M2), Bongo_5 (M1), Bricole_5 (M1), Diminimus_6 (M1), Dulcita_6 (M1), Estes_7 (M2), FreakyGoo_6 (M1), GardenSalsa_7 (M2), GenevaB15_7 (M2), Glaske16_6 (M1), IPhane7_5 (M1), Izel_6 (M1), KleverKiS_5 (M1), LilhomieP_5 (M1), MrMagoo_7 (M2), Nanosmite_6 (M3), PegLeg_5 (M1), Reindeer_4 (M1), Rey_6 (M2), RoseMarie_5 (M1), Skinny_6 (M1), SlimJimmy_5 (M1), TpudiCK_6 (M1), TyDawg_5 (M1),

Start 40:

- Found in 2 of 150 (1.3%) of genes in pham
- Manual Annotations of this start: 1 of 136
- Called 100.0% of time when present
- Phage (with cluster) where this start called: Chilliams_219 (FC), SJReid_226 (FC),

Start 42:

- Found in 4 of 150 (2.7%) of genes in pham
- Manual Annotations of this start: 4 of 136
- Called 100.0% of time when present
- Phage (with cluster) where this start called: Arissanae_66 (A9), Pharaoh_61 (A12), Toaka_68 (A9), Yecey3_71 (A9),

Start 43:

- Found in 61 of 150 (40.7%) of genes in pham
- Manual Annotations of this start: 59 of 136
- Called 100.0% of time when present
- Phage (with cluster) where this start called: ActinUp_67 (K1), Adephagia_67 (K1), Adonis_67 (K1), AlishaPH_67 (K1), Anaya_70 (K1), Asayake_67 (K1), Atiba_68 (K1), BEEST_67 (K1), BGlluviae_67 (K1), BarrelRoll_68 (K1), Beezoo_69 (K1), Belladonna_67 (K1), Blizzard_67 (K1), Boiiii_67 (K1), CREW_67 (K1), CallaLilly_67 (K1), Capricorn_67 (K1), CaseJules_69 (K1), Chavito_70 (K1), Clipper_71 (K1), CrimD_69 (K1), Curiosium_71 (K1), Dalmuri_67 (K1), Durfee_67 (K1), Emerson_69 (K1), Ganymede_67 (K1), Geraldini_70 (K1), Greely_63 (C2), HedwigODU_67 (K1), Homura_67 (K1), Hyperbowlee_67 (K1), Inky_67 (K1), Jarvi_67 (K1), Jayhawk_69 (K1), Jeckyll_67 (K1), Joy99_67 (K1), Llorens_67 (K1), Lunahalos_67 (K1), MacKat_63 (K1), MeaningOfLife_68 (K1), Mynx_69 (K1), Myrna_58 (C2), Padfoot_67 (K1), Padpat_70 (K1), Peel_67 (K1), Piatt_67 (K1), Pokerus_67 (K1), QuincyRose_65 (K1), Ramen_68 (K1), Rapunzel97_69 (K1), Rosmarinus_67 (K1), ShiaSurprise_68 (K1), Slimphazie_68 (K1), Spock_67 (K1), Tachez_67 (K1), Topper_67 (K1), TruffulaTree_68 (K1), Twitch_67 (K1), Validus_72 (K1), Zabiza_62 (K1), Zavala_70 (K1),

Start 45:

- Found in 7 of 150 (4.7%) of genes in pham
- Manual Annotations of this start: 7 of 136
- Called 100.0% of time when present
- Phage (with cluster) where this start called: Fryberger_9 (DP), Guey18_12 (DP), NiceHouse_24 (CE), Peregrin_45 (CB), Ronaldo_13 (DP), Volt_13 (DP), Ziko_14 (DP),

Start 47:

- Found in 1 of 150 (0.7%) of genes in pham
- Manual Annotations of this start: 1 of 136
- Called 100.0% of time when present
- Phage (with cluster) where this start called: Jace_69 (singleton),

Start 48:

- Found in 26 of 150 (17.3%) of genes in pham
- Manual Annotations of this start: 1 of 136
- Called 3.8% of time when present
- Phage (with cluster) where this start called: Bazzle_86 (L2),

Start 49:

- Found in 5 of 150 (3.3%) of genes in pham
- Manual Annotations of this start: 5 of 136
- Called 100.0% of time when present
- Phage (with cluster) where this start called: Aziz_6 (M2), Estes_6 (M2), GardenSalsa_6 (M2), GenevaB15_6 (M2), MrMagoo_6 (M2),

Start 51:

- Found in 28 of 150 (18.7%) of genes in pham
- Manual Annotations of this start: 20 of 136
- Called 82.1% of time when present

- Phage (with cluster) where this start called: Archie_86 (L2), Baoshan_89 (L2), Claus_87 (L2), Crossroads_89 (L2), Douge_90 (L4), Faith1_89 (L2), Gabriela_89 (L2), Gardann_89 (L2), GuuelaD_86 (L2), Itos_89 (L2), Kahlid_88 (L2), LilDestine_87 (L2), Loadrie_88 (L2), Lynnae_90 (L2), Nicholasp3_89 (L2), OverPar_91 (L2), Rumpelstiltskin_85 (L2), Tourach_89 (L2), Underpass_81 (L2), Wigglewiggles_89 (L2), Wilder_90 (L2), Zakai_90 (L2), ZhongYanYuan_86 (L2),

Start 52:

- Found in 1 of 150 (0.7%) of genes in pham
- No Manual Annotations of this start.
- Called 100.0% of time when present
- Phage (with cluster) where this start called: FatCactus_61 (A20),

Start 57:

- Found in 1 of 150 (0.7%) of genes in pham
- Manual Annotations of this start: 1 of 136
- Called 100.0% of time when present
- Phage (with cluster) where this start called: PP_66 (A7),

Start 60:

- Found in 13 of 150 (8.7%) of genes in pham
- Manual Annotations of this start: 11 of 136
- Called 92.3% of time when present
- Phage (with cluster) where this start called: CandC_51 (EG), Fregley_53 (EG), Kelcole_50 (EG), KillerQueen_53 (EG), Marcie_57 (EG), Myrna_56 (C2), OneinaGillian_52 (EG), Pepe25_51 (EG), RobinRose_54 (EG), Romm_54 (EG), ScoobyDoobyDoo_50 (C2), Tempo_52 (EG),

Start 65:

- Found in 13 of 150 (8.7%) of genes in pham
- No Manual Annotations of this start.
- Called 7.7% of time when present
- Phage (with cluster) where this start called: BrainDrainer_91 (L4),

Start 72:

- Found in 4 of 150 (2.7%) of genes in pham
- No Manual Annotations of this start.
- Called 50.0% of time when present
- Phage (with cluster) where this start called: PYPDinur_90 (L4), Quby_90 (L4),

Summary by clusters:

There are 18 clusters represented in this pham: A20, singleton, M3, A12, CB, EG, DU1, CE, L4, K1, FC, L2, A7, M2, A9, M1, C2, DP,

Info for manual annotations of cluster A12:

- Start number 42 was manually annotated 1 time for cluster A12.

Info for manual annotations of cluster A7:

- Start number 57 was manually annotated 1 time for cluster A7.

Info for manual annotations of cluster A9:

- Start number 42 was manually annotated 3 times for cluster A9.

Info for manual annotations of cluster C2:

- Start number 43 was manually annotated 1 time for cluster C2.
- Start number 60 was manually annotated 2 times for cluster C2.

Info for manual annotations of cluster CB:

- Start number 45 was manually annotated 1 time for cluster CB.

Info for manual annotations of cluster CE:

- Start number 45 was manually annotated 1 time for cluster CE.

Info for manual annotations of cluster DP:

- Start number 45 was manually annotated 5 times for cluster DP.

Info for manual annotations of cluster DU1:

- Start number 32 was manually annotated 4 times for cluster DU1.

Info for manual annotations of cluster EG:

- Start number 60 was manually annotated 9 times for cluster EG.

Info for manual annotations of cluster FC:

- Start number 40 was manually annotated 1 time for cluster FC.

Info for manual annotations of cluster K1:

- Start number 43 was manually annotated 58 times for cluster K1.

Info for manual annotations of cluster L2:

- Start number 48 was manually annotated 1 time for cluster L2.
- Start number 51 was manually annotated 19 times for cluster L2.

Info for manual annotations of cluster L4:

- Start number 51 was manually annotated 1 time for cluster L4.

Info for manual annotations of cluster M1:

- Start number 37 was manually annotated 15 times for cluster M1.

Info for manual annotations of cluster M2:

- Start number 37 was manually annotated 6 times for cluster M2.
- Start number 49 was manually annotated 5 times for cluster M2.

Info for manual annotations of cluster M3:

- Start number 37 was manually annotated 1 time for cluster M3.

Gene Information:

Gene: ActinUp_67 Start: 43706, Stop: 43945, Start Num: 43

Candidate Starts for ActinUp_67:

(30, 43655), (Start: 43 @43706 has 59 MA's), (53, 43730), (62, 43751), (73, 43778), (74, 43781), (92, 43880), (94, 43886),

Gene: Adephagia_67 Start: 43743, Stop: 43982, Start Num: 43
Candidate Starts for Adephagia_67:
(6, 43533), (8, 43542), (30, 43692), (Start: 43 @43743 has 59 MA's), (73, 43815), (74, 43818), (92, 43917), (94, 43923),

Gene: Adonis_67 Start: 43978, Stop: 44217, Start Num: 43
Candidate Starts for Adonis_67:
(Start: 43 @43978 has 59 MA's), (73, 44050), (74, 44053), (92, 44152), (94, 44158),

Gene: AlishaPH_67 Start: 44004, Stop: 44243, Start Num: 43
Candidate Starts for AlishaPH_67:
(6, 43794), (8, 43803), (30, 43953), (Start: 43 @44004 has 59 MA's), (73, 44076), (74, 44079), (92, 44178), (94, 44184),

Gene: Anaya_70 Start: 44697, Stop: 44936, Start Num: 43
Candidate Starts for Anaya_70:
(6, 44487), (8, 44496), (30, 44646), (Start: 43 @44697 has 59 MA's), (62, 44742), (67, 44751), (73, 44769), (91, 44868),

Gene: Archie_86 Start: 57063, Stop: 57242, Start Num: 51
Candidate Starts for Archie_86:
(Start: 48 @57057 has 1 MA's), (Start: 51 @57063 has 20 MA's), (70, 57102), (84, 57141), (89, 57168),

Gene: Arissanae_66 Start: 41220, Stop: 40978, Start Num: 42
Candidate Starts for Arissanae_66:
(Start: 42 @41220 has 4 MA's), (56, 41196), (65, 41178), (91, 41067),

Gene: Asayake_67 Start: 44058, Stop: 44297, Start Num: 43
Candidate Starts for Asayake_67:
(6, 43848), (8, 43857), (30, 44007), (Start: 43 @44058 has 59 MA's), (73, 44130), (74, 44133), (92, 44232), (94, 44238),

Gene: Atiba_68 Start: 43706, Stop: 43945, Start Num: 43
Candidate Starts for Atiba_68:
(6, 43496), (8, 43505), (30, 43655), (Start: 43 @43706 has 59 MA's), (73, 43778), (74, 43781), (92, 43880), (94, 43886),

Gene: Auspice_5 Start: 2366, Stop: 2133, Start Num: 37
Candidate Starts for Auspice_5:
(Start: 37 @2366 has 22 MA's), (46, 2348), (66, 2312), (69, 2306), (91, 2207), (94, 2198),

Gene: Aziz_6 Start: 2394, Stop: 2188, Start Num: 49
Candidate Starts for Aziz_6:
(Start: 49 @2394 has 5 MA's), (69, 2352), (77, 2316), (80, 2304),

Gene: Aziz_7 Start: 2636, Stop: 2391, Start Num: 37
Candidate Starts for Aziz_7:
(Start: 37 @2636 has 22 MA's), (66, 2579), (91, 2459), (92, 2456),

Gene: BEEST_67 Start: 44058, Stop: 44297, Start Num: 43
Candidate Starts for BEEST_67:
(6, 43848), (8, 43857), (30, 44007), (Start: 43 @44058 has 59 MA's), (73, 44130), (74, 44133), (92, 44232), (94, 44238),

Gene: BGlluviae_67 Start: 43861, Stop: 44100, Start Num: 43

Candidate Starts for BGlluviae_67:

(6, 43651), (8, 43660), (30, 43810), (Start: 43 @43861 has 59 MA's), (73, 43933), (74, 43936), (92, 44035), (94, 44041),

Gene: Baoshan_89 Start: 57717, Stop: 57896, Start Num: 51

Candidate Starts for Baoshan_89:

(21, 57603), (Start: 48 @57711 has 1 MA's), (Start: 51 @57717 has 20 MA's), (70, 57756), (71, 57759), (84, 57795), (89, 57822),

Gene: BarrelRoll_68 Start: 44144, Stop: 44383, Start Num: 43

Candidate Starts for BarrelRoll_68:

(6, 43934), (8, 43943), (30, 44093), (Start: 43 @44144 has 59 MA's), (53, 44168), (62, 44189), (73, 44216), (74, 44219), (92, 44318), (94, 44324),

Gene: Bazzle_86 Start: 57613, Stop: 57798, Start Num: 48

Candidate Starts for Bazzle_86:

(Start: 48 @57613 has 1 MA's), (Start: 51 @57619 has 20 MA's), (70, 57658), (84, 57697), (89, 57724),

Gene: Beezoo_69 Start: 44656, Stop: 44895, Start Num: 43

Candidate Starts for Beezoo_69:

(6, 44446), (8, 44455), (30, 44605), (Start: 43 @44656 has 59 MA's), (62, 44701), (73, 44728), (74, 44731), (92, 44830), (94, 44836),

Gene: Belladonna_67 Start: 43861, Stop: 44100, Start Num: 43

Candidate Starts for Belladonna_67:

(6, 43651), (8, 43660), (30, 43810), (Start: 43 @43861 has 59 MA's), (73, 43933), (74, 43936), (92, 44035), (94, 44041),

Gene: Blizzard_67 Start: 44058, Stop: 44297, Start Num: 43

Candidate Starts for Blizzard_67:

(6, 43848), (8, 43857), (30, 44007), (Start: 43 @44058 has 59 MA's), (73, 44130), (74, 44133), (92, 44232), (94, 44238),

Gene: Boiiii_67 Start: 44060, Stop: 44299, Start Num: 43

Candidate Starts for Boiiii_67:

(6, 43850), (8, 43859), (30, 44009), (Start: 43 @44060 has 59 MA's), (73, 44132), (74, 44135), (92, 44234), (94, 44240),

Gene: Bongo_5 Start: 2366, Stop: 2133, Start Num: 37

Candidate Starts for Bongo_5:

(Start: 37 @2366 has 22 MA's), (46, 2348), (66, 2312), (69, 2306), (91, 2207), (94, 2198),

Gene: BrainDrainer_91 Start: 57339, Stop: 57524, Start Num: 65

Candidate Starts for BrainDrainer_91:

(Start: 48 @57306 has 1 MA's), (Start: 51 @57312 has 20 MA's), (65, 57339), (66, 57342), (72, 57357), (96, 57477),

Gene: Bricole_5 Start: 2365, Stop: 2132, Start Num: 37

Candidate Starts for Bricole_5:

(Start: 37 @2365 has 22 MA's), (46, 2347), (66, 2311), (69, 2305), (91, 2206), (94, 2197),

Gene: CREW_67 Start: 43861, Stop: 44100, Start Num: 43

Candidate Starts for CREW_67:

(6, 43651), (8, 43660), (30, 43810), (Start: 43 @43861 has 59 MA's), (73, 43933), (74, 43936), (92, 44035), (94, 44041),

Gene: CallaLilly_67 Start: 43784, Stop: 44023, Start Num: 43

Candidate Starts for CallaLilly_67:

(6, 43574), (8, 43583), (30, 43733), (Start: 43 @43784 has 59 MA's), (73, 43856), (74, 43859), (92, 43958), (94, 43964),

Gene: CandC_51 Start: 36309, Stop: 36118, Start Num: 60

Candidate Starts for CandC_51:

(4, 36582), (9, 36531), (22, 36426), (39, 36351), (Start: 60 @36309 has 11 MA's), (81, 36234), (91, 36177),

Gene: Capricorn_67 Start: 43861, Stop: 44100, Start Num: 43

Candidate Starts for Capricorn_67:

(6, 43651), (8, 43660), (30, 43810), (Start: 43 @43861 has 59 MA's), (73, 43933), (74, 43936), (92, 44035), (94, 44041),

Gene: CaseJules_69 Start: 44058, Stop: 44297, Start Num: 43

Candidate Starts for CaseJules_69:

(6, 43848), (8, 43857), (30, 44007), (Start: 43 @44058 has 59 MA's), (73, 44130), (74, 44133), (92, 44232), (94, 44238),

Gene: Chavito_70 Start: 44900, Stop: 45100, Start Num: 43

Candidate Starts for Chavito_70:

(6, 44693), (8, 44702), (30, 44849), (Start: 43 @44900 has 59 MA's), (62, 44918), (83, 44981), (91, 45032), (92, 45035), (94, 45041),

Gene: Chilliams_219 Start: 144486, Stop: 144719, Start Num: 40

Candidate Starts for Chilliams_219:

(Start: 40 @144486 has 1 MA's), (67, 144543), (93, 144642), (95, 144651),

Gene: Claus_87 Start: 57401, Stop: 57580, Start Num: 51

Candidate Starts for Claus_87:

(21, 57287), (29, 57320), (Start: 48 @57395 has 1 MA's), (Start: 51 @57401 has 20 MA's), (70, 57440), (84, 57479), (89, 57506),

Gene: Clipper_71 Start: 44760, Stop: 44999, Start Num: 43

Candidate Starts for Clipper_71:

(6, 44550), (8, 44559), (30, 44709), (Start: 43 @44760 has 59 MA's), (62, 44805), (73, 44832), (74, 44835), (92, 44934), (94, 44940),

Gene: CrimD_69 Start: 44683, Stop: 44892, Start Num: 43

Candidate Starts for CrimD_69:

(Start: 43 @44683 has 59 MA's), (91, 44824), (92, 44827), (94, 44833),

Gene: Crossroads_89 Start: 57560, Stop: 57739, Start Num: 51

Candidate Starts for Crossroads_89:

(17, 57431), (21, 57446), (23, 57455), (27, 57470), (Start: 48 @57554 has 1 MA's), (Start: 51 @57560 has 20 MA's), (70, 57599), (71, 57602), (89, 57665),

Gene: Curiosium_71 Start: 43377, Stop: 43622, Start Num: 43
Candidate Starts for Curiosium_71:
(30, 43326), (Start: 43 @43377 has 59 MA's), (73, 43449), (74, 43452), (87, 43521), (91, 43554), (102, 43614),

Gene: Dalmuri_67 Start: 43861, Stop: 44100, Start Num: 43
Candidate Starts for Dalmuri_67:
(6, 43651), (8, 43660), (30, 43810), (Start: 43 @43861 has 59 MA's), (73, 43933), (74, 43936), (92, 44035), (94, 44041),

Gene: Diminimus_6 Start: 2365, Stop: 2132, Start Num: 37
Candidate Starts for Diminimus_6:
(Start: 37 @2365 has 22 MA's), (46, 2347), (66, 2311), (69, 2305), (91, 2206), (94, 2197),

Gene: Douge_90 Start: 56768, Stop: 56947, Start Num: 51
Candidate Starts for Douge_90:
(Start: 48 @56762 has 1 MA's), (Start: 51 @56768 has 20 MA's), (70, 56807), (71, 56810), (84, 56846), (89, 56873),

Gene: Dulcita_6 Start: 2365, Stop: 2132, Start Num: 37
Candidate Starts for Dulcita_6:
(Start: 37 @2365 has 22 MA's), (46, 2347), (66, 2311), (69, 2305), (91, 2206), (94, 2197),

Gene: Durfee_67 Start: 44058, Stop: 44297, Start Num: 43
Candidate Starts for Durfee_67:
(6, 43848), (8, 43857), (30, 44007), (Start: 43 @44058 has 59 MA's), (73, 44130), (74, 44133), (92, 44232), (94, 44238),

Gene: Emerson_69 Start: 44178, Stop: 44417, Start Num: 43
Candidate Starts for Emerson_69:
(6, 43968), (8, 43977), (30, 44127), (Start: 43 @44178 has 59 MA's), (62, 44223), (73, 44250), (74, 44253), (92, 44352), (94, 44358),

Gene: Estes_7 Start: 2641, Stop: 2399, Start Num: 37
Candidate Starts for Estes_7:
(Start: 37 @2641 has 22 MA's), (66, 2584), (78, 2536), (91, 2470), (92, 2467),

Gene: Estes_6 Start: 2402, Stop: 2196, Start Num: 49
Candidate Starts for Estes_6:
(Start: 32 @2465 has 4 MA's), (41, 2423), (Start: 49 @2402 has 5 MA's), (69, 2360), (72, 2351), (80, 2312),

Gene: Faith1_89 Start: 57485, Stop: 57664, Start Num: 51
Candidate Starts for Faith1_89:
(17, 57356), (21, 57371), (23, 57380), (27, 57395), (Start: 48 @57479 has 1 MA's), (Start: 51 @57485 has 20 MA's), (70, 57524), (71, 57527), (89, 57590),

Gene: FatCactus_61 Start: 39939, Stop: 39736, Start Num: 52
Candidate Starts for FatCactus_61:
(52, 39939),

Gene: FreakyGoo_6 Start: 2366, Stop: 2133, Start Num: 37
Candidate Starts for FreakyGoo_6:

(Start: 37 @2366 has 22 MA's), (46, 2348), (66, 2312), (69, 2306), (91, 2207), (94, 2198),

Gene: Fregley_53 Start: 36870, Stop: 36679, Start Num: 60

Candidate Starts for Fregley_53:

(4, 37143), (9, 37092), (22, 36987), (39, 36912), (Start: 60 @36870 has 11 MA's), (81, 36795), (91, 36738),

Gene: Fryberger_9 Start: 2013, Stop: 1810, Start Num: 45

Candidate Starts for Fryberger_9:

(10, 2187), (11, 2178), (13, 2163), (31, 2067), (Start: 45 @2013 has 7 MA's), (58, 1989), (65, 1971), (68, 1965),

Gene: Gabriela_89 Start: 56831, Stop: 57010, Start Num: 51

Candidate Starts for Gabriela_89:

(17, 56702), (21, 56717), (23, 56726), (27, 56741), (Start: 48 @56825 has 1 MA's), (Start: 51 @56831 has 20 MA's), (70, 56870), (71, 56873), (89, 56936),

Gene: Ganymede_67 Start: 44084, Stop: 44323, Start Num: 43

Candidate Starts for Ganymede_67:

(6, 43874), (8, 43883), (30, 44033), (Start: 43 @44084 has 59 MA's), (62, 44129), (73, 44156), (74, 44159), (92, 44258), (94, 44264),

Gene: Gardann_89 Start: 57320, Stop: 57499, Start Num: 51

Candidate Starts for Gardann_89:

(17, 57191), (21, 57206), (23, 57215), (25, 57221), (27, 57230), (35, 57278), (36, 57284), (Start: 48 @57314 has 1 MA's), (Start: 51 @57320 has 20 MA's), (70, 57359), (84, 57398), (89, 57425),

Gene: GardenSalsa_6 Start: 2415, Stop: 2209, Start Num: 49

Candidate Starts for GardenSalsa_6:

(Start: 49 @2415 has 5 MA's), (69, 2373), (80, 2325),

Gene: GardenSalsa_7 Start: 2660, Stop: 2412, Start Num: 37

Candidate Starts for GardenSalsa_7:

(Start: 37 @2660 has 22 MA's), (66, 2603), (73, 2585), (78, 2549), (91, 2483),

Gene: GenevaB15_7 Start: 2636, Stop: 2391, Start Num: 37

Candidate Starts for GenevaB15_7:

(Start: 37 @2636 has 22 MA's), (66, 2579), (91, 2459), (92, 2456),

Gene: GenevaB15_6 Start: 2394, Stop: 2188, Start Num: 49

Candidate Starts for GenevaB15_6:

(Start: 49 @2394 has 5 MA's), (69, 2352), (77, 2316), (80, 2304),

Gene: Geraldini_70 Start: 44740, Stop: 44979, Start Num: 43

Candidate Starts for Geraldini_70:

(6, 44530), (8, 44539), (30, 44689), (Start: 43 @44740 has 59 MA's), (73, 44812), (74, 44815), (92, 44914), (94, 44920),

Gene: Glaske16_6 Start: 2365, Stop: 2132, Start Num: 37

Candidate Starts for Glaske16_6:

(Start: 37 @2365 has 22 MA's), (46, 2347), (66, 2311), (69, 2305), (91, 2206), (94, 2197),

Gene: Greely_63 Start: 23265, Stop: 23489, Start Num: 43

Candidate Starts for Greely_63:

(Start: 43 @23265 has 59 MA's), (62, 23304), (69, 23319), (91, 23427),

Gene: Guey18_12 Start: 2707, Stop: 2504, Start Num: 45

Candidate Starts for Guey18_12:

(10, 2881), (11, 2872), (13, 2857), (31, 2761), (Start: 45 @2707 has 7 MA's), (50, 2695), (58, 2683), (65, 2665), (68, 2659),

Gene: GuuelaD_86 Start: 57444, Stop: 57623, Start Num: 51

Candidate Starts for GuuelaD_86:

(Start: 48 @57438 has 1 MA's), (Start: 51 @57444 has 20 MA's), (70, 57483), (71, 57486), (84, 57522), (89, 57549),

Gene: HedwigODU_67 Start: 43706, Stop: 43945, Start Num: 43

Candidate Starts for HedwigODU_67:

(30, 43655), (Start: 43 @43706 has 59 MA's), (53, 43730), (62, 43751), (73, 43778), (74, 43781), (92, 43880), (94, 43886),

Gene: Homura_67 Start: 43861, Stop: 44100, Start Num: 43

Candidate Starts for Homura_67:

(6, 43651), (8, 43660), (30, 43810), (Start: 43 @43861 has 59 MA's), (73, 43933), (74, 43936), (92, 44035), (94, 44041),

Gene: Hyperbowlee_67 Start: 44058, Stop: 44297, Start Num: 43

Candidate Starts for Hyperbowlee_67:

(6, 43848), (8, 43857), (30, 44007), (Start: 43 @44058 has 59 MA's), (73, 44130), (74, 44133), (92, 44232), (94, 44238),

Gene: IPHane7_5 Start: 2366, Stop: 2133, Start Num: 37

Candidate Starts for IPHane7_5:

(Start: 37 @2366 has 22 MA's), (46, 2348), (66, 2312), (69, 2306), (91, 2207), (94, 2198),

Gene: Inky_67 Start: 43861, Stop: 44100, Start Num: 43

Candidate Starts for Inky_67:

(6, 43651), (8, 43660), (30, 43810), (Start: 43 @43861 has 59 MA's), (73, 43933), (74, 43936), (92, 44035), (94, 44041),

Gene: Itos_89 Start: 56391, Stop: 56570, Start Num: 51

Candidate Starts for Itos_89:

(17, 56262), (21, 56277), (23, 56286), (27, 56301), (Start: 48 @56385 has 1 MA's), (Start: 51 @56391 has 20 MA's), (70, 56430), (71, 56433), (89, 56496),

Gene: Izel_6 Start: 2365, Stop: 2132, Start Num: 37

Candidate Starts for Izel_6:

(Start: 37 @2365 has 22 MA's), (46, 2347), (66, 2311), (69, 2305), (91, 2206), (94, 2197),

Gene: Jace_69 Start: 40976, Stop: 41194, Start Num: 47

Candidate Starts for Jace_69:

(Start: 47 @40976 has 1 MA's), (63, 41009), (75, 41030), (91, 41126), (101, 41180),

Gene: Jarvi_67 Start: 43861, Stop: 44100, Start Num: 43

Candidate Starts for Jarvi_67:

(6, 43651), (8, 43660), (30, 43810), (Start: 43 @43861 has 59 MA's), (73, 43933), (74, 43936), (92, 44035), (94, 44041),

Gene: Jayhawk_69 Start: 44204, Stop: 44443, Start Num: 43

Candidate Starts for Jayhawk_69:

(6, 43994), (8, 44003), (30, 44153), (Start: 43 @44204 has 59 MA's), (53, 44228), (62, 44249), (73, 44276), (74, 44279), (92, 44378), (94, 44384),

Gene: Jeckyll_67 Start: 43861, Stop: 44100, Start Num: 43

Candidate Starts for Jeckyll_67:

(6, 43651), (8, 43660), (30, 43810), (Start: 43 @43861 has 59 MA's), (73, 43933), (74, 43936), (92, 44035), (94, 44041),

Gene: Joy99_67 Start: 43790, Stop: 44029, Start Num: 43

Candidate Starts for Joy99_67:

(6, 43580), (8, 43589), (30, 43739), (Start: 43 @43790 has 59 MA's), (73, 43862), (74, 43865), (92, 43964), (94, 43970),

Gene: Kahlid_88 Start: 57250, Stop: 57417, Start Num: 51

Candidate Starts for Kahlid_88:

(Start: 48 @57244 has 1 MA's), (Start: 51 @57250 has 20 MA's), (63, 57274), (65, 57277), (88, 57337), (89, 57343), (91, 57361), (92, 57364),

Gene: Kelcole_50 Start: 36504, Stop: 36310, Start Num: 60

Candidate Starts for Kelcole_50:

(4, 36777), (7, 36741), (9, 36726), (22, 36621), (39, 36546), (Start: 60 @36504 has 11 MA's), (81, 36429), (91, 36372),

Gene: KillerQueen_53 Start: 36753, Stop: 36562, Start Num: 60

Candidate Starts for KillerQueen_53:

(Start: 60 @36753 has 11 MA's), (81, 36678), (91, 36621),

Gene: KleverKiS_5 Start: 2362, Stop: 2132, Start Num: 37

Candidate Starts for KleverKiS_5:

(Start: 37 @2362 has 22 MA's), (46, 2344), (66, 2308), (69, 2302), (91, 2203), (94, 2194),

Gene: Kudfre_69 Start: 44258, Stop: 44521, Start Num: 32

Candidate Starts for Kudfre_69:

(Start: 32 @44258 has 4 MA's), (33, 44279), (34, 44282), (44, 44306), (59, 44336), (76, 44381), (86, 44429), (90, 44465), (96, 44474), (98, 44489), (99, 44492),

Gene: LilDestine_87 Start: 57157, Stop: 57336, Start Num: 51

Candidate Starts for LilDestine_87:

(Start: 48 @57151 has 1 MA's), (Start: 51 @57157 has 20 MA's), (70, 57196), (71, 57199), (84, 57235), (89, 57262),

Gene: LilhomieP_5 Start: 2366, Stop: 2133, Start Num: 37

Candidate Starts for LilhomieP_5:

(Start: 37 @2366 has 22 MA's), (46, 2348), (66, 2312), (69, 2306), (91, 2207), (94, 2198),

Gene: Llorens_67 Start: 43861, Stop: 44100, Start Num: 43

Candidate Starts for Llorens_67:

(6, 43651), (8, 43660), (30, 43810), (Start: 43 @43861 has 59 MA's), (73, 43933), (74, 43936), (92, 44035), (94, 44041),

Gene: Loadrie_88 Start: 57652, Stop: 57831, Start Num: 51

Candidate Starts for Loadrie_88:

(17, 57523), (21, 57538), (23, 57547), (27, 57562), (Start: 48 @57646 has 1 MA's), (Start: 51 @57652 has 20 MA's), (70, 57691), (71, 57694), (89, 57757),

Gene: Lunahalos_67 Start: 43861, Stop: 44100, Start Num: 43

Candidate Starts for Lunahalos_67:

(6, 43651), (8, 43660), (30, 43810), (Start: 43 @43861 has 59 MA's), (73, 43933), (74, 43936), (92, 44035), (94, 44041),

Gene: Lynnae_90 Start: 57262, Stop: 57429, Start Num: 51

Candidate Starts for Lynnae_90:

(Start: 48 @57256 has 1 MA's), (Start: 51 @57262 has 20 MA's), (63, 57286), (65, 57289), (88, 57349), (89, 57355), (91, 57373), (92, 57376),

Gene: MacKat_63 Start: 39644, Stop: 39883, Start Num: 43

Candidate Starts for MacKat_63:

(6, 39434), (8, 39443), (30, 39593), (Start: 43 @39644 has 59 MA's), (62, 39689), (73, 39716), (74, 39719), (92, 39818), (94, 39824),

Gene: Marcie_57 Start: 37372, Stop: 37181, Start Num: 60

Candidate Starts for Marcie_57:

(Start: 60 @37372 has 11 MA's), (91, 37240),

Gene: MeaningOfLife_68 Start: 44613, Stop: 44852, Start Num: 43

Candidate Starts for MeaningOfLife_68:

(6, 44403), (8, 44412), (30, 44562), (Start: 43 @44613 has 59 MA's), (53, 44637), (62, 44658), (73, 44685), (74, 44688), (92, 44787), (94, 44793),

Gene: MrMagoo_7 Start: 2660, Stop: 2412, Start Num: 37

Candidate Starts for MrMagoo_7:

(Start: 37 @2660 has 22 MA's), (66, 2603), (73, 2585), (78, 2549), (91, 2483),

Gene: MrMagoo_6 Start: 2415, Stop: 2209, Start Num: 49

Candidate Starts for MrMagoo_6:

(Start: 49 @2415 has 5 MA's), (69, 2373), (80, 2325),

Gene: Mynx_69 Start: 44473, Stop: 44712, Start Num: 43

Candidate Starts for Mynx_69:

(6, 44263), (8, 44272), (30, 44422), (Start: 43 @44473 has 59 MA's), (53, 44497), (62, 44518), (73, 44545), (74, 44548), (92, 44647), (94, 44653),

Gene: Myrna_58 Start: 22613, Stop: 22840, Start Num: 43

Candidate Starts for Myrna_58:

(26, 22553), (28, 22562), (39, 22607), (Start: 43 @22613 has 59 MA's),

Gene: Myrna_56 Start: 22168, Stop: 22353, Start Num: 60

Candidate Starts for Myrna_56:

(15, 22015), (Start: 60 @22168 has 11 MA's), (68, 22177), (88, 22255),

Gene: Nanosmite_6 Start: 2681, Stop: 2448, Start Num: 37
Candidate Starts for Nanosmite_6:
(Start: 37 @2681 has 22 MA's), (66, 2624), (68, 2621), (84, 2564), (91, 2519),

Gene: NiceHouse_24 Start: 11340, Stop: 11110, Start Num: 45
Candidate Starts for NiceHouse_24:
(Start: 45 @11340 has 7 MA's), (62, 11304), (68, 11292), (89, 11208), (94, 11181),

Gene: Nicholasp3_89 Start: 57320, Stop: 57499, Start Num: 51
Candidate Starts for Nicholasp3_89:
(17, 57191), (21, 57206), (23, 57215), (25, 57221), (27, 57230), (35, 57278), (36, 57284), (Start: 48 @57314 has 1 MA's), (Start: 51 @57320 has 20 MA's), (70, 57359), (84, 57398), (89, 57425),

Gene: Octobien14_69 Start: 44537, Stop: 44797, Start Num: 32
Candidate Starts for Octobien14_69:
(Start: 32 @44537 has 4 MA's), (33, 44558), (34, 44561), (44, 44585), (59, 44615), (61, 44618), (64, 44627), (90, 44741), (96, 44750), (98, 44765), (99, 44768),

Gene: OneinaGillian_52 Start: 36406, Stop: 36215, Start Num: 60
Candidate Starts for OneinaGillian_52:
(4, 36679), (9, 36628), (22, 36523), (39, 36448), (Start: 60 @36406 has 11 MA's), (81, 36331), (91, 36274),

Gene: OverPar_91 Start: 57652, Stop: 57831, Start Num: 51
Candidate Starts for OverPar_91:
(17, 57523), (21, 57538), (23, 57547), (27, 57562), (Start: 48 @57646 has 1 MA's), (Start: 51 @57652 has 20 MA's), (70, 57691), (71, 57694), (89, 57757),

Gene: PP_66 Start: 45311, Stop: 45114, Start Num: 57
Candidate Starts for PP_66:
(Start: 51 @45320 has 20 MA's), (Start: 57 @45311 has 1 MA's), (71, 45284), (91, 45182), (92, 45179),

Gene: PYPDinur_90 Start: 57609, Stop: 57776, Start Num: 72
Candidate Starts for PYPDinur_90:
(Start: 48 @57558 has 1 MA's), (Start: 51 @57564 has 20 MA's), (65, 57591), (66, 57594), (72, 57609), (96, 57729),

Gene: Padfoot_67 Start: 44058, Stop: 44297, Start Num: 43
Candidate Starts for Padfoot_67:
(6, 43848), (8, 43857), (30, 44007), (Start: 43 @44058 has 59 MA's), (73, 44130), (74, 44133), (92, 44232), (94, 44238),

Gene: Padpat_70 Start: 44178, Stop: 44417, Start Num: 43
Candidate Starts for Padpat_70:
(6, 43968), (8, 43977), (30, 44127), (Start: 43 @44178 has 59 MA's), (62, 44223), (73, 44250), (74, 44253), (92, 44352), (94, 44358),

Gene: Peel_67 Start: 43863, Stop: 44102, Start Num: 43
Candidate Starts for Peel_67:
(6, 43653), (8, 43662), (30, 43812), (Start: 43 @43863 has 59 MA's), (73, 43935), (74, 43938), (92, 44037), (94, 44043),

Gene: PegLeg_5 Start: 2365, Stop: 2132, Start Num: 37

Candidate Starts for PegLeg_5:

(Start: 37 @2365 has 22 MA's), (46, 2347), (66, 2311), (69, 2305), (91, 2206), (94, 2197),

Gene: Pepe25_51 Start: 35948, Stop: 35757, Start Num: 60

Candidate Starts for Pepe25_51:

(Start: 60 @35948 has 11 MA's), (81, 35873), (91, 35816), (97, 35786),

Gene: Peregrin_45 Start: 15804, Stop: 15583, Start Num: 45

Candidate Starts for Peregrin_45:

(Start: 45 @15804 has 7 MA's), (82, 15705), (86, 15690), (94, 15648),

Gene: Pharaoh_61 Start: 40405, Stop: 40172, Start Num: 42

Candidate Starts for Pharaoh_61:

(38, 40411), (Start: 42 @40405 has 4 MA's), (Start: 60 @40372 has 11 MA's), (66, 40357), (91, 40249), (92, 40246), (94, 40240),

Gene: Piatt_67 Start: 44058, Stop: 44297, Start Num: 43

Candidate Starts for Piatt_67:

(6, 43848), (8, 43857), (30, 44007), (Start: 43 @44058 has 59 MA's), (73, 44130), (74, 44133), (92, 44232), (94, 44238),

Gene: Pokerus_67 Start: 44203, Stop: 44442, Start Num: 43

Candidate Starts for Pokerus_67:

(6, 43993), (8, 44002), (30, 44152), (Start: 43 @44203 has 59 MA's), (62, 44248), (73, 44275), (74, 44278), (92, 44377), (94, 44383),

Gene: Quby_90 Start: 56844, Stop: 57011, Start Num: 72

Candidate Starts for Quby_90:

(Start: 51 @56799 has 20 MA's), (63, 56823), (65, 56826), (66, 56829), (72, 56844), (96, 56964),

Gene: QuincyRose_65 Start: 44084, Stop: 44323, Start Num: 43

Candidate Starts for QuincyRose_65:

(6, 43874), (8, 43883), (30, 44033), (Start: 43 @44084 has 59 MA's), (62, 44129), (73, 44156), (74, 44159), (92, 44258), (94, 44264),

Gene: Ramen_68 Start: 43708, Stop: 43947, Start Num: 43

Candidate Starts for Ramen_68:

(30, 43657), (Start: 43 @43708 has 59 MA's), (53, 43732), (62, 43753), (73, 43780), (74, 43783), (92, 43882), (94, 43888),

Gene: Rapunzel97_69 Start: 44159, Stop: 44398, Start Num: 43

Candidate Starts for Rapunzel97_69:

(6, 43949), (8, 43958), (30, 44108), (Start: 43 @44159 has 59 MA's), (53, 44183), (62, 44204), (73, 44231), (74, 44234), (92, 44333), (94, 44339),

Gene: Reindeer_4 Start: 2200, Stop: 1967, Start Num: 37

Candidate Starts for Reindeer_4:

(5, 2410), (Start: 37 @2200 has 22 MA's), (66, 2146), (69, 2140), (91, 2038), (94, 2029),

Gene: Rey_6 Start: 2648, Stop: 2400, Start Num: 37

Candidate Starts for Rey_6:

(Start: 37 @2648 has 22 MA's), (66, 2591), (73, 2573), (91, 2471),

Gene: RobinRose_54 Start: 36915, Stop: 36724, Start Num: 60
Candidate Starts for RobinRose_54:
(4, 37188), (9, 37137), (22, 37032), (39, 36957), (Start: 60 @36915 has 11 MA's), (81, 36840), (91, 36783),

Gene: Romm_54 Start: 36915, Stop: 36724, Start Num: 60
Candidate Starts for Romm_54:
(4, 37188), (9, 37137), (22, 37032), (39, 36957), (Start: 60 @36915 has 11 MA's), (81, 36840), (91, 36783),

Gene: Ronaldo_13 Start: 3139, Stop: 2936, Start Num: 45
Candidate Starts for Ronaldo_13:
(Start: 45 @3139 has 7 MA's), (50, 3127), (58, 3115), (65, 3097), (68, 3091), (79, 3052),

Gene: RoseMarie_5 Start: 2362, Stop: 2132, Start Num: 37
Candidate Starts for RoseMarie_5:
(Start: 37 @2362 has 22 MA's), (46, 2344), (66, 2308), (69, 2302), (91, 2203), (94, 2194),

Gene: Rosmarinus_67 Start: 43849, Stop: 44088, Start Num: 43
Candidate Starts for Rosmarinus_67:
(6, 43639), (8, 43648), (30, 43798), (Start: 43 @43849 has 59 MA's), (73, 43921), (74, 43924), (92, 44023), (94, 44029),

Gene: Rumpelstiltskin_85 Start: 57113, Stop: 57292, Start Num: 51
Candidate Starts for Rumpelstiltskin_85:
(17, 56984), (21, 56999), (23, 57008), (25, 57014), (27, 57023), (35, 57071), (36, 57077), (Start: 48 @57107 has 1 MA's), (Start: 51 @57113 has 20 MA's), (70, 57152), (84, 57191), (89, 57218),

Gene: SJReid_226 Start: 142221, Stop: 142508, Start Num: 40
Candidate Starts for SJReid_226:
(Start: 40 @142221 has 1 MA's), (54, 142248), (67, 142278),

Gene: ScoobyDoobyDoo_50 Start: 17925, Stop: 18128, Start Num: 60
Candidate Starts for ScoobyDoobyDoo_50:
(34, 17868), (Start: 60 @17925 has 11 MA's), (70, 17949), (85, 18018), (100, 18108), (102, 18120),

Gene: Sephiroth_68 Start: 44430, Stop: 44693, Start Num: 32
Candidate Starts for Sephiroth_68:
(Start: 32 @44430 has 4 MA's), (33, 44451), (34, 44454), (44, 44478), (59, 44508), (76, 44553), (86, 44601), (90, 44637), (96, 44646), (98, 44661), (99, 44664),

Gene: ShiaSurprise_68 Start: 44058, Stop: 44297, Start Num: 43
Candidate Starts for ShiaSurprise_68:
(6, 43848), (8, 43857), (30, 44007), (Start: 43 @44058 has 59 MA's), (73, 44130), (74, 44133), (92, 44232), (94, 44238),

Gene: Skinny_6 Start: 2365, Stop: 2132, Start Num: 37
Candidate Starts for Skinny_6:
(Start: 37 @2365 has 22 MA's), (46, 2347), (66, 2311), (69, 2305), (91, 2206), (94, 2197),

Gene: SlimJimmy_5 Start: 2365, Stop: 2132, Start Num: 37
Candidate Starts for SlimJimmy_5:
(Start: 37 @2365 has 22 MA's), (46, 2347), (66, 2311), (69, 2305), (91, 2206), (94, 2197),

Gene: Slimphazie_68 Start: 44159, Stop: 44398, Start Num: 43

Candidate Starts for Slimphazie_68:

(6, 43949), (8, 43958), (30, 44108), (Start: 43 @44159 has 59 MA's), (53, 44183), (62, 44204), (73, 44231), (74, 44234), (92, 44333), (94, 44339),

Gene: Spock_67 Start: 43862, Stop: 44101, Start Num: 43

Candidate Starts for Spock_67:

(6, 43652), (8, 43661), (30, 43811), (Start: 43 @43862 has 59 MA's), (73, 43934), (74, 43937), (92, 44036), (94, 44042),

Gene: Syleon_70 Start: 44371, Stop: 44631, Start Num: 32

Candidate Starts for Syleon_70:

(Start: 32 @44371 has 4 MA's), (33, 44392), (34, 44395), (44, 44419), (59, 44449), (61, 44452), (90, 44575), (98, 44599), (99, 44602),

Gene: Tachez_67 Start: 43706, Stop: 43945, Start Num: 43

Candidate Starts for Tachez_67:

(6, 43496), (8, 43505), (30, 43655), (Start: 43 @43706 has 59 MA's), (73, 43778), (74, 43781), (92, 43880), (94, 43886),

Gene: Tempo_52 Start: 36794, Stop: 36603, Start Num: 60

Candidate Starts for Tempo_52:

(Start: 60 @36794 has 11 MA's), (81, 36719), (91, 36662),

Gene: Toaka_68 Start: 40924, Stop: 40682, Start Num: 42

Candidate Starts for Toaka_68:

(1, 41545), (2, 41500), (3, 41248), (Start: 42 @40924 has 4 MA's), (55, 40903), (91, 40771),

Gene: Topper_67 Start: 43861, Stop: 44100, Start Num: 43

Candidate Starts for Topper_67:

(6, 43651), (8, 43660), (30, 43810), (Start: 43 @43861 has 59 MA's), (73, 43933), (74, 43936), (92, 44035), (94, 44041),

Gene: Tourach_89 Start: 58025, Stop: 58204, Start Num: 51

Candidate Starts for Tourach_89:

(17, 57896), (21, 57911), (23, 57920), (35, 57983), (Start: 48 @58019 has 1 MA's), (Start: 51 @58025 has 20 MA's), (70, 58064), (71, 58067), (84, 58103), (89, 58130),

Gene: TpudiCK_6 Start: 2365, Stop: 2132, Start Num: 37

Candidate Starts for TpudiCK_6:

(Start: 37 @2365 has 22 MA's), (46, 2347), (66, 2311), (69, 2305), (91, 2206), (94, 2197),

Gene: TruffulaTree_68 Start: 44155, Stop: 44394, Start Num: 43

Candidate Starts for TruffulaTree_68:

(6, 43945), (8, 43954), (30, 44104), (Start: 43 @44155 has 59 MA's), (53, 44179), (62, 44200), (73, 44227), (74, 44230), (92, 44329), (94, 44335),

Gene: Twitch_67 Start: 43863, Stop: 44102, Start Num: 43

Candidate Starts for Twitch_67:

(6, 43653), (8, 43662), (30, 43812), (Start: 43 @43863 has 59 MA's), (73, 43935), (74, 43938), (92, 44037), (94, 44043),

Gene: TyDawg_5 Start: 2366, Stop: 2133, Start Num: 37

Candidate Starts for TyDawg_5:

(Start: 37 @2366 has 22 MA's), (46, 2348), (66, 2312), (69, 2306), (91, 2207), (94, 2198),

Gene: Underpass_81 Start: 52356, Stop: 52535, Start Num: 51

Candidate Starts for Underpass_81:

(17, 52227), (21, 52242), (23, 52251), (25, 52257), (27, 52266), (35, 52314), (36, 52320), (Start: 48 @52350 has 1 MA's), (Start: 51 @52356 has 20 MA's), (70, 52395), (84, 52434), (89, 52461),

Gene: Validus_72 Start: 44730, Stop: 44951, Start Num: 43

Candidate Starts for Validus_72:

(30, 44679), (Start: 43 @44730 has 59 MA's), (62, 44748), (87, 44838), (91, 44871), (94, 44880),

Gene: Volt_13 Start: 3139, Stop: 2936, Start Num: 45

Candidate Starts for Volt_13:

(Start: 45 @3139 has 7 MA's), (50, 3127), (58, 3115), (65, 3097), (68, 3091), (79, 3052),

Gene: Wigglewigggle_89 Start: 57408, Stop: 57575, Start Num: 51

Candidate Starts for Wigglewigggle_89:

(12, 57243), (14, 57264), (17, 57279), (21, 57294), (35, 57366), (36, 57372), (Start: 48 @57402 has 1 MA's), (Start: 51 @57408 has 20 MA's), (63, 57432), (65, 57435), (88, 57495), (89, 57501), (91, 57519), (92, 57522),

Gene: Wilder_90 Start: 57250, Stop: 57417, Start Num: 51

Candidate Starts for Wilder_90:

(Start: 48 @57244 has 1 MA's), (Start: 51 @57250 has 20 MA's), (63, 57274), (65, 57277), (88, 57337), (89, 57343), (91, 57361), (92, 57364),

Gene: Yecey3_71 Start: 41130, Stop: 40897, Start Num: 42

Candidate Starts for Yecey3_71:

(16, 41235), (18, 41229), (19, 41226), (20, 41223), (24, 41205), (Start: 42 @41130 has 4 MA's), (55, 41109), (56, 41106), (84, 41022), (91, 40977), (92, 40974),

Gene: Zabiza_62 Start: 40011, Stop: 40250, Start Num: 43

Candidate Starts for Zabiza_62:

(30, 39960), (Start: 43 @40011 has 59 MA's), (53, 40035), (62, 40056), (73, 40083), (74, 40086), (92, 40185), (94, 40191),

Gene: Zakai_90 Start: 57893, Stop: 58072, Start Num: 51

Candidate Starts for Zakai_90:

(17, 57764), (21, 57779), (23, 57788), (27, 57803), (Start: 48 @57887 has 1 MA's), (Start: 51 @57893 has 20 MA's), (70, 57932), (71, 57935), (89, 57998),

Gene: Zavala_70 Start: 44433, Stop: 44672, Start Num: 43

Candidate Starts for Zavala_70:

(6, 44223), (8, 44232), (30, 44382), (Start: 43 @44433 has 59 MA's), (53, 44457), (62, 44478), (73, 44505), (74, 44508), (92, 44607), (94, 44613),

Gene: ZhongYanYuan_86 Start: 57300, Stop: 57479, Start Num: 51

Candidate Starts for ZhongYanYuan_86:

(Start: 48 @57294 has 1 MA's), (Start: 51 @57300 has 20 MA's), (70, 57339), (71, 57342), (84, 57378), (89, 57405),

Gene: Ziko_14 Start: 3153, Stop: 2950, Start Num: 45

Candidate Starts for Ziko_14:

(Start: 45 @3153 has 7 MA's), (50, 3141), (58, 3129), (65, 3111), (68, 3105), (79, 3066),