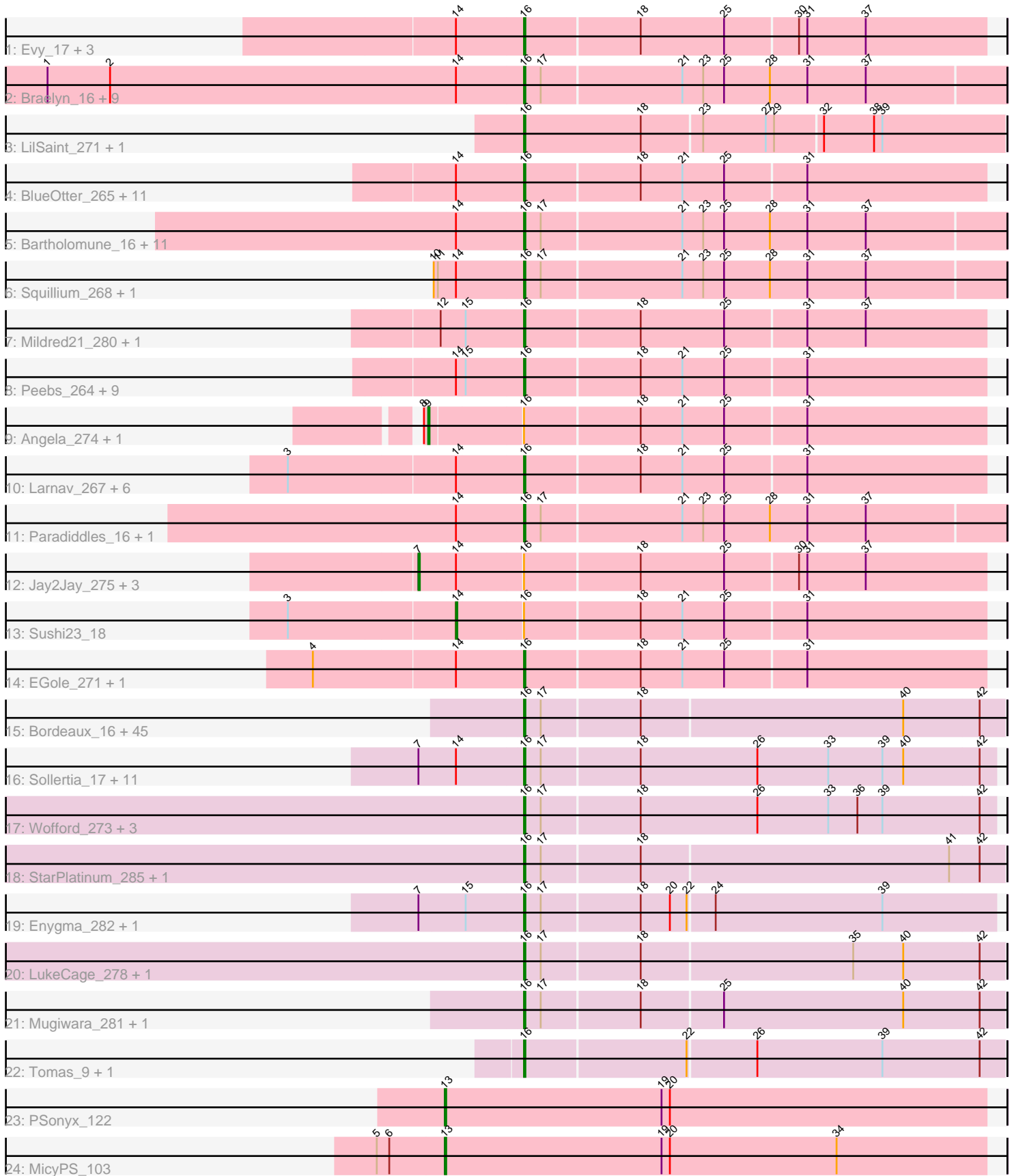


Pham 304779



Note: Tracks are now grouped by subcluster and scaled. Switching in subcluster is indicated by changes in track color. Track scale is now set by default to display the region 30 bp upstream of start 1 to 30 bp downstream of the last possible start. If this default region is judged to be packed too tightly with annotated starts, the track will be further scaled to only show that region of the ORF with annotated starts. This action will be indicated by adding "Zoomed" to the title. For starts, yellow indicates the location of called starts comprised solely of Glimmer/GeneMark auto-annotations, green indicates the location of called starts with at least 1 manual gene annotation.

Pham 304779 Report

This analysis was run 06/08/26 on database version 649.

Pham number 304779 has 146 members, 8 are drafts.

Phages represented in each track:

- Track 1 : Evy_17, Evy_255, Targaryen_266, Targaryen_15
- Track 2 : Braelyn_16, Navo_257, Davielle_15, Braelyn_261, Davielle_264, WhereRU_15, WhereRU_264, Navo_15, Persimmon_266, Persimmon_15
- Track 3 : LilSaint_271, LilSaint_18
- Track 4 : BlueOtter_265, Leo04_268, Watermoore_264, Cross_265, Cursive_269, HangryHippo_17, Leo04_17, HangryHippo_265, Watermoore_17, Cursive_15, Cross_17, BlueOtter_17
- Track 5 : Bartholomune_16, Bartholomune_266, FreddyDRoo_16, PinkiePie_16, FreddyDRoo_269, Liandry_265, Liandry_16, PinkiePie_266, NootNoot_261, Eliot67_267, NootNoot_16, Eliot67_16
- Track 6 : Squillium_268, Squillium_16
- Track 7 : Mildred21_280, Mildred21_17
- Track 8 : Peebs_264, Peebs_17, Lululemon_263, Pepperwood_18, PacManQ_263, Pepperwood_267, PacManQ_16, Scheme_18, Scheme_271, Lululemon_16
- Track 9 : Angela_274, Angela_17
- Track 10 : Larnav_267, Larnav_17, Coogler_17, Tribute_17, Sushi23_268, Coogler_263, Tribute_263
- Track 11 : Paradiddles_16, Paradiddles_257
- Track 12 : Jay2Jay_275, Warpy_272, Warpy_20, Jay2Jay_20
- Track 13 : Sushi23_18
- Track 14 : EGole_271, EGole_17
- Track 15 : Bordeaux_16, MindFlayer_15, IchabodCrane_15, Spelly_16, TomSawyer_281, Amabiko_17, KentuckyRacer_283, Wipeout_269, AcciDwight_288, Starbow_16, Battuta_16, CeilingFan_15, PumpkinSpice_280, Quaran19_16, Quaran19_277, Spilled_15, Spelly_282, CeilingFan_281, Jollison_274, Wipeout_15, MindFlayer_267, SaltySpittoon_276, PumpkinSpice_16, TomSawyer_16, Spilled_283, Rikishi_16, Battuta_273, Karimac_274, Birchlyn_273, Gibbi_17, Jollison_17, Karimac_16, AcciDwight_18, Brizzy_15, Bordeaux_273, Amabiko_281, Brizzy_273, Birchlyn_13, IchabodCrane_268, KentuckyRacer_15, Starbow_273, JimJam_284, Rikishi_278, Gibbi_288, SaltySpittoon_16, JimJam_16
- Track 16 : Sollertia_17, Yaboi_278, Genie2_17, BoomerJR_17, BoomerJR_272, AngryGiraffe_17, Stanimal_272, Stanimal_17, Sollertia_273, Yaboi_17, AngryGiraffe_273, Genie2_272
- Track 17 : Wofford_273, Elmer_15, Wofford_15, Elmer_282
- Track 18 : StarPlatinum_285, StarPlatinum_15
- Track 19 : Enygma_282, Enygma_14
- Track 20 : LukeCage_278, LukeCage_15

- Track 21 : Mugiwara_281, Mugiwara_14
- Track 22 : Tomas_9, Tomas_265
- Track 23 : PSonyx_122
- Track 24 : MicyPS_103

Summary of Final Annotations (See graph section above for start numbers):

The start number called the most often in the published annotations is 16, it was called in 129 of the 138 non-draft genes in the pham.

Genes that call this "Most Annotated" start:

- AcciDwight_18, AcciDwight_288, Amabiko_17, Amabiko_281, AngryGiraffe_17, AngryGiraffe_273, Bartholomune_16, Bartholomune_266, Battuta_16, Battuta_273, Birchlyn_13, Birchlyn_273, BlueOtter_17, BlueOtter_265, BoomerJR_17, BoomerJR_272, Bordeaux_16, Bordeaux_273, Braelyn_16, Braelyn_261, Brizzy_15, Brizzy_273, CeilingFan_15, CeilingFan_281, Coogler_17, Coogler_263, Cross_17, Cross_265, Cursive_15, Cursive_269, Davielle_15, Davielle_264, EGole_17, EGole_271, Eliot67_16, Eliot67_267, Elmer_15, Elmer_282, Enygma_14, Enygma_282, Evy_17, Evy_255, FreddyDRoo_16, FreddyDRoo_269, Genie2_17, Genie2_272, Gibbi_17, Gibbi_288, HangryHippo_17, HangryHippo_265, IchabodCrane_15, IchabodCrane_268, JimJam_16, JimJam_284, Jollison_17, Jollison_274, Karimac_16, Karimac_274, KentuckyRacer_15, KentuckyRacer_283, Larnav_17, Larnav_267, Leo04_17, Leo04_268, Liandry_16, Liandry_265, LilSaint_18, LilSaint_271, LukeCage_15, LukeCage_278, Lululemon_16, Lululemon_263, Mildred21_17, Mildred21_280, MindFlayer_15, MindFlayer_267, Mugiwara_14, Mugiwara_281, Navo_15, Navo_257, NootNoot_16, NootNoot_261, PacManQ_16, PacManQ_263, Paradiddles_16, Paradiddles_257, Peebs_17, Peebs_264, Pepperwood_18, Pepperwood_267, Persimmon_15, Persimmon_266, PinkiePie_16, PinkiePie_266, PumpkinSpice_16, PumpkinSpice_280, Quaran19_16, Quaran19_277, Rikishi_16, Rikishi_278, SaltySpittoon_16, SaltySpittoon_276, Scheme_18, Scheme_271, Sollertia_17, Sollertia_273, Spelly_16, Spelly_282, Spilled_15, Spilled_283, Squillium_16, Squillium_268, Stanimal_17, Stanimal_272, StarPlatinum_15, StarPlatinum_285, Starbow_16, Starbow_273, Sushi23_268, Targaryen_15, Targaryen_266, TomSawyer_16, TomSawyer_281, Tomas_265, Tomas_9, Tribute_17, Tribute_263, Watermoore_17, Watermoore_264, WhereRU_15, WhereRU_264, Wipeout_15, Wipeout_269, Wofford_15, Wofford_273, Yaboi_17, Yaboi_278,

Genes that have the "Most Annotated" start but do not call it:

- Angela_17, Angela_274, Jay2Jay_20, Jay2Jay_275, Sushi23_18, Warpy_20, Warpy_272,

Genes that do not have the "Most Annotated" start:

- MicyPS_103, PSonyx_122,

Summary by start number:

Start 7:

- Found in 18 of 146 (12.3%) of genes in pham
- Manual Annotations of this start: 4 of 138

- Called 22.2% of time when present
- Phage (with cluster) where this start called: Jay2Jay_20 (BE1), Jay2Jay_275 (BE1), Warpy_20 (BE1), Warpy_272 (BE1),

Start 9:

- Found in 2 of 146 (1.4%) of genes in pham
- Manual Annotations of this start: 2 of 138
- Called 100.0% of time when present
- Phage (with cluster) where this start called: Angela_17 (BE1), Angela_274 (BE1),

Start 13:

- Found in 2 of 146 (1.4%) of genes in pham
- Manual Annotations of this start: 2 of 138
- Called 100.0% of time when present
- Phage (with cluster) where this start called: MicyPS_103 (EQ), PSonyx_122 (EQ),

Start 14:

- Found in 78 of 146 (53.4%) of genes in pham
- Manual Annotations of this start: 1 of 138
- Called 1.3% of time when present
- Phage (with cluster) where this start called: Sushi23_18 (BE1),

Start 16:

- Found in 144 of 146 (98.6%) of genes in pham
- Manual Annotations of this start: 129 of 138
- Called 95.1% of time when present
- Phage (with cluster) where this start called: AcciDwight_18 (BE2), AcciDwight_288 (BE2), Amabiko_17 (BE2), Amabiko_281 (BE2), AngryGiraffe_17 (BE2), AngryGiraffe_273 (BE2), Bartholomune_16 (BE1), Bartholomune_266 (BE1), Battuta_16 (BE2), Battuta_273 (BE2), Birchlyn_13 (BE2), Birchlyn_273 (BE2), BlueOtter_17 (BE1), BlueOtter_265 (BE1), BoomerJR_17 (BE2), BoomerJR_272 (BE2), Bordeaux_16 (BE2), Bordeaux_273 (BE2), Braelyn_16 (BE1), Braelyn_261 (BE1), Brizzy_15 (BE2), Brizzy_273 (BE2), CeilingFan_15 (BE2), CeilingFan_281 (BE2), Coogler_17 (BE1), Coogler_263 (BE1), Cross_17 (BE1), Cross_265 (BE1), Cursive_15 (BE1), Cursive_269 (BE1), Davielle_15 (BE1), Davielle_264 (BE1), EGole_17 (BE1), EGole_271 (BE1), Eliot67_16 (BE1), Eliot67_267 (BE1), Elmer_15 (BE2), Elmer_282 (BE2), Enygma_14 (BE2), Enygma_282 (BE2), Evy_17 (BE1), Evy_255 (BE1), FreddyDRoo_16 (BE1), FreddyDRoo_269 (BE1), Genie2_17 (BE2), Genie2_272 (BE2), Gibbi_17 (BE2), Gibbi_288 (BE2), HangryHippo_17 (BE1), HangryHippo_265 (BE1), IchabodCrane_15 (BE2), IchabodCrane_268 (BE2), JimJam_16 (BE2), JimJam_284 (BE2), Jollison_17 (BE2), Jollison_274 (BE2), Karimac_16 (BE2), Karimac_274 (BE2), KentuckyRacer_15 (BE2), KentuckyRacer_283 (BE2), Larnav_17 (BE1), Larnav_267 (BE1), Leo04_17 (BE1), Leo04_268 (BE1), Liandry_16 (BE1), Liandry_265 (BE1), LilSaint_18 (BE1), LilSaint_271 (BE1), LukeCage_15 (BE2), LukeCage_278 (BE2), Lululemon_16 (BE1), Lululemon_263 (BE1), Mildred21_17 (BE1), Mildred21_280 (BE1), MindFlayer_15 (BE2), MindFlayer_267 (BE2), Mugiwara_14 (BE2), Mugiwara_281 (BE2), Navo_15 (BE1), Navo_257 (BE1), NootNoot_16 (BE1), NootNoot_261 (BE1), PacManQ_16 (BE1), PacManQ_263 (BE1), Paradiddles_16 (BE1), Paradiddles_257 (BE1), Peebs_17 (BE1), Peebs_264 (BE1), Pepperwood_18 (BE1), Pepperwood_267 (BE1), Persimmon_15 (BE1), Persimmon_266 (BE1), PinkiePie_16 (BE1), PinkiePie_266 (BE1), PumpkinSpice_16 (BE2), PumpkinSpice_280 (BE2), Quarant19_16 (BE2), Quarant19_277 (BE2), Rikishi_16 (BE2), Rikishi_278 (BE2), SaltySpittoon_16 (BE2),

SaltySpitoon_276 (BE2), Scheme_18 (BE1), Scheme_271 (BE1), Sollertia_17 (BE2), Sollertia_273 (BE2), Spelly_16 (BE2), Spelly_282 (BE2), Spilled_15 (BE2), Spilled_283 (BE2), Squillium_16 (BE1), Squillium_268 (BE1), Stanimal_17 (BE2), Stanimal_272 (BE2), StarPlatinum_15 (BE2), StarPlatinum_285 (BE2), Starbow_16 (BE2), Starbow_273 (BE2), Sushi23_268 (BE1), Targaryen_15 (BE1), Targaryen_266 (BE1), TomSawyer_16 (BE2), TomSawyer_281 (BE2), Tomas_265 (BE2), Tomas_9 (BE2), Tribute_17 (BE1), Tribute_263 (BE1), Watermoore_17 (BE1), Watermoore_264 (BE1), WhereRU_15 (BE1), WhereRU_264 (BE1), Wipeout_15 (BE2), Wipeout_269 (BE2), Wofford_15 (BE2), Wofford_273 (BE2), Yaboi_17 (BE2), Yaboi_278 (BE2),

Summary by clusters:

There are 3 clusters represented in this pham: BE2, BE1, EQ,

Info for manual annotations of cluster BE1:

- Start number 7 was manually annotated 4 times for cluster BE1.
- Start number 9 was manually annotated 2 times for cluster BE1.
- Start number 14 was manually annotated 1 time for cluster BE1.
- Start number 16 was manually annotated 61 times for cluster BE1.

Info for manual annotations of cluster BE2:

- Start number 16 was manually annotated 68 times for cluster BE2.

Info for manual annotations of cluster EQ:

- Start number 13 was manually annotated 2 times for cluster EQ.

Gene Information:

Gene: AcciDwight_288 Start: 128239, Stop: 127901, Start Num: 16

Candidate Starts for AcciDwight_288:

(Start: 16 @128239 has 129 MA's), (17, 128227), (18, 128158), (40, 127972), (42, 127918),

Gene: AcciDwight_18 Start: 8143, Stop: 7805, Start Num: 16

Candidate Starts for AcciDwight_18:

(Start: 16 @8143 has 129 MA's), (17, 8131), (18, 8062), (40, 7876), (42, 7822),

Gene: Amabiko_17 Start: 8143, Stop: 7805, Start Num: 16

Candidate Starts for Amabiko_17:

(Start: 16 @8143 has 129 MA's), (17, 8131), (18, 8062), (40, 7876), (42, 7822),

Gene: Amabiko_281 Start: 126969, Stop: 126631, Start Num: 16

Candidate Starts for Amabiko_281:

(Start: 16 @126969 has 129 MA's), (17, 126957), (18, 126888), (40, 126702), (42, 126648),

Gene: Angela_274 Start: 131229, Stop: 130840, Start Num: 9

Candidate Starts for Angela_274:

(8, 131232), (Start: 9 @131229 has 2 MA's), (Start: 16 @131166 has 129 MA's), (18, 131085), (21, 131055), (25, 131025), (31, 130968),

Gene: Angela_17 Start: 8826, Stop: 8437, Start Num: 9

Candidate Starts for Angela_17:

(8, 8829), (Start: 9 @8826 has 2 MA's), (Start: 16 @8763 has 129 MA's), (18, 8682), (21, 8652), (25, 8622), (31, 8565),

Gene: AngryGiraffe_17 Start: 8112, Stop: 7777, Start Num: 16

Candidate Starts for AngryGiraffe_17:

(Start: 7 @8184 has 4 MA's), (Start: 14 @8157 has 1 MA's), (Start: 16 @8112 has 129 MA's), (17, 8100), (18, 8031), (26, 7947), (33, 7896), (39, 7857), (40, 7842), (42, 7788),

Gene: AngryGiraffe_273 Start: 126455, Stop: 126120, Start Num: 16

Candidate Starts for AngryGiraffe_273:

(Start: 7 @126527 has 4 MA's), (Start: 14 @126500 has 1 MA's), (Start: 16 @126455 has 129 MA's), (17, 126443), (18, 126374), (26, 126290), (33, 126239), (39, 126200), (40, 126185), (42, 126131),

Gene: Bartholomune_16 Start: 8160, Stop: 7819, Start Num: 16

Candidate Starts for Bartholomune_16:

(Start: 14 @8208 has 1 MA's), (Start: 16 @8160 has 129 MA's), (17, 8148), (21, 8049), (23, 8034), (25, 8019), (28, 7986), (31, 7959), (37, 7917),

Gene: Bartholomune_266 Start: 129259, Stop: 128918, Start Num: 16

Candidate Starts for Bartholomune_266:

(Start: 14 @129307 has 1 MA's), (Start: 16 @129259 has 129 MA's), (17, 129247), (21, 129148), (23, 129133), (25, 129118), (28, 129085), (31, 129058), (37, 129016),

Gene: Battuta_16 Start: 8143, Stop: 7805, Start Num: 16

Candidate Starts for Battuta_16:

(Start: 16 @8143 has 129 MA's), (17, 8131), (18, 8062), (40, 7876), (42, 7822),

Gene: Battuta_273 Start: 126298, Stop: 125960, Start Num: 16

Candidate Starts for Battuta_273:

(Start: 16 @126298 has 129 MA's), (17, 126286), (18, 126217), (40, 126031), (42, 125977),

Gene: Birchlyn_273 Start: 122087, Stop: 121749, Start Num: 16

Candidate Starts for Birchlyn_273:

(Start: 16 @122087 has 129 MA's), (17, 122075), (18, 122006), (40, 121820), (42, 121766),

Gene: Birchlyn_13 Start: 5996, Stop: 5658, Start Num: 16

Candidate Starts for Birchlyn_13:

(Start: 16 @5996 has 129 MA's), (17, 5984), (18, 5915), (40, 5729), (42, 5675),

Gene: BlueOtter_265 Start: 129541, Stop: 129215, Start Num: 16

Candidate Starts for BlueOtter_265:

(Start: 14 @129586 has 1 MA's), (Start: 16 @129541 has 129 MA's), (18, 129460), (21, 129430), (25, 129400), (31, 129343),

Gene: BlueOtter_17 Start: 8454, Stop: 8128, Start Num: 16

Candidate Starts for BlueOtter_17:

(Start: 14 @8499 has 1 MA's), (Start: 16 @8454 has 129 MA's), (18, 8373), (21, 8343), (25, 8313), (31, 8256),

Gene: BoomerJR_17 Start: 8112, Stop: 7777, Start Num: 16

Candidate Starts for BoomerJR_17:

(Start: 7 @8184 has 4 MA's), (Start: 14 @8157 has 1 MA's), (Start: 16 @8112 has 129 MA's), (17, 8100), (18, 8031), (26, 7947), (33, 7896), (39, 7857), (40, 7842), (42, 7788),

Gene: BoomerJR_272 Start: 126900, Stop: 126565, Start Num: 16

Candidate Starts for BoomerJR_272:

(Start: 7 @126972 has 4 MA's), (Start: 14 @126945 has 1 MA's), (Start: 16 @126900 has 129 MA's), (17, 126888), (18, 126819), (26, 126735), (33, 126684), (39, 126645), (40, 126630), (42, 126576),

Gene: Bordeaux_16 Start: 8143, Stop: 7805, Start Num: 16

Candidate Starts for Bordeaux_16:

(Start: 16 @8143 has 129 MA's), (17, 8131), (18, 8062), (40, 7876), (42, 7822),

Gene: Bordeaux_273 Start: 126881, Stop: 126543, Start Num: 16

Candidate Starts for Bordeaux_273:

(Start: 16 @126881 has 129 MA's), (17, 126869), (18, 126800), (40, 126614), (42, 126560),

Gene: Braelyn_16 Start: 8203, Stop: 7862, Start Num: 16

Candidate Starts for Braelyn_16:

(1, 8545), (2, 8500), (Start: 14 @8251 has 1 MA's), (Start: 16 @8203 has 129 MA's), (17, 8191), (21, 8092), (23, 8077), (25, 8062), (28, 8029), (31, 8002), (37, 7960),

Gene: Braelyn_261 Start: 128613, Stop: 128272, Start Num: 16

Candidate Starts for Braelyn_261:

(1, 128955), (2, 128910), (Start: 14 @128661 has 1 MA's), (Start: 16 @128613 has 129 MA's), (17, 128601), (21, 128502), (23, 128487), (25, 128472), (28, 128439), (31, 128412), (37, 128370),

Gene: Brizzy_15 Start: 7732, Stop: 7394, Start Num: 16

Candidate Starts for Brizzy_15:

(Start: 16 @7732 has 129 MA's), (17, 7720), (18, 7651), (40, 7465), (42, 7411),

Gene: Brizzy_273 Start: 127000, Stop: 126662, Start Num: 16

Candidate Starts for Brizzy_273:

(Start: 16 @127000 has 129 MA's), (17, 126988), (18, 126919), (40, 126733), (42, 126679),

Gene: CeilingFan_15 Start: 7754, Stop: 7416, Start Num: 16

Candidate Starts for CeilingFan_15:

(Start: 16 @7754 has 129 MA's), (17, 7742), (18, 7673), (40, 7487), (42, 7433),

Gene: CeilingFan_281 Start: 128361, Stop: 128023, Start Num: 16

Candidate Starts for CeilingFan_281:

(Start: 16 @128361 has 129 MA's), (17, 128349), (18, 128280), (40, 128094), (42, 128040),

Gene: Coogler_17 Start: 8454, Stop: 8128, Start Num: 16

Candidate Starts for Coogler_17:

(3, 8616), (Start: 14 @8499 has 1 MA's), (Start: 16 @8454 has 129 MA's), (18, 8373), (21, 8343), (25, 8313), (31, 8256),

Gene: Coogler_263 Start: 129966, Stop: 129640, Start Num: 16

Candidate Starts for Coogler_263:

(3, 130128), (Start: 14 @130011 has 1 MA's), (Start: 16 @129966 has 129 MA's), (18, 129885), (21, 129855), (25, 129825), (31, 129768),

Gene: Cross_265 Start: 130187, Stop: 129861, Start Num: 16

Candidate Starts for Cross_265:

(Start: 14 @130232 has 1 MA's), (Start: 16 @130187 has 129 MA's), (18, 130106), (21, 130076), (25, 130046), (31, 129989),

Gene: Cross_17 Start: 8455, Stop: 8129, Start Num: 16

Candidate Starts for Cross_17:

(Start: 14 @8500 has 1 MA's), (Start: 16 @8455 has 129 MA's), (18, 8374), (21, 8344), (25, 8314), (31, 8257),

Gene: Cursive_269 Start: 129281, Stop: 128955, Start Num: 16

Candidate Starts for Cursive_269:

(Start: 14 @129326 has 1 MA's), (Start: 16 @129281 has 129 MA's), (18, 129200), (21, 129170), (25, 129140), (31, 129083),

Gene: Cursive_15 Start: 7272, Stop: 6946, Start Num: 16

Candidate Starts for Cursive_15:

(Start: 14 @7317 has 1 MA's), (Start: 16 @7272 has 129 MA's), (18, 7191), (21, 7161), (25, 7131), (31, 7074),

Gene: Davielle_15 Start: 7989, Stop: 7648, Start Num: 16

Candidate Starts for Davielle_15:

(1, 8331), (2, 8286), (Start: 14 @8037 has 1 MA's), (Start: 16 @7989 has 129 MA's), (17, 7977), (21, 7878), (23, 7863), (25, 7848), (28, 7815), (31, 7788), (37, 7746),

Gene: Davielle_264 Start: 129149, Stop: 128808, Start Num: 16

Candidate Starts for Davielle_264:

(1, 129491), (2, 129446), (Start: 14 @129197 has 1 MA's), (Start: 16 @129149 has 129 MA's), (17, 129137), (21, 129038), (23, 129023), (25, 129008), (28, 128975), (31, 128948), (37, 128906),

Gene: EGole_271 Start: 133187, Stop: 132861, Start Num: 16

Candidate Starts for EGole_271:

(4, 133331), (Start: 14 @133232 has 1 MA's), (Start: 16 @133187 has 129 MA's), (18, 133106), (21, 133076), (25, 133046), (31, 132989),

Gene: EGole_17 Start: 8875, Stop: 8549, Start Num: 16

Candidate Starts for EGole_17:

(4, 9019), (Start: 14 @8920 has 1 MA's), (Start: 16 @8875 has 129 MA's), (18, 8794), (21, 8764), (25, 8734), (31, 8677),

Gene: Eliot67_267 Start: 128974, Stop: 128633, Start Num: 16

Candidate Starts for Eliot67_267:

(Start: 14 @129022 has 1 MA's), (Start: 16 @128974 has 129 MA's), (17, 128962), (21, 128863), (23, 128848), (25, 128833), (28, 128800), (31, 128773), (37, 128731),

Gene: Eliot67_16 Start: 8160, Stop: 7819, Start Num: 16

Candidate Starts for Eliot67_16:

(Start: 14 @8208 has 1 MA's), (Start: 16 @8160 has 129 MA's), (17, 8148), (21, 8049), (23, 8034), (25, 8019), (28, 7986), (31, 7959), (37, 7917),

Gene: Elmer_15 Start: 7244, Stop: 6909, Start Num: 16

Candidate Starts for Elmer_15:

(Start: 16 @7244 has 129 MA's), (17, 7232), (18, 7163), (26, 7079), (33, 7028), (36, 7007), (39, 6989), (42, 6920),

Gene: Elmer_282 Start: 129612, Stop: 129277, Start Num: 16

Candidate Starts for Elmer_282:

(Start: 16 @129612 has 129 MA's), (17, 129600), (18, 129531), (26, 129447), (33, 129396), (36, 129375), (39, 129357), (42, 129288),

Gene: Enygma_282 Start: 129818, Stop: 129486, Start Num: 16

Candidate Starts for Enygma_282:

(Start: 7 @129890 has 4 MA's), (15, 129857), (Start: 16 @129818 has 129 MA's), (17, 129806), (18, 129737), (20, 129716), (22, 129704), (24, 129686), (39, 129566),

Gene: Enygma_14 Start: 7394, Stop: 7062, Start Num: 16

Candidate Starts for Enygma_14:

(Start: 7 @7466 has 4 MA's), (15, 7433), (Start: 16 @7394 has 129 MA's), (17, 7382), (18, 7313), (20, 7292), (22, 7280), (24, 7262), (39, 7142),

Gene: Evy_17 Start: 8633, Stop: 8307, Start Num: 16

Candidate Starts for Evy_17:

(Start: 14 @8678 has 1 MA's), (Start: 16 @8633 has 129 MA's), (18, 8552), (25, 8492), (30, 8441), (31, 8435), (37, 8393),

Gene: Evy_255 Start: 130362, Stop: 130036, Start Num: 16

Candidate Starts for Evy_255:

(Start: 14 @130407 has 1 MA's), (Start: 16 @130362 has 129 MA's), (18, 130281), (25, 130221), (30, 130170), (31, 130164), (37, 130122),

Gene: FreddyDRoo_16 Start: 8160, Stop: 7819, Start Num: 16

Candidate Starts for FreddyDRoo_16:

(Start: 14 @8208 has 1 MA's), (Start: 16 @8160 has 129 MA's), (17, 8148), (21, 8049), (23, 8034), (25, 8019), (28, 7986), (31, 7959), (37, 7917),

Gene: FreddyDRoo_269 Start: 128974, Stop: 128633, Start Num: 16

Candidate Starts for FreddyDRoo_269:

(Start: 14 @129022 has 1 MA's), (Start: 16 @128974 has 129 MA's), (17, 128962), (21, 128863), (23, 128848), (25, 128833), (28, 128800), (31, 128773), (37, 128731),

Gene: Genie2_17 Start: 8112, Stop: 7777, Start Num: 16

Candidate Starts for Genie2_17:

(Start: 7 @8184 has 4 MA's), (Start: 14 @8157 has 1 MA's), (Start: 16 @8112 has 129 MA's), (17, 8100), (18, 8031), (26, 7947), (33, 7896), (39, 7857), (40, 7842), (42, 7788),

Gene: Genie2_272 Start: 127013, Stop: 126678, Start Num: 16

Candidate Starts for Genie2_272:

(Start: 7 @127085 has 4 MA's), (Start: 14 @127058 has 1 MA's), (Start: 16 @127013 has 129 MA's), (17, 127001), (18, 126932), (26, 126848), (33, 126797), (39, 126758), (40, 126743), (42, 126689),

Gene: Gibbi_17 Start: 7754, Stop: 7416, Start Num: 16

Candidate Starts for Gibbi_17:

(Start: 16 @7754 has 129 MA's), (17, 7742), (18, 7673), (40, 7487), (42, 7433),

Gene: Gibbi_288 Start: 127854, Stop: 127516, Start Num: 16

Candidate Starts for Gibbi_288:

(Start: 16 @127854 has 129 MA's), (17, 127842), (18, 127773), (40, 127587), (42, 127533),

Gene: HangryHippo_17 Start: 8454, Stop: 8128, Start Num: 16
Candidate Starts for HangryHippo_17:
(Start: 14 @8499 has 1 MA's), (Start: 16 @8454 has 129 MA's), (18, 8373), (21, 8343), (25, 8313), (31, 8256),

Gene: HangryHippo_265 Start: 129541, Stop: 129215, Start Num: 16
Candidate Starts for HangryHippo_265:
(Start: 14 @129586 has 1 MA's), (Start: 16 @129541 has 129 MA's), (18, 129460), (21, 129430), (25, 129400), (31, 129343),

Gene: IchabodCrane_15 Start: 7751, Stop: 7413, Start Num: 16
Candidate Starts for IchabodCrane_15:
(Start: 16 @7751 has 129 MA's), (17, 7739), (18, 7670), (40, 7484), (42, 7430),

Gene: IchabodCrane_268 Start: 126294, Stop: 125956, Start Num: 16
Candidate Starts for IchabodCrane_268:
(Start: 16 @126294 has 129 MA's), (17, 126282), (18, 126213), (40, 126027), (42, 125973),

Gene: Jay2Jay_275 Start: 130988, Stop: 130590, Start Num: 7
Candidate Starts for Jay2Jay_275:
(Start: 7 @130988 has 4 MA's), (Start: 14 @130961 has 1 MA's), (Start: 16 @130916 has 129 MA's), (18, 130835), (25, 130775), (30, 130724), (31, 130718), (37, 130676),

Gene: Jay2Jay_20 Start: 8895, Stop: 8497, Start Num: 7
Candidate Starts for Jay2Jay_20:
(Start: 7 @8895 has 4 MA's), (Start: 14 @8868 has 1 MA's), (Start: 16 @8823 has 129 MA's), (18, 8742), (25, 8682), (30, 8631), (31, 8625), (37, 8583),

Gene: JimJam_284 Start: 129678, Stop: 129340, Start Num: 16
Candidate Starts for JimJam_284:
(Start: 16 @129678 has 129 MA's), (17, 129666), (18, 129597), (40, 129411), (42, 129357),

Gene: JimJam_16 Start: 8142, Stop: 7804, Start Num: 16
Candidate Starts for JimJam_16:
(Start: 16 @8142 has 129 MA's), (17, 8130), (18, 8061), (40, 7875), (42, 7821),

Gene: Jollison_274 Start: 126818, Stop: 126480, Start Num: 16
Candidate Starts for Jollison_274:
(Start: 16 @126818 has 129 MA's), (17, 126806), (18, 126737), (40, 126551), (42, 126497),

Gene: Jollison_17 Start: 8143, Stop: 7805, Start Num: 16
Candidate Starts for Jollison_17:
(Start: 16 @8143 has 129 MA's), (17, 8131), (18, 8062), (40, 7876), (42, 7822),

Gene: Karimac_274 Start: 127464, Stop: 127126, Start Num: 16
Candidate Starts for Karimac_274:
(Start: 16 @127464 has 129 MA's), (17, 127452), (18, 127383), (40, 127197), (42, 127143),

Gene: Karimac_16 Start: 8145, Stop: 7807, Start Num: 16
Candidate Starts for Karimac_16:
(Start: 16 @8145 has 129 MA's), (17, 8133), (18, 8064), (40, 7878), (42, 7824),

Gene: KentuckyRacer_283 Start: 129206, Stop: 128868, Start Num: 16
Candidate Starts for KentuckyRacer_283:
(Start: 16 @129206 has 129 MA's), (17, 129194), (18, 129125), (40, 128939), (42, 128885),

Gene: KentuckyRacer_15 Start: 7755, Stop: 7417, Start Num: 16
Candidate Starts for KentuckyRacer_15:
(Start: 16 @7755 has 129 MA's), (17, 7743), (18, 7674), (40, 7488), (42, 7434),

Gene: Larnav_267 Start: 130459, Stop: 130133, Start Num: 16
Candidate Starts for Larnav_267:
(3, 130621), (Start: 14 @130504 has 1 MA's), (Start: 16 @130459 has 129 MA's), (18, 130378), (21, 130348), (25, 130318), (31, 130261),

Gene: Larnav_17 Start: 8454, Stop: 8128, Start Num: 16
Candidate Starts for Larnav_17:
(3, 8616), (Start: 14 @8499 has 1 MA's), (Start: 16 @8454 has 129 MA's), (18, 8373), (21, 8343), (25, 8313), (31, 8256),

Gene: Leo04_268 Start: 130571, Stop: 130245, Start Num: 16
Candidate Starts for Leo04_268:
(Start: 14 @130616 has 1 MA's), (Start: 16 @130571 has 129 MA's), (18, 130490), (21, 130460), (25, 130430), (31, 130373),

Gene: Leo04_17 Start: 8453, Stop: 8127, Start Num: 16
Candidate Starts for Leo04_17:
(Start: 14 @8498 has 1 MA's), (Start: 16 @8453 has 129 MA's), (18, 8372), (21, 8342), (25, 8312), (31, 8255),

Gene: Liandry_265 Start: 129680, Stop: 129339, Start Num: 16
Candidate Starts for Liandry_265:
(Start: 14 @129728 has 1 MA's), (Start: 16 @129680 has 129 MA's), (17, 129668), (21, 129569), (23, 129554), (25, 129539), (28, 129506), (31, 129479), (37, 129437),

Gene: Liandry_16 Start: 8159, Stop: 7818, Start Num: 16
Candidate Starts for Liandry_16:
(Start: 14 @8207 has 1 MA's), (Start: 16 @8159 has 129 MA's), (17, 8147), (21, 8048), (23, 8033), (25, 8018), (28, 7985), (31, 7958), (37, 7916),

Gene: LilSaint_271 Start: 130422, Stop: 130084, Start Num: 16
Candidate Starts for LilSaint_271:
(Start: 16 @130422 has 129 MA's), (18, 130338), (23, 130296), (27, 130251), (29, 130245), (32, 130212), (38, 130176), (39, 130170),

Gene: LilSaint_18 Start: 8572, Stop: 8234, Start Num: 16
Candidate Starts for LilSaint_18:
(Start: 16 @8572 has 129 MA's), (18, 8488), (23, 8446), (27, 8401), (29, 8395), (32, 8362), (38, 8326), (39, 8320),

Gene: LukeCage_278 Start: 128580, Stop: 128242, Start Num: 16
Candidate Starts for LukeCage_278:
(Start: 16 @128580 has 129 MA's), (17, 128568), (18, 128499), (35, 128349), (40, 128313), (42, 128259),

Gene: LukeCage_15 Start: 7676, Stop: 7338, Start Num: 16

Candidate Starts for LukeCage_15:

(Start: 16 @7676 has 129 MA's), (17, 7664), (18, 7595), (35, 7445), (40, 7409), (42, 7355),

Gene: Lululemon_263 Start: 128726, Stop: 128400, Start Num: 16

Candidate Starts for Lululemon_263:

(Start: 14 @128771 has 1 MA's), (15, 128765), (Start: 16 @128726 has 129 MA's), (18, 128645), (21, 128615), (25, 128585), (31, 128528),

Gene: Lululemon_16 Start: 7834, Stop: 7508, Start Num: 16

Candidate Starts for Lululemon_16:

(Start: 14 @7879 has 1 MA's), (15, 7873), (Start: 16 @7834 has 129 MA's), (18, 7753), (21, 7723), (25, 7693), (31, 7636),

Gene: MicyPS_103 Start: 60929, Stop: 60540, Start Num: 13

Candidate Starts for MicyPS_103:

(5, 60977), (6, 60968), (Start: 13 @60929 has 2 MA's), (19, 60773), (20, 60767), (34, 60647),

Gene: Mildred21_280 Start: 129506, Stop: 129180, Start Num: 16

Candidate Starts for Mildred21_280:

(12, 129563), (15, 129545), (Start: 16 @129506 has 129 MA's), (18, 129425), (25, 129365), (31, 129308), (37, 129266),

Gene: Mildred21_17 Start: 8348, Stop: 8022, Start Num: 16

Candidate Starts for Mildred21_17:

(12, 8405), (15, 8387), (Start: 16 @8348 has 129 MA's), (18, 8267), (25, 8207), (31, 8150), (37, 8108),

Gene: MindFlayer_15 Start: 7753, Stop: 7415, Start Num: 16

Candidate Starts for MindFlayer_15:

(Start: 16 @7753 has 129 MA's), (17, 7741), (18, 7672), (40, 7486), (42, 7432),

Gene: MindFlayer_267 Start: 125813, Stop: 125475, Start Num: 16

Candidate Starts for MindFlayer_267:

(Start: 16 @125813 has 129 MA's), (17, 125801), (18, 125732), (40, 125546), (42, 125492),

Gene: Mugiwara_281 Start: 128790, Stop: 128452, Start Num: 16

Candidate Starts for Mugiwara_281:

(Start: 16 @128790 has 129 MA's), (17, 128778), (18, 128709), (25, 128652), (40, 128523), (42, 128469),

Gene: Mugiwara_14 Start: 7405, Stop: 7067, Start Num: 16

Candidate Starts for Mugiwara_14:

(Start: 16 @7405 has 129 MA's), (17, 7393), (18, 7324), (25, 7267), (40, 7138), (42, 7084),

Gene: Navo_257 Start: 127583, Stop: 127242, Start Num: 16

Candidate Starts for Navo_257:

(1, 127925), (2, 127880), (Start: 14 @127631 has 1 MA's), (Start: 16 @127583 has 129 MA's), (17, 127571), (21, 127472), (23, 127457), (25, 127442), (28, 127409), (31, 127382), (37, 127340),

Gene: Navo_15 Start: 7958, Stop: 7617, Start Num: 16

Candidate Starts for Navo_15:

(1, 8300), (2, 8255), (Start: 14 @8006 has 1 MA's), (Start: 16 @7958 has 129 MA's), (17, 7946), (21, 7847), (23, 7832), (25, 7817), (28, 7784), (31, 7757), (37, 7715),

Gene: NootNoot_261 Start: 128469, Stop: 128128, Start Num: 16

Candidate Starts for NootNoot_261:

(Start: 14 @128517 has 1 MA's), (Start: 16 @128469 has 129 MA's), (17, 128457), (21, 128358), (23, 128343), (25, 128328), (28, 128295), (31, 128268), (37, 128226),

Gene: NootNoot_16 Start: 8170, Stop: 7829, Start Num: 16

Candidate Starts for NootNoot_16:

(Start: 14 @8218 has 1 MA's), (Start: 16 @8170 has 129 MA's), (17, 8158), (21, 8059), (23, 8044), (25, 8029), (28, 7996), (31, 7969), (37, 7927),

Gene: PSonyx_122 Start: 64546, Stop: 64157, Start Num: 13

Candidate Starts for PSonyx_122:

(Start: 13 @64546 has 2 MA's), (19, 64390), (20, 64384),

Gene: PacManQ_263 Start: 128726, Stop: 128400, Start Num: 16

Candidate Starts for PacManQ_263:

(Start: 14 @128771 has 1 MA's), (15, 128765), (Start: 16 @128726 has 129 MA's), (18, 128645), (21, 128615), (25, 128585), (31, 128528),

Gene: PacManQ_16 Start: 7834, Stop: 7508, Start Num: 16

Candidate Starts for PacManQ_16:

(Start: 14 @7879 has 1 MA's), (15, 7873), (Start: 16 @7834 has 129 MA's), (18, 7753), (21, 7723), (25, 7693), (31, 7636),

Gene: Paradiddles_16 Start: 8160, Stop: 7819, Start Num: 16

Candidate Starts for Paradiddles_16:

(Start: 14 @8208 has 1 MA's), (Start: 16 @8160 has 129 MA's), (17, 8148), (21, 8049), (23, 8034), (25, 8019), (28, 7986), (31, 7959), (37, 7917),

Gene: Paradiddles_257 Start: 130868, Stop: 130527, Start Num: 16

Candidate Starts for Paradiddles_257:

(Start: 14 @130916 has 1 MA's), (Start: 16 @130868 has 129 MA's), (17, 130856), (21, 130757), (23, 130742), (25, 130727), (28, 130694), (31, 130667), (37, 130625),

Gene: Peebs_264 Start: 130428, Stop: 130102, Start Num: 16

Candidate Starts for Peebs_264:

(Start: 14 @130473 has 1 MA's), (15, 130467), (Start: 16 @130428 has 129 MA's), (18, 130347), (21, 130317), (25, 130287), (31, 130230),

Gene: Peebs_17 Start: 8453, Stop: 8127, Start Num: 16

Candidate Starts for Peebs_17:

(Start: 14 @8498 has 1 MA's), (15, 8492), (Start: 16 @8453 has 129 MA's), (18, 8372), (21, 8342), (25, 8312), (31, 8255),

Gene: Pepperwood_18 Start: 8608, Stop: 8282, Start Num: 16

Candidate Starts for Pepperwood_18:

(Start: 14 @8653 has 1 MA's), (15, 8647), (Start: 16 @8608 has 129 MA's), (18, 8527), (21, 8497), (25, 8467), (31, 8410),

Gene: Pepperwood_267 Start: 130393, Stop: 130067, Start Num: 16

Candidate Starts for Pepperwood_267:

(Start: 14 @130438 has 1 MA's), (15, 130432), (Start: 16 @130393 has 129 MA's), (18, 130312), (21, 130282), (25, 130252), (31, 130195),

Gene: Persimmon_266 Start: 128800, Stop: 128459, Start Num: 16

Candidate Starts for Persimmon_266:

(1, 129142), (2, 129097), (Start: 14 @128848 has 1 MA's), (Start: 16 @128800 has 129 MA's), (17, 128788), (21, 128689), (23, 128674), (25, 128659), (28, 128626), (31, 128599), (37, 128557),

Gene: Persimmon_15 Start: 7989, Stop: 7648, Start Num: 16

Candidate Starts for Persimmon_15:

(1, 8331), (2, 8286), (Start: 14 @8037 has 1 MA's), (Start: 16 @7989 has 129 MA's), (17, 7977), (21, 7878), (23, 7863), (25, 7848), (28, 7815), (31, 7788), (37, 7746),

Gene: PinkiePie_16 Start: 8160, Stop: 7819, Start Num: 16

Candidate Starts for PinkiePie_16:

(Start: 14 @8208 has 1 MA's), (Start: 16 @8160 has 129 MA's), (17, 8148), (21, 8049), (23, 8034), (25, 8019), (28, 7986), (31, 7959), (37, 7917),

Gene: PinkiePie_266 Start: 129681, Stop: 129340, Start Num: 16

Candidate Starts for PinkiePie_266:

(Start: 14 @129729 has 1 MA's), (Start: 16 @129681 has 129 MA's), (17, 129669), (21, 129570), (23, 129555), (25, 129540), (28, 129507), (31, 129480), (37, 129438),

Gene: PumpkinSpice_280 Start: 128035, Stop: 127697, Start Num: 16

Candidate Starts for PumpkinSpice_280:

(Start: 16 @128035 has 129 MA's), (17, 128023), (18, 127954), (40, 127768), (42, 127714),

Gene: PumpkinSpice_16 Start: 8143, Stop: 7805, Start Num: 16

Candidate Starts for PumpkinSpice_16:

(Start: 16 @8143 has 129 MA's), (17, 8131), (18, 8062), (40, 7876), (42, 7822),

Gene: Quaran19_16 Start: 8143, Stop: 7805, Start Num: 16

Candidate Starts for Quaran19_16:

(Start: 16 @8143 has 129 MA's), (17, 8131), (18, 8062), (40, 7876), (42, 7822),

Gene: Quaran19_277 Start: 127325, Stop: 126987, Start Num: 16

Candidate Starts for Quaran19_277:

(Start: 16 @127325 has 129 MA's), (17, 127313), (18, 127244), (40, 127058), (42, 127004),

Gene: Rikishi_16 Start: 7754, Stop: 7416, Start Num: 16

Candidate Starts for Rikishi_16:

(Start: 16 @7754 has 129 MA's), (17, 7742), (18, 7673), (40, 7487), (42, 7433),

Gene: Rikishi_278 Start: 127827, Stop: 127489, Start Num: 16

Candidate Starts for Rikishi_278:

(Start: 16 @127827 has 129 MA's), (17, 127815), (18, 127746), (40, 127560), (42, 127506),

Gene: SaltySpittoon_276 Start: 126407, Stop: 126069, Start Num: 16

Candidate Starts for SaltySpittoon_276:

(Start: 16 @126407 has 129 MA's), (17, 126395), (18, 126326), (40, 126140), (42, 126086),

Gene: SaltySpittoon_16 Start: 8143, Stop: 7805, Start Num: 16

Candidate Starts for SaltySpittoon_16:

(Start: 16 @8143 has 129 MA's), (17, 8131), (18, 8062), (40, 7876), (42, 7822),

Gene: Scheme_18 Start: 8608, Stop: 8282, Start Num: 16

Candidate Starts for Scheme_18:

(Start: 14 @8653 has 1 MA's), (15, 8647), (Start: 16 @8608 has 129 MA's), (18, 8527), (21, 8497), (25, 8467), (31, 8410),

Gene: Scheme_271 Start: 131803, Stop: 131477, Start Num: 16

Candidate Starts for Scheme_271:

(Start: 14 @131848 has 1 MA's), (15, 131842), (Start: 16 @131803 has 129 MA's), (18, 131722), (21, 131692), (25, 131662), (31, 131605),

Gene: Sollertia_17 Start: 8112, Stop: 7777, Start Num: 16

Candidate Starts for Sollertia_17:

(Start: 7 @8184 has 4 MA's), (Start: 14 @8157 has 1 MA's), (Start: 16 @8112 has 129 MA's), (17, 8100), (18, 8031), (26, 7947), (33, 7896), (39, 7857), (40, 7842), (42, 7788),

Gene: Sollertia_273 Start: 127002, Stop: 126667, Start Num: 16

Candidate Starts for Sollertia_273:

(Start: 7 @127074 has 4 MA's), (Start: 14 @127047 has 1 MA's), (Start: 16 @127002 has 129 MA's), (17, 126990), (18, 126921), (26, 126837), (33, 126786), (39, 126747), (40, 126732), (42, 126678),

Gene: Spelly_16 Start: 8143, Stop: 7805, Start Num: 16

Candidate Starts for Spelly_16:

(Start: 16 @8143 has 129 MA's), (17, 8131), (18, 8062), (40, 7876), (42, 7822),

Gene: Spelly_282 Start: 126947, Stop: 126609, Start Num: 16

Candidate Starts for Spelly_282:

(Start: 16 @126947 has 129 MA's), (17, 126935), (18, 126866), (40, 126680), (42, 126626),

Gene: Spilled_15 Start: 7753, Stop: 7415, Start Num: 16

Candidate Starts for Spilled_15:

(Start: 16 @7753 has 129 MA's), (17, 7741), (18, 7672), (40, 7486), (42, 7432),

Gene: Spilled_283 Start: 128222, Stop: 127884, Start Num: 16

Candidate Starts for Spilled_283:

(Start: 16 @128222 has 129 MA's), (17, 128210), (18, 128141), (40, 127955), (42, 127901),

Gene: Squillium_268 Start: 129684, Stop: 129343, Start Num: 16

Candidate Starts for Squillium_268:

(10, 129747), (11, 129744), (Start: 14 @129732 has 1 MA's), (Start: 16 @129684 has 129 MA's), (17, 129672), (21, 129573), (23, 129558), (25, 129543), (28, 129510), (31, 129483), (37, 129441),

Gene: Squillium_16 Start: 8160, Stop: 7819, Start Num: 16

Candidate Starts for Squillium_16:

(10, 8223), (11, 8220), (Start: 14 @8208 has 1 MA's), (Start: 16 @8160 has 129 MA's), (17, 8148), (21, 8049), (23, 8034), (25, 8019), (28, 7986), (31, 7959), (37, 7917),

Gene: Stanimal_272 Start: 127386, Stop: 127051, Start Num: 16

Candidate Starts for Stanimal_272:

(Start: 7 @127458 has 4 MA's), (Start: 14 @127431 has 1 MA's), (Start: 16 @127386 has 129 MA's), (17, 127374), (18, 127305), (26, 127221), (33, 127170), (39, 127131), (40, 127116), (42, 127062),

Gene: Stanimal_17 Start: 8112, Stop: 7777, Start Num: 16

Candidate Starts for Stanimal_17:

(Start: 7 @8184 has 4 MA's), (Start: 14 @8157 has 1 MA's), (Start: 16 @8112 has 129 MA's), (17, 8100), (18, 8031), (26, 7947), (33, 7896), (39, 7857), (40, 7842), (42, 7788),

Gene: StarPlatinum_285 Start: 129523, Stop: 129185, Start Num: 16

Candidate Starts for StarPlatinum_285:

(Start: 16 @129523 has 129 MA's), (17, 129511), (18, 129442), (41, 129223), (42, 129202),

Gene: StarPlatinum_15 Start: 7836, Stop: 7498, Start Num: 16

Candidate Starts for StarPlatinum_15:

(Start: 16 @7836 has 129 MA's), (17, 7824), (18, 7755), (41, 7536), (42, 7515),

Gene: Starbow_16 Start: 8143, Stop: 7805, Start Num: 16

Candidate Starts for Starbow_16:

(Start: 16 @8143 has 129 MA's), (17, 8131), (18, 8062), (40, 7876), (42, 7822),

Gene: Starbow_273 Start: 126991, Stop: 126653, Start Num: 16

Candidate Starts for Starbow_273:

(Start: 16 @126991 has 129 MA's), (17, 126979), (18, 126910), (40, 126724), (42, 126670),

Gene: Sushi23_18 Start: 8499, Stop: 8128, Start Num: 14

Candidate Starts for Sushi23_18:

(3, 8616), (Start: 14 @8499 has 1 MA's), (Start: 16 @8454 has 129 MA's), (18, 8373), (21, 8343), (25, 8313), (31, 8256),

Gene: Sushi23_268 Start: 131297, Stop: 130971, Start Num: 16

Candidate Starts for Sushi23_268:

(3, 131459), (Start: 14 @131342 has 1 MA's), (Start: 16 @131297 has 129 MA's), (18, 131216), (21, 131186), (25, 131156), (31, 131099),

Gene: Targaryen_266 Start: 132305, Stop: 131979, Start Num: 16

Candidate Starts for Targaryen_266:

(Start: 14 @132350 has 1 MA's), (Start: 16 @132305 has 129 MA's), (18, 132224), (25, 132164), (30, 132113), (31, 132107), (37, 132065),

Gene: Targaryen_15 Start: 8629, Stop: 8303, Start Num: 16

Candidate Starts for Targaryen_15:

(Start: 14 @8674 has 1 MA's), (Start: 16 @8629 has 129 MA's), (18, 8548), (25, 8488), (30, 8437), (31, 8431), (37, 8389),

Gene: TomSawyer_281 Start: 129515, Stop: 129177, Start Num: 16

Candidate Starts for TomSawyer_281:

(Start: 16 @129515 has 129 MA's), (17, 129503), (18, 129434), (40, 129248), (42, 129194),

Gene: TomSawyer_16 Start: 7736, Stop: 7398, Start Num: 16

Candidate Starts for TomSawyer_16:

(Start: 16 @7736 has 129 MA's), (17, 7724), (18, 7655), (40, 7469), (42, 7415),

Gene: Tomas_9 Start: 5260, Stop: 4922, Start Num: 16

Candidate Starts for Tomas_9:

(Start: 16 @5260 has 129 MA's), (22, 5146), (26, 5098), (39, 5008), (42, 4939),

Gene: Tomas_265 Start: 126967, Stop: 126629, Start Num: 16
Candidate Starts for Tomas_265:
(Start: 16 @126967 has 129 MA's), (22, 126853), (26, 126805), (39, 126715), (42, 126646),

Gene: Tribute_17 Start: 8454, Stop: 8128, Start Num: 16
Candidate Starts for Tribute_17:
(3, 8616), (Start: 14 @8499 has 1 MA's), (Start: 16 @8454 has 129 MA's), (18, 8373), (21, 8343), (25, 8313), (31, 8256),

Gene: Tribute_263 Start: 130998, Stop: 130672, Start Num: 16
Candidate Starts for Tribute_263:
(3, 131160), (Start: 14 @131043 has 1 MA's), (Start: 16 @130998 has 129 MA's), (18, 130917), (21, 130887), (25, 130857), (31, 130800),

Gene: Warpy_272 Start: 130454, Stop: 130056, Start Num: 7
Candidate Starts for Warpy_272:
(Start: 7 @130454 has 4 MA's), (Start: 14 @130427 has 1 MA's), (Start: 16 @130382 has 129 MA's), (18, 130301), (25, 130241), (30, 130190), (31, 130184), (37, 130142),

Gene: Warpy_20 Start: 8916, Stop: 8518, Start Num: 7
Candidate Starts for Warpy_20:
(Start: 7 @8916 has 4 MA's), (Start: 14 @8889 has 1 MA's), (Start: 16 @8844 has 129 MA's), (18, 8763), (25, 8703), (30, 8652), (31, 8646), (37, 8604),

Gene: Watermoore_264 Start: 131051, Stop: 130725, Start Num: 16
Candidate Starts for Watermoore_264:
(Start: 14 @131096 has 1 MA's), (Start: 16 @131051 has 129 MA's), (18, 130970), (21, 130940), (25, 130910), (31, 130853),

Gene: Watermoore_17 Start: 8455, Stop: 8129, Start Num: 16
Candidate Starts for Watermoore_17:
(Start: 14 @8500 has 1 MA's), (Start: 16 @8455 has 129 MA's), (18, 8374), (21, 8344), (25, 8314), (31, 8257),

Gene: WhereRU_15 Start: 7989, Stop: 7648, Start Num: 16
Candidate Starts for WhereRU_15:
(1, 8331), (2, 8286), (Start: 14 @8037 has 1 MA's), (Start: 16 @7989 has 129 MA's), (17, 7977), (21, 7878), (23, 7863), (25, 7848), (28, 7815), (31, 7788), (37, 7746),

Gene: WhereRU_264 Start: 129134, Stop: 128793, Start Num: 16
Candidate Starts for WhereRU_264:
(1, 129476), (2, 129431), (Start: 14 @129182 has 1 MA's), (Start: 16 @129134 has 129 MA's), (17, 129122), (21, 129023), (23, 129008), (25, 128993), (28, 128960), (31, 128933), (37, 128891),

Gene: Wipeout_269 Start: 128489, Stop: 128151, Start Num: 16
Candidate Starts for Wipeout_269:
(Start: 16 @128489 has 129 MA's), (17, 128477), (18, 128408), (40, 128222), (42, 128168),

Gene: Wipeout_15 Start: 7758, Stop: 7420, Start Num: 16
Candidate Starts for Wipeout_15:
(Start: 16 @7758 has 129 MA's), (17, 7746), (18, 7677), (40, 7491), (42, 7437),

Gene: Wofford_273 Start: 129042, Stop: 128707, Start Num: 16

Candidate Starts for Wofford_273:

(Start: 16 @129042 has 129 MA's), (17, 129030), (18, 128961), (26, 128877), (33, 128826), (36, 128805), (39, 128787), (42, 128718),

Gene: Wofford_15 Start: 7249, Stop: 6914, Start Num: 16

Candidate Starts for Wofford_15:

(Start: 16 @7249 has 129 MA's), (17, 7237), (18, 7168), (26, 7084), (33, 7033), (36, 7012), (39, 6994), (42, 6925),

Gene: Yaboi_278 Start: 126930, Stop: 126595, Start Num: 16

Candidate Starts for Yaboi_278:

(Start: 7 @127002 has 4 MA's), (Start: 14 @126975 has 1 MA's), (Start: 16 @126930 has 129 MA's), (17, 126918), (18, 126849), (26, 126765), (33, 126714), (39, 126675), (40, 126660), (42, 126606),

Gene: Yaboi_17 Start: 8112, Stop: 7777, Start Num: 16

Candidate Starts for Yaboi_17:

(Start: 7 @8184 has 4 MA's), (Start: 14 @8157 has 1 MA's), (Start: 16 @8112 has 129 MA's), (17, 8100), (18, 8031), (26, 7947), (33, 7896), (39, 7857), (40, 7842), (42, 7788),