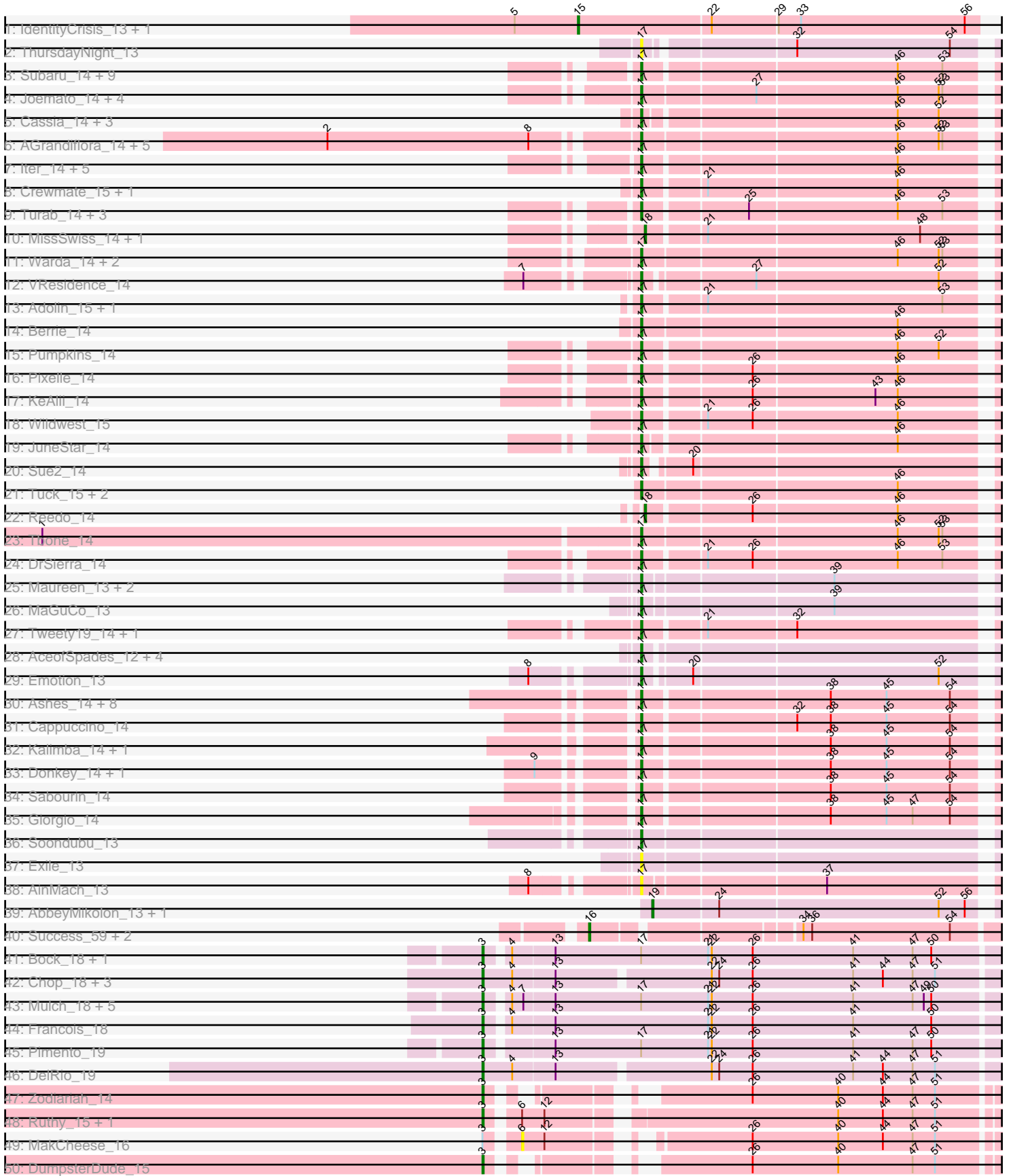
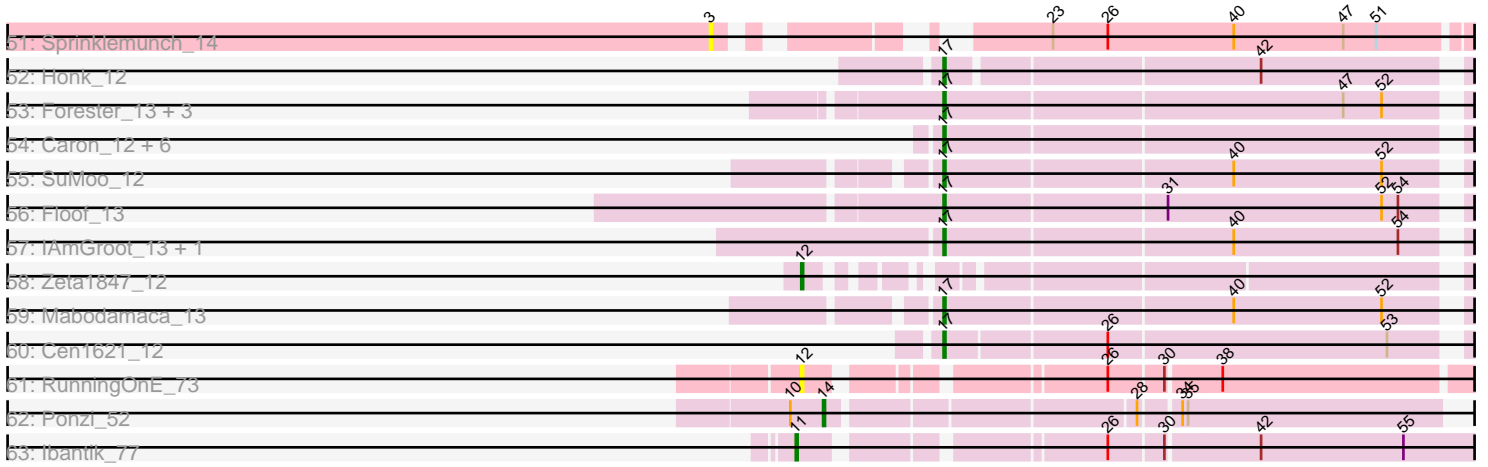


Pham 304790



Pham 304790



Note: Tracks are now grouped by subcluster and scaled. Switching in subcluster is indicated by changes in track color. Track scale is now set by default to display the region 30 bp upstream of start 1 to 30 bp downstream of the last possible start. If this default region is judged to be packed too tightly with annotated starts, the track will be further scaled to only show that region of the ORF with annotated starts. This action will be indicated by adding "Zoomed" to the title. For starts, yellow indicates the location of called starts comprised solely of Glimmer/GeneMark auto-annotations, green indicates the location of called starts with at least 1 manual gene annotation.

Pham 304790 Report

This analysis was run 06/08/26 on database version 649.

Pham number 304790 has 140 members, 25 are drafts.

Phages represented in each track:

- Track 1 : IdentityCrisis_13, WST1_13
- Track 2 : ThursdayNight_13
- Track 3 : Subaru_14, Elezi_14, Nitro_14, Jstan_14, Eraser_14, London_14, Tallboi_14, Niobe_14, Skelbel_14, Asa16_14
- Track 4 : Joemato_14, Simpson_15, JohnDoe_14, Kaylissa_14, Cyan_14
- Track 5 : Cassia_14, TforTroy_14, Yang_14, Schaffner_14
- Track 6 : AGrandiflora_14, Lego_14, Flutur_14, YesChef_14, Tutumahutu_14, Powerpuff_14
- Track 7 : Iter_14, IttyBittyPiggy_14, Tian_14, Ascela_14, Amyev_14, Phives_15
- Track 8 : Crewmate_15, ObiToo_14
- Track 9 : Turab_14, Adumb2043_14, Amploria_14, AEgle_14
- Track 10 : MissSwiss_14, PandaPo_14
- Track 11 : Warda_14, Lizalica_14, Mudpuppy_14
- Track 12 : VResidence_14
- Track 13 : Adolin_15, DrManhattan_14
- Track 14 : Berrie_14
- Track 15 : Pumpkins_14
- Track 16 : Pixelle_14
- Track 17 : KeAlii_14
- Track 18 : Wildwest_15
- Track 19 : JuneStar_14
- Track 20 : Sue2_14
- Track 21 : Tuck_15, Community_15, Janeemi_15
- Track 22 : Reedo_14
- Track 23 : Tbone_14
- Track 24 : DrSierra_14
- Track 25 : Maureen_13, IUFootball_13, Liebe_13
- Track 26 : MaGuCo_13
- Track 27 : Tweety19_14, Snek_14
- Track 28 : AceofSpades_12, MiniMommy_12, JasmineDragon_13, VroomVroom_13, ShakeltOph_13
- Track 29 : Emotion_13
- Track 30 : Ashes_14, RockScotty_14, Mysterium_14, SpecialK_14, Halsey_14, Beaupre_14, Stuu_14, Gumpizza_14, Moss_14
- Track 31 : Cappuccino_14
- Track 32 : Kalimba_14, Sooty_14
- Track 33 : Donkey_14, Gambol_14

- Track 34 : Sabourin_14
- Track 35 : Giorgio_14
- Track 36 : Soondubu_13
- Track 37 : Exile_13
- Track 38 : AinMach_13
- Track 39 : AbbeyMikolon_13, Nesbitt_13
- Track 40 : Success_59, Spooks_58, Bimmel_57
- Track 41 : Bock_18, BetterKatz_18
- Track 42 : Chop_18, GrandSlam_18, Ayotoya_18, Hamood_18
- Track 43 : Mulch_18, WheatThin_19, Nadeem_18, Parada_18, Brylie_18, NancyRae_18
- Track 44 : Francois_18
- Track 45 : Pimento_19
- Track 46 : DelRio_19
- Track 47 : Zodiariah_14
- Track 48 : Ruthy_15, ArchiDore_15
- Track 49 : MakCheese_16
- Track 50 : DumpsterDude_15
- Track 51 : Sprinklemunch_14
- Track 52 : Honk_12
- Track 53 : Forester_13, Percival_13, SuperHands_13, Gretchen_13
- Track 54 : Caron_12, FiveHead_13, Barnstormer_12, Origami_13, LadyAstra_13, UtzChips_12, JohnThicc_13
- Track 55 : SuMoo_12
- Track 56 : Floof_13
- Track 57 : IAmGroot_13, GardenState_13
- Track 58 : Zeta1847_12
- Track 59 : Mabodamaca_13
- Track 60 : Cen1621_12
- Track 61 : RunningOnE_73
- Track 62 : Ponzi_52
- Track 63 : Ibantik_77

Summary of Final Annotations (See graph section above for start numbers):

The start number called the most often in the published annotations is 17, it was called in 85 of the 115 non-draft genes in the pham.

Genes that call this "Most Annotated" start:

- AEgle_14, AGrandiflora_14, AceofSpades_12, Adolin_15, Adumb2043_14, AinMach_13, Amploria_14, Amyev_14, Asa16_14, Ascela_14, Ashes_14, Barnstormer_12, Beaupre_14, Berrie_14, Cappuccino_14, Caron_12, Cassia_14, Cen1621_12, Community_15, Crewmate_15, Cyan_14, Donkey_14, DrManhattan_14, DrSierra_14, Elezi_14, Emotion_13, Eraser_14, Exile_13, FiveHead_13, Floof_13, Flutur_14, Forester_13, Gambol_14, GardenState_13, Giorgio_14, Gretchen_13, Gumpizza_14, Halsey_14, Honk_12, IAmGroot_13, IUFootball_13, Iter_14, IttyBittyPiggy_14, Janeemi_15, JasmineDragon_13, Joemato_14, JohnDoe_14, JohnThicc_13, Jstan_14, JuneStar_14, Kalimba_14, Kaylissa_14, KeAlii_14, LadyAstra_13, Lego_14, Liebe_13, Lizalica_14, London_14, MaGuCo_13, Mabodamaca_13, Maureen_13, MiniMommy_12, Moss_14,

Mudpuppy_14, Mysterium_14, Niobe_14, Nitro_14, ObiToo_14, Origami_13, Percival_13, Phives_15, Pixelle_14, Powerpuff_14, Pumpkins_14, RockScotty_14, Sabourin_14, Schaffner_14, ShakeltOph_13, Simpson_15, Skelbel_14, Snek_14, Soondubu_13, Sooty_14, SpecialK_14, Stuu_14, SuMoo_12, Subaru_14, Sue2_14, SuperHands_13, Tallboi_14, Tbone_14, TforTroy_14, ThursdayNight_13, Tian_14, Tuck_15, Turab_14, Tutumahutu_14, Tweety19_14, UtzChips_12, VResidence_14, VroomVroom_13, Warda_14, Wildwest_15, Yang_14, YesChef_14,

Genes that have the "Most Annotated" start but do not call it:

- BetterKatz_18, Bock_18, Brylie_18, Mulch_18, Nadeem_18, NancyRae_18, Parada_18, Pimento_19, WheatThin_19,

Genes that do not have the "Most Annotated" start:

- AbbeyMikolon_13, ArchiDore_15, Ayotoya_18, Bimmel_57, Chop_18, DelRio_19, DumpsterDude_15, Francois_18, GrandSlam_18, Hamood_18, Ibantik_77, IdentityCrisis_13, MakCheese_16, MissSwiss_14, Nesbitt_13, PandaPo_14, Ponzi_52, Reedo_14, RunningOnE_73, Ruthy_15, Spooks_58, Sprinklemunch_14, Success_59, WST1_13, Zeta1847_12, Zodiariah_14,

Summary by start number:

Start 3:

- Found in 21 of 140 (15.0%) of genes in pham
- Manual Annotations of this start: 19 of 115
- Called 95.2% of time when present
- Phage (with cluster) where this start called: ArchiDore_15 (DW), Ayotoya_18 (DI), BetterKatz_18 (DI), Bock_18 (DI), Brylie_18 (DI), Chop_18 (DI), DelRio_19 (DI), DumpsterDude_15 (DW), Francois_18 (DI), GrandSlam_18 (DI), Hamood_18 (DI), Mulch_18 (DI), Nadeem_18 (DI), NancyRae_18 (DI), Parada_18 (DI), Pimento_19 (DI), Ruthy_15 (DW), Sprinklemunch_14 (DW), WheatThin_19 (DI), Zodiariah_14 (DW),

Start 6:

- Found in 3 of 140 (2.1%) of genes in pham
- No Manual Annotations of this start.
- Called 33.3% of time when present
- Phage (with cluster) where this start called: MakCheese_16 (DW),

Start 11:

- Found in 1 of 140 (0.7%) of genes in pham
- Manual Annotations of this start: 1 of 115
- Called 100.0% of time when present
- Phage (with cluster) where this start called: Ibantik_77 (singleton),

Start 12:

- Found in 5 of 140 (3.6%) of genes in pham
- Manual Annotations of this start: 1 of 115
- Called 40.0% of time when present
- Phage (with cluster) where this start called: RunningOnE_73 (UNK), Zeta1847_12 (EH),

Start 14:

- Found in 1 of 140 (0.7%) of genes in pham

- Manual Annotations of this start: 1 of 115
- Called 100.0% of time when present
- Phage (with cluster) where this start called: Ponzi_52 (singleton),

Start 15:

- Found in 2 of 140 (1.4%) of genes in pham
- Manual Annotations of this start: 1 of 115
- Called 100.0% of time when present
- Phage (with cluster) where this start called: IdentityCrisis_13 (AJ), WST1_13 (AJ),

Start 16:

- Found in 3 of 140 (2.1%) of genes in pham
- Manual Annotations of this start: 3 of 115
- Called 100.0% of time when present
- Phage (with cluster) where this start called: Bimmel_57 (BT), Spooks_58 (BT), Success_59 (BT),

Start 17:

- Found in 114 of 140 (81.4%) of genes in pham
- Manual Annotations of this start: 85 of 115
- Called 92.1% of time when present
- Phage (with cluster) where this start called: AEgle_14 (AZ1), AGrandiflora_14 (AZ1), AceofSpades_12 (AZ4), Adolin_15 (AZ1), Adumb2043_14 (AZ1), AinMach_13 (AZ7), Amploria_14 (AZ1), Amyev_14 (AZ1), Asa16_14 (AZ1), Ascela_14 (AZ1), Ashes_14 (AZ5), Barnstormer_12 (EH), Beaupre_14 (AZ5), Berrie_14 (AZ1), Cappuccino_14 (AZ5), Caron_12 (EH), Cassia_14 (AZ1), Cen1621_12 (EH), Community_15 (AZ1), Crewmate_15 (AZ1), Cyan_14 (AZ1), Donkey_14 (AZ5), DrManhattan_14 (AZ1), DrSierra_14 (AZ1), Elezi_14 (AZ1), Emotion_13 (AZ4), Eraser_14 (AZ1), Exile_13 (AZ6), FiveHead_13 (AZ4), Floof_13 (EH), Flutur_14 (AZ), Forester_13 (EH), Gambol_14 (AZ5), GardenState_13 (EH), Giorgio_14 (AZ5), Gretchen_13 (EH), Gumpizza_14 (AZ5), Halsey_14 (AZ5), Honk_12 (EH), IAmGroot_13 (EH), IUFootball_13 (AZ2), Iter_14 (AZ1), IttyBittyPiggy_14 (AZ1), Janeemi_15 (AZ1), JasmineDragon_13 (AZ4), Joemato_14 (AZ1), JohnDoe_14 (AZ1), JohnThicc_13 (AZ4), Jstan_14 (AZ1), JuneStar_14 (AZ1), Kalimba_14 (AZ5), Kaylissa_14 (AZ1), KeAii_14 (AZ1), LadyAstra_13 (AZ4), Lego_14 (AZ1), Liebe_13 (AZ2), Lizalica_14 (AZ1), London_14 (AZ1), MaGuCo_13 (AZ2), Mabodamaca_13 (EH), Maureen_13 (AZ2), MiniMommy_12 (AZ4), Moss_14 (AZ5), Mudpuppy_14 (AZ1), Mysterium_14 (AZ5), Niobe_14 (AZ1), Nitro_14 (AZ1), ObiToo_14 (AZ1), Origami_13 (AZ4), Percival_13 (EH), Phives_15 (AZ1), Pixelle_14 (AZ1), Powerpuff_14 (AZ1), Pumpkins_14 (AZ1), RockScotty_14 (AZ5), Sabourin_14 (AZ5), Schaffner_14 (AZ1), ShakeltOph_13 (AZ4), Simpson_15 (AZ1), Skelbel_14 (AZ1), Snek_14 (AZ3), Soondubu_13 (AZ6), Sooty_14 (AZ5), SpecialK_14 (AZ5), Stuu_14 (AZ5), SuMoo_12 (EH), Subaru_14 (AZ1), Sue2_14 (AZ1), SuperHands_13 (EH), Tallboi_14 (AZ1), Tbone_14 (AZ1), TforTroy_14 (AZ1), ThursdayNight_13 (AZ), Tian_14 (AZ1), Tuck_15 (AZ1), Turab_14 (AZ1), Tutumahutu_14 (AZ1), Tweety19_14 (AZ3), UtzChips_12 (EH), VResidence_14 (AZ1), VroomVroom_13 (AZ4), Warda_14 (AZ1), Wildwest_15 (AZ1), Yang_14 (AZ1), YesChef_14 (AZ1),

Start 18:

- Found in 3 of 140 (2.1%) of genes in pham
- Manual Annotations of this start: 2 of 115
- Called 100.0% of time when present

- Phage (with cluster) where this start called: MissSwiss_14 (AZ1), PandaPo_14 (AZ1), Reedo_14 (AZ1),

Start 19:

- Found in 2 of 140 (1.4%) of genes in pham
- Manual Annotations of this start: 2 of 115
- Called 100.0% of time when present
- Phage (with cluster) where this start called: AbbeyMikolon_13 (BL), Nesbitt_13 (BL),

Summary by clusters:

There are 16 clusters represented in this pham: singleton, AZ, EH, DI, BL, UNK, AJ, BT, DW, AZ1, AZ2, AZ3, AZ4, AZ5, AZ6, AZ7,

Info for manual annotations of cluster AJ:

- Start number 15 was manually annotated 1 time for cluster AJ.

Info for manual annotations of cluster AZ1:

- Start number 17 was manually annotated 44 times for cluster AZ1.
- Start number 18 was manually annotated 2 times for cluster AZ1.

Info for manual annotations of cluster AZ2:

- Start number 17 was manually annotated 3 times for cluster AZ2.

Info for manual annotations of cluster AZ3:

- Start number 17 was manually annotated 2 times for cluster AZ3.

Info for manual annotations of cluster AZ4:

- Start number 17 was manually annotated 5 times for cluster AZ4.

Info for manual annotations of cluster AZ5:

- Start number 17 was manually annotated 16 times for cluster AZ5.

Info for manual annotations of cluster AZ6:

- Start number 17 was manually annotated 1 time for cluster AZ6.

Info for manual annotations of cluster BL:

- Start number 19 was manually annotated 2 times for cluster BL.

Info for manual annotations of cluster BT:

- Start number 16 was manually annotated 3 times for cluster BT.

Info for manual annotations of cluster DI:

- Start number 3 was manually annotated 15 times for cluster DI.

Info for manual annotations of cluster DW:

- Start number 3 was manually annotated 4 times for cluster DW.

Info for manual annotations of cluster EH:

- Start number 12 was manually annotated 1 time for cluster EH.
- Start number 17 was manually annotated 14 times for cluster EH.

Gene Information:

Gene: AEgle_14 Start: 10121, Stop: 10390, Start Num: 17

Candidate Starts for AEgle_14:

(Start: 17 @10121 has 85 MA's), (25, 10199), (46, 10316), (53, 10352),

Gene: AGrandiflora_14 Start: 10110, Stop: 10382, Start Num: 17

Candidate Starts for AGrandiflora_14:

(2, 9879), (8, 10041), (Start: 17 @10110 has 85 MA's), (46, 10308), (52, 10341), (53, 10344),

Gene: AbbeyMikolon_13 Start: 8843, Stop: 9109, Start Num: 19

Candidate Starts for AbbeyMikolon_13:

(Start: 19 @8843 has 2 MA's), (24, 8894), (52, 9068), (56, 9089),

Gene: AceofSpades_12 Start: 8366, Stop: 8632, Start Num: 17

Candidate Starts for AceofSpades_12:

(Start: 17 @8366 has 85 MA's),

Gene: Adolin_15 Start: 10098, Stop: 10367, Start Num: 17

Candidate Starts for Adolin_15:

(Start: 17 @10098 has 85 MA's), (21, 10143), (53, 10329),

Gene: Adumb2043_14 Start: 10120, Stop: 10389, Start Num: 17

Candidate Starts for Adumb2043_14:

(Start: 17 @10120 has 85 MA's), (25, 10198), (46, 10315), (53, 10351),

Gene: AinMach_13 Start: 9226, Stop: 9495, Start Num: 17

Candidate Starts for AinMach_13:

(8, 9160), (Start: 17 @9226 has 85 MA's), (37, 9364),

Gene: Amploria_14 Start: 10120, Stop: 10389, Start Num: 17

Candidate Starts for Amploria_14:

(Start: 17 @10120 has 85 MA's), (25, 10198), (46, 10315), (53, 10351),

Gene: Amyev_14 Start: 10132, Stop: 10401, Start Num: 17

Candidate Starts for Amyev_14:

(Start: 17 @10132 has 85 MA's), (46, 10327),

Gene: ArchiDore_15 Start: 9329, Stop: 9712, Start Num: 3

Candidate Starts for ArchiDore_15:

(Start: 3 @9329 has 19 MA's), (6, 9350), (Start: 12 @9368 has 1 MA's), (40, 9584), (44, 9620), (47, 9644), (51, 9662),

Gene: Asa16_14 Start: 10090, Stop: 10359, Start Num: 17

Candidate Starts for Asa16_14:

(Start: 17 @10090 has 85 MA's), (46, 10285), (53, 10321),

Gene: Ascela_14 Start: 10125, Stop: 10394, Start Num: 17

Candidate Starts for Ascela_14:

(Start: 17 @10125 has 85 MA's), (46, 10320),

Gene: Ashes_14 Start: 9665, Stop: 9934, Start Num: 17

Candidate Starts for Ashes_14:

(Start: 17 @9665 has 85 MA's), (38, 9806), (45, 9851), (54, 9902),

Gene: Ayotoya_18 Start: 10919, Stop: 11326, Start Num: 3

Candidate Starts for Ayotoya_18:

(Start: 3 @10919 has 19 MA's), (4, 10943), (13, 10976), (22, 11093), (24, 11099), (26, 11126), (41, 11207), (44, 11231), (47, 11255), (51, 11273),

Gene: Barnstormer_12 Start: 9304, Stop: 9579, Start Num: 17

Candidate Starts for Barnstormer_12:

(Start: 17 @9304 has 85 MA's),

Gene: Beaupre_14 Start: 9666, Stop: 9935, Start Num: 17

Candidate Starts for Beaupre_14:

(Start: 17 @9666 has 85 MA's), (38, 9807), (45, 9852), (54, 9903),

Gene: Berrie_14 Start: 10094, Stop: 10366, Start Num: 17

Candidate Starts for Berrie_14:

(Start: 17 @10094 has 85 MA's), (46, 10292),

Gene: BetterKatz_18 Start: 10860, Stop: 11267, Start Num: 3

Candidate Starts for BetterKatz_18:

(Start: 3 @10860 has 19 MA's), (4, 10875), (13, 10908), (Start: 17 @10977 has 85 MA's), (21, 11031), (22, 11034), (26, 11067), (41, 11148), (47, 11196), (50, 11211),

Gene: Bimmel_57 Start: 32464, Stop: 32769, Start Num: 16

Candidate Starts for Bimmel_57:

(Start: 16 @32464 has 3 MA's), (34, 32611), (36, 32617), (54, 32728),

Gene: Bock_18 Start: 10610, Stop: 11017, Start Num: 3

Candidate Starts for Bock_18:

(Start: 3 @10610 has 19 MA's), (4, 10625), (13, 10658), (Start: 17 @10727 has 85 MA's), (21, 10781), (22, 10784), (26, 10817), (41, 10898), (47, 10946), (50, 10961),

Gene: Brylie_18 Start: 10607, Stop: 11014, Start Num: 3

Candidate Starts for Brylie_18:

(Start: 3 @10607 has 19 MA's), (4, 10622), (7, 10631), (13, 10655), (Start: 17 @10724 has 85 MA's), (21, 10778), (22, 10781), (26, 10814), (41, 10895), (47, 10943), (49, 10952), (50, 10958),

Gene: Cappuccino_14 Start: 9570, Stop: 9839, Start Num: 17

Candidate Starts for Cappuccino_14:

(Start: 17 @9570 has 85 MA's), (32, 9684), (38, 9711), (45, 9756), (54, 9807),

Gene: Caron_12 Start: 9346, Stop: 9621, Start Num: 17

Candidate Starts for Caron_12:

(Start: 17 @9346 has 85 MA's),

Gene: Cassia_14 Start: 10208, Stop: 10474, Start Num: 17

Candidate Starts for Cassia_14:

(Start: 17 @10208 has 85 MA's), (46, 10400), (52, 10433),

Gene: Cen1621_12 Start: 8442, Stop: 8714, Start Num: 17

Candidate Starts for Cen1621_12:

(Start: 17 @8442 has 85 MA's), (26, 8526), (53, 8676),

Gene: Chop_18 Start: 10667, Stop: 11074, Start Num: 3

Candidate Starts for Chop_18:

(Start: 3 @10667 has 19 MA's), (4, 10691), (13, 10724), (22, 10841), (24, 10847), (26, 10874), (41, 10955), (44, 10979), (47, 11003), (51, 11021),

Gene: Community_15 Start: 11176, Stop: 11448, Start Num: 17

Candidate Starts for Community_15:

(Start: 17 @11176 has 85 MA's), (46, 11374),

Gene: Crewmate_15 Start: 10566, Stop: 10835, Start Num: 17

Candidate Starts for Crewmate_15:

(Start: 17 @10566 has 85 MA's), (21, 10611), (46, 10761),

Gene: Cyan_14 Start: 10113, Stop: 10385, Start Num: 17

Candidate Starts for Cyan_14:

(Start: 17 @10113 has 85 MA's), (27, 10200), (46, 10311), (52, 10344), (53, 10347),

Gene: DelRio_19 Start: 11141, Stop: 11548, Start Num: 3

Candidate Starts for DelRio_19:

(Start: 3 @11141 has 19 MA's), (4, 11165), (13, 11198), (22, 11315), (24, 11321), (26, 11348), (41, 11429), (44, 11453), (47, 11477), (51, 11495),

Gene: Donkey_14 Start: 9570, Stop: 9839, Start Num: 17

Candidate Starts for Donkey_14:

(9, 9507), (Start: 17 @9570 has 85 MA's), (38, 9711), (45, 9756), (54, 9807),

Gene: DrManhattan_14 Start: 10088, Stop: 10357, Start Num: 17

Candidate Starts for DrManhattan_14:

(Start: 17 @10088 has 85 MA's), (21, 10133), (53, 10319),

Gene: DrSierra_14 Start: 10119, Stop: 10388, Start Num: 17

Candidate Starts for DrSierra_14:

(Start: 17 @10119 has 85 MA's), (21, 10164), (26, 10200), (46, 10314), (53, 10350),

Gene: DumpsterDude_15 Start: 9345, Stop: 9692, Start Num: 3

Candidate Starts for DumpsterDude_15:

(Start: 3 @9345 has 19 MA's), (26, 9495), (40, 9564), (47, 9624), (51, 9642),

Gene: Elezi_14 Start: 10091, Stop: 10360, Start Num: 17

Candidate Starts for Elezi_14:

(Start: 17 @10091 has 85 MA's), (46, 10286), (53, 10322),

Gene: Emotion_13 Start: 8425, Stop: 8691, Start Num: 17

Candidate Starts for Emotion_13:

(8, 8359), (Start: 17 @8425 has 85 MA's), (20, 8458), (52, 8650),

Gene: Eraser_14 Start: 10091, Stop: 10360, Start Num: 17

Candidate Starts for Eraser_14:

(Start: 17 @10091 has 85 MA's), (46, 10286), (53, 10322),

Gene: Exile_13 Start: 10019, Stop: 10291, Start Num: 17

Candidate Starts for Exile_13:

(Start: 17 @10019 has 85 MA's),

Gene: FiveHead_13 Start: 8357, Stop: 8623, Start Num: 17

Candidate Starts for FiveHead_13:

(Start: 17 @8357 has 85 MA's),

Gene: Floof_13 Start: 8909, Stop: 9184, Start Num: 17

Candidate Starts for Floof_13:

(Start: 17 @8909 has 85 MA's), (31, 9026), (52, 9143), (54, 9152),

Gene: Flutur_14 Start: 10113, Stop: 10385, Start Num: 17

Candidate Starts for Flutur_14:

(2, 9882), (8, 10044), (Start: 17 @10113 has 85 MA's), (46, 10311), (52, 10344), (53, 10347),

Gene: Forester_13 Start: 10441, Stop: 10716, Start Num: 17

Candidate Starts for Forester_13:

(Start: 17 @10441 has 85 MA's), (47, 10654), (52, 10675),

Gene: Francois_18 Start: 10624, Stop: 11031, Start Num: 3

Candidate Starts for Francois_18:

(Start: 3 @10624 has 19 MA's), (4, 10639), (13, 10672), (21, 10795), (22, 10798), (26, 10831), (41, 10912), (50, 10975),

Gene: Gambol_14 Start: 9570, Stop: 9839, Start Num: 17

Candidate Starts for Gambol_14:

(9, 9507), (Start: 17 @9570 has 85 MA's), (38, 9711), (45, 9756), (54, 9807),

Gene: GardenState_13 Start: 9573, Stop: 9848, Start Num: 17

Candidate Starts for GardenState_13:

(Start: 17 @9573 has 85 MA's), (40, 9726), (54, 9816),

Gene: Giorgio_14 Start: 9673, Stop: 9942, Start Num: 17

Candidate Starts for Giorgio_14:

(Start: 17 @9673 has 85 MA's), (38, 9814), (45, 9859), (47, 9880), (54, 9910),

Gene: GrandSlam_18 Start: 10667, Stop: 11074, Start Num: 3

Candidate Starts for GrandSlam_18:

(Start: 3 @10667 has 19 MA's), (4, 10691), (13, 10724), (22, 10841), (24, 10847), (26, 10874), (41, 10955), (44, 10979), (47, 11003), (51, 11021),

Gene: Gretchen_13 Start: 10435, Stop: 10710, Start Num: 17

Candidate Starts for Gretchen_13:

(Start: 17 @10435 has 85 MA's), (47, 10648), (52, 10669),

Gene: Gumpizza_14 Start: 9666, Stop: 9935, Start Num: 17

Candidate Starts for Gumpizza_14:

(Start: 17 @9666 has 85 MA's), (38, 9807), (45, 9852), (54, 9903),

Gene: Halsey_14 Start: 9665, Stop: 9934, Start Num: 17

Candidate Starts for Halsey_14:

(Start: 17 @9665 has 85 MA's), (38, 9806), (45, 9851), (54, 9902),

Gene: Hamood_18 Start: 10667, Stop: 11074, Start Num: 3

Candidate Starts for Hamood_18:

(Start: 3 @10667 has 19 MA's), (4, 10691), (13, 10724), (22, 10841), (24, 10847), (26, 10874), (41, 10955), (44, 10979), (47, 11003), (51, 11021),

Gene: Honk_12 Start: 8396, Stop: 8665, Start Num: 17

Candidate Starts for Honk_12:

(Start: 17 @8396 has 85 MA's), (42, 8558),

Gene: IAmGroot_13 Start: 10217, Stop: 10492, Start Num: 17

Candidate Starts for IAmGroot_13:

(Start: 17 @10217 has 85 MA's), (40, 10370), (54, 10460),

Gene: IUFootball_13 Start: 8595, Stop: 8864, Start Num: 17

Candidate Starts for IUFootball_13:

(Start: 17 @8595 has 85 MA's), (39, 8739),

Gene: Ibantik_77 Start: 36465, Stop: 36803, Start Num: 11

Candidate Starts for Ibantik_77:

(Start: 11 @36465 has 1 MA's), (26, 36606), (30, 36633), (42, 36681), (55, 36759),

Gene: IdentityCrisis_13 Start: 9415, Stop: 9732, Start Num: 15

Candidate Starts for IdentityCrisis_13:

(5, 9364), (Start: 15 @9415 has 1 MA's), (22, 9520), (29, 9571), (33, 9589), (56, 9721),

Gene: Iter_14 Start: 10125, Stop: 10394, Start Num: 17

Candidate Starts for Iter_14:

(Start: 17 @10125 has 85 MA's), (46, 10320),

Gene: IttyBittyPiggy_14 Start: 10108, Stop: 10371, Start Num: 17

Candidate Starts for IttyBittyPiggy_14:

(Start: 17 @10108 has 85 MA's), (46, 10297),

Gene: Janeemi_15 Start: 11204, Stop: 11476, Start Num: 17

Candidate Starts for Janeemi_15:

(Start: 17 @11204 has 85 MA's), (46, 11402),

Gene: JasmineDragon_13 Start: 8354, Stop: 8620, Start Num: 17

Candidate Starts for JasmineDragon_13:

(Start: 17 @8354 has 85 MA's),

Gene: Joemato_14 Start: 10113, Stop: 10385, Start Num: 17

Candidate Starts for Joemato_14:

(Start: 17 @10113 has 85 MA's), (27, 10200), (46, 10311), (52, 10344), (53, 10347),

Gene: JohnDoe_14 Start: 10108, Stop: 10380, Start Num: 17

Candidate Starts for JohnDoe_14:

(Start: 17 @10108 has 85 MA's), (27, 10195), (46, 10306), (52, 10339), (53, 10342),

Gene: JohnThicc_13 Start: 8357, Stop: 8623, Start Num: 17

Candidate Starts for JohnThicc_13:

(Start: 17 @8357 has 85 MA's),

Gene: Jstan_14 Start: 10091, Stop: 10360, Start Num: 17

Candidate Starts for Jstan_14:

(Start: 17 @10091 has 85 MA's), (46, 10286), (53, 10322),

Gene: JuneStar_14 Start: 10206, Stop: 10472, Start Num: 17

Candidate Starts for JuneStar_14:

(Start: 17 @10206 has 85 MA's), (46, 10398),

Gene: Kalimba_14 Start: 9571, Stop: 9840, Start Num: 17

Candidate Starts for Kalimba_14:

(Start: 17 @9571 has 85 MA's), (38, 9712), (45, 9757), (54, 9808),

Gene: Kaylissa_14 Start: 10114, Stop: 10386, Start Num: 17

Candidate Starts for Kaylissa_14:

(Start: 17 @10114 has 85 MA's), (27, 10201), (46, 10312), (52, 10345), (53, 10348),

Gene: KeAlii_14 Start: 10157, Stop: 10426, Start Num: 17

Candidate Starts for KeAlii_14:

(Start: 17 @10157 has 85 MA's), (26, 10238), (43, 10334), (46, 10352),

Gene: LadyAstra_13 Start: 8357, Stop: 8623, Start Num: 17

Candidate Starts for LadyAstra_13:

(Start: 17 @8357 has 85 MA's),

Gene: Lego_14 Start: 10113, Stop: 10385, Start Num: 17

Candidate Starts for Lego_14:

(2, 9882), (8, 10044), (Start: 17 @10113 has 85 MA's), (46, 10311), (52, 10344), (53, 10347),

Gene: Liebe_13 Start: 8595, Stop: 8864, Start Num: 17

Candidate Starts for Liebe_13:

(Start: 17 @8595 has 85 MA's), (39, 8739),

Gene: Lizalica_14 Start: 10098, Stop: 10370, Start Num: 17

Candidate Starts for Lizalica_14:

(Start: 17 @10098 has 85 MA's), (46, 10296), (52, 10329), (53, 10332),

Gene: London_14 Start: 10091, Stop: 10360, Start Num: 17

Candidate Starts for London_14:

(Start: 17 @10091 has 85 MA's), (46, 10286), (53, 10322),

Gene: MaGuCo_13 Start: 8529, Stop: 8798, Start Num: 17

Candidate Starts for MaGuCo_13:

(Start: 17 @8529 has 85 MA's), (39, 8673),

Gene: Mabodamaca_13 Start: 9642, Stop: 9917, Start Num: 17

Candidate Starts for Mabodamaca_13:

(Start: 17 @9642 has 85 MA's), (40, 9795), (52, 9876),

Gene: MakCheese_16 Start: 9106, Stop: 9450, Start Num: 6

Candidate Starts for MakCheese_16:

(Start: 3 @9085 has 19 MA's), (6, 9106), (Start: 12 @9124 has 1 MA's), (26, 9253), (40, 9322), (44, 9358), (47, 9382), (51, 9400),

Gene: Maureen_13 Start: 8595, Stop: 8864, Start Num: 17
Candidate Starts for Maureen_13:
(Start: 17 @8595 has 85 MA's), (39, 8739),

Gene: MiniMommy_12 Start: 8355, Stop: 8621, Start Num: 17
Candidate Starts for MiniMommy_12:
(Start: 17 @8355 has 85 MA's),

Gene: MissSwiss_14 Start: 10094, Stop: 10360, Start Num: 18
Candidate Starts for MissSwiss_14:
(Start: 18 @10094 has 2 MA's), (21, 10136), (48, 10304),

Gene: Moss_14 Start: 9665, Stop: 9934, Start Num: 17
Candidate Starts for Moss_14:
(Start: 17 @9665 has 85 MA's), (38, 9806), (45, 9851), (54, 9902),

Gene: Mudpuppy_14 Start: 10112, Stop: 10384, Start Num: 17
Candidate Starts for Mudpuppy_14:
(Start: 17 @10112 has 85 MA's), (46, 10310), (52, 10343), (53, 10346),

Gene: Mulch_18 Start: 10607, Stop: 11014, Start Num: 3
Candidate Starts for Mulch_18:
(Start: 3 @10607 has 19 MA's), (4, 10622), (7, 10631), (13, 10655), (Start: 17 @10724 has 85 MA's), (21, 10778), (22, 10781), (26, 10814), (41, 10895), (47, 10943), (49, 10952), (50, 10958),

Gene: Mysterium_14 Start: 9666, Stop: 9935, Start Num: 17
Candidate Starts for Mysterium_14:
(Start: 17 @9666 has 85 MA's), (38, 9807), (45, 9852), (54, 9903),

Gene: Nadeem_18 Start: 10607, Stop: 11014, Start Num: 3
Candidate Starts for Nadeem_18:
(Start: 3 @10607 has 19 MA's), (4, 10622), (7, 10631), (13, 10655), (Start: 17 @10724 has 85 MA's), (21, 10778), (22, 10781), (26, 10814), (41, 10895), (47, 10943), (49, 10952), (50, 10958),

Gene: NancyRae_18 Start: 10607, Stop: 11014, Start Num: 3
Candidate Starts for NancyRae_18:
(Start: 3 @10607 has 19 MA's), (4, 10622), (7, 10631), (13, 10655), (Start: 17 @10724 has 85 MA's), (21, 10778), (22, 10781), (26, 10814), (41, 10895), (47, 10943), (49, 10952), (50, 10958),

Gene: Nesbitt_13 Start: 8915, Stop: 9181, Start Num: 19
Candidate Starts for Nesbitt_13:
(Start: 19 @8915 has 2 MA's), (24, 8966), (52, 9140), (56, 9161),

Gene: Niobe_14 Start: 10091, Stop: 10360, Start Num: 17
Candidate Starts for Niobe_14:
(Start: 17 @10091 has 85 MA's), (46, 10286), (53, 10322),

Gene: Nitro_14 Start: 10114, Stop: 10383, Start Num: 17
Candidate Starts for Nitro_14:
(Start: 17 @10114 has 85 MA's), (46, 10309), (53, 10345),

Gene: ObiToo_14 Start: 10303, Stop: 10572, Start Num: 17

Candidate Starts for ObiToo_14:

(Start: 17 @10303 has 85 MA's), (21, 10348), (46, 10498),

Gene: Origami_13 Start: 8357, Stop: 8623, Start Num: 17

Candidate Starts for Origami_13:

(Start: 17 @8357 has 85 MA's),

Gene: PandaPo_14 Start: 10094, Stop: 10360, Start Num: 18

Candidate Starts for PandaPo_14:

(Start: 18 @10094 has 2 MA's), (21, 10136), (48, 10304),

Gene: Parada_18 Start: 10607, Stop: 11014, Start Num: 3

Candidate Starts for Parada_18:

(Start: 3 @10607 has 19 MA's), (4, 10622), (7, 10631), (13, 10655), (Start: 17 @10724 has 85 MA's), (21, 10778), (22, 10781), (26, 10814), (41, 10895), (47, 10943), (49, 10952), (50, 10958),

Gene: Percival_13 Start: 10269, Stop: 10544, Start Num: 17

Candidate Starts for Percival_13:

(Start: 17 @10269 has 85 MA's), (47, 10482), (52, 10503),

Gene: Phives_15 Start: 11192, Stop: 11461, Start Num: 17

Candidate Starts for Phives_15:

(Start: 17 @11192 has 85 MA's), (46, 11387),

Gene: Pimento_19 Start: 10811, Stop: 11218, Start Num: 3

Candidate Starts for Pimento_19:

(Start: 3 @10811 has 19 MA's), (13, 10859), (Start: 17 @10928 has 85 MA's), (21, 10982), (22, 10985), (26, 11018), (41, 11099), (47, 11147), (50, 11162),

Gene: Pixelle_14 Start: 10135, Stop: 10404, Start Num: 17

Candidate Starts for Pixelle_14:

(Start: 17 @10135 has 85 MA's), (26, 10216), (46, 10330),

Gene: Ponzi_52 Start: 29867, Stop: 30178, Start Num: 14

Candidate Starts for Ponzi_52:

(10, 29849), (Start: 14 @29867 has 1 MA's), (28, 30020), (34, 30038), (35, 30041),

Gene: Powerpuff_14 Start: 10164, Stop: 10436, Start Num: 17

Candidate Starts for Powerpuff_14:

(2, 9933), (8, 10095), (Start: 17 @10164 has 85 MA's), (46, 10362), (52, 10395), (53, 10398),

Gene: Pumpkins_14 Start: 10215, Stop: 10484, Start Num: 17

Candidate Starts for Pumpkins_14:

(Start: 17 @10215 has 85 MA's), (46, 10410), (52, 10443),

Gene: Reedo_14 Start: 10171, Stop: 10437, Start Num: 18

Candidate Starts for Reedo_14:

(Start: 18 @10171 has 2 MA's), (26, 10249), (46, 10363),

Gene: RockScotty_14 Start: 9665, Stop: 9934, Start Num: 17

Candidate Starts for RockScotty_14:

(Start: 17 @9665 has 85 MA's), (38, 9806), (45, 9851), (54, 9902),

Gene: RunningOnE_73 Start: 35204, Stop: 35530, Start Num: 12

Candidate Starts for RunningOnE_73:

(Start: 12 @35204 has 1 MA's), (26, 35339), (30, 35366), (38, 35393),

Gene: Ruthy_15 Start: 9419, Stop: 9802, Start Num: 3

Candidate Starts for Ruthy_15:

(Start: 3 @9419 has 19 MA's), (6, 9440), (Start: 12 @9458 has 1 MA's), (40, 9674), (44, 9710), (47, 9734), (51, 9752),

Gene: Sabourin_14 Start: 9570, Stop: 9839, Start Num: 17

Candidate Starts for Sabourin_14:

(Start: 17 @9570 has 85 MA's), (38, 9711), (45, 9756), (54, 9807),

Gene: Schaffner_14 Start: 10202, Stop: 10471, Start Num: 17

Candidate Starts for Schaffner_14:

(Start: 17 @10202 has 85 MA's), (46, 10397), (52, 10430),

Gene: ShakeltOph_13 Start: 8354, Stop: 8620, Start Num: 17

Candidate Starts for ShakeltOph_13:

(Start: 17 @8354 has 85 MA's),

Gene: Simpson_15 Start: 10113, Stop: 10385, Start Num: 17

Candidate Starts for Simpson_15:

(Start: 17 @10113 has 85 MA's), (27, 10200), (46, 10311), (52, 10344), (53, 10347),

Gene: Skelbel_14 Start: 10091, Stop: 10360, Start Num: 17

Candidate Starts for Skelbel_14:

(Start: 17 @10091 has 85 MA's), (46, 10286), (53, 10322),

Gene: Snek_14 Start: 9207, Stop: 9476, Start Num: 17

Candidate Starts for Snek_14:

(Start: 17 @9207 has 85 MA's), (21, 9252), (32, 9321),

Gene: Soondubu_13 Start: 10020, Stop: 10292, Start Num: 17

Candidate Starts for Soondubu_13:

(Start: 17 @10020 has 85 MA's),

Gene: Sooty_14 Start: 9572, Stop: 9841, Start Num: 17

Candidate Starts for Sooty_14:

(Start: 17 @9572 has 85 MA's), (38, 9713), (45, 9758), (54, 9809),

Gene: SpecialK_14 Start: 9572, Stop: 9841, Start Num: 17

Candidate Starts for SpecialK_14:

(Start: 17 @9572 has 85 MA's), (38, 9713), (45, 9758), (54, 9809),

Gene: Spooks_58 Start: 33765, Stop: 34070, Start Num: 16

Candidate Starts for Spooks_58:

(Start: 16 @33765 has 3 MA's), (34, 33912), (36, 33918), (54, 34029),

Gene: Sprinklemunch_14 Start: 9134, Stop: 9484, Start Num: 3

Candidate Starts for Sprinklemunch_14:

(Start: 3 @9134 has 19 MA's), (23, 9257), (26, 9287), (40, 9356), (47, 9416), (51, 9434),

Gene: Stuu_14 Start: 9665, Stop: 9934, Start Num: 17

Candidate Starts for Stuu_14:

(Start: 17 @9665 has 85 MA's), (38, 9806), (45, 9851), (54, 9902),

Gene: SuMoo_12 Start: 8599, Stop: 8874, Start Num: 17

Candidate Starts for SuMoo_12:

(Start: 17 @8599 has 85 MA's), (40, 8752), (52, 8833),

Gene: Subaru_14 Start: 10091, Stop: 10360, Start Num: 17

Candidate Starts for Subaru_14:

(Start: 17 @10091 has 85 MA's), (46, 10286), (53, 10322),

Gene: Success_59 Start: 32884, Stop: 33189, Start Num: 16

Candidate Starts for Success_59:

(Start: 16 @32884 has 3 MA's), (34, 33031), (36, 33037), (54, 33148),

Gene: Sue2_14 Start: 10128, Stop: 10391, Start Num: 17

Candidate Starts for Sue2_14:

(Start: 17 @10128 has 85 MA's), (20, 10158),

Gene: SuperHands_13 Start: 10441, Stop: 10716, Start Num: 17

Candidate Starts for SuperHands_13:

(Start: 17 @10441 has 85 MA's), (47, 10654), (52, 10675),

Gene: Tallboi_14 Start: 10118, Stop: 10387, Start Num: 17

Candidate Starts for Tallboi_14:

(Start: 17 @10118 has 85 MA's), (46, 10313), (53, 10349),

Gene: Tbone_14 Start: 10117, Stop: 10389, Start Num: 17

Candidate Starts for Tbone_14:

(1, 9646), (Start: 17 @10117 has 85 MA's), (46, 10315), (52, 10348), (53, 10351),

Gene: TforTroy_14 Start: 10233, Stop: 10502, Start Num: 17

Candidate Starts for TforTroy_14:

(Start: 17 @10233 has 85 MA's), (46, 10428), (52, 10461),

Gene: ThursdayNight_13 Start: 8624, Stop: 8887, Start Num: 17

Candidate Starts for ThursdayNight_13:

(Start: 17 @8624 has 85 MA's), (32, 8732), (54, 8855),

Gene: Tian_14 Start: 10132, Stop: 10401, Start Num: 17

Candidate Starts for Tian_14:

(Start: 17 @10132 has 85 MA's), (46, 10327),

Gene: Tuck_15 Start: 11156, Stop: 11428, Start Num: 17

Candidate Starts for Tuck_15:

(Start: 17 @11156 has 85 MA's), (46, 11354),

Gene: Turab_14 Start: 10120, Stop: 10389, Start Num: 17

Candidate Starts for Turab_14:

(Start: 17 @10120 has 85 MA's), (25, 10198), (46, 10315), (53, 10351),

Gene: Tutumahutu_14 Start: 10164, Stop: 10436, Start Num: 17
Candidate Starts for Tutumahutu_14:
(2, 9933), (8, 10095), (Start: 17 @10164 has 85 MA's), (46, 10362), (52, 10395), (53, 10398),

Gene: Tweety19_14 Start: 9206, Stop: 9475, Start Num: 17
Candidate Starts for Tweety19_14:
(Start: 17 @9206 has 85 MA's), (21, 9251), (32, 9320),

Gene: UtzChips_12 Start: 9292, Stop: 9567, Start Num: 17
Candidate Starts for UtzChips_12:
(Start: 17 @9292 has 85 MA's),

Gene: VResidence_14 Start: 10200, Stop: 10466, Start Num: 17
Candidate Starts for VResidence_14:
(7, 10125), (Start: 17 @10200 has 85 MA's), (27, 10281), (52, 10425),

Gene: VroomVroom_13 Start: 8366, Stop: 8632, Start Num: 17
Candidate Starts for VroomVroom_13:
(Start: 17 @8366 has 85 MA's),

Gene: WST1_13 Start: 9433, Stop: 9750, Start Num: 15
Candidate Starts for WST1_13:
(5, 9382), (Start: 15 @9433 has 1 MA's), (22, 9538), (29, 9589), (33, 9607), (56, 9739),

Gene: Warda_14 Start: 10109, Stop: 10381, Start Num: 17
Candidate Starts for Warda_14:
(Start: 17 @10109 has 85 MA's), (46, 10307), (52, 10340), (53, 10343),

Gene: WheatThin_19 Start: 10607, Stop: 11014, Start Num: 3
Candidate Starts for WheatThin_19:
(Start: 3 @10607 has 19 MA's), (4, 10622), (7, 10631), (13, 10655), (Start: 17 @10724 has 85 MA's),
(21, 10778), (22, 10781), (26, 10814), (41, 10895), (47, 10943), (49, 10952), (50, 10958),

Gene: Wildwest_15 Start: 11039, Stop: 11308, Start Num: 17
Candidate Starts for Wildwest_15:
(Start: 17 @11039 has 85 MA's), (21, 11084), (26, 11120), (46, 11234),

Gene: Yang_14 Start: 10203, Stop: 10472, Start Num: 17
Candidate Starts for Yang_14:
(Start: 17 @10203 has 85 MA's), (46, 10398), (52, 10431),

Gene: YesChef_14 Start: 10164, Stop: 10436, Start Num: 17
Candidate Starts for YesChef_14:
(2, 9933), (8, 10095), (Start: 17 @10164 has 85 MA's), (46, 10362), (52, 10395), (53, 10398),

Gene: Zeta1847_12 Start: 8400, Stop: 8708, Start Num: 12
Candidate Starts for Zeta1847_12:
(Start: 12 @8400 has 1 MA's),

Gene: Zodiariah_14 Start: 9098, Stop: 9445, Start Num: 3
Candidate Starts for Zodiariah_14:
(Start: 3 @9098 has 19 MA's), (26, 9248), (40, 9317), (44, 9353), (47, 9377), (51, 9395),

