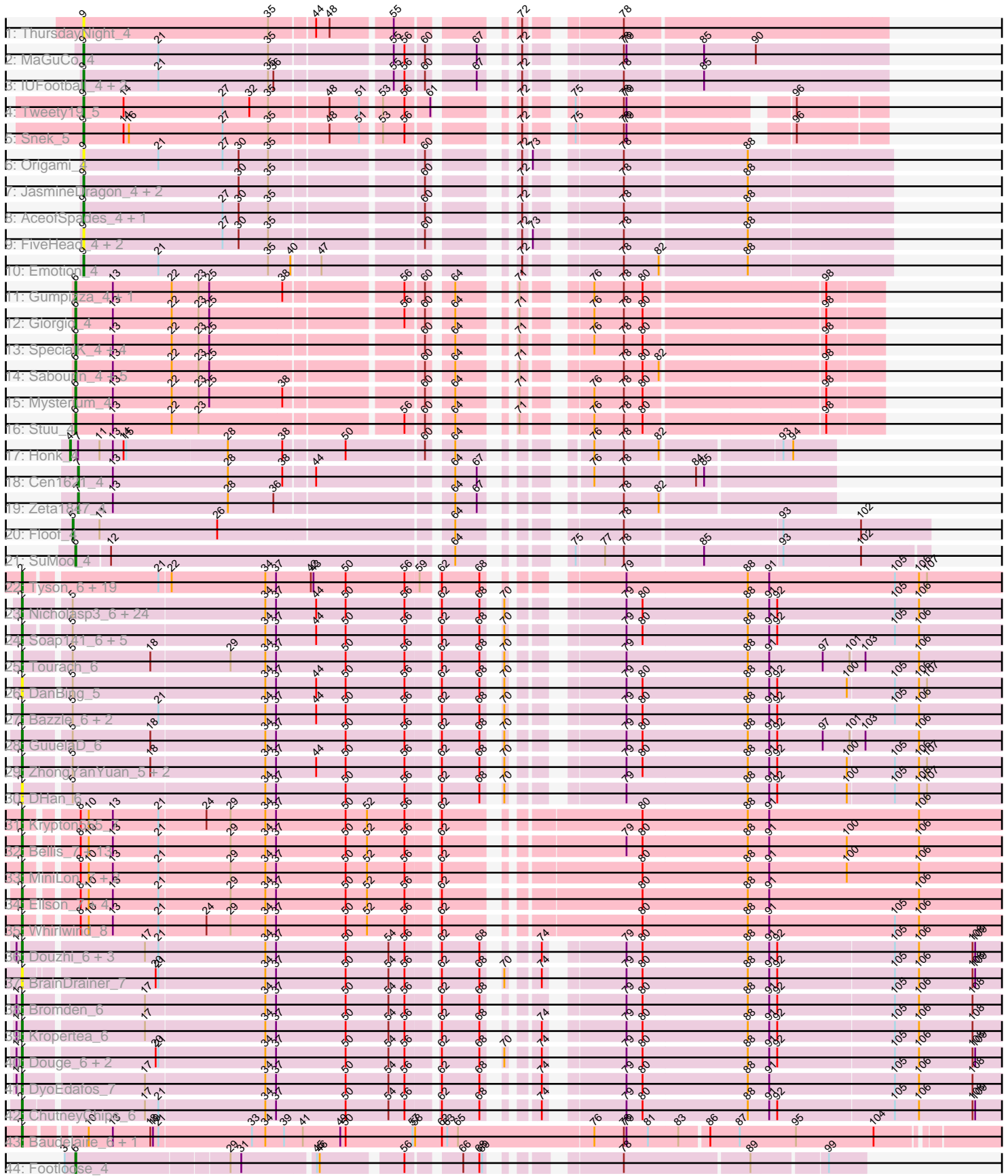


Pham 304791



Note: Tracks are now grouped by subcluster and scaled. Switching in subcluster is indicated by changes in track color. Track scale is now set by default to display the region 30 bp upstream of start 1 to 30 bp downstream of the last possible start. If this default region is judged to be packed too tightly with annotated starts, the track will be further scaled to only show that region of the ORF with annotated starts. This action will be indicated by adding "Zoomed" to the title. For starts, yellow indicates the location of called starts comprised solely of Glimmer/GeneMark auto-annotations, green indicates the location of called starts with at least 1 manual gene annotation.

Pham 304791 Report

This analysis was run 06/08/26 on database version 649.

Pham number 304791 has 138 members, 29 are drafts.

Phages represented in each track:

- Track 1 : ThursdayNight_4
- Track 2 : MaGuCo_4
- Track 3 : IUFootball_4, Liebe_4, Maureen_4
- Track 4 : Tweety19_5
- Track 5 : Snek_5
- Track 6 : Origami_4
- Track 7 : JasmineDragon_4, ShakeltOph_4, MiniMommy_4
- Track 8 : AceofSpades_4, VroomVroom_4
- Track 9 : FiveHead_4, JohnThicc_4, LadyAstra_4
- Track 10 : Emotion_4
- Track 11 : Gumpizza_4, Beaupre_4
- Track 12 : Giorgio_4
- Track 13 : SpecialK_4, Moss_4, Halsey_4, Ashes_4, RockScotty_4
- Track 14 : Sabourin_4, Sooty_4, Cappuccino_4, Gambol_4, Donkey_4, Kalimba_4
- Track 15 : Mysterium_4
- Track 16 : Stuu_4
- Track 17 : Honk_4
- Track 18 : Cen1621_4
- Track 19 : Zeta1847_4
- Track 20 : Floof_4
- Track 21 : SuMoo_4
- Track 22 : Tyson_6, Wyatt2_6, Zaria_6, CicholasNage_6, LeBron_6, AvadaKedavra_6, JoeDirt_6, UPIE_6, Wamburggrxpress_6, Appletree2_6, Rose5_6, MAckerman_6, Enceladus_6, DirkDirk_6, Poochiewood_6, Silverleaf_6, Calm_6, Halena_6, Acquire49_6, OhShagHennessy_6
- Track 23 : Nicholasp3_6, Underpass_6, Vetrrix_6, BobsGarage_6, Lynnae_6, Kahlid_6, Netyap_6, Miley16_6, Gabriela_6, LilDestine_6, Faith1_6, Winky_6, Gardann_6, Itos_6, BigCheese_6, Finemlucis_6, Zakai_6, Lewan_6, DrSeegs_6, Wilder_6, Breezona_6, SoJulia_6, MkaliMitinis3_6, Crossroads_6, Rumpelstiltskin_6
- Track 24 : Soap141_6, Sarshaun_6, OverPar_6, Loadrie_6, Hafay_6, Wigglewiggle_6
- Track 25 : Tourach_6
- Track 26 : DanBing_5
- Track 27 : Bazzle_6, Archie_6, Rossetti_6
- Track 28 : GuuelaD_6
- Track 29 : ZhongYanYuan_5, Claus_6, Baoshan_5
- Track 30 : DHan_6

- Track 31 : Krypton555_7
- Track 32 : Bellis_7, Kingsolomon_7, Nicholas_7, Lumos_7, Moostard_7, Red305_7, TriFive_7, Snenia_7, MsGreen_7, Finnry_7, Jubie_7, Samty_7, Clautastrophe_7, Jobypre_7
- Track 33 : MiniLon_7, Lolly9_7, MiniMac_7
- Track 34 : Ellson_7, BourbonZero_6, DuncansLeg_7, KirDoubleO7_5, LiyuLake_7
- Track 35 : Whirlwind_8
- Track 36 : Douzhi_6, PYPDinur_6, Chaser_6, Sheng711_6
- Track 37 : BrainDrainer_7
- Track 38 : Bromden_6
- Track 39 : Kropertea_6
- Track 40 : Douge_6, Quby_6, FarmResident_6
- Track 41 : DyoEdafos_7
- Track 42 : ChutneyChips_6
- Track 43 : Baudelaire_6, Aegeus_6
- Track 44 : Footloose_4

Summary of Final Annotations (See graph section above for start numbers):

The start number called the most often in the published annotations is 2, it was called in 77 of the 109 non-draft genes in the pham.

Genes that call this "Most Annotated" start:

- Acquire49_6, Aegeus_6, Appletree2_6, Archie_6, AvadaKedavra_6, Baoshan_5, Baudelaire_6, Bazzle_6, Bellis_7, BigCheese_6, BobsGarage_6, BourbonZero_6, BrainDrainer_7, Breezona_6, Bromden_6, Calm_6, Chaser_6, ChutneyChips_6, CicholasNage_6, Claus_6, Clautastrophe_7, Crossroads_6, DHan_6, DanBing_5, DirkDirk_6, Douge_6, Douzhi_6, DrSeegs_6, DuncansLeg_7, DyoEdafos_7, Ellson_7, Enceladus_6, Faith1_6, FarmResident_6, Finemlucis_6, Finnry_7, Gabriela_6, Gardann_6, GuuelaD_6, Hafay_6, Halena_6, Itos_6, Jobypre_7, JoeDirt_6, Jubie_7, Kahlid_6, Kingsolomon_7, KirDoubleO7_5, Kropertea_6, Krypton555_7, LeBron_6, Lewan_6, LilDestine_6, LiyuLake_7, Loadrie_6, Lolly9_7, Lumos_7, Lynnae_6, MAckerman_6, Miley16_6, MiniLon_7, MiniMac_7, MkaliMitinis3_6, Moostard_7, MsGreen_7, Netyap_6, Nicholas_7, Nicholasp3_6, OhShagHennessy_6, OverPar_6, PYPDinur_6, Poochiewood_6, Quby_6, Red305_7, Rose5_6, Rossetti_6, Rumpelstiltskin_6, Samty_7, Sarshaun_6, Sheng711_6, Silverleaf_6, Snenia_7, SoJulia_6, Soap141_6, Tourach_6, TriFive_7, Tyson_6, UPIE_6, Underpass_6, Vetrix_6, Wamburggrxpress_6, Whirlwind_8, Wigglewiggle_6, Wilder_6, Winky_6, Wyatt2_6, Zakai_6, Zaria_6, ZhongYanYuan_5,

Genes that have the "Most Annotated" start but do not call it:

-

Genes that do not have the "Most Annotated" start:

- AceofSpades_4, Ashes_4, Beaupre_4, Cappuccino_4, Cen1621_4, Donkey_4, Emotion_4, FiveHead_4, Floof_4, Footloose_4, Gambol_4, Giorgio_4, Gumpizza_4, Halsey_4, Honk_4, IUFootball_4, JasmineDragon_4, JohnThicc_4, Kalimba_4, LadyAstra_4, Liebe_4, MaGuCo_4, Maureen_4, MiniMommy_4, Moss_4, Mysterium_4, Origami_4, RockScotty_4, Sabourin_4, ShakeltOph_4, Snek_5, Sooty_4, SpecialK_4, Stuu_4, SuMoo_4, ThursdayNight_4, Tweety19_5,

VroomVroom_4, Zeta1847_4,

Summary by start number:

Start 2:

- Found in 99 of 138 (71.7%) of genes in pham
- Manual Annotations of this start: 77 of 109
- Called 100.0% of time when present
- Phage (with cluster) where this start called: Acquire49_6 (L1), Aegeus_6 (L5), Appletree2_6 (L1), Archie_6 (L2), AvadaKedavra_6 (L1), Baoshan_5 (L2), Baudelaire_6 (L5), Bazzle_6 (L2), Bellis_7 (L3), BigCheese_6 (L2), BobsGarage_6 (L2), BourbonZero_6 (L3), BrainDrainer_7 (L4), Breezona_6 (L2), Bromden_6 (L4), Calm_6 (L1), Chaser_6 (L4), ChutneyChips_6 (L4), CicholasNage_6 (L1), Claus_6 (L2), Clautastrophe_7 (L3), Crossroads_6 (L2), DHan_6 (L2), DanBing_5 (L2), DirkDirk_6 (L1), Douge_6 (L4), Douzhi_6 (L4), DrSeegs_6 (L2), DuncansLeg_7 (L3), DyoEdafos_7 (L4), Ellson_7 (L3), Enceladus_6 (L1), Faith1_6 (L2), FarmResident_6 (L4), Finemlucis_6 (L2), Finnry_7 (L3), Gabriela_6 (L2), Gardann_6 (L2), GuuelaD_6 (L2), Hafay_6 (L2), Halena_6 (L1), Itos_6 (L2), Jobypre_7 (L3), JoeDirt_6 (L1), Jubie_7 (L3), Kahlid_6 (L2), Kingsolomon_7 (L3), KirDoubleO7_5 (L3), Kropertea_6 (L4), Krypton555_7 (L3), LeBron_6 (L1), Lewan_6 (L2), LilDestine_6 (L2), LiyuLake_7 (L3), Loadrie_6 (L2), Lolly9_7 (L3), Lumos_7 (L3), Lynnae_6 (L2), MAckerman_6 (L1), Miley16_6 (L2), MiniLon_7 (L3), MiniMac_7 (L3), MkaliMitinis3_6 (L2), Moostard_7 (L3), MsGreen_7 (L3), Netyap_6 (L2), Nicholas_7 (L3), Nicholasp3_6 (L2), OhShagHennessy_6 (L1), OverPar_6 (L2), PYPDinur_6 (L4), Poochiewood_6 (L1), Quby_6 (L4), Red305_7 (L3), Rose5_6 (L1), Rossetti_6 (L2), Rumpelstiltskin_6 (L2), Samty_7 (L3), Sarshaun_6 (L2), Sheng711_6 (L4), Silverleaf_6 (L1), Snenia_7 (L3), SoJulia_6 (L2), Soap141_6 (L2), Tourach_6 (L2), TriFive_7 (L3), Tyson_6 (L1), UPIE_6 (L1), Underpass_6 (L2), Vetrix_6 (L2), Wamburggrxpress_6 (L1), Whirlwind_8 (L3), Wigglewiggles_6 (L2), Wilder_6 (L2), Winky_6 (L2), Wyatt2_6 (L1), Zakai_6 (L2), Zaria_6 (L1), ZhongYanYuan_5 (L2),

Start 4:

- Found in 1 of 138 (0.7%) of genes in pham
- Manual Annotations of this start: 1 of 109
- Called 100.0% of time when present
- Phage (with cluster) where this start called: Honk_4 (EH),

Start 5:

- Found in 42 of 138 (30.4%) of genes in pham
- Manual Annotations of this start: 1 of 109
- Called 2.4% of time when present
- Phage (with cluster) where this start called: Floof_4 (EH),

Start 6:

- Found in 18 of 138 (13.0%) of genes in pham
- Manual Annotations of this start: 18 of 109
- Called 100.0% of time when present
- Phage (with cluster) where this start called: Ashes_4 (AZ5), Beaupre_4 (AZ5), Cappuccino_4 (AZ5), Donkey_4 (AZ5), Footloose_4 (singleton), Gambol_4 (AZ5), Giorgio_4 (AZ5), Gumpizza_4 (AZ5), Halsey_4 (AZ5), Kalimba_4 (AZ5), Moss_4 (AZ5), Mysterium_4 (AZ5), RockScotty_4 (AZ5), Sabourin_4 (AZ5), Sooty_4 (AZ5), SpecialK_4 (AZ5), Stuu_4 (AZ5), SuMoo_4 (EH),

Start 7:

- Found in 3 of 138 (2.2%) of genes in pham
- Manual Annotations of this start: 2 of 109
- Called 66.7% of time when present
- Phage (with cluster) where this start called: Cen1621_4 (EH), Zeta1847_4 (EH),

Start 9:

- Found in 17 of 138 (12.3%) of genes in pham
- Manual Annotations of this start: 10 of 109
- Called 100.0% of time when present
- Phage (with cluster) where this start called: AceofSpades_4 (AZ4), Emotion_4 (AZ4), FiveHead_4 (AZ4), IUFootball_4 (AZ2), JasmineDragon_4 (AZ4), JohnThicc_4 (AZ4), LadyAstra_4 (AZ4), Liebe_4 (AZ2), MaGuCo_4 (AZ2), Maureen_4 (AZ2), MiniMommy_4 (AZ4), Origami_4 (AZ4), ShakeltOph_4 (AZ4), Snek_5 (AZ3), ThursdayNight_4 (AZ), Tweety19_5 (AZ3), VroomVroom_4 (AZ4),

Summary by clusters:

There are 12 clusters represented in this pham: singleton, AZ3, EH, L4, L5, L2, L3, L1, AZ2, AZ, AZ4, AZ5,

Info for manual annotations of cluster AZ2:

- Start number 9 was manually annotated 3 times for cluster AZ2.

Info for manual annotations of cluster AZ3:

- Start number 9 was manually annotated 2 times for cluster AZ3.

Info for manual annotations of cluster AZ4:

- Start number 9 was manually annotated 5 times for cluster AZ4.

Info for manual annotations of cluster AZ5:

- Start number 6 was manually annotated 16 times for cluster AZ5.

Info for manual annotations of cluster EH:

- Start number 4 was manually annotated 1 time for cluster EH.
- Start number 5 was manually annotated 1 time for cluster EH.
- Start number 6 was manually annotated 1 time for cluster EH.
- Start number 7 was manually annotated 2 times for cluster EH.

Info for manual annotations of cluster L1:

- Start number 2 was manually annotated 19 times for cluster L1.

Info for manual annotations of cluster L2:

- Start number 2 was manually annotated 31 times for cluster L2.

Info for manual annotations of cluster L3:

- Start number 2 was manually annotated 19 times for cluster L3.

Info for manual annotations of cluster L4:

- Start number 2 was manually annotated 6 times for cluster L4.

Info for manual annotations of cluster L5:

- Start number 2 was manually annotated 2 times for cluster L5.

Gene Information:

Gene: AceofSpades_4 Start: 3676, Stop: 4473, Start Num: 9

Candidate Starts for AceofSpades_4:

(Start: 9 @3676 has 10 MA's), (27, 3832), (30, 3850), (35, 3883), (60, 4036), (72, 4102), (78, 4186), (88, 4318),

Gene: Acquire49_6 Start: 4320, Stop: 5375, Start Num: 2

Candidate Starts for Acquire49_6:

(Start: 2 @4320 has 77 MA's), (21, 4458), (22, 4470), (34, 4575), (37, 4587), (42, 4626), (43, 4629), (50, 4665), (56, 4731), (59, 4746), (62, 4761), (68, 4803), (79, 4905), (88, 5040), (91, 5064), (105, 5205), (106, 5232), (107, 5241),

Gene: Aegeus_6 Start: 3860, Stop: 4954, Start Num: 2

Candidate Starts for Aegeus_6:

(Start: 2 @3860 has 77 MA's), (10, 3914), (13, 3941), (18, 3983), (19, 3986), (21, 3992), (33, 4094), (34, 4109), (39, 4130), (41, 4151), (49, 4193), (50, 4199), (57, 4274), (58, 4277), (62, 4307), (63, 4313), (65, 4325), (76, 4475), (78, 4508), (79, 4511), (81, 4535), (83, 4568), (86, 4598), (87, 4631), (95, 4694), (104, 4781),

Gene: Appletree2_6 Start: 4294, Stop: 5349, Start Num: 2

Candidate Starts for Appletree2_6:

(Start: 2 @4294 has 77 MA's), (21, 4432), (22, 4444), (34, 4549), (37, 4561), (42, 4600), (43, 4603), (50, 4639), (56, 4705), (59, 4720), (62, 4735), (68, 4777), (79, 4879), (88, 5014), (91, 5038), (105, 5179), (106, 5206), (107, 5215),

Gene: Archie_6 Start: 4276, Stop: 5343, Start Num: 2

Candidate Starts for Archie_6:

(Start: 2 @4276 has 77 MA's), (Start: 5 @4333 has 1 MA's), (21, 4429), (34, 4546), (37, 4558), (44, 4603), (50, 4636), (56, 4702), (62, 4732), (68, 4774), (70, 4783), (79, 4876), (80, 4894), (88, 5011), (91, 5035), (92, 5044), (105, 5176), (106, 5203),

Gene: Ashes_4 Start: 3879, Stop: 4673, Start Num: 6

Candidate Starts for Ashes_4:

(Start: 6 @3879 has 18 MA's), (13, 3921), (22, 3987), (23, 4017), (25, 4029), (60, 4248), (64, 4269), (71, 4311), (76, 4365), (78, 4398), (80, 4419), (98, 4611),

Gene: AvadaKedavra_6 Start: 4320, Stop: 5375, Start Num: 2

Candidate Starts for AvadaKedavra_6:

(Start: 2 @4320 has 77 MA's), (21, 4458), (22, 4470), (34, 4575), (37, 4587), (42, 4626), (43, 4629), (50, 4665), (56, 4731), (59, 4746), (62, 4761), (68, 4803), (79, 4905), (88, 5040), (91, 5064), (105, 5205), (106, 5232), (107, 5241),

Gene: Baoshan_5 Start: 4143, Stop: 5198, Start Num: 2

Candidate Starts for Baoshan_5:

(Start: 2 @4143 has 77 MA's), (Start: 5 @4191 has 1 MA's), (18, 4278), (34, 4404), (37, 4416), (44, 4461), (50, 4494), (56, 4560), (62, 4590), (68, 4632), (70, 4641), (79, 4734), (80, 4752), (88, 4869), (91, 4893), (92, 4902), (100, 4980), (105, 5031), (106, 5058), (107, 5067),

Gene: Baudelaire_6 Start: 3860, Stop: 4954, Start Num: 2

Candidate Starts for Baudelaire_6:

(Start: 2 @3860 has 77 MA's), (10, 3914), (13, 3941), (18, 3983), (19, 3986), (21, 3992), (33, 4094), (34, 4109), (39, 4130), (41, 4151), (49, 4193), (50, 4199), (57, 4274), (58, 4277), (62, 4307), (63, 4313), (65, 4325), (76, 4475), (78, 4508), (79, 4511), (81, 4535), (83, 4568), (86, 4598), (87, 4631), (95, 4694), (104, 4781),

Gene: Bazzle_6 Start: 4252, Stop: 5319, Start Num: 2

Candidate Starts for Bazzle_6:

(Start: 2 @4252 has 77 MA's), (Start: 5 @4309 has 1 MA's), (21, 4405), (34, 4522), (37, 4534), (44, 4579), (50, 4612), (56, 4678), (62, 4708), (68, 4750), (70, 4759), (79, 4852), (80, 4870), (88, 4987), (91, 5011), (92, 5020), (105, 5152), (106, 5179),

Gene: Beaupre_4 Start: 3879, Stop: 4673, Start Num: 6

Candidate Starts for Beaupre_4:

(Start: 6 @3879 has 18 MA's), (13, 3921), (22, 3987), (23, 4017), (25, 4029), (38, 4110), (56, 4230), (60, 4248), (64, 4269), (71, 4311), (76, 4365), (78, 4398), (80, 4419), (98, 4611),

Gene: Bellis_7 Start: 4412, Stop: 5482, Start Num: 2

Candidate Starts for Bellis_7:

(Start: 2 @4412 has 77 MA's), (8, 4460), (10, 4469), (13, 4496), (21, 4547), (29, 4625), (34, 4664), (37, 4676), (50, 4754), (52, 4778), (56, 4820), (62, 4850), (79, 5018), (80, 5036), (88, 5153), (91, 5177), (100, 5264), (106, 5345),

Gene: BigCheese_6 Start: 4311, Stop: 5369, Start Num: 2

Candidate Starts for BigCheese_6:

(Start: 2 @4311 has 77 MA's), (Start: 5 @4359 has 1 MA's), (34, 4572), (37, 4584), (44, 4629), (50, 4662), (56, 4728), (62, 4758), (68, 4800), (70, 4809), (79, 4902), (80, 4920), (88, 5037), (91, 5061), (92, 5070), (105, 5202), (106, 5229),

Gene: BobsGarage_6 Start: 4311, Stop: 5369, Start Num: 2

Candidate Starts for BobsGarage_6:

(Start: 2 @4311 has 77 MA's), (Start: 5 @4359 has 1 MA's), (34, 4572), (37, 4584), (44, 4629), (50, 4662), (56, 4728), (62, 4758), (68, 4800), (70, 4809), (79, 4902), (80, 4920), (88, 5037), (91, 5061), (92, 5070), (105, 5202), (106, 5229),

Gene: BourbonZero_6 Start: 4417, Stop: 5487, Start Num: 2

Candidate Starts for BourbonZero_6:

(Start: 2 @4417 has 77 MA's), (8, 4465), (10, 4474), (13, 4501), (21, 4552), (29, 4630), (34, 4669), (37, 4681), (50, 4759), (52, 4783), (56, 4825), (62, 4855), (80, 5041), (88, 5158), (91, 5182), (106, 5350),

Gene: BrainDrainer_7 Start: 4133, Stop: 5182, Start Num: 2

Candidate Starts for BrainDrainer_7:

(Start: 2 @4133 has 77 MA's), (20, 4268), (21, 4271), (34, 4388), (37, 4400), (50, 4478), (54, 4526), (56, 4544), (62, 4574), (68, 4616), (70, 4625), (74, 4649), (79, 4718), (80, 4736), (88, 4853), (91, 4877), (92, 4886), (105, 5015), (106, 5042), (108, 5102), (109, 5105),

Gene: Breezona_6 Start: 4311, Stop: 5369, Start Num: 2

Candidate Starts for Breezona_6:

(Start: 2 @4311 has 77 MA's), (Start: 5 @4359 has 1 MA's), (34, 4572), (37, 4584), (44, 4629), (50, 4662), (56, 4728), (62, 4758), (68, 4800), (70, 4809), (79, 4902), (80, 4920), (88, 5037), (91, 5061), (92, 5070), (105, 5202), (106, 5229),

Gene: Bromden_6 Start: 4032, Stop: 5087, Start Num: 2

Candidate Starts for Bromden_6:

(1, 4026), (Start: 2 @4032 has 77 MA's), (17, 4161), (34, 4293), (37, 4305), (50, 4383), (54, 4431), (56, 4449), (62, 4479), (68, 4521), (79, 4623), (80, 4641), (88, 4758), (91, 4782), (92, 4791), (105, 4920), (106, 4947), (108, 5007),

Gene: Calm_6 Start: 4321, Stop: 5376, Start Num: 2

Candidate Starts for Calm_6:

(Start: 2 @4321 has 77 MA's), (21, 4459), (22, 4471), (34, 4576), (37, 4588), (42, 4627), (43, 4630), (50, 4666), (56, 4732), (59, 4747), (62, 4762), (68, 4804), (79, 4906), (88, 5041), (91, 5065), (105, 5206), (106, 5233), (107, 5242),

Gene: Cappuccino_4 Start: 3875, Stop: 4669, Start Num: 6

Candidate Starts for Cappuccino_4:

(Start: 6 @3875 has 18 MA's), (13, 3917), (22, 3983), (23, 4013), (25, 4025), (60, 4244), (64, 4265), (71, 4307), (78, 4394), (80, 4415), (82, 4433), (98, 4607),

Gene: Cen1621_4 Start: 3740, Stop: 4483, Start Num: 7

Candidate Starts for Cen1621_4:

(Start: 7 @3740 has 2 MA's), (13, 3779), (28, 3908), (38, 3968), (44, 3998), (64, 4136), (67, 4160), (76, 4229), (78, 4262), (84, 4337), (85, 4346),

Gene: Chaser_6 Start: 4033, Stop: 5088, Start Num: 2

Candidate Starts for Chaser_6:

(1, 4027), (Start: 2 @4033 has 77 MA's), (17, 4162), (21, 4177), (34, 4294), (37, 4306), (50, 4384), (54, 4432), (56, 4450), (62, 4480), (68, 4522), (74, 4555), (79, 4624), (80, 4642), (88, 4759), (91, 4783), (92, 4792), (105, 4921), (106, 4948), (108, 5008), (109, 5011),

Gene: ChutneyChips_6 Start: 4033, Stop: 5085, Start Num: 2

Candidate Starts for ChutneyChips_6:

(Start: 2 @4033 has 77 MA's), (17, 4159), (21, 4174), (34, 4291), (37, 4303), (50, 4381), (54, 4429), (56, 4447), (62, 4477), (68, 4519), (74, 4552), (79, 4621), (80, 4639), (88, 4756), (91, 4780), (92, 4789), (105, 4918), (106, 4945), (108, 5005), (109, 5008),

Gene: CicholasNage_6 Start: 4321, Stop: 5376, Start Num: 2

Candidate Starts for CicholasNage_6:

(Start: 2 @4321 has 77 MA's), (21, 4459), (22, 4471), (34, 4576), (37, 4588), (42, 4627), (43, 4630), (50, 4666), (56, 4732), (59, 4747), (62, 4762), (68, 4804), (79, 4906), (88, 5041), (91, 5065), (105, 5206), (106, 5233), (107, 5242),

Gene: Claus_6 Start: 4323, Stop: 5378, Start Num: 2

Candidate Starts for Claus_6:

(Start: 2 @4323 has 77 MA's), (Start: 5 @4371 has 1 MA's), (18, 4458), (34, 4584), (37, 4596), (44, 4641), (50, 4674), (56, 4740), (62, 4770), (68, 4812), (70, 4821), (79, 4914), (80, 4932), (88, 5049), (91, 5073), (92, 5082), (100, 5160), (105, 5211), (106, 5238), (107, 5247),

Gene: Clautastrophe_7 Start: 4416, Stop: 5486, Start Num: 2

Candidate Starts for Clautastrophe_7:

(Start: 2 @4416 has 77 MA's), (8, 4464), (10, 4473), (13, 4500), (21, 4551), (29, 4629), (34, 4668), (37, 4680), (50, 4758), (52, 4782), (56, 4824), (62, 4854), (79, 5022), (80, 5040), (88, 5157), (91, 5181), (100, 5268), (106, 5349),

Gene: Crossroads_6 Start: 4311, Stop: 5369, Start Num: 2

Candidate Starts for Crossroads_6:

(Start: 2 @4311 has 77 MA's), (Start: 5 @4359 has 1 MA's), (34, 4572), (37, 4584), (44, 4629), (50, 4662), (56, 4728), (62, 4758), (68, 4800), (70, 4809), (79, 4902), (80, 4920), (88, 5037), (91, 5061), (92, 5070), (105, 5202), (106, 5229),

Gene: DHan_6 Start: 4259, Stop: 5314, Start Num: 2

Candidate Starts for DHan_6:

(Start: 2 @4259 has 77 MA's), (Start: 5 @4307 has 1 MA's), (34, 4520), (37, 4532), (50, 4610), (56, 4676), (62, 4706), (68, 4748), (70, 4757), (79, 4850), (88, 4985), (91, 5009), (92, 5018), (100, 5096), (105, 5147), (106, 5174), (107, 5183),

Gene: DanBing_5 Start: 4143, Stop: 5198, Start Num: 2

Candidate Starts for DanBing_5:

(Start: 2 @4143 has 77 MA's), (Start: 5 @4191 has 1 MA's), (34, 4404), (37, 4416), (44, 4461), (50, 4494), (56, 4560), (62, 4590), (68, 4632), (70, 4641), (79, 4734), (80, 4752), (88, 4869), (91, 4893), (92, 4902), (100, 4980), (105, 5031), (106, 5058), (107, 5067),

Gene: DirkDirk_6 Start: 4322, Stop: 5377, Start Num: 2

Candidate Starts for DirkDirk_6:

(Start: 2 @4322 has 77 MA's), (21, 4460), (22, 4472), (34, 4577), (37, 4589), (42, 4628), (43, 4631), (50, 4667), (56, 4733), (59, 4748), (62, 4763), (68, 4805), (79, 4907), (88, 5042), (91, 5066), (105, 5207), (106, 5234), (107, 5243),

Gene: Donkey_4 Start: 3875, Stop: 4669, Start Num: 6

Candidate Starts for Donkey_4:

(Start: 6 @3875 has 18 MA's), (13, 3917), (22, 3983), (23, 4013), (25, 4025), (60, 4244), (64, 4265), (71, 4307), (78, 4394), (80, 4415), (82, 4433), (98, 4607),

Gene: Douge_6 Start: 3988, Stop: 5043, Start Num: 2

Candidate Starts for Douge_6:

(1, 3982), (Start: 2 @3988 has 77 MA's), (20, 4129), (21, 4132), (34, 4249), (37, 4261), (50, 4339), (54, 4387), (56, 4405), (62, 4435), (68, 4477), (70, 4486), (74, 4510), (79, 4579), (80, 4597), (88, 4714), (91, 4738), (92, 4747), (105, 4876), (106, 4903), (108, 4963), (109, 4966),

Gene: Douzhi_6 Start: 3988, Stop: 5043, Start Num: 2

Candidate Starts for Douzhi_6:

(1, 3982), (Start: 2 @3988 has 77 MA's), (17, 4117), (21, 4132), (34, 4249), (37, 4261), (50, 4339), (54, 4387), (56, 4405), (62, 4435), (68, 4477), (74, 4510), (79, 4579), (80, 4597), (88, 4714), (91, 4738), (92, 4747), (105, 4876), (106, 4903), (108, 4963), (109, 4966),

Gene: DrSeegs_6 Start: 4311, Stop: 5369, Start Num: 2

Candidate Starts for DrSeegs_6:

(Start: 2 @4311 has 77 MA's), (Start: 5 @4359 has 1 MA's), (34, 4572), (37, 4584), (44, 4629), (50, 4662), (56, 4728), (62, 4758), (68, 4800), (70, 4809), (79, 4902), (80, 4920), (88, 5037), (91, 5061), (92, 5070), (105, 5202), (106, 5229),

Gene: DuncansLeg_7 Start: 4419, Stop: 5489, Start Num: 2

Candidate Starts for DuncansLeg_7:

(Start: 2 @4419 has 77 MA's), (8, 4467), (10, 4476), (13, 4503), (21, 4554), (29, 4632), (34, 4671), (37, 4683), (50, 4761), (52, 4785), (56, 4827), (62, 4857), (80, 5043), (88, 5160), (91, 5184), (106, 5352),

Gene: DyoEdafos_7 Start: 4176, Stop: 5231, Start Num: 2

Candidate Starts for DyoEdafos_7:

(1, 4170), (Start: 2 @4176 has 77 MA's), (17, 4305), (34, 4437), (37, 4449), (50, 4527), (54, 4575), (56, 4593), (62, 4623), (68, 4665), (74, 4698), (79, 4767), (80, 4785), (88, 4902), (91, 4926), (105, 5064), (106, 5091), (108, 5151),

Gene: Ellson_7 Start: 4428, Stop: 5498, Start Num: 2

Candidate Starts for Ellson_7:

(Start: 2 @4428 has 77 MA's), (8, 4476), (10, 4485), (13, 4512), (21, 4563), (29, 4641), (34, 4680), (37, 4692), (50, 4770), (52, 4794), (56, 4836), (62, 4866), (80, 5052), (88, 5169), (91, 5193), (106, 5361),

Gene: Emotion_4 Start: 3677, Stop: 4474, Start Num: 9

Candidate Starts for Emotion_4:

(Start: 9 @3677 has 10 MA's), (21, 3761), (35, 3884), (40, 3908), (47, 3935), (72, 4103), (78, 4187), (82, 4226), (88, 4319),

Gene: Enceladus_6 Start: 4322, Stop: 5377, Start Num: 2

Candidate Starts for Enceladus_6:

(Start: 2 @4322 has 77 MA's), (21, 4460), (22, 4472), (34, 4577), (37, 4589), (42, 4628), (43, 4631), (50, 4667), (56, 4733), (59, 4748), (62, 4763), (68, 4805), (79, 4907), (88, 5042), (91, 5066), (105, 5207), (106, 5234), (107, 5243),

Gene: Faith1_6 Start: 4311, Stop: 5369, Start Num: 2

Candidate Starts for Faith1_6:

(Start: 2 @4311 has 77 MA's), (Start: 5 @4359 has 1 MA's), (34, 4572), (37, 4584), (44, 4629), (50, 4662), (56, 4728), (62, 4758), (68, 4800), (70, 4809), (79, 4902), (80, 4920), (88, 5037), (91, 5061), (92, 5070), (105, 5202), (106, 5229),

Gene: FarmResident_6 Start: 4027, Stop: 5082, Start Num: 2

Candidate Starts for FarmResident_6:

(1, 4021), (Start: 2 @4027 has 77 MA's), (20, 4168), (21, 4171), (34, 4288), (37, 4300), (50, 4378), (54, 4426), (56, 4444), (62, 4474), (68, 4516), (70, 4525), (74, 4549), (79, 4618), (80, 4636), (88, 4753), (91, 4777), (92, 4786), (105, 4915), (106, 4942), (108, 5002), (109, 5005),

Gene: Finemlucis_6 Start: 4311, Stop: 5369, Start Num: 2

Candidate Starts for Finemlucis_6:

(Start: 2 @4311 has 77 MA's), (Start: 5 @4359 has 1 MA's), (34, 4572), (37, 4584), (44, 4629), (50, 4662), (56, 4728), (62, 4758), (68, 4800), (70, 4809), (79, 4902), (80, 4920), (88, 5037), (91, 5061), (92, 5070), (105, 5202), (106, 5229),

Gene: Finnry_7 Start: 4413, Stop: 5483, Start Num: 2

Candidate Starts for Finnry_7:

(Start: 2 @4413 has 77 MA's), (8, 4461), (10, 4470), (13, 4497), (21, 4548), (29, 4626), (34, 4665), (37, 4677), (50, 4755), (52, 4779), (56, 4821), (62, 4851), (79, 5019), (80, 5037), (88, 5154), (91, 5178), (100, 5265), (106, 5346),

Gene: FiveHead_4 Start: 3658, Stop: 4455, Start Num: 9

Candidate Starts for FiveHead_4:

(Start: 9 @3658 has 10 MA's), (27, 3814), (30, 3832), (35, 3865), (60, 4018), (72, 4084), (73, 4090), (78, 4168), (88, 4300),

Gene: Floof_4 Start: 4029, Stop: 4892, Start Num: 5

Candidate Starts for Floof_4:

(Start: 5 @4029 has 1 MA's), (11, 4059), (26, 4191), (64, 4434), (78, 4563), (93, 4731), (102, 4815),

Gene: Footloose_4 Start: 3515, Stop: 4273, Start Num: 6

Candidate Starts for Footloose_4:

(3, 3503), (Start: 6 @3515 has 18 MA's), (29, 3680), (31, 3692), (45, 3767), (46, 3770), (56, 3851), (66, 3899), (68, 3917), (69, 3920), (78, 4019), (89, 4154), (99, 4232),

Gene: Gabriela_6 Start: 4311, Stop: 5369, Start Num: 2

Candidate Starts for Gabriela_6:

(Start: 2 @4311 has 77 MA's), (Start: 5 @4359 has 1 MA's), (34, 4572), (37, 4584), (44, 4629), (50, 4662), (56, 4728), (62, 4758), (68, 4800), (70, 4809), (79, 4902), (80, 4920), (88, 5037), (91, 5061), (92, 5070), (105, 5202), (106, 5229),

Gene: Gambol_4 Start: 3875, Stop: 4669, Start Num: 6

Candidate Starts for Gambol_4:

(Start: 6 @3875 has 18 MA's), (13, 3917), (22, 3983), (23, 4013), (25, 4025), (60, 4244), (64, 4265), (71, 4307), (78, 4394), (80, 4415), (82, 4433), (98, 4607),

Gene: Gardann_6 Start: 4311, Stop: 5369, Start Num: 2

Candidate Starts for Gardann_6:

(Start: 2 @4311 has 77 MA's), (Start: 5 @4359 has 1 MA's), (34, 4572), (37, 4584), (44, 4629), (50, 4662), (56, 4728), (62, 4758), (68, 4800), (70, 4809), (79, 4902), (80, 4920), (88, 5037), (91, 5061), (92, 5070), (105, 5202), (106, 5229),

Gene: Giorgio_4 Start: 3880, Stop: 4674, Start Num: 6

Candidate Starts for Giorgio_4:

(Start: 6 @3880 has 18 MA's), (13, 3922), (22, 3988), (23, 4018), (25, 4030), (56, 4231), (60, 4249), (64, 4270), (71, 4312), (76, 4366), (78, 4399), (80, 4420), (98, 4612),

Gene: Gumpizza_4 Start: 3879, Stop: 4673, Start Num: 6

Candidate Starts for Gumpizza_4:

(Start: 6 @3879 has 18 MA's), (13, 3921), (22, 3987), (23, 4017), (25, 4029), (38, 4110), (56, 4230), (60, 4248), (64, 4269), (71, 4311), (76, 4365), (78, 4398), (80, 4419), (98, 4611),

Gene: GuuelaD_6 Start: 4356, Stop: 5411, Start Num: 2

Candidate Starts for GuuelaD_6:

(Start: 2 @4356 has 77 MA's), (Start: 5 @4404 has 1 MA's), (18, 4491), (34, 4617), (37, 4629), (50, 4707), (56, 4773), (62, 4803), (68, 4845), (70, 4854), (79, 4947), (80, 4965), (88, 5082), (91, 5106), (92, 5115), (97, 5166), (101, 5196), (103, 5211), (106, 5271),

Gene: Hafay_6 Start: 4350, Stop: 5402, Start Num: 2

Candidate Starts for Hafay_6:

(Start: 2 @4350 has 77 MA's), (Start: 5 @4392 has 1 MA's), (34, 4605), (37, 4617), (44, 4662), (50, 4695), (56, 4761), (62, 4791), (68, 4833), (70, 4842), (79, 4935), (80, 4953), (88, 5070), (91, 5094), (92, 5103), (105, 5235), (106, 5262),

Gene: Halena_6 Start: 4321, Stop: 5376, Start Num: 2

Candidate Starts for Halena_6:

(Start: 2 @4321 has 77 MA's), (21, 4459), (22, 4471), (34, 4576), (37, 4588), (42, 4627), (43, 4630), (50, 4666), (56, 4732), (59, 4747), (62, 4762), (68, 4804), (79, 4906), (88, 5041), (91, 5065), (105, 5206), (106, 5233), (107, 5242),

Gene: Halsey_4 Start: 3879, Stop: 4673, Start Num: 6

Candidate Starts for Halsey_4:

(Start: 6 @3879 has 18 MA's), (13, 3921), (22, 3987), (23, 4017), (25, 4029), (60, 4248), (64, 4269), (71, 4311), (76, 4365), (78, 4398), (80, 4419), (98, 4611),

Gene: Honk_4 Start: 3779, Stop: 4525, Start Num: 4

Candidate Starts for Honk_4:

(Start: 4 @3779 has 1 MA's), (Start: 7 @3788 has 2 MA's), (11, 3812), (13, 3827), (14, 3839), (15, 3842), (28, 3953), (38, 4013), (50, 4076), (60, 4160), (64, 4181), (76, 4274), (78, 4307), (82, 4346), (93, 4469), (94, 4478),

Gene: IUFootball_4 Start: 3813, Stop: 4607, Start Num: 9

Candidate Starts for IUFootball_4:

(Start: 9 @3813 has 10 MA's), (21, 3897), (35, 4020), (36, 4026), (55, 4143), (56, 4155), (60, 4173), (67, 4218), (72, 4239), (78, 4323), (85, 4407),

Gene: Itos_6 Start: 4311, Stop: 5369, Start Num: 2

Candidate Starts for Itos_6:

(Start: 2 @4311 has 77 MA's), (Start: 5 @4359 has 1 MA's), (34, 4572), (37, 4584), (44, 4629), (50, 4662), (56, 4728), (62, 4758), (68, 4800), (70, 4809), (79, 4902), (80, 4920), (88, 5037), (91, 5061), (92, 5070), (105, 5202), (106, 5229),

Gene: JasmineDragon_4 Start: 3667, Stop: 4464, Start Num: 9

Candidate Starts for JasmineDragon_4:

(Start: 9 @3667 has 10 MA's), (30, 3841), (35, 3874), (60, 4027), (72, 4093), (78, 4177), (88, 4309),

Gene: Jobypre_7 Start: 4416, Stop: 5486, Start Num: 2

Candidate Starts for Jobypre_7:

(Start: 2 @4416 has 77 MA's), (8, 4464), (10, 4473), (13, 4500), (21, 4551), (29, 4629), (34, 4668), (37, 4680), (50, 4758), (52, 4782), (56, 4824), (62, 4854), (79, 5022), (80, 5040), (88, 5157), (91, 5181), (100, 5268), (106, 5349),

Gene: JoeDirt_6 Start: 4321, Stop: 5376, Start Num: 2

Candidate Starts for JoeDirt_6:

(Start: 2 @4321 has 77 MA's), (21, 4459), (22, 4471), (34, 4576), (37, 4588), (42, 4627), (43, 4630), (50, 4666), (56, 4732), (59, 4747), (62, 4762), (68, 4804), (79, 4906), (88, 5041), (91, 5065), (105, 5206), (106, 5233), (107, 5242),

Gene: JohnThicc_4 Start: 3658, Stop: 4455, Start Num: 9

Candidate Starts for JohnThicc_4:

(Start: 9 @3658 has 10 MA's), (27, 3814), (30, 3832), (35, 3865), (60, 4018), (72, 4084), (73, 4090), (78, 4168), (88, 4300),

Gene: Jubie_7 Start: 4416, Stop: 5486, Start Num: 2

Candidate Starts for Jubie_7:

(Start: 2 @4416 has 77 MA's), (8, 4464), (10, 4473), (13, 4500), (21, 4551), (29, 4629), (34, 4668), (37, 4680), (50, 4758), (52, 4782), (56, 4824), (62, 4854), (79, 5022), (80, 5040), (88, 5157), (91, 5181), (100, 5268), (106, 5349),

Gene: Kahlid_6 Start: 4311, Stop: 5369, Start Num: 2

Candidate Starts for Kahlid_6:

(Start: 2 @4311 has 77 MA's), (Start: 5 @4359 has 1 MA's), (34, 4572), (37, 4584), (44, 4629), (50, 4662), (56, 4728), (62, 4758), (68, 4800), (70, 4809), (79, 4902), (80, 4920), (88, 5037), (91, 5061), (92, 5070), (105, 5202), (106, 5229),

Gene: Kalimba_4 Start: 3875, Stop: 4669, Start Num: 6

Candidate Starts for Kalimba_4:

(Start: 6 @3875 has 18 MA's), (13, 3917), (22, 3983), (23, 4013), (25, 4025), (60, 4244), (64, 4265), (71, 4307), (78, 4394), (80, 4415), (82, 4433), (98, 4607),

Gene: Kingsolomon_7 Start: 4416, Stop: 5486, Start Num: 2

Candidate Starts for Kingsolomon_7:

(Start: 2 @4416 has 77 MA's), (8, 4464), (10, 4473), (13, 4500), (21, 4551), (29, 4629), (34, 4668), (37, 4680), (50, 4758), (52, 4782), (56, 4824), (62, 4854), (79, 5022), (80, 5040), (88, 5157), (91, 5181), (100, 5268), (106, 5349),

Gene: KirDoubleO7_5 Start: 4428, Stop: 5498, Start Num: 2

Candidate Starts for KirDoubleO7_5:

(Start: 2 @4428 has 77 MA's), (8, 4476), (10, 4485), (13, 4512), (21, 4563), (29, 4641), (34, 4680), (37, 4692), (50, 4770), (52, 4794), (56, 4836), (62, 4866), (80, 5052), (88, 5169), (91, 5193), (106, 5361),

Gene: Kropertea_6 Start: 3983, Stop: 5038, Start Num: 2

Candidate Starts for Kropertea_6:

(1, 3977), (Start: 2 @3983 has 77 MA's), (17, 4112), (34, 4244), (37, 4256), (50, 4334), (54, 4382), (56, 4400), (62, 4430), (68, 4472), (74, 4505), (79, 4574), (80, 4592), (88, 4709), (91, 4733), (92, 4742), (105, 4871), (106, 4898), (108, 4958),

Gene: Krypton555_7 Start: 4408, Stop: 5478, Start Num: 2

Candidate Starts for Krypton555_7:

(Start: 2 @4408 has 77 MA's), (8, 4456), (10, 4465), (13, 4492), (21, 4543), (24, 4594), (29, 4621), (34, 4660), (37, 4672), (50, 4750), (52, 4774), (56, 4816), (62, 4846), (80, 5032), (88, 5149), (91, 5173), (106, 5341),

Gene: LadyAstra_4 Start: 3658, Stop: 4455, Start Num: 9

Candidate Starts for LadyAstra_4:

(Start: 9 @3658 has 10 MA's), (27, 3814), (30, 3832), (35, 3865), (60, 4018), (72, 4084), (73, 4090), (78, 4168), (88, 4300),

Gene: LeBron_6 Start: 4321, Stop: 5376, Start Num: 2

Candidate Starts for LeBron_6:

(Start: 2 @4321 has 77 MA's), (21, 4459), (22, 4471), (34, 4576), (37, 4588), (42, 4627), (43, 4630), (50, 4666), (56, 4732), (59, 4747), (62, 4762), (68, 4804), (79, 4906), (88, 5041), (91, 5065), (105, 5206), (106, 5233), (107, 5242),

Gene: Lewan_6 Start: 4311, Stop: 5369, Start Num: 2

Candidate Starts for Lewan_6:

(Start: 2 @4311 has 77 MA's), (Start: 5 @4359 has 1 MA's), (34, 4572), (37, 4584), (44, 4629), (50, 4662), (56, 4728), (62, 4758), (68, 4800), (70, 4809), (79, 4902), (80, 4920), (88, 5037), (91, 5061), (92, 5070), (105, 5202), (106, 5229),

Gene: Liebe_4 Start: 3813, Stop: 4607, Start Num: 9

Candidate Starts for Liebe_4:

(Start: 9 @3813 has 10 MA's), (21, 3897), (35, 4020), (36, 4026), (55, 4143), (56, 4155), (60, 4173), (67, 4218), (72, 4239), (78, 4323), (85, 4407),

Gene: LilDestine_6 Start: 4311, Stop: 5369, Start Num: 2

Candidate Starts for LilDestine_6:

(Start: 2 @4311 has 77 MA's), (Start: 5 @4359 has 1 MA's), (34, 4572), (37, 4584), (44, 4629), (50, 4662), (56, 4728), (62, 4758), (68, 4800), (70, 4809), (79, 4902), (80, 4920), (88, 5037), (91, 5061), (92, 5070), (105, 5202), (106, 5229),

Gene: LiyuLake_7 Start: 4419, Stop: 5489, Start Num: 2

Candidate Starts for LiyuLake_7:

(Start: 2 @4419 has 77 MA's), (8, 4467), (10, 4476), (13, 4503), (21, 4554), (29, 4632), (34, 4671), (37, 4683), (50, 4761), (52, 4785), (56, 4827), (62, 4857), (80, 5043), (88, 5160), (91, 5184), (106, 5352),

Gene: Loadrie_6 Start: 4350, Stop: 5402, Start Num: 2

Candidate Starts for Loadrie_6:

(Start: 2 @4350 has 77 MA's), (Start: 5 @4392 has 1 MA's), (34, 4605), (37, 4617), (44, 4662), (50, 4695), (56, 4761), (62, 4791), (68, 4833), (70, 4842), (79, 4935), (80, 4953), (88, 5070), (91, 5094), (92, 5103), (105, 5235), (106, 5262),

Gene: Lolly9_7 Start: 4422, Stop: 5492, Start Num: 2

Candidate Starts for Lolly9_7:

(Start: 2 @4422 has 77 MA's), (8, 4470), (10, 4479), (13, 4506), (21, 4557), (29, 4635), (34, 4674), (37, 4686), (50, 4764), (52, 4788), (56, 4830), (62, 4860), (80, 5046), (88, 5163), (91, 5187), (100, 5274), (106, 5355),

Gene: Lumos_7 Start: 4416, Stop: 5486, Start Num: 2

Candidate Starts for Lumos_7:

(Start: 2 @4416 has 77 MA's), (8, 4464), (10, 4473), (13, 4500), (21, 4551), (29, 4629), (34, 4668), (37, 4680), (50, 4758), (52, 4782), (56, 4824), (62, 4854), (79, 5022), (80, 5040), (88, 5157), (91, 5181), (100, 5268), (106, 5349),

Gene: Lynnae_6 Start: 4311, Stop: 5369, Start Num: 2

Candidate Starts for Lynnae_6:

(Start: 2 @4311 has 77 MA's), (Start: 5 @4359 has 1 MA's), (34, 4572), (37, 4584), (44, 4629), (50, 4662), (56, 4728), (62, 4758), (68, 4800), (70, 4809), (79, 4902), (80, 4920), (88, 5037), (91, 5061), (92, 5070), (105, 5202), (106, 5229),

Gene: MAckerman_6 Start: 4320, Stop: 5375, Start Num: 2

Candidate Starts for MAckerman_6:

(Start: 2 @4320 has 77 MA's), (21, 4458), (22, 4470), (34, 4575), (37, 4587), (42, 4626), (43, 4629), (50, 4665), (56, 4731), (59, 4746), (62, 4761), (68, 4803), (79, 4905), (88, 5040), (91, 5064), (105, 5205), (106, 5232), (107, 5241),

Gene: MaGuCo_4 Start: 3672, Stop: 4466, Start Num: 9

Candidate Starts for MaGuCo_4:

(Start: 9 @3672 has 10 MA's), (21, 3756), (35, 3879), (55, 4002), (56, 4014), (60, 4032), (67, 4077), (72, 4098), (78, 4182), (79, 4185), (85, 4266), (90, 4323),

Gene: Maureen_4 Start: 3813, Stop: 4607, Start Num: 9

Candidate Starts for Maureen_4:

(Start: 9 @3813 has 10 MA's), (21, 3897), (35, 4020), (36, 4026), (55, 4143), (56, 4155), (60, 4173), (67, 4218), (72, 4239), (78, 4323), (85, 4407),

Gene: Miley16_6 Start: 4311, Stop: 5369, Start Num: 2

Candidate Starts for Miley16_6:

(Start: 2 @4311 has 77 MA's), (Start: 5 @4359 has 1 MA's), (34, 4572), (37, 4584), (44, 4629), (50, 4662), (56, 4728), (62, 4758), (68, 4800), (70, 4809), (79, 4902), (80, 4920), (88, 5037), (91, 5061), (92,

5070), (105, 5202), (106, 5229),

Gene: MiniLon_7 Start: 4422, Stop: 5492, Start Num: 2

Candidate Starts for MiniLon_7:

(Start: 2 @4422 has 77 MA's), (8, 4470), (10, 4479), (13, 4506), (21, 4557), (29, 4635), (34, 4674), (37, 4686), (50, 4764), (52, 4788), (56, 4830), (62, 4860), (80, 5046), (88, 5163), (91, 5187), (100, 5274), (106, 5355),

Gene: MiniMac_7 Start: 4422, Stop: 5492, Start Num: 2

Candidate Starts for MiniMac_7:

(Start: 2 @4422 has 77 MA's), (8, 4470), (10, 4479), (13, 4506), (21, 4557), (29, 4635), (34, 4674), (37, 4686), (50, 4764), (52, 4788), (56, 4830), (62, 4860), (80, 5046), (88, 5163), (91, 5187), (100, 5274), (106, 5355),

Gene: MiniMommy_4 Start: 3667, Stop: 4464, Start Num: 9

Candidate Starts for MiniMommy_4:

(Start: 9 @3667 has 10 MA's), (30, 3841), (35, 3874), (60, 4027), (72, 4093), (78, 4177), (88, 4309),

Gene: MkaliMitinis3_6 Start: 4311, Stop: 5369, Start Num: 2

Candidate Starts for MkaliMitinis3_6:

(Start: 2 @4311 has 77 MA's), (Start: 5 @4359 has 1 MA's), (34, 4572), (37, 4584), (44, 4629), (50, 4662), (56, 4728), (62, 4758), (68, 4800), (70, 4809), (79, 4902), (80, 4920), (88, 5037), (91, 5061), (92, 5070), (105, 5202), (106, 5229),

Gene: Moostard_7 Start: 4412, Stop: 5482, Start Num: 2

Candidate Starts for Moostard_7:

(Start: 2 @4412 has 77 MA's), (8, 4460), (10, 4469), (13, 4496), (21, 4547), (29, 4625), (34, 4664), (37, 4676), (50, 4754), (52, 4778), (56, 4820), (62, 4850), (79, 5018), (80, 5036), (88, 5153), (91, 5177), (100, 5264), (106, 5345),

Gene: Moss_4 Start: 3879, Stop: 4673, Start Num: 6

Candidate Starts for Moss_4:

(Start: 6 @3879 has 18 MA's), (13, 3921), (22, 3987), (23, 4017), (25, 4029), (60, 4248), (64, 4269), (71, 4311), (76, 4365), (78, 4398), (80, 4419), (98, 4611),

Gene: MsGreen_7 Start: 4416, Stop: 5486, Start Num: 2

Candidate Starts for MsGreen_7:

(Start: 2 @4416 has 77 MA's), (8, 4464), (10, 4473), (13, 4500), (21, 4551), (29, 4629), (34, 4668), (37, 4680), (50, 4758), (52, 4782), (56, 4824), (62, 4854), (79, 5022), (80, 5040), (88, 5157), (91, 5181), (100, 5268), (106, 5349),

Gene: Mysterium_4 Start: 3879, Stop: 4673, Start Num: 6

Candidate Starts for Mysterium_4:

(Start: 6 @3879 has 18 MA's), (13, 3921), (22, 3987), (23, 4017), (25, 4029), (38, 4110), (60, 4248), (64, 4269), (71, 4311), (76, 4365), (78, 4398), (80, 4419), (98, 4611),

Gene: Netyap_6 Start: 4311, Stop: 5369, Start Num: 2

Candidate Starts for Netyap_6:

(Start: 2 @4311 has 77 MA's), (Start: 5 @4359 has 1 MA's), (34, 4572), (37, 4584), (44, 4629), (50, 4662), (56, 4728), (62, 4758), (68, 4800), (70, 4809), (79, 4902), (80, 4920), (88, 5037), (91, 5061), (92, 5070), (105, 5202), (106, 5229),

Gene: Nicholas_7 Start: 4416, Stop: 5486, Start Num: 2

Candidate Starts for Nicholas_7:

(Start: 2 @4416 has 77 MA's), (8, 4464), (10, 4473), (13, 4500), (21, 4551), (29, 4629), (34, 4668), (37, 4680), (50, 4758), (52, 4782), (56, 4824), (62, 4854), (79, 5022), (80, 5040), (88, 5157), (91, 5181), (100, 5268), (106, 5349),

Gene: Nicholasp3_6 Start: 4311, Stop: 5369, Start Num: 2

Candidate Starts for Nicholasp3_6:

(Start: 2 @4311 has 77 MA's), (Start: 5 @4359 has 1 MA's), (34, 4572), (37, 4584), (44, 4629), (50, 4662), (56, 4728), (62, 4758), (68, 4800), (70, 4809), (79, 4902), (80, 4920), (88, 5037), (91, 5061), (92, 5070), (105, 5202), (106, 5229),

Gene: OhShagHennessy_6 Start: 4294, Stop: 5349, Start Num: 2

Candidate Starts for OhShagHennessy_6:

(Start: 2 @4294 has 77 MA's), (21, 4432), (22, 4444), (34, 4549), (37, 4561), (42, 4600), (43, 4603), (50, 4639), (56, 4705), (59, 4720), (62, 4735), (68, 4777), (79, 4879), (88, 5014), (91, 5038), (105, 5179), (106, 5206), (107, 5215),

Gene: Origami_4 Start: 3658, Stop: 4455, Start Num: 9

Candidate Starts for Origami_4:

(Start: 9 @3658 has 10 MA's), (21, 3742), (27, 3814), (30, 3832), (35, 3865), (60, 4018), (72, 4084), (73, 4090), (78, 4168), (88, 4300),

Gene: OverPar_6 Start: 4350, Stop: 5402, Start Num: 2

Candidate Starts for OverPar_6:

(Start: 2 @4350 has 77 MA's), (Start: 5 @4392 has 1 MA's), (34, 4605), (37, 4617), (44, 4662), (50, 4695), (56, 4761), (62, 4791), (68, 4833), (70, 4842), (79, 4935), (80, 4953), (88, 5070), (91, 5094), (92, 5103), (105, 5235), (106, 5262),

Gene: PYPDinur_6 Start: 3988, Stop: 5043, Start Num: 2

Candidate Starts for PYPDinur_6:

(1, 3982), (Start: 2 @3988 has 77 MA's), (17, 4117), (21, 4132), (34, 4249), (37, 4261), (50, 4339), (54, 4387), (56, 4405), (62, 4435), (68, 4477), (74, 4510), (79, 4579), (80, 4597), (88, 4714), (91, 4738), (92, 4747), (105, 4876), (106, 4903), (108, 4963), (109, 4966),

Gene: Pochiewood_6 Start: 4320, Stop: 5375, Start Num: 2

Candidate Starts for Pochiewood_6:

(Start: 2 @4320 has 77 MA's), (21, 4458), (22, 4470), (34, 4575), (37, 4587), (42, 4626), (43, 4629), (50, 4665), (56, 4731), (59, 4746), (62, 4761), (68, 4803), (79, 4905), (88, 5040), (91, 5064), (105, 5205), (106, 5232), (107, 5241),

Gene: Quby_6 Start: 3988, Stop: 5043, Start Num: 2

Candidate Starts for Quby_6:

(1, 3982), (Start: 2 @3988 has 77 MA's), (20, 4129), (21, 4132), (34, 4249), (37, 4261), (50, 4339), (54, 4387), (56, 4405), (62, 4435), (68, 4477), (70, 4486), (74, 4510), (79, 4579), (80, 4597), (88, 4714), (91, 4738), (92, 4747), (105, 4876), (106, 4903), (108, 4963), (109, 4966),

Gene: Red305_7 Start: 4416, Stop: 5486, Start Num: 2

Candidate Starts for Red305_7:

(Start: 2 @4416 has 77 MA's), (8, 4464), (10, 4473), (13, 4500), (21, 4551), (29, 4629), (34, 4668), (37, 4680), (50, 4758), (52, 4782), (56, 4824), (62, 4854), (79, 5022), (80, 5040), (88, 5157), (91, 5181), (100, 5268), (106, 5349),

Gene: RockScotty_4 Start: 3879, Stop: 4673, Start Num: 6

Candidate Starts for RockScotty_4:

(Start: 6 @3879 has 18 MA's), (13, 3921), (22, 3987), (23, 4017), (25, 4029), (60, 4248), (64, 4269), (71, 4311), (76, 4365), (78, 4398), (80, 4419), (98, 4611),

Gene: Rose5_6 Start: 4320, Stop: 5375, Start Num: 2

Candidate Starts for Rose5_6:

(Start: 2 @4320 has 77 MA's), (21, 4458), (22, 4470), (34, 4575), (37, 4587), (42, 4626), (43, 4629), (50, 4665), (56, 4731), (59, 4746), (62, 4761), (68, 4803), (79, 4905), (88, 5040), (91, 5064), (105, 5205), (106, 5232), (107, 5241),

Gene: Rossetti_6 Start: 4311, Stop: 5369, Start Num: 2

Candidate Starts for Rossetti_6:

(Start: 2 @4311 has 77 MA's), (Start: 5 @4359 has 1 MA's), (21, 4455), (34, 4572), (37, 4584), (44, 4629), (50, 4662), (56, 4728), (62, 4758), (68, 4800), (70, 4809), (79, 4902), (80, 4920), (88, 5037), (91, 5061), (92, 5070), (105, 5202), (106, 5229),

Gene: Rumpelstiltskin_6 Start: 4311, Stop: 5369, Start Num: 2

Candidate Starts for Rumpelstiltskin_6:

(Start: 2 @4311 has 77 MA's), (Start: 5 @4359 has 1 MA's), (34, 4572), (37, 4584), (44, 4629), (50, 4662), (56, 4728), (62, 4758), (68, 4800), (70, 4809), (79, 4902), (80, 4920), (88, 5037), (91, 5061), (92, 5070), (105, 5202), (106, 5229),

Gene: Sabourin_4 Start: 3875, Stop: 4669, Start Num: 6

Candidate Starts for Sabourin_4:

(Start: 6 @3875 has 18 MA's), (13, 3917), (22, 3983), (23, 4013), (25, 4025), (60, 4244), (64, 4265), (71, 4307), (78, 4394), (80, 4415), (82, 4433), (98, 4607),

Gene: Samty_7 Start: 4412, Stop: 5482, Start Num: 2

Candidate Starts for Samty_7:

(Start: 2 @4412 has 77 MA's), (8, 4460), (10, 4469), (13, 4496), (21, 4547), (29, 4625), (34, 4664), (37, 4676), (50, 4754), (52, 4778), (56, 4820), (62, 4850), (79, 5018), (80, 5036), (88, 5153), (91, 5177), (100, 5264), (106, 5345),

Gene: Sarshaun_6 Start: 4350, Stop: 5402, Start Num: 2

Candidate Starts for Sarshaun_6:

(Start: 2 @4350 has 77 MA's), (Start: 5 @4392 has 1 MA's), (34, 4605), (37, 4617), (44, 4662), (50, 4695), (56, 4761), (62, 4791), (68, 4833), (70, 4842), (79, 4935), (80, 4953), (88, 5070), (91, 5094), (92, 5103), (105, 5235), (106, 5262),

Gene: ShakeltOph_4 Start: 3667, Stop: 4464, Start Num: 9

Candidate Starts for ShakeltOph_4:

(Start: 9 @3667 has 10 MA's), (30, 3841), (35, 3874), (60, 4027), (72, 4093), (78, 4177), (88, 4309),

Gene: Sheng711_6 Start: 3988, Stop: 5043, Start Num: 2

Candidate Starts for Sheng711_6:

(1, 3982), (Start: 2 @3988 has 77 MA's), (17, 4117), (21, 4132), (34, 4249), (37, 4261), (50, 4339), (54, 4387), (56, 4405), (62, 4435), (68, 4477), (74, 4510), (79, 4579), (80, 4597), (88, 4714), (91, 4738), (92, 4747), (105, 4876), (106, 4903), (108, 4963), (109, 4966),

Gene: Silverleaf_6 Start: 4320, Stop: 5375, Start Num: 2

Candidate Starts for Silverleaf_6:

(Start: 2 @4320 has 77 MA's), (21, 4458), (22, 4470), (34, 4575), (37, 4587), (42, 4626), (43, 4629), (50, 4665), (56, 4731), (59, 4746), (62, 4761), (68, 4803), (79, 4905), (88, 5040), (91, 5064), (105,

5205), (106, 5232), (107, 5241),

Gene: Snek_5 Start: 4503, Stop: 5270, Start Num: 9

Candidate Starts for Snek_5:

(Start: 9 @4503 has 10 MA's), (14, 4548), (16, 4554), (27, 4659), (35, 4710), (48, 4770), (51, 4803), (53, 4821), (56, 4845), (72, 4929), (75, 4962), (78, 5013), (79, 5016), (96, 5175),

Gene: Snenia_7 Start: 4416, Stop: 5486, Start Num: 2

Candidate Starts for Snenia_7:

(Start: 2 @4416 has 77 MA's), (8, 4464), (10, 4473), (13, 4500), (21, 4551), (29, 4629), (34, 4668), (37, 4680), (50, 4758), (52, 4782), (56, 4824), (62, 4854), (79, 5022), (80, 5040), (88, 5157), (91, 5181), (100, 5268), (106, 5349),

Gene: SoJulia_6 Start: 4311, Stop: 5369, Start Num: 2

Candidate Starts for SoJulia_6:

(Start: 2 @4311 has 77 MA's), (Start: 5 @4359 has 1 MA's), (34, 4572), (37, 4584), (44, 4629), (50, 4662), (56, 4728), (62, 4758), (68, 4800), (70, 4809), (79, 4902), (80, 4920), (88, 5037), (91, 5061), (92, 5070), (105, 5202), (106, 5229),

Gene: Soap141_6 Start: 4350, Stop: 5402, Start Num: 2

Candidate Starts for Soap141_6:

(Start: 2 @4350 has 77 MA's), (Start: 5 @4392 has 1 MA's), (34, 4605), (37, 4617), (44, 4662), (50, 4695), (56, 4761), (62, 4791), (68, 4833), (70, 4842), (79, 4935), (80, 4953), (88, 5070), (91, 5094), (92, 5103), (105, 5235), (106, 5262),

Gene: Sooty_4 Start: 3875, Stop: 4669, Start Num: 6

Candidate Starts for Sooty_4:

(Start: 6 @3875 has 18 MA's), (13, 3917), (22, 3983), (23, 4013), (25, 4025), (60, 4244), (64, 4265), (71, 4307), (78, 4394), (80, 4415), (82, 4433), (98, 4607),

Gene: SpecialK_4 Start: 3879, Stop: 4673, Start Num: 6

Candidate Starts for SpecialK_4:

(Start: 6 @3879 has 18 MA's), (13, 3921), (22, 3987), (23, 4017), (25, 4029), (60, 4248), (64, 4269), (71, 4311), (76, 4365), (78, 4398), (80, 4419), (98, 4611),

Gene: Stuu_4 Start: 3879, Stop: 4673, Start Num: 6

Candidate Starts for Stuu_4:

(Start: 6 @3879 has 18 MA's), (13, 3921), (22, 3987), (23, 4017), (56, 4230), (60, 4248), (64, 4269), (71, 4311), (76, 4365), (78, 4398), (80, 4419), (98, 4611),

Gene: SuMoo_4 Start: 3785, Stop: 4639, Start Num: 6

Candidate Starts for SuMoo_4:

(Start: 6 @3785 has 18 MA's), (12, 3821), (64, 4187), (75, 4265), (77, 4295), (78, 4316), (85, 4400), (93, 4484), (102, 4568),

Gene: ThursdayNight_4 Start: 3861, Stop: 4655, Start Num: 9

Candidate Starts for ThursdayNight_4:

(Start: 9 @3861 has 10 MA's), (35, 4068), (44, 4113), (48, 4128), (55, 4191), (72, 4287), (78, 4371),

Gene: Tourach_6 Start: 4327, Stop: 5382, Start Num: 2

Candidate Starts for Tourach_6:

(Start: 2 @4327 has 77 MA's), (Start: 5 @4375 has 1 MA's), (18, 4462), (29, 4549), (34, 4588), (37, 4600), (50, 4678), (56, 4744), (62, 4774), (68, 4816), (70, 4825), (79, 4918), (88, 5053), (91, 5077), (97,

5137), (101, 5167), (103, 5182), (106, 5242),

Gene: TriFive_7 Start: 4416, Stop: 5486, Start Num: 2

Candidate Starts for TriFive_7:

(Start: 2 @4416 has 77 MA's), (8, 4464), (10, 4473), (13, 4500), (21, 4551), (29, 4629), (34, 4668), (37, 4680), (50, 4758), (52, 4782), (56, 4824), (62, 4854), (79, 5022), (80, 5040), (88, 5157), (91, 5181), (100, 5268), (106, 5349),

Gene: Tweety19_5 Start: 4503, Stop: 5270, Start Num: 9

Candidate Starts for Tweety19_5:

(Start: 9 @4503 has 10 MA's), (14, 4548), (27, 4659), (32, 4689), (35, 4710), (48, 4770), (51, 4803), (53, 4821), (56, 4845), (61, 4869), (72, 4929), (75, 4962), (78, 5013), (79, 5016), (96, 5175),

Gene: Tyson_6 Start: 4320, Stop: 5375, Start Num: 2

Candidate Starts for Tyson_6:

(Start: 2 @4320 has 77 MA's), (21, 4458), (22, 4470), (34, 4575), (37, 4587), (42, 4626), (43, 4629), (50, 4665), (56, 4731), (59, 4746), (62, 4761), (68, 4803), (79, 4905), (88, 5040), (91, 5064), (105, 5205), (106, 5232), (107, 5241),

Gene: UPIE_6 Start: 4318, Stop: 5373, Start Num: 2

Candidate Starts for UPIE_6:

(Start: 2 @4318 has 77 MA's), (21, 4456), (22, 4468), (34, 4573), (37, 4585), (42, 4624), (43, 4627), (50, 4663), (56, 4729), (59, 4744), (62, 4759), (68, 4801), (79, 4903), (88, 5038), (91, 5062), (105, 5203), (106, 5230), (107, 5239),

Gene: Underpass_6 Start: 4311, Stop: 5369, Start Num: 2

Candidate Starts for Underpass_6:

(Start: 2 @4311 has 77 MA's), (Start: 5 @4359 has 1 MA's), (34, 4572), (37, 4584), (44, 4629), (50, 4662), (56, 4728), (62, 4758), (68, 4800), (70, 4809), (79, 4902), (80, 4920), (88, 5037), (91, 5061), (92, 5070), (105, 5202), (106, 5229),

Gene: Vetrix_6 Start: 4311, Stop: 5369, Start Num: 2

Candidate Starts for Vetrix_6:

(Start: 2 @4311 has 77 MA's), (Start: 5 @4359 has 1 MA's), (34, 4572), (37, 4584), (44, 4629), (50, 4662), (56, 4728), (62, 4758), (68, 4800), (70, 4809), (79, 4902), (80, 4920), (88, 5037), (91, 5061), (92, 5070), (105, 5202), (106, 5229),

Gene: VroomVroom_4 Start: 3676, Stop: 4473, Start Num: 9

Candidate Starts for VroomVroom_4:

(Start: 9 @3676 has 10 MA's), (27, 3832), (30, 3850), (35, 3883), (60, 4036), (72, 4102), (78, 4186), (88, 4318),

Gene: Wamburgexpress_6 Start: 4320, Stop: 5375, Start Num: 2

Candidate Starts for Wamburgexpress_6:

(Start: 2 @4320 has 77 MA's), (21, 4458), (22, 4470), (34, 4575), (37, 4587), (42, 4626), (43, 4629), (50, 4665), (56, 4731), (59, 4746), (62, 4761), (68, 4803), (79, 4905), (88, 5040), (91, 5064), (105, 5205), (106, 5232), (107, 5241),

Gene: Whirlwind_8 Start: 4408, Stop: 5478, Start Num: 2

Candidate Starts for Whirlwind_8:

(Start: 2 @4408 has 77 MA's), (8, 4456), (10, 4465), (13, 4492), (21, 4543), (24, 4594), (29, 4621), (34, 4660), (37, 4672), (50, 4750), (52, 4774), (56, 4816), (62, 4846), (80, 5032), (88, 5149), (91, 5173), (105, 5314), (106, 5341),

Gene: Wigglewigggle_6 Start: 4350, Stop: 5402, Start Num: 2

Candidate Starts for Wigglewigggle_6:

(Start: 2 @4350 has 77 MA's), (Start: 5 @4392 has 1 MA's), (34, 4605), (37, 4617), (44, 4662), (50, 4695), (56, 4761), (62, 4791), (68, 4833), (70, 4842), (79, 4935), (80, 4953), (88, 5070), (91, 5094), (92, 5103), (105, 5235), (106, 5262),

Gene: Wilder_6 Start: 4311, Stop: 5369, Start Num: 2

Candidate Starts for Wilder_6:

(Start: 2 @4311 has 77 MA's), (Start: 5 @4359 has 1 MA's), (34, 4572), (37, 4584), (44, 4629), (50, 4662), (56, 4728), (62, 4758), (68, 4800), (70, 4809), (79, 4902), (80, 4920), (88, 5037), (91, 5061), (92, 5070), (105, 5202), (106, 5229),

Gene: Winky_6 Start: 4311, Stop: 5369, Start Num: 2

Candidate Starts for Winky_6:

(Start: 2 @4311 has 77 MA's), (Start: 5 @4359 has 1 MA's), (34, 4572), (37, 4584), (44, 4629), (50, 4662), (56, 4728), (62, 4758), (68, 4800), (70, 4809), (79, 4902), (80, 4920), (88, 5037), (91, 5061), (92, 5070), (105, 5202), (106, 5229),

Gene: Wyatt2_6 Start: 4320, Stop: 5375, Start Num: 2

Candidate Starts for Wyatt2_6:

(Start: 2 @4320 has 77 MA's), (21, 4458), (22, 4470), (34, 4575), (37, 4587), (42, 4626), (43, 4629), (50, 4665), (56, 4731), (59, 4746), (62, 4761), (68, 4803), (79, 4905), (88, 5040), (91, 5064), (105, 5205), (106, 5232), (107, 5241),

Gene: Zakai_6 Start: 4299, Stop: 5357, Start Num: 2

Candidate Starts for Zakai_6:

(Start: 2 @4299 has 77 MA's), (Start: 5 @4347 has 1 MA's), (34, 4560), (37, 4572), (44, 4617), (50, 4650), (56, 4716), (62, 4746), (68, 4788), (70, 4797), (79, 4890), (80, 4908), (88, 5025), (91, 5049), (92, 5058), (105, 5190), (106, 5217),

Gene: Zaria_6 Start: 4321, Stop: 5376, Start Num: 2

Candidate Starts for Zaria_6:

(Start: 2 @4321 has 77 MA's), (21, 4459), (22, 4471), (34, 4576), (37, 4588), (42, 4627), (43, 4630), (50, 4666), (56, 4732), (59, 4747), (62, 4762), (68, 4804), (79, 4906), (88, 5041), (91, 5065), (105, 5206), (106, 5233), (107, 5242),

Gene: Zeta1847_4 Start: 3665, Stop: 4408, Start Num: 7

Candidate Starts for Zeta1847_4:

(Start: 7 @3665 has 2 MA's), (13, 3704), (28, 3833), (36, 3884), (64, 4061), (67, 4085), (78, 4187), (82, 4226),

Gene: ZhongYanYuan_5 Start: 4143, Stop: 5198, Start Num: 2

Candidate Starts for ZhongYanYuan_5:

(Start: 2 @4143 has 77 MA's), (Start: 5 @4191 has 1 MA's), (18, 4278), (34, 4404), (37, 4416), (44, 4461), (50, 4494), (56, 4560), (62, 4590), (68, 4632), (70, 4641), (79, 4734), (80, 4752), (88, 4869), (91, 4893), (92, 4902), (100, 4980), (105, 5031), (106, 5058), (107, 5067),