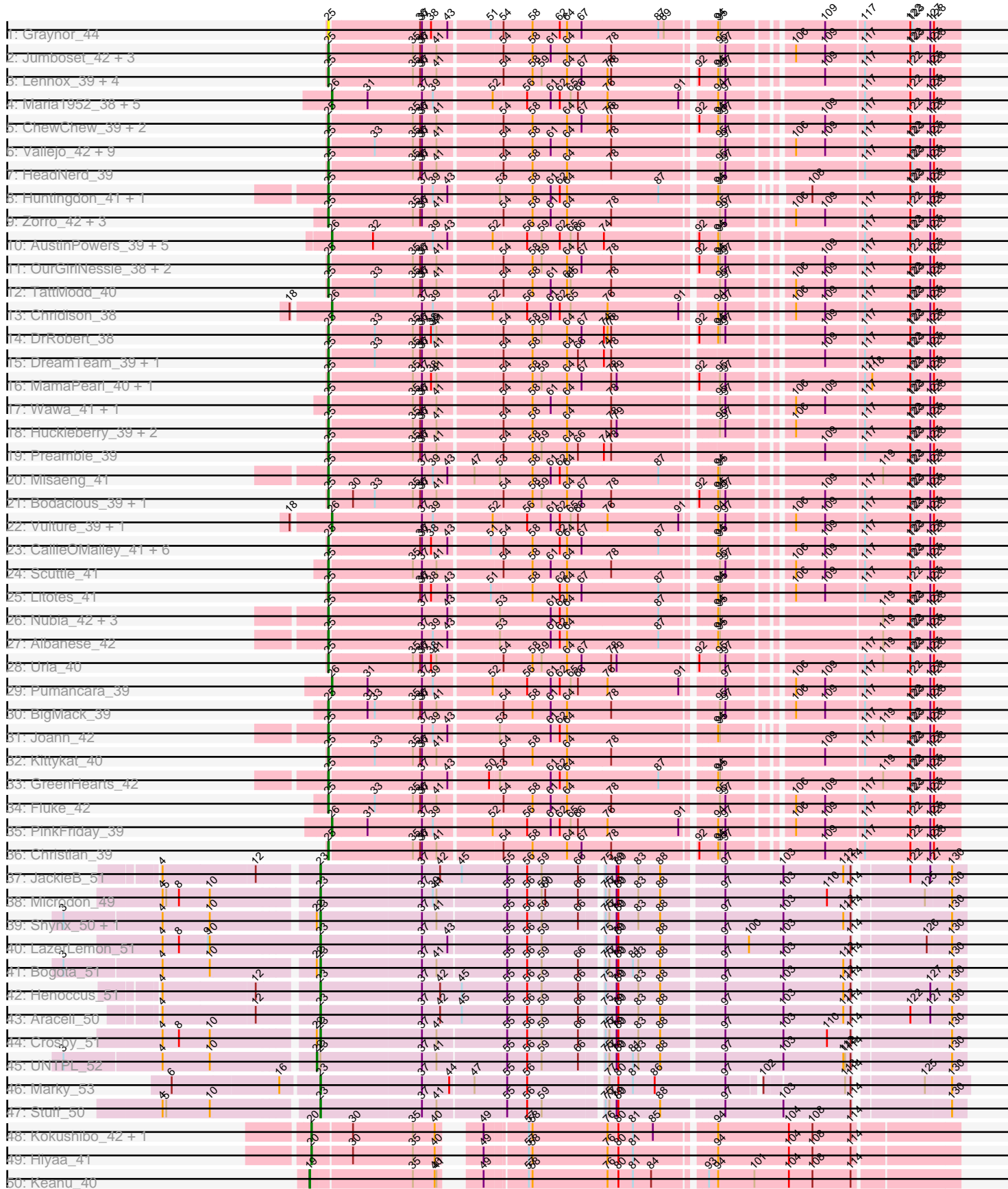
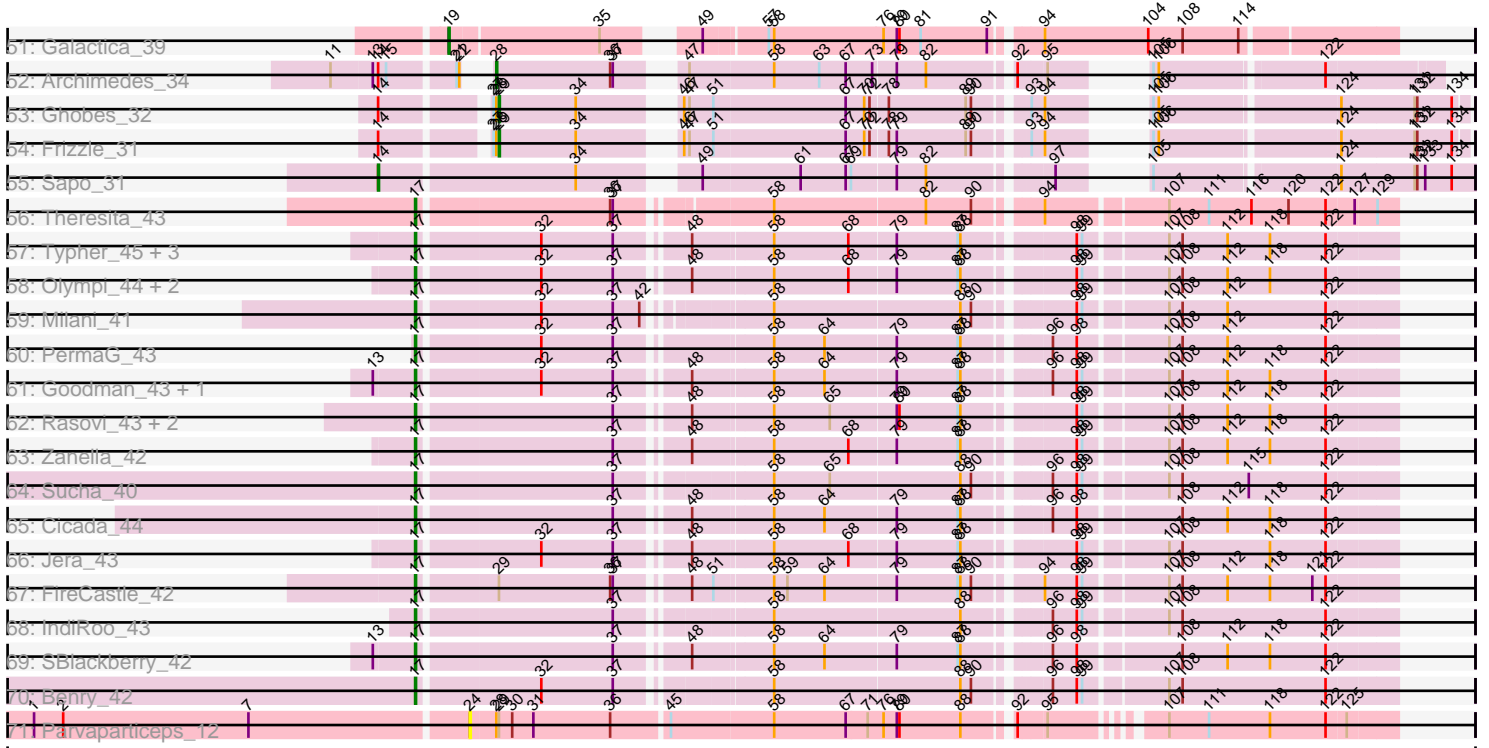


Pham 304803



Pham 304803



Note: Tracks are now grouped by subcluster and scaled. Switching in subcluster is indicated by changes in track color. Track scale is now set by default to display the region 30 bp upstream of start 1 to 30 bp downstream of the last possible start. If this default region is judged to be packed too tightly with annotated starts, the track will be further scaled to only show that region of the ORF with annotated starts. This action will be indicated by adding "Zoomed" to the title. For starts, yellow indicates the location of called starts comprised solely of Glimmer/GeneMark auto-annotations, green indicates the location of called starts with at least 1 manual gene annotation.

Pham 304803 Report

This analysis was run 06/08/26 on database version 649.

Pham number 304803 has 131 members, 7 are drafts.

Phages represented in each track:

- Track 1 : Graynor_44
- Track 2 : Jumboset_42, MrGloopy_42, Glenn_42, Savage2526_42
- Track 3 : Lennox_39, WonderBoy_38, PitaDog_39, Makoto_39, Lucy_39
- Track 4 : Maria1952_38, Daiboju_39, Temper16_39, Herb_39, Sergei_39, KingBob_39
- Track 5 : ChewChew_39, CristinaYang_39, LilStuart_39
- Track 6 : Vallejo_42, Riverdale_42, Beethoven_41, Immaculata_41, BrotherBLo_41, Kalizoi_41, Carpal_41, Cholula_41, Rozby_41, Potatoes_41
- Track 7 : HeadNerd_39
- Track 8 : Huntingdon_41, RcigaStruga_41
- Track 9 : Zorro_42, MeganNoll_41, Dino_42, RAP15_42
- Track 10 : AustinPowers_39, Supakev_39, Eunoia_39, Riovina_39, OMalley_39, Aledel_39
- Track 11 : OurGirlNessie_38, Pterodactyl_39, Lasagna_38
- Track 12 : TattModd_40
- Track 13 : Chridison_38
- Track 14 : DrRobert_38
- Track 15 : DreamTeam_39, Gisselle_39
- Track 16 : MamaPearl_40, EstebanJulior_40
- Track 17 : Wawa_41, Korra_41
- Track 18 : Huckleberry_39, Moki_39, Bennie_39
- Track 19 : Preamble_39
- Track 20 : Misaeng_41
- Track 21 : Bodacious_39, Nancia_39
- Track 22 : Vulture_39, HunterDalle_39
- Track 23 : CallieOMalley_41, AppleCider_41, Suppi_41, Wayne_41, Canowicakte_41, MrBoss_43, PartyCup_42
- Track 24 : Scuttle_41
- Track 25 : Litotes_41
- Track 26 : Nubia_42, Oxynfrius_42, Greenhouse_43, Lakshmi_42
- Track 27 : Albanese_42
- Track 28 : Urla_40
- Track 29 : Pumancara_39
- Track 30 : BigMack_39
- Track 31 : Joann_42
- Track 32 : Kittykat_40
- Track 33 : GreenHearts_42

- Track 34 : Fluke_42
- Track 35 : PinkFriday_39
- Track 36 : Christian_39
- Track 37 : JackieB_51
- Track 38 : Microdon_49
- Track 39 : Shynx_50, Intolerant_48
- Track 40 : LazerLemon_51
- Track 41 : Bogota_51
- Track 42 : Henoccus_51
- Track 43 : Araceli_50
- Track 44 : Crosby_51
- Track 45 : UNTPL_52
- Track 46 : Marky_53
- Track 47 : Stuff_50
- Track 48 : Kokushibo_42, Spocter_40
- Track 49 : Hiyaa_41
- Track 50 : Keanu_40
- Track 51 : Galactica_39
- Track 52 : Archimedes_34
- Track 53 : Ghobes_32
- Track 54 : Frizzle_31
- Track 55 : Sapo_31
- Track 56 : Theresita_43
- Track 57 : Typher_45, AyoTeo_44, Labella_45, TurboVicky_43
- Track 58 : Olympi_44, Rootkit7_42, Alove_42
- Track 59 : Milani_41
- Track 60 : PermaG_43
- Track 61 : Goodman_43, Johann_43
- Track 62 : Rasovi_43, Linayshia_43, Htur_43
- Track 63 : Zanella_42
- Track 64 : Sucha_40
- Track 65 : Cicada_44
- Track 66 : Jera_43
- Track 67 : FireCastle_42
- Track 68 : IndiRoo_43
- Track 69 : SBlackberry_42
- Track 70 : Benry_42
- Track 71 : Parvarticeps_12

Summary of Final Annotations (See graph section above for start numbers):

The start number called the most often in the published annotations is 25, it was called in 67 of the 124 non-draft genes in the pham.

Genes that call this "Most Annotated" start:

• Albanese_42, AppleCider_41, Beethoven_41, Bennie_39, BigMack_39, Bodacious_39, BrotherBLo_41, CallieOMalley_41, Canowicakte_41, Carpal_41, ChewChew_39, Cholula_41, Christian_39, CristinaYang_39, Dino_42, DrRobert_38, DreamTeam_39, EstebanJulior_40, Fluke_42, Gisselle_39, Glenn_42, Graynor_44, GreenHearts_42, Greenhouse_43, HeadNerd_39, Huckleberry_39, Huntingdon_41,

Immaculata_41, Joann_42, Jumboset_42, Kalizoi_41, Kittykat_40, Korra_41, Lakshmi_42, Lasagna_38, Lennox_39, LilStuart_39, Litotes_41, Lucy_39, Makoto_39, MamaPearl_40, MeganNoll_41, Misaeng_41, Moki_39, MrBoss_43, MrGloopy_42, Nancia_39, Nubia_42, OurGirlNessie_38, Oxynfrius_42, PartyCup_42, PitaDog_39, Potatoes_41, Preamble_39, Pterodactyl_39, RAP15_42, RcigaStruga_41, Riverdale_42, Rozby_41, Savage2526_42, Scuttle_41, Suppi_41, TattModd_40, Urla_40, Vallejo_42, Wawa_41, Wayne_41, WonderBoy_38, Zorro_42,

Genes that have the "Most Annotated" start but do not call it:

-

Genes that do not have the "Most Annotated" start:

- Aledel_39, Alove_42, Araceli_50, Archimedes_34, AustinPowers_39, AyoTeo_44, Benry_42, Bogota_51, Chridison_38, Cicada_44, Crosby_51, Daiboju_39, Eunoia_39, FireCastle_42, Frizzle_31, Galactica_39, Ghobes_32, Goodman_43, Henoccus_51, Herb_39, Hiyaa_41, Htur_43, HunterDalle_39, IndiRoo_43, Intolerant_48, JackieB_51, Jera_43, Johann_43, Keanu_40, KingBob_39, Kokushibo_42, Labella_45, LazerLemon_51, Linayshia_43, Maria1952_38, Marky_53, Microdon_49, Milani_41, OMalley_39, Olympi_44, Parvaparticeps_12, PermaG_43, PinkFriday_39, Pumancara_39, Rasovi_43, Riovina_39, Rootkit7_42, SBlackberry_42, Sapo_31, Sergei_39, Shynx_50, Spocster_40, Stuff_50, Sucha_40, Supakev_39, Temper16_39, Theresita_43, TurboVicky_43, Typher_45, UNTPL_52, Vulture_39, Zanella_42,

Summary by start number:

Start 14:

- Found in 4 of 131 (3.1%) of genes in pham
- Manual Annotations of this start: 1 of 124
- Called 25.0% of time when present
- Phage (with cluster) where this start called: Sapo_31 (DA),

Start 17:

- Found in 23 of 131 (17.6%) of genes in pham
- Manual Annotations of this start: 20 of 124
- Called 100.0% of time when present
- Phage (with cluster) where this start called: Alove_42 (EJ), AyoTeo_44 (EJ), Benry_42 (EJ), Cicada_44 (EJ), FireCastle_42 (EJ), Goodman_43 (EJ), Htur_43 (EJ), IndiRoo_43 (EJ), Jera_43 (EJ), Johann_43 (EJ), Labella_45 (EJ), Linayshia_43 (EJ), Milani_41 (EJ), Olympi_44 (EJ), PermaG_43 (EJ), Rasovi_43 (EJ), Rootkit7_42 (EJ), SBlackberry_42 (EJ), Sucha_40 (EJ), Theresita_43 (EA7), TurboVicky_43 (EJ), Typher_45 (EJ), Zanella_42 (EJ),

Start 19:

- Found in 2 of 131 (1.5%) of genes in pham
- Manual Annotations of this start: 2 of 124
- Called 100.0% of time when present
- Phage (with cluster) where this start called: Galactica_39 (BQ), Keanu_40 (BQ),

Start 20:

- Found in 3 of 131 (2.3%) of genes in pham
- Manual Annotations of this start: 2 of 124
- Called 100.0% of time when present

- Phage (with cluster) where this start called: Hiyaa_41 (BQ), Kokushibo_42 (BQ), Spocter_40 (BQ),

Start 22:

- Found in 6 of 131 (4.6%) of genes in pham
- Manual Annotations of this start: 1 of 124
- Called 16.7% of time when present
- Phage (with cluster) where this start called: UNTPL_52 (BH),

Start 23:

- Found in 12 of 131 (9.2%) of genes in pham
- Manual Annotations of this start: 11 of 124
- Called 91.7% of time when present
- Phage (with cluster) where this start called: Araceli_50 (BH), Bogota_51 (BH), Crosby_51 (BH), Henoccus_51 (BH), Intolerant_48 (BH), JackieB_51 (BH), LazerLemon_51 (BH), Marky_53 (BH), Microdon_49 (BH), Shynx_50 (BH), Stuff_50 (BH),

Start 24:

- Found in 1 of 131 (0.8%) of genes in pham
- No Manual Annotations of this start.
- Called 100.0% of time when present
- Phage (with cluster) where this start called: Parvaparticeps_12 (UNK),

Start 25:

- Found in 69 of 131 (52.7%) of genes in pham
- Manual Annotations of this start: 67 of 124
- Called 100.0% of time when present
- Phage (with cluster) where this start called: Albanese_42 (AK), AppleCider_41 (AK), Beethoven_41 (AK), Bennie_39 (AK), BigMack_39 (AK), Bodacious_39 (AK), BrotherBLo_41 (AK), CallieOMalley_41 (AK), Canowicakte_41 (AK), Carpal_41 (AK), ChewChew_39 (AK), Cholula_41 (AK), Christian_39 (AK), CristinaYang_39 (AK), Dino_42 (AK), DrRobert_38 (AK), DreamTeam_39 (AK), EstebanJulior_40 (AK), Fluke_42 (AK), Gisselle_39 (AK), Glenn_42 (AK), Graynor_44 (AK), GreenHearts_42 (AK), Greenhouse_43 (AK), HeadNerd_39 (AK), Huckleberry_39 (AK), Huntingdon_41 (AK), Immaculata_41 (AK), Joann_42 (AK), Jumboset_42 (AK), Kalizoi_41 (AK), Kittykat_40 (AK), Korra_41 (AK), Lakshmi_42 (AK), Lasagna_38 (AK), Lennox_39 (AK), LilStuart_39 (AK), Litotes_41 (AK), Lucy_39 (AK), Makoto_39 (AK), MamaPearl_40 (AK), MeganNoll_41 (AK), Misaeng_41 (AK), Moki_39 (AK), MrBoss_43 (AK), MrGloopy_42 (AK), Nancia_39 (AK), Nubia_42 (AK), OurGirlNessie_38 (AK), Oxynfrius_42 (AK), PartyCup_42 (AK), PitaDog_39 (AK), Potatoes_41 (AK), Preamble_39 (AK), Pterodactyl_39 (AK), RAP15_42 (AK), RcigaStruga_41 (AK), Riverdale_42 (AK), Rozby_41 (AK), Savage2526_42 (AK), Scuttle_41 (AK), Suppi_41 (AK), TattModd_40 (AK), Urla_40 (AK), Vallejo_42 (AK), Wawa_41 (AK), Wayne_41 (AK), WonderBoy_38 (AK), Zorro_42 (AK),

Start 26:

- Found in 17 of 131 (13.0%) of genes in pham
- Manual Annotations of this start: 17 of 124
- Called 100.0% of time when present
- Phage (with cluster) where this start called: Aledel_39 (AK), AustinPowers_39 (AK), Chridison_38 (AK), Daiboju_39 (AK), Eunoia_39 (AK), Herb_39 (AK), HunterDalle_39 (AK), KingBob_39 (AK), Maria1952_38 (AK), OMalley_39 (AK), PinkFriday_39 (AK),

Pumancara_39 (AK), Riovina_39 (AK), Sergei_39 (AK), Supakev_39 (AK),
Temper16_39 (AK), Vulture_39 (AK),

Start 28:

- Found in 4 of 131 (3.1%) of genes in pham
- Manual Annotations of this start: 1 of 124
- Called 25.0% of time when present
- Phage (with cluster) where this start called: Archimedes_34 (DA),

Start 29:

- Found in 4 of 131 (3.1%) of genes in pham
- Manual Annotations of this start: 2 of 124
- Called 50.0% of time when present
- Phage (with cluster) where this start called: Frizzle_31 (DA), Ghobes_32 (DA),

Summary by clusters:

There are 7 clusters represented in this pham: EJ, AK, BH, DA, BQ, UNK, EA7,

Info for manual annotations of cluster AK:

- Start number 25 was manually annotated 67 times for cluster AK.
- Start number 26 was manually annotated 17 times for cluster AK.

Info for manual annotations of cluster BH:

- Start number 22 was manually annotated 1 time for cluster BH.
- Start number 23 was manually annotated 11 times for cluster BH.

Info for manual annotations of cluster BQ:

- Start number 19 was manually annotated 2 times for cluster BQ.
- Start number 20 was manually annotated 2 times for cluster BQ.

Info for manual annotations of cluster DA:

- Start number 14 was manually annotated 1 time for cluster DA.
- Start number 28 was manually annotated 1 time for cluster DA.
- Start number 29 was manually annotated 2 times for cluster DA.

Info for manual annotations of cluster EA7:

- Start number 17 was manually annotated 1 time for cluster EA7.

Info for manual annotations of cluster EJ:

- Start number 17 was manually annotated 19 times for cluster EJ.

Gene Information:

Gene: Albanese_42 Start: 28164, Stop: 29111, Start Num: 25

Candidate Starts for Albanese_42:

(Start: 25 @28164 has 67 MA's), (37, 28311), (39, 28329), (43, 28353), (53, 28428), (61, 28509), (62, 28524), (64, 28536), (87, 28686), (94, 28755), (95, 28758), (119, 28992), (122, 29037), (123, 29040), (127, 29067), (128, 29070),

Gene: Aledel_39 Start: 27504, Stop: 28451, Start Num: 26

Candidate Starts for Aledel_39:

(Start: 26 @27504 has 17 MA's), (32, 27570), (39, 27669), (43, 27693), (52, 27759), (56, 27807), (59, 27831), (62, 27861), (65, 27879), (66, 27891), (74, 27933), (92, 28071), (94, 28092), (95, 28095), (117, 28302), (122, 28377), (123, 28380), (127, 28407), (128, 28410),

Gene: Alove_42 Start: 27509, Stop: 28522, Start Num: 17

Candidate Starts for Alove_42:

(Start: 17 @27509 has 20 MA's), (32, 27638), (37, 27719), (48, 27788), (58, 27872), (68, 27956), (79, 28007), (87, 28076), (88, 28079), (98, 28181), (99, 28187), (107, 28271), (108, 28286), (112, 28337), (118, 28385), (122, 28448),

Gene: AppleCider_41 Start: 27545, Stop: 28492, Start Num: 25

Candidate Starts for AppleCider_41:

(Start: 25 @27545 has 67 MA's), (36, 27689), (37, 27692), (38, 27707), (43, 27734), (51, 27797), (54, 27812), (58, 27860), (62, 27905), (64, 27917), (67, 27941), (87, 28067), (94, 28136), (95, 28139), (109, 28283), (117, 28343), (122, 28418), (123, 28421), (127, 28448), (128, 28451),

Gene: Araceli_50 Start: 35827, Stop: 36834, Start Num: 23

Candidate Starts for Araceli_50:

(4, 35590), (12, 35740), (Start: 23 @35827 has 11 MA's), (37, 35992), (42, 36022), (45, 36058), (55, 36133), (56, 36166), (59, 36190), (66, 36250), (75, 36280), (79, 36298), (80, 36301), (83, 36334), (88, 36370), (97, 36460), (103, 36556), (112, 36655), (114, 36667), (122, 36745), (127, 36778), (130, 36811),

Gene: Archimedes_34 Start: 31001, Stop: 30105, Start Num: 28

Candidate Starts for Archimedes_34:

(11, 31136), (13, 31091), (Start: 14 @31085 has 1 MA's), (15, 31076), (21, 31007), (Start: 22 @31004 has 1 MA's), (Start: 28 @31001 has 1 MA's), (36, 30872), (37, 30869), (47, 30821), (58, 30728), (63, 30677), (67, 30647), (73, 30617), (79, 30593), (82, 30560), (92, 30476), (95, 30452), (105, 30404), (106, 30398), (122, 30227),

Gene: AustinPowers_39 Start: 27502, Stop: 28449, Start Num: 26

Candidate Starts for AustinPowers_39:

(Start: 26 @27502 has 17 MA's), (32, 27568), (39, 27667), (43, 27691), (52, 27757), (56, 27805), (59, 27829), (62, 27859), (65, 27877), (66, 27889), (74, 27931), (92, 28069), (94, 28090), (95, 28093), (117, 28300), (122, 28375), (123, 28378), (127, 28405), (128, 28408),

Gene: AyoTeo_44 Start: 27806, Stop: 28819, Start Num: 17

Candidate Starts for AyoTeo_44:

(Start: 17 @27806 has 20 MA's), (32, 27935), (37, 28016), (48, 28085), (58, 28169), (68, 28253), (79, 28304), (87, 28373), (88, 28376), (98, 28478), (99, 28484), (107, 28568), (108, 28583), (112, 28634), (118, 28682), (122, 28745),

Gene: Beethoven_41 Start: 27476, Stop: 28423, Start Num: 25

Candidate Starts for Beethoven_41:

(Start: 25 @27476 has 67 MA's), (33, 27545), (35, 27608), (36, 27620), (37, 27623), (41, 27647), (54, 27743), (58, 27791), (61, 27821), (64, 27848), (78, 27920), (95, 28070), (97, 28079), (106, 28166), (109, 28214), (117, 28274), (122, 28349), (123, 28352), (127, 28379), (128, 28382),

Gene: Bennie_39 Start: 26287, Stop: 27234, Start Num: 25

Candidate Starts for Bennie_39:

(Start: 25 @26287 has 67 MA's), (35, 26419), (36, 26431), (37, 26434), (41, 26458), (54, 26554), (58, 26602), (64, 26659), (78, 26731), (79, 26740), (95, 26881), (97, 26890), (106, 26977), (117, 27085), (122, 27160), (123, 27163), (127, 27190), (128, 27193),

Gene: Benry_42 Start: 26004, Stop: 27011, Start Num: 17

Candidate Starts for Benry_42:

(Start: 17 @26004 has 20 MA's), (32, 26133), (37, 26214), (58, 26361), (88, 26568), (90, 26580), (96, 26643), (98, 26670), (99, 26676), (107, 26760), (108, 26775), (122, 26937),

Gene: BigMack_39 Start: 26387, Stop: 27334, Start Num: 25

Candidate Starts for BigMack_39:

(Start: 25 @26387 has 67 MA's), (31, 26444), (33, 26456), (35, 26519), (36, 26531), (37, 26534), (41, 26558), (54, 26654), (58, 26702), (61, 26732), (64, 26759), (78, 26831), (95, 26981), (97, 26990), (106, 27077), (109, 27125), (117, 27185), (122, 27260), (123, 27263), (127, 27290), (128, 27293),

Gene: Bodacious_39 Start: 26343, Stop: 27293, Start Num: 25

Candidate Starts for Bodacious_39:

(Start: 25 @26343 has 67 MA's), (30, 26376), (33, 26412), (35, 26475), (36, 26487), (37, 26490), (41, 26514), (54, 26610), (58, 26658), (59, 26673), (64, 26715), (67, 26739), (78, 26787), (92, 26913), (94, 26937), (95, 26940), (97, 26949), (109, 27084), (117, 27144), (122, 27219), (123, 27222), (127, 27249), (128, 27252),

Gene: Bogota_51 Start: 36181, Stop: 37179, Start Num: 23

Candidate Starts for Bogota_51:

(3, 35788), (4, 35944), (10, 36022), (Start: 22 @36175 has 1 MA's), (Start: 23 @36181 has 11 MA's), (37, 36346), (41, 36370), (55, 36478), (56, 36511), (59, 36535), (66, 36595), (75, 36625), (77, 36631), (79, 36643), (80, 36646), (81, 36670), (83, 36679), (88, 36715), (97, 36805), (103, 36901), (112, 37000), (114, 37012), (130, 37156),

Gene: BrotherBLo_41 Start: 27508, Stop: 28455, Start Num: 25

Candidate Starts for BrotherBLo_41:

(Start: 25 @27508 has 67 MA's), (33, 27577), (35, 27640), (36, 27652), (37, 27655), (41, 27679), (54, 27775), (58, 27823), (61, 27853), (64, 27880), (78, 27952), (95, 28102), (97, 28111), (106, 28198), (109, 28246), (117, 28306), (122, 28381), (123, 28384), (127, 28411), (128, 28414),

Gene: CallieOMalley_41 Start: 27545, Stop: 28492, Start Num: 25

Candidate Starts for CallieOMalley_41:

(Start: 25 @27545 has 67 MA's), (36, 27689), (37, 27692), (38, 27707), (43, 27734), (51, 27797), (54, 27812), (58, 27860), (62, 27905), (64, 27917), (67, 27941), (87, 28067), (94, 28136), (95, 28139), (109, 28283), (117, 28343), (122, 28418), (123, 28421), (127, 28448), (128, 28451),

Gene: Canowicakte_41 Start: 27580, Stop: 28527, Start Num: 25

Candidate Starts for Canowicakte_41:

(Start: 25 @27580 has 67 MA's), (36, 27724), (37, 27727), (38, 27742), (43, 27769), (51, 27832), (54, 27847), (58, 27895), (62, 27940), (64, 27952), (67, 27976), (87, 28102), (94, 28171), (95, 28174), (109, 28318), (117, 28378), (122, 28453), (123, 28456), (127, 28483), (128, 28486),

Gene: Carpal_41 Start: 27488, Stop: 28435, Start Num: 25

Candidate Starts for Carpal_41:

(Start: 25 @27488 has 67 MA's), (33, 27557), (35, 27620), (36, 27632), (37, 27635), (41, 27659), (54, 27755), (58, 27803), (61, 27833), (64, 27860), (78, 27932), (95, 28082), (97, 28091), (106, 28178), (109, 28226), (117, 28286), (122, 28361), (123, 28364), (127, 28391), (128, 28394),

Gene: ChewChew_39 Start: 26335, Stop: 27285, Start Num: 25

Candidate Starts for ChewChew_39:

(Start: 25 @26335 has 67 MA's), (35, 26467), (36, 26479), (37, 26482), (41, 26506), (54, 26602), (58, 26650), (64, 26707), (67, 26731), (76, 26773), (78, 26779), (92, 26905), (94, 26929), (95, 26932), (97, 26941), (109, 27076), (117, 27136), (122, 27211), (127, 27241), (128, 27244),

Gene: Cholula_41 Start: 27534, Stop: 28481, Start Num: 25

Candidate Starts for Cholula_41:

(Start: 25 @27534 has 67 MA's), (33, 27603), (35, 27666), (36, 27678), (37, 27681), (41, 27705), (54, 27801), (58, 27849), (61, 27879), (64, 27906), (78, 27978), (95, 28128), (97, 28137), (106, 28224), (109, 28272), (117, 28332), (122, 28407), (123, 28410), (127, 28437), (128, 28440),

Gene: Chridison_38 Start: 27433, Stop: 28383, Start Num: 26

Candidate Starts for Chridison_38:

(18, 27379), (Start: 26 @27433 has 17 MA's), (37, 27580), (39, 27598), (52, 27688), (56, 27739), (61, 27778), (62, 27793), (65, 27811), (76, 27871), (91, 27988), (94, 28027), (97, 28039), (106, 28126), (109, 28174), (117, 28234), (122, 28309), (123, 28312), (127, 28339), (128, 28342),

Gene: Christian_39 Start: 26331, Stop: 27281, Start Num: 25

Candidate Starts for Christian_39:

(Start: 25 @26331 has 67 MA's), (35, 26463), (36, 26475), (37, 26478), (41, 26502), (54, 26598), (58, 26646), (64, 26703), (67, 26727), (78, 26775), (92, 26901), (94, 26925), (95, 26928), (97, 26937), (109, 27072), (117, 27132), (122, 27207), (127, 27237), (128, 27240),

Gene: Cicada_44 Start: 27802, Stop: 28815, Start Num: 17

Candidate Starts for Cicada_44:

(Start: 17 @27802 has 20 MA's), (37, 28012), (48, 28081), (58, 28165), (64, 28222), (79, 28300), (87, 28369), (88, 28372), (96, 28447), (98, 28474), (108, 28579), (112, 28630), (118, 28678), (122, 28741),

Gene: CristinaYang_39 Start: 26331, Stop: 27281, Start Num: 25

Candidate Starts for CristinaYang_39:

(Start: 25 @26331 has 67 MA's), (35, 26463), (36, 26475), (37, 26478), (41, 26502), (54, 26598), (58, 26646), (64, 26703), (67, 26727), (76, 26769), (78, 26775), (92, 26901), (94, 26925), (95, 26928), (97, 26937), (109, 27072), (117, 27132), (122, 27207), (127, 27237), (128, 27240),

Gene: Crosby_51 Start: 35943, Stop: 36941, Start Num: 23

Candidate Starts for Crosby_51:

(4, 35706), (8, 35733), (10, 35784), (Start: 22 @35937 has 1 MA's), (Start: 23 @35943 has 11 MA's), (37, 36108), (41, 36132), (55, 36240), (56, 36273), (59, 36297), (66, 36357), (75, 36387), (77, 36393), (79, 36405), (80, 36408), (83, 36441), (88, 36477), (97, 36567), (103, 36663), (110, 36735), (114, 36774), (130, 36918),

Gene: Daiboju_39 Start: 27511, Stop: 28464, Start Num: 26

Candidate Starts for Daiboju_39:

(Start: 26 @27511 has 17 MA's), (31, 27568), (37, 27658), (39, 27676), (52, 27766), (56, 27817), (61, 27856), (62, 27871), (65, 27889), (66, 27901), (76, 27949), (91, 28066), (94, 28105), (97, 28117), (117, 28315), (122, 28390), (127, 28420), (128, 28423),

Gene: Dino_42 Start: 27635, Stop: 28582, Start Num: 25

Candidate Starts for Dino_42:

(Start: 25 @27635 has 67 MA's), (35, 27767), (36, 27779), (37, 27782), (41, 27806), (54, 27902), (58, 27950), (61, 27980), (64, 28007), (78, 28079), (95, 28229), (97, 28238), (106, 28325), (109, 28373), (117, 28433), (122, 28508), (127, 28538), (128, 28541),

Gene: DrRobert_38 Start: 26111, Stop: 27061, Start Num: 25

Candidate Starts for DrRobert_38:

(Start: 25 @26111 has 67 MA's), (33, 26180), (35, 26243), (36, 26255), (37, 26258), (38, 26273), (39, 26276), (41, 26282), (54, 26378), (58, 26426), (59, 26441), (64, 26483), (67, 26507), (74, 26543), (76, 26549), (78, 26555), (92, 26681), (94, 26705), (95, 26708), (97, 26717), (109, 26852), (117, 26912), (122, 26987), (123, 26990), (127, 27017), (128, 27020),

Gene: DreamTeam_39 Start: 26441, Stop: 27388, Start Num: 25

Candidate Starts for DreamTeam_39:

(Start: 25 @26441 has 67 MA's), (33, 26510), (35, 26573), (36, 26585), (37, 26588), (41, 26612), (54, 26708), (58, 26756), (64, 26813), (66, 26831), (74, 26873), (78, 26885), (109, 27179), (117, 27239), (122, 27314), (123, 27317), (127, 27344), (128, 27347),

Gene: EstebanJulior_40 Start: 27489, Stop: 28439, Start Num: 25

Candidate Starts for EstebanJulior_40:

(Start: 25 @27489 has 67 MA's), (35, 27621), (37, 27636), (38, 27651), (41, 27660), (54, 27756), (58, 27804), (59, 27819), (64, 27861), (67, 27885), (78, 27933), (79, 27942), (92, 28059), (95, 28086), (97, 28095), (117, 28290), (118, 28302), (122, 28365), (123, 28368), (127, 28395), (128, 28398),

Gene: Eunoia_39 Start: 27504, Stop: 28451, Start Num: 26

Candidate Starts for Eunoia_39:

(Start: 26 @27504 has 17 MA's), (32, 27570), (39, 27669), (43, 27693), (52, 27759), (56, 27807), (59, 27831), (62, 27861), (65, 27879), (66, 27891), (74, 27933), (92, 28071), (94, 28092), (95, 28095), (117, 28302), (122, 28377), (123, 28380), (127, 28407), (128, 28410),

Gene: FireCastle_42 Start: 27533, Stop: 28546, Start Num: 17

Candidate Starts for FireCastle_42:

(Start: 17 @27533 has 20 MA's), (Start: 29 @27614 has 2 MA's), (36, 27740), (37, 27743), (48, 27812), (51, 27836), (58, 27896), (59, 27911), (64, 27953), (79, 28031), (87, 28100), (88, 28103), (90, 28115), (94, 28169), (98, 28205), (99, 28211), (107, 28295), (108, 28310), (112, 28361), (118, 28409), (121, 28457), (122, 28472),

Gene: Fluke_42 Start: 27751, Stop: 28698, Start Num: 25

Candidate Starts for Fluke_42:

(Start: 25 @27751 has 67 MA's), (33, 27820), (35, 27883), (36, 27895), (37, 27898), (41, 27922), (54, 28018), (58, 28066), (61, 28096), (64, 28123), (78, 28195), (95, 28345), (97, 28354), (106, 28441), (109, 28489), (117, 28549), (122, 28624), (123, 28627), (127, 28654), (128, 28657),

Gene: Frizzle_31 Start: 30097, Stop: 29171, Start Num: 29

Candidate Starts for Frizzle_31:

(Start: 14 @30205 has 1 MA's), (27, 30103), (Start: 28 @30100 has 1 MA's), (Start: 29 @30097 has 2 MA's), (34, 30010), (46, 29926), (47, 29920), (51, 29893), (67, 29746), (70, 29725), (72, 29719), (78, 29701), (79, 29692), (89, 29614), (90, 29608), (93, 29566), (94, 29554), (105, 29503), (106, 29497), (124, 29308), (131, 29227), (132, 29224), (134, 29185),

Gene: Galactica_39 Start: 28326, Stop: 29291, Start Num: 19

Candidate Starts for Galactica_39:

(Start: 19 @28326 has 2 MA's), (35, 28488), (49, 28563), (57, 28626), (58, 28632), (76, 28755), (79, 28770), (80, 28773), (81, 28797), (91, 28872), (94, 28908), (104, 29025), (108, 29064), (114, 29127),

Gene: Ghobes_32 Start: 30098, Stop: 29172, Start Num: 29

Candidate Starts for Ghobes_32:

(Start: 14 @30206 has 1 MA's), (27, 30104), (Start: 28 @30101 has 1 MA's), (Start: 29 @30098 has 2 MA's), (34, 30011), (46, 29927), (47, 29921), (51, 29894), (67, 29747), (70, 29726), (72, 29720), (78, 29702), (89, 29615), (90, 29609), (93, 29567), (94, 29555), (105, 29504), (106, 29498), (124, 29309), (131, 29228), (132, 29225), (134, 29186),

Gene: Gisselle_39 Start: 26441, Stop: 27388, Start Num: 25

Candidate Starts for Gisselle_39:

(Start: 25 @26441 has 67 MA's), (33, 26510), (35, 26573), (36, 26585), (37, 26588), (41, 26612), (54, 26708), (58, 26756), (64, 26813), (66, 26831), (74, 26873), (78, 26885), (109, 27179), (117, 27239), (122, 27314), (123, 27317), (127, 27344), (128, 27347),

Gene: Glenn_42 Start: 27742, Stop: 28689, Start Num: 25

Candidate Starts for Glenn_42:

(Start: 25 @27742 has 67 MA's), (35, 27874), (36, 27886), (37, 27889), (41, 27913), (54, 28009), (58, 28057), (61, 28087), (64, 28114), (78, 28186), (95, 28336), (97, 28345), (106, 28432), (109, 28480), (117, 28540), (122, 28615), (123, 28618), (127, 28645), (128, 28648),

Gene: Goodman_43 Start: 27572, Stop: 28585, Start Num: 17

Candidate Starts for Goodman_43:

(13, 27527), (Start: 17 @27572 has 20 MA's), (32, 27701), (37, 27782), (48, 27851), (58, 27935), (64, 27992), (79, 28070), (87, 28139), (88, 28142), (96, 28217), (98, 28244), (99, 28250), (107, 28334), (108, 28349), (112, 28400), (118, 28448), (122, 28511),

Gene: Graynor_44 Start: 27566, Stop: 28513, Start Num: 25

Candidate Starts for Graynor_44:

(Start: 25 @27566 has 67 MA's), (36, 27710), (37, 27713), (38, 27728), (43, 27755), (51, 27818), (54, 27833), (58, 27881), (62, 27926), (64, 27938), (67, 27962), (87, 28088), (89, 28097), (94, 28157), (95, 28160), (109, 28304), (117, 28364), (122, 28439), (123, 28442), (127, 28469), (128, 28472),

Gene: GreenHearts_42 Start: 28250, Stop: 29197, Start Num: 25

Candidate Starts for GreenHearts_42:

(Start: 25 @28250 has 67 MA's), (37, 28397), (43, 28439), (50, 28499), (53, 28514), (61, 28595), (62, 28610), (64, 28622), (87, 28772), (94, 28841), (95, 28844), (119, 29078), (122, 29123), (123, 29126), (127, 29153), (128, 29156),

Gene: Greenhouse_43 Start: 28175, Stop: 29122, Start Num: 25

Candidate Starts for Greenhouse_43:

(Start: 25 @28175 has 67 MA's), (37, 28322), (43, 28364), (53, 28439), (61, 28520), (62, 28535), (64, 28547), (87, 28697), (94, 28766), (95, 28769), (119, 29003), (122, 29048), (123, 29051), (127, 29078), (128, 29081),

Gene: HeadNerd_39 Start: 26287, Stop: 27234, Start Num: 25

Candidate Starts for HeadNerd_39:

(Start: 25 @26287 has 67 MA's), (35, 26419), (36, 26431), (37, 26434), (41, 26458), (54, 26554), (58, 26602), (64, 26659), (78, 26731), (95, 26881), (97, 26890), (117, 27085), (122, 27160), (123, 27163), (127, 27190), (128, 27193),

Gene: Henoccus_51 Start: 35844, Stop: 36851, Start Num: 23

Candidate Starts for Henoccus_51:

(4, 35607), (12, 35757), (Start: 23 @35844 has 11 MA's), (37, 36009), (42, 36039), (45, 36075), (55, 36150), (56, 36183), (59, 36207), (66, 36267), (75, 36297), (79, 36315), (80, 36318), (83, 36351), (88, 36387), (97, 36477), (103, 36573), (112, 36672), (114, 36684), (127, 36795), (130, 36828),

Gene: Herb_39 Start: 27510, Stop: 28463, Start Num: 26

Candidate Starts for Herb_39:

(Start: 26 @27510 has 17 MA's), (31, 27567), (37, 27657), (39, 27675), (52, 27765), (56, 27816), (61, 27855), (62, 27870), (65, 27888), (66, 27900), (76, 27948), (91, 28065), (94, 28104), (97, 28116), (117, 28314), (122, 28389), (127, 28419), (128, 28422),

Gene: Hiyaa_41 Start: 29720, Stop: 30685, Start Num: 20

Candidate Starts for Hiyaa_41:

(Start: 20 @29720 has 2 MA's), (30, 29783), (35, 29882), (40, 29918), (49, 29957), (57, 30020), (58, 30026), (76, 30149), (80, 30167), (81, 30191), (94, 30302), (104, 30419), (108, 30458), (114, 30521),

Gene: Htur_43 Start: 27973, Stop: 28986, Start Num: 17

Candidate Starts for Htur_43:

(Start: 17 @27973 has 20 MA's), (37, 28183), (48, 28252), (58, 28336), (65, 28399), (79, 28471), (80, 28474), (87, 28540), (88, 28543), (98, 28645), (99, 28651), (107, 28735), (108, 28750), (112, 28801), (118, 28849), (122, 28912),

Gene: Huckleberry_39 Start: 26270, Stop: 27217, Start Num: 25

Candidate Starts for Huckleberry_39:

(Start: 25 @26270 has 67 MA's), (35, 26402), (36, 26414), (37, 26417), (41, 26441), (54, 26537), (58, 26585), (64, 26642), (78, 26714), (79, 26723), (95, 26864), (97, 26873), (106, 26960), (117, 27068), (122, 27143), (123, 27146), (127, 27173), (128, 27176),

Gene: HunterDalle_39 Start: 27432, Stop: 28382, Start Num: 26

Candidate Starts for HunterDalle_39:

(18, 27378), (Start: 26 @27432 has 17 MA's), (37, 27579), (39, 27597), (52, 27687), (56, 27738), (61, 27777), (62, 27792), (65, 27810), (66, 27822), (76, 27870), (91, 27987), (94, 28026), (97, 28038), (106, 28125), (109, 28173), (117, 28233), (122, 28308), (123, 28311), (127, 28338), (128, 28341),

Gene: Huntingdon_41 Start: 27893, Stop: 28828, Start Num: 25

Candidate Starts for Huntingdon_41:

(Start: 25 @27893 has 67 MA's), (37, 28040), (39, 28058), (43, 28082), (53, 28157), (58, 28208), (61, 28238), (62, 28253), (64, 28265), (87, 28415), (94, 28484), (95, 28487), (108, 28598), (122, 28754), (123, 28757), (127, 28784), (128, 28787),

Gene: Immaculata_41 Start: 27533, Stop: 28480, Start Num: 25

Candidate Starts for Immaculata_41:

(Start: 25 @27533 has 67 MA's), (33, 27602), (35, 27665), (36, 27677), (37, 27680), (41, 27704), (54, 27800), (58, 27848), (61, 27878), (64, 27905), (78, 27977), (95, 28127), (97, 28136), (106, 28223), (109, 28271), (117, 28331), (122, 28406), (123, 28409), (127, 28436), (128, 28439),

Gene: IndiRoo_43 Start: 26273, Stop: 27280, Start Num: 17

Candidate Starts for IndiRoo_43:

(Start: 17 @26273 has 20 MA's), (37, 26483), (58, 26630), (88, 26837), (96, 26912), (98, 26939), (99, 26945), (107, 27029), (108, 27044), (122, 27206),

Gene: Intolerant_48 Start: 35879, Stop: 36877, Start Num: 23

Candidate Starts for Intolerant_48:

(3, 35486), (4, 35642), (10, 35720), (Start: 22 @35873 has 1 MA's), (Start: 23 @35879 has 11 MA's), (37, 36044), (41, 36068), (55, 36176), (56, 36209), (59, 36233), (66, 36293), (75, 36323), (77, 36329), (79, 36341), (80, 36344), (83, 36377), (88, 36413), (97, 36503), (103, 36599), (112, 36698), (114, 36710), (130, 36854),

Gene: JackieB_51 Start: 35683, Stop: 36690, Start Num: 23

Candidate Starts for JackieB_51:

(4, 35446), (12, 35596), (Start: 23 @35683 has 11 MA's), (37, 35848), (42, 35878), (45, 35914), (55, 35989), (56, 36022), (59, 36046), (66, 36106), (75, 36136), (79, 36154), (80, 36157), (83, 36190), (88, 36226), (97, 36316), (103, 36412), (112, 36511), (114, 36523), (122, 36601), (127, 36634), (130, 36667),

Gene: Jera_43 Start: 26765, Stop: 27778, Start Num: 17

Candidate Starts for Jera_43:

(Start: 17 @26765 has 20 MA's), (32, 26894), (37, 26975), (48, 27044), (58, 27128), (68, 27212), (79, 27263), (87, 27332), (88, 27335), (98, 27437), (99, 27443), (107, 27527), (108, 27542), (118, 27641), (122, 27704),

Gene: Joann_42 Start: 28143, Stop: 29078, Start Num: 25

Candidate Starts for Joann_42:

(Start: 25 @28143 has 67 MA's), (37, 28290), (39, 28308), (43, 28332), (53, 28407), (61, 28488), (62, 28503), (64, 28515), (94, 28734), (95, 28737), (117, 28929), (119, 28959), (122, 29004), (123, 29007), (127, 29034), (128, 29037),

Gene: Johann_43 Start: 27572, Stop: 28585, Start Num: 17

Candidate Starts for Johann_43:

(13, 27527), (Start: 17 @27572 has 20 MA's), (32, 27701), (37, 27782), (48, 27851), (58, 27935), (64, 27992), (79, 28070), (87, 28139), (88, 28142), (96, 28217), (98, 28244), (99, 28250), (107, 28334), (108, 28349), (112, 28400), (118, 28448), (122, 28511),

Gene: Jumboset_42 Start: 27650, Stop: 28597, Start Num: 25

Candidate Starts for Jumboset_42:

(Start: 25 @27650 has 67 MA's), (35, 27782), (36, 27794), (37, 27797), (41, 27821), (54, 27917), (58, 27965), (61, 27995), (64, 28022), (78, 28094), (95, 28244), (97, 28253), (106, 28340), (109, 28388), (117, 28448), (122, 28523), (123, 28526), (127, 28553), (128, 28556),

Gene: Kalizoi_41 Start: 27475, Stop: 28422, Start Num: 25

Candidate Starts for Kalizoi_41:

(Start: 25 @27475 has 67 MA's), (33, 27544), (35, 27607), (36, 27619), (37, 27622), (41, 27646), (54, 27742), (58, 27790), (61, 27820), (64, 27847), (78, 27919), (95, 28069), (97, 28078), (106, 28165), (109, 28213), (117, 28273), (122, 28348), (123, 28351), (127, 28378), (128, 28381),

Gene: Keanu_40 Start: 29418, Stop: 30383, Start Num: 19

Candidate Starts for Keanu_40:

(Start: 19 @29418 has 2 MA's), (35, 29580), (40, 29616), (41, 29619), (49, 29655), (57, 29718), (58, 29724), (76, 29847), (80, 29865), (81, 29889), (84, 29919), (93, 29988), (94, 30000), (101, 30060), (104, 30117), (108, 30156), (114, 30219),

Gene: KingBob_39 Start: 27511, Stop: 28464, Start Num: 26

Candidate Starts for KingBob_39:

(Start: 26 @27511 has 17 MA's), (31, 27568), (37, 27658), (39, 27676), (52, 27766), (56, 27817), (61, 27856), (62, 27871), (65, 27889), (66, 27901), (76, 27949), (91, 28066), (94, 28105), (97, 28117), (117, 28315), (122, 28390), (127, 28420), (128, 28423),

Gene: Kittykat_40 Start: 26532, Stop: 27479, Start Num: 25

Candidate Starts for Kittykat_40:

(Start: 25 @26532 has 67 MA's), (33, 26601), (35, 26664), (36, 26676), (37, 26679), (41, 26703), (54, 26799), (58, 26847), (64, 26904), (78, 26976), (109, 27270), (117, 27330), (122, 27405), (123, 27408),

(127, 27435), (128, 27438),

Gene: Kokushibo_42 Start: 29670, Stop: 30635, Start Num: 20

Candidate Starts for Kokushibo_42:

(Start: 20 @29670 has 2 MA's), (30, 29733), (35, 29832), (40, 29868), (49, 29907), (57, 29970), (58, 29976), (76, 30099), (80, 30117), (81, 30141), (85, 30174), (94, 30252), (104, 30369), (108, 30408), (114, 30471),

Gene: Korra_41 Start: 27487, Stop: 28434, Start Num: 25

Candidate Starts for Korra_41:

(Start: 25 @27487 has 67 MA's), (35, 27619), (36, 27631), (37, 27634), (41, 27658), (54, 27754), (58, 27802), (61, 27832), (64, 27859), (78, 27931), (95, 28081), (97, 28090), (106, 28177), (109, 28225), (117, 28285), (122, 28360), (123, 28363), (127, 28390), (128, 28393),

Gene: Labella_45 Start: 27803, Stop: 28816, Start Num: 17

Candidate Starts for Labella_45:

(Start: 17 @27803 has 20 MA's), (32, 27932), (37, 28013), (48, 28082), (58, 28166), (68, 28250), (79, 28301), (87, 28370), (88, 28373), (98, 28475), (99, 28481), (107, 28565), (108, 28580), (112, 28631), (118, 28679), (122, 28742),

Gene: Lakshmi_42 Start: 28138, Stop: 29085, Start Num: 25

Candidate Starts for Lakshmi_42:

(Start: 25 @28138 has 67 MA's), (37, 28285), (43, 28327), (53, 28402), (61, 28483), (62, 28498), (64, 28510), (87, 28660), (94, 28729), (95, 28732), (119, 28966), (122, 29011), (123, 29014), (127, 29041), (128, 29044),

Gene: Lasagna_38 Start: 26108, Stop: 27058, Start Num: 25

Candidate Starts for Lasagna_38:

(Start: 25 @26108 has 67 MA's), (35, 26240), (36, 26252), (37, 26255), (41, 26279), (54, 26375), (58, 26423), (59, 26438), (64, 26480), (67, 26504), (78, 26552), (92, 26678), (94, 26702), (95, 26705), (97, 26714), (109, 26849), (117, 26909), (122, 26984), (127, 27014), (128, 27017),

Gene: LazerLemon_51 Start: 36312, Stop: 37310, Start Num: 23

Candidate Starts for LazerLemon_51:

(4, 36060), (8, 36087), (9, 36132), (10, 36135), (Start: 23 @36312 has 11 MA's), (37, 36477), (43, 36519), (55, 36609), (56, 36642), (59, 36666), (75, 36756), (79, 36774), (80, 36777), (88, 36846), (97, 36936), (100, 36975), (103, 37032), (114, 37143), (126, 37248), (130, 37287),

Gene: Lennox_39 Start: 26316, Stop: 27266, Start Num: 25

Candidate Starts for Lennox_39:

(Start: 25 @26316 has 67 MA's), (35, 26448), (36, 26460), (37, 26463), (41, 26487), (54, 26583), (58, 26631), (59, 26646), (64, 26688), (67, 26712), (76, 26754), (78, 26760), (92, 26886), (94, 26910), (95, 26913), (97, 26922), (109, 27057), (117, 27117), (122, 27192), (127, 27222), (128, 27225),

Gene: LilStuart_39 Start: 26319, Stop: 27269, Start Num: 25

Candidate Starts for LilStuart_39:

(Start: 25 @26319 has 67 MA's), (35, 26451), (36, 26463), (37, 26466), (41, 26490), (54, 26586), (58, 26634), (64, 26691), (67, 26715), (76, 26757), (78, 26763), (92, 26889), (94, 26913), (95, 26916), (97, 26925), (109, 27060), (117, 27120), (122, 27195), (127, 27225), (128, 27228),

Gene: Linayshia_43 Start: 27941, Stop: 28954, Start Num: 17

Candidate Starts for Linayshia_43:

(Start: 17 @27941 has 20 MA's), (37, 28151), (48, 28220), (58, 28304), (65, 28367), (79, 28439), (80, 28442), (87, 28508), (88, 28511), (98, 28613), (99, 28619), (107, 28703), (108, 28718), (112, 28769), (118, 28817), (122, 28880),

Gene: Litotes_41 Start: 27533, Stop: 28480, Start Num: 25

Candidate Starts for Litotes_41:

(Start: 25 @27533 has 67 MA's), (36, 27677), (37, 27680), (38, 27695), (43, 27722), (51, 27785), (58, 27848), (62, 27893), (64, 27905), (67, 27929), (87, 28055), (94, 28124), (95, 28127), (106, 28223), (109, 28271), (117, 28331), (122, 28406), (127, 28436), (128, 28439),

Gene: Lucy_39 Start: 26316, Stop: 27266, Start Num: 25

Candidate Starts for Lucy_39:

(Start: 25 @26316 has 67 MA's), (35, 26448), (36, 26460), (37, 26463), (41, 26487), (54, 26583), (58, 26631), (59, 26646), (64, 26688), (67, 26712), (76, 26754), (78, 26760), (92, 26886), (94, 26910), (95, 26913), (97, 26922), (109, 27057), (117, 27117), (122, 27192), (127, 27222), (128, 27225),

Gene: Makoto_39 Start: 26327, Stop: 27277, Start Num: 25

Candidate Starts for Makoto_39:

(Start: 25 @26327 has 67 MA's), (35, 26459), (36, 26471), (37, 26474), (41, 26498), (54, 26594), (58, 26642), (59, 26657), (64, 26699), (67, 26723), (76, 26765), (78, 26771), (92, 26897), (94, 26921), (95, 26924), (97, 26933), (109, 27068), (117, 27128), (122, 27203), (127, 27233), (128, 27236),

Gene: MamaPearl_40 Start: 27489, Stop: 28439, Start Num: 25

Candidate Starts for MamaPearl_40:

(Start: 25 @27489 has 67 MA's), (35, 27621), (37, 27636), (38, 27651), (41, 27660), (54, 27756), (58, 27804), (59, 27819), (64, 27861), (67, 27885), (78, 27933), (79, 27942), (92, 28059), (95, 28086), (97, 28095), (117, 28290), (118, 28302), (122, 28365), (123, 28368), (127, 28395), (128, 28398),

Gene: Maria1952_38 Start: 27510, Stop: 28463, Start Num: 26

Candidate Starts for Maria1952_38:

(Start: 26 @27510 has 17 MA's), (31, 27567), (37, 27657), (39, 27675), (52, 27765), (56, 27816), (61, 27855), (62, 27870), (65, 27888), (66, 27900), (76, 27948), (91, 28065), (94, 28104), (97, 28116), (117, 28314), (122, 28389), (127, 28419), (128, 28422),

Gene: Marky_53 Start: 36621, Stop: 37619, Start Num: 23

Candidate Starts for Marky_53:

(6, 36390), (16, 36564), (Start: 23 @36621 has 11 MA's), (37, 36786), (44, 36831), (47, 36867), (55, 36918), (56, 36951), (77, 37071), (80, 37086), (81, 37110), (86, 37146), (97, 37263), (102, 37311), (113, 37437), (114, 37446), (125, 37548), (130, 37590),

Gene: MeganNoll_41 Start: 27707, Stop: 28654, Start Num: 25

Candidate Starts for MeganNoll_41:

(Start: 25 @27707 has 67 MA's), (35, 27839), (36, 27851), (37, 27854), (41, 27878), (54, 27974), (58, 28022), (61, 28052), (64, 28079), (78, 28151), (95, 28301), (97, 28310), (106, 28397), (109, 28445), (117, 28505), (122, 28580), (127, 28610), (128, 28613),

Gene: Microdon_49 Start: 35690, Stop: 36691, Start Num: 23

Candidate Starts for Microdon_49:

(4, 35453), (5, 35459), (8, 35480), (10, 35531), (Start: 23 @35690 has 11 MA's), (37, 35855), (39, 35873), (41, 35879), (55, 35990), (56, 36023), (59, 36047), (60, 36053), (66, 36107), (75, 36137), (77, 36143), (79, 36155), (80, 36158), (83, 36191), (88, 36227), (97, 36317), (103, 36413), (110, 36485), (114, 36524), (125, 36626), (130, 36668),

Gene: Milani_41 Start: 26576, Stop: 27577, Start Num: 17

Candidate Starts for Milani_41:

(Start: 17 @26576 has 20 MA's), (32, 26705), (37, 26786), (42, 26816), (58, 26927), (88, 27134), (90, 27146), (98, 27236), (99, 27242), (107, 27326), (108, 27341), (112, 27392), (122, 27503),

Gene: Misaeng_41 Start: 28126, Stop: 29073, Start Num: 25

Candidate Starts for Misaeng_41:

(Start: 25 @28126 has 67 MA's), (37, 28273), (39, 28291), (43, 28315), (47, 28351), (53, 28390), (58, 28441), (61, 28471), (62, 28486), (64, 28498), (87, 28648), (94, 28717), (95, 28720), (119, 28954), (122, 28999), (123, 29002), (127, 29029), (128, 29032),

Gene: Moki_39 Start: 26432, Stop: 27379, Start Num: 25

Candidate Starts for Moki_39:

(Start: 25 @26432 has 67 MA's), (35, 26564), (36, 26576), (37, 26579), (41, 26603), (54, 26699), (58, 26747), (64, 26804), (78, 26876), (79, 26885), (95, 27026), (97, 27035), (106, 27122), (117, 27230), (122, 27305), (123, 27308), (127, 27335), (128, 27338),

Gene: MrBoss_43 Start: 27530, Stop: 28477, Start Num: 25

Candidate Starts for MrBoss_43:

(Start: 25 @27530 has 67 MA's), (36, 27674), (37, 27677), (38, 27692), (43, 27719), (51, 27782), (54, 27797), (58, 27845), (62, 27890), (64, 27902), (67, 27926), (87, 28052), (94, 28121), (95, 28124), (109, 28268), (117, 28328), (122, 28403), (123, 28406), (127, 28433), (128, 28436),

Gene: MrGloopy_42 Start: 27636, Stop: 28583, Start Num: 25

Candidate Starts for MrGloopy_42:

(Start: 25 @27636 has 67 MA's), (35, 27768), (36, 27780), (37, 27783), (41, 27807), (54, 27903), (58, 27951), (61, 27981), (64, 28008), (78, 28080), (95, 28230), (97, 28239), (106, 28326), (109, 28374), (117, 28434), (122, 28509), (123, 28512), (127, 28539), (128, 28542),

Gene: Nancia_39 Start: 26343, Stop: 27293, Start Num: 25

Candidate Starts for Nancia_39:

(Start: 25 @26343 has 67 MA's), (30, 26376), (33, 26412), (35, 26475), (36, 26487), (37, 26490), (41, 26514), (54, 26610), (58, 26658), (59, 26673), (64, 26715), (67, 26739), (78, 26787), (92, 26913), (94, 26937), (95, 26940), (97, 26949), (109, 27084), (117, 27144), (122, 27219), (123, 27222), (127, 27249), (128, 27252),

Gene: Nubia_42 Start: 28083, Stop: 29030, Start Num: 25

Candidate Starts for Nubia_42:

(Start: 25 @28083 has 67 MA's), (37, 28230), (43, 28272), (53, 28347), (61, 28428), (62, 28443), (64, 28455), (87, 28605), (94, 28674), (95, 28677), (119, 28911), (122, 28956), (123, 28959), (127, 28986), (128, 28989),

Gene: OMalley_39 Start: 27504, Stop: 28451, Start Num: 26

Candidate Starts for OMalley_39:

(Start: 26 @27504 has 17 MA's), (32, 27570), (39, 27669), (43, 27693), (52, 27759), (56, 27807), (59, 27831), (62, 27861), (65, 27879), (66, 27891), (74, 27933), (92, 28071), (94, 28092), (95, 28095), (117, 28302), (122, 28377), (123, 28380), (127, 28407), (128, 28410),

Gene: Olympi_44 Start: 27608, Stop: 28621, Start Num: 17

Candidate Starts for Olympi_44:

(Start: 17 @27608 has 20 MA's), (32, 27737), (37, 27818), (48, 27887), (58, 27971), (68, 28055), (79, 28106), (87, 28175), (88, 28178), (98, 28280), (99, 28286), (107, 28370), (108, 28385), (112, 28436), (118, 28484), (122, 28547),

Gene: OurGirlNessie_38 Start: 26071, Stop: 27021, Start Num: 25

Candidate Starts for OurGirlNessie_38:

(Start: 25 @26071 has 67 MA's), (35, 26203), (36, 26215), (37, 26218), (41, 26242), (54, 26338), (58, 26386), (59, 26401), (64, 26443), (67, 26467), (78, 26515), (92, 26641), (94, 26665), (95, 26668), (97, 26677), (109, 26812), (117, 26872), (122, 26947), (127, 26977), (128, 26980),

Gene: Oxynfrius_42 Start: 28104, Stop: 29051, Start Num: 25

Candidate Starts for Oxynfrius_42:

(Start: 25 @28104 has 67 MA's), (37, 28251), (43, 28293), (53, 28368), (61, 28449), (62, 28464), (64, 28476), (87, 28626), (94, 28695), (95, 28698), (119, 28932), (122, 28977), (123, 28980), (127, 29007), (128, 29010),

Gene: PartyCup_42 Start: 27759, Stop: 28706, Start Num: 25

Candidate Starts for PartyCup_42:

(Start: 25 @27759 has 67 MA's), (36, 27903), (37, 27906), (38, 27921), (43, 27948), (51, 28011), (54, 28026), (58, 28074), (62, 28119), (64, 28131), (67, 28155), (87, 28281), (94, 28350), (95, 28353), (109, 28497), (117, 28557), (122, 28632), (123, 28635), (127, 28662), (128, 28665),

Gene: Parvaparticeps_12 Start: 7767, Stop: 8726, Start Num: 24

Candidate Starts for Parvaparticeps_12:

(1, 7284), (2, 7317), (7, 7527), (24, 7767), (Start: 28 @7794 has 1 MA's), (Start: 29 @7797 has 2 MA's), (30, 7812), (31, 7836), (36, 7923), (45, 7983), (58, 8097), (67, 8178), (71, 8202), (76, 8220), (79, 8235), (80, 8238), (88, 8307), (92, 8352), (95, 8379), (107, 8475), (111, 8520), (118, 8589), (122, 8652), (125, 8673),

Gene: PermaG_43 Start: 27639, Stop: 28652, Start Num: 17

Candidate Starts for PermaG_43:

(Start: 17 @27639 has 20 MA's), (32, 27768), (37, 27849), (58, 28002), (64, 28059), (79, 28137), (87, 28206), (88, 28209), (96, 28284), (98, 28311), (107, 28401), (108, 28416), (112, 28467), (122, 28578),

Gene: PinkFriday_39 Start: 26620, Stop: 27570, Start Num: 26

Candidate Starts for PinkFriday_39:

(Start: 26 @26620 has 17 MA's), (31, 26677), (37, 26767), (39, 26785), (52, 26875), (56, 26926), (61, 26965), (62, 26980), (65, 26998), (66, 27010), (76, 27058), (91, 27175), (94, 27214), (97, 27226), (106, 27313), (109, 27361), (117, 27421), (122, 27496), (127, 27526), (128, 27529),

Gene: PitaDog_39 Start: 26328, Stop: 27278, Start Num: 25

Candidate Starts for PitaDog_39:

(Start: 25 @26328 has 67 MA's), (35, 26460), (36, 26472), (37, 26475), (41, 26499), (54, 26595), (58, 26643), (59, 26658), (64, 26700), (67, 26724), (76, 26766), (78, 26772), (92, 26898), (94, 26922), (95, 26925), (97, 26934), (109, 27069), (117, 27129), (122, 27204), (127, 27234), (128, 27237),

Gene: Potatoes_41 Start: 27534, Stop: 28481, Start Num: 25

Candidate Starts for Potatoes_41:

(Start: 25 @27534 has 67 MA's), (33, 27603), (35, 27666), (36, 27678), (37, 27681), (41, 27705), (54, 27801), (58, 27849), (61, 27879), (64, 27906), (78, 27978), (95, 28128), (97, 28137), (106, 28224), (109, 28272), (117, 28332), (122, 28407), (123, 28410), (127, 28437), (128, 28440),

Gene: Preamble_39 Start: 26398, Stop: 27345, Start Num: 25

Candidate Starts for Preamble_39:

(Start: 25 @26398 has 67 MA's), (35, 26530), (36, 26542), (37, 26545), (41, 26569), (54, 26665), (58, 26713), (59, 26728), (64, 26770), (66, 26788), (74, 26830), (78, 26842), (109, 27136), (117, 27196),

(122, 27271), (123, 27274), (127, 27301), (128, 27304),

Gene: Pterodactyl_39 Start: 26308, Stop: 27258, Start Num: 25

Candidate Starts for Pterodactyl_39:

(Start: 25 @26308 has 67 MA's), (35, 26440), (36, 26452), (37, 26455), (41, 26479), (54, 26575), (58, 26623), (59, 26638), (64, 26680), (67, 26704), (78, 26752), (92, 26878), (94, 26902), (95, 26905), (97, 26914), (109, 27049), (117, 27109), (122, 27184), (127, 27214), (128, 27217),

Gene: Pumancara_39 Start: 26532, Stop: 27482, Start Num: 26

Candidate Starts for Pumancara_39:

(Start: 26 @26532 has 17 MA's), (31, 26589), (37, 26679), (39, 26697), (52, 26787), (56, 26838), (61, 26877), (62, 26892), (65, 26910), (66, 26922), (76, 26970), (91, 27087), (97, 27138), (106, 27225), (109, 27273), (117, 27333), (122, 27408), (127, 27438), (128, 27441),

Gene: RAP15_42 Start: 27707, Stop: 28654, Start Num: 25

Candidate Starts for RAP15_42:

(Start: 25 @27707 has 67 MA's), (35, 27839), (36, 27851), (37, 27854), (41, 27878), (54, 27974), (58, 28022), (61, 28052), (64, 28079), (78, 28151), (95, 28301), (97, 28310), (106, 28397), (109, 28445), (117, 28505), (122, 28580), (127, 28610), (128, 28613),

Gene: Rasovi_43 Start: 27973, Stop: 28986, Start Num: 17

Candidate Starts for Rasovi_43:

(Start: 17 @27973 has 20 MA's), (37, 28183), (48, 28252), (58, 28336), (65, 28399), (79, 28471), (80, 28474), (87, 28540), (88, 28543), (98, 28645), (99, 28651), (107, 28735), (108, 28750), (112, 28801), (118, 28849), (122, 28912),

Gene: RcigaStruga_41 Start: 27893, Stop: 28828, Start Num: 25

Candidate Starts for RcigaStruga_41:

(Start: 25 @27893 has 67 MA's), (37, 28040), (39, 28058), (43, 28082), (53, 28157), (58, 28208), (61, 28238), (62, 28253), (64, 28265), (87, 28415), (94, 28484), (95, 28487), (108, 28598), (122, 28754), (123, 28757), (127, 28784), (128, 28787),

Gene: Riovina_39 Start: 27504, Stop: 28451, Start Num: 26

Candidate Starts for Riovina_39:

(Start: 26 @27504 has 17 MA's), (32, 27570), (39, 27669), (43, 27693), (52, 27759), (56, 27807), (59, 27831), (62, 27861), (65, 27879), (66, 27891), (74, 27933), (92, 28071), (94, 28092), (95, 28095), (117, 28302), (122, 28377), (123, 28380), (127, 28407), (128, 28410),

Gene: Riverdale_42 Start: 27672, Stop: 28619, Start Num: 25

Candidate Starts for Riverdale_42:

(Start: 25 @27672 has 67 MA's), (33, 27741), (35, 27804), (36, 27816), (37, 27819), (41, 27843), (54, 27939), (58, 27987), (61, 28017), (64, 28044), (78, 28116), (95, 28266), (97, 28275), (106, 28362), (109, 28410), (117, 28470), (122, 28545), (123, 28548), (127, 28575), (128, 28578),

Gene: Rootkit7_42 Start: 27509, Stop: 28522, Start Num: 17

Candidate Starts for Rootkit7_42:

(Start: 17 @27509 has 20 MA's), (32, 27638), (37, 27719), (48, 27788), (58, 27872), (68, 27956), (79, 28007), (87, 28076), (88, 28079), (98, 28181), (99, 28187), (107, 28271), (108, 28286), (112, 28337), (118, 28385), (122, 28448),

Gene: Rozby_41 Start: 27464, Stop: 28411, Start Num: 25

Candidate Starts for Rozby_41:

(Start: 25 @27464 has 67 MA's), (33, 27533), (35, 27596), (36, 27608), (37, 27611), (41, 27635), (54, 27731), (58, 27779), (61, 27809), (64, 27836), (78, 27908), (95, 28058), (97, 28067), (106, 28154), (109, 28202), (117, 28262), (122, 28337), (123, 28340), (127, 28367), (128, 28370),

Gene: SBlackberry_42 Start: 27445, Stop: 28458, Start Num: 17

Candidate Starts for SBlackberry_42:

(13, 27400), (Start: 17 @27445 has 20 MA's), (37, 27655), (48, 27724), (58, 27808), (64, 27865), (79, 27943), (87, 28012), (88, 28015), (96, 28090), (98, 28117), (108, 28222), (112, 28273), (118, 28321), (122, 28384),

Gene: Sapo_31 Start: 30227, Stop: 29166, Start Num: 14

Candidate Starts for Sapo_31:

(Start: 14 @30227 has 1 MA's), (34, 30014), (49, 29909), (61, 29801), (67, 29750), (69, 29744), (79, 29696), (82, 29663), (97, 29546), (105, 29507), (124, 29315), (131, 29234), (132, 29231), (133, 29222), (134, 29192),

Gene: Savage2526_42 Start: 27701, Stop: 28648, Start Num: 25

Candidate Starts for Savage2526_42:

(Start: 25 @27701 has 67 MA's), (35, 27833), (36, 27845), (37, 27848), (41, 27872), (54, 27968), (58, 28016), (61, 28046), (64, 28073), (78, 28145), (95, 28295), (97, 28304), (106, 28391), (109, 28439), (117, 28499), (122, 28574), (123, 28577), (127, 28604), (128, 28607),

Gene: Scuttle_41 Start: 27661, Stop: 28608, Start Num: 25

Candidate Starts for Scuttle_41:

(Start: 25 @27661 has 67 MA's), (35, 27793), (37, 27808), (41, 27832), (54, 27928), (58, 27976), (61, 28006), (64, 28033), (78, 28105), (95, 28255), (97, 28264), (106, 28351), (109, 28399), (117, 28459), (122, 28534), (123, 28537), (127, 28564), (128, 28567),

Gene: Sergei_39 Start: 27511, Stop: 28464, Start Num: 26

Candidate Starts for Sergei_39:

(Start: 26 @27511 has 17 MA's), (31, 27568), (37, 27658), (39, 27676), (52, 27766), (56, 27817), (61, 27856), (62, 27871), (65, 27889), (66, 27901), (76, 27949), (91, 28066), (94, 28105), (97, 28117), (117, 28315), (122, 28390), (127, 28420), (128, 28423),

Gene: Shynx_50 Start: 36115, Stop: 37113, Start Num: 23

Candidate Starts for Shynx_50:

(3, 35722), (4, 35878), (10, 35956), (Start: 22 @36109 has 1 MA's), (Start: 23 @36115 has 11 MA's), (37, 36280), (41, 36304), (55, 36412), (56, 36445), (59, 36469), (66, 36529), (75, 36559), (77, 36565), (79, 36577), (80, 36580), (83, 36613), (88, 36649), (97, 36739), (103, 36835), (112, 36934), (114, 36946), (130, 37090),

Gene: Spocter_40 Start: 29643, Stop: 30608, Start Num: 20

Candidate Starts for Spocter_40:

(Start: 20 @29643 has 2 MA's), (30, 29706), (35, 29805), (40, 29841), (49, 29880), (57, 29943), (58, 29949), (76, 30072), (80, 30090), (81, 30114), (85, 30147), (94, 30225), (104, 30342), (108, 30381), (114, 30444),

Gene: Stuff_50 Start: 36182, Stop: 37180, Start Num: 23

Candidate Starts for Stuff_50:

(4, 35945), (5, 35951), (10, 36023), (Start: 23 @36182 has 11 MA's), (37, 36347), (41, 36371), (55, 36479), (56, 36512), (59, 36536), (75, 36626), (77, 36632), (79, 36644), (80, 36647), (88, 36716), (97, 36806), (103, 36902), (114, 37013), (130, 37157),

Gene: Sucha_40 Start: 25225, Stop: 26232, Start Num: 17

Candidate Starts for Sucha_40:

(Start: 17 @25225 has 20 MA's), (37, 25435), (58, 25582), (65, 25645), (88, 25789), (90, 25801), (96, 25864), (98, 25891), (99, 25897), (107, 25981), (108, 25996), (115, 26071), (122, 26158),

Gene: Supakev_39 Start: 27504, Stop: 28451, Start Num: 26

Candidate Starts for Supakev_39:

(Start: 26 @27504 has 17 MA's), (32, 27570), (39, 27669), (43, 27693), (52, 27759), (56, 27807), (59, 27831), (62, 27861), (65, 27879), (66, 27891), (74, 27933), (92, 28071), (94, 28092), (95, 28095), (117, 28302), (122, 28377), (123, 28380), (127, 28407), (128, 28410),

Gene: Suppi_41 Start: 27580, Stop: 28527, Start Num: 25

Candidate Starts for Suppi_41:

(Start: 25 @27580 has 67 MA's), (36, 27724), (37, 27727), (38, 27742), (43, 27769), (51, 27832), (54, 27847), (58, 27895), (62, 27940), (64, 27952), (67, 27976), (87, 28102), (94, 28171), (95, 28174), (109, 28318), (117, 28378), (122, 28453), (123, 28456), (127, 28483), (128, 28486),

Gene: TattModd_40 Start: 27321, Stop: 28268, Start Num: 25

Candidate Starts for TattModd_40:

(Start: 25 @27321 has 67 MA's), (33, 27390), (35, 27453), (36, 27465), (37, 27468), (41, 27492), (54, 27588), (58, 27636), (61, 27666), (64, 27693), (65, 27699), (78, 27765), (95, 27915), (97, 27924), (106, 28011), (109, 28059), (117, 28119), (122, 28194), (123, 28197), (127, 28224), (128, 28227),

Gene: Temper16_39 Start: 27511, Stop: 28464, Start Num: 26

Candidate Starts for Temper16_39:

(Start: 26 @27511 has 17 MA's), (31, 27568), (37, 27658), (39, 27676), (52, 27766), (56, 27817), (61, 27856), (62, 27871), (65, 27889), (66, 27901), (76, 27949), (91, 28066), (94, 28105), (97, 28117), (117, 28315), (122, 28390), (127, 28420), (128, 28423),

Gene: Theresita_43 Start: 26461, Stop: 27471, Start Num: 17

Candidate Starts for Theresita_43:

(Start: 17 @26461 has 20 MA's), (36, 26668), (37, 26671), (58, 26821), (82, 26989), (90, 27040), (94, 27094), (107, 27220), (111, 27265), (116, 27313), (120, 27355), (122, 27397), (127, 27427), (129, 27448),

Gene: TurboVicky_43 Start: 27685, Stop: 28698, Start Num: 17

Candidate Starts for TurboVicky_43:

(Start: 17 @27685 has 20 MA's), (32, 27814), (37, 27895), (48, 27964), (58, 28048), (68, 28132), (79, 28183), (87, 28252), (88, 28255), (98, 28357), (99, 28363), (107, 28447), (108, 28462), (112, 28513), (118, 28561), (122, 28624),

Gene: Typher_45 Start: 27803, Stop: 28816, Start Num: 17

Candidate Starts for Typher_45:

(Start: 17 @27803 has 20 MA's), (32, 27932), (37, 28013), (48, 28082), (58, 28166), (68, 28250), (79, 28301), (87, 28370), (88, 28373), (98, 28475), (99, 28481), (107, 28565), (108, 28580), (112, 28631), (118, 28679), (122, 28742),

Gene: UNTPL_52 Start: 36210, Stop: 37214, Start Num: 22

Candidate Starts for UNTPL_52:

(3, 35823), (4, 35979), (10, 36057), (Start: 22 @36210 has 1 MA's), (Start: 23 @36216 has 11 MA's), (37, 36381), (41, 36405), (55, 36513), (56, 36546), (59, 36570), (66, 36630), (75, 36660), (77, 36666), (79, 36678), (80, 36681), (81, 36705), (83, 36714), (88, 36750), (97, 36840), (103, 36936), (112, 37035), (113, 37038), (114, 37047), (130, 37191),

Gene: Urla_40 Start: 27482, Stop: 28432, Start Num: 25

Candidate Starts for Urla_40:

(Start: 25 @27482 has 67 MA's), (35, 27614), (36, 27626), (37, 27629), (38, 27644), (41, 27653), (54, 27749), (58, 27797), (59, 27812), (64, 27854), (67, 27878), (78, 27926), (79, 27935), (92, 28052), (95, 28079), (97, 28088), (117, 28283), (119, 28313), (122, 28358), (123, 28361), (127, 28388), (128, 28391),

Gene: Vallejo_42 Start: 27675, Stop: 28622, Start Num: 25

Candidate Starts for Vallejo_42:

(Start: 25 @27675 has 67 MA's), (33, 27744), (35, 27807), (36, 27819), (37, 27822), (41, 27846), (54, 27942), (58, 27990), (61, 28020), (64, 28047), (78, 28119), (95, 28269), (97, 28278), (106, 28365), (109, 28413), (117, 28473), (122, 28548), (123, 28551), (127, 28578), (128, 28581),

Gene: Vulture_39 Start: 27432, Stop: 28382, Start Num: 26

Candidate Starts for Vulture_39:

(18, 27378), (Start: 26 @27432 has 17 MA's), (37, 27579), (39, 27597), (52, 27687), (56, 27738), (61, 27777), (62, 27792), (65, 27810), (66, 27822), (76, 27870), (91, 27987), (94, 28026), (97, 28038), (106, 28125), (109, 28173), (117, 28233), (122, 28308), (123, 28311), (127, 28338), (128, 28341),

Gene: Wawa_41 Start: 27508, Stop: 28455, Start Num: 25

Candidate Starts for Wawa_41:

(Start: 25 @27508 has 67 MA's), (35, 27640), (36, 27652), (37, 27655), (41, 27679), (54, 27775), (58, 27823), (61, 27853), (64, 27880), (78, 27952), (95, 28102), (97, 28111), (106, 28198), (109, 28246), (117, 28306), (122, 28381), (123, 28384), (127, 28411), (128, 28414),

Gene: Wayne_41 Start: 27626, Stop: 28573, Start Num: 25

Candidate Starts for Wayne_41:

(Start: 25 @27626 has 67 MA's), (36, 27770), (37, 27773), (38, 27788), (43, 27815), (51, 27878), (54, 27893), (58, 27941), (62, 27986), (64, 27998), (67, 28022), (87, 28148), (94, 28217), (95, 28220), (109, 28364), (117, 28424), (122, 28499), (123, 28502), (127, 28529), (128, 28532),

Gene: WonderBoy_38 Start: 26303, Stop: 27253, Start Num: 25

Candidate Starts for WonderBoy_38:

(Start: 25 @26303 has 67 MA's), (35, 26435), (36, 26447), (37, 26450), (41, 26474), (54, 26570), (58, 26618), (59, 26633), (64, 26675), (67, 26699), (76, 26741), (78, 26747), (92, 26873), (94, 26897), (95, 26900), (97, 26909), (109, 27044), (117, 27104), (122, 27179), (127, 27209), (128, 27212),

Gene: Zanella_42 Start: 27511, Stop: 28524, Start Num: 17

Candidate Starts for Zanella_42:

(Start: 17 @27511 has 20 MA's), (37, 27721), (48, 27790), (58, 27874), (68, 27958), (79, 28009), (87, 28078), (88, 28081), (98, 28183), (99, 28189), (107, 28273), (108, 28288), (112, 28339), (118, 28387), (122, 28450),

Gene: Zorro_42 Start: 27635, Stop: 28582, Start Num: 25

Candidate Starts for Zorro_42:

(Start: 25 @27635 has 67 MA's), (35, 27767), (36, 27779), (37, 27782), (41, 27806), (54, 27902), (58, 27950), (61, 27980), (64, 28007), (78, 28079), (95, 28229), (97, 28238), (106, 28325), (109, 28373), (117, 28433), (122, 28508), (127, 28538), (128, 28541),