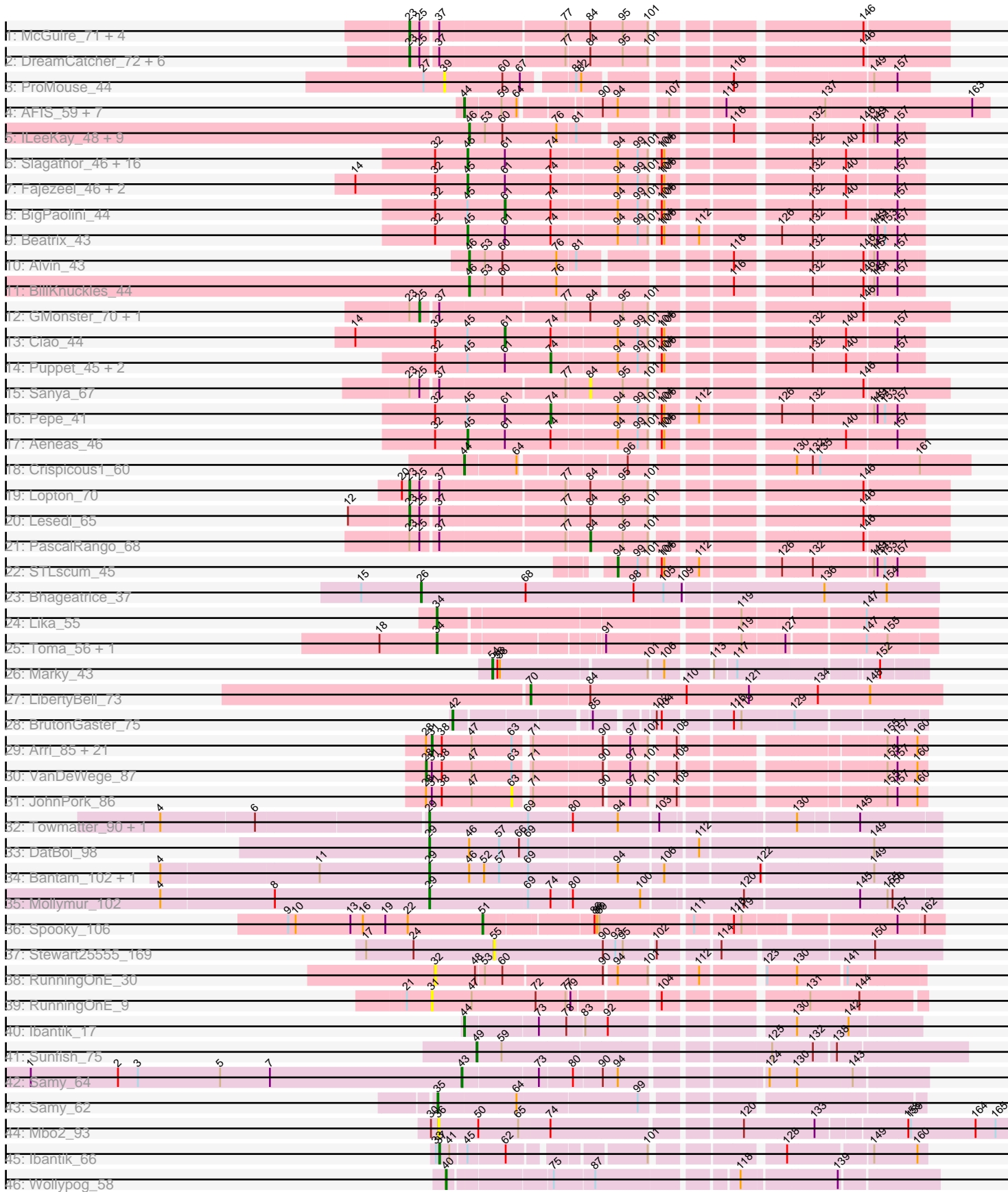


Pham 304844



Note: Tracks are now grouped by subcluster and scaled. Switching in subcluster is indicated by changes in track color. Track scale is now set by default to display the region 30 bp upstream of start 1 to 30 bp downstream of the last possible start. If this default region is judged to be packed too tightly with annotated starts, the track will be further scaled to only show that region of the ORF with annotated starts. This action will be indicated by adding "Zoomed" to the title. For starts, yellow indicates the location of called starts comprised solely of Glimmer/GeneMark auto-annotations, green indicates the location of called starts with at least 1 manual gene annotation.

Pham 304844 Report

This analysis was run 06/08/26 on database version 649.

Pham number 304844 has 117 members, 11 are drafts.

Phages represented in each track:

- Track 1 : McGuire_71, BluSpix_68, Ichabod_74, Squee_73, McSinger_68
- Track 2 : DreamCatcher_72, GrecoEtereo_71, AFIS_66, Snazzy_68, Bigchungu_69, SarFire_70, Thor_70
- Track 3 : ProMouse_44
- Track 4 : AFIS_59, NEHalo_60, SpikeBT_61, Moose_64, SwissCheese_66, GageAP_64, Forsytheast_64, Bruns_64
- Track 5 : ILeeKay_48, Seanderson_46, Fushigi_42, Trouble_45, BluSpix_41, IgnatiusPatJac_43, Petruccio_44, Ajay_44, Kykar_44, Marco3_46
- Track 6 : Slagathor_46, Naira_45, Marge_44, StrongArm_43, Bexan_42, Dexes_44, TheloniousMonk_45, Fenn_45, Rajelicia_45, Arcanine_45, Eyeball_45, Niza_46, Bones_44, Licorice_47, Ruotula_47, Sagefire_47, Smairt_46
- Track 7 : Fajezeel_46, Greg_46, Pippin_46
- Track 8 : BigPaolini_44
- Track 9 : Beatrix_43
- Track 10 : Alvin_43
- Track 11 : BillKnuckles_44
- Track 12 : GMonster_70, IgnatiusPatJac_70
- Track 13 : Ciao_44
- Track 14 : Puppet_45, Teodoridan_42, Ringer_45
- Track 15 : Sanya_67
- Track 16 : Pepe_41
- Track 17 : Aeneas_46
- Track 18 : Crispicous1_60
- Track 19 : Lopton_70
- Track 20 : Lesedi_65
- Track 21 : PascalRango_68
- Track 22 : STLscum_45
- Track 23 : Bhageatrice_37
- Track 24 : Lika_55
- Track 25 : Toma_56, Goby_56
- Track 26 : Marky_43
- Track 27 : LibertyBell_73
- Track 28 : BrutonGaster_75
- Track 29 : Arri_85, PullumCavea_83, SmokingBunny_86, Twister6_84, Wizard_80, Fireball_88, PinkCoffee_86, Gezellig_81, TillyBobJoe_83, Salvador_85, CherryCola_84, RogerDodger_88, Savbucketdawg_80, Evamon_85, Phlop_82, KimmyK_83, Sendy_87, Valary_86, Togo_85, Egi03_83, Portcullis_85, Shinji_84

- Track 30 : VanDeWege_87
- Track 31 : JohnPork_86
- Track 32 : Towmatter_90, Daredevil_91
- Track 33 : DatBoi_98
- Track 34 : Bantam_102, SpeedDemon_1040
- Track 35 : Mollymur_102
- Track 36 : Spooky_106
- Track 37 : Stewart25555_169
- Track 38 : RunningOnE_30
- Track 39 : RunningOnE_9
- Track 40 : Ibantik_17
- Track 41 : Sunfish_75
- Track 42 : Samy_64
- Track 43 : Samy_62
- Track 44 : Mbo2_93
- Track 45 : Ibantik_66
- Track 46 : Wollypog_58

Summary of Final Annotations (See graph section above for start numbers):

The start number called the most often in the published annotations is 45, it was called in 22 of the 106 non-draft genes in the pham.

Genes that call this "Most Annotated" start:

- Aeneas_46, Arcanine_45, Beatrix_43, Bexan_42, Bones_44, Dexes_44, Eyeball_45, Fajezeel_46, Fenn_45, Greg_46, Licorice_47, Marge_44, Naira_45, Niza_46, Pippin_46, Rajelicia_45, Ruotula_47, Sagefire_47, Slagathor_46, Smairt_46, StrongArm_43, TheloniousMonk_45,

Genes that have the "Most Annotated" start but do not call it:

- BigPaolini_44, Ciao_44, Ibantik_66, Pepe_41, Puppet_45, Ringer_45, Teodoridan_42,

Genes that do not have the "Most Annotated" start:

- AFIS_59, AFIS_66, Ajay_44, Alvin_43, Arri_85, Bantam_102, Bhageatrice_37, Bigchung_69, BillKnuckles_44, BluSpix_41, BluSpix_68, Bruns_64, BrutonGaster_75, CherryCola_84, Crispicous1_60, Daredevil_91, DatBoi_98, DreamCatcher_72, Egi03_83, Evamon_85, Fireball_88, Forsytheast_64, Fushigi_42, GMonster_70, GageAP_64, Gezellig_81, Goby_56, GrecoEtereo_71, ILeeKay_48, Ibantik_17, Ichabod_74, IgnatiusPatJac_43, IgnatiusPatJac_70, JohnPork_86, KimmyK_83, Kykar_44, Lesedi_65, LibertyBell_73, Lika_55, Lopton_70, Marco3_46, Marky_43, Mbo2_93, McGuire_71, McSinger_68, Mollymur_102, Moose_64, NEHalo_60, PascalRango_68, Petruccio_44, Phlop_82, PinkCoffee_86, Portcullis_85, ProMouse_44, PullumCavea_83, RogerDodger_88, RunningOnE_30, RunningOnE_9, STLscum_45, Salvador_85, Samy_62, Samy_64, Sanya_67, SarFire_70, Savbucketdawg_80, Seanderson_46, Sendy_87, Shinji_84, SmokingBunny_86, Snazzy_68, SpeedDemon_1040, SpikeBT_61, Spooky_106, Squee_73, Stewart25555_169, Sunfish_75, SwissCheese_66, Thor_70, TillyBobJoe_83, Togo_85, Toma_56, Towmatter_90, Trouble_45, Twister6_84, Valary_86, VanDeWege_87, Wizard_80, Wollypog_58,

Summary by start number:

Start 23:

- Found in 18 of 117 (15.4%) of genes in pham
- Manual Annotations of this start: 14 of 106
- Called 77.8% of time when present
- Phage (with cluster) where this start called: AFIS_66 (A1), Bigchungji_69 (A1), BluSpix_68 (A1), DreamCatcher_72 (A1), GrecoEtereo_71 (A1), Ichabod_74 (A1), Lesedi_65 (A1), Lopton_70 (A1), McGuire_71 (A1), McSinger_68 (A1), SarFire_70 (A1), Snazzy_68 (A1), Squee_73 (A1), Thor_70 (A1),

Start 25:

- Found in 18 of 117 (15.4%) of genes in pham
- Manual Annotations of this start: 2 of 106
- Called 11.1% of time when present
- Phage (with cluster) where this start called: GMonster_70 (A1), IgnatiusPatJac_70 (A1),

Start 26:

- Found in 1 of 117 (0.9%) of genes in pham
- Manual Annotations of this start: 1 of 106
- Called 100.0% of time when present
- Phage (with cluster) where this start called: Bhageatrice_37 (AY),

Start 28:

- Found in 24 of 117 (20.5%) of genes in pham
- Manual Annotations of this start: 1 of 106
- Called 4.2% of time when present
- Phage (with cluster) where this start called: VanDeWege_87 (DC1),

Start 29:

- Found in 6 of 117 (5.1%) of genes in pham
- Manual Annotations of this start: 6 of 106
- Called 100.0% of time when present
- Phage (with cluster) where this start called: Bantam_102 (DL), Daredevil_91 (DL), DatBoi_98 (DL), Mollymur_102 (DL), SpeedDemon_1040 (DL), Towmatter_90 (DL),

Start 31:

- Found in 25 of 117 (21.4%) of genes in pham
- Manual Annotations of this start: 20 of 106
- Called 92.0% of time when present
- Phage (with cluster) where this start called: Arri_85 (DC1), CherryCola_84 (DC1), Egi03_83 (DC1), Evamon_85 (DC1), Fireball_88 (DC1), Gezellig_81 (DC1), KimmyK_83 (DC1), Phlop_82 (DC1), PinkCoffee_86 (DC1), Portcullis_85 (DC1), PullumCavea_83 (DC1), RogerDodger_88 (DC1), RunningOnE_9 (UNK), Salvador_85 (DC1), Savbucketdawg_80 (DC1), Sendy_87 (DC1), Shinji_84 (DC1), SmokingBunny_86 (DC1), TillyBobJoe_83 (DC1), Togo_85 (DC1), Twister6_84 (DC1), Valary_86 (DC1), Wizard_80 (DC1),

Start 32:

- Found in 29 of 117 (24.8%) of genes in pham
- No Manual Annotations of this start.

- Called 3.4% of time when present
- Phage (with cluster) where this start called: RunningOnE_30 (UNK),

Start 34:

- Found in 3 of 117 (2.6%) of genes in pham
- Manual Annotations of this start: 3 of 106
- Called 100.0% of time when present
- Phage (with cluster) where this start called: Goby_56 (BD1), Lika_55 (BD1), Toma_56 (BD1),

Start 35:

- Found in 1 of 117 (0.9%) of genes in pham
- Manual Annotations of this start: 1 of 106
- Called 100.0% of time when present
- Phage (with cluster) where this start called: Samy_62 (singleton),

Start 36:

- Found in 1 of 117 (0.9%) of genes in pham
- No Manual Annotations of this start.
- Called 100.0% of time when present
- Phage (with cluster) where this start called: Mbo2_93 (singleton),

Start 37:

- Found in 19 of 117 (16.2%) of genes in pham
- Manual Annotations of this start: 1 of 106
- Called 5.3% of time when present
- Phage (with cluster) where this start called: Ibantik_66 (singleton),

Start 39:

- Found in 1 of 117 (0.9%) of genes in pham
- No Manual Annotations of this start.
- Called 100.0% of time when present
- Phage (with cluster) where this start called: ProMouse_44 (A1),

Start 40:

- Found in 1 of 117 (0.9%) of genes in pham
- Manual Annotations of this start: 1 of 106
- Called 100.0% of time when present
- Phage (with cluster) where this start called: Wollypog_58 (singleton),

Start 42:

- Found in 1 of 117 (0.9%) of genes in pham
- Manual Annotations of this start: 1 of 106
- Called 100.0% of time when present
- Phage (with cluster) where this start called: BrutonGaster_75 (CQ2),

Start 43:

- Found in 1 of 117 (0.9%) of genes in pham
- Manual Annotations of this start: 1 of 106
- Called 100.0% of time when present
- Phage (with cluster) where this start called: Samy_64 (singleton),

Start 44:

- Found in 10 of 117 (8.5%) of genes in pham
- Manual Annotations of this start: 10 of 106
- Called 100.0% of time when present
- Phage (with cluster) where this start called: AFIS_59 (A1), Bruns_64 (A1), Crispicous1_60 (A1), Forsytheast_64 (A1), GageAP_64 (A1), Ibantik_17 (singleton), Moose_64 (A1), NEHalo_60 (A1), SpikeBT_61 (A1), SwissCheese_66 (A1),

Start 45:

- Found in 29 of 117 (24.8%) of genes in pham
- Manual Annotations of this start: 22 of 106
- Called 75.9% of time when present
- Phage (with cluster) where this start called: Aeneas_46 (A1), Arcanine_45 (A1), Beatrix_43 (A1), Bexan_42 (A1), Bones_44 (A1), Dexes_44 (A1), Eyeball_45 (A1), Fajezeel_46 (A1), Fenn_45 (A1), Greg_46 (A1), Licorice_47 (A1), Marge_44 (A1), Naira_45 (A1), Niza_46 (A1), Pippin_46 (A1), Rajelicia_45 (A1), Ruotula_47 (A1), Sagefire_47 (A1), Slagathor_46 (A1), Smairt_46 (A1), StrongArm_43 (A1), TheloniousMonk_45 (A1),

Start 46:

- Found in 15 of 117 (12.8%) of genes in pham
- Manual Annotations of this start: 12 of 106
- Called 80.0% of time when present
- Phage (with cluster) where this start called: Ajay_44 (A1), Alvin_43 (A1), BillKnuckles_44 (A1), BluSpix_41 (A1), Fushigi_42 (A1), ILeeKay_48 (A1), IgnatiusPatJac_43 (A1), Kykar_44 (A1), Marco3_46 (A1), Petruchio_44 (A1), Seanderson_46 (A1), Trouble_45 (A1),

Start 49:

- Found in 1 of 117 (0.9%) of genes in pham
- Manual Annotations of this start: 1 of 106
- Called 100.0% of time when present
- Phage (with cluster) where this start called: Sunfish_75 (singleton),

Start 51:

- Found in 1 of 117 (0.9%) of genes in pham
- Manual Annotations of this start: 1 of 106
- Called 100.0% of time when present
- Phage (with cluster) where this start called: Spooky_106 (DN2),

Start 54:

- Found in 1 of 117 (0.9%) of genes in pham
- Manual Annotations of this start: 1 of 106
- Called 100.0% of time when present
- Phage (with cluster) where this start called: Marky_43 (BH),

Start 55:

- Found in 1 of 117 (0.9%) of genes in pham
- No Manual Annotations of this start.
- Called 100.0% of time when present
- Phage (with cluster) where this start called: Stewart25555_169 (FC),

Start 61:

- Found in 28 of 117 (23.9%) of genes in pham

- Manual Annotations of this start: 2 of 106
- Called 7.1% of time when present
- Phage (with cluster) where this start called: BigPaolini_44 (A1), Ciao_44 (A1),

Start 63:

- Found in 24 of 117 (20.5%) of genes in pham
- No Manual Annotations of this start.
- Called 4.2% of time when present
- Phage (with cluster) where this start called: JohnPork_86 (DC1),

Start 70:

- Found in 1 of 117 (0.9%) of genes in pham
- Manual Annotations of this start: 1 of 106
- Called 100.0% of time when present
- Phage (with cluster) where this start called: LibertyBell_73 (BI3),

Start 74:

- Found in 30 of 117 (25.6%) of genes in pham
- Manual Annotations of this start: 2 of 106
- Called 13.3% of time when present
- Phage (with cluster) where this start called: Pepe_41 (A1), Puppet_45 (A1), Ringer_45 (A1), Teodoridan_42 (A1),

Start 84:

- Found in 19 of 117 (16.2%) of genes in pham
- Manual Annotations of this start: 1 of 106
- Called 10.5% of time when present
- Phage (with cluster) where this start called: PascalRango_68 (A1), Sanya_67 (A1),

Start 94:

- Found in 43 of 117 (36.8%) of genes in pham
- Manual Annotations of this start: 1 of 106
- Called 2.3% of time when present
- Phage (with cluster) where this start called: STLscum_45 (A1),

Summary by clusters:

There are 12 clusters represented in this pham: singleton, BH, DL, A1, FC, BD1, DN2, AY, CQ2, UNK, BI3, DC1,

Info for manual annotations of cluster A1:

- Start number 23 was manually annotated 14 times for cluster A1.
- Start number 25 was manually annotated 2 times for cluster A1.
- Start number 44 was manually annotated 9 times for cluster A1.
- Start number 45 was manually annotated 22 times for cluster A1.
- Start number 46 was manually annotated 12 times for cluster A1.
- Start number 61 was manually annotated 2 times for cluster A1.
- Start number 74 was manually annotated 2 times for cluster A1.
- Start number 84 was manually annotated 1 time for cluster A1.
- Start number 94 was manually annotated 1 time for cluster A1.

Info for manual annotations of cluster AY:

- Start number 26 was manually annotated 1 time for cluster AY.

Info for manual annotations of cluster BD1:

- Start number 34 was manually annotated 3 times for cluster BD1.

Info for manual annotations of cluster BH:

- Start number 54 was manually annotated 1 time for cluster BH.

Info for manual annotations of cluster BI3:

- Start number 70 was manually annotated 1 time for cluster BI3.

Info for manual annotations of cluster CQ2:

- Start number 42 was manually annotated 1 time for cluster CQ2.

Info for manual annotations of cluster DC1:

- Start number 28 was manually annotated 1 time for cluster DC1.
- Start number 31 was manually annotated 20 times for cluster DC1.

Info for manual annotations of cluster DL:

- Start number 29 was manually annotated 6 times for cluster DL.

Info for manual annotations of cluster DN2:

- Start number 51 was manually annotated 1 time for cluster DN2.

Gene Information:

Gene: AFIS_59 Start: 40536, Stop: 39979, Start Num: 44

Candidate Starts for AFIS_59:

(Start: 44 @40536 has 10 MA's), (59, 40494), (64, 40476), (90, 40392), (Start: 94 @40374 has 1 MA's), (107, 40323), (115, 40269), (137, 40167), (163, 39999),

Gene: AFIS_66 Start: 43840, Stop: 43262, Start Num: 23

Candidate Starts for AFIS_66:

(Start: 23 @43840 has 14 MA's), (Start: 25 @43828 has 2 MA's), (Start: 37 @43810 has 1 MA's), (77, 43669), (Start: 84 @43642 has 1 MA's), (95, 43603), (101, 43573), (146, 43360),

Gene: Aeneas_46 Start: 33206, Stop: 32721, Start Num: 45

Candidate Starts for Aeneas_46:

(32, 33245), (Start: 45 @33206 has 22 MA's), (Start: 61 @33164 has 2 MA's), (Start: 74 @33110 has 2 MA's), (Start: 94 @33035 has 1 MA's), (99, 33011), (101, 32999), (104, 32993), (106, 32990), (140, 32807), (157, 32750),

Gene: Ajay_44 Start: 32810, Stop: 32334, Start Num: 46

Candidate Starts for Ajay_44:

(Start: 46 @32810 has 12 MA's), (53, 32792), (60, 32771), (76, 32708), (81, 32687), (116, 32534), (132, 32456), (146, 32399), (149, 32390), (151, 32387), (157, 32363),

Gene: Alvin_43 Start: 33331, Stop: 32855, Start Num: 46

Candidate Starts for Alvin_43:

(Start: 46 @33331 has 12 MA's), (53, 33313), (60, 33292), (76, 33229), (81, 33208), (116, 33055), (132, 32977), (146, 32920), (149, 32911), (151, 32908), (157, 32884),

Gene: Arcanine_45 Start: 32773, Stop: 32288, Start Num: 45

Candidate Starts for Arcanine_45:

(32, 32812), (Start: 45 @32773 has 22 MA's), (Start: 61 @32731 has 2 MA's), (Start: 74 @32677 has 2 MA's), (Start: 94 @32602 has 1 MA's), (99, 32578), (101, 32566), (104, 32560), (106, 32557), (132, 32410), (140, 32374), (157, 32317),

Gene: Arri_85 Start: 56022, Stop: 55507, Start Num: 31

Candidate Starts for Arri_85:

(Start: 28 @56028 has 1 MA's), (Start: 31 @56022 has 20 MA's), (38, 56010), (47, 55974), (63, 55929), (71, 55914), (90, 55836), (97, 55809), (101, 55788), (108, 55764), (155, 55554), (157, 55542), (160, 55518),

Gene: Bantam_102 Start: 67594, Stop: 68172, Start Num: 29

Candidate Starts for Bantam_102:

(4, 67276), (11, 67462), (Start: 29 @67594 has 6 MA's), (Start: 46 @67642 has 12 MA's), (52, 67660), (57, 67678), (69, 67711), (Start: 94 @67813 has 1 MA's), (106, 67864), (122, 67966), (149, 68092),

Gene: Beatrix_43 Start: 34176, Stop: 33691, Start Num: 45

Candidate Starts for Beatrix_43:

(32, 34215), (Start: 45 @34176 has 22 MA's), (Start: 61 @34134 has 2 MA's), (Start: 74 @34080 has 2 MA's), (Start: 94 @34005 has 1 MA's), (99, 33981), (101, 33969), (104, 33963), (106, 33960), (112, 33927), (126, 33846), (132, 33813), (149, 33747), (151, 33744), (153, 33735), (157, 33720),

Gene: Bexan_42 Start: 33854, Stop: 33369, Start Num: 45

Candidate Starts for Bexan_42:

(32, 33893), (Start: 45 @33854 has 22 MA's), (Start: 61 @33812 has 2 MA's), (Start: 74 @33758 has 2 MA's), (Start: 94 @33683 has 1 MA's), (99, 33659), (101, 33647), (104, 33641), (106, 33638), (132, 33491), (140, 33455), (157, 33398),

Gene: Bhageatrice_37 Start: 26729, Stop: 27340, Start Num: 26

Candidate Starts for Bhageatrice_37:

(15, 26657), (Start: 26 @26729 has 1 MA's), (68, 26855), (98, 26984), (105, 27020), (109, 27041), (136, 27203), (154, 27278),

Gene: BigPaolini_44 Start: 31801, Stop: 31358, Start Num: 61

Candidate Starts for BigPaolini_44:

(32, 31882), (Start: 45 @31843 has 22 MA's), (Start: 61 @31801 has 2 MA's), (Start: 74 @31747 has 2 MA's), (Start: 94 @31672 has 1 MA's), (99, 31648), (101, 31636), (104, 31630), (106, 31627), (132, 31480), (140, 31444), (157, 31387),

Gene: Bigchungji_69 Start: 44593, Stop: 44015, Start Num: 23

Candidate Starts for Bigchungji_69:

(Start: 23 @44593 has 14 MA's), (Start: 25 @44581 has 2 MA's), (Start: 37 @44563 has 1 MA's), (77, 44422), (Start: 84 @44395 has 1 MA's), (95, 44356), (101, 44326), (146, 44113),

Gene: BillKnuckles_44 Start: 33515, Stop: 33039, Start Num: 46

Candidate Starts for BillKnuckles_44:

(Start: 46 @33515 has 12 MA's), (53, 33497), (60, 33476), (76, 33413), (116, 33239), (132, 33161), (146, 33104), (149, 33095), (151, 33092), (157, 33068),

Gene: BluSpix_68 Start: 40281, Stop: 39703, Start Num: 23

Candidate Starts for BluSpix_68:

(Start: 23 @40281 has 14 MA's), (Start: 25 @40269 has 2 MA's), (Start: 37 @40251 has 1 MA's), (77, 40110), (Start: 84 @40083 has 1 MA's), (95, 40044), (101, 40014), (146, 39801),

Gene: BluSpix_41 Start: 28937, Stop: 28461, Start Num: 46

Candidate Starts for BluSpix_41:

(Start: 46 @28937 has 12 MA's), (53, 28919), (60, 28898), (76, 28835), (81, 28814), (116, 28661), (132, 28583), (146, 28526), (149, 28517), (151, 28514), (157, 28490),

Gene: Bones_44 Start: 33339, Stop: 32854, Start Num: 45

Candidate Starts for Bones_44:

(32, 33378), (Start: 45 @33339 has 22 MA's), (Start: 61 @33297 has 2 MA's), (Start: 74 @33243 has 2 MA's), (Start: 94 @33168 has 1 MA's), (99, 33144), (101, 33132), (104, 33126), (106, 33123), (132, 32976), (140, 32940), (157, 32883),

Gene: Bruns_64 Start: 41012, Stop: 40455, Start Num: 44

Candidate Starts for Bruns_64:

(Start: 44 @41012 has 10 MA's), (59, 40970), (64, 40952), (90, 40868), (Start: 94 @40850 has 1 MA's), (107, 40799), (115, 40745), (137, 40643), (163, 40475),

Gene: BrutonGaster_75 Start: 52573, Stop: 53064, Start Num: 42

Candidate Starts for BrutonGaster_75:

(Start: 42 @52573 has 1 MA's), (85, 52717), (102, 52774), (104, 52780), (116, 52852), (119, 52861), (129, 52921),

Gene: CherryCola_84 Start: 56435, Stop: 55920, Start Num: 31

Candidate Starts for CherryCola_84:

(Start: 28 @56441 has 1 MA's), (Start: 31 @56435 has 20 MA's), (38, 56423), (47, 56387), (63, 56342), (71, 56327), (90, 56249), (97, 56222), (101, 56201), (108, 56177), (155, 55967), (157, 55955), (160, 55931),

Gene: Ciao_44 Start: 32944, Stop: 32501, Start Num: 61

Candidate Starts for Ciao_44:

(14, 33121), (32, 33025), (Start: 45 @32986 has 22 MA's), (Start: 61 @32944 has 2 MA's), (Start: 74 @32890 has 2 MA's), (Start: 94 @32815 has 1 MA's), (99, 32791), (101, 32779), (104, 32773), (106, 32770), (132, 32623), (140, 32587), (157, 32530),

Gene: Crispicous1_60 Start: 40522, Stop: 39992, Start Num: 44

Candidate Starts for Crispicous1_60:

(Start: 44 @40522 has 10 MA's), (64, 40462), (96, 40348), (130, 40186), (132, 40168), (135, 40159), (161, 40051),

Gene: Daredevil_91 Start: 63069, Stop: 63638, Start Num: 29

Candidate Starts for Daredevil_91:

(4, 62760), (6, 62871), (Start: 29 @63069 has 6 MA's), (69, 63186), (80, 63237), (Start: 94 @63291 has 1 MA's), (103, 63336), (130, 63480), (145, 63546),

Gene: DatBoi_98 Start: 66730, Stop: 67308, Start Num: 29

Candidate Starts for DatBoi_98:

(Start: 29 @66730 has 6 MA's), (Start: 46 @66778 has 12 MA's), (57, 66814), (66, 66838), (69, 66847), (112, 67036), (149, 67228),

Gene: Dexes_44 Start: 33602, Stop: 33117, Start Num: 45

Candidate Starts for Dexes_44:

(32, 33641), (Start: 45 @33602 has 22 MA's), (Start: 61 @33560 has 2 MA's), (Start: 74 @33506 has 2 MA's), (Start: 94 @33431 has 1 MA's), (99, 33407), (101, 33395), (104, 33389), (106, 33386), (132, 33239), (140, 33203), (157, 33146),

Gene: DreamCatcher_72 Start: 44845, Stop: 44267, Start Num: 23

Candidate Starts for DreamCatcher_72:

(Start: 23 @44845 has 14 MA's), (Start: 25 @44833 has 2 MA's), (Start: 37 @44815 has 1 MA's), (77, 44674), (Start: 84 @44647 has 1 MA's), (95, 44608), (101, 44578), (146, 44365),

Gene: Egi03_83 Start: 55457, Stop: 54942, Start Num: 31

Candidate Starts for Egi03_83:

(Start: 28 @55463 has 1 MA's), (Start: 31 @55457 has 20 MA's), (38, 55445), (47, 55409), (63, 55364), (71, 55349), (90, 55271), (97, 55244), (101, 55223), (108, 55199), (155, 54989), (157, 54977), (160, 54953),

Gene: Evamon_85 Start: 55834, Stop: 55319, Start Num: 31

Candidate Starts for Evamon_85:

(Start: 28 @55840 has 1 MA's), (Start: 31 @55834 has 20 MA's), (38, 55822), (47, 55786), (63, 55741), (71, 55726), (90, 55648), (97, 55621), (101, 55600), (108, 55576), (155, 55366), (157, 55354), (160, 55330),

Gene: Eyeball_45 Start: 33249, Stop: 32764, Start Num: 45

Candidate Starts for Eyeball_45:

(32, 33288), (Start: 45 @33249 has 22 MA's), (Start: 61 @33207 has 2 MA's), (Start: 74 @33153 has 2 MA's), (Start: 94 @33078 has 1 MA's), (99, 33054), (101, 33042), (104, 33036), (106, 33033), (132, 32886), (140, 32850), (157, 32793),

Gene: Fajezeel_46 Start: 33359, Stop: 32874, Start Num: 45

Candidate Starts for Fajezeel_46:

(14, 33494), (32, 33398), (Start: 45 @33359 has 22 MA's), (Start: 61 @33317 has 2 MA's), (Start: 74 @33263 has 2 MA's), (Start: 94 @33188 has 1 MA's), (99, 33164), (101, 33152), (104, 33146), (106, 33143), (132, 32996), (140, 32960), (157, 32903),

Gene: Fenn_45 Start: 34680, Stop: 34195, Start Num: 45

Candidate Starts for Fenn_45:

(32, 34719), (Start: 45 @34680 has 22 MA's), (Start: 61 @34638 has 2 MA's), (Start: 74 @34584 has 2 MA's), (Start: 94 @34509 has 1 MA's), (99, 34485), (101, 34473), (104, 34467), (106, 34464), (132, 34317), (140, 34281), (157, 34224),

Gene: Fireball_88 Start: 56296, Stop: 55781, Start Num: 31

Candidate Starts for Fireball_88:

(Start: 28 @56302 has 1 MA's), (Start: 31 @56296 has 20 MA's), (38, 56284), (47, 56248), (63, 56203), (71, 56188), (90, 56110), (97, 56083), (101, 56062), (108, 56038), (155, 55828), (157, 55816), (160, 55792),

Gene: Forsytheast_64 Start: 41180, Stop: 40623, Start Num: 44

Candidate Starts for Forsytheast_64:

(Start: 44 @41180 has 10 MA's), (59, 41138), (64, 41120), (90, 41036), (Start: 94 @41018 has 1 MA's), (107, 40967), (115, 40913), (137, 40811), (163, 40643),

Gene: Fushigi_42 Start: 30914, Stop: 30438, Start Num: 46

Candidate Starts for Fushigi_42:

(Start: 46 @30914 has 12 MA's), (53, 30896), (60, 30875), (76, 30812), (81, 30791), (116, 30638), (132, 30560), (146, 30503), (149, 30494), (151, 30491), (157, 30467),

Gene: GMonster_70 Start: 44872, Stop: 44306, Start Num: 25

Candidate Starts for GMonster_70:

(Start: 23 @44884 has 14 MA's), (Start: 25 @44872 has 2 MA's), (Start: 37 @44854 has 1 MA's), (77, 44713), (Start: 84 @44686 has 1 MA's), (95, 44647), (101, 44617), (146, 44404),

Gene: GageAP_64 Start: 42203, Stop: 41646, Start Num: 44

Candidate Starts for GageAP_64:

(Start: 44 @42203 has 10 MA's), (59, 42161), (64, 42143), (90, 42059), (Start: 94 @42041 has 1 MA's), (107, 41990), (115, 41936), (137, 41834), (163, 41666),

Gene: Gezellig_81 Start: 55680, Stop: 55165, Start Num: 31

Candidate Starts for Gezellig_81:

(Start: 28 @55686 has 1 MA's), (Start: 31 @55680 has 20 MA's), (38, 55668), (47, 55632), (63, 55587), (71, 55572), (90, 55494), (97, 55467), (101, 55446), (108, 55422), (155, 55212), (157, 55200), (160, 55176),

Gene: Goby_56 Start: 42305, Stop: 41778, Start Num: 34

Candidate Starts for Goby_56:

(18, 42374), (Start: 34 @42305 has 3 MA's), (91, 42131), (119, 41987), (127, 41942), (147, 41858), (155, 41834),

Gene: GrecoEtereo_71 Start: 44625, Stop: 44047, Start Num: 23

Candidate Starts for GrecoEtereo_71:

(Start: 23 @44625 has 14 MA's), (Start: 25 @44613 has 2 MA's), (Start: 37 @44595 has 1 MA's), (77, 44454), (Start: 84 @44427 has 1 MA's), (95, 44388), (101, 44358), (146, 44145),

Gene: Greg_46 Start: 33359, Stop: 32874, Start Num: 45

Candidate Starts for Greg_46:

(14, 33494), (32, 33398), (Start: 45 @33359 has 22 MA's), (Start: 61 @33317 has 2 MA's), (Start: 74 @33263 has 2 MA's), (Start: 94 @33188 has 1 MA's), (99, 33164), (101, 33152), (104, 33146), (106, 33143), (132, 32996), (140, 32960), (157, 32903),

Gene: ILeeKay_48 Start: 33858, Stop: 33382, Start Num: 46

Candidate Starts for ILeeKay_48:

(Start: 46 @33858 has 12 MA's), (53, 33840), (60, 33819), (76, 33756), (81, 33735), (116, 33582), (132, 33504), (146, 33447), (149, 33438), (151, 33435), (157, 33411),

Gene: Ibantik_17 Start: 6683, Stop: 6195, Start Num: 44

Candidate Starts for Ibantik_17:

(Start: 44 @6683 has 10 MA's), (73, 6599), (78, 6566), (83, 6548), (92, 6521), (130, 6335), (142, 6278),

Gene: Ibantik_66 Start: 28032, Stop: 28526, Start Num: 37

Candidate Starts for Ibantik_66:

(33, 28029), (Start: 37 @28032 has 1 MA's), (41, 28044), (Start: 45 @28062 has 22 MA's), (62, 28104), (101, 28245), (128, 28374), (149, 28464), (160, 28515),

Gene: Ichabod_74 Start: 45654, Stop: 45076, Start Num: 23

Candidate Starts for Ichabod_74:

(Start: 23 @45654 has 14 MA's), (Start: 25 @45642 has 2 MA's), (Start: 37 @45624 has 1 MA's), (77, 45483), (Start: 84 @45456 has 1 MA's), (95, 45417), (101, 45387), (146, 45174),

Gene: IgnatiusPatJac_43 Start: 32882, Stop: 32406, Start Num: 46

Candidate Starts for IgnatiusPatJac_43:

(Start: 46 @32882 has 12 MA's), (53, 32864), (60, 32843), (76, 32780), (81, 32759), (116, 32606), (132, 32528), (146, 32471), (149, 32462), (151, 32459), (157, 32435),

Gene: IgnatiusPatJac_70 Start: 44214, Stop: 43648, Start Num: 25

Candidate Starts for IgnatiusPatJac_70:

(Start: 23 @44226 has 14 MA's), (Start: 25 @44214 has 2 MA's), (Start: 37 @44196 has 1 MA's), (77, 44055), (Start: 84 @44028 has 1 MA's), (95, 43989), (101, 43959), (146, 43746),

Gene: JohnPork_86 Start: 55643, Stop: 55221, Start Num: 63

Candidate Starts for JohnPork_86:

(Start: 28 @55742 has 1 MA's), (Start: 31 @55736 has 20 MA's), (38, 55724), (47, 55688), (63, 55643), (71, 55628), (90, 55550), (97, 55523), (101, 55502), (108, 55478), (155, 55268), (157, 55256), (160, 55232),

Gene: KimmyK_83 Start: 56127, Stop: 55612, Start Num: 31

Candidate Starts for KimmyK_83:

(Start: 28 @56133 has 1 MA's), (Start: 31 @56127 has 20 MA's), (38, 56115), (47, 56079), (63, 56034), (71, 56019), (90, 55941), (97, 55914), (101, 55893), (108, 55869), (155, 55659), (157, 55647), (160, 55623),

Gene: Kykar_44 Start: 32934, Stop: 32458, Start Num: 46

Candidate Starts for Kykar_44:

(Start: 46 @32934 has 12 MA's), (53, 32916), (60, 32895), (76, 32832), (81, 32811), (116, 32658), (132, 32580), (146, 32523), (149, 32514), (151, 32511), (157, 32487),

Gene: Lesedi_65 Start: 42530, Stop: 41952, Start Num: 23

Candidate Starts for Lesedi_65:

(12, 42602), (Start: 23 @42530 has 14 MA's), (Start: 25 @42518 has 2 MA's), (Start: 37 @42500 has 1 MA's), (77, 42359), (Start: 84 @42332 has 1 MA's), (95, 42293), (101, 42263), (146, 42050),

Gene: LibertyBell_73 Start: 45969, Stop: 46457, Start Num: 70

Candidate Starts for LibertyBell_73:

(Start: 70 @45969 has 1 MA's), (Start: 84 @46038 has 1 MA's), (110, 46152), (121, 46227), (134, 46308), (148, 46371),

Gene: Licorice_47 Start: 34445, Stop: 33960, Start Num: 45

Candidate Starts for Licorice_47:

(32, 34484), (Start: 45 @34445 has 22 MA's), (Start: 61 @34403 has 2 MA's), (Start: 74 @34349 has 2 MA's), (Start: 94 @34274 has 1 MA's), (99, 34250), (101, 34238), (104, 34232), (106, 34229), (132, 34082), (140, 34046), (157, 33989),

Gene: Lika_55 Start: 42316, Stop: 41774, Start Num: 34

Candidate Starts for Lika_55:

(Start: 34 @42316 has 3 MA's), (119, 41986), (147, 41857),

Gene: Lopton_70 Start: 46302, Stop: 45724, Start Num: 23

Candidate Starts for Lopton_70:

(20, 46311), (Start: 23 @46302 has 14 MA's), (Start: 25 @46290 has 2 MA's), (Start: 37 @46272 has 1 MA's), (77, 46131), (Start: 84 @46104 has 1 MA's), (95, 46065), (101, 46035), (146, 45822),

Gene: Marco3_46 Start: 33679, Stop: 33203, Start Num: 46

Candidate Starts for Marco3_46:

(Start: 46 @33679 has 12 MA's), (53, 33661), (60, 33640), (76, 33577), (81, 33556), (116, 33403), (132, 33325), (146, 33268), (149, 33259), (151, 33256), (157, 33232),

Gene: Marge_44 Start: 33477, Stop: 32992, Start Num: 45

Candidate Starts for Marge_44:

(32, 33516), (Start: 45 @33477 has 22 MA's), (Start: 61 @33435 has 2 MA's), (Start: 74 @33381 has 2 MA's), (Start: 94 @33306 has 1 MA's), (99, 33282), (101, 33270), (104, 33264), (106, 33261), (132, 33114), (140, 33078), (157, 33021),

Gene: Marky_43 Start: 31173, Stop: 31622, Start Num: 54

Candidate Starts for Marky_43:

(Start: 54 @31173 has 1 MA's), (56, 31179), (58, 31182), (101, 31344), (106, 31359), (113, 31404), (117, 31428), (152, 31572),

Gene: Mbo2_93 Start: 66190, Stop: 65546, Start Num: 36

Candidate Starts for Mbo2_93:

(30, 66199), (36, 66190), (50, 66142), (65, 66094), (Start: 74 @66058 has 2 MA's), (120, 65854), (133, 65770), (158, 65671), (159, 65668), (164, 65590), (165, 65566),

Gene: McGuire_71 Start: 44174, Stop: 43596, Start Num: 23

Candidate Starts for McGuire_71:

(Start: 23 @44174 has 14 MA's), (Start: 25 @44162 has 2 MA's), (Start: 37 @44144 has 1 MA's), (77, 44003), (Start: 84 @43976 has 1 MA's), (95, 43937), (101, 43907), (146, 43694),

Gene: McSinger_68 Start: 43534, Stop: 42956, Start Num: 23

Candidate Starts for McSinger_68:

(Start: 23 @43534 has 14 MA's), (Start: 25 @43522 has 2 MA's), (Start: 37 @43504 has 1 MA's), (77, 43363), (Start: 84 @43336 has 1 MA's), (95, 43297), (101, 43267), (146, 43054),

Gene: Mollymur_102 Start: 68397, Stop: 68978, Start Num: 29

Candidate Starts for Mollymur_102:

(4, 68076), (8, 68211), (Start: 29 @68397 has 6 MA's), (69, 68514), (Start: 74 @68541 has 2 MA's), (80, 68565), (100, 68646), (120, 68757), (145, 68886), (155, 68916), (156, 68922),

Gene: Moose_64 Start: 41180, Stop: 40623, Start Num: 44

Candidate Starts for Moose_64:

(Start: 44 @41180 has 10 MA's), (59, 41138), (64, 41120), (90, 41036), (Start: 94 @41018 has 1 MA's), (107, 40967), (115, 40913), (137, 40811), (163, 40643),

Gene: NEHalo_60 Start: 41604, Stop: 41047, Start Num: 44

Candidate Starts for NEHalo_60:

(Start: 44 @41604 has 10 MA's), (59, 41562), (64, 41544), (90, 41460), (Start: 94 @41442 has 1 MA's), (107, 41391), (115, 41337), (137, 41235), (163, 41067),

Gene: Naira_45 Start: 34727, Stop: 34242, Start Num: 45

Candidate Starts for Naira_45:

(32, 34766), (Start: 45 @34727 has 22 MA's), (Start: 61 @34685 has 2 MA's), (Start: 74 @34631 has 2 MA's), (Start: 94 @34556 has 1 MA's), (99, 34532), (101, 34520), (104, 34514), (106, 34511), (132,

34364), (140, 34328), (157, 34271),

Gene: Niza_46 Start: 34104, Stop: 33619, Start Num: 45

Candidate Starts for Niza_46:

(32, 34143), (Start: 45 @34104 has 22 MA's), (Start: 61 @34062 has 2 MA's), (Start: 74 @34008 has 2 MA's), (Start: 94 @33933 has 1 MA's), (99, 33909), (101, 33897), (104, 33891), (106, 33888), (132, 33741), (140, 33705), (157, 33648),

Gene: PascalRango_68 Start: 44439, Stop: 44059, Start Num: 84

Candidate Starts for PascalRango_68:

(Start: 23 @44637 has 14 MA's), (Start: 25 @44625 has 2 MA's), (Start: 37 @44607 has 1 MA's), (77, 44466), (Start: 84 @44439 has 1 MA's), (95, 44400), (101, 44370), (146, 44157),

Gene: Pepe_41 Start: 31155, Stop: 30766, Start Num: 74

Candidate Starts for Pepe_41:

(32, 31290), (Start: 45 @31251 has 22 MA's), (Start: 61 @31209 has 2 MA's), (Start: 74 @31155 has 2 MA's), (Start: 94 @31080 has 1 MA's), (99, 31056), (101, 31044), (104, 31038), (106, 31035), (112, 31002), (126, 30921), (132, 30888), (149, 30822), (151, 30819), (153, 30810), (157, 30795),

Gene: Petruccio_44 Start: 32947, Stop: 32471, Start Num: 46

Candidate Starts for Petruccio_44:

(Start: 46 @32947 has 12 MA's), (53, 32929), (60, 32908), (76, 32845), (81, 32824), (116, 32671), (132, 32593), (146, 32536), (149, 32527), (151, 32524), (157, 32500),

Gene: Phlop_82 Start: 55730, Stop: 55215, Start Num: 31

Candidate Starts for Phlop_82:

(Start: 28 @55736 has 1 MA's), (Start: 31 @55730 has 20 MA's), (38, 55718), (47, 55682), (63, 55637), (71, 55622), (90, 55544), (97, 55517), (101, 55496), (108, 55472), (155, 55262), (157, 55250), (160, 55226),

Gene: PinkCoffee_86 Start: 55594, Stop: 55079, Start Num: 31

Candidate Starts for PinkCoffee_86:

(Start: 28 @55600 has 1 MA's), (Start: 31 @55594 has 20 MA's), (38, 55582), (47, 55546), (63, 55501), (71, 55486), (90, 55408), (97, 55381), (101, 55360), (108, 55336), (155, 55126), (157, 55114), (160, 55090),

Gene: Pippin_46 Start: 33403, Stop: 32918, Start Num: 45

Candidate Starts for Pippin_46:

(14, 33538), (32, 33442), (Start: 45 @33403 has 22 MA's), (Start: 61 @33361 has 2 MA's), (Start: 74 @33307 has 2 MA's), (Start: 94 @33232 has 1 MA's), (99, 33208), (101, 33196), (104, 33190), (106, 33187), (132, 33040), (140, 33004), (157, 32947),

Gene: Portcullis_85 Start: 55736, Stop: 55221, Start Num: 31

Candidate Starts for Portcullis_85:

(Start: 28 @55742 has 1 MA's), (Start: 31 @55736 has 20 MA's), (38, 55724), (47, 55688), (63, 55643), (71, 55628), (90, 55550), (97, 55523), (101, 55502), (108, 55478), (155, 55268), (157, 55256), (160, 55232),

Gene: ProMouse_44 Start: 33305, Stop: 32802, Start Num: 39

Candidate Starts for ProMouse_44:

(27, 33329), (39, 33305), (60, 33236), (67, 33215), (81, 33164), (82, 33158), (116, 33011), (149, 32867), (157, 32840),

Gene: PullumCavea_83 Start: 55907, Stop: 55392, Start Num: 31

Candidate Starts for PullumCavea_83:

(Start: 28 @55913 has 1 MA's), (Start: 31 @55907 has 20 MA's), (38, 55895), (47, 55859), (63, 55814), (71, 55799), (90, 55721), (97, 55694), (101, 55673), (108, 55649), (155, 55439), (157, 55427), (160, 55403),

Gene: Puppet_45 Start: 33423, Stop: 33034, Start Num: 74

Candidate Starts for Puppet_45:

(32, 33558), (Start: 45 @33519 has 22 MA's), (Start: 61 @33477 has 2 MA's), (Start: 74 @33423 has 2 MA's), (Start: 94 @33348 has 1 MA's), (99, 33324), (101, 33312), (104, 33306), (106, 33303), (132, 33156), (140, 33120), (157, 33063),

Gene: Rajelicia_45 Start: 33435, Stop: 32950, Start Num: 45

Candidate Starts for Rajelicia_45:

(32, 33474), (Start: 45 @33435 has 22 MA's), (Start: 61 @33393 has 2 MA's), (Start: 74 @33339 has 2 MA's), (Start: 94 @33264 has 1 MA's), (99, 33240), (101, 33228), (104, 33222), (106, 33219), (132, 33072), (140, 33036), (157, 32979),

Gene: Ringer_45 Start: 33671, Stop: 33282, Start Num: 74

Candidate Starts for Ringer_45:

(32, 33806), (Start: 45 @33767 has 22 MA's), (Start: 61 @33725 has 2 MA's), (Start: 74 @33671 has 2 MA's), (Start: 94 @33596 has 1 MA's), (99, 33572), (101, 33560), (104, 33554), (106, 33551), (132, 33404), (140, 33368), (157, 33311),

Gene: RogerDodger_88 Start: 56495, Stop: 55980, Start Num: 31

Candidate Starts for RogerDodger_88:

(Start: 28 @56501 has 1 MA's), (Start: 31 @56495 has 20 MA's), (38, 56483), (47, 56447), (63, 56402), (71, 56387), (90, 56309), (97, 56282), (101, 56261), (108, 56237), (155, 56027), (157, 56015), (160, 55991),

Gene: RunningOnE_30 Start: 14405, Stop: 13887, Start Num: 32

Candidate Starts for RunningOnE_30:

(32, 14405), (48, 14357), (53, 14348), (60, 14327), (90, 14213), (Start: 94 @14201 has 1 MA's), (101, 14165), (112, 14123), (123, 14060), (130, 14027), (141, 13973),

Gene: RunningOnE_9 Start: 3940, Stop: 3410, Start Num: 31

Candidate Starts for RunningOnE_9:

(21, 3970), (Start: 31 @3940 has 20 MA's), (47, 3892), (72, 3817), (77, 3781), (79, 3778), (104, 3688), (131, 3541), (144, 3484),

Gene: Ruotula_47 Start: 34572, Stop: 34078, Start Num: 45

Candidate Starts for Ruotula_47:

(32, 34611), (Start: 45 @34572 has 22 MA's), (Start: 61 @34530 has 2 MA's), (Start: 74 @34476 has 2 MA's), (Start: 94 @34401 has 1 MA's), (99, 34377), (101, 34365), (104, 34359), (106, 34356), (132, 34200), (140, 34164), (157, 34107),

Gene: STLscum_45 Start: 33801, Stop: 33487, Start Num: 94

Candidate Starts for STLscum_45:

(Start: 94 @33801 has 1 MA's), (99, 33777), (101, 33765), (104, 33759), (106, 33756), (112, 33723), (126, 33642), (132, 33609), (149, 33543), (151, 33540), (153, 33531), (157, 33516),

Gene: Sagefire_47 Start: 34321, Stop: 33836, Start Num: 45

Candidate Starts for Sagefire_47:

(32, 34360), (Start: 45 @34321 has 22 MA's), (Start: 61 @34279 has 2 MA's), (Start: 74 @34225 has 2 MA's), (Start: 94 @34150 has 1 MA's), (99, 34126), (101, 34114), (104, 34108), (106, 34105), (132, 33958), (140, 33922), (157, 33865),

Gene: Salvador_85 Start: 55832, Stop: 55317, Start Num: 31

Candidate Starts for Salvador_85:

(Start: 28 @55838 has 1 MA's), (Start: 31 @55832 has 20 MA's), (38, 55820), (47, 55784), (63, 55739), (71, 55724), (90, 55646), (97, 55619), (101, 55598), (108, 55574), (155, 55364), (157, 55352), (160, 55328),

Gene: Samy_64 Start: 40970, Stop: 41473, Start Num: 43

Candidate Starts for Samy_64:

(1, 40451), (2, 40556), (3, 40580), (5, 40679), (7, 40739), (Start: 43 @40970 has 1 MA's), (73, 41057), (80, 41093), (90, 41126), (Start: 94 @41144 has 1 MA's), (124, 41297), (130, 41327), (143, 41390),

Gene: Samy_62 Start: 37969, Stop: 38490, Start Num: 35

Candidate Starts for Samy_62:

(Start: 35 @37969 has 1 MA's), (64, 38059), (99, 38200),

Gene: Sanya_67 Start: 45283, Stop: 44903, Start Num: 84

Candidate Starts for Sanya_67:

(Start: 23 @45481 has 14 MA's), (Start: 25 @45469 has 2 MA's), (Start: 37 @45451 has 1 MA's), (77, 45310), (Start: 84 @45283 has 1 MA's), (95, 45244), (101, 45214), (146, 45001),

Gene: SarFire_70 Start: 44563, Stop: 43985, Start Num: 23

Candidate Starts for SarFire_70:

(Start: 23 @44563 has 14 MA's), (Start: 25 @44551 has 2 MA's), (Start: 37 @44533 has 1 MA's), (77, 44392), (Start: 84 @44365 has 1 MA's), (95, 44326), (101, 44296), (146, 44083),

Gene: Savbucketdawg_80 Start: 55174, Stop: 54659, Start Num: 31

Candidate Starts for Savbucketdawg_80:

(Start: 28 @55180 has 1 MA's), (Start: 31 @55174 has 20 MA's), (38, 55162), (47, 55126), (63, 55081), (71, 55066), (90, 54988), (97, 54961), (101, 54940), (108, 54916), (155, 54706), (157, 54694), (160, 54670),

Gene: Seanderson_46 Start: 33923, Stop: 33447, Start Num: 46

Candidate Starts for Seanderson_46:

(Start: 46 @33923 has 12 MA's), (53, 33905), (60, 33884), (76, 33821), (81, 33800), (116, 33647), (132, 33569), (146, 33512), (149, 33503), (151, 33500), (157, 33476),

Gene: Sendy_87 Start: 55912, Stop: 55397, Start Num: 31

Candidate Starts for Sendy_87:

(Start: 28 @55918 has 1 MA's), (Start: 31 @55912 has 20 MA's), (38, 55900), (47, 55864), (63, 55819), (71, 55804), (90, 55726), (97, 55699), (101, 55678), (108, 55654), (155, 55444), (157, 55432), (160, 55408),

Gene: Shinji_84 Start: 55913, Stop: 55398, Start Num: 31

Candidate Starts for Shinji_84:

(Start: 28 @55919 has 1 MA's), (Start: 31 @55913 has 20 MA's), (38, 55901), (47, 55865), (63, 55820), (71, 55805), (90, 55727), (97, 55700), (101, 55679), (108, 55655), (155, 55445), (157, 55433), (160, 55409),

Gene: Slogathor_46 Start: 33360, Stop: 32875, Start Num: 45

Candidate Starts for Slagathor_46:

(32, 33399), (Start: 45 @33360 has 22 MA's), (Start: 61 @33318 has 2 MA's), (Start: 74 @33264 has 2 MA's), (Start: 94 @33189 has 1 MA's), (99, 33165), (101, 33153), (104, 33147), (106, 33144), (132, 32997), (140, 32961), (157, 32904),

Gene: Smairt_46 Start: 33659, Stop: 33174, Start Num: 45

Candidate Starts for Smairt_46:

(32, 33698), (Start: 45 @33659 has 22 MA's), (Start: 61 @33617 has 2 MA's), (Start: 74 @33563 has 2 MA's), (Start: 94 @33488 has 1 MA's), (99, 33464), (101, 33452), (104, 33446), (106, 33443), (132, 33296), (140, 33260), (157, 33203),

Gene: SmokingBunny_86 Start: 56828, Stop: 56313, Start Num: 31

Candidate Starts for SmokingBunny_86:

(Start: 28 @56834 has 1 MA's), (Start: 31 @56828 has 20 MA's), (38, 56816), (47, 56780), (63, 56735), (71, 56720), (90, 56642), (97, 56615), (101, 56594), (108, 56570), (155, 56360), (157, 56348), (160, 56324),

Gene: Snazzy_68 Start: 43855, Stop: 43277, Start Num: 23

Candidate Starts for Snazzy_68:

(Start: 23 @43855 has 14 MA's), (Start: 25 @43843 has 2 MA's), (Start: 37 @43825 has 1 MA's), (77, 43684), (Start: 84 @43657 has 1 MA's), (95, 43618), (101, 43588), (146, 43375),

Gene: SpeedDemon_1040 Start: 70108, Stop: 70686, Start Num: 29

Candidate Starts for SpeedDemon_1040:

(4, 69790), (11, 69976), (Start: 29 @70108 has 6 MA's), (Start: 46 @70156 has 12 MA's), (52, 70174), (57, 70192), (69, 70225), (Start: 94 @70327 has 1 MA's), (106, 70378), (122, 70480), (149, 70606),

Gene: SpikeBT_61 Start: 41461, Stop: 40904, Start Num: 44

Candidate Starts for SpikeBT_61:

(Start: 44 @41461 has 10 MA's), (59, 41419), (64, 41401), (90, 41317), (Start: 94 @41299 has 1 MA's), (107, 41248), (115, 41194), (137, 41092), (163, 40924),

Gene: Spooky_106 Start: 55742, Stop: 56233, Start Num: 51

Candidate Starts for Spooky_106:

(9, 55508), (10, 55517), (13, 55583), (16, 55598), (19, 55625), (22, 55652), (Start: 51 @55742 has 1 MA's), (86, 55859), (88, 55862), (89, 55865), (111, 55967), (116, 56009), (119, 56018), (157, 56180), (162, 56210),

Gene: Squee_73 Start: 44893, Stop: 44315, Start Num: 23

Candidate Starts for Squee_73:

(Start: 23 @44893 has 14 MA's), (Start: 25 @44881 has 2 MA's), (Start: 37 @44863 has 1 MA's), (77, 44722), (Start: 84 @44695 has 1 MA's), (95, 44656), (101, 44626), (146, 44413),

Gene: Stewart25555_169 Start: 117773, Stop: 118273, Start Num: 55

Candidate Starts for Stewart25555_169:

(17, 117620), (24, 117677), (55, 117773), (90, 117902), (93, 117917), (95, 117926), (102, 117959), (114, 118022), (150, 118193),

Gene: StrongArm_43 Start: 33982, Stop: 33497, Start Num: 45

Candidate Starts for StrongArm_43:

(32, 34021), (Start: 45 @33982 has 22 MA's), (Start: 61 @33940 has 2 MA's), (Start: 74 @33886 has 2 MA's), (Start: 94 @33811 has 1 MA's), (99, 33787), (101, 33775), (104, 33769), (106, 33766), (132, 33619), (140, 33583), (157, 33526),

Gene: Sunfish_75 Start: 46858, Stop: 46316, Start Num: 49

Candidate Starts for Sunfish_75:

(Start: 49 @46858 has 1 MA's), (59, 46828), (125, 46537), (132, 46489), (138, 46465),

Gene: SwissCheese_66 Start: 41680, Stop: 41123, Start Num: 44

Candidate Starts for SwissCheese_66:

(Start: 44 @41680 has 10 MA's), (59, 41638), (64, 41620), (90, 41536), (Start: 94 @41518 has 1 MA's), (107, 41467), (115, 41413), (137, 41311), (163, 41143),

Gene: Teodoridan_42 Start: 32338, Stop: 31949, Start Num: 74

Candidate Starts for Teodoridan_42:

(32, 32473), (Start: 45 @32434 has 22 MA's), (Start: 61 @32392 has 2 MA's), (Start: 74 @32338 has 2 MA's), (Start: 94 @32263 has 1 MA's), (99, 32239), (101, 32227), (104, 32221), (106, 32218), (132, 32071), (140, 32035), (157, 31978),

Gene: TheloniousMonk_45 Start: 34368, Stop: 33883, Start Num: 45

Candidate Starts for TheloniousMonk_45:

(32, 34407), (Start: 45 @34368 has 22 MA's), (Start: 61 @34326 has 2 MA's), (Start: 74 @34272 has 2 MA's), (Start: 94 @34197 has 1 MA's), (99, 34173), (101, 34161), (104, 34155), (106, 34152), (132, 34005), (140, 33969), (157, 33912),

Gene: Thor_70 Start: 43921, Stop: 43343, Start Num: 23

Candidate Starts for Thor_70:

(Start: 23 @43921 has 14 MA's), (Start: 25 @43909 has 2 MA's), (Start: 37 @43891 has 1 MA's), (77, 43750), (Start: 84 @43723 has 1 MA's), (95, 43684), (101, 43654), (146, 43441),

Gene: TillyBobJoe_83 Start: 55714, Stop: 55199, Start Num: 31

Candidate Starts for TillyBobJoe_83:

(Start: 28 @55720 has 1 MA's), (Start: 31 @55714 has 20 MA's), (38, 55702), (47, 55666), (63, 55621), (71, 55606), (90, 55528), (97, 55501), (101, 55480), (108, 55456), (155, 55246), (157, 55234), (160, 55210),

Gene: Togo_85 Start: 56828, Stop: 56313, Start Num: 31

Candidate Starts for Togo_85:

(Start: 28 @56834 has 1 MA's), (Start: 31 @56828 has 20 MA's), (38, 56816), (47, 56780), (63, 56735), (71, 56720), (90, 56642), (97, 56615), (101, 56594), (108, 56570), (155, 56360), (157, 56348), (160, 56324),

Gene: Toma_56 Start: 42308, Stop: 41778, Start Num: 34

Candidate Starts for Toma_56:

(18, 42377), (Start: 34 @42308 has 3 MA's), (91, 42131), (119, 41987), (127, 41942), (147, 41858), (155, 41834),

Gene: Towmatter_90 Start: 63151, Stop: 63720, Start Num: 29

Candidate Starts for Towmatter_90:

(4, 62842), (6, 62953), (Start: 29 @63151 has 6 MA's), (69, 63268), (80, 63319), (Start: 94 @63373 has 1 MA's), (103, 63418), (130, 63562), (145, 63628),

Gene: Trouble_45 Start: 34048, Stop: 33572, Start Num: 46

Candidate Starts for Trouble_45:

(Start: 46 @34048 has 12 MA's), (53, 34030), (60, 34009), (76, 33946), (81, 33925), (116, 33772), (132, 33694), (146, 33637), (149, 33628), (151, 33625), (157, 33601),

Gene: Twister6_84 Start: 55177, Stop: 54662, Start Num: 31

Candidate Starts for Twister6_84:

(Start: 28 @55183 has 1 MA's), (Start: 31 @55177 has 20 MA's), (38, 55165), (47, 55129), (63, 55084), (71, 55069), (90, 54991), (97, 54964), (101, 54943), (108, 54919), (155, 54709), (157, 54697), (160, 54673),

Gene: Valary_86 Start: 56820, Stop: 56305, Start Num: 31

Candidate Starts for Valary_86:

(Start: 28 @56826 has 1 MA's), (Start: 31 @56820 has 20 MA's), (38, 56808), (47, 56772), (63, 56727), (71, 56712), (90, 56634), (97, 56607), (101, 56586), (108, 56562), (155, 56352), (157, 56340), (160, 56316),

Gene: VanDeWege_87 Start: 56351, Stop: 55830, Start Num: 28

Candidate Starts for VanDeWege_87:

(Start: 28 @56351 has 1 MA's), (Start: 31 @56345 has 20 MA's), (38, 56333), (47, 56297), (63, 56252), (71, 56237), (90, 56159), (97, 56132), (101, 56111), (108, 56087), (155, 55877), (157, 55865), (160, 55841),

Gene: Wizard_80 Start: 55680, Stop: 55165, Start Num: 31

Candidate Starts for Wizard_80:

(Start: 28 @55686 has 1 MA's), (Start: 31 @55680 has 20 MA's), (38, 55668), (47, 55632), (63, 55587), (71, 55572), (90, 55494), (97, 55467), (101, 55446), (108, 55422), (155, 55212), (157, 55200), (160, 55176),

Gene: Wollypog_58 Start: 43704, Stop: 44234, Start Num: 40

Candidate Starts for Wollypog_58:

(Start: 40 @43704 has 1 MA's), (75, 43818), (87, 43863), (118, 44016), (139, 44124),