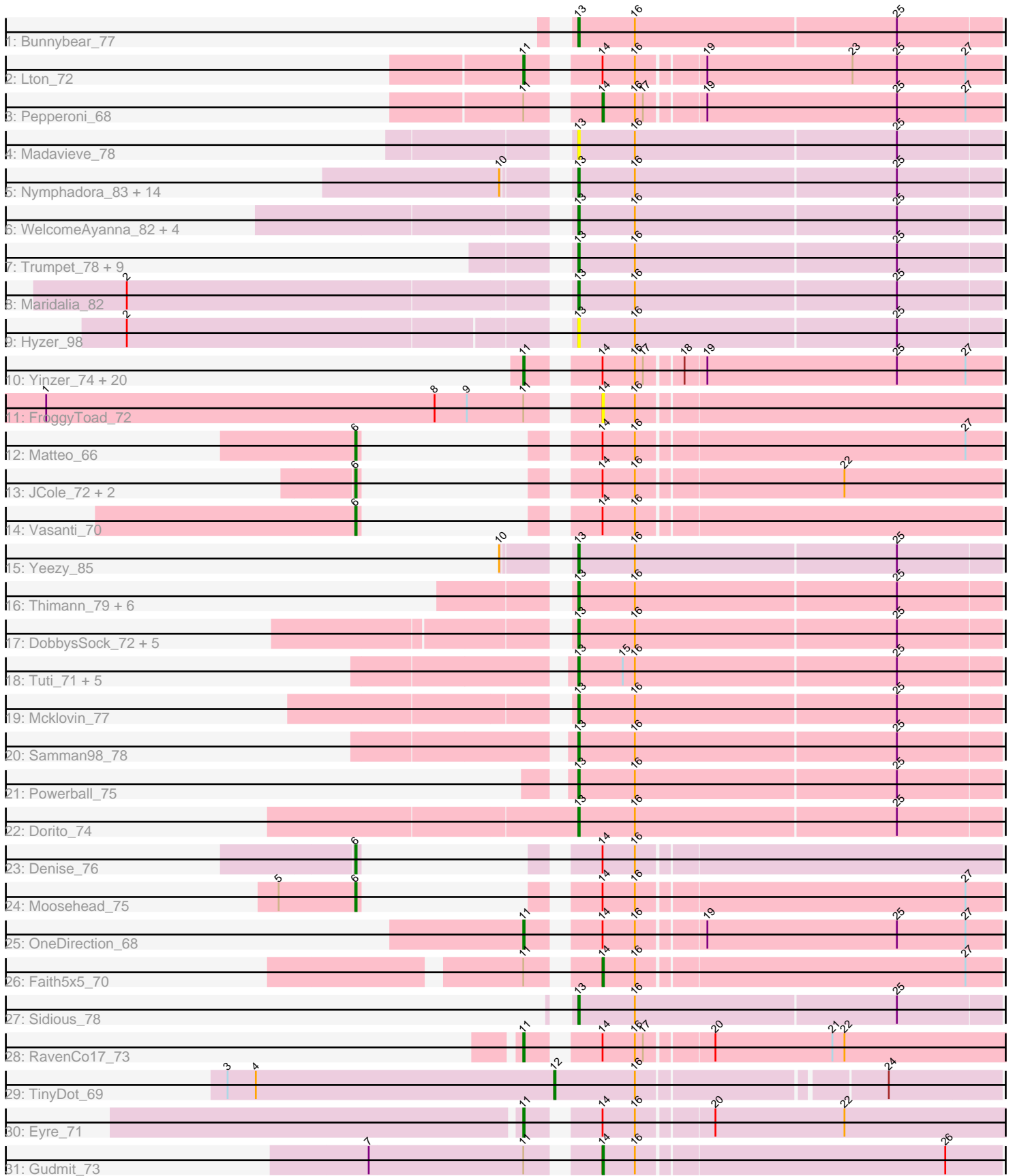


Pham 304891



Note: Tracks are now grouped by subcluster and scaled. Switching in subcluster is indicated by changes in track color. Track scale is now set by default to display the region 30 bp upstream of start 1 to 30 bp downstream of the last possible start. If this default region is judged to be packed too tightly with annotated starts, the track will be further scaled to only show that region of the ORF with annotated starts. This action will be indicated by adding "Zoomed" to the title. For starts, yellow indicates the location of called starts comprised solely of Glimmer/GeneMark auto-annotations, green indicates the location of called starts with at least 1 manual gene annotation.

Pham 304891 Report

This analysis was run 06/08/26 on database version 649.

Pham number 304891 has 96 members, 8 are drafts.

Phages represented in each track:

- Track 1 : Bunnybear_77
- Track 2 : Lton_72
- Track 3 : Pepperoni_68
- Track 4 : Madavieve_78
- Track 5 : Nymphadora_83, Agueybana_84, Zirinka_78, BaxterFox_84, TimTam_83, Hugley_81, Bosnia_81, Eviarto_83, Herod_83, AlumE_81, Ohgeesy_83, BoyNamedSue_81, Bialota_78, SushiChef_81, BatStarr_82
- Track 6 : WelcomeAyanna_82, PantheRoc_85, Madeline_75, PhriskyACE_72, ThankyouJordi_82
- Track 7 : Trumpet_78, Zameen_78, Eudoria_78, Antonio_77, Kita_79, Neobush_80, Manasvini_80, Suscepit_78, Polly_75, Tayonia_78
- Track 8 : Maridalia_82
- Track 9 : Hyzer_98
- Track 10 : Yinzer_74, Haley23_74, Lamberg_70, GemG_74, TuertoX_74, Yeet412_72, Sproutie_74, Cynthia_74, Ebert_77, Bjanes7_71, Mocha12_74, Whiteclaw_74, SoilAssassin_73, Gizermo_74, Clap_74, Jalleen_76, LordFarquaad_75, Savage_74, Nettuno_70, Attis_73, Sahara_71
- Track 11 : FroggyToad_72
- Track 12 : Matteo_66
- Track 13 : JCole_72, Pickett_73, EdnaMode_74
- Track 14 : Vasanti_70
- Track 15 : Yeezy_85
- Track 16 : Thimann_79, Hortense_78, Rizz_80, Adora_75, Shlim410_76, Howe_78, Twinkle_77
- Track 17 : DobbysSock_72, Oregano_78, WinkNick_79, Annalisa_76, Sekhmet_78, Dolores_79
- Track 18 : Tuti_71, Clark_76, Easley_75, Beenie_71, Invectra_80, MichaelScott_78
- Track 19 : Mcklovin_77
- Track 20 : Samman98_78
- Track 21 : Powerball_75
- Track 22 : Dorito_74
- Track 23 : Denise_76
- Track 24 : Moosehead_75
- Track 25 : OneDirection_68
- Track 26 : Faith5x5_70
- Track 27 : Sidious_78
- Track 28 : RavenCo17_73

- Track 29 : TinyDot_69
- Track 30 : Eyre_71
- Track 31 : Gudmit_73

Summary of Final Annotations (See graph section above for start numbers):

The start number called the most often in the published annotations is 13, it was called in 54 of the 88 non-draft genes in the pham.

Genes that call this "Most Annotated" start:

- Adora_75, Agueybana_84, AlumE_81, Annalisa_76, Antonio_77, BatStarr_82, BaxterFox_84, Beenie_71, Bialota_78, Bosnia_81, BoyNamedSue_81, Bunnybear_77, Clark_76, DobbysSock_72, Dolores_79, Dorito_74, Easley_75, Eudoria_78, Eviarto_83, Herod_83, Hortense_78, Howe_78, Hugley_81, Hyzer_98, Invectra_80, Kita_79, Madavieve_78, Madeline_75, Manasvini_80, Maridalia_82, Mcklovin_77, MichaelScott_78, Neobush_80, Nymphadora_83, Ohgeesy_83, Oregano_78, PantheRoc_85, PhriskyACE_72, Polly_75, Powerball_75, Rizz_80, Samman98_78, Sekhmet_78, Shlim410_76, Sidious_78, Suscepit_78, SushiChef_81, Tayonia_78, ThankyouJordi_82, Thimann_79, TimTam_83, Trumpet_78, Tuti_71, Twinkle_77, WelcomeAyanna_82, WinkNick_79, Yeezy_85, Zameen_78, Zirinka_78,

Genes that have the "Most Annotated" start but do not call it:

-

Genes that do not have the "Most Annotated" start:

- Attis_73, Bjanes7_71, Clap_74, Cynthia_74, Denise_76, Ebert_77, EdnaMode_74, Eyre_71, Faith5x5_70, FroggyToad_72, GemG_74, Gizermo_74, Gudmit_73, Haley23_74, JCole_72, Jalleen_76, Lamberg_70, LordFarquaad_75, Lton_72, Matteo_66, Mocha12_74, Moosehead_75, Nettuno_70, OneDirection_68, Pepperoni_68, Pickett_73, RavenCo17_73, Sahara_71, Savage_74, SoilAssassin_73, Sproutie_74, TinyDot_69, TuertoX_74, Vasanti_70, Whiteclaw_74, Yeet412_72, Yinzer_74,

Summary by start number:

Start 6:

- Found in 7 of 96 (7.3%) of genes in pham
- Manual Annotations of this start: 7 of 88
- Called 100.0% of time when present
- Phage (with cluster) where this start called: Denise_76 (CZ5), EdnaMode_74 (CZ2), JCole_72 (CZ2), Matteo_66 (CZ2), Moosehead_75 (CZ6), Pickett_73 (CZ2), Vasanti_70 (CZ2),

Start 11:

- Found in 29 of 96 (30.2%) of genes in pham
- Manual Annotations of this start: 23 of 88
- Called 86.2% of time when present
- Phage (with cluster) where this start called: Attis_73 (CZ2), Bjanes7_71 (CZ2), Clap_74 (CZ2), Cynthia_74 (CZ2), Ebert_77 (CZ2), Eyre_71 (singleton), GemG_74 (CZ2), Gizermo_74 (CZ2), Haley23_74 (CZ2), Jalleen_76 (CZ2), Lamberg_70 (CZ2),

LordFarquaad_75 (CZ2), Lton_72 (CZ), Mocha12_74 (CZ2), Nettuno_70 (CZ2), OneDirection_68 (CZ6), RavenCo17_73 (CZ8), Sahara_71 (CZ2), Savage_74 (CZ2), SoilAssassin_73 (CZ2), Sproutie_74 (CZ2), TuertoX_74 (CZ2), Whiteclaw_74 (CZ2), Yeet412_72 (CZ2), Yinzer_74 (CZ2),

Start 12:

- Found in 1 of 96 (1.0%) of genes in pham
- Manual Annotations of this start: 1 of 88
- Called 100.0% of time when present
- Phage (with cluster) where this start called: TinyDot_69 (singleton),

Start 13:

- Found in 59 of 96 (61.5%) of genes in pham
- Manual Annotations of this start: 54 of 88
- Called 100.0% of time when present
- Phage (with cluster) where this start called: Adora_75 (CZ4), Agueybana_84 (CZ1), AlumE_81 (CZ1), Annalisa_76 (CZ4), Antonio_77 (CZ1), BatStarr_82 (CZ1), BaxterFox_84 (CZ3), Beenie_71 (CZ4), Bialota_78 (CZ1), Bosnia_81 (CZ1), BoyNamedSue_81 (CZ1), Bunnybear_77 (CZ), Clark_76 (CZ4), DobbysSock_72 (CZ4), Dolores_79 (CZ4), Dorito_74 (CZ4), Easley_75 (CZ4), Eudoria_78 (CZ1), Eviarto_83 (CZ1), Herod_83 (CZ1), Hortense_78 (CZ4), Howe_78 (CZ4), Hugley_81 (CZ1), Hyzer_98 (CZ1), Investra_80 (CZ4), Kita_79 (CZ1), Madavieve_78 (CZ1), Madeline_75 (CZ1), Manasvini_80 (CZ1), Maridalia_82 (CZ1), Mcklovin_77 (CZ4), MichaelScott_78 (CZ4), Neobush_80 (CZ1), Nymphadora_83 (CZ1), Ohgeesy_83 (CZ), Oregano_78 (CZ4), PantheRoc_85 (CZ3), PhriskyACE_72 (CZ4), Polly_75 (CZ1), Powerball_75 (CZ4), Rizz_80 (CZ4), Samman98_78 (CZ4), Sekhmet_78 (CZ4), Shlim410_76 (CZ4), Sidious_78 (CZ7), Suscepit_78 (CZ1), SushiChef_81 (CZ), Tayonia_78 (CZ1), ThankyouJordi_82 (CZ1), Thimann_79 (CZ4), TimTam_83 (CZ1), Trumpet_78 (CZ1), Tuti_71 (CZ4), Twinkle_77 (CZ4), WelcomeAyanna_82 (CZ1), WinkNick_79 (CZ4), Yeezy_85 (CZ3), Zameen_78 (CZ1), Zirinka_78 (CZ1),

Start 14:

- Found in 36 of 96 (37.5%) of genes in pham
- Manual Annotations of this start: 3 of 88
- Called 11.1% of time when present
- Phage (with cluster) where this start called: Faith5x5_70 (CZ6), FroggyToad_72 (CZ2), Gudmit_73 (singleton), Pepperoni_68 (CZ),

Summary by clusters:

There are 10 clusters represented in this pham: CZ7, CZ8, CZ2, CZ3, CZ1, CZ6, singleton, CZ4, CZ5, CZ,

Info for manual annotations of cluster CZ:

- Start number 11 was manually annotated 1 time for cluster CZ.
- Start number 13 was manually annotated 2 times for cluster CZ.
- Start number 14 was manually annotated 1 time for cluster CZ.

Info for manual annotations of cluster CZ1:

- Start number 13 was manually annotated 25 times for cluster CZ1.

Info for manual annotations of cluster CZ2:

- Start number 6 was manually annotated 5 times for cluster CZ2.

- Start number 11 was manually annotated 19 times for cluster CZ2.

Info for manual annotations of cluster CZ3:

- Start number 13 was manually annotated 3 times for cluster CZ3.

Info for manual annotations of cluster CZ4:

- Start number 13 was manually annotated 23 times for cluster CZ4.

Info for manual annotations of cluster CZ5:

- Start number 6 was manually annotated 1 time for cluster CZ5.

Info for manual annotations of cluster CZ6:

- Start number 6 was manually annotated 1 time for cluster CZ6.
- Start number 11 was manually annotated 1 time for cluster CZ6.
- Start number 14 was manually annotated 1 time for cluster CZ6.

Info for manual annotations of cluster CZ7:

- Start number 13 was manually annotated 1 time for cluster CZ7.

Info for manual annotations of cluster CZ8:

- Start number 11 was manually annotated 1 time for cluster CZ8.

Gene Information:

Gene: Adora_75 Start: 50646, Stop: 50954, Start Num: 13

Candidate Starts for Adora_75:

(Start: 13 @50646 has 54 MA's), (16, 50688), (25, 50880),

Gene: Agueybana_84 Start: 52113, Stop: 52421, Start Num: 13

Candidate Starts for Agueybana_84:

(10, 52077), (Start: 13 @52113 has 54 MA's), (16, 52155), (25, 52347),

Gene: AlumE_81 Start: 52004, Stop: 52312, Start Num: 13

Candidate Starts for AlumE_81:

(10, 51968), (Start: 13 @52004 has 54 MA's), (16, 52046), (25, 52238),

Gene: Annalisa_76 Start: 46540, Stop: 46848, Start Num: 13

Candidate Starts for Annalisa_76:

(Start: 13 @46540 has 54 MA's), (16, 46582), (25, 46774),

Gene: Antonio_77 Start: 49642, Stop: 49950, Start Num: 13

Candidate Starts for Antonio_77:

(Start: 13 @49642 has 54 MA's), (16, 49684), (25, 49876),

Gene: Attis_73 Start: 47175, Stop: 47504, Start Num: 11

Candidate Starts for Attis_73:

(Start: 11 @47175 has 23 MA's), (Start: 14 @47217 has 3 MA's), (16, 47241), (17, 47247), (18, 47271), (19, 47286), (25, 47427), (27, 47478),

Gene: BatStarr_82 Start: 52738, Stop: 53046, Start Num: 13

Candidate Starts for BatStarr_82:

(10, 52702), (Start: 13 @52738 has 54 MA's), (16, 52780), (25, 52972),

Gene: BaxterFox_84 Start: 52934, Stop: 53242, Start Num: 13

Candidate Starts for BaxterFox_84:

(10, 52898), (Start: 13 @52934 has 54 MA's), (16, 52976), (25, 53168),

Gene: Beenie_71 Start: 46939, Stop: 47247, Start Num: 13

Candidate Starts for Beenie_71:

(Start: 13 @46939 has 54 MA's), (15, 46972), (16, 46981), (25, 47173),

Gene: Bialota_78 Start: 51398, Stop: 51706, Start Num: 13

Candidate Starts for Bialota_78:

(10, 51362), (Start: 13 @51398 has 54 MA's), (16, 51440), (25, 51632),

Gene: Bjaner7_71 Start: 45336, Stop: 45665, Start Num: 11

Candidate Starts for Bjaner7_71:

(Start: 11 @45336 has 23 MA's), (Start: 14 @45378 has 3 MA's), (16, 45402), (17, 45408), (18, 45432), (19, 45447), (25, 45588), (27, 45639),

Gene: Bosnia_81 Start: 53852, Stop: 54160, Start Num: 13

Candidate Starts for Bosnia_81:

(10, 53816), (Start: 13 @53852 has 54 MA's), (16, 53894), (25, 54086),

Gene: BoyNamedSue_81 Start: 52004, Stop: 52312, Start Num: 13

Candidate Starts for BoyNamedSue_81:

(10, 51968), (Start: 13 @52004 has 54 MA's), (16, 52046), (25, 52238),

Gene: Bunnybear_77 Start: 50574, Stop: 50882, Start Num: 13

Candidate Starts for Bunnybear_77:

(Start: 13 @50574 has 54 MA's), (16, 50616), (25, 50808),

Gene: Clap_74 Start: 45515, Stop: 45844, Start Num: 11

Candidate Starts for Clap_74:

(Start: 11 @45515 has 23 MA's), (Start: 14 @45557 has 3 MA's), (16, 45581), (17, 45587), (18, 45611), (19, 45626), (25, 45767), (27, 45818),

Gene: Clark_76 Start: 46702, Stop: 47010, Start Num: 13

Candidate Starts for Clark_76:

(Start: 13 @46702 has 54 MA's), (15, 46735), (16, 46744), (25, 46936),

Gene: Cynthia_74 Start: 45513, Stop: 45842, Start Num: 11

Candidate Starts for Cynthia_74:

(Start: 11 @45513 has 23 MA's), (Start: 14 @45555 has 3 MA's), (16, 45579), (17, 45585), (18, 45609), (19, 45624), (25, 45765), (27, 45816),

Gene: Denise_76 Start: 43912, Stop: 44241, Start Num: 6

Candidate Starts for Denise_76:

(Start: 6 @43912 has 7 MA's), (Start: 14 @43954 has 3 MA's), (16, 43978),

Gene: DobbysSock_72 Start: 47455, Stop: 47763, Start Num: 13

Candidate Starts for DobbysSock_72:

(Start: 13 @47455 has 54 MA's), (16, 47497), (25, 47689),

Gene: Dolores_79 Start: 46593, Stop: 46901, Start Num: 13

Candidate Starts for Dolores_79:

(Start: 13 @46593 has 54 MA's), (16, 46635), (25, 46827),

Gene: Dorito_74 Start: 46041, Stop: 46349, Start Num: 13

Candidate Starts for Dorito_74:

(Start: 13 @46041 has 54 MA's), (16, 46083), (25, 46275),

Gene: Easley_75 Start: 45703, Stop: 46011, Start Num: 13

Candidate Starts for Easley_75:

(Start: 13 @45703 has 54 MA's), (15, 45736), (16, 45745), (25, 45937),

Gene: Ebert_77 Start: 45947, Stop: 46276, Start Num: 11

Candidate Starts for Ebert_77:

(Start: 11 @45947 has 23 MA's), (Start: 14 @45989 has 3 MA's), (16, 46013), (17, 46019), (18, 46043), (19, 46058), (25, 46199), (27, 46250),

Gene: EdnaMode_74 Start: 45868, Stop: 46197, Start Num: 6

Candidate Starts for EdnaMode_74:

(Start: 6 @45868 has 7 MA's), (Start: 14 @45910 has 3 MA's), (16, 45934), (22, 46081),

Gene: Eudoria_78 Start: 49642, Stop: 49950, Start Num: 13

Candidate Starts for Eudoria_78:

(Start: 13 @49642 has 54 MA's), (16, 49684), (25, 49876),

Gene: Eviarto_83 Start: 52713, Stop: 53021, Start Num: 13

Candidate Starts for Eviarto_83:

(10, 52677), (Start: 13 @52713 has 54 MA's), (16, 52755), (25, 52947),

Gene: Eyre_71 Start: 43512, Stop: 43847, Start Num: 11

Candidate Starts for Eyre_71:

(Start: 11 @43512 has 23 MA's), (Start: 14 @43554 has 3 MA's), (16, 43578), (20, 43629), (22, 43725),

Gene: Faith5x5_70 Start: 40885, Stop: 41172, Start Num: 14

Candidate Starts for Faith5x5_70:

(Start: 11 @40843 has 23 MA's), (Start: 14 @40885 has 3 MA's), (16, 40909), (27, 41146),

Gene: FroggyToad_72 Start: 46027, Stop: 46314, Start Num: 14

Candidate Starts for FroggyToad_72:

(1, 45631), (8, 45919), (9, 45943), (Start: 11 @45985 has 23 MA's), (Start: 14 @46027 has 3 MA's), (16, 46051),

Gene: GemG_74 Start: 45519, Stop: 45848, Start Num: 11

Candidate Starts for GemG_74:

(Start: 11 @45519 has 23 MA's), (Start: 14 @45561 has 3 MA's), (16, 45585), (17, 45591), (18, 45615), (19, 45630), (25, 45771), (27, 45822),

Gene: Gizermo_74 Start: 45515, Stop: 45844, Start Num: 11

Candidate Starts for Gizermo_74:

(Start: 11 @45515 has 23 MA's), (Start: 14 @45557 has 3 MA's), (16, 45581), (17, 45587), (18, 45611), (19, 45626), (25, 45767), (27, 45818),

Gene: Gudmit_73 Start: 41550, Stop: 41837, Start Num: 14

Candidate Starts for Gudmit_73:

(7, 41394), (Start: 11 @41508 has 23 MA's), (Start: 14 @41550 has 3 MA's), (16, 41574), (26, 41796),

Gene: Haley23_74 Start: 45515, Stop: 45844, Start Num: 11

Candidate Starts for Haley23_74:

(Start: 11 @45515 has 23 MA's), (Start: 14 @45557 has 3 MA's), (16, 45581), (17, 45587), (18, 45611), (19, 45626), (25, 45767), (27, 45818),

Gene: Herod_83 Start: 53132, Stop: 53440, Start Num: 13

Candidate Starts for Herod_83:

(10, 53096), (Start: 13 @53132 has 54 MA's), (16, 53174), (25, 53366),

Gene: Hortense_78 Start: 52001, Stop: 52309, Start Num: 13

Candidate Starts for Hortense_78:

(Start: 13 @52001 has 54 MA's), (16, 52043), (25, 52235),

Gene: Howe_78 Start: 52001, Stop: 52309, Start Num: 13

Candidate Starts for Howe_78:

(Start: 13 @52001 has 54 MA's), (16, 52043), (25, 52235),

Gene: Hugley_81 Start: 53112, Stop: 53420, Start Num: 13

Candidate Starts for Hugley_81:

(10, 53076), (Start: 13 @53112 has 54 MA's), (16, 53154), (25, 53346),

Gene: Hyzer_98 Start: 59654, Stop: 59962, Start Num: 13

Candidate Starts for Hyzer_98:

(2, 59345), (Start: 13 @59654 has 54 MA's), (16, 59696), (25, 59888),

Gene: Invecetra_80 Start: 48275, Stop: 48583, Start Num: 13

Candidate Starts for Invecetra_80:

(Start: 13 @48275 has 54 MA's), (15, 48308), (16, 48317), (25, 48509),

Gene: JCole_72 Start: 44430, Stop: 44759, Start Num: 6

Candidate Starts for JCole_72:

(Start: 6 @44430 has 7 MA's), (Start: 14 @44472 has 3 MA's), (16, 44496), (22, 44643),

Gene: Jalleen_76 Start: 45272, Stop: 45601, Start Num: 11

Candidate Starts for Jalleen_76:

(Start: 11 @45272 has 23 MA's), (Start: 14 @45314 has 3 MA's), (16, 45338), (17, 45344), (18, 45368), (19, 45383), (25, 45524), (27, 45575),

Gene: Kita_79 Start: 49651, Stop: 49959, Start Num: 13

Candidate Starts for Kita_79:

(Start: 13 @49651 has 54 MA's), (16, 49693), (25, 49885),

Gene: Lamberg_70 Start: 44024, Stop: 44353, Start Num: 11

Candidate Starts for Lamberg_70:

(Start: 11 @44024 has 23 MA's), (Start: 14 @44066 has 3 MA's), (16, 44090), (17, 44096), (18, 44120), (19, 44135), (25, 44276), (27, 44327),

Gene: LordFarquaad_75 Start: 47157, Stop: 47486, Start Num: 11

Candidate Starts for LordFarquaad_75:

(Start: 11 @47157 has 23 MA's), (Start: 14 @47199 has 3 MA's), (16, 47223), (17, 47229), (18, 47253), (19, 47268), (25, 47409), (27, 47460),

Gene: Lton_72 Start: 40999, Stop: 41328, Start Num: 11

Candidate Starts for Lton_72:

(Start: 11 @40999 has 23 MA's), (Start: 14 @41041 has 3 MA's), (16, 41065), (19, 41110), (23, 41218), (25, 41251), (27, 41302),

Gene: Madavieve_78 Start: 51054, Stop: 51362, Start Num: 13

Candidate Starts for Madavieve_78:

(Start: 13 @51054 has 54 MA's), (16, 51096), (25, 51288),

Gene: Madeline_75 Start: 50976, Stop: 51284, Start Num: 13

Candidate Starts for Madeline_75:

(Start: 13 @50976 has 54 MA's), (16, 51018), (25, 51210),

Gene: Manasvini_80 Start: 49666, Stop: 49974, Start Num: 13

Candidate Starts for Manasvini_80:

(Start: 13 @49666 has 54 MA's), (16, 49708), (25, 49900),

Gene: Maridalia_82 Start: 50934, Stop: 51242, Start Num: 13

Candidate Starts for Maridalia_82:

(2, 50622), (Start: 13 @50934 has 54 MA's), (16, 50976), (25, 51168),

Gene: Matteo_66 Start: 43086, Stop: 43415, Start Num: 6

Candidate Starts for Matteo_66:

(Start: 6 @43086 has 7 MA's), (Start: 14 @43128 has 3 MA's), (16, 43152), (27, 43389),

Gene: Mcklovin_77 Start: 52464, Stop: 52772, Start Num: 13

Candidate Starts for Mcklovin_77:

(Start: 13 @52464 has 54 MA's), (16, 52506), (25, 52698),

Gene: MichaelScott_78 Start: 47383, Stop: 47691, Start Num: 13

Candidate Starts for MichaelScott_78:

(Start: 13 @47383 has 54 MA's), (15, 47416), (16, 47425), (25, 47617),

Gene: Mocha12_74 Start: 45515, Stop: 45844, Start Num: 11

Candidate Starts for Mocha12_74:

(Start: 11 @45515 has 23 MA's), (Start: 14 @45557 has 3 MA's), (16, 45581), (17, 45587), (18, 45611), (19, 45626), (25, 45767), (27, 45818),

Gene: Moosehead_75 Start: 41533, Stop: 41862, Start Num: 6

Candidate Starts for Moosehead_75:

(5, 41476), (Start: 6 @41533 has 7 MA's), (Start: 14 @41575 has 3 MA's), (16, 41599), (27, 41836),

Gene: Neobush_80 Start: 50210, Stop: 50518, Start Num: 13

Candidate Starts for Neobush_80:

(Start: 13 @50210 has 54 MA's), (16, 50252), (25, 50444),

Gene: Nettuno_70 Start: 43822, Stop: 44151, Start Num: 11

Candidate Starts for Nettuno_70:

(Start: 11 @43822 has 23 MA's), (Start: 14 @43864 has 3 MA's), (16, 43888), (17, 43894), (18, 43918), (19, 43933), (25, 44074), (27, 44125),

Gene: Nymphadora_83 Start: 52737, Stop: 53045, Start Num: 13
Candidate Starts for Nymphadora_83:
(10, 52701), (Start: 13 @52737 has 54 MA's), (16, 52779), (25, 52971),

Gene: Ohgeesy_83 Start: 52276, Stop: 52584, Start Num: 13
Candidate Starts for Ohgeesy_83:
(10, 52240), (Start: 13 @52276 has 54 MA's), (16, 52318), (25, 52510),

Gene: OneDirection_68 Start: 39305, Stop: 39634, Start Num: 11
Candidate Starts for OneDirection_68:
(Start: 11 @39305 has 23 MA's), (Start: 14 @39347 has 3 MA's), (16, 39371), (19, 39416), (25, 39557),
(27, 39608),

Gene: Oregano_78 Start: 46832, Stop: 47140, Start Num: 13
Candidate Starts for Oregano_78:
(Start: 13 @46832 has 54 MA's), (16, 46874), (25, 47066),

Gene: PantheRoc_85 Start: 52347, Stop: 52655, Start Num: 13
Candidate Starts for PantheRoc_85:
(Start: 13 @52347 has 54 MA's), (16, 52389), (25, 52581),

Gene: Pepperoni_68 Start: 40729, Stop: 41016, Start Num: 14
Candidate Starts for Pepperoni_68:
(Start: 11 @40687 has 23 MA's), (Start: 14 @40729 has 3 MA's), (16, 40753), (17, 40759), (19, 40798),
(25, 40939), (27, 40990),

Gene: PhriskyACE_72 Start: 46489, Stop: 46797, Start Num: 13
Candidate Starts for PhriskyACE_72:
(Start: 13 @46489 has 54 MA's), (16, 46531), (25, 46723),

Gene: Pickett_73 Start: 44706, Stop: 45035, Start Num: 6
Candidate Starts for Pickett_73:
(Start: 6 @44706 has 7 MA's), (Start: 14 @44748 has 3 MA's), (16, 44772), (22, 44919),

Gene: Polly_75 Start: 49085, Stop: 49393, Start Num: 13
Candidate Starts for Polly_75:
(Start: 13 @49085 has 54 MA's), (16, 49127), (25, 49319),

Gene: Powerball_75 Start: 46940, Stop: 47248, Start Num: 13
Candidate Starts for Powerball_75:
(Start: 13 @46940 has 54 MA's), (16, 46982), (25, 47174),

Gene: RavenCo17_73 Start: 48930, Stop: 49265, Start Num: 11
Candidate Starts for RavenCo17_73:
(Start: 11 @48930 has 23 MA's), (Start: 14 @48972 has 3 MA's), (16, 48996), (17, 49002), (20, 49047),
(21, 49134), (22, 49143),

Gene: Rizz_80 Start: 48278, Stop: 48586, Start Num: 13
Candidate Starts for Rizz_80:
(Start: 13 @48278 has 54 MA's), (16, 48320), (25, 48512),

Gene: Sahara_71 Start: 44366, Stop: 44695, Start Num: 11

Candidate Starts for Sahara_71:

(Start: 11 @44366 has 23 MA's), (Start: 14 @44408 has 3 MA's), (16, 44432), (17, 44438), (18, 44462), (19, 44477), (25, 44618), (27, 44669),

Gene: Samman98_78 Start: 46805, Stop: 47113, Start Num: 13

Candidate Starts for Samman98_78:

(Start: 13 @46805 has 54 MA's), (16, 46847), (25, 47039),

Gene: Savage_74 Start: 45515, Stop: 45844, Start Num: 11

Candidate Starts for Savage_74:

(Start: 11 @45515 has 23 MA's), (Start: 14 @45557 has 3 MA's), (16, 45581), (17, 45587), (18, 45611), (19, 45626), (25, 45767), (27, 45818),

Gene: Sekhmet_78 Start: 46992, Stop: 47300, Start Num: 13

Candidate Starts for Sekhmet_78:

(Start: 13 @46992 has 54 MA's), (16, 47034), (25, 47226),

Gene: Shlim410_76 Start: 52001, Stop: 52309, Start Num: 13

Candidate Starts for Shlim410_76:

(Start: 13 @52001 has 54 MA's), (16, 52043), (25, 52235),

Gene: Sidious_78 Start: 50989, Stop: 51297, Start Num: 13

Candidate Starts for Sidious_78:

(Start: 13 @50989 has 54 MA's), (16, 51031), (25, 51223),

Gene: SoilAssassin_73 Start: 47174, Stop: 47503, Start Num: 11

Candidate Starts for SoilAssassin_73:

(Start: 11 @47174 has 23 MA's), (Start: 14 @47216 has 3 MA's), (16, 47240), (17, 47246), (18, 47270), (19, 47285), (25, 47426), (27, 47477),

Gene: Sproutie_74 Start: 45515, Stop: 45844, Start Num: 11

Candidate Starts for Sproutie_74:

(Start: 11 @45515 has 23 MA's), (Start: 14 @45557 has 3 MA's), (16, 45581), (17, 45587), (18, 45611), (19, 45626), (25, 45767), (27, 45818),

Gene: Suscepit_78 Start: 49643, Stop: 49951, Start Num: 13

Candidate Starts for Suscepit_78:

(Start: 13 @49643 has 54 MA's), (16, 49685), (25, 49877),

Gene: SushiChef_81 Start: 52114, Stop: 52422, Start Num: 13

Candidate Starts for SushiChef_81:

(10, 52078), (Start: 13 @52114 has 54 MA's), (16, 52156), (25, 52348),

Gene: Tayonia_78 Start: 49642, Stop: 49950, Start Num: 13

Candidate Starts for Tayonia_78:

(Start: 13 @49642 has 54 MA's), (16, 49684), (25, 49876),

Gene: ThankyouJordi_82 Start: 52759, Stop: 53067, Start Num: 13

Candidate Starts for ThankyouJordi_82:

(Start: 13 @52759 has 54 MA's), (16, 52801), (25, 52993),

Gene: Thimann_79 Start: 47303, Stop: 47611, Start Num: 13

Candidate Starts for Thimann_79:

(Start: 13 @47303 has 54 MA's), (16, 47345), (25, 47537),

Gene: TimTam_83 Start: 52737, Stop: 53045, Start Num: 13

Candidate Starts for TimTam_83:

(10, 52701), (Start: 13 @52737 has 54 MA's), (16, 52779), (25, 52971),

Gene: TinyDot_69 Start: 40745, Stop: 41056, Start Num: 12

Candidate Starts for TinyDot_69:

(3, 40502), (4, 40523), (Start: 12 @40745 has 1 MA's), (16, 40805), (24, 40976),

Gene: Trumpet_78 Start: 49643, Stop: 49951, Start Num: 13

Candidate Starts for Trumpet_78:

(Start: 13 @49643 has 54 MA's), (16, 49685), (25, 49877),

Gene: TuertoX_74 Start: 45515, Stop: 45844, Start Num: 11

Candidate Starts for TuertoX_74:

(Start: 11 @45515 has 23 MA's), (Start: 14 @45557 has 3 MA's), (16, 45581), (17, 45587), (18, 45611), (19, 45626), (25, 45767), (27, 45818),

Gene: Tuti_71 Start: 47241, Stop: 47549, Start Num: 13

Candidate Starts for Tuti_71:

(Start: 13 @47241 has 54 MA's), (15, 47274), (16, 47283), (25, 47475),

Gene: Twinkle_77 Start: 53060, Stop: 53368, Start Num: 13

Candidate Starts for Twinkle_77:

(Start: 13 @53060 has 54 MA's), (16, 53102), (25, 53294),

Gene: Vasanti_70 Start: 45756, Stop: 46085, Start Num: 6

Candidate Starts for Vasanti_70:

(Start: 6 @45756 has 7 MA's), (Start: 14 @45798 has 3 MA's), (16, 45822),

Gene: WelcomeAyanna_82 Start: 52906, Stop: 53214, Start Num: 13

Candidate Starts for WelcomeAyanna_82:

(Start: 13 @52906 has 54 MA's), (16, 52948), (25, 53140),

Gene: Whiteclaw_74 Start: 45515, Stop: 45844, Start Num: 11

Candidate Starts for Whiteclaw_74:

(Start: 11 @45515 has 23 MA's), (Start: 14 @45557 has 3 MA's), (16, 45581), (17, 45587), (18, 45611), (19, 45626), (25, 45767), (27, 45818),

Gene: WinkNick_79 Start: 46516, Stop: 46824, Start Num: 13

Candidate Starts for WinkNick_79:

(Start: 13 @46516 has 54 MA's), (16, 46558), (25, 46750),

Gene: Yeet412_72 Start: 45978, Stop: 46307, Start Num: 11

Candidate Starts for Yeet412_72:

(Start: 11 @45978 has 23 MA's), (Start: 14 @46020 has 3 MA's), (16, 46044), (17, 46050), (18, 46074), (19, 46089), (25, 46230), (27, 46281),

Gene: Yeezy_85 Start: 50799, Stop: 51107, Start Num: 13

Candidate Starts for Yeezy_85:

(10, 50763), (Start: 13 @50799 has 54 MA's), (16, 50841), (25, 51033),

Gene: Yinzer_74 Start: 45515, Stop: 45844, Start Num: 11

Candidate Starts for Yinzer_74:

(Start: 11 @45515 has 23 MA's), (Start: 14 @45557 has 3 MA's), (16, 45581), (17, 45587), (18, 45611), (19, 45626), (25, 45767), (27, 45818),

Gene: Zameen_78 Start: 49642, Stop: 49950, Start Num: 13

Candidate Starts for Zameen_78:

(Start: 13 @49642 has 54 MA's), (16, 49684), (25, 49876),

Gene: Zirinka_78 Start: 51386, Stop: 51694, Start Num: 13

Candidate Starts for Zirinka_78:

(10, 51350), (Start: 13 @51386 has 54 MA's), (16, 51428), (25, 51620),