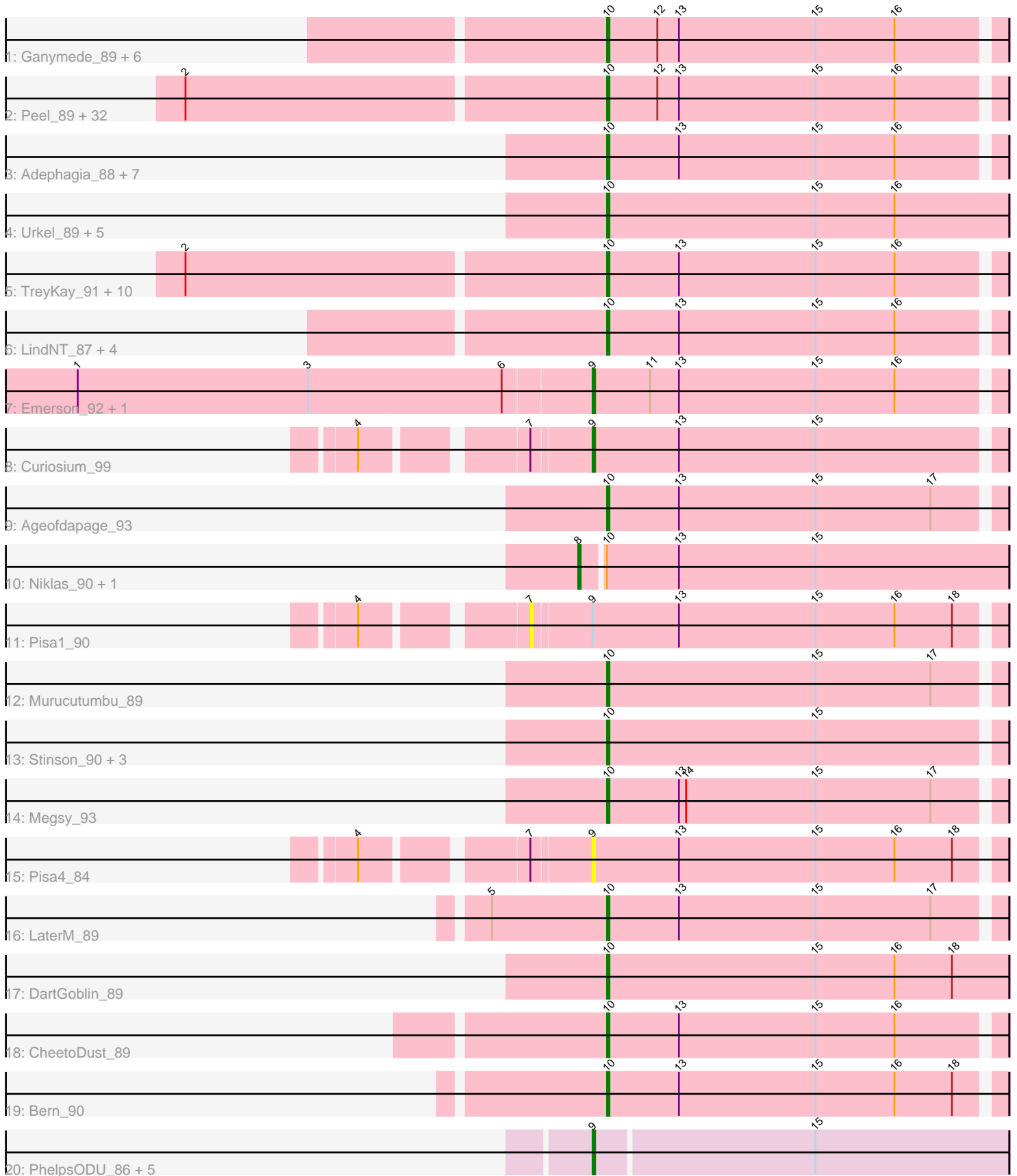


Pham 304894



Note: Tracks are now grouped by subcluster and scaled. Switching in subcluster is indicated by changes in track color. Track scale is now set by default to display the region 30 bp upstream of start 1 to 30 bp downstream of the last possible start. If this default region is judged to be packed too tightly with annotated starts, the track will be further scaled to only show that region of the ORF with annotated starts. This action will be indicated by adding "Zoomed" to the title. For starts, yellow indicates the location of called starts comprised solely of Glimmer/GeneMark auto-annotations, green indicates the location of called starts with at least 1 manual gene annotation.

Pham 304894 Report

This analysis was run 06/08/26 on database version 649.

Pham number 304894 has 94 members, 4 are drafts.

Phages represented in each track:

- Track 1 : Ganymede_89, Beezoo_92, QuincyRose_87, Ramen_90, Apocalypse_91, YoureAdopted_88, Zavala_91
- Track 2 : Peel_89, Pokerus_89, BEEST_89, ShiaSurprise_90, Homura_88, CallaLilly_89, Lunahalos_89, Spock_89, Capricorn_89, MeaningOfLife_91, Tachez_89, Twitch_89, CaseJules_91, Piatt_88, Durfee_89, Rosmarinus_89, Topper_89, Dalmuri_89, Hyperbowlee_88, Jarvi_89, Jeckyll_89, Llorens_89, Padfoot_89, CREW_88, BaghaKamala_88, Boiiii_89, Asayake_89, Joy99_90, Mynx_90, Inky_89, Atiba_90, Blizzard_89, Belladonna_89
- Track 3 : Adephagia_88, HedwigODU_89, TaiwanKao_90, JAWS_88, ActinUp_90, BGIluviae_88, Zabiza_85, Veliki_90
- Track 4 : Urkel_89, SamuelLPlaqson_89, DrHayes_89, Bella96_90, Anma_89, TiniBug_88
- Track 5 : TreyKay_91, Anaya_92, CrimD_89, Jayhawk_91, Rapunzel97_91, AlishaPH_82, TruffulaTree_91, BarrelRoll_89, Prithvi_91, Slimphazie_91, Adonis_89
- Track 6 : LindNT_87, Deby_89, Angelica_86, Sulley_86, Tiri_89
- Track 7 : Emerson_92, Padpat_93
- Track 8 : Curiosium_99
- Track 9 : Ageofdapage_93
- Track 10 : Niklas_90, Shaobing_89
- Track 11 : Pisa1_90
- Track 12 : Murucutumbu_89
- Track 13 : Stinson_90, Illumine_93, Devera_95, Dole_92
- Track 14 : Megsy_93
- Track 15 : Pisa4_84
- Track 16 : LaterM_89
- Track 17 : DartGoblin_89
- Track 18 : CheetoDust_89
- Track 19 : Bern_90
- Track 20 : PhelpsODU_86, Cain_96, Bryler_88, Tierra_96, Unicorn_96, Phrank_96

Summary of Final Annotations (See graph section above for start numbers):

The start number called the most often in the published annotations is 10, it was called in 79 of the 90 non-draft genes in the pham.

Genes that call this "Most Annotated" start:

- ActinUp_90, Adephagia_88, Adonis_89, Ageofdapage_93, AlishaPH_82, Anaya_92, Angelica_86, Anma_89, Apocalypse_91, Asayake_89, Atiba_90, BEEST_89, BGIlluviae_88, BaghaKamala_88, BarrelRoll_89, Beezoo_92, Bella96_90, Belladonna_89, Bern_90, Blizzard_89, Boiii_89, CREW_88, CallaLilly_89, Capricorn_89, CaseJules_91, CheetoDust_89, CrimD_89, Dalmuri_89, DartGoblin_89, Deby_89, Devera_95, Dole_92, DrHayes_89, Durfee_89, Ganymede_89, HedwigODU_89, Homura_88, Hyperbowlee_88, Illumine_93, Inky_89, JAWS_88, Jarvi_89, Jayhawk_91, Jeckyll_89, Joy99_90, LaterM_89, LindNT_87, Llorens_89, Lunahalos_89, MeaningOfLife_91, Megsy_93, Murucutumbu_89, Mynx_90, Padfoot_89, Peel_89, Piatt_88, Pokerus_89, Prithvi_91, QuincyRose_87, Ramen_90, Rapunzel97_91, Rosmarinus_89, SamuelLPlaqson_89, ShiaSurprise_90, Slimphazie_91, Spock_89, Stinson_90, Sulley_86, Tachez_89, TaiwanKao_90, TiniBug_88, Tiri_89, Topper_89, TreyKay_91, TruffulaTree_91, Twitch_89, Urkel_89, Veliki_90, YoureAdopted_88, Zabiza_85, Zavala_91,

Genes that have the "Most Annotated" start but do not call it:

- Niklas_90, Shaobing_89,

Genes that do not have the "Most Annotated" start:

- Bryler_88, Cain_96, Curiosium_99, Emerson_92, Padpat_93, PhelpsODU_86, Phrank_96, Pisa1_90, Pisa4_84, Tierra_96, Unicorn_96,

Summary by start number:

Start 7:

- Found in 3 of 94 (3.2%) of genes in pham
- No Manual Annotations of this start.
- Called 33.3% of time when present
- Phage (with cluster) where this start called: Pisa1_90 (K1),

Start 8:

- Found in 2 of 94 (2.1%) of genes in pham
- Manual Annotations of this start: 2 of 90
- Called 100.0% of time when present
- Phage (with cluster) where this start called: Niklas_90 (K1), Shaobing_89 (K1),

Start 9:

- Found in 11 of 94 (11.7%) of genes in pham
- Manual Annotations of this start: 9 of 90
- Called 90.9% of time when present
- Phage (with cluster) where this start called: Bryler_88 (K6), Cain_96 (K6), Curiosium_99 (K1), Emerson_92 (K1), Padpat_93 (K1), PhelpsODU_86 (K6), Phrank_96 (K6), Pisa4_84 (K1), Tierra_96 (K6), Unicorn_96 (K6),

Start 10:

- Found in 83 of 94 (88.3%) of genes in pham
- Manual Annotations of this start: 79 of 90
- Called 97.6% of time when present
- Phage (with cluster) where this start called: ActinUp_90 (K1), Adephagia_88 (K1), Adonis_89 (K1), Ageofdapage_93 (K1), AlishaPH_82 (K1), Anaya_92 (K1), Angelica_86 (K1), Anma_89 (K1), Apocalypse_91 (K1), Asayake_89 (K1), Atiba_90

(K1), BEEST_89 (K1), BGlluviae_88 (K1), BaghaKamala_88 (K1), BarrelRoll_89 (K1), Beezoo_92 (K1), Bella96_90 (K1), Belladonna_89 (K1), Bern_90 (K1), Blizzard_89 (K1), Boiiii_89 (K1), CREW_88 (K1), CallaLilly_89 (K1), Capricorn_89 (K1), CaseJules_91 (K1), CheetoDust_89 (K1), CrimD_89 (K1), Dalmuri_89 (K1), DartGoblin_89 (K1), Deby_89 (K1), Devera_95 (K1), Dole_92 (K1), DrHayes_89 (K1), Durfee_89 (K1), Ganymede_89 (K1), HedwigODU_89 (K1), Homura_88 (K1), Hyperbowlee_88 (K1), Illumine_93 (K1), Inky_89 (K1), JAWS_88 (K1), Jarvi_89 (K1), Jayhawk_91 (K1), Jeckyll_89 (K1), Joy99_90 (K1), LaterM_89 (K1), LindNT_87 (K1), Llorens_89 (K1), Lunahalos_89 (K1), MeaningOfLife_91 (K1), Megsy_93 (K1), Murucutumbu_89 (K1), Mynx_90 (K1), Padfoot_89 (K1), Peel_89 (K1), Piatt_88 (K1), Pokerus_89 (K1), Prithvi_91 (K1), QuincyRose_87 (K1), Ramen_90 (K1), Rapunzel97_91 (K1), Rosmarinus_89 (K1), SamuelLPlaqson_89 (K1), ShiaSurprise_90 (K1), Slimphazie_91 (K1), Spock_89 (K1), Stinson_90 (K1), Sulley_86 (K1), Tachez_89 (K1), TaiwanKao_90 (K1), TiniBug_88 (K1), Tiri_89 (K1), Topper_89 (K1), TreyKay_91 (K1), TruffulaTree_91 (K1), Twitch_89 (K1), Urkel_89 (K1), Veliki_90 (K1), YoureAdopted_88 (K1), Zabiza_85 (K1), Zavala_91 (K1),

Summary by clusters:

There are 2 clusters represented in this pham: K1, K6,

Info for manual annotations of cluster K1:

- Start number 8 was manually annotated 2 times for cluster K1.
- Start number 9 was manually annotated 3 times for cluster K1.
- Start number 10 was manually annotated 79 times for cluster K1.

Info for manual annotations of cluster K6:

- Start number 9 was manually annotated 6 times for cluster K6.

Gene Information:

Gene: ActinUp_90 Start: 56657, Stop: 56818, Start Num: 10

Candidate Starts for ActinUp_90:

(Start: 10 @56657 has 79 MA's), (13, 56687), (15, 56744), (16, 56777),

Gene: Adephagia_88 Start: 56500, Stop: 56661, Start Num: 10

Candidate Starts for Adephagia_88:

(Start: 10 @56500 has 79 MA's), (13, 56530), (15, 56587), (16, 56620),

Gene: Adonis_89 Start: 56698, Stop: 56859, Start Num: 10

Candidate Starts for Adonis_89:

(2, 56527), (Start: 10 @56698 has 79 MA's), (13, 56728), (15, 56785), (16, 56818),

Gene: Ageofdapage_93 Start: 57508, Stop: 57669, Start Num: 10

Candidate Starts for Ageofdapage_93:

(Start: 10 @57508 has 79 MA's), (13, 57538), (15, 57595), (17, 57643),

Gene: AlishaPH_82 Start: 53889, Stop: 54050, Start Num: 10

Candidate Starts for AlishaPH_82:

(2, 53718), (Start: 10 @53889 has 79 MA's), (13, 53919), (15, 53976), (16, 54009),

Gene: Anaya_92 Start: 57721, Stop: 57882, Start Num: 10
Candidate Starts for Anaya_92:
(2, 57550), (Start: 10 @57721 has 79 MA's), (13, 57751), (15, 57808), (16, 57841),

Gene: Angelica_86 Start: 55917, Stop: 56078, Start Num: 10
Candidate Starts for Angelica_86:
(Start: 10 @55917 has 79 MA's), (13, 55947), (15, 56004), (16, 56037),

Gene: Anma_89 Start: 56880, Stop: 57047, Start Num: 10
Candidate Starts for Anma_89:
(Start: 10 @56880 has 79 MA's), (15, 56967), (16, 57000),

Gene: Apocalypse_91 Start: 56863, Stop: 57024, Start Num: 10
Candidate Starts for Apocalypse_91:
(Start: 10 @56863 has 79 MA's), (12, 56884), (13, 56893), (15, 56950), (16, 56983),

Gene: Asayake_89 Start: 56818, Stop: 56979, Start Num: 10
Candidate Starts for Asayake_89:
(2, 56647), (Start: 10 @56818 has 79 MA's), (12, 56839), (13, 56848), (15, 56905), (16, 56938),

Gene: Atiba_90 Start: 56466, Stop: 56627, Start Num: 10
Candidate Starts for Atiba_90:
(2, 56295), (Start: 10 @56466 has 79 MA's), (12, 56487), (13, 56496), (15, 56553), (16, 56586),

Gene: BEEST_89 Start: 56818, Stop: 56979, Start Num: 10
Candidate Starts for BEEST_89:
(2, 56647), (Start: 10 @56818 has 79 MA's), (12, 56839), (13, 56848), (15, 56905), (16, 56938),

Gene: BGlluviae_88 Start: 56198, Stop: 56359, Start Num: 10
Candidate Starts for BGlluviae_88:
(Start: 10 @56198 has 79 MA's), (13, 56228), (15, 56285), (16, 56318),

Gene: BaghaKamala_88 Start: 56046, Stop: 56207, Start Num: 10
Candidate Starts for BaghaKamala_88:
(2, 55875), (Start: 10 @56046 has 79 MA's), (12, 56067), (13, 56076), (15, 56133), (16, 56166),

Gene: BarrelRoll_89 Start: 56574, Stop: 56735, Start Num: 10
Candidate Starts for BarrelRoll_89:
(2, 56403), (Start: 10 @56574 has 79 MA's), (13, 56604), (15, 56661), (16, 56694),

Gene: Beezoo_92 Start: 57404, Stop: 57565, Start Num: 10
Candidate Starts for Beezoo_92:
(Start: 10 @57404 has 79 MA's), (12, 57425), (13, 57434), (15, 57491), (16, 57524),

Gene: Bella96_90 Start: 57068, Stop: 57235, Start Num: 10
Candidate Starts for Bella96_90:
(Start: 10 @57068 has 79 MA's), (15, 57155), (16, 57188),

Gene: Belladonna_89 Start: 56621, Stop: 56782, Start Num: 10
Candidate Starts for Belladonna_89:
(2, 56450), (Start: 10 @56621 has 79 MA's), (12, 56642), (13, 56651), (15, 56708), (16, 56741),

Gene: Bern_90 Start: 55076, Stop: 55237, Start Num: 10

Candidate Starts for Bern_90:

(Start: 10 @55076 has 79 MA's), (13, 55106), (15, 55163), (16, 55196), (18, 55220),

Gene: Blizzard_89 Start: 56818, Stop: 56979, Start Num: 10

Candidate Starts for Blizzard_89:

(2, 56647), (Start: 10 @56818 has 79 MA's), (12, 56839), (13, 56848), (15, 56905), (16, 56938),

Gene: Boiiii_89 Start: 56820, Stop: 56981, Start Num: 10

Candidate Starts for Boiiii_89:

(2, 56649), (Start: 10 @56820 has 79 MA's), (12, 56841), (13, 56850), (15, 56907), (16, 56940),

Gene: Bryler_88 Start: 54748, Stop: 54918, Start Num: 9

Candidate Starts for Bryler_88:

(Start: 9 @54748 has 9 MA's), (15, 54838),

Gene: CREW_88 Start: 56621, Stop: 56782, Start Num: 10

Candidate Starts for CREW_88:

(2, 56450), (Start: 10 @56621 has 79 MA's), (12, 56642), (13, 56651), (15, 56708), (16, 56741),

Gene: Cain_96 Start: 57895, Stop: 58065, Start Num: 9

Candidate Starts for Cain_96:

(Start: 9 @57895 has 9 MA's), (15, 57985),

Gene: CallaLilly_89 Start: 56544, Stop: 56705, Start Num: 10

Candidate Starts for CallaLilly_89:

(2, 56373), (Start: 10 @56544 has 79 MA's), (12, 56565), (13, 56574), (15, 56631), (16, 56664),

Gene: Capricorn_89 Start: 56621, Stop: 56782, Start Num: 10

Candidate Starts for Capricorn_89:

(2, 56450), (Start: 10 @56621 has 79 MA's), (12, 56642), (13, 56651), (15, 56708), (16, 56741),

Gene: CaseJules_91 Start: 56818, Stop: 56979, Start Num: 10

Candidate Starts for CaseJules_91:

(2, 56647), (Start: 10 @56818 has 79 MA's), (12, 56839), (13, 56848), (15, 56905), (16, 56938),

Gene: CheetoDust_89 Start: 56016, Stop: 56177, Start Num: 10

Candidate Starts for CheetoDust_89:

(Start: 10 @56016 has 79 MA's), (13, 56046), (15, 56103), (16, 56136),

Gene: CrimD_89 Start: 56666, Stop: 56827, Start Num: 10

Candidate Starts for CrimD_89:

(2, 56495), (Start: 10 @56666 has 79 MA's), (13, 56696), (15, 56753), (16, 56786),

Gene: Curiosium_99 Start: 58643, Stop: 58810, Start Num: 9

Candidate Starts for Curiosium_99:

(4, 58559), (7, 58619), (Start: 9 @58643 has 9 MA's), (13, 58679), (15, 58736),

Gene: Dalmuri_89 Start: 56621, Stop: 56782, Start Num: 10

Candidate Starts for Dalmuri_89:

(2, 56450), (Start: 10 @56621 has 79 MA's), (12, 56642), (13, 56651), (15, 56708), (16, 56741),

Gene: DartGoblin_89 Start: 56728, Stop: 56895, Start Num: 10

Candidate Starts for DartGoblin_89:

(Start: 10 @56728 has 79 MA's), (15, 56815), (16, 56848), (18, 56872),

Gene: Deby_89 Start: 57192, Stop: 57353, Start Num: 10

Candidate Starts for Deby_89:

(Start: 10 @57192 has 79 MA's), (13, 57222), (15, 57279), (16, 57312),

Gene: Devera_95 Start: 57498, Stop: 57659, Start Num: 10

Candidate Starts for Devera_95:

(Start: 10 @57498 has 79 MA's), (15, 57585),

Gene: Dole_92 Start: 57501, Stop: 57662, Start Num: 10

Candidate Starts for Dole_92:

(Start: 10 @57501 has 79 MA's), (15, 57588),

Gene: DrHayes_89 Start: 56880, Stop: 57047, Start Num: 10

Candidate Starts for DrHayes_89:

(Start: 10 @56880 has 79 MA's), (15, 56967), (16, 57000),

Gene: Durfee_89 Start: 56818, Stop: 56979, Start Num: 10

Candidate Starts for Durfee_89:

(2, 56647), (Start: 10 @56818 has 79 MA's), (12, 56839), (13, 56848), (15, 56905), (16, 56938),

Gene: Emerson_92 Start: 57216, Stop: 57383, Start Num: 9

Candidate Starts for Emerson_92:

(1, 57003), (3, 57099), (6, 57180), (Start: 9 @57216 has 9 MA's), (11, 57240), (13, 57252), (15, 57309), (16, 57342),

Gene: Ganymede_89 Start: 56630, Stop: 56791, Start Num: 10

Candidate Starts for Ganymede_89:

(Start: 10 @56630 has 79 MA's), (12, 56651), (13, 56660), (15, 56717), (16, 56750),

Gene: HedwigODU_89 Start: 56657, Stop: 56818, Start Num: 10

Candidate Starts for HedwigODU_89:

(Start: 10 @56657 has 79 MA's), (13, 56687), (15, 56744), (16, 56777),

Gene: Homura_88 Start: 56621, Stop: 56782, Start Num: 10

Candidate Starts for Homura_88:

(2, 56450), (Start: 10 @56621 has 79 MA's), (12, 56642), (13, 56651), (15, 56708), (16, 56741),

Gene: Hyperbowlee_88 Start: 56818, Stop: 56979, Start Num: 10

Candidate Starts for Hyperbowlee_88:

(2, 56647), (Start: 10 @56818 has 79 MA's), (12, 56839), (13, 56848), (15, 56905), (16, 56938),

Gene: Illumine_93 Start: 57500, Stop: 57661, Start Num: 10

Candidate Starts for Illumine_93:

(Start: 10 @57500 has 79 MA's), (15, 57587),

Gene: Inky_89 Start: 56621, Stop: 56782, Start Num: 10

Candidate Starts for Inky_89:

(2, 56450), (Start: 10 @56621 has 79 MA's), (12, 56642), (13, 56651), (15, 56708), (16, 56741),

Gene: JAWS_88 Start: 56604, Stop: 56765, Start Num: 10

Candidate Starts for JAWS_88:

(Start: 10 @56604 has 79 MA's), (13, 56634), (15, 56691), (16, 56724),

Gene: Jarvi_89 Start: 56621, Stop: 56782, Start Num: 10

Candidate Starts for Jarvi_89:

(2, 56450), (Start: 10 @56621 has 79 MA's), (12, 56642), (13, 56651), (15, 56708), (16, 56741),

Gene: Jayhawk_91 Start: 56634, Stop: 56795, Start Num: 10

Candidate Starts for Jayhawk_91:

(2, 56463), (Start: 10 @56634 has 79 MA's), (13, 56664), (15, 56721), (16, 56754),

Gene: Jeckyll_89 Start: 56621, Stop: 56782, Start Num: 10

Candidate Starts for Jeckyll_89:

(2, 56450), (Start: 10 @56621 has 79 MA's), (12, 56642), (13, 56651), (15, 56708), (16, 56741),

Gene: Joy99_90 Start: 56750, Stop: 56911, Start Num: 10

Candidate Starts for Joy99_90:

(2, 56579), (Start: 10 @56750 has 79 MA's), (12, 56771), (13, 56780), (15, 56837), (16, 56870),

Gene: LaterM_89 Start: 57037, Stop: 57198, Start Num: 10

Candidate Starts for LaterM_89:

(5, 56989), (Start: 10 @57037 has 79 MA's), (13, 57067), (15, 57124), (17, 57172),

Gene: LindNT_87 Start: 56732, Stop: 56893, Start Num: 10

Candidate Starts for LindNT_87:

(Start: 10 @56732 has 79 MA's), (13, 56762), (15, 56819), (16, 56852),

Gene: Llorens_89 Start: 56621, Stop: 56782, Start Num: 10

Candidate Starts for Llorens_89:

(2, 56450), (Start: 10 @56621 has 79 MA's), (12, 56642), (13, 56651), (15, 56708), (16, 56741),

Gene: Lunahalos_89 Start: 56621, Stop: 56782, Start Num: 10

Candidate Starts for Lunahalos_89:

(2, 56450), (Start: 10 @56621 has 79 MA's), (12, 56642), (13, 56651), (15, 56708), (16, 56741),

Gene: MeaningOfLife_91 Start: 57306, Stop: 57467, Start Num: 10

Candidate Starts for MeaningOfLife_91:

(2, 57135), (Start: 10 @57306 has 79 MA's), (12, 57327), (13, 57336), (15, 57393), (16, 57426),

Gene: Megsy_93 Start: 56961, Stop: 57122, Start Num: 10

Candidate Starts for Megsy_93:

(Start: 10 @56961 has 79 MA's), (13, 56991), (14, 56994), (15, 57048), (17, 57096),

Gene: Murucutumbu_89 Start: 57519, Stop: 57680, Start Num: 10

Candidate Starts for Murucutumbu_89:

(Start: 10 @57519 has 79 MA's), (15, 57606), (17, 57654),

Gene: Mynx_90 Start: 56929, Stop: 57090, Start Num: 10

Candidate Starts for Mynx_90:

(2, 56758), (Start: 10 @56929 has 79 MA's), (12, 56950), (13, 56959), (15, 57016), (16, 57049),

Gene: Niklas_90 Start: 57664, Stop: 57840, Start Num: 8

Candidate Starts for Niklas_90:

(Start: 8 @57664 has 2 MA's), (Start: 10 @57673 has 79 MA's), (13, 57703), (15, 57760),

Gene: Padfoot_89 Start: 56818, Stop: 56979, Start Num: 10

Candidate Starts for Padfoot_89:

(2, 56647), (Start: 10 @56818 has 79 MA's), (12, 56839), (13, 56848), (15, 56905), (16, 56938),

Gene: Padpat_93 Start: 57216, Stop: 57383, Start Num: 9

Candidate Starts for Padpat_93:

(1, 57003), (3, 57099), (6, 57180), (Start: 9 @57216 has 9 MA's), (11, 57240), (13, 57252), (15, 57309), (16, 57342),

Gene: Peel_89 Start: 56623, Stop: 56784, Start Num: 10

Candidate Starts for Peel_89:

(2, 56452), (Start: 10 @56623 has 79 MA's), (12, 56644), (13, 56653), (15, 56710), (16, 56743),

Gene: PhelpsODU_86 Start: 53663, Stop: 53833, Start Num: 9

Candidate Starts for PhelpsODU_86:

(Start: 9 @53663 has 9 MA's), (15, 53753),

Gene: Phrank_96 Start: 57882, Stop: 58046, Start Num: 9

Candidate Starts for Phrank_96:

(Start: 9 @57882 has 9 MA's), (15, 57972),

Gene: Piatt_88 Start: 56818, Stop: 56979, Start Num: 10

Candidate Starts for Piatt_88:

(2, 56647), (Start: 10 @56818 has 79 MA's), (12, 56839), (13, 56848), (15, 56905), (16, 56938),

Gene: Pisa1_90 Start: 57122, Stop: 57313, Start Num: 7

Candidate Starts for Pisa1_90:

(4, 57062), (7, 57122), (Start: 9 @57146 has 9 MA's), (13, 57182), (15, 57239), (16, 57272), (18, 57296),

Gene: Pisa4_84 Start: 52515, Stop: 52682, Start Num: 9

Candidate Starts for Pisa4_84:

(4, 52431), (7, 52491), (Start: 9 @52515 has 9 MA's), (13, 52551), (15, 52608), (16, 52641), (18, 52665),

Gene: Pokerus_89 Start: 56627, Stop: 56788, Start Num: 10

Candidate Starts for Pokerus_89:

(2, 56456), (Start: 10 @56627 has 79 MA's), (12, 56648), (13, 56657), (15, 56714), (16, 56747),

Gene: Prithvi_91 Start: 57030, Stop: 57191, Start Num: 10

Candidate Starts for Prithvi_91:

(2, 56859), (Start: 10 @57030 has 79 MA's), (13, 57060), (15, 57117), (16, 57150),

Gene: QuincyRose_87 Start: 56630, Stop: 56791, Start Num: 10

Candidate Starts for QuincyRose_87:

(Start: 10 @56630 has 79 MA's), (12, 56651), (13, 56660), (15, 56717), (16, 56750),

Gene: Ramen_90 Start: 56373, Stop: 56534, Start Num: 10

Candidate Starts for Ramen_90:

(Start: 10 @56373 has 79 MA's), (12, 56394), (13, 56403), (15, 56460), (16, 56493),

Gene: Rapunzel97_91 Start: 56589, Stop: 56750, Start Num: 10

Candidate Starts for Rapunzel97_91:

(2, 56418), (Start: 10 @56589 has 79 MA's), (13, 56619), (15, 56676), (16, 56709),

Gene: Rosmarinus_89 Start: 56609, Stop: 56770, Start Num: 10

Candidate Starts for Rosmarinus_89:

(2, 56438), (Start: 10 @56609 has 79 MA's), (12, 56630), (13, 56639), (15, 56696), (16, 56729),

Gene: SamuelLPlaqson_89 Start: 56880, Stop: 57047, Start Num: 10

Candidate Starts for SamuelLPlaqson_89:

(Start: 10 @56880 has 79 MA's), (15, 56967), (16, 57000),

Gene: Shaobing_89 Start: 57705, Stop: 57881, Start Num: 8

Candidate Starts for Shaobing_89:

(Start: 8 @57705 has 2 MA's), (Start: 10 @57714 has 79 MA's), (13, 57744), (15, 57801),

Gene: ShiaSurprise_90 Start: 56818, Stop: 56979, Start Num: 10

Candidate Starts for ShiaSurprise_90:

(2, 56647), (Start: 10 @56818 has 79 MA's), (12, 56839), (13, 56848), (15, 56905), (16, 56938),

Gene: Slimphazie_91 Start: 57045, Stop: 57206, Start Num: 10

Candidate Starts for Slimphazie_91:

(2, 56874), (Start: 10 @57045 has 79 MA's), (13, 57075), (15, 57132), (16, 57165),

Gene: Spock_89 Start: 56622, Stop: 56783, Start Num: 10

Candidate Starts for Spock_89:

(2, 56451), (Start: 10 @56622 has 79 MA's), (12, 56643), (13, 56652), (15, 56709), (16, 56742),

Gene: Stinson_90 Start: 56798, Stop: 56959, Start Num: 10

Candidate Starts for Stinson_90:

(Start: 10 @56798 has 79 MA's), (15, 56885),

Gene: Sulley_86 Start: 56193, Stop: 56354, Start Num: 10

Candidate Starts for Sulley_86:

(Start: 10 @56193 has 79 MA's), (13, 56223), (15, 56280), (16, 56313),

Gene: Tachez_89 Start: 56466, Stop: 56627, Start Num: 10

Candidate Starts for Tachez_89:

(2, 56295), (Start: 10 @56466 has 79 MA's), (12, 56487), (13, 56496), (15, 56553), (16, 56586),

Gene: TaiwanKao_90 Start: 56670, Stop: 56831, Start Num: 10

Candidate Starts for TaiwanKao_90:

(Start: 10 @56670 has 79 MA's), (13, 56700), (15, 56757), (16, 56790),

Gene: Tierra_96 Start: 58508, Stop: 58678, Start Num: 9

Candidate Starts for Tierra_96:

(Start: 9 @58508 has 9 MA's), (15, 58598),

Gene: TiniBug_88 Start: 56996, Stop: 57163, Start Num: 10

Candidate Starts for TiniBug_88:

(Start: 10 @56996 has 79 MA's), (15, 57083), (16, 57116),

Gene: Tiri_89 Start: 56360, Stop: 56521, Start Num: 10

Candidate Starts for Tiri_89:

(Start: 10 @56360 has 79 MA's), (13, 56390), (15, 56447), (16, 56480),

Gene: Topper_89 Start: 56621, Stop: 56782, Start Num: 10

Candidate Starts for Topper_89:

(2, 56450), (Start: 10 @56621 has 79 MA's), (12, 56642), (13, 56651), (15, 56708), (16, 56741),

Gene: TreyKay_91 Start: 57030, Stop: 57191, Start Num: 10

Candidate Starts for TreyKay_91:

(2, 56859), (Start: 10 @57030 has 79 MA's), (13, 57060), (15, 57117), (16, 57150),

Gene: TruffulaTree_91 Start: 57011, Stop: 57172, Start Num: 10

Candidate Starts for TruffulaTree_91:

(2, 56840), (Start: 10 @57011 has 79 MA's), (13, 57041), (15, 57098), (16, 57131),

Gene: Twitch_89 Start: 56623, Stop: 56784, Start Num: 10

Candidate Starts for Twitch_89:

(2, 56452), (Start: 10 @56623 has 79 MA's), (12, 56644), (13, 56653), (15, 56710), (16, 56743),

Gene: Unicorn_96 Start: 58291, Stop: 58461, Start Num: 9

Candidate Starts for Unicorn_96:

(Start: 9 @58291 has 9 MA's), (15, 58381),

Gene: Urkel_89 Start: 56880, Stop: 57047, Start Num: 10

Candidate Starts for Urkel_89:

(Start: 10 @56880 has 79 MA's), (15, 56967), (16, 57000),

Gene: Veliki_90 Start: 56589, Stop: 56750, Start Num: 10

Candidate Starts for Veliki_90:

(Start: 10 @56589 has 79 MA's), (13, 56619), (15, 56676), (16, 56709),

Gene: YoureAdopted_88 Start: 56415, Stop: 56576, Start Num: 10

Candidate Starts for YoureAdopted_88:

(Start: 10 @56415 has 79 MA's), (12, 56436), (13, 56445), (15, 56502), (16, 56535),

Gene: Zabiza_85 Start: 52962, Stop: 53123, Start Num: 10

Candidate Starts for Zabiza_85:

(Start: 10 @52962 has 79 MA's), (13, 52992), (15, 53049), (16, 53082),

Gene: Zavala_91 Start: 56880, Stop: 57041, Start Num: 10

Candidate Starts for Zavala_91:

(Start: 10 @56880 has 79 MA's), (12, 56901), (13, 56910), (15, 56967), (16, 57000),