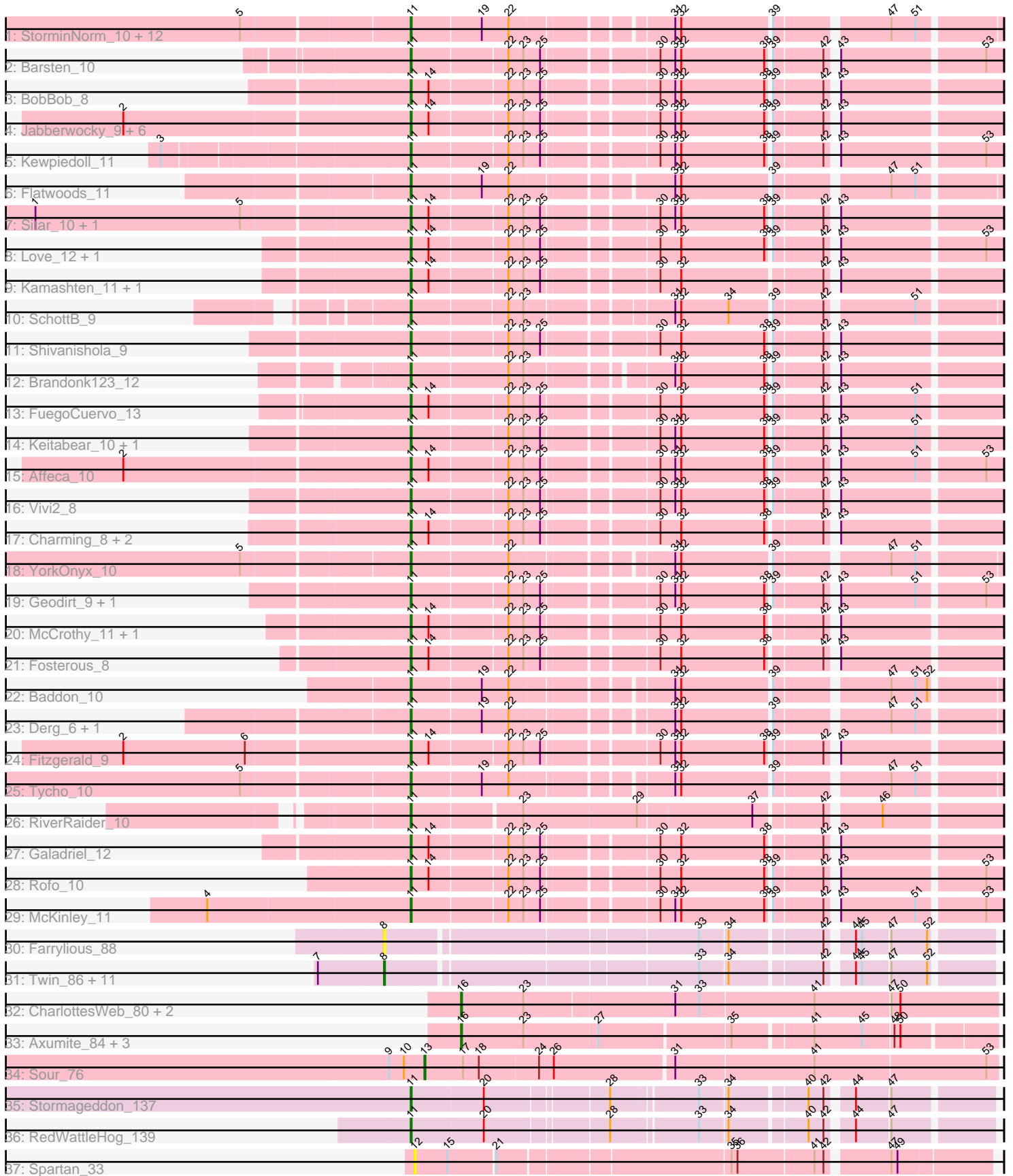


Pham 304952



Note: Tracks are now grouped by subcluster and scaled. Switching in subcluster is indicated by changes in track color. Track scale is now set by default to display the region 30 bp upstream of start 1 to 30 bp downstream of the last possible start. If this default region is judged to be packed too tightly with annotated starts, the track will be further scaled to only show that region of the ORF with annotated starts. This action will be indicated by adding "Zoomed" to the title. For starts, yellow indicates the location of called starts comprised solely of Glimmer/GeneMark auto-annotations, green indicates the location of called starts with at least 1 manual gene annotation.

Pham 304952 Report

This analysis was run 06/08/26 on database version 649.

Pham number 304952 has 80 members, 15 are drafts.

Phages represented in each track:

- Track 1 : StorminNorm_10, Tangerine_10, Kroos_10, Ribeye_11, LilHam_8, Bizzy_11, Baumdotcom_10, Saronaya_10, Kwobi_10, Gaea_10, JKSyngboy_9, Ashertheman_10, Gustavo_10
- Track 2 : Barsten_10
- Track 3 : BobBob_8
- Track 4 : Jabberwocky_9, Brawn1_9, Sanjuju_9, Angelicage_10, Sedona_11, Bibwit_10, Ailee_10
- Track 5 : Kewpiedoll_11
- Track 6 : Flatwoods_11
- Track 7 : Sitar_10, Lennon_10
- Track 8 : Love_12, MoontowerMania_9
- Track 9 : Kamashten_11, Thing3_11
- Track 10 : SchottB_9
- Track 11 : Shivanishola_9
- Track 12 : Brandonk123_12
- Track 13 : FuegoCuervo_13
- Track 14 : Keitabear_10, Stultus_9
- Track 15 : Affeca_10
- Track 16 : Vivi2_8
- Track 17 : Charming_8, Tangent_8, Nordenberg_5
- Track 18 : YorkOnyx_10
- Track 19 : Geodirt_9, ChadMasterC_9
- Track 20 : McCrothy_11, Paries_11
- Track 21 : Fosterous_8
- Track 22 : Baddon_10
- Track 23 : Derg_6, Stichling_10
- Track 24 : Fitzgerald_9
- Track 25 : Tycho_10
- Track 26 : RiverRaider_10
- Track 27 : Galadriel_12
- Track 28 : Rofo_10
- Track 29 : McKinley_11
- Track 30 : Farrylious_88
- Track 31 : Twin_86, Chidiebere_91, Argena_88, EmoNemo_86, Pakusa_87, Toneprano_88, Kabocha_92, Mikronejon_87, Schomber_89, Aloki_86, Amoonguss_88, Hanem_90
- Track 32 : CharlottesWeb_80, JellyBelly_79, Mariokart_80

- Track 33 : Axumite_84, Fresco_84, Shatter_84, Ligma_84
- Track 34 : Sour_76
- Track 35 : Stormageddon_137
- Track 36 : RedWattleHog_139
- Track 37 : Spartan_33

Summary of Final Annotations (See graph section above for start numbers):

The start number called the most often in the published annotations is 11, it was called in 55 of the 65 non-draft genes in the pham.

Genes that call this "Most Annotated" start:

- Affeca_10, Ailee_10, Angelicage_10, Ashertheman_10, Baddon_10, Barsten_10, Baumdotcom_10, Bibwit_10, Bizzy_11, BobBob_8, Brandonk123_12, Brawn1_9, ChadMasterC_9, Charming_8, Derg_6, Fitzgerald_9, Flatwoods_11, Fosterous_8, FuegoCuervo_13, Gaea_10, Galadriel_12, Geodirt_9, Gustavo_10, JKSyngboy_9, Jabberwocky_9, Kamashten_11, Keitabear_10, Kewpiedoll_11, Kroos_10, Kwobi_10, Lennon_10, LilHam_8, Love_12, McCrothy_11, McKinley_11, MoontowerMania_9, Nordenberg_5, Paries_11, RedWattleHog_139, Ribeye_11, RiverRaider_10, Rofo_10, Sanjuju_9, Saronaya_10, SchottB_9, Sedona_11, Shivanishola_9, Sitar_10, Stichling_10, Stormageddon_137, StorminNorm_10, Stultus_9, Tangent_8, Tangerine_10, Thing3_11, Tycho_10, Vivi2_8, YorkOnyx_10,

Genes that have the "Most Annotated" start but do not call it:

-

Genes that do not have the "Most Annotated" start:

- Aloki_86, Amoonguss_88, Argena_88, Axumite_84, CharlottesWeb_80, Chidiebere_91, EmoNemo_86, Farrylious_88, Fresco_84, Hanem_90, JellyBelly_79, Kabocha_92, Ligma_84, Mariokart_80, Mikronejon_87, Pakusa_87, Schomber_89, Shatter_84, Sour_76, Spartan_33, Toneprano_88, Twin_86,

Summary by start number:

Start 8:

- Found in 13 of 80 (16.2%) of genes in pham
- Manual Annotations of this start: 4 of 65
- Called 100.0% of time when present
- Phage (with cluster) where this start called: Aloki_86 (DQ), Amoonguss_88 (DQ), Argena_88 (DQ), Chidiebere_91 (DQ), EmoNemo_86 (DQ), Farrylious_88 (DQ), Hanem_90 (DQ), Kabocha_92 (DQ), Mikronejon_87 (DQ), Pakusa_87 (DQ), Schomber_89 (DQ), Toneprano_88 (DQ), Twin_86 (DQ),

Start 11:

- Found in 58 of 80 (72.5%) of genes in pham
- Manual Annotations of this start: 55 of 65
- Called 100.0% of time when present
- Phage (with cluster) where this start called: Affeca_10 (DE1), Ailee_10 (DE1), Angelicage_10 (DE1), Ashertheman_10 (DE1), Baddon_10 (DE1), Barsten_10 (DE1), Baumdotcom_10 (DE1), Bibwit_10 (DE1), Bizzy_11 (DE1), BobBob_8 (DE1),

Brandonk123_12 (DE1), Brawn1_9 (DE1), ChadMasterC_9 (DE1), Charming_8 (DE1), Derg_6 (DE1), Fitzgerald_9 (DE1), Flatwoods_11 (DE1), Fosterous_8 (DE1), FuegoCuervo_13 (DE1), Gaea_10 (DE1), Galadriel_12 (DE1), Geodirt_9 (DE1), Gustavo_10 (DE1), JKSyngboy_9 (DE1), Jabberwocky_9 (DE1), Kamashten_11 (DE1), Keitabear_10 (DE1), Kewpiedoll_11 (DE1), Kroos_10 (DE1), Kwobi_10 (DE1), Lennon_10 (DE1), LilHam_8 (DE1), Love_12 (DE1), McCrothy_11 (DE1), McKinley_11 (DE1), MoontowerMania_9 (DE1), Nordenberg_5 (DE1), Paries_11 (DE1), RedWattleHog_139 (DX), Ribeye_11 (DE1), RiverRaider_10 (DE1), Rofo_10 (DE1), Sanjuju_9 (DE1), Saronaya_10 (DE1), SchottB_9 (DE1), Sedona_11 (DE1), Shivanishola_9 (DE1), Sitar_10 (DE1), Stichling_10 (DE1), Stormageddon_137 (DX), StorminNorm_10 (DE1), Stultus_9 (DE1), Tangent_8 (DE1), Tangerine_10 (DE1), Thing3_11 (DE1), Tycho_10 (DE1), Vivi2_8 (DE1), YorkOnyx_10 (DE1),

Start 12:

- Found in 1 of 80 (1.2%) of genes in pham
- No Manual Annotations of this start.
- Called 100.0% of time when present
- Phage (with cluster) where this start called: Spartan_33 (ES),

Start 13:

- Found in 1 of 80 (1.2%) of genes in pham
- Manual Annotations of this start: 1 of 65
- Called 100.0% of time when present
- Phage (with cluster) where this start called: Sour_76 (DR),

Start 16:

- Found in 7 of 80 (8.8%) of genes in pham
- Manual Annotations of this start: 5 of 65
- Called 100.0% of time when present
- Phage (with cluster) where this start called: Axumite_84 (DR), CharlottesWeb_80 (DR), Fresco_84 (DR), JellyBelly_79 (DR), Ligma_84 (DR), Mariokart_80 (DR), Shatter_84 (DR),

Summary by clusters:

There are 5 clusters represented in this pham: DE1, DR, ES, DX, DQ,

Info for manual annotations of cluster DE1:

- Start number 11 was manually annotated 53 times for cluster DE1.

Info for manual annotations of cluster DQ:

- Start number 8 was manually annotated 4 times for cluster DQ.

Info for manual annotations of cluster DR:

- Start number 13 was manually annotated 1 time for cluster DR.
- Start number 16 was manually annotated 5 times for cluster DR.

Info for manual annotations of cluster DX:

- Start number 11 was manually annotated 2 times for cluster DX.

Gene Information:

Gene: Affeca_10 Start: 5721, Stop: 6263, Start Num: 11

Candidate Starts for Affeca_10:

(2, 5442), (Start: 11 @5721 has 55 MA's), (14, 5739), (22, 5814), (23, 5829), (25, 5844), (30, 5946), (31, 5961), (32, 5967), (38, 6051), (39, 6054), (42, 6102), (43, 6108), (51, 6183), (53, 6246),

Gene: Ailee_10 Start: 6574, Stop: 7116, Start Num: 11

Candidate Starts for Ailee_10:

(2, 6295), (Start: 11 @6574 has 55 MA's), (14, 6592), (22, 6667), (23, 6682), (25, 6697), (30, 6799), (31, 6814), (32, 6820), (38, 6904), (39, 6907), (42, 6955), (43, 6961),

Gene: Aloki_86 Start: 67872, Stop: 68426, Start Num: 8

Candidate Starts for Aloki_86:

(7, 67806), (Start: 8 @67872 has 4 MA's), (33, 68163), (34, 68190), (42, 68277), (44, 68298), (45, 68304), (47, 68331), (52, 68367),

Gene: Amoonguss_88 Start: 67829, Stop: 68383, Start Num: 8

Candidate Starts for Amoonguss_88:

(7, 67763), (Start: 8 @67829 has 4 MA's), (33, 68120), (34, 68147), (42, 68234), (44, 68255), (45, 68261), (47, 68288), (52, 68324),

Gene: Angelicage_10 Start: 6141, Stop: 6683, Start Num: 11

Candidate Starts for Angelicage_10:

(2, 5862), (Start: 11 @6141 has 55 MA's), (14, 6159), (22, 6234), (23, 6249), (25, 6264), (30, 6366), (31, 6381), (32, 6387), (38, 6471), (39, 6474), (42, 6522), (43, 6528),

Gene: Argena_88 Start: 67841, Stop: 68395, Start Num: 8

Candidate Starts for Argena_88:

(7, 67775), (Start: 8 @67841 has 4 MA's), (33, 68132), (34, 68159), (42, 68246), (44, 68267), (45, 68273), (47, 68300), (52, 68336),

Gene: Ashertheman_10 Start: 5336, Stop: 5872, Start Num: 11

Candidate Starts for Ashertheman_10:

(5, 5180), (Start: 11 @5336 has 55 MA's), (19, 5405), (22, 5432), (31, 5573), (32, 5579), (39, 5666), (47, 5771), (51, 5795),

Gene: Axumite_84 Start: 60888, Stop: 60379, Start Num: 16

Candidate Starts for Axumite_84:

(Start: 16 @60888 has 5 MA's), (23, 60825), (27, 60753), (35, 60627), (41, 60552), (45, 60504), (48, 60474), (50, 60468),

Gene: Baddon_10 Start: 6045, Stop: 6581, Start Num: 11

Candidate Starts for Baddon_10:

(Start: 11 @6045 has 55 MA's), (19, 6114), (22, 6141), (31, 6282), (32, 6288), (39, 6375), (47, 6480), (51, 6504), (52, 6516),

Gene: Barsten_10 Start: 5370, Stop: 5912, Start Num: 11

Candidate Starts for Barsten_10:

(Start: 11 @5370 has 55 MA's), (22, 5463), (23, 5478), (25, 5493), (30, 5595), (31, 5610), (32, 5616), (38, 5700), (39, 5703), (42, 5751), (43, 5757), (53, 5895),

Gene: Baumdotcom_10 Start: 5359, Stop: 5895, Start Num: 11

Candidate Starts for Baumdotcom_10:

(5, 5203), (Start: 11 @5359 has 55 MA's), (19, 5428), (22, 5455), (31, 5596), (32, 5602), (39, 5689), (47, 5794), (51, 5818),

Gene: Bibwit_10 Start: 6407, Stop: 6949, Start Num: 11

Candidate Starts for Bibwit_10:

(2, 6128), (Start: 11 @6407 has 55 MA's), (14, 6425), (22, 6500), (23, 6515), (25, 6530), (30, 6632), (31, 6647), (32, 6653), (38, 6737), (39, 6740), (42, 6788), (43, 6794),

Gene: Bizzy_11 Start: 5533, Stop: 6069, Start Num: 11

Candidate Starts for Bizzy_11:

(5, 5377), (Start: 11 @5533 has 55 MA's), (19, 5602), (22, 5629), (31, 5770), (32, 5776), (39, 5863), (47, 5968), (51, 5992),

Gene: BobBob_8 Start: 5063, Stop: 5605, Start Num: 11

Candidate Starts for BobBob_8:

(Start: 11 @5063 has 55 MA's), (14, 5081), (22, 5156), (23, 5171), (25, 5186), (30, 5288), (31, 5303), (32, 5309), (38, 5393), (39, 5396), (42, 5444), (43, 5450),

Gene: Brandonk123_12 Start: 6057, Stop: 6596, Start Num: 11

Candidate Starts for Brandonk123_12:

(Start: 11 @6057 has 55 MA's), (22, 6153), (23, 6168), (31, 6294), (32, 6300), (38, 6384), (39, 6387), (42, 6435), (43, 6441),

Gene: Brawn1_9 Start: 5893, Stop: 6435, Start Num: 11

Candidate Starts for Brawn1_9:

(2, 5614), (Start: 11 @5893 has 55 MA's), (14, 5911), (22, 5986), (23, 6001), (25, 6016), (30, 6118), (31, 6133), (32, 6139), (38, 6223), (39, 6226), (42, 6274), (43, 6280),

Gene: ChadMasterC_9 Start: 5642, Stop: 6184, Start Num: 11

Candidate Starts for ChadMasterC_9:

(Start: 11 @5642 has 55 MA's), (22, 5735), (23, 5750), (25, 5765), (30, 5867), (31, 5882), (32, 5888), (38, 5972), (39, 5975), (42, 6023), (43, 6029), (51, 6104), (53, 6167),

Gene: CharlottesWeb_80 Start: 59691, Stop: 59161, Start Num: 16

Candidate Starts for CharlottesWeb_80:

(Start: 16 @59691 has 5 MA's), (23, 59628), (31, 59481), (33, 59457), (41, 59343), (47, 59268), (50, 59259),

Gene: Charming_8 Start: 5065, Stop: 5607, Start Num: 11

Candidate Starts for Charming_8:

(Start: 11 @5065 has 55 MA's), (14, 5083), (22, 5158), (23, 5173), (25, 5188), (30, 5290), (32, 5311), (38, 5395), (42, 5446), (43, 5452),

Gene: Chidiebere_91 Start: 68405, Stop: 68959, Start Num: 8

Candidate Starts for Chidiebere_91:

(7, 68339), (Start: 8 @68405 has 4 MA's), (33, 68696), (34, 68723), (42, 68810), (44, 68831), (45, 68837), (47, 68864), (52, 68900),

Gene: Derg_6 Start: 4663, Stop: 5199, Start Num: 11

Candidate Starts for Derg_6:

(Start: 11 @4663 has 55 MA's), (19, 4732), (22, 4759), (31, 4900), (32, 4906), (39, 4993), (47, 5098), (51, 5122),

Gene: EmoNemo_86 Start: 67872, Stop: 68426, Start Num: 8

Candidate Starts for EmoNemo_86:

(7, 67806), (Start: 8 @67872 has 4 MA's), (33, 68163), (34, 68190), (42, 68277), (44, 68298), (45, 68304), (47, 68331), (52, 68367),

Gene: Farrylious_88 Start: 67607, Stop: 68161, Start Num: 8

Candidate Starts for Farrylious_88:

(Start: 8 @67607 has 4 MA's), (33, 67898), (34, 67925), (42, 68012), (44, 68033), (45, 68039), (47, 68066), (52, 68102),

Gene: Fitzgerald_9 Start: 5991, Stop: 6533, Start Num: 11

Candidate Starts for Fitzgerald_9:

(2, 5712), (6, 5835), (Start: 11 @5991 has 55 MA's), (14, 6009), (22, 6084), (23, 6099), (25, 6114), (30, 6216), (31, 6231), (32, 6237), (38, 6321), (39, 6324), (42, 6372), (43, 6378),

Gene: Flatwoods_11 Start: 5532, Stop: 6071, Start Num: 11

Candidate Starts for Flatwoods_11:

(Start: 11 @5532 has 55 MA's), (19, 5601), (22, 5628), (31, 5772), (32, 5778), (39, 5865), (47, 5970), (51, 5994),

Gene: Fosterous_8 Start: 5063, Stop: 5605, Start Num: 11

Candidate Starts for Fosterous_8:

(Start: 11 @5063 has 55 MA's), (14, 5081), (22, 5156), (23, 5171), (25, 5186), (30, 5288), (32, 5309), (38, 5393), (42, 5444), (43, 5450),

Gene: Fresco_84 Start: 60894, Stop: 60385, Start Num: 16

Candidate Starts for Fresco_84:

(Start: 16 @60894 has 5 MA's), (23, 60831), (27, 60759), (35, 60633), (41, 60558), (45, 60510), (48, 60480), (50, 60474),

Gene: FuegoCuervo_13 Start: 5657, Stop: 6199, Start Num: 11

Candidate Starts for FuegoCuervo_13:

(Start: 11 @5657 has 55 MA's), (14, 5675), (22, 5750), (23, 5765), (25, 5780), (30, 5882), (32, 5903), (38, 5987), (39, 5990), (42, 6038), (43, 6044), (51, 6119),

Gene: Gaea_10 Start: 5339, Stop: 5875, Start Num: 11

Candidate Starts for Gaea_10:

(5, 5183), (Start: 11 @5339 has 55 MA's), (19, 5408), (22, 5435), (31, 5576), (32, 5582), (39, 5669), (47, 5774), (51, 5798),

Gene: Galadriel_12 Start: 5831, Stop: 6373, Start Num: 11

Candidate Starts for Galadriel_12:

(Start: 11 @5831 has 55 MA's), (14, 5849), (22, 5924), (23, 5939), (25, 5954), (30, 6056), (32, 6077), (38, 6161), (42, 6212), (43, 6218),

Gene: Geodirt_9 Start: 5682, Stop: 6224, Start Num: 11

Candidate Starts for Geodirt_9:

(Start: 11 @5682 has 55 MA's), (22, 5775), (23, 5790), (25, 5805), (30, 5907), (31, 5922), (32, 5928), (38, 6012), (39, 6015), (42, 6063), (43, 6069), (51, 6144), (53, 6207),

Gene: Gustavo_10 Start: 5336, Stop: 5872, Start Num: 11

Candidate Starts for Gustavo_10:

(5, 5180), (Start: 11 @5336 has 55 MA's), (19, 5405), (22, 5432), (31, 5573), (32, 5579), (39, 5666), (47, 5771), (51, 5795),

Gene: Hanem_90 Start: 67872, Stop: 68426, Start Num: 8

Candidate Starts for Hanem_90:

(7, 67806), (Start: 8 @67872 has 4 MA's), (33, 68163), (34, 68190), (42, 68277), (44, 68298), (45, 68304), (47, 68331), (52, 68367),

Gene: JKSyngboy_9 Start: 5847, Stop: 6383, Start Num: 11

Candidate Starts for JKSyngboy_9:

(5, 5691), (Start: 11 @5847 has 55 MA's), (19, 5916), (22, 5943), (31, 6084), (32, 6090), (39, 6177), (47, 6282), (51, 6306),

Gene: Jabberwocky_9 Start: 5993, Stop: 6535, Start Num: 11

Candidate Starts for Jabberwocky_9:

(2, 5714), (Start: 11 @5993 has 55 MA's), (14, 6011), (22, 6086), (23, 6101), (25, 6116), (30, 6218), (31, 6233), (32, 6239), (38, 6323), (39, 6326), (42, 6374), (43, 6380),

Gene: JellyBelly_79 Start: 59700, Stop: 59170, Start Num: 16

Candidate Starts for JellyBelly_79:

(Start: 16 @59700 has 5 MA's), (23, 59637), (31, 59490), (33, 59466), (41, 59352), (47, 59277), (50, 59268),

Gene: Kabocha_92 Start: 69218, Stop: 69772, Start Num: 8

Candidate Starts for Kabocha_92:

(7, 69152), (Start: 8 @69218 has 4 MA's), (33, 69509), (34, 69536), (42, 69623), (44, 69644), (45, 69650), (47, 69677), (52, 69713),

Gene: Kamashten_11 Start: 6152, Stop: 6694, Start Num: 11

Candidate Starts for Kamashten_11:

(Start: 11 @6152 has 55 MA's), (14, 6170), (22, 6245), (23, 6260), (25, 6275), (30, 6377), (32, 6398), (42, 6533), (43, 6539),

Gene: Keitabear_10 Start: 7048, Stop: 7590, Start Num: 11

Candidate Starts for Keitabear_10:

(Start: 11 @7048 has 55 MA's), (22, 7141), (23, 7156), (25, 7171), (30, 7273), (31, 7288), (32, 7294), (38, 7378), (39, 7381), (42, 7429), (43, 7435), (51, 7510),

Gene: Kewpiedoll_11 Start: 5563, Stop: 6105, Start Num: 11

Candidate Starts for Kewpiedoll_11:

(3, 5332), (Start: 11 @5563 has 55 MA's), (22, 5656), (23, 5671), (25, 5686), (30, 5788), (31, 5803), (32, 5809), (38, 5893), (39, 5896), (42, 5944), (43, 5950), (53, 6088),

Gene: Kroos_10 Start: 5500, Stop: 6036, Start Num: 11

Candidate Starts for Kroos_10:

(5, 5344), (Start: 11 @5500 has 55 MA's), (19, 5569), (22, 5596), (31, 5737), (32, 5743), (39, 5830), (47, 5935), (51, 5959),

Gene: Kwobi_10 Start: 5339, Stop: 5875, Start Num: 11

Candidate Starts for Kwobi_10:

(5, 5183), (Start: 11 @5339 has 55 MA's), (19, 5408), (22, 5435), (31, 5576), (32, 5582), (39, 5669), (47, 5774), (51, 5798),

Gene: Lennon_10 Start: 6257, Stop: 6799, Start Num: 11

Candidate Starts for Lennon_10:

(1, 5891), (5, 6098), (Start: 11 @6257 has 55 MA's), (14, 6275), (22, 6350), (23, 6365), (25, 6380), (30, 6482), (31, 6497), (32, 6503), (38, 6587), (39, 6590), (42, 6638), (43, 6644),

Gene: Ligma_84 Start: 60888, Stop: 60379, Start Num: 16

Candidate Starts for Ligma_84:

(Start: 16 @60888 has 5 MA's), (23, 60825), (27, 60753), (35, 60627), (41, 60552), (45, 60504), (48, 60474), (50, 60468),

Gene: LilHam_8 Start: 4655, Stop: 5191, Start Num: 11

Candidate Starts for LilHam_8:

(5, 4499), (Start: 11 @4655 has 55 MA's), (19, 4724), (22, 4751), (31, 4892), (32, 4898), (39, 4985), (47, 5090), (51, 5114),

Gene: Love_12 Start: 6151, Stop: 6693, Start Num: 11

Candidate Starts for Love_12:

(Start: 11 @6151 has 55 MA's), (14, 6169), (22, 6244), (23, 6259), (25, 6274), (30, 6376), (32, 6397), (38, 6481), (39, 6484), (42, 6532), (43, 6538), (53, 6676),

Gene: Mariokart_80 Start: 59929, Stop: 59399, Start Num: 16

Candidate Starts for Mariokart_80:

(Start: 16 @59929 has 5 MA's), (23, 59866), (31, 59719), (33, 59695), (41, 59581), (47, 59506), (50, 59497),

Gene: McCrothy_11 Start: 6008, Stop: 6550, Start Num: 11

Candidate Starts for McCrothy_11:

(Start: 11 @6008 has 55 MA's), (14, 6026), (22, 6101), (23, 6116), (25, 6131), (30, 6233), (32, 6254), (38, 6338), (42, 6389), (43, 6395),

Gene: McKinley_11 Start: 6510, Stop: 7052, Start Num: 11

Candidate Starts for McKinley_11:

(4, 6312), (Start: 11 @6510 has 55 MA's), (22, 6603), (23, 6618), (25, 6633), (30, 6735), (31, 6750), (32, 6756), (38, 6840), (39, 6843), (42, 6891), (43, 6897), (51, 6972), (53, 7035),

Gene: Mikronejon_87 Start: 67872, Stop: 68426, Start Num: 8

Candidate Starts for Mikronejon_87:

(7, 67806), (Start: 8 @67872 has 4 MA's), (33, 68163), (34, 68190), (42, 68277), (44, 68298), (45, 68304), (47, 68331), (52, 68367),

Gene: MoontowerMania_9 Start: 5550, Stop: 6092, Start Num: 11

Candidate Starts for MoontowerMania_9:

(Start: 11 @5550 has 55 MA's), (14, 5568), (22, 5643), (23, 5658), (25, 5673), (30, 5775), (32, 5796), (38, 5880), (39, 5883), (42, 5931), (43, 5937), (53, 6075),

Gene: Nordenberg_5 Start: 3685, Stop: 4227, Start Num: 11

Candidate Starts for Nordenberg_5:

(Start: 11 @3685 has 55 MA's), (14, 3703), (22, 3778), (23, 3793), (25, 3808), (30, 3910), (32, 3931), (38, 4015), (42, 4066), (43, 4072),

Gene: Pakusa_87 Start: 67598, Stop: 68152, Start Num: 8

Candidate Starts for Pakusa_87:

(7, 67532), (Start: 8 @67598 has 4 MA's), (33, 67889), (34, 67916), (42, 68003), (44, 68024), (45, 68030), (47, 68057), (52, 68093),

Gene: Paries_11 Start: 5833, Stop: 6375, Start Num: 11

Candidate Starts for Paries_11:

(Start: 11 @5833 has 55 MA's), (14, 5851), (22, 5926), (23, 5941), (25, 5956), (30, 6058), (32, 6079), (38, 6163), (42, 6214), (43, 6220),

Gene: RedWattleHog_139 Start: 98356, Stop: 98886, Start Num: 11

Candidate Starts for RedWattleHog_139:

(Start: 11 @98356 has 55 MA's), (20, 98428), (28, 98542), (33, 98623), (34, 98650), (40, 98722), (42, 98737), (44, 98758), (47, 98791),

Gene: Ribeye_11 Start: 5534, Stop: 6070, Start Num: 11

Candidate Starts for Ribeye_11:

(5, 5378), (Start: 11 @5534 has 55 MA's), (19, 5603), (22, 5630), (31, 5771), (32, 5777), (39, 5864), (47, 5969), (51, 5993),

Gene: RiverRaider_10 Start: 4913, Stop: 5464, Start Num: 11

Candidate Starts for RiverRaider_10:

(Start: 11 @4913 has 55 MA's), (23, 5018), (29, 5129), (37, 5240), (42, 5303), (46, 5351),

Gene: Rofo_10 Start: 6082, Stop: 6624, Start Num: 11

Candidate Starts for Rofo_10:

(Start: 11 @6082 has 55 MA's), (14, 6100), (22, 6175), (23, 6190), (25, 6205), (30, 6307), (32, 6328), (38, 6412), (39, 6415), (42, 6463), (43, 6469), (53, 6607),

Gene: Sanjuju_9 Start: 6031, Stop: 6573, Start Num: 11

Candidate Starts for Sanjuju_9:

(2, 5752), (Start: 11 @6031 has 55 MA's), (14, 6049), (22, 6124), (23, 6139), (25, 6154), (30, 6256), (31, 6271), (32, 6277), (38, 6361), (39, 6364), (42, 6412), (43, 6418),

Gene: Saronaya_10 Start: 5336, Stop: 5872, Start Num: 11

Candidate Starts for Saronaya_10:

(5, 5180), (Start: 11 @5336 has 55 MA's), (19, 5405), (22, 5432), (31, 5573), (32, 5579), (39, 5666), (47, 5771), (51, 5795),

Gene: Schomber_89 Start: 67606, Stop: 68160, Start Num: 8

Candidate Starts for Schomber_89:

(7, 67540), (Start: 8 @67606 has 4 MA's), (33, 67897), (34, 67924), (42, 68011), (44, 68032), (45, 68038), (47, 68065), (52, 68101),

Gene: SchottB_9 Start: 5513, Stop: 6049, Start Num: 11

Candidate Starts for SchottB_9:

(Start: 11 @5513 has 55 MA's), (22, 5606), (23, 5621), (31, 5750), (32, 5756), (34, 5804), (39, 5843), (42, 5891), (51, 5972),

Gene: Sedona_11 Start: 7049, Stop: 7591, Start Num: 11

Candidate Starts for Sedona_11:

(2, 6770), (Start: 11 @7049 has 55 MA's), (14, 7067), (22, 7142), (23, 7157), (25, 7172), (30, 7274), (31, 7289), (32, 7295), (38, 7379), (39, 7382), (42, 7430), (43, 7436),

Gene: Shatter_84 Start: 60888, Stop: 60379, Start Num: 16

Candidate Starts for Shatter_84:

(Start: 16 @60888 has 5 MA's), (23, 60825), (27, 60753), (35, 60627), (41, 60552), (45, 60504), (48, 60474), (50, 60468),

Gene: Shivanishola_9 Start: 6091, Stop: 6633, Start Num: 11

Candidate Starts for Shivanishola_9:

(Start: 11 @6091 has 55 MA's), (22, 6184), (23, 6199), (25, 6214), (30, 6316), (32, 6337), (38, 6421), (39, 6424), (42, 6472), (43, 6478),

Gene: Sitar_10 Start: 6257, Stop: 6799, Start Num: 11

Candidate Starts for Sitar_10:

(1, 5891), (5, 6098), (Start: 11 @6257 has 55 MA's), (14, 6275), (22, 6350), (23, 6365), (25, 6380), (30, 6482), (31, 6497), (32, 6503), (38, 6587), (39, 6590), (42, 6638), (43, 6644),

Gene: Sour_76 Start: 60678, Stop: 60115, Start Num: 13

Candidate Starts for Sour_76:

(9, 60714), (10, 60699), (Start: 13 @60678 has 1 MA's), (17, 60639), (18, 60624), (24, 60567), (26, 60552), (31, 60435), (41, 60297), (53, 60126),

Gene: Spartan_33 Start: 31190, Stop: 30648, Start Num: 12

Candidate Starts for Spartan_33:

(12, 31190), (15, 31157), (21, 31112), (35, 30890), (36, 30884), (41, 30809), (42, 30800), (47, 30743), (49, 30737),

Gene: Stichling_10 Start: 4723, Stop: 5259, Start Num: 11

Candidate Starts for Stichling_10:

(Start: 11 @4723 has 55 MA's), (19, 4792), (22, 4819), (31, 4960), (32, 4966), (39, 5053), (47, 5158), (51, 5182),

Gene: Stormageddon_137 Start: 98077, Stop: 98607, Start Num: 11

Candidate Starts for Stormageddon_137:

(Start: 11 @98077 has 55 MA's), (20, 98149), (28, 98263), (33, 98344), (34, 98371), (40, 98443), (42, 98458), (44, 98479), (47, 98512),

Gene: StorminNorm_10 Start: 5339, Stop: 5875, Start Num: 11

Candidate Starts for StorminNorm_10:

(5, 5183), (Start: 11 @5339 has 55 MA's), (19, 5408), (22, 5435), (31, 5576), (32, 5582), (39, 5669), (47, 5774), (51, 5798),

Gene: Stultus_9 Start: 6081, Stop: 6623, Start Num: 11

Candidate Starts for Stultus_9:

(Start: 11 @6081 has 55 MA's), (22, 6174), (23, 6189), (25, 6204), (30, 6306), (31, 6321), (32, 6327), (38, 6411), (39, 6414), (42, 6462), (43, 6468), (51, 6543),

Gene: Tangent_8 Start: 5065, Stop: 5607, Start Num: 11

Candidate Starts for Tangent_8:

(Start: 11 @5065 has 55 MA's), (14, 5083), (22, 5158), (23, 5173), (25, 5188), (30, 5290), (32, 5311), (38, 5395), (42, 5446), (43, 5452),

Gene: Tangerine_10 Start: 5348, Stop: 5884, Start Num: 11

Candidate Starts for Tangerine_10:

(5, 5192), (Start: 11 @5348 has 55 MA's), (19, 5417), (22, 5444), (31, 5585), (32, 5591), (39, 5678), (47, 5783), (51, 5807),

Gene: Thing3_11 Start: 6152, Stop: 6694, Start Num: 11

Candidate Starts for Thing3_11:

(Start: 11 @6152 has 55 MA's), (14, 6170), (22, 6245), (23, 6260), (25, 6275), (30, 6377), (32, 6398), (42, 6533), (43, 6539),

Gene: Toneprano_88 Start: 67843, Stop: 68397, Start Num: 8

Candidate Starts for Toneprano_88:

(7, 67777), (Start: 8 @67843 has 4 MA's), (33, 68134), (34, 68161), (42, 68248), (44, 68269), (45, 68275), (47, 68302), (52, 68338),

Gene: Twin_86 Start: 67871, Stop: 68425, Start Num: 8

Candidate Starts for Twin_86:

(7, 67805), (Start: 8 @67871 has 4 MA's), (33, 68162), (34, 68189), (42, 68276), (44, 68297), (45, 68303), (47, 68330), (52, 68366),

Gene: Tycho_10 Start: 5348, Stop: 5884, Start Num: 11

Candidate Starts for Tycho_10:

(5, 5192), (Start: 11 @5348 has 55 MA's), (19, 5417), (22, 5444), (31, 5585), (32, 5591), (39, 5678), (47, 5783), (51, 5807),

Gene: Vivi2_8 Start: 5070, Stop: 5612, Start Num: 11

Candidate Starts for Vivi2_8:

(Start: 11 @5070 has 55 MA's), (22, 5163), (23, 5178), (25, 5193), (30, 5295), (31, 5310), (32, 5316), (38, 5400), (39, 5403), (42, 5451), (43, 5457),

Gene: YorkOnyx_10 Start: 5297, Stop: 5833, Start Num: 11

Candidate Starts for YorkOnyx_10:

(5, 5141), (Start: 11 @5297 has 55 MA's), (22, 5393), (31, 5534), (32, 5540), (39, 5627), (47, 5732), (51, 5756),