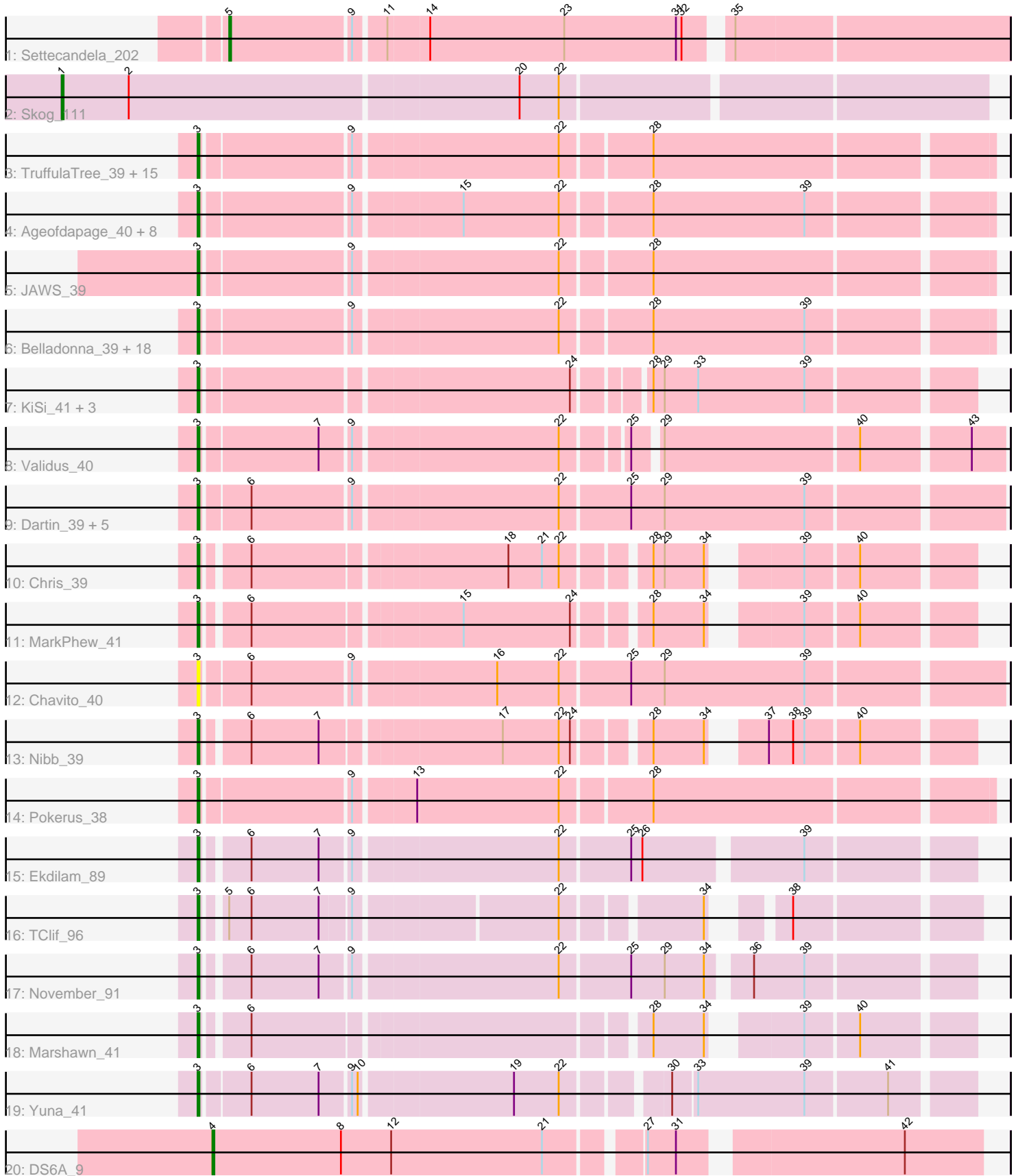


# Pham 304991



Note: Tracks are now grouped by subcluster and scaled. Switching in subcluster is indicated by changes in track color. Track scale is now set by default to display the region 30 bp upstream of start 1 to 30 bp downstream of the last possible start. If this default region is judged to be packed too tightly with annotated starts, the track will be further scaled to only show that region of the ORF with annotated starts. This action will be indicated by adding "Zoomed" to the title. For starts, yellow indicates the location of called starts comprised solely of Glimmer/GeneMark auto-annotations, green indicates the location of called starts with at least 1 manual gene annotation.

## Pham 304991 Report

This analysis was run 06/08/26 on database version 649.

Pham number 304991 has 69 members, 4 are drafts.

Phages represented in each track:

- Track 1 : Settecandela\_202
- Track 2 : Skog\_111
- Track 3 : TruffulaTree\_39, BarrelRoll\_39, Padpat\_40, Atiba\_39, Geraldini\_39, HedwigODU\_39, ActinUp\_39, Adephagia\_39, Emerson\_40, Veliki\_39, Jayhawk\_40, Ramen\_39, Tachez\_39, Slimphazie\_39, Rapunzel97\_39, YoureAdopted\_37
- Track 4 : Ageofdapage\_40, TreyKay\_38, Prithvi\_38, LindNT\_38, DartGoblin\_40, MeaningOfLife\_39, LaterM\_39, Murucutumbu\_39, Bella96\_39
- Track 5 : JAWS\_39
- Track 6 : Belladonna\_39, Inky\_39, BGlluviae\_39, Capricorn\_39, Twitch\_39, Peel\_39, Jeckyll\_39, CREW\_39, Llorens\_39, Lunahalos\_39, Beezoo\_39, Topper\_39, Rosmarinus\_39, Spock\_39, Dalmuri\_39, Jarvi\_39, Homura\_39, CallaLilly\_39, Joy99\_39
- Track 7 : KiSi\_41, Oscar\_41, LeMond\_41, Scarlett\_41
- Track 8 : Validus\_40
- Track 9 : Dartin\_39, Shaobing\_39, Niklas\_39, Richo\_39, Peanam\_39, McMater\_39
- Track 10 : Chris\_39
- Track 11 : MarkPhew\_41
- Track 12 : Chavito\_40
- Track 13 : Nibb\_39
- Track 14 : Pokerus\_38
- Track 15 : Ekdilam\_89
- Track 16 : TClif\_96
- Track 17 : November\_91
- Track 18 : Marshawn\_41
- Track 19 : Yuna\_41
- Track 20 : DS6A\_9

### ***Summary of Final Annotations (See graph section above for start numbers):***

The start number called the most often in the published annotations is 3, it was called in 62 of the 65 non-draft genes in the pham.

Genes that call this "Most Annotated" start:

- ActinUp\_39, Adephagia\_39, Ageofdapage\_40, Atiba\_39, BGIlluviae\_39, BarrelRoll\_39, Beezoo\_39, Bella96\_39, Belladonna\_39, CREW\_39, CallaLilly\_39, Capricorn\_39, Chavito\_40, Chris\_39, Dalmuri\_39, DartGoblin\_40, Dartin\_39, Ekdilam\_89, Emerson\_40, Geraldini\_39, HedwigODU\_39, Homura\_39, Inky\_39, JAWS\_39, Jarvi\_39, Jayhawk\_40, Jeckyll\_39, Joy99\_39, KiSi\_41, LaterM\_39, LeMond\_41, LindNT\_38, Llorens\_39, Lunahalos\_39, MarkPhew\_41, Marshawn\_41, McMater\_39, MeaningOfLife\_39, Murucutumbu\_39, Nibb\_39, Niklas\_39, November\_91, Oscar\_41, Padpat\_40, Peanam\_39, Peel\_39, Pokerus\_38, Prithvi\_38, Ramen\_39, Rapunzel97\_39, Richo\_39, Rosmarinus\_39, Scarlett\_41, Shaobing\_39, Slimphazie\_39, Spock\_39, TClif\_96, Tachez\_39, Topper\_39, TreyKay\_38, TruffulaTree\_39, Twitch\_39, Validus\_40, Veliki\_39, YoureAdopted\_37, Yuna\_41,

Genes that have the "Most Annotated" start but do not call it:

- 

Genes that do not have the "Most Annotated" start:

- DS6A\_9, Settecandela\_202, Skog\_111,

### Summary by start number:

Start 1:

- Found in 1 of 69 ( 1.4% ) of genes in pham
- Manual Annotations of this start: 1 of 65
- Called 100.0% of time when present
- Phage (with cluster) where this start called: Skog\_111 (DO),

Start 3:

- Found in 66 of 69 ( 95.7% ) of genes in pham
- Manual Annotations of this start: 62 of 65
- Called 100.0% of time when present
- Phage (with cluster) where this start called: ActinUp\_39 (K1), Adephagia\_39 (K1), Ageofdapage\_40 (K1), Atiba\_39 (K1), BGIlluviae\_39 (K1), BarrelRoll\_39 (K1), Beezoo\_39 (K1), Bella96\_39 (K1), Belladonna\_39 (K1), CREW\_39 (K1), CallaLilly\_39 (K1), Capricorn\_39 (K1), Chavito\_40 (K1), Chris\_39 (K1), Dalmuri\_39 (K1), DartGoblin\_40 (K1), Dartin\_39 (K1), Ekdilam\_89 (K6), Emerson\_40 (K1), Geraldini\_39 (K1), HedwigODU\_39 (K1), Homura\_39 (K1), Inky\_39 (K1), JAWS\_39 (K1), Jarvi\_39 (K1), Jayhawk\_40 (K1), Jeckyll\_39 (K1), Joy99\_39 (K1), KiSi\_41 (K1), LaterM\_39 (K1), LeMond\_41 (K1), LindNT\_38 (K1), Llorens\_39 (K1), Lunahalos\_39 (K1), MarkPhew\_41 (K1), Marshawn\_41 (K6), McMater\_39 (K1), MeaningOfLife\_39 (K1), Murucutumbu\_39 (K1), Nibb\_39 (K1), Niklas\_39 (K1), November\_91 (K6), Oscar\_41 (K1), Padpat\_40 (K1), Peanam\_39 (K1), Peel\_39 (K1), Pokerus\_38 (K1), Prithvi\_38 (K1), Ramen\_39 (K1), Rapunzel97\_39 (K1), Richo\_39 (K1), Rosmarinus\_39 (K1), Scarlett\_41 (K1), Shaobing\_39 (K1), Slimphazie\_39 (K1), Spock\_39 (K1), TClif\_96 (K6), Tachez\_39 (K1), Topper\_39 (K1), TreyKay\_38 (K1), TruffulaTree\_39 (K1), Twitch\_39 (K1), Validus\_40 (K1), Veliki\_39 (K1), YoureAdopted\_37 (K1), Yuna\_41 (K6),

Start 4:

- Found in 1 of 69 ( 1.4% ) of genes in pham
- Manual Annotations of this start: 1 of 65
- Called 100.0% of time when present
- Phage (with cluster) where this start called: DS6A\_9 (singleton),

Start 5:

- Found in 2 of 69 ( 2.9% ) of genes in pham
- Manual Annotations of this start: 1 of 65
- Called 50.0% of time when present
- Phage (with cluster) where this start called: Settecandela\_202 (AA),

### **Summary by clusters:**

There are 5 clusters represented in this pham: AA, DO, K1, K6, singleton,

Info for manual annotations of cluster AA:

- Start number 5 was manually annotated 1 time for cluster AA.

Info for manual annotations of cluster DO:

- Start number 1 was manually annotated 1 time for cluster DO.

Info for manual annotations of cluster K1:

- Start number 3 was manually annotated 57 times for cluster K1.

Info for manual annotations of cluster K6:

- Start number 3 was manually annotated 5 times for cluster K6.

### **Gene Information:**

Gene: ActinUp\_39 Start: 31347, Stop: 31745, Start Num: 3

Candidate Starts for ActinUp\_39:

(Start: 3 @31347 has 62 MA's), (9, 31422), (22, 31527), (28, 31572),

Gene: Adephagia\_39 Start: 31344, Stop: 31742, Start Num: 3

Candidate Starts for Adephagia\_39:

(Start: 3 @31344 has 62 MA's), (9, 31419), (22, 31524), (28, 31569),

Gene: Ageofdapage\_40 Start: 31306, Stop: 31704, Start Num: 3

Candidate Starts for Ageofdapage\_40:

(Start: 3 @31306 has 62 MA's), (9, 31381), (15, 31435), (22, 31486), (28, 31531), (39, 31612),

Gene: Atiba\_39 Start: 31307, Stop: 31705, Start Num: 3

Candidate Starts for Atiba\_39:

(Start: 3 @31307 has 62 MA's), (9, 31382), (22, 31487), (28, 31532),

Gene: BGlluviae\_39 Start: 31463, Stop: 31861, Start Num: 3

Candidate Starts for BGlluviae\_39:

(Start: 3 @31463 has 62 MA's), (9, 31538), (22, 31643), (28, 31688), (39, 31769),

Gene: BarrelRoll\_39 Start: 31330, Stop: 31728, Start Num: 3

Candidate Starts for BarrelRoll\_39:

(Start: 3 @31330 has 62 MA's), (9, 31405), (22, 31510), (28, 31555),

Gene: Beezoo\_39 Start: 31354, Stop: 31752, Start Num: 3

Candidate Starts for Beezoo\_39:

(Start: 3 @31354 has 62 MA's), (9, 31429), (22, 31534), (28, 31579), (39, 31660),

Gene: Bella96\_39 Start: 31246, Stop: 31644, Start Num: 3  
Candidate Starts for Bella96\_39:  
(Start: 3 @31246 has 62 MA's), (9, 31321), (15, 31375), (22, 31426), (28, 31471), (39, 31552),

Gene: Belladonna\_39 Start: 31463, Stop: 31861, Start Num: 3  
Candidate Starts for Belladonna\_39:  
(Start: 3 @31463 has 62 MA's), (9, 31538), (22, 31643), (28, 31688), (39, 31769),

Gene: CREW\_39 Start: 31463, Stop: 31861, Start Num: 3  
Candidate Starts for CREW\_39:  
(Start: 3 @31463 has 62 MA's), (9, 31538), (22, 31643), (28, 31688), (39, 31769),

Gene: CallaLilly\_39 Start: 31386, Stop: 31784, Start Num: 3  
Candidate Starts for CallaLilly\_39:  
(Start: 3 @31386 has 62 MA's), (9, 31461), (22, 31566), (28, 31611), (39, 31692),

Gene: Capricorn\_39 Start: 31463, Stop: 31861, Start Num: 3  
Candidate Starts for Capricorn\_39:  
(Start: 3 @31463 has 62 MA's), (9, 31538), (22, 31643), (28, 31688), (39, 31769),

Gene: Chavito\_40 Start: 30572, Stop: 30979, Start Num: 3  
Candidate Starts for Chavito\_40:  
(Start: 3 @30572 has 62 MA's), (6, 30596), (9, 30647), (16, 30719), (22, 30752), (25, 30788), (29, 30806), (39, 30881),

Gene: Chris\_39 Start: 30467, Stop: 30829, Start Num: 3  
Candidate Starts for Chris\_39:  
(Start: 3 @30467 has 62 MA's), (6, 30488), (18, 30617), (21, 30635), (22, 30644), (28, 30683), (29, 30689), (34, 30710), (39, 30746), (40, 30773),

Gene: DS6A\_9 Start: 7366, Stop: 6980, Start Num: 4  
Candidate Starts for DS6A\_9:  
(Start: 4 @7366 has 1 MA's), (8, 7297), (12, 7270), (21, 7189), (27, 7144), (31, 7129), (42, 7021),

Gene: Dalmuri\_39 Start: 31463, Stop: 31861, Start Num: 3  
Candidate Starts for Dalmuri\_39:  
(Start: 3 @31463 has 62 MA's), (9, 31538), (22, 31643), (28, 31688), (39, 31769),

Gene: DartGoblin\_40 Start: 31241, Stop: 31639, Start Num: 3  
Candidate Starts for DartGoblin\_40:  
(Start: 3 @31241 has 62 MA's), (9, 31316), (15, 31370), (22, 31421), (28, 31466), (39, 31547),

Gene: Dartin\_39 Start: 29958, Stop: 30365, Start Num: 3  
Candidate Starts for Dartin\_39:  
(Start: 3 @29958 has 62 MA's), (6, 29982), (9, 30033), (22, 30138), (25, 30174), (29, 30192), (39, 30267),

Gene: Ekdilam\_89 Start: 60072, Stop: 60452, Start Num: 3  
Candidate Starts for Ekdilam\_89:  
(Start: 3 @60072 has 62 MA's), (6, 60093), (7, 60129), (9, 60144), (22, 60249), (25, 60285), (26, 60291), (39, 60369),

Gene: Emerson\_40 Start: 31338, Stop: 31736, Start Num: 3  
Candidate Starts for Emerson\_40:  
(Start: 3 @31338 has 62 MA's), (9, 31413), (22, 31518), (28, 31563),

Gene: Geraldini\_39 Start: 31440, Stop: 31838, Start Num: 3  
Candidate Starts for Geraldini\_39:  
(Start: 3 @31440 has 62 MA's), (9, 31515), (22, 31620), (28, 31665),

Gene: HedwigODU\_39 Start: 31347, Stop: 31745, Start Num: 3  
Candidate Starts for HedwigODU\_39:  
(Start: 3 @31347 has 62 MA's), (9, 31422), (22, 31527), (28, 31572),

Gene: Homura\_39 Start: 31463, Stop: 31861, Start Num: 3  
Candidate Starts for Homura\_39:  
(Start: 3 @31463 has 62 MA's), (9, 31538), (22, 31643), (28, 31688), (39, 31769),

Gene: Inky\_39 Start: 31463, Stop: 31861, Start Num: 3  
Candidate Starts for Inky\_39:  
(Start: 3 @31463 has 62 MA's), (9, 31538), (22, 31643), (28, 31688), (39, 31769),

Gene: JAWS\_39 Start: 31333, Stop: 31731, Start Num: 3  
Candidate Starts for JAWS\_39:  
(Start: 3 @31333 has 62 MA's), (9, 31408), (22, 31513), (28, 31558),

Gene: Jarvi\_39 Start: 31463, Stop: 31861, Start Num: 3  
Candidate Starts for Jarvi\_39:  
(Start: 3 @31463 has 62 MA's), (9, 31538), (22, 31643), (28, 31688), (39, 31769),

Gene: Jayhawk\_40 Start: 31345, Stop: 31743, Start Num: 3  
Candidate Starts for Jayhawk\_40:  
(Start: 3 @31345 has 62 MA's), (9, 31420), (22, 31525), (28, 31570),

Gene: Jeckyll\_39 Start: 31463, Stop: 31861, Start Num: 3  
Candidate Starts for Jeckyll\_39:  
(Start: 3 @31463 has 62 MA's), (9, 31538), (22, 31643), (28, 31688), (39, 31769),

Gene: Joy99\_39 Start: 31392, Stop: 31790, Start Num: 3  
Candidate Starts for Joy99\_39:  
(Start: 3 @31392 has 62 MA's), (9, 31467), (22, 31572), (28, 31617), (39, 31698),

Gene: KiSi\_41 Start: 30645, Stop: 31028, Start Num: 3  
Candidate Starts for KiSi\_41:  
(Start: 3 @30645 has 62 MA's), (24, 30831), (28, 30864), (29, 30870), (33, 30888), (39, 30945),

Gene: LaterM\_39 Start: 31293, Stop: 31691, Start Num: 3  
Candidate Starts for LaterM\_39:  
(Start: 3 @31293 has 62 MA's), (9, 31368), (15, 31422), (22, 31473), (28, 31518), (39, 31599),

Gene: LeMond\_41 Start: 30716, Stop: 31099, Start Num: 3  
Candidate Starts for LeMond\_41:  
(Start: 3 @30716 has 62 MA's), (24, 30902), (28, 30935), (29, 30941), (33, 30959), (39, 31016),

Gene: LindNT\_38 Start: 30506, Stop: 30904, Start Num: 3

Candidate Starts for LindNT\_38:

(Start: 3 @30506 has 62 MA's), (9, 30581), (15, 30635), (22, 30686), (28, 30731), (39, 30812),

Gene: Llorens\_39 Start: 31463, Stop: 31861, Start Num: 3

Candidate Starts for Llorens\_39:

(Start: 3 @31463 has 62 MA's), (9, 31538), (22, 31643), (28, 31688), (39, 31769),

Gene: Lunahalos\_39 Start: 31463, Stop: 31861, Start Num: 3

Candidate Starts for Lunahalos\_39:

(Start: 3 @31463 has 62 MA's), (9, 31538), (22, 31643), (28, 31688), (39, 31769),

Gene: MarkPhew\_41 Start: 30593, Stop: 30955, Start Num: 3

Candidate Starts for MarkPhew\_41:

(Start: 3 @30593 has 62 MA's), (6, 30614), (15, 30719), (24, 30776), (28, 30809), (34, 30836), (39, 30872), (40, 30899),

Gene: Marshawn\_41 Start: 30882, Stop: 31244, Start Num: 3

Candidate Starts for Marshawn\_41:

(Start: 3 @30882 has 62 MA's), (6, 30903), (28, 31098), (34, 31125), (39, 31161), (40, 31188),

Gene: McMater\_39 Start: 29958, Stop: 30365, Start Num: 3

Candidate Starts for McMater\_39:

(Start: 3 @29958 has 62 MA's), (6, 29982), (9, 30033), (22, 30138), (25, 30174), (29, 30192), (39, 30267),

Gene: MeaningOfLife\_39 Start: 31325, Stop: 31723, Start Num: 3

Candidate Starts for MeaningOfLife\_39:

(Start: 3 @31325 has 62 MA's), (9, 31400), (15, 31454), (22, 31505), (28, 31550), (39, 31631),

Gene: Murucutumbu\_39 Start: 31387, Stop: 31785, Start Num: 3

Candidate Starts for Murucutumbu\_39:

(Start: 3 @31387 has 62 MA's), (9, 31462), (15, 31516), (22, 31567), (28, 31612), (39, 31693),

Gene: Nibb\_39 Start: 29996, Stop: 30358, Start Num: 3

Candidate Starts for Nibb\_39:

(Start: 3 @29996 has 62 MA's), (6, 30017), (7, 30053), (17, 30143), (22, 30173), (24, 30179), (28, 30212), (34, 30239), (37, 30257), (38, 30269), (39, 30275), (40, 30302),

Gene: Niklas\_39 Start: 29961, Stop: 30368, Start Num: 3

Candidate Starts for Niklas\_39:

(Start: 3 @29961 has 62 MA's), (6, 29985), (9, 30036), (22, 30141), (25, 30177), (29, 30195), (39, 30270),

Gene: November\_91 Start: 59817, Stop: 60197, Start Num: 3

Candidate Starts for November\_91:

(Start: 3 @59817 has 62 MA's), (6, 59838), (7, 59874), (9, 59889), (22, 59994), (25, 60030), (29, 60048), (34, 60069), (36, 60087), (39, 60114),

Gene: Oscar\_41 Start: 30727, Stop: 31110, Start Num: 3

Candidate Starts for Oscar\_41:

(Start: 3 @30727 has 62 MA's), (24, 30913), (28, 30946), (29, 30952), (33, 30970), (39, 31027),

Gene: Padpat\_40 Start: 31338, Stop: 31736, Start Num: 3

Candidate Starts for Padpat\_40:

(Start: 3 @31338 has 62 MA's), (9, 31413), (22, 31518), (28, 31563),

Gene: Peanam\_39 Start: 29958, Stop: 30365, Start Num: 3

Candidate Starts for Peanam\_39:

(Start: 3 @29958 has 62 MA's), (6, 29982), (9, 30033), (22, 30138), (25, 30174), (29, 30192), (39, 30267),

Gene: Peel\_39 Start: 31465, Stop: 31863, Start Num: 3

Candidate Starts for Peel\_39:

(Start: 3 @31465 has 62 MA's), (9, 31540), (22, 31645), (28, 31690), (39, 31771),

Gene: Pokerus\_38 Start: 31380, Stop: 31778, Start Num: 3

Candidate Starts for Pokerus\_38:

(Start: 3 @31380 has 62 MA's), (9, 31455), (13, 31485), (22, 31560), (28, 31605),

Gene: Prithvi\_38 Start: 30506, Stop: 30904, Start Num: 3

Candidate Starts for Prithvi\_38:

(Start: 3 @30506 has 62 MA's), (9, 30581), (15, 30635), (22, 30686), (28, 30731), (39, 30812),

Gene: Ramen\_39 Start: 31345, Stop: 31743, Start Num: 3

Candidate Starts for Ramen\_39:

(Start: 3 @31345 has 62 MA's), (9, 31420), (22, 31525), (28, 31570),

Gene: Rapunzel97\_39 Start: 31345, Stop: 31743, Start Num: 3

Candidate Starts for Rapunzel97\_39:

(Start: 3 @31345 has 62 MA's), (9, 31420), (22, 31525), (28, 31570),

Gene: Richo\_39 Start: 29958, Stop: 30365, Start Num: 3

Candidate Starts for Richo\_39:

(Start: 3 @29958 has 62 MA's), (6, 29982), (9, 30033), (22, 30138), (25, 30174), (29, 30192), (39, 30267),

Gene: Rosmarinus\_39 Start: 31451, Stop: 31849, Start Num: 3

Candidate Starts for Rosmarinus\_39:

(Start: 3 @31451 has 62 MA's), (9, 31526), (22, 31631), (28, 31676), (39, 31757),

Gene: Scarlett\_41 Start: 30718, Stop: 31101, Start Num: 3

Candidate Starts for Scarlett\_41:

(Start: 3 @30718 has 62 MA's), (24, 30904), (28, 30937), (29, 30943), (33, 30961), (39, 31018),

Gene: Settecandela\_202 Start: 126224, Stop: 126619, Start Num: 5

Candidate Starts for Settecandela\_202:

(Start: 5 @126224 has 1 MA's), (9, 126287), (11, 126302), (14, 126323), (23, 126395), (31, 126455), (32, 126458), (35, 126476),

Gene: Shaobing\_39 Start: 29958, Stop: 30365, Start Num: 3

Candidate Starts for Shaobing\_39:

(Start: 3 @29958 has 62 MA's), (6, 29982), (9, 30033), (22, 30138), (25, 30174), (29, 30192), (39, 30267),

Gene: Skog\_111 Start: 44932, Stop: 45411, Start Num: 1

Candidate Starts for Skog\_111:

(Start: 1 @44932 has 1 MA's), (2, 44968), (20, 45172), (22, 45193),

Gene: Slimphazie\_39 Start: 31345, Stop: 31743, Start Num: 3

Candidate Starts for Slimphazie\_39:

(Start: 3 @31345 has 62 MA's), (9, 31420), (22, 31525), (28, 31570),

Gene: Spock\_39 Start: 31463, Stop: 31861, Start Num: 3

Candidate Starts for Spock\_39:

(Start: 3 @31463 has 62 MA's), (9, 31538), (22, 31643), (28, 31688), (39, 31769),

Gene: TClif\_96 Start: 59347, Stop: 59703, Start Num: 3

Candidate Starts for TClif\_96:

(Start: 3 @59347 has 62 MA's), (Start: 5 @59356 has 1 MA's), (6, 59368), (7, 59404), (9, 59419), (22, 59521), (34, 59587), (38, 59611),

Gene: Tachez\_39 Start: 31307, Stop: 31705, Start Num: 3

Candidate Starts for Tachez\_39:

(Start: 3 @31307 has 62 MA's), (9, 31382), (22, 31487), (28, 31532),

Gene: Topper\_39 Start: 31463, Stop: 31861, Start Num: 3

Candidate Starts for Topper\_39:

(Start: 3 @31463 has 62 MA's), (9, 31538), (22, 31643), (28, 31688), (39, 31769),

Gene: TreyKay\_38 Start: 30506, Stop: 30904, Start Num: 3

Candidate Starts for TreyKay\_38:

(Start: 3 @30506 has 62 MA's), (9, 30581), (15, 30635), (22, 30686), (28, 30731), (39, 30812),

Gene: TruffulaTree\_39 Start: 31341, Stop: 31739, Start Num: 3

Candidate Starts for TruffulaTree\_39:

(Start: 3 @31341 has 62 MA's), (9, 31416), (22, 31521), (28, 31566),

Gene: Twitch\_39 Start: 31465, Stop: 31863, Start Num: 3

Candidate Starts for Twitch\_39:

(Start: 3 @31465 has 62 MA's), (9, 31540), (22, 31645), (28, 31690), (39, 31771),

Gene: Validus\_40 Start: 29887, Stop: 30282, Start Num: 3

Candidate Starts for Validus\_40:

(Start: 3 @29887 has 62 MA's), (7, 29947), (9, 29962), (22, 30067), (25, 30097), (29, 30109), (40, 30211), (43, 30265),

Gene: Veliki\_39 Start: 31381, Stop: 31779, Start Num: 3

Candidate Starts for Veliki\_39:

(Start: 3 @31381 has 62 MA's), (9, 31456), (22, 31561), (28, 31606),

Gene: YoureAdopted\_37 Start: 30594, Stop: 30992, Start Num: 3

Candidate Starts for YoureAdopted\_37:

(Start: 3 @30594 has 62 MA's), (9, 30669), (22, 30774), (28, 30819),

Gene: Yuna\_41 Start: 30837, Stop: 31217, Start Num: 3

Candidate Starts for Yuna\_41:

(Start: 3 @30837 has 62 MA's), (6, 30861), (7, 30897), (9, 30912), (10, 30915), (19, 30993), (22, 31017), (30, 31065), (33, 31077), (39, 31134), (41, 31176),