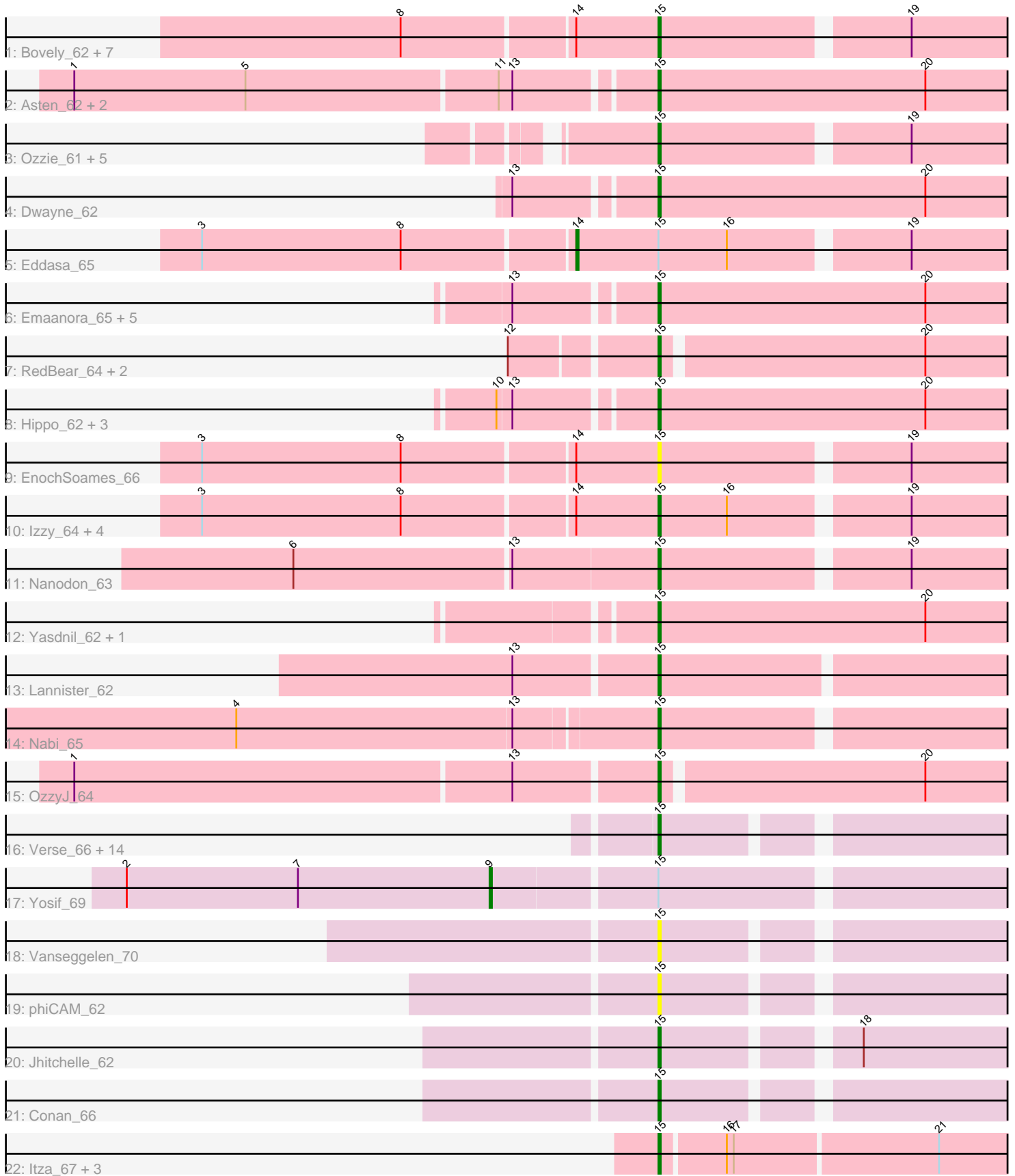


Pham 304994



Note: Tracks are now grouped by subcluster and scaled. Switching in subcluster is indicated by changes in track color. Track scale is now set by default to display the region 30 bp upstream of start 1 to 30 bp downstream of the last possible start. If this default region is judged to be packed too tightly with annotated starts, the track will be further scaled to only show that region of the ORF with annotated starts. This action will be indicated by adding "Zoomed" to the title. For starts, yellow indicates the location of called starts comprised solely of Glimmer/GeneMark auto-annotations, green indicates the location of called starts with at least 1 manual gene annotation.

Pham 304994 Report

This analysis was run 06/08/26 on database version 649.

Pham number 304994 has 68 members, 6 are drafts.

Phages represented in each track:

- Track 1 : Bovely_62, Unstoppable_62, Phettuccine_62, Esperer_63, Leviticus_63, Aaronocolus_62, Indigo_61, Nerdos_61
- Track 2 : Asten_62, SarahRose_62, Snorlax_62
- Track 3 : Ozzie_61, Hydra_64, Caliburn_61, BeardedLady_62, Legacy_61, SunsetPointe_61
- Track 4 : Dwayne_62
- Track 5 : Eddasa_65
- Track 6 : Emaanora_65, Werner_62, Triste_63, TagePhighter_64, Whatever_62, Chucky_62
- Track 7 : RedBear_64, South40_63, Katalie_63
- Track 8 : Hippo_62, TuanPN_60, BarryBee_65, Ejemplo_60
- Track 9 : EnochSoames_66
- Track 10 : Izzy_64, Jash_64, Rusticus_64, BryanRecycles_64, Oliynyk_64
- Track 11 : Nanodon_63
- Track 12 : Yasdnil_62, Maneekul_62
- Track 13 : Lannister_62
- Track 14 : Nabi_65
- Track 15 : OzzyJ_64
- Track 16 : Verse_66, Speedwell_68, Dexers_63, Kaine_65, Amela_65, Sudan_65, Alsaber_65, ElGato_66, Celery_68, ZamZam_65, Provolone_66, SunkenRoot_66, Pavo_66, Saftant_63, Verabelle_68
- Track 17 : Yosif_69
- Track 18 : Vanseggelen_70
- Track 19 : phiCAM_62
- Track 20 : Jhitchelle_62
- Track 21 : Conan_66
- Track 22 : Itza_67, Celia_64, Urza_66, VieEnRose_66

Summary of Final Annotations (See graph section above for start numbers):

The start number called the most often in the published annotations is 15, it was called in 60 of the 62 non-draft genes in the pham.

Genes that call this "Most Annotated" start:

- Aaronocolus_62, Alsaber_65, Amela_65, Asten_62, BarryBee_65, BeardedLady_62, Bovely_62, BryanRecycles_64, Caliburn_61, Celery_68, Celia_64, Chucky_62, Conan_66, Dexers_63, Dwayne_62, Ejemplo_60, ElGato_66, Emaanora_65, EnochSoames_66, Esperer_63, Hippo_62, Hydra_64, Indigo_61, Itza_67, Izzy_64, Jash_64, Jhitchelle_62, Kaine_65, Katalie_63, Lannister_62, Legacy_61, Leviticus_63, Maneekul_62, Nabi_65, Nanodon_63, Nerdos_61, Oliynyk_64, Ozzie_61, OzzyJ_64, Pavo_66, Phettuccine_62, Provolone_66, RedBear_64, Rusticus_64, Saftant_63, SarahRose_62, Snorlax_62, South40_63, Speedwell_68, Sudan_65, SunkenRoot_66, SunsetPointe_61, TAgePhighter_64, Triste_63, TuanPN_60, Unstoppable_62, Urza_66, Vanseggelen_70, Verabelle_68, Verse_66, VieEnRose_66, Werner_62, Whatever_62, Yasdniil_62, ZamZam_65, phiCAM_62,

Genes that have the "Most Annotated" start but do not call it:

- Eddasa_65, Yosif_69,

Genes that do not have the "Most Annotated" start:

-

Summary by start number:

Start 9:

- Found in 1 of 68 (1.5%) of genes in pham
- Manual Annotations of this start: 1 of 62
- Called 100.0% of time when present
- Phage (with cluster) where this start called: Yosif_69 (BD3),

Start 14:

- Found in 15 of 68 (22.1%) of genes in pham
- Manual Annotations of this start: 1 of 62
- Called 6.7% of time when present
- Phage (with cluster) where this start called: Eddasa_65 (BD1),

Start 15:

- Found in 68 of 68 (100.0%) of genes in pham
- Manual Annotations of this start: 60 of 62
- Called 97.1% of time when present
- Phage (with cluster) where this start called: Aaronocolus_62 (BD1), Alsaber_65 (BD3), Amela_65 (BD3), Asten_62 (BD1), BarryBee_65 (BD1), BeardedLady_62 (BD1), Bovely_62 (BD1), BryanRecycles_64 (BD1), Caliburn_61 (BD1), Celery_68 (BD3), Celia_64 (BD6), Chucky_62 (BD1), Conan_66 (BD3), Dexers_63 (BD3), Dwayne_62 (BD1), Ejemplo_60 (BD1), ElGato_66 (BD3), Emaanora_65 (BD1), EnochSoames_66 (BD1), Esperer_63 (BD1), Hippo_62 (BD1), Hydra_64 (BD1), Indigo_61 (BD1), Itza_67 (BD6), Izzy_64 (BD1), Jash_64 (BD1), Jhitchelle_62 (BD3), Kaine_65 (BD3), Katalie_63 (BD1), Lannister_62 (BD1), Legacy_61 (BD1), Leviticus_63 (BD1), Maneekul_62 (BD1), Nabi_65 (BD1), Nanodon_63 (BD1), Nerdos_61 (BD1), Oliynyk_64 (BD1), Ozzie_61 (BD1), OzzyJ_64 (BD1), Pavo_66 (BD3), Phettuccine_62 (BD1), Provolone_66 (BD3), RedBear_64 (BD1), Rusticus_64 (BD1), Saftant_63 (BD3), SarahRose_62 (BD1), Snorlax_62 (BD1), South40_63 (BD1), Speedwell_68 (BD3), Sudan_65 (BD3), SunkenRoot_66 (BD3), SunsetPointe_61 (BD1), TAgePhighter_64 (BD1), Triste_63 (BD1), TuanPN_60 (BD1), Unstoppable_62 (BD1), Urza_66 (BD6), Vanseggelen_70 (BD3), Verabelle_68 (BD3), Verse_66 (BD3), VieEnRose_66 (BD6), Werner_62 (BD1), Whatever_62

(BD1), Yasdnil_62 (BD1), ZamZam_65 (BD3), phiCAM_62 (BD3),

Summary by clusters:

There are 3 clusters represented in this pham: BD6, BD1, BD3,

Info for manual annotations of cluster BD1:

- Start number 14 was manually annotated 1 time for cluster BD1.
- Start number 15 was manually annotated 42 times for cluster BD1.

Info for manual annotations of cluster BD3:

- Start number 9 was manually annotated 1 time for cluster BD3.
- Start number 15 was manually annotated 14 times for cluster BD3.

Info for manual annotations of cluster BD6:

- Start number 15 was manually annotated 4 times for cluster BD6.

Gene Information:

Gene: Aaronocolus_62 Start: 43600, Stop: 43325, Start Num: 15

Candidate Starts for Aaronocolus_62:

(8, 43708), (Start: 14 @43636 has 1 MA's), (Start: 15 @43600 has 60 MA's), (19, 43498),

Gene: Alsaber_65 Start: 43432, Stop: 43151, Start Num: 15

Candidate Starts for Alsaber_65:

(Start: 15 @43432 has 60 MA's),

Gene: Amela_65 Start: 44414, Stop: 44145, Start Num: 15

Candidate Starts for Amela_65:

(Start: 15 @44414 has 60 MA's),

Gene: Asten_62 Start: 45620, Stop: 45309, Start Num: 15

Candidate Starts for Asten_62:

(1, 45866), (5, 45791), (11, 45683), (13, 45677), (Start: 15 @45620 has 60 MA's), (20, 45503),

Gene: BarryBee_65 Start: 45597, Stop: 45286, Start Num: 15

Candidate Starts for BarryBee_65:

(10, 45660), (13, 45654), (Start: 15 @45597 has 60 MA's), (20, 45480),

Gene: BeardedLady_62 Start: 43698, Stop: 43423, Start Num: 15

Candidate Starts for BeardedLady_62:

(Start: 15 @43698 has 60 MA's), (19, 43596),

Gene: Bovely_62 Start: 43603, Stop: 43328, Start Num: 15

Candidate Starts for Bovely_62:

(8, 43711), (Start: 14 @43639 has 1 MA's), (Start: 15 @43603 has 60 MA's), (19, 43501),

Gene: BryanRecycles_64 Start: 44100, Stop: 43813, Start Num: 15

Candidate Starts for BryanRecycles_64:

(3, 44295), (8, 44208), (Start: 14 @44136 has 1 MA's), (Start: 15 @44100 has 60 MA's), (16, 44070), (19, 43998),

Gene: Caliburn_61 Start: 43704, Stop: 43429, Start Num: 15
Candidate Starts for Caliburn_61:
(Start: 15 @43704 has 60 MA's), (19, 43602),

Gene: Celery_68 Start: 43343, Stop: 43065, Start Num: 15
Candidate Starts for Celery_68:
(Start: 15 @43343 has 60 MA's),

Gene: Celia_64 Start: 43676, Stop: 43323, Start Num: 15
Candidate Starts for Celia_64:
(Start: 15 @43676 has 60 MA's), (16, 43649), (17, 43646), (21, 43559),

Gene: Chucky_62 Start: 45658, Stop: 45347, Start Num: 15
Candidate Starts for Chucky_62:
(13, 45715), (Start: 15 @45658 has 60 MA's), (20, 45541),

Gene: Conan_66 Start: 43683, Stop: 43417, Start Num: 15
Candidate Starts for Conan_66:
(Start: 15 @43683 has 60 MA's),

Gene: Dexers_63 Start: 43658, Stop: 43389, Start Num: 15
Candidate Starts for Dexers_63:
(Start: 15 @43658 has 60 MA's),

Gene: Dwayne_62 Start: 45646, Stop: 45335, Start Num: 15
Candidate Starts for Dwayne_62:
(13, 45703), (Start: 15 @45646 has 60 MA's), (20, 45529),

Gene: Eddasa_65 Start: 44675, Stop: 44352, Start Num: 14
Candidate Starts for Eddasa_65:
(3, 44834), (8, 44747), (Start: 14 @44675 has 1 MA's), (Start: 15 @44639 has 60 MA's), (16, 44609),
(19, 44537),

Gene: Ejemplo_60 Start: 45585, Stop: 45274, Start Num: 15
Candidate Starts for Ejemplo_60:
(10, 45648), (13, 45642), (Start: 15 @45585 has 60 MA's), (20, 45468),

Gene: ElGato_66 Start: 43561, Stop: 43289, Start Num: 15
Candidate Starts for ElGato_66:
(Start: 15 @43561 has 60 MA's),

Gene: Emaanora_65 Start: 45570, Stop: 45259, Start Num: 15
Candidate Starts for Emaanora_65:
(13, 45627), (Start: 15 @45570 has 60 MA's), (20, 45453),

Gene: EnochSoames_66 Start: 43897, Stop: 43610, Start Num: 15
Candidate Starts for EnochSoames_66:
(3, 44092), (8, 44005), (Start: 14 @43933 has 1 MA's), (Start: 15 @43897 has 60 MA's), (19, 43795),

Gene: Esperer_63 Start: 43946, Stop: 43671, Start Num: 15
Candidate Starts for Esperer_63:
(8, 44054), (Start: 14 @43982 has 1 MA's), (Start: 15 @43946 has 60 MA's), (19, 43844),

Gene: Hippo_62 Start: 45633, Stop: 45322, Start Num: 15
Candidate Starts for Hippo_62:
(10, 45696), (13, 45690), (Start: 15 @45633 has 60 MA's), (20, 45516),

Gene: Hydra_64 Start: 44506, Stop: 44231, Start Num: 15
Candidate Starts for Hydra_64:
(Start: 15 @44506 has 60 MA's), (19, 44404),

Gene: Indigo_61 Start: 43596, Stop: 43321, Start Num: 15
Candidate Starts for Indigo_61:
(8, 43704), (Start: 14 @43632 has 1 MA's), (Start: 15 @43596 has 60 MA's), (19, 43494),

Gene: Itza_67 Start: 43609, Stop: 43256, Start Num: 15
Candidate Starts for Itza_67:
(Start: 15 @43609 has 60 MA's), (16, 43582), (17, 43579), (21, 43492),

Gene: Izzy_64 Start: 44147, Stop: 43860, Start Num: 15
Candidate Starts for Izzy_64:
(3, 44342), (8, 44255), (Start: 14 @44183 has 1 MA's), (Start: 15 @44147 has 60 MA's), (16, 44117),
(19, 44045),

Gene: Jash_64 Start: 44100, Stop: 43813, Start Num: 15
Candidate Starts for Jash_64:
(3, 44295), (8, 44208), (Start: 14 @44136 has 1 MA's), (Start: 15 @44100 has 60 MA's), (16, 44070),
(19, 43998),

Gene: Jhitchelle_62 Start: 42943, Stop: 42677, Start Num: 15
Candidate Starts for Jhitchelle_62:
(Start: 15 @42943 has 60 MA's), (18, 42868),

Gene: Kaine_65 Start: 43456, Stop: 43175, Start Num: 15
Candidate Starts for Kaine_65:
(Start: 15 @43456 has 60 MA's),

Gene: Katalie_63 Start: 46125, Stop: 45820, Start Num: 15
Candidate Starts for Katalie_63:
(12, 46185), (Start: 15 @46125 has 60 MA's), (20, 46014),

Gene: Lannister_62 Start: 44501, Stop: 44196, Start Num: 15
Candidate Starts for Lannister_62:
(13, 44561), (Start: 15 @44501 has 60 MA's),

Gene: Legacy_61 Start: 43695, Stop: 43420, Start Num: 15
Candidate Starts for Legacy_61:
(Start: 15 @43695 has 60 MA's), (19, 43593),

Gene: Leviticus_63 Start: 44133, Stop: 43858, Start Num: 15
Candidate Starts for Leviticus_63:
(8, 44241), (Start: 14 @44169 has 1 MA's), (Start: 15 @44133 has 60 MA's), (19, 44031),

Gene: Maneekul_62 Start: 45663, Stop: 45352, Start Num: 15
Candidate Starts for Maneekul_62:

(Start: 15 @45663 has 60 MA's), (20, 45546),

Gene: Nabi_65 Start: 45193, Stop: 44897, Start Num: 15

Candidate Starts for Nabi_65:

(4, 45373), (13, 45253), (Start: 15 @45193 has 60 MA's),

Gene: Nanodon_63 Start: 44114, Stop: 43854, Start Num: 15

Candidate Starts for Nanodon_63:

(6, 44270), (13, 44177), (Start: 15 @44114 has 60 MA's), (19, 44012),

Gene: Nerdos_61 Start: 43595, Stop: 43320, Start Num: 15

Candidate Starts for Nerdos_61:

(8, 43703), (Start: 14 @43631 has 1 MA's), (Start: 15 @43595 has 60 MA's), (19, 43493),

Gene: Oliynyk_64 Start: 44100, Stop: 43813, Start Num: 15

Candidate Starts for Oliynyk_64:

(3, 44295), (8, 44208), (Start: 14 @44136 has 1 MA's), (Start: 15 @44100 has 60 MA's), (16, 44070), (19, 43998),

Gene: Ozzie_61 Start: 43704, Stop: 43429, Start Num: 15

Candidate Starts for Ozzie_61:

(Start: 15 @43704 has 60 MA's), (19, 43602),

Gene: OzzyJ_64 Start: 45554, Stop: 45249, Start Num: 15

Candidate Starts for OzzyJ_64:

(1, 45803), (13, 45614), (Start: 15 @45554 has 60 MA's), (20, 45443),

Gene: Pavo_66 Start: 43632, Stop: 43360, Start Num: 15

Candidate Starts for Pavo_66:

(Start: 15 @43632 has 60 MA's),

Gene: Phettuccine_62 Start: 43596, Stop: 43321, Start Num: 15

Candidate Starts for Phettuccine_62:

(8, 43704), (Start: 14 @43632 has 1 MA's), (Start: 15 @43596 has 60 MA's), (19, 43494),

Gene: Provolone_66 Start: 43773, Stop: 43501, Start Num: 15

Candidate Starts for Provolone_66:

(Start: 15 @43773 has 60 MA's),

Gene: RedBear_64 Start: 46125, Stop: 45820, Start Num: 15

Candidate Starts for RedBear_64:

(12, 46185), (Start: 15 @46125 has 60 MA's), (20, 46014),

Gene: Rusticus_64 Start: 44100, Stop: 43813, Start Num: 15

Candidate Starts for Rusticus_64:

(3, 44295), (8, 44208), (Start: 14 @44136 has 1 MA's), (Start: 15 @44100 has 60 MA's), (16, 44070), (19, 43998),

Gene: Saftant_63 Start: 43520, Stop: 43239, Start Num: 15

Candidate Starts for Saftant_63:

(Start: 15 @43520 has 60 MA's),

Gene: SarahRose_62 Start: 45632, Stop: 45321, Start Num: 15

Candidate Starts for SarahRose_62:
(1, 45878), (5, 45803), (11, 45695), (13, 45689), (Start: 15 @45632 has 60 MA's), (20, 45515),

Gene: Snorlax_62 Start: 45657, Stop: 45346, Start Num: 15
Candidate Starts for Snorlax_62:
(1, 45903), (5, 45828), (11, 45720), (13, 45714), (Start: 15 @45657 has 60 MA's), (20, 45540),

Gene: South40_63 Start: 46125, Stop: 45820, Start Num: 15
Candidate Starts for South40_63:
(12, 46185), (Start: 15 @46125 has 60 MA's), (20, 46014),

Gene: Speedwell_68 Start: 44565, Stop: 44284, Start Num: 15
Candidate Starts for Speedwell_68:
(Start: 15 @44565 has 60 MA's),

Gene: Sudan_65 Start: 43439, Stop: 43158, Start Num: 15
Candidate Starts for Sudan_65:
(Start: 15 @43439 has 60 MA's),

Gene: SunkenRoot_66 Start: 44141, Stop: 43872, Start Num: 15
Candidate Starts for SunkenRoot_66:
(Start: 15 @44141 has 60 MA's),

Gene: SunsetPointe_61 Start: 43711, Stop: 43436, Start Num: 15
Candidate Starts for SunsetPointe_61:
(Start: 15 @43711 has 60 MA's), (19, 43609),

Gene: TagePhighter_64 Start: 45633, Stop: 45322, Start Num: 15
Candidate Starts for TagePhighter_64:
(13, 45690), (Start: 15 @45633 has 60 MA's), (20, 45516),

Gene: Triste_63 Start: 45632, Stop: 45321, Start Num: 15
Candidate Starts for Triste_63:
(13, 45689), (Start: 15 @45632 has 60 MA's), (20, 45515),

Gene: TuanPN_60 Start: 45585, Stop: 45274, Start Num: 15
Candidate Starts for TuanPN_60:
(10, 45648), (13, 45642), (Start: 15 @45585 has 60 MA's), (20, 45468),

Gene: Unstoppable_62 Start: 43594, Stop: 43319, Start Num: 15
Candidate Starts for Unstoppable_62:
(8, 43702), (Start: 14 @43630 has 1 MA's), (Start: 15 @43594 has 60 MA's), (19, 43492),

Gene: Urza_66 Start: 43630, Stop: 43277, Start Num: 15
Candidate Starts for Urza_66:
(Start: 15 @43630 has 60 MA's), (16, 43603), (17, 43600), (21, 43513),

Gene: Vanseggelen_70 Start: 43501, Stop: 43232, Start Num: 15
Candidate Starts for Vanseggelen_70:
(Start: 15 @43501 has 60 MA's),

Gene: Verabelle_68 Start: 43108, Stop: 42839, Start Num: 15
Candidate Starts for Verabelle_68:

(Start: 15 @43108 has 60 MA's),

Gene: Verse_66 Start: 44405, Stop: 44136, Start Num: 15

Candidate Starts for Verse_66:

(Start: 15 @44405 has 60 MA's),

Gene: VieEnRose_66 Start: 43482, Stop: 43129, Start Num: 15

Candidate Starts for VieEnRose_66:

(Start: 15 @43482 has 60 MA's), (16, 43455), (17, 43452), (21, 43365),

Gene: Werner_62 Start: 45630, Stop: 45319, Start Num: 15

Candidate Starts for Werner_62:

(13, 45687), (Start: 15 @45630 has 60 MA's), (20, 45513),

Gene: Whatever_62 Start: 45655, Stop: 45344, Start Num: 15

Candidate Starts for Whatever_62:

(13, 45712), (Start: 15 @45655 has 60 MA's), (20, 45538),

Gene: Yasdnii_62 Start: 45682, Stop: 45371, Start Num: 15

Candidate Starts for Yasdnii_62:

(Start: 15 @45682 has 60 MA's), (20, 45565),

Gene: Yosif_69 Start: 44982, Stop: 44650, Start Num: 9

Candidate Starts for Yosif_69:

(2, 45141), (7, 45066), (Start: 9 @44982 has 1 MA's), (Start: 15 @44913 has 60 MA's),

Gene: ZamZam_65 Start: 43862, Stop: 43581, Start Num: 15

Candidate Starts for ZamZam_65:

(Start: 15 @43862 has 60 MA's),

Gene: phiCAM_62 Start: 45181, Stop: 44900, Start Num: 15

Candidate Starts for phiCAM_62:

(Start: 15 @45181 has 60 MA's),