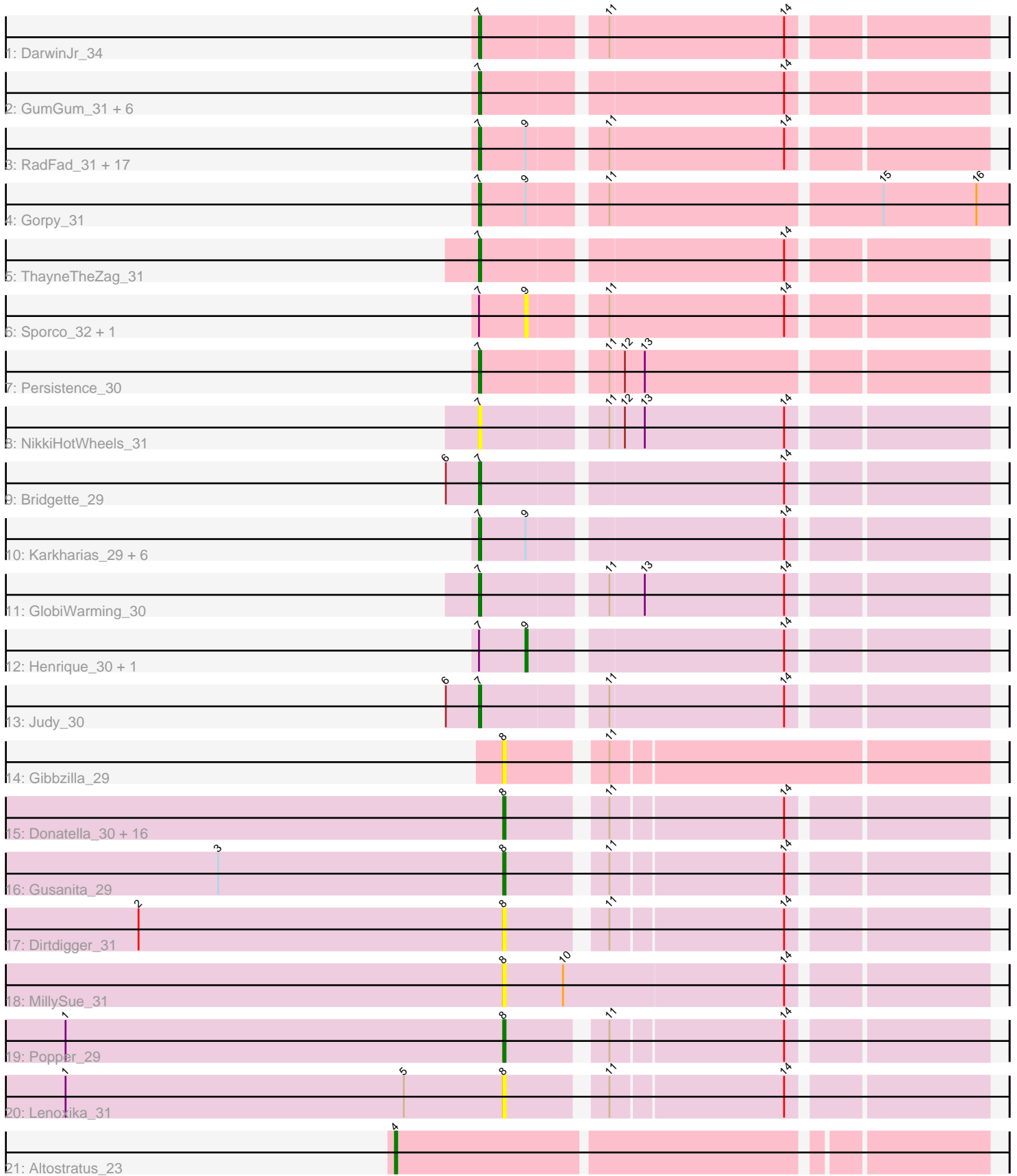


Pham 304996



Note: Tracks are now grouped by subcluster and scaled. Switching in subcluster is indicated by changes in track color. Track scale is now set by default to display the region 30 bp upstream of start 1 to 30 bp downstream of the last possible start. If this default region is judged to be packed too tightly with annotated starts, the track will be further scaled to only show that region of the ORF with annotated starts. This action will be indicated by adding "Zoomed" to the title. For starts, yellow indicates the location of called starts comprised solely of Glimmer/GeneMark auto-annotations, green indicates the location of called starts with at least 1 manual gene annotation.

Pham 304996 Report

This analysis was run 06/08/26 on database version 649.

Pham number 304996 has 68 members, 19 are drafts.

Phages represented in each track:

- Track 1 : DarwinJr_34
- Track 2 : GumGum_31, Anekin_30, Shukran_31, Hestia_31, CosmicBrownie_31, Kabloowy_31, Satrap_31
- Track 3 : RadFad_31, MaterMagnus_31, MidnightRain_31, Hillester_31, Raphaella_31, MUWow_30, Lasker_31, CookieBear_31, Sakai_31, Isolde_31, Richie_31, BenchScraper_31, Lawnathon_31, SonDevVon_30, YoungHarleezy_31, Globfish_31, BlueShadow_31, Mapleville_30
- Track 4 : Gorpy_31
- Track 5 : ThayneTheZag_31
- Track 6 : Sporco_32, BasketStar_31
- Track 7 : Persistence_30
- Track 8 : NikkiHotWheels_31
- Track 9 : Bridgette_29
- Track 10 : Karkharias_29, Constance_29, LilyBell_29, KayMoney_30, ChuckDuck_30, PeggyLeg03_29, SpicyFrank_31
- Track 11 : GlobiWarming_30
- Track 12 : Henrique_30, FosterFrank_30
- Track 13 : Judy_30
- Track 14 : Gibbzilla_29
- Track 15 : Donatella_30, Schism_31, Cole_29, Kihatsu_32, BigSherm_31, Zaheer_31, Ichiang_29, Guinevere_31, Nandita_31, ToastyOats_33, Halloween_29, Toodles_32, Ryan_31, QuinnAvery_31, Saintcarr_31, Yonex_31, GoodLuckBabe_31
- Track 16 : Gusanita_29
- Track 17 : Dirdigger_31
- Track 18 : MillySue_31
- Track 19 : Popper_29
- Track 20 : Lenoxika_31
- Track 21 : Altostratus_23

Summary of Final Annotations (See graph section above for start numbers):

The start number called the most often in the published annotations is 7, it was called in 31 of the 49 non-draft genes in the pham.

Genes that call this "Most Annotated" start:

- Anekin_30, BenchScraper_31, BlueShadow_31, Bridgette_29, ChuckDuck_30, Constance_29, CookieBear_31, CosmicBrownie_31, DarwinJr_34, Globfish_31, GlobiWarming_30, Gorpy_31, GumGum_31, Hestia_31, Hillester_31, Isolde_31, Judy_30, Kabloowy_31, Karkharias_29, KayMoney_30, Lasker_31, Lawnathon_31, LilyBell_29, MUWow_30, Mapleville_30, MaterMagnus_31, MidnightRain_31, NikkiHotWheels_31, PeggyLeg03_29, Persistence_30, RadFad_31, Raphaella_31, Richie_31, Sakai_31, Satrap_31, Shukran_31, SonDevVon_30, SpicyFrank_31, ThayneTheZag_31, YoungHarleezy_31,

Genes that have the "Most Annotated" start but do not call it:

- BasketStar_31, FosterFrank_30, Henrique_30, Sporco_32,

Genes that do not have the "Most Annotated" start:

- Altostratus_23, BigSherm_31, Cole_29, Dirdigger_31, Donatella_30, Gibbzilla_29, GoodLuckBabe_31, Guinevere_31, Gusanita_29, Halloween_29, Ichiang_29, Kihatsu_32, Lenoxika_31, MillySue_31, Nandita_31, Popper_29, QuinnAvery_31, Ryan_31, Saintcarr_31, Schism_31, ToastyOats_33, Toodles_32, Yonex_31, Zaheer_31,

Summary by start number:

Start 4:

- Found in 1 of 68 (1.5%) of genes in pham
- Manual Annotations of this start: 1 of 49
- Called 100.0% of time when present
- Phage (with cluster) where this start called: Altostratus_23 (FS),

Start 7:

- Found in 44 of 68 (64.7%) of genes in pham
- Manual Annotations of this start: 31 of 49
- Called 90.9% of time when present
- Phage (with cluster) where this start called: Anekin_30 (AY), BenchScraper_31 (AY), BlueShadow_31 (AY), Bridgette_29 (FA), ChuckDuck_30 (FA), Constance_29 (FA), CookieBear_31 (AY), CosmicBrownie_31 (AY), DarwinJr_34 (AY), Globfish_31 (AY), GlobiWarming_30 (FA), Gorpy_31 (AY), GumGum_31 (AY), Hestia_31 (AY), Hillester_31 (AY), Isolde_31 (AY), Judy_30 (FA), Kabloowy_31 (AY), Karkharias_29 (FA), KayMoney_30 (FA), Lasker_31 (AY), Lawnathon_31 (AY), LilyBell_29 (FA), MUWow_30 (AY), Mapleville_30 (AY), MaterMagnus_31 (AY), MidnightRain_31 (AY), NikkiHotWheels_31 (FA), PeggyLeg03_29 (FA), Persistence_30 (AY), RadFad_31 (AY), Raphaella_31 (AY), Richie_31 (AY), Sakai_31 (AY), Satrap_31 (AY), Shukran_31 (AY), SonDevVon_30 (AY), SpicyFrank_31 (AY), ThayneTheZag_31 (AY), YoungHarleezy_31 (AY),

Start 8:

- Found in 23 of 68 (33.8%) of genes in pham
- Manual Annotations of this start: 16 of 49
- Called 100.0% of time when present
- Phage (with cluster) where this start called: BigSherm_31 (FF), Cole_29 (FF), Dirdigger_31 (FF), Donatella_30 (FF), Gibbzilla_29 (FB), GoodLuckBabe_31 (FF), Guinevere_31 (FF), Gusanita_29 (FF), Halloween_29 (FF), Ichiang_29 (FF), Kihatsu_32 (FF), Lenoxika_31 (FF), MillySue_31 (FF), Nandita_31 (FF), Popper_29

(FF), QuinnAvery_31 (FF), Ryan_31 (FF), Saintcarr_31 (FF), Schism_31 (FF), ToastyOats_33 (FF), Toodles_32 (FF), Yonex_31 (FF), Zaheer_31 (FF),

Start 9:

- Found in 30 of 68 (44.1%) of genes in pham
- Manual Annotations of this start: 1 of 49
- Called 13.3% of time when present
- Phage (with cluster) where this start called: BasketStar_31 (AY), FosterFrank_30 (FA), Henrique_30 (FA), Sporco_32 (AY),

Summary by clusters:

There are 5 clusters represented in this pham: AY, FA, FB, FS, FF,

Info for manual annotations of cluster AY:

- Start number 7 was manually annotated 23 times for cluster AY.

Info for manual annotations of cluster FA:

- Start number 7 was manually annotated 8 times for cluster FA.
- Start number 9 was manually annotated 1 time for cluster FA.

Info for manual annotations of cluster FF:

- Start number 8 was manually annotated 16 times for cluster FF.

Info for manual annotations of cluster FS:

- Start number 4 was manually annotated 1 time for cluster FS.

Gene Information:

Gene: Altostratus_23 Start: 18535, Stop: 18786, Start Num: 4

Candidate Starts for Altostratus_23:

(Start: 4 @18535 has 1 MA's),

Gene: Anekin_30 Start: 21604, Stop: 21816, Start Num: 7

Candidate Starts for Anekin_30:

(Start: 7 @21604 has 31 MA's), (14, 21733),

Gene: BasketStar_31 Start: 21500, Stop: 21691, Start Num: 9

Candidate Starts for BasketStar_31:

(Start: 7 @21479 has 31 MA's), (Start: 9 @21500 has 1 MA's), (11, 21530), (14, 21608),

Gene: BenchScraper_31 Start: 21440, Stop: 21652, Start Num: 7

Candidate Starts for BenchScraper_31:

(Start: 7 @21440 has 31 MA's), (Start: 9 @21461 has 1 MA's), (11, 21491), (14, 21569),

Gene: BigSherm_31 Start: 23227, Stop: 23424, Start Num: 8

Candidate Starts for BigSherm_31:

(Start: 8 @23227 has 16 MA's), (11, 23266), (14, 23341),

Gene: BlueShadow_31 Start: 21425, Stop: 21637, Start Num: 7

Candidate Starts for BlueShadow_31:
(Start: 7 @21425 has 31 MA's), (Start: 9 @21446 has 1 MA's), (11, 21476), (14, 21554),

Gene: Bridgette_29 Start: 21491, Stop: 21703, Start Num: 7
Candidate Starts for Bridgette_29:
(6, 21476), (Start: 7 @21491 has 31 MA's), (14, 21620),

Gene: ChuckDuck_30 Start: 21259, Stop: 21471, Start Num: 7
Candidate Starts for ChuckDuck_30:
(Start: 7 @21259 has 31 MA's), (Start: 9 @21280 has 1 MA's), (14, 21388),

Gene: Cole_29 Start: 22974, Stop: 23171, Start Num: 8
Candidate Starts for Cole_29:
(Start: 8 @22974 has 16 MA's), (11, 23013), (14, 23088),

Gene: Constance_29 Start: 21731, Stop: 21943, Start Num: 7
Candidate Starts for Constance_29:
(Start: 7 @21731 has 31 MA's), (Start: 9 @21752 has 1 MA's), (14, 21860),

Gene: CookieBear_31 Start: 21425, Stop: 21637, Start Num: 7
Candidate Starts for CookieBear_31:
(Start: 7 @21425 has 31 MA's), (Start: 9 @21446 has 1 MA's), (11, 21476), (14, 21554),

Gene: CosmicBrownie_31 Start: 21244, Stop: 21456, Start Num: 7
Candidate Starts for CosmicBrownie_31:
(Start: 7 @21244 has 31 MA's), (14, 21373),

Gene: DarwinJr_34 Start: 22836, Stop: 23048, Start Num: 7
Candidate Starts for DarwinJr_34:
(Start: 7 @22836 has 31 MA's), (11, 22887), (14, 22965),

Gene: Dirdigger_31 Start: 23048, Stop: 23245, Start Num: 8
Candidate Starts for Dirdigger_31:
(2, 22883), (Start: 8 @23048 has 16 MA's), (11, 23087), (14, 23162),

Gene: Donatella_30 Start: 23438, Stop: 23635, Start Num: 8
Candidate Starts for Donatella_30:
(Start: 8 @23438 has 16 MA's), (11, 23477), (14, 23552),

Gene: FosterFrank_30 Start: 21354, Stop: 21545, Start Num: 9
Candidate Starts for FosterFrank_30:
(Start: 7 @21333 has 31 MA's), (Start: 9 @21354 has 1 MA's), (14, 21462),

Gene: Gibbzilla_29 Start: 19441, Stop: 19644, Start Num: 8
Candidate Starts for Gibbzilla_29:
(Start: 8 @19441 has 16 MA's), (11, 19480),

Gene: Globfish_31 Start: 21659, Stop: 21871, Start Num: 7
Candidate Starts for Globfish_31:
(Start: 7 @21659 has 31 MA's), (Start: 9 @21680 has 1 MA's), (11, 21710), (14, 21788),

Gene: GlobiWarming_30 Start: 21174, Stop: 21386, Start Num: 7
Candidate Starts for GlobiWarming_30:

(Start: 7 @21174 has 31 MA's), (11, 21225), (13, 21240), (14, 21303),

Gene: GoodLuckBabe_31 Start: 23556, Stop: 23753, Start Num: 8

Candidate Starts for GoodLuckBabe_31:

(Start: 8 @23556 has 16 MA's), (11, 23595), (14, 23670),

Gene: Gorpy_31 Start: 21368, Stop: 21592, Start Num: 7

Candidate Starts for Gorpy_31:

(Start: 7 @21368 has 31 MA's), (Start: 9 @21389 has 1 MA's), (11, 21419), (15, 21536), (16, 21578),

Gene: Guinevere_31 Start: 23146, Stop: 23343, Start Num: 8

Candidate Starts for Guinevere_31:

(Start: 8 @23146 has 16 MA's), (11, 23185), (14, 23260),

Gene: GumGum_31 Start: 21588, Stop: 21800, Start Num: 7

Candidate Starts for GumGum_31:

(Start: 7 @21588 has 31 MA's), (14, 21717),

Gene: Gusanita_29 Start: 22909, Stop: 23106, Start Num: 8

Candidate Starts for Gusanita_29:

(3, 22780), (Start: 8 @22909 has 16 MA's), (11, 22948), (14, 23023),

Gene: Halloweekend_29 Start: 22853, Stop: 23050, Start Num: 8

Candidate Starts for Halloweekend_29:

(Start: 8 @22853 has 16 MA's), (11, 22892), (14, 22967),

Gene: Henrique_30 Start: 21223, Stop: 21414, Start Num: 9

Candidate Starts for Henrique_30:

(Start: 7 @21202 has 31 MA's), (Start: 9 @21223 has 1 MA's), (14, 21331),

Gene: Hestia_31 Start: 21464, Stop: 21676, Start Num: 7

Candidate Starts for Hestia_31:

(Start: 7 @21464 has 31 MA's), (14, 21593),

Gene: Hillester_31 Start: 21425, Stop: 21637, Start Num: 7

Candidate Starts for Hillester_31:

(Start: 7 @21425 has 31 MA's), (Start: 9 @21446 has 1 MA's), (11, 21476), (14, 21554),

Gene: Ichiang_29 Start: 22872, Stop: 23069, Start Num: 8

Candidate Starts for Ichiang_29:

(Start: 8 @22872 has 16 MA's), (11, 22911), (14, 22986),

Gene: Isolde_31 Start: 21194, Stop: 21406, Start Num: 7

Candidate Starts for Isolde_31:

(Start: 7 @21194 has 31 MA's), (Start: 9 @21215 has 1 MA's), (11, 21245), (14, 21323),

Gene: Judy_30 Start: 21742, Stop: 21954, Start Num: 7

Candidate Starts for Judy_30:

(6, 21727), (Start: 7 @21742 has 31 MA's), (11, 21793), (14, 21871),

Gene: Kabloowy_31 Start: 21605, Stop: 21817, Start Num: 7

Candidate Starts for Kabloowy_31:

(Start: 7 @21605 has 31 MA's), (14, 21734),

Gene: Karkharias_29 Start: 21119, Stop: 21331, Start Num: 7
Candidate Starts for Karkharias_29:
(Start: 7 @21119 has 31 MA's), (Start: 9 @21140 has 1 MA's), (14, 21248),

Gene: KayMoney_30 Start: 21263, Stop: 21475, Start Num: 7
Candidate Starts for KayMoney_30:
(Start: 7 @21263 has 31 MA's), (Start: 9 @21284 has 1 MA's), (14, 21392),

Gene: Kihatsu_32 Start: 23492, Stop: 23689, Start Num: 8
Candidate Starts for Kihatsu_32:
(Start: 8 @23492 has 16 MA's), (11, 23531), (14, 23606),

Gene: Lasker_31 Start: 21433, Stop: 21645, Start Num: 7
Candidate Starts for Lasker_31:
(Start: 7 @21433 has 31 MA's), (Start: 9 @21454 has 1 MA's), (11, 21484), (14, 21562),

Gene: Lawnathon_31 Start: 21288, Stop: 21500, Start Num: 7
Candidate Starts for Lawnathon_31:
(Start: 7 @21288 has 31 MA's), (Start: 9 @21309 has 1 MA's), (11, 21339), (14, 21417),

Gene: Lenoxika_31 Start: 23142, Stop: 23339, Start Num: 8
Candidate Starts for Lenoxika_31:
(1, 22944), (5, 23097), (Start: 8 @23142 has 16 MA's), (11, 23181), (14, 23256),

Gene: LilyBell_29 Start: 21131, Stop: 21343, Start Num: 7
Candidate Starts for LilyBell_29:
(Start: 7 @21131 has 31 MA's), (Start: 9 @21152 has 1 MA's), (14, 21260),

Gene: MUWow_30 Start: 21452, Stop: 21664, Start Num: 7
Candidate Starts for MUWow_30:
(Start: 7 @21452 has 31 MA's), (Start: 9 @21473 has 1 MA's), (11, 21503), (14, 21581),

Gene: Mapleville_30 Start: 21358, Stop: 21570, Start Num: 7
Candidate Starts for Mapleville_30:
(Start: 7 @21358 has 31 MA's), (Start: 9 @21379 has 1 MA's), (11, 21409), (14, 21487),

Gene: MaterMagnus_31 Start: 21435, Stop: 21647, Start Num: 7
Candidate Starts for MaterMagnus_31:
(Start: 7 @21435 has 31 MA's), (Start: 9 @21456 has 1 MA's), (11, 21486), (14, 21564),

Gene: MidnightRain_31 Start: 21424, Stop: 21636, Start Num: 7
Candidate Starts for MidnightRain_31:
(Start: 7 @21424 has 31 MA's), (Start: 9 @21445 has 1 MA's), (11, 21475), (14, 21553),

Gene: MillySue_31 Start: 23043, Stop: 23252, Start Num: 8
Candidate Starts for MillySue_31:
(Start: 8 @23043 has 16 MA's), (10, 23070), (14, 23169),

Gene: Nandita_31 Start: 23146, Stop: 23343, Start Num: 8
Candidate Starts for Nandita_31:
(Start: 8 @23146 has 16 MA's), (11, 23185), (14, 23260),

Gene: NikkiHotWheels_31 Start: 21195, Stop: 21407, Start Num: 7
Candidate Starts for NikkiHotWheels_31:
(Start: 7 @21195 has 31 MA's), (11, 21246), (12, 21252), (13, 21261), (14, 21324),

Gene: PeggyLeg03_29 Start: 21731, Stop: 21943, Start Num: 7
Candidate Starts for PeggyLeg03_29:
(Start: 7 @21731 has 31 MA's), (Start: 9 @21752 has 1 MA's), (14, 21860),

Gene: Persistence_30 Start: 21462, Stop: 21674, Start Num: 7
Candidate Starts for Persistence_30:
(Start: 7 @21462 has 31 MA's), (11, 21513), (12, 21519), (13, 21528),

Gene: Popper_29 Start: 23059, Stop: 23256, Start Num: 8
Candidate Starts for Popper_29:
(1, 22861), (Start: 8 @23059 has 16 MA's), (11, 23098), (14, 23173),

Gene: QuinnAvery_31 Start: 23236, Stop: 23433, Start Num: 8
Candidate Starts for QuinnAvery_31:
(Start: 8 @23236 has 16 MA's), (11, 23275), (14, 23350),

Gene: RadFad_31 Start: 21425, Stop: 21637, Start Num: 7
Candidate Starts for RadFad_31:
(Start: 7 @21425 has 31 MA's), (Start: 9 @21446 has 1 MA's), (11, 21476), (14, 21554),

Gene: Raphaella_31 Start: 21359, Stop: 21571, Start Num: 7
Candidate Starts for Raphaella_31:
(Start: 7 @21359 has 31 MA's), (Start: 9 @21380 has 1 MA's), (11, 21410), (14, 21488),

Gene: Richie_31 Start: 21440, Stop: 21652, Start Num: 7
Candidate Starts for Richie_31:
(Start: 7 @21440 has 31 MA's), (Start: 9 @21461 has 1 MA's), (11, 21491), (14, 21569),

Gene: Ryan_31 Start: 23757, Stop: 23954, Start Num: 8
Candidate Starts for Ryan_31:
(Start: 8 @23757 has 16 MA's), (11, 23796), (14, 23871),

Gene: Saintcarr_31 Start: 23319, Stop: 23516, Start Num: 8
Candidate Starts for Saintcarr_31:
(Start: 8 @23319 has 16 MA's), (11, 23358), (14, 23433),

Gene: Sakai_31 Start: 21368, Stop: 21580, Start Num: 7
Candidate Starts for Sakai_31:
(Start: 7 @21368 has 31 MA's), (Start: 9 @21389 has 1 MA's), (11, 21419), (14, 21497),

Gene: Satrap_31 Start: 21534, Stop: 21746, Start Num: 7
Candidate Starts for Satrap_31:
(Start: 7 @21534 has 31 MA's), (14, 21663),

Gene: Schism_31 Start: 23146, Stop: 23343, Start Num: 8
Candidate Starts for Schism_31:
(Start: 8 @23146 has 16 MA's), (11, 23185), (14, 23260),

Gene: Shukran_31 Start: 21534, Stop: 21746, Start Num: 7

Candidate Starts for Shukran_31:
(Start: 7 @21534 has 31 MA's), (14, 21663),

Gene: SonDevVon_30 Start: 21361, Stop: 21573, Start Num: 7
Candidate Starts for SonDevVon_30:
(Start: 7 @21361 has 31 MA's), (Start: 9 @21382 has 1 MA's), (11, 21412), (14, 21490),

Gene: SpicyFrank_31 Start: 21660, Stop: 21872, Start Num: 7
Candidate Starts for SpicyFrank_31:
(Start: 7 @21660 has 31 MA's), (Start: 9 @21681 has 1 MA's), (14, 21789),

Gene: Sporco_32 Start: 21437, Stop: 21628, Start Num: 9
Candidate Starts for Sporco_32:
(Start: 7 @21416 has 31 MA's), (Start: 9 @21437 has 1 MA's), (11, 21467), (14, 21545),

Gene: ThayneTheZag_31 Start: 21579, Stop: 21791, Start Num: 7
Candidate Starts for ThayneTheZag_31:
(Start: 7 @21579 has 31 MA's), (14, 21708),

Gene: ToastyOats_33 Start: 23777, Stop: 23974, Start Num: 8
Candidate Starts for ToastyOats_33:
(Start: 8 @23777 has 16 MA's), (11, 23816), (14, 23891),

Gene: Toodles_32 Start: 23607, Stop: 23804, Start Num: 8
Candidate Starts for Toodles_32:
(Start: 8 @23607 has 16 MA's), (11, 23646), (14, 23721),

Gene: Yonex_31 Start: 23757, Stop: 23954, Start Num: 8
Candidate Starts for Yonex_31:
(Start: 8 @23757 has 16 MA's), (11, 23796), (14, 23871),

Gene: YoungHarleezy_31 Start: 21438, Stop: 21650, Start Num: 7
Candidate Starts for YoungHarleezy_31:
(Start: 7 @21438 has 31 MA's), (Start: 9 @21459 has 1 MA's), (11, 21489), (14, 21567),

Gene: Zaheer_31 Start: 23846, Stop: 24043, Start Num: 8
Candidate Starts for Zaheer_31:
(Start: 8 @23846 has 16 MA's), (11, 23885), (14, 23960),