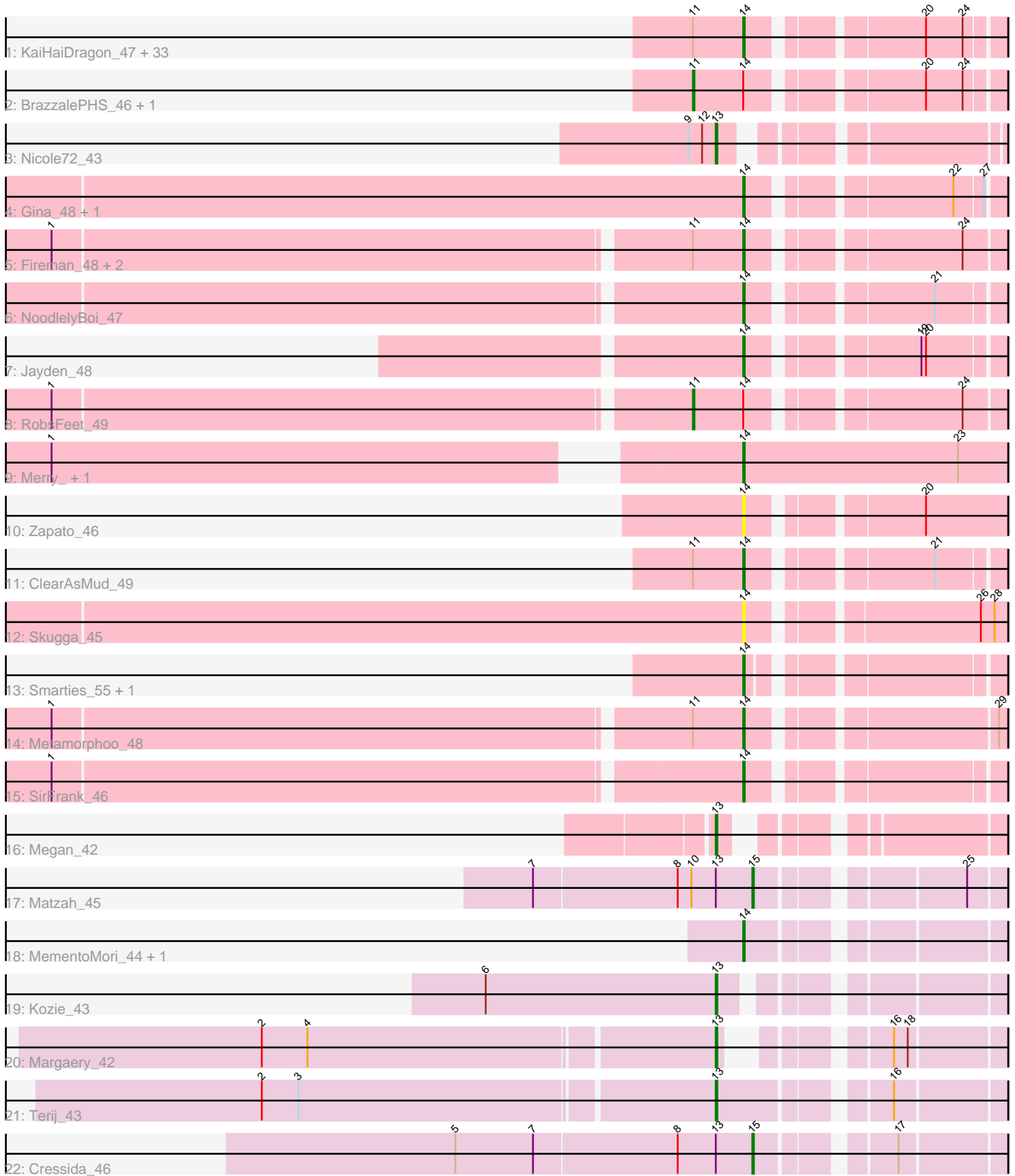


Pham 305020



Note: Tracks are now grouped by subcluster and scaled. Switching in subcluster is indicated by changes in track color. Track scale is now set by default to display the region 30 bp upstream of start 1 to 30 bp downstream of the last possible start. If this default region is judged to be packed too tightly with annotated starts, the track will be further scaled to only show that region of the ORF with annotated starts. This action will be indicated by adding "Zoomed" to the title. For starts, yellow indicates the location of called starts comprised solely of Glimmer/GeneMark auto-annotations, green indicates the location of called starts with at least 1 manual gene annotation.

Pham 305020 Report

This analysis was run 06/08/26 on database version 649.

Pham number 305020 has 62 members, 7 are drafts.

Phages represented in each track:

- Track 1 : KaiHaiDragon_47, Hermeonysus_46, BeagleBug_46, EarickHC_47, Rockwell_46, PhedwardCullen_46, CrazyRich_46, Paschalis_46, Germa_48, Savannah_46, PierreOrion_47, Crisis_48, Jefe_47, Ganandorf_46, Selwyn23_48, Antares_47, Glorp_48, Scumberland_48, Ramiel05_46, Lucretia_47, Piperis_47, LittleFortune_48, Quhwah_50, Jollipop_47, Cranjjs_48, Phorgeous_46, Pulchra_48, Phrancesco_47, Kowalski_46, Honeyfin_48, Shotgun_46, Onika_46, PiperSansNom_47, Yeti_47
- Track 2 : BrazzalePHS_46, Busephilis_46
- Track 3 : Nicole72_43
- Track 4 : Gina_48, Teamocil_48
- Track 5 : Fireman_48, Tyumbra_46, Shrubaron_48
- Track 6 : NoodlelyBoi_47
- Track 7 : Jayden_48
- Track 8 : RobsFeet_49
- Track 9 : Merry_, Sunny_
- Track 10 : Zapato_46
- Track 11 : ClearAsMud_49
- Track 12 : Skugga_45
- Track 13 : Smarties_55, Ariadne_55
- Track 14 : Metamorphoo_48
- Track 15 : SirFrank_46
- Track 16 : Megan_42
- Track 17 : Matzah_45
- Track 18 : MementoMori_44, Cinna_43
- Track 19 : Kozie_43
- Track 20 : Margaery_42
- Track 21 : Terij_43
- Track 22 : Cressida_46

Summary of Final Annotations (See graph section above for start numbers):

The start number called the most often in the published annotations is 14, it was called in 45 of the 55 non-draft genes in the pham.

Genes that call this "Most Annotated" start:

- Antares_47, Ariadne_55, BeagleBug_46, Cinna_43, ClearAsMud_49, Cranjis_48, CrazyRich_46, Crisis_48, EarickHC_47, Fireman_48, Ganandorf_46, Germa_48, Gina_48, Glorp_48, Hermeonysus_46, Honeyfin_48, Jayden_48, Jefe_47, Jollipop_47, KaiHaiDragon_47, Kowalski_46, LittleFortune_48, Lucretia_47, MementoMori_44, Merry_, Metamorphoo_48, NoodlelyBoi_47, Onika_46, Paschalis_46, PhedwardCullen_46, Phorgeous_46, Phrancesco_47, PierreOrion_47, PiperSansNom_47, Piperis_47, Pulchra_48, Quhwah_50, Ramiel05_46, Rockwell_46, Savannah_46, Scumberland_48, Selwyn23_48, Shotgun_46, Shrubaron_48, SirFrank_46, Skugga_45, Smarties_55, Sunny_, Teamocil_48, Tyrumbra_46, Yeti_47, Zapato_46,

Genes that have the "Most Annotated" start but do not call it:

- BrazzalePHS_46, Busephilis_46, RobsFeet_49,

Genes that do not have the "Most Annotated" start:

- Cressida_46, Kozi_43, Margaery_42, Matzah_45, Megan_42, Nicole72_43, Terij_43,

Summary by start number:

Start 11:

- Found in 42 of 62 (67.7%) of genes in pham
- Manual Annotations of this start: 3 of 55
- Called 7.1% of time when present
- Phage (with cluster) where this start called: BrazzalePHS_46 (EC), Busephilis_46 (EC), RobsFeet_49 (EC),

Start 13:

- Found in 7 of 62 (11.3%) of genes in pham
- Manual Annotations of this start: 5 of 55
- Called 71.4% of time when present
- Phage (with cluster) where this start called: Kozi_43 (EI), Margaery_42 (EI), Megan_42 (EC), Nicole72_43 (EC), Terij_43 (EI),

Start 14:

- Found in 55 of 62 (88.7%) of genes in pham
- Manual Annotations of this start: 45 of 55
- Called 94.5% of time when present
- Phage (with cluster) where this start called: Antares_47 (EC), Ariadne_55 (EC), BeagleBug_46 (EC), Cinna_43 (EI), ClearAsMud_49 (EC), Cranjis_48 (EC), CrazyRich_46 (EC), Crisis_48 (EC), EarickHC_47 (EC), Fireman_48 (EC), Ganandorf_46 (EC), Germa_48 (EC), Gina_48 (EC), Glorp_48 (EC), Hermeonysus_46 (EC), Honeyfin_48 (EC), Jayden_48 (EC), Jefe_47 (EC), Jollipop_47 (EC), KaiHaiDragon_47 (EC), Kowalski_46 (EC), LittleFortune_48 (EC), Lucretia_47 (EC), MementoMori_44 (EI), Merry_ (EC), Metamorphoo_48 (EC), NoodlelyBoi_47 (EC), Onika_46 (EC), Paschalis_46 (EC), PhedwardCullen_46 (EC), Phorgeous_46 (EC), Phrancesco_47 (EC), PierreOrion_47 (EC), PiperSansNom_47 (EC), Piperis_47 (EC), Pulchra_48 (EC), Quhwah_50 (EC), Ramiel05_46 (EC), Rockwell_46 (EC), Savannah_46 (EC), Scumberland_48 (EC), Selwyn23_48 (EC), Shotgun_46 (EC), Shrubaron_48 (EC), SirFrank_46 (EC), Skugga_45 (EC), Smarties_55 (EC), Sunny_ (EC), Teamocil_48 (EC), Tyrumbra_46 (EC), Yeti_47 (EC), Zapato_46 (EC),

Start 15:

- Found in 2 of 62 (3.2%) of genes in pham
- Manual Annotations of this start: 2 of 55
- Called 100.0% of time when present
- Phage (with cluster) where this start called: Cressida_46 (EI), Matzah_45 (EI),

Summary by clusters:

There are 2 clusters represented in this pham: EI, EC,

Info for manual annotations of cluster EC:

- Start number 11 was manually annotated 3 times for cluster EC.
- Start number 13 was manually annotated 2 times for cluster EC.
- Start number 14 was manually annotated 43 times for cluster EC.

Info for manual annotations of cluster EI:

- Start number 13 was manually annotated 3 times for cluster EI.
- Start number 14 was manually annotated 2 times for cluster EI.
- Start number 15 was manually annotated 2 times for cluster EI.

Gene Information:

Gene: Antares_47 Start: 32488, Stop: 32634, Start Num: 14

Candidate Starts for Antares_47:

(Start: 11 @32455 has 3 MA's), (Start: 14 @32488 has 45 MA's), (20, 32587), (24, 32611),

Gene: Ariadne_55 Start: 34108, Stop: 34251, Start Num: 14

Candidate Starts for Ariadne_55:

(Start: 14 @34108 has 45 MA's),

Gene: BeagleBug_46 Start: 32269, Stop: 32415, Start Num: 14

Candidate Starts for BeagleBug_46:

(Start: 11 @32236 has 3 MA's), (Start: 14 @32269 has 45 MA's), (20, 32368), (24, 32392),

Gene: BrazzalePHS_46 Start: 32250, Stop: 32429, Start Num: 11

Candidate Starts for BrazzalePHS_46:

(Start: 11 @32250 has 3 MA's), (Start: 14 @32283 has 45 MA's), (20, 32382), (24, 32406),

Gene: Busephilis_46 Start: 32191, Stop: 32370, Start Num: 11

Candidate Starts for Busephilis_46:

(Start: 11 @32191 has 3 MA's), (Start: 14 @32224 has 45 MA's), (20, 32323), (24, 32347),

Gene: Cinna_43 Start: 32599, Stop: 32745, Start Num: 14

Candidate Starts for Cinna_43:

(Start: 14 @32599 has 45 MA's),

Gene: ClearAsMud_49 Start: 32364, Stop: 32510, Start Num: 14

Candidate Starts for ClearAsMud_49:

(Start: 11 @32331 has 3 MA's), (Start: 14 @32364 has 45 MA's), (21, 32469),

Gene: Cranjjs_48 Start: 32443, Stop: 32589, Start Num: 14
Candidate Starts for Cranjjs_48:
(Start: 11 @32410 has 3 MA's), (Start: 14 @32443 has 45 MA's), (20, 32542), (24, 32566),

Gene: CrazyRich_46 Start: 32252, Stop: 32398, Start Num: 14
Candidate Starts for CrazyRich_46:
(Start: 11 @32219 has 3 MA's), (Start: 14 @32252 has 45 MA's), (20, 32351), (24, 32375),

Gene: Cressida_46 Start: 32230, Stop: 32370, Start Num: 15
Candidate Starts for Cressida_46:
(5, 32038), (7, 32089), (8, 32182), (Start: 13 @32206 has 5 MA's), (Start: 15 @32230 has 2 MA's), (17, 32305),

Gene: Crisis_48 Start: 32243, Stop: 32389, Start Num: 14
Candidate Starts for Crisis_48:
(Start: 11 @32210 has 3 MA's), (Start: 14 @32243 has 45 MA's), (20, 32342), (24, 32366),

Gene: EarickHC_47 Start: 32166, Stop: 32312, Start Num: 14
Candidate Starts for EarickHC_47:
(Start: 11 @32133 has 3 MA's), (Start: 14 @32166 has 45 MA's), (20, 32265), (24, 32289),

Gene: Fireman_48 Start: 33773, Stop: 33922, Start Num: 14
Candidate Starts for Fireman_48:
(1, 33335), (Start: 11 @33740 has 3 MA's), (Start: 14 @33773 has 45 MA's), (24, 33896),

Gene: Ganandorf_46 Start: 32305, Stop: 32451, Start Num: 14
Candidate Starts for Ganandorf_46:
(Start: 11 @32272 has 3 MA's), (Start: 14 @32305 has 45 MA's), (20, 32404), (24, 32428),

Gene: Germa_48 Start: 32134, Stop: 32280, Start Num: 14
Candidate Starts for Germa_48:
(Start: 11 @32101 has 3 MA's), (Start: 14 @32134 has 45 MA's), (20, 32233), (24, 32257),

Gene: Gina_48 Start: 31918, Stop: 32064, Start Num: 14
Candidate Starts for Gina_48:
(Start: 14 @31918 has 45 MA's), (22, 32035), (27, 32053),

Gene: Glorp_48 Start: 32306, Stop: 32452, Start Num: 14
Candidate Starts for Glorp_48:
(Start: 11 @32273 has 3 MA's), (Start: 14 @32306 has 45 MA's), (20, 32405), (24, 32429),

Gene: Hermeonysus_46 Start: 32172, Stop: 32318, Start Num: 14
Candidate Starts for Hermeonysus_46:
(Start: 11 @32139 has 3 MA's), (Start: 14 @32172 has 45 MA's), (20, 32271), (24, 32295),

Gene: Honeyfin_48 Start: 32493, Stop: 32639, Start Num: 14
Candidate Starts for Honeyfin_48:
(Start: 11 @32460 has 3 MA's), (Start: 14 @32493 has 45 MA's), (20, 32592), (24, 32616),

Gene: Jayden_48 Start: 32615, Stop: 32761, Start Num: 14
Candidate Starts for Jayden_48:
(Start: 14 @32615 has 45 MA's), (19, 32711), (20, 32714),

Gene: Jefe_47 Start: 32230, Stop: 32376, Start Num: 14

Candidate Starts for Jefe_47:

(Start: 11 @32197 has 3 MA's), (Start: 14 @32230 has 45 MA's), (20, 32329), (24, 32353),

Gene: Jollipop_47 Start: 32569, Stop: 32715, Start Num: 14

Candidate Starts for Jollipop_47:

(Start: 11 @32536 has 3 MA's), (Start: 14 @32569 has 45 MA's), (20, 32668), (24, 32692),

Gene: KaiHaiDragon_47 Start: 32166, Stop: 32312, Start Num: 14

Candidate Starts for KaiHaiDragon_47:

(Start: 11 @32133 has 3 MA's), (Start: 14 @32166 has 45 MA's), (20, 32265), (24, 32289),

Gene: Kowalski_46 Start: 32279, Stop: 32425, Start Num: 14

Candidate Starts for Kowalski_46:

(Start: 11 @32246 has 3 MA's), (Start: 14 @32279 has 45 MA's), (20, 32378), (24, 32402),

Gene: Kozie_43 Start: 32123, Stop: 32275, Start Num: 13

Candidate Starts for Kozie_43:

(6, 31973), (Start: 13 @32123 has 5 MA's),

Gene: LittleFortune_48 Start: 32535, Stop: 32681, Start Num: 14

Candidate Starts for LittleFortune_48:

(Start: 11 @32502 has 3 MA's), (Start: 14 @32535 has 45 MA's), (20, 32634), (24, 32658),

Gene: Lucretia_47 Start: 32222, Stop: 32368, Start Num: 14

Candidate Starts for Lucretia_47:

(Start: 11 @32189 has 3 MA's), (Start: 14 @32222 has 45 MA's), (20, 32321), (24, 32345),

Gene: Margaery_42 Start: 31857, Stop: 31997, Start Num: 13

Candidate Starts for Margaery_42:

(2, 31569), (4, 31599), (Start: 13 @31857 has 5 MA's), (16, 31929), (18, 31938),

Gene: Matzah_45 Start: 32700, Stop: 32840, Start Num: 15

Candidate Starts for Matzah_45:

(7, 32559), (8, 32652), (10, 32661), (Start: 13 @32676 has 5 MA's), (Start: 15 @32700 has 2 MA's), (25, 32817),

Gene: Megan_42 Start: 33574, Stop: 33720, Start Num: 13

Candidate Starts for Megan_42:

(Start: 13 @33574 has 5 MA's),

Gene: MementoMori_44 Start: 32287, Stop: 32433, Start Num: 14

Candidate Starts for MementoMori_44:

(Start: 14 @32287 has 45 MA's),

Gene: Merry_ Start: 33793, Stop: 33966, Start Num: 14

Candidate Starts for Merry_:

(1, 33382), (Start: 14 @33793 has 45 MA's), (23, 33934),

Gene: Metamorphoo_48 Start: 33035, Stop: 33184, Start Num: 14

Candidate Starts for Metamorphoo_48:

(1, 32597), (Start: 11 @33002 has 3 MA's), (Start: 14 @33035 has 45 MA's), (29, 33179),

Gene: Nicole72_43 Start: 34182, Stop: 34334, Start Num: 13

Candidate Starts for Nicole72_43:

(9, 34164), (12, 34173), (Start: 13 @34182 has 5 MA's),

Gene: NoodlelyBoi_47 Start: 32576, Stop: 32722, Start Num: 14

Candidate Starts for NoodlelyBoi_47:

(Start: 14 @32576 has 45 MA's), (21, 32681),

Gene: Onika_46 Start: 32254, Stop: 32400, Start Num: 14

Candidate Starts for Onika_46:

(Start: 11 @32221 has 3 MA's), (Start: 14 @32254 has 45 MA's), (20, 32353), (24, 32377),

Gene: Paschalis_46 Start: 32261, Stop: 32407, Start Num: 14

Candidate Starts for Paschalis_46:

(Start: 11 @32228 has 3 MA's), (Start: 14 @32261 has 45 MA's), (20, 32360), (24, 32384),

Gene: PhedwardCullen_46 Start: 32012, Stop: 32158, Start Num: 14

Candidate Starts for PhedwardCullen_46:

(Start: 11 @31979 has 3 MA's), (Start: 14 @32012 has 45 MA's), (20, 32111), (24, 32135),

Gene: Phorgeous_46 Start: 32124, Stop: 32270, Start Num: 14

Candidate Starts for Phorgeous_46:

(Start: 11 @32091 has 3 MA's), (Start: 14 @32124 has 45 MA's), (20, 32223), (24, 32247),

Gene: Phrancesco_47 Start: 32414, Stop: 32560, Start Num: 14

Candidate Starts for Phrancesco_47:

(Start: 11 @32381 has 3 MA's), (Start: 14 @32414 has 45 MA's), (20, 32513), (24, 32537),

Gene: PierreOrion_47 Start: 32428, Stop: 32574, Start Num: 14

Candidate Starts for PierreOrion_47:

(Start: 11 @32395 has 3 MA's), (Start: 14 @32428 has 45 MA's), (20, 32527), (24, 32551),

Gene: PiperSansNom_47 Start: 32568, Stop: 32714, Start Num: 14

Candidate Starts for PiperSansNom_47:

(Start: 11 @32535 has 3 MA's), (Start: 14 @32568 has 45 MA's), (20, 32667), (24, 32691),

Gene: Piperis_47 Start: 32247, Stop: 32393, Start Num: 14

Candidate Starts for Piperis_47:

(Start: 11 @32214 has 3 MA's), (Start: 14 @32247 has 45 MA's), (20, 32346), (24, 32370),

Gene: Pulchra_48 Start: 32644, Stop: 32790, Start Num: 14

Candidate Starts for Pulchra_48:

(Start: 11 @32611 has 3 MA's), (Start: 14 @32644 has 45 MA's), (20, 32743), (24, 32767),

Gene: Quhwah_50 Start: 32876, Stop: 33022, Start Num: 14

Candidate Starts for Quhwah_50:

(Start: 11 @32843 has 3 MA's), (Start: 14 @32876 has 45 MA's), (20, 32975), (24, 32999),

Gene: Ramiel05_46 Start: 32279, Stop: 32425, Start Num: 14

Candidate Starts for Ramiel05_46:

(Start: 11 @32246 has 3 MA's), (Start: 14 @32279 has 45 MA's), (20, 32378), (24, 32402),

Gene: RobsFeet_49 Start: 33283, Stop: 33465, Start Num: 11

Candidate Starts for RobsFeet_49:

(1, 32878), (Start: 11 @33283 has 3 MA's), (Start: 14 @33316 has 45 MA's), (24, 33439),

Gene: Rockwell_46 Start: 32279, Stop: 32425, Start Num: 14

Candidate Starts for Rockwell_46:

(Start: 11 @32246 has 3 MA's), (Start: 14 @32279 has 45 MA's), (20, 32378), (24, 32402),

Gene: Savannah_46 Start: 32306, Stop: 32452, Start Num: 14

Candidate Starts for Savannah_46:

(Start: 11 @32273 has 3 MA's), (Start: 14 @32306 has 45 MA's), (20, 32405), (24, 32429),

Gene: Scumberland_48 Start: 32501, Stop: 32647, Start Num: 14

Candidate Starts for Scumberland_48:

(Start: 11 @32468 has 3 MA's), (Start: 14 @32501 has 45 MA's), (20, 32600), (24, 32624),

Gene: Selwyn23_48 Start: 32478, Stop: 32624, Start Num: 14

Candidate Starts for Selwyn23_48:

(Start: 11 @32445 has 3 MA's), (Start: 14 @32478 has 45 MA's), (20, 32577), (24, 32601),

Gene: Shotgun_46 Start: 32105, Stop: 32251, Start Num: 14

Candidate Starts for Shotgun_46:

(Start: 11 @32072 has 3 MA's), (Start: 14 @32105 has 45 MA's), (20, 32204), (24, 32228),

Gene: Shrubaron_48 Start: 32950, Stop: 33099, Start Num: 14

Candidate Starts for Shrubaron_48:

(1, 32512), (Start: 11 @32917 has 3 MA's), (Start: 14 @32950 has 45 MA's), (24, 33073),

Gene: SirFrank_46 Start: 32146, Stop: 32292, Start Num: 14

Candidate Starts for SirFrank_46:

(1, 31708), (Start: 14 @32146 has 45 MA's),

Gene: Skugga_45 Start: 31934, Stop: 32086, Start Num: 14

Candidate Starts for Skugga_45:

(Start: 14 @31934 has 45 MA's), (26, 32069), (28, 32078),

Gene: Smarties_55 Start: 34108, Stop: 34251, Start Num: 14

Candidate Starts for Smarties_55:

(Start: 14 @34108 has 45 MA's),

Gene: Sunny_ Start: 33795, Stop: 33968, Start Num: 14

Candidate Starts for Sunny_:

(1, 33384), (Start: 14 @33795 has 45 MA's), (23, 33936),

Gene: Teamocil_48 Start: 32017, Stop: 32163, Start Num: 14

Candidate Starts for Teamocil_48:

(Start: 14 @32017 has 45 MA's), (22, 32134), (27, 32152),

Gene: Terij_43 Start: 31296, Stop: 31460, Start Num: 13

Candidate Starts for Terij_43:

(2, 31008), (3, 31032), (Start: 13 @31296 has 5 MA's), (16, 31392),

Gene: Tyrumbra_46 Start: 33116, Stop: 33265, Start Num: 14

Candidate Starts for Tyrumbra_46:

(1, 32678), (Start: 11 @33083 has 3 MA's), (Start: 14 @33116 has 45 MA's), (24, 33239),

Gene: Yeti_47 Start: 32280, Stop: 32426, Start Num: 14

Candidate Starts for Yeti_47:

(Start: 11 @32247 has 3 MA's), (Start: 14 @32280 has 45 MA's), (20, 32379), (24, 32403),

Gene: Zapato_46 Start: 32426, Stop: 32578, Start Num: 14

Candidate Starts for Zapato_46:

(Start: 14 @32426 has 45 MA's), (20, 32525),